

# OMUKWETU

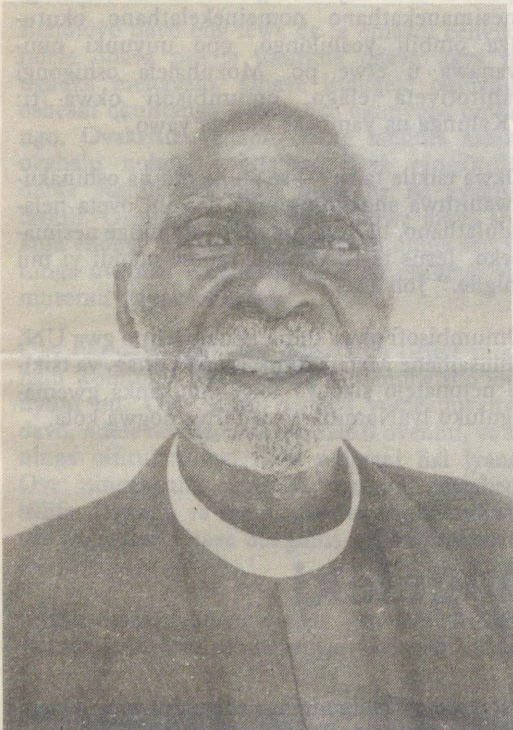


50c

No. 22

ISBN 0-620-06828-0

## ELCIN A GWEDHELWA KO OMUSITA GUMWE MIILONGA



Tatekulu Moses Shikongo ngoka a lele egongalo Onawa omimvo konyala 10 nokwa tungitha ongeleka yoshinanenalela.

**Omusita Lukas Haindongo, okwa yapulilwa oshilonga shuusitagongalo 29.10.1989 megongalo Onawa, moshitayingeleki shUuninginino. Okwa gwedha kongundu yaasita konyala 135 ya adhika nale miilonga yOngeleki yaELCIN. Aasita 21 mOngeleki ndjoka otaa li ngaashingeyi oshikwiila shawo shevululuko, konima yomimvo dhawo odhindji miilonga.**

Okulangekwa kwomusita Haindongo megongalo moka a yapulilwa komumbisofi Kleopas Dumeni, mesiku licyapulo, okwa thigi natango omagongalo 12 gaa na nando omusita, osho wo iikandjolongwa iyali, uudiakoni nUuleligumbo. Oku na wo oondjakulwambinga dhilwe miitayingeleki inaadhi yalulilwa manga komwaalu gwomagonglao, ihe nadho odha pumbwa eyakulo lyopausita ando ethimbo kehe.

KUushimba mokati kiilyo yomagongalo ga-ELCIN mbyoka tayi longo mehalakano ompu-

mbwe yaasita namo otayi lulumike. "Olwindji aantu mboka kaye na omahala mpoka taa gongalele, yo itaa mono eyakulo lyopausita pethimbo ndyoka ye li pumbwa, onkene oye endjelela owala konyala keikwatho lyawo yene," osho omutonateli gwoshilonga shopambepo mUushimba, omusita Josef Kapewangolo a hokolola pOmukwetu.

Omusita Kapewangolo ota ti, mOsoondaha, aluhe oha kambadhala okuninga omalangelokalunga mokati kaantu mboka pomahala ge vule gane mesiku. Omolwompumbwe yaasita momagongalo tayi thelekenya ngeyi, Elelongeleki momutumba gwalyo muKotoba gwa zi ko, olya tokola okweegulula ompito, tu tye omagongalo

gaali taga vulu okukala melelo lyomusita gumwe oshita.

Ongeleki otayi ligamene wo netegameno enene kaalongwasita yahetatu mboka konima yeidheulo lyawo petameko lyomumvo tagu ya, tashi vulika ya ka yapulilwe oshilonga. "Ito ka vula sha miilonga yoye, ngele ino pewa omagano gOmbepo Ondjapuki," osho omumbisofi a dhibbulukitha omuyapulwa Haindongo moshituthi shoka she.

Omeho gaanona nogaakuluntu oga li taga adhimma sho taga tala iiningwanima yoshituthi sheyapulo mOngeleka ya li kaayi na we eha tali gwanene nompadhi yimwe ayike. Omuyapulwa okwa hempulula newi lya yeluka eitaalo lye lyopakriste ndyoka komukanka gwalyo ta ka wilika egongalo ndyoka. Sho a gana egano lyopashilonga omumbisofi okwe mu pe pambelewa oo-

Tala kependja tali landula

## Emoniko konima yomimvo 50

Onkalo yaNamibia oya kala tayi yanga momadhiladhilo goyendji. Yamwe otaa yaguma, yamwe taa mono omamoniko nayakwawo ngiika tayi yanga owala momadhiladhilo. Omukulupe Berta Kalola (70), methano ndila, okwi ile mombelewa yOmukwetu ta holola shoka ta ti oku ulukilwa, kombinga yaNamibia, nale konima yomimvo 50 dha piti.

Pomathimbo ngaka nuumvo, kuku Berta okwi ipyakidhila a tseye ando omusamane Shikongo, ngoka ine mu tseye oShikongo shalye nomomukunda gunipo mOngandjera, ngele oku li tuu natango momwenyo nenge aawe. Ekongo ndika olyo lye eta kuku Berta mombelewa yOmukwetu. Okwe shi hokolola ngeyi:

Osha li ashike ongula yoshitumbetango, te fala iinima yi ka nwe, sho pwa ningwa endundumo enene, nopwa tsiimi olwithi. Pethimbo ndyoka okakadhona ngiika komimvo 14 nenge 15. Mokulengalenga onda mono aalumentu yaali ya zala oonguwo oontokele ye na omawawa. Ohaluka ya ningi yatatu.

Aalumentu mboka oyi ithana ndje ndi ya landule, ihe Kalunga okwa ti, inandi shi ninga, oshoka ondi na ondjo yethigululo. Onda lombwelwa ndi ka shashwe kuFeelani Anneli (omutumwa omukulu puElim). Onda pewa etumwalaka ndi li faalele kuAnneli tali ti:

Aakwaniilwa otaa ka hula mo moshilongo, e taku ya iita iidhigu, iita yemanguluko. Mboka

Tala kep. 10



Kuku Berta Kalola, oti ipula noshimpwiyu nkene e na okumona omusamane Shikongo ngoka a pelwe oshimpwiyu shedhiginino lyondhimbo.

**OMBILI NEMANGULUKO OYO  
YA KALA EINDILO  
LYOSHIGWANA**

Ehogololo lyopahistoli iiwike ya yi muNamibia olyu ulika puuyelele shono sha kala sha yuulukiwa koyendji moshigwana shika, nokutya ombili nemanguluko. Mbi-ka oyo ya kala enota nondjala onene maantu, onkene aakulupe, iilema, noombendjele, aavu naakolele, aaposi naanameho naagundjuka oya yile puuketha wehogololo okuulika shoka ya hala.

Inashi holama nkene kwa li wo ku na oongundu dhimwe dhomo-mwaalu omushona ndhoka dha ka hogolola elalakano nondjuulukwe yoshigwana yaa gwanithwe. Ohenda onene wo sho mokati kaa-holimbili nemanguluko mu na mboka ya tula omandhindhiliko gawo pomahala ga puka omolwomapuko gomuntu. Mboka naa kale ashike nombili, Kalunga mwene e shi shi shoka ya hala.

Otashi ti shike ombili nemanguluko? Otashi ti shike okupya omutenya esiku alihe nokusa ondjala nenota omolwiitya mbyoka iyali? Oshinakugwanithwa andola shongundu ndjoka twa hogolola yi gandje eyamukulo komapulo ge li pombanda, oshoka omokupopya kwayo (omauvaneko) nomeihumbato lyayo ye tu itaalitha kutya oyi tu nine iinima mbyoka iyali, ombili nemanguluko.

Peha lyongeleki, omumbisofi K. Dumeni okwa popya peha limwe koshipala shaawiliki yopapolotika medhina lyOngeleki ye e ta ti, Ongeleki oya hala okukala iilyo yongundu ndjoka tayi lalakanene uuyuuki nombili. Omuwambo sho a tile euvaneke ongunga, oshigwana itashi ka dhimbwa nando ondjuulukwe yasho ndjika, sigo ye shi gwanithilwa.

Sebulon Ekandjo

**Ino dhimbwa okwiilongekidhila oshifo shoye omumvo tagu ya. Ondando oyi li natango R 8,00 muNamibia nenge R20,00 kombanda yomafuta.**

**Dumeni ta hiya ombili, oveta nelandulathano**

Konima yoshizemo shehogololo, omumbisofi Kleopas Dumeni peha lyOngeleki ya ELCIN, okwa pandula oongundu adhihe dha li melongelokumwe opo ehogololo li



**Omumbisofi K. Dumeni**

ningwe pamathaneko. Okwa pandula tango Aanambia yoyene, ligwanahangano, omukalelipo gwayo muNamibia netanga

lya UNTAG, uuyuni, Ngoloneyandjaji naalongi pamwe naye.

“Otwa piti ekonakono notatu shi pandulile Kalunga nenyanyu,” osho omumbisofi a ulike kensindano ndyoka lya zi mehogololo, a ti kutya olye tu egululile ompito tu tokole tseyene onakuyiwa yoshilongo shetu, konima yomahepeko gomimvo odhindji, elongitho lyoonkondo noku-pangelwa kaakwiilongo.

Omumbisofi okwa pandula omagalikano gootaali muNamibia nomuuyuni. Okwa pandula wo oongundutonateli dhehogololo dha zile moongeleki nomomahangano galwe nokwa ti: “Tsikileni ngaaka negalikano, Kalunga oha yamukula. Aanelago oyo mboka aanambili.” Mat.5:9

Mokudhiladhila onakuyiwa yoshilongo omumbisofi okwa hiya oshigwana ashihe shi longe mesimanekathano nomeinekelathano okutunga ombili yoshilongo, opo uuyuuki nuwanawa u etwe po. Mokuhalela oshigongi oshitotiveta elago, omumbisofi okwa ti: “Kalunga na yambeke iilonga yawo.”

Okwa tsikile ta ti: “Tse atuhe otu na oshinakugwanithwa shokudhiginina ombili, oveta nelandulathano, tu dhiginineni tu shi ninge nesimaneke. Jesus ta ti: Ombili yandje otandi yi mu thigile.” Joh 14:27

Omumbisofi okwa indile omukalelipo gwa UN, omusamane Martti Ahtisaari na Untag, ya tsikile netonatelelo sigo ya thigi omukanka gwemanguluko lyaNamibia gwa fulwa nogwa kola.

**Kiilyo yOngeleki**

**Owe shi dhiladhila ngaa?**

Andola Ongeleki oya li inaayi sila aagaluki oshimpwiyu, ando oya kwathwa kulye? Okuza okathimbo hoka kotangotango, uuna pwa konekiwa kutya, evi ngiika otali ka manguluka, Ongeleki oya holola kutya, oyi ilongekidha okutaamba oshimpwiyu.

Okukwatha aagaluki okwa pula iimaliwa oyindjiyindji. Lagonene Ongeleki oya pewa iimaliwa noya yakula nawa. Omalunza giimaliwa mbika ogo iilongo nomahangano gi ili nogi ili, ihe ombinga onene yomakwatho ngaka oya zi kOngeleki.

Owa tseyu tuu mpoka iimaliwa hayi zi okuhumbata iilonga yOngeleki? Olunza olunene olu iigandjwa yaakwanegongalo. Iigandjwa oyo ofuto yuukwashilyo womukwanegongalo. Ihe iigandjwa ya futwa kaakwanegongalo ihayi siikile omayalulo agehe. Etata natango otali zi pondje?

Owa tseyu tuu kutya, andola aakwanegongalo ayehe ya fute iigandjwa yawo, ngaashi Oshigongingeleki sha adhika sha tokola, kutya iigandjwa oyi na okugandjwa, andola Ongeleki itayi pumbwa nando ekwatho tali zi we pondje?

Patokolo lyOshigongingeleki omukwanegongalo kehe oku na okufuta opelesenda yimwe yomondjambi ye (opelesenda yimwe yomooranda ethele limwe oyo oranda yimwe.) Ngoka ha taamba ondjambi yi li nawa, oku na okugandja oyindji yi vule mbyoka tayi tegelelwa kungoka ha taamba ondjambi onshona. Patokolo lyOshigongingeleki uuyuuki otawu gwanithwa ngeyi.

Owa tseyu tuu kutya omolwashike oshiwana-wa unene, ngele Ongeleki inayi pumbwa we ekwatho tali zi pondje? Oomwedhi ndhika Ongeleki oya pewa iimaliwa oyindji ya zi pondje. Shika osha ningwa, oshoka omeho gaantu oyeindji miilongo oyindji, oga taalela kuNamibia li li pokumanguluka. Ihe omalunza ngoka otaga ka pwina po nenge otaga ka shonopala, shaa tuu onkalo muka ya hwepopala. Uuyuni otawu ka tegelela oshilongo sha manguluka shi isile oshimpwiyu, nOngeleki nayo oyi na okwiithikame-na.

Ongeleki otayi ka pumbwa iimaliwa oyindji nando egaluko lyaantu lya ningwa. Otayi ka pumbwa iimaliwa, opo yi fute omayalulo ga hupu ko, nokulongitha miilonga yetungululo.

**Martin Rantala  
Omugandjimayeke miiniwe yOngeleki**

# OIIMATI IWA KOMUKRISTE KESHE NOSHILI

Oshiiimati ihashi wile kokule nomuti oko sha ima. Omukriste keshe oove omuti ha wiima oiimati. Omukriste keshe okwa teeelwa a imike oiimati iwa meongalo omo yee e li mo oshilyo. Omuneumbo yoo ou na okukala noiimati i hafifa meumbo, poushiinda nomudingonoko womukunda oo ove u limo. U ha kombe pondje moo meumbo mwa kaka.

Tete kendabala u wapeke onghalo yoye nokaana komomwenyo woye oko ihaka fufya mwene, to hovele okulongela Kalunga ove u ha ye kokule naye. Osheshi eshi wa shiiva Kalunga, ou na oku mu fimaneka. Omadiladilo oye a ha ninge ongaho, a ha pilalale, u he litale oove omuna-ndunge. U ha pingakanife oshili noiipupulu, efimano u he li pe ovanhu ponhele yoku li pa Kalunga. U ha landule ouwa wounyuni, osheshi ava ve li ngaha, itava longele Kalunga, ndele omadimo avo vene.

Eendjovo davo oda fewa da fa omaadi eenyiki, ndele ohava pukifa omitima daava hava tengauka meitavelo. Ohave litangele omhango osheshi okulitanga kwavo oko okunyona omhango. Ovakriste vahapu ohava landula ashike okahalu nohole yoimaliwa. Ova pingakafifa ohole yashili noshihole nope he na eyakulo lashili. Ovanvasha mefimbo vamwe otava shikula ehongo la puka omolwovakulunhu ovo va ninga ovapika voikunwa nove na omhepo yomutondi noyoutondwe.

Ova fifa omaliudo avo, ndele tave liefele mouhalu womitima davo. Ova pwila molwiso lounyuni ou. Ova dipaa ouona vomeemwenyo davo, ndele tava kala va fa ve he fi ovanhu, ve lilinga oifitukuti hai tilifa noiinyani hai lyana. Ova pingakanifa onghedi younhu nonghedi itilifa. Ovanhu va tya ngaha ova kanifa oukwaya wopanhu. Otava hongaula vakwao meitavelo.

Ovashamane vamwe osho yo ovakulukadi vamwe paife ova ninga ashike ovakriste edina,

## Omatokolo a dja kElelongeleki 18-20.10.1989

527/89

Molweeprojekta dihapu, tadi kongelwa o-makwafo kEhanganotumo laSoomi (FELM) ko Finn Church Aid nokOngongahangano yOvakwaluther (LWF), Elelongeleki ola ufa vomadina tas landula va kale mokangudu kekwaatkanifo (co-ordinating committee) pokati kaELCIN nOmahangano a tumbulwa pombada:

Moses Amkongo, Matias Ngipandulwa, Amushanga weeprojekta dOngeleki, Johannes Sindano, uuna pe na sha tashi kumu Kavango, omudlinini wolniwe nge pe na sha tashi kumu oiniwe yOngeleki nomutungifi wOngeleki uuna pe na sha tashi kumu omatungo.

534/89

Elelongeleki eshi la koneka chalo liwa movafita okulixumifa komesho, ola tokola kutya omunashilonga na kale a longa tete meongalo ile pamwe pe lili eedula ngeenge odinini nhatu (3), fimbo inaa pewa omhito yokulixumifa komesho okuninga ku na omatomhelo omafininiki.

nande voo ove li kokule nondjila yaKalunga. Ounona paife ihava pangelwa vali, osheshi kape na ou te va pangele. Ounona kave na vali eduliko, osheshi novakulunhu vavo pefimbo eli eduliko ove li enda pomunghulo. Omolwaasho oshiiimati osha wila meni lomuti oo sha ima kuwo nokaana komomwenyo oko ihaka fufya mwene oka fya filufilu.

Omunhu okwa ninga omusheki womukongi wondjila yexupifo note mu hongaula noku mu sheka alushe, noku mu kolekela momapuko. Osho ngaha omunhu ta puka mo mondjila youkongimwenyo, ta efa oshili nde ta landula eliko lounyuni olo hali xulupo nosho ngaha te lilandi-fapo kusatana. Ota pukifa ouona vanini ovo ve li ovatekuli voshiwana shokomongula.

Kala u na onghenda noshiwana, nde to tungu pamwe nasho eitavelo lashili olo tali shilile shili memanguluko lokomwenyo ihau xulupo. Shuna mongudu yovaitaveli vakweni.

Shililamo ovo va kofamo meitavelo va fa va fyamo muJesus Kristus mwene wexupifo. Ounyuni oo we litula muwo, oo ondjabi ya ondoka oyo hai xulupo nefimano layo olopakafimbo. Oyo hai shunduka mepakumo leisho. Efa okusheka nokuhongaula. Konga Kristus manga ta monika. Osheshi efiku otali uya omo ye ita monika vali. U ha ka ninge ongoukadona venya vatano omalai.

Dimbulukwa, ove ou na Omupopili nomwaa-meni. Oye Omhepo Iyapuki, tai kwoongele nevaengeli, otai ku minikile nde tai ku diininine muJesus Kristus meitavelo limwe la yuka. Dama Kalunga kashili ou te ku mangulula me-fyo nomepangelo lasatana, ove u ninge omunhu waye u mu longele mouyuuki nomouyapuki nomelao laalushe, mounyuni ou nomounyuni tau uya.

Eneas Vatileni Haifidi

537/89

Molwombillive ya dja kuHamushangandjai wa CCN, tai indile ELCIN a konge oukwa-shilyo mOmahangano Bengeleki; All African Council of Churches (AACC/Oraata yBengeleki adishe muAfrika) nomu World Council of Churches (WCC/Oraata yBengeleki adishe mounyuni) ovapashukili voitaingeleki, ova pewa oshisho shokukonga ouyelele wa wana moshinima osho, ope ELCIN a ninge etokolo moshinima.

544/89

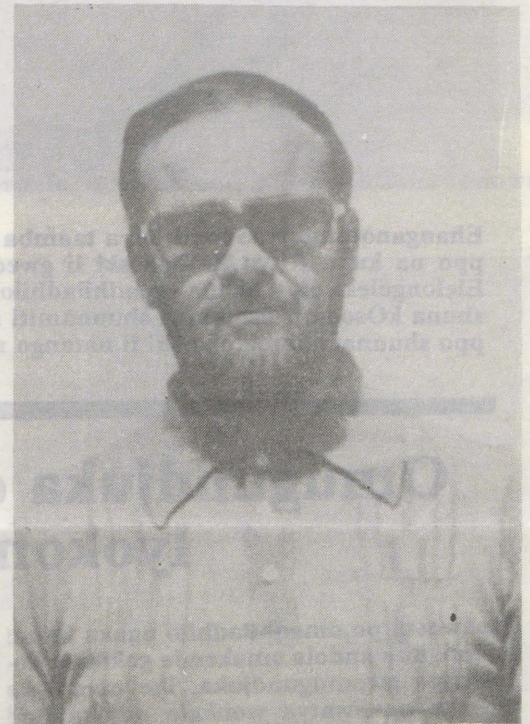
Opo Ongeleki yaELCIN i longe nawa etumo molando, Elelongeleki ola tokola oku indila Ehanganotumo laSoomi (FELM) oi-maliwa yetungo longeleka yomoshilando shepangelo laNamibia, mOvenduka. Felm okwa indilwa eindilo loimaliwa e li yandje komaongalo omoshilandopangelo sha-Soomi, Helsingki.

Oprojekta ei ya pewa edina ELCIN Centre Windhoek, okutungila mOkatutura oya kwatelela mo;

1. Ongeleka yoovene
2. Ondjuwo yokwoongalela
3. Oshikunino shounona
4. Ongulu yovaenda
5. Oshililo
6. Ombelewa yoshital
7. Neumbo lomufita.

548/89

Petameko lOkambunga (Okangudu koma-faneko moshital shaKavango), Elelongeleki otali ifana ovatumwa vakulu, Matti na-Raili Seppala keyakulo laELCIN moshital shaKavango. Omufita Seppala a yakule moshilongatumo mokati kovanyasha, ye meme Raili a longe mofikola yOmbibeli moNkurenkuru, ye a ninge yo eekersesa dowina mouteku wopakriste.



Omufita Matti Seppala

Elelongeleki ola tokola omufita Toivo Mwoonde a shune mollonga youfita okudja Kotoba 1, 1989, molwounghundi wolutu omufita Mwoonde eshi ta nyengwa okulonga nawa oshilonga shoufita, okwa tokolelwa okupewa oshipundi shetulumuko okudja Januari 1, 1990.

571/89

Elelongeleki ola koleka efaneko lOkangu-du koiniwe okuyelula eendjabi dopendjela neepelesenda 5% komudo. Ovanailonga a-veshe ava ve li mopendjela 1973-1979, ova wedelwa eepelesenda mbali (2%). Opendjela yopedu lela oya yelulwa yo opo pa ha kale nande umwe ta pewa vali koshi R5.00

Aainyolithi amuhe yOmu-kwetu, otamu dhimbulukithwa ngele ope na ngoka inoo futa natango oshifo shoye, u shi ninge mbala, manga iilonga inaayi pata.

## Eso lyokomwenyo oshike?

Eso lyokomwenyo itali dhimbululwa nawa kunakukala mulyo. Eeno, osho oshi li pashito kutya nakukala meso iha dhimbululwa kutya okwa sa, onkee eso ndika hali monika momuntu ngoka e na omwenyo nota ende, ta popi, ta nu, ta li ye komwenyo gwe okwa sa. Itatu pumbwa tu tompakanithe eso ndika nomuntu a sa enota, nenge a sa ondjala nenge naandyoka a sa onkayi aawe, eso lyokomwenyo oshinima shopambepo.

Omuntu pakushitwa okuumbwa montsi yeve, e ta fudhilwa ombepo yaKalunga pa Gen. 2:7. Nombepo ndjika oyo ya ningi omuntu a ningi omunamwenyo a fa Kalunga e na oshifetha shaKalunga, ye a kale e na omwenyo gomomwenyo ngele e li mekwatathano nomushiti gwe. Eso ndika otali dhimbululwa mpoka omuntu te etha okukala kwe ku pangulwe komahalo ge mwene gopanyama ye ehalo lyaKalunga te li patele pondje.

Omuntu a sa komwenyo ota monika mpoka sho kee na ehalo lyoohapu dhaKalunga nonelandulathano lyonkalathano, ye ti itula muufuthi, muunkolwi, mondhinokalunga, mesimaneko lyiimenka, mokukolokosha, mokudhipaga, mokuhondela/nokuhondelwa nosho wo mokwaa-vulika.

Omwenyo ngele ogwa sa, kagu na we ontulo yasha yuumbanda wopaKalunga onkee kuye iinima mbyoka iihuna koshipala shaKalunga oyo iwanawa, naambyoka iwanawa kuKalunga, kuye uugoya nuukwaa na eputuko.

## Omugundjuka neso lyokomwenyo

Mokuyamukula epulo ndika otandi ka topola ongundu yaagundjuka moongundu ndatu:

Tala kepanja tali landula

## Ehiyo kosikola yOmbimbeli

*Osikola yOmbimbeli moNgwediva, otayi tseyitha etameko lyaalongwa aape yomumvo 1990, Kalunga ngele e shi hala. Omaindilo naga kale ngeyi:*

Omwiindili na kale e shi okulesha nokushanga, onzapo ye, ombapila yegongalo lyaandjawa, epopilo lyaakuluntu ye, ye na kale e na uukolele. Otwa tegelela wo naagaluki, ningeni omaindilo.

Omaindilo agehe otaga tegelelwa manga Januari inaagu pita, go naga ukithwe kondjukithi tayi landula:

Omukuluntusikola: E. Amaambo ELCIN  
Bible School, Ongwediva  
P/Bag X5505  
Oshakati  
9000



Ehanganotumo lyaSoomi, olya taamba eindilo lyElelongeleki, ethimbo lya tate Seppo na kuku Ritva Kalliokoski li gwedhelwe sigo Desemba 1989, mOnandjokwe. Elelongeleki olya holola omadhiladhilo galyo, kutya aanashilonga mbaka ngele ya shuna kOsoomi, oshilonga shuunamiti shomundohotola Ritva noshomusamane Seppo shuunafaalama oko shi li natango mOngeleki ndjika.

## Omugundjuka oku li ngiini neso lyokomwenyo?

Mokweeta po omadhiladhilo ngaka itandi ka longitha andola omakende gokutala komwenyo gwomugundjuka, ihe otandi ke shi eta paukwatya wonkalo ndjoka tayi ulike shoka omwenyo gwe gwa tya. Nomo-ku shi eta otandi ke shi kankamekela kilita mbika tayi landula: Olye omugundjuka? Eso oshike? Eso lyokomwenyo olini? Omugundjuka neso lyokomwenyo. Oshilanduli

sheso lyokomwenyo noohapu dhehulitho.

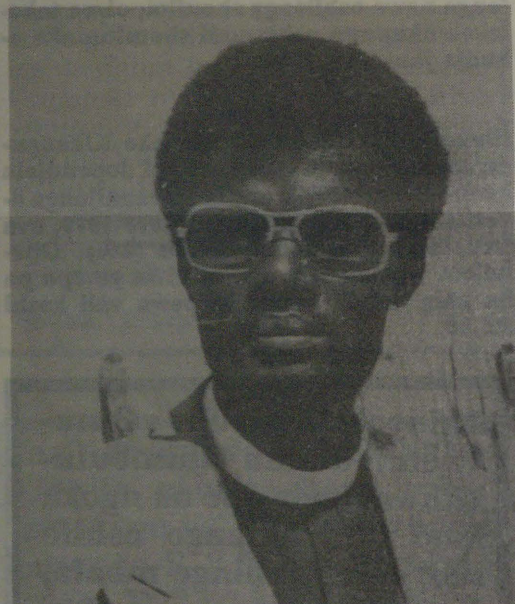
### Omugundjuka olye?

Oshitya omugundjuka otashi holola omuntu e li monkalo yuupokati, kee shi kanona, ye kee shi omukulupe nenge omukokele. Mepipi ndika otatu adha mo wo aagundjuka aamati naakadhona nosho wo aagundjuka aatungagumbo ootate noomeme. Oshitya omugundjuka osho oshitya sha mbwalangandja mokuholola epipi lyuukokele, ihe pashipopiwa shika otandi ke shi eta pamuthika gwomugundjuka omumati nomukadhona.

### Eso oshike?

Palongo lyopakriste eso oli li pamikalo ndatu: (1) Eso lyokomwenyo; (2) Eso lyokolutu; (3) Neso lyaaluhe. Ope na omaso gaali gomomaso ngaka gatatu ge li oshinima kaakriste tashi tilitha notashi eta oluhodhi nogo eso lyokomwenyo nolyaaluhe. Omuntu ngele a sa komwenyo oshilanduli ko osho eso lyaaluhe. Omukriste ngele e na eitaalo lya kola nonando a adhike keso lyopalutu, nena oku na etegameno lyelikolo lyomwenyo gwaaluhe ngaashika Paulus ta ti: "Omwenyo gwandje oKristus, nokusa okwo elikolo." Fil. 1:21.

- Eso otatu vulu oku li fatulula kutya olyo omwenyo sho tagu zi molutu.
- Eso olyo wo uukwatya womwenyo gwomuntu sho tagu iteka Kalunga notagu kalele uulunde.
- Eso olyo olutu nomwenyo sho tagu topoka naKalunga sigo aluhe e tagu umbilwa moheli.



Omusita Eliakim Shaanika (Kakeke kaAfrika)

Dha za kep.

nkondo dhokutopola omasakramendi noku uvitha mekwatathano naasita ayehe Aakwalu-ther muuyuni.

Ondigolo miipundi oya tameke okukelenge-ndja, ehologo lyolupandu okupewa omuyakuli. Egongalo Onawa egongalo ekulu lya zi moNa-kayale, ihe pambelewa olya dhikwa muKoto-ba, 1, 1966 nolya kala melelo lyomusita Moses Shikongo. Ngashingeyi Tatekulu Shikongo okwa tsike ondjoko yewiliko komapepe gomugundjuka manga ti ilongekidhile okukuutumba moshipundi shesimaneko okuvululukwa.

## ESO

Esiku 19.8.1988 Kalunga a zimbula tatekulu Josef Simon Haidula nedhina lya tseyika nawa Kakwafa, muwehame wethimbo ele mombete. Okwa thigi ko omukulukadhi gwe noyana yahamano aatekulu 33 aatekululuwa yabhatu.

Tse aakwaHaidula otatu pandula amuhe mboka mwe tu yakula moshituthi shoka. Omwenyo gwandje oKristus nokusa okwo eikolo Eimbilo 627.

Amos Ndesheetelwa Tuhafeni  
na Haitembu Lazarus Iyaloo

Dha za kep. 4

Ongundu yotango oyo ongundu yaagundjuka mboka taa pangelwa koohapu dhaKalunga, e taa longo pavuliko nopatilokalunga muukulu-ntu puKaiunga nopaantu. Nongundu ndjika oyaagundjuka taa kambadhala okukala aayogoki momadhiladhilo gawo nomiilonga nosho moo-hapu dhawo.

Aluhe oye na ondjuulukwe okugongala pooha-pu dhaKalunga ongele mootundi dhawo dhaa-gundjuka nenge miigongi yilwe yopakriste no-tayi kongo aluhe edhimopo lyoondjo mombinzi yaKristus, ongele mUulalelo Uuyapuki nenge meimatulo lyomwenyo. Kepulo lyetu omugu-ndjuka oku li ngiini neso lyokomwenyo, eya-mukulo kongundu ndjika, oyo oye li taa ko-ndjo niikuti yopambepo opo yaa kwatwe kulyo, Ef. 6:10.

Ongundu ontiyali oyi na oombinga mbali. Ethimbo limwe Aafarisayi nethimbo ekwawo Aate-loni. Ongula oya talala, komatango oya pupya-la. MOosoondaha ootaali, moshiwike aasheki, mEtitatu oyo ngaa aagandjimaye. Omutenya oye li aakadhona naamati, ihe uusiku aasamane naakulukadhi.

Kuyo uuwanawa nuuwinayi aakwanambwiyu, nonande paushili ohi ihayi pile mumwe nohi-ma. Ongundu ndjika yaagundjuka mbaka oyo ehwata lyaamboka taa itanga kutya yo kaye na ondjila inaa enda, yo taa dhimbwa kutya yoke-gulu inaye yi enda nongele itaa itedhulula, kaye na siku naye ke yi enda. Taa ti: "Kape na o-mweenge inaatu lya", yo taa dhimbwa kutya ekaya nalyo oli na omweenge, ihe kaa na siku naa ke gu lola.

Ongundu ontintatu oyaamboka taa lukwa "O-kiipeta yakahima" nenge "Kemanya ku za wo ontsi." Ihe nando ongaaka emanya nalyo ohali tanduka ngele kwa longithwa ondilimani. Iiko-litha kuyo oya ninga othithiya ontalala, uulunga owo ondjila ndjoka tayi fala kehupitho, opo omuntu a kale monkalo yaaluhe. Omakaya oga ninga omuti gwokupanga omalutu gawo. Oshimaliwa kuyo ohapu yaaluhe tayi mangulula, yo o "Mode" oya ninga "egulu epe nevi epe, Jeru-salem sha kuluka megulu". Omahala gomai-nyanyudhilo (Recreations) kuyo ootempeli mo-



Konima yeyapulo lyomusita aakwanegongalo oye ya taa halele omusita gwawo omayambeko.



Methano ndika omusita omuyapulwa Lukas Haindongo kolumoho pamwe naasita David Iileka pokati, Josef Avia kolulyo nokonima Linus Shimakeleni. Ethano olya thanekwa konima yoshituthi sheyapulo

ka taa ka hambelala nokwiinyengitha omalutu gawo sho taa papatelathana nokwiimba "O' what a night" nenge "O' Sangoma" nenge "Darling I believe you."

Iilyo yiivalitho kuyo iigunda yomavi, aanona kuyo iimaliwa. Onakuyiwa kuyo ongashingeyi. Kongundu ndjika, Kalunga kaye mu nine mo cha lyoku mu dhiladhila. Kaagundjuka ya tya ngeyi ngele onde ku pula, kutya oye li ngiini neso lyokomwenyo, ondi shi shi oto yamukula ndje niitsa ethele limwe to ti: "Oye li omuntu nakuame ke."

### Oshilanduliko sheso lyokomwenyo

Omukulugwonale okwa tile: "Kee ku lombwele ke shi gwoye", ngoka te ku lombwele sha oye ngaa ngoka e na olukeno nangoye. Aluhe aaku-luntu oye na olukeno nomalualo gawo, onkee otaa thiminikwa kohole opo ya galule aagundju-

ka yawo meyonuko. Ye Salomo ota ti: "Aakolo-koshi ngele taye ku lapa, ino ya pitika", Omaj. 1:10. "Omumwandje ipungulila iipango yaho, ngoye ino kandula po omapukululo ga-nyoko" Omaj. 6:20.

Natu gwedhe ko wo Omuwambo gwonale ngu ta ti: "Naakwaalombwelwa ona yi niiso paantu." Adhihe ndhika odhe tu shangelwa opo tu kale twa tonata nokutala onakuyiwa yetu yi kale ombwanawa ngele tatu yanda oshiponga nokukala aanevuliko. Oshoka ngele tatu yono owina nando twa tseyo oshili, nena katu na we omagandjelo goondjo dhetu, ihe etegelelo lypangulo lya tilitha, nomulilo gwondjahi tagu li aanandumbo," Hebr. 10:26-27.

Onda hala wo okuhulitha nepulo oku mu pula ne aagundjuka. Omugundjuka na kale ngiini neso lyokomwenyo?

Eliakim N-K. Shaanika

# ONGHALAFANO YOUNONGONONI NOUNEITAVELO

Oshinyolwa eshi itashi lalakanene shi kale ngeno osho ondjovo ya xuuninwa konghalafano younongononi (science) nouneitavelo (religion). Oinyolwa ikwao yomayoyi nomafele mahapu, otai dulu okunyolwa natango kombinga yoshipopwa eshi. Elalakano loshinyolwa eshi, okuholola po pamatumbulo oo nda dula okumona po, onghalafano pokati kounongononi neitavelo lopakriste, osho yo nouteoloxi.

Eshi itashi ti kutya omalongoitavelo amwe inaa fimana ngeno ngaashi eli lopakriste, ahowe. Onda hoolola mo ashike limwe omolwefimbo. Ngaashi naanaa handi dulu okunyola kombinga yonghalafano pokati kounongononi neitavelo lopakriste, osho yoo naanaa handi dulu okunyola sha pokati kounongononi nomaitevelo amwe, natu tye nande eitavelo lopaHindu (Hinduism).

Osho oshilalakanenwa eshi okuulika kutya kape na fiyo opaapa omanyamukulo axuuninwa komayooloko oo taa holoka pokati kounongononi neitavelo lopakriste, osho yoo omunhu ota dulu naanaa okukala omunongononi (Scientist) pefimbo olo tuu olo, oku li yo omwiitaveli a mana mo.

## Ondjokonona

Momafimbo opetameko, Omwiitaveli omunongononi Galileo okwa li a pula nokapulekona wa omalongo Ongeleki kombinga yeshito lonyuni. Modula 1616, Galileo konyala okwa li ve lipuma mumwe nOngeleki mefatululo loshinyolwahongo shaCorpenicus. Osha tameke nemoniko lipe leesatelite daJupter.

Galileo okwa li ta koleke, kutya oteoli yaCorpenicus oyo ya li omukalo muwa wokufatulula ngehe oonyuni wewangadjo u li po. Okudja puGalileo wa yuka keedula dokomesho, ounongononi owa mona ondodo ipe. Nale ovanongononi kakwa li va efelwa va holole po keshe osho tava diladila, osha li sha ngabekwa kelongo lopaitavelo (lopaNgeleki), ashike okudja muGalileo, ounongononi owe limonena ondodo ipe.

Ounongononi owa tameka nokuli okushitilila elongo lOngeleki nelipumomumwe ola li li po

pepi. Ovakwangeleki novanongononi va tameka okukala ve he uditafane vali. Momakonakono mahapu, osha fa shi li ngaha, kutya elongo lopaNgeleki oli li alushe mengungutulo nounongononi. Kombinga yoshinima sha tya ngaha, ope na eengudu dovanhu nhatu odo di na sha okutya:

a) Ongudu yotete oyo oyo tai ti kutya onghalafano pokati kelongoitavelo nounongononi alushe ihai tu kumwe. Ehatwokumwe olo, oli li pefina leembingalongo edi mbali: ouneitavelo nounongononi. Ongudu ya tya ngaha oya itavela yoo kutya eshi ngoo ounongononi tau xumu komesho, woo ouneitavelo owa yuka monima. Kutya eshi oshili, ile osho omutoto wongaho, oshinima shomunhu ove mwene okulitalela ko.

Ongudu ya tya ngaha, oya itavela yo kutya ouneitavelo kau na onakwiiwa, owa damwa ashike kwaavo ve he na eendunge da wana okumona omatomhelo oo tae a tomho va ha ita ele, ile kwaavo ve na eendunge dihapu ngaho, kutya otava dulu okutotapo omatomhelo mahapu oo tae a kwafele va dule okwiitavela.

b) Ongudu onhivali oyo oyo tai ti, kutya nande pa kala ngaha okuhatwa kumwe pokati kounongononi nouneitavelo, eshi osha dja ashike mokuliuda ko epuko kwovanhu vomeengudu edi mbali. Ava otava koleke kutya ngeno okwa li ovaneitavelo novanongononi ve liudite, ngeno kape na ehatwokumwe la tya ngaha. Koneka yo kutya ovanongononi vamwe ovo yoo ovaitaveli vomaitavelo a yooloka.

Ovanhu vongudu ya tya ngaha, unene ohave ulike kefimbo lefelemudo 19. (19th century) ongefimbo loululume nehatwokumwe lihapu pokati kounongononi nOvakwangeleki, olo tava ti, kutya okwa li ngeno tali dulu okuyepwa. "Aishe ngeno oya kala ashike nawa," osho ongudu ei tai ti, "ngeenge ovalanduli vOmuna-biologi omunongononi Darwin ova li itava tula unene omufindo kehongo lelunduluko lefimbo (Darwin's Theory of Evolution), osho yo ovateoloxi ngeno ova li itava fatulula paupofi omanyolo omOmbibeli."

c) Ongudu onhitatu oyovanhu ovo tava ti, omayooloko aa oo oinima yanafangwa, "oikungulu

mokakopi kotee," oyo tai dulu ashike okufatululwa noupu. Ongudu ei oya itavela kutya ounongononi oo omukalo umwe omo Kalunga te liholola, oo omukalo tau ulike eenghono daKalunga meshito. Mouyelele wa tya ngaha, ehongo laDarwin ponhele yokukala oupyakadi nendangalati meudeko lOmbibeli kovaitaveli, olo enwefemo nehololo leenghono mounene waKalunga. Moshitopolwa tashi landula, onda hala okukufa oihopaenenwa imwe oyo tai holola eyooloko lopafatululo pokati kounongononi nouneitavelo.

1. Luhapu ovanhu ngeenge tava diladila okuhatwa kumwe pokati kounongononi nouneitavelo, alushe ohava twala omadiladilo avo kehatwokumwe olo la tamekele mefelemudo 19, eshi efatululo lopaunongononi (Darwin's Theory of Evolution) nolopauneitavelo kombinga yeshito lonyuni (membwalangadjo) a li inaa twa kumwe (natango onghee ngoo e li ngaho).

Ehongo lelunduluko lefimbo laDarwin, otali tula omunhu pedu moishitwa (mefimano lopashito), omanga Ombibeli tai tula omunhu pombada. Ombibeli otai ti, kutya omunhu oku li pombada yoinamwenyo nokwa wa ashike eshi a tameka okunyona. Ehongo lelundululo lefimbo otali ti, kutya omunhu noinamwenyo aveshe ove li pondodo imwe. Elongoitavelo (lopakriste) itali itavele nande efatululo lopaunongononi la tya ngaha. Loo otali tula omufindo apa, kutya omunhu oye ondodo yopombada meshito nokwa yoololwa moishitwa ikwao imwe, shaashi oku na omwenyo. Gen 1:3

3. Oshihopaenenwa vali shikwao osho tashi ulike okuhatwa kumwe pokati kounongononi neitavelo, oshinima shetango tali dingonoka edu (ngaashi Ombibeli tai ti). Ovaneitavelo ovakriste vahapu otave lipopile ngaha, nokwiikolelela keendjovo dopamishangwa. "Ngeenge nani etango ihali ende, ongahelipi hano Josua kwa li a dula okufikameka etango Jos 10:12 ngeenge ola hangika la fikama nale, ngaashi ounongononi tau fatulula?"

Ashike efatululo lihapu lopaupofi melongoitavelo ola dja ashike moutile wovaitaveli. Ove udite, kutya vati ngeenge ova itavela osho tashi fatululwa kounongononi, nena ouneitavelo otau dinika nokudimbuwa. Vahapu vomovakriste ova udika tava tumbula:

"Nena nee ngeenge Ombibeli oya fatululwa ngaashi omambo makwao aeshe, nena oukriste otau kala u he na omidi."

Ame onda itavela kutya efatululo la wana po laashi sha ningwa apa, olo olo, kutya outeloxi owe lihonga kounongononi nelihongo la tya ngaha, otali u etele yoo oiimati youwa okwiitavela. Eshi itashi ti, kutya okulandifa po epito louteoloxi kounongononi, ile ngeno okutya moinima aishe yopauteoloxi, ounongononi oo nau mone onhele yokomesho ile u kale ondjovo yaxuuninwa.

Eshi osho ashike okudimbulukwa nokukoneka kutya ounongononi oo umwe womomikalo odo Kalunga te tu yukifa koshili. Nonande ovateoloxi ova kale tava ti, ohava popi oinima imwe yoshili noi na oshilonga kombinga yomunhu naKalunga, voo itava dulu nokave na okutya otava dulu okupopya oinima aishe.

Ope na omafimbo amwe oo voo yoo ve na okudimbulukwa, kutya omafatululo omalongo avo otave a mono ashike nekwafo lopaunongononi.

Tala kepannja tali landula



Oshigwana osha kala sha kumwa, sho omiyalu dhaalanduli yongundu yo DTA, dha uvika ashike tadhi leshwa ominenenene, dho ihaadhi gongala miigongi. Oshigongi shika methano ndika oshimwe shomiigongi yaSWAPO nuumvo mOvenduka.



**“Aakavango oye tu kutha koho yomuhepeki DTA,” osho omuhogololi gumwe mOwambo a tumbula nepandulo enene. SWAPO moKavango okwa zi mo nomawi 27,256. Mowaaalu nguka inamu kwatelelwa omawi gaahogololi ngoka ga yalulilwa kOvenduka.**

#### Dha za kep. 6

Vahapu vomovateolohi okwa li va itavela mefatululo lopaupofi lomishangwa diyapuki.

Osho onunongononi wa ninga, oku va kwafela okudiladilulula. Ediladilululo la tya ngaha, olo la etela ovateoloxi vahapu omadiladilo kutya nani osho Ombibeli nomishangwa diyapuki tadi shi ti, kashi shi ashike oinhimbu yopandjokona. Oyo omafatululo kombinga youkwatya womunhu ngaashi ye e li po paife.

Omunhu okwa yooloka moishitwa ikwao, shaashi oye aeke a hala okuya mekwatafano naKalunga. Ehokololo langhee sha enda opo a kale a yooloka, osho oshinima shounongononi okukonakona. Okuuda ko ehokololo alishe, itashi kufanande efimano kehokolololo lomanyolo mayapuki.

Ovateoloxi ova ti, omunhu okwa hala okuya mekwatafano naKalunga, ashike ita dula, osheshi okwa topauka. Heeno, ei oshili. Omidi dopanghalafano (Psychology) nghee omunhu a tameka opo a kale a topauka, osho oshinakuwanifwa shounongononi okushikula, ashike yo okuuda ko eshi nghee sha enda paunongononi, itashi kufanande efimano lasha kehokololo lOmbibeli.

Oshitwa sha fimana okutoola apa osho eshi, kutya omafatululo opaunongononi, ngaashi naanaa oo opaMbibeli nomishangwa dikwao diyapuki, oku li ashike okukwafela okuyandja eudeko lixwepo lokuuda ko oushili. Outeoloxi ou na apa okulihonga kounongononi osho yo keedjo dao dikwao dounongo.

Oshi shii yoo okukonekwa, kutya kashi li ekani fo lefimano ile oshiponga sha kula, ngeenge mouyelele wounongononi, omalongo makulu taa udika ko momikalo dipe. Ashike omahatwukumwe aa nda tumbula metetekelo, okwe likwatelela mo. Kashi fi oshidila nokape na omhu-

mbwe opo ngeno ouneitavelo nounongononi i kale alushe i li mekondjifafano. Osha kala onghendabala yoshinyolwa eshi okuholola, kutya omayooloko opamafatululo a tya ngaha, itaa ulike kutya Ombibeli imwe oya puka ile oi li mondjila.

Ngaashi naanaa nda tumbula metekelo, osha dulika kutya omunhu a kale omunongononi muwa nomunene, osho yo pefimbo olo tuu olo omuneitavelo la pama, kutya nee omukriste ile Omumoslema ile Omujuda.

#### S. Nghikembwa London



**SWAPO mOwambo okwa mono omawi 196 169 gaahogololi 226 294 ya hogolola mOwambo. Osha ningwa mokati kondjala, enota, uupyu nomvulwe yomuthika gwomomukweyo omule, yamwe ye gu thikama ootundi 12.**

### OSHZEMO SHOMAHOGOLOLO NASHI TAAMBWE KOMUNTU KEHE: EINDILO LYOMUWILIKINGELEKI

Omumbisofi gwOngeleki yaELC mUushimba, Hendrik Frederik, okwa kumagidha oshigwana konima yehogololo shi taambe shono tashi pewa tashi zi mehogololo lya ningwa moshigwana ashihe. Okwa ti kutya eyamukulo lyehogololo itali ka nyanyadha omuntu kehe, nongaashi inashi tegelelwa oongundu adhihedha li methigathano dhi ze mo nesindano, ihe ongundu ndjoka tayi ka anduka mo nesindano, nayi pewe ompito yi longele oshigwana shono yu uva-neka.

“Mboka inaamu sindana, inamu kutha omukuya okuhahalathana, ihe yelutheni iikaha yeni kumwe nomusindani opo ku tungwe oshilongo,” osho a kumagidha omolwuuwanawa waayehe moshigwana.

CCN/London



# EHOKOLOLO LAKRISMESA

## Ovanongo vokOushilo

Ehokololo eli nali tukulwe meengudu mbali, notali pumbwa ovahokololi ava: Ovanongo veenyofi vatatu, ohamba Herodes, ovanongo vomikanda vamwe, omupiya waHerodes, ovafita vavali nongudu younona ile yovanyasha.

### ETUKULWA LOTETE

Ovanongo veenyofi mouhamba waHerodes

**Herodes:** (E li omutumba moshipundi shefimano sha yalwa nawa elapi li na omaulenga matilyana.

**Omupiya:** )Ta tu eengolo nelixupipiko koshipala shaHerodes nde ta ti:) Omufimanekwa, pondje opwa fikama ovalumenhu vatatu ovayamba va dja kokulekule nova hala okupopya naave.

**Herodes:** Ovo oolyelye notava di peni?

**Omupiya:** Ova ti, ovo ovanongo vokOushilo. Eengameli davo odi li mepandavanda ofika. Voo ove li ofika poshivelo shoshinyanga va teelela.

**Herodes:** Inda u ke va pule omadina avo nomolwashike va hala okupopya naame. (Omupiya okwa pita mo. Konima yokafimbo okwa aluka vali.)

**Omupiya:** (Ta tu eengolo nelixupipiko koshipala shohamba). Tate, omadina avo oo Melchior, Caspar naBaltasar notave uya voovene ve ku hokololele osho va endela.

**Herodes:** (Ta punguluka nde ta tale okafimbo kwinya ta diladila, ta yelula omake aye nde ta ti:) Nave uye mo.

(Ovanongo vatatu ovo va djala nawa, ove uya mo nokweenda kanini nova twa eengolo koshipala shaHerodes, ve likwata peenhulo.)

**Herodes:** Mwe uya po, omwa hala jkuuda shike mwaame?

**Melchior:** Omufimanekwa, fye ohatu kongo ohamba ipe yOvajuda. Tu lombwela hano opo hatu dulu oku i mona.

**Herodes:** (Ta mwena filu, okafimbo nde ta ti:) Ohamba yOvajuda? Ame ame ohamba yOvajuda. Tala ouhamba wange nhumbi u li wa wapala. Ohamba ipe oyo tamu popi, oyolyelye nomwe i uda peni? Lombwelele nge diva. (Ta fikama okafimbo, ye ta shuna molukalwa lwaye.)

**Caspar:** Omufimanekwa, fye ohatu konakona omadidiliko omafimbo keenyofi. Hano tala, (ta yelula eke laye,) oufiku wonhumba okwa holoka onyofi ipe komesho yetu. Ouyelele wayo owa li tau vadima nawa u dule eenyofi dikwao. Olo edidiliko olo twe li teelela nale. Paife otwa shiiva nokutya ohamba oyo tai ka pangela ounyuni, oya dalwa.

**Herodes:** (Ta popile pedu.) Heeno, heeno, ndelencee .....

**Caspar:** Omufimanekwa, edidiliko eshi twe li mona, inatu dula okumwena, divadiva otwa kufa eengamelo detu notwe ya. Fye otwa hala okumona ohamba apa i li. Onyofi oye tu kwatela komesho noye tu tula mondjila ya yuka. Omutenya ohatu tulumukwa, ndele oufiku ohatu twikile, fiyo twa fika oku kuJerusalem. Omufimanekwa, paife itatu dulu okuteelela, tu lombwela apa hatu mono ohamba ipe.

**Herodes:** Omolwashike tamu ke i kongela nani?

**Ovanongo:** Otwa hala oku ke i ilikana. Tala otwe i etela nomaano.

**Herodes:** (Ta yelula eke laye nde ta ti:) Inda u ka ifane ovanongomhango ve uye divadiva.

(Ovanongomhango tave uya, omuwiliki wavo te ya e va kwatela komesho nembo meke. Ove linyongamena kuHerodes)

**Herodes:** Eshi nda uda oshike, eshi taku tiwa ohamba ipe oya dalwa? Omwa shiiva tuu oshini-ma osho?

(Ovanongo tava ehene popepi notave linyongamene kuye nde tava ti:)

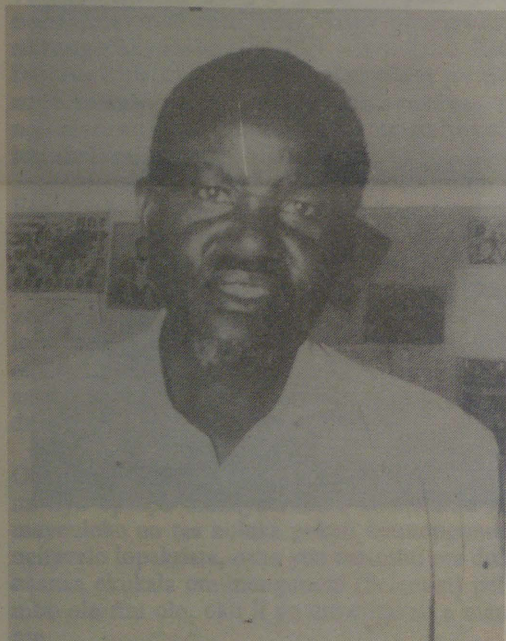
**Ovanongomhango:** Heeno, ohamba, omuBetlehem shomuJuda, osheshi osho omuxunganeke a nyola. (Ta nyanuna embo laye, Mat. 2:6)

**Herodes:** (Ta fikama nota endaenda nokulidiladila mokule; Betlehem, Betlehem, Betlehema? Ohamba?? Otashi ka ninga shoshili? Okwa fikama ponhele imwe nde ta yelula eke nde ta ti kuvo:) Indeni, ohandi mu ilikana mu he shi lombwele nando omunhu. (Okwa ifana omupiya nde ta ti:)

**Herodes:** Ifana ovalumenhu venya vatatu. (Ye ta twikile okweendaenda vali, opo konima okwa kala omutumba koshipundi shaye. Venya vatatu eshi ve uya mo, okwa tya:)

**Herodes:** Okaana oko tamu kongo oda dalelwa muBetlehem.

**Ovanongo:** Betlehem, Betlehem. Ohatu ku pandula omufimanekwa. Paife ohatu i ko divadiva.



**Nakusa Josua Nghatanga**

Elelongeleki momutumba gwalyo 18-20.89 olya kundana noluhodhi omatseyitho goosa dhaanashilongangeleki taa landula: Omuyevangeliste Josua Nghatanga, ngoka a yakula egongalo noshipangelo Oshakati, okuza 1970-1989. Okwa mana oondjenda dhe 17.10.1989, sho a kala mombete yuwehame ethimbo ele.

Elelongeleki olya ti, eso lyomunashilonga nguka Nghatanga, ekanitho enene kOngeleki nokegongalo Oshakati. Nghatanga okwa kala ependa mokuuvitha nomudhiginini. Elelongeleki otali halele meme Nghatanga naanegumbo ehekeleko lya za pombanda, osho wo oonkondo dhokutaamba ehala lyaKalunga. Egongalo lyaShakati noshipangelo nayo wo oya pewa elaka lyomupe-ndu kewiliko lyOngeleki, opo nayo ya pewe oonkondo dhokutaamba ehala lyaKalunga.

Omuyakuli omukwawo a hulitha oye omupangi Laimi Mwapopi, moshipangelo shaNgela, ngoka a hulitha 11.10.1989 ombaadhilila. Aakwa-nezimo lyanakusa naanashilonga pamwe naye nayo oya halelwa ehekeleko.

## Elalekathano

Ngame omulechi gwochifo shOmukwetu nomulandithi gwaasho, otandi lalake kOmukwetu kutya otandi shuna koshilongo ko Angola omasiku 11.11.89 Kalunga ngele e shi hala. Mpaka onda hala okutseyithila mboka haa lesha oshifo, haye shi landa kungame, okutameka oshifo shaNovomba 15, 1989, kandi po we, onkene naye ke shi konge palwe.

Nosho wo asyakuliwa yandje yopambepo, ngame ilongwa yandje oya pwa pu mpaka moNamibia me-gongalo lyaShakati. Naamboka mwa li hamu yakulwa mililonga yikaha moshihongelo shilpilangi puKandjengedi, osha hulila mpaka.

Kundweni nombili amuhe.

Edward Figula  
Oshakati

**Herodes:** Inamu hala nande okukala apa nokutululukwa? Onda halele okuuda natango shihapu kunye kombinga yonyofi oyo mwe i mona.

**Ovanongo:** (Tava pukapuka komitwe notava nyamukula:) Inatu hala, itatu dulu okuteelela, ohatu ka konga okaana.

**Herodes:** Indeni hano kuBetlehem, nongeenge okaana mwe ka mono, alukeni diva, nye mu hololele nge, opo naame yo ndi ke ka fimaneke.

(Ovanongo ove linyongamena vali nde tava fikama pondje nokutala keulu fiyo ou a li komesho ta mono onyofi, nde ta ulikile vakwao neke laye.)

**Melchior:** Taleni onyofi, oyo inya vali. Otai tu endifa fiyo twa fika oku hatu i.

(Ovanongo tava i, ongudu tai imbi eimbilo.)

#### ETUKULWA ETIVALI:

(Pondje yaBetlehem, ovanongo ove li poshivelo shoshilando, Melchior ta yelula eke laye nota ti:)

**Melchior:** Otashi ka ninga shoshili, Betlehem, osheshi onyofi oye tu endifa fiyo opaapa. Tala, kwinya otaku di ovafita veedi, tu va puleni. Ookaume, eshi oBetlehema?

**Ovafita:** Heeno, omushamane (Ovafita tave va tale nonghumwe notave va pula:

**Ovafita:** Nye eehamba?

**Caspar:** Ahowe, fye ohatu di ashike kOushilo, ndele ohatu kongo okaana kanini ka dalwa oku, oko taka ka ninga ohamba yOvajuda.

**Omufita omutivali:** Shike? Omwa lombwelwa komweengeli?

**Baltasar:** Omweengeli? Heeno.

**Omufita:** Fye otwa li mofuka keedi detu, ndele apeshepeshe opa li pe yadi ovaengeli ovo ve tu hokololela, kutya muBetlehem omwa dalwa okaana oko taka ka ninga ohamba yOvajuda.

(Ovanongo tava pwiilikine nde tava ti:)

**Ovanongo:** Heeno, oshi li mondjila.

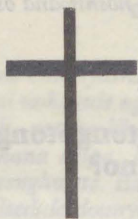
**Ovafita:** Fye otwe mu mona metemba moshiunda, notwa li twa hafa notwe mu fimaneke. Ye okaana kawa, nouyelele u kumwifa owe ka yelega.

**Melchior:** Tu ulukileni nee opo hatu yuka, opo tu dule oku ka mona, osheshi otwe ka etela o-maano.

(Omufita te va ulikile oshivelo opo ouyelele otawu monika. Ovanongo ova ya moshivelo nde tava tu eengolo nde tave linyongamene kokaana.)

Ongudu tai imbi: Ehang. 32:1-4

#### EXULIFO



**Omumati Josef Nadipite Ruben (17)** okwa mana oondjenda meso lyombaadhilila, meongalo Endola. Okwa thigi ko he nayina, samwayina aalumentu yatatu nomukiintu gumwe. Elmbilo 133.

Anna Namupaafita Haindongo  
Skin College Ongwediva

\*\*\*\*\*

**Omumati Timoteus Natanael Hambunda (36)** okwa mana oondjenda dhe meso lyombaadhilila sho a dhi-pagwa momukunda Omanyoshe me-gongala Endola. Okwa thigi ko he nayina naamwayina yaheyali.

Anna N. Haindongo  
Ongwediva

**Omusamane Raimo Holopainen, methano** ndika kolulyo okwa hiyilwe mpaka meyakulo lyOngeleki pethimbo lyetulo-miilonga lyokatokolitho. Oyi ile ayehe nameme Eva-Liisa. Tate Raimo ota tala ngele ombapila yeziminino lye okukala muNamibia, ngele otayi gwedhelwa onkondo sho ya pelwe oomwedhi ndatu adhike. Methano otaa kundathana nameme Taimi Saari, omunashilonga koKavango.

## Omalunduluko amwe ovanashilonga va ELCIN

**Omufita wElelongeleki la-ELCIN wohani yaKotoba, 1989 owa ninga omulundululo amwe mokati kovanashilongangeleki vamwe ngaashi tashi landula:**

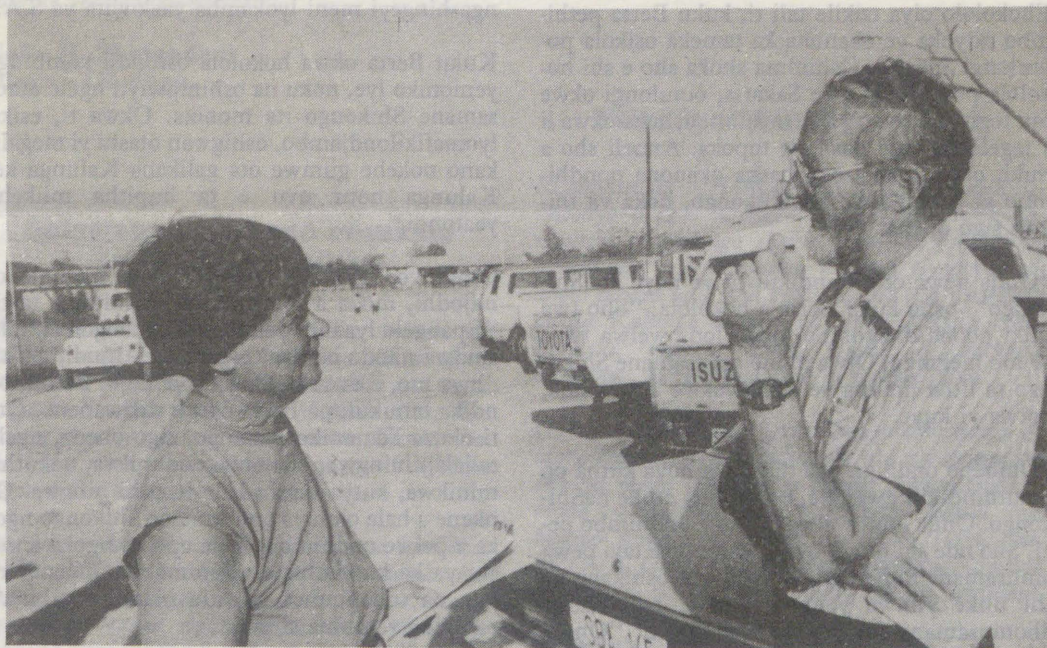
Omufita Veikko Muniyika, Elelongeleki ole mu nangeke a kale omufita wEhangano lovalihongi ovakriste (SCM) wefimbo alishe, okutameka Januari 1, 1990 nomufita Jonas Mweutota a kale omuponhele waye. Elelongeleki ola ufa yo omufita J. Mweutota a kale noshisho shexungomwenyo noshilonga shomalongelokalunga mominghandjo edi; Mweshipandeka, Ongwediva naGabriel Taapopi, ve shi ninge pamwe nomufita weongalo laNgedwiva omo mu na eefikola odo.

Omufitaongalo Simon Namunyekwa, Ondobe, okwa nangekwa meongalo Ohaukelo. Omufita Paulus Ndamanomhata, mOhaukelo okwa ya kelihongo kuAmerika pexulilio lomudo ou. Omufita Lapindja Nghole, Edundja okwa nangekwa meongalo Ondobe. Aveshe ava otava tameke muJanuali 1, 1990.

Elelongeleki ola shivifilwa ovayakulingeleki vawe va dja kuSoomi. Omundohotola womayoo Marjaan Halinen, ote lihongo manga elaka nota teeleele ediminino lopambelewa lepangelo li fike, opo a hovele oilonga yaye mOnandjokwe.

Omulongi wOshiingilisha kOshigambo Marja Leena Laskinen, okwa tameke nale nokuli eetundi. Omufita Gerson Nghilundilwa, Mpu-ngu, Elelongeleki ola kufa po oshilonga shaye pashitokolifo 85 mOmaufomhango. Omufita Toivo Mwoonde Omuthiyagwiipundi Elelongeleki ole mu tula moshipundi shetulumuko molwounghundi wopalutu.

#### Sebulon Ekandjo



# OVA SHANGELA NGE TAVA TI .....

NATU IMANGENI KUMWE

Osha zi oomvula odhindji dha ka pita, nosha pula omadhiladhilo ogendji sho tu li oshilongithwa sha SA. Naashika oshe etele Aanamibia omadhiladhilo opo ya tokole shoka ye na okuninga. Oya tokola opo ya ye, ano ya thige po Namibia molwo uukoloni mboka u li mo, na inaya ka mwena owala molwaasho ya thiga po uukoloni andola, ihe oya ka yambuka omweetipo guukoloni mbuka, SA.

Mbela ngoye ongomuyambidhidhi nomukali gwomuNamibia oto shi uvuko ngiini? Tse otu na okulonga omanga SA e li muno tali mo owala uuyamba wetu. Tse otu na okuyoga omakumbatha ge noku mu siikila komutse manga a lala. Otu na okumeneka ongula, nongele hasho aniwa ngoka ita longo nuudhiginini.

Oshoka otu udha oopate twa pumbwa iilonga, manga iilonga yomaludhi omawanawa tayi longwa kookayamukulwa. Shigwana oshili omwa pumbwa natango onkalo ngandjika, opo tandi shi uvu nena! Ano natu imangeni kumwe opo tu hogololeni SWAPO twaa kale twa thikamena oopate mevi lyetu. Tse twaa ulwewe ookafala ethimbo nethimbo. Ano onawa sho mu shi wete kutya tse otu li aathiminikwa, ndele inatu shi pumbwa we. Hogolola SWAPO u manguluke.

Petrus Shivute  
P.O. Box 40114  
Ausspandlatz

## EMONIKO KONIMA YOMIMVO 50

Dha za kep. 1

taye ke yi mangulula, otaa ka za kUuninginino. Sakaria ota ka vala okanona Sem, hoka taka ka kwatela iita yemanguluko komeho. Onda pewa ondhimbo yi pewe omusamane Shikongo, kandi shi wo oShikongo shalye.

Pahokololo lye, kuku Berta ota ti, shika osha ningilwa mUukwandongo, mOngandjera. Sakaria Shoombe omulongi omukulu posikola pUukwandongo, ngoka a si kee na omwana Sem.

Ehokololo olya tsikile tali ti, kuku Berta pethimbo ndyoka ye okanona ka tameka osikola pomulongi Sakaria. Oshinima shoka sho e shi hokolola pomulongi gwe Sakaria, omulongi okwe mu tegitha Feelani, a ze kuElim, oshoka okwa li a tegelelwa nale posikola mpoka. Anneli sho a thiki, okwa tokola okushasha okanona nondhimbo yi thindikilwe kooShikongo, hoka ya thigwa sigo onena.

"Onda pewa omuthindikili tu ye naye kooShikongo", osho kuku Berta a hokolola. "Sho twa thiki pooha dhegumbo, onda lombwelwa twaa ye mo megumbo. Otwa mono omusamane Shikongo ta litha iimuna ye oshikwekwe kolwaanda, notwa yi kuye.

"Ombepo ondhigu oya tukuluka noya kutha po omuthindikili gwandje, e tatu kala atuke naShikongo. Onda lombwelwa ndi tule ondhimbo pevi. Sho nde shi ningi, oya kuthwa po e tayi pewa omusamane Shikongo. Onda mono oshikaha tashi ulike yimwe yoomongombe oonduudhe dhomusamane Shikongo, newi tali ti: "Ongombe yoye ndjono otayi vala oongombe oonduumentu heyali (7). dha fa oonkameli. Ino dhipaga

## OSHILOGO OSHA KONDJELWA NOUDJU

Ovamwatate noukadona waNamibia, ovalimi vomapya novalifi veengobe ovanailonga, ovanangeshefa, ovanangeleka, ovalihongi novahongwanhu ovo ve na omadiladhilo a xuma komesho. Onye mwa kala nokumona oixuna oufiku nomutenya, omadengo nomahepeko omwa kala tamu a ningilwa, ndele inamu teka omukumo okuyambidida SWAPO yaNamibia oyo i li

## Ino taandelitha iifundja

Onda hala okulombweia X, kutya ne ethe po okunyateka edhina lyandje sho ta lombwele kehe Omunamibia e shi ndje, kutya ondi li mo DTA. Oto fundju aantu. Ngaashi to ti, owa mono ndje nomeho goye, hasho. Nomeho goye oge ku fundju. Ngame Omuswapo, nondi na okusa Omuswapo, kandi na esiku nandi ningi omushunimonima.

Ruusa Fox Malulu  
Oniipa



Ruusa Malulu



enyamukulo kepulo loshiwana, kutya osha hala emanguluko.

Shiwana shaNamibia omapendafule aNamibia okwa kanifa eemwenyo, va ninga oingudu va tokola kutya nande ongaho emanguluko eli tava lwile oli na oku ka tyapulwa kovana vaNamibia. Onghee opo tu ha kengeleleni ohonde yavo oyo ya tika, i ha tikile epwanga, tu longeni nouidinini, kutya nee otashi tu pula shike mokuhanga efindano.

Shiwana shaNamibia, pitikei nge ndi pukulule vawameme ootate noomeme va pukifwa ku Dirk Mudge nomapuli makwao. Ovamwameme oSWAPO otai lwifa oukoloni weembulu do N.P. ya SA. Ngeenge owa hala u mone oshili, tala kutya Swapo oya kala hai kwata eenghwatwa dopaukwaita pefimbo loita yokakulumbwati.

Ndele kape na efiku ya shangele ile ya popya moradio, kutya oya kwata Omunamibia ndele tai mu ningi onghwate yopapolitika, kakele ashike kovakwaita vo SADF, ovo tatu lwifa, shaashi va kolonyeka Namibia letu. Omolwashike ngaho? Omolwashike Swapo haave ta lwifa mumwameme.

Etanga lokumangulula oshiwana shaNamibia PLAN, evava la homata loSWAPO eli la totelwa okunyamukula omutondi momukalo omo a itavela, eshi la kala noku pa omutondi kapinya, okwa tameka okutungo eefikola, oipangelo, okuwedela oimaliwa yovanailonga (nande hasho ngoo lela). Aishe ei okwe i ninga okuulikila ounyuni, kutya ota xumifa Namibia komesho, opo ounyuni u ha yambidide oSwapo.

Kombinga ikwao okwa hala a heke oshiwana kaashi ye koSwapo. Ndele nande ongaho, omutondi okwa dopa okuwanifa po oungangala waye. Paife efimbo ola fika nee loku longela oshiwana, osheshi oSwapo ei i li omukalelipo woshili woshiwana, otai findana, ndele oNamibia tai manguluka. Swapo oyo oshiwana noshiwana osho oSwapo.

Abraham Tshivolo Ndumbu

## Oukwamunghoko nokatongotongo emanguluko hano?

Vahapu otu shi shii nawa kutya South Africa oye efina lokatongotongo mounyuni. Omolwokatongotongo kaye okwa kendabala okutandavelifa okatongo noukwamunghoko mOvanamibia, ngaashi hatu shi mono omu mOvenduka molukanda laKatutura, mwa ningwa olukanda lOvaherero, lOvanama, lOvadamara nolEembastera koKhomasdal.

Oshinima sha tya ngaha osha ningilwa owina opo ovakwashiwana va topoke nova tondafane paukwamunghoko. Omolwashike nee molukanda loilumbu mo "doolopa" mu he na kutya e li olukanda lOvaingilisha, linya olEembulu nalinya olOvadowishi?

"Fye Ovanamibia otwa hala oukumwe (unity) oshiwana shimwe (one nation) emanguluko lopauyuki nehongo laaveshe. Inatu hala ou-

Tala kopardja tali landula

kwamunghoko (racism) nokatongotongo (apartheid) ka SA."

**Shetunyenga**  
**University of Namibia**

## E TU TETEKELE

Tate Absalom Namashana Shippiki omulongi moApoteka yaShakati, okwa mama oondjenda 16.06.1989. Okwa thigi ko aanona 18. Kune amuhe, ootate, oomeme ookuume katate naatondoki yonkugo amuhe, nandi mu pandule nomapandulo ga sheywa, sho mwi ile tu topelelathaneni oluhodhi. Koothigwa amuhe aakwanezimo nomuselekadhi, Omuwa oye e tu pele, Omuwa e mu zimbula muwehame we-thimbo efupi.

Tala, Omuwa okwa thikama posheelo shoye nota konkola, mu egulula e ye mo. Eimbilo 476 (mEhangano)

Lusia Mwachinandje Shippiki

## Ye tu tetekelela

Otandi ku indile nesimaneko, opo u tule aasi yandje mbaka mOmukwetu, oyo:-

Aakwanambwiyu iisheeli yatate Paulus Ntinda nameme Teopolina Namwele mOmbata mOlulongo. Oya mana oondjenda dhawo ombaadhilila. Limpini Ntinda (32) a si eti 19/11/88, a thigi ko aanona 5. Lasarus Ntinda (33) a si eti 20/8/89. A thigi ko omuselekadhi naanona yatatu.

Kookuume, aashiinda nokaakwanezimo amuhe mwa li mwa kala pamwe natse moluhodhi lwakwana yetu, tatu mu pandulile ehekeleko lyeni, omakwatho geni osho wo omagalikano geni. Kalunga ne mu yambeke ye ne mu gwedhele eitaalo lya kola. Omakundo getweni ngoka taga kala ehekeleko lyetu ogo Joh.14:1-4, Ps.55, Eimbilo 546; 528 mEhangano.

Peha lyoothigwa naakwanezimo

**Viktoria - Kandali Kambamba**  
**(omuselekadhi)**

## Ondjebo yoikolwifa noyoshipango oshitihamano

Ame omunyasha nda tala ovanyasha vahapu popipi nokokule ngehe tava kondjifa nai oinima ei i- vali, notave lihakana nokuli ongeembwa tadi lihakana ekipa. Nove liyandja ashike ngoo nee ongeenghate. Eshi ngoo omunyasha ta fiki mepupi leedula dounyasha ile manga e li okaana, yoo oholo oye mu vakulapo nale.

Voo vahapu ove li ovanyasha, omutondi okwe tu kotokela ngaha opo a tete oshiwana omutwe, shaashi sha tetwa omutwe ihashi ende, voo ovanyasha ovo oshiwana shomongula. Okwa tala ngeenge ondjebo yaye e i yukifa movakulunhu ovo ve li po ashike efimbo lixupi okwa fa inaa ninga sha, nonande ovakulunhu vamwe va kwatelwa ngoo melandu ndee kevahapu unene.

Nope na nokuli ovanyasha vahapu va ninga eemwiyo davo oku va heka nawanawa. Opo va ye tuu vati moshuunda sheume liwa, nande halo shili eume liwa oo omunheka ashike, shaashi ohaka telwa naasho haka li. Omunyasha omuholike ohandi kwiindile u ha ninge omhani ile onhaili yokulitwila Satana a ka kwate po vakweni. Ndele kendabala u ninge omweeti muwa moshuunda sho mwene.

## Anglican Diocese of Namibia

The Diocese of Namibia is looking for HIGH SCHOOL TEACHERS for St Mary's Odibo High School at Onekwaya, in the following subjects:

English  
Kwanyama  
Mathematics  
General Science/Biology  
Bookkeeping  
Physical Science and Chemistry  
Economics  
Agriculture  
Geography  
History  
Religious studies

Applicants should state academic and professional qualifications, including certified copies of relevant documents.

Please apply to:

Education Officer  
Diocese of Namibia  
P.O. Box 57  
Windhoek, . Tel. 38920  
9000

Salary and accommodation negotiable.

Ame ondi shii vakweni vahapu va li ve liyandja ngaho kelodu nokoshipango oshitihamano, ashike paife ngeenge we mu hange, ounyuni owa lya ko shao, ndele tau mu shundula filu, nokwe likanifila ngaho ondjelo younhu noyounyasha waye nokuhe- na vali apa te ke u hanga, nande na kale te lifu- fya ta ti yee omunyasha.

Kovakulunhu vetu ovaholike, otu shi shi omu li moudjuu omolwetu ovamweni ovo twa yashwa nai kondjebo oyo, ashike ohandi mu halele omukumo nepukululo liwa okwaalulila vali ovana veni moshuunda omo vali mo noku va hakulifa, va veluke koipute yeeholo doshinanena.

**Hello H. Shipandeni**  
**Oipya - Ohaingu**

## Shigwana hulithapo omukalo gwokunwa iikolitha

Shigwana shaNamibia oshiholike, otandi ku indile nesimaneko enene u huliithe po omukalo gwokunwa iikolitha. Oto dhimbulukwa tuu nawa kutya ou li mesilu lyomilema? Mokunwa iikolitha ihamu zi otseyo ya sha moshigwana. Uunene aagundjuka tseni moshigwana shetu, otatu nyateke ugundjuka wetu nokunwa iikolitha.

Otwa kanitheni eitaalo lyetu nokunwa iikolitha. E thimbo lyohapu dhKalunga ihatu holo ka kudho tu ka pulakeneni nokwiiutha kudho. Nata- ngo epuko enene moshigwana shetu oli li wo maasita tseni mboka hatu kwateni mo miikolitha. Otandi ti ngeyi kune, aasita aaholike aagundju-

ka, Omuwa okwe mu hogolola mu longe oshilonga, mu uwiithe evangeli lye.

Shigwana shaNamibia, hulithapo omukalo gwokunwa iikolitha. Ando omupresidende gwehangano lyetu lyaSwapo sho ta ka lala oshipundi, natu adhikeni tu na ombepo ndjoka tayi tungu oshigwana. Iikolitha hakutunga oshigwana, ihe okuhanagula po thilu.

**Jeremia Shaanika**  
**Pretoria**

## Etiko lyombinzi yoo hailwa

Koonakuvala ooHailwa mboka ya kanithila oomwenyo dhawo nomalutu garwo mekonjelomanguluko lyoshilongo shawo Namibia oshiholike, otandi mu tsu omukumo notandi ti oomwenyo dheni inadhi kala dha ziyalala dha tila. Inekeleni owala Kalunga nOmwana Jesus Kristus omuhekeleki, ngaashi Jesus mwene a lombwele aalongwa ye Joh 14:1, sho ta topoka nayo.

Oomwenyo nomalutu goohailwa mbaka itamu ga mono we muuyuni mbuka, ihe otu na etegameno oku ya mona momwenyo omupe nomomalutu omape moshilongo oshipe megulu. Iikulu oya hulapo niipe oya holoka po Ehol 21:1-4, Jes. 65:17-19. Otwa thindeneni kevalululo lyaNamibia epe, iikulu natu yi dhimbweni, iipe tu landuleni.

**Timothy Amuulo**  
**Tsumeb**

# Oshizemo shehogololo muNamibia



Esiku lyehogololo, omutenya sho gwa tsu, aakulupe kaya li we taa vulu okuthika, ashike oya tegelele neidhidhimiko ootundi 12 omoluuwanawa waatekulu yawo.

Ehogololo lyoshigwana ashihe okuhogolola ongundu ndjoka tayi toto ekotampango lyoshilongo olya li lya topolwa miikandjo 23 moshilongo ashihe.

Aantu 670 830 oya yile mehogololo, okwiitopolela oongundu 10 ndhoka dha hala okulela oshilongo.

Omawi 8532 oga zi mo ga yonuka, ngo-

## мбаКА YOMONDHOLONGO OYA KALA TUU PENI?

Kaleb Paulus Shikale, Onawa 21.1.1977  
 Rufus Amukuhu (44), Nakayale 18.9.1978  
 Mutumbulwa Amukuhu (38), Nakayale 2.9.1978  
 Erastus Ndeifeka (48), Nakayale 18.9.1978  
 Festus Nakawa (56), Ontananga ?? 10.1978  
 Ndemuweda Heskiel Kakunya (30), ?? 4.4.1978  
 John Nakawa (50), Onlipa 31.5.1979  
 David Hamutenya, Okatana 13.5.1979  
 Matias Ashipembe, Oshigambo 7.6.1979  
 Simeon Nehoya, Omuntele 19.6.1979  
 Immanuel Kambala ??? 1979  
 Neema Lazarus ?? 1979  
 Sakaria Akwaake (17), Onayena 1979  
 Paulus Hafeni (20) Onangwe 16.2.1980  
 Vilho Mateus Nyambali ?? 25.7.1980  
 Marcellinus Ipinge (35) Okatana. 4.10.1980  
 Modestus Ipinge (30), Okatana 4.10.1980  
 Andreas Kashikola, Elombe 27.11.1980  
 Hafeni Sh. Paulus, Ohaukelo 15.12.1980  
 Frans Kashipakelwa, Ohaukelo 15.12.1980  
 Toivo Shilongo (70), Okahao 5.5.1980  
 Teofilus Mateus, Elombe 27.11.1980  
 Petrus Taunyenge yaKosmas (24), Uukwambi 19.12.1980  
 Werner Elia Hamunyela (32), Ondobe 1.8.1980  
 Filemon Kasita Ilkela (43), Onlipa 19.1.1981  
 Kristof Iiyambo Shikongo, Ekamba 10.4.1981  
 Simeon J. Nehoya (40), Onyaanya ?? 6.1981  
 Amutenya J. Ashipala, Okatana 29.6.1981  
 Markus Paulus, Onlipa 4.9.1985  
 Petrus Paulus (28), Ondangwa 10.3.1985  
 Henok Shifeta (50), Ongenga 22.10.1985  
 Ruben Edmund, Eendombe 28.11.1986  
 Simeon Amwilimbi (75), Onankali 12.1987  
 Johanna Kayambu, Engela 31.7.1987  
 Abner Shikesho, Onilimwandi 3.7.1987  
 Afunda Nghiyolwa, Oshikuku 4.9.1987  
 Immanuel Hatutale (37), Ongenga 1.8.1987  
 Festus Adolf, Kongo 9.7.1988  
 Festus Samuel, Kongo ?? 2.1988  
 Mikka George, Windhoek 26.10.1988  
 (N) Jason Illeka (15) Tshandi, 14.7.1988  
 Sheetekela Shiningeni (24), Windhoek 11.7.1988  
 Jonas Kemanya, Oshakati 9.10.1988  
 Fraco M. Shaningwa, Ombalantu ?? 7.1988

Matias Josef, Omungwelumbe 5.3.1988  
 Sadrath Mupandi, Omdano 10.4.1988  
 Henry Nghede, Windhoek 29.1.1988  
 Paulus Nghipunja, Ohausholo ?? 1.1988  
 Kambatha Sheya, Windhoek 26.10.1988  
 Paulus Shilule, Omuulukila 20.1.1988  
 Linus Matongo, Caprivi ?? 1.1988  
 Natanael Nghinamwaami ?? ??  
 Maria Shoongeleni (24), Oshakati ??  
 Tylves Kahima ?? ??  
 Jimmy Kwala ?? ??  
 Oskar Muhongo Nallenge ?? ??  
 Aina N. Amunyela ?? ??  
 Johannes Protasius ?? ??  
 Anna Shikongo, Oshakati ?? ??

### Naye okwa kana

Paulus Hangula Shimhanda, Ohaali Endola, okwa kana 12.9.1979 a kwatelwa mOshomeva fimbo a yuka koilonga kOvenduka. Okwa kundanenwe 1984, ha monika modholongo mOmaruru. Ovapolifi ova ti kutya okwa tembuliwa kOmarara. Xe yanaku-kwatwa Fillemon yaShimhanda, oku li mOnamhadi, Endola.

Ehepu ola yandiwa ku  
 Julia Haufiku  
 Ongwediva

Aasimanekwa,

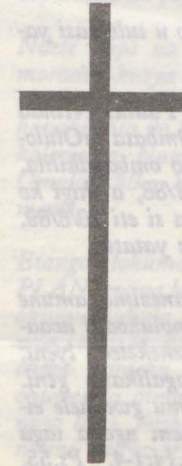
Otandi mu indile mu kwathe ndje kombinga yomulumentu gwedhina Mateus Jesaja a kwatelwe 27.11.1980. Edhina lye olya kana mo melandulathano lyomakwawo, ngele pamwe omwa li mwe mu kanitha mo. Nongele omu na uyelele umwe, tseyithileni ndje kondjukithi tayi landula:

Israel Nambinga  
 Box 5429  
 Windhoek

ka ga zi mo ge li nawa, ongundu odha mono ngaashi tashi landula:

1. Swapo	- 384 567 iipundi 41
2. DTA	- 191 532 iipundi 21
3. UDF	- 37,874, iipundi 4
4. ACN	- 23,728, iipundi 3
5. NPF	- 10,693, oshipundi 1
6. FCN	- 10,452, oshipundi 1
7. NNF	- 5344, oshipundi 1
8. SWAPO-D	- 3161 —
9. CDA	- 2495 —
10. NNDP	- 984 —

Okumona oshipundi mepangelo otashi pula omawi 9317. Ongundu ndjoka tayi mono uuthemba wokutunga ekotampango oyo ndjoka tayi sindana niipundi 48. Esindano lya SWAPO olya pitile momatilitho, momambandameko, momahepeko nomomapukitho ngoka ga longekidhwa komutondi gwemanguluko lyoshigwana shika.



Samuel N. Nkandi Amalovu, Iihandhi congalo Onyaanya, okwa mana oweenda waye mo 15.8.1989 mOvenduka. Okwa fiya ko nekulu laye memme Martha Amunyela nounona vahetatu. Omwenyo wange oKristus nokufya okwo eikolo. Eimbilo 487 momaimbilo.

Julia Kandjala  
 Windhoek

+++++

Hilma Nekulu Asser gwomvula yimwe noomwedhi ndatu okwa mana ondjenda 5-9-1989 mOnamulunga mOnlipa. Okwa thigi ko samwayins yane.

Saara Sakaria  
 Onamulunga

+++++

Omwene okwa dimbula okanona Elia lombweleni Benjamin (5) eti 25/8/89 mouyehame wefimbo lile. Okamomati katate Gotlieb nameme Monica Benjamin. Oka fiya ko ovakulunhu vako nokamwainakadoma kamwe. "Omwene ondi hole onhele yongulu yoye naapa tapa kala oshinge shoye" Heb 28:18-20 Eimbilo 390.

Xekulu  
 Josua P. Nangada

### OMUKWETU

Oye oshifo shOngeleki Onkwaevangeli paLuther yomu SWA/NAMIBIA.

Ohashi nyanyangidhwa mOshinyanyangidho shOngeleki mOnlipa.

Omukuluntu gwoshifo omumbisofi Kleopas Dumeni.

Amushanga gwoshifo omusita Sebulon Ekandjo.

Ondando yOmukwetu muNamibia naSouth Africa R8,00 komumvo.

Pondje yaNamibia na SA R20,00 komumvo. Ndjika oyo wo ondando yoshifo shomondhila.

Oondando nomambesitelo agehe naga tumwe kOmukwetu, Onlipa, P/Bag 2013, Ondangwa 9000, N A M I B I A.

ELOC PRINTING PRESS  
 PRIVATE BAG 2013, TEL. (06762) 11, TELEX 56-3257 WK  
 SWA/NAMIBIA