

OMUKWE TU



50c

No. 21

ISBN 0-620-06828-0

ELCSWA I IKUTHA MO MU UELCSWA

Oshigongi shOngeleki onkwaEvangeli paLuther yAalundhe mUushimba (ELCSWA) osha tokola shi hulitha po uukwashilyo washo mEhangano lyOngeleki onkwaLuther moshilongo (UELCSWA). Etokolo olya ningilwa momutumba omuti 13 gweti 23-29.9.1989 muSwakopmund.

ELCSWA nando a hulitha po ye mwene uukwashilyo we, okwa tokola okutsikila

noonkundathana nomwayinangeleki ELCIN, opo Oongeleki ndhoka mbali dhi tale nkene tadhi vulu okuninga Ongeleki yimwe ayike moshilongo.

ELCSWA okwa ti wo momutumba ngoka, kutya kombinga yOngeleki yAandowishi, otapu kala natango ekwatathano pokati kiilyo yOngeleki ndhoka mbali, nonkene tashi ningwa, otashi tokolwa kOmalelongeleki gOongeleki ndhoka mbali. Eyooloko mokutala onkalo yaNamibia, unene paupolotika, mOongeleki ndhoka mbali ELCSWA Na DELC, yAandowishi, okwo aniwa etompelo lya gandjwa ku ELCSWA okuthiga po UELCSWA.

“Osha yelele ELCSWA nawa ngashingeyi shi vule shito, kutya nonando Oongeleki ndhika mbali adhike onkwaLuther, osha yoolokathana unene kokule mehempululo lyadho kombinga yaNamibia, nonkalo ndjoka otayi lunduluka ashike uuna DELC ta dhimi po etokolo lye lyomumvo 1987 sho i ikutha mOraata yOngeleki muNamibia (CCN),“ osho ELCSWA a gandja omatompelo ge.

Oongeleki onkwaLuther ndatu muNamibia; DELC, ELCSWA naELCIN, odha ningile etokolo 1986 opo dhi ninge Ongeleki yimwe ayike 1992. Omumvo gwa landula ko, DELC okwi



Omuwiliki Hendrik Frederik, Oongeleki ye ELCSWA oya hulitha po uukwashilyo wayo mEhangano lyAakwaluther mu-Namibia.

ikutha mo CCN, shoka sha dhigupaleke omalongekidho agehe guukumwe wOongeleki ndhoka.

Sebulon Ekandjo



Oohofa dhopashingolo nomapangulo go-pooeyene yilikandjo nomikunda, oga tullilwa po okukonakona omapogolo gaayoni noku ya geela. MOwambo ohashi monika olwindji aakwashilwana yamwe oyo taa ipe uuthe-mba mboka notashi eta liponga. Tala kepandja 11.

ELCIN A KOKO 3.48% OMUMVO GWA YI

Iilyo yomagongalo gaELCIN, oya adha ngashingeyi 394 823, pandjalalulahokolo lyomumvo 1988. Eindjipalo 13 280 nenge oopelesenda 3.48% okuyeleda nehokololo yomumvo 1987. Eindjipalalo lyaakwa-negongalo momagongalo gOngeleki ndjoka, ohali zi unene maspagani aakuluntu mboka taa itedhulula notaa shashwa, meshasho lyuunona waakriste nomwaalu omushona gwaakriste mboka taa tembukile mo okuza moongeleki dhilwe.

Eindjipalo lyomwaalu 13 280 kali shi ngiika naanaa okwiinekelwa unene, sho pe na

omagongalo gamwe omiyalu dhaakwanegongalo inaadhi yela, naunene sho nuumvo omagongalo gamwe ga tokelwa okuthikitha omiyalu dhago kombelwa yoondjalulilo. Ihe nando ongeyi, sigo oompaka kape na omumvo, uuna omwaalu gwiilyo yOngeleki ndjika gwa shuna pevi.

Eindjipalalo enene iyilyo yOngeleki ndjika olya tegelelwa pehulilo lyomumvo nguka 1989, uuna omadhina giilyo iipe mbyoka ya zi muupongekwa noya shashelwa hwiyaaha, taga nyolelwa momambo gomagongalo.

Sebulon Ekandjo

NOVOMBA 15, 1989

NOVOMBA 15, 1989

**OKUPANGULILA
ONGELEKI ONDJO
OMAPUKO GOPAPO-
LOTIKA**

Ongeleki muNamibia ope na mboka pethimbo ndika taa yi pe uusama molwashoka aniwa ya kala ya tseyi sha komahepeko ganingilwa oonkwatwa ndhoka dha dhigininwakuSwapo muupongekwa, ihe inayi tya ko sha.

Olunza lwetamaneko ndyoka olwa za mombilive yomusita Salatiel Ailonga, ngokanaye a fadhuka po ongundu yoSWAPO eta ka kala muSoomi. Ombilive yaanilonga yomumvo 1977 oya gandjwa kilfo omasiku ngaka komusita Sigried Groth, ngoka a longa ethimbo ele muNamibia noku li ngashingeyi muNdowishilanda.

Kashi shi oshiwinyayi aasita mboka yaali sho yu uvitile oonkwatwa ohenda dhopondje yoshilongo. Shoka ashike ta shi limbilike osho shoka kutya kuyo omahepeko goonkwatwa ogo ageke ngoka ga ningwa kuSwapo. Meni lyoshilongo moka mwa kala upangelo li li koshipundi paveta, noli na oohofa dhokupangula nokugeela oonkwatwa dhamo, aasita mboka ihaa popi ko sha kudho.

Ihe ndishi oonkwatwa dha SA nadho aakwashigwana, dha kana nodha hepekwa? Ongeleki ndjoka tayi tamanelwa okumwena kwayo, oshinima oshi li ngaashi omumbisofi Dumeni e shi ulika kutya, ongele Swapo, nenge South Africa, ewi lyOngeleki kuyo ayehe yaali olya kala lya yela.

Olukeno lwaatamaneki mboka naye lu ulike ano pauyuuki okupangula omahepeko gokoombinga adhihe. Ngele hasho, ohenda yawo otayi limbilike.

Sebulon Ekandjo

Ouhaku womunwi

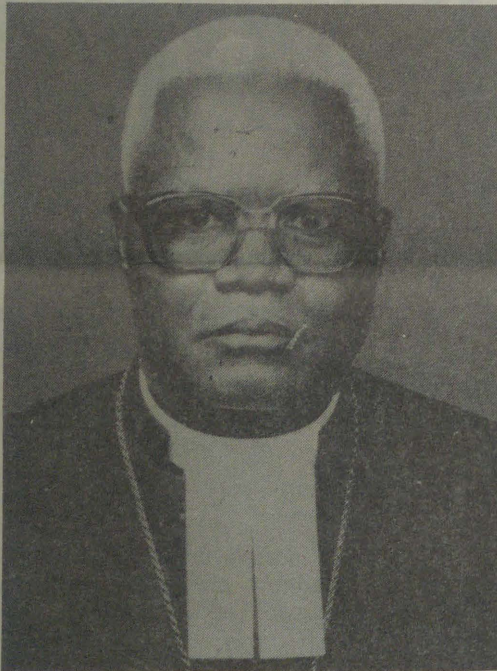
7. KONGA EKWATAFANO NAYE

Kala naye naapa ha nwine. Nande ove iho nu, kala naye, shimba ashike ito shiliwa kuye mokunwa. Mu kalela ngaho eshi ta nu, nye tamu twikile ngaho nokulonga naye oilonga oyo ta duli, ngee ohamu longo.

8. MU KONGELA OIFO NOMAMBO NOILESHWA

Ope na oifo yopamhepo tai duli okutungu omunhu, na mone omhito oku i lesha. Ostola yomambo ol na omambo taa duli yo okukwafa nokulesha, mu landela amwe a kale ha lesha mo. Molongalele i li lili na i lili ohamu topolwa oileshwa noipopiwa tai duli okukwafa, mu pa aleshe mo. Ove kala nee we lilongekida okunyamukula omapulo taa penduka muye mokulesha kwaye.

**OTO PUKA NGELE TO TI ONGELEKI
OYA KALA YA MWENA**



Omumbisofi K. Dumeni

Omumbisofi Kleopas Dumeni okwa pululula oshifonkundana Times of Namibia, kutya otashi puka ngele otashi dhiladhila, kutya Ongeleki oya kala ya mwenena omahepeko mongundu yaSWAPO. Kepopyo lyoshifo shoka, omumbisofi Dumeni okwa ti:

"Momimvo adhihe dhokondjelo lyemanguluko

**TSE INATU ADHA KO
SHA: UN**

Aatumwa yligwanahangano kuAngola naZambia okukonakona oonkwatwa haku tiwa odha dhigininwa kuSWAPO miilongo mbyoka, oya galukile kuNamibia noonnyala dhowala. Ihe aatumwa oya mona kutya aantu konyala 914 oya li ya dhigininwa kuSWAPO mumboka 115 taku tiwa oya sa, na 315 inaa tseyika mpoka ya hit!

Osheendo shaatumwa osha yile muSeptemba 2,1989 kuAngola naZambia. Osha talela po omahala 30 miilongo mbyoka. Osha dhimbululwa kutya aantu 484 yomomusholondondo gwomadhina 1,100 oya kala ya mangululwa nale noya galukila kegumbo.

Aantu 71 mwa kwatelelwa aanambelewa yamwe yoSWAPO, omadhina gawo ga kala taga holoka momusholondondo gwoonkwatwa, nani oya kala inaa kwatwa nando, manga yalwe 52 kape wetike nkene taa landulwa, omolwomauyelele inaaga gwana. Aantu 315 kaku wetike nkene taa fatululwa.

Yamwe muNamibia haa iithana kutya yo okomitiye yaavali, oya kala taa thiminike ligwanahangano ku ka kopakonwe kookamba dhaSWAPO mboka taku tiwa oya kanena mo. Untag okwa ningile ekonakono ndyoka nokwa ziko iikaha yowala. Ehokololo lyolweendo olya gandjwa muKotoba.

lyaNamibia, okuza muukoloni sigo onena, Ongeleki dhetu, omahangano getu ngaashi Ongongahangano yAakwaluther (LWF) nomakwawo, otwa kundathana newiliko lyOSWAPO aantu mboka ye li moondholongo ngaashi naanaa haku kundathanwa nepangelo lya SA."

Oshifo shoka Times of Namibia, osha nyangidha ombilive yomusita Salatiel Ailonga, muSoomi, e yi nyolela aniwa omumbisofi nakusa Leonard Auala 24.5.1977. Ailonga oti indile Ongeleki yi talele po aanandholongo yooAndreas Shipanga nooFilemon Moongo nooyakwawo muTanzania nomuZambia.

Oshifo shoka osha gandja uusama kOngeleki, kutya okuza 1977, Ongeleki oya kala yi shi epulo lyoonkwatwa dhaSWAPO, "ihe inayi tseyithila oshigwana." Meyamukulo lye kepopyo ndyoka, omumbisofi Dumeni okwa ti:

"Oto puka ngele oto ti, kutya Ongeleki oya kala ya mwena. Ongeleki yetu oye ekelahi eshundulo lyuuthemba womuntu, kape na ihe mbudhi, kutya otashi ningwa kulye. Ongeleki ohayi indile kehe ngoka e na oonkwatwa inaadhi egululwa mo natango, e shi ninge nziya pwa na shoka tashi pulwa tango.

"Ethembo olyo ndika, oombinga adhihe mbali, kehe gumwe a popye oshili, ye a indile edhiminopo ye e li pewe. Iikulu yi ethiwe niipe yi tameke. Onakuyiwa oya simana unene, onkee osho oshinakugwanithwa shetu tu tungile oshigwana shetu komukanka gwa kola gwombili, uuyuuki nesimaneko lyuuthemba womuntu."

Sebulon Ekandjo

**Va dja ko koolongo
Kalunga nahambebelelwe**

Katwa li tu shii ngeenge nave uya
Katwa li tu shii ngeenge natu lipopifa
Katwa li tu shii ngeenge natu likundu
Ndele Namhongo okwe shi pitika

Okwa li tve va hupula
Twa li tve va dimbwa filufilu
Tve va yandja meke laKalunga
Kalunga e ve tu alulilwa vali

Ove uya va lemama
Ve uya kave na omesho
Oikuti neeboma ye shi mana
Ndele Kalunga okwe va xupifa ngoo.

Paife keshe umwe, popifa wambuleni
Ngeenge okwa fya, pandula ashike Kalunga
Osheshi ehale laNamhongo le shi tya.

Vanambia atusheni, tu tweni eengolo pedu
Tu hambelelani Kalunga
Ava va xupa ko.

Kalunga Tate ohatu ku hambelele
Eshi we tu hanganifa
Otu liwets paife moipala
Ohatu ku hambelele Tate.

M.Kandaha Angula
Etilahi

ESIMANO LYOMUNONA KOSHIPALA SHAKALUNGA

Pankalathano omunona ota talwa aluhe omugundjuka e na oondunge inaadhi koka nota pumbwa okutekulwa manga. Omunona ita ziminwa okuya miinima mbyoka ya yelaka omayele gaakuluntu. Kombinga yimwe santu yamwe ohaa tala uugundjuka waanona nondhino. Ohashi vulika ya kale nokuhepeka aanona nenge ye ya lele nokwaa na uuyuku. PaTestamendi Ekulu aanona inaa simanekwa wo monkalathano.

Oyi ikalekelwa. Oya thigwa po wo uuna taku yalulwa aantu. Oya keelelwa wo okuya mekwatathano nAarabi ya simana. Otekisti ndjika yomuMateus 21:14-16, otayi holola aanona ye li motempeli. Aanona mbaka oya li ya adha ngaa epipi lyontumba opo ya vule okukala motempeli, ngaashi Jesus a li a kala mo pepipi lyoomvula omulongo nambali.

Aanona mbaka oya li taa imbi nokuhambelela Jesus manga a li ta aludha aavu niilema. Oya imbi eimbilo tali ti: "Hosianna omuna gwa-David". Aanona mbaka nande aashona oya ndhindhilike oonkondo dhaJesus okuhupitha nokumangulula omuntu muudhigu we. Nondjimo yawo otaa holola eitaalo lyawo neinekelo lyawo moonkondo nomiilonga yaJesus.

Otekisti ndjika otayi holola wo shoka sha ningwa kaasasari aakuluntu nokaanongoraamata. Manga aanona taa hambelele Jesus, yo otaa geele iilonga neyakulo lyaJesus. Otaa nyengwa okwiitaala nokutaamba Jesus. Kombinga onkwawo otaa geele wo okwiimba kwaanona, oshoka oya tala aanona inaa gwana manga oku shi ninga.

Nande Aasasari aakuluntu naanongoraamata ya geele okwiimba kwaanona, Jesus okwe shi popile. Jesus ita tala aanona palandulathano lyEtestandi Ekulu, ota simaneke aanona note ya ziminine ekwatathano naye. Motekisti ndjika ota zimine nokuli okwiimba kwawo. "Omomana gaanona noguuhana wi ilongekidhile chambelelo", nuunona ou na wo ompito okwiimba nokukoleka eitaalo lyomuntu. Ou na wo ompito okwiimba nokusimaneka Kalunga.

Mokutala uugundjuka womunona Jesus ota ndhindhilike iinima yontumba mbyoka santu yalwe itaa ndhindhilike nuupu. Aanona oyo aafupipiki mokukala kwawo. Aanona aapu wo mokwiitaala, otaa taamba nuupu omadhiladhilo ngoka taa lombwelwa. Aanona kaye na egamo lyokulimbililwa nenge okupataneka omadhiladhilo gaantu yelwe.

Egamo ndika olyo Jesus ta nyanyukilwa mokukala kwomunona note li tala lya opalela oshilongo shaKalunga. Egamo ndika Jesus ota tegelele li kale mooitaali ye, yaa limbililwe oohapu dhe noya kale ya kola mokwiitaala nomoku mu inekela opo ya vule okuthigulula oshilongo shaKalunga. Jesus mokuhokwa uwanawa woomwenyo dhaanona, ota zimine pamwe wo naanona ya kale nemanguluko lyelongelokalunga pamwe naakuluntu.

Morekisti ndjila Jesus ota hololwa ta popile okwiimba kwaanona. Esiku lyaMikael olyo esiku lyaayengeli naanona. Otekisti yEsiku ndika oyi li po okupopila uuthemba waanona. Aanona yo yene naantu mboka ye li monkalo ye ya shonopeka notaa pumbwa ekwatho lyaantu aakwawo mokukalamwenyo kwawo, otaa popilwa kotekisti ndjika. Aanona otaa pu-

mbwa okutekulwa nokukwathwa nokuyakulwa nawa mokukalamwenyo kwawo, opo ya koke nombili.

Ope na wo ongundu yiilema, yaaposi, yoothigwa naanaluhepo otayi pumbwa esiloshimpwiyu ewanawa. Ongundu ndjika oya kwatelwa wo moshitya "uunona". Mokukwatha aantu mboka ye na omaudhigu nomaluhepo Jesus ota kwathwa wo. Jesus oku li aluhe pamwe naantu mboka taa pumbwa omakwatho notaa tegelele wo aalanduli ye nooitaali ye ye shi ninge nuudhiginini. Okukwatha nokuyakula oohepele oshinima tashi utha wo uuyuku womuntu a vule okuya moshilongo shaKalunga (Mat.25:34-35).

Oshilongo shaKalunga oshaamboka ya fa uunona. Jesus okwa li e na uudhigu okumona aalanduli nooitaali mokati kaakuluntu. Natanael ota limbililwa esimano lyaJesus sho ta dhini oshilongo moka a valelwa. Aanasaret otaa dhini Jesus sho taa tacya aakuluntu ye. Aafarisai oya dhini Jesus sho a li inaa longwa ompango noya kala noku mu makela. Aasasari oya geele okulonga kwe mokati kaantu.

Opwa li uunyengwi owindji maantu yethimbo lye oku mu taamba. Ethimbo ndika tu li olyo ethimbo lyomadhiladhilo ogendji, ngee kombinga yiinima yonkalathano nenge kombinga yiinina yopambepo notashi vulika okutaamba nokwiitaala Jesus ku nkundipalekwe maantu



oyendji koshinima shika. Otekisti ndjika otayi gandja uyelele kutya eitaalo lyopakanona otali taambwa nyenyanyu kuJesus. Aakuluntu moku-dhiladhila oohapu dhaKalunga nenge iinima yoshilongo otaa pulwa oomwenyo dhi ifupipika nodha manguluka komalimbililo agehe.

Otaa pulwa oomwenyo tadhi taamba nombili elongo lyaJesus moohapu dhe pwaa na omaipopilo gasha. Aantu mboka taa itaale oohapu dhaKalunga komwenyo aguhe ngashi uunona oyo wo taa vulu okuvulika kudho noku dhi gwanitha. Jesus ota tegelele eifupipiko mokukala nomoomwenyo dhooitaali, oshoka otali fala mehupitho. Mu Mat.11:25, Jesus ota ti ngeyi: "Otandi ku hambelele Tate, Omuwa gwegulu nogwevi, oshoka iinima mbika ongoye we yi holeke aanona naanamaye, nowe yi hololele oombaka aafupi".

**E.Niinkoti
Nakayale**



OMOLWASHIKE HATU I LONGELWA

Ame ondi li mofikola nonda pita ongudu 8, ndele nghi udite ko ofikola kutya oshike, unene kombinga yoolongwa ei; History General. Otai tu longo shike? Eendje, shanghana, namumbabale, okafelepuka, onghofya nongala ohatu i longwa tu ke i ninge shike notu ke i kwafe shike? Unene tuu omaufemba ayo, nda fa handi ka kala po fiku tai dala?

Ohatu longelwa shike Jan van Rebeek a fa womedu letu? Eshi ihatu longwa ondjo-

konona yoshilongo shetu, oshike? Ondikaana kanini keedula 17, ndele nghi udite ko fiyo opaapa ofikola. Onda pulile omukulunhufikola wetu, ndele ina nyamukula nge. Ovakulu vange navo otava findile nge kofikola vati ondi na omaano, ndele onda anya ko. Ofikola ohandi i fiye po.

**T.L.Ngh.Simeon
Oikokola**

ELCIN nkene ta tala UELCSWA

Onakuyiwa yuukumwe wOongeleki oonkwaLuther muNamibia, ndjoka ya kala ya tegamenwa nehwamo enene, ngashingeyi otayi pendula omaipulo maatalinawa yoshinima. Shoka osha zi unene mehulitho po lya ELCSWA ilonga ayihe yEhangano ndyoka nokonima okwa hulitha po thilu uukwashilyo we moka.

Kombinga yaELCIN omolwomalimbililo ngoka taga ende taga koko, nkene ehengumukilo mumwe lyOongeleki ndhoka tali vulu okutsikila, okwa gandja omakankameno ge. Shoka okwe shi ningi pethimbo lyomutumba gwOmalelongeleki gOongeleki ndhoka ndatu oonkwaLuther, omwedhi gwa yi mOvenduka, moka kwa kundathanwa eikuthomo lya ELCSWA mehangano. ELCIN okwa gandja omakankamano ge ngaashi tashi landula:

"ELCIN natango okwa hokwa okulalakanena uugumwe wAakwaluther mboka tau kongo ondjila okwaadha ehengumukilo mumwe lyOongeleki ndatu oonkwaLuther muNamibia. Komukalo nguka,, Elcin okwa hala a mone nkene omalongekidho agehe gehengumukilo mumwe taga tulwa ishewe miilonga, ongo-shilalakanenwa sha simana.

"Osha yela lela, kutya Elcin okwa li a kumwa nooknkondo keikutho mo lyombadhilila lya DELC mekawatathano lyOraata yOongeleki muNamibia (CCN), naunene tuu sho a tindi okutaamba osheendo shaayenda yokOongahangano yAakwaluther (LWF) nokutinda ishewe okugandja omatompelo ge kushono she mu ikuthitha mo.

"Pauyelele mbuka owo wa li wa tokolitha Elcin kaa kundathane we na DELC ngele ota tsikile ashike nokutinda kwe ngeyi kaa gandje omatompelo ngoka ge mu ningitha etokolo. Pokati mpoka, DELC okwa yamukula komapulo getu gaali. Tse okwa li twa vulu okutaa-

moa pamwe osheendo shaayenda yOngonga ngano yAakwaluther ongAakwaluther muNamibia nolwahugunina ngeyi, DELC okwa tseyithile moshigongingeleki she shahugunina omatompelo ge gahugunina, ngoka ge mu kuthitha mo mo CCN.

Pauyelele mbuka, Elcin okwi ilongekidha ngashingeyi okuya na DELC moonkundathana dhehengumukilo mumwe dha mana mo okuninga etokolo nkene taku tsikilwa komoheo."

Sebulon Ekanayo



Okahanona negundji lyekende

Oshitya eputuko moshigwana shetu oshi li mo sha pilama. Omahangano naanangeshefa osho nokuli haa longitha momauliko nomatseyitho giilandithwa yawo. Okulongitha omahini goLactogen nenge Nestle okuyamitha okanona osha ningi eputuko moshigwana shaNamibia. Shika itashi ningi epuko omolwokwaashi sha moku ga longitha, shila otashi ka ninga owala epuko ngele ta ka tinda omapukululo gaangoka a mona okauyelele.

Ongundu yotango ndjono ya nyenyeta kombinga yomahini goNestle na Lactogen oyomuEngilanda. Oya yekele nawa kutya omahini ga tumbulwa metetekelo otaga gwedhele kepundalo (endjukulo) lyuunona. Payo omwaalu guunona mboka wa si omolwekende lyegundji, ogu vule mboka wa yamu kegundji lyayina. Okwa konekwa, India 1974, uunona owindji inau yama kuyina petameko, owa sile.

Gumwe gwomaanongononi yiikulya Alan Berg, okwa koneke, kutya uunona ngashingeyi ohau tameke okundjukula okuza poomwedhi hetatu okuza kevalo mokuyelekanitha nomimvo 30 dha piti sho wa li tau tameke okundjukula konima yoomwedhi 18.

Konima sho kwa ningwa ekonakono lya mana mo, okwa ndhindhikwa, kutya omahini ga yina ageke taga vulu okukokeka okanona muukolele. Aanongononi oya tsikile okuyelitha taa ti; omahini gayina kage na owala ipumbiwa (protein + fats) oyindji, ihe oge na ongushu moku-kokeka okahanona.

Oya yelitha kutya omahini gaantu oge na opelesenda 1,5 manga goongombe ge na 3,5. Gumwe gwoomoondohotola aakuluntu muLondon, okwa ulike kutya iitungithi ngaashi protein, mineral nomagadhi, mbyono hayi adhikwa moma-

Tala kep. 5



Oshigongingeleki shaUELCSWA shoka sha tokolele Oongeleki ndatu oonkwaLuther dhi hengumukile mumwe 1992.

lilyo yoKoevoet 1 800 ya thigala natango millonga yuupolosi pondje yetokolo lyOraata yegameno ya UN, eti 640/89, hasho ashike eipulo maakalimo yomoshitopolwa. Oku na natango omainyengo omakwawo taga llimbilike oshigwana ga nika uukwiita, unene tuu kombinga yongamba yaNamibia naAngola.

Uunkundi wetonatelo lyaUntag aakwiita ya SA koongamba nomakoto ngoka SA ta longo nago naakwiita ye, otashi kolekwa wo nokehokololo lya Dr Colin Leys gwaCanada, omutseyi nawa guupolotika. Onkalo yaNamibia paukwiita, okwe yi ndjandjukununa ngaashi tashi landula. Ehokololo lye olya holoka moshifonkundana The Namibian, mOvenduka.

Ota ti, pauyelele wa gandjwa kuUntag, kOshivelo oku na ootrupa dha SA 900 - 950 na 400 - 450 kOshaanda. Mbaka oye na oondjembo oonene noonshona. Otaku hokololwa ku na wo oondhila dha holekwa, ihe shoka inashi yela nawa. Omadhagadhaga gaali, oga gandjwa othitha ko SWAPOL. Pahokololo lya Untag, omatanga ngoka oge li megundjilo ewanawa.

MObaye otamu adhika aakwiita 1000, oo,

OMAINYENGO GAAKWIITA YA SA KOONGAMBA OGE LI TUU PAKATOKOLITHO?

makinga. Omu na wo aalongi noondohotola 900, mboka taa longo iilonga yopashigwana Inaku tseyika iikondjitho ye na, kutya oya tya ngiini. Ehokololo otali ti, mObaye Untag ina zinininwa okutonatela mo.

Okuza pomalenga gamwe mOwambo sho ga pula SA egameno, oku na ngashingeyi omakakunya 215, ga topelelwa omalenga 20 lwaampoka. Omakakunya ngoka ehokololo otali ti, oga za unene moBataliona 101 na 102. Naambaka kaye li metonatelo lyaUntag, shila okuSwapol ye mwene.

Iikondjitho yopaumwene moshigwana

Kape na ngoka e shi shi natango kutya omakakunya ngoka ga lalekwa ga ye komagumbo, oga faalele ko iikondjitho yi thike peni. Ndjayi Hans Dreyer sho a pulwa oshinima shoka, okwa yamukula kutya ke na onsteyo

yasha. Nguka oye omukuluntu gwoKoevoeta.

Aapolosi (Swapol) nayo osho ya pulwa, kutya oombapila odhi thike peni ya gandja kumboka ya kongo oondjembo, nayo itaa popi sha. Aanafaalama moofaalama, nayo otaku tiwa oye li mo ya pama. Patengeneko lyaUntag, aakalimo yomOwambo otashi vulika ye na oondjembo oonshona 8500, odhindji dhomudho ngiika dhaa na oombapila. Naampaka ehokololo otali ti, Untag ina pewa oshimpwiyu shokutonatela iikondjitho yopaumwene.

Ookamba dhomeholeko

Pahokololo ndyoka, okuza Septemba numvwo, opwa dhimbululwa omainyengo gaatiligane, mboka ya kala shito metanga lya SA muuzilo wUukwanyama. Ehangano limwe lyedhina aniwa Ombili Foundation, oli li mokamba onkulu yaakwiita ya SA mOmauni, mOsholo,

Tala Kep. 6

Dha za kep. 4

Epalutho lyuunona

hini gayina yokanona, otayi opalele iitiyanathi-goyokanona.

Pawino we, uutana owa pumbwa oprotein oyindji, oshoka otau koko tau endebele. Komukalo nguka ita popile okuyamitha okanona kekende lyomahini ngoka haga opalele owala uutana. Gumwe gwoomoondohotola dhaAmerika, omuprofesoli Paul Gyagy ota ti: Omahini goongombe omawanawa kuutana, omahini gaantu omawawanawa nomatoye kuuhanona waantu.

Omundohotola Gyagy okwa yeleke nawa, kutya omahini gaantu oge na iikelelithi yomikithi. Omahini haga adhikwa owala maantu goshunga sheyi gopetameko konima yokumona okanona, ohaga kelele aantu komukithi gwendjandja, osho wo omukithi gwokwaa na ehalo lyiikulya. Oshikondjitho shomikithi dha tumbulwa metetekelo, kashi adhika we nando omomahini gaLactogen nenge Nestle.

Gumwe ishewe gwomaanongononi yiikulya muNigeria, dr Adewale Omololu, ota holola a panga okahanona hono yina a hulitha po okuyamitha kontulo, e ta yamitha kekende. Dr Adewale okwa ti omahini ngono gomoondooha, oge na oprotein oopelesenda 3,5% ohaga etele uunona oshimela tashi ithanwa 'marasmus'. Shino ohashi dhipaga uunona meendelelo.

Olwindji ohashi zi mpoka, kutya omahini otashi vulika ethimbo lyago lya pitilila, ga kanitha onkondo noshimela otashi tameke ihe. Omahanganano osho wo aanangeseefa oyendji, inaa tsa kumwe noondohotola ndhoka nadhilwe muuyuni. Otaa ipopile:

Oondohotola mboka ando ya kale ye li mondjila, e tatu kala twaa po, nena ando hamaso guunona owindji taga holoka moshilongo, oshoka tse ohatu kwatha owala mboka kaaye na omahini ga gwana. Mupyamunene aanongononi yiikulya oya yeleke kutya mboka kaye na omahini, nenge ye na uupyakadhi neshito lyomagundji, aashona, kaye vule opelesenda 1% moopelesenda 100%.

Omadhiladhilo goondohotola ndhoka tadhi kondjitha omahini gomoondooha, oga yambidhidhidhwa nokukolekwa kongundu yligwanahanganano, The U. N. Protein Advisory, sho taa indile aantu ya konge omikalo dhilwe tadhi kwatha, peha lyaLactogen na Nestle.

Molwaashoka otaa kondjithwa, Omahanganano gamwe ohaga longitha omathano ge na enona lya kwata ekende lyegundji lyoondoka nawa. Omafano ohaye ga tula miipangelo. Ishewe ohaa kutu aapangi miipangelo, opo ya gandje kaavali omayele mokulongitha ekende lyomahini goLactogen noNestle.

Omathambo gamwe ohaa gandja omahini ga tumbulwa metetekelo miipangelo oshali, okukumika aantu opo sho taa zi mpoka, ya ka lande omahini ngoka. Kakele kuupyakadhi wa tumbulwa metetekelo, omahini otaga pula oshindji kunaku ga longitha.

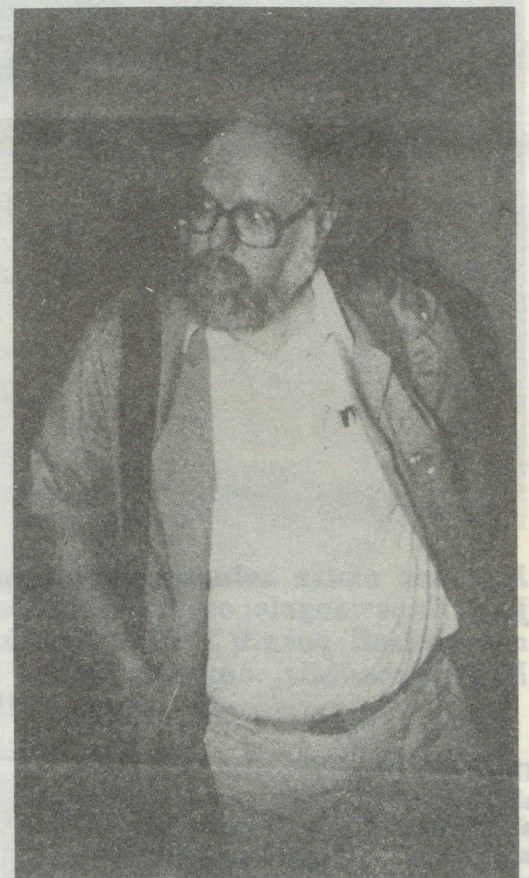
Aanongononi otaa yelitha, kutya omahini ngoka oga pumbwa oklimate yaa shi ompyu unene yo yaa shi ontalala unene. Oga pumbwa esiga lyolusheno nenge lyohasa, opo u vule oku ga yeleka nokudhipaga mo shono tashi vulu okuyona po olutu lwokanona. Omasiga gopomotoko nolwithi itaga opalele elongitho lyomahini ngoka.

Iilongo yimwe muAfrika ngaashi New Guinea, Tanzania, Seirra Leone oya keelela omahini ngoka gaa igidhwe momatseyitho. Kenya naye ote ga kondjitha. Zambia oku na ehanganano lyoku ga longa, ihe oga pitikwa ga landwe owala kwaangoka e na ombapila yaNdohotola, kutya oku na uupyakadhi wokuyamutha. Epulo ngiika otali ya:

Ano omahini ngoka oga longelwa shike? Eya-mukulo; ongeshefa. Nokauyelele hano, onda dhiladhila mboka ya kala inaa tseya sha koshinima shika.

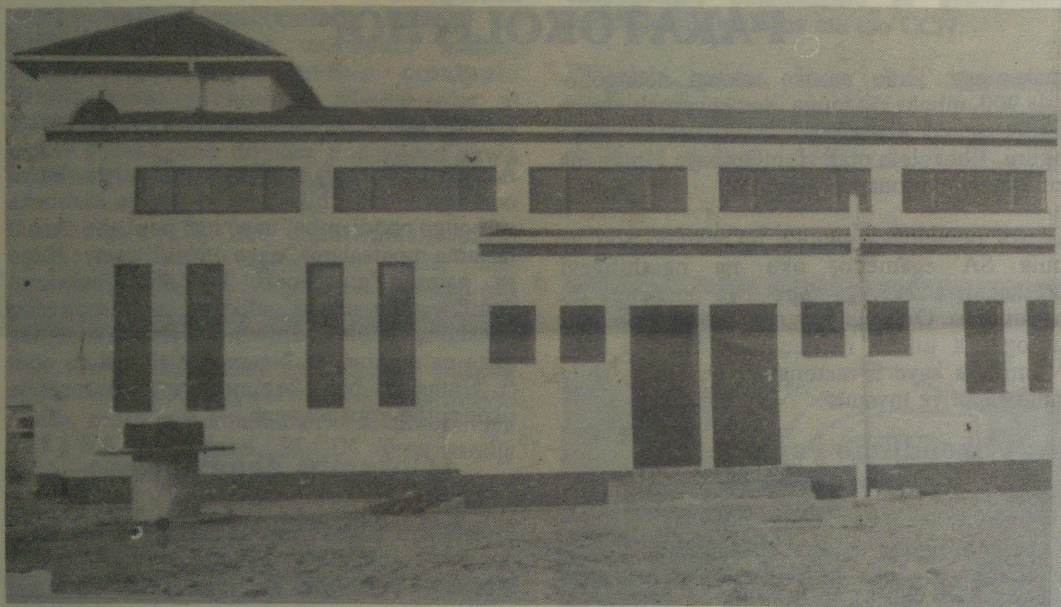
Andowa A. Protasius
South Africa

Aaniifo muNamibia



Ehokololo muNamibia 7-11.11.89 otali ka hila antoolinkundana oyendji pondje yoshilongo, ya kundaneke lillongo yawo. Ayehe kumwe otaa tengenekwa 1 000 oya tegelelwa ya ka kale po ethimbo ndyoka. Methano ndika, omusita Johannes Evenson, omutoolinkundana gwEhangano lyonkundana lyOngeleki kombinga yiliningwanima muNamibia (Namibia Communication Centre) muLondon, naye wo okwa tegelelwa a kale po pethimbo ndyoka. Pethimbo lyekondjo okwa kwatha Oongeleki muuyuni okuuya ko omukundu gwevi ndika pamukalo gu uka, nando pwa pitile omimvo odhindji inaa pitukilwa okuya mo moshilongo.

EYEULULO NEYAPULO LONGELEKI YAEBCIN MOUSHIMBA



Etungo lyongeleka yaSwakopmund ndjoka sanilonga yaamoka, yi itungile. Omahala omakwawo mUushimba otaga tegelelwa ga landule oshiholelwa.



Methano okuza kolumoho; omusita Junias Vaino Kaspanda, omusita Josef Kapewangolo; omusita Apollos Kaulinge, omusita Pauli Laukkanen omumbisofi pokati; konima omukuluntugongalo T.Shikongo omusita Matti Amadhila, omusita Josafat Shangahala nomusita Johannes Sindano ye li meyakulo.

Ongeleka ipeipe noyotete moshitukulwa ihomOushimba, oyo ya tungifwa kOvasicin vovene, oya fikama paife moSwakopmund. Ovaicin vomoSwakopo ova ti ova fikameka po ongeleka yavo vene keyambidido lEhanganotumo laSoomi noiBengeleki eemwainafana di lili noku lili mOwambo nomOushimba.

Eyeululo neyapulo longeleka ei moSwakopo ola ningwa komubishofi waELCIN Kleopas Dumeni eti 15.10.1989. Fimbo inaku iwa kongeleka ipe, opwa ongalwa tete mondjuwo ya kula yokulila ovanailonga noku i lekela. Omu omo ovaELCIN va kala hava ongalele nokuninga elongelokalunga lavo, cedula heyali da pita.

Mewiliko lomubishofi ongeleka oya patululwa nokuyeululwa komukulunhuongalo, omushamane Trofimus Shikongo nEpsalmi 118: 19-20 ola leshwa. Pamwe nomubishofi meyapulo olo opwa li ovafita: Joseph Kapewangolo; Apollos Kaulinge; Pauli Laukkanen; Josaphat Shanghala; Johannes Sindano naMatti Amadhila.

Omumbisofi meyapulo eli okwa ingida ongulu oyo naashishe tashi longelwa mo, shi kale mOmhepo nomoshili, eifano lokutambula omwenyo waalushe nokufinda epangelo lefyo, okufimanekifa edina lOmwene Kalunga ketu. "Ongulu yOmwene oyo ei nai kale ya yapulilwa Omwene Kalunga omunaenghono adishe no-

munamutimanghenda", osho a tumbula nokuyandja ongeleka kovalongifi yavo.

Ovaicin moSwakopo ovo va kala va dimininwa okuninga omalongelokalunga avo moshala yovanailonga yaMuni, okudja 8.8.1982, moku shi ninga ova kala nelixumbato liwa. Luhapu eshi ve li melongelokalunga voo ovanailonga ove li konima tava li. Elelongeleki leti 6.1.1985, omo mwa etwa ediladilo pu kongwe onhele yavo, osheshi omo ve li kamu shi mwavo.

Ova ka kufa onhele oyo, opo pwa fikama paife ongeleka molukanda lwaMondesa, osheshi onhele oyo okwa li i li pokulandifwa po ko-Rössing. Oku ka lopota kumwene wonhele kutya ova hala okutunga ongeleka ponhele opo, omuhokololi wehistoli eli omukulunhuongalo T.Shikongo okwa ti, ove na okutwaalela eembapila da shainwa komukulunhu wOngeliki yaELCIN. Meembapila odo omwa li yo o-matumbulo avali oo kwa li a fa madjuu kovakwaneongalo ovo:

- 1) Onhele nave i futile ididiliko kutya ove i pumbwa shili.
- 2) Meni leedula nhano nava kale va mana okutunga ongeleka oyo.

Edu opo tapu fikama etungo longeleka opwa tengenekwa tapa kosho R90 000. Shikongo okwa ti Eleloongalo ola kala nokutwa omukumo ovakwaneongalo va ha fye oonye mokuoongelela eongalo lavo li holoke po. Ehanganotumo laSoomi ola kwafela R181 250,00, eongalo ola ongela R57 314,85 nomakwafo Eengeleki nookaume inava tumbulwa.

Ova hovela okukonga omufaneki wetungo lavo,

Tala kepanja tali landula

AAKWIITA

Dha za kep. 5

mOmboloka nomOlukula.

Pauyelele womuwiliki gwehangano ndyoka, omusamane Von Stittard, omunaveta mOshomeya (Tsumeb), changano lye ota ti ohali mono omakwatho koongundu dhimwe mu SA, muNamibia naNdowishi lyuuninginino. Elalakano lyalyo, aniwa okukwatha ashike aakwashigwana mushoka sha li hashi gandjwa ketanga lyegameno, ndyoka lya zi miilonga.

Untaga sho a tseyithilwa a konakone ookamba ndhoka, okwa lombwelwa ashike taku ti, ngoka omahala gopaumwene, naangoka a hala okuya mo mugo, na pule tango epitikilo kooyene yomikunda ndhoka, mboka ya gandja uuthe-mba okudhika ookamba ndhoka.

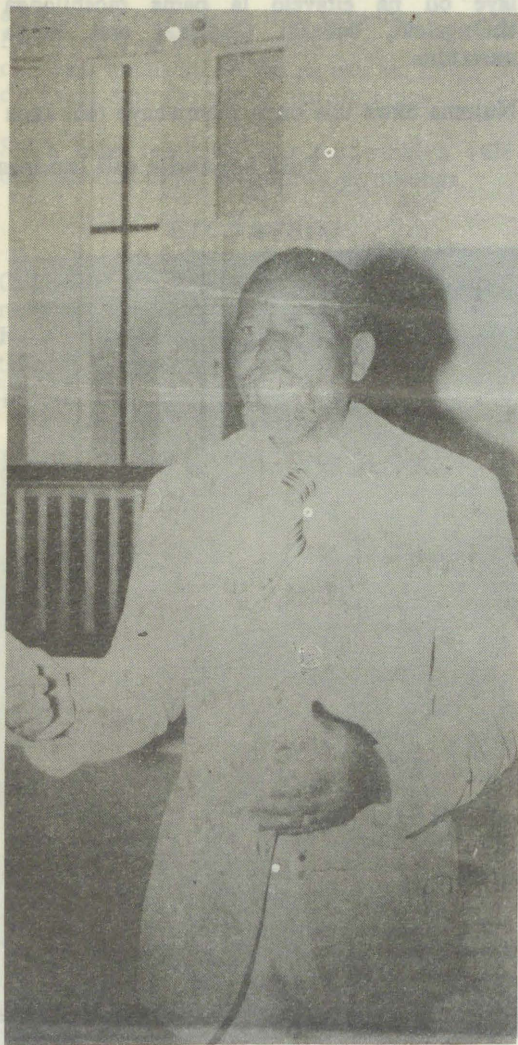
MoCaprivi omu na changano ekwawo tali ithanwa Kopano Ya Tou, ndyoka aniwa tali sile Aakwankala oshipwiyu, ngaashi tashi ningwa aniwa mOmauni nomOsholo, okugandja iikulya nokulonga osikola. Ngele ehanganano ndyoka oli na sha ashike nokugandja oompumbwe dhopalutu kaakwashigwana, omolwashike ano li na uudhigu naUntag okwoontamena mo meni lyalyo? osho ehokololo tali ipula.

Ehokololo olya hulithwa ngeyi, kutya ilonga oyindji yaa li paveta nopambepo yokatokolitho 435, otayi longwa koshitopolwa shoka shuumbangalantu waNamibia, kaape na ngoka e shi shi, shila o SA ashike ye mwene.

omo efaneko la pula R190 000,00. Ova konga ovatungi nokuyeleanifa eendjabi, omo va ka mona omushamane Theron, oo e va tungila ongeleka yavo. Ondado yelongifo loimaliwa moilongifwa imwe yetungo longeleka, pandjokona oi li ngaashi tashi landula:

— Edu opo pwa fikama etungo	R 90 000,00
— Efaneko letungo longeleka	R190 000,00
— Omufaneki wetungo	R 3 2000,00
— Opainda ketungo	R 1 300,00
— Oipundi yeongalo	R 15 469,80

Omutungi mokutunga kwaye okwa pewa R43 539, oikando ine, opo yo a pe navakwao ovo a tunga navo. Omushamane Shikongo okwa holo-la elongelokumwe liwa la kala pokati kavo nomutungi wongeleka yavo. "Nande pwa li oumbada meongelo, kutya ohatu shi dulu ngahelipi, Omwene okwe tu kwafa netungo letu ola pwa keenghono daye," osho omushamane Shikongo a pandula.



Omuyevangeliste Gideon Shakaalela ta popitha aayenda yoshituthi.

Ovawatelikomesho melongelokalunga mefiku leyapulo longeleka okwa li ovafita: Hendrik Dengeinge; Joseph Kapewangolo naJunias Kaapanda. Ovafita ava aveshe ohava longo mOushimba. Ovskwaneongalo novaenda ova yadekele ongeleka oyo fiyo opondje.

Ova pwilikina eudifo mokanya komupashukilishitaingeleki shaUninginino, omufita Josaphat Shanghala, paendjovo defiku olo Joh.10:22-32.



Melongelokalunga lyoshituthi moSwakopmund, ongeleki oya li yu udha sigo opondje.

Nado yo oda hokolola efiku leyapulo lotembeli yomuJerusalem, omo mwa li vamwe va limbililwa Jesus nove mu pula e va lombwele kutya oye lyelye. Omufita Shanghala okwa indila aveshe ovo va li moshivilo sheyapulo olo, opo va ha limbililwe Jesus ngaashi Ovajuda venya. Okwe va halela ediinino leitavelo lavo mokushikula Jesus opo va ka mone oshipewa shovaitaveli "omwenyo wasalushe".

Moshivilo omo ovakalelipo vBengeleki di lili naku lili ova fikifile omahalelo avo mawa koilyo yomaongalo a ELCIN moSwakopo. Ponhele yEhanganotumo laSoomi, omufita Pauli Laukkanen oye a kundifa. Ekundo lOngeleki omwainafana noyaELCIN, ELK mOushimba ola etwa komufita W.Matthys pa Joh.15:11-17. Hamushangandjai wo CCN omufita Abisai Shejavali, naye yoo okwa eta ekundo lombelewa yavo paendjovo da dja muHaggai 2:9b.

Omakundo omeendjibo okwa etelewe kovanyasha vOngeleki yaKatoolika kaRooma nokOngeleki yaAnglikana. Ekundo lomukulunhu wolukanda omo mwa tungwa ongeleka oyo muMondesa, omushamane Van Zyl okwe li kufa mu Jes.2:1.

Omweevangeliste Gideon Shakaalela oo a kwatela komesho oilonga yetungo longeleka noye omuleli weongalo olo, okwe shi tonga nonghumwe inene ta ti, oku na ehafo linene mokudiladila oilonga inene yOmwene waye. Moku shi tumbula okwa indila oomememe vo-meongalo olo ve mu kwafe okupandula ne-nghuwilili.

Okwa twikila ta pandula ohole yaKalunga kaye oo he mu pe oinima oyo ta ti, ka li a wana ngeno oye te i ningilwa. Okwa ti alushe oinima ngeenge tai di keembelwa dOngeleki, omubisofi oha ti nai yuke kuShakaalela, nohashi mu kumwifa. Kwaaishe ei omushamane Shakaalela okwa ti ohai mu diladilifa pedalo laJesus, ou a dalwa kovadinwa nokwa dalelwa opo inapa fimana. "Ovaswakopo tu panduleni Omwene ou e tu ningila oinima inene, nonande fye ovadinwa", osho a kumika eongalo laye.

Naye katu mu wete

Matheus Ngesheya Haihambo, Okatope, Oukwanyama okwa kwatelwe 1979, a hangika koilonga kOvenduka. Otwe mu konga okudja odula oyo a kwatwa, ndee fiyo onena inatu mona buyelele washa. Edina laye nali ye momusholondodo weenghwatwa.

Kaunapawa Hamunime, Onandova



Oongundu dhaagundjuka moshituthi sheyapulo lyongeleka, odha li tadhi shi enditha nawa.

Tala kep. 12

Oilyo yomaongalo Eengeleki; yaKatoolika kaRooma, yaAnglikana noya ELCIN, oya holokele moshivilo shehambelelo muAnamulenge mOmbalantu 8.10.1989, omo va yandja efimano kuKalunga kavo, ou a lundulula onghalo aishhe youpika ya pangela oshilongo eshi eshula defele limwe.

Melongelokalunga eli lehambelelo omwa kalwa yo komupresidende wEhangangano laSWAPO, omusamane Sam Shafishuna Nujoma, pamwe noilyo ihapu yongudumutima wongudu yaye. Oilyo ikwao ihapu yomaongalo eengeleki da tumbulwa pombada oyo ya aluka pondje yo-



OMWENE OKWA DIMBULUKWA

shilongo pamwe novawiliki vayo, nayo omo ya li moshivilo osho.

Elongelokalunga moshivilo osho ola ningwa kovafita Ananias Iita, (ELCIN) ou kwa li omuwiliki woshivilo naJosef Shikongo womeongalo laAnamulenge. Eudifo ola ningwa komufita Abisai Shejavali, ou meudifo a tya kutya:

Ovanamibia ove na omatomhelo mahapu okuhambelela Kalunga, osheshi Ovanamibia va li moupongekwa, ova alukila moshilongo shavo, Oiwanahangano (Untag) oya hovela noilonga yayo yepashukilo lehoololo; eeveta dihapu domafininiko oda kufwa po. Eudifo laye eli a kufa mEpsalmi 100, omufita Shejavali okwa twikila okuulika koilonganghono inene yaKalunga e i ningile Ovanamibia eshi a ti kutya:

Omakakakunya a li moshilongo omu, matilyaana nomalaula, oku fike peni? Mahapu okwa shuna ku SA. Omupresidende womahepeko P.W.Botha Kalunga okwe mu deanga momutwe, a efe Ovanamibia. Vanamibia nava fikame va imbile Omwene kouwanghenda waye, muhapu e u tu ningila.

Polwaye mwene Shejavali okwa ti ye ota pundula Kalunga ou nena, nosho te ke mu pundula yo nokomesho. Okwa dimbulukifa o-

Natango ou na ompito yokunyo-
litha oshifo shoye. Tuma ashike
mbala edhina lyoye nondjukithi
yoye yayela.

shiwana: "Namibia itali ka yambekwa nawa, ngeenge oshiwana kashi li kumwe. Oukumwe ota diladila omutilyane nOmulaule ile Omulaule nOmulaule mukwao," osho a ulika.

Okwa ti kutya eengudu dopapolotika odo tadi longifa oukolokoshi moshiwana, ode lilongela oku ha hoololwa koshiwana. Okwa kumaida oshiwana kehoololo shi ka longele kumwe sho shi ka hoolole ongudu oyo tai kalele po ouwa woshilongo. Ina tumbula kedina ongudu oyo kutya oilipipo. Omufita Shejavali okwa xulifa eudifo laye netumbulo kutya ngeenge hatu hambelele Kalunga, natu kale yo twe mu lineekela.

Mekundo laye okupopifa Ongeleki Omupresidende Nujoma okwa yandja olupandu linene kOngeleki muNamibia osho ye shi ninga okuyambidida nokuxunga oshiwana meedula 23 doita odo da dja ko. Okwa ti kutya ehanganano laye oli na eitavelo la pama moshilonga shOngeleki, osheshi Ongeleki otai longo movanhu.

Nujoma okwa uda onya yeemwenyo tadi kana

Tala kepannja tali landula



Omupresidende Nujoma ta yelitha edhiladhilo lye kaatoolinkundana mOniipa.

aathindikili ooyakwawo pamwe nomusamane Elieser Tuhadeleni (Kaxumakandola).

Mekundo lye kaayenda omukwaniilwa I.Elifas okwa ti, oku na enyanyu enene okutaamba omusamane Nujoma mOndonga, nuunene tuu muuwa we. Okwa ti, Kalunga ota hambelelwa ngoka a longitha Nujoma sho inaa ndalapatela omwenyo gwe nolutu omolwemanguluko lya-Namibia mekondjo lyethimbo ele, sigo ema-

Tala kepannja tali landula

Emanguluko lyaNamibia nali kale emanguluko lyaAfrika

Namibia okantuntu kamwe akeke komeenevi lyaAfrika. Nonando natu mangulukeni muNamibia, itashi kwatha zha, okuninga Afrika alihe lya manguluka, osha dhimbulukithwa sakwaniilwa yomOwambo nomalenga gawo komupresidende gwaSWAPO, omusamane Sam Nujoma. Etsakanano lyaNujoma naakwaniilwa olya longekidhilwe muuwa waNdonga, mOnamungundo paindilo lye mwene nokwe li ningi pethimbo lyetalelopo lye lyotango moshitopiwa shOwambo omwedhi gwa yi.

Manga inaa gandja ondjokonona yekondjo lyoshilongo shika, ndyoka a ti, kutya olya tamekwa kaakwaniilwa yotango, ooMaharero nooNehale lyaMingana, omupresidende gwaSWAPO, Nujoma okwa ti, uukumwe waAfrika oshinima oshikulukulu shopahistoli lyuuyuni. Aatiligane ayeke ya kambadhala oku u teya po. Okwa ti okutauka kwawo mevi ndika pomimvo dho-1960 omolwokukonga omakwatho pondje okukondjitha omutondi, kaAyafrika osha li oshinima tashi taambwa ko nuupu noye endebele oku ya kwatha nonando inaa tseyathana shito.

"Ngele tatu popi Namibia, tu dhimbulukweni ano, kutya shika okantuntu kowala kamwe komevi enene lyaAfrika alihe. Nonando tu mangulukeni, ngele katu li muukumwe Aayafrika ooyamwetu, kashi na shoka tashi tu kwatha," osho a kumagidha sapulakeni ye. South Africa shoka inaashi manguluka, okwa ti otashi ka pumbwa ekwatho lyaNamibia, ngaashi Namibia lya mona omakwatho kii-mwayinalongo iikwawo.

Oshigongi osha li sha kalwa komukwaniilwa gwomOndonga, Immanuel Elifas, ngoka a kala omunashipundi; omukwaniilwa gwomUukwaludhi Josia Shikongo shaTaapopi; nomukwaniilwa gwaNgandjera Jafet Munkundi. Omwa li omalenga omakuluntu gomiilongo Uukwanyama, Uukwambi, nUukolonkadhi.

Omupresidende Nujoma metalelopo lye ndika okwa li a thindikilwa komukulukadhi gwe, efelo Kovambo Nujoma nokiliyo yimwe yome-wilikongundu lyongundu ye; omusamane Simon Kaukungwa, omusamane Peter Mwe-shihange, omundohotola guunamiti Philip Indongo nomundohotola omukwawo Nicky Iiyambo, omusamane Dimo Amaambo osho wo

OKUDINWA KWOVANAMIBIA

natango melongifo lekuni moshilongo omo-lwetondafano loshiwana. Okwa ti kave na fiku limwe ve shi tambule ko (Swapo), kutya osha nyengana shili okutula elandulafano mokati koilyo yo DTA ei tai eta oupyakadi.

Kovapolifi vaSwapol nova Untag omuwiliki woSwapo, Nujoma, okwe va indila va kale hava tambula ko omaudjuu oilyo yoSwapo ngeenge tai holoka okukonga ekwafo. Okwa shilipaleke ovapwilikini va li melongelokalunga linya kutya, Swapo ita kufwa nande komashindo oo momulandu waye wokutambulafana ko noku-

diminafana po, osheshi omo amuke mu na onakwiwa yoshiwana.

Nujoma okwa kunghilila oshiwana shi tambule ko omulandu ou, sho shi ka hoolole ongudu ei (Swapo) i na omhangela noi shii nghee oshiwana tashi ka xupifwa mondjala nomonghai. Omubishofi K. Dumeni, ou naye a li melongelokalunga eli, okwa yandja olupandu laye kekundo lomupresidende Sam Nujoma.

Sebulon Ekandjo

Oshinakugwanithwa nuuthemba womunashilonga

Omuwilikishikandjo okwa tegelelwa a kale a tseya mbika:

- Kala wa tseya shoka u na okuninga
- Nkene u na oku shi ninga
- Tseya omolwashike wu na oku shi ninga
- Tseya ethimbo wu na oku shi ninga

Shika osha tegelelwa opo omuwiliki a vule okugwanitha iinakugwanithwa ye niilonga.

ETONATELO

Omuwiliki gwoshikandjo omupangeli nomutonateli gwaaniilonga mboka ye li mewiliko lye. Kakele ketonatelelo oku li wo omuningi gwomathaneko nomalandulathano ge na sha niilonga.



Omusamane Sam Nujoma nomukulukadhi gwe pethimbo lyetalelopo lyawo mOwambo, pOniipa.

Omukuluntushikandjo oye ongodhi yomakwathano pokati kaanashilonga mboka ye li mewiliko lye nosho wo miikandjolonga. Oku li omukandulipo gwomikundu mokati kaanashilonga ayehe.

Taku twikilwa

Emanguluko lyaNamibia olyo wo lyaAfrika

Dha za kep. 8

nguluko e li etelele ko.

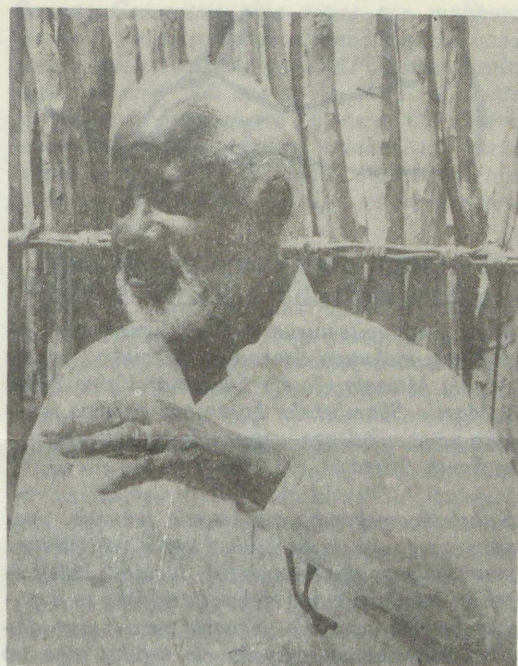
Peha lyomalenga, elenga ekuluntu mOndonga, omusamane Andreas Uukule okwa shilipaleke omupresidende, kutya ekondjo ndyoka ye li kondjo pondje yoshilongo, limwe alike naandyoka omupopi ya kondjo meni lyoshilongo. Uukule okwa ti uukumwe wawo meni, ohau ulikwa ketaambathano lyomaudhigu pokati kawo, uuna ga holoka po opo ya kwathathane.

Okwa gwedha ko a ti, osho sha kala ondjodhi yawo (omupopi) kutya oshiyimati shemanguluko shoka sha kala tashi tagwa kokule, esiku limwe shi toononwe popepi nota nyanyukwa ngashingeyi ondjodhi yawo sho ya tsu.

Omupresidende Nujoma okwa yelithile oshigongi omaudhigu ogendji nomanene ya kala nago mekondjo, okuza petameko. Okwe shi tsu wo omukumo nkene kaape na muuyuni oonkondo tadhi vulu okusinda ehala lyoshigwana noshili yasho. "Oombulu odha li dhi na oondjembo oonene tadhi vulu okudhengela kokule, ihe nando ongeyi emanguluko inatu li thiga ko, otwa galuka nalyo," osho Nujoma a popi manga aakulukadhi taa yamukula nondigolo.

Omuwiliki gwaSWAPO okwa ti yo inaa etelele ashike emanguluko, nelongo wo inaye li thiga ko. Sho twa kala twe shi itaala, kutya kape na eyooloko moondunge dhomuluudhe nodhomutiligane, aagundjuka yetu otwe ya putudha ye ye ya tunge oshigwana, onkene kape na oludhi lwoshilonga itaa vulu ando oku shi longa. Uuluwi womomutse owo u na oshilonga, hashipa shokombanda, osho Nujoma a ti.

Omupresidende okwa gandja olupandu lwo-wina kaanyekadhi nokaakulukadhi yoshigwana mboka a ti, kutya oya dhiginine okutema omulilo pethimbo lyekondjo sigo omutondi a dhengwa. Omoluukolele we-



Omusamane Peter Mweshihange, Hamushanga woshitai shokakulumbwati.

manguluko lyoshilongo, omusamane Nujoma okwa kumagidhwa aaleli yoshitopolwa shika ya dhimbwe mbyoka iiwinayi yokonima, noya konge ondjila yokutunga ontopa pokati kaaaleli yiitopolwa iikwawo yoshilongo, pwa tumbulwa Kavango naKaoko.

Okwa indila omakakunya ga popithwe noga kwathwe. Kaatiligane okwa ti Namibia oshilongo oshinene, tamu gwana omuntu kehe noshi na eliko tali kutitha omuntu kehe. Okwa ti, SWAPO ita tidha nende Omutiligane, shila Omutiligane oye mwene ta yi sho inaa hala okukanitha uuhona we nondhino yokwaasimaneka uuthikepamwe womuntu mukwawo.

Nujoma ina dhimbwa shono Ongeleki ye shi ningi. Okwe shi popi nepandulo, kutya oya kwatha moluhepo lwayo lwiimaliwa okuputudha oshigwana noku shi sila oshimpwiyu shi mone uundjolowele. Okwa ti Epangelo lyaSWAPO otali ka sila oshimpwiyu ayihe mbyoka. Omupresidende okwa hiya oshigwana shi hogolole ongundu ndjoka yi lile po oshigwanaopo yi ka vule okutula miilonga shoka ye shi ilongekidhila etungo lyoshilongo. "SWAPO oyo ayike ongundu yi na elandulathano lyaashono tayi ka ningila oshigwana," osho a dhimbulukitha.

Okwa hiya aaleli mbaka yOwambo nokwa ti, ombelewa ye oye eguluka aluhe kOvenduka nokehe gumwe a hala okumona uuyelele moshinima shontumba ota taambwa nenge ku konkolwe komweelo gwaandjoka yi li mOshakati mewiliko lyomusamane S. Kaugungwa. Pehulilo lyoshigongi, okwa halele aakwaniilwa nomalenga gawo elago nokwe ya tumbuhile: "Kalunga kootatekulu ne mu pe oondunge nomayeke okuyakula oshigwana shetu."

Sebulon Ekandjo



OVA SHANGELA NGE TAVA TI

nonande inatu tsakaneneni. Esilohenda lya Tate Kalunga nali mu indjipalele amuhe Aanamibia.

**Komeho Nomatokolo
Tsandi - Uukwaluudhi**

Eindilo kaahingi yiyenditho ayehe nosho wo aalongithi yopate atuheni

Okuza omwedhi gwa zi ka, Auguste, iiponga yiihauto oya kala tayi uvika unene noonkondo mii-topolwa ayihe yoshilongo, na unene omaso ngoka ga etithwa komakandomo nomasitambathano gi-hauto.

Onkene otandi indile nomutima aguhe kaahingi ayehe yiihauto, opo ya kambadhale noonkondo adhihe ya hinge neitulomo. Mpano onda dhiladhila kutya pwaa ha kale omuntu ta hingi a nwa unene iikolitha, nosho wo okukambadhala okuhinga noonkondo.

Aahingi yamwe otaya hingi unene nayi nonando e wete kutya oshiyenditho osha humbata aantu oye-ndji nenge ofulaha ya pitilila. Yamwe otaya hingi

owala ya fa aaposi, ta tula osheenditho mopate nonande konima ye otaku zi osheenditho sha ende-lela noshi li popepi.

Yamwe otaya hingi owala ta pitilile posheenditho shoka shi mu li komeho ge otaku zi osheenditho. Yamwe otaa hingilile unene noonkondo nonande e wete iimuna tayi taaguluka opate komeho ge. Iini-ma ayihe ya tya ngeyi yakwetu otayi eta oshipo-nga nuupu. Onkene onawa unene ngele tatu kam-badheleni okukala tatu hingeni nuukeka, opo tu vuleni okupangela osheenditho uuna tapa holoka elyalyakano lyiihauto iikwawo.

Otandi indile wo aalongithi yondjila aayendi kolupadhi opo ya kale nokutala nawa iihauto. Oto adha omuntu ta taaguluka ashike opate nuuhasha ko taku zi oshihauto. Opo u taaguluke opate, ou na okutala nawa koombinga adhihe dhopate ngele oku na oshihauto, nongele kaku na oshihauto, opo nduno to vulu okutaaguluka opate, ihe shi ninga meendelelo.

Shino osho owala tashi vulu okuhupitha oomwe-nyo dhetu ngele tatu iyutha koompango nda tum-bula metetekelo. Ashike inandi tya andola omuntu oto vulu okukwata moshipala oshiponga, aawe. Oshiponga ngaa, ashike pamathimbo gamwe aantu otatu longitha unene iiyenditho nuuhasha. Onda hala atuheni tu ka nyanyukweni pamwe muNamibia epe, onkene tu kaleni nokwiinyenga melandulathano.

**Nangame ondi mu hole
Martin N. Kasita
Onethika-Ontananga**

EPUKULULO:

MO mukwetu wonomola 18 mokapalahalafu okati 18, omwa nyolwa: Ashike okwa kambela oshinima shondilo, oshoka ku shi omukondjellimanguloko, owi iningi omukondjellimanguluko. Nashi kale owi iningi omukondjithimanguluko. Shoka osho shi li mokopi yandje nenge momadhiladhilo gandje.

**Mukwillongo
Elim**

Eithikameno lyaalongwantu methimbo ndika

Aaleshi aaholike moshigwana shetu nenge mboka mu li palwe nashi kale kutya omiiilonga yomomagumbo nosho wo momahangano: Mpaka ondi na omadhiladhilo ga tala kwaamboka hatu ithana kutya eithikameno. Methimbo ndika onda dhimbulula oshinima shika shokwiithikamena kutya oyendji oye shi uwiteko nomadhiladhilo ga nika uunona.

Omolwaashoka oto adha omuntu u hala okutula enbo momutse uuna ta nyola ekonakono, ihe ngele owe mu pua esiku lya tetekela ndyoka a li ta nyola oto ka adha ashike omuntu itaa vulu nando okudhimbulukwa shoka a li i ilonga. Ngele omuntu owa pulakene nokulandula omuntu oye tuu ngoka, mbalambala oto mono ashike kutya ope na sha shoka omuntu inez shi tsey.

Iinima mbi tayi mu imbi opo a vule okweetha mbala

Tala kepanja tali landula

Natango omukumo gweni nagu tsikile mokuhola Namibia lyeni

Onda li ndi uvite uugumbo nondi li menyanyu si-go onena mokuuva "oohailwa mekondjo" yandje Angula Mwaala; Josefp Shikuma; Vaino Heita naMartin Shambekela, kutya oya galulwa mu-pika nomondholongo yomutondi gwoshilongo she-tu South Africa.

Kakele koomekondjo mboka nda tumbula, ondi uvite wo etumbalo kooohailwa ayehe ya egululwa moonholongo dhokatongo SA. Notandi halele ayehe mboka omukumo mekondjo ndyoka tu li mu-lyo efupi, ihe olya lula. Ngaashi mwa li mwi idhi-dhimikile ekondjo ndiyaka ele nelulu, osho wo omukumo gweni nagu kale pombanda nomundika efupi.

One oomekondjo yandje mwa kala mekwathano nangame pethimbo mwa li mondholongo ondu uvite uugumbo moku mu uva mwa mangululwa,

OSHIKANDJO SHOMEVA MO CCN OTASHI ENDEPO NGAHELIPI PAIFE?

Ondi wete opa pita ngaa okafimbo inandi mu shivifila ovapwilikini vange, unene ovo mwa tokola okulonga moukumwe opo mu limonene omeva oo e li mevatelelo lo CCN oshali. Oprojeka ei i li mewiliko lo CCN oi li lela metifa lokuvatela oshiwana shaNamibia, unene peenhele odo da lulumikwa kenota moitopolwa aishe yaNamibia. Ondi wete kutya ou na nge epulo ino i mona, ile ino shi uda, ile owe shi udile to ningi eindilo, ndee ino mona sha natango.

Ohandi nyamukula omapulo avali opetameko. Ongongahangano yEengeleki domuNamibia ngaashi naana tu i shii, oya mona kutya omeva moNamibia oku li omukundu munene. Ovana-mibia vahapu ohava longifa omeva omomifima, eendungu, nosho tuu momatale. Omeva a tya ngaha alushe ohaa kala a kaka nai. Eendungu alushe ohadi idilwa noiti omo mu na omakololo omapuka, nomayoka ohaa dulu okuwila momeva oo taa nuwa kovanhu osho yo oinamwenyo noipuka, ohaa dulu okunwa omeva oo taa nuwa kovanhu.

Omeva a tya ngaha, inaa pumbiwa okunuwa kovanhu shaashi okwa kaka nai, ongee ovakulunhu nounona otava kwatwa diva komikifi ngaashi okorela, nosho yo omikifi dikwao odo hadi dulu okutandavelifwa komeva a kaka momunhu. Nandi ku pandulile ko Omunamibia omukwetu kovawiliki vetu ava va tota po Ongongahangano yEengeleki muNamibia. Eengeleki oda hangana tadi mono ekwafo loimaliwa opo ku monike oilongifo yoshali tai dulu okukwafa yoo ovo tava hangana melongelokumwe ngaashi oCCN i li, opo va kwafelwe voo va longelwe omeva tava pewa oshali.

Ekwafo lo CCN otali ya ngaashi tashi landula apa: Ponhele opo mu li omwa mona kutya ope na enota ile ope na ondungu omo hamu dulu

okunuwa, nee amushe vopomukunda opo ile voposhikandjo opo. Melongelokumwe leni olo liwa pomukunda opo otamu kundafana nee ngee mu na okuxupa ondungu opo i mu xupife amushe mu li po mu li vahamano ile omulongo. Ile ngee mu na okulongifa ondungu ile omufima weni. Ningeni nee eindilo leni komunambelewa oo e lile po oshikondo shomeva mo CCN kondjukifi oyo tai ke uya kexulilo lombapila ei.

CCN otai ku kwafa ngaashi tashi landula apa. CCN otai mu landele opomba yokupomba omeva mondungu yeni oshali. CCN otai mu tungile ondungu yeni opo i dule okukala ya tuvikwa nawa. Ominino, eedopi, osamende osho yo opomba, eshina lomhepo, ei aishe otamu i pewa oshali kEhangano lEengeleki. Oilonga yokulonga opo ava mu li oovene vomeva oo otamu longo amushe melongelokumwe leni amushe pamwe nomunambelewa wo CCN ongomuwiliki.

Ngaashi nde mu lombwela petameko, kutya o CCN oyo Eengeleki da hangana muNamibia, nanye omwa pumbwa okuhangana momikunda, moikandjo, momaongalo nosho tuu, opo mu mone ekwafo eli. Ekwafo eli ondi wete vahapu ova tala kutya otali diladililwa ashike okukwafa ovakriste ile ovatengeli vokombinga yonhumba ile ovakwangeleki vaBLCIN, Anglican, Roma ile Eengeleki dikwao. Eshi hasho nande nande. Ekwafo lo CCN olakeshe umwe ompaani ile omukriste, osheshi elalakano okukwafa oshiwana omolwenota, osho yo omukundu womeva oo u li moshilongo shetu, u kandulwe po. Omeva oo omwenyo. Otwa djuulukwa okukala tu lyeni melongelokumwe neudafano limwe, opo tu kufepo omukundu womeva moshilongo shetu. Ninga nee ngaha, tuma eindilo loye oku:

**Ombelewa yoikwameva
Ongwediva — Oshiko**

oyo mbika.

1. Ke shi kutya ota zi peni nopeni u uka.
2. Ombepo yokwihola oyo tayi mu pangele.
3. Ke na omaiwo taga tala ondilo yethimbo.
4. Onkalathano nomalunduluko gamo itaga ti sha kuye.
5. Oku uwite e li muukwatya ta thiminikilwa mo.
6. Omakwatho ngoka ha mono ina tala kutya mboka haye ge mu ningile oya kondja nuudhigu.

Shigwana oshiholike okwiilonga itashi ti: Okunya-nyudha omulongi esiku lyomakonakono, ndele eilongo otashi ti okukala u na ontseyo nando ito konakonwa komulongi:

Ondu uwite ngele owa zimine ngeyi, nena oto kala wo omuntu u ithikamena tashi ti ta dhiladhila kuye mwene ta ningile yalwe omathaneko tage ya kwatha, monkalamwenyo yawo. Osha mana po onkalo yokukala (moluto) tadhi pukitha aantu pethimbo ndika.

Lamek Israel

OKU YA KARA EYI MWA TU TANTERERE MO 1978

Melima olyo nina tumbura peguru kwa keremo ehoroworo olyo ga mwene DTA komukaro gomibiliha morwa yiuyunga yendi oyo nga tantere vantu. Morwa vantu siruwo sina kapukuru kawo iyo va zire nado ndi ni tumbure asi iyo twa zire nado dogoro tatu ka horoworo mbunga ozo za liruka zene asi DTA.

Tanko ni ku tantereko asi DTA yinke ga ninkire melima olyo. Nga havareko yikovero, yikulya noyininke peke-napeke, age oku ta ninki yigongi yendi, zende mukunda, tunda mukunda oku ta tantere vantu oku ta gana asi sinene tupu epangero lya DTA li za kosipundi, hawe tatu ka tunga moruyiga, tatu ka mu tungira yipangero nosikora donongwa nononzira nadinnye tatu ka di tura teya.

"Ewa, munekuto DTA ana ka wina mehoro-wo, tungisa ko nye nosure edi wa tente ndangove yipangero mpaga noteya edi ngo kavauka kwato. Erongo eli ngo zuhwaro to rokota mokana kapi tu naku li mona. Pevenga nye lyoyininke oyo ngauyunga mwene munekuto DTA, aawe pwa ka wiza sili erunduruko. Erongo eli nga kavauka lina ka mbonyoka omo vanasikora vovanzi ngava dopa makonakono, tupu gayi mona ngoso age ta tura po ukatako omo ga zigida vamatati va ka "djoine" moukwaita iyo nye omu mono va DTA navenye nodom.

Makaspara vana gambestere nokukuta etanga lyaKoevoet moyirugana. Emona lyetu nalinye tava hanagura, yipangero eyi ngava kavauka ntene o purako, asi kapureni Kleopas Dumeni na Sam Nujoma. Ntene o heteka kutumbura 435 asi oyo yininke ya SWAPO no VVO morwa navenye vamwe tupu.

Muntu to lipura nye asi hano ogu DTA ngatu zuvhisire yininke ntaantani oku yina kara no. Nteneni tanta usili kapi na zuvha simpe ndokotora Gomusovagani ogu ga lilongesa DTA, vasingi wonodira va DTA oku va kara? Nye simpe kuna kavauka asi tu pandure DTA, gatw ninkira uwa ndi pamwe uwa ou ana ku tanta womakaperi nono R1,000 ga havareka vana vazinyetu noku va pukisa.

SWAPO kwa rwa nomvhura dononzi moyihwa, nye kapi ga rwise DTA nampili nakauke. Swapo kwa rwise epangero lyonomburu lyokatongotongo, nawa one vakwetu nani simpe epangero lya ngoso ilyo muna hara? Simpe kuna hara moupika wonomburu?

Ni tantere eyi ya tetukisa nge ponomukunda edi dina zura ilyo yombunga zo DTA. Yosiri mokuheteka nonomukunda nadinnye ipo pana kara maruhepo gokufa nokutara. Mambo gokupanauka. Gamwe to gwianamo nonzugo mbali tupu, hano gamwe mataratara tupu. Pevega lye lyokukondjera katongotongo ipo tuna gwana epangero eli nali katu ka tu fira sinka. Nomvhura dingapi epangero lya SA lina rere Namibia nye simpe moluhepo rozanyi tuna kara uwa wosirongo nougawo wosirongo naunye, kuna karerepo tupu yirumbu, ntani vakaume zawo konze zomafuta.

Hulilira ni tumbure tupu yuma nakauke koKomitee za kara omu moNamibia zedina asi Komitee zovakurona (Parents Comitee) ozo za karera po mpamwe uwa wepangero lyokatongotongo lya SA. Mbunga ozo zina kupa tupu Swapo usima morwanondadi daSouth Africa edi da kere monomango daSwapo. Ntene asi u comitee weni wouwa wosirongo saNamibia.

Siruwoke nomutameka kupurako kepangero lya SA kombinga zomadina gomanzi aga gana kara melikwamo, nye simpe kapi vana mangurura? Ndi mpamwe to mu kondjo tupu oko, kapi tupu ayi piti mo monoRadio, nye ntene monoRadio kapi ayi piti nye monoyifo moomu? Eyi ntene kapi muna ku yi ninka, nani comitee zeni kwa zi horwerapo zi karerepo mbunga zimwe tupu.

OKWIUKUTHILA OVETA OSHIPONGA MOSHIGWANA

Osha tsakanekwa opendji moshigwana shika, unene mOwambo, sakwashigwana yoyene taa ipe uthemba wokupangula nokugeela ngoka a talika omuyoni, manga omuntu inas pangulwa koveta ndjoka ya dhikilwa po sayoni. Shoka osha fala oye-ndji momahepeko gas na elandulathano. Omusamane Filippus Iidhogela (35) mOlungalunga, mOndonga, oye gumwe a ningi oshihakanwa shomahepeko gopamukalo ngoka. Ombunda ye yu udha lito-sholela, otayi shi ulike, kutya okwa li a gwile milikaha ya puka. Ye mwene ote shi hokolola ngeyi:

Onde endeke ashike uusiku, esiku limwe e te puka kegumbo. Onda yi pegumbo limwe, ndi shi po ngaa ndi pukululwe. Onda pewa po omusamane gwOshimbundu, ndahe mu shi shito. Nguka otwe ya naye sigo opegumbo limwe, mpoka twa topoka naye ta shuna kegumbo, ngaye ndi ka thike wo kaandjetu.

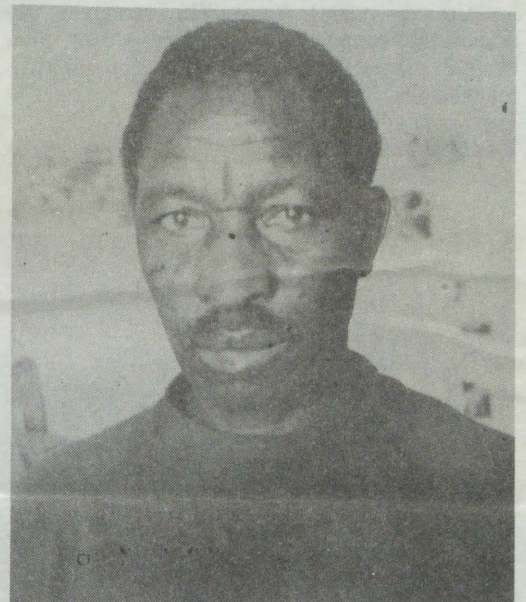
Eti 2.10.1989 onda adhika kaamati yegumbo moka nda ka pukulululwe, lyaNgola, mOmbata, taa thiminike ndje ndi popye omusamane gwaandjawa mpoka nde mu fala. Sho nda li ndaa na uyelele woshinima oya manga ndje komagulu nokomaako, e taa dhenge ngaashi ya hala. Oya mangle ndje koshihauto e tashi kokolola ndje melundu. Manga taa tsikile nomahepeko ngeyi, aspolosi yaUntag noya SWAPOL oye ya, e taa fala ndje mOnandjokwe, moka nda kala oshiwike shimwe noma-siku gatatu.

Parents Committee zina retere nge malipuro gomanzi. Hano vantu owo muna kupura vana kara simpe momawoko gaSWAPO, nani kapi si koyita va zire? Ndi apa va ka sikire koLuanda ipo nye va ka mu tyangera asi awo kwina vahona monondoropa nomonohotera mwelike ava kara? Ntene nani nayinye eyi kapi si imo, amesi tasi tanta asi koyita va zire, ipo va ka kondjere sirongo sawo?

Vakondjelimanguruko mayovi nomayovi va zumbanesera nomwenyo dawo mekonjo, tasi tanta asi SA gava dipaga googu muna kuruganena. Ndi mpamwe mOshatorwa mokamba zaSWAPO moZambia, ava muna kupapara kapi va keremo? Ntene omo va keremo, nye nomoKassinga asi moomu amo simpe kapi vana zi ko koLuanda. Ntene nye asi mo 1978 moMai 4, awo simpe kapi vana zi ko omu nye mo 1 Apilili 1989 pOkahenge, awo kapi nye va ngwanuire po. Ntene asi koSWAPO va zire pomavega nagenye ogo nina tumbura peguru. Vakondjelimanguruko ava va lizambena Namibia evhu upingwa lyawo ipo da zumbanena nomwenyo dawo dononzi, imo hena mavega gamwe nina kutumbura po apa.

Ntudi ava muna kupapara vaavasa muna diva ava mwa tumine va ka hanagurepo SWAPO. Ntene asi yimo muna kupapara owo nani edina lyaKomitee zeni kapi zalya gwana po, mwa divara ko sitya simwe tanko nye ni mu diworokese morwa kulidiworokesa iko kuwa. Zi kare nye ngesi; puppets Parents Committee yangoso lina yuka nye. Viva Swapo of Namibia.

Tuyapeni Sam Tuyapeni



Omusamane Filippus Iidhogela ngoka a hepekwa manga inas etwa kepangulo lyopaveta ndyoka li na okumona omuntu ondjo.

Omusamane Iidhogela okwa popi pOmukwetu, kutya oshinima shika oku na oku shi landula paveta, sigo sha monenwa uyelele. Pethimbo ndyoka ta hokolola, kakwa li a tseyo natango ngele omusamane gwOshimbundu ta kongwa osho tuu a monika nenge aawe.

RUDOLF BAHM

Omupangeli gwootundi MOSHAKATI

Mpaka otandi tseyithile aayakulwa yetu ayehe, kutya iilonga yokupangela ootundi, okulanditha po oompe nokwoopaleka ndhoka dha teka, okutula ko omakende nuumanya, itatu yi longele we metungo JAMAICA INN.

Ngashingeyi otu li mpaka mOshakati metungo lya ENOK (BBK), mpeya hapa kala pwa thikama aluhe omaloli goeskilima (Roomys). Shika otashi ti elalakano mpaka oku ku etela eyakulo ndika popepilela, waaha pumbwe we okufala nenge okutuma ootundi dhoje kUushimba.

Ohatu landitha wo ootundi oonkulu kondando yi li hwepo, onkene tu talela po ngele to piti pOshakati.

Eyapulo lyongeleka

Dha za kep. 7

Omutungi wongeleka omushamane Theron, ekundo laye okwe li kufa ma Efes.4:1-6. Pamwe novafindikili vaye ova fikifa yo eendjibo melaka lavo. Ovanyasha vopoushiinda ovo va dile kOmbaye nokoArandis navo ova udifa neendjibo. Ongudulwiimbo yeongalo olo lipe, oi na oshihopaenenwa shiwa, shaashi oyovakulunhu novanyasha, ootate noomeme, ovamati noukadona, osho sha pumba momaongalo amwe.

Oshivilo osha xulifwa nenangeko noupuna komubishofi, nosha ka twikila neendya pondje yongeleka, odo da dja mekwatafano loukumwe, pokati kovawiliki veongalo olo novatungi yongeleka. Omuyevangeliste Shaakaalela okwe shi yelifa nehafo mokufimanckafana.

Taati Kanana



Ongundulwiimbo yegongalo kolumoho mewiliko lyomusamane Stefanus Show tayi imbi moshituthi.

Sisulu a mangukulwa, Mandela?

Walter Max Ulyate Sisulu (77), okwa mono etango 15.10.1989 muule womimvo 20 sho a longele ondhologo yokukalamwenyo kOntutu yaKobben mu SA. Mondholongo okwa mangukwa mo sayakwawo yaheyali. Sisulu okwa li Amushangandjayi gwehangano ANC ndyoka tali kongokumangukula SA mokatongotongo.

Ya mangukulwa pamwe naye ojafta Meemula; Andreas Mlangeni (63); Raymond Mhlaba (66); Elias Motsoaka (66); Wilton Mkwayi (66); Ahmed Kathrada (66) naOscar Mpeha (66) (UDF). Omusemene Sisulu mehanganano lye okwa yile mo 1949 nokuzi mpaka okwa kala oshiliyo shongundu tashi popi ailinga, peha lyelaka lyemokana ngaashi olwinda hachi ningwa.

Okwa 1962 okukalamwenyo kwe nokemukadhi Albertina, okwa kala unene kwomondholongo eigo 1964 sho a pangulilwa ondhologo yokukalamwenyo, manga efelo ta longele ondhologo yomimvo 10 yomegumbo. Emangukulo lyoonkwa-twa ndhika otaka tiwa omupresidende gwa SA, Frederik Willem de Klerk, okwe shi nangi sho i iyageka oondjindikila dha kola ndhoka tashi vulika dhi ka ningwe moahigongi shilongo hayi popi Oshingilisa, muMalaysia, muKotoba.

EPUKULULO

MOmukwetu waSeptemba 30,1989 epandja 9, mokatendo 3 okudja pombada, omu na etumbulo: "eengaba nadi lundululwe nekwa-tafano la SA naUntag meengaba nali fye". Ha SA naUntag, adele o SA naUnita.

Shaashi keengaba unene pedingonoko lobakana 16 SA naUnita ove na ekwatafano. Haku yuka ngaho oihauto apa i na efulaha, apa i na omakutu oufila, apa kwa twalwa komatango onduba yovanhu voo mefiku tali landula tava ka talwa ko. Keengaba ongudu yaUnita noKoo-voeta noDTA insi yootolwa vali.

Otadi nyonsauna oinima do eemhadi tadi yuku mokataula nokukanena ko kuAngola. Nge wa dengwa ile wa teyelwa ofitola ile ovanhu va dipawa, ngaashi va dipawa peengaba, ku shii ou e shi ninga. Opa pumbiwa ekonaakono lo-keengaba momudingonoko oo.

K. Hamushanga

Ethigathano momwaalu olya ningwa mOngwediva

Oosikola dhopombanda mOwambo: yaGabriel Taapopi; Mweshipandeka, Oluno; Ongandjera; Oshakati nOshigambo odha kuthile oshitopolwa methigathano etiyali lyokomumvo lyOmwaalu, ndyoka lya ningilwa mOngwediva 7.10.1989.

Omulongwa Petrus Amakali gwemoMweshipandeka oye a anduka mo omutango, a piti Anna Hango gwemoOeko yaNgandjera. Omuitatu methigathano ndika oTuhafeni Nekongo e taku ya Gervanius Shikongo najulia lilende omutitano. Yakwawo omulongo ya taamba ondjambi yepandulo oyo:

Helena Shilimbi; Julia Tuvadimbwa, Selma Shipopyeni, Tuyenikelao Shashohamba na-Fillemon Kayofa. Ekonakono ndyoka lya kuthile uule wotundi yimwe mokati kaalongwa yOstanda 9-10, olya li nomwaalu gwokusinda (analytical geometry) omwaalu gwoohuke (trigonometry) nogwoografiki naashihe sha pamba kumbyoka. Ongeleki yaBaptist mu-Namibia oyo ya kwatha ilimaliwa mekonakono ndyoka.

OMUKWETU

Oye oshifo shOngeleki Onkwaevangeli paLuther yomu SWA/NAMIBIA.

Ohashi nyanyangidhwa mOshinyanyangidho shOngeleki mOniipa.

Omukuluntu gwoshifo omumbisofi Kleopas Dumeni.

Amushanga gwoshifo omusita Sebulon Ekandjo.

Ondando yOmukwetu muNamibia naSouth Africa R8,00 komumvo.

Pondje yaNamibia na SA R20,00 komumvo. Ndjika oyo wo ondando yoshifo shomondhila.

Oondando nomambesitelo agehe naga tumwe kOmukwetu, Oniipa, P/Bag 2013, Ondangwa 9000, N A M I B I A.

ELOC PRINTING PRESS
PRIVATE BAG 2013, TEL. (06762) 11, TELEX 54-3257 WK
SWA/NAMIBIA