

UMUKWETHU



50c

No. 19

ISBN 0-620-06828-0



Omukunda omutiheyali moshipangelo shaNandjokwe, ogwa tseyika omukunda guunona. Uuna to talele po omukunda ngoka oto mono ethano lya yela nawa, nkene esiloshimpwiyu lyuunona li liwe nalyo moshigwana. Kakele kuuvu wondjala mboka tau hepeke uunona tau etwa momukunda ngoka, omwaalu omunene ohagu ya mo wo omolwilalo yomulilo nenge yomeya. Iiponga mbika iyali kuunona kayi shi omupya, ihe otayi talelwa muhethi waa-
leli.

AMADHILA NAAUSIKU METOTO LYOMPANGO YOSHILONGO

Aasita yaali mu ELCIN, Matti Amadhila na-Heikki Ausiku, oye li mongundu yaanapolotika 72 ndjoka tayi toto Ekotampango lyemanguluko lyaNamibia mOvenduka. Omutumba gwoshigongi shoka, ngoka gu li mewiliko lyomunashipundi omusamane Hage Geingob, ogwa tamekele niilonga yagwo 21.11.1989. Omusamane Geingob okwa kala shito omuwiliki gwOshiputudhilo shaNamibia muLusaka, shoka SWAPO a dhikilwa kligwanahangano.

Oongundu heyali adhike dhomoongundu 10 ndhoka dha li tadhithigathana mehogololo dhi li momutumba ngoka. SWAPO oku na

mo iipundi 41; DTA iipundi 21; UDF 4; ACN 3; FCN: NNF na NPF kehe yimwe oshipundi 1 pamawi ngoka dha mono mehogololo.

Ope na ngashingeyi etegameno enene maanapolotika, oshituthi shemanguluko lyaNamibia shi ka dhanwe mbala shi vulithe kuApilili 1990 hoka sha kala tashi tengenekelwa. Esiku lyemanguluko otali endeletithwa nenge tali tokelithwa, shi ikwatelela kokupwa kwiilonga yetoto lyEkotampango.

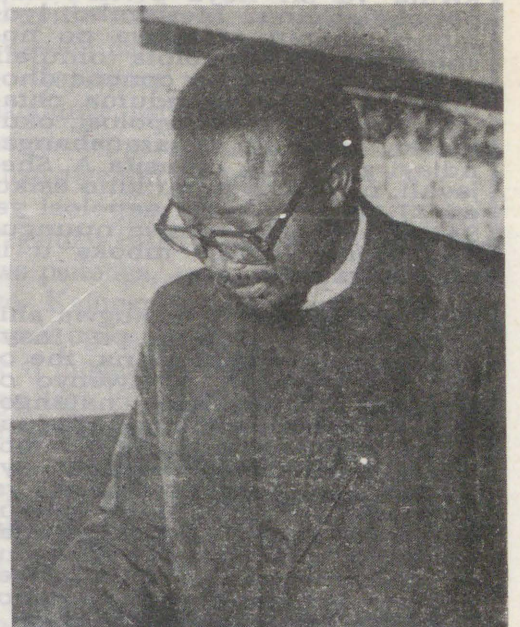
Omusita Amadhila oha longo mombelewa yomumbisofi, pautho lyOshigongingeleki

okukwatha omumbisofi melongekidho lyetendo lyOngeliki mlikandjongeleki. Omusita Ausiku omupehamutonateli mOshitayingeleki shaKavango, noku li wo omukuluntu gwosikola yOmbimbeli moNkurenkuru. Inashi yela manga, kutya aanashilonga mboka ya ELCIN otaa yakula ethimbo li

Tala kependja tali landula



Omusita Matti Amadhila



Omusita Heikki Ausiku

Natango ope na sha shokupopiwa

Oshi li kokule natango kaantu yomoshitopolwa shuumbangalantu woshilongo, sha tseyika nedhina ekwawo, oshitopolwa shiita, ya lole omulyo gwombili yomalunduluko omawanawa ngoa ningwa po omumvo nguka. Omoshitopolwa tuu shoka, aantu natango taa dhipagwa iipundjamenye ngaashi shito, uusiku itaa kotha kehaluko ngaashi shito, nekukumo aanegumbo ya thige po omahala gawo omolwomatumwalaka gomaehameko taye ga tuminwa, otali tsikile pwaa na egameno nelandulathano lyoveta.

Ayihe mbyoka tayi ningwa methimbo SA i inekelelwa natango egameno lyaakalimo notayi ningwa pakutala nawa kumboka ye na eyambidhidho lyaapolosi mboka ya tulilwa po ombili nelandulathano. Iinima mbika otayi longo notayi tsikile nonando taku iyakele emweno moshigwana, ndyoka tali gandja ethano lya puka, kAanamibia yoyene naunene kuuyuni wopondje mboka tau tala iinima mpaka nkene tayi humu komeho, sho tashi monika iinima ya fa tayi ende nawa.

Eti 28.11.1989 mokati komutenya pombali, manga aantu taa inyenge koombinga noombinga yi iyakidhila niimpwiyu yesiku, oondjembo dhomashina odha kala tadhil umbu mokamba ya SA mOutapi, kwaa shiwiki elalakan. Aakalimo yomomudhingoloko otaa ti, shoka hasho oshikando shotango, ihe etsikilo komambo gomasi ku ogendji ga piti. Oshinima shika osha ningwa montaneho ya UNTAG a kunduka okamba ndjoka. Methimbo lya piti omukalo ngoka ogwa eta olwindji iiponga.

Shito aantu oya dhipagwa netompelo, kutya evi tali kondjelwa. Ngashingeyi otaa dhipagelwa ano shike? Oondjembo odha li dha humbatwa neipopilo kutya aakwiita ya SA noya SWAPO taa ponokelathana. Methimbo lyombuu, omatati ga tulwa po noshilongo sha hogolola omuleli gwasho, oondjembo oonene dhomashina tadhil ndunduma natango mookamba dhaapolosi, okukoleka efatululo lyAamushangandjayi gwa CCN, omusita A. Shejavali, ndyoka a tumu kiifo esiku eti 27.11.1989, kutya aapolosi ya SA otaa longele kumwe nuungundu womadhipago mboka u li moshigwana?

Iinima mbika oyo ya kugwa shito kOngeleki yi hule po. Inayi vulitha ashike oshigwana, ihe oya kanithitha wo oomwenyo odhindji notadhi kana natango. Kakele komalunduluko omawanawa ngoka ga ningwa po monkalo yoshilongo, Ongeleki oyi na natango etompelo ngaashi ya kala hayi shi ningi shito, okukuga kepangelo lya SA nokligwananangano, sigo egameno lyomalutu noomwenyo lya shilipalekelwa wo nomaantu yomoshitopolwa shokuumbangalantu.

Sebulon Ekandjo

Oshoongaleleleki mu ELCIN sha kalekwa mangha

Oshoongalelele shovafita mOngeleki ya ELCIN, momutumba washo omutivali 21.11.1989 osha indila Elelongeleki li mweneke mangha Oshoongaleleleki osho sha li shi na okukala ko ohani ei. Etendo

Etungo lyEkotampango lyaNamibia

Dha za kep. 1

thike peni mongundu ndjoka yopashigwana.

Kape na eziminino momauthompango ga ELCIN komunashilonga a putudhwa kOngeleki okulonga iilonga iyali oshita. Omauthompango otaga utha ngeyi, kutya omunashilonga manga inaa taamba iilonga yilwe, pondje yeithano lye na konge tango eziminino kElelongeleki nenge kongunduleli ndjoka ye mu langeka moshilonga, manga ku na oomwedhi ndatu.

“Ongeleki oya kala nokugalikanenaomalunduluko ga ningwe po melelo lyoshilongo shetu, noshi li mondjila aanashilonga yOngeleki ngele taa longo pamwe moshilonga shoka sha simana okumonena oshigwana Ekotampango. Ashike Elelongeleki inali ya mo manga moshinina shaasita mboka, oshoka kape na natango ngoka a tseyitha sha pambelewa,” osho omumbisofi K. Dumeni a yamukula kepulo nkene iilonga yaasita mboka tayi tsikile mOngeleki.

Sebulon Ekandjo

+++++

Kalunga okwa zimbula omumati omugundjuka Makoti Amia (23) eti 19.8.89 moshipangelo Onandjokwe. Okwa thigi ko aakuluntu ye naamwayina.

+++++

Omasiku 23.5.1989 tate Kalunga okwa ilepo Naemi Tweufilwa Uushona Shilongo, ombaadhilila mepipi lyoomwedhi heyali, a thigi po yina nokamwayina kamwe.

+++++

Omasiku 28.9.1989 omukulupe Mateus Mushona (64) e tu tetekele muukwaaluhe. Okwa li omukwanegongalo mOnguta a thigi po oyana yaali aatekulu 14 naatekulululwa 10.

Mumbika ayihe sho nde yi mono onda ti: “Omwenyo mwena, Eimbilo 518:4 mEhangano.

Ruusa - Magano Nembungu Olukonda - Ondangwa

longaba doikandjongeleki mOngeleki, osho sha li oshikundafanwa shomOshoongaleleleki shinya sha li tashi ifanwa paulumomhumbwe.

Eshi kwa konekwa, kutya omalongekido moshinima shongaba inaa wana natango, ovafita moshoongalelele shavo ova tuma eindilo lavo kElelongeleki, opo li undulile Oshoongaleleleki shaDesemba komesho fiyo okOshoongaleleleki shopafo, shiimba tashi ka kala ko 1991 ile 1992.

Okangudu kongaba oka indilwa yo ka twikile nomalongekido ako, ko ka twife kumwe omafaneko ongaba oo a dile koitaingeleki, fimbo oshoongaleleleki inashi fika.

Oshoongalelele shovafita osha li mOniipa 21.11.1989 etwikilo lashikwao sha li ko 20.9.1989, natango mOniipa. Omolweyakulo lovafita mofimbo eli nomolwomalongekido oshOongaleleleki, okwa li kwa ifanwa oyoongalelele yovafita oyo pamhumbwe. Oshoongalelele shovafita shopafo oshi li ko omudo tau ya 1990.

Sebulon Ekandjo

Onkundana yoluhodhi



Nakusa Marjatta

Aatumwa aakulu mpaka, meme Marjatta Mustaniemi (51), okwa mana oondjenda dhe muSoomi 2.11.1989 nakuku Hilma Ranttila, omulongi gwaalongi mu ELCIN, 1.11.1989 mepipi lyomimvo 92. “Mboka taa kunu nokulila omahodhi, oyo taa ka teya nenyanu lyopombanda.” Eps. 126:5.

Omiti dha tokolelwa eso

Otashi halutha notashi kakamitha omuntu e na ohole yuuntsitwe neopalo lyawo nokwa ndhindhilika ompumbwe yekale po lyiimeno, okunona kehe esiku iiyenditho yaa shi kuyalulwa yu udha iimeno ya tulwa kohake (anuwa omiti). Oonakuhumbata oofulaha ndhika aluhe ngele to ya pula kutya ano omiti tadhi tutwa ngaa kehe esiku odha shike, kehe gumwe ota yamukula owala, "TSE INATU HALA UUGUMBO WA NIKA OSHIKATA-LUME."

Eeno, odhoshili, shika otashi popilwa kukehe gumwe.

Gumwe nokuli sho nda li nde mu pula oofulaha ha tutu esiku kehe kutya odha shike, okwa ti: "Omati naga komangelwe. Ohaga longo shike? Natu taleni uutale kuyimwe yomiilonga yomiti dhi na omwenyo:

- Oshilongo shi na omiti niihwa oyindji, osha pumbwa owala okamvula okashona, yo iimeno oya mena nale nokuli, oshoka omeya gokohi yevi (kapillary water) otaga aadhika popepi okukwatathana naanga gomvula oshoka, etango inali mona ompito ya gwana okuthithina mo nga gokohi yevi omolwomuzile gwomiti/gwiihwa. Onkene ho mono ombuga nando nayi lokwe, ku kunu mo sha.
- Uupopepi womeya gomevi (capillary water) ohau gamene iilya yaa kokotwe nuupu, nande omvula kayi shi onene.
- Iimuna kayi na mpo hayi gondjo ohayi kwatwa mbala kuukumba nando nayi kale pomeya, shi vulithe iimuna yomiihwa/mokuti.
- Uudhila owindji ohau hupu miiyimati, yo iiyimati ohayi kala mpa pe na omiti. Ngele twe dhi letheke po, inatu nyenyeta nande "okadhila" ngele taka tauka e ta ka ponokele omapya getu ko ka lye po iilya yetu.
- Iinamwenyo oyindji yokohi yevi ngaashi ombuku odha tameka nale okufula kohi yomiti dhomomagumbo, nenge kohi yongulu yoye nokuli, oshoka omidhi domiti oongudhi dhomakwena kaaga mbonyoke, dho omiti otwe dhi mana po.
- Omayoka otaga ka holama miiyagaya nomomagumbo uuna omiti dha pwa po.
- Manga oshinamwenyo kehe, nomuntu wo, ta fudhile mo ombepo ya longa nale (carbon hydrate), okwa pumbwa wo okufudhila mo ombepo ompe, ohapi (oxgen). Yo nee iimeno oyo hayi gandja ohapi kiiinamwenyo, yo iinamwenyo, nomuntu wo, ta gandja o"carbon hydrate" kiimeno. Osho nee ho mono wa vululukwa nawa ngele wa gondja momuti, shi vulithe mongulu.
- Okuletheke omiti pokuma owa fa naanaa omakakunya taga lyatagula po egumbo, go ge shi shiilile nawanawa kutya aantu omo haya mono iikulya, haya lala, haya holama ombepo, haya gondjo, haya holama iiponga nsht. Ano mokuti omo wo iinamwenyo hayi

ETUMWALAKA KOOITAALI TALI POPI EGALUKO LYAKRISTUS

Mokulesha kwetu Ombimbeli otu na okundhindhilika. Elaka lyegaluko lyaKristus nkene te li popi ye mwene. Noku na aakriste oyendji muuyuni wetu kaaye na oshimpwiyu oku mu tegelela, nando etegelelo ndika lya li lya kola megongalo lyotango muJerusalem. O-

nawa aakriste ooyakwetu tu tamekeni okwiipula nena kehe gumwe ta lesa etumwalaka ndika, kutya ondi li ngiini mokutegelela egaluko lyaKristus?

Mombimbeli Jesus ta popi pegaluko lye ta ti: Ota ka galuka pamwe naayengeli ye nota ka yoolola oonzi miikombo. PaMateus 25:32 noonkwawo Nii-gwana ayihe otayi gongelwa koshipala she, nota yoolola aantu mooyakwawo.

Jesus ta ti mboka haa yono uuyuuki, otaa ku imbilwa meziko lya hanya omo hamu kala elilagano neikokoto lyomayego. Naayuuki otaa ka adhima ngetango omoshilongo shaHe. Ngoka e na omakutsi nu uve ko. Mat 13:41-43 Omuleshi omukwetu oyendji ngiika noku uva oohapu ndhika dhaJesus oye dhi tala dha fa kaadhi na oonkondo. Ihe ope na ethimbo ndyoka aantu taa ka mona nkene tashi ka gwanithwa, nando ye li ye shi tala sha fa itaashi ka ningwa.

Naampaka otu na lela okukotoka opo tu ikeleleni twaa yone uuyuuki opo tu yeni ontuku iilonga mbyoka tayi tsu ondumbo nehalo lyaKalunga. Nonando omutondi iha etha oku tu longitha, otuneni okukotoka twaa ninge aatumwa naalongithwa yaSatana. Mokulonga iilonga ngaashi mbika tayi landula: omadhipago, uunkolwi, uufuthi, omalundilathano, omasimaneko giimanka, okahalu keliko; okahalu konyama niikwawo ya fa mbika tayi tsu ondumbo nehalo lyaKalunga.

Onkene natu kotokeni, opo tu ninge etokololo metagelelo lyegaluko lyaKristus, opo kaatu ka peweni ondjambi yomupya. Oshoka omuntu ngoka a mono ehupitho muJesus, oye awike ta vulu okugwanitha ehala lyaKalunga. Megaluko lyaKristus meyele lyaakadhona aannandunge, osho sha li wo. Oyo ya adhika yi ilongekidha, oshoka oomwenyo dhawo ye dhi matulile Jesus.

Pegaluko lyaKristus aantu itaa yoololwa pailonga, aawe, ihe opankalelo yawo. Kalunga ina dhiladhilila omuntu nande ogumwe oheli, ihe omuntu mwene ti ihogololele ondjila ye. Ihe omwenyo tagu zi muKristus gwa gwana no-kugwanenena.

Tu galikaneneni Kalunga e tu yelithile ethikilo ndika, noku tu pe ohole okuhola egaluko lyaKristus.

**Johannes Amukugo
Oranjemund**



Omulongi Josua N. Amukugo

mono iikulya; hayi lala, hayi gondjo, nohayi holama iiponga.

DHIMBULUKWA: Aanona yongashingeyi nuulimba kaye wu shi we. Epuko olya lye nee? Aanona otaye wu mono peni? Iinamwenyo oyaale yi kale momahenene? Miilongo ya putuka omolwomupondo gweshito, omwa kala ooveta tadhi dhengele ngaashi:

- Hamuntu wa vudha mo omuti nenge oshihwa
- Hamuntu wa ehameke omuti nenge oshihwa
- Hamuntu wa fike po omuti nenge oshihwa
- Hamuntu wa hanagula po omuti nenge oshihwa nopwaa na epitikilo lyepangelo.

Otandi inekele kehe gumwe ngoka e hole oshilongo she ota kambadhala oku shi tsika omiti, naangoka e na oshege nasho ota kambadhala oku shi letheke omiti.

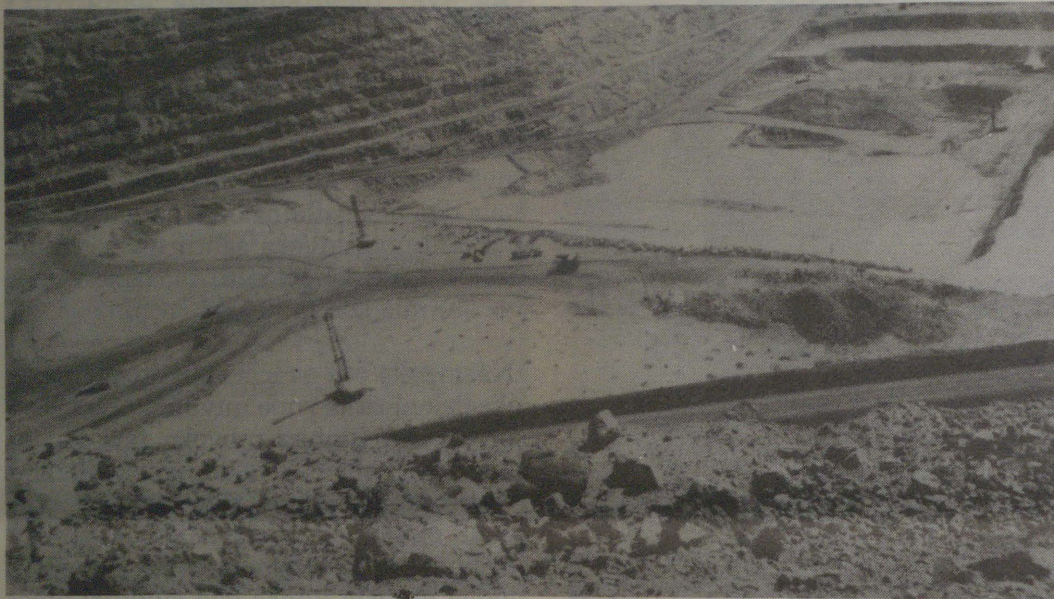
**J.N. Amukugo
Box 380
Ondangwa**

SOUTH AFRICA OTA THIGINAMIBIA LYA HUTUKA

Nonando omalunza guuyamba waNamibia momimvo ndhika dha zi ko oge ende hwepo noondando dhiinima osho wo iilikolomwa yomevi oya yeluka po, onkene tuu ope na natango oonkatu hetatu moka tamu talelwa uupyakadhi womahupilo goshilongo shika, osha leshwa mombapila yomayelithilo gOongeleki muLondon.

Iitsa tayi landula mpaka otayi ulike oonkatu ndhoka moka omahupilo gaNamibia ga talikila taga hepele.

1. Payalulo lyaatseyinawa yomahupilo, omukakena gwomimvo okuza 1980 ogwa kala omwii-nayi miilikolomwa yoshilongo. Otaku tiwa omumvo 1977 okwa li kwa likolwa ashike R930 (oomiliyona) nodha kuluka 1983 sigo R690.



Oshilambo shomina yaourana moRossinga, popepi naSwakopmund. Oshifulwamo shomomina ndjoka osha simana pethimbo ndika muuyuni auhe.

Naashono osha tsikile sigo 1986-8.

2. Patiyali opwa kala omwaka onene pokati kiilikolomwa yomeni lyoshilongo naambyoka hayi ya mo, tayi zi pondje. Konyala oopelesenda 60% dhiilikolomwa yomeni, ohadhi tumwa tadhi yi pondje. Omwaka pokati kiilikolomwa yomeni lyoshilongo naambyoka yopondje yoshilongo ogwa za unene meinekelo lya pitilila okwiinekela ekunguno lyopafabulika, omahanganogaaatiligane yokiilongo nokepungulo lyopondje yaNamibia, osho ombapila ya ulike.

3. Patitatu ombapila oya tsikila tayi ti, moshitsa shika omahupilo gaNamibia oga dthingolokwa unene komukalo gwekunguno lyoofabulika, ngaashi oomina ndhoka hadhi kuthwa tu tye etata alihe lyiilikolomwa yomeni. Namibia ngele ohali tumu pondje iilikolomwa shi vule etata lyaashono a likola, nena meni oha longitha mo ashike konyala iititatu itano (3/5) yiilikolomwa ye ayihe hayi zi pondje nomiilonga ye. Tashi ti oopelesenda 90% dhaashono sha longithwa po naashono sha pungulwa she ya mo, ohadhi zi ku SA.

4. Moshitsa shika, ombapila otayi ti kutya muuyamba waNamibia inamu kala uuyuuuki oku u topolelathana. Opwa ulikwa ngeyi, kutya shi vule nokuli oopelesenda 65% dhaAaluudhe a-

yehe moshilongo otaa hupu shokadhila, manga iiyemo yAatiligane konyala omunegumbo kehe ha likola lwomilongo 20, okuyeleka nomunegumbo Omuluudhe.

Okwa tiwa mombapila ndjoka kutya okwaa na uuthikepamwe hoka okwa, etwa kombinga yimwe komangambeko gomaiyengo gomuluudhe nokekuto lyiilonga yawo, manga etopolo lyiilonga noondjambi lya ningwa nuunkulungu lya taalelithwa owala kAatiligane. Pashiholelwa sha gandjwa moshinima shoka, opwa ulikwa omwaalu gwAaluudhe aakeeniilonga mOvenduka, gwa tengenekwa gu vule oopelesenda 20%.

5. Ohedhi yelongitho lyiiniwe lyomoshigwana nayo oya dhimbululwa kutya kayi li muuthikepamwe, kombinga yimwe sha etwa kiita noke-tyapulo lyelongitho lyuwanawa lyaanashilonga yepangelo lya SA. Kombinga onkwawo osha za melongitho inaali ihwapo mokati kAaluudhe kombinga yuundjolowe, elongo osho momayakulo galwe gomonkalathano yawo.

6. Moshitsa shika opwa ulikwa unene elongithonayi lyomahupilo. Uyelele mushika owa zile unene mekonakono lyokomisi yaThirion ndjoka ya ningile ekonakono momalelo gomavigumbo gomoshilongo shika konyala 1985, moka ya dhimbulula embangoloto enene, ehepeko lyiimaliwa, nokwaa na uudhiginini moshinima shoka. Elongithonayi lyuunamapya nalyo olya kwathela membangoloto ndyoka.

7. Ombilive oya tsikile moshitsa shika, kutya omahupilo muNamibia oga hepekwa kiinima yimwe yokombanda, ngaashi elondo lyondando miitenda noshikukuta. Okwa tiwa kutya eikuthomo lyaakwiita ya SA muNamibia nalyo otali eta mo sha menkundipalo lyomahupilo, unene mombinga yekuto lyaaniilonga, ombapila ya ti.

8. Lwahuginina opwa ulikwa uumumwe wamahupilo goshilongo shika noga South Africa. Kakele keendjelelo lyaNamibia ku SA miipindi, momalweendo nomomulandu gwiimaliwa, ehokololo olya ti South Africa okwa thiga mo ongu-

MOMAHUPILO

nga onene muka. SA okwa thigi wo onakuyiwa yaNamibia yaa na we omalunza ga gwana okulongela mo.

Ehokololo olya tsikile natango tali ti SA okwa thigi a shonopeka elongitho lyiimaliwa noopelesenda 7% okuza 1988-9, shoka she eta ekuluko momahupilo gomeni noopelesenda 13% dhiilikolomwa ayihe. Konyala etata lyiyyemo yepangelo, ohali zi ku South Africa, ongele meukililo nenge iifutila yopongamba. Ashike ekwatho lya SA lyokomumvo paimaliwa nalyo olya shonopekwa noopelesenda 73% omumvo nguka (1989), nombanga ya South Africa oya tindi okugandja euvaneke kutya otayi ka gandja ekwatho nokomeho, ombapila ya ti.

Osha ulikwa momushangwahokololo ngoka, kutya ongunga ya thigilwa epangelo epe ku South Africa, otayi tengenekwa pokati koomiliyona R780 na R800.

Efatululo olya gandjwa kutya yoyene ongunga ndjono paveta yuuyuni otayi talika iyololwa yowala, molwaashoka oye etwa po kepangelo lya li paveta, ashike oshinima otashi vulu wo okutalelwa keuvoko lyoombaanga dhokiilongo yuuninginino, kutya dho otadhi shi tala ngiini, nomolwashoka tayi vulu okuyonagula onkalo yiimaliwa yepangelo epe.

Shoka shi shi okuningwa po.

Ehokololo inali gandja owala shono she etela omahupilo gaNamibia uupyakadhi, ihe olya gandja wo nomathaneko gaashono shi shi okuningwa po monakuyiwa, opo ependulepo lyomahupilo li ningwe. Ehokololo olya ti epangelo lyoshilongo ando li kambadhale:

- nokukoleka iizemo yomevi
- Pu kongwe omahalithilo omape gonyama ngoka taga vulu okweeta iihohela
- Omwaalu gwekwato lyoochi gu gwedhelwe, pamwe onegwedhelo lyoomaila moka mu na okukwatwa ooche.
- Okwiindjipaleka iilongomwa moshilongo, sha kwatela mo wo netumo lyonyama nochi pondje yoshilongo.
- Iiyemo yopauanamapya yi kolekwe.
- Pu kongwe oompito dhelongitho lyegwo lya-Kunene molusheno nometekelo lyomapya.
- Oondjila oompe dhi kongwe po, okuyanda ndhoka dha kwatathana na SA omolwiipindi nenge sha shilwe.
- Omahanganano muuyuni ga tsuwe omukumo okupungula muNamibia, ngoka ga kala mo shito nomape ga kongwe mokulonga uunamapya nenge omahooli komunkulo gwefuta.
- Nopu konakonwe ngele otashi vulika Namibia a kale niimaliwa ye mwene.

Ehokololo olya tsikile lya ti, kutya omulandu gwa SWAPO ngoka a gandja 1988, ogwa kankamekelwa kuuyuuuki womonkalathano. Otagu zimine ompumbwe yomalunza gopondje yoshilongo kutya nago oga pumbiwa. Nonando SWAPO okwa hala okungambeka omukalo gwomahupilo tagu pangwa kaakwiilongo, ina popila wo okukutha ko oomina, omapya niimpungulonga yilwe e yi ningepo yopashigwana, muule wethimbo efupi.

Omulandu gwe ogwa popila omahupilo gomu-

Tala kepanja tali landula

OMAUPYAKADI AMWE MELONGO MOSHILONGO

Oshilongo shetu osha kala efimbo lile moukoloni oo wa kala nokunaipika ondodo yonghalo moshilongo, unene mokukaleka ondodo yelongo pedu. Moshinyolwa eshi, onda hala okukwandjanga nomulandu welongo oo wa kala nokulandulwa meefikola domoshilongo shetu, nonghee omufindalongo wa tya ngaha wa kala nokukaleka ovanhu monima. Apa onda hala okutameka nokuholola nghee elaka lOshiingilisha la kala nokulungifwa meefikola detu, unene tuu domOwambo.

Oshiingilisha osho elaka olo hali popiwa konyala kovanhu vahapu mounyuni vominghoko da yooloka. Olo yo omo ovakwaunyuni aushe ve na okushakana paudafano. Hano olo elaka lounyuni lopambelewa. Moshitukulwa shaWambo, olo yoo elaka olo hali longifwa meefikola, ongelongifwalaka. Ashike nee meefikola detu mOwambo, omufindo ou wa tulwa melongo lOshiingilisha lomondjila ounini lela, naluhapu ovanafikola otave lipitile meefikola, meengudu dopombada nokuli ve he shii nande yoo tuu nee okutungwa omatumbulo atano a landulafana noku li mondjila.

Ashike luhapu omuntu oto kumwa nee, kutya omolwashike mbela ondodo younongo welaka lOshiingilisha ya wa pedu ngaha, nonande olo elaka olo hali longifwa meefikola? Apa shiimba ope na oitwa yonhumba okutumbula.

a) Olupe lwofikola oyo omunhu to tumbula. Eefikola depangelo konyala odo da didilikwa di li pondodo yopedu melongo nelongifo lOshiingilisha lomondjila. Eshi shiimba osha dja apa eshi vahapu vomovalongi vomeefikola depangelo navo vene ova mwene ashike edeulo lelaka lininilela. Eshi kashi fi nande ondjo yalye i he fi yepangelo olo la li koshipundi.

Osha yela, kutya osho sha li oshilalakanenwa shalo oshinene okukaleka ovanhu ve he shii omalaka omounyuni aa a fimana. Eshi otashi va keelele kokulesha omambo noifonghundana ihapu yomounyuni, osho yoo okupwilikina eenghundana da fimana mounyuni, odo luhapu hadi popiwa nawa mOshiingilisha.

Komukalo ou, ovanhu otava tetwa ko kounyuni wopondje nounongo wavo otaw ninipikwa. Eshi osha ningwa naanaa opo ovanhu va kale va kofa voo va ha dule okulwifa oukoloni.

b) Osha fimana yoo okukoneka, kutya ovalongwa vahapu navo inava kala ve litula mo melihongo lOshiingilisha. Oshiingilisha konyala osha kala sha talika ko ongelaka lomongulu alike. Konima yeetundi, kape na mbudi ovanhu otava denge omalaka avo okeumbo. Heeno, osha fimana nosha pumbiwa ovanhu va diinine omalaka ooina, ashike oshinima yoo shinene ovanhu va shiive nawa omalaka oo tae va xupifa keshe opo tava i mounyuni.

ELONGO

Elongo loovene ola kala la nghundipala. Ngashi nda tumbula metetekelo, ovalongi inava deulikika, navo otashi dulika ngaha va weda ko kenghundipalo lehongo. Inandi hala okutya ovahapu vomovalongi inava deuka, ashike onda hala okuyelifa, kutya vanini tuu ovo ve li mo, otava dule okweeta po elunduluko la kala.

Lwopokati opo opa enda yoo ekufu moilonga lovahongi vahapu vakulu, ovo pashikondo shelongo, vati ve he na eembapila doufemba welongo odo da halika. Paushili ame ondi wete ova-

hongu vakulu ava va dja moilonga va li ve shii oilonga yavo nawa, nekufwomoilonga lavo ola eta ashike ewopedu momufika welongo nedopo lovanafikola ola hapupala.

Pakutala oshikondo shelongo osha fa sha li inashi tala po nawa ponghufwanghatu yasho ei. Osha fa sha li sha dimbwa, kutya osho sha fimana melongo ounongo womunongeki okushiiva osho ta ningi, ndele hambapila youfemba wokulonga unene. Imwe yomeenghatu dopanhu oyo oshikondo shelongo kwa li tashi dule okuninga, osho okukonakona ondodo younongo welongo yovanongeki venya, noku va pa eembapila doufemba, ngeenge ova wana oku di pewa.

Nande hano eshi osha fa oshinima shongaho noshi shii okudimbuwa noupu, ondi wete ngaha sha li ekufikufi la kula olo le lidenga moukalinawa welongo moshitukulwa nole liyehameka neenghono. Kakele nee koitwa ashike oyo nda tumbula pombada, oku na yoo ikwao i na efimano ngolayo.

Eefikola dovanafikola Ovalaule oda kala di he na oilongifomwa aische ngaashi tai pumbiwa. Unene oilongwa yOunongononi oya kala ya dengwa odibo ya kula noye tu fiya oshivadi. Meefikola kamu na eelaboratori omo onavafikola ngeni tava dule okulihongela nawa ounongononi, shaashi ngeni otave lihongo oinima ve i wete.

Omeefikola dinini lela, odo konyala dopaumwene, omo kwa kala oilongifo ihapu oyo ovanafikola tave i pumbwa. Shihapu shomelihongo lovahongwa vetu, ongee hano osha kala elihongo lomomotwe. Omunafikola okwa li e na okulihonga oshitya "Thermometer" momutwe, nande yee mwene paushili ke shii kutya eshi oshilongifo hashi longo ngahelipi.

Meefikola omwa kala yoo eemhumbwe deengulumambo omo ovanafikola tava dule okuteka mo ounongo. Ounghundi ukwao womoilongwa owa kala yoo melongo lOmuvalu meefikola. Eefikola domoshitopolwa oda kala nokulongifa omufindalongo oo hau ifanwa omufindalongo oo tau findolola (pamidi dao dikulu), kutya kape na nande omhumbwe opo Omulale e lihonge Omuvalu ile Ounongononi. Oilonga yaye alushe vati omokombifa. Osho ngaha ovanafikola Ovalaule moshitukulwa shOwambo, va kala konima. Konima yoo noyOvalaule moilongo yopoushiinda nomounyuni aushe.

Ashike eshi hasho nande sha kala novanafikola Ovatiyane. Eefikola davo kombinga yavo oda kala noilongifo aische ye liwana po, osho yoo ovalongi ovo va mona edeulo lopombada. Omapiro meefikola da tya ngaha, okwa kala mawalela notaa etifa eenghono. Konyala modula 1988, eepeleshenda 94% dovalongwa Ovatiyane ovo va nyola-ekonakono lOmatilika, oda pita noda pita yoo nawa.

Omuvalu wOvalaule mongudu oyo tuu oyo, nomodula oyo tuu oyo, owa li u lilifa neenghono. Omatomhelo oo e li moitwa oyo nda eta po-

mbada. Opa kala yoo omukundu welongo lEhistoli. Konyala ovanafikola Ovalaule ova kala nokukomangelwa ehistoli lokoilongo yokokule (Europa nooAmerika), manga inava pitikwa nande okulihonga ehistoli lohilongo shavo.

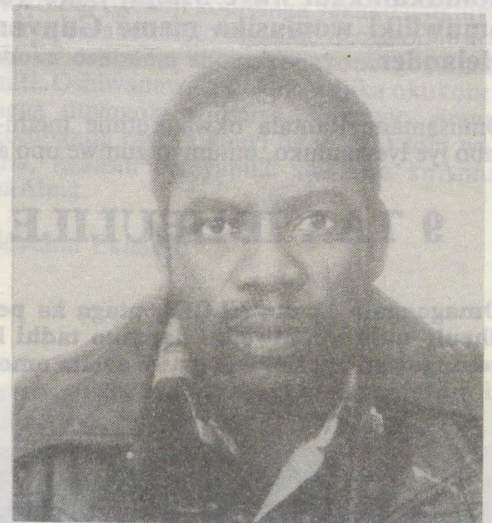
Eshi osha nghundipaleka nai eshiivo lOvanambia okushiiva oshilongo shavo. Itashi kala kondje yoshili ngeenge handi tumbula apa, kutya ovo ve na ounongo kombinga yoshilongo eshi, ovo ovo ve u lilonga nove u leshe pamwe pe lili nokuvo vene, hameefikola domoshilongo eshi nande.

Osha yela, kutya omulandu welongo wa tya ngaha, ou na okuxulifwa po nomulandu mupe nou na oyuuki, ou na okuhololwa po. Osha yela yoo, kutya vahapu otava ka hafa nokunyakukwa ngeenge tava ka mona elongo lipe noloshili.

Ashike ondodo ei ipe oya pumbwa yoo elitulemo lovanawino melongo, Ovanambia ovo vahapu vomuwo ve li nokuli ovahongi vomido dihapu. Oshinakuwanifwa hano shovafindi vehongo, va kendabale ve ete po omalunduluko oo ve wete otava ka etela oshiwana ounongo oo tashi u pumbwa.

Scowitt-Sekai Nghikemba
Wales, UK

KATU ETHA KU MU LILA



Thomas Aktofel Kadhikwa okwa manene oondjenda dhe 3.5.1989 moshiponga shoshihauto. Onkee aakwaKashikwa atuhe otwa hala okupandula aamwatate muKristus amuhemuhe, koombinga noombinga mwa tondokele onkugo yoluhodhi lwamukwetu nguka, nomwe tu hekeleke pamikalo dhi ili nodhi ili. Omuwa ne mu indjipalithile oshindjishindji.

Ngaashi nakusa mwene a kala nokuhola nokushendjula naandhika tadhi ti: "Okuyakula aayenda inamu ku dhimbwa, oshoka moku shi ninga, yamwe oye edhilile aayengeli inaaaye shi tseyu." Heb. 13:2, 14 - 16. Ye gwonale ina fundja sho a tile; ihadhi faalele omuyuni, nani oshili. Omolwomagalikaneno geni sho inaadhi tu faalela.

Kuume ketweni a thigi po omayemato niimpwiyu yuuyuni mbuka, a yi komukwathi gwe. Oshoka katu na etsali tali kalele huka. Esilohenda nali kale nane amuhe.

Nehafo Aktofel
Ondangwa

+++++



Methano ndika okuza kolumoho, omusamane M. Rantala, meme Maija nomunamusika meme G. Helander.

VATATU VA LEKELA ELCIN

Ovanashilongangeleki vatatu va lekela ohani ya dja ko, Ongeleki ya ELCIN, omo va kala tava yakula. Ovo omweekonomi Martin Rantala nomukulukadi waye Maija; osho yo omuwiliki womusika meme Gunvor Helander.

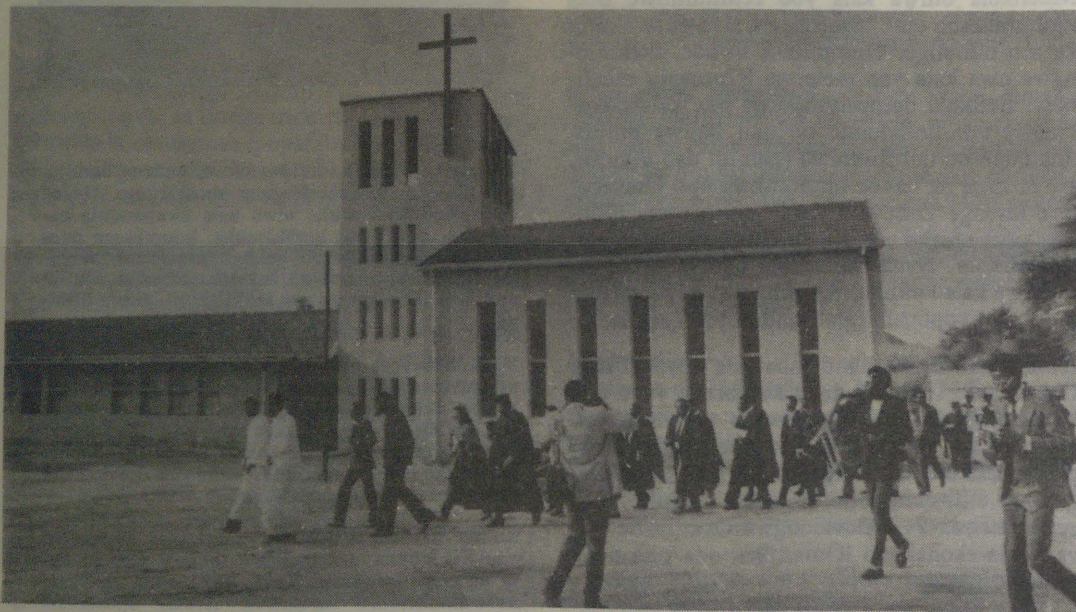
Omusamane Rantala okwa kuthile methimbo lye lyevululuko, omumvo gumwe opo a

kwathe Ongeleki ndjika mokukonga omikalo dhokuyambula po omahupilo. Oya longo pamwe nomudhiginini gwiiniwe mOngeleki omusita Julius Mtuleni. Miifo yOmukwetu omwa kala hamu holoka omakupukululongo kombinga yeithikameno lyomagongalo. Ohaga zi mombelewa ndjoka.

Meme Maija okwa yakula wo ethimbo efupi okulonga oshilongwa shObiologi mosikola

9 TAA IDHEULILE MOMAGONGALO 13

Omagongalo 13 mu ELCIN, otaga ka pewa eyakulo lyaalongwasita, pamukalo gweidheulo uule woomwedhi hamano tadhi landula okutameka Desmba 1, 1989. Gamwe gomugo ogo ngoka kage na we aasita omolweshonopalo lyaasita miilonga. Etokolo olya zi mElelongeiki lya Kotoba 1989.



Ongeleka yomomuhandjo gwosikola yuusita muPaulimun

yOngeleki, mOshigambo.

Omunamusika meme Helander, naye okwa yakula oomwedhi odhindji mombelewa yomusika mOngwediva. "Kalunga ote mu hapupalifile efilonghenda keshe, mu kale mu na ashishe, moinama aishe eshi mwe shi pumbwa", osho Hamushanga wOngeleki, omufita Absalom Hasheela a yandja ekundo lOngeleki kovanashilonga ava fimbo inava nangekwa noupuna va ye medimo londjila.

Elekelo lavo ola ningilwa mOnandjokwe, omo ovalekelwa va holola yo ehambelelo lavo komhito ve i mwene okuyakula Ongeleki muNamibia. Eumbo laRantala oli li moshipundi shetulumuko.

Sebulon Ekandjo

SA nomahupilo gaNamibia

Dha za kep. 4

mwe (mpoka tashi vulika uusosiale naampoka tashi piti uukapitali). SWAPO okwa hala okukala oshilyo shEhangano lyomapendulopo gomahupilo muumbugantu waAfrika, hali ithana nwa SADCC.

Moomvula dha zi ko, SWAPO okwa kundathana naatiligane muNamibia, aanangeshefa, osho wo nEhangano lyokawe lya De Beers. Mookundathana ndhoka, oombinga adhihe mbali odha zile mo dhi na etegameno lyomahupilo goshilongo monakuyiwa, ombapila ya ti.

Omagongalo, Ekamba, Othithiya, Oshilemba, nOnaanda mUuninginino ogo taga ka mona ompolo yeyakulo patokolo lyElelongeiki, mangwa mUukwanyama, Ewaneno nEdundja ogo ga tothwa mo. Ondonga Onankali, Okaku, Onakazizi, Oshitayi nEheke nomoKavango Nkarapamwe naNepara.

Pamautho gOngeleki egongalo otali taamba omwiidheuli, oyo wo tali gandja ehala mpoka ta kala sha kwatelela mo eyakulo lye alihe pethimbo e li megongalo ndyoka. Kombinga yomwiidheuli okwa tegelelwa a longithe nawa ethimbo lye, opo a mone ompito yokutalela po oongundu adhihe dhomegongalo.

Shoka osha kwatelela mo wo etalelopo lye momagumbo, miipangelo noondholongo ngele one na megongalo ndyoka. Okwa tegelelwa a kale miigongi ayihe yegongalo nokugandja omaye-ge nomadhiladhilo memanguluko nande kee na ewi lyetokolo. Komusita ngoka ta adhika megongalo, ethimbo lyomwiidheuli kali shi nando efudho kuye, ihe eindjipaleko lyewiliko, osho osikola yuusita tayi londodha aasita momagongalo.

Taa ka tameka eidheulo rdika oyo Petrus Amwaalwa; Meening Egumbo; Abrahamama Iitope; Titus Mbango; Gottlieb Nairenge; Erkki Shipingana; Isak Shoomba; Gideon Taapopi naMagdaleena Shalongo.

Sebulon Ekandjo

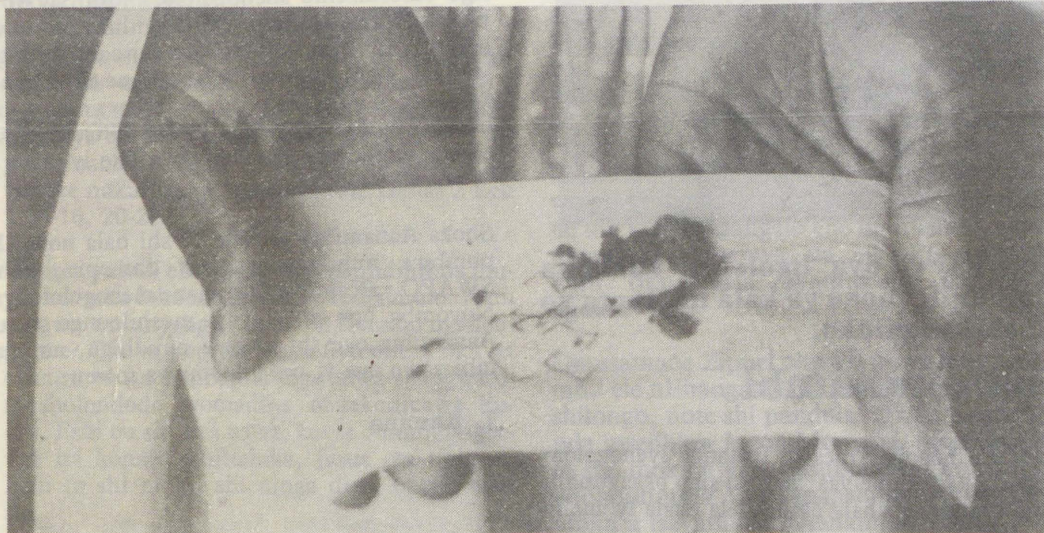
Uuyogoki wiikulya nau konenenwe moshigwana

Epulo otali koko moshigwana, kutya omolwashike ikulya poompito dhimwe inaayi yogoka. Miinuwa nomiiliwa ngaashi omaliwishi, iihakautu nodho yuu iiyimati, pethimbo ndika ohashi vulika tamu itsuwa iinima yokweeta oshiponga momuntu. Epulo oli li

oshitiyali, okuuvite elaka nomayego tayi gumu sha shaa shi oshiyimati. Sho a hiya mo, okwa dhimbulula uudhalate owindjiwindji mboka hau kwatele kumwe oombapila moshikambi shoshiyimati. Osha li uusiku, megumbo lyawo mOnayena mOndonga.



Anna nokahampi koonthalate peke lye



“Tala ko koonthalate ndhoka nda taasinine mumwe noshipambu shoshiyapula,” osho Anna u ulukile Omukwetu oshiponga shoka sha li popepi.

mpoka kutya epuko ohali zi moofabulika nenge openi?

Omasiku ga zi ko Omukwetu okwa tsakane-nene nomugundjuka Anna Josef (21) ngoka a haluka noonkondo sho a dhimbulula oodhalate mokana ke, manga kwa li ta taasina oshiyimati shoshiyapula. Ina tseya omukalo guni oondhalate ndhoka dha yi mo moshiyimati.

Pahokololo lye Anna ota ti okwa pambula ko tango oshipambu shimwe, koshiyimati, ta taasina, ta nina. Sho a ka pambula ko

Meme Alma Nangonya ota ti oye omutango okulya koshiyapula shono sha liwa kuAnna. Ye okwa pambula ko ipambu iyali, e ta nina, inaa dhimbulula sha. Ota ti, konima okwa ku uva ngaa a fa te ehama mela. Omukulukadhi gumwe moshiningwanima shi ili, okwa li ta paka po iihakautu ye. Mashihakautu shimwe okwa dhimbulula mu na olwaala lwaa shi lwamo.

Konima yekonakono enene, opwa shimbululwa kutya, omu na uuzigo moshiyimati. Natango moshiningwanima oshikwawo, omusamane gumwe okwi ilandele oshinamu-

nate okunwa. Konima okwa dhimbulula me-kende kutya omu na sha shaa shi shamo. Omukwetu ina mona natango oshizemo shekonakono ndjoka.

Momidhingoloko dhoshilongo omu na omahokololo ogendji kombinga yekako lyiikulya kutya omahokololo ogo shili nenge omitoto, shoka oshinima shomakonakono gopaunamiti. Oshiwana monkalo ndjika okukonenena uuyogoki wiikulya, nonando yimwe kombanda oya fa kaayi na uupyakadhi washa, ngaashi oshiyapula sha liwa kuAnna naAlma.

Sebulon Ekandjo

Gabriel Mweshidiwa, Ongenga mOukwanyama okwa file 22.10.-1985. Okwa fya e na eedula 54. Okwa fiya ko ovana vahamano novatekulu vahpu nomufiyekadi waye. Eimbilo 400 Epsalomi 23. Fil.22:23.

Mweshidina G.
Windhoek

+++++

Esiku 25.7.89 Tate Kalunga okwa zimbula Silas Sh. Amalovu momukunda Olunkavu mOngandjera muuwehame wethimbo efupi. Okwa thigi ko omuselekadhi gwe naanona omugoyi. Tate Kalunga oye e mu pele ndje noye e mu kutha ndje. Otandi pandula amuhe mwa kalele pamwe natse momayakulo gopambepo nogopalutu.

Rebekka Uushona
Oshukwa

+++++



Meme Alma tu ulukile Omukwetu iiyimati mbyoka ya li nkene ya fa yaa na ando uupyakadhi mokutala kombanda.



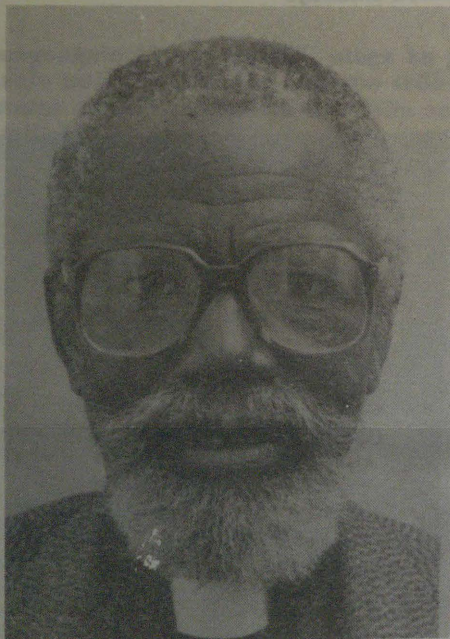
MOwambo onkundana yesindano lyaSWAPO oya ligolelwa kaanona nokaagundjuka momapandaanda nomoondjila moka ya kala taa tanta yo taa imbi omaimbilo gemanguluko.

Sha alula oshi na ondjambi

Nkene ngaa omwiinyolithi gwehogololo kehe mOnamibia a kundana kutya okake-tha kehogololo oke mu gama lwaapeni, manga ku na ootundi ntano sigo omulongo ehala kehe lyomahogololelo li eguluke olya kalelwa nale komayovi gaantu ya hala okuhogolola. Iilonga yomahogololo oya uthwa yi tameke poheyali yongula sigo o-yongulohi. Pomahala gamwe etameko o-lyakala tali tokelwa netatatundi sigo otundi yu udha nokuli.

Konyala omuhogololi kehe okwa li ta kamba-

ESO



Tate Tomas Amutenya Silas Nepaya (62), okwa mana oondjenda dhe 13.8.1989 moshipangelo shaVenduka. Okwa li omukali mo megongalo Olukonda, okwa thigi ko omuselekadhi oyana 10, atekulu 12 naatekululwa yane.

Ruusa - Magano Nembungu
Olukonda

dhala a hogolole mesiku lyotango lyehogololo. Okuza kaakulupe yaa wete ko sigo okaagundjuka, oya kambadhala okulangela ehala lyomaho-



gololelo ongula yuusiku opo yaa hupe ko.

Mokuthikama momikweyo esiku alihe pehala lyokuhogololela, nando esiku ndyoka ina mona ompito a hogolole omolwoundji waantu, oya tegamene esiku lya landula. Elalakano lyokute-gamena ehogololo kalya li osima, ihe okuholola kutya Aanamibia oya hala shili okuhogolola omutoti gwekotampango noku ya kutha monkalo ondhigu ya kala mo.

Aainyolithi amuhe yOmu-kwetu, otamu dhimbulu-kithwa ngele ope na ngoka inoo futa natango oshifo shoye, u shi ninge mbala, manga iilonga inaayi pata.

Nonando pe na mboka ya ningi omapuko gopantu mokuhogolola noombapila dhawo dhe eke-lwahi, otashi holola wo puuyeleele, kutya oye-ndji moNmaibia oya gandja euvito lyawo oku-mona ombili, sho ya hogolola ongundu yombili. Ombili nelandulathano puuketha womahogolo oya kondjelwa unene komeho guuwinayi.

Elalakano lyaantu yaNamibia olya yamukulwa kOmuwa mwene, sho a wilike iilonga ayihe i-iwanawa yomumvo nguka nokwe enditha nawa sigo omoshizemo shehogololo, moka SWAPO yaNamibia ya sindana. Okutaaguluka omumvo nguka (1989) gwelago nokuya mwaangoka tagu landula, moka Omuwa Jesus mwene e tu uvane-kela ombili ye te yi tu thigile, onawa wo okwi-ndilila aawiliki yongundu yo SWAPO, Omuwa e ya yambidhidhe natango mewiliko lyawo.

Shoka Aanamibia ya kala ye shi hala noye shi pumbwa muule womimvo dha piti, osho SWAPO yaNamibia yi sindane mehogololo lya-Novomba, opo ombili yi ye moshiloongo shetu. Aanamibia oye shi longele nuudhigu, nondjam-bi yawo oye yi pewa kOmuwa mwene.

T. Kanana

Ove owa tambulila ko shike oimaliwa yovanhu?

Momafiku onena otaku popiwa unene ovanhu hava pewa oimaliwa ofuto, omunhu a tya ngaha a ka DIPAE omunhu mukwao, omivalu di li pomayovi mahapu. Omunhu oto diladila nee kutya omunhu oo mbela ke shii ngaa nande okulesha naa iha lesa Ombibeli yaye, okudja ngaa kounyasha waye? Oshili ngaa kutya nongenge oha lesa, ondjovo ei ohe i taulukile peni? OIMALIWA YOYE NAI YE NAAVE MO-HELI (mekano) Oil 8:20.

Oimaliwa inya, okukandulapo tuu shili omaluhepo meumbo, ngaashi ondjala nonghai, ile ofuto yofikola? Kwaashi Omwene Kalunga oye mwene ta nyamukula ko sha. ONGHEE HANO OMWENE ESHI E SHI UDA OKWA KESHUKA (elikesho) Ps 78: 21-23, osheshi o-

ye omupaluli wetu.

Hano fye ni mokukufa oulaadi nonyati yokwaa-nya eefuto da tya ngaha, otwa homatekwa komumati wOmwene. Kaku na nande oumwemwe a xupifilwe koxupilo ya tya ngaha nandemande. Dan 5:16-17. Petrus ota popi nouladi "Oimaliwa yoye na i ye pamwe naave moheli." Otashi dulika ondudu inya Simon, ya li i na eendunge pamwe i ku dule nokuli, shaashi okwa kendabala divadiva okulidilulula i indililwe, oyo a diminwepo shili.

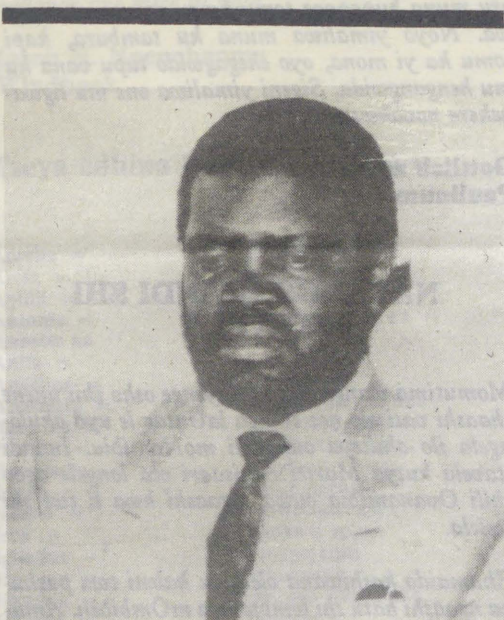
Oimaliwa oi na eenghono, okulonga, okufikameka po eengeshefa da kola. Naava tave i longifa nomukalo oo, osho ve shii naanaa osho. Nokutya omunhu a tya ngaha oheli itai mu twifa nande. Ohaku tiwa oheli kuvamwe ohai tameke nokuli apa kombada yedu. Gehas 2 Eeh 5:15-16, 20-27.

Oinima yoludi eli oidjuu shili okulidilulula muyo, netimba lohonde olidjuu okudja mulo. Kain oumwe wovanyengwi. Eshi ou li nasho ngahelipi nee? Ohaku popiwa kutya fiyo onena oku na ovanhu ve na eembapila omo mya shangwa omusholondodo womadina oonakudipawa kuove. Eshi ou shi shii nawa, kutya omunhu ngeenge ita kondjo okulialuka, Jesus ota ti kuye: Eshi to shi ningi, shi ninga diva, opaife taku shi.

Ngaashi twa tumbula kutya etimba lohonde olidjuu unene, ohatu ti yo nohonde yoovene oi na ongha", ito koshoka vali, okuninga to koshwa kohonde yOmwene Jesus aikeike. Ashike eshi shiimba otashi ka kala shidjuu kumwene woi-maliwa ei opo e kweefe vali. Kotoka. Tala eshi to ningi, manga inava patulula omuvelo wokamba yomaendo, ve ku kongelemo okatutumbo koye. Pamwe hakokule vali.

Okulidilula diva kashifi ouvaya nande. Otashi ku dalele elao laalushe. Ohonde yovanhu otai ke ku kuwila onghuwo i keneneka shili. Ino lineekela ovakoshi okukosha omautoni, to kana. Inda u ka tale kutya, mbqli OSHILI ovadipai aveshe ove li kondje youhamba waKalunga. Ehol 21:8 Udeni ko nye mu didilike. Mat 15:10.

J. Vatilifa



Omusamane Hage Geingob ngoka a ningi omunashipundi shongundu ontontiveta

OMAYELITHILO MAATILIGANE OGA PU-MBIWA NATANGO

"Onda kundathana nAatiligane yopamithika dhi ili nodhi ili, muNamibia, kombinga yelunduluko yoshilongo, nonda dhimbulula nkene muyo mu na omapulo ogendji ga tegelela natango omayamukulo," osha popiwa komundohotola guanamiti Christian Zippel, ngoka a kala konyala oomwedhi mbali muNamibia.

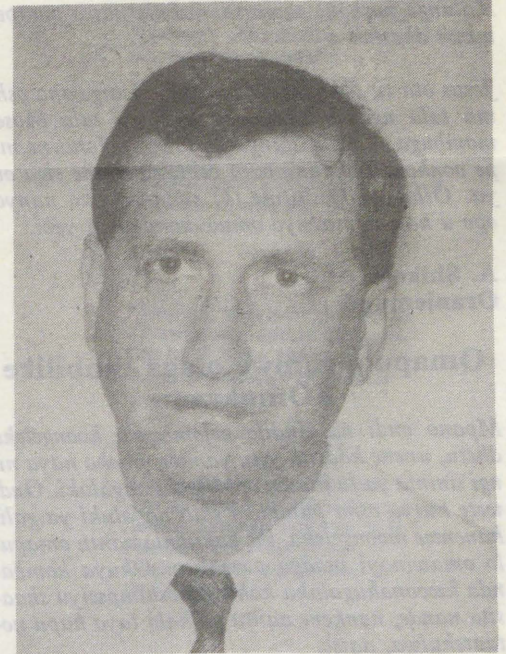
Omundohotola Zippel okwa zile mOngeleki onkwaEvangelii paLuther muBerlin, Brandenburg muNdowishilanda lyokuuzilo. Okwa kala gumwe gwomongundu onene ndjoka yi ile okutala iinima yehogololo lyaNamibia nkene tayi ende. Okwa ti, kutya Aatiligane oyendji muNamibia oya hala okukala moshilongo, ashike otaa kudhilwa komaipulo kombinga yiimaliwa yomomahangano gawo goAsulansa, elongo lyuunona wawo nkene tali kala mepangelo epe nuuthemba wawo nkene taa gamenwa, na SWAPO awike ta vulu okugandja eyamukulo komapulo ngoka.

Omusamane Zippel okwa ti okwa longo ethimbo ele nEhangano lya SWAPO pondje yoshilongo, note shi pandula. Okwa ti omukunda gwedhina Jacob Morenga, moshipangelo she moka a kala omukuluntu, kombanda yoondohotola 12 naanaashilonga 100, omo moka a tseyathana nAanamibia oyendji.

Manga ta kundathana nOmukwetu, dr Zippel poshitaafula she oku na ehokololo etalala, ndyoka uyelele walyo e u gongele molweendo lwe lwesiku. Okwa li i itsu omusamane Leonard Kandjibi moshipangelo shaShakati sho a tsuwa noomwele konyala olutu aluhe. Inaku tseyika okulye noshinima osha li mekonakono lyo SWAPOL.

Natango pauyelele mboka wa li poshitaafula she, iilyo yo DTA konyala ihetatu, mbyoka ehokololo tali ti, yimwe yomuyo oya li moKoevoeta, oyi ile pQmaalaka gomusamane Namundjembo "Pick and Pay" pOngwediva, ya homata oondjembo 4 niitopitha iyali. Oya dhenge niitopitha mbika mekuma lyombelewa yOmaalaka, lago enene inapu ehamekelwa omuntu.

Ayihe mbika oya ningwa konima yomasiku gatano, oshizemo shehogololo sho sha tseyithwa. Omunawino gwomimvo 21 moshilonga shuundohotola, Zippel, okwi itaala kutya okuyanda uupyakadhi owindji megameno lyoshigwana monakuyiwa, ongele ashike iilyo mbyoka yomakakunya tayi tulwa mumwe netanga lyoshilongo, moka tayi kala koho yomuwiliki omupe nohayi futwa ondjambi.



Dr. Ch. Zippel

Ota pandula unene kombepo ndjoka a ti kutya okwe yi koneke maawiliki ya SWAPO, yokutaambathana nokudhiminathana po moshigwana. "Ashike SWAPO oku na natango oshilonga oshinene komeho, moku uvitha ko Aatiligane miinima mbyoka ye na omaipulo muyo, naashika SWAPO ote shi tsakanitha owala, ngele ta hiya aanangeshefa, oondohotola, nosho tuu Aatiligane yalwe pamithika dhawo nokuyamukula opulo gawo", osho a holola shoka ye mwene a ti okwa yuulukwa shi ningwe.

Kepulo ngele ote ke ya koshituthi shemanguluko lyaNamibia, okwa yolo mo e ta ti kutya, shoka okwe shi yuulukwa, ashike otashi zi kutya okwa hiywa ko nenge aawe. Okwa shuna pehulilo lyomwedhi gwa zi ko a ka adhe omukadhi nuunona we une.

Sebulon Ekandjo

OMUTUMBA GWEKOTAMPANGO GWA TAMEKE

Omutumba gwoshigongi shetoto lyEkotampango, ogwa tamekele 21.11.1989, mOvenduka. Ekotampango ndyoka olyo tali ka lelitha oshilonga shoka tashi ka manguluka mbala. Omuwiliki gwehogololo mo SWAPO, omusamane Hage Geingob, oye a hogololwa a kale omunashipundi uuna iilyo mbyoka 72 yi li momutumba. Moshigongi shoka okwa taambwa ko nale shono sha thanekelwe 1982, nasho shi kale oshigwedhelwa mo shomEkotampango ndyoka. Oshigwedhelwa mo shoka otashi utha Namibia li kale limwe alike, mwa kwatelelwa Ombaye, oongundu odhindji pamukanka guudemokoli, ohofa yi ithikamena nepopilo lyuuthemba womuntu komuntu kehe inaaku talwa oiwaala nenge citaalo lye.

OVA SHANGELA NGE TAVA TI

Etumwalaka kaaniimpwiyu

Kaasitagongalo, aakwaniilwa nomalenga nooyene yomikunda, aalongi moombaanga, aalongi mo-poosa nomoombelewa naanangeshefa. Oshigwana otashi mu tala noku mu pandula, nohole ya Tate Kalunga noshono tamu shi yakula nawa pampumbwe dhasho.

Jesus ota ti; litha oonzi dhandje. Oshigwana oshe mu tala ngaashi Aaisrael ya li ya tala Moses mombuga. Tate Kalunga nOmwana Jesus ne mu pe oonkondo okuhumbata oshigwana she sigo ote ya. Oshipango oshitine (4) simaneka ho nanyo, opo u kale nomwenyo omule kombanda yevi.

A. Shikele
Oranjemund

Omapulo gamwe otaga limbilike KOMUKWETU

Mpano ondi na eindilo nelombwelo koongeleka dhetu, unene kaasita yetu yamwe mboka haya ningi iinima ya fa inaayi opalela tse aagaluki. Ondi wete kutya osha pumbiwa shili aagaluki ya galikanenwe moongeleka, ihe hakupula aantu omapulo omawinayi inaaga pumbiwa. Okuya kombanda kwoonakugaluka kaku shi oshimpwiyu shaasita nande, nankene aantu ya kala taya hupu no taatekulwa, aawe.

Oshimpwiyu shaasita, okugalikanena aagaluki shila noku ya taambela momagongalo. Otandi indile ngele ope na natango aasita momagongalo gamwe taya pula omapulo ge li ngeyi kaagaluki yago, inaye shi ninga we. Shino otashi ka nyanya-litha aagaluki oyendji koongeleka, ngoye to ka mona megongalo lyoye ihaamu wu aagaluki omolwomapulo goye. Pethimbo ndino lyongashingeyi halyo yokupula omapulo ge li ngaaka kutse aagaluki nande, shaashi elalakano lyaango te shi ningi kali shiwiki olyashike.

Omugaluki

Ino dhimbwa okwiilongekidhila oshifo shoye omumvo tagu ya. Ondando oyi li natango R 8,00 muNamibia nenge R20,00 kombanda yomafuta.

Omukanda wenyemato

Komuyakulinhumwafo yange,

Ame oumwe womovalongimina moRosh Pinah, ondi udite oudjuu munene wa mukwetu Simon Naftali ou kwa li twa telepwa naye komukolonye-ki mbulu umwe wa SA omu momina ya Rosh Pinah, notwa li twa hepekwa. Unene ame onda li nda yashwa momanafaula neeholo dongumi, nonda ka dengelwa vali mondama yomeva yokuyowela. Okwa li yo tava pangele va mange nge komaako nopeemhando, opo ve ekele nge momeva, ndele umwe okwa ti, ahowe, ndokotola ote shi mono nde tatu wile moshiponga.

Okwa ti tu dengen ashike Omuwambo, nova tameka tava denge opo ndi tonge apa twa holeka oinima imwe, ile ndi tonge ava va shimokola. Ova dja ko naame fiyo pumukwetu apa nda ka hanga

mukwetu naye ta di ohonde momutwe, ta ti okwa dengwa noshitenda. Otwa twalwa kodolongo koAus. Shifyande okwa pula nge pefimbo tatu shangifa oshibofa, kutya ou udite okuulu unene? Onda ti, heeno. Okwa lombwela oilumbu oyo ye tu eta ta ti:

Ame itai tambula omunhu mwe mu denge ngaho. Indeni naye, ngeenge a veluka, nye tamu mu eta. Mukwetu onde mu fiya kodolongo. Ame onde ya ndi tukwe kopate. Onde likoka po fiyo omonduda. Embulu opo da tula nge, oda ti veluka diva, mEtine ohatu ku ile tu ku twale kumukweni koAus, kodolongo. Onda li kutelela fiyo Etine, inadi uya fiyo mafiku aeshe oo. Onda kendabala ndi ye ndi ka konge oshimaliwa opo ndi kulile mo mukwetu.

Onda uda elaka nda tuminwa kumukwetu, kutya aame vati nde mu kwatifa, ngeenge okwa di mo ota dipaa nge. Ina hala nokuli okumona oshipala shange. Okudja opo inandi ka ya ko vali kumukwetu, onda mwena osho, fiyo vakwao tawe mu futile mo. Paife oku li koNoord Oewer, oku naame ndi na onduda oyo ya li i na okunangala omwedi wa dja ko.

Paife mukwetu ota ti, vati inandi enda ko, osheshi vati onde mu kwatifa. Eshi ta popi, vati nonduda itandi i mo vali. Onduda oya pula nge R16 000 moilongifo yayo noikalimo yayo. Ashike ame itai patana, osheshi ame nda ti na findikile nge koilonga, opo a ka pula nge ngeenge oku na oilumbu hai kala ya hala oinima.

Ame onda tile ope na shimwe hashi pulapula, ye ta ti, ondi na oinima ashike ame nde i ninga ame mwene, ndele ohatu dulu shilumbu tu mu lyate. Ame handi ku pe po ngoo omulongo. Onda ti, oshwa, ohatu tale ashike kaume. Oshinima ashike wa takamisha, osheshi ngeenge okwa lande, nde te ke shi dimbulukwa, fiku limwe otashi ka tulifa nge moshiponga, ove wa ya nale. Okwa ti oyo oinima yovalumenhu oyo.

Ame naame onda ti, tu ye tu ka lyate hano omutondi mbulu wani. Mboli fimbo hatu i lyata, mboli oyo tai ke tu lyata. Hano osho sha enda ngaho. Paife mukwetu okwa luka nge oshipendela, nounyuni aushe ou shi paife kutya vati ame oshipendela. Ashike ame mwene ngehe nda dalekwe ndi longe oilonga youshipendela. Ngeenge moNamibia onda loloka mo, ohandi i oku taku i vakwetu opo ka kondjele edu letu Namibia.

Ohaku ti vakwetu ova ka konga emanguluko, ame oku ahandi va mange? Aye. Edina lange olo wa kakeka, shiwa kutya ame odalele yaamu, osho yo nande ohandi ende ondi wete kutya onda yuka peni. Ino mangela nge moinima yeni nOvanoord Oewer vakweni. Lipula nawa kutya ova twika nge omutengi mudjuu.

Owa tula nge moshiponga sha kula. Shapo ou na ondubo naame, ile oshike? Ame nghi na fiku ndi longe oilonga youshipendela kaya. Owa nyateka edina lange kumwe novamwanyoko ovo. Ame itai tambula ko oilonga yokufipe vakwetu ohonde kaya.

F.F. Namundjebo
Rosh Pinah

KOMUNAMIBIA GEHARO

MuNamibia mukwetu geharo, asi ntaantani siruwo sina sokimo, yipo nye asi ngano tu pa-



hukeni tu tare asi mpepo zosirongo ngapi omu zina kupepa. Ano tu tareni asi komeho yisinke yina ku tu ndindira.

Komeho zetu kwa kere ehoroworo. Ano kuna kara vantu vavali vana horoworo. Eyi vana kara vantu owo vavali, gumwe kuna kukondja ngano a horowore upika. Kutanta asi kapi ana hara emanguruko nampili nakauke.

Ano ntani pana kara gumwe ana hara emanguruko. Age kuna kara nositambo ngano a tunde moupika, yipo nga kare ana manguruka Yipo nye asi tu kare tatu gazadara asi zira musinke natu vhura kukwama ozo tazi tu twara kemanguruko. Ntani asi zira musinke tatu gendi yipo upika wetu u ka lingwederere.

Asi nombunga dina horokere mehoroworo nonzi, nye nampili di kare ngoso ame kuna ku di mona ngwendi mbali tupu. Kodili nombunga dina kondja ngano tuzi simpe moupika, ntani kozili mbunga zimwe tupu zina ku kondja ngano upika u hage. Ano mbunga ozo SWAPO, yipo yi naku ku pukurura munwamali geharo asi nampili mu kare tomu kukutike nomutjima deni morwasimaliwa, gazara ndi gazareni asi konyima zosimaliwa asi, yinke tayi ka ku horokera.

Asi siruwo sokutengura tasi pu, nsene simpe tomu kwama madowo gosimaliwa naina tai ka mu twara mezume. Saha ku pangera simaliwa to ka litwara nyaamoge moupika wanarunye. Kareni tomu gazara asi mpito ozo muna gwana kapi ngomu zi gwana hena asi mu ka ze mehoroworo igamoomu tuna lindindira.

Asi ngano gumwe gonondunge to tara asi mbunga kupi zina hamene? Owo ugova woge wokuhura kupiko? Ntaantani tara asi noMitili kupi dina hamene, ntani asi varugani navenye kupi vana hamene, ntani tu tare nye Ngereka esi twa huguvara asi kupi zina kara. Ntaantani ove nyovelike namukadoge, tomu ka pangera sirongo ngapi? Asi kareni tomu tarurura asi, vantu ava vana diva yuma kupi nava karere.

Ano nsene kapi muna kulitezurura naina ruhepo oru muna kupapara tomu ka ru gwana nawanawa. Noyo yimaliwa muna ku tambura, kapi tomu ka yi mona, oyo ehagawido tupu vana ku mu hengagwida. Sigeni yimaliwa one mu ligwanekere novakweneni.

Gottlieb za Nairenge
Paulinum

NATANGO INANDI SHI ITAVELA

Momutima wange otamu linyenge osho shii unene shaashi vati olo nee etanga laUntag le uya okulungela ilo okuteya oukoloni moNamibia. Inandi itavela kutya Martti Ahtisaari ota longele ngoo shili Ovanamibia ouwa, ngaashi kwa li twe shi teelela.

Ekumaido koshiwana oleli, tu kaleni twa pashuka ngaashi hatu shi lombwelwa mOmbibeli. Amushanga woikwapondje moSwapo, Theo Ben Guri-

Tala kependja tali landula

rab okwa popile ta ti, shiwana tungama, shaashi Untag oku koNamibia okwe uya a longe oiponda yaye ye a shune.

Shaashi kandi shi udite ko nande nawa. Osheshi ngee hatu tale koshiholelwa osho sha ningilwe muCongo, hano Zaire, omwa ningilwe ehoololo, nOiwanahangano oyo ya li ye li kalele po. Ashike omupresidende waZaire Patrick Lumumba, okwa dipaelwe kovakondjifi vaye, pefimbo leehololo omolwa okuhalonga nawa kOiwanahangano.

Ndele Oiwanahangano inai tya ko sha, oya kala ashike ngo ya tala ngokoudu wombwa. Onghee nafyeni shiwana nehoololo nge tali ke uya, natu kaleni ngoo trwa lungudja, inatu dimbweni omaidilo Omwene, Oye e shi eshi ta ningi.

Hamukwaya Mateus

Aasita naakuluntu yomagongalo taa pulwa

Aasita naakuluntu yomagongalo, kwathii ndje mu yamukule ndje. Omolwashike omugundjuka omumati nenge omukadhona e na okaana, ye oha hiti moshigongi shaagundjuka noha longo iilonga ayihe tayi longwa kaagundjuka, itaa zala ohema ontokele?

Konakoneni nawa, oshoka mba nee tamu ti oyo aagundjuka, yamwe yomuyo oya kuthamo o m a p u - nda, ya nwa oodepo, yi iwendiha nosho tuu. Natu dhipage nee ngaashi mbono? Ngame okwa li ndi shi eyono lyaangu lya holoka kombanda e te li hempulula okwa dhiminwapo, shi vulithe nge ta yi owala koshililo ye okwa dhipaga.

Nenge ngele omuntu a kuthilwa, oha kuthilwa po oondjo dhimwe po tapu thigala dhimwe? Ngele omu wete nee kutya inatu opala okuzala oohema oontokele shaashi otwa yona, inatu ya we nee koshigongi shaagundjuka, oshoka katu shi aagundjuka, niimaliwa yaagundjuka inatu yi pulwa we ngele tatu hokana.

Tu lombweleni nee tu ye kiigongi yootate nenge yoomeme. Nengele omu wete kutya kwaambyono itatu wapa ko shaashi katu na omagumbo nenge omalugo, tu lombweleni nee tu ninge shetu shiikumbu, otwe shi vula shaashi ne omwe tu yoolola, nonande one mwe tu vala.

Jason H. Ngenohaama
Windhoek

Tseye edhina lyoye shoka tali tu

Aurelia =	shafoshingoli
Areta =	uuwanawa
Apilili =	ombululu
Antonia =	kee shi kuyelekwa
Annette na	
Anita =	omunahenda
Angeline =	omutumwa
Anastasia =	omuna gweyumuko
Amanda =	ohole tayi opalele
Amelia =	omukwafabulika
Amalia =	esindano
Jakob =	omupingeneni
Ismael =	omweendaendi
Isak =	ngoka a yolwa
Ignatius =	omugeyentu
Herman =	omukwiita
Hendrik =	omuleli gwegumbo
Helmut =	omukumo
Gustaf =	olwoondje
Godfried =	ombili yaKalunga
Gideon =	omuhanaguli

Ovo naanaa

1
Otwa ning'efiku hatu lilikana
Ongeleki twa ning'efiku hatu indile.
Opo vawwameme aveshe ovo va ya nale
Ve tu alukile vali nombili
Ovo naanaa!

2
Vahapu ova ya inava lekela.
Ovanhu va ya tave livake.
Shaashi ngee va monik' ombalu
Shoo ngee sha udika kava tumwa vali
Onghee hatu ti: Ovo naanaa!

3
Ondjila ya endwa oile noidjuu.
Elila la lambelwe ke lipu nokweenda
Kalunga yeemwene a pepela.
Pamba yeemwene a li omupopili
Ovo naanaa!

4
Ohaluka va fika koufikilo
Koima ku he fi koshilongo shavo
Nand'ongaho oiwana otai va kwafa
Nande shi he fi shoye, ihashi likolwa matanga.
Onghee hatu hambelele;
Ovo naanaa

5
Ja Toivo ta ti: "Olwoodi olile loo olidjuu".
Andimba ta ti: "Vakwetu inamu tonyala"
Kokule ihaku fikwa ongula, shiwa ihashi di poka-
pala ka yela
Ovo naanaa!

6
Shafoixuna navakwao va tetekela.
Oihomena ikwao ye va shikula
Edula tadi ya, doo tadi ka pita.
Ohaluka vahapu ve tu alukila
Onghee twa panda;
Ovo naanaa!

7
Osho sha ningwa pondje, itatu shi dimbwa
Eshi shomeni, shinya ihashi xupulwa
Oixuna noikumuna, ito pula
Shapo okuninga ashike hatu xupula
Tu ha tye nee ngeno;
Ovo naanaa!

8.
Moule wefimbo, eengudu oda totwa.
Moule welala, omapangelo a ka pita.
Vahapu ve litya vati ovo dingi
Ndele mboli kongolo inaku sha
Onghee fye ohatu ti;
Ovo naanaa!

9.
Ovapangeli tave ya, voo tava i
Oongoloneyandjai tashi kulilafana
Vali kukondja, oshinima itashi di
Ngolongo okatokolifo, ka ya moilonga
Akutu! Ovo naanaa!

10.
Odila tai tuka, tai imbila.
I li pokati keulu nedu.
Vahapu inave shi nangala ondjodi
Ohaluka ya wila moNamibia
Onye naanaa!

11.
Vaholike, otwa pew' oshilonga
Vawwameme opo tu litungeni,
Otu na shihapu okulonga
Owa woshilongo tu tungeni
Onye naanaa!

12.
Nande vahapu inave shi hala
Ope na vahapu inave shi pumbwa
Ashike Kalunga okwe shi hala
Pamba e shi nyakukilwa
Onghee ohatu ingida hatu ti:
Onye naanaa!

13.
Edina "OVAALUKI" otali ka xula
"OVAFADUKIPO" linya inatu li hala
Atusheni ovaina imwe.
Shaashi noshiwana shimwe
Onghee ohatu ti Onye naanaa!

14.
Vawwameme otwe mu tambula
Fye atushe otwe mu nyakukilwa
Eshi sha ningwa oPamba e shi ufa.
Onghuwo yetu ya tondokwa hewa
Onghee otu na eingido eli:
Onye naanaa!

Rev. F. J. Nashidengo
Ongwediva



Methano ndika, yamwe yomaagaluki 41 000 mboka ya zi muupongekwa.

RUDOLF BAHM

Omupangeli gwootundi MOSHAKATI

Mpaka otandi tseyithile aayakulwa yetu ayehe, kutya iilonga yokupangela ootundi, okulanditha po oompe nokwoopaleka ndhoka dha teka, okutula ko omakende nuumanya, itatu yi longele we metungo JAMAICA INN.

Ngashingeyi otu li mpaka mOshakati metungo lya ENOK (BBK), mpeya hapa kala pwa thikama aluhe omaloli goeskilima (Roomys). Shika otashi ti elalakano mpaka oku ku etela eyakulo ndika popepilela, waaha pumbwe we okufala nenge okutuma ootundi dhoye kUushimba.

Ohatu landitha wo ootundi oonkulu kondando yi li hwepo, onkene tu talela po ngele to piti pOshakati.

Iilyo yo PLAN nayo ya

thiki muNamibia

Iinakugwanithwa yokatokolitho sho tayi ende yu aka pehulilo, opwa thikwa wo poshikako shokupata ookamba dhaakwiita ya SWAPO muAngola. Shoka osha landula mbala keikuthemo lyaakwiita yahugunina ya SA 1 500 mboka ya thigalele mOshaanda nopoOshivelo sho ya shuna ku SA.

Mekundo lye kaakwiita ya SWAPO 217 mOngwediva, 29.11.1989 omumbisofi Kleopas Dumeni, peha lyOngeleki ndjoka ye ya taamba, okwa ti kutya oluvalo lwaNamibia, shi italeni kutya omu li ngaashingeyi muNamibia ndyoka mwe li kondjele omimvo odhindji. Ngashingeyi olyeni yene, SWAPO oya sindana.

Omalaka gaakulukadhi oga li taga hala okutokoka mo koondigolo, manga aakwiita yoyene taa imbi omaimbilo gomiita. Olugumbo aluhe lwaNgwediva olwa kala talu mikita aantu mboka ye ya kokatalekanawa nokokuhambelela egaluko lyaamwayina.

Etanga lyo SWAPO olya thigalele muAngola palongekidho lyo SWAPO nolyokatokolitho 435, manga ehogololo tali piti. Mokuthika kwawo ngashingeyi oyi ihula iikondjitho ayihe noya thiki molupe lwombili pauvathano lyokakatolitho.

Iikondjitho yawo nkene tayi thiki okuza muAngola, oshi li miikaha yepangelo epe lyaNamibia nepangelo lyaAngola, pamupopihapu omwiinekelwa. "Mboka mwa adha aakwazimo yeni yaa po, hekelekweni, tse wo tu hekelekwene sho inaamu galuka amuhe."

Ihe tseni mboka twa hupithwa moshilambo sheso, Kalunga okwe tu hupithile etungo lyoshilongo shika muukumwe nevuiko kuye," osho omumbisofi a kumagidha oshigwana sha zi momuthitu.

Sebulon Ekandjo

Mbaka ayehe inaa hogolola sho kaaye Iwetike

Kaleb Paulus Shikale, Onawa 21.1.1977
Rufus Amukuhu (44), Nakayale 18.9.1978
Mutumbulwa Amukuhu (38), Nakayale 2.9.1978
Erastus Ndeifeka (48), Nakayale 18.9.1978
Festus Nakawa (56), Ontananga ?? 10.1978
Ndemuweda Hezekiel Kakunya (30), ?? 4.4.1978
John Nakawa (50), Oniipa 31.5.1979
David Hamutenya, Okatana 13.5.1979
Matias Ashipembe, Oshigambo 7.6.1979
Simeon Nehoya, Omuntele 19.6.1979
Immanuel Kambala ?? ?? 1979
Neema Lasarus ?? 1979
Sakaria Akwaake (17), Onayena 1979
Paulus Hafeni (20) Onangwe 16.2.1980
Vilho Mateus Nyambali ?? 25.7.1980
Marcellinus Iipinge (35) Okatana, 4.10.1980
Modestus Iipinge (30), Okatana 4.10.1980
Andreas Kashikola, Elombe 27.11.1980
Hafeni Sh. Paulus, Ohaukelo 15.12.1980
Frans Kashipakelwa, Ohaukelo 15.12.1980
Toivo Shilongo (70), Okahao 5.5.1980
Teofilus Mateus, Elombe 27.11.1980
Petrus Taunyenge yaKosmas (24), Uukwambi 19.12.1980
Werner Elia Hamunyela (32), Ondobe 1.8.1980
Filemon Kasita Iikela (43), Oniipa 19.1.1981
Kristof Iiyambo Shikongo, Ekamba 10.4.1981
Simeon J. Nehoya (40), Onyaanya ?? 6.1981
Amutenya J. Ashipala, Okatana 29.6.1981
Markus Paulus, Oniipa 4.9.1985
Petrus Paulus (28), Ondangwa 10.3.1985
Henok Shifeta (50), Ongenga 22.10.1985
Ruben Edmund, Eendombe 25.11.1986
Simeon Amwiilmbi (75), Onankali 12.1987

Johanna Kayambu, Engela 31.7.1987
Abner Shikesho, Onlimwandi 3.7.1987
Afunda Nghiyolwa, Oshikuku 4.9.1987
Immanuel Hatutale (37), Ongenga 1.8.1987
Festus Adolf, Kongo 9.7.1988
Festus Samuel, Kongo ?? 2.1988
Mikka George, Windhoek 26.10.1988
(N) Jason Illeka (15) Tshandi, 14.7.1988
Sheetekela Shiningeni (24), Windhoek 11.7.1988
Jonas Kemanya, Oshakati 9.10.1988
Fraco M. Shaningwa, Ombalantu ?? 7.1988
Matias Josef, Omungwelume 5.3.1988
Sadrath Mupandi, Omdano 10.4.1988
Henry Nghede, Windhoek 29.1.1988
Paulus Nghipunja, Ohausholo ?? 1.1988
Kambatha Sheya, Windhoek 26.10.1988
Paulus Shilule, Omuulukila 20.1.1988
Linus Matongo, Caprivi ?? 1.1988
Natanuel Nghinamwaami ?? ??
Maria Shoongeleni (24), Oshakati ??
Tylves Kahima ?? ??
Jimmy Kwala ?? ??
Oskar Muhongo Nalenge ?? ??
Aina N. Amunyela ?? ??
Johannes Protasius ?? ??
Anna Shikongo, Oshakati ?? ??

PAULUS H. SHIMHANDA, Endola 12.9.1979
MATEUS JESAJA ?? 27.11.1980
LASARUS MANYA PETRUS Oshikango 12.12.1982

Ndhindhilika: Ngoka wa tseya gumwe gwaantu mbaka, kutya okwa manguluka, onawa u tseyithile ombelewa yOmukwetu mbala. Tangi kekwa.

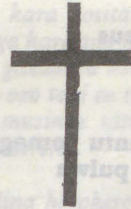
Kee shi Taimi Saari

MOmukwetu No. 22/1989 epandja etimugoyi, ngoka ta kundathana nomusamane Holopainen, kee shi Taimi Saari, ihe oRauni Rautavuori.

Omuleshi gwOmukwetu

Twa pandula omuleshi omusimanekwa, kepukululo lyoye ewanawa. Omukwetu ota gandja ombili kaaleshi moshinima shika, unene kumeme Taimi Saari. Ombili.

Amushanga gwOmukwetu



Eti 20.10.1989 Omuwa okwa zimbulu muuyuni muka kuku gwetu Martha Shilongo (84), gwomegongalo Elombe, mOndonga. Kuku Gwashilongo okwe tu thigililwe omuleli gwetu megumbo lyomuholike gwe Johannes Kanana, ngoka a hulithile 15.2.1987.

Okwa thigi ko oyana yatano, aatekulu 29 naatekulululwa yatano. Otatu taamba ko ehalo lya-Tate Kalunga, ngoka omugandji nomukuthi. Kaayakuli yetu amuhe moshituthi shakuku gwetu, Omuwa oye mwene ne mu pandule. Eimbilo 526 mEhangano.

Aakwa Kanana
mElombe

OMUKWETU

Oye oshifo shOngeleki Onkwaevangeli paLuther yomu SWA/NAMIBIA.

Ohashi nyanyangidhwa mOshinyanyangidho shOngeleki mOniipa.

Omukuluntu gwoshifo omumbisofi Kleopas Dumeni.

Amushanga gwoshifo omusita Sebulon Ekandjo.

Ondando yOmukwetu muNamibia naSouth Africa R8,00 komumvo.

Pondje yaNamibia na SA R20,00 komumvo. Ndjika oyo wo ondando yoshifo shomondhila .

Oondando nomambesitelo agehe naga tumwe kOmukwetu, Oniipa, P/Bag 2013, Ondangwa 9000, N A M I B I A.

ELOC PRINTING PRESS
PRIVATE BAG 2013, TEL. (06762) 11, TELEX 56-3257 WK
SWA/NAMIBIA