



KONYALA OMIMVO 9 A KEELELWA MUNAMIBIA

Omusita Johannes Evenson, omweelo okuya muNamibia osho gwe mu egulukile omwedhi gwayi, konima yekondjo lye lyomimvo konyala omugoyi. Omusamane Evenson omuwiliki gwombelewa yomakwatathano gOongelegeki muuyuni, muLondon.



metalelopo ndyoka a thaneke ofilima ya simana yedhina 'ONKUGO YANAMIBIA'.

Omusita Evenson ngoka a thikile muNamibia muAguste petameko, nokwa thikile wo kOwambo, pOniipa, onkene i ihulile moshilongo 1980 umumvo ngoka a kwatelwe komakakunya pamwe naalumentu oyendji Aanamibia momudhingoloko gwOniipa. Nonando omathano ge oga piyaganekelwe, okwa li e shi pondola

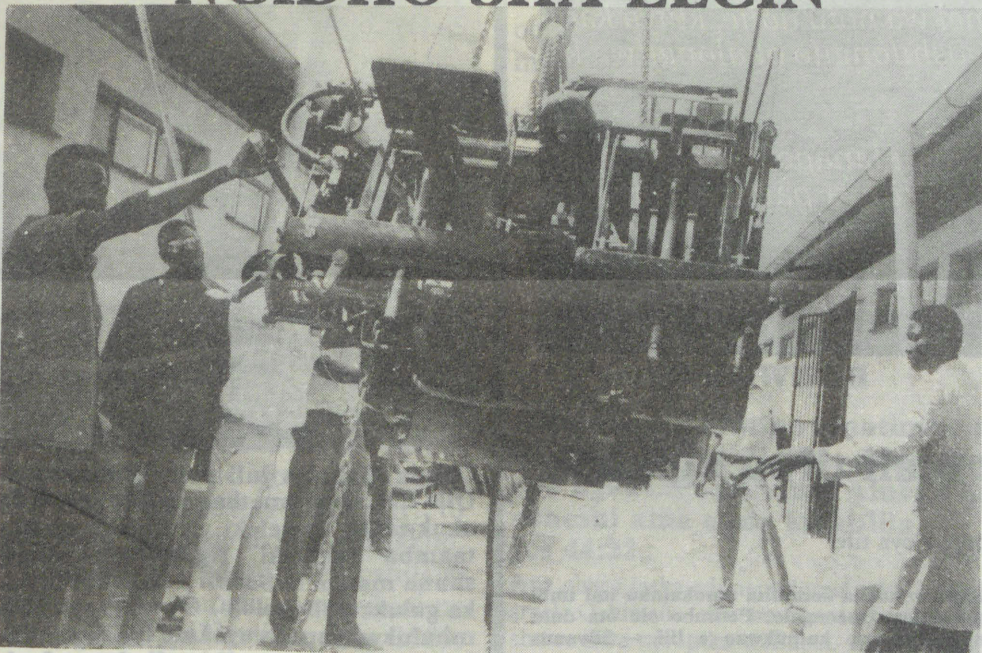
Methano ndika omusita J, Evenson naanashinyanyangidho yamwe, omusamane J. Kangonga nomuwiliki gwOshinyanyangidho M. Amkongo

Okwa zile po itaa dhimbwa we uukoloko-shi wetanga ndyoka hali ithanwa, etanga lyegameno. Ngele taku popiwa aaholimbili muuyuni mboka ya humitha ko nawa komeho ekondjo lyoshigwana shaNamibia shu uke kemanguluko, ombelewa ndjoka ye oyo yimwe yomokati koyendji haa popiwa.

Ombelewa oya dhikilwe po 1984 paindilo lyOongelegeki dhomuNamibia, nelalakano okuulika puuelele onkalo yaNamibia nkene ya tya muuyuni. Ohayi si oshimpwiyu opo uyelele mboka tau zi muNamibia u thike mbala ngaashi tashi vulika kiilongo 14 muuyuni moka tau gandjwa kiifo nokoaradio konyala 60 miilongo mbyoka.

Omulumentu omutoye mokana, omunamashendjo nomunandjungu miilonga ye. Nonando oku li ookilometa omayovi

ENENEPALO LYOSHINYANYANGIDHO SHA ELCIN



Methano pevi, otaku gwedhelwa omashina omape goondanda dhaaposi. Eopaleko lyehala lyomashina ngoka olya tameka nokuli noli li pokupwa. Omashina gatatu oge li momukala ga tegelela.

Methano pevi, otaku gwedhelwa omashina omape goondanda dhaaposi. Eopaleko lyehala lyomashina ngoka olya tameka nokuli noli li pokupwa. Omashina gatatu oge li momukala ga tegelela.

EFATULULO KOIFO

Ewilikongudu lOraata yEengeleki muNamibia (CCN) moshongalele shalo 28.8.1989 mOvenduka, oia kwatwa kOmnepo yakalunga yonole 'okupopya oshili', Ef. 4:15. Otwa twa kumwe molwoshisho shetu she lifa shovanhu vetu tu va hole, unene tu paife mexulifepo leedula domafele doukoloni noleedula 23 deemwenyo da kanena moita yoshilongo shetu.

Peemhito dihapu otwa holola omadiladilo etu nokutya, fye ohatu kondjifa filufilu omukalo keshe wokulongifa nai oufemba womunhu, nashi kale otashi ningwa kulyelye note shi ningi netomhelo lilipipo.

Natango fye otwa fikama komishangwahokololo detu nokomishangwahokololo dakeshe Ongeleki polwayo. Nande twa koneka ekani-fo leemwenyo dihapu nouyehame munene omo Ovanamibia va pita omolwemangulukó letu, otwe shi dimbulukwa yo nokutya ovo va monena mo oixuna moita oyo i nyanyalifa, vahapu vomuvo kakwali ve na mo etimba lasha.

Efimbo ola fika paife, fyeni atusheni tu li mangeni kumwe, opo tu eteni po eveluko moshiwana, etambulafano noukumwe. Onghee 23-24.8.89 otwa kundafana noilyo oyo ya dja moSWAPO osho yo novawiliki voSWAPO, eshakeno olo la longekidwa kufyevene. Oshetu hafifa eshi ovakalelipo ovo ve tu pitikila tu pwilikine omahokololo avo nopauyelele wokulandula kwetu pauxupi, otwa indilwa keengudu odo mbali tu ninge ovapokati.

Eshi oshe tu etifa ombili noshe tu pa eteelelo eshi ovakalelipo avave liyandja voovene tu kale hatu kundafana notwe va pandula unene eshi ve tu lineekela ngaha nande tu udite kutya inatu ninga sha unene sha wana moshinima osho.

Eshi nee eenghundafana edi di li lela petameko, doo oda pumbwa okukwatwa nawa (sensitive), fye inatu hala nande tu nyonaune etwikilo lado, ohatu indile hano koilyo yomaongalo etu nokwaaveshe ve hole ombili, va ilikane pamwe nafye nove tu ilikanene yo mokukonga kwetu lwaxuuninwa etambulafano li na oshilonga.

Fye oshiwana otwa pumbwa efimbo opo tu lile eefya dovafi vetu notu yandje omhito yeveluko kwaavo va ehamekwa notu udite, kutya kapuna ouwa washa tau di momahepeko ongoshilongifo okulongifwa kongudu yonhumba yopapolotika.

Otwa tambula ko ehalo olo li li po okudiminfanapo notu na eitavelo, kutya komukangha ou, ohatu dulu okutunga pamwe oshiwana shipe shi na omwenyo.

(Ya shainwa komubishofi Hendrik Fredrik (ELC) ponhele yEwilikongudu.)

oha tumwa mo. Omukalo ngoka ngashingeyi ogwa lunduluka. Omuntu ye mwene pethimbo ndika oye ti indile ompito ndjoka. Meindilo mwene omo mwa zi aakiintu wo yi indile. Po kape na ihe ngoka ti imbi omuntu i ilonge uuteolohi, aawe.

Eyapulilo lyomukiintu muusitagongalo mu ELCIN olya kwatwa ashike kEkotampango ndyoka lyu utha kutya omusitagongalo mOngeleki omulumentu ngoka — Matias Ngipandulua.

+++++

— Epulo lyoshikundathanwa shika olya pumbwa ashike efatululo lya yela miilyo yomagongalo nosha pwa. — Mateus Kapolo naApollus Kaulinge.

+++++

— Oongeleki mbali adhike oonkwaLuther ihaadhi yapulitha aakiintu, ndjoka yaMissouri Synod muAmerika noya ELCIN — Tuovi-Kaarina Pennanen.

+++++

— Ethimbo ngele lya pi, kape na we ngoka te shi kondjitha. Aakiintu mboka taa ilongo uuteolohi, naa dhiginine ashike eitaalo. — Tobias Amupala.

+++++

— Okulongwa uusita kashi shi ondjambi yokuyapulwa, shoka nashi yelithwe maailongi ayehe, unene tuu aakiintu. — Vili-Heikki Shivute.

+++++

— Ngele tatu popi eyapulo tse aakiintu, otatu dhiladhila EYAKULO, hasimano lyasha. Kutse ethimbo olya pya moshinima shika — Petrina Shiimi.

+++++

— Oshitya OMULUMENTU mOmauthompango ando shi kuthwe mo, opo ethimbo ngele lya pi, eyapulo li tulwe ashike miilonga — Paulus Heita.

+++++

— Omagongalo naga pewe tango ompito ya gwana okukundathana oshinima shika, opo shi kale sha yela komuntu kehe — Petrus Shipena.



Okuza Mai sigo Juli 1989, omusamane Olle Eriksson, (methano ndika) okwi ile okukwatha Ongeleki ya ELCIN moku-taamba aagaluki. Ngashingeyi okwa shuna manga kuSoomi notashi vulika a ka galuke pehogololo. Oyendji oya dhimbulukwa mpaka eyakulo lye nepandulo enene moomwedhi ndhoka oofupi. Meme Mia naanonna oya li wo ya talele po Namibia.

Eyapulo lyaasita aakiintu otali tilwa ngiini

yokupopya oya tile:

Oshigongingeleki shOngeleki ya ELCIN, omumvo 13-15.8.1988 mOngwediva, osha li sha kundathana kepulo lyethimbo ele ngele ethi-

mbo lya thiki opo mEkotampango lyOngeleki ndjoka mu egululilwe wo ompito yokuyapulila omukiintu muusitagongalo. Mboka ya monene

— Odikwa yokaana komufita omukainhu itai imbi eyakulo laye meongalo. Pefimbo olo ota dulu okuyakulwa mo kumukwao e lili. — Silvanus Vatuva.

+++++

— Nale mOngeleki omuntu ngele ta yi muusita,

OSHIGWANA OSHA HUPITHWA KEITAALO

Komuntu gwonyama nombinzi owa li to ipula noto dhiladhila aantu yOmuwa otaa piti ngiini, sho ya li ya tsakanekwa noya gumwa nayi kiiningwanima iidhigu yomumvo 1988? Osha vulika ngiini aantu yOmuwa ya vule okwiikankameka moshimpwiyu shomaso inaaaye ga tsakaneka nale mokati kawo? Sha popiwa komupisalomi osho oshili: "Oshigwana shi na Kalunga kasho Omuwa, oshi na elago....Ps. 33:12.

Oshigwana osha li sha hungwa omwe-nyo methimbo epyu nelulu koohapu dhaKalunga ndhoka oontoye dhi vule omagadhi goonyushi. Osho sha popitha Omupisalomi: "Ohandi nyanyukilwa oohapu dhoye ongomuntu a likola eliko olindji." (Ps. 119:162) Ye ta ti ishewe: "Oohapu dhoye oontoye ngiini kelaka lyandje! Odho oontoye dhi vule omagadhi goonyushi." (Ps. 119:103)

Oohapu dhOmuwa odho dha poleke omalugodhu gaaholike yetu ya kanithila oomwenyo dhaaholike yawo mombaanga yaShakati eti 19.2.1988. Oohapu dhOmuwa odho dhe tu kumagidhile tu dhiginine eitaalo lyashili ndyoka li shi oku tu thikitha megulu, lyo li na ondjambi onene. Olyo eitaalo lyomuKalunga ndyoka li sinde uyuni nomaudhigu gamo.

Eitaalo lyomuKalunga oli vule uudhigu womboma nando hayi halakanitha omatungo ga kola. Eitaalo lyomuKalunga ohali hupitha nomokati komulilo gwomboma. Eitaalo ndyoka olyo lya hupithile omapenda gatatu meziko lyomulilo Mesak, Sadrak naAbednego. (Dan. 3:23).

Oli na ondjundo kayi na emanya lya nyenga ondilimani. Olyo lya kwathele Paulus naSilas ya ze mondholongo yomuFilippi, olyo lya dhitulula omalyenge. (Iil. 16:26) Olyo lya kwatha Stefanus sho a dhpagwa. Meitaalo tuu ndyo, nomoonkondo dhalyo omo mwa sile 27 yaCassinga okatiyali, ndele naahoka kotango.

Omukumo gwetu ogu li mpoka nando yo ya pile mo, eitaalo lyomuKalunga ihali pi. Ano ayihe ye tu gumeni nayi, tu shi konekeni Kalunga oku na elalakano. Ano tu tegeleleni nomukumo oshilalakanenwa shaKalunga nomoshinima shemanguluko lyaNamibia, mo 1989. Oye ta ti: "Oshoka omadhiladhilo nde ge mu dhiladhilile ondi ga shi, Omuwa

osho ta ti, omadhiladhilo gombili go gaa shi gomupya ndi ga thikithile ko kudhiladhila kweni kwelago." (Jer 29:11)

Omuwa ngo a popi ngeyi oye wo Omuwa ngo a ti ngeyi natango: "Oshili otandi ya kutha kevi lyokonori, notandi ya kongolola koocha dhuuyuni. Mokati kawo omu na aaposi, niitiningili, aasimba naamwali, ongaashi ye li otaa galukile mpaka ongundu oyindjiyindji" (Jer 31:8). Omuwa tuu ngoka oye ta ti: "Oku na einkelo lyokukala kwoye kwokomeho, Omuwa osho ta ti, oluvalo lwoye lu na okushuna koyandjawa. (Jer. 31:17).

"Gamena nesilohenda lyoye mboka ya taaguluka oongamba, u ya popile kiiponga yokomwenyo noyokolutu, ngoye u ya galulile nombili kevi lyawo." Omuwa ote tu uvu, eitaalo olyo ngaa sha. Oonakulala ondangala shigwana shaNamibia tegeni Omuwa a longe iikumitha.

Omwiimbi ta ti: "Muwo twa lila, twa kakama, ombili yo otwa makela. Nau xule po noudjuu noiponga, Nau nau xule yo nomapandulo." Ehang. 44:2.

Otandi mu halele one Aanamibia meni nopondje yoshilongo elago momumvo omupe gwemanguluko. Nombili yaKalunga ndjoka yi vule uunongo auhe, noondunge adhihe dhopantu, ombili ndjoka ihayi sindwa komaudhigu nokii-kungulu yuuyuni iidhigu, nokoondholongo oyo nayi gamene oomwenyo oomwenyo dheni, nomadhiladhilo geni muKristus Jesus.

**Alpo Sakari Enkono
mOniimwandi**

Edimepo lomatimba oshiwana

Ame ohandi dimipo omatimba oye ngaashi omudidimbe nomatimba oye ngaashi oshilemo. Alukile nge, osheshi ame onde ku kulila.
Jes 44:22

Apa ohatu lesa edimepo lomatimba la pewa Israel. Oshiwana eshi omolwomatimba asho osha twalwa moupika waBabel. Ame ohandi dimipo omatauluko oye. Etumbulo eli "okudimapo" otali dulu okuyeekwa nomukanda woshikolo. Ngeenge umwe e na oshikolo namu kwao, ohapa kala omukanda ou tau shi holola



Nongeeenge oshikolo sha futwa, omunashikolo oha pewa sha osho tashi holola kutya okwa futa shili oshikolo shaye, nosha dimwa mo membo omo sha li sha shangelwa. Motekisti ei tate Kalunga ota holola kutya yee okwa dima po omatimba oshiwana nokwe a halakanifa po filufilu.

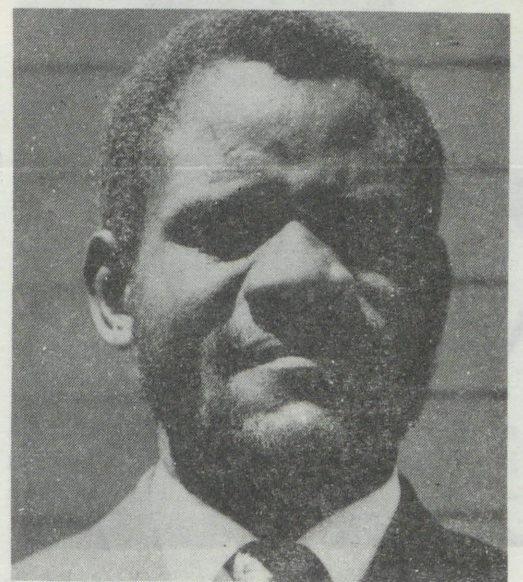
Omatimba oshiwana okwa dimwapo nokwa tuvikilwa ngaashi oilemo ya tuvikila eenyofi dokeuldi. Omwene Tate Kalunga mokudimapo omatimba oshiwana shaye ote va ulikile kutya voo kave na ekwafo pamwe pe lili, li he fi alike olo voo ngeenge tava alukile kuKalunga kavo. Omwene Tate Kalunga okwa dimapo omatimba etu mOmona waye Jesus Kristus.

Omwene Jesus okwa valelwa komushiyakano oko a dengelwa neembosha. Elalakano laashi olo okukosha po omatimba etu aeshe. Eshi osho oshilonga shefilonghenda laTate Kalunga nohole yaye. Onghee keshe ou ta itavele, oku na shili omwenyo waalushe (Joh 3:16).

Elalakano lefyo lOmukulili wetu komushiyakano oleli, kutya kukeshe ou ta itavele oku na omwenyo muye. Embosha otadi holola edimepo lomatimba medina laye kwaava va itavela. Eheeno, oshili eembosha kufye ovaitaveli odo oshilimbo shaTate Kalunga mufye.

Kokutya fye otwa ninga vaye. Onghee kwaashishe oye e tu ningila tu pilukileni kuye, fye tu lalakanene ouyuki waye. Ove mokweenda kwoye oto ende tuu ngaashi ou e na omatimba a dimwapo? Ove oto kongo tuu Kalunga nomitima aushe? Ile pamwe efilonghenda laye muKristus Jesus kwoove itali ti sha? Fikama nena nde yukilila kuye okwe ku teelela a hala u ninge Omona waye. Amen.

Johannes Kashokulu



Omusamane J. Kashokulu

Oinima ohai popiwa ngaho

Okapalanyolo ke li pombada, oka li haka holoka omudo wa dja ko, omalupita ngaho, nelalakano lokulindungika nhumbi hatu ka shakeneka onakwiiwa yaNamibia la mangukuka. Pefimbo linya kakwa li haka shili omadiladilo ovaleshi, ashike okwa holo-kele ngaho omuleshi umwe ou a holola omadiladilo aye mokakololo aka. Natu pwilikine hano ye oshinima eshi e shi wete.

Ohandi indile nelixupipiko linene koshiwana ashishe shaNamibia, osho shi kwetiwe kodjuulu fi yemanguluko loshilongo shavo Namibia. Omitima neemwenyo detu natu di yandje kOmwene, ngaashi vakwetu vokuNinive va ningile. Oshilando shinya osha li shi na okuhanau- nwapo, ndele ovalakimo ove liyandja kOmwene nokudjala eeshako nokulidilika yo eendja ndele tava filwa onghenda.

Fyee Ovanamibia otwa teelelwa kOmwene tu longe shike osho tashi xwepopalifa oudjuu nonghalo i he na eameno medu letu? Momido di- nya da pita fiyo olwopo 1965, momikunda adi- she odo di na ovakriste omwa li eenhele do- kwoongala opo ovanhu va li va hoolola va kale hava ningile po eewandaxa. Alushe po 18h00 (6h00) komatango ovakriste ohava di momau- mbo tava i koandaxa. Ova li va konga yo omate- nda oko haku dengwa ponhele yeengedjo, o- kwiifana ovakriste koandaxa.

Onawa hano natango ngeenge hatu pendulapo eeandaxa momikunda adishe odo di na ovakriste moNamibia alishe. Meedolopa nomoilando meestrata, momapandavanda aeshe, ovalakimo nava hoolole eetundi odo tadi wanaalele, oshoyo

eenhele odo tadi wapalele okwoongalela.

Omaongalo aeshe nEengeleki adishe odo da hangana tu kaleni kumwe nokutota oprograma oyo tai wapalele oshilonga eshi opo shi ye moi- longa diva, hatu manepo efimbo. Osheshi omhi- to iwa opaife nefimbo la wapala onena okuli- yandja nokulidilulula opo tu filwe onghenda.

Okwoongala kwinya okwa li ovakriste ve litula- mo nokakwa li hava faula, Osha ka dimwapo ashike ketandavelo loikunwa. Ovakriste ovo va li hava ongala nexwamo linene, ovo yoo va kala oonakwoongala peendingosho nelitulemo la- xuuninwa. To hange tava dengelemo voo tava imbi oiimbo nokudana.

U mone va fululukile momaimbilo tava imbi- fwa koikunwa. Vo tave lipopile tava ti: Ito lombwele nge owandaxa opo manga hai dengelemo, omaimbilo hayaa handi imbi paife ngaha? Osho ngaha oshiwana shetu sha shuna monima nokukukutika omitima detu noinima oyo tai tu etele oluhepo lokeemwenyo, nokuli tala twa kuta eendjovo daPamba.

Hano paife oshilongo shetu oshi li moudjuu no-

nghalo yetu yokomesho oya laula. Luhapt. oha- tu lipopile twa sholola notwa fya ounyc hatu ti: Oi, Omwene Pamba vati iha dipaelwa ovana ota tale ngoo eshi te tu longele. Fyee otwa mwena a- shike hatu dengelemo omalodu, vati tu dengele- ni mo wani, Kalunga opo e li.

Nomukulu wonale okwa tile: Omwene Kalunga iha kwafa elai la mwena li li monduda vakwao tava longo, vati Kalunga ote li etele ashishe osho la hala, shaashi oye omuyandji waaisho. Hasho ngaho, shiwana inatu lifufyeni vali. Tu kongeni efilonghenda pOmwene, ofye natu liya- ndje kuye, ofye natu longele, Omwene haye ne tu longele.

Okwe tu longela nale a mana. Natu tuleni ee- nghatu doilonga yOmwene moilonga. Tu diini- neni oipango yaye. Tu liufe kuyo fye tu i sha- ngele meni momaliudo eemwenyo detu. Natu e- feni aishe oyo hatu i longo. Tu yoololeni ouwa nowii, fye natu tete eemhepo odo tadi tu etele e- lao ile omupya tu dule okushikula oyo tai tu etele elao nouwa.

Opo tu pewe ondjabi yefilonghenda kOmwene. E i tu pe twe i longela haku tu pa ashike opu- nyu, ayee efilonghenda natu li konge paife eshi, monena eli. Nemanguluko laNamibia olo twa hala ohatu li pewa divadiva. Tu lundululeni hano omikalo detu dii, daalukile kouwa nomoshilongo shetu shipe tu dule okuyamo tu vape. Oikulu nai xulile medu likulu loukoloni.

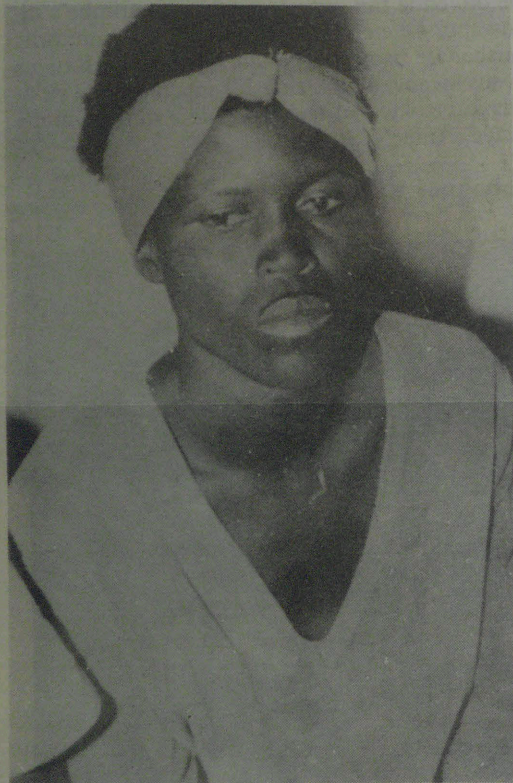
Edu laNamibia la mangukuka Omwene oku li kwete meke laye nomauwa alo mahapu oo itaa ka pwapo nandenande. Oilonga yetu iwa hatu ke i longa okutanga nokufimanekifa edina lo- mwene, oye ote ke tu futa diva. Inatu fyeni ou- nye okutota oprograma yokuninga eeandaxa momikunda nomomapandavanda aeshe.

Inatu i wa moshipala kovadinikalunga ovo va hapupala mokati ketu, oshoyo ovasheki ovo ve li moluhepo nomomulaulu wefyo lokeemwenyo, Nonande tu va wete tava ende ngaashi ovanhu aveshe. Hano shiwana shaNamibia oove u li Sion hano kondja dama eitavelo loye ino tenguka. Sion diinina, diinina finda ounyuni.

Ndilimeke Lasarus Ouhongo—Engela

Tseye edhina lyoye

Sabina	= Omukwali muSabina
Rut	= Omunalukeno
Rosalina na	
Rosalinde na	
Rosina	Ongala
Otto	= omuyamba
Renate	= evalululo
Regina	= omukwaniilwa
Rafael	= a aludhwa kuKalunga
Priskilla	= shoka shonale
Penina	= okawe
Paula na	
Paulina	= omushona
Olga	= uuyapuki
Olivia	= oshitayi sholumono
Patrisia	= omusimanekwa
Silvester	= a zi miihwa
Set	= eshunithilepo
Sebastian	= a simanekwa
Samuel	= edhina lye oKalunga
Salomon	= shopambili
Sadok	= oshiyapuki
Ruben	= Tala omumwoye
Fillemon	= ethipo lyokomilungu



Meme Regina Jason nonkumwe yokaana ke

Okaana Aili, keehani nhatu adike, oka vakwa meembete mOnandjokwe ongula yefiku lotete (1.9.1989) konima ashike yomafiku atatu eshi ka etwa mo kuina ka hakulwe oipute yomundi- lo. "Nomalapi ako kokwooko kwokolulyo, katu shii vali kutya oke li peni," osho ina Regina nomushamane waye Filippus Ndungula va popya nonghumwe inene mOnandjokwe.

Fiku olo ina Regina ina nyamifa okaana potundi onhihamano yongula, omolwomaimbo amwe a holokele po. Eshi e ke uya pokambete kokaana potundi onhimuwoyi, mokambete ina hanga mo sha. Otashi dulika evako la ningwa pefimbo lovapangi tava pingafana moilonga, ava va nangalamo eshi tava piti mo, naava tave uya va uhale mo.

Enyamukulo olo meme a pewa kovapangi, otali ulike oshinima osho, eshi tava ti shiimba okaana oke li mepashukilo lomundohotola. Lwopotun- di onhimulongo, opo sha yele kutya okaana ka ke li momake ovapangi, ndele omomake ombu- di. Meme Regina noshihakulilo shaNandjokwe otava ondile ou to mono okaana ka pya kokwoo- ko kwolulyo nopolupanda lokolulyo, a kwatafa- ne noshihakulilo osho.

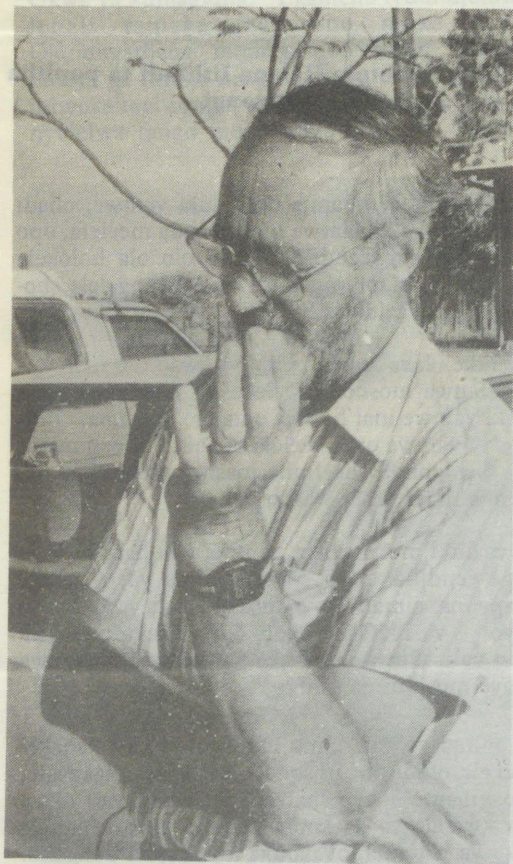
Sebulon Ekandjo

Omwilongi Sakeus Akweenda ngoka omwedhi gwa zi ko a galuka keilongo lye koUnivesiti yaLondon, okwa holola etegameno lye kombinga yetulilo lyaMbaye, ndyoka SA ta ti oli li oshitopolwa sha SA kutya kali shi unene oshikundathanwa oshidhigu konima yemanguluko, ngele oli kundathanwe komukanka gwoveta yuuyuni. Okwa ti wo kutya Ombaye kayi li wo mongundu yaashono hashi tiwa oongamba dhopauvathano lyiigwana, ndhoka kaadhi na okulundululwa komapangelo omape.

Nonando pwa ningwa nokuli euvathano kIlgwanahangano, uuwanawa wOmbaye noontuntu dhomefuta, shi kundathanwe na SA konima yemanguluko lyaNamibia, pawino we Akweenda ota ti, onke tuu okatokolitho kemanguluko lyaNamibia 435, pethimbo ndyoka oka adhika ka ziminwa nale koongundu adhihe (SWAPO na SA) mwa kwatelelwa wo nOmbaye.

“Oku na shili oongamba dhimwe uumwene wadho wa dhimbakana nenge wa kitakana, ngaashi tu tye oshitopolwa shaCaprivi nenge Ontaululi yaAngola, ihe haOmbaye nando,” osho a yele-

Holopainen ya galukile kuNamibia



Omusamane Raimo Holopainen

Aatumwa aakulu mpaka mu ELCIN, omusamane Raimo Holopainen nomukulukadhi gwe omupangi Eeva-Liisa, oya galukile ishewe meyakulo lyOngeleki ndjika. Aanashilonga mbaka omimvo dha zi ko, oya longo mepyatumo lyaBotswana manga Epangelo lya SA lye ya tindile eziminino okuya muNamibia. Ngaashingeyi oya thika.

Ombaye kayi shi oshikundathanwa oshidhigu: etegameno lyaAkweenda

kanitha omikundu dhaNamibia.

Omugundjukalela Sakeus Akweenda, okwa nono onkatu yuundohotola motseyo yooveta



Omundohotola moveta S. Akweenda

(D. Ph in Law) nuumvo muMai moUnivesiti yaLondon. Uunasikola mboka okwa li e u pewa kOngeleki yawo ya ELCIN 1979, mekwatathano nOngongahangano yAakwaluther, sho a manene tango Omatilika ge mosikola yOngeleki mOshigambo 1976.

Iipotha yaanasikola moUnivesiti yaZululand mu SA moka a adhikile ta tameke oshilongwa shoka 1977, oyo ngiika ye mu egululile ompito yokuLondon, hoka e shi tumbula nepandulo, kutya oshe mu kwatha unene okumona omalunza giileshwa omolwondji woondjugo dhomambo, okuyeleka nomuSouth Africa.

Kepulo, kutya iilonga ye okwa hala e ke yi tameke mehanganu linipo, okwa yamukula ti ime-meha, ta ti okwa hala okupulakana tango Ongeleki ye ndjoka ye mu pele uunasikola shoka tayi ti. Ngele kayi na shoka tayi mu longitha, oyo ihe ta tala shoka ta ningi.

Pakutala kwe Ongeleki oyi na oshinakugwanithwa sha simana molweendo lwokatokolitho hoka ke li ngashingeyi miilonga. “Ko okanima hoka (okatokolitho), oke na ihe iinima oyindji ya kitakana. Ongeleki ngaashi ya kondjo methimbo lya piti okatokolitho ka ye miilonga, osho andola yi tsikile nokukwatha momikundu ndhoka tadhi tsakanekwa muko, yi shi ninge muuyeleele woveta,” osho a hulitha inaa ndjandjukununa kutya iikitakani oyini yi li muko.

Sebulon Ekanjjo

Omundohotola muJuni 1990

Omwilongi gwomomumvo gwa hugunina muundohotola, Ndamono Hainyemba oti ilongekidhile ngashingeyi ekonakono lye lya hugunina, ashike ota yaguma ondjodhi a ka kale ando omunawino gwowina momikithi dhuunona. MuJuni 1990 omo tashi ka yela etsikilo lye meilongo kutya otali mu ukitha peni.

Ndamono okwa tameke eidheulo omasiku ngaka moshipangelo shaShakati, sho a galuka muupongekwa womimvo 14. Uundohotola ote u ilonge muRusland, moka ta ti ota tegelele ekonakono lyahugunina edhigu lyopapangelo ndyoka oshizemo shalyo tashi ka tseyithwa muJuni tagu ya.

Elaka lyOshirusia, uulelekule noshimpwiyu shuunona oyo tuu iinima ya kala tayi hepeke omuntu meilongo,” osho meme Ndamono u ulike komikundu dhomeilongo. Ashike okwa holola ondjuulukwe ye okuninga omakonakono gowina momikithi dhuunona. Ndamono okwa pitile uupangi mOshakati 1974.

Omumvo gwa landula okwa taagulukana ongamba sigo muZambia moka ehanganu lyaSWAPO lye mu pe uunasikola wetsikilo lyuupangi 1976 muRusland. Omumvo 1981 okwa galukile kuAngola moka a ningi omukuluntu gwokapangelo ka SWAPO moLuanda. Okwa shuna ko natango kuRusland 1983 hoka a zi sho e ya kehogololo, ye a shune mbala a ka ninge ekonakono



Meme Ndamono Hainyemba ngoka naye a holokele poshigongi shaapangi ooyakwawo mOndjokwe

kono lyahugunina.

Sebulon Ekanjjo

OSHOOPALA, Onandjokwe - Konima yaapopi yaali nenge yatatu, oshigongi sho sha tameke, mosaala omwa li natango ekolokoto lyuupundi tau taagulikithwa komitise dhaakwashigongi, okumonena natango oyendji omahala mboka taa thiki.

Omwaalu ogwa li tagu londo ethimbo alihe, 50, 100, 150 sigo 300. Osaala oyu udha ya tsa ko,

Uundjolowele omegumbo:

aapangi yomongundu yaagaluki. Oyendji yomuyo eithano lyuupangi oye li monene muupongekwa pondje yoshilongo. "Natango konima yoshigongi, otwa kala tatu taamba aayenda mboka", osho Matron gwoshipangelo shaNandjokwe a tseyithile Omukwetu.

Mokati kawo omu na omwaalu omushona gwaapangi mboka ya monene eithano lyuupangi mosikola tuu ndjoka, yOngeleki mOshoopala. Omeho gawo oga kala taga minikathana sho taa idhimbulula, manga ompito yemanguluko lyoshigongi inayai thikana.

Oya hulathana ethimbo ele nayamwe opo taa imono ngaaka lwotango, muule womivmo dhawo 15 mekondjo. Etsakaneno ndyoka lyopahistoli olya ningilwe 23.8.1989 mOnandjokwe. Ohokwe yuunashilonga shimwe noyekondjo limwe, oya li ya udhitha ombepo ayihe yomehala ndyoka Oshoopala. Iitya 'Comrade' nenge 'Hailwa' oyo ya li tayi uvika pamwe nomainye-

Tala kep. 7



Mboka ye tu galukile yomoshikondo shuunamiti, otaa popithathana nohamu onenenene

Ofuto yovaaluki moihakulilo

Opwa ningwa eudafano opo ovaaluki aveshe ovo tava pumbwa eyakulo lopau-namiti, va ha fute sha. Eshi osha li sha shiivifwa kuMatrone omukulunhu woihakulilo mOwambo, Hefolo Aletta Ngaikukwete. Epulo omolwovaaluki vahapu hava pulwa ofuto uuna va ka hakulwa, Matrone okwe li nyamukula ngaha, kutya oshikondo shouhaku osha yandja nale omukanda wafatululo koshinima osho, opo omwaalu-

ki keshe a ha pulwe vali ofuto uuna te uya koshihakulilo, shimha ashike ta ulike ofooloma (ombapila) youkwatya waye.

Ovapwilikini ova kumaidwa neenghono ombapila youkwatya wavo ei, ve he i longife mepuko ngeenge tave i yandje kovaneumbo vavo ile kookaume kavu opo navo va ha fute ofuto yoipangelo ngaashi ya ufwa. Opwa udika okadimba



Omundohotola Helena Iithindi ta popitha oshigongi

oko, kutya eembapila dovaaluki vamwe, ohadi longifwa yo kuvamwe mokweenda meelega, opo va ha fute oyeendifo. Epulo olo ola holokele pamwe nomapulo makwao moshongalele shovapangi ovaaluki 22.8.1989 mOnandjokwe.

Ashike okwa kala yo epulo likwao olo inali kundafanwa moshongalele osho. Oinima yovaaluki vamwe inai fikifwa natango koovene. Oinima ei vamwe ove i teelela ohani ile mbali nokuli. Oshikondo sheefraha inashi potokonona natango omukundu washo ou.

Ovaaluki mokuteelela efimbo, ova hala ve lidenge eendjila va ka konge oinima yavo, ashike kape na oimaliwa yokufuta eelega. Moihauto oyo ye va fikifa keenhele davo, ihava pitikilwa mo vali. Opwa fa pe hee na ou ta kundafanwa naye moshinima eshi.

Konima yovivike itano Omukwetu okwa shakenekele omufita Simson Ndatipo, moNakayale, noshihauto shaye shi yadi ovaaluki, vati okwe va kwafele va ka konge oinima yavo keenhele oko va helukila, ova aluka ko eenyala dongaho. Kashi shii oushima wovaaluki, eshi oinima yavo ya kana, osheshi oya yandjelwe kwaavo ve i pewa, ndele eshi inai fika, kape na vali ou ta nyamukula omapulo avo.

"Otwa ungaunga noshinima osho efimbo lile, ndele fiyo onena kape na apa twa mona enyamukulo," osho Ndatipo a popya eshi a shakena vali nOmukwetu omafiku aa.

Sebulon Ekandjo



Koyendji oshigongi osha li ompito ombwanawa okutsakanena.

Aapangi 300 ya lombwelwa

ngo geminikathano lyeipapatelo.

Oshigongi oshotango koludhi lwasho, oshigongi shaapangi ya galuka muupongekwa. Ewiliko lyiipangelo moshitopolwa shOwambo, olya dhimbulula ompumbwe ndjoka okuhiya aapangi ayehe ya galuka pondje muupongekwa. "Otu lwete oshivanawa tu tsakaneneni ngeyi, opo tse mbaka twa kala ethimbo alihe, tu mu ulukile oshipala shoshilonga shuumaniti mpoka sha thikama ngaashingeyi", Matron omukuluntu gwii-pangelo mOwambo Aletta Ngaikukwete osho a li e ya kutha ngeyi omaipulo, omolwashike yi ithanwa.

Mokati kaagaluki omwa li omundohotola Helena Ithindi, ngoka e ya dhimbulukitha natango omulandu gwa SWAPO kombinga yoshilonga shokweeta po uundjolowe moshigwana. Pakundo lyomundohotola Ithindi, uuna ku li we miinima yokweeta po uundjolowe moshigwana omupangi oku na okudhimbwa manga uupolotika, nonando oku li monkalo yopapolotika.

Okwa ti omulandu ngoka sigo onena mo-SWAPO osho gu li, inagu lunduluka. Kombinga yuukee na iilonga mokati kaapangi, omundohotola, okwa kumagidha aalongi pamwe naye yi idhidhimikile okathimbo komalunduluko gopapolotika hoka ke liwe muko pethimbo ndika.

Okwe ya kumagidha: "Egamenno lyuundjolowelenali tameke megumbo moka u li. Okulongathana momagumbo aantu ya nwe omeya ga fuluka nenge uunona u pewe iikulya mbyoka tayi tungu, shono itashi pula u kale wa nyolelwa tango membo lyuupangi." Matron



Etsakaneno li shambula

omukuluntu gwii-pangelo moshitopolwa shOwambo okwa ulika nkene oshilonga shuunamiti moshitopolwa shoka sha kambale omoluushona waanashilonga "nomolwompumbwe yiimaliwa" ndjoka itaayi vulu okutaambitha aantu miilonga. Okwa holola etegamenno lye, nkene omukundu ngoka tagu hulithwa po mbala kelunduluko lyonkalo yopapolotika.

momwaalu noo Klinika dhawo, manga omaya kulo guundjolowele wAaluudhe mboka oyendy momwaalu taga nikithwa ko owala kiihupe mbyoka tayi hupu kAatiligane.

Okwa gwedha ko kutya ye (SWAPO) kombinga ye, etuntilo moshigwana nepango lyokwaaludha mboka ya kwatwa nale, osho oshinima shotango shoka tashi ka ningilwa Omunamibia kehe pwaa na ondjolola. Natango oshifo osha tsikile tashi ti, ngele epangelo lyaSWAPO olya yi koshipu-ndi, ekwatho lyopaunamiti, oshinima tashi ka andjaganekwa moshitopolwa kehe shoshilongo.

Sebulon Ekandjo



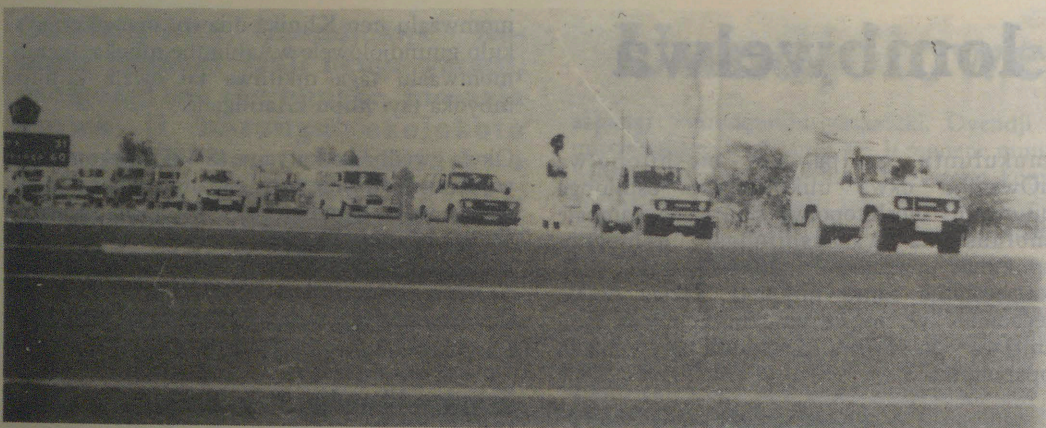
Pethimbo lyokufudha yamwe oya li yi inyenge komeho gethano lyOmukwetu noya thigi po omalupe gawo.

Moshifo shomayelithilo gomulandu gwaSWAPO, 'Manifeto', SWAPO ota ti kutya eyakulo lyopaukalinawa olyo limwe lyomomayakulo taga ulike onyanya ya shiga ko ndjoka tayi ningwa kuukoloni muNamibia. Ota ti, iimaliwa oyindji ohayi tulwa ashike mokusungitha iipangelo ya za ko yAatiligane mboka aashona

Natango ou na ompito yokunyolitha oshifo shoye. Tuma ashike mbala edhina lyoye nondjukithi ya yela.



Mboka ye tu galukile yomoshikondo shuunamiti, otaa popithathana nohamu onenenene



Yimwe yomiihauto yongundu ya SWAPO mbyoka ya thiki omwedhi gwa yi muNamibia okuziilila muAngola

66 Ya tegelela ekwatho lyoshigwana

Aagaluki 66 oya thigwa ashike nooguguwo nanoka ana amuka komatu-tu, ombesa yomitsalo dhawo sho ya hwama omulilo ombaadhilila 19.8.89 mondjila yokuza kOvenduka okuya kOngwediva. Ina mu za sha. Osha hingwa popepi nOmuthiyagwiipundi, longula potundi 8.00

Ontaaliho yimwe yoshiningwanima shoka, oya hokolola, kutya sho twa tmono olwithi notwa matukile ko, lotwa adha aahingi ya thikama kokule ya isa iikaha moondjato, ngiika oya kumwa nenge oya tila, katu shi wo. Konima yetata lyotundi, opo tu wete shilumbu gumwe ta kutha okakende komeya gokudhima omililo, ihe kasha li we shi na ekwatho.

Omukuluntu gwehala lyaagaluki moOngwediva moka mwa thikile aagaluki mboka ya mono ekanitho enene lyomaliko gawo, omusita Eino Amaambo, okwa nyolele kOmukwetu ngeyi.

"Aantu mbaka oya pumbwa eyambidhidho lyooitaali, unene kombinga yomizalo, oshoka iinima yawo oyindji oya pile mombesa." Omukwetu okwa pewa ashike omadhina the oondjukithi dhawo otadhi monika kOngwediva. Ngoka ta ningi sha moshinima shika, onawa a kwatathane nehala lyomataambelo moOngwediva, medhina lyomusita Eino Amaambo.

Sebulon Ekandjo

Ebandulo

Otandi pandula Kalunga, sho a hupitha kuku Sakeus Mbango Amutenya (Gwaiimbanga) moshiponga shoshihauto, pokati kOndangwa nOshakati. Nampongo ite ku etha ngaashi nyoko.

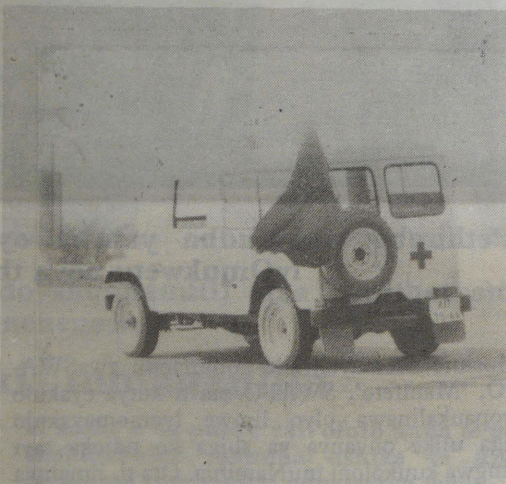
Tangi kekwa thio lyombala

Ngula Kaarina Nambatalina Onyaanya

Hakeenghono ile kefininiko

Omukulu wonale okwe shi popile Kokutya: Yepongo oKalunga he i tondokele Poo kape na Shikukutu shi ha xulu Kape na Shidjuu shi ha shuna mhadi monima "Hakeenghono ile kefininiko Ndele okOmhepo yange."

F.J. Nashidengo



Mokati kiihauto ya SWAPO mbyoka ya ze kombanda, omu na wo mbyoka yokweenditha aavu, Ambulansa.

Ekundo koshigwana shaNamibia pethimbo ndika tu li

Aanamibia aaholike, otu li pethimbo lyuuka pomibili, ihe tu dhigininini oshinakugwanithwa shetweni, oshoka Namibia inali manguluka natango. Natu simanekeni ombili ndjoka yi li mokati ketu ngashingeyi, oshoka oya pula ombinzi noomwenyo dhomapefule, aamati naakadhona.

Ekondjo lya li po olya li lyokuthiminika South Africa opo a zimine oonkundathana ngaashi e shi ningi omolwomapenda go PLAN yaNamibia. Otandi gandja ebandulo ko CCN osho wo kAambisofi yaNamibia mboka ya kala taya dhenge omutondi pamwe noSWAPO yaNamibia. Eyaambidhidho lyeni kumboka ye li oshihakanwa shomutondimbulu inamu li etha pamwe taa itedhulula, ya tseye ondilo yaantu yaKalunga.

Omapendafule go PLAN osho wo SWAPO ya-

Shika naashiyaka

- Omumvo 1885 Heinrich Göring okwa tumwa koNamibia.
- Omumvo 1885, Elenga enene Maharero kaTjamaaha okwa shayina euvathano nAandowishi. Euvathano ndyoka Maharero okwe li ekelehi momumvo 1888.
- Omumvo 1889, Omunene gwAandowishi (The German Chancellor) okwa tumu aakwiita yotango Aandowishi ye li 21 koNamibia. Mbaka oya li mewiliko lyaKapitiya Kurt von Francois (Franke).
- Omumvo 1890, Elenga enene Maharero olya thiminikwa kiinima yopapolitika yaAandowishi li taambulule euvathano ndyoka lyomo-1885 nokwa li e li ekelehi mo 1888.
- Omumvo 1890, Engelandana nAandowishi oya uvathana opo Ndowishi a tsikile nokukolonyeka Namibia. Pethimbo olya tuu ndyoka Kapitiya von Francois okwa lundulula omakakunya ge gAandowishi ga ze puTsaobis popepi nOmbaye ga ye kOvenduka.
- Omumvo 1893, Kapitiya von Francois okwa ponokele aantu yelenga Enene Witbooi puHoornkranz. Meponokelo ndika omwa dhipagelwa Aanamibia, aakulupe nuunona kAandowishi. Eponokelo ndyoka olya li lya geyitha Aanamibia sigo onena ongeyo ndjoka inayi polithwa sigo Namibia lya galukile momake gooyene Aanamibia.
- Omumvo 1894, Theodor Leutwein okwa tumwa koNamibia.
- Omumvo 1896-1898, iita yotango yekondjelomanguluko oya kondjwa muNamibia. Aanamibia pokati nolukadhi lwaNamibia oya li ngaaka taa kondjitha Aandowishi. Ekondjo ndyoka olya lya hanyekwa koSWAPO sigo onena (1989).
- Omumvo 1903, Aanamibia (Bondelswartz) oya tokola okudhenga natango Aandowishi. Gamwe gomomatompelo ya li ye ga na ogo:
 1. Oya tonda omukalo gukoloni ngoka aatiligane ya li taa pangele nagwo.
 2. Oya tonda okulombwelwa kutya omutiligane oye sha e vule omuluudhe. Shomuluudhe aniwa okumwena nokuuthwa owala.
 3. Oya vulwa okulombwelwa nomompangu nokutya aniwa eipopilo lyomutiligane gumwe mompangu otali vulu owala okweekelwahi shila pamwe ongele pe na uunzapo wAaluudhe yaheyali.

S.V.V.Nambala.

Namibia pamwe no NANSO omwa tonga oshilonga sha simana. Ngaashi mwa dhenge aatekulu yaMalan nokakulumbwati, naa dhengwe natango mehokololo. Ombinzi ya tika moCassinga, Okahenge, Oshaatwa noshu tuu, oyo ya eta ombili nemanguluko moNamibia, onkene natu kaleni tu na omukumo notwa hwama.

Omutondi onkene ta kondjo opo SWAPO ongundu yoshigwana kaayi sindane, ngaashi a tula omambungu miikombo sho a pitika oKoevoeta yi tonatele ehogololo lya manguluka, nonando oyo ya kala omudhipagi omunene kombanda yeve muNamibia.

Shigwana kala wa tonata nokutseya omutondi gwoye, opo waa hogolole epuko mehogololo tu uka mo. Namibia oli na okumanguluka ashike mewiliko lyaPresidente Sam Nuuyoma.

T. Samuel Mbango Windhoek

OMAUYELELE ITAAGA MANA PO OMAIPULO

Oshifo shomapandja 32 shono ongula yeti 29.8.1989 sha penduka sha halakanithwa no-ndjila yopokati kOnandjokwe nOnethindi, omunyoli ngiika okwa li nelalakano okuga-ndja uyelele moshigwana nkene Ehangano lyaSWAPO li shi okuhepeka aantu.

Oshifo shoka shedhina "OHELI YASWAPO (SWAPO HEL)" momapandja gasho omu udha omathano ga thanekwa noonjala ngoka taga ulike iilonga yomahepeko yaSWAPO mookamba dhe. Omathano gamwe oga thanekwa kethano lyolyene, okuulika iyadhi yaamboka ya zi momahepeko.

Omukwetu okwa thikamene okangundu kaakwashigwana yamwe mboka ya li taa penapena momapandja goshifo shoka pakutala tashi gandja ando uyelele, ihe oya li nomaipulo itaaga zimbuka. Gamwe gomomaipulo gawo oga li ngaka:

- SWAPO oye awike a li noondholongo tadhi hepeke? Omahepeko ngoka twa mono moondholongo dha SA, niyadhi mbyoka twa zi mo nayo, kayi li komalutu gaantu?
- Mboka ya zi moondholongo dha SWAPO sho ya ka kuga onkugo yawo ku SA, oya yi nee kungoka ihaa hepeke ndishi omuntu? Naasho ya zile moshilongo, kaya li ya kuthwa mo komahepeko nani?
- Oomwenyo dhaantu mboka taku tiwa oya sile moondholongo dhaSWAPO, ndishi odho adhike dhi na ondilo dhi vule dhaamboka ya sile miikaha ya SA muNamibia nomuAngola?
- SA okukala e nako nasha unene naantu mboka shi vulithe yalwe mboka ya galuka ye li nawa otashi zi naanaa moshike? Ekwatathano ndyoka otali limbilike unene.
- SA ngele ta ningi iiponokela koongamba dhaSWAPO muAngola, okutameka mushono oshinene shaCassinga, oha galuka ta lombwele oshigwana, kurva okwa thigi a dhipaga iikulo yo-

40 000 ya galukile muNamibia

Ombelewa yligwanahangano mesiloshimpwiyu lyoontauki muuyuni (UNHCR), oya galulila ngashingeyi Aanamibia 40 000 moshilongo shawo pamulandu gwokatokolitho 435, hoka ke na sha nemanguluko lyaNamibia. Egalulilo lyAanamibia kevi lyawo okuza muupongekwa, moka ya kala omimvo dhi vule 30, oya tamekele 12.6.1989 nopahapu dhomuna-mbelewa omukuluntu mOvenduka, omusamane Nicolas Mbwakira, egalulilomo otali vulu okutsikila nokonima yehogololo, uuna pe na natango mboka ya hala okugaluka. Sigo 1.9.1989 aagaluki 36 493 oya za mo momahala gomataambelo ya ye komagumbo gawo.

mathele ogendji.

Ngashingeyi aavali yamwe sho haa pula uunona wawo u galulilwe kuSWAPO koshilongo, SA iha fatululile nando aavali mboka kutya aanona yamwe onde ya dhipaga po nale sho he ka ponokela. Omolwashike SA ta holeke omadhipago ngoka ye a li he ga popi pombandambanda?

Nenge sho a li ha dhipaga ngawo, aanona yaavali mboka okwa li he ya yoolola mo? Nongele osho ngawo, omolwashike e na oku ya yoolola mo miikulo iikwawo? Omukwetu sho a mono omapulo gaaleshi yoshifo shoka itaaga hulu, okwa tsikile nondjila ye.

Omukwetu okwi ilongo moshinima shika, kutya nani okwa kala omagandjo guyelele gamwe ihaaga mana po omaipulo gaantu.

Oshifo aniwa osha nyanyangidhwa nosha pithwa koNamibia Gulde Vir Internationale Kultuur Samewerking, mOvenduka.



Limwe lyomomathano ngoka taga leshwa moshifo shoka shedhina Oheli ya SWAPO

NAMIBIA

Evi ndika otali katuka ngashingeyi oonkatu dhu aka memanguluko metonatelo lyligwanahangano. Olya talwa kutya oyo okoloni yahugunina muAfrika. Ashike omukolonyeki gwalyo, SA, ita gandja natango omainyengo taga ulike, kutya okwi ilongekidha ihe oku li gandja li manguluke, shila ongele ashike kee wete we omukalo gwoku li dhamatela natango.

Evi oli na uunene woombinekilometa 824 269, mwa kwatelelwa Ombaye.

- Aakalimo omiliyona 1,5

Omahupilo

- Oongombe omiliyona 1,75
- Oonzi oomiliyona 2,6
- Iikombo oomiliyona 0.8
- Oofaalama dha tseyika paveta 300
- Oopelesenda dhaakalimo 20% kadhi n a iilonga.

Uundjolowele

- Uunona hau si kuuvu wondjala, meyovi li-mwe kehe ohamu si 8 (8/1000).
- Aavu yo TB 293/1000
- Uunona hau si konima yokuvalwa 1,45/1000
- Hau si sho tau walwa 14/1000
- Iipangelo 62
- Uuklinika 158
- Oondohotola 250
- Oondohotola dhomayego 41
- Oondohotola dhowina 26
- Aapangi 4 200

Elongo

- Aalongwa 350 000
- Oosikola 1 114
- Aalongi 11 121

(Optima No.2/1989)

Ova shangela nge tava ti.

Shiwana ino ngwangwana

Natango ondi udite kutya ope na omalimbililo nomangwangwana mahapu moshiwana shaNamibia, tai dilile meponyo lOvanambia ava tava popile okukala kwa SA moNamibia. Omupopyo u li ngaha ou kwetelwe unene komesho kwaava va li meedolongo doSWAPO pondje yoshilongo, eshi la mona ouyelele kutya ovanhu va tya ngaha ova tumwa wa SA opo va hanaunepo oPlan.

Omupopyo u li ngaha notau tandavelifwa koRadio yeembulu mo SA HANO Radio R.S.A, mewiliko have li ifana voovene ooNdjeke yaNdjeke, Tomy yaTomy nosho tuu. Ovanhu ovalongifwa SA. Shiwana shaNamibia oto itavele ngahelipi eengangala da SA odo da li da tumwa okuhanauna po oPLAN nde eshi d a kwatwa koPLAN (People's Liberation Army of Namibia), ile ndi tye da dopa okuhaunapo oPLAN, ndele di efiwe di uye moshiwana oda fikila da yukilila kovahona vado, opo va ka hokolole ngehe vo inava pita (not succeeded).

Konena eli otava popi moRadio yeembulu (ovakonyeki vaNamibia) kutya ovahepekwa koSWAPO mokutulwa meedolongo. Nondi pule nde va ukilile kutya; vanhu nye otamu kala inamu tulwa meedolongo ngahelipi ngeenge nye ovatumwa va SA (SA agents)? Ye SA oye ta lwifa koSWAPO ye a djemo moNamibia?

Ngeenge omu shi kutya otamu lundilwa kutya nye ovatumwa veembulu, omolwashike inamu fyala moSWAPO konima eshi mwa efiwa, nde tamu hokolola oshili yeni koshigwana tashi pitile moSWAPO (through SWAPO)? OSWAPO nayo oi na eeradio, eembelewa di li nomOvenduka, omolwashike inamu li hokolola koshiwana kutya nye kakwa li mwa tumwa, ndele shapo ope na ou ile a va ve mu lundila ndele ngeno tamu monika oshili yeni?

Oshinima she va twala koRadio yeembulu oshikwashike? Ihava file oshili yavo? Ihamu ti tu dipaeni ashike, fye inatu tumwa ku SA eshi tamu ka itavelifwa kutya nye omwa tumwa? Ihamu fi ohoni nokuli omawi eni taa dilile moPretoria ile moJohannesburg sha SA, ngeenge nyee ovakondjelimanguluko voshili?

Omwa ka enda ngahelipi nokuli onye mu ka mangwe mu li 100 ile 200, ko ku na omayovi mahapu omangha oSWAPO elalakano layo okulundila nokutula ovanhu meedolongo nomalambo ngaashi tamu ti? Hano Shiwana shaNamibia, ino ngwangwanekwa kovatumwa va SA. Ou wete eshi ve efiwa koSWAPO nove liyandja kovahona vavo nokeengudu adishe edi tadi twala ku SA.

Shiwana, paife otava ti inamu hoolola oSWAPO, shaashi ovana veni ova idilikwa natango ile va dipawa koSWAPO. Hano ovanhu ava va teywa eefingongumitila, naava va dipaifa keembulu eenhele dihapu ngaashi; peeCassinga ovana voolye? Ile ooxe nooina yaava va dipaifwa kovatumwa va SA kave li moNamibia?

Shalongo nokuli oSWAPO ya endelela oku va kwata, ngeno omayovi mahapu okwa fya. Makakunya naamushe mwa ama keembulu, meni loshilongo shaNamibia, omwa kala tamu lyatele ovanhu meenduda, ovakulupe nounona. Pondje yoshilongo omwa kala tamu yandje omaweyelele keembulu (to destroy PLAN) ndee mu kwatitwe otamu ti kutya oSWAPO kai li nawa? Omwa hala

shike hano? Dimbulukweni kutya SWAPO hahe a kolonyeka Namibia, noina hala natango oukoloni mupe tau diilile meengudu odo tamu lonibwele ovanhu va hoolole doo DTA.

Nye nee ooNdjeke yaNdjeke mu li koJohannesburg kaahona veni omu shi shi ngoo kutya ovahona veni nedina Namibia kakwa li ve hole tali tongwa? Ile onye nee mwe va udifa ko edina la tya ngaha, eshi hamu tokelwa tamu tongo Namibia, Namibia?

Nye kakwa li hamu li tongo ile mu li hole nale? Kaleni mu shi shi kutya SA oku na, ile ndi tye nalo oli na o ANC i li mondjila. Inamu mangukula eekofa deni, opo mu kale mwa yambela. Walye, shapo lidilululeni mangha inaaku toka. Nye paife ovomo DTA, ile omwaShipanga (SWAPO D)?

Mwa li pondje yoshilongo kaleni mu shi shi kutya ovanhu ava va li va pukifwa kuShipanga vahapu ove lidilulula mongudu yo SWAPO OF NAMIBIA. Ava inamu aluka, shapo ovaava ashike mwa lekelwa ku SA. Ovanhu (fye) okwa li tye ya ile ve ya okukondjela oshilongo hakupangela.

Tala omanyamukulo mOmukwetu No. 11, epandja 10/1989 moshipalanyolo "Shiwana ino ngwangwana."

Julius O. Heita
Zambia

ETSOMUKUMO KAAILONGI AANAMIBIA

Ngame Omunamibia nondi li omukondjelimanguluko, ondi uvite ondjo, ngele inandi tumbula sha kAanamibia ooyakwetu. Tango onda hala okugandja olupandu kaailongi ayehe meni lyoshilongo nopondje yasho, sho ya tokola nokusinda onkandja dhomutondi, oku shi pondola noku shi ulika, kutya yo otaa vulu okukondjela oshilongo shawo sigo okemanguluko lyashili, lyoshilongo shawo.

Otandi ya pandula notandi ya tsu omukumo kwaashihe shawo ye shi longo noye shi ningi okuhedhitha popepi emanguluko lyoshilongo shetu. Oyendji yomuyo oya kanitha omahala moosikola nayamwe oya kanitha oomwenyo dhawo omolwoshigwana shetu nomolwoshilongo shawo.

Omakwato, omalemaneko, omaso niikwarwo mbika, oya li komapepe gawo ethimbo kehe. Shino osha eta opo aailongi oyendji ya thige po oshilongo nevi lyawo, omoluupika nondjoko yuukoloni niilonga yi nyanyalitha ye yi ningilwa kaambwati mevi lyetu (Oombulu). Eeno Namibia olyetu notu na oku li kondjela kutya otashi tu pula eso nenge omwenyo, ekondjo na li ye komeho. Okusa okuhwepo shi vule okukala omupika moshilongo shoye.

Otandi indile notandi igidha newi lyomuule kaagundjuka ayehe nokaaholimbili ayehe, kutya natu kaleni omuthika, opo tu kondjele oshilongo shetu. Namumbamba nali ete omeya kegumbo, aanona taa si enota. Ondi uvite osha pumbiwa okukumagidha ayehe mboka ye li metanga lyuulunde (uukakunya) wa SA, opo ya ethe po iilonga yawo yuukolokoshi yo ya galukile koshigwana nombili.



Pehulilo onda hala oku mu kunda noku mu halela omayambeko mwaashihe mwe shi ningile oshigwana shetu nevi lyetu. Medhina lyoSWAPO otandi mu Saluta; One Namibia, One Nation, Swapo must win; Namibia must be free, one day.

Mamba K. Uutona na
Peter Shumba

Keyakulo lyaamwameme amuhe hamu longo mOshinyanyangidho, otandi mu pandula unene keyakulo lyoombapila dhetu, shono hamu dhi lesa nokutuma omatumwalaka getu moshifo shOmukwetu. Tangi keyakulo lyeni.

Ote pandula kaamwameme nootate noomeme shono kwa li ya ya pondje yoshilongo Namibia. Enyanyu kungame moku ya mona. Kwaatuhe mboka tu li moNamibia tu takamitheni oshigwana shetu oshi li muudhigu ngashingeyi. Omutondi natango oku li mokati ketu.

Mpano nandi tye oshigwana nashi ninge oshihupi mokunwa, oshoka ngele otwa kala mokunwa, otatu pu po komutondi. Omutondi okwe tu langele ashike ethimbo kehe. Kombinga yaamwameme mboka ya galukile kegumbo koNamibia inamu monathana ndele tamu yi pekende lyowisika nombelende kumwe nombiila, shaashi aniwa mwe ethathana nale.

Shaa tuu mwa pwile mokunwa, nena omutondi Mbulu okwe ku tala, ote ku tege naashoka ho li, opo e ku kwate. Natu takamitheni okunwa.

B.J. Amunyela
Hentiesbaai

ETUMWALAKA LEPANDULO

Ootate noomeme, ovakulu vetu neendenge detu, otwa pandula eshi mwa tula ofikola yetu yaPonhofi momailikano. Okwa li ya ninga eputu oule wodula ndi tye, ndele paife ya yeuluka vali odula ei 1989. Otu li mo hatu pandula Kalunga tu li mo nokuhafa fye hatu indile kutate wopombada, kutya oiningwanima ei ya ningilwa ofikola ei, ina yaaluka vali.

Ovaponhofi ohatu pandula Ovaenhana efimbo twa kala puvo, fye hatu pandula Ovanangela. Unene ohatu pandula tate Hasheela pamwe novalongi vaye twa kala navo nehafo okudja odula youdwaali fiyo odula yoneudo. Tate ne mu wedeleko vali.

Meme wetu Nghishidimbwa opamwe novalongi vowe natate T. Ndevaetela Kalunga ne mu wedeleko. Vadali vetu inamu teka omukumo okukondjifa eshi tashi kolonyeke oshiwana shetu. Natango twikileni okuya keengolo, shaashi Tate ota udu omailikano etweni. Onghuwo yepongo oKalunga mwene he i tondoka.

Kalimbo Ndeshipanda N, Kalimbo Ndeshihafela N, naKalimbo Dolly Nalimanguluke
moPonhofi Sec. School

E TU THIGI PO OMBAADHILILA

Nakusa Festus Mweendeleli okwa vaelwa megongalo Onayena eti 24/9/1928. Okwa putukile megumbo lyahye nayina nopo a hiti osikola yongula e ta hulile mongundu ontintatu. Sho a koko okwa yi kUushimba nokwa longo mOvenduka, unene mOshaanda. Okwa li ha vulika kaahona ye ngaashi kaakuluntu ye megumbo.

Okwa hokana eti 21/2/1957 omukadhona gwe Taimi Shikongo ngoka a manene oondjenda dhe 1959. Kalunga okwe mu pe ishewe omukwathi omutiya-li, meme Loide eti 28/2/1963. Oya dhike egumbo lyawo nokwa li e na chalo a tsikile oskola, ihe ine yi pita we. Okwa tameke iilonga yOpoosa pOnayena. Omolwiita Opoosa oya teka po.

Okwa mono iilonga ye yorawmene mbyoka ya kala tayi mu enditha nomikunda adhihe ta kwatha oshigwana ye ti ikwatha ye mwene, nomiilonga mbyoka omo a manene oondjenda dhe esiku eti 17/7/1989 moshiponga shoshihauto. Okwa li a pewa omagano gaanona yahetatu mumboka yaali ya tetekela nale muukwaaluhe.

Okwa thigi ko omuselekadhi gwe noyana 6 naatekulu 5. Okwa li omuleli gwaakwiilongo; iimbundu, Aankumbi; Aakwankala; oohepele naakambelindunge, ayehe okwe ya tala ngoyana nongaamwayina. Poshigumbo she opwa li engathithi lyaa shi okuyalwa noluhodhi lwaamboka twa thigwa po olwa topolwa tuu shili.

Onkee mpano otatu pandula nepandulo lya shewa kune amuhemuhe ookuume shono mwe tu ningile moshituthi shoosa. Ethimbo lyeni okukala pamwe natse, okuviyauka kweni uusiku nomutenya, oku tu etela iipalutha yomalutu, okupalutha oomwenyo dhetu nohapu yOmuwa.

Oondjimbo dheni omatumbulo gomahekeleko geni



Nakusa Festus Mweendeleli

Ehambelelo nepandulo

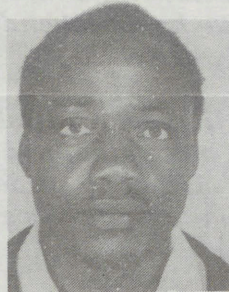
Otandi gandja ehambelelo nepandulo moshifo she-tu oshiholike, Omukwetu. Mboka hamu shanga oshifo shika onda hala mu gandje omakundo ngaka gandje koshigwana shaNamibia shoka she ya komagumbo, otandi shi halele eyambeko enene sigo okesiku tuu ndyoka lyehogololo muNamibia. Kalunga na kale pamwe nevi lyaNamibia sigo aluhe. Oshigwana shaNamibia, kaleni mu na omukumo lela megalikano.

Tobias J.B. mujohannesburg

taga zi muule woomwenyo dheni, oku tu galikanena noku tu dhiladhila kweni, amuhe mwa li moosa, naamboka inaamu mona ompito yokuthika, ayihe mbika oya ningi shili ehekeleko lyetu. E tatu zimine kutya ehala lyOmuwa nali tye. Tate Omuyambeki ne mu yambeke ye ne mu pe ayihe mwe yi pumbwa. Tsikileni natango oku tu dhimbulukwa.

Loide Mweendeleli noc thigwa dhe.

+++++



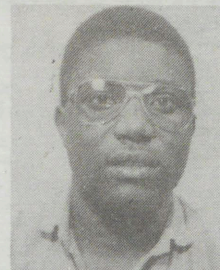
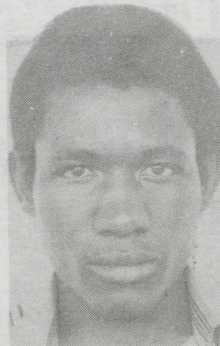
Omusamane Hosea Aukongo (44), Ombalantu, okwa hulitha oondjenda ombaadhilila moshiponga shekunguloko lyomeya 11.2.1989. Okwa thigi ko omuselekadhi naanona 6. Twa pandula unene kaalilasa sho mwi ile tu topolelatheneni oluhodhi. Omuuv. 4:1-4, Eimbiilo: 192

Titus E. Aukongo
Oipandahangano, Ombalantu

Emmanuel Neumbo-Tau Haipinge (29) mOnamutai, okwa xulifa oweenda waye 17.6.89 moshiponga shekandomo loshihauto. Kovatondokinguwo amu-she ohatu ti: Omwene ne mu punike, ye ne mu shunifile aishe mwe tu kwafela.

Eps. 142

OkakwaHaipinge
Onamutai



Eunike Simon, Onamundindi, Ogongo, okwa mana oondjenda 4.7.1989 muuwehame wethimbo ele.

Tulela N. Mutota
Gambia, W. Africa

Kwathii ndje aakwetu mu tulile ndje oshipopiwa shandje shika mOmukwetu:

Ngame omugundjuka Omunamibia, onda yemata kaahokanathani yethimbo lyongashingeyi mboka ya siha po ebandela lyesindano. Onda hala okuuva kutya ebandela oshike ano? Ondi shi aniwa ebandela olyo esindano? Ihe omolwashike aahokanathani yongashingeyi itaa yeluthilwa we ebandela ndyono lyesindano?

Kombinga yokUukwanyama ondi shi okupandula aasitagongalo yaahoka. Mboka ihaa hokanitha ohango ngele kapu na ebandela. Akwetu oshinima shika onde shi ukitha momakutsi gaasitagongalo ya konakone oshinina shika shoohango hadhi hokanithwa kaape na ebandela, nongele ebandela olyo esimano.

Kwathii ndje mu shi konakone nawa ne aasitagongalo ne mboka mu li aawiliki yoshigwana shetu.

Petrina Josafat Oshakati

She tu halutha

Momasiku 29/7/89 manga nda li tandi idhigi momemo, etumwalaka lyoluhodhi, tate Benyamin-Ndiimeke Johannes Makambuli ke ko we, a si eso lyombaadhilila, Mokupulakena chokololo lyeso lyatate nuuyelele tate ina kandomwa, ina ehama ando a hungwe aawe.

Tate Benjamin okwa valwa momumvo 1926, a putukile paakuluntu ye, sigo a tameke iilonga yuukalele paahongi e na oomvula 20. Mpano a ka pula epitikilo kaakuluntu ye, opo a ye mUushimba. Okwa longo uushimba wotango mOmbaye (Walvisbaai).

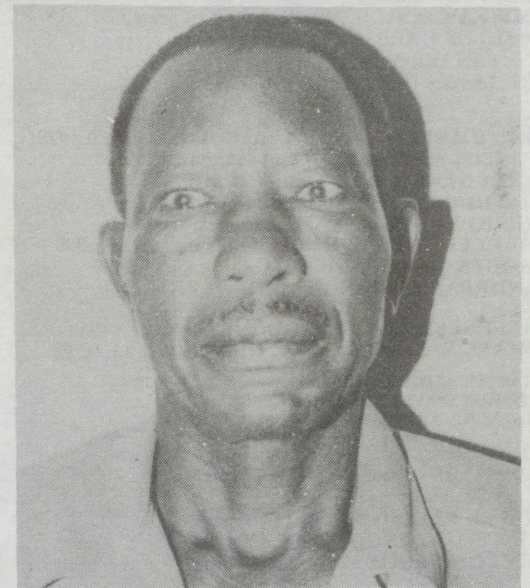
Konyala ando a ningi ombwiti, ihe hasho eithano lye. A tseyu okuhinga nokwa galukile paahongi ye ookuku Alho. Okwa hokana omukadhona gwe Rebekka Nuundjomba Shilunga omumvo 1957. Benjamin okwa li a mono aanona nokwa luku ngomuntu ta te uuholo.

Osheeli she Simaneka, ngono a kala shili omusimaneke gwaakuluntu ye. A landula ko Katunevi, ngono a li nokuli a taaguluka konima yoomvula (13). Tuyakula okwa li omusita giimuna, a kwathele aakuluntu yandje miimuna. OoLitungeni nooMegameno ngono a lukilwa oshipalanyolo shomumvo 1967, mono a li a kandoma nosheenditho shOngeleki, manga ta fala aalongwasita kOtjimbingwe. Dhiladhila, Tautunyenge, Taati nosho wo Ndangi naNata-ngwe onkelo yetu.

Kalunga oye mwene ta tseyu shoka sha kutha ko tate kombnda yevi. Otandi pandula tango aalongi pamwe naye ethimbo ele sho ya kala nokuhumbatathana. Omaudhigu gawo agehe, osho wo aawilikishituthi, oonakugalikanena ethimbo kehe. Kalunga ne mu yambeke.

Okwa thigi ko oyana 13 naatekulu 10.

Peha lyaavalwa
Phillemon Tuyakula-Nangolo Benjamin
Omaruru



Nakusa Benjamin Makambuli

ESO

- Rusia Nangolo (77), Oshendje 9.5.1989
- Titus Mbaimbai S. Nehale (45), Onayena 15.5.1989
- Junias Angombe, Uutsima 27.4.1989
- Vaino Matti Shapaka (50), Oluteyi 30.4.1989
- Nehemia (Kaleke) Haggai (70), Swakopmund 26.6.1989
- Frieda Nglinambedi yaHangodji (108), 30.4.1989
- Gebhard Kathindi, ??? 24.3.1989
- Eunike Nelago Endjala (102), Tshandi 24.4.1989
- Anna Nandiniotyia Simon, Othika, 15.5.1989
- Nehemia N. Shinyemba (66), Okatope
- Albedrtina N. Kambungu (78), Oshigambo, 26.7.1989
- Lovisa-Namvula Kristof (8) ??? 30.7.1989

**EEDOLONGO ODI UDITIWEKO HANO
PAMUKALO ULIPIPO KOSHIWANA
SHETU?**

Omalyengo nomapiyaano e he li pamukalo woshililela nou lilepo oufemba womunhu keshe mu-Namibia otaa twikile natango. Eshi osha etela nge epulo eli kutya, omolwashike hatu anye okudimina kutya oukwatya womunhu e li modolongo ongonghwatwe, ngeene e li moRobben Island ile meedolongo daSWAPO ohashi dulika u faafane kanini nande hafilufilu?

Eshi osha hala okutya nakweehama ile ou a kwetele omwenyo pomutima, omolwomona, omushamane, omukulukadi, tate ile meme waye a idililwa koRobben, nena nakwiidililwa kuSWAPO na kale nee e li moParadisa yokombada yedu molwashike? Onhumwa wa ka ndaada Ovanamibia vakweni nokuli, olo etimba lelipangula loovene nale.

Owa hala nee ngeni omunhu a tya ngaha a ningilwe shikesho, ngeenge eyo laye kwinya okwa li e na okudimapo omafele Ovanamibia? Opo nee hano ohandje i ha xwike ofuka, ova li ve na okwiidililwa. Hano tu kendabalenii ngaa tu ha valele SWAPO novalanduli vaye alushe komushiya-kano.

Ndahafa A. Nghifindaka

**Mbaka ya kala mondholongo oye li
tuu peni?**

RUFUS AMUKUHU (44) Nakayale 18.9.1978
SIMEON AMWIIMBI (75), Onankali 12.1987
ERASTUS NDEIFEKA (48) Nakayale 18.9.1978
FESTUS ADOLF, Kongo 9.7.1988
FESTUS SAMUEL, Kongo 2.1988
MIKKA GEORGE, Windhoek 26.10.1988
PAULUS HAFENI (20) Onanghwe 16.12.1980
NAGANAEL NGHINAMWAAMI ?? ??
(N) JASON IILEKA (15) Tshandi 14.7.1988

MUTUMBULWA AMUKUHU (38) Nakayale 9.1978
FESTUS NAKAWA (56) Ontananga 10.1978
JOHN NAKAWA (50) Oniipa 31.5.1979
DAVID HAMUTETA, Okatana 13.10.1979
VILHO MATEUS NYAMBALI ?? 25.7.1980
MARCELLINUS IPIINGE (35) Okatana 4.10.1980
MODESTUS IPIINGE (30) Okatana 4.10.1980
ANDREAS KASHIKOIA, Elombe 27.11.1980

HAFENI SH. PAULUS, OHAUKELO 15.12.1980
FRANS KASHIPALEKWA, OHAUKELO 15.12.19

MATIAS ASHIPEMBE, OSHIGAMBO 7.6.1979
PETRUS EMVULA ?? 10.7.1988
JOHANNA KAYAMBU ENGELA 31.7.1987

TOIVO SHILONGO, OKAHAO 5.5.1980

KALEB PAULUS SHIKALE, Onawa 21.1.1977
LINUS MATONGO, Caprivi 1.1988
SIMEON NEHOYA, Omuntele 1979

Uupindi Eliasel yaAmbelm yaAmufufu (28), Ogongo 19.12.1980
Petrus Tautunyenge yaKosmas yIipinge (26) Okadhima kaNangolo mUukwambi 19.12.1989.

TEOFILUS MATEUS, Elombe 27.11.1980
FILEMON KASITA IKELA (43), Oniipa 19.1.1981
KRISTOF IYAMBO SHIKONGO Ekamba 10.4.1981
SIMEON JOHANNES NEHOYA (40) Onyaanya 6.1981
AMUTENYA JOHANNES ASHIPALA Okatana 29.6.1981
MARKUS PAULUS, Oniipa 4.9.1985
RUBEN EDMUND, Eendobe 28.11.1986
ABNER SHIKESHO, Oniimwandi 3.7.1987
AFUNDE NGHIVOLWA, Oshikuku 4.9.1987
SHETEKELA SHININGENI (24) Windhoek 11.7.1988
MARIA SHOONGELENI, (24) Oshakati ???
IMMANUEL KAMBANDA ??? 1979
NEEMA LASARUS ??? 1979
SAKARIA AKWAAKE (17) Onayena 1979
IMMANUEL HATUTALE (37) Ongenga 1.8.1987

RUDOLF BAHM
Omupangeli gwootundi
MOSHAKATI

Mpaka otandi tseyithile aayakulwa yetu ayehe, kutya iilonga yokupangela ootundi, okulanditha po oompe nokwoopaleka ndhoka dha teka, okutula ko omakende nuumanya, itatu yi longele we metungo JAMAICA INN.

Ngashingeyi otu li mpaka mOshakati metungo lya ENOK (BBK), mpeya hapa kala pwa thikama aluhe omaloli goeskilima (Roomys). Shika otashi ti elalakano mpaka oku ku etela eyakulo ndika popepilela, waaha pumbwe we okufala nenge okutuma ootundi dhoye kUushimba.

Ohatu landitha wo ootundi oonkulu kondando yi li hwepo, onkene tu talela po ngele to piti pOshakati.

Ou shi shi tuu?

Ngele oto nu iikolitha osho oshinima shoye mwene, ihe ngele oye ku etele omaupyakadhi oshinima shetu nangoye. Omaupyakadhi giikolitha ngaashi:

1. Oontamanana megumbo.
2. Okufaula iilonga nenge okweetha iilonga inayi longwa megumbo.
3. Okulongitha iimaliwa oyindji nenge ayihe miikolitha.
4. Okweehama uuvu wolutu omolwayo we shi lombwelwa kundohotola nenge kaapangi kutya oyo tayi ku ehameke nenge ho chama ashike shaa wa nu mo.
5. Okuhinda aantu nowa ninga omutilithi pomudhingoloko gweni.

F. Ashipala

Nayo katu ya lwete

Henok Shifeta (50), Ongenga okwa kwatwa po oufiku meumbo laye eti 22.10.1985, fiyo onena katu shii apa e li. Okwa li ngaha ha kala melandulafano lomadina makwao fiyo 1986. Na shunwe mo.

Omushiofi

Ohandi shivifile Omukwetu edina lomumwameme Werner Elia Hamunyela (32) Ondobe, ou a kwatelwe po ku SA fimbo e li koilonga kuTsumeb, ndele fiyo onena okwa kana noiha udika. Otwe mu konga ndele inatu mu mona. Okwa kwatelwe 1.8.1980. Onomola yaye yoiilonga 11300.

*M. Elia Hamunyela
Oshakati*

Ndemuweda Hesekiel Kakunya (30), okwa kwatelwe 4.4.1978 mOmbalantu ketanga lyegameno. Otwa ka mona uuyeleele umwe wa yela kutya okwa pitwa naye pOshivelo 6.6.1985 ta falwa kOmalinda (Mariental), ihe sigo onena inatu uva we sha kuye. Okwa li ha ngeshefa mondjugo Kilimandjaro, pOngwediva. Edhina lye nali ye momusholondondo gwomakwawo.

*Barkias Kakunya
Tsumeb*

OMUKWETU

Oye oshifo shOngeleki Onkwaevangeli paLuther yomu SWA/NAMIBIA.

Ohashi nyanyangidhwa mOshinyanyangidho shOngeleki mOniipa.

Omukuluntu gwoshifo omumbisofi Kleopas Dumeni.

Amushanga gwoshifo omusita Sebulon Ekandjo.

Ondando yOmukwetu muNamibia naSouth Africa R8,00 komumvo.

Pondje yaNamibia na SA R20,00 komumvo. Ndjika oyo wo ondando yoshifo shomondhila.

Oondando nomambesitelo agehe naga tumwe kOmukwetu, Oniipa, P/Bag 2013, Ondangwa 9000, N A M I B I A.

ELOC PRINTING PRESS
PRIVATE BAG 2013, TEL. (06762) 11, TELEX 56-3257 WK
SWA/NAMIBIA