

OMUKWETU



50c

No. 15

ISBN 0-620-06828-0

ONTENGENEKOMWAALU YAELCIN 1990 YAFUPIPIKWA NOMILYONA

Elelongeleki lyaElcin, olya koleke ontengenekofaneko yelongitho lyiimaliwa yi kale ashike R2 362 022, omolwiilonga yOngeleki omumvo tagu ya. Iimaliwa oya shuna pevi nomwaalu R1 450 733, oku-yeleka nomwaalu gwembo lyomumvo 1989.

Omwaalu omunene miilonga yOngeleki ndjika ohagu pumbiwa unene ngaashi moosikola dhOngeleki. Pantengeneke yomumvo 1988,

iimaliwa yoosikola dhOngeleki adhihe kumwe oya li R903 436. Engela alike olya pula R254 633. Oosikola oonkwawo oyo ndjoka yu-sita kOtjimbingwe, Oseko yaShigambo naandhoka mbali dhOmbimbeli moNkurenkuru nomOngwediva.

Omolvompumbwe yiimaliwa tayi thelekenya mOngeleki ndjika, niilonga oyindji tayi nyengwa okupita omolvoshimaliwa, Ele-longeleki otali indile pu kongwe onduge yo-

KALEKA OMAGANO GOYE GO- MALOVU KOKULE NAAGALUKI: EKUMAGIDHO

Alikana aagaluki yetu inaa hambelwa we nomikonyo. Momukalo nguka kamu na etungo lyasha, ihe chalakanitho, osho sha kundathanwa omasiku ngaka mongundu yoohamushanga naawiliki yiitopolwa mehanganano lyoSWAPO mOndangwa.

Oshimpwiyu osha penduthwa komaihumbato gamwe inaaga ndjanga mokati kaagaluki yamwe po, nuunkundi mboka owa monika kutya otau humithwa unene komeho kethimbo ele lyokunwa moshigwana. Ngashingeyi omumvo omuti-tatu Ongeleki ya ELCIN sho ya dhike oprojeka yokukundathana omaupyakadhi ngoka taga zii-lile mokunwa, nenge miingangamithi.

Oprojeka oyi li mewiliko lyomusita Festus Ashipala melongelokumwe nomundohotola gwekwatho moAlkohol, Reijo Ojuthangas muSoomi. Omumbisofi K. Dumeni sho a talele po Soomi muJuni nuumvo okwa pewa ehokololo kombinga yoprojeka ndjoka. "Shono twa hala ngashingeyi okumona iimaliwa tu dhike oombelewa dheyakulo lyaamboka ya monb uupyakadhi," osho omusita Ashipala a yamukula Omukwetu sho a zi moshigongi shokomisi yiinima yopasosiale mOngeleki omasiku ngaka.

Oshigwana otashi indilwa shi kaleke omagano gasho gomalovu kokule naamboka taa galuka, opo ku yandwe nuupu omakotokelo gomiita moshigwana shika, moyoka tayi tsikile natango.

kwiindjipalitha iiniwe momimvo mbali tadhi landula 1990-1991. Omuthika gwoondjambi dhaanashilonga mOngeleki, nagwo ogwa tulwa mo moshimpwiyu shokakomisi kiiniwe yOngeleki, ku talike shono shi shi okuningwa po.

Sebulon Ekandjo

Manga taku ipulwa nomapuko ogendji muukalata waainyolithi mOwambo, ye omuwiliki gwomainyolitho Visser ota tseyitha egwedhelo lyomadhina 37 731 komwaalu gwaainyolithi mOwambo, ngoka gwe eta ya kale 198 789. Shoka osha gwedhele natango omapulo:

Omwaalu ngoka 37 731 ogwa li nale peni? Ooyene yomadhina ngoka uukalata wawo owa opalekelwa peni? Omadhina ogendji ga galukila mOndangwa nuukalata wa puka, oga kwatelelwa momwaalu gwaataambwa 37 731?



Omumbisofi K. Dumeni nomushangwahokololo peke ngoka e gu pewa ku dr R. Ojuthangas, pooha dhe omusita Martti Voipio.

AGUSTE 15, 1989

Eenhokotwa telelongeleki 20-21.7.1989, moniipa

365/89

Elelongeleki ola tokola okumangulula omushamane John Shitundeni, opo a ka longe mombelwa ya CCN, oyo tai totwa pOngwediva. Oilonga yomayelifilo a ELCIN oya ufwa i kale manga moshisho shOmbelwa yOmukwetu, noshihauto shomayelifilo shi tulwe manga mefiloshisho lombelewa yOngeleki.

368/89

Ombapila yomuyandjimaye wopaveta wOngeleki oya leshwa mElelongeleki omo ta holola nghe pu na eembei moifo tadi pewa Ongeleki yetu melongifo leedjapo deshahasho melinyolifo lehoololo. Elelongeleki otali yelifa kutya Ongeleki yetu kai na elongekido lomakoto.

Onghe Elelongeleki tali kumaida ovafita vomaongalo novanashilonga aveshe moinyanga yomaongalo, kutya eembapila deongalo ngee tadi yandjwa, di kale mondjila nomoshili. Ombelwa yomukwafi womubishofi oya filwa oshisho i tume ombapila yomayelifilo komaongalo etu, yo i nyolele koifo oyo ya lundila Ongeleki yetu, opo i yelife oshinima.

Otaku yelifwa yo, kutya omaingido eengudu dopolotika, kae fi omaingido eongalo, onghee itaa ningwa mongeleka.

371/89

Opwa leshwa ombapila yomukulunhu weongalo leendombwedi daJehova moKatimaMulilo, omushamane L.H.Greenway, omo ta indile Ongeleki yaELCIN i fute oimaliwa oyo ya longifa mokutula moluumbo lonhele oyo ya pewa ELCIN, kelelo laCprivi. Pambapila oimaliwa oi li R1700,00.

Elelongeleki ola tokola ku yandjwe R1 400,00, ye Hamushanga wEtumo muELCIN pamwe nomupashikili woshitai shaKavango, tava pulwa nediviliko kElelongeleki opo va talele po diva Caprivi, voo va tale osho sha ningwa ko.

372/89

Elelongeleki ola lesha ombapila yomufita Lapindja Nghole, ta shiivifa, kutya okwa ya koilonga yokangudu ka O'Linn, kekonakono lominyonena nomatillifo mehoololo. Elelongeleki otali holola eudonai lalo omolwomukalo oshinima sha enda. Elelongeleki otali kunghilile ovanashilonga avesho mOngeleki, kutya omunashilonga oku na okulekela, manga ina ya koilonga i lili pamaufu.

387/89

Elelongeleki ola ufa oshikefangeleki shi yandje R3 000 meyakulo lomOushimba, ku tungwe etala lokwoongalela mOvenduka koBrak Water.

388/89

Molwomhumbwe yosheendifo moshilongatumo koKaoko, Elelongeleki ola tokola ku indilwe Ehanganotumo laSoomi, li kwafe Ongeleki yetu Oimaliwa, opo i lande osheendifo shi pewe omunashilonga ou e li ko.

SHA FOOLWA MOKAMBO KOINI-NGWANIMA YEFIKU (DAIRY)

Omudo 1988, opwa li pwa ningwa oshivilo shinene shetumo shOngeleki aisho. Efiku ola li eti 10 laJuli. Mokambo koiningwanima yefiku omwa didilikwa amatumbulo amwe omubishofi novapashukili voitai, kombinga yetumo. Omatumbulo okwa li ngaha pauxupi. Oshivilo osha li mOngwediva.

ETUMO: Ino popya etumo nomutima inau litula mo.

Omafiku aa Elelongeleki ole i pula apa pa ku ndila oshilonga shetumo kombelewa yEtumo. Enyamukulo mepulo eli inali yandjwa natango naamwe inandi shiiva apa tapa ka helaana omalipulo alo:

- Oimaliwa opo i li?
- Ovanashilonga opo ve li?

Pomido 1985-86 opa li omunghapo mOngwediva hau ti: Ino shonga etumo, oto tu likifa. Otashi dulika etumbulo la udika ko pomunghulo, kutya fye etumo inatu li hala, osheshi ohali li ovanhu. Ndele fye kOndonga, otwe li udako tali ti: Ino popya etumo nomutima inau lipakwilamo, oto tu yolifa kounyuni.

Etokolo lohilile la mana mo ola pumbiwa moshinima eshi. Otwa teeleda Oitaingeleki ikwetu tai popi etumo i li popye momhepo ei - Etokolo la mana mo. Okuudifa ko ovanyasha vetu, ava va hala kutya onomola yohauto nima oyo Kalunga koye.

Ovanyasha vetu kutya onomola yohema oyo Kalunga koye. Kalunga koye Omwene, osho shi na okukala ngaho. Ovadali ava va mona oita nomakangha ovanafikola kutya, oyo tai pangele, ndele fye kOndonga otwa hala okuulika kuKalunga koye ou e ku eta mounyuni, ou e ku fikifa mo 1988, ou e ku etela evaengeli Oye Omwene, Ohamba.

Kleopas Dumeni

Etumo eudifo lokutwala ko ombili

Otwa pewa oshinakuwanifwa meshasho letu tu hepaulule Kalunga kutya oye Omwene. Otwa lesha muEfeso etukulwa etihamano movelise omulongo nonhinano, kutya ilongekideni mu udife eudifo lombili, li ninge eenghaku keemhadi deni.

Asser Lihongo

Metumo otu na ekwatafano naKalunga

Oshilonga shetumo osha fikamekwa po komatumbulo nokomaudaneke aKalunga eshi a tya, kutya ngaashi Tate a tuma nge, osho yo naame handi mu tumu, navali ohandi kala pamwe nanye omafiku aeshe. Etumo olo tali tu eta mekwatafano naKalunga nomekwatafano novakwetu yo.

Fiyo opaapa, otwa popya sha wana, ndele inatu longa sha wana. Otwa udifilwa sha wana. ndele

inatu itavela sha wana. Otwa diladila sha wana, ndele inatu eta po sha wana.

Josaphat Shanghala

Metumo omwa dja oudalwa wetu

Etumo kuame efiku ledalo lange. Metumo ohandi lihongo apa nda dja. Otwa li nale tu he na Kalunga nOmukulili, ndele paife otwe mu shiiva noku mu lineekela. Momadalo etu ookaume ohave tu pe eeshali, ndele moshivilo shetumo ofye hatu yandje kuKalunga, eendunge detu, efimbo nomaliko etu.

Oumbada ohau pendulwa okutala ou ta longo etumo, ndele opo hapo pe na epulo. Epulo oli li kutya ohandi longo tuu Etumo? Otu na oufumba munene puKalunga, tu kaleke po eumbo laye apa. Oudalwa wetu nau kale omukumoto tu longo etumo. Ovakriste ngeenge itava longo etumo, nena ohatu longo sha shimwe shi lili, osho tashi longwa nokovapaani.

Apollos Kaulinge

Elunduluko lovanashilonga va ELCIN

Elelongeleki lOngeleki yaElcin leti 20-21.7.1989, ola ninga omalundululo amwe movanashilonga valo. Omalundululo oku li ngaashi tashi shikula:

Omudiakoni Linda Festus, Elim, okwa nangekwa mOhalushu okutameka Auguste 1,1989. Omufita Abraham Malwa, Ewaneno, Elelongeleki ole mu tuma moshitaingeleki shaKunene, meongalo Oshangalala, okutameka Auguste 1,1989. Omweevangeliste Teodor Nghipangelwa Kongo, okwa nangekwa meyakulo mOushimba Outjo okutameka Septemba 1,1989. Omweevangeliste Frans David, Kongo, okwa nangekwa omweevangeliste wetumo moshitaingeleki shaUkwanyama.

OVO VA UFILWA VA KA TULUMUKWE PO

Oku na ovanashilonga ovo va longa efimbo lile, nElelongeleki ola tala sha pumbiwa va ka tulumukwe po pamulandu womaupo Ongeleki, ovo:

Omweevangeliste Paulus Shindinge, Ongenga; Omweevangeliste Melkisedek Nghatanga, Okambebe, omufita Johannes Ekandjo, Eheke; Omufita Filippus Imene, Onyaanya nomudiakoni Silas Shalanda, Ewaneno.

Hakeenghono ile kefininiko

Omukulu wonale okwe shi popile Kokutya: Yepongo oKalunga he i tondokele Poo kape na Shikukutu shi ha xulu Kape na Shidjuu shi ha shuna mhadi monima "Hakeenghono ile kefininiko Ndele okOmhepo yange."

F.J. Nashidengo

JESUS KRISTUS OYE OMUKA-NKA GWA KOLA!

Pokati kuusiku Paulus naSilas oya galikana noya simaneke Kalunga nomahambeledondjimo",... Iil.16:25-. Osho ngeyi oitaali muKristus otaa gandja omahokololo giilonga yawo yopakriste mehala ewanawa lyomuKalunga momaudhigu tage ya adha. Ndika olyo etegameno lyomukriste kehe ngoka i itaala muushili kutya Kalunga oye omuhupithi muudhigu auhe, a hambelele nomaimbilo nokugatikana Kalunga e mu mangulule.

"Ya yapulila moshili, oohapu dhoeye odho oshili." Joh.17:17. Jesus osho a galikanene aalongwa ye mehokololo lye lyokundja iilonga ye kuHe. Oshili oya simana unene, otundji osho hatu popi.

- Omolvashike hatu longo ngaashi onkalo dhetu nuukwatya wetu u li?
- Omolvashike ihe tatu longo iinima mondjila ndjoka hatu yi longo?
- Oshike ano hashi kutha nohashi pangele iilonga yetu kooyakwetu?

Omayamukulo gi ili nogi ili otatu vulu oku ga gandja mpaka omolvomapulo ngaka. Omayamukulo aluhe ogi ivule kwaamboka taye ga gandja inaga faathana. Omuuvithi gwevaangeli eyamukulo lye oli ili. Osho wo omudhinalunga eyamukulo lye oli ili.

Elalakano lyeyamukulo kehe okugandja uumbangi nuuyecele. Otatu longo ngaashi onkalo yetu, oshoka osho twa adha aasita aakwetu haa longo, nenge osho twa adha aakuluntu yetu haa longitha nenge otse ohatu longo ngaashi onkalo yetu oshoka osho twi itaala.

Mpaka omapulo otage ya kutse: Ongiini ano ngele otatu longitha shoka aakuluntu yetu ya kala taa shi longitha shi li mepuko? Ngele tseni ohatu longo iilonga omolvaitaalo, ongiini ano eitaalo ndyoka ngele olya puka?

Oshoopala tuu tu pukulule onkalo yetu ngele oya puka mokati komahangano getu notayi yono ombili yooyakwetu noyuyuni? "Hakehe ngoka ta lombwele ndje: Omuwa, Omuwa ta yi moshilongo shomegulu, aawe, oye tuu ngoka ta longo ehala lyaTate yomegulu". Ndika olyo elongo lyafJesus komushitwa kehe kokutya osheelo shegulu oshe egulukila kehe ngoka ta thikitha mo iipango yaKalunga iiyapuki. Mat.7:21.

Osho ngeyi epulo okupula uushili tali simana. Oko ye li oyendji taa holama epulo ndika. Yamwe otaa dhiladhila omuntu ita vulu okuyamukula epulo ndika. Eeno, oya dhiladhila nawa noya popi nawa, ihe otali ka kala epuko enene ngele tatu dhiladhila kutya otse katu shi oshili, oshoka oohapu dhaKalunga momakana getu odho oshili. 2 Kor.17:24.

"Nombaadhilila omiyelo adhihe odhe eguluka, nomalyenge gaayehe oga dhituluka". Iil.16:26. Paulus naSilas inaya holama nando okuyamukula epulo ndika, uushili oshike? Aakriste mbaka yaali inaya itla nando okuyamukula epulo ndika mokati kaahepeki, mokati kaapagani, momaudhigu giilalo tayi ziya ombinzi. Mondholongo yaapagani omo tuu

moka mu uvika omahambebelele nomagalikano paMapisalomi gaDavid, oshoka ogo ya kala taa longitha pethimbo ndiyaka.

Oshinima shika osho tuu shoka Paulus te tu kumagidhile mo 2 Kor.3:11-12. "Oshoka kaku na ngoka ta vulu okudhika omukanka gulwe, ogwo tuu ngoka gwa dhikwa kuJesus Kristus ngoka ta tungile momukanka nguka oshingoli, oshisilveli, okawe omiti, omwiidhi iihenguti, oshilonga shakehe ngoka otashi ka holoka." Shika otashi tu pe uuyele kutya oyendji pethimbo ndika otaa longitha oshikalunga shoshisilveli ano oshimaliwa. Ihe omuyapostoli Paulus ote tu londodha. Oshilonga sha kehe tuu ngoka otashi holoka. Omulilo gwesiku ndyoka otagu ka holola uukwatya woshilonga shakehe omuntu. 1 Kor. 3:13.

Omukwetu, omolvashike tatu tila okulongitha omagano gomehala lyaKalunga? Omolvashike tatu pulakeneni momahalo guuyuni pehala lyokupulakana kehalo lyaKalunga? Ngele Kalunga oye ehala ngaashi twe shi tseyi nawa, shika otashi ti shike kutseni?

Shika otashi ti ngiini monkalathano yetu yesiku kehe? Shika otashi ti shike kutse mbaka tatu longelathana esiku kehe? Ohapu ndjika, Kalunga oye ehala, otayi tu hili opo tu dhiladhile muule wondjila yomahangano getu kutya:

Ehala lyakalunga olyo tuu tali pangele mokati komahangano getu?

- Mondjila yuukumwe waantu wa yonuka po.
- Mondjila yokutsakanena nooyakwetu esiku kehe.
- Mondjila yokweeta ombili nenyanyu mokati kaantu ayehe.
- Mondjila yoshilongatamo kaantu ayehe komihoko adhihe.
- Nondjila ndjika tatu longele Kalunga?

Aakriste oyendji oya kotha nale moomposi, oya ningina muunkundi wokudhiladhila oshinima shegalikano nokuhambelele Kalunga nomaimbilo. Ethimbo ndyoka tatu tameke okudhina elongelokalunga, olyo ethimbo ndyoka tatu tameke okudhiginina oshilonga shokulongela Kalunga momagumbo getu, olyo wo ethimbo tatu mono (oonkondo) iikondjitho noondunge dhokukondjitaha uuwinayi kehe tau tu adha.

Oohapu ndhika otadhi ya kutse mboka tu li miilonga yopanyama, nokwaamboka ye li moluhodhi omolvonkalo yuupika. Otadhi ya koludhi ndoka lwa kanitha efano lyoshifetha shaKalunga nolwa taamba onkalo yomupika. Otadhi ya kwaamboka taa li yo taa kuta nawa noye li pothithiya yomagadhi goshilongo.

Kwaamboka taa si ondjala, oohepele omolwiilonga yefupa nondumbo kutya atuhe otwa pumbwa okuzala omuntu omupe, Jesus Kristus niilonga yetu oya pumbwa okukala yomiiyimati noyomahini gaKristus. Otekisti ndjika twe yi hololelwa mpoka oya hala, oku tu longi kutya: nomondholongo uvitha evangeli, mokati komahepeko gaapagani, uvitha oshili yaKristus, mokati kuudhigu wombinzi tayi tika nomomalyenge, hokololele Kalunga uudhigu woye

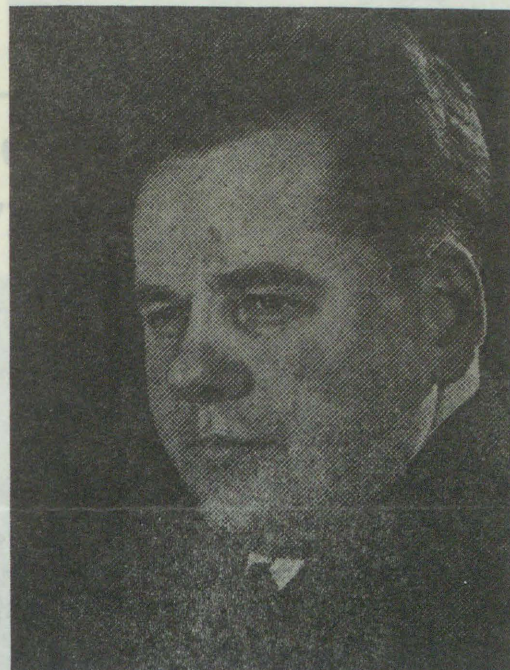


auhe momagalikano nomahambeledondjimo. **OMUWA GWESIMANO OTA TAMEKE OKU KU MANGULULA.**

Joseph Namutenya



E tu tetekelele muukwaaluhe



Nakusa Voutilainen

Omutumwa omukulu mpaka omutungi Väinämö Voutilainen (61) okwa mana oondjenda dhe muSoomi 28.6.1989. Omusamane Voutilainen (Kapunda) okwa longo mOwambo okuza 1959-64 nashewe 1965-1970 ongomuwiliki gwomatungo gOngeleki. "Mboka taa kunu nokulila omahodhi, otaa ka teya nenyanyu lyopombanda." Eps. 126:5.

OMAUDAFANO AMWE POKATI KONGELEKI YAANGLIKAN NOYAELENCIN

Opa kala cenghundafana defimbo lile pokati keengeleki mbali, yaAnglikan noyaelecin. Okakomisi kowina oka totwa nelalakano okukundafana oinima oyo tai kumu Eengeleki odo mbali tadi longo moshitukulwa shimwe. Omafiku aa, Omukwetu okwe li twa amwe omoitwa ya diminafanwa mokakomisi koukumwe: Oshoongalele shako oshitivali omo mwa dja omafaneke aa a tambulwa kEengeleki odo.

1. ESHASHO:

Eengeleki edi mbali keshe imwe oya tambula ko eshasho tali ningwa mOngeleki ikwao nokape na omhumbwe yokushalula, omukwaneongalo a shashwa nale.

Omufita ina pitikwa okushasha okaana komukwaneongalo wOngeleki i lili, ngeenge ine shi itavelelwa, okuninga te shi ningi paulumomhumbwe ile sha yela kutya ovakwaneongalo vaapo ihava mono eyakulo lopaufita lOngeleki yavo.

Omufita ngeenge okwa shashe oshilyo shOngeleki i he fi yavo, ita dudu okupula omushashwa a ninge po oshilyo shOngeleki yomufita oo a shasha. Okaana komOngeleki imwe nande taka shashwa mOngeleki ikwao ovafikameni vako ove na okukala oilyo yongeleki yomushashwa.

2. EKOLEKO:

Oilyo yOngeleki yaAnglikana ihai kolekwa komuntu ehe fi Omumbishofi.

3. UULALELO UUYAPUKI:

Eengeleki eedi mbali otadi tambulafana

poshitaafula shouvalelo uyapuki.

4. ETEMBU LOVAKWANEONGALO:

Keshe Ongeleki (Anglikan nEvaengeli) nai kal'tai yandje ombapila yetembu komukwaneongalo wayo, a tembuke uuna te shi pula, ngeenge omukwaneongalo a wanifa tete osho te shi pulwa e shi ninge. Ovalihomboli vopokati kEengeleki edi ovo vene nava tokole kutya okOngeleki ilipipo tava ame.

5. EYAKULO LOPAUFITA:

Oshilyo keshe shOngeleki keshe sha pumbwa ekwafo lopaufita, otashi dudu okukwafwa komufita wOngeleki keshe itapu talwa oukwangeleki womunhu. Omuyakulwa na konakonwe tete ngeenge okwa pumbwa tuu shili ekwafo, oyo pu henukwe omapuko omeyakulo.

Omufita wOngeleki keshe, ota dudu okukundafana nakeshe umwe ovo tava kala moihakulilo, meefikola ile meedolongo.

6. OHOMBO YOVAKWANEONGALO VE HE FI VEITAVELO LIMWE

Melongekido lohombo, ya tya ngaha ovafita vEengeleki odo mbali nave li tulemo aveshe mokulongekida ovanyasha. Nonande osho sha kala omukalo kutya ovanyasha otava hambolifwa meongalo lokakadona, oshiwa yo ovafuko va pewe emanguluko okutokola oyo va hala va hambolifwe. Epukululo nali ningilwe mukesho Ongeleki nomushangwahokololo woukumwe nau ningwe kEengeleki odo mbali kwaasho tashi pulwa ovalihomboli.

Aaniilonga moTerracebaai ya tula po iilongitho

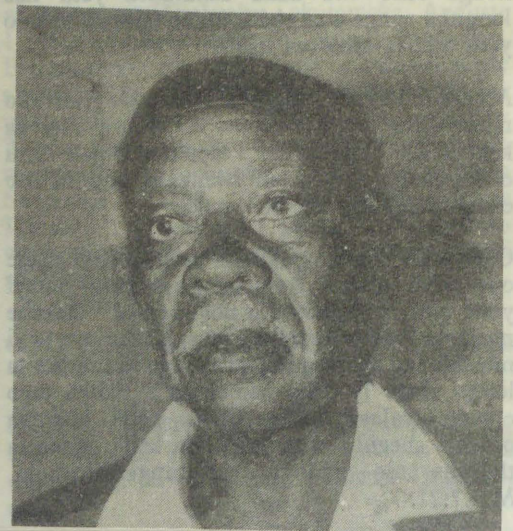
Aaniilonga moTerracebaai oya tokola oyo ya tule po iilongitho omolwoompango ndhoka dha kala tadi ningwa, mewiliko lya NAPWU. Oya li ya tungu litisa ya hala ye yi ningilwe nonge itayi gwanithwa po, nena otaa ka kala inaa longa omasiku gatatu. Niitsa kwa li tayi pulwa ongaashi tayi landula:

1. Ootundi hetatu mesiku.
2. Efudho lyOsoondaha lya gwana po.
3. Omafudho taga futwa gomasiku 30.
4. Okumanguluka okuya kegumbo mbala ngele omuniilonga a mono uuyyakadhi.
5. Uunamiti wa gwana, akwazimo yaaniilonga ya kale ya manguluka okutalela po ehala ndyoka ngaashi tashi vulika.
6. Okatongotongo mokati kaaniilonga taka etwa komutiligane ka hulithwepo.
7. Omahala gokulala ga gwana.

Ayihe mbika eti 25.4.1989 oya pewa uuyeleele wa gwana nokape na ngoka a landulwa. Tu kondjitheni uukoloni mboka wa vuka moshilongo shetu, mboka wa kulupika ootate. Kutse otwa hala u monenwe ehulilo. Mpaka otatu kundu aaniilonga ayehe medhira lyo NAPWU.

Omunashipundi, Paulus N. Ndeulyatele
P/Sak 5011
Terrace Baai, Swakopmund

Natango ou na ompito yokunyolilita oshifo shoye. Tuma ashike mbala edhina lyoye nondjukithi ya yela.



Stefanus Natanael

Kape na etegameno enene lyonakuyiwa yoshigwana, tashi zi mpoka aagundjuka sho itaa hala we iilonga unene tuu mbyoka yomomapyo, osho omusamane Stefanus Natanael a tumbula pOmukwetu noshimpwiyu oshinene.

Openi muuyuni to adha oshilongo sha kola kaashi na iilonga yokomake? Openi muuyuni to adha oshilongo sha kola kaashi na aagundjuka ye shi iilonga omusamane Natanael osho a hala okuuva nawa, ngele okwa kala sha sha tya ngaaka muuyuni.

Okwa ulika kiilonga yomomapyo mbyoka ya nkundipala moshigwana nokwa ti unamapyo moshilongo shika nau konekwe komuntu kehe kutya owo auke u li esipa lyombunda lyomahupilo goshigwana, nowahe po, oshigwana otashi gwile po mbala.

Uunamapyo esipa lyombunda lyoshigwana



Momimvo ndhika iipalutha inayi pumba ashike sho omvula itaayi loko nawa, ihe nomapyo sho ga thigilwa owala aakulupe.

ELONGO NOKUMONA OKANONA OHAYI PAATHANA OMALUFO



Martin Akweenda

Omwiha uupambu une womboloto, nuulalelo onona yepungu

Ehokololo lyaamboka 24 ya mangelulwa ku SA, inali kwatelela mo ashike omahepeko gopalutu, ihe niikulya wo yoyene yesiku oya li ya pumba. Ongulangula oto pe-wa okatete nokakopi kotee kaa na omboloto, omutenya uupambu (4) womboloto nuulalelo okayaha konona yepungu, nenge epungu lya kweywa, ehokololo lya ti.

Martin Akweenda, Oniipa na Johannes Nangolo Oshigambo, nayo oya li mongundu yaamboka 24 ya mangelulwa pakatokolitho 435, manga taa longele ondhologo yawo yomimvo 22 muukumwe wadho. Omumvo 1987 ohofa yopombanda oya li ya tokolele Akweenda omimvo 10 na Nangolo omimvo 12 megeelo lyoveta yuukulo. Etokolo olya ningwa sho ya adhika ya dhigininwa okuza Aguste 1985. Omasiku 9 otwi iteka iikulya mbyoka iwinayi, sigo yoopalekwa k a s h o - na, osho Akweenda a tumbula ngoka a yile mondhologo manga e na omimvo 22 adhike.

Efelo Elizabeth, omusosiale nomunawino meputudho lyelongo, okwa yamukula Omukwetu, kutya oku na etegameno enene a ka galukile kuNamibia nonkatu yu-ndohotola nuumvo muDesemba, ihe ina tseye natango nawa nkene ta tsitha kumwe oprograma yeilongo lye nehogololo ndyoka lya tegelelwa kOmunamibia kehe, mbala muNovomba nuumvo.

Mukadhandhotola Kaire Mbwende, meme Elizabeth, omasiku ngaka oku li mefudho lyoomwedhi mbali, sho ya thiki muNamibia okuza keilongo nomuupongekwa. Omundohotola Kaire Mbwende oku li ngashingeyi omukuluntu gwombelewa yoSWAPO koGobabis.

Manga e li mefudho lye, meme Elizabeth okwa mono ompito yokutalela po aakuluntu ye mOnayena meme Selma natate Armas Amukugo. Uunona wawo uyali Hainyeko (11) naTjivingurura (7) mboka kau uvite ko nando oshitya shimwe shOshiwambo nenge Oshiharero, nawo owe ya pamwe nayina kOwambo nohau lesa ashike miipala yoinakulu, nomandhindhiliko kutya owa taambwa nenyanyu enene.

“Kandi uvite manga uugumbo okukala muNamibia,” osho Hainyeko ka lombwele Omukwetu mOshiingilisa sha dhoga nawa ko ka tala mevi. Elaka lyomegumbo pahokololo lyayina oyo Oshiingilisa nOshisweden. Edhina Hainyeko olya kuthwa komukwiita gwoPlan ngoka ombinzi ye ya tika tangotango metsakaneno netanga lya SA.

Eilongelo lyoonkatu meme Elizabeth ota ti okwe li tamekele 1980 moUniversity yaLund, muSweden hoka ya yile ko nomusamane gwe dr. Mbwende 1979. Okwa mana onkatu yotango B.Sc. melongo lyonkalathano nolyeputudho lyomosikola (Sociology and Education).

Opo ishewe onkatu ye ontyali M.Sc. meputudho lyosikola amuke. MuDesemba okwa tegelela ihe a mone onkatu Ph.D. u-ndohotola mofilosofi yeputudho lyomosikola. “Omuntu wa ka mona manga okakona, elongo to etha. Sho ka toyo to ka tsikila ishewe, nosho tuu,” osho a ulukile Omukwetu nkene a kala a papata, omimvo 14 ndhoka a kala kombanda.

Sebulon Ekandjo



Meme Elizabeth (Amukugo) Mbwende
B.Sc: M.Sc



Methano ndika Herman Mengela (31) Nakayale, ota ti ye uulongisikola okwe wu ilogela moontu-mwafo, noku na ngashingeyi owino welongo woomvula ntano muAngola. Okwa kwatwa kuulema womagulu ombaadhihila noku li ngashingeyi moNakayale pamwe nooyakwawo mboka ya lemama.

ESINDANO LYEKONDJO OTALI KA YELITHWA ASHIKE KOSHIZEMO SHEHOGOLOLO

Osha li ashike potundi yotango yomutenya 31.7.1989, moshipangelo oshikulu shOngeleki shaNakayale, aapangi oyendji naavu oya li taa fudha po manga efudho lyomutenya. Omuvu Haufiku Hinounye ye okwa li ti ikutha ezaza manga nowela yopokataafula komondunda.

Oshikaha she shokulyo nokugulu kwako itayilongo we. Ewi lyomokana nalyo okwa li te li pititha mo nuudhigu sho ta yekelele okuyamukula omapulo gOmukwetu ngoka ga li taga konenene shoka she mu etele ngeyi uulema wopalutu. Nando a holola enyanyu lye sho a thiki muNamibia, Hinounye oku uvite kutya esindano ndyoka lya tameke komuthitu otali

kala ashike lya tsakana ngele lya kolekwa koshizemo oshiwana shomehogololo.

Okwa ti kutya omimvo adhihe 16 a kala kombanda, okwa kala ashike kondjembo. Ina hala wo okutamutha nenge ita dhimbulukwa kutya iikando ingapi a kala koongamba. “Opo nda lemama ngashingeyi, ashike hi shi ku lombwele, kutya oshe ende ngiini, inandi pewa natango ehokololo,” osho a kala ti ipopile.

Ye mwene ita monika ando a mona iihuna kolutu naishewe ina nika ombepo yuupongo. Okwa taamba okukalamwenyo hoka kwe mu adha. “Kondje onda yile ko okanona, ngashingeyi omutse gwandje omutokele,” osho a yamukula epulo, uuna a thigile po oshilongo shika.

Omumati nguno Hinounye, okwa thikile muNamibia pamwe nosheendo shiilema iikwawo 2.7.1989 okuza kuLuanda paprograma yegaluko lyAanamibia yomombelewa yoontauki mligwanahangano. Ongeleki oye ya monene chala moshipangelo shaNakayale. Uule womasiku ge vule oshiwike sho a thiki muNamibia, pethimbo ndyoka a popi nOmukwetu, ina mona natango aashiwikile nenge aanegumbo ya za kegumbo pOngonga, mUukwanyama.

“Kegumbo onda tumako ngaho, ashike fye otwe lihonga okutala keshe umwe tu na naye ombili omukwapata,” osho a nyamukula mombepo yokwaa na uuthigona nuukwazimo.

OMBELEWA ONENE YOSWAPO MO SHITOPOLWA SHOWAMBO OYA EGULULWA MOSHAKATI

"Koonkondo dhewiliko lyaKalunga mwe-ne, otwa thiki mpaka okuza momaughigu ogendji nokesilohenda lyOmushiti," osho omukuluntu gwombelewa ndjika omusamane Simon (Mzee) Kaukungwa a tumbula, ye ta tala nawa ongundu yaantu mboka yi ile okutala ehala nomatungo gombelewa yehangano lyoSWAPO mOshakati 2.8.1989.

Okwa tumbula kutya okukala mpaka nena otwe ya okutsilika epandele lyetu lyoSwapo noku egulula ombelewa yoSWAPO mpaka. Mokuyelitha ondjokonona yoSWAPO, omusamane Kaukungwa okwa ti, oya yile kombanda ya tila epangelo lyOombulu, sho dha hala dhi ya dhi-page. Okwa tsikile ta ti, sho ya yile oya kala nelalakano kutya otaa ka galuka.

Ethimbo ndyoka ya kala kombanda okwa ti, Oombulu odha kala tadhi ti SWAPO ite ya mo mo-Namibia. "Paife keshe apa to i oSWAPO tai li nyenge po, ndee oye uya medu looina," osho a ti. Pandjokonona omusamane Kaukungwa okwa ti kutya esiku ndika 2.8.1989, otali ka kala mondjekonona yaNamibia lya mangeluka. Okwa igidhile aagundjuka nomapipi ngoka taga ka nyola ondjokonona, ga ka tule mo esiku ndika ombelewa onene yoSWAPO mOwambo ye egululwa mOshakati nepandela lyoSWAPO lya tsilikwa.

Okwe ya kumagidha wo yaa ka dhimbwe po aanangeshefa yetu, mboka ya kwatha notaa kwatha natango okuyambidhidha SWAPO. Tatekulu Kaukungwa okwa gandja olupandu lwe komunangeshefa Frans Aupa Iindongo, ngoka a gandja etungo lye li ninga ombelewa yoSWAPO.



Meme Beata Ambiga, Oshaango okwa thikile muNamibia 14.6.1989, osheendo oshittitatu shaagaluki. Mujuli 1, 1989 okwa mono okakadhona mOkanyothi mOnandjokwe. Meme Marta Andima, Oshigambo oye gwtango a mono okanona moshipangelo shoka mujuni sho ya thiki. Omusamane Erastus Ambiga, he yokanona okwa li inaa thika manga pethimbo ndyoka.

PO poConde No.3. Okwa tsikile ta ti aanangeshefa okwe ya pandula omolwomakwatho gawo, nokwa indile omakwatho ga ze mukehe gumwe ta vulu okukwatha. "Kwaava mwe tu kwafa Kalunga oye e mu lombwela mu tu kwafe onghee ote mu wedeleko," osho a pandula.

Omukuluntu gwombelewa Kaukungwa okwe yi

yelitha kutya oyo tayi kala ya kwatela komeho ehogololo mOwambo. Oyo ombelewa ontiyali muNamibia ya landula yotango ndjoka yi li mOvenduka. Ombelewa oyakehe oshilyo sho-SWAPO, ndjoka tayi ka wiyauka noku ka gwaniha po kehe shimwe tashi ka pumbiwa mehogololo. Ombelewa otayi ka kwathelwa kuumbelewagona tau ka kala pomahala ogendji mOwambo.

Omukalelipo gwombelewa yokOvenduka pegululo lyombelewa ndjika, omusamane Nahas Angula ngoka a tumwa thikithe etumwalaka kombelewa ndjika yoSWAPO mOwambo. Omusamane Angula okwa ti okwa dhiladhilwa ombelewa odhindji pomahala ogendji mOwambo, ndhoka tadhi kala koho yombelewa ndjika onene mOshakati.

Omusamane Angula okwa li a pandula koonkambadhala dhaakalimo yokuumbangalantu woshilongo molweitulumo lyawo. Okwa ti elalakanano lyoombelwa dhoSWAPO mOnamibia, okukwatha kehe gumwe ta pumbwa ekwatho. Okwa indile wo shi kale oshinakugwanithwa shakehe gumwe, oyo oshigwana ashihe shi mone ekwatho.

Omusamane Nahas okwa popi kombinga yaalongithwa ya SA, mboka a ti kutya oyo aamwame-me Aanamibia, mboka ye na uuthemba wokukala moNamibia. Otaa ende momudhingoloko gwoshilongo ye na oondhimbo, omakatana, oomwele, omagonga nomatati ya hala okukondjitha oshigwana.

Okwa ti naa dhimbulukwe oshigwana osha loloka iita nosha yuulukwa shili ombili. Naa hulithe po iipwe ya tya ngaaka tayi uvika nokaakwiilongo. Inaye tu falitha nuuyuni. Kumboka ya dhimbulula omapuko gawo noya galukile koshigwana shawo, Nahas ota ti okwe ya pandula. Ota indile natango mboka yi

Tala kepannja tali landula



Uuna omumbisoffi K. Dumeni kee li pondje yoshilongo, oha kala olwindji i ipyakhila naayenda. Methano ndika ota kundathana nomukalelipo gwepangelo lyaNdowishilanda lyuuzilo mOvenduka dr Hans - Georg Schleicher, methano ndika kolulyo. Oye li nomusamane Rüdiger Weissbarth, gwepangelo lyawo ngoka a thindikile Aanamibia mboka ya kala taa ilongo hoka, sho ye ya kehogololo. Kape na ngoka kwa li ta fekele epangelo lya Ndowishilanda lyuuzilo, li dhike ombelewa yalyo moshilongo shika.

OVANYASHA OVE SHI KEMA

Oukengeleli wa SA ou a kala ta longo nao moNamibia mefimbo loita, owa lulila oshiwana noshe u koneka. Oumbudi umwe owa minika mo nale eshi a kala te uya pomaumbo ovakwashiwana te va fininikile oinima i he shi yoshili noku va denga. Ikwa o konekiwa momitotolombo davo, eshi a kala ta tandavelifa owii kombinga yOvanamibia ovo va kala kombada.

Ovanyasha ovanafikola ova holola eudonai lavo, eshi SA a longekida ovanhu tava di komadu avo ve uye ve lishangifile ehoololo laNamibia. Ovanyasha ove shi kema osho kutya ovanhu Ovanamibia ngoo? Ngeenge Ovanamibia oshike nee ve lileko oko? Oukengeleli wa SA owa lolokiwa kOvanamibia, osheshi keshe efimbo okwe va halela moupika.

Ovanyasha ova tonga nonghenda kengabeko momalishangifo laavo tava wanifa omido 18 neudo konima yelishangifo, ndee itava i mehoololo. Ou a dalwa 16.9.1971, onghenda shaashi vati ita ka hoolola. Ovanamibia ve-li kOmbaye omalishangifo oku li kOshiwakopo: Ovanyasha ove shi kema yo kutya vamwe vomuvo otashi dulika va ha ka mone omhito yokuya kelishangifo nokoku ka hoolola.

Ovanyasha ova indila mofikola keshe mu kale eudeko lohinakuwanifwa shomuhongwa keshe

Eegululo lyombeleva

Dha za kep. 6.

iholekela mo, kutya ombelewa yoSWAPO oya patuluka mOshakati naye ye, oshigwana oshe ya tegelela nombili.

Ombelewa oyi lile po okukwatha kehe gumwe a pumbwa ekwatho. Pamwe owa li inoo uvako elaka lyoSWAPO, ila kOmbelewa u li uve ko. Etumwalaka lyoSWAPO omusamane Nahas okwe li yelitha ta ti, oyo etumwalaka lyombili, lyedhiminathanopo, lyehumokomeho nolyemanguluko lyaNamibia. Una SWAPO a ya koshipundi, otayi ka tala ompumbwe yomuntu kehe yi kale yopantu.

Meegululo lyombeleva moka omo omusamane Mzee a tumbula kutya, etiko lyombinzi olya pita nale noitaye ke li pumbwa we. Kumboka ya hala ya kondje pethimbo ndino, okwa pula: "Omwa li peni nale?" Okwe li yelitha ta ti, ekondjo li li po olyehogololo. "Tu yeni kokakefa kehoololo oko ku na AK - 47," osho a yelitha. Oongundu adhihe tadhi ka ya mehogololo, kutya nee omathele gangapi, omusamane Kaukungwa okwa ti SWAPO kayi na uumbanda nadho.

Etameko nehulitho olya ningwa komusita Erasmus (Katalala) Haikali, ngoka naye gumwe gwomaagaluki a zile kOnamutayi. Aapika ya SA sho ye li natango miilonga yawo yuupika, gumwe gwomuyo okwa li i itsuwa mokati kongundu yaantu, mboka yi ile keegululo lyombeleva e na ondjembo. Inaku tseyika elalakano lye noshikondjiitho mokati kaantu. Kumboka yi itula mo natango miilonga yuupwidhi, tatekulu Kaukungwa ota ti, Tate Kalunga ne ya dhiminepo, oshoka kaye shi wo shoka taa ningi!

Taati Kanana



eshi ta i kexuliloshivike, okulonga oshiwana noku shi udifa ko oSWAPO. Nashi udike ko momaongalo, momikunda nomomaumbo aeshe oshiwana shi ka hoolole oSWAPO yaNamibia, osho va kumaidafana.

Omukumo u li movanyasha ava oyou, kutya ngeenge ova longo nelitulemo tava udifa ko ovanhu meenhele adishe, osha yela oshiwana otashi ka hoolola nawa, ombinga ei yokoumbangalanhu woshilongo ku monike eepesenda 95% tadi ka hoolola SWAPO.

Osha li shomeenghundafana dovanyasha ovalihongi vehangano loNANSO, eshi va kema oimbuluma ya SA moshilongo.

Taati Kanana

Eopalekitho lyuukalata womOwambo lya tameke

SWAPO okwa tokola okuninga ekonakono lya kwata miiti okukonga uuyeleele mushoka sha talwa koyendji kutya "ompangela yopaumbudhi", mokuyona einyolitho moshitopolwa shokuumbangalantu woshilongo. Ekoneneno moshinima shoka olya zi momatseyitho gopapangelo ngoka haga holoka moshifo shopapangelo Gazette kombinga yomiyalu dhaainyolithi moshilongo.

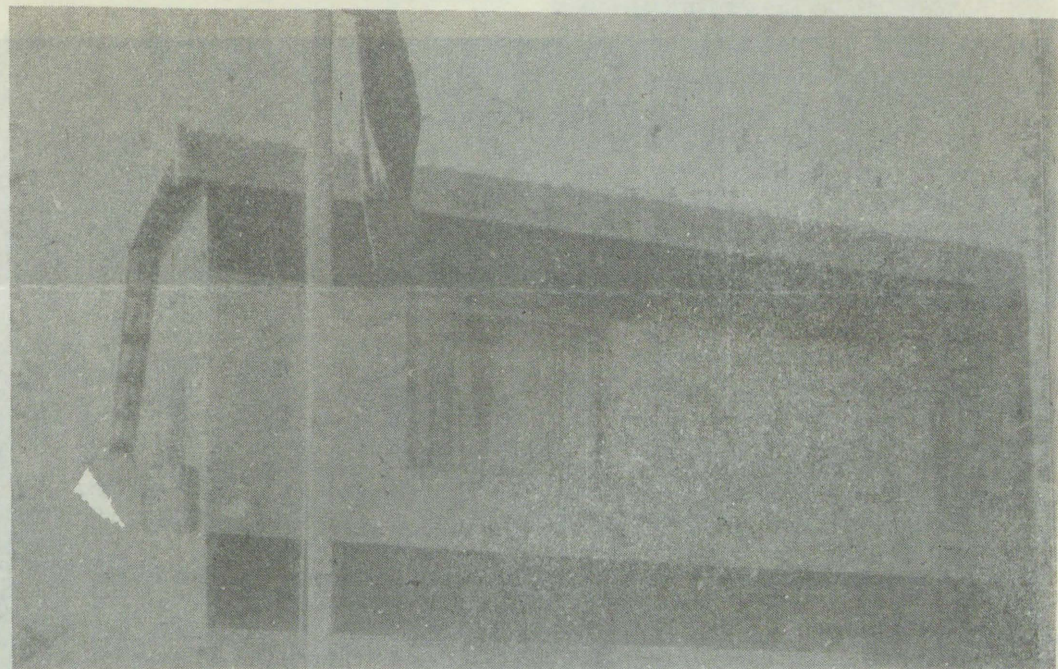
Pauyeleele wa holoka moshifo shoka, sigo olwopuhulilo lyomwedhi gwa zi ko, oopelesenda 37% adhike dhaainyolithi mOwambo uukalata wawo ou li mondjila okuyeeka noopelesenda 44% dhaainyolithi kOkaiti. "Ekonakono tatu ke li ninga moshinima shika, otwa hala tu mone uukwashili womapuko tu ga landule, nongele tashi vulika sigo omohofa yopombanda, osho o-munambelewa omukuluntu mombelewa yoSWAPO mOndangwa, omusamane E. Amuthe-nu a gandja etimaumbwile kaawiliki nohamushanga yuutayi woSWAPO moshitopolwa.

Kape na uuyeleele wa gwana okomukalo guni omapuko taga ningwa muukalata waainyolithi opo u kale itaau taambwa momashina gekonakono lyomapuko. Osho wo kape na uuyeleele, kutya okomukalo guni omapuko taga vulu okupita metonatele lyaUNTAG pomainyolitho.

Ongundu yoSWAPO oya hiya aainyolithi ayehe mOwambo ya konakonithe uukalata wawo kumboka ye shiwike noye shi okwiinekelwa, opo ku talike oolye ya pungula uukalata wa puka, manga ehogololo inaali thikana. Shono sha tegelelwa shi kale mokakalata komwiinyolithi pafatululo lyombeleva yoSWAPO, osho:

1. Edhina lya yela lyomwiinyolithi.
 2. Onomola ya yela yokamutse ke.
- Kumboka ya longitha oofooloma dho-pondje yoshilongo, itaa pulwa ono-

Tala kep.9



Etungo lyombeleva ompe yaSWAPO poConde No. 3 mOshakati.

TSEYA ONDJOKONONA YOMOSHILONGO SHOYE NAMIBIA

hali kutha aaniilonga kOkavango.

Nena onda tokola owala ndi tule pomapila uuntoko umweumwe wondjokonona yiiningwanima moNamibia. Ondi inekela omuleshi oto itsu mo ngaa sha wa kala wa hala ookuuva nenge okutseya. Ngele owi itsu mo sha, onawa unene kombinga yandje, sho nani inaandi shanga osima.

Aluhe mokulesha ondjokonona yaNamibia nenge yaAfrika nokuli, natu koneke nokutya, aatiligane opo ya adha Namibia naAfrika. Oya adha mo aantu, hambuga. Oya adha ookuku haye tu hokololele omahokololo gonale --- ondjokonona, omikalo noohedhi dhetu dhonale muAfrika. Ou na wo okudhimbulukwa kutya otashi vulika nAaisrael yi ilongo okulongela Kalunga kashili muEgipiti shaAfrika.

Moomvula dhomayovi, inatu kala owala tu na oohedhi dhetu, ihe Aayafrika oya kala wo aalongelikalunga. Eputuko wo lyokulonga nokutekela omapyo, oshowo omukalo gwokunyola nokuyalula, ogwa kala tango tagu longithwa muAfrika yetu.

Omatungo goopilamide mUumbangalantu waAfrika inaga tungwa kaantu yaa na uunongo womwaalu neputuko lya ya pombanda. Uunongo owindji womuuyuni mboka twa tala aniwa owoshinanena, omuAfrika wa tseyika tango.

Yalwe oya gwedha ko owala kwaashoka Aayafrika ya kala ye shi oomvula omayovi ga pita. Mupya munene eputuko lyaAfrika oya yonwa kuukoloni nomathiminiko gaatiligane sho ye ya taa yugu ko iilongo yetu koonkondo dhoondjembo.

Nomolwaasho, iiningwanima yopethimbo lyiilumbu ya ye mevi lyetu, oya pumbiwa tu yi tseye. Tu tale kutya oya etelele "eputuko" lya tya ngiini ndyoka olwindji taye tu inomene nalyo. Ngele nena itatu tseya ondjokonona ndjoka, kape na esiku natu tseya nkene

uukoloni we enda nonkene tatu wu kondjitha nokomeho. Omuleshi omusimanekwa, onda hala wu ilonge ano mbika tayi landula!

I. Aatiligane Oondaadhikonakoni dhotango moNamibia (yamwepo owala)

1. James Alexander, 1832-1837.
2. F. Galton naC.Anderson, po-1850.
3. James Chapman, 1855.
4. Hahn, Rath naGreen, po-1856.

II. Omathipihangano gaatiligane (gamwepo owala)

(a) Ehangano hali ithanwa "A.&E. de Pass Co." ndyoka konima lya lundululwa li ninge "De Pass, Spence and Co." mewiliko lyepangelo lyAaingilisa mOkapa, oya li lya thihi oontuntu dhaNamibia ndhoka dha tseyika ndhina "Guano Islands." Ethimbo ndika oya li lya ningwa pokati koomvula 1861-1866.

Konima Engelanda okwa yugu ko oontuntu ndhoka ta ti aniwa dha ningi dhe. Shika osho sha fala sigo a yugu ko nOmbaye momumvo 1878. Eyugeko ndika lyOmbaye oyo sigo onena Oombulu dhokatongo tadhi inomene kutya Ombaye oyaatiligabe yaKapa.

(b) Momumvo 1885, omusamane Omundowishi, Adolf Lüderitz, ngoka a lukilwa Oliindili, okwa toto ehanganu lyuukoloni lyAandowishi moNamibia ndyoka lya lukwa, "Deutsche Kolonialgesellschaft für Südwest Afrika" ("German Colonial Company of South West Africa"). Elalakano enene lyehanganu ndika oya li okuthipa nawa Namibia.

(c) MuDesemba 1925, ehanganu lyopaukoloni lyokukuta aaniilonga moshitopolwa shokUumbangalantu oya totwa komahanganu ngaka: OMEG, S.W.A. Company, naS.W.A. Mines Limited. Ehangano ndika epe oye li luku: "Ehangano lyiilonga lyokUumbangalantu" ("Northern Labour Organization" lya fupipikwa, N.L.O.). Ehangano ndika oya li

(d) Ehangano limwe lya fa ndika oya li "Ehangano lyiilonga lyokUumbangantu" ndyoka pashitakumo "Southern Labour Organization" nenge pafupipiko, S.L.O. Ndika oya li okukuta aaniilonga yomoomina dhokawe. Oyo lya li nuuthemba wokukuta aaniilonga moshitopolwa shOwambo wo, nonando Owambo kaya li kolukadhi lwaNamibia, Aawambo oya li ya longithwa moonima.

(e) Omahanganu ngaka gaali twa tumbula pombanda mu (c) na (d) --- ano N.L.O. naS.L.O., oga hangana momumvo 1943 e ta ga ningi SWANLA. SWANLA efupipiko tali ti, "South West Africa Native Labour Association (Pty) Ltd." Ombelewa onene ya-SWANLA oya li kOshaanda (Grootfontein).

SWANLA okwa li nuuthemba wokukuta aaniilonga miitopolwa ayihe mbyoka ya li ya talwa aniwa oyi li kondje yo "Police Zone." Kokutya Owambo nOkavango oya li moongamba dhaSWANLA. SWANLA mokukuta aantu okwa li ha longitha omukalo gwokutopola aaniilonga moongundu ndatu A, B, na C.

Aaniilonga yomongundu A, oya li ya dhiladhililwa iilonga yekuni --- ano iilonga iidhigu mbyoka ye yi luku "heavy duties." Mboka yomongundu B, oyokulonga moondoolopa nomomagumbo giilumbu.

Omanga mboka yomu C, oyokulonga moofaalama Oonomola dha tya ngaaka okwa li wo hadhi thenyenwa nokusitambelwa kokaholo hoka kali haka mangelwa mothingo nenge koshikesho shokufalwa kondhalate yethimbo eleeleeka.

III. Aaniilonga

Sigo opetameko lyomumvo 1900, Aawambo kaya li naanaa ya longithwa natango miilonga yaAandowishi yokondhalate. Aandowishi oya kala nokulongitha Aanamibia yopokati nokolukadhi lwoshilongo.

Ihe omolwiita ya yaga kegonga ya li pokati kAanamibia naAandowishi pokati komimvo ndhika, 1890-1810, Aandowishi oya adhika kompumbwe yaaniilonga. Uene tu sho iita mbyoka ya li tayi luwa kAanamibia oyo tuu mbyoka yopokati nokolukadhi lwaNamibia.

Nokuli lwopomumvo 1890, Aandowishi oya li ya hala ya ete aaniilonga okuya kutha kookoloni dhawo ngashi Tanganjika, Togo, naCameroon. Shika inaye shi ninga sigo omumvo 1919, sho aaniilonga ya etwa muNamibia okuza koTanganjika, koTogo nokoSouth Africa.

Pomumvo 1911, muNamibia omwa li aaniilonga ye thike lwopo-6,400 ya za kuSouth Africa. Omuntu otashi ku fala mpoka u dhiladhile kutya otashi vulika ookuku yetu moNamibia nena oyo Aatanzania nosho Aatogo mboka nkene yi ile kiilonga pethimbo ndiyaka lyonale. Ngoye dhimbulukwa wo mpaka kutya, kiilongo oyo tuu mbyoka otashi vulika ku na Aanamibia ya yile ko pethimbo ndyoka lyonale.

Oshiholelwa, momumvo 1910, Aanamibia 93 (aalumentu 26, aakiintu 40, aanona 27) oya tutililwe koCameroon, aniwa otaa wilike iipotha yokutonda uukoloni. Walye wo nuunona ngele osho wa li tawu ningi (?). Hoka 56 oya sile ko na 37 oya galulwa ko ye ye koNamibia mo-1913.



Aapika yaAfrika momusholondondo yu ukithwa komunkulo gwefuta ya ka londekwe moosikepa.

Omuleli Ngoloneyandjaji, Louis Pienaar okwa gandja ethaneko lyoveta ndjoka tayi ka landulwa uuna taku ningwa ehogololo nuumvo muNovomba. Ethaneko olya holoka moshifo shepangelo Gazette mapandja 54. Iitsa yimwe yomethaneko otayi landula mpaka:

Aakalelipo yoongundu muuketha

Ongundu ndjoka yi inyolitha megololo, oyi na ompito yokuhogolola aakalelipo yayo puuketha wehogololo moshitopolwa kehe. Omadhina gaahogololwa mboka otaga tseyithilwa tango omunambelewa, omukuluntu gwehogololo, gwomoshitopolwa moka taa ka longela.

Omukalelipo gwongundu pokaketha kehogololo ke na uuthemba wokwiidhopa moshilonga shehogololo, nenge a zale sha tashi mu ulike, kutya okwa kalela po ongundu yawo. Ihe omukalelipo ngoka oku na ompito yokukala po uuna omunambelewa gwehogololo ta pata uuketha pezimbuko.

EINYOLITHO LYOONGUNDU DHA HALA MEHOGOLOLO

Uuna Ngoloneyandjaji a gandja esiku, ethimbo nehala mpoka oongundu dhopapolotika tadhi inyolitha dhi ye mehogololo, ongundu ndjoka ya tokola okuya mo otayi gandja ihe edhina lyayo nefupipiko lyalyo, nendhindhiliko lyayo. Iinima mbyoka otayi ka holoka muumbapila mboka tau ka nyolwa kaahogololi.

Otapu gandjwa wo Ekotampango lyongundu ngele ope na, nenge ombapila yasha tayi ulike eholokepo lyongundu ndjoka nomadhina gaantu ya shaina yoyene ngele omashona 2,000 ye na uuthemba wehogololo.

Meinyolitho ongundu kehe otayi pulwa yi gandje po R 10 000 mbyoka konima ngele oya mono iipindi momutumba gwepangelo tayi ke yi shunithilwa. Okakololo moka aahogololi taa hogololele otaka longekidhilwa pehala mpoka

Dha za kep. 7

- mola ndjoka.
- 3. Esiku lya yela lyevalo lyomwiinyolithi.
- 4. Eshaino nenge esitambo lyomwiinyolithi. Mpaka otapu pulwa omukalo nkene wa shaina nenge omunwe ngoka wa sitambitha, ogwo wo u longithe nesiku lyehogololo.
- 5. Eshaino lyomunyalithi.
- 6. Ositombe yomunyalithi kombanda yokalata.

Ngoka okakalata koye ke na shimwe shomwaambika sha piyagana, itaka vulu okulongi-thwa mehogololo. Aawiyauki yomongundu ya-SWAPO momukunda oya kumagidhwa ya gandje omauyelege ga pumbiwa moshigwana, ihe oya londodhwa wo yaa gandje omafatululo pondje yomulandu gwehangano.

“Omulandu gwetu ogwa yela moshifo shomulandu “Manifesto”, onkee ilongekidha tango oku shi konakona, manga inoo ka gandja omauyelege,” osho elondodho lya gandjwa komusamane Amuthenu.

Sebulon Ekandjo

ETHANEKO LYOVETA YEHOGOLOLO MUNOVOMBA

omuntu ngoka ta yi mo nenge ta zi mo a kale ando itaa monika komutonateli gwaampoka.

UUKETHA WEHOGOLOLO NEHOGOLOLO

Mesiku lyotango lyehogololo, manga ku na ominute dhi vule 30 ehogololo li tameke omutonateli gwehogololo na kale a tala okaketha kopehala ndyoka, kutya oke li shili owala (inamu umbilwa uumbapila) ye ne ka ulike wo kumboka ye na okutonatela ehogololo mpoka, osho wo konima yesiku, oku na oku ka pata montaneho yawo.

Ehogololo otali tameke otundi ontiheyali (7.00) yongula e tali pata pontihetatu (8.00) yongulohi, esiku kehe. Kape na omuhogololi ta ziminwa a gandje ewi lye konima yotundi onti-8.00 komatango mesiku lyahugunina lyehogololo puuketha mboka tau ende miihauto okuninga a adhika a gandja nale okakalata ke keinyolitho komukuluntu gwehogololo nenge ofooloma ye manga otundi ndjoka inaayi dhenga.

Uuna okakalata ka kana, ka yonuka po, nenge itaka vulu okuleshwa, omuhogololi na ninge eindilo komuwiliki gwehogololo pehala mpoka oyo u udhithe ofooloma ndjoka tayi mu ziminine ehogololo.

Uuna omuhogololi a yono okambapila ke mokunyola, ne ka gandje komukuluntu gwehogololo mpoka oyo a pewe kalwe. Ngoka kee shi okulesha, nenge kee lwete ko, naye na pule omukuluntu gwehogololo mpoka e mu kwathe okunyola po.

ETOKELWO LYOKUTSEYITHA OSHIZEMO SHEHOGOLOLO

Oshizemo shehogololo otashi vulu okutokelwa okutseyithwa.

— ngele ope na omuntu a hogolola ye kee na okuhogolola, nenge.

— uumbapila wehogololo wa taambwa, wo waa na okutaambwa, nenge.

uumbapila wehogololo wa tindwa okutaambwa, wo waa na okutindwa.

MOMIMVO DHE 50

Omulongi Epafras Pendapala Auala mOniipa okwa hiyile ookuume ke naashiinda me-gumbo lyawo nomupangi Maija Auala, okuhambelela pamwe Kalunga omolwokukala-mwenyo kwe hoka e ku tamekele 11.7.1939.

Pamwe naanona yaheyali nomutekulwa gumwe, oya hokololelemoshituthihambelelo shawo ngeyi pafupi:

Iiponga ya halutha egumbo lyetu noonkondo

1. OMUKITHI

(1) Ekambuko lyuule wootundi ndatu (3) lyomumati NEILI PANDULENI omumvo 1973 moshipangelo shaNandjokwe.

(11) Uuvu womutima monkalo ombwinayi komumati gwetu onkelo PENDAPALA MEKONDJO miipangelo mbika ORANJEMUND KAAPSTAD NONANDJOKWE, omumvo 1982 uule woomwedhi ntano (5).

2. OSHIHAUTO

(1) Eipumo mumwe lyoshihauto shetu nololi onene yomakakunya mopate yoteya pOnethindi omumvo 1985, ongula onene 7.15 am. moka nda li mo awike.

(11) Ekandomo lyoshihauto shoKumbi KORANJEMUND moka nda li mo omuhingi naahumbatwa yaali. PETRUS KASHEETA NAKAMBONDE na GIDEON IIKWA, omumvo 1981.

3. OSHIPONOKELA SHOMAKAKUNYA

Sha ningwa megumbo lyetu uusiku nokukwatwa po. Otundi yotango lwaampoka.

(1) Aanona ayehe oya li ya dhengwa nayi niiti



Omulongi Pendapala Auala (50)

nominino dhomeya.

(11) Ngame onda dhengwa wo niiti noongonyo nomunino gwomeya nokuthangwa nokukwatwa po pamwe nomushiinda gwandje nakusa MARKUS PAULUS ngoka ka sila kondholongo.

(III) Otwa ka zalekele oshiteta shambushe yameme MAIJA kOneputa kaandja JOHANNES NANGOLO nguka a mangululwa omasiku ngaka. Onda sitopwa nooholo iikando itatu komakakunya pOkalungu

Tala kep. 10



Osikepa ndjika yAaingilisa, oya longithwa okukonakona elandithopo lyaapika komukulofuta gwaAfrika lyuuninginino - Membo lyedhina Through African eyes, by L.E. Clark

Aandowishi ano otashi vulika ya tutila aantu yetu kiilongo. Osha tseyika nawa kutya ookuku oyendji oya tidhilwa nokupongekwa kAandowishi koBotswana (kOshawana), hoka ye li ko sigo onena. Otwi inekela otaye etelelwako kaatekulu mboka taa galukile kuNamibia sho ya li wo ya tidhilwa kiilongo kaakolonyeki yOombulu pomimvo dho-1960 sigo odho 1980.

MuAgute 18,1907, ooveta dhuupika ndatu (3) odha pitithwa kAandowishi. Yimwe yomudho oyokuungidha aniwa aavalelwamo yaa kale nomaliko nonokweendagula. Ohayi ithanwa: "Massregeln zur Kontrolle der Eingeborenen Nr.82/1907". Oveta ndjika melaka lilwe ohayi lukwa "German Administration Ordinance No.82/1907." Oyo okuthiminika aavalelwamo Aanamibia yi ikwatelele kAandowishi monkalo yawo yopalikolo.

Okantoko kotango koveta ndjoka No.82 oraka ti: "Pakatokolitho kotango aavalelwa mo otaya indikwa okukala nuuthemba nenge edhina okukala nepya. Uuthemba mbuka otaye wu mono shila owala ngele osha ziminwa/pitikwa kuKomufala Omukuluntu ("Governor")."

Oshowo pakatokolitho okatiyali aaluudhe oya keelelwa okukala ye na oonkutsa dhokukayila nenge okukala ye na oongombe ..." Ooveta dholudhi nduka lwokukelela Aanamibia okukala nomapya nenge niimuna, odha yono onkalo yawo nemanguluko lyawo olya keelelwa.

Pethimbo olyo tuu ndyoka Aanamibia aavalelwamo ayehe ye na omimvo okuza puheyali, oya thiminikilwa oombapila dhokweenda nadho, ndhoka dha lukwa "opaasa." Kakele kaashino, ngoka a adhika te ende kee na "omuhona", ano te ende nemanguluko nando ke na mbudhi namuntu, Aandowishi otaa ndjindjagula naye notashi vulika shi mu tulithe mondholongo yaatiliganekolonyeki.

Omolwooveta dholudhi nduka, anaafaalama yaatiliganeyi oyendji oya li ya pakelwa po. Yamwe oya dhenge aalongeli yawo yene. Yamwe oye ya fala ya ka dhengwe kaapolosi

noongola pwa na ohenda. Aaniilonga oya li ya falwa ya ka dhengwe kaapolisi shaashi aniwa "aananyalo", "itaa vulika," yo "aayamukudhi" "naatangalali".

Aapolisi oya li ya dhenge aaniilonga yoludhi nduka oongola 10 sigo 15. Oongola odha li dha ningwa miipa yoompanda. Otaku tiwa kutya aaniilonga 187 oya lopotwa ya dhengwa pokati komimvo 1907-1910. Omanga pokati ko-1911-1912 aaniilonga 1,655 oya nakagulwa noongola.

Anafaalama oyendji oya dhengele owala aaniilonga yawo poofaalama. Kaya li nethimbo lyokufala kaapolisi. Ishewe momemo goyendji (anaafaalama), aapolisi kaye shi okudhenga omuluudhe. Aapolisi taa dhenge ishewe taa yalula oveta! Anaafaalama sho yi ikwateleko kedhengo lyaaniilonga yawo, aaniilonga oyendji oya sile momadhengo ngoka. Oshiholelwa shimwe oshomunafaalama Cramer. Cramer omunafaalama kwa li ha dhenge omuluudhe u uve ko. Ishewe ngele nani omuluudhe ita uvu ko, Cramer okwa li i ipa uuthemba wokuthikitha omuluudhe ngoka mbala kegulu. Pomimvo 1911/1912 Cramer okwa dhengele aaniilonga ye yahetatu tagu pu mo.

Yaheyali yomuyo oya li aakiintu Aanamibia. Yaali oya li metegelelo, ano aasimba. Oya li ya dhengwa uule womasiku gaali ga landulathana. Onkee oya ponona uunona wawo (ano uunona inau valwa we nomwenyo). Ishewe aakiintu oya si kokumbothagulwa komuhona omunafaalama Cramer.

Otaku hokololwa nkene Cramer u uhalele ta dhenge omulumentu gumwe gwomuniilonga pofaalama ye. Noshu wo nkene a tokelelwe ta mbondagula omukiintu gwomuniilonga konyala uusiku auhe. Cramer okwa li omulumentu ha dhenge, ndele oha dhenge tuu shili. Okudhenga omuntu ohe ku etha owala uuna ndoka omaako ge mwene ogo ga vulwa okuyelutha ongola.

Okudhenga huka okwa li kwe mu tseyikitha koveta. Ihe oveta yuukoloni sho ihaayi gamene omuluudhe, nando a dhipaga aaniilonga,

okwa li owala a pangulilwa ondhologo yoomwedhi ne (4) nokafuto okashona kiimaliwa (2,700 Marks -- iimaliwa yOshindowishi).

Manga inaatu za po mpaka, onda hala wo u tseye kutya okuza momumvo 1904-1907, Aanamibia ye thike lwopo 17,000 oya li ya tulwa mondholongo kAandowishi. Ye thike lwopo 7,680 yomaanandholongo mboka oya sile mondjedhililo. Omanga ye thike lwopo 25,000 ya pongekwa pondje yaNamibia. Mbaka oya li ya kwatelelamo aawiliki yooSamuel Maharero.

Shaashi oshinyolwa shika oshi li mOshiwambo, pamwe nandi tumbule mpaka kutya okuza pomumvo 1911, omwaalu omunene gwAawambo ogwa tameke okufalwa kiilonga yokondhalate. Oya kala taa yi kiilonga yAandowishi taa pitile kombinga yokOkaukweyo. Muule womimvo ne (4) omiyalu dhawo odha li ngeyi:

Omumvo Aawambo kondhalate

1911	9,295
1912	6,076
1913	12,025
1914	11,536

Aaniilonga mbaka oya li taa longithwa iilonga iidhigu, ihe ihaa pewa sha gwanena iilonga yawo. Oondjambi dhawo poomvula ndhiyaka odha li dha nanga ngeyi. Oshiholelwa shondjambi yopevi:

Omumvo Ofuto komwedhi mooranda

1893	2.00
1813	2.50
1922	1.95
1946	1.95 (nosho tuul)

Omumvo 1910, muSeptemba naKotoba, aaniilonga yomolutenda popepi naWilhelmsthal, oya ningile oshipotha sha kwata miiti. Limwe lyomomatompelo ogendji olya li uundjambi uushona. Aandowishi mokwaa na ohenda kwa-wo, oye ya tumine omakunya ngoka ga dhipaga po aaniilonga 14, no 25 ya ehamekwa nayi.

S.V.V.Nambala

Da dja kep. 9

mpoka nda dhengwa nomakende gokomeho ga tatulwa omumvo 1983.

4.ONDHOLONGO:

(1) Omakakunya oge tu kwata omumvo 1983 tu li yane nokupatelwa mo MONDANGWA aniwa otwe ende uusiku oshipotha osha teka aniwa katu na ondjo moshinima shika.

(11) Aapolosi yokoALEXANDER BAY ko KAAP PROVINCE oye tu kwatele MORANJEMUND noku tu patela MOKARANSBERG sigo KEETMANS-HOOP aniwa otwa monika tatu landitha okawe omumvo 1982, ihe oshipotha osha teka aniwa katu na ondjo moshinima shoka.

Mesiku ndika otu shi okuhambelela Kalunga sho e tu gamene kiiponga yi thike mpoka. "Esihohenda lya ndje olye mu gwana, oshoka oonkondo dhandje otadhi gwanene pombanda omuunkundi." Kor 12:9

Otse aanegumbo atuhe otwa hala okutumbula ngeyi kutya.

"OMUWA OYE OMUSITA GWANDJE INANDI PUMBWA SHA" PS:23

We are the Champions



**Meat and poultry products
for energy and strength**



CHAMPION

PRODUCED BY HARTLIEF

ADFACORY WINDHOEK

Oda kuma omwenyo wange. "Jesus ota aluka Ehololo 7

Ondi li omupika woulunde wa Satana apa ndi li, ndele eshi onde shi ningifwa koupika wedu (Namibia ehohike) nomokushahiiwa euyo lOmukulili wange. Ndelenee ohandi hangika tuu ndi li oupafi fiku Omwene te uya?

Ota hange tuu ndi na sha shoku mu pa efiku olo? Ohandi shi humbata nomake aa a dipaa, a kengelela, a vaka, a ana keulu nokedu ile ndi tye a longa oilonga aishe oyo i he fi yopuye yopauyuki? Woo ame eshi handi ka kana, Jes 6: Eindilo kwoove tate, meme, omunyashakadona ile mati, indilila omukweni eli moudjuu u li ngaha.

Omukwetu waApilili owa kuma nge nai komutima wange, onghee onda fika meumbo lao.

Teopolina Iliwa Nangeni
Lusaka

RUDOLF BAHM

Omupangeli gwootundi MOSHAKATI

Mpaka otandi tseyithile aayakulwa yetu ayehe, kutya iilonga yokupangela ootundi, okulanditha po oompe nokwoopaleka ndhoka dha teka, okutula ko omakende nuumanya, itatu yi longele we metungo JAMAICA INN.

Ngashingeyi otu li mpaka mOshakati metungo lya ENOK (BBK), mpeya hapa kala pwa thikama aluhe omaloli goeskilima (Roomys). Shika otashi ti elalakano mpaka oku ku etela eyakulo ndika popepilela, waaha pumbwe we okufala nenge okutuma ootundi dhoye kUushimba.

Ohatu landitha wo ootundi oonkulu kondando yi li hwepo, onkene tu talela po ngele to piti pOshakati.

Mbaka ya kala mondholongo oye li tuu peni?

RUFUS AMUKUHU (44) Nakayale 18.9.1978
SIMEON AMWIIMBI (75), Onankali 12.1987
ERASTUS NDEIFEKA (48) Nakayale 18.9.1978
FESTUS ADOLF, Kongo 9.7.1988
FESTUS SAMUEL, Kongo 2.1988
MIKKA GEORGE, Windhoek 26.10.1988
PAULUS HAFENI (20) Onanghwe 16.12.1980
NDILIMEKE ALUTENI, Oukwanyama 7.8.1988
NATANAEL NGHINAMWAAMI ?? ??
(N) JASON ILEKA (15) Tshandi 14.7.1988

MUTUMBULWA AMUKUHU (38) Nakayale 9.1978
FESTUS NAKAWA (56) Ontananga 10.1978
JOHN NAKAWA (50) Oniipa 31.5.1979
DAVID HAMUTETA, Okatana 13.10.1979
VILHO MATEUS NYAMBALI ?? 25.7.1980
MARCELLINUS IIPINGE (35) Okatana 4.10.1980
MODESTUS IIPINGE (30) Okatana 4.10.1980
ANDREAS KASHIKOLA, Elombe 27.11.1980
HAFENI SH. PAULUS, OHAUKELO 15.12.1980
FRANS KASHIPALEKWA, OHAUKELO 15.12.1980

TEOFILUS MATEUS, Elombe 27.11.1980
FILEMON KASITA IKELA (43), Oniipa 19.1.1981
KRISTOF IYAMBO SHIKONGO Ekamba 10.4.1981
SIMEON JOHANNES NEHOYA (40) Onyaanya 6.1981
AMUTENYA JOHANNES ASHIPALA Okatana 29.6.1981
MARKUS PAULUS, Oniipa 4.9.1985
RUBEN EDMUND, Eendobe 28.11.1986
ABNER SHIKESHO, Oniimwandi 3.7.1987
AFUNDE NGHIYOLWA, Oshikuku 4.9.1987
KALEB PAULUS SHIKALE, Onawa 21.1.1977
LINUS MATONGO, Caprivi 1.1988
SIMEON NEHOYA, Omuntele 1979

SHETEKELA SHININGENI (24) Windhoek 11.7.1988
MARIA SHOONGELENI, (24) Oshakati ???
MATIAS ASHIPEMBE, OSHIGAMBO 7.6.1979
PETRUS EMVULA ?? 10.7.1988
JOHANNA KAYAMBU ENGELA 31.7.1987

TYLVES KAHIMA ?? ??
HILJA KAULUMA, Oukwanyama 7.8.1988
JONAS KEMANYA, Oshakati 9.10.1988
JIMMY KWALA, ??? ???
FRACO (MANUVWALI) SHANINGWA Ombalantu 7.1988

MATIAS JOSEF, Omungwelume 5.8.1988
OSKAR MUHONGO NAILENGE, ??? ???
SADRATH MUPANDI, Omdano 10.4.1988
AINA NANGOMBE AMUNYELA, ??? ???
HENRY NGHEDE, Windhoek 29.1.1988
PAULUS NGHIPUNYA, Ohausholo 1.1988
PETRUS PAULUS (28), Ondangwa 10.3.1985
JOHANNES PROTASIVS ??? ???
KAMBATHA SHEYA, Windhoek 26.10.1988
ANNA SHIKONGO, Oshakati ???
PAULUS SHILULE, Omuulukila 20.1.1988

TOIVO SHILONGO, OKAHAO 5.5.1980

IMMANUEL KAMBANDA ??? 1979
NEEMA LASARUS ??? 1979
SAKARIA AKWAAKE (17) Onayena 1979
IMMANUEL HATUTALE (37) Ongenga 1.8.1987

Ndhindhilika: Ngoka wa tseya gumwe gwaantu mbaka, kutya okwa manguluka, onawa u tseyithile ombelewa yOmukwetu mbala. Tangi kekwatho.

Konakonitha omeho goye manga kuye

Okapangelo komakende oka patuluka nale 15.6.1989 pOmwandi gwaKamanya, muuninginino.

OMATHIMBO: Oke eguluka okuza Omaandaha sigo Etitano,
OTUNDI: 8:00 sigo 5.00 komatango
Olyomakaya: 8:00 sigo 12.00 pomutenya.

Ila ano u konakonithe omeho goye, ngoye wi imonene omakende manga omeho goye inaaga yonuka.

Tseyitha wo ehologo lyoye pangodhi konomola 298, Ondangwa nenge popepi naToni Banana, Ondangwa.

OMUKWETU

Oye oshifo shOngeleki Onkwaevangeli paLuther yomu SWA/NAMIBIA.

Ohashi nyanyangidhwa mOshinyanyangidho shOngeleki mOniipa.

Omukuluntu gwoshifo omumbisofi Kleopas Dumeni.

Amushanga gwoshifo omusita Sebulon Ekdandjo.

Ondando yOmukwetu muNamibia naSouth Africa R8,00 komumvo.

Pondje yaNamibia na SA R20,00 komumvo. Ndjika oyo wo ondando yoshifo shomondhila.

Oondando nomambesitelo agehe naga tumwe kOmukwetu, Oniipa, P/Bag 2013, Ondangwa 9000, N A M I B I A.

ELOC PRINTING PRESS
PRIVATE BAG 2013, TEL. (06762) 11, TELEX 56-3257 WK
SWA/NAMIBIA