

OMUKWETU



50c

No. 13

ISBN 0-620-06828-0

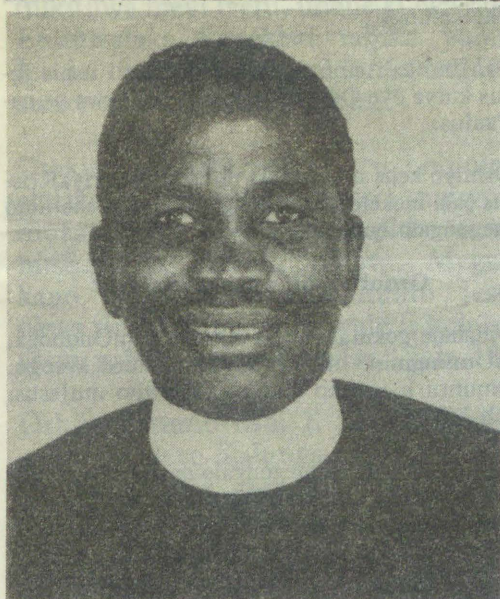
OMUFITA MALWA A SHUNA KEPYATUMO LAANGOLA

Ombelewa yOmukwetu oya kundanekwa etembu leumbo lomufitaongalo Abraham Malwa, eshi ta ka twikila noshilonga shoufitaongalo kOshangalala muAngola. Etembu ola ningwa pokati kohani ei Juni. "Konyala neongalo inatu mona onhito yoku li lekela," osho omufita Malwa a yandja ombangi keendelelo letembu lavo.

Pahepu laye, omupashukili woshitaingeleki shaKunene, omufita Noa Ndeutapo, okwa kema puye omhumbwe yovafita moshitai shaye. Omufita Malwa kombinga yaye okwa holola yo ehalo oku ka longa oshilonga shoufita moshitai shinya.

"Fimbo inatu ninga nokuli etokolo laxuuninwa meumbo letu, oku ka longa kwinya, omupashukili Noa okwa longekida nale oshinima meembelewa adishe depangelo lavo okutaméka oilonga," osho a kundañeka pOmukwetu.

Omudo 1972 omufita Malwa okwa pitile



Omufita Natanael Shinana oumwe wovadali vahapu paife va tambula onunona wavo okudja moita.

ofikola youyevaengeliste mEngela, ndele ta ka longa eedula mbali mOnamumbunga, mu-



Mefano eli, omufita Malwa, okanghelo kavu Nambowa nameme Naemi

"Oshikulo" nekakunya va kofela pombete imwe momhepo yeta- mbulafano

Omufita Natanael Shinana mEngela, okwa hepaulula oupyakadi ve u shakenekele oshivike sha dja ko meumbo lavo okumona etokolo apa tava nangeke onunona vavo eshi va aluka koita yokukondjifafana. Oshilonga shetambulafano pokati kovaneumbo limwe pefimbo eli, osha fikamena omaumbo mahapu eshi oita pokati ka SA naSWAPO ya xulifwa po ketulomoilonga lokatokolifo 435 kOiwana yahangana.

"Fimbo twa xungila po oufiku wa yuka mokukanangala, onunona vetu voumati, Tauno yaShinana ou a kala moukakunya pefike eedula shiimba hamano lwaapo naTimoteus wondenge yaye ou a taulukile nale konima yeedula paife 11, ove tu hanga oshita. Ehafo letu ola li mumwe neipulo loshisho, kutya otava kalafana mbela ngahelipo," osho she va hangele po.

Kepulo lOmukwetu, tate Shinana ou a shiivika muNamibia, kutya omuudifili wOngeleki

Angola. Malwa ota ti muAngola omo a kulila nota shuna keumbo. Odula onhinatu mouyevaengeliste Malwa okwe ke i manena mOndjiva 1975.

Okwa ka twikila ofikola youfita mEngela natango 1976 - 78, omo a dja a ka longe meongalo Onandjaba (Okalongo) 1979 - 1984. Natango okwa ka twikila ehongo loufita

Tala kep. 7

Ou kwa li a tila mukwao, oye a ka kongu mu-

Tala kep.8

JULI 15, 1989

JULI 15, 1989

Etaambathano lyaakwiita momagumbo

Muule wiiwike itano ya zi ko aagaluki yotangongalo sho ya lyata oompadhi dhawo muNamibia, oshinakugwanithwa oshinene osha tameke maavali momagumbo okuhanganitha oomvato dhawo ndhoka dha yilwe pokati komutondi gwoshigwana. "Itatu ekelehi nando gumwe, ayehe ombinzi yetu," osho omuvali Elisabet Simon (49) a yamukula Omukwetu omolwashike itaa gama ombinga mokutaamba oluvalo ndoka lwa galuka kiita.

Ombelwa yOmukwetu oya taamba omahokololo ogendji ga zi koombinga adhihe dhoshilongo, ngoka gamwe gomugo Omukwetu kee na omalimbililo mugo, nkene iikumithalanga yetaambathano ya longwa pokati komakakunya naamwayina yoSWAPO, nenge nokuli pokati kaavali noyana momagumbo.

Ombili ya kala tayi galikanenwa moshilongo shika nomuuyuni nokuli, yi holoke, oshinima shoshili shono Kalunga mwene a tokola oku shi gandja. Mboka ya tsakanene aamwayinathana yomoSWAPO noondjembo peke, oye dhi ekelehi owala opo ya papatelathane ngeyi mohole. Ngoka ta yekelele okuninga sha shilwe shaashi okutungwa ombili yoshilongo shika, ota yi etokolo lyaKalunga moshipala. Olye a tokola okukondjitha Kalunga?

Eifano kofikola youfita 1990

Elelungeleki otali shivi ovanyasha ovo va hala okutambulilwa mofikola youfita kuPaulinum omudo tau ya 1990, va tume omaindilo avo kElelungeleki, kombelewa yOngeleki kOniipa, P/Bag 2018 Ondangwa, 9000, manga Kotoba 1989 inau pita. Eindilo keshe otali teejelwa li kale li na eembapila ngaashi tadi shikula:

1. Ombapila yeindilo lomunhu mwene
2. Epopilo lElelungeleki leongalo lomwiindili
3. Ombapila yeongalo
4. Okopi yodjapo yOstanda 8 ile yOmatrika
5. Ehokololo longhalamwenyo yomwiindili paxupi
6. Epopilo lomulongi wongudu omo omwiindili a xuuninwa
7. Epopilo laNdohotola loukolele womwiindili

OMATOKOLO AMWE A PITA MELE-LONGELEKI 30 - 31.5.1989 MONIIPA

Elelungeleki ola lesa ombapila yomuwiliki woshilongatumo muKongo, omufita Josia Mufeti, tai popi ngehe omapiya Ovakwanghala a hanaunapo koita nota indile ekwafo kOngeleki omolwewapaleko lokushunifako eedalate.

ETOKOLO: Omolwetungululo lomapyatumo keni lOngeleki ngaashi pwe uya eindilo la dji Mufeti, Elelungeleki otali ufa opo Ewili-kongudu letumo muELCIN li lipyakidile netungululo lomapyatumo a nyonaunwa po koita, ngaashi omhumbwe tai shi pula. (Oshit.243/89)

Elelungeleki ola kundana noluhodi exulifo lameme Helvi Iihuhwa, nakudala omupashukili J.Shanghala ou e li yo oshilyo shElelungeleki. Elelungeleki otali mu halele ehekeleko lOmwe, pamwe nepata alishe. (Oshit.245/89)

Omukulukadi Eeva Hakala ou a tumbulwa monhokolwa yElelungeleki 211/89, Elelungeleki otali shiivifilwa, kutya ita ka longa vali koRupara ngaashi sha shangwa monhokolwa ya ulikwa pomhada, ndele ote ke uya a longa mOniipa pombelewa yOngeleki. (Oshit.256/89)

Elelungeleki otali shiivifilwa kuHamushangakwatakanifi, kutya omulwongi Lahja Lehtonen, okwa alukila koilonga kosikola yOngeleki kOshigambo, ngaashi a ifanwa kElelungeleki. Elelungeleki otali mu halele epuniko laKalunga. (Oshit.257/89)

ETUMO MOMAGONGALO NALI HUMITHWE KOMEHO

Oshilonga shika oshinakugwanithwa shegongalo kehe meni lyalyo noshomukwanegongalo kehe. Ngele omagongalo taga longo, nena Ongeleki otayi tsikile okukundaneka epipi kehe noshigwana kehe etumwalaka lyalyo muuyuni. Mat 28:18-20

Oshilonga shetumo oshi na okulongwa momagongalo moongundu kehe dhegongalo nomiingongi, aakwanegongalo ayehe ya kundanekelela elaka lyetumo. Uuna egongalo hali kundana ethi-

Elelungeleki ola tokola omulongwafita Lukas Haindongo, ou a li a fyaala po molwaashi ina mana oilongwa aishe kuPaulinum, a kona-konwe kElelungeleki, loo li tale ngehe tali mono omukumo oku mu yapulila oshilonga shoufita. Ekonakono ola ufwa li ka ninge mElelungeleki tali ya 27 - 29.6.1989 (Oshit.296/89)

Elaka loluhodi ola tumbulwa kElelungeleki, Sirkka Omuyakuningeleki mukulu, meekulu Sirkka Hynönen okwa hulifa oweenda wekye 10.5.1989 muSoomi. Omufiwapo omukulupe Erkki Hynönen novakwapata, Elelungeleki otali va halele ehekeleko laKalunga. (Oshit.270/89)

Elelungeleki otali tumbula nepandulo linene eshiivifo komuwiliki woshihondjelo shaELCIN, kutya oilonga yokuteleka omingome douvalelo uyapuki, oya tameke moshihondjelo mOniipa. Omaongalo otaa indilwa e lilandele meyukililo koshihondjelo. Ondado oshipakete shoukwiila 500 = R 7,50 Oshipakete shoukwiila 1000 = R 14,00 (Oshit.271/89)

Natango ou na ompito yokunyolitha oshifo shoye. Tuma ashike mbala edhina lyoye nondjukithi ya yela.

mbo kehe oshilonga shetumo, nena egongalo ndyoka ohali hwama wo mohole yetumo notali kala li na omwenyo.

OmuKriste kehe oye omutumwa gwaJesus shaampoka e li. Oye a pewa uuthemba kuKristus a humithe komeho oshilonga shetumo ngaashi omauthompango gOngeleki yetu taga ti. Oshit. 47.

Okuza petameko lyOngeleki, Ongeleki oya tungala sha zi mombepo yEtumo, ndjoka ya li tayi inyenge maantu mboka ya li yu uvu oohapu dhaKalunga.

PaMbimbeli omutumwa oye ngoka i itaala Jesus kutya oye Omuwa, ngaashi aalongwa ye na-Paulus.

Oshilyo kehe mOngeleki nomegongalo lyaKristus oshi inekelelwa okulonga oshilonga shetumo megongalo lyaandjawa.

Omolwashike tashi longwa?

Omahala gokutalelwapo omo ge li mOndonga, mUuninginino mUukwanyama nomoKavango. Omuntu u uve ko ondilo yehupitho muJesus, Joh 14:6

Ookuume ketumo megongalo nayo wo naa yelithe oshilonga shika koshilyo kehe shegongalo. Ewilikongundu nali longe osikola yetumo megongalo pamwe nomusitagongalo.

Etumo muuyuni okukondjitha uupagani noonkondo dhawo nokweeta aantu yaKalunga mehupitho.

Johannes Mvula

UUKOLELE WEITAALO NAU LONGITHWE MOKUYAMBULA PO AANKUNDI

“Ongoye onzapo yandje nomuntu gwandje, nde ku hogolola, u tseye ndje ngoye wi itaale ndje nokutya ongame awike Kalunga omuhupithi.”

Israel oshigwana shaKalunga mwene e shi hogolola manga sha li muupika waEgipiti nokwe shi ithana mo shi ye kevi lyeuvaneko, opo shi kale noku mu longela. Oshigwana shika osha kala onzapo yaKalunga, tashi holola esimano nuuyapuki we mokati kiigwana yomuuyuni. Omolweitaalo lyaisrael iigwana yomuuyuni ya mono wo eyambeko lyaKalunga. Gen.22:18

Israel okwa kala oshigwana tashi pangelwa koohapu dhaKalunga ngaashi ta shi holoka miilonga yaaprofeti noshigwana osha dhiginine nuupenda okuvulika nokwiiyutha kehalo lyaKalunga. Onke oshigwana shika osha kala sha tseye Kalunga kasho. Israel oshigwana sha kala shi itaala nohashi longele Kalunga gumwe awike.

Osha kala sha tseye kutya, Jehova oye awike Kalunga nokaku na we ookalunga yalwe pamwe naye. Jehova oye awike omuhupithi noye awike e na okulongelwa nokugalikanenwa. Ex.20:2,3

Oohapu ndhika muJesaja 43:10,11, odha uthilwa evangeli lyOsoondaha yEsiku lyEtumo. Mesiku ndika ohatu dhimbulukithwa aluhe ohole yaKalunga sho evaangeli lyoshilongo she lya thikithwa mevi lyetu, unene kOwambo. Etumwalaka lyotekisti ndjika yomuJesaja, otali ti: “Tseyeni kutya ongame awike Kalunga omuhupithi.”

Otekisti ndjika otayi tu hololele elalakano lyoshilongatumo muuyuni muka, kutya olyo okwiitaalitha aantu muKalunga kashili, Jehova. Megalikanano lyomusaseli omukuluntu Jesus okwa ti: “Edhina lyoye onde li hololele aantu mbaka we ya pe ndje.” Joh. 17:6

Oshilongatumo oshi li po okukwatha aantu ya tseye Kalunga omuyapuki, yo ye mu inekele. Aakriste oyo onzapo dhaJesus ya hokolole ehupitho ndyoka tali zi mokwiitaala Jesus. Mevaangeli lyoshilongo shaKalunga, Jesus okwa fatulula nawa nkene omuntu ta hupithwa kuKalunga, onkee evaangeli ndika oli na okuhokololelwa aantu ayehe muuyuni. Iil.1:8

Elongelokalunga lyAawambo manga ya kala momilema dhuupagani, oya li ngeyi. Aantu oyi itaale muKalunga kaNangombe, omushiti gwaashihe nomukwathi gwoohepele nomapongo. Okwa itaalwa moombepo dhaathithi naakwampungu ndhoka dha tilika unene sho kwa dhiladhilwa, kutya ohashi etele aantu omaupyakadhi, ngele inadhi nyanyudha. Aantu oyi ihepeke okuyamba oombepo ndhika.

Okwa tilika wo iinamwenyo yontumba sho kwa dhiladhilwa, oyi na oonkondo dhontumba tadhi tilitha notadhi kumitha. Elongelokalunga ndika ekulu, inali shilipalekela aantu ehupitho, nuumbanda wokutila aantu nenge uyuni noonkondo dhawo, owa pangele unene moomwenyo dhaantu.

Aantu oya zala iiketi noya kala niimenka yontumba noyongandi ya popile oomwenyo dhawo. Otashi holoka kutya natse Aanamibia otwa li muupika nomomilema dhuupagani notwa li nompumbwe onene yokuhokololelwa, Omuwa, Kalunga kashili ngoka ta vulu okuhupitha.

Aantu mokuholokola edhina lyaJesus Omukulili gwaantu ayehe, oye tu kwatha tu ethe elongelokalunga ndyoka inaali opalela Kalunga. Rom. 1:21 Ngashingeyi otu li oshigwana hashi longele nohashi simaneke Kalunga kashili. Nongele tatu dhiladhila oshilongatumo shoka sha longwa mevi lyetu, oomwenyo dhetu ohadhi hambelele nokupandula Kalunga. “Ompadhi odhoopala ngiini dhaamboka haa uvitha oonkundana oombwanawa, Rom.10:15 osho omuyapostoli Paulus ta hambelele.

Oshilongatumo mevi lyetu itashi tu pendulile owala ombepo yokuhambelala, ihe otashi tu tseyithile wo ongunga yokuhempulula Jesus kaapagani. Aapagani oyo oonzi dhaJesus ndhoka kaadhi li moshigunda, naJesus ota tegelele dhi ye mo moshigunda dho dhi kale wo muusita we. Joh. 10:16

Tse aakriste mboka twa tseye, kutya ehupitho otali monika owala muKalunga kashili ngoka twe mu ilo-

Jes.43:10,11



ngo mevaangeli lyoshilongo she, otu na wo okugandja owino mbuka kaapagani, opo ya tameke okulongela Kalunga kashili pamwe natse. Evaangeli kaapagani otali falwa ko mokwiiyamba mwene u ninge omutumwa e to ka yakula mwene aapagani.

Evaangeli otali falwa kaapagani koonkondo dheliko ndyoka to yamba moshilongatumo. Evaangeli otali falwa kaapagani nokwiiyamba mwene megon-galo lyeni, u fatululile aantu ompumbwe yoshilongatumo maapagani noto likolele ngeyi egongalo ongundu yookuume ketumo.

Evaangeli kaapagani otali falwa ko nomagalikano nomagalikaneno. Sho tu na ongeleki yi ithikamena, otashi kala ongunga onene kutse ngele itatu fala ko evaangeli koombinga noombinga dhuuyuni hoka tali pumbiwa ko. Otu na okuhempulula ehupitho lyaKalunga kooitaali oyakwetu mboka taa holola uunkundi wopakriste meitaalo lyawo.

Sigo onena eitaalo li li pokati kuukriste nuupagani otali itsuwa muyamwe momagongalo. Aakriste yamwe otaa inekele natango muunganga. Yamwe otaa inekele momalufuko. Yamwe otaa pangelwa kuumbanda womaulodhi. Eitaalo tali tengatenga pokati kuukriste nuupagani olyo ndyoka Ombimbeli tayi li pangula notayi li tala uukriste wa nika uunkundi.

Oshinakugwanithwa shaakriste mboka ya kola meitaalo okuhempulula esimano noonkondo dhokuhupitha dhaJesus paamwayina aankundi. Aakriste ohatu vulwa nohatu kotha wo meitaalo lyetu, onkee otatu pumbwa okupendulwa nokupapudhulwa kooitaali oyakwetu, tu kale twa tonata notwa kola mokulongela Jesus Kristus Omuwa gwetu.

Kakele ketumo lyokuya kaapagani, ope na wo etumo lyomeni yOngeleki tali sile oshimpwiyu iilyo yOngeleki yi kole noyi koke meitaalo lyashili. Etumo

Tala kep. 7

OKAWE: UUKOLONI NENGE UUFUTHI?

OSHINIMA: Omulumentu Nyenti naanegumbo lye oye na epya ndyoka ye li thigulula kooyinakulu omimvo dha piti po. Inaku tseyika naanaa, kutya yinakulu gwtango mepya moka okwi ile mo unake. Omulumentu nguka Nyenti pamwe naanegumbo lye oyendji, oya kala negumbo lyawo mepya moka. Oye li longo noku li sila oshimpwiyu. Oya kala nombili nokukwathathana. Oya longitha nombili ashike shoka epya lyawo lya kala noku ya pa.

Ohaluka esiku limwe omulumentu omunankondo, edhina lye Nyanga, okwa zi kiilongo. Nyanga nguka okwe etelele omagonga guuzigo, noomwele inaadhi monika nale kegumbo lya-Nyenti. Egumbo lyaNyenti olya taamba nombili "epongo" ndika.

Mupyamunene, nani Nyenti negumbo lye oye edhilile oshilyani megumbo. Omulumentu Nyanga sho a dhimbulula kutya Nyenti ke na omagonga ga gwana, Nyanga okwa longitha omagongamwele ge guusigo nokudhipaga po oyana yaNyenti. Okwa kutha ko wo epya lyaNyenti koonkondo.

Konima Nyanga sho a yugu ko epya lyaNyenti, Nyanga okwa tula po oompango tadhi ti: "Shaa tuu Nyenti nenge oyana ya kambadhala okulongitha sha shomepya lyawo (ndyoka ngashingeyi lya ningi po lyaNyanga koonkondo), otaya talwa kutya otaa yaka. Onke Nyanga ote ya tula modholongo pwaa na ohenda."

Osho sha kala ngaaka. Nyenti a yugwa epya ku-Nyanga, naNyanga ta longitha epya ndyoka a yugu kuNyenti. Nyanga okwa ningi Nyenti omuniilonga gwe mepya omo tuu moka. Ihe nyenti iha futwa sha, kakele kokashona kowala. Pethimbo oyo tuu ndyoka, Nyanga nani ke shi epongo.

Oohe nooyina oku shi hu ya kala. Oye na ekwathathano natango. Onke Nyanga okwa kala ta tatile oshaalwaata shomepya ndyoka kooyina noo-

he naamwayina. Shika osho sha dhimbululwa kuNyenti. Molwaashoka Nyenti oye omulongi, okwa tokola a kale wo ti ilatha koonyala sho ta lungile omuhona Nyanga.

Mupyamunene kombinga yaNyenti okwiilatha kwa tya ngaaka, okwe mu dhengitha nenge kwe mu tulitha mondholongo kuNyanga, oshoka aniwa Nyenti ota yaka. Epulo ndi li na oyo ndyoka: Mokahokololo muno omufuthi olye? Omufuthi oNyenti nenge oNyanga, nenge ayehe? Olye e na uuthemba wotango wepya?

Uufuthi nokawe nekolonyeko

Omuleshi omusimanekwa, ondi inekela owu nine ndje omayamukulo. Ngiika oti oshinima oshipu okuyamukula. Eeno ngiika osho. Ihe ngame osha nyenga ndje.

Oshi li ngeyi: Onda hala tu kundathane oshinima shuufuthi. Itatu kundathana ando nkene tatu ka yaka, ihe okutala kutya uunake uufuthi u li uufuthi. Olye ta ti oshinima uufuthi, opo shi ninge uufuthi dhoshili? Onda hala tu dhike tango omukanka gwokudhiladhila iinima moku- le, opo twaa nukile oshinima mohongo. Ngele osho twa ningi, otashi vulika shi tu thange, sho shi tu nyenge oku shi gundjilika. Otwa hala wo twaa popile uufuthi, tse twaa talike tatu popile uuwinayi nokwaa na omikalo nelandulathano.

Kape na ngo ta popile omufuthi. Onkee natse natu holole mpano kutya natse uufuthi otu wu tonde okalagalaga. Natu tile wo etumbulo

ndyoka tali ti: "Ino yaka." Ndishi okuyaka okukuthapo iinima yooyene pwaa na euvathano namwene? Uufuthi ndishi otashi ti okukuthapo nokulongitha iinima yaantu pwaa na epitikilo lyamwene gwiinima?

Nenge uufuthi itashi ti okuyonapo oomwenyo dhaantu mokufadhukapo naashono kwa li taa vuli okwiikwatha nasho? Ngele uufuthi osho u li ngawo, onda hala tu koneke omikalo noetika (oohedhi) pethimbo lyuukoloni.

Uufuthi mboka nda hala tu popye nena, owa guma okawe. Oshi li ngeyi: Moshilongo shetu Namibia omu na oondumba dhaantu tadhi olele moodholongo aniwa oya yaka okawe. Shika osho nda hala tu taleni nawa. Mpaka inandi hala omuntu manga to lombwele ndje ooveta dhokawe moshilongo shi li manga muukoloni. Ihe onda hala tu taleni oshili nokwaa na oshili, kutya oku li peni miinima ngaambika.

Oshe ende ngeyi: Eti 14 Apilili 1908, okawe oka itsuwa moNamibia. Osho ngaaka omina yokawe yaLange ya mono etameko. Okawe sho ka monika, Namibia olya adhika mewiliko lyAandowishi mboka ye li kutha Aanamibia koonkondo mo - 1884.

Omumvo wo ngoka okawe sho taka monika, opelesenda konyala 60 (60%) dhAanamibia odha adhika dha dhipagwapo kAandowishi nenge dha tidhilwa kiilongo. Aandowishi mbaka (paNamibia twa tala ando oyo aafuthi), oyo ya tulapo omulandu gwooveta dhuufuthi wokawe. Oyo wo ya tula po omulandu gwokututula okawe kaNamibia kiilongo hoka ya zile, ko ihaku zile Aanamibia nando osha li, tashi ya kwatha momaluhepo gawo.

Otwa popi nokutya pomimvo ndhoka Aanamibia omayovi oya dhipagwa nenge ya pongekwa. Onkee okuza omumvo ngoka 1908, Namibia olya pangelwa kiilumbu nonyanya yaa shi yopantu. Aanamibia oya longithwa momina yokawe komukalo gwonyanya, gwehepeko gwiihuna guulunde, gwopauipika nogwokwaa na henda. Oshiholelwa moshinima shika:

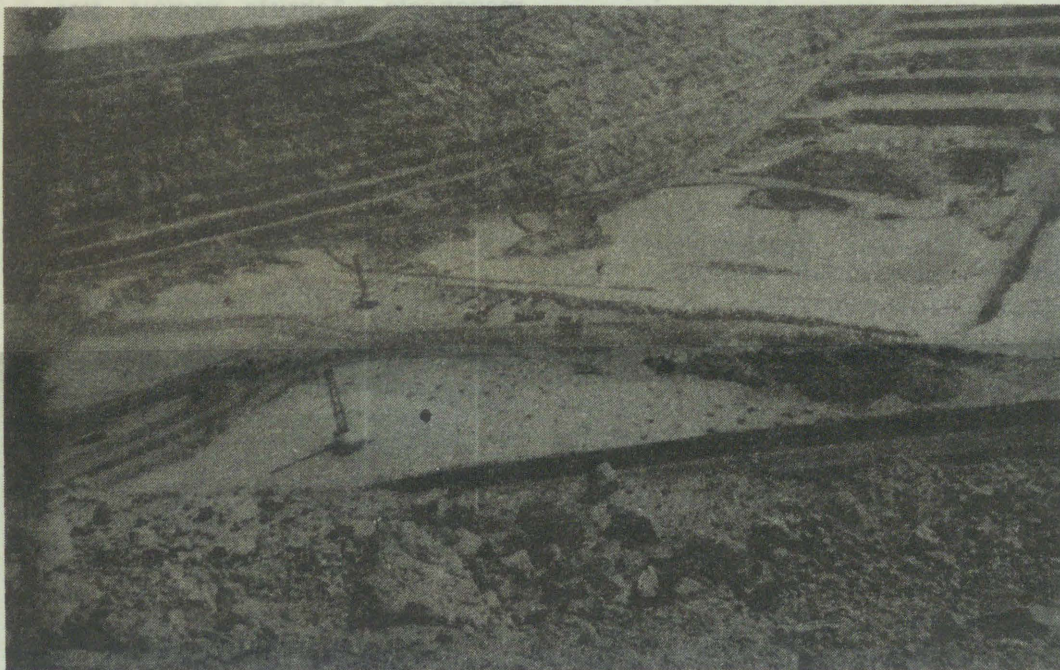
Momumvo 1913 Olange oya li ya likolitha iilumbu iimaliwa yooranda oomiliona ne netata (R4.5 mil). Ihe aaniilonga Aaluudhe mboka ya li taa longo mo oya li 3, 000. Ihe Aalange mboka oya li owala ya pewa kumwe komumvo ooranda omayovi ethele limwe (R100 000,00). Ano ngele owa topola mo oto mono owala R33.33 komuntu komumvo. Ano konyala R2.77 komwedhi lwaampo.

Ehepekopiko lya tya ngaaka inali tya po hwepo sigo onena. Oku li tuu, aaniilonga itaa pewa sha gwana kiilonga yawo, yo sho taa longele itashi ka longithwa mo moNamibia. Omaluhepo sho tage ya thenya momina, osho wo tage ya landula nokomagumbo gawo kondje yomina.

Aakulukadhi yawo noyana onkee tuu taa ende taa punduka koluhepo nondjala, kuuvu nokomvulwe yolupadhi. Oosikola, iipangelo, iye-nditho yaayehe, niikulya kayi na mpo tayi zi. Lyo huno Namibia otali fuluka ngaa okawe nongopolo, tayi undulwa mevi kaasamane nokoyana yawo aaniilonga.

Aandowishi sho ya kanitha elelo lyaNamibia mo 1915, South Africa okwa kutha ko ewiliko lyO- lange. Konima ehanganano lyaDe Beers (natango tuu olyaatiligane-kolonyeki aakwiilongo) olya yi mokuwilika Olange. Pokati ko 1932 na 1935 O- lange oya li ya pata okathimbo. Ihe epato ndika oya li lyowina.

Tala kepanja tali landula



Oshilambo shomina yaourana moRossinga, popepi naSwakopmund. Oshifulwamo shomomina ndjoka osha simana pethimbo ndika muuyuni auhe.

Dha za kep. 4

Aatiligane yamwe otaa ti kutya epato olya li lya ningwa owina opo iilumbu yi mone ompito yethaneko nkene tayi vulu okwiiyambapaleka nomina ndjoka. Pamwe osha li ngaa mondjila oku shi uva ko ngaaka, oshoka sigo onena iilumbu inayi hala okweetha Olange.

Olange hayo ayike omina yi li moNamibia nokukolonyeka Aanamibia. Okawe ishewe hako akeke oshilongwamevi shaNamibia. Omu na omina odhindji ngaashi:

Omina
 Olange (1908)
 Oshomeya (1906)

Rösing (1976)
 Otjihase (1975)
 Trekkopje
 Langer
 Heinrich
 Kombat
 Matches
 Otjosundu
 Brandberg West
 Berg Aukas
 Klein Aub (1966)
 Rosh Pinah (1871)
 Uis
 Oamites (1971)
 Elbe
 Krantzberg (1972)
 Onganja (1967)
 Lorelei (1960)
 Popepi naKaribib
 Witvlei
 Kokalonga kaOrange (metegameno)
 Oshiwakopo (Omoonda)
 Ombaye (metegameno)
 KoKunene (metegameno)
 Koondundu dhaHuns (metegameno)

Oomina nando odhi li po odhindji ngaaka, oshilikolwamo shadho otashi liwa kondje notashi yambapaleke owala Aatiligane aakwiilongo. Nonando omazigudhe noomwenyo dhAanamibia otayi kanenepo, onkene tuu kaye na uuthemba wokwiikwatha nayo. Ngele taa ilatha, aniwa otaa yaka iinima yaahona, onkee taa tulwa modholongo nenge ya futithwe nokohi yoompadhi.

Omulumentu Omuuludhe okuza poomvula 17 sigo omopenzela okwa ningwa oshilongitho nokandoongi kuukoloni. Ngele a kulupa, ote ekelwahi ngaaka. Kee na gumbo, ke na shimaliwa shokoshipangelo. Oonkondo dha hepele moomina. Omo a thiga nuuntu we auhe. Akutu!

Mokwiipula iinima mbino, epulo lyandje lyopetameko opo li li natango. Omufuthi ano olye? Omuntu ota vulu ngaa okuyaka shono she mwene? Nena ngele nani Aanamibia pethimbo ndino otaa yaka okawe, aakolonyeki oshike taa ningi? Omufuthi olye?

Ngele Omunamibia ota "yaka" shono she, opo shi ka longe moNamibia, otashi yelekwa ngiini naashono omukolonyeki nomukwiilongo ta tutile kondje yaNamibia, shi ka longe kiilongo sho tashi thigi Namibia kohi yoluhepo nondjala?

Hangame omunongo mwaayihe mbika nda popi mpaka. Ote pula owala, ye nakupula kee shi goya, ye nakuminikila hameho kee na! Omuntu ou hole ho pula kaanongo u pukululwe. Otandi tegelele aaleshi mu pe ndje eyamukulo moshinima shika.

Uushili nuuyuuki ou li peni omuntu ta tulwa mondholongo sho ta longitha shono shaandjawa

nokukambadhala uuyamba woshilongo u longe megumbo? Omufuthi olye? Omukolonyeki ngoka a yaka-po Namibia nuuyamba walyo nenge Omunamibia ngono ta kambadhala a galule ko okapambu kamwe komauyamba gaNamibia kaakwiilongo?

Manga nda tegelela omayamukulo geni aaleshi, nandi endlule mpaka kutya, mpaka otatu popi uukoloni nooveta dhawo. Ihe itatu kambadhala ando tu popile uufuthi naafuthi. Ihe onawa wo twaa itaalithwe shaashoka omukolonyeki ta ti oshi li mondjila nenge shaashoka tu ula kutya

Oshilongwamo
 Okawe (D)
 Ongopolo (Cu); Oshisiluvuli (Ag); Iipeleki (Zn); Otina (Sn)
 Urana (Ur)
 Zn; Ag; Cu
 Ur
 Ur
 D
 Cu; oholo (Pb); Zn
 Cu
 Omanganise (Mn)
 Otangsten/Owolfram (W); Ag; Sn
 Ovanadium (Va); Pb; Zn
 Cu; Ag
 Zn; Pb
 W; Zn; Sn
 Cu; Ag
 Cu; Ag; Zn
 W; Sn
 Cu
 Cu
 Olithium (Li)
 Cu
 Ombepo (natural gas); notantalite (Ts)
 Omongwa (S)
 Omahooli
 Omahooli
 D (okawe)

sho uuyuuki nombili. Nenge nokuli ta ti uufuthi.

Ope na omapulo ogendji goludhi nduka tatu vulu oku ga pula aakolonyeki nooveta dhawo moshilongo shetu. Otatu vulu okupula, kutya opauyuuki uni Nduuvu yaNangolo a tulwa kohake? Omolwashike oyendji ya tokola okudhipaga aakolonyeki nando yoyene itaye shi hala oku shi ninga? Omufuthi olye? Omuyoni olye? Omuteyi gwiipo olye?

Lwahugunina nandi tye kutya otwa hala omilandu dhetu yene, nokutulapo oompito dhokulongitha uuyamba waNamibia meni lyaNamibia, opo mboka taa ulwa "aafuthi" ya kuthwe oshimpwiyu "shuufuthi" sho omazigudhe gawo taga kwatha Namibia alihe meni.

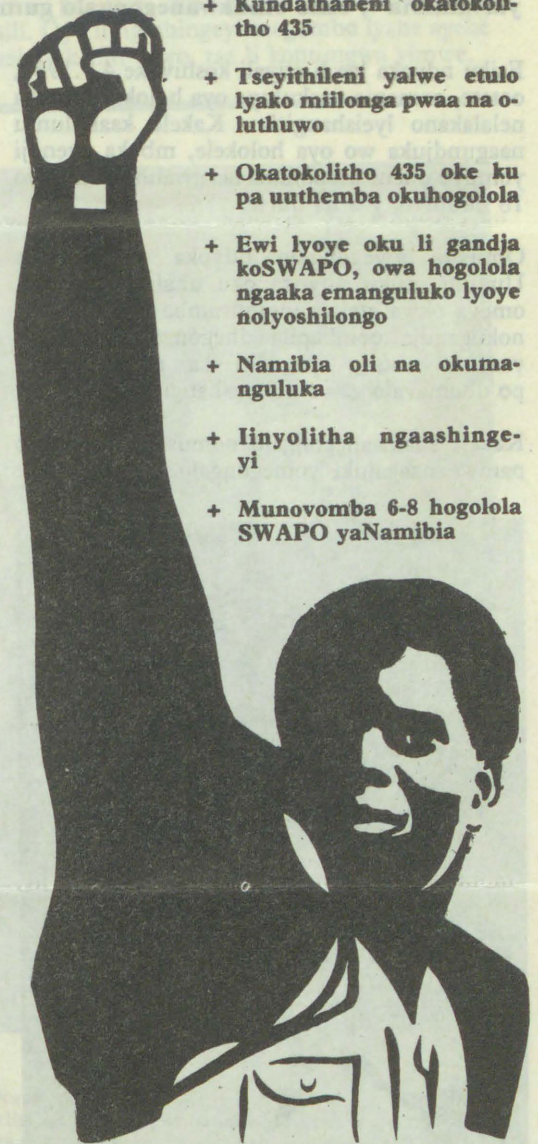
Osha yela shoka aakolonyeki taa ula "uufuthi wokawe", itashi zi po omanga inaa teyapo omukalo gwokuhwa iilongo yaa shi yawo. Omunamibia a "yaka" okawe olye ta kanitha, kee shi owala omukwiilongo nomukolonyeki ngono oye e li ekota lyuufuthi nomudhi guufukulume!

Oku na owala omasiku taga yalulwa u ka hogolole aawiliki yoye mwene. Uukoloni nawu sindwe. Emanguluko lyashili ongele to hogolola wa gama kaakondjelimanguluko yashili. Dhimbulukweni, Nakwaahungila ka ningi ndunge. Aakuluntu miinima ngaa mbino tayi inyenge, inamu sa uunye okupula aatekulu yeni, aniwa Kandjambwena oka ula yina oondunge.

S.V.V.Nambala

ETUMWALAKA LYASWAPO KAAHOGOLOLI

- + Kondjela ondilo yuuntu woye u talwe ngaashi omuntu
- + Kundathaneni okatokolitho 435
- + Tseyithileni yalwe etulo lyako miilonga pwaa na oluthuwo
- + Okatokolitho 435 oke ku pa uuthemba okuhogolola
- + Ewi lyoye oku li gandja koSWAPO, owa hogolola ngaaka emanguluko lyoye nolyoshilongo
- + Namibia oli na okumanguluka
- + Iinyolitha ngaashingeyi
- + Munovomba 6-8 hogolola SWAPO yaNamibia



Itatu tegelele Namibia li tsikile nomahepeko

Ongeleki yaKatoolika kaRooma oya holola euvito lyayo komahepeko ga ningilwa oonkwatwa muAngola kuSWAPO. Oya ti oshinima otashi chameke nayi omadhiladhilo. Omahepeko oshinima unene shi idhimbika uuntu womuntu neuliko lyonkalo yoola, ndjoka tayi tameke nziya moshilongo shika.

Sho taku ilongekidhilwa chogololo lyaayehe, oongundu adhihe dhi li meihogololitho nadi yelithe shili, kutya omahepeko itaga ka monenwa eha muNamibia epe. Omahepeko naga talwe epogolo, onke ohofa nayi ye mo shili ya mana mo. Otatu tegelele tu mone mboka ya ningi omahepeko ga tya ngeyi, ye etwe mpangulo naahepekwa ya futilwe. Etaambathano lyoshigwana shaNamibia nedhimitanathano, oshinima sha simana unene metungululo lyaNamibia.

Omushangwahokololo ogwa tsikile tagu ti; sho tu uvitile oonkwatwa ngeyi ohenda, otatu pangula ano omahepeko gawo ngoka ga longithwa palalakano lyopaati. Omahepeko goonkwatwa oga li ge na okungambekwa nenge nokuli okuyandwa andola Aanamibia ayehe aaholimbili oya li yi itula mo metulomiilonga lyokatokolitho 435. Etumwalaka olya hulithwa neindilo oshigwana ashike shi hangane meiuvaneno, kutya pwaa ka kale nande oluhindo luuthemba womuntu muNamibia epe.

Lya pitithwa kokomisi uuyuuki nombili mOngeleki yaKatoolika.

ETEGAMENO LYOMAISHANGITHO PELO-MBE OLYA LI ENENE

Aakwanegongalo ye thike 300-400 mElombe oya holokele esiku ye li uvanekelwa lyotango lyomaiyolitho pegongalo lyawo. "Otatu ya tegelele nomukumo sigo ye ya, oshoka otwa hala tu shangwe, opo tu ka hogolele ongundu yetu yopashigwana SWAPO yaNamibia", osho omukwanegongalo gumwe a popi mokuholola etegameno lyawo.

Esiku ndyoka lya li etiyali koshiwike 4.7.1989, ootate, oomeme naakulupe oya holokele mpoka nelalakano lyeishangitho. Kakele kaakuluntu naagundjuka wo oya holokele, mboka oyendji yomuyo unene aakadhona taa gwanitha omimvo 18 nuumvo, yaa na uutse.

Omusita gwegongalo ndyoka tate Petrus Uugulu, esiku ndyoka oku uhalele inaa lya, omeya okwa etelwa momutumba i ipyakidhila nokugandja oombapila dhegongalo kumboka yaa na uutse, opo dhi ka ninge oonza-po dhomavalo gawo pomaishangitho.

Kakele kaakwanegongalo nomusita, oye li wo pamwe naagaluki yomegongalo lyawo. Ayehe



Tatekulu Sakeus Katangolo nameekulu Julia Shikesho, Oshimwaku, mOukwanyama, ova enda eekilometa 5 lwaapo okufika ponhele yomalishangifo pOngenga. Ova teelela omafiku atatu ndele inava mona sha.

oyu uhalele taa hedhele nomizile dhomiti ya tegelele. "Eshiiwifo eli oliwa unene, osheshi keshe ou ha dula okufika komambo ote uya ashike pongeleka nokulishangifa," gumwe gwomaagaluki osho a holola.

Esiku alihe olya pitile inaa mona nande uyelele washa kombinga yaashangi.

Ongulohi oya shuna komagumbo nelalakano ya galuke ongula, oshoka pamishangwa nopamatseyitho gomombepo oya li ye na okutalelwa po nomaiyolitho okuza 4 -8.7.1989. "Natu shuneni fye twaalukeni mongula, osheshi ou to fi ounye okuya kelishangifo, olo elalakano lomutondi wetu", osho omugaluki omukwawo a lombwele egongalo.

Etegameno lyomaishangitho pElombe olya kala momukumo nomeinekelo enene, ihe olya ka sithwa oluhodhi esiku lya landula, sho

UNTAG e ya holokele noku ya tseyithila ya tegelele sigo oshiwike tashi landula, manga taa mono iiyenditho oku ya thikitha.

OMAUTHO GEINYOLITHO

Omusamane Martti Ahtisaari okwa uvaneke aatonateli ya Untag ya kale mokangundu kehe keinyolitho mboka wa hogololwa kuNgoloneyandjaji. Otaa kala wo pomahala gokambelewa kehe keinyolitho nomombelewa yomuwiliki omukuluntu gwomaiyolitho omusamane A.G.Visser.

Uuna tapu ningwa ompangu omolwofooloma yomuntu yeinyolitho ya tindwa, Untag naye opo e na okukala. Ngele pwa gandjelwa omanyenyeto ge na sha neinyolitho mokangundu koku shi konakona, Untag naye omo ta kala. Uukalata weinyolitho noombapila dhehogololo, mbyoka tayi nyanyangidhwa kuPretoria, uuna tadhi tuminwa kuNamibia mosheendo shoka otamu kala aakalelipo yombelewa yaNgoloneyandjaji noyaUntag.

Movenduka oonomola dhuukalata womaiyolitho nodhoombapila dhehogololo, otadhi kala hadhi konakonwa kuUntag nokuNgoloneyandjaji, opo ku talike ngele

otadhi tsu tuu shili kumwe naandhoka dha nyanyangidhwa kuPretoria. Uukalata womaiyolitho noombapila dhehogololo otadhi patelwa mondjugo ya kola oshipatululo shimwe tashi pewa Untag noshikwawo tashi pewa omunambelewa omukuluntu gwa SA gwomaiyolitho.

Uuna uukalata mboka womaiyolitho noombapila dhomahogololo tadhi tumwa dhi ka longithwe kiitopolwa yoshilongo, ohadhi patelwa moshiketha sha kola, e tadhi thindikilwa kosheendo sha tonatelwa kaapolosi, e tadhi gandjwa kaatonateli yaapolisi ya SA noyaUntag, moshitopolwa shoka.

Ehokololo otali ti, kutya Ngoloneyandjaji okwa zimine Ahtisaari, kehe shoka tashi ningwa mombelwa yomukuluntu gwomaiyolitho gwa SA, a kale te shi ningi metonatelo lyaUntag. Iilonga yomombelewa yomukuluntu gwomahogololo noyondjugo yompungulilo yuukalata womaiyolitho, otadhi kala metonatelo lyaapolosi ya SA noyaUntag uule wesiku alihe, uusiku nomutenya, pethimbo alihe lyehogololo.

Omusamane Pienaar oku uvaneke kutya aakwanepangelo mboka ayehe ye shi okwiinekelwa, noye na epopilo ewanawa, inaa gama ombinga, otaa vulu okulongithwa ya kale aawiliki yiitopolwa, aawiliki yomaiyolitho. Mboka ya talwa itaa wapa okuyakulithwa moshinima shoka oyo mboka:

- Ya yakulithwa nale miilonga yuukwiita nenge yuupolosi.
- A monika mo sha yela kutya oha ningi iigongi molwongundu yontumba yopapolitika.
- Nenge oshilyo shomatanga gaakwiita ngoka

ga kuthwa miilonga.

- Omunambelewa gwongundu yontumba yopapolitika.

Inaku uthwa omaiyolitho ga ningilwe pomahala taga landula:

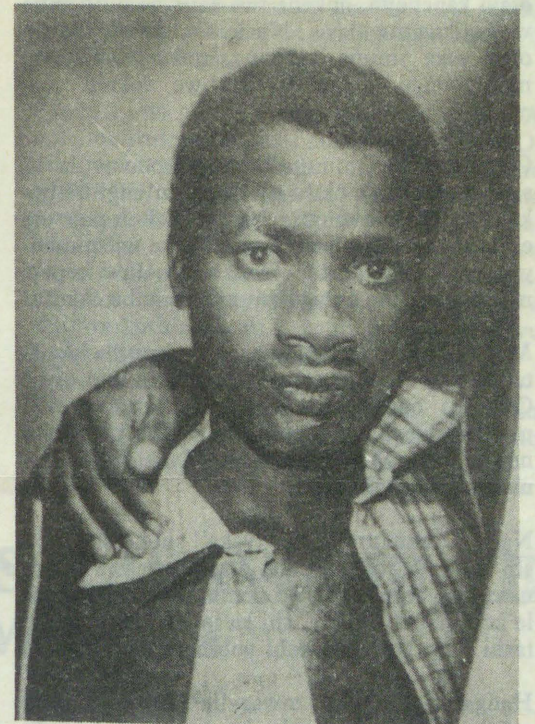
- * Opombelwa yaapolosi
- * Opokamba yaakwiita
- * Opegumbo lyelenga
- * Nenge pombelewa yongundu yontumba yopapolitika.

Omaishangitho oga kala wo ga tegelelwa oshiwike shoka shotango shaJuli pomahala ngaashi; Okantaya, Oshikushashipya, Ongenga, Oneeya, Onandjokwe nagalwe. Mpoka oga kala wo inaaga thika omolwompumbwe yiyyenditho, osho ya tseyitha.

The momudhingoloko gwOnandjokwe osho ya thika moshiwike sha landula 10.7. noshigwana oshe ya nomukumo komaishangitho.

Taati Kanana

Okuza 12.6.1989 Aanamibia yotango sho ya thiki moshilongo okuza muupongekwa sigo 12.7. ngashingeyi otaku yalulwa Aanamibia 18,000 ga galuka. Ongwediva nEngela oya taamba nale 10,000 mumboka 7,000 ga thiki nale momagumbo gawo. Sigo oompaka oprograma yokuya komagumbo otayi ende lela nawa, pahapu dhomunambelewa gwaUntag.



Oshilyo shaSwapo Nangolo dhaAmuhala sho a thiki pegumbo 7.7.1989 mlikango, mOndonga, okwa adha ondenge ye Malakia Johannes naye a galukila pegumbo okuza koBataliona 101, kOndangwa. Oshikaha tashi monika kepepe lyaNangolo, oshomumwayina Malakia ngoka a hempulula kutya ye kee na uudhigu okutaamba mumwayina.

MALWA

Dha za kep. 1

koPaulinum, Otjimbingwe, eedula nhatu. Elelongeleki ole mu nangeka omufita omuwiliki mEwaneno omo a longa ashike odula imwe 1988.

Omukulukadi waye meme Naemi, naye omunashilonga weedula 10 mofikola younona mOkalongo. Ove na onunona vaheyalu kokanghelo Nambowa kechani 11.

Oshitaingeleki shaKunene oshi na paife omaongalo ahetau mewiliko lovafitaongalo omugoyi komupashukili woshitai. Omudo 1987, oshitai osha yapulile ovaevangeliste 17. Oilonga aishe yoshitai oi li mepashukilo lomubishofi waELCIN.

Kuku Hilja Namukwaya Gwashikongo (93) momukunda Onangombe megongalo lyaLombe, okwa mana oondjenda dhe 7.1.1989. Okwa thigi ko oyana yaali, uutekulu nuutekululwa oondji. Nometi 19.2.1989 Kalunga okwa zimbula omwana gwakuku Hilja, Fillemon Imene Namwandi (64) muwehame wethimbo ele. Okwa thigi ko oyana yahetatu nuutekulu oondji. Eimbilo 522 (momaimbilo).



Uusiku Magano Shekupe
Elombe

EKAKUNYA IIPINGE A GALUKILE KOSHIGWANA

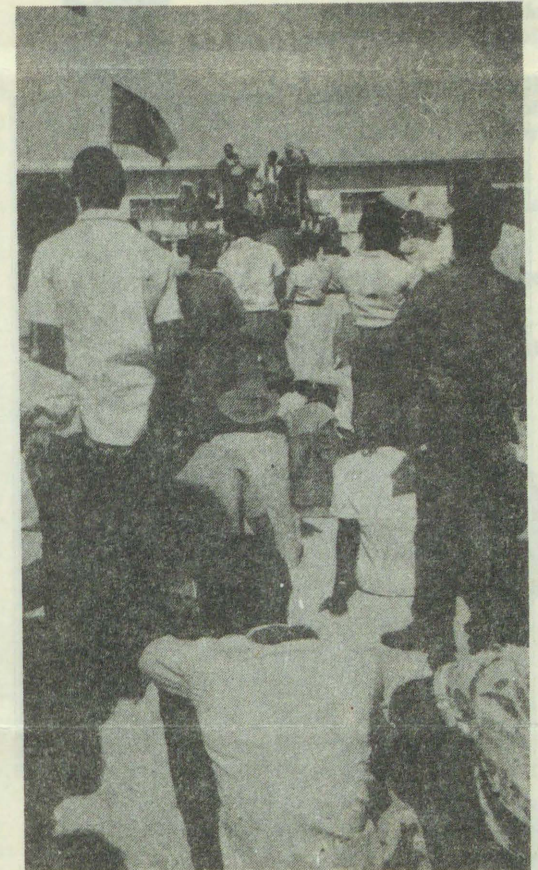
Ekakunya Iipinge yaNangombe gwomegongalo Elombe, okwi itedhulula a galukile kegumbo nokoshigwana she. Eitedhululo lye okwe li ningi megumbo lyaandjawa, ndyoka e li thigile po a ye miita ya SA, a ka kondjithe aamwayina yoSwapo.

Iipinge onkelo yegumbo lyomusamane Nangombe manga e li miilonga ye yuukakunya, pehulilo lyaJuni okwa kundana osheeli shawo sha galukila kegumbo okuza pondje yoshilongo noshi li kegumbo lyahe. Iipinge okwa tokola a ka talele po osheeli shawo Max.

Ethimbo ndyoka Max ina adhika mo megumbo. Mokumonathana Iipinge okwa hambelele mumwayina nokulila. Pethimbo ndyoka okwa adhika noshikondjitho, shoka e shi yelitha nomahodhi taga votoka momoho ge, kutya ke na nande uuwinayi washa oku shi longitha, ihe okwe shi humbata molwiilonga.

Konima yoonkundathana oonde nofamili ye, Iipinge okwa indile ekwatho a thindikilwe kaakuluntu kiilonga ye, a fale ko iilongitho ya SA, ye a galukile moshigwana. Etaambwo lye okwe li thikithile egongalo lyawo Osoondaha 2.7.1989, sho a thikama komeho gegongalo pamwe naagaluki yalwe nosheeli shawo, naakuluntu yawo ayehe opo a holole kutya ye

okwa galukila koshigwana nokwiitedhulula shili. Oye li ngashingeyi megumbo lyahe ayehe naakulukadhi yawo, taa li kontungwa yimwe.



Natango oku na yamwe moshigwana taa tila ko kiigongi, sho ye na omadhimbulukwo gomadhengo gaapolosi piigongi yaSWAPO momimvo 10 dha piti. Ooveta dhokwiindika iigongi, odha kuthwa po ngashingeyi kokatokolitho. Oshigwana nashi holoke miigongi shi mone omauyeleele mushono shi na okuningwa po pethimbo lyeinyolitho nolyehogololo. Oshigongi shika osha ningilwa mOnayena 8.7.1989, mOndonga.

Da dja kep. 3

ndika oli na wo okukolekwa komakwatho getu. Opo tu kale oonzapo oombwanawa dhaKristus, otu na okukala neitaalo li na omwenyo ndyoka tali tu vulikitha aluhe kehalo lyaKalunga.

Ehupitho lyetu inali ikolelela kokutseya nokokuuvithila yakwetu oohapu dhaKalunga, ihe oli ikolelela kokugwanitha ehalo lyaKalunga, ngaashi tali hololwa koohapu dhe. Mat. 7:21 Tu longeleni ano Omuwa nuudhiginini, tse tu ka pewe ondjambi yomwenyo gwaaluhe kuJesus, sho ta galuka.

E.Niinkoti
Nakayale

OTANDI NYANYUKWA 55% ADHIKE

Omupangi Elina Mbango, mOshitutuma okwa yamukula Omukwetu, kutya enyanyu lye otali hindwa natango kekalepo lya SA mevi, onkene oli thike ashike poepelesenda 55%. Mbango okwa thikile moNamibia omwedhi nguka petameko sho a thigile po oshilongo muKotoba 1977 manga a li omupangi mOshakati.

Mokugaluka nomusamane gwe Linus Kalenda, nomumati gwawo Mbango gwoomvula 10, omupangi oku na ngashingeyi oshiyadhi oshinene mothingo, shoka ta ti, okwa yahwa esiku lyaCassinga 4.5.1978 muAngola, omutondi sho a li ta sigula ayehe mboka ya li taa monika natango ya fa ye na omwenyo. "Ondi iningi nda fa nda sa nonando nda yahwa, Oombulu nodha thigi ndje po neitaalo, kutya kandi na we omwenyo," osho a hokolola iihuna mbyoka ye ya adhele esiku ndyoka.

Pahokololo lyahe omusamane Samuel Mbango, Elina okwa li a yungilwa oosa omumvo ngoka maandjawa, sho kwa kundandwa kutya okwa hulithila moCassinga. Ohaluka taa lesa ombilive ye ya za kuTanzania. "Katwa li tu shiwo ngele natu mu mono we ngaaka," osho omuvali a tumbula nonkumwe onene manga ye li mondjila ya ka thike kegumbo lyawo, okuza kEngela.

Manga e li kombanda, ongundu yoSWAPO oye mu pele ompito iikando iyali okwiihumitha komeho. Lwotango okwa kala muTanzania oomvula ne 1981 muDesemba sigo Febuluali 1985 ti ilongele uunamiti. Patiyali oomvula mbali muNdwishilanda lyokuuzilo ti ilongele



Omupangi Elina (Mbango) Kalenda ngoka a lilwa nale 1978, naye okwa thikile muNamibia petameko lyomwedhi nguka.

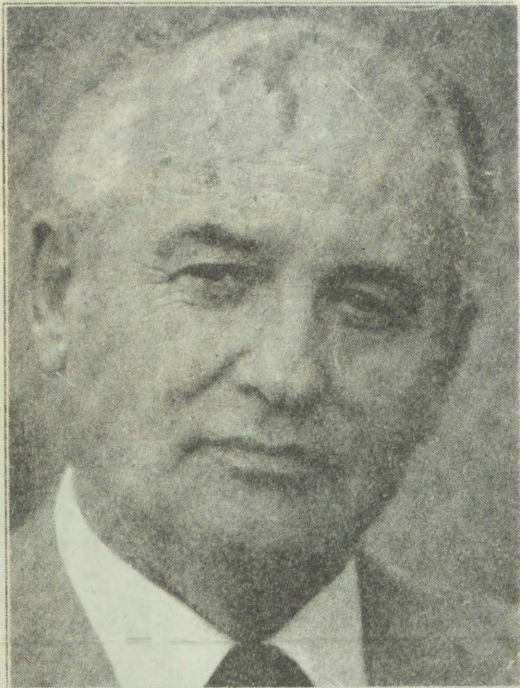
iiinima yopolitika. Omupangi Elina oti indile oshigwana shi imange kumwe sho shi dhenge omutondi pokaketha kehogololo, enyanyu lye li gwanepo noopelesenda 100%.

Sebulon Ekandjo

KEHE GUMWE NA LOLE KO KOMBILI — GORBACHEV

Mikhali Sergeevich Gorbachev omuleli omuti-8 mepangelo lyaRusia. Edhiladhilo ndyoka tali inyenge momutse gwe okugandja ompito komuntu kehe muRusia nomuuyuni okulola ombili. Gorbachev oye ndji oya zimine ngashingeyi kutya omuleli ngoka inaa monika mo shito muRusia.

Omuleli Gorbachev oku na eitaalo kutya onkalo ayihe otayi vulu okulunduluka, shimpa tuu o-



Omuleli gwaRuslanda, Mikhail Gorbachev ngoka ta kambadhala okuhupitha uuyuni monkalo yembonyoko.

mbili ya lolwa komuntu kehe. Oshilongo kashi na siku nashi humu ko, uuna iimaliwa yasho yu uka ashike moondjembo.

Aantu ayehe kombanda yeve, aayendindjila mosikepa, kevi: Ihe omolwashike tatu etha osikepa yetu yi ipume momamanya?, osho a ti. Tse atuhe negele aalongwa nomulongi gwetu oye onkalamwenyo nethimbo, omumvo sho tagu ka nina 2000 omuntu kehe na adhike a lola ombili, uulinawa nenyanyu.

Eitaalo ndika olo lye mu ziminita moonkundathana nepangelo lyaAmerika, oyo ya hanagule po iikondjitho yimwe yolute, yoshinano oshile noshifupi. Ehanagulo ndyoka oye li tamekele omumvo gwa zi ko, notaa tsikile natango noonkundathana.

Omulumuntu okwa hogololelwe ashike muMaalitsa 1985, a ninge amushanga omukuluntu gwoPaati yuukomunisi muRusia. Konima yehogololo, okwa ningi ngaashi aaleli yoshilongo shoka olwindji haye shi ningi. Ihe kombinga ye osha li shi ili kashona.

Ye ina ya nando komahala hoka ta ka tsakanekwa noongala niinima ya tulwa melandulathano. Ye okwa yi kuupale womalandithilo, ta popi naalandithi ompumbwe yiikulya. Okwa yi kii-kunino yuunona, a popye naavali nokuukilnika hoka a kundathana naapangi.

Ayehe konyala a popi nayo oya ningi naanaa ngaashi aakuluntu ayehe haa lombwelwa. Ayihe oyi li nawa, kape na uupyakadhi. Gorbachev ina zimina omayamukulo ngoka gokambweenga. Okwe ya pula okanaku ye mu etele iilongitho mbyoka e shi kutya ohayi kala ya pumba. "Katu na nkene tatu mu kwatha ngele ihamu popi oshili," osho e ya kumagidha.

Rusia onda hala oku shi shuna konkalamwenyo ompe," osho sha kala etumwala lye moshilongo.

Onkalamwenyo ompe ota dhiladhila okupopya nomutima gwe eguluka. Aantu mboka ya li ya mwenekwa oya shuninwa uuthemba wawo. Omambo ngoka ga li ihaaga leshwa muRusia, oga shunwa moondjugo dhomambo (Libraries).

Ehistoli lyoshilongo mpoka lya kala lya filala, o-tapu lafululwa, omapuko gomonakuyiwa otaga konakonwa nokukundathanwa. Rusia onda hala oku shi ninga oshipe, osho ondjodhi ye ta kambadhala oku yi ninga yoshili.

Dhiladhila pamukalo omupe oshilongo sheni nuuyuni wo, olo enenedhiladhilo ndyoka lya holoka mokambo kedhina "Perestroika". Omusamane Gorbachev ota ti Perestroika oya kwatelela mo uudemokooli. Aaniilonga yawo aawiliki yiilonga naa hogololwe kaaniilonga hakaahona.

Oofaalama noofabulika nadhi futwe pamahupilo gadho. Ndhoka dha mbangolota, nadhi pate. Elunduluko enene lyopapolotika ndyoka tali inyenge ngashingeyi muumbugantu waAfrika, inashi dhimbiwa nande kutya enwethemo enene lyomulumentu nguka. "Katu na esiku natu hulitha po iita manga omuntu kehe moshilongo inaa lola emanguluko lyehogololo lyopapolotika, pahalo lyomuntu mwene," osho a londodha.

Omulumuntu okwa valelwe 2.3.1931, momukunda Pivolneya muRusia. Oye gwtotango ta lele Rusia omugundjuka e thike mpoka. He Sergei okwa sile miita iitiyali yuuyuni okukondjitha Hitler manga Mikhail e na oomvula ndatu.

Mosikola okwa kala enyakwa nokwa wilika oongundu dhi ili nodhi ili dhaagundjuka aakwawo sigo omoongundu dhepangelo. Omumvo gwa zi ko okwa talele po Amerika nokwa popitha omutumba gwIlgwanahangano, shoka shi ihulwa nale kaaleli yaRusia. "Okwaadha kethikilo lyondjodhi ndjika yoPrestroika, ongele ashike omuntu kehe te shi lalakanene", osho ta dhimbulukitha.

(Learn of Teach No. 6/88)

DOS SANTOS NASAVIMBI VE LIMINIKA

Eenghundafana pokati kepangelo laAngola nehangano laUnita muGbadolite shomu-Zaire, oda xuliile meminikafano lomuleli waAngola, Jose Eduardo dos Santos nomukondjifi waye Jonas Savimbi. Otaku ti olo eshakeno lavo lotete oule weedula 14 tava kondjifafana.

Ounyuni otawu tongolola paife nomesho manene

Dha za kep. 1

mwaina kOshakati, ndele eshi va shakana, Tauno okwa hovela okulila. Okwa dingakatela ondenge yaye ndele tava minike nomesho a pusha omahodi. Okwa kongela mumwaina olefa ndele te mu eta fiyo omeumbo laxe mEngela.

"Osha li she tu kumwifa unene, ndele she tu hafifa yo. Otwa kala nelipulo ovaneumbo atushe ovakulunhu nounona, ngeenge eshi Tauno ta ningile mumwaina, okwa mana mo tuu shili, ile oku li momakotokelo. Eshi twa li tu he na eshi hatu dulu okuninga, otwe va tula monduda imwe va ka nangale. Ova kofela pombete imwe nombili, fiyo kwa sha," osho xe younona vaheyali Shinana a popya.

Pakudimbulukwa kwaye, Tauno womona ngehe a ile koukakunya a lele meumbo laxe, fiyo okefiku olo a findikila mo ondenge yaye oyo a kala ta kondjifa komufitu." Ongula eshi kwa sha (2.7.1989), otwa ya kongeleka komambo na Tauno a kwatela Ombimbeli yaye monghwa-pa", osho omudali xe a hepaulula ye a fa e mu tala natango eshi ta piti momuvelo wongeleka ta ka shita.

Konima yomambo, Tauno okwa shuna koilonga yaye youkakunya, oko natango ya findikilafana nondenge yaye pamwe novaneumbo vakwao, Inaku shiivika unene eenghundafana da kala pokati kovamati ovakwaita ovo vavali, kutya oda kala da pamba koinima ilipipo. Ekemo la udika mokanya kaTimoteus, osheeshi vati mumwaina okwa koneka mo eshiivo lihupi moinima yopapolotika.

Epangelo la SA eshi kwa li tali yengwa koita okukondjifa ongudu yoshiwana yaSWAPO, ola heka ovanayasha vamwe moshiwana noimaliwa ile okomukalo wefininiko, oyo li va longife okukondjifa ovamwaina noshiwana shavo, nokutondafanifafana.

Komukalo ou oita inai kala ashike pokati ka SA novakwaita vaSWAPO meyukililo, ndele oya shituka yo oita youkwashiwana. Vali eshi inashi twalifa ashike oita kokule ndelene oya mana yo eemwenyo dihapu.

Konima eshi okatokolifo ka ya moilonga na SA a shaina etulepo lomatati pokati ke na SWAPO, omupesidende Nujoma newiliko alishe laSWAPO, okwa shiivifa diva oprograma yetambulafano noyombili, oyo a hala okutandavelifa moshiwana shishe shaNamibia. Ava yo va pukifwa ile kakwa li ve na eitavelo melunduluko longhala yoshilongo eshi, navo ova shiivwa koshiwana va hepaulule omatimba avo koshiwana voo va diminwe po.

Okomukalo ou auke, Namibia ta dulu okutungululwa nokukala mombili, osho omuwiliki waSWAPO a kumaida.

u mone ombili oyo nhumbi tai tulwa moilonga. Exulifepo lomaumbafano pokati kavo ola tulilwe moilonga 24.6.1989. Paife otaku likundwa ngeenge ongudu yaSavimbi tai hengumukile mepangelo la MPLA ile naku ningwe tete echoololo ku monike ou ta di mo nomawi mahapu.

Ova shangela nge tava



NATANGO OKATONGO OTAKA TI PII MONAMIBIA

Otwa li tu shi okatongo ngashingeyi otaka ende taka fupipala mAnamibia, ihe nani otaka londo ku uka pombada. Omolwashike UNTAG e ya e na iilonga, ihe natango tuu mboka ya tulwa po otaya taamba owala aantu yomazimo gawo ngaashi haya ningi shito?

Yamwe mOndangwa oyo aanene nopu UNTAG oyo ye li po, sho to yi kuye wa hala iilonga oto pulwa, kutya nyoko olye? Untag okwe ya niilonga yi longwe kaana yoolye ano? Tse otwa li tu na okukonga iilonga yetu kutse yene tatu popi Oshingilisa na Untag e tatu taambwa, ihe ngele Untag a taamba omuntu ote ya a kuthwe po, anuwa okwa yi peha kaali shi lye. Ngu ta kuthitha omuntu peha oye aniwa shike, yo aantu ayehe Aanamibia?

Oshinima shimwe shi yemateka, miilonga omwa kutwa mboka ye na nale iilonga. Omolwashike,

Omasiku 10.1.1989 Kalunga okwa zimbula moshipangelo shaShakati Lazarus Kambata Uusiku, okwa thigiko oyana 12. Taangi yakwetu komahekeleko geni mwe tu ningile yakwetu Kalunga ne mu gwedheleko ishewe. Jacob 4:7-10. Eimbilo 898.

Paulus Kandali Iyambo
Oluno Sec. School

Tate Kornelius Nangombe yaNamene Oshitutuma mOndonga, okwa mana oondjenda dhe eti 23.1.1989 mepipi lyuukulupe. Okwa thigi ko omukulukadhi gwe, oyana 8, aatekulu 38 naatekululwa 6. Omuwa dhimbukwa ndje moshilongo shoye. Eimbilo 626 (OMA). S.M.Namene Oshitutuma

Meme Rauna Ndapandula Mateus (26) okwa mana ooweenda waye 25.3.89. Okwa fiyako ovakulunhu vaye nounona vavali. Amushe ava mwa li mwa ongalele pamwe nafye itandi mu dimbwa momailikano aTate Kalunga Eps. 25:1-22

Philippus Nghidinwa P. Haitembu
Okahandja

Kuku Naango Saali Natalia Shiningwe (120) okwa mana oondjenda dhe meti 22-2-1989 megongalo Etilyasa mOngandjera. Okwa thigi ko oyana yahamano naatekulu oyendji, Joh. 14: 1-4. Ehanganano 143

Hango Titus
Swakopmund

Omasiku 13.3.1989 Kalunga okwa zimbula omunona gwedhina ndika Helena Shipanga (14) muuwehame womasiku gatatu moshipangelo mOshakati. Okwa valwa eti 27.11.75. Okwa thigiko he nayina naamwayina 6.

Fenni Uupindi
Onyanya

po pu na mba twa hepa nkene omuntu wa vaelwe u mone iilonga? Aanamibia ngele tamu popi emanguluko aanandunge, ihe Shafiihuna okatongo muno ote ya e ka kuthe mo nuudhigu.

Kandi shi wo ngele Aanamibia omu shi ngaa emanguluko shi li hole naashi li tonde. Okatongo oke li wo nomongeleka, nayo olwindji otayi tala mba yi shi.

Nalimanguluke Mushimone
Ondangwa

OMWENE EEDULA NGAPI NATANGO DI LI KO?

1. Omwene ofiyo onaini ovashitwa voye ava wa shitila medu omu tava lili notavaiifana edina loye omolwekwafo loye tate. Molwoshilunda shomutondi nomuhepeki eshi sha dama medu letu.? Omwene ila kekwafo letu.

2. Omwene ofiyo onaini ovashitwa voye ava wa shitila medu omu tavelihanauna po vovene molwashi vapofipalekwa koshilunda shomutondi, noinava shiva nokutya ovo oilongifo yomutondi? Omwene pashula omesho avo.

3. Omwene fiyo onaini ovashitwa voye ava wa shitila medu omu tavaefa okupwilikina eendjovo dohasha tadi va lombwele vakale kombinga yavo ofimbo vo tava dipaa ovamwaina? Omwene, kuma omitima davo.

4. Omwene ofiyo onaini ovashitwa voye ava wa shitila medu omu tava kulu ve li medongakano nomeyahamo linene li fike apa, molwashi keshe

Tala kepanja tali landula

Okangundu ketaambo lyaa-galuki momagongalo

Okangundu hoka ka hogololwa megongalo kehe okutaamba aagaluki, haki ithanwa okangundu koo-R yatatu (3-R) oki iholola nale miilonga yako, kutya oka taamba ko oshinakugwanithwa ngaashi she ki inekelelwa. Ashike ope shi okudhiladhilululwa mbala, opo eyakulo lyako li tsikile nomibili.

1. Aayakuli yomuko momagongalo gamwe oyo aanashilonga mboka ye na nale iinakugwanithwa yilwe. Mushika omwa kwatelelwa omusita gwegongalo, ngoka kee shi okukuthwa mo moshimpwiyu shoka.

Eyakulo ndyoka komeho itali ka tsakanithwa we nuupu, omolwiimpwiyu yilwe yomunashilonga ngoka tayi mu pula. Ndhindhilika: eyakulo lyaagaluki otali ka pula natango iiwike ihetatu komeho, ngele otu yalule ashike sigo Kotoba.

Onawa omagongalo ga dhiladhile aantu mboka ya mangululuka. Onawa wo pudhiladhilwe epandulo lyawo. Shilonga iha longwa nandjala.

2. Meyakulo lyiiwike ya piti, opwa dhimbululwa momagongalo gamwe ompumbwe yiihauto yokuthikitha aagaluki pomagumbo gawo. Napu kongwe oshihauto showina, ngele iyali nokuli, yo yi kale tayi pewa omahooli kokaketha (3-R) megongalo. Shoka itashi kandula po ekwatho lyaa-kwanegongalo ngaashi haye li ningi shito.

3. Aagaluki oya silwa oshimpwiyu kombinga yiikulya uuna ya thiki momagumbo gawo. Shoka ashike i-

RRR



REPATRIATION
RESETTLEMENT
RECONSTRUCTION

naashi yela sho inaashi kundathanwa, okombinga yomalweendo gawo uuna ya hala okutalela po oofamili dhawo ndhoka dha halakana koombinga noombinga. Kaye na natango iimaliwa yokufutila oolefa dhawo.

4. Moonkundathana dhOmukwetu naasita yamwe mOwambo, okaketha kokukwatha aagaluki momagongalo gamwe inaka gongelelwa sha gwanena ompumbwe yeyakulo alihe, ngaashi lya thikamena egongalo ndyoka uule wiiwike yi vule ihetatu natango komeho.

Okangundu koo-R yatatu megongalo, otaka longo mekwatathano nelyenge lya ka tsa sigo omombelwa onene yaKomufala gwoontauki muuyuni, ndjoka yi na aakalelipo yayo mOwambo nokOvenduka. Shoka ashike sha pumbiwa kokangundu komegongalo, okutseya omukalo gwokupopitha aakwanegongalo okutseyitha ompumbwe ndhoka dhi li po, osho wo okugandja ehokololo lyeyakulo lyako koombelewa ndhoka tadhi longo kumwe negongalo lyawo mokutaamba aagaluki.

Ngele itaku endwa nondjila ndjoka, eyakulo lyaagaluki momagongalo ngiika ogendji nokuli otali ka tsikila nuudhigu.

Sebulon Ekandjo

Ova shangela nge tava ti.

efiku omauta ashike ve wete nomalyataulepo omapya nomaumbo avo? Omwene, lundulula onghalo oyo fye tu li mo.

5. Omwene fiyo onanini ovashitwa voye ava wa shitila medu omu tava hupu mohonde yavakwao, omolwashi va lombwelwa kutya ngeenge otava kengelele ovakwao otava futwa nawa oimaliwa yohonde. Omwene pashula omesho avo.

6. Omwene fiyo onaini ovashitwa voye ava wa shitila medu omu, tava kala va mwena, molwaashi ngeenge ovahokolola sha nena otava ka kwatelwa oikonene ihena nande ouyuki washa? Omwene lundulula omitima do vafininiki.

7. Omwene ofiyo onaini ovashitwa voye ava wa shitila medu omu, tava kufwa omaufemba avo, haave wa yandja kukeshe umwe omo kwomona woye ewifa Jesus Kristus, ou etu valelelwa komushiakano Omwene eedula ngapi natango di li ko?

8. Elia okwa hepaulula ondjala. Jonah okwaudifa ehanaunwepo. Johannes omushashi okwa ingida elidilululo, Ovaprofeti vounyuni ou otava hokolola oufemba womona. Ndele ne Ovanamibia atushe ohatu ti! Omwene tu pa ombili neingido leti: naluuye kwoove.

Naftalie K. Shinedimah
Oranyemund

ONGHANYUTULULA NAI NINGWE YO MEESHINGELA DAUSHIMBA

Onda hala okupopya nda yukilila apa kutya, ngaashi naana kwe lipyakidilwa kovafita vetu noshikumhungu shounona novakulunhu vamwe hava ka xupila komalambo omakakunya, oshoyo ovakomesho vetu vamwe ngaashi ovakulunhu vomahangano ovanailonga moushimba nava tale

yo onghalo yomeeshingela daushimba ile mbela oshinakuwanifwa eshi otashi pewa mbela lye?

Eemwedi da pita ovanailonga vamwe ova kala nokukwandjangela newedelo leendjambi, nopeemhito dimwe osha wanifwa. Omunailonga umwe nge okwa li ondjabi i fike R150,00 komwedi nde ta wedelwa R500.00 onghatu ya katukwa oiva shili, ashike woo nee koku ke i longifa, omunailonga a ty a ngaha omuneumbo kOwambo e na omukulukadi nounona vatano eshi monduda yaye oyo a pewa ngeno a dje mo ta i koi longa oye ake, oku na mo omukulukadi nounona vavo vane.

Naumwe wopomunghulo, mo monduda tuu omo omo a idilila natango kaume kaye e he na oilonga, ye vali oku na okafuko nokaana kavo. Vakwetu omunailonga ou shapo ounyuni otatu teka po ashike ta pula eendjambi di wedelwe shaashi ke na efiku a ka kutife ovanaeumbo laye vOkowambo naava ve li puye mOshingela, nota ka mana mo ashike omifudo daava va li ngeno tava kondjele oulilepo waye.

Ovakomesho vomahangano ovanailonga ngeno va londe okudja pefina va yuka koitai. Ovakulukadi ava ve ya kuyadeka eeshingela nokupiyaaneka omaliko ovanailonga, ngeno va dje ko va lime omapya ooina. Ovashamane ava tamu xupu meendjato dookaume keni inamu teelela eemwiya dashinana dhi kufe eeholo deengumi, djeiko noufuko veni ileni mu dike apa pwa heva momaumbo omu mwa yambukile kaena vali outalelo.

Lineekela Shipena (Oshikango)

WAA PANDULA NOYAKA!

Ngele omuntu ihoo pandula onokayaka, kwo okuyaka kaku shi nee okuwanawa. Mpaka ngame onda hala okupandula omusamane tate A.L.Nghifikwa amushanga gwokambo "Etu-mwalaka kovanyasha". Mokulesha okambo haka

onda li nda kumwa unene, omolwuuwanawa wiileshwa yako.

Epukululo lye kutse aanyasha olii kwatelela ashike kiinima iiwanawa niwinayi hatu yi ningi. Omuntu oto hala ashike kutya okwa fa he tu uvu sho hatu yi popepi nenge ha mono shoka hatu dhiladhila moomwenyo dhetu nando iha mono mo.

Tate Nghifikwa ina pukulula ashike aanyasha nokumwena okwa pandula wo aanyasha mboka yi ihumbata nawa, noya dhiginina uunyasha wawo. Mpaka onda hala ashike oku lombwela aanyasha aakwetu kutya: "Inapu kala nando ngoka ta endwa pomunkulo kokambo haka nenge e ka gandje po (iikuthemo), kokutya oontumba noongandi oyo naye ka leshe, oshoka oyo haa ningi omapuko olwindji.

Atuheni aanyasha otse ooyene yokambo haka. Omuntu ngele ova pewa sha kumukweni, nenge wa tumimwa sha, oho mu pe wo sha opo a nyanyukwe. Tseni aagundjuka otatu ningeni po shike ano? Sho twa peweni omagano ge thike mpaka? Mpaka nandi mu lombwele shoka tu na okuninga po;

"Natu galikaneneni omusamane nguka opo Kalunga e mu gwedhele ko komagano, nokuunongo we auhe, ye e mu pe wo onkalamwenyo yi na elago, nuukolele wolutu. Tse aanyasha otatu tegelele natango omambo ogendji kungoye ino etha oku shi ninga. Otatu pandula Kalunga unene omolwoye.

Nd.Nghipandwa
Eengolo

OMVALELE YANAMIBIA

Ngame omvalele yaNamibia tandi kwiitangele Namibia. Otashi kwathele shike tandi kwiitangele Namibia ngame itaandi ku kondjele opo u manguluke wu ze mo miikaha yomutondi gwoye? Otashi kwathele shike tandi kwiitangele Namibia ngame nde ku gandja po kaaniilongo nde ku landitha po?

Otashi kwathele shike tandi kwiitangele Namibia ngame nda tulwa okandami mokana kAaeuropa ko kaake na omahini? Otashi kwathele shike tandi kwiitangele Namibia, ngame nda gwayekwa omahoka gombwa komilungu kaakengeleli kaahongololi ye vule aalodhi yaEuropa ngame inaandi lya onyama yombwa?

Otashi kwathele shike tandi kwiitangele Namibia ngame eliko lyoye handi li tapitha mo hali yi naEuropa nookuume kawo? Otashi kwathele shike tandi itangele Namibia sho handi lala kombete yomatalashe ga gwedhelwa ye tate nameme haa lala poombanza dhomagonyoto?

Otashi kwathele shike tandi itangele Namibia sho handi litha oombeke nofoloko ye tate nameme haa litha oonyala? Otashi kwathele shike tandi itangele Namibia sho handi ende mohauto yomakende ga ziza yo yi na iipundi yoveliveta yo ya landwa kombaanga nenge kuAmusilasi yo tate nameme haye ende kolupadhi?

Ngame itandi kondjele Namibia li manguluke? Shigwana shaNamibia, natu thikame pamwe nayakwetu aakondjelimanguluko yaNamibia opo tu kondjeni tu mangululeni Namibia tu wape twi itangele Namibia lyetu. Tangi kelongelokumwe.

C.Nambuli dhaMakili
Windhoek

RUDOLF BAHM

Omupangeli gwootundi MOSHAKATI

Mpaka otandi tseyithile aayakulwa yetu ayehe, kutya iilonga yokupangela ootundi, okulanditha po oompe nokwoopaleka ndhoka dha teka, okutula ko omakende nuumanya, itatu yi longele we metungo JAMAICA INN.

Ngashingeyi otu li mpaka mOshakati metungo lya ENOK (BBK), mpeya hapa kala pwa thikama aluhe omaloli goeskilima (Roomys). Shika otashi ti elalakano mpaka oku ku etela eyakulo ndika popepilela, waaha pumbwe we okufala nenge okutuma ootundi dhoye kUushimba.

Ohatu landitha wo ootundi oonkulu kondando yi li hwepo, onkene tu talela po ngele to piti pOshakati.

We are the Champions



**Meat and poultry products
for energy and strength**



CHAMPION

PRODUCED BY HARTLIEF

ADFATORY WINDHOEK

Emanguluko lyoonkwatwa Iya tokelwa iiwike iyali

Ngashingeyi iiwike iyali ya pita oonkwatwa dhopolotika ndhoka dha dhigininwa ku SA, sho inaadhi mangelulwa natango. Ethimbo lyokatokolitho olyu utha oonkwatwa adhihe dhopolotika dhi kale dha mangeluka petameko IyaJuli.

Omusamane Louis Pienaar, ota thiminike SWAPO a mangelule tango oondaadhi adhihe ndhoka dha kala dha dhigininwa muAngola. Oonkwatwa 153 odha thika nale mOvenduka, ashike SA ota ti, kutya oku na natango oye-ndjiyendji. Omumvo 1985, Swapo okwa popile a dhiginina oondaadhi dha SA dhi vule 100.

Kombinga ye, SA okwa zimina ashike e na oonkwatwa dhi thike po 30, nonando omusholondondo gwomadhina goonkwatwa dhe, ohagu holoka miifo gu vule mpoka. Ombelewa yOmukwetu oya pewa omadhina gamwe kaakwazimo yoonkwatwa nenge ga za miifo yomoshilongo ngaashi taga landula.

RUFUS AMUKUHU (44) Nakayale 18.9.1978
SIMEON AMWIIMBI (75), Onankali 12.1987
ERASTUS NDEIFEKA (48) Nakayale 18.9.1978
FESTUS ADOLF, Kongo 9.7.1988
FESTUS SAMUEL, Kongo 2.1988
MIKKA GEORGE, Windhoek 26.10.1988
PAULUS HAFENI (20) Onanghwe 16.12.1980
NDILIMEKE ALUTENI, Oukwanyama 7.8.1988
NATANAEEL NGHINAMWAAMI ?? ??
(N) JASON ILEKA (15) Tshandi 14.7.1988

MUTUMBULWA AMUKUHU (38) Nakayale 9.1978
FESTUS NAKAWA (56) Ontananga 10.1978
JOHN NAKAWA (50) Oniipa 31.5.1979
DAVID HAMUTETA, Okatana 13.10.1979
VILHO MATEUS NYAMBALI ?? 25.7.1980
MARCELLINUS IPINGE (35) Okatana 4.10.1980
MODESTUS IPINGE (30) Okatana 4.10.1980
ANDREAS KASHIKOLA, Elombe 27.11.1980

HAFENI SH. PAULUS, OHAUKILO 15.12.1980
FRANS KASHIPALEKWA, OHAUKILO 15.12.1980
JACOB P. SHIVUTE, ELIM 2.8.1988

TEOFILUS MATEUS, Elombe 27.11.1980
FILEMON KASITA IKELA (43), Oniipa 19.1.1981
KRISTOF IYAMBO SHIKONGO Ekamba 10.4.1981
SIMEON JOHANNES NEHOYA (40) Onyaanya 6.1981
AMUTENYA JOHANNES ASHIPALA Okatana 29.6.1981
MARKUS PAULUS, Oniipa 4.9.1985
RUBEN EDMUND, Eendobe 28.11.1986
ABNER SHIKESHO, Onimwandi 3.7.1987
AFUNDE NGHIYOLWA, Oshikuku 4.9.1987
FILIPPUS GIDEON, Ondonga 26.10.1987
KALEB PAULUS SHIKALE, Onawa 21.1.1977
LINUS MATONGO, Caprivi 1.1988
SIMEON NEHOYA, Omuntele 1979

SHETEKELA SHININGENI (24) Windhoek 11.7.1988
MARIA SHOONGELENI, (24) Oshakati ???
TYLVES KAHIMA ?? ??
HILJA KAULUMA, Oukwanyama 7.8.1988
JONAS KEMANYA, Oshakati 9.10.1988
JIMMY KWALA, ??? ???
FRACO (MANUVWALI) SHANINGWA Ombalantu 7.1988
MATIAS JOSEF, Omungwelume 5.8.1988
OSKAR MUHONGO NAILENGE, ??? ???
SADRATH MUPANDI, Omadano 10.4.1988
AINA NANGOMBE AMUNYELA, ??? ???
HENRY NGHEDE, Windhoek 29.1.1988
PAULUS NGHIPUNYA, Ohausholo 1.1988
PETRUS PAULUS (28), Ondangwa 10.3.1985
JOHANNES PROTASIUS ??? ???
KAMBATHA SHEYA, Windhoek 26.10.1988
ANNA SHIKONGO, Oshakati ???
PAULUS SHILULE, Omuulukila 20.1.1988

IMMANUEL KAMBANDA ??? 1979
NEEMA LASARUS ??? 1979
SAKARIA AKWAAKE (17) Onayena 1979
IMMANUEL HATUTALE (37) Ongenga 1.8.1987

Ndhindhilika: Ngoka wa tseyu gumwe gwaantu mbaka, kutya okwa mangeluka, onawa u tseyithile ombelewa yOmukwetu mbala. Tangi kekwaitho.

NAYE KATU MU LWETE

Ongame Shikongo Adam nomtukulukadhi gwandje Sofia Fillemon momukunda Ohyelelo mOkaku mOndonga. Otwa kanitha omunona gwetu Sakaria (Shikongo) Lugambo; omulongi posikola Oshikondiilongo megongalo IyaKaku.

Okwa kuthilwe posikola ndjoka 29-1-1980, kaalumentu ye li kolupadhi, pakutala omakakunya. Okwa za po notbasikela kwa mangelwa omambo ge. Esiku Iya landula okwa monika pethimbo lyongula ta londekwa memboofola nombasikela ye, komakakunya tuu ngoka.

Nakumona shino, okakona ku uka kosikola tuu ndjoka ya tumbulwa pombanda. Emboofola olyu uka kOndangwa. Ipatululo yondjugo ye okwa ya wo nayo. Okwa valwa 1950. Okuza mpono okwa kana sigo onena.

Tangi sho tamu shi tula mOmukwetu.

Sikongo Adam
Onyelelo - Okaku

EKWAFO LAKALUNGA

Hamushanga wOmukwetu, kwafe nge u tulile nge omakundo ange moshifo shOmukwetu. Onda hala ndi kunde oshiwana shaNamibia oshiholike ngashi tashi shikula apa:

Eimbilo lomolweendo lokuya kouyapuki. Omesho ange ohandi a yelulile keenhunda, ekwafo mbela otali dile nge peni? Ekwafo lange otali di kOmweene, ou omushiti weulu nedu. Ye ita efa omhadi yoye i fenungite.

Omwaameni woye iha kofa, tala omufita ou waIsrael iha kumuka. Ye iha fi eemhofi. Omweene oye omwaameni woye, Omweene oye omudile woye wokolulyo loye. Etango opo li he ku twile omutenya, ile ohani oufiku. Omweene ohe ku amene kowii aushe. Oha amene omwenyo woye. Omweene ota amene epito loye neuyemo loye, okudja nena fiyo alushe. Amen.

Olo ekundo lange koshiwana oshiholike. Unene kovamwameme nootate ava mwa li mwa fiya po oshilongo ndele paafa kefilonghenda laKalunga okwe va kwafa, eshi va alukila medu lawo ehohike.

Immanuel P. Shaanika
Mariental

OMUKWETU

Oye oshifo shOngeliki Onkwaevangeli paLuther yomu SWA/NAMIBIA.

Ohashi nyanyangidhwa mOshinyanyangidho shOngeliki mOniipa.

Omukuluntu gwoshifo omumbisofi Kleopas Dumeni.

Amushanga gwoshifo omusita Sebulon Ekanjo.

Ondando yOmukwetu muNamibia naSouth Africa R8,00 komumvo.

Pondje yaNamibia na SA R20,00 komumvo. Ndjika oyo wo ondando yoshifo shomondhila.

Oondando nomambesitelo agehe naga tumwe kOmukwetu, Oniipa, P/Bag 2013, Ondangwa 9000, N A M I B I A.

ELOC PRINTING PRESS
PRIVATE BAG 2013, TEL. (06762) 11, TELEX 56-3257 WK
SWA/NAMIBIA



Momagongalo gamwe etaambo Iyaagaluki, ohali longekidhwa pamukalo gwesimaneko enene. Methano ndika otapu ningwa etaambo megongalo IyaTshikuku, mUukwambi.