

OMUKWETU



50c

No. 8

ISBN 0-620-06828-0

ETUNDA, Ongandjera: Omukulupe kuku Helvi Kondombolo ngoka a gwanitha nuumvo petameko omimvo 90, okwa ti egalikano lye esiku kehe, Omuwa gwomwenyo a topolele iigwana ayihe ombili. Kuku gwaKandombolo shono okwe shi popi 15.4.89 sho a talelwa po komumbisofi K.Dumeni megumbo lye, momukunda etunda, popepi nOkahao.

GwaKandombolo, oyina yomupresidende gwa-SWAPO omusamane Sam Nujoma. Kolutu ota monika a fa a kola natango ihe ota lili uuwehame womutse mboka omumvo gwa yi (1988) we mu falele sigo okiipangelo koSoomi. Ota ti uuwehame owe mu zile momangwandjagulo ngoka he ga ningilwa komakakunya sho

OHANDI GALIKANENE ALUHE OMBILI YIIGWANA: GWAKONDOMBOLO

tage mu hindile pegumbo lye. Okwe ga lombwele kutya: "Amwandje, aantu ohaa popi, ihaa thikile owala taa dhenge," osho a kala ta hingi omikalo nkene omakakunya hage mu adha.

Manga e li kOsoomi, okwa mono ompito yokutsakanena nomwana Nujoma, oshikando shotanga muule womimvo konyala 30, Nujoma sho a thigi po oshilongo nokwa tameke ekondjo lye-manguluko.

Pamwe nomumbisofi molweendo nduka, omwa li wo omutumwa omukulu mpaka, omusamane Olle Eriksson. Tate Eriksson okwa hiywa kO-

Ombelewa yaUntag ya egululwa mOngwediva

Egumbo lyaakulupe megongalo lyaNgwediva olya thithwa ngashingeyi ketanga lyombili lya UN (Untag) okuyakulila mo oshigwana okutameka oshiwike sha yi. Ehala ndyoka otali ka kala limwe lyomomahala omashona gaUntag mpoka oshigwana tashi vulu okuthika pwaa na uumbanda wetanga lya SA.

mushanga omukuluntu pombelewa yOngeleki

ya ELCIN, omusita Absalom Hasheela okuza moonkundathana dhegandjo lyehala lyOngeleki meyakulo lyetanga lya UN, okwa ti, oshigwana oshe egulukilwa kompito ya simana ngashingeyi okuthika paayakuli mboka pwaa na uumbanda washa.

Omusamane Edward Omotoso, omunambelewa omukuluntu miinima yopapolotika, metanga lya UN, okwa zile kOvenduka owina 12.3.1989 omolwomalongekidho gekwatathano lyaUntag

Tala kep. 6



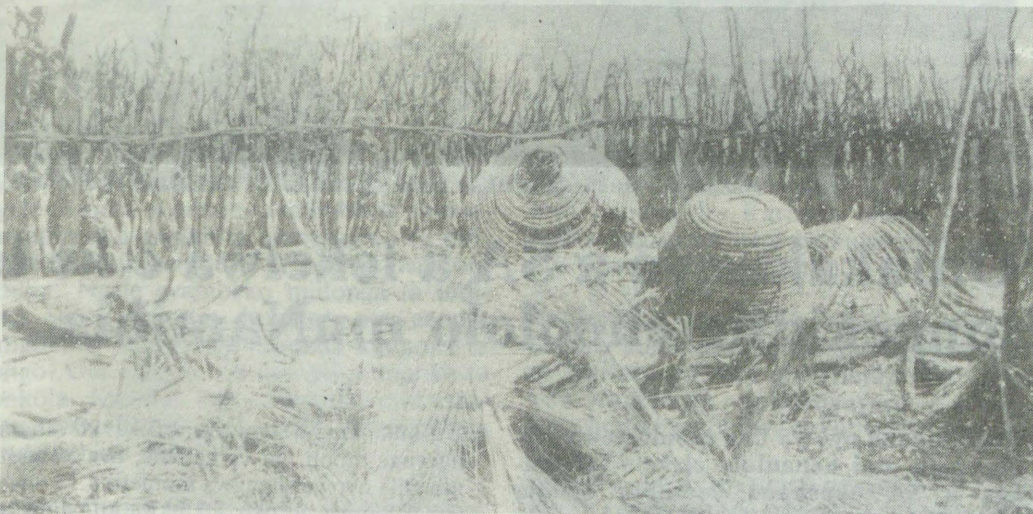
Kuku Helvi Kondombolo okwa tsakanitha nuumvo omimvo 90 muFebuluali nenge Maalitsa. "Aniwa onda valwa petoolo lyoombe, osho a hokololelwa kuhe. Ethano olya thanekwa 1988 kuAmushanga gwOmukwetu.

ngeleki yaELCIN nuumvo e ye a kwathe Ongeleki ndjika melongikitho lyokutaamba Aanamibia mboka taa zi pondje.

Kuku gwaKondo, okwa li a hokwa okupula oyendji yomaatumwa mboka ya longo muNamibia noya tseyathana shito, nenge mboka ya kala pamwe pethimbo ndyoka kuku a li muSoomi. Ota pula oogumwe noogumwe komadhina nomusamane Eriksson ota yamukula. Oyendji yomaatumwa mboka nayo aakulupe ngashingeyi.

Kombinga yiita mbyoka ya tsikila natango muNamibia omukulupe okwa ti ye oha galikana esiku kehe Omuwa gwomwenyo a yeluthe iikaha ye kombanda yiigwana ayihe e yi topolele ombili ye. "Ondi inekela shono Kalunga ote ke shi tu ningila," osho a ti ye ta menyemo ta ligamene koshipala shomumbisofi.

Sebulon Ekandjo



Pomahala mpoka pwa kondjelwa, omagumbo gopopepi oga hanagulwa po ngeyi ketanga lyegameno pamwe nomapya gago. Egumbo ndika olyomOndeshifilwa

APILILI 30, 1989

APILILI 30, 1989

SA na DTA

Etopolo lyiikulya ndyoka lya kala tali ningwa komakakunya momikunda nokuwendela oshigwana omiti dhaa shi-wike, kutya odhashike, osho wo okulonda komitise dhomakaspeli tagi igidha edhimitanathanopo noshigwana, otashi vulika kwa li ku na aakwashigwana yamwe ya tala kutya mbyoka iilonga ya li tayi longwa tayi zi mohole.

Osho wo iigongi yo DTA sho ya kala tayi dhingoloka nOwambo, okuza petameko lyomumvo nguka, yamwe mboka ya yile kiigongi mbyoka noya pulakene iipopiwa yayo, poompito dhimwe iipopiwa mbyoka tayi sheke nokuli SA notayi mu pangula aniwa sho e li moNamibia, ngiika aapulakeni yamwe oya li ya hongoloka noyu uvite kutya DTA ongundu ya humbata uwanawa woshigwana.

Okuza Apilili, oshigwana ngiika sha yeelwa tuu ihe kolupe lwa SA na DTA ye, ndoka lwa li lwa dhimeya koho yoowenda dhoshali, etopolo lyomau-sila, ehawaleko lyiikulya nomauleke. Koombinga adhihe pethimbo ndika, mOwambo, oKavango sigo Caprivi, otaku zi omalilagano omolwetanga lya SA tali lyata po omagumbo nomapya. Iilyo mbyoka ya londa momakaspeli ngoka iilyo yo DTA.

Oshigwana otashi keme komadhengo sho tashi thiminikwa okuganeka mombanda endhindhiliko lya DTA, manga iikutu yasho tayi tuulwa po notayi fikwa po oshityani. Oonakuni-nga ngeyi iilyo yo DTA ndjoka yamwe yomoshigwana haa ka ngundumana piigongi yayo, opo ya lye yo ya nwe shono taa pewa ngaashi taa ti, "oshali".

Mpoka opwa li tuu oshali? Ou shi SA pamwe no DTA ye, oya posipala ngaaka ya kanithile iimaliwa yawo oyindji ngaaka moku ku pa oshali? Owa li to pindike iipindi waa yi lwete, ihe mukweni oku yi lwete. Nando ino pulwa ofuto esiku ndyoka, omugandji oku shi shi uuna to ka futa, yimwe yomofuto yi lwetike oyo omadhengo, ehanagulopo lyiikulya yoye nefikopo lyomaliko. Mupyamunene shoka otashi ningwa ihe mwa kwatelelwa naamboka ihaa taamba "oshali" yawo.

Natango oshigwana otashi koleke tuu eitedhululo lyomakakunya ngaashi yamwe ya kala haa popi, kutya "oga fa ngaa gi itedhulula". Omuwambo oha ti: "Wa pukile u tila okuti." Owa manguluka natango okutsikila nokugandja eyambidhidho lyoye ko DTA, ihe dhimbulukwa wo emanya edhigu ndyoka wa mangela oshigwana mo-thingo yasho oku shi kaleka melelo lya SA na DTA gwe.

Etalelopo lyaakwiita ya SA momahala gOngeleki

Oshiwike oshitiyali shaApilili, osha kala shomainyengo ogendji getanga lya SA momahala gOngeleki momagongalo. Omapulo gwaakwiita apehe mpoka ya talele po, opo aniwa ya pewe aakwiita ya SWAPO nenge ya lombwelwe mpoka ye li ye ya thindikile aniwa ketanga lyombili lya UN, osha pendutha omalimbililo ogendji maapulakeni. Omukalo ngoka gwa longithwa kaakwiita, omumbisofi Kleopas Dumeni, okwe gu tala oluhindo kamahala gOngeleki nokeuvathano lya Mount Etjo.

Pofaalama yedhina Mount Etjo, popepi nO-tjiwarongo, opwa ningilwe euvathano pokati kaAngola, SA naCuba osho wo Amerika naRusland oya li po aapulakeni. Meuvathano omwa li mwa indilwa aakwiita ya SWAPO mboka ya kala momalugodhi na SA okutameka Apilili, ya shune mbala kuAngola.

Euvathano olya dhike omahala gaheyali kongamba yaNamibia naAngola mpoka aakwiita yaSWAPO ye na okwiigandja rikupitithwa andola ketanga lyaUntag. Omahala gOngeleki momagongalo nago oga li ga pewa oshimpwiyu andola pauvathano ndyoka, opo ga taambe aamati yaSWAPO noye ya gandje ketanga lyombili lyaUntag. Okankolo naKongo, ogo gamwe ga li ga tumbulwa komadhina.

Oshimpwiyu shoka shokomagongalo, osha fa osho sha pendutha okatalekonawa momakakunya, sho ga monika ga langela omaha-

la gOngeleki ngaashi mEpembe, no Tshandi mUukwaluudhi. Omakakunya oga holokele wo mOshaango; mOkahao; mElim; mEngela; mOlukonda; mOniipa; nOluteyi.

Omainyengo ga SA momahala gOngeleki, piyelo yokongamba mpoka pu na Untag nomomidhingoloko adhihe dhositopolwa, ogo ga dhigupaleke emanguluko lyaakwiita ya SWAPO, okulongitha ompito ndjoka, osho aawilikingeleki ya tala oshinima.

Aakwiita yaSWAPO yane mboka sigo oompoka ayeke ya kongele ompito ndjoka momagongalo okukwatakanitha naUntag, yaali yomuyo oye ehamekwa momalugodhi noya kala taa mono epango mOshakati.

Omumbisofi Dumeni okwe endele nokwa talele ye mwene omahala gamwe ngoka ga dhingolokwa nago komakakunya. Omumbisofi okwa li wo a talelapo omahala gamwe gokongamba piyele mpoka aamati yaSWAPO yu uthilwa okupitila, ngele taa igandja.

Pomahala ogendji omuntu oto thikile tango metanga lya SA ndyoka tali konakona tango manga omuntu inoo thika petanga lyaUntag, naashika pamwe nokangendjo kuusiku hoka taki imbi SWAPO i igandje kuUntag, itashi gandja omukumo gwokulongitha ompito ndyoka, osho omumbisofi a keme omukalo gwetonatelo lyopiyelelo.

Sebulon Ekandjo



Omakakunya a SA a lekelwa e ke lilongekidile ehoololo muNamibia

Onghundana oyo ya fika mombelewa yO-mukwetu otai hepaulula elekelo lomatan-nga a SA okushuna keumbo, okudja 13.5.1989 e ke lilongekidile ehoololo olo twa teelega neudo muNovomba. Elekelo otaku tiwa ola ningwa pamushangwa wombapila kuKolonela F.A.Botes womatanga ovatilyaane.

Oinima inene yokulimbilika Ovanamibia ngeenge mboli itai va halwifa, oya leshwa mombapila oyo ya shangwa momafiku 13 ohani ei. Omakakunya oo oku SA okwa kumaidwa neenghono a kufe oshitukulwa mehoololo eli tali longekidwa paife kOiwanahangano.

Tala kep. 9

Osoondaha yeti 30 . 4 . 1989, oya nyolwa mOndjalulamasiku yetu, Osoondaha onti - 5 ya landula Eyumuko, ihe Osoondaha ndjika oyi na ehala lyayo lyowina momu-mvongeleki. Osoondaha ndjoka oyegalikano (Rogate). Osoondaha ndjika oyi li aluhe pokati kOsoondaha dha landula eyumuko nEsiku lyElondo lyOmukulili. Osoondaha ndjika kayi shi Esiku lyegalikano. Omasiku yegalikano ogi ili noye li gane momu-mvongeleki aguhe. Otekisti yOsoondaha yEgalikano ohayi popi aluhe kombinga yegalikano.

Mosoondaha yegalikano omagongalo oga kala haga tsu oongolo koshipala shaKalunga opo ga holole oompumbwe dhago koshipala she. Otekisti ya uthilwa Osoondaha ndjika, oya kuthwa mu Luk. 11 : 1 - 13 noshikalimo shoohapu ndhika osho egalikano.

Aalóngwa oya pula Jesus e ya longwe okugalikana nokwe ya longo egalikano lya-Tate yetu megulu nokonima okwe ya kumagidhile uudhiginini noohedhi dhokugalikana.

Egalikano olyo oonkundathana oondjapuki dhopokati komuntu naKalunga. Mokugalikana omuntu ota pulwa okwiipula pamwenyo nosho wo palutu, opo a mone ekwatathano naKalunga. Einekelo muKalunga, otali pumbiwa momuntu ngoka ta galikana, opo e shi ninge nomwenyo gwa kola nogwaa na etengauko.

Otekisti otayi tu longo kutya omuntu ngwiya a ka indila kuume ke oshikwiila, okwa dhiginine owala okwiindila kuume ke, nande kuume ke a kala ta kwatakata, inaa hala oku mu kwatha. Nguka okwa tsikile owala oku mu indila, oshoka oye i inekela ta vulu oku mu kwatha.

Uuna tatu galikana Kalunga, otwa ndhindhilike, kutya Kalunga okwi ithikamena nohe tu yamukula ethimbo ndyoka ta tala sha opala oku tu pa eyamukulo. Hasha one kutya ote tu yamukula mbala nenge hambala. Ohapu ondjapuki yaKalunga otayi tu kumagidha tu mu galikane twaa na ezimbuko. Tess. 5 : 17.

Aantu mboka ye na oomwenyo dhi inekela Kalunga, oku mu galikana olwindji, oshinima haye shi ningi nenyanyu, oshoka Kalunga oye He yawo. Kaku na omuvalwa ha limbililwa uuwanawa wahe. Oshinima shimwe Jesus ta longo aalanduli noohapu dhotekisti ndjika, osho uukwatya waKalunga koshipala shaalanduli ye. Kalunga omunambili, oshoka shoka ta indilwa, ote shi gandja shi li ngaashi shi li.

Ngele oti indilwa omvula, ote yi lokitha. Ngele okupita ekonakono ta indilwa, shaa omugalikani a gwanitha iilonga ye, ota piti. Ngele okwaaluka kuvu ta indilwa nena ota aludha. Ngele eyambeko miilonga ta indilwa, ote li gandja. Kalunga ota gandja kungoka ti indile. Ota monitha kungoka ta kongo. Ota egulula wo nombili kungoka ta konkola. Kalunga oye omuyyuki mokutamba omagalikano getu noita pingakanitha nande nehala lyetu.

Nando Kalunga oku li ngeyi, otatu pulwa omikalo dhoopalela Kalunga moku mu galikana. Omuyapostoli Jakob ota holola, kutya ope na okugalikana kumwe ihaaku pewa evamukulo kuKalunga. Okugalikana huka

EGALIKANO

okwo hoka kwa kankamekwa kuuhalu womuntu "One ohamu indile, ne itamu mono sha, oshoka ohamu indile nayi mu yi dhanithile muhalu weni." Jak. 4 : 3

Kalunga ita yamukula nande egalikano lya nwehwamo kombepo yokahalu noyokwiihola. Ombepo ya tya ngeyi, itayi opalele omwiitaali meendathano lye naKalunga. MuGetsemene Jesus okwa yanda emakelo ndika sho a ti, hahalo lyandje li gwanithwe, ihe ehala lyoye. Mark . 14 : 36. Koshipala shaKalunga omugalikani gwashili ita yi ko nokahalu, ihe onombepo ndjoka yo opalela Kalunga.

Tse aantu aankundi, Kalunga okwe tu pa Omwana Jesus Kristus oye a kale omupokati ketu naye. Otu na okutaamba Jesus meitaalo, opo muye tu mone ombepo ndjoka yo opalela okugalikana Kalunga. Jesus okwa kumagidha aalongwa ye ya kale muye nomoohapu dhe, opo shaashoka taa indile kuKalunga, otaye shi pewa. Joh . 15 : 7 , 16

Kalunga ye mwene omuyyuki nomuntu ngoka te mu galikana e na okukala omuyyuki, opo okugalikana kwe, ku mu opalele. MuPetrus lyotango 3 : 12 otaku tiwa: "Oshoka omeho gOmuwa oga taalela aayyuki, nomakutsi ge oge endekela komagalikano gawo, ihe oshipala shOmuwa sha tsa ondumbo naamboka haa longo uuwina." "

Omagalikano gomelongelokalunga ohaga hulithwa aluhe niitya mbika: Omolwomumwoye Jesus Kristus, tashi ti, otwe ku galikana medhina lyOmumwoye Jesus Kristus. Jesus Kristus oye twa pewa a yapule oomwenyo dhetu, ye a thikithe iitya yomagalikano getu kuKalunga Tate. Egalikano ndyoka inaali nwehwamo kombepo ya nika uulunde, otali opalele Kalunga.

Egalikano li li ngeyi, ohali galikanwa lya za komwenyo aguhe gwomugalikani. Egalikano ndika ohali indile iinima yo opalela

Jona 3 : 5 - 9

Ninivhe sirando sepangero lyosirongo saSiriya sa kere. Siriya posiruwu oso, somuprofeti Jona kwa kere yiso sirongo sononkondo mouzuni naunye. Yirugana yovaNinivhe kwa handukisire Karunga unene. Etokoro lyaKarunga kwa kere lyokuhanagurapo vantu womoNinivhe navenye.

Vaninivhe navenye kutunda komunona dogoro kumukurona, eyi va zuvhire etokoro lyaKarunga mokana komuprofeti Jona, kwa litezwirire nokuhuguvara Karunga. Kwa lidilikire nondya nokudwara nonsako.

Ano nohampa gosirongo mwene nage eyi ga zuvhire etokoro eli, nage kwa hutwire yikoverero nokudwara nonsako nokuhingira menoto. Age kwa geve mpango kosirongo sendi nasinye va lidilike nondya. Nelidiliko kapi lya tembe vantu velike, nye kwa nkenye

Luk. 11 : 1 - 13



Kalunga naantu ayehe nohali nyanyudha Kalunga. Mokugalikana omukriste kehe, ke na okupangelwa kombepo yokahalu noyokwiihola, oshoka ombepo ndjoka otayi geyitha Kalunga. "Kalunga oye Ombepo naamboka taye mu galikana, oyo ye na okugalikana mombepo nomoshili." Joh. 4 : 24

Mokugalikana omwiitaali oku na wo okugalikanena ooitaali ooyakwawo. Nomagalikano getu, otatu longo oshilonga shuudiakoni sho tatu fala ooyakwetu nomaudhigu gawo koshipala shaKalunga. Momagalikano getu, inamu kala owala omaindilo, ihe namu kale omahambeleo. Kalunga oha nyanyudhwa wo komahambeleo nokomapandulo getu. Uuna Kalunga te tu hololele uuwanawa we, tu panduleni nomwenyo aguhe.

Okugalikana okwo oshinakugwanithwa shopalongelokalunga komwiitaali. Otwe ku pewa tu ku ninge muuwike, mondunda nomomalongelokalunga. Otu na ano okukala twa tonata ethimbo kehe, opo tu dhiginine okulongela Kalunga ketu nokugalikana.

Onyalo mokugalikana otayi falitha omuntu momamakelo gomutondi. Jesus oku li pamwe natse omasiku agehe, sigo ehulilo lyuuyuni, onke tu ithaneni edhina lye noku mu inekela momagalikano getu.

E.Niinkoti

Tu dwareni nonsako

sinamwenyo oso sa kere mosirongo sendi.

Sitambo selidiliko kwa kere ngesi asi, Karunga mpamwe ta rundurura etokoro lyendi lyehandua, ga ha zonagura po sirongo novantu vaso. Ezuvha eli Apilili 1, ame kuna ku limona asi ezuvha olyo vaNamibia tatu hepa kudwara nonsako.

Ezuvha olyo Jona ana tu wizire noku tu retera etokoro lyaKarunga. Jona muprofeti gwaKarunga, ano muntu ogo ta vhuru kuretapo mbili ntene vantu va tambura mbudi zaKarunga ozo ana simbi. Yimo nina ku tara Untag moApilili 1, ngomuretipo mbili ntene ose vaNamibia tu tambura mbudi zombili ozo ana simbi, moku livhera konongolo detu noku litezurura. Ose nga tu kanderere mbili nemanguruko lyosirongo setu, nye kapi twa divire ezuvha nosiruwu oso tayi vhuru ku wiza.

Tala kep. 4

OM AUSAMA GONDJOKANA PE- THIMBO NDIKA

MOMUKWETU No.23/88 pepandja 4, omu na oshipopiwa shatate Mweutota kombinga yaasamane aahokani nkene ya hala ya ningilwe kaahokanwa yawo. Oshipopiwa shoye oshivanawa unene nosha hili aaleshi oyendji ye shi mane ko, ihe otashi vulika u ka mone wo oombilive dhe ku ukilila mwenemwene omolwasho, oshoka ou li konima yesiga, ku shi uupyu womulilo.

Ino puka shili kutya omukiintu oye ondjokana, osho wo owa nyema kombinga yuukodhi (mpono we u fatulula kondandalunde), ngele otau longithwa epuko. Ihe haaluhe ndishi naapehe pwa ndandwa aalumentu koothingo? Shono osha faathana owala nuuna omuhokani ta yaha omuhokanwa gwe e ta si, omolwuukodhi.

Esiku lyehokanitho mongeleka, inaku tya: omuhokani nguka, nenge omuhokanwa nguka, ihe okwa tiwa: 'aahokanathani mbaka.' Osho shi li mondjokana yopakriste, ihe moshipopiwa shoye omu na aluhe "twe mu hokana", we shi nkondopaleka. Tashi ti omadhiladhilo goye oge li mpono, kutya uukoloni mboka tau kondjithwa, nau ze owala kombinga, ihe moondjoka-

na nau kalele mo aakiintu mbono ya hokanwa. Omulandu gwopakriste moondjokana dhOngeleki, nagu ze po ndishi?

Tse aakulukadhi otu shi nale kutya okwa tiwa mOmbimbeli natu vulike, nohatu shi landula nokuli, oshoka ohole ndji to pula momuhokanwa opo yi li, oshoka ando ke li pungweye, sigo onena. Omolwoku ku hola e li po. Oku ku hole. Oondjokana dhoshili ohole. Ando hahole, ando ku mu na. Eidhidhimiko omuhokanwa oku li na olindji. Ando okwa li ha li ende lya shangwa ando oto vulwa oku li lesa.

Molweidhidhimiko omuhokanwa gwoye oku li po, ta pepelitha nalyo ohole ndjoka e na po yaa dhimeye, omolweihumbato nayi lyomuhokani gwe koombinga odhindji. Ombili kombanda yevi opendji oyi li aluhe mpoka pu na eidhidhimiko nohole. Hasho? Ayihe mbika iyali otayi kwatele po ombili yomuhokanwa gwoye ngele itayi pukagulwa kiikungulu yomuhokani gwe pailonga nopandjenda dhe dhontumba nenge dhongandi.

Mbika unene oyo etindi lyondjokana. Oyo wo yimwe yomaahokani ya hala aahokanwa yawo ya kale ye na, ngaashi tashi holoka momaiuvo gomushangi, kape na aanandjokana, ope na owala aahokanwa, ano aapika.

Ihe oshi li wo ngeyi, kutya omuhokani na kale e hole wo omuhokanwa gwe pwaa na omambembeleko niineya. Ohole yomuhokanwa otayi tema ngiini nuupu, ngele omuhokani okwe mu ethele owala megumbo ngawo, ye kee na iimaliwa, oshoka oyo tayi longo pethimbo ndika, noyokufalitha aantu mboka ya kala megumbo mono koshipangelo ote ke yi indila?

Ye omuhokani oha yi ngaa kiilonga kehe esiku, ye te etelele okano omolwiineya. Opo ndi yoge ngaye ndi ku kangulile nawa, ote longitha shike ndaa na iimaliwa? Omeya ageke ihaga yelege iikutu. Ou hole omuhokanwa gwoye ngawo?

Omuhokani ota tuku nokudhenga nokusheka ngaashi a hala omuhokanwa oomvula noomvula nadhi piti, omukolonyekwa i idhidhimika ngaa. Ou shi okwe shi panda? Eidhidhimiko owala. Ihe omuhokani **iti idhidhimike nando** kaa tuke ye kaa dhenge omuhokanwa gwe. Molweidhidhimiko, egumbo lyoye (oshoka olyomuhokanwa gwowala kali shi lyaanandjokana) opo li li sigo onena. Epya ohali longwa sigo onena. Egumbo olyoye, ihe mulyo oho ile mo owala iikutu ya yela mu ka tyapule oshimwenyo nooSiili naKelau manga Nepeti ta weguka ngaa noongaga dhiikutu yoye. Ho ningi gane sigo gahamano waa mo omolweidhidhimiko nohole.

Megumbo ote si omukaga, omanga to ningi o'braavleis' palwe dhomasiku oogaali. Nii ku pule u fale ndje pokuma, iho ende naakulukadhi, ngoye u na ooSiili nooKelau, nayo oya vala wo naalumentu aakweni nokuli.

Ayihe mbika omolweidhidhimiko nohole. Molweidhidhimiko nohole nombili ndjono ndi na, oti ka indila okayuhwa pumushiinda ndi ku telekele, u elele sho ino etelela nando onduku yewawa lyondjuhwa, ndhoka mwa tokelwa tamu li kopaa ni nenge kohotela. Oyo ohole nombili yoye omuhokani ndjono komuhokanwa gwoye?

Longathaneni, pukululathaneni, osho Ombimbeli tayi ti. Nenge aahokani oya yoololwa mo maalombwelwa yOmbimbeli pahapu ndhino? Ngele omuhokanwa gwoye ou wete inaa teleka iikulya iiwanawa, hato mu longo! Eputuko lyoye nehumokomeho lyoye, ou li ulukile wo nomuhokanwa gwoye u mu hole sho we mu hokana. Aluhe okokefe owala to ka lya kuSelma? Selma ona ka hokanathana ihe nomulumentu omukweni, oko ngaa to kala to ka lya hono?

Owa ti owa hala aakiintu mboka inaa ya moondjokana ya ye mo. Osho, ihe otaa yi mo ngiini, ngele ngweye omuhokani owe ya kodhilila ayehe omilongo ndatu? Shaa pwi inyenge omulumentu omukweni, oongonyo nenge oomwele. Aalumentu inaa hokana omwe ya dhigupalela ne aahokani.

Mwa hokanithwa opendjipendji pamukalo shaangoka. Ohoni ndjoka hamu tu sile naandjoka mwe tu sitha ngawo oyini? Peni mboka wo ya hala aahokanwa yawo ompito ngaashi ne. Aahokani omu na aakiintu oyendji unene. Ihe iilonga yoyendji katu yi lwete, oyaahokanwa owala mboka ya tulwa kondungu yelaka.

Aakiintu yeni mbono otaa ke mu longela uunake? Okukala owala nayo, nena ogwoye, ngula ogwamukweni, osho eidhidhimiko nohole sho-

Tala kep.9

Aakiintu ya simanekelwa eyakulo lyawo mu ELCIN



Numvo muMaalitsa, Ehangano lyaakiintu mOngeleki ya ELCIN oya li olya ningile aakiintu aalongi mboka ya longo ethimbo ele oshituthi shesimaneko mOngwediva. Meme Veronika Shidinge, oye gumwe gwawo. Methano ndika ota minike nomulongwa gwe, omusita Julius Mtuleni. Mtuleni mwene ohe shi tala kutya ohokwe yosikola okwe yi mono mumeme Veronika sho ha piti aluhe pegumbo lyawo taka longa.

Dha zi kep. 3

Ntaantani tu na nawanawa siruwo nezuvha, yipo siruwo esi nezuvha eli yisike mo, mo nawanawa tu dwareni nonsako nokulidilika nondya. Karunga kwa rundurwire etokoro lyokuzonagurapo vaNinivhe, morwa kulitezurura kwawo mokulidilika nondya noku-dwara nonsako yimo nga rooro Karunga nontaantani ta vthuru kurundurura etokoro lyendi yipo a tu pe ehoroworo lyombili nemanguruko lyerago lyosirongo setu Namibia ntene nose tatu litezurura noku-dwara nonsako nokulidilika nondya.

Diworokeni asi ntene tu litura mo sili

melitezururo eli nelidiliko lyonondya yosiri Karunga gwetu tatu fire nkenda. Vasita vaELCIN, diworokeni siruwo sosigongi seni sovasita mongereka nazinye somo 1989 moOngwediva, apa mwa dililire nokukandenderera morwankaro zosirongo setu. Sikureni nawa asi yinke yinahoroka mehistolli lyosirongo setu kutunda ezuvha dogoro naina.

Esi si tu twe mukumo asi nani elituro mo lyetu mokulidilika nokukanderera Karunga ku yi zuvha. Tani rugurura mo, tu dwareni nonsako.

**Johannes Sindano
Nkarapamwe**

Okahokololo ka leshulula

Onda lesa uuhokololo tau nyanyudha miifo yOmukwetu yaKotoba sigo Novamba 1988, mboka tau popi egaluko lyAanamibia muupongekwa. Uuhokololo uuwanawa shili okupulakenwa.

Kehe gumwe ondi wete kutya okwa hala ayehe ya galuke ngaashi ya yile. Okahokololo kamwe oka holoka moshifo 15 Nov. No. 21 Ep. 6, hoka taka popi omumati omugundjuka ta tseyithile aakuluntu ye kutya ote ya kegumbo konima yiita. Okahokololo hano ngele owe ka lesa to dhiladhila, oto mono mbala kutya oka hala okutya ngiini.

Ka leshululula natango, e to tala edhiladhilo lyako. Oka hala okutya ngeyi: Otake tu londodha kutya natu taambe ko Aanamibia mboka taa galuka ngaashi ya yile. Ongaashi naanaa taye tu adha haasho ye tu thigile. Inandi hala okundjandjukununa, ihe onda hala omuleshi omukwetu u leshulule okapopiwa hoka ka holoka moshifo sha tetekele.

Omuleshi omukweni
Ketu kokuushimba
London

Natango ou na ompito yokunyolotha oshifo shoye. Tuma ashike mbala edhina lyouye nondjukithi ya yela.

Natu ninge shike kwaava ve tu shilila popepi nemanguluko?

Epulo eli ota li limwe lomoipopiwa moshongalele shOvanamibia aveshe efiku letulomoiilonga lokatokolifo 435 kOiwanahangano mu Apilili 1, 1989. Oshongalele eshi sha kula mOnamibia aishe osha ningilwa ponhele oyo i li popepi nofikola A. Shipena mOvenduka.

Umwe womovakundaneki moshongalele osho okwa li nekumaido koshiwana kutya ovili oya denga aishe pamwe nokatenda kayo eshi okatokolifo 435 ka ya moilonga efiku olo. Okwa ti eshi ka ya moilonga nena, oko taka yandja omukumo mOvanamibia aveshe, kutya Namibia otali manguluka.

Okwa yelifa kutya okudja efiku olo, ope na oudjuu muhapu mokweenda twa finda kemarguluko. Ovanambia ove li moshifeta sha kula omo kwa teelwa edalo lokaana (emanguluko loshilongo). Okudja nena oku na okafimbo kaxupi, oku ka shakaneka oshiwana shetu osho sha li moupongekwa, she ke tu kongela emanguluko.

Mokuhena omalimbililo kwaye, omupopi okwa yelifa kutya otatu ke va shakaneka nokuhambelala (ongondema ya dal'onghadi). Ope na yo oluhodi kwaavo va kanifila eemwenyo davo mekondjo ndele ohatu hafe eshi ve tu ehenifa memanguluko.

Omumamibia ou na okuninga shike kovaetimbi-li ava, noto ningi shike koludalo olo le ku eta pondobe yomeva apa? Eshi oshinima sha fimana mondjokonona yaNamibia alishe. Okwa ti ava otwe va fimaneka noku va pandulila ohole yoshiwana shavo.

Okwa indila keshe Omumamibia naye moikololo aishe yaNamibia, okukonga nokulonga ovo va pukifwa, opo va alukile koshiwana. Okwa ti ngeenge ito shi ningi ove ou we va tala, po ope na ovo ve tu etela onghalo iwa, otave ke tu pa etimba, hamOnamibia amuke ndelenee omuAfrika alishe. Okwa twikila kutya longafaneni neendunge adishe. Ke va lombweleni oSWAPO yaNamibia, opo va alukile kongudu yemangululo loshiwana. Keshe umwe na shiive kutya osho

Oshe tu kanithila uunona wetu: Omukwaniilwa Taapopi

Ezimino lyaUntag opo oBatalion 101 yi shune miilonga noyi ka koleke etanga lyo-Kufuta (Koevoet), ndyoka tali ithanwa aapolosi, oshe tu kanithila uunona wetu no-shetu ehameka koomwenyo, osha li sha tumbulwa komukwaniilwa gUukwaluudhi, Josia Shikongo shaTaapopi mombala ye eti 15.4.1989.

MUukwaluudhi omwa li mwa ningilwa omalugodhi omanene petameko lyomwedhi nguka nokalo oya li tayi nayipala. Omolwonkalo ndjoka, omukwaniilwa Taapopi okwa ti, okwa li i ithana omalenga goshilongo she ya kundathane onkalo ndjoka.

“Onda li nda tsuwa omukumo sho nda pulakene momakana gomalenga ngoka ga zi koombinga noombinga sho ga holola, kutya aamati oye ya lombwele nkene yo inaa endela olugodhi, osho omukwaniilwa a hokolola. Okwa gwedha ko kutya, iita nando ya li ya pimbila, onkalo otayi ende tayi shuna pevi. Nonando ya kanitha “uunona wetu” momalugodhi ngoka Untag kwa li ta vulu okukelele nenge okungambeka shaa ningwe, mboka ya thigala po, Kalunga ota vulu oku ya wilika natango miilonga yawo.

Moshinima sheigandjo lyaamati yaSWAPO, omukwaniilwa okwa holola omadhiladhilo ngoka tagi inyenge maantu yoshilongo she, kutya oye na uumbanda okugandja aamati ketanga lyaUntag, oshoka oyo lya zimine omakunya ngoka ga zile miilonga ga shune mo ishewe netiko lyombinzi li tsikile.

Omukwaniilwa Taapopi ngoka edhina lye lya leshwa mombapila yomusholondondo gwomadhina gaamboka ye na aniwa okudhipagwa ku SA, okwe shi ulike puuyebele kutya yo mUukwaluudhi oya kala ye shi yematela sho ya kundana Omukalelipo gwowina gwa UN, a gandja ezimino ku SA a longitha oBatalion 101, omukalo ngono ngaashingeyi gwa ningi uupitilo wa SA okulongitha omatanga ge agehe ngoka a hala.

Omukwaniilwa okwa yuulukwa euvathano lyetulopo lyomatati li dhigininwe ando koongundu adhihe, unene ku SA ngoka omatanga ge taga inyenge shaampoka, opo iilonga yokatokolitho yi tsikile nombili.

Sebulon Ekandjo



Omukwaniilwa Taapopi a kuutumba mombala ye, pamwe nomumbisofi Dumeni, taa kundathana onkalo yoshilongo pethimbo lyiita

sha eta emanguluko laNamibia, ongudu yoSWAPO.

Okwa shiivifila oshiwana kutya oSWAPO oya dengifa okakulumbwati, oko ka denga omuto-ndi ndee ta tu ongolo ta ti, “ohandi shuna kOkakamasha.” Natango olwoodi inali xula, tu kondjeni fiyo ometokolo laxuuninwa okuya mehoololo.

Okwa kumaida Omumamibia kutya, ino nyengwa koshipu. Vakweni ova tokola okufya, opo u mone emanguluko. Vamwe ova lemana nove na oilyo inai lixwa po, fimbo ove wa nangala tolofa. Pife owa pewa ashike opena, opo u ka

hoolole ou u wete kutya ote ku pe ombili moshilongo. “Inamu nyengwa keshaino lopena, oshe-shi omesho eni okwe mu pa nale kutya, SWAPO oye omuholimbili.”

Okwa xulifa oshipopiwa eshi ngaha: “Ava mwa kala tamu anyene okudja mounyenywe wa SA, owo a kala te mu hekifa ominghaka, opo mu ka pukife oshiwana sheni, ileni kongudu yaSwapo, otai mu tambula. Otwa pumbwa elongelokumwe, opo oludalo letu olo le tu eta popepi nemanguluko, li uye tali lishiti li udite onhwa eshi oshilongo sha tungwa kovanyasha,” osho a ti.

H. Taati Kanana



Etanga lyaUntag olya taamba omukwiita gwa SWAPO omutitano miikaha yOngeleki opo a taagulukithwe ongamba yaAngola. Methano ndika omumati ota monika tá katuka ta ka londa moshihauto shaUntag. Okwa li e ehamekelwa momalugodhi

nOngeleki moshitopolwa shOwambo. Okwa ti, kutya ombelewa yawo otyai ningi ashihe tayi vulu okwoopaleka ekwatathano ndyoka.

Muule wiiwike itatu okatokolitho sho ka ya miilonga, amatanga gaaposi naakwiita ya SA oga kala taga monika apehe momwaalu omunene naampoka Untag ta longele nosha pendutha cipulo enene maakwashigwana, kutya yo kaye na natango emanguluko okuholola uudhigu wawo kuUntag, ngaashi sha tegelelwa. "Ondi lwete ashike ngashingeyi Untag oye ta tonatelwa ku SA, peha lyokutonatela SA," osho omupopihapu gumwe a popi pOmukwetu.

Ethaneko lyomasiku giilonga ya Untag otali ti, kutya Untag shimpa tuu a thiki muNamibia, yo aakwiita ya SA otaa thigi po Namibia, naamboka taa thigala po, otaa ngambekelwa mookamba. Ethaneko ndyoka olya tokelwa okutulwa miilonga noshe etele oshigwana omalimbililo oge ndji, Untag nkene ta vulu okweeta po ombili monkalo ndjoka ya mbandamekwa ku SA ethimbo ele.

Ethaneko otali gandja omahala omulongo, moka tamu kala oombelewa oonene dhaUntag moshilongo ashihe nomahala omakwawo 36 moka tamu kala oombelewa oonshona. Oombelewa oonene odha dhiladhililwa:

MoRuacana; Opuwo; Ondangwa; Oshikango; Eenhana; Okankolo; Kongo; Nkurenkuru; Sesfontein; Kamanjab; Katima Mulilo; Outjo; Grootfontein; Tsumkwe; Okakarara; Omaruru; Karibib; Okahandja; Windhoek moKatutura nomoKomasdal; Rehoboth; Maltahöhe; Gibeon; Lideritz; Karasburg naOranjemund.

Etokelwo lyetanga lyombili okuthika muNamibia, osho wo omalugodhi ngoka ga tameke esiku okatokolitho ka tulwa miilonga, mbika oya mwetha mo noonkondo elunduluko lyomathaneko gomalandulathano ngoka ga li ga ningwa po. Ehala lyOngwediva inali kala nale melandulathano lyelongitho lyombelewa yaUntag, ihe ompumbwe ya dhimbululwa miilonga.

Etanga lyaUntag inali tokelwa ashike okuthika muNamibia, ihe naamboka ya thiki oya tameke

ulonga yawo nompumbwe onene yiyenditho nomagumbo noombelewa dhokulongela mo. Ongeleki oyu uvaneke okukwatha mpoka tayi vulu moshinima shika.

Sebulon Ekandjo



Oshihauto shaavu shetanga lyombili lyiligwanahangano sha thikama pOniipa sho shi ile okutaamba omukwiita ngoka e ehamekelwa momalugodhi muuzilo wOndonga

Omidhimba dhopOutapi osho dha fulwa mo

Elombwelo lyohofa mOvenduka omidhimba dhaakwiita yaSWAPO mboka ya sile momalugodhi nadho dhi longekidhilwe omukalo gwepako lyomidhimba adhihe palandulathano manga inaadhi fumvika, olya li lya longithwa nomOmbalantu pOutapi 12.4.1989. Omidhimba odhindji odha li dha fulwa melambo enene moka konima yomasiku 10 ga piti, dha li dhu umbilwa mo ngaashi omuntu ta fumvike iiyagaya.

Elombwelo olya zile kohofa yopombanda mOvenduka, lya tumwa ketanga lyegameno paveta yonomola 58/1959, aantu mboka ya sa pamukalo gwaa shi gwopanshitwe yi longithwe wo nokaakwiita yaSwapo mboka ya sila momalugodhi okutameka lyotango lyaApilili. Eindilo mohofa olya falwa mo koshilyo shoSwapo Natanael Maxwell.

Omaumbathano ga ningwa pokati komatanga ga SA nogaSWAPO, omwedhi nguka, omwa zi omidhimba odhindji dha fumvikwa koombinga noombinga dhoshitopolwa sholugodhi pamukalo gwelambo limwe lya fulwa nenge dha thigilwa aakwashigwana ya tale shono taa ningi nadho.

Omidhimba nadhi falwe kokila, oonakusa naadhimbululwe, ko ku talike nakusa okwa si pamukalo guni ngaashi omidhimba adhihe hadhi shi ningilwa, ehokololo lyohofa osho lyi indile.

Efumvulomo lyomidhimba mOmbalantu, olya li lya hili aantu oyendji nuunona wosikola, okutala. Oyendji yomuyo kaye shi shi omolwashike omidhimba tadhii fumvulwa mo, manga yalwe ishewe taa ipula uuna omidhimba dha fumvikilwe po nolye e shi ningile. Omukwetu pethimbo ndyoka a thigi iilonga tayi tsikile, omidhimba 13 okwa thigile dha fulwa mo nale mevi.

Efumvulomo lyomidhimba olya li tali ningwa komakakunya omaluudhe mewiliko lyaatiligane. Kapwa li epitikilo kaakwashigwana ya hedhe popepi naAmushanga gwOmukwetu ina zimininwa okuthaneka iilonga mbyoka.

Omumbisofi Kleopas Dumeni; mwene gwoshilongo shaMbalantu elenga Oswin Mukulu no-

malenga ge gamwe osho wo omusita gwegongalo lyaNakayale Simson Ndatipo, oya li mongundu ndjoka ya li tayi tala iilonga yi nyanyulitha.

"Ondu uvite ohenda koshigwana shandje tashi longithwa iilonga yaa na omutse nondungu kaatiligane. Aatiligane oya li taa gandja elombwelo kaaludhe; Yaheni aamwanyoko, ngashingeyi sho sha landulwa koveta oyo natango taa lombwelwa fuleni mo aamwanyoko, manga yo ya tsa iikaha yawo moondjato ye li kokule," osho omumbisofi a holola oluhodhi lwe.

Omakakunya oga li ga hala okutopa pokati sho ga tala Omukwetu a ganeka ethano oku ya thaneka manga taa fulu oshilambo. Kaya li ye na eiuvo lya yela okumonika momathano taa longo iilonga mbyoka inayi za mohole. Kape na nando gumwe a hala okulonga iilonga yohoni.

Omalugodhi ngoka ga kanitha oomwenyo odhindji, oga ningwa pOkahenge nOndeshifiilwa momudhingoloko gwEndola, momudhingoloko gwEenhana, momudhingoloko gwaShaango, momudhingoloko gwOnawa mOmbalantu, mUukwaluudhi.

Omumamibia tala u tale nawa, ethimbo lya lunduluka, li na ombepo tayi pepe, ombepo yemanguluko lyaNamibia. Ethimbo tu li mulyo olyo okwiilongekidhila ehogololo ndyoka tali tu fala kemanguluko lyoshilongo shetu. Okwa kundane kwa kutya ondjila yokuya mehogololo, opo oshilongo shi ka totelwe ekotampango lyasho, Omumamibia oto yi enditha ngeyi:

PWAA NA OMAINYOLITHO NEHOGOLOLO KALI PO!

lele wa manguluka muNamibia. Onkundana ndjika oya zile mokana komunashipundi gwEhangano lyaanangeshefa aakriste mOwambo, omusamane Frans Aupa lindingo mosikola yopombanda yaShigambo

osho omusamane Aupa a kumagidha oshigwana.

Taati Kanana



Megongalo Oshaango, omusamane Olle Eriksson ota pulakene komusita gwegongalo ndyoka, Shaduka nokomudiakoni, methano kolumoho shoka shi inyenge megongalo lyawo kombinga yiita.

Muule woomwedhi dhi li pokati okuthika kehogololo muNovomba 1, 1989, otapu longekidhwa omainyolitho ngoka taga ka ninga osheelo shokuya mehogololo. Pahokololo li shi okwiinkelwa omainyolitho otaga ka tameka 26.6.1989.

Omukwashigwana kehe e na oomvula 18 nokuya pombanda, oye ta ka ya komainyolitho nokehogololo wo. Osha yelithwa ngeyi, kutya ngele ino ya komainyolitho nokehogololo ito ka ya ko. Komainyolitho hoka oto ka ya ko nokatse koye. Oto ka pewa ombapila yokuudhitha (form), moka to udhitha mo edhina lyoye nonomola yokatse koye.

Komainyolitho hoka oko to ka za ko nokamutse okatiyali, to ka pewa hoka. Okamutse hoka oto ke ka pungula nawa, oshoka oko take ke ku fala mehogololo. Ngele ehogololo olya thiki, oto yi nokamutse hoka wa pelwe komainyolitho noku ka hogolola shoka wa hala paumwene. Okatse oko to ka thigi, ngele wa hogolola. Shika osha ningwa opo kehe gumwe a ka hogolele lumwe aluke ngaashi sha pumbiwa.

Kwaamboka yaa na uutse yo ya thika moomvula dhehogololo, otaa ka ningilwa ekwatho lyawo opo ya ka mone uutse mboka tau ka yiwa nawo mehogololo. Ngele owa pelwe okatse komainyolitho ke ku fale mehogololo, ihe sho lya thiki owe ka kaniitha, nehogololo owe li kaniitha ngaaka.

Okatse hoka ka kala nokupulwa aakwashigwana ku SA oko ngaa to ka ya nako komainyolitho, opo ke ke ku kwathe mokuudhitha ofooloma. Ngele u udhitha ofooloma, oto pewa nee okatse kamwe hoka take ke ku fala mompito yehogololo.

Ano ngele owa kundana omainyolitho, kotoka gaa ku pitilile po, opo u ka mone wo ompito yokuhogolola ngoka wa hala e ke ku

muMaalitsa nuumvo.

Omusamane Aupa okwa ti inaku tseyika manga omadhiladhilo ngoka taga ka holoka po mehogololo, ihe mpoka otapu ka pumbiwa omapukululo opo oshigwana shaa ka hogolole endhindhiliko tali limbilike. Omapukululo gopauyuuki oga pumbiwa, ihe hauyuuki woshitumbulitho, osho a ti.

Okwa kumagidhile edhiminopo moshigwana sigo egaluko lyaamwameme ya thike moshilongo. Opwa pumbiwa ombepo ombwanawa nelongelokumwe pwaa kale iikonene, opo tu ka tunge Namibia epe lya manguluka mewiliko lyoSWAPO ya-NAMIBIA pamwe noonkondo dhaKaluga

Eetundi omulongo naimwe meumbo

Ohani tuu ei yokatokolifo ke li moilonga 20.4.1989, etanga la SA ole uya meumbo letu oufiku potundi onhimugoyi (9.00). Otwa ongelwa atushe monduda imwe tu li vaheyali, manga vakwetu 10, ounona nokaana ketu keehani hamano va ongelwa poluhaela moutalala. Vamwe va dengwa.

Ava twa li monduda otwa hakelwa mo noshikuti shondjembo. Omakakunya okwa kala tava weelele, vamwe va hala nokuli okutomeka onduda. Otwe va lombwela va ete okaana ketu oko kaniini. Eshi ve ka eta, moshishaali shokaana ova tula mo oholo. Ova kala tava penauka neumbo alishe, mangha twa idililwa.

Petata lomulongo naimwe (10.30) umwe womuvo Omukwambi okwa handukila vakwao. Okwa tokola a tu kufe mo monduda. Otwa pulwapulwa oikulo ivali ya li meumbo letu onguloshi ya telekelwa, ve shi lombwelwa vati komukwashigwana oo inava tonga edina laye.

Eumbo alishe ole lihanena ovakwaita va SA ne-meenduda adishe. Fye otwa nangala meenduda mbali. Poivelo yeenduda omo tu li, opa nangelwa. Pombali youfiku (2.00), odula oya hovela okuloka nomakakunya avali okwe uya okunangala omo twa nangala.

Potundi onhiheyali yongula (7.00), okwa hovela okuya, va fa tave livake. Omwa fyaala ashike Ovkwambi vavali, ovo umwe e tu kwafa oufiku

Tala kep. 10



Kuku Selma Hamundjebo methano ndika okwa thikama pompile ndjoka a thigilwa kiita yeti 6.4.1989 pamwe noshitenya she Maria Hashoongo nuutekulu.

NAMPA GWANAMIBIA

Melaka lyoshiwambo edhina Nampa nenge Namupa kali niwe owala koyendji, ihe olya tseyika wo nawa shoka tali ti. Nampa edhina hali lukwa aakdhona, ano Nelende lyUugwanga, ngoka a valwa oye awike paamati. Nando aakadhona yalwe oya ka valwe megumbo moka konima, Nampa ota kala ngaa Nampa. Iha pewa edhina lilwe, oshoka edhina kali shi owala ekoogidho, ihe olyo wo tali ti sha. Nampa otali holola pethimbo mpoka omukadhona a valwa. Ano nkene uukwatya wofamili wa li. Kokutya megumbo omwa li owala aamati.

Nampa otashi ti oongoka ha pe aasita. Ano tali ti Nakupa, Omugandji, nenge Nakugandja. Aamati okuye taa ligamene uuna ya sa ondjala opo Nampa e ya pe okulya, oshoka oye awike mokati kaamati e shi okutsa, okuthitha nokuteleka. Pamukalo ngoka Nampa ota talwa ongaashi yina

yaamati megumbo, nonando yina gwolela omo ngaa eli. Uuna Nampa e li po, aamati yomegumbo otaa yolele ketayego. Oshoka pela ngele opwa tameke okugona, Namapa opo e li.

Namibia okwa vaelwa Nampa. Nampa nguka okwa vaelwa muupongekwa. Okwa vaelwa

kulwa komakakunya notashi dulika va finda lwokomikunda davo.

Omushamane Kandume okwa twikila ta ti, omukulukadi nounona navo ova londoka momeumbo, omolwomapopyo oo va uda. Okwa ti ova hangika ashike opo va fiki apa va ya, vo inava kundwa olwoodi nolwa hovela. Pauyelele wavo ota ti SWAPO oye ngoo a kondjifwa ku SA kOkahenge mu 1 - 2. 4. 1989 nokomikunda dikwao.

Ova ti otashi dulika kwa li va loloka, onghene eshi va mona kutya meumbo kamu na omunhu, ova kanghama mekove. Ovakalimo mEnghandja ova koneka SA oo kwa li e li meedila nomomatuwa, kutya oye a hovela tete okuumba. Konima yolwoodi SA okwa hovela okuumba meumbo neeloli davo oda li nokuhapuala.

Konima yokuumba meumbo ova hovela okulyataula po eumbo. Keshe ngoo onduda nakeshe omuti wa fikama owa lyatwa po. Eumbo eli ola hanaunwa po filu inapa xupa sha nandende. Epya nalo ola lyataulwa po, omaanda okwa pya po novakali mo ove li poluhaela.

Molwoodi omo omwa kanena eemwenyo nhatu doilyo yaSWAPO. "Eshi twa mona va fiwa opo komakakunya, otwa fa oshilambo shimwe ashike mekove notwe va tula mo aveshe," osho omushamane Kandume a shiivifila Omukwetu.

"Oshimhu shimwe shomoilyo yaSWAPO vati osha nyonaunwa omutwe eshi a lyatelwa mekove komaloli a SA. Otwa kwafela ngaho okuholeka oludalo letu, osheshi itatu dulu tu li efele kombada," osho a yelifa.

"Fye otu na ebandulo la shewa keenghono daTate Kalunga ketu eshi meumbo inamu hangika omunhu pefimbo lolwoodi. Vali yo eumbo inali xwikwa po, osheshi momundilo ihamu di sha tashi longo ngaashi ondjafa ei nda djala oya xupu ngaho meeholo nokoshi yomalola," osho tate Kandume a tanga omushiti waye.

"Otwa hangika ngaho tu shi oita oya xula notwa li nomukumo eshi okatokolifo ka ya moilonga, ndee mboli oita opo ngoo vali tai tu hange. Otwa pandula ava mwe tu talela po konima yoshiponga, notwe linekela otamu tu ilikanene natango," meme Rebekka Kandume pamwe neumbo lavo osho a pandula pOmukwetu.

Taati Kanana

moLuanda, Angola, eti 28 Novemba 1987. Nampa nguka ke shi omukadhona. Ihe oye **O-nzonkundana** nenge **olunza lwonkundana** lwokufala omauyebele nomatseyitho koshigwana nokombinga yoshilongo shaNamibia. Ekundaneko lyoonkundana lya tya ngaaka olya thanekwa li ningwe pamukalo gwa andjakana nogwa yela. Oonkundana otadhi falwa koshilongo sha-Namibia nokuyuuni auhe.

Melaka lyOshingilisa NAMPA olyo efupipiko tali ti: **"NAMIBIA PRESS AGENCY (NAMPA)"** Shika osho shoka tashi ti **OLUNZANKUNDANA IwaNAMIBIA**. Olunza ndoka olu li metonatelo lyoSWAPO yaNamibia. Uuna Namibia lya mona eipangelo, otwi inekela NAMPA naye wo otaka za mo muupongekwa.

NAMPA okwa tameka nale nokuli nokupa mo aamati naakadhona yaNamibia. Eti 16 Maalitsa 1989 moLuanda, NAMPA mokuyangela Aanamibia okwi itu omusamane Hidipo yaHamutenya. Omusamane Hidipo oye e li Amushanga gwomauyebele nomanyangidho moSWAPO. NAMPA okwa li a hala a uve nawa kombinga yiinima ya guma aaniilonga moNamibia lya manguluka --- unene tuu SWAPO ngele oye a hogololelwa ewiliko kAanamibia momahogololo nuumvo (1989).

Omusamane Hamutenya okwa shilipaleke NAMPA, kutya SWAPO moNamibia lya manguluka ota ka ninga shoka ta vulu okumbwalangandjeka omukalo noompito dhiilonga. Iimpungu yiilonga yi ili noyi ili, otayi ka endithwa pamukalo guudemokoli.

Yimwe yomiinima SWAPO a hala a sile oshimpwiyu muNamibia lya na uukoloni nokatongotongo ongaashi: Okulalakanena edhikopo lyomagumbo ge shi okukalwa, okutotapo oompito dhiilonga ngashi tadh etwapo kelongo lyoondjila, lyomagumbo, eegululo lyoomina oompe, edhikopo lyoofabulika, oosikola, iipangelo nuupangelogona, nosho tuu.

Omuthindo otagu tulwa wo kelongo lyaayehe opo aaniilonga ya mone oontseyo noowino mwaashoka ye na okulonga nokuninga. Osho omusamane Hamutenya a ti. Kamarada Hamutenya okwa yematela wo epangelo lyuukoloni ndyoka lya ngambekele Aanamibia momaitano owala gopane: Uulongi, uusitagongalo, uupangi, nuuhamushanga moombelewa, opuwo. Oompito ngele dhe egululwa keipangelo lyaNamibia, nena ayehe otaa ka mona oompito dhehogololo lyaashoka ya hala ya longe nenyanyu, osho kamarada nguka a ti.

Aanamibia oyendji otaa ka mona wo iilonga mukalalapo Namibia kiilongo niilongo nomahangano gi ili nogi ili guuyuni ngaashi: UNESCO UNICEF, WHO, World Food Programme, ILO, FAO, UNDP, nosho tuu, Hidipo osho a ti.

Mbika oyo ya li yimwe yomiikundathanwa ya-NAMPA nakamarada Hidipo Hamutenya gwo-SWAPO. Osha yela kutya, SWAPO changanonyaniilonga noondima, onkene aaniilonga ya longe pauyuuki noondjambi dhi futwe pamukalo itaa gu nyokoma. Sho shoka tashi longwa kaaniilonga shi vule ihe okukwathela oshilongo ashike shaNamibia. Ano kashi shi oshipu omuntu u dhiladhile, kutya pamwe SWAPO ona dhimbwa aaniilonga noompumbwe dhawo. Shoka ngele SWAPO okwe shi dhimbwa, nena ke na we shoka a dhimbulukwa.

S.V.V.Nambala



Okamenhu aka okomeumbo lomushamane Kandume oka fikamena oitopifa oyo ya fiwa ya napela nomudingonoko weumbo lavo

Kandume novaneumbo laye ova fiwa pomutenya

Eumbo lomushamane Filippus Kandume womomukunda Enghandja mOukwanyama, ola hanaunwa po filu kumwe nepya lalo. Oshiningwanima eshi osha ningwa momafiku 3 - 4 - 1989, konima yolwoondi olo la lwila mekove laye kovakwaita va SA na-SWAPO. Pahokololo lomushamane Kandume pOmukwetu okwa ti, ye okwa hangika ngoo a kundana kutva. SWAPO okwa shi-

Dha za kep. 2

Oilumbu oyo oya ngongoshekwa i yandje "elongelokumwe" layo (inapa ulikwa kutya onalye). Oya ngongoshekwa i longe vati neenghono nonoinheya, opo vati oukelefiti u ha kane

Kolonela Botes okwa indila ovanhu mombapila oyo ta ti, ote va indile naanaa opo vati keshe umwe a kale e lilongekida, omalishangifo oo taa hovele 26.6.1989, pa ha kale nande umwe a xupa ko kuo. "Kala we lishangifa ove kala yo wa hoolola," osho e va kunghilila.

Ombilive oya twikila tai ti, kutya ngee u kale wa dalelwa mu SA, ongheengoo handi ku indile naanaa u longekide omalweendo oye opavali ku "SWA"; limwe osheshi to ke lishangifa nalikwao osheshi to ka hoolola mefiku lotete laNovomba. "Ame naame osho handi ka ninga," osho a ti.

moNamibia. Shiimba olwo lwotete Ovanamibia tave shi kundana kutya mboli oukelefiti muNamibia owa kalekwa mo kovakwaita va SA notashi pendula epulo, kutya mbela okomukalo ulipipo?



Pondambo yolugodhi, iipatulona tayi moika methano ndika oya kala ya napela shaampoka. Pehala ndika osha fa omukwiita gwa SWAPO a li ta shini iipeta. Ekanona lya SA olya adhika lya kokololwa po ngohela, omutoolinkundana gwOmukwetu sho a thiki. Osha li moTunganga.

Dha za kep.4

no? Aakiintu mboka ndishi oyo owala ye shi okwiidhidhimikilwa kune miilonga yawo yashaa-shoka? Oondjokana dhopangeleki odhi lilepo ihe shike ano nani, ngele omuhokani owala a manguluka, manga omuhokanwa omupika?

Koshipala shaKalunga, kaku na omulumentu nomukiintu, oku na owala omuntu. Onkene ngele omuhokani okwa pumbwa okusimanekwa komuhokanwa, nena naye wo na simaneke omukanwa, kutya ihe okwe mu dhina ngiini, e mu hokana nale. Onke ihe ngele ndi kale meme, itee lunduluka, omuntu owala ngaashi omuhokani omuntu wo, opuwo.

Etumwalaka lyowina kootate moshifo shono, oshinima tashi ulike, kutya kape na omuntu a shitwa etata. Ayehe ohaa vulu okudhiladhila, omukiintu nenge omuhokani, hasho? Omwe shi tala ko ngiini ohole, eidhidhimiko nombili tayi talelwa owala momuhokanwa? Omuhokani ongiini ano? Omuhokanwa ota gwanitha ngiini ayihe mbino, ngele omuhokani ite yi gwanitha wo pamwe? Aluhe omukiintu oye ngaa i idhidhimikila peni

Eeveta dehoololo mounyuni aushe naadi yo domuNamibia, itadi pitika nande omunhu e he fi odalele yoshilongo osho, ile ine likongela oukwashiwana woshilongo osho oule wefimbo la ufwa a ye mehoololo. Ashike omukwanepangelo la SA ou, oku na omukumo okulombwela ovanhu vaye ngaha kutya:

Omaliishangifo opo u ka hoolole nomahoololo oovene, otaa ka ningilwa keshe modoolopa. I-ndeni hano koudolopa ava ve mu li popepi ngaashi: Ariamsvlei; Aroab; ile koViolsdrif peengaba. Okwa weda kutya omawi ehoololo otae likwatelele koudalelwa woshilongo, ngaashi Ovatiyane ovo va dalelwa mu SWA ile wa li omukalimo oule wodula imwe.

Moule wefimbo la dja ko, opa kundanwa omahokololo mahapu mai, natango kombinga yelilongekido la SA, okuponyifa ehoololo lOvanamibia. SA oye a fiilwa oshinakuwanifwa kOraata yeameno ya UN, opo a longekidile Ovanamibia omhito yehoololo la manguluka noli na oyuki, oshiwana shi hoolole ovo tava ka tunga efinamhango lonakwiwa yaNamibia la manguluka, loo etanga laUntag li kale ashike omupashukili okutala SA eshi te shi endifa.

Momaludja amwe e lili oo inaa kolekwa natango, omwa dja omahepu taa ti, kutya pefimbo lehoololo SA ota ka tokelifa okushiivifa oshidjemo shehoololo. Ye omukalelipo wowina wa UN, moNamibia ta indilwa a tambule ko omuvalu wOvanamibia womudo 1981 oo muo inamu valulilwa nande Ovanamibia vopondje. Osho ngeenge osha ningwa vati otashi ka kwafa:

— SA a hapupalife omuvalu wovahoololwa ava va ama kuye nokushonopeka ava va ama kuSWAPO.

— Momalongekido ehoololo, SA te eta mo oinima ihapu i nasha unene noukwamunghoko.

— SA ta yelula pombada ehoololo lechamba nomalenga ile omapangelo opamaduumbo.

— SA tashi dulika a longife omukalo wehoololo wa piyaana ngaashi ewi lomunhu umwe tali valulwa luvali nande eshi osha ekelwashi nale 1981.

Kombinga yomalinyolifo, oinima oyo SA taku popiwa ta longekida, ongaashi okulongifa melishangifo lovahoololi noumutwe ovo ve li po paife, nomukalelipo wowina wa UN, otaku tiwa otaka indilwa a tambule ko oshinima osho. Musho SA otaku tiwa, otaka mona omhito yokukelela ovalishangifi nomukalo itau konekwa noupu.

— Oradio tashi dulika tai tindi okushiivifa omauyeleele e na sha novalishangifi. Nongeege tai a tambula, otai ke a tuma a tumhakana nowina, opo ovalishangifi va ye keenhele oko ku he na omayakulilo avo.

— Tashi dulika yo omauyeleele eshi a yandjwa ngaashi e li, konima yokafimbo otaku ningwa omalundululo nelalakano okupiyaaneka oshiwana. Nomunhu oo ta pitililwa po komhito yelishangifo ngaha, sha ctifwa kepiyaaneko loinima, otashi dulika ita pewa vali omhito oyo.

Otapa diladilwa yo oilonga yokulishangifa i patwe kuyela, nande ovalishangifi oveyadipo natango, noitava ka monenwa vali omhito ya tya ngaho.

— Ovanamibia ovo ve he na oumutwe, unene ovo tava di pondje yoshilongo noinava pitila poivelo ei ya utwa pongaba, otava ka anyenwa okulishangifa. Omaupyakadi makwao mahapu otaku ti, okwa diladililwa mo yo natango momukalo ou wengabeko olo.

Oinima aishe ei naikwao inai tumbulwa apa, oshili yayo ngeenge SA oku na elalakano loku i ninga, otashi ka yela ashike eshi tai ka tulwa moilonga. Ashike moiningwanima imwe ya pita po nale, oya ulika poluhaela nokutya SA ine lilongekida natango okufiya po edu eli.

Fiyo opaapa omukalelipo wowina wa UN, ina yandja natango ediminino laye, kutya omukalo ulipipo ehoololo tali ka ningwa, ashike ovanapolitika otave shi tale kutya eendjovo daKolonela Botes ngeenge oda ka tulwa moilonga, ovakwaita va SA ve dule 30, 000 va longa muNamibia aveshe ove na omhito yokuhoolola. Okwe va lombwela ta ti:

"Kalenii mwa manguluka nye mu kwatafane noshikondo shoinima youkwashiwana mOvendka, otamu ka endelwa po nawa" (nokutya otamu ka yakulwa nawa), osho e va kumaida.

Ombapila ei Botes okwe i xulifa ngaha: Ngee mu kale mu li mu SA, ohonde alushe oya pama

Tala kep. 10

Peha lyaahokanwa Aanamibia

Nantinda a monika omu kee na ndjo mohofa yopombanda

Ohofa yopombanda mOvenduka inayi mona omusita Johannes Nantinda e na ondjo mushono te shi tamanekelwa kElelo lyoshilongo shOndonga nokungoka a kala shito omunashipundi shOkomitiye yElelo lyOwambo, omusamane Peter Kalangula. Ohofa otayi pula aatamaneki mbaka ya "file oompadhi dhawo" miilonga yohofa.

Eti 16.4.1988, omusamane Nantinda okwa tokolelwa komalenga guuwa mOndonga egeelo R34 500 melopotelo lvuufuthi woongombe 21, manga dhi li kohambo yomusamane Kalangula, muuzilo wOndonga. Omageelo omakwawo okwa li wo e ga pewa pamwe netokolo ndyoka, ngaashi okukuthwa omukunda gwOluno, ye kaa monike we ta landitha onyama puugunda ngaashi he shi ningi shito.

Nantinda okwa zile mepangelo ndyoka ke uvite ombili oshoka ota ti:

— Ina tseye sha ngele opwa kala oongombe hadhi landwa naamati ye yokohambo hadhi zi mohambo yomusamane Kalangula. "Ngame kohambo ihandi ende ko," osho a ti.

— Etokolo kali shi lyopayuuqi, sho tali mu pula R1 500 mongombe kehe, manga paveta yOndonga, ongombe hayi pula owala R600,00.

— Omutamaneki gwe (Kalangula) okwa kuutumba koshipundi shimwe naapanguli sigo ope-thimbo lyetokolo, shono ihashi ningwa nando moveta yoshilongo shOndonga.

"Elelo lyOndonga olya etha oshinakugwanithwa shalyo, sho lya gandja oshipundi shepangulo komutamaneki. Epangulo netokolo lyandje nda tokolelwa, olya mena ashike muutondwe woshito wokwaa tsa kumwe nomutamane-ki gwandje momadhiladhilo nomelalakano lyokunyateka edhina lyandje," osho omusamane Nantinda e shi tala ngawo.

Okwa yi a ka pule omayele kaagandjimayele ye yopaveta, mboka konima yoomwedhi 16, okukonakona oshinima, ya uthile omusamane Nantinda omukeenandjo paveta.

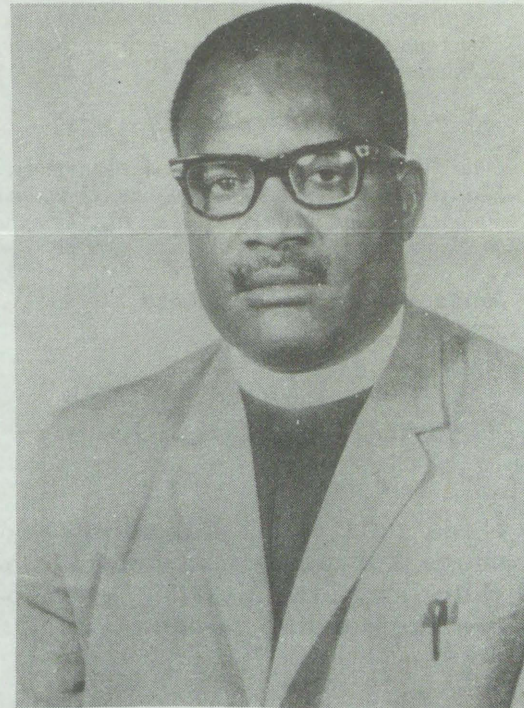
Omimvo odhindji omusamane Nantinda okwa kala mwene gwomukunda gwOluno. Okwa kala wo oshilyo shongundu yompitithi mepangelo lyOwambo, sigo 1986 uuna ndoka a ti kutya okwa tidhwa mo komusamane Kalangula. Okuza mpoka okwa kala oshilyo shokomitiye pombelewa yOshilongo shOndonga, oshilonga nasho e shi kuthwa ketokolo lyopuuwa.

"Eyeme lyandje oli li mpoka, kutya omusamane Kalangula oku na uuthemba unipo mOndonga okukutha ndje omukunda, ndaa kale we oshilyo shelelo lyOndonga nondaa landithe we onyama?", osho a kala ti ipula nasho. Ihe mepangulo lye ota dhimbulukwa mboka inaa popila etokolo ndyoka ngaashi elenga Wilbard Mwandingi Toteya.

Eti 23.5.1988, omusamane Nantinda okwa pewa ombapila ya za mElelo lyOndonga, ndjoka yalundulula etokolo lyofuto R 1 500, ihe li kale R600,00 mongombe ngaashi shito. Ombapila ndjika inayi mweneka omakonakono gopahofa.

Ohofa oya gandja kutya ngele omusamane Kalangula ke na we sha okugandja uumbangi welopotelo lye, shoka a tegelelwa e shi ningi sigo 21.4.1989, nena e na okufuta iilonga ayihe

yohofa moshinima shoka. Omusamane Nantinda a shunithilwa uuthemba mboka a kuthilwe ketokolo lyopuuwa ngaashi okukala mwene gwomukunda, okulanditha onyama puugunda nosho tuu.



Omusamane Johannes Nantinda

Oshipotha shomusamane Nantinda osha kala miikaha yohahende W.D.Breedt gwEhangano lyaanaveta Lorentz & Bone.

Ova shangela nge tava ti

OTWA KUNDANA

Miifo yomumvo gwa zi ko, oyindji yomuyo omwa holoka iipopiwambilive kombinga yeuvitho lye-vaangeli tali pitile mokakola ka tseyika "ORADIO" omukulu gwonale okwa tile: ihadhi yi inaadhi umbilwa. Ngame ote gunyagunya ko ngeyi:

1. Ngame mwene ng'omukriste onda kala mituthi oyindji yopakriste. Omayapulo gaasita, omayambekelo gaanashilonga mongeleki yetu gi ili nogi ili. Olwindji ohaa leshelewa oohapu dha kongwa owina nodha nika etumo. Olwindji ohaa lombwelwa ngeyi: "Indeni mu ka uwithile aashitwa yaKalunga evaangeli shaampoka ye li po".

Ondi inekela mpaka omuyapuli naayakuli ye oya oya dhiladhila uukololo auhe noshaampoka pu na aashitwa yaKalunga, ya adhike kohapu yaKalunga (aawanawa nenge aawinayi), ookuume nenge aatondi.) Ngame ondi shi wete shi li nawa, ngele aasita taa pitithile ohapu yaKalunga mokakola hoka, shampa owala itaaye shi ningi neiuvito lyeliko.

Oshikwarwo aasita mboka tu na oyo aashona lela, itaa vulu okuthika sigo (OKOKARA-



SBURG) nenge okuukololo auhe woshilongo. Oshigwana osha sa enota lyohapu yOmuwa nosha yuulukwa ngoka ta holola oondjo dhasho puuyelee, sho shi itedhulule.

2. Oshikwarwo osho shi: (ORADIO) okakola kokene hako ke na ondjo ngaashi yamwe ye shi tala. Tala po nawa mpoka. Mboka yi ininga iilongitho nokupititha iinima yaa fele, oyo owala ye na oondjo. Uuna tatu pulakene iiningwanima yuuyuni, otandi popi nee kwaamboka haa patulula BBC NEWS, ihaa kala nando yu uvite sha.

Kuyo shi sha simana noshi na oshilonga okupulakena ashike uyuni sho tau ti. Nashi yele kutya okakola hako ke na ondjo, ihe (iilongitho) nenge ndi tye aapukithwa, oyo ye na ondjo noshinima shoka, notaa ke shi pulwa esiku limwe, ngele FLUWA LYA TENDE. NASHI YE OKAWI NOKAWI.

OKETU KOKUUSHIMBA

SHIGWANA OWA DHILADHILA TUU?

Oshipopiwa shandje otashi thikama miipatululo ine, kukehe shimwe hoka ndi na ko amatumbulo gatatu nenge gane.

1. NAMIBIA MOOMPOSI DHUUPIKA

Onda kuminwa aamwameme mboka ya pwilu natango moomposi dhuupika. Oshigwana otashi matukile kemanguluko, yo otaa matuka taa shuna lwanima. Taa ende moonkwapa dhiilumbu, taa ulwa ookafala, yo taa komona komitse.

2. OWA TIDHA ELIKO, HAUWANAWA WOSHIGWANA:

Shigwana owa titha unene eliko, nowa dhimbwa onakuyiwa yoye. Otamu matukile komalambo goondipa, nokupupapupa mpo pe na shilumbu ta landitha po iinima (ostola, omagumbo, oombete n.sh.t.), opo u ke yi lande po. Unene tuu aanangeshefa pamwe nomalandwambongo.

Otatu matukile unene iinima yaakolonyeki, yaaludhe aakweni aniwa oyi na ondilo, yo oyo tayi ke ku kwatha komongula. Kotoka panda kola, mbiimbili oha yi. Shilumbu ngele ita vulu okupapata iinima ye, ne yi thige mpo. Na ye ngaashi i ile. Iimaliwa oya pumbiwa metungululo lyoshigwana shetu, halyaakolonyeki nando.

Tala kepanja tali landula

Ova shangela nge tava ti.

"Oshikwiila shaanona ino shi gandja po koo-
mbwa."

3. SHIGWANA KOTOKA:

Longitha eliko lyoye nawu. Gwana naasho u na.
U hakana iho kuta. Tse otwa tidha emanguluko,
haliko nande.

4. DHA LONDOKA IHADHI YI IITA

Onde ku londodha. Kee ku lombwele ke shi gwoye.
Sha tsima hono, emanguluko, haliko. U hakana
iho kuta, ye omukulugwonale okwa tile: "Amuhe
gu umbwa egoya, onkotoki tayi gu toola po.

Immanuel Kleopas Nashikaku

ONKALO TAYI SHONGOLA:

Onda hala owala ndi yelithe ka-
shona kokapopiwa ka holoka mo-
shifo shonomola 19/88 ka nyo-
lwa kuMartha gaJohannes taka
popi:

Otandi tsu kumwe Martha sho ta ti, kutya
manga ye li miipundi oya li taa pewa omaye

Mbaka ya kala mondholongo oye li tuu peni?

MUTUMBULWA AMUKUHU (38) Nakayale 9.1978
FESTUS NAKAWA (56) Ontananga 10.1978
JOHN NAKAWA (50) Oniipa 31.5.1979
DAVID HAMUTETA, Okatana 13.10.1979
VILHO MATEUS NYAMBALI ?? 25.7.1980
MARCELLINUS IIPINGE (35) Okatana 4.10.1980
MODESTUS IIPINGE (30) Okatana 4.10.1980
ANDREAS KASHIKOLA, Elombe 27.11.1980
TEOFILUS MATEUS, Elombe 27.11.1980
FILEMON KASITA IKELA (43), Oniipa 19.1.1981
KRISTOF IYAMBO SHIKONGO Ekamba 10.4.1981
SIMEON JOHANNES NEHOYA (40) Onyaanya
6.1981
AMUTENYA JOHANNES ASHIPALA Okatana
29.6.1981
MARKUS PAULUS, Oniipa 4.9.1985
RUBEN EDMUND, Eendobe 28.11.1986
ABNER SHIKESHO, Onimwandi 3.7.1987
AFUNDE NGHIYOLWA, Oshikuku 4.9.1987
FILIPPUS GIDEON, Ondonga 26.10.1987
KALEB PAULUS SHIKALE, Onawa 21.1.1977
LINUS MATONGO, Caprivi 1.1988
SIMEON NEHOYA, Omuntele 1979

RUFUS AMUKUHU (44) Nakayale 18.9.1978
SIMEON AMWIMBI (75), Onankali 12.1987
ERASTUS NDEIFEKA (48) Nakayale 18.9.1978
FESTUS ADOLF, Kongo 9.7.1988
FESTUS SAMUEL, Kongo 2.1988
MIKKA GEORGE, Windhoek 26.10.1988
PAULUS HAFENI (20) Onanghwe 16.12.1980
NDILIMEKE ALUTENI, Oukwanyama 7.8.1988
NATANAEL NGHINAMWAAMI ?? ??
(N) JASON ILEKA (15) Tshandi 14.7.1988

TYLVES KAHIMA ?? ??
HILJA KAULUMA, Oukwanyama 7.8.1988
JONAS KEMANYA, Oshakati 9.10.1988
JIMMY KWALA, ??? ???
FRACO (MANUVWALI) SHANINGWA Ombalantu
7.1988
MATIAS JOSEF, Omungwelumbe 5.8.1988
OSKAR MUHONGO NAIENGE, ??? ???
SADRATH MUPANDI, Omadano 10.4.1988
AINA NANGOMBE AMUNYELA, ??? ???
HENRY NGHEDE, Windhoek 29.1.1988
PAULUS NGHIPUNYA, Ohausholo 1.1988
PETRUS PAULUS (28), Ondangwa 10.3.1985
JOHANNES PROTASIVS ??? ???
KAMBATHA SHEYA, Windhoek 26.10.1988
ANNA SHIKONGO, Oshakati ???
PAULUS SHILULE, Omuulukila 20.1.1988

SHETEKELA SHININGENI (24) Windhoek 11.7.1988
MARIA SHOONGELENI, (24) Oshakati ???
ABSALOM UUSIKU, Onayena 19.10.1988

Pakalindeli koshitokolitho 435 shLigwanaha-
ngano oonkwatwa dhopolotika odha uthwa
dhi mangululwe mo okutameka omwedhi
nguka Apilili. Shoka osho sha pendula
ekonakono ndyoka.

Sebulon Ekanjjo

mbala opo sho to ka pita ontumulongo ou shi
shoka to ka dheulilwa. Martha okwa ti ngele e ya
pomukuluntusikola nenge poombelewa dhi ili
nodhi ili, oha pulwa owala ngele okwa li kuulongi
nenge oku na onzapu yOmatilika.

Oshi li mondjila. Mboka ye na okulonga oosikola
ando oomboka ya putudhilwa okulonga oskola
noya pita miilongwa yi ili noyi ili. Mboka taa
longo ngashingeyi ndele kaye na onzapu, oya
kelela owala omahala manga ooyene taye ya.

Shino osha ningwa oshoka katu neni aalongi ya
gwana noya pyokoka. Kombinga yoombelewa
odhindji nadho odha pumbwa aantu ya pyokoka,
opo ya longe iilonga paushili. Sho ho mono aluhe
iinima itaayi ende nawu moombelewa odhindji
moshilongo shetu, omolwashoka aantu mboka taa
longo mo kaye na owino wa gwana miilonga
yawo. Nayo oya kelela owala omahala.

Angula David Angula
London

Namibia oshitunda wa shitika

Namibia oshitunda wa simana
Wa simana kiitunda ayihe
Oshilongo wa tumbala
Wa tumbala kiilongo ayihe

Muushitwe woye wa shitika
Omo mu na omwenyo gwaantu yoye
Miyela yoye yongushu
Omo mu na ongushu yoye

Mboka ya lumba
Oye ku lumbile
Aafukedhi yeliko
Ye li taye ku kondjele

Omacapitalist oga hala
Ando ge ku tule miintimbu
Omutungilo gwoye gwa shitika
Inaa vula oku gu pambula

Ombaye nando ya tende ko omusa
Namibia uushitwe woye
Owa hala oku gu thila
Namibia wa hala ku gu hota

Aalumbuntu nando ya kambadhala
Ando oku ku shitulula
Namibia owe ya ikanyutulula
Oombepo dhawo ku dhi shi

Ondi shi ku ku lila
Ku ku kuga ndi li kiilongo
Namibia hi shi ku ku dhimbwa
Shitunda hi shi ku ku hupula

MuNamibia tala sho to ningi po
Okukalelapo eopalo lyaNamibia
Namibia mpoka a kololwa
MuNamibia tula po oshiyando

Crd E. N. ja Newaka
Finland

OMUKWETU

Oye oshifo shOngeleki Onkwaevangeli paLuther
yomu SWA/NAMIBIA.

Ohashi nyanyangidhwa mOshinyanyangidho
shOngeleki mOniipa.

Omukuluntu gwoshifo omumbisofi Kleopas
Dumeni.

Amushanga gwoshifo omusita Sebulon Ekanjjo.

Ondando yOmukwetu muNamibia naSouth Africa
R8,00 komumvo.

Pondje yaNamibia na SA R20,00 komumvo. Ndjika
oyo wo ondando yoshifo shomondhila .

Oondando nomambesitelo agehe naga tumwe
kOmukwetu, Oniipa, P/Bag 2013, Ondangwa 9000,
NAMIBIA.

ELOC PRINTING PRESS
PRIVATE BAG 2013, TEL. (06762) 11, TELEX 56-3257 WK
SWA/NAMIBIA

