



Eso lyomusitagongalo Daniel Iimalwa 26.3.1989 moshipangelo mOvenduka, olya eta po ekanitho enene moshitolwa ashihe shOwambo naunene kOngeleki yaELCIN. Iimalwa okwa li omuhungimwenyo moshipangelo mOshakati, oomvula odhindji nokwa si kuuwehame wethimbo efupi.

Omusita Iimalwa okwa lilwa mokati kaasitagongalo ooyakwawo, mokati kaavu, kaanasikola, kaalongi nokaakwanegongalo momagongalo. Okwa lilwa mOngeleki yawo ya ELCIN nomOongelesi dhilwe moshitolwa shoka.

Omusita Iimalwa okwa pewa iilukadhina oyindji, mbyoka ya kuthwa momayakulo ngoka ha ningile oshigwana. Oye omusamaria gwohenda, omuuvithi omunene, yinakulu yaailongi aakriste nomuhungimwenyo.

## Oyendji mOwambo ya kanitha omuhungimwenyo gwawo

“Omvulwe ashike yiilonga ye mu lya,” osho oyendji ya tompelwa mboka ya kala moshipangelo mOshakati. Nakusa Iimalwa okwa konekwa kaayakulwa ye, nokutya olwindji ina thika komwiha omolweipyakidhilo lye naavu. “Omuntu ngele e kwiindile u mu pulakene, ethimbo ndyoka ino li undulila we komeho, oshoka otashi vulika itoo ke li mona we,” osho a yamukula mboka ya kala haye mu kumagidhile evululuko miilonga ye.

Ethimbo efupi, osha yela, ihe Iimalwa otwe mu kuthwa mbala, “omumbisofi Kleopas Dumeni ngoka a ningi eyambeko lyomudhimba,” osho a popya moluhodhi olunene nokuulika kekanitho

Tala ke. 3

## Okatokolitho 435 oka yile miilonga muApilili 1, 1989



Omayovi ogendji oga li ga kala moshigongi shoSWAPO mOvenduka 1.4.1989 okudhana esiku lyetulomiilonga lyokatokolitho.



Nakusa Daniel Iimalwa

Oshigwana shaNamibia oshihepekwa no-shithiminikwa osha zile kuumbangalantu wOwambo nokoombinga adhihe dhaNamibia, okuya koshilandopangelo shaNamibia mOvenduka, oku ka tsakanena, omwalwetulomiilonga lyokatokolitho 435 kligwanahangano.

Aanamibia yomayovi nomayovi oya gongalele pehala limwe lyosikola A. Shipena mOvenduka, nokupulakena omakundaneko kombinga yokatokolitho 435 nkene ka yi miilonga 1.4.1989. Nando oshigwana osha li oshindji konyala itaashi gwana pehala ndiyaka, osha kala megundjilo nokupulakena nomukumo kiipopiwa.

Esiku 1Apilili 1989 olya talika lya simana notali ka kala mondjokonona yaNamibia. Oomvula odhindji Namibia e li koho yuupika, ihe esiku ndika sho lya thiki, olya eta mpoka omukumo gwAanamibia oku ka thika kemanguluko lyoshilongo, moka taa ka kala ongomuntu, osha ku-

Tala kep. 5

APILILI 15, 1989

**“Omwene na amene nge oku ku pa efyuululo lootate”**

1 Eeh 21:3

Ope na ovanhu vamwe vomoshilongo shetu ovahasha, ve he na outende okuyandja po edu looinakulu nepingakanifo loikwangaho. Lao linene okangudu oko okanini ngaho. Okangudu oko oka pewa oshilongatumo kovatondi voshiwana eshi ka longe mokati kovamwaina nookaume kavo, navo yo va itavelelifuwe okuyandja po efyuululwadu looinakulu.

Okangudu oko otake ende moshiwana taka fatulula edu lavo li pindikwe noimaliwa yeepenzela, neefyuuka ile ondjabi yoondoka. Osho vamwe va fikamenwa ngaha komaheka va pewe vati oihauto, oimaliwa ihapu inave i longela sha ile oulenga, ngeenge tava itavele okuyandja po edu looinakulu.

Ava ve hole oshiwana shavo nedu lavo, komingheka da tya ngaho noko-maudaneko oipupulu, ohava yandja enyamukulo limwe alike, lixupi nola yela: Kalunga na amene nge koshiponga sha kula shekengelelo li fike opo okuyandja po efyuululo lootate nookuku.

Enyamukulo eli ola dipaifa omushamane Nabot Ov. 13C. Omupiki woshiwana ngeenge eemhangela daye ota nyengwa oku di shakenifa neendjovo dokuheka, oha longifa yo eenghono. Eshi otwe shi shakeneka moshilongo shetu. Vahapu ohonde yavo oya tika omolwoshinima tuu osho.

Ashike ondjovo yOmwene otai ti yo Kalunga ota ame alushe komuhepekwa. Konima yefyo lomuhepekwa Nabot okwa landula diva elombwelo laKalunga tali tumwa komudipai: Omwene ota ti: Monhele tu oyo eembwa da lafa ohonde yaNabot, eembwa otadi ka lafa yo ohonde yoye mwene. Ov 19b. Oshili ei oi na oku-dimbulukiwa koonakudipaa noonakudipaifa aveshe, ovo tava kondjele osho shi he fi shavo vene. Vanambia, natango otava dimbulukifwa kutya, ovafukenhu vedu eli itava tulumukwa fimbo inava udanekelwa kOvanambia okupindika navo edu eli eholike noinima i he na shili nekwafo loshiwana.

Oshi na elao kuKalunga nokovanhu tu dipaelwe okwaanyena edu lookuku shi dulife hatu dipawa eshi twa nyona nokuyandja po efyuululo loshiwana shetu mokulya kumwe akuke.

Sebulon Ekandjo

## ETUMWALAKA LYA ZI MAAWILIKI YOONGUNDUMBIMBELI MONGWEDIVA:

Ilyo oya gongalele yi thike 58

Hosea 6:1-3

Ekumagidho lyokwiitedhululitha oshigwana shaNamibia ashihe. Pethimbo lyokutegelela eyamukulo lyOmuwa Kalunga ketu okuza muupika wa S.A. ngaashi sha uvanekwa, oshigongi otashi tumu elaka kEelengeleki lya ELCIN esimanekwa nokaakwaniilwa nokaapangeli aaleli yoshilongo shaNamibia kuumbangalantu washo, omolwiikolitha moshilongo shetu.

*Mokudhiladhila onkalo yoshigwana shetu:*

Otwa hatwa pevi koshiponga shomalovu. Oshigwana osha kanitha omadhiladhilo gopakriste nontilokalunga. Okudhina omageelo gomapangelo moshilongo ashihe shOwambo. Oondunda dhiikolitha dha patuluka mOosondaha pethimbo lyomalongelokalunga.

Onkee otatu indile nesimaneko ongaawiliki yoongundumbimbeli kuumbangalantu waNamibia, kEelengeleki esimanekwa nokomalelo agehe giilongo mOwambo, opo ga nkondopaleke omageelo gokugeela elongitho lyiikolitha iidhigu, ndyoka olyo chalo nedhiladhiloindilo lyaawiliki yoongundumbimbeli sho lya li lya gongala mOngwediva eti 16-19-02-1989.

*Omunashipundi: Mr. K.Nainda  
Ooamushanga: F. Kamanja  
S. Shidhudhu*

## Jesus ota aluka

Ehol. 1:7

Omwene ota aluka. Kape na nande umwe wovaitaveli te shi limbililwa, osheshi osha fatululwa nawa meendjovo daKalunga. Kape na shimwe sha fatululwa sha yela shi dule okwaaluka kwOmwene Jesus Kristus. Moitukulwa 260 yomEtestamendi Lipe, otamu fatululwa okwaaluka kwaKristus lwo 318. MOmapistoli omuyapostoli Paulus otamu holoka eenhele 50, tadi hokolola okwaaluka kwaJesus. Eshi osho eteelelo la yambekwa, Titus 2:1-3, omo ovakwangeleka ve na okukolekafana 1Tess 4:1-8.

Shaa tuu to indile “Tate yetu meulu”, nena oto ilikanene yo okwaaluka kwaKristus. “Ouhamba woye nau ye, ehala loye nali longwe kombada yedu ngaashi hali longwa meulu,” Mat. 6:10. Eindilo laxuuninwa otali halula omutima molwokwaaluka kwaKristus. Heeno, ila Omwene Jesus, Ehol. 22:20. Enyamukulo lOmbibeli otali nyamukula ovadulululwa aveshe ngaha: “Tala ohandi uya diva, nondjabi yange pamwe naame,” Ehol. 22:12

Jesus okwa udaneka ye mwene nokutya ota aluka diva. Nongeenge nda i, ohandi ke mu longekidila onhele, opo mu ka kale oko ame ndi li, Joh. 14:3. Oshike hano sha fatululwa shi dule efatululo eli? Jesus okwa londa? Heeno, mOilonga yovayapostoli ohatu mono efatululo la yela okulonda kwaKristus meulu. Nomanga e shi tya, okwa kufwa po puvo manga tave mu tale, noshilemo oshe mu kufa po moipafi yavo.

Omuyengeli okwa tonga nokutya ota ka aluka. Nomanga va li po va liamena pombada, manga ta londo keulu, puvo opwa holoka ovaengeli vavali va djala oikutu itoka, nova tya kuvo: “Valumenhu nye Ovangelilea, oshike mwa fikama notamu liamene keulu? Ngaashi Jesus a kufwa po punye, a londa keulu, osho tamu ke

mu mona ta aluka ngaashi mwe mu mona ta londo, Oil. 1:10-11. Jesus ota ka aluka vali shoshili, eshi kashi fi eengano.

Ondaka yealuko laJesus oyo ondaka yehafu momitima dovaitaveli. Ondaka tai eta ehafu momitima dovana vouyelele. Shaashi oulunde nomahepeko otaa xulu po. Nomuyapostoli Paulus ota hokola okwaaluka kwaJesus. Shaashi Omwene ye mwene ota ka londoloka keulu, neingido lelombwelo nondaka yomweengeli omukulunhu neshiko lenghuma laKalunga. Ovafi ovo va fila muKristus otava nyumuka tete. Opo nee nafye yo, ovanamwenyo ava twa fyaala po, ohatu ka vakulwa po pamwe navo moilemo tu ka shakeneka Omwene kombadam-bada, ndee hatu kala alushe pOmwene, 1Tess. 4:16-17, Mhepo Omuyapuki ota shivifa nota dimbulukifa notu shi shi nokutya okwaaluka kwaJesus oku li popepi Joh 14:26. Ngeenge ohatu mono kutya okwaaluka kwaJesus oku li popepi, ovadinikalunga nava dine, voo novasheki nava sheke euyo lOmwene paMhepo nopambelega. Ota alukile Ongeleki yaye.

Ngaashi va sheka nale Noa, komesho yeyelu. Ndelenee ngaashi eyelu le ile ndele tali xupifa Noa mowato, novadini ova fudikwa mefuta, osho yo nee Jesus omunangekwa noupuna, ombushiki, yOngeleki ta ka aluka nota pangula ovadini noonanakulilongekida, Mat 25:1-13.

Jesus ota ka aluka vali. Ota dulu okwaaluka manga to lesa Ombibeli, ile to imbula omaimbulu. Ediladilo eli otali tu etele tuu ehafu? Owe lilongekida tuu okwaaluka kOmwene? Owa koshwa tuu nohonde yOdjona? Owa yadifwa tuu nOmhepo Iyapuki? Ngeenge hasho, kongga Omwene diva, efimbo ola pwa po.

**Jeremia W. Shimulu  
Church of England in Namibia, Ouheke**

# JESUS TI ITHANA AASI YENOTA

Aajuda oya li nomulandu gwokukala moshituthi shOmatsali giihwali hashi kalwa omasiku gahetatu Lev.23:36 okuyambela Omuwa omulilondjambo. Moshituthi shoka mesiku lyasho lyahugunina etihetatu omo mwa li Omuwa gwetu Jesus Kristus sho a tumbula oohapu ndhika. Omukalo gwaalongihapu Aajuda oya li haa longo aantu ya kuutumba Ihe mpaka Jesus okwa thikama e ta tameke okwiigidha. "Ngele ku na ngoka a si enota, ne ye kungame, ye na nwe."

Jesus mpaka ota popi enota lyopambepo. Ota gandja omeya taga kutha po enota lyokommwenyo sigo aluhe. Joh.4:14 Omukulili ota pendula ehala maapulakeni ye opo ya papudhuke noya kwatwe kehalo lyokunwa. Omeya taga popiwa mpaka kOmukulili gwetu ogo Ohapu.

Ohapu yi na Omwenyo. Ohapu tayi gandja Omwenyo tu na oku yi taamba. Okulya nokunwa okwo oombinga mbali dhoshilonga shimwe, noshilonga shika osho okwiitaala Jesus. Opo omuntu a lye noku nwe, opwa pumbwa oonkondo dhontumba.

Oonkondo ndhika odho dhOhapu ndjoka tayi tu vulikitha, tatu li notatu nu no itatu si we enota. Kapu na we eendululo lyoshilonga. Otatu lesa Joh.3:3-5 omukalo gwokualululwa momeya nomombepo mEshasho Eyapuki. Mpaka otatu mono oshilonga tashi longwa lumwe aluke muKristus, nokape na we eendululo, osha longwa sha pwa.

Ano ngele tatu nu omeya gaKristus, itatu si we enota Joh.4:14. Omeya ngoka tatu pewa kuKristus otaga ningi othithiya tayi tondoka meni lyetu, omilonga dhomeya omanamwenyo. Ano omilonga dhomeya taga inyenge, inaga mwena.

Tashi ti okutaamba omagano gaKristus, oku mu itaala, noku ga topelela yalwe. Ngaashi naanaa Kristus ina mwenena noku ngungunina Ombepo Ondjapuki, ihe sho a mana oshilonga she shekulilo okwa tumu omaganao ngaka Ombepo Ondjapuki kooitaali ye.

Omilonga dhomeya omanamwenyo, otadhi ulike uwindji womilonga, kagu shi gumwe. Omilonga tadhi tondoka tashi ti okutedhululitha yalwe. Okupewa omeya okupewa omuntu omupe, omeya ogo omwenyo. MuKristus otatu pewa mo omwenyo gwaaluhe.

Nongele twa pewa omwenyo gwaaluhe otatu inyenge nokwiitaalitha wo yakwetu Joh.17:20. Ongeleki ya-

Kristus eha moka omilonga dhomeya omanamwenyo tadhi tondoka, olukeno, ohole, ohenda ombili, enyanyu, uuyuuki. Mpoka pwaa na ombili, pwaa na uuyuuki, pwaa na ohole, olukeno nenge enyanyu, opo mpoka omilonga dhomeya omanamwenyo tadhi tondoka nokufala po omwenyo.

Ngaashi naanaa mOshilongo shetu moka mwaa na nande uuyuuki nombili, Ongeleki yaKristus otayi tondokitha omilonga dhayo nokuuvitha elaka lyevaangeli, elaka lyombili, tali gandja omwenyo. Ombepo Ondjapuki oya monika miilonga yaJohannes omushashi osho wo moshilonga shOmukulili shekulilo.

Movelise 39 mpaka oitaali inaa tumwa natango okutaandelitha evaangeli, oshoka Jesus ina adhimithwa manga. Eadhimitho olyo tali gandja kuyo Ombepo Ondjapuki. Omukulili ota yumuka manga nota londo, opo ihe mesiku lyaPentekoste ota tumu Ombepo Ondjapuki kooitali ye.

Joh.7:37-39



Oyo nee tayi mwenyopaleke nokwii-nyengitha omilonga dhomeya omanamwenyo, dhi vule okukunduluka sigo okooaha dhuuyuni. Evaangeli nolya thiki kutse. Ooitaali tse otwa pumbwa omeya ngaka ge na omwenyo opo tu inyenge nokukwatha oshigwana shetu monkalo yaa na omwenyo.

Otwa pumbwa oonkondo dhombepo Ondjapuki dhi tu inyengithe, opo tu ze memweno nomuulunde, tu popye noku ulika oshili yaKristus monkalamwenyo yomuntu. Otwa pumbwa Ombepo Ondjapuki, oshoka moshilongo shetu ongaashi naanaa elundu lyaa na omwenyo lya pumbwa omvula nomwenyo otagu holoka.

Omuwa okwa uvaneka nokwa hala okukwatha. Tse otwa pumbwa ashike okuya kuye noku mu taamba, ota tilile omeya ge kombanda yetu notatu ningi omwenyo. Jes.44:3, opo ihe otatu kala muye tu li mehupitho Jes.12:3.

## Halolye Nashihanga



Oluvalo lwomufita Imalwa pamwe nayina omuselekadhi pokatilela kethano.

enene ndyoka lya holoka mOngeleki. Oshituthi shefumviko osha ningilwa megongalo lyawo Ekamba, moka wo a kala omusitagongalo, omulongi gwsikola yaanona nomudiakoni manga inaa yapulilwa oshilonga.

Omuunguli omukulu moofaalama nokOlange Iimalwa, okwa longo nondjungu iilongayakulo

mOngeleki ye nomoshigwana. Oshilonga shu-sita okwe shi yapulilwa 1974. "Katwa li tu mu shi pegumbo, ihe shoka otwa li twe shi taamba ko," osho omuselekadhi kwa li a tumbula. Okwa thigi ko omuselekadhi gwe noyana yatano naatekulu.

Sebulon Ekandjo

# Oshigongi shaakiintu mOnamungundo

**Aakiintu ayehe yomoshilongo shaNdonga oya gongalele pamwe eti 18.3.1989 pondje yOmbala yamwene gwoshilongo shawo omukwaniilwa Immanuel Kauluma Elifas. Oshigongi osha longekidhwa komunyekadhi, kuku Sesilia Kauluma, nelalakano aakiintu ya kundathane kombinga yoluvalo lwawo moshigwana.**

Aakiintu konyala 300 oya holokele moshigongi shawo shoka sha li mewiliko lyame-me Martha Sheya. Meme Ester Amaambo mokulesha ohapu yesiku ndyoka, okwa kumagidha aakiintu ya ka pulakene nawa shoka tashi ka ningwa moshigongi, shaa kale osima.

Omunyekadhi kuku Sesilia okwa popitha aakiintu. Okwa tseyitha omumvo 1986 moka a dhimbulula aakiintu ya pumbwa okugongala pamwe moshilongo, opo ya tungathane. Okwa ti omumvo ngoka oya gongalele noya kundathanene kombinga yiinima mbyoka hayi thiminike omukiintu megumbo nenge moshilongo.

Okwa ti elelo lyoshilongo olya yamukula omapulo gawo noya pitikilwa shoka ya li ye shi indile. Okwa ti uyelele umwe otawu monika mokambo koompango dhoshilongo. Oshigongi shika okwa li a thaneke shi kale ko ando kehe mvula, ihe mumbali dhopokati inashi ningwa omolwomaupyakadhi ga li mo.

Meme Petrina Shiimi okwa kundaneke eilongekidhilo lyaagaluki. Okwa ti shoka she ya fala hoka, hakutya inaa hala okuvulika, ihe oye ke etela oshigwana shawo emanguluko. Omupresidende Sam Nuuyoma okwe shi longekidha naalangi pamwe naye. Shika otashi ulike iilonga yawo inaa kala taa dhana, ihe oya li ko niilonga. "Onkugo yepongo oKalonga mwene he yi tondoka."

Meme Omunamibia ilongekidhila egaluko lyomumwoye. Taamba ko kehe gumwe te ya pungoye e li ngaashi e li. Kaya li kefudho,

ihe oya li kiita. Pamwe ote ya oshilema, ino mu ekelahi.

Ano memanguluko lyoshilongo shetu, hauwanawa auke twa tegelela, hanyanyu alike, ihe noluhodhi wo. Omukiintu ongoye egumbo, onkee kala omwiinekelwa.

Okwa tsikile ta ti, kwaamboka ya li ya pukithwa komutondi, ngele taye ya ya tsakanene megumbo, meme ngoye kala omuhungimwenyo gwaamwoye mbaka. Etumwala-ka lya zi kuSam Nuuyoma olyo; "likulu nayi fumvikwe, iipe nayi holoke." Oshigwana nashi dhiminathane po, osho meme Shiimi a ti.

Hailwa Ndapewa Kankondi okwa kwandjangele kombinga yeliko lyoshilongo shetu, ndyoka a ti kutya olindji nolyo itaali tu mangululitha ku SA. Okwa tala oomina, uunamapya nuuniimuna, oohi niyamakuti mbika oyo SA ha ka landitha po kondje yoshilongo shetu.

Okwa ti Namibia oku li momake gomuholi gweliko. Meme ngele owa hala u kale neliko lyoye, ka hogolole nawa. "Ou shi mo tuu nyoko mokati kaambono yi ininga ooyina yoshigwana nena?" osho a pula. Nyoko ye oye ho, oye SWAPO yaNAMIBIA. "Nekwa lya tsima oye nyoko, ooyina yaantu kaa lililwa."

Ipopiwa yaapopi oya kala tayi tetwa koonidigolo nokoondjimbo dhoomeme, ya nyanukilwa ombepo yemanguluko tayi pepe mokati kawo. Oshigongi shika osha li tashi

tungu nokupukulula aakiintu miinima oyindji.

Meme Aletta Ngaikukwete okwa fatulula kombinga yemanguluko. Okwa ti olyo oshinima sha li sha mangwa. Namibia olya kala lya mangwa komutondi SA, nena otatu tseyithi- lwa emanguluko tu ze muupika womutondi gwetu.

Aanamibia oya dhimbulula ukoloni, noya tameke okukondjitha omutondi gwawo. Etanga olya tamekele mehanganano hali ithanwa OPO (Owambo People's Organisation). Konima okwa dhimbululwa hAawambo aye-ke taa kolonyekwa nopwa totwa ehanganano SWAPO (South West Africa People's Organisation). Okwa tsikile ta ti, oluvalo lwetu olu li mondjila okugalukila kegumbo, shoka she ya falele itaye shi thigi ko otaye shi etelele, oshoka omolwetu ya yile tu manguluke. Omuwa ote shi tu ningile.

Okwa ti nando inatu tseyi shoka tashi ka ningwa pokati mpoka komutondi, ihe omunwe omwiinayi ihagu iyulikwa naashoka tashi ya ihashi londelwa. Okwa kumagidha kutya emanguluko hakulala, ihe okulonga nokuvulika koompango, to longo opo u tunge oshilongo shoye.

Omukwaniilwa okwa popitha aakiintu yoshilongo she, okwa holola kutya okwa nyanukwa mokupulakana etungathano lyaakiintu moshilongo she. Okwa ti kokangundu okashona kaalumentu mboka ya li po, kutya aalumentu shi li ko oshetu, inatu etheni tu kaleni konima. Okwi indile oshigongi shi thikame, endhindhiliko lyoshigwana tashi thikama mekondjo limwe sigo emanguluko.

Taati Kanana

## Okambo kotango koompango dhElelo lyOndonga

Iilyo yoshilongo shOndonga, oya tsakanene lwotango mokukalamwenyo kwawo ooveta noompango ndhoka ya kala hayi lelithwa, dhi li molupe lwokambo. Okambo oka holokele pehulilo lyomumvo 1988 noka tulwa melongitho nuumvo petameko. Kake shi manga okanene, ihe oke shi okutalika ko onkatu onde ya katukwa mokuteneneka ooveta dhoshilongo puuyelee

Ooveta ndhoka dha ethelwa natango miikaha yelee lyopamithigululwakalo dhoshilongo, odho unene tadhoni monika mokambo hoka ngaashi:

- Ethigululo lyomapya
- Ondando yongombe paveta
- Oonkondelela noongombe ndhoka dha kana

Okambo oka gandja wo u uyelele uuna ya pumbwa okufala oshinima shoye miihokolola, mpoka u na okutameka naampoka u na okuhulila. Oveta onti 5 mokambo hoka otayi popi nakutsipulwa eho nenge a lemanekwa uulema tau kalelele, kutya ota futwa etata lyomwenyo gwe. Shoka otashi ti ota



**Ongonyo oyo endhindhiliko lyuukumwe mekondjo lyaSWAPO, ihe kaalanduli ya SA oyo etukano enene, oshoka ehalakano pamulandu gwawo esimano, onke ongonyo tayi dhengitha oshigwana**

## Dha za kep. 1

ndanekwa (kuhailwa) Sefanya Kameeta, ngoka a li omutameki gwoshigongi.

Okwa ti Namibia ina pumbwa a thike kevi lyeuvaneko (kemanguluko) a mwena, ihe okwa pumbwa wo ombili, uukumwe nelongelukumwe moshigwana sigo a thiki memanguluko. Okugongala kwAanamibia esiku ndiyaka oya ulukile SA kutya nayo oya hala okukala aantu ye li moshilongo shawo, ihe hakukala ongoontauki moshilongo.

Okwa tsikile kutya, esiku olya thika, nokatokolitho oka ya mo nena! Petameko lyako shigwana shaNamibia longa wi itula mo nando komeho ku na omilonga dhoongandu dhokatongotongo, dhooBotha noongandu dhaayehe ya pukithwa. Shigwana longela kumwe mokufala kemanguluko lyoshilongo shoye mwene.

Okwa holola wo elalakano lyoSWAPO yaNamibia kutya limwe nolya yela itali kondjitha omuntu, ihe otali kondjitha uukoloni, okatongotongo nuukwamuhoko. Okuza nena sho okatokolitho 435 ka yi miilonga, Aanamibia itaa ka zimina we omatilitho nomapopyo agehe ga SA ngoka a kala ta pukitha nago moshigwana, osho a ti. Kameeta okwa hala kehe Omunamibia a tseye kutya kehe shimwe oshiwana shi li muNamibia oshe etwa koSWAPO yaNamibia. Ano kutya nee ope na gumwe inaa hala, Namibia oli na okumanguluka.

Okwa ti, pehulilo ota dhimbulukwa kehe gumwe a gandja omwenyo gwe nokwe gu kanitha molwemanguluko lyaNamibia. Ngaashi ombepo ndjika tayi pepe yemanguluko, sho Iigwanahangano ye ya moshilongo nokatokolitho 435 ka yi miilonga nena, inayi valwa nenge yi ze mootjeke nomomihaka dha SA, ihe oya etwa kaamati naakadhona, mboka ya gandja oomwenyo dhawo mekondjo, osho a hulitha oshipopiwa she.

Omupresidende gwopevi gwaSWAPO, omusamane Hendrik Witbooi okwa tseyithile oshigwana shoka sha li nenyanyu moshigongi, tashi ligola noku imba pombanda, kutya okatokolitho 435 oka ya miilonga. Botha naalanduli ye naa ze mo moNamibia, ihe ngele taa yi inaya ya ko nande kOmbaye, oshoka nayo oshitopolwa shaNamibia.

Okwa tsikile ta ti, ope na oondjila mbali okuya kemanguluko, ondjila ya SA noyaSWAPO. Pehogololo opo oshilongo shi ka mone ombili nemanguluko, natu ka hogolole oSWAPO. Okwa yelitha kutya SWAPO kayi shi yaAwambo ngaashi omihoko dhimwe tathi lombwelwa ku SA, ihe oSWAPO oyOmunamibia kehe.

Okwa ti ngele owa ka hogolola ongundu yimwe yaa shi SWAPO, owa hogolola SA nowa ya muupika wuulunde. Ethimbo olya pya nena naambo taa ti kaye na ombinga otayi ifundju. Oshinakugwapithwa shOmunamibia kehe, pukulula mboka ye li momapukitho, opo ya galukile koshigwana. Esiku onena notu uka kemanguluko tu ka igidheni (One Namibia, One Nation, the Spirit of Freedom is below), osho Omupresidende Witbooi a kumike oshigwana.

**Hilma Taati Kanana**



**MOvenduka esiku lyotango lyaApilili omuntu kwa li u na mpoka to vulu okulyata molwowindji waantu.**

## EHOVELO LOKATOKOLIFO, OLUSHINDO KOSHIWANA LA HANYEKWA NEPUNIKO LAUNTAG KOILONGA YOMAKAKUNYA

**Ehafo loshiwana molwokatokolifo ka tulwa moilonga nomolweshaino lombili pokati ka SA naSWAPO, ola tuvikilwa diva koshilemo shilaula sholuhodi osho sha etifwa po keemhangela domoumbudi okudipaa ile okuyehameka aveshe ovo tava yambidida oSWAPO. Elongekido loilyo yoSWAPO meni loshilongo, oku ka hambelela efiko lomukalelipo wowina wa UN moNamibia 31.3.1989, ola kalekwa ombadilila kovawiliki vOswapo eshi pa kundandwa, kutya opa ningwa omalongekido mai keengudu odo tadi yambidida epangelo la SA.**

Nande oyoongalele yoSWAPO ya ningilwe noya piti ngaho nombili mOkatutura 31.3. na 1.4.1989, mehalakano nomokushuna meendjila ololi inene i yadi ovanhu, oya umbwa kokahauto ke he na onomola taka shingwa kOvatilyane vavali. Osha ningilwa pokati kOshivelo naTsumeb 2.4.1989.

Ovanhu vaheyali ova kwatwa keeholo, ovo vavali; David Indongo, Etilyasa naJohannes Shipila, Omagongati, mOndonga va yehamekwa neenghono notava pangwa paife mOvenduka. Vakwao Hilma Tomas, Ombalamumbwenge; Sevelinus Amutenya, pOndjondjo; Simon Ashipala, Okatana; Rosalia Shilongo, Omeege otava pangwa moTsumeb naVeijo Nghifikwa, Ongenga ou a mono ekwafu mOshakati. Kalunga okwa amena shili, eshi inapa kanena omwenyo womunhu.

Omunafikola mOstanda VI pOkando, Josefina Shigwedha (21), ou a ninga omafiku ta hakulwa oipute yokomwenyo yehaluko mOnandjokwe, omolwoshiponokela osho, okwa popya pO-mukwetu, kutya eponhokelo lololi i yadi ovakwashiwana, osha dja ashike melengwa, eshi

va mona kutya mboli oshiwana otashi yambidida SWAPO.

Omafiku 1-3.4.1989 pOJunu, okwa kala omafiku oiponhokela yomakakunya oBataliona 101 moshiwana. Eshi osha shakenekwa yo meenehe dikwao mOwambo ile mOkavango. Edidiliko lokwiishilila omadengo kuvo, okuulika ashike ongonyo mombada ile okudjala oshikutu shi na oluvala lepande la SWAPO.

Eumbo lomushamane Hesekiel Naunyang mOndeshifilwa, meengaba deongalo lEndola, ola xwikwapo ketanga la SA 2.4.1989. Eendunda nhano nomaliko ado oda pila mo. Odo da

Tala kep. 7



**Omupresidende gwopevi gwoSWAPO omusita Hendrik Witbooi ta nyanda kokahumba moshigongi shaayehe 1.4.1989 mOvenduka.**

# Ovakwashiwana va kwafela okufudika oimhu yoshiwana shavo



**Egumbo lyomusamane Heseziel Naunyango, mOndeshifiilwa, osho lya hanagulwa po ngeyi komakaspeli 2-4-1989.**

Ovakali vomomukunda Ondeshifiilwa popepi nEndola, osho va fiilwa omidimba dovakwaita vaSWAPO 21 odo da kala kombada omafiku ane. Edimba nenyanalifo momesho kakwa li tai pitika omunhu u ehene popepi, ndele ovakwashiwana ova fudika oshiwana shavo nounhwa.

Ongula yOshoondaxa potundi 11h00 ovanhu vomomukunda ova halulwa ketopo lomauta,

“Okafimbo kanini ashike eshi ka pita po onda uda eendjebo tadi topa, ame nonda yandja ovamwange meke laKalunga nonda faduka po,” osho a hokololela Omukwetu. Olwoodi olo ovanhu vomomudingonoko tava ti kutya ola ka xula konhatu yokomatango, ola fiya po omidimba dovakwaita vaSWAPO 21. Onghendabala yoshiwana ketanga leameno nokovapolifi omidimba di fudikwe, inai kwafa sha fiyo ovakwashiwana ve likwatela ko voovene.



**Omidhimba 21 odha lala mpaka omasiku gane pwaa na ekwatho lyasha. Aakalimo yomomudhingoloko oye na omalimbililo kutya omidhimba haadhihe dhetanga lyaSWAPO.**

eshi SA a hovela okuumba etanga laSWAPO. SA oye naanaa a hovela, osho ovakalimo tava dimbuluka. Pefimbo olo meme Fransina Ndilimeke Naunyango, okwa hangika a ka tala omeva, ye a fiya ounona vaye vahamano meumbo. Okwa ti mondjila manga ina fika komeva, okwa shakana nomakaspeli a finda lwokeumbo laye.

Omufita meongalo Tomas Ndiwakalunga okwa li pamwe noilyo yeongalo laye okukwafa moshilonga osho, pamwe novafita yo vomomaongalo opoushiinda. Ovakwashiwana momudingonoko omo, inava fiilwa ashike oupyakadi womidimba di li kombada, ndele ova fiilwa yo omudingonoko wa napela oitopifa

yimwe ya dimbulukiwa inai topa.

“Katu shii kutya ounona vetu otava xupu ngahelipi koshiponga shoitopifa ye va kalela i fike opo,” omukulupe womido di li ko 60, osho a kema noshisho shinene.

**Sebulon Ekandjo**

## Kapu na omupika kamana e vule iikolitha

Uukoloni, uupika, uudhinwantu, okuthindilwa kongudhi naayihe mbyoka tayi thiminke uuntu wAanamibia, mbika oya dhimbululwa tayi zilile wo muupika wiikolitha. Iikolitha oye etelwa Aanamibia mevi lyawo komutondi gwoshigwana, SA. South Africa kee na nando epitikilo lyokweeta mo iikolitha, ihe shoka ote shi ningi sho e tonde Aanamibia. Okwe shi ningi nelalakano sho e shi shi, kutya muunkolwe ohamu zi omapiyaganeko ogendji.

Namibia nena oku li koho yuupika wuukoloni, mboka tau pangele maagundjuka nomaakuluntu wo. Aagundjuka itaa yakula we momagumbo pethimbo. Muupika womalovu maagundjuka otamu ya zile uumbotsotso, nokuya muukakunya mboka wa yiwa kaamati naakadhona pethimbo ndika.

Aakuluntu miikolitha otaa likola mo omapukitho gomutondi nokulombwelwa, kutya otaye ya ya sithwe ondjala kuSWAPO. Otaa pewa ooshako dhomapungu opo yi inekele ehawaleko lyomukolonyeki, manga omapya gawo taga lyatwa po kaye shi lwete. Otaa tuntulwa nokupewa omi komutondi pwaa na ofuto. Inaa dhimbululwa uukoloni mbuka, oye shi holekwa kiikolitha.

Omunamibia omusimanekwa, omugundjuka nomukuluntu, ndhindhilika, omupika omunene iikolitha. Otayi ku kutha ohole yoshigwana shoye. Otayi ku kutha onkondo dhokulonga opo u mone iipalutha. Osha yela, kutya muNamibia oshigwana oshi na ondjala, ihe oya zi mpoka Aanamibia sho inaa hala we okulonga. Otaa menekele owala puundingosho. Namibia oyina yAanamibia, ihe otatu hepele ponto ye.

Otatu lile peke, oshoka ekuta otwe li kuthwa komutondi gwetu. Onkalo yaNamibia oya luudhikwa kuunkolwe nokohole yeliko. SA mokweeta iikolitha moNamibia pwaa shi papitikilo lyAanamibia, oku na elalakano tu hepe. Omalunza goohungi nago oga teka mo nale.

Omunamibia kotoka waa adhike kehogololo u li koho yuupika wiikolitha. Osha pumbiwa unene u kale u shi shoka to ningi pehogololo. Kape na omupika kamana e vule omalovu, ihe ekondjelomanguluko otali pitile ashike mekondjo. Dhiminapo omutondi gwoye, ihe kotoka wo ino egamena kuye, u mu inekele.

Okwa tiwa, kutya omakengelelo ogendji pethimbo ndika otaga longithwa, ihe natu ipuleni alikana: Ngele enota li ku na nwa omeva, ngele ondjala, inda pomushiinda shoye u ka konge oontanga, oshoka odho dha hupitha nale ookuku. Ngele uuvu opo u tuntulwe ku SA miihwa, tseya kutya shoka otashi pula omwenyo gwoye. Tu gwaneni nokashona ketu mu-Namibia.

Onkundana ndjika oya zile moshigongi shaagundjuka shomayelithilo kombinga yonkalo yaNamibia nena, eti 25.3.1989, moka naakuluntu ya holokela mo okukundathana pamwe megongalo Elombe, mOndonga.

**Taati H.Kanana**



## Omalugodhi omadhigu oga tukuluka muNamibia esiku lyeshaino lyombili pokati ka SA naSWAPO.

Dha za kep. 5

xupa ko, oda lyatwa po komakaspeli. Lao linene inamu yehamekelwa umunhu. Ounona vaheyalu va hangikile meumbo pefimbo loshiponhokela nokatiheyali koluvanda koimuna, ova xupa ngaho.

Ehokololo lomaumbo a pya mOnanghulo novakwashiwana va dipaelwa mo keedila, inali kolekwa kovanhlu vomoshitukulwa osho. MOilagati, popepi neongalo Eenghango, omapya ahetatu, otaku tiwa okwa lyatwa po komakaspeli omo oipalwifa ihapu ya monena mo oshiponga.

Eshi osha ningwa 3-4.1989 ketanga la SA la homata omaloli nomakanona. Omupopindjovo ou e shi tala nomesho okwa ti, kutya fiyo okonima yefiku limwe eshi sha ningwa, ovakwashiwana vamwe okwa li inava shuna natango momaumbo avo eshi va faduka po. Momukunda ou inamu ningwa fiyo opefimbo olo omaumbafano asha.



Enyonauko lomidimba okwa li la ningifa oshilonga shidjuu shokufudika oimhu oyo kovakwashiwana, ndele ove shi pondola ngaho. Ondunge yelongifo loshipoleki oye va kwafa unene.

## Omapulo oshiwana kombinga yombili mepashukilo laUNTAG

Oshiwana oshi na omalipulo mahapu nomanene kombinga yeenghono detanga la Untag odo e kwete noufemba waye okukwafa oshiwana momashindo oo sha kala hashi ningilwa komakakunya. Obataliona 101 yomahepeko oyo ya dimininwa okushuna moilonga komuwiliki waUntag, osha wedela omalimbililo moshiwana, eshi kwa li sha teelega efudepo koixuna yomashindo. Omapulo taa shikula okwa dja moshiwana.

- ★ Untag kai na eenghono hamba okwaamena omaumbo nomapya taa lyataulwa po ku SA?
- ★ Untag okwe uya hamba a kwate ko SWAPO, ye e tu yandje momake omuhepeki wetu SA?
- ★ Oiwana yahangana hamba oya ninipike etanga laUntag nowino, opo i longife nawa ovakwaita va SA?
- ★ Eenghono daUntag onadi ka longe naini mepopilo lombili yaNamibia, ngeenge SA oye ta wilike okatokolifo?

Kombinga yaSWAPO muNamibia pefimbo okatokolifo ka tulwa moilonga, omukwashiwana umwe okwanyamukula Omukwetu, kutya oshi fike pamwe nokatokolifo ka ya moilonga ndele SA oye natango ta wilike okatokolifo. Okwa weda ko ta ti, kutya Swapo ou omudalelwamo moshilongo, oye kwa li e na okukala meni loshilongo, mangha SA ta kalekwa kondje yasho ile a shune oko a dile. Nongenge hasho shi li mokatokolifo, mboli omwa fyaala epulo la fimana inali nyamukulwa, osho a popya.

Omalinyengo omatanga a SA mokati koshiwana pefimbo lokatokolifo ka tulwa moilonga, osha limbilika nosha piyaaneka oshiwana neenghono, naunene tuu omahepeko eshi taa twikile shi dulife shito.

## Sebulon Ekandjo



Omunati ou ota ulike oitopifa oyo inai topa ya fiwa ya napela nomudingonoko wOndeshifiilwa.

## SWAPO na shune mu-Angola: Nujoma ta ti

Aakwiita yaSWAPO ya kala taa kondjo nomatanga ga SA muNamibia, oya pewa omasiku gatatu sigo onena (15.4.89), ya shune muAngola. Elombwelo ndika olya zi komupresidende Nujoma nokokomisi yopongamba ya Namibia naAngola. KuAngola etanga lyaSWAPO otali thindikilwa ketanga lyaUntag ndyoka tali adhika pomahala taga landula:

Epupa; Swartbooi Drift; pOmbakana 1 (Ruacana); pOmbakana 7 (Uukwandongo mOmbalantu); pOmbakana 14 (Kavango); pOmbakana 19 (Oshikango) nopOmbakana 25 (Epinga); Kongo nOkankolo. Okomisi yopongamba nayo otayi kala pomahala ngoka kakele poKongo nOkankolo, mboka Cuba naAngola ita kala po.

Oshigongi shopoluomompumbwe shaatonateli yiitayingeleki naakwathi yawo, osha ithanwa mbala mOngwediva kaawilikingeleki opo ya yelithilathane nawa aasita momagongalo nkene taa vulu okutaamba aakwiita yaSWAPO moongamba dhomagongalo gawo, yo ye ya gandje ketanga lyaUntag. Epangelo lya SA oiyu uvaneke kaali hinde nando eyakulo ndyoka.

Aawilikingeleki muukumwe wawo, oya kala nokukonga omukalo nkene okatokolitho taka vulu okutsikila natango, nonando pwa kala omalugodhi pokati kaakwiita eshaino lyombili sho lya tulwa moilonga. SWAPO okwa tiwa na kale komusinda 16, muAngola moka ta tonatelwa kuUntag. Efaaeko lyaakwiita ya sa sigo oompaka oli li 230 yaSWAPO na 55 ya SA.

# AANAMIBIA NGASHINGEYI O-TAA KONDJITHWA KU UNTAG?

Ezimino lyomukalelipo gwa UN muNamibia, opo SA a koleke omatanga ge methimbo okatokolitho 435 ka tulwa miilonga, osha talwa kAanamibia oyendji, kutya omukalo lela gwokusikumudhila Aanamibia omadhipago ngoka ya kala mugo omimvo odhindji. Osha zi momaipumo mumwe omadhigu ngoka ga ningwa pokati komatanga ga SA nogaSWAPO konima ashike yootundi ntano eshaino lyetulopo lyomatati pokati komatanga ngoka gaali sho lya tulwa miilonga 1.4.1989.

Omadhengathano omanene ngoka ga zi ekanitho lyoomwenyo odhindji koombinga adhihe mbali, oga ningilwa pOkahenge kaSebulon pokati kEndola nOhaingu 1.4.1989; mOndeshifilwa 2.4.1989 natango moongamba dhEndola; pOntokolo mOmbalantu esiku tuu ndyoka nonoKaoko 1.4.1989. Pethimbo lyoshinyolwa shika tashi longekidhwa, otaku tiwa aakwiita yaSWAPO 252 oya sila momalugodhi ngoka nayakwawo yane ya kwa-twa nomwenyo.

Kombinga ya SA ye mwene ota popi a kanitha omakakunya 22 nayalwe ye vule 40 ye ehamekwa muule wethimbo tuu ndyoka. Onkundana onkwawo yomalugodhi oyu uvika 4.4.89 mOnamugolo, moongamba dhOshaango, ihe oya li inayi kolekwa natango koonzapo dhilwe.

Omadhipago nomahindo ngoka aakwashigwana taa ningilwa komakakunya nomethimbo lyetulomiilonga okatokolitho kombili, nezimino lyomusamane Ahtisaari etanga lyedhipagi lyoBatalion 101 li shune miilonga, osha pendutha epulo enene maakwashigwana shoka tashi lalakanenwa ku UNTAG.



Omugundjuka Saara Nangula Ihuhwa (28) mOnewamba, Oshitutuma, okwa mana oondjenda dhe 3.1.1989. Okwa thigi ko he nayina naamwayina yahayali. Omwenyo gwandje oKristus nokusa okwo elikilo. Eimbilo 400

A.Nd. Ihuhwa  
Oshitutuma



Ndjayi Dewan Prem Chand gwetanga lyombili lya Untag kolulyo naNdjayi Willie Meyer gwomatanga ga SA.

Ngele oshigwana otashi dhipagwa po ku SA, ondjo ndjoka otayi tentekwa komutse gwomukalelipo gwowina gwa UN, ngoka a gandja ezimino ku SA a longithe omatanga ge peha lyoku ga shonopeka.

Mokudhimbulukitha omukalelipo gwa UN, onkalo ndjoka Ongeleki yaELCIN tayi yi tala, omukwathi gwomumbisofi omusita Matti Amadhila, okwe mu nyolele ngeyi:

Omusimanekwa, ohenda sho twe mu pilukile ishewe. Otwa sa oshimpwiyu shedhipago ndyoka tali ningwa ashike nombiliha. Osha fa kutya aakwiita ya SWAPO oya li ya tegelele ya mone egameno ketanga lyaUNTAG, olyo li ya hangukunune. Nonando katu shi omadhiladhilo geyandjaganeko lyaSWAPO moshitopolwa, osha fa kaye na elalakano lyokuponokela.

Otwa talepo omahala gi ili nogi ili mpoka pwa kondjelwa nosha eta etiko enene lyombinzi. Otu uvite nayi komaso koombinga adhihe ga tya ngeyi. Otwa sa wo oluhodhi keshunomiilonga lyoBatalion 101.

Oluhodhi lwetu olunene olu li mpoka sho aapolosi naakwiita ya SA kaye li nando pamwe netanga lyaUntag opo ya tonatelwe. Andola osha li ngeyi, andola omapumathano ga tya ngeyi ga yandwa. Ngashingeyi kaku na nando Untag ta monika ta konakona wo tuu oshinima mpoka omaipumomumwe ga ningilwa.

Okuza kutse yene osho wo kaakwashigwana, ayehe, kape na nando ngoka ta tseyu Untag mpoka e na okwaadhika ngele omuntu owe mu

pumbwa huka kuumbangalantu woshilongo. Otwa hala Untag a langeke mbala aatonateli yetanga lye lyombili noongundu ndhoka tadhi kondjo, dhi ngambekelwe mookamba dhadho.

Otu shi shi omaudhigu opo ge li notatu ku halele ewiliko noonkondo dha za kOmuwa, osho ombilive ya hulithwa.

Oya shainwa komusita M.Amadhila eti 3.4.1989 mOniipa.

Oraata yOongeleki muNamibia (CCN) nayo wo mokuholola oluhodhi lwayo komaso goludhi ndoka, oya ningi eindilo koongundu adhihe tadhi kondjo, opo dhi galukile kombepo yoshikalimo shoshitokolitho 435/78, opo emanguluko lyoshilongo li ye pwaa na ekateko lyasha.

Sebulon Ekandjo

## OMAPANDULO

*Aamwatate aaniilonga yOshitayingeleki Uuninginino nOvenduka.*

*Ombelewa yOshitayingeleki shUuninginino oya taamba nenyanyu nomaako ga shambekela iilonga yiikaha yeni moka mOvenduka R1014,73. Osho wo epanдела lyetumo ewanawalela, oonguwo dhokomalutu noongaku mwe tu tumine odha thika nawa mOmbelewa yetu.*

*Sho twa taamba R 1014.73 otwa kundana wo kutya omwa kwatelelwa R 113.31 twe yi pewa kegongalo lyaSoweto, osho oomeme ya ELK moSoweto mboka ye tu pa R 10.00 noomeme ya ELCIN moSoweto oye tu pa R 7.00.*

*Kepandela otwa kundana wo kutya otwe li kongelwa kongundu yaagundjuka aapopi yelaka lyOshiwambo mUushimba mewiliko lyaagundjuka yOshitayingeleki shUuninginino.*

*Epandule lyowina nolya shewa otali pewa aalumentu mbaka: Simon Iileka Eendombe, Konrad Nawela Oshikuku, Fimaneka Shidute na Filemon Lungameni, Silas Paulus Aakando, otwe mu pandula unene. 2 Kor 9:8.*

Shanghala  
Ombelewa yOshitayingeleki

## SWAPO ota ti muNamibia ita zi mo

Ewiliko lyoSWAPO moLuanda otali indile Iigwanahangano yi tume omatanga ga gwana muNamibia, opo yi tule omatanga ga SA noye mookamba meni lyaNamibia. Naashika okwe shi indile shi ningwe meendelelo. Sigo opelongekidho lyoshinyolwa shika, SWAPO okwa ti ye okwa kanithile ashike aakwiita 38 momalugodhi ngoka kaye li 259 ngaashi SA ta ti.

Omalugodhi oga kala taga uvika natango muuzilo wUukwanyama, nonando Ngoloneya Ndjayi, omusamane Louis Pienaar a gandja elombwelo lyohenda SWAPO i ilongekidhe okwiigandja nenge a shune kuAngola.

# OUTEOLOXI WOVALAULE

Outeoloxi wemanguluko opo ngaho wa holoka omido edi. Eshi otashi ti oupe kufye, onghée ihatu udu nokuli tau popiwa unene. Ashike monghalo omu tu li, katu na omhito oku u henuka. Mokapopiwa aka, ohandi kendabala okufatulula oshitai shao shimwe hashi ifanwa "Outeoloxi wovalaule" (Black theology).

## Oitai youteoloxi wemangululo

Outeoloxi ou owa fikama moitai itatu: Outeloxi wemangululo oo ekwatelokumwe lomahanyuko ovanhu tava hepekwa nove li meenghalo da yooloka. Bengahalo edi oda kwatelwa kumwe patatu ngaashi:

- Outeoloxi wemangululo, ou tau monika unene muLatin Amerika omo ongudu (class) imwe tai lyatele dikwao poshi noku di fipa ohonde.
- Outeloxi wOvalaule, ou tau monika unene muAmerika lokoumbangala mu S.A. nomu-Namibia, omo omunghoko umwe tau fininike dikwao (rases), noinima aische hai ufwa koukwamunghoko.
- Outeloxi wovakainhu, oo tau monika paife mounyuni aushe, omo tamu monika elyateloposhi loludi limwe (omukainhu). Omunhu woludi likwao (omulumenhu). Eshi handi ka nyeshula kusho osho outeloxi wOvalaule.

## Outeoloxi wovalaule oo oshike?

Kau fi sha shimwe, shi he fi ediladilo, nedimbuluko longhalo yomahepeko molwoukwamunghoko nomolwoluvala loshipa.

## Oshike sha etifa outeloxi ou?

Ekoneko, edimbuluko netokolo — Ekoneko lOvalaule vovene kutya voo otava hepekwa, nokushundulwa va lumbulwa eenghono nouyamba komunghoko oo wa hakana po aische oyo tai valulwa, kutya oyo oufemba womunhu, mwa kwatelwa omhito yokuufa onghalo yavo yonena noyonakwiiwa.

## Oukriste ou li peni moshinima eshi?

Oukriste kau li mekoneko medimbuluko ile metokolo, ndele ou li mOvalaule. Ovo ovakriste! Hano eshi va tokola ve limangulule, ova kala yo noku shi diladila paukriste nokukendabala va mone yo ouyelele mOmbibeli kepulo, kutya voo osho va ufwa va kale ngaho kuKalunga, ile ahowe?

## Outeloxi ou tva kala nao nale owa puka?

Aaye, ashike owa kala nolwaamamhati. Owa kala neamo okupopila onghalo i kale ngaashi i li, moo monghalo omo omu na Omulaule ta hepekwa. Outeoloxi ou ohau tiwa nokuli owoindele novayamba novalumenhu. Mouteoloxi omu omwa udifwa unene exupifo lopaumwene, nokutya ekwatafano lomunhu naKalunga kaye.

Owa yelifa ashike nawa ohole yokuhola Kalunga, pa fa pe he na yo ohole yokuhola omunhu omukwetu. Outeoloxi ou oule wefimbo lile owa efa Ovalaule va futwe eendjabi da

fa omuti womomesho, va kale kodulate eemwedi 18, nomanga Oilumbu i li momaumbo ayo. Owa mwenena okuhayapulwa kwovakainhu, wo u he na omatomhelo a tya shoo. Owa mwenena chongo eli tali pewa Oilumbu li kale li dule olo tali pewa Ovalaule nosho tuu. Ou otau dulu shili okulukwa outeloxi wokeulu ile weemwenyo. Ame ohandi u ifana outeloxi woshitonale.

Outeoloxi ovo tava tiwa "valaula" otava ti, outeloxi ou woshitonale, owa ama ovayamba, ovanaenghono, ava va ondoka, naava ve li nawa nale, notava amenwa komilandu odo di li po va ha wile pomufika opo pe na Ovalaule ile ovakainhu. Paxupi outeloxi ou owa mwenena oulunde wovahepeki.

## Outeoloxi wOvalaule otau fatulula oulunde ngahelipi?

Pauteoloxi woshitonale oulunde oo okuteya ekwatafano pokati komunhu naKalunga. Efatululo eli oli li mondjila, ashike oli li omukili. Oku na okuwedwa alushe, kutya pokati komunhu nomunhu mukwao. Osha fa

kuta outeloxi woshitonale owa kala unene tau pashukile oshitai shotete osho: ekwatafano lomunhu naKalunga, pa fa pe he na oshitai shikwao ekwatafano lomunhu nomunhu mukwao, shi na okuyelifwa.

Hano, outeloxi wovalaule inau kondjifa efatululo loulunde pauteoloxi oo wa ikililwa. Ovo tava mboona outeloxi wovalaule otava ti, heeno oulende oo **etukauko** lomunhu naKalunga, ndele nonomunhu yo mukwao. Oulunde pauteoloxi wovalaule oo okwaanya okuhola Kalunga neshito laye, osho yo okuliyemba molwouwa womunhu mukwetu. Shaashi Ovalaule otava hepekwa, okuhenuyuuki, elyatelopedu, eshundulo nedidivalwo lOmulaula kOilumbu oo oulunde oo outeloxi woshitonale wa li a na okukala we u ponokela nale nale.

Edimbuluko lOvalaule kutya omahepeko, oluhepo neshundulwo kai fi omupya we va hanga ngeni, ndele voo ova ningwa eehepele, oipipili, notava lyatelwa pedu palandulafano la ufwa komunghoko oo wa hakana po eenghono adishe, wa nyangula po eliko alishe nokutya oufemba aushe.

## Tala kemandja tali landula

# N.N.T.A. OKWA HANYUKA NGAHELIPI KETOTEPO LA N.A.N.T.U.?

Ehangano lovalongi moshitukulwa shOwambo (N.N.T.A.) ola tambula nehafo nonepandulo etotepo lEhangano lovalongi voshiwana shaNamibia (Namibia National Teacher's Union/NANTU) olo la totwa 11.3.1989 mOvenduka.

Ewilikongudu la N.N.T.A. olo la hangika moilonga ola tokola meendelelo okwoongala 15.3.1989 mOshakati nola tokola okudja efiku tuu olo la tumbulwa pombada, opo oNNTA noilyo yaye li lundulilwe mo NANTU.

Oshilyo kehe shoNNTA, osha mangeluka okulinyolifa moNANTU, ndele omauyelele amwe otaa ka landula konima yomalongekido aeshe nge a pu.

P.O. Haufiku  
P.O. Box 260  
Oshakati



Iilyo mbika oyokomitiye yelongekidho lyedhiko lyehangano lyaalongi yoshigwana shaNamibia ndyoka ye endelee noshilongo ashihe okuyelitha elalakano lyehangano oya kala mewiliko lyomusamane Aron Ivan Kasingo omutango okuza kolumoho.

## Emanguluko lyaShipandeni lya yele mombelewa yOmukwetu

Onkwatwa yopapolotika Shipandeni Mupolo, mOnyaanya mOndonga, oya mangululwa mondholongo yayo yuuwike moka ya kala omvula yimwe noomwedhi ne. Omusamane Shipandeni okwa kuthiwe pegumbo lye kaakwiita ya SA mOnyaanya 3.12.1987 e ta pongekwa tango moshipangelo shaOranje koBloemfontein, nokonima omOshakati, Ondangwa, Grootfontein nolwahugunina ishewe mOndangwa.

Oshipangelo shaOranje, ku SA ohashi tuminwa mboka ya talika oya piyagana momutse. "The omusamane gwandje ina piyagana, oku li ngaashi ndi mu shi," osho meme Selma a popi pOmukwetu, kuundjolowele womusamane gwe ke na omalimbililo gasha.

Shipandeni pethimbo a kwatwa okwa thigile omukulukadhi gwe e li metegelelo e valelwa peni, nonkambadhala yomukulukadhi gwe a popye namwene a gandje edhina lyokanona oya hulile ashike muunyengwi. "Oshimpwiyu shomukulukadhi gwandje osha li sha hepeke ndje nayi mondholongo shi thike pamwe nuuwike mboka nda kala muwo, ihe etalaleko onde li mono ashike mOmbimbeli ngele nda leshe, ohe mono twa fa tu li ongundu onene," osho a holola onkalo ye ndioka a tsakanene mondholongo. MOmukwetu No 5/1989 epandja 9, otwa li twa tseyitha kutya omulumentu nguka okwa fa a kwatululwa, ihe nani hasho. Emangululo lye



### Egumbo lyaShipandeni lya hangana ishewe pamwe nokankelo kawo komwedhi gumwe natata

olya li ashike 24.2.1989. Pamwe nomukulukadhi gwe meme Selma nokankelo kawo koomwedhi 12 Selma, hoka opo ya tsakanene nako lwotango otaa gandja omakundo kaaleshi yOmukwetu, Job 42 1-6 nepandulo kwaayehe mboka ya galikanene noya kwatha egumbo lyawo pethimbo lyetopoko.

Sebulon Ekandjo

## Uuteoloxi wOshilaule

Da dja kep. 9



Etokolo lOvalaule, kutya voo ova loloka nee, noinave lilongekida vali okutambula nokukala monghalo ve i ufilwa kovanhu vakwao. Ova tokola va lundulule onghalo yavo vene. Etokolo eli ove shi shii otali va talifa omesho mai kongudu oyo ya ika okulya tai kuta noinai hala nande elunduluko.

Oulunde ou otau findwa nee ngahelipi?

Okelidilululo! Inashi wana okulidilulula meemwenyo. Pauteoloxi ou kelunduluko lomitima oku na okulandula divadiva elunduluko lomilandu monghalafano. Ovanhu aveshe ove na nee okufikifwa pamwe moinima aische. Ovakinhu ove na okupewa oufemba va yakule ngaashi ovalumenhu mOngeleki nomoshiwana. Ovalaule ove na okupewa omhito va kale apa va hoolola nova futwe ngaashi ve lihongela, nova pewe oufemba aushe womukwashiwana. Tashi ti, elidilululo oli na okumonika monghalamwenyo yefiku nefiku.

Dha za kep. 4

futwa oongombe ne (4) nenge iimaliwa ya yeleka oongombe ndhoka. Iimaliwa yongombe oya yelekwa niimaliwa yondando yongombe paveta.

Iimaliwa yongombe paveta oyu uthwa moveta onti 13 yokambo hoka. Paveta mOndonga oongombe otayi kosho R 300,00. Omuti gwiiyimati gu li melundu, inagu tagwa, gwo inagu gumbilwa enkolo, paveta onti 8 yomokambo. Ngele omuti ogwa tili-gana, nagu londwe, nongele omulunga, inagu tagwa amazilolwa, nagu tegelele gu kuku-te, opo gu tagwe.

Uuthiga womapya otau leshwa moveta onti 9 yomokambo hoka. Otayi ti omusamane ngele okwa mana oondjenda, omuselekadhi omuhokanwa oku na uuthemba okulala mepya ngele okwa hala. (9.1) Epya ndyoka omuselekadhi ote li gandjele R 300,00 ngele eshona; R 400,00 ngele epokati nenge R 600,00 ngele enene. (9.2 na 3)

Aayonwa aakadhona otaa futwa R600,00 paveta onti 14 yomokambo hoka. Iimaliwa R 400,00 otayi pewa omuyonwa na R 200,00 otayi tulwa mokambo koshilongo. Kombinga yiilonga yomoOsoondaha, oveta onti 24 otayi ti, inashi pitikwa okulonga mOsoondaha, naangoka te shi ningi uuna a gwile momake goveta, ota mono egeelo.

lilonga ya tumbulwa mpoka ongaashi okulonga mepya nokuteta iiti mOsoondaha. Ongaashi wo nakuumba ondjembo moshituthi shohango, shoosa nenge moshituthi kehe, okwa tiwa ota mono egeelo paveta onti 26 yomokambo hoka.

Omageelo mooveta odhindji mokambo hoka inaga uthwa, oto geelwa nashike osho wo ooveta dhimwe ngaashi unene yomapya, itayi yamukula unene omapulo ngoka ge li moshigwana molwayo, ihe Elelo lyOndonga olya ningi etameko lya simana nokuholola po okambo hoka kaashi shi okwiidhimbi-kwa. Enyanyangidho olya zi mOshinyanyangidho shaELOC, mOniipa.

Sebulon Ekandjo

**FUEL  
TABLET**

**HARMFUL  
IF SWALLOWED**

**Burn with wrapping!**

- OPELA YOMULILO
- OSHIPONGA NGELE OWE YI NINA.

Osho enyolo pombanda tali ti, ngaashi tali leshwa kokapakete ka gandjelwe komakakunya kuunona momudhingoloko gwOniipa pehulilo lyaMaalitsa nuumvo, mumwe niikulya yilwe.

Aakuluntu naanona mboka haa taamba iikulya mbyoka momikunda, osha yela kutya ohaa lile wo mumwe omauzigo ngoka. Shigwana, iktokela, omutondi okwe ku langela.

Aantu oyendji okuza 1.4.1989 oya taukile momikunda dhawo komalugodhi moshitopolwa shEndola. Meme Hendrina Paulus nokanona ke kolulyo naPeneyambeko Shikulo, oya thikile sigo okOniipa. Osho wo Hambeleleni David kee li methano.

Okutidhwa miilonga pwaa na omatompelo nokukala wa landulwa nokuwilikwa miilonga, mbika oyo yimwe tayi vulu okuthiminika omuniilonga, okulongitha ukomitiye mboka wa totwa po okukundathana omaudhigu gaaniilonga. Etumwalaka ndika olya kundane kwa kuAmushanga gwehangano lyaaniilonga (NAPWU) kOvenduka, omusamane Peter Nangolo mOnandjokwe omwedhi gwa zi ko.

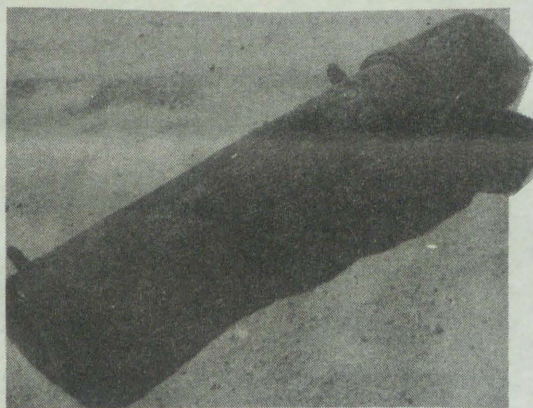
Igongi yokutota ookomitiye ndhoka olya ningilwe okuza muSeptemba omumvo gwa zi ko, kuumbangalantu waNamibia. Nangolo okwa ti, okwa koneke kutya ookomitiye odha totwa, ihe ihadhi longithwa nande. Omusamane Nangolo okwa yelitha kutya, otashi vulika mboka ya hogololwa (iilyo yokomitiye) nayo haa tila okuthikitha omaudhigu kaawiliki omolwekanitho lyiilonga.

Omukundaneki okwa ti, uumbanda mbuka nau ze mo maaniilonga, kehe shimwe nashi ningwe pauyuuki. Omuniilonga kehe e na uudhigu miilonga ye, na tseyithile okomitiye, yo nayi thikithe mbala komuwiliki, pokati kawo pu tungwe ekwatathano ewanawa.

Okwa indile aaniilonga ya kale haa gongala okukundathana onkalo yiilonga nomaudhigu gawo, opo okomitiye yi ninge ekwatathano nomuwiliki, pu monike ekwatho. Nangolo okwa kundathana wo naaniilonga yomOnandjokwe kombinga yonkalo yonena moshilongo shetu.

Okwa hala aaniilonga ya gandje ongono yahugunina, okuulukila SA kutya shoka oshigwana sha kondjele nosha sila, osho emanguluko. "Ngaashi twa zi nale tu li mehepeko lyomutondi, nena ethimbo lye olya pwa ko." Okwa gwedha ko, kutya oshikondo shuunamiti osha koneka omaudhigu gAanamibia sho ya yakulwa miipangelo molwomaulunde gomutondi.

Okwa gandja ekumagidho kaaniilonga ya kale kumwe melongelokumwe nomokuya mehogololo opo ya ka hogolole SWAPO yaNamibia ndjoka omusamane Nangolo; a ti kutya oyo ayike tayi ka pangela oshigwana pauyuuki. "Ino etha ehogololo li ku pitilile po, opo u ka gandje ewi lyoye," osho a kumagidha aaniilonga.



Oshitopitha shika osha thigwa popepi nolugumbo lwoshinyanyangidho nositola yomambo yaELCIN, kaakwiita ya SA 4.4.1989, konima yekondeko lyawo pOnandjokwe nopomudhingoloko.

## AANIILONGA ITULII MO MOKU-LONGITHA UUKOMITIYE WOKUTHIKITHA OMAUDHIGU KAAWILIKI YIILONGA: NANGOLO

Okwa hololele aaniilonga kutya oku na wo elandithopo lyiinima yepangelo momake gopaumwene. Mbika otayi landithwa po ku SA sho ta zi koshipundi. Iinima oyepangelo lyaNamibia, ye ote yi landitha po kuyo, nenge kuyopondje, peha lyoku yi thiga po ngaashi e yi adha po. Okwa yelitha kutya ngele oshipangelo sha landithwa po, naaniilonga moshipangelo moka oya landwa po. Okwa ti ombelewa yaaniilonga kOvenduka otayi kambadhala kombinga yoshinima shoka shaa ningwe.

Ekumagidho lye lyahugunina kaaniilonga nokoshigwana olya, ti kehe Omunamibia na kotokele omutondi. "Konakona ehlokepo lye nomanyengo ge agehe." Okwa ti mOmbimbeli Omuwa ota popi kutya, aluhe oku li kombinga yaathiminikwa nokape na shoka tashi imbi Omunamibia a ye memanguluko. Aanamibia natse Kalunga oku li kumwe natse note tu pe emanguluko, osho a kunda-neke.

Taati Kanana

## OOTUNDI NE (4) ONANDJOKWE MEKONDEKA LYAAKWIITA!



ETANGA ALIHE NDYOKA OLYA KONGO OMULUMENTU GWO-MPADHI YA MONIKA MONANDJOKWE ANIWA, IHE OTA KONGWA NOKOHI YOOMBAPILA. "TSE OTWE SHI KUMINWA," OSHO AAPANGI YA HOKOLOLA NONKUMWE.

Iilonga yoshipangelo shOngeleki mOnandjokwe neyakulo lyaavu, oya yiwa pokati uule wootundi ne, ketanga lyaakwiita ya SA 4.4.1989. Omulumentu gwompadhi aniwa ya monika ye enda moshipangelo shoka okwa kala ta hadhwa nokohi yoombapila, nosha kumitha aantu kutya oku na uunene u thike peni.

Pahokololo lyaMatron omukuluntu gwo-shipangelo, mehadho inamu chemekelwa omuntu kakele kondjato yomunashilonga gwawo gumwe ndjoka ya yiwa nayo. Mondjato omwa adhikile ashike omalapi gamwe golwaala lwebandela lyondundu yaSWAPO.

Konima yehadho nekondeko sho lya halakana, opwa dhimbululwa iinima oyindji, yimwe iitopitha koombinga noombinga dholugumbo ya thigwa ashike ya napela nomudhingoloko.

Sho ye yi ithanenwa ye yi toolepo, oye shi ningi nomanyenyeto ogendji, kutya otaa hepekwa iinima yaa na oshilonga. Aantu mboka oyo tuu haa kugu aluhe aakwashigwana yaa gume nando sha shoka tashi limbilike. Aaniifo oye-ndji mboka ya adhikile po kaya li ya pitikwa okuthaneka omathano gomanyengo ngoka.

Sebulon Ekanjo

## Epangelo "vati" inali shiiva sha keenghwatwa 56

Eenghwatwa dopapolotika 56 muNamibia da shiivika di li momake epangelo la SA, omafiku aa SA ota ti, ye okwa shiiva ashike sha keenghwatwa hamano. Eshi epangelo ole shi nyamukula oshifonghundana The Namibia 31.3.1989.

Omadina eenghwatwa e shiivike kepangelo oo Evelin Aindaka, Ongudi, inaku shiivika efiku lekwapo; Titus Angula (kapwepwe) na Silas Iiyambo (28) a kwatelwe 1988. Omupolifi okwa nyamukula oshifo, kutya ava vomadina aa, ove li momambo Ehangano lovanaveta moshilongo, ovo nee: Silas Kamule (Kandenge), pandjokonona vati a kwatelwe mu Febuluali 1988 naStefanus Nghifikwa (22.7.1987).

Kondjela Shali, Omungwelume, ou pandjokonona yaye vati a kwatelwe 5.8.1988. oye aeke kwa popiwa sha yukilila, nokutya okwe liyandja a ninge oshilyo shetanga la SA.

Enyamukulo lovapolifi ola ulika yo komadina a tano, oo epangelo la SA tali tengeneke, kutya shiimba ova tauluka eengaba ovo: Matias Ashipembe, Oshakati (6.1979) Petrus Emvula (10.7.1988) ina ulikwa kutya okwa dile peni; Immanuel Hatutale, Ongenga (31.7.1987) Johanna Kayambu, Engela (1.8.1987 naToivo Shilongo Okahao (5.5.1980).

Omadina eenghwatwa 22, oshiwana osha itavela nokutya odi li momake epangelo la SA, osheshi oye e va kwatele, kudo inaku tumbulwa sha mekonakonopulo olo.

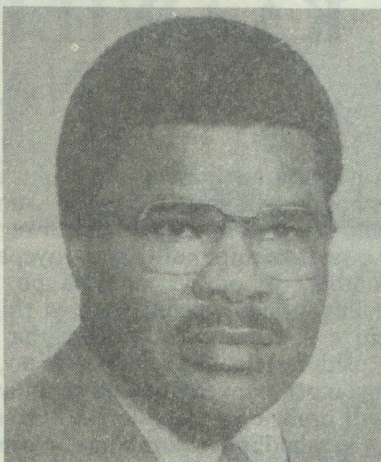
MUTUMBULWA AMUKUHU (38) Nakayale 9.1978  
FESTUS NAKAWA (56) Ontananga 10.1978  
JOHN NAKAWA (50) Oniipa 31.5.1979  
DAVID HAMUTETA, Okatana 13.10.1979  
VILHO MATEUS NYAMBALI ?? 25.7.1980  
MARCELLINUS IIPINGE (35) Okatana 4.10.1980  
MODESTUS IIPINGE (30) Okatana 4.10.1980  
ANDREAS KASHIKOLA, Elombe 27.11.1980  
TEOFILUS MATEUS, Elombe 27.11.1980  
FILEMON KASITA IIKELA (43), Oniipa 19.1.1981  
KRISTOF IYAMBO SHIKONGO Ekamba 10.4.1981  
SIMEON JOHANNES NEHOYA (40) Onyaanya 6.1981  
AMUTENYA JOHANNES ASHIPALA Okatana 29.6.1981  
MARKUS PAULUS, Oniipa 4.9.1985  
RUBEN EDMUND, Eendobe 28.11.1986  
ABNER SHIKESHO, Oniimwandi 3.7.1987  
AFUNDE NGHIYOLWA, Oshikuku 4.9.1987  
FILIPPUS GIDEON, Ondonga 26.10.1987  
KALEB PAULUS SHIKALE, Onawa 21.1.1977  
LINUS MATONGO, Caprivi 1.1988  
SIMEON NEHOYA, Omuntele 1979

Omadina makwao eenghwatwa 32, oo SA a tomonenwa kepulokonakono olo nokwa nyamukula kutya ke shii ehokololo lavo, ovo ngaashi



## Supervision for Educational Excellence

"Supervision for Educational Excellence" deals with a historical analysis of educational supervision in the United States of America as well as in Namibia and other national settings where circumstances are appropriate.



This book presents theory, research, and practical suggestions useful for those who want to become excellent teachers, super-

### AANAMIBIA AAHOLIKE

Otwa ende olweendo olule lwa pupyala. Inatu thika natango. Mokutala owa fa to tala omini ngaashingeyi tadhi tumbu ko, opo tu thike megumbo moka tatu yeni. Ondjila onde yo ondhigu, iiponga nomakwega niilikama oyo ya kundukidha ondjila yetu. "Inatu tileni, otu na omugameni Nampongo."

tashi landula apa:

RUFUS AMUKUHU (44) Nakayale 18.9.1978  
SIMEON AMWIIMBI (75), Onankali 12.1987  
ERASTUS NDEIFEKA (48) Nakayale 18.9.1978  
FESTUS ADOLF, Kongo 9.7.1988  
FESTUS SAMUEL, Kongo 2.1988  
MIKKA GEORGE, Windhoek 26.10.1988  
PAULUS HAFENI (20) Onanghwe 16.12.1980  
NDILIMEKE ALUTENI, Oukwanyama 7.8.1988  
NATANAEL NGHINAMWAAMI ?? ??  
(N) JASON IILEKA (15) Tshandi 14.7.1988  
JOHANNES KAVILA, Eengolo ??  
TYLVES KAHIMA ?? ??  
HILJA KAULUMA, Oukwanyama 7.8.1988  
JONAS KEMANYA, Oshakati 9.10.1988  
JIMMY KWALA, ??? ???  
FRACO (MANUVWALI) SHANINGWA Ombalantu 7.1988  
MATIAS JOSEF, Omungwelume 5.8.1988  
OSKAR MUHONGO NAIENGE, ??? ???  
SADRATH MUPANDI, Omadano 10.4.1988  
AINA NANGOMBE AMUNYELA, ??? ???  
HENRY NGHEDE, Windhoek 29.1.1988  
PAULUS NGHIPUNYA, Ohausholo 1.1988  
PETRUS PAULUS (28), Ondangwa 10.3.1985  
JOHANNES PROTASIVUS ??? ???  
KAMBATHA SHEYA, Windhoek 26.10.1988  
ANNA SHIKONGO, Oshakati ???  
PAULUS SHILULE, Omuulukila 20.1.1988  
SHINANA ARMAS Oshela Sec School 13.3.1988  
SHETEKELA SHININGENI (24) Windhoek 11.7.1988  
MARIA SHOONGELENI, (24) Oshakati ???  
ABSALOM UUSIKU, Onayena 19.10.1988

Pakalindeli koshitokolitho 435 shligwanahangano oonkwatwa dhopapolotika odha uthwa dhi mangelulwe mo okutameka omwedhi nguka Apilili. Shoka osho sha pendula ekonakono ndyoka.

Sebulon Ekandjo

visors, consultants, counselors curriculum specialists, and administrators. The information can help interested parents and concerned citizens to understand better the educational supervision needed to improve student learning.

Dr Rehabeam K.Auala completed his B.A. at the University of the North in R.S.A. he obtained both M.Ed. and Ph.D with distinction at Miami University in the U.S.A. Dr Auala is the Head of the Department of Comparative Pedagogics and Educational Management at the University of Namibia.

Price: R9.50 (GST. Included)

Available from:

- ELOC Book Depot
- P/Bag 2013
- Ondangwa 9000
- CNA, Kaiser Str, Windhoek
- Book Cellar, Peter Muller Str, Windhoek

Otu lyaathaneni kokule meni lyaNamibia nokiilongo yopondje kombanda yomafuta, oko tatu lelwa, nando tu na egumbo lyetu eholike Namibia. Walye, oye e shi shi ngoka e tu topagula. Kalunga ne mu kuthile po, shaa owala ti itedhulula.

Otandi indile tu tsikileni twa mana mo egalikano okwiitunga tu kwatathaneni omuyamba nohepele, omupagani nomikriste, omukuluntu nomugundjuka, omukulupe nomunona. Tu imangeni oshihampi shimwe Aanamibia lela. Nampongo ote tu kondjele.

Oohapu otadhi tu popitha wo natse, ongaashi a li a popitha Aaisrael shono taa hepekwa ngatse. Ex.14:14-15, Omuwa ote tu kondjele. Tse otu na okumwena thilu. Ondjila yetu onde ondhigu ndele otu na omupopili. Natu tsikileni niilonga negalikano. Omakundilo ogendji.

Gatu-Julius J.Nakanyala

### OMUKWETU

Oye oshifo shOngeleki Onkwaevangeli paLuther yomu SWA/NAMIBIA.

Ohashi nyanyangidhwa mOshinyanyangidho shOngeleki mOniipa.

Omukuluntu gwoshifo omumbisofi Kleopas Dumeni.

Amushanga gwoshifo omusita Sebulon Ekandjo.

Ondando yOmukwetu muNamibia naSouth Africa R8,00 komumvo.

Pondje yaNamibia na SA R20,00 komumvo. Ndjika oyo wo ondando yoshifo shomondhila .

Oondando nomambesitelo agehe naga tumwe kOmukwetu, Oniipa, P/Bag 2013, Ondangwa 9000, N A M I B I A.

ELOC PRINTING PRESS  
PRIVATE BAG 2013, TEL. (06762) 11, TELEX 56-3257 WK  
SWA/NAMIBIA