

OMUKWE TU



40c

No. 24

ISBN 0-620-06828-0

Eadhimo nesimano IyaSion

IIGWANA OTAYI KE YA KUUYE-
LELE WOYE, NAAKWANIILWA
KEMINILO LYEADHIMO LYO-
YE. UUYAMBA WOKOMAFUTA
OTAU ETWA KUNGOYE, AAYA-
MBA YOMIIGWANA OTAA YA
KUNGOYE. IYENDO YOONGA-
MELO OTAYI KA NAPAKANA
NOSHILONGO SHENI, OONGA-
MELO OONGUNDJUKA DHOKU-
MIDIANA NOKUEFA. ADHIHE-
OTADHI KA ZA KUSAHA DHA
HUMBATA OSHINGOLI NIITSI-
NINO. AANTU NOTAA KA HO-
LOLA ESIMANO LYOMUWA....
Jes.60:3,5-6



“INAMU TILA, OSHOKA TALA,
NGAME OTANDI MU UVITHILE
ENYANYU ENENE TALI NINGI
LYAANTU AYEHE. ONENA TUU
NDJIKA MWA VALELWA OMU-
KULILI MOSILANDO SHADA-
VID OYE TUU NGUKA KRISTUS
OMUWA. NENDHINDHILIKO
MU MU DHIMBULULÉ OLYO
NDIKA; OTAMU KA MONA
OKAHANONA KA DHINGILWA
MOMALAPI NOKA LANGEKWA
METEMBA LYOKULILA
IIMUNA.” Luk.2:10-12.

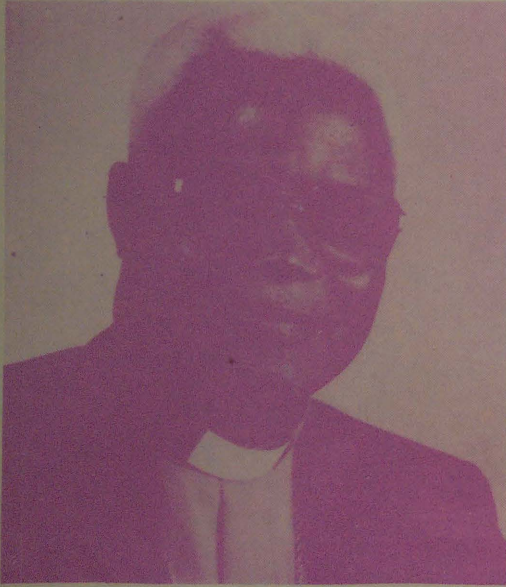
DESEMBA 30, 1987

IDHIDHIMIKILATHANENI, OTATU KA PEWA SHONO TWE SHI UVANEKELWA:

**ETUMWALAKA LYOKRISMESA 1987
NOLYOMUMVO OMUPE 1988 komagongalo
GAELCIN NOKOOKUUME EYEHE,
LYA ZI KOMUMBISOFI KLEOPAS DUMENI**

Aaholike, muJesus Kristus,

"Inamu ekelahi einkelelo (eitaalo) lyeni li na ondjambi onene!" Heb.10:35.



Omumbisofi K. Dumeni

Sho nda tala omumvo 1987, onda dhimbulukwa: "Omuwa oye omuwanawa, nesilohenda lye hali kala aluhe nuudhiginini we kolualo nolualo" Eps.100:5.

Petameko lyOmumvo 1987, otwa li twa halelathana omumvo ngoka gu kale, gwetaambathano, gwokukonga ombili yokomwenyo, nosho wo okukala nombili nooyakwetu ayehe. Opwa gandjwa wo elaka lyomukumo, okugalikanena ombili, nemanguluko lyoshilongo shetu.

Omuthindo gwa li gwa tulwa wo, kutya, ohole oyo yi kale tayi pangele meyakulo lyetu alihe: "Ookuume, ohole nayi pangele meyakulo alihe! Inamu tila, omwa vaelwa Jesus Kristus Omukulili. Ota kala pamwe natse momumvo 1987", osho etumalaka lya li lya ti nosho li li nonena.

Muule womumvo onda koneke oombinga oonene mbali:

Tango mokati komaudhigu omanene ooitaalali oya kala meitaalo, meinekelo lya kola muJesus Kristus Omuwa gwetu.

Olutiyali onda koneke opwa li wo iinima iinene niidhigu tayi kondjitha eitaalo neinekelo lyetu tu li na muJesus Kristus Omuwa gwetu.

Jesus Kristus ngoka ihaa lunduluka, ngashi a li ohela osho e li nena nosho ta kala sigo aluhe Heb.13:8. Egongalo lyOmuwa opo li li. Ongeleki inayi sindwa kuudhigu nenge komiyelo dhoheli. Oshoka eitaalo ndika olyomuJesus

Kristus itali ka sindwa nando esiku limwe:

"Nangame otandi ku lombwele ongoye Petrus, nokemanya (eitaalo) tuu ndika, otandi tungile ko (Ongeleki) egongalo lyandje, noitali ka sindwa komiyelo dhoheli "Mat.16:18. Shika otashi pendutha chambelelo momwenyo gwomwiitaali:

Ehambelelo oshoka Kalunga okwe tu dhiginine atuhe mboka tu li po sigo opehulilo lyomumvo nguka. "Oshoka oye ta holeke ndje monduda ye esiku lyiiponga, ta gamene ndje metsali lye, ta londeke ndje kemanya, ngame otandi mu yamba omahambelelo notandi mu imbile e tandi mu hikile" Eps.27:5-6.

MEtumwalaka lyOmumvo Omupe 1988, komagongalo agehe nokookuume amuhe, otandi kumagidha notandi tsu omukumo mu thike meitaalo, nomeinekelo lya kola muJesus Kristus Omuwa gwOngeleki.

Omuwa ota ti: "Ihe ote yambeke omuntu ngoka i inekela ndje". Jer.17:7, nena Kalunga ote ya yambeke.

Etumwalaka ndika olyo oshipalanyolo shOmumvo 1988 pautho lyElelongeleki lyOngeleki ya ELCIN. Omumvo aguhe otagu ka kumagidhwa: "Ano inamu ekelahi einkelelo lyeni li na ondjambi onene" Heb.10:35. Einkelelo olyo eitaalo lya kola. "Eitaalo olyo einkelelo lya kola okwiinekela iitegelelwa, nokwi iutha kiinima kaayi wetike" Heb.11:1.

Meitaalo ndika nomeinekelo lya tya ngaaka, otatu pewa oonkondo kuKalunga opo tu kale aluhe aana yaKalunga. Meitaalo ndyoka mboka twa kuthwa aaholike yetu otatu talalekwa, oshoka otwiitaala otaa ka pewa omwenyo gwaaluhe kesilohenda. Meitaalo otatu galikana opo ombili yoshilongo shetu, nosho wo ombili muuyuni, mokati kiigwana ayihe, yi holoke.

Metaalo ndika otu shi shi Kalunga mwene ota ka hulitha po iita moshilongo shetu e te tu pe ombili. Inamu ekelahi einkelelo, neitaalo lya kola okugalikanena emanguluko lyaNamibia. Emanguluko ota li ya. Esiku lyemanguluko oko li li komeho. Inamu ekelahi einkelelo lyeni, opo mu gwanithe ehala lyaKalunga, nosho wo tu ka pewe shoka twe shi uvanelkelwa. Idhidhimikeni natango Omuwa ota ka gandja mbala eyamukulo ewanawa.

Aamwameme aaholike, moohapu dhaKalunga otu na oohapu dha kola tadhi gandja omukumo neitaalo lya kola:

"Ino tila ondi li pu ngoye, Ongame, Ongame Omuwa; nokaku na omukwathi gulwe, Ongame awike" Jes.43:5,11, Omuwa mwene osho te tu

lombwele.

Omakumagidho omakwawo: "Aawe inamu tila, ikoleloleni, one nbtamu ka mona Omuwa nkene te mu kwatha; Omuwa ote mu kondjele". 2Mose 14:13-14. Tega, Omuwa! Ikolelela, tsomukumo omutima gwoye, ngoye u tegelele Omuwa".

Komukanka gwoohapu ndhika dhoshili dha kola, otandi mu thikithile amuhe aanona, aagundjuka, naakuluntu etumwalaka ly**AKRISMESA** nolyo**OMUMVO OMUPE 1988:**

"ANO INAMU EKELAHI EINEKELO (eitaalo) LYENI LI NA ONDJAMBI ONENE".

NOmwa gwetu Jesus Kristus mwene naKalunga Tate yetu nguka e tu hole nokwe tu pe etalaleko lyaaluhe, netegameno ewanawa omolwesilohenda, oye na talaleke oomwenyo dheni, ye ne mu koleke okulonga nokupopya uuwanawa auhe" 2Tess.2:16.

Onde ku halela:

OKRISMESA 1987 YENYANYU, NOMUMVO OMUPE 1988 GWEINEEKELO LYA KOLA.

**Sha dja mElelongeleki
16-18.11.1987**

* Hamushangakwatakanifi meme Ulla Nenonen, okwa alukila kuNamibia eshi a fuda eehani heyali muSoomi. Elelongeleki ole mu tambula nepandulo nole mu halela eenghono dipe metwikilo lolilonga. Meme Tuovikaarina Pennanen ou a kala ta longo ponhele yaye, okwa pandulwa unene.

* Pakotamhango oshitendwa XI.3, Elelongeleki ola tokola Oshoongaleleleki oshiti XIV, shi ka kale ko 11-16.7.1988, mOngwediva, Kalunga ngeenge te shi pitike.

* Opwa didilikwa kutya Ongeleki yetu momudo 1987, oya hapupala novakwaneongalo 11,501 nomuvalu woilyo aisho yOngeleki yetu paife 372,154.

* Elelongeleki ola ufa omafiku 6.12.1987 na 17.1.1988 na 7.2.1988 a kale okwiindila odula ile okuhambelela molwayo.

* Elelongeleki ola hoolulula omufita Asser Lihongo a kale natango omupashukili woshitaingeleki shaKavango, eedula nhano tadi landula okudja 1.1.1988 nomufita Heikki Ausiku a kale natango omuponhele waye.

* Elelongeleki ola tokola embo lipe Ehangano lomaimbilo li tameke elongifo mulotete lomudo mupe wOngeleki (29.11.1987). Omaongalo oo inaa mona natango embo eli lipe la wana, otaa dulu ngaho okulungifa embo likulu fiyo e likongela omambo mape.

* Elelongeleki ola tokola omaongalo aa mape; Onangolo, Eengango nOkambebe a dikwe efiku lotete laJanuali 1988.

* Elelongeleki eshi la tala omatomhelo Eleloongalo laKalongo, okwa yela, ola tokola edina leongalo Okalongo li lunduluke, lo li kale Onandjaba, li tameke okulungifwa 1.1.1988.

* Elelongeleki la tambula nepandulo omaano R310,00 a yandjwa kovanaailonga kOlange (CDM). Otai tulwa moshikefa shomaano.

Muye omwa kala omwenyo, nomwenyo omwa kala ouyelele wounyuni

Efiku laKrisimesa olo efiku la wanifilwa aishe oyo ya shangelwa mOmbibeli Iyapuki. Mefiku eli ledalo lOmuxupifi wounyuni aushe, olo efiku lehafo lovanhu aveshe, ngashi sha udifwa komweengeli waKalunga ta ti: "Inamu tila, taleni, ame ohandi mu udifile ehafo linene tali ningi lovanhu aveshe." Luk.2:10

Efiku laKrisimesa olo efiku ledalo lOngeleki yaKalunga mounyuni womilaulu fokofoko, va mona ouyelele muhapu ngaashi sha xunganekwa komuprofeti Jesaja eshi ta ti: "Oshiwana hashi endaenda momilaulu, osha mona ouyelele muhapu, naava hava kala medu lomudile wefyo, ouyelele otatu va minikile." Jes.9:1.

Ovaevangeli Mateus, Markus naLukas ova hepaulula sha ngaa kuJesus, unene okutameka pedalo laye. Ndele omweevangeli Johannes okwa li a pewa omesho okutala onakudiwa yaJesus kokule konima kwi, oko ovaevangeli yakwao inava hepaulula ko, nokutya kehovelu laJesus.

Johannes ota ti: "Pehovelo opa li Ondjovo, nOndjovo oya li puKalunga nOndjovo ei oya li Kalunga." Johannes ta holo-lele ounyuni aushe u shiive, kutya Jesus oye Kalunga ou a shita aishe. Joh.1:3

Aishe oya shitwa kuye nokape na nande oshinima inashi shitwa muJesus. Johannes oye omweevangeli a pewa eshiivo lokushiiwa Kalunga neshito laye ngaashi la hokololwa muGenesis 1:-31.

Omweevangeli Johannes okwa pewa a yelifile eshito alishe Jesus, oye Kalunga ou a shita eulu nedu naashishe shi li ko. NaJesus mwene okwe shi holola ta ti: "Ndele paife Tate, fimanekife nge puove mwene nefimano olo nda li ndi li kwete eshi nda kala puove, ounyuni fimbo inau shitwa." Joh.17:5.

Omuyapostoli Paulus ote shi koleke ta ti: "Osheshi ofye oshilonga shaye twa shitilwa muKristus Jesus oilonga iwa oyo ya longekidwa nale kuKalunga, opo fye tu kale nokweenda muye." Ef.2:10 MuJesus ou a ifanwa Ondjovo a kala Kalunga, omo mwa kala omwenyo nouyelele wovanhu Joh.1:4,5.

MuJesus omo mu na omwenyo, keshe ou te mu itavele, oku na omwenyo waalushe. Joh.3:16 MuJesus omo mu na ouyelele oo ihau likwata nomilaulu. Jesus ta ti: "Ou ta shikula nge, ita ende momulaulu, ndele ota kala e na ouyelele womwenyo." Joh.8:12.

Manga Jesus ina dalwa, opa kala ovatu-mwa vaKalunga ovo Kalunga e va tuma

va longekide ounyuni u teecele Jesus Omuxupifi. MEvaengeli eli, ohatu leshe mo Johannes Omushashi, ou ha ifanwa omuteteki waJesus, oye okwa tumwa kuKalunga a hepaulule ouyelele nomwenyo waalushe tau etwa kuJesus, ngaashi ta ingidile ovanhu elidilululo ta ti: "Lidilululeni, osheshi ouhamba weulu we uya popepi." Mat.3:2.

Omwevaengeli ota holola oshikumwifa eshi ta ti; "Ondjovo oya ninga omunhu. Apa otapa hololwa oule nounene wohole yaTate Kalunga ou iha nyengwa kusha, ngaashi omwengeli Gabriel a lombwela Maria ta ti: "Kalunga iha nyengwa kusha." Luk.1:37.

Nande hatu nyengwa okufatulula ovelise ei, ohatu itavele shili, kutya ondjovo oya ninga omunhu, nohatu shi hepaulula mehepaululo leitavelo lovakriste moshitopolwa osho tashi popi okudalwa kwaJesus, pafatululo laMartin Luther, haku ti:

Ohandi itavele nokutya Jesus Kristus Oye Kalunga shili a dja muKalunga Xe, ou-

Iimaliwa oyaKalunga tuu?

Amushanga omusimanekwa, onda hala u yamukule ndje epulo lyandje ndika, kutya iimaliwa oyalye, nayo oyaKalunga tuu? Oshoka ondi lwete ashike omaupyakadhi taga holoka po omolwiimaliwa. Aantu otaya lopotathana omolwiimaliwa nosho wo otaya dhipagathana nokuninga iikwawo ya fa mbika.

Oshigwana ashike aamati naakadhona, ootate noomeme ngashi aanasikola aakadhona omuntu ota hekwa ashike niimaliwa, aniwa ota henita, nokonima osikola otayi mu kana. Ayihe mbika otayi holoka omolwiimaliwa niikolitha tuu.

**J. Mwaala Mateus
Tsumeb**

Eyamukulo:

Eshito alihe olya Kalunga nevi moka mwa fulwa iimaliwa. Kalunga oye a gandja eshito alihe kobi yepangelo lyomuntu. Ngele omuntu oye i igandja a pangelwe keshito, nena omuntu mwene i ikutha melombwelo lyaKalunga. Iimaliwa hayo ano tayi pulwa ondjo yomuntu, the omuntu oye ta pulwa ondjo yeyunuko lyeshito.

Amushanga gwOmukwetu

Joh.1:1-14



nyuni manga wa li u he ko, nomunhu shili a dalwa kokakadona Maria, oye Omwene wange a kulila nge."

Ndele nande Jesus a ninga omunhu, okwa kala nokuholola oshinge shaye mounyuni, osho tashi holola oye Kalunga. Nomoshinge shaye okwa holola efilonghenda noshili. Omolwonghenda ei, noneudo otu na ehafo okudana oshivilo shaKrisimesa nge hatu dimbuluka Jesus ou muye mu na omwenyo nouyelele womunhu.

Ongeleki yaKalunga mounyuni, oi li mouyelele nomomwenyo. Otai longo, tai popi, tai udifa omwenyo ou u li muJesus. Itai tila ashishe osho tashi kendabala oku i tilifa. Ongeleki i na Jesus oi na omwenyo, onghee nomoshivilo sha Krisimesa neudo 1987, otuyadi omapandulo nomahambelero okupandula Tate Kalunga nohole yaye inene ya holoka muJesus Kristus Omwene wetu.

Tate Kalunga ne tu yambekele hano Okrisimesa ei, ye ne tu pe vali omudo mupe u na elao.

Paulus Andreas

Meme Selma K. M. Shiimi (47), oshilyo shaalongisikula yOsoondaha mOshitutuma 4.11.1987 okwa thigi ko omusamane gwe, oyana 6 nokatekulu kamwe. Eimbilo 630:6-10.

*Hilmi Nelago Abner Neshuku
Onalulago*

Andreas Lugondo okwa hulitha oondjenda dhe 25.8.1987 megongalo Okankolo okwa thigi ko oyana 17, aatekulu 60 naatekululwa 8. Eimbilo 644.

*Hilma Naunda
Okankolo*

Kuku Maria Ntinda Mupupa, (110), momukunda Onambango mOnyaanya 31.10.1987. Okwa thigi po oyana 5, aatekulu 40 aatekululwa 12. Eimbilo 366, Eps 5015.

*Joel Ndahafa Nehale
Omuntele*

Omukulupe kuku Nagendji Maria yaNandjenda, momukunda Oloole 26.6.1987 muukulupe womutoko a kuta omwenyo.

T. Amulo

19.10.1987 Kalunga okwa zimine eso lombadhilila li kuthepo lipinge Jason ya-Johannes Amulo (27), Oloole mUukwambi. Tu longa okuyalula omasiku getu opo tu mone omwenyo gu na oondunge.

T. Amulo

Omathimbo giituthi yomumvongeleki

Ku dr. Tomas Shivute

'Advendi', tashi ti egaluko, okuthika (adventus). Elalakano lyethimbo lyaAdvendi okulongeki-dha egongalo netegameno lyeyo lyOmuna gwaKalunga. Yamwe oya topola ethimbo ndika ngeyi:

Osoondaha yotango (muAdvendi) otayi tu dhimbulukitha okuya kwaJesus monyama, (Ohapu ya ningi onyama), Osoondaha ontiyali otayi ulike okuya kwaJesus mekwatathano netililo lyOmbepo Ondjapuki.

Osoondaha ontintatu otayi tu dhimbulukitha okuya kwaJesus momutima, momwenyo gwootaali kehe naOsoondaha ontine otayi ulike kegaluko lyahugunina, sho Omuwa te ya okupangula aanamwenyo naasi. Tashi ti ndika oyo ethimbo lyeitedhululo nolyegalikano.

Okrismesa

Ongeleki yopetameko inayi ipyakidhila unene nokudhana oshituthi shaKrismesa (tashi ti emisa molwaKristus), sigo sha taambwa pokati kethelemumvo etine yi ithanwe ngoshituthi shopakriste.

Oshituthi shaKrismesa otashi tu dhimbulukitha omagano omanene gaKalunga e ga pe aantu, nomolwasho moshuuvithilo mu na okuuvithwa etumwalaka lyombili nolyohole. Onawa omuuvithi kaa ye moshuuvithilo ngele ke na etumwalaka ndika.



Ngaashi Kristus e mu taamba, osho wo mu ninge

Omumvo Omupe

Omumvo Omupe otagu adhika mongonga yethimbo lyaKrismesa. Oshituthi shika otashi tu dhimbulukitha Omuna gwOmntu a gandjwa koho yompango nokwa pewa edhina epe 'oshoka oye ta kulile oshigwana muulunde', nongaashi omuyapostoli Paulus ta ti:

'...Kalunga okwe mu lenge nokwe mu luku edhina li vule omadhina agehe, opo ayehe ye na okutsa oongolo medhina lyaJesus...' (Fil.2:9,10). Esiku ndika olya kwatakanithwa wo nokufalwa kwaJesus kotempeli nokufukalekwa.

Epiphania (epifania)

Oshituthi shika oshi li mongundu yiituthi mbyoka ihaayi lunduluka: Okrismesa ohayi dhanwa aluhe eti 25 Desemba, Omumvo Omupe ogu li aluhe esiku lyotango lyaJanuali, nando mongeleki yetu oya kanitha omulandu nguka molwomaimbo ga tseyika.

Petameko esiku ndika olya dhanwa kaakriste, taa dhiladhila nokudhimbulukwa eshasho lyaJesus. Yalwe oya dhana wo esiku ndika pamadhiladhilo goKrismesa (okudhimbulukwa eholoko lyOmukulili, tashi ti evalwo lyaJesus).

Esiku lyAapagani oyo oshinima oshiyenda mondjokonona yomadhiladhilo noshikalimo shesiku ndika. Eeno shili aanongo yokuuzilo oya landula onyothi nokukonga "Omukwaniilwa gwAajuda a valwa. (Mat.2:2). Ihe onkene tuu 'onyothi ye otwe yi mono kuuzilo notwe ya okwiinyongamena kuye' (Mat.2:2). Ihe eholoko lyOmuwa oli vule aakoneki. Eeno, oya ningi nawa, oshoka kaya li nokuli yelongelokalunga lyAajuda.

Ethimbo lyeimweneneno

Ndika oyo ethimbo ootaali taa dhiladhila omahepeko gOmukulili, tashi ti okudhiladhila iiningwanima mbyoka ya ningilwa Omuwa Jesus sigo omealelo nomokusa. Pamadhiladhilo gopetameko ootundi omilongo ne dhopokati keso neyumuko lyOmuwa odha li dha talika, kutya odho ethimbo lyeidhiliko nolyoluhodhi.

Konima ootundi odha lundululilwa momasiku omilongo ne, tapu dhiladhilwa omasiku

geidhiliko lyaMoses naElia, nosho wo omasiku ngoka Omuwa Jesus a kala mombuga. Momasiku ngoka ihamu yalulilwa Osoondaha, osho ngeyi taga ningi omilongo ne.

Edhiladhilo enene lyethimbo ndika, oyo okutaalelitha oomwenyo nomadhiladhilo gootaali kungoka a li a yeluthwa, opo a hilile ayehe kuye.

Omuuvithi kehe methimbo ndika na lalakane okuhokolola iilongahupitho yOmuwa nokupe-ndulila aantu eitaalo neidhidhimiko, (oongoka a hala okulandula ndje, ni idhi-imbike ye mwene) yo ya landule ngoka a gandja omwenyo gwe mwene 'omolwetu' (pro nobis).

Oshituthi shokudhimbulukwa Eyumuko lyOmukulili osho 'oshitsa shopokati' momumvongeleki. Meyumuko lyOmuwa omo tse tu na etegameno lyomwenyo guuyuni tau ya. Elaka lyesiku ndika oli na okukala tali ulike kuKristus mwene.

Esiku lyEyumuko olya kwatelela mo esilohenda nenyanyu lyooitaali, ihe inaku dhimbiwa wo elondodho, oshoka 'Oyendji mwaamboka ya lala montsi yeve, taa yumuka, yamwe taa yumukile omwenyo gwaaluhe, ooyakwawo okusithwa ohoni niuhuna yaaluhe' (Dan.12:2).

Eyeluko / Elondo

Ongeleki yopetameko inayi dhana oshituthi shika. Sigo ongashingeyi oshituthi shika osha dhanwa mekwatathano neyumuko lyOmuwa, tashi ti osha dhanwa konima yeyumuko, pwa pita omasiku omilongo ne. Okwa yeluthwa opo e tu yeluthile kuye. Shika osho elago lyetu.

Pentekoste / Etililo lyOmbepo Ondjapuki

Aakriste ohaa dhana oshituthi shika mokudhimbulukwa Etililo lyOmbepo Ondjapuki nedhiko lyOngeleki onkwakriste muuyuni mbuka. Mesiku ndika omuuvithi na dhimbulukwe kutya epya olya tiliganena eteyo. Eyo lyOmbepo Ondjapuki — 'Omuwa nOmugandjimwenyo' — uupersona niilonga ye; ekwatathano lye naKalunga He Omwana.

'Ngoka ta zi muHe nomOmwana, ngoka ti inyongamenwa nota simanekwa pamwe naHe nOmwana, Ngoka a popi naaprofeti' — Omupopili nomuhekeleki, mbika ayihe oyo omatumwalaka gesiku ndyoka. Omuuvithi ke na okupalutha (okushekuna) iinima mbika.

Uukwatatu

Ethimbo lyUukwatatu olya kwata etatamumvo l y o m u - mvongeleki aguhe. Ethimbo ndika nando olya tamekwa okudhanwa pomumvo 1303, olya taambwa kwaayehe ongethimbo lyesimaneko lyUukwatatu momumvo 1334) Ongeleki otayi dhimbulukwa iilonga iinene mbyoka Kristus e yi longo 'molwetu'.

'Ngoka molwetu aantu, nomolwelago lyetu, a kuluka a zi megulu, nokwa ningwa omuntu mOmbepo Ondjapuki nokomukadhona Maria'. Mbika oyo iiningwanima yaKrismesa. 'Okwe tu alelelwa muuyuni waPontius Pilatus. Okwa dhipagwa nokwa fumvikwa, nokwa yumudhwa kuusi esiku Etitatu pamanyolo'. Mbika oyo iiningwanima yethimbo lyomahepeko nesiku lyeyumuko nosho wo omagano gOmbepo Ondjapuki.

Nomunekango oha tula!

Aleshi yOmukwetu noyomambo aaholike, ethimbo lyokutuminathana omakundo nomahaleloyambeko nani lye ya ishewe. Ndika olyo wo ethimbo lyo opala kutse tu mu pandule, sho mwa li mwe tu yambidhidha pamadhiladhilo nopailonga miinima mbika yiishangomwa nonumoo ndjika. Eeno, omumvo ogwa li ngaaka gu na uatalala nogu na uupyu monkalamwenyo yesiku kehe. Ogwa li gu na oondila, ihe noondigolo wo.

Ombinga onkwawo oya kala yokuhambelela Kalunga omuhumbati gwetu noguuyuni auhe naashihe shi li mo, oshoka ayihe oye nokaku na shoka she mu holekwa. Kalunga okwe tu taamba nomaukwatya getu - ndishi osho tuu nangoye wo wa taamba omukweni panenedhiladhilo lyomumvo nguno gu li kongulohi yagwo - onawa!

Ondi inekela oyendji mwa li nokuli oshiye shEMBWIIITYA, embo tali fatulula Oshiwambo mOshiingilisa, nomwa entamena nokupenapena mEHANGANO, embo lyomaimbilo gOngeleki ELCIN, moka lwotango tamu monika uunima wa fa uumbiga womakaya haku tiwa oonote.

Enyakwa lyiinyolwa omusita V. Munyika ina dhimbwa okuhohela pombiga nuuteologi wokuhongwela, manga omunyoli gwiiteyo onkulungu omulongi A. L. Nghifikwa a li a sa ompiya, opo aagundjuka yetu ya mone numvo Etumwalaka lyonomenawina, ndyoka pakutala itaali thigile omuleshi kehe ofogo miinima yonkalamwenyo nomombinga wo yopambepo.

Pokunima opwa topolwa nawa nopwa katukwa onkatu, kundjoka aaniitewo oonkulungu naaimbi omanyakwa gomoshigwana shetu taa ka tsikila mpoka pwa hulilwa.

Aaholike, aniwa nomunekango oha tula - tse wo aayakuli yeni mpano, otwa hala tu ka fudhe po manga, onkene otatu mu tseyithile: Okuza 07 Deseмба'87 sigo 08 Januari 1988, iilonga yokunyanyangidha otayi kala ya pata, notayi ka egululwa meti 11 Januari 1988.

NDHINDHILIKA: Ostolamambo nombelewa yomaishangitho gOmukwetu otadhi kala dha eguluka, kakele pephulilelela lyomumvo nopetameko, sho tapa ka edhilwa omolwekolamumvo nomayalulo gehulilo pamwe nomalongekidho galwe.

Nuutya mbuka otatu mu kundu noku mu halela Okrismesa yi na elago nOmumvo Omupe gu udhilila omaya-

Okuhepekwa kwaantu yandje muNamibia onde ku tala, nokukuga kwawo ya popilwe, onde ku UVU

Olya li eyamukulo eyapuki nenankondo lyaKalunga (Exodus 3:7) koonkali dhoshigwana shalrael kohl yondjoko yuupika nuukoloni waAyegipiti. Ehepeko lyawo olya li puuyelee li wetike, tali uvika notali vulu wo okugumwa. Shika osha li oshiningwanima shoka Kalunga inaashi mu holekwa. Nokwa li wo a kwatelwa mo mokuhepekwa kwawo nomonkugo yawo, opo ya manguulwe.

Israel okwa li a kugu kuKalunga e li muukumwe noka pe na ngoka a li pondje yomahepeko noyonkugo ndjoka. Kalunga, koonkondo dhe oomangululi noonkwagulu, nomoshili yoyene, a tokola a taalelithe oshipala she komuhepeki gwawo. Omukwaniilwa Farao nosho wo Aayegipiti ayehe.

Osho ngeyi okwa londoloka mo megulu lye, a kulukile pevi kuMoses nokwe mu tumu u ukilila ku he nayina yoluhepo lwaIsrael omunanyanya Farao. Moses mokana ke okwa li a humbata mo euvitho lya tsa, e li falele Farao a tya: "Tu laleka tu ka yambele Kalunga ketu mbalambala ov.18"

Monkalo ondhigu noyi nyanyalitha, Moses nAaisrael oya li muumbanda nometilo enene. Ihe Kalunga oku uvaneke "Ongame ondi ku na shili Exodus 3:12;6:7." Ta kala Kalunga kawo. Kalunga ina shelelelwa noinatokelelwa okukutha ombinga yaathiminikwa komeho nokonima sho a dhimipo Farao nepangelo lye lyuupika kombanda yeve nokoshigwana shalrael.

Ihe Kalunga tuu ngoka, oshoka ookalunga kaye shi oyendji, Oye e na aantu ye taahepekwa muNamibia notaa kugu, opo ya popilwe. Onkundana ndjika otayi tu itaalitha, kutya Kalunga oye olye kutse, aathiminikwa naahepekwa muNamibia. Ihe omolwonkalo ya yaga kegonga noshiponga moka tu li mo, epulo otali thikama komeho getu "Kalunga oku li tuu pamwe natse nenge ke po?"

Epulo otali etwa komalimbililo nokii-ningilawina niuhuna tatu yi longelwa ye tu sheyelwa yi shonopeke po omwaalu gwoshi-

gwana sha pikwa. Nande ongawo shoka tu na okutseya ooshika, kutya ekalopo lye pangelo epiki, inali za kehalo lyetu, okatongotongo, omagwaaleko, omadhipago gomontaneho nogo-miineya, uukwiita tau thiminikile, omakakunya, okufuta, Etango, elongo lya gwa pevi, ombili yiifundja, okangendjo kuusiku nuupika moNamibia itayi hokolola Kalunga ketu a za po putse.

Kalunga ketu oku li mokati ketu molupe lwetu tse oshifetha she, noye te tu dhimbulutha onkalo ndjoka tu li mu yo, nkene ya tya. Ote tu longo tu mu inekele, ngaashi Moses noshigwana shalrael. Ongeleki ndjoka olutu lwaKristus muNamibia pethimbo lyetu, oya tumwa kuKalunga ngaashi Moses kuFarao. Ongeleki



Barnabas Haileka

yaKristus oyi na okukugila Kalunga emanguluko noyi na okukugila Kalunga "Omuna-mwenyo" ngoka ha yamukula nomumangululi shili.

Shigwana shaNamibia nonkugogalikano yetu natu tseyithileni Kalunga edhina lyaFarao te tu hepeke, te tu yugu Namibia ehohike nokuyonagula po omaliko getu ngashingeyi. Megalikano lyetu inatu tila nenge tu se ohoni okutumbula edhina lya P. W. Botha nomukalo gwe omululu gwepangelo lye. Tu kaleni neitaalo, Kalunga ketu ote tu yamukula ethimbo lye lypoopa.

Tseni otu na okugalikana Kalunga mombepo nomoshili (Joh.4:21) tu mu lombwele shoka naangoka ta yonagula esimano lyuuthemba wetu muumbugantu waAfrika. Inatu dhimbweni okuyambidhidha omahangano ngoka taga kondjele ombili nuuthemba womuntu nema-nguluko pankalathano, paitaalo, palutu

Tala kopardja lya landula

mbeko taga zi kombanda kuTtate.

Omuyakuli gweni M.Amkongo peha lyayakwawo

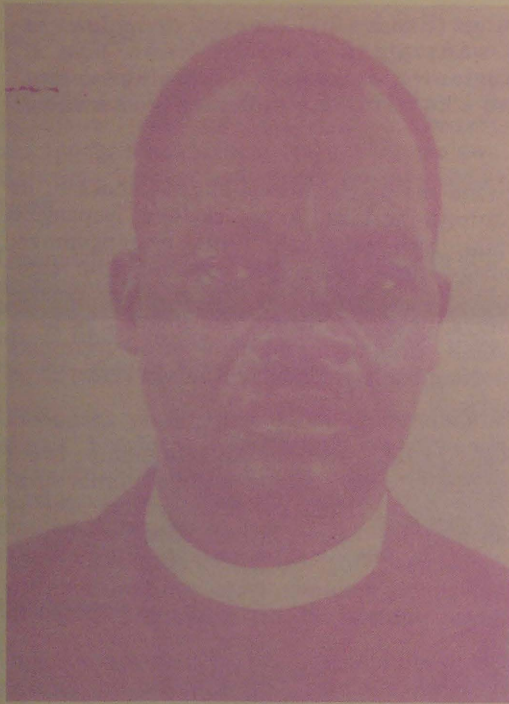
Ame yo(Omukwetu) pohaulwange, onde mu halela Okrismesa ya punikwa nOmudo mupe welao, eshi mwa kala nokupenapena momapandja ange nokuyandja yo omadiladilo eni kuwakweni.

Tulumukweni po manga okafimbo, hatu ka shakeneni konima yetokolamudo Omwene ngeenge okwa ti "osho". Natango ondi kwete eembapila deni dihapu da xupa ko koilonga yomudo, nohandi ka hetekela nado yo ndi ke di humbate momapandja ange omudo tau uya. Oribili kunye amushe mwa li mwa teelega oinyolwa yeni i pite diva.

Omwene na pandulilwe omhito e i tu pele neudo okunyola nokulesha, ye ne tu wedele ko natango kwaaishe ei.

Omukwetu

Omusitagongalo Shongolo a gwanitha omimvo 65



Omusita Herman Shongolo, Ontananga a gwanitha omimvo 65 omwedhi gwa yi.

Ethano lyomusita Shongolo mpaka olya thanekwa esiku lyegwanitho lyomimvo dhe 65, okuza 4.11.22 sho a valwa. Ye mwene okwa tumbula kOmukwetu. "Otandi hambelele Kalunga kandje sho a gamena ndje okuza kuunona sigo onena." Okwa gandja oshinkoti shokukalamwenyo ngaashi tashi landula.

- 1937-38 Onda kala momakuti miilikama kohambo.
- 1939-41 kiilonga iidhigu moofalama.
- 1942-43 miita iitiyali yuuyuni.
- 1944-47 mOseminali mOniipa.
- 1949-50 omulongi mokati kaamati naasamane ya koka.
- 1951-53 omosikola yuusita.
- 1954- sigo onena moshilonga shelelo lyegongalo.

Tatekulu Shongolo nonando a tsakanitha omimvo dhetameko 65 okuzimininwa pamauthompango okukuutumba moshipundi shevululuko, ota ti, ina tseyithilwa sha natango kombelewa yOngeleki.

Kombinga ye ngiika ke na wo ompumbwe yokupula evululuko manga, oshoka kolutu ota monika natango a fa omusamane gwomimvo 50. Kalunga okwe mu pele ukolele. Omauthompango gOngeleki oge na epitikilo komunashilonga omukolele a tsikile neyakulo sigo okomuvo omuti 70.

"Onda mona omaudhigu ogendji melala lyethimbo ndyoka. Ondi ilongo wo oshindji pankalo yopalutu nopambepo," osho omusamane Shongolo ye mwene a tumbula kOmukwetu.

Oya hokana 12.12.1946 nomuholike gwe Lahja noye na aanona 10. Okwa makele uupyu welelo lyegumbo negongalo. Okwa piti mekondjo niilikama, mbyoka inaa fatulula kutya iishike. Okwa hepa pamwe noshigwana she momudhingoloko gwe. Eps.103:1-22

Sebulon Ekandjo

Onkugo onde yu uvu

Dha za kep. 5

nopambepo.

Otwa taalelwa koshilikama sha sa enota lyombinzi yetu nondjala yonyama yetu nevi lyetu.

Ongeleki ndjoka ya pewa oonkondo noya tumwa shili kuKristus omumangululi gwayo Mat.28:18-20, okwe yi pe oonkondo pevi yi mu uvithe kutya oye Kalunga kaathiminikwa e ya mangulule. Ongeleki yaKristus muNamibia naSouth Africa (Azania) oyi na okuuvitha elaka etoye lyemanguluko kaahepekwa, nemangululo lyaNamibia.

Ongeleki oyi na oonkondo nuuthemba okuuvitha emangululo nuupika wAanamibia, nokuuvitha omumvo omutoye gwOmuwa gwetulo miilonga lyoshitokolitho 435/1978 shokiigwana yahangana; pwaa na ekogeto lyezemo lyAacuba muAngola. Luk.4:18-20.

Osha yela kAanamibia ayehe, kutya tse Aacuba inatu ya hinda, yo inaye tu hinda sho ye li muAngola. Shoka sha tseyika kutse nokuuyuni auhe, oshoka kutya aakwiita ya SA oyo haa ka hinda Aacuba muAngola "To kongo oto mono" Mat.7:8

Monkalo itaayi nuwa omeya, Jesus Kristus omo a tumu ongeleki ye ngashingeyi Exod.3:10, opo yi kale ewi lyahepekwa na ewi moshilongo shawo. Euvitho lyOngeleki newi lyayo oJesus Kristus, ngoka ta egulula omiyelo mwa patelwa aahepekwa (Iil.16:25-26). Nonando ethimbo edhigu shili, ongeleki yaKristus oyi na okuhumbata omushigakano, opo yi sinde uupika we etwa muNamibia. Jesus Kristus oku li pamwe nayo Mat.28:20. "Ongame ondi li pamwe nane omasiku agehe". Kristus ota kala pamwe natse sigo SA te ki ilonga oshilongwa ngashi Farao gwaAegipiti, ngu a sile mefuta etiligane omolwuulunde kwa li a hala e u longele aana yaIsrael.

Tse otatu hepa nokudhipagwa omilape twa fa oombwa niimuna yowala, oshoka epangelo lya SA kali na Kalunga. Oli li kobi yewiliko lyoonkondo dhasatana. Ongeleki yaKristus muudhigu nomiihuna, otayi galikana opo oonkondo dhaKalunga dhi kulukile muNamibia, dhi hulihe po omadhipago haga longekidhilwa aaluudhe, okufuta oondjembo nomakasipeli nga tu wete aluhe, opo Namibia li tu galukile ishewe.

Kalunga ketu keeshi kayamukulwa, tu mu puleni omapulo oshoka, oye Tate onakuvula ayihe pa Mat.28:20 "owa uvaneke oto kala natse, ihe tse otatu yahwa nokudhipagwa

ngaashi iilikama noombwa twa fa iinima yowala. Aakwiita otaa yonagula po owina omagumbo getu, omaliko getu natse yene.

Onkugo yetu nayi ukilile kegulu kuKalunga ketu ngoka ta mono okuhepekwa kwetu nota uvu onkugo yetu opo tu manguluke.

Barnabas K. Haileka

EKUNI ILE ENYAMUKULO:

Hano enyamukulo loshiwana oshifininikwa nali kale ngahelipi? Ovanamibia ova li okupopya nombili, opo SA a dje mo moNamibia, nde aye. Paife keembinga neembinga doshilongo otaku udika omatopo, oo a lukwa ku SA elongifo lekuni.

Hano omakasipeli oo taa lyatele ovakulupe nounona momaumbo, otaa longifa shike ngeenge haelongifo lekuni? Okulyataulila oilya yovanhu momapya nokuxwika po omaumbo oshiwana, osho hano oshike ngeenge kashi fi elongifo lekuni?

Okukwata ovakulukadi keenghono nokuyasha okufya ovanhu needila kwa SA, osho nee oveta nelandulafano osho? Ngeenge ovayambididi vokakulumbwati novaholimbili tava pewa oshilanduli kuSA, hano sha SA otashi pewa lvele?

Shiwana, ino hekwa, SA oku na oshimaliwa te ku pe, oku oku na omupini e ku denge kofingo. Ou wete po tuu opo?

Ndaileko K. Matheus

Omatokolo gamwe kombinga yaNamibia

20.12.1982 - Oshigongi shaayche shiigwanahangano (UNO) osha koleke ontokolwa yasho ndjoka ya tinda Amerika na SA okukogeka emanguluko lyaNamibia kAacuba muAngola, nenge omikundu ndhoka dhi endele pamwe.

23.5 sigo 1.6.1983 - Namibia tali kundathanwa momutumba gwOraata yegameno ya UN.

28-28.10.1983 - Oraata yegameno ayihe nayo oya ekelehi edhiladhilo lyaAmerika lyokukogeka emanguluko lyaNamibia kAacuba muAngola.

3.5.1985 - Oraata yegameno ya UN oya pangula omadhiladhilo ga SA okudhika epangelo lyopokati mu Namibia.

EHEKELEKO KAAKWANEZIMO NOOKUUME YA MEME NAKUSA HANNA AUALA

Oluhodhi nuupongo mboka we mu adha omolweso lyameme Hanna, nau kale wa thetwa kOmuwa. Oye ha utha ayihe, nomasiku getu oge li miikaha ye. Tse aantu ohatu nyengwa, ashike ye iha nyengwa. Onkee otandi mu indile, NAMPONGO e mu hekeleke nomaimbilo ngaka; 468 na 649. Atuheni onatu ka landulako wo uuna omasiku getu ga thikana.

*R. Tilomalinga Amupala
New York, U.S.A.*

Amushanga omusimanekwa, onda hala oshipopiwa shika shi holoke moshifo

Onda lesha moshifo shonomola ontine, epandja lyotango. Koshipopiwa shomuwiliki gwelongo Tk. Dennis Nandi, shono tashi popi aalongi ye thike lwopomayovi gane ye na okugandja omahala kumboka ya pita ostanda 8 nontimulongo. Ondi uvite oku li mondjila.

Ngika okwa dhimbulula kutya mboka ye na owala ositanda ontihamano kaye na ontseyo ya gwana. Naisheve ngika okwa dhimbulula, kutya opu na oyendji ya pita oongundu dha tumbulwa pombanda, ihe kaye na iilonga. Oshili mondjila.

Omaipulo gandja oga zi nee mpa: Omolwashike aalongi mbono ye na onzapo yongundu ontihamano oyo ayeke ye na okuthigapo iilonga? Omolwashono mbela oyo ye na okuthikama komeho gaanona nenge ongiini?

Moombelewa dhaatalelisokola yamwe ohamu longo yamwe mboka yaa na nando onzapo yositanda ontihamano, nosho wo moombelewa dhaawiliki yelongo, miikondo yimaliwa nosho wo miikondo yilwe yepangelo.

Ngele elongo olyo lya halika li ye komeho, nena mboka taa longo moombelewa nana kale wo ya yapukila mboka ye na onzapo dhopombanda, nenge yi ihumithe wo komeho ngaashi aalongi haa lombwelwa.

Ngele osha ningwa owala sho pwa monika mboka ya pita oongundu dhopombanda kaaye na iilonga, osha hala okutya aantu ayehe mboka taa longo miikondo yepangelo, ngaashi moshikondo shimaliwa, nosho wo miikondo iikwawo, nayo naa yapukile mboka ya mona elongo nande olyOmwaalu, oshoka uunimaliwa ou na sha nOmwaalu, opo inima ayihe yi kale ya humithwa komeho moshilongo shetu. Inatu thehenga owala oshinima kombanda wo uuzigo tau kala koki. Ihadhi gwanene omutse gumwe.

Kamati Kokuushimba Ondangwa

Oshilonga shomokati kaalumentu mOndonga, osha li sha longwa neitulemo omumvo nguka momagongalo. Ependela methano ndika noshitenga oyo ya kala tayi kondjelwa pokati komagongalo goshitayi. Omukwanii-lwa mwene gwoshilongo, Immanuel Elifas, kolumoho methano ndika, naye okwa kala popepi naamati ye moshilongo note ya kumike. Omunangeshefa Johannes Mbokoma, omutiyali kolumoho oye a hololitha po oshitenga.

Omutonatelishitayingeleki, omusita Petrus Shipena, ota monika pokati nomuwiliki gwoshilonga shaalumentu moshitayi, omulongi Sakeus Ipinge Mbangula kolulyo. Ependela olya hololwa po kelenga Andreas Uukule, kee li methano ndika. Ependela lyaalumentu mOngeleki ayihe nalyo olya kala moshitayi shoka.



Ondjokonona yanakufya Metusalem

Shilongo

Efiku 15.11.1930, momukunda Eemboo, meongalo laNgela, meumbo laElia Shilongo naJohanna Ndeiluka, omwa danwa oshivilo shehafo eshi kwa monika omukwati womafuma. Pefimbo olo oka li okaana okatitano taka monika meumbo lavo.

OVadali ava okaana kavo ove ka twala diva keshasho, ngaashi omaufo ongeleki taa pula 7.12.1930 noka pewa edina Metusalem. Metusalem eshi a ninga omumati okwa ya a ka ungule. Okwa ya meefalama 1946 nde ta aluka mo 1948. Oshikando shikwao okwa ya kOlivingi oko a kala eedula mbali 1949-1950 noko a kolekelwa.

Ku SA okwa mona omhepo yelixumifo komesho nokwa dja ko e uye a hovele ofikola yovamati 1951. Omo a kala fiyo 1952 mEngela. Omudo wa shikula 1953, okwa ya kOseminali kOniipa fiyo 1954. Eshi a pita okwa ka longa kOngwediva 1955.

Omudo 1956 Metusalem okwa ka longa ofikola yovamati mEenhana fiyo 1957. Eti 20.11.1957, ova hombolafana nokakadona kaye Lea Ndahafa yaJesaja Itoolwa, mEenhana.

Omudo 1958 Metusalem okwa hovele ofikola youfita mOshigambo. Okwa kala mo fiyo 1959. Ova ka twikila nofikola yavo kuElim 1960 fiyo 1962. Eyapulo ola ningilwe muAguste 19.1962 muElim. Okwa ka longa eedula nhano omufita mokati kovanaionga mOlange.

Okwa lundulukila kOmbaye oko a longa eedula nhatu, nde te uya vali muTsumeb omo a longa eedula 9. Meongalo laNankali okwa longo mo

odula imwe. Okwa longa efimbo lile mokati kovanafikola momunghandjo waNgwediva nowaMweshipandeka.

Eti 11.1.1986 Kalunga okwe mu ifana moukwaalushe mouvela wefimbo lile. Okwa fiya ko omufiyekadi nounona wavo 7.

(Sabulon Ehandjo, paidilo lomufiyekadi)



Nakusa Metusalem Shilongo

EPANDULO LETU LINENE

Nye ovakwaneongalo meongalo, Omutundungu, ohatu mu pandula unene ovo mwa kala mehalakano, eshi mwe lihepeka okuninga ehanga la pya okwoongelela etungo longeleka yetu. Amushe ovo mwe shi ninga, oinima yeni aishe oya fika nawa, kufye notwe yi yakula neemwenyo diyadi ehafu nepandulo linene.

Okwa li twa hala keshe umwe ou we shi ninga tu ku nyolele ombapila yoye paumwene, opo tu fikife epandulo letu kwoove, ndele ookaume eshi mu li po ngaho vahapu, inatu shi ninga vali, onghee ohatu indile oshifo, Omukwetu osho shi fikife epandulo letu kunye.

Tangi unene kookaume ovo mu li mOranjeimund osho yo moGrootfontein, nanye ovo mwa kala moWindhoek osho yo ovo mu li pOndaugwa nOshakati. Ohatu ti inamu fya ounye, twikileni oshilonga shi ye komesho. Etungo oli li metifa. Hano inatu efelafaneni, osheshi nafye yo oku inatu mwena, hano tu kondjeleni ongeleka yetu. Nanye amushe keembinga neembinga inamu shi ninga, otamu teelelwa mu tenheke ko omake eni ketungo. Hano shi ninga ngaashi omwenyo woye tau ti. Tu tufeni hano oukuni kumwe.

Ohatu mu kundu unene. Iil.2:7-8.

*ponhele yeongalo
Abraham Haileka*



DOS SANTOS MUANGOLA OTA LONDODHA UUYUNI OMOLWIITA MOSHILONGO SHE

Omupresidende gwolepublika yoshigwana shaAngola, Jose Eduardo dos Santos, okwi ikwata pomwenyo kiita mbyoka tayi hingwa kuAmerika na SA moshilongo she, nokwa londodha uuyuni u endebele okuninga po sha, manga onkalo inaayi ndwafuka.

Omuleli gwaAngola Dos Santos, okwa popya oshinima shoka pethimbo lyokudhana oshituthi 12 shemanguluko lyaAngola nosha pitithwa meyakulo lyombako yiilonga yomombepo melaka lyOshikwanyama 12.11.1987 otundi 17H30 pethimbo lya SA.

Mokuulika mpoka pe thike eipumo mumwe lyomatanga goshilongo shaAngola naakwiita ya SA meni lyaAngola nuumvo, Dos Santos okwa ti moomwedhi mbali dha zi ko, SA okwa kanithila oondhila 32 momalugodhi ngoka, ashike sigo onena itopolwa yimwe yoshilongo, oyi li natango miikaha ya SA, oradio ya leshwa.

Ebandulo ketokolo lyomatanga goshigwana she okugamenena po emanguluko ndyoka ye li kondjela netiko lyombinzi onene, Dos Santos, okwe li hulitha nehoyo ndyoka a gandja kiilongo yomuuyuni opo yi endebele okuninga po sha, okupopila ombili yomuumbugantu waAfrika, omukundu gwaNamibia nge tagu potokononwa nziya.

MuKotoba nuumvo; oministeli yegameno ya SA, omusamane Magnus Malan, okwa li a zimine okuya kwomatnga ge muAngola. Pashifonkundana Windhoek Advertiser 12.10.1987, okwa toolwa amatumbulo kondungu yelaka sho a ti: "MuAngola omu tu li, tu li mo okathimbo pamukalo gwa ngambekwa, opo tu keelele ekunguluko (lya SWAPO) lyaa hedhe popepi nongamba yaNamibia.

Ehokololo lya fa ndika, olya li lya papekidhwa kekawo lya gandjwa petameko lyaNovemba, koshikondo shegameno sha SA, moka sha ti, kutya osha ka dhengele ookamba dha SWAPO muumbugantu waAngola manga omvula inaayi loka, moka ya thigi aakwiita 150 aniwa ya sa. Kombinga yawo ehokololo olya ti oya kanitaha ashike aakwiita 12.

Omupresidende gwa SWAPO omusamane Sam Nujoma, okwa li a yamukula mbala kepopyo lya SA, ta ti ngele nani SA okwa dhipaga aantu muAngola, naa kale shila, aakwashigwana yaAngola, mboka a ti kutya olwindji oya mono iihuna kiiponokela ya SA.

Pokati mpoka onkundana yi nyanyalitha oya adhikwa ya zi moshitopolwa shoka shomalugodhi muumbugantu waAngola molunza lu shi okwiinekelwa noya thiki sigo omombelewa yOmukwetu. Kape na ngoka ta vulu okwiitaala nuupu shono tashi hokololwa tashi ningilwa aakwashigwana kuUnita pamwe naSA muAngola.

"Aalumentu otaa thonwa, aakiintu otaa tandwa uunona momala nenge taa longithwa kaalumentu 10 oshita. Shiyaka kashi shi iita, omuntu oto nyengwa okutseya elalakano lyekondjo kutya oshike," osho ehokololo lya ti.

Ethimbo kehe moshitopolwa shono shUumbugantu waAngola, ehokololo olya tsikile lya ti ohaa kanitha iinamwenyo yawo momagumbo oondjuhwa, iikombo noongombe sho tayi kwatwa mo kaakwiita yaUnita ya ka lye momithu.

Aakiintu otaa hepekwa komukalo kehe gu nyanyalith, oshoka aniwa oya vala oSWAPO nenge oFapla, (aakwiita yepangelo lyaAngola), ihe uuyuni otatu mwenene iihuna mbika.

"Tse otatu kugu onkugo yaa na omutondoki. Mboka kaye na ondjo yokweeta po iita mbyoka,



Omupresidende Jose Eduardo dos Santos

oyo ya humbata oshilanduli oshidhigu", osho omuhokololi a hulitha okupopya iihuna yawo manga ta shunitha omahodhi momocho gaa pite mo. Ina zimina nando Omukwetu a tumbule edhina lye moshinima shika, omolwoshilanduli oshidhigu a angala shi ke mu adhe.

Omalunzankundana omakwawo, unene muBritania, otaga koleke kutya iita ya kondjwa nuumvo muAngola oyo yotango ya kwata miiti komalugodhi agehe ga kondja muumbugantu waAfrika.

Oministeli yegameno lyoshilongo shaAngola, Kolonelandjayi Pedro Maria Tonha pethimbo lyoshituthi shedhimbuluko lyoomvula 12 dhe-manguluko, okwa ningile chiyo komatanga gaUnita, opo gi igandje ketanga lyegameno lyoshilongo, noya tunge oshilongo muukumwe.

Ishewe nuumvo pehulilo lyomumvo, epangelo lyaAngola olya li lya kambadhala okushuna oonkunda poshitaafula pokati kalyo naAmerika, molwemanguluko lyaNamibia. "Inatu zimina ekwatathano lyAacuba nemanguluko lyaNamibia, ihe omolwombili yuumbugantu waAfrika yi na okulalakanenwa, otapu kongwa ondjila," osho Angola a gandja omatompele.

Sebulon Ekandjo

VAWILIKI VEHONGO, INAMU FYA OUNYE!

Vawiliki velongo mOwambo, inamu tila ile mu fye ounye, ndele twikileni shili mwa mana mo, opo mu wapaleke elongo. Ope na shili oudjuu kwaavo ve na okuyapukila ava ve na eedjapo doulongi, ashike kape na omhito imwe.

Omukuluwonale okwa tile: "Ohatu kwatele moihebado, manga oimbale ipe tai tungwa!" Hano oshihembado nande she tu kwafa shili nale, owe shi pandula, ashike ito twikile vali oku shi longifa nge owa mona nee eshi shipe. Nelalakano loye, opo u amene oufila ile oilya yoye i ha hepe vali.

Vawiliki velongo longeni ngaashi mu wete tashi eta eyokomesho melongo. Otu na eenhele doilonga dihapu da pumbwa ovanhu ava ve na oMatrika (kakele koulongi noupangi) ndele ounona vomOwambo nande va ninge omaindilo, itava tambulwa omolwoinima tai shikula apa:

- a) Omaludi oilongwa, (itai ti sha metwikilo)
- b) Oitwa yopedu (hano eepeleshenda 40% fiyo 54%. Ondi shi shi onghendabala yeni okukufa mo ovo ve he na eedjapo doulongi, oya pendulwa kepito lounona la nghundipala, nghee twikileni mu wapaleke elongo. Oshinima keshe shi na sha nouwa wonakwiita yoshilongo, oshi na oudjuu okuudika ko kovantu aveshe.

Kendabaleni shili, opo ounona va longwe oilongwa ei i na shili omungudo melongo (ngaashi "Mathematics, Chemistry, Physics (Physical Science noBiology,) i longwe shili, fiyo oko St. X. Nge otamu efa oshiwana ashishe shi mbonyokele melambo lelongo lopedu, vati shaashi oolyeelyeelye oshinima ve he shi udite ko, oushima otatu uya u ninge weni, shaashi onye mwa pewa oshisho osho.

Ovalongi ove na okukala nowino wa kola lela, opo oilongwa ei i na oshilonga, i longwe yoo i pitwe shili noitwa iwa 75%. Elineekelo nehalo lange oleli: Wapalekeni ngaashi mu wete sha pumbiwa.

E. L. Moses
Windhoek

Otashi ti ngiini?

Nandi kwathwe ndi yelithilwe elombwelo hali kala mOmukwetu li li ngeyi, "Landela hano eshiivifo loye onhele mOmukwetu". Kandi uwite ko kutya tashi ti ngiini?

Nelago Selma Omagano
Southern Namibia

EYAMUKULO

Ngele ou na shoka wa hala okutseyithila omuntu kehe moshigwana shopaumwene ngaashi okungeshefa nenge okutaamba aalongwa posikola yoye nosho tuu, osho shoka twa dhiladhila.

Amushanga guOmukwetu

ESO

Tate Vilho Hamunyela, gwomomukunda Omundudu, meangalo Endola, mOukwanyama, 15.10.1987 moyechame wefimbo lixupi okwa fiya ko ovana vane novatekulu vavali Job.19:25-26.

Reonard Eino Hamunyela



OKUVALITHA

Onda kumwa unene sho omukulukadhi e li metegelelo e ta lombwelwa kaapangi "Meme kala popepi no-shipangelo." Shaa tuu u uvu a ngendjununwa mela, ye ota yi moshipangelo. Aapangi sho ye mu tala otaa ti inashi thika, (oshitheta) shuna, kala to endaenda.

Meme ngele ti ithana aapangi sho oshitheta sha geya, otaa ti: "Ano ou na mo omupangi gwezimo lyeni muno, nenge owa tala okuwala? Ila tu ku wende, enona lyoye olya sa nokuli."

Nke nga koshipangelo oko hatu holama iiponga yopokuwala, nena oko tatu thigi omapunda getu nuunona wetu wa sila momala? O!

Mutleni Kaonde
Ekamba

Vakomesho otamu tungu ile otamu tungulula?

VaNamibia vakwetu ovakomesho vetu, oshiwana tashi lili omolweni. Otamu longo oilonga imwe ya puka unene. Ovalongwanhu tamu xungile eexungi pamwe nomaludalo eni, eexungi deni okupopya omona wanhumba nangadi vati oye ngoo. Omona woye ove iho uhala naye, u tale kutya yee okwa tya ngahelipi. Dimbulukwa, shi li kOnghumbi osho ngoo shi li kEvale.

Tuyeimo Lenny Paulus
Omuloka

Iifundja oyo omukithi omunene moshilongo

Aaholike, inatu taleni ashike iikunwa oyo omukithi aawe, natu taleni wo iifundja nayo omukithi omunene moshilongo shetu. Mokutala iikolitha niifundja oyo aakwanambwiyu.

Tse ngashingeyi otwa ningi oshilongithwa shasatana. Hatu popi oohapu dhiifundja. Moshipango oshitihetatu otashi ti:

Mukweni ino mu hokololela iifundja. Mukweni ino mu hokololela oohapu oombwinayi nomalaka omawinayi, ino hokololela oohapu we dhi uva maantu aawe, mu dhiladhilila nawa, ngu mu popye nelaka ewanawa.

Elizabeth N. Kambweshele
Eendombe

KOVANAFIKOLA

Ofyeni ovanafikola naunene tuu ava tu li meengudu dopombada otu li po ongovanhu tu he shi eshi hatu ningi. Omunhu owa ya kofikola opo u lihonge, u mone ouwa wokomesho, omukulunhu ote ku pe oshimaliwa te shi kongo nouduu, ndele fye katu shi wete.

Ashike ope na ovanafikola vamwe ngeenge ke na oshimaliwa, okuwete ina manguluka okulihonga. Hano onawa ngeenge to lihongo noluhepo ove u ka hepuluke ngeenge owe lihongo nawa.

Hano vakwetu, tu yeni moilonga. Tu longifeni efimbo nawa, fye tu indile ku Tate e tu kwafe ye e tu pe eenghono. Mat. 7:7-12.

N.P.Neshuku
Ongha Sec. School

"OVA SHANGELA NGE TA VA TI....."

Ouhongifikola kau na omudjalo wao?

Eendokotola, ovapangi, ovafitaongalo, ovalongi vomeemina, meefitola nosho tu ovanailonga vakwao ove na omidjalo doilonga.

Omolwashike ovahongifikola voshiwana shetu kave na omudjalo woilonga ngaashi ovanailonga vakwao, nande aveshe ohava longo oilonga ya fimana ku he na vali. Onda limbililwa unene molwaashi ngeenge owa hanga omuhongifikola ta longo ovahongwa ke he na omudjalo wofikola, hanoupu ho hale okudimbuluka omulongi nomuhongwa. Omanga ovanailonga ovo va tumbulwa metetekelo ngeenge wa hange e li moilonga, owa yeelwa nale nawa omunashilonga nomuyakulwa.

K.I.Shafashike
Oshatotwa

EPUKULULO

Onda hala ashike ndi gwedhele kwaashoka sha li sha popiwa mOradio South West Africa, kombinga yomaitano gaanona. Onda hala ndi holole kombinga yaamboka ya hogolola eithano lyuulongi, ndele sho omunona a piti ostanda ontihetatu, ina mona ompito yoku ka tsikila uulongi mboka a hala. Oyendji ohaya galukile ashike komagumbo, anuwa ota tegelele omvula tayi landula.

Shono osho okwiishunitha monima. Ngele ope na ompito yostanda ontimugoyi, inda owala mostanda ndjoka sigo nookuli wa mana ostanda ontimulongo. Itashi ti anuwa ngele omuntu ina mona ompito yokuya kuulongi opuwo? Aawe.

Konima yostanda ontimulongo, otashi vulika wo wu ka tsikile eithano lyoye ndyoka lyuulongi kooskola dhopombanda e to longeka ("pyokoka") ihe nawa.

Deevy Angula yAngula

Ehiyo kosikola yOmbimbeli

Oosikola yOmbimbeli noutoludigumbo poNkurenkuru otayi ka taamba amasikola Omumvo 1988. Ninga eindilo lyoye kuye. Tuma mbika tayi landula:

1. Eindilo lyoye mwene, nomeindilo ando mu holoke oStanda yoye.
2. Epopilo lyaakuluntu yoye.
3. Ombapila yegongalo noyomusitagongalo.

Tuma eindilo lyoye ko:
Kavango Bible School (ELCIN)
Nkurenkuru
Private Bag 2084
Rundu 9000

ETHIMBO LYONGASHI-NGEYI NIININGWANI-MA YALYO:

Ethimbo lyongashingeyi oli limbilika. Ethimbo lyomuntu to dhiladhila. Ethimbo lya kanitha uumwayinathana. Ethimbo lyayonauka keliko. Ethimbo li na oomoode dha piyagana.

Iita methimbo ndika otayi kenyaneeke unene tuu moNamibia. Oya piyaganeka oyendji, oya lemaneka oyendji komalutu, moondunge nokoomwenyo. Aanamibia otaa ende taa shongola. Moondunge oya lemana keliko, ndyoka tali manitha po oshigwana shawo.

Natu ipuleni nawa, kutya otu na okuninga shike methimbo lya tya ngaaka. Ngele itatu pendutha omadhiladhilo getu ngoka ge li moomposi olye te ke tu pukulula unene tuu oshigwana shaNamibia shoka sha pwila mokunwa, nomeliko lyiimaliwa. Twa ningeni omalandwambongo!

Omakaya nago oga ninga omoode! ndjoka oyo naanaa ontuko dhingi! Okanona shampa ka mono ekaya tali hilwa kuShilumbu nenge komunashilonga gwontumba, nena oke wete esimano. Aanashilonga mboka mu na omai-uvu, kambadhaleni mu gandje oshiholelwa oshiwana koshigwana shokomeho.

Elongo methimbo ndino nalyo olya nku-ndipala. Momitima dhaalongi nodhaalongwa, otamu inyenge oshindji molwiita, notashi eta epiyagano, nokwaaitula mo. Ayehe otaya ti, ote ningi ngaa, omuntu waashi kutya oto si uunake, eso lyongaashingeyi oli li peke. U mwene, nani ou na ko ngaa omasiku, u itulemo eso nani olye kweendjelela. Oto limbililwa niinima ayihe oya piyagana methimbo ndika. Oyendji ngele ya ningi epuko ohaya ti hasho ya hala, ethimbo tali ti.

Olye a eta epiyagano methimbo ndika?
Olye a eta mo inima mbyono ya piyaga moNamibia?

OKALIINDELISKOLA 1988

Ethimbo Ondjohomamasiku ya longekidhwa, Okaliindeliskola otwa li inaaka monika manga. Ngashingeyi otatu ka tonenke ngeyi, opo ngoka a hala otubata e ka na e ti inyolele.

Ethimbo

- | | | | | | |
|-------------|----|---------|------|----|----------|
| 01. Etitatu | 19 | Januali | sigo | 30 | Maalitsa |
| 02. Etiyali | 12 | Apilili | sigo | 23 | Juni |
| 03. Etiyali | 19 | Juli | sigo | 22 | Septemba |
| 03. Etiyali | 04 | Kotoba | sigo | 07 | Desemba |

Iikakomumvo yetatamumvo

- | | | | | |
|-------------|----|------|----|---------|
| 01. Etitatu | 19 | sigo | 23 | Juni |
| 02. Etiyali | 02 | sigo | 07 | Desemba |

Ooskola otadhi ka tameka ishewe 17 Januali 1989.

Omafudho gowina gooskola:

- | | | |
|-----------|----|----------|
| Etitatu | 13 | Maalitsa |
| Omaandaha | 03 | Kotoba |

OMAHALELOYAMBEKO GOKRISMESA

Omuhupithi a valwa

Kristus okwa li a valwa, Mesias e tu valemwa, Omukumithipukululi okwa li muuyuni mbuka, Omuwa okwa li a monika oshipala she mevi ndika lyuundjendi. Kristus okwa li a valemwa muuyuni mbuka womahepeko ngaashi ngaka tu ga na nena. Okwa li a hepekwa, a dhipagwa, a dhinwa nokwe ethiwa kaantu. Omulumentu gwomahepeko nomuvuntu.

Omasiku ngaka gokuvalwa kwaKristus sigo ogokuhepekwa kwe, ogo omasiku omanene miigwana ayihe nomomihoko adhihe mooitaali. Yaloo, Omuhupithi sho wa li we ya po, tu kale tu na etegameno.

Festus Ekandjo

Etumwalaka kaapongekwa

Aamwameme aakwashigwana yetu mboka mu li muZambia, Angola nosho wo mitopolwa yikwe inaandi yi tumbula, omatumwalaka nomakumagidho ngoka hamu tu tumine nekwitho lyiifo, oga thika koshitopolwa shetu shaNamibia.

Sho kwa tiwa waa pandula noyaka, natse wo

Aanamibia ooyakweni, inatu hala okuyaka. O- rwa hala oku mu pandula unene mwaashoka. Oku tu tsa omukumo noku tu kumagidha, inashi mona ehulilo, ihe tsikileni nomukumo.

Tse otwe mu halela oonkondo nuupenda mwaa teke omukumo kemanguluko lyaNamibia. Kape

na oshikukutu ihaashi hulu, ko kaku na oshidhigu ihaashi shuna ompadhi lwanima, osho lela.

Pamwe nane mekondjo
Ingapeyashikuka Masikunelagokwaashi
Namibia

Sipango saune nani ngapi asi tanta kwetu ose vasesugona novadinkantu?

Vakwetu, ame kutetuka sili nokufa nomuga ntaantani. Mapupi getu ose ava nana ninki asi ngano nyose rudi romungura, hawe, kapi yina kuzira mo nampili nakauke.

Vakwetu, funadeka guho nanyoko nani kutanta asi ngapi? Nani woowo va ku reta makura? Amesi guho ndi nyoko nkenye tupu mukurona ogo ga ku pitakana monomvuhura ndi moukurona?

Ngapi nye ose vantaantani kutara vakurona ngwendi mapupi getu tupu? A ku pe ko magano mukurona gongandi ove nombili ko si. A kare guho ndi nyoko goku ku reta nayo si koge nayimwe si, morwa asi navenye vana kurupa makura nonondunge dawo ngosikwawo.

Oku onogwana nye ove nondunge dokupitakana doguho nonyoko kwalye? Yiyo sa nye mwa vhuka nobotjotjo noyininke ya hana divilisa mokatji ketu? Vakwetu wokuhara, tu kwameni mapukururo govakurona vetu, ntani a tu tungika

nomutiya Elia Malwa naye gwomOshigambo.

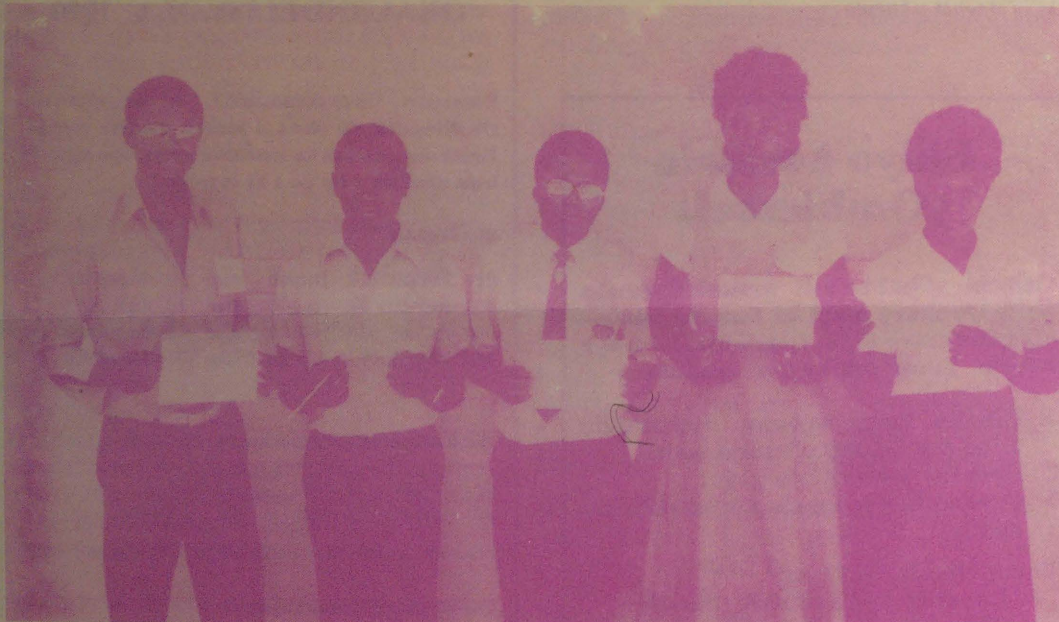
Ethigathano olya kutha ashike ominute 60, noli na omapulo 40 moka mu na ngoka to vulu okuhogolola. Algebra, Analitical geometry, trigonometry niitopolwa ikwawo yi na sha naashika, oyo ya li tayi konakonwa.

Ashihe osha li sha ningwa mezininino lyepangelo lyOwambo nosha ningithwa ketumo lyOngeleki yaBaptist muNamibia. SWA.

Oshikola yaShigambo oyo tango methigathano

Osekundo yaShigambo, oya holoka monomola yotango, mokati kOoseko ntano dha kuthile oshitopolwa methigathano lyomwaalu muKotoba gwa zi ko, moshitopolwa shOwambo. Ethigathano olya ningilwa mOngwediva moka aalongwa 16 ya li aathigathani.

Oosikola dha mwene ompito yomethigathano ndika odho Oseko yaMweshipandeka, yaLuno, yaNgandjera, Ongwediva Tr. Centre nOseko yaShigambo ndjoka omulongwa gwomuyo Joel Uusiku e ya omutango,



Methano ndika yatano mboka ya piti nawa mekonakono. Okuza kolumoho Joel Uusiku, Oshigambo, Elia Malwa Oshigambo; Mateus Hamutenya, Ongwediva; Rosina Ndilenga, Mweshipandeka naHelena Amukoto Ongwediva.

Karunga asi, nose tu ka kare vakurona womulyo komeho.

F. J. Nakale
Nkarapamwe, Rundu

Omahaleloyambeko gOkili

Otandi halele Aanamibia ayehe moshilongo nopondje Okrismesa ya yambekwa nOmumvo Omupe gu na elago. Tango aasita yiimuna, aasita yomagongalo, aalongisikola, aanasikola yetu, aalongi moombelewa, aaniilonga mUshimba nomOwambo, Aambisofi yevi lyetu naakwaniilwa yetu, aavu miipangelo nomomagumbo nosho wo aanandholongo.

Kalunga keshito alihe gamena Namibia lyoye naakalimo yamo. Ekundo lyetweni, Joh.17:6-17.

Erastus Ts. Shigwedha
Eros Airport

Omuwa oku li pune

Aamwameme aaholike kuumbangalantu waNamibia, otandi mu halele Okrismesa nOmumvo Omupe gu na elago. Nampango ne mu wilike nopethimbo tu li mo. Tate yomegulu ota ti: Nonando uudhigu opo u li, ondi li pune. Mat.1:22-23

Victoria Namene Mb.
Elombe

Tse otatu ku galikanene

Tate Sam Nujoma, otandi ku tsu omukumo mokulonga iilonga yoye. Tate Kalunga ne ku yambeke ye ne ku pe oonkondo nuupenda moku-kondjela ko oshigwana shetu.

Tse otatu ku galikanene uusiku nomutenya pamwe naakwathi yoye. Inamu teka omukumo mekondjo lyeni, oshoka esiku masiku olya thikana opo Namibia lyetu li manguluke. Otandi ku kundu pamwe naakwathi yoye neimbilo 40 mEhangano, osho wo oohapu mu Rom.12:12

Mekondjo pamwe nane
Nelago Selma Omagano

Tu ikankamekeni

Ai, omudo ou 1987 hamba mafiku mafiku u ka dilongele. Ngeenge oshi li ngaha, edina laKalunga nali hambelwe. Moshietwa po eshi, inandi hala okuliukilila ame mwene momukolomoko wodulu ei, ndele onda hala okukwatela mo vakwetu aveshe ovo va kumwa komaupyakadi omaludi keshe odula ei, komalutu ile keemwenyo.

Aishe ei vakwetu oyopakafimbo, ashike inai tu jmana eenghono yo i shunife omitwe detu moipeta, tu ninge omaitavelo etu omanghundi. Hano natu i lyateleni pedu, ei tai uya moipala tu i tambuleni ko i li ngaashi i li. Efimbo ola pwa po notali ufa aishe oyo ii i wanife. Inatu limbililwa, Omwene ote tu kondjele.

Ame mwene kondadalunde, onda kala momudo omu inandi manguluka, nda kala nda limbililwa, nda tila, ndi he na eteelelo lasha, nda fya oonye nahauxuuninwa onde ke likumika kutya aishe

Tala kopardja lya landula

Oudano wopaminghoko otau nghundipaleke etungo loumwainafana woshiwana eli tali lalakanenwa kuvahapu

Oonakutota po onghandeka ova li ve i tala ko oudano wa wedwa pomaudano makwao opashiwana ngaashi eenghama, etenda, omupembe nosho tuu. Ova li hava kandeki pamukalo wombili, fiyo tava halakana inapa dja nande omunhu eisho ile eyoo, kakele shapo umwe nge a dengwa keyulu nde ta di omukota. Ashike apa opa li pe na okuyandjwa ombili. Onghandeka oya li hai kandekwa komukulu nondenge, komunhu nomushiinda ile ovanhu va dja koshilongo shimwe nosho tuu.

Onghandeka yonena otai limbilike, unene mOvawambo ovo tu li moushimba meekomboni.

- Ongandeka tai ningwa paminghoko
- Onghandeka yominwe da xula ko oitenda
- Onghandeka yeenghaku da pamhelwa eembosha, yo tai lyata vakwao omalunha momadimo nopomitima
- Onghandeka ya homata omamudibo nomikonda yo tai li tetaula nomakatana
- Oudano hau dudu okutwala omunhu mefyo.

Kombinga yange onda nyengwa okuya mondabo yonghandeka yopamukalo ou, molwaashi kaume koye iha monika ta dalwa. Pamwe oo to tete okutwi nena, mongula oye ta ka kala omushiinda shoye.

Ondi hole ouwa, nde ondi tonde owii, ondi hole mukwetu ngaashi ndi lihole mwene, onghee ohandi nyengwa oku-nyenyepeka olutu lakaume kange. Ondi wete sha nyika ouwaya okulitanda shaashi ho tete omakatana a yukilila pamukalo wonghandeka, ove ho pilamene ongwe ile oshimbungu e li momwiyo. Teta osho sha pumbwa okutetwa, havanhu.

Ove lyelye omulumenhu, eshi ho mange ombao to di mOmbaye ile peni, u ka shilile onghandeka yoludi eli kOshivanda ile kOshomeva? Oshike tashi ku imbi oku ka lwa apa pa pumbiwa okulwa?



Omushamane K. Tawii

Vakwetu, ngeenge onghandeka oudano wopashiwana, oshike haudanenwa ovanhu ve litukula pamihoko? Omolwashike hatu fufyile ounyuni hatu ti inatu hala okatongotongo, fye hatu ka longifa?

Shiwana, oukwamunghoko nau fye, okatongotongo natu ka fudikeni. Tu fimanekafaneni fye tu fimanekwe. Tu lalakaneni ombili netungafano osheshi atushe otwaxe naina imwe notwa kumininwa modikwa imwe.

Kaningina H. Tawii

noshimhutu, longa osho sha yuka. Alushe kendabala u ka lombwele onghalo yopu-Kalunga.

Ovanyasha vahapu ovo ovanafikola, nomolwaasho onda hala tu pwilikine nawa vanyasha nghee tu na okuhoolola nawa omaifano etu.

Okwa didilika ovanafikola vahapu ohava efa omaifano avo molwoukaume wonhumba. Omunafikola onawa u tale nawa eifano olo li li momutima woye ongoshinima sha fimana, shi dulife olo to pewa kukaume koye.

Natango sha fimana osheeshi, kutya ino efa okunyonenwa okuhoolola oshilongwa shoye molwaasho taku tiwa ohashi dopwa neenghono. Pamukalo wa tya ngaho oto ka teya osho ino kuna, ndele omunyasha u li mefimo lofikola, diladila oinima itai ku etele edopo noupu.

Hoolola kaume e li nawa. Kala popepi nomailikano aKalunga, ino liefela omakaya ile oikunwa noingangamifi. Kala kokule nokupeema, ile nokulundulula oshipa shoye.

Okulesha nokukoneka, oudiinini nokutongola ouwa nowii, oyo efimano linene shi dule wa lesha, ndele to efa ashike ngaho.

Samuel N.J. Shipululu

UUYUNI NANKALI KOHI NANGOMBE KOMBANDA

'Aaholike, e omukulu gwonale okwa tile: Dha londoka ihadhi yi iita. Aagundjuka yomuNamibia unene yomOwambo, tu lundululeni oonkalo dhetu manga esilohenda li li po. Otatu longeni unene iilonga yaa na omutse nandungu, oshoka oyendji yomutse twa ningi: oonkolwi, aahondeli, aaholi yuuntsa noyeliko, oombotsotso nosho tuu, nayilwe kayi shi okupopiwa.

Anna M. Shalihu Okahao

OU WETE KO TUU?

Omunamibia omuholike! oshike wa ninga oshilongitho komutondi? Omuntuuntuu-wa shitwa kuNampongo, ihe ongoye u na ondingili mokudhipaga Aanamibia aakweni? Hela u na iihako komapepe, oyokutilahi ombinzi, yaho, yanyoko noyaamwanyoko?

Amweenye Fares

NAMIBIA EVI LYETU, IHE OTATU KOLONYEKWA

Otatu kolonyekwa nayi ketanga lyegameno. Ngame itandi tsu kumwe nedhina ndika, shapo nali ninge etanga lyokudhipaga Aanamibia. Lungapi Aanamibia twa dhipagwa twaa na ondjo yasha? Man! Lungapi twa falwa miipangelo twa dhengwa? Yangapi yomutse ya patelwa mooncholongo? Omagumbo gangapi ga hanagulwa po, ye tu ninga oohepele tse tu na Namibia li na uuyamba? Oomeme ya ninga aaselekadhi powalawala. Aanona yangapi tu li oothigwa mevi ndika? Shika ohashi lilitha ndje, unene ngele nda dhiladhila Namibia muukoloni. Yayee! Suid-Afrika e tu etela uuyapakadhi.

V.K. Kayambo Tulimekondjo

Tu ikankamekeni

Dha za kep. 10

ohandi i pondola mwaau ta koleke nge. Osho shili, nena ame ou, efilonghenda laKalunga li life nge po fiyo onena.

Ovaholike amushe, Okrimesa nai kale i na elao kunye, nOmudo Omupe nau kale nomakunguluko elao kunye. 1Kor.16:13-14

M. Nelago Many

Epulo

Omolwashike omuntu ta ningi ohango ye e na okanona, ndele ota tsilike okalapi, yo aantu taa ligola, yo taa tanta taa ti: Okwa kondjo ndele ta sindana, okwa sindana mushike? Kwathii ndje, ohango nani oshike ano?

T. Nesho

EYAMUKULO:

Ngiika kape na mboka ye ya pukulula.

Amushanga gOmukwetu

Waa pandula noyaka

Otandi pandula Kalunga kandje sho a hupitha ndje megwo lyoshihauto 6.9.1987. Kalunga na hambelelwe shili, ando kwa li kee po, ando uuwinayi wa holoka. Omwenyo gwandje, hambelela Omuwa, ngoye ino dhimbwa uuwanaru mboka e u ku ningile.

M. R. Embula Ongwediva Tr. College

Otandi mu halele Okili ombwanawa

Onda hala okupandula oongundu ndhono dhi lile po oshigwana nodha kala nokukondjela shili, opo dhaadhe emanguluko. Ondi na omukumo, kutya Namibia otali manguluka. Otandi mu halele Okrimesa yi na elago nomwenyo omupe gwa yambekwa, opo mu tsikile nomukomo.

Uuyuni nau pindje, tse ihatu tila sha, yo naa popye, tse ihatu sholola, otu na emanya lyetu Kristus.

M. Nd. Angula Namibia

OMUNANDUNGE PWILIKINA

Nandi tye paife otwa wana okulipyakidila novanyasha opamwe nounona vanini fyee tu va pe omakumaido a wana, osheshi ovo ovanhu mefimo tali uya.

Okanona oko okanhu okahopaeleli unene nomolwaasho otashi pumbwa ngee u li



ESIMANO OLYAKALUNGA GWOKOMBANDAMBANDA NOMBILI KOMBANDA YEVI MAANTU E YA HOKWA.

OVANA VAMBANGU

Twa fikeiko vali kexulilo lodula,
Hatu pandula Kalunga
Namhongo laMushidula,
Eshi e tu humbata nonena
Nande hatu tangalala

Tate Kalunga omuyambeki
Ha yandje mokuhamonika
Ta kulile ovana vaye
Eshi e va halela ye mwene
Nande hatu tangalala

Vahapu ove mu pa ombuda
Oludi la pilamena Kalunga
Ou ha yandje mokuhamonika
Namhongo iha limbililwa
Nande oto tangalala

Momudo ou okwe tu humbata
Moiponga okwe tu amena
Ngahalipi tu he mu hambelele?
Kalunga tu he mu pandule?
Ngeenge itatu tangalala.

Tate shi tala nawa
Meme shi dimbulukwa yo
Omumati ove to tale yo
Kakadona to dimbulukwa,
Eshi Kalunga e tu hole

Omafimbo aa ochafo
Omafimbo chambelelo
Hatu pandula omukwafi
Kristus okwe tu dalelwa
Nande otwa tangalala

Ndele vahapu katu shi wete
Nde ku lombwele wa handuka
Nde kuumbu omushe wa umba elungu
Ino hala okulombwelwa
Shaashi wa tangalala

Natu hambelele Namhongo
Fye hatu pandula Kalunga
Natu dimbulukweni yo
Eshi e tu tumina ekulilo
Nande otwa tangalala

Johannes M. Shikeva
Ai-Ais, Karasberg

ESO

Tekamo Mothithiya Shetulimba yaSam
Amutenya (14), momukunda Iikokola,
Onangalo, okwa hulitha ombadhilila
moshiponga shoshihauto 10.10.1987. Okwa
thiga ko he nayina naamwayina yaheyali.

E. Lukeniko Iileka

Kuku Selma Mwashitwanayi (84),
momukunda Oshikuyu, Olupandu,
15.5.1986

Viktoria Sheetekela

Johannes Kambonde Nekomba (54),
megongalo Onamukulo mOndonga,
17.9.1987. Okwa thigi ko omukulukadhi
gwe, oyana 13, aatekulu naatekulululwa.
"Omwenyo gwandje oKristus nokusa okwo
elikolo." Eimbilo 481

Nekomba Kondjeni
Mweshipandeka High School

Omumati Jeremia-Sheya-Tangeni Awene
(20) ombadhilila momeya gaRuacana.
Okwa li ta sikola mOseko yaMweshi-
pandeka. Okwa thigi ko he nayina naa-
mwayina. Eimbilo 630

Saimah-Omagano-Nd. Nombia
Nuuyoma Sec. School

Tatekulu Josef Shipilla Nashilongo (102)
momukunda Onkiila muTshandi,
19.9.1987. Okwa thigi ko omuselekadhi
noyana yaheyali, aatekulu 37
naatekulululwa oyendij. Eimbilo 389,
Rom.15:7

Tuuliki N. Ndeshigwanitha Ipanda
Tshandi

Tate Simon Nuuyoma (64) momukunda
Olwani, egongalo Eliimi, okwa hulitha
4.10.1987 muwehame wethimbo ele.
Okwathigi ko omuselekadhi, oyana 13
naatekulu 12. Eimbilo 630

Josephina K. Simon

Tatekulu Josef Immanuel, okwa mana oon-
djenda muwehame wethimbo ele
momukunda Elamba mUkwaluudhi
21.9.1987. Eimbilo 553

Immanuel Shoopala
Oshana-Sheri

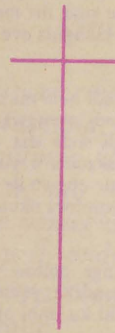
Johannes Angula Endjala, ombadhilila
moshiponga shedhipago, 17.8.1987. Okwa
thigi ko he nayina naamwayina yatano.
Eimbilo 647

Ndilimeke M. Endjala

Meeckulu Anneli Upama Aipanda 5.9.1987.
Okwa thigi ko oyana yane, aatekulu 18
naatekulululwa yaheyali Eimbilo 651.

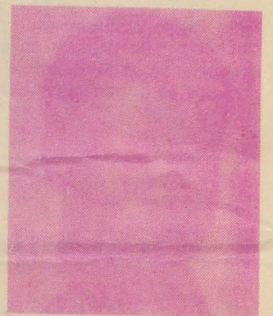
Simon Aipanda Andjelo

Ombalantu



Tate Immanuel Jesaja Moongo gwomo-
mukunda Etope megongalo Oniipa, okwa
hulitha muuvu wethimbo ele 12.10.1987
moshipangelo shaNandjokwe. Okwa thigi
ko omukulukadhi gwe nomunona gumwe.
"Omwenyo gwandje oKristus nokusa okwo
elikolo." Eimbilo 630.

Alma Ndinelago Nambahu
Nehule Sec. School



Johannes Ilonga yaNika-
nor yaKulula (32) momu-
kunda Onevoya, mEheke
mOndonga, 3.10.1987
moshiponga shoshihauto,
mOlange. Okwa thigi ko
omuselekadhi noyana
yaali. Eimbilo 133.

Elizabeth Metuma Kululu
Onevoya Eheke

Erastus Moses Ugwanga (11) Oshigambo,
19.8.1987 moshipangelo mOshakati. Okwa
thigi ko he nayina naamwayina 9.

Lempi M. Ugwanga
Windhoek

Kuku Maria. M. Mupupa, 2.11.1987,
moshipangelo mOndandjokwe. Okwa thigi
ko oyana yatano, aatekulu 40
naatekulululwa 18. Longekidha egumbo
lyoye, oshoka oto si. Eimbilo 653.
Mat.11:28-30

Petrus Johannes

OMUKWETU

Oye oshifo shOngeleki Onkwaevangeli paLuther yomu-
SWA/NAMIBIA.

Ohashi nyanyangidhwa mOshinyanyangidho shOngeleki
mOnlipa.

Omukuluntu gwoshifo omumbisofi Kleopas Dumeni.

Amushanga gwoshifo omusita Sebulon Ekandjo.

Ondando yOmukwetu muNamibia naSouth Africa R6,00
komumvo.

Palwe muAfrica R10,00 nokombanda yomafuta R14,00
komumvo. Mondhila R17,00.

Ondando nomambesitelo agehe naga tumwe kOmukwetu,
Oniipa, P/Bag 2013, Ondangwa, 9000.

Martin Namupala Akuunda (32) momuku-
nda Uushinga, mOnayena 30.9.1987
moshiponga shekandomo lyoshihauto. Ei-
mbilo 455

Gumbece, gromamaamwevona
Viktoria Kamotya

