



## AAPANGI 56 MU ELCIN, YA YAMBEKELWA MIILONGA YAWO

**ONANDJOKWE, ONDONGA** — Aapangi 56, ayehe iilyo yOngeleki onkwaevangeli paLuther muNamibia (ELCIN), oya tentekwa iikaha yeyambeko oogumwe nagumwe powalitali yongeleka yopaumbisofi mOniipa. Oshituthi osha ningwa 7.11.1987 okuza pomugoyi gwongula.

Omuyambekeli moshilonga shika okwa li omukwathi gwomumbisofi, omusita Matti I.Amadhila, pamwe naakwathi ye. Aantu ye vule 900, oyendji yomuyo aakwanezimo lyaayambekwi, oya li yu udhitha ongeleka sigo opndje.

Mokati kaayenda yoshituthi, omwa li wo aayenda ya simana; oondohotola dhomOnandjokwe, aalongi yaapangi, oomatrona osho wo aanashilonga yalwe moshipangelo shoka. Oshipala shomunashipundi gwokomitiye yepangelo lyOwambo, omusamane Peter Kalangula, nasho osha li tashi monika mokati kaakwashituthi.

“Kamu shi yeni yene, ihe oyaangoka e mu ithana moshilonga, opo mu yakule aantu ye, itaapu talwa olupe lwomuntu lwokombanda,” osho omusita Amadhila kwa li e ya popitha, manga inee ya pula ya hempulule eitaalo lyawo lyopakriste, komukanka hoka taa ka longa iilonga yawo moshigwana.

Ohapu yomEvaangeli paJohannes 3:29-30, oko Amadhila kwa li a kankamekele epopitho lye kongundu ndjoka ya yambekwa. Okwe ya kumagidha ya longe mohole, meidhidhimiko nomeifupipiko ngaashi omuyakuli omukwawo Johannes Omushashi e shi ningile.

Iitokolitho yimwe ya simana yomOmauthompango gOngeleki ya ELCIN, kombinga yaapangi, oya leshelwa momakutsi gongundu ndjoka ya li naapangi 24, aayakulipangi 16 naavalithi 16.

“Omuhakuli omukriste ota teelwa e liyambe moshilonga shaye paenghedi edi tadi fimanekifa



Pamauthompango gOngeleki ya ELCIN, ongeleki oyi na esilosimpwiyu enene kaanashilonga yayo ngaashi aapangi. Aanashilonga mbaka nayo wo oye na enyanyu enene okupewa omayambeko gopangeleki konima yeilongo lyawo. Aapangi 56 oya li ya taamba eyambeko ndika. Aalongisikola oyo tuu ya fa taa limbililwa ompito ndjika nonando nayo wo oye ya egulukila.

oshilonga neyakulo laye mokati kovayakulwa, moipafi yaaveshe.

“Mokuyakula kwaye ovakemi, na kale yo ou e shii okukoneka eemhumbwe davo dopamhepo, ye a kendabale okutala nhumbi ve shi okukwafwa pamwenyo. Panghedi edi, omuhakuli ne litale yo omuhakulimwenyo moilonga nomokupopya naaveshe,” shika osha li shimwe shomii-tokolitho mbyoka ya leshelwa aayambekwa.

Pamwe naAmadhila meyakulo ndika, omwa li wo aasita; Vili-Heikki Shivute, Festus Ashipala, Josia Mufeti, Titus Ngula, Daniel Imalwa naJohannes Hamulungu. Omundohotola omukuluntu gwoshipangelo Filemon Amaambo, oye a li omupopi omunene moshituthi shoka.

Ehulitho lyoshituthi sheyambeko lyaakwiita

yomikithi miiponga moshigwana, mongeleka, okonyala li ipume mumwe noshituthi shefumviko lyomumati gwomumbisofi Dumeni, shoka nasho wo osha dhanenwe esiku ndyoka mongeleka.

Leonard-Nangolo yaKleopas Dumeni, okwa manene oondjenda dhe 31.10.1987 moshiponga shoshihauto pamwe nayakwawo yaali, nefumviko lye olya li lya hili oyendji koombinga adhihe dhOwambo, sigo okOlange hoka nakusa a kala ha longo noko a hulithile.

Omudhingoloko aguhe gwOniipa esiku ndyoka ogwa li tagu inyenge aantu oyendji mombepo yoluhodhi noyenyanu oshita.

Sebulon Ekandjo

## Amuthenu na kale omutumba, ovanyasha nava fikame — Hasheela ta ti

Omafiku a dja ko hamushanga wongeleki ya ELCIN, omufita Absalom Hasheela okwa li ta popi ngaha eshi a li ta yandje oshipundi shetulumuko komweevangeliste tatekulu Malakia Amuthenu, pamwe neumbo laye; konima yoilonga yefimbo lile okutandavelifa evaengeli moshiwa na shetu shaNamibia. Oshivilo osha ni ngilwa mongeleka yaNiipa.



**Omuyevangeliste Malakia Amuthenu pamwe negumbo lye, iipundi oye yi kuutumba nokuli mongeleka, manga taa imbi omahambeledondjimbo gegameno lyaKalunga melalathimbo lyiilonga yawo.**

Omufita Hasheela okwa li ta popi ngaha eti-1.11.1987 kutya: "Ovakulupe nava kale omutumba, ovanyasha nava fikame, shaashi otava ka ya moilonga." Edi okwe di popya omanga tatekulu Amuthenu nameekulu Monika, tava kala omutumba moipundi yavo yetulumuko ei va pewa kOngeleki fiku olo, mongeleka yaNiipa.

Tatekulu Amuthenu okwa kala tete omwii-imbifi meongalo Oniipa, opo konima okwa ka tumwa kOmbalantu. Konima ashike yodula imwe okwa tumina vali kOlukonda ongomuhongifikola. Amuthenu okwa li a tekela ewatwa, shaashi natango modula ya landula ko okwa ka tameka ofikola yoweevangeliste mEngela, nokwa yapulilwa oshilonga shaye modula 1954. Oshilonga shaye okwe shi tameka koSwakopmund, opo konima okwa ka tumina vali kOnayena oko a kala nokulundulula omambo.

Momudo 1972 okwa holoka vali omhumbwe ya kula mokati kovanailonga koSwakopmund, oko tatekulu Amuthenu a tumwa ko. Nonande efimbo laye lokuya moshipundi shoukulupe ola li la fika, Elelongeleki ola pula natango Amuthenu a twikile omolwomhumbwe yopamhepo ya holokele mOnandjokwe. Okwa longa mo eedula nhano fiyo a pewa oshipundi shaye shoukulupe momudo ou wa ya.

"Omapenda okwa longifa eenghono davo mokati koshiwana, onghe otaa pewa eengho-

no dipe opo a twikile natango. Ovakulupe nava kale omutumba, ovanyasha va fikame, shaashi otava ka ya natango moilonga", osho Hasheela a tumbula mokati kovakwaneongalo ovo va li moshivilo osho noponhele yElelongeleki

"Otwala kala tu hole Epsalome 23, osheshi fye otu li moufita wOmwene", osho tatekulu Amuthenu a ti pomhito oyo a li a pewa okutumbula sha. Pomhito oyo tuu oyo, okwa ninga vali eindilo la manamo nolowina kongeleki ya ELCIN, opo i tandavelife, noku-deula ovafita ovanyasha opo ku twalwe evaengeli keembinga adishe. Okwa pandula ovakwaneongalo lavo laNiipa, eshi va kala noku va dimbulukwa momailikano avo.

"Amuthenu, owa dja moilonga tai dengele, eshi to yakula ongeleki, ndele paife, longifa efimbo loye ngaashi ove mwene to li ufa," odo omufita Hasheela a lekela nado omukulupe, a ya moshipundi shetulumuko.

Thomas Nghitukwa

### Aavali tu putudheni pauyuuki

Ope na aavali yetu yamwe inaa hala tu vulike. Otaa tumbula owala kokana, kutya natu vulike ihe eputudho lyawo kutse itaali ulike kutya oya hala shili tu vulike.

Ngategelelwa Pea  
Mwaala Sec. School

## Etumwalaka lomunaudu kovaitaveli aveshe

Mefimbo alishe nda kala eedula needula mouvela moshipangelo, onda shakeneka mo oinima ihapu. Efiku limwe omwe uya omulumenhu umwe ta vele ngaashi ame. Ehokololo lovanhu vokoilongo yavo nalo ola fika, kutya omulumenhu oo, oye umwe ou e hole oipala, nokwa li a pwila mo.

Onghalelo yaye oya li tai shi ulike shili, kutya iha dula nande okulikalela, osheshi apa e li ota kondjifa ashike okwiifana ovakainhu, ndele ke na nande efude po. Efimbo keshe ota popi ashike oinima yovakainhu.

Moku mu tala omunhu mukweni oto eta onghenda. Omunhu e li mouyahame, ndele okwe lipyakidila ashike novakainhu. Mokuputuka kwange onda kala handi udu elaka tali ti. Omunhu ino kala u hole oipala, oshiponga, osheshi otai ku shundula.

Ootatekulu vonale ova kala va shiiva oshinima eshi kutya oshiponga shili. Tala, oipala oshiponga.

Omulumenhu nda hokolola, omahepu okwe uya kutya, oye umwe oo vati ha yandje ashike omadimo kounona, nokovakulukadi vovashiinda shaye, ye iha futu, ile a hombole. Okudja opo oshinima osha ninga nee ngaho edundakano momutwe waye.

Eshi nda kala noku mu tala noku mu tongolola, onda hangwa kediladilo, kutya mbela ame ondi li peni monghalo ya tya ngaha? Apa ope na efano liwa oku tu ulukila nghe oipala i li oshiponga shinene mefimbo letu, apa kape na elipopilo.

Onda fa inandi hala naanaa okupopya oshinima eshi nouladi, ashike tu konakoneni pamwe nokutya, ope na tuu mbela omwenyo waalushe hau monika tau di moipala? Ngeenge kape na omwenyo hau monika ngaho, osho osha wana oku tu londwela notu lideule okulondoka oinima ya tya ngaha.

Ngeenge otwa hovela eliduulo eli ohatu ka mona eyambidido mOmwene nopo ohatu mono eenghono dokulondoka oinima ya fa ei.

Abraham Sh.Angula  
Oshakati

## Ebandulo kaa CDM

Otandi mu shangele noku mu pandula, aaholike one Aalocola, Aanorthe negongalo lyaandjetu Uubvley. Otandi mu shangele Aamittag, Aayaffen, nokuhalala Kalunga e mu indjipalithile esilohenda kehe, ne mu kale mu na iinima ayihe, ashike shoka mwe shi pumbwa, ne mu ninge sayamba yilonga ayihe ilwanawa. Shoka mwe shi ningile ndje sho nda kala pune, ekwatho lyegumbo lyandje alithe, itatu shi dhimbwa.

"Onke ano samwameme kaleni mwj ikolelela mwaatenguke aluhe aalaadhi moshilonga shOmuwa, mu kale mu shi shi, oshilonga sheni kashi shi osima mOmuwa. Kalunga ketu ke shi omugoyokithi a dhimbwe ando ilonga yeni ilwanawa."

Kundilathaneni po nuuhapu mbuka.

Omwukweni  
Salomo Elago  
Oshigambo

# EKUFILAFANEPO LOMATIMBA NOMBILI

Tate Kalunga ota tondo omatimba, naau e a na, ote litondifa kuKalunga, pamwe nomatimba aye. Kalunga eshi ina hala omunhu waye a kale nomatimba, omolwaashi okwe tu tumina Omona waye Jesus Kristus, e tu kulile momatimba nomefyo.

Paife Tate Kalunga, ota tale kufye, nota teelele omunhu a kufile po mukwao omanyono aye. Ou a kufila po mukwao naKalunga ote mu kufile po yo. Ndelene ou ita kufile po mukwao, na kale a shiiva kutya Kalunga ite ku kufile po omanyono aye yo. Mat. 18:21-25. 2 Kor.2:10. Kol. 3:13; Mark 11:25-26. Omunhu ngeenge ina kufila po mukwao, otashi ka kala eimbo, nomeilikanano laye, itali tambulwa kuTate meulu.

Mokati ketu otamu monika oshinima shi li ngaha, omunhu okwa hengwa okwa tameka ta pula oi-putula, ei a pele omuvalekwa waye. Nomoku i pula ota ti nongwiya nai uye apa nokutya okakadona ka ete aishe ei ka pelwe.

Epulo paife mbela omumati ou a futilwa aishe, ngeenge ta ilikana, meindilo olo Tate yetu meulu, ndele ta fiki meindilo etitano opo ha pa ti: Tu kufila po omatimba etu ngaashi hatu a kufile po yo vakwetu. Opo ta nhuka po, ile ota tumbula po ngaho? Ngeenge okwa tumbula po nena okwa fufya Kalunga. Na ninge ngaha, eengwiya noupolopolo vamwe nava kale ko, ye a pewe ko ngaho imwe eshi osho ekufile po. Talulula Mat.18:21-35 neimbilo 656. 6 mEhangano.

## Tu kufilafanenipo omatimba

Ekufilepo la yela noloshili oleli, lomunhu ta i e ke lihokolole koshipala shamwene woshinima eshi wa nyona. Ngaashi handi tumbula po imwe po. Ope na omunhu a vaka sha shomunhu nande oshimaliwa, omaadi, omakaya, nosho tuu, ile a lifa epya lovanhu, a dipaa po oxuxwa yovanhu. Na ye kumwene woshinima e ke lihokolole, ye a kufilwe po, kumwene waashi a nyona.

Ope na omanyono amwe madjuu no-manene, nao yo otaa pumbwa a hololwe e limatulwe, nande pamwe ekufilo lao otali pitile mofuto, kashi na nee mbudi, futa ashike ove u kufilwe po kumwene woshinima. Ngeenge ito dulu okufuta, ino nyonena owina oshinima shovanhu, ove u shi shii nale

nawa kutya nge we shi ningi otashi ku futifa, longifa elidiliko u he shi ninge. Tit.2:2.

Oinima idjuu ongaashi ei, okupa omunhu oudiyo, ndele ta fi, okunangala nomukainhu wovanhu, okulandifa po ongobe yovanhu, moumbudi, okulya oshikodongo. Oinima oyo ope na ofina yokulimatula muyo. Ashike owa teelwa u limatule muyo. Ngeenge we i holeke oto ka ya moheli.

## Ekufilafanepo lomatismba otali pumbiwa

Eshi omunhu ta kufilwa po, ota pewa ne ombili, nge ekufilo lopaumwene, ile lopangudu yonhumba. Lopaumwene oleli lomunhu a nyona sha shangadi yanhumba, nena ombili otave i li pe nangadi oo.

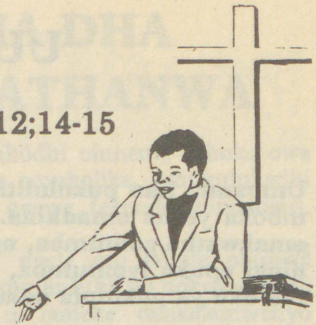
Enyono lopangudu oleli lomunhu a nyona keongalo ile kofikola, nena ou a nyona keongalo neleloongalo tali mu pe ehandu pashitokolifo 67.68.69.70. meufomhango. Nena omunhu a tya ngaha fiku na ka pewe ombili, ote i pewa paongalo. Ina konenena umwe womeleloongalo oye e mu pe ombili, aye.

Ile okwa nyona kofikola, lo etonatelonongelo tali mu pe ehandu pashitokolifo shopamaufomhango ofikola. Ombili nge te ke i pewa ina diladila e ke i pewe kuumwe wometonatelonongelo, ahowe. Ombili ote ke i pewe kwaaveshe pambelewa. Elihumbatc nai (i) (ii) ile ke pandja 2. (i) (ii) (iii) (iv). Oilonga noinakuwanifwa yetonatelonongelo 2-4. (c) Hebr 12:7-11.

Omuniyoni na konge ombili yopaumwene, yopaongalo, yopafikola ote i pewa ku ou e na oku i mu pa. Nombili ya tya ngaha, nai kale ombili lela hashimbilikulyange osho sha popiwa kuPaulus 1 Tes.5:3.

Lesha eendjovo daKalunga tadi popi epaafano lombili Mat.5:23-26; Luk.12:58-59; Efs.4:2-3. Ombili oyo omwiya woku tu mangela kumwe. Ava ve na ombili, Kalunga ota kala

Mat. 6:12;14-15



navo, noshinima shombili noshediminanepo, ofye Ovanambia atu-sheni; tu tambulafaneni ngaashi Kristus e tu tambula.

Ev.A.Muleka

## Onakudiwa yetu meo- ngalo lipe Omutu- ndungu

Omutundungu oshitopolwa sha li nale shomeongalo Onandjaba, mOkalongo. Momudo 1978 opa kundafar wa ku ningwe omalufu. Oshoondaxa imwe ohatu ka uda omambo kOnandjaba, Oshoondaxa ikwao tai landula, opokangulu ketu koihati pOmutundungu.

Momudo 1980 opa kundafanwa, kutya omapeni oo hatu umbu pOmutundungu itaa twalwa vali kOnandjaba, ndele ohatu a ongele a ninge opOmutundungu, nelalakano osheshi twa hala eongalo letu lipe nongeleka yetu vene i kale pOmutundungu.

Pexulilo lomudo 1984 muDesemba, omupashukilishitaingeleki shaUkwanyama, tate A. Kaulinge okwa talela po Omutundungu nokwe tu lombwela onghundana iwa ta ti: Omutundungu otau ka dikwa eongalo lipe konima yomafiku manini. Otwa li nee twa hafa unene.

Ongula yeti 6 laJanuali 1985, ola li oshivilo shinene sheongalo lipe tali dikwa pOmutundungu, ndele kakwa li twa pewa manga omufita. Elelongeleki ole tu pa omwevangeliste tate M. Nghatanga, ou e tu yakula oule wodula imwe, pamwe novafita vokOnandjaba. Modula 1986 mOngwediva omwa li mwa yapulwa ovafita vape, notwa pewa mo omufita omunyasha nomunandjunga moilonga, Linus Shimakeleni.

Ame onda li nda kumwa unene mokutala ovakwaneongalo vetu vahapu ve liyamba vovene mokuyandjela ongeleka yavo oinima, ve i landa noimaliwa yavo vene nove shi ninga neemwenyo diyadi ehafo. Ngaashi omukwaneongalo wetu umwe okwa yandja omashina aye okufoloma eedopi detungo longeleka notwa foloma fiyo twa mana, ndele ye ina pula nande oshenda.

Vamwe ova yandja oiyasha yokushashelwa ova-paani nounona ovo tava dalululwa va ninge ovakwaneongalo. Vamwe va yandja oiyasha vokuumbila eengalo mOsoondaxa, vamwe va yandja omaholo ouvalelo uyapuki, vamwe va yandja omalapi mawa unene, e na ondilo okoalutali.

Tala kep. 8

# UUMBANDA OSHIPONGA

KuImmanuel Iithete

**Umbanda itau pukululitha we aayamba naamboka ye na omaliko, aalongwantu naamboka ye na omadhina. Unene tuu uuna mboka yomoongundu ndhoka haa gandja omakwatho gontumba, ngele komagongalo nenge kaakuluntu momagumbo. Ngele oya ningi epuko lyontumba, aasita yomagongalo, aakuluntugongalo osho wo aavali ohaa tila oku ya pukulula noku ya hunga, oshoka oya tila okuthitika oonzo dhokulikola.**

Mpaka otapu holoka okwaalanga moshili notaku ethele yamwe mokutsikila okulonga uuwinayi tau yono onkalathano nelandulathano lyopantu.

Uumbanda owa kwata aavali. Shampa tuu ya mono omwana a piti omalongo, a mono po okankatu nenge eithano lyontumba, nando a longe sha nenge a kale monkalo tayi mu yono po nota yi eta eshunduko ngaashi uuholome nokunwa, itaa ti ko sha we kuyo. Oya tila kutya ote ya tompo nelongo lye, ote ya panga uuthewa nuusuuka osho wo iimaliwa.

Yamwe pamwe otaa dhiladhila kutya momalongo aantu otaa longwa okwaayona we sha nokutseya uuwanawa auhe osho wo omauwinayi kehe nomikalo dhoku ga yanda, ihe hasho shi li ngaaka. Melongo omuntu ota longwa uunongo noowino dhopaunongononi ashike.

Ota longwa wo omalongo okutseya shika nashiyaka, osho wo omauwinayi gawo nomauwanawa gawo, ihe omamakelo kaalongwantu osho wo kaayamba nokumboka ye na omaliko, oga faathana nogaamboka inaa longwa nolwindji oye na omamakelo ogendji nomanene ge vule gayalwe. Onkee aavali momagumbo inamu tila okupukulula aana yeni nge ya longwa nenge ya yambapala.

Uumbanda owo tuu tau fala oyendji moongundu dholulonga omauwinayi. Gumwe ota tila sho a tiwa kutya: "Nima ino nwa oto kolwa u ka dhengwe kumuhongi, nenge ino nwa to ka dhengwa kumestela, kuJuffolou nenge kusestela

ngele omukulukadhi nenge omusamane gwe. Okuza mpoka ota dhengele mo ihe noonkondo, opo u ulike kutya iha tila mestela, muhongi, sestela, musita nenge mevrou.

Shoka tashi mu ningitha ngeyi, a nwe sigo a pitilile, ta hepitha iimaliwa, aanona taa sondjala nonkayi nomukaga, osho uumbanda wongundu moka e li. Yakwetu okunwa nokukulwa kashi shi eputuko nehumokomeho lya zi kuEuropa, ndele omukundu nuukoloni we ya pamwe nuukwawo okuza kuEuropa okuhepeka omuntu palutu osho wo pambepo. Osho wo okuhingila omuntu mekanitho lyeliko lyolutu lyuukolele nolyekanitho lyoondunge nomayeke gopanshitwe.

Uumbanda owo tau nwitha aantu oyendji nokudhengela mo iipakete yomikonyo ookansacity nomapunyapunya omutenya aguhe nenge taa kuutumba nokunwa omangandja shaa ethimbo. Aniwa iha ye omwenyo nenge iha ndjanga manga ina hila mo. Nenge aniwa okwa tila okuyolwa ku yalwe ngele iha dhengele mo. Nenge aniwa a tila enota onkee nee omuntu a nwa oomvula, ye ita kumwa a ze enota, ye ita simana.

Peha lyaambika aantu oyendji oya kanitha oonkondo dholutu nuukolele wawo. Oya kanitha oondunge dhokudhiladhila nokupikula iinima osho wo eyakulo lyawo moshigwana nenge einkelole lyawo maantu.

Mokunwa noonkondo iikolitha oyendji oya kanithile mo ethimbo lyokulonga iilonga yiikaha nenge yomadhiladhilo. Mokunwa

noonkondo iikolitha, oyendji oya kanithile mo oomwenyo dhawo nodha yalwe sho ya hingi ya kolwa. Omalovu nomahooli ongashika naana omulilo nomahooli, shaa ya tsakanene otapu yonuka sha.

Muuyuni ohaku tangwa aasimani nenge aazeko. Ihe ito uvu nande taku ti, nima okwa simana nenge okwa za ko sho a li ha nu unene. Shila otaku ti ashike, kutya nima okwa kwishi nenge a si sho a li ha nu nokudhengela mo unene. Omudhingoloko gwoonkolwe kape na ngoka ta kala mo nombili. Sho ishewe shaa wa ningi gwokunwa kape na we ngu te ku inekele, naangu he ku landitha iikunwa ihe ku inekele we, oshimaliwa ashike a hala ko kungoye.

Uumbanda owo tau kunyananitha nokutulitha aapangi yetu oothige kiipala miipangelo, ngele taa yakula aantu. Peha lyoyakula nokwiimemeha sho ta popitha aapangwa ye, noku ya pula omikithi, otaa ganda nokuningitha oshipala oshidhigu nokuyamakula omalaka omakukutu, oshoka aniwa okwa tila ngele aniwa i imemeha ota dhinwa kaantu nokaapangwa ye.

Omupangi muuyuni, omuhakuli gwaantu ya mona iihuna nale, onkee oku na oku ya uvitha elago noshipala she shenyanyu neimemeha. Miipangelo yomiilongo yi li pevi meputuko, unene tuu mbyoka yi li pamukalo guukoloni, aapangi ohaa lilwa nohaa popiwa nayi, hamolwashoka kaye shi kuwenda nenge kaye shi okugandja omiti dholela ando, aawe.

Omolwashoka oya lulika iipala, ohaa dhenge aantu nomalaka, ohaa kunyanana nokudhina aapangwa. Oshike mbela? Oya tila aniwa ya dhinikwe yo nee komukalo nguka inaa simanekwa we yo inaa yelwa we kaapangwa, ihe ohaa tilika uumbanda mbu womuntu ta tila onime.

Uumbanda owo tau kunyananitha aalandithi moostora nomoongeshefa nokugonena aalandi sho taa pula oondando niinima ngele omo yi li. Uunene tu aalandithi aakiintu. Ihaa yamukula nawa ngele taa pulwa, ihaa tseyitha nombili, kutya oshinima kashi mo nenge osha pwa mo. Ihaa tala naalandwa yawo kiipala noku ya pandula sho taa ya pe iinima yawo, nooshendja ohadhi ekelwa ashike piitaafula.

Ihaa popitha omuntu nenge oku mu yolitha, shila na kale e mu shi nenge e nedhina. Komukalo nguka aalandithi oyendji otaa kolonyeke ooyene yoostora, oshoka aantu ihaa ya ko we nenge nge ye ya, ihaa ya nuupu, oshoka oya tila omayamukulo gonayi. Ihaa tseyithile aalandi noku ulikila aalandi iinima mbyoka opo ye ya mo nenge yi li momoode.

Oya kolonyeke aantu naalandi, unene tuu mboka ye na omadhina nenge ye niikutu ya nyata nenge ya kulupa, osho wo aakulupe mboka kaye shi we iinima yoshinanena. Oyi ikolonyeke wo yene, oshoka oostora ngele itadhi yi nawa, itaa vulu okufutwa nawa.

Unene tuu sho ihaa simaneke nokuyakula aantu nenyanyu nopamukalo omwaanawa, shika osho uukoloni mbu tau kondjithwa muuyuni ngashingeyi.

Uumbanda oshiponga owo tau yakitha aalandithi moostora moka haa longo, oshoka okwa tila aniwa ita zi ko mbala, ye aniwa shoka ha pewa komwedhi oshishona. Komukalo nguka oyendji oyi ikanithile iilonga niimaliwa nokwiinikelwa osho wo okuyelwa.



**MOndonga, iiyale masiku oya ninga omukundu omunene kaanashilonga yiilonga yiikaha, ngaashi meme Marta Johannes methano ndika, ihe shoka inashi ya teya omukumo gwokulonga. Meme Marta okwa ti iilonga ye ote ke yishingitha momapandaanda gaVenduka. "Oku hatu tsakanene naakulukadhi ooyakwetu taa zi kokule ku SA taye ya okushingitha iilonga yiikaha yawo nomuntu oto tsuwa shili uupenda," osho a li ta hokololele Omukwetu nkene e na enyanyu miilonga ye.**

## Ehafo, elao nombili mohombo

Ino kala mohombo nelelakano u ha fifwe kumukweni. Osho oshinakuwanifwa shoye u ninge mukweni nawa, nou mu hafife. Ngeenge keshe umwe ta wanifa oshinakuwanifwa shaye, ohombo kai kala inai mona ehafo, elao nombili.

Kashi fi naanaa shipu okufinda oshiponga shelingungunino noshokulihola mwene. Ashike Ombibeli otai tu ulukile ovelishe imwe tai tu kwafa.

"Hano ngeenge ope na ou e li muKristus, oye omushitwa mupe, eshi shikulu osha xula po, tala aische oya nginga ipe." 2 Kor.5:17.

Omunahombo keshe ta pitika Jesus a dike oshipuadi tete momutima waye, opone membo lave. Elingungunino nokulihola mwene okwo outunde.

Otashi dulika wa pyokoka, wa hongwa nawa, ile u na eliko la wana, ndele ou li natango okaana moikwahombo. Ngeenge wa dopa mohombo, ovanhu otave ku tala wa dopa monghalamwenvo vove. Ngeenge wa nyengwa kofikola, ove wa hepa. shimpa ashike wa diinina ohombo ovanhu otave ku tala wa findana monghalamwenvo.

Konyala adishe domechombo edi da pama oda kanghekwa po kelimatulo. Lihokolola hano kumukweni omolwokuliholemwene kwove. Dimina omapuko ove. Kala u shi okutya ombili meme ile tate, ngeenge pa holoka etumhakano.

Indila Kalunga e ku lundulule. Kalunga ina hala tu kale oonakulihola. Oshiwa oku muindila e tu amene koshiponga eshi 1 Joh. 5:14-15.

Ohole yohombo oya lumbakanifwa nomahalo opambelega. Ombibeli otai ti omulumenhu na kale e hole omukainhu, naana ngaashi e hole olutu laye.

Omulumenhu ota pulwa e lihupule molwomukainhu waye, ngaashi Kristus e lihupulila Ongeleki. Eshi osha kwatelela mo oinima oyo omunhu kwali he i ningi mangan ya m hombo.

Omukainhu keshe te li hupulilwa ngaho, ita kala ina mona elao, ehafo nombili. Omulumenhu keshe te li hupula ngaho, omolwomukainhu waye, ita kala ina lya oimati yelihupulo laye, osheshi omukainhu waye naye ote mu lihupulile oku mu liyandjela.

Ohole mohombo oshinima ihashi monika, oya fa Kalunga. Ashike oilonga yayo ohai monika ngaashi naanaa yaKalunga tai monika. Nande tu na oudjuu okufatulula ohole, ohatu dulo okutya sha koilonga yavo, paPaulus 1 Kor.13.

ihai fi efupa nokulitanga  
ihai tuwalala nokuholoka nai  
ihai kongo shayo vene nokukenyanana  
kai na onghone  
ihai nyakukilwa osho inashi yuka

ndele

+ oi na olukeno  
+ ohai tuvike aische  
+ ohai itavele aische

## OMIKUNDU DHIKOLITHA DHA

Momasiku sho ga li 16-18.10.1987 okwa li kwa gongala oshigongi shehangano lyekwatho miikunwa, mOngwediva. (Symposium for people who are interested in solving alcoholic problems).

Oshigongi osha li mewiliko lyomundohotola gowina muunamiti omusoomi Dr. Reijo A. Ojutkangas (M.D.) pamwe naahungimwenyo oomvalele dhomoshilongo. Oshigongi osha kundathana nosha hungathana nokugalikana, nkene taku kandulwa po uuvu wiikolitha momagumbo, ndongo oshigwana ashihe.

Tango okwa talika uuwinayi wiikolitha:-

- Iipala ya pitilila, olwindji ohayi zi miikolitha
- Efupa nondumbo
- Ekanitho lyiilonga nembuluko
- Egumbo tali teka po nokuhalakana
- Ombili yopantu tayi kana
- Omikithi tadhil holoka moka mwa kwatelelwa oonkwengu
- Iiponga yomaso yomadhiladhilo unene kaahingi yihauto noshonsho.

Ikolitha kayi shi iikulya, itayi tungu, ano oyo uuzigo wowene. Ethimbo ndyoka to etha iikoli-



+ ohai teecele aische  
+ ohai lididimikile aische

### Kristus mohombo

Ovanhu va lukilwa omunhu umwe navo oombushe. Aveshe va lukilwa Kristus ovo ovakriste. Ovanhu va fa omunhu umwe navo ove lifa. Ovanahombo va kwatafana naKristus, keshe umwe ponhele yaye otava kala yo va kwatafana nawa kuvovene.

Manga ino ninga sha ongomunahombo, lipula tete ngaha: Omedina tuu lomwene? "Nakeshe eshi tamu shi ningi, neendjovo ile noilonga, shi ningeni ashike medina lomwene Jesus Kristus mokupendula Kalunga Xe, omolwaye Kol.3:17.

**Veikko Munyika**

## KUNDATHANWA

tha, oto kala moluhodhi olunene, oshoka owa silwa kuume koye omuholike, omukulukadhi nenge omusamane gwoye, (ekende lyomalovu).

Oshigwana tokola ngele oto tsikile okunwa ngoye u se, nenge oto hulitha po nokweetha po iikolitha ngoye u tameke okukalamwenyo okupe, nokuwanawa, kwi ihwapo kwanakandjegele. Aantu otaya kumwa, ngele onkolwi ti itedhulula e ta tameke okunwa iikunwa iitalala.

Onawa ngele taku talika pondje nomeni lyoshilongo oosikola dhoonkolwi ndhoka dha nyengwa nodha pitilila, opo omuntu nomuntu moshigwana ngele tamu tsakanene, kundathani aluhe nkene taku ethiwa iikolitha, oshoka oya ninga omukolonyeki omutiyali gwoshigwana.

Ikolitha otayi kotheke uuluyi woshigwana. Oshigwana oshi li po sha sa uatalala omolwomalovu. Osha huhuwala owala, sha mbandapala nosha goyapala. Mokulanda omalovu kala u shi shi oto hutuka nokuteya po oshigwana pankalathano. Uunkolwi owo uulunde wotango.

Muuyuni auhe miilongo ya putuka noya manguluka kiikunwa nopankalathano, omu na omahangano ngaashi lya A.A. (Alcoholics Anonymous). Ndika olyo ehangano lyoonkolwe dhaa na omadhina; tashi ti ano oonkolwi ndhoka dha hala okweetha po omalovu niikolitha yuuzigo auhe.

Ehangano ekwawo olyo natango A.A. (AL.Anon) ndika olyo ehangano lyaamboka ihaya nu, ihe oye na aapambelega yawo, aakwanegumbo, aakwanezimo, ookuume nenge ashiinda yawo haya nu. Nena aantu mbaka oha kundathana nee nkene ye na okukwatha aavu yawo oonkolwi okweetha po iikolitha. Omahangano ngaka ito ga yoolola. Elalakano okukondjitha omutondi omunene omuwinayi **OMALOVU.**

Kehe gumwe polwoye kambadhala nkene taku keelelwa uunkolwe mAanamibia ayehe. Oombwa ngele odhindji tadhil tidha okulimba, nena otaka si nziya. Tu kondjitheni uunkolwe nomatati gomukriste.

Oshigongi osha li shookolwe aakriste, taku leshwa oohapu dhaKalunga. Aamwaameme yokOkavango nayo oyi ile, noya holola kutya omukundu gweyonuko nuuvu wokunwa, owa faathana naahwiwaka komunkulo.

*Peha lyaakwashigongi*  
*T. N. Namalenga*

## Omalunduluko ovanashilonga vakwao

Omweevangeliste Petrus Nghishivasha, Ongenga, Elelongeleki ole mu nangeka mOmungwelume. Omudiakoni Aina Namalenga, Oluteyi okwa nangekwa meongalo Onawa. Omudiakoni Kaarina Haishonga, Tshandi, okwa nangekwa mondjakulwambinga yaRuacana.

Omweevangeliste Filippus Mbangula, Swakopmund, okwa nangekwa mOkahandja. Omweevangeliste Gideon Shakaleka, Eenhana, okwa nangekwa meyakulo lovanailonga muSwakopmund. Ovanashilonga aveshe ava, otava hovele omayakulo avo mulotete laJanuali 1988, paufu lelelongeleki. Sebulo Ekandjo

# Britania naNdowishilanda lyuuni- nginino inaa keelela etokolo ngaashi shito

Oshigongi shOraata yegameno kiigwanahangano, osha ningi etokolo muukumwe washo mokupangula SA ngoka sha ti, okwa tindila muNamibia nokwa imba oshitokolitho 435/78 shi tulwe miilonga.

Oshigongi osha li ko petameko lyaNovomba nuumvo nosha gandja ontokolwa yasho onti 601, ndjoka ya kolekwa konyala komawi agehe goshigongi 14, kakele kaAmerika awike ngoka kaha li po petokolo omolweikukutiko lye mAcuba ya ze muAngola. Oraata ayihe oyi na iilyo 15.

Etokolo eti 601 lyOraata yegameno ndyoka inaali kondjithwa komawi omanene ngaashi ge shi ningi momimvo 20 dha zi ko, olya kwatelela mo iinima tayi landula:

\* SA okwa pangulwa sho e li natango muNamibia, pwaa shi paveta (etokolo ndika monakuziwa ihali ziminwa kiilyo ayihe yOraata) nomolwaashoka a tindila oshitokolitho 435/78 shi tulwe miilonga.

\* Oraata oya kolekulula kutya UNO oye tuu e li natango i inekelelwa elelo lya Namibia. meukililo.

Oraata oya koleka kutya oonkudhu dha li dha thigala methaneke lyoshitokolitho 435,

adhihe ngashingeyi odha manwa po.

\* Oraata oya pandula eilongekidho lya SWAPO okushaina etulopo lyomatati ethimbo kehe pokati ke na SA, opo etokolo eti 435 li tulwe miilonga.

\* Oraata oya gandja oshimpwiyu kuAmushangandjayi gwa UNO, opo a longekidhe mbala eshaino lyetulopo lyomatati pokati ka SA na SWAPO, opo oonkatu oonkwawo dha pumbiwa dhi katukwe mbala ngaashi okweeta po etango lyombili lyegameno muNamibia (Untag).

\* Oraata oyi indila wo iilongo ayihe yi li iilyo mu UNO, yi gandje eyambidhidho lyalyo kuAmushangandjayi melongekidho lyoshinima shika.

\* Amushangandjayi okwa tegelelwa a gandje mbala ehokololo lye kOraata yegameno, kutya okwa thiki peni noshinima.

Ombelewa yOraata yOongeleki muNamibia (CCN), etokolo lyOraata yegameno, oye li luku "etemununo lyonyeka" yetegameno yAnamibia, mboka ya kala nondjuulukwe onene yemanguluko omimvo odhindji.

"Oraata yOongeleki muNamibia, otayi tala etokolo ndika, kutya onkatu komeho yu uka mondjila ndjoka yi na okweendwa, shimpa tayi endeke pamwe niilonga," osho sha tumbulwa mefatululo kiifo ndyoka lya shainwa kuAmushangandjayi gwomaungakaneko mombelewa ya CCN, Vezera Kandetu.

Sebulon Ekandjo

## Omatokolo gamwe molwaNamibia

17.12.1984 - Oraata yegameno lyiigwanahangano (UNO), oya tokola muukumwe SA a gandje epangelo koshigwana sha-Namibia, pashitokolitho 366 shomumvo ngoka

11-13.9.1980 - Oshigongi shuuyuni auhe mokuulika eyambidhidho lyasho kekondjo lyoshigwana shaNamibia, sha kwatelwa komeho ku SWAPO, osha hiya iigwana ayihe yuuyuni yi gandje eyambidhidho lyayo koshigwana sha-Namibia.

19.1.1981 - Amushangandjayi gwa UNO, okwa gandja ehokololo lye kOraata yegameno ya UN, kutya SWAPO oye awike i ilongekidha okushaina etulopo lyomatati, iita yi hule muNamibia, ihe SA ina hala nando.

2-2.3.1981 - Oshigongi shaayehe shiigwanahangano osha tula ondjo komapepe ga SA, kutya oye a ponyitha oonkundathana pokati ke na SWAPO, ndhoka dha ningilwe muGeneva muJanuali omumvo ngoka.

3-14.9.1981 - Omutumba gwowina omutihetatu-gwoshigongi, shaayehe sha UNO, ogwa koleke ontokolwa yOraata yegameno 435/78 oyo yi kale natango omukanka gwokumangulutha Namibia pamukalo gwombili.

## EPANDULO

Otandi pandula Tate Kalunga sho a kala pamwe natse okuza Januali sigo 19 gajuli nuumvo, sho nda kala nokulonga aanasikola yekoleko.

Otandi pandula woo tate Likius Neumbo, ngoka a pe ndje oshilonga shika sheyakulo nokwa li e shi inekelele ndje, nonde shi taambako nombili nomako gaali. Tate Kalunga okwa pe ndje oonkondo mokugongala pamwe, naagundjuka nonda gwanitha ayihe pankondo dhe.

Osha li oshikando oshitiyali moWaterberg, aagundjuka sho ya kolekwa ngeyi. Ekundo kaakriste ayehe moNamibia, Eimbilo 415; Efes 1:3-10. Shika ondi shi ku shi pandula, nepandulo tali zi kuTate Kalunga ngoka a tumu Omwana muuyuni, opo tu hupithwe kuye.

Abraham Amutenya Nekuwaya  
Waterberg

## ELC ta pangula ekuto lyomuukakunya

Omutumba gwowina gwoshigongingeleki shOngeleki onkwaevaangeli paLuther yAaluudhe mUushimba (ELC) ogwa pangula nonyanya epangelo ndyoka tali kutu iilyo yayo muukakunya. Omutumba ogwa li ko 9-13.12.1984 muKhomasdal, nontokolwa ndjoka oya kolekululwa moshigongingeleki shonuumvo muKeetmanshoop.

"Ongeleki otayi pewa tuusama, aniwa otayi popile elongitho lyoonkondo, ihe epogolo lyokukuta ilvo yOngeleki muukakunya kali lwetike, nando omakakunya ngoka oya taga ka pilukila aantu yago," oshigongingeleki sha ti.

Oshigongi shoka osha li ko okuza 27.9 sigo 1.10.1987, osha gwedha ko kutya Ongeleki otayi pangula notayi ekelehi omukalo gwokukuta aagundjuka muukwiita notaku indilwa oshitokolitho 435, shi tulwe miilonga.

Omutumba gwonuumvo gwOngeleki ndjoka ogwa ekelahi wo osikola vaasita vashaangoka, ndjoka tavi dhikwa mOvenduka, omukalo ngoka oshigongi sha ti "okukondjitha eitaalo lyOngeleki muNamibia".

Ongeleki ya ELC, oya londodha ilvo yayo, kutya ngoka te ki iputudhitha moka, ke na nando esiku limwe a longithwe kOngeleki ya ELC.

Sebulon Ekandjo

## Omambo! Omambo! Omambo! Omambo!

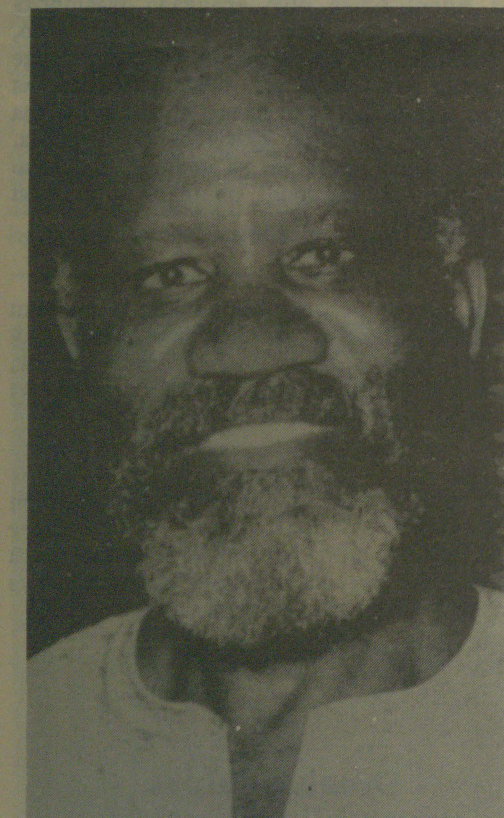
MOsitola yomambo oto imonene  
omambo taga landula:

— Eimbilo lyEhangano .. R15,00

— Ondjalulamasiku 1988

— Embwiitya Ndonga-Englisha  
Dictionary ..... R25,00

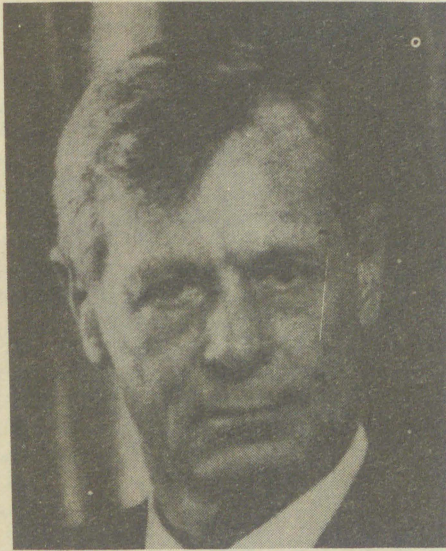
Endelela u mone po goye manga  
kuyele.



"Tse katu na sha shokwiikunda nepangelo lyopokati, li li ethimnikwa lye tu fa. Ontamanana tu na nalyo, oshoka ashike taa yambidhidha omukolonyeki gwetu, omukalo ngoka tagu imbi emanguluko lyoshilongo." ----- Andimba Toivo jaToivo, Amushangandjayi gwaSWAPO.

## Ondjalulahokololo yiilonga ya SWAPO

### muAguste naSeptemba



“Aakwiita ya SA muNamibia oye li mo pamukalo gwokugamena aakalimo kiiponokela yooterolesa, okuza konima yongamba. Kape na omandhindhiliko tagu ulike, kutya Namibia ota longithwa ku SA o-mpani yokuponokela iishiindalongo.”----- Adv. Louis Pienaar, ngoloneyandjayi gwa SWA.

### Farisaani ita galukile we ku SA



Omutonatelishitaingeleki Simon Farisani (40) okwa tokola kaa galukile we manga kegumbo ku SA, sho a mana okupangwa iilalo yomahepeko gaapolosi muAmerica mbyoka a mono pethimbo a kala mndholongo. Oye omutonateli gwomagongalo 500 moshitayingeleki shaVenda, moka epangelo lya SA lye mu indika okwiinyenga momagongalo ge.

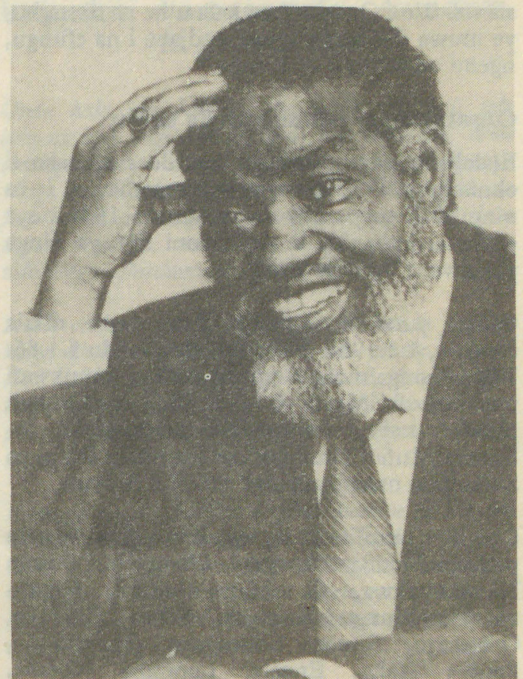
Ngashingeyi ota kala muCalifornia shaAmerika ta longo oshilongwa “uuyuuki womonkalathano”, ye ti ilongo wo.

Ehangano lya SWAPO olya gandja okalii-ndeli kiilonga yalyo yoomwedhi mbali Aguste naSeptemba nuumvo ngaashi tashi landula. Ehokololo inali ziminwa ku SA nokwe li luka ondumba yiyagaya.

- = Aakwiita ya SA ye vule 30, okwa tiwa oya dhipagwa nayakwawo ye vule 40 oye ehamekwa. Osha ningwa aniwa pokati kaAguste naSeptemba, ehokololo lya ti.
- = Oshikando oshikwawo, ookamba ntano dheta tanga lyegameno nadho ehokololo olya ti odha ponokelwa, moka omakaspeli 12 taku ti oga yonukile mo.
- = 1.8.1987. - Okamba yaNavivi oya ponokelwa, aantu niilongitho, oya monene mo oshiponga.
- = 6.8.1987. - MuKongo, ekaspeli olya lyata koboma, aayendi mo ayehe omo ya thigala.
- = MOhainengena, ookilometa 57, kuuzilombangalantu wOndangwa, yaali yetanga lyegameno okwa tiwa oya dhipagwa nayakwawo inaa tumbulwa omwaalu ye ehamekwa.
- = 21.8.1987. - Ekaspeli limwe olya lyata komboma popepi nEngela ookilometa 50 kuumbangalantu wOndangwa. Aakwiita yatano otaku tiwa omo ya sila.
- = 5.9.1987. - Ookamba Elundu nEkamba dha ponokelwa.
- = 7.9.1987. - Omakakunya gokufuta; Mahopolido Tjihame naKandongi Tjivara oya dhipagathana moontamanana dhokutinda oku ka kondjitha SWAPO.
- = 8.9.1987. - POmboloka, ookilometa 10 kuumbangalantuzilo wOkongo, oshihauto shaakwiita osha lyata omboma. Omwa sile aakwiita yaali.

= Pehala li ili natango oshihauto shaakwiita sha lyata komboma pOntananga, ookilometa 72 kuuninginino wOshakati. Aakwiita yahayali okwa tiwa oya sile mo nyoyendji oye ehamekwa.

= 15.9.1987. - Aakwiita yaali ya SA oya gwile miikaha ya SWAPO manga ya landula aakwiita ya SWAPO. Oya li yometanga lyokufuta pOlukulo, ookilometa 56 kuuninginino wOshakati, ehokololo lya ti.



“Ngele SA okwa dhipaga aantu muAngola, naa kale shila oshigwana shaAngola shono tashi hepa kiiponokela ya SA.”----- Sam Nujoma, omupresidende gwa SWAPO.

## OMUKWETU

Oniipa

Private Bag 2013  
Phone (06762) 41  
TLX 56-3257 WK  
9000 ONDANGWA, NAMIBIA

Omusimanekwa

..... 19 .....

Oshinima: OFUTO YOMUKWETU

Sho wa tuminwa Omukwetu gwonomola tadhi landula \_\_\_\_\_ molwii-fo mbyoka ayihe kumwe u na oku tu tumina R \_\_\_\_\_, otwa dhimbulula kutya inatu yi taamba natango, onkene to indilwa mpaka nesimaneko, opo u tume mbala omwaalu ngoka tuse.

Oofuto ndhika odho tuu hadhi ambidhidha iilonga yOmukwetu, opo oshifo shi vule okuholoka. Tu kwatha ano u tume mbala mbyoka.

Pokati mpono ngele owa adhika wa tuma manga ombapila ndjika inaayi thika kungoye, nena edhimbulukitho ndika li tala lyaa na we oshilonga moshinima shika.

Hĩĩmã Kalumbu

Amushanga mombelewa yOmukwetu

## Ondjokononashivilo sheedula 40 molwevaengeli mOhaukelo

Neudo otwa dana oshivilohambeleshe sheedula 40. Osha li ko 26-27.9.1987 mOhaukelo wUugole. Osha li shiwa shi na ouwa weendjovo daKalunga nowomaimbilo opamhepo, mawa momawi nomoitya. Amwe omuo otaa tange ehovelo leendjovo daKalunga novahovelifi vado neenhele omu da longelwa di li nhe; (4), momupungululu, momupanda, momuve nomehengehenene, apa pe na cengulu paife.

Opa li ouwa wongudu ya kula i fike pomayovi onhumba, ovakulunhu nounona. Opa li yo ouwa wodjo yoiyemo kombinga yeongalo adishe dopavali; yomelongelokalunga noyetungo longeleka ipe tai ka tungwa meongalo enyasha.

Opa li yo eendja dokolutu, kakele kefundja ihali fingwa lo ihali fingala nande u li finge (omalodu). Mwaaishe oyo nda popya, osha li shiwa. Wo "Ouvela ihau kala u he na okanghu, ye muwa iha mane ngeno ondjaba i na efungu, ngeno onduli ina eembinga."

### Omatomhelo edano shivilo shetu

Elalakano letu okuninga oshivilo eshi osha li okuhambeleshe Kalunga molwaaishhe e i tu ningila. E tu pa ofikola ya tameka 1947 noya enda tai kulu. Ya li mumisioni fiyo ya ninga yoshiwana modula 1963.

Ohatu pandula Kalunga eshi e tu dikila eongalo, 4.1.1986. Eyapulo lomawendo 5.1.86. Ediko leongalo ola ningwa pawiliko lomukwafi womubisofi Matti I. Amadhila novayakuli pamwe naye, omuponheleshitaingeleki Johannes Mufeti, omupashukili mukulu Filippus Shikomba nahamushanga Set Son Shivute.

Opa li yo omufita xe ou kwa li ta wilike eongalo pefimbo lediko leongalo Ohaukelo, Simon Namunyekwa, G. Namunyekwa, Johannes Hamulungu, Eembaxu, Sakeus Shaduka, Oshaango, Simon Shiwagala, Onamukulo, Paulus Heita, Engela, Lapindja Nghole, Okatope.

Otwa pandula Kalunga eshi e tu pa okapangelo ka yeuluka 1.7.1986. Omuhakuli wotete oye Kaino V. Nghinamundowa nomuhakuli omutivali Julia J. Ndeyahoma a tameka muKotoba 1986. Otwa pandula Kalunga eshi e tu pa omufitaongalo omunyasha, opo a di melewa, Paulus L. Ndamanomhata, ou a yapulwa 8.6.1986 nokwa hovela oilonga apa 19.6.1986.

Enangeko laye 1.1.1987 komubishofi K. Dumeni, omwa li omufita Absalom Hasheela, Apollos Kaulinge, Filippus Shikomba, Filippus Henok, Paulus Heita na M. Tuyapeni wa-Anglikana.

Oshivilo otwe shi dana fimbo tu li momwenyo inatu fya. Kalunga e tu fikifa ko keedula 40. Vakwetu vamwe twa hovelele navo, inava fika ko. Oshivilo otwe shi dana eshi twa fika meedula domwaalu wa fimana paMbibeli: 1Mos.7:4; 2Mos.34:28; 5Mos.2:7; Ehol.19:8 na Mat.4:2

Oshivilo osha danena mongeleka ipe yetwali younene weemhadi 94 neemhadi 33 (vt.) momutam. Etwali ola dikwa pefimbo lomuti omupungululu, opo pa tamekelwa ofikola kuShidute shaMuleka, manga e li omupaani. Okwa longa ashike ohani imwe netata naina twikila vali fiyo onena.

Kalunga ine mu efa, okwa shashelwe 27.9.1987 komufita Simon Namunyekwa. Shidute okwa ninga Erastus Muleka. Omufita P. Ndamanomhata okwa ninga eudifo. Omweevangeliste Andreas Muleka, okwa eta ondjokonona ngaha:

Koshilonga shaErastus Muleka onda twikila ko omudo 1949 muAguste. Otwa li hatu longele momuti womupanda nokutembukila momuve opo twa dikile etwali lotete, opone twa tembukila apa pe na cengulu paife.

Ongulu yotete oya tungwa 1962 yoshiwana, ya uvilikwa noihati. Ongeleka oya tungwa 1963, nayo oya uvilikwa noihati. Ongulu onhinhatu yoshiwana oya tungwa 19.4.1967 yoipeleki. Ikwawo natango oya ka tungwa 1972 yoipeleki. Ongeleka yoipeleki oya tungwa 1979, okapangelo 1985.

Ovalongi veshasho va kwatela komesho 5, voshikunino vavali, yoshiwana va pita mose-minali 7, ovakwafilongi 17.

Elanga la kula mwene woshikandjo, Petrus Kauluma, okwa popya yo etumwalaka laye olo tali popi oukumwe u kale meongalo. Okwe li yandja ponhele yaye noyohamba oyo inai mona omhito yokufika omolwedjepo.

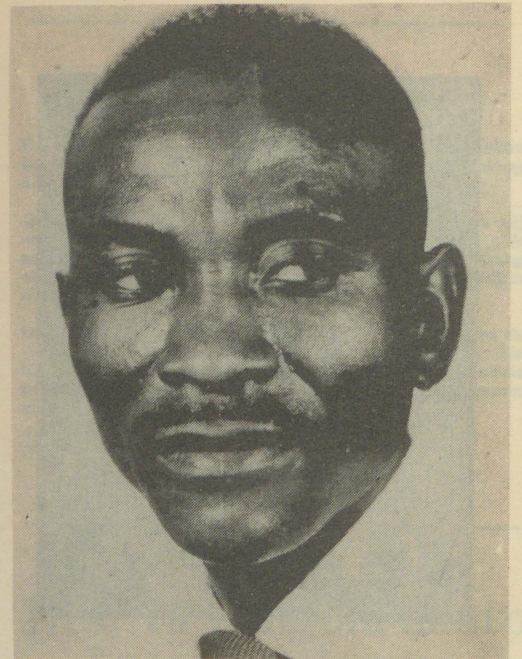
Ovakwaneongalo ova yandja nelitulomo oikulya yoshivilo, shi fike pomufika wavo. Ova yandja aveshe; ovalongi, ovapangi, omalenga, omufita, ovanangeshefa nosho tuu. Opa li oivelelwa; engobe, oikombo neexuxwa.

Nande oshilongo oshi na ondjala, inava sholola okuyandja aishhe oyo. Mbela eshi eongalo la kendabala ngaha opo li li petameko nomondjala, apa li ningila ekuluongalo oivilo yalo otai ka kala ngahelipi? Omatuwa okwa kwafela omeva meendoloma, ounonafikola owa eta oikuni nelitulomo. Kalunga na punike aveshe.

Andresa Muleka



Omweevangeliste A. Muleka



Abraham Haileka

## Onakudiwa yetu meongalo lipe Omutundungu

### Dha za kep. 3

Vamwe va yandja osikopa ya kula ya kula yokutuvikila omambo eongalo, vamwe va yandja omavela noixupulo. Omukwaneongalo wetu umwe wokOnandjaba oko twa dja, a yandja outenda vokuvalula ovanhu mOshoondaxa.

Ongula yefiku eti 20.1.1987 etungo longeleka ipe ola tameka. Otwa li twa mona ovatungi ve li vavali. Fye otwa li tu shi otava tungu oule weehani hamano, ndele nani ova tunga ashike oule weehani nhatu.

Efiku eti 7.4.1987 ova mana ekuma nove li kolonga alishhe meni nokombada. Paife ova ka fuda po manga notwe va teelela ve uye va tuleko oipeleki noipilangi noipumbiwa aishhe. Osho ne sha enda manga ngaho, onakudiwa yetu meongalo lipe Omutundungu.

Abraham Haileka

### Uuthiga

Onda kumwea koshinima shika anwea uuthiga. Omolvashike ano aantu haya thigulula nayi ngeya? Ondi shi anwea okwa tilwe aantu inaa thigulula ve? Ngawe onda kumwea sho nda kala nda tala aakwanzimo yanakusa taa thigulula nayi, ndele noondunda oya hala ya ve nadho omolvashike? Ondi shi opwa li oshigongi tashi popi uuthiga, yakwetu yanankali uuthiga.

Omuselekadhi ota thigwa a tukwa nayi anwea oye a li omulumentu gwe. Ote mu tilepo ihe-shike, oluhepo ihe a hala? To thigulula ngoye oto ka ya. shi li ko oshoye. Tse anona utwa tala sho aakuluntu taa kondjele uuthiga.

Aina Ndinelago Victory Oshigambo

**Aaluudhe oyo aalongithwa okukaleka po omulandu gwa SA, ngiika ngoye wa ningi nale gumwe gwawo**

Oshilyo shongundu yEtango, **MATTI ERASTUS NGHIDINWA**, osha kambadhala okudhenga aaleshi ihwa komeho, tashi popile Etango (Omukwetu No. 12/1987.) Elalakano lyoshinyolwa shoka oyo okupukitha mboka inaya tseyi nawa ongundu ndjoka, nosho wo okungwanngwaneka opo aambanda ya shune omitse miipeta. Oshinyolwa shoka osha ehameke aakwashigwana oyendji koomwenyo.

Ngaashi sha holoka momayamukulo gi ili nogi ili tse aakwashigwana, ongundu ndjoka yaasimanekwa **Kautwima-Amupindi-Dana** (mOwambo) itatu yi lombwelwa komuntu, otu yi shi sha gwana. Nokuli omupopyo otagu ti: "Sho tuu Okufuta ye ku 'gamene', lyo Etango otali ya po li ku mbembeleke; nonando ayehe yaali ekuvu neta."

**NGHIDINWA** ina yamukula iitsa mbyoka nda gandjele nkene ehanganu ndyoka. **Ezuva-Etango-Namwi-Nasok** lyi ipyakidhila moNamibia alihe (Omukwetu No.6/1987) nosho Omukuni No.4/1987.) Osha yela kutya ye mwene oku li mEtango, ihe ke li shi nando okashona. Onkee ota kambadhala okukondjitha uuyejele nomilema.

Ye omuntu a tya ngaaka oye naanaa a pumbiwa kOombulu pethimbo ndika moNamibia, opo a longithwe okuteya po Aaluudhe, noshigwana. Moshinyolwa she omu na wo iitsa yontumba yaa fele, ngiika pamwe tayi opalele ashike poonkundathana dhopongoma. Onkee oshinyolwa ashike onde shi ekelahi kokule.

Aalongeli yepangelo lyaSuid-Afrika itaya kotha nando. Oye na oompangela dha mana mo dhokukwatela po epange lo ndika ehepeki kAaluudhe. Aaluudhe oyendji oyo taya longithwa ihe moompangela ndhika. Oongeleki oompe tadhii popile epangelo ndika, otadhi totwa po, osho wo ndhoka dhopondje otadhi eta itayi yadhmoNamibia.

Omahanganu omape omayambidhidhi gepangelo ndika otaga totwa po wo, nenge taga egulula oombeleva dhago moNamibia. Otaku longithwa okakoto kopaali. Okakoto kamwe, aniwa oongeleki ndhoka nomahanganu ngoka itagi itula miinima yopolotika. Okakoto okakawawo, aniwa oongeleki ndhoka nomahanganu ngoka otaga kondjitha uukomonisi.

Ehanganu lyedhina **CHRISTIAN ACTION (CTA)** olya egulula ombelwa mOvenduka. Olya tameka nokuli nale okushika oongeleki naakriste mboka taya kondjele uutheba womuntu. Otali popile muuwinayi omahanganu ngoka taga kondjele emanguluko lyoshili moNamibia.

Ishewe ehanganu ndyoka otali hiya aakriste yoongeleki dhilwe aniwa ya ye kOngoleki ompe. Aniwa omukriste kehe ngoka ihaa yi we kelongelokalunga molwaashoka ongeleki ye, nenge omusitagongalo gwe, nenge aawilikingeleki ye oyi itula mopolotika nenge taya popile elunduluko lyombala, nenge omukriste shaangoka a kanitha einelke momathikameno gongeleki ye, nenge ta yuulukwa ishewe okuwa evangeli-vangeli, nena omukriste a tya ngaaka ota hiywa a ka gongale pamwe nooyakawawo yalwe yoludhi nduka melongelokalunga tali ningwa Osoondaha kehe potundi ontimugoyi yongula, metungo lyiigongi yongeleka yOombulu (NG Kerk), modoolo-pa yaVenduka.

Ehanganu lyedhina **VETERANS FOR VICTORY** otali kondjo naagundjuka opo ya ndjoyine uukakunya, aniwa ya ka gamene oshilongo

## "OVA SHANGELA NGE TA VA TI....."

kuukomonisi. Ehanganu lyoongeleki lyedhina **NAMIBIA CHURCHES UNION (NCU)**, otali longele kumwe nongundu yaNational unity democratic organisation (nudo), ndjoka yi li esipa lyombunda lyo DTA.

Ehanganu epe lyaanasikola lyedhina **NAMIBIA COUNCIL OF STUDENTS (NACOS)**, oli na omidhi dhalyo miilyo yoNUDO noyoNCU. Osikola yuuteolohi yedhina **WINDHOEK THEOLOGICAL SEMINARY (WTS)** oyokudheula aasitagongalo nosho wo aawiliki yoongundu dhaagundjuka nodhoomeme miilyongeleki yoNCU.

Ehanganu lyedhina **NAMIBIË SPORTS EN ONTSPANNINGSKLUB (NASOK)** oli ipyakidhila okuhila nokudheula aagundjuka momaudhano gi ili nogi ili ngaashi omatanga (unene lyooko-mpadhi), ombokisa, okungh-fu, okarate nosho okulongekidha oondanisa. Otali longo wo aagundjuka okudhenga iiketala. Oli ipyakidhila wo nokuhika aanona (unene uumatyona) noku ya pa uutoyenima opo ya kale taya landula omaloli gokutoola iyagaya momalukanda.

Ehanganu lyedhina namibia national allied unions (nanu), nando kali na iilyo oyindji, aluhe ohali nenepakwa miikundaneki ayihe mbyoka yi lile po epangelo lyaSuid-Afrika ngaashi miifo, moFM-Radio nosho motelevisi.

Omumvogu (1986), oondhila nomakambamba oga tutile okweeta mOvenduka omathele nomathele gAaluudhe yoongeleki yoPenetekoste okuza koSuid-Afrika, opo ya ningile elongelokalunga lyawo poluhalandjandja moKatutura. Oshilyo shokabinete kepangelo lyopakathimbo, omusamane Jariretundu Kozonguizi, oyo ya li kiipundi yokomeho melongelokalunga ndika. Omusamane nguka shito ina tseyika ha yi komalongelokalunga.

Oongeleki dha konda okuza koAmerika nokoSwitzerland, ndhoka tadhii ti aniwa otadhi uwitha evangeli lyoshili, lyaa na enwethomo lyopolotika, nadho wo odha tameka okweeta omitse moNamibia. Poshituthi sheegululo lyoongeleki yimwe yomwaandhoka, omusamane Moses Katjiuongua gwokabinete kepangelo lyopakathimbo, oye a gandja oshinenepopiwa.

Ope na ehanganu lyedhina **ICHTUS**. Aakriste naakwashigwana otaya pumbwa oku li dhinda mo nawa. Olya totelwa mOvenduka momumvo 1986, kofi yomupresidende gwalyo gwotango omusita Efraim Angula. Petotopo lya **ICHTUS**, omuyenda-popithi gwoshituthi, okwa zile koNigeria. Nuumvo ehanganu ndika olya ningi **OSHIKONGI SHUUYAPOSTOLI** momasiku 24-27 gaSeptemba mOvenduka. Omuyendapopithi gwoshituthi okwa zile koIndonesia.

OoFm-Radio odha kalele dhaa na oluthuwo, tadhii igidha nokutsa omukumo opo aakwashigwana ya ka thike koshigongi. Miitopolwa ayihe yaNamibia, aakwashigwana oya kala taya tseyithilwa nawa omaha mpoka taye ki inyolitha nosho wo mpoka taya ka londela ombesa dhoku ya fala koshigongi kOvenduka.

Oshigongi osha tameke nookersesa ndhoka dha ningilwa mootenda dhoothayila mOsikola yOshikondo shIyenditho (Gamams Transport Services Training College,) popepilela neyana ndyoka lya ziza aluhe lyomawendo gAatiligane. Aakwashigwana oyendji eya pewa omilalo mosikola ndjika. Mosikola ndjika omo wo hamu ningilwa ookersesa dhaapolosi.

Ongula yoOsoondaha (27/09/1987) onda zi momutumba opo ndi ka popye naakwashigongi. Osha li oshikumithi oshoka osheelo sholugumbo osha li sha tonatelwa kiilyo iyali yOkufuta. Onda popi naagundjuka, oomeme, ootate nosho naawiliki yaali yosheendo shoka sha zile kOwambo, aasita Efraim Angula naTitus Ngula. Molufo talu ya oto ki ishela shoka twa popi naakwashigongi mbaka yo **ICHTUS**' 87.

**Samson Ndeikwila WINDHOEK**

**Kovapashukili voitangeleki kovafita vomaongalo nokovakulunhu vomaongalo, kundweni mOmwenene**

Onda hala nokuhalelela opo keshe umwe u tale eongalo loye ongoshikutu shoye muwenemwene. Ame omunyasha womido 25, ndele monghalamwenyo yange inandi uda noinandi mona omunhu a fikamifwa komesho yeongalo taku tiwa okwa vaka ile a dipaa omunhu, ndele oye tu aeke oo a tauluka oshipango oshitihamano.

Ndele oshike twa udeni komuprofeti meme Justina kutya eehombo nadi wapalekwe, ndee omwa mwena! Eedi daKalunga edi da shuna monima hanye vafita vado? Olye te di alula mo mekano? Eshi itashi mu pangulifa kuKalunga ngaashi oinima ikwao? Oshike mwa tila okufila medina laJesus?

Kape na ou ta i kuTate ta pitile pamwe pe lili, loo eitavelo li he na oilonga ola fya. Ehol. 3:2 na 2 Tim.1:2. Lesheni mokambo Elongo loukriste epandja 24, epulo 98 okatendo kotete na epandja 25 epulo 100 onomola 5. Ngeno keshe omufita, kala wa wapaleka eongalo loye.

Fye yo ohatu ilikana Tate Kalunga e mu pe eenghono nouladi mu findane mwaashi. Ondjabi yeni oinene meulu.

**L.Ndapandula Paulus Oshikango**

**Oshiwana shaNamibia shi xulife po oilonga ya nyata**

Oshiwana shovanyasha vaNamibia meni loshilongo nopondje yoshilongo osha loloka koilonga ya nyata tai longwa kOvanamibia vakwetu.

Paife moshilongo shetu omu na ovadali tava landifa po ovana komakakunya. Unene meedoolopa, oomeme ohava tumu ovanakadona keeklinika opo va ka mone oDepo-provera, opo nawa a shive okukala nekakunya laye meumbo, osho mOushimba have shi ifana (saamlewe), shaashi omakakunya oo haa futu omaumbo, oo haa lande oikulya, oo taa futile yo onunona ofikola.

Oomeme, diladileni kutya okanona oko okwa li ke na okumona mukwao oo ta dula okutungo nako onghalamwenyo, paife owe ka kanifa eshi to pewa komulongeli wepangelo laBotha.

Ovanyasha Ovanamibia, unene moshiwana shAawambo ovo tava longifwa kepangelo okulonga oilonga ya nyata. Paife ava twa longwa ofye hatu longo oilonga yomutondi, opo tu mone eliko lihapu. Paife ovapangi, ovalongi osho yo ovanashilonga mee-

**Tala kepanja tali landula**

# OMALANGA ETU OTWA TEELELA SHIHAPU KUNYE

*mbelewa depangelo mOndangwa ovo ve lininga ovalopoteli (Brou gewens) voKoevoet, SWAGM, Etango noshonosho.*

*Kovanyasha vakwetu, xulifeipo oilonga ya nyata ndee tamu alukile moshiwana. Fye itatu lwifa Omunambia mukwetu, ahowe. Fye ohatu lwifa epangelo laSuid-Afrika, ndee ngeenge oto ya pokati ketu na SA, oove to u tete!*

**W.S.Haikali**

## Naku fupipikwe ootundi dhaayakuli momagumbo

*Aaniilonga mu ya na momagumbo geni, unene tuu aanashilonga, ohamu ya hepeke nayi unene. Nena omuhona gwe ngele oha tameke iilonga potundi 6.30, nena omuyakuli oha penduka potundi 6 komutse, oyo a longekidhe oshuumbululwa. Okuza mpono nee iilonga ya tameke sigo omowili yahugunina aantu taa ka lala. Ohenda unene komuntu omukweni shili, 1Pet. 1:14.*

*Kehe gumwe e na omuyakuli ha longo iilonga yi thike mpano esiku limwe, omuntu ngono oto mu futu shi thike peni? Aayakuli oyendji, ohaa futwa owala R40,00, R50,00; R60,00; R80,00 oyo ya shiga ko mboka. Ndele mbano yongundu yotango otaya yalulwa. Omukalele gwoye oho mu gwedhele konima yoomvula ngapi?*

*Longitheni aantu ngaashi omumwanyoko. Uuthike-pamwe moshigwana.*

**N. Fanus**

## Inatu ethelathana

*Inatu etheni owala aamwameme mboka ya taaguluka oyo ya kondje, manga tse twa mwena twaa na sho tatu ningi. Tala aagundjuka ooyakwetu sho taya ningi moSouth Africa, kutya otaya kondjo nomikalo odhindji, omanga tse twe ethalapo owala "PLAN", tse atuhe otwa pumbwa shili emanguluko. Tu kondjeni, ekondjo edhigu lyo elulu shili, ndele tu kondjeni twi itula mo kutya nee onomukalo guni nenge onegalikano.*

**J.Ndeuthigilwa Uukongo**

## Onghalo oya naipala moshitukulwa shOwambo

*Ngeenge otu na oilongo itanonaivali mOwambo yaNamibia, okwa li shiwa unene, eshi tu na oshiwana shi fike apa noinatu wana kwa li okupangelwa kovaleli ile kovapangeli nefininiko li fike penya.*

*Ovapangeli ovanailongo nokuli, shapu ohatu ti ashike ovatondi vetu novahanauni voshilongo shetu. Sha hala kutya ove tu dina nokuli nove tu shi oulai, ndelene nande va etelela okaheka oka ka monika mo nale nokuli, paife otashi ulike kutya efimbo ola pya nee okulipupula ponho oukoloni wa tya ngaha.*

*Oshiwana shetu osha kanifa eliko loshilongo meedula da ka pita, olo la longwa nale kootatekulu nootate novakulu vetu, fiyo nafye vene twe shi lihanela. Nokonima yomafimbo maxupi, moNamibia omwa dja oshiwana osho sha fiya po oshilongo shavo oshiholike, okufiya po ondjoko youpika, oyo tai ningilwa oshiwana shedu eli.*

*Hano paife oudjuu wa tya ngaha, ohatu u tula komapepe omalenga oo makula omoilongo iheyali ya tumbulwa metetekelo. Omalenga onye mwa pewa epangelo kuKalunga okulela oshiwana mwe shi pewa. Ootatekulu malenga, omwa uda kutya ningeni po sha kombinga yoshiwana sheni osho tashi pupo kovanailongo. Otamu lipula ngahelipi?*

*Pamwe ope na epuko lasha, fye nafye otwa limbililwa nee ngo. Ame ohandi tu kumwe nondjovo oyo ya dja mOmukwetu womwedi Maalitsa 30, 1987 oyo tai ti; pamwe tashi li ekunde omekunde shi li? Ame kepulo olo onda hala ndi tye ootatekulu omalenga, omu shi tuu oshinima shinene sha nyona po ombili (moshilongo shetweni), ile ndi tye yoshiwana shaNamibia, omaludalo eni oo a faduka po a ya kondje yoshilongo?*

*Otwa kwatwa kenyeme linene shili, eshi onakwiiwa yoshilongo omunhu ito polele mo ngo nandenande, oyo ya kwatwa po komutondi woshiwana. Hano oludalo leni okwa li la teelela li ude mwa ninga po sha. Okupopila oshiwana ongovakulunhu ile ongovapangeli voshilongo shavo.*

*Ndele meteelelo lavo shapu ohava udu ashike omawi eni taa popifwa meeradio tamu popifwa oinima yanafangwa, noku va sheka kutya otava kondjele shike, nando mu shi shi osho tashi kondjifwa kutya oukoloni wedu eli. Omwa li mu na okutula oludalo leni momailikano mu he na edimbuko.*

*Paife otamu lipula, otashi ningi shalyelye, nye omwa pewa oufita woshiwana sheni kuKalunga nongeenge otamu wefa, ondjo otai londo komapepe eni. Etilokalunga olo efina lounongo aushe, Kalunga ota ka pula oshiwana shaye osho kwa li mwa pewa. Ino shi efa tashi lika po mwa tala ko mwa mwena. Malenga ningei po sha.*

*Omufita muwa ota yandjele eedi daye omwenyo waye, li twikeni ondjoko yange nomutengi wange. Hano ootatekulu omwa teelelwa mu ninge po sha. Kondjeni pamwe monakwiiwa yoshilongo shetweni nye mwa uda ondjovo yaKalunga oyo tai ti ombada kau na efyululo lomwenyo ile louhamba waKalunga.*

*Onye ovakwaita vaKalunga mwa pewa oshiwana kuKalunga, ndele tamu efa oshiwana tashi lihanifwa komabungu. Hanyeneni omabungu, dengeni oifitukuti mokati keni.*

*Ngeenge mwa katuka onghatu, Kalunga ote mu kwafa, ondjabi yeni omeulu tamu ke i mona. Oshike tamu longo mwa fa ovalongeli vondjabi? Taleni efimbo ola ehena popepi, keshe oshilonga omo shi na okutokolwa nokape na ombili moshilongo shetweni. Natu hepaulule omanyono etu koshipala shaKalunga oyo tu pewe ombili moNamibia. Namibia otu na oku li mona pe he na omambadameko ile omatilifo asha. Kalunga ne tu kwafe momailikano etu.*

**Timoteus T.Heita  
Windhoek**

## KUTSE HASHO EPUTUKO

*Kwatha ndje ndi yamukulile mo epulo lyandje moshifo shOmukwetu lya pulilwe mOradio yOwambo, momasiku 13.8.1987, methigathano.*

*Epulo: "Omulumentu Jan van Riebeeck Omweeuropa oye e etela Afrika lyuumbugantu eputuko, a thika moKapa 6 gaApilili 1652. Omulumentu nguno okwa zile peni*

*kuEuropa?*

*Manga inaandi yamukula epulo, onda hala ndi tale ngele oyo tuu shili eputuko pandjokona (History) yaJan van Riebeeck mUmbugantu waAfrika.*

a. Jan okwe ya kuAfrika a sa ondjala, opo ye mwene i ihupithe ye a tume wo eliko alihe lyaAfrika kooyina manga Aayafrika ya sa ondjala.

b. Jan okwa adhele po aanafalama aaluudhe Aayafrika taa litha, mpo a thikila. Okwe ya tidha po, iimuna okwe yi kutha ko koonkondo, uulithilo owa ningi we, naantu "Africans" okwe ya landitha po kuEuropa aapika.

c. Jan okwa tota omukalo gwoopasa, to pulwa opaasa u li megumbo lyoye. Okwa tungu ondholongu, oyo ngoka inaa konga opaasa a patelwe mondholongo, ye a ninge oshiholelwa kaaluudhe ooyakwawo.

d. Aavali Aayafrika oya kongele oyana oopaasa koonkondo, oya topolwa pamihoko opo ye a vule oku ya lela pamavigumbo yaa shaathane ("Divided and rule"). Iitopolwa ayihe oya ningi yaJan. Oondoolopa osho wo omalukanda oga tungwa.

e. Jan okwa tameke okufula okawe, ongopolo, oshingoli noshu tuu. Oongombe, oonzi omahini iinima ayihe oya ningi ye. Oonyama omagadhi osho wo omahini oga tumwa kuEuropa.

*Oshike sha landula ko? Omuyafrika okwa dhi-  
mbulula omeya ge li mondunda, okwa pula  
tango uuthemba. Epulo lyuuthemba, oyo  
yamukulwa noondjembo, omakanona no-  
ndhila dhiita. Ombinzi yOmuafrika sigo onena  
otayi tika. Ekondjo elulu. Uupika, oluhepo  
noosa dhakehe esiku, woo Jan van Riebeeck.*

*Eyamukulo kepulo: Omulumentu ngoka okwa  
zile koHollanda oye a etele Afrika lyuum-  
banganantu eso, ondjala nuundjendi kiilongo,  
haeputuko nando.*

**Johannes Festus  
Oranjemund**

## Waa pandula noyaka

*Onda li nda kwatwa komavu omadhigu gopaali ga  
yooloka, mungoka nda kala nuwehame uule  
woomwedhi ndatu. Onda kala mombete yuwehame  
moshipangelo shepangelo mOshakati moka nda mono  
epango lyopauamiti, sigo nda galukile muundjo-  
lowele, omanga Novomba naDesemba  
1986 "wonkombo wa kala tau pendukile keno"*

*Shika otandi shi pandulile Tate Kalunga katatu  
gumwe, sho a sile ndje ohenda, nokwa pitika ndi kale  
natango momwenyo.*

*Olupandu lwa ndje otandi lu gandja kumboka mwa  
li mwa humbata ndje momagalikano geni, mwe shi  
ningile pomutumba. Otandi pandula wo aapangi  
noondohotola mboka mwa li mwa yakula ndje  
mpeyaka.*

*Tangi Kalunga ne mu yambeke. Ekundo lyeni  
Aafilipi 4: 4-7, Eimbilo 359 mEhangano.*

**Joseph. G. Uushona  
Onayena**

# CHAMPION

# yo omunguda neenghono

Otai dulu yo okumonika  
peenhele tadi landula:

Ruacana Wholesalers  
Onethindi Normal  
Continental Wholesalers  
Kuthiladjeko Simark  
Uundjombala Store  
Continental No.2

Osho yo moWambo aisho  
*Hoolola omusindani*



# CHAMPION

## ESO

Kuku Silas Kapia (77) momukunda Ombwalefuma, megongalo Oniimwandi, mUkwambi 14.10.1987 okwa thigi ko omukulukadhi gwe noyana omulongo. Fil.21:4; Eimbilo 654  
Lawana N. Amupolo  
Okando

Momukunda Onandjila mOngandjera, Kalunga okwi ithana omusamane Ananias Shoomb 26.3.1987 ombaadhilila. Okwa thigi ko omukulukadhi gwe, oyana yahetatu nuutekulu uyali. Pa.103:15-16

Ester K. Kasheeta  
Onanyila

Martin Filippus Nampala (6) gwomongalo Oniipa, mOnesputa, aka mana oondjenda dhe 24.9.1987. Okwa thigi ko he nayina naamwayina 6. "Omwenyo oKristus nokusa oko eikholo. Eimbilo 533.

Heloi N. Mbango  
Nehale Sec. School

Kuku gwaMoula Sofia, a mana oondjenda 18.7.1987, pOmulonga, nokwa shashelwa megongalo lyaNiipa. Okwa thigi ko oyana yane, aatekulu omugoyi.

Martha Nkandi

Omukulimo gwomomukunda Uukwalumbe mOngandjera, meme Aina Selma Namatsi Andreas (40) a hulitha 5.9.1987 moshipangelo shaShakati muwehame wethimbo ele. Okwa thigi ko he, nayina, naamwayina. Oyana ya heyali nomusamane gwe. Jeremia 29.11 Eimbilo 644.

Kristofina Ndapewa Andreas  
Uukwalumbe

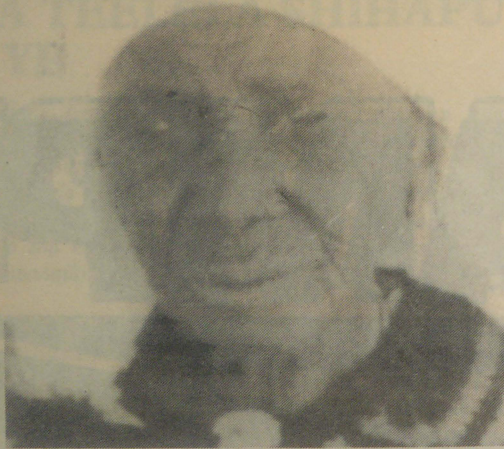
Meskulu Luise Lovisa Mukwamhani yaKanjekule (80), momukunda Oshandi, megongalo Oshandi, popepi nEembaxu moUkwanyama, a hulitha 14.9.1987, mowela wefimbo lixupi. Okwa fiya ko ovana 2, ovatekulu 18 novatekulululwa 2.

Meskulu mukwamhani oye a kala omukulunku woshipangelo shaShandi fiyo 30.9.1987, omo a pewa efudepo moilonga yaye.

Kaulukuwa K. Shipoke  
Eenhana Comb. School

Tatekulu David Haiduwa (67) womomukunda Onsheke, Okalongo, a hulitha 31.7.1987 mowehame wefimbo ile. Okwa fiyako ovana 5, ovatekulu 2.

Maria P. Daniel  
Ongwediva



Omukulupe Dorte Iyambo (120) Elim, a mana 18.10.1987 muwehame wethimbo ele. Okwa thigi ko oyana 6, aatekulu 48 naatekulululwa 32.

"Omwenyo gwandje oKristus nokusa okwo eikholo.  
Monica Alfred  
Ihanguti

Tate Nikodemus Meula mOndangi mOkaku okwa mana oondjenda ombaadhilila kOlange 9.6.1987 mepipi lyoomenda (44). Okwa thigi ko omuselekadhi Selma Simon novana uyali.

Beata K.Kapenda  
Omaalala

Okamati David Tonateni Kwashi Amkongo, megongalo Eshke, a hulitha 21.8.1987 muwehame wethimbo efupi, mepipi lyoomwedhi omugoyi. Okwa thigiko aakuluntu yako. Heb.5:3-5

Joseph. Sh. Amkongo  
Oshipumbu

Tate Kalunga okwa zimbula megongalo Ontananga mOndonga, meme Salmi Kaarina Ikela (70). Okwa thigi ko oyana 9 naatekulu 30 Eimbilo 400.

Cristine Shipanga  
Ongwediva Training Centre

Efiku 1.10.1987, Omwene Kalunga okwa ila ko Severus Aron Amaambo (38). Okwa fiya ko omukulukadi waye nounona 8. Eimbilo 621; Ps 6.

Lusia Nd. Ngesheya  
Eengedo Sec. School

Otandi gandja omahekeleko kaakwanzimo mboka ya thigwa ko komukulupe kuku Hilleni Amuzimbi mOntananga, mOndonga. Mat.11:28-30

Paulus Boy M. Elias  
Walvisbaai

Johannes Nasho - oshiva Teofilus megongalo Onyaanya okwa hulitha oondjenda dhe meso lyombaadhilila 31.7.1987. "Oshoka ngaashi omeshamo gaKristus ge tu udhilila pombanda, osho tuu nomatalakko getu gu udhilila pombanda omokwaKristus" 2Kor.1:3-5

Ndahafa Iiyambo  
Onyaanya

Meskulu Hendrina Nghishimawa waNamunganga a kala momukunda Okavandje, megongalo Oupunako, okwa hulitha 25.8.1987 mepipi ledula (67) ehi a kala djimbo lih mombere yowehame. Okwa fiya ko ovana 4, ovatekulu 16. Filippi 1:21

Namunyah Bonny Nangula  
Ongwediva Training College

## Omuwa Kalunga a zimbula omumati gwe miilonga

Omusamane Johannes Nambuli, okwa valelwa mOmbadja, momukunda Oshoovele momumvo 1928 patengeneko. Paithano lyaKalunga, Nambuli okwa za mOmbadja omumatiyona, okwe ya mOmbalantu ta kala moomumwayina Kaleb Shinghaueni momukunda Onawa.

Okwa shashwa 18.12.1945 megongalo Onakayale, a kolekwa 17.11.1948. A hokana omuholike gwe Naem Shiponeni 4.10.1962. Egongalo Onawa sho lya totwa 1.10.1966, Nambuli okwa kala gwegongalo Onawa, Nambuli okwa kala wo oshilyo shelelogongalo okuza 1985.

Kalunga a zimbula omumati gwe miilonga, 1.10.1987 muwehame wethimbo efupi. Okwa thigi ko omuselekadhi noyana 8. Omahekeleko 2Kor 5:1-5, Eimbilo 653 olyo a li e hole.

E. Moombola  
Onawa

## Imonena omakende gokomeho

Okuza 9-16.12.1987 mehala lya tseyika nedhina; Central Dispensary, Oshakati popepi nongalashe F.M.Garage, puKapaleni, otapa ka kala omukonakoni gwomeho nota vulu okugandja omakende gokomeho.

Ehala ndyoka oli li pokati kaNambili naAupa. Ngoka u uvite ompumbwe ndjoka, ino etha ompito ndjoka yi ku ende ponto.



Kuku Johanna Iindongo (77), megongalo Oshitutuma, a mana 8.8.1987 muwehame wethimbo ele. Oye omuselekadhi gwaNangolo Andreas Amwaalwa, ngoka a li a tetekele nale 27.2.1973. Nakusa Johanna omukuluntugongalo wo omukulu mOniipa pethimbo lyaasita Nangolo dhaAuaia naStefanus Mvula.

Pethimbo lyomasiku ge gahuginina muwehame okwa li i thana omusita Petrus Shipena, ya kundathane pambepo. Okwa thigi ko oyana 9, aatekulu 37, naatekulululwa yaali.

Selma Nd. Amwaalwa  
Windhoek

## Ya mangelulwa mondholongo

Filimon Katsimine  
Samuel Andreas  
Saara Teofilus  
Saara Lukas  
Leonard Andreas  
Edmund Teofilus

Mbaka oya kwatelwe 2.3.1987 noya mangelulwa 21.7.1987 pauyelele mboka wa adha ombelewa yOmukwetu. Josef Katofa, Eengolo naye otashi kolekwa kutya okwa mangelulwa.

## OMUKWETU

Oye oshifo shOngeleki Onkwaevangeli paLuther yomuswa/NAMIBIA.

Ohashi nyanyangidhwa mOshinyanyangidho shOngeleki mOniipa.

Omukuluntu gwoshifo omumbisofi Kleopas Dumeni.

Amushanga gwoshifo omusita Sebulon Ekandjo.

Ondando yOmukwetu muNamibia naSouth Africa R6,00 komumvo.

Palwe muAfrica R10,00 nokombanda yomafuta R14,00 komumvo. Mondhila R17,00.

Oondando nomambesitelo agehe naga tumwe kOmukwetu, Oniipa, P/Bag 2013, Ondangwa, 9000.

ELOC PRINTING PRESS  
PRIVATE BAG 2013, TEL. (06762) 11, TELEX 56-3257 WK  
SWA/NAMIBIA

## Etseyitho

Okrismesa oya thikana ila ko HEKA MARKET, wi ilandele ohema yomoode yoshinanena lela, omagwe gomothingo, uutenda womomakutsi, uulinga niinima iikwawo.

Ayihe otayi monika mo HEKA MARKET.

Ila oto yakulwa nambili.