

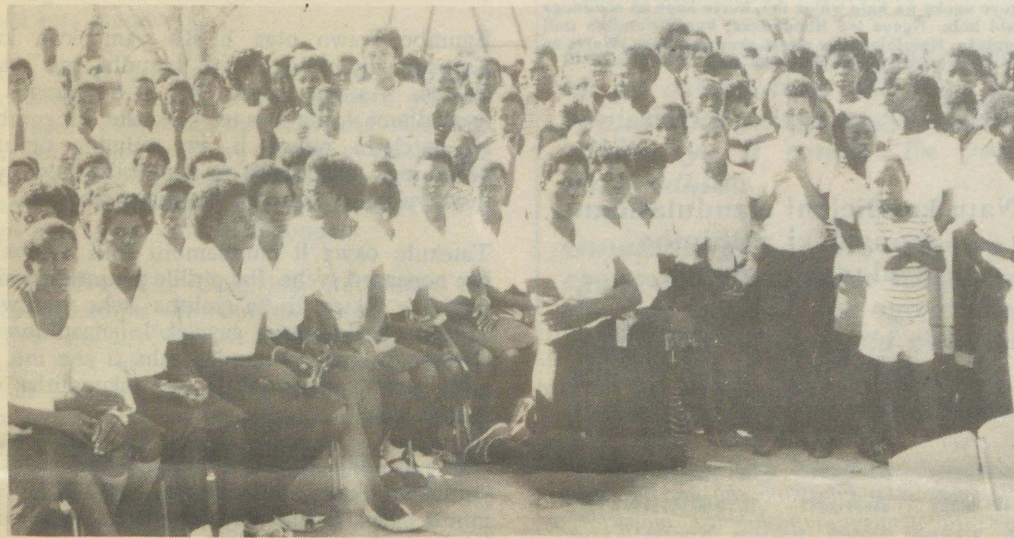
OMUKWE TU



40c

No. 21

ISBN 0-620-06828-0



Tala kep. 6

Ongeleki yAandowishi oya adhikwa ya holola kutya nonando yi ikutha mo mOraata yOongelesi, moka mu na ongeleki dhi ili nodhi ili, noinayi hala okutaamba aayenda yOngongahangano yAakwaluther, onkene tuu ya hala okutsikila nelongekidho lyehengumukilo mumwe mu Velkswa.

Ongeleki yAaluudhe mUushimba (ELC) nayo oya ningi etokolo konyala lya faathana naandyoka lya ELCIN. Oya ti, ngele DELC, ita kala we mOraata yOongelesi, nena yo (ELC) otaa hulitha po elongelokumwe alihe mu VELKSWA.

Okukala muukomisi womalongekidho, momitumba dhelelongeleki hali ningwa muukumwe kOongelesi ndhoka ndatu, osho wo momalongelokalunga guukumwe, oyo ya dhiladhilwa ku ELC, tayi mwenekwa manga, sigo kwa monika uyelele umwe upe.

Oshigongi shaasita mu ELCIN nuumvo, osha li sha popi nomuthindo, omalongekidho gehe-

Tala kep. 2

ETEGAMENO LYOMUMVO 1992 LYA TULWA MOSHIPULITHO

Omumvo 1992 ogwa li gwa ndhindhilikwa mokambo komalandulathano giiningwanima yehangano lyoongelesi oonkwaluther muNamibia (VELKSWA) mu ka dhanwe oshituthi shehengumukilo mumwe lyoongelesi ndatu; Ongelesi yomUushimba (ELC) yAandowishi (DELC) noya (ELCIN).

Etokolo olya zile moshigongingeleki shehangano ndyoka muKotoba 27-31,1986 mOvenduka. Nkene etokolo ndyoka tali tulwa miilonga osha pendula epulo enene ngashingeyi moongelesi.

Omalmobililo oga penduthwa kOongelesi yAandowishi ndjoka ya tokola yaa kale we mOraata yOongelesi (CCN), shoka aniwa itayi nyanukilwa omakankameno gamo gopolotika. Omuwilikingeleki gwAandowishi, Wilfried Blank, oye omupresidende gwa VELKSWA.

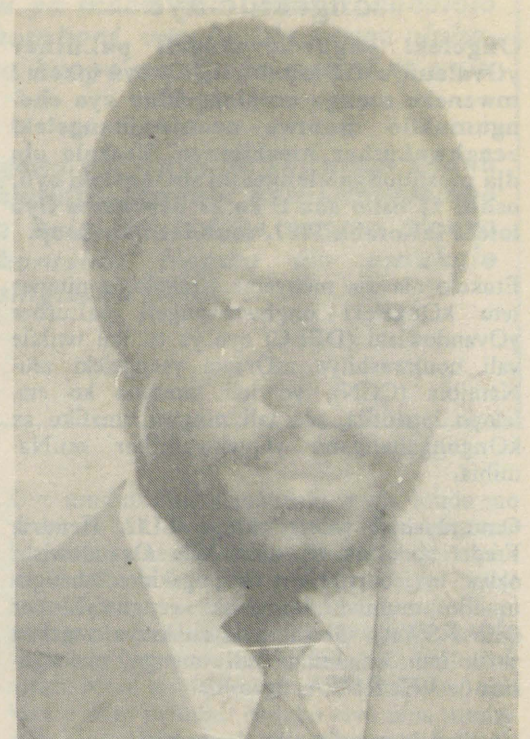
Ongelesi yAandowishi oya tokola wo yaa taambe etalelopo lyopausita ndyoka tali ningwa muNamibia pethimbo ndika kaayenda yOngongahangano muGeneva.

“Ngele aamwameme Aandowishi inaa hala okukala pamwe natse mOraata yOongelesi, yo inaa hala okukala pamwe natse montaneho yaayenda yetu yOngongahangano yAakwaluther, otaa vulu ngiini, okukundathana natse ehengumukilo mumwe?” osho omumbisofi Kleopas Dumeni a holola nkene ELCIN ta tala oshinima shAandowishi.

Ongelesi yAandowishi inayi hala

Oongelesi oonkwaluther mbali dhAaluudhe muNamibia, ELC na ELCIN, odha tsa kumwe, omusita lipinge Kristof Shuuya a kale natango omuhogololwa muhamushanga wehangano lyOongelesi ndhoka, FELSCWA, ihe oongelesi yAandowishi inayi hala.

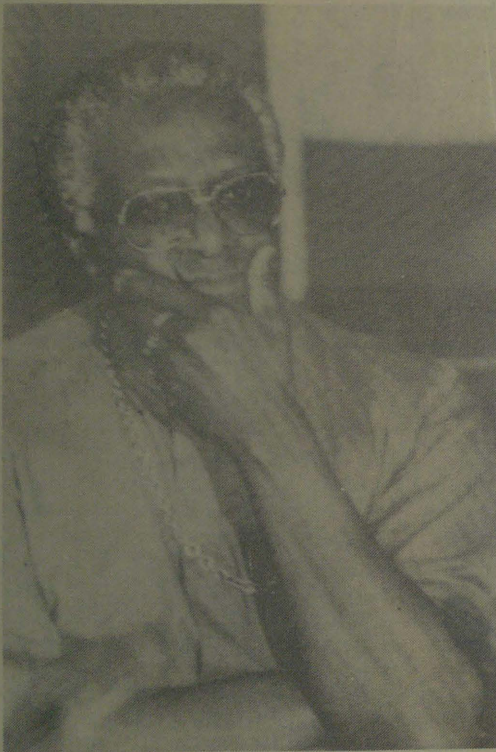
Omusita Shuuya okwa longo ngashingeyi Amushangandjaji mehanganu ndyoka oomvula ndatu dha zi ko, nethimbo lye olya adhika lya pu ko.



Amushangandjaji gwaVELKSWA, omusita lipinge K.Shuuya

NOVOMBA 15, 1987

ANC nOngeleki



Omumbisofi omukuluntu gwOngeleki yaAnglikan, Desmond Tutu, oku na oshimpwiyu oshinene nemanguluko lya SA naNamibia. MuSeptemba numvo, okwa yile pamwe naambisofi yOngeleki ye kuLusaka, a ka kundathane naawiliki yehangano ndyoka, lya ANC. Ehangano ndika olya patwa iilonga yalyo mu SA.

Metsakaneno lyawo lyootundi mbali, aambisofi oyi ilongo, kutya changano ndyoka, oli na oshitopolwa sha simana mepongololo lyomukundu gwopapolotika pamwe na SA.

ELC a kangheka omalongekido aye

Ongeleki onghwaevaengeli paLuther yOvalaule mOushimba (ELC) oya tokola i mweneke manga omalongekido ayo ehengumukilo mumwe neemwainangeleki eenghwaLuther moshilongo. Etokolo ola dja moshongalelelekeki shOngeleki oyo, oshiti 12 osho sha li ko 27 Septemba fiyo lotete laKotoba 1987, muKeetmanshoop.

Etokolo ola dja menyeme letokolo la ningwa tete kOngeleki onghwaevangeli paLuther yOvandowishi (DELC) oyo ya ti, itai twikile vali noukwashilyo mOraata yeengeleki muNamibia (CCN), yo itai tambula ko etalelopo lopaufita, olo tali ningwa omafiku aa kOngongahangano yOvakwaluther muNamibia.

Omumbishofi wOngeleki ya ELC, Hendrik Frederick okwa ti, omatokolo Ovandowishi okwa eta oupyakadi melongekido lehengumukilo mumwe leengeleki eenghwaLuther (VELKSWA). Okwa weda ko kutya ongeleki yavo itai ke litula vali manga melongekido la VELKSWA, ngaashi;

- okukala momitumba doukomisi
- okukala momitumba dewilikongudu la VELKSWA
- mElelongeleki loukumwe
- nomomalongelokalunga oukumwe

Momushangwahokololo woshongalelelekeki sha ELC, Elelongeleki ola indilwa koshoongalele li ye meenghundafana na ELCIN osho yo na DELC, po pa kundafanwe osho tashi imbi oukumwe weengeleki.

Ongeleki ya Elc oyi na oilyo konyala 190,000

Sebulon Ekandjo

Dhiladhileni onakuyiwa yeni

Pethimbo ndika lyiita otatu mono iihuna, notatu hupu shokadhila. Ihe mpano petameko onda hala okutya sha kungoye ngoka u li ongomugandjimaye komakakunya, kutya ou shi ngaa kutya aamwanyoko yangapi ya dhipagwa iipundjamenye, nenge ya lemanekwa?

Ngoye ongomukadhona hela u li to zi mosikola, owu ka hokanwe kekakunya, owa puka naana ngaashi oshikombo sha kana iikwawo. Kala ano u shi shi kutya ekakunya lyoye ohali fike po osikola moka aamwanyoko haa putudhilwa.

Huginina lela mpaka, onda hala okutya kungoye ekakunya nangoye ngoka wa hala wu ye mo, kutya kape na oshilonga ihaashi hulu. Ngoye ino ifundjaleka, kutya Namibia itali manguluka. Namibia oli na owala okumanguluka. Walye ne kutya ngele lya manguluka oto uka peni.

Omukolonyekwa
E.M. Shivolo

Natu kondjeleni elandulathano mongeleki pethimbo lyelongelokalunga

Atuheni otu shi shi nawa kutya, Osoondaha olya esiku tse li peveni ovina kuNampongo tu adulakani po kiilonga yetu ayihe, tse tu peve ikulya mbyoka yopamweyo. Onkee aantu oye-ndi ohaa yi kelongelokalunga esiku ndyoka ndalukano lyoku ka pulakona, ihe opu na shoka ha li yono po elandulathano, sho osho ihe aanona. Uone tu omeme aanashilonga, mongeleki omeme pumbwa putudho opo mu kale elandulathano. I putudho ndika olya pumbwa okuningwa kavalu imeme omeme, maanona yomvula 1-5 laampyo.

Opu na iinima itatu mbyoka hayi yono po upulakani yo ovo nce:

1. Okupalutha okanona melongelokalunga.
2. Okugandja ominona a kale kumukwawo.
3. Okugandja iidhanitho komunona.

Natu taloni kombinga yokupalutha okanona melongelokalunga.

Meme omunashilonga ote ya a longekidhila okanona ke iinima ngaambi: okanamunote, oshika, okakuki (Tansen) noshu tuu. Iinima ayih mbika otavi gandja cyinyengo ovinayi momakasi gaapulakani yelongelokalunga. Okanona ngele oka mono okakwawo taka li, otaka kwawo khalo lyokulya notaka tameke okulilila iikulya waantu lya dlongelokalunga lya vumka ihe.

Okugandja ominona a kale kumukwawo melongelokalunga.

Okanona ngele oka kala aluhe ke li owala kumukwawo otaka ilongo aluhe shoka tashi ningwa kuvakwawo ngaashi: okudhana, okupopya nokuyaga ovakwawo. Omukuluntu bala nokanona kove ko, ki ilonge sha mungoye ngaashi: okutula omake kumwe, okuthithikila, okugandjila noka tseye okutya AMENI. Nongele ka tseva mbika, opo ihe ta ka yi kuvakwawo.

Okugandja iidhanitho melongelokalunga osho oshinima sha puua.

Iidhanitho mbyoka yakashilumbu ohayi kala tavi keelengendja imeme muule, aantu itaa vulu zve okupulakona nawa. Pamukalo gwa tya ngaaka

wa yono po dlongelokalunga. Omunona na longwe okukala a gundjila.

Ndjukuma E.Ndapewoshali
Onesi

Ependa lyaTshandi lya ka vululukwa

Tatekulu Sheya Iitula moTshandi mUukwaluudhi okwa mana oondjenda dhe mu Desemba 1986, muukulupe woovmva 122. Okwa valelwa mEtunda mOngandjera nOngozi, moka mwa kala ezimo lye. Sho a koko okwa ningi omukriste nokwa shashwa Abraham, ihi ithanwa we Sheya.

Okwa kala e hole Kalunga a mana mo. Okwa longo iilonga oyindji yopakalunga. Okwa ka tungila kUukwaluudhi, hoka a hokana omufuko gwe Emma Andreas yaShikongo shaKalulu.

Egumbo lyawo olya li lya yambekwa kuKalunga. Egumbo olya li lyuudha tuu ndo, aalelwa. Aanona yawo oya li 8, aamati 3 naakadhona 4, ihe 2 ya tetekele nale. Megumbo lya tatekulu omwa li wo muudha ombili yaKalunga. Naamboka ya putudhilwa mo, oya li wo yu uvite uugumbo wa mana mo.

Tatekulu okwa li omunambili shili noluvale lwe nonaantu ayehe. Iha pitilile omuntu ine mu popitha. Okwa li ha yolitha kehe gumwe, aanona naakuluntu aavalekele naadhinwa. Oshilongo shUukwaluudhi osha li she mu igilile nawa omolwonkalo ye yokuyolitha omuntu kehe.

Oomvula dhe sho dha thiki, okwa kala a yuulukwa okuya kuukwawo. Okwa li ha tumbula ngeyi; Esamane lyopombanda onda yuulukwa li ile ndje, ndi ka kale mekolo lya mbushandje, moka tandi ka imba ekandanga.

Tatekulu a simana, owa kala embale lya siikila ombepo. Owa li wa tangwa taku ti; "nakuvala omalenga, ihe oho shi yamukula to ti: omandengu momalenga onde ga vala ndele, oKalunga Nampongo e ga pandje, nonde ga taamba lwaali." Oye he yomunyakadhi gUukwaluudhi, ngoka e li moshilongo ngashingeyi.

Abraham ya Tarah, nando olutu lwoye mombila lu olele, omwenyo ogwa mwenyekwa nale kuKalunga ngaashi wa li we shi tegelele ethimbo ele.

Albertina Tamukondjo N.Itenge
Lusaka Zambia

Etegameno lyomumvo 1992

Dha za kep. 1

ngumukilomumwe ga tsikile pokati koongeleki mbali dha thigala po, nonando DELC kee mo.

Omumvo gwondjokana yaAakwaluther muNamibia, ngoka gwa li gu uthwa gu kale 1992, ogwa pendula ngashingeyi omalimbililo moye-ndji ngele otagu tsakanithwa we tuu.

Sebulon Ekandjo

Vadinkantu wopondje Jesus ku na ku mu zigidira membo

Ame eyi nina tara mongereka, nina monomo asi mwe li vadinkantu wopondje move li womonda, nye kuna kuzuvha unene nkenda kowo woponze. Morwa kukara ponze sininke sili sosinene, esi tasi vhuru kulikanesa muntu kembungu lyedona Satana. Nahena ngano kapi si siponga sokulikana kwelike, awe nokutengura hena monyima nampili muntu wa kere mudameki to tengura monyima.

Eeno, nyiru kulya nomfinonkwawo, makura yiyo dapira ku mu hara, morwa narunye kapi adi kara nendi nombili, morwa ukorokotji wendi. Vadinkantu ava vana kara mombunga zoponze, yiwo hena mombunga zokonyima na hena yiwo vana lisitunuka vanyiru noma mbungu ava vana hara ku kwata vadinkantu ava vana kara momambo.

Yiwo ngesi vadinkantu vana ninki vanyiru womambo. Ove mudinkantu mukwetu, yilye ta ku waparere eyi ono silitununa nyiru? Ngano tu tare tanko yininke yimwe pausupi yovadinkantu woponze, nedina lyene tali ku kundu asi, edona unene sili. Yimo tupu gavaunga Karunga asi, va fane ngesi awe, vene va lisitunuka.

1. UKONYIMA: Ukonyima wombunga ezi morwa kutupu mupukuruli. Eeno, owo navenye vana dili kugwana marongo, ame si yiwo vana kara sili konyima pankarero zantantani. Nye owo vana gwana marongo yiwo tu na kutara asi awo yiwo kamanakandongo. Yimo kapi tu na puka, morwa awo kwa gwene erongo makura yiyo va pukuruka, ku gwana erongo sili muntu ta pukuruka.

Tara sikora kapi to zi gwana ponze opo ono kara ndi ono kutjilira awe, ponze to ka lisitunuka tupu eyiu. Sikora mozi li membo, nowo tava zi gwana wowo vana ku kulira membo pomurongi gomuwa Jesus, yiwo wokuvhura kukara nonompito edi. Ano ei ono kara konyima kapi ono hara kukara pomurongi gomuwa Jesus, nahena kapi wa diva asi Jesus kwa kara nerongo lyewa.

Vadinkantu navenye ava vana lipaparere mpito zokukara pwaJesus noptononkango dendi, awo vana heda komeho mwanayinye.

2. USONDORO: Ano navenye navenye owo va hana kukara momambo, yiwo nosondoro. Vakurona narunye kuuyungira vana vawo asi, walye o gendagura ngoso ngwendi gokuzaruka. Yimo ngesi asi owo woponze tau va pangere uzruki yeeyi momambo omo va kere vava tida mo. Ruk.10:18.

Ame kuna hara ku ku twa mayere asi hwilira membo. Tunda mo mombunga zoponze yipo mu yaliyike nokulidiva novakweni, morwa namuvenye membo muna kara. Yimo mpito pozi li nanaina Jesus kuna ku ku zigida, ove mudinkantu o hwilire membo. Tunda ko konze to kaneneko. Ove makura guheko makura kowo ono kunzagera. Hwilira membo, tunda konze to samukire ko, tara womembo kwawo mba kapi va kara worusamu.

Pana kara simpangwa sili. Morwa kukara koge ponze yiyo nye ono ku tanta asi vamati, ndi vakadona kutupu. Awe pove li kuna zura, kapi to va mono morwa ponze ono kara. Waha fa

Edhimbulukitho lyowina

Kaainyolithi amuhe naambesteli yoshifo shOmukwetu aasimanekwa, otatu mu tyeyithile mpaka, kutya nani omumvo gwa yi, tamekeni nomalongekidho gomumvo tagu ya, mboka inaamu tameka natango.

1. Ondando yoshifo shetu oyi li natango ngaashi shito omumvo tagu ya, R6-00 na R17-00 mondhila, kombanda yomafuta. Otwa pumbwa ano nomomumvo tagu ya eyambidhidho lyoye okukaleka po oshifo shetu momimvo tadhi landula.

Eyambidhidho ndika oto li gandja sho to inyolitha ngoye mwene nokutsa wo yalwe omukumo, nayo wo yi inyolithe. Ngele owe tu tumine R6-00, tse otatu ku tumine iifo 24 omumvo aguhe. Iifo iyali omwedhi kehe. Shoka osho eyambidhidho twa dhiladhila.

2. Itsa omukumo u gongele omadhina gayalwe momukunda gweni, molukanda lweni nenge momudhingoloko moka wa tseye, kutya kamu na omuyakuli a tya ngaaka. Iifo yawo otayi kala hayi ya medhina lyoye, ngeleshoka osho ya hala.

ELONDODHO: *Ino tuma nando edhina lyomuntu kutse, manga inee ku pa oshimaliwa she. Oto ka gwila mbala moongunga. Aagongeli yomadhina ya tya ngeyi ohatu ya pandula noopelesenda 10% kukehe edhina ye li tuma. Tu yelithila ano tu ku tumine oofooloma dhomadhina.*

Omukalo gwomuntu gumwe awike megongalo, oye i inekelelwa egongelo lyomadhina megongalo alihe, omukalo ngaa omwaanawa, sho gwi igililwa, ihe ogwa kulupa. Omukunda kehe nolukanda kehe, otalu vulu okugongela omadhina galwo e taga tumwa kOmukwetu. Mboka mwa hala okukwatha ngeyi, puleni omayeke kumboka haa mbesitele shito, ye mu kwathe.

3. Opu na wo ompito yakehe gumwe a hala okutaandelitha oshifo shOmukwetu, mokati kaamboka ya hala okulanda ooshimwe nashimwe esiku kehe tashi holoka. Ondando yoshifo shimwe 40c nohatu gandja oopelesenda 20% kukehe oshifo wa landitha po, epandulo.

Onawa u tameke manga nomwaalu omushona, opo u tale nkene tashi ende. Iilonga ayihe twa fatulula pombanda, otayi vulu okulungwa kukehe omuntu. Ano omumvo tagu ya inaku kala nando okakololo moshilongo shetu; kutya osikola, okomboni, omukunda nenge olukanda, Omukwetu ihaa thiki mo, sho kaape na ngoka aniwa ta vulu okumbesitela.

Pula ano uuyelee kutse nenge kungoka wa tseye he shi ningi pooha nangoye, opo eyakulo ndika u li hedhithe popepi nomudhingoloko gwoye. Nguka ogwo omukalo twa hala, tu koleke nagwo olunza lwoshifo shetu, shi tsikile nokomeho. Nogwo wo omukalo gwokutaneka ontseyo yoshindji moshigwana shetu.

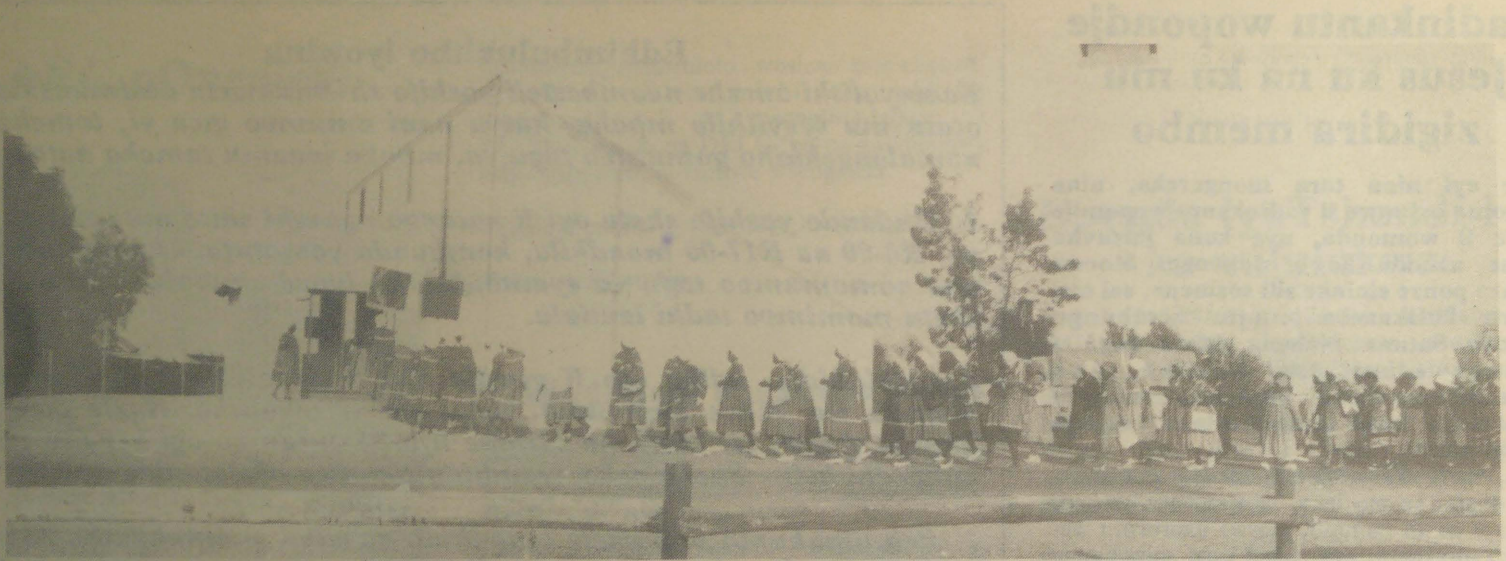
Amushanga gwOmukwetu

nomuga, wiza tupu. Nampili omutwiku ndi hepwe ndi sirema wiza tupu. Yeeyi membo omu navenye move li, yipo nye wa ha fa unye, wiza wiza ngamomu wa kara.

Vandunge vakweni move li membo, vafuuli vakweni nawo hena move li. Ano ogu ga dira kuwapa muwapeki nage mweli omu membo eli. Ove mudinkantu goponze Jesus ana ku hara. Ana hara ku ku gusa moukonyima woge ana hara ku ku silika usondoro.

Ove mudinkantu gomondaha waha tunda mo yeeyi to ka lisitunuka eyiu. Ove goponze katyama nsene ana lisitunuka embunde, kapi a ka kara hena kutyama esi ngano si tu tjilise kukara ponze, neyisi ngo kara embunde. Kapi nina tamba vadinkantu velike awe, kuna tamba hena nkenye mukriste a dameke tundibibeli zendi. Nove tunda ko konze zongereka oko ono kara o wize membo. Nembo oloyo nina tumbagura mosiuyungwa esi yizo mbungakriste zeni.

P.Ausiku



Oshigongi shaakiintu yomUushimba tashi ka hita mongeleki yomina muArandis.

OMUKWETU MONTANDA YAAKIINTU MUARANDIS

ARANDIS: Aakiintu ye vule po 200, oya li montanda yawo yomasiku gane 8-11.10.1987, molukanda lwomina yaRossinga, Arandis, popepi naSwakopmund. Pakuuva, osho oshikando shotango aakiintu yOngeleki yaELCIN mUushimba taa gongala pawiliko lyomusilishimpiyu gwawo meme Aino Kapewangolo.

Ehiyo lyowina olye egulula wo nokOmukwetu omiyelo, a yemoshigongi, a tale ye a pulakene momakana gooyina yoshigwana noyOngeleki. "Kape na shoka shi na omwenyo, inaashi valwa kune," osho omuyevangeliste Lot Kaishungu, kwa li te ya ulukile oshinakugwanithwa oshinene ye shi na.

Methimbo lyoonkundathana nopehulilo lyontanda oyendji oya li taa holola omauvito gawo, kushono ya likola mo. "Kungame ontanda oya li oshipangelo, onda pangwa," osho gumwe a hokolola. "Inapu kala ngoka ta shuna nomutenge gwe inee gu tula," osho ishewe mukwawo a kumagidha ongundu.

Ongundu oya li po onene, ihe otayi inyenge mombwepo yimwe. Oya wilikathana, oya kumagidhathana yu uvitathane ko. "Tu dhigini-neni eitaalo, oshoka omasiku omawinayi," osho ya londodhathana.

Oonkundathana dhawo odha li tadhi imbagana nokukonga eyamukulo nkene ye na okumona omukalo tagu opalele okuputudha oomvalo ndhoka tadhi valelwa mookomboni nenge momagumbo. Oya li wo taa ipula nomukalo nkene ye na okuhwamekathana miigongi yawo, komahala gawo.

Osho oshigongi shotango Omukwetu a tsakanke muELCIN, tashi tungu ontopa pokati kaakiintu naalumentu. Osha li oshigongi shokutunga eitaalo, peha lyokutunga omadhiladhilo. Kakwa li taku pewa uusama Nima nenge Ngandi, oye ando e eta eyonuko moshigwana e vule mukwawo.

Omutonateli omukuluntu gwondjakulwambi-nga yUushimba, omusita Jason Amakutuwa omo a li wo montanda ndjoka, pamwe nomukwathi gwomumbisofi omusita Matti Amadhila.

"Sho e ya pandulile tango uudhiginini wawo okukala poohapu dhaKalunga, omusita Ama-

Tala kepanja talilandula

Oshipopiwa sha A.N.Nghifikwa, sha holokele mOmukwetu weedula da pita, shi na oshipalanyolo tashi ti: "Nakufya na fyuulule tete."

Ovaholike, ohandi indile koshiwana oshiholike noshifimanekwa ngeenge nakufya okwa fya e na eliko, tete napa kufwe yemanya lanakufya.

Eshi onde shi tonga nenyeme linene, shaashi onda filwa omumwatate a li e na eliko lihapu nokwa li ha longo kOlange, kamukomboni a kula eedula dihapu, nokwa li ovafyuululi vaye va mona oimaliwa yaye yopensione ihapu, ndelene eshi nda ka enda momaendo avo okutalela po ombila yomumwatate ou, inandi i mona nande.

Eshi nda pula ovapashukili vonhele oyo, ova ti ashike; ombila yomumati waxo, oyo ngo i li lwaapo. Nda li ku konga, inandi i mona, ya kanena meembila dovadovakwaneongalo olo. Omulumenhu a li a fimana moshiwana nokwa yakula ovanhu vahapu, ombila yaye oya kana, nande inapa pita eedula dihapu unene.

*I. Amupolo
Okando*



Efolo Maria Dax, omunashilonga mombeleva yomina yaRossinga, miinima yoposiale naye okwi ile okupopitha aayenda, pamwe nokankelo kawo. Methano ndika otaa kundathana nomundohotola Ruth Eiseb nomusita gwegongalo lyaArandis, Josef Kapewangolo.

Dha za kep. 4

dhila okwe ya lombwele: "One ooyene yOngeleki ndjika." Amadhila oye kwa li a thindikile ekundo lyombelewangeleki kontanda.

Okwe ya kumagidha ya tameke okwiitungila oongeleki dhawo yene, mpoka ye li po, manga Ongeleki tayi ya sile oshimpwiyu shokumona aasitagongalo, nonando oya pumba.

Omahala ngaashi: Windhoek, Otjiwarongo, Omaruru, Usakos, Karibib, Walvisbaai, Hentisbaai, Deblin, Swakopmund nomuArandis momwene, oga li ga tumu aakalelipo yago montanda ndjoka.

Aayenda ya simana oya li wo ya hiyilwa mo. Oondohotola adhihe Aaluudhe moshilogo, oya li yi ithanwa pamwe nomagumbo gawo opo



Omuwiliki gwoshilonga mokati kaakiintu mondjakulwambinga yUushimba meme A.Kapewangolo.



"Ilonga yetu yaa na eyambeko lyopangeleki kayi na shoka tayi kwatha oshigwana," omunaveta Kasuto nomundohotola Ruth, pokati lela methano ndika, osho ya tumbula montaneho yoshigongi shaakiintu. Efolo Nelago Kasuto, kolulyo omweekonomi naFrits Eiseb, omunashilonga gwa Asulansi, omutango okuza kolumoho.

nayo wo ando ya ningile ontanda yawo moka. Mupyamunene dr Ruth, mOshakati awike a wapa okumanguluka kiilonga, yo naAhende Efraim Kasuto, pamwe nomagumbo gawo. Yalwe oya gandja ashike ombili noyi indile yaa dhimbiwe komeho.

Ombelewa yoshilonga mokati kaakiintu mOngeleki nayo oya li ya tuma meme Justina Nani Shivute, ngoka e ya kumagidha ya longe nuudhiginini mokwiithikamena momahupilo goshilonga shawo moshitopolwa shUushimba, yo ye ende pamautho goshilonga pangeleki.

Megongalo lyaNyaanya, omwa zile aakiintu 42, ya ka kale montanda ndjoka noku ya yambidhidha wo painiwe. Uukumwe woludhi ndoka, owa li tau pandulwa montaneho yaayehe moshigongi. Oya li ye ende kuyo yene.

"Kotokeleli oongundu dhilwe dhaakiintu momahala nomahala, ndhoka dhaa na sha netungo lyeitaalo, opo dhaaye mu yuge ehala lyeni naashono mwa tsikwa mo musho," osha li sha kumagidhithwa aakiintu komuwiliki mondjakulwambinga yUushimba, meme Kapewangolo pehulilo lyontanda.

Ina tumbula nande ongundu yontumba kedhina, ihe aapulakeni inaa holola wo nando omalimbililo miipala yawo. Ngiika oya li ye mu uvite ko shoka a hala okutya. Omathigathano ogendji oga li ga ningwa pethimbo lyontanda, moka aasindani ya topelelwa oondjambi dhawo, mwa kwatelelwa epandela lyoshilonga shaakiintu mUushimba, ndyoka lya yi naanegumbo yoyene.

Sebulon Ekandjo



Aakiintu 202 yondjakulwambinga yomUushimba oya li ya gongalele moshigongi shawo shaayehe muArandis. Omusita M. Amadhila ote ya popitha.

Tu kaleni kumwe, inaku kala umwe ta landwa po! — Haushiku ta ti



Omumbisofi B.Haushiku ta popitha aayenda yoshituthi mOmuulukila.

Omafiku a dja ko omubishofi wongeleki yaKatoolika muNamibia, Bonifatius Haushiku, okwa kumaida oshiwana ashishe shaNamibia shi kale kumwe noshi kale shi holafane. "Inaku kala nande oumwe ta landwa po, inaku kala nande oumwe ta tondo omushiinda shaye note mu dipai-fa po, ngaashi tashi ningwa pefimbo eli muNamibia," osho omubishofi a kumaida engafifi lovapwilikini vaye omayovi avali lwaapo.

Omubishofi Haushiku okwa li ta popi ngaha moshivilo shinene meongalo Omuulukila mOmbalantu, eti 11.10.1987. Oshivilo eshi osha li sha longekidwa owina mokuulika eudopamwe novakwaneongalo vomOmuulukila ovo ve na ongeleka yavo ya hanaunwa po koitopifa eti 20.9.1987 lwopotundi onhimugoyi yonguloshi.

Omubishofi Haushiku okwa pangula unene omuningi woshinima eshi, osheshi okwa ti okwa hanuna po onhele iyapuki. "Omuhanauni wetungo eli okwa dimbwa kutya ongeleki yaKatoolika oya tandavela mounyuni aushe," osho a tumbula mokutala oikulukuma yongeleka oyo. Okwa twikila ko ta ti eengeleki adishe daKatoolika oda patwa fiku olo nota di ningile elongelokalunga momutenya, pondje, okuulika eudonya lado.

Okwa ti keshe ou ta hanauna po etungo longeleka, oye ota yahameke ovanhu vaNamibia nomounyuni aushe. Okwa holola kutya etungo ola hanaunwa po moufiku welimweneneno, omo keshe umwe e li ponhele yaye a mwena. Omolwoveta ei, kaku na ou e na oumbangi wa yela, kutya olyeie a tela oitopifa ei ya hanauna po etungo longeleka yaMuulukila.

Pehovelo lomudo ou, eengeleki nhatu do moNamibia oda li da twala oveta yokangedjo koufiku momhangu, opo ngeno ku kale kwa xulifwa po oveta ei, ndele eshi inashi kwa-fa sha. "Ovanhu vomoshitukulwa shoita mou-

mbuwanhu waNamibia ovo unene va kumwa koveta ei, notava hepekwa koita, ongee ohonde yavo otai kuu pombada," osho omubishofi Haushiku a dimbulukifa ovapwilikini vaye poMuulukila.

Melongelokalunga olo leefya omupashukilishi-taingeleki shokouninginino, omufita Josaphat Shanghala, oye kwa li a findikila ehekeleko lOngeleki ya ELCIN. Okwa ti ye okuudite oluhodi nota pangula nai ehanauno po longeleka ei. "Fye va ELCIN nOngeleki yaKatoolika otu na elalakano limwe, oku-tandavelifa evaengeli laKristus", osho Shanghala a ti.

Okwa twikila ko ta ti ongeleka yaMuulukila otai faafanifwa naStefanus, omuhokololahonde a tumbulwa mOmbibeli. "Ovaelcin otwa

shakeneka nale ominyonena domaludi aa, ngaashi kOshinyanyangido shetu pOniipa, no-peenhele dimwe mongeleki yetu, ndele omatungo etu otwe a fikameka po vali paife," osho Shanghala a tumbula. Okwa ninga yo eindilo lowina kOvamuulukila opo va fikamife po natango ongeleka yavo imwe ipe, opo omuhanauni wongeleka a ha mone omhito.

Oshivilo eshi osha li sha popifwa nomatu-mwalaka oluhodi nehekeleko a dja keembinga adishe daNamibia nosho yo koshilyo shomhitifi mepangelo lOwambo, omushamane Peter Kalangula wo CDA. Omilungu da kukuta nomesho a tenha, oo omadidiliko kwa li taa monika moipala yovakwashiwana mokutala oikulukuma yetungo linya la ongotela mumwe.

T.Nghitukwa

Omhangu omolwedipao la-Shifidi otai twikile

Ovatilyane vane ova efiwa manga eshi keshe umwe a yandja ombambyona yoimaliwa R 1000 fimbo ovalaule vavali va yandja ombabyona R 500,00 keshe umwe. Aveshe vahamano ova anya etimba eli tali va shikulifa kohofa kutya ove na sha nedipao lomushamane Immanuel Shifidi 30.11.1986 mOv-nduka.

Ovatamanekwa ovo eengudi da kula metanga la SA, Komandanda Antonie Johannes Louwrens Botes; Kolonela Johannes Hendrik Vorster; Kolonela Willem Hendrik Welgemoed; Letinanda Nicolaas Jacobus Andre Prinsloo; Koporala Eusebius Christiaan Kambishi na Private Steven Festus.

Aveshe ova holokele efimbo lixupi momhangu yaMangestrata 8.11.1987 mOvenduka. Muvo aveshe, kape na nande ou a itavela etimba letauluko loveta yelongifo leenghono mokati koshiwana ile okunyo-nauna oyoongalele ile oketimba ledipao.

Omakakunya e dule 50, okwa dile mokamba 101, pOndangwa 29.11.1986 omo yo mwa kala Kolonela Welgemoed, omunambelewa omukulunhu ve kwete omauta oshiwambo, eedibo neemwele, ndele tava ka halakifa oshoongalele shaSWAPO 30.11.1986, omo mwa fila omushamane Shifidi.

Vamwe vomomakakunya aa, okwa yandja nale oumbangi wavo moshinima shedipao lomukondjeli-manguluko Shifidi. Epangulo otali ka shuna natango moipundi 8.11.1987 nope na eteelelo li ka ye mohofa yopombanda.



Otaku tengenekwa aantu 700 sigo 800 oya li ya gongala melongelokalunga lyoosa pegongalo Omuulukila mOmbalantu.

Aasita ya ELCIN inaa ziminathana momukalo gwokulongitha Oradio Owambo

Oshihongi shaasita yOngeleke ya ELCIN, osha halakana inaashi mona etsokumwe, ngele naku tsikilwe tuu natango nokulongitha Oradio ndjoka meuvitho lye-vaangeli nenge aawe. Oshihongi shaasita osha li ko 14-18 gaSeptemba numvo, mOngwediva.

"Otat u li aantu ondjala yepulakeno lyohapu yaKalunga, miipangelo nopondje yoshilongo nokuli mboka kaatu na omukalo gulwe gwokuyaadha," osho Tatekulu Efraim Angula, ngoka a talwa omuwiliki gwoshilonga sheuvitho lyomoradio a gandja omatompelo nkene Ongeleki ya pumbwa okulongitha ompito ndjoka.

Oprograma yehungomwenyo mOradio ndjoka yi li mewiliko lye, oyo oshinima shimwe sha pendutha omapulo omanene maasita oyendji, yOngeleki ndjika. "Kashi mo melongo ekwaLuther okuhunga mukweni, montaneho yaayehe," osho aasita yamwe ya kala taye shi konge uumbangi, kutya itashi pumbiwa.

Aasita oyendji omimvo dha piti, oya kala aavuthi mOradio Owambo, ihe oyendji oya haluka owala omauvitho gawo itaa ga tumwa we mombepo yo inaa pewa etompelo. Oradio oyo yene yi na okuhogolola ngoka ya hala u uvithe mo. Ongeleki sigo ompaka kayi na ewi kaasita yayo, olye e na okukala omuvuthi mOradio.

Aasita yamwe oya kala neipulo, moshigongi, kutya omolwashike aasita haa longo mOradio Owambo, ye na okufutwa kOradio, ngele euvitho lyevaangeli oshimwe shomiilonga yawo?

Momimvo dha zi ko, aasita oyendji na-nashilonga yOngeleki ya ELCIN oya li ya kumagidhwa ya hulithe po elongo lyawo moosikola dhOshingilisa nodhaamboka taa idheula okulesha nokunyola mewiliko lya CCN, ngaashi omauthompango taga keelele omunashilonga niilonga iyali.

"Ngame onda limbililwa ngoka a tindila ndje emanguluko lyokolutu ngele otu uvu ko tuu shili emanguluko lyandje lyokomwenyo note li kondjele," omusita gumwe mongundu osho a li ta yamukula mboka taa popile ompito ndjoka ya pewa Ongeleki, kOradio Owambo, kutya aniwa oya simana opo oshigwana aniwa shi yakulwe.

Etsokumwe olya nyengana okwaadhika moshigongi shiyaka ngele oshi li tuu mondjila, Ongeleki yi tsikile nokuyakulitha aasita yayo mOradio Owambo, nenge aawe.

Sebulon Ekandjo

Ningisheni V.Hawina 28.7.1987, a shikula meekulu wetu ou a xulifa 12.7.1987. Okwa fiya ko ounona vaye. Eimbilo 133.

John Nekundi
Oyongo - Odibo Church

OMUKWETU

No. 1 Registered at the GPO as a Newspaper 30c

Uukwamuhoko muNamibia oshiponga oshinene shi thike pamwe nuukoloni

Oshitya uukwamuhoko (tribalism) osha fatululwa kembwiitya lyOshingilisa, kutya oohedhi, nenge eitaalo nenge uukwatya u niwe kongundu yontumba, tayi popi elaka limwe, pehala lyongandi koho yomuleli gwawo. Opwa gwedhelwa wo kutya uukwamuhoko olwindji otau adhika maantu yoohedhi dhu ukila kumwe noye na eputuko li li pevi.

Oshitya oshikwawo tashi dhangoloka noondunge ndhoka uukwaludhi (racism) shoka sha fatululwa, kutya eitaalo momuhoko gwontumba, ngoka tagu itala gu vule aantu yomihoko dhilwe.

Mpoka omaukwatya ga fatululwa pombanda taga simanekwa notaga tulwa miilonga, opo mpoka gulwe to zi pondje yomuhoko ngoka, itoo vulu we okumona eha mokati kawo, ito taambwa noito talika u na oshilonga mokati kawo, nonando ou kale u li ekwatho enene kugwo.

MuNamibia moka uukwamuhoko wa putudhilwa mo paveta kuukoloni otamu adhikwa sigo onena oyendji kaaye na uuge okuulika kondilo yuukwamuhoko wawo, nonando otaa itala oyo aakondjelimanguluko aanene. Moku-tsikila ngeyi nomugoya ota kala a yeletwa, kutya aantu yaNamibia oye li natango kokule okutunga po uukumwe wopashigwana ngaashi u li miilonga iikwawo.

Okamwaalu kaantu yaNamibia sho ka patelathana pondje ngeyi, paupolotika osha etitha maantu yomiliyona yimwe ayike mu dhikwe oopaati dhi vule 40, nomukehe opaati aantu yomuhoko gumwe nenge yopomukunda gumwe nenge yezimo limwe nokuli.

Paitaalo osha kaleka po sigo onena oongeleki, naandhoka dhi na ehempululo limwe, kehe yimwe ya hala okudhiginina uuthigakalo wayo. Pausosiale osho wo ngaashi naanaa pamahupilo. Oyendji otaa hepa esiku kehe moshigwana shika momahala gomayakulilo, oshoka oye na okuyakulwa ashike nawa, uuna ya adha po ngoka gwomuhoko gwawo nuunene gwezimo lyawo. Ngele hasho, nena eyakulo oku na oku li landa, nombumbo.

Ontiko yuukwamuhoko muNamibia oya ya muule, oshoka oya hita nomokati kaantu yomuhoko gumwe, mboka to adha ya nyengwathana mokukala kumwe. Omutondi omunene gwonakuyiwa yaNamibia uukwamuhoko waakalimo mboka tau putudhwa sigo onena kuukoloni nokongeleki nokuli.

Iiyimati kayi kala inaayi liwa

Eihumbato lyaamati aanasikola mOshikongo lipinge mUukwaludhi iiwike ya piti, okupula kaalongi yawo epitikilo ya ka nwe omalovu gawo pondje yoskola, oshi li elondodho enene kaavali, nokaaputudhi ayehe yoshigwana shika, kutya itaa pumbwa we okugwedhela ethimbo lyetokelwo okuninga etokolo lyokunwa kwaanona moshigwana shino.

Aanona mboka omalovu inaye gi ilongela nando peke lyaanona oya-kwawo, ihe iitenga oye yi taamba miikaha yaakuluntu naaputudhi yawo. Nesiku ya za momuhandjo, oya ka nwa taa pewa kaakuluntu nokaaputudhi yoshigwana, mboka ye li mookamba nomoositola dhomakende. Iimaliwa ya likolwa shili, ihe oondunge dho-shigwana shangula dha kana.

Osha yela wo kutya nokonima sho kwa kundanwa omuyonena ngoka gwa ningwa kaanona sho ya shuna momuhandjo, aagandji yomalovu kaanona oya li mongundu ndjoka tayi ehama omayego, mokulila mmm, aanona yetu.

Ngele otaku tsikilwa neputudho lyaanona lya tya ngeyi uuyuni wopondje itau tu yalulile tuu mongundu yoshigwana oshikambeli? Iigwana ayihe muuyuni, ohayi nu, ihe omoongamba dhomautho ga tulwa po.

Oshigwana shetu ngele sha tokola shi longithe omalovu shaa li moongamba dhomautho, nashi ilongekidhile wo ano ehulopo lwoondunge dhasho. Aanona ya gandja euliko lya yela luyiyimati yeputudho lyawo.

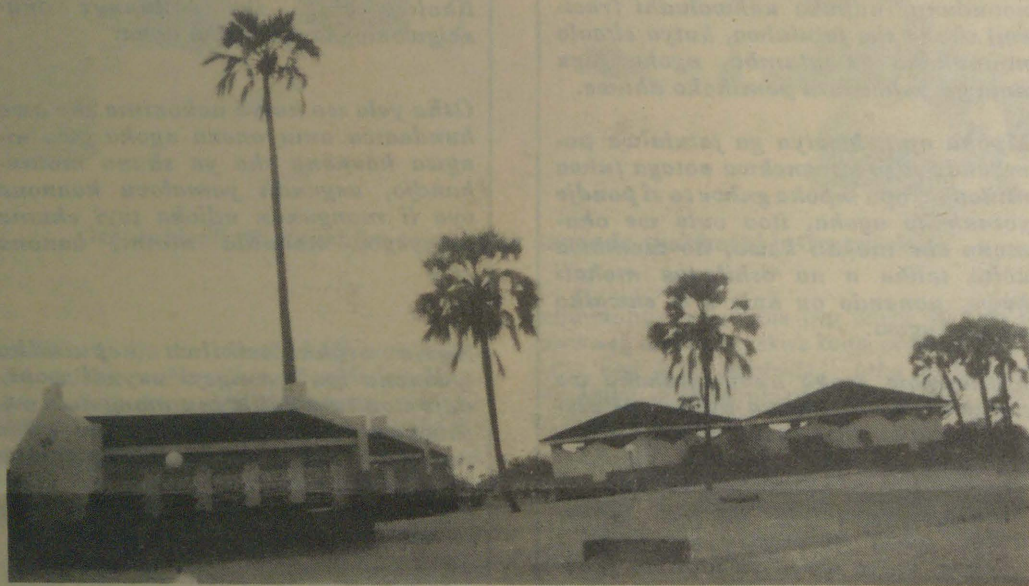
Omatokolo gamwe ga UN molwaNamibia

- 27.7.1978 Oraata yegameno yiigwanahangano oya zimine onulanduthaneko gwokumangululitha Namibia pashitokolitho 435 shoraata ndjoka.
- 29.9.1978 Oraata yegameno ya UN oya tokola pu dhikwe etanga lyombili luyigwanahangano, UNTAG okukwathela melongekidho lyemanguluko lya-Namibia. SWAPO e li zimina mbala, na SA okwa indilwa naye e li taambe.
- 13.11.1978 Oraata yegameno yiigwanahangano oya pangula SA, ngoka a tokola okuya komeho nehogololo lye lyopamavigumbo muNamibia, konima sho a zimine tango ehogololo lyaayehe pashitokolitho 435 shOraata yiigwanahangano.
- 7-11.7.1980 Ehokololo lyaanawino 24 yomuuyuni lya pulakenwa moombelewa dhiigwanahangano, kombinga yomina yaUrana muNamibia ndjoka eliko lyayo tali halithwa po ku SA pamwe nookuume ke yokuuningino, metaagulukulo lyoveta yiigwanahangano (Decree No.1) ndjoka tayi indike ehalitho po lyeliko lyaNamibia pondje yezimino lyOraata yaNamibia kiiigwanahangano.

Omalovu ga patithile osikola

UUKWALUUDHI: Omukuluntusikola gwOseko yaShikongo lipinge mUukwaluudhi okwe shi koleke pangodhi pOmukwetu, kutya konyala aanona ayehe yosikola ye oya galukile miipundi, konima sho ya thigile ya tatula omakende, ya taula omatalashe, nomalapi gookombete nomalapi gopomakende momagumbo gaalongi yaamoka.

Omusamane Chris Ipinge, omukuluntusikola okwa ti, konima yoonkundathana oonde pamwe nokomitiye yOsikola ndjoka, osho wo aavali yaanona taa sikola muShikongo Ipinge, aanona ayehe oya galukile miipundi 13.10.1987, kakale



Okambinga kamwe kosikola yaShikongo shIpinge mUukwaluudhi otayi monika methano ndika.

kaanona yatatu mboka inaku tseyika sha kuyo mpoka ye li, nakuluntu yawo inaa monika.

Osikola ndjoka omukuluntusikola pamwe naalongi ye oya li ye yi laleke ombaadhilila muule wethimbo inaali uthwa 23.9.1987, sha zi meihumbato lyaamati yomuhandjo ngoka 170,

“Omolwenota nondjala”

Osho omutoolinkudana gwoRadio Owambo a li a pewa eyamukulo sho a pula etompelo komuwiliki gwomuthigululwakalo mOwambo, MuAuguste nuumvo.

Radio Owambo: “**Nda fa nda kundana kutya omuthigululwakalo nuumvo kagu ko we?**”

Omuwiliki: “**Eeno osho naanaa ngashi to ti, ka gu ko.**”

Radio Owambo: “**Omatompelo ogashike sho itaagu kala ko nuumvo?**”

Omuwiliki: “**Epangelo eleli mOwambo, osho wo oshikondo shelongo mOwambo oya ti kutya omolwenota nondjala nuumvo 1987, omuthigululwakalo itagu kala ko.**”

Eyamukulo olya fa lya nathangwa, ihe oli li muule lela. Eyamukulo ondi li uvite ko ngeyi kutya, omolwenota no-

mboka yi indile epitikilo kaalongi ya ka nwe omalovu pondje yomautho gosikola.

Mokugaluka komalovu hoka ya yile yaa na epitikilo, oya tameke okudhenga mo omakende gomagumbo gaalongi, okuteta omatalashe, omalaakana nosho wo omalapi gopomakende nokuyuga shaashoka ya li taa vulu okumona momagumbo. Inamu ehamekelwa omuntu esiku ndyoka.

Patengeneko lyomukuluntusikola eyonuko alihe olya tengenekwa R4280. Oshigongi shaavali osha tsu kumwe eyonuko alihe ndyoka li futwe kaanona mboka ya li moshipotha.

“Kape na sha shilwe ya li ando ye shi pula ye shi ningilwe ando, nonando ompito ndjoka oye yi pelwe ya holole omaudhigu gawo, kakele

ashike ya pitikilwe ya ka nwe omalovu gawo,” osho omusamane Ipinge a li a yamukula Omukwetu petameko lyoshikako oshitine shosikola.

Oseko yaShikongo Ipinge oya dhikilwe 1985 noyi na ngashingeyi aalongwa 464 okuza Std. 6-8, naalongi 18.

Sebulon Ekanjo

ndjala Owambo otatu yi tanga ngiini? Omapiya inaga gandja kwaayeche sha gwana, opo tu imbe tse tu tange Owambo twa kuta. Omithima omadhiya niishana kayi na omeya, otatu ka ligolela shike?

Omolwenota nondjala - Aawambo katu na nuumvo enyanyu-li tya shoo. Omvula ngashingeyi nando yi loke yi thike peni, mOwambo omeya ihaga kankama mo we. Omukanka ndhoka dha taakana oshitopolwa shetu dha za kUumbangalantu dha thinda kuumbugantu, ngoka e dhi fula okwe shi ninga nelalakano, opo Owambo yi kangalekwe.

Omolwenota nondjala omilunga nomigongo ngashingeyi mOwambo otadhi si. Omiye hatu dhi tanga moondjimbo sho ihadhi kuta we omeya, odhindji odha sa. Omanga iihupe tayi imi oombe dha pela. Iiyimati mOwambo hayo we ngashi nale. Otatu ka tanga shike komuthigululwakalo? Omolwenota nondjala yoshigwana itagu kala ko nuumvo.

Oshigwana oshiholike, oto ka ligolela shike? Omakunde noontanga momapiya oya lyatagulwa mo? Oto imbi shike, to nyanyudha yamwe taye ku faneke ya panda, yo aawanyoko hwiya ye li ko taa fumvike Nima a sa kondjala? Nguya ta lilwa mpeya a yahwa, egumbo lyeni hwiya tali

Imonena omakende gokomeho

Okuza 9-16.12.1987 mehala lya tseyika nedhina; Central Dispensary, Oshakati popepi nongalashe F.M.Garage, puKapaleni, otapa ka kala omukonakoni gwomeho nota vulu okugandja omakende gokomeho.

Ehala ndyoka oli li pokati kaNambili naAupa. Ngoka u uvite ompumbwe ndjoka, ino etha ompito ndjoka yi ku ende ponto.

L.Shaetonhodi

Aanona 9 yomOshigambo ya galulwa ketanga lyegameno

Aasikola 9, aakadhona ayehe, mosikola yopombanda yaShigambo, oya ethiwa ketanga lyegameno 20.10.1987, ya ye komagumbo gawo, manga uumati uyali taku tiwa owa thigala ko tau pangwa lilalo yomaumbathano.

Pauyelele mboka wa uvika mOradio Owambo, uunona owa yuulululwa miikaha yaamati yomoshiheke, ookilometa 10, okuza mOshigambo taa taagulukithwa ongamba yaAngola. Momau-bathano omwe ehamekelwa uumati uyali, manga une taku tiwa owa fadhukwa po nawo kaamati.

Omukuluntusikola yaShigambo, omusamane Timoteus Ndakunda, okwa adhika a yongola aanasikola 15, kutya kaye li mo mongundu yayakwawo momuhandjo, aakadhona omugoyi naamati yahamano. Pakutseya kwe uunona inau yakwa po kaamati, ngaashi Oradio ye shi popya, ihe oyi iyaka mo molugumbo yo yene.

Omusamane Ndakunda, okwa ti, oya uvanekelwa pamwe nombelewa yOngeleki, kutya uumati mboka tau pangwa natango kaakwiita, nawo komeho otau ka mangelulwa.

Sebulon Ekanjo

hanagulwa po? Oto ligola wa panda shike?

Omolwenota nondjala - Tse Aawambo otashi tu kwatha tuu tu umbile omishila mombanda, yo yakwetu koombinga noombinga taa lili?

OTATU IMBI NGIINI OONDJIMBO DHENYANYU MEVI NDIKA LYUUPIKA! Otwa hala oshilongo shetu shi mangeluke, opo tu tutule omithigululwakalo dhetu dhAanamibia muNamibia.

L.N.Iita

OKUTULA ESHIIVIFO LOYE MOMUKWETU, OSHO OKULO-MBWELA OMUNHU KESHE MOSHIWANA. LANDELA HANO ESHIIVIFO LOYE ONHELE MOMUKWETU.

OVA SHANGELA NGE - TAVA 'I

Suid Africa ota kolonyeke

Hano oukoloni wa SA ne u xulifa po. Ngeenge ite u xulifa po, "tashi ono otashi ende ngoo", osho omukulu wonale a tile. Ohai halele ovamwameme ava twa kwatelwe navo 9.1.1985, ndele hatu kala modolongo oule weemwedi hamano. Kalunga ne va pe enangeko noupuna. Eps.104:1-35.

Joseph Hailume
Uis Mine

Ekundo kovamwameme mou-pongekwa

Oshiwana shOmwenwe oshihlike, omalutu eni neemwenyo deni, ohatu di yandje momake aTate wopombada, e mu tumine elao nomwenyo waalushe kombada yedu ye e mu dimbulukife kutya, oye Kalunga kashili, ou e li ko nokwa kala ko note ke uya.

Vamwameme nye ovaholike, fye otu li ongovadali vateelela omona e na ehombolo a ya kongelesa, opo tu ka hafeleni pamwe palutu nopamhepo, fye hatu nhuka kehafo linene hatu ke li mona, molwaJesus Kristus omumangululi wetu. Inamu tila okuhepekelwa oshili nouyuki weni. Jesus naye okwa hepekwa omolwetu, ndele e tu fila shili.

Eliaser L.Kaunongwa
Oupumako

Ino idilila eyoka monduda yoye yokunangala

Ngeenge owa idilila eyoka monduda ove omo ho nangala, oto nangala peni, lo eyoka ohali li ovanhu? Diladila tete oyo u ka longe, ove u mone ounongo aushe.

Konyala Ovanambia, ohatu nangala mumwe nomayoka, ndele omolwoboloto yopaumwene ei twa panda okulya. Osha yela ngaho okukala wa kuta, ndele cendenge doye, ovakulu voye, ovakulunhu voye nosho yo oshiwana sheni sha fya ondjala?

Shinana E.Mwatinghimunhu
Windhoek

Okatongo mofikola naka felwe okalambo

Ohandi koleke kenyamukulo la holokele moshifo sheti 30.4.1987, mepandja e ti 10. Omunyamukuli koshinima shokatongotongo meefikola, ohandi mu koleke.

Ope na oshitya shovakulu vonale tashi ti; "Moshitila mwa dja oxupa, navali ohamba omolwovanhu." Ohatu ehela natango kunye, ovanyasha va ye mofikola, ve lilonge, opo va dule okukwafa oshiwana. Okatongotongo meefikola naka felwe okalambo.

J.H.Kasheeta
Jan Smuts Airport

Ethimbo otu na oku li longitha ngiini?

Ethimbo sho lya fa li po aluhe, otwa pumbwa okuthikama nokwidhimbulutha, kutya ethimbo omagano ga za ku-Kalunga. Aakriste yotango oya li ya koneke naanaa oshinima shika palongo ndika: "Oshoka omasiku omawinayi" Ef.5:16.

"One omuku hagu monika okathimbo notagu halakana ihe" Jak.4:14.

Ohatu hepitha ethimbo mokunwa likolutha nomlinima likwawo oyindji.

Naashoka hamu shi longo, ongele noohapu nenge niilonga, shi longeni ashihe medhina lyOmuwa Jesus nokuhambelela Kalunga He omolwe! Ano ngashingeyi ethimbo alihe tve li peva omagano, osho wo tu na okukonga ompito kehe tu mu longele, megumbo, mosikola, miilonga, muudhano nomoongumbimbili.

Linea N.Ileka

Nkene ndi na okusila evi oshimpwiyu

Omagano omakwawo ngoka Kalunga e ga gandja milkaha yetu, tse aayakuli ye ogo evi. Kalunga okwa ti evi olyOmuwa noshaashoka sha kala mo mooha dhuuyuni naamboka ya kala mo. Evi otu na oku li sila oshimpwiyu ngele tatu li longo opo tu mone likulya yokupalutha omalutu getu. Sho sha tya ngaaka, otu na oku li tonatela nawa, haku li hepitha nenge oku li longitha pombambo, nopo ihe tatu li pe aanona yetu li li monkalo ombanawa yi vule ndjoka tve li adhele, opo wo ya mone mo omungundo mekwatathano nevi nonlimeno.

Owindji otatu mono mOmbimbili edhiladhilo ndika, kutya shoka Kalunga okwa shiti limeno, opo tu hupe mumbiyoka tayi mene mevi. Ngele tatu shunitha ombinga yomagano ngaka kuye, eyambopandulo oshi li melandulathano.

Okweeta kOmuwa omayambo ga tya ngaaka giyimati niilikolwa, osho omukalo gwoopala okupandula ngoka a gandja kutse ashihe, notashi tu dhimbulutha kutya ayihe tu yi na oya zi kuye. Omiti inadhi tetwa we, oshoka ngele tve dhi tete, omvula itayi loko we oshoka ombuga yowala.

Nonando tse atuhe ihatu eta iylimati yotango yometeyo lyetu, otu na okugalula oshitopolwa oshiwana kuKalunga, omayambopandulo. Okuumba oondjembo owala mombepo otashi zigopaleke onkalo yevi, naantu ye li mo.

Saara Mutota

Omulongi nopolotika

Pamauthompango aniwa omulongisikola ina uthwa a kale oshilyo shongundu yontumba yopolotika. Ngame onda tala kutya omauthompango ngaka moshikondo shelongo mOwambo ohaga ningliwa owala oohashikeshalye. Omolwashike shi na okukala ngeyi nosigo unake?

Uuna ku na ligongi ngaashi Etango, CDA nosho tuu yilwe, oto adha aakulutusikola naalangi yamwe ya thiga po oshilongaithano shawo ya yi kiigongi ngaambika.

Epulo oli li ihe mpaka: Etango nenge oCDA nani kadhi shi oongundu dhoopolotika? Ngele oongundu dhoopolotika, omolwashike yamwe yomaanongeki haa talika omeho omanene koshikondo shelongo, uuna ye li ookuume kehanganano NANSO?

Omutondi gwoNanso, owa tseyu tuu kutya oNanso ehanganano lyaa shi lyopapolotika? Ngele omaludhi ka leshe omakotampango gehanganano ndika.

Onkee tandi indie nda mana mo, opo oshikondo shelongo mOwambo shi kamulithe aalongi yasho ayehe oshikamule shimwe.

Shilongo Shokambambi
Oshakati

Mboka hamu yi pomahala gooyina yoothigwa, putudheni nawa oothigwa

Otandi nyengwa koomeme yamwe mboka haa yi anuwa otaa ka putudha oothigwa, ihe ngele to adha aanona yaKalunga mboka ya ka putudhwa, oto eta ohenda. Oto nyengwa nee, ku shi kutya omuntu okwe ya okuputudha nenge okwe ya okuhepeka. Otamu hepeke unene aanona mboka hamu yi kuyo notamu ya pe oombepo oombwinayi.

Ndahambelela Omagano Abraham
Uukwaluudhi

Lidiladila tete, u dule okulonga

Ove mulaule mukwetu, lidiladila tete, opo u dule okulonga, shaashi paife owe lininga omuhenako nasha. Weli tula molilonga i he fi yoye. Paife oove wa londa kombada yomatuwa to lyata po omaumbo nomapya oonyoko noonyokokulu.

Ovalaule ovo ve lininga eebotsosto tava nyeka ooina oimaliwa, otamu hekwa koshike? Nge eembulu oda i, otamu yuka peni? Nge la manguluka, Botha ota yuka peni? Fye otu na ewaneno la wana tve li pewa kuKalunga.

Ove S.A., inda nee kedu leni, to ningifa ovamwameme omalai. Fye otwa hala ovamwameme ovo va ya kondje yoshilongo va aluke. Omwene, tilila omhepo iwa movamwameme va shiive kutya oshike tava ningi.

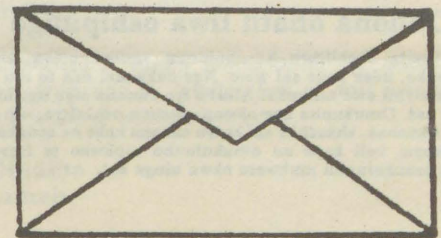
Ndaenda E.Elijah
Engedjo Sec. School

Onda hala okupula kutya ovakwashiwana shaNamibia otamu lwile shike? Notamu file shike? Ouwa waSuid-Afrika, kau shi woshiwana shaNamibia. Etanga leameno ile ledipao? Fye ohatu li luku etanga ledipao. Shaashi oinima ei hai longwa kulo, oya fa yomunhu a vela eenghwengu ile ke he li nawa. Vakwetu Ovanambia, ileni nena mekondejoma nguluko. "Mongula otaku ka kala kwa toka."

W.Hambata
Grootfontein

Epukululo kaamwameme yokOsekundo yaShikongo shlipinge

Eeno shili, sha longwa, sha pu, ihe iipotha omwe yi uvako pombambo. Ongoshigwana shaNamibia shoka shi na enota lyemanguluko, nomu li momusinda gwaahopeki, naakolonyeki yoshigwana shaNamibia sho tashi kondjele uuthe-mba womuntu kehe pwaa kale okatongotongo muNamibia lyetu.



Iilonga mwa longele kOgongo naambika mwa longo kenongelo lyeni mbyoka ye eta sigo oponkatu mpoka omukuluntusikola a tokole kaamu tsikile we manga osikola, oyi nyanyalitha nokayi shi okutumbulwa, oshoka otayi thiminike oshigwana shoka shi li nale oshithiminikwa. Ando mwa kondjelele uuthe-mba weni mboka ndaa na uyelele wa gwana kuwo, ihe haku dhenga nokuthiminika, nokuyuga oshigwana omaliko gasho.

Iipotha oyindji mbyoka ya ningwa kaanasikola yaNamibia nuumvo, oombyoka tayi kondjele shili, noya tsa ondumbo nomulandu gwokatongotongo nuukoloni wevi lyetu notayi pula okatokolitho 435 kIlgwanahanganano ka ye miilonga. Ihe kune omwe ka lyatela pevi. Mboka tamu longelwa kompango yomukuluntusikola gweni hawo uukoloni. Shoka tamu kondjele owo uukoloni.

Uunkolwe owo inaawu pumbiwa, ne owo mwa hala. Emanguluko ndyoka lya tegelelwa komuntu kehe nokwe li hala moNamibia kali shi okuteya po elandulathano, ihe okutulapo omulandumpango omwaanawa. Oshipotha sheni oshiwana kaatondi yoshigwana oshithiminikwa shaNamibia, ihe osha kala omutenge kaaholimbili moNamibia.

Aawiliki yiilonga mbyoka, omwa fa owala omalandwambongo, ngoka haga longele Aanambia iikulumuna. Nane osho mwa talika ko ngaaka. Ewiliko lyiilonga yomuyonena koshigwana oshithiminikwa, nali lyatelwe pevi, ekondjo lyuuyuki li landulwe.

Abraham Shivolo Ndumbu
(Northern Namibian Student)

Meme Hendelina Shiipa, meongalo Eloo, mOndonga 21.9.1987. Okwa fiya ko omushamane waye nounona vaheyalu. Joh.18:11-12.

L.Sh.Nanghala
Windhoek

Meekulu Sesilia Ngotipeni Mwe-shipopya (109), meongalo Ohaingu, 17.9.1987 mouyehame wefimbo lile. Okwa fiya ko ovana 7 nouteku-lululwa 96. Eimbilo 651.

T.I.Shonena
Windhoek

“OVA SHANGELA NGE TA VA TI.....”

Hano okumangulula oolyelye?

Ngeenge omakakunya, vati otaa lwile Namibia, hano edu ashike ile ovanhu tuu? Nomakakunya hano okwe lininga Ovatiyane, eshi ngaho tava tele ceboma mokati koshiwana shavo, nokuhanauna po oinima yavo, voo tava lundile SWAPO?

Fye paife otwa limbililwa, eshi ashike hatu dipawa kovalaula vakwetu (omakakunya) ponhele yokudipawa ngeno kovatiyane. Fiku ovatiyane tava i hano omakakunya nao otaa i? Shaashi fye otu na elinekelo, kutya ovatiyane (cembulu) ove na okuya, nande hanena.

Nghilifavali Nd.N.
Okongo

Ohatu nyengwa

Ngeno otu kwafelwe ngaho omalaka a kale haa nyolwa lwa-xuuninwa, opo ovahongwa va leshe nawa oilongwa ikwao. Shaashi ngeenge owa nyola tete elaka, ndee ku na elinekelo nawa kutya owe li pita, nena oto ka fya ounye nowokulesha ei ya fyaala ko.

Hangula Nekongo
Oshela Secondary School

Ekumagidho koshigwana

Shigwana shaKalunga, holathaneni. Shigwana shaKalunga, holathaneni. Shigwana shaKalunga, holathaneni. Onda tumbula lutatu nda nkankama muukwatatu wa Tate Kalunga ngoka e tu longo okuholathana, oshoka ohole oyo tayi vala ombili, Olukeno esimanekeathano.

Elongelokumwe nooyakwetu neyakulathano ewanawa shili lyaa na okambweenga, oshoka ngele nani ou na ombili yokambweenga, otashi ti ongoye omuhepeki gwayakweni.

Okambweenga oko taka vala onyanya, ondhino, efupa nehepeko. Ayihe mbika iiyimati yokambweenga, ihe ohenda onene kaantu ya tya ngaaka. Nengele oto patana omadhiladhilo ngano, tala oohapu 1 Kor.3:1-6, nena oto mono kutya ohole oshinima oshinene.

A.Martin

Ounona ohatu liwa oshipungo

Ame onda limbililwa kovakulunhu vamwe otava ningi omapuko, ndee kave shi wete. Nge oukaana, nde to mu lombwele vati owe mu tuka. Alushe fye onunona ofye ngo hatu ningi nai. Omukunhu nge okwanyonauna oshinima, ota lundile okanona, shaashi e shi kutya okaana kake na ceenghono okupopya, vali kape na omukulunhu mukwao ta itavele kutya omukulunhu mukwetu okwa ninga nai.

Tu ilikaneni pamwe, Omwene te ke va pa omhepo ipe.

Johannes Joram

Omakotokelo momalenga

Okwa ndhilandhilikwa omalenga gamwe moshigwana haga longitha iineya okukwata ko oshigwana noku shi pukitha. Omalenga ngoka ohagi iningi ga fa gaa nakonasha nepangelo lyomukoloniyeki, nonando ohaga longele kumwe nalyo.

Omalenga ngoka ohaga ti, kage na konasha nepangelo lya SA nenge niilonga yiikengelela yEtango, ihe omagumbo

Etseyitho lyowina

Ehangano lya tseyika nawa nedhina Jambolongondjo Garage, olya lunduluka nedhina epe AUAS MOTOR SPARES. Olya tameka okulongithwa 1.6.1987.

- Ehangano lyombiliha noli na konyala iipumbiwa ayihe yiihauto.

- Omatayiyela niikwawo yiiyenditho omaludhi konyala agehe.

- Auas Motors Spares oyi li pO-mugongo pooha dha A.B.C. pOluno.

- Ila wi italeleko mwene!

Oyi li mewiliko lyaMoses Auala, Box 256, Tel. 168, Ondangwa

gomalenga ngoka oto adha ga kondekwa komakunya ga SA. Oge na oondjembo dha SA, ohaga futwa ku SA.

Omalenga ngele oga hala shili oshigwana shi ga landule, naga laleke omakakunya, ndele taga kala ngaashi ga kala shito pamuthigululwakalo gwoshigwana.

Amakali V.Kambo
Etalaleko Sec.School

Ekundo kovanyasha

Onda tuma oshipopiwa eshi kOmukwetu noneudo, shi na sha novanyasha eshi tava funga meitavelo notava nyekwa ouladi komalodu. Ovanvasha vamwe ihava dulu okupangela yo onghalo yavo. Vamwe otava tumbula omahongo opomunghulo notava hongaulwa fiyo va yapuka mo moukriste.

Ava ve li meefikola va dimbwa kutya ova tecelelwa va mane elihongo lavo vo va ka ninge ovaleli voshilongo eshi mongula. Ovakulunhu vamwe navo otava yandje oshiholelwa shii kounona vavo, eshi hava piti poukefe nopoundingosho, fiyo la toka, ngolongo a twa pokalambo kofingo. Okanona nge ka nyono ile ka dopa, nena ota tanguna, yee a dimbwa oshiholelwa shoukolwe osho a yandja meumbo.

E.V.Haifidi

“Taambathaneni ngaashi Kristus e mu taamba”

Ovaholike muJesus Kristus, nomodula ei onda hala oku mu halela omayambeko aTate womeulu. Ovalihongi amushe kundweni nokavelishe aka Ovaefeso 5:11-13.

Ongehe tambuleni oilwifo aishe yaKalunga, mu shiive okulipopila mefilu lili nokukala ofika, eshi mwa longa aishe.

Vanambia vakwetu, eilikano tu diinineni, fye tu dibulukwe momailikano etu alushe Tate womeulu e tu pe ombili nemanguluko.

Okulineekela Omwene oshi dule okulineekela ovanhu.

Tuyenimo Aisheoiwa Paulus
Olukonda

Ethimbo otali ya

Otandi ehama, ihe kandi na uuvu. Uuwehame wandje otava etwa kaamwameme Aanambia mbono ya pukithwa, noya itaala ya ninge ilongitho yomutondi nomukoloniyeki gwaNamibia, South Afrika, opo ya thiminike nokuthiminika oohe, ooyina, aamwayina naakwashigwana aakwawo.

Ethimbo lyelunduluko otali ya, we shi hala nenge inoo shi hala, Namibi otali manguluka. Ihe ongoye omukwetu wa ningwa oshilongitho shomutondi nomuniita gwoshigwana shAanambia, oto ya u kale peni?

Shi tseyi kutya oshipwe shomuntu oshi vule shombwa. Mokati ketu omu na aantu yamwe mboka ya dheulilwa uukakunya womineya nokutya (uundaadhi) nelalakano lyokuningina moSWAPO, opo ya wape okukengelela oshigwana shawo. Nashi yele nawa kutya ekoto olya gondja pamwe nuugoya. Otali ke ku faalela mekano nomeso ewinayi.

E.Joas Hainghumbi

Ekumagidho kootate noomeme

Ope na ootate oyendji mboka haa ka longa kUushimba ta ya hepeke aaholike yawo naanona yawo mbono haya thigi komagumbo. Sha hala okutya tate shaa a yi koSwakopo nenge penipeni, ota kongo owala omukulukadhi gumwe ishewe hwiya, ngoka taa kala nokwiinyandha naye sigo a dhimbwa, kutya oku na egumbo kOwambo.

Mpaka ope na iinima hayi holoka koombinga adhihe ngele kutate nenge kumeme. Shaa nee tate e ya po, ye oku na omukulukadhi kUushimba, meme ota adhika a kanitha ombili. Gumwe ota tameka nokuli okutukana, nokuumana, osho ngeyi oontamanana ndhono dhe etwa kutate dha tameke. Oomeme yamwe ohaa kambadhala okuthiga po omagumbo gawo e taa shuna kooyina omolwonkalo yatate ombwinayi.

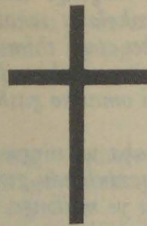
Mpano ondi na ekumagidho koome aaholike, mbono ye na ootate yawo ya gwile moshiponga shi li ngeyi, kutya idhidhimikila uudhigu woye mboka pamwe negalikano. Kalunga ite ku etha po owala, ihe ote ku kwatha. Inashi pumbiwa okutamanana nomuholike gwoye, nando a ninga nayi. Mu heka nohole, galikaneneni pamwe Kalunga kombili ote mu pe ombili, otashi vulika meme nge ota kala nokutamanana aluhe, oto kolondeke owala omusamane e to mono owala sho a shuna inee ku laleka.

Ootate yetu aaholike, otu shi shi kutya otu li pethimbo edhigu moka twa topolwa naaholike yetu omolwilonga nomoluupika mevi lyetu, ihe tu taleni po nga shono tashi opalele notashi lalakanene uwanawa waantu ayehe mono mwa kwatelelwa aaholike yetu komagumbo getu. Kalunga kombili nokelandulathano na kale pamwe natse koombinga adhihe.

Maria Amukwaya
Swakopmund



Nakusa omupangi H. Elago.



Omunangeshefa Hileni a Hulitha ombaadhilila

Onkundana yeso lyombaadhilila lyomunangeshefa omunene Hileni (Pau) Elago, oya dhenga omakuthikuthi gayo koombinga adhihe ndhoshilongo, sigo omuyuni wopondje nokuli.

Oshiponga osha ningwa 12.10.1987 mOshakati, komatango. Oontaliho, otadhi ti, eso lyameme Hileni olya holoka sho a dhengwa koshihauto shomukwashigwana manga kwa adhihwa te ende kolupadhi u uka koshigongi shaakiintu kOngeleka, shoka hashi kala ko Omaandaha kehe.

Efolo Elago oya adhika taa zi pongeshefa yawo yoomboloto nameme Bernadette Aitembu, okahauto kamwe sho ke ya neendelelo enene e take ya pitula po, ko e taka kandoma. Nakusa Hileni okwa hulithile mbala koshipangelo naBernadette ota yakulwa natango mOshakati. Aamati yaali mboka taku tiwa oye eta oshiponga, inaa mona okapethili. Nakusa Hileni okwa thigi ko aanona yane. Okwa li gwomimvo 44.

Sebulon Ekandjo

Etumwalaka lya zi muupongekwa

Mokampito haka okafupi, nandi ete po omatumbulo gamwe koshigwana shaNamibia. Ondi shi shi nkene iinima tayi ende muNamibia, monkalo ndjoka esiku kehe yu uka ashike kuuwinayi.

Aagundjuka yeni huka pondje, aamati naakadhona, esiku kehe oye li mekondjo palutu nopamadhiladhilo. Tse kape na nando esiku limwe tu ka zimine tu kale kofi yomuhepeki gwetu.

Kune omakakunya neepapeta, nando omwa kala ngashingeyi ethimbo mwa landitha po oshigwana, inamu shi dhimbulula natango. Omwa thikama mu kondjithe ooho, oonyoko, naamwanyoko, mu na eihumbato lya tya ngiini ngawo koshigwana?

Omwa zimine mu wilikwe kaatiligane? Ohoni onene oyi thike peni? Onda nyengwa oku mu dhiladhila nkene mwa tya. Omwa kambela sha pamwe moonduge dheni? SWAPO ota kondjele Omunamibia kehe, nane wo. Etheni iilonga yokulongithwa komuhepeki.

Aina Angula
Sweden

Ohenda

Aalongi aasimanekwa, kutheni oongaku koompadhi, opo mu kale pondje yokupopiwa. Patiyali oondjokana dhongashingeyi ndhoka tadhilimbilike: nosha yela kutya omutondi gwadho omunene iikunwa. Tu kondjeni tu sinde ayihe mbika.

Titus Shinkwanyu
Ongandjera

Ava va fyaala mo ovo shike?

Omolwashike ovataleli va kufila mo ovanhu vamwe moilonga youhongifikola ava ve na eedjapo do 6-7, vo tava fiye mo vamwe? Ava va fyaala mo ovo shike? Unene osha ukilila koshikandjo shaUukwanyama.

Taulinge Moses
Oshikango

Oshili mondjila

MOmukwetu No.2/87. Ep.11, omwa li oshipopiwa sha Mr. J.H. Kasheeta. Kaume Kasheeta ou li mondjila lela, moshiwana shOvawambo omo amuke tamu monika ekolonyeko lomufiyekadi neefiye. Otava futu eumbo luvali ile nokuli lwomulongo nonande la futilwe komushamane oo a li omutwe weumbo olo tuu olo.

Nda hala nokuhalelela omalenga noovene vomikunda noulengwena mu tale nawa nokudiladila nawa, ngaashi tashi wapalele oshiwana sheni. Omolwaasho omatokolo eni kae li pauyuki, ohamu lilifa ovafiyekadi neefiye. Tamu lilifa oshiwana sheni luvali.

Mokupula ofuto ngaashi omwenyo waye wa hala nope he na nghenda, nonge mboli onakufiwa po ovomepata lomongula naku she tu ka nyange, nena ponhele yokulila omuholike waye a tetekela oku na okulila ongomunhu e he na vali onhele.

Ame mwene itandi popi omufiyekadi aeke, ndele novadalwa yo. Osheshi ohatu mono eumbo ola li lameme naashishe shi li mo otashi dulika ovadalwa ve shi longela mo. Namwene womukunda ou na eshiivo kutya ounona ovo va futa eumbo olo.

Ndele shamha tuu ounona va fiwa po kuina ile tuu kwao a li ha ifanwa neumbo olo, nena mwene womukunda oukengeli owa wana po. Osha yela kutya ovapangeli vetu ova kala tava shundula onghalo yoshilongo shetu neliko letu. Ye wonale okwa tile; sha pumba nyoko, naina yamukweni osho ngaho.

Okwa tiwa omupangeli okwa tulwa po kuKalunga mwene. Ndele Kalunga ketweni ota ti pangela edu loye noshiwana shoye, ndele opauyuki nopaushili.

T.N.Mwatelulo
Walvisbay

Etambulo lovaenda inali wapala

Otwa li tu na ovaenda va dja keongalo Olupandu ve uya oku tu talelapo. Meumbo nge mu na ovaenda, enyaku li li mo, oli dule lambishi meumbo mwa tomwa.

Ovaenda vetu inave tu pa vali omulongelo ou kwa li ve tu nhunina. Ove tu pa ashike eimbilo limwe opone ngeno ve tu kufile ko mbali, kohalutali ova kufwa ko. Nokudja opo eshi ongeleka ya dimbuka otaku tiwa, inava tya katu i kovalu. Okudja opo eemwenyo detu oda nyika oufiye, omolwovamwameme venya inave tu pa omulongelo wetu, kape na ne etomhelo kutya onghahelipi.

E.J.Haimene
Windhoek

E he ku lombwele ke fi woye

Onda lesa oshifo shonomola No.13/1987 tashi ti ovakulunhu kave na sha nemanguluko, eshi oshinima shovanyasha. Kutya emanguluko kali na sha novakulunhu, oshinima shovanyasha kadi fi doshili.

Ngeenge hatu tongo emanguluko, oshinima shomunamwenyo keshe, kutya ne omunyasha ile omukulupe. Ovakulupe navo yoo ova pumbwa emangulu, o, eshi tava dengwa notava lyatelwa momaumbo komaloli a SA, inave shi hala.

Oshinima shimwe osheshi, ovakulupe emanguluko ove na sha nalo, molwaashi ovo ve tu dala fye ovanyasha. Ovanyasha vaNamibia natu diladileni nawa unene tuu ovo mu li moukakunya to denge nyoko naxo. Owa ama peni? Naapa to di openi? Napa toi Namibia ngeenge la manguluka?

Shokoluke ihashi monika fiku tashi fiki, yoo onghuwo yepongo oKalunga he i lotoka.

Namhadi Haixwema
Okahandja

Okatongo otaka hepeke

Omolwashike ovanailonga vovalaule inatu valukwa koilumbu ngaashi omunhu e na okuvalukwa? Omafiku 20, lwaapo aMaalitsa 1987, ovanailonga vamwe Ovawambo, nashilumbu umwe moLuderitz, ova kandomene nohauto moilonga, moOfabulika, ohauto inai dja po vali fiyo onena. Mekandomo omo, ovalaule ovo kwa li va yehamekwa unene. Umwe womuvo okwa li a yehama unene fiyo ta tuminwa kOvenduka. Oshiponga okwa li she mu twala fiyo ometando.

Manga e li moshipangelo ofabulika otai landele po oshihautho shayo osho sha hanauka po. Winya eshi a dja koshipangelo ina pewa nande ofuto yasha, fiyo opapa okwa ninga ofingo yoshilema pe he na ofuto. Omolwashike twa talika ko tu dulike nokomatuwa? Omolwoshifefa shaKalunga sha lyatelwa pedu koilonga yomake ovanhu?

Hinaunye I.M.Henghono
Luderitz

Hekelekweni amushe

Oshiwana oshiholike shaNamibia, kundweni nondjovo yOmweene muPetrus 4:12-14, Eimbilo mEhangano 500.

Onda lesa oshifo shOmukwetu 30.6.87 omo mu na efyo la Josef Dumeni. Onda shakenaka mo oinima ihapu tai popi etanga leameno.

Onda hala tu tuleni oukuni kumwe opo edina lomakakunya olo hali longifwa, etanga leameno li lundululwe. Ame onda luka nokuli, nali ninge "Etanga ledipai." Efipi lohonde moshiwana shaNamibia.

Otweehelwa u yandje omadiladilo oye nokuluka edina loye, opo tu lambalaleni eli tali wapalele. Ihadi wanene omutwe umwe.

K.Hadibo
Tsumeb

RUDOLF BAHM

Omupangeli gwootundi

MOSHAKATI

Mpaka otandi tseyithile aayakulwa yetu ayehe, kutya iilonga yokupangela ootundi, okulanditha po oompe nokwoopaleka ndhoka dha teka, okutula ko omakende numanya, itatu yi longele we metungo JAMAICA INN.

Ngashingeyi otu li mpaka mOshakati metungo lya ENOK (BBK), mpeya hapa kala pwa thikama aluhe omaloli goeiskilima (Roomys). Shika otashi ti elalakano mpaka, oku ku etela eyakulo ndika popepilela, waaha pumbwe we okufala nenge okutuma oowili dhoeye kUushimba.

Ohatu landitha wo oowili oonkulu kondando yi li hwepo, onkene tu talela po ngele to piti pOshakati.

ILA KOFANDITHA YOMAMBO MOSITOLA-MAMBO ONIIPA

Ositolamambo Oniipa, okuza 1 Sepetemba sigo 31 Desemba, 87 otayi ka landitha po omambo gomadhina taga landula, kondando yopevilela. Omambo ogendji gomugo ngaashi to ga dhimbulukwa, oge na oshikalimo sha ngongeka, onkene ino etha ge ku pitilile po oshoka ethimbo lyofanditha ngele lya hulu, ondando otayi ka shuna moka ya kala shito, endelega ano.

<i>Nakambalekanene (Ehistoli)</i>	<i>R5-00</i>	<i>R2-00</i>
<i>Onakuziwa yandje Leonard Auala</i>	<i>R5-50</i>	<i>2-00</i>
<i>Oshigwana hashi lesa (T.E.Torronen)</i>	<i>1-00</i>	<i>0-50</i>
<i>Aleksis Kivi LEA (oshinyandwa)</i>	<i>0-60</i>	<i>0-30</i>
<i>Shitilangu (omunagwokombanda)</i>	<i>3-80</i>	<i>1-50</i>
<i>Robinson Crusoe (ekwamukuli)</i>	<i>2-30</i>	<i>1-00</i>
<i>Moshinkoti shaShakespeare</i>	<i>2-30</i>	<i>1-00</i>
<i>Moshilongo shetu (L.M.Shemuvalula)</i>	<i>1-00</i>	<i>0-50</i>
<i>Oushitwe woinamwenyo mOwambo (L.M.Sh.)</i>	<i>1-00</i>	<i>0-50</i>
<i>Iikela yaAshipala (E.T.Elago)</i>	<i>1-40</i>	<i>0-50</i>
<i>Ewi mOmulilo (Eino Amaambo)</i>	<i>1-40</i>	<i>0-50</i>
<i>Ame ohandi itavele (U.Poikolaine)</i>	<i>1-30</i>	<i>0-50</i>
<i>Itaakola, litye (T.E.Tirronen)</i>	<i>0-90</i>	<i>0-45</i>
<i>Omapenda aKristus</i>	<i>0-80</i>	<i>0-40</i>
<i>Embo lokuteleka (K.Poikolainen)</i>	<i>1-40</i>	<i>0-50</i>
<i>Iilonga yomoshinyanga (M.Ngipandulua)</i>	<i>3-30</i>	<i>1-50</i>
<i>The Holy Bible for Children</i>	<i>11-00</i>	<i>5-00</i>
<i>Elaka Etoye A B C</i>	<i>0-50</i>	<i>0-20</i>
<i>Ondaka inyenye kovalessi vape</i>	<i>0-50</i>	<i>0-20</i>
<i>Elilongekido kOmuwiliki (V.Munyika)</i>	<i>2-50</i>	<i>1-20</i>

— Aakuluntuskola ileni mu ilandele oobiblio dhooskola dheni.
 — Aawilikingundu miikandjolongi yi ili noyi ili, ileni mu landele oombelewa dheni nosho tuu omambo gokutopola opapandulo momathigathano gontumba nogongandi. Ngoye ino dhimbwa okulandela po kuume koye, ngandi, u mu tumine omagano gembo limwe lyomungaka ge na oshikalimo ihaashi lyuka.
 "Lye enda ongula"

ESO:

Kuku Monika Ipinge, mOndjola, mUkwambi, okwa mana oondjenda dhe muwehame wethimbo ele 30.8.1987. Eimbilo 388.

Pelagia Nathanael

Okakadhona koomvuka 17 Aili, Michael Nameme Marian Naboth, mOnkani mOndonga, oka manene oondjenda dhako 18.3.1987 moshipangelo shaNandjokwe, muwehame womasiku gatatu. Oka thigi ko he nayina naamwayina yaheyali.

J.Michael Grootfontein

Jairus N.Kamwandi (57) okwa mana 11.7.1987 moshipangelo shaShiwarongo, muwehame wethimbo ele. Okwa thigi ko omukulukadhi gwe naamwayina 8. Eimbilo 624.

Vistorina M.Shilunga Grootfontein

Sakaria E. Mutilifa, Olukonda, mOkaloko 17.8.1987 okwa thigi ko aakuluntu ye naamwayina yatano. Eimbilo 219.

Paulus Nepembe Oranjemund

Kuku Lydia Kaalo (69) Oshipanda, Oshigambo 29.8.1987, okwa thigi ko oyana yaali naatekulu oyendji. Eimbilo 470.

Hileni S.Nehoya

Ester M.Shaambeni meongalo Onguta 21.8.1987. Eimbilo 129.

Lucas S.Shaambeni Oranjemund

Omwene Tate Kalunga okwa ilapo omupiya waye Tate Johannes Homateni Nghitwikwa (79), 3.9.1987 mOhaingo mOukwanyama.

Okwa fiya ko omufiyekadi waye, ovana 9 ovatekulu 32. Fili.1:21 Eimbilo 448.

O.Liyolifeni Nghitwikwa

Tatekulu Jeremia Iihuhwa 8.9.1987, megumbo lye mOnyaanya. Okwa thigi ko oyana 11, aatekulu 47, aatekululwa 11 nomuselekadhi gwe. Eimbilo 646.

Ruusa Sakaria Oneputa - Oniipa

Rebecca Nghishikomesho Hamukoto (23) okwa xulifa 1.8.1987 moshiponga shotuwa. Ohatu pandula Gabriel Alweendo naAbsalom Haiweka ovo va li ve tu kwafa momhumbwe yoyeendifo, naaveshe ovo ve uyile tu topolelafaneni moluhodi eli. Eimbilo 621

Alugodhi M.G.Ngeandafiki

Milka Natangwe Shomokuti Amupolo (25) momukunda Oshuuli, megongalo Othika mUkwambi 11.6.1987, ombaadhillila moshiponga shoshi-

hauto. Okwa thigo ko naamwayina yahetatu. 2 Korinto 5:1-5.

Selma M.Amupolo Ongandjera Sekundosikola

Kuku Helena yaMbango (99) okwa mana oondjenda 30.7.1987 megumbo lye, momukunda Oshali megongalo Omulonga mOndonga. Aatekulululwa 84, oyana 4. Eimbilo 410.

Joël E.Nuunyangyo C.D.M.

Kuku Lusianene Nakandi Kaandjelo 29.7.1987, muwehame womasiku omashona. Okwa thi ko oyana 9 naatekulu oyendji.

Omwenyo gwandje oKristus nokusa okwo elikolo.

Sakeus E.Nangolo Onyaanya

Vicktoria Kuneni Nghikembwa (22) 21.4.1987, okwa fiya ko ina novamwaina. Okwa li ta fikola mOseko mOngha.

J.K.Kandume Ondobe

Omusamane Elifas Abed Ekaku (54) megongalo Uukwiyuushona 5.7.1987 muSwakopmund muwehame wethimbo efupilela. Okwa thigi ko omuselekadhi gwe. Ehololo 22:16 Eimbilo 654.

Selma M.Nafuka

Omukulupe Rakkell Hengobe (90) womomukunda Omunyekadi meongalo Ondobe mOukwanyama, 13.9.1987 mouvela wethimbo lixupi.

Okwa fiya ko ovana 10, ovatekulululwa 46 Ovukulululwa 56. Kol.4:4-5.

Jason Nghilifavali Kandume

Otandi gandja omahekeleko ku kuku Fillippus Immanuel, nameme Marta Neshuku omukunda Oneputa, megongalo Oniipa, omolweso lyokaana kawo hoka ke ya thigi po ombaadhillila. Eimbilo 274.

Iyambo D.Sarlotte Nangalo Sec. School

OMUKWETU

Oye oshifo shOngeleki Onkwaevangeli paLuther yomuSWA/NAMIBIA.

Ohashi nyanyangidhwa mOshinyanyangidho shOngeleki mOniipa.

Omukuluntu gwoshifo omumbisofu Kleopas Dumeni.

Amushanga gwoshifo omusita Sebulon Ekandjo.

Ondando yOmukwetu muNamibia naSouth Africa R6,00 komumvo.

Palwe muAfrica R10,00 nokombanda yomafuta R14,00 komumvo. Mondhila R17,00.

Oondando nomambesitelo agehe naga tumwe kOmukwetu, Oniipa, P/Bag 2013, Ondangwa, 9000.

ELOC PRINTING PRESS
 PRIVATE BAG 2013, TEL. 11, ONDANGWA 9000
 SWA/NAMIBIA.