

OMUKWE TU



40c

No. 20

ISBN 0-620-06828-0

Omumbisofi neefolo kuAmerika

Omumbisofi Kleopas Dumeni nameme Aino Dumeni, oya ka kalela po Ongeleki ya ELCIN moshituthi shelongeko lyomumbisofi Herbert W.Chilstrom, moshilonga shewiliko lyOngeleki ya hangana onkwaLuther muAmerika.

Elangeko olya ningilwe 10.10.1987 muChicago, ehala ndyoka lya hogololwa li ninge endiki lyoombelwa oompe dhongeleki ompe, ndjoka ya dhanene oshituthi shayo shehokano muMai numvvo.

Omimvo odhindji dha zi ko, odha kala dhelongekidho lyoongeleki ndatu oonkwavaangeli paLuther muAmerika, dhi ninge ongeleki yimwe ayike moshilongo. Omumbisofi H.W.Chilstrom (55), oye a hogololwa a ninge omuwilikingleki gwotango gwOngeleki ndjoka yi na ngaashingeyi aakawanegongalo ayehe kumwe oomiliyona 5.3.

Kape na nando ogumwe gwomaawilikingleki aakulu yoongeleki ndatu a zi mo mehogololo.

Tala kep. 2



Omumbisofi K. Dumeni

IITA NOMALOVU OYA KALA OMUTENGE KOMAPEPE GOSHILONGA SHUUNAMITI 1986/87



Konyala aantu yomilongo oya li ye ehamekelwa esiku kehe pokati komambathano gaakiita, mooboma moondjila nomokuyahelwa miilangela yaakwiita, moshitopolwa shokuumbangalantu nosha dhigupalele iilonga yuunamiti," osha leshwa mehokololo lyokomumvo lyiilonga yiipangelo yOngeleki ya ELCIN moshitopolwa.

Momapandja galyo 88 ehokololo olya kwatelela mo ehistoli lyoshilonga shuunamiti mOngeleki, omwaalu gwaanashilonga, egwanitho lyomutenegenekwamwaalu nomathaneko goshilonga shoka moomvula tadhi landula.

Mulyo otamu holokele wo omiyalu dhaavu ya yakulwa, omaludhi gomikithi dha pangwa nomwaalu gwaamboka ya faalelwa komavu ngoka. Evundakano lyiita moshitopolwa omadhengo gaakwashigwana, omalugodhi omadhigu gomeni niikulya yopashingolo mbyoka ya kutha ehala enene lyiikulya yopashigwana moshitopolwa, oyo yimwe ya gandjwa uunzapu ya kwatha mokulondeka epiyagano lyomitse nelondo lyombizi, pakonakono lyomundohotola Helene Von Schantz, ngoka a yakula oomwedhi hamane mOnandjokwe.

Okwa gwedha ko a ti, iilonga yaapangi noondohotola miilonga yiipangelo yOngeleki, oya li wo ya gwedhelwa omutenge kelongitho nayi lyomalovu, komadhengo gaakwiita, nokomakandomo giyenditho moondjila.

Ongeleki ya ELCIN ohayi sile oshimpwiyu yiipangelo 9 nuukilinka 19 mOwambo noKavango, naanshilonga 700 mboka taa longo mo. Aavu 356,000 ehokololo olya ti oya li ya talele po Onandjokwe okuza muMaalitsa 1986 sigo Maalitsa 1987, manga aantu 32,000 ya li ya langekwa moombete.

Mokuulika komikundu dhiilonga moshinaku-gwanithwa shoka, ehokololo olya ti, yiipangelo yOngeleki otayi yakula aantu sha pitilila oonkondo dhayo, ihe aanashilonga mboka ye li mo nando inaa gwana, otaa nyengwa

Tala kep. 6



Omukundu gukakunya onagu ka kundathanwe ano uunake?

Miitopolwa ayihe yaNamibia mbyoka ya yalulwa kutya oshitopolwa shiita, unene mOwambo, aakalimo otaa lili ethimbo kehe kiilonga yoluhindo, yedhipago noyomahepeko tayi longwa komakakunya. Epulo enene olyo ndyoka kutya omakakunya ngaka oga zi peni ano notaga kongo shike?

Iilongo ayihe ya manguluka muuyuni, omapangelo gayo ohaga dheulile aagundjuka aalumenu muukwiita nomuupolosi, tashi ningwa paveta nopalandulathano lya ziminwa koshigwana ashihe.

Omahiyo ohaga zi mombeleva yoshilonga shoka notaga adha aagundjuka nenge aasamane momagumbo gawo, nelalekathano tali ningwa kaavali nomwana, nenge okomukulukadhi noyana, nepangelo olyo hali kala aluhe omupokati komukwiita ngoka negumbo lyaandjawa sigo ethimbo lyiilonga ye lya pu ko, ta galukile kegumbo nomoshigwana a tsikile onkalamwenyo naakwashigwana ooyakwawo.

Epangelo noshigwana okudheula aagundjuka yalyo ngeyi, okwiilongekidhila kehe ngoka ta ponokele oshilongo

Dha za kep. 1

Omumbisofi mu-Amerika



Meme A. Dumeni

Esindano lyOngeleki yahangana muAmerika o-kwaadha uukumwe mboka, olya gandja etegameno enene koongeleki oonkwaLuther muNamibia, ndhoka nadho wo dhi li mondjila yokuninga ongeleki yimwe ayike.

Sebulon Ekandjo

ta zi pondje nenge ngoka te eta evu-ndakano meni lyoshilongo, opo ombili yaakalimo yi gamenwe noyi popilwe. Aantu yoludhi nduka ohaa ithanwa ashike aakwiita nenge aapolosi, opuwo. MuNamibia omwa dhikwa epangelo lyopashigwana uunake ano?

Omakakunya moshigwana shaNamibia oga zi ano peni? Oge na elalakano lyashike notage li ningile lye? Ngele oge li oshitopolwa shimwe shuukoloni, ngaashi iilonga yago nedhina lyago tayi shi ulike, ethimbo inali thika, aavali ya tameke okukonga uunona wawo mboka wa yakwa nenge wi iyaka momagumbo wa ka ninga aayambidhidi yelongitho lyoonkondo, ndyoka lya tondwa koshigwana.

Aavali muNamibia, mboka OMUKWETU a tsey a kee na omalimbilo, kutya oya yuulukwa ombili negundjilo, kaye na ewi okukundathana na SA ngoka ta longitha uunona wawo pwaa shi paveta? Oshitokolitho oshitine (4) mekotampango lyongongayiigwana (State bond) ndjoka ya pingenwa kiigwanahangano (UN) moka SA e li oshilyo ngele inashi pitika evi inaali manguluka (ngaashi Namibia) mu dhikwe ookamba dhaakwiita, ndishi osha yela wo kutya itashi pitika aavalelwa mo ya dheulilwe uukwiita?

Oshitokolitho shoka pakutala oshi na oonkondo dhi thike pamwe noshitokolitho 435 shOraata yiigwanahangano 1978, shoka shi na epopilo enene moshigwana shika tashi utha Namibia li li mondjila yokulongekidhilwa emanguluko. Epangelo lya SA nalyo olye shi zimina kutya, "eeno," Namibia inali manguluka natango, nali manguluke pamathaneko ngoka.

Mevi lya tya ngeyi inaali manguluka shoshili, itashi gwanene ando opo epangelo lya SA lyaa longithe we aagundjuka nembembeleko kutya otaa gamenene po, uuwanawa wAaluudhe, peha lyokupopya Aatiligane? Omukwetu oku shi shi kee na omalimbilo, kutya Aaluudhe moshilongo shika kaye na ondumbo nuuwanawa wAatiligane shono ashike aakali yomevi ndika ye na ondumbo nasho, osho okukonga ashike uuwanawa wongundu yolwaala lwontumba, manga yalwe taa ethiwa.

Ongeleki moshilongo shika, kakele koonkambadhala dha simana ndhoka ya ningile okwiimba ando epangelo lya SA kaali tule aagundjuka mboka miita, mbyoka inaayi kwatela mo uuwanawa waayehé mevi, kayi na we oshitopolwa moshigwana, okuuvitha ko ondilo mokukondjela kwomuntu kehe, ombili mokati kaagundjuka naavali?

OMUKWETU oku na eitaalo lya kola, kutya omukundu gukakunya moshigwana inagu kundathanwa natango neitulomo komuntu kehe, nonando elilo lyoshigwana omolwomahepeko otali uvika konyala mokana komuntu kehe.

KALUNGA UMWE AEKE

Onda hala oku nyamukula, kepulo lomOmu-kwetu waMaalitsa 30/1987 No. 6, komumwameme u na omutima u li momalimbililo. Ovakulu voye neendenge doye opo tu li, ohatu ku hekeleke. Kala nokwiilikana Kalunga, ota nyamukula pfimbo laye la wapala.

Ofy e ovanelao nonando edu ola hakameka okanya kalo mokuponapo ohonde yetu, fye otu na omupopili ou e tu kufa momaudjuu etu nota feta po oluhodi letu.

Kalunga iha kofa, oku li oupafi, ke li kokule nafye. Kalunga iha holekwa sha, naaishe oi li poluhaela momesho aye. Kalunga iha kumaidwa ile a longwe eendunge, osheshi aishe ei tai longwa ye mwene oku i wete note i nyamukula

pafimbo laye olo ye e li udaneka. Kalunga iha tila ngaashi fye hatu tila, iha tilifwa ngaashi fye hatu tilifwa. Omolwashike tu na okutula, fye twa udanekelwa exupifo? Kalunga mwene oku tu shi.

Nande ve tu dipae fye itave tu manepo, nande ove tu tilife, fye itatu tila, nande ove tu tule meedolongo, fye itatu wanamo, nande nave tu tatae, fye katu na apa hatu i.

Kalunga ketu ote tu pe efindano.

J. H. Hamukoto
Walvis Bay

Eputudho lyaanano nali kondjelwe.

Omukuluntu omuvali omuholike, dhimbulukwa kutya oluvalo lwoye owe lu pewa omagano kuKalunga. Ngele omumwoye a yona sha, ino mu popila nando, shila shoka una okugandja uuyele komumwoye, kutya osho e li ngaaka, shaashi ngele owe mu popile, nena otashi ulike okuhaalongela kumwe naalongi yomunona gwoye. Sho to ithanwa u ye u ka pulakene shoka omunona a ningi, ongoye omutse gwe.

Aakuluntu yetu ne, ngele omwe tu lele ngaashi aana yaEli kamu li mondjila nando. Ngele ehokololo omu li shi nawa, Eli okwa sa ngiini omolwoyana? Dhimbulukweni kutya oomwenyo dhaanona yeni, mboka taa ningi iinima yi li ngaaka otamu ke dhi pulwa. Omunona a putudhwa okwi ili ina fa ngoka ina putuka.

Oshilonga shomukuluntu ndishi okuputudha omunona aguhe pamwe nontilokalunga, nena ngele otamu ethele oluvalo lweni moshilambo oshile ngaaka otau sile mo ashike. Etumbulo ndika nenge eyamukulo kandi shiwo. "Awe ethimbo ewinayi". Ewinayi shili, ihe olya pumbwa epukululo lya mana mo lela. Ngele nani omwa ti owala "ethimbo ewinayi", nena otamu haluka owala aantu taa ningi iita moosikola omuntu nomwana taa kondjo, yo iita oyo inaatu hala nando we moshilongo muka.

Talen oshinima shoka nawa, manga inaashi koka muule. Oshilalo ohashi pangwa manga oshitalala. Ano natu italeniko nawa nombili nohole nesimanekathano.

N.Freeman-Nehale
Ondangwa

ETUMWALAKA KOVANYASHA LA DJA MOSHIPANGELO

Ondi na ehalo opo ngeno tu popyeni kokanya nokanya, ndele itashi shiiva. Onghee onda kendabala okunyola omatumbulo aa nomoku shi ninga ondi wete oshipu vali kwaame, nande ounghundi ouhapu natango mokunyola.

Mokunyola omatumbulo avari, atatu oupyu nouyehameotau tameke, nokupopya itai dulu vali. Ediladilo lokunyola sha mwaame ola penduka mo nale okudja 1979 naasho inandi shi ninga nale omolwounghundi ashike wolutu.

Kalunga eshi iha nyengwa kusha, onde ya fiyo efimbo olo nda mona omunyoleli 1986, ou a hala a kwafe nge. Okwa kala nee he ya kwaame nofiku a hanga nda lele po hatu longo po. Fiku a hanga ndi he na oukolele, ota shuna ngaho.

Okudja 1978-1986 inai pita pondje noinai mona etango. Ashike ohandi pandula Kalunga eshi a kaleka nge nomwenyo, nande ndi na olutu li li ngaho, osheshi kakwa-li nde shi lineekela ngeenge omunhu ihe li nyenge shapo okomutwe ashike, otashi dulika a kale nomwenyo efimbo li fike opo.

Okuhadulika oshiponga

Manga nda li omunyasha, onda li inandi dulika nawa keemhango nokomalombwelo atate. Onda kala ashike nokuudafana novanyasha vakwetu. Tate okwa li a lombwela nge kutya inandi hongwa komayoo, ndelene ame inandi dimina.

Eshi nda ka hongwa eyoo limwe ola tatuka. Eshi oshe ke uya, molwaashi inandi dulika. Efimbo olo nokuli kanda li ndi shii oshipango oshitine kutya otashi ti shike kwaame. Efimbo olo otu li moupaani woovene.

Eshi nda ka uda eendjovo daKalunga, opo nee nda ka uda oshipango oshitine. Onda yeleanifa oshipango eshi nomalombwelo a tate, nonda mona kutya onda ninga epuko. Natango eshi nda ka ninga omukriste, inandi kala unene nde li paka mo.

Nomonghalo ya tya ngaho, onda mona kutya Kalunga oha denge, ye ta kongo. Kalunga okwa denge nge naanaa odibo ya kula. Odibo yaKalunga ihai denge ngaashi omunhu ta denge. Onda ka lemana koshihauto ndele ihandi linyenge nokulinyenga. Opo nee nda ka dimbulukwa ondjovo oyo ya shangwa kutya "Etilokalunga olo efina lounongo aushe."

Ovamwameme ovaholike, natu diinineni etilokalunga, osheshi Kalunga oha denge ovatangalali. Ohandi indile kovakriste vakwetu va dimbulukwe nge momailikano avo, ndi kale omukriste omuduliki nondi kale ndi na oukriste wa xwama.

Onda hala nokuhalelela omukriste keshe apa u li, u kale noukriste wa kola, nongeenge atusheni otu na eitavelo limwe, nena itatu wileni mehandu laKalunga. Ouwa wounyuni nande tu u landule, kau na eshi tau tu kwafa, otau tu twalifa ashike mehandu laKalunga.

Ngeenge ohai tale ekongo eli nda kongwa nalo kuKalunga, ekongo lidjuu lela, omunhu iho linyenge, ndele fiyo eedula omulongo u na omwenyo. Nomokukala kwange ngaha mombete, onda mona kutya, mboli oKalunga ta kongo omunhu waye e mu xupife.

Mokukala kwange mombete onda mona ounghundi wokomwenyo tau tandavele, ndele

omolwokuhauda eendjovo daKalunga. Onda didilika kutya fye ava ihatu linyenge, ngeenge twa etelwa eyakulo leendjovo daKalunga, ndele mwa hangika umwe womovalongi ye ota piti mo.

Ovayakuli vamwe omapopyo avo itaa ulike oukriste, ile omunhu a hongwa. Oto mono nawa nokutya omunhu oku na ondjala yeendjovo daKalunga. Mombete oto mono oinima i he fi okuyelekwa. Onda mwene ovapangi omunhu ta fi, ndele vo otava yolo eengadja notashi etifa onghenda. Ei aisho oya etwa kokukala kokule neendjovo daKalunga.

Ondi wete oinima ya tya ngaha oya wana okutwilwa eengolo nokutwalwa koshipala shaKalunga, opo a kufe po oinima ya tya ngaha. Osheshi okwa nyolwa: Ou te uya okutwa eengolo nokulilila omanyono aye, ame itandi mu te po.

Onda hala nokuhalelela yo opo oshiwana shetu shi kale noku tu dimbulukwa ava tu li meembete, osheshi ofye naanaa luhapu tu li

Kuku gwaAmupanda a galukile kegumbo

Kuku Rebbeka Amupanda (79) mOniipa, okwa galukile kegumbo, sho a fudha muSoomi, konyala uule woomwedhi ndatu. Kuku gwaAmupanda okwa thigile po Namibia muMai numvo.

MuSoomi okwa talele po aatumwa oyendji mboka ya longo muNamibia. "MuSoomi otamu longwa shili, kehe gumwe oku li miilonga, naamboka ye li moombete omoluukulupe, oye li megalikano," osho a hokololele Omukwetu.

Kuku okwa kala moshituthi oshinene shetumo muYlivieska eti 12-14.6.87. Aantu omayovi oya li moshituthi shoka. Aatumwa aape 26, oya yambekelwa miilonga noya tumwa kiilongo yi ili noyi ili. Omahala omakwawo ga simana, aniwa oga talelwa po wo kuye.

Kuku Rebbeka ngoka a longo pamwe naatumwa oyendji mpaka moshilonga shuupangi, okwa li a pandulwa koyana ngaaka meputudho lye, noye mu pe efudho koshilongo shokuume ke.

Aamwandje oya pe ndje ompito yokutala iinima iinene tayi longwa muSoomi. Omagalikano gAasoomi okugalikanena Namibia, uusiku nomutenya, osho oshinima shimwe kuku Rebbeka a galuka te shi popile othika.

Sebulon Ekandjo

ovapuki. Omolwouyehame nokululuma, luhapu otwa nyengwa okuwanifa eemhamgo nomalandulandulafano aKalunga.

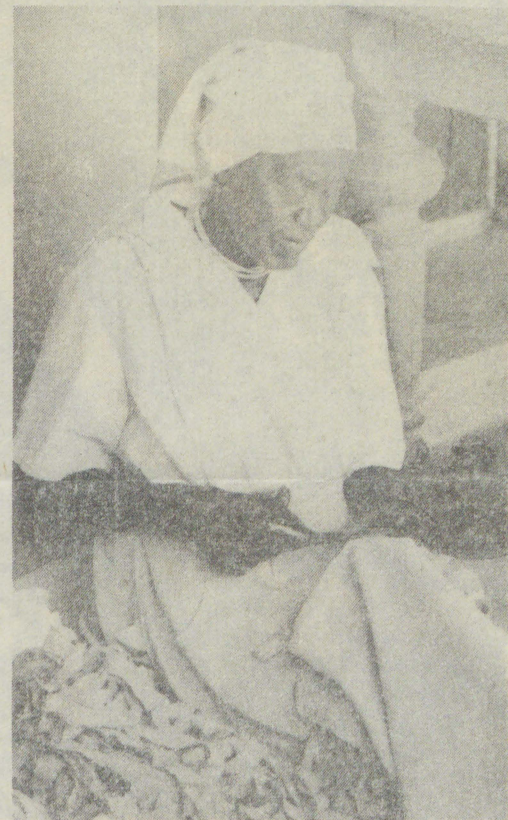
Omakaya oo oshinima osho kwa li nde shi udi-fwa ko nai. Vamwe otava ti, omakaya ohaa shitilwa omunhu, ndele kape na efiku nae ku efe. Nande nda kala nokushila omakaya, onda kala noudjuu, osheshi ihai dulu okulikwafa mwene, omaoko ange ihae linyenge. Naava hava kwafe nge, ova kala noudjuu shili.

Meni lange omwa kala ngaho elinyengo lokweefa omakaya, nonda mona kutya ondjovo yaKalunga ei tai ti: "Indileni ndele tamu pewa" oyoshili. Onda kala ngaho nokwiindila, Kalunga nokwa kwafa nge

Kalunga okwa xupifa nge moshiponga shidjuu, nonda hala okulombwela ovo ve na citavelo, kutya omakaya kae na po sha moku a efa. Noxwe-xwe oyo vati oshinima shidjuu momakaya, oshinimasha hamakasha lela, ngeenge oto shi ningi pamwe neilikano

Ekondjo lohilili nolouyuki olo eilikano, opo tu ha kale moinima yoludi eli. Mokwiilikana nomokudulika kwetu, omo ashike momufika u na ekanghameno. Elimba letu lomeni nali kale liyadi eitavelo,ouyuki nohole. Noshidilifo shomalimba etu omeni, osho okuwanifa oshili neitavelo.

**Teofilus Andreas
Oshakati**



Kuku Rebbeka Amupanda

OUKAKUNYA WOPAMHEPO WA PENDUKA MOSHIWANA

Shiwana shaNamibia natu lidilululeni vakwetu, tu diminwepo omatimba etu kuTate yetu meulu, mehanganano lipe lohonde yOmukulili wetu Jesus Kristus. Meemwenyo detu tu tambulile mo Omhepo Iyapuki i tu yapule fyee tu kale ovakoshoki vashili.

Otu li pefimbo lii loita itai xulu nande. Katu shii kutya oshike itai xulile, nonaini tai ka xulapo. Hano tu lidilululeni, tu efeni aishe oyo ii, opo Omwene e tu file onghenda ye e tu efele ombili yetu.

Meilikano lOngeleki omu na omatumbulo taa ti "Omwene ohatu ku pandula eshi wa li wa yandja omafimbo ombili koshiwana shetu, oo a li a dja mokuuda nomokutambula eendjovo doye. Natango ohatu ku indile u tu a menene mombili ei."

Hano paife natu shiive kutya okulidilulula noku uda eendjovo dOmwene nokuliufa kudo, otashi tu etele ombili moshiwana. Shaashi atushe ohatu diladila nawa, nombili nomahalelo etu koshiwana ashishe otaa ka kala mawa.

Tu dimbulukweni yo kutya moixuna noupyakadi omu tu li paife, ofye vene twe litulamo.

shaashi twa dina no inatu hala okuuda nokuliufa keendjovo dOmwene, ohatu uhala hatu kwenauka, twa dengwa, twa dipawa kovanhu vetu vene, havokoilongo nande.

Paife omesho etu okwa tala komakakunya, kutya oo taa etele oshilongo okuhena mbili. Otaa denge ovanhu, taa dipaa oshiwana, taa lyataula omaumbo nomakaspeli, taa pumu oihauto keepate nokulonga oilonga inyanyalifa mokati ketu. Heeno osho.

Tu taleni vali shiwana omakakunya aa a djoina oilonga ihe fi yoita, ndele nee odinokalunga nokuhafimaneka edina laye liyapuki. Paife pokati ketu naKalunga ope na ombwili ile itatu shiiva oku i tauluka tu ye kuye. Tu lidilululeni hano, tu fikameni, tu yapule edina laKalunga, opo e tu alulile omafimbo ombili, oo twa hala taa di mokuuda nomotambula eendjovo daye.

Oshiwana osha shituka omakakunya taa longo mOshondaxa. Inatu yoolola vali Oshondaxa nomafiku makwao. Efiku eli ola tulwa moshipango 3 tu li yapule, fye tu kale tu hole onhele yongulu yOmwene, neendjovo daye neudifo lado. Tu di diinine noku di lihonga. Hakumona omhito yetyapulo nokulonga ngaashi twa hala. Hano natu lidilululeni

shiwana.

Ope na vali oukakunya twa djoina wa tata, wa indula. Owo odino yovakulunhu ovo twa tala ko va kusha, va dja mopula, nokave na po sha vali. Omakumaido avo okwa nyika oulai mufye, shaashi kave shi oinima yonena.

Taleni shiwana, eshi ngoo u wete ovanhu vaaapu tava elaela, ve he na mapata, tava kongo okwiidililwa, onhiko oya dja mokuhatila ovakulunhu.

Natu dimbulukweni eshi twa handukifa Omwene mokuhatila ovakulunhu. Vakwetu tu dimbulukweni Omwene okwa ti: Fimaneka xo nanyoko, opo u kale nelao nomwenyo mule kombada yedu. Paife vahapu ve ha na omitumba tava elaela, vati ova fingwa kooxe.

Tala, ino fingwa nande kuxo, oove lela mwene we lifinga. Shimha tuu we lidilulula, loo nelao otali ku ehene. Shiwana, tu lidilululeni tu shunifilweni omafimbo ombili.

Nye ovakulunhu inamu djoina moukakunya woukolwe. Ava mwa djoina, efeni oilonga oyo. Tekuleni ounona veni palandulafano. Hakuni nga eendingosho ongeleka, tamu imbi omaimbilo opeehango mwa kolwa, nye tamu popi keshe eli le uya. Tamu nyonauna oshiwana shokomesho. Ndele nombili tai i kokule. Okukrimesa kwopoumbenge naku xule po.

Vakulunhu mwa tya omakaspeli, tamu lyataula po outeku wounona veni, tamu lyataulapo oshiwana mokuhelihumbata nawa, tamu yandje oshiholelwa shii. Hano lidilululeni opo tu alulilwe ombili, Omwene okwe tu teelela efimbo keshe.

Edjaino eli li li mopula paife, oloukakunya tau kunya oshiwana eenhumba, pailonga nopamadiladilo. Otatu dipaa unene. Omwene Kalunga okwa tula oshipango shiyapuki oshititano, kutya inatu shi tauluka. Shiwana ngeenge inandi dipaa naame inandi fuda nawa.

Ayee, hasho natu longifeni osho, natu taleni osho sha wapalela Omwene. Sho shi wapalele yo ovanhu. Vakwetu oshike tamu tikue oshiwana noku shi ula nai, nokukengelela, nokudipaa vakweni pamikalo dii, di lili noku lili? Naashi odula itai loko, Omushiti okwa kenyanana, edimba lolunde wetu otali nyika nai koshipala shOmushiti.

Osho ngaho hatu kaleni eshi, nonghalamwenyo hatu i shundula fyee vene. Omaupyakadi, noluhupo, noukoloni woshiwana, paemhito dihapu, ofye vene twe lietela molwokuhadulika keendjovo nokoipango yOmwene ei twa ekelashi.

Etanga eli tali tyakaleke mokati koshiwana olo oluhaelo. Etanga eli eshi lii, ngeenge we li djoina ohali lundulula olutu lomunhu, tali shunduka, ongoshiyata sha li noshinge shityaana ndele tashi shituka sha pemba.

Eehombo tadi lyataulwapo komakaspeli, ovakulukadi vati ihava putulwa koovene, onghee otava i opo vati va ka mone omakenge, pamwe tava pewa ngoo nande R100, va ka lande oikutu iwa yopovanhu.

Vakulukadi, nge iho putulwa, diladila nawa u likongele oilonga yoye mwene yokomake, u

Tala-kepanja talilandula



Eudafano loshilonga shetumo, nande itashi longwa vali pokati ka ELCIN nEhanganotumo laSoomi, onghene tuu Ongeleki yaSenegal, otai teelele ELCIN e i tumine ovanashilonga.

Dha za kep. 4

mone mo sha shokuhupifa eumbo loye. Ya oluhaelo onhapo, osheshi otalu nyateke ashike olutu, nomwenyo woye.

Omakaspeli a londwa kovashamane taa lyataula omaumbo, vati ovakulukadi inava fewa oovene, ovashamane tava lyataula ovanyasha, nelalakano vati ovo ve li mopula, ovakulukadi vavo ova kulupa, inava hala vali ovakulupe. Vanyasha, yeni onhapo ovanhu va tya ngaho, ave mu tula pomutenya.

Ovanyasha navo vene otave litula pomutenya nokunyonafanapo. Fiyo onaini nee tashi ka mona exulilo? Tamu etele ovakulunhu veni omaupyakadi mokufuta omatimba noikolo yoludi olo alushe.

Ndishi omwa dimbwa kutya nale oshiwana shOvawambo okwa li hashi xwikepo ovatauluki voshipango oshithamano, opo oulunde u ha tane? Paife omwa filwa onghenda, ashike kamu shi wete. Onghenda ei oi na efiku tai ka pwapo. Openi tamu ka ya? Hano shiwana, lidilululeni, opo tu filwe onghenda, tu pewe ashishe osho shiwa twe shi hala, sha wapalela Omwene.

Vanyansa ovakainhu, mwa tya omakaspeli tamu lyataula ovakulukadi vovanhu, vati ame omushamane ohandi i naye owina opo omukulukadi a pye komwenyo kwii, opo ta di elundu. Tala omukwetu, to longifa aishe ya fa oyo, lidilulula, to imbi odula i loke, owa keelela ouwa woshiwana, nomafimbo ombili owe a tela kokule.

Ovaleshi tu taleni nawa oukakunya, hawo auke owo u li moita mboli atushe otwa djoina metanga laSatana. Tu djenimo nena paife eshi. "Oukakunya" tau linyangele komatwi owo okuvaka. Eyele: Omukwiyu u li mepya inau hala okwiima nau kewepo. Ayee, nau filwe onghenda pamwe modula tai ya tau imi.

Tala shiwana, ino nyeka vali ovanhu oinima yavo. Mwa tya omakaspeli tamu lyataula vakweni ve mu nyolele omakonakono, mu mone eedjapo diwa, inamu di lilongela. Tamu lyataula eengeshefa momaumbo mwa hala mu idililwe, nye mu tye winya ke na outeku eshi tamu ulwa oilonga.

Omwa hala mu lye opunyu, tamu longo ngaashi mwa hala. Nge kwa tiwa lilongeni mu mone eedjapo, oilonga iwa otai di kodjapo, nye tamu ti omunhu ota penya eshi ye e wete a longwa.

Ope na oilonga ihapu yokomake i lili noku lili tai kwafa ovanhu. Ngeenge owa hoololapo ei ye ku pupalela, nena oto mono po ngaho omungome woye wefiku keshe. Hano natu efeni 'Oukakunya' ou tu longwe fye tu mone eteyo liwa.

Otwa djoina vali etanga loipupulu nomalundilo. Hatu denge oshiwana omitwe mumwe. Hatu lundile, hatu popi omalwaambo, omaushiinda okwa teka po keeholo deendjebo detu. Oukumwe, elineekelafano, etwaalafaneke okwa bomwamo neeboma doikuti youlunde. Ekengelelufano, ekonda, nomityanai adishe da fa omakanona taa umbu eeholo da taalela oshiwana.

Ta! eshi otashi tu etele owii aushe, tu djeni mo onhapo, moulunde wetauluko loshipango oshiti 8. Fiyo onaini hatu yeni nonghalamwenyo i li ngaha? Onda tile tuu ofye vene twe li ma-

Okukalamwenyo komufita F.Nghihalwa

Ngenosheni Fredrik Nghihalwa okwa dalwa 1921, e ta shashwa 1941. Okwa ya moita yaHitler 1941 fiyo 1944. Okwa hombola 1947, e ta ningi eedula 16 ina mona okaana. Omudo 1951 omo a mona okaana okashiveli Sirkka. Eshi a hombola okwa ya kOushimba kOlindili oko a ninga ko eedula mbali.

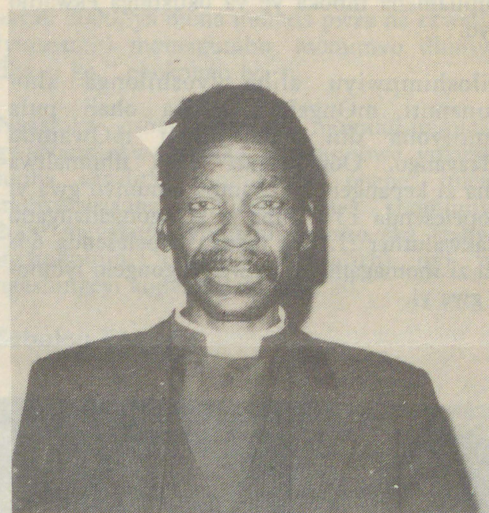
Okwa dja ko 1950, e ta i kofikola yovamati 1953 oko a pita ko 1955. Okwa ya mofikola youyevangeliste 1956 mEngela, a kala mo eedula nhatu. Okwa yapulilwa ouyevangeliste modula 1958, nokwa tumwa kOngenga oko a longa ko eedula 8.

Modula 1964, okwa tumwa koKongo, komukunda Ekoka. Ovo va kokola Ekoka, vo nomuhongi E. Hynonen. Ova tunga eendunda, nova ninga ko omappa etumo. MEkoka okwa ninga mo eemwedi 3 eshi a dja ko nokwa shuna kOngenga 1966.

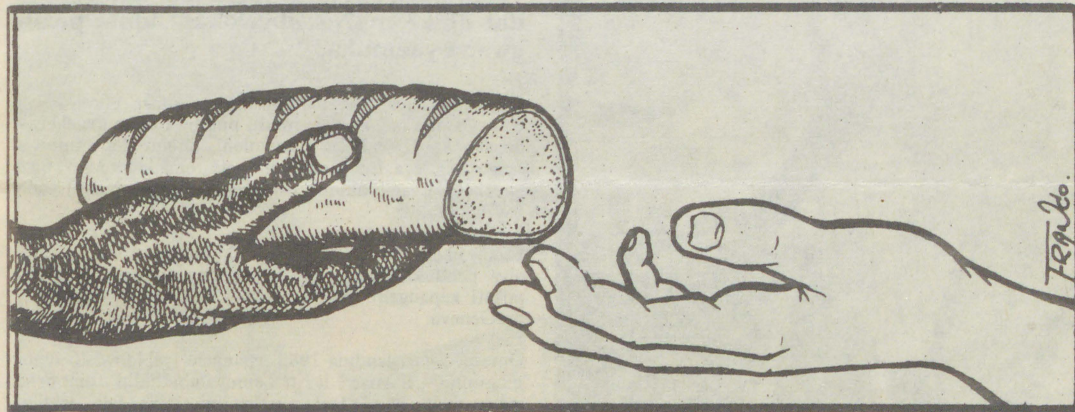
Okwa tumwa kOushimba kOtavi, oko a longa eedula 8. Modula 1973 okwa ifanwa ko, e uya kOwambo kofikola youfita kEngela. Okwa kala mo eedula 2 na 24.11.1874, okwa yapulilwa oufitaongalo. Okwa tumwa kOhalushu pehovelu laDesemba. Ova ya noshiveli shaye Sirkka.

Mohalushu okwa longa mo eedula 13. Okwa longa nouidiinini nokwa fila moshilonga shaye. Okwa fiya ko ovamwaina vatatu nounona vaye vatano; Sirkka, Julia, Lukius, Sakaria najohanna okanghelo kaye.

Linda Nghihalwa



Nakusa Fredrik Ngenosheni Nghihalwa



Mounyuni ou wehepuluko, omu na eemiliyona dihapu di he na eshi tadi li. Ove omungome woye ohamu u tukulilafana noolye?

ngeleka moupyu omu tu li. Nge twa ekeleshi oipupulu, hatu popi oshili tu he na malimbililo ohatu alulilwa aishe iwa kOmushiti wetu. Tu yeni nena eli paife eshi, otwa teelelwa kOmukulili weemwenyo detu.

Shiwana shaNamibia, efa olwisho nokuhaluka ovanhu ovo ve na omaumbo mawa e na elandulafano. Elao lavo ola dja peni mbela? Ola dja mokutilla nokufimaneka edina laKalunga noku li ufa koipango yaye iyapuki. Osho yo mokudulika kovakulunhu.

Shimha tuu twa wanifa ehalo laTate meulu, aishe ote i tu ningile ngaashi hatu mu pula. Nomahodi etu ote a fetapo yoo noixuna ote yi xulifapo diva.

Ovaudifi mongeleki yaKristus, shakaleni omundilo, tau xwike, tau lungwinifa oupaani noulunde filufilu. Indileni omhepo Iyapuki i mu wilike mu fatululile oshiwana eendjovo daKalunga nokuyelekanifa noinima yopaife. Pamwe oshiwana tashi u du ko ngaho.

Inamu fya nande ounye lididimikeni meefina nomoupyu wonena. Taleni aishe oyongaho elela. Nye shiwana, lidilululeni, longifeni efirmbo nawa osheshi omafiku omai.

Osheshi onghalamwenyo kombinga oi li momake etu vene, nge otai naipala okufye vene, nge otai wapala natango okufye vene. Kape na umwe ta di meulu e uye a wapaleke onghalo yetu, ahowe. Eendjovo dOmwene nOmhepo yaye Iyapuki oyo tuu aike nai tu wanene.

Ekulilo ola longwa la pwa, itali ka endululwa vali, shaashi linya lotete vati la kusha, ahowe. Ndele ngaashi Omwene Jesus komushiyakano a ingida: "Sha longwa sha pwa," owa kulilwa. Kape na vali oo ta kana, shapo oye oo te likani fa oye mwene.

**Ndilimeke Lasarus
Ouhongo - Engela**

Dha za kep. 1

okupilamena mboka ye ya okukonga ekwatho kuyo.

Esiloshimpwiyu alihe lyoshilonga shopaunamiti mOngeleki ndjika ohali pula oomiliyona dhi vule mbali mOwambo noKavango. Oopelesenda 81% dhiimaliwa odha zi kepangelo lyOwambo omumvo gwa yi noopelesenda 13% odha zi kOngongahangano yAakwaluther (LWF) manga oopelesenda 6% dha zi momagano ga yalwe, pagongelo lyomuvo gwa yi.



Omundohotola gwokuthula omasipa mOnandjokwe Päivi Säynevirts pamwe nomuvu gwe.

Iimaliwa oyindji pahokololo ndyoka, ohayi pwile moondjambi nomomiti. Ondjindikila yiipindi tayi ningilwa SA kuuyuni, nayo oya hokololwa mpoka yimwe ya nwetha mo ondilo yomiti niilongitho iikwawo miipangelo. "Ayihe otayi zi ashike ku SA notashi pula ethimbo ele. Mondjila otashi vulika iinima yi kanene mo nenge yi thike ya yonuka," ehokololo lya ti.

Mokati komaupyakadhi agehe ngoka Ongeleki oya tokola yi tsikile natango noshilongayakulo shayo shuupangi moshigwana, molwashoka oshi li oshitopolwa shimwe sheuvitho lyevaangeli, pamatumbulo gomumbisofi K.Dumeni ngoka ga li oshitopolwa shimwe shehokololo.

Omatompelo omakwawo ga gandjwa Ongeleki yi tsikile newiliko lyoshikondo shuupangi, opwa tumbulwa okwaagwana kwiipangelo yepangelo, osho wo, eyakulo lyopakriste miipangelo yOngeleki ndyoka tali hili natango oyendji moshigwana.

Oshilonga shetumo shopaunamiti mOngeleki ndjika shoka sha gwanitha nokuli omimvo 75, pehulilo lyomumvo gwa zi ko, oshi na ngashingeyi pombapila omathaneko omanene okwoopaleka omahala gasho gomayakulilo.

Etungo epe lyoshitandelo mOnandjokwe ndyoka lya tegelelwa li ka tulwe mbala miilonga, kumwe nondjugo yeshina lyonte ya X = X-ray, olyo etameko lyomathaneko ngoka taga ka kwata omimvo ntano tadhi landula.

Ongongahangano yAakwaluther muuyuni (LWF) moshikondo shayo shopamapendulopo

EPENDULOPO LYEVI NENGE EMANGULUKO LYANAMIBIA, OSHINI SHOTANGO?

Oompata oonde odha kala ngashingeyi ethimbo ele muNdowishi lyuuninginino, pokati kehangano lyaSWAPO nomahangano omapendulipo giigwana moshilongo shoka. Omaludhi oga kala kombinga yooprojeka dhi ili nodhi ili dhomahangano dhi dhike muNamibia okupendula po iigwana yaamuka.

Edhiladhilo lya SWAPO moshinima shoka efupi nolya yela. Oshigwana shandje inashi pumbwa okupupalekelwa onkalo, kofi yondjoko yuukoloni. Shono sha pumbiwa tango okuteya po uukoloni, oyo omapendulopo taga tameke okuyambidhidha oshigwana meithikameno, osho SWAPO ha ti.

Epulo nkene Aanamibia ye shi okukongelwa omakwatho, olya pendukile unene okuza meponyo lyoonkundathana pokati kepangelo lya SA, na SWAPO muJanuali 1981, muGeneva.

Omumvo gwa landula 1982, epangelo lyaNdowishi lyuuninginino, ndyoka li li omuyambidhidhi omunene gwepangelo lyuukoloni muNamibia, olya fala oshikundathanwa shependulopo lyAanamibia koshigongi shomapangelo omanene muuyuni (European Community) noyu uvathana iimaliwa koNamibia yi kale hayi pitithilwa momahangano gopaumwene, gaa na sha nepangelo.

"Aanamibia otaa hepa, oya pumbwa ekwatho mbala, kashi na ompumbwe oku ya tegelelitha emanguluko," osho epangelo lyaNdowishilanda tali ipopile nasho.

Omuntu oto kuminwa ohenda yomapangelo ngoka koshigwana shaNamibia, uuna taku popiwa ooprojeka dhomapendulopo, ihe aantu oyo tuu mboka ngele taa kugu kutya iita mbyoka tayi ya li nayi hulithwe po, oshitokolitho 435 shi tulwe miilonga, kehe gumwe ota nukile pomunya.

Epangelo lyaNdowishilanda olya yi komeho nompangela yalyo noprojeka onene; "Oshenda yuuteku womaithano" (Vocational Training Centre) oya tamekwa noyi inekelelwa ehanganano lyopaumwene lyedhina Otto-Benecke-Foundation (OBS), hali pewa iimaliwa kepangelo.

Aawiliki yehanganano lyaOtto-Benecke oya ka heka SWAPO naawiliki yOraata yOngeleki muNamibia (CCN) oyo ya taambe ko oprojeka ndyoka yeputudho. Kaawiliki yoongeleki muNamibia medhina lyehanganano lyaOtto-Benecke, okwa tuminwe omusamane Christian Krause, ngoka a longa shito mookomitiye dhOngongahangano yAakwaluther, oyo elalakano lyawo li taambwe ko nuupu.

Okwa kala wo omahanganano omakwawo muNdowishilanda lyuuninginino ngoka taga longo mekwatathano nepangelo lyawo, nando go gene ogi ithikamena ngaashi; Hanns-Seidel Foundation (CSU); Konrad-Adnauer Foundatoin (CDU) naFriedrich-Naumann Foundation (FDP) nenge galwe omashona.

Oku na wo ooprojeka onkwawo tadhi futwa muNdowishilanda okupendula po aniwa Namibia ngaashi ndjono yuunamapya nokwawo yuuklinika womiihwa (Bush Clinics). Ooprojeka ndhika odha simana unene momemo

giigwana, oya zimina nale omathaneko ngoka moshilonga shopaunamiti mOngeleki.

Omundohotola H.von Schantz, manga inaa shuna kuSoomi muMai 1987, pashimpwiyu sheongomundohotola omukuluntu pethimbo ndyoka a kala mpaka, okwa holola euvitoshimpwiyu lye enene molwomikithi ndhoka a tala tadhi ka mana po oshigwana shika, ngele inadhi kwatwa moshipala.

Uuvu womalovu, uuvu waakiintu, oTB, oshimela nuuvu wondjala muunona nomaa-

Tala kepandja tali landula

gepangelo lyopokati.

Ombelewa yomayelithilo yepangelo lyopokati muNdowishilanda, otayi longele kumwe mwiya nehangano ependulipo lyAanamibia muNdowishilanda, (German-Namibian Development Association), ndyoka lya kala wo melongelokumwe nongeshefa ya ENOK muNamibia.

Omehanganano ndyoka mwa zile omusamane Kai-Uwe von Hassel, ngoka i ile keegululo lyepangelo lyopokati muJuni 17, 1985. Otaku yelithwa kutya iilyo oyindji yepangelo lyaNdowishilanda otayi popile ooprojeka dhi dhikwe muNamibia, ngaashi wo ya tala kutya epangelo lyopokati oli shi okuyambidhidha, oshoka oli li aniwa onkatu ombwanawa mehumokomeho lyemanguluko lyoshilongo shika.

Nokuli ope na euvoko lya kola maatalinawa yomayengo gopapolotika, kutya miilyo yoludhi ndoka, mwa pendukile omutoto gwiifundja, aniwa oontauki dhaNamibia mookamba dha SWAPO miilongo yopondje, otadhi hepekwa kaawiliki yawo.

Oombaanga dhaNdowishilanda odho tadhi palutha okatongotongo.

Okuza 1978, epangelo lya SA sho lya kala ihaali mono we nawa omakwatho koombaanga dhiilongo yilwe, ngaashi kuAmerika, oombaanga dhomuNdowishilanda lyuuninginino odha kutha oshinakugwanithwa shoka. Ekwatho lyoombaanga dhaNdowishilanda ku SA olya koko okuza oomaalaka dhOshindowishi oomiliyona 140 omumvo 1979, sigo oobiliyona 1,95 (DM) omumvo 1985.

Pauyelele mboka wa zi muNdowishilanda, oombaanga 48, moshilongo shoka odhi li melongelokumwe nomulandu gwokatongotongo mu SA naNamibia. Oombaanga dhimwe ngaashi; Dresdner Bank; Deutsche Bank; Commerz-Bank; Berliner Handels and Frankfurter Bank; Bayerische Vereins Bank na West Deutsche Landes Bank Girozentrale, odha kwatha unene mongunga ya SA, ndjoka ya kala nayo moombaanga dhuuyuni oodola dhoshiyamerika oobiliyona 14.

Dresdner Bank oyo tayi longele kumwe na SWABANK muNamibia nomu SA noyo hayi yambidhidha epangelo lya SWA, pahokololo lyomunashipundi gwOraata yombaanga ndjoka omumvo 1986.

Oongeleki onkwaprotestandane muNdowishilanda (EKD) noonkwawo ngaashi Landeskirchen, Deutscher Evangelischer Kirchentag, noonkwawo dhilwe odha pungulitha iimaliwa yadho moombaanga ndhoka tadhi yambidhidha okatongotongo mu SA, nando pwa kala onkundathana oonene okuza 1985 pokati kadho nokangundu kokukondjitha okatongotongo moshilongo shoka oyo dhi kuthe mo iimaliwa yadho. Oongeleki dhimwe dhimwe dhe shi pondola, ngaashi ndhoka Deutscher Evangelischer Kirchentag (DEKT).

MuJuni 17-21.1987 opwa li oshigongi oshinene shoongeleki muFrankfurt shaNdowishilanda lyuuninginino, moka mwa li mwa gongala aantu 150 000 ya za miilongo konyala 40 muuyuni. Omusitagongalo Ananias Iita oye a li a kalele po Ongeleki ya ELCIN moshigongi shoka.

Tala kepandja tali landula



Aayakuli yaavu melongekidho lyiikulya mOnandjokwe.

Iita nomalovu moshilonga shuunamiti

kulupe, ogo omavu a tomona koshito. "Oshigwana otashi hepa komikundu dhopakalinawa dhopailongo ya putuka naandhoka dhopailongo opo yi li meputuko," osho a tumbula.

Okwa kumagidha nomuthindo ku longwe nuudhiginini mokuninga omatuntilo komikithi dha tumbulwa metetekelo naavali ya putudhwe okuninga eigameno lyotango momavu haga holoka esiku kehe.

Aantu 76.200 oya hokololwa ya mona etuntilo kombinga yomikithi, okakwenyene, Polio, tetanus nosho tuu, omumvo gwa yi.

Ompumbwe onene yoondohotola miipangelo mbyoka otayi thelekenya ngaashi wo yaanashilonga ooyakwawo yalwe. Oshipangelo shaNkurenkuru moKavango osho oshinene noshikulu (1929) moshitopolwa shoka, nasho kashi na nando omundohotola gumwe, pauliko lyehokololo ndyoka.

Aavu yomiipangelo nenge muukilinika auhe uhetau, itano yaELCIN niitatu yaKatoolika kaRooma moshitopolwa shoka, ohaa falwa esiku limwe alike koRundu hoka taa tegelelwa keyakulo lyoondohotola mbali nenge ndatu adhike.

Dha za kep.6

Nkene oongeleki anomuNdowishilanda dhi na okuteya po ekwatathano lyadhoo noombaanga tadhi longele kumwe na SA, osho shimwe sha li shomiikundathanwa yoshigongi ya simana.

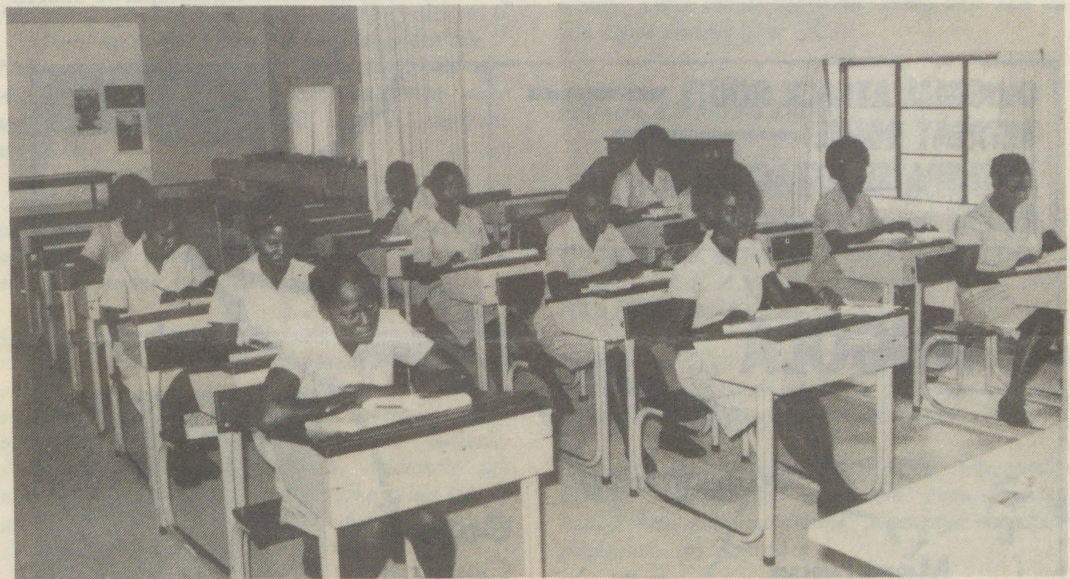
Eti 20.6.87 oshigongi osha ka holola omadhiladhilo gasho momapandaanda goshilando, moka aantu 40,000 yu ulike noyi igidha ekwatathano nepangelo lyokatongotongo li teywe po. Pauyelele mboka wa anduka moodokumende dhomuNdowishilanda, SA koshilongo shoka okwaa taamba ko omwaalu gwiimaliwa yOshindowishi oobiliyona mbali moomwedhi hamano adhike dhomumvo 1985.

Otaku tiwa wo SA okwa nenepeka omwaalu gwiilonga ye yiita okuza oobiliyona ndatu (3) dhomumvo 1984/85 sigo oobiliyona ntano (5) dhomomumvo 1986/87, pahokololo lyongundu yokukondjitha okatongotongo muNdowishilanda.

Sebulon Ekandjo

"Aavu yamwe otashi vulika ya galuke ko esiku ndyoka inaa mona omundohotola omolwothina yaantu," ehokololo lya ti.

Ompumbwe onkwawo oyu ulikwa yaavalithi ya



Ongundu yaalongwapangi mOnandjokwe

Iituthi yopaukriste yi yooloke

Yayee iituthi yaantu yopethimbo ndika! Omanga aantu opo nee nawa twa tseyalululo, nolumoho, otatu yoolola iituthi. Nena ando otwa topola wo inima ya topoka.

Ohango yi kale ngaa ohango, etulokumwe li kale ngaa etulokumwe. Ohango oshituthi sha simana. Oshoka aamati, naakadhona mba ya shinda omapuko guunyasha. Oonakupunduka oshoka oya dhinitha uunyasha wawo, oshoka oshoka ohatu mono nomeho getu. Oshitiningili (oshilema) osha tseyika kukehe gumwe.

Nonale omuntu a gwila meziko apya momutwe, nande napangwe omafufu kage na siku naga ka shuna po. Mpaka ote ti, omuleshi omukwetu omugundjuka gopethi-

ziminwa papangelo. Oveta yuusiku yokangendjo oyu ulikwa ye eta uupyakadhi unene mokumona uunona mokati kaakiintu. "Konyala aavali 2000, ya mona uunona pwaa na ekwatho lyuunamiti momagumbo, momimvo dhimwe dha zi ko," ehokololo lya ti.

Naashika osha ningilwa momudhingoloko gwaNandjokwe amuke. Ompumbwe yokuputudha aavalithi momikunda onene, unene molwokwaadha oshilalakanenwa shomumvo 2000 meyakulo lyuunamiti, osho sha leshwa mehokololo. Osikola yuualithi oyi na ngashingeyi konyala aalongwa 20.

Sebulon Ekandjo



mbo ndika u li omunyasha natango. Kala wa kotoka topi momutse, kala kokule nomulilo. Shaa wa pya u na epalu aantu ayehe yeku shi kutya owu na epalu.

Osho tuu omuvale ngoye to siikile epalu lyomumwoye, opo a faathane noya yakweni, tamu iyandeke newi lyomukumo sho to andeke ohoni yeni newi lyomuthindako sho to ti: Ngoka we shi yala topa, ouhwe owu na ominwe 5.

Oshigwana ngele itashi itedhulula nokweetha omayono, itashi manguluka. Ano aavali ngele ita yeetha oku siikila omauwinyayi goomvalo, aanona nayo oya tala oonkalo dhaawiliki. Aavali lundululuni mu yoolole iituthi nai kale ngaa shi shuukilila. Omuntu ta longo uuwanawa Kalunga ote mu galulile kuuwanawa.

**S.Akoko
Okaku**

Mavinga otayi ningi yalye, ombinzi tayi shi yamukula

Odoolopa yaMavinga noshitopolwa shaCuango Cubango, muAngola, kutya otayi ningi yalye, eyamukulo ngiika otayi gandjwa kowindji wombinzi ndjoka tayi tika pokati komatanga gaAngola naakolokoshi ya Unita pamwe naayambidhidhi ye omasiku ngaka.

Omumvo gwa zi ko okuza Auguste, etanga lyoshigwana shaAngola Fapla, olya li lya ningi oshipupudha oshinene okukomba po Unita muuzilombugantu waAngola. Olugodhi olwa li lwa hulile pomulonga gwaLomba, okilometa 10 muumbangalantu waMavinga, endiki etiyali lyiilonga ya Unita, kundyoka lyaJamba.

Omalunzankundana giilongo yuuninginino, otaga tengeneke aakwiita yaAngola 2,500 ya sila molugodhi ndoka nenge ye ehamekwa nokombinga ya Unita 500 ya sa na 1500 ye ehamekwa.

Olugodhi lwomumvo pokati koongundu ndho-

waCuito Cuanavale, muSeptemba 14 sigo 16. S.A. mwene ina zimina omapopyo ngoka.

Okuza Septemba 16 sigo 20, oondhila dha S.A. 20, uuhwalala nomadhagadhaga giita oga ponokela omikunda dhaNdjiva, Omongwa, Cuamato nomoChimbemba moshitopolwa shaKunene.

Onzonkundana yaAngola oya ti, omasiku 27 Septemba 87, omatanga ga S.A. ogi ishuna ko kuCuito Cuanavale, e ta ga lemaneke aakwiita yatano yepangelo lyaAngola.

Onkundana oya tsikile ya ti 19 Septemba, oFapla oya li natango ya tsakanena nomatanga ga S.A. moChimbolele, moshitopolwa shaKu-

topolwa shaMexico.

Pomulonga gwaLumbala, ookilometa konyala 10 okuthika muMavinga, olugodhi olwa tsu oonyala mevi, mpoka panzonkundana yauninginino tayi ti, opwa kanena oomwenyo odhindji dhaakwiita yaAngola, omakanona golugodhi gahamano, omahauto 26 noondhila 30, moka mwa li omadhagadhaga gahamano. Aatseyinawa yomalugodhi oya tompelwa kutya Mavinga ngele oya teka nuumvo ngaashi pe na etegameno enene musho, nombala ya Unita Jamba ookilometa 270 muumbugantu waMavinga, nayo oya kana.

S.A. okwe shi popya iikando oyindji, kutya itashi mu etele uuwanawa washwa ngele ta tala ashike Unita ta dhengwa ye a tala ko. Kombinga yepangelo lyaAngola, inali tala momalugodhi ngoka tali kondjo naUnita, ihe ona S.A. nomukwathi gwe Amerika.

Omumvo gawa yi Amerika okwa li a gandja iilwitho iidhigu ku Unita, mbyoka taku tiwa ine yi gandja nkene a valelwe kongundu yontumba tayi kondjitha epangelo. Shika osha li sha thiminike Angola a teye po ekwatathano lyoonkundathana pokati ke naAngola, omolwomukundu guumbugantu waAfrika.

Onkundathana ndhoka odha shunine miipundi muJuli naSeptemba nuumvo, nondjila otayi kongwa pu monike etsokumwe nkene aakwiita ya S.A. ye na okuza muNamibia pashitokolitho 435 shiigwanahangano, mboka taa ka egulula ondjila yaAcuba ya ze muAngola, ngaashi tashi pulwa kuAmerika na S.A.

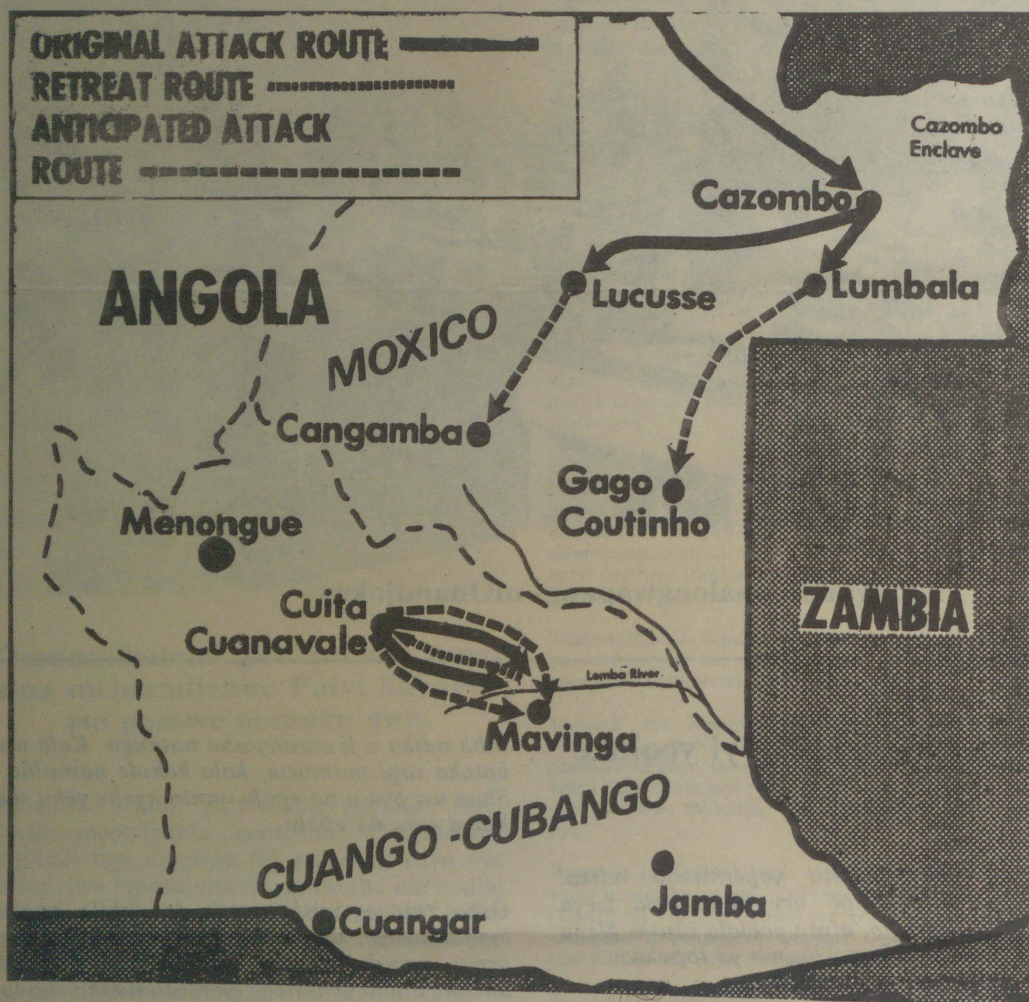
Sebulon Ekandjo

KAAHOKANATHANI

Omukulukadhi a hokanwa komusamane gwe ihe oku na oongunga megongalo ano iigandjwa, inaa futa, ihe omukulukadhi okwa futa a mana, ohashi zi peni mbela? Ngelel nani oho yi kVulalelo Wuyapuki mu li nomusamane gwoye, oshike to nyengwa okufutila omusamane?

Nongele omusamane gwoye oku li kiilonga, eliko ta longo olyomukulukadhi gwe negumbo alihe, ye ha tumu iimaliwa kegumbo. Oshike tashi imbi u kuthe po u ka fute iigandjwa yoye nove? Kungame osha etele ndje elengwa sho nda mono moshinyanga shegongalo mu na omusholondondo gwomadhina gaakwengongalo inaa ya futa iinakugwanithwa yawo yegongalo. Nesimaneko enene otandi indile mu tale oshinima shoka, po pu kongwe omukalo gumwe tagu opalele aantu yo ya kale nombili ngomuntu gumwe.

Natangwe Naftaly
Elombe



Okaalita kolugodhi lwa MPLA muAngola naUnita omumvo 1986

ka mbali, olwa tamekele muSeptemba nonkambadhala yokukutha ko Mavinga. Inaku tseyithwa natango ekanitho lyoomwenyo, ashike otali hokololwa enene koombinga adhihe mbali li vule lyomumvo gwa yi.

Ngaashi sha ningilwe momalugodhi gomumvo gwa zi ko nonuumvo, S.A. ota hokololwa ta dhana onkandangala moshinima shoka. Iiponokela ya S.A. oya hokololwa ya ningwa muuzilo

nene. Iikondjitho yimwe oya kwatwa ko kepangelo lyaAngola, nokadhila kokahwalala kamwe ka S.A. oka gwile pevi, ehokololo lya ti.

Omumvo gwa yi omatanga gaAngola oga li natango ga kambadhala okukwata ko odoolopa yaMavinga, ndjoka ya tulwa mepopilo lya kola, lya zi ku S.A. nokuAmerika. Okuza kuCazombo, kuuzilo lela waAngola, Unita okwa hingwa sigo Lucusse naCangamba moshi-

EESHALI DA PEWA ONGELEKI KOVALANGE

N. Viktor	R30,00
E. Andras	10,00
M. Pocolo	30,00
D. Ankanga	10,00

Kumwe R80,00

"OVA SHANGELA NGE TA VA TI....."

Tse otwa nala ehogololo

Onda lesa moshifo sham Omukwetu 30 Auguste 87 mepandja eti 9 oohapu dhoshipalanyolo shi: Omakakunya neepapeta ovo aveke tava yambidida epangelo loukoloni?

Eyamukulo kepulo ndino: Eeno. Ngoye owa hala ano u tye one noolye?

Kombinga yookamba tse otu na ngaa uuthemba mpu tatu vulu, nande hakoonkondo. Ngaashi dhimwe odha zapo nale nokuli. Nande iilonga yeni yuukoloni tayi tsikile, oshaa tuu okamba dha za po pOosikola, oshoka owa pula to ti:

Sho shene hololeni owala puuyelee, kutya omakakunya inatu ga hala. Oshilanduli oshini?

Oshilanduli, "emanguluko lya Namibia". Hamba ku shi kutya ongoye wa kateka, emanguluko lyetu? Za mo u tale muukakunya nookuli.

Owa ti owa hala epangelo ndi li li koshipundi olyo li kaleko? Tse Aanamibia otwa hala epangelo lyoshili tali zi mehogololo lyokatokolitho 435 kiigwanahangano. Kutya nee ongoye wa ka za mo tu pangela ihe pahalo lyoshigwana, ha nethiminiko.

S. Thikameni

SWAPO okwa fa oshikaha shoye shokolulyo

Kombinga yoye Alushe Hailonga, ondi wete kutya oto hala kupatana oshoka nangweye omuyambidhidhi pamwe nayakweni yalwe. Ano ngele ku shi wete kutya omwa pata, ito shi mono we. Ekumba ndi lye mu pata olya ninga iikogo, nande tsa mo oshipatululo, itali patuluka, oshoka olya kukutula ko. Shila otali ngilishwa manga. Moku mu lombwela okupata kweni, otu li ongongilishi oku mu tutika, oyo mu wape mu patuluke.

Oto lwitha SWAPO, SWAPO olye nee? Ondi wete kutya otwiiwitha mwene, wa fa ashike to lwitha okwooko kwoye kwokolulyo u ku tete ko, ku shi ne kutya komongula oto longitha shike, okwooko ngele kwa zi ko. Kakunya owa pata.

Oto kondjele epangelo lyaa kuthwe koshipundi. Epangelo ano olyalye? Tse otu shi shi kutya epangelo o lya li mo nale mu Namibia, ndele ngashingeyi kali mo. Epangelo lyokatongotongo lya S.A. ndyoka to popile, owe lyaadha tali popilwa kulye?

Kakele. kungoye nayakweni mba tamu li popile. Ano kala u shi shi nawa kutya oSWAPO otayi kondjo ekondjo lya kondjwa nale kookuku ngaashi ooNehale nooMandume nooHipumbu nooyakwawo mba ya kondjele Namibia oku kondjitha uupika nuukoloni woombulu.

Oto ti shino ho ningile SWAPO, osho to ningile oshigwana? Tse otu shi shi kutya omutenya nuusiku oto dhipaga oshigwana sha Namibia nelalakano oyo u shi manepo.

Tse katu na nande esiku tu ki itaale epangelo lyokatongotongo lya South Africa nande, oto tu manapo owala, ngoye u tale ne kutya oto li taalitha oolye.

Kombinga yaanangeshefa naaniilonga ngaashi wa ti, ohaa yambidhidha epangelo, ku li mondjila. Ndjino

oveta yuukayamukulwa yepangelo lya South Africa, ndyoka yi lilepo okukolonyeka oshigwana.

Ookamba shaa dha yele mo mo Namibia, Namibia olyoopala ne, kaku na we. Oshoka ookamba odha nyateka naye oshilongo. Shuneni komagumbo geni, ne mu tale kutya oombulu okatongotongo otadhi ka kondjele ethimbo li thike peni?

A.K. Haufiku
Swakopmund

"Nandi kwathwe wo ndi holole omadhiladhilo gandje."

Mokatendo kotango, Hailonga oku shi nawa nkene aakwashigwana yamwe ye li pokati, aniwa (Neutral). Mbela Hailonga okwa tseyu tuu kutya oshike sha eta uukwatya mbuno mAnamibia? Aantu mbano oya tegelela 435 yi ye miilonga, oyo omakunde ga ze mooshendje.

Mokatendo ke okatiyali ongomukolonyeki ota ti. "Ohatu ku longele oilonga ei hatu longele oPlan." Oshinima osha li ando oonkundathana oyo Aanamibia tu galulilwe, ewi, uuthemba auhe wopantu mevi lyetu, ngaashi sha li muuyuni wookuku.

O mukolonyeki sho inaa hala okupulakena oshipa oshiluudhe, oshigwana osha katuka onkatu, okanona oka valwa noka pewa edhina SWAPO, oyo yi kale ewi lyoshigwana ngele taku yiwa koshitaafula.

Oonkundathana sho inaadhi pondola sha noshitaafula sha nyengwa okukandula po omukundu, onkatu ontiyali oya katukwa. MoSwapo mwa valwa okanona ka lukwa PLAN (People Liberation Army of Namibia), oyo yi kuthe oondhi komaale. Palongelokumwe naaholi yombili, omatokolo oga ningwa kaalumentu yomwaalu omushona lela kwali, ashike oga kola. Konyala nena oomvula 21 oku za 26.8.1966 lwotango mOngulumbashe.

Aanangeshefa ondi wete kutya yo kaye li po iilongitho meke lyomukolonyeki, ihe otaa lalakanene okuyakula aantu yoshilongo shawo pampumbwe yesiku kehe palutu. Yo aaniilonga Aanamibia inaa taagulukila nande koHolland, ya ka kolonyekwe. Kakele kaMweyanoshilundo, ngo e ya oku ya kolonyekela megumbo. Ihe natango inaa i-longekidhila okupulwa iitendela kOopwiiko nookayamukulwa.

Tse aaniilonga Aanamibia inatu itaala uuyamba wu li ashike mo Namibia nena, ihe otu shi shi nawa kutya okuza nale Namibia eyamba kwaa na we. Nomolwaasho ngoye wa homata to popile oonkondo dhuukoloni. Nuunene eliko kiilongo yuuninginino, ne mu tule Namibia pomutenya.

Ngoye oto hupu nawa nena, owa fa wa gamenekeka mbela kepangelo, onkee wa hala li kale po. Yakweni ihatu kotha, otwa ninga oondjito ethimbo kehe, otwa tla. Inatu tla sha shilwe, ongoye nepangelo lyouye twa tla. Oshoka tse katu na manga epangelo mo Namibia.

Kashi na uunene mbudhi, shampa to hupu nawa nena, ngoye ninga nee u piluke, ongoye wa tegelelwa, ompito yoye oyo yi li nena. Manga to ninga-ninga ko, lyou nethimbo otali yi.

Uuyuni owehongo lye ku gu, ye mukweni te li toola po. Yakweni otatu ti owala "Ambambi inga yi sa."

Kee he ku lombwele ke shi gwoye.

Omwiilongi
Abisai Ndeshietelwa

Owa dhimbithwa oshigwana kiimaliwa

Kwathandje oyo ndi yamukule oshipopiwa sha A.Alushe Hailonga, moshifo sh Omukwetu No.15/87.

Te ti, ngoye mwene manga inoo ya wu ka kwathe SA, owa li ho longo shike? Omolwashike wu na okukwatha SA? Omagumbo gangapi gAatiligane wa lyata po? Ya ngapi ye ku ithana omuhona? Aatiligane yangapi wa fikila omagumbo?

Hailonga, ino hekwa noshimawali musamane, omukulugonale okwa tile: Ombwa ohayi hekwa naashi yi hole. Wa hekwa noshimaliwa e to dhimbwa naanaa thiluthilu oshigwana shoye.

Tse itatu sholola, kutya nee owu popye komukalo guni, aaye. Aakwashigwana atuhe otwa hala ookambadhi hedhe kokule noosikola. Inatu hala oku ku tala ngoye nezimo lyouye SA.

Fillemon A. Kondjela David

SWAPO omunegumbo lyetu

Ote yamukula nomuthindo noneyeme koshipopiwa shuuposi sha A.Alushe Hailonga m Omukwetu No.15/87, epandja 9.

Sho to ti ne otamu lwitha SWAPO oyo mu kaleke ko epangelo lya SA koshipundi, ou shi pamwe SA oku na esiku na ka ithanwe hokulu nenge omumwanyoko?

Tse uuna tatu yambidhidha SWAPO, otatu yambidhidha omunegumbo, omwalwa pamwe natse, kuume ketu nomumwameme. Ehangano ekondjeli-manguluko lya Namibia.

Ookamba dheni uuna dha tembuka mo moshitopolwa sh Owambo nomo Namibia alihe, inga tamu yi nookuume keni (oombulu) kOkapa hoka tamu ka ningila ngiika elandulathano lyenilyomahepeko gAanamibia.

Kombinga ishewe yetu aanasikola hoka wa popi molwoofuto dhoskola oontshona, tse epangelo otu na ashike oku li pula oompumbwe dhetu dhi ihwapo, oshoka pakutindila kwalyo koshipundi, omolwaasho li iwete li na oonkondo.

Nuuna nee lya loloka komakudhilo getu gashaasiku, onawa li ze momeho getu, osho twa halelela. Tse otwa hala elelo lyaavaalelwa mo.

Fanuel K. Sh.

Uuyamba woshilongo otau yi koosikola dhAatiligane?

Onda hala okugandja uuyelee kashona kombinga yoshipopiwa sha A.Alushe Hailonga m Omukwetu 30.8.1987. Kutya omakakunya neepapeta oyo ayeke taya yambidhidha epangelo lyuukoloni? Eyamukulo! eeno! oyo. Kombinga yaa-

Tala kepandja tali landula

Dha za kep. 9

mbaka ye li "Neutral" oyo naana oopapeta onkweni mbo.

Kutya ne otamu kondjitha SWAPO, SWAPO olye? Okwa tya ngiini? Omunamibia, nenge okwe ya mo a fa oombulu? Ne omwa fa ashike oombwa dha valwa kuyina yimwe, ndele tadhi kolwa mo kaantu yomagumbo ga yooloka. Sho tadhi ka tsakanena, dha koka, kehe yimwe oyi li namwene, olugodhi ihe ndo. Osho mwa tya ngaaka. Ndele inamu tseya omadhina geni, nuuntu weni.

Oshikondo shelongo nashi gwaniithe oompumbwe dhaanasikola, oshoka aanasikola yoombulu oye li ko taa gwanithilwa oompumbwe dhawo nawa nimaliwa yoshilongo shetu, manga tse tatu lilwa kesilu ku SA.

Kombinga yookamba otandi ti 'eeno' uthe- mba otu wu na l elalela wa gwana. Ngoye oto dhiladhila kutya ngele owa adha omakakunya ga tye

oonajembo taga yaha egumbo lyaandjeni nenge aantu yaandjeni oto tala ko ashike ngokuuvu wayengele?

Panduleni. I
Ondangwa

Enyamukulo kepopyo loye A. Alushe Hailonga

Ondi wete kutya ove naanaa omufipihonde woshiwana shaNamibia. Ndele fye otu li moluhodi linene omolwoomeme nootate ovo ve he na onunona vavo momaumbo, va ya kondje yoshilongo medina leni makakunya pamwe neembulu dokatongotongo da SA shi he shi pahalo lOvanamibia.

Makakunya, omwe shi shiiva tuu kutya okuhena oilonga oumbotyotyonye tamu ku tandavelifa? Otamu denge ovanhu noku va longela oilonga yomunyonena. Ovanhu ove na okuya onhapo pondje

yoshilongo, oyo va mone ekwafo okulipopila komutondi nye.

Kaleni mu shi shi kutya kape na wa imine ihau kuka, nanye sheni tashi puko shito. Ashike landulani eembulu ooxo noonnyoko voomwishishi. Fye otwe mu loloka, indeni, indeni.

Shuudeni. A. Shituleipo
Walvisbay

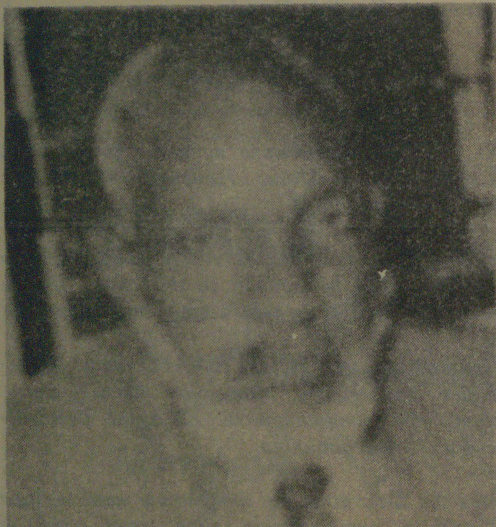
Ino panda oonyoko yavakweni

A. Alushe Hailonga, ove ou li moukakunya, to dipaa oshiwana noku shi hepeka molwashi te ti ku shi vali omulaule nande u na oshipa shilaula. Osha yela ove ou li lela pondodo jepuko eli li fifa ohoni.

Omutilyane nande ou mu litadele, kashi na eshi tashi vatele. Okutonda nyoko, ove to pande ina yamukweni oshinima sha puka, ove vali ongeyoka tali endifa edimo, fimbo oinamwenyo ikwawo tai endifa omaulu.

E. Hangula
Windhoek

Tuhadeleni a fiya po Namibia



Omushamane Andimba Toivo yaToivo, ou umwe va kala naye, okwa tetekela nale moupongekwa.

KOvanamibia vahapu, ekondjelo lemanguluko kashi na sha nouhapu weedula tadi piti ile woixuna tai monika, ndele eitavelo la pama, kutya oli na ashike okuhangwa efiku limwe.

Sebulon Ekandjo

Omatokolo ga (UN) molwaNamibia

4.11.1977 — Omutumba gwaayehe gwiigwanahangano (UN) ogwa tsu kumwe kutya Ombaye (Walvisbay) oshitopolwa shimwe shaNamibia. Ogwa pangula SA ngoka ta kogeke Ombaye ku SA shaa li paveta.

Lwotango mehisoli lyehangano ndyoka, oshigongi sha zimina pwaa na omukondjithi, kutya SA na tulwe koho yoveta yondjindikila yepindiko lyomatati niilongo iikwawo, mwa kwatelelwa elongelokumwe lyiikondjitho yolute.

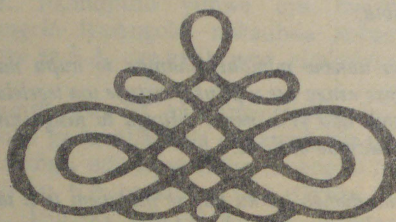
6.5.1987 — Oraata yegameno lyiigwanahangano oya pangula SA sho a longitha Namibia ongompani okuponokela Angola. Oshigongi osha lombwela SA a kuthe mo omatanga ge mu Angola.

27.7.1987 — Oraata yegameno ya UN, oya zimine ethaneko (435) nkene Namibia li na okumanguluka, ngaashi ye li etelwa kokangundu kiilongo itano yuuninginino. Ethaneko ndyoka SA okwa adhika e li taamba 25.4.78 na SWAPO okwe li zimina 12.7.78 konima yefatululo ele.

Ependa nomutete mekondjo lemanguluko laNamibia, omushamane Eliaser Tuhadeleni (Kaxumbakandola), osha kundandwa moifonghundana imwe moshilongo noku- tya ye a ka kondja manga pamwe nongudu oyo ya homata yaSWAPO moupongekwa. Kaxumba okwa ya naefolo laye, meme Priscilla.

Omukondjelimanguluko Kaxumba, okwa li a tokolelwa odolongo yokukalamwenyo kwaye akushe, konhunhu yaRobben, mu SA, fiyo omudo 1985 eshi va mangululwa ko navakwao ovo va li pamwe naye moixuna yomahepeko.

**OKUTULA ESHIIVIFO LOYE
MOMUKWETU, OSHO OKULO-
MBWELA OMUNHU KESHE
MOSHIWANA. LANDELA HANO
ESHIIVIFO LOYE ONHELE
MOMUKWETU.**



Wa mwene tuu ombulu tai denge dikwao?

Tate Alushe Hailonga, Ovanamibia fye inatu pata, otwa hala emanguluko. Eepapeta edi dOvalaule hadi lopota komakakunya odo inadi hala emanguluko, shaashi omakakunya oo taa imbi Namibia letu li manguluke.

Makakunya nye, nanye omalai, ohamu lopotelwa nee kovanhuru nye tamu itavele nande oshinima oipupulu. Ove nee ukakunya oto ka denge ovamwanyoko to ti nava tonge SWAPO.

Otamu ti fye ofye nee hatu mu mono, nye ihamu mu mono, ye mbela oye oshilalakanenwa sheni eshi muwa ya moukakunya? Ohamu mono ngoo eembulu da lam- bama omaumbo eembulu dikwao tadi a xwike, ile tadi a lyataula po, ile tai denge ikwao?

Fye Ovanamibia ohatu halele tate Sam Nuyoma omukumo, noupenda, okutwikila oilonga yaye, fiyo Namibia la manguluka.

D.H. Alfews

A. Alushe Hailonga, owa hala okupukifa oshiwana nowe shi li- mbilika noshipopwa shoye.

Oove auke wa hala "okapangelo kaBotha" ka kale ka fikama po, shaashi oto li to kuta. Ku na ombili momwenyo, onghenda nelandulafano, eendunge nado yo, shaashi oho pewa otjeke yeemwenyo doonyoko nodovamwanyoko. Oove umwe womovapiyaaneki vaNamibia, to hekwa koshimaliwa nokondooxa yobifa.

Fye katu shi ovapofi, navali otu na eendunge onghene ino tu fufya. Swapo oho mu dengele peni? Vambuleni ava wa dengele onghela? Omaumbo aSWAPO owe a xwike naini? Laxokulu eli wa xwika po? Oshike ino xwika po loye eli wa pewa kuBotha? Naave oSwapo, haumuNamibia, ile owa dja kuEuropa?

Tala kep. 11

Dha za kep. 10

Moimauwa ei ho pewa kuBotha, owa pelwa mo edundakano lomoulwi. Shaashi paife ku shi kutya Kalunga oye lyelye. Owa kumwifa oshiwana shaNamibia, shaashi oshikalimo shoshipalanyole shoye kashi na elandulathano. Ngeenge ola manguluka oto ka yuka peni? Oto i naBotha? Owa hala oku kala wa fa Savimbi e li moAngola? Oto ka yandja ombili koshiwana, ou shi shi tuu?

Ino popya vali ongeleka pamwe "noukakunya", mbela popya ofikola ei i li mewiliko laBotha, ye oye ta wilike "oukakunya". Ongeleka oyaKalunga.

Pengevali J.N. Shitaleni
Nothorn-Namibia

Ombinzi yoshigwana otayi futwa oondoha

Moshifo shOmukwetu 30 August 87. Omulongithwadhipagi gwoshigwana shaNamibia okwa pitithile oshinyolwa she mOmukwetu moka a popila aahona ye naadhipagi yoshigwana shetu. Tse oshigwana shaNamibia inatu hala epangelo lyokatongo lya SA.

Ne omakakunya dhimbulukweni kutya oondjambi ndhoka tamu futwa dhoondoka opo mu dhipage oshigwana sheni, kadhi na siku nadhi ke mu pa elago lyaaluhe. Oofudas nee, etheni oshigwana shaNamibia shi kale moshilongo shasho nombili.

Indeni naahona yeni hu ya za. Opo mu ka kale mepangelo ndi mwa hala ngaashi tamu ti. Tse tweetheni tu kale ngaashi mwe tu adhele.

Natangwe J. Kwedhi
Swakopmund

Oupofi tau mu popifa

Hailonga omunhu e na omadiladilo a pata, ndele ke shi wete. Nomuhona waye ou ha longele, oku shi shi, kutya Hailonga wange okwa pata.

Kanyika Daniel
Windhoek

Yapukileni SWAPO koshipundi

Onda hala okupopya nakaume "Alushe", onda kumiwa nohandi di omawilili mokuuda eendjovo odo to popi wa fa wa dimbwa kutya ou na oshipa shilaula.

Fye ovanafikola ohatu hale ngahelipi epangelo leni la fa hano letu, shaashi ngeno okwa li epangelo leni, olovanafikola aveshe, ngeno ohali tu wanifile ashishe osho twe shi pumbwa. Fye ngee ohatu popi oshili, fye ovanafikola katu na epangelo. Nge otu li na nali tu pe omambo nee. Ove ito hale epangelo leni li djeko koshipundi shaashi ove oshilongifomwa nale sha SA.

Epangelo leni nali dje koshipundi, li pe SWAPO oshipundi nye nee ava mwa landwa nale tamu shikula vakweni, walye nee eshi mu valaula! Fye otwa loloka omahepeko, otwa hala ombili. Ove dimbulukwa nee kutya omukengeleli ke na omwenyo mule. Ou lesha mOmbibeli Judas, eshi a ninga.

RUDOLF BAHM

Omupangeli gwootundi

MOSHAKATI

Mpaka otandi tseyithile aayakulwa yetu ayehe, kutya iilonga yokupangela ootundi, okulanditha po oompe nokwoopaleka ndhoka dha teka, okutula ko omakende nuumanya, itatu yi longele we metungo JAMAICA INN.

Ngashingeyi otu li mpaka mOshakati metungo lya ENOK (BBK), mpeya hapa kala pwa thikama aluhe omaloli goeiskilima (Roomys). Shika otashi ti elalakano mpaka, oku ku etela eyakulo ndika popepilela, waaha pumbwe we okufala nenge okutuma oowili dhoeye kUushimba.

Ohatu landitha wo oowili oonkulu kondando yi li hwepo, onkene tu talela po ngele to piti pOshakati.

aakwashigwana, opo ya ye muukakunya, ya kateke emanguluko.

Ove oto popi ashike eshi u kwete okakopi peke, to nu ohonde yavamwanyoko ndee ku shii apa u li.

Hailwa
R.N. Gebhardt

SWAPO ita kondjele iimaliwa

Dhiladhila kutya, ngoye Omunamibia ashike noku na esiku noka ninga ombulu, niisheue epangelo ndyoka to ti omwa hala, itali kalele sigo aluhe, oya fa owala nokuli lya teka po nale.

Ngele to yi momuthitu, oho yi mo naatiligane yangapi? Dhimbulukwa mbulu oku mu li owala koho yoompadhi mu idhipage po ne yene aaluudhe.

SWAPO ita kondjele iimaliwa ngaashi ngoye, ihe okwa hala emanguluko lyoshigwana she, a kale mevi lye a manguluka. Eeno aanasikola oya hala ya gwanithilwe po oompumbwe dhawo, molwashoka ohaa futu shi vulithe.

Aanasikola yo ishewe ohaa futu ngaashi haa pulwa kepangelo, onkee naa gwanithilwe oompumbwe, ngaashi shi li omusindalongo. Oto ipula nee kutya omakakunya otaga kala ge holike koshigwana ngiini, ngele nani ohaga longo iilonga yomunyonena?

Shoka to longo, shi longa nomukumo. Ashike dhiladhila komeho. Tse itatu etha okuyambidhidha aakwiita yoPLAN, molwashoka natse otu li po ongaSWAPO.

M. Lundulula, naN. Lipula
naL. Kotoka

Ku A. Alushe Hailonga

"Omakakunya neepapeta ovo aveke tava yambidida epangelo loukoloni? Eeno. Kapu na nando Omunamibia gumwe e ki ithanene oombulu dhokatongotongo dha SA, opo dhi ye oku tu dhipaga, oku tu kolonyeka, okuyaka mo eliko lyetu nokuheka

Efupipiko SWAPO otali ti: "Ehangano lyaakondjelimanguluko Aanamibia tali kondjitha okuteya uukoloni mbo to nyenyeta hau kuthitha ko iimaliwa yoye.

Aanamibia kaye na epangelo natango! Epangelo li li muno olyoombulu, kali shi lyeni. Ndi mwa hala li kale ko ano olini? Ne oombulu? Ihe kamu na nando epangelo lyoombulu oonduudhe muka!

Andreas Hamadhimbo
Oshigambo-High-School

Omakakunya noopapeta oyo ye li aatondi naateyipo yoshigwana

Kuume A.A. Hailonga, ohenda onene kungoye sho wa ninga eyoka lyoshigwana, nowa hala oku shi pukitha noku shi landitha po kepangelo lya SA, ngaashi ngoye lye ku landa po.

Oho kala wa panda sho to lyatapo egumbo lyanyoko, oho kala wa nyanyukwa uuna to fike po omagumbo goonyokokulu? Nenge oto dhiladhila kutya nyoko Omutiligane?

Uuna to lyatapo egumbo (omagumbo) kala wi i tula mo, ngweye shi ninga mbala tse yo (PLAN) inatu ya. Kehe koshilonga to shilongo oshi na oshilanduli. Oswapo ku na esiku no yi mana po, nando wu lale inoo kotha. Ino kambadhala nando okukengelela oshigwana noku shi fundja. Tse otatu si owala tatu kwatha oSWAPO yetu, sigo okesiku ndyoka Namibia tali manguluka.

Mamba Uutoni naKondjeni N.

Ndhindhilika: Sigo oompaka twa pata omayamukulo kuAlushe Hailonga. Mboka oombapila dheni dha thiki, ombili sho twe dhi fupipi, omolwehala moshifo lya po. Mboka oombilive dheni dha tokelwa natango ombili, natu taambe shono sha yamukulwa kuyakwetu, oye shi ningi medhina lyetu.

Amushanga gwOmukwetu

APPLICATIONS INVITED FOR FOLLOWING POSITION

1. WELFARE WORKER

in the Social Services Unit

DUTIES: — *work to provide assistance to the needy in Namibia.*
— *Co-ordinate self-help programmes in the Unit, and more.*

SALARY: *Negotiable*
TO START: *Any time*

2. ADMINISTRATIVE ASSISTANT

in the Social Services Unit

DUTIES: — *Assist with admin. work in the Unit:*
— *receive quests;*
— *co-ordinate appointments;*
— *co-ordinate correspondence;*
— *be responsible for filing and records.*

SALARY: *Negotiable*
TO SALARY: *Any time*

3. HEALTH WORKER

in the Health Desk

DUTIES: — *Work as health educator*
— *Help to asses community health needs;*
— *Draw plans for proper services*
— *Visit Health and Welfare Committees and help with*
— *Community health education.*

SALARY: *Negotiable*
TO START: *Any time*

Please contact Mr P. Aluteni

P.O. Box 41

Windhoek 9000

Phones: 061 or 62187/8

061 37519/1/2

Omumati Johannes Shuutheni Lindombo (18) megongalo Iipandayaamiti mUukwambi, okwa mana oondjenda dhe ombaadhilila moshipangelo shepangelo mOshakati 22.8.1987. Okwa thigi ko yina naamwayina yahamano. Eps 103:15 - 18

Rauna K.lindombo

Omasiku sho 10.8.1987 Omurwa okwa zimbula tate Johannes Shivute Shikongo (64) gwomogongalo Onayena moshiponga shoshihauto. Okwa thigi ko omukulukadhi gwe, oyana 13 naatekulu 17. Eimbilo 400

Omweno gwandje oKristus nokusa oko elikolo.

Ruusa Magano Shikongo
Nehale Secondary School

Kuku Emmie Maria Kaluwapa gwomomukunda Oshana megongalo Onyaanya, Kalunga okwe mu ile po 24.7.1987 muwehame wesiku limwe. Okwa thigi ko oyana yatano, aatekulu naatekulululwa oyendji.

Sylvia T.Nambahu
Nehale Secondary School

Etseyitho lyowina

Ehangano lya tseyika nawa nedhina Jambolongondjo Garage, olya lunduluka nedhina epe AUAS MOTOR SPARES. Olya tameka okulongithwa 1.6.1987.

- **Ehangano lyombiliha noli na konyala iipumbiwa ayihe yiihauto.**
- **Omatayiyela niikwawo yiiyenditho omaludhi konyala agehe.**
- **Auas Motors Spares oyi li pO-mugongo pooha dha A.B.C. pOluno.**
- **Ila wi italeleko mwene!**

Oyi li mewiliko lya Moses Auala, Box 256, Tel. 168, Ondangwa

OMUKWETU

Oye oshifo shOngeleki Onkwaevangeli paLuther yomuSWA/NAMIBIA.

Ohashi nyanyangidhwa mOshinyanyangidho shOngeleki mOniipa.

Omukuluntu gwoshifo omumbisofi Kleopas Dumeni.

Amushanga gwoshifo omusita Sebulon Ekandjo.

Ondando yOmukwetu muNamibia naSouth Africa R6,00 komumvo.

Palwe muAfrica R10,00 nokombanda yomafuta R14,00 komumvo. Mondhila R17,00.

Ondando nomambesitelo agehe naga tumwe kOmukwetu, Oniipa, P/Bag 2013, Ondangwa, 9000.

ELOC PRINTING PRESS
PRIVATE BAG 2013, TEL. 11, ONDANGWA 9000
SWA/NAMIBIA.

ESO

Meme Mukwanime Sylvia Ndaipawa Wapunduka, okwa mana oondjenda dhe ombaadhilila 29.8.1987. Okwa thigi ko oyana yatatu naatekulu oyendji.

Isak Mwaifusa
Oshela Secondary School

Gerbahard Iipinge yaAngula (31) gwomomukunda lino, Elim mUukwambi eti 2.8.1987 moshipangelo shaMaruru okwa mana oondjenda dhe.

Eimbilo 190. 1-8.

Ekundo lyaakwanezimo Joh.14.1-4

A.Sh.Nashima
Windhoek

Kuku Ekaku UeyangananiShiindi (125), gwomomukunda Oniinkundundu megongalo lyaShaango, okwa mana oondjenda dhe 30.8.1987 muwehame wethimbo ele. Okwa thigi ko nekulu lye, oyana 15, naatekulu naatekulululwa oyendji. Eimbilo 473

Olvia Niita Shilongo
Oshaango

Kuku Maartha Nuui gwaAnkome (81) gwomomukunda Egundjilo Okaku mO-donga, okwa mana oondjenda dhe 19.7.1987 muwehame wethimbo efupi megumbo lye. Okwa thigi ko oyana 6 aatekulu 42, aatekulululwa 19. Okwa landula omusamane gwe Andreas Iipinge. Kalunga na hekeleke ezimo alihe, aashiinda nookuume ayehe.

Eimbilo 630, Eps 23.

Martha Nuui Iipinge