

OMUKWE TU



40c

No. 19

ISBN 0-620-06828-0

ONGELEKI YA ELCIN MOMEHO GAATONATELI YITAYINGELEKI YAYO

“Evi lyetu olya ningi cha lyomawendo, omagongalo oge li mevi lyaa na ombili, lyu udha omahepeko,” osho sha leshwa mehokololo lyokomumvo 1986 lyomutonatelishitayingeleki, omusita Josafat Shanghala. Kakele koshitayingeleki shaKavango, uudhigu wonkalo yoshilongo owa holoka wo momahokololo gomumvo gwa zi ko gaatonateli yitayingeleki iikwawo moshitipolwa shOwambo.

Omutonatelishitayingeleki shOndonga omusita Petrus Shipena mehokololo lye ota ti, okwa koneka ekwatathano ewanawa lyaakriste momaudhigu momathimbo ngoka omadhigu ge etwa konkalo yiita moshilongo.

“Ongeleki oyi li momalyenge, oshigwana kashi na uuthemba wopantu, kashi na mwene onkee kashi na egameno,” pahokololo lyomutonatelishitayingeleki shuukwanyama, omusita Apollos Kaulinge. Moshitayimgeleki she shono oombati dhasho dha egamena ongamba yaAngola, omutonateli Kaulinge oku ulika mo omayonuko gamwe gopaita.

“Otwa kanitha uukilinika mOnheleiwa, mEwaneno nopOnamhindi mOkalongo. Osinagoga pOhamuti megongalo Omutundungu, oongulu dhosikola mOkambebe, Onheleiwa nopOnamhindi, osho a hokolola.



Omotonatelishitayingeleki shaNdonga
Petrus Shipena

Tala kep. 6

Kaapanda a toola oonzi mbali mOkaoko

Aasita oyendji mOngeleki ya ELCIN otaa yemata olwindji komadhina ogendji gaakwanegongalo ga thikama owala momambo gegongalo, yo yene yaa shiwiki mpoka ya kala. Omusita Junias Vaino Kaapanda moTsandi, Uukwaluudhi, oye gumwe gwawo hi ipula nomiyalu dhaakwanegongalo.

Esiku 29.8.1987, olya li enene kuKaapanda mokwiitsa oonzi dhe, aakwanegongalo yaali mokati koondundu dhaKaoko, manga a li metalelo pamwe nomutonateli gwoshitayingeleki shoka mondjakulwambinga yegongalo tyaPuwo.

Kuku Fransina (Hosea) Hindjou (82), momukunda Kondaulye, ookilometa konyala 100 muumbangalantu wOpuwo, okwa kala ti ipula nomauvitho ngoka ya ningilwa kaayenda ya zi kOwambo.

Tala kep. 7



Omusita J.V.Kaapanda nakuku Fransina Hindjou, a yelutha onzapo ye yeshasho. Kolulyo methano ndika okuku Getrud Tjilovi, ayehe yomomukunda Kondaulye moKaoko.

Etalelopo koongeleki oonkwaLuther muNamibia

Oongeleki oonkwaLuther muNamibia odha tegelela omwedhi nguka etalelopo lyopausita okuza mombelewa yaAakwaluther ayehe muuyuni kuGeneva shomu-Switzerland. Aambisofi, aasita naanambelewa, ayehe kumwe yaheyali otaa ka kala mosheendo shoka.

Osho osheendo oshinene shotango tashi zi koombelewa dhEhangano lyAakwaluther muuyuni tashi talele po Namibia.

Omumvo 1986 Amushangandjayi gwehangano lyAakwaluther okwa zile ko a talele po mpaka nokwa kundathana naawilikingeleki.



Omuwiliki gwoosheendo Ch.Held

Pambelewa yomukwathi gwombisofi pO-niipa, aayenda mboka ye li mewiliko lyaEfolo Christa Helda, omuwiliki gwoshikondo shomapendulopo giigwana, otaa ka thika pombelewa yaELCIN 23 gaKotoba notaa kala sigo 26. Osoondaha yeti 25.10 otaa uvu momagongalo gi ili nogi ili gaELCIN.

Onkundana ya za molunza lu shi o-kwiinekela, Ongeleki yAandowishi inayi taamba ko etalelopo lyaayenda mbaka lyopausita, shoka ya ti aniwa etalelopo inali kwatelela mo uuwanawa wOngeleki ndjoka.

Okuza 1984 Ongeleki yAandowishi oya hulithilwa po uukwashilyo wayo mOngongahangano yaAakwaluther mukupewa uusama kutya itayi longele nawa kumwe noomwayinangeleki dhAaluudhe moshilongo.

Moshigongingeleki shayo muAguste numvo, Ongeleki yAandowishi muNamibia oya yematele ewiliko lyOngongahangano yaAakwaluther, kutya inali hala nando okuyalula elunduluko ndyoka ya ningi momimvo ndhoka mbali dha zi ko.

“DELK okwa dhimbulula kutya okwiidhopa kwOngongahangano mutse itaku kwatha we sha, onkene itatu (DELK) ipyakidhile we nekondo lye” osho Ongeleki yAandowishi ya kundathana moshigongingeleki shayo.

Sebulon Ekandjo

nomOnandjokwe. Nahauxwiinina okwa tambulwa meembete mOnandjokwe 7-23.5.87. Nomefiku tuu 26.5. 87 omo a li a pewa a ka twikile ekonakono palombwelo laNdohotola ndele nani aye, tashi ono otashi ende. Okwa penduka ongula te lilongekida opo tu mu twale kouhaku.

Ashike eshi tuu a mana okulikosha okwa nangala nokwa kofa. Omwene a ila po omupiya waye. Oye okwa li omukulunhufikola nosho omukulunhuongalo nsht, nOmwene eshi a tala longa sha wana okwe mu dimbula e na eedula 50. Apa nandi pandule nepandulo la sheywa kovapangi aveshe neendohotola da ungaunga nokulihepekela omulumenhu ou. Kalunga ne mu wedele ko ye e mu pe eenghono.

Taimi Shilongo



Omukulupe omuposi nkene a za, kuku Veronika Amunime, megongalo Elondo, okwa piti nawa ekonakono lyOkatikisa. Oshilyo shElelogongalo meme Emma Kadhila, ota monika methano ndika kolulyo, ta gandja onzapo yOkatikisa komuposi.

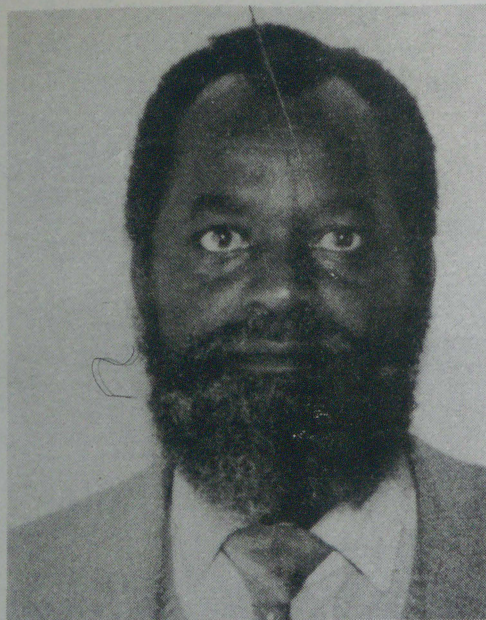
Saara Indongo

ONGHALAMWENYO YANA-KUFYA SHILONGO

Nakufwa Martin Shilikoshi Shilongo okwa dalwa meti 20.10.37 mOikoto, Ongenga. Oye omonamati watate Aron nameme Mirjam Shilongo. Pailongaifano youlongi Shilongo okwa li koseminali youlongi kOngwediva okudja 1969-1972. Nomodula 1973 Shilongo a dimbulukwa kOngenga nokwa shuna mOikoto meumbo laxe fiyo eti 26.5.1986 eshi Omwene e mu dimbula moilonga yaye.

Okwa kala nounghundi okudja 1982 eshi ovakwaita va S.A. ve mu kwata nove mu tula modolongo, omo a kala mo omwedi nomafiku. Okwa kwatwa kouvela oo we mu twala fiyo omeembete mOnandjokwe kexulilo lomudo.

Natango manga a li a dja koshipangelo e li ngaa nee mombete yomeumbo, ongula yOshoondaxa petamekolela laMaalitsa ovakwaita ove mu kwata po vali ngoshito. Osha li shi ehameka oshimbebe shi li modolongo, okwa kala mo omwedi nokwa li a dja mo 2.4.1983. Mokukala kwaye momahepeko okwa li e hole eimbilo: Jesus oye omona waKalunga a dalelwa muBetlehem unene tuu omatumbulo aa: Komushiyakano va dimina po, osheshi kave shii eshi tava ningi.



Nakusa Martin Shilongo

Ounghundi owa kala tau mu hepeke nokwa kala ha kwafwa mouklinika nokunangekwa yo moipangelo ya kula ngaashi mEngela

Omupangi ta pumbi-wa mOmusimboti

MOkaklinika kOmusimboti, megongalo Ompundja, mUukwambi, omwa pumbiwa neulumo omupangi e na onzapo yuupangi. Ngoka e na ehalo okuyakula mehala ndika, na kwatathane naMatrona omukuluntu mOshakati, ye mwene nenge pangodhi Tel. 9, Oshakati.

EIHOLOLO LYA KALUNGA KAANTU YOMOMBIMBELI

Aluhe naakuhe momwenyo gwomuntu omwa kala elalakano lyokukonga Kalunga. Omuyapostoli Paulus ta hokolola nkene aapagani taya ugadhala momukonga Kalunga (Iil.17:27). Ihe paitaalo lyetu lyopakriste aantu itaa vulu okutunga ondjila yokuya kuKalunga. Kalunga oye tuu okwe ya kuyo nokwe ya ihololele. Egongalo lyaakriste tali mono notali uvu mOmbimbeli Ondjapuki eihololo lyaKalunga.

Ombimbeli inayi nyolwa ya pwa pethimbo limwe andola aawe. Oya nyolwa kashona nakashona sigo pwa piti omathimbo omale. Etendo lyotango, Etestamendi Ekulu, olya nyolwa mOshiheberi nombinga onshona mOshiaramea. Olyo tali hokolola eihololo lyaKalunga pethimbo lyeilongekidho. Etendo etiyali, Etestamendi Epe, olya nyolwa mOshigreka notali hokolola ehalohupitho lyaKalunga lya pwa, lye etwa nolya gwanithwa kuJesus.

Omatendo agehe gaali oge na ekwatathano lya kola. Limwe ngele lya po ekwawo kali vulu okuuvika nawa. Agehe gaali kumwe ogo ehistolli lyeihololo lyaKalunga muuyuni.

Otu na okudhimbulukwa wo, Ombimbeli ngaashika tu yi na oyo inayi za megulu noinayi nyolwa noshikaha shaKalunga mwene. Ombimbeli yoyene otayi hokolola, nkene ya holoka, kokutya ya nyolwa kaantu ngaashika tse. Omadhina gaanyoli ogendji oga tseyika, gamwe oga dhimbiwa.

Nena tashi vulika ngiini okutya mOmbimbeli oyo oohapu dhaKalunga, nando oyo ya nyolwa kaantu? Oyo oohapu dhaKalunga, oshoka Kalunga okwi iholola mokukala kwaantu mehistolli nomwaashoka sha ningwa mulyo. Ngaashika muJesus Kristus, Kalunga okwa hedha kutse molupe lwomuntu, osho wo eihololo lye limwe lye ya kutse mokukala kwaantu.

Kalunga okwa popi moohapu nomokukala kwaantu, e ya hogolola nosho wo miinyolwa nomiilonga yawo. Eihololo lyaKalunga olyopambepo, ihe ombepo otayi pumbwa olutu, yi wape okutaambwa nokuuvika kaantu. Omunyoli kehe mOmbimbeli ti iholola wo mokunyola kwe. Shaangoka ta nyola pamagano ge. Ombepo Ondjapuki sho a gumu omwenyo gwomunyoli, oye okwe mu pe sha e shi hololele aantu. Elaka ndyoka lye etwa pamikalo dhi ili nodhi ili, ongaashi kehe gumwe e na omagano ge nokulongwa kwe okwi ili.

Gumwe ta nyola elaka lye molupe lwoshitewo, omunchistolli ishewe molupe lwehistolli, omutoti gwiipango opaipango. Tatu longitha ayehe: Ongaashika ethimbithimbi tali lunduluka, ombapa yalyo yi zize nenge yi tiligane ihe olyo tuu ethimbithimbi. Osho tuu oohapu dhaKalunga tadhi holokele moombapa dhi ili nodhi ili momunyoli kehe.

Okuuva ko shili Ombimbeli, otaku pula egalikano nokwiikalela pOmbimbeli. Omuleshi e na wo okukonga oondunge mehistolli lyethimbo lyonale. Aantu miilongo tayi hokololwa mOmbimbeli ya kala kokule natse, nonkalelo yawo nomikalo dhawo odhi ikalelele. Pethimbo ndika lyetu momavi taga hokololwa mOmbimbeli mwa fulwa muule mevi iinima ya longithwa muuyuni waantu

mboka taa hokololwa mOmbimbeli.

Mevi mwa monika iikulukuma yoongulu, iilando nokuli iilongitho yaantu momafano gawo nogiikalunga yawo nosho wo omambo omakulu ogendji gomuuyuni wawo. Pomimvo dhongashingeyi pwa monika wo omanyolululo gOmbimbeli omakulwelela gomuuyuni wOmbimbeli yo yene.

Ogo tage tu hololele oshili shOmbimbeli nkene inashi lunduluka nando omapipi nomapipi ga nyolulula omambo gomOmbimbeli. Oyo tuu tayi tu fatululile wo aantu nkene ya kala muEgipiti nomuBabilon nomuKanaan, notayi kwatha ngaaka okuuva

omahokololo gomOmbimbeli.

Mekonakono ndika tatu ka uva aantu yamwe yomOmbimbeli "Aahumbati yonyeka yaKalunga" oyo ayehe yomEtestamendi Ekulu. Oyo ya kala aantu mokati kepipi lyawo, ihe oya pewa sha kuKalunga, shoka sha wapa okuminikila uuyuni wawo. Oyo inaa eta uyelele wawo ongelongo lyi ikalela, ihe aluhe oye na ekwatathano naantu noshigwana.

Mpoka pwa holoka ompumbwe ya sha, opo mpoka ye eta eminikilo ndyoka ye li pewa kuKalunga. Oohapu dhaKalunga itadhi kala owala, aluhe odho tadhi longo sha. Shoka dha longo mokati kaantu mbeya ye dhi etelwa tango, osho tadhi longo mokati ketu wo. Oonkondo ndhoka dha hwameke aahumbati yonyeka yaKalunga muuyuni wEtestamenti Ekulu, odho tadhi vulu okuhwameka oomwenyo dhaamboka taa lesa oohapu nonena wo. Ando dhi tu hwameke wo.

Angulah-Devey Angulah
Ondangwa
9000

ELCIN OTA NINGI NGIINI NETUMO?



Ongundu yaAashimba taa pulakene euvitho mOkaoko

Oshilonga shetumo lyaSenegal itashi kundathanwa we pokati kOngeleki yaELCIN nEhanganotumo lyaSoomi. Shoka osha zi mpoka sho Ongeleki ya dhikwa muSenegal omimvo dha zi ko oya mono eipangelo lyayo, noyo yi na uuthemba wokwiithana aanashilonga mboka ya hala.

Pakuuva ELCIN oku li natango momadhiladhilo gOngeleki okwaevangeli paLuther muSenegal e yi pe mbalambala aanashilonga.

Omukwaniilwa gwaCaprivi Moraliswane methano ndika oti indile ELCIN e ya tumine aavvithi yevaangeli. Omukwaniilwa gwaPuwo, mOkaoko, Mombuu, naye ota ti aavvithi ya ELCIN naa endeleele ya kwathe oshigwana she. ELCIN ota ti ngiini? Omahala omakwawo ngaashi Angola, Senegal, niilyo yomehalakano mUushimba, nayo oya ligamena ku ELCIN.



Omukwaniilwa Moraliswane, mokaprivi, okwa ligamena ku ELCIN a tuminwe ko aavvithi yevaangeli-ELCIN ota ti ngiini?

Eumbo lomufita ola pumbwa exungomwenyo, nali endifwe ngahelipi.

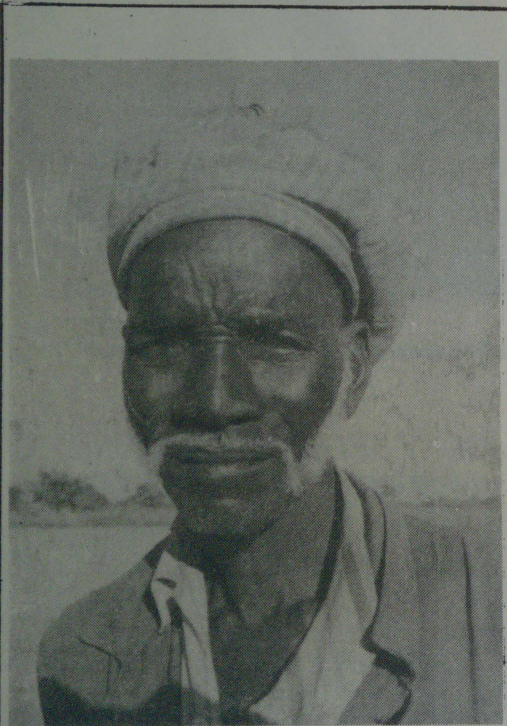
Eumbo lomufita olo eumbo ashike ngaashi omaumbo makwao ovakriste. Kaku na sha ngeno sha yoolola keumbo eli nomaumbo makwao momudingonoko ile moshilongo, Meumbo e li omu na ngaa tate, meme, ounona novalelwa ngaashi momaumbo aeshe.

Ovanhu aveshe ove na eemhumbwe da faafana meumbo lomufita ile li he fi lomufita. Ovanhu aveshe ova pumbwa eshikulafano, ombili, ohole, ouwa nelididimiko. Ashike nande ongaho, eumbo lomufita oli na okukala tali yandje oshihopaenenwa shiwa komaumbo makwao.

Ngeenge handi yukilile oshipalanyolo eumbo lomufita ola pumbwa exungomwenyo, nali endifwe ngahelipi, ohandi dimbulukwa divadiva eendjovo edi di li mOvaroma 3:10-12. Kape na omuyuuki nande oumwe, aveshe ova puuma mo mondjila yaKalunga. Omufita neumbo laye ome ve li mongudu ei ya popiwa apa. Navo ova nyona.

Onghee ova pumbwa ouhaku wokomwenyo ngaashi ovanhu vakwao aveshe. Kokutya exungomwenyo nali endifwe ngahelipi, olo epulo tu na oku li monena enyamukulo. Tete natu tale kombinga yameme natate meumbo e li. Meme natate ova pumbwa etambulafano. Keshe umwe na tambule mukwao ngaashi e li nomaukwatya aye. Ova pumbwa eudafaneko moilonga. Keshe umwe a ude ko oupu ile oudjuu nondilo yoilonga yamukwao.

Ova pumbwa eudopamwe kutya vo ove li omunhu umwe. Ku ha kale kutya ame omulongi ile omupangi, ile nghi na oilonga yopondje yeumbo, nghi na sha nomaufitaongalo avo. Ove omulongi washike? Ove omupangi washike ile wooye? Mukweni omufita wooye? Ou ho shilwa meumbo omupukululi nomuyakuli wooye? Ndi shii owovanhu tuu?



Omusamane Abraham Ismael (68) mOnakathila, megongalo lyaShitayi egumbo lye olya dhengelwe numvo kolwaadhi, e tamu kanene omukulukadhi gwe Marta Tobias 11.1.1987. Esiku lyefumviko lyanakusa Marta, 14.1.1987 natango oongombe mbali odha dhengwa kolwaadhi noshikombo shimwe momukunda tuu ngoka. "Onda taamba oshipewa oshidhigu mokukalamwenyo kwandje." osho a tumbula pOmukwetu.

Amushe ndishi omu na elalakano limwe alike louwa ne-xupifo lomunhu. Ope na tuu mbela ongudu yonhumba yovanashilonga tai lalakanene owii nekano lomunhu? Hano ngeenge amushe omu na elalakano limwe, nye omu li vamwe moshilonga.

Omaupyakadi omoilonga naa kundafanwe kumwe meumbo kovakulunhu. Omushamane woye ile omukulukadi oo we mu hoolola mokati keengudu dovanhu oye ngaa omukwafi momaudjuu nomoilonga. MuJakob 5:13. ohatu lombwelwa: Ou e na oudjuu na ilikane.

Ovaneumbo nava ilikane kumwe konima yeenghunda-fana. Nava twaafane omukumo. Nava wapaleke omapuko taa holoka po kuyela. Omaushima naa popiwe a yukilila, opo ombili i tungwe vali pokati kovaneumbo ile kovanailonga.

Apa onda hala okutya tate oye omuxungimwenyo wameme, ye meme oye omuxungimwenyo watate. Moinima yomeumbo noyomoilonga yo exungomwenyo nali ningwe diva. Mokupaafana ombili, inai tambulwa divadiva sho nani oshinima inashi yela nawa. Eshi osha fa ashike omunhu ta fufile oshitutimine shoshixwa nedu, ndele omafo noitai eshi tai kulu tai uluka mo divadiva medu.

Natango tuu muJakob 15:16 ohatu kumaidilwa ehupaululafano lomatimba etu, fye tu ilikane tu diminwe po. Ohatu lesa yo kutya eilikano otali xupifa moudu nongeenge omunhu ou okwa nyona, nena ota diminwa po. Kutate nameme ondi udite ku he na naanaa ekwafo mexungomwenyo li dule okulixunga nokulikwafa vovene pamwe nomutungu weumbo lavo paPs. 127 1b, osheshi ou ta di pondje otashi dulika a kale ita kwafa, ndele ota twala oshinima kokule.

Heeno oku na omaongalo e na ovakulunhuongalo ve shii okulineekelwa shili, nosho yo ovaevangeliste vava ovo hava talepo no nokuli omaumbo ovafita nokuninga eandaxa nopamukalo oo otava xungu eemwenyo dova-fita nomaumbo avo. Okukala moyoongalele oko yo omhito iwa yexungomwenyo letweni.

Koludalo letu novalelwa vetu ofyeni ovakwafi novaxungi vavo. Ngeenge hatu lesa mu 1 Sam. 2:12-25 ovana vomupristeli Eli ova li tava nyono ngaashi twa leseni manyono avo, ngaashi va kufa po eembelela da yoololelwa Omwene nova hondela ovanailonga voilonga yOmwene.

Omwene moku va handukila ina yukilila ounona ndele okwa yukilila Eli mwene pa 1 Sam. 2:34. Ovana voye otava fi efiku limwe. Oku wete Eli ina yandja outeku wa wana, onge omutima waye nau humbate onghundana ei idjuu.

Ounona nava pukululwe, vo nava lombwelwe oshili. Ou ta tumbula ota tumbula ngaa, ou ina hala okuuda ko naye otashi ke mu yelela pefimbo lonhumba. Itandi popi apa oudu nenyonauko, ou a nyonauka okwa pumbwa omuxungimwenyo ou e shii nawa ngeee ta ende omunhu keshe. Apa ohandi popi ashike ngaashi hava popi kutya; Ovana vovafita ihava udu ko, vo ovafita ohava tila ovana vavo, vo ove na ohole ya puka.

Tu kondjeni pamwe naKalunga ketu ou e tu pa omaano oludalo. Oludalo kali fi omukundu ngaashi vamwe ve wete pefimbo e li, ndele olo omaano aTate Kalunga moku tu ulukila kutya okwa yambeka eehombo detu.

Tu kendabaleneni tu yepeni etumbulo eli; "Osheshi omolweni edina laKalunga tali shekwa kovapaani" pa Rom.2:24. Inatu kaleni ngaEli tu ha lombwelwe kutya: Owa fimaheka ovana voye shi dule nge pa 1 Sam.2:29b.

(Ku Rakel Hasheela moshongalele shovakulukadi vovafita moRupara eti.20.6.1987).



Meme Nangombe Amushila

WAA PANDULA NOYAKA!

"Kafu kape u lelema
Kafu kakulu osho a li."
Momumvo gwomilongo ntano.
Ependa tse twa etelwa
Muuyuni lya valelwa.
Kaa-pagani yondondolo
Yokuuninginino hwii!
Momukunda "Okakola" koonyali naNembundu
Megongalo lyomOthika
Moshilongo shIipumbu yaShilongo
MUUkwambi mwii!

Ondongo "ndongolo" yii-gwana
Ondjayi tse twa taamba
MOnayena ya kuutumba
Mekolo lyongeleka, ya gondjo mo
Ependa gwaNuuyoma
Omuladhi gwaMarkus
Omutongolome gwaAmushila
Enyakwa lyopooLukasa "Nangombe"

"Imboto yaAngula keendawala
Shila omvula ya loko"
Omupaluthi gwomalutu
Omutungi gwonkalamwenyo
Omugandji gwomaye-le kaalongi
Omutsi gwetu gwomukumo
Kaambanda yopEthimbo ndi

Tangi meme gwaAmushila
Pandulwa gwaNuuyoma
Thuwa po manga wa koko
Gondja manga kwa talala
Ombimbeli owa longa
Nuunongo owe yi fatulula
Omwaalu owa tseyitha
Momapipi nomapipi

"Yo ohela hayo yo nena"
Oshike twaa ku tange!
Nangombe twaa ku pandule!
Omagumbo owe tu pa!
Aahona yetu owa ganda
Okuzi kugwaMuleka
Nonkelo yetu gwaAluteni Maria

Oontekulu owa lela
Iimputu owa putudha
Iinkenya wa loolola
Natango tala konima
Oondolofiya u yambidhidhe
Go ga ninge wo shomupondo

Ohombo kai shi okupewa, ndele okuyandja

Ovanhu vahapu otave lipula, ngeenge mounyuni wonena omu na tuu vali eehombo di na elao, ehafo nombili. Epulo eli otali eta likwao: Oshike hano tashi etele eehombo elao, ehafo, nombili?

Mokapopiwa aka ohandi ke mu pa ashike oipatululo, eeshapi odo tadi mu kwafa nghe mu na okuhanga elao, ehafo nombili mohombo yeni. Ovanahombo vape novakulu omukalo oo tamu ka longifa eeshapi odo, oo tau ka ufa onghalo yohombo yeni.

Ngeenge eeshapi edi omwe di lyatela pedu, itamu ka dula okukeelela omikundu mohombo yeni. Eeshapi edi oda dja mOmbibeli, embo laKalunga omo tamu ufa okukala kwetu nokweehombo detu.

Eeshapi edi odo: oukulunhu, ohole, Kristus, eilikano, neenghundafana. Ounona ova yooloka novakulunhu, osheshi onunona ove li hole vovene. Okaana ohaka hovele okulila, okulidenda po nokwaalangata, ke liteeka ngeenge itaku ningwa eshi ka hala.

Okaana ka tya ngaha ngeenge taka i mohombo pamukalo ou, otaka ka teelela keshe shimwe shi ningwe naanaa ngaashi ka hala pefimbo tuu olo. Eshi ombuto yomukifi mohombo.

Oshihongwa shotete kovalihomboli osho okulihongafana. Kala nodjuulufi yokushiiva mukweni eshi e hole. Mu shiiva nomeemhafu nomeenhunhu domesho ngeenge ta yolo, nongenge te limemesha.

Omukainhu umwe okwa pukulula mukwao ta i mohombo ta ti: "Kahewa, shi koneka alushe kutya ovalumenhu aveshe onamupewakavapandula. Ino liefela unene omulumenhu

Dha kep. 4

Ino ya wa yiilila "Nangombe"
Ino fudha wa fudhilila
Otwe ku pumbwa natango
Omayele u ge tu pe
Oondunge u tu gwedhele
Tu wape tu mon'ondjila
Ndji tayi fala melago

"Thadhi etha ku lathathana"
"Lwaati ina gwa ngodhi!"
Pamba ne ku wilike
Nampongo ne ku gamene
Mbangu ne ku pe ashike
Muukulupe womutoko
Nangoye u ka thike mo

Tatekulu Markus gaAmushila
Ontana yetu ya koko
Omukulu gwoye okwa pumbw'evululuko
lipundi mbi mwa pewa
Amuhe mwa ning aagondji
Hakutya mu gondj'owala
Gondjeni nOmbimbili

Kuutumbeni nEhangano
Imbeni mwaa na uumbanda
Uvitheni ngaashi shito
Mu ka adhe esindano
Mwe li longekidhilwa megulu

Okatewo haka ka totwa, omolwekuutumbiko lyameme Amushila moshipundi shevululuko 3.12.1986.

K.Tonatani Alugodhi

woye, ote ku ningi oshilongifo."

Epukululo eli kombinga imwe oli na oshili, kombinga ikwawo oli na epukifo. Ovalumenhu vahapu otu lihole, ashike haalushe tu li ngaho. Onghalo yovalumenhu yokuteelela oinima aishe i kale tai ende ngaashi a hala, otai nghundipaleke eehombo detu.

Onghalo yovakainhu yokulingunina opo ve ke liefele unene momake ovalumenhu vavo, nayo otai nghundipaleke eehombo detu. Pamafatululo a Kalunga, ito pewa nokupewa ndele oto pewa nokuyandja.

Ngeenge owa hala ohole nomukulukadi woye, ino i konga kuye, i mu pa. Ngeenge owa hala oukaume, ino ka konga, kala kaume. Ngeenge owa hala omunahombo woye e ku liyandjele, mu liyandjela tete. Ngeenge owa hala e ku fuule, mu fuula tete.

Ino ya mohombo shaashi u na eshi wa hala u mone mo, u kufe mo, ndele inda mohombo, osheshi ou na eshi wa hala okutula mo. Ino hombola nomunhu osheshi owa hala e ke ku pe sha, ndele unene kala wa hala u mu pe sha.

Veikko Munyika

AAKIINTU MOONGELEKI OONKWALUTHER

Oongeleki oonkwaLuther muuyuni, unene ndhoka dhi li iilyo yOngongashangano yAakwaLuther (LWF) odha mona ekumagidho lyowina dhi taneke omwaalu gwadho gwaakiintu moongunduwiliki dhomagongalo nodhongelesi.

Ekumagidho olya zi mokomitiye ompitithi pethimbo lyomutumba gwa lyo 9 - 15.7.1987 muViborg shomuDenmark. Opo ku tsakanithwe anuwa shono tashi lalakanenwa kehanganano ndyoka lyoongeleki, okomitiye oyi indile koongelekishilyo, kutya uuna omutumbagwaayehe gwOngongahanganano tagu ka gongala ishewe 1990, aakiintu naa kale mo oopelesenda 40% dhaayenda ayehe yoshigongi shoka.

Okomitiye oya tokola natango kutya miigongi iikwawo yi na sha nOngongahanganano yAakwaluther, aakiintu naa kale aluhe ye thike poopelesenda 30% dhaakali vomoshigongi.

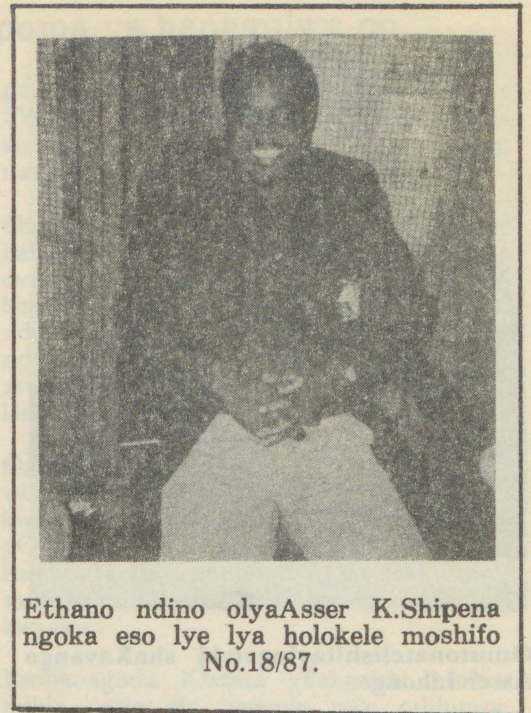
Eindjipaleko lyomwaalu gwaakiintu moongunduleli dhopangeleki muuyuni tali pulwa kOngongahanganano, otali gandja cuvoko maalumentu yamwe, kutya itaku lalakanenwa we okutala ngoka ti inekelelwa oshimpwiyu shontumba, ihe otashi ningwa opo ku yandwe

Ou shi tuu?

nokutya

Alkoholi otai nyonauna olutu lomunhu

-ouluvi neenelive
-oilyo yoludalo
-omutima, nomifipa dohode
-Eefiyo
-Exuli
-Omesho nomandjadja
-Omapunga, ohonde, oshipa, omakipa, eenhumba nosho tuu.



Ethano ndino olya Asser K. Shipena ngoka eso lye lya holokele moshifo No.18/87.

omahilathano pokati kaalumentu naakiintu.

Oshigongi shaayehe shehangano ndika muBudapest 1984, osha li sha thigile oongelekishilyo dhadho dhi yapulithe aakiintu mbala, ngaashi tashi vulika. Nongeleki ndjoka inaayi ilongekidha okuyapula aakiintu, oyi ilongele egeelo komautho gehanganano ndyoka.

Oongeleki ndhoka hadhi yapula aalumentu ayeke, nadho ihadhi yapula omulumentu kehe ngoka te ya, ohadhi tala tango ngoka ta vulu meyakulo ndyoka. Oompata odhindji odha ningwa moongeleki kombinga yeyapulilo lyaakiintu muusita, ihe sigo onena oku na ndhoka dha nyengwa okumona omukumo gwo-ku shi ninga.

Oongeleki ya ELCIN, yimwe yaandhoka inaadhi yapulila natango aakiintu muusita, inayi gandja ngiika ewi lyayo pambelwala, shoka yi na oku shi ninga, ihe moonkundathana dhopaumwene, aasita oyendji mOongeleki ndjika otaa ti okwaayapula aakiintu mpaka inashi ningwa meyooolo lyokutala kuukwaludhi womuntu,

Tala kep. 10





Omutonatelishitayingeleki shaKavango Asser Lihongo

Otjimbingwe

Osha li 30.7.1987 eshi ovalumenhu 13 ovaevangeliste va dja moitaingeleka itatu Ondonga, Ouninginino nOukwanyama. Elalakano kombinga yongeleki yavo oyo ya li ye va tuma kOtjimbingwe kokersesa oule womwedi umwe oku ka upikwa, shaashi ove li omakuwa a fimba pumbwa okuupikwa.

Otwa pandula unene ovalongwafita ovo ve tu kwafa unene momalaka ngaashi Oshiingilisa. Ovalongi vomOtjimbingwe katu na fiku natu mu dimbwe.

Paife otwa hovela oilonga yetu. Omunyoli okwa dimbulukwa nawa kutya osho sha li sha diladilwa kongeleki oshi li mondjila. Oilonga yomOtjimbingwe oya ya nale moilonga.

Ovawkwaneongalo ovo va li va tumifa ovanhu va ye oko ova makela nale oiimati.

Tangi unene komhito twe i mwene.

*Ev. Gideon Shakaalela
Eenhana*



Methano ndika okuza kolulyo, omulongi gwaalongwasita dr Tomas Shivute, omuyevangeliste Gideon Shaakalela nomusita Abraham Malwa, naye e li ketsikilo kOtjimbingwe

ELCIN MOMEHO GAATONATELI

Dha za kep. 1

Omahepeko, omadhipago gopaipundjamenye uubotsotso niilonga iikwawo yomuyonena, Kaulinge okwa tumbula mehokololo ndyoka, kutya nayo oya ningilwa aakriste moshigwana shika.

Iinima ya fa mbika oya tumbulitha omutonatelishitayingeleki Shanghala noluhodhi olunene, kutya omagongalo getu oge li shili mevi lyaa na ombili, lyomahepeko.

Omainyengo gopapolitika oga guma onkala-mwenyo yaakriste yetu. Enayipalo lyomahupilo olya fala mondjala yopela ndjoka tayi thininike eitaalo lyiilyo oyindji. Evi ndika olya ningi eha lyomawendo osho a ti.

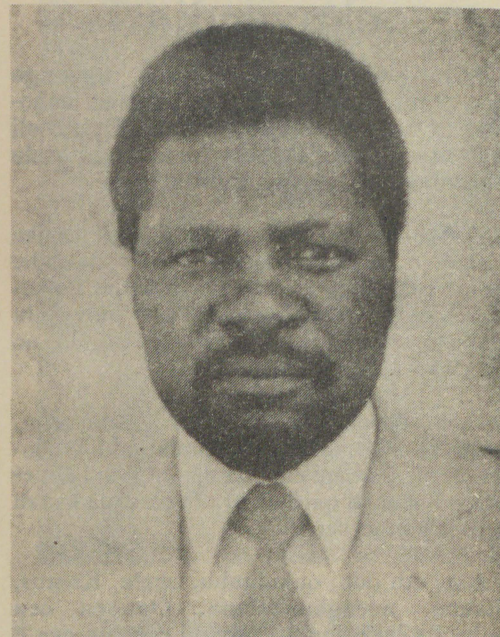
Kehe gumwe mehokololo lye, aatonateli mboka oya li wo ye na sha shokuulika kesindano lyohapu yaKalunga moshigwana shuupyakadhi.

Aapagani 845 oyi ile keshasho, naanona yaakriste 3 279 nayo oya etelwe kaakuluntu yawo keshasho, moshitayingeleki shUukwanyama.

Muuniongino namo omwa monika epapudhuko enene mokati kaapagani.

Aapagani 897 moshitayi shoka oyi ishashitha naavali oye etele wo uunona wawo keshasho eyapuki 1,945 pahokololo lyomutonateli Shanghala. "Evaangeli otali minikile nopethimbo lyeiteeko," osho Shanghala a tompelwa.

Oshitayingeleki shaKavango osha shashitha aantu 605 aakuluntu mumwe nuunona waakriste, nomoshitayingeleki shOndonga omwa shashwa aakuluntu 625 nuunona waakriste 3 145



Omutonatelishitayingeleki J. Shanghala.

Onemanya ayike mOshitayingeleki shUuninginino omwa shashwa aapagani 137, moMpungu moshitayingeleki shaKavango 167 nOkalongo mUukwanyama 115 ya shashwa.

"Momaudhigu, Kristus oku li pamwe nooitaali ye," osho omutonatelishitayingeleki Shanghala a tumbula mehokololo lye.

Sebulon Ekandjo



Iilonga yomatungo momagongalo, otayi mana aasita oontumba. Methano ndika omusita Ismael Amupolo mOkando, otu ulukile Amushanga gwOmukwetu mpoka ye na okutunga natango enenepeko lyOngeleka yawo, oshoka ndjoka tayi monika methano, itayi ya gwanene we.

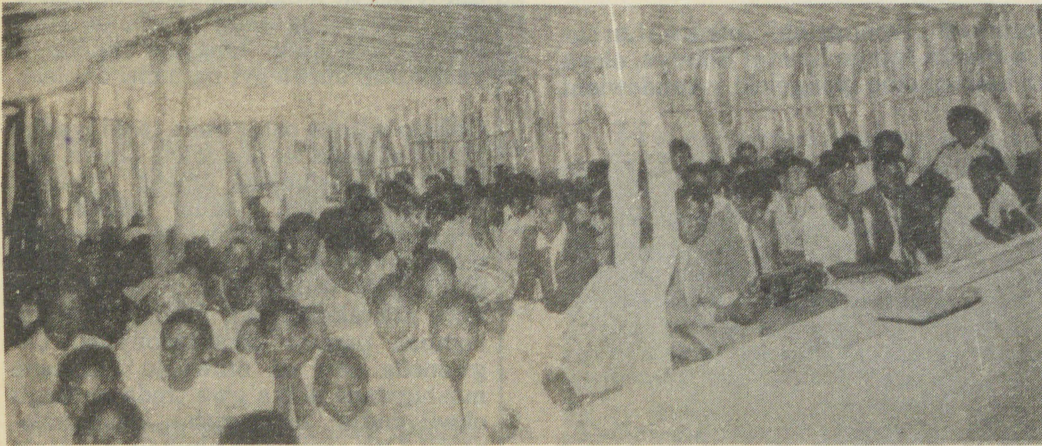
Dha za kep. 1

“Ne oyOngeleki yini ano, pamwe iimpaga?” osho kuku Fransina a pula nawa kaayenda mboka ya li ya gongele ongundu yAaherero noku yi popitha nevaangeli.

Omukulupe Fransina okwa hitulula mondjato ye okakalata noku ka ulika kaatalelipo. Moku ka lesa opwa dhimbululwa Fransina okwa valwa 1905 nokwa shashwa 17.10.1925 komuhongi Jarvinen, megongalo lyaTshandi, mUkwaluudhi.

Okwa zi omukulupe omukwawo aniwa oGertrud Tjilovi (75). Nguka kee na okakalata, ihe naye ota hempulula a shashelwa megongalo lyaTshandi. Omusita Kaapanda naakwanegongalo lye oya tsakanene ngaaka lwotango, okuza oomvula 18 ngashingeyi sho a yakula egongalo ndyoka.

Kuku Fransina (Hosea) Hindjou, okwa hokolola kutya okuza kesiku ndyoka sho a tokoka mekwatathano negongalo lyaandjawa, konyala omimvo 60 ngashingeyi, okwa kala ha ka taamba oshililo kOvenduka sigo onena.



Iipala yaakwanegongalo lyaPuwo,tayi monika methano ndika

Ongeleki yOombulu ndjoka ya longo ethimbo ele mOkaoko, kaya li tayi vulu oku mu pa shoka a yamu mevaangeli lyopaLuther. “Ngame Omukwaluther,” osho ta tumbula ethimbo alihe.

Omusita Kaapanda oonzi ndhika okwe dhi thigile metonatelo lyomusita gwondjakulwambinga Opuwo, Johannes Tolu.

Sebulon Ekandjo

Ya dhigininwa natango

Samuel Andreas, Oshakati
Amutenya Ashipala, Okatana
Filemon Katsimine, Oshamuhenyé
Josef Kakofa, Eengolo
Saara Lukas, Eloolo
Saara Teofilus, Eloolo
Martin Mulondo, Katimamulilo
Abner Shikesho, Okamule
Stefanus Nghifikwa, Engela
Sakeus Shikongo, Okahao 27.8.1987

Ino holeka Amushanga gwo-shifo edhina lyoye nondjuki-thi nando wa hala okulongi-tha edhina lyefutamo.

Ongeleka yaKatoolika kaRooma ya hanagulwa po oufiku koitopifa

Etungo lOngeleka yaKatoolika kaRooma yoipundi 500, pOmuulukila, Ombalanhu, moshitopolwa shimwe moubanganlanhu waNamibia, oya hanaunwa po noitopifa idjuu mOshoondaxa yeti 20 laSeptemba 1987, petata lomugoyi wonguloshi.

Padjonghundana yOngeleki yaKatoolika, etungo eli la tungilwe mevateo loimaliwa ya dja kuNdowishi lautokelo, eedula omulongo da pita lwaapo, paife oli li koshi yomute. Ongeleka oya li iyadi ongula yOsoondaha oyo. Osikola oyo i li popepi inai kumwa, mo inamu ehamekelwa omunhu.

Oradio yepangelo la SA oya yandja nale etimba, kehangano emangululi laNamibia, SWAPO, ashike eshi ovanambelewa yOngeleki yaKatoolika ove shi limbililwa filu. Omufita Heinz Steegman womoshitopolwa shomaongalo aMaria Omuyapuki, okwa ti, omanga ongeleki kai shii ou ha tele eeboma, ye naye ina itavela omapopyo a SA. “Ame

paumwene, oshi shii moushili, kutya ha SWAPO”, osho Steegman a ti. Okwa weda ko kutya SWAPO ita dulu oku shi ninga, navali ke na etomhelo oku shi ninga.

Omufita Steegman okwa ti, ongeleka oyo ya hanaunwa po oi li moshitopolwa omo mu na ovakatoolika hava ngongota alushe omahepeko omatanga ovakwaita va SA. “Ohandi ti, onda tila shaashi eshi osho elondwelo kongeleki yaKatoolika, opo i mwenekwe”, osho omupristeli Omundowishi lautokelo a popya.

Omufita Abisai Shejavali, Hamushangandjai wOraata yEengeleki muNamibia (CCN), ou kwa li a ka fikamena onhele ei, okwa hokolola pOmukwetu, nokutya etungo longeleka ola hanaunwa po komutondi wOngeleka nowoshiwana eshi shaNamibia. Ina twikila ko vali kwaashi.

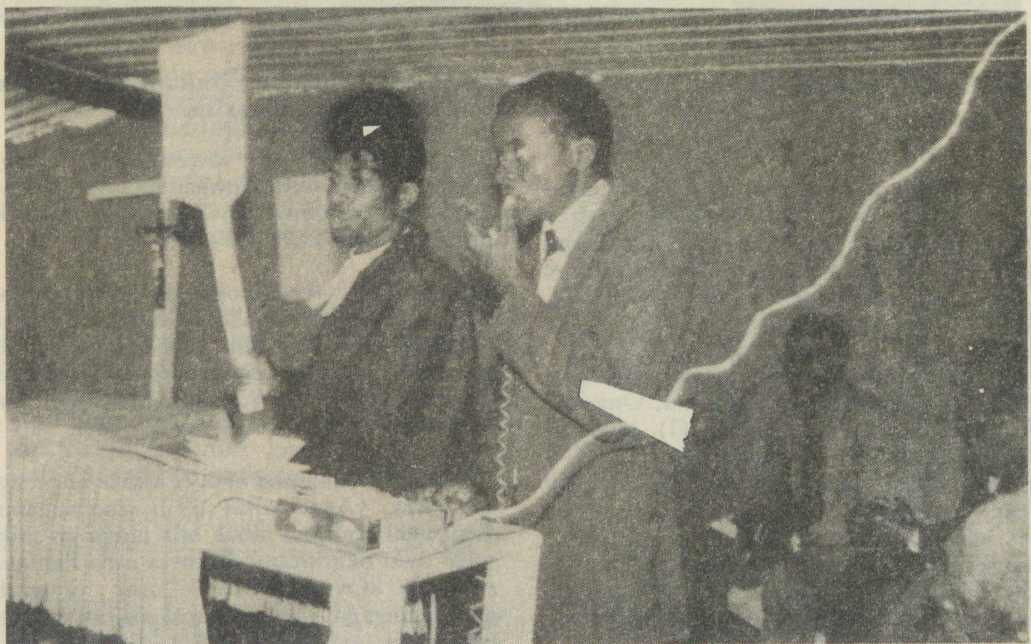
Ewilikongudu lOraata yEengeleki muNamibia, nalo ola pangula nale oshingwanima sha tya ngaha.

Dha za kep. 8

kape na etompelo lya kola okutokelitha ehengumukilo mumwe lya UELCSWA, omolwokutegelela Ongeleki yAandowishi nando omukundu gwopaimaliwa nagwo ogwa li gwa tumbulwa, ngele ongeleki yimwe yaa po.

Omutumba gwaayehe gwEhangano ndika pehulilo lyaKotoba 1986 ogwa tokolele Oongeleki ndatu oonkwaLuther dhi ka dhane oshituthi shehengumukilo mumwe omumvo 1992.

Sebulon Ekandjo



Omusita Johannes Tolu mondjakulwambinga Opuwo tu ulike ondjambi yesindano momathigathano moshigongi shaalumentu shokomumvo nuumvo.Egongalo egundjuka ihe otali kondjo nawa. Pooha dhe omukuluntugongalo ta toloka mOshierero.

Emanguluko lya halika, pwaa na ondjindikila yekwatathano nomukolonyeki

Omumvo omutimilongombali nayimwe gwekondjelomanguluko lyoshilongo shaNamibia numvo ogwa dhanwa pamwe naashono tashi halutha mondjokonona yekondjo lyoshilongo shika. Otashi pendutha wo epulo enene nkene taku tsikilwa monkalo ya tya ngeyi, okuza mpaka.

Omukwetu okwa taamba numvo oombilive dha zi kuyanwe moshigwana mboka yi ilongekidha okupopila omulandu gwepangelo lya SA, ngoka gwa tseyika moshigwana ashihe nomuuyuni wopondje nokuli, nokutya ogwa kanitha oshili, uuyuuki nohole koshipa oshiludhe.

Oonakupopila omulandu gwepangelo ontumba yimwe noyomomazimo goyendji mboka taa dhipagwa kepangelo li li koshipundi, taa hepekwa, taa sithwa ondjala owina noya yugwa uuthemba wokupopya nokwiinyenga nowokwiigamena. Omuntu oto vulu okwiipopila kutya oshike ngiika she ya eta ponkatu yokupopila epangelo lyoludhi ndoka?

Epangelo otali kambadhala opo oompumbwe adhihe dhoshigwana dhi ka-

le miikaha yalyo, noshigwana shi kanithe oonkondo nuuthemba wokulongitha oompumbwe ndhoka pamukalo ngoka sha hala shoshene. Epangelo olya hala okutala onomukalo guni tali topola oompumbwe ndhoka dhoshigwana moshigwana, mpoka oshigwana tashi ki iyadha sha endjelela ashike kepangelo, konyala mukehe okanima.

Iiholelwa yimwe: Omulandu nguka tu na nena, tagu tu dhipagitha nogwa kaleka iita moshilongo, ogwa li gwa tulwa metokolo lyoshigwana 1980, ngele otagu tsikile nenge otagu hulithwa po. Aantu oyendji oya li ya mbombolokele kehogololo, nuumbanda kutya ngele inaa ya ko, itaa ka taamba oondjambi dhawo mepangelo, itaa ka taamba we oopenzela dhawo, yo itaa ka pangwa we miipangelo nosho tuu.

Ehengumukilomumwe lyoongeleki oonkwaLuther, aniwa lya mwena manga.

Etameko lyomalongekidho gehengumukilomumwe lyoongeleki oonkwaLuther muNamibia, ngoka ga tamekwa kombelewa ye, omusita Ipinge Kristof Shuuya, okwa ti oga mwena manga. Okwa ti shoka osha etwa keikuthomo lyongeleki yAandowishi mOraata yoongeleki moshilongo.



Aasita Paulus Andreas, Kongo, kolumoho naVaino Nepembe, Onkumbula, ayehe muuzilo wOwambo, oya holokele moshigongi shaasita.

Omusita Shuuya ngoka e li Amushangandjayi gwEhangano lyAakwaluther muNamibia; United Evangelical Lutheran Church in SWA (UELCSWA), shoka okwe shi popya moshigongi shaasita ya ELCIN, 18.9.1987 mOngwediva.

Ehangano lyAakwaluther moshilongo olya thikama ashike mOongeleki ndatu; Ongeleki yAaludhe mUushimba (ELC) noyAandowoshi (DEL) naandjoka ya ELCIN. Adhihe kumwe odhi na aakriste 560,000 ayeke.

Okuza Febuluali numvo sigo Auguste, Amushanga Shuuya okwa ti ombelewa ye oya ningi iigongi omulongo yomayelithilo kaasita kaakuluntugongalo osho wo kaagundjuka moongelekishilyo.

Oshigongi shaasita yoongeleki ndhoka ndatu dhomhangano, osho shimwe shomiiigongi ya li ya thanekelwa muSeptemba sigo, Desc-

mba mbyoka ya mwenekwa manga omolwongeleki yAandowishi inayai hala we okulongela kumwe nOraata yOongeleki muNamibia (CCN).

Keyamukulo lyoshipopiya shomusamane Shuuya, omusita Apollos Kaulinge okwa ti, Ongeleki yAandowishi hayo ayike yi shi okupewa uusama metokelwo lyokuhengumukila mumwe kwAakwaLuther, hoka kwa longekidhwa omimvo 14 ngashingeyi.

“UELCSWA hamba okutya ashike ongeenge Ongeleki yAandowishi i li mehanganu? Eengeleki dhikwao mbali oda ninga po shike tashi dulu okutumbulwa kutya osha hanaunwa po kOyandowishi? “oshu omapulo gaKaulinge ga li po, ta gatampele aapulakeni ohinima

Aapopi ooyakwawo moshigongi shika, nayo osho ya li ya holola omauvito gawo, kutya

Tala kep. 7

Uumbanda wa fa mboka owo we tu taambitha tu longithe oosikola dhomulandu gwokatongotongo, oshoka odho dhi li po, tu longithe oohofa dhomulandu gwokatongotongo, oshoka odho dhi li po, tu longihe ooradio dhomulandu gwokatongotongo, oshoka odho dhi li po notu longithe iipangelo yaakwiita, aniwa oyi na omiiti dholela.

Onkalo ndjoka oshigwana tashi iyadha sha fa shaa na we ehogololo limwe, oyo tuu tayi posipaleke omeho goyendji moshigwana shi iyadhe ashike sha hokanathana nomukolonyeki, sha tula oongeshefa kumwe nomukolonyeki, shi li muupale womatanga guudhano pamwe nomukolonyeki, notashi tyapula oombaa pamwe nomukolonyeki. Lagwenene oku na omwaalu omunene moshigwana shika gwa tinda natango okwiigandja melongitho lyomukolonyeki. Oya tompelwa okukala nondjala nenota hwepo shi vule okukutithwa komutondi.

Oyendji moshigwana oya zimina kutya onkalathano yoludhi ndoka kayi li mondjila. Ihe omuhapo nguka komilungu dhoyendji, nokutya “Sha fala ndje mpoka, omahupilo ageke,” ogwa mbilipaleka oyendji. Mondjigilile ndjoka omo mwa zi yamwe yu uvite uugumbo noya tokola okupopila montaneho onkalo ndjika yaa teke po.

Una taku popiwa epangelo lya SA li ningilwe ondjindikila, opo li ethe evi ndika, oyendji oya fa taa koleke omadhiladhilo ngoka. Ihe oya tegelela shi ningwe moshilongo shaKaunda gwaZambia, nomoshilongo shaMugabe gwaZimbabwe. Meni lyoshilongo oshigwana otashi dhimbululwa no-kuuyuni wopondje, nkene kehe gumwe a fa ta nkenene omiya dhaa tokoke ko komukolonyeki gwe, onge- shefa ye yi tsikile, ondjambi ye yaa kane, noompito dhomahupilo dhaa thite.

Namibia olya lya hugunina mekon- djelomanguluko muAfrika, ihe otwa nyengwa natango okwiilonga, kutya emanguluko ihali kondjwa nela lya kutithwa komayakulo gomukolonyeki, ku na esiku noli adha.

Omumbisofi Tutu a thigile Aatiligane muNamibia epulo

Omumbisofi omukulunhu gwOngeleki ayihe yaAnglikan muumbugantu waAfrika, pethimbo lyetalelopo lye muNamibia okwa thigile Aatiligane yomoshilongo, ya dhiladhile omolwashike



momimvo ndhiyaka?" osho omuwilingeleki a thigile Aatiligane mpaka ekonakono.

Omumbisofi ngoka a ti itashi vulika uuyuki u sindike kuugoyoki nokomahopeko okwa londodha Aatiligane mbo haa ti oya manguluka, kutya otaa ifundju yo yene.

"Emanguluko openi we, ngele ohaa longitha ethimbo alihe mokugamenena po shono taye shi ithana emanguluko, nokaye na we ethimbo oku li tyapula? osho e ya dhimbulukitha.

"Ehalo lyaKalunga olyo ndyoka aantu ye ya manguluke noya kale mombili. Namibia otali manguluka, naamboka ye li ompangela ndjika moshipala, naa tseye kutya ekondjo lyawo olya kana nale," osho omumbisofi u ulike etegameno lye.

Sebulon Ekandjo



Omumbisofi Desmond Tutu

"Okwa li onkalo yimwe ayike tayi talwa kayi na etegelelo lyasha, esiku omulumentu omugundjuka e endjelela komushigakano mEtitano. Kehe gumwe okwa li inaa hala okuyelutha oshipala she, e mu tale. Osoondaha sho kwa ka sha, okwa yumuka. Nokuza mpoka omukriste okwa ningi omupika gwetegameno"

Tutu 1982.

ya kanyatela evi moka inaa halikila mo koyendji yomoshilongo.

Okwe ya pula kutya oshike taa talwa aahepeki aatilithi, ya lala oshilongo koonkondo dhomatati, ngaashi Hitler a ningile momimvo dha piti.

Omapulo ngoka, omumbisofi Tutu okwa li e ga pula moshigongi shaatoolinkundana 14.9.1987 mOvenduka manga inaa tsikila etalelopo lye kuLusaka, shaZambia.

Etalelopo lyomumbisofi petameko lyaSeptemba 1987, olya thikile sigo okOwambo, moshitopolwa sholugodhi. Okwa talele po iikulukuma yOmisioni onkulu yaAnglikan, Odibo, ndjoka ya hepekwa nayi kiita.

Okwa li wo a popitha ombelewa yomumbisofi gwaELCIN pOniipa, mpoka a taambwa kongundu onene yaanashilonga ya zile koombinga adhihe dhOngeleki onkwaevaangeli moshitopolwa.

"Aayambidhidhi yomulandu gwepangelo lya SA, onda hala oku mu pula kutya omolwashike mwa hala okukala mpoka aantu oyendji moshilongo inaaye mu halela? Inamu likola natango omitima dhoshigwana. Omolwashike mwa talwa mu li aathiminiki aakwiilongo aatilithi, mwa kwata ko oshilongo shaantu koonkondo dhomatati, mwa fa Hitler

Hamutwe okwa teelega natango enyamukulo

Omafiku 9.9.1987, eumbo lomushamane wefano tali monika apa, Hamutwe yaHamutwe, (27) ola ponokelwa nomaута kovakwaita. Nopamadidiliko oipatolona ei ya toolwa po ongula eshi kwa sha, ovakwaita ve shi ninga, ovetanga leameno.

Eshi osha ningilwa momukunda, Ohangwena. Omukulupe Elise Ngolomo (65) omo a hangika pamwe novatekulu vaye vaheyali. Inamu monikila omunhu oshiponga. Omushamane Hamutwe okwa hangika koilonga kOandjokwe.

Pahepu lomushamane Hamutwe, omakakunya avali okwa kala ofika popepi neumbo, konyala eemeta 200 nokwa ponokela eumbo noikuti. Ongula eshi kwa sha, pondabo yomaumbilo opwa toolwa oipatolona 32, nomushamane Hamutwe okwa ti, ei okwe i kufa nde te i twala koomwene woshikandjo, omushamane Gottlieb Dan, a ninge ekonakono lohinima.

Ovakali vomomudingonoko oo, ova hokolola natango omakakunya a ya mokandingosho ndee tava kufa mo omakende, pe he na ofuto yasha. Eshi osha ningwa vati 14.9.1987, mOndobe, omo mwa hokololwa yo mwa kwatwa eexuxwa mokaumbo komukulukadi, nde tadi ka yofelwa moluxwa.

OKUTULA ESHIIVIFO LOYE MOMUKWETU, OSHO OKULOMBWELA OMUNHU KESHE MOSHIWANA. LANDELA HANO ESHIIVIFO LOYE ONHELE MOMUKWETU.

Ovanhu vahapu ova itavela kutya oiningwanima ei oya dja molungwenye loshoongalele shoshiwana, osho sha ongalele 5.9.1987 pOhangwena mewiliko lomunashipundi wokomitiye omhitifi yepangelo lOwambo, omushamane Peter Kalangula. Oshoongalele osho osha li sha twa kumwe kutya, eekamba dovakwaita mOukwanyama nadi shune oku da dile.

Omushamane Hamutwe ota ti, fiyo one-na, ina lombwelwa kutya oolyelye va ile va ka umba eumbo laye, lo li he na eshi la ninga.



Omushamane H.J. Hamutwe

"OVA SHANGELA NGE TA VA TI....."

Oshike tatu fike po epya lyetu?

Ondi shi shi kutya Aanamibia atuhe otwa sa ondjala yemanguluko lyoshilongo shetu. Otwa hepekwa nale, ndele natango tuu otu li aahepekwa. Kalunga ketu okwe tu pele oshilongo shetu oshiholike, opo ombili ye yi tu pangele. Omolwashike ano twa hala okwiiteka po oshilongo shetu, aamwameme, ootate noomeme? Onda hala okuukitha omadhiladhilo gandje mokati koshigwana shetu ashihe, aanasikola ooyakwetu amuhe, ongele omOsekundo nenge pOoprime, opo kuha kale we omukwashigwana shetu to zi megumbo lyaandjeni nenge mosikola, ndele oto yi wu ka kwathe omutondi, opo oshilongo shetu naantu yasho shi kale muukolokoshi.

Ohashi lilitha unene, omuntu ta zi mosikola, ndele ote ki inyolitha a ye muukakunya. Kalunga okwe ku shiti, opo wu ka kondjele iimaliwa muukakunya? Aamwaameme mboka ye li muukwiita wa SA oyo ihe ya ningwa oombwa dhokusakumudhwa, yo taa hekwa nosipenitha. - Oshinima shoka kaashi na nando ehupitho byomwenyo muukwaaluhe.

Oshigwana sheni otashi mu ithana. Galukeni! Ileni kaamwanyoko! Tse otu mu hole, ihe iilonga yeni oyo owala twaa hole. Tu pilamene omutondi gwetu.

Ombepo yaKalunga ketu nayi ye meni moomwenyo dhetu, opo tu itedhulule moshinima shika, oshoka epya olya tiligana, ndele otatu li fike po.

Penda John
Oshigambo High School

Onda li mbililwa kiilonga yandje

Onda hala okupula, kiilonga yuuHuismoeder. Osha yela ngaa Huismoeder omuhokamwa ta lala miilonga a thiga po egumbo lye nomusamane gwe? Onda hala ndi pule, ano osha za kepangelo nenge omaakulu-

ntusikola? Iilonga ano nenge eteyo lyoondjokana? Omukwetu, pukulula ndje, oshoka onda fa kandi wite ko nawa kiilonga yandje yuuHuismoeder mbyoka handi longo.

N.Maria
Mwaala Sec School

EYAMUKULO

Sho wa pula omukoluntusikola okwa ti ngiini? Moshipangele sheni kamu na sapangi haa langele iilonga? Kundathaneni nooyene yoosikola, otashi ka yela.

Amushanga gwOmwuketu.

Okomitiye yovadali otai pula ovahepekwa vahandimwe?

Onda kumwa shili komapopyo handi udu alushe mOradio taa popi vati okomitee yovadali i ka konakone kombinga yovawaameme ovo ve li kondje yoshilongo va dja moshilongo shetu Namibia omolwoukoloni oo u li mo. Epulo oleli, kutya nani ovadali voshiwana shetu ove na konasha ashike nomapopyo oo alushe taa ningilwa oshiwana shetu?

Omwa dimbulukwa tuu eshi sha ningilwa ovamwaameme muAngola 4 Mei 1978, ile twa ndimbwa pamwe? Opa ningilwe tuu sha okupula eemwenyo odo momake a South Africa, ile ongahelipi oshiwana shetu shaNamibia twa twikifwa kuSouth Africa oo e li omutondi wetu? Ovadali ohandi mu indile mu tote po okomitiye yokupula omutondi oo a efe oshiwana shetu osho, tashi hepekwa, kutya nee omeedolongo ile omoshiwana nee ngaho omaliko taa hanaanwapo novanhu tava kwatwa nope he na na epangulo lasha, ekwato lokeenghono nosho tuu. Mwa pulile tuu South Africa a efe oilonga ya tya ngaho? Otaku kombwa mepya hano manga meumbo mwa kaka nani? Ame nandi tye itashi shiiva shi

Inava hala tu ye kOngeleka

Efiku 13.10.1987 mEtivali اونونا aveshe okwa li twa onkala nawa moshongalele shetu pombali yokomatango. Osha li sha ongalela momuve wedina Shopondjila. Ookaume aveshe momukunda nopo-ushiinda okwa li va fika.

Okaana Nghilundilemunhu oko ka li ka hoololwa omu-nashipundi woshongalele nomuhepaululi apa, oye okwa li



hamushanga. Oshikundafanwa osha li kombinga youdjuu wovakulunhu vetu eshi inave tu halela tu kale hatu i komambo kelongelokalunga, vati ohatu va ningile nai nokukofa kwetu mongeleka. Navali ohatu va imbi vati va ye keenhingo davo komatango ngeenge va aluka komambo.

Fye اونونا oudjuu wovakulunhu vetu owe tu pendulile omapulo ngaashi taa shikula apa:

1. Ngeenge ohatu kofele mongeleka, hamba ovakulunhu ohamu kala mwa kenyanana? MuLukas 2:46 ohatu lombwelwa Jesus eshi a li okaana okwa fyaalele omafiku atatu motempeli, muJerusalem. Okwa li ha kofele peni, ile ka li ha kofa?
2. Tu ka uhale meemwandi, ngaashi da tilyana ngahenya, oingulu ei hai uhala mo i ka uhale peni? Ile otu ka uhale mumwe nayo?
3. Fye اونونا onghe twa dalelwe tu mone mongeleka tamu landifwa sha. Omaukuki nomauleke ohatu i landelwa mo eshi twa kofa, ile efimbo peni?
4. Hamba oukulunhu okupashiona nokumanako oundingosho mOsoondaxa?
5. Keumbo itamu i ko mokati komutenya, omu li nomahewa makweni, otamu ka ya ko ngeenge kwa ti ngahenya, nokano ngece mwa twaalele? Ngahenya, ongahelipi ne? Nokano aka tamu etelele keumbo, otamu di nako peni, okeendingosho ile okongeleka?

Okaana Ngh. Fikameni
Oupumako

kale ngaho vadali ovaholike.

David Hikelah
Smelter Tsumeb

Ano elanditho lyomambo nenge epitilomo lyokupopila Aawilikingeleki muuwinayi

Olundji onda tsakaneke aalandithi yomambo, ihe gwahugunina a pitilila unene. Sha limbilika ndje okutala omuntu ota landitha nawa omambo, a fa omukriste nani hasho.

Okwiithana ndje, "waa lele po" osho a popitha ndje. Ngame "ee", nokutameka ta nyanuna omambo, ta talitha ndje omathano ta ti omathano ou ga wete? Omolwashike Aawilikingeleki taa itula miinima yopapolitika yo oye li aawiliki yopambepo? Te lombwelwa nduno. Ano elanditho tuu shili nenge epitilomo lyokupopila aawilikingeleki muuwinayi?

Ina lesa nkene Jesus Kristus a kondjitha omutondi, eyoka enene Satana. Ano aawiliki yopambepo inaa puka, ngele taa popile opolotika, oshoka opolotika otayi kondjele uyelele opo Satana, he yomilema a tudhwemo, unene sho e li po a luudhika Namibia.

Aamwatate otandi mu kumagidha tu tonateleni mboka taye eta utondwe moshilonga shOmbepo Ondjapuki. Kalunga kombili oye ota ka nyanyagula mbala, Satana koho yoompadhi dhene.

Talita K. Temukondjele Ekandjo
Oupumako

Fiyo onaini hatu mono oixuna moNamibia

Oshiwana shetu osha pumbwa ekwafo. Nge hatu tale onghalo omo shi li mo, oshi li mo tashi mono oixuna unene. Nohatu mono naana nge sha taalela omuwelo wa kula noshi li mondjila yambwalangadja. Unene onghalo ya tya ngaho oi li unene mwaava ve li oshiwana shokomesho, ovanyasha.

Oshiwana shetu shokomesho osha shuna monima nai unene komalodu nokomikifi doluhaelo. Oshiwana osha shunifa monima omifyuululwakalo dootatekulu nexumo komesho lomuAfrika omolwoukoloni wa puka oo tau yambididwa koukriste wa puka.

Ye omuyapastoli Paulus ota ti! "Kristus okwe tu mangulula tu kale twa manguluka." Likwateleleni, kotokeni, takamifeni hano mu ha tulwe meti loupika. Ovanyasha vahapu otava ka lila shili eshi tava ka kala ve he shi elaka lomomeva. Oluhepo otali ke ya. Okanona eshi ta ka ka tya, tate penge eapela ove oto kufa ondunga, ponhele yoolosa oto kufa omeva matalala.

Otu na okutala onghalo yopaife nomesho a tonata nokukoneka kutya Kalunga ine tu pa ashike emanguluko okudja moupika womatimba ndele okwe tu mangulula yo okudja momafininiko a Suid Afrika nomokuhena ouyuki kwaye.

Ovawameme vahapu ova dja momaumbo ova vati ova ya kOushi-mba va jadukapo okuiwa navo, oto ti ngeno oita va tila. Koushim-ba oha ningiko efiku limwe ye oto diko. Oto udu taku ti oku li mo bataliona mOshakati. Ku shi nana kutya oita ei kwa li a tila ilipi, ye a ya moukakunya. Onghe ovawameme tu na okwekelashi osho tashi tu twala moupika waSuid-Afrika. Ndele tu kale tu na emanguluko letu.

Vaino T. Shiweda
Nuuyoma Sec. School

Tala kep. tali landula

Dha za kep 5

omulumentu nenge omukiintu, ihe opwa talwa ngoka ta vulu okuyakula moshilonga shoka.

Nomolwoshinima shoka oshigongingeleki shomumvo 1984 osha tindi okulundulula mekotampango etumbulo ndyoka lya gandja uuthemba kaalumentu ayeke mokuyapulilwa muusitagongalo. Kakele kaashono Ongeleki ya ELCIN oya tameka momimvo dhonele okuputudhija aakiintu konyala moshilonga kehe noku ya langeka mo.

Sebulon Ekandjo

ETHIMBO LYEKONGO LYAKALUNGA

Omu kwetu omuholike pamwe oto ti ohapu yaKalunga otayi popi iifundja nenge otayi dhana ngomashendjo, sho tayi ti: Ethimbo lyehupitho onena. Kongeni Omurwa manga ta monika ne mu mweithane manga e li popepi.

Oshili ngele to uvu ewi lye tali konkola, ino kukutika omwenyo gwoye omumwameme. Ethimbo olya thikana, ayihe oya gwanithwa Omurwa ote ya mbala.

Onda hala oku ku lombwela kutya shi na oshilonga okukonga ekwatho nOmurwa gwoye, ano u lupithe omwenyo gwoye, manga u li kevi ndika lyuundjendi. Owa makelithwa tuu uutove wOmurwa? Owa tseva tuu kutya pOmurwa opuuzwanawa nokukala?

Owa zimina tuu Omurwa a lala ye a pangele omutima gwoye omumwameme? Ngele hasho penduka, thikama, yambuka kutha amatati gove noshikwitho sha kolelela, Ombimbeli Ondjapuki osho egalikano. Egalikano olya otelefona ndjoka hayi endebele. Owe shi itaala tuu?, Eps. 70:3,5,6

Liinda N. Kalipi

Omatokolo ga UN molwaNamibia Omatokolo

17.12.1984:Oraata yeameno yOiwanahangano oya pangula SA eshi ta twikile ashike noilonga yaye yokotogotongo muNamibia, shi he li paveta, ngaashi omaduumbo nokwiidilila eenghatwa modolongo. Oraata oya indila SA a yandje epangelo koshiwana shaNamibia, pafiloshosho loshitokolifo 366 shOiwanahangano.

30.1.1976.Oraata yeameno yOiwanahangano (UN) oya pangula SA okututula kwaye ovakwaita muNamibia shi he li paveta nokulongifa Namibia omhani yokuponokela oishindalongo. Oraata oya tokola pashitokolifo 385/76, ehoololo muNamibia li ningwe mepashukilo loiwanahangano. Oraata oya indila SA a yandje omhito ya wana ko UNO, opo ku longekidwe nawa ehoololo eli moshwana ashishe moukumwe washo.

RUDOLF BAHM

Omupangeli gwootundi

MOSHA KATI

Mpaka otandi tseyithile aayakulwa yetu ayehe, kutya iilonga yokupangela ootundi, okulanditha po oompe nokwoopaleka ndhoka dha teka, okutula ko omakende nuumanya, itatu yi wengele we metungo JAMAICA INN.

Ngashingeyi otu li mpaka mOshakati metungo lya ENOK (BBK), mpeya hapa kala pwa thikama aluhe omaloli goeiskilima (Roomys). Shika otashi ti elalakano mpaka, oku ku etela eyakulo ndika popepilela, waaha pumbwe we okufala nenge okutuma oowili dhoye kUushimba.

Ohatu landitha wo oowili oonkulu kondando yi li hwepo, onkene tu talela po ngele to piti pOshakati.

Waa pandula noyaka

Omasiku 8.3.1987 onda li nda kwatwa kuuvu uunene nokanda li nde shi inekela, kutya otandi kala muukolele. Ondi shi okuhambela Kalunga kandje mwaayihe mbika a kala ta wilike sigo nda aluka kuuvu nda li ndi u na nonda yakulwa nawa mOshakati.

Taapopi Sarti Mpingana
Onangalo

OLUSINDO TALWIIDHIPAGELE OMBIGA

Netwi lya nika oluhodhi otandi popi ndu ukilila lela yamwe yomoshigwana shandje shOwambo mbono ye li miilonga yuukakunya, mbono taya hepeke, taya lemaneke notaya dhipaga oshigwana shawo yene pamwe nomutondi gwa-Namibia.

Omanga inandi ya muule woshipopitwa, aantu mboka ondi nena po omapulo taga landula:

1. Omwe dhiladhila ngaa tango omanga inaamu ihomeka iikutu yokudhipaga nokutilahi ombinzi yoshigwana shoye shaa na oondjo?

2. Omanga inoo pewa ondjembo peke, owa pula ngaa omuhona gwoye nokutya oto ka dhipaga lye?

3. Omwe shi koneka tuu nokutya onakuyitwa yeni oviudhigu muupyakadhi mokati koshigwana shaNamibia?

Eitheni omutondi, itedhululeni, galukeni, ileni koshigwana sheni, omanga ethimbo, oshoka otaku ke ya ethimbo ndyoka oshigwana itaashi mu taamba we. Ikuthamo mongurwo yoshimbungu, zala ongurwo yonzi.

One mu li eshihahoni miyolitha mokati koshigwana shetu. One omu li oshikumitha nomuyuni aulhe. One omu li notwe mu valulila mongundu yaatondi, nomweitekapo oshigwana sheni, mwea ningi yomavulu omale, nande geni omafupi, mwea ningi aakweilongo mwea lyaandjeni naatcyipo yoshigwana sheni. One mwea sa Judas Iskarioto ngoka a li i iteka omulongi gwec Jesus Kristus, omolweimalizea nokeve mu gandja miikaha yaadhipagi.

Festus Angula Ekandjo
Windhoek

Ano, otatu yandele peni?

Omukulupe S.Akoko okwa nyengwa nota hala okutya: Ano otatu yandele peni? Etanga lyegameno aniwa otali gamene oshigwana, ano otali gamene ngaa shili? Otali nyenyeta SWAPO ta hepeke oshigwana nokuyona po omaliko niinima yoshigwana. Etanga lyegameno ano otali gamene shike? Olyo naanaa tali hanagula oshigwana. Shaampoka koombinga adhihe oshigwana otashi lili ompumpuhodhi, omolwetanga lyegameno.

Omasiku ga landulathana, oomvula, noomwedhi oshigwana otashi ndonda omahodhi kiilonga yetanga lyegameno. Aniwa inaku endiwa uusiku, omanga etanga lyegameno tali matuka noshilongo ashihe tali yono inima shaampoka.

Onda pulakene omayeme koombinga adhihe. Aantu otaa yahwa, omagumbo otaga yakwa nokufikwa po. Sho oshigwana oshi na ngaa aagameni taa keelele SWAPO kaa yone aniwa. Omahepeko omanene nomadhigu moshigwana gi igalala. Aantu otaya kwatwa ye keedhililwe pwaana uumbangi washwa nuukwatya wa yela. Aakwiita yetanga lyegameno oya tamedkulula okuteya omankolo noondhalate, taya yaka iikombo kiigunda noondjuhwa kiikuku.

Omasiku ngaka okupenduka 25.7.1987 pomikunda Ongenga nLitananga, omagumbo gamwe oga lili, oshoka oondjuhwa niikombo ya yakwa kiigunda nokiikuku. Oongaku odha monika kutya odhaakwiita yetanga lyegameno, uusiku ngaa manga aantu ya kotha. Ano oshigwana otashi yandele peni? Nenge SWAPO oye ngaa ta ningi ngeyi?

Konakona 5 Mos.11, ontopolwa ayihe wi ipule ngele owa gwana tuu okumangulula oshigwana muupika waatondi. Kalunga ina nyengwa okumangulula oshigwana shetu momahepeko ngoka. Oshigwana shetu owa nyengwa okwiikutha muupika, omolwomauwinayi taga londo pombanda itaaga kuluka ga gwe pevi, ongAaninive ya galikanene neitulemo. Tu yeni mo neitulomo. Tu pewe ohenda kOmurwa omumangululi.
Dan.2:18-22.

Ino tala kiipala yaantu, oshoka Kalunga ota hupitha oshigwana she keitaalo lyomuntu gumwe. Unene tuu ngele tatu zala oongurwo oompe ote tu uvu.

Ombili nohole nontalanteni yaTate Kalunga koonkondo adhihe nadhi kwatele komeho kwaayihe tayi tu nyenge.

S.Akoko
Okaku

APPLICATIONS INVITED FOR FOLLOWING POSITION

1. WELFARE WORKER

in the Social Services Unit

DUTIES: — work to provide assistance to the needy in Namibia.
— Co-ordinate self-help programmes in the Unit, and more.

SALARY: Negotiable

TO START: Any time

2. ADMINISTRATIVE ASSISTANT

in the Social Services Unit

DUTIES: — Assist with admin. work in the Unit:
— receive quests;
— co-ordinate appointments;
— co-ordinate correspondence;
— be responsible for filing and records.

SALARY: Negotiable

TO SALARY: Any time

3. HEALTH WORKER

in the Health Desk

DUTIES: — Work as health educator
— Help to assess community health needs;
— Draw plans for proper services
— Visit Health and Welfare Committees and help with
— Community health education.

SALARY: Negotiable

TO START: Any time

Please contact Mr P. Aluteni

P.O. Box 41

Windhoek 9000

Phones: 061 or 62187/8

061 37519/1/2

ESO

Kuku Elima Akapeke mOnokwaya mOndonga, okwa mana oondjenda muukulupe lela 18.8.1987, okwa thigi ko omumwayina gumwe, oyana ya hetatu aatekulu naatekululwa oyendji.

Helena Ihuhwa
Osholuyu - Eheke

29.7.1987 muukokele womimvo 46 moshipangelo shaNandjokwe, muwechame wethimbo efupi. Okwa thigi ko omukulukadhi gwe oyana vatano naatekulu oyendji. Eimbilo 617. Mat.5:3 - 10

S.H.Uushona
Okashandja

Tate Amos Shipena Mikael momukunda Okashandja, egongalo Olukonda, okwa mana oondjenda dhe

Leevi Simon M.Shapwa (31) Epangu megongalo Eendombe, okwa mana oondjenda dhe eri 3.9.1987 meso lyo-

mbaadhilila mOvenduka. Okwa thigi ko he, aamwayina 8 nokamwanamati kamwe. Eimbilo 500

Abed Laimi Ndapewa
Epangu - Eendombe

Meme Josefina Ugwanga, okwa nama oondjenda dhe eri 14-7-1987 muwechame wethimbo ele, momukunda Uukwaniita megongalo lyaLupumbu mUukwambi. Okwa li e na omvula 68. Okwa thigi ko oyana

yahamano aatekulu yane. Mboka taa kumu nokulila otaa ka teya nenyanyu lyopombanda, Eimbilo 620.

Josefina naNelago Gabriel

Petrus Kwedhi A.GwaElifas Ngolo Kalunga okwe mu zimbula 7.6.1987 muwechame wethimbo ele. Otatu pandula aayakuli yomoshipangelo Onandjokwe nayakwetu mboka mwe tu yakulile moshituthi shatate Petrus. Kalunga ne mu yambekele oshilonga sheni. Okwa thigi ko yina naamwayina 9, oyana 6 naatekulu oyendji. Eimbilo 58.

Maria N.T.Ngolo

Omasiku 1.8.1987 Kalunga okwa ihana po omumati Almas Kaboy Lasarus Ndishishi, ombadhilila moshiponga shedhipago lyomwele moKatutura mOvenduka. Okwa li gwomimvo 24 patengeneko. Okwa thigi ko he na yina naamwayina. Eimbilo 644. Eps 23.

Martha M.Fillemon
Windhoek

Omasiku 7.7.1987 Kalunga okwa zimbula meme Rakkal N. Hango omukunda Uukwandongo mOngandjera, moshipangelo shaShakati muwechame wethimbo efupi. Okwa thigi ko oyana 4, aatekulu 45 naatekulululwa. Eimbilo 630

Klaudia W. Iilonga
Oshilemba
Ongandjera

Omasiku 21.8.1987 Tate Kalunga okwa zimbula tate Alfeus Abed, momukunda Onankali, mOndonga, ombaadhilila moshiponga shoshihauto. Okwa li gwomimvo 64 okwa thigi ko omuselekadhi noyana 12, aatekulu 9. Eimbilo 630 Eps 24

Albertina N. Alfeus
Onathing - Suid

Omugundjuka Loide N.Sem, megongalo Nkarapamwe. Okwa mana oondjenda dhe 16.8.1987 muwechame wethimbo ele. Okwa li e na omimvo 24. Okwa thigi ko aakuluntu ye naamwayina yatatu. Eimbilo 633. Fillip 1:21

Lukas Shikale
Rundu

OMUKWETU

Oye oshifo shOngeleki Onkwaevangeli paLuther yomuSWA/NAMIBIA.

Ohashi nyanyangidhwa mOshinyanyangidho shOngeleki mOniipa.

Omukuluntu gwoshifo omumbisofi Kleopas Dumeni.

Amushanga gwoshifo omusita Sebulon Ekandjo.

Ondando yOmukwetu muNamibia naSouth Africa R6,00 komumvo.

Palwe muAfrica R10,00 nokombanda yomasfuta R14,00 komumvo. Mondhila R17,00.

Oondando nomambesitelo agehe naga tumwe kOmukwetu, Oniipa, P/Bag 2013, Ondangwa, 9000.

ELOC PRINTING PRESS
PRIVATE BAG 2013, TEL. 11, ONDANGWA 9000
SWA/NAMIBIA.