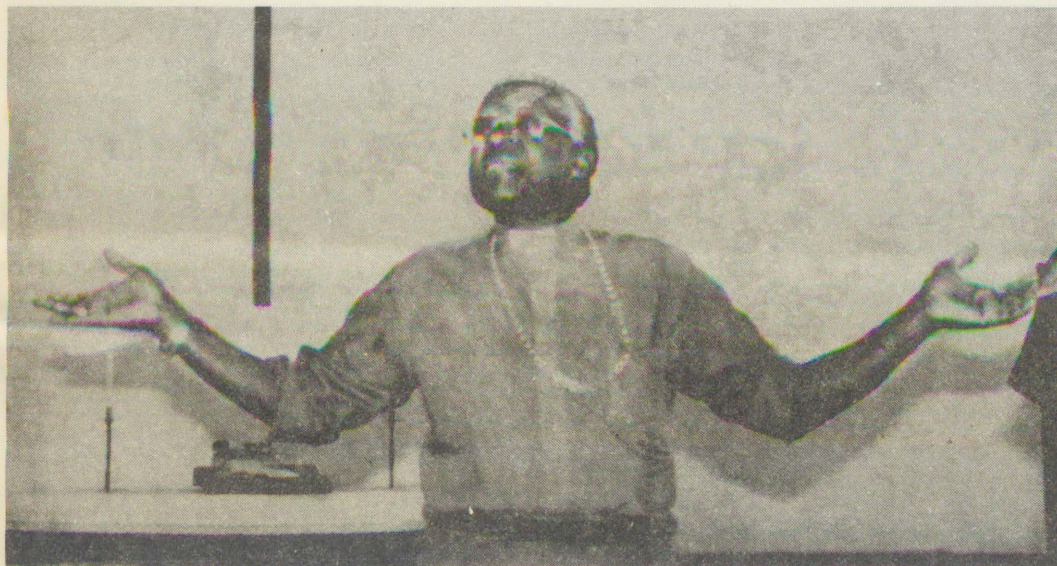




AATILIGANE NAYO ITAA TYAPULA EMANGULUKO: TUTU



Omumbisofi Tutu ta fatulula oshinakugwanithwa shemanguluko mOniipa.

ONIIPA, OWAMBO = Omumbisofi omukuluntu mOngeleki yaAnglikana, Desmond Mpilo Tutu, okwa ti, kutya uumbanda wAatiligane okutula Aaluudhe, owe ya imba ya tyapule nawa emanguluko lyawo. Shika omubisofi okwe shi popila pOniipa, 12.9.1987 mpoka a kundwa kaanashilonga yOngeleki yaELCIN ye vule 200.

Okwa ulika eitaalo lye megwanitho lyoshitolitho 435 shiigwanahangano shono shu utha emanguluko lyaNamibia, kutya nando tashi ka tsakanitaha omimvo omulongo omumvo tagu ya, onashi ka tulwa esiku limwe miilonga, osho wo ekondjelomanguluko lyawo, ndyoka a ti, kutya olya gwanitha nuumvo omimvo 20.

Momakondjo agehe gomimvo dhi thike mpoka, omumbisofi okwi ikwata kAaluudhe yamwe ye na egamo lyokukondjela emanguluko lyopalwaala ngaashi ndyoka lyAatiligane ye li

“Kape na nando ogumwe ta ka hupila mo memanguluko lyoludhi ndoka, na kale Omuluudhe nenge Omutiligane. Tashi tu hupitheni, ongele ashike tatu kondjele emanguluko lyomuntu kehe, inaaku talwa olwaala.” Elondodho lye ndika olya landulwa mbala kondigolo ya zi maapulakeni nokehakelo lyomake.

Omupopi okwa tsikile noshipopwiwa, kutya oshi na uuyamba u thike peni ngele ando tseni atuheni tu dhimbululathane palongo lyaJesus, nokutya tse atuhe aantu namumwayina.

“Ando olye we ta ka landa oondjembo a dhipage omumwayina, ando olye we ta zi po ta ka kotokela omumwayina, ando olye we ta ka tula iimaliwa oyindjiyindji mwaashono itaashi tungu aamwayina?” osho omapulo ge ga li po taga tsatsalakana sigo nomutuloui konyala a nyengwa okulandula.

Omumbisofi gwaambisofi ayehe muumbugantu waAfrika, mOngeleka yaAnglikana, Tutu, otaka tsakanitaha omimvo 56 eti 7 lyaKotoba nuumvo. Metalelopo lye ndika muNamibia, moshikandjongeleki shoka shi li mewiliko lyomumbisofi James Kauluma, okwe ende pamwe neefolo lye, meme Leah Nomalizo. Ishewe mosheendo shoka omwa li Amushanga

Tala kep. 2

na ngashingeyi notaa longitha iimaliwa oyindji mokulanda iikondjitho oku li gamenena po.



Aantu ye vulithe 500 oya li ye ya okupulakena elongekalunga mokana komumbisofi Desmond Tutu gwaAnglikana mOshakati, methano ndika ombinga yimwe yaapulakeni

AATILIGANE ITAA TYAPULA EMANGULUKO:

Dha za kep. 1

mombelewa ye, omusamane Matt Esau; omuwiliki woshikondo shombili nuuyuuki, efolo Emmy Mashinini nomutoolinkundana mombelewa yomumbisofi, omusamane John Allen.

Okuthika kOwambo oya thindikilwa komumbisofi gwoshikandjongeleki shaDamaralanda, James Hamupanda Kauluma; Amushanga gwaagundjuka moshikandjongeleki shoka, Nangula Hauuanga; omusita Nehemia Hamupembe nomusamane Shikongo omuhingi.

Peha lyaanashilonga mboka ya li ya thikama metsakaneko ndyoka nopeha lyOngeleki ayihe onkwaEvangeli paLuther muNamibia (ELCIN), omumbisofi Kleopas Dumeni, okwa kundu aayenda.

Mekundo lye okwa yelithile aayenda nkene okuthika kwawo sigo okoshitopolwa shiita, taku ulike omukumo nohole yawo koshigwana shaNamibia. Okwa gwedha ko a ti, Ongeleki yaELCIN etalelopo ndika olye yi taamba ko nomaako agehe, oshoka oongeleki ndhoka mbali odhi na oshinakugwanithwa shimwe ashike.

“Ongeleki yaAnglikana ngele oyi li menyanyu, olyo wo enyanyu lyaELCIN nenyanyu lyaELCIN olyo wo enyanyu lyaAnglikana,” omumbisofi Dumeni osho a tumbula nomuthindo kaayenda.

Konima sho a tumbulile omumbisofi Tutu omahaleloyambeko omolwoshipundi shuumbisofi omukuluntu mOngeleki ayihe yaAnglikana moka a kuutumbikwa mo omumvo gwa yi, noshipundi shuupresidende mEhangano

Omulumentu gwothika ofupi, gwolutu lwopokati nefufu komutse ihaali kamuka, Tutu, pompito ye yokupopya okwa dhuga omaako mombanda, ta ligalaleke omutse e ta lombwele aapulakeni, kutya ye epangelo lyokatongotongo okwe li londodha nale, kutya lyo momwaalu gwomapangelo olya gwa mo nale, oshoka olya kanitha uuyuuki mokati kaantu yalyo.

Uunzapo wesindano mekondjelo lyemanguluko omumbisofi ye li na muumbugantu waAfrika, okwe u gandja womukulukadhi momakuti gaCalifornia, muAmerika, ngoka u uvanekele omumbisofi oku mu galikanena kee na ezimbu-ko.

“Oonkondo dhepangelo lyomupresidende Botha odhi li peni dhi vule dhaamboka taye tu galikanene? Epangelo kaali na uuyuuki noshili kali na onakuyiwa, osho hii ya lombwele,” omumbisofi Tutu a ti.

Okwa pandula unene kushono omumbisofi Dumeni naye he shi ningi moshitopolwa sholugodhi.

Omuwilikingeleki gwongeleki yaakriste taa tengenekwa poomiliyona mbali muumbugantu auhe waAfrika, dr Tutu, okwa hokolola ohole onkumithi mokati kooitali muuyuni auhe. “Ku na mpoka to yi, e to iyadha u li muundjendi, osho a tumbula nonkumwe onene.

Naashoka omumbisofi okwe shi luku egwanitho lyomauvaneko gOmuwa, ngoka a ti: Ota- mu ka mona ko ayihe mbyoka mwa thigile ko, omolwandje.” Mat. 19:29.

Mokuyelitha uukwatya nemanguluko lya tegelelwa muNamibia nomu SA, omumbisofi Tutu

okwa ti emanguluko lye ihwapo, ongele ashike tali mangulula omuntu kehe, Omutiligane nOmuluudhe muuthikepamwe.

“Opo apeke mpaka tatu hupeni keyonuko lyokwiimanapo ndyoka lye tu thikamena,” okwa tumbula ngeyi mehulitho ye i ihila pokahalasa komeya omolweloloko nuupyu mboka u halele ko siku ndyoka.

Manga inaa shuna ku SA, dr Tutu okwa ningi elongelokalunga mongeleka yawo yaTomas omuyapuki, mOshakati 13.9.1987 moka aakriste yoongeleki dhilwe ya yile wo ye ke mu pulakene. Eti 15.9 okwa ningi oshigongi shaatoolinkundana mOvenduka.

Sebulon Ekandjo

NGUKA OYE TUTU

Dr Tutu okwa vaelwa moshilongo shokatongotongo, mu SA nokwa putudhwa moosikola dhako. Omumvo 1963 okwa mono lwotango oDiploma muulongi moBantu Normal College muPretoria, nomumvo gwa landula o B.A.

Okwa 1955-58 ota longo mosikola yokombanda yaMun- sievill muKrugersdorp. Omumvo 1960 okwa yapulilwa oshilonga shuudiakoni mOngeleki yawo, nomomumvo 1961 uusita. Okwa yi kuEngelanda hoka a tsikile nosikola yuuteologi nokwa adha onkatu M.Th. omumvo 1966.

Okwe ya a longe mOseminali yuusita muAlice mOkapa, manga inaayi kuthwa po kepangelo. Okwa mpoka okwa ka longa kouniveesiti yaRoma muLesotho.

Omumvo 1972 okwa hogololwa omuwiliki gwoshikondo shuuteologi mOraata yoongeleki muuyuni (WCC.) Omumvo 1975 okwa ningi omotonatishitayingeleki muJohannesburg. Omumvo 1976 okwa hogololwa a ninge omumbisofi gwaLesotho sigo 1978, sho e ya a ninge Amushanga- ndjaji gwOraata yoongeleki mu SA (SACC).

Omumvo 1980 epangelo lya SA olye mu kutha opasporta yalyo e te yi shuninwa ishewe 1981. Omumvo 1984 okwa pewa oshishani shombili kEhangano lyomuNorwee. Shoka osha landula onkatu odhindji dhomasimaneke e dhi pewa miilongo oyindji ngaashi:

Onkatu yesimaneke muundohotola welongo lyuukalunga 1978, kOseminali yuuteologi waayehe muAmerika;

- Nokoseminali yaHarvard, 1979;
- Nokoseminali yuuteologi yaAberdeen muScotland 1981;
- Nomouniveesiti yaRuhr muNdowishilanda lyuuningini- no 1981.
- Nokonkwawo yaColumbia, muAmerika 1982.

Okatongotongo oko ke mu yonena eithano lyuulongi ngaashi he kwa li e li na, sho ta ti; otau longekidhile ashike Aatiligane aakalele aawanawa.

Omumvo 1985 dr Tutu okwa hupithile opapeta meso, miikaha yoshigwana. Oshikando oshikwawo okwa yi pokati kaapoloji nAaluudhe mboka ya li ya gongalele pefumviko pondje yoveta ya SA. Shoka a hala oku shi lombwela epangelo, ohe shi popi meukililo, ihe omohole wo.

Eindjipalo lyiigwana yimwe muumbugantu waAfrika (1985)

	(millions)	Meyovi	eyovi	Eindjipalo
South Africa	32,5	35	14	2,1
Lesotho	1,5	42	16	2,1
Botswana	1,1	50	13	3,7
Namibia	1,1	45	17	2,8
Swaziland	0,6	48	17	3,1

Our living World No 5/86

Oku na eitaalo lya kola maatseyi yomahupilo giigwana nokutya uuyamba waNamibia otau vulu



Omumbisofi Tutu pamwe neefolo lye Leah Nomalizo

lyoongeleki adhihe muAfrika (AACC), shoka a hogololelwa muAguste nuumvo, omumbisofi Dumeni okwe mu tumbulile ngeyi:

“Ngoye ependa mekondjelo lyuuyuuki nombili komuntu kehe muumbugantu waAfrika, moka aantu taa hepa. Otatu ku kwatha, otu li pamwe nangoye, osho she tu eta nena mpaka.”

naanaa okupalutha oshigwana ashihe. Eso lyuunona tali monika lya londa ngeyi komumvo, otali etwa komatompelo ogendji, haiikulya ando yaa mo moshilongo.

EUYO LOMWENE JESUS

Ehoololo otali ulikwa keetekisti tadi landula apa; Mat.24:40 - 41,25:1 - 13. Moku di lesa otadi ulike sha yela, kutya nani Omwene ote ya okuhoolola, movalumenu ota vakula mo osho movakainhu ota vakula mo ovahoololwa vaye.

Ovavakulwa ava itava hangwa ashike mepya noposhini, otava hangwa peenhele di lili nodi lili, ngee okohambo ile omoixwa ile opoundingosho shaatu opo omunhu ta hangwa opo e na okuvakulilwa. Evakulo eli oli na elandulafano. Tete otaku hoololwa ava ve li meembila opo taku landula ava tava hangwa nomwenyo u li molutu. Lesa 1 Tess.4:14 - 17. Noushakeneno wavo aveshe omoilemo okushakena naJesus.

Omwene ote uya

Evakulo eli otali tu ulikile yo kutya mboli ovanhu vamwe otava ka fyaala ko kombada yedu navamwe ava ve li meembila vamwe otava ka fyaala mo. Ava tava fyaala po ovo ava inava hoololwa. Ava tava vakulwa po ovaava va hoololwa.

EESHALI DA PEWA ONGELEKI KOVALANGE

I.G. Ickua	-	20,00
T. Nekomba	-	20,00
M. Nduuvundi	-	10,00
V. Amukwa	-	10,00
O. Boas	-	10,00
J. Josua	-	20,00
A. Hofeni	-	30,00
S. Shivolo	-	30,00
S. Samuel	-	30,00
G. Andreas	-	30,00
H.Nathanael	-	30,00
R. Thomas	-	30,00
N. David	-	30,00

R300,00

OINIMA IVALI

Ope na oinima ivali
Pe na ouwa ile owii
Oushima ile ounongo
Oudiinini ile ouhasa
Oulai ile eendunge
Ove owa tya ngahelipi?

Ope na eendjila mbali
Pe na ya finana ile yambwalangadja
Ondjila yovayapuki ile ondjila yovalunde
Ondjila yefyo ile odnjila yomwenyo
Ove ilipipo to ende nayo

Ope na oshili ile oipupulu
Pe na outondwe ile ohole
Okume ile etondathano
Ehandu ile ombili
Ove ou li ngahelipi?

Ope na ehafo ile ehandu
Pe na omupya ile elao
Enyakuko ile etilo
Ehepelelo ile chepuluko
Ove owa teelega shike

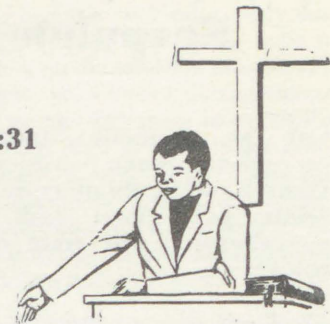
Oshike mbela tashi ulike oonakufiwa noonakuiwa navo? Ombibeli oye shi ulika meendjovo da ulikwa pombapila ei di leshulula nokupwilikina nelitulemo. Eshi tadi ti: Umwe ta fyaala mepya umwe ta iwa naye, umwe ta fyaala poshini umwe ta iwa naye.

Noukadona omulongo; vatano va iwa navo vatano vomuvo va fyaala po. Ovanhu ava tava fyaala po, otava ka kala ve he na eongalo, osheeshi eongalo Omwene eshi te ya olo ta ile. Ovanhu ovo eongalo otave ke li hala noku li kongka keembinga neembinga, ndele itave li mono. Lesa Amos.8:11 - 13.

Otava ka uda enota nondjala yeendjovo daKalunga. Osheshi satana oo kwa li he va hongaula kepo vali, okwa mangwa e li modolongo a patelwa mo opo a ha hongaula oiwana Ehol.20:13. Ashike konima yeedula eyovi ota ka dja mo, modolongo yaye. Ehol.20:17 nota ka eta oudjuu movanhu.

Oudjuu oo owo tau ka etifa omundilo, omu satana ta ka ekelwa mo ta hange mo oshilyani. Ehol.20:10; 13:1 - 18. Osho yo ovo tava ka hangwa inava nyolwa moramata yomwenyo, otava ka ekelwa mo yo. Ehol. 20:15 nefyo

Mat.24:31



noshovafi oinima oyo nayo otai ka ekelwa moheli Ehol. 20:14. Oyo oilongifo ya satana 1Mos.3:

Omwene ote uya, na kongwe manga ta monika Jes. 55:6

Ope na onhanda yovayapuki tai ka kala pondudu yeemono oku taku ka lyatwa komadi yOmwene eshi te uya Sak.14:4 - 5a. Omwene ote uya ngeenge omuaalu wovapaani ava tave uya meongalo wa wana Rom.11:25

Apa ope na epulo. Oshike tashi imbi ovanhu vamwe va hoololwe? Omatimba tava ka hangwa muo inaa dimwa po neendjo davo inadi tuvikilwa. Ps.32:1 - 3. Rom.4:7. Ava tava hoololwa oshike tashi va hoololifa? Fye naave otu li mongudu ilipipo mwaadi mbali? Tambulafaneni ngaashi Kristus e mu tambula. Eimbi lo 631

A.Muleka

Ope na oukriste ile oupaani
Pe na oulunde ile ouyuki
Ekondjo ile emweyo
Eemhofi ile oupafi
Ove ou na po shike?

Ope na exupifo ile ekano
Efyo laalushe nomwenyo waalushe
Efikilo ile ekaneno
Oheli ile eulu
Ove owa yuka peni

DELK A DHIMI PO UUKWASHILYO WE

Opwa leshwa moshifonkundana, The Namibian, kutya Ongeleki yAandowishi moshilongo, oya hulitha po yo yene uukwashilyo wayo mOraata yOongeleki ndjoka muNamibia (CCN). Ongeleki ndjoka oya kala oshilyo okuza 1978, Oraata ndjoka sho ya dhikwa.

Etokolo otaku ti aniwa olya zi moshigongi-ngeleka shoka sha li ko 20 - 23.8.1987 mOvenduka. Uunkundi welongelokumwe miinima yopapolitika melongelokumwe noomwayinangeleki owo wa hokololwa u li shimwe shomiithiminiki shokwiikutha muumwayinangeleki.

Omumvo 1984, Ongeleki ndjoka oya kondwa mEhangano lyAaakwaluther ayehe muuyuni (LWF) molwashoka itaa yi pangula omulandu gwokatongotongo puuyelee. Ihe Ongeleki ndjoka oyi itula ngashingeyi melongekidho pamwe noongeleki oonkwaLuther adhihe muNamibia opo dhi ka ninge Ongeleki yimwe ayike omumvo 1992.

Sebulon Ekandjo



Omuwilikingeleki W. Blank

Ehepululo la dja mombete youyehame

Oshiwana oshiholike, onda hala okweeta po eshi nda mona naashi sha hanga nge. Okwa li ndi he shi ounyuni, kutya oshike, ndele paife eshi ondi li mombete youyehame, ndi wete ounyuni kutya oshike.

Mboli eshi tu lyeni ngaha, otu li medimo lounyuni. Okudja kwange kounona onda li omuduliki lelalela. Pefimbo lopokati onda wila mounyuni. Onda li nda hongwa nawa eduliko kovakulunhu vange, ndele ehongo lange onde li ekelashi. Onda fuuka kuvakwetu eshi tave li denge mokakundu vo tava kongo oukadona.

Mediladilo lange okwa li ndi shi osho efimano. Osho naame nda tameka okweenda neendjila odo mboli, oikunwa novakainhu, nonda li ndi wete nda fika.

Taleni vakwetu, kendabaleni mu ha ende nondjila ngaashi ei nda enda nayo; oukolwe, oipala, elundilo, ounhwa, esheko nouheenakonasha. MuKalunga amuke hatu nomo omwenyo waalushe.

Oudjuu mombete

Ino lemama u mone oixuna. Oshinima shikumwifa nda mona mombete, osheshi kakwa li nde shi teelega nonde shi lineekela omunhu u kale mombete efimbo leedula hetatu ngaashi nda kala mo.

Eedula adishe odo mombete yange onda kala mo ndi he na etulumuko. Onda kala handi chama kombelela nokomwenyo. Oto hangika komalaka amwe mawa naamwe mai. Paife kolutu lange ka ku na vali oshilyo hashi longo. Eloloko lovayakuli moshipangelo ohali va hange nohava hovele okungongota.

Eindjipalo lyoshigwana shaNamibia olya penda epulo mepangelo lyopokati

Oministeli yuukalinawa nonkalonawa yoshigwana Moses Katjuongua, okwa ti kutya opu na okukongwa ondunge nziya omolwomukundu gweindjipalo lyoshigwana ngoka gwa thikamena SWA.

Okwa gwedha ko a ti kutya omumvo gwa yi oopelesenda 18,5% dhaakiintu odha yakulwa moprograma yengambeko lyoluvalo. Uunona wa ulikwa mpoka wa ya moshipangelo omolwepalutho lya nkundipala 1 300.

Omushamane Katjuongua osho u ulike kiinima yimwe mbyoka tayi ya imbi okulonga nawa moshinima shengambeko lyoluvalo, ngaashi oohedhi oonkulu dhopashigwana, oongelegeki dhimwe noma-pangelo gamwe gopamavigumbo ngoka aniwa itaaga yi moonkundathana nepangelo lyawo, okwa ti yo ongaanapolotika naawiliki yoshigwana osho oshinakugwanithwa shawo yu ulike oshiponga shoka sha taalela oshigwana.

(Record No.16/87)

Ino holeka Amushanga gwo-shifo edhina lyoye nondjuki-thi nando wa hala okulongi-tha edhina lyefutamo.

Mombete omo nda shakeneka omunhu ta fi ndele ota ingida ovakainhu, vati ita dulu okulinangela. Vamwe otava ingida kutya etango ola pwa po vati na kavake. vakwao vamwe natango otava fi tava pula omalodu vanwe manga mapyu.

Oshikumwifa shili okutala mukweni a yuka mefyo, ndele ota popi oinima oyo. Nediladilo la kula nee opo, kutya fiku ame nandi fiki mefiku lange lokutokoka nounyuni, onashi ka kala ngahelipi?

Vakwetu, natu wanifeni eufo laKalunga, osheshi eitavelo olo elineekelo la kola. Ngeenge u li mOmwene, owa wana wa pwa, nondjila yoye itai tengauka. Eitavelo lounyuni olo okafundaela. Eendjovo daKalunga itadi fufya, kutya ngeenge to wanifa ompango yaKalunga ku na fiku u ka mone epuko lasha. Ndele owii oto u mono ashike ngeenge to wanifa omhango yasatan, osheshi oye omuwiliki wowii keshe u li mounyuni.

Kombinga yange okwa li hashi dulika ndi ye monduda, ndele itai kofa, ndele omolwomadiladilo mai. Nande nda kala ngaha, omunhu ngeenge we ya puame, ito mono nge kutya ondi na omadiladilo mai. Nomokupopya kwange oto ti: "Omulumenhu oku na omwenyo muwa."

Nomokumona oudjuu kwange, onda tameka okuindila opo Omwene a kufe po omadiladilo a tya ngaho. Nomeindilo lange onda mona ekwafo shili. Naashe ya li momwenyo oya

OSHIVILOTUMO OMUDO OU MENDOLA

Omissioni yoshitaingeleki shaUkwanyama, oya dimbulukilwe neudo mEndola, nonande ovakwa ELCIN, ova li have i dimbulukile luhapu meemwandi daNgela. Oshivilo eshi osha li sha danwa eti 5-6.9.1987, koshi yoshipalanyole "Eemhadi oda fewa ngahelipi daava hava udifa eenghundana diwa," Rom. 10:15.

Ovanhu ve dulife 1000 ova li momisioni ei, ya hovelele Olomakaya noya twikila fiyo omOshoondaxa nelongelokalunga. Ovanhu ovo va dile keembinga neembinga adishe doshitaingeleki osho, ova pwilikina yo eudifo mokanya komweevangeliste Junias Haixuxwa pefimbo lelongelokalunga.

Omushamane Haixuxwa okwa tumbula kutya oshilonga shetumo osha lwifwa nomauta, omaonga nomikonda. Nonande pa li oita inene ngaha, evaengeli ola findana, noita ei kai po vali.

Okwa indila ovaitaveli aveshe va twale oshilongatumo moushilo wOukwanyama koshiwana shaye shOvakwanghala. "Kalunga na hambelelwe eshi evaengeli tali twikile nonena," osho omushamane Haixuxwa a ti. Oshivilo osha popifilwe yo neudifo komuteologi Wilhelmina Shikomba. Omuponhele wamwene woshilongo, naye okwa li a popifa oshivilo.

Momisioni ei, omubishofi Kleopas Dumeni naye yo okwa kunda nokupopifa oshivilo neendjovo da dja muJesaja 40:28-31. Mokulesha ehistolli la ELCIN nokuyeleanifa ohole, omukumo, oilonga yetumo nexwamo moshilongatumo, omubishofi okwa ti: "Onda koneka oungone neloloko mefimbo lopaife."

koshoka mo filu, nondi na ombili, nande olutu li na ouyehame

Ngeenge paife hai tale ovo ve he nakonasha na Kalunga naaveshe ovo ve li moilonga ii yoludi keshe, ohava udifa nge nai unene. Unene tuu oonakukulwa, ovaholi voipala novadipai, ohava etifa nge onghenda unene, ndele kwaashe ei, natu ilikanene vakwetu ava opo onyata ei i dje mo momitima davo.

Apa ohandi indile ovanyasha opo mu kotokele oshiponga shi li mokati kedu letu paife. Oshiponga eshi oshi li movakulunhu vamwepo, ndele unene mounona woshiwana shetu ovo vanini. Oshiponga osho ngeenge tashi popiwa, omunhu oto hale okulikwata komatwi. Ngeenge hai pwilikine omupopyo, ame hai dimbulikwa ovanhu ava va nyonauka, ohandi eta onghenda neenghono.

Oshiponga eshi osha ninga ovanhu omalai, vamwe ova ninga ovayananghwengu, kave na apa itava nangala, ndele ngeenge sha popiwa, vati oshiwa. Oshiponga eshi osho omakende, omakaya noingangamifi yoludi keshe.

Oshiponga eshi osha nyona eehombo momambo, ngeenge osha kwata omumati ina hambola ita hambola vali. Osho yo ngeenge sha i mokakadona, nako itaka hambolwa vali. Hano omunyasha kotoka u ha ninge omhilaali mokati kavakweni. Kaleni meduliko, osheshi omo amuke ta mu likola elao nonghalamwenyo iwa.

Teofilus Andreas Oshakati

Okwa ti otwa pumbwa eenghono dipe noulaadi waKalunga okulonga oshilongatumo. Okwa indila yo oilyo yomaongalo aELCIN i kale noukumwe nonelitulemo moilonga yetumo. "Omukwaneongalo keshe na longe oshilongatumo, osheshi osho oshilonga shaaveshe," osho omubishofi a ngongosheka engafifi lovakwashivilo mEndola.

Okwa weda ko ta ti naku ningwe ovanhu aveshe oilyo yeongalo noyOengeleki, nonande eshi osha ningwa nale. Otashi dulu okuningwa paife notashi ka ningwa natango. Otu na okupameka oyo yoshili nokupendula po oyo ya efiwa, opo oshilonga shi kale tashi kulu.

Omubishofi okwa holola yo eudonai laye, kutya omivelo oda pata, ile odi li pokupata, opo tu ha longe vali oshilonga shetumo. Okwa kunghilila kutya ope na ovanhu vamwe moshiwana shetu ovo pefimbo lopaife tava ti kaku na vali Kalunga. Naashi osha etwa mokuhaitavela muKalunga oko kwa tana notaku tane movanhu voshiwana shetu.

Oku niwe omhumbwe yetumo muELCIN omolwonghalo yoita oyo tai pange pefimbo eli. Okwa ninga yo eindilo opo omapyatumo muAngola, Senegal, Kongo, Omangeti, Kaoko naCaprivi a longwe nelalakano.

Natu yambukei po, natu fikamei po tu twikile etumo muELCIN. Eendjovo daKalunga

Tala kep. 7

Omulongwa owa tseya tuu ongeshefa yomaitano giilonga ngele wa mana eilongo lyoye?

Eithano lyomuntu otali yelakannithwa nomuntu e na ongeshefa ye. Omuntu mongeshefa ye oku na mo iinima oyindji yi ili noyi ili. Omu na iinima yomaludhi oge-dnji mbyoka omuntu to vulu oku yi ilandela tashi zi kehalo lye nokeuvo lye mwene.

Mooraka dhongeshefa omu na iinima oyindji mbyoka omuntu to vulu okuhogolola shoka wa hala okulanda noku ke shi longitha, opo shi ku kwathe ngele we shi landa. Ngele to landa oshinima shoye, ou na okuhogolola nawa nokutala nawa, kutya owe shi nyanyu-kilwa tuu shili.

Pamwe ohema nenge ombulukweya, nenge oshihauto, ou na okukonakona nawa, kape na ngoka te ku thiminike nenge te ku tidha opo u lande, ongoye mwene to kola. Nongele owe yi tala nawa, nokuli ngele uule wesiku nenge omasiku ge vule limwe nena oto tokola kutya oto vulu okulanda oshinima shoka, sha zi kehalo lyoye mwene nokupula omauyebele komulandithi gwiinima mbyoka.

Omulongwa neithano lye.

Omunasikola eithano lyoye ou li shi tuu? Eithano lyoye oto li adha ano peni? Mooraka dhomaithano omu na omaithano oge-dnjige-dnji, ninga ehogololo lyoye mbala. Omaithano otaga mbwalangandja mooraka dhelongo. Ope na iikulya yimwe yi holike kaantu oyendji, nenge iikutu yimwe yi holike kaantu nenge iihauto.

Osho wo kombinga yomaithano ope na omaithano giilonga ngoka aanasikola ye ga hoole noya tala ga fa ge vule omakwawo moshigwana, nonando eithano kehe moshigwana oli na oshilonga notali simanekwa, unene miilongo mbyoka ya mona eputuko nelongo lya ya pombanda.



Kauko Shikongo

Mpaka otapu landula ongeshefa yomaithano giilonga, mpoka omunasikola to vulu okuhogolola po limwe. Oto hogolola po lini ano? Thikama nawa komeho gooraka e to tala

nawa manga ino tameka okuhogolola mo li-mwe mooraka.

Ongeshefa yomaithano giilonga

Mpaka otapa landula gamwe 10 gomo-maithano oge-dnji mooraka dhomaithano giilonga ngaashi:

1. Omulandithi gwomiti
2. Omulongi gomalusheno
3. Omulongi gwasikola
4. Omumakeninga
5. Omundohotola gwomayego
6. Omuhungimwenyo
7. Omuthaneki gwevi
8. Omusindi gwiilando
9. Omunambelewa
10. Omunyoli nomulandithi gwomambo

Omunasikola gumwe okwa yi mongeshefa yomaithano. Okwa lesa omadhina agehe gomaithano ngaashi taga monika mooraka dhongeshefa. Omadhina gamwe omape kuye oku ga lesa oga nyolwa melaka lyoshikwiilongo, osho ngoka ge li mooraka dhomaithano oga shangwa melaka lyoshikwiilongo. Omunasikola ngoka ina tseya kutya iinima mbyoka nomadhina ngoka ogo omaithano. Ye ina tseya wo kutya uuna a thiga po osikola oku na okukatameka iilonga mbyoka moshigwana.

Natango ina yoolola naanaa iilonga ngashi "dentist, engineer" oyo iilonga ya tya ngiini. Molwashoka kee na ontseyo yasha m o m a i t h a n o ngoka nokape na ngoka e mu pa uyelele washa kombinga yomaithano giilonga, onkee ke na etokolo lyokugoholola eithano lyiilonga mbyoka ye a hala

Ope na aanasikola oyendji sigo otaa thiki mostanda onti-7 kee shi kutya ongeshefa yomaithano giilonga ote yi a adha peni, ishewe ke shi kutya oshike, niilongwa yini e na okulandula okuya kostanda 8. Aanasikola yamwe oya matukile kooraka dhomaithano ngoka haga monika olwindji kaantu ngaashi uulongi wosikola, uupangi nosho iilonga iikwawo tayi adhika mevi lyetu.

Inandji hala okugandja uusama kaailongi yetu aawe, omolwoonkalo yevi lyetu nelongo lyetu sho li li moshipilili, onke aanasikola naailongi inaa yoolola naana omaithano gawo niilongwa yini taa landula.

Oshinima oshidhigu shili pethimbo ndika, unene sho evi lyetu natango elongo li li pevi nelongo lyokatongotongo. Pethimbo limwe ito vulu okwiiningila etokolo lyoye mwene li li mondjila ngele kape na aagandjimayele kaanasikola yetu.

Omulandithi gwomaithano giilonga oye ano lye?

Omulandithi gwomaithano oye omulongisikola, unene ethimbo ndyoka omulongwa e li miipundi. Omulongi kehe e na ongundu ye oku na okulanditha omaithano giilonga kaalongwa ye. Ooraka dhomaithano omambo ngoka ge na okuleshwa kaanasikola ge na iilongwa yi ili noyi ili yomaludhi kehe noyi li mewiliko lyomulongi. Oongulu dhosikola odho ongeshefa yomaithano moka to longele mo aalongwa yoye iilongwa yi ili noyi ili yi na sha niilonga yomaludhi gi ili nogi ili moshigwana shetu nomevi lyetu.

Eithano lyomukwathilongi oli ni ano?

Moshilongo shetu omu na aalongi oyendji taa longo, ye na oonzapo dhuulongi. Aalongi mbono oyo aakwathilongi. Aalongi ya tya ngaaka oyo taa longo unene moongundu dhopevi moka aanona taa pulwa omaithano gawo. Aalongi ya tya ngaaka olwindji oya limbililwa omaithano gawo yene, nopethimbo ndika aalongi yamwe oya kanitha iilonga, aniwa kaa shi aalongi nando yamwe oya longa ethimbo ele noonkondo.

Mbono ya thigala mo otaa longo ya dhinwa aniwa kaa shi aalongisikola notaa longo yi idhina yoyene. Aalongi miigwana ayihe nomiilongo mbyono elongo lya ya pombanda oya pumba, inaa gwana moshilonga shuulongi. Onkee miigwana ayihe otamu adhika aakwathilongi.

Naakwathilongi ya tya ngaaka ngele okwa longo oomvula dhi vulithe pundatu niilonga ye, otayi humu komeho, aalongi ya tya ngaaka ohaa tumwa mookersesa dhontumba noku longeki dhilwe uulongi pantseyo ye miilonga ye.

Omunasikola ngoka aluhe oti ipula kutya oku na oku ka longa shike, ngele a piti osikola? Ota ende ti ipula aluhe eithano lye kutya olini nota ka longa shike? Nonando omaithano giilonga oge-dnji. Kape na mbyoka a hogolola po. Kuye oshe mu etele uudhigu oshoka kee shi naana kutya iilonga yini taka longa monkalamwenyo ye.

Aalongi ya tya ngaaka ihaa tidhwa miilonga nande. Oyendji oya mono omaithano gawo guulongisikola sho a longo iilonga ye nuudhiginini nokwa ka ninga omulongi omwaanawa moshigwana.

Miilongo ya putuka aalongi yaa na oonzapo ihaa ekelwahi, oyo taa simanekwa opo ya mone omaithano gawo moshigwana. Onke nane wo aalongikwathi, omaithano geni ogo uulongisikola, inamu holeka aanona tamu ya longo omaithano gawo. Ya fatululileni naana mooraka dhomaithano gi ili nogi ili. Aalongi aasimanekwa natu yelithileni aalongwa yetu omaithano giilonga yomaludhi oge-dnji mbyoka tayi kwathele chumokomeho lyevi lyetu.

Ethimbo olya pya natse wo Aanamibia tu longeni iilonga yetu pamaithano getu gi ili nogi ili. Aanasikola, konekeni mooraka dhomaithano geni omu na iilongwa tayi opalele omaithano geni, mbyoka u na oku yi landula keithano lyoye manga inoo ya kostanda onti-8. Puleni aagandjimayele nokuhogolola iilongwa yi li mondjila.

Kauko Shikongo
Britania

“Outeologi wemanguluko”

KuPaulus Ndamanomhata

Outeolohi wemanguluko oo outeolohi wopaMbibeli. Outeolohi wopaiwana ngaashi Ombibeli yopamuhoko ile yovanhu vongudu yonhumba, ndele oyovakwaunyuni, ovakulilwa aveshe. Outeolohi ou wopaMbibeli oo tau tula osho sha popiwa kOmbibeli moilonga nomonghalomwenyo yefiku keshe.

Outeolohi wemanguluko otau popile emanguluko lomuhepekwa nomumangwa nomumangi keshe, inaku talika koluvala laye, kutya omutilyaane ile omulaule. Omunhu keshe ota lalakanenwa a xupe nawa monghalomwenyo yokedu nomoukwaalushe. Outeolohi ou otau yandje omhito ya fimana kovakriste, opo ve li talulule nge otava ende tuu mondjila ile va puma mo.

Outeolohi wemanguluko owa dimbulukwa kutya oshinakuwanifwa shovakriste okupalula ovafindjala mounyuni aushe; okupopila ova fi-pwahonde; okutwa ovaitaveli novanhu aveshe omukumo; okuwapaleka onghalomwenyo yavo yonena nomounyuni tau uya.

Pauteolohi wemanguluko osha puka sha pukilila okweefa satana a longife ounyuni ngaashi a hala, manga ovaitaveli twa mwena, twa mwena emweno la puka, vati hatu lalakanene oikwaulu, manga oikwadu twa tala i he na oshilonga.

Pauteolohi wemanguluko oshinakuwanifwa shongeleki okukaleka ovanhu nomukumo momaupyakadi keshe taa holoka monghalomwenyo yavo. Ongeleki oya teelelwa nosho sha yuka i yelule ewi layo pombada, kutya ounyuni ou owaKalunga hawendeemoni ile wasatana.

Eholokepo louteolohi wemanguluko

Outeolohi wemanguluko owa tameka muLATIN AMERICA, hano America laumbuwanhu, omangha outeolohi wemanguluko wOvalaule wa tameka muAmerica laumbanganhu nomumbanganhuelela wAfrica.

Outeolohi wemanguluko oo wa kala wa efiwa ile wa fudikwa kovatilyaane, owa pendulwa po kOvalaule. Ovateolohi Ovalaule ovo va konakona nokukonakonununa onghalamwenyo yovalaula nondjovo yaKalunga, omahokololo oiwana yavo; omahepeko nomashundulo owinawina taa ningilwa ovanhu yavo.

Osho sha yela osho sho kutya outeolohi ou omo wa li u na okudja mOvalaule, osheshi ovo ovamoni voixuna pamwe novanhu yavo. Outeolohi ou kau dulu ku dja mOvayilyaane, ovo ve li ovalinawa, ovaxupinawa, kave shii ndjala. Efipohonde ovo have li ningile vakwao have have li ningilwa. Ondjokonona yopau-nyuni itai ulike naanaa Ovatiyaane ve li ovana vovapika palutu, ndele osho shi he na eholeko, ovo ovana vovapika pamadiladilo mai okukotokola.

Outelohi wemanguluko kau fi outelohi upe, ndele oukulu. Oo eudifo londjovo ihai pu mulyo (ondjovo ikulu noiye notai ka kala ipe

fiyo alushe). Ondjovo inyenye ku he na vali; ondjovo paife ya mangululwa mefyo omo ya kala ya kwatelwa kovanaenghono; ya ningwa tai wapalele onghalo keshe; tai yandje omanyamukulo konghalo yeehepele, ovapondwa, ovalyatelwa pedu kovanhu vakwao.

Eholokepo louteolohi wemanguluko lomumangwa keshe, ola kanghamekelwa kuKalunga komEtestamenti Likulu, Kalunga omumangululi oo e li hololela Moses nosho yo Israel alishe. Eliholokolo eli laye okwa hala li kale loiwana aishhe, mwa kwatelelwa noshetu yo. Pa Ex.3:15 edina olo eli holola nalo olo YHWH=Kalunga oo ta longo e na omwenyo no ta ka mangulula ovanhu momalyenge omupiki.

Emangululo eli hatu popi mouteolohi ou, ola longekidwa nale kuKalunga. Otashi monika petameko lOmbibeli (Genesis 15:14) noshi li Ombibeli aishhe. Ovaprofeti emangululo eli ove li luka omukanghalyatelelo wehupifo. Jes 2, ota tumbula eenghono demangululo daKalunga; Daniel 1:15 “Jehova, Omwene Kalunga ketu oo e tu kufa muEgipiti neke laye li na eenghono.”

Kalunga okwa holola poluhaela ngehe ha xupifa ovanhu. He shi ningi hamoubudi, ndele moshanga shomuteriya (tala oshiningwanima shopefuta litilyaana). Kalunga omumangululi ote li holola oye Kalunga kashili, ke fi oshikalunga, ke fi oshihongwa momake omunhu.

Jesus Kristus oye oshitwa shopokati mouteolohi wemangululo. Etestamenti Likulu oli li mondjila mokuudifa emangululo, hano exupifo laavo tava dipawa notava hepekwa. ETESTAMEN-TI LIPE oli li mondjila mokuudifa emangululo lovahepekwa novahepeki oshita, osheshi aveshe ova filwa nova mangululwa oshita kuKristus Jesus Omwene wetu.

Jesus Kristus oye oshitwa shopokati mehongo loukriste wetu, ndele hafye vene. Onghee katu na nande efiku limwe tu ka kala tu li mondjila, ngeenge hatu popi emangululo, itatu tumbula Jesus Kristus oo eli omukangha oko kwa tungilwa emangululo alishe lomunhu aushe. Emangululo lovanhu aveshe ku Kristus olo oshilongaxupifo sha longelwa ounyuni aushe kuKalunga muKristus Jesus.

Omupika omumangululwa wedina, Anthony, oku li mondjila eshi ta ti “Kalunga okwa shita nge omunhu, hamupika. Okwa pange oufemba u fike pamwe nowaava va vaka po wange.” Eli olo eyelifo kutya emanguluko kali fi omaano onghenda yovatiyaane, ndele omaano a dja pombada kuKalunga. Nge wa manguluka ino pandula omunhu komesho yaKalunga.

Ovateolohi venya ova uda ko emangululo la shili lokumangulula omumangwa novamangi muKristus nokuhala oku shi longa ponhele yaye. Mehala lokupopya oshili yemangululo loshita laaveshe muKristus, ova li ve na elipulo linene, olo eli:

Omolvashike omahepeko nomamono oixuna a tongola mo ashike ovalaule. “Vali omahepeko

aa itaa ningwa kovapaani ile kovashunanima, ndele okovamwameme meitaalo, Ovatiyaane ovo fye navo tu na Omwene umwe, Jesus Kristus?

Jesus oye odjo/oshitwa shopokati monghalomwenyo yetu yefiku nefimbo keshe. Oye oshitwa shetu shopokati moukalunga, moupolitika, mousosiale. Oye ashishe shetu. Onghee sha puka nokupukilila vamwe va hepekwe ile va liwe oshipungo kuvakwao.

Outeolohi wemangululo netambulafano (ehanganifo)

Metetekelo onda tumbula kutya kaku na outeolohi wemango, ndele oku na outeolohi wo-vauninginino oo hau udifa exupifo lomwenyo, omangha olutu omo mu na omwenyo, a talika oinima yongaho; outeolohi tau popile oluhepo kombada yedu, nelalakano opo nakuhepa a ka hepuluke meulu.

Outeolohi itau hokolola kutya ongeleki oyo olutu oluhokolahonde li li pamwe naKristus monghalo keshe.

Ongeleki okanya kovafiminikwa; omuhangukununi moikolokosha keshe; omupokati kepangelo nomupangelwa. Outeolohi wa mwena, emweno itali ti kosha koulunde tau longwa pefimbo olo. Okumwena okuhakufa ombinga, oko taku ti ouhefi. Oku henakonasha okuyambidida oonakulonga oulunde; okuhayavala, ile okuhaudako emangululo lomunhu muJesus Kristus.

Emweno eli olo ekengelelo londjovomangululi yaKalunga. Outeolohi wa ekelashi Jesus Kristus ongoshitwa shopokati, ponhele yaye va tula po omifyuululwakalo.

Ehanganifo omaano mayapuki a dja pombada kuKunga kali fi oilongamake yenyakwa nhumba, ile ngadi. MuKristus (Kalunga omunhu) Kalunga omwa hanganifa ounyuni naye omunhu nomunhu mukwao. Pauteolohi wemangululo ehanganifo otali ti, Kalunga e uya mondjokonona yOvalaule novadinwa, aveshe ta teyaula po ekuma loutondwe wopaiwana, outondwe pokati kOmutilyaane nOmulaula, Omutilyana nOmutilyane.

Ehanganifo etambulafano lashili lomuKristus hakulya pamwe eembelela da kangwa, okunwina pamwe nomeholo limwe, hakudanisa ile okwiimba pamwe, ndele olo etokolo lashili nolopauyuki tali twala fiyo omefyo omolvaxupifo lovamangwa novamangi oshita.

Pa Mateus 25:31 ff. kape na ehanganifo lashili omangha ovafindjala inava kutifwa, ovanauudu inava pewa ouhaku tau wapalele. Ovo va hangika va wanifa aishhe ei kuKristus pealuko laye, ova pandulwa nova tulwa kolulyo laKalunga.

Vahepekwa, natu tambuleni onghalamwenyo ipe twa pewa kuKristus. Inatu itavela nande efiku limwe tu pikwe ile tu pukifwe palutu ile pamadiladilo.

Pauteolohi wemanguluko Kalunga ota longo shike monghalo muNamibia?

MuNamibia Kalunga ota longo shili noku he na etulumuko monhalo ikenyeneka yoita yowina, eshunomonima nomapukifo e he shi kuyelekwa.

Tala kopardja tali landula

Nande ku na oita ya ningwa eedula dihapu, haatushe twa twaalelwa kuyo, twa fya. Nonande eshunomonima tali monika muvahapu moshiwana shetu, haatushe twa ekelashi eitavelo lomuJesus Kristus. Ponhele yoku leefa otwa pamekwa komaudjuu aa.

Nonande omapukifo omahapu hatu a ningilwa, opo mu fye mu dipawe outeolohi washili, haatushe twa lundulula ekanghameno letu.

Jesus ongOmunamibia omo e li monghalo keshe (Mat.28:20). Monghalo ei ke li mo a mwena e lixukata, ndele ota longo ta wapaleke, ta lundulula onghalo, te i kufa kowii e i ete kouwa. Oye mwene wonghalamwenyo aishe, nai kale oi na eedemoni tadi mu kondjifa. Oye omupangeli nowaANTIKRISTUS. Oye ohamba ya nyumuka koufi, omupangeli wefyo nowoshovafi. Kristus ita longo ashike mongeleki ndele mounyuni aushe (Joh.3:16).

Kristus ke li monghalamwenyo yetu noyounyuni, opo a twile onghalamwenyo younyuni eengolo, ndele onghalamwenyo younyuni u mu twile eengolo. Onghee ondjovo yaKristus i li eongamukonda leememo kuvali nomefimbo eli lidjuu oi li nawa hano.Osho i na kukala, doinima i kale ngaho.

(Da xupipikwa)

EIMBILO LYEHAMBELELO

Waa pandula noyaka
Tu hambeleni Tate Kalunga
Megongalo lyetu Ewaneno
Tate Mtuleni sho ya galuka
Keilongo lye kombanda yomafuta.

Tate Mtuleni oya yile ye li yatano
Nena otu ya wete ya galuka ayehe
Kalunga kaaluhe natu mu simanekeni
Omuwa a enditha Omuwa a gamena

Oomvula ndatu megongalo dha pita po
Mtuleni e li keilongo lye
Tatu tsu oongolo tatu galikana
Nampongo a galule Mtuleni gwetu

Egongalo owe li adha li li nawa
Nande iikungulu yetu dhenga
Egongalo nonena opo li li
Omuwa ota dtenge ye ta hekeleke

Omvula ndatu megongalo wa longo
We tu lela nale we tu tekula
Mtuleni gwetu, Mtuleni gwetu
Nkoka to ka kala ino tu dhimbwa
Nahambo Tweufiilwa

Oshivilotumo mEndola

Dha kep. 4

noupuna aushe wado nadi twalwe kuaveshe neenghono dipe, osheshi etumo otali fimaneke omunhu keshe ou e li oshifefa shaKalunga, na kale oshipuna ile ohepele, osho omubishofi a xulifa oshipopiwa shaye nomatumbulo oo.

Inaku udika onghundana ii yasha kombinga yomalinyengo ovakwaita va SA oo kwa li taa monika momudinogonoko oo fiku lOlmakaya. Oshivilo osha xula netyapulo loikulya nonomukalo woukumwe nombili.

Thomas Nghitukwavali

Elongekidho lyoprojeka yekwatho lyaavu yomalovu muELCIN lya tameke



Omundohotola guanamiti Reijo Ojutkangas oku li ngashingeyi muNamibia, metalelopo lyoomwedhi mbali. Muule wethimbo ndyoka ota longekidha pamwe nomusita Festus Ashipala etameko lyoprojeka yokukwatha mboka ye na uuvu womalovu nenge wiingangamithi.

Dr Ojutkangas ye mwene okwa hokololela Omukwetu, kutya konima yoomvula 11 dha piti, naye okwa li moshiponga shuuvu mboka.

“Konyala ndi kanithe nonzapo yuundohotola, ihe onda tameke okudhiladhila onakuyiwa yandje, nonda kongo ekwatho lyolela,” osho a hokolola.

Ota koleke nokutya etameko kali shi epu okweetha, ihe emanguluko oko li li, kukehe gumwe ti idheula okwiipangela.

Pokati komwedhi nguka naKotoba opu na okersesa yaamboka ya hala okukwatha yakwa-



Omundohotola Reijo Ojutkangas, methano ndika omutiyali okuza kolulyo, pamwe nomusita F.Ashipala kolulyo; omukwathi gwomumbisofi Matti Amadhila naamushangakwatakanithi meme Kaarina Tuovi Pennanen. Oya thanekelwa pOniipa.

Oumukwashike hano kepata leni?

Omukwaluvala ngongolo
Mukwamhinda ngonguluve
Omutwe wongolo keshe apa u li

ile

Omukwaneidi lihapa
Hali palula eengobe
Omukaholo ke yadi ndo omashini
Omukwakaholo ke yadi ndo oshitaka
Euyo leni okombala li li
Ombala yeni ya kambwa neidi
Endjuwo leni la kambwa nexwati
Eumbo la kambwa nombidangolo

wo muuvu mboka, mOngwediva. Oonkunda-thana oonkwawo otadhi ka kala ko ishewe 16-18.10.1987 mOngwediva.

Manga dr Ojutkangas inaa tsikila etalelopo lye kOkavango, okwa hala okukala tango pamwe naakuluntu yoosikola dhopombanda moshikondo shelongo. Otaka shuna pehulilo lyomwedhi tagu ya.

“Ndika etameko alike lyaashono tatu ka tsikila nasho ethimbo ele komeho,” omusita Ashipala osho a gandja uyelele kOmukwetu.

S.Ekandjo

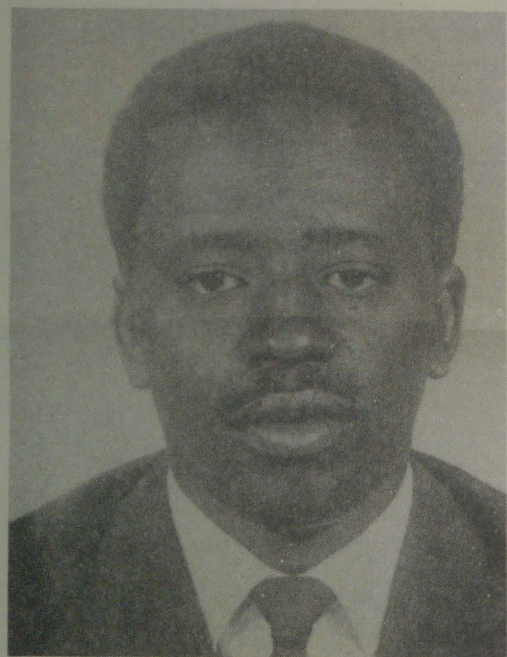
Ovanailonga mwa kundilwa po kuMax

Ngeenge tu na odidi hai yandje omashini kovaneumbo, efimano hakupewa ashike omashini, ndele okudimbuluka yo oku i palula nomwiidi opo iha xulepo.

Nandi pandule ovakulunhuongalo nye ava mu li meekomboni dovanailonga eshi tamu diinine eyakulo lopamhepo movanailonga naava hamu wilike oyoongalele yovanyasha mOushimba.

Ebandulo lange ole li koilyo yomaongalo yovanailonga nokovakulunhuongalo, diinineni opo oukriste u na omwenyo u kale mokati kovanailonga. Inamu efa omalangekido oo vamwe mwa hovela nokuli nale, omatungo eengeleka ngashi Swakopmund na-Windhoek.

Efimbo letu otali tu shingile opo okutala nawa oukriste u na omwenyo uha dime mokati kovanailonga vetu. Ovanailonga



Omusita gwaaniilonga G. Max

Okomboni yaKatutura metungululo

Aantu 2400 oye li pokomonenwa omagumbo koprojeka yedhina Hakahana omolwokomboni yaKatutura mOvenduka ndjoka okuza 30 Septemba 1987 itaayi ka tumbulwa we.

Elalakano lyokuhalakanitha po okomboni ndjoka olya kuthwa mokana koshilyo shokabinete mepangelo lyopakathimbo omusamane Moses Katjiuongua, koshifonkundana Die Suidwester, kutya aniwa muyo omo mwa kala omudhi gwokatongotongo nonkalo yehala oya kala kaayi shi okutalwa mekako lyayo.

Mokupingena ehala ndika melongitho, oprojeka Hakahana oya landa ofaalama konima yaKatutura nomagumbo gaantu 2400 otaga ka pwa mbala, pashifonkundana shoka.

Omagumbo ngoka otaku ti otaga vulu okulongithwa othitha kiimaliwa R30.00 momwedhi kehe nenge oku li landa po kondando R3 700.00. Omala gokulala mokomboni nekuma alihe lyolugumbo okwa tiwa otaga teywa po, ihe onkombitha, oombelewa nondjugo yomanyanyudho okwa ti epangelo otali yi gandja kaakalimo yomuKatutura.

Sebulon Ekandjo

vaNamibia, kaleni kumwe moinima ei iyapuki.

Ovawiliki diinineni okuyakula ovanailonga ovo ve li moluhepo tava pumbwa ekwafo lokomwenyo, ope na vahapu itave li mono, nove li djuulukwa, Ps. 146;7. Omupopili wovafinikwa nomupaluli wovanandjala, omumangululi wovamangwa, opo e li popepi nakeshe umwe.

Ondi li manga metwikilofikola handi konakona outeologi wovanailonga, oo tau wapalele onghalo yovanailonga vaNamibia.

Ookuume aaholike yaNamibia

Omolvashike oshigwana shetu tashi hepekwa kuita nokoluteni, unene ketanga lya SA? Uunona poosikola otawu dhengwa naakulupe momagumbo taa dhengwa, oshilongo shetu sha ningwa owala oshilambo shombinzi, omuntu to dhipagelwa oshili yoye, noku-lemanekwa nokutulwa mondholongo pwaa na etompelo lyasha. Ngoye shigwana, oto ti nee ngiini koshinima shoka shomahepeko moNamibia.

Kaamwameme mboka hamu hepekwa naam-boka mu li moonholongo, naamboka mu li miipangelo mwa lemanekwa, omolvoshili sheni, kutya ne eso nenge omwenyo, otali manguluka.

Oshili ombinzi yaNamibia otayi ka shituka omagadhi oshoka noshigwana shaIsrael osha kala ethimbo ele muupika waEgipiti, ndele Kalunga okwe shi mangulula mo, onkee natse tate Kalunga oku na oku tu mangululila Namibia. Otatu indile e shi tu ningile, oye e tu hulithile po iita moshilongo shetu.

Petrus Keendjele
Windhoek

Ya hokololwa ya kwatwa po

Frederika Gideon, popepi nOhangwena 7.9.1987
Sakeus Shikongo, Okahao 27.8.1987
Pauyelele mboka inaa kolekwa, meme Frederika okwa dhigininwa kaakwiita yelenga Gottlieb Dan, manga Shikongo taku tiwa oku li mOshakati

Ya dhigininwa natango

Samuel Andreas, Oshakati
Amutenya Ashipala, Okatana
Filemon Katsimine, Oshamuhenyé
Josef Kakofa, Engolo
Saara Lukas, Eloolo
Saara Teofilus, Eloolo
Martin Mulondo, Katimamulilo
Abner Shikesho, Okamule
Stefanus Nghifikwa, Engela

Ngele to longitha edhina lyefutamo, hololela omulongekidhi gwoshifo edhina lyoye nondjukithi.

6 yaSWAPO ohofa ya ti naa mangululwe

Ohofa yopombanda mOvenduka oya gandja elombwelo kaapolosi ya SA opo ya mangulule aawiliki yahamano yaSWAPO noyehangano lyaaniilonga. Ohofa oya li ko 11.9.1987 noya li ya dhigininwa pakatokolitho 6 koveta yuukulo.

Iilyo itano yaSWAPO oya kwatelwe pomasiku 18 nenge 19.8.1987, nomutihamano gwawo, omusamane Ben Uulenga okwa kwatelwe 26.8.1987 mokapale koondhila kaVenduka, manga ta galuka metalelopo lye kuEngilanda.

Yalwe mboka ya kala mokakuma oyo Dan Tjongarero, omunashipundi gwaSWAPO gwopevi; Nico Bessinger, Amushanga gwiikwapondje; Anton Lubowski omudhiginini gwiiniwe yehangano lyaaniilonga; John Pandeni, Amushanga omukuluntu gwehangano The Namibian Food and Allied Union naHendrik Witbooi omupresidende gwopevi.

Omupanguli Justice Kenneth Bethune oye a gandja elombwelo oonkwatwa ndhoka dhi mangululwe mo. Omusamane Tjongarero nomusamane Lubowski, oya kala yaa na ukolele, onkene nondholongo oye yi thigile po manga ya ye moshipangelo.

Omatokolo ga UN molwaNamibia

29.7.1970 — Oraata yegameno yiigwanahangano (UN) oya hiya iilongo ayihe muuyuni yi hulithe po ekwatahano lyayo na SA, Franisa naBritania yi ikaleka pondje yetokolo.

21.6.1971 — Ohofa yuuyuni muHolanda oya tokola kutya S.A.muNamibia oku li mo pwaa shi paveta, noshimpwiyu shono e shi pelwe okuputudha oshigwana shaNamibia, ngashingeyi ote shi kuthwa. Oraata yegameno yiigwanahangano, oyo ya pulile omayele kohofa ndjoka.

4.2.1972 — Oraata yegameno yiigwanahangano oyi indila Amushangandjaji gwa UNO a talele po Namibia (Pethimbo ndiyaka dr Kurt Waldheim), opo a ninge oonkundathana noongundu dhi ili nodhi ili moshilongo. Mehokololo lye ndyoka lya piti 30.4.1973, Amushangandjaji okwa ti kutya epangelo lya SA inali ulika nando ehala lyokwitula mo moshinima shemanguluko lya-Namibia.

14.4.1973 — Oshigongi shaanawino yomuuyuni auhe okukwatha mboka ya hepekwa kuukoloni nokokatongotongo mu SA osha ninga eindilo kiilongo ayihe muuyuni yi yambididhe ekondjo lyoshigwana shaNamibia. Oshigongi osha li sha ningilwa muOslo shomuNorway.

14.12.1973 — Oshigongi shaayehé sha UNO, osha zimine SWAPO a ninge omukalelipo gwopaveta gwoshigwana shaNamibia pashitokolitho 3111/73.

Ondjokonona yomulongisikola NelsonAshipala

OMUWA OYE OMUSITA GWETU INATU PUMBWA SHA PS. 23

Omulongisikola omusamane Nelson Sh.Ashipala, okwa hulitha oondjenda dhe eti 4.5.1986 mepipi lyoomvula 36 ombaadhilila. Okwa longo mepya lyetumo Onanyanga, mokati kAayelele pamwe naefolo lye, moka Aayelele oye ndji ya shashwa noya kolekwa. Okwa thigi ko omuselekadhi gwe naanona yatano. Mat:11:28

Omuselekadhi
W.Ashipala

Oonkundathana dha-Namibia dha shuna miipundi

Omusamane Chester Crocker, Amushanga gwiinima ya Afrika mepangelo lya Amerika, okwa shunine moonkundathana nepangelo lya Angola mEtiyali 8.9.1987, molwoshikundathanwa shemanguluko lya Namibia

Vakatako wosasovagani, yinke muna kurira nani?

Vakwetu wokuhara vakatako, ame kuna hara ku mu pura ko tupu: Asi omu gazara one ngapi? Ndi kapi omu gazara nampo, one ngoso eyi muna kurwa tomu gazara asi tomu parura rudi, ndi tomu ru li po.

One vakwetu vakatako nolyo edina va mu ruka, one kulimona uwa ndi? Eyi ali tanta yisinke nani? Onene, one ruhepo rwanyamweni tupu muna kuhedesa komeho. Ove kugazara asi ngo gwane ungawo siruwo oso ono ku kwatesa ko mukweni kougawo wendi ndi?

Omu adi swaura nge noMburu asi kafara, nove hena yimo adi kuswaura asi nokafara dina tadi zi kopatoroli konokafara nonkwawo vaSwapo. One hena kapi ngomu mona sirumbu siku nyenge siruwo esi ono ku si kwatesa ko mukudipaga musovagani mukweni, morwa kاپisi sirumbu ono kudipaga.

Awo kukondjera ko tupu asi, ngano va guse mo mwenyo goge o hore komuvaru gwani vasovagani, ngano asi wonondunge ngano muna lizuvhu mu tunde mo. Anove mukwetu, oyo yimaliwa ava ku pe to randesa ugawo wosirongo soqe.

Hateka tupu o sige noMburu delike asi yinke nadi tompora. Anove mukatako gomusovagani, ove o kwatesako nomburu, ove wa hana kudiva asi sitambo musinke na karera mosirugana esi, tani popere sirongo ndi, ndi tani digopeke sirongo?

One kuna kara nombunga mbali asi tomu kondjere mpora zosirongo. Sirongo muna kondjera po seni nye one vasovagani ndi? Ndi sonoMburu? Ndi ngomu siligawina nowo va mu kuta? Nye ngomu lifira mu gwane ko kokanunu. Nomburu kwa kotoka, momamutuwa nyonelike muna kuvhuka mo, awo vene vanunu.

Eyi mwa hepa kundimburura po yeyi, asi tomu katopoke emanguruko lyosirongo setu. Apa kuna kuhundira one ava omu dwara nombindja dezuva asi hawe, ezuva kwa li tu pa mburu kuna kurwira asi sirongo sawo si gawope. Ove sirongo salye nye ngo mangurura? Vakwetu, sigeni odo noMburu dokatongotongo. Tundamo omo momanuiniforum to dipagesa 'vantu. Sigeni sirongo si manguruke moupika wonomburu.

K.Lebbeus
Nkurenkuru

Amushanga Crocker opo a zile kuAngola petameko lyaJuli 1987 ta hala okusa omutima, kutya epangelo lyoshilongo shoka olye mu endithile epwanga lya inaali longekidha iinima ya kola.

Epangelo lyaAmerika olya kala ethimbo alihe lya kukutika othingo yalyo mokumweneka omathaneko gemanguluko lyaNamibia ga ye komeho, manga aniwa epangelo lyaAngola inaali laleka Aacuba ya shune kegumbo taa tengenekwa 30 000.

Kombinga yepangelo lyaAngola nando lya tala, kutya Aacuba kaye na sha nemanguluko lyaNamibia, onkene tuu lya kala tali kongo omukalo tagu opalele okufalitha emanguluko lyaNamibia moonkundathana nuuyuni.

Oshikando shika epangelo lyaAngola otali kongo eyelithilo kepangelo lyaAmerika, ngele otashi vulika Aacuba yi ipweye mo muAngola muule woovvula ndatu. Ethimbo lyoomvula ndatu, kuAmerika olya talwa ele, unene ihe shila omumvo gumwe.

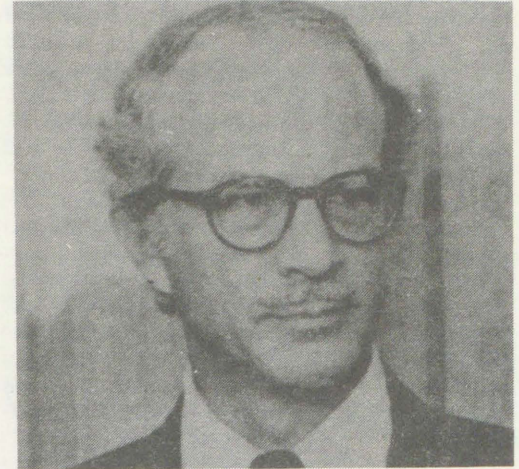
Kombinga ya SA ngoka a tindila uuthemba woshigwana shaNamibia shi thike memanguluko lyasho, oku uvite lela ombili kepuko lyaAmerika, kutya Aacuba oyo naa ze mo tango muAngola.

Okuhomona kwe pomathimbo nomathimbo oshilongo shaAngola, oshi na ondungedhildhilo, kutya epangelo lyaAngola li kwatwe

kuumbanda opo lyaaleke aakwiita yaCuba mboka ye ya oku li kwatha.

Aapolotika ngele taa popi kutya emanguluko lyaNamibia oli li miikaha yoshigwana shoshe- ne, osho tashi li eta po, ihatu kala tu uviteko shoka ya hala okupopya. Ondi lwete ethimbo olya thiki, iinima mbika oshigwana shi yi dhi- ladhile nawa, opo emanguluko lyaNamibia kaali tegelelwe we tali zi moombala dhooWashington, London nenge Luanda, ihe momagumbo gaamboka taa si ondjala notaa hepe- kwa omo mu ze etokolo lya kola.

Sebulon Ekandjo



Amushanga gwaAmerika Crocker



ILANDELA OSHIHAUTO SHOLELA

CADDILAC, oshihauto oshivanawa lela shomodela 1978, noshi na:

- Oshihingitho hashi ipata (Powersteering)
- Omakende omaluudhe
- Omupepo gwokutalaleka
- Oteyiparadio
- Omakende golusheno
- Shomakopi gahetatu (V8 Engine)

Ondando R19 500.

Ngoka we shi pumbwa monathana nomusamane:

**C.Kiesgen konomola yotelefona 227960, Windhoek, nenge u nyolele kondjukithi:
P.O.Box 6642
Ausspanplatz
Windhoek 9000**

"OVA SHANGELA NGE TA VA TI....."

Tu penduleni po olune momayakulo etu

Ongenda koshiwana shetu eshi handi lihongo paumwene. Apa onda hala okupopya k o n b i - nga yaava have lihongo paumwene, unene kombinga yoshiwana shetu shomOwambo. Kombinga yokukonga odjapo ngeenge omunhu a mana oilongwa yaye yostanda 8 ile 10. Ounona vahapu ohave ya okulila omahodi oku kOvenduka, ndee unene eshi ohashi dalwa komatumhakano oo haa kala mombapila vavo veenomola domakonakono, omadalo a puka nohani ihe fi imwe ei i li pokamutwe hayo i li peembapila.

Eshi osho naanaa oshinima shimwe eshi nda mona nomesho ange tashi hepekifa ovalihongi nonande oku na shikwao sha weda ko. Oshityani osho shi li movalongi vo-meembelewa deendjapo, navo ovo tava hepeke ovanhu nokuwahala ashike tava dundu puvo efimbo nefimbo, omwedi keshe, voo itava holola sha tashi ulike evatelo la wana.

Apa onda hala okupopya kombinga yovakomesho voshiwana shetu. Opo va ninge po shomupondo, ngeenge ve na olune noshiwana shokomesho, osho tashi mono oixuna ngaha.

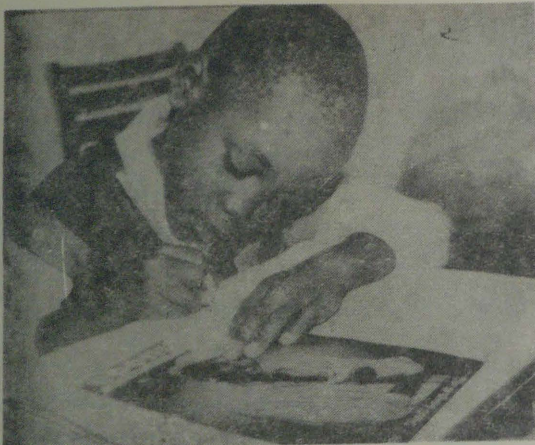
Ounona otava ende eendjila dile nova hepifa oimaliwa yavo, ndee eshi tave ya pombelewa ohaku tiwa ashike teelega mopoosa. Okaana ka li okutala mopoosa atyee, fiyo omudo wa teka teelega odjapo. Vakwetu kendabaleni mu ninge po sha, opo oshiwana shi ha mone vali oixuna ngaha.

Oshiwana otashi kendabala shili nelihongo ndee kashi na evatelo lasha, oshimha

Inava hala tu ende kongeleka

Osoondaha ya dja ko otwa li ongudu ovakulunhu nounona, atushe tu li nondjila hatu i komambo kongeleka. Fye onunona okwa li tva hafa okuya nokukala mongeleka. Otwa enda hatu nhuka nokudanauka komesho yovakulunhu vetu. Konima yokafimbo ame onda ka fiwa po kuvakwetu nonda endela pamwe novakulunhu. Onda uda nghe ovakulunhu tava kundafana neenghundafana davo okwa li ashike oku tu popya fye onunona nove tu popya pamalufu ngaashi tashi landula apa.

Wotete: Omu wete ko vakwee, ame mwene ohandi kenyanana onunona, ovo ve hole komambo vo hakukofa mongeleka.



y o n g a h o .

Ngeenge mOwambo kamuna onhele yokutunga ombelewa yeendjapo, kongeni ovanhu ara tava dulu okuyya kombelewa ya tya ngaha, opo va kwafele oshiwana shi dulife pekwafo eli tashi mono paife.

Ame nakushanga, oumwe nda mona nghee oshiwana tashi hepa kovanhu ovo hava longo meembelewa daVenduka, ngeenge owa hala okutala oukwashili ila u li talele ko mwene.

Kondjeleni oshiwana, ngaashi Kristus e shi kondjela ndee tashi mono ombili.

S. Shuumbili
Windhoek

Natu hogolole omaithano ngono pamwe nago tatu yakula oshigwana

Ondi wete oshoopala ngele kehe gumwe gwomoshigwana shetu ta kala e na oshinakugwanithwa mokati kaakwashigwana ye. Ihe ondi wete nondi uvite oluhodhi ngele omuntu ta yakula oshigwana momukalo inaagu ukila ko.

Nda dhini okutumbula omuntu okwa hogolola nande uupangi, uulongi nosho tuu, e shi ningi owala shaashi oyendji ye li kutha. Oto mu adha nduno ta undula mboka kaaye shi okulesha. Unene tuu aakokele. Nena omuntu ngoka ta ningi ngaaka oku uvite ko eithano lye pombambo. Peha lyokupukulula aantu ote ya gandagula ashike. Ngele ohatu ningi ngeyi, katu li pamaithano getu.

Aakuluntu pamwe naalongisikola naya kwathe aanona nenge ye ya lombwele omaithano gi ili nogi ili, manga ye li po aashona. Aalongisikola aasimanekwa,

Omutivali: Ounona vopaife ovalunduka, va wana ngeno va uhale meemwandi tava li eenyandi ngaashi nga da tilyana ngahenya.

Omutitatu: Ounona kongeleka ove hole ko, shaashi ohamu va landele ko oikuki nomauleke, sho osho nee she va lundukifa.

Omutine: Ounona apa ngaa ndi va yelege, ohava eta omukundu mokwaaluka shaashi ito pashiona nawa noundingosho. Omunhu womukulunhu, ou hole ngo ngeno oto nu omangadja oye wa mangeluka.

Omutitano: Ame eshi mu wete vange ihava ende komambo, omukundu oo ovo inandi hala. Itandi fii po okunwa kwange, medina lounona. Nghe ngo ndi li nomahewa makwetu, opo nee ndi ye keumbo mokati komutenya? Ayee, ohandi i nga ngeenge kwa ti ngahenya. Ngee nda twaalele okano nokuli.

Fimbo va pwila ngaha meendjovo davo, ame onda kala handi lidanaukifa onunima vange, nda fa ndi he udite eshi tava ti. Onda dja po nda tokola ndi ka shiive oshoongalele shounona vakwetu, opo tu kundafane oudjuu wovakulunhu vetu.

Moshooongalele osho onda tokola yo tu ka ifanene mo ovanaifo. Molufo tali landula, teelega hano oshidje mo shoshooongalele.

Okaana
Ngh. Fikameni
Oupumuka

kwatheni aanona manga ye li poongundu dhopevi. Aanona naa hokithwe iilongwa ayihe. Iilongwa nayi talike ko yi thike pamwe, opo shi ke tu kwathe komeho. Mbono twa mono nale omaithano, natu longe pamwe nago.

Deevev Angulah yaAngulah

Ombapila kaagundjuka

Aagundjuka aaholike muNamibia, ethimbo otali endelege. Otu na okulongelela manga ethimbo inaali tu kwata moshipala. Lyo ethimbo lyolyene itali tu tegelege nande.

Taleni! Otatu dhaneni shili tse aagundjuka. Ando otwa li tva dhiladhileni nawa, ando otatu endeleni ngaa pamwe nethimbo. Ngashingeyi sho tva ningeni owala yopoondingosho, itatu ka tmpola sha nande. Ando otwa li tvi ituleni mo shili melongo, ando otatu ka kaleni nawa muNamibia lya mangeluka.

Aagundjuka, tu lesheni omambo. Natu longweni nawa. Kehe gumwe na lalakanene uwanawa waNamibia. Tu thigii po omutondi "TOMBO". Oongoma nadhi kale dhaa na aanwi, e tatu longweni. Emanguluko lyaNamibia sho tali ya nali tu adhe tva putuka. Aagundjuka tvi ininga ashike yopoondingosho, tu li ashike potombo. Hatu kolwa ashike esiku kehe. Katu sita tuu ohoni!

Lungapi oshigwana tashi lili omolwetu sho tse aagundjuka kaatu li moosikola. Mbaka ye li mo, oye li mo ashike ya tokithe etango, naamboka taa ilongo shili otaa yalutwa ashike. Mbaka ye na ko nasha noshigwana shawo aashona yowala. Aagundjuka mbo tva tala ya longwa nayo wo oonkolwe.

Ngaashingeyi kape na we eyooloko pokati kaalongi naalongwa, ayehe oonkolwe. Oshigwana shokomongula nani sha gwile momalovu. Oshike mbela sha pundukitha? Muunkolwe kamu na nande eputuko lyasha, shoka oshoshili sho. Osho ngaa tse aagundjuka tatu kaleni muunkolwe mo itamu zi nando uwanawa?

Mba muundingosho, mba muumbotsotso, mba momaloli (muukakunya), tatu teya po oshigwana tse yene. Itatu sita tuu ohoni?

Aagundjuka tu fuleni omukanka moka oshigwana shetu shangula shi na okutungilwa mo. Ethimbo ngashingeyi olya pya, aagundjuka ayehe ya longwe opo ya ka kale ye li monkalo ombwanawa muNamibia lya mangeluka.

Tarah N.Shaanika
Ongandjera Socondary School

Etumwalaka lyombili koshigwana shaNamibia

Etumwalaka ndika lyombili koshigwana shaNamibia olya zile kugumwe gwomaaleshi yiifo.

Sho nda li ndu uvu ko, nonda lesa omapuko gi igalala, kokutya aniwa ongeleki otayi idhopo miiinima oyindji, onkene onda hala okuyelitha pafupi kombinga, yaashoka nda lesa sha puka.

Tala kepaandja 11

Ongeleki moNamibia oyi shi nawa oshilonga, noshinakugwanithwa shayo shopambepo shoka yi na okulonga. Ihe aantu yamwe oya tala ko Ongeleki pombambo kutya, oyi li omupiyaganeki sho tayi popile uuthemba waantu.

Ongeleki moNamibia shika otayi shi ningi meni lyaNamibia ngame otandi shiluku omuprofeti omuniifundja ngele (omuntu) ta thithikilitha omeho ge nota pangula ashike shoka tashi ningilwa aantu yamwe muuyuni, omanga oshigwana she tashi thiminikwa, notashi hepa naye kee na konasha moNamibia.

Mpaka nandi gandje paufupi oshilonga, oshinakugwanithwa shongeleki moNamibia: Ongeleki moNamibia kayi lile po oku ninga oompangela dhi na sha niinima yopapolotika yonkalamwenyo, nenge mbyoka yopaimaliwa.

**Joram Sh. Namupala
Windhoek**

OSHIGWANA TASHI LILI OOSA DHAKAKOKO

Omaliagano nomakudhilo gu uvika moshitopolwa shaWambo shono tashi mono iihuna okudhengwa, okudhipagwa, okuyonenwa omaliko nosho wo okupatelwa moondjedhililo.

Oolye taye shi ningi? Etanga lyegameno. Oshitya egameno otashi ti shike? Otashi ti okudhenga nokulyatela aantu momagumbo, nenge okudhipaga aantu uusiku nosho wo omutenya nenge okutula aantu mondholongo yaa na ondjo?

Shono otashi etwa kushike? Otashi etwa kokatongotongo kuukwamuhoko hono taka pangele moNamibia. Ngele okudhipaga nokuhepeka okwo egameno, etanga nali kale lyaa po, oshoka egameno ndino lya tegelewa halyo tali ningwa.

**F.L.Nangolo
Ongwediva**

Okuningila koombunda okwa vuka unene

Okuningila koombunda okwa vuka, unene tuu kaagandji yiilonga mepangelo lyOwambo. Omuntu oto ya pombelewa ye to kongo iilonga noonzapo dhoye ou dhi na momake, ihe oto lombwelwa owala kutya kape na ehala. Konima yoye otape ya okanona ka kuume ke nenge komushiwikile gwe, ye ote ka pe iilonga molwaashoka aniwa he nenge yina oku mu shi, manga ngoka kee shiwike yina ta tidhwa po.

Otashi vulika omuntu ngoka a tidhwa po, oye e na onzapo yi li pombanda yi vule yaangoka nenge ye na onzapo dhi thike pamwe. Akwetu aantu ayehe naa kale ngaa ya talika ko ngaashi aantu. Omuntu ngele oku na onzapo ye oku na owala onzapo, nando kee shi omuna gwanima "ashike-shalye." Shoka omuntu i ilongela napewe owala ondjambi yasho. Omuntu ngele owa tulwa komeho gaantu kuKalunga, longa oshilonga shoye pauyuuki nopahenda, oshoka Kalunga naye ke na okatongo.

Aakomeho yoshigwana shaKalunga natu tungeni oshigwana, haku shi teya po.

Maria naNangula

UUDHIGU WOKOMUTIMA

Oshoopala ngaa tse aailongi yopaumwene tatu futu R8.00 koskola yepukululo, tse elongo itatu mono? Onda dhimbulula sho twa tameke oskola yetu nuumvo mpano poNangolo, ndele muule woomwedhi ndatu otwa longwa mo ashike omasiku gane, tse ohatu futu iimaliwa okuya nokugaluka, ndele elongo kali po. Aalongi yo ihaaya popi nande omoradio, kutya mOlyo-makaya kayi ko. Otatu hepeke owala iimaliwa yetu, yo ya hepa nale petameko.

Kandi shiwo ngele oshinima shino oshi li apehe nenge opoNangolo apuke shi li.

**Ndapewa T. Johannes
Oniipa**

INO KWATHELA UUKOLONI MOLWOHOLE YELIKO

Ohandi uvu Aanamibia oyendji taa popi kombinga yokatokolitho 435, ka tulwe mbala miilonga, nosha fa tashi ulukile omuntu, kutya aantu mbaka oya fa ya sa enota lyemanguluko lyoshilongo shika. Ihe kombinga onkwawo, omuntu oto si ohoni mokutala aantu oyo tuu mboka ya hala emanguluko, oyendji yomuyo otaa imanga yo yene nokumanga wo yakwawo.

Oyendji pamwe inatu shi kutha mo nawa, nokutya Comrade Nuujoma ita tsu kumwe nuukoloni womalovu, ongaashi wo naanaa ita tsu kumwe nuukoloni woludhi kehe. Unene tuu iikunwa mbika tayi dhungwa notayi etwa moshilongo kaatondi, oombulu nooyakwawo ye ya fa.

Omunamibia to yuulukwa emanguluko lya shili,

OKAMBO OKAKWAWO MOSITOLA YOMAMBO.

Okambo kedhina "Shalulile," oka holoka ishewe mositola yOmambo mOniipa. Okambo oka zi kondungu yopena hoka kwa zile okambo ka tseyika nawa moshigwana, Mavole gaShipanga, komunyoli meme Christine Muteka.

Okambo haka okape otaka minikile monkalathano yuuteku wOshiwambo momagumbo, unene kombinga yaalelwa. Aalelwa oyendji otaa ka mona mokambo haka omayamukulo komapulo ge ya thikamena methimbo ndika omolweihumbato lyaatekuli yawo.

Ishewe kombinga onkwawo aaleli mokulesha okambo haka, nayo otaa ki imonena mesipili ndyoka pamwe yamwe yomuyo tali ke ya kwatha okutota po omukalo omupe guuteku momagumbo.

Momapandja gako 72, omunyoli gwokambo okwa dhike ngeyi oshiputudhilo oshipe kaaleli yOshiwambo mboka oyendji monkandjambinzi dhawo tamu tondoka ashike eitaalo ndika, kutya "kamukweni (okanona) naka ka nine mepya manga koye taka nine mpaka".

Ki ilandela ano nziya, otaka gu R2.50 adhike.

oto dhiladhila oto ke shi tompola ngiini okweetha omalovu uuna siku taku dhanwa oshituthi shemanguluko? Esiku ndyoka olyo wo omalandulathano omape taga tulwa miilonga. Oto ka gama ombinga yini ngiika? Otashi siha ohoni, unene tuu mokutala omulumentu Omunamibia, wa gama oombinga mbali, ngiika mokwaaha shiwo pamwe.

Oto vulu ngiini okutya owa hala emanguluko lyashili, ngele oto kolonyeke oshilongo nuukoloni womalovu? Oto ambidhidha omutondi sha yela mo, ngoka ta tutile omalovu moshilongo nelalakano lyokuyoga mo oondunge momitise dhetu, opo sho esiku tali ka thika, nena otatu ka adhika naana ngaashi omutondi a hala!

Kehe gumwe, ihe unene omulumentu gwoshigwana shika, ngoka wa talika omutse miinima oyindji, ninga etokolo ngele oto gama komalovu nokutsikila okukolonyeka oshigwana, nenge oto kambadhala okutunga oshilongo pamukalo ngoka omwaanawa. Etokolo li ninga mbala opo waa ki ipe uusama komeho.

Otatu lili koshigwana oshiholike sha mbonyo-kela muukoloni wonkalo yomalovu, tayi hanagula po oshilongo, tashi kondjelwa koyendji netiko lyombinzi. Oshilongo tashi kondjelwa nonkalo yoluhepo, omanga yakwetu tamu hupu nawa "nyanyu" lyomalovu. Ipula shigwana! Omutondi ota tutu iimaliwa moshilongo shoye naunene oondunge, opo mu ka adhike oomomutse mwa pwa.

Pamwe owa pilalekwa konkalo yomalovu ndjoka hayi posipaleke omuntu? Oto landitha po oshilongo shoye ano? Tonata e to pupu omakutsi goye, eluwa olya tenda. Oshilongo otashi manguluka mbala.

Dhilaahila nawa kutya ku ivule naangoka ho mu tala ota lopota aniwa. Ethimbo olya pya udhimbulule uunkundi nuudhudhu auhe wa kwatelwa momalovu. Otashi ka kala sha fa shi uvitirwe ko uuna Namibia ta adhika a pwa aantu kokusa molwekondjo lyokukondjela emanguluko. Ihe oto shi tala ngiini mukwetu oshilongo tashi ka adhika sha pwa oondunge? "Ihadhi landwa."

Tokola nena kutya oto ningi ngiini moshinima shika, oshoka dha londoka ihadhi yi iita." Ino kala ongoye tashi li ekunde omolukunde shi li. Iita naye tsikile, esindano oshili!

**S.J.Murirwa
Zambia**

OOTATE INAMU DHENGA WE OOMEME

Kandi wete nande shi li mondjila okukala tandi tala aakulukadhi taa yi koshipangelo omolwoondhimbo dhaasamane yawo. Ondi wete owala shoopala ngele aatungamagumbo taa pukululathana, ngele ope na ngoka a ningi epuko lyontumba.

Ando kehe gumwe na kambadhale ngaa a taambe ko ombedhi te yi pewa. Epukululathano otali eta ombili megumbo shi vule okumokagula noondhimbo. Shino otashi eta owala uutondwe wo wene-wene niikonene.

Tamu tilitha aagundjuka nokugandja iiholelwa ya tya ngaaka. Ohole ya tya nduno ngiini ndjono hayi dhenge? 1Kor.13:4-8

**Nahambelelwe Kristof
Ongwediva Tr. College**

ESO

Tatekulu Jona Kanaye (60), momukunda Onekwaya popepi nOhangwena moshilongo shaUkwanyama, okwa hulifa oweenda waye 18.8.1987 mouvela wefimbo lile.

Okwa fiya ko ovana 4, ovatekulu 28 nomutekulululwa umwe Eimbilo 630

Ponhele yovatekulu Metriede Nd. Nashidengo

Omasiku 4.6.1987 Kalunga okwa zimbula kuku David Ugwanga Sakaria (40) muuvu womvula netata, megongalo Onankali momukunda liputu mOndonga. Okwa thigi ko omukulukadhi gwe noyana (4).

Kahweka Hileni Fudheni

Toini J.David Nashidengo (53) okwa xulifa moshipangelo shokOshakati mouyehame wefimbo lile. Okwa fiya ko omushamane waye, ounona vaheyali ovatekulu vahamano.

Fye ovakwapata ohatu yandje olupandu kOvangela, Ovahnana nOvashakati omo a kala meembete eshi ve tu yakula pamwenyo nopalutu

Ponhele yovakwanedimo Nangula Shilongo

Kleopas Vaino Ben Hango, momukunda Okangala, Ongandjera okwa mana oondjenda dhe ombaadhilila moshipangelo shaKahao 29.7.1987. Okwa thigi ko he na yina naamwayina. Jes.35:8 - 10 Eimbilo mhanganano 256

Omutseyithi Johanna M.Amutenya

Maria Magano Sheya (19) 23.3.1987 momukunda Amuteya megongalo Onyaanya mOndonga. Epsalmi 23

Elise Magano Ulumbu Omandongo

Tate Lot Abraham (99) mOshigambo okwa mana oondjenda dhe 20/8/1987 muuwehame wethimbo ele. Okwa thigi ko oyana 8 aatekulu 26

Fransina Lot Oshigambo

Tate Asser Shipena, omukunda Okaliveva megongalo Onayena, okwa mana oondjenda dhe muuwehame wethimbo efupi, moshipangelo mOshakati 29.5.1987. Okwa thigi ko omukulukadhi gwe noyana 8, aatekulu 4.

Gumwe gwomoyana Onayena

Meme Hanna Hashilongo Auala (60) okwa mana oondjenda dhe 28.7.1987 muuwehame wethimbo ele. Oye omuselekadhi gwa Filippus Nelo-mba Auala ngoka e mu tetekele muukwaaluhe 11.4.1977. Meme Hanna okwa thigi ko oyana ya tano naatekulu 12.

Nathan Kapofi Oshakati

RUDOLF BAHM

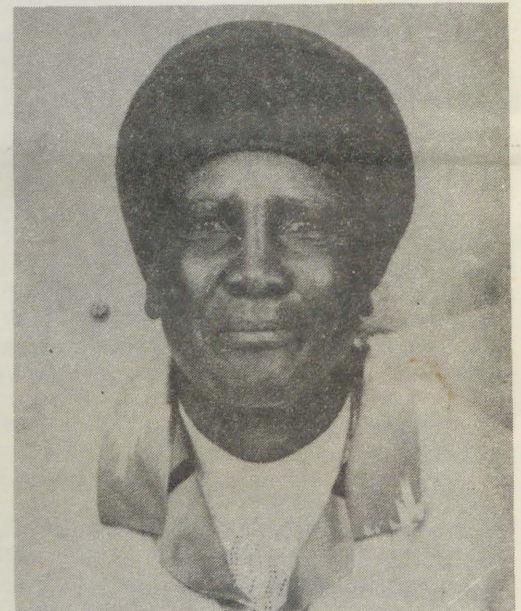
Omupangeli gwootundi

MOSHA-KATI

Mpaka otandi tseyithile aayakulwa yetu ayehe, kutya iilonga yokupangela ootundi, okulanditha po oompe nokwoopaleka ndhoka dha teka, okutula ko omakende nuumanya, itatu yi longele we metungo JAMAICA INN.

Ngashingeyi otu li mpaka mOshakati metungo lya ENOK (BBK), mpeya hapa kala pwa thikama aluhe omaloli goeiskilima (Roomys). Shika otashi ti elalakano mpaka, oku ku etela eyakulo ndika popepilela, waaha pumbwe we okufala nenge okutuma oowili dhoeye kUushimba.

Ohatu landitha wo oowili oonkulu kondando yi li hwepo, onkene tu talela po ngele to piti pOshakati.



Nakusa Hanna Auala

ETSEYITHO LYOWINA

AAYAKULWA AMUHE AASIMANEKWA, MBOKA HATU YAKULA MPAKA NOOMPUMBWE DHENI, ONGELE DHOKUNYANYANGI-DHILWA OMAMBO, UUKALATA NIIKWAWO YILWE YA FA MBIKA, OTATU MU TSEYITHILE MPAKA KUTYA OMUMVO MASIKU GWA KA DHILOGELA. ONKEE KAMBADHALENI WO MU TALE MO NAWA MOOMPUNGULO DHENI NGELE OMU NA TUU OMAMBO NENGE UUKALATA WA GWANA OKU MU PITITHA SIGO OKOMVUMVO TAGU YA.

NGOKA WA DHIMBULULA NOKUTYA OWA PUMBWA OKUNYANYANGIDHILWA SHA, ENDELELA U TUME EMBESITELO LYOYE KUYELE, OSHOKA PETAMEKO LYADESEMBA OTATU KA PATA IILONGA YETU OMOLWEFUDHO LYOKOMUMVO.

TANGI SHO TAMU SHI TAAMBA NONANDO OTWA TOKELWA OKU SHI MU TSEYITHILA.

OSHINYANYANGIDHO ONIIPA

OMUKWETU

Oye oshifo shOngeleki Onkwaevangeli paLuther yomuSWA/NAMIBIA.

Ohashi nyanyangidhwa mOshinyanyangidho shOngeleki mOniipa.

Omukuluntu gwoshifo omumbisofi Kleopas Dumeni.

Amushanga gwoshifo omusita Sebulon Ekanjo.

Ondando yOmukwetu muNamibia naSouth Africa R8,00 komumvo.

Palwe muAfrica R10,00 nokombanda yomafuta R14,00 komumvo. Mondhila R17,00.

Ondando nomambesitelo agehe naga tumwe kOmukwetu, Oniipa, P/Bag 2013, Ondangwa, 9000.

ELOC PRINTING PRESS PRIVATE BAG 2013, TEL. 11, ONDANGWA 9000 SWA/NAMIBIA.