

# OMUKWETU



40c

No. 17

ISBN 0-620-06828-0

## YATATU YA TUMWA MOLWEYAKULO LYAA- POSI MU ELCIN

Aagundjuka yatatu oya londo ondhila nena mOvenduka ya ye kOsoomi okukonakona omanyolo goshiposi hwiya. Shoka osha ningwa nelalakano opo mokugaluka konima yeilongo lyawo, ya longe niinyolwa yaamboka ihaaya monoko.

Aagundjuka mboka oyo Gebhard Haule, ngoka naye kee na oshipala; Jairus Nepela naPetrina Kavungo. Haule naKavungo oya kala mEnongelo lyaayakuli mEngela, manga

## Oshikukuta muNami- bia

Koombinga adhihe dhoshitopolwa shuumbangalantu waNamibia, aantu otaa ya mata komhumbwe yomeya. Naamboka ye ga na, oga lula, kage shi okulongithwa.

Shoka osha valwa momimvo dhiikukuta ndhoka dha dhenge Namibia uule womimvo 160 dha zi ko, pahokololo lyombeleva yomakonakono goonyothi moshilongo.

Pahokololo lyombeleva ndjoka ya toolwa onkundana kehangano egandjinkundana muAfrika, (APS) oshikukuta shongaashingeyi muNamibia otashi vulu okutsikila natango uule womimvo 10, okuza 1985 sho sha tamekele.

Aanamapya muumbangalantu waNamibia, mboka onkalamwenyo yawo ye endjelela ashike kuunamapya nuuniimuna, numvo oya kanit'a etata nenge shi vule nokuli, lyaashono haa likola shito momapya, omolwomvula inaayi monika.

Onkene ootona 30 000 dhiikulya odha pumbiwa moCaprivi, mOkavango nomOwambo, okusiikila shono sha kana po, patengeneko lyomunashipundi gwewilikonundu lychanganolyuunamapya mu SWA.

Sebulon Ekandjo

Nepela, okwi idheula nomashina gokunya-nyangidha oomwedhi heyali mOshinya-nyangidho sha ELOC.

“Otatu ka tala shono tatu toolako opo tu ye tu shi longithe mpaka” osho Nepela a tumbula pOmukwetu pokuthikama kwe e ki ilongekidhile ondjila.

Ehanganotumo lyaSoomi oya tameka nale nokuputudha mboka ya taamba eithano okukwatha meputudho lyaaposi. Omulongi Tuuliki Nekundi oye gumwe a putudhwa muSoomi omimvo dha piti, osho wo omulongi Josef Halweendo. Ayehe oye li aalongi mokati kaaposi mEnongelo

Ngashingeyi Ehanganano lyaaposi yomuSoomi oya tokola okupendula po onkalamwenyo yaaposi muNamibia nopakwatho lyoshikondo shomakwatho mOngeleki yaSoomi, oya hala okudhika endiki lyaaposi mu ELCIN.

Iimaliwa konyala ooranda oomiliyona mbali oya gongelelwa oprojekte ndjoka, pwa tengenekwa yi tameke numvo iilyolwa yaaposi, iifo nomambo osho wo uukaseta nomashina gokunya-nyangidha omambo ngoka, oyo ya kwatelelwa miimaliwa yoprojekte ndjoka nomolwoshilonga shoka aagundjuka yetu taa ka longa owino melongitho lyayo.

S. Ekandjo

## Etopolo lyiikulya mOkangwati



Osha li oshituthi oshinene koshigwana shAahimba nAadhimba mOkangwati 29.8.87, omukunda omunene ookilimeta 240 muuninginino wOpuwo, sho oshitayingeleki shUuninginino sha topola iikulya kuyo. Etopolo oya ningwa pethimbo lyetalelopo lyomusita mOpuwo, Johannes Tolu pamwe nomutonatelishitayingeleki shoka, omusita Josafat Shanghala, ngoka a talele po ombinga yaKaoko 28-31.8.1987 pamwe naathindikili ye. Omadhina tala kep.5

# AANYOLI YIIFO MUAFRIKA MO-SHIGONGI SHAWO MUHARARE

Oohamushanga yiifonkundana yopangeleki ye vule 50, oya gongalele muHarare, oshilandopangelo shaZimbabwe pehulilo lyaJuli nuumvo. Konyala iilongo 12 muAfrika oya li ya kalelwa po, mwa kwatelelwa Namibia na S.Afrika, moka ya kundathana oshinakugwanithwa shawo okuyakula omuntu kehe, unene mboka ya dhibiwa monkalathano.



Ongundu yaaniifo yopangeleki muAfrika pethimbo lyoshigongi shawo muHarare, nuumvo.

Aanawino yi ili noyi ili miinima yiinyolwa nayo oya li ya hiyilwa moshigongi shoka. Moonkundathana dhomasiku 10, oshigongi osha tompelwa kutya mboka taa yakulwa nawa kiinyolwa sigo oompaka, oyo ayeke mboka ye li mewiliko lyOngeleki nenge lyoshilongo. Iinyolwa otayi tyapulwa wo kumboka ye na omaliko miikaha noyo poompito odhindji haa landa omadhiladhilo giifo opo yi popye shoka tashi ya opalele.

“Ethembo olya thika, iifo muAfrika yi penduthe po wo ewi lyaakwashigwana momalukanda nomomikunda, opo nayo wo ompumbwe dhawo dhi tseyike kumboka ye li mewiliko,” osho dr Muelanzambi a dhibbulukitha oshigongi.

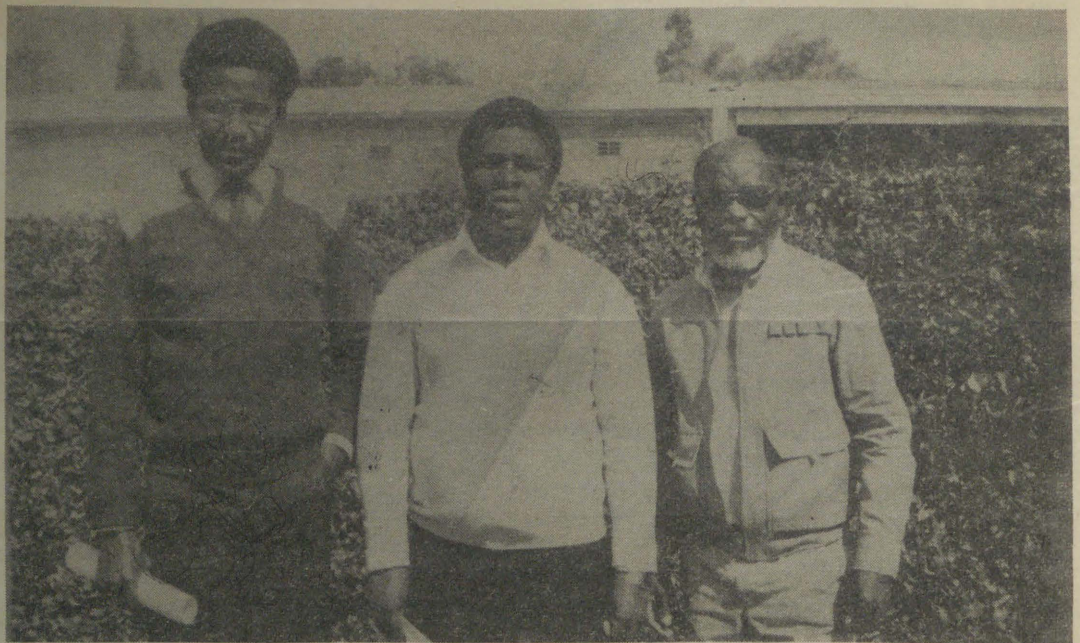
Oshigongi osha tula omuthindo moonkundathana dhasho koshinakugwanithwa shiinyolwa yopakriste, yi gandje euvoko lya yela nkene iigwana yaAfrika yi na okupita nawa momaupyakadhi gayo ngoka olwindji taga zi muunkundi wewiliko lyopapolitika, lyomahupilo nomonkalathano tayi pangelwa kuumbanda wokwainekelathana.

Opwa kumagidhwa moshigongi shoka onkalamwenyo yaamboka ya talwa yaa shi okulesha, yaa na sha shokuzala, shokulya noshokunwa yi pendulwe po, opo ewi lyawo wo mokukuga oomumbwe dhawo kaawiliki li thike momakutsi gaamboka taa vulu okwoopaleka onkalo ndjoka.

Kalunga sho a gandja uuyamba koshigwana kehe okuholola omadhiladhilo gasho komikalo dhi ili nodhi ili, okwa indilwa omikalo ndhoka dhi egululilwe ano aakwashigwana, ye dhi longithe pamagano gawo, ngaashi mokwiimba, mokudhana iinyandwa, mokutala omathano mokupulakana nenge mokunyola.

Ngoka ti idhimbike ompumbwe dhomuntu omukwawo nota pangelwa kuukwamuhoko, kolwaala, keitaalo nenge kondjigilile, oye okwi idhimbika eitaalo lyomuJesus ngoka e ya muuntu auhe opo a teye po eyonuko ndyoka tali pangele mo.

Oshigongi osha pulakene momakana goonza-po odhindji noluhodhi olunene, nkene iifo oyindji moongeleki muAfrika nooradio tayi yiwa moshipala kumboka ye li mewiliko



Methano ndika pokati, omusamane Richard Sakala, Amushanga omukuluntu mombelewa yaWorld Association for Christian Communication/Africa Region (WACC/AR) muKenya. Pamwe naye omutoolinkundana gwoshifo shOMUKUNI, William Mbangula kolumoho naAmushanga gwOMUKWETU, S. Ekanjo.

lyuupolitika nopoompito dhimwe kumboka ye li mewiliko lyongeleki nokuli.

Ompumbwe yiimaliwa, aanashilonga yopainyolwa ya pyokokela oshilonga shawo, uumbanda wokutila omagandambadhi gaawiliki, iinima mbyoka nayo wo oya talwa moshigongi, kutya oya kwathela unene menkundipalo lyokuthikitha nawa etumwalaka lya yela moshigwana.

Elalakano lyiinyolwa nolyiilongitho ayihe tayi longithwa mokukwatathana nomuntu omukwawo olya yelithwa mpoka, kutya oli na okukala lyokweeta po uuyuki moshigwana nomongeleki, ombili noshili. Elalakano oli na wo okukala oshietipo shetegameno miigwana yaAfrika mbyoka poompito odhindji, ya kanitha omaliko omazimo, omagumbo, nuukwashilongo wawo, notayi iyadha konyala esiku kehe muundjendi nomuuwike waa na ehekeleko.

Omunyoli kehe miinyolwa yopakriste okwa thiminikwa a longe koshipala shepangulo lya yela tali zi meiyuvo lya thinimikwa koshili ndjoka ya li ya pangele mooitaali ya tetekele, ngaashi ya vulu okulombwela oonkondo dhopethimbo lyawo ya ti: Katu vulu okulonga pondje yevuliko lyaKalunga. Iil.5.29.

Oshigongi shiyaka osha halakana momutumba gawasho muHarare, shi shune kehe gumwe poshitaafula she nomomudhingoloko gwe, moka oyendji yomuyo taa iyadha monkalo yaPetrus ta kuluka kondundu yeyelitho, nopekota lyondundu ota adha omeho gomusamane e eta omwana kealudho, ihe olya fa tali nyengana.

Oshigongi shiyaka osha halakana wo miipundi shu uvite ehiyo lyaJesus, kumboka taa nyengwa okwaaludha onkalo: Omuvu mweeteni nkuka ndi mu aludhe. Pamwe naJesus, otatu vulu okuthikamena onkalo kehe.

Sebulon Ekanjo

# ELIDIDIMIKO Jak. 5:7 - 8

**Omunhu opo a ninge omunhuelela palutu nopamwenyo, ota pumbwa a kale omulididimiki. Apa tapa tumbulwa elididimiko opapa pe na oudjuu washa. Ngaashi omunhu ta eta okaana ha kala noudjuu. Ovadalifi vaye ohave mu pe oshitya eshi: Lididimika, opo a ete okaana nombili.**

Osho yo ngeenge omunhu ta shokolwa oshiti molutu, ye a hala okuhandjuka oha pewa oshitya osho; lididimika, nongeenge e lididimiko, nena oshiti otashi pweywa mo nombili. Apa ope na epulo, olyelye mbela ta pumbwa elididimiko? Elididimiko otali pumbiwa kovahombolafani, osheshir movahomboli vamwe ohapa kala umwe, mudjuu monghalo yaye. Nena ou a djuupalelwa kumukwao ota pumbwa e lididimikile mukwao. Jak. 1:3 - 4:12

Omulumenhu ngeenge e na omukainhu waye e li kOwambo ye e li mOushimba, ina hambola ovakainhu vamwe kOushimba, na kale ko nelididimiko fiyo a hanga omukainhu waye keumbo. Osho yo omukainhu mokukala kwaye mOwambo ye e na mwene a ya koolonga na kale

## OONKONDO DHATATE

Omitenge dhetu ngele tadhiko, te tu kokithile wo oonkondo dhe Upyakadhi wetu ngele tau lundu pombanda ye ta nenepeke wo ombili ye. Omathiminiko ngele ge tu adha, tatu adhika wo komakwatho ge. Omamakelo sho ge li po ogendji, Oye mwene te ya e tu gamene.

Otse ngele tatu adhika kuunkundi noonkondo dhetu katu vulu sha, ngele uudhigu wetu waa na ekwatho, nena natu tale ngoka e tu shiti. Mpoka tse twa mana po ayihe yetu, opo mpoka tate ota tameke. Mpoka tse twaa shi wo nkene tu pite opo mpoka Tate ota tameke Eopaleko alihe.

Oshilalakanenwa showala shika: Nda hala ngaye ndi kale omunashili Oshoka aantu yi inekela ndje. Nda hala ngaye ndi yele nokomwenyo Muuyuni mbuka waa na uyelele Nda hala okukala omunankondo Opo ndi hambate uudhigu wo. Nda hala ngaye ndi kale ndi na uupenda Oshoka uuyuni u udha iitilithi

Nda hala okukala kuume kaayehe nokaamboka ye tonde ndje. Nda hala, ngame ndaa inenepeke omufupi shili ngaashi ndi li po Nda hala okugandja, nondi dhimbwe po shoka nde shi gandjele

Nda hala ngaye ndi kale ndi na enyanyu, nohole, nonge nolukeno wo. Omadhiladhilo geni naga fe ngeyaka gaKristus Jesus kwa li e ga na. Fil 2:5 - Oshoka ongame nde mu pe oshiholelwa mu ninge wo ngangame nde mu ningila. Joh 13:15

Oku ya miilonga Iilonga we yi hala, shi vule okukala waa longe sha, opo u pe ompito komulongi ngo gwoshito kuKalunga. Oshoka otse oshilonga she, twa shitilwa muKristus Jesus, tu kale tu na iilonga iivanawa Kalunga e yi longekidha nale tu kale muyo. Ef. 2:10 Nyonu uvu ewi enene moshipangelapundi lya ti: "Tala ko egumbo lyaKalunga li li paantu, noye ta kala nayo, oyo notaa ningi oshigwana she Kalunga mwene nota kala pamwe nayo Kalunga kawo:

nelididimiko fiyo mwene e uya e mu hange ina mona po omulumenhu umwe 1Pet.4:7.

Omumati nokakadona otava pumbwa elididimiko va diinine onyasha wavo fiyo va findana. Ope na ovamati vamwe ihave lididimike. Manga ina hambola oku na nale okaana ile onunona. Ope na yo oukadona vamwe ihave lididimike. Manga ina hambolwa okwa dja nale edimo ile e na okaana. Panghedi i li ngaho kape na elididimiko lasha Hebr 10:36. Ovanyasha teeeleni oshipewa shohombo mu he na oshipo.

**Omunafikola ota pumbwa elididimiko e lididimikile:**

**Oilongwa idjuu, nondjala yokofikola nenota.**

**E lididimikile, omutenya, noutalala noshimwati shomulongi. Ou e lididimikila aishe ei nda tumbula naai inandi tumbula, otaka mona oilonga iwa i na ondjabi tai mu hafifa. Ou a nyengwa okulididimika itaka mona oshipewa. Rom.5:3 - 5; 12:12**

## Ongongahangano yAakwaluther yi imonene omupresidende gwayo

**Ehangano lyAakwaluther ayehe muuyuni (LWF) ndyoka lya kanithile omupresidende gwalyo muMai gwa zi ko, ngashingeyi olya ihogololele omupresidende gwalyo. Oye omumbisofi Johannes Hanselmann gwOngeleki onkwaLuther yaBavaria muNdowishilanda lyokuuzilo.**

Okwa landula omumbisofi Zoltan Kaldy, ngoka naye a zile moshilongo shuusosiale shaHungary nokwa si muMai gwa zi ko. Hanselmann (60), okwa hogololwa a zi mongundu yaapresidende yopevi yatano yomehangano ndyoka.

Ngashingeyi oku li omuleli gwOngeleki onkwaLuther 104 dhi na iilyo oomiliyona 53. Ongeleki ye moka a kala ta longo muBavaria oyi na oomiliyona mbali netata.

Ehogololo olya ningilwa moshigongi shompitithingundu yEhangano ndyoka, shoka sha li muViborg, shaDenemark 6-15.7.1987 moka omumbisofi K.Dumeni wo a li oshilyo.

**Sebulon Ekandjo**

Nota theta omahodhi momeho gawo, neso kali kala mo we, nenge oluhodhi nenge elilagano, nenge uuwehame kau kala mo we, oshoka shiyaka shotango osha hulupo." Ehololo 21:3-4, Oye tuu ngoka ta hokolola mbika ota ti: "Oshili, ongame otandi ya mbala." Ehololo 22:2

Gweni  
L.A.Max

Omulongi ota pumbwa e lididimikile ovalongwa ve he na eenghedi, novadali vai have mu popile nai. Ne lididimikile okuholoka keetundi pefimbo, naalushe yo. Omuyevangeliste nomudiakoni nave lididimikile omalweendo madjuu, neendjila dile, naaishe tai va shakeneke momikunda nave i lididimikile. Ovafita novakulunhuongalo nave lididimikile ovakwaneongalo ve he na omatwi nande va popifwe, kemanya haku di yo ondwi.

Osho yo omaudjuu efimbo eli. Onye ova-hakuli, nanye kaleni noku tu lididimikila, ofye ovanaudu twa kaka noipute ya ola noshonosho 2Tim. 2:10;12. Naau ino tumbulwa kedina moshinima shelididimiko, oto teelelwa u lididimikile, ei tai ku shakeneke mondjila yOmwe wetu Jesus. Ohatu ka peweni ondjabi yomwenyo meulu. Tu tambulafaneni ngaashi Kristus e tu tambula.

Eimbilo 366:2

A.Muleka



**Omupresidende omupe gwa LWF, omumbisofi J. Hanselmann**

**Ino holeka Amushanga gwo-shifo edhina lyouye nondjuki-thi nando wa hala okulongi-tha edhina lyefutamoo.**

# ONGENGA YA DANA EDALO LEEDULA 50

Kape na omalimbililo, onhele ei ongaashi enhele dikwao moilongo ei, monakudiwa tai li omute, oya kala yo nale oonyuni wovanhu ve he shiivike, fiyo mwe uya Ovakwanghai ovo va undulwa mo kOvakwanyama momafimbo eehamba.



Nakusa Paulus Nailenge, omutoti gwegongalo Ongenga.

Mefimbo lomalenga ile leehamba omo shuude mwa totwa edina eli Ongenga. Eluwa ledalululo lOngenga nomudingonoko wayo, ola dilila kEngela, oya kala oshinagoga shokEngela.

Estamendi lipe lOngenga, ola hovela momulumenhu ina tongwa kutya odalele yaapa, ile ongholoki wedina Lukasa Kaumbe. Oye a dika oitwambe yotete yeendjovo daKalunga mOngenga noya ningi Bettel = eumbo lOmwene.

Elia Shedile omushimali a pita kOniipa, okwe uya nde ta mbwalangadjeke oshihambo. Diva okwa tunga ongeleka yotete mOngenga. Tate Shedile ova longa pamwe nooAbraham Nghipandwa, Gideon Hamukwaya, David Haifene, Jakob Malwa nooGidion Hamaulu.

Omudo 1937, omufita Nailenge okwa fika yo mOngenga, congalo nola totwa. Paife eshi opa pita eedula 50. Omufita Nailenge oku okwa tumwa ko komufita Simson Shituwa mewiliko lovatumwa vooSyria nooHanninen.

Omufita Nailenge okwa li a nangekwa meongalo la tanda kokule fiyo eekilometa konyala 30 okuya muAngola. Oinagoga ya fimana meongalo eli oyo; Oshimwaku, Elakalapa, Okambebe, Oikokola nO-nheleiwa.

Omudo 1955, tatekulu Nailenge okwa pewa omufitaongalo Paulus Munalye e mu wede. Ou okwa kala po ashike eedula mbali, ye ota tembukile kOngwediva oko a kala fiyo omopendjela yaye. Okwa landula omufita omudalelwa womeongalo Jakob Munashimwe. Ou naye okwa kala po ashike odula imwe.

Modula 1962, Kalunga eongalo okwe li pa natango omuyakuli womudalwa, omufita Adolf Hangula. Ou okwa longa nomukulupe Nailenge nokwe lihonga shihapu kuye ngaashi ye mwene Hangula he shi hepaulula.

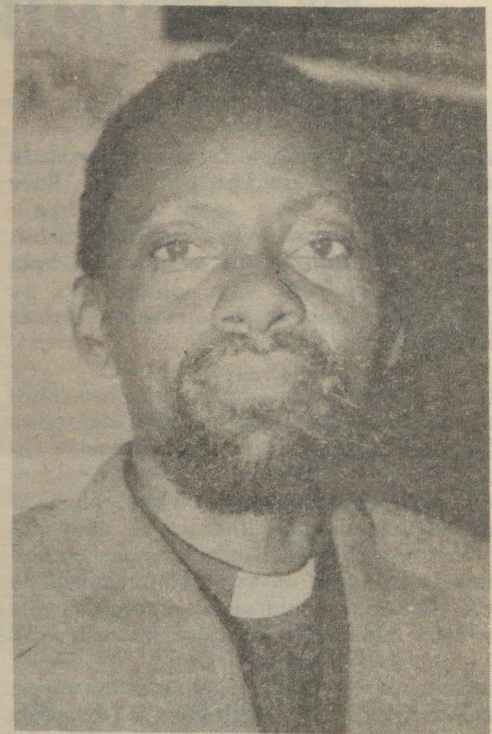
Omufitaongalo Adolf Hangula okwa pew omuyakuli moilonga, omufitaongalo Daniel Dulikeni Hamukwaya nova longa pamwe fiyo omodula 1984, eshi omufitaongalo Hangula Ongeleki ye mu tuma a ka yakule ko CDM. Eongalo paife oli li mewiliko lomufitaongalo D.D.Hamukwaya ou e li longekidila oshivilo eshi sheedula 50.

## Exupifo kali po pe he na elidilululo

Eke lOmwene inali xupipala okukwafa, nomatwi aye inaa fita okuuda ko, ndelene omanyonauno etu e tu tukula muKalunga ketu nomatimba etu okwa tuvika oshipale. shaye a ha udeko.

Omake etu okwa nyika ohonde, nominwe detu oda nyika oulunde. Omilungu detu tadi popi oipupulu nelaka letu tali hundile. Kape na ou ta hokololifa ile ta hokololifwa mouyuki, ile ta twifa nota twifwa eemhata moshili. Ohatu lineekele dongaho, nde hatu popi doipupulu.

Otwa ninga ovafimba vopyakadi, nde hatu dala oixuna, itatu dula ku li tuvikila noilonga yetu. Oilonga yetu oyo oilonga youlunde. Ndele otu na oumhulu momake etu.



Omufita omunyasha mOngenga, Daniel Hamukwaya ou ta longo pamwe nomufita Adolf Hangula

Eemhadi detu otadi lotoka okuninga owii, noda endelega okutilashi ohonde.

Omadiadilo oo oulunde, nomeendjila detu, omu na ehanauno nomateyaulo. Ondjila yombili katu i shii nongaashi meendjila detu kamu na ouyuki twa hoolola eendjila da penga, nokape na nande ou ta endemo a shiiva ombili.

Eendjila domanyeko; omadipao, olwisho leliko; okahalu kolutu; noufukulume woipala, osho yoo dihapu di nyanyalifa. Onghe eyokifo liyuki ole tu ama kokule nouyuki itatu u hange. Otwa teelega ouyelele, ndele omilaulu tadi yapo. Etendo leluwa ndele omilaulu kokofoko. Ohatu lipumu mekuma ngaashi ovo ve he na omesho. Omutenya ohatu punduka twa fa tu li momulaulu.

Ohatu kumbu ngaashi onghoshi, hatu shukushula ngaashi onghuti. Otwa ninga eenghwate domalodu, tu li ovapika voringamifi. Otwe liteeka Omwene, tu li twe lidimbika Omushiti wetu. Notwe likufa meshikulo laKalunga ketu.

Otwa popya eendjovo domanyeko, dondubo twe di humbata momitima. Meni letu twa pitifa mo eendjovo doipupulu. Eyukifo liyuki ola kandulwapo, nouyuki owa kala ofika kokule, osheshi oshili yo vene oya pundukila momapandaanda naashi sha yuka itashi dula okuya mo. Naau a efa owii, ote linyatekifa vali. Omwene okwe shi mona nokwa ninga omwenyo mwii. Oove omushike eshi iho lipulapula?

Tu liyandjeni hano pamwe nounhu wetu aushe komushiti weulu nedu, fye tu filwe onghenda kuye. Tu lidululeni hano oikutu yomulaulu fye tu djale omidjalo douyelele.

Shi pashukileni hano, ovamwatate pa ha kale nande umwe womunye e na omutima mwii u he na eitavelo, nde ta efa Kalunga amanamwenyo. Hebr. 3: 12

Kaleb. Nd. Hamwele  
Oranjemund

## Namibia lyetu

Otandi lili molwaNamibia  
Ndi uvite uudhigu molwevi lyetu  
Li na eso lya tiligana tuu shili  
Naantu taa hepekwa

Otatu indile Kalunga  
A yambeke evi Namibia  
Akutu Omuwa, tu mangululul  
Muupika muNamibia

Tatu kugu kuKalunga  
kOmuwa gwegulu nogwevi  
Uuyuni waa na ombili  
Oomahepeko nomadhipago



Ongeleka ipe ei tai longifwa paife mOngenga

# OMULONGI GWAAKAGUMBO A YI MEVULULUKO

Meme Rakkell Petrus okwa valwa 5.1.1923 momukunda Eemboo, mUukwanyama. Osikola yongula okwe yi hiti pOnekwaya yokuuzilo, popepi lela nomukunda Eemboo. Pethimbo ndiya pOnekwaya opwa li ashike hapu ilongwa okutameka omapakolwa sigo ondatu.

Okwa piti nawa sigo a ka tameka nee enongelo kEngela, opwa li uupadhi, ihe meme Rakkell okwa mwene epandulo, sho inaa faula nando esiku limwe.

Omumvo 1939 okwa taambwa menongelo lyaakadhona mEngela. Oshilonga shuulongi okwe shi putudhilwa mOseminali mOniipa 1942. Okwa piti 1944. Opwa dhimbululwa ompumbwe yaalangi yokutota oostanda 3 moosikola dhaakadhona naamati wo. Omulongi nguka okwa tsikile omumvo gumwe mOniipa 1945 nokwa piti nawa.

Oshilonga shuulongi okwe shi tameke mOshigambo mosikola yaakadhona, hayi ithanwa "Okagumbo" 1946-1964. Okwa longo aalangi nosho wo aapangi oyendji moshigwana. Meme Rakkell okwa li e na ohe-nda oyindji nomolwayo oye mu lukitha okadhina aniwa "Kananghenda".

Omumvo 1965 okwa hokanwa komusita-gongalo Johannes Itope megongalo Oshitayi. Okwa ningi "Meekulu Itope". Okwa longo ihe osikola yaanona penongelo Oshitayi mOndonga sigo 1984 sho a taamba oshipundi shevululuko. Meme Rakkell a yi kevululuko lyaaluhe 2.4.1987 ombaadhilila moshiponga shoshihauto. Okwa thigi ko oyana yaali naatekulu yaali.

Ester Nd. Amushendje  
Oshitayi



Nakusa Rakkell Itope

## Epandulo kaamwameme Aanamibia

Onda li ndi uvite uuntsa nenyanyu enene sho handi lesa ifo yomeni lyoshilongo moka mu na uutondwe nomahepeko taga ningilwa Aanamibia. Onda uvu kutya kehe esiku ohamu gamenwa, ihe inandi uva nande taku tiwa shilumbu gumwe pOndangwa nenge poTsumeb osho a gamenwa, aawe.

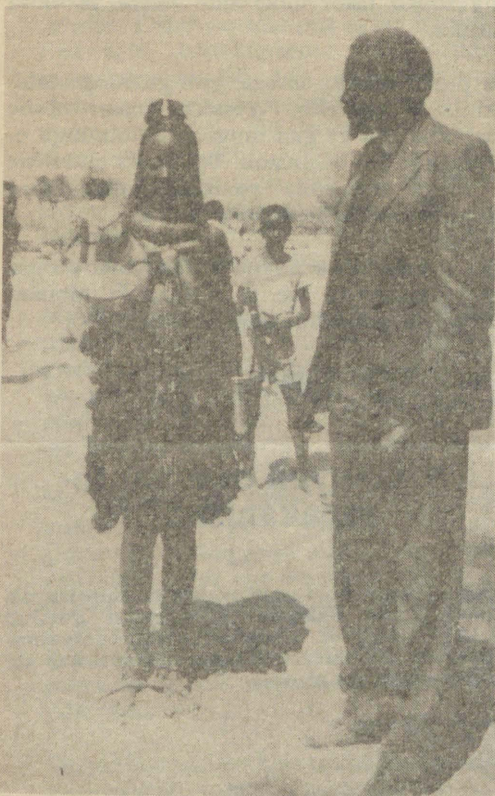
Shino nashi kale sha yeleda ano kehe Omunamibia, kutya nee ekakunya nenge Omunamibia ha longo shike, Namibia kape na omuntu taka za peni, e ye e li mangulule, otse yene ashike tu na oku shi ninga. Otse yene tu na okusila oshilongo shetu shono twa pewa omagano kuKalunga.

Ruusa Fox Malulu  
Zambia

## ETOPOLO LYIIKULYA MOKANGWATI

Egongalo lya ELCIN mOpuwo, Kaokoland, olya talelwa po komutonatelishitayingeleki, omusita J.Shanghala. Pamwe naye okweendele nomusita Alpo Enkono; omusita J.V.Kaapanda ngoka e li Amushanga gwetumo moshitayi shoka; omudiakoni Aina Kambuta; omukuluntugongalo Andreas Shaanika; Amushanga gwetumo mOngeleki Justus David nAmushanga gwOmukwetu S.Ekandjo.

Ilyo yimwe yElelogongalo lyaPuwo, oye endele pamwe nomusita okuthindikila aayenda kOkangwati. Ondjala yopela noyohapu dhaKalunga oshinima tashi idimbululilwa momalukanda gaPuwo, mOkangwati nomomikunda dhilwe. Omulongi Rauna Hamukalu pamwe nayakwawo mOkangwati oya dhiginina eitaalo ekwaLuther nonando otaa longo mongeleki ya NG. Aantu 160 mOkwangwati oya pulakana nawa euvitho lyevaangeli momakana gaayenda.



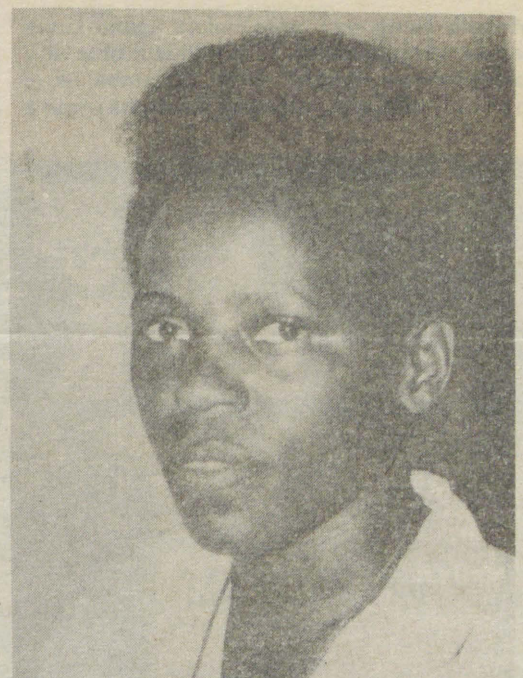
## Eidheulo lyaalongwasita momagongalo lya tseyithwa

Aalongwasita 11 mboka ya kala oomvula ne kOtjimbingwe, Elelongeleki olya tseyitha kutya otaa ka tameka neidheulo lyawo momagongalo gaELCIN, okutameka Desemba nuumvo. Ashike Sylvia Heita ngoka a kala awike omukiintu mongundu ndjoka, ye okwa zimininwa etsikilo lyeilongo lye kuAmerika. Eidheulo lye okonima ngele a galuka, Elelongeleki lya ti:

Omagongalo 18 mOngeleki ndjika, oga tumbulwa taga ka mona eyakulo lyoomwedhi ndatu mukehe limwe, kaagundjuka mbaka. Pamulandu gwongeleki ndjika, eidheulo otali kala oomwedhi hamano, manga omwiidheuli inaa ningilwa ekonakono lyoku mu ziminina moshilonga shuusita.

Moomwedhi dha piti, Elelongeleki olya li lya tumu nale ehiyo lyayo komagongalo agehe, opo omalelogongalo ga tameke okukundathana naagundjuka mboka yu uvite eithano lyoshilonga shuusitagongalo.

Sebulon Ekandjo



Omuteologi S. Haita, ou a dimininwa kElelongeleki etwikilo kuAmerika nge a piti kOtjimbingwe neudo.

Omusita Kaapanda ta popitha Omukulukadhi gwOmuhimba ngoka ta zi pahawalo nondoocha ye yuusila.

# Omhangu molwedipao mOndangwa

KuJohn Shitundeni

Metitatu 19.8.1987, omhangu mombelewa yaMengistrata pOndangwa, oya pwilikine oshibofa omolwefyo lomushamane Amalodu Iita (60) ou taku tiwa okwa li a dengwa okufya koKufuta yomokamba yaNgwediva. Eshi osha li sha ningilwa peumbo lanakufya, mefiku 16.3.1986, momukunda Oupumako oo u li eekilometa konyala 20 koumbangalanhuushilo wOshakati.

Pahepu lomushamane Filippus Dumeni, ombangi yepangelo ei ya li poshiningwanima osho, oshilyo shomokamba yokufuta pOngwediva, okwe uya mOupumako pamwe nomakaspele aheyal nomabofola avali okukonga vati ovakwaita va SWAPO ovo kwa tiwa ova monika momudingonoko oo.

Omushamane Filippus okwa twikila ta lombwele ohofa ta ti osha li Oshoondaxa yeti 15.3.1986 shiimba potundi 9.30, eshi omaloli okufuta e uya mOupumako.

Okwa dimina epulo laMengistrata nokutya fiku olo, okwa kala ta pulapula Josef Iita (15) okamonamati kanakufya Iita ngeenge oka mona ovakwaita vaSWAPO.

Filippus ou a shiivika yo nedina likwao "Shilamba", okwa dimina ohofa, kutya ye pamwe navakwao peemhito dihapu ohava denge ovakwashiwana, ndele vamwe ihave shi ningi. Ashike ina itavela nokutya ovo va denga nakufya Iita eti 15.3.1986, ye vati ka li moilonga 16.3.1986, fiku Iita a dengwa fiyo ota fi potundi 5.00 yokomatango.

Ombangi ikwao ya yandjele oumbangi wayo mohofa oyo Asser Tulonga Nendonga ou kwa li nale oshilyo shoKufuta. Nendonga okwa lombwela ohofa ta ti, ye naye yo fiku olo (15.3.1986) okwa li mongudu yoKufuta oyo ye u ile kOupumako, ashike vati ye fiku nakufya a fya (16.3.86) ina shuna ko vali.

Mohofa Nendonga okwa holola ngaho kutya ongula yOmaandaha (17.3.1986) fimbo ve li mombelewa yokamba yavo, Shilamba okwe mu lombwela ta ti, naye yo (Shilamba) omo a

li mongudu yaava va dipaa omushamane Iira noikulumbwati nokulyatwa neenghaku.

Natango Tulonga okwa lombwela ohofa nokutya eflyo lalita okwe li kundana yo kuvakwao vavali vomoilyo yoKufuta: Katau Endjala naKaulandwa (edina eli alike la tumbulwa mohofa) nokutya ava ovo yo va ninga shihapu medipao.

Eehahende Bryan O'Linn SG naHartmut Ruppel ovo va li ve lile po epata lanakufya Iita mepangulo, ova indila oshibofa shi undulilwe kovanaveta ovakulunhu (Attorney General) kOvenduka. Mengistrata pauyelele oo a mona, okwa ti eflyo lomushamane Iita oli li momake omadina oKufuta a tumbulwa metetekelo.

Pomhito i lili, omufita Johannes Kashihakumwa, ou paife ta li omungome wetulumuko, meongalo Eenhana, okwa ti kutya okudja tuu 1975, oilyo yeongalo laEenhana, oi shii okuhepaulula oululu woita.

Moshivilo shedimbulukwo lewano leongalo eedula 60, omufita Kashihakumwa okwa ti, omahepeko okwa tamekele unene omudo 1975, eshi ovahongifikola, ovaevangeliste noilyo ihapu yeongalo ya kala tai kwatwa yo tai tulwa meedolongo pe he na nande epangulo lasha lopahofa. Nokuli vamwe va fila moiponga yeeboma, osho Kashihakumwa a tumbula.

Okwa ulika koshiponga shoboma omo mwa fila omushingi woshihauto shokapangelo kOngeleki (Ambulansa) mEenhana omushamane Filippus Kautondokwa eti 3.7.1983 pamwe nounona vaye vane novaneumbo laye vakwao vane.

Oshivilo shedimbulukwo lediko leongalo eli osha danene 21-23.8.1987. Eenhana eongalo li li konyala eekilometa 70, koushilombanganlanhu wOndangwa.

"Ehistoli eli ola fimana unene kufye noka li na nande okuholekwa. Ounyuni otu na oku lombwela oshinima eshi tu he na outile osheshi otu shi shii, fye ohatu popi oshili." osho omufita a tumbula nomufindo.

## Omwiilongi ngoka ta vulu okutumbulilwa oshitya eputuko, oye ngoka a putuka miitsa tayi landula:

**Ontseyokalunga monkalathano naantu ooyakwawo. nomonkalathano nuuntu we mwene.**

**a) Pantseyo yopakalunga:**

Omwiilongi a putuka oku na okukala a tseyo nawa omanyolo omayapuki nkene taga ti kuye mwene noshowo kaantu yalwe. Oha dhiginine kehe mpoka tapu tumbulwa oohapu dhaKalunga, ngaashi okukala oshilyo sho S.C.M. (ehangano lyaaailongi aakriste).

**b) Monkalathano ye naantu ooyakwawo:**

Ngoka a putuka pantseyo yopaKalunga, halwindji onkalamwenyo ye naantu ooyakwawo hayi dhigupala, kee na nando esiku limwe taka tumbulilwa taku ti: "Kashi pile oho ti kasha li nankuni."

Omwiilongi a putuka oha keelele elaka lye koohapu dhaafele, nodhuugoyoki, noshikaha she kiilonga yuumpwidhi noyuukolokoshi. Oha nyanyukilwa ombili. Omakutsi ge ohaga thiti kiihenandunge, nomeho ge ohaga nyu mokutala iilonga yohoni. Oha popitha aakuluntu nombili, iha ti nando ya kunda ya tya uugala uuluudhe nenge ya tokelitha ya tya uuyego wuungungu, oshoka oha tila omathingo gaakuluntu ye, noha si ohoni okutala nokudhiladhila omayeme gaakuluntu ye.

**c) Nuuntu we mwene:**

Omwiilongi a puka oku na okukala, omuyogoki komwenyo sigo okolutu lwe. Omukadhona a putuka oku na okukala ta zala shoka tashi ulike shili kutya ye okwa putuka.

Ita pitika nando omutse gwe gu ninge oshipithilo shaCastello, Western Cooler noshoo tuu, omayulu ge gaa ninge ando oluungu okupitithila mo oGunston. Iha pitika olutu lwe lu ninge ongostola yombiliha okulandwa nokulanditha kehe kukehe gumwe.

Oha nyanyukilwa uuyuku noha uvu uuntsa omoluugundjuka we te u tyapula monkalathano othemba, noyi na elago.

**Kamek Mwanyangapo  
Otinka Comb. Sckool**

## "Omuniyoli owe mu tompakanitha"

Edhina lyandje koki yoshinyolwa shoshipalanyole "Enota", sha holokele mOmukwetu gwaJuli 30,1987, owe li dhimbakanitha nolyamumwameme S.P.Shivute, Edhina Shampo, kali shi oshilukadhina, ihe olyolela.

Shampo Shivute  
Box 630  
Ondangwa

\* Twe ku pandulila epukululo lyoje ewanawa. Ombili wo sho nani inaatu tala nawa omadhina geni.

Amushanga gwOmukwetu



## SINGAPORE

Singapore oyo ontuntu yi li kuuzilombugantu waIndia. Ontuntu ndjika Singapore oya kala oomvula 110 koho yuukoloni waBritania sigo uuna ndoka omatanga ga homata gaJapan ga kutha oshilongo shika kOmwiingilisa. Osha li 1942. Okutameka omumvo nguka 1946 Aajapan oyo ya kala taa pangele oshitopolwa shika.

**Momumvo 1946 aagundjuka Aasingapore oya dhimbulula kutya emanguluko oye na oku li konga kuyo yene noku li sila nokuli, kape na ngoka te li ya pe peke. Oya thikama noya kala taa pula emanguluko lyawo noku li kondjela.**

Aasingapore oya kala mekondjelo lyemanguluko ethimbo ele sigo ya mono emanguluko lyawo eti-3.6.1959. Epulo ndika oli shi okwiipulwa kaagundjuka Aanamibia yo ya tale shoka ye na okuninga po manga kuye.

Singapore oyo ontuntu yombepo opyu, yi na ashike oombinekilometa 617. Oku na uuntu-tugona 57. Aakalimo oomiliyona mbali netata. Konyala Namibia otayi mo lwaali. Namibia ngoka e na oombinekilometa 825,269. Aakwa-shigwana otaa topolelathana uuthikepamwe, ombili nuuyuuki moshilongo shawo sha manguluka. Omalongelokalunga moshilongo muka oga manguluka. Otamu adhika omalongelokalunga ngaashi aakriste mboka ye li ashike oopelesenda 8% dhaakalimo ayehe yoshilando. 92% odhAahindu, Aabundha nAaislama. Aantu mbaka natango inaa itaala kutya Jesus Kristus oye Omuwa. Aantu oyendji oyo oshihakanwa shomalongelokalunga nde ga tumbula pombanda.

**Nkene tamu kalwa moSingapore lya manguluka**

Aantu ayehe moshilongo otaa pewa elongo li thike pamwe. Okatongotongo melongo kake shiwiki. Osho wo miinima ayihe moshilongo. Epangelo lyaSingapore olyo epangelo lyopashigwana tali tala uuwanawa waantu ayehe, opo uuyuuki nombili u monike kaantu ayehe, onkee kaku na omunona ta kala kee li moskola ngaashi shika tashi monika moNamibia. Omuntu oku na ondilo nokwa simana, onkee kehe ngoka ta valele omuntu muuyuni oku na oku mu sila oshimpwiyu iikulya, elongo neputudho.

Mpaka ngame ondi uvite aalumentu mboka haa nipile uunona muuyuni pamukalo gwekangakanga tali nipile oombamba koshifo lyo itali ipula kutya shono tashi ka za moka otashi ka lya shike, oye shi okumona ko oshiholelwa kutya omuntu oku na ondilo.

Ne aapangeli yetu mboka mwa shundula ondilo yomuntu ilongeni mpaka oshilongwa. Omulongi koSingapore ota pulwa kaapangeli opo itaale kutya oye omulongi ethimbo alihe, uuna e li mongulu yosikola ndele nuuna ndoka e li pondje yongulu yosikola. Ota pulwa kepangelo, opo a gandje oshiholelwa oshiwana kaalongwa meni lyongulu nopondje yosikola.

Shino shomutalelisikola taa nu pamwe naalangi ye, naalangi pamwe naalongwa yawo, itashi monika osho oshipwe kepangelo lyaSingapore. Okumitikapo omulongwa gwoye osho wo epogolo enene muSingapore. Okanona kopmuvula 8 otaka vulu okuya kostora ka ka lande ke

## Okamanya ka tungulula ishewe ongeleka

Etungo lyongeleka posinagoga, Okamanya, megongalo lyaShitayi, otali monika ngashingeyi lya thikama ishewe niipeleki tayi adhima pombanda, konima yoomwedhi hamano adhike, etala ndyoka sho lya li lya hanagulwa po kombepo.

Aakriste yomomudhingoloko gwOkamanya mboka taa tengenekwa peyuvu limwe niihupe, oya li ya kanitha konyala R 10 800, ombepo yoshikungulu sho ya teyagula po oongudhi

dhetala lyongeleka ndjoka, konima iipeleki sho ya pwile ko. Osha li 18.1.1987.

Konima yoomwedhi hamano, anda adha etungo ewanawa lya thikama ishewe pehala tuu mpoka. Onda katuka oonkatu 14 opo ndi li maneko momukoka gwalyo. "Oshinyanga otwe shi dhiladhilila shi ka kale mpaka," osho omusita u ulukile ndje nomeho taga adhima ketegameno lyiilonga tayi ende po nawa.

Omuntu kehe to tala iilonga mpoka, oto kumwa kelongelokumwe ndyoka li niwe kaakriste



Ethano ndika otali ulike ehanagulo lyotango 18.1.87 mOkamanya



**Omusita Hosea Iiyambo, okwa langekwa kElongeleki a ninge omusita gwehangano lyaalumentu mOngeleki**

na iimaliwa peke, oshoka oombotsotso kaye na ehala moshilongo shoka. Uuna a monika ota yi kohake. Oshiwike shandje shotango mo-Singapore okwa tulwa gumwe kohake.

Oombotolostola otadhi patuluka ootundi 3 konima yiilonga yesiku po 9.00 ongulohi sigo 11.00 ongulohi opuwo. Kaku na omuntu tu uhala mombotolo naangoka te shi ningi ota geelwa kepangelo. Onkene epangelo ndyoka li lile po aantu otali sile aantu yalyo oshimpwiyu.

yomomudhingoloko ngoka, kombinga yiilonga yegongalo mbyoka ya ningitha aasita oyendji momagongalo oothingo oonene kokupopya.

"Igidha ko kiilyo yegongalo nokookuume ayehe ye hole iilonga yOmuwa, wa ti thikitheni iituingitha yeni mbala ketungo, opo li thike pehulilo," osho Ngula i indile Omukwetu e mu kwathe meigidho lyiilonga.

Sebulon Ekandjo

*Ngele to longitha edhina lyefutamo, hololela omulongekidhi gwoshifo edhina lyoye nondjukithi.*

Edhina lyombwa okumukweni to li uvu. Ne aalumentu naakiintu yoshilongo shika ndhindhilikeni kutya omalovu oga patululwa nowina ga teye po oshigwana.

Onkene itonatela ngoye mwene sigo uuna ndoka Kalunga taka gandja omupangeli e ku yakule note ku sile oshimpwiyu.

Hosea Emuno Iiyambo

# FIYO OPAAPA OMWENE OKWE TU KWAFWA

## Eenhana

Oshipalanyolo shi li pombada osha li enenediladilo moshivilohambelesha li meongalo Eenhana okudja 21-23.8.1987. Momafiku a tumbukwa, eongalo Eenhana ola li tali hambelele Kalunga eshi e li amena koikungulu yoita nokwe li kwafa fiyo omefiku 22/8/1987 eshi la wanifa eedula 60.

“Otwé mu ifana owina opo tu hambeleleni Kalunga eshi a endifa eongalo Eenhana nomonghalo yoita oyo ya kanifa eemwenyo dihapu meongalo eli ngaashi sha ningwa momaongalo makwao moshitukulwa eshi sholwoodi,” osho omufita omuwiliki mEenhana, Adolf Hashikutuva a tumbula eshi a li ta yandje ekundo laye kovaenda voshivilohambelesha.

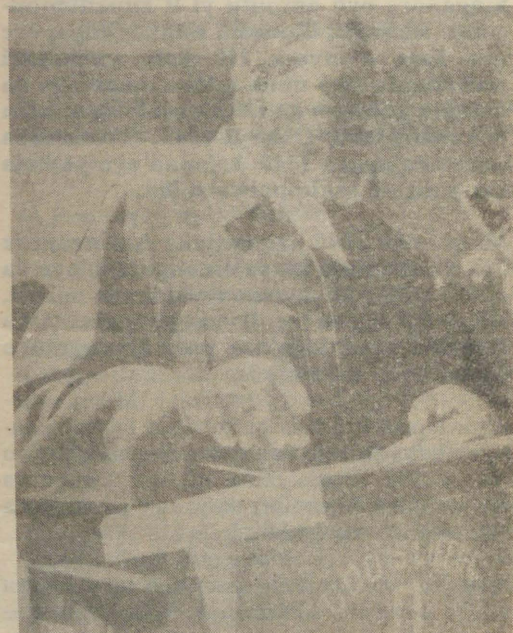
Omufita omukulupe Johannes Kashihakumwa mokundjokonona onakudiwa yeongalo, naye okwa fatulula kutya elalakano loshivilo shinya ola li okuhambelesha Kalunga omolwonyika yevaengeli eshi ya kala ya tema mEenhana fiyo eongalo la wanifa eedula 60. Okwa twikila ta ti kutya eongalo otali hambelele yo Kalunga eshi a kala pamwe nalo

“Oinagoga yeongalo ngaashi shokOnakalunga nokEhonge, oya xwikwa po kuwalye; konyala Osoondaxa keshe, ongeleka yomEenhana oya li hai kala ya kondekwa kovakwaita, vamwe vati ovahongi vo ova homata eembisitoli; omashakalo Okrismesa konguloshi neexungi, oya mwenekwa omolwoita; eemwenyo dovakwaneongalo vahapu nodovayakuli meongalo, oda kanena moita,” osho ondjokonona ya ti.

Ponhele ei tatekulu Kashihakumwa okwa tumbula omadina amwe po oonakutwaalelwa konghalo yoita. Umwe womwaava omushingi wetuwa lokuhumbata ovanaudu, omushamane Filippus Kautondokwa, ou omundjokononi a ti okwa fila moshiponga shoboma pamwe novana vane novatekulwa vane. Oshiponga eshi osha ningilwe eti-3/7/1983, eekilometa ashike 3-4 lwaapo okudja mEenhana.

Nakufya Kautondokwa okwa li vati ta twala ovana kOndonga opo va ka ye neelefa kefudo kOmbaye noonakufya vamwe ovo va li mosheendifo shaye, pakuuda ova li tava ka talela po ovanaudu kOndanjokwe.

“Ondjokonona ya tya ngaha oya fimana nokai na okuholekwa, otu na tku i ihokolola tu he na ombada, shaashi tu shi shii, kutya ohatu popi oshili,” osho tatekulu



Omusita J. Kashihakumwa, ngoka ta li ngashingeyi oshikwiila shevululuko.

Eongalo Eenhana oli li mOukwanyama, eekilometa 70 lwaapo koumbanganhuushilo wOndangwa. Pandjokonona eongalo eli ola totelwe momudo 1927 komufita Paulus Hamutenya, ou ta hokololwa kutya okwa li ependa moilonga yaye yokuudifa evaengeli noyokukokola oshilongo.

Omumtwa Omusoomi Linda ota hokololwa a ninga shihapu mokutungifa ongeleka yomEenhana noshihakulilo.

Ovayakuli vamwe ovadalelwamo va yakula mEenhana ongaashi omumtwa Simson Shituwa, Andreas Kanhalelo, nakufya Josua Hanyango, Moses Shikongo, Johannes Kashihakumwa (paife moshipundi shetulumuko) nomufita omunyasha, Adolf Hashikutuva ou ta yakula paife meongalo nota hokololwa kutya oku na ondjungu moilonga yaye.

Pavalulohokololo lomudo 1986, eongalo Eenhana oli na oilyo 6,669. Imwe yomoinagoga yomeongalo linya ongaashi: Onakalunga, Ohehonge, Ondjakulwambinga Onangolo, Ondingwanyama, Egambo, Oshikonda nEpale.

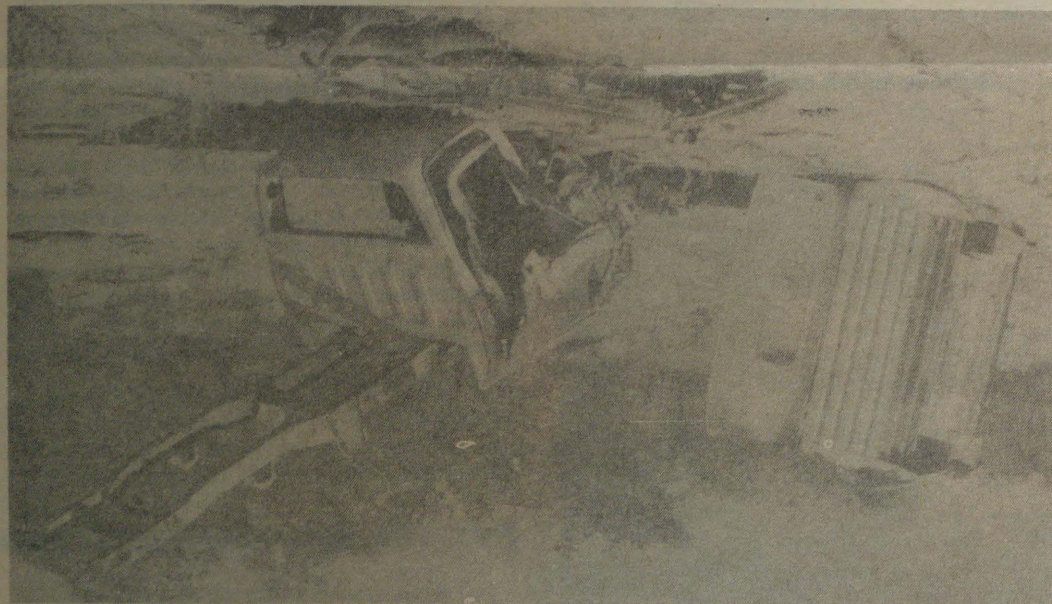
(Omayelifilo)

## Uunshitwe waNamibia

Pokati kOshaanda (Grootfontein) nOtavi opwi itsuwa ngashingeyi etale enene li li kofi yevi, lyuunene woometa 100 noometa 200 momukoka. Otaku tengenekwa kutya oyo etale enene kofi yevi li vule agehe muuyuni.

Mujuli numvo oondjubeta dhokweenda kofi yomeya, odha zile ku SA, e tadbi ningi iiwike itatu momudhingoloko ngoka okukonakona oshinima. Iimuna oyindji otaku ti oya kanene mokwena kwetale ndyoka, sigo mwene gwofaalama a tula po enkolo okuhupitha iimuna ye.

Uunshitwe mbo wa dhimbululwa konima yomimvo 60 dha piti, ihe inau kala wa konakonwa. Ngashingeyi opwa dhimbululwa ope na etale enene, li na omeya omayecele nomapyu. Omakonakono otaga tskile.



Omandhindhiliko giita momudhingoloko gwEenhana ngaashi taga monika wo konyala mOwambo ayihe.

okudja pomido 1975 eshi eongalo Eenhana la hovelwa okuhepekwa konghalo yoita omahepeko oludi keshe.

Omushamane Kashihakumwa okwa twikila nokuhokolola nghe ovanashilonga meongalo ngaashi ovalongi novaevangeliste va kala hava kwatwa po nokwiidililwa modolongo. Okwa hokololela yo ovakwashivilo kutya ovanyasha vahapu vomeongalo Eenhana ova fiya po oshilongo peedula odo oita ya hovela, omolwonghalo yoita.

Kashihakumwa a shiivifila ovakwashivilo omayuvi nomayuvi ovo va li va dja keembinga neembinga doshilongo, unene mOwambo.

Ovakwashivilo kava li ashike tava pwilikine nonghumwe inene nghe eongalo Eenhana la hepekwa koita moule weedula odo da dja ko, ndele ova li yo tava pwilikine eendjibo odo da li tadi mwenyewe oshivilo shinya. Eengudu dovanyasha meongalo, eesekundofikola ngaashi Oshela, Oshigambo, Oluno, Ongwediva, Mweshipandeka neengudu dikwao dimwe domalwiimbo, odo tadi popiwa da li tadi mwenyewe oshivilo.

**Kandi uvite ko nawa kombinga yaalongi pamwe yomosikola yetu. Hapolotika aniwa mosikola.**

Omolwashike aalongi yamwe po mosikola yetu, ye tu lombwela kutya aniwa inatu kala nande mopolotika manga tu li mosikola, natu tege tu mane. Osha yela nga mbela? Tse otu li muuyuni wiita.

*Omuwii longi moMweshipandeka Panduleni Reinhold*

**EYAMUKULO**

*Epulo lyoye inali yela, opolotika owa dhiladhila, okuya kiigongi u ka kale mo nenge ou ka londe kondoloma? Ngele okwii-longa ehstoli lyoshilongo sheni shono sha kolonyekwa nokupula omapulo ge na sha nuukoloni nonemanguluko, osho aniwa sha puka? Yelitha nawa!*

**Amushanga gwOmukwetu**

**Omadhengo moshigwana**

*Otatu dhengelwa shike? Omu shi shi tuu kutya otatu dhengelwa uuthemba wetu, oshili shoye, uuthemba woye notau ku dhengitha. Tala ko nawa Omunamibia omukwetu ino tila shaashoka, galikana uusiku nomutenya waa na ezimbuko, Tate Kalunga okwa tala oshigwana she tashi monithwa ihuna kaakolonyeki. Oku lwete ko, noku uvite ko, ote tu kwatha momagalikano getu.*

*Omwa hala emanguluko lyoshili nolyuyuyuki. Omapisalomi otaga ti Tate Kalunga aatondi yandje ya tula koki yoompadhi dhandje e tandi ya lyateleleko. Ngoye otandi indile Kalunga a teye po omatati gaaniita natse. Ongundu yaatondi otayi dhipaga owala omalutu ihe oomwenyo ite dhi dhipaga.*

**Petrina Benhard Katutura**

**AANANGESHEFA TAA KONGO ONDJILA YUUMUKWE**



Iilyo yewilikongundu lyaanangeshefa mbyoka ya gongalele, okuza kolumoho: efolo Letty Kweyo; omusamane Eliakim Namundjebo; omusamane Lukas Malakia; omusamane Johannes Aluvilu; omusita Efraim Angula; efolo Hileni Elago; omusamane Frans Indongo (Aupa) nomusamane Werner Namugongo.

Ehanganotumo lyaanangeshefa aakriste muNamibia (ETAAN), lya zi meyi moomwedhi dha zi ko, otali kongo ondjila yokuhanganitha aanangeshefa ayehe aakriste muNamibia, itaaku talwa olwala. Elalakano okukwatha nokuhwamitha aanangeshefa ya dhiginine eitaalo lyawo noya ngeshefe muuyuuki nomeidhidhimiko lyiinima tayi shundula uunangeshefa notayi shekitha omulandu gwaJesus Kristus.

Omadhiladhilo ngaka ngaashi ga hololwa mekotampango lya ETAAN, oga li ishewe ga popiwa nomuthindo momutumba gwo tangotango gwEwilikongundu gwehangano ndyoka gwa gongalele mokonde No. 1 mOshakati eti-12/8/1987 mewiliko lyomunashipundi gwalyo, omunangeshefa a simana, Frans Aupa Iindongo.

“Otu shi shii otu na iilonga oyindji, ndele

otatu ka kambadhala ngaashi tatu vulu, opo ehanganano lyetu li kale li na omwenyo. Natu ka tseni aanangeshefa yakwetu omukumo noku ya yelithila omalalakano gehanganano ndika.” Ngaka ogamwe gomomatumbulo gomusamane Iindongo sho a li ta popitha iilyo yewilikongundu lya ETAAN mbyoka ya li ya holoka po.

Mokati komathaneko galwe, Ewilikongundu olya thaneke iifendela yehanganano ETAAN, komumvo, yi kale R10.00 komunangeshefa kehe ngoka a hala okuninga oshilyo shehangano ndika. Ewikilongundu olya thaneke ishewe ETAAN a kale nombandi yi na uukwatya wu li popepi nuukwatya wombandi yEhanganotumo lyAanangeshefa Aakriste muSoomi ndyoka taku tiwa oli li emwayinathana na ETAAN. Okwa thanekwa ishewe ku kale oshigongi shaayeche sha ETAAN, manga aanangeshefa inaa tameka okwi ipyakidila niipumbiwa yaKarimesa.

(Omayelifilo)

**Ya dhigininwa natango**

Omusita Hendrik Witbooi, omupresidende gwopevi gwa SWAPO, Dan Tjongarero, omunashipundi gwehangano, Nico Bessinger, amushanga gwiikwapondje, Anton Lubowski naJohn Pandeni omuwiliki gwehangano lyaaniilonga. Ayehe otaku tiwa oya kwatwa pakatokolitho 6, koveta yuukulo.

- Samwel Andreas, Oshakati (28.2.1987)
- Amutenya Ashipala, Okatana (1985)
- Filemon Katsimine, Oshamuhene
- Josef Katofa, Eengolo (7.7.1987)
- Saara Lukas, Eeloolo (1987)
- Saara Teofilus, Eeloolo (1987)
- Martin Mulondo, Katimamulilo (3.4.1987)
- Abner Shikesho, Okamule (3.7.1987)

(Sha zi mo NCC: London)

Omulongisikola mEngela, Stefanus Nghifikwa, naye otaku hokololwa a kuthwa posikola ye kaapolosi. Esiku lyekwato inali tseyika nawa.



Omusamane Abraham Moses pamwe nomukutukadhi gwe, mboka omwedhi gwa zi ko ya li ya ponokelwa komakakunya megumbo lyawo mOshukwa, megongalo lyaKahao.

# Omukundaneki Halweendo

Omafiku a dja ko omukundaneki wetu Halweendo okwa li te li nyenge momikunda dimwe di he li unene kokule nOshakati. Efiku olo okwa li mOkatoyota ke na oluvala limbula nokapi itoka, ko oke na onomola yaVenduka. Osho a shakeneka momikunda dinya ye mwene ote shi hokolola ngaashi tashi landula:

"Efiku olo otwa li tu li vavali nakaume kange umwe. Atushe ondjila yaaku kwa li twa yuka katwa li tu i shii nawa. Eshi oshe tu fininika opo tu ende hatu pulaapula ovanhu vomikunda dinya ve tu pukulule. Elongelokumwe eli kwa li twa teelega movanhu venya halo twa ka mona.

"Vamwe ovo ve tu monena kokule, ponhele yoku tu teelega, ova li tave tu faduka po noku tu hondama. Ovo twa mona omhito yokupopya navo noku va pula ve tu ulukile ondjila, moipala yavo omwa li tamu leshwa ombada noku he na elitulemo mokupopya nafye; osho va li tava ningi okuta ashike omumbala peumbo no ku tu lombwela kutya ondjila oyo twa lamba oyo ashike ya yuka oko hatu pula.

"Opo nee mufye omwa penduka omalimbililo nomalipulapulo kombinga yomalihumbato ovanhu vomomikunda dinya. Omolwashike ve na oku tu faduka po? Otwe va ninga shike? Omolwashike ve he na nande ehala loku tu kwafa? Osho twa kala ngaha hatu lipula fye namukwetu twa limbililwa.

"Osho twa enda ngaha nokuninga omadingonoko inaa pumbiwa fiyo twa fika opo twa li hatu i. Eshi twa hokolola pwaavo twe ya puvo ngehe twa enda hatu mono oixuna omolwondjila oyo tu he i shii nawa nonghee ovanhu vomomikunda omo twa pita va li tave tu faduka po va fa ve tu tula, otwa pewa efatululo tali landula:

"Talen i ovanhu otave mu faduka po omolwoluvala lohauto yeni nonomola yaVenduka oyo i li ko. Moivike ya dja ko, momikunda odo omwa kala tamu fofodolwa okahauto ke na oluvala la fa lokahauto keni ke na onomola yaVenduka, haka kala novalumenhu vavali. Ovalumenhu ovo otava hokololwa va longa oixuna momikunda odo noilonga yavo oya mbadapaleka ovanhu...

(Etwikilio, tala moifo tai shikula)

## EPANDULO

Esiku 28.7.1987 omusamane Tomas Beniet okwa li te ende moshiheke pamwe nooyakwawo yaali Martin Shoomba naNyambo Asino momikunda Omuntele. Oya tsakanekwa kongwe noya kwata Tomas noye mu hata pevi. Yakwawo ayehe oya fadhuka po, Tomas okwa kala ta kondjo nongwe sigo Kalunga mwene okwa hangukununa nokwa hupitha Tomas.

Okwa zi po ngaa niilalo mbyoka ya kala tayi pangwa sigo ya aluka. "Tangi Kalunga kandje wa hupitha ndje meso, andola ongwe ya dhipaga ndje." osho a tumbula.

Ota pandula wo aapangi mboka ye mu panga nombili sigo iilalo ye ya aluka. "Tate Kalunga ne mu gwedhele ko oonkondo esiku nesiku," osho e ya halele.

Festus Mweendeleli

# "OVA SHANGELA NGE TA VA TI....."

## Omayamukulo gahugunina kuNghidinwa

MOmukwetu No.16/87 omwa holokele omayamukulo pafupi komusamane Matti Nghidinwa omolwokupopila kwe Etango. Omadhina taga landula mpaka ogaamboka ya yamukula hugunina. Omukwetu ota tseyitha mpaka nokugandja ombili kaaleshi yOmukwetu ayehe, kutya katu na we ehala moshifo komayamukulo gaNghidinwa.

Osho wo aaleshi yalwe mboka ya hala okunyola sha shilwe kOmukwetu naye shi tule miitya iifupi lela, oshoka otu na ngashingeyi oombapila odhindji lela nomumvo ogo li pokuhula. Okafo ketu ka ningi okashona, itaka yamukula we oompumbwe dhaaleshi. Otatu mu pandulile okuholola kweni omadhiladhilo, nando tse olwindji twa nyengwa oku mu kwatha.

Aayamukuli yahugunina yaNghidinwa oyo: Alweendo Ngolomwe, Windhoek; Paul Noa, University of the North; Nd. Nekongo, Windhoek; Swanepoel Kalimbo, Oshikango.

Amushanga gwOmukwetu

## Epulo

MOmukwetu gwaMai No. 15,1987 moshipopipiwa "Uumbanda oshiponga," epulo lyandje oli li mpaka kutya. "Ngame omunona ndi li naakuluntu yandje megumbo."

Nandi tsikile ngaa nokwiindila tate nenge meme, nando ota ngwandjagula ndje?

Epulo ekwawo metalelopo lyaPata gwetu sho kwa ti; ongeleki keshe elalakano lyayo omuntu a hupithwe. Epulo oli li mpa kutya; nani nando ndi li mongeleki yiimpaga nandi itaale owala kutya ote hupithwa? Shaashi ongeleki adhihe elalakano lyadho omuntu a hupithwe?

Ndapewa lipinge  
Ompundja

EYAMUKULO:

Mepulo lyotango Ombimbeli wo oye tu kumagidha tu indile aluhe Kalunga, nando ita yamukula. Luk.18:1-8 osho wo tu na okuninga komuntu mukwetu.

Epulo etiyali Pata okwa ti ehupitho oli li moongeleki hamimpaga. Dhiimpaga owe dhi etele po shike dho inaadhi popiwa?

Amushanga gwOmukwetu

## Epulo

Kwathiindje mu yamukule ndje epulo lyandje ndika. Oshoopala ngaa tse aanasikola mo Std 4 nenge 7 ihe itatu longwa elaka lyOshimbulu, otandi li adha ashike mostd 8. Otandi li tseyi ngiini ngele nani inadi li longwa konima? Oshikondo shelongo tala ko nawa oshinima shoka omolwashoka otashi etele aanasikola endopo.

Miina W. Shaanika

Ongandjera Sec. School

## Onghuwo yovalihongi vopaumwene vo Std. 8

Ohandi shange kOmukwetu onhumwafu yange ei nenyeme li li komwenyo oshoyo nomahodi omolwetu ovo tu li mefimbo lii lokulihonga kufye vene.

Epulo eli ola yukilila omukulunhu welongo. Hano omolwashike eedjapo dovalihongi kuvo

vene ihadi uya diva? Fyee otu uditte oudjuu lela omolwashu omunhu oto ka mona o-djapo yoye pujuni, yoo omhito yofikola ye ku pitililapo nale. Vati ke i tale kOvenduka.

Ile hano fyee inatu talika ko ongovalihongi hatu ka kwafa oshiwana ngaashi vakwetu? Ee, oilonga ito mono, ofikola oyoo nee manhu ndee omolwaomukundu weedjapo ihadi ya diva noupu. Onawa tate Denis a tale po nawa opo, opo modula tai uya tu halilile vali keemwenyo.

Tuliyameni P. Nghilongwa

## Epandulo kevaluko louvela

Ame ondi na unene olupandu mokukala kwange mEngela. Kanda li ndi shi shi ngeenge onandi kale nomwenyo nani Omwene Kalunga ota yambidida ngaho.

Omwene na hambelwe alushe. Ohandi pandula unene eesetela mEngela. Ova yakula nge nawa, nOmwene okwe va pa omhepo iwa okukala naame. Ohandi va halele omayambeko nomanangeko nou-puna moilonga yavo. Ova yakula nge nawa, nonda hala osho ve shi ningila nge ve he shi dimbwe nove shi ningile keshe umwe. Omwene onda hala e va wedele ko kwaashe tave i pumbwa. Onda pandula omaongalo oo a li a lila nokutwa eengolo medu molwange ndi veluke. Ohandi ti tangi cindilo leni ola udika.

Elia Hailaula  
Engela

## Aanasikola pethimbo lyongashingeyi

Okukala mosikola oko oshinima oshiwanaawa, ihe ohashi kala oshiwanaawa unene ngele omuntu e li mo nomalalakano. Aanasikola oyendji oya dhimbwa shoka she ya kutha komagumbo. Yamwe inaa hala okuyanuna nokupenauka nomambo. Yamwe ohaa kala taya endagula owala.

Aanasikola oshigwana okune sha ligamena. Osha tegelela shi ye shi lye iyimati yilonga yeni konakuyiwa. Ngoye ngoka u li kosikola ngashingeyi, ongoye omuwiliki gwoshigwana shangula. Ano kambadhala waa hepithe ethimbo nompito we yi pewa omagano. Waa kambadhala ku sindi.

Angula Deevy Angula

## OMAFININIKO NOMAHEPEKO MOSHITOPOLWA SHETU SHAWAMBO

Oshitukulwa shetu shaWambo paife osha ninga shomafininiko nomahepeko, ndee nounyuni aushe paife owe shi itavela. Efiku keshe oilonga yomahepeko i-nyanyalifa yaSatana otai longeiwa ovakalimo vomoshitukulwa shetu. Ovanhu otava pedulwa meemhofi omaufiku, nokunyekwa omaliko avo pamukalo wokuulikwa eendjebo moshipala kuWALYE (e he shivike)

Otava dipawa omaufiku kuWALYE, eefitola

Tala kepanja 11

otadi pupo okutewa kuWALYE, eefikola noipangelo otai xwikwa po kuWALYE, eeboma otadi mane okulya ovanhu moshitopolwa shetu, tadi telwa kuWALYE eli moshitukulwa ta ryakaleke. Vati oda longwa muRusia ile omulye walye

Konima eshi eefikola nhee (4) Okambebe S.P. Shedile, Ohamuti, nOmutundungu S.P. da tomekwa omundilo kuWALYE, wedina hali ka shituka SWAPO, WALYE ou a ka monika nee koshipala. Nokudja opo osha fila meemha filu.

Paife WALYE ou oku na nee omadina avali omolwoubada ou u kwete ovanhu paife. Nande voo vene va mona ouyelele kombinga yaye (WALYE), ova tila oku shi tonga.

Lwopefimbo tuu olo leefikola noipangelo tai lilikwa kuWALYE, okwa ka dja nee WALYE umwe oo e na omadiladilo maxupi. Omutenya utwa yee okwa twa omutyonghe ta tele oboma yaye momukunda, opo tuu ha xwike eefikola daye.

Mokutela oboma ei, ka li a shiiva kutya lwopopepi nopate opo ta tele okaboma kaye ope na ovanhu tave mu tale. Eshi a mana okutela okapolopolo kaye, yee ota eheneko kanini. Ina ya unene kokule okwa ya ashike mekove popepi naapa a tela oboma.

Opa pita ashike oumunute omilongombali lwaapo, koo okwa nhuka okabofola kooWALYE vamwe. Oke ya ka yukilila kombinga inya ya telwa oboma kuvakwawo. WALYE ou a tela oboma manga ta fi oilapata ta alula mukwao moshiponga vati nee ngeni shinya, okabofola omombada e ka monena ashike. Ka enda nale.

Oshike vali sha ningwa po? Okulambalala ovanhu momukunda omo tava pula ou a tela oboma oyo. Inamu fyaala omunhu ina mona enghava ile oshimwati. Ou ina dengwa shapo momukunda omo hamo a hangika.

Apa ohandi holola epulo lange movakwashiwana kutya: "Okomukalo u lipi hamu itavele okulombwelwa kutya oboma oyo ya topa oya longwa kuRusia, omanga ou te ku lombwele ngaho, okwa tya omamuxwalakata mahapumahapu moshiya eeboma a xwelamo? Daye ohadi longo shike? Ohadi ka telwa peni nohadi ka telwa oolye? Nova ninga sinike opo va telwe eeboma?"

Simeon T.M.Hamukwaya  
Olyamahenge  
Onheleirwa

**DIDILIKA:** Oshiningwanima tashi hokololwa apa, ovakalimo vomomudingonoko oo, otave shi koleke, kutya osha ningilwe eti 20.5.1987.

Hamushanga wOmwukwetu

## TU LESHENI VAKWETU

Ohai kumaida Ovanamibia aveshe tu kale hatu lesa, oifo nomambo unene Ombibeli. Ombibeli embo linene. Ngeenge owa hala okushiiva oonyuni ile onakudiwa, ile ouhaku ile opolotika ile etilokalunga, ounongo, exulilo lounyuni, umbada, ouvela, ile eenghali oinima ihapu inandi i tonga apa, otai monika mOmbibeli.

Ombibeli embo linene li kumwifa shamha ashike to li lesa u na owino. Ngeenge owa hala

## Imonena etungo ewanawa

Otatu landitha etungo li li mOluno, popepi nombelewa yishilongo.

Mehala lyonomola 231, Oluno.

Oli na - Bottle store  
- Market  
- Omala gatano  
- nomukala pokati  
kondando R 27 900-00

Okuuva uuyeleele, inda po-Orlando, Ondangwa, nenge wu dhengele kongodhi yonomola 192, Ondangwa.  
Box 624, Ondangwa.

Gweni  
V.N.Adidas

okushiiva oupolotika lesa Ombibeli oi na exupifo loye, ndele oi na ouwa woye mwene nowovakweni vonena novomongula.

Omunongo umwe okwa ti, omunhu iho lesa, owa fa efuma li li mondobe, ngeenge tali tale kominghulo dondobe oli shii oonyuni opo wa xulila apa pa xulila omeva, mboli owa ya kokule.

Ngeenge oho lesa oto shiiva Namibia alishe osho yo oukwatya nopolotika yalo, oto shiiva ominghoko damo nomilonga, omifitu nosho tuu.

Ndele ngeenge iho lesa oifo, Omukuni, Omukwetu, lesa oifo, hauxuninwa lesa Ombibeli yoye u mone eendunge da nyenga ounongo wovanhu. Ngeenge wa lesa Ombibeli ito kala inoo shangela nge u tye Ombibeli embo lovandunge.

Iho lesa ku na eshi to fiye po shokutungu oludalo lokomesho. Lesa, lesa koneka eshi wa lesa opo shi tunge nena nomongula monakuiwa.

Ohandi mu halele elesho odula eyi 1987

T.Ndakomhani Kambode  
Edundja

## OHANDI ULIKE KOSHINYOLWA SHOMUKWETU WAMAI 30,1987 KOMBINGA YOMAKAKUNYA MONGELEKA

Kombinga yokuya moukakunya osha yela kuwahapu shili kutya ava hava i mo, ovava ina va mona elongo, nokeve na eshivo lasha papolotika. Ovanhu kave na shili eshivo lopapolotika molwaashi katu na mo natango onhele yelongo lopapolotika moNamibia. Paife hano ovanhu opolotika ota ve i shiiva ngahelipi?

Onawa hano ngee ovanhu tava longwa opolotika, opo va ha ye moukakunya.

Kombinga yomahepeko oludi keshe, osha puka shili okuhepeka oshiwana shoye mwene. Ndee osha yela kutya omunhu ngee ou na ounona meumbo itava ve na omikalo de lifa. Nena molwaava ve he na omikalo de lifa, aveshe oto tondo ngoo nee? Aveshe ova ninga ngoo nee vai? Ounhu ohau di pauteku uwa. Omunhu ngee ino mu tekula narwa, ote ke ku denga shili nonando oove ina.

Elalakano lokuuya moukakunya hakuhepeka ashike oshiwana ile okudipaya ovamwameme ava tauluka eengaba, ahowe, ndele oshinima oshi na sha noIdologie yopaukonomi, osho yoo oukapitali. Omunhu ngee owa i moule woukapitali noukomoni, nena oto nomo eyooloko olilipipo.

Ovanhu atushe otwa hala shili emanguluko notwe li djuulukwa shili. SWAPO okwa nyama shili koukomonisi ndele fye inatu mu tonda, molwashi oye a mona shili oluhepo (solidarity) lovaNamibia. Fye otwa tonda ashike oukomonisi. Oshiholelwa shimwe tashiholola kutya SWAPO okwa nyama koukomonisi, onge wa pwilikine Oradio Ruanda ngee SWAPO ta popi.

Oshikumwifa shili eshi ihava tongo mo yoo tuu nande ondjovo yOmwene e va yambidide mekondjo lavo. Omaimbilo avo otaa tanga ashike ova wiliki vavo. Hano kuvo kaku na vali ovakriste? Oukomoni ouwa shili pakupopya (teory) ndee pakulonga (prectise) itashi dulika.

Oshinima shimwe osheshi, onghalo yoilonga muNamibia. Oilonga oya pumba shili. Omunhu nande ou kale u na St.10 ito mono oilonga. Ehalo loku ke li hongwa opo li li, ndee evatelo kali po. Ovanhu ohava vatele ashike ovana voohashike shalye. Oilonga nayo okeembuda ashike. Nena otu kalonge nee peni?

Ombibeli tai ti, "Hla mukweni ngashi u li hole mwene." Osho yoo Omwene wetu Jesus Kristus okwa kala nomukengeleledi waye Judas, ndee efimbo alishe okwe mu longela ouwa. Omolwashike nye ovamwatate inamu hala oku uda ondjovo yOmwene pamwe nomakakunya.

Oukakunya itashi ti kutya, okutonda Kalunga. Jesus Kristus ina nande odi yaye imwe ikane. Nena omakakunya onaa ka shiva ondjila ya yuka, ngeenge nye inamu hala okuuda pamwe nayo meengeleka. Omunhu eshi a hala okuuda ondjovo yomwene osheshi e lidilula ile ahala okulidilula nande ye e li ekakunya.

Ondjovo yOmwene naye udifwe fiyo okexulilo lounyuni opo ovanhu aveshe va xupifwe. Paife nye omwa hala nee omakakunya a xupe ko kexupifo? Ile oshilongo sheulu oshi ns eengaba, kutya ngee wa li ekakunya ito i mo?

Udifeni ondjovo yohole, ngaashi kwa tirwa, kala u hole mukweni ngaashi u li hole mwene. Ndee haku udifa ondjovo yetondafano. Oukakunya hamba hamidjalo edi hadi djalwa?

Omutondi otu mu shi ndee fye oma twe mu hanga omu eshi twa dalwa. Katu mbedi. Ngeno okwa li ovanhu ve mu yele, ngeno inave mweefelamo mwudu letu. Osho yo u yele ekishi noinima yalo.

Ovamwatate muJesus Kristus, tu indilileni ombili younyuni opo i uye mounyuni noiwana aise younyuni i hangane, ndee hashekafano.

Nalimanguluke Titus Gerson (Ekakunya)  
Ondangwa

## ESO

Sakaria Johannes (52) mOmbalantu okwa mana oondjenda dhe 16.7.1987. Okwa thigi ko yina naamwayina yaheyali.

Aanelago aanambili, oyo taa ka mona Kalunga.

M. Nangulohi Kashau  
Ontokolo  
Ombalantu

Paulus Hidengwa Kalulu (102) okwa mana oondjenda dhe muuwehame woshiwike shimwe moshipangelo shaNaanda. Okwa thigi ko oyana 10, aatekulu 99 naatekulululwa oyendji.

Eimbilo 644

Ruusa Magano Nembungu  
Ongwediva Training College

Leopold Tegelela Pendapala yaPaulus Nangolo (5) momukunda Efidilomulunga, Ongwediva, okwa xulifa oweenda waye moshiponga shekandomo 14.7.1987. Okwa fiya ko xe na ina novamwaina vatano. "Omwenyo wange oKristus nokusa okwo elikolo. Eimbilo 621

Fillemon Laxalapo Nangolo  
Ongwediva Training College

Tate Festus (75) okwa mana oondjenda dhe 16.5.1986. Okwa thigi ko omuselekadhi gwe noyana 5, aatekulu 26.

Hilda Nuusiku Festus

## RUDOLF BAHM

### Omupangeli gwootundi

#### MOSHAKATI

*Mpaka otandi tseyithile aayakulwa yetu ayehe, kutya iilonga yokupangela ootundi, okulanditha po oompe nokwoopaleka ndhoka dha teka, okutula ko omakende nuumanya, itatu yi longele we metungo JAMAICA INN.*

*Ngashingeyi otu li mpaka mOshakati metungo lya ENOK (BBK), mpeya hapa kala pwa thikama aluhe omaloli goeiskilima (Roomys). Shika otashi ti elalakano mpaka, oku ku etela eyakulo ndika popepilela, waaha pumbwe we okufala nenge okutuma oowili dhoye kUushimba.*

*Ohatu landitha wo oowili oonkulu kondando yi li hwepo, onkene tu talela po ngele to piti pOshakati.*

#### Ebandulo

*Omakundo nomahaleloyambeko kaashangi nokaaleshi yoshifo shOmukwetu, osho wo kaakriste yakwetu naauvithi yoohapu dhaKalunga muNamibia osho wo muuyuni auhe.*

*Itatu mu dhimbwa nando momahaleloyambeko nomomagalikano getu.*

V.Namene Amakali

#### Ofuto youbesha nai yelifwe

*Onda hala mu pitike nge ndi popye sha kombinga yovashingi voubesha. Otandi indile kokomitiye youbesha pokati kOshakati nOushimba, mu yandje omauyelele kovanaubesha osho yo va peni eembapila domafutulo eendjila.*

*Ope na omapuko mahapu, onda uda pokati kOshakati nOndangwa kutya ohapa futwa R2.70, ile to di mOshakati fiyo Tsumeb R16.00. Paife otwa nyengwa ne, to di pOndangwa natango wa yuka koTsumeb osho ngaa to futu.*

*Onda udile yo okudja mOshakati to i koWalvisbay ope na R30.00 ndee ohai pulwa ndi fute R28.00. Hano okomitiye youbesha nai tu kwafe mwaasho.*

P. Haufiku  
Arandis

## INO HALA ETUNGO LYOOPALA?

OTATU LANDITHA ETUNGO EWANAWA LELA LYI LI MOSHAKATI MOLUKANDA ANKAMBYA, POPEPI NOFABULIKA YOONYAMA.

OLI NA OMAALAKA (MARKET) BOTTLE STORE, OMANGANDJIINA (ODEPOT).

OTATU LANDITHA KONDANDO R19 500,00

OTO VULU OKUPULA POANKAMBYA, Mpono li li nenge PEGUMBO LYA E. NAKAMBONDE, OKATANA NENGE POORLANDO PONDANGWA.

ONGODHI YETU (TEL) 192 ONDANGWA  
P.O.BOX 292

Oshakati

Gweni  
V.N.Adidas

#### OMUKWETU

Oye oshifo shOngeleki Onkwaevangeli paLuther yomuSWA/NAMIBIA.

Ohashi nyanyangidhwa mOshinyanyangidho shOngeleki mOniipa.

Omukuluntu gwoshifo omumbisofi Kleopas Dumeni.

Amushanga gwoshifo omusita Sebulon Ekandjo.

Ondando yOmukwetu muNamibia naSouth Africa R6,00 komumvo.

Palwe muAfrica R10,00 nokombanda yomafuta R14,00 komumvo. Mondhila R17,00.

Oondando nomambesitelo agehe naga tumwe kOmukwetu, Oniipa, P/Bag 2013, Ondangwa, 9000.

ELOC PRINTING PRESS  
PRIVATE BAG 2013, TEL 11, ONDANGWA 9000  
SWA/NAMIBIA.