

OMUKKWE TU



40c

No. 16

ISBN 0-620-06828-0

OSHIGONGINGELEKI 1988, SHA MONENWA IILYO

ONGWEDIVA: OWAMBO: Iilyo 28 ya za maakwanegongalo naasita, oya hogololwa yi ka dhike oshigongingeleki shotangotango shopamulandu gwiikandjongeleki mOngeleki yaELCIN 1988. Ehogololo ndika olya ningwa moshigongi shelongekidho lyiikandjongeleki 13-15. 8.1987 mOngwediva.

Osho oshikando shotango mehistoli lyOngeleki ya ELCIN, iilyo yoshigongingeleki tayi hogololwa pondje yoshigongingongalo pamauthompango nopakotampango epe, ndyoka lya tameke iilonga 1985. Aahogololwa kehe gumwe oku na omupeha gwe.

Aasitagongalo 12 pamwe naakwanegongalo 16 oya hogololwa ya ka dhike oshigongingeleki pamulandu gwiikandjongeleki omumvo tagu

ya. Aatonateli yiitayingeleki, omumbisofi nElelongeleki, nayo oye li iilyo yoshigongi shoka, pakotampango epe.

Oshigongingeleki shono inaashi uthilwa natango esiku omumvo tagu ya, otashi ka kundathana iinima iinene yi na sha natango nomalongekidho getungo lyiikandjongeleki. Shimwe shomiikundathanwa, otashi ka kala ongamba yiikandjongeleki mpoka yi na o- kweenda.

Omumvo 1986 Oshigongingeleki osha tokolele mOngwediva, ongeleki yi topolwe miikandjongeleki iyali; oshikandjo shokuuzilo no-shokuuninginino, naampoka ongamba yayo yi na okweenda. Mokushuna komagumbo, oshitayingeleki shUukwanyama osha tamaneke etokolo ndyoka, neyemato lyasho otali ka kundathanwa ihe koshigongi shoka.

Okuza mpaka omagongalo ge vule 70 mu ELCIN, ogi ihulu ngeyi okuhogolola iilyo yoshigongingeleki shOngeleki ayihe, oshoka elelo lyomagongalo, otali ka kala unene miigongi yiikandjongeleki.

Omadhina gaahogololwa yoshigongingeleki nogaapeha yawo, otaga monika moshifo shika.

Sebulon Ekandjo

Ya kwatwa omwedhi nguka.

Omusita Hendrik Witbooi, omupresidende gwopevi gwa SWAPO, Dan Tjongarero, omunashipundi gwehangano, Nico Bessinger, amushanga gwiikwapondje, Anton Lubowski naJohn Pandeni omuwiliki gwehangano lyaaniilonga. Ayehe otaku tiwa oya kwatwa pakatokolitho 6, koveta yuukulo.

Omulongisikola mEngela, Stefanus Nghifikwa, naye otaku hokololwa a kuthwa posikola ye omwedhi nguka, kaapolosi. Esiku lyekwato inali tseyika nawa.

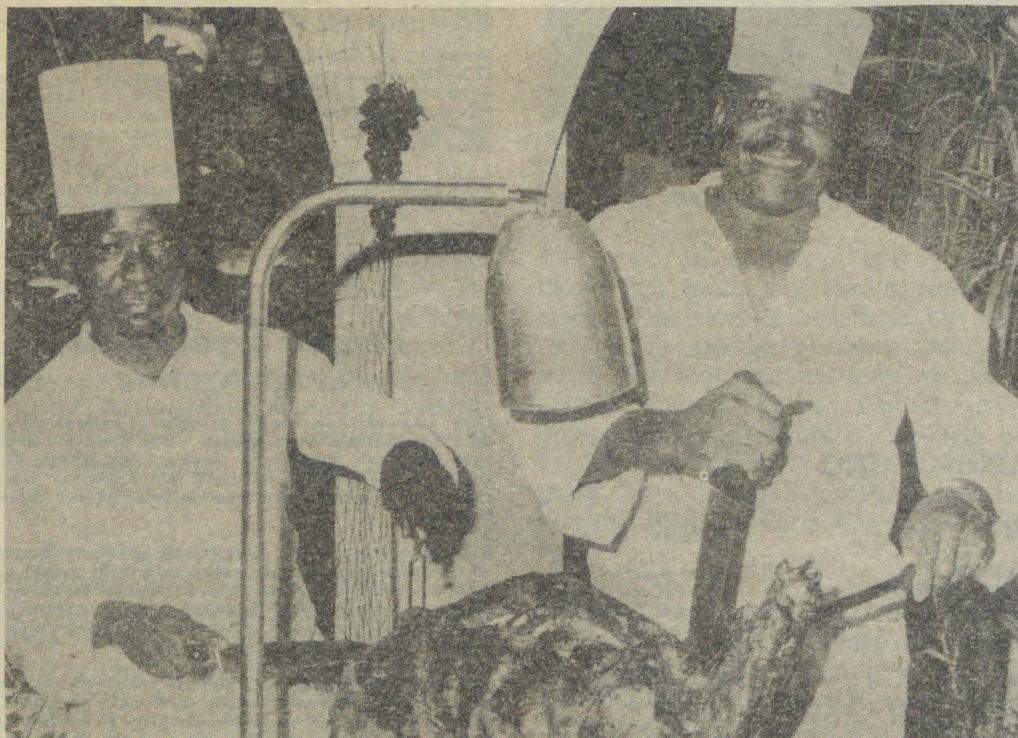
Eindilo lya halutha oshigwana

Eindilo ndyoka lya uvika moradio Owambo, lya zi komalenga gamwe gUukwanyama, olya halutha noonkondo aakalimo yomOwambo. Eindilo olya pula ookamba dhaakwiita dhi galukile pomahala gadho. MOWambo omu na eindilo enene, li li nomomakana guunona opo wa tseyi okupopya, aakwiita ya S.A. ya thige po oshitopolwa shoka. Mboka taa zi momudhingoloko gwaKahao mOngandjera, otaa koleke, kutya okamba yaakwiita mpoka oya tembudhwa po, kakele komahepeko moshilongo otaga tsikile ngaashi shito.

Okamba yaMungwelume nayo otaku tiwa oyi li pokuza po. Okamba yaHangwena oyo ayike inaku tseyika ngele otayi zi po, oshoka omalenga gamwe koshitopolwa shoka, omusamane Gabriel Kautwima nomusamane Immanuel Nghixulifwa, otaa galikana okamba yaa tembuke.

Eindilo lyawo olya halutha noonkondo Owambo ayihe, naapulakeni yOradio oya limbililwa

Tala kep. 9



Mbano aateleki ya pyokoka momina yaRossinga. Kolumoho oFrans Kornelius naLudwig Kandara Zimo taa tete onyama yonzi ya yothwa mesiga.

Iitayingeleki iikulu ya longithwa etamekitho

Omadhina giilyo mbyoka ya hogololwa yi ye koshigongingeleki shomumvo 1988, otaga holoka mpaka paitayingeleki, peha lyiikandjongeleki. Euvathano olya ningwa pethimbo lyehogololo li ende ngaaka, omolwomapulo gamwe kombinga yongamba yiikandjongeleki inaaga mona manga eyamukulo.

Iitayingeleki oya longithwa mpaka etamekitho lyehogololo lyiilyo yoshigongingeleki, shoka komeho tashi ka hogololelwa iilyo miigongi yiikandjongeleki. Omadhina otaga landula mpaka:

UUKWANYAMA

AASITA

Filippus Shikomba
Paulus Heita
Veikko Muniyika

AAPEHA

Natanael Shinana
Filippus Haulofu
Tomas Ndiwakalunga

AAKWANEGONGALO

Paulus Haufiku
Hendrik Hasheela
Lot Kaishungu
Adelheid Hauala

Absalom Hamulungu
Immanuel Mungolo
Elifas Namhindo
Luise Ndahangwapo



Iilyo yoshigongingeleki 1984 tayi konakona onzapo dhaakwashigongi

KAVANGO

AASITA

Heikki Ausiku
Natanael Sironko
Oiva Sikwaya

AAPEHA

Barnabas Haileka
Hesron Nghilundilwa
Naftali Lihongo

AAKWANEGONGALO

Leevi Kamaranga
Yrio de Elestino
Erastus Karunyeva
Gebhard Erastus

Leevi Lukas
Jeremia Kangayi
Teopolina Gideon
Kleopas Naingwendje

ONDONGA

AASITA

Vili-Heikki Shivute
Filippus Henok
Salomo Elago

AAPEHA

Johannes Mvula
Festus Ashipala
Sebulon Ekandjo

AAKWANEGONGALO

Petrina Shiimi
Loide Mweendeleli
Eliesser Kushinga
Samuel Ntinda

Filemon Naanda
Tomas Amagola
Paulus Uugwanga
Davi Mudhika

SA I INDILWA A ZIMINE EHOGOLOLO LYOPAVETA

Epangelo lya S.Africa olya indilwa kElelongeleki lya ELCIN, opo li zimine mbala- mbala ehogololo lyaayehe moshilongo pashitokolitho 435/78 shligwanahangano, peha lyaandyoka tali longekidhwa lycpavi- gumbo.

Momutumba gwalyo gwokomwedhi gweti 18-20.8.1987 mOniipa, Elelongeleki ndyoka tali lele Ongeleki olya holola euvitoshimpwiyu lyalyo enene omolwoondjenda dhuusiku dhomakakunya megumbo negumbo momikunda, omadhipago gaantu, omakwatopo gaawiliki ya SWAPO netidhopo lyaaniilonga miilonga yomina.

Metumwalaka lyalyo lya gandjwa kiifo, Elelongeleki olya pangula nonyanya iilonga ayihe mbyoka yelongitho lyoonkondo, notali pula epangelo li hulihe po mbala ashije shono shaashi shopantu tashi ningilwa aantu kaaye na ondjo.

Okuulika koshipotha shaaniilonga yongopolo omasiku ga zi ko, Elelongeleki olya ti kutya

mboka oya li ashike taa pula eopaleko lyoon- djambi, nolyonkalo yomuniilonga miilonga.

Ongunduleli ndjoka yOngeleki oya ningi ei- ndilo kepangelo lya SA, li zimine mbala etu- lomiiilonga lyoshitokolitho 435/78 pwaa na omaongaongo.

Etumwalaka alihe muukwatya walyo, nalyo otali monikwa moshifo shika.

Sebulon Ekandjo

EPULO:

MONamibia omu na ano aakalimo yoomwaalu gu thike peni? Onda lesa oshikundaneki shimwe sha ti; aantu muNamibia oye thike paakalimo yomodoolopa yimwe yomuAmerika, oshili nenge omashendjo?

P.K.Nyati
Otiwarongo

EYAMUKULO:

HamuAmerika amuke mu aantu oyendji moshilando shiwe. NomuSuid-Afrika oto adha aantu ye thike poomiliyona mbali sigo ndatu. Manga tse muNamibia alihe tatu yalulwa omiliyona yimwe ayike netata.

Amushanga gwOmukwetu



ESO

Jonathan Shayuka Haikali okwa mana oweenda waye 17.5.1987 mepipi leedula 5 moshipangelo shepangelo mOshakati mefimbo louyahame wefimbo lile. Kovahakuli amushe Onandjokwe, Oshakati, Windhoek, naCape Town, ohatu mu pandula unene komayakulo aeshe oo mwa kwafela okamatati ketu.

Osho yo ovaholike ava mwa li pamwe nafye moluhodi eli, tangi unene kuaishhe mwe i tu ningila. Mat.18:15-16.

Nd. Haikali

Ekundo lyeni lya zi muupongekwa

Otse agundjukakadhona yongeleki onkwaEvangelii paLuther muNamibia, nenyanyu enene otatu mu kundu aakwashigwana ooyakwetu medhila lyaKalunga Tate omunankondo adhihe. Nonande inatu itseyeni palupe nokatu lyeni pamwe, pambepo otu lyeni pamwe najesus Kristus.

Kaagundjuka ooyakwetu meni lyoshilongo shetu Namibia noshu wo koomeme nootate amuhe mu li meni lyoshilongo, otatu mu indile nefimaneko linene kutya lilikaneni mu he na edimbuko, hambeleleni Omwene nokunyakukilwafana alushe osheshi olo chalo laTate Kalunga la li mOmona Jesus Kristus.

Ovakwashiwana oovakwetu, diinineni nokukondja opo mu dule okusinda omamakelo aeshe omutondi wetu ou te tu kondjifa yo memanguluko loshilongo shetu. Tu kondjeni opo tu wape okusinda omutondi novamakeli vetu mefimbo eli lopaimhe. Ovakriste ovakwetu tu lilikaneni pamwe na fyeeni atusheni. Ekundo leni taleni Epislalmi 34:1-8, 124:1-8, Mat.25:1-13; Luk.15:11-32.

Aimi Beata Naapopye Igonda
Lagos
Nigeria

UUNINGININO

AASITA

Ananias Iita
Benjamin Shuuvani
Mateus Kapolo

AAPEHA

Hosea Iiyambo
Alpo Enkono
Johannes Tolu

AAKWANEGONGALO

Lahja Angolo
Mariana Ekandjo
Tobias Amupala
Abner Shigwedha

Martin Amupolo
Josef Shivute
Liinda Kiiyala
Jacob Vilho

Pakotampango, oshigongingeleki otashi hiywa aluke konima yoomvula mbali ngele oonshona nenge ne, ngele odhindji. Ope na wo ompito yokwilithana oshigongingeleki shopaulumompumbwe ngele ope na iithiminiki.

Sebulon Ekandjo

ONGHALO YOPAIFE MOSHIWANA SHETU

Onghalo yopaife otai limbilike neenghono moshiwana shetu. Onghalo ei oya pwiduka unene mokati kovalongi, ovafita, ovanyasha, ovakulunhu nosho yo mokati kovawiliki moshiwana.

Omayele aa onde a yukifa ashike moshiwana shetu, opo ndi kumaide oshiwana monghalo omo shi li paife. Elalakano lange alishe oleli, kutya ngeenge omunhu umwe ile vavali tava tambula omayele aa, nena onda hanga elalakano lange. Ame mwene itandi nyemata ngeenge nani omayele aa inaa tambulwa moshiwana.

Ngeenge pamwe ope na ongudu yonhumba yovalongi ile yovanyasha ya twa ondubo nomayele aa, nena oshixwepo kuvo va ekeleshi, vo va yandje yo kovakwashiwana ava va pumbwa omayele nomapukululo aa. Onghalo ei handi ka popya otai dana unene onghandangala mokati kovanhu aveshe ovo va puka mo moshili nova ya kokule nomushiti wavo.

Etilokalunga mokati kovanhu:

Ovanhu paife ova efa Kalunga nova ya kokule naye. Osheshi nande vo ova shiiva Kalunga, inave mu fimaneka. Omadiladilo ovanhu okwa ninga ongaho nokwa pilaalala. Ove litala ovo ovanaendunge, nande vo omalai. Ovanhu ova pingakanifa oshili noipupulu, ouyelele nomulaulu, efimano ove li pa ovanhu ponhele yoku li pa Kalunga. Onghee hano Kalunga okwe va efele mouhalu womitima davo. Molwaashi ova dina eshiivo lokushiiva Kalunga, osho yo Kalunga okwe va efela meendunge dii. Omitima davo odi yadi owii, olwisho loipala, oumbudi, ekonda noipupulu.

Ovakwatelikomesho ngaashi ovafita novalongi ova puka mo moshili nova landula elongo lasatana (oskema yopasatana). Inava hala vali okukala koshi yomhango nova landula ouwa wounyuni. Osheshi ava ve li ngaha, itava longele Kalunga, ndelene omadimo avo vene. Eendjovo davo oda fewa da fa omaadi eenyiki, ndele ohava pukifa omitima domalai nodaavo hava tengauka meitavelo.

Omolwashike hano ou ho longo ovanhu, iho lihongo ove mwene; ho udifa va ha vake, ndele ove oho vake, ove oho ti inava haela, ndele ove oho haele, ove oho litangele omhango ndele ove oto dini Kalunga mokunyona omhango? Osheshi keshe tuu ou ha longo oulunde oye ota nyono yo omhango. Osheshi oulunde oo okunyona omhango.

Ovanhu ava tava longo oulunde ova dja muSatana, osheshi Satana nghee tuu a dja kehovelu oha longo oulunde. Satana okwa hovela okulonga oulunde moparadisa, eshi kwa li ta hongaula ovanhu, osho e li fiyo onena.

Ovanhu moshiwana shetu paife ova landula ashike okahalu kolutu nokoimaliwa.

Ovanhu ova pingakanifa ohole yoshili noihole. Omadiladhilo aeshe aa noifulalala yokukalamwenyo, oya dja kuSatana ou ta hongaula ovanhu omutenya noufiku.

Ovanyasha vopaife ova lambalala elongo la puka omolwovakulunhu ovo ve na omhepo yomutondi, ovanhu natango otava ende ngaashi ovapaani hava ende moulai womadilaadilo avo.

Ovapaani ova laula meendunge davo, ndele ove li kokule nomwenyo waalushe omolwokuhashiiva kwavo nomolwelikukutiko lomitima davo. Osheshi vo ova fifa omaliudo avo noveliefela mouhalu womitima davo. Omwa shiiva tuu kutya Satana oku na omakoto noipupulu? Ovananyi veehombo nye, kamu shi shii hano nokutya oukaume wounyuni ou owo okutonda Kalunga? Elongo laSatana ola hovela nale, osheshi Satana okwa hala ouhamba waye.

Pakupopya oshili, Satana ke na fiku limwe ta ka ninga ohamba. Omwa shiiva yo tuu kutya Satana naye moheli omo ta ka ya? Oheli oya longelwa Satana novaengeli vaye naava hava dulika kuye nohava landula elongo laye, (oskema yopausatana).

Ovanhu moshiwana shetu ova pilamena omushiti wavo. Omaliudo avo paife okwa fya nova ninga ashike ovanhu vongaho. Ova pwila ashike moluhaelo, moukolwe nomolwisho lounyuni ou. Omwa shiiva tuu kutya okunwa nokuhaela otaku xulu po?

Okaana koye komomwenyo woye shimha tuu we ka dipaa mo, nena osha yela kutya ove ku fi vali omunhu, ndele ova ninga oshimuna. Osheshi ovanhu vopaife ova pingakanifa onghedi yopanhu nonghedi yoshimuna. Paife ovanhu ova landula omalongo e lili. Otava longo ngaashi va hala nova kanifa oukwatya wavo.

Ava kwa li va talika ovo ovakwatelikomesho, paife ova kanifa efano lavo moshiwana. Ovafita novalongi oto hange tava longo ovanhu eendjovo domushiti, ndele voo vene ova nyengwa okulihonga osho hava longo vakwao. Vamwe vomuvo ohava pumine momaumbo tava heke ovakainhu ava va lololwa kouhalu womitima davo. Otava fimaneke omushiti nomilungu nokanya ndele omitima davo odi li kokule naye.

Ovalongi novakulunhu otava hongaula ovanyasha noku va pundukifa. Otava udanekele ovanhu emanguluko, nande voo vene ova mangwa koulunde wavo. Ovashamane novakulukadi paife ova ninga ashike ovakristedina, ndele vo ove li kokule nondjila yaKristus.

Nande vo ova shashwa nova kolekwa, ova ninga ovashunimonima nova landula noku-diinina eenghulunghedo dovapaani. Ounona paife ihava pangelwa vali, shaashi kape na ou te va pangele. Ounona itava dulika vali, shaashi novakulunhu eduliko ove li enda ponghulo: "Oshiihati ihashi wile kokule nomuti oko sha ima."

Eexungi momaumbo ihadi ningwa vali, shaashi ovakulunhu ove li ashike poundingosho tava konyona fiyo omokati kofiku. Omwa koneka tuu kutya oikolwifa oyo tai eta oluhaelo, omahengafano nomautondwe moshiwana? Satana paife oku li mounyuni ta hongaula ashike ovanhu efimbo keshe. Omwa shiiva ngaho kutya Satana ovanhu ohe va hongaula neendjovo domaheko? Ota dudu oku ku lombwela, kutya oto kala wa fimana ngeenge to ningi ngaashi handi ku lombwele. Konima oto ka mona kutya Satana okwe ku heka ashike.

Ovanhu ohava efa nee oshili nova landula ehala laSatana. Paife otava hombolafana nokonima yokafimbo tava hengafana vali. Ova dimbwa edilaadilo eli: Ohombo oya-vavali, omutitatu ote i nyono. Paife kape na nee vali, kutya ongadi ile onhumba. Ovashamane novakainhu inava didilika nawa kutya omunhu omutitatu ngeenge ta holoka mohombo oku na okweeta oupyakadi munene. Omwa shiiva yo tuu kutya oikolwifa oyo omhani noshilyatelelo shomunhu omutitatu mohombo pefimbo lopaife?

Aveshe ava hava kolwa omutondi ohe va hongaula noku va longifa ngaashi ye a hala,

Tala kep. 4

Omukundu gwelongo mo-wambo

Enayipalo lyonkalo yelongo moshilongo shika nenge moNamibia, otali etitha ohenda unene. Elongo moNamibia otali shuna monima, oshoka ope na iinima oyindji ya pumbwa etonatel.

Natu tale iitsa tayi landula:

1. Elongo kali li pampango (compulsory)
2. Kapu na aalongi mboka ye na elongo lyopombanda (qualified teachers) ya longe iilonga ya simana.
3. Kapu na oosikola dha gwana.
4. Okatongotongo maakuluntusikola naalongi
5. Okwaanelongelokumwe pokati kaanona naalongi.
6. Okwaatambula aalongwa.
7. Oompumbwe dhomambo.

Osho sha kala ngaaka moNamibia alihe kombinga adhihe. Aakuluntu yelongo inaa simaneka naihaa gwanitha iilonga yawo. Aakuluntu yikandjo nayo wo ihaa tala ko elongo ngoshinima sha simana. Tse otwa sa enota lyelongo, otwa pumbwa oshigwana sha putuka, otwa hala elongo lyoopala. Elongo nali kale lya simanekwa.

Eduward Tangeni Josef na Kleopas Shilongo Windhoek

Dha za kep.3

kutya nee omushamane ile omukulukadi, omumati ile okakadona. Oikolwifa ihai longo sha yuka, shapu otai tungulula. Kotokeleni hano omunhu ou omutitatu meehombo deni.

Kuovo ihamu nu natango, onda hala okutya: Kondjeni shi dulife opo, osheshi Satana oku li mounyuni ta longifa eemwiyo domaludi mahapu. Omunhu omutitatu ota dulu yo okupitila moimaliwa ile moketuketu waavo va pola kombada. Lungameni okahalua komesho oko haka lwifa olutu nokupendula omahalo mai, opo mu ha wile mepunduko.

Etilokalunga olo eliko linene shili, shimha omunhu a wana naai yaye. Osheeshi fye inatu eta mo sha mounyuni, onghee itatu dulu okudja mo nasha. Ndelene ngeenge tu na oipalwifa noikutu, oyo nai tu wanene. Ndelene ava va hala okupunapala, otava wile momahongaulo nomomwiyo nomouhalu uhapu woulai nowoiponga, tau ninginifa ovanhu menyonauko. Osheeshi olwiso loimaliwa olo efina lowii aushe nomoku li haluka, vamwe va puka mo meitavelo nomoshili, ve li tyulifa nomaudjuu mahapu. Onghee hano kondjeni.

Pwilikina omayeke ange:

Landeni oshili inamu i landifa po. Kongeni yo اونونو noutekuduliko kuKalunga.

- Kotokeleni oikolwifa, otai pilaleke nokutwala menyonauko. Ovo hava kala efimbo lile pomaviinyu konima ohava wile moulunde nomoukolwe.

- Pilamena اونونو wovanhu, osheshi vamwe vomunye ova yulwa nova pundukifwa kuwo.

- Okudulika kweni kuKalunga naku shiivike kovanhu aveshi, opo nee Omwene ote mu futu meholeko.

- Ame onda hala mu kale ovanongo moinima iwa, nomalai moinima ii.

- Keleleni elaka leni kowii nomilungu deni keendjovo doipupulu, ndele longeni ouwa.

- Kongeni ombili, nye mu i lalakanene.

- Oshipala shOmwene osha twa ondubo naavo hava longo owii, ndele ovo hava longo ouwa, ote va file onghenda.

- Pukululafaneni, nye mu tungafane palutu nopamhepo yashili.

- Hano liduleni owii aushe noihelele aishu, noipupulu nefupa nomalwaambo.

- Inamu tila etilifo lavo, nye inamu haluka, ndelene longeleni Omwene mwa pama meitavelo nomoshili.

- Tambuleni oshali, osheshi naame yo onda pewa oshali, opo ndi mu twe omukumo meitavelo leni nomolonga yeni.

Omukweni meitavelo
Hauwanga Christian Shiwanifeni

osha gongele konyala R16 510,19. Methano ndika omulongi Sakeus Mb. Ipinge ota fatulula oshikalimo shepandela mulimwe lyomomago-galo goshitayi shOndonga, Uukwiyu.

Ebandela lyaagundjuka Maranata lyoshitayingeleki shOndonga nuumvo nalyo olya shuna mOnandjokwe kiimaliwa R1 053,64 oshikando oshititatu, Aaniipa taa zi ko nekopi.

Aalumentu ye vule 200 oya hokololwa ya li moshigongi shawo shokomumvo 21-23.8.1987, noonkundathana dhawo odha li tadhi ulike kutha ethimbo lyaakiintu taa monika ya fa oyo omutse mOngeleki lya puko ihe.

Aanasikola nayo ngashingeyi ohaa fendele?

MOMukwetu gwaApilili 15 nuumvo omwa pitile epulo lyahailwa Zazkia Zile Swanepoel gwokosekundoskola yaNgandjera, ndyono nanamutenya ngu ina li mona eyamukulo. Oshinima, aanasikola aamati Aakwaluudhi taa fendele uukalata woshilongo ooranda omulongo nambali komumvo.

Oshinima osha tameke momumvo 1985, aanasikola sho taa fala uukalata wawo u ka dhengwe ihako, wo wu nyolwe kutya aanasikola, otaa lombwelwa owala kutya oshinima sha lunduluka, otaa futu ngashingeyi R12.00. Okupula etompelo kutya omolwashike aanasikola ye na okufuta, ito mono eyamukulo lilwe lya shi owala kutya osho owala tashi ningwa kiilongo ayihe mOwambo, nonando kamu na uushili meyamukulo ndyoka.

Omuntu oto zi po wa tompelwa kegamo ndika kutya, komunasikola inashi pumbiwa a fendele nande. Omunasikola nani ke shi ohepele paliko ngaashi ohepele dhi li moshilongo nonando omagumbo inaga faathana. Nani hamunasikola ha ligamene kaakuluntu ye omvula kehe a pewe omulongo gwokufuta enongelo? Mpono oyendji yomaakuluntu haye shi ningi nuudhigu omolwiimaliwa ya pumba. Gumwe omukuluntu ohe shi ningi mokuhehelela omwana ooranda 80 lwaampo, onkee ngaa natango ta ka hehela omwana R12.00 a fendele okakalata? O! okufendela kwaanasikola kaku na nande uuyuki. Ihaku tegelelwa ngaa nee ya mane osikola yo ya ka fendele sho taa longo?

Oshinima shimwe, uuna wa adhika nokakalata koshilongo inaa ka fendelelwa, komakakunya, nena onena, onkee ngaa nee omeya taga mono uupitilo. Onkee pehala lyaanasikola atuhe twa gumwa koshinima shika, otandi ningi eindilo lya shewa kElelo lyoshilongo shUukwaluudhi esimanekwa, kEpangelo lyOwambo muukwalukehe, naakadhona mu ninge kehe shono tamu vulu oku tu kwathela tu ze momuzimbi gwa tya ngeyi.

Tangi Tate Kalunga sho te tu pe ombepo yokuuwa ko uudhigu wetu moshinima shika.

Sam
Omungandu

Ino holeka Amushanga gwo-shifo edhina lyoye nondjuki-thi nando wa hala okulongi-tha edhina lyefutammo.

Ebandela lyaalumentu yOngeleki ya ELCIN kiitayi yilwe aniwa nali dhimbiwe



Aalumentu mOngeleki ngele ya hala ebandela, naa konge shila lilwe, ndika itaye li mono we, lya ningi lyOshitayingeleki shaNdonga, osho aalumentu yomOniipa ya popi pOMukwetu, sho ya galuka kOngwe-

diva nuumvo nepandela lyawo oshikando oshititatu kiimaliwa R9 230,42. Omumvo 1986 oya galukile nalyo kiimaliwa R12,200 lwaampoka.

Oshiketha shaalumentu nuumvo mOngeleki

Omapenda gokOshitambi ga ka lala

Ontumba adjoka ya humbata lifudho yandje oya kala ethimbo eie lela ya fa ya mangwa. Ehala lyokweeta po sha ondi li na, ando ndi tumbule sha, ihe onda nyengwa. Ngashingeyi onda thikama owala onkumamuthika nda isala Oshitambi sha zalekwa eguyo eludhe. Oshitambi shaShitilindindi sha nyenga Shalani, sha hepa, sha toka nomoompadhi dhasho.

Manga ndi na iipembithi, go omayulu opo tage ya, moombako dhandje aniwa omakutsi omwe ya edhina lyomusamane gumwe aniwa otatekulu Itembu. Tatekulu nguka oku na sha nelongo, oshoka ethimbo ndyoka onda li tandi kongo uunongo. Itembu okwa li omutalelisi-koia koshikandjo shokOshitambi. Ontseyo yandje ofupi kuye, ihe shoka ndi shi onde shi uva kutya okwa li ha longo iilonga ye neitulomo enene.

Ngele owa hala u uve nawa, pula aalongi aakulu mboka taye ku pe uyelele ngaashi kuku Kamanya nakuku Inyemba nosho tuu. Tatekulu Itembu okwa li ta humitha komeho, onkene okwa tokola a tungithe Oseko kOshitambi, ndjoka ya lukilwa oShitilindindi sha nyenga Shalani (Nehale lyaMpingana). Kombinga yEmanya okwa yaga ko ngaa, ihe inaku za ontsi. Tate Kalunga okwe mu zimbula miilonga ye momumvo 1979.

Okwe tu thigila amushanga gwe ngoka e na othika tayi hokitha, okwa li e hole uunona, opo nda zi ihaandi kala kokule naye, unene molwohole ye. Manga nda li pOsekundo yaNehale, kehe esiku otwe mu tala i ipyakidhila mombelewa moka a kala ta longitha opena.

Amushanga ngoka tandi tumbula mpaka oye tate Katondoka, amushanga gwoshikandjo tuu

shika. Otwa kala naye oomwedhi dhontumba, tate Katondoka naye Kalunga e mu ile po ishewe momumvo 1980 lwaampo.

Tate Leonard Hamunyela okwa yi pehala lyatekulu nakusa Itembu, omutalelisikola. Okwa li a pyokoka miilonga, oshoka okwa konkolwa kAasoomi mOshigambo. Tate Hamunyela a kala ta shangeiwa olwindji opo a popye naakuluntu, yo ya zimine Oseko yi tungwe pEmanya. Okwa longo ngaashi oonkondo dhe tadh mu pe. Eyamukulo lye okwe li tu pa moshigongi sha "OTA" yoshikandjo shetu momasiku 30 Mai 1986.

Okwa ti ngeyi: "Oseko oya ziminwa, ihe otayi ka tungwa kiigunda yaKiliyana kOluno." Omitse ominene ndhoka dha li po odhe shi tindi, nodha ti napu katukwe oonkatu dhontumba opo yi ye pOnathing South nenge pEmanya.

Omanga inaatu ya pefudho lyaJuni okwa ka mona uyelele kutya Oseko otayi ka tungwa pEmanya. Omanga tate Leonard Hamunyela e shi koleke, tate Kalunga okwa dhimbulukwa omupiya gwe Hamunyela, nokwe mu zimbula miilonga ye momasiku 12 gaJuli 1986. etokolo lye e li thigi ngaaka.

Tate Kalunga sho inaa hala e ethe aantu ye, okwe tu tumine ekuya, tate Eneas Amutenya. Okwa li te tu yakula manga tatu mono ngoka te ya e tu lele. Omasiku 14 gaJuli 1986, tate Eneas okwe ya a tale ehala mpoka tapu tungwa Oseko yEmanya. Okwe shi koleke opo yi tungwe.

Omasiku 22 gaSeptemba 1986 okwe tu popitha pombelewa yetu pOnathing - South, mpoka e tu lombwele wo kutya oosikola ndhoka opo tadhiti totwa odha taambwa papangelo. Omasiku 2 gaKotoba 1986, tate Kalunga okwe mu zimbula ishewe.

Andola ndi tumbule sha, elaka lyandje olya kukutula koondaathelo, ando ndi lile, omeho gandje ongaashika ekango lya kukutikwa kokwenye. U gandje uusama, mbyoka iilonga ya Tate Kalunga mwene.

Ondi tye ngiini? Iitya kandi na, omapenda go-koshitambi ga ka lala.

KuNeshila Paulinus (Shisande)

Aantu taq pumbiwa meyakulo lya WCC

Oku na ompumbwe onene yaanashilonga mOraata yOongelesi muuyuni (WCC) miilonga tayi landula: Omandilo oga li ga tegelelwa muule woomwedhi ndatu okuza Januari 1987.

1. Omunambelewa omukuluntu mombelewa yuunilfo (a pumbiwa nuumvo).
2. Amushanga gwooprograma miinima yongeleki noshigwana. (a pumbiwa nuumvo).
3. Omuwiliki gwokomisi yoongeleki moshilonga shomape-ndulepo gligwana, (a pumbiwa nuumvo).
4. Omuwiliki gwooprograma dhokukondjitha uukwamuhoko (a pumbiwa nuumvo).
5. Omuwiliki gwokomisi yuunamiti wopakriste (a pumbiwa 1988).
6. Amushanga gwoprograma dheputudho miinima yomagumbo.
7. Amushanga gwokomisi yekwatho lyoontauki neyakulo muuyuni pokati koogeleki (a pumbiwa nuumvo).
8. Amushanga gwEwilikongundu lyelongo lyaakuluntu (a pumbiwa nuumvo).
9. Omuphawiliki gwooprograma dheputudho lyopau-theologi (a pumbiwa nuumvo).
10. Omuphawiliki miinima yaagundjuka (a pumbiwa nuumvo).

Oshigongi shaayche shehangano ndika lyoongeleki oshi li ko 1991 muCanberra shaAustralia, ngele Kalunga e shi hala.

Ngele to longitha edhina lye-futamo, hololela omulongeki-dhi gwoshifo edhina lyoye nondjukithi.

Onaini natu ka manguluke?

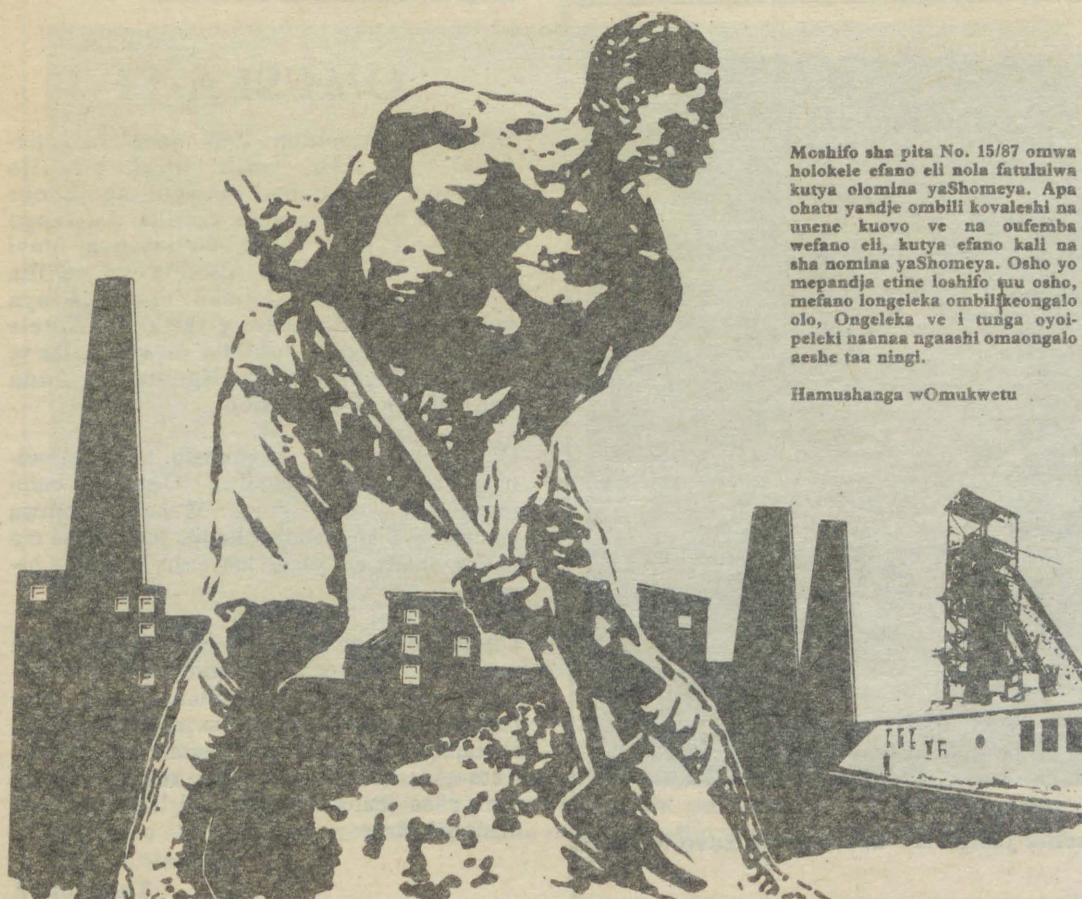
Ngeenge hatu tale onghalo moNamibia oi li ya naipala unene, nonande Ovanamibia voovene ovo tave i naipaleke. Etumbulo limwe otali ti: "Ekondjelomanguluko ohile nolilula."

Okuya kwoye moilonga youposi notai amene okatongotongo (oukakunya) oko taku lepaleke ondjila oyo ya finda kemanguluko loshili. Oilonga yii to i longo ngaashi okudipaa Ovanamibia vakweni, okulyata po omaumbo, okudenga ovanhu nokuxwika po eefikola, oko ondungu yalula oyo tai lulike ekondjelomanguluko loshili.

Onaini natu ka manguluke ngeenge osho tashi twikile ngaha? Eshi to lyataula po omaumbo nokudenga ovanhu, oto ti oto lwile nee emanguluko loshili ngaha? Uda ko kutya, emanguluko loshili nola teelelwa kOvanamibia aveshe, otali kwilwa ko "PLAN".

Hano efa oilonga ya tya ngaho ndee to xulifa po okuhanauna po eefikola detu.

**A.K.Odatwa
Ondangwa**



Moshifo sha pita No. 15/87 omwa holokele efano eli nola fatululiwa kutya olomina yaShomeya. Apa ohatu yandje ombili kovaleshi na unene kuovo ve na oufemba wefano eli, kutya efano kali na sha nomina yaShomeya. Osho yo mepandja etine loshifo gu osho, mefano longeleka ombilikongalo olo, Ongeleka ve i tunga oyoi-peleki naanaa ngaashi omaongalo aeshe taa ningi.

Hamushanga wOmukwetu

Ovafitaongalo vavali mu ELCIN va alukila koilonga konima yeli-hongo lavo

Ovafita, Julius Nghishitivali Mtuleni naMartin Nelumbu, ova alukila paife moilonga pamwe novaneumbo lavo eshi va kala eedula dimwe muAmerika, tave lixumifa komesho.

Omufita Mtuleni, ou a longa shito meongalo Ewaneno, vo nahefelo laye meme Josephine ova ulikilile Elelongeleki oiimati yelihongo lavo 29.7.1987 mOniipa.

Moule weedula nhatu Mtuleni a kala kwinya okwa mona onghatu yotete Master of Divinity (M.Div. nonhivali Mster of Sacred Theology (S.T.M.) adishe mouteolohi.

“Kalunga mokushita edu eli, shiimba okwa li a handuka, eli etumbulo likulu lOvakwanghala muNamibia nola fa la pingafana neuditonghenda nohole yoshilongo shavo ei va hala okuulika, nhumbi ve shi hole.

“Nande oshinyolwa eshi shi na sha unene nou-teologi noneenghedi (ethics) dopakriste, itashi henuka yo oinima yopapolitika ile oyopanghalafano nande okuya mo muyo tai handukifa nge ashike nokutyolokifa nge.

“Sho eshi itashi ti ne ngeno, kutya inai hala okutala ehistolli laNamibia, ndelene otashi ti ehandu lange oli li mumwe nohole okuhola oshiwana shange, osho sha etela nge eenghono (motivated) ndi litule mekonakono eli. Opo pe fike handi i moule wehistoli eli, opo yo pe fike

handi nyeshwa komutima nopo yo pe fike ohole yange okuhola Namibia tai kulu.”

Eshi okahepu kamwe kaxupi komounhenhekeli-ndjovo domoshinyolwa shomufita Mtuleni shomapangandja 231, osho she mu pefifa onghatu yazuuninwa melihongo olo la humbata oshipalanyole: Christian Attitude Towards Violence and Resistance.

Meme Josephine yo eedula mbali a kala ko, okwa monene omhito yokukala meetundi di na sha nouhakuli omo a mona eedjapo mbali mouhakulipangi (Medical Assistant) nonhinhatu yekwafu lotete pedeulo lehangano lOmushiyakano Omutilyaane.

Omufita Nelumbu pamwe neumbo laye, inatu mona mangha omaukwatya elihongo lavo, ashike otave shi hokolola kutya navo ove shi endifa nawa. Mtuleni okwa nangekwa paife mombelewa yoiniwe ya ELCIN naNelumbu omo-fikola yovafita yOngeleki kOtjimbingwe 1988.

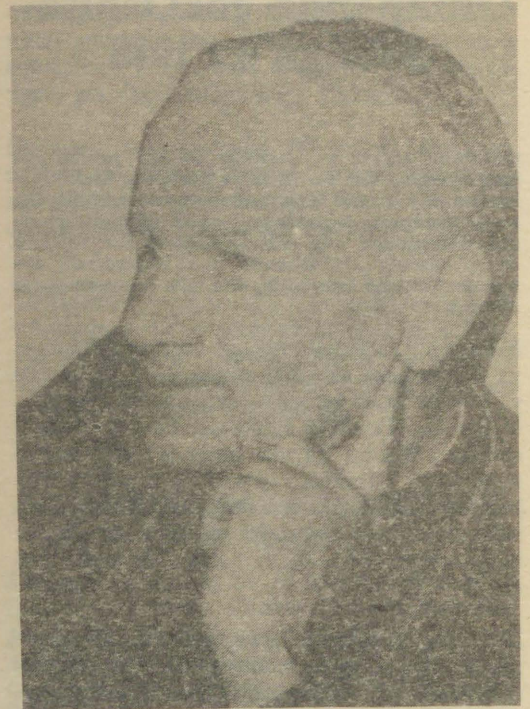
Eehani dopexulilo lomudo ou, Nelumbu ote di yakula manga moshifiwa po sheongalo Ohalushu.

Sebulon Ekandjo

Ya dhigininwa natango

Samwel Andreas, Oshakati (28.2.1987)
Amutenya Ashipala, Okatana (1985)
Filemon Katsimine, Oshamuhenyé
Josef Katofa, Eengolo (7.7.1987)
Saara Lukas, Eeloolo (1987)
Saara Teofilus, Eeloolo (1987)
Martin Mulondo, Katimamulilo (3.4.1987)
Abner Shikesho, Okamule (3.7.1987)

(Sha zi mo NCC: London)



Omupapa John Paul II

Omupapa gwaRooma ta hiya uukumwe woongeleki

Mujuli nuumvo petameko, Amushanga gwOngongahangano yAakwaluther muuyuni, okwa lesa ombilive ya za komuwiliki omukuluntu gwOngeleki yaKatoolika kaRooma, moka ta pula omaitaalo ngoka gopaali ga kokeke ekwatathano lyago.

“Sho tu li po tatu hedha popepi nethelemumvo 2000, ompumbwe onene yaantu kevi, ehiyo lyaakriste ya mwenyeke oshilonga sheuvitho lyevaangeli muukumwe, okukandula po ondjala yopambepo, ndjoka tayi monika muuyuni wetu”, osho ombilive ya lesawa.

Etumwalaka lyomupapa John Paul II olya pandula kekwatathano ndyoka li li po nale nAakwaluther, unene moonkundathana dhuuteolohi.

OMUSI A TI

Esiku 31 Desemba 1986 omulongo nam-bali guusiku, ondi imbi eimbilo lyehambeleso, manga yakwetu taa dhenge omayela nokuhwameka omililo. Lyotango lyajanauali 1987 12h00 yomutenya inayi dhenga, okwa nuka oBofola yu ukilila egumbo lyandje. Onaku yi londa oya nuka mo mbalambala e taa mbolokotele megumbo. Onda adhikile mokamuzile te keelele uulya wandje. Ngame wo onda endebele te yi megumbo.

Oi, iihuna yowala, oomweelo tadhii mbwan-gagulwa, tadhii teyagulwa. Oosikopa tadhii teyagulwa, ehadhagulo. Mehadho omwa yonuukile eliko lyandje olindji. Ihe inaa za mo nasha. Shono taa kongo inaye shi mona mo nando.

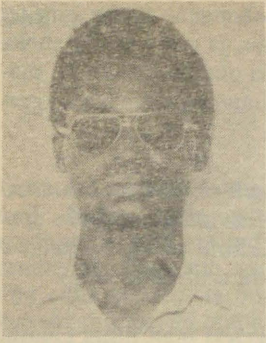
Otu li muudhigu tse Aawambo. Uudhigu tau zi mu tse yene, oshipa oshiluudhe twa taalathana. Tatu lundilathana, tatu dhipagathana, tatu falathana moondholongo, komapopyo getu. Okana ekumbu lyamwene. Tatu ende tu li miipa yoonzi, twa fa tu lilepo oshigwana shetu, ihe otatu shi li po, tatu shi mana po sheke.

Tala kep. 9

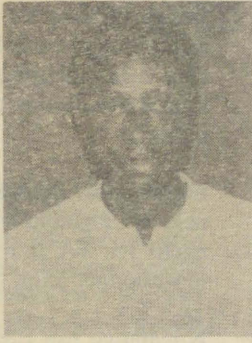


Tate Mtuleni naLatenda (7), Kanyofi (10), meme Josephine nokanghelo kavo Mohote (5).

10 ya mona uunasikola muAmerika



Medardus Kambonde
Augustana College
Rock Island, Illinois



Immanuel Mureni
Upsala College
East Orange, New Jersey

Aagundjuka 10, aamati naakandhona, oya yambuka omwedhi nguka muNamibia koshitopolwa shokuumbangalantu ya ka tsikile eilongo lyawo mOokolidji (College) dhOngeleki muAmerika. Yaali yomuyo oya zi mongeleki yaAnglikan noyaKatoolika kaRooma, manga yakwawo ya zi mOngeleki ya ELCIN.

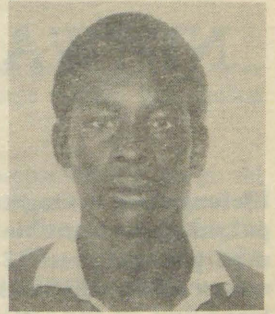
Ekwatathano lyongeleki onkwaluther muAmerika nOngeleki ya ELCIN muNamibia, ndyoka lya tungwa omimvo ne dha zi ko, oyo lye egulula omweelo kaailongi Aanamibia ye vule ngashingeyi 20 taa ilongo ngashingeyi muAmerika.

Ayehe 10 otaa kambadhala okwaadha onkatu yotango melongo B.A. manga inaa galukila keyakulo lyongeleki yawo muNamibia. Omumvogu aagundjuka 10, oya zile natango muNamibia okuya keilongo kuAmerika. Yatano oya zile mOngeleki onkwaLuther mUushimba.

Ongeleki onkwaLuther muAmerika metseyathano nOngeleki onkwaLuther muNamibia, oshe yi fala wo mpoka yi thikame okukondjitha omulandu gwepangelo lyawo lyaReagan, sho tali kwata evi lyetu ombambyona omolwAacuba aniwa muAngola.

“Ngame onda sa ohoni ngashingeyi okuuva ko shono epangelo lyetu tali ningile Namibia,” osho omumbisofi David Brown, kwa li a hempulula mOngeleka yaNiipa 1986 manga a li metalelopo pamwe naawilikengeleki ooyakwawo.

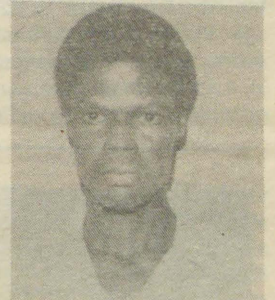
Sebulona Ekandjo



Robert Kalombo
Susquehanna University
Selinsgrove, Pennsylvania



Kristi Elma Dumeni
Gettysburg, College
Pennsylvania



Vilho Kaulinge
Wartburg College
Wauery, Iowa



Ndamono Kashikaku
Lenoir-Rhyne College
Hickory, North Carolina



Ortilie Iiyambo
Lenoir-Rhyne College
Hickory, North Carolina

Katu na we aagundjuka

Oluhodhi olunene omolwaagundjuka yoshigwana shetu ya halakana owala nomalukanda agehe mOwambo nosho wo mUushimba.

Ohenda onene, unene kwaamboka ya li ye na oompito dhokukala miipundi yoskola, ihe ngashingeyi ngele we ya momalukanda oyo to adha ye na oondhikwa poombunda. Oyendji oye etele owala aakuluntu yawo omaluhepo, unene tuu koshitopolwa shokolukadhi lwaNamibia. Naku kambadhawe shoka tashi ningwa po, manga oshigwana ashihe inaashi landulathana. Ihadhi gwanene omutse gumwe.

Nakambunda J. yaNakambunda
Oshigambo High School



Klemens Namwira
Dana College
Blair, Nebraska



Elieser Amunjela
Bethany College
Lindsborg, Kansas



Omwedhi gwa zi ko omumbisofi Robert H. Mize okwa talela po Namibia, uule wiiwike itatu, konima yomimvo odhindji sho a tidhilwe moshilongo kepangelo lya SA. Ngashingeyi oku li omumbisofi moCalifornia, Amerika. MuNamibia okwa lela Ongeleki ya Angilikana 1960-1968. Okwa kundila po Ongeleki ya ELCIN unene. Methano oku li pamwe neefolo Kauluma nuunona osho wo omukwathi gwomumbisofi M. Amadhila.

ETUMWALAKA KIIFO, LYA GANDJWA KELELONGELEKI LYA ELCIN

Elelongeleki lyOngeleki Onkwaevangeli paLuther muNamibia, (ELCIN) momutumba gwalyo gwati 18-20.8.1987, olya kundana noluhodhi oshikungulu shekwatopo lyaawiliki ya SWAPO noyehangano lyaaniilonga muNamibia alihe, aniwa ovetu yuuteroleza pakatokolitho 6 koveta yuukulo.

Natango opwa kundanwa oombelewa dhongeleki, dhehangano lyaailongi, omagumbo gi ili nogi ili oombelewa dhehangano lyaaniilonga nodha SWAPO, kutya nadho odha hadhwa.

Omadhipago, omadhengo, omaehameko, omatilitho nomathiminiko gaantu, unene koshitopulwa shokuumbangalantu waNamibia, mbika otayi tsikile ashike pwaa na nando eshunomoni ma.

Aalumentu ya zala oonguwo dhuukwiita nenge dhaantu yowala otaa endagula uusiku nokupita pegumbo negumbo, naashika osha koko unene okuza tuu sho ookamba dhimwe dhaakwiita dha tembuhwa po poosikola nopiipangelo.

Aalumentu mbaka otaa soso aantu nedhipago manga kwa luudha uusiku nokupula iimaliwa. Shoka osho onkambadhala yokuthiminika oshigwana shi igandje nomokuthiminikwa shi indile ookamba dhaakwiita dhi galuke ishewe, nando dha tembuhilwe po kepulo lyomwaaalu omunene moshigwana.

Ohofa muNamibia nayo oya gandja elombwelo okutidha po aalumentu konyala 4000 ya ningile oshipotha moonima dhongopolo, mOshomeya (Tsumeb), Kombati nOtjihase. Aaniilonga mboka oya ningile ashike oshipotha opo ya futwe nawa, onkalo yomiilonga yi opalekwe nenge mboka taa kanitha iilonga ya futwe.

Elelongeleki lya ELCIN, otali pangula ano iilonga yuupwidhi ya tya ngeyi yelongitho lyoonkondo. Otali ningi eindilo kepangelo, opo ku huli thwe po iilonga ayihe yoludhi ndoka tayi ningi lwa aakwashigwana yaa na ondjo.

Otaku indilwa wo omahangano agehe omagandji giilonga moshilongo, ga ninge ashihe shoka taga vulu mokuhogolola ondjila yopambili mukukala omutumba nokumana po omayeme gaaniilonga.

Elelongeleki natango otali ekelehi naanaa ethaneke lyehogololo lyopamavigumbo ndyoka epangelo lya SA li ipyakidhila nalyo, li ningwe moshilongo, ando muule wethimbo efupi.

Nonatango tuu Elelongeleki otali ningi eindilo kepangelo lya SA, opo li zimine mbalambala ngaashi tashi vulika okutulitha miilonga okatokolitho 435/1978 kOraata yligwanahanganopwaa na omaongaongo.

Elelongeleki otali ningi ishewe eindilo kiilyo ayihe yomagongalo nokaakriste ayehe muuyuni ya tsikile natango negalikano, opo omukundu gwaNamibia gu kandulwe po pambili.

Sebulon Ekandjo

A sile muudhano woshitopitha

Okamati Kaunda (16) kaMatti Lukas, megongalo Elondo, oka mana oondjenda ombaadhihila moshiponga shoboma 9.8.1987. Pauyelele mboka wa thiki mOmbelewa yOmukwetu, Kaunda okwa dhana oshitopitha shoka noshe mu topele.

Pamahokololo kaage shi kwiinekelwa, pomudhingoloko ngoka gwomukunda Onaniki Kaunda a sile, otapu popiwa natango inima ya limbilika aakwashigwana. Ihe mpoka tayi monikwa kape na ngoka a hala okugandja uunzapo wa yela.

Nando opwa londodhwa omimvo odhindji, aantu yaa dhane inima mbyoka yaa yi shi, onkene tuu omaso otaga tsikile ashike miiponga mbyoka.

Sebulon Ekandjo

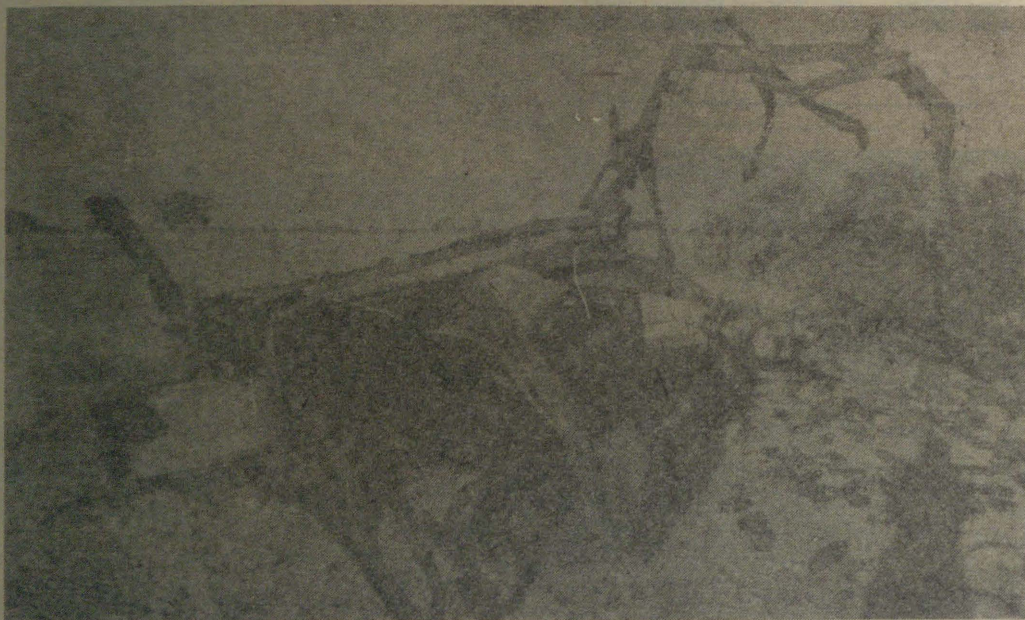
Hedimbi ota kongo ouholameno kehandu lovakwaita va SA

Eti 9.8.1987 potundi onhano yokomatango eumbo lomufita David Hedimbi (58) wa-Anglican ola ponokelwa nokuhadulwa kovakwaita va SA., mEendadi mOukwanyama. Omukulukadi waye Victoria (52) nokanona kaye okakadona Rebeka (14), otaku tiwa ova dengwa tau pumo kovakwaita. Otava mono ouhaku paife mokapangelo kopOndobe.

Pahokololo nOmukwetu, omufita Hedimbi ou ina hangika meumbo pefimbo loshiningwanima okwa ti ovakwaita ova panuna olupale laye nokufinda ombila nolupale laye. Okwa twikila ko ta ti, ovakwaita ovo ova nangalele mekove laye efiku olo, ongula yefiku la landula ova shuna vali meumbo nokudenga ovanhu vati "oshuumbululwa." Okangudu oko oka li ka fikama movakwaita ve li omulongo lwaapo.

Nomokwaaluka kwaye koilonga okwa lombwela kutya eumbo laye ola ponokelwa, onge ina dula vali okufika ko omolwoshilanduli shovakwaita kashi shiivike. Oshiningwanima eshi okwe shi twala nale momatwi epangelo nokombelewa yepangelo lOwambo. Ashike ovanambelewa ova lombwela Omuketu kutya

Tala kep. 10



Meme Marta Nanyome megongalo lyaShitayi ongula kehe ta piti meelo lyegumbo lye, omeho ge otagi itsu tango miitenda yoshihauto mbyoka ya hupu momulilo gwoboma ndjoka ya lya aantu 11.

"Siku ndyoka onda adhikilwe megumbo, uunona wandje tau dhana peelo. Konima yomutopo omudhigu, oonyama dhaantu mombanda, ongaashika naanaa iiyagaya tayi falwafalwa kokambiya," osho a hokololela Omukwetu sho a pitile poshihauto shoka.

Aakwanegongalo lyaShigambo 6 noyaShitayi 5 oya sile mpoka, omuhingi awike, tate Petrus Amwele taku ti okwa hupu mo kee na okankisha kasha.

Osha li 1980 momukunda Okapembe, ihe aantu yangapi natango ye na okusa kiita yoshilongo shika?

Ehangano lyongopolo lya kanitha R300 000 mesiku

Uuwanawa ndishi aantu, kashi shi omiti nenge evi? Aantu ngele tatu ya dhipagitha po nomapopyo getu giifundja gaa fele goondumbo nomafupa, Owambo otayi ka thikama ngiini? Oto adha omuntu ta popi oshinima e shi uvu kee shi shi, ine shi mona, ka li po, ihe oye e shi lile komeho.

Otatu ithikitha tuu kemanguluko lyevi lyetu? Otali ya tuu mbala nenge otatu li kateke tse yene? Omolwashike iita ya yaga kegonga mOwambo? Owa tseya kutya oshe ya po ngiini?

Andiya ndi ku lombwele kashona. Omolwoye ngoye ngoka nokeho nokokana. Elaka lye eta uudhigu mOwambo. Omaj.30:8. Ondi shi shi nawa kutya:

a) Kombanda yevi otu li mondholongo, Kalunga e yi tu ziminina omolwokwaauvako kwetu.

b) Ondholongo yomwenyo tayi zi momutondi, okukutika oomwenyo dhetu pa Ps. 142:8a.

Iinima ya tya ngeyi otayi ya po mokwaa na ohole yooyakwetu. Ohole ohayi siikile ayihe. Natu kale twa tseya kutya Kalunga ote ke tu adha nando hanena. Mal.4:1.

Eva Shaningi

NDHINDHILIKA:

Nakusa Eva Shaningi sho a si ombaadhillila kedhengo lyomutima 5.5.1987, konima yethimbo efupi sho a zi kondholongo, poshitaafula she opwa adhikwa oombapila odhindji e dhi nyola. Yimwe yadhho oyo ndjika ta hokolola uudhigu wonkalo yoshilongo.

Ndhoka dha tiwa kunakusa, odhi na oshindji kaanamwenyo.

Amushanga gwOmukwetu



Nakusa Eva Shaningi

Ohofa mOvenduka oya pulakene, kutya ehangano lyomina yongopolo muTsumeb, olya kala tali kanitha R300 000 esiku kehe, okuza aaniilonga yehangano ndyoka sho ya tameke okweetha iilonga, iiwike ine ya piti.

Ohofa oya tindi omauelele gaAhende Ian Farlam SG, opo aaniilonga 4000 kaa tidhwe mo miilonga, oshoka otashi ka eta uupyakadhi momahupilo gomagumbo ogendji mOwambo. Ahende okwa gwedha ko a ti omina inayi gwanithila aaniilonga yayo iinagugwanithwa ngaashi yi li mevathano paSullivan Code.

Oondjambi kadhi thike pamwe, aaniilonga ohaa talele po ashike omagumbo gawo omasiku 21 momumvo, iikulya inayi gwana nomagumbo, oyo omusamane Farlam a ulike yimwe yomiiinima mbyoka inaayi gwanithilwa po aaniilonga nande yi oyi li mevathano.

Ohofa mOvenduka 19.8.1987 oya hulitha po uuthemba auhe wekuto miilonga lyaalumentu 4000 momina yaTsumeb, Komban, nOttijhase netokolo ndyoka olya kolekululwa kohofa yeti

24.8.1987. Ngoka a hala natango iilonga okwa pewa ompito a ningulule eindilo lyondhalate ompe.

Omupopyo gwaa shi gwopambelewa, ihe gu shi okwiinekelwa, omina yaTsumeb oya hala yi ka kute aantu aashona manga, noondjambi dhoonakutidhwa po, dhi siikile ekanitho lyaashono she etwa po kokweetha iilonga

Aaniilonga oya pulile ya gwedhelwe kondjambi yawo noopelesenda 120%. Oya pula efudho lyomasiku 60 momumvo, okatongotongo ka hulithwe po miilonga nomina yi gandje epitikilo komuniilonga kehe a adhikwa kuupyakadhi, a ze po miilonga pwaa na ekanitho lyondjambi.

Omukwetu ina tseya manga ngele aaniilonga otaa ka taamba ko etokolo lyohofa okukanitha uuthemba wawo wokondhalate nongele wo otaa ka uudhitha oofooloma dhomaindilo omape manga omaindilo gawo inaaga kundathanwa.

Sebulon Ekandjo

Omakakunya neepapeta ovo aveke tava yambidida epangelo loukoloni?

Ovanamibia ava ve he na oku va ama, ve li "neutral" ohava ula omakakunya neepapeta va pata. Oto lifufya shiwana. Fyee ohatu lwifa SWAPO, ou a hala epangelo eli li koshipundi e li kufe ko, shaashi fyee otwa hala li kale po ngaashi tu li paife ngaha. Nge shiwana oto tu kumwe nomatokolo a SWAPO, oho udile nec oudjuu shike, ngeenge wa xwikilwa eumbo, ile wa dengwa kekakunya, to osho hali ningile SWAPO?

Ovanangeshefa novanailonga amushe moNamibia, ohatu yambidideni epangelo loukoloni noifendela oyo hai di keendjabi detweni. Vahapu otava ti, voo ohava nanwa oifendela kondje yomahalo avo. Oilonga youkolonyeki ngee we i efa, nde to longele SWAPO, ito pulwa oifendela nande. Ohatu ku longele ashike oilonga ei hatu longele oplana (ovakwaita vaSWAPO).

Kutya epangelo olokatongotongo, okatongotongo koovene ohaka holoka po nge omunhu a hala okutwa mo daye. Onda mona omukwane-gongalo iha futu omudo, yee iha i kongeleka, nde fiku va ka hangwa komhumbwe yopamhepo naau ha ongala, eshi omufita a endelega po ou ha ongala, winya okwa hovela okupopyaapopya, kutya "oshifita shokatongotongo noshingeleki shasho".

Kombinga nec yovamwameme ovanafikola, ava va hala epangelo (oshikondo shehongo) li va wanifile eemhumbwe davo, imolwaashi va futa, vanafikola, nge omwa kala ihamu futu, shaashi nec mu na epangelo olo tali mu futile ovahongi neengulu dofikola, nye, otamu ke li wanifila nga poshikando eemhumbwe adishe dofikola noimaliwa oyo hamu futu paife?

Kutya eekamba nadi dje po? Shiwana, fyeni ava tu he di pitikile di nangekwe, otu neni tuu oufemba woku di kufa po? Sho vali, ngee otwa haleni okuholola pauelele, kutya inatu haleni omakakunya otaku ka landula mbela shike? Nge omwa itavela kutya omakakunya oo haa umbu meefikola inamu a ninga sha, ngee omwe a te po, otaa kala tuu mbela haa pitilile po omaumbo neefikola deni?

Ngee ohatu itaveleni elongelokumwe, SWAPO osho ngaa ha ningi ngaho, oshinima shiwa ihashi monika nokapala ka yela. Nge nec ope na ava hava ti kave na oku va ama, mwe shi lietela nec, shaashi eengudu adishe otadi ku manene mo omesho.

A. Alushe Hailonga Omhumbu Oshakati

Didilika: Omunyoli, efano leyakulo lomufita moshinyanga eli wa eta apa mekwatafano nokatongotongo, itali tu nande kumwe, eshi okupiyaneka eudeko li yela loukwatya wokatongotongo.

Hamushanga wOmukwetu

Eindilo lya halutha

Dha za kep. 1

ngele aantu mboka oya kala tuu nomazimo gawo moshitopolwa shoka sha hepekwa nayi ketanga lya SA.

Omunashipundi gwepangelo lyOwambo, omusamane Peter Kalangula, pashifonkundana, The Namibian, okwa ti okwa hala a gongele oshigwana moshitopolwa shaUkwanyama, opo a pulakene shono tashi popilwa kaantu. Omusamane Kalangula oha ti naye okwa tegelela ookamba dhomakakunya, tadhi yele mo mOwambo.

Sebulon Ekandjo

Uunona owindji woshigwana shetu ihau yi we koskola

Ngame ogumwe gwomaanasikola. Onda haluka nonda nyanyala onkalo yetu aanasikola. Otandi kumagidha aanasikola ooyakwetu mboka ye etha osikola kutya naa shune mosikola manga ku na ethimbo, oshoka mosikola omo tamu zi oondunge nuunongo. Yo aanona oyo oshigwana shokomeho.

Ondi wete kutya oshigwana shetu oshi li konima nanyi, unene tuu meputuko, oshoka osha thigala. Mbono ye etha osikola oyo ya li ye na oku ka kala aawiliki yangula.

Otandi indile mboka ye li mosikola ya tsikile nomukumo, otaa ka sindana. Naamboka mwa za mo ompito opo yi li natango mu shune mo.

**Ndakolele
Ondangwa**

Iinima ya yiwa nayo

Onkundana oya zi ishewe momukunda Iikokola megongalo Onangalo, kutya egumbo lyomusamane Helmut Ipinge Shetunyenga, olya hadhwa ketanga lyaakwiita ya SA.

Oshiningwanima osha li sheti 13.8.1987, nokonima yehadho opwa dhimbululwa iinima oyindji ya yiwa nayo. Pethimbo tatu longekidhile onkundana ndjika menyanyangidho, inaku yalulwa nawa manga kutya oshike sha yiwa nasho.

Ihe ootundi ndatu, niimaliwa oyindji otayi hokololwa kaayi lwetike, okuza mehadho. Oontaaliho, odha koneke kutya etanga ndyoka lya li megumbo lyomusamane Shetunyenga, olya zile kokamba yaMbalantu. Omukuluntu gwokamba yaMabalantu ina monika a gandje uyelele moshinima shoka.

Sebulon Ekandjo

Ehistoli lyomatokolo giigwanahangano kombinga yaNamibia

- 1961 Okomitiye yiigwanahangano (UNO), yoshikundathanwa shaNamibia, oya gandja ethaneko elelo lya SA muNamibia li hulithwe po, na UNO yi kuthe po oshimpwiyu shoka.
- 1966 Omutumba gwaayehe gwa UNO, ogwa kolekulula kutya oshigwana shaNamibia oshi na uthemba okutokola onakuyiwa yasho, nemanguluko. Ogwa hulitha po oonkondo dha SA, okulela evi nolya tulwa mesiloshimpwiyu lya UNO pashitokolitho 2145.
- 19.5.1967: Oraata yaNamibia kiigwanahangano ya dhikwa opo yi lele evi sigo oshilongo sha manguluka.
- 20.3.1969: Oraata yegameno kiiganahangano oya tokola okukala kwa SA muNamibia, kutya oku li pondje yoveta na SA, okwi indilwa a thige po mbalambala oshilongo.
- 12.8.1969: Oraata yegameno kiigwanahangano nayo oyataamba ko uthemba woshigwana shaNamibia okukondjitha SA muNamibia, noya pula iilongo ayihe muuyuni yi gandje ekwatho alihe lya pumbiwa koshigwana shaNamibia mekonjjo lyasho.

OVA SHANGELA NGE TAVA TI

Enota masiku lye tu faalele atuhe

Tse aanona aashona koshitopolwa shokuuninginino pomahala nga:

Onayeluka, Oshitudha, Ondukuta, otwa dhimbulula onkalo ya nayipala omolwompumbwe yomeya miitopolwa yetu mUukwaluudhi. Ngiika oyendji mboka ya kala kiitopolwa yomeya otamu ipula nale ngeyi:

Ihamu hupu omithima?

Eyamukulo: Evi lyetu olya lula, nande hupa omeya ito ga nu omolowomuloka inaatu gu mona oomvula ndhika.

Ihamu teke moomboola nenge mominino?

= Ayihe mbika oyi tu li kokule noonkondo nohashi tu pula etata lyesiku oku ka thika ko.

Oh! ne mwa ti omukanka ogwa pombelwa omeya, ihamu ka teka momukanka?

= Akuutu!! Kiitopolwa yetu nomutungilo gwomukanka katu gu shi, ohatu gu uvu owala. Omukanka ngoka gwa kutha anirwa omeya okuza kUukolonkadhi, nando nagu popolwe, katu na esiku natu nu omeya gamo, omoluukule.

Poosikola dheni kape na oopomba?

Openi ano yakwetu tatu mono ekwatho opo tu tulilwe po oopomba dhomeya poosikola dhetu? Omukundu nguka otagu kandulwa po kulye opo tu kwathwe nauunake? Oyendji kooskola nokomambo otwa kondwa ko manga, omolwenota, oshoka moondjila dhetu kamu na mpoka to mono eta lyomeya.

Tangi kuAmushanga sho to ku kwatha u nyolele mo oshipopiwa shetu.

Amukwa, Namandje naKornelius Iita
Ondukuta Comb. School
Uukwaluudhi

Aakwetu, shigwana shaNamibia,

Tu tuleni uukuni kumwe, uukoloni u teke, okatongo naka lyatelwe pevi, opo tu mone emanguluko lyuuyuki nombili muNamibia. Tu kaleni tu li meitaalo limwe, twaa kale twa topoka naalongi yetu nenge twa topoka naalongwa yetu. Uunene tuu ooskola dhopombanda nenge tu tye Osekondere, otapu adhika omakuyunguto ga tya ngaaka.

Aalongi aasimanekwa, dhimbulukweni kutya uuna omuntu ta tidhwa moskola opo ta zi ta yi muukakunya nenge ta ningi omufuthi nokuli.

Dha za kep. 8

inava tameka natango okukonakona oshinima eshi.

Omufita Hedimbi oku li paife omufita waAnglican mOngulayanetanga, mOndonga. Omukalimo umwe okwa holola kutya onghalo oya mwena mEendadi, ashike ope niwe elimbililo kutya ovakwaita otava tale ngahelipi eumbo linya. Eumbo laHedimbi neongalo aishe okwe i fiya po i he li mepashukilo.

Thomas Nghitukwa

Ngoye omunasikola omukwetu uuna wa mona ompito yomoshipundi yi longitha nawa. Oonkee ano tu tuleni uukuni kumwe nomatokolo pamwe Nanamibia tali manguluka.

Nangolo Shindombo
Uukango - Uulumbu

Tu kongeni eshi tashi tungu

Oshiwana oshiholike!! Onale mwa kendabala noinima itai kwafa. Oshiwana she lifikamena sho vene, onale mwe lidipaa nye mwe lidipaifa, ndele fiyo opapa inapa lunduluka sha.

Oshiwana shaNamibia omwe tu fifa ohoni, mwa ninga eembwa doilumbu mu ka kwate vamwanyoko mu ka dipae eendenge deni, wanyoko naxo we mu landula, ndele ove to mu taata ile to mu dipaifa, ndele omedina loshimaliwa. Eedula tadi ka pita, eemwedi tadi ya ko, oto dipaa ngo mu-mwanyoko, po itapa lunduluka sha.

Tala, lundulula u tale u ha dipae vali mu-mwanyoko, ove ino mu shikila vali eeshiva ngenge a dipawa, wa fa u li mohango. Ove ino mu shikila vali wa fa ombwa ya lamba ondiba, ove u tale nee nge itape u ya shimwe shi lili, tashi xumifa oshiwana komesho.

Efimbo ola pya, kape na shikukutu shi ha xulu, kape na shilongo itashi manguluka. Tala eshi to ningi po, ove u he ke livele eembei lwanima. Efimbo olaKalunga halomunhu.

L.Nd.Nd.Shuudifonya Nanyama

Ehokololo lyoondjokana dhongashingeyi

Ngame mwene ondjendi mevi ndika, ihe onda nyengwa kuukriste wongashingeyi muka muNamibia, oshoka oondjokana otadhi teka noonkondo. Aakriste nayo oye na po epuko, oshoka omukriste ota vulu okutaamba omuntu a teya ondjokana a ninge omukalele gwe megumbo. Oshinima shono epuko enene.

Omuntu ngele a teya ondjokana, ita vulu okukonga iilonga megumbo lyomukriste. Aawameme, tu taleni nawa mboka ye shi okutaa-mbwa miilonga, unene miilonga yongeleka.

Omushangi
Valentinus Kalenga

Etango kutya olOvawambo, osho etukano kuvahapu moshiwana

Enyamukulo lomushamane Matti E. Nghidinwa, kombinga yokupopila kwaye Etango pashifo shaJuni 30, 1987, osha pendula omanyamukulo mahapu movaleshi, oo tae shi kondjifa. Ombili eshi hatu nyengwa okunyanyangida eembiilive adishe de li xwapo ngaashi da holoka, ndele ohatu tumbula ashike paxupi. Omanyamukulo otaa landula apa:

Kaume Matti, oshipopiwa shoye osha yehameka vahapu keenwenyo, pamwe ngeno we shi tumine koRepublikein ngeno xwepo. Owe shi tuma vali koOmukwetu wo oo hatu lesa hatu tungwa mo koipopiwa ihapu. Oshipopiwa shoye itashi tungu sha, unene fye ava twa hepekwa nai konghalo yoita.

Tala kepanja tali landula

Kutya Etango oOvawambo? Kape na nande opaati imwe muNamibia i na omakakunya, kutya nee oya totwa kulyelye, i he fi ngeno oshitai sha SA. S.Africa aeke ta longo oilonga ya kaka muNamibia, kape na mbudi otai longwa tai pitile mulyelye.

Etango olo oKoevoet, ehanganano lokudipaa ovanhu moinheya. Oto fufya oshiwana kutya Etango ehanganano liwa. Pamwe owa ka kongele ashike oilonga, ove u he shii kutya loo oshike? To hekwa koimaliwa, opo u mane po Ovawambo.

Oshi li nee nawa mEtango eshi itamu fininikwa ovanhu, osheshi aveshe ve li mo, ovo ava ve he na ohole, ombili, nelandulafano moshiwana. Ove Matti oto kongo nee omifyuululwakalo apa da kanena, otamu ke di tyapula nalyelye? Kaimba apa u ke di monena, shoo oshiwana owe shi mana po nale?

Anti - Etango
Northern Namibia

Kuume Eraslu Nghidinwa, gwomOshakati, yamukula omapulo ngaka paushili nopaumwene.

- Etango olya hogololwa kulye muno moNamibia? Tamu longo mu gwanithe chalo lyemushidi?
- Ogunipo ngoka? Ondeveli niilonga yuukolokoshi?
- Ngoye owa shita lye nenge yangapi mbo mu li nayo

Kutheni po ayihe iwinayi opo tu mone kutya otamu longele oshigwana. Lesha isheve moRepubulikein 3 Juli 1987, epandja 3 koho yoshipalanyolo oshitiyali kolumoho (okuza pombanda).

Eeno, inaku dhiladhilwa mu ze mo mEtango, okwa dhiladhilwa etungepo lyoshigwana. Ngele amuhe mwa yi mEtango mokudhipaga aanona, aakulupe naagundjuka otatu ka adha peni aasita naalongi, oondohotola naapangi, aapolisi (yaashi omakakunya) naapanguli, aanambelewa noomakeninga.

Etango nando oli li po enene lya kola, tse itatu tila sha. Aluhe ongundu yomutondi oyo oyindji. Kalunga oye mwene ha tondoka onkugo yepongo.
N. Gotlieb na
Nd. Tobias
Ongandjera

Omufimanekwa Nghidinwa, Ito dulu nande u fufye ovanhu, kutya Etango ehanganano leenghedi, manga hali wilikwa komakakunya matilyana. Ombapila yoye moku i lesa, onda uda oudjuu

pamwe nOvanambia vahapu. Omapopyo aeshe nomapulo wa pula Ndeikwila, ondi wete kutya haye, ndele oSWAPO wa hala okusheka. Ashike dimbwa.

Ngeenge oto patana kutya Omutilyane okwe li pweya po, nedu a ya nalo....., owa fyaala po. Edu otamu ke li landifa po nEtango loye.

L.L.L.Nyolavali
Ongwediva

Kuume Matti,
Ngoye mwene owa dhiladhila nawa, ihe owa popi iinima ihamu yi longo nando. Owa ti Etango olya totwa po kaAwambo nowa gandja uumbangi waConny. Ngoye mwene owa dhiladhila kutya Conny Omuwambo, ta gamene Aawambo? Owa tseya tuu omutondi gwoye?

Omatango oge li gangapi ano? Tse otwa tseya ashike ndyoka ehepeki lyoshigwana. Owa ti ohamu kwatha oshigwana, hamu shi kwatha oku shi dhipaga? Omagumbo gAawambo ge vulithe 23, oga hanagulwa po kEtango naantu oyendji oya dhipagwa yaa na oondjo.

Kuume Matti, oho lesa tu nando Namibian?

Keendjele A.
Mweshipandeka

Etango omutondi gwoshigwana shaNamibia. Ohandi pula Nghidinwa apa kutya omifyuululwakalo dikulu dOshiwana shaNamibia, oda li okudipaa ovanhu? Lifufya ove mwene, hafye to fufya nande. Osho oukriste woye nao otaw limbilike, osheshi efiku keshe oto dipaa ove to yofa ovanhu ve na omwenyo.

Hailwa Hengobe
Windhoek

Etango olya nyateka omithigululwakalo dhetu mooVideo, mooTV. noshwo muunyolwa walyo mbono hali taandelitha mokati kaamboka kaaye na euveko lya gwana.

"Ovanyasha novakriste" mboka to popi oyeni, ngiika hamakakunya omakriste anizwa ngono haga mbembeleke oshigwana okuya kongeleka? Tate Nghidinwa okwi iyakwa ketumbulo limwe sho a ti, "Etango olye egulukila kehe Omuwambo, ashike ina kala nande mehanganano li tonde Aawambo."

Olye ta lombwelwa mpano, uunona nenge uyuni wopondje? Omakakunya gometango oge hole Aawambo ndishi? Tse otwi ilongekidha oku mu dhimina po, ngele tamu etha okulongithwa kaatondi yetu.

G.yaSheepo na F.T.yaSheepo

Ondi inkela Nghidinwa ogumwe gomAawambo taa kondjele iimaliwa, ita kondjo shili a hala emanguluko. Oto ti ihe otu pande okuyakulwa kEtango, lyo olya hali tu hepeke? Aamwameme yangapi ya dhipagwa kaaye na oondjo? Ngele oho kondjo wa gama kEtango, oto kondjele ihe shike? Owa dhiladhila tuu onakuyiwa yaNamibia?

Andreas T.Nabotha
Oshilulu

Etango lya totwa kaAwambo? Oolye? Ngele olya totwa kaAwambo, omolwashike li na ilyo yaatiligane aakwiita? Etango oli na asha nuukriste nenge omomithigululwakalo, oshoka mbyoka iyali, iinima ya yooloka kokule.

P.L.Kafidi
Oshigambo

Johannes Julius Nangolo (24), weongalo Omutundungu, Okalongo, okwa xulifa 28.6.1987 ombaadilila eshi a tuwa nombele. Okwa fiya ko ovakulunhu vaye noshwo yo mumwana umwe. Ps.46:1-11

Julius Mekondjo Hatutale
Eengedjo Sec School

Ehekeleko

Abisai Shigwedha Ndjembo ota gandja omahekeleko omolweso lya-Monika Kaunapawa Ndjembo 3.5.1987, muuyehame wethimbo ele moshipangelo shaShakati. Okwa li gwomegongalo Uukwiyuushona moOndonga.

Ef.6:13-14
Eimbilo 406

A.S.Ndjembo
Swakopmund

Kuku Toininene Honga, Okaku, okwa mana oondjenga muwehame wethimbo ele moshipangelo shaNandjokwe 18.7.1987 mepipi lyoomvula 83. Okwa thigi ko omusamane gwe noyana yatano, aatekulu 32 naatekululwa oyendji.

Eimbilo 279

Frieda Nangula
Okaku

Meme Elizabeth Namupala Daniel (73) megongalo Onesil mUukolonkadhi, okwa mana oondjenda 17.1.1987. Okwa thigi ko omusamane gwe, oyana yaheyali, aatekulu 28 nokatekululwa kamwe.

Getrud N. Shilongo
Onakaheke

Omukalimo a shiivika nwa momukunda, Okatope moUukwanyama, omushamane Timoteus Katikopa Shikongo, okwa xulifa oweenda waye. 10.1.1987 meumbo laye.

Okatekulu Mekondjo Toivo Shikongo nako oka xulifa vali oweenda wako 23.4.1987 muwehame wethimbo lixupi. Apa ohandi yandje omahekeleko koonakufiwapo amusho Eimbilo 467, 630

Eben N.Stefanus

ESO

Elina N. Shikangala, ota gandja omahekeleko kaakwancimo noshwo wo kookuume ayehe omolweso lyatate Simeon Amaambo Ananias Shikangala, sho a manene ondjenda dhe 15.7.1987 muwehame wethimbo ele. Hekelekwani. Eimbilo 473

Elina Nambahu Shikangala

Mateus Neema (18) momukunda Ongudi, moUukwanyama okwa xulifa oweenda waye 26.7.1987 ombaadilila. Okwa fiya ko ovakulunhu vaye noundenge vaye 7.

Miriam Shindobe
Olupandu

Omumati Dishela Meester (36) gwomomukunda Okathakamumbwenge, moOndonga, okwa mana oondjenda dhe 28.7.1987 moshipangela shedhipago, a yahwa ketanga lyegameno pamwe nooyakwawo yatatu.

Katrina Nd. Indongo
Nangolo Sec. School

Tatekulu M. Kondjela ya Simon Hango (20) 24.7.87, megongalo Onyaanya, okwa thigi ko he nayina naamwayina 3 nokanona ke kamwe.

Fil.1:21
Eimbilo 627

Elina Nelago

Okamati Johannes Julius Nangolo (25) momukunda Onelombo, Olupandu, moUukwanyama okwa xulifile 29.6.1987 moshipanga shedipao. Okwa fiya ko ina noundenge vaye. Eimbilo 630

Ndahaja Shiweda
Omutundungu - Okalongo

Lukas Nghifekwena (140) moMhedi, meongalo laShandi, 4.6.1987, okwa fiya ko ovana 22 ovatekulu 99.

Likundeni P. Nghifekwena
Walvis Bay

Otandi mu pandula unene one amuhe aayakuli yetu moshituthi sheso lya meme Elizabeth Nekulu Michael Ashaanda, sho a hulithile 17.6.1987 mepipi lyoomvula 68 megongalo Ongwediva, Eimbilo 380.

Tertu N. Ashaanda
Mweshipandeka Senior Secondary School

Okaadona Laimy Netha Iyambo, oka xulifa oweenda wako 5.5.1987 mepipi leedula 23, konima youvela wetata lodula. Nakufya Laimy okwa dalwa eti 3.12.1984 moOluteyi moOngandjera. Okwa li te lihongele ou "General Nursing" okwa kala alushe kaume kaaveshe. Ovakwapata, hekelekwani nomatumbulo aa:

Ponhele yovalihongi pamwe naye nookaume kaye.

A.S.M.David
Hungary

EHEKELEKO

Otandi gandja omahekeleko kaakwancimo lyanakusa David Shikwena (19) ngoka a manene oondjenda dhe omasiku 12.7.87 moshipangelo moOshikuku muwehame wesiku limwe.

Omahekeleko koonakuthigwa po ngaashi asputudhi ye tate Jeremia naMeme Helena Hango, hekelekwani omolwokamati keni hoka ke mu thigi po ombaadilila. Hebr.3:14-15; Eimbilo 269.

Nalukale Shekuza
Okaloko



Omutaleli Abraham Nyambali, okwa mana oondjenda dhe muwehame woomvula omugoyi nokwa sile moshipangelo shepangelo mOshakati mepipi lyoomvula 68.

Oye gumwe gwomaataleli aakuluntu, mboka ya li ya yi mopenzela, ihe oya li ya vulu okukwatha natango. Okwa li a longo oomvula 21 muutaleli.

Okwa thigi ko omuselekadhi gwe meme Josephina, oyana 8 naatekulu 8. E tu tekele muukwaaluhe. Jesaja 40:30-31.

Aakwanyambali

Koludalo laNamibia alishe

Vakwetu Ovanamibia, okutongatonga kekuwa, natu fikameni atusheni, tu yeni moukongo, tu kongeni ovamwaameme ava va dja pufyeni momaumbo pootate noomeme, otu shii omalupe nomadina avo. Paiife ihava ifanwa vali omadina avo aa va lukilwe kooxe Ovalukwa omakakunya neetoli. Natu yeni moukongo, tu lihaneneni oshilongo neefuka adishe ve uye komaumbo

kootate noomeme, apa va dalelwa nova putukila, va kale ve na ombili ngaashi va li nale.

Nye ovamwameme, alukeni, ileni komaumbo, ileni komitumba deni vamwameme. Djeiko, djeiko keekamba doukwaita inamu lidipa vali, omukulu ile okandenge koye, omona woye ile okatekulu koye. Udeni eshi handi mu lombwele ludalo latate nameme.

Oshike mwe li ninga? Punye vavali ondi shi shi kape na ou a shinda mukwakwao, osheshi kape na omulaule a shinda ile a shindwa komulaule mukwao, ndele omulaule okwa shindwa a shike komutilyane. Paiife ovamwameme onye hamu undulilwa komesho keembulu mu ka dipaye ovamwanyoko, mu ke lidipae, nande nye ovana vaxe imwe.

Taleni nee nye ovakwaita omakakunya, eembulu ode mu pa oikulumbwati nomipini mu denge oshiwana sheni, mu shidipae po noku shi lemaneka, do tadi yolo nokukomona komitwe, tashi holola kutya aa omalai lelalela, notashi ulike kutya nye etanga lokudipaa oshiwana sheni, fimbo vakweni shavo tashi kala nomwenyo.

Opo mu shi monemo nawa kutya eembulu odi tu shi oulai fyeni Ovalaule, ovakwaita ningeni ngaha taa! Mongula homateni omahomato eni ngashi shito, nde mu kufe oikulumbwati nomipini, nye mu lombwele eembulu, kutya nena natu yeni tu ka ameneni eemwiishishi modoolopa, nye mu pwilikine eshi tadi ti. Eemhata okukwa ke he po, vamwameme.

Kunye amusne ovana vatate nameme Namibia, u li meni, kondje nomeekamba doukwaita, alikana natu popyeni natu udafaneni, tu limangeni kumwe nde hatu kaleni ongomunhu umwe tu kondjeleni edu letu limwe alike, Namibia, li manguluke tu moneni ombili nolufuo.

Otwa loloka okukwena, ndele otwa fya ondjala yemanguluko oshiwana oshiholike. Kondjela edu

noshiwana shoye, ino shi ninga oipindi konhu. Ino kondjela vali okunwa meholo li na ohonde yamumwanyoko, ndele lalakanena okukondjela eholo li yadi ombili, opo ovamwameme ovo ve li meedolongo naavo tava dalwa, va hange tu neni ombili fye tu i va peni yo.

Ngh. Fikameni

Kombinga yOoraata dhaKatutura gwaVenduka nomakenge gokOwambo

Ooraata dhaKatutura gwaVenduka odha tameka ombepo ombwinayi, tadi landitha po omagumbo gaakalimo yaVenduka muKatutura. Itaa longo we ngaashi yu utilwa.

Yo aayamba yokOwambo oya tameka taa landa po omagumbo gaantu moondunge oombwinayi, taye ga kwatele oohahende dhiimaliwa oyindji. Omolwashike aayamba taa landa po omagumbo gaathigona, omanga andola oyo ya gwana okuwatela aathigona opo aathigona ya mone wo oamgumbo, nenge yi iwatele nokufuta omagumbo gawo ngele pamwe oge na oondjo?

Ano aantu inaa leshe oshipango oshitimugoyi? Naa leshe utale oshipango shino, yo ya pulakene sho tashi ti.

MOkatutura omwa landwa egumbo mOndjambo, ihe aalandi oye li landa palupe lwekengelelelo. Oya heke mwene gwegumbo, shoka ye shi shi nokutya okwe ehamene omutse. E taye mu pe iimaliwa ofuthi, manga pwaa na nando omukwezimo nando umwe. Egumbo sho ye li landa ko, mwene gwegumbo okwa kala kee na mpo e na okuya, oshoka egumbo ine li landitha po e shi sho ta ningi, naalandi yegumbo oye shi shi nokutya omutse kagu li nawa. Sho ya mono kutya egumbo ye li kwata, oya matukile kopolisi, opo opolisi yi ye yi tidhe mo uunona, nomukulupe gumwe omuposi a li mo.

Opolisi sho ye ya, oya tameke shili okutidha mo uunona namwene gwegumbo nomukulupe. Oya ti ngele kamu wete mpo tamu uka, tutileni iinima yeni pondje, mu kale pondje. Aantu oya tula iinima yawo pondje, mpoka ya lala omasiku gaali. Omvula nombepo oya laminineko.

Ano natu galikaneneni aantu mboka yaa na mpo taa uuka, aantu yaKalunga taa mono iihuna, ihe omolwaayamba. Ano natu kaleni tu shi shi nokutya okudhenga okati koonyala oshi na ondjo.

Joseph K.Hasheela
Windhoek

OMUKWETU

Oye oshifo shOngeleki Onkwaevangeli paLuther yomuSWA/NAMIBIA.

Ohashi nyanyangidhwa mOshinyanyangidho shOngeleki mOniipa.

Omukuluntu gwoshifo omumbisofi Kleopas Dumeni.

Amushanga gwoshifo omusita Sebulon Ekanjo.

Ondando yOmukwetu muNamibia naSouth Africa R6,00 komumvo.

Palwe muAfrica R10,00 nokombanda yomafuta R14,00 komumvo. Mondhila R17,00.

Ondando nomambesitelo agehe naga tumwe kOmukwetu, Oniipa, P/Bag 2013, Ondangwa, 9000.

ELOC PRINTING PRESS
PRIVATE BAG 2013, TEL. 11, ONDANGWA 9000
SWA/NAMIBIA.

RUDOLF BAHM

Omupangeli gwootundi

MOSHA KATI

Mpaka otandi tseyithile aayakulwa yetu ayehe, kutya iilonga yokupangela ootundi, okulanditha po oompe nokwoopaleka ndhoka dha teka, okutula ko omakende nuumanya, itatu yi longele we metungo JAMAICA INN.

Ngashingeyi otu li mpaka mOshakati metungo lya ENOK (BBK), mpeya hapa kala pwa thikama aluhe omaloli goeiskilima (Roomys). Shika otashi ti elalakano mpaka, oku ku etela eyakulo ndika popepilela, waaha pumbwe we okufala nenge okutuma oowili dhoeye kUushimba.

Ohatu landitha wo oowili oonkulu kondando yi li hwepo, onkene tu talela po ngele to piti pOshakati.

