



Efeni okudenga, okuhepeka nokudipaa oshiwana sheni

----- Omubishofi Dumeni ta ti -----

Ponhele yElelongeleki lOngeleki ya ELCIN, omubishofi wongeleki oyo, omufita Kleopas Dumeni, omafiku a dja ko okwa ninga eindilopukululo kOvanamibia aveshe osho hatu tiwa omakakunya va efe okuhepeka nokudenga nokudipaa oshiwana shavo vene. Okwa holola vali kutya ye mollongo aishe yomounyuni omo a enda, ina mona mo oshiwana tashi hepeke notashi lixulifa po shoovene ngaashi tashi ningwa muNamibia.

“Onda mona onghenda yokweenda konyala mounyuni aushe, ndele inandi mona nande omunhu ta dengwa ile ta dipawa, omanga ina monika etimba. Eshi onde shi mona ashike moshiwana shetu. Ashike moshiwana tuu eshi inandi mona mo oilumbu tai denge oilumbu ikwao naai ngaho hai kala novalaule ovo hava denge nokuhepeka ovalaule vakwao.

Eindilo etivali omubishofi okwe li yukifa kovahepekwa nokovafininikwa ta ti: “Nye ovafininikwa novahepekwa novadipawa, twikileni nondjila yeni mu yadi omhepo Iyapuki. Ilikaneneni ovahepeki novadipai fimbo inava fya, opo ve lidilulule, shaashi otava

kufilwa ashike ngenge ove lidilulula. Oukriste wetu nau kale poluhaela. Natu lombwele ovahepeki vetu kutya ohatu va ilikanene. Ondi shi shii, kandi na omalimbililo, ngee ndi li momwenyo ile handi ka kala ndihe po, otamu ke shi popya kutya Kalunga oKalunga ha nyamukula.”

Omadengo taa popiwa inaa ningilwa ashike ovakwashiwana vahapu omafimbo a pita, ndele okwa li yo a ningilwa nakufya Nghihalwa ou a xulifile oweenda waye eti-23/7/1987 moshihakulilo shaVenduka. Ounghundi ou wa twala fiyo omefyo lomufita Nghihalwa otau hokololwa kutya owa etwa komadengo omakakunya meti-23/4/1987.

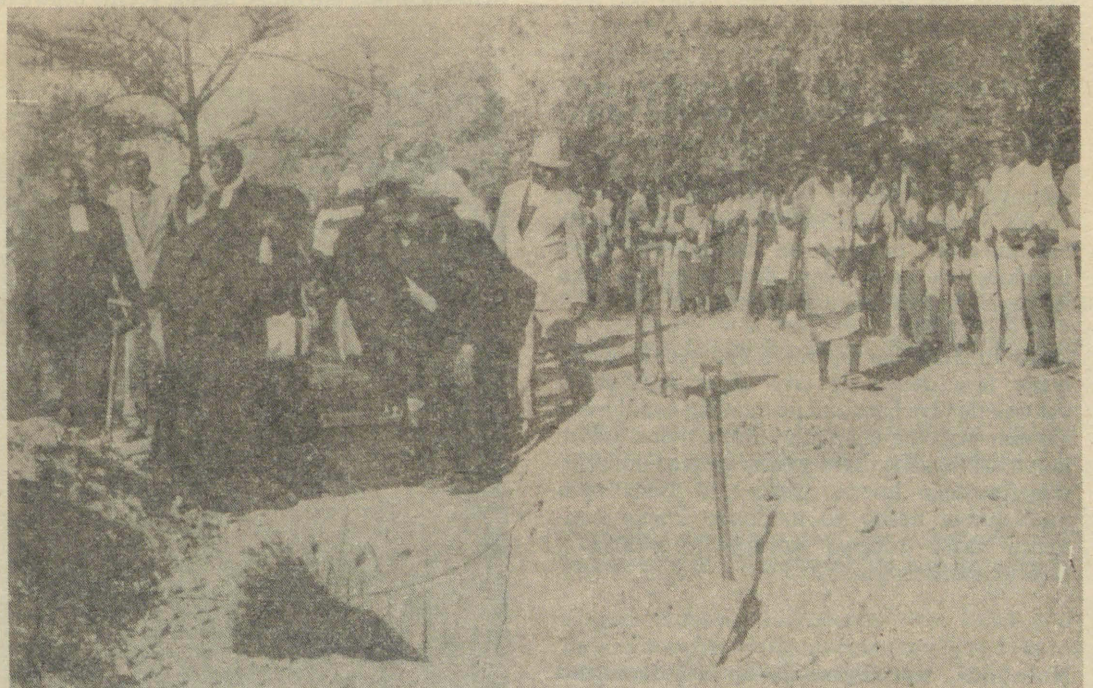
Ehokololo otali ti kutya oshiningwanima eshi shomadengo, osha ningilwe lwopotundi onhi-8 yonguloshi, eshi eloli lomakakunya la fitikinina nakufya poshinyangaongalo opo a li a ila oininwe yeongalo, ei dimbwile ko eshi a dimbuka komatango. Ehokololo ola twikila tali ti kutya omufita Nghihalwa okwa lele momake omakakunya onguloshi oyo; keumbo okwe ke uya ko ongula youfiku, a findikilwa, shaashi vati keumbo okwa li a puka ko, nonande onhele opo a lele a diininwa oi li ashike eekilometa mbali lwaapo okudja peumbo laye.

Tala kep. 4

“Hano nye oshiwana shange, shiiveni kutya okuhepeka nokudenga nokudipaa oshiwana shoye, oove mwene to shi xulifa po, ihashi ningwa mounyuni. Omubishofi Dumeni okwa li ta popi ngaha moshivilo shepako lomufita Fredrik Ngenoosheni Nghihalwa meongalo Ohalushu mOukwanyama. Moipafi yovalilanghali omayuvi nomayuvi, omubishofi okwa twikila ta ti:

“Ponhele yElelongeleki la ELCIN, ohandi indile pouyelele kovawiliki vovakwaita nokovawiliki vopolifi moshilongo omu, kutya fye omahepeko nomadipao ovanhu kave na etimba otwa hala a xule. Ou ina hala a xule na fikame a popye!” Pomhito ei mongeleka inamu monika nande oumwe a fikama a popye kutya ye ina hala omahepeko omuNamibia a xule.

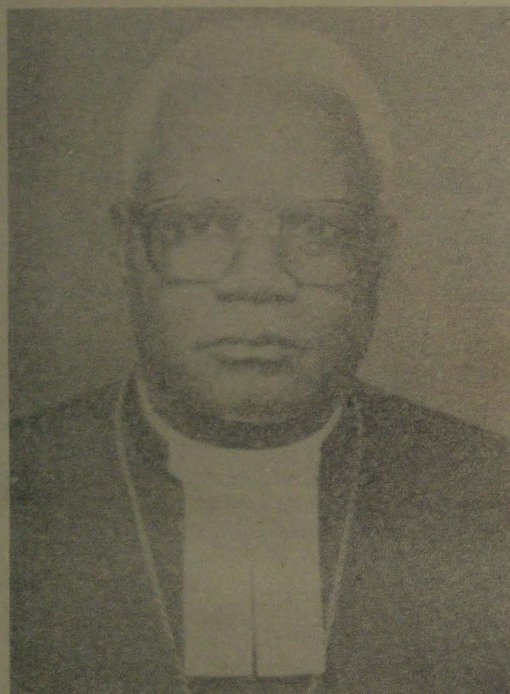
Omubishofi Dumeni, ou ta wilike ongeleki oyo i li moshitukulwa sholwoodi noi na ovanhu tava hepekwa notava dipawa, okwa twikila ta ti: “Otu shi shii kutya ovawiliki veni epangelo laSouth Africa. Otu shi shii kutya mounyuni omu na oveta nelandulafano, ndele ohatu indile omahepeko nomadipao ovanhu vehe na etimba a xule. Fye otwa hala ombili mokati ketu.”



Epako lomufita Fredrik Nghihalwa. Mefano otamu monika ongudu yovafita tave lilongekidile okukulukifila oshikefa melambo

EINDILO KEPANGELO LA S. AFRICA, KOMAONGALO AESHE A ELCIN, KOSHIWA- NA ASHISHE SHANAMIBIA NOKOOKAUME OVAITAVELI VAKWETU MOUNYUNI AUSHE

Eindilo ola ningwa komubishofi K.Dumeni moshivilo shepako lomufita wa ELCIN, Fredrik Nghilawa ou a xulifa, sha etwa eshi a dengwa kovakwaita vaSouth Africa eti 23/4/1987, nokwa pakwa eti-28/7/1987 meongalo omo a li a nangekwa kElelongeleki la ELCIN. Ohalushu eongalo li na oilyo i dule 10 000



Omubishofi Kleopas Dumeni

Etwaremo: Onda enda moilongo ihapu mounyuni. Onda mona ovakwaita novapolifi vahapu moilongo ihapu. Onda uda nonda mona oilongo ya vahapu. Oilongo oyo nda mona ihapu yomuyo oyo oilongo oinanghono mounyuni aushe. Moilongo oyo, inandi mona, inandi uda ovalumenhu, onunona ile ovakulunhu tava hepekwa tete fimbo inava monika etimba loku va hepekifa komhangu yoshilongo.

Omu muNamibia inandi mona nande ovatilyane tava denge ile tava dipaa ovatilyaane vakwao ile tava hanauna po omaliko ovatilyaane vakwao pehe na epangulo. Onda mona ashike kutya ovatilyaane otava yakula vakwao nombili, nonefimaneko linene. Osho nda mona omu muNamibia nosho yo moilongo ihapu mounyuni tashi ningwa kovapolifi ovakwaita, nokovayakuli aveshe.

Noluhodi, nononghenda inene momutima wange, onda mona, onda uda nonda koneka ovakwaita ovalaule novapolifi ovalaule "OKUFUTA" omakakunya mewiliko lovakwaita novapolifi va S.Africa tava denge oshiwana shavo vene. Tava dipaa ovanhu vomomaongalo avo, nokuhanauna po omaliko

oshilongo shavo vene nokudipaa ovanhu ve he na etimba. Oshilonga shavo shotete okudenga nande omunhu ina pangulwa epangulo lopauyuuki opo a monike ngenge oku na etimba omolwonghalo yoita muNamibia ya naipala nai, shi dule shito. Ohandi ningi natango tuu eindilo kwaava tava shikula, ngashi va tongwa metetekelo.

Eindilo ponhele yongeleki noshiwana shaNamibia

1.1.Eindilo kepangelo laSouth Africa: Ngaashi handi indile luhapu, ohandi indile natango nomufindo kepangelo laSouth Africa kovawiliki vovakwaita, novapolifi "OKUFUTA" naaveshe ovo ve na eendjebo, opo omadipao, omadengo, nomahepeko oludi keshe taa ningilwa Ovanamibia a xulifwepo diva muNamibia noku shainwe etulopo lomauta pokati kovakwaita vaSouth Africa na SWAPO pakatokolifo ka UN 435/78. Otwa djuulukwa ombili muNamibia.

1.2. Eindilo komaongalo aeshe a ELCIN, nokovaitaveli aveshe muNamibia.

- Ovamwameme Kalunga okwa hala tu kale tu na ombili naye mwene. Kalunga okwa hala yo tu kale nombili mokati koshigwana shetu. Kalunga ota pula elidilululo mufye oshiwana ashishe shaNamibia. Onghe ohandi mu indile nelinekelo opo mu ninge ngaha: Keshe umwe to

mono, to udu omunhu ta hepeke, ta denge nota dipaa mukwao, na ilikanerwe. Ovahepeki novadipai aveshe nava ilikanerwe: Jesus mwene wOngeleki osho a li ha ningi "Tate" va dimina po osheshi kave shi eshi tava ningi "Luk.23:34."

Otwa hala ovahepeki, ovadengi novadipai novakolonyeki aveshe ovalaule novatilyane ve li dilulule nova efe oilonga youlunde okuhepeka ovanhu vaKalunga oshifefa shaye, opo aveshe va xupifwe, eshi va diminwa po omanyono avo.

Fye yo ovaitaveli ovashikuli vaJesus otu na oku va ilikanena fimbo inatu fya, tu na omwenyo. Ovaitaveli vakwetu osho va li hava ningi, Stefanus osho a ilikana. Ndele fimbo tava kupula Stefanus nomamanya ye okwa ilikana, ta ti: Tambula omhepo yange. Ndele ye okwa tva eengolo ndee ta ingida mokule unene: "Omwene etimba eli ino li va valulila."

1.3. Eindilo kovaitaveli vakwetu mounyuni aushe

Ohandi endulula eindilo lange ponhele yOngeleki ya ELCIN kutya, ohandi indile ovaitaveli vakwetu mounyuni, ava ve hole ombili yaye (human dignity) eshi a shitwa efano laKalunga, ngashi have shi ningi shito, va twikile noku tu ilikanena, nokukwafa komikalo adishe fiyo Namibia la manguluka.

Etiko lohonde li xule, nombili ya Jesus i kale tai pangele muNamibia alishe nosho yo pamwe pe li mounyuni opo pe na omahepeko ovanhu vaKalunga. Eindilo eli ola pamekwa kElelongeleki la Elcin leti-28-30/7/1987 nola popilwa li tumwe koifo, nokepangelo la SA.

Ehokololo lokudengwa kwomufita Fredrik Nghihalwa mOhalushu.

Osha li efiku 23/4/1987 potundi onhi 20 h00 konguloshi, eshi omufita tate Nghihalwa kwa li a ila oiniwe yeongalo koshinyanga, oyo kwa li a dimbwa ko pedimbuko laye.

Tate F.Nghihalwa okwa li e ya nohauto yaye, omanga tuu ta fiki poshinyanga ohaluka ova

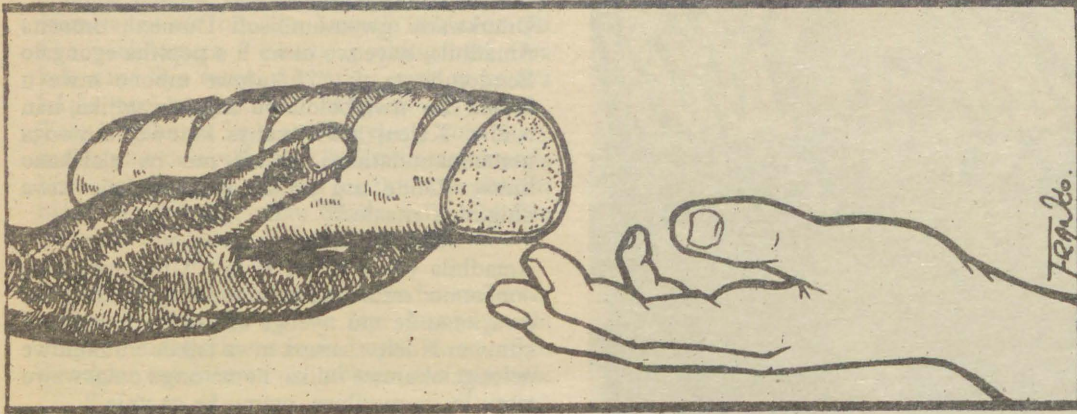
Tala kep. 5



Mefano otamu monika meme Aune Shilongo kolulyo ta yandje eyambidido komufiyekadi wanakufya Nghihalwa

EKUTIFO LOMAYOVI ATANO

Jesus okwa li a tala nonghenda eengudu dovanhu ve fike pomayovi atano, ve mu shikula. Okwe va yakulifa onghuta yokamati, omingome nhano doilya neeshi mbali adike.



Manga ine di longifa, paMarkus okwa ti: Jesus okwa tala keulu, e na oipalwifa ei meke. Konima yepandulo opo nee oya tukaulilwa ovaenda vaye, aveshe va kuta. Eshi taku hololwa etalo keulu, okwa indila eenghono kuXe, omunaenghono *shishe*.

Omunhu oto kuminwa oilongakumwifa yaKalunga, eshi kwa xupa oimbale omulongo naivali, hano ovanhu va yakulifwa eshi sha li shi he po. Moshilongo shetu, otu na omaipilo manene neudo omolwomaxupilo, eshi twe shi koneka kutya efimbo lodula ola pwa ko. Nandi ku dimbulukife, ootatekulu ova tile: "Kalunga ihe ku efa nganyoko, iha dipaelwa ovana." Ove shi koneka eshi e va xupifila pou-

Ovalumenhu moshilongo shetu

Valumenhu vanekanda
Vashingi vongobe vaHaivinga
Efimbo li li ko oletweni
Tu kondjeleni komesho
Tu naneneni kefikilo
Tu kondjeni pamhepo
Palutu inatu lidimbwa.

Valumenhu tu indilileni
Eemhwaka tu ilikaneneni
nande kwa tiwa:
Mulamukweni hamo to xupifilwa.
Valumenhu twa hepekwa nale
Vashingi vongobe twa mona oixuna
Tu lyaameneni kuKalunga
Tu taleni kuNamhongo.

Tu nomesho ndee katu weteko
Tu nomatwi ndee ihatu uduko
Hatu hekwa tu he shi wete
Liko nedimo twa tula komesho
Vanamibia tu djaleni onyati
Shiwana tu nyatipaleni
Tu ha vaeke omihoka komilungu
Opo ku ha tiwe otwa lya.

patekedi, pokati koshilaleko nomukonda.

Ove novanhu voye noinamwenyo voye owa dilaadila u ka hupile peni modula ei? Ino ka vaka, oto kwata noshidila koshipango shaKalunga: "Ino vaka". Tu itaveleni omishangwa, ovanhu omayovi atano a kutifwa komingome nhano neeshi mbali, da dja meke lOmona waKalunga.

Omufiyekadi wokuSarepta okwa lombwela Elia: "Ondi na okafila eshambekela limwe alike moshiyuma nomaadi manini moshanga, ohandi ka teleka opo tu lye nomumwange omumati fye tu fye". Ohaluka ota pewa elaka lipe komulumenhu waKalunga, Elia: "Oufila moshiyuma itau

Takamifa u ha kufe po oiyuna
Kotoka u ha nyangulepo oimbale
Lungama u ha lyate omhadi yelunga
Pashuka, koneka konima ngehe kwa li
Lya odidi u didilike
Lya omhuku u pukuluke
Ewi haku popya
Ondaka haku makuka.

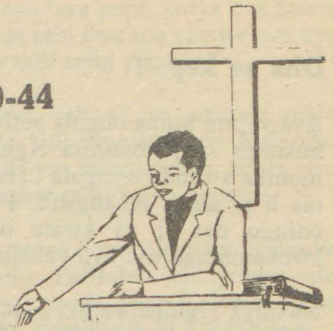
Haku lifya ounye oove mwene
Hamba eyokonima letu omolwoshipa shilaula?
Nekalepo letu eexwiki edi dixupi?
Hamba Kalunga eshi tuvalaula
nohonde yetu ollaula?
Hamba Namhongo itatu kuu tu nyamukulwe?

Hakutya eshi hatu ningilwa osho shiwa
Hakutya eshi shi li po osho ngoo,
Tu kondjeni tu yeni kefikilo
Fye tu ka hange kefindano.

Inatu tya oipindi omomesho
Emanguluko oletweni
Efindano olaaveshe
Kalunga iha dipaelwa ovana
Natu tyeni Kalunga nge to filonghenda
ovamoye ino tu dimbwako
Nge to ile ovanhu voye, ino tu fiyako.

Enos Hafeni Kaukungwa
Ohalushu

MARK.6:30-44

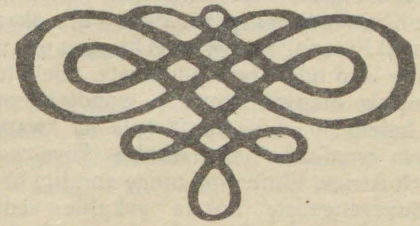


ka pwa mo nomaadi moshanga itaa ka pwa mo fiyo efiku olo Omwene ta lokifile edu odula". (1Ehamba 17:9-16).

Ino tila, Kalunga ketu oku na eenghono, ote tu xupifa nomodula ei mu na ovanhu va haluka nova teelela efyo omolwondjala. Eshi tashi teelela kufye: Oku mu itavela, oku mu lineekela nokweefa oulunde woludi keshe.

Tu yandjeni ano oupalwifa vetu meke la-Jesus, li na eenghono, e va punike fiyo ohatu ka fika kodula 1988 yeloolo.

S.Ndatipo



Ekumaido koshiwana

E he ku lombwele ke fi woye, ye e he ku lilile, oye ou ine ku lineekela. Ngeenge oto efa omu-mwanyoko ta i mepuko, nena owa fa ashike to li efele moshiponga kwa li u shi wete.

Ondi wete kutya oshiwana shaNamibia otu lyeni mepuko, tu li mondjila youpongo, ndele katu shi apa twa yuka. Ondi shi shi kutya vahapu vomufye otwa nyonauka koimaliwa, twe lilandifa po kominghoko di he fi detu. Sho osha yela nee, kutya ngeenge oto lilandifa po, nena owa llandifapo ashike edu leni koilongo i he fi yeni.

Vakwetu, natu lididimikeni fiyo Kalunga te tu nyamukula pefimbo la wapala. Okwa tiwa shivalula shi na ondjabi. Ye nee Kalunga iha kwafa elai.

Ngeenge hatu diladileni Ovaisrael, osho naana oshiwana sha kala moupika wOvaegipiti efimbo, ndele mokulididimika kwavo, Kalunga okwe shi kufa mo.

Ongehe hano nafye natu kale naana ngaashi Ovaisraeli. Natu lididimikeni fiyo Kalunga te tu nyamukula.

Ngeenge ovakulunhu vetu ove li mepuko, nena oshiwana shokomesho otashi ka kala momilaulu.

Ongehe shiwana shaNamibia, natu kaleni ova-dinini novalididimiki, nakeshe tuu osho hatu shi ningi, tu shi ningeni nomailikano.

H.J.Detu
Ondangwa

Dha za kep. 1

Ava ve mu mona ongula yefiku la landula, ova hokolola kutya omufita Nghihalwa okwa li a monika a dinda oshipala neisho laye lokolulyo ola li la ninga omangwili. Pakupopya kwavo, odindo oya li ya kwata okuulu nokwooko kwokombinga tuu oyo yokolulyo.

Nakufya Nghihalwa ota hokololwa kutya ka li ashike omukwaita moita yaHitler, ndele okwa yo omukwaita waKalunga a pendapala mokuudifa Evaengeli. Ota hokololwa kutya okwa li ha udifa ominute dixupi, ndele omunhu keshe te mu pwilikine okwa uda ko.

"Oye omulumenhu a li e na onghenda mokuyakula nomokukwafa ovakwaneongalo. Moule weedula 13 odo a kala meyakulo mOhalushu, okwe shi pondola okukwatakanifa eengudu domeongalo olo, odo di djuu okuhanganifa. Okupopya kwaye nokweenda kwaye, okwa fa kwomutoti weongalo olo, omufita Sem Kaukungwa," osho ava ve mu shii nawa va li tave mu tangumuna ngaha moshivilo shepako laye momaendo aHalushu, eti-28/7/1987.

ONDJOKONONA PAXUPI

Omufita Nghihalwa okwa dalelwe momudo 1923 muAngola. Ota hokololwa kutya oye omulumenhu womahepeko. Fimbo a li okaana kedula (4) lwaapo, ovakwaita vOvaputu ove uya meumbo lavo ndele tave mu kwata, ndele tave mu kupula mepya. Omweeti wondjokonona, okwa holola yo kutya okwa kala ha kwatwa kwatwa omafimbo nomafimbo kovakwaita vaSouth Africa. Fimbo ina ninga omufita okwa li omuyevangeliste nokwa yakulile eedula dimwe mOushimba. Okwa fiya ko omufiyekadi nounona vatano.

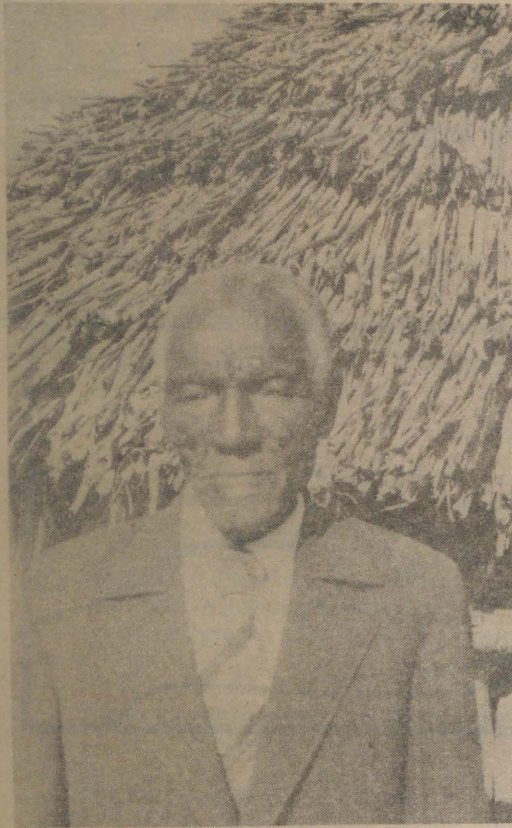
Didilika: Eindilo alishe lomubishofi Dumeni nehokololo lokudenga kwomufita F. Nghihalwa, tala pamwe pelili moshifo eshi.

(Omayelifilo)

Aambisfi yatatu mu-Namibia ya tsuwa omukumo

Elenga Oswil Mukulu mOmbalantu, omasiku ga zi ko okwa li a shilipaleke aawiliki yoongeleki oonene moshilongo, ndhoka tadhi hepekwa kiita, kutya okuza kaanona aashonalela sigo okomukulupe ta li omutoko, ayehe mbaka otaa galikanene aawilikingeleki ya tumbulwa uusiku nomutenya. Aambisofi oyo ngaashi: Kleopas Dumeni (ELCIN), Bonifatius Haushiku (Katoolika) naJames Kauluma (Anglikana).

"Onda hala oku shi popya sha ukilila kutya tse, okuza komunona omushona opo a valwa, sigo okomukulupe ta li omutoko, otatu mu galikanene osiku kehe mu mone omukumo



Omushamane Johannes Asino omotipito weongalo Eendombe

noonkondo dhokukoleka omagongalo getu nodhokugandja omukumo moshigwana ashihe shaNamibia mokukondjela emanguluko lyoshilongo shetu."

Omuleli gwoshilongo shaMbalantu okwa li ta popi ngeyi mesiku lyeyapulo lyongeleka yomegongalo Eendombe mOngandjera ndyoka lya ningilwe meti-2/8/1987. Omumbisofi Kleopas Dumeni, ngoka a yapula ongeleka ndjoka, naye wo okwa li a pulakene pamwe naakwashituthi omathele ogendji, sho omusamane Mukulu ta gandja ekundo lye mominute dha ngambekwa omolwoveta yuusiku.



Ongeleka yoihati oyo tai monika mefano eli konima yongudu yolwiimbo. Oya li ya yapulilwa oilonga yayo eti 2.8,1987

"Kutya omu li mondhila, omoshihauto, okokandoongi, okombaskela nenge okolupadhi, otatu mu galikanene," osho omusamane Mukulu a shilipaleke omumbisofi Dumeni nopeha lyayakwawo yaali mboka kaaya li moshituthi shiyaka. Mukulu okwa pandula wo egongalo Eendombe sho lya itungile ongeleka yoshinanena. "Ondi shi shii kashi shi oshipu okuholola po egumbo lyaKalunga li thike mpaka; ondi shi shi kutya omwi ihepekela po nomwa monena po omaupyakadhi, onke otatu mu pandula."

Omukwathi gwomumbisofi Dumeni, omusita Amadhila, naye wo okwa li a popitha egongalo Eendombe ta ti: "Uukumwe mbono mwe u holola sho mwa holola po ongeleki ndjika, nau tsikile. Kaleni mwi imanga kumwe, miilonga nomoonkundathana dheni, mu na elalakano limwe. Onde mu halela wo mu kale mwa dhiginina eitaalo."

Amadhila okwa tsikile ta ti: "Uukumwe owo oonkondo; nuulonga mbu wa thigala ko inau pwa, otatu ke mu nyenga ashike ngele kamu li kumwe. Ndele shampa mwa tsikile nuukumwe nelongelokumwe ndika, nomatungo omakwawo tamu ke ga pumbwa, otamu ke ga vula."

Mokati kaakwashituthi shiyaka omwa li omukulupe gwedhina Johannes Asino ngoka ta hokololwa kutya okwa ningi oshindji mehologo lyeegongalo Eendombe. Pondje aantu sho ya piti mo, omusamane Asino okwa hokololele aaniifo kutya oye gwotango mEendombe a kambadhala nokugongaleka aantu mokano sigo ya ningi etsali nokonima oyi itungile ongeleka ya kumbwa nomwiidhi ndjoka ya laleke eti-2/8/1987, sho ongeleka ompe ya yapulilwa iilonga yayo. Egongalo Eendombe olya totelwe eti-2/8/1976 lya kuthwa megongalo Okahao.

(Omayelithilo)

Dha za kep. 2

fikila po oshita netuwa letanga leameno. Ole mu ponokela noku mu shila mohauto yaye. Ove mu pula apa ta i nokwe va nyamukula kutya ye omufita weongalo linya Ohalushu okwe ya ashike koshinyanga. Ova tameka oku mu denga fiyo ta wile po nokuli, ove mu kufa po ndee tave mu ekele mololi yavo ongomunhu ta ekele oshikuni mohauto. Konima otwa uda omauta a topa, okwa li ngoo tu shi opuwu.

Ova ya naye ve mu londeka mehauto lavo omanga ohauto yaye ya shingwa po kuumwe wometanga olo tuu olo, konyala oshinano shi fike peekilometa 2 okudja poshinyanga. Ova kala naye fiyo omokati koufiku, omo ve ke mu lekela opo aye keumbo lwopombali youfiku. Tate Nghihalwa ka li eshi kutya ota yuka peni, molwaashi ka li eshi apa e li. Umwe wometanga leameno okwa ti:,, Ila ndi ku findikile shaashi owa twaalelele nge efiku limwe, eshi a ka fika meumbo olwopotundi 4 h00 yongula.

Eshi twe mu tala okwa dinda okudja koshipala ombinga yokolulyo neisho laye lokolulyo ola ninga omangwili, odindo oya kwata fiyo okwooko nokuulu kwokombinga oyo tuu oyo.

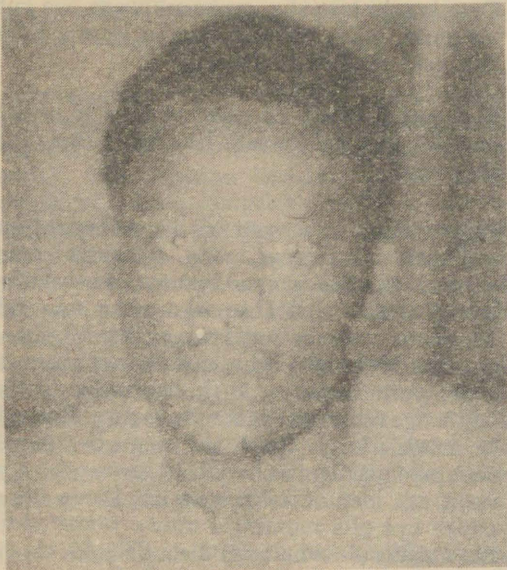
Okudja opo, tate Nghihalwa okwa kwatwa kounghundi fiyo omefyo laye eti 23.7.1987.

Ongula eshi kwa sha ovaneumbo ova ya opo va ka tale ko ohauto yatate Nghihalwa, shaashi oko kwa li ya fyaala oufiku oo. Elao linene etanga leameno opo ve li hanga, ove va pa ngaho ohauto ndee tava di ko nayo. Okwa li va kufa ko onomola yehauto yetanga leameno oyo:

**101 Batalion
Romio NR 3**

“Omambungu moipa yeedi” taa denge ovanhu

Omunashilonga komina yaLange (CDM) wedina Achilles Kalunde (32), omafiku a dja ko, okwa lele a idililwa ”modolongo” yehauto la fya, a pandekelwa mo needalate, ye a mangwa nomalyenge komaoko. “Odolongo” ei ya nangekelwe Achilles ina lya sha, ye ta fi outalala, oi li molukanda laUupindi mOshakati.



Omusamane Achilles Kalunde

Pakupopya kwomushamane Kalunde moshikangwa shehauto lo “Chefrolet” okwa li a idililwa mo kovahepeki vaye konima yokumudenga omadengo manyanyalifa Mee-nghundafana novatoolinghundana vOmukwetu, omusamane Kalunde okwa ti kutya ovahepeki vaye ove mu hangele meongalo lavo Endola, pokafitola e li navakwao. “Osha li eti 6.8.1987 lwopotundi 6h00, eshi ovalumenhu vatatu ve uya pufye pokafitola, opo ve tu hanga tu li omutumba pamwe navakwetu. Ova li va djala oikutu yopashiwana noya li mehauto loFoota imbulau, i na evala litilyana meemhati, yopaumwene.”



Mefano otamu monika ombuda yaKalunde ou ta pangwa moshihakulilo mOshakati konima yomadengo e a ningilwa komakakunya

“Umwe okwe uya pufye ndele ta ifana nge po, vati tu ka popye po. Eshi nde ya pomuvelo wehauto lavo, ova hovela okuundulila nge mo keenghono ndele tava i naame.”

Okwa twikila ko ta ti kutya ova dja ko naye foyo omomwandi u li konima yokalukanda kedina Omumbu, mOshakati, ndele tava hovele oku mu manga komesho noku mu denga nongodi yeedalate nomunino woshitenda, noku mu lyata neenghaku. “Opo va kala opo noku denga nge, vo hava ka fuda po manga, fiyo olwopoheyalu yonguloshi.”

“Opo nee ova londeka nge mehauto lavo fiyo oponduda yavo molukanda lwaUupindi, ndele tava nangeke nge mehauto loChefa olo ihaali ende vali. Omo nda kala fiyo ongula eshi kwa sha,” osho omushamane Kalunde a hokolola.

Pahokololo lyomushamane ou ovanhu vomudingonoko wounduda vaapo a lele, eshi va

uda ovahepeki vaye tava popi, kutya ova kwata “oshikulo” ongula eshi kwa sha vamwe ove uya okutala oshikulo eshi tashi popiwa.

Vamwe vomwaava vali ve ya okutala oilyo “yokufuta” oyo i shii omushamane Kalunde, ove mu mangelula mo momalyenge, ndele tava ka lombwela omukulunhu wavo nopolifi.

Opolifi eshi ye uya oya ti omushamane Kalunde naye koshipangelo. Pefimbo oshinyolwa eshi tashi longekidwa, omushamane Kalunde okwa li ta mono ouhaku moshihakulilo shaShakati.

Omushamane Kalunde okwa hombola noku na اونونا vatatu. Omukwaneongalo womEndola nokwa hangwa ashike e ya kefudo kOwambo. Olutu laye ola ningwa eembole nomanhanda, okudja komutwe fiyo okomaulu. Kombuda kwinya oixuna yongaho, ngomunhu oto ti okwa vavwa noundilo.

(Omayelifilo)

UUMBANDA OSHIPONGA

Owo hau yitha aanona yaamati noombele mootundi opo ngaa aniwa omulongi nge te endebele, ye mu tse. Shoka aalongi taa ningi mootundi ongee mokulonga nenge mokupukulula, oshi na sha nuwanawa womulongwa kehe. Lyo olyo elalakano lyelongo okugandja uunongo noowino osho wo okuutha mbo itaa iutha koompango nokomikalo tadhi opalele onkalathano yoopala.

Moshigwana omwa pumbiwa aalongi opo tu ka mone aanangeshefa, aasita, aapangi, aandohotola, aapangeli, aaleli aawanawa nosho tuu. Pwaa na aalongi itashi vulika ku monike mbaka.

Owo wa ethitha aavali oyendji eputudho lya mana mo nenge lya kola maanona. Otaa pewa iikulya ya gwana. Aanona otaa zalekwa nawa nenge sha pitilila. Otaa pewa iimaliwa. Ohaa zimininwa okuya shaampoka taa ka uhala nenge taa ka lala nenge okugaluka shaathimbo ndyo taa ya.

Aanona itaa longwa iilonga yiikaha nenge omayakulo gontumba, oshoka aavali oya tila oku ya hepeka aniwa, onkee haa ki ikongela sho taa ningi opo ya hempuluthe ethimbo, kashi na nee kutya oshivanawa nenge oshiwiniyi. Aavali yamwe oya luka oosikola aniwa odho tadhi longo aanona okuvulika nokulonga iilonga ayihe.

Moosikola aanona otaa longwa uunongo osho wo okwiimonena omaithano gontumba, onkee ngele inaa putudhwa nawa momagumbo otashi ya yonene okukala mosikola nokwiilongekidhila omaithano gawo nonkalo yokomeho. Ino panga aanona eputudho lya kola megumbo nolyiihwa po. Ohenda ngaa aanona pethimbo lyetu ye nokuya kooseko nokomihandjo mepipi eshona noye na ashike omasiku omashonashona momumvo ngo ye li paakuluntu nomomagumbo. Ihe moompito ndhoka ye li momagumbo naa putudhwe pwaa nuumbanda.

Owo ngaa tau hilitha aantu omakaya noku-nwitha aantu unene tuu aagundjuka ningangamithi; ngaashi epangwe niikwawo yoludhi lwomapangwe. Aniwa otayi kutha po uumbanda nolukaka notayi fupipaleke nokugandja omukumo noonkondo nenge uupenda nuufule. Onkee mokulongitha mbika

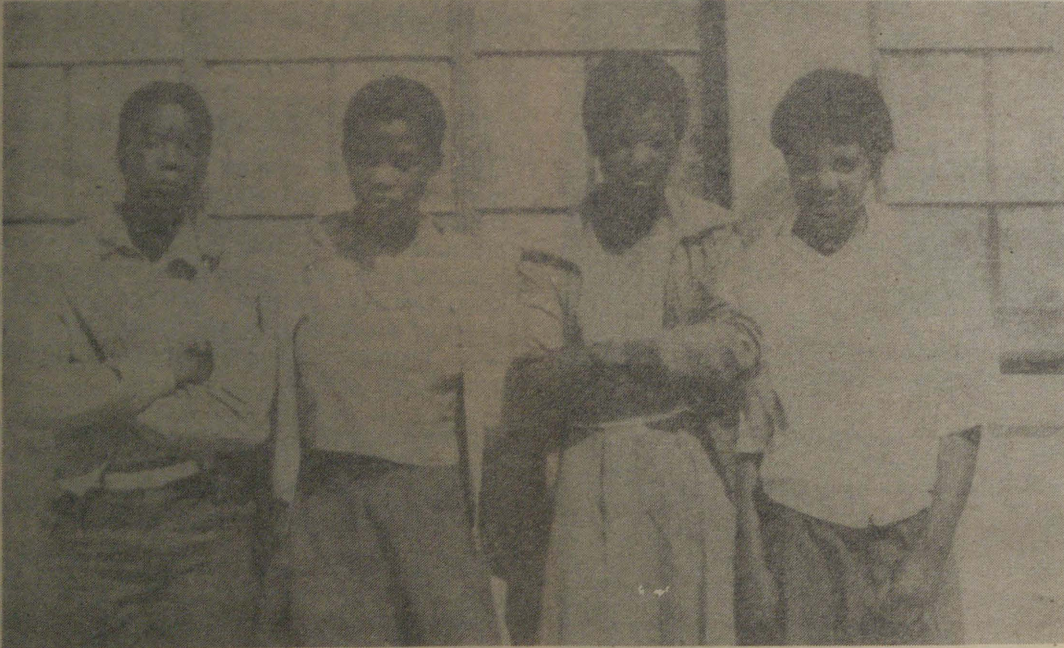
Tala kep. 7

OMAKAKUNYA TAA HEPEKE

MOKAHAO

OVAKWASHIWANA VA XWIKWA NOMALUSHENO

Omafiku a dja ko, omushamane Abraham Moses womeongalo Okahao okwa lombwela ovatoolinghundana vongeleki ya ELCIN kutya vo nokatekulu Alina Eelu, ova xwikilwe nomalusheno komakakunya omokamba yaKahao. Omushamane Abraham eshi okwe shi popila meumbo laye momukunda Oshukwa, eekilometa heyali lwaapo okudja mOkahao kombinga youmbuanhu. Ovanaifo ova hangele oshiningwanima eshi opo sha ningwa ongula yeti-5/8/1987 nomushamane Abraham okwa hangwa natango a pupyala kehandu, shaashi oku udite kutya okwa hepekelwa oinima yongaho.



Vamwe vomovanafikola mOkahao ovo va hokolola omahepeko nomadengo omakakunya mofikola yavo.

“Osha li lwopotundi 9h00 yongula eshi ouloli voubofola vatatu nohauto yoToyota, ye ya peumbo letu. Meumbo otwa hangwa hatu kundu okatekulu kange Alina oko ka li ashike ke tu popifa opo ka twikile nondjila yako yokoshipangelo shaKahao, ka ka hakulwe oshipute osho ka ningwa kekiya. Alina (14), owomomukunda Omatuni meongalo Onemanya mOngandjera,” osho omushamane Abraham a hokolola.

Okwa twikila ta ti: “Omakakunya okwa fikila tae tu pula tu popye “SWAPO”. Eshi twa holola oku ha shiiva sha kwetu kombinga yaSWAPO, ova hovela okudenga ovanhu aveshe meumbo. Ame ova manga nge komesho, ndele tava ti nandi nangale. Opo nee ova tula oumunwe vange ava vanini, vokeenya adishe, kolusheno nokuxwika vo tava twikile okudenga nge nokupula ndi popye vati SWAPO ou ha umbu okamba yaKahao. Konima yefimbo ova ka efa nge.”

Omukulukadi womushamane Abraham okwa hokolola kutya ye okwa kala a idililwa mondu da yokunangala, eshi, omushamane waye naAlina tava xwikwa nolusheno. “Eshi ndi li monduda onda li ndi udite Alina ta kuwaana eshi ta xwikwa nomalusheno,” osho a fatulula e na oshipala shi udite oudjuu.

Omadengo a mwe a ningilwa ovakwashiwana inava ninga sha, okwa ningilwe meti-31/7/1987 molukanda laKahao. Eedjonghundana mOkahao, oda kundaneke kutya efiku olo omakakunya okwa li taa denge ovanhu oshimha, vo taa li po “oupana” vovanhu nokunyeka ovanafitola, omakende okunwa, nope he na kutya otava futu oinima ei. Eefitola dihapu mOkahao oda hokololwa kutya oda patele mokati komutenya omolwomanyeko a tyangaha. Pakuuda, oinima ei yomadengo taa kenyeke nomanyeko, oya li tai ningilwa owina, shaashi vati omakakunya amwe omokamba yaKahao okwa tembukile efiku olo, paindilo lovakwashiwana vomOngandjera novanafikola olo la ningilwe konyala pehovelo lodula ei.

Mefiku la tumbulwa pombada, ovanafikola vavali vOmoseko yedina Etalaleko mOkahao, Ester Amupadhi naJohanna Nekwaya, navo ova dengelwe nai. Ester okwa hokolola kutya okwa dengwa keisho nomolutu neengonyo, ofimbo Johanna ta ti okwa dengwa komayulu neengonyo nokwa li ta di eehonde. Aveshe vavali ova hokolola kutya ova hangwa tava di koshipangelo shaKahao kwa li va ka talela po ovanaudu. Omadengo aa okwa ningilwa pondje yoluumbo lwofikola.

Ehokololo limwe la dja mOseko Etalaleko otali ti kutya omafiku eshi a li 17/7/1987, ovanafikola vavali vomofikola oyo, Silas Anyolo (21) naShiimi Lysias (20), ova ehamekelwe keeholo da dja kondjebo yekakunya lomOkahao, olo la li tali umbu medu lwaapo pwa li pwa fikama oumatyona ava vavali, pondje yoluumbo lwOseko oyo. Omunafikola umwe wedina Josephina Halweendo, womEtalaleko, naye okwa hokolola kutya okwa dengelwe efiku olo kekakunya tuu olo kwa li tali umbu oumatyona va tumbulwa. Josephina okwa hokolola kutya ye okwa hangwa ta di kopoosha. Ekakunya vati ola lombwela ovanafikola ava kutya ope na omunafikola umwe e likupula nomamanya, omolwaasho la fululukila mukesho omunafikola e uya momesho alo.

Omukulunhufikola wEtalaleko, Paulus Amadhila, okwa ti oshinima eshi shokutya ekakunya ola kupulwa nomamanya kovanafikola vomofikola yaye, kashi fi shoshili. Pafatululo lomushamane Amadhila, pefimbo olo tali popiwa kwa kupulwa omamanya, ovanafikola aveshe ova li natango meengulu dofikola, kava li va pita mo manga. Meemwedi dopehovelo lodula ei, eeseke mbali domOkahao, Etalaleko nOsekundo yaNgandjera, oda li da tulwa omakamba, eshi ovanafikola va dja mo oinyeko, omolwomalushindo omakakunya omokamba yaKahao.

Momwedi wa dja ko, ovakwaita vomokamba yaKahao ova hokololwa kutya ova kala tava ende nomikunda dihapu domOngandjera nokuningila ovakwashiwana oyoongalele omo tave va lombwele kutya vo ova tokola okutembuka po pOkahao, paindilo lovakwashiwana novanafikola vomOngandjera. Ashike fiyo osheshi oshinyolwa eshi tashi longekidwa, ope na omadiladilo manini taa ulike kutya okamba inya oya tembuka po. Omakuma edu oo a dingilila okamba otaa monika natango, inaa ngumunwa po. Mokamba nopomudingonoko ohapu monika natango ovakwaita tave linyenge. Nokuli noonakuxwika omushamane Abraham nomalusheno, otava hokololwa kutya omo va penduka mokamba ei, ve ya po komatango meti-4/8/1987.

MuMalitsa neudo, momahenene omOkahao, okilometa ashike imwe lwaapo okudja pokamba yomakakunya, opwa li pwe lituwa omidimba dovalumenhu vatatu tadi lika keembwa, da kupulilwe po komakakunya omokamba omo lwopotundi 8h00 yonguloshi, vati “oikulo”. Ongula eshi kwa sha, ovakwashiwana ova kufa oixupulo, ndele, tava fe elambo limwe, ndele tava pake mo omidimba edi.

Fiyo onena eendo eli ohali monika le likalela moushilo wongeleka yaKahao, kwa tulwa omushiyakano.

Onghundana imwe vali ya dja mOngandjera, meongalo Onemanya, otai ti kutya omushamane wedina Tomas Iyambo, ota hakulwa moshihakulilo shaKahao. Osho she mu etela ouyehame ote shi holokola ngaha: “Osha li omafiku 19/7/1987, eshi omakakunya ahamano e uya pofitola yange, ndele taa hovele okukondjifa nge ndi va pe omakende va nwe. Eshi nde va hololela kutya itandi shi ningi, ova hovela okuumba nge momaulu. Oholo imwe oyo ne ya yasha nge metundji. Yo vene inai kwata ekipa, ashike oya pita momufipa umwe wometundji. Ekalanyana olo nda li nda djala fiku olo, ola dja po la ningwa oshinyanyu keeholo.”

Dha za kep. 5

omuntu ota kanitha omaiuvu ga yela, eipangelo lyopantu, omaiuvu gokuyoolola uuwanawa nuuwinayi, osho wo egamo lyokuuvitila ohenda nenge okuyaalela omuntu omukwawo noku mu tala ongomuntu.

Onke kombinga yelongitho lyiingamithi, omuntu ota vulu okuyona po nokudhipaga aantu ooyakwawo nenge okuyonagula omaliko nomalandulathano monkalo. Olwindji aalongithi yomapangwe oyi iyono po yoyene sho omitse dhawo dha teka (ya piyagana) nenge ya yi miiponga yeso lyo lyene sho ya longithwa koonkondo dhomapangwe.

Owo tau fala aakadhona moondjokana mbala mbala ye kee na iilonga nenge eitahano lyasha, oshoka aniwa nge a landula omalongo ota hupuku ko. Osho wo she ya fala moondjokana noshe ya ziminita aamati shaa ngoka e ya tango, nonando ke mu hole nenge oshoka aniwa aalumentu oya pumba.

Shika osho nee she eta oondjokana inadhi kola moshigwana, eteko lyoondjokakana noontamanana hadhi tameke ashike omvula yotango yomoondjokana. Uumbanda owo tau falitha aakadhona nomoombotsotso nando e shi shi kutya ngoka omufuthi, oshimpulu nenge omukolokoshi. Yo nee shaa ya yi pamwe, ote mu tala uumbanda wowane ite mu gunu, ihe mu pukulula, ihaa longele kumwe nonando na zimine, kutya eno tate, omoluumbanda ashike wowane.

Owo tau kuthitha aamati omukadhona shaa ngoka a adha nonando ke mu hole unene, nenge ihe mu fuula noku mu hokwa a ninge omukulukadhi gwe, kuume komokukalamwenyo kwe akuhe. Onkee omoluumbanda aniwa aakadhona ohaa tindi aamati, ota kutha shaangoka a adha koluha ti iendele nenge shaango a zimine nuupu.

Uumbanda owo ihaa ziminita aamati omakumagidho gookuume gaavali sho taa ti: Tala mo natango kuume, nima ngaa? oshoka pamwe ita mono we gulwe, onkee omoluumbanda ohaa ikumike kutya: Shaa e shi okuteleka oshithima opuwo. Ondjokana kayi shi ashike okulya nokunwa, onkee itayi kalekwa po kiithima ya telekwa nawa nenge koontaku nomalovu ga dhungwa nawa. Osho wo itayi kalekwa po sho nima a za megumbo e yamba nenge mezimo enene, ihe otayi kalekwa po konkalo yetaambathano.

Aakulukadhi mbo ya kongwa ngeyi, omolu okuteleka ohaa thigwa nee momagumbo, omusamane ta yi ta ka enda nokuuhalelela oye awake, oshoka aniwa iilonga yomukulukadhi okuteleka, okuya kongeleka nokuvala uunona opuwo. Mbika iilongayakulo ashike yimwe mbyo ha ningi, onkee inayi mu imba okweendwa naye. Aakwetu aakulukadhi ongaashi naanaa aantu yalwe haku thigwa ashike momagumbo ihe naa endwe nayo, oyo eopalo lyetu osho sha tulitha mihauto omitumba ombali, opo ye tu gamene yo taa tu ganda sho tatu hingi uunene, nenge tatu kotha. Opo ye tu landele sho tatu nu nenge tatu li, itaashi eta iiponga mondjila. Opo ye tu gamene wo noku-gamena aendindjila yalwe.

Owo ngaa itau kothitha nawa oyendji uusiku nonando a kale a langelwa nenge e li megameno lyontumba, oshoka oku na ngaa sho a ninga nenge e li monkalo yontumba ndjoka aantu

aakwashigwana inaayi hokwa, nenge ihayi ya nyanyudha. Owo itau holokitha oyendji puuyeleele nenge okupopya sha mokati kaantu nenge kaakwashigwana, oshoka oye shi shi kutya omadhiladhilo gawo ihaga popilwa kaantu.

Epulo olwindji otali holoka omolwashike omuntu ita etha nee okulonga iilonga iwinayi, mbyo itayi mu mangulukitha mokuholoka paantu? Eyamakulo oyo ndi kutya uumbanda ngaa, oshoka okwa tala oku yi etha, oshoka pamwe ita hupu nawa konima yasho. Uumbanda omupolisi wokwiiholamwene, onkee mpo pe na okwiihola mwene, uumbanda otawo hepeke noonkondo.

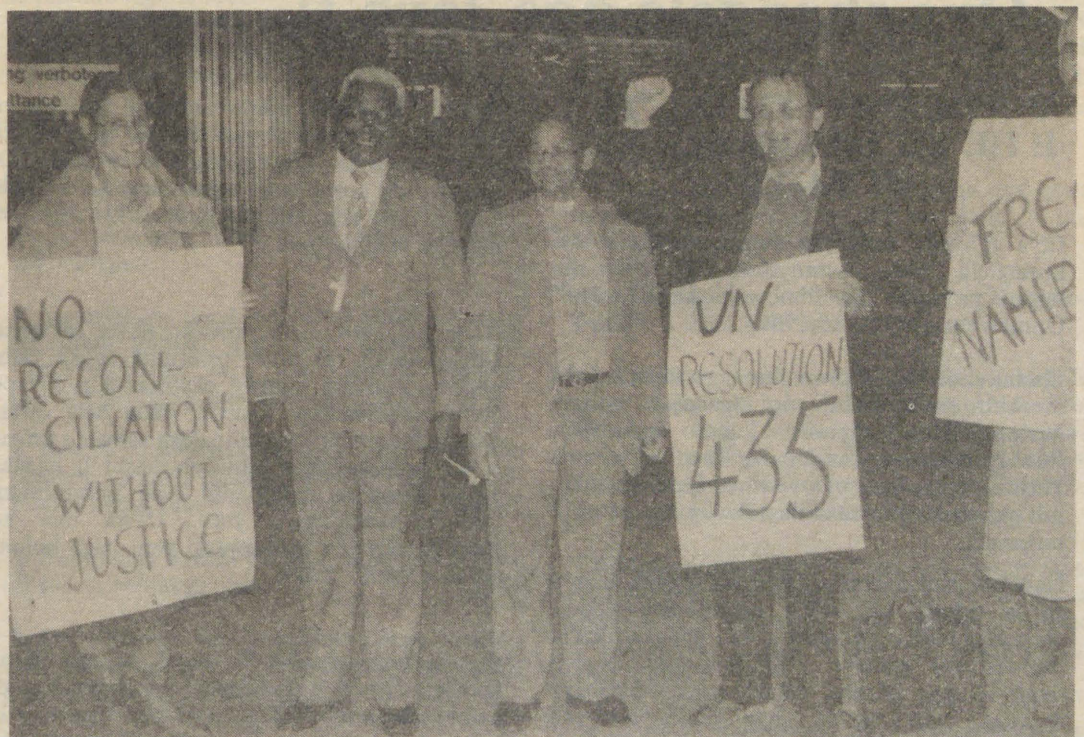
Immanuel lithete

Vane mOnamukulo va dipawa keembulu

Ovakwashiwana vane, ovakainhu vavali nokaana komudo umwe ova dipaelwe neendjebo kovakwaita veembulu eti-28.7.1987, vati omolwokutauluka oveta youfiku. Ehokololo otali ti oshiningwanima eshi osha ninghilwe lwopotundi 7h30 momukunda Okathakamumbwenge, meni leengaba deongalo Onamukulo mOndonga.

Pahokololo, oonakudipawa ova hangwa tava di poundingosho wedina Onakayale, va finda komaumbo avo. Eshi va enda oshinano sheekilometa mbali lwaapo, ehokololo la ti, ove litwa moshinangela sheembulu.

Omadina oonakufya ongaashi taa landula: omumati wedina Diesela ha di mooMateus Alukolo (omutungi weengulu), Rauha Andreas, Selma Angula nokanona David yaDavid. Rauha naSelma ova hangwa hava di meumbo lomushamane David Kakehongo.



Ombili yaNamibia otai di ashike moshitokolifo 435 (1978) shoiwanahangano

Ehokololo ola twikila kutya okangudu kovadipai oka li ka fikama movakwaita 9. Ovakwaita ava, pahokololo, pomukunda opo ove u yile po 27.7.1987. Mefiku la landula komatango ove uya poundingosho, ndele tava hovele okunwa. Pokunwa opo va dja va ka ninga oshilangela.

Meehani dopehovelu lomudo ovawilikingeleki tatatu ova li va twala oshinima eshi shoveta youfiku mohofa yaVenduka, opo ngeno oveta ei i dje po noiha longifwe vali, ndele inashi pita.

(omayelifilo)

Moshifo eshi, omubishofi wongeleki ya ELCIN, Kleopas Dumeni, ota ningi eindilo la mana mo, opo omakakunya a efe po okuhepeka, nokudenga nokudipaa ovanhu voshiwana shavo vene. Omubishofi Dumeni eindilo eli okwe li ningila moshivilo shepako lomufita wongeleki ya ELCIN, omufita Fridrik Nhgihalwa ou a dengelwe komakakunya, ndele oungundi womadengo tau mu twala fiyo omefyo.

(Omayelifilo)

Omusi gwotango muNamibia komukithi gwa AIDS

Olwotango muNamibia taku tumbulwa nakusa komukithi Acquired Immune Deficiency Syndrome (AIDS), ngoka inaagu monenwa natango omuti gwealudho. Nakusa oye okamati koomvula 18, omvatele yaAngola, pashifonkundana The Namibian.

Inaku tumbulwa edhina noinaku tumbulwa mpoka a sila. Ihe ehokololo otali ti nakusa okwa si ngashingeyi konima yiiwike iheyali. Aantu konyala 300 muNamibia, momihoko adhihe, otaku tiwa oya menwa nale kombuto ndjoka hayi endeleele mokutaandela.

Ompangu molweso IyaShifidi

Konima yedhipago, eyotho lyonyama

Uyelele uukwawo kombinga yedhipago lyomusamane Immanuel Shifidi (50) oshilyo sha SWAPO, nkene sha ende, owa pulakenwa mohofa mokana kaangoka inaa tumbulwa kedhina, taku ti ashike "omuhingi". Edhipago IyaShifidi olya li 30 gaNovomba 1986, mOvenduka.

Omumentu ngoka pahokololo lye ha hingi okambesa pokati kOshakati nOndangwa noina fala shito aantu kUushimba, okwa ti moshiwike sha hugunina sha Novomba 1986, okwa adhikilwe ku Jakob Tomas ngoka e mu pula ompito yokufala aantu kUushimba. Omuhingi aniwa okwe shi dhimbulula ngaa kutya Jakob ngoka oshilyo shobataliona 101, pOndangwa.

Tomas okwa lombwele aniwa omuhingi ngoka, kutya aantu kutya oshinima oye shi kundathana nale nomuhona gwe (omuhingi) noya zimina-thana nawa. Tomas okwa gwedha ko a ti aantu mboka taa falwa kUushimba, otaa yi kosikola yuukwiita kOkahandja.

Olyomakaya ongulungula yesiku ndyoka lya tetekela oshigongi sha SWAPO, omuhingi nomukwathi gwe oya yi kOkamba 101 ngaashi yu uvathana naTomas.

"Onda thikameke oshihauto shandje pondje yokamba. Tomas okwe ya kutse nopwa li wo pe na natango okambesa okakwawo, hoka omuhingi gwako inaandi mu tseye, ashike onda tseye kutya Omukwambi," osho omuhingi a hokolola etameko lyolweendo lwawo.

Okwa tsikile ta ti, Tomas okwe ya lombwele ayehe yuumbesa ya ye meni lyokamba niihauto yawo. Oya dhimbulula aakwiita yaali aatiligane ye li mothayila. Omukwiita ngoka a zala oonguwo dhuukwiita namukwawo omoonguwo dhowala. Omukwiita ngoka a zala oonguwo dhoshikwiita okwa pula, kutya aantu ye thihe peni taa gwana mokambesa kehe nondando oyi thihe peni?

Aahingi oya yamukula ya ti okambesa kamwe otaka gwana aantu 27 notaa pula iimaliwa R27.00 komuntu kehe. Opo tuu mpoka kehe gumwe okwa pewa R1,080 okuya nokugaluka. Oonakufalwa noya lombwelwa ya londe.

"Aalumentu 27 oya londo mokambesa kandje, oya londeke omatati gawo, oomwele dho-shiwambo nodhoshingolo, noondhimbo. Ayehe oya li ya zala oonguwo dhaakwashi-gwana," osho omuhingi a hokolola. Yalwe 27 oya londo ishewe mokambesa okakwawo.

Mumboka ya londo mokambesa ke, omuhokololo ngoka okwa ti, okwa dhimbululula mo yamwe yomokamba 101 ngaashi; Jakob Tomas, Paulus Sakaria; Immanuel Gideon; Mateus Filemon; Vaino Andreas nomuwiliki gwosheendo ngoka a tseye ashike edhina Kashiimbi.

Uumbesa mboka owi idhenge ondjila ongula ndjoka yeti 29.11.1986 potundi 8.00. Okuthika mOkahandja pomahooli, oya lombwelathana ya ka thihe tango kOvenduka, opo ya ka uve kutya omokamba yini taa ka lala. Pomaholi mpoka mOkahandja, opo aniwa Tomas a lombwelela omuhingi, kutya yo itaa yi nando okokersesa yasha, ihe otaa yi ya ka kale moshigongi sha SWAPO mOvenduka esiku tali landula.

Omuhingi okwa pula aniwa Tomas shono ya dhiladhila ya ka ninge koshigongi nokwa yamukulwa kutya, oku ka pulakena owala, oshoka inaa kala nale miigongi ya tya ngaaka. Uumbesa nowa, tsikile ondjila sigo okOvenduka.

Tala kep. 9

Ova shangela nge tava ti.....

U NYIKA IHO LIUDU, YE E HE KU LOMBWELE KE FI WOYE

Iitya mbyoka tandi ka tumbula mpaka oyi ikwatelela unene koshinyolwa "U nyika iho liudu, ye e he ku lombwele ke fi woye" Omukwetu gwajuli 15,1987.

Hasho ando oshipopiwa shotango tashi holoka moshifo shika tashi popi (gandja) uusama kaalongisikola. Oyindji handi tsakanene. Koshiyetwapo shomusamane Tawii okwa tala kutya aalongisikola oyo ye li oshiyeti shuunkundi maanasikola okutsikila nokwiilonga nombili miipundi.

Natango pamusamane Tawii, aalongisikola oyo ye li ongola okutidhila aanasikola oyendji momalukanda nomomukithi gwokapundja (uukakunya) ngaashi e gu tumbula. Ngaye ogumwe gomaalongi, ndele otandi pataneke omadhiladhilo goye tate Tawii. Nokutya mpaka owa fala omeya hoka itaa ku dhungwa. Ondi inekela aalongi ooyakwetu mpaka otaya tsu kumwe nangaye.

Nandi yamukule epulo ndyoka lya pulwa omulongi kehe, kutya onda tegelela onkalo ya fa peni kaanyasha yetu aailongi? Eyamukulo: Onda tegelela omunyasha omwiilongi kehe a kale e na onzapo yuulongi noyethano kehe (galwe) notyeye ye ngangaye.

Onda hala mu u ve ndje ko nawa aakwetu, kutya inandi tya ando oshinima shoka tashi popiwa kaalongi yamwe okwiitangela onzapo notjeke oshiwana. Aawe, onda hala owala okuyelithila nokukwashiilipaleka aakwetu unene aavali mpaka kutya oshinima kashi li ngaaka kutya oonzapo dhetu dhi kale oondilimani nooholo kaalongwa yetu. Otwa uva ko komakumagidho nomanyano geni haga holoka aluhe moshifo shika.

Ihe tse ongaalongisikola ohatu yemata unene komagandjo geni guusama, ne ihaamu popi nande okauwanawa kasha twe ka longa. Mbela sigo oompaka aalongisikola inaya longa natango sha oshiwana shoka tashi eta pondondo yepandulo?

Aaniilonga yalwe nayo ohaya pewa ngaa omausama, ndele ohaya ka tulwa pehulilo uuna aalongisikola ya tulwa pomutenya. Omukwetu omuholike unene aavali mboka mu li tamu pampadhala oshiyeti (endangalati) shoka shi li mondjila yaanona yeni mokwaamana eilongo lyawo sigo ombedhi mwe yi luhithile maalongisikola mboka taa itangele oonzapo nootjeke ileni tu tuleni uukuni kumwe, nokuimonena omapulo komaluvulo getu omayamukulo kushoka twe shi hala na otatu yambula po oshigwana shetu.

Ondi wete kutya oshiwana nasha simana na ishewe oyo ethimbo opo u kuthe oompadhi dhoye e to yi posikola mpoka wa uva nenge wa mono omapuko ngaashi ngaka ga tumbulwa nagalwe inaaga popiwa, e to kundathana nomulongi (aalongi) posikola ndjoka. Aalongwa yetu mboka tatu longo one oohe nooyina, ne one mu na oshimpwiyu (etokolo) lyaashoka tu na okutya nashoka katu na okutya kuyo. Onkee otatu mu tegelele nyenyanyu mu thihe kutse shi vulithe okunyola moshifo nokumonikitha omapuko getu kaanona.

Edhimbulukitho, tseyeni kutya aalongisikola mpaka oye na oshilonga oshinene. Inaya uhala owala taa nyanwa ngaaka, nando oombelewa dhelongo naakuluntu yadho, oosikola naakuluntu sikola opo ye li poosikola ye mu tegelela okukundathana nokutsaathana omayeke nomukumo. Inamu dhiladhila ando kutya omatungo naantu mbono ya tulwa po oya tulilwa po efuu (osima) lyowala.

Omulongisikola gumwe okwa li ando ta vululukitha omadhiladhilo ge moshifo "Omukwetu" konima yiilonga iidhigu yesiku. Mokulesha oti itsu ishewe mekuthikuthi nenge ndi tye sha shoka tashi mu popi nayi, nande haye e shi popi (ningi). Omukulu gwonale okwa ti: "Sha nya gumwe osha tukitha oyendji." Etashi mu etele ishewe elondo lyombinzi.

Ondi lwete kutya oyo ethimbo okuhulitha po omapopyo nayi gaalongisikola miifo pwaa na eholeko lyasha. Naangoka to tsikile natango nomukalo nguka, olufo olwetu aalongisikola tu ningeni po sha. Nenge omukwetu oto ningi ngaa ne kutya lyoshilalo oyo hali lika?

Kombinga onkwawo omukwetu oto pangula, oshoka ou lwete inaatu simaneka aalongisikola yetu aakulu naKalunga. Ndele hasho shi li ngaaka. Ngoka u na uundjolowele natango nangoye oto hiwa u ka putudhilwe oshilonga shika, opo u ye tu kondjeni pamwe. Ndishi shoo ino ya keithano ndika nando ompito opo ya li owii idhimbike omushigakano?

Kaito Nangula
Uukwaluudhi

Ya dhigininwa natango

Samwel Andreas, Oshakati (28.2.1987)
Amutenya Ashipala, Okatana (1985)
Filemon Katsimine, Oshamuhene
Josef Katofa, Eengolo (7.7.1987)
Saara Lukas, Eloolo (1987)
Saara Teofilus, Eloolo (1987)
Martin Mulondo, Katimamulilo (3.4.1987)
Abner Shikesho, Okamule (3.7.1987)

(Sha zi mo NCC: London)

Dha za kep. 8

Okwa ti oye ya pehala limwe lyokamba yomakakunya, e taa zi po nekakunya limwe li li momuzalo gwiilonga lya londa kokapakapaka. Olye ya fala sigo opokamba onkwawo mu-mbugantu waVenduka. Ngaashi ya ningile nale, Kashiimbi nayakwawo yamwe oya yi meni lyokamba, nashilumbu ngoka e ya thindikile, manga yalwe ya tegelela pondje. Konima yethimbo oya zi mo naatiligane yaali.

OLandrover yomakakunya oya kwata komeho nondjila ndjoka ya ya koRehoboth, hoka ye ya fala natango kokamba onkwawo. Omuhingi okwa lombwele ohofa kutya oya taambwa ihe mokamba ndjoka, noya heluka.

Kashiimbi okwa thigala komweelo gwokamba ta popi manga noradio. Omuhingi okwa ti, okwa li e lwete kutya ngiika okamba hayo natango ndjoka ye na okuya.

Aniwa okwa helula omakakunya ge mpoka, ye nokuhinga a pite mo. Pomweelo okwa adha po Kashiimbi ngoka e mu indile a tegelele kashona, oshoka okwa tega maŋga eyamukulo mOradio. Eyamukulo sho lye ya olya ti, mokamba moka hamo ye na okukala. Omuhingi okwa shuna mo a kala londeke aamentu ye.

Pethimbo ndyoka okwa ti, okambesa ke nako itaka ende we nawa. Shika okwe shi lombwela wo Kashiimbi, sho ya thiki mOvenduka. Opwa ningwa euvathano e ya fale kontopa yopu SWAWEK, mpoka yi ilwe po koshihauto shimwe tashi zi kokamba yaKahandja.

Omuhingi okwe ya helula mpoka pontopa noyu uvathana ya tsakanene ihewe mpoka ongula. Tomas okwa londo mokambesa komuhokololi noya yi koKatutura, hoka ya mono omupangeli pokomboni. Ongula yeti 30.11. potundi 9-00 oshihauto oye shi pewa nale sha pwa.

Potundi 3. komatango, Tomas okwe mu lombwele aniwa ya ye koshigongi yo ya tale yakwawo ngele ya thiki ko. "Sho twa thiki poshigongi, otwa thikameke oshihauto shetu lwokuumbangalantu wondjila yoteya notwa yi tu ukilile moshigongi," osho omuhingi a hokolola.

Omuhingi nomukwathi gwe, oya kala aniwa ya thikama mpoka ya taalela kaawiliki yoshigongi. Manga ya thikama mpoka gumwe gwomomakakunya, Nangolo yaJosef, okwe ya kuyo te ya lombwele, kutya oya thiki noshihauto shoFoota, ye te shi ulike. Osha li oFoota ontokele yobaki.

Nangolo okwa tsikile ta ti, yakwawo oya gama haandiyaka yongeleka, konima yaantu. Sho a hokolola okwa shuna koFoota yawo. Ehololola otali ti manga aniwa omuhingi ya thikama natango tuu mpoka, gumwe gwomomakakunya okwa zi ko te ya pomuhingi, te ya lombwele ya thige po oshigongi, oshoka uupyakadhi otawu tameke mbala. Omuhingi nomukwathi gwe naTomas, oya yi mokambesa e taa yi sigo okokapale ketanga. Tomas okwe ya lombwele mpoka, kutya yo nooyakwawo otawu ka tsakanana owala kontopa yokuSwawek.

Lwopotundi onti 5-00 komatango, oya hingi okambesa kawo ya ye kontopa. "Sho twa thiki mpoka, otwa adha nale oFoota ontokele ya thikama mpoka koho yontopa," osho omuhokololi a ti: Omwa li ashike aantu aashona natango. Yalwe inaa thika. Kashiimbi oye kwa li ta hingi oFoota.

Tala kep. 12

OMAPULO 15 GA MWENKA IILONGA YOMINA

Aaniilonga 3 100 momina yaShomeya (Tsumeb), oya tsikila natango noshipotha shokweetha iilonga komina yiiwike itatu, sigo ya zimininwa omaindilo gawo 15 kewiliko lyomina. Ekanitho lyomina ndjoka otali yalulwa ngashingeyi poepelesenda 60% nenge dhi vule po mesiku. Oshipotha shaaniilonga osha tamekele okuza Juni 7, 1987 sho itaa landa we sha moositola dhAatiligane. Naashika sho inaashi lundulula omitima dhaawiliki yomina, okuza 27 Juli oye etha iilongitho ayihe momina sigo omapulo gawo 15 ga yamukulwa.



Ethano ndika otali ulike omina yaShomeya moka aaniilonga ye etha po iilonga yawo nokupula oondjambi dhi gwedhelwe

Omina yaKombat nOtjihase, adhihe dhongopolo, nadho wo odhi li moshipotha shoka. Manga oomina onkwawo oonene moshilongo; CDM naRössing, nadho taku tiwa odha gandja eyambidhidho lyadho koshipotha. Aaniilonga yaShomeya oya tega omayamukulo ga "eeno" komapulo taga landula:

1. Ya gwedhelwe opelesenda 120% kondjambi ndjoka haa kwata. Aaniilonga mboka ha longo koho yeve ohaa kwata 87c motundi naamboka haa longo kombanda otaku ti oye na R1.08.

2. Aaniilonga ya zimininwe okukala noofamili dhawo kiilonga. Shino otashi dhimi po oveta yokondhalate.

3. Mokomboni oondunda dhokulala dhi tulwe omashina guupyu pethimbo lyuutalala, mu yalwe ombanza pevi, mu tulwe omatalashe noombete, ontala moombuli nosho tuu.

4. Iikulya yi opalekwe, aantu ya kale haa mono omahini, omayi, iiyimati niikwamboga. Mokomboni namu tulwe wo ootelefona dha gwana.

5. Aaniilonga ayehe yomina ya longekidhilwe openzela miilonga yawo.

6. Omuniilonga kehe a kale ha mono omasiku gefudho 60 momumvo, taga futwa, opo a mone ethimbo lyokukala naanegumbo lye

7. Aaniilonga ya longekidhilwe ombesa pokati koshilando nokomboni, osho wo kegumbo ko wambo mehuliloshiwike kehe.

8. Okatongotongo nenenepeko alihe lyopatiligane li hulithwe po miilonga nopwaa kale we omutiligane ti ithanwa "baas". Iiyakulitho ayihe nayi egulukile omuntu kehe, inaapu talwa olwala lwe nuuntu wAaluudhe nau simanekwe shili.

9. Omina nayi kale nooAmbulansa dha gwana, noshi hulithwe po okufala aavu koshipangelo taa ende momashina nenge omokugaluka kwawo. Moompito dheulumo, omina nayi longithe ondhila okufala omuvu koshipangelo.

10. Uuna omina ya pata, aaniilonga naa pewe eyambidhidho lyekwatho, tali kwatelele mo uule womumvo aguhe.

11. Omatidhopo miilonga inaaga konakona oshinima naga hulithwe po.

12. Ewiliko lyomina nali holole omadhiladhilo galyo nkene tali tala iita kuumbangalantu woshilongo, oshoka aaniilonga oyendji oya gumwa kuyo nomagumbo gawo. Iita otayi ningilwa aaniilonga naanegumbo lyawo ku SA. Ethimbo lyokukala pokati nali hule po.

13. Uuna omuniilonga a mona elaka lyuupyakadhi kegumbo, ne ethiwe, nethimbo ndjoka ta kala kee li miilonga, nali futwe. Etilitho lyokukanitha iilonga momazepo guupyakadhi nali hulithwe po.

14. Oohapu ombwinayi okupopya aawiliki yehangano lyaaniilonga naku hule po.

Tala kep. 10

Dha kep. 9

Moshigongi shalyo shokomumvo, COSATU, changano enene lyaaniilonga mu SA, olya gandja euvitopamwe lyalyo kehangano lyaaniilonga muNamibia, NUNW, yo yene nenge okepangelo lyopokati.

Oshigongi sha COSATU pehulilo lyomwedhi gwa zi ko, osha ti otashi yambidhidha etulomiilonga lyoshitokolitho shligwanahangano 435 muNamibia, otashi yambidhidha changano lyaaniilonga ayehe muNamibia, moositola, moofabulika, moomina noshapoka aaniilonga taa itula kumwe okugamena uuthemba wawo.

COSATU otali ekelehi ekogeko lyAacuba kemanguluko lyaNamibia. Aacuba oyi ithanwa kepangelo lyopaveta lyaAngola oku li kwatha, osho oshigongi sha ti. Olwotango ngiika Ehangano lyaaniilonga mu SA tali gandja eyambidhidho lyalyo kuuthemba woshigwana sha-Namibia.

Imonena etungo ewanawa

Otatu landitha etungo li li mOluno, popepi nombelewa yishilongo.

Mehala lyonomola 231, Oluno.

Oli na - Bottle store

- Market

- Omala gatano

- nomukala pokati

kondando R 27 900-00

Okuuva uuyeleele, inda po-Orlando, Ondangwa, nenge wu dhengele kongodhi yonomola 192, Ondangwa.

Box 624, Ondangwa.

Gweni

V.N.Adidas

Etseyitho lyOmarusumo

Eimbilo lyOrukwangali, Marusumo otali monika natango kOmbelewangeleki kOniipa. Ondando R3.00 kehe limwe.

Tuma: embesitelo:

Ombelewa yOngeleki
P/Bag 2018
Ondangwa
9000

ILA KOFANDITHA YOMAMBO MOSITOLA- MAMBO ONIIPA

Ositolamambo Oniipa, okuza 1 Sepetemba sigo 31 Desemba, 87 otayi ka landitha po omambo gomadhina taga landula, kondando yopevilela. Omambo ogendji gomugo ngaashi to ga dhimbulukwa, oge na oshikalimo sha ngongeka, onkene ino etha ge ku pitilile po oshoka ethimbo lyofanditha ngele lya hulu, ondando otayi ka shuna moka ya kala shito, endelega ano.

<i>Nakambalekanene (Ehistoli)</i>	<i>R5-00</i>	<i>R2-00</i>
<i>Onakuziwa yandje Leonard Auala</i>	<i>R5-50</i>	<i>2-00</i>
<i>Oshigwana hashi lesa (T.E.Torronen)</i>	<i>1-00</i>	<i>0-50</i>
<i>Aleksis Kivi LEA (oshinyandwa)</i>	<i>0-60</i>	<i>0-30</i>
<i>Shitilangu (omunagwokombanda)</i>	<i>3-80</i>	<i>1-50</i>
<i>Robinson Crusoe (ekwamukuli)</i>	<i>2-30</i>	<i>1-00</i>
<i>Moshinkoti shaShakespeare</i>	<i>2-30</i>	<i>1-00</i>
<i>Moshilongo shetu (L.M.Shemuvalula)</i>	<i>1-00</i>	<i>0-50</i>
<i>Oushitwe woinamwenyo mOwambo (L.M.Sh.)</i>	<i>1-00</i>	<i>0-50</i>
<i>Iikela yaAshipala (E.T.Elago)</i>	<i>1-40</i>	<i>0-50</i>
<i>Ewi mOmulilo (Eino Amaambo)</i>	<i>1-40</i>	<i>0-50</i>
<i>Ame ohandi itavele (U.Poikolaine)</i>	<i>1-30</i>	<i>0-50</i>
<i>Itakola, litye (T.E.Tirronen)</i>	<i>0-90</i>	<i>0-45</i>
<i>Omapenda aKristus</i>	<i>0-80</i>	<i>0-40</i>
<i>Embo lokuteleka (K.Poikolainen)</i>	<i>1-40</i>	<i>0-50</i>
<i>Iilonga yomoshinyanga (M.Ngipandulua)</i>	<i>3-30</i>	<i>1-50</i>
<i>The Holy Bible for Children</i>	<i>11-00</i>	<i>5-00</i>
<i>Elaka Etoye A B C</i>	<i>0-50</i>	<i>0-20</i>
<i>Ondaka inyenye kovalessi vape</i>	<i>0-50</i>	<i>0-20</i>
<i>Etilongekido kOmuwiliki (V.Munyika)</i>	<i>2-50</i>	<i>1-20</i>

— Aakuluntuskola ileni mu ilandele oobiblio dhooskola dheni.

— Aawilikingundu miikandjolonga yi ili noyi ili, ileni mu landele oombeleva dheni nosho tuu omambo gokutopola omapandulo momathigathano gontumba nogongandi. Ngoye ino dhimbwa okulandela po kuume koye, ngandi, u mu tumine omagano gembo limwe lyomungaka ge na oshikalimo ihaashi lyuka.

“Lye enda ongula”

ESO

Kuku Maria Shimuni okwa hulitha oondjenda dhe muukulupe womutoko 25.7.1987, megongalo Okankolo mOndonga. Okwa thigi ko oyana 5, aatekulu 29 nuutekulululwa 14.

Fil.21, Eimbilo 522

Kamulumbu Maria Penehafo naNangombe Helvi Inueethandje Omulondo.

Kuku Hilma Koonde (95), Ontananga okwa mana oondjenda dhe 25.7.1987. Okwa thigi ko oyana 6, aatekulu 28 naatekulululwa 20. Eimbilo 337

Peha lyaatekulu
Luise H.Ifugula
Olukonda

Tate Samuel Mapoye Omadhiya mOmuntele (45), okwa mana oondjenda dhe 14.11.1986, muuyehame wokathimbo okafupi. Okwa thigi ko omuselekadhi gwe noyana 9.

Omwana
Otto N.Mapoye

Kuku David Ugwanga Sakaria (40) momukunda liputu, Onankali mOndonga, okwa si 4.6.1987, muuwchame wethimbo ele. Okwa thigi ko, omukulukadhi gwe noyana yane. Eimbilo 617

Gumwe gwomaatekulu
Kahweka Hileni Fudheni

Meekulu Ester Ndooya okwa xulifa 12.7.1987 mepipi leedula dihapu. Okwa fiya ko ovatekulu novana vahapu. Eimbilo 133, Joh.6:1-8

John. Ngh. Nekundi
Edundja - Odibo

Tatekulu P. Hamukoshi Nailwa (86) womomukunda Omatangeia, Ohalngu okwa fya 10.7.1987 muuyehame wefimbo ihupi. Okwa fiyako omufiyekadi waye novana 13 novatekulu vahapu. Eimbilo 617; Eps. 119

Rauna N. Kautondokwa
Ongwediva Training College

CHAMPION

yo omunguda neenghono

Otai dulu yo okumonika
peenhele tadi landula:

Ruacana Wholesalers
Onethindi Normal
Continental Wholesalers
Kuthiladjeko Simark
Uundjombala Store
Continental No.2

Osho yo moWambo aisho
Hoolola omusindani



CHAMPION

Dha za kep. 9

Manga tu li po twa thikama, okwa zi okahauto koToyota 4x4 taka hingwa kiilumbu iyali, osho omuhingi a tsikile nehokololo lye. Okwa ti okwa dhimbulula mokahauto moka mu na omentu gumwe gwomobataliona 101, ngoka e mu mwene nohela. Omulumentu ngoka oye mu thigile kOwambo, ta ti ye ota landula ko nokahauto ke mwene. MokaToyota omwa li omakukunya gahamano.

Okuza mpoka omuhingi okwa ti oya yi kOkahandja, yamwe oya londo mokambesa ke, yamwe moToyota nayakwawo ishewe moFoota, sigo omokamba yaKahandja. "Sho twa thiki mOkahandja yamwe yomongundu yosheendo shetu oya li inaa thika natango." osho omuhokololo a ti.

Kashiimbi okwa tameke ti ithana omadhina. Okwa monika kutya yata tu neenge yane lwaampoka, kaye lwetike natango, oToyota noya hwamekwa yi shune kOvenduka, okutala mpoka ye li. Oya ka galuka ko nayaali, manga gumwe kee lwetike natango.

Konima eyotho lyonyama oya tameke, mpoka pwa li aatiligane yahamano. Ongundu oya pulwa kaatiligane, yi hokolole oshinima nkene sha ende naKashiimbi oye kwa li ta toloka. Omakakunya oga nyenyeta kutya aniwa ogi indikilwa okukutha oondjembo dhago, mokuya koshigongi, manga aantu ya SWAPO ya li ye na ooboma dhopetrol, omagonga nomatati go-shiwambo.

Omakakunya oga tsikile ga ti, inaga ehamekwa unene, kakele kagumwe ngoka a mona oshilalo mokwooko. Gumwe okwa yaha po omuntu no-shikuti poshigongi, osho ya li taa hokolola. Oya gwedha ko, kutya ngeno haapolisi mboka ye ke ya po, andola oya dhipaga po aantu oye-ndji.

Oya ti natango kutya oya li taa tidhwa koshihauto shobaki, ihe oya li ye na elago, molwashoka oshihauto osha kandoma. Ngeno asho ngeno oshe tu lyata nayi. Omuhingi okwa ti yo nomukwathi gwe naTomas sho ya mana okulya, oya zi po e taa shuna kokambesa kawo. Yamwe oya halele ya lopote Tomas koshilumbu, oshoka aniwa ina longa sha.

OSHIKUNDAFANWA SHOMEVA

Oshikondo shomarendulepo mOraata yEengeleki moNamibia (CCN), otashi ka ninga oshoongalele shokukundafana kombinga yomhumbwe yomeva moshitukulwa eshi:

EFIKU: 24-26.8.1987

ONHELE: Ongwediva

OMALISHANGIFO: 24.8.1987, pohetatu yongula (8.00)

OIKUNDAFANWA:

1. Exupo leendungu
2. Olweendo okutalelapo eenhele odo da longwa ko CCN
3. Omafaneko.

Onawa ovalitulimo va tule kumwe omalweendo avo, osheshi oCCN otai ke va shunifila oimaliwa yavo nepelesenda 75%.

Ou a pumbwa natango ouyelele kwatafana na:
John Hashoongo ile Boys kongodi: 37510, Windhoek

OFANDITHA - OFANDITHA - OFANDITHA

EKULUKO LYOONDANDO MOHEKA MARKET

**TSE YOHEKA MARKET OTATU KA KULULA OONDANDO
DHIILANDITHOMWA NETATA (1/2) OKUZA 15-30 AGUSTE 1987
MIINIMA TAYI LANDULA:**

**OOHEMA DHOSHILUMENTU NODHOSHIINTU, OONGAKU
NOOMBULUKWEYA, NOMALAPI GOKIIPUNDI YOMAHAUTO
(SUIT - COVERS)**

ILA U ITALELE KO NGOYE MWENE.

Eliakim Shiimi
P.O.Box 169
Ondangwa
9000

"Onda lombwelwa ndi tegelele okambesa kamwe, aniwa hoka ke na okuthika ongula Omaandaha poheyali yongula. Omaandaha komatango oya thiki mOwambo, omuhingi nokwa helula aamentu ye pOluno, peha lyoku ya helula pokamba yawo 101. Omuhingi sho a thiki kOwambo, opo aniwa ta kundana kutya poshigongi opwa sila omuntu.

Omuhiingi okwa tsikile nehokololo lye mohofa ta ti, konima okwa ku uva kuyamwe mboka a falele kOvenduka, kutya Jakob Tomas okwa sila

kongamba muMai, osho wo Vulika Jakob, momwedhi tuu ngoka. Omuhingi ota ti pakutseya kwe, Kashiimbi natango oku li koporal mobataliona 101, nayakwawo yomadhina ngoka ga holoka mehokololo lye.

Omuhiingi okwa lombwele ohofa natango kutya okwe ke shi uva aniwa omentu ngwiya a thigalele kOvenduka kee lwetike, osho ngaa a ka galukila kOwambo. Mehokololo lye omuhingi okwe shi ikala kutya ye ka li a tseya ompangela yomakukunya.

"Onde ya falele ashike, molwaashoka oshinima ye shi popya nale nomuhona gwandje" osho i ipopile. Okwa ti, ando kwa li e shi tseya shono tashi ka ningwa, ando okwa tindi ko.

Epangulo natango otali tsikile.

OMUKWETU

Oye oshifo shOngeleki Onkwaevangeli paLuther yomuSWA/NAMIBIA.

Ohashi nyanyangidhwa mOshinyanyangidho shOngeleki mOniipa.

Omukuluntu gwoshifo omumbisofi Kleopas Dumeni.

Amushanga gwoshifo omusita Sebulon Ekanjo.

Ondando yOmukwetu muNamibia naSouth Africa R4,00 komumvo.

Palwe muAfrica R10,00 nokombanda yomafuta R14,00 komumvo. Mondhila R17,00.

Oondando nomambesitelo agehe naga tumwe kOmukwetu, Oniipa, P/Bag 2013, Ondangwa, 9000.

ELOC PRINTING PRESS
PRIVATE BAG 2013, TEL. 11, ONDANGWA 9000
SWA/NAMIBIA.