



KAAPANDA OTA LANGELWA?



Omusita Junias V. Kaapanda

TSHANDI - Uukwaluudhi: Omusitagongalo Junias Vaino Kaapanda, omuwiliki gwegongalo lya Tsandi mUukwaluudhi, ota hokolola, kutya, egumbo lye olya langelwa kaakwiita ya SA omasiku gatatu, omwedhi nguka, olya hadhwa iikando itatu okuza Januali sigo Apilili.

Pahokololo lye omusita Kaapanda ota ti omakakunya oga holokele pegumbo lye eti 12.4.1987 ethimbo lyomulongo guusiku, taa pula omuyonaguli. Oya galukile po ishewe eti 15.4, omutenya taa pula aanegumbo ngele ya

mona SWAPO. Omusamane inaa adhika mo megumbo. Egumbo nolya hadhwa oshikando oshititatu.

Omukulukadhi gwe Emma, okwa pewa omankawa sho ta yamukula kutya ina mona SWAPO. Ongulohi yesiku ndyoka oya ka galuka e taa lala pooha dhegumbo.

Eti 17.4. Oya dhimbululwa natango ya lala, hakokule nohapopepi unene negumbo. Oye shi ningi ishewe eti 23.4. Esiku ndika oya holokele ishewe uusiku pegumbo ekulu lyomisioni lyomusita omuyakuli Tobias Shiwana.

Pegumbo ndika oya thiminike omusita Shiwana a hwameke oshihauto she ye kee shi mpoka ta yi. Oye mu soso neso, ngele ite shi ningi. Naasho omusita a tsikile netindo lye, oye mu etha noya yi.

Esiku lya landula, aakwiita oya galuka e taa pula Shiwana aantu yatatu ya li pegumbo lye uusiku taa undula oshihauto. Inaa holola nkene ye ya mono nonkene ye shi tsey. Nguka sho a yamukula kutya oyo ya li po, oyu ula omusita kutya omufundja a fa aantu yaandja Kaapanda.

Omusamane Kaapanda okwa geya komagumbo gopausita taga dhingolokwa nago kaakwiita uusiku. Okwa yemata wo komukulukadhi gwe a dhengwa ye omunkundi gwomutima.

“Ngele oya tsakanene nomukwanegongalo gumwe te ya komusita omolwoshimpwiyu shomwenyo gwe, otaye mu umbu nenge otaye mu etha?” Epulo ndika Kaapanda okwa ti okwe ya pula, ihe inaye li yamukula.

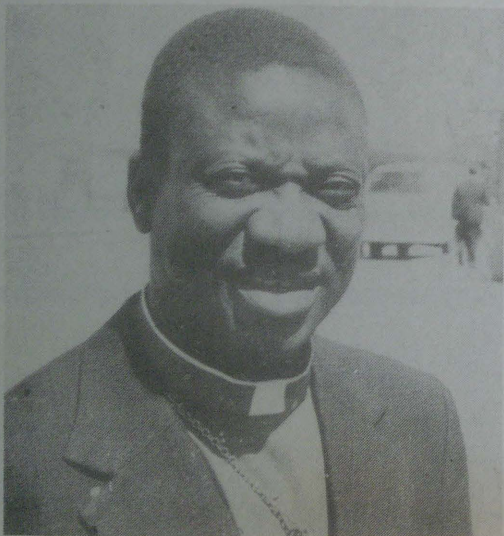
Ota ti wo omudhingoloko aguhe, aantu oya sa ehaluko, omolwomainyengo gomakakunya uusiku. Omusamane Kaapanda, a tseyikanedhina ekwawo “Kaunda” okuza 5-13.2.1987 okwa kala mondholongo mOshakati nokwe egululwa mo ina pangulwa.

Sebulon Ekanjo



Omufita Ari Suutarla, ou ta talele po Ongeleki ya ELCIN omafiku aa. Efano ola fanekwa 1985 mOniipa. Ehokololo tala moshifo eshi.

OONKUNDATHANA POKATI KA P.W.BOTHA NONGELEKI MU- NAMIBIA MELONGEKIDHO



**Omumbisofi James Kauluma ngoka ta kala omuwiliki gwasheendo shaawilingeleki metsakaneno lyawo nomu-
Presidende Botha.**

WINDHOEK: Aawiliki yoongeleki 8 dhi li iilyo mOraata yOongeleki muNamibia, odha taamba ko eyamukulo lyomupresidende gwa SA, Pieter Willem Botha, pu ningwe etsakaneno nopu kundathane nkene ombili muNamibia tayi monika.

Eindilo pu ningwe etsakaneno ndyoka olya penduka tango moshimpwiyu shaawilingeleki, ngaashi ya hololele meindilo lyawo, kutya "opo pu keelwe onkalo ndjoka ya adha nale ondondo yopombanda muwinayi yaa tsikile" (Tala omukwetu No.7/1987).

Nonando omupresidende P.W.Botha a zimina eindilo lyaawilingeleki pamwe niinaku-gwanithwa mbyoka yi na tango okuningwa kaawilingeleki, aawilingeleki oya ta-



Omumbisofi H.Frederik gwa ELC

la sha pumbiwa ompito yetsakaneno ngele tayi monika.

Omupresidende Botha okwa li a yamukula eindilo lyaawilingeleki kutya, ye ota taamba chiyo lyawo:

— Ngele ta mono ehala nesiku ndyoka tali mu opalele.

— Ngele oonkundathana otadhi ki ikwatelela unene kedhiminathanopo mokati kaakwashi-gwana shaNamibia ya topauke momadhiladhi.

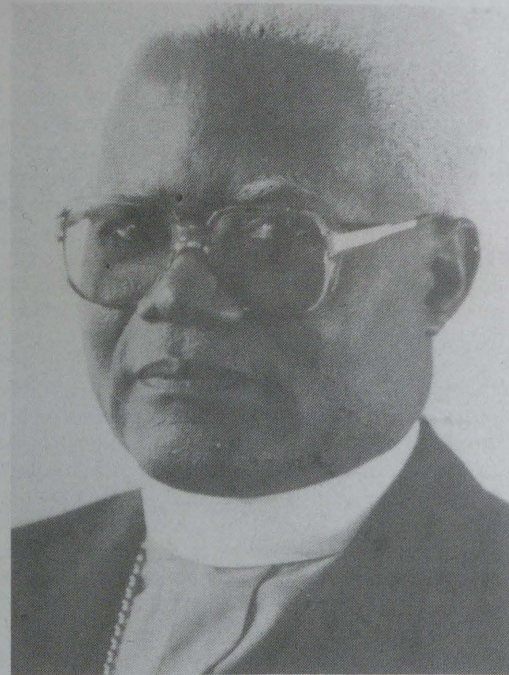
— Ngele SWAPO ta kumagidhwa melongitho lye lyoonkondo, ndyoka tali yono etaambathano pokati kongundu dhopapolotika notali imbi pu tungwe ombili pamukalo guudemokooli.

— Ngele aawilingeleki taa gandja elongelukumwe lyawo okushilipaleka egameno lyuuthemba wokamwaalu kaatiligane hoka ke li moshilongo.

— Noopaati dhomepangelo lyopokati dhi yilwe mo wo moonkundathana.

Omusamane Botha okwa ti natango meyamukulo lye, kutya ina zimina wo pamwe naawilingeleki sho taa ti onkalo yoshilongo oya nayipala. Pwaashono ye e shi, iiningwanima yomoshilongo omumvo 1986 oya shuna nokuli pevi noopelesenda 27% shi vilithe omumvo gwa tetekela.

Okwa ti wo ota zimine tuu shili oshimpwiyu shayamwe mboka ye na omadhiladhilo omawanawa, omolwaantu mboka taa hepa kiilonga yuuteloresa tayi ningwa kiikulo opo yi adhe elalakano lyayo lyopapolotika.



Omumbisofi K.Dumeni gwa ELCIN

Shoka ohashi ningwa ihe ngele aantu ya tya ngaaka taa sile pokati komaumbathano gawkwiita, etanga lyegameno ngele tali kambadhala okugamena aantu, osho omupresidende a yelithila aawilingeleki mombilive ye.

Keyamukulo lyombilive yomupresidende Botha, aawilingeleki oya ti yo otaa taamba ompito yetsakaneno nonando ya tulilwa pooongamba dhiinakuwanithwa. Yo ongaavithi yombili pashipango shOmuwa oya hala okutsakanena naangoka ya tala oku na uutemba wokugandja eyamukulo lya hugunina koshikundathanwa shaNamibia.

Oya ti wo otaye shi endulula kutya yo otaa indile elandulathano lyiikundathanwa li kale ndyoka yo ongongeleki taa vulu wo okuya mo moohapu dhalyo nomupresidende kombinga yonkalo yoshilongo, miinima mbyoka tayi eta ombili. Luk.19:42.

Aawilingeleki keyamukulo lyomupresidende Botha oye shi yelitha kutya kashi shi oshilonga shawo okupula ekotampango lyoshilongo nongaashi wo inaa itala kutya oshilonga shawo shokuludhika ekotampango noongundu dhopapolotika.

"Tse otu na ashike oshimpwiyu nehulitho po lyuutondwe mokati koshigwana opo pu hololwe ombepo nonkalo moka etaaguluko pamukalo gwombili tali vulu okuningwa" osho ya ti.

Oya hulitha neindilo komupresidende opo etsakaneno lyawo nomupresidende li ningwe inaapu tegelelwa iinakuwanithwa yasha tayi tsakanithwa tango. Ethimbo lyetsakaneno lya thanekwa komupresidende okonima yiiwike ihamano sigo ihetatu.

Onhumwafo oya li ya shainwa kovawiliki veengeleki tadi landula:

Omushamane Bernard Nordkamp wOngeleki yaKaatoilika kaRooma; omufita Peter Lamoela, waCongregational Church (UCCSA); omufita Demetris Palos wongeleki yaMetodist (M.C.S.A); omufita Bartolomeus Karuera wongeleki yaMetodist muAfrica; omubishofi James Kauluma waAnglikana, omubishofi Hendrik Frederik wongeleki onghwaluther mOushimba; omubishofi Kleopas Dumeni wa ELCIN nomufita Karl Sundermeier wongeleki yOvadowishi (DELK).

Sebulon Ekandjo

Owa shiiva tuu edina loye eshi tali ti?

Mokulesha kwange oifo yOmukwetu, luhapu muimwe yomuyo ohamu shivifwa owa shiiva tuu edina loye? Ame eshi nda tala kombinga yomadina aa oshinima shiwa unene okushiivifila oshiwana nokukala hashi shi shivifilwa ngaha, osheshi omadina katu a shii eshi taa ti. Ohandi luku ile ohandi shangifa ashike okaana edina olo nda panda ndele ngi shi eshi tali ti.

Onghee ohandi indile nefimaneko linene omadina aa a kale ngeni haa endululwa, amwe inatu a shakeneka nokuli. Oshiholelwa hatu shi hange muHosea 1:4 penya eshi ta lombwelwa a luke omumwaye Jisreel.

**Ngele to longitha edhina lye-
futamo, hololela omulongeki-
dhi gwoshifo edhina lyoye no-
ndjukithi.**

EKENDE LA KWATA KO OSHILONGO

Aame malodu nda nyon'oshilongo, dungo yaShilumbu nda nyenga Namibia, okudja kOkalonga kaLange fiyo momulonga waKunene, mefuta laMbaye fiyo omoKapriivi.

Ondi neehambo domakende muNamibia, ndi na eexupa doukolwe moshilongo. Aame malodu hi tila mupapa womumati, dungo yaShilumbu hi tila ndolofiya yokakadona, okapaka nande naka kale ka kindja, okalume nande naka tuwalale. Ooxe nooina otava nangala inava lya, molwaashi eembwa da kwata odange. Aame Hailume hai ti ondiba oyange. Ohai lu olwoodi li shambula, ndi neemhanda di li mokanya, ehomato lange ehalasha, eeholo hadi ende momunino tadi ka kwata momapunga.

"Hai tamekele momunino hai ka kondjela mohonde. Ohai denge meengolo nomomutwe omo ndi li. Onda nyeng'ovanandunge, nda tonya naava va tala momambo. Ovawiliki noovene voikandjo otava tu efoola momayulu. Namibia onde li hambola, olo nda ninga Munyalombe. Tembo yeumbo ou nda tumbaleka muvakwao. Ihandi lu nashinghundi, ihai kondjo nashimbebe, ohai shi ifanene ombiila.

*Kaleb Hamwele
Oranjemund*



BILIKANO

Omuwa tate Kalunga ketu tu sila ohenda omevi iyihuna Namibia. Ongaashi ho shi ningi shito nale. Tu gamena kaatondi ye tu kondeka.

Oonkondo Omuwa katu na, kala omugameni nomukwateli komeho. ngu u ninge oshikandekithi shetu.

Tu gamena komutondi Satana.

Tate Kalunga, gamena Namibia naAngola, kuulumbu wondjala, ngu ga menithile iipalutha ya gwana. Tu yambekela evi lyetu Namibia eholike. Tu longa oku ku galikana noku simaneka edhina lyoye. Mangulula mboka ye li moonholongo, yululula omalyenge goonkwatwa mboka taa hepekwa.

EKUNDO LYAPAASA

Lya zi ku K.Dumeni

Mark: 14:32-42

“THIKAMENI TU YENI”

Ethimbo ndika olyo ethimbo moka tatu dhana oshituthi shEso noshEyumuko lyOmukulili gwetu Jesus Kristus. Otwa pulakena egalikano lyaJesus muGetsemane: "Tate, Tate ayihe oto yi vulu, kutha ndje oshitenga shika, Ihe haashono nde shi hala, aawe, oshoka we shi hala." Ovelise 36.

Jesus okwa li muudhigu muGetsemane. Muudhigu we okwa tula omuthindo megalikano. Ota lombwele wo aalongwa ye, aalanduli ye: "Kaleni mpaka ne mu tonate" ovelise 34, mu galikane. Otwa dhimbulula kutya, uudhigu owa hata Jesus pevi. Okwa nika oluhodhi olunene. Oti indile kuHe, ngele otashi vulika uudhigu mbuka wu mu pitilile po: "Tate, Tate ayihe oto yi vulu, kutha ndje oshitenga shika." Kutha ndje uudhigu mbuka.

Ndika olyo ethimbo lyopaasa yOmushigakano, nopaasa yeyumuko lyOmukulili. Tseni otatu landula moonkatu dhaJesus Omukulili gwetu. Omaudhigu oge tu vulitha. Okukalamwenyo okudhigu. Omaudhigu omaso nomahepeko goshilongo shetu oga kala ethimbo ele noonkondo. Yamwe ya kala momaudhigu gomomagumbo, monkalathano miilonga nenge muushiinda.

Oku na omaudhigu. Aantu ye li moonholongo, yamwe inatu tseyaya oye li peni! Ooyakwawo inatu tseyaya otaa ka galukila uunake kegumbo. Opu na mboka ye li muulunde noye na omitenge omidhigu dhoondjo. Kaye na omapitikilo gegongalo. Aantu yamwe ya longo nuudhiginini noya vulwa "Omeho gawo oga li ga vulwa shili" Ov. 40. Eeno otwa vulwa. Pamwe noonkondo dhokugalikana dha pupo nokuli:

Jesus ta ti komulongwa gwe: "Wa kotha? Ino vula okutonata okathimbo kamwe akeke pamwe nangame? Tonateni ne mu galikane" ov. 38. Otandi dhimbulutha aaleshi kutya, pethimbo ndika otse aalongwa yaJesus. Otwe shi dhimbulula ondjila yokuya komushigakano sigo okesindano kEyumuko, oyo ondjila ondhigu. "Epola lyomegulu ndyo, ihe ondjila ondhigu ndjo" Eimbilo 46.

Jesus ota hepa, oti igandja omolwaantu yalwe. Molwetu! Osho natse otatu tegelelwa tu hepe, twi igandje muudhigu, opo aantu yalwe ya mone ehupitho. Tu dhiladhileni nando oshilonga shetumo lyEvaangeli, emanguluko lyoshilongo, eputudho lyoshigwana, uuhaku woshigwana shetu neyakulo kehe, otali pula ndje ndi iyambe, ndi hepe opo, aantu yaKalunga ya kwathwe.

Okukonga uuwanawa womukwetu otaku pula ndje ndi hepe. Jesus muudhigu we okwiihata pevi ta galikana. Okwa li e na einekelo omaudhigu otaga ka pwa. Okwa hala ashike okukala mondjila yopahalo lyaKalunga. "Ihe haashono nde shi hala, aawe, oshono we shi hala" ov. 36. Osho ngaa natse tu na okuninga: Tate, Tate ayihe oto yi vulu.

Osha yela ano ngele otu na omaudhigu, nomahepeko, omolwokukondjela oshili, uuyuki, ombili, nondilo yuuntu, omuntu ngoka e li oshifetha shaKalunga mwene. Tatu hepa omolweuvitho lyEvaangeli komuntu aguhe. Tatu hepekwa sho tatu yakula aantu yaKalunga neyakulo ekwakriste, nashi kale sha yela oyo ondjila yomulanduli gwaJesus ndjoka! "Epola lyomegulu ndyo, ihe ondjila ondhigu ndjo".

Ashike omwiimbi gumwe ota tsu omukumo kutya: "Omaudjuu nande omo e li, kombuda taa ka pwa" Eimbilo 415. Nando tu na omaudhigu omanene, Jesus mwene ota ti: "Inamu tila ongame ondi li pamwe nane."

Opo mpaka pu na omutima gwelaka lyomukumo muudhigu." Inamu tila ondi li pamwe nane". Jesus oye a tetekela, okwa pitila mondjila ndjoka. Okwa tseyaya otu li mudhigu. Ihe ote tu lombwele tu longe iilonga yetu nando omuudhigu, mokati omahepeko nomaso.

Tu ende moompadhi dhaamboka taa hepa noya dhipagwa omolwokukonga ehupitho muuwanawa waantu yaKalunga. Ekopi muudhigu Kalunga ine li kutha ko kuJesus. Omaudhigu ngoka tu na ogo ekopi lyuudhigu Kalunga a pitika tu kale mo. Ihe Kalunga ine tu geela noitetu etha.

Kepandja tali landula

Ekundo lyomumbisofi kOngeleki mOpaasa

Dha za kep. 3

Kalunga oku na edhiladhilo lye te ke li tsakanitha konima yuudhigu mbuka. Uudhigu otau ka pwa. Otaku ya esindano. Nena sho tu li mokati kuudhigu, tu tsikileni niilonga yetu, koshipala shaKalunga. Ondjila yomushigakano oyo ondjila yaKalunga oyo ondjila yokesindano.

Aapulakeni: Eshimbo ndika lyaPaasa noshiningwanima shalyo: Eso, neyumuko lyaJesus Kristus lyo ethimbo moka mu na elaka lyoku tu tsa omukumo muudhigu wetu. "Nomuyengeli gwomegulu e mu holokele nokwe mu tsu omukumo" Luk: 22:43. Ano iituthi mbika oya kala aluhe noyi li omuyengeli, omutumwa gwaKalunga e ya oku tu koleka muudhigu.

Pulakena, dhimbulukwa nawa omauvitho, omapopitho, omahokololo gokuhepekwa kwa Jesus sigo eyumuko lye. Olutu nombinzi yaJesus ndjoka ya topolwa methimbo lya paasa, osha ningwa palombwelo lye. "Uuna tamu shi ningi, shi ningeni nokudhimbulukwa ndje"

Ha okudhimbulukwa omahepeko neso lye alike, ihe okudhimbulukwa wo eyumuko lye kuusi. Esindano konima yuudhigu, konima yegalikano lye, Jesus ota lombwele aalongwa ye: "Thikameni tu yeni" Aaholike otu na ELO-MBWELO lyaJesus.

Elaka tali gandja onyati nomukumo opo tu tsikile nekondjo lyOpakriste. Tu tsikile nondjila yomushigakano, ondjila yokuJerusalem. Epola lyomegulu ondjila tayi ka hulila mesindano. Konima yuutondwe otaku ya ombili.

Konima yomatopoko nomahalakano, aantu otaa ka hangana notaa kala muukumwe nomemanguluko. Otaku ya oshigwana oshipe nombili moshilongo shetu. Ombili uuna tatu ka za muuyuni mbuka. Opo mpoka pu na einkelo ne nyanyu lyetu: Mokupitila muudhigu otaku kala twa maguluka muupika, nokuulunde auhe. Onawa tu ndhindhilike omalombwelo gaJesus kutse.

- Jesus ota lombwele aalongwa ye: "Thikanemi, tu yeni." Natu yeni nondjila yomushigakano. Osha yela otatu vulwa. Osha yela wo kutya elaka ndika olyo okutsomukumo oomwenyo dhaalongwa okudhiginina eitaalo, oshoka mokuya moshilongo shomegulu otu na okupitila muudhigu owindji." Iil.14:22.

- Otu na ehiyo lyaJesus: "Ileni kungame amuhe hamu longo nomwa lolokithwa ongame notandi mu pe evululuko. Evululuko lyetu atuhe, evululuko lyaaluhe".

- "Thikameni, tu yeni". Otatu yi pamwe naJesus mondjila yetu. Aamwameme taambeni omukumo, eitaalo lya kola pahapu ndhika dha popiwa kuPaulus kaAefeso 3:14-21.

"Onkee ano otandi tsu oongolo nda taalela He yOmuwa gwetu Jesus Kristus. Oongoka omazimo nomegulu nokombanda yevi ge mu lukilwa, e mu pe oonkondo pashindji shesimano lye odhokwiikolekela kwomuntu gwomeni okOmbepo ye. Kristus opo a kale moomwenyo dheni okokwiitaala.

Ne mu wape, nge mwa tsama nomwa dhikika mohole, okunongela pamwe naayapuki ayehe uumbwalangandja nuule nolumbumbu nuule wopombanda, nokutseya ohole yaKristus yi vule uunongo auhe, opo mu udhe omaudho agehe gaKalunga.

"Ihe oye tuu nguka ta vulu okulonga oshindjishindji noku shi vulitha po ayihe mbyoka hatu yi indile notu yi shi, opankondo ndhoka tadhi longo mutse, oye na simanekwe megongalo nomuKristus Jesus komaluvalo nomaluvalo agehe sigo aluhe".

AMEN.

**KRISTUS OYE OMBILI YETU, OOMBINGA
ADHIHE MBALI OKWE DHI HANGANITHA**

Suutarla ishewe muNamibia

Omusita Ari Suutarla, (44) okwa galukile ishewe kuNamibia, oshikando oshitiyali sho kwa li a talele po lwotango oshilongo shika omumvo 1985 Pamwe naye okwe ya nomusamane Arvo Rintaluoma, omusamane Yrjo Hoysniemi na Ilkka-Kajalo.

Omusita Suutarla omuposi, nomuwiliki gwehangano lyaaposi muSoomi, mOniipa oya thikile mo 28 gomwedhi nguka. Meta-lelopo lyawo ndika lyomasiku konyala 20, manga inaa shuna oya hala okutalela po, omahala gaaposi niilema; mEnongelo lyaayakuligongalo mEngela, mEluwa, mOngwediva nomehafo mOvenduka.

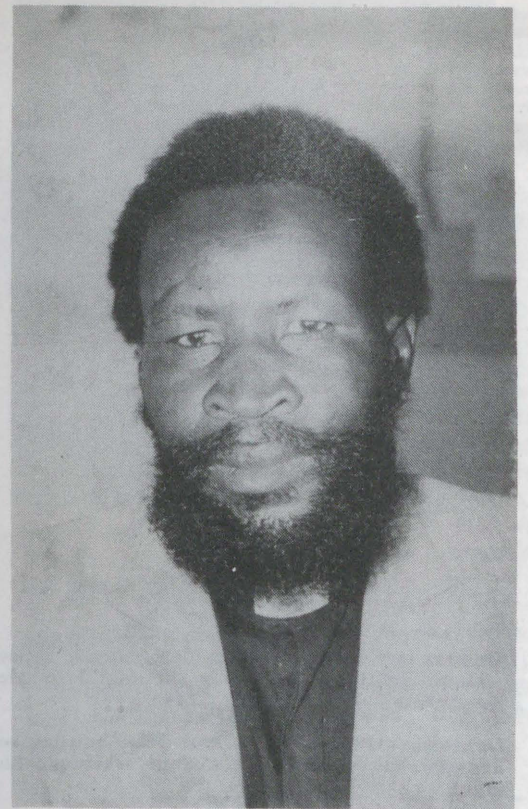
Otaa talele po wo Kavango nOshiwakop manga inaa shuna kaandjawa eti 15, lyaMai tagu ya.

Omumvo 1985 sho kwa li a talele po lwotango Owambo, okwa thigile po elunduluko ewanawa nependulopo lyonkalamwenyo yaaposi ndyoka tali koko esiku kehe.

Uunzapo umwe tu shi okutumbula mpaka, oshifo shOmukwetu shoka tashi leshwa ngashingeyi melaka lyoshiposi.

Sebulon Ekandjo

KUSINGAPUR



Omusita Hosea Iyambo okwa thigile po Namibia omwedhi nguka a ka kale mokeresesa yewiliko mokweevangelitha, kuSingapur, Asia. Iyambo omuwiliki gwoshilonga shaalumentu mongeleki ya ELCIN. Ota ka galukila kegumbo pephulilo lyaMai.

SIPITO SEHAMBERERO MOKAKURO

“Sipito eshi kapisi serekero, nye sehamberero lyange kwaKarunga, morwa ana penge ruvharo nonontekuru nononkwara dage,” muswamane Abisai Kakukuru yimo ya korangedere wosipito nonontekuru dendi edi da kere tadi lili asi pamwe zinyakurwawo kuna ninki sipito serekero a dongoroke.



Omama Kakukuru pokatji novasita vavali tava tungike epata lyonsiraaura Esra Kakukuru

Nsene o ngenda moUkwangali to gwana komasimbi ga fumana. Esimbi limwe lyafumana moKavango yige foromani Abisai Kakukuru, ga fumana kedina eli asi “Kamina.”

Muswamane ogu kwa runganena ukwangali nonohompa daUkwangali. Mouforomani kwa kara mo malima gomanzi. Mwene ku sanseka asi hompa Kanuni ga mu pere uforomani. Kapi ta diva asi elima ke, nomalima gangapi ana kara mouforomani. Muntu gomayokora kuvhura o tante asi malima nomurongo ne ana kara mo mouforomani. Ngano si noforomani kumona pensiyuna, ngano zendi nzi unene.

Foromani ogu mukriste gongereka zEvangeli. Kwa mu kuhwa mo 19.11.1933. Ekwareko lyendi lyopakriste mo 10.10.1937, nomugolikadi gwendi omama Elisabeta Nukongo zaKamanya. munwa erenga limwe lyEkwambi lya fumanene moKavango.

Muswamane Abisai kuzoresa vantu asi momunyondo va va kwarekere. Makura mungolikadi gwendi, ku di sensa asi “Ado domomunyondo,” Kasumbi kawo va ya ziga uhura yige Jaako Kangayi.

Age kwa kere mukuronapongero mosiruwo sovahongi. Age hena muudisi ga kere gomunene. Ngesi ana kurupa nye unene, malima gendi ntani 91 morwa kwa mu tera mo 1996. Nye epuro lyomwaKarunga simpe nonkondo.

Momazuva 7 gaFebruari kwa terekere sipito. Mosipito oso kwa zigidire vana, nonontekuru dendi a hamberere Karunga. Mosipito esi yimo

ga sansekere nye ukaro wendi nomu ga ya gwanekerere novahongi, va ka mu ronge kuresa, no mu va mu kuhwa.

Age kwa tumbwire nokurugurura nkano ezi asi: “Tani pandura Karunga gwange ei ga pange ruvharo ni ya mone nontekuru dange.” Age kwa tente hena nkango za likumidisire vantu asi: “Vakurona ava mu na kara apa mwa diva nge asi ezimo lyetu lya pwa kufa, nyamelike novambjavange vavali tva hupa po, nye mpili ngesi Karunga ana ya penge vana, owo vana reta nontekuru.”

Vasitapongero kwa va zingidire va ka ninke eruganenokarunga. Musita Barnabas Haileka yinge ga ninkisire eruganenokarunga, H.Ausiku eudiso. Musita Haileka kwa tumbwirire vana nonontekuru asi “Pingeni epuro lyomukurupe ogu morwa yilyo ugawozuni.” Nokuoro zovatekuru yipo za kere.

Konyima muswamane Abisai, limwe Katemba, kwa hingidire kosipundi, Vasita vana mu tura pokatji, makura yipo ga zigidire vana vendi gumwe-nagumwe novana vavo nontekuru dawo ava tungike.

Vana vombeli zendi Hilka nonontekuru dokononkokona kwa zigidire va di tungikire pamwe. Vasita kwa zerwire mawoko kumwe nendi makura, tava uyunga etungiko. Ava va pilire po oHilka naLeevi ava vana kara mosirongo sendindiro, naMarkus ogu ga kere ure.

Vana vendi vahetatu navenye kwa reta, ka kere ka Leevi da gwene nomfa ahe moudinkantu

wendi. Vana nonontekuru nedi dokononkona va kere po ku sika poyiha 50 ngoso. Yitenya yimwe nayo yipo ya kere. Musita Ludwig Hausiku ga kwara ntekuru nage yipo ga kere.

Vantu kwa pongere unene. Awo kwa lire unene sipito. Nzambo za tundire mo zo R64.56 kwa zi pere sikesapongero. Epongero lyaNkurenkuru tali fumadeke sirugana satate Abisai Kakukune, noku mu harera erago nomatungiko moukurupe wendi.

H.Ausiku

Epulo koshiwana

Osha wapala ngoo mbela fyeni oukadona tu longife ovenda oyo hai ifanwa Odepo? Luhapu ohandi shakene noukadona vakwetu tava ti ame onda vendwa ile ondi na eepela.

Ngeenge ame okakadona nee ndele onda vendwa, vati onde lingabeka, owe shi shirva ngahelipi kutya oove oho mono ounona ile iho mono ounona? Pamwe onghee ngoo wa vendelwe lumwe ile lutano ndi tye nokuli.

Ove oto ka mona omumati te ku valeke tamu i fiyo omohombo. Eedula do otadi ka pita osho, nokaana kamwe oko ngoo ino mona, oho ti osho nda shitwa ile oho ti odepo?

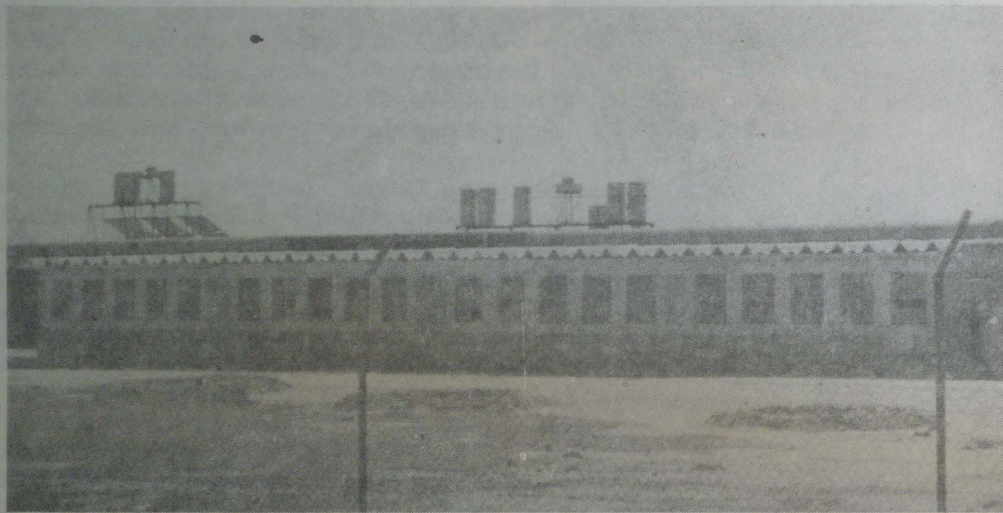
Maria F.Shatipamba
Windhoek



Mefano eli omama Abisai Kakukuru nomugolikadi Elizabet Naukongo, nomusita Heikki Ausiku.

Aavali mOngandjera ya tegelela osima eyamukulo lyokomisi omolwetembudho lyokamba yaakwiita

Eindilo lyoshigongi shaavali mOngandjera opo okamba yaakwiita yi ze popepi nomihandjo dhaanasikola inali galuka natango nkene lya thindikilwa kokomisi kombelewa yomunashipundi gwongundumpitithi mepangelo lyOwambo omusamane Pieter Kalangula kOndangwa.



Ethano ndika osikola yOseko yaNgandjera, mOngandjera moka mwa zile epulo lyokamba yi hedhe kokule

Aanasikola yomomihandjo mbali mOseko yaNgandjera nomOseko yEtalaleko, adhihe dha kunduka omissioni yaKahao mOngandjera, odha li dha thigi po ootundi moshiwike sha tetekelela efudho lyaMaalitsa. Aanasikola oya zile po neuvaneko kutya otaa galukile ashike kootundi ngele okamba yaakwiita pomudhingoloko ngoka oya tembudhwa po.

Oshigongi shaavali ayehe yaanona taa sikola mooseko ndhoka osha li shi ithanwa 26.3.1987 kaakuluntusikola shi kundatahane eindilo lyaanona. Oshigongi osha hogolola okomitiye yiililo 13 yi fale eindilo lyaavali komukuluntu gwepangelo lyOwambo kOndangwa nongele sha pumbiwa eindilo li ka thike sigo okOvenduka kuNgoloneyandjayi.

Eindilo olya li tali koleke omadhiladhilo gaanona. Kape na we omuvali a tseye okomitiye mpoka ya hulile noshinima sigo yu uvu mOradio epopyo lyomusamane Kalangula kutya ookamba poosikola itadhi zi po, oshoka kape na iimaliwa okudhika oompe.

Omusamane Simon Nambili, nomusita Ananias Iita iilyo yimwe yokomitiye, ayehe oya holola nkene okomisi yawo ya kumagidhwa ashike komusamane Kalangula, kutya etembu lyokamba kali li moshimpwiyu shaavali, ihe omoshikondo shelongo nombelelwa ye.

Omusamane Kalangula moshinima shoka okwa yamukula Omukwetu, kutya shono aavali shila ya li ye na okuninga, okugandja omathaneko gawo hamatokolo. Okwa ti wo ka li a hala a kundathane oshinima shoka nokomisi, oshoka osha adhikwa nale moonkundathana dhawo nombelewa yaakwiita, unene omolwoshipangelo.

Omusamane Kalangula okwe shi koleke kutya onkundathana dhawo naakwiita molwokamba

yaKahao inadhi thika manga pehulilo osho wo ndjoka yaHangwena nande ya lombwelwa kutya kape na iimaliwa.

Pahokololo lyomukuluntusikola Epafras Uushona mOseko yaNgandjera moka mwa tukukile oshipotha shokamba, aanona ayehe oya



Omukuluntusikola E.Uushona mOseko yaNgandjera

galukila kootundi okuza petameko lyoshikako oshitiyali nootundi otadhi tsikile negundjilo.

Pokati mpoka Omukwetu okwa kundana molunza lu shi okwiinekelwa kutya elelo lyoshilongo shaNgandjera momutumba gwalyo 24.4.1987 mOkahao olya kundathana uupyakadhi wokamba yaakwiita pooha dhoosikola, oshipangelo nehala lyomisioni.

Omwa kundathanwa wo eihumbatonayi lyomakakunya omaluudhe mokati kaakwashigwana. Oonkundathana odha ningwa pokati kelelo lyoshilongo naakuluntu yomatanga gaakwiita mOwambo. Oshigongi osha li mewiliko lyomusita Johannes Kalenga.

Sebulon Ekandjo

Omasiku 24 moshipotha mOseko yaShakati

Aalongi ye vule 40 mOseko yaShakati oshiwike shika otaa tsakanitha omasiku 24, iiwike itatu okutsikila etindo lyawo oku ya mootundi. Eyeme lyawo oya ti olye etwa komulongi pamwe nayo Tomas Nambambi ngoka a lalekwa miilonga komukuluntusikola yo inaa pewa etompelo.

Pauyelele wa gandjwa komukuluntusikola omupeha, omusamane Immanuel Nakasole

aalongi otaa tegelele natango eyelithilo li ya zile komukuluntu gwelongo omusame Denis Nandi, kutya eindilo lyomulongi Nambambi olye ende ngiini.

Oshipotha shaalongi osha tsikile koshipotha shaanasikola mOseko ndjoka mboka ya li ya tokola okuthiga po iipundi uule woshiwike shimwe shoka sha tetekele efudho lyaMaalitsa, manga taa kongelwa omatalashe gokoombete.

Aalongwa ayehe sho ya galukile miipundi konima yefudho, omulongi Tomas Nambambi

okwa tiwa iilonga ye oya hulithwa po mosikola ndjoka nosha yemateke ihe aalongi pamwe naye.

Omukwetu okwa nyengwa okumona omuwiliki gwelongo Denis Nandi opo a tseye eindilo lyaalongi nkene tali ningwa.

Sebulon Ekandjo

Ya dhigininwa

Titus Shalimba
Wilika Ainima pamwe nokanona ke koomwedhi mbali
Mirjam Filippus, Nakayale
Elizabeth Amukwaya, Nakayale
Ruben Edmund, Anamulenge
Konis Shoombe
Nestor Tobias
Lamek Kadhila
Josef Katofa
Omukulupe Katofa Shilongo, Eengolo
Samuel Andreas
Okamati Oskar J. (Kashima) Joel (28)
Onangalo oka kwatwa 22.3.1987

OMULUUDHE OKWA FA OWALA OMBAPA ONDUUDHE

Uuna tatu tumbula oshitya "eluudho" okwa shiladhilwa ekako nenge okuhaa yela kwoshinima. Mbela tse osho twa shitwa Aaluudhe osha hala oku tya aantu twa luudha, nenge ombapa ngaa ya hogololelwa oshigwana kuKalunga sho omihoko dha shitwa o-dhindji?

Ngoka u na eitaalo ndika kutya Omuluudhe oye oshishitwa sha luudha omaiuvu goye oga sa, ga pa ano omwenyo. Omuluudhe ina shitwa a kaka, kakele sho kwi ikakeke miinima oyindji, hi itaalithwa noiha itaalitha.

Omuluudhe oha kengelelwa nuupu noha taamba elongo kehe lyaa na uuyuuki nenge uuwanawa we mu pamba. Shaashoka te shi pewa nenge te shi ningilwa, nomalalakaneno omawanawa nenge omawinayi, kuye oshi li shaa na omadhambululilo. Oha komona owala komutse a pandula.

U tale nee mboka kwa tiwa aanashilonga, oyo ya ningi aapika yoshisiliveli. Ooponda omulongo haa mono komwedhi, odhe ya kutha oondunge, ihaa lalakanene we uuthemba nuuwanawa wayalwe. Ohaa lalakanene owala uuwanawa wonena, wanofu kaa u shi we.

Yamwe nge to ya pula kutya: Otashi vulika tuu Namibia li kale inaali manguluka muule womimvo omilongo ntano dhi li komeho? Ohaa ku yamukula owala taa ti: Kaana ngoye, olye e shi shi ngele oku na noomvula ndatu komeho omuntu inoo sa? Shika osha hala okutya, moshigwana omu na eiuvu lya sa. Omuluudhe ohi iningile omauwanawa ge mwene, oyana ota ti "Omokutala kweni".

Oopelesenda odhindji dhaaniilonga aaluudhe kadhi na ohokwe niigongi nenge omayelithilo

giinima yontumba. Eitaalo neuveko lyopambambo ndyoka ye na, otaa ti oshe ya gwanena. Aanashilonga oyo ooyene yondumbo, ondumbo ashike mokati kawo yene okutaalelathana kombanda yiikaha.

Kaa holathanene uuwanawa, kaa hole okuwilikwa kaaluudhe ooyakwawo. Na tulwe komutse gwepangelo, okwa hala owala te ende a humbatwa, nenge a tiwe "Meneer" shaa thimbo sigo a dhimbwa nedhina lye. Na kale ogwoomvula 50, okwii itaala kutya Omutiligane gwoomvula 18 ota vulu oku mu wilika.

Omuluudhe na kale omwiinikelwa ngiini, shaa tuu a kutwa kwaamboka haku tiwa aahona, nena okwe endwa mevi nokwa posipalekwa.

Taa tu mbembeleke ngaashi omagoya haga ningwa nongaashi okanona haka hekwa.

Tala kep. 8

Ehanauno leefikola mOwambo



Methano ndika ofikola yaKambebe oyo ya pile po 23.4.1987

Omhangela yehanauno leefikola, nomundilo, oya hovela ohani ei, navahapu kave shii apa tai ka xulila. Fiyo opapa Omukwetu okwa kundana eefikola 9 da lungwina po, odo:

Onamhindi	
Omutundungu	11.4.1987
Onelago	20.4.1987
Okando	22.4.1987
Ohamuti	16.4.1987
Nicoderus	
Okalale	26.4.1987
Olyasiti	
Okambebe	23.4.1987

Fiyo opaapa oshiwana oshi na elipulo kutya olyelye te shi ningi. Ndele oshiwana oshi na yo epulo linene li dule okushiiva naku shi ninga kutya oita nomunyonena wayo onaini tai xulu.

S.Ekandjo

Ino holeka Amushanga gwo-shifo edhina lyoye nondjuki-thi nando wa hala okulongi-tha edhina lyefutamo.



Ongeleka yaKahao ndjoka ye egamathana noshipangelo, ekuma lyayo nomakende kombinga yokuumbugantu, osho tayi monika ya mona iihuna kooholo, okuziilila mokamba yaakwiita mehala ndyoka. Oombululu odha holoka po eti 26.3.1987 siku lyoshigongi shaavali

Omuluudhe ke na a koka, okuninga itoo mu uvanekela oshimaliwa, ote ku ningile shaa shoka to mu pula. Paempito dimwe oha papala naye mwene ta hala okwiilya ko noonkambadhala dhoshimaliwa.

Twa ningwa omagoya kaana yanima. Natse yene itatu shi dhimbulula we. Otwa fa owala iinamwenyo mbyoka hayi thigi po ooyene yawo e tayi hokwa mpoka tayi ningwa nawa. Nakumona ondjambi yoondoka ota dhimbwa po mbala uudhigu woshigwana she. Oti itangele nokuuvitha omuhona gwe uugumbo. Kaku na omuluudhe ta longele omuluudhe omukwawo e te mu ithana omuhona gwe. Kuye oshipa oshitoligane osho tashi ti uuhona.

Uuyuni ohau tu pe ekothi, oshoka otse aaluudhe oshigwana osha wendwa owenda yoomposi. Sigo okonena ndjika oko ye li taa hupile mombinzi yaa na ondjo ngajudas. Taa dhindola po oongudhi dhoshigwana. Taa li iimaliwa yelunguluko.

Oku na owala ootundi dhimwedhimwe kaatu ye mo we moohapu. Ndhindhilika nee kutya okambwa ohaka hekwa naashoka ke hole, oshimbombo nomanga ka pwila mokulya, omupini gwa gwile kothingo yako e take gu inana noshithima inaashi pwa mo mokana. Oshigwana inashi ku tala omunandunge, osho wo naku ku longitha ngoka ine ku tala shili omunandunge. Ohe ku sheke, sho he ku longitha miilonga yomuheka.

Ontuko ya tuka oshiti onkene tuu nashi gu po. Ezinyo lya hita monyama onkene tuu nayi olo. Ombuto yuuvu ya ya molutu onkene tuu nalu thononoka po. Taleni, tashi li ekunde omekunde ngaa shi li. She mu yuka omutoko omokati keni ngaa shi li. Omuluudhe ke na onduge yokunongela oyindji. Shaa a li a kuta, kee na we nokaana ke ke li mpee. Shaa a kuta, nena ota fudha a pepelelwa.

Oshigwana oshi ihana wala momutamano ndele hamoondunge. Yamwe otaa lilagana, yamwe otaa yolagana. Yamwe taa li omagadhi omatoye gonyalo, nayalwe taa hupu shokadhila, notaa thindilwa kongudhi.

Oyendji yomoshigwana otaa tumbula taa ti: Gwandhimbo nena ota dhenge gwagonga, ye kee shi kutya oye gwagonga ngoka ta ka sindika. Oshigwana inashi tseyi kutya uumwayinathana oshike. Ohashi ti: Omumwameme oye ngoka twa valwa naye kuyina yimwe.

Oshigwana inashi kokeka, sha lelwa nayi ohedhako nondhendhu. Ngaashi naana okaana taka pula yina: Meme ano oho ka tala shike kiilonga shaasiku, ihatu kaleni pegumbo? Yina ta yi mo: Otandi ka konga omboloto yetu sheeli. Ko taka ti: Omboloto ndjiya yi li mosikopa i-nayi gwana?

Oshigwana tala, panda kola, mbiimbili oha yi kaandjawa, ta yi a longela, nomolwaasho a lukwa keendawala.

Longeni ano mbyoka yomungundo. Uukaka thigeni po, inamu yoga we ontente yaanona mboka haa tila okusa omeya.

Oga li omatumbulo ga hadhwa muule womu-Namibia omukweni.

F.K. Shingenge

INAKU TEGELELWA WE MOSHIKU-NDATHANWA SHANAMIBIA MU ZE SHA MANGA, MANGA EPANGELO LYAREAGAN LI LI MEWILIKO

Omulandu gwepangelo lyaAmerika gwongashingeyi mewiliko lyomusamane Ronald W.Reagan mekwatathano nemanguluko lyaNamibia, ogwa ndjandjukununwa komusamane Martin A. Sovik omasiku ngaka. Nguka omunashilonga mombelewa yOongeleki oonkwaLuther miinima yi na sha nepangelo. Omasiku hamale sho kwa li a talele po ombelewangeleki yetu pOniipa.

Nonando a tala kutya elunduluko enene mepangelo lye okuhumitha komeho emanguluko lyaNamibia, otati otashi ka za ashike mekanitho lyaReagan oshipundi shuupresidente. Omusamane Sovik, ota ngongosheke oshigwana she shAajamerika shi tameke elongekidho ndyoka nena.

Pamadhiladhilo ge omukundu aguhe gwaNamibia ogwa kwatwa ashike kiinima itatu. Ngele mbyoka Amerika okwa tameke ngashingeyi oku

yi longa po, emanguluko nalyo otali adhikwa nziyanziya. Iinima mbyoka okwa ti oyo:

1. Ngele Amerika okwa tameke okweetha po epulo lye lyAacuba muAngola mekwatathano nemanguluko lyaNamibia.
2. Ngele Amerika oku hulithe po ekwatho lye kongundu yaUnita.
3. Nongele Amerika ota tulile po SA ondji-ndikila ya kwata miiti.

SA ngoka oye e na oshapi yemanguluko lya-Namibia, noku na wo oshapi yokweetitha po emanguluko ewanawa lyopambili mu SA mowene, okwa talwa ta tivuka ashike nuupu ngele oongudhi ndhoka dhopatatu dhe mu yelutha, tadhhi dhikulwa po.

Omusamane Sovik okwa ulika wo kiitsa iikwawo yopane mbyoka nayo e yi konakona kutya ngele oyi longithwe, nena oya kwatelela mo eyambidhidho enene kepangelo lyaAmerika kushono lya tegelela SA e shi ninge muumbugantu waAfrika notayi endelelitha wo enkundipaleko lyonkalo ya SA puadiplomati uuyuni.

Iitsa mbyoka oyi li ngaashi tayi landula mpaka:

- a) Ngele epangelo lyaAmerika tali hulitha po ekwatathano lyalyo nepangelo lyuupapeta moNamibia.
- b) Ngele Amerika ta nenepeke omakwatho ge kAanamibia mboka ye li pondje yoshilongo muupongekwa.
- c) Ngele Amerika ta kutha ko oongaku mokulandula eyonagulo lyuuthemba wopantu ndyoka tali ningwa ku SA muNamibia.
- d) Nongele Amerika ta pulakene nesimaneko onkugo yaAnamibia sho taa indile emanguluko lyawo.

Sovik mokuulika kiitsa ayihe mbyoka ya tetekele, okwa kambadhala wo okuulika koshito iinima mbyoka yi li moonkondo dhongundu kehe yi li momulandu gwelelo lyAmerika ngaashi; oSenaata, oCongressa noonkondo dhomupresidente ye mwene.

Ngele tatu tala pafupi iiholelwa mbyoka omukonakoni Sovik ye mwene a gandja.

1. Ehulitho po kepulo lyAacuba negwanitho lyoshitokolitho 435.

Omupopi ota ti moshitsa shika ewiliko lye-

“Naku ifanwe okomisi okukonakona omahepeko muNamibia

Omunashipundi wongudumhitifi yepangelo lOwambo omushamane Pieter Kalangula okwa ti osha pumbiwa ku ifanwe okomitiye yokukonakona omahepeko aa e li moshilongo eshi. Eshi omushamane Kalangula okwe shi popya pefimbo leyeululo loshoongalele shaaveshe (Congress) shokomudo shongudu yaye Christian Democratic Action (CDA) mOngwediva 10.4.1987.

Moshongalele osho omo a hoololululwa natango a ninge omuwiliki wongudu yo CDA. Omushamane Kalangula okwa popya nenyeme koolonga yomunyonena tai longwa ketanga leameno moshilongo eshi, nokwa hala pu dikwe okomisi yowina ye lifikamena, oyo pakupopya kwaye itai kalelwa po nande okoshilyo shimwe shepangelo.

Mwaashi ina twikila ko vali kutya olyelye e na okuhoolola okomisi ei nanhumbi i na okuhoololwa. Oilonga yomungheka yongudu yEtango mokati kovakwashiwana, epiyaaneke lovakwaita peefikola, oveta yokangedjo koufiku mOwambo neholeko loshili lovakwaita novapolifi, oyo ya kala unene tai pangulwa pefimbo loshipopiwa osho.

Okwa pangula yo epangelo lopokati nhumbi tali lalakanene okweendifa oinima yokoshitukulwa shOwambo. Okwa pangulwa omukalo woifendela tai pulwa omukwashiwana keshe mefimbo eli loluteni, osho yo kwa pangulwa oilonga yehangano lounangeshefa ENOK moshiwana.

Omunashipundi wo CDA, Kalangula okwa pula ovashikuli vongudu yaye ve mu yambidide ndela mokupula okatokolifo ko VVO, 435 ka tulwe moilonga.

Sebulon Ekandjo

OONKUNDANA PAFUPI

Dimbulukwa Mai 4, 1978

*MuNamibia mukwetu ino shi dimbwa
Efiku 4 laMai moCassinga,
Eshi omapenda etu a fila mo
Vahapu va lemanekelwa mo
Oto shi dimbulukwa eshi Omunamibia?*

*Oita yomapumba fye ihatu tila
Tu nangaleni ondangala kokwiilikana.
Eenghono noupenda omapenda a pewe
Okukondjela edu loomeekulu
Ovanamibia ove na okufindana!*

*Omwene uda omaindilo etu
Tu pa emanguluko moshilongo shetu
Ovanamibia tu hanganeni
Ofiyo onaini hatu hepele mo?
Akutu, Namibia letu tu alukila.*

Tuyeimo H.Hamukwaya
Omuloka-Engela

Ewilikongudu lipe lo- Christian Democratic Action la hoololwa Ongwediva - 10.4.1987

Oshoongalele shaaveshe (Congress) shOngudu ya CDA, mumutumba washo mOngwediva neudo osha hoolola ewilikongudu lipe oilyo yomadina taa shikula apa:

Elifas Kanime ou a hoololwa omunashipundi woshoongalele naJesaja Nambundunga

Inaku tegelelwa we moshikundathanwa shaNamibia mu ze sha manga

Dha za kep. 8

pangelo lyaAmerika olyo alike li na oonkondo okweetha po epulo ndyoka li li oshitsa sha simana moshikundathanwa ashike shemanguluko lyaNamibia.

Ongunduleli yoCongress mepangelo ndyoka otayi vulu ashike okusakumudha omadhiladhilo gewiliko (Administration). Nuuna epulo ndyoka lya hulithwa po, nena osho ashike tashi shuna oonkundathana dhaNamibia kethimbo lyomumvo 1981, uuna Reagan u umbile endangalati lyaAcuba mondjila yemanguluko lyoshilongo shika.

Osho wo tashi kankameke SA a kale mushono te shi pulwa, okugandja emanguluko kAanamibia. Nondo omupopi e shi tala kutya elelo lyaAmerika otali vulu okweetha po epulo lyekogeko lyAcuba kemanguluko lyaNamibia, noinaali etha po nando okukwathela Unita, onkene tuu a popile, ekwatho kuUnita li hulithwe po, oshoka ota ti olya ningitha iita yomuAngola yi kale yaa shi we yopauntu.

2. Ehulitho po lyekwatho kuUnita

Ekwatho ndyoka pahapu dhomupopi ota ti oshinima oshi li unene moonkondo dhewiliko ngaashi moshitsa shotango. Oshi na wo ekitakano lyasho moku shi hulitha po, oshoka oshi na sha nomulandu aguhe gwepangelo miilongo yopondje.

Okwa gandja etegameno lye eshona mokutega-tegelela elunduluko lyasha moshinima shoka, manga omumvo inaagu hula po. MuKotoba naNovomba omo epangelo lyaAmerika tali ka talulula elunduluko ndyoka lya ningwa po ku SA, noku talike nkene taku tsikilwa.

omunashipundi wopedu; Frans Lindongo, ohamba Josia Taapopi naViktor Ueyulu. Okwa ulikwa yo vakwao komupresidende wo CDA vomadina aa: Titus Heita, Hileni Elago naDaniel Shoooya. Werner Neef naye oshilyo shewilikongudu.

561 ya sila miiponga yoo- boma omumvo gwa yi

Pauyelele mboka wa gandjwa kombelewa yaakwiita mu SWA, eso lyomiiponga yoo-boma moondjila nopomahala galwe otali londo pombanda. Omumvo 1986 amuke aantu 561 oya kanitha oomwenyo dhawo.

Omumvo 1985 omwa sile aantu 234 nomumvo 1984 aantu 142. Omumvo 1986 okwa ningilwe omatopo moondjila 328, omumvo 1985 omatopo 147 nomumvo 1984 omatopo 77.

Aakwashigwana ya sile miiningwanima yiita omumvo gwa yi, omwaalu gwa gandjwa 119, momumvo 1985 aantu 138, nomomumvo 1984 aantu 160. Omatsakaneno pokati kaawitwa ga shongwa ketanga lyegameno oga li 121 omumvo gwa yi; 186 omumvo 1985 na 245 omumvo 1984.

Omatsakaneno pokati kaakwiita ga shongwa kuSWAPO oga li 55 omumvo gwa yi, 66 omumvo 1985 na 62 omumvo 1984. Pahokololo ndyoka omumvo gwa yi SWAPO okwa kanithile momalugodhi aakwiita 645, omumvo 1985 aakwiita 559 nomumvo 1984 aakwiita 584.

Inaku gandjwa omwaalu kombinga yetanga lyegameno.

3. Okutula po ondjindikila ya kola.

Oshitsa shika kashi na unene ondjundo momukundu gwemanguluko shi fe ando iikwawo, ihe ngele oshi tulwe miilonga otashi kwatha Amerika okuhulitha po okatongotongo mu SA nokweetitha wo emanguluko muNamibia.

Nonando moshitsa shino tamu pumbwa wo eyambidhidho lyoCongressa, onkene tuu ewiliko olyo ngaa tango tali pulwa okutulitha miilonga oshitsa shoka.

Omupopi ota ti oveta ndjoka ya pitile omumvogu moCongress, okwiindika amalunza gopashitwe muNamibia gaa thipwe komahangano gaAmerika, kayi na unene enwethomo lya kola pamatompelo gontumba nenge gongandi. Ye ota popile unene ondjindikila yopaipindi ya kola (Trade embango).

Ishewe omolwekwatathano enene pokati ka SA naNamibia, Sovik ota popile ondjindikila yi tulilwe iilongo ayihe mbyoka iyali oshita. Okuningila shimwe ashike, ota ti osima yowala, oshoka oshikwawo otashi ka hupila moshikwawo.

4. Ehulitho po lyeendathano nepangelo lyuupapeta muNamibia.

Shono SA ta lalakana a sindane musho osho okudhika epangelo lya dheuka muNamibia ndyoka itali mu hindi nando omusha. Nonando Amerika ina zimina omavigumbo, noina taamba aawiliki yomavigumbo pamukanka gwopapangelo, onkene nga he ya taamba medhina kutya okwa hala okuuya oma-

dhiladhilo gawo ngaashi hashi ningilwa wo aawilikingeleki. Oshiholelwa mushika ongaashi iilyo yepangelo lyopokati ndyoka ya li ya talele po muWashington omumvogu, e tayi kundathana nomusamane Chester Crocker.

Omukalo nguka omupopi ota ti ogwo gwa pumbwa okudhikilwa oveta koCongress e tagu hulithwa po.

5. Enenepeko lyekwatho lyAanamibia yopondje.

Moshitsa shika omusamane Sovik okwa tala sha pumbiwa epangelo lye li ninge oonkundathana olwindji niilyo ya SWAPO nokugandja omakwatho gopapolotika kaafadhukipo Aanamibia ngaashi hashi ningilwa wo oongundu dhilwe.

Okwa tala wo sha pumbiwa Aanamibia mboka ye li pondje epangelo lye li ya hiye olwindji opo ye ye muAmerika, pamukalo ngoka ekwatathano pokati ka SWAPO naAmerika otali kala ewanawa shi vule sho li li ngashingeyi.

6. Amerika neyonagulo lyuuthemba womumtu muNamibia.

Opo ku gandjwe oshiviha oshinene okutonatela eyonagulo lyuuthemba wopantu ndyoka tali ningwa kepangelo muNamibia, ewiliko (Administration) li tseyithe puuyeleele nonomuthindo gwa kola shono li shi nale komuyonena ngoka.

Aanambelewa yoshikondo shegameno lyuuthemba womuntu nashi ninge iipopiwa omumvo kehe; ombelewa yomatseyitho yi tseyithe olwindji iinima mbyoka, aanashilonga moombelewa dhepangelo lyaAmerika muPerthoria ya indjipalekwe opo ku konakonwe iilonga mbyoka noshninenenima oopropaganda adhihe dha SA dhi ekelwehi noonkondo dhopaveta.

Sovik okwa hiya oshigwana she shi ye miilonga okuyelithilathana ompumbwe yemanguluko lyaNamibia nomatumbulo taga landula:

- Naku gandjwe omauyeleele kewikilo lyepangelo, ewiliko li tseyithilwe iiningwanima ooshimwe nashimwe yi na sha neyonagulo lyuuthemba muNamibia noli yelithilwe wo omulandu gwepangelo nkene gu li.

- Naku nyolelwe oombelewakalelipo dhepangelo mu SA dhi pewe uyeleele kushono sha holoka po. Naku nyolelwe wo kiilyo yoCongress kombinga yuuthemba womuntu muNamibia.

- Namibia nali kundathanwe kokana nokana naakwanepangelo mboka ya tseyi sha naamboka inaa tseyi sha. Ya tseyithileni oonkondo dhewi lyeni mehokololo tali ya.

- Naku kongwe uyeleele wa gwana okutseyi Namibia miigongi mbyoka tayi ka ningwa kOngeleki moshilongo nenge momatalelopo ngoka taga ka ningwa kuNamibia.

- Namibia okoloni ya hugunina muAfrika, ihe kayi shi oshinima tashi nyenge epangelo lyAmerika, nenge aapolotika yaAmerika shimpa tuu ya yelithilwa nawa ompumbwe yoshilongo shoka, osho Sovik a tumbula moshipopiwa she.

Sebulon Ekandjo

OVA SHANGELA NGE TAVA TI

Ovanyasha pefimbo lopaife

Nghi na naanaa eshiivo li ty a shoo, ndele odibo e nda hangwa nayo oyo ngoo handi kupulifa.

Okrima, opeema, omoode yeenghaku de lifa noshikutu, woo eliwapaleko olo. Omumati ile okaadona shaa ka tale aishe oyoo, oke wete ka wana ka pwa. Omaumbo omiti okwa shundulwa taku ti okomavoude. Havahapu ve li komaumbo omiti omotwedina olo, ova kalela Oshakati, Ongwediva, Ondangwa nOluno.

Oushimba winya itau tongwa nee vali vo ve he shi ovanafikola ile yoo tuu ovanashilonga sha sha. Ohava popi nee tava ti 'komavoude itandi i ko, ohai di ko nda laula, ile ohai ka twifwa ndi kale neenghindo, ounyala vange ovapu nawa. O, oshiwana oshinyasha shaWambo sha shundula ounyasha washo.

Paife ohatu tale nee kovanyasha vomeefikola dopombada nande nometetekelo vahapu vomuvo ovo naanaa ovawiliki monghedi oyo. Ovanyasha vomEsekundo onye vshiwana twa tala mwa fa oshikundu tashi dungwa shi nuwe efiku tali

OVETA YIIGONGI MU SA

Oveta yokukelela iigongi mu SA oya lelepekwa ishewe olutiyali nuumvo sigo okomumvo tagu ya. Paveta ndjika itaku pitikwa nando ku gongalwe, okuninga pombila momawendo, mokapale kuudhano nenge oshigongi shomeni lyongulu okuza Apilili 1,1987 sigo Maalitsa 31,1988.

Iigongi yomeni lyongulu yi na sha nompangela yiipotha poosikola nenge aaniilonga ye ethe po iilonga nayo oyi indikwa. Oveta oya dhikilwe 1985 noya lelepekwe ishewe omumvo gwa yi.

(S.A. Digest 3.4.1987)

shikula. Ndele ngeenge elalakano leni eli mwa ila kofikola omwe li pa omakofi, mwa tala meedisko, eepakinga odo oxungi yeni, ovakulunhu komaumbo itava teeleele sha shomelihongo leni vali.

Onghenda nandi i yandjele oukadona, shaashi ovo unene hava mono oshilanduli shidjuu vo ihave shi monene kokule. Ngeenge a lyata momunoko opo nee te linane mo vati, ndele ita dimo vali osheshi omunoko we limbilika ou mu kwete.

Paife keshi vali omunafikola, okwa tya okofa popate ta lefa a ye keumbo ye ta fikile ta kwena nokupopya ita shiiva. Woo! ounyasha ofilu. Mukwao kwinya oku li ngoo nawa ngeenge omunafikola, omambo otaa leshwa ashike.

Ngeenge owokomaonda etemo laShilumbu oli kwetiwe ashike nonghono pe he na nande okambedi. Ove nee kaadona paife owa fa ombala ya dudwa koilya to pi ngoo nee ketemo pombuda nando li keenyala.

Vanyasha vakwetu, tu taleni nawa, tu tale eshi tashi tungu naashi tashi teya. Omunhu u shi naanaa kutya oshinima osho hashi eta oupyakadi, ndee ove to danauka nasho. Omwene na wedele ko ye a pe eenghono ava ve li kondje yaaishe ei ya tumbulwa metetekelo ye a pe ava ve li mwaayo omadiladilo mawa opo va alukile kuye.

Hileni Shoombala Windhoek

Ovakwateli komesho, onakuiwa yoshiwana shetu omwe i yukifa hano peni?

Ame oumwe womovalihongi ndee ondi na oudjuu komutima, onde lineekela haame andike ndi na oudjuu ou. Kombinga yovalongi ndi tye yovakulunhufikola vomoshilongo shetu ondi wete kutya vamwe vomuvo kave na elalakano loku-

xumifa oshiwana komesho, ndee oku shi findila pedu.

Ovakulunhufikola otamu ningi oinima ya puka. Kombinga yokutula ovanhu moilonga yeni yepangelo itamu ningi nawa. Omunhu wa pita Std 8-10 ndee kuwete oilonga? Mboli oilonga yepangelo nyee ovakulunhufikola otamu i yandje tamu ningile keembuda?

Eshi nda mona kutya okeembuda, osheeshi handi uya pwoove, pe na onhele ndi ningi omuyakuli ndee oto nyamukula kutya "Kape na onhele, opeyadi" Eshi ngoo nda pilamena ko pwoove otape uya mukwetu umwe, ove oto mu tambula.

Onhele owe ke i mona eshi nda ya ile ongaali? Sha hala okutya eenhele deni, otamu di yandje kwaava mwa hala. Ndee kwaasho opekalo ya-xuunina tamu longo.

Tu kondjeleni oufikepamwe muNamibia. Efeni okatongotongo ava hamu ningi ngaho, opo oufike pamwe u dalwe, onghalo ipe i holoke tu kale tu li muNamibia limwe.

Unene tuu eshi inamu hala okukwafafana, oshike itaa mu shi ningile. PuKalunga kape na kombuda. Longeni ngaashi yee ha longele keshe umwe.

Ndishi ove eshi u li omuyakuli nou li omutwe woshiwana okehalo laKalunga? Oshike to nyengwa okuyandja pamaufu kuvakweni ovo va shitwa pamwe naave?

Ngee epangelo tali longelwa, nali longelwe kukeshe umwe, opo osho epangelo hali shi yandje shi monike kukeshe umwe. Ngee onhele opo i li, inai teelelifwa mumwanyoko ile omona wakaume koye ile omona womuyamba ngadi. Nai yandjwe kukeshe oo te ya shaashi "Ia enda ongula olo la toola oshima."

Ngee oto kwafa ou u hole, u shii xe na ina, mumwanyoko, ou li ngoo mepya lOmwene osho? Oto longo ngoo moshikunino shaye osho? Ou li ngoo omulongi pamwe naKalunga osho?

Tambulafaneni ngaashi Kristus e mu tambula!!

Umwe womovalihongi Oshikango

OSHIWANA OSHIHOLIKE

Tete onda hala manga ndi tameke nepulo: Ovakwashiwana ovaholike, hano eefikola paife oda ninga dovana voohashikeshalye? Hamba aava inatu dalwa koohashikeshalye itatu ka mona vali ehongo komafiku okomesho? Epulo eli ohai li pula osheshi onda mona oshinima sha kumwifa nge moshiwana shetu omu, shOmulaule ta kolonyeke Omulaule mukwao.

Ame oumwe waava va pita ostanda onhi 8 oudwaali 1986. Eshi nda uda kutya nda pita onda ya ndi ka konge ofikola ndi twikile natango komesho. Onda kendabala ndi konge opo ndi tumbulilwe kouhongi ngeno kOngwediva, ndele inandi tumbulwa. Okwa li ngaho hai ti kashiimba eshi inandi tumbulwa osheshi ngaho kashiimba ndi na omupya, ndee onda ka dimbulukwa konima yefimbo kutya hamupya ndi na, mboli osheshi ashike inandi dalwa kuhashikeshalye.

Eshi onde shi dimbulukwa eshi efiku limwe twa li twa kalela ombelewa yomukulunhufikola hatu



Pethimbo ndika, otaku tiwa Aaluudhe mboka onkalamwenyo yawo ye endjelela kuunamapya, aniwa otaa nana hwepo monkalamwenyo ye vule mboka ye endjelela konkalamwenyo yomoositola. Ihe yangapi yomepipi egundjuka ya zimina oshili ndjika?

ESHI SHA NINGWA MUNAMIBIA NALE NOPAIFE

- 1850 - Jonker Afrikander, ohamba yOvanama tai kondjo nOvaherero notai findana.
- 1862 - Natango oita yOvaherero nOvanama.
- 1868 - Komufala wOvaingilisha a tumwa e uye a pangele SWA okudja kOkapa.
- 1876 - Eembulu da hokela oshilongo okukala koumbanganhuushilo woshilongo.
- 1878 - Etuliloskepa laMbaye Britania te li ningi po laye.
- 1884-85 Oukoloni wOvandowishi wa hovela mu SWA, Ombaye ya kufwa po kOvaingilisha vaKaapa.
- 1888-89 Oita yOvaherero nOvandowishi.
 - Ovakwaite vOvandowishi ve uya moshilongo.
- 1890 - SWA la ninga oshitukulwa shaNdowishilanda.
- 1892 - Ovakwaite vOvandowishi va ninga oshidipaelo mokati kOvanama.
- 1894 - Ovanama va tewa kOvandowishi.
 - Oshibofa shOvaherero sha mwenekwa kOvandowishi.
- 1904 - Oku Ovawambo va shakena nOmuputu kOnhaululi, Omuputu nokwa tewa.
- 1904 - Ovanamibia 80,000 va dipawa kOvandowishi, nde tave litukulile edu noimuna.
- 1908 - Okawe ka monika noka shila ovanailongo vahapu ve uye moshilongo.
- 1914 - Oita yotete younyuni ya hovela, SA e liameka kOvaingilisha okukondjifa Ovandowishi.
- 1915 - SA a kufa ko SWA keenghono domauta noukoloni waye wa hovela nelelo lopakwaite.
- 1920 - SWA la tulwa mepashukilo longonga yoiwana na SA a pewa oshisho shouteku ponhele yohamba yaEnglanda.
- 1922 - SA oshilongo e shi tukaula momaduumbo Ovalaule pamihoko novanailongo vakwao e va pa onhele yavo.
- 1925 - Okwa dikwa Oraata yetoto leeveta ya fikama movatiljaane aveke mu SWA.
- 1939 - Oita oitivali younyuni ya hovela SA nokwa koleka omatanga aye muNamibia.
- 1946 - SA a anya lwotete okushunifa elelo loshilongo kongonga yoiwana oko e li pelwe nota ti kutya Oiwanahangano (UN) ei ye uya po, hayo ya pingena ongonga yoiwana (League of Nations).
- 1948 - Opaati yaNasionale ya pita mehoololo noya ya koshipundi oko inai dja vali fiyo onena. Eeveta dokatongotongo noda hovela osho.
- 1949 - Omukanda wotete wa shangwa kOvanamibia owa tuminwa oiwanahangno notau pula SA a xulifwe po elelo laye moshilongo.
- 1950 - Ohofa younyuni oya tokola nokutya Oiwanahangano oyo natango i na eenghono okulela Namibia nande SA te shi patana.
- 1959 - Ovanamibia 12 va dipawa kovapolifi va SA moshibofa eshi va anya okutembukila kolukanda lipe laKatutura, 50 va yehamekwa.
- 1960 - Ediko laSWAPO yaNamibia.
 - Etiopia naLiberia va kufa oshibofa shaNamibia nove shi twala kohofa younyuni opo eenghono da SA okulela Namibia ngaashi e di pelwe kOngonga yoiwango 1920 di xulifwe po.

kongo ofikola tu li navakwetu tu fike lwopo 10 osheshi okwa sha. Otwa li ngaho twa fa tu va hapu manga ongula ndee eshi kwa pepa otwa ka ninipala shaashi vamwe ove ke lihakana eelesa va ye komaumbo. Okwa li ngaho hatu ti kashiimba ohatu tambulwa ngaho shaashi katu yadi po vali pombelwa.

Eshi nee sha kumwifa nge vakwetu osho nee eshi. Manga ngaho twa kalela ombelwa ngaho okwa dja omushamane umwe ta shikulwa kokaana kaye te ka kongele ofikola. Omushamane okwe uya a yukilila fiyo omombelewa yomukulunhufikola. Eshi a ya mombelewa ova kundafana efimbo lixupi nomukulunhufikola manga okaana ke li pondje.

Konima yeenghundafana davo okaana oka ifanwa mombelewa. Otu udite ashike eshi okaana ta ka lombwelwa taku ti: "Aaye, owa tambulwa wani, etelela ashike ipumbiwa yoye yonhumba nongadi ngeenge ofikola tai ka tameka." Fye nee ava tu li pondje oshike nee itatu tambulikwa do mboli eenhele opo ngaho di ii? Fye otu shii eshi itatu tambulwa eenhele di he po. Natango vali efiku la shikula manga twa li twa kalela ashike ombelwa ya hoofa.

Otu udite ashike eshi Hoofa ta yakula ongodu. Shaashi fye otwe mu kalela ashike poshivelo shombelewa, otu udite ngaho eshi tava popifafana pangodi. Hoofa oo okwa lombwela nakupopya naye ta ti: Aaye, meme paife okaana oka tambulwa, otwe ka teelela ashike fiku ofikola tai tameke."

Hano komukalo oo omunhu ina mona nokuli noixuna yokukonga ofikola nokufya omitenya nomanota kumwe nondjala Yee ina mona oixuna yokulonda neelefa nokuli ndele okwa tambulwa ashike diva hano pangodi.

O, ovakomesho ava mwa pewa oukomesho mu tu lele, otamu tu findile unene kongodi vakwe twa fa tu he shii twomuhoko umwe. Medu letu otu li mo twa hala emanguluko. Hano emanguluko ohatu li mono peni ngeenge itatu limangulula fye vene? Hai ti, mboli ava ovakulunhu vetu ve he shiirvike kovakomesho ihatu ka mona vali ehongo?

Vakwetu napa talwe nawa opo, otu udite unene oudjuu, unene tuu mokutala mukweni ta tambulwa ina mona po nande oixuna yasha. Manga ove ou wa uhala ile ndi tye ho uhala to ende keshe fiku eelesa to futu, to lishunine u ka kale omutumba meumbo leni.

Vakwetu ava mwa pewa oukomesho, u longifeni, kehalo laKalunga ndele hakehalo leni vene. Osheshi koshipala shaKalunga kaku na omona womunamadina nomona womufyoona. Nokoi-pala yeni natu kale tu fike pamwe atushe ngaashi koshipala shaKalunga tu fike pamwe.

**Naemi N. Haufiku
Ohaali**

Omukwati womafuma (Omukwetu No.4/87, Ep.6)

Pefimbo lopaife, nopetameko nokuli lodula, ovanhu vahapu otwe litula unene mokukonaakona nokukondolola oilonga, onghalo nomaukwatya ovanhu vakwetu. Ohatu yandje omaushima kovanhu unene ovo ve li komesho yovanhu, nande navo ove na yoo omaudjuu moilonga yavo. Omanga fyee hatu kombo mepya,

tate Hamulungu ota kombo tete meumbo.

Leshulula vali utale onakudiwa iwa yomukwati womafuma, ngaashi tai monika moshifo sha tumbulwa pombada, oyo ya hokololwa nawa komunhu mwene, Omukwanyamenena. Eendjokonona ngaadi otadi longo shili okulitala fyee vene tete, tu tale opo Kalunga e tu yambeka nokwe tu longela oilonga iwa, fyee tu kale tu shii oku mu pandula.

Omukwati womafuma padalo, oo a ka ninga omukwati wovanhu vaPamba, okwa kala omutumba efiku limwe. Kashi na nee mbudi kutya omo 5.11.86 ile oneudo. Okwa konakona oinima i na oshilonga monakudiwa yaye, okudja 5.11.1925-5.11.1986! Omulumenhu pahokololo laye a palelwa ondjila iwa kovakulunhu vaye, okwe i diinina fiyo oneudo. Pahokololo laye ohatu mono oinima itatu:

- a) Okwa valula ouwa wOmwene (ou a ningilwa).
- b) Okwa valula omayambeko Omwene,
- c) Ta kuminwa oilonganghono vaKalunga, o-

nghee ota xulifa ehokololo lonakudiwa yaye nepulo: "O, Omwene, ondi ku fute shike?"

Epulo lomunelao shili! Ondi shi shii kutya ina teelela enyamukulo komunhu, osheshi oku li shii ye mwene. Ame umwe womovaleshi oo e linyengi-fwa unene kondjokonona ei, naunene kepulo laxuuninwa, itai dulu okumwena.

Omunhu keshe e na, nokuudite ongunga momwenyo waye, oha tale moiniwe yaye ngee omu na sha sha wana ongunga oyo. Ongunga itai dulu okufutwa, oha twaalele omunangunga!

Ondi wete kutya tate Hamulungu owa mona kutya moiniwe yoye kamu na sha sha wana; onghee ondi wete oto tu kumwe nomwiimbi ou, movelisho yaye onhinhatu yo oyo yaxuuninwa ta ti:

"Ohai twala shike kuye,
Tashi wan'epandulo?
Nghi kwete sha sha wana sha!
Hai liyandje ame mwene!!"

E.L.Moses
Windhoek

ESO

Omulongi gwasikola kOnelago mOmbalantu Kleopas M. Haipanda (23) okwa thigi ko he nayina naamwayina. Esiku ?? Aanelago aanambili oyo tas ka mona Kalunga.

*Peha Iyaakawanezimo
P.Sakeus*

+++++

Kuku Karolina Nakakalepo Amweenye (63) 12.2.1987 meso lyombaadhilila. Okwa li megongalo Uukwiyu mOndonga. Okwa thigi ko omusamane gwe noyana yahamano naatekulu 28.

Eimbilo 400. Omuvithi 12.1-8

*Vistorina Nd.Iiyambo
Iipumbu Secondary School*

+++++

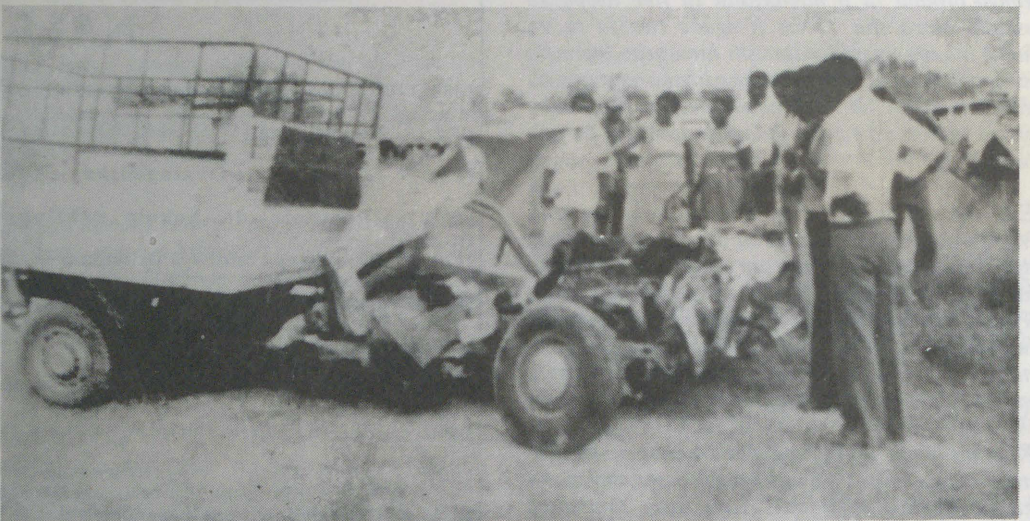
Tate Nikanor Paulus Shindombo, gwomegongalo Onyaanya mOndonga okwa mana oondjenda dhe muwehame womasiku gaali ageke, moshipangelo shepangelo mOshakati Esiku ?? Okwa thigiko omuselekadhi noyana omulongo naatekulu 48. O-pwa piti owala oomwedhi ne, sho Toivo Paulus Shindombo okwa mana oondjenda dhe muwehame womasiku gatatu ageke moshipangelo shaWindhoek. Esiku ?? Okwa thigi ko omwana gumwe.

Elizabeth N.Shindombo

+++++

Meme Mukwahepo Maria Shiyakela (90) momukunda Okalyafengwa, meongalo Ongenga 8.1.1987. Okwa thigi ko onunona 4 novatekulu 36, ovatekulululwa 30 nokatekulululwa 1. Ohandi pandula eshi mwe tu kwafa.

*K.Shipalu
P.O.Box 462
Arandis*



Omufitaongalo Filippus Shikomba efiku lotete laApilili okwa xupa moshiponga shoshihauto melipumomumwe neloli lomakakunya. Okamona Leonard Metumo omo ka xulifila. Oshiponga osha ningilwa mOshakati.

EPANDULO KOMUWA

Omasiku 28.2.1986, onda li nda kwatwa komukithi ngoka ndaa gu shi nokape na ngoka e gu shi kakele kaTate gwomegulu. Ogwa li gwa ningi uule womasiku 36. Omuwa nokwa sile ndje ohenda sho a aludha uuvu wandje 4.3.1987. Tangi kaatalelipo nookuume mboka mwa tula ndje momagalikano geni, Omukulili okwe gu uva.

*Hilja N.Elago
Oshitutuma*

Eilikano omolwombili yoye modula 1987

Tate owe tu shitila medu eli letu, ndele ohatu hepekelwa mo komafininiko a keshe efiku. Ohatu hepa komatokolo inaa yuka, ohatu fininikwa omolwoshili yetu.

Tate, tala oshiwana shoye, hanganifa ovanhu yoye aveshe medu letu. Mwene tu uda, pungulula omitima dovapangeli va tale oshili. Omwene tu manga kumwe melulo lombili naava tave tu tondo.

Tate fye ovyoye, Omwene, tu kwatakaneka tu ninge oshiwana shimwe shi na ombili. Omwene ladipika omitima dovanandunge ovo hava kala moyoongalele younyuni opo va twe kumwe mombili yoye. Tate tu holafanifa.

*Tate H.Ngh.Kashava
Tsumeb*

OLUPANDU KAAHEKELEKI

Omusamane Timoteus Amuulo, ota gandja epandulo kookuume mbono mwa kalele pamwe natse mopludhodhi lwetu. Omolwokuthigwa po kwetu ku Tatekulu Petrus Alweendo, a si 9.1.1987 methimbo lyokukala mombete yuwehame ele. Okwa li gwomimvo 76 patengeneko. Ogwomomukunda Oloole, popepi nUutsima mUukwambi. Okwa thigi ko omukadhi noyana 10, naatekulu ye 22.

Meme Johana N.S.Kwedhi, okwa adhika kuwehame uudhigu, manga a li omudiakoni megongalo lyOshigambo okuza 1973-1986, ihe 1987, ota monika muundjolowe lela kolutu nokoshipala, nomepya ota yi mo ngaashi shito. Omuwa ne mu gwedhele ko uukolele wolutu sigo omuukulupe we womutoko.

*Nasimane Elago
Oshitutuma*

OHANDI MU KUNDILE PO

Aame okaana opamwe nounona aveshe, ondi na yo eteelelo loku ka ninga omukulunhu pamwe novakulunhu aveshe. Onye oshiwana shOmwene pamwe naame ohandi mu kundile po amushe.

Onye ovalongi vange ohandi mu pandula noku mu pandulila unene momudo wa dja ko eshi nda monene oshinhwi moipala yeni omolwelitulemo leni moku tu longa moshili. Noneudo ohandi mu indilile Omwene e mu pe ceenghono di dulife pushito. Twikileni hano oshilonga sheni nombili.

Onye ovanafikola vakwetu ohandi mu lombwele kutya ame neudo onda pita nawa. Onda hafa nokuhafelela nohai pandula Kalunga kange kopombada. Ondi na eedjapo nhatu paife, ndele imwe yomudo oyo odjapo yeenghono nohandi limemesha nehafo omolwayo. Oyo odjapo yange yotete oyo Jesus, notai ka kala oyo odjapo yange yaxuuninwa.

*Okaana
Ngh.Fikameni
Uupumako*



OMUKWETU

Oye oshifo shOngeleki Onkwaevangeli paLuther yomuSWA/NAMIBIA.

Ohashi nyanyangidhwa mOshinyanyangidho shOngeleki mOnilpa.

Omukuluntu gwoshifo omumbisofi Kleopas Dumeni.

Amushanga gwoshifo omusita Sebulon Ekandjo.

Ondando yOmukwetu muNamibia naSouth Africa R6,00 komumvo.

Palwe muAfrica R10,00 nokombanda yomafuta R14,00 komumvo. Mondhila R17,00.

Ondando nomambesitelo agehe naga tumwe kOmukwetu, Onilpa, P/Bag 2013, Ondangwa, 9000.

ELOC PRINTING PRESS
PRIVATE BAG 2013, TEL. 11, ONDANGWA 9000
SWA/NAMIBIA