

OMUKWETU



40c

No. 6

ISBN 0-620-06828-0

VAVALI VA LYATWA KECASIPELI FIMBO VA HONDAMA OITA MONDUDA

Ovakulupe vavali ova fila meumbo eshi onduda omo kwa li va hondama omaumbafano ya lyatwa po komaloli omakakunya. Ovanhu vatatu navo ova ehamekelwa mo. Eshi osha ningwa 17.3.1987 meumbo lomushamane Josef momukunda. Okandongwena popepi nOnamutai mOukwanyama. Oonakufya ovo Ndikuwa yaShindodi (67) namu-mwaina Kaunapawa Shindodi (65).

Meme Laimi Asser (21) omukulukadi waJosef, okwa li umwe wovanhu vahetatu ovo kwa li va hondama owala, oo ta ti ova kondjela mekove lambulavo. Ye mwene nokanghelo kaye keehani 10 navakwao vane ova xupa komatayela Ecasipeli fimbo tali nyanghaua okanguu omo kwa li va hondama.

Nonghumwe inene nonetilo yo tali leshwa momesho nomondaka eshi ta popi, omukulukadi Laimi ota ti oita fiku olo oya hovelele potunai yongula, eshi omatanga SA noaSWAPO a shakena mekove lavo. Vo ova hangikile meumbo nova ya monduda yekuma va ka hondame oikuti.

Konima yeetundi mbali lwaapo eshi omaumbafano a sheka, omaloli avali okwe uya me-



Konima eshi eumbo la teyaulwa po komaloli, ovanhu ova fiwa poluhaela momhepo nomodula.

mbo taa lyataula eenduda. Nakuhepuutula ina shiiva apa va xupila nokaana kaye kanini navakwao vane. Omushame Josef okwa hangika koilonga kOushimba.

navakwao omo va hangikininwa koita. Rebekka (27) okwa fiya ko ounona vaye vatatu.

Meme Laimi okwa hepaulula kutya fiku olo omidimba doonimamweno okwa uhala nado nde ta nangala nado nomefiku la shikula omo da ilwa po kopolifi. Nakutya Ndikuwa oye ina ya-Josef.

Omukundaneki wOmwetu eshi a fika poshiningwanima eshi konima yomafiku avali oita eshi ya kondja, okwa hanga ovanhu vomomukunda oo ve uya okuxupulufa omukulukadi Laimi nomunona vaye.

Pefimbo opo, eumbo alishe otali monika la dundakana nola tyanghaukila mumwe. Movanhu omuyadi ehaluko nomalimbililo nova fa tava teelee natango oupyakadi mukwawo u ka landule ko.

Oipatolona ya topa naai inai topa natango, osho yo oikamufino yokeemhadi oya li ya lapakana nonhele aishe oyo ya li tai kondjelwa. Efudiko loonakufya pefimbo loshinyolwa eshi tashi longekidwa, okwa li inali shiivifwa natango.

Iinimima mbika otandi
yi li li, momeho gandje
tamu tondoka omeya o-
shoka omupenduli a ka-
la ndje kokule, a
mwenyike ndje omwe-
nyo nomukumo.

Ont.1.16.



Omafano tala kep. 7

AANAMIBIA OYA THIGILWA PO TUU WE UUTHEMBA WOKUPOPILA UUNTU WAWO

Omwaalu gwaakwiita Aanamibia metanga lya SA otagu koko omumvo kehe. Yamwe oya thiminikilwa mo, yakwawo ishewe oya ya mo kehala nenge pamukalo gulwe.

Iita muNamibia kayi li we ashike pokati komatanga ga SA naSWAPO, ihe opokati kaSWAPO noshigwana she. Iita oya ninga yopaukwashigwana.

SA okwa thiminimwa okuya mo miita mbyoka, okugamenena po omulandu gwe gwokatongotongo nomaliko muNamibia. Aanamibia mboka taa kondjo ya gama ko-

okwiinekelwa otali ti okuza komumvo 1981, egumbo kehe etiyali muKatutura, omwa za omugundjuka a kutwa miita.

Mboka kaaye na natango evi lyawo yene, kaaye na uuthemba washa mevi lyuuvalwa mo, kaaye na ewi lyehogololo lyaaleli yawo yene, kaaye na eliko nokaaye na uukwashigwana, oyo ye li ngashingeyi iilongitho yokugamenena po onkalo ndjoka yoluhepo komuluudhe yi tsikile natango.

Iita mbyoka SA ta kondjo muNamibia, opwa dhimbululwa nkene tayi mu pula ondilo onene vooranda oomiliyona mbali (R 2mil.) mesiku.

Omalmibililathano oga vuka pokati kaantu naantu.

Edopo lyaalongwa moosikola otali koko omumvo kehe.

Okwaaniilonga moyendji okwe eta ondjala moshilongo.

Oosikola niipangelo ya gwile miikaha yaa-kwiita.

Okatongotongo oka kolekwa mokudhika po epangelo lyetaaguluko. Shoka osha kwathele uukwamuhoko u mone omidhi moyendji shi vule shito.

MuNamibia kamu na oveta yokugamena ngoka inaa hala uukwiita omolweiuvo lye lyopakriste, ngaashi shi li mu SA, osho wo kamu na egameno kungoka pamatompelo geiuvo lye mwene inaa hala okukondja miita mbyoka kee shi shoka tayi gamene.

Oshimpwiyu shOngeleki mepulo ndyoka edhigu oshini? Osho sha li tashi kongelwa

eyamukulo koshigongi mOvenduka. "Tse otwa hala ombili, haiita," osho omukwashigongi gunwe a kaluluka mongundu.

Oshigongi osha ziminathana muukumwe washo, kutya aantu yomoshilongo shika oya yuulukwa ashike ombili, haiita nando. Osha taambwa ko wo kwaayehe kutya Ongeleki moshilongo shika oyo yi na okuhumbata etumwalaka lyokukonga ombili mokati kiilyo yayo.

Oshi ilongwa ishewe nokutya ombili otayi vulu ashike okukondjelwa kungoka a dhimbulula uuntu we nowayalwe. Ngele hasho nena omuntu otaa taamba onkalo kehe ndjoka ta pewa nando yaa shi yopantu. Shika osho oshipewa shoyendji pethimbo ndika muNamibia.

Ongeleki nayi kuthe onkatu netumwalaka lyayo lyopaupofeti, opo yi hupithe oshigwana membonyoko, osho oshigongi shi indile.

Oshi ilongwa wo moshigongi shiyaka kutya oyendji moshilongo shika oya vulwa okuhumbata onkalo ndjoka ye li muyo, yaa na etegameno ewanawa lyonakuyiwa, ihe aantu oyo tuu mboka natango shoka taa longo osho tashi kwatha onkalo ya tya ngaaka yi tsikile. Oshigwana osha pumbwa eputudho moshinima shoka.

Tala kep. 5



Pefimbo leenghundafana, oshoongalefe ashishe osha fikama mokuholola etokolo lasho okuya moilonga yokupendula ondilo younhu moshiwana eshi sha shundulwa.

mbinga ye, okupopila shike shawo?

Omaipulo ngaka nomakwawo ogendji, oga kundathanwa omasiku ga zi ko koongundu dha /Ai //Gams mOvenduka mewiliko lyOraata yOongeleki muNamibia (CCN).

Aakalelipo yoongundu dhopapolitika ndhoka dha shaina chempululo lya /Ai //Gams, osho wo yOongeleki dhomOraata yOongeleki ye vule 30 oya kala moshigongi shomasiku gatatu (13-15.3.1987) okukundathana onakuyiwa yoshilongo.

"Onde mu ithana tu pulakeneni, tse tu kundathaneni shoka shi shi okuningwa po kombinga yuukwiita moshilongo shetu," osho Amushangandjayi dr Abisai Shejavali a tumbula petameko lela lyoshigongi.

Okuza 1980 SA okwi igidha aagundjuka ayehe yomimvo okuza 16-25 muNamibia Aatiligane nenge Aaluudhe, ya ndjoine muukwiita, ya hala nenge inaa hala.

Aawambo nAakavango inaa kwatelelwa manga moveta ndjoka, ashike ekunguluko lyawo oku kutwa muukwiita nalyo enene omumvo kehe ngaashi vakwawo. Etengeneko kaali shi unene

Oshigongi osha tala nolwiho nkene iimaliwa mbyoka ya li tayi vulu okupendula po oshigwana shika moompumbwe dhesiku kehe ngaashi elongo, uundiolowele nosho tuu.

Oshigongi sha /Ai //Gams moonkundathana dhasho osha tala noluhodhi kiinima mbyoka yi li moshigwana ya etwa po konkalo yiita.



Moshigongi omwa li wo aagundjuka mboka ya kalele po omahangano gawo Oongeleki.

EMANGULUKO LYOMUNTU

Mondjokonona yehupitho lyomuntu kuKalunga otatu mono nkene Kalunga ta hupitha nota mangulula omuntu papolitika, palutu, pankalathano nopambepo.

Kalunga omumangululi papolitika. Okwa mangulula mo oshigwana shaIsrael muupika waEgipiti, moka sha li tashi thindilwa kongudhi. Kalunga omumangululi okwa longitha Moses opo a mangulule oshigwana she. Emanguluko ndika otali ithanwa emanguluko lyopapolitika. Ano Kalunga ita popile uupika wopapolitika nando!

Kalunga omumangululi muupika wopalutu. Kalunga okwa tumu Jesus a mangulule aantu palutu. Jesus okwa mangulula aaposi sho e ya tonatitha. Oombolo okwe dhi thitulula. Aavu okwe ya aludha. Oompwidhuli okwe dhi tidha mo. Shika otashi ulike kutya Jesus okwa mangulula omuntu palutu.

Kalunga omumangululi gwopankalathano. Otatu shi mono sho' Jesus a li a kundathana nomukiintu Omusamaria nonando Aajuda kaya li ye na ekwatathano nAasamaria. Mbuka owa li uupika okwaapopya nooyakwawo. Eyele lyOmusamaria omunamutimahenda otali ulike kutya uupika wopankalathano owa hula po. Ngoka to u ningi oongoka wa tambula ko Satana nelongo lye.

Kalunga omumangululi gwopambepo. Otatu mono muJesus Kristus ngoka u uvitha elaka etoye lyemanguluko kaantu yaKalunga. Jesus okwa gandja omwenyo gwe opo uuyuni u

hupithwe, u ze mo muupika waSatana, ye omuntu a mone omwenyo gwaaluhe. Ombinzi yaJesus oya dhimi po oondjo dhaantu ayehe opo uuyuni u mone ehupitho. Jesus a mangulula omuntu muupika waSatana.

Onkee Jesus muLuk.4:18 ota ti: "Oshoka oye a gwayeke ndje, ndi uvithile oohepele evaangeli, nokwa tumu ndje, ndi igidhile oonkwatwa emanguluko naaposi etonato, nokute-mbudhamo oonakuhepekwa," Shika otashi tu ulukile kutya Kalunga ota mangulula omuntu muupika ahe.

Ye omuyapostoli Paulus ota ti: "Kristus okwe tu mangulula tu kale twa manguluka. Iikwateleleni (kotokeni, takamitheni) ano mwaa tulwe we meti lyuupika" (Gal.5:1). Uupika ngele wopalutu, pambepo pankalathano nenge wopapolitika.

Onke tu na okutala onkalo yongashingeyi nomeho ga tonata, nokukoneka kutya Kalunga ine tu pa ashike emanguluko okuza muupika woondjo, ihe okwe tu mangulula wo okuza momathiminiko nomokwaa na uuyuuki. Emanguluko lyomuJesus olyokuza muupika waSatana woludhi kehe.

Onkee tu na okweekelahi ashike shoka tashi tu fala moondjo nenge muupika. Ngaashi epangelo lyokatongotongo. Omulandu nguka gwokatongotongo kagu na omakankameno mOmbimbeli.

Pahokololo lyeshito otatu lombwelwa kutya omuntu kehe okwa shithwa oshifetha shaKalunga. Nopehokololo lyehupitho lyomuntu otatu lombwelwa kutya kehe omuntu okwa longelwa ehupitho. Tseni aakriste otwi itaala kutya meso lyaKristus, Kalunga okwa hangana naantu ayehe nosho wo omuntu okwa hangana nomuntu omukwawo. Omuyapostoli Paulus muEfes 2: 14-16 ota ti:



Omusita David Iileka

"Oshoka oye ombili yetu, noombinga adhihe mbali okwe dhi hanganitha kumwe nokwa kumu na po ekuma lya li pokati nokutya etondathano... opo e ya hanganithe naKalunga molutu lumwe okomushigakano.."

Ano eyooloko netopoko kayi na mo nando ehala moohapu dhaKalunga. Eso lyaJesus lyoko-

mushigakano olya teya omahepeko nosho wo oonkondo ndhoka tadhi tula omuntu muupika.

Ope na mboka ya dhiladhila ashike emanguluko lyokomeho muuyuni tau ya. Ihe natu uveniko kutya emanguluko kali shi ashike lyomuuyuni tau ya, ndele oKalunga te ya monkalo yuuyuni wetu shoka ta tula po ohole, uuyuki nosho wo ombili moshigwana shetu. Kalunga ota longitha aantu ngaashi a li a longitha Moses. Opo a mangulule oshigwana oshithiminikwa.

Ekuthomo lyaIsrael muupika waEgipiti, olugodhi lwopuJeriko, eyaludho lyaavu, ekutitho lyaalumentu omayovi gatano, otayi tu ulukile kutya **ehupitho** nenge emanguluko olyopambepo nosho wo papolitika.

Otatu vulu okupopya emanguluko nguu themba wetu wonale, eshitululo netungululo,

uuthemba wetu wopantu nosho wo woshigwana shi na omwenyo nokukala tu li ngaashi tu na okukala. Emanguluko olyo okusinda uuwehame nomahepeko. Okukala kwomuntu akuhe oku li ashike monkalo ombwanawa uuna onkalo ye yopambepo, papolitika nopankalathano tayi yamukulwa pampumbwe yomuntu.

Onke ongeleki nayi longe aantu kutya kehe omuntu okwa valwa a manguluka noku na uuthemba we koshipala shaKalunga. Nosho wo oku ya longa ya tsikile okukondjela uuthemba wuukriste wa gwana po, wi ikwatelela kombili, ohole nosho wo uumwayinathana mokati komihoko dha yooloka moshigwana shetu.

Emanguluko okuhangana (ehangano), oya mangelwa kumwe. Itatu vulu okutya otwa manguluka, manga pe na okatongotongo. Ihe otu na okupopya kutya otwa manguluka uuna pe na ombili nosho wo ehanganitho. Onke omukriste gwashili ota lalakanene okweeta ehanganitho (Reconciliation) pokati kOmutiligane nOmuluudhe mevi lyetu, nosho wo okweeta uuthikepamwe.

Ihe natu shi konakone wo kutya Aanamibia itaa vulu okuhangana naatondi yawo, omanga ye ya lyatela pevi noye ya ninga aapika. Omanga yo yi itula pombanda noyi ininga aahona. Uuwanawa itau vulu okuhangana nuuwinayi, okuninga uuwinayi tau lunduluka.

Natu kotokeni okuhangana kwaa na oshili, kwaa na eitedhululo nuuyuki. Kalunga ita vulu okuhangana nondeeveli.

Kalunga ngoka a mangulula Aaisrael ota ka mangulula wo Aanamibia kofi yuupika waSouth Africa. Onke tu na okwiitula mo mokukonga emanguluko lyoshilongo shetu. Otu shi sheni kutya epangelo olya ninga oshilongitho shaSatana okuhepeka aantu.

Onkee uukriste itau kondjitha epangelo lyaatiligane, ihe otatu kondjitha uukoloni, uukwamuhoko, ethiminiko, okwaanuuuyuki, okwaanoshili, okweenda, okwaanuuthemba woludhi kehe, nosho wo omadhiladhilo niilonga ayihe yopasatana.

Kalunga okwe tu mangulula pambepo, pausosiale nopapolitika. Tu tonateni opo twaa iyetheleni muupika woludhi kehe. Tu kondjeni pahalo lyaKalunga opo tu zeni mo muupika moka tu li mo ngashingeyi.

**David Iileka
Onakaheke**

Etילו Kalunga olo efina lounongo

Oshiwana shetu shOvarwambo osha pumbwa ekwafu. Nge hatu tale onghalo omo shi li mo, ohatu mono ngehe sha taalela omuvelo wa kula noshi li mondjila ya mbwalangadja. Unene onghalo ya tya ngaha oi li unene mwaava ve li oshiwana shokomesho, hano movanyasha. Ndele mokambo "Enota ile ondjala" Tate Munyika ota ti:

"Oshidjuu okweefa oshiponga sha yuka meumbo u shi wete. Omunandunge ohe ke shi kondjifa manga shi li koluvanda.

Apa nandi halele oshiwana omhepo Iyapuki ngeno i uye musho, sho shi mone omadiladilo okutema olamba, okukufa Ombimbeli opo shi mone ounyene wondjovo yOmwene. Omajel.4:22. Hano nge twa lesa Ombibeli ohatu mono shili kutya Okutula Omwene okwo efina leshiivo.

Pexulilo nandi xulife nendjovo edi: Itandi diladila vali ndi he na eenghono okweefa oulunde, osheshi muKristus ondi na eenghono. Itandi tila sha vali, osheshi muKristus ondi na eameno. "Ondjovo yoye oyo olamba yeemhadi dange, nouyelele mondjila yange." Ps.119:105.

Ohandi halele oshiwana shange omayambeko nokumona etilokalunga olo li li efina lounongo 2Petr.3:14-15. Omwene ne mu pendulile alushe eenghono dipe fiyo mwa mona exupifo pauyuki nopahalo lOmwene. Omuye tu na exupifo.

**Elieser Hamukwaya
Ponhofi Sec. School**

£900 000 nayi gwanene Aanimibia - Epangelo lyaBritania lya ti

Epangelo lyaBritania olya tinda okugwedhelitha iimaliwa yaailongi Aanamibia muBritania, yi londe sigo ando iiponda oomiliyona mbali ngaashi lya pulwa. Aniwa naa gwanene naambyoka £900 000 pamambo gokomumvo 1986-1987. Eindilo lyegwedhelo olya zile komahangano gi ipyakidhila ngashingeyi nokwiilongitha Aanamibia moshilongo shoka.

Okuza Apilili 1986, muBritania omwa kala Aanamibia 190 taa ilongo, 80 yomuyo otaa futilwa kOraata yOongeleki yaBritania (British Council of Churches).

Yakwawo yalwe okomahangano ngaashi; African Education Trust; Canon Collins Educational Trust for Southern Africa; Christian Aid; Namibia Refugees Projects naWorld University Service.

Omahangano ngaka moshigongi shago nepangelo lyaBritania muJanuali 6, 1987 oga lombwele oministeli yotango efolo Margaret Thatcher, kutya eputudho lyaanashilonga Aanamibia, oshinima sha simana unene manga emanguluko inaali thika.

Ongundu oya ti wo kutya Britania kee na ashike omaliko muNamibia, ihe oku na wo okuhumbata oshimpwiyu omolwonkalo ombwinayi moka Aanamibia ye li mo.

Ehokololo olya ti omumvo 1985 ekwatho lyaBritania kaailongi yaNamibia olya li iiponda £605 000 sigo £481 000. Iikwawo £107 000 ya longithwa molwaanashilonga mboka ye ki ihumitha komeho muEuropa na £13 000 oya longithwa moompumbwe dhawo.

Ailongi mboka oyo mboka unene taa

idheula melaka lyOshiingilisa, nenge taa idheula mokulonga aanona osho wo miinima yi nasha newiliko moshigwana.

Iimaliwa hayi longithwa komahangano omakwatheli gAanamibia, haayihe hayi zi kepangelo lyaEngilanda. Iikwawo okwa tiwa ohayi zi unene komahangano giilongo yaSkandinawie noyaEuropa nokomahangano ngaashi ngoka ga thikama mEhangano lyaEuropeans Economic Community (EEC), ehokololo lya ti.

MuJuli 1986, oministeli yotango yaBritania efolo Thatcher, okwa li a tseyitha kutya epangelo lye otali ka gwedhelitha iimaliwa yekwatho lyaailongi Aaluudhe yomu SA niiponda oomiliyona 15 (£15 mil) muule woomvula ntano tadhilandula.

Epopyo ndyoka olya lya tukulutha omahangano haga kwatha Aanamibia yi indile wo egwedhelo sho taa ti Aanamibia nayo otaa hepa kokatongotongo shi thike naanaa pamwe naantu yomu SA.

“Namibia na gwanenwe komwaalu gwiiponda £900 000,” osho oministeli yomapendulopo giilongo yopondje omusamane Christopher Patten a tumbula pethimbo lyoonkundathana nomahangano omakwatheli kuNamibia.

Ihe okwa ti wo kAnamibia ye li muZambia iimaliwa yowina otayi ka gandjwa kepangelo lye omolwaalongwa ya adhe oonkatu meilongo noyi ihumithe komeho miinima yopaunongononi mookersesa muLondon.

(Namibia Communication Centre)

ELONGO UUYAMBA WOSHI-GWANA, (NOHAIMALIWA ASHIKE)

Elongo kali shi uuyamba womuntu mwene nenge uuyamba wezimo ihe olyo uuyamba woshilongo shetweni ngashingeyi nosho wo monakuyiwa. Aalongi nosho wo aailongi yamwe moshigwana shetu oye na uudhigu wokuuwa ko kutya elongo oshike, nosho wo elalakano lyalyo. Elalakano lyelongo olyo okumona ontseyo ya hwepopala ndjoka nakwiilonga ta kala e yu uvitile uuntsa nege ta kwatha nayo oshilongo shawo.

Oonakwiilonga yamwe ohaya kala noku-nyanyukwa nege ya mono onkatu yontumba nenge ontseyo moshinima shongandi, ihe hamolwaashoka taa ka kwatha nayo oshigwana nege omonakuyiwa nenge ongashingeyi. Okwa nyanyukwa netompelo ndika, kutya kezimo lyawo oku na omuntu a longwa.

Gumwe oku na edhilaadhilo ndika kutya ngashingeyi iimaliwa okwe yi lala nee komutse gwayo. Edhilaadhilo lya tya ngeyi olya puka. Oshiwana okupandula moku ka kwatha oshigwana sheni nosho wo aashitwa yaKalunga mboka ya pumbwa ekwatho lyoye.

Ope na aalongwa yamwe ye na omagano mokwiilonga kwawo, (oshoka aantu oye na omagano ga yooloka, (1Kor.12:28-31). Gumwe shimpa tuu a piti Ostanda ontihetatu, ye nokuli ota kongo iilonga netompelo ndika kutya ita si inaa kwata oshimaliwa, nando praa na omaimbo gopaimaliwa. Etompelo lya tya ngeyi olyanathangwa, oshoka Kalunga oye mwene e shi kutya uunake to si.

Otashi vulika u ka se u na oomvula dha konda ethele, omanga to matukile iimaliwa. Ope na ngaa aalongwa yamwe haa longo owala omvula yimwe ye ota ka tsikila. Etompelo lya tya ngeyi ewanawa noonkondo omolwuunkundi wiikwatha mosikola.

Omwiilongi gumwe meilongo lye pehala lyokudhiladhila nkene ta ka yakula oshigwana nege a piti, ota dhiladhila nkene ta ka landa oB.M.W.

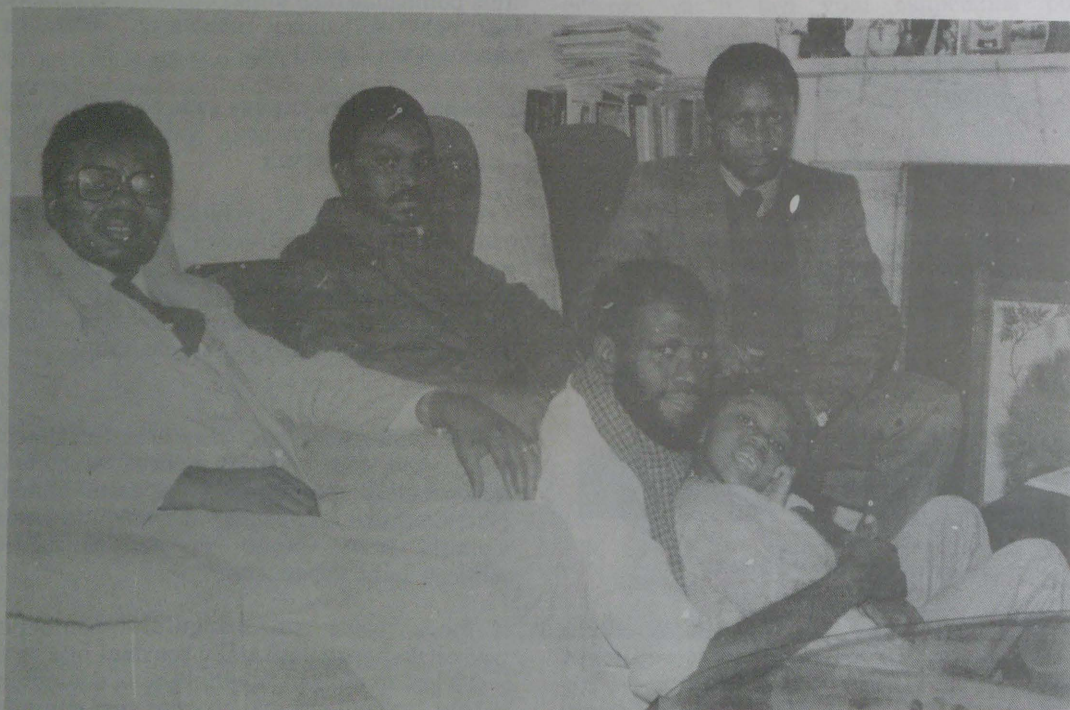
Omwiilongi gumwe pehala lyokwiilonga, ota dhilaadhila okutunga manga egumbo ye a ka tsikile nduno nawu, ihe hwepo ngaa. Ndele dhimbulukwa kutya ontelekulula ihayi dhokeke omahoka.

Omwiilongi omwaanawa oye ngoka ti ilongo nelalakano, opo a ka yakule oshigwana monakuyiwa. Omwiilongi omwaanawa ota tegelelwa a kale a tula iinima mbika melandulathano ngeyi:

1. Okwiilonga neitulomo.
2. Okwiilonga, opo u ka kwathe oshigwana.
3. Okwiilonga onkalonawa yoshigwana.
4. Okwiilongela onkalamwenyo yoye ohwepo (egumbo, iimaliwa nosho tuu) ihe haku tula omadhilaadhilo tango kiimaliwa komeho gaayihe mbika.

Onkee ano aailongi ooyakwetu, tango natu taleni onkalo yoshilongo shetu nkee ya tya nonkene ya pumbwa aapukululi. Ootatekulu oya kondjo nale komukalo ngoka taa vulu, ihe ngashingeyi shi li ko oshetweni aagundjuka nosho wo aanya-nyamagulu.

Kepandja tali landula



Methano ndika omu na yamwe yomAanamibia mboka taa ilongo muBritania. Okuza kolumoho omulongi Kauko Shikongo; omunangeshefa Martin Jacob nomulongi Martin Nantanga. Komeho Amushanga gwomayelithilo mu ELCIN John Shitundeni ngoka kwa li metalelopo nokanona komwiilongi Hishikushitya.

Ongeleki yaSoomi okuza nena sigo omumvo 2000

Oshigongi shaambisofi yOngeleki onkwaevangeli paLuther muSoomi, pehulilo lyomumvo gwa yi, osha ningi ethaneko lyopolana yiilonga yayo, ndjoka yi na okutameka nuumvo sigo okomumvo 2000.

Pashifonkundana: News From the CHURCH of Finland, No.3/86 mopulana ndjoka omwa kwatelelwa iinima tayi landula:

— Ongeleki oshilonga shayo momagongalo shi kale natango okulonga ohapu nokutopola Omasakramendi, opo eitaalo lyomuKalunga katatugumwe, li tungwe noli kolekwe maakriste, yo yu uve ko oshinakugwanithwa shawo komuntu mukwawo.

— Olupe lwongeleki lu hololwe puuyeleele nolu dhigininwe mokulonga oshilonga shayo shopambepo nawa.

— Ongeleki yi kwathe aantu okuhangana kumwe nokukolekathana meitaalo lyopakriste.

— Uukwanegongalo wiilyo yOngeleki u konakonwe nawa nopolu talwe oshike tashi fala yamwe mokweetha Ongeleki.

— Otaku tulwa wo omuthindo kehuku lyelngelokalunga ngaashi eshasho, ondjokana nosho tuu, oshoka omiinima mbika aakriste taa holola omwenyo gwawo.

— Aakwanegongalo yalwe wo yi inekelelwe inakugwanithwa oyindji shi vule ngashingeyi.



Omumbisofi omukuluntu gwOngeleki onkwaLuther muSoomi, John Vikström.

— Mopulana ndjoka, otaku talwa kuunkundi weputudho lyopakriste momagumbo. Aanamagumbo otaa pulwa uudhiginini moshilonga shoka sheputudho.

Oshinakuwanifwa shOngeleki

Oshityadina ongeleki osha dja koshitya shOshigreka Kyriake; tashi ti shOmweene, ile Ekklesia, ongudu ile oukumwe (community). Okudja ongeleki yotete fiku ya totwa kombada yedu, efiku laPentecost opa pita paife eedula 1952 lwaapo! Omuleshi, pakupopya ongeleki apa itandi ka popya ngeno ongeleki omo ove u li oshilyo, ndi li oshilyo; ashike nayo ihandi ke i fiya po, onde i kwatela mo yo.

a) Ongeleki kai na okukala hai dimbulukwa omapuko taa ningwa kovafita ile koilyo yayo ondjongwela-holo; yo nai lilongele ko yo!

b) Ongeleki kai fi omwoode, fashion, itai di mo yo itai ya mo.

c) Ongeleki inai pitwa komesho kefimbo, konghalo (situation,) inai lumbakana nalo.

Ongeleki nai kale omutengeneki wouwa ile wowii tau wa komongula.

Ongeleki i na okukala ya tonata, omanga ounyuni wa pwila mo.

Ongeleki hayo nai lilonge sha lwanima kounyuni, ndele oo nau li longe sha kuyo. Luk.22:25.

Ongeleki nai lilile ovanhu vayo; hayo nai lililwe! Luk.20:41-44. Shiffinwa nashi landule omhadi, mhadi inai landula shiffinwa.

Eeno E. Kamati

Kalunga kOvalaule hano e li pipo?

Nandi kwafwe ndi pukululwe kovareshi vOmu-kwetu:

Kalunga ketu hano oye ngoo Kalunga kOvati-lyaaane, ile fye otu na po oshikalunga shimwe shi dulike eenghono kuKalunga wOvatilyaane? Ile ngee Kalunga umwe aeke, fye Ovanamibia mbela ke tu hole ngaashi e hole Ovatilyaane?

Ile oshike twa li ku ilikana ndele Kalunga ite tu kufa nande moudjuu ou tu li mo? Ile pamwe ihatu ilikana twa mana mo? Ile pamwe otwa konenwa unene koulunde? Onda limbililwa nghi shi vali ngee emanguluko laNamibia oli kwetiwe moshipala kOmutilyaane ile okOvalaule voo vene?

Osheshi oto hange ovanhu (ovakwashiwana) va mangwa komesho tava dengwa neeshokoto vati nava tonge SWAPO, tava dengwa kOvalaule vakwao (omakakunya) manga shilumbu a londa ke (Kasper) ta yolo eengadja, yee ta nu okashekeleta.

Takatu S.N. Ondangwa

EILIKANO

Tate Kalunga ketu, osigo uunake to shi pitika tu kale kofi yomapangelo giilongo yilwe. Kala pamwe natse uusiku nomutenya. Koleka aakwateli komeho yoshigwana shetu.

Galula mboka ye li kondje yoongamba, gamena aalongi yoosikola mevi lyetu, ngu u gandje omayeke kaalongwa ya gwanithe mbyoka taye yi longwa noku yi dhiginina.

Opo ya kale ye na uunongo noondunge, ya ka kwathe le oshigwana mevi lyetu.

Kalunga ketu, ino tu etha po, kala putse atuhe oshoka waa hepo katu na shoka tatu vulu, tu sila ohenda ngu tu uve momagalikano getu.

Tate yetu, tu pa emanguluko lya kola nombili nuuyuki woye moNamibia.

Ngoye u tulithe oshitokolitho 435 koshipundi mehogololo okešilohenda nombili yoye Omuwa gwetu. Tate chalo lyoye nali tye.

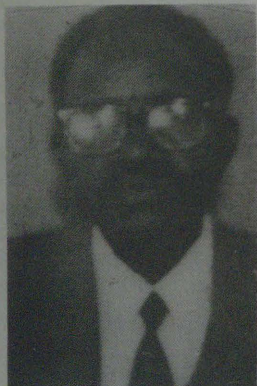
Ameni

Nambili yaNambili Windhoek

Omulongi pOniipa Tate David Leonard Mulenga (65) okwa hulitha oondjenda dhe ombaadhilila megumbo lye 31.12.86. Okwa thigi ko omukulukadhi gwe noyana 9.

Oshoka omwenyo gwandje oKristus, nokusa okwo elikolo. Eimbilo 543. Otatu mu pandula amuhe mboka mwa li mwe tu yakula noku tu hekeleka moluhodhi lwetu.

Frieda Mulenga Oniipa



EFYO

Immanuel Hafeni Augustus Shifidi, okwa xulifa oweenda waye 30.11.1986 moshiponga shedipao omanga a li poshoongalele shomudo wombili. Okwa kala cedula 19 modolongo yaRobben Island eshi a li a tokolelwa onghalamwenyo modolongo.

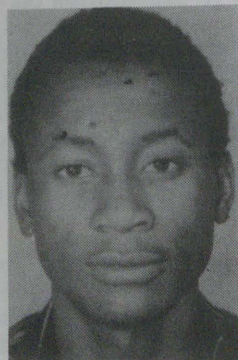
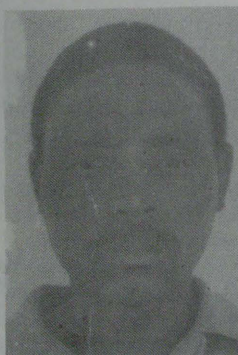
Ohandi pandula oshiwana eshi mwe u ile tu tukululilafaneni oluhodi naashi mwe tu twala momalikano fiyo opaapa. Ohandi indile Tate Kalunga e mu pe eenghono noupenda okuyakula natango.

Immanuel okwa fiya ko omukulukadi waye nounona vane.

Oshiveli shaye Hilde H. Ndesheetelwa Shifidi

Kuku Tobias Shinghumbi Namwele okwa hulitha oondjenda dhe 27.12.86 mepipi lyomimvo 63. Okwa thigi ko omuselekadhi gwe kuku Helena Shigwedha naanona yawo mOlungalunga mOkaku mOndonga.

Fredrika S. Enkali Ongandjera Hospitaal



Omumati Oiva Tonata yaJona Amukushu (23) gwomegongalo lyaElim okwa mana oondjenda dhe ombaadhilila moshiponga shehauto 4.10.1986.

Erastus Jona Elim

Aakwiita yaSouth Africa otaa longo po iilonga yaanapolotika

Moomvula dha yi aakwiita ya SA oya kambadhala okukwata aakwashigwana noku ya pulapula elongelokumwe. Pakutala oshinima ando oshiwana, ihe ombinga onkwawo oto limbililwa elongelokumwe tali pulwa kaakwiita.

Ishewe omuntu oto kwatwa mbala komadhiladhilo kutya omolwashike aakwiita taa longo po oshilonga shaanapolotika? Aakwiita itaa pula owala elongelokumwe, ihe oya hala ishewe aakwashigwana ya longe po oshilonga shawo shokutonatela oshilongo.

Unene tuu sho taa pulapula aakwashigwana ngele oya mona aakwiita ya SWAPO. Omolwashike aakwiita ya SA ya hala okutula oshigwana muudhigu sho shi li mo nale? Aakwiita ya SA otaa pulapula aantu aakwiita ya SWAPO yo taye ya thigi momakuti.

Aakwiita ya SA sho taa pula uukumwe, aanapolotika ya SA kaye mo we moombelewa? Nenge pamwe aanapolotika oyo ya gandja oshimpwiyu shawo kaakwiita? Oshigwana osha loloka kiilonga yaakwiita ya SA, oshoka oyo taa kwata aantu, oyo taa dhenge aantu aakeenandjo, oyo taa tula aantu moondholongo ngaashi Robben Island noonkwawo, yo oyo taa tiliitha oshigwana.

Elongelokumwe otali etwa po tuu kaasolotati, omanga mboka yi inekelelwa aniwa uupolotika ya londeka okugulu kokukwawo moombelewa? Shika itashi vulika nokuli.

Omkalo omwiinayi gu li maakwiita ya SA ogwo nguka: Aakwiita oyi itula moshilonga shokupula aakwashigwana eitaalo lyawo. Shaa tuu wa ti ondi li omukriste, nena we dhi eta ko ihe. Ngiika osha zi mpoka, shoka naapangeli yamwe Aawambo oye tonde uukriste.

Oshigwana osha limbililwa noonkondo omolwiilonga ya SA naasolotati ye moshilongo. Otwa li tu shi aakwiita oye ya shili okugamena aantu, ihe yaye omahepeko ga vuka.

Omolwashike ngele nda yono handi pangulwa nokupewa ondjo yandje, ihe yamwe ku shi lolo. Adhengi yo aahepeki yoshigwana ohaa kwatwa tuu nokupangulwa?

Moshilongo muka oto kumwa kumboka ye lile po Aaluudite mwa ti etanga lyegameno yo oyo naanaa aahepeki aakukutu.

Ohaye ya nduno miipangelo unene mbyoka yi li kokule nookamba dhawo oonene nokupula ondohotola naapangi omapulo ge li handiyaka niilonga yawo. Aakwiita mOrwambo otaa longo ano miikondo yini po? Oye ya tuu shili ya longe nokugamena oongamba nenge otaa longo owala shaampoka? Aakwetu omuntu na simanekwe, ye na talwe kutya oshifetho .naKalunga shi na ondilo.

Epangelo otya tulilwa po omolwaantu hamuntu a tulilwa po epangelo, ihe aakwiita nepangelo lyawo oyo ya tulilwa po Ongeleki kuKalunga mwene.

Aakwiita naa longwe okusimaneka Ongeleki yaKalunga niilyo yayo. Aakwiita inamu itula miinima yeitaalo, otamu yi kokule niilonga yeni

ENYONAUKO LEUMBO MOMAFANO



mbyoka mu lile po aniwa oyokugamena. Aanambia otwe mu limbililwa nonakuyiwa yoshilongo shika omwe yi tula momalimbililo.

Otandi galikana Kalunga a gamene Ongeleki dhe muNamibia niilyo yadho ayihe mbyoka ya hepekwa notayi hepekwa nayi kaakwiita ya SA. Otandi galikanene wo aapolsi naakwiita ya SA

mboka taa hepeke aantu nOngeleki dhawo mu-Namibia yo ya holole epuko lyawo puuyeleele, ihe hakuhepeka nokudhipaga aantu yoshigwana she-tu.

**F.N.Shiviya yaShiviya
Katutura**

Ondjokonona yomulongi nomwiimbithi

A. Nandjo mOkahao 1898-1984

Egongalo lyaKahao mOngandjera ndyoka lya dhikwa 1906 kaahongi yetumo lyaSoomi, olya wilikwa moondjimbo dhalyo komulongisikola Alfeus Nandjo (Uukaku). Nonando Uukaku oshilongaithano she osha li omulongi gwaanona nomuuvithi melongelokalunga, shoka shi li natango momadhimbulukwo gaamboka ye mu shi osho omusiki.

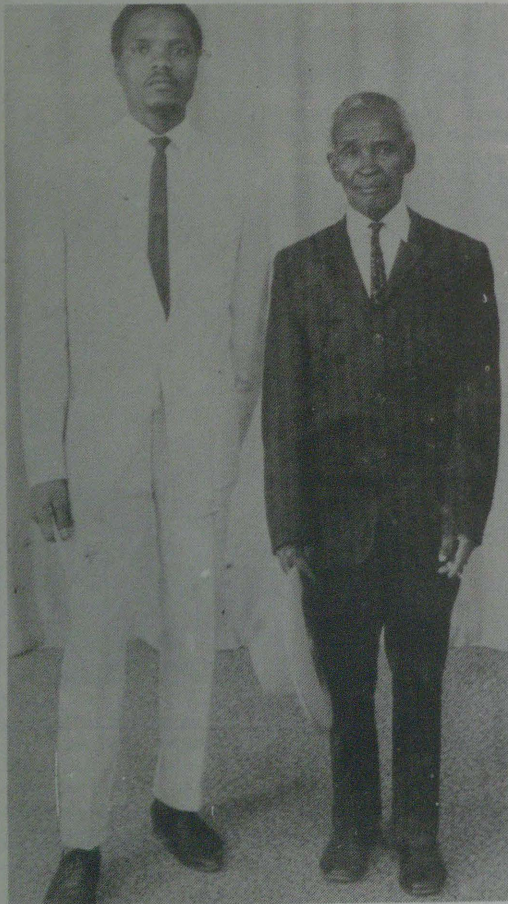
Shoka tashi landula mpaka osho ondjokonona ye mekwatathano nomusiki ndjoka e yi longitha megongalo lyawo omimvo 30. Konyala ashike tatu eta mpaka osha zi kondungu yopena ye mwene.

Omusamane Nandjo okwa vaelwa mOmbwata, mOngandjera 1898, a vaelwa muupagani. Okwa putukile mohekulu Kadhila kaAmwama. Sho a zi moka okwe ya puukalele waahongi mOniipa nopo a shashelwa.

Puukalele okwa li pomuhongi ngoka ta dhimbulukiwa Anetu Järvinen. Osha li pomimvo dho 20 (1920). Ihe pahokololo lyaNandjo mwene, puukalele okwa kala po nokuli omimvo dha tetekele.

Mboka taa dhimbulukiwa yi ile naye puukalele oLeevi Iippinge nomukadhi Ruusa Iiputa (nayo nagshingeyi oonakusa). Sho a shashwa okwa taambelwa wo mOseminali yuulongi omimvo ndatu nokwa piti 1924.

Omulongi Nandjo a ningi omulongi gwongundulwiimbo mOniipa oomvula mbali, oshoka okwa longwa nawa oonote kufeelani Maikki Hattinen oomvula ndatu. Oshilyo shongundulwiimbo mOniipa, pethimbo ndyoka, kuku Ruusa lwaVilho, ota ti omusamane Uukaku okwa li a tungu ongundulwiimbo yawo mOniipa, oshoka okwa li omwiidhidhimiki ihaa geye mbala.



Omwiimbithi Alfeus Nandjo kolulyo pamwe nomutekulu waye Johannes Shangula.

Loide Shikongo (yina yomumbisofi Auala) Selma Amutana, e li natango momwenyo, Selma Joel naAlina Salomo, oyo yamwe ya kala molwiimbo lwaNandjo mOniipa.

Omumvo 1940, omulongi Nandjo okwa tumi-nwa kOngandjera a ka longe osikola yaanona. Oshilonga shosikola hwiwaka okwa adha sha tamekelwe ko kaalumentu yaali yAandonga; Johannes Tokundu na Jakob Kiimba, ya yile ko nomuhongi Karl-Emil Liljabland 1903.

Ihe pethimbo ndyoka a yi ko okwa adha shi niwe kaalongi ya pita oseminali, Jeremia Ekandjo, Sakaria Shoombe, Armas Iimene, Mateus Angolo, Petrus Amutenja naWilhelm Amutenja.

Aalongi yopethimbo lye omusamane Nandjo ote ya hokolola kutya oya li ya sa onkayi kaayi shi okutumbulwa, aathigona yokolutu, ihe aayamba lela yohole yoshigwana shawo, nomolwaasho kapwa li ngoka e etha oshilonga she omolwoluhepo lwokolutu.

Alfeus Nandjo sho a thiki kOngandjera, mbalambala okwa dhike ongundulwiimbo megongalo; yedhina Ekandanga lyevaangeli, pamadhiladhilo gomuyapostoli Paulus 2Kor.2:14 nokwa kala wo omutameki gwondjimbo melongelokalunga.

Nonando egongalo lyaKahao olya dhikwa omumvo 1906 aakriste yotango sho ya shashwa, omwiimbithi Nandjo ota hokolola aatameki yoondjimbo melongelokalunga megongalo ndyoka komimvo lela dhokonima.

Aatameki yotango megongalo ndyoka ota ti aalumentu yAandonga yaali; Erkka naSalomo, ya yile hwiya nomuhongi K.E.Liljebld 1903. Mboka oya landulwa kuMatilda Isak, nguka sho a kulupa pwa holoka Wilika Filemon, sigo naye a mana po oondjenda.

Opwa ka pita ethimbo ele egongalo lya na ye omutameki gwomaimbilo, sigo Nandjo a thiki 1940. Omwiimbithi Nandjo ota ti, ye okwa li omunkundi lela gwopalutu, ihe oshilonga shoondjimbo okwe shi longo pamwe noshilonga she shosikola nuudhiginini.

Okwa longo aanona ongula sigo otundi ontintatu komatango. Ta tsikile nolwiimbo okuza otundi ontine sigo opohamano. Ongundu yolwiimbo kaya li nomafudho nonando osikola yaanona yi fudhe po, osho ye mwene ta ti.

Omumvo 1945 Nandjo okwa tumwa kuFeelani Elma Rantamaki, kosikola yaaimbithi kOmbalantu. Omulongi gwayo okwa li omulongi Kalle Himanen. Elalakano lyosikola ndjoka okuputudha aaimbithi momagongalo agehe gOngeleki, okulongitha oonote.

Uukaku ota hokolola kutya iiwike ine ya kala mosikola ndjiyaka, oyendji oya shunine komagongalo gawo inaa tseya nando oonote ndhoka ye dhi tsakaneke ashike ngaaka lwotango.

Egongalo lyaKahao, nolyaTshandi ogo ageke ga li ga mono eyambeko enene, oshoka aatumwa yago; Nandjo nomulongi Titus Iilonga moTshandi oya yile ko ye shi nale oonote, ye dhi longo mOseminali.

Omwiimbithi Nandjo sho a galuka ketsikilosikola lyaonote, kOmbalantu, okwi ihogololele aakwathi ye metameko lyaondjimbo dhelongelokalunga; oyo Selma Nakambale, Irja Iiyambo, Anna Sakaria naWilika Efraim. Oya hogololwa omumvo 1947.

Omumvo 1948 omo omwiimbithi Nandjo a pewa oshimpwiyu shokukonga omaimbilo ngoka ge na okwiimbwa melongelokalunga Osoondaha kehe. Okwa ti, shoka osha zi metalelopo lyomuhongi Erkki Lehto ngoka a talelepo egongalo lyaKahao omumvo ngoka noye shi kundatahana nomusita gwegongalo Elia Haipinga.

Omadhina omo ge li mondjokonona yanakusa Nandjo, gaayehe mboka ya li aatameki yomongundulwiimbo Ekandanga lyevaangeli ngaashi Johannes Kamati, Hendrik Homateni, Filippus Amadhila, Matias Josua, ooDavid Keendjele, Killian Shijagaja, Andreas Kalenga, Selma Nakambale, Laimi Ntsilu, Helvi Shihwameni, Irja Amukwa, Hilda Nkumbo nooyakwawo oyendji, kwa tiwa oya li metameko lyongundu ndjoka.

Shoka Ekandanga lyevaangeli lya ningi megongalo.

Mewiliko lyomwiimbithi nguka ependa Alfeus Nandjo, ongundulwiimbo oya gandja etumwalaka lyayo momalongelokalunga mOngeleki nomiituthi. Oya li wo hayi endagula noshilongo ashike sigo omomakuti.

Oya yi momagumbo gomalenga nogooyene yomikunda tayi uvitha noomwenyo dhoyendji odha hendwa tuu shili koondjimbo ndhoka. Heb.4:12, Efes 5:9. Kapwa li nando omukunda mOngandjera inaagu talelwapo kEkandanga lyevaangeli sigo omuuwa waShaanika shli-ppinge.

Omwiimbithi A.Nandjo osho a wilike ngeyi ongundulwiimbo ye, sigo a mono aakwathi mboka ya pukululwa moonote; Andreas Kalenga 1952 Anna Sakaria (1959) naSamuel Namulo (1964) nguka gwahugunina ngashingeyi onakusa.

Omumvo 1969 pehulilo okwa pewa koshikondo shelongo evululuko koshilonga she shuulongi shoka e shi longo konyala omumvo omilongo 30. Eti 19.1.1984 Kalunga okwe mu zimbula mesilu ndika nokwe mu taambelevululuko lyaaluhe.

Okwa thigi ko pethimbo ndyoka omukadhi Ruusa ngoka naye a ka landula ko 1986 noyana yahamano.

Sebulon Ekandjo

Edhimbulukitho

Oonakutseyitha omaso moshifo, yaluleni nuuyuki oonakuthigwa po. Ngele wa gandja omwaaalu gwoyana, konakona tango ngele moyana mboka omu na shili mboka ya vala opo u gandje nawa omwaaalu guutekulu wanakusa. Shoka osho wo tashi ningwa nokombinga yaatekulululwa. Ngele aatekulu yanakusa ayehe kamu na ngoka e na omunona, ino ka kongolola we kaana yamumwayina gwanakusa. Shoka Kalunga inee shi ku pa, ine shi ku pa.

Amushanga gwOmukwetu

ESO

Omuhongifikola Thomas Nafimane yaNghiilwamo (33) pOndehaluka meongalo Engela, 22.11.86, okwa fiya ko omukulukadi waye novana vatatu.

Caloline Ndapewoshali Nghiilwamo

XXXXXXXXXXXXXXXXXXXXXXXXXXXX

Meme Leena Silas Nampila (37) Olupumbu mUukwambi, 9.1.1987 moshiponga shoshihauto. Okwa thigi ko oyana yaali. Okwa li omwiimbithi nomuyakuli megongalo lyaLupumbu. Otatu gandja omapandulo kwaayehe mboka mwa li mwe ya tu topolelathaneni oluhodhi nduka. Eimbilo 630. Kalunga ne tu hekelekeni.

Oyana
Paulus naLahja Gabriel
Olupumbu, Box 1423 Oshakati 9000

Sakaria Kayuhwa Shagandjwa (77) Iikokola, Olupumbu, Uukwambi, 9.2.1987 muuvu wethimbo ele. Okwa thigiko omukulukadhi gwe oyana 5 naatekulu 27. Aafilipi 3.20

Marianne Ndesihala Ndeshipanda

Kuku Johannes Kanana Ndemuweda, Oniimwandi, egongalo Elombe, 15.2.1987 muukulupe womutoko. Okwa thigi ko omukulukadhi gwe, oyana 8, aatekulu 48 naatekululwa 4.

Kanana Hilma
Nehale Sec.School

Leo Natangwe Mbambus (19) Okapya, megongalo Oshitayi, okwa mana oondjenda dhe 2.2.1987, okwa thigi ko aakuluntu ye nosho wo aamwayina. Eimbilo 630.1-5

Hileni S.Nehoya

Nikodemus Nhipuuma Oipya, 23.2.1987 mouyehame wefimbo lixupi moukulunhu weedula 79. Okwa fiya ko ovana va 5 novatekulu vahapu.

Viktoria Hamunyela

Kuku Lusya Amakali Okantaya mOlupumbu, 4.12.1986 muukokele womumvo odhindji. Okwa thigi ko oyana yane naatekulu 37.

E.Nelago Iipinge
Olupumbu

Johannes K.Uunona, Okagongo mOgongo, 20.11.1986 mukokele womimvo odhindji. Okwa thigi ko oyana 9 naatekulu 5.

Dortea M.Uunona
Okagongo

Oshinima okersesa yovalitulimo monghalo yovayambididwa meti 17-20.9.1987 Kalunga ngeenge e shi hala

Okersesa ya tumbulwa pombada otai ka ningwa mEnongelo lovayakuli mEngela momafiku a ulikwa.

Mokersesa ei ohatu pumbwa ovanyasha novakulunhu ovo ve litula mo monghalo yovayambididwa nove na ehalo opo va ka yakule meongalo lavo nomOngeleki aishe mokati kovantu va tya ngaho ve he shi kulikwafa kuvo vene.

Mokersesa ei ohatu pumbwa ovanyasha novakulunhu ovo ve shi kushanga nokulesha nove shii ku udako oinima yefimbo eli. Nope-xulilo lOkersesa otava ka pewa odjapo yokulonga mokati kovayambididwa. Ou nee a hala noku na elitule mo na ninge eindilo la nyolwa.

Osho tashi teelwa meindilo.

- Eindilo lomunhu mwene la nyolwa nawa
- Ombapila yeongalo lavo.
- Epopilo la nyolwa kuumwe womwaava va tumbulwa pehovel.

Ou a tumbulwa ota ka tuminwa enyamukulo diva.

Omukulunhufikola
F.Shikomba
Enongelo lovayakuliengalo
Engela P.k. Oshikango
9000

Omimvo dhoondjokana

Oshilongo shoka shi na santu haa hokana mepipi lyoomvula oonshona, osho India. Aantu mulndia ohaa hokana uuna omulumentu a gwanitha oomvula 20 adhike nomukiintu oomvula 14 netata. Oshilongo sha landula ko osho Ireland. Aalumentu haa hokana ye na oomvula 26,8 naakiintu ye na oomvula 24,7.

Ya dhigininwa natango

Titus Shalimba naWilika Ainima pamwe nokanona kawo koomwedhi mbali, mOnakayale.
Mirjam Filippus, Nakayale
Elizabeth Amukwaya, Nakayale
Ruben Edmund, Anamulenge
Konis Shoomba
Nestor Tobias
Lamek Kadhila
Isak Shoome, Tshandi
Eva Shaningi, Tshandi
Absalom D. Nuugulu, Tshandi
Abner Lukas, Elondo
Taimi Endjala, Etilyasa
Abraham Shivute, Oluteyi
Josef Katofa, Eengolo
Katofa Shilongo, Eengolo
Samuel Andreas

Omukwetu Feb.1986,15, ep.11-12

Okulanda omaumbo oonakufya otashi eta oluhepo, osho yo efyululo lomapya olo nali tameke! Ku J.H.Kasheeta na Hangula Shanghai, Tsumeb

EYAMUKULO!

Omadhiladhilo geni ogo omawanawa shili, ihe kaku na muuyuni evi nenge ehala li na omupangeli, nenge mwene gwalyo hali gandjwa omagano. Nonge to hokana ou na okufuta ko omukiintu koohe, ihe ino mana oku mu futa. Shampa ngaa we mu monitha oshiponga aakwawo oto ya mono taa ku pula ofuto. Ano kamu li natango ofamili. Tango kaleni ofamili nena ayihe opo tayi ka enda nawa.

Momikunda otwa dhimbulula tse aaleli yaantu nkene aantu taa hepeke aasamane ngele ya koko. Ngele ngame omuleli gwegumbo ndyona onda dhimbulula shono, omolwashike tandi gandja epya lyandje komuntu a tya ngawo? Naishewe epya kali shi lye olyaangu a si, onkene oku na oku li kulila, opo li ninge lye, ngele ta vulu. Ihe ngele hasho, mwene gwomukunda na landithe po epya lye kungoka e li hala.

Okugandja epya omagano hasho uuktumwe welik pokati komuhomboli nomuhombolwa. Ano ngele epya ino li futa, kali shi lyoye, futa nombili epya li ninge ihe lyoye mwene. Omapya gopafamili momavi gamwe, mwene ngele a si ngoka to yi lao, oto kala ho futu obelasting komumvo nando lya futwa nale.

T.A.Moongo
Onambemba

Oshilyo shepangelo lya SA otashi yaguma Omupresidende Omuluudhe mu SA

Omumvane Denis Worrall ngoka a kala shito omukalelipo gwepangelo lya SA kuBritania omimvo dha piti, okwa hala okumona mu SA okatongotongo ka fulilwa okalambo. Okwa hala wo Aaluudhe ya pewe uuthemba auhe wopapolotika.

Omumvane Worrall okwa hulitha po ye mwene oshilonga shokukalela po epangelo lyawo muBritania petameko lyaFebuluali nuumvo, ashike konima yethimbo efupi Omupresidende P.W.Botha sho a tseyitha kutya moshilongo otamu ka ningwa ehogololo lyAatiligane ayehe muMai 6 nuumvo.

“Okutunga onakuyiwa yoshilongo shika, oshi vule kokule okulombwela aantu kutya oCongressa yaAmerika ya kana. Oshi vule wo kokule okututila omatanga gaakwiita momalukanda gAaluudhe, aniwa otaga ka gamena,” osho Worrall a tamaneka omulandu gwepangelo lye.

Omumvo 1982 sho Omupresidende Botha kwa li ta tungu omathaneko gokutungulula omulandu gwepangelo ngoka gwa ka pitikila Aandia nAakleuring ompito yokumona iipundi moshigongi shAatiligane shetoto lyooveta, Worrall oyo yamwe ya ta kondjitha omalunduluko ngoka gaa ningwe.

Ngashingeyi etumwalaka lye koshigwana she oli ili lela. Ota ti ongundu yopapolotika ya ANC osho wo oonkwawo dhAaluudhe moshilongo, odhi na oshilonga noshinakugwanithwa shokukonga muukumwe noonkwawo ekanzulopo lyomukundu gwoshilongo. Epangelo lya SA olya tinda sigo onena okuya moonkundathana nehangano lya ANC.

Ehogololo ndyoka tati ka kala ko 6.5.1987 mokati kAatiligane, omumvane Worrall mehogololo ndyoka okwa ti ye ota ka kala mo i ithikamena, kee lile po we ongunduleli yawo yaNasionale ndjoka a longele omimvo odhindji.

Okwa ti wo ke lwete etompelo, kutya omolwashike SA itaashi vulu okulelwa kOmupresidende Omuluudhe ngaashi Nelson Mandela. Omufango gwelelo lyongundu ya dr D.F.Malan ngoka tagu lelitha ngaashingeyi SA naNamibia konyala oomvula 40, otagu talwa kAatiligane yamwe pethimbo ndika, kutya inagu kwatelela mo we onakuyiwa ombwanawa yOmutiligane ngaashi ya kala ye shi itaala shito.

Ehangano lyopapolotika African National Congress (ANC) mokati kAaluudhe ndyoka lya totwa 1912 mu SA, osho wo omakwawo: Pan African Congress (PAN) naUnited Democratic Front (UDF) inaaga enda ondjila ompu okuziminitha Omutiligane, kutya omulandu gwelelo lyoshilongo gwa tungilwa kokatongotongo, kagu na onakuyiwa yasha.

Omumvo 1960 Aaluudhe 70 oya gandja oomwenyo dhawo mokusa opo ya holole okwaauva ombili kwawo momulandu gwokatongotongo. Omumvo 1976 natango Aaluudhe 380, oyendji uunona wosikola owa gandja oomwenyo dhawo mokutamaneka elongo lyowina lya ningilwa Omuluudhe.

Ombinzi yaAaluudhe osho ya tsikile okukuga koshipala shepangelo sigo omuSeptemba 1984 moka oyendji momalukanda ya kanitha oomwenyo. Okuza Juni 12, 1986 oshilongo otashi lelwa noveta yokangendjo.

Omwaalu gwoonakusa ngoka gwa li tagu tengenekwa paantu 20 mesiku ogwa kuluka noopelesenda 44 nenge noopelesenda 13,3 moshiwike (SA-Digest 18.7.1986, ep.643). Omutoolinkundana gwoshifo Weekly Mail mu SA, ota nyola ta ti muule wethimbo ndyoka alihe lyoomvula 25 dha piti, Omuluudhe ina mona nando oluthuwo momalukanda wewo.

Methimbo ndyoka omuntu oto vulu okutya, omo mwa valwa iinima mbyoka tayi hepeke aakalimo methimbo ndika ngaashi: elondo lyoondando ndyoka lya nayipaleka oondjambi dhaaniilonga oyendji, ekanitho enene lyiilonga, omulandu gwomavigumbo ngoka gwa pula SA iimaliwa oyindji oku gu kaleka po; omakwatopo gAaluudhe nokweedhililwa moondholongo pwaa na omatompelo ga kola.

Pethimbo wo iinima mbyoka tayi valwa opo pethimbo wo uuyuni wopondje wa tameke okulundulula kashona onkalo yawo nowa hala okupulakena konkugo yomwaalu omunene gwAaluudhe ngoka tagu hepa kokatongotongo.

Epangelo lyaAmerika ndyoka li li koluuli lwokuhinga omadhiladhilo giilongo ayihe yuu-

ningino, pethimbo ndika olya thiminikwa lela konkalo yopapolotika mUumbugantu waAfrika, opo li thiminike SA e ete po omalunduluko ge shi okutaambwa ko kAaluudhe.

Ethiminiko ndyoka lyaAmerika nolyoongundu dhomeni lyoshilongo mu SA, olya tali dhibulukitha Aatiligane yamwe mepangelo lyomupresidende Botha kutya epangelo lyawo otali kokolola unene oompadhi mokweeta po elunduluko lya pumbiwa, manga Aatiligane yalwe taye shi tala ishewe kutya otapu endelelwa unene okulunduluka momulandu omukulu.

Konyala onkatu kehe nayi kale ofupi yi thike peni epangelo lya SA lya hala oku yi katuka, opo aniwa li ete po elunduluko ewanawa, shoka osha eta ashike omusa mongunduleli yaNasionale. Pamatompelo ngoka omumvane Andries Treunicht omumvo 1983 okwa thigile po oopaati ndjoka nayakwawo yalwe.

Pamadhiladhilo gaatalinawa yamwe yopapolotika, etanduko pokati lyongundu yaNasionale, halyo natango tali shilipaleke uupopepi wemanguluko lya SA. Ekondjo otali tsikile nantango komeho, sigo ondjodhi ya dr Worrall ya tsu, uuna SA tali lelwa paudemokooli woshili, komwaalu gwaamboka oyendji moshilongo --- Aaluudhe.

Sebulon Ekanjio

OVA SHANGELA NGE TAVA TI

UUKOLONI UPE OTAU LONGITHA OMIKALO OMIPE OKULIKOLA AFRIKA

Momukwetu No.3 gwouumvo, Miss Conny gwokOshakati, okwa eta mo iitsa yontumba, aniwa ota yamukula kiipopiwa hayi holoka mOmukwetu shi na sha nEtango. Etango olya oshitayi shomatanga gaakwiita yaSuid-Afrika, shoka shi ipyakidhila pamikalo odhindji mokati kaakwashigwana moNamibia alihe.

Momumvo 1985 omukriste gumwe okwa tile: "Etango olya embungu enene lyi izaleka moshipa shonzi opo li wape okukala mokati koonzi noli dhi lye po". Ano onawa aakriste naakwashigwana ayehe ya ye natango muule mokukonakona mo nawa ehangano ndika.

Monkambadhala opo ya kwate ko omitima noondunge dhaakwashigwana, aakwiita oya toto po ihe ehangano tali holoka momalupe gi ili nogi ili, li na omadhina gi ili nogi ili miitopokwa yi ili noyi ili yaNamibia. MOKavango otali ithanwa EZUVA: mOcapilivi otali ithanwa NAMBEZA uuna li na sha naagundjuka, ihe uuna li na sha naantu yomapipe agehe otali ithanwa NAMWI; mOwambo otali ithanwa ETANGO; mokati kaapopi yOshiherero mOkaoko noshu muuzilo otali ithanwa EJUVA. Oli na wo uutayi uushona momalukanda nomosikola, wi ipyakidhila unene nomaudhano noondhelela, nelalakano lyokuhila aagundjuka.

Ehangano nawa otali kambadhala okwunikolela iilyo nookuume pamikalo odhindji. Unene otali ya molupe lwuukwambepo, aniwa otali lalakanene okuyambula po eitaalo lyopakriste. Onkee ohali hawaleke aantu Oombimbeli. Shika otashi tu dhimbulutha nawa shoka hashi popiwa muAfrika alihe kombinga yekoto ndyoka lya longithwa

komutiligane sho e ya okukwata ko Afrika noku li tula muupika wuukoloni:

Okwe ya nelaka etalala nOmbimbeli monkwapa. Okwa pe Omuyafrika Ombimbeli, nokwe mu lombwele ya thithikile opo ya galikane. Konima sho Omuyafrika a ka tonata, okwi iyadha nOmbimbeli yi li meke, manga Omutiligane i ipweya po nale ihe nevi okwa ya nalyo.

Ishewe ehangano ndika otali ti oli lile po okuyambula po omithigululwakalo dhaavalelwamo. Haka okakoto ishewe kokenekene, kakaandje nashimbungu. Osha fa oshitewo shehokololo lyaantu yaali. Gwotango oku li moshilambo, a hala a ze mo. Omutiyali oku li komutuni a kwata mukwawo moshikaha, ihe okwa lyatelela ompadhi ye kombanda yomutse gwe, aniwa ote mu yambidhidha opo a ze mo moshilambo.

Shoka sha shunitha monima omithigululwakalo nehumokomeho lyOmuyafrika osho uukoloni, tau yambidhidha kuukriste wa puka. Naashoka tashi yambula po omithigululwakalo nehumokomeho lyOmuyafrika osho emanguluko, pamwe nomaitaalo gopambepo ga simaneka omuntu aguhe.

Osha yela kutya ehangano ndika olya hala okupitila mongeleki nomomithigululwakalo dhAanamibia opo li adhe omalalakaneno galyo gokukwata ko aakwashigwana. Ano uukuume nehangano ndika owo uukuume wakaandje nashimbungu, wegoya to li pe oongodhi opo li ki imangeleke lyolyene.

Omukalo omukwawo tagu longithwa kehangano ndika ogwo okersesa. Ngaashi mOcapilivi NAMWI, ota longitha ookersesa dhoome dha mana mo molukanda Ngwezi mOkatima Mulilo. NAMWI ota longitha wo ookersesa lhomomikunda. Ihe ehangano alihe olyi ikolelela

Dha za kep. 10

kookersesa ndhoka hadhi ningilwa komaha gi ikalekelwa kokule naantu, mihwa.

Pomathimbo gamwe aantu ohaya falwa ko nomadhagadhaga. Omahangano gatatu gopakriste, ngoka taga popile omulandu gwokatongotongo moSuid-Afrika, ogo haga longekidha uleshomwa oyindji yookersesa ndhika. Omahangano ngaka ogo "Gospel Defence League", "Christian Missions International", nosho "Frontline Fellowship" - ngoka to vulu oku ga fatulula mOshiwambo to ti: "Ehangano Egameni Lyevaangeli", "Omatumo gopakriste mokati kiigwana", nosho "Ehangano Lyuukumwe (wopakriste) wokoongamba".

Ookersesa ndhika ohadhi ithanwa WEER-BAARHEIDSKURSESSE, ano ookersesa dhopakwiigamena. Pafupi, shoka tashi longwa ko kashi shi sha shilwe shaahle shi okusheka uilongo yaAfrika mbyoka ya manguluka; okufatulula ukomoni ngaashi hatu shi uvu moFM-Radio; okusheka aawilikingeleki moSuid-Afrika, ngaashi omukuluntumbisofi D. Tutu nenge omundohotola A. Boesak; okukondjitha omadhiladhilo gokambo KAIROS DOCUMENT, nosho tuu.

Aantu otaa longwa wo Ombimbeli nuuwilikingundu. Konima yokersesa aantu otaya pewa ihe oonzapo, tadhil holola kutya oya ningi uilyo yehangano noya ganena okukala mo, okulonga nokugamena Suid-Afrika. Poompito dhimwe aantu ohaya falwa ko nekoto e taa iyadha owala ye li pomahala inaaye ga tegelela yo taya longwa iinima yaa shi mbyoka ya lombwelwa petameko.

Miitopolwa yilwe, ngaashi mOkavango, oWEERBAARHEIDSKURSESSE otadhi dhengele kaanashilonga ayehe. yomiikondo yepangelo, ngaashi aapangi naalangi. Olwindji aantu otayi imbete po owala sigo ya mana okersesa yawo, aniva oya tila yi ikanithile omboloto. Ihe ope na iiholelwa mpoka aakwashigwana ya nukile mpeyaka kutya yo inaya pumbwa omalongo ga tya ngaaka.

Samson Ndeikwila
P.O.Box 41
WINDHOEK, 9000

Natu popilwe

MOwambo otu li mo oiwana itano naiwali, novapangeli vayo ove li vatano navavali vo ovo nee ve tu lilepo fye ava tu li mo. Ame mwene ondi na epulo linene tali ti: Mbela omalenga manene ohaa ti nee ngahelipi koshinima eshi, sho ovanhu vomoikandjo yawo hava kwatwa po ketanga leameno, vo tava dengwa vo tava dipawa?

Omalenga nye ovapopili vetu, ngeenge omwa mwena otamu papala ashike ovanhu twa pwa mo moshilongo. Nde tamu kala mo ashike nomiti, do nee omiti ihadi pangelwa, ovanhu ovo ashike hava pangelwa vo ovo hava longo edu eli.

Malenga manene, ningeni po sha, etanga leameno nali kale hali futifwa ngeenge la dipaa omunhu ile ngeenge la twala omunhu mondjedililo shaashi edipao ile etimba alishe oli fike pamwe.

Onye mwa pewa eenghono kuKalunga dokupangela oiwana, ei hakapandi we litwika oudjuu kuyavala. Najesus Kristus okwe litwika

omaudjuu etu. Nanye litwikeni oudjuu wetu yoo.

Ile mbela otashi li ekunde, sho shi li mekunde hano?

J.P.Nghatanga
Ondangwa

XX

Omoode

Vakwetu, ohatu mono oixuna kovanhu ovo hava djala omoode ndele inava yoolola vali omidjalo dokongeleka. Paife omidjalo dokondanisa odo da ningwa dokongeleka.

Vanyasha, kongeleka hako kodanisa. Nge to i kongeleka, djala nawwa. Ove nge to i kondanisa, djala ngaashi wa hala, kutya ou li mofulukweva yomupambo wa twa mombuda ndee komesho oya twa monhulo kape na oudjuu.

Johanna Joram
Windhoek

+++++

Omapulo taa nyamukulwa

Ame omulongi opamwe novanailonga vakwetu momina Tsumeb Copration Limited, otwa hala okushiivifa mOmukwetu, kutya otwa li twa ongala pamwe nomukulunhu womina wedina Tonie Botes momafiku 13.2.1987, hatu popi kombinga youdjuu wOmulaule momina.

Omapulo oo twa pula Tonie Botes oo aata landula:

1. Omolwashike omulaule momina ei ke na oufemba wopanhu? Enyamukulo eli e tu pa oleli: Ame haame nda ti nyoko na dale okaana kalaula koluhepo, naave haave wa ti meme na dale okaana katilyana kokakengeli. Walye, moneni eshi tamu ningi.

2. Epulo etivali omolwashike ihatu mono ouhaku moshipangelo. shomina? Enyamukulo: Omolwaasho Ovalaule kamu na oimaliwa yokufuta ouhaku muwa. Omu na okukala ngaho shaashi kamu na oimaliwa. Osho twa kala nasho osho momafiku oo twa tonga metetekelo. Ye okwa ti katu na apa hatu ka kuwa omaudjuu pe he fi pOmbulu tuu.

T.Silvanus Kambode
T.C.L. Tsumeb

+++++

Noneudo ofyeni ngoo

Kovaleshi voifo yOMUKWETU osho yo OMUKUNI, kovabishofi veengeleki detu nhatu domuNamibia, kovafita veengeleki adishe nhatu, koilyo aishe i lilepo omaongalo, kovapangeli vetu, kovalongifikola, kovalihongi amushe, kovayakuli voundjolowe, kootate, koomeme, kovanyasha ovamati noukadona vaNamibia, nokoshiwana ashishe shaNamibia oshiholike, kundweni nomodula ei 1987.

Ohandi mu indile tu tuleni oukuni kumwe fyee tu longeleni kumwe nokutwa eengolo fye tziilikane twa mana mo tu he na edimbuko, opo Kalunga ketu e tu pe emanguluko moshilongo shetu. Okulesha omambo okwoongala peendjovo daKalunga natu ku diinineni.

Tu kwafeni ava ve he shi okulesha osheshi omunailongo okwe shi popile a ti "A nation without knowledge of it's culture is like a tree without roots." Kokutya oshiwana shi he na ounongo ile eshiivo lomufyuululwakalo washo, osha fa omuti u he na midi. Ongehe tu kondjeni nohole youmwainafana Eps.117. Rom.12:12, Eimbilo mehanganano 467.

Ku F.M.Nghidinihamba
Arandis

ONGHALAFANO OMUKUNDU?

Onghalo yomalihongelo pokati komunhu nomunhu otai kwafa, otai tungu ile otai tungulula? Otashi limbilike nakudiladila voo nanakumona nomesho a pashuka. Elisha-ngeleko lekonakono mboli itali ningwa? Mboli oku linyolela ko ekonakono etimba? Ngee itaku ningwa oshike haku ningilwa? ile ngee inaku yuka oshike haku ningilwa.

Otashi dulika tu li mongulu yokunyolela omakonakono ndee ohandi kendabala okunyolela ko Martha koshilongwa shaye. Ndee oto mono omuhongi te ya ta taataa mo oo ta nyolele ko Martha, ndee ye apa ta di okwa li ta nyolele ko Saima, ile Paulus.

Ngee okulishangela ko okwa keelelwa nakukelelwe. Ovahongi veefikola otamu tu lile konomola, shaashi ohamu shangelwa oilongwa yeni, unene tuu otamu nyolele ko ovanhu nye inamu hala tu nyolele ko vakwetu.

Paife ou nakonasha naau hai nyolele ko, ile wa hala a kendabale polwaye a shiive, ile ou na okatili naye? Ngee owa hala ovanhu va kendabala, oshike to nyolele ko Monika? Fye ohatu mu kumaida nye mu li ovakwateli komesho vetu, mu ninge aishe oyo ya wapala mu kule moukulunhu nomounongo.

Oshike tamu kombele mepya meumbo mwa kaka? Otamu ti nee ovahongi ovo va tewa moilonga ovo aveke va nyona? Nye nee ovo mwa fyaala po, kendabalen mu ha tule oshiwana moudu, ndele shi veluleni.

Nge elinyolelo ko ola fya, nali fiilile, inali nyumukila ovahongi loo li file ovanafikola. Shaashi nge handi ku tale wa hafela okumonika kwange nda tewa mekonakono, ove wa tefa nge mo, ove to shuna momutumba woye u ka nyolele ko nhumba winya otashi udifa nge nai. Dudei mo oufudime momitima deni, osheshi naame ou kwa li handi nyolele ko, ondi na sha naye ngaashi ove u na sha naao to nyolele ko.

Nge osho ngaha, emanguluko omwe li halela nee shike? Oli mangulukile ovadjeko, loo li mange ovafyoona? Ngee emanguluko ole ya tali mu hange mu li ngaha, otamu lihepeke ashike, otwe lineekela itali mu hange li kalelele punye ndee oli mu myauke.

Tu longeni aishe ya pumbiwa nope he na omulongi nomulongwa va kale tava longo omapuko.

Ndahafa na Mirjam
Oukwanyama
Oshikango





ESO

Natanael Amukugo ya Stefanus Amukugo mOniipa okwa mana oondjenda dhe ombaadhilila 10.2.1987 moshipangelo shaNandjokwe. Okwa thi gi ko he nayina naamwayina 9. Okwa si e na oomvula 24.

Kalunga oye a pele ndje, Kalunga oye a kutha ndje, edhina lye nali hambelwe. Job 1:21.

Stefanus Natanael

Ekumagidho koshigwana

Ehuku lyetumwalaka lyandje komagongalo nokokuume ayehe olyo ndika:

Taambathaneni ngaashi Kristus e mu taamba okusimanekiitha Kalunga. Rom.15:).

Otandi indue ayehe ye na omaudhigu, oontamanana nooyakwawo, ongele oyomoondjokana momagumbo, monkalathano miilonga opo ya holathane ongomuntu namushiinda. Mevi ndika ayihe, nayi opalekwe, natu dhiminathanepo, natu taambathaneni opo tu kale nombili moshilongo shetu ashije.

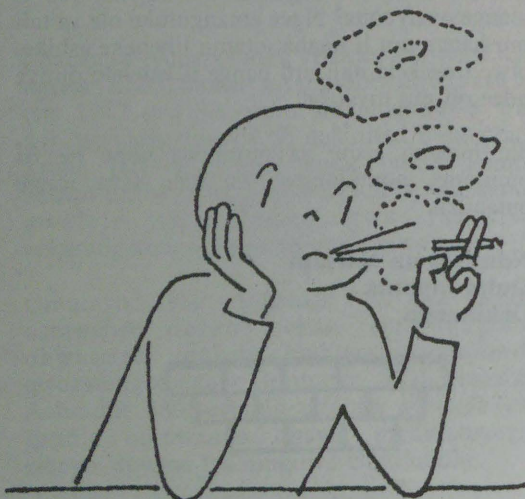
Ohole nayi pangele meyakulo alihe, naku kale elalakano okuhuma komeho meilongo, mbyoka yi li omutondi gwoshigwana nayi ethiwe, nayi kondjithwe, nayi yonagulwe po sheke.

Sh.Namupala
Windhoek

Edhimbulukitho

Ngele to nyolele kOmukwetu, inoo hala edhina lyoye li holoke, shi tseyithila tango amushanga gwoshifo ngoye e to gandja edhina ndyoka wa dhiladhila li longithwe. Ngele owa holeke amushanga edhina lyoye, ita vulu wo okulongekidha oshinyolwa shoye, oshoka kashi li palandulathano.

Amushanga gwOmukwetu



OMPUMWE YAANASHILONGA MONGA-LASHE YA ELCIN

Ongalashhe ya Elcin pOniipa oya pumbwa aantu yaali miilonga ya adha poonkatu tadhi landula:

1. Ngoka e na ontseyo yasha mokulanditha iitenda yiihauto. Ye na kale e na ontseyo ombwanawa yOmwaalu nOshiingilisa nenge nOshimbulu.
2. Ngoka e na ontseyo yontumba yokupangela iihauto, ye oku na ando ostanda ngele opevi Std. 8.

Aantu mboka naa kale ye na ompito yokudheulwa nokuhumithwa komeko. Omaindilo otaga tegelelwa ga thike manga Apilili inaagu sa. Omaindilo agehe naga tumwe ku:

ELOC WORKSHOP
ONIIPA,P/Bag 2018
Ondangwa 9000

IMONENA OMAKENDE GOKOMEHO

Okuza 10 sigo 20 Juni 1987 mehala lya tseyika nedhina **CENTRAL DISPENSARY, OSHAKATI**, popepi nongalashhe **F.M.Garage**, puKapapaleni otapa ka kala omukonakoni gwomeho nota vulu okugandja omakende gokomeho.

Ehala ndyoka oli li pokati kaNambili naAupa.

Ngoka u uvite ompumbwe ndjoka ino etha ompito ndjika yi ku ende ponto.

Ou shi shii tuu?

nokutya

Omakaya otaa eta yo omalunduluko oo ihaa monika kombada, ndele oku li naanaa oshiponga sha kula kuove?

- Ohonde otai ende kanini molutu notashi hepeke omutima.
- Eembululu domapunga otadi fiti, notashi eta emweno lomutima noupu.
- Mohonde yomushili womakaya otamu holoka ekako olo tali holoka moumanya vanininini notau eta diva oshiponga.

Omunelao nomukondjifi muwa womakaya ongeenge ino a danena nandenande opo e he ku ninge omupiya wao.

OMUKWETU

Oye oshifo shOngeleki Onkwaevangeli paLuther yomuSWA/NAMIBIA.

Ohashi nyanyangidhwa mOshinyanyangidho shOngeleki mOniipa.

Omukuluntu gwoshifo omumbisoti Kteopas Dumeni.

Amushanga gwoshifo omusita Sebulon Ekandjo.

Ondando yOmukwetu muNamibia naSouth Africa R6,00 komumvo.

Palwe muAfrica R10,00 nokombanda yomafuta R14,00 komumvo. Mondhila R17,00.

Oondando nomambesitelo agehe naga tumwe kOmukwetu, Oniipa, P/Bag 2013, Ondangwa, 9000.

ELOC PRINTING PRESS
PRIVATE BAG 2013, TEL. 11, ONDANGWA 9000
SWA/NAMIBIA