

# OMUKWE TU



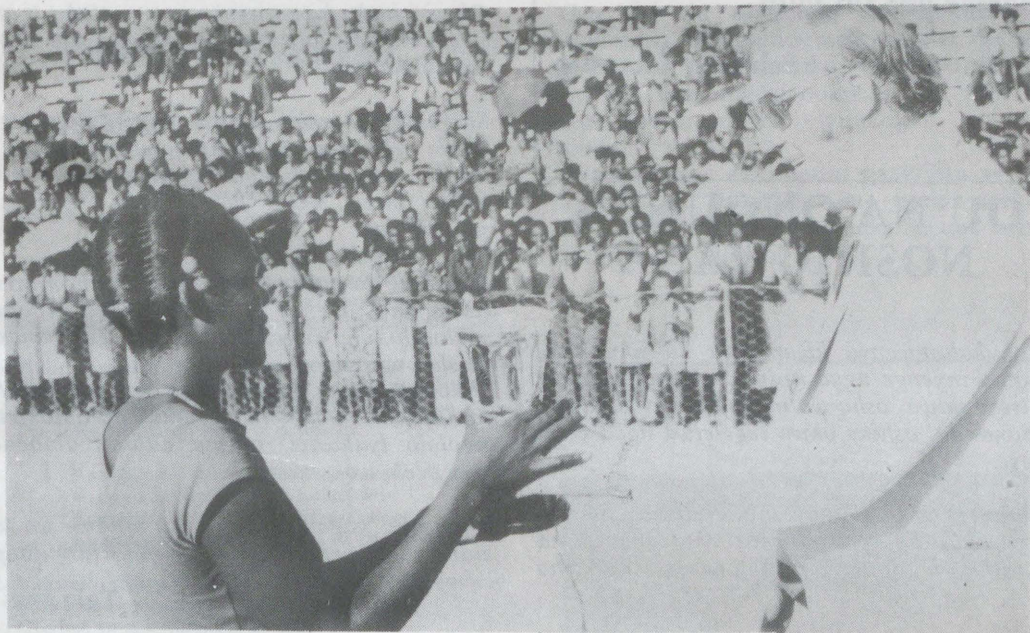
40c

No. 3

ISBN 0-620-06828-0

## — 130 va pita Omatrika — 333 va dopa

Eefikola hamano da nyolele omakonakono oMatrika mOshitukulwa shOwambo omudo 1986, ofikola imwe aike ya pita mo nenyamukulo liwa. Ofikola ei oyOngeleki ya ELCIN kOshigambo.



Ovahongwa vOvalaule omakopi efindano ohave a tambula moudano, fimbo ovahongwa vOvatilyane have a tambula mehongo.

Ovahongwa avesho 463 okwa li va nyola ekonakono lOmatrika mOwambo, ovahongwa 130 aveke va piti mo.

Ovahongwa 27 okwa li va shanga ekonakono eli mOshigambo, vane aveke inava pita mo. Ofikola ya mona oixuna oyaNgandjera eshi ya pita omulongwa umwe ake womovahongwa 10 va nyolele ekonakono.

Pashifonghundana Windhoek Avertiser 23.12.1986, ovalihongi avesho 2 023 okwa li va shanga ekonakono lOmatrika omudo 1986 muNamibia. Muvo 714 aveke va pita.

Epito liwa ola monika ashike meefikola dOvatilyane ngaashi shito, omo ovalihongi 879 va shangele ekonakono, ndele epelesenda 90,7% oda pita, na 461 va pita noitwa yopombada lela.

Kombinga yekonakono lyOstanda 8 mOwambo, nalo ola lilifa vahapu. Ovahongwa 3944 va shangele, 1059 aveke va piti mo.

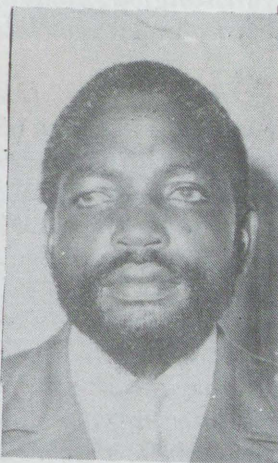
Epito lii lela ola holoka mOngwediva omo ovahongwa 33 va shangele ndele vahamano aveke va pita mo. Epito liwa ola dja

## Kaapanda a kwatwa ishewe

TSHANDI, Uukwaluudhi: Omusitagongalo Junias Vaino Kaapanda megongalo lya Tshandi, mUukwaluudhi, opwa kundanwa, kutya okwa kwatwa ishewe ketanga lyegame-no.

Omusamane gwomimvo 55, Kaapanda okwa kuthwa pegumbo lye petameko lyomwedhi nguka, konima sho egumbo lye (lyegongalo) lya hadhwa tango. MuKotoba 1985 okwa li natango a kuthwa pegumbo e ta kala oomwedhi odhindi kondholongo.

Oshikando shika aakwanegongalo ye yamwe nayo omondholo-



ngo ya kala. Tala kemandja eti

### MOSHIFO SHIKA

- \* Evi lyetu - Omumbisofi Haushiku, ep. 3
- \* Omavu guunona - Dr Amadhila - ep. 4
- \* Ombilive ya zi mondholongo - ep. 5
- \* Onkalo yaaniilonga - ep. 8

mOshigambo omo 36 va shanga navatano aveke va dopa.

Eshi osho yo sha ningwa nokekonakono lOstanda 5 mOwambo omo 10,837 va shangele, ndele 3388 aveke va pita.

Oidjemo yomakonakono ei otwa nyengwa oku i yeleanifa nepito lomudo 1985 mOwambo, osheshi inatu li mona.

Sebulon Ekandjo

## EPITO LYOMWAALU OLYE ETITHA OONKONDO

*Omiyaluhokololo dhoshizemo shekonakono lyOmwaalu mOstanda 5, moshitopolwa shOwambo, odhu ulika eyokomeho ewanawa lela, neitaalo lyopombambo lya tsikwa moyendji, kutya Omwaalu kagu shi oshilongwa shAaluudhe, masiku otali iholola okwaa na oshili kwalyo.*

*Paulyelele woshizemo shekonakono lyOmwaalu omumvo 1982, 1983, 1984 na 1986 mongundu ndjoka, oshu ulika kutya omumvo kehe omwaalu gwoonakupita moshilongwa shoka ogwa londo nekatuko ewanawa lela.*

*Omumvo 1982 Omwaalu ogwa pitwa kaalongwa 623 yomaalongwa 7,546 ya nyolele ekonakono lyOsitanda 5. Omumvo 1983 ogwa pitwa kaalongwa 699 yomaalongwa 7,892 ya nyolele.*

*Omumvo 1984 Omwaalu ogwa pitwa kaalongwa 1,706 yomaalongwa 8,622 mboka ya nyolele. E-londo mpaka enene noonkondo nokandi shiwo ngele oli li tuu mondjila. Omumvo 1986 Omwaalu ogwa pitwa kaalongwa 952 yomaalongwa 10,837 ayehe ya nyolele Omwaalu.*

*Otashi vulika omuleshi ta kumwa okulombwelwa ehumokomeho ewanawa, ihe kumboka ya tseya uunene woshilalo shuumbanda wOmwaalu maailongi mpoka shi thike, itaa kumwa nando ndele otaye shi tala ko nonkumwe nokuli.*

*Oshikandjo aalongi yasho ya pititha nawa Omwaalu omumvogu, oshiti-8, sha pititha aalongwa 289. Oshikandjo sha pititha nuunkundi oshiti-10, sha pititha aalongwa yaali ayeke mOsitanda 5.*

*Okuza sho sha yele kutya Omwaalu ogwo oshipatululo shokweegulula omiyelo adhihe dhelongo lyomunona, monakuyiwa ye, omikalo omipe melongo lyOmwaalu odha tamekwa okukongwa notashi vulika oyendji ya mona ondjila.*

*Omutalelisikola Hosea Nampala okwa tile, ye ke na nando eitaali, kutya Aaluudhe kaye shi Omwaalu, manga ku na mboka haye gu piti. Omukalo omwaanawa gwoku gu ilonga ogwo aguke gwa pumbiwa.*

*Omusita Nampala oshikandjo she osho sha pititha nawa Omwaalu omumvo gwa zi ko. Omwiilongi gumwe ngoka a kundathana nOmukwetu uudhigu wOmwaalu, okwa ti ye sho a longwa oondjila dhOmwaalu manga e li mOstanda 10, omulongi gwe okwa li te mu longo ngaashi okanona komo Sub B.*

*“Ngashingeyi omwaalu ondi gu shi ngaashi omuntu a tseya edhina lye,” osho a tumbula neipando tali leshwa momemo ge.*

*Olugodhi lwokukondjitha okwaa shi sha kOmwaalu, tango maalongi opo ihe maalongwa, otalu pula ashike ehungomwenyo lyokutunga ombepo yomuntu, kutya nangingame otii shi vulu.*

Sebulon Ekandjo

## OU NA ONGUNGA NOSHIGWANA

*Mokukalamwenyo kwomuntu kwesiku kehe otamu inyenge ngaa iinima mbyoka omuntu a tseya nawa, osho wo mbyoka inaa tseya nandonando, ashike okwa tegelelwa ngaa e shi tseye.*

*Omuntu aguhe omuyambidhidhwa, ha gandja ekwatho ye te li pewa, ha toola ye ha kanitha, ha longo ye ta longwa, ehumitho*

*neihumitho nosho tuu. Kape na ngoka e na onkalamwenyo yi “ihwapo”, tashi ti onkalamwenyo “onkwatwaketi.”*

*Moshigwana shetu shAawambo osha tseyika nawa kutya omuntu shaa tuu a gwanitha oomvula 25-30, ke na we ompito yoku ka tsikila oongundu dhopevi, na kale omuhokanwa nenge ina hokanwa, nenge a pitile ngaa oStd, 3 nokuli. Oha tumbula owala kutya “ethimbo lyetu olya pwa po nale.” Omuntu a tya ngeyi okwiuyuga uuthemba womwenyo gwe mokwiidhina.*

*Omuntu a hala okutembukila komavi ga manguluka, a hala ashike okulongelwa ye inaa hala okwiilonga mwene. Oto dhiladhila kutya nge to keelele omeya noonyala itage ya mondunda? Oshike wa talela oshinima ombinga? Ou shi emanguluko ohali etwa owala ketiko lyombinzi? Oto imbembeleke owala neithano lyoye, u shi we shi adha ngiini?*

*Ino hala nani okwiuyambela oshilongo shoye Namibia? Membwinda nomomangathithi goyendji oto zi mo ngaa shili oonyala dhowala?*

*Oshike ano inamu hala okulonga ne mwa hala okulya? Enkundundu lyoshigwana oto ke li kutha po uunake ano? To kondjo tuu nonnyalo molwembangoloto lyomwenyo gwoye? Komukalo gwa tya ngawo oto ti ito hutula oonzo dheliko lyoshilongo? Oho lalakanene ano ondjambi? Joh.10:12-13.*

*Ino hala u ninge ompani yalwe ya londeleko? Okwaativuka kwomwenyo gwoye otaku ti ano sigo uunake? Owa hala uwanawa tau zi pokapala ka yela?*

*Shigwana shandje, inatu longeni tatu uga-dhala nethimbo, taleni kutya ethimbo otali yi ashike lya thinda ko. Tu kwinyoleni tu ka kaleni ontega nalyo. Pamwe tatu li kwata wo moshipala.*

*Esiku oli na ootundi 24 muAfrika nomuAsia nomomavi agehe. Onkee kape na eipopilo mokudhikula kwetu. Omalunza guwanawa woshilongo ngele nani itag etwa po kaanashilonga, otaga ka za we mbela peni? Muutalambambi, mekoneneno, muulaadhi nometongololo lyiikwavi, otamu adhika ombende yuuyelele wokemanguluko.*

*Omambo naga leshwe, naga landwe wo nondilo yago, peha lyiikwakumoko. Hamulongi-*

Tala kep. 5



# Evi twa pewa kuKalunga nkene li li

— Sigo onena katu li yamwe muNamibia  
 — Sigo onena katu li aantu twa manguluka  
 — Sigo onena oshigwana inashi mangu-  
 luka  
 — “Uugumwe wetu otau imbwa kuulunde  
 wokatongotongo, womatopagulo nowuu-  
 kwamuhoko. Emanguluko lyetu oli li sigo  
 onena momayagumo manga tatu lelwa  
 kaakwiilongo, tatu lelwa koonkondo tadhi  
 zi pondje, tu li okoloni, twi imbwa tu  
 manguluke, twi imbwa okuhogolola aaleli  
 yetu yene.

“Nonando taku ningwa oopropahanda,  
 Namibia sigo 1986 okoloni ya hugunina  
 muAfrika, Evi lyokatongotongo nolyoma-  
 hepeko, evi moka omwaalu gwoyendji ye li  
 monkalo ombwinayi lela yoveta yokange-  
 ndjo, ye li muudhigu wiita yomumwayina ta  
 kondjitha omumwayina.

“Kalunga okwa lombwela Abraham a thige  
 po oshilongo she, ye a ye koshilongo hoka ye  
 mwene te mu ulukile ko. Gen. 12:1-5 Ha-  
 Abraham a tokola kevi hoka e na okuya ko,  
 ihe oKalunga.

## TAMBULAFANENI

(Oshipalanyole shomudo 1987)

1. Eedula otadi ya doo tadi i  
 Omafimbo tae ya oo taa i  
 Odula ya ya otwa li nepapuduko  
 Mwa kwatelw' elidilululo neilikano.
2. Nge twa tambulwa osho twa udifilwa.  
 Fye twa dama osho twa ngongoshekelwa  
 Neudo atusheni tu tambulafaneni  
 Ngaashi Kristus ye mwene e tu tambula
3. Pakulitambula inatu ninga ka tambula ka kwara  
 Tu lungameni tu ha ninge ka yandja u shi mone  
 Osheshi etambulo la tya ngaha kali fi oudano  
 Fye itatu shi ningi hatu te eengano.
4. Vanahombo neudo odula oyetweni  
 Vanamaumbo shiwa tu kondjeleni  
 Komapata atushe tu tambulafaneni  
 Komalupale atushe ombili tu paafaneni.
5. Vakwet' oshitya OKUTAMBULA ka shi fi oudano  
 Shiwana okukwatafana okun' eenghono  
 Onghee tu shi wanifeni nelitule mo  
 Opo onghalamwenyo iwa mufye i kale mo.
6. Pefimbo lopaife ombili inai wanena  
 Moshilongo shetu mun' eenhamanana  
 Onghe noneudo hatu ingidilwa  
 Tambulafaneni ngaKristus e mu tambula
7. Vapangeli onye handi londwele  
 Etumwalaka tu li na oliwa  
 Vakwaita onye handi lombwele  
 Tu litambuleni tu kale mouwa.
8. Vakwaita engwandjulafano nali kale  
 Vana vameme edengafano natu xupule  
 Vanw' oonye tu tambulafaneni  
 Vamwatate Kalunga natu mu fimanekeni!
9. Okutambulafana itatu ku litoto  
 Okukala nombili kaku fi mutoto  
 Kalunga oye e tu tambula tete  
 Eshi e tu ning' ovakriste.
10. Onghee hano tu tambulafaneni  
 Ngaashi Kristus e tu tambuleni  
 Moku shi wanifa monghalo yetu,  
 Ohatu fimanekeni Kalunga ketu.

F.J. Nashidengo

“Tse wo inatu ya kevi ndyoka lya kala lya tsa  
 momadhiladhilo getu yene, mehalo lyetu  
 nomomayagumo getu. Evi olya kala lya tsa  
 mondilo yoshilongo shaKalunga. Ehogololo  
 lyetu olya landula ehogololo lyaKalunga.  
 Ehogololo omolwoshilongo shaKalunga.

“Evi ndyoka lya li lyo opalela oshilongo  
 shaKalunga, ngashingeyi otali monika lya tya  
 ngiini?

“Tse muNamibia otu li mevi lyokatongoto-  
 ngo, ihe evi ndyoka lyo opalela oshilongo  
 shaKalunga oli na okukala evi lyuukumwe.

“MuNamibia otatu tongolathana, ihe evi  
 ndyoka Kalunga e tu pa, olya li li na ashike  
 okukala evi lyuuthikepamwe.

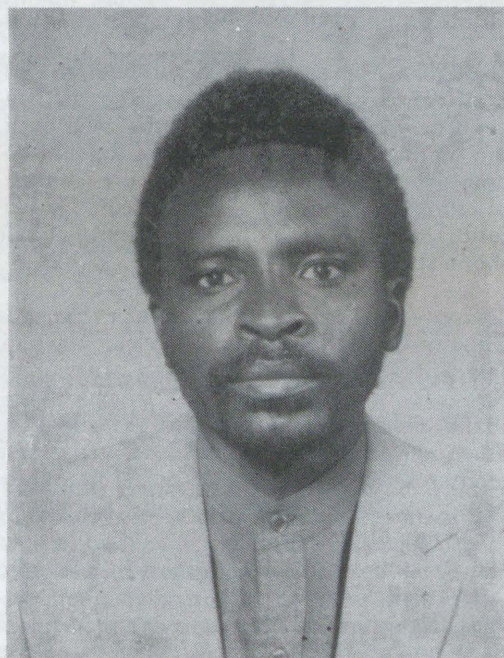
MuNamibia natango evi lyomathiminiko, ihe  
 evi ndyoka lyo opalela oshilongo shaKalunga  
 oli na okukala ashike evi lyemanguluko.

“Namibia natango olyu udha omahokololo  
 guukenuuyuki, ihe, evi ndyoka lyoopalela  
 oshilongo shegulu, olya li li na owala okukala  
 evi lyuuyuki.

“Inda kevi ndyoka tandi li ku ulukile, osho  
 Kalunga a ti. Kalunga oye mwene ta tokola  
 ondjila. Tse, shetu okwiilongekidhila ashike  
 etembu.

“Otu shi shi olweendo nduka olule tse  
 Aanamibia twe lu ende nale omimvo dhi vule  
 40 tu uka kemanguluko. Omimvo 40 tatu  
 kondjo. Ngashingeyi oomvula dhi vule 100  
 tatu hepele melelo lyuukoloni nolyethi-  
 miniko.

“Aamwameme aalumentu naakiintu ye vule  
 11,000 oya kanithila mo nale oomwe-  
 nyo dhawo molweendo nduka lu uka kema-  
 nguluko lyoshilongo.



Omusita Ferdinand Nashidengo

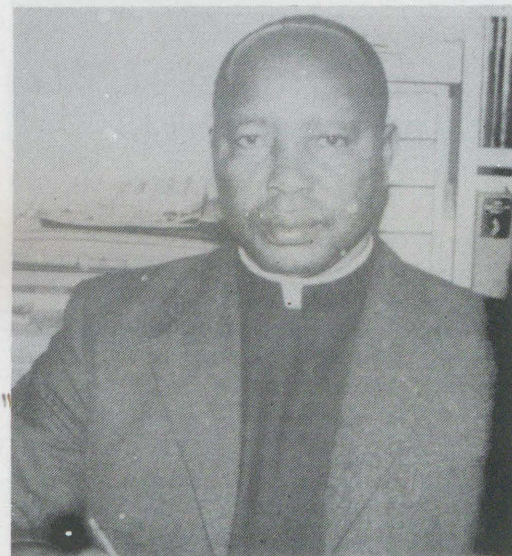
“Okoko ye li ngashingeyi mboka ya gwile mo-  
 mwigo gwomahepeko. Aantu mbaka oyo taa  
 lombwele ngashingeyi uuyini auhe taa ti:

“Namibia olya manguluka, okatongotongo ka  
 si, otu na ekotampango ngashingeyi  
 lyuuthemba womuntu nosho tuu.

“Opropahanda ndjoka ohayi zi unene me-  
 pangelo lyopokati. Koyendji shono osha ni-  
 ngi ondjila kuyo okweetha ekondjo. Otaa ti,  
 itatu shi vulu. Aahepeki yetu oye na oonko-  
 ndo, aageyentu noya tokola, natu dhimbwe-  
 ni, natu etheni. Ihe tse otwa zimina ondjila  
 yetu onde nondhigu nehulilo lyayo lya fa lyaa  
 lwetike.

“Tse ando twa li twaa na etegameno, ando  
 inatu kala nena mpaka moonkundathana  
 dhemanguluko lyaNamibia.

Otwa tsuwa omukumo komuprofeti omune-  
 ne Jeremia, manga oshigwana she sha thi-  
 kamenwa kehanagulo shi falwe muupika  
 waBabel, ye Jeremia ota ka landa epya mu  
 Anatot. Jer.32:7,8.



Omumbisofi B. Haushiku

“Ongeleki muNamibia otwa hala okukala  
 epya muAnatot, epya lyetegameno. Epya  
 moka oshigwana shetu shaNamibia shi uvi-  
 te nale uupyu ongo shi li muNamibia omu-  
 pe, Namibia limwe noshigwana she shimwe  
 nonando okatongotongo nomahepeko opo yi  
 li natango.

“Nandi tumbule mpaka nemanguluko  
 kashona. Aantu oyendji oyu uvite okato-  
 ngotongo nongiika otaa dhiladhila owala  
 kutya ngiika okuyoolola owala omihoko  
 mumwe. Eeno, osho shoka, ihe nandi mu  
 lombwele aaholike, okatongotongo oke li  
 muule shi vule mpoka.

“Tse Aaluudhe otwa hepekwa kuko, nomo-  
 lwaashono otwe ka ekelahi ngashingeyi.  
 Okatongotongo otaka ti: Ngoye Omuluudhe  
 ku shi sha, ku shi omuntu shili, ku shi  
 oshifetha shaKalunga. Ngoka ogo omadhi-  
 ladhilo gomuule gokatongotongo nomolwaa-  
 shoka Aaluudhe inaye ka hala ke ya shundu-  
 le, noke ya shonopeke, ihe ya longithwe  
 ngaashi aantu nongoshifetha shaKalunga.

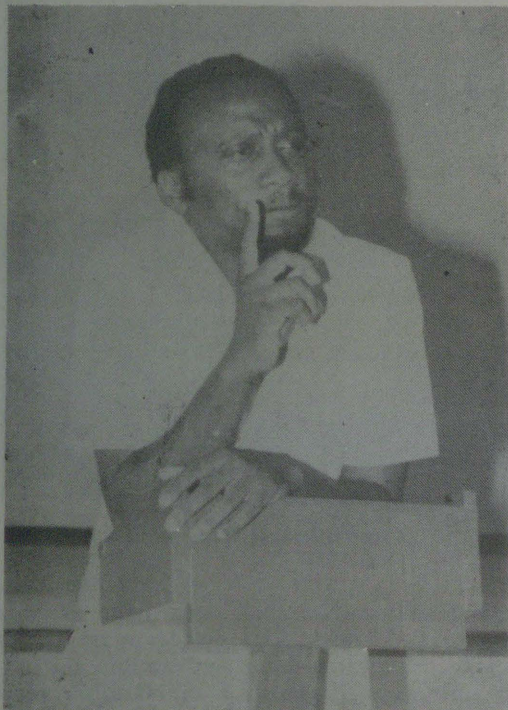
“Tse Ongeleki otu uvite ko lela oshinaku-  
 gwanithwa shetu shopauprofeti shoka tu na

Tala kep.4

# "WAA KAMBADHALA KU SINDI." EKUNDO LYOMUNDOHOTOLA AMADHILA

Petamekolela lyomvula ndjika onda hala okugandja omapandulo gandje kaapangi ayehe mboka ya li yi ipyakidhile neitulomo enene okupanga nokusila oshimpwiyu aanona mboka ya taambelwa miipangelo yi ili noyi ili mOwambo. Kape na oshitopolwa shimwe muunamiti sha pumbwa eidhidhimiko neitulomo enene sha fa epango lyuunona nuuhanona. Otandi mu indile ishewe opo omvula ndjika mu itule mo mwa mana mo lela.

Ope na iinima yontumba tayi ya mbala momadhiladhilo gandje. Shotango osho uuvu wokakwenyene hoka ka li ka geya noonkondo noka faalela aanona oyendji. Katu na manga omwaalu gwaanona mboka ya si kokakwenyene. Moshipangelo sha Shakati omvula 1986 omwa taambelwa aanona 645 taa ehama okakwenyene hoka ka geya.



Omundohotola gwowina guunona  
Salomo Amadhila

Osha yela kutya okakwenyene otaka vulu okukelelwa koshinima shimwe shoka sha simana, sho osho ETUNTILO. Omunona kene ta valwa moshilongo muka oku na okutuntulwa ngashi naanaa sha shangwa pokakalata ketuntulo. Olwindji aanona ohaa ihulu owala etuntulo ndyoka hali gandjwa pevalo, ano o BCG nokonima yina ota faula etuntulo.

Ope na etompelo hali longithwa olwindji koomeme kutya omunona okwa li aniwa ta pupyala nomolwaasho ine mu eta ketuntulo sho lya adha.

Shika kashi shi nande etompelo, molwasha omunona ngele okwa pupyala nenge e na omukolo, oku na okweetwa koshipangelo nongele a aluka, nena etuntulo nali tsikilwe nombili. Omunona oku

na okutuntulwa okakwenyene poomwedhi 7 nosho wo poomwedhi 15, ano lwaali.

Oshitiyali onda hala okutya sha kombinga yomukithi gwondjala, melaka ekwiilongo haku ti "marasmus" na "kwashiorkor". Uunona 165 owa taambwa moshipangelo sha Shakati okuza Jan. - Dec. 1986 ta ehama omukithi nguka. Shino osho 4,7% dhaanona ayehe mboka ya taambwa momukunda 10 gwaanona. Omukithi gwa "marasmus" ogwa gandja 72% dhomikithi adhihe dhondjala. Shono sha eta ondjala ongashi tashi landula:

1. Okukutha okanona kegundji manga inaaka gwanitha oomwedhi 6 noku ka pa oshimbombo nontaku nenge okapilili ka lungithwa omeya, po pwaa na omahini gasha.

2. Omikithi ngaashi oshimela nosho wo okakwenyene.

3. Okumenekelitha uunona uushona kooyinakulu ya kulupa yo pamwe kaye na iikulya ya gwana megumbo molwomatompelo gi ili nogi ili.

4. Oluhepo lwe etwa kokwaamona iilonga, kuunkolwe n.sh.t.

Nandi shi holole kutya aanona aashona haa zi momagumbo gomiti ye niwe komukithi nguka gwondjala. Aanona oyendji otaa zi muukamba nosho wo pomahala mpoka pe na oontauki. Osha yela kutya aantu mbano kaye na omapyo, ihe ondi inekela kutya ngele oya tameke okuninga iikunino puukamba wawo nokukuna oomboga, okanakamundesha, omangulumutu, omapungu, omatama n.sh.t. nena omukithi nguka otagu ningi ngaa omuhwepo.

Itashi kwatha sha okulandela omunona iikuki yomagadhi nosho wo oochips. Shono hasho ehumokomeho nande ihe eshunomonima. Onda dhimbulula wo kutya oomeme ohaa landa iikulya ya puka noyi na ondilo uuna aanona yawo ye li moshipangelo.

Kambadhala okuyanda okulandela aanona oochips n.sh.t. ihe landa omahini,

Tala kepanja tali landula

## Evi twa pewa.....

Dha za kep.3

ngongeleki nongele ewi lyopauprofeti tali mwena monkalo ndjoka, nena kali shi we ewi lyopauprofeti.

"Hasho eithano lyetu tu popye tangotango kuuthemba womuntu itau gwanithwa mu-Elsalvador, Chile, Rusia nosho tuu. Ewi lyetu otu na oku li gandja muNamibia, moka tu li.

"Kungoka e li muNamibia moshilongo shomathiminiko, nomahokololo gasho ga nyanalitha okuyonagula uuthemba womuntu, ihe omuntu ota gandja uusama kelongithonayi lyuuthemba womuntu palwe muuyuni, shoka ngame otii shi luku; evuyitha lyifundja ndyo. Tonatitha omeho goye u tale shono shi li komeho goye.

"Nandi fatulule kashona mpaka uunzapo wopauprofeti wOngeleki. Ongeleki inayi shi tala kutya sho oshilonga shayo okweeta po omikalo dhopaupolotika, dhopankalathano nenge dhopamahupilo. Yi ninge ando oompangela nomathaneko taga fala momatokolo go gene gaashono shi na okuningwa nomikundu dhomahupilo, dhopasosiale nenge dhopapolotika.

oku shi longa. Momeho gayalwe, tse otatu talwa ngiika kutya aakongi yoonkalankongo. Ihe osho shoka tu na oku shi ninga o-

"Patiyali uumbangi wopapolotika wOngeleki muNamibia ou li kashona, shono omuntu to vulu oku shi luka, kutya ekondjithathano.

"Ongeleki oyi na okudhimbulula nokutongolola onkalo ndjoka yaa shi ku idhidhimikilwa.

"Okatongotongo otu na oku ki ithana okatongotongo nokufatulula shoka taka ti. Otayi ithana omahepeko kutya omahepeko, nuukeenuuyuuki, uukeenuuyuuki. Itatu vulu okutya oshiwana naayihe otayi ende po nawa. Ongeleki otayi fatulula kutya omolwashike onkalo kaayi shi okutaambwa ko.

"Ongeleki otayi pangula onkalo yopapolotika noyopasosiale ndjoka yi li moshilongo pethimbo ndika, kutya oya nika omathiminiko noya pingathana nelaka lyevaangeli.

"Patitatu Ongeleki ngele ya kondjitha shono shaa li mondjila, oyi na wo iinakugwanithwa iyali oku yi gwanitha:

- Okuuvitha elaka lyevaangeli monkalo ndjika ondhigu noyomahepeko.
- Nokugalikanena oshilonga shopauprofeti shi longwe moshili.

"Otatu galikana, esiku limwe onatu sindana, esiku limwe Namibia onali ka manguluka, esiku limwe Namibia onali ka ninga oshilongo shimwe ngaashi iilongo iikwawo muuyuni."

(Osha kuthwa mevitho lyomumbisofi Bonifatius Haushiku, e li uvitha pethimbo lyoonkundathana dhemanguluko lyaNamibia muHannover shomuNdowishilanda peshililo lyomumvogu.)

## Omavu gaanona

Dha za kep.4

omayi. onyama niyimati. Mbino oyo iikulya tayi tungu omasipa nosho wo oontumba dhokanona.

Mpano onda hala okulongitha okampito hano opo ndi pandule ongeshefa yedhina ABC Trading Centre pOndangwa sho ya gandja iimaliwa yi thike po R2000-00 opo yi longithwe okukonakona iikulya yOshiwambo mbyoka tayi vulu okupewa omunona opo a koke nawa. Ondi inekela aanangeshefa ooyakwawo otaa landula oshiholelwa shika oshiwana.

Omvula ndjika 1987 ondi inekela otatu ke egulula ehala lyedhina "Nutritional Rehabilitation Centre" moshipangelo sha Shakati. Elalakano lyehala okupukulula oomeme nkene ye na okupalutha aanona niikulya yi na ombiliha nosho wo oku ya longa kombinga yuuyogoki wowene ngashi pokupilula omahini gomoondooha n.sh.t. Etumwalaka lyandje koomeme olyo ndi:

1. Lya iikulya yo opala uuna u li metegelelo.
2. Ino faula omathulo.
3. Dhiginina etuntilo.
4. Palutha omumwoye niikulya yo opala noya yela.
5. Fulukitha omeya manga inaaga nuwa.
6. Omapya naga longwe opo tu kale tu na iipalutha ya gwana. Ninga wo okakunino okashona pegumbo lyoye ngele onkalo yomeya otayi shi pitika.
7. Pomagumbo napu ningwe uuholameno -shino oshinakugwanithwa shootate.

Aluhe etameko lyoshinima ohali kala edhigu, ihe waa kambadhala ku sindi!

Dha za kep. 2

sikola ta kala nongunga yomulongwa gwe. Lalakaneni aluhe ilonga yeni iiyogoki yi monike kaalongwa yeni. Ya nyangeleni wo mooha nomomudhingoloko, mifo iikundaneke nomooRadio, opo ontseyo yawo yi yambapale yo ya ndungapale.

Hamulongwa ta kala nongunga yomulongi gwe omolwokwaailonga. Alikana kongeni uunongo momambo. Twa vulwa okuningilwa. Papudhukeni moomposi, mu tale sho tashi lalakanenwa. Onda ndhindhilike kutya nando ohamu longwa Oshingilisa ethimbo kehe, paushili kamu shi oku shi popya. Ondi wete oyendji otaa pataneke ndje kwaasho. Ngele ongawo, omaludhi okakuya kaake po.

Ilonga yeni iwanawa otayi hokitha notayi tegelelwa mpaka. Omukumo netegameno lye-ni nali mu fale sigo okethikilo nokelago lya-shili.

F.K.Shingenges

## EHEMPULULO LYA ANDUKA MONDHOLONGO

"Ngame ondi li omukeenandjo, nokonima sho nda pulwaapulwa iikando itano kaapolosi. Onda taamba omushigakano gwaKristus, nonando ndi mu landule sigo okuGolgata, ite kanitha citaalo lyandje lyomuye omolwoshili nomoluuyuki!"

Ehempululo ndika lya kola nedhigu lya leshwa mombilive yonkwatwa omutonatelishi-taingeleki omusita Tshenuweni Simon Farisani, mu SA.

Omutonateli Farisani (39) OKWA kwatelwe kaapolosi 22.11.1986 mevigumbo lyaWenda. Kutya ombilive oya piti ngiini yi ka leshwa komukadhi Regina nokaakwanezimo, kape na ngoka he shi popi.

"Onda ninga oshipotha shondjala nkene nda tamekele momumvo omupe sigo otandi si, ngele nani ite mangululwa nenge ndi pagulwe palandulathano lyoveta mohofa," osho sha leshwa miitya yimwe yombilive mbyoka ya gandjwa kEhangano lyepopilo lyahepekwa muuyuni (Amnesty Internationaal) muLondon, pehulilo lyaJanuali 1987.

Ombilive oya nyokwa komusamane Farisani eti 7 lya Januari, tashi ti konimayoshiwike shimwe sho a tameke oshipotha shondjala. Mombilive okwa lombwela omukadhi, kutya pambepo ye okwa kola, ihe palutu okwa nkundipala.

Otaku tiwa osho oshikando oshitine komusita ngoka Farisani gwOngeleki onkwaLuther mu SA, sho a tulwa ngeyi konima yokakuma pwaa na ompangu yasha mohofa.

Mboka ya tseya ehistolli lye, otaa ti nomomakwato gonale okwa li a hepekwa nayi. Iikando iyali omutima gwe gwa li gwa mwena, omolwomafiko golusheno.

Mekwato lyongashingeyi, okwa monikwa iikando ihamano e etwa koshipangelo. Kape na ngoka kwa li e shi shi kutya omolwashike. Oku mu pula mwene, itashi wapa, oshoka oku li megameno lyaapolosi.

Eindilo ndyoka lya ningilwe komukulukadhi gwe, opo ohofa yi mu popile komahepeko gaapolosi, nasho inashi pita.

Mombilive ye ndjoka ya pitithwa monguwi, omusita Farisani okwa ti aniwa ekwato lye siku limwe olya zi owala miikonene sho kwa li a holola omahepeko e ga ningilwa mekwato ndiyaka lyotango, mekondjitho lye lyokatongotongo, nomokufutitha aapolosi, osho a nyola.

Oshitopolwa shopehulilo lyombilive shono sha kwatelele mo wo netopolo lyuuthiga, Farisani okwa kumagidha omukadhi a tsikile nokufala iikulya kondholongo, aniwa opo ya kale "yaa na eipopilo," osho ombilive ya leshwa.

"Itandi ki imangeleka nando, sigo nda si shila komukalo gweidhiliko lyiikulya. Omusamane gwoye omuholike melambo lyomahepeko," osho a hulitha ombilive ye.

Ehokololo otali ti omutonateli Farisani okwa tseyika nawa muEuropa, Amerika nomuAsia omolwoshilonga shoka a kala ha longo medhina lyEhangano lyokupopila aageelwi muuyuni



Omusita S. Farisari manga inaa shuna mondholongo

(Amnesty International). Nokuli omumvo 1981 oye mu luku aniwa Farsani "onkwatwa yeiuvo."

Oongeleki onkwaLuther koombinga noombinga otadhi indile epangelo lya SA nolyaVenda ga mangulule Farisani. Pahokololo lyOngongahangano yaAkwaLuther muuyuni (LWF) MuGeneva, oshimpwiyu oshinene sheipulo lyaFarisani otashi dhimbulukiwa miilongo yaSkandinavia, (uumbangalantu waEuropa) muNdowishilanda lyuuninginino nomuHollanda.

Sebulon Ekandjo

### Nandi pukululwe aakwetu

Ngame omwiilongi ndi li muAmerika. Onda hala okuuya elongo lyomosikola yedhina Academy kOvenduka kutya olyi lilepo tuu oompumbwe dhAanamibia?

Aalongi mbono haa longo mo oolye, nelalakano lyawo olyashike?

Ndalulilwa Haihambo USA

### EYAMUKULO

Kehe ngoka u na owino komapulo ge li pombanda, oto vulu okunyolela koshifo shika.

Amushanga gwOmukwetu

## Omulumentu ongomutse gwegumbo na gandje oshilolelwa shi li ngiini?

**Oshipalanyolo shoshene osha nika epulo, oshoka pehulilo opu na iitya: "Shi li ngiini"? Ano oshiholelwa shi li ngiini? Ashike omuntu oto limbililwa kutya oshiholelwa shoka omupuli a hala shi gandjwe omegongalo, opuushiinda (momudhingoloko) nenge omegumbo?**

Yelekanitha nEimbilo 24:1,2 Mu simanekeni Kalunga. Ngele owa ndhindhilika, oto koneke kutya, omu na iitya mbi: Jesus, Maria naJosef ongefamilia eyapuki, oya li ye holathane, oya li ya kwathathana aluhe miihuna nomomaupya-kadhi gi ili nogi ili, oya li ya kala nawa nonteni noya dhiginina ombili.

Owa koneke tuu nawa kutya Josef okwa li omulumentu omutse gwegumbo? Okuye tatu kutha oshiholelwa. Tala u tale, muukwatya tau landula mpano, otatu imbi omulumentu ongomutse gwegumbo, a gandje oshiholelwa oshiwana.

**a) Uukwaayamukulwa:** Aalumentu aanegumbo oyi ininga ookayamukulwa noohamadhimbo momagumbo gawo. Ihaa yamukulwa kaakulukadhi, ihaa yamukulwa koyana. Oyi ininga ombaasa.

**b) Uunkolwe:** Aalumentu ye vule etata lyomwaalu gwawo moshilongo shetu aapika yiikolitha. Efeso 5:18 otatu kumagidhwa tu yande uunkolwe.

**c) Oondjuma:** Momagumbo ogendji kamu na we ombili. Ombili ya kana. Esiku kehe ondokosho ashike to uvu. Ohadhi etwa kulye? Okomulumentu.

**d) Ondjahi:** Aanandjahi kaa shi xwiidhidhimika. "Ngele tamu geye inamu etha ondjahi yeni yi mu fale sigo omokuyona; inamu kala mwa geya esiku alihe" (Efes.4:26).

**e) Onyalo:** Aalumentu oyendji ya gwile monyalo. Omagumbo ihaga opalekwa. Omapya itaga limwa, iimuna itayi pukululwa. Koshigunda ihaku endiwa.

**f) Uufuthi:** Omwaalu ogundji gwaalumentu ogwa gwile muumbotsotso. mu Kaaefeso.4:28 otatu kumagidhwa tu ethe uufuthi.

Aashunimonima: Omolwiinima nde yi tumbula oondjokana odhindji odha topoka. Kombinga yaamati yi iningi iikumbumati. inaa hala okudhika omagumbo goshili.

Pitika ndje ndi tumbule iinima yimwe tayi vulu okukwatha omulumentu opo a kale shili "Omutse gwegumbo." Omulumentu ongomutse gwegumbo na kale:

a) Omukriste omudhiginini: Omulumentu gwomagalikano (oowandaha kehe esiku megumbo). Omukali gwopomalongelokalunga, omutaambi gwomasakramendi. Omukonakoni gwoohapu dhaKalunga. Ha gongala miigongi yopakriste.

b) Omunambili megumbo, puushiinda, momudhingoloko nomoshilongo.

c) Omunyanyukwi unene tuu megumbo.

d) Omuyakuli nohole omukulukadhi naanona.

e) Omwiifupipiki koshipala shaKalunga noshaantu.

f) Omunanteni, nongele ta tokola sha ote shi ningi nomwenyo gwa ngungumana.

g) Omuhanganithi, omukumagidhi nomugandjimaye.

h) Omuleli nomupukululi gwaanegumbo lye.

i) Omuputudhi omwaanawa.

j) Omwiidhidhimiki.

k) Omupanduli e shi ku pandula aanegumbo lye.

Ano omulumentu oku na okukambadhala i imonene iimaliwa niilya oyindji opo a paluthe omukulukadhi gwe noyana. Noku ya yakule moompumbwe dhawo adhihe. Ita etha aanegumbo lye ya se ondjala nenge ya se onkayi. Oku na okukala e na uunongo wa gwana mokuyakula, mokupalutha nomokuputudha (aanona) aanegumbo lye.

Aanona naa dhimbulule kutya, tate nameme oyo omuntu gumwe, kaye shi okutopolwa. Oye li muukumwe. Molwaashono, tate nameme, miinakugwanithwa yawo ayihe, naa ulike uukumwe wawo kaanegumbo lyawo. Pwaa kale nande okayoya kasha. Pokuninga omapuko, ayehe yaali oya pumbwathana, kehe gumwe a pukulule mukwawo, unene tuu pakuputudha nopakutekula.

Uukumwe wa tate nameme megumbo, owo omukanka gwonkalamwenyo yaanegumbo ayehe megumbo (mefamilia) Kau shi ku kala kau mo. Megumbo nge kamu na uukumwe nelandulathano, egumbo lya tya ngaaka olya ninga oshivunyino. Kashi shi oshikumithi, "aanyasha" oyendji sho ya ninga iimpulu, oombotsotso nokakombwiilitha. Aakadhona yi iningi iihakanwa ya shaangoka.

Osha zi mpoka sho momagumbo moka haa zi kamu na elandulathano nuukumwe. Omukulugwonale okwa tile; "Sha mena, oketindi sha za." Ashihe nde shi holola mpano shi na sha noshinakugwanithwa shomulumentu ongomutse gwegumbo, ote shi gwanitha ashike pokati ke nomukulukadhi gwe noyana uuna pu na ekwatathano, euvathano nohole yashili.

Ondi shi shi, oku na aalumentu yamwe, ihe hayendji ngaa unene, haa kala omathimbo nomathimbo kokule nomagumbo gawo, pamwe omolwiilonga, noihaa mono tuu shili ompito ya gwana okukala pamwe nomafamilia gawo ethimbo alihe, opo ya gwanithe onkalathano yomegumbo.

Ihe nando ongawo oku na ngaa oompito dhimwe, mpoka aalumentu taa vulu okuninga ootate aahwepo, shi vultithe sho osho ye li ngaashingeyi. Mpoka onda dhiladhila wo aalumentu mboka taa valele miihwa, yo inaa hokana. Otaa vulu okuninga po oopulanda, ya hokane (etulukumwe) nameme gwaanona mbo, opo ya dhike efamilia lyoshili, moka taa putudhile aanona yawo onkalamwenyo yi li nawa palutu osho wo pambepo.

Oshili oyo ndjoka kutya, Omushiti okwa tegelela omulumentu kehe, a gandje oshiholelwa oshiwana ngaashi omutse gwegumbo, ongaashi Kristus oye Omutse gwegongalo.

*D.Atshikuni Nuuyoma*

Oshipopiwa moshigongi-shaalumentu, 17-19.10.1986 m<sup>o</sup>shikuku.



Oho dulu okulipangela mokushinga kwoye nande wa tokelwa, luhapu ove ho ka fika oku wa hala

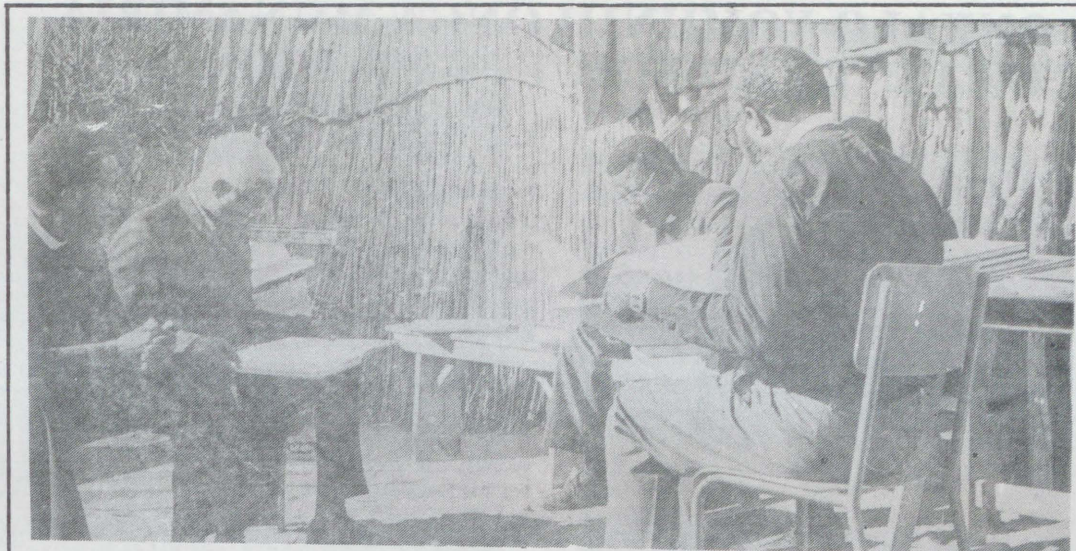
## Ontanda yaayambidhidhwa naakulupe 1986 mElondo

Ewilikongundu lyudiakoni, omusitago-ngalo nomudiakoni gwegongalo mElondo oya li ya longekidhile egongalo ontanda yaaposi, oombolo, iilema naavu nosho wo aakulupe.

Aakwanegongalo oya li ya si oshimpwiyu okuwatha ontanda. Aaniihauto naanamatemba oya tokola okweetela ontanda omeya niikuni. Mboka kaaye na iiyenditho oya tokola okuhumbata omeya niikuni komitise dhawo yene. Aanona oyi iyamba okutsila ontanda. Ilongitho yomontanda aakwanegongalo oyo yene ya kwatha. Aaniihauto oya kambadhala okuthikitha aayambidhidhwa kontanda yawo. Aadiakoni (40) megongalo oya li taa viyauka montanda. Mokati kawo omwa li aalumentu 5 aadiakoni.

Aakulupe oya holola omaudhigu gawo nokweethiwa kwawo. Oya holola nkene ye na onduulukwe yOkatikisa nokudhimbuluthwa iipango. Aakulupe oya kala taa hakana okuhokolola iipango. Naashika otashi holola kutya oye hole shili iipango.

Ontanda sho ya li ya ningilwa ekonakono lyOkatikisa, omwa monika omukulupe omuposi, a tsika okuza muunona we, a piti ekonakono, oshoka okwa li e shi Okatikisa akehe momutse. Okwa pewa onzapo yOkatikisa. Oya holola nkene omatalelopo gaakriste momikunda ga nkundipala. Aakulupe oya yogwa noya thulwa.



Omaongalo omulongo okwa tulwa nale meshikulafano letalelopo lomubishofi okudja 20 ohani ei fiyo 28 aJuni. Kakele koKavango, oitai aishe mOwambo oya kumwa ketalelopo olo. Ombinga imwe yometalelopo ohai kala ekonakono lomambo eongalo ngaashi tashi monika mefano.

Iilema nayo oya pandula sho ya mono ompito ndjoka okukala montanda yawo. Ihe otaa ningi eindilo ando ku ningwe oshigongi shiilema moshitayi nenge mOngeleki ayihe.

Oya ti oya yuulukwa okumona iilema iikwawo. Aavu ongashikwawo. Nayo otaa holola omatalelopo maakwanegongalo ga sa mo okutalelopo aavu. Otaa holola kutya omavu oge ya tona noonkondo, onkee neitaalo lyawo otali nkundipala. Oya tegelela omakwatho ga-

kriste ooyakwawo mokutsuwa omukumo. Otaa pumbwa okukolekwa.

Aaposi otaa holola omaudhigu gawo kutya oye ekelwahi kaantu noya dhinika. Nayo otaa pumbwa omatalaleko, netsuwomukumo ya wape okuhumbata onkalamwenyo yawo. Ando aniwa ya tsikile niigongi ngaaka momagongalo agehe. "Ando tse aaposi otatu ka nyanyukwa," osho ya ti.

Oombolo nayo taa popi taa lili, sho inaa yalulwa miinima yiigongi. Ando ku ningwe ngaa oshigongi shoombolo. Aayambidhidhwa nayo oya li miikongo esiku ndyoka, ya li taa yolitha oondhi.

Aakulupe yamwe naavu yamwe kaya li ya mono ompito okuthika kontanda omoluwehame. Aadiyakoni oya topelelathana okufala iikulya komagumbo gawo. Oothewa ndhoka dha hupu ko, odha topelelwa aaselekadhi noonakuthigwapo kaaholike yawo megongalo. Nokonima yoshituthi sho sha pu, aayenda oya lalelwa nuuyamba kOmusitago-ngalo Lasarus Katoma. Omudiakoni Aina. N. Kambuta okwe ya halele ompolo mondjila.

Sho ya zi mongeleka oya shuna koontanda dhawo. Oya pewa sha shokunwa ya wape okuya mela lyondjila. Aakayili yuuthanguthangu oye u pomele nale manga aanamagulu gane (iihauto) taye ga shunitha lwanima iinguma yi wape okulonda. Yo aakulupe otaa tsu oontondje mevi ya landula uutekulu wawo. Osho ngeyi ontanda ya li ye ende megongalo Elondo eti10-12.10.1986.

Omudiakoni Aina Niipindi Kambuta



Enyanyangidhululo epe lyOmbimbeli yOshindonga, lya piti mo mOshinyanyangidho omasiku ngaka melaka lya pupalekwa. Ngashingeyi nEtestamendi Ekulu otali leshwa mOshindonga shu uvitike methimbo lyetu. MOsitola yomambo mOniipa, Oombimbeli inadhi thika mo manga, ihe odha mbestelwa. Methano ndika, okuku L.Kivela kolumoho lela, ngoka a leshulula enyanyangidho ndika epe. Oku li pamwe niilyo yokomitiye yenyanyangidho mu ELCIN.

### Elunduluko lovanashilonga

Omweevangeliste Gottlieb Manya, a xulifa oilonga yomokati kovanyasha nokwa shuna meongalo Olukonda. Omudiakoni Tomas Amagola, Okaku a nangekwa moshilonga shovanyasha voshitai shOndonga okutameka odula ei.

Omufita Titus Niitshinda, Etilyasa, a nangekwa omufita omuwiliki mOthika, mUukwambi.

# ONKALO YOMUNIILONGA MUNAMIBIA OTAYI TSIKILE MUUPYAKADHI WAYO



Omusamane Leonard Nghipandulwa, gumwe gwomaawiliki mboka ya wilikile oshipotha oshinene mehistolli lyaaniilonga muNamibia 1971-1972

Onkalamwenyo yaa na egameno lyopaveta muNamibia komuniilonga oyi na etameko lyayo muuyuni wAandowishi, moka omahokololo ga nyanyalitha taga dhimbulukiwa natango mokati kaaniilonga mboka ya thigala momwenyo.

Ethiminiko lyopaukoloni nethipombinzi lyopaukapitali, mbika oya makelwa tangotango kaaniilonga yomevi ndika, manga oshigwana ashihe sha fa shi li konima yesiga shaa uvite uupyu mboka u li po.

Kashi kumitha ano kutya ekondjo lyopapolotika ndyoka tali kondjo mevi ndika, olya va lwa muudhigu wonkalo yomuniilonga. Muule woomvula 100 dha zi ko, omuniilonga Omunamibia muudhigu wonkalamwenyo ye niilonga ye, ina kala e na ewi lyasha, nomuhona gwe okwe mu ningi naanaa ngaashi omwenyo gwe tagu mu lombwele.

Sigo opetameko lyomimvo dho '70 (1970) omalenga gomOwambo oga li ga zalekwa oonkondo kepangelo lyOshingolo okukwatitha, okufutitha nokushunitha omuniilonga Omuwambo ngoka a ya ontuku yomahepeko miilonga ye.

Oveta ndjoka oya li tayi longo pamwe noveta yaVargancy ndjoka ye etelwe muNamibia okuza komimvo dho '20 (1920). Oveta ndjoka oya li tayi gandja oonkondo komupolisi kehe nenge kOmutiligane kehe okukwatitha Omuludhe ngoka ta monika ti inyenge miilando kee na eziminino lyomuhona gwe (Workers of Namibia, kuGillian naSuzanne Cronje, ep.31).

Oku na ngashingeyi omahangano gaaniilonga yi ili noyi ili konyala 13. Gamwe gomugo inaga mona natango eyalulo lyopaveta. Ngaka otaga kambadhala okupendula po ewi lyomuniilonga ndyoka lya li lya mwene kwa tangotango nethiminiko mOtavi 1893.

Osho taga kambadhala kuyumudha po ewi lyaaniilonga ye vule 25,000 ndyoka lya li lya mwene kwa nomakoto 1971-1972. Nogo etsikilo lyewi lyaaniilonga oogumwe noogumwe ya mwene kwa pamukalo gwaAbel.

Ondi lwete oshivanawa wo okuulika omahangano ngoka taga ningi oonkambadhala pethimbo ndika, opo ewi lyomuniilonga Omuludhe li uvike. Omusholondondo gwomahangano ngaka Omukwetu okwe gu kutha mokafonkundana SAF. No.2/1986.

1. National Union of Namibia Workers (NUNW) lya zi 1957 mewiliko lyomusamane Andimba Toivo yaToivo, mokati kaalongi yokondhalate.

Omumvo 1975 oshikondo shaaniilonga mepangelo lya SWA osha tindi oku li pa eziminino, molwaashoka aniwa li na ekwatathano na SWAPO. Ombelewa yalyo oya hanagulwa po 1979 muKlein Windhoek kaapolosi, aawiliki ya tulwa mondholongo noombapila dhehangano dha yiwa nadho.

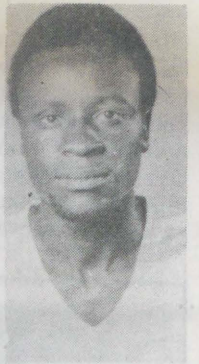
Ehangano oli li ngashingeyi mewiliko lyajason Angula nolya kwata aaniilonga yoommina noyomoofabulika, konyala moshilongo ashihe.

Ehangano ndika olya toto okomitiye yalyo 1986 yedhina: Workers Action Committee (WAC). Elalakano lyokomitiye okukwatha ehangano lyaaniilonga okwiitunga nokwadhah oshilalakanenwa.

## Tala kepandja tali landula

## OMBILIVE YOMATUKANO

Werner Sh.Haikali, mOtjiwarongo, ota hokolola va havalekwa eembapila domatukano moilonga yavo pongalashye ya J.L.Cohen. Eshi va hovela okukonakona omukanda womatukano apa wa dja, okwa twalwa kopolifi nokudengwa. Omukanda owa shangwa mOshimbulu nowa fika yo mombelewa yOmukwetu.



Eshi omushamane Haikali okwe shi luka "oilonga yoka-tongotongo."

## Tu taleni shono tashi tungu komeho

Oto kumwa ngele wa uvu aanasikola oondumba mboka ya pita ositanda onti 8, ayehe otaye ki ilongela kOngwediva, kuulongi naashona yowala taa yi muupangi nenge pondje yoshilongo oku ki ilonga.

Ondi shi shi kutya kehe gumwe oku na eithano lye, ihe oto adha aanona aashona yoomvula 18 oyo yuuka muulongi, ye omunona a tyngawo oku na omagano, ihe ota tondokele owala kiimaliwa a ka kwate omafo.

Aanona yamwe oye li ngaa shili momaluhepo kaaye na oohe nenge ooyina opo ye ya kwathe kombinga yolukaku nenge omutsuhu. Ihe otatu popi mboka ye na omakwatho. Tate gwe nenge meme gwe omunashilonga kee na nando oluhepo lwasha, ihe ota tondokele oku ka kwata omafo, ita dhiladhila a gwedhe ko keilongo lye.

Ino lalakanena mbyoka, manga u na aakwa thi yoye mbono, ngoye ou li omunamagano, ano ho ilongo, kambadhala shili

Nd. John Eheke



Aaniilonga moombautu mOmbaye



Mookomboni ngaashi, ya Lange (CDM), ya Tsumeb, ya Rossinga noya Tjihase otamu longo okomitiye ndjoka.

2. Ehangano ndika NUNW, otali longele kumwe nekwawo; **Namibia Food and Allied Union (NAFAU)** lya totwa 1986 mokati kaaniilonga haa longo niikulya, osho wo moohotela.

Mewiliko lyomunashipundi Mc Donald Natlabathi, ehangano otali lalakanene okupendula po oondjambi dhaaniilonga osho wo onkalamwenyo yawo. Otali lalakanene wo oshitokolito 435 shiigwanahangano shi tulwe miilonga.

Iilyo yalyo otayi tengenekwa 6 000. Omumvogu olya ningi iipotha mOliindili, mOkahandja, moHartlief's nomOvenduka, nolya adha ethikilo ewanawa.

3. Omwa penduka wo ehangano lyokukwatha aaniilonga yu uve ko ondilo yuuthemba wawo monkalo ye li muyo, moka mwa kwatelwa eputudho lyawo miilonga mbyoka taye yi longo.

Ehangano ndyoka o**Namibia National Trade Union (NNTU)** lya dhikwa 1985. Amushanga mEhangano omusamane Theo Ngaujake noli na iilyo taye tengenekwa 7,600.

4. NNTU otali longo pamwe nehangano **Namibia Wholesalers and Retail Workers Union (NWRWU)** ndyoka tali tala okwaa na iilonga kwoshigwana, oondjambi oonshona nokuninga wo ooprograma dhomayambidhidho gomakwatho kumboka taa hepa momikunda nomomalukanda.

Iilyo otayi tengenekwa 6 000 nomunashipundi omusamane Veripi Katenge.

5. Ehangano **Drivers, Transport and Allied Workers Union (DRTAWA)**, ohali longo kumwe nekwawo NNTU noli lile po aanashilonga yiyenditho nomalweendo.

Olya dhikwa muJuli 1986 noli na ashike manga iilyo taye tengenekwa 300 mewiliko lyomunashipundi Jonny Miller.

6. **Epukiro Agricultural Organisation (EAO)** otali longo unene mokati kaanafaalama mEpukiro nomudhingoloko. Nalyo otali

longo pamwe na NNTU niilyo yalyo oyi li ashike 300 lwaampoka.

7. **Namibia Trade Union (NTU)** olya dhikilwe 1985, ihe sigo onena inali taambwa paveta. Olyo li lile po aaniilonga momagumbo, moofaalama nomoofabulika dhiitenda.

Mewiliko lyomupresidende gwalyo omusamane Alpha Kangueehi, oli na ashike iilyo taye tengenekwa manga 6,700.

8. Ndika otali longo kumwe nehangano lyedhina; **Automobile and Metal Workers Union (AMWU)** lya ziminwa paveta muKotoba 1986.

9. **Namibia Federation of Trade Unions (NFTU)** olya dhikilwe 1981. Lya kutha iilyo moomina, oli na Amushanga gwalyo Jackson Kamonde niilyo taye tengenekwa ashike manga 450.

10. Ekwawo, ehangano lyomatungo muRehoboth nomuKhomasdal lyedhina, **Namibia Builders Trade Union (NBTU)** nomupresidende gwalyo Aloisius Yon. Ndika ohali tala ekwatho lyopaunamiti lyaaniilonga noopenzela dhawo.

11. **Rossing Mine Workers Union (RMU)** olya dhikilwe muJanuali 1986 nolya ziminwa koshikondo shaaniilonga mepangelo muJuni 1986, nando oonkundathana dhalyo nomina yo yene, otadhi tsikile natango. Oli na Amushanga gwalyo Winston Grunewald.

12. **South West Africa Municipal Staff Association (SWAMSA)** olya dhikilwe 1986 mokati kaaniilonga yaMuni moshilongo ando ashihe. Amushanga gwalyo omusamane Hanes Schoeman.

Oku na wo omahangano ngaashi gaalongisikola inaaga tumbulwa mpaka, ihe otaga lalakanene shimwe. Ando omuntu ou tale nawa momahangano agehe ngoka, nena oto ka dhimbulula nuupu nkene omulandu gwokotongotongo naamoka ogwa nweha mo omutungilo gwomahangano. Inashi kala oshipu mevi ndika okudhika ehangano lyopashigwana moka omihoko adhihe tadhi tsakanene.

Omato mpelo gamwe moshitsa shoka oge li mpoka, kutya omihoko dhomoshilongo shono kehe gumwe ogwi iyoololelwa mokuyaku-

lwa moompumbwe dhago, osha kala kaashi shi oshipu komihoko dhimwe dhi dhimbulule ompumbwe yokukonga uutheмба wadho pamwe noonkwawo.

Ishewe kombinga onkwawo omulandu gwokotongotongo inagu shi pitika, omuhoko nguka gu kundathane naangwiya uudhigu u li po. Oshi li wo ano puuyelele kutya omahangano ngoka nando ogendji, kage na siku naga adha oshilalakanenwa shago, manga inaaga thika mombepo yeyitungo lyopaukwashigwana, go ge ethe po eitungo lyopamihoko.

Sigo okuya pokati komimvo dho '70' (1975) opwa li aaniilonga yamwe mboka ya longele Aaluudhe ooyakwawo, unene kUumbangalantu waNamibia. Ngashingeyi engathithi lyaaniilonga yoludhi ndoka oyi indjipala notaa ka ninga mbala omukundu omunene kaahona yawo ngele inapu longekidhwa sha kuye.

Aanashilonga yoludhi nduka otaa adhikwa taa longo momagumbo, momapya, moongeshefa, koohambo dhiimuna nopalwe. Sho kaape na we ethimbo ele Aaluudhe ya dhike nomahangano gopaunangeshefa wi ili nowi ili, aanashilonga ya tya ngaaka mbalambala otaa ka adhikwa wo nomoongeshefahangano ndhoka.

Uuthemba wawo nuwanawa auhe womiilonga yawo itau ka etwa po nando okaahona yawo, naanaa ngaashi sha monika muuyuni auhe. Unene itau tegelelwa u ze kaahona mboka nayo wo monkalamwenyo yawo inaa ningilwa uwanawa washa miilonga yawo.

Aaniilonga mboka oyo yene ye na okuhangana nokutunga onakuyiwa yawo yene, ye yi kundathane naahona yawo. Epulo tali thigala po edhigu oondyoka; oye ihe gwomokati kawo ti ithana yakwawo ya kundathane?

Sebulon Ekandjo



Omunashilonga mofabulika yiipa yoonzi

## Etumwalaka lyOngeleki otali monikila mopolotika — Omusita gwaNGK ta ti.

“Kape na nando ongeleki kaayi li mopolotika, ihe otayi inekelelwa eithano lyayo,” osha popiwa aniwa komusita gwOngeleki yOombulu (NGK), Omuprofesoli Johan Heyns omasiku ngaka. A kuthwa omatumbulo gamwe mokana koshifonkundana shOombulu, Die Afrikaner 27.1.1987, Omusita Heyns okwa ti, yo oye shi yelitha nale ya ti kape na ekankameno lyasha lyopaMbimbeli nenge lyelongo lyonkalathano tali popile okatongotongo.

Omusita Heyns omumvo 1985, okwa hogololwa koshigongingeleki shawo a ninge omutonatelishitayingeleki shuumbangalantu waTransvaal nomuwiliki gwoshigongingeleki.

Ongeleki ya NG. omuvogu oya ningi ihe etokolo moshigongingeleki shayo, opo omagongalo gOngeleki ndjoka ge egulule omiyelo dhago nokAaluudhe wo. Osho sha li oshikando shotango NGK ta ningi etokolo lyu ukitha mokudhima po okatongotongo muule womimvo dhi vule 200 sho ya longo mu SA.

Konima yetokolo ndyoka, omagongalo gamwe oga geye noga tokola okwiikutha mo metokolo. Nokuli pashifonkundana shoka, omapopyo gomutonateli Heyns oga talwa taga ke mu etela uupyakadhi owindji mewiliko lye. Egongalo limwe mOngeleki ye otali pula nokuli e ethe po oshilonga shewiliko omolwomapopyo nomatokolo ngoka ga ningwa pethimbo lyewiliko lye.

Omusita Heyns sho kwa li a tseya omakankameno gOngeleki ye kombinga yopolotika kutya ihaga ende shimwe noongelesi odhindji, unene dhAaluudhe moshilongo, pehogololo lye okwa li e ya londodha ngeyi.

Inaye mu tala ko kutya ota nyateke ikaha ye ngele ando otayi miinima yopolotika. “Oshoka kaku na Ongeleki tayi vulu okwiinekelelwa oshilonga shayo, ngele itayi gumu wo muupolotika,” osho a ti. *Amushanga gwOmukwetu*

## A mangululwa mondholongo

Frans Nangombe, Tshandi, omasiku gemanguluko inaga tseyika.

## Natango ya dhigininwa

Martin Abakus, Tshandi  
Abner Lukas, Elondo  
Isak Shoome, Tshandi  
Absalom D. Nuugulu, Tshandi  
Eva Shaningi, Tshandi  
Julia Nuulimba, Tshandi  
Taimi Endjala, Etilyasa  
Abraham D. Shivute, (26) Oluteyi  
Elizabeth Amukwaya, (60) Nakayale  
Mirjam Filippus, (57) Nakayale  
Ruben Edmund (34) Anamulenge

Omusita Junias-Vaino Kaapanda, Tshandi

## “OVA SHANGELA NGE TAVA TI ....”

### Eindilo lyeitedhululo kAanamibia

Oshigwana oshiholike nokaaleshi ayehe, otandi mu indile nesimaneko tu taleni nawa ethimbo ndino tu li mo, li na omaudhigu ogendji. Kape na Omunamibia kee shi uudhigu wOshigwana shetu, nande tu shi shi shili kutya kehe Omunamibia oha galikana Kalunga opo a kuthe po uudhigu mbuka.

Mpano onda hala nee kehe Omunamibia ta lesa mpano u leshe nomeho gomeni nokukehe gumwe wi ipule ngoye mweene meni lyomutima gwoye kutya: Omolwashike mbela hatu galikana, yamwe ohatu galikana nokuli omutenya nuusiku, ndele natango omagalikano inaga yamukulwa? Pamwe opu na sha shono Kalunga inee shi hala noihatu gwanitha ehala lye?

Tu itedhululeni ngaashi Aaninive, opo Kalunga e tu sile ohenda e tu uve omaindilo getu, shimpa tuu twi itedhulula. Tala Niinive osha li tashi yonwa po, ndele sho shi itedhulula Kalunga okwe shi sile ohenda. Jona 3:1-10. Kalunga otu uvu omagalikano getu e te tu sile ohenda. Habakuk 3:1-2 Kalunga otu uvu omagalikano getu ndele te tu sile ohenda ngele otwi itedhulula Jes.59:1-4

Aasitagongalo ya kumagidhe aantu ayehe yi itedhulule, opo tu silwe ohenda. Ooitaali ayehe naa ye megalikano lyeitedhululo. JES.62:9 Jer.3:12-13. Omutondi Satana oku li mokati kAanamibia, okwa mona ompito oku ya longitha. Ehol.3:20-22; Ehol.14:6-7 Ehol.15:3-4; Ehol.20:1-3 Satana okwa hala okukutha aana yaKalunga mondjila yehupitho noku ya tula mondjila yekano.

Willbard Djuulume  
Oranjemund

### EPANDULO

Oondohotola, aapangi, aayakuli mOnandjokwe, mOshakati, noshipangelo shaKatutura mOvenduka tangi keyakulo ewanawa nokomakwatho agehe mwe ge tu pa, sho mwa viyauka okamentu ketu muwehame wako wethimbo ele sigo Kalunga e ka zimbula 19.12.1986. Oka kala ashike oomwedhi 10 kombanda yevi. Ookuume naashiinda tangi wo komahakeleko geni, Kalunga ne mu pe oonkondo miilonga ye ne mu yambeke.

Sakeus naMirjam Hekandjo  
Oniipa

### EPULO OLA FA LA NYAMUKU-LWA NEKUNI

Moshifo shotete kodula ei 1987 epandja 10, ope na oshipopiwa tashi popi kombinga yepasha, omupuli G.Kanyeku. Kanyeku okwa pula epulo liwa koshiwana naana ndele enyamukulo kaliwa, ola fa la nyamukulwa nekuni.

Shoovenevene ndishi omunhu oku li omushitwa waKalunga? Ngeenge oku li omushitwa waKalunga, ndishi nounongo e u na aushe okwe u pewa kuKalunga? Eshi shiwa komunhu omwenyo ile efyo?

Ndishi Kalunga oye a ufila omunhu oo a ninga

omunandunge mokulela efyo nekoshu ledalo lepa-sha? Shoovenevene hano ounyuni eshi wa kala u na ootatekulu noomeekulu votete, ndishi konyala kakwa li naana ku na oipangelo oyo yOshitilyane, ndele ondi wete kutya osha li ngoo tashi ende nawa. Efyo kala li unene la tana ngaashi paife eli lefimbo loipangelo.

Hano okulongifa oinima yOshitilyane osho ashike shiwa omangha yetu hatu i efa? Ame onde linekela eshi Omutilyane a pita oondohotola ndishi okwa hongwa ile tu tye okwa pita etanda, hano a tuwa olusha. Hano eongalo ile tu tye oukriste woovene otawo longo tuu osho sha ufwa kuKalunga? Ile, hano opashitilyane? Ngeenge opaKalunga, nau tale ko efyo oshinima shidjuu sho oshitilifa.

Vali onawa omunhu a amene omwenyo waye nowedimo laye, yee omunhu iha koshwa ngeno e linyateka sha, ndele oha hakulwa ashike paumwevene ngaashi omunhu ha i komeva. Voo nOvatilyane ohava dala omapasha, ndele eshi hava ningi katu shi shii. Vo ndishi mbela ovo nee Kalunga? Ovo ashike mwa hala tava hakula ovanhu, opo va ha ye mekufilo kombinga yOngeleki? Oku amena omwenyo osha fimana ye Kalunga iha kwafa elai.

Petrus Shimullenda  
Tsumeb-Eckleben Hotel

### ENYAMUKULO

Omuleshi omufimanekwa Shimullenda, ohandi ku pe ombili pamwe naaveshe ovo va koneka oukukutu wenyamukulo lange la holoka moshifo No. 1/1987, ep. 10. Onda li ngoo ndi shi vati ohandi hongo, ndele nani nda tula mo okahamala.

Natango ohandi hetekete okufatulula oshinima apa paxupi, ndele hanelalakano lokufininikila mo omunhu ngeenge ke shi udite ko. Owa ti omunhu na longife ounongo ou a pewa kuKalunga, eshi oshi li mondjila.

Oupyakadi wetu Ovalaule osheshi ashike ounongo oo tva pewa ohatu u ningi po wetu vene nowomapata etu. Vakwetu Ovatiyane ounongo wavo ohave u tukulilafana moipafi, nde ou e shi sha, tashi lihongwa kwaaveshe ngeenge ove na eenghono.

Kape na ou a dina ouhaku wOshilaule, osheshi ashike hau ningilwa monguvi, do neembudi tadi pitile mo nande kadi shii sha shili. Ngeenge eendudu doshilaule di dike ehanganano lado, ngeno ovanapupulu veendudu otava monika mo diva nouhaku wOshilaule otawo kala wa yela. Hano ava ve shii sha, ovo tava shekifa oshilonga nouhefi wavo.

Pativali okupita oudokotola ile keshe tuu shimwe shopombada, kashi shi okutuwa olusha. Naapa yo ava va hongwa nova pita eenghatu dopombada ediladilo eli otave li yolo ashike, nande ve li yo Ovalaule.

Okutuwa olusha omukalo tau longifwa kOvalaule e shi ta va yapula ovanhu vavo (ou a hoololwa mepata) va ka ninge ovanashilonga vonhumba. Fimbo outeku ou wa tekulwa ovanhu ava, wa ningilwa monguvi. Ngeno tu

Kepandja tali landula

**lundulule.** elandulafano eli, ngeno otatu kulu montongayakulo yetu yOshilaule, ngaashi Ovatilityane yava londo alushe pombada moimima ei.

Hauxuuninwa, okuyepa eflyo ngaashi to shi tula omufindo, itali keelwa kekosho pefimbo lepasha. Eflyo li li oshiponga kufye olo eli lokupilamena oipango yaKalunga eshi a tya: Inamu ya ko keemhulile nokeenganga mu di pule ekwafo. 3Mos.20:6

### Amushanga gwOmukwetu

## TU HETEKENI KUSIKURA VETA ZAHOMPA

Vanavamali tani gava tupu ekorangedo kombinga zetu ose natu venye tuna kara mouzuni. Sosinenepo vakwetu nkenye muntu ndi ni tante ngesi asi: Nkenye mukriste ogu ga lidiva asi, eme va kuhwa nge mukurupe, muswamanekurona, mukurukadikurona, mumati, mudinkantu matigona mukadona, mudinkantukadona, vantu ava natuvenye, ava tuna tumbagura apa.

Ngano tatu hundire nkenye gumwe a kwate pena zendi. Tu tjange ekonakono eli ngali wiza konyima. Alyo ngava likonakona nkenye muntu ga lidiva, asi age mukriste, ngava tare asi yilye ogu nga gwana Sertifikati zomekonakono olo asi wolye. Vena ava tumbura si no student ano owo ngano yiwo ngava ka gwana nkata zefundo.

Nomwenyo gwanarunye ogu aduka mo udano wakulirombera nsene adina veta kapi ava mu tumbura asi: Ana fundu. Nayeeyi yimo ngano natu yi rugana.

Mukriste mukwetu esi natu divapo seesi asi: Nagumwesi ga diva ezuvha nosiruwu apa ngasi sika. Mark 13:32-37.

### Gomwe gombungakriste Mayenzere

## OTWE SHI PANDULILA KALUNGA

Otandi pandula Tate Kalunga shoka a kala pamwe natse oomvula dha piti megongalo epe Omulondo, nonuumvo ote tu wilike natango. Otwa li hatu ende oondjila oonde okuya kelongelokalunga, ihe Tate gwopombanda okwe tu dhimbulukwa no kwe tu dhikile egongalo popepi.

Egongalo ndika oli na aakwanegongalo omapenda haa longo nomukumo noneitulomo, otandi indile ya dhiginine natango ya longe nuupenda ngaashi ya zile petameko lela esiku 1.1.1984-1986. Kalunga ne tu kwathe ye e tu gwedhele ko oonkondo oompe momumvo nguka omupe. Itatu lokwa we, oshoka etalangeleka olya pwa nale okutungwa.

### Nicky Natangwe Nambala Omulondo

## IHANDI LONGO ALUHE

Nandi kwathwe ndi yelithilwe kombinga yiigandjwa. Ngame omunashilonga, ndele iilonga yandje kayi shi yaaluhe. Ohashi vulika ndi pewe na-

ndo efudho lyoomwedhi hamano. Ngashingeyi ondi na okufuta iigandjwa yandje ngiini? Oshoka onda yalulwa omunashilonga, ngame ndaa na iilonga tayi kalelele. Tangi kekwafo.

### N.Petrus Malapi Okaku

## “METANGO INATU FININIKI-LWA MO — OMULESHI WOMUKWETU

### Etango

Onda hala okunyamukulo koipopipiwa oyo hai holo ka mOmukwetu shi na sha nEtango.

1. Kutya Etango ola heka ovapangi, tava longo oilonga yEtango moipangelo. Omupangi woshilyo shEtango, ita longele Etango. Ye oku li oshilyo sha dja kehala laye. Ye oku li ashike mongudu oyo ino hala, ngee oto mu kufa mo, oto mu nyeke ehala laye.
2. Kutya CCN, ota londwele ovanyasha ve he litule mEhangano lEtango, fye mEtango inatu hekelwamo. Inatu fininikilwa mo. Loo vali i-hali tu imbi tu longele Kalunga. Fye ohatu tu kumwe neenghedi domifyuululwakalo odo tali tu pe.

## Vanamibia tu djaleni elinipiko

Oshiwana oshiholike shaNamibia  
Otunen'omesho tu he wete ko  
Tu li moudjuu tu li mo edina  
Tu li moluhepo tu he li wete  
Vanamibia, tu djaleni elixupipiko

Otun'omatwi ihatu udu ko  
Tu li pedu twa fa tu li pombada  
Hatu nu omakende hatu kuluka  
Hatu li eedja tu udite ombili  
Twa mangwa ndele, otwa manguluka  
Vanamibia, tu djaleni elixupipiko

Vakwetu tu feni Ovaninive  
Tu weni poshi twa djal'eeshako  
Tu pew'ombili twe i djuulukwa  
Eti loupika li kandulwe po  
Vanamibia, tu djaleni elixupipiko

Ohatu indile tu filw'onghenda  
Hatu kuu Tate e tu popile  
Mbolu otwa dimbwa odikwa koshilwa  
Meindilo letu omwa kambela sha  
Vanamibia, tu djaleni elixupipiko

Omutondi woye ngee a fy'ondjala mu pa a lye  
Ngee a fy'enota mu pa a nwe  
Halutu alike la pumbwa okulya  
Nwa mokamukonyo ke na shilonga  
Omwenyo to ka pulwa kuKalunga  
Oto ka nyamukula Kalunga shike?

Ohatu ende hatu shuna monima  
Hatu lotoka inatu mana mo  
Hatu pwa (ndee) itatu yandjeni  
Hatu kongo (ndee) itatu mono sha  
Hatu makuka itatu tumbula  
Vanamibia, omaindilo etweni nae lixwe po

Inatu indileni nande nomilungu  
Manga cemwenyo (detu) twe di tuma po  
Di ka diladile manga keliko, kedimo  
Nokouwa aushe tau xulu po  
Opo cilikano loye li ha shituke oshivandamougwa  
Vanmibia, tu djaleni elixupipiko

Natu dengeleni Kalunga ongodu  
Tu mu kuwile twe linipika  
Neilikano inali kambela  
Ndee hatu til Kalunga kwafa ovahepeki vetu  
Va diminapo, va filonghenda, va yambeka  
Ngee to yambeke ovanhu voye aveshe.

Helena Halweendo

3. Kutya V.Weyulu (Mwaandjayi) elenga la nyenga Etango. Hamushanga wOmukwetu, tatekulu V.Weyulu ile oove oshike yee manga ina fya, ina tuma oshipopiwa osho kOmukwetu? Tula mo nee eshi a popile ye mwene.
4. Kutya omalenga aUkwanyama okwa hekwa kEtango. Etango inali kufa elenga oufemba walo. Nakunyola, oo e he li oshilyo shEtango, yee ko mo melelo laUkwanyama, haEtango le mu kufa mo. Oye ta topola Ukwanyama ou e u fiya po.
5. Kutya nomufita Kalangula ina panda Etango. Hano olye e li nangeka moshilongo omu? Ile okwa li ashike te tu nyomaida ouwa oo a monene mo?
6. Kutya Etango otali yandje Depo-Provera. Okaklinika oko kEtango oka ama peni? Kake ko. Popya ashike Depo-Provera oyo hai yandjwa mouklinika wepangelo naavo vOngeleki. KEtango kaku na sha sha fa osho.

Omapulo nomawedelopo naa yukilile ku:  
Miss Conny  
P.O.Box 645  
Oshakati  
9000

\*\*\*\*\*  
EDIMBULUKIFO: Osha yela kutya omuleshi wOmukwetu ou oku na oinima ihapu ke i udite ko moshinyolwa shOmukwetu No. 20/1986 epandja 6. Onawa u leshulule natango nawa u shiive okunyamukula. Vali Omukwetu ota holola euditonghenda laye linene, eshi ku na natango vamwe ve udite omifyuululwakalo davo ove na oku di hongwa kovakwailongo.

## OKULANDA OMAUMBO OONAKUFYA OTASHI ETA OLUHEPO

Ohandi popi kombinga yomushamane nomukulu-kadi va hombolafana ve na ombapila yaKomufala, ndele Kalunga ta ile po omulumenhu waye, ta fiye po omukulakadi nounona vavo.

Oveta yo otai uya, tai landifa po eumbo olo omulumenhu ve li lilandela nomukulukadi waye. Otashi ti oludalo lavo ola ekelwashi ne moixwa.

Otashi dulika oveta i tye, omukulukadi ile ovana nave lilandele po vali eumbo. Eshi otashi ti ngahelepi, lo eumbo ola landwa nale kuxe fimbo e na omwenyo?

Oshinima eshi otashi etele ovanhu oudjuu noluhepo okulanda oshinima shimwe ashike, to shi lande luvali ile lutano nokuli.

Ombili ngeenge onda puka moshinima eshi.

J.H.Kasheeta  
Jan Smuts Air Port

## OLUHODHI MOLWIKOLITHA

Ngame ondi hole okulesha Omukwetu nOmukuni, ihe ondi na oluhodhi olunene sho aluhe te tsakaneeke mo yamwe yomoshigwana shetu taa longina naye iikolitha. Yamwe yomuyo aalongi naalungwa.

Napu ningwe onkatu yokungambeka elongithonayi lya tya ngeyi, nenge ano ongiini? Ithadhi gwane omutse gumwe.

Titus A.Abniel

## EFYUULULO LOMAPYA OLO NALI TAMEKE

*KuHamushanga nokovaleshi vOmukwetu*

*Onda hala okutonga sha moshinima eshi taku tiwa omulumenhu na fyuululwe komukulukadi waye.*

*Shoovene ame eshi nda tala oshinima eshi tashi imbi oshiwana shi ude ko oshinima eshi osheshi. Omunhu umwe ota hambola e he na nande eumbo laye mwene ndele fiyo otava tameke okuka eumbo lavo nomukulukadi waye, ongaashi naana tava tameke okwoongela eliko lavo.*

*Eshi tuu va mana okulonga eumbo lavo, konima ye omushamane ota fi osho. Shimha tuu ndele omukulukadi oo ke na oifuta yeumbo olo, nena meumbo ota tewa mo.*

*Omolvashike nee omukulukadi oo ta tewa meumbo ile ta futifwa, loo eumbo ove lilongele vo namwene, ongaashi naana va konga eliko lavo? Hano ngeno okwa li omukulukadi ha fyuulula po eumbo ve li longa namwene, ngeno osha yela kutya noshiwana ngeno osha uda ko nale kutya omulumenhu na fyuululwe komukulukadi waye.*

### Hangula Shanghala Tsumeb

Eso

Meme Victoria Asino Shaanika a mana oondjenda dhe 7.12.1986, mepipi lyoomvula 66, okwa li gwomomukunda Oshilulu moshilongo shaNgandjera, egongalo Onemanya. Okwa thigi ko oyana 7 naatekulu 25.

Rauna Guuvika Nütenge  
Olukumwe-Tshandi

+++++

Petrus Shikolalye Shindubu, womomukunda ouhongo, mOkwanyama, okwa xulifa oweenda waye, moychame wefimbo lile 30.12.1986. Okwa fiya ko omufiyekadi novana 12, ovatekulu 8. Okwa li e na eedula 68 lwaapo.

Petrus Shimullenda  
Tsumeb

~~~~~

Tatekulu Gabriel Ndimati Shemuteka, meongalo Onghala, okwa xulifa oweenda waye 15.1.1987 moukulupe weedula dopokati mouvela wefimbo lile, okwa fiya ko ovana 18, ovatekulu 50, ovatekululwa 14. Sha wana metiti okulunhu e shi yandja, onghee katu na amatumbulo. Eimbilo 630.

Albertina Ndimbulukweni Ndeapwa

\*\*\*\*\*

Anna Magano Oskar Mnakapa okwa mana oondjenda dhe 20.11.86 ombaadhillila.

Fiina Talamondjila Oskar Mnakapa

**EDIMBULUKIFO:** Omuleshi wOmukwetu omufimanekwa, mokushikula omadiladilo oye aa, otashi ulike kutya ou na eudeko lixupi mokulesha oshipopiwa shOmukwetu No. 20/1986 ep. 6. Onawa u shi leshulule ove u tule omadiladilo peenhele dao.

Omukwetu ota holola vali euditonghenda laye apa, eshi moshiwana shaNamibia mu na natango ovo ve na eitavelo, kutya omifyuululwakalo davo ove na oku di hongwa kuovo hava di pondje.

Hamushanga wOmukwetu

## Onghuwo yovafitangobe

Ovanahambo tava lifa eengobe dovakengeli; unene tuu dovahongifikola, dovanambelwa navakwao tuu vamwe ve lili. Omunahambo wekenge la tya ngaha, ofuto yaye oi li ngaha:

Modula oha futwa lumwe aluke R30,00. Ndele ongeenge omuhona waye a dja koilonga; oikutu noikulya oya kwatelelwa mo. Omunhu ou okwa tya ngoo ye ota limi epya, ota ke ongubu, ye oku na ngoo eengobe tadi xwiilwa.

Nonande nee eengobe ohadi kongelelwa ashike, ngeenge imwe ya kana, ita futwa ofimbo ine i mona. Ponhele yofuto R30,00 lwaapo ota mono ehandu. Mongudu yovakengeli omo pakutala, omu na yo ava inava hala ekolonyeko, omhanga voo vene tava kolonyeke vakwao.

Pamwe ombedi oya dja mwaashi vahapu vomuvo ngehe va dalelwe va ende nande omwefaalama, opo va mone kutya okatongo noukolonyeki oshike. Eshi otashi eta naanaa elunduluko ledina "oukengeli", li shituke "oukengeleli". Onda hala omakenge noonakulongelwa aveshe va konaakone oshinima osho, voo va lundulule po sha.

Kombinga yokukonga ovalongeli vavo, eudafano lotete otava udafana nawa. Noonakudala ou ta kutwa ohava diladila, kutya omona wavo oku li meke lomunandunge, ndele nani,

woo nee. Oluhapu ooyefolou vamwe tava kongo ovaleli vounona vavo, omanga ve li keetundi. Osho va udafana petameko.

Shaa tuu nakukutwa a tameke oilonga, okwa tya ngoo etemo olaye, okutyava oikuni okwaye, okutwa, okuteleka, oku ka tala omeva okwaye, newapaleko leumbo olaye.

Weda ko nee ounona ava ve mu kutifa moilonga, voo vamwe ova lundukifwa nee nale nokuli. Yo ofuto oyo ashike oyo yokulela ounona, fikulimwe ya xupipikwa nokuli, shaashi vati iha wanifa nawa oilonga.

Omhalaka ngoo aa ta pewa, nanakulongelwa ngehe a dalwa e a ude ko keumbo lavo, ye te a kupula mukwao.

Ile pamwe Kalunga okwa ninga nai eshi a shita ovafyoono novayamba? Oonakulongelwa, edi omwe di enda peni, daKristus eshi ta ti "Keshe eshi mwa hala ovanhu ve shi mu ningile osho va ningila yo. Ile ino shi koneka kutya nakuhepekwa ou ote ku ndubile omakala a xwama kombada yomutwe woye?

Ngeenge ou li moshimhungu shaava nda tumbula, nena owa hala kutya oumukengeli ile oumukengeleledi? Eshi ino hala oupika ove to piki vakeni?

T.Hango Twamoneni  
Windhoek

## OMAKUNDO

*Aagundjuka ooyakwetu, otandi mu halele omayambeko gatate Kalunga. Otandi indile mu dhiginine uugundjuka weni, inamu u hepitha nando, kaleni mu na eidhidhimiko lya kola opo tu gandjeni oshiholelwa nokomapi pi ngoka tage ya.*

*Tu kaleni nuudhiginini waKristus. Kala mohole yaJesus Kristus Omukulili gwetu ngoka a li ko noku li ko note ya. Nomakundo geni Efes 3:19-21; Eimbilo 190.*

*Tse huka kuWaterberg otu li ko tu li kokule noku mona oohapu dhomwenyo, ndele otatu kambadhala ngaa. Ishewe otandi indile mu tu tule momagalikano. Omuwa ne mu yambekele Okrismesa nomumvo omupe gu na elago.*

Abraham Amutenya Nekwaya  
Waterberg

## OMUKWETU

Oye oshifo shOngeleki Onkwaevangeli paLuther yomuSWA/NAMIBIA.

Ohashi nyanyangidhwa mOshinyanyangidho shOngeleki mOniipa.

Omukuluntu gwoshifo omumbisofi Kleopas Dumeni.

Amushanga gwoshifo omusita Sebulon Ekandjo.

Ondando yOmukwetu muNamibia naSouth Africa R6,00 komumvo.

Palwe muAfrica R10,00 nokombanda yomafuta R14,00 komumvo. Mondhila R17,00.

Oondando nomambesitelo agehe naga tumwe kOmukwetu, Oniipa, P/Bag 2013, Ondangwa, 9000.

ELOC PRINTING PRESS  
PRIVATE BAG 2013, TEL. 11, ONDANGWA 9000  
SWA/NAMIBIA

**Omukoki** weongalo lokEenhana te li shiile kofuka, kukalapo tali tungu, Tate Daniel Nghifikua kwa ya metulumuko eti 15.10.1986 (Dan.12:9,13) Apa ovadalwa 10 vatate Daniel Nghifikua ohatu yandje olupandu kovahekeleki vetu amushe eshi mwa onga omadiko pamwe nafye nomwe tu twa omukumo moluhodi letu.

Osha yandja unene omukumo kumeme oo a fiwa po moukulupe. Tangi eshi inamu tu udila hatu lili. Tate Daniel Nghifikua okwa xulifa mepupi leedula 93. Okwa fiya ko omukulukadi waye, ovana 10, ovatekulu 85 nova tekulululwa 17.

Ondjokonona yaye, oyo iwa nokupwilikina, otai ka holoka mOmukwetu komesho.

Ponhele yovadalwa  
Tabita Daniel