

OMUKWE TU



40c

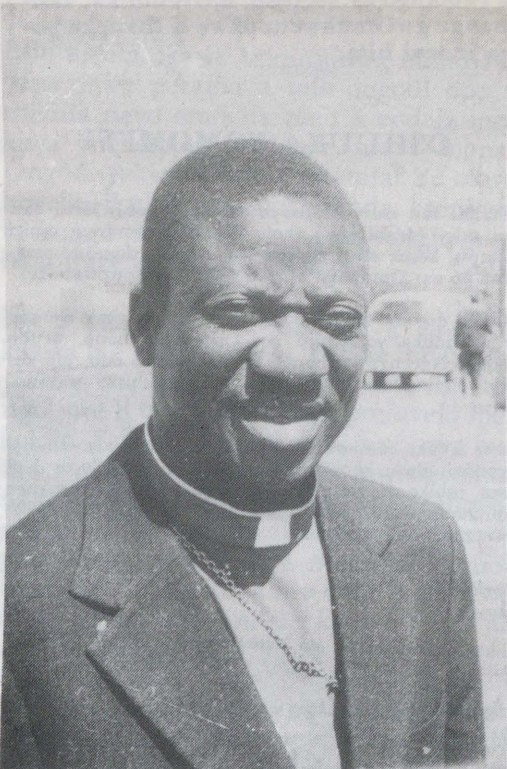
No.2

ISBN 0-620-06828-0

OVETA YUUSIKU NAYI TSIKILE ETOKOLO LYOHOFA

WINDHOEK: Ohofa yopombanda mOvenduka, oya tokola kutya oveta yuusiku tayi longo ngashingeyi mOwambo, nayi tsikile. Omupanguli omukuluntu J.Berker, okwa kumagidha ashike mboka ye na sha noveta, nkene mboka taa hepa nayi koveta ndjoka, taa nengenekelwa onkalo.

Ehokololo alihe tala kepandja 2



Palandulathano lyompangu mohofa moshipotha shoveta yuusiku, omumbisofi James Kauluma (methano ndika) oye omutamane-ki gwtango, omumbisofi B.Haushiku onomola ontiyali, nomumbisofi K.Dumeni onomola ontintatu

Pashifonkundana "The Namibian, oohahende dha kalele po aawiliki moshipotha moka odha holola onkumwe yadho kutya etokolo lyohofa itali tsu kumwe noshili yonkalo yokOwambo. Nayo otaa kongo ondji-la yoku shi shuna miipundi.

Epulo enene kElelongeleki lya ELCIN

ONIIPA, Ondonga: Epulo enene nkene taku tsikilwa momumvo nguka (1987) olye etelwa 'Elelongeleki lyOngeleki ndjika komumbisofi Kleopas Dumeni. Shoka osha ningilwa momutumba gwotangotango gwongunduleli ndjoka ngoka gwa li ko 21-23.1.1987 mOniipa.

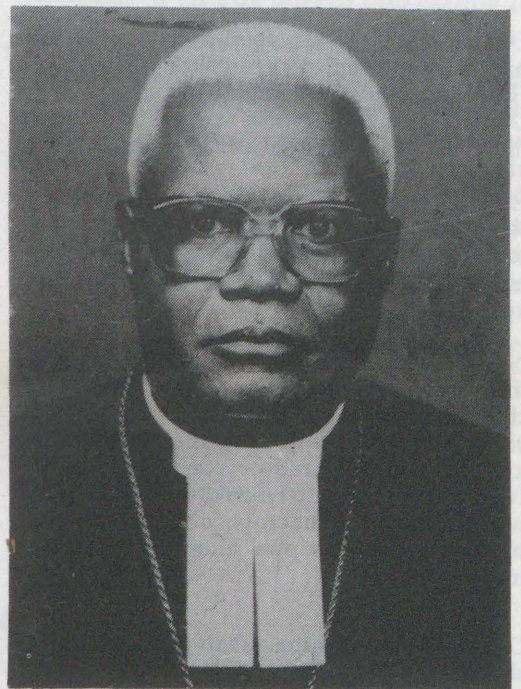
Konyala iilyo ayihe yElelongeleki, oya holokele momutumba ngoka kakele komukwathi gwomumbisofi ngoka a adhikwa natango mefudho. Aatonateli yitayingeleki nayo oya li wo yi ithanenwa mo.

Mokulesha ohapu yesiku ndyoka mu Jer.14:2-9, omumbisofi Kleopas Dumeni 'kwe egulula omutumba gwElelongeleki nomatumbulo ngaka.

"Otwa kala methimbo edhigu notali tsikile natango komeho. Tse otatu tsikileni ngiini?" osho a pula olwindjilwindji.

Mokuulukila ongunduleli yOngeleki oshipala shonkalo yOngeleki noshigwana, omumbisofi okwa ti aayakulwa yetu oye niwe kondjala, kave na iilonga, iinamwe-

Tala kep. 3



Omumbisofi K.Dumeni



Omumbisofi Bonifatius Haushiku gwOngeleki yaKatoolika kaRooma

EINDILO LYOVETA YOKANGENDJO YI KUTHWE PO, LYA EKELWAHI KOFA

Eindilo ndyoka lya ningilwe kaawiliki-ngeleki yatatu moshilongo, ohofa yi kuthwe oonkondo okatopolwa okatitatu (3) kometseyitho AG-9 lyomumvo 1977, nelombwelo AG-26 lyomumvo 1978 nekawo AG-50 lyomumvo 1979, olya tindwa kohofa.

Moonomola dhooveta dha tumbulwa pombanda omo mwa kwatelelwa oveta yokangendjo yuusiku tayi longo mOwambo ndjoka ya totelewe 1977 ya tseyika nedhina oveta yaSteyn.

Etokolo lyahugunina lyetindo oveta ndjoka yi kuthwe oonkondo olya gandjelwe eti 16 lyomwedhi nguka mohofa yokombanda mOvenduka.

Omumvo gwa yi 1986 aawilisofi; James Amupanda Kauluma gwaAnglikan; Bonifatius Haushiku gwaKatoolika kaRooma naKleopas Dumeni gwa ELCIN oya falele eindilo lyawo nohofa lyokumweneka oveta yuusiku.

Eti 29.10.1986 osha li lwotango oshipotha shoka tashi pulakenwa mohofa konima yoomvula 8 sho ya kala miilonga. Epangulo olya tsikile sigo eti 16.1.1987, sho ohofa ya tokola kutya:

Nonando oveta yuusiku otayi hindi uuthe-mba womainyengo gomuntu notayi kondjithathana noveta yuuthemba womuntu patseyitho R101 lyomumvo 1985 mepangelo lyopakathimbo, onkene tuu ooveta adhihe dha totwa manga epangelo lyopakathimbo inaali ya po, otadhi talwa natango dhi na oonkondo mudho dhene sigo pwa ningwa omautho o-mape.

Oveta ndjoka ya guma aakali yomoshitopolwa shOwambo taa tengenekwa 500 000 otayi ti kutya hamuntu ti inyenge kolupadhi nenge o-mosheenditho e li musho nenge oku li kusho pethimbo lyuusiku mOwambo kee na opele-

MUkwaluudhi oya

Moshilongo shUkwaluudhi omwa zi chokololo kutya aalumentu yahamano naakiintu yaali oya kwatwa. Mbaka oyo omuniilonga mOseko yaMwaala Martin Abakus, a kwatwa 1.1.1987. Ooyakwawo oya kwatwa eti 15.1.1987, omuteleki mOseko yaMwaala, Frans Nangombe; omunangeshefa Abner Lukas; omulongi moshipangelo shaTandi Isak Shoom omusamane Absalom David Nuugulu; omulongisikola Eva Shaningi; naMatrone gwOseko yaShikongo Iipinga, meme Julia Nuulimba.

KOngandjera okwa hokololwa wo kwa kwatwa omulongi Taimi Endjala megongalop lyaTilyasa.

Oshiningwanima shekwato lyaayehe mboka osha zi mu-nona 2 taku tiwa owa ziwa nawo muAngola ketanga lye-gameno wa li tau taaguluk. Ekonakono kutya oonaku kwatwa oye li peni otali tsikile.

Onkundana onkwawo yomakwato gaantu oya zi mOngandjera. Omulongi Abraham David Shivute (26), posikola yaPyamukuyu, okwa

meta ya nyolwa komunaveta gwombili nenge kukehe omunepangelo gwoshikondo shega-meno.

Mboka ya li yi indilwa ya huliithe po oveta ndjoka, gwotango Okabinete kepangelo lyo-



Esiku lyoshipotha shoveta yuusiku sha pulakenwa lwotango 29.10.1986, mOvenduka, aasita oyendji oya holokele mo. Ethano ndika Amushanga gwOmukwetu okwe li thaneka pomweelo gwohofa manga inaayi hita.

pokati, patiyali Oministeli yegameno ya SA, naNgoloneyandjayi gwa SWA.

Aapanguli oya kala 5 ya gwana po pautho. Omupanguli omukuluntu P.J.Berker; J.Bethune; J.Strydom; L.Levy na S.A.Hendler.

Aawilikingeleki moshipotha shika oya kalelwa po komunaveta Jeremmy Gauntlett a tulwa po kehangano lyaLorenz & Bone.

kwatwa ketanga lye-gameno

kwatetwe po 16.1.1987. Omusamane Shivute opo a adhikile e ya pegumbo popepi nOkrismesa okuza kondholongo.

Okwa hokana noye na okanona kamwe.

MOMBalantu omwa kwatwa omukulukadhi Elizabeth Amukwaya (60) momukunda Okapanda eti 15.1.1987, osho wo Mirjam Filippus (57) esiku tuu ndyoka nomomukunda tuu ngoka.

Ruben Edmund (34), Omhakoya mOmbalantu, egongalo Anamulenge naye onkene a kwatetwe 28.11.1986, ihe sigo oompaka inaku uwika kutya okwa dhigininwa peni. Elelo lya-Mbalantu oli ipyakidhila nokumona uyeyelele.

Sebulon Ekandjo

Mokulesha etokolo lyohofa, omumbisofi Dumeni okwa kumwa noonkondo. Okwa ti opo taa konakona oshinima shoka natango ngele oshi shi okutsikilwa nasho kompangu yokombanda.

"Ngele oongeleki adhihe moshilongo odhe shi pangula, osho wo epangelo lyOwambo, nena oshi lile po we nee uwanawa walye?" osho a tumbula noluhodhi olunene.

Sebulon Ekandjo

OSHUUKA YOMOMITI

Ohandi mu shiivifile onye ovanongononi, ileni oku mu tale. Moshilongo shetu Namibia omu na omiti dihapu, keshe muti nedina lao. DIMwe domudo omadina oo aa: Omupapa omu u shii, nomupupwaheke.

Momiti do omo hamu di oshuuka. Ileni mu tale nye mu lole oshuuka yomomuti oo. Oshuuka oihapu, neudo (1986). Ngeenge wa hanga ya dja momiti odo, oto kumwa. Pefina lomuti oikangwa omuti wa shisha, wa fululila pedu.

Otwe u luka okahundjololo. Onghe hatu ti nee omunongononi, ila u konakone oshuuka yetu, u tale ohai di peni, oshike she i eta, ohai dindwa koshike? Ila manga odula inai loka. Ava twe i lola otwa nwa okafe muyo. Vamwe ove i dunga ombike.

Dorkas Fumalekuu
Kongo

Omuleshi, eshiivifo eli ola holokele pexulilo lodula 1986, ombili eshi la tokelwa.

Hamushanga wOmukwetu

Ya 8 otaa pangulwa mOvenduka

Epangulo lyoonkwatwa 8 dhopolotika olya tegelelwa li ka kale ko 16.2.1987 mOvenduka. Ekwato lyaamboka olya zile 1985 muAguste nepangulo lyawo olya tamkele omumvo gwa yi 1986.

Ye li mompangu yetaaguluko lyoveta yuukulo AG-9 oyo: Andreas John Heita (22); Salomo Paulus (27); Andreas Gideon Tanjeni (23); Gabriel Mateus (23); Martin Akwenda (23); Johannes Nangolo (33); Petrus Kakede Nangombe (23); naSakaria Barakias Namwandi Shipanga (18).

OTASHI KWAFWA SHIKE OMUNHU NANDE NE LILIKOLELE OUNYUNI AUSHE NDELE TA KANIFA OMWENYO WAALUSHE MARK. 8:36

MuAfrika lomutenya ohamu hepaululwa eh paululo lomulumenhu ou kwa li ha kongo ouwe (diamonds). Okwa diladila kutya mekololo lonhumba li li medu ohali dulu okumonika ouwe, omolwashi okwe lilongekida opo a ye mo.

Oye okwa kufa olamba nongodi ile nokwa shita mo. Oxulo imwe yongodi okwe iditika mondungu yemanya li li poshivelo shekololo omanga ikwao e i kwatela meke laye. Ye okwa enda a yuuka mekololo meni lela nokwa mangulula ongodi kanini nakanini meke laye opo a shiive' okwaaluka, eshi ta kwatele ongodi oyo noku i shikula fiyo ta fiki pondje.

Oye okwa ya komesho kanini nakanini fiyo ongodi ya xula meke laye. Eshi a tala onhele inya, okwa hanga ouwe vahapu. Eshi a tula ongodi nolamba pedu ndele ta hovele okwoongela ouwe waye, ohaluka olamba yaye ya dima. Paife okwa li momulaulu fokofoko molwaashi ina etelela okapalwa a temunune olamba yaye.

Eshi a tula okawe kaxuuninwa mondjato yaye okwa petama a tale ongodi opo a shikula nayo omikala omu a endela mukuya mekololo, ndelenee ine i mona. Ongodi yekwafwa laye e i kanifa! Ye okwa hovele okulipweda nokweenda keengolo ta kongo ongodi yaye ndele eenghandabala daye adishe oda ponya.

Ine i hanga mwene okwa li a kana ye kakwa li e na elineekelo. Oivike imwe esni ya pita po, ovanhu ovo va li tave mu kongo, ove li twa ongodi yaye poshivelo shekololo. Eshi ve i landula lwaxuuninwa ove litwa omudimba waye. Ye mwene okwa nangala pedu poxulo yongodi. Ongodi oyo oya li inai mu twala kekwafo lokexupifo laye. Ye okwa fila momulaulu moweendada dinini dokawe oko. Ouwe owa li mondjato yaye ndele kakwa li ve na ekwafwa lasha kuye.

Oku na ovanhu vahapu va fa naana: omulumenhu ou ta tongwa mehepaululo eli. Ngaashi ye a li momulaulu navo osho yo ve li momulaulu womhepo. Ovo ihava mono ko ondjila oyo ya wana oku va kufa muwo. Kalunga okwe tu pa olamba, Ombibeli ndele vo ove i kanifa. Vo ove i efa naitave i landula yo, oya ninga oshinima shongaholela opo nee ihai va pe vali ouyelele. Vo ohava landula ouwa wounyuni ou:

Ngaashi oukolwe, oluhaelo nokukonga omapandulo, oupuna, efimano nefimbo alishe ohava dini epulo la kula eli tali pula elao lemwenyo davo. Vo kave na ko

nasha kwaaishe i na ekwatafano nehalo laKalunga, opo nee ihave mu diladila nande nande efiku limwe ashike okuya kongulu yOmwene osho emanepo lefimbo kuvo. Vo ova tala efiku lOshoondaxa olo efiku lavo liwa lokutyapula oufemba wavo.

Ongaashi omulumenhu ou womekololo lomamanya okwa li a pumbwa olamba, osho yo hatu pumbwa olamba Ombibeli ondjovo yaKalunga oyo ya tongwa kuDavid. "Ondjovo yoye oyo olamba yeemhadi dange nouyelele mondjila yange," pa Eps.119:105.

Ongodi oyo ya tumbulwa pombada oyo ongodi yelao (hano Ombibeli Iyapuki) oyo omulongi, omupukululi wetu. Hano

hatu ti oshiyekifongodi shetu. Koneka, omutungi wongulu oha longifa ongodi opo ekuma li yuukilile nawa, onghee hano Ombibeli oyo oshiyekifongodi shetu opo tu yukilile mondjila yexupifo, ngaashi omutungi ta longifa ongodi opo ekuma li yukilile.

Omwene Jesus Kristus eshi e liyandja omolwomatimba etu, opo e tu xupife mefimbo lii lounyuni wopaife opahalo laKalunga Tate yetu Gal.1:4 navali iTim.1:15, otaku ti: Ondjovo ei oya pa, a shili noya wana okutambulwa nokutya Kristus Jesus okwe uya mounyuni okuxupifa ovalunde. Pa Joh.3:16, osheshi osho Kalunga a kala e hole ounyuni oye a yandja Omona waye Ewifa, opo keshe ou te mu itavele a ha kane, ndele a mone omwenyo waalushe.

Erkki Shitana
Ponhofi Sec. School

Elelongeleki

Dha za kep. 1

nyo yawo otayi si po, omadhipagathano, nelongo kali po, otaku tsikilwa ngiini?

Paupolotika omadhipago otaga tsikile. omakwato gaantu, omadhengo, omayugo gomaliko, uutondwe, okwaa na uuyuuki noshili, iinima mbyoka oya ninga oshikwiila shetu shesiku kehe.

Uulunde owa vuka, ehempululo lyoondjo kali po, okupaathana ombili kwa pumba, omateko goondjokana ogendji, uunkolwe, omalopotathano taga fala momadhipago.

Omumbisofi okwa pula kElelongeleki kutya ngele onkalo osho yi li ngawo, naku tsikilwe ngiini omumvo 1987? "Pamwe itatu tsakanitheni we shono twe shi inekelwa, euvitho lyevaangeli," osho omumbisofi a holola omalimbililo ge.

Manga oshigongi shika inaashi tsa ongolo megalikano, Kalunga u ulike ondjila, manga inaashi ya mo moonkundathana dhiinima ya pamba Ongeleki ndjika

noshigwana, omumbisofi okwa dhimbulutha ongundu ndjoka okulesha omauthompango moka mwa ulikwa iilonga yayo.

Omumbisofi okwa ulika wo koshilonga shohole shoka shi na okupendulwa po opo etumo nuudiakoni, yi dhigininwe mOngeleki. Eyakulo lyaamboka ya fadhuka po omaudhigu goshilongo shika nokumomena Ongeleki ndjika aayakuli aawanawa nokusila oshimpwiyu mboka ye li miilonga, osho omumbisofi a ti kutya oshi li miinakugwanithwa nomatumbulo ngaka: "Tu hambeleleni sho tu na osheelo she eguluka okuuvitha evaangeli. Aagundjuka oya hala okupulakena oohapu dhaKalunga.

Patiyali otu na ompito yegalikano, tu tumbulile Kalunga: Omuwa tu utha omolwedhina lyoye. Jer. 14:7,8.

Sebulon Ekandjo

OHO GANDJA TUU NATANGO OSHITIMU- LONGO SHOYE?

Iifonkundana yopangeleki oyo aakundaneki yongeleki, osho wo oshigwana ashihe. Ohayi kundaneke kukehe gumwe shoka tashi inyenge momudhingoloko gwongeleki, osho wo oshigwana ashihe. Nokuli omuleshi omunelago oongoka hi ileshele iikundanekifo mbika, noha konakona nawa opo u uve elalakano lyoshipopwiwa nenge lyoshinyolwa shoka she a tsakanekwe moshifo shoka.

Nokuli ohaku holoka iipopwiwa yilwe yi na omaganeno gongandi, ihe konima yethimbo oho ka haluka ihoo yi tsakanekwe we miilandulifo. Onkee omuleshi omwanawa oongoka ha leshulula iifo mbyoka ya pita, opo ngele i itsu mo sha shoka sha kanena mondalaye, nena ota kambadhala oku shi holola.

Nena mpaka oto ka pulakena koonkundathana dhomasamane T.E.Kambau mokutsakaneka tate Maulus K.Uugwanga, gwomegongalo Oshaaneko mUukwambi. Omusamane Uugwanga okwa li noshipopwiwa mushimwe shomiifo yOMUKUNI gwomumvo 1981, mono ye a li a holola kutya ota kala ha gandjele Kalunga ke ngoka a yamukula egalikano lye, nokwe mu pe iilonga ngaashi a li e shi indile megalikano lye.

Konima yomimvo mbali dha zi ko, omusamane Kambau okwa dhimbulula oshitimulongo shika ihe shi tsakanekwe we miifo mbika yongeleki. Osho ano oonkundathana otadhi tsikile.

KAMBAU: Omolwashike ano tate Maulus ihoo gandja we oshitimulongo shoye shokomumvo ngaashi wa li we shi uvaneke? Owa lundulula mbela euvaneko lyoye?

MAULUS: Kepulo lyoye tate Kambau onda hala okutya, mokugandja oshitimulongo shandje inandi lunduluka noitandi ka lunduluka, manga ndi na iilonga ngaashi nda li nde yi indile kuKalunga kandje.

KAMBAU: Konyala haunene ngaa iifo mbika OMUKUNI nosho wo OMUKWETU hayi ende ndje ponto, ihe omimvo mbali dha ka pita inandi tsakaneka nando euvaneko lyoye ndyoka. Mbela owa lundulula kutya inali kala we hali pitile miifo, nenge ongiini?

MAULUS: Nandi ku yelithile manga nawa kutya; osigo opo mpaka inandi ninga nando engambeko lyasha okupitila miifo. Ashike sha yela osho owala shika, kutya sigo okonena ohandi tumu oshitimulongo shandje kukehe egongalo ndyoka tandi pewa komadhilodhilo gandje.

Nokuli nangame wo ohandi kala nokwoontamena miifo, ihe inandi tsakanekwe mo nando eyamukulo okuziilila koonakutuminwa oshitimulongo shika. Otandi inekele ngiika uunkundi ou li ngaa kumboka handi tumine, oyo ngiika ihaa shi fala kaanifo yetu.

KAMBAU: Kakele nduno keyamukulo ndyono hali pitile miifo, ihashi vulika mbela u mone eyamukulo lyopaumwene? Nda dhini okutumbula omushangwa gopaumwene?

MAULUS: Aluhe mokutuma oshitimulongo shika, ohandi enditha mo omushangwa ngoka tagu tseyithile oonakutuminwa, kutya itandi tege nando eyamukulo lyopaumwene, ihe nando taa tumu lyopaumwene, otandi tegelele eyamukulo lyomontaneho, ano paifo.

KAMBAU: Pamwe oku na oonakutaamba ko oshitimulongo shika shoye haa tala sha fa eitalitho mokupitithila eyamukulo miifo?

MAULUS: Ngele nani oku na egongalo ndyoka lye shi tala ko komukalo ngoka omadhiladhilo gopaumwe, nogopombanda. Ihe ngame otandi pandula tate Kalunga sho a yamukula ndje puuyeleele, sho nda li monkalo yaa na iilonga e ta uvu egalikano lyandje.

Nongaashi nda li nde shi holola puuyeleele mo 1981, osho wo nda tega eyamukulo lyomontaneho, opo nomagongalo ga tseye kutya ongunga yoshitimulongo shomumvo ngoka onde yi gandja.

KAMBAU: Metetekelo owa yamukula ndje, kutya osigo okeluwa ndika oho gandja oshitimulongo shoye, oto vulu mbela okundjandjukununina ndje kutya; omimvo dha pita owa tumina oshitimulongo shoye komagongalo geni, nomagongalo geni ga gandja eyamukulo paifonkundana?

MAULUS: Mo 1980 omo nda gandja oshitimulongo shandje lwotango nonde shi gandja momake gomuhongi (Keleme), megongalo Okatana. Ihe moshifo inandi mona mo eyamukulo lyasha osho wo nomakwanegongalo inaya uva oshinima shika sigo okeluwa ndika.

Momumvo 1982 onda tumine Ehangano lyaagundjuka ya NACAYUL. Mbaka oya gandja eyamukulo lya pitila mOMUKUNI: Momumvo 1983 onda tumine kegongalo OMALUNGANDJAMBA, Ombalantu. Naambaka oya gandja eyamukulo mOMUKUNI.

KAMBAU: Kakele kegongalo lyOkatana, owa holola iitopolwa mbyoka ya gandja omayamukulo paifonkundana ngaashi osho wa tegelele. Mbela omagongalo oge ni ngono waa tumina, ihe inaga gandja eyamukulo ngaashi we ya tseyithila momushangwa gwopaumwene?

MAULUS: Momumvo 1984 onda tumina kegongalo ONKANI, mUukwambi. Ihe sigo okeluwa ndika onda li ku ontamena miifongeleki. Momumvo 1985 onda tumina kegongalo OSHITOWA, mUukwambi.



Omudiakoni Otto Egumbo okwa galukile ishewe megongalo lyawo mOniipa pamwe negumbo lye (tala methano ndika) konima sho ya longo oomvula ntano mepyatumo, Omuthiyagwiipundi. Elelongeleki olyu utha elunduluko lye.

Naandika ongashikwawo. Ano ngoka ogo omagongalo ngoka nda tumina, ihe inaga gandja nokutseyitha kutya oshinakugwanithwa shandje onde shi longa.

KAMBAU: Mbela komagongalo ngano gaali oto tseyi ngiini kutya; oshitumulongo shono kuyo osha thika ko nenge inashi thika ko?

MAULUS: Ondi na nale ontseyo ya gwana kutya omagongalo ngaka oshitumulongo shoka osha thika mo muyo. Ihe ngele inashi thika mo, nena ompito oye ya egulukila sho taa ilesehele nena mpaka moshifo, otaa vulu okugandja uyelele moshifo.

KAMBAU: Kombinga yoshitumulongo shino shoye oho tumine komagongalo gongeleki yoye, nenge ohashi vulika u tumine wo komagongalo goongeleki dhilwe?

MAULUS: Ohandi tumine komagongalo gooitaali yaKalunga, ano kandi na ondjoolola kutya ongeleki yeitaalo lini. Ngaashi OKATANA, NACAYUL, OMALUNGANDJAMBA, omagongalo ngaka ogaKATOOLIKA. Manga OSHITOWA nONKANI ngaka oga ELCIN.

KAMBAU: Nena sho ho tumine oongeleki adhihe lyo eganeno lyoye onde li tsakanekela ashike mOmukuni mbela omagongalo ngashi ga ELCIN otaga tseyi peni kutya; ou na oshinakugwanithwa shi li ngawo? Oshoka pamwe oku na omagongalo galwe itaaga hokwa okulesha oshifo kundaneke shOngeleki onkwawo?

MAULUS: Methimbo ndika ondi na ontseyo ya gwana, kutya kaku na nando nando egongalo itaali hokwa oshifokundaneke shOngeleki onkwawo. Nokuli ngele oku na o muntu na kale omusita nenge o munashilonga shashike, ihe oku na ombepo yuukwangeleki, nena tse otatu mu tala ko e li konima yesiga. Ihe nando ongeyi otandi ka kambadhala opo oonkundathana ndhika dhetu ndi dhi tumine kiifokundaneke yetu ayihe iyali, OMUKWETU nOMUKUNI.

KAMBAU: Ombili ngaa tate Uugwanga ngele to pitika ndje ndi ku pulu epulo lyahugunina, nonando ndi na ngaa omapulo ogendji. Mbela mokutuma oshitumulongo shoye, oto tegelele oonaku shi tuminwa ye shi tseyithe moshifo shinipo?

MAULUS: Unene iifo yetu ya simana oyo mbyoka OMUKWETU nOMUKUNI. Onkee kehe egongalo nenge Ehangano tali ka tsakaneka oshitumulongo shika shandje R30, oyo nali tale lyo lyene kutya

Aupa ota ti hadho

Omusamane Frans Iindongo (Aupa) okwa yamukula Omukwetu omasiku ngaka, kutya ye ina kundathana nando lumwe noshifonkundana 'Advertiser' shoka sha ti omusamane okwa hala okutota po ongundu yopapolotika ndjoka tayi ka hita mepangelo lyopakathimbo.

"Ka leshe oshifonkundana" Die Suidwester sheti 12.1.1987 moka nda holola nale omadhiladhilo gandje kombinga yehokololo lyomuAdvertiser," osho omunangeshefa omunene mOwambo, Aupa a yamukula epulo lyOmukwetu.

Moshifonkundana shaAdvertiser 8.1.1987, omwa leshwa kutya mepangelo lyopakathimbo nomOwambo omwa za uyelele kutya omusamane Iindongo ota toto opaati ye. Aniwa aantu mboka ye lyaathane popepi naAupa nayo oya koleka omadhiladhilo gawo opaati yi totwe. Omadhina gawo inaga tumbulwa.

Omusamane Iindongo ngoka oshifo sha ti oku li ngashingeyi omuwiliki omupeha gwopaati

yomusamane Pieter Kalangula, Christian Democratic Action for Social Justice Party (CDA), osha ti wo omusamane Iindongo oti ipula nkene tu umbuko omusamane Kalangula mewiliko lyopaati.

"Ehokololo nangame onde li mono lya kumitha ndje. Eyamukulo lyandje tala moSuidwester yeti 12.1.1987," osho omusamane Iindongo a pukulula Omukwetu.

Omukwetu ina tsakaneka natango oshifo sheyamukulo lyomusamane Iindongo, a tale shono shi li mo.

Sebulon Ekandjo



Aasamane T.E.Kambau kolumoho na M.K.Ugwanga taa kundathana elongelokalunga

etseyitho lyawo otaye li tumine koshifo shinipo. Nondi na einekelo, kutya oohamushanga yiifo mbika otaye ke shi taamba ko no ku shi pititha miifo.

KAMBAU: Onda pandula tate Maulus kuuyeleele mboka wa pe ndje, nondi inekela, kutya nakehe ngoka a li nomalimbililo okwa mona uyelele. Ondi inekela wo kutya naamboka taa ka tsakaneka oshinakugwanithwa

shika shoye, otaa ke shi gandjela eyamukulo unene tuu paifonkundaneke mbika yetu yopangeleki.

Pehulilo onda hala ashike okutya; Tate gwopombanda ne ku pe oonkondo esiku nesiku, unene tuu miilonga yoye yokomake, opo u vule oku mu gwannithila euvaneke lyoye.

EDHENGO LYOLWAADHI NENGE OSHIKU- NGULU SHOMBEPLO?

Iilonga ayihe ya pula oonkondo odhindji niimaliwa yooranda dhi vule omayovi omulongo (R10 800) oya hulile mowala sho ombepo yoshikungulu yi idhenge metala lyiipeleki lyuunene woometeli 9 x 18

osho omusamane gumwe gwomukuluntu u ulukilendje oshiningwanima shoka she ya adhele.

Ayehe yomomudhingoloko kapwa li ngoka ta vulu oku shi koleka kutya oongudhi dhiitenda mevi mosamende odha dhikulwa mo kushike. Kuku Dorte Festus okwa ti ombepo sho ya



Manga egongalo lyaShitayi tali ilongekidhile okutula ekuma metala ndyoka lyoometeli 9 momutamano noometeli 18 momukoka, sho oshikungulu shombepo otashi ti andiya manga ndi pite po

muule, momukunda Onakathila megon-galo Oshitayi, mOndonga.

Ehanagulo lyiilonga mbyoka ya pula aakwanegongalo lyaShitayi yomomudhingoloko ngoka, oonkondo nomaliko ogendji olya ningwa komatango gOsoondaha yeti 18.1.1987 posinagonga Okamanya, ookilometa 6 kuumbangalantu wOshitayi.

Amushanga gwOmukwetu sho a ka thikame-na ehala ndika okwa adha oongudhi oonene dhiitenda ndhoka dha li dha fulilwa mevi nokaungulita, dha finyanana dha tala mbanda.

Omitenge dhondunda nadho wo dhiitenda odha lala mevi dha ndonyauka. Iipeleki yimwe oya lala mpaka naampeyaka.

"Iipeleki mpaka oya gongelwa po kaanona yosikola, ila u ka tale mpoka ya toolwa," osho omusitagongalo Titus Ngula a lombwele amushanga gwOmukwetu.

Sho twe ende oshitine shokilometa okuza petungo ndyoka, otwe ya puundingosho mpoka nda adha iitayi yomuhama ya gwila mosheelo shokandingosho. Pombanda yomuti onda dhimbulula oshitayi sha fononwa.

"Tala, oshipeleki shimwe opo sha dhenge mpaka, manga aantu ye li mokandingosho hoka. Egameno lyaKalunga olya li enene,"

tukuka oye mu adha pegumbo, pooha ashike nosinagoga. "Ine mona olwaadhi lwasha noine dhimbulula kutya etsali olya gwa po," osho a tumbula nonkumwe.

"Tse otwa adhikwa nayakwetu mokandingosho, nda ka talele ompumbwe yandje. Otwa mono olwaadhi lwa shela, nokonima otwa mono etala alihe lyOngeleka lya lala," meme Albertina Albin osho a li ta dhimbulukwa notwa hokololele omutoolinkundana.

Omulongi meme Kadhikwa posikola yaampoka, ndjoka nayo wo iipeleki ya nakulwa ko kondjugo yimwe, ota ti pakutala ombepo kaya li nando ya fa onene yi kookolole oongudhi dhiitenda ngeyaka dhi li mosamende.

Ongulohi yesiku ndyoka opwa dhimbululwa momudhingoloko ngoka, omi 4 dha vudhwa mo nomidhi. Omusamane gumwe okwa ti pegumbo lye ondunda ya li ya siikila okatamba oya tentulwa ko e tayi tentekwa mpeyaka.

Pomukunda gwopuushiinda naangoka Okapembe, omukulukadhi Marta Tobias yaLugambo (64) okwa li a akulwa kolwaadhi konima yiwike itatu, oshikungulu shika shi holo-ke. Okwa li a mana oondjenda.

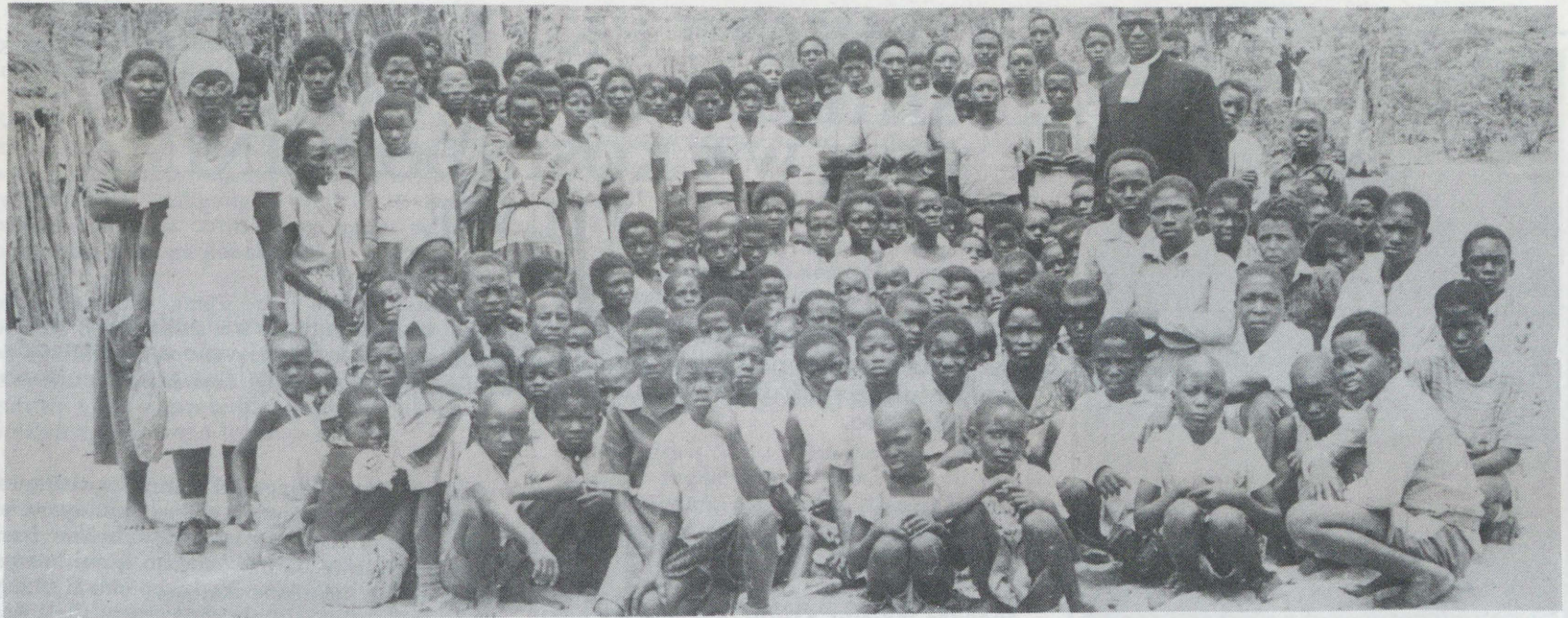
Omusitagongalo T.Ngula sho a kundathana naAmushanga gwOmukwetu okwa ti, shonsha ningwa po iilonga yaKalunga. Ye ota hiya natango egongalo lye li itule omukumo noli tamekulule ishewe.

Omusamane Ngula chiyo lye okwe li taalelitha wo nokAasamaria ayehe ye na olukeno moshigwana nomuuyuni okuyambidhidha naashono taa vulu.

Sebulon Ekandjo



Omusita gwegongalo T.Ngula nomutonatelishitayingeleki P.Shipena, kolumoho, otaa tala nonkumwe oongudhi nkene dha dhikulwa mo mevi nosamende yadho



Moongundu dhosikola, aanona mboka ye shi shi naamboka kaaye shi shi, oye li ashike mumwe omolwompumbwe yaalongi nomatungo. Oya pumbwa ekwatho lyonziya. Mpaka oya zi melongelokalunga lyawo.

OMUSITA A KALELA OONZI, OMPU-MBWE ONENE MONKUMBULA

Omutonatelishitayingeleki shOndonga, omusita Petrus Shipena, okwa holola kutya ye otaka fala mbala mElelongeleki omathaneko getendo lyoongamba dhegongalo, Onkumbula. Egongalo oli li ookilometa konyala 109 okuza pOniipa u uka kuuzilombangalantu wOndonga.

Ehokololo ndika omutonateli Shipena okwe li popya konima yiiwike yimwe sho kwa li a talele po ehala ndyoka. Osho sha li oshikando shotango kuye okweenda kehala ndyoka sho a kala moshilonga shuutonateli ngashingeyi uule womumvo.

Pamwe naye metalelopo ndyoka, omutonateli okwe endeke nomusita Sebulon Ashipala, omusita gwoshilongatumo moshitayingeleki shoka nomusita Titus Ngula, omuyakuli gwomutonateli. Aantu 400 oya li ya thiki melongelokalunga esiku ndyoka.

"Ayehe mbaka oya li ya tompelwa ompumbwe yedhiko lyegongalo mpeyaka," osho omutonateli Shipena a koleke oohapu pOmukwetu.

Ongamba yegongalo ndyoka lya kala ngashingeyi ondjakulwambinga yegongalo Okankolo omimvo dhimwe dha piti, otayi gumu iitayingeleki iyali, shUukwanyama noshaNdonga. "Oshitayi shUukwanyama osha gandja nale eyamukulo lyasho mepopilo lyoongamba ndhoka," osho omusita Shipena a ti.

Omagongalo moshitayingeleki shUukwanyama ga gumwa koongamba ndhoka ogo: Eenhana, Omundaungilo noKongo. Nokombinga yoshitayingeleki shaNdonga omagongalo ga gumwa, Okankolo nEpembe. Pakuuva aakwanegongalo yamwe megongalo ndyoka otaa ende omasiku gaali opo ya thike kelongelokalunga.

"Kakele kosikola ndjoka tayi ka pendulwa po, ompumbwe odhindji otadhi ka kwathwa ke-

dhiko lyegongalo ndyoka," osho omutonateli Shipena a tala oshinima.

Sebulon Ekandjo

Nda nyengwa okumona onzapo tandi ilongo paumwene

Esiku limwe onda adha kuume kandje ta lesa, opo a ka shange oshilongwa she shoka tahsi ka nyolwa esiku tali landula.

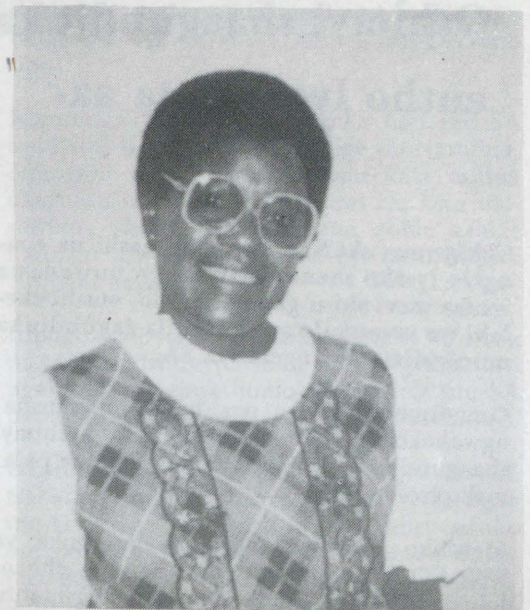
Okwa ti kutya okwa nyengwa, nandi mu kwathele moshinima shoka, a mone onzapo. Ngame onde mu kwatha ngeyi: "Sho ihoo mono iitsa yi li nawa osho ihoo ilongekidhile ekonakono kuye. Olwindji ku na ethimbo lyokulesha, onkee ho tseya owala okashona."

Osha hala okutya ngele wa tokola oku ka nyola oshilongwa shontumba, tameka mu-Januali, ngaashi naanaa mboka ye li miipundi, sigo naanaa esiku tashi ka nyolwa. Komukalo gwa tya ngawo, oto kala konyala u shi oshindji koshilongwa shoka. Kala ho iningile uukonakono woye ngoye mwene, u tale ngele oto dhimbulukwa shoka we shi lesa.

Kambadhala ngeyi, u tale ngele itapu lunduluka sha.

Deevy-Angula yaAngula Ondangwa

Ekundo lyaKrisimesa



*Krisimesa yetu ya thikana ihe x2
Twa pewa Omukwaniilwa
OJesus Kristus ihe,
Twa manguulilwa ehupitho ndi lyegulu
Jesus Kristus Omuwa gwegulu nevi ndi
Tu sil'ohenda
Tu fala wo menyanyu lyoye lyomegulu
Tu nyanyukwe sigo -aluhe x2*

*Lya gandjwa ku
L.A.Max*



Omusita Onsmus Shanyengange methano ndika, okwa galuka keflongo lye lyomimvo mbali muNdowishilanda lyuuninginino. Elelongeleki olye mu langeke moshilonga shaalumentu yomehalakano mUushimba, mOvenduka.

Oshitayi shaagundjuka mo SWAPO sha ekelehi eutho lyokukuta aakwiita

Oshigwana shaNamibia sho kaashi na epangelo lyasho shene nokaashi na uuwanawa washa mevi shi u gamenene mo, otashi ekelehi wo nomukalo gwokukutula aagundjuka muukwiita wepangelo lya SA.

Omatumbulo ngoka oga holoka momusha ngwahokololo gwa gandjwa kiifo koshitay. shaagundjuka mo SWAPO mOvenduka petameko lyomwedhi nguka.

Mewiliko lyaAmushanga gwaagundjuka ya SWAPO, omusamane Jerry Ekandjo, ehokololo olya ti SA ohi iti oye omugameni gwaantu mpaka nomaliko gawo, note eta po oveta nelandulathano, ihe oshitayi shaagundjuka ya SWAPO osha dhimbulula kutya omalikolelo agehe omanene oge li moonyala dha SA ndhaakapitali ooyakwawo aakwiilongo noveta tayi popiwa tayi gamenenwa po, oyo ndjoka ashike yokuthiminika, yokudhipaga nokuhanagala.

Mokuulika kiiningwanima yooshimwe nooshimwe mbyoka oshitayi shaagundjuka mboka sha ti omuyonena gwetanga lyegameno muule womumvo 1986, ehokololo olya tsikile lya ti otatu hiya aagundjuka ayehe Aanamibia ye ekelehi omaithano agehe tage ya okuya muukwiita wa SA.

EMANGULUKO LYANAMIBIA OSHIKUNDATHANWA SHU U-MBILWA KOSINDO YIINIMA YILWE

Emanguluko lyoshigwana shaNamibia shoka tashi tengenekwa pethimbo ndika sha konda omiliyona yimwe, oshinima she engena kokule shi vule nale nonando ondjuulukwe yaakalimo tayi dhimbululwa natango moyendji tayi koko neulumo shi vule shito.

Ekumagidho kaagundjuka

Aholike muJesus Kristus, aagundjuka ooyakwetu mboka mwa li mwa gongala montanda yetu yaagundjuka 19-21. 1986, mEengolo mOmbalantu, otandi mu halele omahalelo-yambeko gaTate gwopombanda. Ne tu gwedhele ko tu kaleni noonkondo, omukumo neitaalo lya kola momumvo nguka notu gwanitheni iilongayakulo yetu ayihe momagongalo, naanaa ngaashi sha pumbiwa.

Tu tseni ishewe aagundjuka ooyakwetu omukumo mboka ya kaniitha eitaalo lyOngeleki kutya naa tale onkalamwenyo yoshilongo shetu nkene yi li. Ps. 105:1-4

Tobias Nd. Shagandjwa
Windhoek

Onkugo yaawilikingeleki pamwe naatumwa yOongeleki moshilongo shika, ngaashi ye yi kugile miilongo ya simana mbyoka hayi longele kumwe na SA pehulilo lyomumvogu muEuropa nokuAmerika, osho sha li onkambadhala yokulafulula shona tashi filala kombinga yokuulumika emanguluko lyoshilongo shika sha kala ngashingeyi oomvula dhi vule 100 muukoloni.

Omeho guuyuni auhe otaga dhimbululwa ga peguka ko okutongolola Namibia noshiponga shalyo sheso lyakehe esiku omolwonkalo ayihe ya nayipikwa kiita notau tongolola ashike shono tashi inyenge mu SA.

Etagololo lyuuyuni okutongolola shono tashi ningwa muNamibia, osho etsomukumo koyendji yoshigwana shino nonando uudhigu wawo inau kuthwa ko manga komapepe gawo. Ihe oku shi pa ombunda nokutongolola ashike iiningwanima yomiilongo yilwe, (nando nasho inashi puka) osho okugwedhela uudhigu kuukwawo.

Oku na iinima oyindji mbyoka tayi lemene omapepe goshigwana pevi mevi ndika, noyendji oyi itaala kutya kayi vulu okukandulwa

Tala kependja tali landula

Woo! Fiyo onaini Namibia moupika

Shiwana shaNamibia pashuka
Namibia keuka keembinga adishe
Kuumbanganhu koushilo nouninginino tala
Pwilikina onghundana yefyo
Woo! Omwene ofiyo onaini?

Oshiwana shetu sha halakana
Kokulekule koiilongo i he fi
yetu sha ka monika
Haliko hauxupilo muwa va ka konga
Emanguluko laNamibia va hala
Woo! Onaini hatu monafana?

Vanamibia tu hanganeni
Eilikano tu ha dimbweni
Ovamwameme ve tu hange nombili
Emanguluko ve tu etele
Woo! Emanguluko ou li peni?

Otwe lineekela ohatu ka monafana
Etimaumbwile li dule ekuta
Yo oilongo yovanhu kai likolwa matanga
Kape na omudalwa ka djuulukwa
Kape na wa imine ihau kuka
Onghuwo yepongo oKalunga he i lotoka

KuHelvi Shimbwede Hamukwaya
Engela

Otatu hiya wo aagundjuka ya landule oshiholelwa shaBinga, Amuporo naKotjipati okuti-nda muukwiita wa SA, (mbaka oya fala oshipotha shawo mohofa, nekonakono lyasho otali tsikile.)

"Mboka mwa kutwa nale metanga ndyoka, zeni mo mu game koshigwana sheni okukondjela ombili opo elalakano lyokusinda ekolonyeko moshitopolwa shika shuuyuni li adhi-kwe mbala," omushangwahokololo gwa leshwa. Moshifonkundana shOshiingilisa "The Windhoek Advertiser 16.1.1987 omwa leshwa wo ehokololo lyombelewa yetanga lyegameno mu SWA, tayi ti kutya ehiyo lya SWAPO aantu ya kondjithe ekuto lyomuukwiita, olya ponya lela thilu.

Okukoleka oohapu dhayo, ombelewa oya ti omwaaalu aguhe gwAanamibia yi ithanenwa muukwiita inagu gongelwa natango, ashike oku na nale 2 200 yi imeleta kombelewa.

Omihoko adhihe muNamibia, kakele kAawambo, aagundjuka oya pewa oshipango ya hiyilwe miita yetanga lya SA. Aawambo otaye shi ningi ngele ya hala. Oongeleki oonene moshilongo odha ananeka nale etokolo ndyoka okuza 1984, muumbanda kutya otali ki indjipaleka iita yopaukwashigwana moshilongo.

Sebulon Ekandjo

po manga omukanka gwayo, uukoloni inaagu teywa po.

Kakele komadhipago ngoka taga ningwa meukililo nenge taga ningwa monguwi kuwalye, oshigwana osha fulilwa ekelo melongo lyomoosikola, miipangelo moka to adha omavu kaage na omiti nenge kaage na oondohotola yoku ga konakona.

Monkalathano aantu oya sithwa ondjala nowino mokuhulithilwa po iilonga yaŵo opo ye egululilwe ompito yokulongitha iimaliwa mbyoka ya tenenekwa okulongithwa kukehe gumwe uuna a gwanitha tango omalalakano omawinayi geteyopo lyoshigwana.

Aawilikingeleki mboka ya thindikile onkugo yemanguluko lyaNamibia miilongo yomuuyuni muNovomba naDesemba oya galukile netumwalaka koshigwana, nokutya oshigwana osha pumbwa okuninga omatamekululo gekondjo nogepulo lyasho emanguluko.

Inapu fatululwa oshindji medhiladhilo ndyoka. Ashike itashi pula omuntu u ninge tango omuhunganeki opo u tengeneke shono sha dhiladhilwa, kutya itaku dhimbululwa ye inyengo lypulo lyoshigwana okugalulilwa evi lyasho.

Otashi vulika wo tapu dhiladhilwa kutya omukalo ngoka gwa tamekelwe nagwo ogwa kulupa noitagu longo we methimbo ndika lya lunduluka.

Etegameno lyuuyuni okuza nale sigo onga-shinegyi, olyo ndyoka ekondjelomanguluko lyaNamibia li kwatelwe komeho kAanamibia yo yene, nuuyuni u gandje owala eyambidhido lyawo. Shika osho wo oshilalakanenwa nokOmunamibia kehe.

Ihe etumbulo lyomuBrigadier Mashin. I. Mbita, Amushanga gwokomitiye yinima yemanguluko lyiilongo mEhangano lyuukumwe waAfrika, otali pulakenwa pethimbo ndika nohokwe kOmunamibia konyala kehe.

Moshituthi shokudhimbulukwa ekondjo lya SWAPO uule womimvo 20 muLusaka pehulilo lyomumvo gwa zi ko, mumwe negwanitho lyomimvo 10 dhosikola yAanamibia yIigwanahangano moshilongo shoka, Omubrigadier H.I.Mbita okwa tile:

"Oshigwana shaNamibia otashi igandja ondjambo onene mekondjelomanguluko lyasho, naAfrika ite shi etha nando shi gwile po."

Okupulakena nohokwe omatumbulo ngoka, kashi shi okumanguluka kwoshigwana meithano lyasho, ihe shila okudhimbulula owala kutya oku na mboka ya dhimbulula muule onkalo yoshigwana shaNamibia, kutya kayi shi owala onkalo yomupika ngoka ti inyenge a manguluka, ihe onkalo yomupika e li meti. Komuntu a tya ngeyi inaku tegelelwa we ekondjo lyasha.

Okafonkundana haka piti mOvenduka kedhina Southern Africa Focus, okuulika komau-pyakadhi gamwe ngoka ge li moshipala oongundu dhopapolotika moshilongo ndhoka tadhi kongo emanguluko. Hakehe ngiika omuntu to tsu kumwe nomadhiladhilo gako, agehe, ihe otashi vulika ka gandja wo efano omuntu to vulu okutungila ko.

"OVA SHANGELA NGE TAVA TI"

Oshiwana oshifimanekwa, ngeno okuningwe onghendabala yasha kombinga yomuvaleki, opo ngeno ngenge nee va valekafana, shaashi omuvalekwa oku na nale okalinga kaye, ngeno nomuvaleki a kale yo e na ka tya ngaho.

Oshinima eshi otu li hatu hepekwa hatu etelwa omahongololo nokutalwa omesho male kovakwaunyuni ovo. Onde lineekela ngeenge osha ningwa pamwe voo tava mono kutya, omunhu ou mboli oku na mwene, ye ta kala nee ngoo kokule, shaashi ookakombolilifa ovo ovi li va hala ve tu hongolole.

Nandi pewe omayeke moshinima eshi ile pa kongwe onghendabala yasha opo tu vatelwe moshinima sha tya ngaha. "Ouxuku vokuliye-ngela ihava di, doo ihadi wanene mutwe u mwe." Pe nge omayeke."

Nghidinihamba Kashidimbiwa Ondangwa

Onkalo yeve lyetu nelimbililo lyemanguluko itaali thiki mbala

Ondi li po nda eta ohenda kevi lyetu. Kali na omukuluntu nenge omunona, ayehe oye thike pamwe. Tse tu li po tva hala emanguluko, aagundjuka, evi nali manguluke ngiini ngele nani otwa pandeni okwiikalela katu na ekwathathano nOmbimbeli?

Ando tseni mbaka tu lyeni meni lyoshilongo ando tu kondjeni iita nomukwiita ofule Ombimbeli pamwe negalikano, oshoka kokule ihaku thikwa mbala, sho ishewe shi li metiti Omuwa eshi tula mo. Oshigwana shaNamibia inamu teka omukumo, tsikileni nokugalikana.

Aagundjuka mboka tu lyeni moskola tu ilongeni, opo tu adhike tva ningeni po shomupondo, oshoka moshigwana shetu kamu na oondohotola, aalongi oyendji, aaniilonga yi

Tala kep. 10

Onomola ontiyali yokafo hoka oya holokele pehulilo lyomumvo gwa yi muNovomba. Moshipalanyolo oongundukondjithi (dhepangelo) dhi muupyakadhi, okafo oka ti, nonando pwa pitithwa omishangwahokololo kiifo nopwa ningwa onkugo kOongeleki, opo oshitokolitho 435 shIigwanahangano shi tulwe miilonga, aawiliki yoongundu ndhoka osho ashike ya li taa vulu okuninga shoka.

Epangelo lyaPretoria sho olyo li li natango koluuli lwewiliko lyonkalo yopapolotika noyopakwiita, omathaneko gemanguluko ge shi okutaambwa ko kuuyuni, muNamibia, oshinima lela sha tsima, okafo ka ti.

Oongundukondjithi ndhoka tadhi kondjitha omutumba gwa SA muNamibia dha tumbulwa mokafo hoka ongaashi: SWANU, kwa tiwa oyi na unene iilyo yaapopi yOshierero, Damara Council, yi na unene aapopi yOshidamara; CDA yi na unene aapopi yOshiwambo mewiliko lyomusamane Pieter Kalangu-la, NCDP tayi adhikwa unene moshitopolwa shaKavango; NIP tayi adhikwa unene miilyo yaapopi yOokleuringe na SWAPO ndjoka okafo ka ti oyi na iilyo ya za maapopi yomalaka agehe gomoshilongo.

Pahokololo lyokafo hoka, okuza kwa SA muNamibia naavalelwamo ya hogolole yo yene aaleli yawo pamukalo gwehogololo lyaaye-he lyoshili nolya manguluka, oka ti otaku thiminikilwa po koompito dhopatatu noompito ndhoka odho ihe pamadhiladhilo gokafo inaadhi adha natango elalakano lyadho.

Oompito ndhika odho ekondjo lyopapolotika lyomeni lyoshilongo; ethiminiko lyiigwana yuuyuni, okupula SA i iuthe komatokolo guuyuni nekondjo lyomatati koongamba.

Uupyakadhi woongundu dhopapolotika meni lyoshilongo ngaashi dha tumbulwa meteteke-lo, omunyoli okwa ti kutya ou li ashike mpo-ka, sho ongundu kehe inaayi hala okukanitha uukwatya wayo, osho wo okwaalongelakumwe kwadho.

Okafo hoka ka ti kutya kake na ombinga yasha muupolotika, oka dhimbulula wo onkambadhala ndjoka ya li ya ningwa po kOraata yOongeleki moshilongo okutula oongundu ndhoka kumwe nokuholola ewi lyadho muukumwe, okweekelahi epangelo lyopakathimbo nokupula SA a tulithe oshitokolitho 435 miilonga.

Ewi ndika lyuukumwe olya taambwa wo nopalwe muuyuni nohali ulikwa ongehalo lyoshigwana shaNamibia medhina lyalyo "Onkugo ya /Ai //Gams (/Ai //Gams Declaration).

Kombinga yethiminiko ndyoka hali zile SA muuyuni wopondje opo a thige po Namibia, omunyoli ota ti kutya, inashi kala oshipu okutulwa miilonga, oshoka ewi lya kola moshinima shono SA ohali mu ziilile ashike kiilongo mbyoka ya lukwa methimbo lyetu "uuyuni uutitatu."

Iilongo mbyoka oyomomanenevi gaAsia naAfrika. Omunyoli ta ti iilongo yomomavi ngoka oyi na enwethomo eshona lela mu SA pamahupilo, paukwiita nenge musha shilwe.

Okafo oka ti wo epangelo lya SA sho inaali tsakanitha omauvaneko kepangelo lyaReagan muAmerika okweeta po omalunduluko omape mu SA, nomolwiipotha yomomalukanda goshilongo shoka mbyoka ya geye pethimbo ndino nepulo lyaAmerika Aacuba ya ze mo muAngola, sho lya talwa kuuyuni auhe kutya kali na we omaningilo, iinima mbika oya talwa kutya oyo ya pegula omeho guuyuni ga ze kuNamibia noga tongolole shono tashi inyenge pethimbo ndika mu SA.

Moompito odhindji, oshigwana shaNamibia otashi iyadha shi li oshithitandaka, onkugo yasho opendji nolwindji oya gwile komakutsi ga thita. Ihe oshigwana oshi na etegameno ndika itaali si, kutya ombinzi yaAbel, oyi igidha nomokusa. Naampaka muNamibia osho nashi ka ningwa.

Sebulon Ekandjo

Dha za kep. 9

ili noyi ili, onkee nee tumoho ilonga manga kulyo e li po. Wo uuyuni uukwanampinyuka. Ngele odha ka shuna otatu ka ningeni ngiini oompagona dhoshigwana shetu tu dhiladhile-ni nawa.

Oompagona dhokomongula, omu shi shi tuu kutya aakuluntu oye li po ya teka omukumo okutega emanguluko? Ngashingeyi oye li po taa igandja ngokanona taka yi kontulo yayina. Tu li popyeni puyo emanguluko noku ya heka nomukalo omwaanawa opo yaa teke omukumo. Haku tiwa dha kwata odhoye, ko haku na nyenti ha dhininwa peumba lye.

Taleni ooyakwetu, ekondjelomanguluko kali shi ilonga yaakuluntu aawe, oyoompagona ndhoka dhi shi nomalaka gi ili nogi ili. Ngele oshinima sha tya ngaaka otwe shi etheleni maakuluntu, ndele taku zi omuntu ta popi ta ti: "Evi nali ninge lyetu", nena omukuluntu ota yamukula kutya ningeni shoka mwa hala, molwaashoka ku uvite shoka tashi tiwa.

Onkee aagundjuka natu kale twa ndjanga tu li moshigwana shetu shaNamibia shi na ondjala nenota lyemanguluko. Onkugo yepo-ngo oKalunga mwene he yi tondoka. Meko-ndjo lyetu natu kondjeni naangoka ihaa sindwa nando okulye, Ombimbeli negalikhano. 1Tim 6:11-12.

G.Smile Indongo
Mwaala Secondary School

Epunduko lyoshigwana

Pulakeneni oohapu dhOmuwa, one Aanami-bia, oshoka Omuwa e na oontamanana na-ntu yoshilongo. Oshoka moshilongo kamu na oshili nokamu na ohole nokamu na okutseya kwaKalunga. Ohaku garwa nohakufundjwa, hakudhipagwa hakuyakwa, nohakuhonde-lwa, hakufulwa omagumbo nondjo yombinzi hayi landula onkwawo.

Oyo haa li, yo ihaa kuta, ohaa hondele yo ihaa indjipala, oshoka oyo inaa dhimbulukwa Omuwa ye mu simaneke. Uuhulwalume wii-kolitha tuu yugu omuntu oondunge, oshoka oshigwana shaKalunga tashi mono ihuna. Natu galikaneni Kalunga e tu pe ombili nuwanawa.

Gebhard Sakaria Petrus
Nuuyoma Sec.

Omithigululwakalo nenge ekengelelo?

Otandi indile kaaleshi yOmukwetu nokaa-kwashigwana shAawambo ayehe ya pukulule ndje moshinima shoshituthi shomuthigulu-wakalo hashi ningwa mOwambo omumvo kehe.

Sho shene naanaa otashi tu longo shike tse Aawambo? Elalakano lyasho nuwanawa wa-sho owashike naanaa? Onda limbililwa sho hashi ningwa owala kAawambo nonando muNamibia otu li mo omihoko odhindji, ihe oshigwana shetu shAawambo osho ashike ha-

shi ningithwa omuthigululwakalo. Nenge Aa-wambo oyo ayeke ye na omuthigululwakalo?

Ngame kombinga yandje ondu uvite owala kutya aantu mbano unene tuu (Oombulu) aakolonyeki yetu oya fa owala ya hala ye tu konakone, yo ya tale kutya uukwatya wetu tse Aawambo otwa li tu li ngiini nale notu li ngiini ngashingeyi.

Ngashingeyi ne onda fa ngaa nee ndi wete kutya mOwambo omuthigululwakalo ogwa ninga mo oomvula odhindji, andola ngashi-ngeyi nagu ningwe ishewe komihoko dhimwe, yo ye tu hiye ngaa nee natse wo tu ka tale, ngaashi ngaa yo haye ya kutse Aawambo. Nando ngaa nee sha tameke kOombulu, tse Aa-wambo tu vululukwe po manga.

Ngaashi naanaa kombinga yaanasikola haa lombwelwa ya imbe omaimbilo gokutanga Owambo ko ihaku tiwa naya tar ? Namibia, ihe otaa tanga owala Owambo opuwo. Nonando yse Owambo otu li mo kaatu na ombili nokatu uvite enyanyu oshoka omaliko getu niinima yetu otayi halakanithwa po, nonando tatu lombwelwa tu tange Owambo tse tu li mo tatu monithwa ihuna. Natu tye owala oma-hepeko ashike ge li mo muka mOwambo.

Opu na aakwashigana yetu oyendji yaAawambo yi itula mo unene moshinima shika shomithigululwakalo, yo wete owala aniwa otaa ningwa nawa nonando oye oye liwe poonyu-gu.

Naanasikola otaa thigithwapo ootundi, aniwa otaa yi komuthigululwakalo. Ndele ngame ondi wete oshinima shika inashi gwana okuthigithapo ootundi dhosikola. Aantu tamu u-like owala niuholekwa yeni aniwa ekopi tamu kondjele. Ekopi ihe nduno lyokukukwatha shike?

Ongame ondi uvite kutya shoo sha fa shi li hwepo kashona osho shika, kutya ando omuthigululwakalo aantu otaa ilongo yo yene moshilongo shawo maka mu na aakuluntu mbo-ka ya tseya iinima yoshilongo shawo yonalena-le, ngele ando osha pumbiwa. Hakugongelwa nokukongololwa nomaloli kaakolonyeki yetu taye tu fala kOshakati nokOngwediva aniwa omuthigululwakalo.

Onkee aakwashigwana shetu shAawambo aaholike otandi mu indile neifupipiko enene ka-tu taambeni owala shaashoka tatu etelwa kaa-kwiilongo nokaakengeleli yetu, ihe tango na-tu taleni iinima nawa noku yi konakona, nge-le otayi tu tungu tuu nenge otayi tu teya po. Unene tuu aawiliki yetu naakwateli yetu ko-meho, ohaya itaala owala iinima mbyoka taa lombwelwa yo oye yi tala ko owala aniwa ehu-mokomeho.

Suoma Stella Taapopi
Swakopmund

Oshigwana osha pumbwa olukeno

Omvula ya piti 1986 oshipalanyolo shawo osha li "Kalunga shitila ndje omwenyo gwa yela ngu pe ndje ombepo ya ngungumana." Ihe ngame inandi mona engungumano. no-

mwenyo gwanje inagu kala gwa yela omo-lwoomwenyo dhaakwashigwana ooyakwetu oyendji dha yi nomvula ya zi ko, miihponga yi ili noyi ili, unene tuu medhina lyoshimaliwa. Ondumbo, iita noshowo iikolitha oya faalele oyendji, onkene mpano otandi indile aakwa-shigwana, galikaneni opo oshigwana shetu shaa ihumbate ngaashi omvula ya zi ko.

Kleopas N.J.Ngwena
Swakopmund

Kepandja tali landula

Namibia tali ihokolola lyo lyene

Ngu ku shi ndje pula ndje ndi kwiilombwele mwene Ongame Namibia nda kala muAfrika Nde mu gama kuumbugantuninginino Ngame oshitunda nda shitika Shilongo nda shitwa nda gwana po Shilongo ndi nomatahapyo Omanapelo giimuna ku pula Iimuna neliko kehe omungame lya kala.

Oomina dhokawe nongopolo kupula Nda ti, oto popi shike Pula ndje ndi kwiilombwele mwene Nda ti kandi vulike komuntu Ngame oshilongo oshiholimbili Mungame nda taamba wo aaholimbili Ya kundathane noomvalelwa dhomungame Mboka ye ya yamukula ya ti Kaleni omutumba tu wape tu uvathaneni One aatumwa yaKalunga.

Mungame aatumwa yaKalunga ya thiki Mboka ye li mo omutumba aahumbati yomeya gevalululo Okuhunga oomwenyo dhaakulilwa yomungame Aawithi yelaka etoye Ya shasha noya taandelitha evaangeli Aaholimbili ne aahumbati yembo Iyiipango yaKalunga.

Kaleni mungame mu longe mo mungame Namibia, ndi vule ndi mu lele Mungame mwe ya gumwe ngame itandi mu popi kedhina Hela a valwa a hungile ina lelwa ye ina tekulwa.

Ha hungile monduda yakwawo okoshoto E ya mungame nondhino onkumithi Oondunge nomayele okwa thiga ko Lombweleni nima kutya ngame Namibia Kandi shi nande okagumbo.

Mungame mwa vaelwa aalumentulela aanandunge naanamayele ito pula Oofule omapenda ihaa vulwa nokuloloka Ya nyenga nande omu ya tunte nando omu ya ndangule po nando dhenga, okiipeta yaKahima Omungame ya vaelwa, ngame Namibia.

Namibia ndi shi okutanga Kalunga Ndi shi okuhambelela Pamba Sho a shitile mungame omapenda Omapongo ga zi mungame ga ka pula ekwatho Handiyaka kuZambia nokumeme Angola nkelo. Ongame mwene nde shi mono sha ngandi ka tumbulwa Oshikundenona shaamwandje taa ti Omapendo li thikameni Yamwandje omeya tage ya monduda Tu shi vudhe mo manga inaashi koka Ngame Namibia.

Tamu sindana one mboka yomungame Oshoka komeho geni oku na omukwiita Ngoka inaa lwa niiti yomuuyuni Mwene uva ewinkugo lyandje Ngame Namibia onda vulwa uupika Heeno oshilonga hatu shi longo tse aakriste Noshi kale sha lalakanena ombili nuyyuki Nemanguluko lyoshilongo shetu nolyomuntu ye mwene.

Efs.6:13-19

Natanael Abisai
Swakopmund

Efyuululo la pitilila moshiwana sha Namibia

Ovakwashiwana ovaholike, paife otwe lininga ngoo nee ovafyuululi naapa inatu wana okufyuulula. Otwe lininga ngoo nee ovakwao vovafi nonande inatu va pamba, kakele kwaashi kutya ofye ovamwainafana muJesus Kristus. Eshi oshe tu etela tu kale ihatu yavala, twa hala okudipaa po osho sha totwa koommekulu nootatekulu vonale, nonande otu shii, kutya elaka lomufi ihali taulukwa.

Onghedi yoovene ohai twala omunhu meikililo, shoo osho nee u wete eshi twa ikilila okufyuulula, fiyo hatu fyuulula noihefa oyo ya holekwa oovakwetu, ovo ve tu tetekela. Oshinima shi nyanyalifa unene nge to fudula omudimba wa holekekwa nawa ponhele yao, nelalakano lokukufa mo oshikefa. Onawa tu ha likife ovafi ovafi keembwa ndee omolwoku va kufa oikefa yavo omo va holekwa.

Ondi wete nakuninga ngaho ina mona kaimba epukululo lasha, noina dimbulukwa kutya oku li mepuko. Ndishi epukululo olo ashike tali kwafa oshiwana? Onawa tu tuleni po epuko la tya ngaha, oyo onghenda ya Namhongo i ha ehene kokule nafye.

E ku pa kanini e ku xunga omwenyo.

Loide Ndeshipanda Vilho
Okalongo

Eenghono doranda oda kanena hano moshike?

Oluhapu tu udite moradio FM taku tiwa oranda kai na vali eenghono yo inai fya po, mangha fye ovanailonga mOushimba hatu wedelwa keshe kodula 3c ile 4c omunelao 5c.

Eshi oranda kai na eenghono katu i wedelwa ne? Omapeni oo ne e na eenghono e dulife oranda? Fye ihatu dula vali okulanda sha, nofewa ohai pula paife oranda nasha. Omanga fye ihatu i futwa.

Oranda oi na ashike eenghono, okuninga hatu i mono movili. Nandi pewe ouyelele kutya omolwashike oranda kai na vali eenghono fye ihatu i futwa.

Omunashilonga mukweni mOushimba

Eumbo Lanangoma
S.P.C.Okahandja

Omwene okwe tu pa shihapu

Oshiwana shOvawambo oshiholike, tuleni okuni kumwe. Nye ovapangeli ngeenge omwa hoololwa kuKalunga mu lele ovanhu, va leleni pauyuki. Oshiwana shetu osha pewa shihapu kuKalunga, ndele otashi ekeleshi olonga yasho ei sha pewa kOmwene washo.

Sha pewa okulima omatya, okulifa oimuna, okudika omaumbo, okuhonga oitoo, okutunga oimbale, okutungu omaanda, okutungu eenduda nosho tuu.

Ohatu indile ovapangeli pa kale omhango yokulonga novakwamhepo va indile ovanhu oyo oilonga i kale ya diininwa. Ovanhu va ha tondokele keedoolopa.

Ngeenge oshilongo itashi longwa, ohatu fi oluhepo. "Vakwetu she ku pe Pamba tambula, she ku pe Kalunga shambekela nomaoko avali."

L.Kashawa
Tsumeb

Omaongalo naa popile yo ovakainhu

Onda kala efimbo lile moyoongalele noku-pwilikina yo eeradio, ndele onda kala nokulipula nghe eengeleki da ama ashike ombinga imwe, molwoshipopiwa sheteyo lehombo.

Ohombo yoovene ndishi oyavavali, osha tongwa nale, ndele mwaavo vavali omo mu na omuteihombo. Ndele ngeenge omulumenhu ou e li omutwe weumbo a teya ohombo kape na ou te mu landula, nande na ninge eedula dihapu e li ngoo kOushimba ile pokamba yaye. Eongalo itali ti ko sha, ola mwena ashike.

Ndele omukulukadi tuu fiku ngo olo ta i a ka fuda po ngeno e wete nga ta luluma, lo eongalo onghela la li ko, oyo li ku shune mo tu moupyu mwi, lo kali shi ku ka tala omulumenhu oku e li.

Oandaha ngeenge ya ningwa meumbo, ongeenge ya ningwa komukulukadi. Omukulukadi a ninga ongholwe ile a fa ta i eemhwengu ndele omulumenhu ayee, ka tala ko nande oko. Hano ndishi mbela oomeme inava valulwa ngaashi mu Mat.14:21?

Eshi ondi wete kutya oyo sha dja tu ha valulwe nokeongalo, taku ti ngo natu hepe, shaa-

shi katu na shilonga, inatu valulwa. Vakwetu, naku talululwe oshinima eshi keongalo nokelelongeleki. Ovanhu nava kale ve fike pamwe, olutu alishe limwe, atushe otembeli yOmwenene.

L.Ndifitu

Omulongi na kale a tya ngiini?

Omulongi a longwa na kale a tseyi iinima tayi landula ngele otashi vulika:

- * Omulongi na kale e shi okunyola nawa elaka lyooyina noku-topola nawa iitya. Na kale wo nomadhiladhilo gu uvitike.
- * Na kale e shi okupopya iitya ya fatuka noitaa kothitha aalongwa.
- * Na kale e hole okulesha omambo galwe.
- * Na kale a pyokoka mokumona omapuko mpoka itaaga pumbiwa.
- * Na kale ha pe omulongwa iitsa mbyoka i ilongela.
- * Na kale omupenda okuholoka kootundi dhe.
- * Aalongi one omutse gwoshigwana.

Angulah T.Mekke
Ondangwa

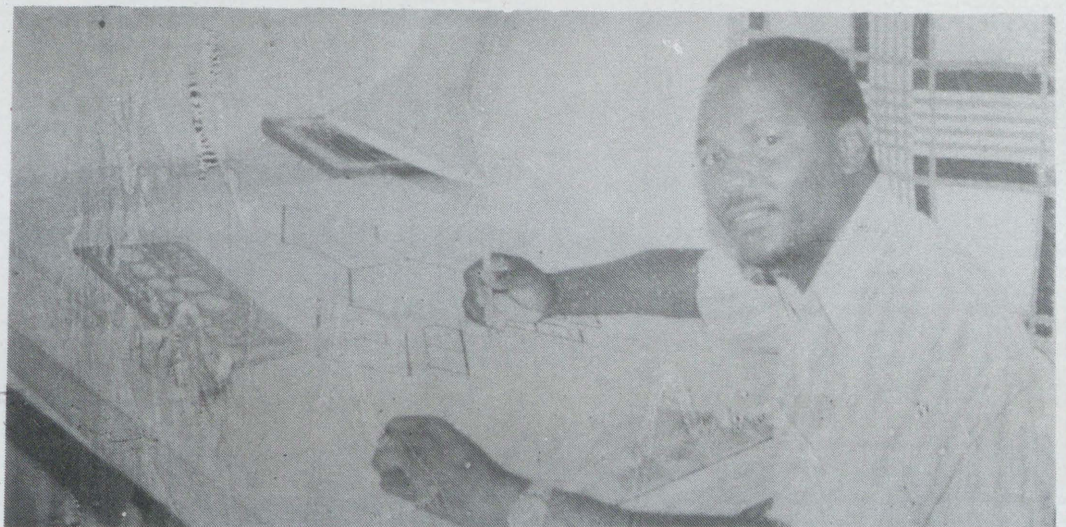
Omakundo kaamwameme amuhe

Omakundo kutate Dumeni Ps. 122:1-9
Kegongalo Eengolo Eimbilo 156; Mat.6:1-13
Kaanasikola: Eimbilo 511
Kaagundjuka: Eimbilo 541
Komagongalo agehe ga ELCIN: Eimbilo 187

Tu kaleni nokugalikana twaa na ezimbuko, oyo Tate e tu kuthe mo muupika tu li muwo.

Annely Ndapandula Shilongo
Cameroon

Kuutumbeni ota longele onzapu



Omusindili gwomatungo mOngeleki ya ELCIN, Kuutumbeni-Ben Kathindi okwa laleke aanashilonga ooyakwawo poombelewa dhOngeleki pOniipa, petameko lyomwedhi nguka.

Elaleko lye olya zi mpoka sho a ka tameka iilonga kehangano KORRY McNamara, Architects, kOvenduka. Pahokololo lye, omusamane Kathindi ehanganu ndyoka ote ke li longela oomvula ngele oonshona mbali sigo a zimininwa eithano lye paveta yoshilongo.

Melaleko lye Kathindi ngoka a yakula Ongeleki ye omumvo netata sho a zi keilongo lye okwa ti ependukopo lyOngeleki oli ikwatelela owala maagundjuka ngele taa longitha ethimbo lyawo nawa. Kombinga ye oku na ohokwe onene natango okulongela Ongeleki.

ETSEYITHO KOMAGONGALO AGEHE

Oshihondjelo sha ELCIN mOniipa otashi tsikile natango okuhondjela aakolekwa momagongalo omizalo dhekoleko.

— *Egongalo kehe oli na ompito okuhehela omizalo ndhoka pamithika dhaakolekwa noku dhi shunitha nziya kOniipa.*

* *Odeposito (ombambyona) mehehelo ndika R15 negongalo otali ka shunithilwa R7.50.*

— *Patiyali egongalo oli na ompito okwiikongela omizalo dhalyo lyene. Ohema yimwe otayi kosho R47,50.*

— *Omikalo ndhika odhi na ombiliha okuyeleva naavali yo yene oyo taa kongo omizalo dhomukolekwa gwawo.*

OMADHIMBULUTHO GAMWE:

* Omuzalo ngele otagu shunithwa nagu pungulwe aluhe moshinyanga, hakegumbo.

* Omuntu gumwe nagumwe oku na wo ompito yokuhehela omuzalo noku gu shunitha konima yelongitho.

* Oompumbwe dhilwe wo dhaa shi omuzalo nguka otadhi vulu okupulwa koshihondjelo.

Loide Alweendo



Aalumentu naakiintu, ayehe oye na omuzalo gumwe aguke melongitho ndika

ESO

Tate Teofilus Malenga Taleninawa Amushila, Onamundindi, Ogongo. Okwa hulithile oondjenda dhe moshiponga shehauto okuza kOlange eti 13.12.1986. Okwa li e na omimvo 45. Okwa thigi ko omuselekadhi gwe noyana 12. Kalunga ne mu yambeke.

Marianne Nd. Nd. Sakaria Olupumbu

+++++

Kuku Maria Amushimba momukunda Etilahi, megongalo Okaku okwa mana oondjenda dhe 22.12.1986 muwehame wethimbo ele. Okwa li e na oonvula 125. Okwa thigiko aatekulu tatano naatekulululwa oyendji.

Richard M. N. Taapopi Okaku

+++++

Omukulupe Maria Angunga Mponyo, gwomegongalo lyaNayena mOndonga, okwa mana oondjenda dhe 26.11.1986 moshipangelo shepangelo mOshakati. Okwa thigiko oyana 6, aatekulu 36 naatekulululwa 6.

Linea Ndapandula Mateus Okakwiyu-Onayena

+++++

Kaarina Mateus muElim, okwa mana oondjenda eti 5.1.1987, mepipi lyoomvula 20.

Diina Shuuya

+++++

Omafiku 25.12.1986 Omwene okwa ifana po oshivelikadona Profilia Nda-halombili Mw. Fikunawa, momukunda Oshuundje, mOkalongo, eongalo Oshikuku. Okwa fiya ko xe naina nokamwanakadona kamwe. Fil.3:21-22.

M. Kafute Sheetekela Oshakati

EPANDULO

Otandi mu pandula one amuhe aayakuli yetu moshituthi shetambu lyakuku Helena Kanyonte sho a hulithile oondjenda dhe 28.11.1986 mepipi lyoomvula 73, megongalo Oshitayi.

Omutonatelishitayingeleki shOndonga, P.Shipena, omusita gwegongalo lyaShitayi T. Ngula, mesiela E. Negumbo, ombelewa yaakiintu mOngwediva, osho wo yakwawo oyendji inaatu ya tumbula komadhina, Kalunga ne mu sile natango oshimpwiyu mpoka mwa kuthile.

Nakusa okwa thigi ko omwana naatekulu yatano.

J. Nandago

Osha li sha kumitha ndje

Otandi pula ekwatho nepukululo moshinima sha tya ngeyi. Onda li nda mono oshinima sha limbilika ndje sho nda yi opo ndi ka talele po omagongalo gaakriste ooyakwetu. Mokuya kwandje onda li nda tsakanene mo naanasikola yamwe yomegongalo limwe ya zi koosikola dhi ili nodhi ili, yi ilongekidha opo ye etele egongalo lyawo oondjimbo.

Ihe omusita okwa ti owala naya imbe ko owala omaimbilo gaali, yo isheve aakwanegongalo yamwe otaa ti inaaya hala nande okupulakena otaa yi komagumbo.

Aanona sho taye ya noondjimbo ohaa yuulukwa omusita gwawo negongalo lyawo. Naishewe aavali yamwe ihaya kala ya hala okutala aanona yayakwawo ngele taa thikama komeho nenge taku tiwa oyo aanasikola, okwa hala owala ti imanga komeho nenge komakutsi ku uve ko nenge a pite mo.

Yakwetu aakuluntu yetu vudhii mo oombepo dha Satana momitima dheri ondumbo, okahalul tidhii

mo aakwetu. Omunona gwamukweni oye omunona gwoye, ye sho e li mosikola iti ilongele he nenge yina nenge aamwayina, aawe: Nangoye owa kwatelwa mo mekwatho lye.

Ngele oto ti gwoye oye owala wa tala nenge wi inekela, taleni miipangelo oto pangwa owala nawala lela, ihe kamu na nado omumwoye ngo to tanga. Ngaashi aakuluntu yamwe taa popi kutya ihe ehema kokanona kamukwawo nenge uuve uudhigu.

N.P. Saimc
Eheke

OMUKWETU

Oye oshifo shOngeleki Onkwaevangeli paLuther yomuSWA/NAMIBIA.

Ohashi nyanyangidhwa mOshinyanyangidho shOngeleki mOliipa.

Omukuluntu gwoshifo omumbisofi Kleopas Dumeni.

Amushanga gwoshifo omusita Sebulon Ekandjo.

Ondando yOmukwetu muNamibia naSouth Africa R6,00 komumvo.

Palwe muAfrica R10,00 nokombanda yomafuta R14,00 komumvo. Mondhila R17,00.

Oondando nomambesitelo agehe naga tumwe kOmukwetu, Oniipa, P/Bag 2013, Ondangwa, 9000.

ELOC PRINTING PRESS
PRIVATE BAG 2013, TEL. 11, ONDANGWA 9000
SWA/NAMIBIA