

OMUKWETU

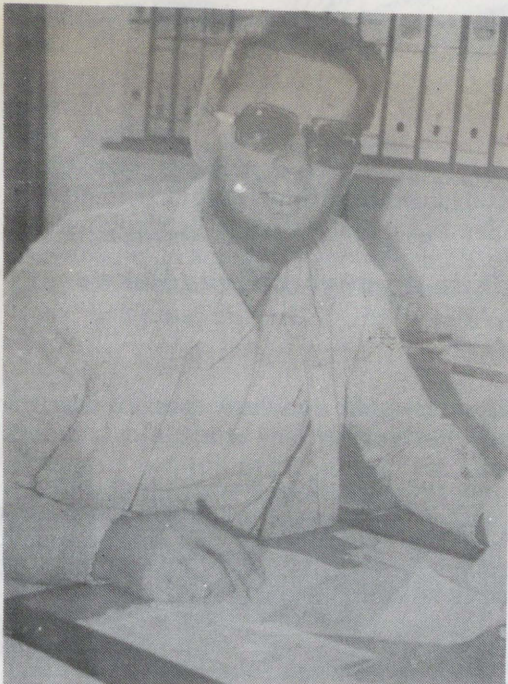


40c

No. 1

ISBN 0-620-06828-0

IWIKE 2 YAERIKSSON MUNAMIBIA



Omumane Olle Eriksson. Ethano olya thanekwa manga ta yakula mu ELCIN

ONIPA, Owambo: Omutumwa omukulu gwehangantumo lyaSoomi muNamibia, omumane Olle Eriksson, oku li ngashingeyi metalelopo lye lyiwiike itatu mOngeleki ya ELCIN.

Elalakano lyolweendo lwe muNamibia omumane Olle okwa ti kutya ehiyo lyowina lye mu zile kOngeleki ndjika.

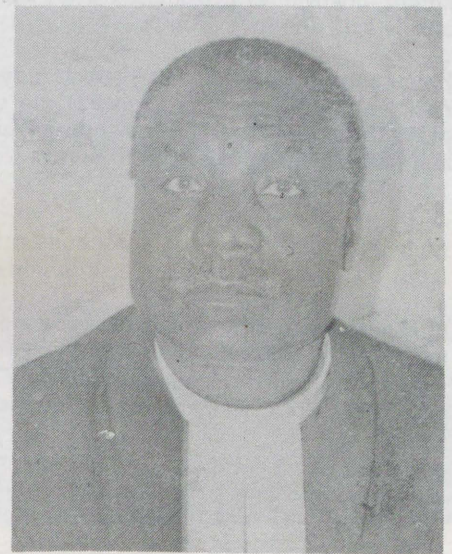
Omvaale yaNamibia pOnipa mOwambo, Eriksson, omwana gwomutumwa omukulu mOngeleki ndjika Birger Eriksson. Konima yomimvo heyali omutalelipo Eriksson okwa thigilepo eyakulo lye mpaka, osho Ongeleki yaandjawa muSoomi ya li ye mu gandja a ka

Tala kep. 9

Edhipago lyomusita Amupolo lya halutha Ongeleki ya ELCIN

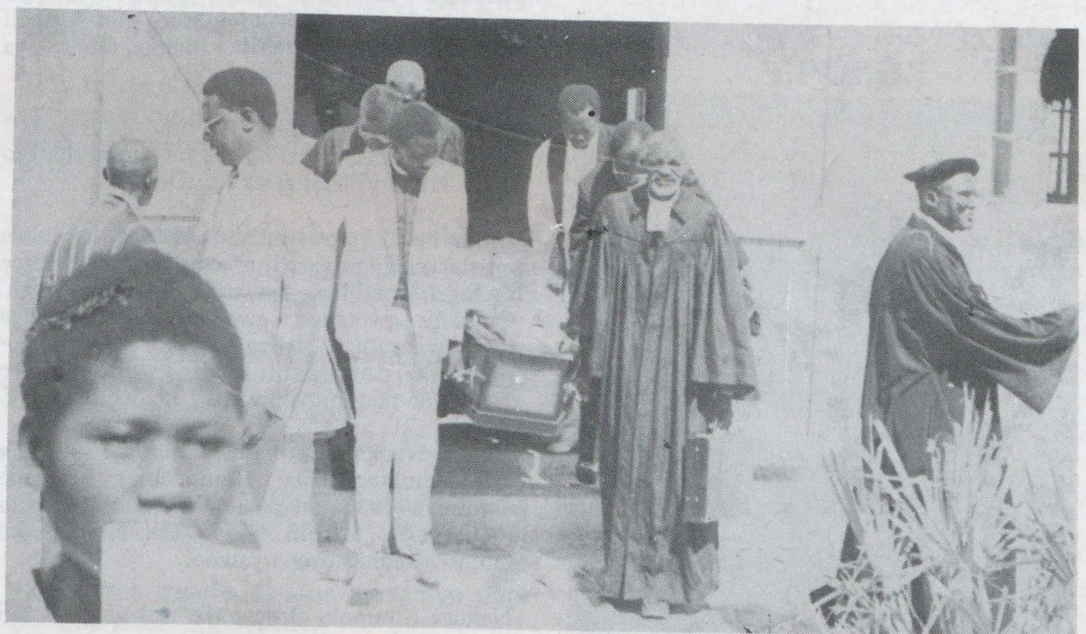
Ongula yeti 26.11.1986 onkundana yeso oya dhenga omakuthikuthi gayo neulumo kooaha dhoshilongo ashihe shaNamibia sigo uuyuni wopondje nokuli sho pwa kundandwa edhipago lyomusitagongalo Gabriel Amupolo (64) uusiku wa tetekele kaalumentu ya homata oondjembo yaa-shiwiike pegumbo lye.

Oshituthi shefumviko lye, egongalo lya-Thika mUukwambi, olye shi dhana eti 30.11.1986, Osoondaha ndjoka omusita kwa li a hiya egongalo li dhane oshituthi shuulalelo Uuyapuki. Aantu taa tengenekwa 950 - 1000 oya li poshituthi shefumviko.



Nakusa Gabriel Amupolo

Tala kep. 2



Omudhimba otagu zi mOngeleki gu ye komawendo

Dr Amaambo a galukile mOnandjokwe, omuhungimwenyo Ashipala naye a galuka kuSoomi

Aanashilonga yaali mOngeleki ya ELCIN, oya galukile miilongayakulo yawo sho ya hulitha po etsikilosikola lyawo.

Omundohotola Filemon Amaambo okwa tsikile iilonga ye moshipangelo shOngeleki mOnandjokwe okuza petameko lyomumvo nguka moka a longo shito manga inaa ya keilongo lye koshipangelo oshinene shepangelo kOvenduka.

Omusamane Amaambo kOvenduka okwa kala ko omumvo gumwe netata pamwe naanegumbo lye.

Elelongeleki lyeti 17-18.12.1986 olya langeka omusita Festus Ashipala a ninge omunashimpwiyu shehungomwenyo miipangelo. Shika osha ningwa konima Elelongeleki sho lye mu kundu mokugaluka ketsikilosikola lye kuSoomi hoka a kala omumvo gumwe.

Ehungomwenyo lyomusita Ashipala ndyoka a konakona muSoomi olya kwatelela mo omaupyakadhi gomoondjokana, omaupyakadhi taga zi miikunwa netonatelolo lyaanashilonga.

Elelongeleki olya indila omuhungimwenyo Ashipala a tule owino we mbuka miilonga.

Egalukilo lyomundohotola Amaambo moshipangelo shaNandjokwe, osho okudhenga poka ngolona oluhepo olunene lwoondokotola mehalanda ndyoka ndoka lwa hepeke mo ethimbo ele.

Mokuthika kwe oya tsakanene wo nomusamane gwOmundowishi Klaus-Dieter Elstermann pamwe nomukulukadhi gwe meme Annette, ayehe oondohotola.



Omundohotola Amaambo i ipyakidhila nomuvu mOnandjokwe

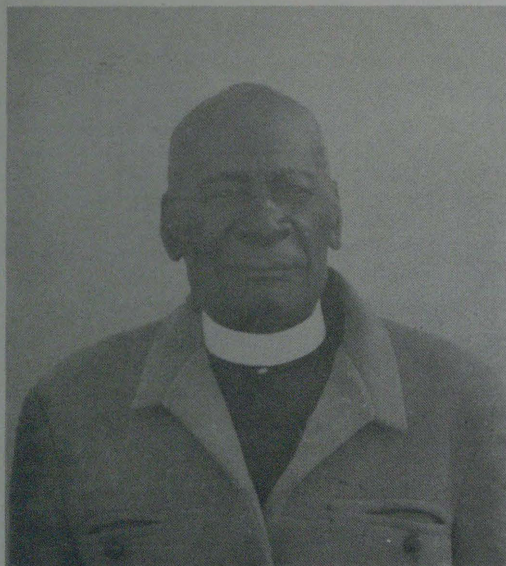
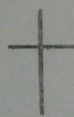
Mbaka oya zi kuBerlin shaNdowishilanda noya hala ya longithe oonkondo dhawo, ethimbo lya wo noondunge dhawo oku tu yakula moshipangelo shoka.

Omayamukulo goyendji okugalikanena oshipangelo shoka mompumbwe yoondohotola, omuntu oto vulu okutya mpaka, oga yamukulwa.

Sebulon Ekandjo

Omusita a dhipagwa ...

Dha za kep. 1



Nakufya omufitaongalo Paulus Nailenge

Amupolo omusita omutiyali a dhipagwa meukililo methimbo ndika lyiita, a landula omusita Matias Shikondomboro. Aasita yaali Gerhard Shangheta naMika Iilonga, mboka oya sila metopo lyoboma moondjila.

"Shika osho emweneko lyeuvitho lyevangeli," osho omumbisofi a tumbula mokutseyitha eso ndika kiilyo yElelongeleki muDesemba.

Onkundana yeso lyaAmupolo oya landulwa mbala natango keso lyomusita omukulupe mOngeleki ndjika, Tatekulu Paulus nailenge. Omuleli gwotango gwegongalo lyaNgenga mUukwanyama, Nailenge okwa hulitha oondjenda dhe pamukalo gwopanshitwe 1.12.1986 mepipi lyomimvo 103 megumbo lye.

Nakusa Nailenge okwa pita Oseminali 1924 e ta kala omulongisikola nomutaleli gwoosikola. Omumvo 1933 okwa tameka osikola yuusita mOniipa e ta piti 1937. Okwa thigi ko Omuselekadhi noyana yatano.

Nakusa Amupolo okwa pitile osikola yuulongi 1954 e ta longo oomvula ndatu manga inaa ka tsikila osikola yuusita 1958 mOshigambo nomuElim sho a yapulilwa uusitagongalo 1962.

Okwa langekwa a ka dhike egongalo Onangalo muUukwaluudhi.

Omumvo 1981 okwa tembudhilwa kelelo lye-gongalo Othika moka a hulithile sho u uhala miilonga yomaleshelo maakwanegongalo momikunda 25.11.1986. Okwa thigi ko omuselekadhi gwe naanona 11.

Sebulon Ekandjo

EPULO

Omolvashike aasita mboka ya thiga po oshilonga shuusita kuyo yene, ndele ohaa kuutumba koshipundi shaasita mboka ye li moshilonga pethimbo lyelangelokalunga? Omolvashike ihaa kala miipundi yaakwanegongalo?

Festus Awala
Ombalantu

EYAMUKULO

Omupuli omusimanekwa, konyala kaku na naanaa oshipundi shaasita momagongalo, ihe oku na ashike shaamboka taa yakula melongelokalunga siku ndyoka. Nongele okwa hupa ehala omuntu kehe okwa manguluka okukuutumba ko.

Melongelokalunga omuntu kehe oha kuutumba mpoka omwenyo gwe gwa hokwa nohashi mu kwatha okulandula omapopitho.

Amushanga gwOmukwetu

EMBO LYEHOLOLO NETHIMBO LYETU

Pashipalanyolo shika, Embo lyEhololo oli li efatululo lyu udha lyoohapu dhaKristus, moka Kristus ta popi iinima yahugunina ngaashi ya hololwa wo nomu Mat. 24; Mark 13; nomu Luk. 21:5-38.

Etumbulo lyotango membo ndika otali ti Kalunga oye mwene a gandja ehoololo ndika kuKristus a hololele aamati yaKalunga shoka shi na okuningwa mbala. Kristus okwa tseyithile omumati gwe Johannes iinima mbika sho a tumu omuyengeli gwe ku-ye.

Johannes okwa nyolele ihe ashihe shoka a mono nokwa tumine ombilive ndjika komagongalo gaheyali gomuAsia eshona ngaashi taga tumbulwa montopolwa yotango 1:1-4,9 na 22:8.

Esiku lyokunyolwa kwombilive ndjika pa Ehol. 1:9, pethimbo ndyoka Johannes okwa li a tulwa kontuntu yaPatmos molwaasho a uvitha oohapu dhaKalunga nokwa hokolola Jesus. Tangotango embo ndika olya nyolelwa aakriste yopethimbo lyaJohannes mboka ya li momahepeko nomomatidhagano omanene. Olyo eyamukulo lyaKalunga komagalikano nokomahodhi gaakriste mboka ya li taa tidhaganwa noya li ya halakana niilando ayihe yomuAsia eshona.

Patiyali omahepeko ngoka Ongeleki yopethimbo lyaJohannes ya li yi ga na notayi tidhaganwa ogo tuu ngoka ooitaali yashili ye nokupitila mugo ethimbo alihe ndyoka Ongeleki yaKristus yi na okukala muuyuni mbuka momahepeko pethimbo wo ndika lyetu. 2Tim 3:12 li li popepi lela nokugaluka kwaKristus, Mat 24:29-30.

Patitatu omahunganeko ogendji ngoka ge li membo ndika, ngaashi ngoka taga popi iihako omankuma niyaha, otaga popi iinima, omautho niiningwanima mbyoka itayi vulu okungambekelwa ashike pethimbo lyontgumba nenge poomvula dhontumba. Omahunganeko ga tya ngeyi oga kwatelela mo ethimbo alihe lyOngeleki sigo egaluko lyaKristus. Onkee natse ooitaali yopethimbo lyetu otwa gwana oku shi koneka tse tu kale twa tonata ethimbo kehe, Mat.24:42-44.

Patine oontumwafo ndhoka dhi li moontopolwa ontiyali nontintatu odha nyolelwa komagongalo gaheyali. Heyali ogwo omwaalu ngoka tagu holola egwanopo. Okulongithwa kwaheyali mpaka, otashi vuluka kutya, Ongeleki ayihe yomomapipe agehe oyo ya dhiladhilwa.

Ano omakumagidho nomahekeleko gome-mbo ndika oga dhiladhililwa ooitaali yomomapipe agehe nolyetu wo. Hugunina aantu ayehe yomomapipe agehe mboka taa lesa

nokukonakona ontumwafo ndjika oyo aanelago.

Omunyoli ita popitha ashike ongundu yaantu yontumba pethimbo lyontumba, ndele omuntu kehe ngoka tu uvu oohapu dhaKalunga, dhehunganeko lyomembo ndika. Ehol. 22:18.

Elalakano nomakonekelo gembo

Ehololo lyaJohannes otali talaleke Ongeleki ndjoka yi li mekondjo lyokukondjitha oombepo dhuuwinayi mewangandjo. Omunyoli okwa hala okupa aaleshi etegameno nomukumo, note ya kumagidha ya dhigini-ne eitaalo nomokati komahepeko. Ongeleki yaKristus hasho yi li mokati ketu pethimbo lyetu? Omahepeko otu ga na ge thike peni? Unene moshilongo shika shetu shaNamibia omadhipago nomayedhililo moondholongo nomathindilo kongudhi agehe ngoka taga ningilwa oshigwana nongeleki yaKalunga.

Onke embo lyEhololo oli li ekwatho nehekeleko kaakriste ayehe noyomoshilongo shetu Namibia notali tu etele enenedhiladhilo lyaKalunga okwiilongekidhila egaluko lyaKristus, okwiila egongalo lye nongeleki ye, e yi fale kuJerusalem oshipe muukwaaluhe.

Ooitaali ooyakwetu, tu dhiginineni okulesha embo ndika lyEhololo pethimbo ndika lyetu, ethimbo lyahugunina, ethimbo ndyoka tseni atuheni aakuluntu naagundjuka naanona tatu tala nomeho getu notatu uvu nomakutsi getu nkene iiningwanima oyindji ya popiwa membo ndika tayi gwanithwa.

Tala membo ndika ooitaali ayehe otaa tsuwa omukumo nguka kutya, Kalunga okuwete ko omahodhi getu. Ehol. 7:17; Ehol 21:4.

— Omagalikano gooitaali oge na oshilonga nondjundo onene miiningwanima yomuuyuni, Ehol. 8:3-4.

— Nokuli neso lyawo oli na ondilo momembo gaKalunga.

— Esindano olyawo shili Ehol 15:2

— Ombinzi yawo otayi ka pulwa miikaha yaahepeki yawo, Ehol.19:2.

— Kristus gwawo oku na omwenyo nota pangele aluhe sigo aluhe.

— Kristus ota lele uuyuni mbuka omoluwawanawa wongeleki ye, Ehol.5:7-10.

— Kristus ota galuka ishewe okwiila aantu ye e ya fale hoka ye mwene e li ko, moshithi shohango yOnzigona nota ka kala nayo aluhe sigo aluhe muuyuni uupe. Ehol.21:22-23.

**Shikongo yaShikongo
Windhoek**



**Omusamane Shikongo yaShikongo,
mOvenduka**

EPULO

Onda hala okupukululwa, uuna omunona nenge omukuluntu a shashwa, aantu ohaa minike naku-shashwa taa ti: Omuwa na yambeke edhina lyoye.

Ndishi omuntu iha shashwa a ninge omunedhina? Ndishi okuninga omwiitaali?

Ngame ohandi dhiladhila ngeyi omuntu okwa shashelwa eitaalo nopo ota kolekelwa meitaalo ndyoka onda puka?

Stephanus Alweendo
Swakopmund

EYAMUKULO

Omuleshi Alweendo, ino puka nando meuvoko lyoye. Ou li mondjila.

Amushanga gwOmukwetu

Ongamba yiikandjo mu ELCIN yu undulilwa koshigongingeleki 1988

ONGWEDIVA: Epulo ndyoka lya kala moshitayingeleki shUukwanyama ongamba yiikandjongeleki ya ELCIN yi talululwe, olyu undulilwa koshigongingeleki shomumvo 1988.

Euvathano lyaashino shi ningwe olya zi moshigongi shuukumwe shiilyo yiigongi yiikandjongeleki shoka sha li mOngwediva omasiku 9-12 gaDesemba 1985. Aantu 234 oya li moshigongi shoka.

Ethaneko lyoshitayingeleki shUukwanyama mpoka ongamba yi na okweenda ndyoka lye ende pamwe neindilo lyongamba yi talululwe, nalyo wo olyu ukithwa koshigongingeleki shomumvo 1988. Ethaneko oli li molupe lwa Z notali gumu konyala iitayingeleki ayihe yongashingeyi, kakele koshitayi shaKavango.

Oshigongingeleki shopaulumompumbwe muApilili 1985, mOngwediva, osha li sha tokola Ongeleki ya ELCIN yi tendwe miikandjongeleki iyali nongamba yayo yi ze muumbangalantu yu uka uumbugantu woshitopolwa shOwambo.

Konima yoshigongingeleki oshitayingeleki shUukwanyama osha tumu kElelongeleki eyeme lyasho ketendo lyongamba ndjoka, oshoka otashi ti osho "ashike" sha tendwa pokati. Oshitayi shoka osha eta po wo ethaneko lyasho molupe lwondanda Z.

Elelongeleki sho kaali na oonkondo pamauthompango okulundulula etokolo lyoshigongingeleki olya ithana oshigongi sha hogololwa momagongalo agehe gOngeleki pamukalo gwiikandjongeleki okupula omayele.

Oshigongi shika nasho wo kaashi na oonkondo pamauthompango okulundulula etokolo lyoshigongingeleki, oshu uvathana epulo li ukithwe koshigongingeleki shomumvo 1988.

Oshigongi oshi indile Elelongeleki li ka hogole okangundu kokutalulula efaneko lyoshitayingeleki shUukwanyama noli tuminwe wo iitayingeleki iikwawo okukundathanwa. Manga inaa-li tuminwa iitayingeleki yilwe otali pitile tango mElelongeleki.

Elelongeleki olyi indilwa wo koshigongi shika, li tsithe kumwe omayooloko gomathaneko giitayingeleki iikwawo, manga ethaneko ndyoka inaali tumwa koshigongingeleki shomumvo 1988, shoka ashike shi na oonkondo okulundulula etokolo lyasho lyomumvo 1985 nenge okuthikama mulyo.

Ethaneko lya zi kUukwanyama nando tali gumu wo iitayingeleki iikwawo, otali koleke Ongeleki yi topolwe miikandjongeleki iyali ayike. Iikandjo mbyoka otayi kwatelelemo ethaneko lyiitayingeleki itano.

Oshikandjo shokuuzilo oshi na iitayingeleki ando itatu noshokuuninginino oshi na iyali. Omagongalo miikandjongeleki ayihe oge thike pamwe, 38 mukehe oshikandjo. Oshitayingeleki shaKavango osho ashike shi na omagongalo gahamano. Iitayingeleki ayihe iikwawo ine oyi na omagongalo 16 nenge 21 pathaneko ndyoka lya Z.

Sebulon Ekandjo

Eino Pennanen a mana oondjenda



Nakusa Eino Pennanen

Omutumwa omukulu mpaka omusitagongalo nomutungi okwi ithanenwa keviluluko lyaana yaKalunga 22.11.1986 muSoomi, mepipi lyoomvula 86. Omutumwa Pennanen okwi ile kOwambo lwotango 1934 e ta longo mOlukonda. Omumvo gwa landula oya dhana ohango yawo naEeva Vaili.

Oya tembukile koKavango moNkurenkuru nkoka ya longo sigo 1947. Okwa tungu oongeleka mbali, moNkurenkuru nomoRupara nosho wo oosikola odhindji. KOsoomi okwa longo moshilonga sheuvitho nokufatulula oshilongatumo 1947 - 1957.

Omumvo 1958 okwa kumbululitha oongulu dhokOnayena nodhomOnandjokwe konima yomulilo, opo ihe okwa ka longa kuKongo sigo ya shuna kOsoomi 1962. KOsoomi okwa longo ongaamushanga gwoshilongatumo moshikandjongeleki shaMikkeli sigo a penzelwa 1970.

Oshiholekwa shi itsuwa mepyatumo lyaBotswana: Pakkala ta ti

"Omimvo ndhika nda kala mpaka moshilonga shepyatumo lyaBotswana, onda koneke lela nokutya iilema naayambidhidhwa mpaka oyo eliko noshiholekwa shaKalunga," osho omutumwa gwonale muNamibia meme Kirsti Pakkala a tumbula.

Mehokololo lyiilonga ye yokomumvo 1985, omupangi naMatrona omukulu moshipangelo shaNandjokwe, Pakkala, okwa ti yo oya gongela iilema 51 muEtsha, omukunda gumwe muBotswana gwaakalimo 4711 payalulo lyomumvo (1981).

Oyendji yomiilema naayambidhidhwa mboka oya kongelwa nale ekwatho lyopaundokotola, osho omutumwa Pakkala a hokolola iilonga mepyatumo lyawo mpevaka.

Mboka inaa monenwa natango ekwatho lyomu-

ndohotola, meme Pakkala ota ti, otashi imbwa unene komaitaalo gopaukwashigwana.

Aakwanezimo lyiilema naayambidhidhwa sigo onena otaa longitha iimaliwa oyindji notaa futu oongombe odhindji koonganga dhopashipagani nokoompulile.

Ashike muyelele welongo lyopakriste ndyoka taye li pewa kaatumwa mokutalela po omagumbo, oshigwana otashi tameke okudhimbulula kutya nani muKristus otaa vulu okumanguluka komaitaalo gawo gonale, osho ehokololo lya Pa-

kkala lya leshwa.

Nomokuhulitha ehokololo lye lyomapandja gatano, omupangi nomuuvithi omunene Pakkala okwa ti muule weyakulo lye omimvo ndhoka a kala muBotswana, (ina holola kutya ngapi) okwi ilongo naanaa kutya aayambidhidhwa moshilonga shawo shetumo oyo eliko noshalwaata oshiholekwa shaKalunga, paJesaja 45:3.

"Shoka ashike twe shi pumbwa osho Ombepo Ondjapuki yi tu pe ohole neifupipiko tu wape okukwatha aayambidhidhwa yetu," osho a ti.

EDHIMBULUKITHO

Aaleshi aasimanekwa, otamu dhimbulukithwa mpaka nesimaneke, kutya onomola yongodhi yOshinyanyangidho oya lunduluka ngaashi tashi monika moshifo shika. Ngashingeyi oyo: Tel.11 Ondangwa. Ondjukithi oyi li ngaashi ya kala shito.

EKONDJELOMANGULUKO LA MANAMO OTALI PULWA NATANGO OVANAMIBIA

Ovawilikingeleki veengeleki da kula mu Namibia ova dimbulukwa nokutya ope na omhumbwe inene moshiwana yokutamekulula elitulemo mekondjelomanguluko ledu eli omunhu keshe paumwene, ile pahangano.

Eshiiwokoneko eli ola dja meewino odo da likolwa kovawilikingeleki eshi va talela po omapangelo mahapu oilongo ya Amerika Kanada naEuropa pokati ka Novomba naDesemba wodula ya pita.

Ovawiliki veengeleki; yaKatoolika kaRooma, yaAnglikana neengeleki mbali eenghwaLuther dOvalaule mOshilongo ova enda noilandopangelo tai shikula: Bonn shomuNdowishilanda; Rome shaItalia; London shaBritania; Paris shaFlanisha; Copenhagen shaDenmark; Osho shaNorwee; Helsinki shaFinland; Stockholm shaSweden; Ottawa sha Canada naWashington, D.C, shaAmerika.

Moilandopangelo oyo ova popifa ovawiliki vomapangelo noveengeleki nokupula emanguluko laNamibia li endelexifwe ngaashi tashi dulika. "MuAmerika otwa lombwela omushamane Chester Crocker kutya epangelo laye olo li na sha nomadipaafano taa ningwa mu Namibia" osho omukalelipo wOngeleki ya ELCIN mosheendo sha fikile muWashington,

meme Salmi Shivute a hepaulula mokwaaluka kwavo.

Osheendo shaNamibia moilongo yopondje osha alukila keumbo nomhepo kombinga imwe oya tulwa oupenda nokombinga ikwao oya dengwa poshi.

"Okoko twe va hanga nedu Namibia kave shi oku la ama oonyuni," osho omufita Apollos Kaulinge yo a tumbula. Ashike omufita Kaulinge ote shi tale kutya osho sha ningwa po molweendo eli ehovelo liwa okuyelifa omhumbwe yemanguluko laNamibia mounyuni.

Osheendo osha li sha tukulwa meengudu nhano nakeshe ongudu oi na konyala ovanhu vahe-yali. Osheendo osho omwa li omufita Kaulinge osha talela po muLondon nomuParis. Apeshe apa oyeendo ei ya fika, oya yandja po etumwalaka lOvanamibia keengeleki nokomapangelo oshita opo ku limangwe kumwe moweendelexifwa emanguluko loshilongo eshi.

Olwotete sha ningwa Eengeleki muNamibia moukumwe wado da ninga etumo moilongo yopondje oku ka udifa omhungwe yemanguluko loshilongo eshi. Ombelewa yomupapa muRoma, nombelewa yomubishofi omukulunhu wOngeleki yaAnglikan mounyuni aushe osho yo ombelewa yOngongahangano yOvakwaLuther mounyuni (LWF) oda kwafela

unene melongekido longeda noyoongalele yetumo eli.

MuDenmark oupyakadi waNamibia otwa hanga wa shiivika mo nawa nohava ningi shihapu omolwetu mepangelo nomongeleki, osho omulongi Usko Shivute a koneka. Osheendo shavo osha fikile yo muNorwee, Sweden nomu Soomi.

Momushangwahokololo ou wa yandjwa konima yetalelo po, ovawilikingeleki ova ti kutya nande vahapu ve li popila vati kave na ouyelele kombinga yaNamibia, eindilo ola kumaida ovawiliki vomapangelo noveengeleki mounyuni opo va shiivifile ovanhu vavo oinima yoshili.

Ova kunghililwa yo va longife ouyelele oo hau yandjwa kehangano leenghundana leengeleki muLondon kombinga yaNamibia nouyelele ou ve u fikife diva kovanhu vavo.

Kombinga yOvanamibia omushangwa owa ti naamu etamekululo nelitulemo la mana mo mekondjelomanguluko ola pumbiwa neenghono, shi ningwe paumwene ile opamahangano okweeta po emanguluko loshilongo.

Mokuxulifa etumwalaka eli, ovawilikingeleki ova ti kutya, peemhito neemhito metalelopo lavo opa monika omadidiliko eteelolo liwa. Okwa li ku na ovo ve he na eshikulafano lasha lelengelokumwe, ndele va udaneka okuhovela.

Tala kep. 9



Mokapale koondhila muNdowishilanda, yamwe yomookuume kaNamibia mOngeleki onkwaevangeli moshilongo shoka, oya tsakaneeke aawilikingeleki, omumbisofi K.Dumeni nomumbisofi H.Frederik naAmushanga gwa VELKSWA omusita K.Shuuya nokuholola momapakete gawo shono ya yuulukwa shi ningilwe Namibia

ETUMWALAKA LYOMUPAPA GWAKATOOLIKA KOSHIGWANA SHANAMIBIA

Rome: Osheendo shaatumwa yOongeleki sha zile mOongeleki adhihe oonene muNamibia, okwiigidha nokukonkola komiyelo dhaaleli nodhOongeleki muuyuni, yamwe oya thikile wo muFatican, oshilando shOmupapa gwaKatoolika, John Paul II.



Omupapa John Paul II ota minike nomulongi Klemens Namwila gwOongeleki ya ELCIN, pethimbo lyetalelopo lyosheendo shawo muRoma.

Mekundo lye omwa holoka omatumbulo gamwe ngaashi taga landula mpaka:

“Onda nyanyukwa okutaamba nena ongundu yopakwatathano lyoongeleki ya zi kuNamibia. Oongeleki yaKatoolika sho tayi longo oshilonga shayo shetumo muuyuni, osho wo yi na ehwamo okuyakula ezimo lyaakwaayuni mohole, ohole ndjoka inaayi thiga po nando ogumwe, ngaashi ndjoka yaKristus.

“Onkee pamakankameno ngaka otayi popile esimano lyomuntu kehe notayi kondjitha kehe shoka tashi hindi omuntu nenge tashi mu dhini.

“Nomakankameno ngano, otamu dhimbulukwa naanaa oshimpwiyu showina shono nda holola, iikando oyindji omolwemanguluko lyaNamibia. Emanguluko ndyoka tandi li tala kombanda yaashihe kutya olyo epulo tali pula uuyuku tashi tsu kumwe nondjuulukwe yopauthemba yaavalelwamo.

“Natango otamu dhimbulukwa omaulikilo oge ndji ga ningwa kOongeleki kombinga yomatopa-

gulo gokatongotongo. Inima mbika otandi yi tumbula nena mpaka, haku mu talitha ashike oshimpwiyu shOongeleki, omolweni noshigwana sheni molwethimbo lya piti, ihe okutula natango omuthindo moshinima shohole yayo nuwanawa wayo nena nomonakuyiwa.

“Otwa hala tu thikameni pamwe notu mu kalele po, tu galikanene uugumwe nuwanawa waantu yeni.”

TU KONGENI OSHIPANGO SHOHOLE NOILONGA YOKO- MAKE

Ootate tungeni omaanda, eenduda, hambuleni oivela ngaashi ootatekulu va ningile opo mu mone mo oimaliwa mwe i lilongela nomake eni vene. Oomeme hongeni iitoo, tungeni oimbale nye mu litule moilonga, opo mu mone oimaliwa.

Eshi, xwepo shi dule okukonga oimaliwa nohonde yOmunamibia mukweni. Kongeni oupuna neenghono deni, hameemwenyo dovakwashiwana vakweni. Vangapi vomoshiwana ve li moupongekwa omolwelopoto, vangapi va xwikwa nomalusheno nokuhepekwa omahepeko madjuu omolwelopoto loye? Kalunga ita yandje emanguluko shaashi ohatu tauluka oipango yaye. Dimbulukwa kutya, okwa tiwa hola (mukweni) mushiinda ngaashi ove mwene.

Ovanamibia, xwepo u ka kale kokule navo ove u fiile ovalihomboli moshilongo ombili yavo ei va djuulukwa pamwe nemanguluko. Vanamibia tu tuleni oukuni kumwe, ndele hatu indileni twe litula mo notwe lineekela ekwafo laKalunga hatu ti: “Kalunga mangulula Namibia; nemanguluko otali ya diva.”

Nd. Natangwe

OMUNYASHA ONAINI A WANA OKUVALEKA/OKUVALEKWA

Omunhu okwa shitwa ha kulu paengundu heyali:-

- Pauhanana okudja omudo 0-1
- Paunhovele okudja 1-5
- Paunona okudja 6-12
- Yokamukondapweyu (p) okudja 13-16
- Younyasha okudja 17-20
- Youkulunhu okudja 21-60
- Youkulupe okudja 60 -

Natu taleni nee mongudu omo omunhu a wana okweendela/lwa, oyo ongudu onhihamano yepupi 21-60. Ashike ame onda eta onghenda eshi epupi lopaife li he shii kutya onaini la wana okuninga omushamane ile omukulukadi.

Manga inaku iwa mohombo ohaku dilaadilwa oo to ka ka kala naye mohombo ile mokukalamwenyo kwoye. Okukonga omunhu oo to i naye mohombo oshi li ehalo laKalunga ile lopaushitwe womunhu.

Kombinga yomukriste etokolo li li ngaho laatu to ka ya naye mohombo osha fimana unene. Moiwana ihapu muEuropa naAsia nomuAfrika, osha li ngaha: Ovakulunhu vomepata ovo hava tokola omumati womepata li lili a hombole nokakadona. Omukainhu ou okwa monika nomailikano manene. Naashi hatu lihongo apa oshoosho, kutya ovadali ove na shili okuindilila ovana oyo va konge ovanhu vokuya navo mohombo volela.



Tatekulu Festus Kathe Nakanyala momukunda Okakoto, megongalo Omuntele, okwa si 11.8.1986 muuvu wethimbo ele. Okwa valwa 1904.

Sh.K.Indongo Omuntele

Pefimbo lopaife omulumenhu oye ha kongo omukainhu mwene, ashike onghedi ei yokukongelwa omukainhu kai fi ii. Luhapu ohombo oyo ohai kala ya pama shi dule oyo omunhu e likongela yee mwene. Ashike eshi shi na oshilonga oshoosho ku kongwe oo Omwene e mu hoolola opo mu kale naye mohombo.

Omunhu oha hombolele shike?

Ovanhu vahapu ohava endebele unene okuhombola opo va fudife omahalo avo opambelela. Ovalumenhu vamwe ova hala va hombole nokakadona kenya kawa kawa.

Oukadona vamwe ova hala va hombole nomulumenhu omunedina ha fimanekwa ile ou e na oimaliwa ihapu. Omahalo a tya ngaha ohaa shuduka, ndele osho hashi katelele osho ohole oyo

tate Kalunga e i tula momulumenhu nomomukainhu momitima davo. Onawa hano omulumenhu ile omukainhu ovo va hala va hambolafane va kale aveshe ovaitaveli 2Kor. 6:14-16. Ovalikongi nave liindilile. Nave lipameke meitavelo.

Onawa vali u hombole nomunhu ou e udite nokwe litula moinima omo u li. Kashi li nawa ngeenge umwe okwa hongwa, ye mukwao ina shiiva okulesha.

Elipangelo

Vahapu inava shiiva yo nghee omulumenhu omukriste e na okukala nomukainhu oo ta ka hambola. Vahapu otava diladila otava kala ashike ngaashi omulumenhu nomukainhu, tava nangala. Vamwe otava ti kutya ovanhu ovo vavali va hala okuhombolafana otave lilolo, opo ku monike kutya omukainhu oha dala ile ahowe. Momilele da tya ngaha omo hamu di omikifi domoinena. Ombibeli otai tu longo kutya enangalafano nali teebele ovanhu va hambolafane. Gen.24:67 ile 1Kor 7:1-5. Ombibeli yoovene oyo nai tu wilike moshinima eshi.

Omumati omukriste nokakadona okakriste itava dulu okukala tava nangala, ofimbo inava hambola, osheshi ovamati vakwao noukadona vakwao iheve shi ningi. Ashike omukriste omulumenhu ina hambola, nosho yo oukadona nave lideule okulipangela voovene, osheshi haemwenyo davo adike, ndele yo omalutu avo oaKalunga, 1Kor 6:20.

Osho yo ovanhu ovo va putulafana, itashi duli ka va nangalafane, ofimbo vo ongovaitaveli inava mangwa kumwe mohombo. Ou te shi ningi okwa tauluka oshipango oshitihamano. Ovo va tauluka oshipango eshi, nava hepaulule okuhelipangelo kwavo, ndee nava heteelele okutulwa kumwe divadiva mehombolo koshipala shaKalunga nosheongalo, Ex.22:16-17; Deut 22:28-29.

Eeshali dehombolo

Moiwana ihapu muAfrika oshi li nonena onghedi yokuyandja oyoonda komufuko ofimbo ovalihomboli inava hambolafana. Eli olo efimaneke komufuko oo a teeelwa nooshuwala ovo tave uya. Omukalo oo wa lukwa "lobola" pamikalo doiwana yaAfrika, ou li yo monghedi yokufimaneke ooxemweno noku va kwafela. Omukalo ou woovene inau puka.

Ohombo yaIsak naRebekka nayo oya tetelelwa keyandjo lomilongelo kuRebekka novakwadimo vaye Gen 24:53,67. Ashike itaku itavelwa okakadona ka fininikilwe okuhombolwa komulumenhu oo a yandja omaano a dena mbada, ile ohombo i kalekwe molwomaano inaa yandjwa.

Omulumenhu nomukainhu omukriste ovo va hala okulihombola, nava konge Omwene oye e va tule kumwe ye mwene. Opo va kale noku mu shikula mokukalamwenyo kwavo, va kale eedjapo daye ndee va dike eumbo omo Jesus ta fimanekwa ngaashi ohamba.

**L.O.Namhindo
Box 74
Oshikango**

OMAKUNDO OKRISMESA

Omahaleloyambeko Okrismesa nOmudo mupe, kongeleki nokoshiwana ashishe. Ovabishofi K.Dumeni; Kauluma; Haushiku; Frederik, nokengeleki yaKatoolika, ovakwaneongalo vayo ohandi mu kundu.

Ovalongifikola, ovafitaongalo, ovakulunhuongalo, ovaevangeliste, ovapangeli voshilongo, ovalongi vomeeposha novayakuli vomeengeshefa, ovafita voimuna, ovalongi vomapya, ovalihongi novashingi voitukutuku novayuli veeshi.

Ohandi mu halele omayambeko Okrismesa nomudo mupe wa punikwa. Tate Kalunga e tu fikifa mo, onda hala amushe ovo nda tumbula odula ei 1987 i ninge odula yetweni atusheni. Mokulitula mo moilonga momaumbo nomeefikola nomeengeleki kombinga younuna vetu ovo ve li po vashona natango oku va hongwa ondjovo yaKalunga, noku va hongwa kutya moubotyotyoto ohamu di shike nomoubudi wokuvaka oinima yovannhu.

Kakele kaava va vaka nale ovo ve shi ika, itava ka kwatwa kehongo eli molwaashi vo ova makela oonyenye woubudi. Onghe tu lituleimo. Ovakulunhu peexungi, ovalongi meefikola, ovafita momaudifo naatushe tu ulikeni oshiponga shoubudi, kutya kau li panhu nohau dipaifa ovanhu. Inamu kala mwa nangala ongali nande, ndele kaleni moilonga efimbo keshe.

Tala okaana koye eshi ka etelele meumbo opo ka ka uhalele. Tala oshikutu ke shi na apa sha dja naolyelye e ke shi pa. Ngeenge haave, pendukeni meemhofi, oshiwana tashi i menyonaoko laalushe. Kaleni oupafi okukondjifa osho apa tashi di. Hakunwa nokunangala, ndele okulonga okukwafa oshiwana shoye.

Mesita E.H., dr Djikolo Nghishihange

OUKWAMUHOKO NAU KONDJIFWE MEEMBINGA ADISHE

Oshitya ovakwanghala ohatu shi udu unene moRadio-Wambo nomoshifo shOmukwetu. Mokulesha kwange, ehistolilounyuni ngaashi moilongo ei ya manguluka, nandi tye nee nande ongaashi muAngola, Mozambikwe nomuZimbabwe, ito hange mo ovanhu have li tale komihoko ngaashi Ovanamibia.

Oshitya Ovakwanghala osho oshitya tashi eta outondwe pokati ketweni Ovanamibia. Kombada yedu kaku na Omukwanghala. Oku na ashike ovapopi vOshiwambo, vOshinama, vOshidamarara. Vo ovo nee hatu ifana edina la shundula, Ovakwanghala.

Omukuluwonale okwa ti: "Efiye ihadi li nyengaula". Fye Ovanamibia otu li ongeefiye molwonghalo yedu letu.

**Julia Kandjala
Golob Windhoek**



Ohatu va pandulile eudaneke lavo eli liyapuki.

“Ohatu teelee pu ningwe natango elongelokumwe la mbwalangadja nola kwata monghama mefimo eli twa taalela. Ashike fye otu shi shii eteelelo letu oli dule ekwafo olo hali di movanhu onghe hatu li yandje fye vene momake a Kalunga ou e li ehondamo letu neenghono detu, ekwafo moudjuu li shii kulineekelwa” Eps. 46:2

Etalelopo lyaEriksson

Dha za kep. 1

yakule manga koombelewa dhOngongahangano yAakwaluther muuyuni (LWF) kuGeneva.

Ngashingeyi Eriksson omulongi pamwe na-nashilonga ooyakwawo taa tengenekwa ye thike pethete limwe moombelewa dhEhangangantumo lyaSoomi. Pahokololo lye, Ehangano ndyoka lyEtumo mOngeleki yaSoomi otali longo ngashingeyi momapyatumo 17 muuyuni nolya tuma ko aatumwa ye thike konyala 350.

Omapyatumo ogendji oge li muAfrika nomakwawo muAsia nopalwe. “MuNepal a-nashilonga yetu inaa pitikilwa okuuvitha, ihe oya zimininwa nga okulonga oshilonga shohole mokati koshigwana,” osho omutalelipo Eriksson a lombwela aanahilonga pombelewa yOngeleki pOniipa, mboka oyendji yomuyo a longa pamwe nayo ethimbo ele.

Mokuthika kwe koshitopolwa shOwambo, moka tamu longo Ongeleki ya ELCIN moka a kala shito Amushangakwatakanithi nEhangangantumo lyawo, okwa tsakanene naayakulingeleki aapopi yOshisoomi yomwaalu gwa konda ashike 15 taa longo natango muNamibia, manga ye li moshigongi shawo mOnandjokwe.

Eti 12.1.1987 okwa popitha aanambeleva pOniipa nokutsakanena nomumbisofi naayakuli ye, pompito mpoka a gandja omakundo ngoka e eteelele okuza kuSoomi.

Pethimbo lyetalelopo ndika omahala gamwe ga simana mOngeleki otaga talelwa po kuye; ngaashi oshipangelo shaNandjokwe, Engela mUukwanyama, Osikola yOngeleki yaShigambo, nomahala gamwe noshitayi shUuninginino noshaKavango.

Osoondaha yeti 18.1. ote yi uvu mOniipa nokwa thanekwa a kale moshigongi shotango shomumvo shElelongeleki shoka nasho tashi ka kala mOniipa okuza 21 - 23.1.1987.

Manga inaa shuna kuSoomi, omusamane Eriksson, ngoka i iyendele molweendo nduka olule okwa ti otaka pita wo kuBotswana, hoka Etumo lyawo nako wo tali longo oshilongatumo.

Sebulon Ekandjo

1. Namibia otu ku hole
Twe ku pewa kuKalunga
Twe ku kufwa ngoileva
Wa ya wa fa to shendjula
Hatu hepa tu he ku na
Hatu lili u aluke
Namibia; otu ku hole.

2. Maharero okwe ku anyena
Hendrik Witbooi e ku kondjela
Hauwanga kOkavango a umbile
Nehale laMpingana a homona
Mandume e ku lwila a tokola
lipumbu naye a kondjele
Namibia; otu ku hole.

3. Vamwe va lwa fiyo ve ku fila
Va ana ve he ku yandje
Ove ku kufwa va nangala
Wa ya we va tauluka
U ningwe waava ve ku xuula
Ve ku kufa ve he ku hanga
Namibia; otu ku hole.

4. Otwe ku kufwa tu ku wete
Twe ku nyekwa twe ku tala
Otu li eefiye mekolo loye
Hatu hepele ponho yoye
Twa ninga omawilandjila
Wa fa u he po ove meme
Namibia; otu ku hole.

5. Ohatu lile peke tu li pekuta
Hatu hepa fye otu na
Otu li kokule neliko loye
Oupuna wa li wetu nale
Efyuululo eli we tu pele
La mona oovene vamwe
Namibia; otu ku hole.

6. Owa fiwa po kovamwoye ve ku hala
Wa haulukwa koludalo le ku pumbwa
Ove ku kanifa ino kana
Ve li hana moku ku konga
Va ka ongelwa nova ka tekulwa
Kwaava inave va dala
Namibia; otu ku hole.

7. Ohatu kanifa tu ku mone
Hatu liyongola tu ku alule
Ohatu kondjo u manguluke
Twa hala tu ku likole
U ningwe wetu ongonale
Mondjokonona tu ku shunife
Namibia; otu ku hole.

8. Ohatu lili tu ku wete
Tu na oluhodi ino fya
Otwe ku fila hatu ku file
Twa kwatwa hatu ku kwatelwa
Ohatu hepekwa molwoye
Tu kale ovana voye
Namibia; otu ku hole.

9. Vamwe otave ku landifa po
Tave ku yandje molwondjato
Tave ku li po ngomboloto
Va fa va tila u manguluke
Ongo va panda to kolonyekwa
Va hokwa ouwa wavo vene
Namibia; otu ku hole.

10. Otwa hala u tu longele
Eeshi doye di tu palule
Mokawe nomongopolo yoye tu xupe
Ourana noshingoli tu longife
Tu ku tunge tu ku yambule
Tu kale pushetu tu shi pange
Namibia; otu ku hole.

11. Otwa hala ku hoololwe
Ehalo lovamwoye li monike
U mone ovawiliki ve holike
Ava itava kongo shavo vene
Ve na oshisho u manguluke
Va nyamukule omapulo ovamwoye
Namibia; otu ku hole.

12. Otwa hala u dalulule
Memanguluko u tu shunine
U tu ongele u tu tekule
Ovamwoye u tu ukate
Alushe u kuminine
Modikwa imwe u tu loolole
Namibia; otu ku hole.

A.L.Nghifikua

EPULO

Omolvashike aasita mboka ya thiga po oshilonga shuusita kuyo yene, ndele ohaa kuutumba koshipundi shaasita mboka ye li moshilonga pethimbo lyelongelokalunga? Omolvashike ihaa kala miipundi yaakwanegongalo?

Festus Awala
Ombalantu

EYAMUKULO

Omupuli omusimanekwa, konyala kaku na naanaa oshipundi shaasita momagongalo, ihe oku na ashike shaamboka taa yakula melongelokalunga siku ndyoka. Nongele okwa hupa ehala omuntu kehe okwa manguluka okukuutumba ko.

Melongelokalunga omuntu kehe oha kuutumba mpoka omwenyo gwe gwa hokwa nohashi mu kwatha okulandula omapopitho.

Amushanga gwOmukwetu

Eyakulo lyoombesa

Ombesa oyo osheendiitho sha simana okuyakula aantu. Aantu oyendji otaa pandula eyakulo ndyoka. Oombesa dhimwe odha kongelwa iyakulitho yontumba noyongandi okuuvitha omukalimo uugumbo.

One ooyene yoombesa unene ndhoka oonene dhi na oondjila oonde otatu indile nesimaneko oombesa dheni mu kongele mo iilongitho yoonahapota nando mbali adhike, otashi kwatha unene muuyogoki wombesa.

Taambeni ko epukululo ndika otali ka uvitha aayendithwa yeni ombili momalweendo gawo.

Andreas Kanhalele

Nandi pukululwe

Kandi uvite ko oshinima shelundululo lyofani yanakuhokanwa, hayi yi mofani yomusamane gwe. Oshinima shelundululo lyofani osha za peni ano?

Mweshigandja Metumo Japhet
P/Bag 2016
Ondangwa

EYAMUKULO

Omaholela oga kuthwa komukalo gwOshihiligane, nosha li ngaa ando omukalo omwaanawa, ihe omutungilo guukwazimo wOshiwambo ogwa fa itaagu tsu kumwe nelongitho lyoofani pashingolo. Ashike otagu tsu kumwe netumbulo lyOshiwambo omuntu okwa hokanwa.

Amushanga gwOmukwetu

Pamwe inandi tala nawa?

KuAmushanga gwOmukwetu nokaaleshi amuhe aasimanekwa, kundweni unene.

Kombinga yoshipalanyolo pamwe inandi tala nawa? Ondi na ko omatseyitho nomapulo gi ikwatelela kelongo, unene tuu lyomOwambo. Okanona ngele taka pewa oshimbombo kuyina, olwindji ohaka ti ngaa aah! Oshitoye, opo ka wape okweendela ko ka lye.

Kelongo ondi wete kutya aalongi oyo taa dhana onkandangala mokutoyaleka elongo ngaashi naanaa osho shili oshilalakanenwa shawo, noye li taa kambadhala tuu shili mpoka taa adha notaa vulu. Ngame ine kala ngaa melongo oomvula odhindji, ihe onda dhimbulula kutya melongo omwe ya, notamu ke ya sha tashi etele oshigwana shAawambo shi shune lela pevi.

Oku na iilongwa ngaashi Mathematic, Science and Typing niukwawo oyindji kayi na we oshilonga omolwaalongi yayo kayepo. Aalongi oyendji yongashingeyi oyo tuu mboka ya li aanasikola ya li meitaalo kutya iilongwa ya tumbulwa metetekele iidhigu, taa kala inaayi kutha. Aalongi mboka taa yi longo, nena otaa kambadhala owala, ihe kaa na naanaa owino wa gwana muyo.

Otandi faneke oshinima ndi lwete pamwe tashi kwatha, opo ando epangelo lyOwambo ngele olya dhimbulula uunkundi mbuka, li u tale e tali kutha omuntu posikola kehe, taye mu tumu kokeksesa ya nuninwa oshilongwa shono. Nkoka itaaka longwa omukalo gwokulonga aanona, ihe otaaka longwa lela oshilongwa shongundu ndjono, ye ta ka longa.

Tu tye ota longwa Omwaalu gwongundu ontihetatu ngono tagu talika kukehe omudhigu nogwe etela oshilongo eshunomonima, opo e ye e gu longwe mongundu ndjoka.

Oshinima oshikwawo oshi na sha nomalaka. Atuhe otu shi kutya omunona ngele ti ilongo okupopya, tango oha tameke na "tate" "meme", nokonima aanegumbo omadhina garwo. Osho wo ta vulu okutunga etumbulo "Omeya ndi nwe". Nokonima ta tungu omatumbulo ga yela nawa e ta vulu nokuli okuhokololela tate nameme omahokololo gasha e ga uva.

Melongo lyetu lyomOwambo aanasikola ohaa tameke okwiilonga elaka lyOshimbulu (Afrikaans-taal) mositanda ontihamano ndjoka ya talika ongetameko lyongundu yopombanda. MOwambo muka okanona otaka tameke okuuvva iitya ngaashi: kop, oor, oë osho Dit is my hemp, osho wo okusomotola mokunyola oontumwafu osho wo amatotwahokololo mongundu oyo tuu ndjoka ya tumbulwa metetekele.

Kaakuluntu yoshikondo shelongo, okuniwe tuu shili elalakano mushino? Ngele onda tala nawa, napu ningululwe mpo. Kaalongi yoshilongwa sha tumbulwa metetekele nokwaamuhe mu shi sha kombinga yelongo omu lwete ngaa tapu pondolwa sha mpoka? Osho tandi tile kutya pamwe inandi tala nawa.

**Andowa A. Protasius
Okahala - Ombalantu**

Otu li ngiini naatondi yetu?

Onda hala ndi mu tseyithile kutya, ngele tzeni itatu ningeni ngaashi Ombimbeli tayi ti walyewo tuu.

MOmbimbeli omu na oohapu dhimwe tadhi ti: Hola wo naangoka e ku tonde. Tzeni aanona, oomeme, ootate, ookuku aaholike, osho tuu hatu ningi ngaashi etumbulo ndika tali ti? "Holeni aatondi yeni mboka ye mu huge, ya ningileni uuzwanawa. Oongoka te ku dhenge kolupanda lumwe, mu etha, a dhenge nokuli kolukwarwo. Ngoka te ku kutha ohema yoye, mu pa nombayikitha yoye wo. Kehe ngoka te ku indile sha, mu pa. Olye gwomutse ha ningi ngaashi naanaa iitya mbika nda zi nokupopya?

Ombimbeli osho tayi ti ngaaka. Ngoye omumwameme omuholike ongoye tuu gumwe ho ningi ngaaka, nenge ongoye gumwe waa shi natango mpoka wa gama?

Oyendji ohamu ipula mbela kutya ngele to yi kongeleka ngoye omukriste. Owe shi tseyi ngiini? Ngoye ku na nando ombili nayakweni? Onkene tandi ku yakele ko, kutya ino hokwa mbika tayi hulupo, panda mbyoka itaayi hulu po.

Shoka mwa hala Kalunga e mu ningile, osho wo mu ya ningile. Ino kala owala u hole aantu mboka ye ku hole, oshoka itamu ka tegelela epandulo lyasha. Naalunde oye hole wo mboka ye ya hole. Ihe ngoye mumwameme ngele nani ku shi omulunde ngoye ku hole yakweni, ino tya owa likola uuyuni. Ombimbeli qtayi ti: "Gandjeni, ne inamu tegelela mu galulilwe, oshoka ondjambi yeni onene, notamu ningi aana yaKalunga gwokombandambanda.

Onkee ano etha ayihe, landula ehupitho lyomweenyo gwoye. To tsikile, tsikila, to lundulula, lundulula.

**Petrus Simaneka Shivute
Shipena Secondary School**

Oshi li tuu mondjila okufuta ponhele yomunyoni e na omwenyo?

Ngeenge ohatu uhala hatu komo exumokomesho ile omoode iwa, omolwashike hano hatu nyengwa kombinga yeembudi odo tadi vake oinima yovanhu. Eembudi dimwe odikulu, dimwe opo tadi lihongo.

Omolwashike oveta tai fininike oonakudala ombudi va fute oinima ya vakwa komona, ye omona opo e li ina fya? Oshinima shombudi tashi tulwa muina, ongeenge oye ha ti omona naka vake ile omolwaashi ovo hava li oinima ei ya vakwa?

Ina naxe kave shii omona apa ha kala, ohave mu mono ashike ngeenge te etwa, a mangwa. Onda hala kutya mokufutula ombudi nomoku i kufa meemango, omo yo moku i pa eenghono i ka twikile vali. Oto upike ekuva li ka ke nawa. Kombinga imwe owa fa to ti ota lundilwa.

Ombudi nai likalwe kutya oinima yovanhu ihai vakwa, opo yo mongula ngeenge tai diladila okwaka, otai diladila yo okuhepekwa. Ngeenge

itamu kotoka, oshilongo otashi ka kala shi he na elandulafano, mwa hokwa ashike okufutlwa.

Taleni eeveta doshinanena, omu na eedolongo, ihaku shikulwa ooina nooxe. Inai tya shi ningwe, ashike nashi talike nawa ngaashi mwa talele shoukadona va mita.

Mesta Djikolo
Luderitz

EPULO

Onda hala ndi yelifilwe nawa kwaai tai landula apa: Omolwashike fyeni ovakriste shaa omunhu a dala epasha ngeenge a ka koshwa vati oku na ondjo, okwa nyona shike mbela?

Ondjo yaye osheshi mbela a dala epasha iloo? Taleni nee okuhatila Kalunga kwetweni uta. Umwe ota dala nee epasha, ndele ta ka koshwa moipafi yovanhu, umwe ta dala epasha, ndele ou ota ka koshwa oufiku, ota vake lyelye? Ota vake ovanhu ile oKalungaga?

Nani mboli ohatu tala ovanhu komesho yokutula Kalunga. Paife omunhu ota ka koshelwa shike oufiku nande pe na elaka olo tali ti okukoshwa ondjo? Hano ame mokuyelekanifa kwange ondi wete ashike nakukoshwa oufiku paholeko lovanhu vakwao, yee mbela Omushiti waye omupofi oye ashike e na ondjo, paholeko laye.

G.Kanyeku
Tsumeb - Smelter

ENYAMUKULO

Ehongo lopakriste inali tala okudala epasha kutya okwo oshiponga, onghee itali popile yo nakudala epasha a koshwe, ile omupambele waye. Ovapaani ovo tava tale okudala pamukalo oo, vati oshipwe, onghe va ufa omunhu a koshwe a shiive okukwatafana novanhu.

Oukriste itau popile oonakukoshwa oufiku, woo itau popile yo oonakukoshwa moitanaishe. Omunhu ota koshwa e linyateka nashike hano? Ounona vavali vatatu ovo ngo ve shii kunyateka omudali, ye iha nyate ngeenge a dala okaana kamwe? Eitavelo lekoshu ola kulupa paife muvahapu ovo va pewa ouyelele keendokotola edi da shiiva oushitwe aushe womunhu.

Hamushanga wOmukwetu

OWE SHI TSEYA TUU?

Oku haa zi kuAmerika ya zala oonguwo nuugala woonkatu melongo, ihe nani inaa mana iinakugwanithwa yoonkatu. Oyi ilandele owala oonguwo, taa futu omuthaneke opo ye mu etele omafano mu tule miifo. Komongula, ya puleni oombapila odho dhi ye miifo molwaasho ONKATU kayi shi ONGUWO, ihe OMBAPILA.

Jackson Clear
USA

EYAMUKULO

Tangi omuleshi Jackson kepukululo ewanawa nelondodho. Lagwenene ayehe mboka twa tseyitha moshijo shetu, otwa mona wo noonzapo dhawo, uuhethi wetu ashike sho inaatu tula mo onzapo, ngiika nehala itaali gwanene. Komeho otatu tala nkene tashi piti. Tangi kekwotho

Amushanga gwOmukwetu

NATANAEL NEMBIA NEMBIA KERWERY

ILA U TALE IILONGA YIIPILANGI MOFABULIKA NEMBIA KERWERY

EHALA: POPEPI NOHOLOSAYILA YASHAKATI;
KEHULILO LYONDHALATE NDJOKA O-
NDE PONDJILA YOTEYA NDJOKA YU UKA
MUUNINGININO

IINIMA: KONDANDO OMBWANAWA OTO VULU
OKWIIMONENA IINIMA TAYI LANDULA
MPAKA:

+ **OMALUDHI** AGEHE GIITAAFULA YA LO-
NGWA MIITI YOMUGUYA (DORFHOUT).

IITAAFULA YORONDO IINENE PAMWE
NIIPUNDI IHAMANO NENGE IHETATU,
OSITELA, OTAYI MONIKA MO.

* **IIPUNDI** YOKWEEGAMENA OOMBAANGA
OONDE NOOFUPI NIIPUNDI YOMONGELEKA O-
TAYI MONIKA WO.

* **OOMBETE:** DHOKULALA OONENE (DOUBLE)
NENGE OONSHONA (SINGLE) DHA
LONGWA MIIPILANGI.

* **UUSIKOPA:** WOKUTULA MO OMAHALASA, II-
YAHA NOOMBIGA. UUSIKOPA WO-
MOKOMBITHA NOWOMOSETA
NAWO OTU U NA PAMALUDHI GI
ILI NOGI ILI.

* **OMIYELO:** DHOONDUNDA DHOSHIWAMBO
DHI LI MIKULO NADHIMWE KAA-
DHI LI MIKULO.

— **OMIYELO** OMINENE DHOPONDJE DHONGULU
NDHOKA IHAADHI TENDE.

* **UUPUNDI:** (BARSTOEL) WOMOOSITOLA NO-
MOOMBOTOLO OMO U LI.

* **OMAPELEMETA:** IKULO YOMALAPI GOPO-
MAKENDE OMALUDHI GI
NOGI ILI.

* **OOTOONBANGA** DHOMOOSITOLA OONDE
NOOFUPI.

— **OSHO** WO OORAKA DHO-
KUTSILIKA IINIMA MOSI-
TOLA.

* **UUSIKOPA:** WOKUTULA UULEKE NOONYAMA
MOOSITOLA.

— **OOSIKOPA** DHIKUTU NADHO
OTADHI MONIKA MOFABULI-
KA NDJIKA.

NGELE WA HALA IINIMA YOYE YI LONGWE
KUTSE IHE OU LI KOKULE, DHENGA O-
NGODHI KONOMOLA 287 - OSHAKATI NE-
NGE U TU NYOLELE KOSHIKETHA 427 - O-
SHAKATI.



Omusamane Natanael Nembia



KONEKA: Inima ayihe mbika hatu longo, ohatu yi opaleke
wo uuna ya yonuka.



Yamwe yomoshigongi shaakiintu megongalo Etilyasa, mboka ya sindana mekonjelo lyongoma kiimaliwa R3957,91 moshitayingeleki shawo muSeptemba gwa zi ko.

Oshigongi shaakiintu sha totwa pamauthoukitho goshilonga shoka nopamauthompango ga ELCIN mUushimba

Oshigongi shotangotango mwa li aakiintu ya za momahala ngaka: Usakos, Arandis, Deblinmy, Nodidas-farm, Swakopmund, Hentiesbay, osha gongale 9.11.1986 muArandis.

Tango omatalelopo nomadhiko giigongi yakiintu momahala ga tumbulwa oga ningwa ku-Aino Kapewangolo okuza petameko lyomumvo 1986.

Otwa li twa tegelela aakiintu oyendji ya holoke ihe omolwetameko niimaliwa ya gwana yaa po yokuyakula oshigongi oshinene, moshigongi omwa li ashike manga aakiintu 48.

Omwa ningwa omatokolothaneko taga ka holoka miinyolwakundathanwa yoshigongi notayi ka tuminwa ewilikongundu lyaakiintu mu ELCIN, lyo li tale nkene yi na okutulwa miilonga.

Gweni
Aino Kapewangolo
Amushanga gwaakiintu moshitayi shokufuta ELCIN

ESO

Omulongwa Sakaria Pandeni Thomas (Sakaria Amagola) momukunda Olambo, mOnyaanya mOndonga okwa manene oondjenda dhe 5.11.1986 ombaadhillila. Okwa valwa 4.9.1964. Aafilip 1:21.

Marta Naambo Amagola gaSakaria

Omusamane Lasarus Mudjanima Hamunyela momukunda Eefadoukadona, mOnamutai, okwa xulifa oweenda waye 18.9.1986, momido 67. Okwa fiya ko omufiyekadi waye nounona 9. Ovatekulu 8. Eps.36:6;11

Hamunyela Leonard Swakopmund

Hilde Kalenga Shelele gwomegongalo Ompundja, okwa mana oondjenda dhe eti 23.11.1986 mepipi lyoomvula 121.

Gumwe gwomaatekulu ye Jakobina Indongo

Tate Johannes Kalipi mOmanogondjamba, Ogongo, mUukwambi a mana oondjenda dhe, ombaadhillila megumba lye eti 12.6.1986, mepipi lyomimvo 69.

Joël Ashipala Ogongo

Omukulupe Paulina A. Inima yaShitkwa gwomimvo 136 okwa mana oondjenda dhe 13.11.1986 pegumbo lye Uukwanangaa-Eunda.

Paulina Namutenya E. Shivute Eunda-Ruacana

Elizabeth Tuliikeni Kandjabanga G.Kautwima okwa xulifa oweenda waye 31.10.1986, mouyehame wefiku limwe mokudja koshipangelo kEngela.

Helena T. Vateimo Engela

Okaana ka kundana

Onghundana nda li nda shakena nayo omafiku a dja ko otayi popi kombinga yootate ava hava longo komaonda kOushimba tai ti:

Ovashamane Ovawambo vokOwambo ovo ve li koiilonga kOushimba, vahapu ove li va dimbwa komaumbo avo oku va dja, va ninga oikanakani. Vamwe va hambola navakwao va hambolwa koikunwa. Omulomboli ota ti ye okwa eta onghenda kovanhu va tya ngaha, osheshi ediladilo lokOwambo komaumbo avo muvo kali mo vali, ola fya mo noitatu ke va mona noupu.

Nongeenge onave ke uya itava ka dja ko nomboloto ei twa tecelela keumbo, vati shapo otava ka dja ko ashike nomakalanyana avo aa e li komalutu. Okofa daUshimba da lila ko, ngeenge ne okofa daUshimba da lilako, ouleke vetu? Osheshi alushe oomeme ohave tu lombwele tava ti otashi dulika tate ote uya momwedi tau ya, ta etelele ouleke vetu nomboloto yondjema nomidjalo detu dofikola.

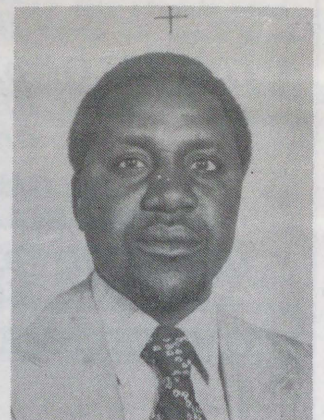
Paife onda limbililwa nondi li pokati kamuhaka namuhaka. Ootate hamba kOushimba omu li ko mwa dimbwa komumbo? Omu li ko mwa hambola, mwa hambolwa koikunwa mwa ninga oikanakani? Omulomboli ota ti: Natu dimbwa ouleke, odoshili tuu mbela? Ootate onye hatu pula.

Orianona
Ngh. Fikameni



Thomas Lasarus (32) mEheke okwa mana oondjenda dhe 1986. Okwa thigi ko omuselekadhi gwe omufuko.

Eva Kandali Eheke



OMUKWETU

Oye oshifo shOngeleki Onkwaevangeli paLuther yomuSWA/NAMIBIA.

Ohashi nyanyangidhwa mOshinyanyangidho shOngeleki mOniipa.

Omukuluntu gwoshifo omumbisofi Kleopas Dumeni.

Amushanga gwoshifo omusita Sebulon Ekandjo.

Ondando yOmukwetu muNamibia naSouth Africa R6,00 komumvo.

Palwe muAfrica R10,00 nokombanda yomafuta R14,00 komumvo. Mondhila R17,00.

Oondando nomambesitelo agehe naga tumwe kOmukwetu, Oniipa, P/Bag 2013, Ondangwa, 9000.

ELOC PRINTING PRESS
PRIVATE BAG 2013, TEL. 11, ONDANGWA 9000
SWA/NAMIBIA