



Namibia otali kundathanwa muNdowishilanda 23 — 25.11

Osheendo shaawilikingeleki yoongeleki ndatu muNamibia; Ongeleki yaKatoolika kaRooma, Anglikana noonkwawo dhevangeli paLuther dhAaluudhe, otashi ilongekidha omasiku ngaka shi ka kale moonkundathana dhomukundu gwemanguluko lyaNamibia muNdowishilanda lyuuningini.

Osheendo oshitiyali shaakalelipo ya za moongeleki dha tumbulwa metetekelo, nasho otashi ka landula ko mbala. Aatumwa 5

otaa ka kalela po Ongeleki ya ELCIN, 10 otaa ka kalela po Ongeleki yaAnglikana, 10 Ongeleki yaKatoolika kaRooma na 5 Ongeleki onkwaLuther yaAaluudhe mUushimba.

Oshigongi otashi tameke 23 gomwedhi nguka muHannover, shimwe shomiilando iinene yaNdowishilanda, notashi ka hula eti 25 koho yoshipalanyolo: **“Molutu Iwa-Kristus yamwe, oshigwana pamwe sha manguluka.”**

Paueyelele mboka wa thika mombeleva yo-mukwetu, oshigongi otashi ka tsikila noma-

talelopo koongeleki nokaaleli yiilongo 10 muEuropa sigo kuAmerika mwa kwatelelwa omapangelo giilongo itano yi na sha nomatokolo gemanguluko lyevi ndika.

Oshigongi shoka shi li mewiliko lyOongeleki; yaKatoolika muRoma noyaAnglikana muLondon, osho wo ehanganano lyoongeleki muGeneva (LWF), otashi ka konakona etumwalaka lyopakriste ndyoka oongeleki muNamibia dhi na, kekondjelomanguluko lyoshilongo nolyuuyuuiki washo.

Iitsa tayi landula otayi ka kongelwa eyamukulo moshigongi shoka shopahistoli mekon-djo lyaNamibia.

a) Okukonakona omukalo gwaNamibia gwelongelokumwe lyawo pahempululoitalo noshilonga shagwo moshilongatamo shOngeleki pethimbo ndika.

b) Okuholola puueyelele omidhi dhekon-djo lyaNamibia pambepo muueyelele wombimbeli nopauthiga wOngeleki.

c) Nokwiipula nkene Oongeleki ndhoka 3 muuyuni; (yaKatoolika, yaAnglikana noyEvangeli) tadhi vulu okugandja ekwatho lyadho lyopausita koongeleki dhomu-Namibia pethimbo ndika.

Konima yoonkundathana ndhoka, oshigongi otashi ka topoka moongundu mbali uuna tashi tsikile nomatalelopo giilongo. Osheendo shayatano (aawilikingeleki) osha tegelelwa shi tsakanene nomumbisofi omukuluntu gwOngeleki yaAnglikana muuyuni auhe, Robert Runcie muCanterbury, London eti 26.11.



Mongeleka yaNiipa aagundjuka yaNayena otaa gandja ekundo lyawo. Ehokololo tala kepan-dja 5

ONGELEKI YASOOMI YA ZIMINE EYAPULO LYAAKIINTU

TURKU: Onkundana oya zi omasiku ngaka momutumba gwoshigongingeleki shOngeleki onkwaevangeli paLuther muSoomi, kutya opwa tokolwa nomawi 87 aakiintu mOngeleki ndjoka nayo wo ya yapulilwe oshilonga shuusitagongalo. Omawi 21 ageke ga kondjitha etokolo.

Omutumba gwoshigongingeleki ngoka gu na ashike iilyo 108 ogwa li ko petameko lyomwedhi nguka muTurku, shimwe shomiilando iinene yaSoomi, ngoka gwa ningi etokolo lyopahistoli mOngeleki ndjoka ya kala konyala oomvula 800. Ohagu gongala lwaali momumvo.

Etokolo olya guma aateolohi aakiintu konyala 250 ta longo mOngeleki ndjoka. Opwa tegamenwa etata lyaakiintu mboka nenge pevi natango, otaa ki igandja ketokolo ndyoka, pashifonkundana, News from the Church of Finland No.3/86 shOngeleki ndjoka.

Aasita mOngeleki yaSoomi oyo yene haa indile eyapulo negele ya mana osikola yawo. Ngashingeyi oku na aasita 1380 taa longo momagongalo. Ongeleki ayihe oyi na aateolohi aakiintu 400 noye na uuthemba okulonga momagongalo.

Osha pula Ongeleki ndjoka omimvo odhindji okuthika metokolo negele aakiintu ye na tuu okuyapulilwa muusitagongalo. Ongeleki ya ELCIN nayo wo moshikundathanwa shoka oya kala hayi ipula nayinangeleki, kutya okwa thiki sigo openi moshinima shono. Otashi vulika ELCIN naye teke shi ninga mbala.

Ongeleki yaKatoolika muSoomi, osho wo ndjoka yaOrthodox, odha tinda okuyapulilwa

la aakiintu muusita. Ongeleki onkwaevangeli paLuther oyi na iilyo konyala oomilyona 4.3, omagongalo 598 ga topolwa miikandjongeleki yopaumbisofi 8.

MuNamibia sigo oompaka Ongeleki yimwe ayike onkwaLuther yomUushimba (ELC) ya yapulila aakiintu muusitagongalo.

Sebulon Ekandjo

Omundohotola Helen von Schantz ishewe mOnandjokwe

ONANDJOKWE, ONIIPA: Omundohotola nomutumwa omukulu mOngeleki ya ELCIN, kuku Helen von Schantz, okwa galukile ishewe miilonga ye moshipangelo shOngeleki mOnandjokwe konima yoomvula 13 egumbo lyawo sho lya shunine kuSoomi.

Kuku von Schantz ngoka a hokanwa komusitagongalo Hendrik, okwe ya ashike neyakulo lyoomwedhi hamano, okukondjitha oluhepo lwoondohotola ndoka talu thelekenya oshipangelo shoka. Tate von Schantz okwa thigala ko kegumbo naanona a tonatele egumbo lyawo.

“Nani ethimbo ele ngaa nda yi, niinima oyindji

onda adha ya lunduluka mpaka,” osho omundohotola a tumbula pOmukwetu mOshindonga oshiwana lela.

Omumvo 1957 ogwo yi ile lwotango kuNamibia e taa longo moshipangelo shaNandjokwe oomvula 12. Pomathimbo gahugunina omusita von Schantz okwa kala omusita gwoshipangelo shoka.

Mokushuna kwawo hwiya okwa longo mpaka naamepyaka momavi gaAfrika, nonando a longo wo ethimbo ele moshipangelo shoshilando shaandjawa Tamisaari shoka a ti kutya oshi na ashike oombete dhaavu 140 naandohotola 14, nokwa tegelelwa mo ishewe mbala musho.

Oomwedhi heyali kuku Helen okwa longo muKenya pamwe nehanganu lyomushigakano omutiligane moprojeka yokukwatha aanamagumbo (Family Relief) nopethimbo ekwawo okwa longo mepyatumo lyaSoomi, muSenegal konyala oomwedhi heyali wo.

Okwa yamukula epulo lyOmukwetu kutya konyala omikithi ndhoka dhi indjipala wo mpaka ngashingeyi, ngaashi elondo lyombinzi, uuvu wosuuka, edhengo lyomutima, odho wo a tsakanene moshipangelo shaandjawa shaTamisaari, unene mokati kaakulupe. Uuvu womomasipa niiponga yokombanda nayo wo okwa ti ohayi monika olwindji moshipangelo shawo.

“Enyanyu opo li li mungame okulonga ishewe mpaka, ihe elunduluko wo lyiinima enene, niilonga oyi li po oyindji,” osho a tumbulile Omukwetu ye ta menye mo.

Pethimbo ndika oshipangelo shaNandjokwe oshi na aandohotola yaali ayehe nomutitatu ngoka gwomayego, onkee aavu yamwe osha vulika ya tegelele ekwatho lyomundohotola konyala ootundi hamano sigo heyali. Omundohotola omutiyali, kuku Banda oha zi kOshakati konyala ongula kehe moshiwike.

Elelongeleki moontokolwa dhalyo dhethi 17-18.9.1986 olya holola etegameno lyalyo okumona oondohotola dha gwana omumvo tagu ya moshipangelo shaNandjokwe shoka hashi taamba aavu yomiitayingeleki ayihe yOwambo.

Omundohotola von Schantz okwa thiki petameko lyomwedhi nguka nokwa tameke mbala niilonga ye.

Sebulon Ekandjo

Ondjokonona yanakusa Kwedhi Simeon Mateus

Okwa valelwa momukunda Oneputa mOndonga, kuyina Lovisa Niinkoti. Sho a toyo okwa pewa yinakulu Shikoto Teopolina Ntinda. Puyinakulu okwa kala ha lelwa kumumwayina Nuule Maria Ngula.

Omumati nguka okwa li e na omikalo omiwanawa nomuvuliki. Okwa shashelwa megongalo lyaShigambo. Okwa longo kUushimba ngaashi kOutjo nokOvenduka mOndamala. Eti 18.11.1959 okwa hokana omukadhona gwe Frieda Amwaalwa megongalo Okaku. Noya pewa omagano gaanona.

Mokukalamwenyo kwe okuhole okwiimba unene eimbilo mEhangano 354 nomuImbileni Omuwa 83. Eti 26.8.1986, okwa mana oondjenda dhe ombaadhilila. Okwa thigi ko omukulukadhi gwe naanona 6. Omuwa mwene okwe tu londodha sho ta ti: “Longekidha egumbo lyoye, oshoka oto si.”

**Peha lyaavalwa
Helena Amutenya**



Omundohotola Helen von Schantz

Eyo lyOmuwa

Meuvitho ndika itandi ka popya oshindji kombinga yepangulo, aawe, otandi ka kambadhala nokufatulula kombinga yehupitho ndyoka tali lalakanenwa kukehe omukriste. Ohatu hempulula kutya muuyuni mbuka otu li pamwe naKalunga, momangundumano getu nenge muuwiwe wetu. NaJesus mwene ote tu lombwele kutya oku li pamwe natse omasiku getu agehe sigo opehulilo lyolweendo lwetu, Mt.28:20.

Okukala huka pamwe naJesus oko tatu lalakanene tse aakriste, tu ka thike mo muka kwa gwana po, esiku ndyoka Omuna gOmuntu sho te ya meyadhimo lye, naayengele ayehe pamwe naye, ndele ta kuutumba koshipangelapundi sheyadhimo lye. Yo iigwana ayihe tayi gongelwa koshipala she, e ta yoolola aantu mooyakwawo, ongomusita ta yoolola oonzi miikombo. Mt.25:31-32.

Eyo lyOmuwa otali fatululwa nawa koshitya shOshigreka "eschatology", moka mu na "eschatin" shoka shi na omadhiladhilo ngoka ga holola oshinima shahugunina. Mu eschatology omu na natango oshitya "logos," oku mu luka kutya oye ohapu nenge elongo li na sha niinima yahugunina, mekwatathano naJesus Kristus sho te ya oluti-yali.

Nelongelokalunga lyetu oli na okukala aluhe tali thindi omuthindo kEyo lyOmuwa. Nuulalelo Uuyapuki owo endhidhiliko kutya Kristus oku li putse, ote tu topolele olutu lwe ombinzi, ye, onkee oshituthi shino shuulalelo uuyapuki tse aakriste otu na oku shi lya noku shi nwa sigo Omuwa ote ya.

"Oshoka kehe esiku tamu li oshikwiila shika notamu nu oshitenga shika, ohamu hokolola eso lyOmuwa sigo ote ya, 2Kor.11:26. Ngaashi naanaa aayapostoli ya lile oshikwiila noya nwine omaviinu pamwe naJesus omoshilongo shaKalunga, Luk. 22:16-18, moka uuyuuki nombili tayi pangele.

Otwa pumbwa shili okukala tu li metanga (mongundu) limwe naJesus ngaashika aakriste yoketameko lyOngeleki ya li ye li, twa tsa ompango yimwe, twa dhama megalikano tu na ombili naantu ayehe, notatu topolelathana ashihe shoka tu shi na, opo tu kale nenyanyu nuuyuuki wokomwenyo. Iil.2:46-47, oshoka ayihe tatu yi ningi omolwaJesus, ngoka ta li pamwe natse Iil.1:4 nota ka lya pamwe natse omoshilongo shaKalunga, Luk. 22:16-18.

Nomokutala ayihe mbika twe yi ningilwa kuJesus omolwehupitho lyetu, Omuyapostoli Paulus okwa tumbulile aadhini yeitaalo ngeyi: "Ngele ku na ngoka kee hole Omuwa, oye natulwe omutima, 1Kor.16:22.Ihe tse aakriste yashili inatu pumbwa ontulomutima, aawe, otwa pumbwa omayambeko gatate Kalunga, uuna tatu pulakene omatumbulo ngaka gaJesus notatu ga taamba:

Tala, onda thikama posheelo shomwenyo gwoye, notandi konkola, ngele ku na ngoka

tu uvu ewi lyandje noto egulula ndje, cku-ngoye tandi ya notatu li uulalelo pamwe nangoye, nangoye pamwe nangame, Eh.3:20.

Omatumbulo ngaka otaga holola kutya Omuwa omuyumuki okwa hala okuya moomwenyo dhetu (onda thikama posheelo), opo a lye pamwe natse iikulya yokomwenyo mbyoka oye mwene te yi gandja note yi topolele ooitaali ye, ngashingeyi ndele nomuuyuni mboka tau ke ya.

Onkee egalikano lyetu nali kale "Maranatha" 1Kor 16:22, kokutya ila Omuwa Jesus moomwenyo dhetu, ngoye u dhi pangele. Tse otu na wo okundhindhika kutya Omuwa Jesus okwe ya nale, nomo e li mokati ketu, ta wilike nota enditha Ongeleki ye sigo e yi thikitha megwaneneno.

Paufupi, ethimbo ndika tu li mulyo, olyo ethimbo ndyoka lyJesus a yumuka notwe mu tega ta galuka opo e tu fale megwaneneno lyaaluhe moshilongo shegulu. "Jesus tuu nguka e mu kuthwa a yi megulu, osho tuu ngeyi ta galuka ngaashi mwe mu mono a yi megulu." Iil. 1:11.

Eyumuko lyetu

Uuna tatu yumuka mo meso, otatu yi moomwenyo puKalunga, notatu ka kala moomwenyo gwaaluhe pamwe naKristus. Ihe epulo otali ya, otatu ka yumuka nomalutu ga tya ngiini? Pa 1Kor 15:44, omalutu ngoka tatu ka yumuka tu li mugo ogopambepo. Eeno, omalutu ngoka inaga nika we uulunde, aawe, ogu udha uuyuuki nombili. Nomuuyuuki ota ka kala e li koho yepangelo lyOmbepo yaKalunga, oshoka Ombepo oyo tayi gandja omwenyo. Olye ta yumuka?

Omuntu nguka ongame lela tandi ka yumuka, sho olutu nduka olusi, talu ka zala ndwiyaka itaalu si, 1Kor.15:53. Ano, nakusa oye ngaa nakuyumuka, ihe ota yumuka e li molupe lwa yooloka kwaandoka a li mulo manga inaa sa, oshoka shoka tashi hulu po notashi kana po, otashi zala shoka itaashi hulu po noitaashi kana po.

Nakusa oha yi peni?

Ota yi moshashi, moka aasi ayehe taa ka adhika keyo lyOmuwa Joh.1:25, oshoka Ombimbeli uuna tayi popi omuntu, inayi dhiladhila ashike omwenyo, aawe, oya dhiladhila omuntu aguhe pamwenyo, palutu, nopambepo, ano omuntu i ihwapo thiluthilu. Nomuntu ngoka i ihwapo oye ta ka yumuka.



"The, aamwameme, inatu hala mu kale mu shi shi, oomboka ya kotha mo (oonakusa) nkene ye li, mwaaye ya nikile uuthigwa ngaambeyaka yalwe yaa na etegelelo. Oshoka otse ngele twi itaala Jesus a si nokwa yumuka, ano osho ngeyi naomboka ya kotha mo, Kalunga te ya etitha kuJesus pamwe naye puuyeleele" 1Tes.4:13-14.

Kalunga nguka awike kee na mpoka ta si, 1Tim 6:16. Oshoka oye Kalunga Omunan-kondo, ngoka a shita egulu nevi, e li shita mowala. Noye wo omuyumudhi gwomalutu getu ngoka ga halakanena montsi yevi. Shoka a pumbwa kutse, osho eitaalo alike. "Oongoka i itaala ndje, oye ta kala e na omwenyo, nando na kale a sa. Nakehe tuu ngoka e na omwenyo nokwi itaala ndje, kee na mpo ta si sigo aluhe," Joh. 11:25-26.

Ehupitho ongoshiningwanima shi li komeho

Omuyapostoli Paulus ota ti ehupitho lyetu olya gwanithwa nale muKristus. Oshoka twa hupithwa tu li metegameno Rom.8:24, twa tegamena eyumuko lyomalutu. Ano, ooitaali oya hupithwa nale, ihe otaya tegelele natango ehupitho li ihwapo ndyoka li li komeho, moka omuntu ta yumuka e li molupe ndoka talu opalele okuya megulu, naango ta adhika momufudho nguka, Omuwa Jesus ote mu shitulufe molupe ndoka talu opalele okuya mehupitho.

Esiku lyOmuwa ngele tali ya, aakriste otaya ka kala muukumwe umwe (pamwe) naKristus, nonkalo yimwe nomuukwatya umwe naJesus. Ngele twa sile pamwe naKristus otwi itaala, tse otatu ka kala tu na omwenyo wo pamwe naye Rom.6:8. Nando eadhimo lyetu opo tali ke ya komeho, muuyuni mbuka woothina Rom.8:35-39, kapu na shoka tashi vulu oku tu topola mehanganano lyetu lyomuKristus Jesus, Omuwa ngoka a yumuka kuusi.

Oshoka Kristus, omwenyo gwetu, nge ta holoka, nena wo otamu ka holoka pamwe naye mesimano Kol. 3:4. Naampoka tapu thindwa omuthindo, ope na ekwatathano ndyoka li li pokati komuntu nOmuwa gwe, owo naanaa tau ka tulwa megwaneneno, sho Omuwa ta ka holoka, oshoka ngashingeyi okutseya kwetu okombinga, ihe esiku ndiyaka otatu ka tseya ayihe ya gwanapo.

Onkee onkalo yetu yongashingeyi katu vulu oku yi topola konkalamwenyo yetu yokomeho (otandi kala poohapu dhOmuwa opo ndi ka kale puye, uuna ndoka tandi zi ko kombanda yevi ndika.) Tashi ti aakriste ngashingeyi oye li moomwenyo muKristus, nokonima yeso otaa ka tsikila natango okukala moomwenyo ngoka gwomuKristus Jesus. Osho wo ngoka kee li momwe-

Tala kep. 4

Osikola ombwanawa moomwedhi ndatu

Osikola ndjika otayi vulu okutaamba omuntu kehe, nokuli omushitwa kehe kombanda yeve oku li mosikola. Omuntu ota tegelelwa i ilonge iilongwa ye nawa nokudhiginina. Otaku ke ya esiku uuna tatu ka lombwelwa ngoka a dhiginina meilongo nomusindani.

Omuleshi omusimanekwa, pitika ndje ndi ku kuthile ko kashona koskola ya tumbulwa pombanda.

Esiku eti 4.8.1986 onda taambwelwa moshipangelo shongeleki ya ELCIN mOnandjokwe sho nda li nda kwatwa kuuwehame. Pomathimbo ngoka oshipangelo shika oshi na oluhepo lwoondohotola. Konima yomasiku gamwe, onda tembudhilwa koshipangelo shepangelo kOshakati, hoka nda yakulwa nonda pangwa nawa lela. Olwotango nda pangwa nonda lala moshipangelo shepangelo.

Uunamiti oshinima ihaashi uvika ko nawa komuntu okuninga we wi ilonga. Ehalo lya Tate Kalunga nohole ye okwa tula omadhiladhilo

moondohotola nonda tuminwa ishewe koshipangelo shepangelo kOvenduka. Papango lyopaunamiti, osho nda taambathanwa ngaaka koondohotola.

Miipangelo mbika yepangelo onda pangwa kaantu oyendji inaatu tseyathana nando onale nayo. Opo nda tsakanene nayo, lwotango sho taa yakula ndje. Ongomunashilonga moku-yakulwa nomokutala iilonga miipangelo mbiyaka, ondi ilongo oshindji shoka sho opala noshiwanawa. Onda dhimbulula wo shoka oshiwiniyati notashi yemateke omuvu. "Mbuku u za wo pomvugo."

Otandi pandula Tate Kalunga sho a li a pe ndje ethimbo lyoskola yoomwedhi ndatu mombete. Ongomuyakuli gwaavu ondi ilongo iilongwa yandje mbyoka inaandi dhiginina nawa pethimbo lyuundjolowele meyakulo lyandje.

Moshipangelo poompito dhimwe onda kala awike mondjugo, nopoompito oonkwawo otwa kala 2 sigo 6 mondjugo. Onda li nethimbo ewanawa lyeilongo muuwike nomongundu.

Omasiku gamwe oga kala guuwehame, ihe omasiku ogendji onda pulakene ewi lya Tate Kalunga moohapu dhe, megalikano, nomokuhambelela omolwomagano gesilohenda lye kungame, kaakwanezimo yandje, koshigwana shandje nokookuume mboka haa dhimbulukwa oshigwana shandje nongeleki yetu.

Tala kependja tali landula

Eyo lyOmuwa

Dha za kep. 3

nyo gwomuKalunga ngashingeyi, nokonima yeso puKalunga itaa ka kala po. Mokukala momwenyo gwomuKalunga, otashi ti, okuza meso lyaaluhe nokuya momwenyo gwaaluhe, wa za mo mepangulo, oshoka Kalunga ina uutha tu geelwe, aawe, ihe tu hupithwe omolwOmuwa gwetu Jesus Kristus 1Tes 5:9.

Ngoka e eta uutondwe womuntu pehulilo, nando inau sa thiluthilu, natango omahalo guutondwe otaga holoka momuntu natango nepangulo lyuutondwe olya hololwa notali ka tulwa mii-longa esiku lyeyo lyOmuwa, sho aanuutondwe nuutondwe wo wene tau ka hulithwa po thiluthilu, omanga aanambili naayuuki taa ka kala meligolo nomenyanyu lyaaluhe megulu.

Onkee te tumbula ngeyi meitaalo: Oonkondo dhomutondi odha sindwa keso lyaKristus Jesus nodhi li mondjila yokuhula po, e taku ya ihe ehulilo sho Jesus ta gandja oshilongo kuKalunga kuHe, nge a hanagula po elelo alihe nepangelo, noonkondo adhihe, oshoka oye e na okupangela sigo a tula aatondi ayehe kohi yoompadhi dhe 1Kor 15:24-25.

Nuuna ayihe mbika ya gwanithwa, tse ooitaali yashili otatu ka lya notatu ka nwa pamwe nOmuwa gwetu konima yeyumuko, omoshilongo shegulu Iil.10:41; Luk 22:16,18. Eeno, Omuwa ngoka twe mu tegelela e tu ile, oye Omuwa ngoka i ile nale nokwe tu hupitha mo moondjo dhetu.

Esiku lyOmuwa ngele lya thikana, otse otatu ka fa Kristus, oshoka Kristus ote ke tu shitukithila monkalo ndjoka a kala muyo, okOmbepo.

tu shitukithwa tu fe efano tuu ndyoka omeadhimo okeadhimo, ngaashika Omuwa awike, oye ngoka Ombepo, ta vulu okushitukitha 2Kor.3:18.

Ihe atuhe mbaka otatu tala niipala ya siikililwa eadhimo lyOmuwa, ongaashi moshitaalelo, ota-

Nuuna twa shitukithwa e tatu fe Kristus, ndyoka olyo ehalo lyaKalunga okuza nale, oshoka okwa hala tu kale twa fa Omwana omuholike, o po Omwana Jesus Kristus a kale omutango gwaayehe. Naashika otashi ti ehupitho olyo okukala pamwe naKristus Jesus meadhimo lye. Ano sho tatu shitukithilwa monkalo yaKristus.

Otse otatu yi muukumwe woshili muye, meadhimo lye. Uuna ndoka olutu nduka olusi talu pingenwa kolutu ndoka itaalu si we, oshoka otalu kala pamwe naKristus nomuKristus.

Itandi vulu okufatululila kutya olutu ndoka lwomehupitho otalu ka kala lwa fa peni, ihe meitaalo otandi ku uvithile kutya okuya mehupitho, okwo okuya momwenyo ngoka itaagu hulu po we, aluhe sigo aluhe. Nongele nee wa thiki mo, nena oto mono kutya oto kala molupe lwa fa peni, nOmukulili gwoye oto ke mu dhimbulula kutya okwa fa peni. Ando ndi ka thike mweel!

Omuwa kwatha ndje ndi thike mo, ngame ndi ku mone nkee u li moshilongo shoye oshiyapuki, shuuyuki nombili, shenyanyu nosheligolo, Omuwa kwatha ndje ndi thike mo.

Eitaalo lyandje koleka, noompadhi dhandje gamena. Mondjila ndjika ondjapuki, ndaa pukithwe kaapukithi. Muudhigu wandje ndi u na, ongoye nde ku inekela. Ndi itaala, ngoye nge to ya, kungoye tandi fudhithwa. Omwenyo gwandje pendutha, nangame wo ndi tonate, kungoye tuu ndi taalele

A.lita

Oonkundathana dha-Namibia

Dha za kep. 1

Etsakaneno lyawo nomupapa gwOngeleki yaRooma, John Paul II otali ka kala ko eti 4 lyaDesemba. Konima yetsakaneno naawilikingeleki, otaku landula aluhe etsakaneno naaleli yoshilongo shoka.

Okwa tegelelwa aawiliki mbaka ya ka popithe omapangelo giilongo tayi landula; lya-Roma, lyaEngilanda, lyaFulanisa, lyaAmerika nolyaCanada.

Osheendo oshitiyali shaakaleli po yoongeleki muNamibia, otashi ka enda niilongo yilwe yomumbyoka 10 yi li melandulathano lyetalelopo, nelalakano okugandja komapangelo ngoka etumwalaka ndyoka lya ziwa nalyo moshigongi muHannover.

Konima yetalelopo lyiilongo, otaku ka ningwa natango okagongi kuyamwe yomaatalelipo, pamwe naakalelipo yoongeleki dha wilika oshigongi, o po ku talike oshinima ashihe nkene sha ende.

Oshigwana shaNamibia ashihe otashi indilwa shi tule momagalikano oshigongi shika nomapopitho kumboka ye na oonkondo dhomatokolo memanguluko lyaNamibia.

Mboka taa zi mu ELCIN okukalela po Ongeleki yetu oyo: Omumbisofi K.Dumeni; omulongi Klemens Namwira; ompangi Salmi Shivute; omulongi Usko Shivute nomusita Apollon Kaulinge.

Sebulon Ekandjo

Pakutala ethimbo lyokulala mombete ele. Omuntu owa fa wa tetwa ko kuuyuni nokiilonga yoye. Paushili wowene, Omuwa na hambelwe, oshoka aantu ihaa ilongo shi thike pamwe, 1Kor 10:13.

Otandi pandula aandohotola, aapangi naayakuli momukunda omutitatu mOnandjokwe. Oondohotola, aapangi naayakuli ayehe momukunda omutihetatu mOshakati. Tangi keyakulo lyeni. Medhina lyoshipangelo shika otandi pandula omukuluntu gwoshipangelo, dr T.Shivute naMatrone Nd.Shanghala sho mwa li mwi itula meyakulo lyandje ngaashi mwe shi ningile wo avu ooyakwetu.

Tate Kalunga na yambeke iilonga yeni moshigwana. MUushimba moshipangelo shaKatutura oyendji kamu uvite ko elaka lyandje, ihe Omuwa gwetweni gwopombanda na thikithile epandulo lyandje koondohotola, aapangi naayakuli ayehe.

Aanona yoskola yOsoondaha mOniipa pongulu, tangi kekundo lyeni sho mwa kunduka ombete yandje mOnandjokwe tamu indile Jesus kuume kaanona a galulile ndje uukolele. Jesus oku mu hole okwe shi ningile ndje. Aakongindjilakadhona moshitayi shaNdonga mboka mwa kala montanda mOshaatotwa, tangi kekundo lyeni lyongula yOsoondaha.

Ongundulwiimbo mOniipa sho mwi idhenge ondjila yokuya kOshakati pombete yandje. Omwa thigile ndje ndi li pokati kegulu nevi esiku ndyoka. Ekwelengendjo lyoondjimbo dhu udhilila ondjugo yetu nomukunda gwaavu moka ndi li mo. Atuheni otwa li twa fa tatu tanga Onzigona miikogo sho oondjo noma-yonagulo getu ga dhimwa po. Tangi kohole yaTate Kalunga ketu.

Aanasikola yomusika mu ELCIN tangi sho mwa yalulile ndje mongundu yeni, nando pethimbo ndyoka tamu hulitha oskola ondi li mombete. Okuya kweni kungame koombete nokuhalela ndje efudho nuukolele uwanawa, onda pewa omukumo gweyakulo.

Aalongi yandje aasimanekwa, tangi kedhiladhilo ndika. Tate T.Ngula, nAashitayi amuhe, tangi koompadhi dhonkundana yombili sho mwa dhimbulukwa ndje muuwehame wandje.

Aambisofi aasimanekwa tate K.Dumeni natate M.Amadhila pamwe naanashilonga yopambepo mboka mwa talele ndje po nenge mwa galikanene ndje. Oshilonga sheni oshitoye ngiini kaavu, unene tuu miipangelo yepangelo moka kaamu na nando elandulathano lyesiku lyowandaha kaavu. Onda li nde mu taamba nomaako ga shambekela, ongaashi wo avu ooyakwetu, twa pandula unene.

Peha lyaatumwa Aasoomi otandi pandula omukuluntutumwa meme Ula Nenonen sho mwa talele ndje po kOshakati. Tangi unene. Tangi komagalikaneno nomayakulo gokolutu gootaali amuhe mwa dhimbulukwa okagumbo kakuku Aina Auala mOniipa, pethimbo ndi li muuwehame ongaashi hamu tu dhimbulukwa aluhe, Gal.6:10; Fil.20:35b.

Aakwanezimo aaholike, egumbo lyatate Immanuel Elifas mOndonga, lyatate Gerson Shipwata mOngwediva, omagumbo goosuwala yandje naamwameme mOvenduka, omwi

ikutha oshindji omolweyakulo lyandje lyethimbo ele mombete.

Ngame inandi shi tala osho mu na okuninga, ihe omolwohole neyakulathano lya zi mesilohenda lyaTate Kalunga ketu. Omuwa ne tu kalekeni miimpwiyu yetu, Eps.133:1.

Omuleshi omusimanekwa, omasiku oga tya pephulilo. Natu ilongeni nuudhiginini kehe gumwe oto ka pewa shi thike piilonga yoye.

**Omukweni
Katrina Auala**

Ebandela, 'Faleni ko evaangeli' lyu ulikwa mOniipa

ONIIPA, ONDONGA: Aagundjuka ye vule 20 yomegongalo lyaNayena mOndonga oya li ya thindikila ebandela, Faleni ko Evaangeli li ulikwe mOniipa. Osha li sha ningwa mOsoondaha ontintatu yomwedhi nguka.

Ebandela lyaagundjuka ayehe mOngeleki ya ELCIN lyedhina Faleniko Evaangeli, olya li lya sindanwa kegongalo lyaNayena moshigongi shaagundjuka ayehe shokomumvo, muSeptemba nuumvo.

Konima yiiwike ihayali, aagundjuka yaNayena oye eta ebandela ndyoka li kundwe megongalo lyomumbisofi gwOngeleki. Aasamane yamwe naakulukadhi yegongalo ndyoka Onayena, oya li ya thindikile aagundjuka mondjila.

Faleniko Evaangeli ohali kondjelwa miigongi yaagundjuka nelalakano okweetela oshiketha shaagundjuka iimaliwa. Iigongi nomalweendo mokati kaagundjuka oshinima shoka hashi ya pula iimaliwa oyindi lela. Ihe ohaa hupitha sha natango, opo ya gandjele koshilonga shetumo meni lyOngeleki omumvo kehe.

Ehangano lyaagundjuka ohali futu aayevangeli ste Junias Haixuxwa, Jonas Tjikulya naJerobeam Siwiyo mboka taa longo momapyatumo meni lya ELCIN. Nohali futu ihe omusita gwalyo ngoka ta longo mokati kalyo.

Sebulon Ekandjo

YA MANGULULWA MONDHOLONGO OMASIKU NGAKA

David Gabriel	Oshitayi
Alfeus Ngipandulua	Oshigambo
Gideon Iindongo	Oniipa
Henok Johannes	Oniipa
Natanael Amukugo	Oniipa

YA DHIGININWA NATANGO NOYE LI MEPANGULO

Mateus Gabriel (23)	Oshitutuma
Gideon Andreas (23)	—
Petrus Nangombe (23)	Oshitutuma
Johannes Nangolo Iipito (33)	Oshigambo
Sakaria Barakias Namwandi (18)	Oniipa
Martin Akweenda (23)	Oniipa
Tara-Malakia Sakaria	Oniipa
Risto Sheya	Oniipa
Naftali Andimba	Oshitutuma
Letta Alumbungu	Oshigambo

Ndhindhilika: Mboka yane ya tumbulwa hugunina ope na wetegameno ya mangululwe wo mbala.



Aavali mboka ya thindikile aagundjuka yaNayena

Oshigongi sheihomateko lyomikalo omiwanawa

(Moral Reamament (MNR))

Moral reamament oshigongi shuuyuni auhe hashi kala ko omumvo kehe nohashi ningi-lwa momahala gi ili nogi ili. Nuumvo osha li muGeneva shaSwitzerland. Osha li shi na aakalelipo taa tengenekwa lwopeyuvi, moka mwa li wo yamwe twa za kuNamibia.

Oshigongi osha topolwa pamalufo. Opwa li oshitopolwa shuukwafabulika, shuunamapya, shuukwazimo nosho tuu. Oshigongi osha tame-kele muJuli sigo 30 gaAguste, oshitopolwa shoka natse wo yokuNamibia twa li mo.

Aakalelipo ooyakwetu oya zile kuIndia, Irac, Iran, Australia, Japan, Nederland, Finland,



Omulongi Erengardis Iithete

Sweden, Britania, Frankryk, osho wo miilongo yaAfrika ngaashi, Tunisia, Gabon, Malawi, Ghana, Egipiti, Angola, Nigeria, Kenya, Zambia, Zaire, Sudan, Zimbabwe nomuSouth Africa.

Osha li oshikumitha, omuleshi omusimanekwa, kungame okumona aantu yaKalunga yomalwaa-la gi ili nogi ili nomalaka gi ili nogi ili taa kundathana, taa kwathathana, taa longele kumwe ngaamwayinathana nokutsaathana omukumo mokukondjitha onkalo yokatongotongo, yiita nonkalo yuumbanda wokupopya oshili.

Onda dhimbulula aantu muuyuni otaa lalakane-ne okutungwa uuyuni uupe mokulandula oongundu nenge oonkatu ne tadhilandula mpaka:

1. Onkatu yotango: Okupopya oshili. Okwa dhimbululwa iifundja kutya otayi teya po ii-gwana.

2. Onkatu ontiyali: Okukondjitha okwiihola mwene. Moshilongo shetu omu na mboka taa hupu nawa, manga yamwe kaaye na iilonga. Yamwe otaa li nawa, manga yalwe taa ningi ka mabela ka ka sa. Okwaa na iilonga okwa pendulile muyamwe ombepo yuumbotsotso. Omu na wo aantu mevi lyetu taa tokelwa pamwe nomaluvalo gawo poohungi dha manguluka, manga yalwe taa tsu owala omazima.

Uuwanawa mboka u na, u ningila wo yakweni.

3. Onkatu ontintatu: Ku kondjelwe uuyuuiki wowane. Uuyogoki wopethimbo ndika owa ningwa wokombanda yomalutu, opuwo, ihe moomwenyo dhaantu yaKalunga kamu na nando ehalo lyokukwatha yakwawo.

Omuleshi omusimanekwa, ito vulu nando okulonga uuwanawa, ngele meni lyoye omwa nyata. Tu indileni edhimopo nesilohenda kOmuwa, ayihe ote yi tu pe.

4. Onkatu ontine: Okukondjela ohole yo yene. Ito vulu okulundulula omuntu nuutondwe. Omangwandjagulathano moshilongo shetu itage eta sha oshiwana.

Tu longeleni kumwe, tu pukululathaneni nombili, opo tu tunge oshigwana shetu oshiholike. Ngoka wa mona uuyelee nkene oshigwana shi na okutungwa, longitha ompito ndjoka nehale ewanawa. Aantu oya pumbwa uuyelee tau zi mutseni.

E.M.Iithete

OTATU HULITHIPO NGIINI ELOPOTATHANO

Otandi pula Aanamibia ayehe kutya oya tala ko ngiini noyu uvite ngiini oshinima shika, omuntu nashilandula she taa dhipagathana nokulopotathana yo oya za ngaa muyina yimwe? Otu na okuninga ngiini oshinima shika opo tu kaleni itaatu longo ayihe mbika tu kale nombili?

Naemi Naambo Shiningwe
Shikongo-Iipingwe Sec. School

+++++

Edipaafano mOvenduka

Vakwetu omu moVenduka ovanhu Ovalaule ohatu dipaafana momilema. Osha vatela shike vakwetu? Ou ta dipaa na kale e shi kutya yee ota dipaa ashike ohutu, ndele ou ha dipaa omwenyo ye te u undulile moheli opo e li.

Jackson Ngh. Shikulo
Windhoek

+++++

Omumvo sho tagu ka londongela, owi ilongekidha tuu ofuto yo-ye yOMUKWETU omumvo 1987? Oyi li ashike R6,00 muNamibia nomu SA, nenge R17,00 kombanda yomafuta.

SA siga vana vange: Nkugo zaNamibia

Nyame Namibia zinya vaNamibia Sange nasinye esi na weka somuNamibia Morwa yige gelike munange a huru muNamibia Ugawo wange naunye wovana vange vaNamibia "SA siga vana vange."

Nampili oli gegeremo nayimwesi nayi kukwasa, Ediwo lyomuNamibia nendindiro lyendi limwe tu-pu, SA ngotengura o hare o dire kuhara, zuzva ko Esi wa lya mo moNamibia sa ku gwana makura "SA siga vana vange."

Nomutwiku nage kuna ku yi mona yi kara yoge Nomu ono kulisangaura ngonkambe zina kufa, Yimo hena yikara yoge ngondi zina kufa momasini Ntene tayi kuvhuru kuza nyovelike, pitura vantu woge mu ze kumwe, siga Namibia "SA siga vana vange."

Nonkendabara doge nadinye momema Nyove mo D.T.A. nyove mEzuva naina ono hara kurundurura edina Namibia nositambo soku hengayika mahali yimaliwa ga ku pure, ago ga ku kwame MuNamibia gomagazaro nare ga yidiva asi ove SA simbungu mosipapa sonzwi "Zuva, SA siga vana vange"

Ose vaNamibia tatu pandura Pamba eyi ga tu pa Sirongo sosiwa sougawo ngesi, tatu pandura Pamba eyi ga tu pa vaBisofi owo vana ku tu kondjera yimo hena vana vamali ponze zosirongo.

Mpandu
Shets Kavango-West

Ooministeli oompe mepange-lo lya SA

Opwa ningwa omalunduluko omanene mokati kOkabinete ka SA omwedhi nguka. Ooministeli oompe 4 odha ulikwa nooministeli dhopevi oonkwawo 12 noshikondo oshipe shiinima yekonomi. Etseyitho moshinima shoka olya gandjwa komupresidende P.W.Botha.

Elunduluko otaku tiwa olye etwa po kokweetha iilonga kwooministeli dhimwe ndhoka dha kala ethimbo ele mOkabinete.



Omupresidende Eduardo dos Santos
gwaAngola

MOZAMBIKWE LYA MONO ISHEWE OMULELI GWALYO



**Omupresidende omupe Joaquim Chissano
gwaMozambikwe**

Oshigwana oshithigwa shaMozambikwe shi imonene ishewe omuleli gwashe konima yiwike iyali sho sha thigilwe po ombaadhilila kuhe yasho, omupresidende Samora Machel, ngoka a sile moshiponga shondhila eti 19.10.1986.

Omulanduli gwe omusamane gwomimvo 47, Joaquim Chissano. Chissano okwa kala oshilyo mOkabinete kepangelo, oministeli yikwapondje.

Eso lyomusamane Machel moshiponga shondhila shono sigo onena shaa na efatululo lya yela nkene sha holoka, olyo umbila oshikogo oshiludhe mopolotika ayihe muUmbugantu waAfrika.

Okuza peso lye otaku tsikilwa ngiini notaku endwa nondjila yu uka peni, ogo ga kala omapulo omanene maawiliki yopolotika unene yomoshitopolwa shika shaAfrika noyomuuyuni auhe.

Ehogololo lyomusamane Chissano koshigwana shaMozambikwe nokiishiindalongo ye yi li naMozambikwe mokukonga emanguluko lyuumbugantu auhe waAfrika, olyo okutema onyeka momilema dhoshikogo shoka, opo oonakweenda mondjila ndjoka ya vule okutseya mpoka taa lyata.

Mboka ye mu kala popepi, otaye mu hokolola kutya omulumentu nguka Chissano, haye unene gwomagano gopanshitwe mokweenditha iinima ngaashi omutetekeli gwe nakusa Machel.

Ihe omuntu oto vulu oku mu luka kutya oye omulongwa gwaMachel mokudhika po ongundu yaFrelimo sho ya thigilwa oshipundi shika ku

dr Eduardo Mondlane (Shitlangu) ngoka a sile moshiponga shoboma yomoombapila muTanzania 1969.

Metanga lyaakwiita yaFrelimo ndyoka lya gwitha Omuputu koshipundi 1974, okwa adha onkatu yaNdjayimayola. Okwa li gumwe gwomuunona uushonashona momwaalu muMozambikwe pethimbo ndiyaka mboka wa li wa mono ompito yokulongwa sigo omosikola yokombanda muMaputo.

Iimaliwa yoku mu ilongitha kouniveesiti yaLisbon, muPortugal mbyoka a pelwe kOmuputu i ilonge uunamiti, okwe yi longitha omumvo gumwe aguke.

Okwa fadhukile kuParis shaFulanisa hoka a tsakanene nomusamane gwoshilongo shawo Marcelino dos Santos ngoka ya li naye ngashingeyi mehogololo lyuupresidende hoka ya tameke okwiilonga opolotika.

Ongaashi naanaa omutetekeli gwe, omupresidende Chissano yamwe ye mu tala kutya Omukomunisi, ihe moshigwana she ota talwa omukondjelimanguluko gwoshili, ngoka ta longo komatokolo ge mwene.

Oshipundi she melelo lyaMozambikwe osho ashike tashi ka gandja uumbangi washili, kutya otashi ka wilikwa komupresidende a tya ngiini.

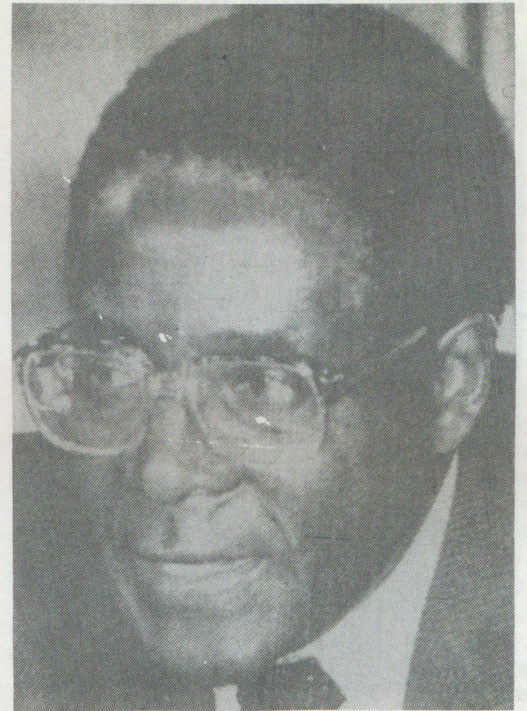
Emanguluko lyaMozambikwe 25.6.1975 ndyoka lya galulile Aamozambikwe yomayovi oge ndji moshilongo okuza momuthitu nomuupongekwa, olya landulwa mbala kiita yopaukwashigwana mbyoka ya vala ondjala, onkayi noluhupo koshigwana shoomiliyona tadhi tengenekwa 13.

Pamwe naashika epangelo lyaMozambikwe olya tameke etungululo lyoshilongo nuushiinda wa SA mboka hau popiwa mOshiwambo kutya "owoshigonga."

Omulandu gwa SA gwokunkundipaleka iishiindalongo ye yaAaluudhe ogwa mona iyimati muMozambikwe. Shoka osha fala sigo oompo ka pu ningwe euvathano lyelongelokumwe pokati kiilongo mbyoka iyali kutya oshilongo kehe shaa gandje ompito koshiponokela shu uka moshilongo oshikwawo. Iponokela mbyoka okwa dhiladhilwa iikulo ya ANC mbyoka hayi pewa ekwatho kuMozambikwe nongundu ya RENAMO ndjoka hayi yambidhidhwa ku SA.

Pethimbo lyeso lyaMachel euvathano ndyoka olya adhikwa lya kanitha omwenyo nuusama owa li tau umbilathanwa pokati komapangelo ngoka. Mozambikwe kuuzilo, ongaashi naanaa Angola kuumbangalantu oga ninga omani yokulyatelela meumpilathano lyopolotika yaAuninginino (Amerika nomahewa ge) noyAauzilo (Rusia nomahewa ge).

Shoka osho, pakutala nawa kwaatseyi yuupolotika, sha popitha pombanda oministeli yikwapondje ya SA, omusamane Pik Botha omasiku ngaka sho a ti ngele odhoshili ngaashi tadhi hokololwa kutya Mozambikwe otaka longitha Aa-



**Omupresidende Robert Mugabe
gwaZimbabwe**

cuba okugamena oshilongo she, nena edhigupalo lyonkalathano muumbugantu waAfrika otali tsikile ashike. (Star 5.11.1986).

Nkene omuleli Chissano ta ka enditha onkalathano ndjoka noku yi hupitha moshiponga, ethimbo olyo alike tali ka gandja uumbangi washili moshinima shoka.

Tala kep. 8



Oministeli ompe Adriaan Vlok, ngoka a pingene oministeli yoshikondo shoveta nelandulathano, Louis le Grange, ngoka i indile ye mwene a mangululwe moshilonga shoka



Omupresidende Kamuzu Banda gwa-Malawi ngoka taku tiwa ota yambidhidha Renamo

Dha za kep. 7

Mozambikwe etuno lyomutima guumbugantu waAfrika

Otu na aantu oyendji muNamibia inaa hala nando okupulakena iiningwanima yokuMozambikwe. Oya yuulukwa ngoka to ya lombwele onakuyiwa yaNamibia mpoka yu uka.

Oshi na ano okuyelithwa mpaka kutya omuntu ito puka unene kokule ngele oto ti onakuyiwa yaNamibia oya kwatelelwa mo konkalo ndjoka yi li muMozambikwe nkene ya tya.

Aantu aashona muNamibia natango mboka taa tseya kutya emanguluko lyevi ndika nekondjo lyalyo oku li kondjela li holoke po, kashi shi ashike oshinima tashi talwa momudhidhi gwasho, ihe otashi talelwa kumwe muumbugantu auhe waAfrika.

Hasho tse Aanambia twa hogolola shi kale ngaaka, ihe onkalo yo yene ye tu hingile po, ngaashi ya longekidhwa kaathiminiki yetu.

Moohapu dhetokolo lyomusamane Robert Mugabe, omupresidende gwaZimbabwe, konima yethimbo efupi Machel sho a kundanwa a si, omu shi okwiilongwa oshindji.

Nguka okwa tile, yo Zimbabwe otaa ka kondja sigo omulumentu gwahugunina, opo koshipundi shaMozambikwe kaaku lalwe nando kongundu yaRenamo ndjoka tayi kondjitha epangelo nohayi mono omakwatho ku SA.

Zimbabwe oku na nale aakwiita 12 000 taa yambidhidha epangelo lyaMozambikwe okuhulitha po Renamo. Mozambikwe oshilyo shehangano lyuukumwe wiilongo yaAfrika ya mangu-luka (OAU). Oku li wo oshilyo mongonga yiilongo 6 yomuumbugantu waAfrika tayi longo pamwe niigwanahangano (UNO) moshinima she-manguluko lyaNamibia.

Iilongo iikwawo oyo Angola, Botswana, Zambia, Zimbabwe naTanzania.

Iilongo mbyoka oyo yotango muuyuni okwiindila SA a ningilwe ondjindikila yiipindi mukehe shimwe, molwaashono inaa hala okwiutha komatokolo gehangano lyuuyuni opo a tulithe oshitokolitho 435 miilonga noku ete po omulandu mu SA tagu taambwa kaakalimo ayehe yomoshilongo she.

SA oye egundji lyokuthikitha iiyetwamo niizemo yomiilongo mbyoka yaa na omatulilo goosikepa ngaashi Zambia, Botswana naZimbabwe. Pethimbo lyondjindikila ya tulwa miilonga, ompito onkwawo opo iilongo mbyoka yi pite, oya li ashike yi na okulongitha etulilo lyaMozambikwe

Ngele ando kapu na ompito yilwe okulongitha etulilo lyaMozambikwe, nena iilongo iishiinda na SA okupula ondjindikila, eimangeleko lyowala kuyo yene. Osho shoka tashi dhiladhilwa komusamane Mugabe, kutya koshipundi shaMozambikwe kwaa ye nando epangelo li na ondumbo nemanguluko lyaAfrika.

Epangelo lyaZimbabwe opo li gandje nawa ompito kondjindikila yi longe ku SA ngoka e yi dhiladhilwa nomuthindo gwa gwana, olya tokola okulongitha ombululu ndjoka tayi pitithile iipindi yalyo muMozambikwe pokati kaMutare sigo Beira.

Ombululu ndjoka sho yi li popepi nomainyengelo gaRenamo, ehanganano ndyoka tali kondjitha epangelo lyaMozambikwe, Zimbabwe okwa langeka po aakwiita ye 5000 paziminathano naFrelimo.

Ombululu ohayi enditha omahooli gomomiligu pokati kiilongo mbyoka iyali noyi na wo ondjila yolutenda wondjila yiihauto. Oku na ishewe ondjila mbali dhomalutenda ndhoka dha fala ketulilo lyaMaputo.



Omupresidende Mobutu Sese Seko gwa-Zaire ngoka taku tiwa ota kwathele UNITA



Omupresidende Quett Masire gwa-Botswana, oshilyo shiilongo 6 yaAfrika ya pewa oonkondo momatokolo gemanguluko lyaNamibia

Ondjila yimwe oya za kuumbugantuzilo waZimbabwe ya fala muMaputo, nonkwawo oya za muMalawi ya fala kuNacala. Mupyamunene ndhika ihadhi longo we omolwaRenamo.

Malawi oshilonga shimwe shono she etela uuyyakadhi iilongo yaAfrika 6 tayi kondjele emanguluko muumbugantu woshitopolwa shika. Omasiku hamale eso lyomusamane Machel li holoke, sho ya yile komusamane Kamuzu Banda, omupresidende gwoshilongo, opo ye mu tule mosikola noya pilule uuluyi we u taalele mondilo yemanguluko lyOmuluudhe moshitopolwavi shika.

Onkatu ya fa ndjika oya li ya ningilwa wo Mobutu Sese Seko, omupresidende gwaZaire omolwelongelokumwe lye nongundu yaUnita tayi kondjitha epangelo lya MPLA muAngola.

Angola oye ompito ontintatu Zimbabwe - Zambia taa vulu okupitithila iipindi yawo nondjila yaBenguela ndjoka ya pitila muZaire tayi fala ketulilo lyaLobito, muAngola.

Nonando eso lyomupresidende Machel lya ningwa pethimbo lyoonkalankongo dhepangelo lye nolya SA dha kwata miiti, pethimbo ndika mu SA otamu uvika ombepo yetegameno tayi pepe tayi zi komilungu dhaawiliki yoshilongo shono, kutya ngashingeyi etsikilo otali ka ya nawa.

Ihe aatalinawa onkene tuu ye wete kutya einekelathano pokati komapangelo ngoka gaali otali koko mokunkundipala. Meuvaneko lye koshigwana, omupresidende omupe Chissano okwa ti ye otaka lyata moompadhi dhometeteekli gwe mokukondjitha Renamo. Uunkulungu we nkene te ke shi enditha, aakaliko taye ke u hokolola.

Omusamane gwaanona yane, Chissano okwa pyokoka momalaka; Oshiputu, Oshiingilisa, Oshifulanisa nOshisiwahili.

Sebulon Ekandjo

Ova shangela nge tava ti

Toivo Mathele Paulus momukunda Onyaanya, egongalo Onyaanya, okwa hulitha oondjenda dhe muwehame wethimbo efupi. Okwa li e na oomvula 33. Joh.16:4-10, nEimbilo 410.

Selma Ndapewa Shipanga Windhoek

+++++

Omumamane Petrus Uuwa Amagulu, mlino muElim mUkwambi, okwa hulitha oondjenda dhe omasiku 4.8.1986 muwehame wethimbo ele. Okwa li e na oomvula 75. Okwa thigi ko omukulukadhi gwe noyana 6.

"Omwenyo gwandje oKristus, nokusa okwo elikolo."

Peha lyaatekulu Elizabeth Noa Amagulu

+++++

Tate Filippus Monkala Sakaria, gwomomukunda Ekamba, megongalo Oshigambo, okwa manene oondjenda dhe 21.8.1986 muwehame wethimbo ele moshipangelo shaNandjokwe. Okwa kala muuyuni omimvo 58. Okwa thigi ko omukulukadhi gwe, oyana 9, Eps.103:18, Eimbilo 630.

Kanana Hilma Taati Nehale Sec. School

+++++

Omumamane Wilhelm Kautondokwa Amukwaya gwomegongalo Nakayale mOmbalantu, okwa manene oondjenda dhe 23.9.1986 muwehame wethimbo ele. Okwa thigi ko oyana 6 nomukulukadhi gwe naatekulu 9.

Eimbilo 415

Erasmus Aluuma Amukwaya Nakayale

+++++

Johannes Shikongo Filippus, megongalo Okaku, okwa mana oondjenda dhe 17.10.1986. Okwa thigi ko aakuluntu ye naamwayina 3. Okwa li e na oomvula 12.

Joh.27:30; 17:24.

V.N.Kadhila Onandjokwe Hospital

+++++

Omumamane Timoteus Reopold Shidhika mOlukonda, okwa mana oondjenda dhe eti 29.6.1986 ombaadhilila, mepipi lyoomvula 40. Okwa thigi ko omuselekadhi noyana 7. 2Kor 5:1-5.

Aron R. Shidhika

+++++

Omumamane Reinhold Shili KONDJELA yaSamuel Kapata momukunda Onamavo megongalo Omuntele, okwa mana oondjenda dhe 14.4.1986 moshipangelo shaVenduka muwehame woomwedhi 6. Okwa thigi ko he nayina naamwayina.

Eimbilo 410.

Omumwayina Megameno Kapata Omuntele

+++++

Omumamane Matias Itope gwomimvo 71 megongalo Oshigambo okwa mana oondjenda dhe 30.7.1986. Okwa thigi ko oyana 11 naatekulu 35.

Wilhelmina H.P. Amwele Okalunga - Oshigambo

+++++

Johannes Pendapala Lukas Onangombe, Elombe, Omuwa Kalunga okwe mu zimbula moshiponga shombaadhilila shoshihauto eti 8.9.1986.

Hilma Ndatega

+++++

Esiloshimpwiyu lyuunona mOshakati

Onda li nda talele po oshipangelo shaShakati nonda zile mo nda kumwa noonkondo mosaala yuunona nkene uunona wa hepa esiloshimpwiyu.

Tango ezimba ngele to ya mo olyo tali ku kundu. Uunona ou li muumbete oohutatu noohune. Uunona ngele tau etwa koshipangelo, aapangi ohaa nyenyetele ooyina yawo, aniwa ihaa sile uunona wawo oshimpwiyu.

Ngele wa kala moombete, nena osha fa oshikwawo.

I.Uupindi Walvisbaai

Moosikola ofuto onene, iikulya nomambo iishona

Aanasikola otaa si ondjala, hamolwiikulya ando inayyi gwana, ihe omolwaateleki mboka haa humbata po iikulya taye ke yi landitha po nenge taa faalele komagumbo gawo.

Oofedics naa dhiginine oshinakugwanithwa shawo opo eshonopalo lyiikulya li hwepopalekwe. Oshidhigu lela komunasikola okulya lumwe mesiku, hela ngaa wa lile onguta uulalelo opuwu, nenge tamu li osopa ndjono ombwinayi manga onyama tayi ka landithwa po. Oonkondo dhokulesha otadhi zi peni ngele ito li?

Aalongi yomelugo naa lundulule. Elalakano lyaawo olyashike ngele nani ondjambi yawo otaye yi pewa ya gwana, yo taa yi niikulya yaanasikola? Otu uvite uudhigu omolwiiimaliwa yetu mbyoka tatu futu oyindji, omambo inatu mona, ngiika pamwe nago kage ko kepangelo, kombinga yiikulya ongiini?

Gumwe gwomaanasikola M.N.Mpingana Iipinge

+++++

Nandi pukululwe

Uuna omuntu a mana osikola e ta ya kuupangi, tango oku na okuyapulwa manga opo a ka tameke iilonga. Omolwashike aalongi ihaaya yapulwa mbela, yo nayo otaa ka yakula ngaa oshigwana, ngaashi omupangi ta ka panga oshigwana?

Andola napu talike ngaa oshinima shika, oshoka aalongi nayo otaa pumbwa wo egalikaneno, nenge ongiini mbela?

T.K.Jesaya Ongwediva T.College

EYAMUKULO

Pamauthompango gOngeleki ya ELCIN, aalongi nayo oye na ompito yokuyambekelwa moshilonga shawo uuna taa piti. Shimpa ashike taye shi kundathana tango naalongi yawo nenge naasita yaandjawa hoka taa ka longa, ngaashi aapangi haye shi ningi.

Amushanga gwOmukwetu

Omwenyo wange hambelela Omwene ove ino dimbwa ouwa e u ku ningila, Ps.103:2

Onda ninga eemwedi mbali nomafiku 10 ndi he wete ko nandenande. Mefiku eti 16 Septemba 1986 onda tambulwa moshipangelo mOshakati. Nomefiku eti 17 lomwedi oo nda tonga metetekelo, onda ya koshitandelo nokuwapekwa. Mefiku eti 19.9.1986, ondi wete ko nonda pewa omakende kuNdokotola. Paife ondi wete ko naanaa ngaashi nale.

Osha etela nge onghumwe inene pamwe nolupandu okupandula Kalunga eshi e tu pa ovanandunge novanongononi tava dulu oku tu kwafa. Ohandi yandje omapandulo keendokotola, kovahakuli aveshe moshipangelo, kovaitaveli yo aveshe awa va kala ve na oshisho naame nova kala yo momailikano okudimbuluka efimbo olo nda kala ndi he wete ko.

Oshilonga mwe shi longa kashi fi oshimha koshipala shaTate womeulu. Kalunga ne mu yambeke. Tu twikileni natango nomailikano kwaashishe tashi linyenge nge shipu ile shidjuu. Omwene ote tu nyamukula.

Kristian Hafeni Shipunda Omundaungilo

+++++

Oudjuu wovaunguli

Ovamwatate nyee mu li koumbanganhu woshilongo shetu Namibia, unene awa mu na ovashamane veni ve li koilonga mOushimba. Onda hala tu udeni tete ondilo noudjuu woilonga nowovayandji voilonga.

Ngeenge hano to i kongodi u pewe ewi loye li ye momhepo koprograma yomoradio, "Eyakulo lo-shiwana," tete diladila nawa, opo u ha ka tye ou to ifana ne uye nena ile mongula. Omulumenhu woye ngeenge okwa ninga oule weedula mbali ine uya keumbo, xwepo, osheshi kape na oilonga hai ningi oule u fike opo inai yandja efudo.

Osho yo, shiwa tete omulumenhu woye oilonga ei ha longo. Moshilongo shetu omu na eemina nhatu da kula. Odo nee: CDM; RUL na TCL, nodi na eefolomana dOvawambo unene, voo ove shi nee omaupyakadi aeshe Ovawambo.

Ava hava longo meehotela, meekombifa noshonsho, ovanhu ovo ove na oudjuu. Ovayandji voilonga otave va lombwele ashike tava ti inda, wa manguluka kOvawambo, ashike oilonga woye inda nayo, nonge hasho ovanhu ovahapu va hala oilonga.

Olo elaka tali pewa omushamane woye olo hano? Pamwe ke na nee odjapo yasha. Inatu taleni komahangano oo makula. Hano tetetete pula omulumenhu woye oilonga ei ha longo opo tu kaleni oshiwana sha putuka, fiyo to hangika kemanguluko u shi eshi tali ti.

Steve K.Ndilula Omaruru

Tala kepanja tali landula

Eilongo tango, opo ihe eyale-kathano

Onda lesa moshifo shaKotoba 30/86 epandja lya-hugunina, oshipopiwa shaPeuyeshasho, shono tashi popi "Ekongo lyaakadhona aanasikola."

Ngame ondi shi uvite ko ngeyi: Kashi shi naanaa oshiwanaawa okukonga omukadhona e li mosikola, unene tuu mbaka ye li moongundu oonshona. Onda koneke kutya otashi etele oyendji yomaakadhona endopo, oshoka omadhiladhilo miilongwa kage mo we, otaa dhiladhila owala omumati ngoka.

Tse aakongi natu pe aakadhona ompito opo twaa ya yonene onakuyirwa yawo ombwanawa ndjono twa hala ya ka kale nayo, ngele tu ya na.

Ngele omukadhona ogwandje, nando okundope ongundu ontihetatu, ogwandje owala. Konyala endopo itali tonditha omuntu, oshoka kashi shi ehalo lye mwene.

Angula D. Angula
Ondangwa

+++++

Omakundo kaadiakoni yoshtayingeleki shuuninginino

Otwa li twa hala tu tyapuleni oshituthi shaadiakoni pamwe nane 24-26.10.1986, ihe inatu vula okuholoka omolwokersesa yetu mEngela.

Taleni owala ekundo lyeni mu 5 Mos 15:7-8; Gal.6:9. Pahapu ndhika otatu mu tsu omukumo mu longe mwa mana mo. Tse otu li nawa.

Aune Shiimi
Jafet Uudhila
Matias Shivolo

Uuthiga wepya nau talululwe

Otashi ti ngiini omuselekadhi ta futithwa epya lyomulumentu gwe ngele a si yo oye li ye li landa nomulumentu gwe?

J.N.L.Nkandi
Tsumeb

+++++

Ebandulo

Ovamwatate muJesus, ohandi mu pandula unene eshi mwa li mwa talela nge po eshi nda li moshipangelo omolwoshiponga shoshihauto.

Olupandu lange olinene, osho yo ava mwa li inamu mona omhito, ohani mu pandula

yo, osheshi ondi wete kutya momailikano okwa li mu na nge. Omwene na hambelelwe. Eps. 33:13-19.

K.Peter H. Hangula
Arandis

+++++

Oikunwa otai xulike oshiwana

Ovamwatate, omu shi wete tuu nokutya oshiwana otatu shi xulike po noikunwa. Omunhu ngeenge okwa nwa, oha eta omapuko mahapu. Oikunwa ngeenge ya pate, nena noshilongo otashi kala nawa.

Amon Lamek

Walvisbaai

+++++

Ounona nava deulilwe oilonga

Fyeni ovadali vakwetu ohatu ka pulwa ongunga yakula kuKalunga omolwoludalo letweni. Okanona koye we ka pewa kuKalunga, ka hongha onghalo yoshilongo sheni, ka longha onghalo yomeumbo loye, ka longha okuhongha ngeenge ino ka longha oilonga, oushima owoye naapa ngo taka i otaku tiwa omunhu ina tekulwa. Olyelye e na etimba eli?

Ove ou ino hongha okaana oilonga. NaKalunga ina hala omunhu mundede, ohatu ti ondede oulunde. Ano natu hongeni onunona oilonga aische pefimbo lomafudo eefikola. Okanona hakeshe efudo ka ye kOushimba, onawa u ka tele oilonga.

Naini a longe oilonga yomeumbo, yo oilonga yomeumbo nayo oya pumbirwa unene. Oyo oinakuwanifwa i na oshilonga sha kula. Komudalekwa mo keshe shiiva shambuleni tete opo u shiive shokoilongo. Tu pangeleni onunona vetweni opo tu ha ka pangulwe.

Mwaashi dimbulukwa eshi wa lombwelwa peshasho lokanona koye. Ino dimbwa, ou na ongunga ya kula onunona nava pangelwe ndele nava longe. Olyelye taka longha monakuiwa? "Omumwoye handjabi, ndele oilonga kai longwa yo nandjala," Hano oto ke shi pulwa. Omona haye omupangeli, ndele oye omupangelwa.

H.Kashava
Tsumeb

+++++

Aalongi aakulu naa silwe oshimpwiyu

Taleni kaalongi yetu mboka ya pita owala ongundu onti 6-7, ya longo nalenale, nane oyendji mu li komeho goshigwana ngashingeyi omwa longwa kaantu mboka.

Osha gwana andola aalongi mboka ya ningilwe okersesa ko ku talike kutya olye ta vulu okutsikila niilonga. Shi vule owala kutya: "Zii mo miilonga," yo taa ka ninga oombotsotso.

Kosikola ita taambwa ko, aniwa ota mana po omahala gaanona. Natu ningeni ngiini aantu mboka?

Jafet Nashidengo
Uukwambi

+++++

Engabeko loludalo moita

Osha pumbirwa tuu engabeko loludalo li longifwe kOvanambia meedula edi doita? Nandi pukulu-lwe mepulo eli. Kalunga okwa ti oludalo otali hapupala ngaashi omawe edu.

Osho yo oshipango oshititano osha ti, ino dipaa ove to ngabeke, ino nyona tuu mbela? Nye Ovanambia eshi mwa hala engabeko, ko ohaku ti ovanhu aveshe muNamibia ove dulike kodoolopa imwe yomuEuropa, onaini nee tamu ka dula po?

Efyo eshi la duka nomalihongo a ninga mahapu, oto ka longha nee shike noto ka longha lye?

T.K.Kamati
Tsumeb

+++++

"Inamu shunitha oshigwana muupagani"

Onda lesa Omukuni gwaNovomba 86, osho wo Omukwetu gwaKotoba 15/86 mepandja 4,7, mOmukuni epandja 9. Shono sha tukulutha omadhiladhilo gandje osho shika: Depo Provera noshiponga shagwo.

Tango nandi ukilile aagandji yomuti ngoka Depo Provera, kutya otamu shunitha oshigwana muupagani shi vulithe shito, oshoka onda tala ompito yokugandja Depo Provera, okutaandelitha oluhondelo mokati kaanona, oshoka kaye na we uumbanda wemito.

Moraamata yaMoses otaku tiwa oluhondelo nalu geelwe, 5Mos. 22:15-22, ihe ne ngashingeyi otamu lu pe ompito.

Kaleni uuyelee wuuyuni nomongwa gwokutoyalaka, Mat.5:13-16. Inamu tema olamba nde tamu yi tula kohi yontungwa, mwe yi siikila.

Aakwatelikomeho amuhe, kaleni melandulathano lya yela ne mu yande oshiponga sha popiwa mOraamata yOmuprofeti Mika 3:8-16.

Simon A. Shivute
Klein Windhoek

+++++

20 ayeke taa vulu okulonga 5 taa ka dheulwa

Aanaveta Aaluudhe 200 mu SA mokati kawo omu na ashike konyala 20 mboka taa vulu okupopila oshipo-tha mompangu yopombanda. Ngashingeyi oku na elongekidho lyaanaveta yatano mboka taa ka opaleka omuthika gwawo guanaveta kuAmerika omumvo tagu ya.

OMAMBO

Omambo taga landula otaga monika mositola yomambo
kOniipa, Oshako 2013, Tel. 11 Ondangwa 9000.

Tuma embesitelo lyoye pamwe nofuto. Ino dhimbwa ko 50c dhopoosa kembo kehe!
Omambo itaga tumwa moongunga nandonando.

Omaimbilo.....	R7-00
Ombimbeli Ondjapuki/Oshikwanyama nOshindonga.....	R5-80
Okatikisa Okashona/kanini.....	R1-00
Elongo lyuukriste/loukriste.....	R2-50
Oonkundathana tadhi manguwala omwenyo.....	R2-50
Okambongeleki kOshikwanyama.....	R2-50
Oshigwana hashi lesa.....	R1-50
Onakuziwa yandje Leonard Auala.....	R5-50
Nakambalekanene.....	R5-50
Imbileni Omuwa.....	R2-50
Imba omunona.....	R1-00
Okrismesa (Omaimbilo gOkrismesa).....	50c
Ehokololo iyomahepeko gaKristus.....	R1-00
Mavole gaShipanga (Ch. Muteka).....	R1-50
Enota ile Ondjala? (V.Munyika).....	R3-00
Ondjalulamasiku 1987.....	R1-20
Uuleligumbo (M.Ngipandulua).....	R2-60
Meyakulo iye (L.Knutson).....	R1-60

+++++

Omasiku 8.10.1986 Omuwa okwi
ithana po omukulupe Maks Uu-
shona (Amutse). Okwa li gwomo-
mukunda Olukuma egongalo
Tshandi mUukwaluudhi. Okwa
thigi ko omuselekedhi noyana 3
naatekulu oyendji. 2Kor.5:1-5.

W.Shaanika
Uukwaluudhi

+++++

Kuku Mirjam Nelago Amukugo
gwomegongalo Onayena okwa
mana oondjenda dhe 24.10.1986
moshipangelo mOnandjokwe
mepipi lyoomvula 81. Okwa thi-
gi ko oyana 6, aatekulu 26 naate-
kulululwa 11.

Ekundo kaathigwapo Filipi
3:21-22

Gumwe gwomaatekulu
Kaarina N.Amalwa
Nehale Sec. School

TSEYA EDHINA LYOYE

Linda = Omulongi gwiipa
Lusia = Oshidhimi
Alma = Omugameni gwiilonga
Amalia
Markus = Ohamala onene
Mikael = Olye a fe Kalunga
Monika = Oku na ezaza
Natalia = Okrismesa
Otilie = Mwene guuthiga we
Albin = Kuume
Linus = Omunyenyeti
Gebhard = Oha gandja omagano



Oluhapu twa fikamena oilambo yomidimba daavo va file melipumomumwe loihauto
omutwe nomutwe. Omunhu oho nyengwa okuhekeleka moluhodi eli, ngeenge osha li
eufu laKalunga ile epuko lovanhu

ONDANDO YOMUKWETU 1987

- Oshifo shimwe ohashi kosho 40c
- Ondando omumvo aguhe muNamibia nomu S.Afrika R6,00
- MuAfrika alihe R 10,00
- Kombanda yomafuta R 14,00
- Kombanda yomafuta mondhila R 17,00

* Kaanangeshefa mboka ya hala okutseyitha iinima yawo
mOmukwetu, epandja limwe alihe otali kosho R 112,20

— Ngele etseyitho eshona, iimaliwa otayi kululwa wo pevi.

OMUKWETU

Oye oshifo shOngeleki Onkwaevangeli paLuther yo-
muSWA/NAMIBIA.

Ohashi nyanyangidhwa mOshinyanyangidho shOngeleki
mOniipa.

Omukuluntu gwoshifo omumbisofi Kleopas Dumeni.

Amushanga gwoshifo omusita Sebulon Ekandjo.

Ondando yOmukwetu muNamibia naSouth Africa R5,00
komumvo.

Palwe muAfrica R8,00 nokombanda yomafuta R11,00
komumvo. Mondhila R13,00.

Oondando nomambesitelo agehe naga tumwe kOmukwetu,
Oniipa, P/Bag 2013, Ondangwa, 9000.

ELOC PRINTING PRESS
PRIVATE BAG 2013, TEL. 11, ONDANGWA 9000
SWA/NAMIBIA