

OMUKWETU



30c

No. 20

ISBN 0-620-06828-0

OSHITAYINGELEKI SHUUKWANYAMA SHA ZIMINA OKUYA KOMALONGEKIDHO GIIKANDJONGELEKI

Omukwetu okwa kundana kutya oshitayingeleki shUukwanyama osha galulula ngashingeyi etokolo lyasho nosha zimina ngashingeyi nasho wo shi ye pamwe niitayingeleki iikwawo ya ELCIN komalongekidho getopolo lyongeleki ndjika miikandjongeleki.

Ehiyo kiigongi yiikandjongeleki olya ningwa nale nokuli kElelongeleki niigongi mbyoka oyu uthwa yi ka kale ko muDesemba tagu ya mOngwediva. Etokolo lyoshitayingeleki shUukwanyama nasho wo okuya komalongekidho ngaka, olya zi moshigongi shopaulumompumbwe shoshitayi shoka sheti 11.10.1986 mEngela nokwa tiwa etokolo olya ningwa pamatompelo taga landula:

— Oshitayingeleki osha mona kutya Elelongeleki olyu uva ko nawa eindilokemo lyoshitayi shoka nolya konga ompito yopaulumompumbwe okukundathana ketalululo lyongamba dhiikandjongeleki, oshinima shoka sha kala osho ondjuulukwe onene yoshitayingeleki.

— Elelongeleki olya mona ondjila ombwanawa okukandula po omukundu gwoshitayingeleki nokugamena uukumwe wa ELCIN, ondjila ndjoka yi na wo euvaneko ewanawa, kulyo kwi ikwatelela etegameno lyasho.

Ethaneko epe lyongamba yiikandjongeleki, olya gandjwa wo koshigongi shoshitayi shUukwanyama nolya taambwa kElelongeleki li ka kale oshikundathana koshigongi shaDesemba.



Methano ndika, omumbisofi Dumeni ota yapula oBiblio nongulu yomambo omakulu /Archive). Aayakuli ye omusita P.Shipena kolulyo nomusita S.S.Shivute kolumoho. Eyapulo olya ningwa 25.9.1986 pOniipa. Tala mepandja 2.

Nale muJuli 1986 oshitayingeleki shUukwanyama osha tumine ombilive kElelongeleki moka sha holola okwaauva ombili kwasho kontokolwa yoshigongingeleki oshiti 13. Oshigongi shoka osho sha tokolele oongamba dhiikandjongeleki.

Konima yoomwedhi mbali, oshigongi shoshitayingeleki shUukwanyama osha nyola ombilive yetamaneko, nosha indila yi talululwe. Oonkundathana pokati kElelongeleki noshitayi shoka odha kala oonde nodha pama, oshoka pamau-thompango gOngeleki ndjika, oshigongi shoshitayi shontumba kashi na uuthemba wokumweneka etokolo lyoshigongingeleki.

Momotumba omutiyali gwoshigongi shoshitayingeleki shUukwanyama, omo mwa zi ngashingeyi etokolo lyokukutha po omatokolo gamwe ngoka ga zile meuvonayi ngaashi okwaa ha ya komalongekidho giigongi yiikandjongeleki kOngwediva ngaashi ya adhikwa ya hiywa kElelongeleki.

“Oshitayingeleki osha galulula etokolo lyasho lyokwaa ha ya kiigongi yiikandjongeleki, nosha pula nengongosheke omagongalo agehe gasho ga longithe nawa ompito yowina ndjoka yu u-

Tala kep. 11

Omumbisofi Dumeni ta fatulula oshitya oBiblio

Oshitya Biblio osha za kOshigreka nomOshiegipiti tashi ti ombapila mwa shangwa, Mark.10:4. Otashi vulika mombapila mwa shangwa oveta, Gal.3:10. Oshitya otashi holola wo oondunge ndhika *Embo lyiiholekwa yaKalunga Ehol. 22:10.*

Uuyuni owa shangwa momambo gaKalunga Luk.10:20. Omadhina gaantu yaKalunga oga nyolelwa membo Eho. 20:15.

Omolvashike ku na oobiblio miigwana niigwana?

Uunongo mboka owo oonkondopangelo monkalamwenyo yomuntu noyoshigwana.

Omumbisofi Dumeni natango ota yelitha epulo ndyoka, nokufatulula oshitya ontseyo (ginosko) sha za mOshigreka okutseya, nenge okuuvako nawa iinima. Osho wo oondunge dhokuyoolola nawa iinima.

Okutseya okukala wo wa pyokoka nawa ongele omiinima yuupolotika, yuunongononi nenge yuukalunga. Osho oondunge okundhindhilika, nawa nokudhimbulula nawa nokwiilonga iinima iipe. Ontseyo wo yokupangula pokati kuuwanawa nuuwiniyi.

Ontseyo oyo omukanka nompito yopomanda lela mokukalamwenyo, kwomuntu. Ontseyo oyo wo uunongo (sophia) shoka tashi ti: Oshili, uuyuuki elandulathano ewanawa miinima yokevi noyomegulu wo.

Ehiyo lyomumbisofi Dumeni kaaleshi

Otandi yelitha elalakano lyOngeleki okutungitha oBiblio pOniipa. Aasama ya hedhe mpaka, ngoka a pumbwa oondunge otatu mu ithana, ileni. Otatu kumagidha opo aa-



Kuku Aina Auala naye opo a li peegululo lyoBiblio. Methano ndika ota monika e li omutumba kolulyo

Omauthoukitho gamwe gelongithomambo lyoBiblio

1. Omambo oge na okukwatwa nesimaneko nonohole, oshoka ogo uuyamba neliko enene.
5. Membo lyoBiblio ino pitikwa okutula mo efano nenge okaalita nenge epandja lyontumba.
11. Omambo otaga thithwa ethimbo lyiiwike ine (4) kungoka a futu R1-00 molwokakalata kObiblio. Embo otali vulu okushunithwa nando ethimbo ndyoka inali pwa ko. Ethimbo lyokukala nembo ngele efupi noonkondo kunakuthithwa, otali vulu okulelepekwa lwaali ngele kape na ngoka e li pula.
12. Embo ngele tali pulwa nolya adhika lya thithwa mo kugulwe, omunabililio ota vulu okupulwa e li pungulile ngoka te li pula, ngele lya galulilwa mo.
13. Embo ngele olya tokelwa okugalulwa, nakuthitha ota pulwa 50c kembo kehe moshiwike. Ngele ihe okwe li kanitha, ota futithwa 75% dhondando yembo. Ngele e li mono ne li galule shunithilwa etata lyaashona a futile. Ngoka ta tindi okufuta, ota landulwa paveta.

ntu yi iyoolole mo maasama, maagoya, ye ende nondjila yoondunge miinima ayihe. Omaj.9:4-6.

Ku kale etilokalunga moshigwana shika, ndyoka li li ekota lyuunongo auhe ov. 10. Oshigwana shi kale shi na iiholekwa yaKalunga. Ku kale elandulathano ewanawa miinima ayihe iikwavi niikwagulu.

“Ombimbeli yoye nayi kale aluhe ya egulu, nena ito ka mona nando osheelo shegulu she ku edhililwa po.”

Owa tseya tuu edhina lyoye?

Ismael = Kalunga tu uvu
 Elia = Omuwa gwoye oJehova
 Fredrik = omuleli omunambili
 Naemi = Enyanyu lyandje
 Moses = A kuthwa (momeya)
 Timoteus = Simaneka Kalunga
 Jesaja = Ehupitho lyaKalunga
 Elizabeth = Kalunga omupangeli
 Johanna = Esilohenda lyOmuwa
 Evelina = omwenyo
 Salomo = ombili
 Silas = a pulwa Kalunga
 Diina = omupangulwa
 Paulina = omushona
 Rauha = ombili

OMATHIMBO OBIBLIO TAYI LONGO

OMASIKU: Etiyali, Etitatu nEtine

ETHIMBO: 1.00 pomutenya sigo 6.00 komatango

LONGEKIDHILENI OMUWA ONDJILA

Aapangeli ya tumbulwa petameko lyotekisti ndjika oyo euliko lya yela tali holola kutya omuprofeti Johannes yaSakaria okwa holokele pethimbo lyawo. Omuprofeti nguka okwa hunganekwa ta ka holoka. Omuprofeti Jesaja oye a pewa kuKalunga a tomone okuholoka po kwaJohannes. Ehunganeko ndyoka otali ulikwa mOramata yomuprofeti Jesaja (Jes.40:3-4).

Omuprofeti Johannes, nenge ngaashi twi igilila kutya: Johannes omushashi, okwa li a hwama okuholola shoka e shi lombwelwa kOmuwa gwe. Ehwamo lye olya hololwa kovelise ontintatu, sho kwa tiwa: "Oye nokwa yi komikunda adhihe dhaJordan okuuvitha."

Omuprofeti Johannes otu uluma okuya komukunda nomukunda, oshoka euvitho lye olyelongikidho. Aapulakeni otaa uvithilwa ya adhike ya mona uuthemba miinima tayi landula: Eshasho lya kanamekwa keitedhululo nokedhimopo lyoondjo.

Johannes oye omuprofeti a landulwa keholoko po lyaangoka a kwatele kumwe oopolofeti dhaapolofeti ayehe ye mu tetekela. Oye Onzigona yaKalunga ngoka ta ka kutha po oondjo adhihe dhaamboka taa ke mu itaala.

Euvitho tali ti: "Omasilu, oondundu, omitunda iisilukutumba, nomagoli nanyi longwe mbala, olya hala okutya ngiini? Epulo ndika pamwe otali kuthwa enota lyaalyo ngele tapu fatululwa tango pafupi omahala ga tumbulwa metetekelo. Aantu ayehe mboka inaaya mona eitedhululo oya fa omahala ga tumbulwa. Omakwaaitedhulula gaantu oge li ngaashi oondundu nomasilu niisilukutumba nomagoli nomitunda. Onkee omuprofeti Johannes ta ti: "Ite-dhululeni."

Movelise ontine motekisti ndjika omwa tiwa: "Yeleanitheni omapola ge." Inaku tiwa: "Yeleanitheni omapola," noshahulu. Okatumbulo "ge", otaka ulike oshikalimo oshinene mevitho lyaJohannes. Natu dhiladhileni tango shoka tashi opalekwa, sha yelekwa nomahala ga tumbulwa metetekelo, osho omwenyo.

Ndishi omwenyo kagu shi gwomuntu mwene. Omwenyo momuntu ogwo gwaKalunga. Uushili mboka otatu u adha moramata yotango yaMoses (Lesha 1Mos 2:7). Ano oomwenyo dhaKalunga maantu odha kanitha ethelakano. Onkee omutumi okwa

tetekelitha omulongekidhi gwadho Johannes yaSakaria, pu ningwe tango ethelakanitho. Kristus kee na ompumbwe nehalo okweenda pondje yomuntu. Okwa hala okukala momwenyo. Okwa nyolwa mOmbimbeli:

"Ombepo ye momuntu ohe yi yuulukwa a sa uukodhi." Omutumi oye e na ehalo enene li vule lyomutumwa, oomwenyo dhaapulakeni ayehe dhi opalekwe. Oshoka ovelise ontihamano otayi shi holola sho tayi ti: "Nonyama ayihe oyi na okumona ehupitho lyaKalunga." Ngoka e na etokolo ndyoka oye Omutumi gwaJohannes.

Konima yelongekidhouvitho alihe lyaJohannes, Omuwa Jesus Kristus okwa holokele muuyuni muka, nokwa longa ashike sha kwatelela mo ehupitho lonyama yaantu ayehe kombanda yeve alihe. Oshilongahupitho shonyama ayihe osha tsakanithwa kuKristus muuyuni womuleli Pontius Pilatus mevi lyOmbimbeli. Lesha mEvangelii paMateus ontopolwa 27, ovelise 58 no 65. (Mat.27:58,65).

Omuwa Jesus sho a shuna megulu, okwa thigi mpaka kevi elongekidho lonyama ayihe li tsikilwe. Omauvitho gopethimbo lyetu kage na eyooloko enene neuvitho lyaJohannes Omushashi. Aantu atuhe otatu pulwa keuvitho lyevangeli eitedhululo. Neitedhululo oyo egaluko hoka nda li tandi yi.

Evangelii lyaKristus olya thigwa mpaka li tu lombwele tu galuke moondjila dhetu dhaa shi dhopahalo lyaKalunga. Ngele twa ningi etokolo lyokugaluka mudho, opo tatu shashwa. Nena otatu kala ihe aana yaKalunga, aahupithwa.

Ihe aapulakeni yeuvitho lyaJohannes Omushashi kaya li aapagani ayeke. Pamwe aapagani oya li haa kala ko omwaalu gu vulike kogwAaisraeli. Oshigwana shaKalunga osha mbombolokele ko shi ka pulakene euvitho lyeitedhululo. Omukulili ota pula Aajuda kutya: "Mombuga omwa ka talele shike,

LUK.3: 1-6

enenge tali nyenganyengithwa kombe-po?

Epulo ndyoka oyo tali holola kutya okwa li Aajuda oyendji. Pamwe haAajuda ayehe ya li ya vulika keuvitho lyaJohannes, noya ningi ando ngaashi euvitho tali lalakanene maapulakeni.

Pethimbo lyetu aakriste oyo oyendji, naapagani aashona. Ihe onkene tuu euvitho lyevangeli tali tu uvithilwa tali ti: "Ite-dhululeni." Sha hala okutya: Igalukeni moonkalamwenyo dheni ne aakriste, ndhoka inaadhi tsa we kumwe nehalo lyaKristus gweni. Ngoka edhina lyeni "kriste" lya valwa medhina ndyo Kristus.

Eitedhululo lyetu tse aakriste kali na sha we neshasho lyomeya ngaashi aapagani taa ningilwa. Mutse otatu pulwa: "Omuntu omukulu mutse a ninginithwe esiku kehe keitedhululo nokegundjilo, nopeha lye napu yumuke mutse omuntu omupe esiku kehe, ngoka ta kala muuyuuki nomuuyapuki koshipala shaKalunga aluheluhe."

Tse itatu mono Jesus nomeho getu, ngaashi aapulakeni yaJohannes ya li ye mu tongolola, sigo ya ningi omatokolo geitedhululo. Ihe tse otu na uuthemba wa yela u vule waapulakeni yaJohannes. Shaa u wete omwenyo gwoye gu niwe kekwidhidhiko, ndyoka tali ku imbi okumona nawa Jesus Omukulili gwoye; hedha owala pomuntu omukweni ngoka omwenyo gwoye gwe mu inekela.

Aantu aakwetu oyo mboka haku ti: Aahempululithitate, nenge meme. Pethimbo tatu hedha kaainekelwa yetu ya tya ngaaka, nena naJesus ote ya putse pethimbo tuu ndyoka. Oshoka okwa nyolwa:

"Shaampoka pu na yaali nenge yatatu medhina lyandje, ongame ndi li pamwe nayo." (Mat.18:20). Nopethimbo tuu ndyoka ota longo ihe oshilongahenda she mutse mokwaamonika, shokukutha po ekwidhidhika alihe lyi li momwenyo. Nena otatu mono ihe nawa Jesus Kristus Omukulili gwetu. Nomushitwa omupe opo ngaa ta tameke mpo mutse.

Natu longitheni ano iitya mbi: Tangi Omuwa Jesus Omuhupithi sho to longo mutse eshitululo epe esiku nesiku. Amen.

Juuso Shikongo

Oshiwana otashi kongo ena- ngeko noupuna peni?

Gen. 32:24-29

Mounyuni omu keshe omunhu oku na elalakano laye osho ta kondjele shi ningwe ile shi kale po, shiwa ile shii ngaashi elalakano laye tali ti. Jakob okwa li ta kondjo naKalunga, elalakano laye okunangekwa noupuna. Jakob ta ti: Itandi ku efa fimbo ino nangeka noupuna, ov. 26).

Jakob okwa li ta kondjo opo a nangekwe noupuna. Oshiwana shaNamibia ou li peni? Oto kondjele shike? Oto kondjo nalyelye? Wa fa u kwete mokuulu kwomutumwa wasatana to ti: Satana, itandi ku efa osheshi oulunde neenyata edi ndi hole oove omupangeli wado. Wa fa to lalakanene outondwe, edipao, oukolokoshi, oluhaelo, oukolwe, naikwao itai mane oku i tumbula?

Tu efeni mokuulu kwomutumwa waSatana fye tu kwateni mokuulu komutumwa waKalunga tu tyeni: Omwene Jesus, itandi ku efa osheshi oove exupifo lomwenyo wange. Ngaashi ependa Petrus ta ti Omwene ohatu i peni, eendjovo domwenyo waalushe oove u di na? (Joh 6:68). Eli olo ekondjo liwa. Eimbilo 501.

David Hauljondjaba

OMUTUMWA GWAAKIINTU MU ELCIN A GALUKA KUAMERIKA

Omuteologi Aino Kapewangolo, okwa thikithile omakundo ge kElelongeleki lya ELCIN pokati kaKotoba nguka sho a kala oomwedhi ndatu muAmerika ta konakona iilonga yaakiintu momagongalo gaPhiladelphia shomuPennsylvania.

Efelo Kapewangolo ogumwe gwomaawiliki mokati kaakiintu mOngeleki ya ELCIN nokwa tuminwe kehangano lyaakiintu okukala mokersesa yepatudho lyewiliko mokati kaakiintu momagongalo.



Meme Aino Kapewangolo

Oukakombolilifa owa duka movanyasha

Fye ovanyasha vopaife otwa duka unene moukako-mbolilifa. Ovakulunhu ihava fimanekwa vali, epopi-fyo linya ombalu oku tu tuma olwoodi. Momaumbo ohatu di mo oshita naava tava i koilonga ndee okano hatu etelele. Mondjila oto lidenge koshifidi eshi to di opo: efidi eli; oto tanguline oshifidi ove wa dimbwa oshipango oshitine.

Oto kala nee nelao peni u he litwe koifidi ove oshipango oshitine owe shi dipaa mo momutima woye? Nale peexungi opa li hapa tewa eengano, poo tapa danaukwa oondilyako, Jakob naikokowi. Paife oto hange ovanhu tava te eemheko. Omifyuululwakalo dopashiwana otwe di pa ombuda.

Omutenya ponhele yokuta owela omunhu ehalasha e kwe-te, ile taku danwa dil'ekende. Nande ou tu pule kutya dil'ekende oshike, enyamukulo itatu li ku pe.

Ovanyasha vamwe momaumbo omadina ashike tu shiivike, ndee komukova kwoovene ihatu monika vali, shapo ohatu dumwa twa fa oikombo ya kana. Fiku nee hatu ke ya keumbo oku taku diwa ku na eshi wa dja ko nasho, oku to ya ku na esho wa etelela shapo oudu, ondjala nonghai to etelele.

Vanyasha vakwetu tu aaleleni oshipango oshitine ndee hatu shi konaakona nawa, ikwao ei ya xupako nayo inatu i peni ekofi. Ovakulunhu vetu inamu tu efa inamu tu ninga osho ve li. Tu tuleni alushe momailikano.

Atty L.P.Hainiga



Omuwiliki gwaagundjuka muArandis, Diogenes Nakasole, ota gandja omakundo megongalo lya-wo sho ya galuka nesindano lyomakopi koshigongi shokomumvo shoka sha li kOkahandja nu-mvo.

AANASHILONGA YA- ELIM YA PANDULWA KEGONGALO

Eti 20.4.1986 egongalo lyaElim olya gandja iipundi iyali noshitaafula shimwe epandulo komuyevangeliste Petrus Eelu ngoka a yi moshipundi shevululuko pamwe neefolo lye Maria. Osha li oshituthi oshinene.

Omuyevangeliste Eelu okwa kala meyakulo lya ELCIN konyala uule womimvo 20. Okwa yapulilwa uuyevangeliste 18.10.1964 mEngela sho a longwa moka omimvo ndatu.

Omusamane Eelu okwa pitile osikola yaamati 1950 mOngwediva manga inaa ya kosikola yuuyevangeliste 1962.

Pethimbo lyuuyevangeliste okwa longo wo momapyatomo ngaashi kOmindamba nokUutsathima. Omumvo 1967-1969 okwa li a yakulithwa moshipangelo maavu mOshakati.

Megongalo lyawo muElim, okwa longo momikunda tadhilanda: Ekamba niipandayamiti manga omahala ngoka inaaga totwa omagongalo, Oaukamasheshe, Onuumba, Oshuulo, Ombwelwa, Oshuungu, Olupembana nOshiku-shomunkete.

Omusamane gwomimvo 70, Eelu, nuumvo egongalo lyawo olye mu pandulile eviyauko lye pamukalo gwoshituthi nolye mu pe iipundi iyali noshitaafula. Kuku Maria naye okwa pandulilwa eyakulo lyomusamane gwe moshituthi shoka.

V.Tsh, Elim
naJoel Eelu, Windhoek

Okersesa oya longekidhwa kOngeleki onkwaLuther muAmerika (LCA) yimwe yomoongeleki ndatu onkwaLuther moshilongo shoka paimaliwa ya gandjwa kOngongahangano yaAkwaluther (LWF).

"Otwa li mo ashike yahetatu mokersesa ndjoka. Yakwetu oya zile kuHong Kong, India, South-Africa, Guyana, Norway, Ndowishilanda lyuuninginino naMalesia. Niilonga yetu unene oya li okutala nkene iigongi tayi wilikwa, nkene aakiintu ye li kokule negongalo taa hiyilwa mii-gongi osho wo eputudho lyomokati kaagundjuka," osho Kapewangolo a hokolola pOMUKWETU.

Ongeleki ya LCA moka ya kala oyi na iigongi yaakiintu 4750. Oya pelwe ompito okutala ewiliko lyoshigongi shaakiintu 1 300, nkene tashi longekidhwa, okuninga omatokolo noku ga tula miilonga.

"Onda tompelwa kutya tse mu ELCIN otu na omukanka omwaanawalela mewiliko lyiilonga yOngeleki yetu, shoka ashike sha kambela po shila iimaliwa, tu wape okutsakanitha shono inaashi ningwa po natango," osho meme Kapengolo a pandula oshilonga shOngeleki ye.

Manga e li hwiwaka, Kapewangolo okwa mone ne ompito yokukala meegululo lyomutumba gwokomumvo gwIlgwanahangano (UNO) muNew York. Okwa talele po iitopolwavi yimwe moshilongo sigo okuCanada.

Ehiyo lye enene kaakiintu ayehe muNamibia, oyo ndyoka monkatu yotango omukiintu kehe i ilonge okutseya Ongeleki ye, neuvoko ndyoka otali ke mu kwatha okulonga iilonga ye ayihe mokusimanekitha Kalunga.

Sebulon Ekandjo

EPULO

Onda nyengwa koohapu dhombimbeli ndhoka tadhi ti: Kaku na omudhipagi e na omwenyo gwaluhe. Nena otu na aakwiita oyendji mokati ketu. Nayo oya yalulilwa mongundu ndjoka nenge aantu yowala ayeke?

Martin Lukas
Uukwambi

EYAMUKULO

Ombimbeli itayi vulu okupitikila yalwe muulunde nokukelela mo yakwawo. Shoka shi indikwa, oshi indikwa ayehe.

Amushanga gwOmukwetu

Ondjuulukwe yehupitho

Kalunga kandje, onde ku dhimbulukwa mevi lyoluhodhi Namibia. Omasiku gehupitho otwe ga yuulukwa nomimvo dhombili otwe dhi sa enota. Omawa, owa kala nokuhupitha oonakuhepekwa okuza nalenale.

Onyoye wa hupitha Daniel miikaha yoonime, wa hupitha Moses momulonga gwaNiili, Lot noyana momulilo gwaSodom naGomora nowa hupitha Noa momeya omanenenene. Tu hupitha wo mahepeko nomomathiminiko mevi lyetu ngaashi we shi ningile oshigwana shaIsrael. Kristus, kala ombili yetu muNamibia.

Festus Ekdandjo

EPULO

Omolwashike omuntu ha futu iigandjwa yegongalo ye e li megeelo lyegongalo? Iha tegeletwa sigo a pewa ombili opo a gandje iigandjwa ye?

L.G.Shindongo
Oranyemund

EYAMUKULO

Egeelopotudho lyegongalo ngele tali pewa omuntu olwindji ohali gandjwa moonkatu noonkatu, okuza muunima uushona sigo omiinima iinene. Iigandjwa oyo yimwe yomoonkatu dhopombanda.

Onkee ho mono omuyoni pethimbo lyegeelo, lye, ta hiti natango mongeleki nomiigongi yopakriste, ombila ye tayi yapulwa ngele okwa si, negongalo hali yi kuye li ke mu kumagidhe e ethe eyono, oyo wo ethimbo ta pulwa niigandjwa. Mpoka ngele opwa kondwa nena

Amushanga gwOmukwetu

EPULO

Omolwashike omuntu ngele a yi koonganga dhOshiluudhe ta geelwa kegongalo nando okwa mona ko ekwatho, ndyoka inee li mona moshipangelo shAatiligane? Ota geelwa ano sho inaa sa? Nenge Omuluudhe ina inekelwa a fa Omutiligane?

L.G.Shindongo
Oranyemund

EYAMUKULO

Omuntu ngoka ita geelelwa eyaluko lye, ihe ota geelwa sho a ka aludhwa mpoka inaa pitikilwa kegongalo nokoveta yuundjolowele woshilongo. Uuna oonganga dhOshiluudhe tadhi ka pewa eziminino ndyoka paveta kape na we ngoka te ke ku geela ngele wa yi kudho. Dhi thiminikeni ano nadho wo dhi konge eziminino lyopaveta, uupyakadhi u hule po.

Amushanga gwOmukwetu

UUKRISTE KAU SHI OSHINIMA SHAATHIGONA AYEKE — Omu- nangeshefa a ti

KuJohn Mutilifa Shitundeni

Omasiku ga zile ko, yamwe yomaanangeshefa Aanamibia 15, mbono ya li ya talele po kOsoomi muAguste nuumvo, oya li ya ningi okagongi kaatoolinkundana mOshakati. Omutoolinkundana gwOmukwetu, John Shitundeni naye opo a li pokagongi ka tumbulwa nokwa li a pula aanangeshefa mbeyaka omapulo taga landula:

EPULO: "Oshike naanaa mwi ilongo kaanangeshefa yokOsoomi tamu vulu oku shi lombwela aanangeshefa yetu mboka yaaha li ko, pompito ndjika? Ano shono mwa li unene mwe shi tala nomeho omanene hwiya."

EYAMUKULO: "Oshinima shimwe twe shi ilongo osho shika kutya uukriste maanangeshefa yokOsoomi owa kola notwa mono kutya owa koleke wo noongeshefa dhawo. Olwindji moshilongo shetu omuntu ngele oku li omunangeshefa, oha dhimbwa kutya ota pumbwa wo nuukriste.

"Uukriste kaanangeshefa yetu, owa fa ashike oshinima shaathigona. Hwiya kOsoomi otwa dhimbulula kutya uukriste owo naanaa oshitsa shotango, opo omuntu u ye moongeshefa. Ngele tamu yi mongeshefa yontumba, omu na okuninga egalikano.

Aanangeshefa yaahwiya ota gongala momalengelokalunga noyo yamwe twa mono nokuli ya tungitha oongeleki oombwanawa noonene shili. Shika osha li elongo enene kutse," osho omunangeshefa gumwe gwaamboka ya li taa gandja oonkundana a fatuhula.

Mukwawo gwosheendo tuu shoka, okwa gwedha po ishewe ta ti: "Nando twa mono kutya oongeshefa dhayakwetu mbeyaka odha huma komeho, shoka sha li she tu kumitha unene osho uukumwe waanangeshefa mbeyaka. Nashi kale oongalash nenge iilonga yowala mbi yopevi, oye na ekwata-thano nomahangano omanene.

Uuna nee ongeshefa yimwe ya adhikwa kuudhigu, hayo ayike tayi u yamukula, ndele noongeshefa oonkwawo otadhi yamukula. Ishewe, aaniilonga yaanangeshefa mbeyaka oye na oosikola ngaashi dhokwoopaleka momagumbo nosho wo okuyakula moongeshefa. Osikola ya tya ngawo oya humbawo kaanangeshefa yo yene, taa kwathwa kepangelo. Ano oongeshefa nepangelo otaa longele kumwe. Aanangeshefa omo nee haa kutha aaniilonga yawo mosikolal ya tya ngaaka naaniilonga mbaka otaa longo iilonga ye yi shi, oshoka oye yi longwa. Otwa li ihe tatu dhiladhila, kutya osikola yoludhi nduka natse otwe yi pumbwa muka muNamibia."

EPULO: "Ohaku popiwa kutya aanangeshefa oyo aadhiginini aanene yeliko lyoshigwana. Kakele kokweetela oshigwana iinima yokulanda, ope na mbela ngoka ta vulu okufatulula oshilonga shomunangeshefa moshigwana kutya osha shike naana?"

EYAMUKULO: "Sho shene oshilonga shomunangeshefa moshigwana moshitsa shotango osho shika kutya omunangeshefa oye omupika gwo-shigwana, oshoka oku lile po okutumwa komukwashigwana shaashoka omukwashigwana a pumbwa. Uuna omukwashigwana e ya mongeshefa yandje ta pula kutya okwa pumbwa omatemo nenge uusila wepungu, nena ondi na okwiipyakidhila nokutala kutya openi tandi adha iinima mbyoka tayi pulwa, opo ndi yi ete mongeshefa.

Tala kep. 9

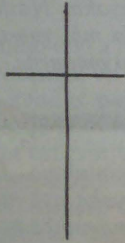


Aakiintu yomomagongalo gOngoleki onkwaLuther muAmerika ya gongala moshigongi shawo. Ehokololo tala epandja 4.

OMUPANGELI A NYENGA ONGUDU YETANGO

KuJohn Mutilifa Shitundeni

Oku na odilo yoshikwahamba i na oshuuluko. Omutilifi ngaashi ohamba. Eumbo otali holola olupe louhamba. Ina itavela



Nakufya Vilho Ueyulu

eendjovo domahongaulo. Ina kukuka nopomafimbo oiponga oyo ya li tai dulu okutwaalela omwenyo waye. Ashike ope na vali shimwe shinene nosha fimana osho she mu ningifa ofule, eshi a ninga etokolo okukala omukriste a mana mo, omutilikalunga nomulineekelikalunga moinima aishe.

Omupangeli ou ta tongomonwa ngaha oye Vilho yaUeyulu, omona wohamba nomupangeli munene mOukwanyama, oo a kala neumbo laye olo tali popiwa la fa ouhamba, mOhaingu, kouninginino wEngela. Omatumbulo taa tangumuna omupangeli ou, amwe okwa li taa popiwa kovapiya vaye, amwe okookaume kaye namakwao okovakwapata, pefimbo loshivilo shepako laye mOhaingu, eti-10/10/1986, eshi a xulifile oweenda waye eti 5/10/1986, moshihakulilo shaShakati konima youdu wefimbo lile. Ota tengenekwa kutya okwa li omukulupe weedula di dilife po 90.

Nakundjokonona ehapu lokukalamwenyo kwa-Vilho yaUeyulu, mbushaye Vilho yaKaulinge, ou a ti ova dalwa efiku limwe nanakufya Vilho, okwa ti kutya Vilho omutekulu wohamba Mweshipandeka nomo a tekulwa mouhamba wa-Mweshipandeka mOndjiva, kuAngola. Pahepu laKaulinge, ava aveshe vavali, ova putukila pamwe fiyo omouhamba waMandume yaNdemufayo.

Eshi oita yEmbulo naMandume ye ya, Kaulinge a ti, ava vavali pamwe navakwao vamwe, ova findikila omaliko aMandume kohamba yokOndonga Nambala, palombwelo laMandume. Oko va kala fiyo Vilho yaUeyulu a ka shashwa meongalo laNayena.

Konima okwa twikila ofikola yOseminali kOniipa. Eshi a pita okwa tokola a ka longe Ova-kwanghala moushilo wOukwanyama omo a ka kongwa konima yeedula, ndele ta nangekwa omupangeli mOhaingu, osho Kaulinge a hokolola. Pomhito ei, Kaulinge okwa kumaida ovapwilikini vaye ta ti: "Diinineni eendjovo daKa-

lunga, nongeenge itamu di diinine, oshilongo eshi otashi ka hanaunwa po filu."

Omunashipundi wokOmitiye omhitifi yepangelo lOwambo, omushamene Peter Kalangula, eshi a li ta ti sha pefimbo lepako laMwaandjai, Vilho yaUeyulu, okwa ti kutya ouleli waVilho inau tengauka noka li ha hongaulwa.

Okwa weda ko ta ti kutya eshi pwa kala eengudu dopapolotika di na omalalakano a yooloka noda li tadi heke omalenga omOukwanyama noku a pona po eshi a itavela omaheka a tya ngaha, Vilho okwa dika eenyala medu.

"Shingunguma (Vilho), iha kukuka. Otashi mofika yo monghalo a kala nayo eshi a fika moukulupe waye, e he wete ko vali, kwa li wa teeleda a faduke po omolwoikungulu yomahomono..... ndele mwaashi okwa kala natango ta ti onda diladila okukala apa.

"Okwa li ha diladila kuye mwene noha ningi o-matokolo a yuka, e mu pefa efindano ngaashi atushe hatu litange nena, osheshi oku na omadiladilo aye mwene," osho Kalangula a fatulula oukwatya wanakufya Vilho ngaashi e mu shii.

Omushamane Kalangula okwa twikila ko ta ti: "Otu udite omu na oshinima osho taku tiwa ongudu yomifiyuululwakalo, tadi hongwa koindele, kwa li hai endele Vilho efiku keshe i mu tule mEtango, Vilho okwe shi anyu filu. Omalenga amwe onhumba okwa li hae mu endele oweenda ngeno a ame kongudu oyo inai ama no-inai amwa kovantu, okwe shi anyu. Inava shii-

Tala kepanja tali landula

Oonkundana pafupi

Ehengathano Iya vuka

Oshilongo shi na oondjokana ha dhi teka noonkondo muuyuni osho Amerika. Momumvo 1983 omwa li tamu yalulwa aantu ya hengana momvula ndjoka ya konda omiliyona yimwe (1,179,000.)

+++++

Okukala ethimbo ele moombete

Omukadhona Martha Nelson okwa li a taambelwa moshipangelo shaColumbus muOhio, USA mo 1875. Okwa si 1975 e na oomvula 103 noomwedhi 6 sho a kala moombete uule womimvo 99.

+++++

Oshilongo shi na aantu oyendji muuyuni

China osho shimwe shomilongo muuyuni shi na omwaalu gwaantu oyendji muuyuni. Payalulo lyomumvo 1982 mujuli osha li shi na aantu oomiliyona 1,008,175,288.

Endjipalo Iyaantu muChina oli li paantu 38,700 mesiku nenge oomilijona 14,1 komumvo. Sho pwa ningilwe eyalulo pokati komumvo gwa zi ko 1985 omwaalu ogwa li paantu taa tengenekwa ye li oomiliyona 1050.

India methelemumvo tali landula otashi vulika olyo tali ka pitilila China meindjipalo Iyaantu.

+++++

Oshilongo shi na aakalimo aashona muuyuni

Oshilongo sha manguluka noshi na aakalimo aashona muuyuni osho Vatican nenge Efuta Eyapuki shi na aakalimo 1008 payalulo lyomumvo 1984.

Joel Akudhenga

OMAONGALO A FYUULULA NAKUFYA

Onghundana iwa oya fika mombelewa yOmukwetu, nokutya ovakwapata vanakufya elenga Vilho Ueyulu, ova kufa eengobe mbali moufiya wavo nde tave di pe omaongalo; Engela nOuhongo ongabe imwe keshe limwe, omaongalo omo mwa kala nakufya ta yakulwa paukriste.

Pakuuda osho ovakwapata vati ove shi ninga eshi navo yo va koneka ekwatafano lanakufya nomaongalo oo avali fimbo kwa li e na omwenyo, nande nakufya mwene ina fiya po enyolo moshinima osho.

Olwo lwotete Omukwetu ta kundana onghundana ei mOngeleki ya ELCIN yokufyuululifa omaongalo nande shiimba shi na yo apa sha ningwa nale. Ovo va kala popepi nanakufya fimbo e na omwenyo otava hokolola omaudaneke aye mawa okuningila omaongalo aye.

Omukwetu eshi a popya nomufita Natanael

Shinana, oshinima shongobe ya yandjwa oufiya keongalo laNgela, naye okwe shi koleka. Omukwetu ina mona omhito yokushakana nomufita omuwiliki woengalo laNgela Jason Haufiku osho yo ina mona ombangi womufita weongalo laUhongo, Johannes Mufeti.

Ngeenge ope na ou ha limbililwa eenghono detavelo lomuKristus, ne uye a fikamene oshinima eshi a tale nhumbi tali teyaula neenghono doukwapata moshiwana shetu omo wa nyemateka eefya dihapu.

Sebulon Ekandjo

Onkundana yeso lyomuleli gwaMozambikwe, omupresidende Samora Moisés Machel oyi inyengitha uuyuni auhe, nuunene tuu uumbugantu waAfrika. Aaleli yiilongo iishiinda na SA oya li ye na okukaleka omalandulathano gomalweendo gawo kii-longo yopondje opo ya gongale kumwe ya kundathane eso ndyoka.

Omupresidende Machel oku li oshilyo miilongo yuumbugantu waAfrika mbyoka yi li pautho lyiigwanahangano (VVO) okupulwa ondunge uuna taku kundathanwa emanguluko lyaNamibia. Iilongo iikwawo oZimbabwe, Botswana, Zambia, Tanzania naAngola notayi longo mdhina lyuukumwe wiilongo yaAfrika (OAU).

Pauyelele mboka wa kundana sigo oompaka kombinga yeso lyomusamane Machel, oye okwa si 19.10.1986 moshiponga shondhila manga e li molweendo lwe okugaluka kuLusaka hoka ya li noshigongi shokukundathana omikalo dhondjindikila ndjoka yi na okuningilwa SA.

Aantu ye thike po 30 oya li mosheendo shoka noshiponga osha ningilwa konyala okilometa yimwe okuza pongamba ya SA, paRadio yaWashington yeti 21.10.1986 komatango. SA oye omutango okulopota oshiponga shoka.

Samora Machel momeho gAayafrika oye omukondjelimanguluko nomuleli gwoshigwana, manga iilongo yaauninginino ye mu yalula kutya omukomonisi. Mboka ye mu kala popepi oye mu shi omulumentu e na ohole yoshigwana komutima nokwa taambwa ko koshigwana she nonando ope na ongundu ndjoka ya kala tayi mu kondjitha.

OOSA DHOMULELI GWAMOZAMBIKWE MUUMBUGANTU WA-AFRIKA

Oye okamentu ka valemwa muumbugantu waMozambikwe moshitopolwa shaGaza 1933. Ngaashi naanaa Aajafrika oyendji, osho naye wo eputuko lyosikola okwe li mona nuudhigu.

Aavali ye kaya li taa vulu oku mu futila sha mosikola nekwatho ndyoka a li ha mono kumumwayina, oya ka hula po, mumwayina sho a sile miilonga yomina mu SA. Machel okwa longo oshilumentu, e ta kaia ha elufuna pomissioni yimwe yaAprotestande.

Omumati nkene ta putuka ukoloni wOshiputu ou li lela momeho ge. Sho e ke ya pomimvo 1950, okwi imono lela kutya oku li pethimbo ta vulu okuningila sha oshigwana she. Go omakuthikuthi goonkundana dhe kondjelomanguluko nodhokuhulitha po ukoloni muAfrika ngaashi sha tamekwa nale nokuli pethimbo ndyoka ku dr Kwame Nkrumah, gwaGhana, oga thiki wo momakutsi ge.

Ihe otaku tiwa momainyengo agehe gelunduluko lyaAfrika, Machel okwa li i inyengithwa noonkondo kemanguluko lyoshilongo shaCongo 1960, mpoka a za te shi dhiladhila kutya nani naMozambikwe oli na ompito yokumanguluka.

Shoka osha gwedhelwa kongundukondjelimanguluko yomuAngola 1961. Pethimbo ndyoka dr Eduardo Mondlane (Shitlangu) oku li omukaelipo gwepangelo lyaMozambikwe kiigwanahangano. Omumvo 1961 dr Shitlangu sho a talele po oshilongo shawo Mozambikwe, okwe ya nelalakano lyokusikumudha uumentu womoshilongo u uve ko ekondjelomanguluko. Mokati kaamboka wa li wa gongelwa, omwa li Samora Machel.

Eti 25.9.1964 ehomono lyotango oya ningwa muMozambikwe mpoka opo pwa zi oshipundi shaKaputu inaashi kola we moshilongo moka. Mongundu yaahomoni 250 mboka ya dhike po ongundukondjelimanguluko, Frelimo, omo mwa li wo Samora Machel.

Methimbo efupi Machel okwa ningi omuwiliki gwokakulumbwati noshilonga she oshinene osha kala okuunganeka oshigwana ashihe shi itule mo mekondjo lyemanguluko. Omumvo 1960 Machel okwa hogololwa a ninge omupresidende gwaFrelimo, omupresidende gwtango

Tala kep. 8

Omupangeli omukriste

Dha za kep. 6

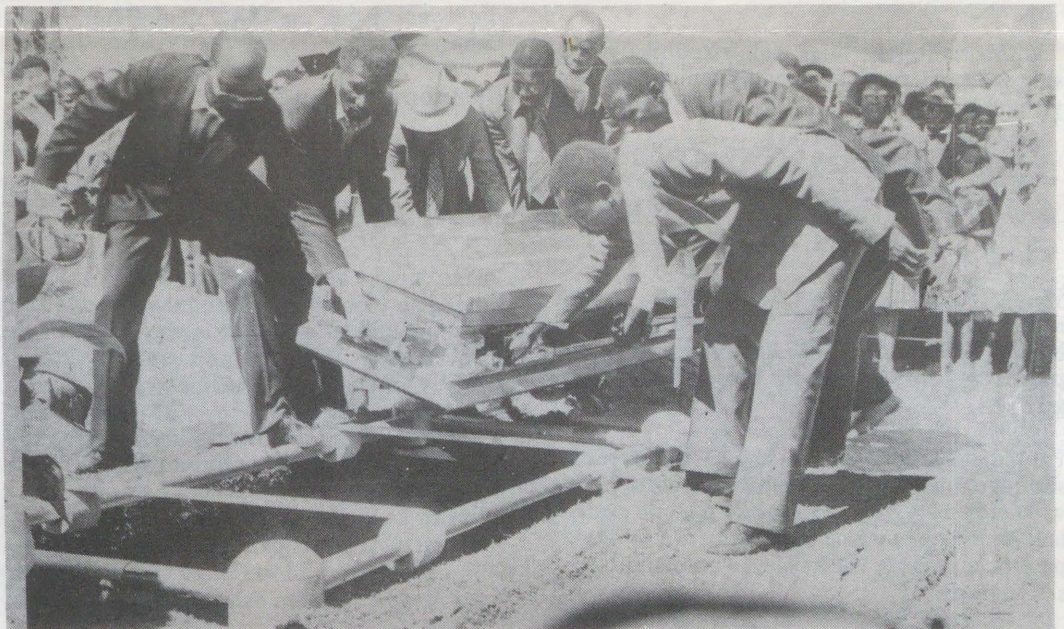
va fye paife pondodo apa tu li. Otwa loloka okutukulwa. Vilho okwa anya okutukulwa nafyeni tu li apa, fiyo osheshi ta nangala apa."

Pomhito tuu inya, Kalangula okwa fatululila vali ovapwilikini vaye paxupi, osho opolotika tai ti, shaashi okwa koneka vati kutya ope na ovanhu vamwe tava ti kutya elenga ile omupangeli umwe woludi lonhumba kave fi ovanapolotika.

Mokufatululila ava tava diladila ngaha, Kalangula okwa ti: "Keshe tuu osho to ningi shi na ko nasha nomunhu nge we mu halela ouwa wonhumba ile wa hala oku mu ningila sha shonhumba nge pamwe omeva ile oshitauwa, opolotika oyo."

Okwa twikila ta ti: 'Nelenga nee limwe otali ti lo kali mo mopolotika, oli li ashike mEtango. Owa hala okutya ngahelipi? Etango oshike?,' osho Kalangula a pula. Mu shiive nena eli, Kalangula ta twikile, Vilho ou e tu kondjela, okwa anya okundonyoka. Okwa kala a ama koshiwana. Ovo nee ovapangeli hatu ti vawa ovo!"

Omupashukili woshitaingeleki shokOukwanyama, omufita Apollos Kaulinge, pefimbo a li ta yapula omudimba wanakufya Vilho yaUeyulu okwa lombwela ovakwapata vanakufya novaitaveli aveshe va li po ta ti: "Tu fyuululeni efyuululo liwa olo itali lika keenhwishi, itali pi komundilo lo itali vakwa po keebotjotjo. Ngeenge hatu dulu fyuulula eitavelo eli la li mutate ile mutatekulu Vilho.



Oshikefa shomudimba otashi kulukifilwa moshilambo, pOuhongo

Kaulinge okwa twikila nokukumaida ovalilanghali venya ta ti: "Ohandi mu kumaida amusha ava twa fyaaleni po, kutya okukalamwenyo kuhe na Kalunga kaku na elao nokashi na okukala ngaho, osha puka. Ndele okukalamwenyo ku na Kalunga oko taku eta elao monghalamwenyo yetu nosho yo moilonga yetu."

Omushamane nakufya Mwaandjai, nande a li omunhu a fimana, ota hokololwa kutya okwa kala a fimaneka ohombo yavo nomukulukadi waye wokongeleki. Omahokololo otaa ti kutya

okwa kala nokukwafa eefikola nomaongalo nemona laye.

Omweevangelifi wa ELCIN, omufita Natanael Shinana mEngela, ota yandje oshiholelwa shamwe yomoilonga yaVilho. Okwa ti: "Onduda yongeleki yokEngela, oikonde, oipeleki neemmosha, onduda aishe, kape na nande oumwe a kuma ko, otatekulu Vilho yaUeyulu a longa ashishe osho nomake aye nemona.laye.

Shitlangu sho a dhipagwa koboma muTanzania.

Omundohotola Mondlane (Shitlangu) sho a ka shuna ku VVO 1961, ina ka kala ko we, okwa ka dhika ongundu yemanguluko muTanzania. Nguka ohaku tiwa omulumentu omunandunge nomuvalekele.

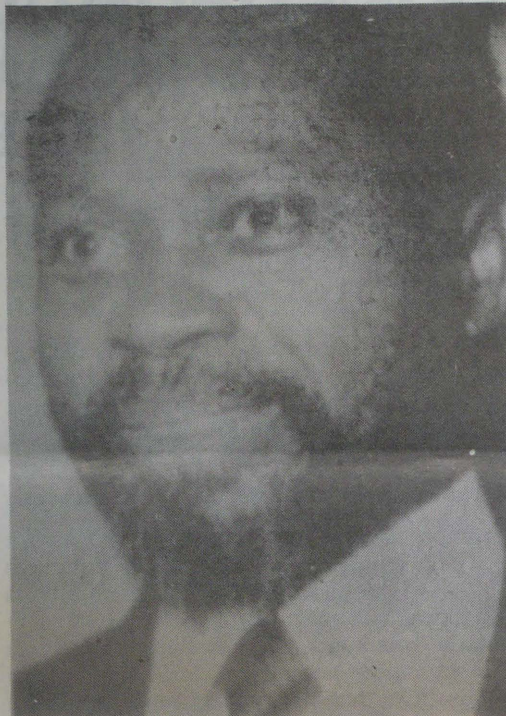
Oputu (Portugal) sho ya teka 1974 Machel okwa ningi omuleli gwotango gwomepangelo lyopakathimbo sigo a hogololwa pwaa na eko-ndjitho lyasha mehogololo lyaayehe 1975, a ninge omupresidende gwotango gwaMozambikwe.

Ndyoka olyo lya li ehulilo lyuukoloni wOmu-putu muule womimvo 500 koshigwana shaMozambikwe shoka tashi tengenekwa shi vule oomiliyona 12, ihe hasho sha li ehulilo lyekondjo lyomukondjelimanguluko Machel muumbugantu waAfrika.

Muule womimvo 10 dha landula ko e li koshipundi, okwa kambadhala okutula miilonga shoka e shi uvithile nale oshigwana she manga e li momuthitu. Ngaashi sha tsakanekwa opendji miilongo yaAfrika, osho nomuMozambikwe osha li tashi yele, omuwiliki Omuyafrika ite ethiwa i idhiladhilile uwanawa woshigwana she nowevi lye pwaa na yalwe taa tiwa aagandjima-yele, ongele yokuuzilo nenge yokuuninginino.

Machel okwa longo pokati koonkondo ndhoka dhopaali tadhi mu hili koombinga noombinga. Ihe shono ye kwa li e shi hala oku shi shi no-kwe shi lalakanene.

"MuMozambikwe onda hala okudhika mo oshigwana oshipe sha thikama komukanka gweyiyambo lyasho shene, iilonga ya kwata mo-



Nakusa Samora Machel

nkama noshi na ombepo yokudhipaga uuwinayi auhe u li muukapitali," osho Machel a popya pompito yimwe.

Memanguluko lyaNamibia nenge lya SA, Machel okwa li a tula mo oonkondo dhe shi thike pundhoka a tula moshigwana she muMozambikwe. Okwa sile mondjila yetumo lyemanguluko omolwaNamibia na SA, ndmolUumbugantu auhe waAfrika.

Sebulon Ekandjo

OONKUNDANA PAFUPI

WINDHOEK: Miilyo yOkabinete kepangelo lyopakathimbo mOvenduka omwa holoka omusa ngoka pakutala nawa kwaapolitika yamwe tagu ka hondjwa nuudhigu.

Pankundana ndhoka dha holoka miifo yomoshilongo noyoku SA, oontamanana odha zi anywa metokolo ndyoka lya ningwa po, opo oosikola omumvo tagu ya kaadhi taambe we aalongwa pamihoko ngaashi sha kala osho omulandu gwoshilongo shika.

Konima oministeli yelongo omusamane Andrew Matjila sho a tseyitha etokolo ndyoka kutya olya ningwa newi limwe alike, aakalelipo yongundu yaNasionale mepangelo lyopokati oya holola mbala okuuva nayi kwawo moshinima shoka.

Aniwa uukwashili opo u li kutya ongundu yaNasionale nayo oya shaina etokolo ndyoka kutya uukwamuhoko nolwaala inayi dhana we onkandangala metaambo lyoosikola, ihe Aatiligane inaa hala evigumbo kehe li kanithe oonkondo miinima yosikola yalyo.

Oombasitela dhaRehoboth nando otaku tiwa odhi li momadhiladhilo ngoka taga hololwa kongundu yaAatiligane, Nasionale moshinima she- taambo lyoosikola omumvo tagu ya.

Pokati mpoka opwa kundana kutya Okabinete kepangelo lyopokati mOvenduka oka yile ka ka ninge oonkundathana nomupresidende gwa SA, omusamane P.W.Botha, nopwa tegelelwa natango etsakaneno etiyali petameko lyaNovomba.

Ndhoka hadhi kundathanwa hoka ihadhi popiwa, ashike ohaku tiwa omusamane Botha oye mwene i ithana oshigongi shoka. Okwaavathana hoka ku li mOkabinete ngiika haku pendulwa koveta AG 8 ndjoka yi li omukanka gwomavigumbo natango moshilongo shika, oko aantu haa fala omeya kutya osho oshikundathanwa.

Oku na wo omafekela omakwawo ngoka ga tala kutya otashi vulika ge li moonkundathana ndhoka inaadhi adha natango ehulilo, ku ningwe ehogololo omumvo tagu ya moshilongo a-shihe metonatelo lyiilongo yimwe yopondje.

Aatalinawa yopolitika yoshilongo shika, otaa ti ehogololo tali dhiladhilwa, olyokupingena ndyoka tali pulwa SA kiigwanahangano pashitokolitho 435.

Poompito odhindji, SA osho wo epangelo lyopokati mOvenduka oya kala haa holola euvonayi lyawo ketulomiilonga lyoshitokolitho 435, oshoka otaa ti, osha humbatela mo ashike uwanawa wa SWAPO.

Iilema mu SA

Aantu ye vule oomiliyona ndatu dhomoshigwana sha SA otaku tiwa oye li iilema pamukalo gwontumba nenge gwongandi, osha tseyithwa komundohotola J.F.J. Hattingh, omuwiliki gwehangano lyiilema moshilongo shoka.

Aantu ye vule omiliyona aathitamatsi, 66,000 aaposi na 290,000 kaye shi okupopya, ehokololo lya ti.

Iilonga yAamozambikwe ku SA ya hulithwa po

Onkundana oyu uvika mu SA okuza 9.10.1986 kutya SA itaka kuta we miilonga ye aanashilonga aape taa zi muMozambikwe. Etokolo aniwa olya zi meuvonayi lya SA molwoboma ndjoka ya topa poongamba dhawo naMozambikwe o-masiku ga zi ko moka mwa li aakwiita ya SA.

Moshinima shoka SA ota tala omeho kepangelo lyaMozambikwe kutya olyo tali pitike iikulo ya ANC yi tege ooboma poongamba. Epangelo lyaMozambikwe meipopilo lyalyo otali ti ooboma shila ohadhi tegwa kongundu yaRenamo (RNM) ndjoka SA ha kwathele.

Aantu ye vule 200,000 ohaa longo omumvo kehe moomina dha SA nomoofaalama. SA okwa popile petameko lyomumvo nguka kutya uuyuni ngele tau mu ningile ondjindikila, ye ota ka tidha aanashilonga ayehe yomiishiindalongo naye mboka haa longo mu SA.

Ekwatho lyiimaliwa ku SWAPO

Oshikondo shoprograma yokukondjitha uukwamuhoko shOraata yOongeleki muuyuni (WCC), osha popila omwaaalu gwiimaliwa yoodola \$110 000 gu pewe ehanganano lya SWAPO. Konyala omumvo keke SWAPO oha mono ekwatho kehanganano ndyoka.

Iimaliwa hayi gandjwa oyi na eutho lyayo kutya otayi ka longithwa muunamiti, meputudho lyoosikola nomoompumbwe dhilwe dhesiku kehe. Ehanganano lyiikulo mu SA, ANC, nalyo olya pewa wo iimaliwa yalyo oodola \$80 000.

UNO ta opalekitha oondjila muumbugantu waAfrika

Oshikondo shomapendulopo mehanganano lyiigwana yuuyuni (UNO) osha zimina ooprojeka mbali dhomakwatathano goondjila molukadhi lwaAfrika, dhi tamekwe okwoopalekwa nooranda oomiliyona R9,5.

Oprojela yimwe otayi ka tungitha ontopa kombanda yomulonga gwaKazungula mpoka pwa tsakanena oongamba dhaNamibia, Botswana, Zambia naZimbabwe.

Oprojeka onkwawo ondjila yaPandamatenga muBotswana ndjoka yi na okukwatakanithwa nEgwo lyomeya lyaVictoria muZimbabwe. Onkundana oya toolwa moshifonkundana sha-Tanzania Daily News.

Aantu oya fa haa tala kutya aanangeshefa otse aahona, ihe aanangeshefa hayo aahona nandonando, ndele oshigwana osho aahona yoongeshefa. Omunangeshefa oku lile po ashike okukwatela iilonga komeho, ndele ongeshefa oyi lile po okuyakula oshigwana. Omunangeshefa okwa fa owala okanona, kutya nee ona kale omuyamba e thike peni, shaa omukwashington a pula kutya okwa hala oshinima shongandi, nena tse aanangeshefa otu na okuwulika kelaka lyaakwashington.

EPULO: "Pomimvo dha zi ko sigo onena ohatu uvu kutya moshigwana otamu inyenye omahangano gaanangeshefa aavalelwamo unene moshitopolwa shika shOwambo, nondi inekela kutya oga koka ngaa ngashingeyi. Omahangano ga tumbulwa mbela ohaga tala ko ngiini oshinima shaanasikola yetu mbono ya mapa oositanda ngaashi Omatilika notaa endagula owala, omolwompumbwe yiimaliwa yokwiihumi-tha komeho melongo yaapo?"

Eyamukulo: "Epulo ewanawa nando edhigu okuyamukula. Omadhiladhilo ngono wa holola mepulo omanene maanangeshefa, ihe pamwe inatu pya ngaa manga kombinga yimwe otashi vulika sha zi mpono sho pamwe inaatu pulwa," osho gumwe a yamukula ngeyi pafupi nokwa ti kutya ina hala naanaa okuya mo muule woshinima.

Mukwawo gumwe okwa gwedhele po ngaashi tashi landula: "Oku na oompito dhimwe ngaashi miigwana yimwe omu na ombaanga yaavalelwamo, moka taa tula iimaliwa yawo, opo ya vule oku yi longitha. Tse muNamibia inatu adha natango onkatu ndjoka. Ombaanga ya tya ngeyi oyo hayi vulu okukwatha aanasikola. Otaa vulu okulya mo oongunga, yo ya ka galule iimaliwa mbyoka ngele ya piti. Kombinga yaanangeshefa mompumbwe ndjino, ngele ando oya yi kumwe, otaa vulu okweeta po sha, nando itaa mana po mpumbwe ayihe."

EPULO: "Olweendo nduka olwo oshikando shotango aanangeshefa yetu taa yi kOsoomi pamukalo nguka gwokwiifutula yo yene nenge osha ningilwe nale?"

EYAMUKULO: "Shika osho oshikando shotango aanangeshefa yomuNamibia taa yi kOsoomi ongundu yi thike mpoka yaantu 15. Opwa kala nale omalweendo gaasita naaimbi yomuNamibia taa kiimba hwiya, ihe aanangeshefa inaa monika nale ongundu yi thike mpoka mOsoomi; onkee aantu yomOsoomi ngaashi aatumwa aakulu mba ya li nale muNamibia, oya li taa ti kutya inashi dhiladhilwa nale ongundu yaantu mboka kaaye shi unene yiilonga yopambepo ya holoke ye thike mpoka mOsoomi. Opwa dhimbulwa kutya etumo lyaSoomi muNamibia nani inali longa owala uukwambepo, ndele olya kwatha wo no miinima yomahupilo."

*Momushangwahokelolo ngoka gwa li gwa pewa aatoolinkundana, kaanangeshefa mboka ya li molweendo lwa tumbulwa, omwa hololwa kutya aanangeshefa mbaka oya li ya hiywa kEhangano lyAanangeshefa Aakriste yomuSoomi. Mokufatulula elalakano lyolweendo, omushangwa ogwa ti: "Elalakano lyolweendo nduno olya li okutala nokutseya nokukonakona nkene aanangeshefa taa pindike hwiya-ka."

Omushangwa ogwa ti ishewe kutya yamwe yomaanangeshefa mbono ya yile molweendo nduno, oya tsikile olweendo lwawo oku ka talela po Israel moka ya talele po oongeshefa nosho wo omahala omapuki ngaashi Jerusalem, Betlehem, Golgata nosho nosho.

Otatu dhenge unene uunona sha pitilila

Ngame mwene sho te tala kashi shi unene oshiwana- wa omuntu to dhenge okanona kamukweni ndele owa fa ashike to dhenge eyoka. Akwetu natu dhenge ngaa tatu dhiladhila.

Ngame edhengo ihandi li mono mooskola adhihe, ihe omoosikola ngaa dhimwe po ashike. Ndji nda mona nomeho gandje, aalongi otaa dhenge unene noonkondo sha pitilila. Itandi ti nee aalongi ayehe yaampoka.

Ope na ngaa yamwe oyo ooyene yedhengo. Okaana ohaka geelwa unene shi vulithe pepuko lyako ndyoka ka ninga. Nandi yeleke nee omulongi okwa adha okanona mostudi taka indile okakwawo embo. Omulongi sho te ya ota ti okanona otaka piyaganeke. Oshili olyo nduno epiyaganeke ndyono? Ndele edhengo ndi taka dhengwa oto zi po we eta ohenda shili. Sho ka dhengwa otaka kumagidhwa nee:

- Tse otu mu lilepo ne!
- Nge ihatu mudhenge katu mu hole ne!
- Opo mu ki ilongele uwanawa weni ne!

Edhengo ndyoka onde li tala ko lya puka.

Omulongi omukweni
Martha Panduleni Elia
Oshakati

OHOMBO OSHIKE?

Ohombo oyo oshinima osho sha ufwa kuKalunga mwene, ashike echombo dopaife dimwe domudo otadi iimbilike, oda fa inadi ufwa kuKalunga.

Kaku na vali ovamatiiti ngaashi nale. Ovamati vahapu tava hombola ove na nale onunona oovavali ile oovavali ndele ita hombola nande oumwe womwaavo a nyona po. Ota kufa moshipakete, osho hawa ti.

Omufuko ota fiwa meumbo, manga omumati ta i kovanhu yave venya vonale. Umwe onghee a shunine kOushimba owa hombola nee ngaho?

Ame kakadona oo onde mu hombola ashike molwainima yange ei nde mu putula, shaashi eshi a li mofikola onde mu pele oinima yange ihapu. Ame onda hombola ashike shaashi kwa tiwa ava va hombola oimaliwa yavo otai we-dwa.

Ope na ngaho mbela omumati ta dula okuputula oinima ya wana omwenyo womunhu ou tau hepekwa ngaha?

Ovadali: Kendabaleni mu ha teye echombo dovana veni. noku va holekela momapuko molwaasho. Kumaideni oludalo nombili.

Oukadona: Oukadona ovo hava ningi omapuko ovoovo ashike hava hombolwa nomadimo e he shiivike. Oukadona kendabaleni mu ha hombolwe nomadimo opo mu ha nyemateke ovaholike veni, ndele mu va hafife opamwe novadali.

Ovamati: Kendabaleni mu hombola oukadona veni mwe va hala nomu va hole shili. Ovanyasha vopaipe otave liningi ovanhu vongaho. Ndele omolweehombo odo ve wete di he na ombili, onghee kendabaleni ovafuko veni va toole ohambo nomaholo ayo.

Ovanyasha kendabaleni mu lihumbate nawa mu dane oivilo yeni yaxuuninwa yohombo. Unene mu hafife ovakulunhu nyee mu yandje yo oshihopaenenwa shiwa kepupi tali uya. Ngeno oove nee wa tya okamatwe moishani pamwe nomumati woye e ku hole ee! Eps 119:5-10.

Namupa Simon



Yamwe yomosheendo shaanangeshefa shoka sha yile kOsoomi. Okuza kolumoho, Efraim Angula omuwiliki gwasheendo; Nangolo dhajacob; Helena (Josef); Hileni Elago; Kauna Nashandi; Frans Iihuhwa amushanga gwasheendo; Werner Namgongo; Frans Iindongo (Aupa); Gerhard Kambonde naNdishishi Kambonde.

Aanangeshefa ya li mosheendo kaaye li methano ndika: Eliakim Namundjembo; Eliakim Shiimi (Prince); Silvanus Vatuva; Jakob Vilho najohannes Sindano

Oluvalo lwomukiintu otalu kondjithathana

Otu li methimbo edhigu, ethimbo lya pupyala, pokati kiilongo inankondo, pokati kiigwana nopokati komaluvalo getu. Omaudhigu agehe ngaka oga zi peni noga etwa kulye? Okoluvalo lwomukiintu, omukiintu oye a vala, 1Mos 3:15. Omukiintu okwa tulwa omutima nolualo lwe, netulomutima ndyoka lya fa naanaa li ikunu pokati kolualo lwetu, nohenda yo yene kayi po tuu shili.

Omukiintu owa tegelelwa u longele shike moshigwana shoye? Otu na aakwashigwana ye li putse, otu na yamwe ye li kombanda yongamba. Aluhe ohatu uvu oonkundana dhomatsakaneno gawo, iihuna yowala, ohole kayi po, ombili kayi po, ohenda kayi po, omuntu namumwayina ayeche oya valwa komukiintu, ayeche oya valwa kuyina gumwe na kale ogwolwaala luni, ogwoludhi luni.

Okuyona kwoshipango oshihamano hakanona

Moshigwana shetu omu na euvoko lya puka lyoshipango oshihamano. Oshigwana ngashingeyi osha topola oshipango shika moongundu mbali.

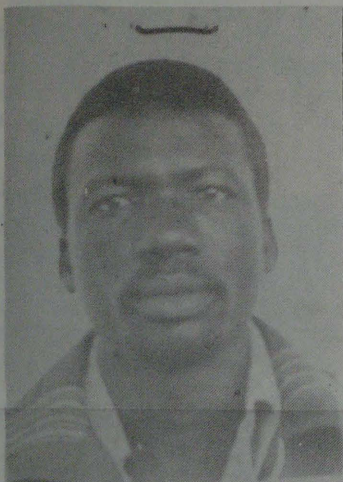
1. Okuyona kuKalunga nokaantu.
2. Okuyona kuKalunga ngaa.

Okuyona kuKalunga nokaantu, ongele omuntu a ningi etegelelo nenge a gandja etegelelo. Omuntu nguka oha talika ko a pogola tuu shili, ihe oku na owala okukonga ombili yegongalo.

Okuyona kuKalunga ongele omuntu he endagula owala aniwa oku na elago, molwaashoka Selma naNangula okwe yi ipatana, nenge Eva oku na aniwa elago, molwaashoka ina ninga etegelelo.

Omukriste omukwetu, ngele owi itula mongundu ontiyali, oto dhana nekano. Oshihwepo okuzimina eyono, pamwe to mono esilohenda

Ngeenge osho tashi twikile ngaha onakuiwa younona oi li moshiponga



Efiku limwe ovakulunhu vange okwa li va tuma nge keefitola ndi ka lande ko omundilo, oupalwa. Mokuya kwange kofitola omu hamu landwa oipumbiwa aishe onda enda nondjila oyo ya enda popepi nofitola yoikunwa opo pa li pe na ovanhu va omba momudile wokatala oko ka dikwa poshivelelo shofitola yoikunwa.

Mokatala omwa li mu na oipakete yomalea novanhu vamwe ova li omutumba koipakete oyo yomalea vo tave lilandelelo, ovanhu vovakulunhu.

lyokulandula Jesus, ihe ngele oto ti ongoye omunelago, oto kala omunamupyaalela esiku lya hugunina.

Okwoopalela Kalunga ku vule okwoopalela antu. Omuwa ne tu shitile oomwenyo dha yela, ye ne tu pe oondunge mekondjo ndika lyeitaalo, opo tu ka mone oshishani.

Selma, Eva naNangula, otandi ya pe ombili ngele omadhina ngaka oga tsa kumwe nomadhina gaanu ye li ko yo hayo nda dhilaadhila, oshiholelwa owala nda gandja.

Omunyoli
I.Sh.Shikwambi

+++++

Omaihokanitho mUushimba

Ngele to ende moodolopa ndhi dha simana ngaashi Windhoek, Tsumeb nopomina yaRossinga mono mu na aaniilonga ngiika ye thike 3000 ye li molukanda, Arandis nomoSwakopmund, oto adha uumati uushonashona ou na aakulukadhi.

Oto eta ohenda shili aalumentu aalongimina hayendji we ye na konasha nomagumbo gawo. Yamwe otaa ti oye na omagumbo gawo naakulukadhi yaali, gwokOwambo ihe ende ko kUushimba. Shaa e ya ko ota shuna ta ka longela a ye kooyina.

Oshigwana osha yonwa po kelikolo nokiikunwa, ndele tu kongeni ompito tu lyateleni iikunwa muulunde auhe pevi, opo Tate Kalunga e tu se ohenda. Ino hokanununa lyo egongalo lyeni lya shi sha.

Fanus Nestor

+++++

Eshi ndi hole sha talwa nawa, ondi wete omaludi omakende a dikwa mokati kavo nouhalasha vokunwifa va koshwa nawa nokwa tenhekwa pokamate oko ka li ka yalwa nawanawa. Eshi nda ehena popepi ondi wete okanona ka nangala medu inapa yalwa nande okalapi ko kake na oshikutu.

Oka li ka nangala mokati koipeta yomakende oo a pwa okunuwa. Omaulu ako okwa li e li momutenya. Ovakulunhu ove li momuuhalo muwalela tava ngwengwesheke elaka tave di tongo komadina dopunyapunya nadikwao da landula ko.

Umwe womuvo eshi kwa li e wete e li kokule nado okwa ehenifa oshipakete shomalea popepi osho kwa li e li ko omutumba. Mboli pokati koipakete opa li pe litonyena eyombokela. Eyombokela eshi la nhuka mo aveshe ove lihakana okukufa po omakende nouhalasha vokunwina nde tava faduka po. Okanona ka fiwapo, kape na ou e ka pukulula.

Eyombokela eshi la faduka po, ova pulafana ngeenge opa tika ekende ile pa tatuka okahalasha.

Hatu twikile ko vali molufo tali landula.

Ngh.Fikameni

Omukiintu kehe a vala, omukiintu, a thetwa, inatu mwena, tu kuutumbeni momutoko tu galikaneni, tu kugeni kuKalunga ketu. Tate Kalunga pamwe otse a tegelela tu ninge po sha, opo ombili yi ye moshigwana? Otandi indile aakiintu tu etheni ayihe yetu tu imangeni kumwe tu tzeni oongolo miigongi yetu momagumbo nomomikunda dhetu, opo Kalunga a kuthe po uutondwe mbo u li pokati komaluvalo getu. Tu galikaneni twaa na ezimbuko. Onkugo yepongo oKalunga mwene te yi tondoka.

E.Amutenya

Epukululo lya puka

MOradio Owambo moprograma 'Thadi wanene omutwe umwe, omwa li epulo nge osha wapala tuu oukadona tava tokelwa meendanisha oufiku. Omanyamukulo aa a li a yandjwa fye itatu tu kumwe nao.

Ame onda hala okukoleka oshipopiwa shanakyola moshifo sha pita nale kutya:

Omunhu nge oukadona oto ka tala shike meendanisha domaufiku? Nge oukadona nde ou li meendanisha doufiku fye katu shi nge ove okakadona. Nomudalakadi ha efele okaana kaye kokakadona keendanisha domaufiku hano okwa kanifa lela. Onghee ovapopi voshipopiwa osho inamu nyonapo oshiwana shetu, fye inatu hala okutungulula, nde otwa hala okutunga. Nye ne oukadona tamu hekelwa moulayi. Nge owe liningi wopeekamba namwene ito mu mono, oto ningi ngo nee womeendaanisha domaufiku.

M.S.S.Haufiku

ESO

Omukulupe Helena Shuungula Nangombe gwomimvo (93) okwa mana oondjenda dhe 20.9.1986 moshipangelo shaShakati methimbo lyuuwehame wethimbo ele. Ogwomegongalo Elombe, mOndonga.

Okwa thigi ko oyana 5, naatekulu omilongo 44.

Peha lyaamwayina Shimbamba shajason Elombe

Okamati Filemon Nghinaunye David Shikeshe oka xulifa oweenda wako 2.8.1986 mouyehame wethimbo lixupi moshipangelo mEngela.

Omwene na hekeleke omitema deni.

Ponhele yovadali Helena T.Vateimo Engela

Meme Jacobina Nathanael megongalo Onguta mOndonga, okwa mana oondjenda dhe 7.8.1986 moshipangelo shaShakati muuwehame wethimbo ele. Otandi pandula unene aamwameme mboka mwa li mwe mu pe ehungomwenyo, ethimbo e li mombete ye yuuwehame. Kalunga ne mu gwedhele, ye e mu zaleke oonkondo sho mwa kala nokunika oluhodhi pamwe nats. Joh.14:1-4.

Peha lyaakwanezimo Saima T.Kambishi

Tate Tylves Mutotela Shaanika, Uuthimawomeya Ongandjera, okwa mana oondjenda dhe 27.6.1986 muuwehame womasiku gaali. Okwa thigi po omuselekadhi gwe noyana 9.

1 Joh. 5:13, nEimbilo 630.

Peha lyaavalwa Loide Magana Shaanika

Dha za kep. 1

nganekwa kElelongeleki yoonkundathana dhetalululo lyoongamba dhiikandjongeleki miingongi yikandjongeleki yomumwe," osho sha leshwa mombilive yahugunina yoshitayi shoka kElelongeleki omasiku ngaka.

Kombinga yElelongeleki pantokolwa yalyo 543/86 nalyo olya holola olupandu lwalyo koshitayi shoka omolwokulundulula etokolo lyasho. Opwa ulikwa wo nkene ethaneko epe lyongamba yikandjongeleki lya taambwa ngaashi lya gandjwa koshitayingeleki shUkwanyama nokwa popilwa li ye koshigongingeleki oshiti 14 omumvo 1988, ihe li pitile moshigongi shiikandjongeleki muDesemba nuumvo mOngwediva.

Sebulon Ekandjo

Ekoko lyokulesha mungeleki ya ELCIN oli thike peni?

Mboka ye shi okulesha mOwambo oyo oyendjiyendji, naamboka ya hokwa okulesha iifo nomambo nayo oyendji wo. Ethimbo olya pya nale obiblio yi tamekwe, ihe inayi holoka mbala.

Omiyaluhokololo dhimwe odha simana momavi gi ili nogi ili. Unene ostantika ndjoka tayi holola, aantu yoopelesenda ngapi moshigwana ye shi okulesha, ohayi konakonwa noya simana. Muuyelele wostastika ya tya ngaaka ehumokomeho lyoshigwana ohali metwa.

Ohela onda tala embo ekulu limwe nde li thigulula kutatetkulu he yameme. Omumvo 1910 oostastika kombinga yomavi gamwe muEuropa odha li ngeyi:

— muOstenryk oopelesenda	16%	odha li kaadhi shi okulesha
— muFulanisa	25%	
— muHongarye	33%	
— muItalie	36%	

RUDOLF BAHM

Omupangeli gwootundi

MOSHAKATI

Mpaka otandi tseyithile aayakulwa yetu ayehe, kutya iilonga yokupangela ootundi, okulanditha po oompe nokwoopaleka ndhoka dha teka, okutula ko omakende nuumanya, itatu yi longele we metungo Jaica Inn.

Ngashingeyi otu li mpaka mOshakati metungo lya ENOK (BBK), mpeya hapa kala pwa thikama aluhe omaloli goeiskilima (Roomys). Shika otashi ti elalakano mpaka oku ku etela eyakulo ndika popepilela, waaha pumbwe we okufala nenge okutuma oowili dhoye kUushimba.

Ohatu landitha wo oowili onkulu kondando yi li hwepo, onkene tu talela po ngele to piti pOshakati.

EHYO KOSIKOLA

Osikola yOmbimbeli moNkurenkuru otayi ka taamba aalongwa aape omumvo 1987. Ninga eindilo mbala komukuluntusikola:

Kavango Bible School
Nkurenkuru
Private Bag 2084
Rundu 9000

Shoka tashi pulwa:

- ***Onzapo yahugunina mosikola moka wa li***
- ***Ombapila yegongalo***

H. Aasiku

— muPortugal	50-75%
— muRusia	50-75%

Igwana mbyoka ya li ya humu komeho nawa moshinima shika omumvo 1910, konyala aantu ayehe ya li ye shi okulesha shila opelesenda yimwe ayike kaaye shi okulesha, oyo Aahollanda, Aandowishi, Aaswedeni, Aaswitserlanda, Aanorwee nAasoomi.

Ondi wete kutya Aafulanisa nAaostenryk nayalwe oya humu ngashingeyi komeho, ngaa kaye li we ngaashi ya kala ethimbo ndyoka.

Ihe otu li muAfrika. Ondjalulahokololo dhomavi gomuAfrika odhi li ngiini? Omumvo 1913 aakriste ayehe kumwe mOwambo oya li 2 871. Osha yela kutya opelesenda oya li pevi pethimbo ndyoka manga. Ongiini ngashingeyi?

Etengeneko lyandje: 65% - 70% otadhi tseya okulesha. Kuku Liina Lindström okwa li a gandja oopelesenda 80%. Ngele ongaaka oopelesenda odhi li nawa unene. Momavi ogendji muAfrika oopelesenda dhaamboka ye shi okulesha inadhi adha 10%.

Andola pu kale ondjila yokuyalula aantu mboka ye shi okulesha, opo tu tseye omwaalu gwawo noopelesenda tatu dhi gandja, dhi kale dhi shi okwiinekelwa.

Onda hala ndi endulule shoka nde shi tumbula petameko: Mboka ye shi okulesha oyendji mOwambo. Oshikumitha ngele to dhimbulukwa kutya omumvo 1870 inamu adhika nando ogumwe e shi okulesha nelaka lyaantu inali nyolwa nando omembo, elaka lya nyolwa kalya li po.

Osha zi peni kutya muka mOwambo aantu oyendji oye shi okulesha? Kalunga mwene okwe shi enditha ngeyi.

Rautanen nayalwe mboka ya tameke iilonga, oya li Aakwalutheri yashili. Oya li ye na edhiladhilo ndika kutya, omukriste kehe e na okukala e na ompito yokulesha Ombimbeli melaka lyooyina. Aatumwa oya thiki 1870. Okambo ABD oka holoka 1876 - 1877. Aantu oya longwa okulesha nomambo ga tameke okuholoka.

"Embo lyomayeletumbulo" (mobiblio) oli na Omayeletumbulo 2483. Uuyamba ou thike peni! Embo ndika oli na ondilo omolwoondunge dhaakulu yonale adhihe dhi li mo. Embo ndika otali holola kutya elaka lyOshiwambo oli na uuyamba wiitya nomatumbulo.

A. Oshigwana osha huma komeho notashi simanewka ngele aakwashigwana ye shi okulesha.

B. Ehutmokomeho lyoshigwana oli na uukolele oshigwana ngele sha dhimbulula ondilo yelaka lyooyina. Omaiuvito ge na omadhiladhilo ge omuntu ota nyengwa oku ga hololola mo momalaka omakwiilongo. Andola aantu ya penduke shili nokutameka okunyo la omahokololo nuutewo niinyandwa opo obiblio yi kale yi na ooraka odhindji dhu udha omambo ga nyolwa mOshiwambo.

Aniwa kOsoomi- nondi na okutya "aniwa" oshoka inandi kala ko unene, inandi shi koneka kOsoomi onde shi hokololelwa kumboka ya tseya- aniwa kOsoomi mboka ya gandja iimaliwa yokuyambidhidha metungo lyObiblio, oya hwamekwa kedhiladhilo ndika: Aaleshi Aawambo oyendji otaa ka mona ompito yokulesha omambo ga nyolwa mOshiwambo.

UUKUMWE HWEPO SHI VULITHE ETOPOLO: O- NGELEKI YAANGLIKANA YA TI

Omutumba gwoshigongingeleki shOngeleki yaAnglikana moshikandjongeleki sha-Natal mu SA, ogwa tinda natango oshikandjo shoka shi topolwe miikandjongeleki iyali. Omatompelo ga gandjwa uunkundi wekonomi lyongeleki nonkalo yopapolotika moshilongo.

Pashifonkundana shOngeleki ndjoka, Seek mu-Septemba nuumvo, uule womasiku gaali oshigongi osha nyengwa okumona omatompelo go-kutopola oshikandjo shoka methimbo ndika.

Edhiginino lyuukumwe woshikandjo oye li ta-la ehwepo shi vulithe etopolo lyasho, oshifo sha ti.

ONDANDO YOMUKWETU 1987

- Oshifo shimwe ohashi kosho 40c
- Ondando omumvo aguhe muNamibia nomu S.Afrika R6,00
- MuAfrika alihe R 10,00
- Kombanda yomafuta R 14,00
- Kombanda yomafuta mondhila R 17,00

* *Kaanangeshefa mboka ya hala okutseyitha iinima yawo mOmukwetu, epandja limwe alihe otali kosho R 112,20*

— *Ngele etseyitho eshona, iimaliwa otayi kululwa wo pevi.*

*Shiivifa oinima yoye mO-
MUKWETU, nowa hanga omu-
nhu keshe wa hala!*

IMONENA OMAKENDE GOKOMEHO

Okuza 01 - 06 Desemba 1986 mehala lya tseyika nedhina CENTRAL DISPESARY li li popepi nongalasho F.M.Garage, puKapapaleni, otapa ka kala omukonakoni gwomeho nota vulu okugandja omakende gokomeho.

Ehala ndyoka oli li pokati kaNambili naAupa.

Ngoka wu uvite ompumbwe ndjoka ino etha ompito ndjika yi ku ende ponto.

++++
“Natu kwathwe opo aakulupe okuza pomimvo 60 momagongalo ya kale ihaa futu we iigandjwa momagongalo, oshoka oya talika ko oyo aakulupe lela. Ano aakulupe yoshilongo shetu oyeni twa tegeleleni?”

David Ipinge
Oshakati

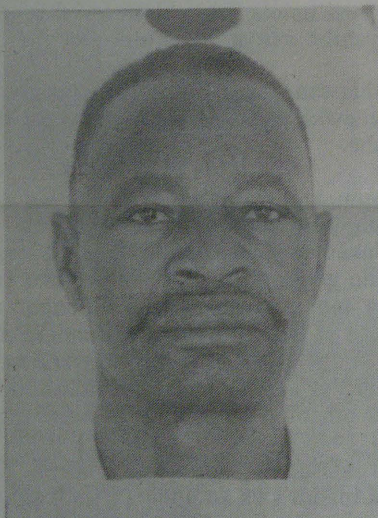
EYAMUKULO:

Aakulupe oyo yene ya ningi eindilo nenge ongoye ashike we eta ohenda? Pambimbeli okugandja kegongalo ngele okwa talwa oshitopolwa shimwe shomuntu okuhambelela Kalunga ke, ondi inekela kape na ngoka e na omukumo megongalo okushunitha ko omukulupe niigandjwa ye.

Ishewe ngele aakulupe momagongalo ohaa yalulwa ye na oongunga dhiigandjwa, naashono itandi shi popile. Ashike pawino wandje miilonga, omukulupe ngele owe mu shunitha noosenda dhe, ohashi mu kanithile ombili oyindji.

Amushanga gwOmukwetu

ESO



Sakaria Andreas Nuumbala megongalo lyaLukonda, okwa mana oondjenda dhe eti 28.9.1986 mepipi lyoomvula 73 muuwehame wethimbo ele. Okwa thigi ko omuselekadhi, oyana 20, aatekulu 76 naatekulululwa 2.

Ekongo loukadona

Nandi kwafwe ndi mone ewedelopo moshiwana ngeenge osha yuka ngaho ovamati unene tuu ovo va longwa ile ndi tye ovanashilonga nokuli, eshi hava kongo oukadona ve li meestanda dopedu ngaashi Std 6,7,8 pefimbo olo omumati a konga okakadona ke li mo Std 6 ndee taka piti okaye naanaa, taka piti vali Std 7, natango okaye naanaa, eshi tuu ka ya mo std 8 koo oka dopa osho. Eshi ka dopa, mofikola inaka tambulwa vali, koo kake na oilonga, paife oke li nee meumbo.

Omumati shamha nee a mono ngaho, yee ota denge mo daye vati ina hala e “cow-girl”! Paife owa li wa konga okakadona oko shaashi u ka hole, ile oshaashi ka li mofikola? Eshi we ka efa nee omolwaashi ka dopa? Hamolwaasho ke na omikalo dii ile elihumbato la nyika pange apa.

Omunhu ngee ou shii kutya ove oho kongo, kwafela ava hava kongwa opo u ha manepo omafimbo avo. Shaashi ovamati ohamu manepo omafimbo oukadona, osho hashi va twala fiyo omeponduko. Nonawa nee ngee omunhu wa dengamo doye u shivifile mukweni. Shi dulife ngee u mu li koshi.

Kovakwashiwana, okwa tiwa ihadi wanene omutwe umwe. Ove oto ti ngahelipi? Onda teelela omawede-loko kunye nomapukululo mahapu kunye natango.

Peuyeshasho
Oshikango

OMUKWETU

Oye oshifo shOngeleki Onkwaevangeli paLuther yomuSWA/NAMIBIA.

Ohashi nyanyangidhwa mOshinyanyangidho shOngeleki mOniipa.

Omukuluntu gwoshifo omumbisofi Kleopas Dumeni.

Amushanga gwoshifo omusita Sebulon Ekandjo.

Ondando yOmukwetu muNamibia naSouth Africa R5,00 komumvo.

Palwe muAfrica R8,00 nokombanda yomafuta R11,00 komumvo. Mondhila R13,00.

Oondando nomambesitelo agehe naga tumwe kOmukwetu, Oniipa, P/Bag 2013, Ondangwa, 9000.

ELOC PRINTING PRESS
PRIVATE BAG 2013, TEL. 11, ONDANGWA 9000
SWA/NAMIBIA