



Efimbo paife ola pya muNamibia okaa- na ke lihepekelwe nokulongwa — Mu- nyika

KuSebulon Ekandjo

Ongwediva, OWAMBO: Omufita Veikko Munyika okwa londwela ovapwilikini vaye kutya efimbo oleli la fika opo ku lihepekelwe nokaana nande kamwe akeke ka mone ehongo liwa mouniveesiti. Eshi Munnyika okwe shi popila mOngwediva omafiku a dja ko mokavilo kehambelelo omolwovahongwa vavali va aluka kelihongo lavo.

Omuhongifikola Rehabeam Katengela Auala nahefolo laye Hilma Dhiginina nokashiveli kavo keedula mbali netata ovo kwa li tava kundwa fiku olo eshi va aluka kuAmerika neenghatu dopombada.

Mokuulika kwaasho sha popiwa komishangwa kombinga yehongo muAfrika novahongi ovo tava dula okuhonga meeuniveesiti, kutya epeleshenda nhatu adike omufita nomuhongifikola Munnyika okwa ti: "Ngeno ku totwe yo omahangano ovakwashiwana oo taa dula okuli-hongifa okaana nande kamwe akeke."

Ompangu yu undu- lilwa komeho

Epangulo lyoonkwatwa hetatu Andreas J. Heita (22); Salomo Paulus (27); Andreas G.T.(23); Gabriel Mateus (23); Martin Akweenda (23); Johannes Nangolo (33); Petrus K. Nangombe (23) naSakaria S.B.Namwandi (18) olyu undulilwa natango komeho.

Epangulo olya li 8 Septemba 1986 mOvenduka notali ka kala ko ishewe 29 lyaKotoba.

Okwa weda ko ta ti ehongo oshinima sha pumbiwa komushitwa keshe, unene tuu kOmuna-mibia, ou kwa tya ngaho ye oku li moukoloni, ye oha fininikilwa ehongo "lomatyatya."

Omolwomhumbwe ei tai dengele muNamibia yovahongi ve he po neefikola da wana di he po, unene moshitukulwa shokOumbanganhu, omushamane Munnyika okwa yandja efaneko ku ningwe omhangela yelongekido oule weedula nande omulongo. Mefimbo olo otamu tumwa ovalongi nande kevahapu keefikola diwa ve ke lihonge.

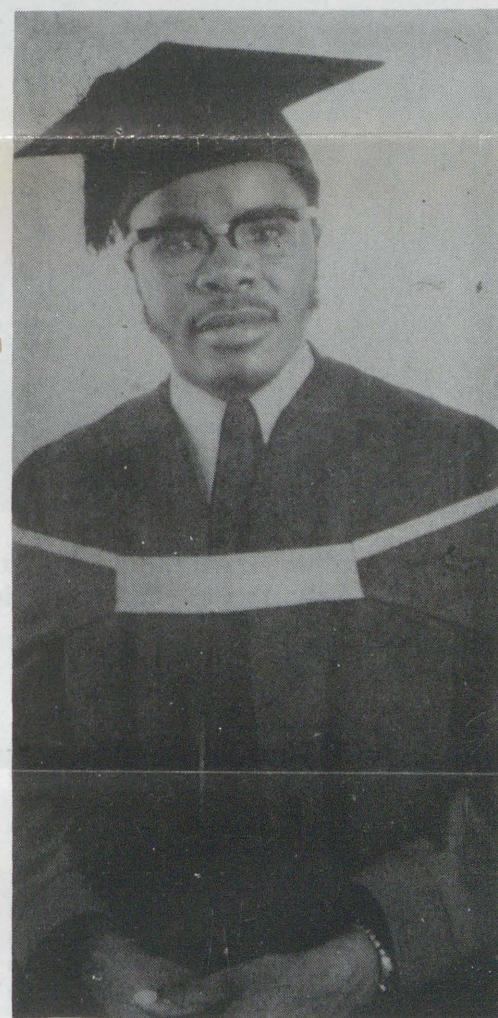
"Apa pu pitila omido 20 otapu ka hangika ku na ovalongi va mona ehongo liwa, ve shii okuli-neekelwa moinima yehongo, osho a tumbula.

Elongekido eli ota ti olo "omhangela yefimbo lile," (longo term planning) nosho onghedi yokuninipika okweeta mo ovahongi ovakwailongo ovo inava shiivika kutya otava etelele mo enwefemo la tya ngahelipi moshilongo shetu.

Muhongi Munnyika okwa londwela oovene voshivilo novapwilikini aveshe va li po va yepe oshiponga shodinokalunga, eshi pefimbo eli a ti otashi ende tashi liwewenyene kehongo nokeputuko.

Ava va wila nale musho okwa ti "Kalunga ohave mu pumbwa ashike ngeenge pe na eefya opo omudimba u ka ende mongeleka, omo e lihulile mo pehombolo." Oshiwana shetu osha pumbwa tetetete ovahongwanhu ovakriste, shi dulife okundubila omaunongo mahapu po pe he na Kalunga," osho a kumaida.

Omushamane Katengela okwa menekelele kuAmerika eedula nhe netata mouniveesiti yaMiami omo a pewa paife onghatu youndokotola moshimhungu shehongo fimbo omukulukadi waye a mona onghatu yotete mouhakuli, Association in Applied Science in Nursing moule weedula



Katengela, ethano olya thanekwa pethimbo lyegandjo lyonkatu yotango B.A. mu SA

Tala kep. 12

OVANAMIBIA MOUPONGEKWA OTAVA LYAAMENE NODJUULUFI KEDU LAVO

Etalelopo lahamushanga wOMUKWETU koLusaka muZambia, vo nomumbisofi Hendrik Frederik pehulilo lohani ya dja ko, ole mu pa omhito iwa okulesha efano longhalamwenyo yoshiwana shinya sha pongekwa paife eedula di dule 25.

Kombinga yavo keshipu naanaa omunhu okuxunganeke, kutya otave shi tile ngahelipi, ashike eshi tashi piti momakanya avo, luhapu osho ashike: Ongeleki inai tu dimbwa nande mekondjo letu.

Hamushanga ou ota hepaulula ngaha, kutya ovanhu venya keshe apa to va hange, omalinyengo, eenghedi noipopya yavo oyOvanamibia lela. Inava kanifa po sha. Epupi okudja kodula imwe fiyo eedula 12, ngeenge ite ku lombwele nokutya ye omo a dalelwa moupongekwa, shapo ote ku lombwele ta ti okwe ya mo munini lela.

Ashike eshi inashi va imba va humbate ohole yoshilongo shavo Namibia komitima nande omafele omuvo inave shi mona natango nhumbi sha tya. Vali oku he shii ko kwavo inaku va imba va tokole okuyandja eemwenyo davo

shetu yo oku va honga nokutya omutondi kee shi oluvala loshipa, ndelene omutima womuntu eshi tau tu diladila moutondwe, osho umwe womovawiliki vongudu a hepaulula.

Ehongo eli ohave li pamekifa noilonga eshi luhapu tava tambula Ovatiyaane ovaenda mokati kavu ngeenge va ulika tete ohole yavo kutya navo otava lalakanene ouwa waNamibia nemanguluko lasho.

Umwe wavo omufita Gerhard Heimerix ou a yakula paife efimbo lile mokati kavu meongalo laNyango. Ou momesho avo ke fi vali omutilyaane ndele omukondjelimanguluko pamwe navo.

“Ashike peemhito dimwe ohava fiki momalimbililo madjuu omo tava holoka nomapulo manene ngeenge Kalunga oku va hole tuu shili,

ngaashi e hole Ovatiyaane ovo va kwata ko edu lavo keenghono domauta,” osho omufita wavo Katalala a hepaululila hamushanga wOmu-kwetu nokuulika keyakulo lavo lidjuu ve likwete mokati koshiwana osho sha kanifa omaumbo, omaliko, omapata nedu lasho nokuli.

Okukola kwopambepo yavo mokukondjela emanguluko lohilongo shavo oule weedula di fike opo, okwe va kwafa okukala yo va pama no-moinima yopamhepo oyo hai pula omunhu eteelelo mwaasho shi he wetike manga nomesho.

Eitavelo lomuKalunga olo tete va shiiva fimbo inava wila moupyakadi wopapolitika. Omulo ve lihonga tete ondilo yomunhu nemanguluko laye. Omo yo velihonga ouyuki nombili, kutya oi na okuwanifilwa omunhu mukweni, inapu talwa koshipa shaye, keitavelo ile konakudiwa yaye.

Komukangha weitavelo eli vahapu fiyo onena oko va kanghamekela ekondjo lavo eli tali va pula fiyo onena eenghono dopalutu, dopamhepo neemwenyo nokuli.

Ounona vanini novanyasha va dalelwa penya, navo otava konekwa va tekulilwa naanaa momhepo ei yomukumo noyetelelo, kutya efiku limwe ve ke lihangve ve li muNamibia la manguluka. Moshiwana osho shipe sha holoka penya, omunhu oto tomhelwa noupu, kutya outeku mukulu wopashiwana okukala novakukunhu nokukalafana navakwao, oshinima sha diiniwa, onghedi ei ya pumba paife meni lohilongo shetu.

“Inatu hala fiku Namibia tali manguluka, opo vali hatu ka kala tu na oupyakadi wokuhonga ovanhu nghe ve na okukala nemanguluko lavo,” osho omupresidende wongudu, omusamane Sam Nuujoma mwene a tumbula pOmu-kwetu mokuulika oshinakuwafwa shinene osho ve shi na mokati koshiwana osho shi li moixwa. Ounona vodula imwe fiyo nhatu otava kongwa kooina, kutya omolwashike ve li moixwa. Okudja peedula nhano fiyo heyali ehongo eli otali twikilwa moshikunino komudali a hoololwa nokwa tekulilwa oshilonga osho. Apa yo ehongo lopakriste otali hovele mofikola yOsoondaxa. Kwaasho Omu-kwetu a hokololelwa kovakalimo nokutala kwaye nomesho, onhele inya Nyango, okamba yovafadukipo muZambia



Methano ndika Amushanga gwOmu-kwetu ngoka e na ethano peke. Ethano olya thanekwa konima yelongelokalunga

ongefiyawilo lemanguluko lohilongo osho ohole yasho ve i nyama ashike kevele looina.

Aveshe kumwe ovaxungu, ovakulunhu, ovan-yasha, neehanana, otava lyaamene omesho avo kuNamibia va teelega efiku limwe va alukile koshilongo, opo va monafane neendenge davo, ovakulu vavo, ooxe nooina ava ve li ko.

Ou e va imba mwaashi ove mu shi, ove mu ngongoshekelwa onghee shidjuu kuvo oku mu tala omunhu, ndelene ove na oshitya shavo “omutondi wetu”. Omonhele ei Nyango, mwa dile omikanda da shangwa keemhutu, da shangela komupresidende waAmerika, omushamane Reagan opo a xulife po eindilo laye okumangela kumwe emanguluko laNamibia nOvacuba muAngola, nokatokolifo koiwanahangano 435 ka tulwe diva moilonga.

Ounona vetu ove na oupyakadi alushe ngeenge tava mono Omutilyaane, ova hala ashike okukondja ile okufaduka po, ndele oshisho

Tala kopardja tali landula

ONDANDO YOMUKWETU 1987

Opwa pita ngashingeyi omimvo odhindji inaatu gwedhela ondando yoshifo shOmu-kwetu. Muule wethimbo ndyoka oositombe noondando yoombapila oya gwedhelwa otwindjilwindji. Osho tu thiminike natse wo tu gwedhele ondando yoshifo ngaashi tashi landula omumvo 1987:

- Oshifo shimwe otashi gu 40c
- Ondando omumvo aguhe muNamibia nomu S.Afrika - R6.00
- MuAfrika alihe = R10 -00
- Kombanda yomafuta R14-00
- Ngele omondhila R17-00 komumvo

Otatu pandula noonkondo mboka ye tu landa noyi imbesitelele omimvo dha piti notatu inekele otaa tsikile natango nomukumo okukaleka po oshifo shawo.

Omumvo 1985 otwa li twa kambitha ko owala R4312,03 tu tsakanithe iilonga yetu. Ngiika egwedhelo ndika otali ka mana po ongunga ndjoka.

Amushanga gwOmu-kwetu

ya fimana mouteku wayo wopahongo osho yo mefiloshisho loundjolowele.

Ehongo olo tali hovele noshikunino, otali ka xula fiyo Std. 8 nopo nee tava ka twikila keefikola dimwe koilongo noilongo. Omalutu ovakalimo mokamba ei, otaa monika a kola nawa, nande kombinga ikwao omhepo yavo tai monika yo ya dengwa kodjuulufi yokeumbo.

Odjuulufi ei inai kwatelela mo, kutya ove lilongekida ngeno okutambula ko keshe efaneko tali va yeululile omuvelo wokuya muNamibia, ahowe. "Emanguluko laNamibia otu na oku li futa ondilo ngeenge mboli osho tali tu pula, onghe twe lilongekida natango oku litelela noku li kondjela oule weedula 20 ile 30 komesho," osho tava hepaulula nomukumo.

Moipafi yavo ounona ile ovakulunhu, ito fiilwa nande omalimbililo asha, ndele oto mono nokutya venya ove na oshinakuwanifwa ve shi tambula ko nove shi humbata nefimaneko.

Oshihakulilo shonhele oyo oshi na konyala eembete 12 kokanyofi, omo twa hanga ihamu nangala nande omunhu umwe. Eshi osha ulika oudiinini muwa woukalinawa mokati kavo, ou omolwoku he u na tashi kanififa eetundi dihapu ngaashi muNamibia okuteelela eyakulo ile okunangala meembete nokuli.

Pefimbo letalelopo letu, inatu hanga po omundohotola, ashike oostetela ava twa hanga po itave ku lombwele nande oupyakadi moilonga yavo yepango lomikifi edi omunhu wa teelela ngeno di kale tadi holoka, kakele koMalaria.

Kutya omolwashike okanyofi nako kake na omunhu meumbo enene lovanyasha novakulukadi ve fike penya, OMUKWETU okwa nyamukulwa ashike kutya osheshi oshiwana osha hongwa okulihumbata nawa, nokombinga ikwao efiloshisho lopamhepo mokati kovakalimo otali longifwa nawa.

Eshi osha tumbulwa hapo momhepo yomasendjo, ashike oshili yasho nayo kai shii okukandulwa po filufilu.

Kaku na emanguluko loshilongo ngeenge kaku na tete oilonga yomake movakalimo. Eshi osha udika ko nosha tumbulwa nawa mongudu ya SWAPO. Nyango ngaashi i li onhele youteku onghe muyo mwa dikwa eeprojeke moinama i lili noku lili ngaashi omauteku oimuna, oinamwenyo ngaashi oingulu eexuxwa, oulimba needila osho yo omapya.

Eeprojeke edi dihapu ohadi mono ekwafelo



MoNyango, iipala yaanona otayi holola natango etegameno lyonakuyiwa

loimaliwa kOngongahangano yOvakwaluther mounyuni. Nelalakano leeprojeke edi haku shiiva ashike okutekula oinima ei, ndele omo yo ovakalimo tava mono oipalwifa yavo. "Moule wefimbo lixupi lela, itatu ka pumbwa vali ekwafo tali di pondje loipalwifa," osho umwe womovawiliki a tumbula.

Okudja 1974 eshi omuvalu munene wOvanamibia va tauluka ongaba, Ongeleki muNamibia oya kala ya humbata oshisho shinene shoilyo yayo oyo ye ke lihanena nounyuni wopondje. Ongeleki eshi ya li kai na eshi tai dudu okuninga, oya indila keemwainangeleki mounyuni di humbate efiloshisho lofadukipo venya, nosho sha ningwa mohole inene nomelitule mo.

Paife eyakulo lopamhepo mokati kOvanamibia ovafadukipo tava tengenekwa 90,000 fiyo 100,000 muZambia nomuAngola, otali monika kutya oshilonga sha tulwa nawa meshikulafano. Ovayakuli ovadalelwa mo navo yo ova penduka moilyo yongudu oyo nokuyakula vamwaina.

Umwe wavo ou OMUKWETU a shakena naye oye omufita Erastus Haikali, (Katalala). Ou omushamane muye to lihongo diva oshinakuwanifwa shomukriste pamwe nemanguluko

lomunhu ile loshilongo.

Mokati kounona novanyasha, Katalala okwa talika ko oxe nomutekuli wopamhepo nomokati kovakulunhu okwa talika ko omupia nomuyakuli. Apeshe apa te linyenge mokati kongudu aveshe otava ingida kehafo 'Katalala.' "Kalunga ou omunaenghono adishe nomushiti waashishe, otashi dulika tuu a shite ko ovanhu vamwe ovahepeki vavakwao? Otashi dulika tuu Kalunga a pitikile ovakriste va longife okatongotongo? Kalunga oku hole tuu shili Ovatiyaane shi dule Ovalaule?"

Omapulo oludi eli namakwao e a pamba, oo haa pulwa ovawiliki vopamhepo, unene kovanyasha vongudu ei, nomunhu u na okulungama moku a nyamukula opo u he va nyonene eitavelo lavo. "Ongudu yetu ya SWAPO ohai tu yambidida neenghono moshilonga eshi shopamhepo nosha ningifa eyakulo letu li ninge lipu," osho Katalala a holola olupandu laye moshinima osho.

Pauyelele ou twa pewa komupresidende Nuujoma, okulungela Kalunga oshitukulwa shimwe shomoiilonga oyo ya itavelelwa okuningwa mokati kongudu. "Ovanyasha ove na emanguluko okuhoolola eifano loufita mongudu yetu nokulitekula mehongo louteologi" osho ye mwene a tumbula okuyelifa oshinima.

Mokukoleka oitya yaye, omupresidende okwa ulika kovalihongi vongudu yaye vavali; Lukas Nantanga na Teofilus Kalimba ovo tave lihongo paife mofikola youfita nova teelelwa va yakule ongudu.

Pamwe neyambidido lewiliko longudu, oshilonga shopamhepo movafadukipo ohashi mono yo ekwafo linene kOngongahangano yOvakwaluther nokOraata yeengeleki muZambia. Omunhu oto shi tambula ko neudeko yo eli, kutya meumbo laNyango omu na oku kala yo mu na omaushima komukalo wonhumba ile wongadi, oo taa shiivika ashike kovaneumbo voovene, ndele ha komweenda wa kala ashikepuvo efiku netata, okuninga ve e ku hololela.

Omaushima oo ihaa tetekele momesho ovaenda, ohaa talwa opashitwe naashi osho nee hashi yandjifa etumba kunakutalelwa po.

hitwe naashi osho nee hashi yandjifa etumba kunakutalelwa po.

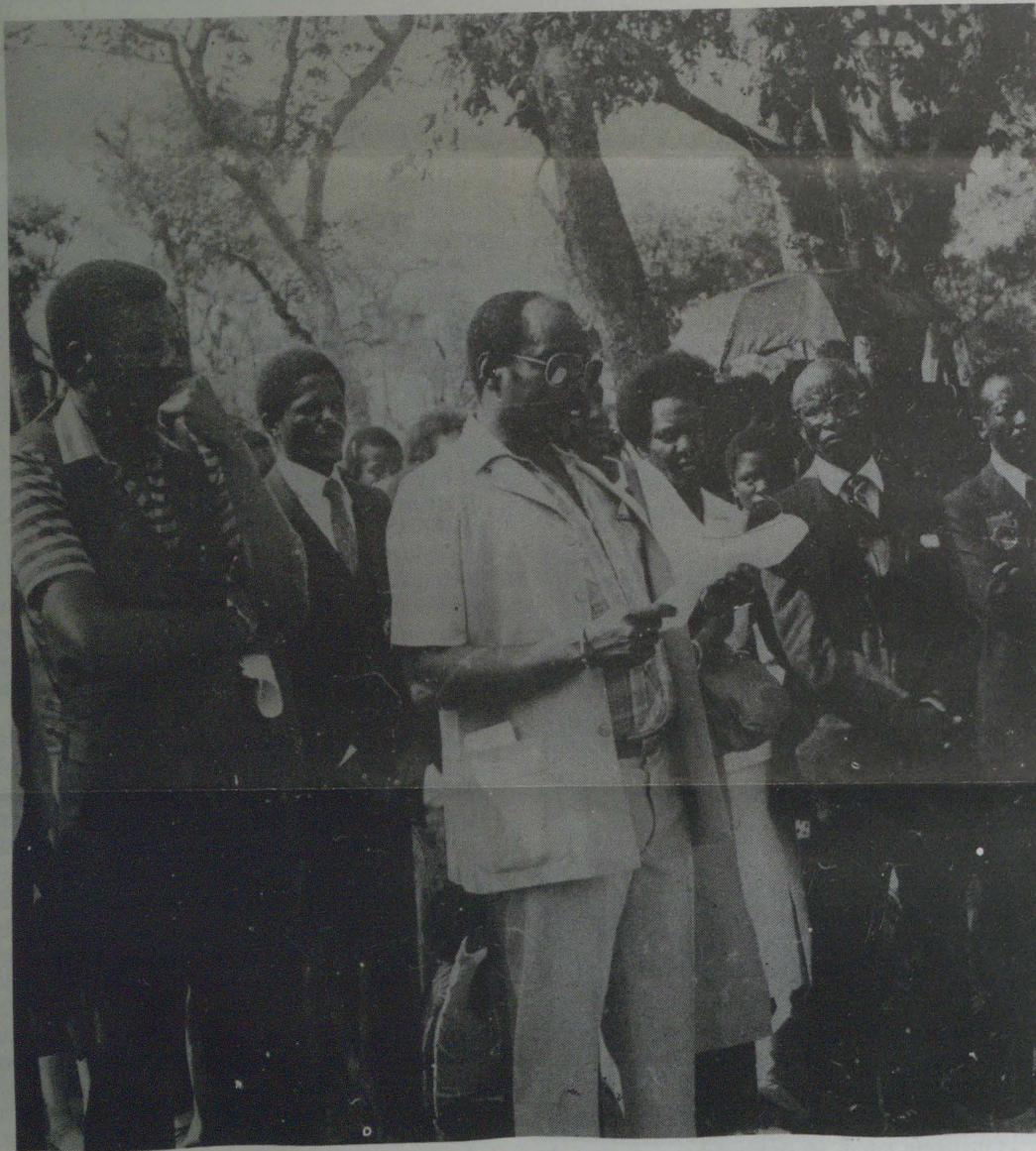
Omathano tala kep. 4,5,6, na 7



Uumentu otau inyanyudha nuudhano wokatanga



Aavali oye etele esiku ndyoka uunona wawo keshasho eyapuki nowa shashwa mOngeleka ompe



Amushanga gwelongo moSWAPO omusamane Nahas Angula pokati lela ta popitha egongalo lyaNyango pondje yOngeleka

Oshinima eopaleko mOmukwetu gwesiku 30 Mai 1986 pepandja 5

Oshipanyolo onkugo yokuEtiopia ya uvika wo nomu Eloc.

Omagongalo ngoka ga gandja ongalo yokuEtiopia moshitayingeleki shUuninginino, Egongalo eti 9 Endola lya gandja R77.10, mOshitayingeleki shokUukwanyama egongalo eti 8 Endola lya gandja R104-79. Ano shika osho epuko. mOshitayingeleki shUuninginino kamu na egongalo Endola. Egongalo eti 9 Elondo lya gandja R77-10 ongalo yokuEtiopia. Otatu indile nesimaneko mu opaleke oshinima shika.

Gumwe gwomaakwanegongalo Elondo.

Tangi kekwatho lyoye omuleshi omukwetu. Amushanga gwOmukwetu

Namibia tali kundathanwa natango muNew York

Omutumba gwowina gwiigwanahangano ogwa tameke ishewe omwedhi nguka muNew York moka omukundu gwaNamiba tagu ka pewa ethimbo ele lyoonkundathana. Shoka oshigongi shaayeche sha UNO oshiti 41 moka aapopi 100 ya tegelelwa ya ka holole omadhiladhilo gawo kombinga yaNamibia

Iikundathanwa iikwawo yomiikundathanwa yoshigongi shoka 140 otayi ka popya kombinga yaAmushanga omupe omulanduli gwomusamane Javier Perez de Cuellar ngoka ethimbo lye lyeyakulo lya pu ko, osho wo kompumbwe yiimaliwa ndjoka tayi piyaganeke onkalo yehangano ndyoka lyiilongo 157.

+++++

Kuku Josef Nangombe Shikongo okwa mana oondjenda dhe 5.9.1986 megongalo lyaNyaanya. Okwa thigi ko omukulukadhi gwe noyana yatano naatekulu 40 aatekulululwa 26. Eimbilo 309

*Okatekulu ke
Rakkel Ndinelago Ndokosho
Omuntele.*

+++++

ONKALO YOMUSELEKADHI NOKUHEKELE-KWA KWAWO

KulImmanuel Iithete

Etsikilo mOmukwetu No.16/86

Mokuputudha, ilonjeni aanona nomaukwatya gawo. Aanona ohaa koko momathimbo gatano. Ethimbo edhigu kuyo yene nokaavali oyo ethimbo lyekopolo. Pethimbo aamati taa mene oombenzi, omawi taga ndunduma. Osho wo aakadhona taa ya uugundji taa mene omafufu nosho taa dhimbululwa koombulwa miipala yawo, osho wo ekuni noshityani nenge etangalalo lyontumba.

Ethimbo ndika ohali adha omunona kehe, ihe ihali kala lya faathana omolwaasho omaukwatya gaantu inaga faathana. Yamwe otaa adhika ke-thimbo ndyoka kuyelee poomvula 9,10 na 11. Yamwe otali ya adha 13-15.

Maakadhona olwindji otali ya kuyelee, oshoka aakiintu ohaa koko mbala. Onkee ngele oto mono okamwoyekadhona taka nkunyanana megumbo sho to ka lombwele, nenge take ku yamukula omalaka omadhigu, dhimbulukwa ethimbo ndyoka. Ngele oke na olutu olunene, olwindji oyo aadhigu methimbo ndyoka.

Otaa kotha olwindji nomutenya, sho to mu lombwele ninga shontumba, otashi vulika a tye: Ngoye iho shi ningi? Oto lombwele ndje owala ndi ka longe, ngoye wa kuutumba ashike. Sha hala okutya, ngaye nangaye omukiintu ngangoye, ku wete nomagundji nde ku fa? Pethimbo ndino otaa pumbwa ohole oyindji. Oto vulu oku mu yamukula:

Ondi shi lwete kutya nangoye omukiintu ngangoye, ihe ngame ongame nde ku vala. Tegelela u ka vale yoye opo u pangele ngaashi tii ku pangele. Mu lombwela ishewe kutya ou li methimbo edhigu, ndele kotoka, ethimbo lyo lyene otali ka hula po, ihe kambadhala kaali ku faalele. Tse natse osho twa li.

Ino kambadhala okudhenga ethimbo alihe, omunona ota fadhuka po. Ye shaa a fadhuka po ota ka konga iipululu iikwawo nenge ta ka konga aamati opo aniwa a mone ohole ndjo ihe

yi pewa megumbo.

Shaa to kondjo nokupopya nokukumagidha ethimbo otali hulu po owala, ndee ta ka galukila muuntu uwanawa ishewe. Monkalathano otu na okudhimbulukwa kutya aantu ayehe oye na omaiuvo. Tashi ti omuntu kehe oha dhiladhila shika naashiyaka.

Nolwindji otashi vulika a dhiladhile sha sho we mu tala nomeho geni ga tsakanene. Aantu ohaa idhiladhilile sha. Ngaashi ku na omikithi dhontumba ngaashi okanker hashi vulika yi kwate omuntu sho e yi tala.

Oshitiyali aantu ihaa faathana. Ngaashi omalupe, omeho, omafufu getu gokomitse nomayego nokweenda kwetu inaaku faathana, osho naanaa tu li ngaaka nomadhiladhilo nomokukala akuhe twa yooloka. Otu rfa omaukwatya twe ga thigulula kuyo. Osho wo okuuva nayi nenge okweehama kwetu kwopalutu inaku faathana.

Otashi vulika gumwe a terwa okalalo komunwe ihe otaka ehama unene nota lili, shi vulithe gumwe e na elalo enene mokugulu. Osho wo euvo-nayi nokweehama kwopamwenyo, aantu otwa yoolokeni. Gumwe oha uvu nayi a popiwa ashike okahapu okashona oha lili mbala nenge ha si oluhodhi nuupu, onkee ino lombwela nokuganda omukuluntu kutya:

“Ino lila, okalalo okashonashona hono.” Nenge ino uva oluhodhi, ino lila omusamane gwoye, owa thigilwa uunona.” “Natu taambeni okuuva nayi nokulila kwayakwetu, oku na etompelo. Inatu ganda yaalile sho twa tala ye tu lilithe wo, ihe ngele otashi vulika lileni pamwe. Okulila okwo okukungu.

Okanona ngele oke na onyango ihe itaka kungu, otaka hepekwa nayi konyango. Ihe mokukungu otaka pepelelwa. Ngele ishewe mukwetu okwa hala okuholola sha kombinga yomwana a mana oondjenda nenge e na uuvu nenge kombinga yomusamane gwe, mu pulakena, nonando ta hokolola ta zi omahodhi otashi mu kwatha opo a dhimbwe.

Ngele ope na ngoka te mu pulakene nota gwe-dha ko nokutanga nenge nokupopya oonkalo dhe ngele oombwinayi sho ye mwene e dhi tameke, shi ninga wa manguluka opo mukweni a dhimbulule kutya ou na ko nasha naye, ou uvite pamwe naye. Opo nee konima mu hilithe nokutsaathana omukumo, kutya iinima nomadhiladhilo gaKalunga inaga fa getu.

Ino tameka ashike petameko manga inamu ya nomoonkundathana, kutya Kalunga osho a ti. Nena owa fa ashike wa tula emanya posheelo nenge ekumba komweelo opo kaa mu pite we sha. Onkee olwindji ota mwena nenge tamu tameke okupopya omikithi dhoyaandjeni, nenge wa tula po dhomakakunya tage mu hepeke, ye a hepekwa keso lyomulume, ihe inamu popya ko nande sha.

Elalakano lyonkalathano lyo lyene okuuvithathana elago ongele megumbo naanona nenge u li nomuselekadhi omukweni. Ihe oto uvu elago ngele ito popi ko mbyoka ihaayi ku nyanyudha nenge ihaayi ku uvitha elago, ngele nee omathigululo ngoka ga piyagana moshilongo shetu.

Shi hololeni kaahungimwenyo, kaasita yeni sho taye mu popitha, oshoka oyo ye mu hokanitha opo ya tale ngele omikalo tadhi thigululwa moshilongo shetu odho tuu ndhoka ya lesa sho ye mu hokanitha.

Olwindji otaku mweniwa nomikundu dhuuthiga aniwa iinima yaakwazimo. Yo aakwazimo otaya ka ganda ashike. “Munaangwe mwena, ino kondjela iinima yaantu. Omulumentu gwoye kee shi omukweni. Iinima yomazimo gaantu mbyo.” Walyewo tuu ngele otwa hokana pamazimo nenge opaveta yeliko lyuukumwe.

Omuntu sho itee shi popi komusita ye a hungwe a kwathwe okwa tala aniwa a monike ta kondjele eliko. Eliko kali shi ondjo osho oshiyakulithi shegumbo. Nge kali po nando okashona, nena ito vulu nokuya kongeleka, nge ito gandja nando iigandjwa, ito pitikilwa omayakulo gegongalo.

Ngele ku na sho wa hulwa otashi ka yakitha ngoye e to yono koshipango, ngoye u ka kane. Muuyuni kamu na shoka ihaashi popiwa noihaashi hokololwa. Nonkalathano otayi opala sho mu na mboka tu shi ku lombwela yakwetu omaudhigu nomanyanyu getu wo.

Aaselekadhi ningeni uukuume nayakweni, oshoka yo oye shi omaudhigu geni otamu kwatathana unene shi vulithe mboka ye li moondjokana nokaye shi omaudhigu geni.

Kondjeni moonkundathana mokundjela omauthemba geni nando omiinima yomathigululo. Inamu ihuta nokutya ashike; “munaangwe ote ti ngiini?” Oshikwawo kundathaneni miigongi yeni oshinima shethigululo, opo ongeleki nepangelo mu li tule miilonga yokudhiladhila kutya otapu ningwa shike.

Aakiintu mwa silwa muugundjuka weni aamwanyoko aalumentu nomakenge, taleni oosuwala yeni. Kotokeni mokuthigulula omulilo tagu fike aaselekadhi ogwa temwa kaakiintu. “Tashi li ekunde omekunde shi li.”

Oshinima shuuselekadhi oshidhigu pethimbo lyetu, ihe ngele tatu yi meputuko nokweetha omaukulu nuumbanda wokutila omaso niipwe



Aagundjuka aakongindjila moNyango

Tala kep. 12

ONGELEKA IPE MOKAMBA

YOVAFADUKIPO



Osheendo shomumbisofi Frederik shu uka ketungo epe lyOngeleka. Ongundu ya landula omumbisofi oyaakuluntu yegongalo

NYANGO; Zambia: Etungo longeleka ipe mokamba yovafaduki po Ovanamibia muZambia oya yapulilwa oshilonga shayo komubisofi Hendrik Frederik pexulilo lohani ya dja ko. Osho oshiningwanima shotete mehistolli lekondjelomanguluko moilongo yaAfrika eshi ovafadukipo vovapolitika ve litungila ongeleka mokati kavo.

Hamushanga wOmukwetu naye okwa li yo poshiningwanima eshi ta tale ye ta pwilikine Ovanamibia omafele ovanhu ava va kala va teeleda nexwamo linene eetundi konyala 24 omuyapuli a fike okudja mondjila yeekilometa 500 okudja kuLusaka.

“Monghalo ya naipala, Jesus omo e li ta kwafa ovanhu vaye nongeleki yaye, ye ita ka xula po, osheshi owaalushe. Naashi osho ehekeleko kufye ovashikuli vaye,” osho omumbisofi Frederik a udifila oshivilo shinya shovanhu ve dule 400.

Patekisti yomu Heb. 13:8 omuwilikingeleki Frederik okwa ulika natango kuJesus kutya oye omukangha wOngeleki ihau linyengifwa kusha. Iha fi, ndele owaalushe. Ongeleki muNamibia otai udifa Jesus ou,” osho a lombwela oilyo yongudu yaSWAPO.

Ongeleki oya li iyadi ndo nopondje. Ehanana oda li tadi kwena momake ooina eshi taku



Omukweyo gwaakongindjila gu uka kOngeleka

lifininikwa okumona onhele mOngeleki oyo tai wanene ovanhu ve dule 300. Ovakulupe novanyasha okwa li tava vemifa omesho kehafo laasho tashi ningwa mokati kavo.

Omaimbilo mahapu omeimbilo lEhangano la ELCIN, okwa li taa imbwa nondaka iyela, nande vamwevamwe ashike ovo ve a kwete. Engafifi linya ola kala ofika noshipala sha yeluka mokuhepaulula Kalunga katatu umwe, ehempaululo lopakriste omo va shashelwa mo novapamekelwa mo.

Mokukala mokati kavo kape na osho tashi ku limbilike kombinga youkriste, ndele ou udite u li mokati kovaitaveli, ve liyandja kuKalunga nohava kongo ekwafo kuye.

Oshivilo osha li sheetundi nhatu netata, sha kwatelela mo elongelokalunga, eshasho lounona eekuolo nomakundo ovaenda. Ofikola yOshoondaxa netanga lovakongindjila okwa li ve na shihapu okuviyauka moshivilo shinya.

Etungo longeleka enene nawa, la andjuka nola tungifwa noitungifo ya wapala ndele kai shi yaalushe, osho tashi ku pe efano liyela loshiyakulifo shomoungedi. Ongeleka ikulu ei va kala hava longifa nayo otai monika natango ashike polwaamba lwaayo ipe. Eshi nda vandamena mo, emweno eli la shakaneka nge ola fa tali lombwele nge kutya eyakulo nde li yandja po kumukwetu ou e na onhele tai wanene avesho.

Ponhele yomupresidende wa SWAPO ou a halele okukala moshivilo eshi ndele ine shi dula, omushamane Nahas Angula okwa ti okukala po kwaye moshivilo otaku pameke eitavelelo loshilonga shopamhepo mokati kongudu.

Okwa weda ko ta ti kutya shito oukriste owa longifwa okuyukipalifa epiphonde lovakolonyeki, ndele paife Ongeleki muNamibia oya teelwa i holole poluhaela onghalo yopanh.

“Ongeleki nayi kondjele emanguluko loshiwana, ombili nefimaneko lounhu”, osho a tumbula. Omushamane Angula oku li Hamushanga weputudo mo SWAPO.

Mokuulika ketongoko lomaitavelo eengeleki odo hadi hepaulula eitavelo limwe noda itavela muKalunga umwe, omushamane Angula okwa ti oshinima osho itashi nyamukula vali omhumbwe younhu wopaife.

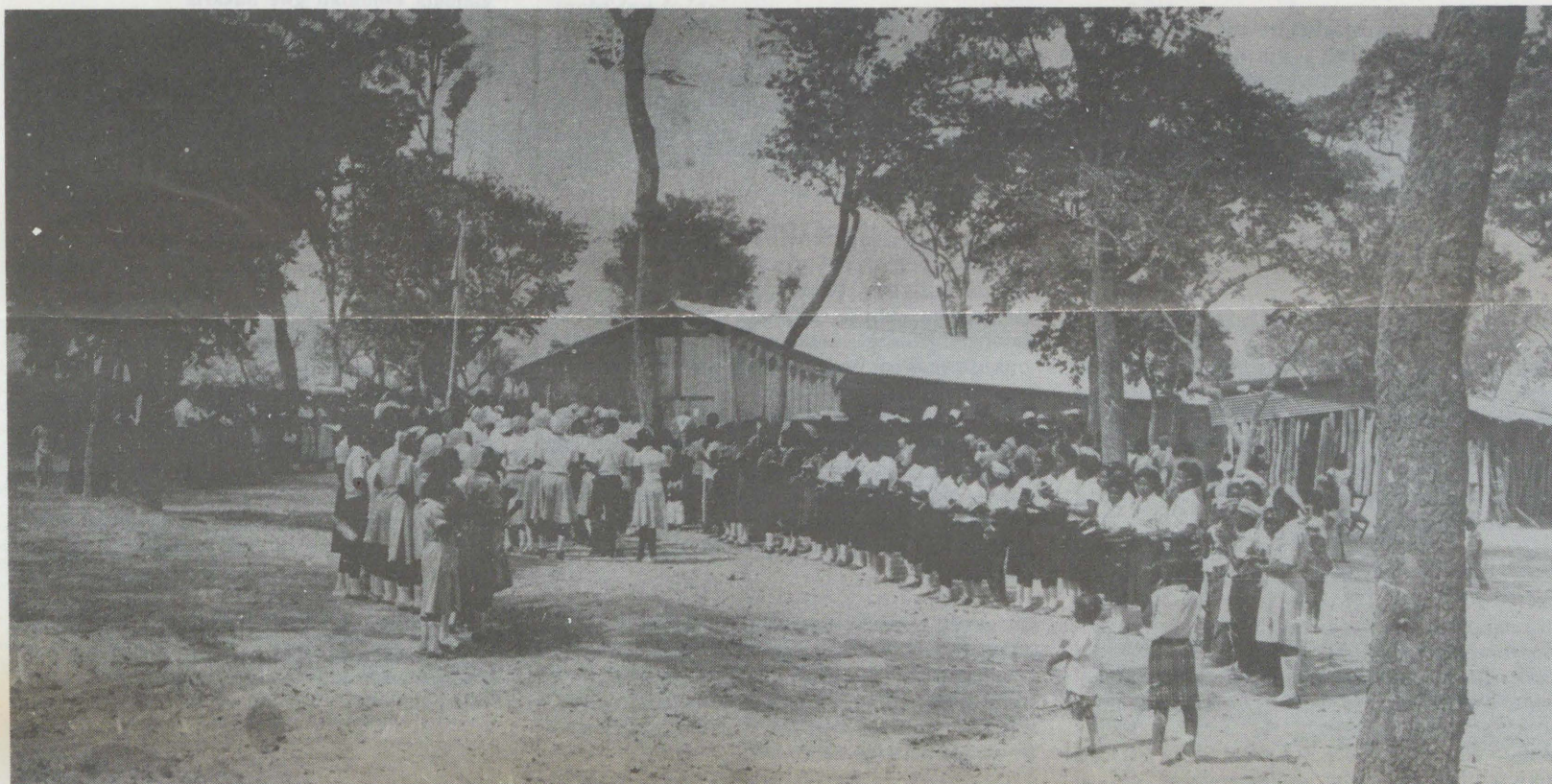
Meyakulo leyapulo longeleka ei, omubishofi okwa li ta kwafwa kovafita vomeumbo, ova-yakuli veongalo laNyango; omufita Erastus Haikali nomufita Gerhard Heimerikx. Fimbo ina yandja omakundo a dja koNamibia, omubishofi okwa ti:

“Ongeleki oyaJesus ou e li yo mwene wedu, iha fi ndele owaalushe. Eshi oshe li holola mehistolli alishe lOngeleki yaye. Jesus okwe li holola ye mwene kovanhu meendjovo daye nomoilonga yaye.

“Jesus okwe li holola kounona, kovakulunhu, kovahepekwa nokovalinawa; osho yo e li holola kovanamatimba, keefiye nokovafiyekadi. Okwa kwatafana navo e va xupife,” osho a udifa.

Ondjuulufi inene meongalo eli oya li va ningilwe ngeno oshivilo shouvalelo Uyapuki,

MONYANGO YA YAPULILWA OSHILONGA



Egongalo olya ngundumana pondje lya tegelela omumbisofi a tamekithe oshituthi. Kombinga yokolulyo etungo lyOngeleka onkulu otali monikwa.

Efimbo inali shi pitika Otava indile ongeleki i va talele po efimbo keshe, otava indile va tuminwe omaimbilo, ova djuulukwa oukumwe novaitaveli vomeni loshilongo.

Oshivilo shinya inashi kalelwa po unene kovaenda vahapu ngaashi sha li sha teelwa omolwomaupyakadi oilonga. Ava va monene omhito oHefolo Connie Brathwaite omukaleli po wOngongahangano yOvakwaluther

muZambia noye kwa li a kalela po yo ombelewa yOraata yeengeleki muZambia omusamane Nahas Angula Hamushanga weputudo moSWAPO.

Sebulon Ekandjo



Efolo Connie Brathwaite omukalelipo gwOngongahangano yAakwaluther. Ombelewa ye otayi ningi oshindji meyakulo lyokamba yaNyango nadhilwe muZambia



Ongeleka meni lyayo naayakuli omumbisofi pokati, Kaishala kaNangombe naKatalala kombinga nombinga

OKATONGOTONGO OKO OULUNDE — Shejavali a ti

Hamushanga omukulunhu mOraata yEengeleki muNamibia, omufita Abisai Shejavali, okwa popya omafiku a dja ko kutya efimbo ola pya paife opo eengeleki muNamibia di popye poluhaela kutya okatongotongo oko oulunde nodi lombwele meyukililo omuhepeki nomufininiki woshiwana shaNamibia owii waye, opo e lidilulule ye a efe oilonga yaye yokuhepeka ovanhu vomuNamibia nokunyonauna po omaliko avo.

SA okwa pulwa a fute iishiindalongo ye, ye a mangelule Namibia

HARARE, Zimbabwe: Ehangano lyiilongo inaayi gama ombinga momutumba gwalyo omutihetatu muHarare, ombala yaZimbabwe, oiyi igidha kepangelo lya SA li futile po omayonuko ngoka lya ninga miishiindalongo ye, unene Angola naMozambique.

Ehangano olya pangula Amerika na SA molwetulokumwe lyuukuni wawo okutsikila nuukoloni muNamibia nolya pangula wo ombaanga dhuuyuni Monetary Fund naWorld Bank sho tadhithipi omavi ngoka opo ge li meputuko.

Iilongo 101 moka SWAPO yaNamibia e na wo ukwawashilyo u udha ongepangelo, oyi li mehangano lyiilongo mbyoka ya tinda okwiitula mulimwe lyomomahangano omapangelinkondo paukwiita muuyuni; lyaauninginizo (NATO) nenge lyaauzilo Warsaw Pact).

Ehangano lyiilongo inaayi gama ombinga (Non-Aligned Movement) (NAM) olya dhana nuumvo oshituthi shoovvula 25 sho lya dhikilwe kaawiliki mopolotika yemanguluko lyiigwana, ngaashi oministeli yotango yaIndia, Pandit Nehru; Kwame Nkrumah gwaGhana; Gamal Abdel Nasser gwaEgipti; Josip Broz Tito gwaYugoslavia nomupresidende Ahmed Sukarno gwaIndonesia.

Iilongo oyindji yaAfrika noyaAsia oyi li mehangano ndyoka hali gongala omumvo kehe omutihetatu okuza komumvo 1961 sho lya gongalele lwotango muBelgrado shomuYugoslavia.

SA okwa li oshikundathanwa shethimbo ele momutumba gwomuHarare, ngoka gwa li mewiliko lyoministeli yotango omusamane Robert Mugabe. Iitsa tayi landula oya kolekwa

Tala kep. 9

Omufita Shejavali okwa li ta popi ngaha eshi a li ta udifa mefiku lelongelokalunga loukumwe la li la ningwa lwotete koshitukulwa eshi shOwambo eti-31 laAguste 1986. Elalakano lelongelokalunga linya ola li okwiilikanena: oukumwe woshiwana ashishe shaNamibia.

Elongekido lelongelokalunga la tya ngaha, ola li la ningwa kokakomitiye koilyo yeengeleka ngaashi: yaAnglican, yaKatoolika ya Elcin nosho yo oyo yedina: Baptist Church. Ova-pwilikini vahapu va li melongelokalunga linya ova li va dja komaongalo eengeleki da tumbulwa.

Shejavali okwa kunghilila yo ovafininikwa vomuNamibia va ha efepo Kalunga kashili vo ve li ameke komufininiki, ndele tava ningi oilongifo yaye. Ovapopi vamwe ngaashi omukalelipo waAnglikana kombinga yokumbanganhanu.

Dean Philip Shilongo, naye okwa ngongosheka ovafita vomaongalo va ha udifile ashike omaongalo kutya Kalunga ohoole, ndele tava xulile opo, ndele ove na okukuma konghalo omo ovaudifilwa vavo ve li mo: omahepeko, omadipao, omadengo nosho nosho, ngaashi Jesus Kristus a li ta kumu onghalo omo mwa li ovaudifilwa vaye ovo a li ha udifile manga a li kombada yedu.

John Shitundeni

Ombili kaaleshi

Moshifo No.17/86 omwa hokololwa eso lyomusita Immanuel Kamho moka mwa tumbulwa okwa valwa 1986, peha lyokunyola 1916. Komuselekadhi nokezimo, osho kaaleshi ayehe otatu gandja ombili mushika.

Amushanga gwOmukwetu

+++++

Ebandela lyaalumentu lya galukile mOniipa, ombangula oya li tayi panda omuti

Ebandela lyaalumentu lyOngeleki lya galukile ishewe mOniipa oshoka oohAkudhenga oya li taa dhenge, ye Amakali okwa li ta shongo olugodhi lu tameke, manga Mutota e shi totela a mana mo u ka komeho.

Ngaikukuete okwa li ta kwata ngota kwata omafuma, manga Namuhuja te ga manga nomihuya. Shigwedha ta kudhile kenyanu a fa ta gwedha.

Ihambo okwa ka talele iimuna kohambo, ye Amkongo a ganeka ondhimbo mefuta tu wape tu

pite po, ye Auala ta ti oye li owala kaye na sha.

OohAmbondo oya li taa mbondagula kaaye na ohenda ongotaa dhenge emanya momina, ye mpaka Nalupe ota tala ashike omalupe gawo a fa a kumwa, manga Kalimba e ya thigile ontsi omolwondapo ye yoshimvumvu.

Shivute okwa li u uvite ko nee sho tashi ningwa, omanga Ndjambula nkene a yambulile okuza petameko, ye mpaka Dumeni ota dhuma owala itaa vulu nokupopya ashike okwa li ta yolele ketayego.

Eso

Omasiku 27.8.1986 Kalunga a zimbula omumati gwe Sakaria yaSimon Niilenge. Okwa li gwomElondo, mUukwaluudhi. A thigi ko omuselekadhi gwe nosheelimati she. Joh.16:20

Panduleni Naango Titus
Shikongo Ipinge Sek Skool

+++++

Omukulupe Aina Aili Shivute nedhina lya tseyika nawa (Nehoyanene) momukunda Olambo, Onyaanya mOndonga, okwa manene oondjenda dhe muuwehame wethimbo efupi moshipangelo shaNandjokwe 3.6.1986. Okwa thigi ko oyana yane naatekulu 38 naatekululwa 50 okwa li e na oomvula 99 Joh. 14:1-4. Eimbilo 491.

Gumwe gwomaatekulu

Martha Naambo
Amagola Sakaria
Onyaanya

+++++

Kuku Fenni Deupamwene Amwanka mOmpundja okwa manene oondjenda dhe 10.9.1986 mepipi lyoomvula 100 sho a kala ethimbo efupi ta ehama, sigo a hulitha oondjenda dhe megumbo lyameme Amalia Ismael mOmpundja mUukwambi.

Peha lyaatekulu
Ottile Jalitaati Nangombe

Jakob Hishuninwa Ndakalako a kala momukunda Oshali, Eongalo Onekwaya. Okwa xulifa oweenda waye mepupi leedula 60 mefiku 29.6.1986 moshipangelo mEngela. Okwa fiya ko ovana vaheyali, outekulu vatatu.

Eimbilo 8; Ps.23

Johanna L.Ndakalako

+++++

Teopolina Ipinge ota tseyitha eso lyokamati ke Rafael Joel eti 3.7.1986 mepipi lyoomvula mbali momukunda Oshika, mUukolonkadhi.

+++++

Tate Filippus Shilipipo Ndemufufya, Omwene e mu ila ko mepupi leedula 65 mOshakati 14.4.1986. Tate Ndemufufya okwa kala momukunda Onekwaya West. Okwa fiya ko ovana 7, ovatekulu 15, nomufiyekadi Lonia Nekundi. Ohandi mu halele Omahekeleko.

Filippus H.Olavi Ndemufufya

+++++

Tate Titus Nakwafila okwa hulitha oondjenda dhe 29.8.1986 mOshakati. Onda hala okupandula aapangi oonakuyakula amuhe naalilisa amuhe. Ehololo 22:1-3.

Tate Titus okwa li gwoomvula 61, nokwa thigi ko oyana 23 naatekulu 4. Kalunga na thete po oluhodhi lweni.

Onkelo ye
Angombe Petrus
Onguta

+++++

koshigongi shoka yi ninge epopitho ku SA ngoka a talika e li eimbo lyombili muumbugantu wa Afrika.

- Epangelo lya SA li dhikilwe ondjindikila muupale woondhila nomamatulilo gooskepa miilongo niilongo.

- Iiyimati ya SA yaa landwe we momalandithilo guuyuni, mwa kwatelelwa omakalamanya, iiyela niitenda.

- Pu hulithwe okupungulitha iimaliwa mu SA.

- Pu keelelwe okutma ku SA iilongitho ayihe yopaungomba.

- Pu hulithwe okutumina SA omahooli, nenge oku ga halithilwa, nenge oku ge mu endithila nenge kehe tuu shono shi na sha niikwamahooli.

- Pu hulithwe okulanda oshingoli shoranda ya SA nenge kehe tuu shimwe sha hambulwa mu SA.

Kombinga yinima yi na sha nomalweendo oshigongi oshi indila kuuyuni u hulithe po uuthemba woovisa dha SA nenge omolwa SA.

- Opwa indilwa uuyuni kaau pitikile we aataleli po ye ye ku SA.

- Pu hulithwe po ekwatathano na SA moshinima shelongo, shomithigululwako nomaudhano, osho wo shopaunongononi pangundu yontumba nenge kehe tuu shono shi na ekwatathano nomulandu gwokatongotongo.

- Omahangano ngoka ga ninga okondraka na SA miipindi, ga hulithe po elongelokumwe ndyoka, unene ngoka taga longo naanangeshefa oyendji ya SA.

Oveta ya Steyn ya tulwa mohofa

Oveta yuusiku ndjoka tayi longo moshitopolwa shOwambo okuza 1978 otayi tamanekwa ngashingeyi kaawilingeleki yOongeleki oonene ndatu muNamibia. Ohofa moshinima shoka oya li ko 25 gaSeptemba nguka.

Aambisofi James Kauluma gwaAnglikan oye omwiindili gwotango moshinima shoka. Omumbisofi Bonifatius Ausiku gwaKatolika kaRooma omutiyaali, nomumbisofi Kleopas Dumeni gwa ELCIN omutitatu okupula oveta ndjoka ya tseyikila medhina oveta yaSteyn, yi hulithwe po.

Epangelo lyopakathimbo olyo lyotango tali pulwa li yamukule keindilo ndika. Pamwe nalyo oministeli yegameno ya SA osho wo omutitatu oNgoloneyandjaji gwa SWA mboka taa pulwa ya hulithe po oveta ndjoka.

Ehangano lyooveta lyaLorentz + Bone olyo li lilepo aatamaneki moshipotha.

Ehangano ndika manga inaali halakana momutumba gwalyo olya ninga wo omathaneko kombinga yomahupilo ngaashi tashi landula:

1. Pu katukwe onkatu onde okutota po omulandu omupe gwaayehe moshinima shomahupilo ngoka taga ka pendula po omavi opo taga penduka noku ga hupitha mengambeko lyomoondjugo dhiipindi muuyuni ndyoka taga ningilwa komavi omayamba.

2. Pu hulithwe po okulongitha ombaanga yopaigwana (IMF) osho wo ombaanga yuuyuni (WB) ngaashi hadhi longithwa komavi omayamba, pamukalo ngoka tagu nkundipaleke omavi opo taga putuka.

3. Pu tungwe omulandu gwopolotika ya yela komavi ga putuka naangoka inaaga putuka opo kuyandwe okwaathike pamwe kwekonomi lyuuyuni hoka taku vala uupyakadhi wekonomi ongele momavi opo taga putuka nenge ngoka ga putuka nale.

Mokutongolola onkalo yopapolotika nkene tayi inyenge meni lya SA oshigongi shomasiku gaheyali oshi indila.

a) SA, a mangulule onkwatwa adhihe mbalambala dhopapolotika inaapu ningwa ewathano lyasha. Onkwatwa Nelson Mandela naSaphania Mothopena ya kale yomongundu yaamangululwa.

b) Omahangano omakondjelimanguluko moshilongo shono Afrika National Congress na Pan-African Congress ngoka inaaga zimininwa iilonga, ga zimininwe okulonga osho wo oopaati dhilwe moshilongo.

c) Ooveta adhihe dha lukwa odhegameno

Tala kep. 10



Nakusa Aina Ndjiminene



Nakusa Elizabeth Iihuhua

Omulongi Eizabeth Andreas Iihuhua, okwa mana oondjenda dhe 9.8.1986 moshipangelo shEpangelo mOshakati sho a kala muuwehame wethimbo ele.

Oye ontowele yatate Andreas Iihuhua nameme Selma Kwedhi. Okwa valwa 15.11.1925 moKeetmanshoop, nokwa hiti osikola yaanona moKeetmanshoop momumvo 1933. Aakuluntu ye oya tembukile mOwambo, nokwi ilongo sigo a tuminwa kOsiminali yuulongi kOngandjera. Okwa tameke oshilonga shuulongi 1958, megongalo Oshitayi nEheke.

Megongalo Eheke okwa li omwiimbi a simana, omuwiliki gwaagundjuka nomudhiginini gwiiniwe megongalo.

"Oshoka Omwenyo gwandje oKristus nokusa okwo elikolo" Aafilippi 1:21

Mbushu
Elizabeth N.A.Iihuhua

Kuku Aina yaShiimi (Ndjiminene) okwa mana oondjenda dhe 24.7.1986 mepipi lyoomvula 93, sho a kala ethimbo efupi muuwehame. Kuku Ndjimi okwa valelwa mOndonga kOshitambi. Okwe ya a putukile mOndangwa megumbo lyomuhongi August Pettinen (Nandago). Omuhongi Kalle Koivo (Niifudho) sho a tumwa kUukwambi, okwa pewa aagundjuka mbaka yaali Alfrid Mukwiilongo naAina Shiimi ye ke mu yakule, e ya pewa komuhongi Nandago.

Oya yakula omuhongi Koivo muElim sigo ya yi mondjokana 20.9.1916. Oyo ya pewa aanona 7 mwaamboka yaali yomuyo ya yi nale kevluluko. Kuku Ndjiminene okwa thigi ko oyana yatano aatekulu 45 naatekulululwa 33.

A landula omuholike gwe ngoka a tetekele tango. Kuku Ndjiminene mekondjo lye lya hugunina okwa kala ta galikanene iinima mbika:

Egongalo lyaandjawa lya Elim, omukunda gwaandjawa Onashiku, evi lyaandjawa, nokudhimbulukwa aanona mboka ya yi kondje yoshilongo.

Lwa hugunina okwa tumbula ta ti. "Nda loloka, Omukulili kwata ndje koshikaha. Eimbilo 126 (ekulu).

Martin Mukwiilongo
gumwe gwomoyana

Dha za kep. 9

nooveta oonkwawo dhuupwidhi dhi hulithwe po.

d) Omatanga agehe gaakwiita ga tembudhwe mo momalukanda gAaluudhe.

e) Oongundu adhihe dhaafadhukipo pondje yoshilongo dhi galukile nombili kegumbo, osho wo aakondjelimanguluko ayehe, opo pu tamekwe noonkundana tadhi tungu pokati kepangelo naawiliki mboka ye lile po oshigwana oshihepekwa.

Oshifonkundana shomu SA, The Star osha tula elandulathano lyomadhina giilongo 20 mbyoka tayi ngeshefa na SA. Shotango sha tulwa melandulathano ndika monomola yotango Amerika ngoka ha mono ooranda oomiliyona R3159 tadhi zi mushono he eta moshilongo she ta kutha ku SA ooranda oomiliyona R3029 hadhi zi mu shono ta tumu ku SA.

Japan omutiayali ha likola ooranda oomiliyona R2 280 dhomiyyemo nooranda oomiliyona R2 829 dhomiipindi hayi tumwa ku SA.

(STAR 14.8.1986)

Reagan neye tu popye - iilongo yaAfrika tayi indile.

Iilongo iishiinda na SA oya pula omupresidende gwaAmerika Ronald Reagan e ye kuyo muumbangalantu waAfrika opo ya popye naye omukalo gwokuhulitha po okatongotongo moshitopolwa shika. Ngele hasho, mbaka oyo taa yambuka ya ye kuAmerika.

Etokolo ndika olya zi moshigongi shiilongo mbyoka, sha ningilwe muLusaka, pehulilo lyaAguste nuumvo.

Iilongo iishiinda ya SA noyi na oonkondo moshikundathanwa shemanguluko lyaNamibia ngaashi ya tseyika, Angola, Zambia, Botswana, Tanzania, Zimbabwe naMozambique, oya taalelwa konkalo ombwinayi omasiku ngaka pekonomi omowloonkambadhala ndhoka tadhi ningwa po kuuyuni okuningila SA ondjindikila yiipindi.

Nonando iilongo mbyoka tayi dhengwa nayi koshitago shoka tashi dhengithwa nasho SA paliko, oyo wo oya ninga etokolo itaali galuluka nuupu, kutya SA a thiminikwe pamukalo ngoka, opo a lundulule omulandu gwe gwokatongo mu SA nokuzimine okatokolitho 435 kiiganahangano omolwemanguluko lyaNamibia, ka tulwe miilonga.

Pehulilo lyetalelopo lye miilongo mbyoka yopopepi na SA, omuwiliki gwongundu yekondjelomanguluko lyuuthemba wopantu muAmerika, omusita Jesse Jackson, okwa popya noonkondo, kutya oshi na ompumwe onene aawiliki yiilongo mbika yaAfrika lyuumbugantu ngele taa talele po Amerika opo ku talike oshiponga shenkundipalo lyekonomi miilongo yawo nkene shi shi okupupalekwa omolwondjindikila tayi ningilwa SA.

Pokati mpoka opwa kundanwa miifo kutya oSenata (ongundu yimwe melelo lyAmerika) oya ninga ethaneko ndyoka lya pumbwa eziminino lyomupresidende Reagan kombinga yeyelutho pombanda lyoondjindikila li ningilwe natango SA.

Eyelutho pombanda lyegeelo lya tya ngeyi, olya kwatelela mo:

- Ekwatho kehe lyiimaliwa hali pewa aanangeshefa yopaumwene haa longo mu SA.

- Okuhulitha po epungulitho kehe lyiimaliwa epe mu SA.

- Amerika kaa kuthe we ku SA iikwamina ngaashi Urana, omakalamanya, iitenda niyela (iron and steel) osho wo iikwafabulika niilongomwa yomomapy.

- Oondhila dha SA dhaa gwile we muAmerika.

Ope na omalimbililo ngele Reagan ota ka zimina oonkatu ndhika adhihe, ashike osha yelela wo aatalinawa yopapolitika, kutya ngele ina zimina, otashi ka vala oonkalankongo mongundu ndjoka.

Oshinima shelondeko lyoonkatu mondjindikila osha tegelelwa wo shi ka kundathanwe moshigongi shehangano lyiipindi muuyuni (EEC) muKotoba tagu ya. Omuleli gwaAngola okwa tseyitha wo kutya epangelo lye otali egulula ishewe ompito yokuya nepangelo lyaAmerika moonkundathana, shimpa tuu

Amerika ti iyageke okwiivunda miinima yegumbo lyaAngola.

Omapangelo giilongo mbyka iyali oga kala ethimbo ele taga kongo ompito opo ga longele kumwe pamukalo gwomapangelo ga zimina-thana, ihe oonkundathana odha li dha tokoka pokati nuumvo omolwepangelo lyaAmerika ndyoka lya tokola okukwatha Savimbi muAngola omwaalu gwiimaliwa oomiliyona 33 (R33ml) nosho wo iilwitho yoshinanena.

Angola okwa kala wo noonkundathana nepangelo ndyoka lyaAmerika, ando e li omupokati gwa SA naAngola, opo ku talike nkene emanguluko lyaNamibia tali tulwa miilonga, ngele oshinima shAacuba sha monikila eyamukulo.

Epangelo lyaAmerika otali pula Aacuba ya ze mo tango muAngola, manga Namibia inaali manguluka, neindilo ndyoka lyaAmerika otali yambidhidhwa ku SA.

Kombinga yaAngola ota ti Aacuba moshilongo she ote ya kutha mo ashike ngele aakwiita ya SA oya zi mo ayehe muNamibia e taa shuna ku SA.

Sebulon Ekandjo

Ova shangela nge tava ti...

Kaanambelewa aasi-manekwa

Kwathii ndje paufupi mu yamukule epulo lyandje ndika: Omolwashike ano mOngeleki ya ELCIN kaatu na uukongindjila waamati?

Ondi wete kutya aamati tse otu li mehalakano unene otwa pwila owala mokunwa, muumbotsotso noshowo oyendji oya hala muukwiita (muukakunya). Olwindji oto adha aamati oye li potombo, oye a tegelela yi patuluke. Natu dhiginineni wo iigongi yaalumentu momagongalo. Tu ningeni wo aamati aakongindjila oontetango. Nosho wo aayendindjila pamwe tatu galukile kondjila, opo ngaa oshilongo tashi ya ombili.

Tuhafeni K.Amutenya
Ondangwa

+++++

Shiwana shOmwene penduka

Shiwana shOmwene, oshike we lipyakidila to kongo ouwa wopakafimbo tau xulu po. Oshike to di oshinwi koinima i he na ekwafo? Alushe owa loloka nowa tekauka nai. Alushe wa lololwa nokuli kwaai tai ku pukifa. Lyaaluluka hano, shuna mondjila inya wa dja muyo, mu he noifidi, nomakiya, opo nee to ka fika diva kefikilo.

Omuleshi nomupwilikini omuholike, ou shii nawa kutya ou li moupika nowa djuulukwa shili emanguluko. Inda nee moule womadilongo u tale. Ou li moupika womaludi opavali; oupika woulunde, noupika wonghalo yokolutu, oupika wOshilongo shetu oshiholike Namibia.

Tete manguluka nee moupika woulunde, ndee to kala wa manguluka. U na ombili naKalunga koye. Wa petuka wa efa oihafifi ihapu yolutu, noiinyoni yombili pokati keni namukweni, ndele to lalakanene ombili. Opo nee to fikama koshipala shOmwene nokupula ekwafo laye. Opo tu shiive okukandja twa mana mo atushe oshita. Ekondjc loshili, noliyuuki Kalunga note tu mangulula

★ STAR BAKERY ★

Ondangwa oya mona ombeka yayo yokumbaka oomboloto dhomaludhi kehe. Ombeka ndjika yedhina STAR BAKERY oya tamekele iilonga yokumbaka oomboloto 16.9.1986.

Eyakulo lya nukapo nolyopaukuume lela. Ila koSTAR BAKERY ngoye mwene, oto yakulwa mbala.

Nenge monathana natate T.E.Hakko konomola yongodhi 68, Ondangwa.

T.E.Hakko
P/Bag 2033
Ondangwa
9000

diva nge hatu kondjo medina laye.

Onghee hano teteni onhele yoshiya shomitima deni, ndele inamu likukutika vali. Osheshi Omwene Kalunga keni oye Kalunga kookalunga nOmwene woovene. Kalunga omunene, omunaenghono nomutilifi. Ou iha tale oshipala shomunhu ndee ita tambula ombubo yee ota yukifa eendjovo deefiye nodovafiyekadi. 5Mos.10:16-18a.

Kaleb Hamwele
Oranjemund

+++++

Tu lidilululeni, fye tu ilikane efimbo ola tya ko

Ovamwameme ovaholike, muJesus Kristus, tu taleni fye tu dimbulukwe kutya otu li mounyuni udjuu shili. Ounyuni womadipaafano. Ovashitwa vaKalunga tava fi shodi ya fila komashini.

Kaku na efiku tali piti ino kundana efyo lombaadilila. Onghee mefimbo eli li li ngaha, otwa wana okulidula oulunde aushe nokuliameka

kuKalunga ketu tu ilikane e tu pe ombili ye e tu fi onghenda mounyuni ou u li ngaha.

Omwene okwe shi popya mwene ta ti kape na ou eshi efimbo notundi Omwene te uya, onghee omumwatate ohandi ti: "Longekida eumbo loye osheeshi oto fi. Ekundo leni mOvaheberi 10:32-39.

Omwiilongi
Tuyenimo Kaudulafane Paulus
Engela

+++++

Ekumaido koshiwana

Oshiwana oshiholike, onghalo ei tu li muyo oidjuu nefimbo ola fika. Otu shi shii kutya otu li moupika, ashike kombinga imwe ondi wete otwe limanga fye vene.

Ovamwameme tu lyeni meefikola, kutya nee mOushimba unene tuu mOwambo. Vakwetu tu diladileni nawa, fye ofyeni oshiwana shokomongula ovanyasha. Otwa wana okuudifa ko oshiwana, ndelenee ponhele yoku shi pukulula, ohatu shi pukifa.

Onda mana nee elihongo lange ile ngoo nee onghatu oyo nda mona. Nandi kufe nee nghatu imwe i lili opo, ndi udife ko oshiwana. Osho ihatu

shi ningeni osho. Shapu ngeenge omumati mu lombwela oukwaita waSuid-Afrika ile nge okaadona u tya a ka kalele omakakunya.

Itandi ti atusheni osho tu lyeni ngaho, ashike ovanyasha ovo ngaho ve kwetele unene oshinima eshi komesho.

Ovamwameme ava va dja omu, ova ka kuwa onghuwo shaashi ve wete kutya otu li mondjoko youpika. Otava twikile va mangelule Namibia letu. Ngeenge nee ove ekakunya oto lwile nee u mangelule lyelye?

Hamakakunya aeke naave ngoo, ove ho longele eeranda doufiku, to longele kumwe novapwidi nande u li peumbo loye. Eeranda doufiku oto di kwata lungapi? Oshili onye ngoo tamu imbi Namibia li mangeluke.

Olyelye mwa teelega a mangelule Namibia? Hamba hafye vene? Ava ve li pondje yoshilongo otava kondjo, ndele otu na yo okukondja pamwe navo. Tu tuleni oukuni kumwe, tu kale mekondjo nelimangelokumwe. Inatu tya vali: Swapo ile Swapo ta nyono po oshilongo, Swapo olyelye hano? Swapo oove (South West Africa People's Organsation) Hano ovadalelwa mo vaNamibia.

Elly Naloliwa Mwashindange
Windhoek



WINDHOEK:Omapandela gaSWAPO oga li taga ye-
lela kombanda yomitse dhengathithi lyaantu taa
tengenekwa 8000 nenge 9000. Poompito dhimwe oon-
gonyo otadhi yedhwa mombanda neigidho "VIVA
SWAPO-O-O." Oshituthi osha li (tala methano) sho-
kudhimbulukwa omimvo 20 SWAPO a kondjo noma-
tati.

Oshilyo shaSWAPO Mokganedi Thlabanello okwa
lombwele aapulakeni ta ti SWAPO haye omushongi
gwelongitho lyoonkondo mevi ndika. Okwa sipela iin-
gingwanima yomehistoli ngeyi:

— 60,000 gAaherero oga dhipagwa kuSWAPO? Ndi-
shi okuNdjayi von Trotha 1884-1904? (Omundow-
shi)?

— Aabondelswart yomayovi omumvo 1922 oya dhi-
pagelwe kuSWAPO? Ndishi oku SA? Nenge SWAPO
oye a dhipagele Aanamibia moshipotha shombili
1959

— Olye a dhipaga Mandume nAanamibia kuumba-
ngalantu 1917, ndishi oNdjayi Louis Botha nAaputu?

Okuza 26.8.1966 iita sho ya tameka sigo numvo, SA
ota ti okwa dhipaga aakwiita yaSWAPO ye vule
10,000. Kumwe nomwaalu gwaakwashigwana otagu
ya popepi 20,000. Iita mbika SA ohayi mu pula shi
vule iimaliwa oomiliyona mbali mesiku. SWAPO
ota ti ye iita ke li muyo a tale omwaalu ta vulu
okudhipaga, ihe okwa thiminikwa okukala mo omo-
lwevi lye lya lalwa komutondi.

Ehekeleko

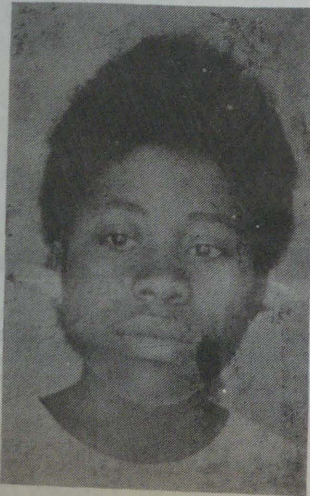
Ya pewa uunasikola pondje yoshilongo kOngeleki

Dha za kep. 5

yilwe, nasho otashi ka lunduluka, opo aaselekadhi ya hokanununwe.

Aalumentu yo yene oye na ngaa uuntsa shili pakutala, ihe kaye shi aambanda yešo naatili yiipwe ngaashi oomeme. Onkee nomoshinima shokuhokana po aaselekadhi, aamwameme aakiintu oyo ngaa ye tu li komeho." Ou shi osho sha li po omulumentu gwe?" Ye okwa si ngaa ngaashi tate nenge mumwameme. Opwa fa ishewe pe na ombepo yokudhinathana maakiintu.

Oomeme inamu yelathana, inamu simane-kathana onkee one hamu tu nyanene ooyakweni. Oto adha omuntu ota makele omuselekadhi ya lale naye noita tila okusa, ihe uuna taku ti; na hokane, iihuna yowala. Ngele omumati nokuli iihuna nee. Ihe muuyuni waaputiki kashi mo shika. Pamwe euveko lya yela nalyo tali adha wo kutse mbala nokulunduluka momadhiladhilo gopaukulu nokutila shaashoka.



Maria Amakali (19) okwa yi ko College yaDana, muAmerika a tale ngele ta adha onkatu B. Sc. moChemistry, naye sho a mana omatilika mOshigambo 1985.

Beata Kaunehafo Kapolo (19) okwa yi koAustana College, Illinois, muAmerika. Okwe ki ilongela B.Sc. Phicotherapy, sho a mana omatilika mOshigambo 1985.



Cornelia Shimwooshili (21) okwe ki ilonga kouniveesiti yoshigwana shaLesotho. (National University of Lesotho. Oye okwa yakula ethimbo efupi mosikola yokombanda yaShigambo manga inaa ka tsikila.

OMAHALA GIILONGA (VAKANTE POSTE)

Pooklinika tadhi lanadula opwa pumbiwa omaludhi gaapangi taga landula:

OMAHENENE

1 *Suster (geregistreerde verpleegkundige)*

nenge

1 *Omuvalithi (geregistreerde vroedvrouw)*

nenge

1 *Stafnurse (ingeskrewede verpleegkundige)*

ONAANDA

1 *Suster (geregistreerde verpleegkundige)*

nenge

1 *Omuvalithi (geregistreerde vroedvrouw)*

nenge

1 *Stafnurse (ingeskrewede verpleegkundige)*

Omupangi na kale oshilyo sho S.A.R.V. no S.W.A.V.V. nokwa futa numvo.

Omaindilo naga tumwe kondjukithi tayi landula:

Die Adjunkhoof Verpleegdoens
Privaatsak X5501
OSHAKATI
9000

Elihongo muNamibia

Da dja kep. 1

mbali netata a kala ko mofikola tuu oyo.

"Eenghatu edi kadi fi detu ndele odoshiwana. Otwa hala oku di longifa mouwa woshiwana," osho ofamili yaKatengela ya tumbula nelinipiko kovaenda voshivilo.

Ehekeleko

Omasiku 29.2.1986 onda kundana eso lyakuku Petrus Nghifimule. Nando ine thika hekelekweni noohapu dhi li mu Mat.5:1-10. Eimbilo 133.

Josefina Pinchas
Omuntele

+



OMUKWETU

Oye oshifo shOngeleki Onkwaevangeli paLuther yomuSWA/NAMIBIA.

Ohashi nyanyangidhwa mOshinyanyangidho shOngeleki mOnipa.

Omukuluntu gwoshifo omumbisofi Kleopas Dumeni.

Amushanga gwoshifo omusita Sebulon Ekandjo.

Ondando yOmukwetu muNamibia naSouth Africa R5,00 komumvo.

Palwe muAfrica R8,00 nokombanda yomafuta R11,00 komumvo. Mondhila R13,00.

Ondando nomambesitelo agehe naga tumwe kOmukwetu, Onipa, P/Bag 2013, Ondangwa, 9000.

ELOC PRINTING PRESS
PRIVATE BAG 2013, TEL. 41, ONDANGWA 900
SWA/NAMIBIA