

OMUKWE TU



30c

No. 12

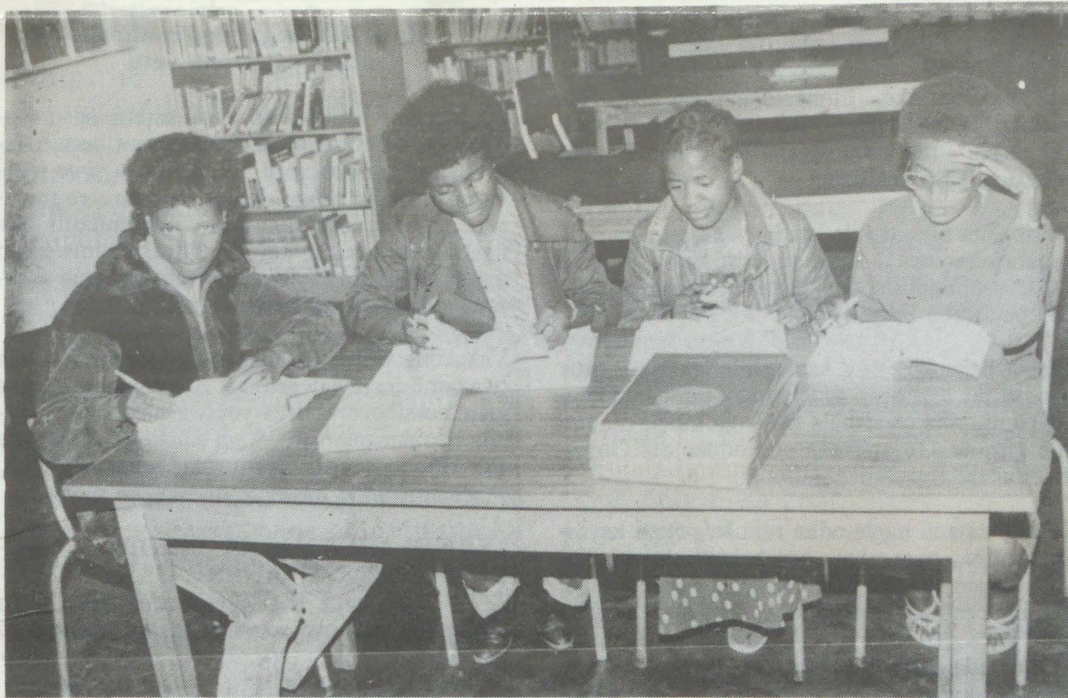
ISBN 0-620-06828-0

OVAKRISTE MUAMERIKA ITAVA NINGI SHA: OSHA TIWA MUUMBUWANHU WAAFRIKA

Etumwalaka olo la dja moshongalele shokomudo shooamushanga veeraata deengeleki moumbuwanhu waAfrika ola indila eengeleki

muAmerika di litule mo mokukondjifa okatongotongo noupolotika woulipamwe wopakanya itau kumu ketukululifano lomaxupilo pauyuki.

Nyango, egumbo lyAanamibia muZambia



Aanasikola mOnyango, ohaa ka tsikila oosikola palwe, manga yamwe taa yi kookamba kuAngola, osho chokololo lya ti. Methano ndika oye li moshiputudhilo shawo muLusaka, Zambia.

MuNamibia wo, omahokololo ogi inyingitha omitima dhoyendji nopoompito dhimwe she eta nokuli omapumathano pokati kayamwe, unene paitaalo lyopolotika.

Omahokololo oga fumvuka ngiika momitse dhehangano etengeli kolulyo muNdowishilanda lyuuninginino, ndyoka lya talwa oli lile po uuthemba waantu muuyuni, sho lya kutha onkatu yokukondjitha SWAPO.

Medina lovakriste eemiliyona dihapu moumbuwanhu wedu laAfrika omukanda owa ti woo otau holola onghalo yoshitukulwa ya pumbwa ekwafo li he fi ku teelelifwa, oshiwana sha fika mefimbo loshili (Kairos) lodjuulufi yombili nouyuuki, nefimbo omo vahapu itave ke lididinikila vali okupangelwa kOvatilyane ovo ve li okamuvalu kanini moshitukulwa.

“Ovakriste muAmerika nave shi ude ko nokutya ova talika itava ningi sha komulandu waAmerika moumbuwanhu waAfrika, mokukwafela mexulife po lokatongotongo,” osho oohamushanga veengeleki va dimbulukifa eengeleki muAmerika.

Okudja 1974 epangelo lopakoloni laKaputu (Portugal) eshi la teka moumbuwanhu waAfrika, oonyuni owa li wa teelela omaupyakadi opapolotika a xupipale moshitukulwa osho, mupyamunene omaudjuu okwa chena ashike komesho.

Epangelo lomulandu wokatongotongo mu SA okudja kefimbo olo inali itavela nando omafaneko oiwana younyuni okumangululifa Namibia, mwa kwatelelwa oshitokolifo shOraata yoiwanahangano 435 shomudo 1978.

Epangelo olo ola nenepeka eenghono dalo fiyo omoishiindalongo oyo opo ya mangeluka, Angola naMozambikwe naayo ya mangeluka nale. Eshi ole shi ninga ngee mokuponokela oilongo oyo, ile mokunangeka omatanga alo moilongo oyo keenghono domauta ile okuyambidida eengudu dimwe dokukondjifa omapangelo oilongo oyo ya mangeluka.

Epangelo laRonald Reagan eshi la ya koshipundi lwotete 1981, ola endelega okukandula po omafaneko oo a li poshitaafula okufininika SA a mangelule Namibia nokutambula etulo moilongo loshitokolifo 435 shOraata yeameno.

Eshi epangelo laAmerika ole shi twikila fiyo 1985 eshi la shuna vali koshipundi. Omulandu walo koumbuwanhu waAfrika oo le u luka “Ekwatafano tali tungu” (Construction engagement) koiwana yaAfrika, unene moumbuwanhu owo elyatelopedu linene loufemba

Tala kep. 11

Tala kep. 2

JUNI 30, 1986

Nyango, egumbo lyAanamibia muZambia

Dha za kep. 1

Omahokololo gomahepeko gaantu ku SWAPO nelyatelo pevi lyuuthe- mba womuntu mookamba dhoontauki, unene mundjoka yaNyango, mu- Zambia, osha pendutha okatalekonawa moyendji ye hole ombili muuyu- ni.

Aanashilonga yOngeleki muDusseldorf, Ndo- wishilanda; omusita Rolf Lahusen nafeelani Elvi Surmund oya kutha ompadhi owinawina ye ki italele ko yo yene. Osha li muKotoba gwa zi ko. Feelani Surmund emenekelo lyawo mo- Nyango uule woshiwike shimwe, ote li hokolo- la ihe ngeyi:

“Otwa falwa nemanguluko shaampoka twa pu- la tu falwe notwa popi nakehe gumwe twa hale- le okupopya naye. Otwa li okutala tu mone o- ndhalate yolugumbo ndjoka taku tiwa ohayi lo- ndwa, aantu ngele taa iyaka mo. Otwa li kutala tu mone ehala lyomahepekelo ndyoka hali popi- wa kaashunimonima ya SWAPO,“ osho meme Surmund a hokolola.

Aayenda mboka oya li ya thindikilwa komusita gwokamba ndjoka, Erastus Haikali, nokomu- kwanepangelo gumwe lyZambia. Omuhokololi ota ti, okamba oyi na aakalimo 4,500 moka aa- nona ye li omwaalu omunene.

“Omu na wo aalumentu aashona lela ye vulike kaakiintu mboka ye li mo. Inaa homata iiko- ndjitho. Ehokololo lyomakwato gaakiintu koo-

nkondo mokamba ndjoka, oshinima shi lyaatha- ne kokule naashono tashi monika.

“Uumati uunasikola ou na omuhandjo gwawo osho wo uukadhona, nomihandjo ndhika oha- dhi tonatelwa koomatrone. Aalumentu mboka ye li mo, oye na aakulukadhi yawo yene nenge mboka inaa hokana oye na ookuume kawo,” e- hokololo lya ti.

Kombinga yongeleki meme Surmund ota ti, “otwa adha mo aayakuli yi ili noyi ili ya za moongeleki dhawo oonene ndatu muNamibia; yaKatoolika, yaAngilikana noyEvaangeli, mboka taa longo mokati kawo, ihe elongeloka- lunga ohali ningilwa muukumwe. Ongeleka ndjoka ya tungwa nomiti, ohayi gwanene ashike aantu 500 oshikando shimwe.

“Elongelokalunga lyomoNyango oli vule koku- le lyomuNdowishilanda. Ongeleka ompe yoo- ndhopi opo yi li mokutungwa. Siku ndyoka o- mathele ogendji ogu uvile pondje, sho itaa gwa- na mo mongeleka.

“Melongelokalunga moka twa yile, olya li oshi- kumitha kutse,” osho Surmund a hokolola. “E- gongalo kali na Oombimbili dha gwana noma- mbo gomaimbilo, ihe shoka osha fa itaashi imbi sha, oshoka omaimbilo konyala agehe oye ga shi momutse.

“Okuwolo ndjoka yi imbi, oyi imbi omaimbilo gamwe membo nomakwawo omaimbilo geko- ndjelomanguluko. Elongelokalunga olya kala naanaa ootundi ndatu, konyala ngaashi olwi- ndji tashi adhi kwa muNamibia. Okwa li uula- lelo uuyapuki neshasho.”

Ehokololo olya tsikile lya ti, “sho tatu ya pula omahepeko, oya fa kaaye tu uvite ko nokuli sho- no tatu dhiladhila, oshoka yo oya talathana aa- ntu yegumbo limwe.”

Shoka osha kolekwa kaanashilonga Aatiligane mboka taa longo wo moNyango; omusita Gera- rd Heimerikx (Kaishala kaNangombe), omulo- ngi gumwe Omunorwie omundokotola Omus- wedeni nOmusoomi omulongi.

Oontamanana ngele odha tukuka pokati kayaa- li, ohadhi etwa mbala kombelewa dhi kunda- thanwe montaneho yaKomufala gwopapolitika, uyelele mboka owa gandjwa kuPata Kaishala.

Omuyenda Lahusen okwa gwedhele po keholo- lo lyamukwawo sho a ti, oyendji yomoontauki oye na omapya gawo yene moka ya kuna iikwa- mboga noya tekula oondjuhwa. Omasiga oga te- mwa pondje yegumbo. Iikombo oya li tayi mo- nika tayi inyenge mpaka naampeyaka, moka a- niwa hamu ya zile omahini.”

Opu na epya enene lyofaalama moka mwa ku- nwa epungu nomwa tekulwa oombaka, iingulu nuulimba. Nyango ehala lya gandjwa kepangelo lyaZambia nohali longitgwa ihe ngaaka ku SWAPO kekawo ndyoka hali mu zile kOngo- ngahangano yAakwaluther (LWF); kEhangano lyuukalinawa muuyuni (WHO) nokOraata yoo- ngeleki muZambia, ehokololo lya ti.

Uyelele mbuka owa zi mombelewa yomakwa- tathano goongeleki muLondon, sho wa thiki mombelewa yOMUKWETU.

Sebulon Ekandjo

SIPANGO SAUNE

Sipango ilyo ediviso ndi etentero oloyo ali kerere ndi ku pulisira yuma. Ose vakriste Karunga kwa tu pa yipango ipo yi tu kere- re komaudona (2 Mos. 20:1-17). Yipango nayinye kwa kara nositambo sohore. “Hara hompa Karunga koge” yiso sipango sopomuhowo, nasauvali “Hara mukweni moomo wa lihara nyaamoge” (Mark.12: 29-31). Hano hore yilyo egwane- so lyoipango nayinye. (Rom. 13:10).

Ose kwa kara noyipango murongo oyo va gaununa pavali. Moomu twa yi diveni. Ruha rokuhova kwa kara mo yipango yitatu, oyo ayiuyunga pokaty kaKarunga nomuntu. Ayo tayi tu rongo Karunga asi yige a kare gopomu- howo monkaramwenyo zetu nazinye. Papareni pomuhowo untungi waKarunga, eyi nayinye ngayi mu gwedereko. (Mat. 6:33; Luk.12:31).

Ruha rwauvaliaro kwa kara noyipango yiheyali oyo yina kuuyunga pokaty komuntu nomuntu mukwawo. Mwanayinye eyi yiheyali FUMA- DEKA OGUHO NONYOKO yiso sa pita po yikwawo yeeyi aso kwa kara netumbwidiro “Yipo OKARE NOMWENYO NERAGO KONTUNDA ZEVU”.

Hano Karunga yige muhowo ntani vakurona vetu

Hano eseni vadinkantu tuna kareni nosinaku- gwanesa sokufumadekeni vakurona vetu. Nam- pili va kare nohepwe ndi va dinwa yiwo woo- wo gatu pa Karunga. Ntene kapi tatu va fuma- deke nayina, ose tuna kara nonomukuli odo ngatu dira komana kufuta. Yilye mpamwe ogo nga vura kufuta nayinye oyo vamu rugana vaku- rona vendi? Hawe kwato.

Vakurona vetu yigo magano gopomuhowo aga twa tambura kwaKarunga. Atu pangere maraka getu nokuhorora yitya yoyiwa ntene tatu uyungu novakurona vetu. Yiso sinakugwanesa setu oso vanona novadinkantu sokukwasa vakurona, yeeyi nonkondo dawo va di manena mwetu.

“KANHUNHWAGONA HADERA NYO- KO, NYOKO MWANARE GAKU HADE- RA”. Twa hepa kufira vakurona vetu sinka unenepo mosiruwo soukurupe nesi somaudigu gawo.

Novapagani ava ngava fumadeke vakurona vawo kwa ndindilire yipo va kare nerago no- mwenyo gomure pevhu. Gazara asi erago lina lyovapagani, alyo kwa kere mwenyo ogu goku- lya yisima nerago lyemona ndi lyoruvaro makura.

Nye ose vakriste ntene tatu uyunga erago no- mwenyo gomure ose apa kuna kugazara matu- ngiko nagenye gokontunda zevhu; yimo hena nomwenyo gwanarunye. Ntene pwele ogu a tu- ku oguhwe ndi ozina, ogo va mu gave va mu di-

Tala kep. 7

ESO

Omukadhona Frieda Justina Kaunapawa Sakaria Lumbu okwa mana oondjenda dhe muuwehame wethimbo efupi 19.3.1986 mepipi lyoomvula 22, megongalo Onyaanya.

Eimbilo 627, ovelise 5.

Helena Ndeapo Kuunda

Omushamane Petrus (Hai- mbodi) Nanghonga, omukali- mo momukunda Outwilo, eongalo Ondobe, okwa xulifila moshipangelo mOnandjokwe 8.6.1986 mouvela wefimbo lizupi. Okwa fiya ko omuku- lukadi waye, onunona 3 nova- tekulu vahapu. Okwa fya me- pupi leedula tadi tengenekwa 67.

Hekelekweni ovana nookau- me, Tess 4:13-14.

P.Shimoneni Kandume

Omusamane Tobias Ikuwa okwa mana oondjenda dhe 22.3.1986 megongalo Okan- kolo. Okwa thigi ko oyana 4, naatekulu 17 naatekululwa 2. Kalunga na hekeleke ayehe mboka kwa li ya matuka onkugo ndjika. Okwa li e na oomvula 96.

Erastus Thomas
Okankolo

OMADHILADHILO GOPAUKILILO (OVERTICALISM) NOGOPASHINDJAKANO (HORIZONTALISM) KOMBINGA YEHUPITHO

Omadhiladhilo guukumwe wehupitho oshike?

Omadhiladhilo guukumwe wehupitho oge na sha nekwatathano pokati komuntu naKalunga, pokati kegulu nevi, ondjokonona yehupitho nondjokonona yuuyuni tayi zi mehokololo lyajesus Kristus. Ondjokonona ndjika tayi thindi omuthindo miinima yopaukililo (vertikalism) nomiinima yopashindjakano (horizontalism).

Onkato yotango yokutaamba ehupitho oyo eshasho. Otashi vulika li kale eshasho lyomukuluntu nenge lyokanona. Ooitaali oyo taya fala aanona yawo kongeleka molweshasho, (Jesus nde ku etela). Konima yeshasho omalongo neputudhilo muukriste otaga landula omushashwa, nomalongo ngoka otaga fala sigo omekoleko.

Nokonima yekoleko omuntu ota dhiginine natango omalongo guukriste, opo uukriste u na omwenyo u koke nou taandele moomwenyo dhaahupithwa. Nopamukalo gwa tya ngaaka ongeleki (established church) otayi longo ya fa eshina yehupitho.

Ehupitho lyo lyene otali pula ekwatathano pokati kaKalunga nomuntu noshowo pokati komuntu nomuntu omukwawo. Ano omuntu a hupithwe pambepo, palutu nopauhupilo weliko (economics). Omuntu a mangeluka mokulongela Kalunga nokwa mangeluka monkalamwenyo yopamwene noyopaengundu (individual and social).

Pamanguluko lya tya ngaaka aantu otawa vulu okulongitha omaunongo gawo noku eta po aluhe sha oshipe nomayinyengo omape. Nuuna onkato ya tya ngaaka ya adhika, nena omuntu ota lundulukile monkalo ompelela, onkalo ya mangeluka, omuntu a mangelukila omudhingoloko.

Noshitya shopokati osho shika kutya ehupitho lyaKalunga olya dhiladhililwa aantu ayehe nuuntu auhe. Palongo lyopaKalunga nosho shi li oshilalakanenwa oshinene shOngeleki, osho shika, kutya omuntu a taambe ekulilo lyaKristus. Omalongo gongeleki oge na okukonakonwa opo ga gandje omukumo gwehupitho kukehe omuntu Jes. 16:1-2; Luk. 4:16-22. Blaser ota ti: Ehupitho itali adhika mompango nokali shi ompango aawe. Ehupitho olyo onkalamwenyo yolela,

eeno, emanguluko nenyanyu.

Pashitsa shika, onkalamwenyo ombwanawa yomuntu oyo uuyogoki wopalutu nowopamwenyo, nowo tau thindwa omuthindo. Oshoka olyo lela emanguluko lyaantu yaKalunga, okuza moonkondo (omuupika) wasatana nowondemoni.

Nokwa mangelukila ekwatathano pokati ke naKalunga, ye a mangeluka natango pamahupilo, palutu nopankalathano. Onkee oompito adhihe dhomuntu odha gumwa kehupitho.

Mpaka onda kondjitha omadhiladhilo gaKitter ngoka ta ti; kutya "ehupitho kali na sha nonkalo yomuntu yokevi, aawe, ehupitho oli na sha ashike nekwatathano lyomuntu naKalunga" (Theological Dictionary of the New Testament).

3.2 Mpaka otandi dhiginine omadhiladhilo ngaaka kutya ehupitho olya kwata onkalamwenyo yomuntu ayihe. Ehupitho oli na sha unene muukalinawa womuntu wopalutu, wopambepo nosho wo onkalo yomuntu ombwanawa. Olya kwatela mo uuyamba weliko ngaashi ikulya niikunwa (mpaka itadhi dhiladhila iikolitha). Onkalathano nuupolotika nayo wo inayi dhimbiwa ko.

Etegameno lyomwenyo olya yambekwa nombili otayi monika moomwenyo dhaantu. Ehupitho otali ti: Okukala moshigwana moka kaamu na nando omanyenyeto, omathiminiko nomatilitho. Oshigwana oshipe shombili, shuuyuuki nenyanyu. Onkee etegameno lyaantu lyopashindjakano (horizontal) olya mangela kumwe uuntu auhe womuntu, omwenyo, olutu nombepo.

Pamupopyo gwandje olyo ngaa enyanyu lyaantu yaKalunga nolyaantu ayehe kombanda yeve. Oshoka Kalunga He yOmuwa gwetu Jesus Kristus, oye Kalunga kaantu ayehe. Oye ngaa Tate

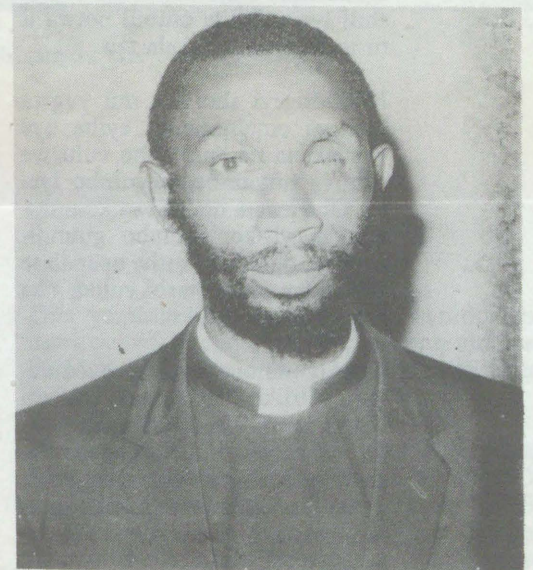
yetu nOmushiti gwaayihe. Ohole ndjoka a shitila momitima dhetu oyi na sha naamboke ye li popepi nosho wo naambeyaka ye li kokule.

Onkee oshikwiila shandje osho wo oshikwiila shomumwameme. Kokutya otatu topolelathana nooyakwetu shoka tu shi na omolwohole yaKalunga ndjoka yi li momitima dhetu. "Oshigwana, shi li ngeyi, oshi na elago, eeno, oshigwana, shi na Kalunga kasho Omuwa, oshi na elago, Eps. 144:15 lesa vv 12,14.

Mokukonakona uukumwe wa gwana po wehupitho, onda adha oshitsa shika kutya ehupitho itali vulu okuningwa oshinima shimwe, aawe, oli na iinima oyindji nolya mbwalangandja, ihe ethikilo lyalyo limwe alike. Kali shi oshinima shokuhalakanitha aawe, ehupitho otali gongele, eeno otalu tungulula. Ehupitho olyo okwaaludha pamukalo gwa mbwalangandja. Ehupitho lyaJesus olya eta sha oshindji monkalamwenyo ndjika ya topagulwa kuulunde.

Ehupitho olya yelitha uupe womwenyo, ehololo lyuuntu washili negwano lyuukalunga. Kol. 2:9. Ehupitho ndika oli na sha unene nomwenyo nolutu, paumwene nopangundu, uuntu nomahamo geshito Rom. 8:19. Oshi li sha yela kutya aakondjeli yuuyuuki weliko, emanguluko lyopaupolotika neopaleko lyomithigululwakalo, ayihe mbika otayi yalulilwa memanguluko lyashili lyuuyuni ndyoka tali adhikwa metumo lyaKalunga.

A. Iita



Omusita A. Iita

OMWANA A HUPITHA YINA MEYONUKO NEGALIKANO

Mawawa na Tutumina oyo aamati muyimwe yom Oosekundosikola mOwambo. Aamati mbaka oye holathane shili noonkondo. Konyala ethimbo kehe oya kala nokweenda pamwe, naanasikola ooyakwawo oye ya luku nokuli "engwanda lyiyali" (twintigsent-stuk). Muule wethimbo ele Mawawa okwa dhimbulula nkene kuume ke Tutumina ha kala a nika oluhodhi. METitano limwe konima yootundi, manga aamati mbaka ya li taa yi kostola, Mawawa okwa tokola okupula kuume ke.

Mawawa: Tutumina, ano ou na uudhigu wa sha nenge ongiini?

Tutumina: Owa dhimbulula shike?

Mawawa: Onda dhimbulula ngaa nkene ho kala wa nika oluhodhi konyala ethimbo kehe, nolwindji onda dhimbulula kutya oho lilile monguwi.

Tutumina: Tu ye ano tu ka kuutumbe momuti mwiya (ta ulike omuti komeho gawo) e tandi ku hokololele nawa. Ondi na shili uudhigu.

Mawawa: (Sho ya kuutumba). Hokololele ndje ihe kuume, pamwe otandi vulu ngaa oku ku kwatha.

Tutumina: (Ta mwena po okathimbo e ta keme). Otandi ku hokololele ngaa, ihe inandi inekela nande to ka vula okukwatha ndje. (Ti itsu omutse koongolo e ta hekumuna ethimbo ele).

Mawawa: O, Tutumina, idhidhimika, omuntu to lili, ihe owa fa nokuli wa dhimbwa kutya ngoye omulumentu. Hokololele ndje, ondi ilongekidha oku ku kwatha.

Tutumina: Eewa kuume. Uudhigu wandje ou li owala mpaka kutya ngame nuumwameme, katu na we meme.

Mawawa: Mwaa he mu na ngiini?

Tutumina: Omalovu ge tu mu kutha.

Mawawa: Oo, osho ngawo? Oge mu mu kutha ngiini?

Tutumina: (Ta keme noonkondo, omutse gwe ogu li natango koongolo). Tala kuume, sho shene meputuko lyandje, meme okwa li shili omukiintu omudhiginini miinima ayihe megumbo naayihe oya li melandulathano negumbo lyetu olya li shili lyu udhilila ombili notwa li tu uvite elago okukala mo.

Ngashingeyi sho twe mu yugwa komeya omalumentu, ayihe oya vandakana nomuntu iho vulu we okuuva uugumbo megumbo lyetu. Oha kwata ondjuhwa komulungu ta yi komagumbo guundingosho, opo e ki ikuthe opapalase yesiku lya pita notashi vulika a ka galuke owala uusiku.

Nokuli uunona ngaashi ooMutaleni, Osiike naGamena, ohashi vulika pu pite omasiku gaali inaa ye mu mona. Pethimbo lyoondima oha shodha po owala kashona, ye ota ka longa komagumbo guundingosho, a vule okumona chalasa mofola.

Tate ngele a zi kUushimba, oye ha landele mo iilya megumbo, ihe

ngele a shuna, omukuluntu iilya oyo owala ha tutu mo a ka nwe nayo. O, otu na ngaa meme ngawo?

Mawawa: O, ohenda shili. Omwa kongo ngaa ekwatho?

Tutumina: Eeno! Tala ihe, Inotweetha oku na ngashingeyi oomvula 12, ihe oye ha sile egumbo noohembumbangele oshimpwiyu. Oye ha tsu, ha teke omeya nokweedhilila iimuna. Molwaashoka oye okakadhona natango okashona, nomolwokwaanomuwiliki, iilonga ye ihayi kala yi na elandulathano.

Mawawa: O, ope na uudhigu shili. Lombwela ndje ihe kutya omwa kongo omakwatho geni na openi?

Tutumina: Pulakena kuume. Tse natate olwindji otwe mu kumagidha nelaka, ihe olwindji okwe tu yamukula owala ngeyi: "Ethii ndje! Mwi ishi uuyuuiki nayi. Omuntu aluhe oshinima ngele iho shi li, oho mono owala aali yasho aasama. Ngoye Tutumina dhimbulukwa owala kutya ongame nyoko. Shili aantu mwa longwa kamu na oondunge? Owa valwa uunake ano u vule okutsa ndje omayeke?"

Konima otwe mu kongele oopela koshipangelo dhokweetha omalovu. Naandhoka okwe dhi fike po, aniwa otwa hala oku mu lya. Konima natango otwa kambadhala oku mu kwatha nomakwatho geni po we, ngele ngono agehe inaga pita? Otwe mu kanitha owala ngawo, ita pondoka we.

Mawawa: Aawe, otashi vulika a pondoke, oshoka owala mwa thigi ko omukwathi ngoka ihaa nyengwa. Ota vulu naanaa oku ku kwatha, nande onena ndjika, ngele owa hala.

Tutumina: (Ta kutha ko omutse gwe kongolo e ta tala kuume ke). Otashi ka vulika ihe ongiini ngele meme ita ka zimina okuya ko?

Mawawa: Ye mwene ita ka pula nande ehala lyanakukwathwa ota ka landula owala eindilo lyanakumwiindila. Ke li kokule, oku li owala pungoye, note ke ku kwatha mbala, oshoka oku udhilila ohenda, ye oye Omuwa Jesus.

Tutumina: (Ta tala Mawawa e mu tongolola momeho.) Fatululila ndje ihe nawa.

Mawawa: Tala, oto galikana owala neitulomo note ku yamukula nziya nenge komeho. Ngele ye inaa nyengwa okuyumudha aasi, okuhupitha aa-

lumentu yatatu meziko lyomulilo, okuhupitha Daniel momakana goonime, ota ka nyengwa ngiini oku mu opalekela nyoko? Aawe, ota vulu. Shaa owala wa indile neinekelo ote ku kwatha pethimbo lye lye owala. Itaala owala.

Tutumina: (Te mu tongolola nokwiimemeha kashona, ta yelutha eke lye a minike kuume ke). Tangi kuume sho wa ulukile ndje ngoka e na oshilonga nda li ndaaye mu lwete nande.

(Ta thikama). Ngashingeyi tu shune owala momuhandjo, oshoka ethimbo lyokukala kondje olya pwa ko. Ohamano otayi ka dhenga nokuli ngashingeyi. Ngoye nande owa yi owala u ukilila koshililo u ka lye uulalelo, ngame kandi na ehalo lyokulya nena, otandi yi owala momuhandjo.

Mawawa: Eewa ano.

Momuhandjo Tutumina okwa ukilile owala mondunda yawo yokulala. Okwa thikile ta londo pombete ye ndjoka yi li pombanda. Okwa lala egombe e ti isikile komutse. Mondunda omwa mwena thilu, ihe momwenyo gwe okwa li shili ta galikana neitulomo.

Megalikano lye okwa pandula Omuwa sho e mu tumine uyelele okumona ondjila yokuya komukwathi. Netumbulo e li endulula olwindji oloyo: "Omuwa kwatha ndje u tu opalekele meme, e ta ningi ishewe omuvali omwaanwawa."

Osho a kala nokugalikana sigo uusiku. Ye mwene ke shi nokuli kutya okwa ka kotha ethimbo lini, ohaluka owala ongula onene ta penduthwa kuKalonge kaNdjukutu, okamati komondunda yawo:

"Tutumina, Tutu, Tutwee! Oto ithanwa kaantu ye li komweelo gwasikola aniwa endelega. Yo yene oya fa ya za kegumbo sho te tala."

Tutumina inaa kwatakwa okwa yi. Omanga inaa thika pomweelo, okwa dhimbulula ohauto yahekulu Sheemateka ya kankama, nahokulu mwene okwa li a thikama puyo. Tutumina okwa li a nyanyukwa noonkondo oku mu mona. Sho ya pendulathana, omusamane Sheemateka okwa hokololele Tutumina:

"Onde ya owala oku ku tseyithila ngeyi kutya nyoko okwa mono oshiponga ongulohi pomulongo nambali pokandingosho. Oya li yi ipyakhila nokudhana uudhano wOshiwambo. Nomanga taa dhana ngawo, okadhila kuusiku oke ya umbu.

"Inapu mona aantu oyendji iiponga, oye owala a yahwa mompadhi. Ina mona oshiponga unene, ihe okwa kanitha ombinzi oyindji. Oku li ngashingeyi moshipangelo ta yakulwa. Itashi vulika mbela u indile epitikilo komukuluntusikola tu ye nangoye ngashingeyi koshipangelo, ngame ndi ku galula ishewe?"

Tutumina okwa matuka mbala sigo opegumbo lyomukuluntusikola. Omukuluntusikola okwe mu pitike noya yi nahokulu. Moshipangelo okwa dhimbulula nkene yina a mona oshiponga, ompadhi oya mangwa nomalapi omatokele ye oku li komakende gomeya. Okwa tonata nawa newi lye olya yela, ihe omatumbulo ge a-

gehe oga pingathana naangoka a kala ha popi shito. Ngashingeyi ota hokolola ngeyi:

“O, oshiponga shika osha kumitha ndje noonkondo, nonda dhimbulula kutya osha li owala sha nuninwa ndje, ngame awike. Nokape na omalimbililo osha zi owala kuKalunga. Oshoka omolwashike ongame owala sha gumu?”

“Aawe, mwa ti ndi na omutse omukukutu, shaa owala nda zi mo moshipangelo muno, hampadhi yandje we pokefe, halovu we pothingo yandje. Ondi na oku ka kala megumbo ngaashi aakulukadhi ooyakwetu tandi opaleke ayihe.”

Tutumina okwa thikamene ombete yayina nonkumwe yaashono sha ningwa po. Okwa ningi egalikano, Kalunga e mu koleke metokolo lye epe nokwa zi po puye. Mokushuna komuhandjo, Tutumina okwa li a nyanyakwa noonkondo mokumona elunduluko enete muyina.

Konima yoomwedhi dhimwe yina yaTutumina okwa lalekwa mo moshipangelo ihe ke na we ompadhi ye mwene, oyopaunongononi. Aanegumbo ayehe oya li yu uvite uudhigu sho yina a kanitha ngeyi oshilyo she shimwe, ihe oya nyanyukwa wo noonkondo kelunduluko enene lya holoka muye.

Ngashingeyi muye omu udhilila ombepo yuukriste noha sile nawa egumbo naayihe oshimpwiyu, shi vulithe nokuli sho a li tango. Onkalo ayihe yegumbo oya galukile kuuwanawa.

Aanegumbo ayehe onkalo ya piti yanaku ya sila oshimpwiyu ngashingeyi ohaye shi dhimbulukwa nokwiipuka komitise. Yina yaTutumina mwene, ke shi oku yi popila pomulilo ota gwile mo. Tutumina awike kwa li a tseya kutya oonkondo dhegalikano lye odho dha longo muyina.

L.Tshekupe Kaapanda



Anna Nyambali okwa yi mevululuko lyaana yaKalunga, ngaashi sha uthwa kuKalunga mwene mEpsalomi 90. Kuku Anna okwa vaelwa momukunda Oshigombo popepi nOshitutuma. Konima oya tembukile kOkahenge popepi nOshigambo, mo omo a putukile, nokushashelwa kwe muugundjuka we. Konima yethimbo okwa mono po omuholike gwe Tobias Iita ngoka a dhike naye egumbo paukriste.

Oya kala mOnanganga moka omuholike gwe e mu tekele wo momumvo 1961. Kuku Anna okwa tembukile kOndukutu megongalo Oshitayi, moka a kala sigo Kalunga e mu zimbula eti 19.4.1986.

Kuku Anna okwa thigi ko oyana 11, aatekulu 84 naatekulululwa 24. Okwa li e na oomvula 87.

Kalunga na hekeleke oothigwa nookuume ayehe koombinga noombinga mboka yu uvite oluhodhi.

Gumwe gwomiitenya ye,
Hosea Eino Mateus

RUPARA, KAVANGO: “Otwa tala oshiwa unene tu hovele paife nouteku weengobe. Omalongekido otwe lipyakidila nao nokuli paife,” osho Aurelius Samakupa omuhongwa mukulu womofikola younamapya yaCommercial Industrial Sec. School, moNew Lisboa shomuAngola, a hokololela Omukwetu omafimbo aa.

Omushamane Samakupa (41) moRupara moKavango, okwa hangwa kuHamushanga wOmu-kwetu e lipyakidila nokudika oshuunda sheengobe, osho a kongela onhele moshikunino shomiti. Oshikunino eshi oshi na onunene wehekter nhano.

Samakupa omunashilonga wa ELCIN ou a nangekwa moshikunino shOngeleki moRupara konima yeedula 9 da pita. Oshikunino shaye oshi na omiti 264 domaludi atano, noikwambidi ihapu. Oiimati otai landifwa moihakulilo nomeenhele dihapu moKavango.

“Oudwaali otwa likolele shihapu moshikunino shetu,” osho a hokololela Omukwetu, fimbo e likesha eshi ta shili odalate oyo kwa li ta mangifa nayo eepaala doshiunda shaye.

Ombinga imwe oyeengobe odo di li nawa, nombinga onkwao oyokudiinina odo tadi pumbwa ouhaku.

Omeva omahapu moshikunino shinya taa pom-bwa momashina momulonga oo u li ashike shiimba eemeteli 400 noshikunino. Omwiidi otau monika yo muhapu mekove loshikunino osho.

Fimbo hatu ende naye hatu piti mo momuvelo woshikunino, omulumenhu ou okwa piluka nde ta taalele kuame. Okwe likwata pomutima nde ta tumbula: “Oilonga ei nda pewa kOngeleki, oya hafifa nge unene. Ondjila yange okuuya muNamibia oya wilikwa kOmbibeli oyo aike meliko letu twa kufile eshi twe uya.”

Xe younona vatano, Samakupa okwa nyamukula omapulo OMUKWETU kombinga yonakudiwa yaye nonhumbi ve uya muNamibia neu-mbo laye. Vati okwa putukila ashike pomissioni moshitukulwa shaHuambo, muAngola noyo ye mu lilongifa fiyo omOseko younamapya oule weedula nhatu, Commercial Industrial Sec. School, muNew Lisboa, shaAngola.



Omusamane Samakupa poshigunda she shoongombe

Otwa ya naye twa ka fikamena oshinhenga shoi-lya yomahangu shounene wohektar imwe. Omitwe domahangu aa odile nodinene noda ima nawa eemuma. “Ombuto yetu ohai hoololwa owina alushe konima yeteyo,” osho a hepaulula mokuyeekanifa neembuto odo di li momapya mahapu Ovakavango neudo.

Oshitukulwa shaKavango osho shimwe mu-Namibia sha mona odula iwa neudo navahapu otava ka mona eteyo liwa, okuyeleka nomido da pita.

Kombinga yeengobe omushamane Samakupa okwa ti kutya ove li nale meenghundafana nomushamane Seppo Kalliokoski, omufita weengobe da ELCIN mOnandjokwe. Oshiunda osho Samakupa a longekida osha tukulwa moitukulwa ivali.

Oita yomoshilongo osho, oye va kanififa eum-bo, oukwashilongo, ovakwapata, ookaume neliko lavo alishe omo mwa kwatelelwa oihauto ivali.

Okwe limemesha nde ta tumbula kOmu-kwetu, “Oh, ondi udite nawa okulongela natango, Ongeleki, Kalunga okwa alulila nge shihapu, shiimba osheshi meliko letu alishe eli twa fiya ko, otwa kufa mo ashike Ombibeli i tu wilike mondjila yetu.”

Sebulon Ekandjo

HAMUNONA WE TA MONIKA POMALAMBO GIIYAGAYA TA HADHA IIKULYA— — — — AA- VALI YA TI

KuJohn Shitundeni

Moshigongi shaavali naalongi mOmbalantu, omwa ningwa etokolo kutya omunona kehe ta ka monika pomalambo giiyagaya nenge ta endagula pethimbo ndyoka aana ooyakwawo ye li mootundi, oku na oku katukilwa onkatu nokufalwa koskola pethimbo tuu ndyoka komuleli gwoshilongo shoka melongelokumwe naakwathi ye. Pamaalunzankundana galwe mOmbalantu, etokolo ndika olya tulilwe miilonga muMai 26, 1986.

Oshigongi shika osha li sha hiywa komuleli gwaMbalantu, elenga Oswil Mukulu nosha li sha gongala puAnamulenge meti 24 lyaMai. Omupopi gumwe moshigongi shiyaka okwa ti kutya oshigongi tuu shoka, oshopandjokonona, oshoka aniwa muule womimvo adhihe 36 a kala miilonga yooskola mOmbalantu, inamu ningwa nale oshigongi shoshilongo ashihe sha hiywa kumwene gwoshilongo shi na elalakano lyomupondo gwelongo lyaanona yoshigwana.

“Ndele iigongi yilwe yelalakano lyiinima yoshilongo, oya ningwa oyindjiyindji omumvo kehe,” osho omupopi ngwiwaka a fatulula nkene a kuminwa uukwatya woshigongi sha tumbulwa.

Omupopi gumwe ishewe mokufatululila aavali oshinakugwanithwa shawo oshinene melongo, okwa ti: “Olwindji ohaku popiwa kutya aalongi oyo ooyene nooyina noohe yoskola. Ihe pama-dhiladhilo gandje, omupopi ta tsikile, aavali oyo aahona, ooyene noonakukalela po elongo. Oyo ooyina noohe yaalongi, yaapangi, yoon-dohotola, yoomakeninga, yaanongononi naaniilonga ayehe ya pumbiwa moshigwana.

“Aavali ngele itaa tumu aanona yawo kenongelo, nena oshigwana shawo otashi shunduka notashi kala koho yiilongo noyiigwana yilwe, omupopi a ti. Okwa tsikila ko ta ti: ‘Molwashoka aavali oyo oonakukalela po elongo, oye na okutonatela iinima mbika:

Omunona kehe e li megumbo a ye kenongelo; okutala kutya omunona oha thiki tuu shili kenongelo; okutala kutya omunona oha lesa tuu, unene kongulohi mekwatho lyolamba ndjoka a kongelwa kaakuluntu; aavali naa kale haa kundathana naalongi okupula aanona yawo nkee ye li koskola ngaashi kombinga yokwiilonga, yomikalo nokuthika kenongelo.

“Aavali naa dhimbulukwe wo kutya omukuluntusikola naalongi ye itaa vulu okupangela aanona ye li 300 nenge 600 nokulandula omunona kehe. Aavali oyo wo aatonateli yomatungo goskola. Shika otaye shi ningi mokutunga omatsali nokupula epangelo li ya tungile ooskola dha gwana.

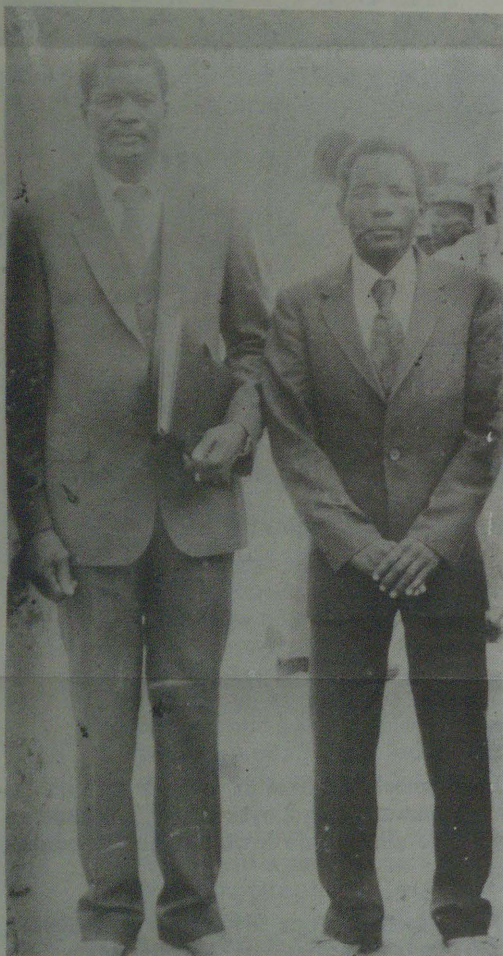
Omapukululo nomaku- gidho naga dhigininwe shili

Aanamibia aaholike, natu taambeni omapukululo omawanawa hage tu ziilile maakomeho yetu. Ongele gokudhiginina iilonga yokomake, oshoka muyo omo tamu tu zile wo sha. Okugandjela Kalunga Omushiti gwetu noku mu simanekitha nago. Ne mu ya thiminike shili okukala maandjawa ya longe shoka ye na oku shi longe, osho tatu lesa moshipango oshitimulongo.

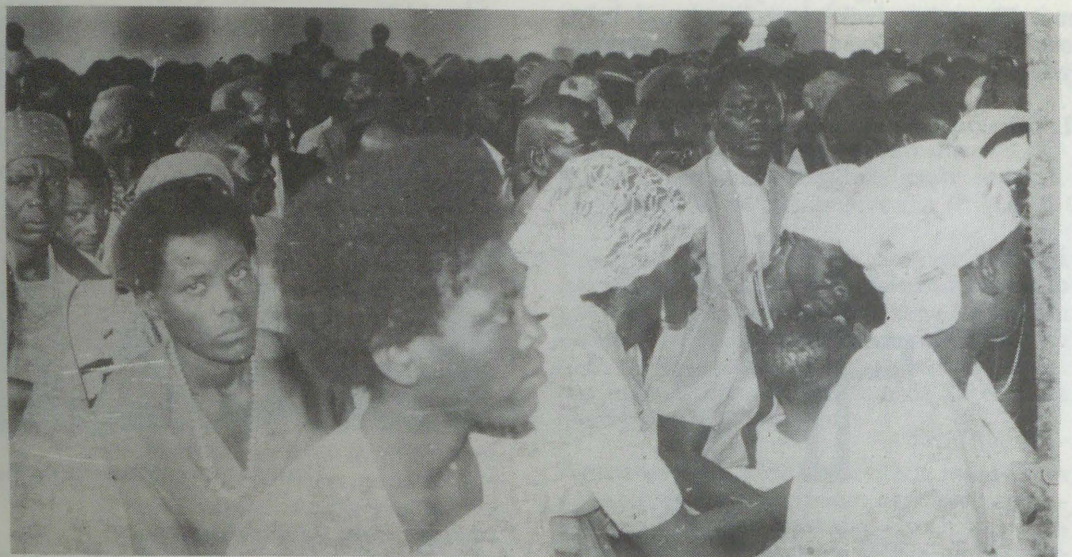
Natu dhiginine wo iilonga yaKalunga, tu holoke shaampoka tapa longelwa Kanunga. Ongele moma-longelokalunga, moongeleka nenge moongundu dhootate nodhoomeme. Nomiigongi yaagundjuka, tu longe Omuwa nenyanyu twaa na ezimbuko. Eps. 100:2-5.

Otandi mu indile one aanashilonga amuhe mongeleki nomoshigwana, gandjeni omapukululo ga gwana koshigwana; oshoka Omuwa mwene gwasho okwe shi mu inekelela. Ne mu ya longe okudhiginina ayihe mbyoka nde yi mu lombwela. Mateus 28:20.

Tsh. Amuulo
Tsumeb



Elenga ekuluntu lyaMbalantu, Oswil Mukulu, kolumoho, omutekulululwa gwaKamhaku kaHuhwa



Aavali Aambalantu moshigongi shawo sheputudho lyuunona

Onawa ngele taa pula olwindji sigo epangelo lya yamukula. Ombelwa yomutaleli oye egulukila omuvali kehe, nomutaleli ngoka e shi shoka e lile po, ondi inekela ota yamukula omuvali kehe nombili,” osho omupopi nguka a shilipaleke aavali mbeyaka moshigongi shawo naalongi mOmbalantu.

Oshigongi osha li wo sha fatululilwa iipopiwa yilwe ngaashi shimwe tashi popi omupondo

gwelongo moka omupopi a holola kutya oshigwana inashi longwa osha fa omuntu a patelwa monzimbogo. Oshipopiwa shilwe ishewe osha li tashi popi shoka hashi eta endopo moosikola moka omupopi a ulike kutya omulongi, omukuluntuskola, omutaleli, oshikondo shelongi, aavali nomudhingoloko, otashi vulika ya kale ye na mo sha mendopo lyaanona.

Otu li peni apa?

Moshilongo shetu, Namibia omu na oinima ihapu tai nyemateke omunhu efiku keshe. Imwe yomuyo ongaashi: Elondo leendado omwedi keshe, oishoshe-la koilandomwa (sale tax) omadengo ketanga leameno, oo konyala keshe omunhu e li moshilongo omu unene mOwambo a makela ko, ngee kenghava, ngee ketukano ile kondjebo yoovenevene yovalume-nhu vo "Koevoet."

Onda kala eedula da dja ko hai konakona onghalafano yovakwashiwana shaNamibia nonda dililika sha tashi tokoteke sha fa oshitumba shi li mombelela yomunhu, sha twipuka unene mOwambo, osho **outondwe** ile tu tye **ombelela** i li meenhele domayakulilo mOwambo, i kwetelwe komesho kovadalelwamo Ovawambo voovenevene.

Onda lola moipangelo aishe mOwambo, ya kula ile ouklinika, ndee onda kumwa oipangelo yetu mOwambo oheli yongaho!

Ovahakuli vetu mOwambo (eesestela, eenesa ovalihongipangi, ovatameki voikutu itilyana mOshakati oto kumwa komalaka nokoipala yavo eshi ya lulipalekelwa ovayakulwa vavo.

Kashi na ondjoolola. Nale otwa li twa tula oipangelo yomatumo komesho, (Otshikuku, Onandjokwe, Okatana, Engela nosho tuu), ndee paife kashi lidule!

Oto kumwa ove to fi ohoni kovahakuli vokouklinika ava va ninga "eehamba" tadi likumbwa. Otashi dulika u uye nomunaudu woye pokaklinika ndee to hange omuhakuli a ya keumbo meevili domutenya, ndee ita aluka vali, ndee ove to i keumbo nomunaudu woye ina kwafwa sha. Ngee owa hetekele oku ke mu konga keumbo, to pi nena keeholo domalaka!

Ame onda kumwa eshi oondokotola aveshe (Ovawambo novanailongo) aveshe ve na ombili alushe, ndee vakwetu ovahakuli vamwe!

Ohandi kumwa yo nokufuuka koolestela moipangelo yaKatoolika kaRooma eshi efimbo alishe otava ngungula, tava yakula meendelelo, ndele alushe ove na ombili lelalela, voo ovo tava yakula ovanhu voilongo ihe fi yavo, ndele poshitaa-fula opo tuu ope na omuhakuli Omuwambo a lulika oshipala, e shi taalelifa kooxe, kooina, kovakulu nokeendenge daye.

Meengeshefa, meembelewa, meembelewa dOshikondo shehongo unene mo "Finance" pOndangwa, ovayakuli inava hala oilonga ndele oto fi ohoni, ovanhu keshe umwe konyala pomesho aye ope na oikulya meevili doilonga.

Umwe okwa nyamukula nge a pilamena nge, ta leshe o 'Newspaper' nelinyengo ota ulikile nge kutya "To piyaaneke nge, ame ohai leshe manga eenghundana dange." Onde shi tala nda fya ohoni, ovanhu va hala emanguluko ndee inava hala oilonga, vo kave na ohole youmwainafana.

Onda dimbulukwa kutya Ovatilityane ove shii okuyakula ovanhu vomihoko adishe nombili no-neendelelo. Ohava longo yo lela nge ve li meetundi doilonga.

Omolwashike hatu fuuka ngee hatu lande mefitola mOushimba? Manga to piti momuvelo, ye omulandifi ota pula nale eshi wa hala e ku ningile. Ndee nande ou mu pule oilandomwa lwomilongo, ku mono te ku ngwenyukile. Otamu litukauka ashike nombili. Nge wa i mee-

mbelewa mOushimba, oto yakulwa diva meendelelo nombili.

Ngee eemhata indeni mo Apoteka i li popepi nOpoosha yaShakati, mu tale nghee ovanhu hava yakulwa nombili nelimemesho, ndele odiva yo! Shuude owa hala u tye, ou hano okwa hala okuningilwa shike?

Ame omukwashiwana eshi shaNamibia lela. Paukriste ondi wete ohole ei twa makelele motatumwa vetu Ovasoomi, Ovaingilisha, Ova-ndowishi, kai mo vali omu! Paukwashiwana, onda makela ile otwa makelele ashike ohole youmwainafana oyo ya li tai hovele okushitwa mo kongudu yoshiwana, SWAPO manga oyoo-galele ya SWAPO ya li inai kelelwa filufilu.

Aveshe ovahakuli, ovahongifikola, ovanafikola momihandjo nomomikunda, ovadali moshilongo ashishe ova li filufilu va hovela okutemuna ohole youmwainafana konima yongudu ei.

Onda itavela kutya ovanhu vahapu eshi tava vele mOwambo, otava ehama kenyeme lomaya-kulo mai!

Ondi wete inandi puka nge te toto po oshitya shi kale momutima womuyakuli keshe moshiwana shetu osho tu "fefengeni" mokuyakula kwetu.

N.B. "okufefenga" otashi ti "okuninga omunhu nawa."

Tuhekelekeni yaTuholafaneni

EPULO

Omunhu a dopa ongudu onhi 8 ndee ta kala meumbo te lihongo a shangele pedu, ndee eshi e li meumbo omo oshoongalele shovanyasha nasho otashi dengele kumwe noilonga yomeumbo, nefimbo loku-lesha kali po vali.

Osha yuka tuu osho?

Silas Haileka
Eengedjo Sec. School

ENYAMUKULO

Oshoongalele shovanyasha nasho keshinini shi dulike koilonga oyo tai ku imbi u ye ko. Shapo okutala ashike nhumbi to tukula efimbo nawa, opo shi ha xupe ko omolwaikwao. Oshoshili kutya efimbo oli na ondilo paife.

Hamushanga wOmu kwetu

Sipango saune

Kutunda kepenuno 2

pag. (2Mos. 21:15,17). Vakurona owo natu fumadeka yiwo otate nonane. (Efes. 6:1-3).

Atu vulikeni koyininke eyi tayi tu kumwe neharo lyaKarunga, nye ntene tava tupukisa tu ka kware mongoma, ndi asi vaka tu zanekele nayina, apa hasa tu vulikeni keharo lyaKarunga.

Tara apa wa kere mezimo onyoko omu ngava kukungu dogoro vana kuhampuruka, nye dogoro nonomwanyambo omu ngava ku dwareke, momundiro va ku popera, kuuyunga va ku rongu yipo ngo kare muntuuntu.

Gazara yininke eyi ngo ninki pounona yimwe ngano ya kuninka sirema nokuli ndi ngano wafa nye nayinye morwa vakurona woge kapi ya horoka. Nye ngatu vura tupu ku yi futa eyi ndi?

Ntene asi kapi tuna kufumadekeni vakurona vetu, nani siruwo ke ngatu ka va fumadeka? Sipango kapi sina kutanta asi fumadeka oguho, ndi onyoko, nye aso tasi pura yipo tu va fumadeke navenye pakuhetakana.

Vakurona vamwe kwali sigilira tupu mokunwa asi yipo va divare maudigu gomaruvavo gawo. Mpamwe morwetu vakurona vetu vana ninki nonkorwe? Ntene ofumadeka vakurona woge, tasi vulika va sige kunwa.

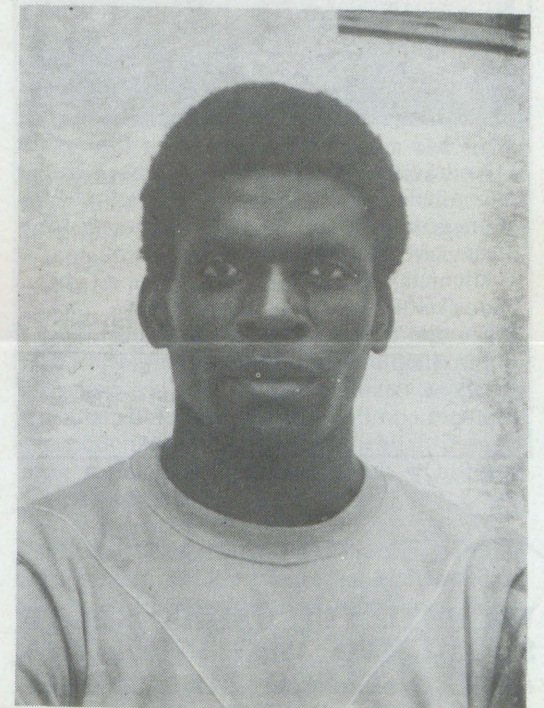
Vamwe kutondesa vakurona vavo ukriste, nkenye ezuva mokakayiwa asi kosigongi, nye ove membo omukorokotji. Wa zire kosigongi ngwendi kipasi yiko wa zire motwa pamwe nonkedi doge dina ka donapa hena unene, morwa kuvura o ka tunde ko onolirongo nokukoka LEXINGTON no GUNSTON, yimo hena ne kokomo lyo KING KORN.

Mпамwe ntene o siga makanya noyikorwesa mpamwe navali tezurora? Mpamwe ntene osiga kuhundira yimaliwa o ka rande nohema va taura dogoro pononyonga nokonyima mpamwe kuvura va ku kwase kupitakana nare.

Nzambi zomugwanese gosipango esi mwenyo gomure nerago kontunda zevhu. Hano zogu asi taguruka ehudi dogoro mezumbano. OSE KUPIKO NYE TUNA HAMENI?

Tani gava ekundo komunona nkenye yimo hena komudinkatu nkenye.

Mudinkantu mukweni
S.T.Shekupakela
Mpungu



S.T. Shekupakela

wOmulaule nokutumbaleka pombada eyonawa lomaxupilo shi dulife eemwenyo edi tadi kanene mo.

“Eudeko la pama mokati kovanhu vetu olo eli kutya epangelo laAmerika olo naanaa tali humbata oshilanduli shomahepeko avo, nokutya olo tali yambidida SA menghundipaleko loshitukulwa shetu,” osho sha leshwa momukanda oo.

Omukanda owa shainwa ngaashi tashi landula apa:

Hamushangandjai: Jose Chipenda wOraata yee-
ngeleki ceenghwaevangeli mu-
Angola.

Hamushangandjai: Filipe Sique Banze wOraata
yeengeleki muMozambikwe.



Omumvo 1983 Amushanga gwOmukwetu sho a talela po Caprivi, okwa thikile wo nomegumbo lye fudho lye mukwaniilwa Josua Mutwa Moralwane, puNgoma, eekilometa 42 okuza muKatima Mulilo. Aanyekadhi ye yaali otaa monika ngeyi megumbo lyawo. ELCIN oti ipula noshifonga shetumo moshitopolwa shoka tashi hepekwa natango komaitaalo gopaukwashi-gwana.

WA FUTU TUU OSHIFO SHOYE SHOMUMVO 1985? INYOLITHA ANO NATANGO MBALA MOLWOMUMVO 1986.

Hamushangandjai: Abisai Shejvali wOraata yee-
ngeleki muNamibia.

NaHamushangandjai: Beyers Naudé wOraata yee-
ngeleki mu SA.

Omukanda owa xulifa nomatumbulo taa indile elongelokumwe leengeleki domuAmerika novashangi, osho yo novanhu aveshe moumbuwanhu waAfrika, opo ombili nouyuki i monike. “Emanguluko oshinima shi na okuuya, ashike ngeenge kali na ouyuki nombilf itai monika yo,” osho omukanda wa londwela.

Onghundana ei ya dja muAmerika

Petameko lohani ei hamushanga woshilongo mepangelo laAmerika George P. Shultz okwa popifa ongudu yovanhu ve dule 450 omo mu na ovawiliki veengeleki novopapolotika. Mepopifo eli omushamane Shultz ota pangula omulandu wokatongotongo oo a ti kutya kau fi wopaunhu, ndele ina hala yo epangelo la SA li ningilwe ondjidikila yoipindi.

Omumbisofi David Preus wongeleki onghwa-Luther muAmerika nomubishofi Will L. Herzfeld wongeleki onghwaevangeli paLuther, Association navo omo va li mongudu yovawilikini.

Mokunyamukula kuHamushanga Shultz omubishofi Herzfeld okwa ti vo mukupula ondjidikila yoipindi ku SA kave na elalakano lokudima po epata alishe lOvatilyane, mu SA ndele “oshisho shetu okulipula nhumbi tatu keelele Ovatilyane ve he lidime po voovene.”

Pafatululo laShultz, ondjidikila yoipindi okwe i tala i fike pamwe nelongifo leenghono okufinika SA a lundulule onghalo yaye.

Mokuulika kOmbibeli, omushamane Shultz okwa ti vati osho oshinakuwanifwa shavo novawilikingeleki va tale nhumbi tava eta po elunduluko lopambili mu SA. Mwaasho itava dulu okulikosha keenyala ngaPontius Pilatus e shi ninga.

Eshi Ombibeli ya tya oshinima keshe oshi na efimbo lasho, paife efimbo oleenghundafana, osho e lipopila.

Omubishofi David Preus okwa holola yo vati eengeleki domoumbuwanhu waAfrika oda tokola di ha tambule vali ekwafo lopaimaliwa olo tali di kuAmerika. E shi popila pomhito imwe i lili, ta hokololele okakomitiye keyandjomayeke kepangelo, omubishofi Preus okwa ti.

Epangelo eshi le lidunda momahangano opaumwene mu SA nomuNamibia, osha talika ko okupopina oupolotika walo neemwamengeleki moilongo oyo inava hala vali omakwafo a tya ngaho.

Paendjovo doshifonghundana shOngeleki muAmerika, News Bureau, 86-22, epangelo laAmerika ola faneka li tume ekwafo lopaimaliwa keengeleki mu SA nomuNamibia osho yo keengudu dimwe omolwomapendulopo oiwana omu. Ekwafo olo okwa tiwa oli na ngeno okupitila mehanganano lependulo po laAmerika mounyuni aushe.

Omubishofi okwa ti SA ina fininikwa natango sha wana, opo e liufe ketokolo loiwanahanganano, molwaasho Amerika a tula po onghedi yokumbilipaleka oshinima omolwekufe mo lova-kwaita va SA muAngola.

“Nandi mu yelifile sha yela nokutya eengeleki noshiwana shihapu shaNamibia kashi na ombada wOvacuba ve li muAngola, osho yo kave shi udite ko kutya omolwashike twa efa ashike SA a dike eenyala daye moshilongo shavo omolwainima oyo inai va kuma,” Preus osho a lombwela okakomitiye.

Okwa weda ko kutya Ovanamibia nava kwafelwe mukupula SA a lundulule omulandu waye. Eyambidido moku mu ningila ondjidikila moi-pindi nokuxulifa po okukwafela ongudu yaUnita, oshi na oshilongo oshinene, osho a ti.

Omubishofi Preus okwa endulula eendjovo domubishofi Dumeni neudo muMai e shi a tya: Okumangela emanguluko laNamibia kumwe nOvacuba muAngola, kufye Ovanamibia oshi fike pamwe nomunhu wa kufa ondjebo yolute nde to hanauna po oshiwana ashishe shaNamibia.

Sebulon Ekandjo

A mangululwa

Omusita Tomas Ndiwakalunga Eadola, ngoka rkwatelwe nokweedhiilwa mondholongo 14.5.1986, ngashingeyi okwa mangululawa.

Ya dhigininwa natango

David Shiimbi
Toivo Kankono
Johannes Jeremia (20)
Eliakim Johannes
Kleopas Johannes
David Johannes Nakwafila
Uejulu Ndume
Letta Alumbungu (Oshigambo)
Martin Akweenda (Oniipa)
Natanael Amukugo (Oniipa)
Festus Mvula
Abel Festus
Amakali (Oneeya)
Helmut Angula
Nestor Ashoongo
Petrus Haimbodi
Filemon Hamukoto
Frank Hamunime (40)
Eric Iikukutu
Amutenja Iipinga
Stefanus Iishilelo Teofilus
Johannes Festus
Sakaria Barakias
Tara Sakaria
Viktoria Moshana
Lusia Nanghama
Lukas Nauyoma
Kondjeni Nenghede
Werner Paulus
Teofilus Shidjuu
Iiyambo Shilongo (37)
Timoteus Shikongo (48)
John Shiluwa (30)
Petrus Shipahu

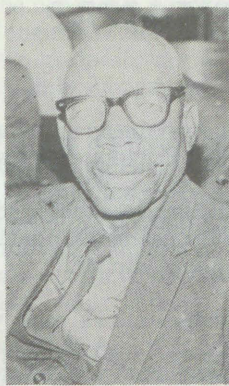
Henok Malakia
Gerhard Nafuka
Naftali Andimba
Mateus Gabriel
Andreas Gideon
Reinhold Shipo

Johannes Uutoni (50)
Listo Katengo (Sheya)
Petrus Nangombe (Kakede) (37)

Ondjokonona yanakufya omufita Ismael - Abraham yaThomas Nhinda ngaashi ya hokololwa mefiku lepako laye eti 16.12.1985

komufita Natanael H. Shinana

Opo omunhu u ude ko nawa, ondjokonona ei onawa u i hovele kokule lela, meumbo laxekulu Abraham yaShiweda, ou a dala Maria ou a dala Ismael. Abraham okwa shiivika nedina Abraham Takalungwinike. Eshi ovahongi votete Ovandowishi va fika mOukwanyama mounyuni waWeyulu 3.9.1891, Abraham Shiweda (Takalungwinike) oye a li omuudifi Omuwambo wotete, pamwe novahongi venya Ovandowishi, va udifa omido 25 mOukwanyama



Abraham okwa udifila echamba nomalenga noule ngwena mOukwanyama, nokwa teyaula eenghono doupaani. Hano eumbo laAbraham omo mwa dalwa Mukwanaifeta, Maria ina yaIsmael, ola li ouyelele tau minikile momilaulu doupaani.

Opa kala yo omunyasha Thomas Nhinda a li omumati wovahongi Ovandowishi ou naye yo okwa kala a yelwa kovahongi, nokwa li e linekelwa okudiinina yo ovapaani, oku va pukulula. Omunyasha ou oye xe yaIsmael.

Osha li shipu kuye okuninga oshitenya shamuhongi Takalungwinike, eshi a hombola Maria yaAbraham, ndele tava ningi eumbo lavo mOmupanda, mOukwanyama muAngola, popepi neengulu dovahongi opo, neumbo lavo ola kala ouyelele mokati komilaulu doupaani.

Efiku 18.1.1913 Thomas naMaria ova pewa okamati ka shikula oukadona vavali vaMaria. Omumati okwa ka shikulwa keendenge 6, vavali vomuvo ova tetekela nale, nena oye omutitatu. Omumati ou okwa shashwa eti 9.2.1913, konima yomafiku e fike lwopo 21 konima yokudalwa kwaye.

Okwa shashwa komukulunhutumwa wetumo ekwaevaengeli la dile kuNdowishilanda, olo la li mOukwanyama efimbo linya, nomuhongi ou oye August Wulfhorst, ou ha ifanwa Omuyapostoli wOvakwanyama, nedina lophonho Hashipala.

Omumati okwa shashwa Ismael Abraham yaThomas Nhinda. Ovafikamini vaye oxekulu nainakulu Abraham Shiweda naEmilia Haipinge. Oka shashelwa mongeleka mOmupanda. Omumati Ismael Abraham Nhinda okwa kolekwa nokuli 27.12.1931, e na omido 18.

Ismael, okwa putuka omufita weengobe shaashi ovakulunhu vaye ova li ve na eengobe dihapu. Okwa kala yo ha i kohambo koushilo nokouningnino kOnheleiwa nOkalongo oku na omatunda mahapu omo va kala nale eehambo. Ismael okwa hokololwa kuvakwao ovo ve mu shii nova lifa navo, nokovakulunhu ove ve mu shii nawa, kutya moudano navakwao nomoufita apeshe okwa holola omhepo youkriste weumbo laxe nolaxekulu ongaPaulus ta lombwele Timoteus eitavelo lanyokokulu Loide nolanyoko Eunike.

Eitavelo noukriste owa holoka mokuhanyena vakwao ovo tava ningi nai. MuIsrael omwa monika eenghono da sha doukwatya waye wokomesho fimbo e li koufita, osheshi shikondobolo, oha monikila mei.

Ondjala oyo ya hovela pomido dinya, oyo ya li ya hepeka Owambo, oya hepeka yo mOukwanyama, oyo haku tiwa ondjala yokapuka. Ismael ova tembukila mOndonga omo mwa li mu na ovakwapata vavo, nova ka tula mooxekulu Abed yaKafidi, nokonima momudo 1916, ovakulu-

nhu vaIsmael ova ninga eumbo lavo momukunda Oshitapo, popepi nOndjondjo.

POshitapo ova kala po ashike omudo umwe, koo kOukwanyama oshilonga osha hanauka po koita yOvakwanyama nOvapuuto momudo 1917, onghee eshi novahongi va dja mo ava va li kOndjiva, kOmupanda, kOnamakunde nOmatemba, ova ya omolwoita. Oshilongo shOukwanyama osha li sha nyika omatau ovanhu tava tauka, omaongalo Ovandowishi okwa halakana po, ovanhu vahapu ovakriste novapaani ova li va yuka kOumbuwanhu, va lambalala omifinda domatamba ovahongi vavo, va yuka koxulo, ve uya pOshikango nopOnghala.

Pefimbo lokudja po kOvandowishi, Ovashoomi ova fila Ovakwanyama oshisho. Onghee Nakambale kOlukonda, okwa shiiva nawa exwamo laThomas Nhinda ou a dja kOukwanyama. Onghee okwe mu tuma a shune ko a ka yakule eedi di he na omufita. Ismael novakulunhu vaye ova alukila mOukwanyama, nova dika ofikola younona mOnghala. Ismael okwa hovela yo okufikola mofikola yaxee pOnghala.

Omolvoupaani wa li wa handuka pOnghala, opa li omupaani Haiduwa ou a li mwene wOnghala, okwa etela eumbo laThomas Nhinda o-maudjuu, osheshi eeandaxa daThomas xe yaIsmael oda lolola ovanhu. Ovatumwa ova tokola ofikola yaThomas i tembukile mEngela, kombinga yokOuheke. Ismael okwa twikila enongopalo mEngela fiyo a pita. Ovahongi vaye ngaashi Mika Hiyoonanye ta hokolola, ova li va hala unene Ismael a twikila eefikola, osheshi okwa li e shii nawa Omuvulu.

Ismael okwa ya kofikola yovamati kOngwediva, ovo nokuli ve i tota po, va hovela 1932-1934, mofikola ova kala mo nomaudjuu ngaashi ye mwene e shi hokolola. MEngela ova dile mo vane naFilippus Tauhakana, Stefanus Haifidi, Moses Haufiku. Filippus okwa fila pOuhongo, Moses Haufiku okwa fila pOmheddi. MOvange-la Ismael oye aeke a dja mo a ka twikila Osiminali kOniipa, oko a hovela 1935-1937.

Ova kala mOsiminali navakwao vahapu, ndele umwe e shii okudimbulukiwa otatekulu Johannes Shaimemanya wokOndobe ou a kala he mu kwafa monghalo aische yomofikola, nokwa kala omupashukili waye. MOsiminali Ismael okwa kala ha shindwa kovanafikola vamwe, eshi a li e hole okushika okaxumba nomolwomainyengo aye, onghee nee eshi kwa li hava lesa ehistolli longeleki, ova luka nee Ismael "Omubishofi wokuKartago".

Omumati wokooThomas Nhinda mOsiminali okwa yauka mo osimati nokwa ninga omuhongifikola. Eshi e uya keumbo okwa nangekwa kofikola yaKafunga, ya li kOshikango, a longa ko omido mbali okuhovela 1938-1939. Momudo waye wotete mouhongifikola, okwa hombola okakadona kaye Lusua Xwanda keongalo lavo, eti 16.11.1938 okwa hombola okamati komido 25.

Ova kala ve na elao monombo yavo nova kala va punikwa, osheshi meti 22.12.1939 ova li va hafa unene, osheshi omo Kalunga e va dimbuluka eshi e va pa okakadona oshiveli omutwi woku-vila.

Ehaho oli li unene opo eshi Ismael Abraham a mona oshiveli okakadona a fa xe naina, onghe okwa ninga naanaa ngaashi xe, okaana okwe ka lukila omukulu, nomukulu okwa lukilwa inakulu, okwa ti Emilia Ndahambelela. Heeno okwa li shili a hambelela. Emilia Ndahambelela, okwa shikulwa koundenge 11, kumwe ove li 12 ounona vaIsmael Abraham yaThomas Nhinda.

Ismael ina kala ashike omuhongifikola, ndele nee osho sha xunganekwa mOsiminali nosha monika moudano nokoufita, oshe uya poluhaela. Omudo 1940-1941 Ismael okwa ya kofikola yovafita kOniipa, nokwa yapulwa meyapulo lofavita etitatu mOngeleki ei. Ova yapulwa pamwe novafita vakwao E.Angula, J.Hanjango, L.Dama, A.Mungungu, L.Auala.

Ismael okwa yapulilwa oufita e na omido 33, naashi a yapulilwa ngaha oufita okwa li shili omunyasha, osheshi okwa li e dulike kovafita aveshe ovo va li mOukwanyama pefimbo olo.

Eshi Ovashoomi va kala mEngela, okuhovela ku A. Hänninen, J.Syria, W.Kivinen (Manya) K. Petäjä, A.W.Björklund, ovo va kala ovayakuli vomeongalo Engela.

Eshi Ismael a nangekwa mEngela omudo a pita, oye omufita Omukwanyama wotete a nangekwa meongalo eli, a kale omufita omuwiliki. Ovakulunhu veongalo ava va lela eongalo pamwe novatumwa, eshi va mona va pewa omunyasha omuwiliki, okafitona, ova li ve ka etela onghe-nda, va li ve shi eongalo otali ke ka nyenga, shaashi omunhu okaana lo eongalo ola kula, yoo onghulungubu ihai pu omakiya

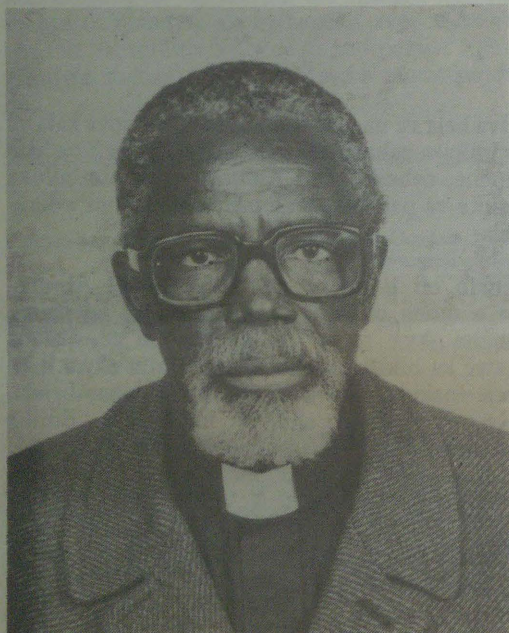
Ova li va kendabala okukwafela okaana kavu, nove li dopa moilonga youfita, ova ka kumwa ashike eshi va ka mona diva kutya okamenhu oinima otake i endifa nawa hangaashi kwa li va teelega. Omolwaasho nokuli a pewa edina olo: Haishanga wokambo waLusia. Walye nge ovanafikola yekoleko ve mu luka ile ovakwaneongalo.

Ismael okwa longa pamwe novatumwa ava; A.W.Björklund na E. Hynönen a dja koshipundi momudo 1962. Okwa kala moilonga youshitai oule womido 10, mefimbo olo okwa kala noilonga ei: Omupashukilishitai, omuponehele melelongeleki, omuleshululi wOmbibeli yOshikwanyama.

Moilonga youshitai okwa kala mo pefimbo linya oonyuni wa li u li ixwe, osheshi okwa kala ha i meefuka moushilo wOukwanyama, ta nangala eenhanda pamwe nongudu yovafita novaevangeliste tava udifa evaengeli nokuninga eexungi. Omaxunganeko omOsiminali a wanifwa, omufi Aili Mwatotele okwe mu lombwela nge ta ti: Otwa li twe mu luka omubishofi wokuKartago kamu mu wete?

Tala kep. 12

“Onda talele po omukwaniilwa Samuel”



Omasiku 27.4.1986 onda ningi etalelopo megumbo lyomukwaniilwa Samuel Ashikoto, mOkaonde mOndonga. Omukwaniilwa okwa kala ethimbo ele muuwehame, konyala omimvo 20 mombete. Ohapu John.17:20,21 na Eps. 24 oyo ya li oshikwiila she shokomwenyo. Aashiinda oyendji oya li wo va gongalele mo ---- T.H.S. Nepaya gwAnglikana.

Shoka Britania te shi pulwa mondjindikila

1. Oombelewa dhaakalelipo yaBritania mu SA dhi pate nodhaakalelipo ya SA mu-Britania dhi pate.
2. Epungulitho lyiimaliwa mu SA li mwenekwe nomahangano gaBritania gaa ne-nepeke we iilonga yago ku SA.
3. Oombaanga dhaBritania dhaa gandje we omakwatho ku SA nodhi hulithe po ehalitho lyoshingoli sha SA (Krugerrand).



Oministeli yotango yaBritania, efolo M Thatcher

ONDJINDIKILA MIIPINDI NENGE OONKUNDATHANA?

Epulo enene tali inyenge muuyuni auhe pethimbo ndika ongele epangelo lya SA tali tsikilwa nalyo noonkundathana dhomokana, nenge otali dhikilwa ondjindikila miipindi. Nokuli epulo otali tsikile: Nengele ondjindikila, omiinima yinipo?

Omulandu gwa SA okulela oshilongo pakatongotongo hoka taka tindile Omuluudhe uuthe-mba auhe wopantu, osho wo elelo lye ndyoka a tinda e li hulithe mo muNamibia nonando pe na omatokolo giigwana yuuyuni e shi ninge, iinima ya fa mbyoka oyo ya pendula epulo li li pombanda.

Pamwe nomulandu ngoka gwa pangulwa ngashingeyi kuuyuni shi vulithe shito (ngele uuyuni we shi uvu ko nenge otashi zi monkugo yaathiminikwa), epangelo lya SA olya dhike po wo omulandu gwokunkundipaleka omapangelo giilongo ayihe konyala ye li kundukidha, unene pamahupilo gayo, paitaaloo (moral) nopankalathano yomokati kayo.

Iilongo iinene muuyuni, ookuume ka SA; Amerika; Britania, Fulanisa naNdowishilanda lyuuninginino, pethimbo ndika otapu kundanwa, tayi kondjo ekondjo edhigu yi tale ngele tayi hupitha natango SA medhengo lyoshitago shondjindikila yipindi.

Iilongo mbika osho ya ningi omimvo adhihe dha zi ko, SA sho a kala ta tamanekwa omolwo-kwaaiutha kwe komatokolo guuyuni.

Okangundukonakoni konkalo ya SA, oka dhimbulula nkene kape na etegameno lyasha natango momadhiladhilo ga SA okuninga oonkundathana naye dhi ete ando onkalo ompe moshilongo shoka. Ondjindikila aniwa oyo ayike tayi kala ewi li uvitikiwe ko ku SA.

Okangundu hpka oka hogololwa owina koshingongi shomumvogu shaCommonwealth (iilongo yi vule 100 ya kala shito melelo lyOmwiingilisa), ka tale onkalo ya SA manga inaapu katukwa oonkatu dhasha kehangano ndyoka.

Tala kepanja tali landula

OMAPIPI NAGA DHIMBULU-KWE NAKAMBALE

Ohandi kala ndi wete ndi na ongunga, sho handi kala owala te yaguma kutya mOlukonda ndoka lu na eitango netumo lyaNakambale itaamu dhimbuluthwa omapipi gonena nogokomeho. Ondi lwete edhina ndika “Nakambale Secondary School” lyaa shi andola okweethiwa mokukwatakanitha kumwe etumo nelongo.

Etumo olyo omukanka gwelongo. Mpoka etumo lya holoka po elongo olye endebelelwa po mbala. Elongo olyi ikwatelela kondjokonona, ongele yetumo nenge oondjokonona dhi-lwe. Ndika olya fa elombwelo, ihe eindilo li kale tali konkola pomiyelo dhoombelewa dhomapatudhilo gaanona.

Olukonda lwaAndjelo yaNegongo lwaaw ka talwa omulilo shila oohapu to ka konga, nalu yambulwe po wo nelongo.

S.O.W.Ngaikukwete

4. Epangell li mweneke okunenepaka iipindi na SA. Pwaa gandjwe we iimaliwa yomalweendo kumboka taa ka halitha ku SA; pwaa gandjwe we iimaliwa yipindi mbyoka tayi ka halithwa ku SA nonkalathano yehangano lyaBritania - South Africa naandyoka lyiipindi lyaBritania lyokombanda yomafuta yi na okuhulithwa po.

5. Pu dhikwe eutho tali thiminike ndyoka tali wilike lya kwatelela mo etumo lyomahooli mofuta lyuumbangalantu, notali kanitha po uuthemba waEngilanda okugandja omahooli ngele uuna te shi ningi ye mwene nenge ta longitha yalwe.

6. Ondjindikila yiilwitho yi dhigininwe noyi tulwe miilonga nonyanya kepangelo lyaBritania. Britania a hulithe po ekondjitho lye lyokukondjitha omalombwelo 16 gokomitiye yOraata yegameno ya UN, kombinga yondjindikila yiilwitho, oyo yi tulwe miilonga. Unene omikalo adhihe dhe-longelokumiwe na SA miikondjitho yolute dhi hulithwe po.

7. Euvathano lyokwaalongitha oovisa na SA li hulithwe po, sho shi kwathe wo okukondolola aatalelipo mboka taa zi ku SA mwa kwatelelwa aakwiita, aapolosi yiineya naanashilonga yomaludhi ga fa ngoka neuvathano lyaGleneagles lyomaudhano li tulwe miilonga.

8. Epangelo li tseye kutya Britania ine endjelela ku SA melongitho lyuupyu no-

moompangela dhilwe dhomathaneko, onke ku na okuhulithwa po okweeta mo omalalamanya nourana.

9. Epangelo lyaBritania li londodhe aakwashigwana yaBritania mboka ye li mu SA, kutya oye li monkalo yoshiponga naamboka taaape ya hala oku ka tungila hoka ya tseyithilwe kutya kape na egameno lyasha kuyo nenge nokuli ya geelwe ngele sha pumbiwa. Pu kondololwe aakwiita mboka taa inyolitha muukwiita womeholamo yaa tungile ku SA.

10. Iikandjo yepangelo yi ulike puuyelele iilonga yayo okuyambidhidha okukondjitha okatongotongo ngele tayi hulitha po okulanda iinima ku SA.

Mekonakono lyako lyoomwedhi ntano dha zi ko, okangundu oka tsikile ka ti; shoka tashi dhigupaleke oonkundathana nepangelo ndyoka, iitya yalyo mbyoka hali longitha muupolotika walyo aluhe yi na omwiityo gwopaali; ta popi shontumba ihe ye ota dhiladhila shongandi.

Manga ongundu ndjoka yi li mu SA tayi kona-kona, ye SA ota tumu aakwiita ye ya ka ponokele muBotswana, Zambia naZimbabwe. Pokati mpoka ooministeli dhiilongo 12 ya dhika po ehanganano lyiipindi lyuuyuni auhe muEuropa (EEC), oya gongala mbala yi tale omiinima yinipo SA e shi okuningilwa ondjindikila.

Etsokumwe moshinima shono olya kala edhigu, ngaashi olwindji hashi kala, ngiika omolwiilongo oyindji mehanganano ndyoka sho ya kala mekwatathano na SA miipindi.

Britania okwe shi popi puuyelete, kutya ye ita ningile nando SA ondjindikila miinima iinene. Ihe ezimba lyoshinima otali ulike kutya shono osha tegelelwa wo shi ke mu valele uupyakadhi niilyo yehanganano lyaCommonwealth, ndyoka a talika oye omutse gwalyo, uuna tayi ka gongala muLondon muAguste nuumvo.

Moshigongi shoka tashi ya, omo wo mwa dhiladhililwa mu ka kundathanwe oonkatu ndhoka dhi na okukuthilwa SA pauyelele mboka tau ka za mehokololo lyokangundukonakoni.

Omusamane Kenneth Kaunda, gwaZambia ngoka naye a adhikwa a ninga nale etokolo i ikuthe mo mehanganano ndyoka omolwekwatathano lyaBritania na SA itaali piti omya pokati, okwa ti nashi tege manga sigo okoshigongi shoka kuAguste, a tale manga shono tashi ka za mo.

Omahilathano moshinima shoka oga kundanwa wo mepangelo lyaReagan muWashington. Ongundu yompilameno mepangelo ndyoka, otayi kondjo yi tale ngele tayi shi pititha SA a ningilwe ondjindikila andola mukehe shimwe; omapungulitho giimaliwa mu SA, oombelewa dhaakalelipo mu SA dhi pate osho wo epindiko lyiipindi yilwe.

Pauyelele mboka wa gandjwa kehanganano lyomakonakono gekonomi lyaEuropa muBritania nowa kolekwa kundyoka lyomuFulanisa nomuNdowishilanda lyuuninginino, otau ti; SA ngele okuningilwe ondjindikila mukehe shimwe, nena shoka otashi ka kanithila aantu 500,000 iilonga miilongo yuuninginino.

Ekonakono ndyoka olya talika ko lya kulupa kashona, onkene tashi vulika omwaalu gu vule po mpoka. Ehokololo olya tsikile lya ti, Britania ngoka a talwa e endjelela ku SA meliko, mondjindikila ndjoka ota kanithile mo aaniilonga taa tengenekwa 250,000. Britania oha mono iimaliwa oobilyona R 4 omumvo, kehe mokupindika na SA.

Mu SA omu na omahanganano gAaingilisa konyala 1,400 pashifonkundana; S.A. Digest 9.5.1986, Ndowishilanda oye a pungulitha mo iimaliwa oyindji noopelesenda 20. Britania oku na mo oopelesenda 40. Omahanganano gaNdowishilanda mu SA otaga tengenekwa 350.

Amerika mu SA otaku ti oku na mo omahanganano 6,000 nepungulo lyiimaliwa yoopesenda 17 dhiimaliwa ye yopondje yoshilongo. Osho iilongo iikwawo yilwe muuninginino tayi ende tayi landula mo nomiyalu dhu uka pevi.

Osha yela ano ngeyi kutya ngoka ta pula Aauninginino ya ningile SA ondjindikila, okwa li e na okudhimbulukwa tango iinima mbyoka.

SA oku li wo etathapya lyiilongo yuuninginino moshinima shiikwamina, naashono otashi mu ningi a kale mondunda ombwanawa okwoondama omuzimbi gwomaludhi gondjindikila kuye.

Iikwamina mbyoka ya simana nokayi shi okukanihwa kuuyuni oyo; platinum he yi gandja oopelesenda 89; chrome oopelesenda 84; manganese oopelesenda 93 naurana.

“Okukwata iikwamina mbyoka moshipala osho okunkundipaleka ekonomo lyaAmerika nokweetela eilongekidho lye lyopaukwiita uupyakadhi,” osho ehokololo lyombelewa yoompangela dhiita muAmerika lya londodha omumvo gwa yi.

Sebulon Ekandjo

Epangelo lopokati la dopele momudo wotete

Epangelo lopokati okabinete noshongalele shako ashishe ngeno shi kale pauyuki, pakatalulula oilonga yasho yomudo umwe eshi le uya koshipundi ngeno otali longele ashike omambo alo nokupita mo mombelwa, oyo oshitololifo 435 shi tulwe moilonga, osho sha tiwa kuGwen Lister, hamushanga woshifonghundana Namibian mOvenduka.

Epangelo lopokati ola danene efiku ledimbuluko lenangalo loshipundi 17.6. ohani ei eshi la wanifa omudo umwe moilonga. Fimbo li li momalongekido oshivilodimbulukwo shalo ola shakenekwa yo komadimbulukifwo oo a dja moshwana taa ulike kedopo lalo moilonga.

Eenghono ola pelwe komuhona walo (SA), ola ningila oshiwana omaudaneko mahapu mawa inaa ningwa. Moiwana youdemokoli yomapangelo a hoololwa koshiwana, epangelo keshe inali shakenifa osho kwa li li na okuninga ohali efa po ashike oshipundi memanguluko nde tali liyandje kehalo loshiwana, osho omunashifo Lister a holola.

Okudja 17.6.1985 epangelo eshi la ya koshipundi, oshiwana inashi holeka nando eudonai lasho omolwonghedi oyo epangelo la holoka po. Eengudu dimwe dopapolotika di he li mepangelol, osho yo eengeleki oda ulika poluhaela oku he na oshili kwalo okukala koshipundi.

Momukanda wokakomisi kouyuki netambulafano mOngeleki yaKatoolika kaRooma ou wa shangwa okuulika kewanifo lomudo moilonga yepangelo, omwa holoka omapulo ngaashi taa shikula apa:

+ Owe tu udanekela oufemba wemanguluko lokupopya, nde oshifo “The Namibian owe shi pula odeposito R20 000.

+ Owe tu udanekela emanguluko nepangulo liwa, ndele owa yandja eenghono Katofa a idililwe pu he na epangulo lasha, eenghwatwe owa tinda di talelwe po kovanaveta vado, do oda hepekwa kovanhu vove paveta youterolesa ongaavo va monika etimba koveta youfemba womunhu.

+ Owe tu udanekela oufemba wokukala moyoongalele yopambili, ndele ove owa mweneka oyoongalele nowa ta ovanhu vamwe moshilongo.

+ Owe tu udanekela oufemba welongelo itavelo la manguluka, ndele ongedamushi-yakano yOngeleki owa li to kongo u i mweneke nokukelela ovateolohi ve uye mo moshilongo shetu.

+ Owe tu udanekela oufemba wemanguluko lokulinyenga, ndele aapaspoorta fiyo onena oda tindilwa vamwe osho yo eepermeta dokuya moitukulwa imwe yaNamibia.

+ Owe tu udanekela oufemba wokuhan-gana noufemba wemanguluko lokudika omahanganano ovanailonga, ndele ove nande ne ino shi pitifa, owa li to hetেকে okuninga po vali oveta yokulidopa moinima yomahanganano ovanailonga.

+ Owa ti oto fimaneke Ovanamibia, ndele ovakwaita vove ohava ulike omidimba doikulo momalukanda aShakati.

Mokakololo komadiladilo aye hamushanga woifo G. Lister okwa ti epangelo nali shi koneke nokutya ondaka yoshiwana oyo tai li kondjifa oya ninga inene oshiwana sha hangana kumwe okulikondjifa. Ngeno medimbuluko lewanifo lomudo epangelo li itavele ashike edopo lalo nde tali efa oilonga, oyo oshitokolifo 435 shoiwanahanganano shi tulwe moilonga, noshiwana shi hoolole ovaleli vasho ava sha hala.

Pamadiladilo aye ehenokomesho moilonga yepangelo inali kala nande la iwa moshipala kuNgoloneyandjai ngaashi sha li hashi monika mepangelo lo DTA.

OLUKENO

Vakwetu vamwe kave po
Katu va na, ova dja po
Va ya pondje yoshilongo
Va tewatewa kOngolo
Molwonghalo yedu letu.

Onda li nda eta onghenda
Kovashamane tava i
Ve li novakulukadi vavo
Tava fiye po omaumbo
Molwonghalo yedu letu.

Openi pa ya Shoomb
Mweeheli vo namukwao
Va li ve li moilonga
Yavo yOshinyanyangido
Tava nyanyangid'omambo
Haa leshwa koshiwana.

Oshitwime movadali
Onghone movatekuli
Ovo va li ve na ovanhu vavo
Va ya noshikenyaoko
Ve na enyeme keemwenyo
Molwonghalo yedu letu.

Namhongo oku na omwenyo
Tate e li noilonga
Nande eenghono katu na
Eitavelo otu li na
Li shi oku tu mangulula
Li tu kufe moupika.

Frieda Mtaleni Haitembu
Ogongo Landbou College

Ondjokonona yaNhinda

Da dja kep. 9

Ovadowishi eshi va ya, koshipundi okwa ya Ovashoomi, naashi Ovashoomi va dja meongalo olo la totwa kOvadowishi okudja kOmupanda oye a ya melelo koshipundi shaxexulu August Wulfhorst, osho yo mewiliko loshitai otwa tala okwa mangela ehstoli kumwe.

Konima yokuyakula kwaye moshitai eshi a yakula omido 10, ongeleki oye mu yandja a ka yakule mofikola yovanyasha mOngwediva omo a yakula fiyo efimbo laye lokuya moshipundi shetulumuko. Eshi a pewa oshipundi shetulumuko ovanafikola ova holola olupandu lavo kutya ove mu pandula eshi ve mu landela "Alba" ondjafa itoka youfita.

Ismael Abraham T.Nhinda okwa kala neitavelo la pama shili osho a itavela ito mu kufa mo nande noupu. Oha kumaida ovanhu, iha tila okuyalwa ile okutalwa nai. Okwa kala e hole oukriste wa yela, onghe oshinima keshe okwa hala shi konakonwe nawa, onghe okuhole okuya:

"Oshinima oshinene, sho oshi na eembinga dihapu." Eshi a ikililifwa nale oilonga okudja kounona, shaashi meumbo laye ohamu longwa kamu holike ondede, fiyo omefimbo lopenzela, okwa diinina oilonga ngaashi oufita weengobe.

Okwa ya yo kohambo nokwa longa oilonga yaye aishe. Eongalo lipe okwe li dika mOmangeti, ofikola yeshasho noyekoleko oya longwa. Eongalo eli okwe li fiila oshitaingeleki shaNdonga. Hano inamu li dimbwa. Ouyehame owe mu hanga, nokwa kala ta hakulwa ta nu omi meumbo ta pewa moshihakulilo mEngela.

Ouyehame owa enda tau xumu komesho, nefiku limwe eshi nde mu talela po meumbo laye, okwa lombwela nge ta ti: Kaume Shinana, onda dja nale, ndele nghe nda dalwa ndi vele ngaashi handi vele paafa. Ouyehame owe mu hepeka fiyo a ya mOnandjokwe, omo a xulifila oweenda waye eti 14.12.1985. Okwa fya mepupi lomido 72 neehani 11.

Dimbulukeni ovakwatelikomesho veni ava ve mu udifila eendjovo daKalunga; taleni exulilo leengeda davo na shikuleni eitavelo lavo. Heb.13:7.



Vilho Tangi yaKornelius, okasheeli kaamwayina yaali, okwa ilwa po kOmuwa gwako eti 18.2.1986 ombaadhilila moshipopnga sho ka gu mehauto mondjila yokuza kosikola Okatana nokushuna kegumbo kOshakati, mepipi lyomimvo 8 noomwedhi 9.

Kalunga na thete po omahodhi tzeni mboka twa gumwa keso lyoshiponga shika.

Mr. Asino Sakeus

ETSEYITHO KAALANDI AASIMANEKWA

ESIKU SHO TALI KA KALA ETI 28.6.1986, PONETHINDI OTAPU PATULUKA OSITOLA YIIPUNDI, OSHO WO OOSIKOPA NOOMBETE DHOMALUDHI GI ILI NOGI ILI.

AYIHE MBIKA OTAYI MONIKA KONDANDO OMBWANAWA LELA. ILA ASHIKE U IMONENE KO YOYE MANGA PU NA ETHIMBO. IIPINDI OMOMEHO. LYO LYE ENDA ONGULA OLYO NGAA LYA TOOLA OHIMA.

J.P.Nangolo

OMUKWETU

Oye oshifo shOngeleki Onkwaevangeli paLuther yomuSWA/NAMIBIA.

Ohashi nyanyangidhwa mOshinyanyangidho shOngeleki mOniipa.

Omukuluntu gwoshifo omumbisofi Kleopas Dumeni.

Amushanga gwoshifo omusita Sebulon Ekandjo.

Ondando yOmukwetu muNamibia naSouth Africa R5,00 komumvo.

Palwe muAfrica R 8,00 nokombanda yomafuta R11,00 komumvo. Mondhila R13,00.

Oondando nomambesitelo agehe naga tumwe kOmukwetu, Oniipa, P/Bag 2013, Ondangwa, 9000.

ELOC PRINTING PRESS
PRIVATE BAG 2013, TEL. 41, ONDANGWA 9000
SWA/NAMIBIA