



## Ovafita vavali mu ELCIN nomukainhu umwe va xulifa oweenda



**Nakusa Ismael Nhinda**

**Ku Sebulon Ekandjo**  
**ONIPA: Eehani Desemba na-Januali mOngeleki ya ELCIN oda kala efimbo leefya, eshi ova-nashilonga vOngeleki vatatu va xulifa po oweenda wavo ve li shikula.**

Eti 11.1.1986 omufitaongalo Metusalem Shilongo (55) okwa xulifila moshipangelo mOvenduka, eti 3.1.1986 omeekulu Aina (Amutenya) Nambundunga (78) meumbo lavo mOnesi neti 14.12.1985 omufita Ismael Nhinda (72) moshihakulilo shOngeleki mOnandjokwe.

Meekulu Nambundunga, omukulukadi womufitaongalo Paavo Nambundunga meongalo Onesi, mUukolonkadhi. Okwa kala efimbo lile nounghundi ou

we mu twaalela. Okwa fiya ko omushamane waye, ovana vane novatekulu.

Nakufya Shilongo Metusalem yaElia Shilongo okwa dalelwa mOnengali yaKaluvi 15.1.1930, mOukwanyama, mo omo a endela ofikola younona.

Ofikola youlongi okwe i pitile mOngwediva 1955 e ta ka longa ofikola yovafita mEnhana oule weedula mbali.

Konima yefimbo olo okwa ya keifano loufita. Omudo 1958 okwa tameka elongekido loufita mOshigambo fiyo omuElim oko a pitila 1962. Shilongo oye omufita umwe womovafita va ELCIN ovo va kala "Shitimukupulwapale" mokuyakulifwa kOngeleki yaye.

Eshi a yapulilwa oufitaongalo, okwa ka longa mokati kovanailonga kOlange oule weedula nhano. KOmbaye ta longo ko eedula nhatu, mOshomeva (Tsumeb) eedula 9, meongalo Onankali mOndonga odula imwe nomomuhandjo wovanafikola mOngwediva nomoMweshipandeka kumwe eedula nhano. Ombila yaye otai hangika momawendo aNgwediva, omo a pakwa.

Okwa fiya ko omufiyekadi novana vaheyali.

Ounghundi wopalutu owo yo wa twaalela natetekulu Ismael Abraham yaTomas Nhinda. Fimbo ina ya moshipundi shetulumuko 1981, okwa hangika a longa oshilonga shoufitaongalo eedula di dule 30 needula 12 moshilonga shoulongi. Oulongi waye wa xuuninwa okwe u longa mOseko yaNgwediva 1972-1980.

Omufita Nhinda oye wotete omu-

**Tala kep. 9**

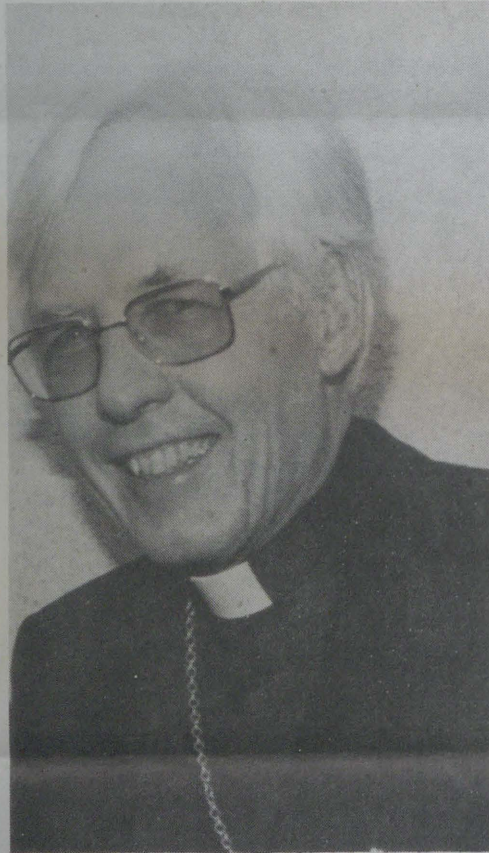
# Oongeleki ookwaluther natango otadhi longitha okatongotongo

Opwa dhimbululwa pu na Oongeleki ntano ookwaluther ndhoka tashi longitha natango okatongotongo momalongelokalunga gadho, osha popiwa kungoka a li nale Amushanga omukuluntu gwEhangano lyAakwaluther muuyuni, dr Carl Mau Jr.

Manga a zi mokutanga ombepo, yuumwayinathana pokati koongeleki ookwaLuther (104) mEhangano ndyoka, omusita Mau okwe shi ulike nolukeno kutya kakeke koongeleki ntano adhike nantango mezimo alihe lyaAakwaluther, tadhi itala itaadhi vulu okulongitha oshuuvithilo nowalitali meyakulathano noomwayinangeleki dhilwe.

Dr. Mau mukupopya kwe ngeyi, ina tumbula nando Ongeleki yontumba kedhina. Ashike Ongongahangano yAakwaluther moshigongingeleki shayo shomumvo 1984, muBudapest oya kondele mo oongeleki dhaapopi yOshindowishi shomu SA naNamibia, omolwokutinda kwadho okulongela kumwe noomwayinangeleki dhAaluudhe.

Omumvo 1980 uuna kwa dhanwa oshituthi shedhimbulukwo lyoomvula 450, uukwaLuther sho wa holoka po, oongeleki adhihe meghangano ndika odha li dha thigilathana endhindhiliko lyokudhimbululathana ndyoka li li miitya mbika: **Ito vulu okukala Omukwaluther**



Omusita Carl Mau Jr.

gwashili okuninga wi itula mo moshinima shuukumwe.

Mau (64) ngoka a ka tsikila oshilonga shopausita muWashington D.C. moshilongo shaandjawa muAmerika okuza 17 Nov. 1985 sho a kala tango oomvula 11 muhamushanga wOngongahangano, okwa holola enyanyu lye omolwonkundathana ndhoka dha tamekwa pokati kAakwaluther nOngeleki yaKatoolika kaRooma, opo ku kongwe etsokumwe.

Okwa pandula wo kuupenda nokeitulomo lyOngeleki ya ELCIN muNamibia mokulongela kumwe noomwayinangeleki muuyuni, sho a ti kutya oyi shi okutalwa "oshiholelwa sheyakulo."

Omupopi okwa dhiladhila mpaka Ongalo ndjoka yu umbwa ku ELCIN omolwondjala kuEtiopia osho wo oongalo dhilwe. "Inaku kala nando eindilo limwe moongeleki adhihe muuyuni ELCIN inee li yamukula," osho omusamane Mau a ti.

Omuwilikingeleki nguka a talela po pompito dhimwe Ongeleki yetu, okwa longela Ehangano lyAakwaluther omimvo 28.

*Sebulon Ekandjo*

## EFYO

Lovisa Ndilipunye Shimwooshili okwa mana oweenda waye 27.11.1985 moshihakulilo mEngela mepupi leedula 2, owomomukunda Omatunda mOukwanyama. Ohatu pandula amushe ovo mwe ile nomwe tu yakula moluhodi letu.

*P. Ndahafa Nghilongwa Omatunda.*



Aakalelipo ya ELCIN moshigongingeleki shOngongahangano yAakwaluther 1984 muBudapest methano ndika otaa monika popepi.

# KALUNGA, SHITILANGE OMU-TIMA WA YELA.

Oshipalonyolo shomudo 1986 mOngeleki ya ELCIN osha ufwa kElelongeleki leti 17-19 Sept. 1985 onhokolwa onhi 407, otai ti: omudo ou owa ufwa u kale omudo WEPAPUDUKO, ELIDILULULO NEILIKANO.

Onghee oshikandjo shokweevangelifa nouleliumbo, osha dakamena omesho nelitulemo linene onhokolwa yeelongeleki mokutala oitwa oyo itatu ya fimana.

Ewilikongudu lokweevangelifa nouleliumbo leti 30 Nov.1985 mokafanekwa okati 8, omu na omatumbulo aa;

Ewilikongudu ola tala kutya, onawa shili omudo ou u kale omudo wopashivilo mu ELCIN alishe, osheshi epapuduko olo hatu lalakanene moyoongalele yokweevangelifa nouleliumbo, ovanhu va longele Kalunga va papuduka. Onghee ewilikongudu ola twa kumwe moimnima ei tai shikula apa;

(a) Ewilikongudu ola faneka kutya, ombelewa yokweevangelifa nouleliumbo nai shange oshishangomwa tashi fatulula nawa omudo wepapuduko, elidilululo, neilikano, sho shi tuminwe omaongalo aeshe mu ELCIN.

(b) Ovaevangelifi moitaingeleki aishe va longikide yo omaudifo okuudifila meenhele da nyika oilando nomomalukanda, opo omudo 1986 va kale nokulalakanena epapuduko, elidilululo neilikano.

(c) Eengudu dopamusika mOngeleki aishe nomoitaingeleki fiyo omomaongalo di longekide omaimbilo e na sha nepapuduko, elidilululo neilikano.

(d) Ova fita novaevangeliste vovanyasha moitaingeleki mu ELCIN va yukife omadiladilo avo mepapuduko, elidilululo neilikano, opo epapuduko li holoke.

(e) Opa fanekwa efiku eti 4 Mei 1986 li ninge efiku lopashivilo shepapuduko mu ELCIN alishe, opo momaongalo mu ningwe sha tashi holola epapuduko, elidilululo neilikano.

Hano ashishe eshi osha ningwa okudiladila omudo aushe u kale omudo welinyengo lepapuduko, osheshi osha yela nawa kutya, epapuduko otwe li pumbwa shili unene. Onghe apa otapa shikula efatululo paupupi.

Ovataleli voikandjo ngeno mu talelepo ofikola keshe lumwe moshikako, na lune momudo ngeno osha yeleka notashi kwafa ovalongi novahongwa vonhele oyo.

Ohandi indile ovakulunhufikola va udeko ondilo yelongo, yokaana nondilo yoshiwana shokomesho.

## EPAPUDUKO

Mokutala oshipalanyolo shomudo 1986,

ohatu hangwa diva kehalo lokuuda kutya olyelye a indila ngaha; "KALUNGA SHITILE NGE OMUTIMA WA YELA" Eps.51:12. Omolwashike ta indile ngaha? Ou oye ohamba David ou a li mepunduko ndele te li holeke, nande ola li la shiivika kovanhua avesho.

Omuxunganeki Natan okwe uya kuye, e mu udifile elidilululo, olo li li meendjovo da futikwa e di mu lombwela ngaashi omunhu ta lombwele omukulunhu. David eshi a yelifilwa nawa kutya oye ta ulikwa meudifo laNatan, opo nee okwa papuduka, ndele ta yeulula okanya kaye okupopya eendjovo odo.

Hano mokunyamukula epulo kutya EPAPUDUKO OSHIKE, ohatu ti, epapuduko olo ependuko, etukuluko monghalo yonhumba noyongadi, yeemhofi ile youdimbwanhu ile youndede ile yoshiningilawina.

Epapuduko kombinga youkriste, olo okutukuluka meemhofi doulunde, nokumona omadimbuluko mape nokumona ondjila ipe lela mokukalanwenyo kwomunhu i dule yonale omo omunhu a kala nale ta ende, ngaashi David a ninga.

David okwa li e likukutika nokulipwililikila metimba olo linene, eshi ta ti: Eshi nda li nda mwena nasho, omakipa ange okwa li a tekauka molweemhata domeni lange efiku alishe Eps.32:3. David okwa li monghalo ya pumbwa shili epapuduko, shalongo Natan e ile kuye palombwelo laKalunga.

Epapuduko inali pumbiwa ashike kwaava va punduka ile kovanyoni, ndele ola pumbiwa yo kovakriste avesho noko-valongelikalunga avesho, osheeshi olo okupapuduka meemhofi dopamhepo, odo omunhu waKalunga te di etelwa konghalo younyuni ou.

Ngaashi tu wete ovahongwa vaJesus ova li pamwe naJesus muGetsemane palutu nopamhepo, ndele konima, ova hangwa keemhofi, Mat.26:41. Meemhofi Jesus okwe va pendula ta ti: "Kaleni oupafi nye mu indile mu ha hangike komahongaulo. Omhepo oya hala, ndele ne ombelela oi na oungone.

Eps. 51:12



Ovahongwa ava, inava hangwa nande ku-Jesus va wila ngeno moulunde ile mepunduko lonhumba, ndele ne, ova li ashike va tukauka naJesus pamhepo, eshi va kofifwa koluhodi lounyuni neloloko. Hano, epapuduko otashi ti vali, okukala oupafi pamwe naJesus.

Epapuduko, olo omwenyo woukriste, osheshi olo ekwatafano li na omwenyo naKristus, olo fye twe li pumbwa efiku keshe, shaashi, oukriste u he na epapuduko, owa fya muwo vene, osheeshi mepapuduko omo omunhu ta haluka, eshi ta dimbulukwa omapuko nomapunduko aye, nomatumhakano mondjila yaye, nopamwe nee naasho, omupunduki ota mono ondjila ipe oyo i he na epuko netumhakano lasha, nondjila ei oya palwa kuKalunga aeke muJesus Kristus nomenghono dOmhepo Iyapuki.

Epapuduko ohatu limono momuyapostoli Paulus, ou a kala meitavelo lavo loshijuda e li fyulula kooxekulu, ndele ina tenguka mo nande nande. Okwa kala a pendapala e dule vahapu vepupi laye.

Hano mokupopya oshili, Paulus okwa kala a kofela momhango, onghee ina shiiva osho sha ningwa mounyuni waye, nokwa tya; Edifo la udifwa ku Johannes Omushashi pomulonga Jordan, nedalo nehologo la-Jesus, noilonga yaye aishe ei a longa oule womido nhatu, okuudifa nokuvelula ovanaudu, okufya nokunyumuka kwaye koufi, okulonda kwaye keulu noshilonga shetililo lOmhepo Iyapuki, aishe ei ine i shiiva nande.

Ye mwene ina kala moupaani ile mepunduko lonhumba; shapu ohatu ti ashike Paulus okwa kala ashike mepapuduko olo a papudulwa nalo kuJesus mondjila yokuDamaskus, omo e li hololelwa ngoshikumwifa kuJesus.

Hano mepapuduko eli Paulus okwa mona eudeko lipe nomadimbuluko mape, okudimbuluka Jesus ou a tongwa momhango nomovaxunganeki. Mepapuduko Paulus okwa koneka vali kutya, omuyuki ota kala e nomwenyo womeitavelo, ndele hakoilonga yomhango.

Epapuduko komukriste, olo okukala oupafi pamwe naJesus, okukala mekondjo pamwe naye. Ou e li mekondjo eli, ota indile alushe nota djuulukwa alushe okutumbula; KALUNGA SHITILE NGE, OMU-

Tala kepanja tali landula

### Dha za kep. 3

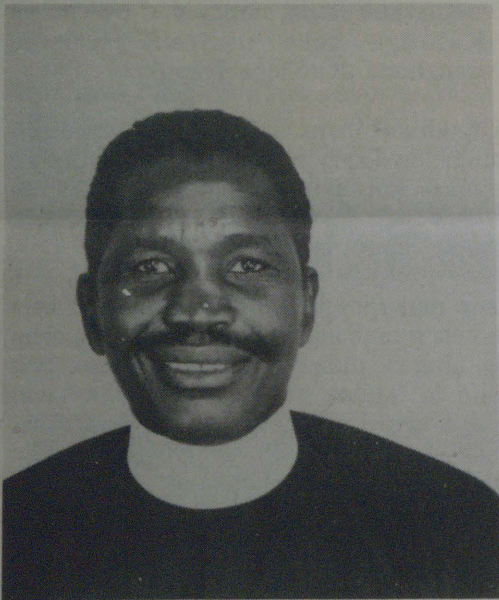
TIMA WA YELA". Hano, ou a papuduka, oye aeke ta shiiva okuindila ngaha, osheshi meemhofi omunhu iha dulu nande okuninga sha.

Hano otu shi wete kutya epapuduko olo okukalamwenyo kupe kwopamhepo okulongela Kalunga, nokweenda mondjila yeitavelo li he na oihelele neliningifo. Olo yo okukala moukriste u na onhodi nelikwatonawa lashili, nokukondjifa oulunde oo hau eta eemhofi dopamhepo.

Epapuduko, olo yo edalululo kOmhepo Iyapuki, onghee olo oshali inene yaKalunga he i yandje kovanhu vaye. Omweevangelifi E. Angula, okwa kala luhapu ha udifa ta ti; Natu lihaleleni epapuduko, natu indile tu pewe epapuduko, osheshi olo oshali yaTate Kalunga.

### ELIDILULULO.

Elalakano laNatan okuuya kuDavid ola li oku mu papudula, oku mu lidilululifa



Omweevangeliste N. Shinana

### Kaagundjuka ooyakwetu

Aagundjuka tu dhimbulukweni omushiti gwetu manga tu li muugundjuka, oshoka komeho oku na omathimbo nomasiku omawinayi. Tu yandeni ano uuhalu nuukuume wuuyuni, ne inamu iinekela ne yene, chalo lyaKalunga oloyo nali kale tango.

Tu vulikeni ano kuKalunga tse tu kondjitheni ondeveli, opo yi tu ye ontuku. Tu kaleni aaidhidhimiki momamakelo gopendji, otatu vulu oku ga sinda.

Omukumo gweitaalo lyetweni momayekele otagu etitha eidhidhimiko. Jak.1:12 Omulumentu omunelago oye ngoka ta sindana momamakelo, oshoka nge ta monika omudhiginini, ota pewa oshishani shomwenyo Omuwa e shi uvanekele mboka ye mu hole.

Tu kaleni ano aagwanithi yoohapu, haapulakeni yowala nokwiifundjaleka.

Maria Nehale Ashipala  
Elim

nande ye oku li ohamba, opo David a dje mo mepuko laye nomepunduko laye a xupifwe. Eudifo laNatan ola hanga nokuli elalakano lalo, hatu li mono momatumbulo aDavid mEpsalme 51 alishe.

Johannes Omushashi okwa holoka moshiwana shavo sha li sha kofela momhango, omo mwa li yo Paulus, ndele vahapu ova kala mo nokuli va nyona ehala laKalunga nokukala kwavo ngaashi komesho va ka tanguninwa kuJesus meudifo laye.

Omolwaasho Johannes a holoka a u dife elidilululo opo ovanhu va tambule ouhamba waKalunga oo u li mevaengeli. Jesus yo okwa udifa elidilululo monghalo oyo ovanhu va itavele evaengeli vo ve mu tambule.

Okukalamwenyo kwomunhu alushe, oku na eamo neendamo lokweendamena koulunde. Oulunde eshi u li po okunyona omhango yaKalunga, ohau tukaula omunhu naKalunga, omunhu ota tukauka shili naKalunga momhepo yaye noneendunge daye fiyo nokuli omunhu ta i kokule moilonga yaye aishe nomeendaka daye adishe, ndele ta pwile ashike moulunde. Oulunde ihau tila nande omunhu a fa ngeno a fimana.

David okwa kwatwa koulunde nande okwa li a fimana puKalunga nopovanhu, shaashi David okwa li a longifwa kuKalunga, naye mwene okwa kala metilokalunga, onghee oulunde oo ngoo we mu twala mepunduko ndele ta i kokule naKalunga, nde ota pumbwa ashike elidilululo.

Otu shi wete nee nawa kutya, elidilululo, olo onghatu ya fimana mepapuduko, osheshi elidilululo otali ti, okulidiladilulula "okwiitedhulula" okulidilulula.

Oshitya eshi mOshisherero ohashi ti, "okuritanaura" Hano mediladilo eli, omunhu oye mwene te lidilulula ndele te lialuluka mwaasho kwa li a hala okuninga ile e shi ninga nokuli, ndele ta aluka momafaneko aye aeshe nomomadiladilo aye aeshe, naashi osho nee okulitanaunauritanaura-okupilukila mondjila ipe nomonghalo ile ta shuna monghalo omo a kala nale.

Eshi otwe shi yelifilwa nale keyele lomumati a kanene, omumati winya, ina mona eudifo lasha loku mu lidilululifa; kakele ashike koluhepo ashike koluhepo nondjala, oyo aike ye mu udifila fiyo ta papuduka, ndele te lidilulula mu ye mwene ndele ta pilukile mondjila ei ya yuka kooxe, kwinya a hanga a teelwa ko nohole. Eshi osha teelwa shi ningwe komulunde keshe okwaalukila kuKalunga.

Elidilululo ola udifwa nonale kovaxunganeke, ovo Kalunga a longifa va ninge ovapapuduli nokulalakanena elidilululo momaudifo avo. Mu Hes.33:11 omwa tiwa: "Tya kuvo: Oshili ngaashi Ame ndi

nomwenyo, Omwene Kalunga ta ti, oshili lela, Ame ndi he nohokwe nefyo lomuhena-kalunga, ndele omuhena-kalunga e lialuluke mondjila yaye, opo a kale momwenyo. Lialulukeni! keendjila deni dii! Omolwashike wa hala okufya oove neumbo laIsrael?"

Eudifo la fa eli, ohatu li hange momaudifo mahapu opaxunganeke, ngaashi mu Jer.3:14a, osheshi ame nde mu tambula .... "Heeno, oshili ondjila youlunde nokukala momatimba, otai twala mefyo laalushe; ndele ondjila yelialuluko nelidilululo otai twala melao nomexupififo laalushe.

Melidilululo, omu na alushe elihepaululo koshipala shaKalunga, nokulivelombedi. Elihepaululo eli nelivelombedi eli, ohatu li hange muDavid, ngee hatu konakona Epsalme 51 unene movelise 6 omo mwa tiwa; eshi shii momesho oye, opo u kale omuyuki mendjovo doye, nou he na ombedi momatokolo oye."

Elihepaululo eli, oli na oshili osheshi ola dja shili komutima wa loloka, nowa papuduka, onghe Kalunga elihepaululo eli okwe li tambula, nomulihepaululi okwe mu tambula. Omumati a kanene okwa ty: "Tate, onda nyona keulu nokwoove, ame inandi wana vali okwiifanwa omona woye." Luk.15: 19-21. Omumati ou melidilululo laye okwa tambulwa kuxe meumbo, ndele otu shi shii kutya ina ka dja mo vali meumbo a ye moushondolo, osheshi okwe lialuluka.

Osho otwe shi mona muDavid naye yo ina dja mo vali monghatu oyo, shaashi ota ti komesho: "Opo ava va puka, ndi ke va longe eendjila doye, ovalunde vo ve ku lialulukile." Eps.51:15.

Elidilululo otali ti, okweefa eendjila dii nokwaalukila kuKalunga, omunhu a longe pamwe naKalunga. Paulus melidilululo laye eshi a papuduka momhango ota ti: "Pauladi ondimuhepeki weongalo, payuyuki womhango omuhenashipo. Ndele ei ya li eliko lange, onde i tala oyo oshiponga omolwaKristus." Fil.3:6,7. Paulus okwa ninga omulongi pamwe naJesus eshi ta ti: "Hano oulunde inau pangela momalutu eni omafi nye mu dulike ngeno kouhalu wao.... Rom.6:12.

Paife otu shi wete nee nawa kutya, kape na elidilululo nge kape na epapuduko; po kape na epapuduko nge kape na elidilululo. Oinima ei aishe otwe i pumbwa unene mefimbo letu, otu wete kutya katu li nawa koshipala shaKalunga, otwa fa ovanhu vefimbo laNoa novanhu vomuSodom naGomora, ndele ohatu pumbwa nena epapuduko nelidilululo ngaashi la ningwa muNinive.

Tu taleni oinima imwe oyo tai monika mokati ketu, oyo ya udifwa nale kovaxunganeke: "Udeni ondjovo yOmwene, akutu, nye ovana vaIsrael. Osheshi Omwene oku na oihokolola noonakukala mo moshilongo, osheshi moshilongo kamu na oudiinini nokamu na ohole nokamu na eshiivokalunga.

Natanael Shinana

## Okuululwa otaku opalele tuu omapipi agehe methimbo tali ya

Muule wethimbo lya piti ookuku oya li haya longitha omikalo dhi ili nodhi ili, aniwa okwoopaleka omalutu.

- Yamwe oya li haa ululwa oombululu oonenenene momakutsi.
- Yamwe oya li haa ikuthitha omayego gaali pombanda nenge pevi; okukulwa nenge okutenwa.
- Yamwe oya li haa shatwa koompanda nokombanda yomeho nomomapunda.

Ookuku yetu mbeyaka inaa ululitha oyana, ye ya tenithe, nenge ye ya shatithe omanga aanona aashona. Nonando ookuku oya li momilema thokothoko. Oye etha aanona nomalutu gawo ga yela e taa koko e taa hogolola yo yene ondjila ndjoka ye na okweenda nayo.

Tseni methimbo lyetu inatu hokwa naanaa okukulwa nonande yamwe ye shi ningi hayendji unene. Noshu wo inatu panda okushatwa kombanda yomeho nenge momapunda.

Ihe tse otwa panda omukalo gwokuululwa noonkondo notwe gu hokwa po shili. Shoka tashi kumitha unene, ooshoka sho omuvali to adha a ululitha okanona taka yamu, kamwe kake shi oku kuutumba. Umwe otawu ululithwa oombululu oonene noontano, walyewo nee kutya adhihe ndhoka odhashike.

Mbela ongiini nee kombinga yonakuyiwa yuunona mbuka? Omahalo omaithano gawo otu ga shi tuu auhe? Mbela otawu kala tuu we tu panduleni?

**Omukweni,  
Shitaleni**

## Eindilopukululo kovayakuli vomoinyanga

Ovayakuli ovafimanekwa, oohamushanga novafita vongelegeki ya ELOC, ohandi mu indile nefimaneko tu kaleni hatu longifa omaufo ngaashi sha ufwa, opo tu dule okukwafa aveshe. Tu kwafe ovayakulwa vetu notu kwafe yo ovayakuli vakwetu.

Eufu nge olidjuu nowa tala la wana okulundululwa ngeno li tumwe ngoo kelelo longeleki lo shi endife pamaufu fiyo la lundululwa mongeleki aische, nopo nee tashi longifwa. Onda hala okuulika oinima imwe ei:

1. Etokolo loshoongalaleleleki okuyandja oiyandjiwa papelesenda imwe yokondjabi. Ngeno tu shi ningeni ngo twa faafana. Vamwe ove shi lundulula ve shi tula momukalo u kulu.

Vati omunhu ou ha longo na yandje R12,00 ile R20,00 nosho tuu. Vamwe, ou ha longo noha kwata R400,00, vati na fute R48,00. Apa natu tye oshi li mondjila, ndele ongeenge ashike omunhu oo ina kanifa oilonga eehani dimwe umudo oo. Ngeenge tu tye, okwa longo ashike eehani 6 ile 8 kashi li vali mondjila.

Ehovelu alushe olidjuu vakwetu nde nge onatu longo hatu ningi eshilulula kombinga yovanyenge, otashi ka enda nai.

2. Nefimaneko ohandi indile opo tashi dulika ovafita inatu yandja vali ombapila yeongalo komukwaneongalo e he mo momambo eongalo olo. Tuma tete ombapila yaye i dje ko keongalo oko e na okutembuka, opo ne eshi a tembulwa, ove to mu pe ne nawa ombapila yeyakulo, inatu anyeneni eembapila daava ve li meni leengaba deongalo.

Ovamwameme, onde mu indila mu tu kwafe ngaho fye ava tu li meyakulo loilyo yomaongalo aeshe apa keenhele doilonga, opo tu dule nga okuyakula noupu, osheshi ofye ovayakuli vongelegeki imwe.

**Adolf Hangula**

## EPANDULO KOVAYANDJI

Otwa hala okuyandja olupandu linene kongudu yovashamane momuhandjo (Hostel) mOvenduka ava va yandja R 1000,00 omolwetungongeleka. Omwene ne va wedeleko ye e va pe eenghono moilonga yavo. Omahalelo mawa Okrimesa nOmudo mupe u na elao.

*Omuyakuli  
Oiva Sikwaya*

## OMBILI NAKALUNGA

“Ano nena sho twa ningi aayuuki keitaalo, otu na ombili naKalunga” omolwa Jesus Kristus. Uuna ondjahi yaKalunga ya za po, nena otu na ekwatathano naKalunga. Otashi ti, uuna twa li twa ya kokule e tatu galukile kegumbo, kuKalunga ketu.

Ngele otu na ombili naKalunga, nena otu na wo ombili nomuntu mukwetu. Omuntu e na ombili, otashi ti, oku na uundjolowele palutu nopamwenyo. Otashi vulika ta alukwa, ihe natango oku na ombili. Otashi vulika e na uudhigu, ihe ote u humbata pamwe nooyakwawo ye li puye, opo u ninge uupu Gal.6:2.

Ngashingeyi otu na ompito yokuhanganithwa kuKalunga, mokwiitedhulula nomokuhempulula oondjo dhetu, nena otadhi dhimwa po kombinzi yaJesus Kristus. Otu na ompito yokupaathana omake namukwetu twa ningathana naye, na kale oye olye.

Kaiunga oye ohole, natse natu kaieni mohole.

**Maria Amweenye  
Oskola yOmbimbeli,  
Ongwediva 1985**

Omukwetu waNovomba 30.85 epandja 12 Omwa li mwa tseyithwa eso iyaMateus E. Shivute Kambata a si 30.9.85. Okwa li e na oomvula omilongo mbali nahamano, oyana yaali naatekulu omulongo osho tuu? Talii po nawa, ondi inekela epuko.

*Omuleshi gwOmukwetu - Kombawe  
N.A. Ngesheya*



Natango oshidjuu okuxunganeka nnumbi omuloka woneudo tau ka kala. Ashike nande oluteni okwa li lile, vahapu ove na eteelelo lodula iwa. Pefimbo hatu nyanyangida oshifo eshi, oshitopolwa shinene shOumbangalanhu osha mona omata. Eembinga dihapu oda meneka oilya. MOukwambi oilya imwe otai hala okudala. Ope na eteelelo mo maanda mu ka ye sha neudo.



Oshigwana shAakwanghala otashi monika shi li moluhepo lwependji elongo lyoohapu dhaKalunga, onteyo yomomutse, oonguwo niikulya. Ethano olya thanekwa mOmangeti moka oshitayingeleki shOndonga tashi longo mokati kawo.

## Etalelopo moushilo wondjakulwambinga onkumbula

MuNovomba 1985, opa ningwa etalelopo momukunda Oshifitu, mewiliko lomufitaongalo Vaino Nepembe. Ova enda pamwe noilyo ivali yomondjakulwambinga oyo; oyo Ester Naikaku naMateus Nghipunya.

Penya otwa hanga omufita wokOmundaungilo Tate Kristian Shipunda a fika nale, notwa hanga ve tu teelela monhele oyo ya tumbulwa pombada. Efiku olo tuu olo, elongelokalunga ola ningwa kovafita ava. Okwa li kwa ningwa yo, eshasho lounona ve li 8, ovakulunhu va shashwa ove li 3 novakufilwa 13.

Eudifo ola ningwa ku E. Naikaku pa Luk. 12:35-40. Omuvulu wovanhu va li va ongala opo 320. Momuvulu omo mu na ovamwameme vongeiki onghwaAngilikani navo yo ova li pamwe nafye. Opwa tukulwa Esakramendi lOuvalelo Uyapuki omo mwa yakulwa ovanhu 97.

Konima eshi ouvalelo wa pwa okutukulwa, ovafita ava vavali ova popifa yo engafifi lovanhu ava va li va ongala mOshifitu. Eengudu domalwiimbo oda li da imba nawa unene, ovaenda ova tumbulwa nawa. Konima eshi omambo a dja mo, K. Shipunda okwa shuna diva keumbo omolwounghundi. Osho yo Tate M. Nghipunya okwa shuna diva omolwo- upyakadi wonhumba.

Omufita V. Nepembe na E. Naikaku, ova twikila olweendo nefiku 19.11.85 otwa ninga omambo mOmutwewomhedi. Opa ningwa eshasho lounona ve li 3, ovakufilwa 3, ovakolekwa 2.

Okwa ningwa yo eshasho lovakulunhu 3. Opo nee elongelokalunga na E. Naikaku a lesa Tit.2:11-14 omo ovapwilikini va ulikilwa efilonghenda laKalunga eshi la fika yo

nomomukunda wavo oku va etela exupifo.

Opa tukulwa yo Ouvalelo Uyapuki wa tukulilwa ovaitaveli 36. Ovanhu aveshe kumwe ova li 75 naapenya eengudu domalwiimbo oda li da nyenyepeka engudumano eli.

Omufita V. Nepembe a popifa ongudu ei. Osho yo Naikaku a tumbulila Ovamatwewomhedi oinima imwe ya pumbiwa.

Opo nee otwa twikila vali olweendo letu fiyo twe ya momukunda Oshauku, eti-20.11.85. Naapo yo otwa ongala nawa novanhu 97. Ounona 11 ova shashwa. Opa ningwa vali ekufilo lava 3. Opo ne elongelokalunga. E. Naikaku a lesa Mat.13:44-46 omo okawe ke na ondilo noke shii okulandififapo oyo aische



Omutonatelishitayingeleki shOndonga, Petrus Shipena, oha talele po wo omahala gaakwanghala, unene mOmangeti. Methano ndika ota monika pamwe nuunona wAakwankala.

omunhu e i kwete, e ke limone ne mo oupuna aushe u li mo, oko Kristus.

Omufita Nepembe a popifa yo Ovashauku nepandulo eshi ve tu tambula yo nawa. Osho ngaha etalelopo la fika pexulilo. Apeshe opo twa enda aveshe otava ti; hafye atuke ava otuvahapu. Vakwetu vamwe ova dja po n.sh.t.

Ebandulo lovatalelwa po ava ove li taalelifa movataleli po ndele tave li pitililifa mo ndele tave li yukililifa kElongeleki nokewilikongudu loshilongatumo, eshi la taalelifa oshipala shalo moku tu pa omufita V. Nepembe te tu yakula neyakulo lopaufita.

“Mboli ohatu ka eta eembapila detu domate- mbu komaongalo etu, opo tu di ete kOnku- mbula oku omakwafo tae tu dile ko,” osho tava ti ngaho.

Oshe tu etela omadiladilo okutala omadina ovatembukilimo mOndjakulwambinga ei. Otaku pandulwa omaongalo aa: Eembaxu, Eenhana, Ondobe, Oshaango, nOmundaungilo. Ndele otwa pandula vali omufita K. Shipunda eshi a lombwela oilyo yeongalo laye mOshifitu eshi a ti keshe umwe na ile diva ombapila yaye yetembu, opo eongalo li dikwe diva mOnku- mbula.

Pexulilo ohai ti kewilikongudu letumo; eyakulo lomufita Vaino Nepembe oku moushilo wO- ndonga olo oshitwa sha fimana kufye nopaKalunga.

**Esra Naikaku**  
**Onkumbula**

## Epulo koshigwana

Omolwashike omusamane ha kala e na omukulukadhi gwe, ndele shampa a si, omuselekadhi oha futu ishewe epya, nonande omukulukadhi naye otashi vulika ya tulile kumwe nomusamane gwe iimaliwa mbyoka ya yile mepya?

*David Katanga*  
*Walvisbaai*

## Okersesa yovafiyekadi Menongelo lovayaku- lio ngalo mEngela

Petameko laNovomba 1985, ovafiyekadi voitaingeleki itatu otwa li twa ongala menongelo lOvayakuli keshivo lomukulunhu wenongelo mEngela. Elalakano, ovafiyekadi va fude po vo va tuwe omukumo moufiye wavo.

Otwa li twa pewa ava ve tu ningila eetundi di lili noku lili ndele adishe ode tu twa omukumo. Motundimbibeli otwa kumikwa ngehe omufiyekadi e li moshisho shaKalunga Ps. 68:6; Ps 146:8-9a; Omaj.15:25.

Otwa pewa shihapu motundi ei ngaashi: eyakulo lovafiyekadi 2Mos. 22:22-23; 5 Mos 14:29, Jes 1:17b. Ohatu pandula komalombwelo omupopi umwe meetundi daye a li e tu kwafa ngehe tu na okufinda ewopedu olo hali etwa komaudjuu e lili noku lili: omaluhodi, omaudu, omauwike nosho tuu. Otundi ei oi na shihapu shiwa neenghono. Mewopedu ito dulu oku londa mo ngeenge u li kokule naKalunga ile Jesus Kristus ina ninga omuxupifi woye naito dulu oku mu holeka sha 1 Joh.1:9.

Otwa longwa yo kutya Omapisalmi okwa nyolelwa shike nokwa nyolwa koolye. Paife otu shi shii ne kutya nani embo lOmapisalmi, eimbilo ngaashi naanaa tu na eimbilo letu Ehangano.

Ovatoti vomaimbilo omEhangano ovahapu osho yo ovatoti vomaimbilo omOmapisalmi ovahapu nohaa imbwa momalongelokalunga nomoivilo kovaitaveli vonale, ngaashi hatu imbi omaimbilo etu paife.

Otwa pukululwa yo okushiiva ongeleki yetu ELCIN, netumo e li le i dala kutya olovaitaveli oolye, Ovasoomi. Vati ongeleki yetu paife oya tova nee, ya ninga omukulunhu.

"Ame ondi li pamwe nanye omafiku aeshe fiyo exulilo lounyuni." Mat. 28:20 osho oshipopwiwa sha umwe sha hovela ngaho. Etumbulo eli twe li ika moivilo yomashasho nomoivilo yaMisioni ndele oli na shihapu ihatu shi dimbulukwa osho: oupopepi waKalunga pufye. Oye Tate omufilishisho wetu, omwaameni, kaume ketu kaalushe ite tu fiye po, omutekuli, omumangululi, omuhekeleki Xe yohole Joh. 16:27.

Olupandu letu itali pu laashi twa ningilwa mEnongelo shaashi omo yo twa pukululwa onghalamwenyo yovakoneki (ovapofi) nonghee tu na okukala navo. Ovo ovahapu ngaashi vakwao. Nava longwe, nava hafifwe, nava pewe omaufemba, nava talifwe oinima youshitwe. Otundi ei otwe i ningilwa komulongi omupofi ou ina fa nokuli omupofi.

Twa pukululwa moukalinawa opo tu kale ovakoshoki tu liamene keembuto doudu. Omitala detu paife otu shii oku di yala pe he na omaongaongo. Neetundi domalwiimbo oko da li hatu imbile Kalunga ketu. Osho twa ningi nedeulo lolutu hatu nhuka.

Yaloo, yaloo! twa pandula eshi Tate Kalunga e mu pa mu tu ningile oinima inene i fike apa efimano nepandulo alishe nali ninge laKalunga ketu.

Motundimbibeli otwa lesa eendjovo tadi popi

nghee ovafiyekadi vonale va li hava filwa oshisho kongeleki Oil.6:1-4; Jak.1:27, nosho tuu. Eshi twa fafanifa efiloshisho lOngeleki nale naali lopaife otu wete fye ovafiyekadi vopaife ongeleki ya fa nga ihai tu tale (kwafa) nawa momaluhepo etu.

Unene ngaashi ovafiyekadi ovanyasha, ongeleki oya fa ashike hai tale ko, haunene hai kwafa. Paife ohatu idile nelinipiko kOngeleki, tate meme yetu i talulule ngaa oshinima eshi shokufiloshisho ovafiyekadi apa tai dulu.

Fye ovafiyekadi otwa li twafa tu wete tuvanini tu he fi vahapu. Eshi twa pula omolwashike mwe tu shiva tuvanini, enyamukulo: Omwa li mu na okukala 142, onye vene inamu uya shaashi ava mwe ya omu li ashike 23.

Paife ohatu ti nee ngahelipi mbela? Eshiiivo olo mbela inali fika komaongalo ile ovashivwa ovo inava hala? Ohatu indile ootate ovafitaongalo ava inamu tuma ovafiyekadi vomomaongalo eni kOkersesa ya li iwaiwa, sha umbwa sha pita nee ngaa, momashivo taa shikula oludi eli, ndee ombapila yeshivo ye ya moshinyanga shiivifila diva, nande efiku li li kokule.

Ngeenge eshivo ole ya tali ti naku tumwe

ovanhu wavali nava kale ve na ovaponhele opo tashi ende nawa. Ngeenge inava hala va kumaidila ko shaashi otava ka likola oipopwa iwa tai kwafa.

Vakwetu ava mwa mwene eshiivo ndee inamu uya nande kape na omaimbo, (ava mwa imbwa kusha hanye hatu popi), ileni Tate Kalunga ote ke mu pa eenghono mounghone weni.

MOmbibeli otamu popiwa yo oinakuwanifwa yomufiyekadi 1Tim.5:4-6; Luk.2:37. Hand ovafiyekadi katu na ashike okuteelela omakwafu twa mwena, ndelenee otu na okulonga nokulonga ounona novakulunhu vetu oilonga, opo onghalamwenyo yetu i kale nawa. Komesho yaaishe tu kaleni nokwoongala peendjovo da Kalunga nokwiilikana ngaashi omufiyekadi mukwetu Hanna ou a li iha di mo motembeli fiyo Omuxupifi wounyuni e mu hanga mo nokuli. Luk.2:36-38.

Ofy e ovafiyekadi ohatu halele elao ava va li ve tu ningila eetundi mEnongelo inamu shi efa ootate noomeme.

### Oshoongalele shovafiyekadi

## OMUKWETU

No. 1 Registered at the GPO as a Newspaper 30c

***Aaleshi aaholike, twa pewa ishewe omumvo omupe. Oye-ndji mwa tameke nale nokuli iilonga yeni, oshivanawa. Tse wo konyala opo ngaa twa tameke. Inatu wapa okutameka nondapo yoshimvumvu nando twa tokelwa, oshoka iilonga oyindji mOshinyanyangidho oya kala tayi thikama ootundi odhindji omolwomalusheno itaaga longo nawa.***

***Onkene tatu gandja mpaka ombili kune aaleshi yOmukwetu aasimanekwa, sho oshifo sheni sha tokelwa ngeyi. Otashi ke tu pula natango iiwike yimwe komeho manga inaatu tokolokwa. Tegeleleni ngaa iifo yeni nomukumo ngaashi hamu shi ningi shito.***

***Otwe mu pandula unene mboka mwa tumu nale kuyeleyele omadhina geni nenge gaantu yeni, opo ga tulwe melandulathano. Tangi unene. Ngoka inoo mona oshifo shoye, tu tseyithila mbala, opo tu talulule oshinima.***

***Aaleshi mboka mwa gumo komukalo gwontumba nenge gwongandi, otandi mu hiya natango mu tume omadhina geni nomwenyo omwaanawa. Methimbo ndika lyonkalathano ya topoka, Omukwetu oye awike ta vulu okuthika pungoye shaampoka u li po, monzimbogo, momukunda gweni, mondholongo kiilongo nenge maandjeni.***

***Imbesitelela ano oshifo shoye shOmukwetu 1986, omadhiladhilo goye ge ende pamwe nuuyuni auhe, pausosiale, pamahupilo, paitaalo nenge paupolotika.***

*Amushanga gwOmukwetu*

## Ondjokonona yomuku- lupe nakusa Lovisa Niinkoti

**Omukulupe Lumbu Mukwananzi Lovisa Niinkoti okwa valwa awike ku he Niinkoti yaNangolo dhAmutenja, nayina Oshikoto Teopolina Ntinda mOshitambi, mOndonga.**

**Kuku Lumbu oya fukala oshita nomukwaniilwa Nashikwele shaKadhikwa,**

Konima yethimbo efupi okuza mohango yiitsali Lumbu nomusamane gwe Ngula ya Nagonja oya dhike egumbo lyawo momukunda okambonde. mOkambonde oya tembuka mo e taa yi kOneputa moka ya kala ethimbo ele, noya monene ko oyana yahamano. Noya tembukile komukunda Ompunda megongalo lyaShitayi. Hono ya monene ko aana yane.

Kuku Lumbu pamwe nomusamane gwe Ngula, oya mono esilohenda leshasho esiku limwe. Lumbu a ningi Lovisa, Ngula oye Mateus. Oya shashwa komusita Juuso Itewa megongalo lyaShitayi. Noya hokana pagongalo mOndangwa. Tatekulu Ngula okwa li elenga lyomukwaniilwa Kambonde kItupe. Oye okwa pewa nokuli omukunda Omandombe megongalo Okaku, mOndonga.

Eti 19.9.1970 Tatekulu M. Ngula okwa mana oondjenda dhe. Nakuku Lovisa okwa kala megumbo lyomwana Leopold Nagonja.

Eti 3.11.1985 potundi 11 yongula kuku Lumbu Lovisa Niinkoti a yi wo kevluluko lyaana yaKalunga. Okwa li e na oomvula 87 patengeneko. Okwa thigi ko oya 9, gumwe okwe ya tetekele nale. Aatekulu naatekulululwa oye-ndijiyendji.

Leopold Nagonja  
Okaku  
Ondonga

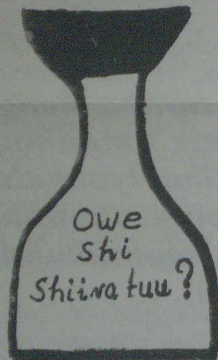
## OMAKUNDIFO OMUDO OMUPE

*Ekundo vakwetu eshi twa fikeni mo momudo mupe, ovapangi, eendohotola, ovafita voimuna, ovanadolongo, ovo ve li moupungekwa, ovalongifikola, ovalimi vomapya, ovapangeli, ovanyasha nakeshe tuu umwe mongudu yoye.*

*Inamu dimbwa omailikano okwiilikanena oshiwana eshi. Efimbo lonena keliwa, ashike Kalunga opo e li te tu amene. Kaku na osho ihashi xulu po. Ovafita novaudifi aveshe inamu tila okuudifa edina lOmwehe, Tate Kalunga oku li pamwe nanye moilonga yeni.*

*Kundweni hano Ovanamibia amushe novaleshi vOmukwetu.*

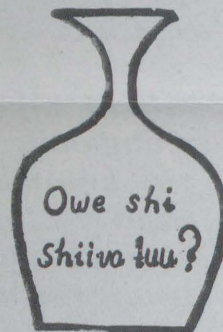
Mesta Djikolo



### Owe shi shiiva tuu Kutya

Omakaya nao oku na naana oshiponga ngaashi oikunwa. Momakaya namo omu na oudio. Oudio womakaya otawo dudu okunyonaunapo olutu lwoye nonghalonawa yoye. Vamwe ohava nu omakaya tava dilaadila kutya otawo va kwafa yati komukalo wonhumba ile wongadi. Oudio wa nikotin ou u li momakaya, itau ku kwafa nande, shapu otawo ku etele ashike omukundu molutu nomonghalonawa yoye.

Oudio womakaya nao ohau eta oiponga, ndele yao oya yooloka ku ei yoalkoholi. Keshe shimwe shi italela moyelele washo ngaashi to u pewa. Nge oho longifa nee aische, aische otai dudu oku ku etela omaupyakadi a yooloka. Lungamena omakaya ngaashi yo oikunwa.



## UUYUUKI OMPUMBWE ONENE MOKUKALAMWE- NYO KWESIKU KEHE

Uuyuuki owa pumbiwa moompangu nomokutokola oohapu dhaalelwa. Omukotoli ina kala e na okatongotongo nenge ta tala uuvalekele womupangulwa. Aatokoli yamwe otawo thindile oohepele kongudhi, ngaashi aatokele, oothigwa naaselekadhi. Shika osho iihuna momeho gaKalunga. Amos.8:4-7; Jes.10:1-2.

Uuyuuki moshigwana shetu owa pumbiwa wo mukulanditha. Okulonga pauyuuki otaku eta eyambeko moshigwana, ihe okunyokoma aalandi otaku eta eshunduko nomupya. Ngele oto tongolola aantu, owa fa u wete yaa na mwene, ya fa "oonzi dhaa na omusita," ihe aantu oye na mwene, Kalunga. Ngele oto gumu omuntu, oto gumu omuholike gwaKalunga, ondanda yeho lye.

Uuyuuki otashi ti okulunga shoka shu uka nokuvulika kehalo lyaKalunga Deut.6:25 na Hes.18:5-9. Omuwa oye omuyuuki nokuhole iilonga yu uka Eps.11:7.

Uuyuuki okukala mondjila yaKalunga wu ukilila, itoo tenguka mo, oto ningi shoka she mu opalela.

Petrus Kuvale  
Oskola yOmbimbeli,  
Ongwediva, 1985

## Nandi pukululwe

**Hamushanga wOmukwetu., noshu yo ovaleshi ovafimanekwa, onda hala mu pukulule nge: Onda kongo oilonga mofitola yonhumba opo ndi kale omulongi mofitola oyo, ndele ohaku ningi omukulukadi wamwene wofitola oyo ngee oinima yaye ya kaka keumbo, otai tutumbwa ko tai etwa kuamwe ndi wapaleke manga ye nounona vomuemo bwa mwena nonando ovo ngoo va kakeka.**

**Paife onda ninga omukalele wokukosha hano, ile ondi li ngoo omulongi-fitola?**

Ndahafa Nghilongwa  
Omatunda-Odibo

## EYAMUKULO:

*Kundafana natango nomuhona woye e ku yelifile nawa kutya oilonga yoye puye oyashike nashike fiyo wa yeletwa.*

Hamushanga wOmukwetu

## Efyo

Omukulupe niikodemus Nekundi (Kashokulu) womeongalo Endola, okwa xulifa oweenda waye moukulupe womido 89 efiku 5/10/85. Oye okwa longa luhapuoshilonga shoukuluongalo meongalo lavo.

Omwehe na hekeleke oonakufiwapo aveshe.

John Kashokulu  
Endola.

## Epangelo lyaBotha nali ethe po iilonga: Aawilikingeleki

**HARARE, ZIMBABWE**

**Aawilikingeleki moshigongi shawo sha ningilwe muHarare, oshilandopangelo shaZimbabwe, oya ti kutya oshiwana pethimbo ndika ongele ashike epangelo li li koshipundi mu SA tali etha po iilonga yalyo, oshoka lya olya kanitha ngashingeyi ondilo yalyo momeho gaantu.**

Oshigongi osha gongalele pehulilo lyaDesemba gwa zi ko nomwa li aawiliki yoongeleki konyala 100, ya za koombinga adhihe dhuuyuni. Moshigongi omwa li wo aakaleli po yomahangano goongeleki; Ongongahangano yAakwaluther (LWF), Oraata yoongeleki adhihe dhomuAfrika (AACC) osho wo Ehangano lyoongeleki oonkwaReformi muuyuni (WARC).

Mokupangula okatongotongo mu SA, oshigongi osha nyola omushangwahokololo tagu kumagidha uuyuni u ningile SA ondji-ndikila ya kwata miiti, esiku 16.6.86 li kale esiku lyegalikano muumbugantu waAfrika okudhimbulukwa etokolo lyAaluudhe muSoweto, okukondjitha okatongotongo oomvula 10 dha piti noombaanga dhuuyuni dhaa gandje we omakwatho gopaimaliwa ku SA.

Oshiwana okweeta po elunduluko lya pumbiwa moshilongo shoka, ongele ashike epangelo li li koshipundi tali etha po iilonga yalyo, oshoka lya kanitha ngashingeyi esimano momeho guuyuni, osho aawiliki ya ti.

Opwa piti ngashingeyi konyala oomvula 40 ongundu yaNasionale tayi lele oshilongo mu SA, pamulandu gwokatongotongo. "Shoka tatu kongo mpaka okuhulitha po uwinayi mu SA," osho omumbisofi omukuluntu gwaAfrika lyopokati W.P.K.Makhulu, a tumbula mevitho lye moshigongi shoka.

Omumbisofi Kleopas Dumeni muNamibia nomumbisofi Desmond Tutu mu SA oya li wo ya popitha oshigongi shoka.

Lwi/No.1

## OONKUNDANA PAFUPI

**DURBAN:** Oshigongi shehangano lyiipi-ndi mu SA, Congress of SA Trade Union (COSATU) osha pa epangelo lya SA oomwedhi hamano li ilongekidhe okuhulitha po okatongotongo moshilongo, manga iipotha inaayi tameka.

Oshigongi shaayeha shehangano ndyoka tali tengenekwa li na omahangano giipindi 35 mwa kwatelelwa ehangano lyoomina ndyoka li na iilyo 150,000 osha ningilwe muDurban petameko lyaDesemba gwa zi ko.

Oshigongi otashi ti itashi ka pula ashike eopaleko moondjambi, ihe otashi ka nyatulula wo omulandu gwomalukanda nuupolotika woshilongo.

"Ethembo ndiyaka lyokukala twa mwena owala, lya hulu po, iipotha nokweetha iilonga otashi ka kala oshinima shesiku kehe monakuyiwa" osho aawiliki yoshigongi ya lombwele aaniifo konima yoshigongi.

(Adv.2.12.1985)

# Euvathano melongelokumwe miinima yoo-ndjokana pokati kOngeleka ya ELCIN nOngeleka yaKatoolika kaRooma:

Esiku eti 15 lyaSeptemba 1985 potundi 6 komatango opwa ningwa oshigongi shoondathana pongulutumo yOngeleki yaKatoolika kaRooma pOkatana, mOwambo. Oshigongi osha li pokati komumbisofi Bonifatius Haushiku gwOngeleki yaKatoolika kaRooma a kala



**Meme Lusía Nhinda, omufiyekadi wanakufya Nhinda mefano eli pokati lela, ota minikwa eminiko lehekeleko komufi-taongalo Eino Amaambo.**

Da dja kep. 1

dalelwa mo a lela eongalo laNgela, eshi la dja melelo lovatumwa, oye wotete omudalelwa mo a lela oshitaingeleki shaUkwanyama okudja 1960-1971.

Okwa fiya ko omufiyekadi ovana 12 novatekulu. Odi na omwenyo nokomunashilonga wopaife edi da tongwa kOmwe Jesus eshi a tya:

“Ame ondi na okulonga oilonga yaau a tuma nge fimbo omutenya, oufiku otau uya ndele kape na ou ta dulu okulonga. 2 Joh.9:4.

mo pamwe noopata J. Nienhaus, A. Volk na F. Houben nomumbisofi gwa ELCIN, Dr. Kleopas Dumeni a li pamwe nomusita nOmukwathi gwOmumbisofi Matti I. Amadhila nomusita Paulus Heita.

Oshikundathanwa osha li: Oondjokana pokati kiilyo yoongeleki ndhika mbali RCC na ELCIN.

Euvathano ekulu ndyoka lya li lya ningwa pokati komumbisofi Rudolf Koppman (RCC) nanakusa omumbisofi gwa ELOC, Dr. Leonard N. Auala olya kundathanwa nolya lundululwa nolya uthwa li kale ngeyi:

1. Oondjokana pokati kiilyo yoongeleki ndhoka mbali otadhi hokanithwa mongeleka yegongalo lyaandjawa yomufuko omukadhona. Paveta ompe yopaKanon (Canon Law) yoongeleki yaKatoolika kaRooma, ehokanitho etiyali (ehokanithululo) pamushingo gwongeleki yaKatoolika kali na we okuningwa, ngaashi sha kala.

Onkene ngele ehokanitho otali ningilwa mongeleka yegongalo lya ELCIN, nena ezimino lyowina lyokumangulula omuhokani/nwa Omukatoolika keutho lyopaKanon lyOngeleki ndjoka oli na okugandjwa tango, tashi ningwa komumbisofi mwene nenge komukwathi gwomumbisofi (Vicar General) nenge komukaleli po gwowina gwomumbisofi (Appointed Vicar) moshitopolwa shoka, ongele omOwambo nenge okOkavango.

2. Inapu kala nando gumwe ta thiminikwa okulundulukila mOngeleki yaKatoolika kaRooma (RCC) nenge mOngeleki onkwaevangeli paLuther yomu SWA/NAMIBIA (ELOC) molwashoka ashike a hokana nenge a hokanwa koshilyo shOngeleki ndjoka. Omuntu kehe na kale a manguluka melongelokalunga lye okukala mongeleki moka a hala okukala.

3. Aavali yomunona naa tokole kuyo yene kutya, omwana ota shashelwa mOngeleki yini po, RCC nenge ELCIN, pwaa na eidhopo mo lya sha tali zi pondje (ngaashi ando kaakuluntu yaavali, komusita nenge kupata nosho tuu).

**NDHINDHILIKA:** Paveta yaKanon yoongeleki yaKatoolika kaRooma, Aakatoolika oye na okuninga ashihe shoka taa vulu aanona yawo ya shashelwe noya putudhilwe muukatoolika. Aavali ayehe oye na ompito yokukala peshasho lyomunona gwawo. Ihe aathikameni, oye na okukala iilyo yoongeleki yegongalo moka tamu ningilwa eshasho.

4. Manga ehokanitho inaali ningwa, aafuko ayehe yaali (omukadhona nomumati) oye na okuholoka kupata gwaKatoolika opo e ya ndungike papukululohombo, nonando ehokanitho oli kale tali ningilwa megongalo lya ELCIN.

(Onawa aasitagongalo ya ELCIN nayo wo ya kale haa ningile aahokanathani yoludhi nduka ayehe omapukuluhombo ga tya ngaaka.)

5. Egongalo kehe lya gumwa kondjokana ya tya ngaaka oli na okuholelela egongalo ekwawo



onkalo nuukwatya woshilyo shalyo kutya omuntu (inaa hokanwa/na nale,) omuselekadhi, omuthigwakadhi nenge omuteyindjokana.

6. Ehokanitho nge lya pu, egongalo moka mwa ningilwa oshituthi oli na okutseyithila egongalo ekwawo pambelewa, opo nalyo wo li vule okundhindhilika ehokano lya tya ngaaka membo lyalyo.

Pehulilo lyonkundathana ndhika opwa ziminathanwa kutya: Eshasho lyopaulumompumbwe lya ningwa komusita, komupangi nenge komukwanegongalo gwontumba omwiinckelwa oli na okutseyithilwa egongalo lyaandjawa yomushashwa notali taambwa ko, konima yaasho pwa konakonwa nawa, ngele eshasho lya tya ngaaka olya ningwa tuu pamukalo gu uka.

Etsakaneno ekwawo okutsikila oonkundathana ndhika nokukundathana wo iinima yilwe iikwawo olya popilwa komumbisofi Kleopas Dumeni nolya ziminwa noku kolekwa komumbisofi Haushiku.

## ELONDODHO!!

*Sho pwa dhimbululwa omukalo gwokutuma iimaliwa yokeshe oyindji mopoosa, kutya kagu na egameno lyasha, naasho opoosa yo yene ya londodha koshinima shono, Ewilikongundu lyOshinyanyangidho otali kumagidha notali popile kutya ayehe mboka haa tumu iimaliwa mopoosa uuna omwaalu gwa konda R50,00, nena gu na okutumwa paPostal Order nenge Money Order.*

# IILONGA YETANGO OYA TAMANEKWA KAAANASHILONGA MOWAMBO

Tashi landula mpaka efatululo lya zi moshigongi shaaniimpwiyu yi ili noyi ili moshigwana nomOngeleki. Eatululo olya tuminwa kiifo yomoshilongo ompito ndjoka nombelewa yOmukwetu ya pewa wo omasiku ngaka.

## OSHIPITITHWA MIIFO

Tse, aayakuli mOngeleka nomoshigwana, twa kala moonkumdatahana mOsentrum ya ELOC mOngwediva, muumbangalantu wa-Namibia momasiku 7-10 Novomba 1985, mewiliko lyOngongahangano yOngeleka moNamibia koshi yoshipalanyolo "TU IKONAKONENI TSE YENE", otwa koneke noluhodhi kutya onkalo yAaluudhe moshilongo shetu ashihe shaNamibia otayi endebele mokunayipala ngaashi tashi landula:

- Ongundu yEtango inayi totwa po opo shili yi "uvithe evangeli lyoshili nokuyambula po omithigululwakalo". Etango oli na elalakano lya tala muule monakuyiwa opo li faie pombambo aathininikwa, unene aagundjuka, meitaalo lyawo lyopakriste nosho wo mokuvongakanitha etegameno lyawo lyemanguluko lyoshilongo tali pitile mokatokolitho 435 kligwanahangano, komumvo 1978.
- Omutondi ota longitha iikondjitho yomaludhi gi ili nogi ili okulwitha oshigwana; ngaashi embombolokelomo lyiikolitha opo oshigwana shi goyapalekwe shi dhimbwe omaudhigu gasho gongashingeyi noshi kale shaa na ko nasha nonakuyiwa yomalualo gasho.
- Aakulupe moshigwana shetu kaye na esiloshimpwiyu lyopauyuki; tashi fala mpoka kutya oshinakugwanithwa shayo otashi shonopala nonkalamwenyo yawo tayi fupipikwa.
- Oopela dhokungambeka oluvalo muukilinika owindji ndhoka hadhi pewa uukadhona uunasikola oshali odha etwa po opo aagundjuka mbaka ya mangulukile elongitho lyiivalitho yawo lilanduliko oyo ombepo yokwaikwata neyonuuko moosikola, eshunduko lyondjelo yomuntu, etaandelitho lyomikithi, uunona wokomeho tau valwa iilema, engambeko lyolualo ndyoka tali fala meshonopalo lyomapiji gokomeho.
- Omwaalu omunene gwaalongwa ohagu ndopa omakonakono omvula kehe omolwomatompelo taga landula: elongo lya nkundipala nolyopombambo ndyoka tali pewa aalongi, ethimbo lyekonakono inaali opala nosho

omaudhano ga pitilila.

- Omolwonkalo ondhigu yongashingeyi, aanona yamwe otaya putudhwa ihe kaye na omukanka gwa kola gwonakuziwa nenge omadhiladhilo ga yela gonakuyiwa. Shika otashi vulu okufala mpoka oshigwana shokomeho shi iteye po sho shene.
- Aanangeshefa mboka aashona kaye na omaha gomalandithilo ga silwa oshimpwiyu nawa.
- Iiyamakuti otayi manwa mo kaakwiilongo nosho wo kaakwa-kwashigwa nomukalo opo ya yambapale mbala.
- Oshitopolwa shokuumbangalantu otashi endebele okumbugalekwa Kakele keyonopo lyeopalo lyuushitwe, omuloka gwa gwana otagu kelelwa, nohugunina shika otashi fala sigo omondjala ondhigu komapiji ngoka tage ke ya.
- Omainyengo gaakwiita yaSuid-Afrika naSuiwes Afrika ye na iikondjitho mokati kaakwashigwa, pomathimbo gaa shi giilonga yawo, otaga eta evundakano, uumbanda nomadhipago gaa fele gaakwashigwana.
- Ewi lyaawiliki yolela mOngeleka nomoshigwana, ndyoka li lilepo ehale lyaKalunga nosho omaiuvo gomwaalu ogwindji moshigwana, ihali pulakenwa kепangelo.

Tse mboka tu li moshitolwa sholugodhi huka kuumbangalantu, otatu koleke noonkondo omathikameno gOngeleki nogomwaalu omunene gwAanamibia kutya OKATOKOLITHO 435 KIIGWANAHANGANO KOMUMVO 1978 NAKA TULWE MBALA MIILONGA OPO UUYUKI NOMBILI YI DHIKWE MOSHILONGO SHETU.

### Ehiyo kAanamibia

Otatu ithana Aanamibia ooyakwetu moshilongo ashihe opo tu kuthe oshiholelwa oshiwana wa kaantu yiilongo yiwe muuyuni, unene moAfrika lya manguluka:

- Tu kale twa yalulathana notu yakulathane nohole nonesimane-kathano. Inatu etha tu ninge iilongitho yokudhipagathana no-kweehamekathana.
- Tu yande okahalu keliko opo twaa longithwe nayi omolwijimaliwa nenge shaa shoka sha kwatathana niimaliwa.

- Tu simaneke noonkondo nokuyelutha po oondjokana.
- Aakulupe mokati ketu oyi ilongela esimaneke enene, eyambidhidho nohole. Inatu ya enditha oondjila onde, inatu ya thikamitha momikweyo ethimbo ele, inatu ya pitha omutenya, inatu ya etha ya lokwe komvula nenge ya se uatalala uuna taya kwata uumaliwa wawo mboka uushona wopenzela.
- Aakwaniilwa, omalenga nooyene yomikunda: gameneni aantu yeni methimbo ndika edhigu. Kaleni ongenhindhiliko lyuuyuki kuayehe; unene popilene oohepele, aaselekadhi noothigwa.

Niitya tayi nyengathana okutumbula, otatu pandula Kalunga omunamwenyo sho tu na mokati ketu Aanamibia ooyakwetu mboka taya yakula oshigwana nomutima aguhe pambepo, paputudho nopalutu: aasita, aavali, oondohotola naapangi, aalongi naatalelisikola, aanangeshefa, aakwaniilwa nomalenga nooyene yomikunda, aalongi moombelewa nomomalundu, nosho wo yalwe oyendji moshigwana. Oshiholelwa shawo oshiwana nashi kale onza tayi tu pe omukalo noonkondo miilonga yetu yesiku kehe mondjila yokuya kemanguluko lyoshilongo shetu nosho wo metegameno lyetu lyoshilongo shaKalunga.

\*\*\*\*\*

### Evi ndi

Evi ndi ehilike, ihe ngashingeyi lya nyatekwa. Uuwana owindji mulyo, ihe ngashingeyi wa kana mo Omalukalwa gaantu ga halakanithwa po Omaunapelo giimuna kaga monika mo we.

Ondalu yanelyanga ya ningwa omupangeli mevi ndi Etiko lyombinzi lya talika ko ongefundja kevi ndi Eso lyombaadhilila lya ningwa uulenga mevi ndi Okwaa na evuliko kwa talika ko ongemanguluko mevi ndi.

Aamwameme oyendji moondholongo ye li molwevi ndi. Etegameno lyombili twa kanitha mevi ndi Nkalamwenyo ya nyenge ndje mevi ndi Uunake nandi ka nyanyukwa mevi ndi

Mawawa ndaa na ndi thige po evi ndi Ohole muka katu na tu kundathane evi ndi Emanguluko inaatu adha tu popile evi ndi Mbiji, nyanyu, hole twa hala mevi ndi

Yaye ngame ondjendi mevi ndi Yaye ngame othigwa mevi ndi Tate ndi he na molwevi ndi Uuthigwa nani oshiponga kevi ndi

Shike aathigululi yaa na ndjaalela mevi ndi Shike to thigulula wa fa inoo valela kevi ndi Omulalakadhi ngoye waa na nevi ndi Dhimbulukwa kutya ongoye evi ndi

Mahodhi to ga lilithile kevi ndi Ono ke ga pulwa kuMwene gwevi ndi Epongeko lyoothigwa kevi ndi Onali ke ku adha esiku limwe mevi ndi

Nampongo tu hupitha kevi ndi Luhodhi lwetu theta po mevi ndi Mapulo getu yamukula kevi ndi Nkugo yepongo ongoye ho tondoka nokevi ndi.

Lungameni P. Kafute

## Natango ya dhigininwa

Markus Paulus, Onguta  
Natanel Amukugo, Oniipa  
Johannes Kandima  
Festus Mvula  
Abel Festus  
Johannes Akambaye  
Amakali (Omukatoolika) Oneeya  
Helmut Angula  
Nestor Ashoongo  
Petrus Haimbodi  
Oscar Haludilu (35)  
Filemon Hamukoto  
Frank Hamunime (40)  
Immanuel Hamutenya  
Frans Hango  
Iihuhwa Frans (50)  
Agapitus Iiyambo  
Eric Iikukutu  
Amutenya Iipinge  
Stefanus Iishilelo Teofilus  
Lamek Kavila (24)  
Reinhold Kwathiindje Aumbi  
Absalom Linus  
Henok Malakia  
Gerhard Nafuka  
Modestus Nambwandja  
Ndeuka Nakatana  
Andreas Namhweya (60)  
Lusia Nanghama  
Lukas Nauyoma  
Kondjeni Nenghede  
Absalom Onesimus (27)  
Werner Paulus  
Jakob Pendukeni  
Paulus Rafael (43)  
Andreas Shapumba  
Teofilus Shidjuu  
Henok Shifeta  
Ferdenand Shifidi (40)  
Damian Shikongo  
Iiyambo Shilongo (37)  
Timoteus Shikongo (48)  
Shikoyeni Oskar  
Paulus Shilongo  
John Shiluwa (30)  
Petrus Shipahu  
Toivo Kankono  
Johannes Jeremia (20)  
Eliakim Johannes  
Kleopas Johannes  
David Johannes Nakwafila  
Jona Kambudu  
Uejulu Ndume

Tomas Akweenda (32), Oniipa  
Johannes Festus Oshigambo  
Andreas Immanuel (44), Oniipa  
Sakaria Barakias  
Tara Sakaria

Reinhold Shipo  
Paulus Shipweya (36)  
Elkan Shoombe (21)  
Johannes Uutoni (50)  
Marius Valombola (28)  
Tobias Andimba  
Naftali Andimba  
Mateus Gabriel  
Andreas Gideon  
Listo Katengo (Sheya)  
Petrus Nangombe (Kakede) (37)  
Alfeus Nghipandilwa (Shikongeni)  
Frans Angula (28)  
Nobert Ankome (25)  
Desiderius Ankome (26)  
Vilho Kashululu (22)  
Bernadinus Shikongo (Petrus) (47)  
Festus Uutoni (Napoleon) (28)  
David Iimbodi  
Simon Iikondela  
Victoria Moshana  
Rehabeam Nambinga  
Selma Nepolo

## 7 ya tegelela epangulo

Aalumentu ya 7 oya tegelela epangulo muFebuluali 4.1986, mOvenduka pahokololo lyoshifo CCN-Information No.12/1985. Oonakutamanekwa oya holokele lwotango ethimbo efupi mompangu yopombanda 14.10.1985 mOvenduka.

Ondjo yawo otayi fekelwa kepogolo lyokaveta okati 11 (a) hoka ke nasha noka Artikel 1,2, (1) 11 na 12 koveta yegameno lyomeni lyoshilongo paveta No 44/1950 osho wo elalakano lyokuhumitha komeho ukukomoni.

Aatamanekwa oyo: Fransa Angula (28) Onanghulo; Robert Ankome (25) Oshikutshatshipya; Elkan Shoombe Simon (21) Ohathingo; Bernadus P. Shikongo (47) Etayi; Desiderius Ankome (26) omulongi mOngwediva Erastus Uutoni (28) na Vilho Kashululu (22) Olupandu.

Hahende Theo Frank oye e ya lile po mepangulo palombwelo lya hahende David Smuts gwehangano lyooveta lya Lorents + Bone, mOvenduka.

Kombinga yepangelo ohahende H. J. Liebenberg SC. ta kwathwa kuhahende Stefaan de Vos.

## VACANCY! VACANCY!

### THE LEGAL AID UNIT OF DHE COUNCIL OF CHUR- CHES IN NAMIBIA

*have a vancancy in dhe WINDHOEK office for clerk preferably with matric to assist the Head of the Legal Aid Unit and to commence as soon as possible.*

*Applicants should contact the Head of the Legal Aid Unit at 061-37510 or apply in Writing to:*

Legal Aid Unit  
CCN  
P.O. Box 41  
WINDHOEK  
9000

## OMUMVO GWESO 1985

- x Aantu 7 000 oya sile mekakamo lyevi muMexiko.
- x 20,000 ya sile menono lyomulilo (Volcano) muNevando del Ruiz
- x 60 ya sile moshiponokela shondhila ndjoka ya kwatwa po ombambyona muEgipiti.
- x Ye vule 2,726 oya sile miiponga yegwo lyoondhila
- x Ye vule 800 oya sile miikolokosha pokati kAaluudhe nepangelo lyokatongotongo mu SA.
- x 39 oya si sho ya gwilwa kekuma pokapale kuudhano muBrussel.
- x Namibia okwa kanitha yangapi mbela?

# ETSEYITHO

*O s t o r a O m b i l i h a .  
O n i i p a . I L A !*

Koponen

## OUNYASHA

Ino likanifila ounyasha  
Ino ekelashi oshinakuwanifwa shoye  
Ounyasha ino u kwata peke  
Ino u kwata koxulo yeenyala

Ope na vakweni tave u lili  
Ve li meenghali dounyasha  
Ngeno okwa li haku shunwa ee!  
Ovanyasha kupula

Nge we ku xutuka, owe ku xutuka  
Nge wa wile pedu, owa wile pedu  
hi to ka tala, oto likeuka konima  
Muhalombelewa, oha i nonyata povanhu

Nge e ku lombwele oto ti,  
ame oko, nde shi hanga  
Nge e ku kumaida oto ti,  
davendji kadi yahama  
Nge e ku popi oto ti olange mwene  
Po pohaulwa yoye oponguwo

Efimbo tali ke uya  
Ounyasha otawu ke ku fiya po  
Fimbo to ti, opo ngoo to lyaalya ko  
Oulya ngo, to keuka konima

Ounyuni ngenge otawu ke heke  
Younyuni i efa  
Ngenge oto utondokele  
To ka punduka ino fika

Diinina ounyasha woye  
Efimbo manga u li na  
Otaku ke uya efimbo  
To ka dimbulukwa kounyasha woye

Omunyasha ou na okuhambelela  
Omunyasha ou na okupandula  
Namhongo e u ku pa omaano.

*Nangie Metusalem*

## EHIOY KOKERSESA YEDHIGININOMAMBO

Tayi ka kala ko okuza 1-2-1986, mOvenduka, uule woomwedhi ndatu. Otayi ka ilonga omambo ngaashi:

- CASH BOOK
- SALES BOOK
- PURCHASES BOOK
- DEBTORS LEDGER
- CREDITORS LEDGER
- STOCKTAKING PROCEDURES
- GENERAL SALES TAX
- PETTY CASH BOOK
- MARKETING (an introduction)

Ontseyo yOshiyafrikaanisa nenge Oshiingilisa oya pumbiwa. Ngele ou na ehalo, nyolela kondjukithi tayi landula pevuu u tuminwe ofooloma u uve kutya okersesa ayihe otayi ka kosha ngiini.

Nelago Kasuto  
P.O. Box 23084  
WINDHOEK  
9000

Tel. 62459

## The CCN has a vacancy in the position of the Director of the Education Department.

### The Director of Education is required to:

- (a) Have a degree, preferably in education
- (b) Have excellent command of English and at least one indigenous language.
- (c) Be a good administrator
- (d) Be a man/woman who has the disposition to work with people
- (e) Have teaching experience
- (f) He/she must be committed to the course of the Namibian people
- (g) He/she should at least understand the political economic and social situation in the country
- (h) He/she should be a Christian and also involved in the life of the Church.

All the applications and enquiries should be sent to the General Secretary of the Council of Churches in Namibia before the end of November 85.

P.O. Box 41  
WINDHOEK  
9000

## EYOOLOKO OLI LI PENI?

Ondi na epulo nda hala okupukululwa. Ngame mwene okuume kiifo yOngeleki ngaashi Omukwetu nOmukuni. Epulo lyandje oondi: Omukwetu oha kosha 30c moshifo shimwe. Osho wo Omukuni. Komumvo ohandi futu Omukwetu R 5.00, osho wo Omukuni komumvo ohandi futu R 5-60. Omukuni oha monika momwedhi lumwe, nOmukwetu oha holoka momwedhi lwaali. Onda nyengwa ihe kiimaliwa yOmukwetu iishona yi vulike koyOmukuni, ye Omukuni oha holoka ashike lumwe momwedhi. Kwatha ndje opo u yelithile ndje oshinima shoka.

*Kashima Amunyela  
Swakopmund*

## EYAMUKULO:

Oshifo kehe ohashi lelwa kongundu yasho yi ithikamena notayi ningi amatokolo ngaashi ya tala tashi opalele aaleshi. Ongunduleli yoshifo, OMUKWETU inayi londeka manga ondando yoshifo, oshoka oya hala oshilyo kehe shOngeleki ya ELCIN, naamboka yaa na iilonga yi inyolithe oshifo shoka yo yi indungike ngaashi tashi vulika.

**Amushanga gwOmukwetu**

## OMUKWETU

Oye oshifo shOngeleki Onkwaevangeli paLuther yomuSWA/NAMIBIA.

Ohashi nyanyangidhwa mOshinyanyangidho shOngeleki mOniipa.

Omukuluntu gwoshifo omumbisofi Dr. Kleopas Dumeni, Amushanga gwoshifo omusita Sebulon Ekandjo. Ondando yOmukwetu muNamibia naSouth-Afrika R 5,00 komumvo.

Palwe muAfrika R 8,00 nokombanda yomafuta R11,00 komumvo. Mondhila R13,00.

Ondando nomambesitelo agehe naga tumwe kOmukwetu, Oniipa, P/Bag 2013, Ondangwa, 9000

ELOC PRINTING PRESS  
PRIVATE BAG 2013, ONDANGWA 9000  
SWA/NAMIBIA