

OMUKWE TU



30c

No. 3

ISBN 0-620-06828-0

ELCIN A TOKOLA OKUSHAINA EUVATHANO MOLWASENEGAL

Elelongeleki lya kundathana eshaino lyethaneko lyelongelokumwe lyoshilongatumo kuSenegal nomautho galyo pokati kEhanganotumo lya-Soomi (FELM) na ELCIN.

Moondathana opwa dhimbululwa kutya, omalundululo ga pulilwe ku ELCIN ga ningwe methaneko lyelongelokumwe oga ningwa.

Ewilikongundu lyEtumo lya ELCIN olya zimine wo kutya, omapulo ngoka ga li po sho ga yamukulwa kapu na we sha tashi imbi eshaino lyeuvathano lyelongelokumwe.

Etokolo: Onke Elelongeleki olya tokola euvathano lyelongelokumwe moshilongatumo kuSenegal pokati ka ELCIN na FELM li shainwe, na ELCIN a gongele iimaliwa ya gwana, a tume aatumwa ye kuSenegal.

Elelongeleki olya utha wo, kutya ngele inapu holoka we omaimbo gasha, euvathano ndika li ka shainwe muAguste 1986 pethimbo ndyoka omuwilikitumi



Tala kepanja tali landula MuSenegal etameko olya ningwa nokuli, oya pumbwa ashike eyambidhidho

FEBULUALI 15, 1986

Ombilive yomumbisofi komagongalo

Dr. H.Smedjebäcka, pamwe nomumbisofi omukuluntu gwOngeleki onkwa-Luther muSoomi taa ka talela po Ongeleki yetu.

Elelongeleki otali indile Ewilikongundu lyEtumo mu ELCIN li ninge omalongekidho agehe taga pumbiwa manga euvathano ndika inaali tulwa miilonga.

- Okutala ngele opu na iimaliwa ya gwana yokutuma omutumwa noku kale ko oomvula ndatu.

- Okufaneka kutya uunake aatumwa taa ka tumwa.

- Okulongekidha omahala gokukala kwawo muSenegal.

- Okupendula omagongalo noku ga dhimbulutha oshinakugwanithwa

OSHINIMA: Esiku eti 23/2/1986 lya uthwa kElelongeleki oshitokolitho 58/86 li kale esiku lyehambeleso nolyegalikano omolwomvula nonkalo yoshilongo shetu.

Onda adhika nde ku tumina ekundo nehalelo lyaKrismesa nolyOmumvo Omupe, pehulilo lyomumvo gwa yi 1985. Otandi koleke ekundo ndyoka, nokuhalela omagongalo agehe ga ELCIN momumvo nguka 1986 gu kale meitaalo lya kola mokwiinekela "Kalunga kehupitho lyetu, nomokwiitaala kutya "Jesus Kristus Oye Omuwa.

Mokugalikana: "Kalunga, shitila ndje omwenyo gwa yela," osho wo omumvo gu kale shili omumvo gwepapudhuko, eitedhululo negalikano momagongalo agehe.

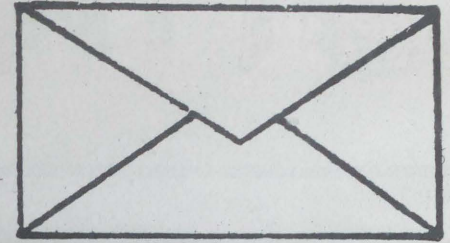
Mombapila ndjika yandje yotango nuumvo kune, otandi thikitha eutho lyElelongeleki lya tumbulwa pombanda, komagongalo agehe. Otandi indile esiku ndyoka li longekidhwe nawa. Ando li igidhwe mOsoondaha mbali dha landulathana.

Esiku lya tiwa: Esiku lyehambeleso nolyegalikano omolwomvula nonkalo yoshilongo shetu. Shoka tashi ti: Mboka ya lokwa, esiku ndyoka otaa hambelele. Mboka inaaya lokwa otaa galikana. Ngele atuhe otwa lokwa, nena otatu hambelele.

Omagongalo oga manguluka okukutha kehe limwe esiku lyokwiindilila nenge lyokuhambeleso omvula, nando esiku ndyoka inali thika nenge lya pita.

Esiku 23/2/1986 olya uthwa opo li kale esiku lyuukumwe Aaelcin ayehe mokuhambeleso nokugalikana omolwomvula nonkalo yoshilongo shetu.

Onkalo yoshilongo otayi ulike omaudhigu niiponga oyindji, iinene niidhigu.



"Ngu ithane ndje esiku lyuudhigu woye, ngame notandi ku hupitha" Otatu dhama omawvaneko ngoka. Konima yesiku ndyoka omahambeleso nomagalikano otaga tsikile muuwike nomoongundu memanguluko ngaashi shito.

Omukanka gwetu miinima mbika ogu li moohapu dhaKalunga: 1) Lesha 1 Tess.5:18. Hambelele aluhe, oshoka olyo ehala lyaKalunga muJesus Kristus, e li hala kune. 2 Lesha wo Jak.5:16-18. Ovelise 18 Elia okwa galikanununa, egulu nevi nolya gandja omvula, nevi lya meneke iiyimati yalyo. Na 2 Ondjalula 6:26-42 dhilwe dha longekidhwa kegongalo lyo lyene.

Egalikano nehambeleso otali ningwa lya tetekela egalikano enene lyOngeleki. Indileni otamu pewa" osho Jesus ta ti. Esilohenda lyOmuwa Jesus Kristus nali kale nane.

Peha lyElelongeleki

K *Dumeñi*
Kleopas Dumeñi
OMUMBISOFI



Omumbisofi omukuluntu gwOngeleki yomuSoomi John Vikström ngoka a tegelelwa a talele po Ongeleki ya ELCIN nuumvo nomukuluntutumi omusita Henrik Smedjebäcka

shago nokuhwamitha ohole yoshilongatumo.

- Elelongeleki otali indile wo okangundulongekidhi kEhanganotumo mu ELCIN hoka ka uthwa montokolwa 164/85 ka tameke omalongekidho gako.

(Elelongeleki oshit. 21/86)

OMBEPO YAA OPALELE

Okuza 1983 osekundosikola yaNgandjera oya kwatwa kombepo ya nyata, sho aantu taa kolekwa nenge omulongi ta ningi ohango ota kugililwa, ta tukwa ye ota shekelwa ohe-ma ndjoka a zala aniwa, okwi ipa nenge ohepele nenge otaa ti ngandi ngoye owo opala ndele uusama oosho wa ningi omwiinayi.

Aanona oyendji oya li oongunga sho ya mono kutya aakuluntu inaa gandja oshimaliwa oshindji opo ye ki ilandele oshikutu shondilo, opo kaa tukwe.

Nyowa O.Wilbard



Omukuluntutumi H.Smedjebäcka. Okwa tsakanitha omimvo 60 pehulilo lyaDesemba gwa zi ko. Omusita Festus Ashipala ngoka ti ilongó ngashingeyi muSoomi, oye a li a gandja ehaleloyambeko kuye peha lyOngeleki ya ELCIN

Okokutya ngahelipi paLuther:

“OMHANGO NEVAENGELI?”

Opa kala onghanyutulula mondjokonona yOngeleki oyo ye tu eta fiyo omeyelifo leitavelo. Luther ye mwene ina kala moupu wonghalamwenyo yaye ongomwiitaveli. Okwa kala nehala la kula lokuwanifa ehala laKalunga. Eshi a pita ofikola youfita okwa ya moulikaleli omo a kala nokulihepeka, ta denge nokunyota olutu laye, ngeenge muye mwe linyenge sha tashi kondjifa ehala laKalunga. Mokukendabala kwaye neenghono ngeno a wanife ehala laKalunga, omo mokudjuupala kwonghalamwenyo yaye mokuhanga ouyapuki.

OMHANGO

Omhangho paLuther otai ulikile omunhu osho kwa li e na okukala. Katu li ngaashi twa li tu na okukala, ndele omhangho muyo yene itai dulu oku tu ninga tu kale ngaashi tu na okukala. Oyo okapeleki taka ulikile omweendindjila oku ta i, ndele itaka dula oku mu twala ko. Omhangho otai pangula ndele itai xupifa osho tashi ulikwa kuyo; oulunde nounyengwi wetu. Osho tashi pulwa komhangho, otashi yandjwa kEvaengeli alike.

EVAENGELI

Otwa tumbula evaengeli, elaka linyenye. Momhito ei Kalunga ota dimine omunhu a ye mehangano naye e li ngaashi e li, a hepe omolwoixuna e i xuna. Esho osha lukwa ediminepo. Umwe okwa fininikwa opo a hepekwe omolwenyono lomunhu mukwao, ou e na okudiminwa po. MuKristus Kalunga okwe litwika onghalo yetu ya nyonauka yokukala tu li osho tu he na okukala. Luther okwa mona nokwa likola oupuna meenhumwafo daPaulus kutya, ouyuki waKalunga kau shi oshinima osho tu na okulongela noku shi likola, ndele ohatu u pewa kuKalunga mwene.

Oo tau tu ifana moilonga yakulo. Meitavelo oikumwifilonga otai longwa. Kristus ota kufa po oulunde nounghundi wetu, ndele te tu pe ouyuki waye nenghono daye. Kalunga ote tu tambula muKristus, nonande fye katu shi ku tambulwa.

Kalunga moku tu tambula muKristus, okwe tu pa omhito yokupewa mo oshitukulwa momwenyo mupe waKristus. Eshi otashi dingonoka shokuulu kwetemba. Osho hatu kala tu li (simul justus et peccator) Ovalunde meenghalamwenyo detu, ndele twa yukipalifwa momwenyo mupe waye.

Apa ope na eyooloko pokati komhangho nEvaengeli.

1. Omhangho otai tu pula omwenyo mupe waKristus.

2. Evaengeli otali tu pe omwenyo mupe waKristus.

Omhangho otai ti, to pi, u li mediko, Evaengeli otali ku tula modikwa nokuxupifa. Omhangho otai tu pula omwenyo mupe muKristus. Eli olo eyooloko pokati komhangho nevaengeli li he fi lomoshikalimo, ndele olopailonga. Omhangho otai twala omulunde mefyo pamwe naKristus komushiyakano, evaengeli, otali yandje enyumuko pamwe naKristus.

Eshi osho Luther a diladila, nge ta popi omhangho nevaengeli. Ndele eshi Luther okwe

shi lihonga komuyapostoli Paulus, ou ta ti: “Eshi tu shi shii kutya, omunhu iha yukipalifwa molowoilonga yomhangho, ndele omolweitavelo laJesus Kristus, onghe hano nafye yo otwa itavalela Jesus Kristus, hakoilonga yomhangho. Osheshi kape na nade ombelela imwe tai yukipalifwa koilonga yomhangho” (Gal.2:16).

Nye ovayakuli vovanhu vaKalunga, mu na oshinakuwanifwa shinene nosha fimana ondi shi shi, Omhangho oya kala nokulonga oshilonga shayo munye moilonga yeni efiku keshe, tai ku

lombwele owa li u na okutya, ino tya; wa tya osho u he na okutya, owa li u na okutalela po omukulupe, omukoneki, omuyambididwa ngadi nomunaudu nhumba ndele omunaudu winya ina pumbwa eepela shike, ndele exungomwenyo. Ngeenge engongoto eli lomomaliudo nomomadiladilo la nyamukulwa shili, okapate komhangho ka taulukwa, otu li mevaengeli laKristus. Momhangho kamu na omwenyo mupe womuKristus, womuyakuli ile womuyakulwa.

Omwenyo mupe otai hangwa melaka linyenye la tulwa moilonga olo tali ti: Jesus Kristus e uya mounyuni okuxupifa ovalunde mwaava ame omunene ndi va dule aveshe. (Tim.1:15).

Onghee ovayakuli vakwetu ovaholike, diinineni kutya, omuti mupe, Kristus, omo ovaitaveli tu li oitai, otai ima oiimati iwa muo vene. Omhangho otai pangula oulunde wetu, tai tu pula omwenyo mupe muKristus.

Oshipopiwa osha dja moshongalele shovahakuli moshitaingeleki shaUkwanyama 1985.

Komufita
T. M. Ndiwakalunga

Etumwalaka lomupendu

Igreja Evangélica Luterana do Sul de Angola Missão Evangélica de Shangalala

SHANGALALA ◀ NAMAYAKA ◀ KALONGA ◀ OSHIKANGO-POPAWA
CAIXA POSTAL 42
XANGONGO

La dja kOshitaingeleki shaKunene - Angola

Ovamwameme ovaholike, komufiyekadi meme Lea Shilongo neefiye 7, kovadali vanakufya omufotaongalo Metusalem Shilongo novamwayina aveshe nookaume, kongudu yovafitaongalo va yapulilwe shimwe naye omudo 1962, naame yo omo ndi li, novafitaongalo aveshe va ELCIN nOngeleki aishe yaKristus ya kanifa omuyakuli wayo.

Otu na euditopamwe moluhodi eshi Omwene Kalunga e tu kufa oo kwa li twe mu lineekela. Elaka lenyumuko olo alike tali tu talaleke: Joh.11:25,26; Rom.8:31-39. Ohatu tambula ashike nokulixupipika: Kalunga Tate owe tu pele, paife owe tu kufa, edina loye nali hambelelwe.

Epopifo lowina kovatumwa moilonga 1962, ondi udite kutya atushe ohatu koneke nhumbi Kalunga a fa ta endebele okudimbula vahapu vongudu yetu mounyasha weedula nowefimbo loilonga. Hano natu longeni nokweendelela ava twa fyaala po, shaashi efimbo otali endebele.

Omwene ne tu hekelekeni, ovamwameme.

Ponhele yOshitaingeleki
Noa Ndeutapo



NAKU TUNGWE EEFIKOLA DOULONGI DA WANA - Ovanafikola tava indile

KuJohn Shitundeni

Moivike ya dja ko, ombelewa yomukulunhufikola waNgwediva, ngaashi eembelewa dikwao deefikola moshilongo, oya li ya kundukidwa kovanafikola omafele nomafele va xupa ko komatambulo oneudo mofikola omo. Vahapu vomuvo ava nda popya navo, otava pula va tambulilwe moulongi. Pakupopya kwomukulunhufikola ou ta yakula mOngwediva pakafimbo, ofikola inya oya tungwa ashike tai wana ovahongwa 700 aveke.

“Neudo mofikola yetu otu na ovahongwa ave she kumwe 1020. Mokati kavo omu na ovalongwalongi 850. Eshi otashi ti otwa pitilila omuvalu ou wa ufwa, novahongwa 320,” osho omukulunhufikola waNgwediva wopakafimbo, tate Josia Udjombala a fatulula meenghupdafana nomutoolinghundana woshifo shOmukwetu.

Eshi omunhu to katuka wa finda momebelewa yomukulunhufikola, oto pandakana mengafifi linene lovanafikola va napakana nomukala aushe wopombelewa oyo. Vamwe otava monika va kukutika omilungu; vamwe ove na omandjaja taa kwena kondjala; vamwe ova mbudukila komalutu; eengolo davo oda fa da tyololokifwa kokufikama eevili neevili vo itava kumbululwa; vamwe ova fidimaneka oipala va fa ve wete onakwiiwa yavo ya tuvikilwa koshilemo shilaula.

Kokule kanini momiti domoluumbo lofikola oyo, omu na oungudu vamwe voonakukonga omatambulo. Nge omunhu to va pulaapula va yandje omadiladilo avo moshinima sheefikola da pumba, oto mono ashike omanyamukulo maxupi taa tu kumwe kutya naku tungwe eefikola doulongi da wana; “nongeenge hasho, omuvalu wovanhu ava hava xupu ko komatambulo otaw hapupala ashike omudo keshe nepamukalo ou, fye ovanyasha ohatu shololokifwa meenghendabala detu dokulihonga, opo tu ka pendulepo oshiwana,” osho umwe a fatululila nge e udite enyeme.

Kepulo kutya eshi have uya ongula keshe okukalela ombelewa inya, ohava nangala peni, umwe okwa nyamukula ta ti:

“Vakwetu vamwe ohava nangala keembete daava ve shii momuhandjo, omanga vamwe haku ti ngaho mongula nda nangala meumbo eli pomumbo opopepi, omolwoumbada kutya pamwe omunhu oto mane po unene oilya yovanhu ngeenge wa menekele unene meumbo limwe.”

Ofikola yaNgwediva oyo aike ti hai longo ovalongwalongi mOwambo, nonande moshitukulwa eshi omo mu na ovakalimo vahapu ve dule moitukulwa imwe moshilongo. Pamivalu da dja momebelewa yomukulunhufikola, mofikola yaNgwediva omu na ovalongi aveshe kumwe 37; ovadalelwamo 21; naava va dja koilongo 16. Mokati kavo omu na Ovasouth Africa 10; Ova-fillipyne 6, nOvaamerica 2.

Omushamane Udjombala okwa hovelele okulonga mOngwediva momudo 1982, konima eshi a pita oulongi kuAgustineum kOvenduka. Okwa hoololelwe a kale ta yakula pakafimbo momebelewa yomukulunhufikola omolwomukulunhufikola ou a li po a tembuka vati oudwaali. Okudja meedula da dja ko, ofikola ei oya kala alushe

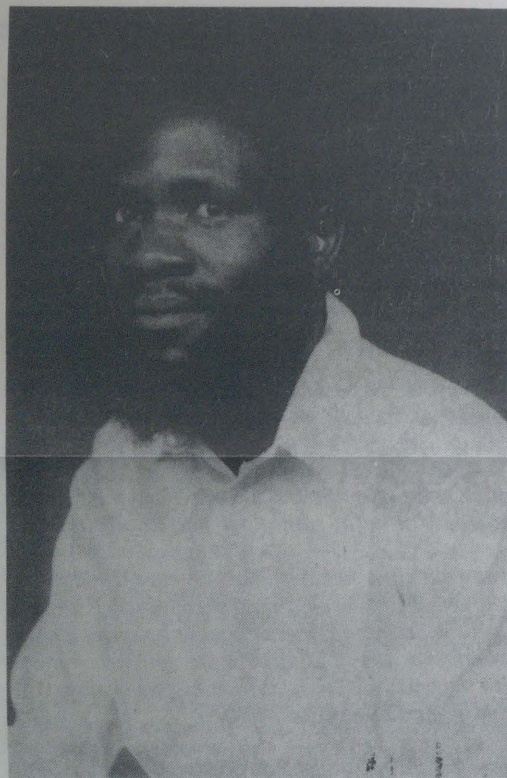
mewiliko lOvatilyane noshu oshikando shotete ngaha tai wilikwa komudalelwamo.

OVALONGWALONGI 500 VA DJA MEFYO LOBOMA

Natango ovalongi mOngwediva novalongwalongi vakulu ovo nda popya navo, otava hokolola nomawi e na oumbada nghee eemwenyo davo da ningwa oipute kehaluko omolwomutopo woboma ya topelele mongulu yaaveshe yomofikola omo, mwa li ovalongwalongi 500 tava shange ekonakono.

Ehokololo otali ti oshiningwanima shinya osha ningilwe oudwaali mefiku laxuuninwa lomakonaakono. “Metopo inamu fila omunhu naaveshe ava vali va ehamekwa paife ove li nawa,” osho umwe waavo va xunhuka mefyo a hokololela nge.

“Otwa hangwa ashike opo twa piti mo mekonakono, opo tu ka lye omusha. Okwa tya ngaho opo twa fiki moshililo, otu udite omutopo munene tau nduduma. Mokati ketu omwa li mu na epiyaano linene; shaashi katwa li tu shii apa pwa topa.



Omushamane John Shitundeni

Ame onda li ashike ndi udite pokati komutwe wange pwa fa opo pwa topa,” osho umwe a hokolola, osho sha li tashi ya momadimbuluko aye pefimbo linya eshi handi popi naye.

Ngaashi eeboma dihapu hadi topa moshilongo eshi, ngeenge to pula ou a tela oboma inya mokati kovanhulu nokwa hala shike; ito mono nande nyamukulo lofaafaa.

“Oshitopifa eshi ngeenge ohandi dimbuluka mondjila, oshititano shomoitopifa oyo ya kala hai lituwa meni loluumbo lofikola yetu nopoumbululu ovo ve li modalate yoluumbo,” umwe vali womovakalimo vomOngwediva a hokolola.

Nkene u na okwiilonga nokupita omakonakono

Omolvashike tu na okwiilonga?

- Opo tu ihumithe komeho
- opo tu mone uunongo wa gwana moshinima shontumba.
- opo tu imonene iilonga iiwanawa
- opo tu opaleke onkalo yetu yokukalathana nayakwetu
- Osha simana kutse moshilongo shika opo tashi putuka okukwathela meputuko lyasho.

Nkene u na okwiilonga

Oshithiminiki (Motivation) Opu na okukala oshithiminiki nenge oshiunduli sha sha shoka tashi ku undula, opo u ilonge.

- Ehalo lyuunongo moshitopolwa shontumba.
- Wo opaleke eputuko lyoye (qualification)

Otu na okukala twa tokola (determination) okulesha nokutseya oshilongwa. Omathigathano (competitive) omawanawa.

ELANDULATHANO

Ou na okukala wa ninga elandulathano lyokwiilonga moshiiwike. Elandulathano nali kwatelele mo ethimbo:

- lyokulesha
- lyokufudha po nokuninga iinima yimwe ngaashi omaudhano noshu tuu.
- ethimbo kaali na sha, li longithwe pampumabwe.

Mokulesha ngele owa tokola u leshe ootundi 3, ninga elundululo lyiilongwa, tu tye otundi moshilongwa. Kala wa tseya kutya motundi ohandi lesa omapandja gangapi.

Uumbanda (anxiety) nau kundathanwe nomuhungimwenyo. Uutile wokundopa inau kala po, oshoka itau tungu.

- Kala negamo opo u pite omakonakono.
- Mpaka wa ninga epuko, shi taamba ko inashi ku kanithila ombili.
- Kala u na eineekelo mungoye mwene, kutya oto vulu okuninga sha, shi ulika wo miilonga.

Tala kepanja tali landula

Oshike tashi etitna endopo moosikola

Omadhiladhilo niilongwa

Mokulesha owa pumbiwa omadhiladhilo ga kale ge li poshionlongwa. Onawa ngele aluhe ho leshele peha limwe nopethimbo limwe, opo shi kale tashi ku pe ehalo yokulesha.

- Emweno ewanawa, ashike inali pumbiwa.
- Kala u na uufudho wokulundulula iilongwa konima yethimbo.

Okulesha

Opu na oonkatu 5 meilongo:

Survey: - U tale embo alihe
- U tale ontompolwa ayihe nuupalanyolo, opo u mone uyelele kutya otayi popi shike.

Omapulo: Tala omapulo pehulilo lyontopolwa opo nge to ka tameka okulesha u konge omayamukulo.

Recite: Endulula oshileshwa na tala kutya oto dhimbulukwa shi thike peni.

Review: Eendululo olya pumbiwa.

Endulula shoka wa lesa manga inoo dhimbwa.

Endulula natango ekonakono ngele lya hedha popepi.

Okulesha: Siikila embo ngoye e to tala shoka to dhimbulukwa mokupopya nenge mokunyola pombapila.
Omeho naga fudhe po konima yominate dhontumba.

Omakonakono

- Uukonakono nomakonakono naga talwe onkatu moka to pitile u thike nenge u engene kethikilo lyoye.
- Naga ilongekidhilwe nawa.
- Kala wa manguluka sho to yi mekonakono.

Yamukula ngeyi

- Lesa omapulo agehe tango.
- Yamukula tango ngoka u shi nawa, shi ku pe omukumo okuya mungoka omadhigu.
- Kambadhala u yamukule omapulo agehe ngoka u na okuyamukula.
- Longitha ethimbo nawa na li dhiginina wo nawa.

Omwiiilongi omukweni

Heitha N Lylje

Okulipangela okwa pumba

Otwa li komuhalo,
Konhingo yakaume ketu,
Twa hanga e lilongekida,
Ndee otwa dja ko nee twa fewa,
Tu na oikutu yomeva.

Kwa li eendja da wapala,
Pofingo tadi dana onghandala,
Eshi to pona oto nyekula,
To nu nghi ku pashukile nghi ku wete,
Nande wa twa kokapateko.

Opwa konekwa ngashingeyi kutya endopo lyaalongwa yomoongundu onti 8 nonti-10 olya vuka pombanda noonkondo, unene moomvula 1983-1984. Onkene aailongi yo yene oya ndhindhilike kutya nani endopo ihali etithwa po kokwaailonga akuke nando. Iitsa tayi landula oyo yimwe aalongwa ya tala kutya oyo tayi etitha wo endopo, unene mOwambo:

a) Okweendagula kwaanasikola, oshoka mokweendagula omuntu ito mono nando ompito yokulesha.

b) Uupika wiikolitha kaalongwa.

c) Aalongi yamwe ihaa dhiginine ootundi dhokulonga, nomolwaasho otashi vulika aalongwa ya ye ashike mekonakono oshilongwa shontumba inaashi pwa ko okulongwa. Onkee oto adha ashike omulongi ta ti: "Tsikileni komeho nokulesha" ye ota yi, waalyewo kutya openi.

d) Etompokano lyiilongwa nolyoonomola oyo yimwe mbyoka tayi etitha endopo moshigwana. Aalongwa oya koneke kutya aalongi mboka haa udhitha oofooloma dhawo oyo haa udhitha omapuko. Nelandulathano lyiilongwa yekonakono sho tali ya epuko omo tali adhika.

Kombinga yoonomola dho dhene dha puka ngiika epuko ohali zi ngaa kOvenduka ko kwene, nenge aalongi oyo yene haye dhi ningi waalye. "Olye ta yi ko kOvenduka kokulekule oku ka opalekitha iinima ya tya ngaaka? Naa nyolelwe owala ombapila nenge ya dhengeiwe

oongodhi" osho aakomeho yosikola haa popi ngaaka.

E) Ekutho lyoombapila dhekonacono mekonakono nalyo wo otali etitha endopo, unene momalaka (Engels noAfrikaans).

Shika ihashi zi ashike mokwaaendelela mokunyola komulongwa, ihe ethimbo ndyoka hali pewa iilongwa mbyoka oyo eupi noonkondo, yo iinima oyindji mokudhiladhila. Onkee aalongwa oyendji ihaa mana.

Ngame pakunyola oshinyolwa shika, inandi tseyo kutya oshizemo shomakonakono gomumvo 1985 otashi ya sha tya ngiini, ashike ote popi shoka nda koneke momakonakono ga tetekele nale.

Ngame ongomulongwa moongundu dha tya ngaaka, shika otandi shi popi nomahodhi taga polinda, opo aawiliki yetu yelongo ya talulule oshinima shoka noku shi konakona wo nawa, unene miitsa iye yopohulilo nde yi tumbula metetekelo.

Kombinga yiitsa iyali yopetameko, onda hala okulondodha aalongwa ooyakwetu kutya natu ninge aafupi miikolitha, ihe natu ninge aale mokulesha, tse natu ninge wo aafupi moondjenda, oshoka miinima ya tya ngaaka itamu tu zile uunongo washa.

Tse natu konekeni wo kutya okwaagongala pookhapu dhaKalunga nokwaa dhi simaneka, nako otashi vulika ku etithe endopo lya tya ngaaka, nomolwaasho Kalunga ota pitika omipya dha tya ngaaka dhi ye mutse (kutse). Onkee otatu indile tse aalongwa opo elongo lyOmbimbeli li dhigininwe mosikola.

Omumvo omupe nagu kale gwe mu yambekelelwa ne aalongwa ooyakwetu.

P.P.I.Indila

Oikunwa ya dungika,
Pomunino tai end'ofaalala,
Ya yuka meni momandjandja,
Omeva omanenguni nokupona,
Kukala po, wa ndjefula elungu.

Elaka ola shituka endangalati,
Tali popi otali depula,
Ku dulu ku li pangela,
Ola ninga oihandala,
La fa echala depungu.

Eendya hadi tetekele komutwe,
Ndee tadi ende otyaalala,
Da yuka meengolo nomesho,
Mhadi ku dulu oku i yambula,
Shapu oto liyelele.

Oudiyo wa komenekeka,
Odungo yokunghulungumhako,
Shonghela ku dimbulukwa vali,
Ou ta popi ote ku lundile,
Shaashi wa li moikutu yomeva.

We e lifininika wa hafa,
We a pona wa nyakukwa,
Nande nee epala la nyemuka,
Doo eemhanda da endjelela,
Eshi wa djala oikutu yomeva.

Oulai ou fike peni,
Meekulu shi dimbulukwa,
Tatekulu didilika nawa,
Eshi ho efa u pangelwe,
Ku eshi wa teleka mwene.

Johannes M. Shikeva



EONGALO ETI 76 MONGELEKI YA ELCIN

OLA DIKILWE 2.2.1986 MOUKWANYAMA

OMUNGWELUME: Omubishofi Kleopas Dumeni okwa dikile eongalo Omungwelume pehovelohani ei moshitai shaUkwanyama. Eshi osha eta paife omuvalu womaongalo aeshe mOngoleki ei onghwaevangeli paLuther yomu SWA/Namibia (ELCIN) u fike fiyo opo 76.



Omukulunhuongalo S.Vatuva ta popi mombako. Oye yo oku li oshilyo oshiponhele mElelongeleki moshitaingeleki shavo.

Edina Omungwelume ola shiivika konyala mOwambo aische mekwatafano noilonga yopambelewa yomoshitukulwa osho shouninginino wOukwanyama. Okudja ashike 1980, pahokololo lomushamane Silvanus Vatuva, eyakulo lopamhepo opo la hovela yo okufika mo, tali diilile meongalo Ongenga.

Omunangeshefa Vatuva oye yo e li omukulunhuongalo ponhele oyo, shito mekwatafano nOngenga ndele paife va pewa eongalo. Mondjokonona yaye onakudiwa yonhele, Vatuva okwa tumbula oinima tai shikula:

Onhele oya kala ya fimana noiwa mounamapya nomounaimuna okukalwa. Muyo omwa kala ediva la kula olo ihali pwiinine noupu nola xupifa ovanhu vahapu momafimbo madjuu. Edina lediva Omungwelume (Ongwe yondume), okwa ti shiimba ola lukwa kOvakwambi ovo va shiivikila shito monhele ei fimbo Ovakwanyama inave uyamo. Omadina mahapu monhele ei nao otae shi koleke kutya okwa lukwa kOvakwambi.

Eehambo mofuka ei eshi da kundulukila momutungilo w omaumbo nOngolo (Ovatiyaane) eshi ye uya, oya tokola mu dikwe omaanda oilya oyo i na okupungulilwa omafimbo madjuu. Okudja 1964 ope uya ofikola younona nokonima oshihakulilo, ndele eyakulo lopamhepo ola kala efimbo lile inali monika mo, osho a ti.

Monhele oyo ya nyika natango ofuka ngeenge wa i mo ito hale oku shi itavela u hange mo ngeno omayakulo aeshe oo haa pumbiwa komunhu efiku keshe; ehongo, ouhaku, omeva, eengeshefa nopaife eongalo. Pomido edi omwa dikwa Oseko yedina Eengedjo oyo tai tekula bunona omafele mahapu.

Eongalo inali monenwa manga omufita, nde paendjovo domupashukili Kaulinge, ola ulika oshihopaenenwa shiwa shokulungekida omaongalo peenhele neenhele moshitaingeleki shaye, osheshi lo inali indila li pewe omufita neendjovo, ndele ole shi ninga noilonga yalo.

Omudo 1984 ova ongelela etungo longeleka yavo oimaliwa noya pwa okutunga meni lomudo umwe. Oya yapulilwa oshilonga shayo 28.10.1984 komubishofi Dumeni.

Eumbo leongalo kave li kwete manga pamufika ou va diladila, ashike otava ti onhele ove i na nale, nonge va pewa omufita

kunena eli, apa ta kala ita lokwa nande, osho va udanekela Elelongeleki.

Pefimbo leyapulo lonhele yomawendo mOmungwelume olo la ningwa komubishofi Dumeni pamwe novakwafi vaye mefiku la tetekela (1.2.1986), Hamushanga wOmwketu okwa li yo a fikamena onhele oyo.

Onhele kai li unene kokule nongeleka, yo kai li vali kokule noshihakulilo. Eshi to fiki po oto mono diva omadidiliko oilonga i li natango metifa. Ouxwa vamwe ova nangekwa komakwa, oilambo imwe oya fewa nomuikwao oto hange eepaala da fikamekwa mo nale nokuli, neteelelo olo eli oluumbo lodalate li ye po diva.

Omwenyo weongalo ihau monika meendjovo ile mokwoongala kwongaho, ndele omoilonga yokutunga nokutungafana. Eshi osho tashi holoka meongalo olo li he na manga ovayakuli vowina va hoololelwa ewiliko.

“Ngeenge oku na umwe ta diladila a hanaune po eongalo eli, na kondjife tete Kalunga ye mwene. Ngeenge ina pondola okuhanauna po Kalunga, neongalo eli ne li efe, osheshi ite ke li dula, ola tungilwa muKalunga, kemanya,” osho omubishofi a tumbula meudifo laye lediko leongalo Omungwelume pa Mat.16:17-19.

Kape na manga omufita, ile omweevangeliste ile omudiakoni meongalo olo. Kombinga yomufita omupashukili Kaulinge okwa ti nava teelee fiyo Juni neudo. Omufitaongalo Daniel Hamukwaya ou ta lele paife



Momiti edi omo mwa ningilwa oshivilo shediko leongalo. Omo yo mwa kala hamu ongalwa fimbo etungongeleka inali holoka po.

eongalo Ongenga oye a pewa yo natango oshisho shepashukilo leongalo Omungwelume.

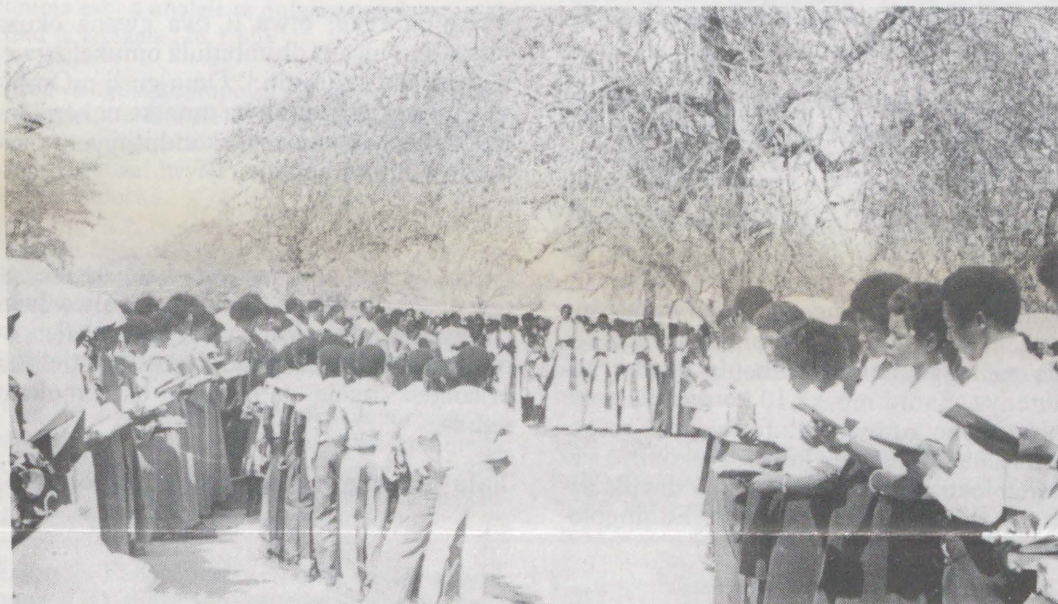
Pefimbo eli ote shi ningi nokukwafwa komuhongwafita Ferdinand Nashidengo ou Elelongeleki le mu ufila e lideule mOngenga ehani nhatu.

Oshoongaleongalo shotete, osha ifanwa, nale nokuli shi ongale sho shi hoolole ovaviyauki veongalo aveshe ava va pumbiwa nove li meenghono dasho okuhoololwa pamaufomhango. Shiimba otashi ka hoolola yo noilyo ei i na okukalela po eongalo mOshoongaleleengeleki shopaulumomhumbwe neudo.

Sebulon Ekandjo



Ounonaongalo ova li yo tava hambelele pamwe novakulunhu moshivilo shediko leongalo



OSHO OPALA TUU?

Olwindji ohandi mono unene aagundjuka yethimbo lyongashingeyi ngele oya yi kongeleka, pethimbo lyokutsa oongolo pevi, ihaa tsu nande oongolo otaa tsu owala okanyonti aniwa inaa hala okutsima. Osho opala tuu shono?

Theopholine O. Shilongo

ENYAMUKULO:

Okutsima nako kaku shi okuwanawa osho wo okutsa enyonti peha lyokutsa oongolo. Ihe ngele tatu gwile mekolo lyaKalunga meifupipiko nomeitedhululo lyashili, twa hala okusilwa ohenda kuye ngaashi osho shi li elalakano lyokutsa oongolo mungeleka, nena otatu dhimbwa wo neopalo lyomalutu getu. Aaopaleki yoongeleka naa itule wo mo okwoopaleka osho wo aakwanegongalo naa gandje iimaliwa oongeleka oombwanawa dhi tungwe.

Amushanga gwOmukwetu

Okupewa eongalo kashi fi oufemba, ndele oshinakuwanifwa, Kaulinge ta ti

Elondwelo linene nola pama okwa li la ningwa komupashukilishitaingeleki shaUkwanyama, omufita Apollos Kaulinge moshivilo shediko leongalo lipe, Omungwelume moshitai osho. Konyala ovanhu 800 ova kala eevili nhano ve li omutumba tava pwilikine komaudifo, koipopiwa nokomapopifo.

Ovakalimo vahapu ova li oilyo yeongalo loovene olo tali dikwa, osho yo oilyo yomaongalo opoushiinda, Ongenga, Endola nOlupandu. Eongalo alishe oilyo ei ya valulwa oi fike 1,333 omo mu na 607 va pamekwa. Pafatululo lomupashukili oku na oilyo ihapu inai valulwa manga, osheshi oi li natango komaongalo amwe opoushiinda.

Mekundo laye koshivilo, omupashukili Kaulinge okwa ingida nokulondwela eongalo komashindo oo tali ka shakeneka moilonga yalo. "Shi didilikeni, omutondi munene weongalo eli la

dikwa nena apa, ota ka dja munye mokati keni Ovamungwelume.

"Ota ka sheka eongalo eli, ota ka sheka omufita weni, ota ka sheka okwoongala kweni apa, naana ngaashi tashi ningwa momaongalo makwao", osho a ti.

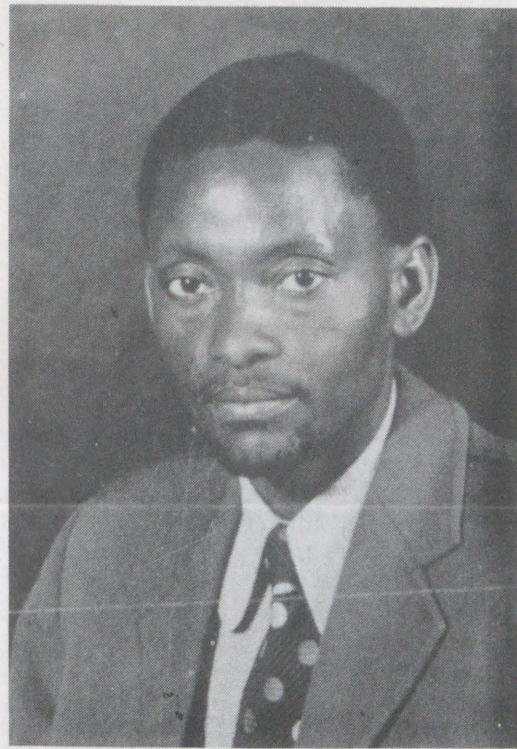
Kombinga yoshinakuwanifwa, omufita Kaulinge okwa ti ohonde yomupaani, yomushunimonima noyomunhu keshe meengaba deongalo eli itai ka pulwa vali eongalo, Ongenga, ndele onye vene ava mwa dika eongalo apa.

Hano kashi fi oufemba komukriste okupewa eongalo, ndelene osho oshinakuwanifwa shidjuu nomukundu, osho omukriste e na oku shi longametilokalunga nomohole, osheshi ote shi ningi e li meitavelo, a tungila kemanya nota findana.

TWA PANDULA

Otse egongalo Omulondo, otatu pandula Kalunga sho ta wilike oitaali ye. Mpano otatu pandula omungeshefa mOwambo, tate Israel Jona ngoka e tu pe iipeleki omagano. Omuwa Oye mwene ta vulu oku mu pandula tse itatu vula sha.

*Fanus Mettus Nestory
Box 339
Arandis*



Omufita Daniel Hamukwaya ou ta lele paife eongalo laNgenga nokwa pewa yo epashukilo leongalo Omungwelume. Omungwelume owa kala shito oshinagoga yOngenga.

EGONGALO OTALI VULU TUU OKULONGA OSHILONGATUMO?

ETSIKILO

b) ETEYO EWANAWA OLYA THIKAMA MAAKUNI AAWANAWA

Omuyapostoli Paulus montumwafu ye kegongalo lyaKorinto ota ti: "Dhimbulukweni ndhika tadhi ti: Ngoka ta kunu nuuluya, ota teya nuuluya, naangoka ta kunu oshindji, ota teya oshindji". Shika osho oshipango sheteyo.

Uuna tatu tula uukuni kumwe (oonkondo, omadhiladhilo, iimaliwa) tashi ti okuya kwetu atuhe miilonga, e tatu peni Kalunga, Kalunga nota vulu okulongitha okashona hoka twe mu pe. Moshikaha shaKalunga omagano ote ga yambeke e taga ningi omakumithi.

Tseni aantu otatu pulwa tu pe Kalunga omagano taga zi kehalo ewanawa. E tatu shi thigile ihe moshikaha shaKalunga, nomagano ngaka ga yambekwa ote ke ge tu galulile. Kombinga yoshipopwa shandje shika, onda hala ndi mu pe eyamukulo lyu ukilila kutya: "Egongalo otali vulu okulonga oshilongatumo.

"Ayehe opo ya kale gumwe," ndika olyo egalikano ekwagulu lyOmuwa gwetu Jesus Kristus. Joh.17:21. Egongalo naakwanegongalo oya li ye na okulonga pamwe ngaashi olutu lumwe, oshoka Ongeleki ayihe oyo olutu lwaKristus, naJesus Kristus oye omutse gwolutu nduka.

Uukumwe wetu muKristus owa kankamekelwa mekwatathano naKristus, omutse gwetu. Uuna omagongalo naakwanegongalo inaaya hala okulongela kumwe metaandelitho lyevaangeli, shika otashi eta omupya omunene metaandelitho lyuukriste. Natu dhimbululeni uuwinayi womupya ngu.

c) NKENE KALUNGA HA LONGO:

Omukalo gwokulonga gwaKalunga, ogwa yooloka kwaanguka gwomuntu. Olwindji omuntu oha yalula **oshindji nohandjundo** (quantity and not quality). Oshindji hasho oshiwana, ihe oshiwana ondjundo. Kalunga okwa hogolola okulonga naantu aashona ihe ooitaali, pehala lyokulonga naantu oyendjiyendji yaa na omakankame-no meitaalo.

Sho Gideon a wilike Aaisraeli mokukondjitha Aamidiana, aakwiita yomayuvi ogendji Kalunga okwe ya shunitha komagumbo, e ta hogolola mo owala 300, opo yaa pe nando ompito yokwiitangela esindano lya-wo.

Omukwaniilwa David oye awike, ihe omegameno lyaKalunga, okwa sindi omutongolome Goliat. Mehistolli lyAaisraeli, uungundu uushona waalumentu omapenda wa sindana sho wa li wa kondjo pamwe naKalunga.

Mtestamendi Epe, okangundu okashona kaalongwa yaJesus oka li ka sindana moku-lundulula uuyuni, nokutaandelitha evaangeli lyehupitho mepangelo elulu lyaRoma. Shika otashi tu ulukile kutya, konyala aantu ayehe ya ningwa aakriste.

d) OMUKALO GWOPAMBIMBELI GWOKUTAANDELITHA EVANGELI

Aakomonisi ohaya longitha omukalo nguka mokudheula aantu yawo, nomukalo nguka oye gu yaka mtestamendi Epe. Omukalo nguka ogwa tya ngeyi: Omuwiliki ota gongele ongundu ya thikama maantu 10. Ote ya longo noku ya dheula uusiku nomutenya. Aantu mbaka 10 konima yelongo lyawo, kehe gumwe palufo lwe, ota ka gongela aantu 10 e te ya longo. Nokonima yehingoloko etiyali otaya kala ya dheula aantu ye thike $1+10+100=111$. Edhingoloko etitatu $111+1+110=1\ 221$

Ano oshinima osho shi li ngawo kutya, ngele omuntu ota gongele aantu 10, nakehe gumwe gwomaantu 10 ota gongele aantu 10, konima yomadingoloko 10 aantu otaya kala ye thike 23,793,835,791, yi ilongekidha natango okutaandelitha eitaalo lyawo.

Shika tatu koneke mpaka osho: eindjipaleko ekumithi". Nomukalo nguka gwokudheula aantu ogwa kuthwa mtestamendi Epe, 2 Tim.2:2.

"Naashono we shi uvu kungame nosha hokololwa koyendji, shi gandja kaantu ye shi okwiinekelwa, ya wape ihe okulonga nooyakwawo."

Tseni aakriste, otwa li twa gwana okusa ohoni sho inaatu dhimbulula omukalo gweindjipaleko ekumithi." Omo gu li mOmbimbeli yetu, omanga gwa monika nohagu longithwa kAakomonisi aakondjithi yetu naatondi yOmbimbeli.

Ngame esiku ndu uva omukalo nguka, onda li nda kankwa owala. Lwo olwo lwotango nda ndhindhilika kutya, otu neni ompito ya mbwalangandja yokutaandelitha evaangeli ngele tatu longitha omukalo nguka.

Tala natango egongelo lyomagongalo

EGONGALO	OSHINAKUGWANITHWA		
	1983	1984	1985
	R	c	R c
28. Ohalushu.....	87,85	-	-
29. Okahao.....	386,00	-	-
30. Okaku.....	91,00	-	-
31. Okando.....	148,80*	-	-
32. Okalongo.....	100,00	-	-
33. Okankolo.....	245,02	-	-
34. Okatope.....	-	-	-
35. Olukonda.....	-	-	-
36. Olupandu.....	145,00	-	-
37. Olupumbu.....	191,20*	-	-
38. Oluteyi.....	336,80*	18,30	-
39. Omundaungilo.....	-	-	-
40. Omulondo.....	-	-	-
41. Omulonga.....	14,00	-	-
42. Omungwelume.....	-	-	-
43. Omuntele.....	265,00	-	-
44. Ompundja.....	135,30	-	-
45. Omutundungu.....	-	-	-
46. Onaanda.....	577,01*	-	-
47. Onakaheke.....	-	-	-
48. Onamukulo.....	54,00	-	-
49. Onangalo.....	90,00	-	-
50. Onankali.....	-	-	-
51. Onayena.....	280,00	-	-
52. Onawa.....	119,59	-	-
53. Ondobe.....	28,75	-	-
54. Onemanya.....	151,71	-	-
55. Onesi.....	483,70*	146,00	-
56. Ongenga.....	681,00	-	-
57. Onguta.....	-	-	-

Taku twikilwa

Amushanga gwetumo mOngeleki

Omhangu yefyo laShindobo

Epulo kutya osha enda ngahelipi omushamane Thomas Nikanor Shindobo (48) a fye, ola nyamukulwa momhangu kuMangestrata Gerrit Pletzen kutya nakufya okwe limangeleka ye mwene nope he na omunhu ta pulwa efyo laye.

Mangestrata Pletzen okwa li pamwe nomu-profesoli Theo Schwäer womouniveesiti ya-Kaapstad.

Omushamane Shindobo, pOuhongo mEngela, okwa hangikile modolongo mOsire popepi nO-tjiwarongo a fila mokanduda kaye eti 27.1.1985 konima eshi a uhalele ta pulwapulwa kovapolifi efiku la tetekela (26.1.85).

Okwa hangika komupolifi Shishande Abraham I. Tredoux a endjelela moikaufino oyo ya mangelwa mombosha mekuma. Okwa li umwe weenghwatwa heyali odo da dile kOshakati okupulwapulwa.

Pexulilo laJanuali neudo (26.1.1986), oshibofa shefyo eli osha etwa momhangu yaMangestrata mOtjiwarongo, omo Mangestrata Pletzen a tonga kutya nakufya oye mwene e limangeleka nokape na omunhu ta dulu okupulwa efyo laye.

Ou e lile po ovamwaina vanakufya mepangulo hahende Ian Farlam okwa ti kutya kombinga yovapolifi mOsire oku na ouhefi, nande ouyelele ou wa holoka po moshinima fiyo opaapa otau ulike omunhu e limangeleka.

Hahende Farlam okwa twikile ta ti ouhefi umwe u li poluhaela oo ou eshi Shishande Tredoux ina keelela elimangeleko, nande Shishande a koneka onghalo yomadiladilo anakufya kutya oya li ya dengwa pedu konima eshi a

uhala ta pulwa omutenya aushe.

Efiku alishe lOlomakaya nakufya okwa kala ta pulwapulwa, nopauyelele ou wa yandjwa ku-Shishande, nakufya okwa holola omadidiliko kutya okwa li e na oupyakadi washa momadiladilo, ndele fiyo opoopo Shishande ina pula nande nakufya osho she mu piyaaneka kutya osha li shike.

Kombinga yaye Shishande Tredoux okwe li popila kutya paenghatu odo hadi longifwa kovapolifi mukupulapula eenghwatwa, vati oda talwa nawa noda yandja ouyelele kutya ou ta pulwapulwa e he lidipae nande.

Hahende Farlam okwa ti ohashi ningwa luhapu kutya nakufya okwa li a patelwa mokangulu oye aeke omo mu na ombosha yondingila oyo ya tuwa mekumaoule weesendimeta 3,5.

Omushamane Farlam ta ti, ombosha oyo osha li shipu i monike kuShishande Tredoux eshi okangulu ka konakonwa. Hano epangelo okwa li li shi shii, nokutya osha fimana ngeenge kekuma lokadolongo kaku na nande osho tashi dulu okulongifwa nelalakano lokulidipaa.

Eshi osha hololwa koukwatya ou nokutya oitenda yopomakende mokandjuwo oko, oya tuviki-lwa kodalate yoshipe, sha ningilwa owina okukeelela omunhu okuhanga oitenda yopekende oyo e i longife okulidipaa.

Opo hano omulumenhu e li ponghatu ei yaShishande Tredoux, okwa li e na oku shi koneka nale nokufya oshisho opo nakufya a ha dule nande okulidipaa.

Vali efekelo eli la etelwe po, kutya pamwe nakufya okwa longifa nande okafindo kotee okude-ngela nako ombosha mekuma, kali na makanghameno a pama.

Hahende Farlam okwa twikile ta ti nakufya eshi a kala mokamba oyo yaSire omolwokukonakonwa nokupulwapulwa okwa kala mepashukilo loilyo yopolifi. Mekwatafano lavo nanakufya

1984 - 1985

Oomvula mbali dha tumbulwa metetekelo odha li oondhigu koshigwana shAawambo kombinga yonkalathano noyiita.

Otandi ningi eindilo kwaayehe mboka ya pewa ookondo miinima yevi lyetu ye dhi longithe neitulemo, opo emanguluko lyoshilongo shetu li endeletithe mbala, nonkalo yiita yi hule po moshilongo shetu.

Kumboka twa hupu miikungulu yoomvula ndhoka, otandi mu kundu noku mu halela omayambeko gaTate Kalunga.

Natu kongeni oshilongo shaKalunga, nena shaashoka tatu shi mu indile ote shi tu pe.

F.T.Newaya.

Sho pwa hololwa omasiku ngaka kutya ongeshefa onene yomadhagadhaga muEnglanda oya mbanngolota noomiaisteli mbali mepangelo odha etha iilonga yadho omolwoshinima shoka, ngashingeyi otaku ti onakuyiwa yuupolotika weefolo Margaret Thatcher owa thikamenwa koshipulitho oshinene nkene tau tsikile moshilongo shoka.

Yamwe oye lwete oshihwepo ngele te etha po oshilonga she shuuministeli manga ehogololo tali landula inaali thikama. Efolo Thatcher oye ominsteli yotango moshilongo shoka.

ovo kwa li ve na okuhumbata oshinakuwanifwa shokupashukila onghalonawa yaye neameno laye.

Ngeno okwa li tuu epashukilo la ningilwe pehovele, okanduda ka konakonwe noumbosha ve li mo va kufwe mo, ngeno nakufya ina fya.

Mokuxulifa ehokololo laye, hahende Farlam okwa ti ashike: Omulumenhu omufimanekwa e na onghatu movanambelewa vopolifi, ngaashi ou okwa li e na oku shi mona mo diva kutya nakufya owokulimangeleka monghalo ya tya ngaha, ile e li yehameke nomukalo tau twala mefyo.

Ngeno omulumenhu a fimana e fike opo ngeno okwa katuka lela onghatu opo nakufya a ha mone nande omhito yokulimangeleka, eshi okandjuwo kanakufya ka konakonwa noka kufwa ounima aveshe ovo tava dulu okweeta oshiponga.

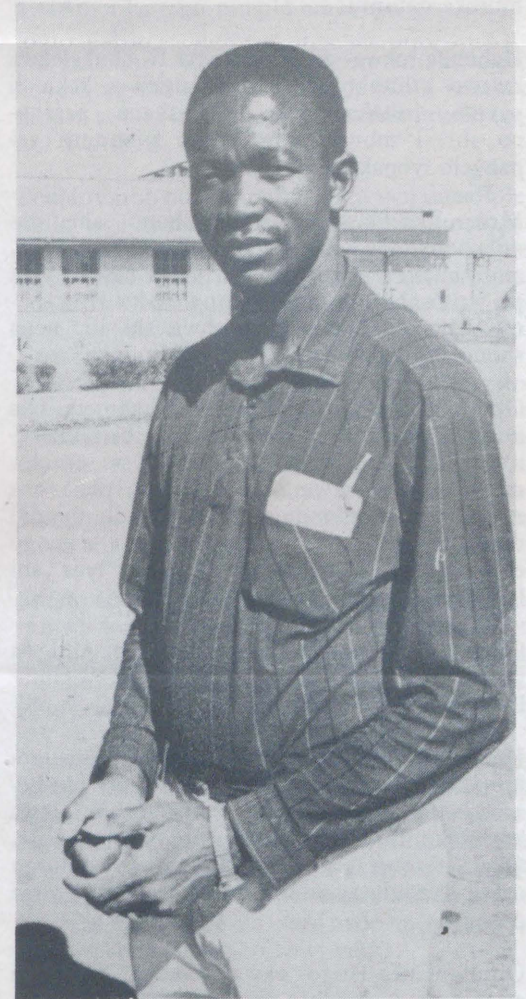
Osho sha li oshinima shipulela okuningwa sho osho ne ovapolifi mokamba yaSire va ninga ouhefi moku ha katuka onghatu oyo. Molwonghalo aishe oyo tai ulike ouhefi, otashi ningifa etimba li ame kombinga yavo.

Hahende Farlam okwa indila ohofa i konakone natango oshinima osho.

Hahende J.Liebenberg wa SA nahahende Z.J.Grobler ovo kwa li ve lile po ovapolifi mepangulo manga hahende Farlam naHahende Jeremy Gaunlett ve lile po oyakwapata lanakufya ngaashi va tulwa po kuhahende David Smuts wehangano leehahende la-Lorentz + Bone.



Efolo Margaret Thatcher



Nakusa Tomas Shindobo

OMUKWETU OHA TOKELWA

KOmuKwetu,

Te tii, omolwashike ano iifo yetu aluhe hayi ya ethimbo lya pwa po? Shomasiku 15 ohashi ka monika 29 nenge 30 gomwedhi, sho to ke shi mona oshifo osha leshwa nale kwaamba haye shi ilandele mondjila. Alikana kongii po onduge mbala opo mu kale hamu shi tumu kuyele.

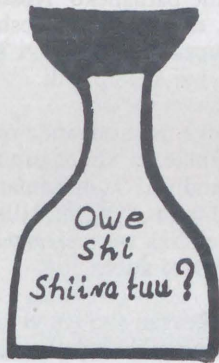
Omuleshi gwOmukwetu
T.I.Henok

EYAMUKULO:

Omuleshi gwOmukwetu Henok, epulo lyoye lyiifo yaainyolothi hayi tokelwa manga yaamboka haa ilandele moondjila tayi thiki kuyele, otwe li tsakaneke olwindji.

Neyamukulo lyetu ohali kala efupilela nolyoshili ngaa, nokutya iifo yomadhina aluhe oyi na ethimbo ele okuyalulwa nokunyoleta ko omadhina kuyo.

Kali shi eipopilo, ihe osho wo shi li nomiinyanya-
ngidho mbyoka iinene sigo onena inaayi mona po



Oudio womakaya nikotin, otau dulu oku ku etela omukolo tau kalelele. Otau dulu oku ku etela enyonauko momapunga, unene tuu eshi tau keelele u mone omhepo, ohapi ya wana momapunga.

Otau dulu yo oku ku etela oshitumbuka momapunga osho tashi dulu oku ku etela efyo diva. Oudio oo otau dulu yo okutunga oitumbuka ihai veluka momunino womhepo nomomunino woikulya nde tai ku shilile efyo popepi.

Ohonde nayo itai dingonoka nawa momifipa dohonde molwonikotin oyo tai dulu okufitika ile okufinda omifipa dohonde, notashi dulika shi ete ouyehame monhulo, mombuda, momaoko nomomauulu nosho tuu.

Kotokela oukolele woye u ha nyonaunwe po komakaya.



ondunge nando yokuthikitha iifo yomadhina kaaleshi pethimbo limwe alike naambyoka hayi halithwa moondjila.

Pamwe omuleshi oye na tale ashike omukalo

kutya oguni po ta longitha gwe mu opalela; okulanda mondjila nenge okwiinyolitha.

Amushanga gwOmukwetu

OKERSESA YEDHIGININOMAMBO

Otayi ka kala ko okuza Mai sigo Juli 1986. Otayi ka ilonga omambo ngaashi:

CASH BOOK

SALES BOOK

PURCHASES BOOK

DEBTORS LEDGER

CREDITORS LEDGER

STOCKTAKING PROCEDURES

GENERAL SALES TAX

PETTY CASH BOOK

MARKETING: (an introduction)

Ontseyo yOshiafrikaanisa nenge Oshiingilisa oya pumbiwa unene. Ngele ou na ehalo, nyolela kondjukithi tayi landula u tuminwe oofooloma ngweye u uve kutya okersesa ayihe otayi ka kosha ngiini.

Nelago Kasuto
P.O.Box 23084
WINDHOEK
9000

Mokudhenga ongodhi longitha omathimbo taga landula:

Ethimbo	Onomola yongodhi
8 - 12H00	24093
14 - 16H30	37166
Konima yiilonga	62459

ESO

Omukulupe Albertina Kaalombwelwa Sheendelwako, Ombalantu, mOnawa, okwa mana oweenda waye 26/11/85 mepipi loukulupe weedula 105. Okwa fiya po ovana vatano, outekulu 49, noutekulululwa 35.

E TU TETEKELE KAA- NDJETU

Omukulupe kuku Jason Ndjembela Iihuhwa okwa mana oondjenda dhe eti 14/1/1986 megumbo lye muuwehame wethimbo ele.

Okwa li e na oomvula odhindji. Okwa thigi ko omuseleka-dhi gwe, aatekulu omilongo ne lwaampoka naatekulululwa 7.

Petrus Amwaalwa
Paulinum

OMUKWETU

Oye oshifo shOngeleki Onkwaevangeli paLuther yomuSWA/NAMIBIA.

Ohashi nyanyangidhwa mOshinyanyangidho shOngeleki mOniipa.

Omukuluntu gwoshifo omumbisofi Dr. Kleopas Dumeni, Amushanga gwoshifo omusita Sebulon Ekandjo. Ondando yOmukwetu muNamibia naSouth-Afrika R 5,00 komumvo.

Palwe muAfrika R 8,00 nokombanda yomafuta R11,00 komumvo. Mondhila R13,00.

Oondando nomambesitelo agehe naga tumwe kOmukwetu, Oniipa, P/Bag 2013, Ondangwa, 9000

ELOC PRINTING PRESS
PRIVATE BAG 2013, ONDANGWA 9000
SWA/NAMIBIA