



Nghifikua ta nyamukula epulo lovafita

Ku Sebulon Ekandjo

“Omukundu wa kula weyakulo loshiwana shetu paife oo olwaamamhati, oukwapata ombubo noukaume womoilonga. Meyakulo lovafita kashi mo, ashike omafekela nomangongoto otaa udika luhapu,” osho omutalelifikola Abednego Nghifikua a popya moshongalele shovafita neudo.

Lwotete mehistoli loyoongalele yovafita vongelesi onghwaevangeli paLuther yomu SWA/Namibia (ELCIN) mwa ifanenwa umwe a dja pondje okupopifa oshoongalele.

“Fye otu shi shii notu shi wete, kutya nomovafita vetu ounhu noufita luhapu ohau kondjifafanana, ashike luhapu oufita oo hau findana, sho eshi osho she mu kalifa ovafita fiyo onena,” osho ovafita ve dule 80 va pwilikina lwotete mokanya komukwaneongalo ou ina tekulilwa nande outeologi washa.

Oshoongalele shovafita aveshe vongelesi ya ELCIN osha li ko muKotoba neudo mOngwediva. Ohashi kala ko omudo omutivali keshe pamaufomhango. Elalakano loshoongalele eshi okulongekidila oshoongalelengeseleki oikundafanwa osho yo okunyamukula omapulo oo ovafita va shakeneka moilonga yavo momaongalo.

Koshi yoshipalanyolo osho e shi pewa e

etele ovafita enyamukulo: **Ovakwaneongalo omwa djuulukwa shike meyakulo lovafita veni, Nghifikua okwa ti:**

“Omhumbwe inene moshilongo shetu paife oyovayakuli ovanambili moikandjolonga aische, onghe fye ovayakulwa

veni otwa teelega ovafita mu longife enwefemo leni, opo ovakwaneongalo ava hava yakula oshiwana nolungwenye moihakulilo, meembelewa nomeefitola va ude ko yo ondilo younashilonga wavo nomeyakulo loshiwana shavo.”

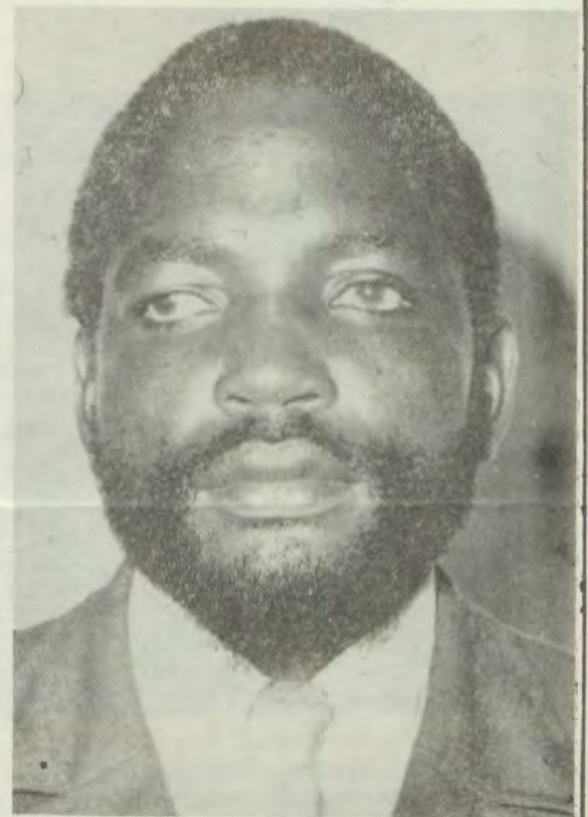
Tala kep. 6

Kaapanda mokakuma

Onkundana ya thiki mombelwa yOngeleki ya ELCIN, otayi hokolola omusitagongalo Junias Vaino Kaapanda (Kau-nda), kutya okwa kwatwa po pegumbo lye, moTshandi eti 22.10.1985.

Natango opwa kundanwa omulongi Heikki Shililifa, Nakayale, kutya naye okwa kwatelwe 22.10.1985, osho wo omusamane Henok Shifeta, Ongenga, eti 20.10.1985.

Tala kep. 8



Omusita J. V. Kaapanda

EYAKULO LOILYO YA ELCIN MOUSHIMBA

Ehokololo loshilonga shevaengeli mokati koilyo yOngeleki onghwaevangeli paLuther mu SWA/Namibia (ELCIN) oyo ya halakala mOushimba aushe ola etelwa oshoongalele shovafita vOngeleki oyo komufita Jason Amakutuwa.

Ovafita vakwao vane tava longo pamwe naye mOushimba, navo yo omo va li moshongalele osho. Omufita Amakutuwa oye omupashukili woshilonga osho ashishe. Movenduka amuke ovanhu 130



Egongalo lyaapopi yOshiwambo mOsitata, ngashi, hali ithanwa mOvenduka, Oosoonaha odhindji, aantu oyendji ohaa uvu omambo ye li othika, omolwothina yOngeleki ndjoka. Yamwe ohaa ende ookilometa konyala ntano, okuthika pehala ndyoka, sho taa zi kOkatutura. Mefano ndika, omumbisofi Dumeni ote ya laleke, ya shune komagumbo, sho e ya ningile elongelokalunga.



Konima yookilometa konyala eyovi limwe, muCaprivi, muuzilombangalantu waNamibia, iilyo ya ELOK noya ELK, oya adhikilwe komusita gwaanilonga mUushimba, Gerson Max 1982, ya ponga noya kanitha etegameno lyekwatathano nOngeleki dhaandjawa. Mefano ndika, pokatilela, Max ota monika e li moonkundathana nayo oku ya kolekela natango meitaalo lyawo.

ova shashwa omudo 1984, 150, va pewa ombili na 2 348 ova yakulwa mOuvalelo Uyapuki.

“Ovanhu ove na odjuulufi inene yokwoongala peendjovo daKalunga,” osho omufita Amakutuwa a holola kovafita vomaongalo oko kwa dja vahapu vomovayakulwa ovo.

Kakele koilyo ihapu ya ELCIN oyo ya fiya po omaumbo avo nomaongalo avo mOwambo omolwoluhupo noumbada woita oku na yo oinima imwe yu udifa onya,

moshilonga osho. Nopahokololo olo, oinima yoluhodi oya pamba unene kokunwa kwavo kwa pitilila, osho yo keteko leehombo, mokati kavo ile oku va dja.

Kombinga yo yovayakuli ohava shakekwa koimbide yomoshilonga, ngaashi omhumbwe inene yeenhele opo ve na okwoongalela nokupwilikina evaengeli. Ovayakuli navo yo ova pumbwa oimaliwa tai wanene eemhumbwe domalweendo, dokulya nodokufutila omaumbo avo, opo va shakenife oilonga yavo.

Ehangano leengeleki eenghwaevangeli paLuther muNamibia (Velkswa) oshilonga sheudifo levaangeli mokati koilyo oyo ole shi tala ko panghedi yetumo lomoilando, osho Hamushanga omukulunhu Ipinge Kristof Shuuya a yelifa oshinima.

Nande ehokololo la ulika oilando 64 mwa kwatelelwa eemina hai dingonokwa nayo kovafita ovo vatano va tumwa ku ELCIN meyakulo mOushimba, ehokololo ola holola yo ku na eenhele dihapu kadi na ovayaluki. Nhumbi eyakulo tali shakenifwa mokati kovakwaneongalo va ELCIN, oshi li epulo lefimbo lile la pita mOngeleki ei.

Oshoongalele shovafita shomudo 1983 osha li sha indila Elelongeleki li kale hali longekida ovafita vamwe pomafimbo nomafimbo va kale hava yakula nefimbo lixupi oilyo oyo, nosha li sha pandika neenghono kovayakulwa.

Omafaneko amwe oo hae linyenge mu ELCIN, okudika ngeno omaongalo meedoolopa omo mu na oilyo yaye, oshinima osho oshi na yo eembinga dimwe da kitakana, unene mekwatafano lOngeleki inya yomOushimba osho yo omukundu woimaliwa novayakuli.

Sebulon Ekanjo

Shitunda nonghedi, shilongo nomukalo washo.

Onda humbata oipango ivali momwenyo wange. Oshipango eshi; Hambelela nyokokulu, ngeno nyoko ina dalwa. Fye inatu fimaneka oinima yootatekulu noomeekulu, ohatu ka mona ngaho mbela elao? Omukuluwonale okwa tile vali:

“Nekwa litoka oye ngaa nyoko.”

Oshinima eshi onde shi fafanifa noshipango oshitine; “Fimaneka xo nanyoko, opo u kale nelao nomwenyo mule kombada yedu.” Fyeni otwa fimaneka oinima yoomeekulu yoovakwetu, ndele hatu dini yoomeekulu.

Fye Ovawambo otwa fa twa fya ohoni omikalo dootatekulu moipafi yoiwana ikwetu. Omwene wetu ite ke tu fya tuu ohoni mbela? Ootatekulu Kalunga okwe va pele ondjila yavo omo ve na okweenda, fye yo omo tu na okweenda opo Omwene e he ke tu fye ohoni meulu. Oshitunda nonghedi, shilongo nomukalo washo.

Job P. Nghatanga

DR SHIVUTE TA FATULULA ETUMO PAUTEOLOGI

Mokupopya Etumo nuuteolohi walyo opu na iinima yimwe mbyoka omuntu e na oku yi koneka noku yi nongela. Ngaashi: Kalungakatatugumwe oye oshitsa shopokati moshinima shEtumo. Ngoka i ipyakidhila nEtumo oku li moshinima shOmuwa. Tashi ti Etumo oli na oluthithiya puKalunga He, Omwana nOmbepe Ondjapuki, onkene a vulu okupopya "Etumo lyaKalunga" Misio Dei.

Shika otashi tu hingile mpoka kutya Etumo kali shi ashike **oshilonga** shaKalunga, ihe oli na wo nonkalo yamwene. MEpistoli ndika lyaJohannes 4:8 otatu lesa.... "oshoka Kalunga oye ohole", ohole ndjika oyo yi igandja yo yene 'molwesilohenda alike' (Luther) (zola gratia). Ohole tayi hunguna ehupitho, kehe ngoka itaala ota hupithwa!

Eigandjo lyohole olyu uvithwa kaayindapo. Tala omutoti gweimbilo ota ti: "...Oya adha ndje sho nde ku holama, nokungoye ya galulile ndje". Onda li hanga nda ya ihe ohole, ano Kalunga mOmwana, a galulile ndje mpoka ngame ndu uthilwa.

Okuya ondapo Kalunga osho oshinima oshiyenda komuntu. Omusimani Augustinus omuna gwaMonica, oku li mondjila sho ta ti: 'Omwenyo gwomuntu itagu mono oluthuwo, manga inaagu mona Kalunga, oshoka ogwe mu shitilwa'.

Ongeleki yaKatoolika kaRooma oya tameke Etumo manga 'aaprotestande' ya kumuka, tashi ti; eyelitho lyeitaalo niinyolwa yalyo itai popi unene oshinima shEtumo. Olwindji aayelithi yeitaalo oya pewa uusama koyendji moshinima shEtumo.

Ihe opu na wo mboka haye ya gamene. Ethimbo olya longithwa mokuyelitha eitaalo tali dhimi. Noshitya 'ta ethne' (omupagani) kaayelithi yeitaalo ota shi ti, omuntu meni lyoongamba dhuukriste inaa taamba evaangeli.

Pethimbo ndika muuteologi wEtumo otamu popiwa 'Ondi itaala mOshipangotumo'. Tashi ti onda hala okuvulika komutumi Jesus Kristus, otandi yi ndaa na omangungutulo. Onda zimina pamwe nomutoti gweimbilo sho ta ti: 'Kesh'apa ye ta twala nge, onda hala oku mu shikula!

Moshipango oshinene shEtumo (Mat.28:18-20) Omuwa Jesus mwene oku uvaneke okweenda pamwe nomutumwa, nakutumwa naye wo oku na okudhimbulukwa nokuyulukwa okweendithwa kOmusita omukuluntu, opo a vule okutumbula: 'Jesus tu tuma u ende natse'.

Ondilo yeuvaneke oyi li mpoka kutya omutumi ita gandja omukerubi nenge omuyengeli, **nando osha vulika**, ihe 'ondi li' ngame mwene 'pamwe nane', Immanuel, omasiku agehe sigo ehulilo

lyuuyuni'.

Monkatu **yotango** Etumo olyo oli li moshimpwiyu shaKalunga nomonkatu **ontiyali** oli li wo moshimpwiyu shomuntu, omolwaasho omunhu ha gongala pamwe nayalwe ya popye okupangela kombinga yoshimpwiyutumo shOngeleki. Otwi ithanenwa moshinima shaKalunga notu na uudhigu okwi ipweya mo, oshoka katu vulu 'okuthigulula pamwe naKristus, ngele itatu longo pamwe naye'

Okuza petameko lyeshito lyuuyuni omuntu okwa pewa oshimpwiyu a longwe pamwe naKalunga. MuGenesis otatu lesa eyana lyaEden lya gandjwa miikaha yomuntu 'e li longwe ye e li keelele'. Tashi ti Kalunga **mwene** oye omusilishimpwiyu monkatu **yotango** nomunhu omuhiyilwa miilonga mbyoka, ta kutha onkatu **ontiyali**.

Ngoka ta piyaganeke etumo nokwa hala okuninga mwene gwalyo, e na okudhimbuluthwa kutya; Etumo olyOmuwa, ngoye omulongi pamwe naye! Ngaashi naana meyana lyaEden, omuntu ota yambekwa ngele ta longo mevuliko, ihe ota kuthwa oshilonga ngele ta longo netangalalo.

Elongitho lyiitya 'uuteologi wetu' olya kwatelela mo iinima oyindji. Otu na wo okudhimbulukwa kutya nale aantu inaa popya unene uuteologi, tu tye sigo omumvo 1910 moshigongitumo sha tseyika nawa nedhina 'Edinburgh/1910; aantu inaa ipyakidhila niinima yuuteologi. Etumo olya longwa pwaa na omapulo.

Omolvashoka tu na okupula! Sho iitya 'uuteologi wetumo' ya tameke okulongithwa, nena shoka sha kwatelelwa miitya, osha dhangolokwa wo nasho; 'eitaalo lyopakriste', omikalok dhokulonga (oshilonga kehe oshi na oonziilililo opo shaa he ku thange) nelalakano lyetumo lyopakriste muuyuni nosht.

Sigo konyala omoshigongitumo shedhina 'Jerusalem/1928' omapulo miinima yetumo inaga ha, ihe konima yaJerusalem/1928 miigongitumo omwa holoka omapulo ngaashi: Omolvashike Etumo? Etumo ngiini? Omapulo ngaka oga hilile unene kungoka twa hala okuguma kashona. 'Olye kee shi omutumwa? Epulo ndika olya egamathana naandika: 'Etumo oshike?

Okonyala omuntu a tokelwa ngele pe na omapulo goludhi nduka, tashi ti nomOngeleki yetu otwa tokelwa ngele ope

na omapulo ngaka. Ndhindhilika kutya ompito oko yi li, ihe tu londokeni twaa tokelwe sha pitilila. Natu taleni pamwe epulo lyotango; omukriste kehe okwiitalala mEvangelii lyaJesus Kristus oye omutumwa, otashi ti otseni ongundu yaatumwa 'nezimo lya hogololwa pakwaniilwa!

Ayehe mboka ye mu taamba oya kwatelelwa momatumbulo ngaka, 'Ngaashi Tate a tumu ndje muuyuni, osho wo nangame tandi mu tumu muuyuni'. Mongeleki megongalo otashi vulika mu kale oongundu mbali, a) aantu miilonga na b) ongundu yi li epyatumo. Otashi vulika omusita a kale mongundu b nando oshinima shika osho oshiponokela shomutondi).

Etumo kali shi oshikogekwa keitaalo lyopakriste, ihe olyo uyuyamba weitaalo lyOngeleki. Epulo lyotango otali hingile kepulo etitatu: 'Omutumwa olye?' ndyoka lya yamukulwa nale metumbulo lyOmukulili, 'Ngaashi Tate a tumu.... osho wo nangame tandi mu tumu'... ihe mundika omwa kwatelelwa wo unene oongundu dhaatumwa **paithano** ndhoka dha ya muuyuni, mboka ye na ompadhi dhoopala dha fala onkundana yenyanyu momanenevi gahamano.

Muuteologi wetumo epulo lyotango olya kongwa mundika etitatu, tu tye: 'Omutumwa olye?' — Olye kee shi omutumwa? Opu na mboka ya yi metumo yaa shi aatumwa. Yamwe oya fadhuka po uudhigu wehala ekulu (mevi lyaandjawa), yamwe oye na ashike ehalo lyokweenda niilongo, yamwe oya yi metumo, ihe nani oyo aakalelipo yaakolonyeki naayugi yiilongo (ehistoli lyetumo olyo onzapo onene miinima mbika!).

Ngele nani evaangeli lyoshilongo shaKalunga olya taandele molwaambaka, nena osha talikila mombinga ndjika kutya, 'oshi na shike ngele Kristus tu uvithwa kefupa nokondumbo? (Fil.1:15)

Etumo muuteologi wopakriste olyo eyamukulo lyetu kuKalunga. Oshipu okukala meitaalo itaali pula sha. Opu na aantu oyendji ye li momaitaalo itaaga pula sha. Ndishi okwiitaale kutya oku na Kalunga ngoka a shiti ayihe muuyuni, itaku pula sha. Tashi ti shika itashi thiminike u longwe sha, unene tuu sho nomutondi okwe shi itaala (Jak 2.19).

'Hakehe ngoka ta ti Omuwa, Omuwa ta yi moshilongo shegulu, ihe oye ngoka ta gwanitha ehala lyaKalunga' Mat.7:21). Meitaalo ndika lyopakriste otatu tumwa, otwa landula omutumi e li miilonga ta wiyauka, tashi ti ewiyauko lyetu otholoto yaandyoka lye.

Aakriste otse otu na omanyolo guudha ohapu yEtumo, ano tu tye Etumo olyo **eitaalo miilonga**. Epulo enene olyo: 'Olye ngo tandi mu tumu? Tse otwi ipyakidhila okuyamukula epulo ndyoka. Olwindji otwa ndopa, ihe tu kambadhaleni okwiigidha: 'Omuwa otatu ningine'.

Ongeleki oyo owato mefuta lya pindjala naalongwa otaa kakama, mowato Jesus e li mo, a kotha'. Tse otwa tseya ehala lyaKalunga nolyaangoka a tumwa kuye, kutya olyo ndyoka, 'aantu **ayehe** ya hupe noya tseye oshili', tashi ti

Tala kep.7

Uukolokoshi niilonga yomuyonena mokati kaagundjuka otayi zi peni

Aaleshi aaholike, tu pulakeneni mpoka tapu zi elega ndyoka tali ivundu mokati kaagundjuka yetu, oshigwana osho onakuyiwa. Egumbo olyo ondingandinga nolyo wo ekankameno hoka kwa kankamelwa onakuyiwa yomugundjuka. Uuteku moka ta tekulwa nawo, owo ngaa ta dhiginine monkalamwenyo ye ayihe. Ngele owa yela, nena kapu na omukundu gwasha kombinga ye, ihe ngele owa thata nowa kumbala, tage ya amalwa.

Omunona petamekolela ke na manga omayulu, kakele owala kwaanga gokwiipemba, onkene ota yelekele shoka omutekuli gwe te shi ningi, pailonga nopahapu wo. Omukuluntu ngele oku na elaka lyokagonga, nenge e na omaganda mbadhi, omunona nguka ote mu holele monakuyiwa ye.

Meme natate megumbo ngele otaa uyagele aluhe nokwiipaapaa omalaka omakukutu montaneho yaanona yawo, aanona osho ngaa taa ka ninga wo monakuyiwa. Meme ngele oha dhigula ko koludhingu mombiga nelalakano aniwa okutala ngele oya towala, esiku limwe omunona ota ka yuula mo ngaa oludhingu aluhe.

Tate ngele aluhe ote ya megumbo a kolwa, uunona wo otau shi tala ko ongomoode notau tameke wo okuganda enota ngaashi he nenge yina. Oomeme yamwe oya ninga nduno ootate oyo iihaluthithi yuunona. "Ho oye ngo ta zi ho mwena!"

Okanona otaka ngwangwana nokake shi we kutya yina ohe shi tumbula moompito ndhini, onkene taka kala ka huhwa ethimbo kehe he e li megumbo, ko ngele a zi mo taka ndjanga. Aasamane yamwe opo ngaa ye li shili, uunona ohaa vundakanitha ashike e tau ngwangwana. Efatululo tango kutya omolwashike to shi ningi olyo alike tali kwathele omunona okuuva ko oshinima.

Okwaayamukula omapulo gaanona kombinga yonkalamwenyo, oshi na oshiponga. "Onda ti inandi ku uva we to pula ndje omipulo ndhono dhuulayi uvite. Oho uvu ko tuu?" Itashi longo, ombotsotso yowala to itekulile. Omunona mu eta poshitsa mpoka tu uvu ko ondilo yuuntu kutya oyini, nongele hasho, nena osha yela ota putuka oshimpwani. Oye ngaa ta ka yaka, ta ka tsana noombe, ta ka fika omagumbo gaantu noshowo ta ka ya niinima yaantu pauninangamba.

Ohole yaakuluntu kaanona yawo oshinima sha simana, ihe nayi kotokelwe yaa pitilile yo yaa kumbale. Aakuluntu yamwe oya lemaneke aanona yawo molwohole yapitilila. Omunona okwa ningilwa kehe shimwe noina longwa nando okwiikwatha ye mwene. Omunona a tya ngeyi oha nyengwa nokuninga omatokolo kuye mwene, oshoka okwa putudhwa pombambo.

Aanona yamwe netemo kaye li shi, oshoka iilonga oya longwa po kaakalele. Yo shoka ye shi okutala ooTv, nokuhinga omashete. Ngele taa ti kosikola iimaliwa oha pewa a fa ta ka landa ohauto. Ye shampa e yi mana po, ota yaka po yayakwawo, oshoka ita vulu okukala kee na sha mondjato. Kegumbo okwa tila a ka pulwe nkene mbiyaka a pelwe tango e yi mana po.

Kosikola omunona, a tya ngeyi oye ngaa aluhe gwahugunina kaandopi, oshoka yo nomambo kaa na ombili, omanga pe na omulongo gwa

gwana. Uuna ndoka okwaahavulika kwe kwa vuka, aalongi ohaa kambadhala nduno yi ithane aakuluntu ye, opo ye mu kumagidhe pamwe.

Aakuluntu yamwe ishewe ohaa thikile owala taa pula maalongi nokuya ngwanda omalaka, manga omunona a pulakena. Ye omunona sho ta zi mpono okwi ilongekidha ondjela, opo a ka langele omulongi gwontumba pondjila. Osha zi peni? Omunona okwa tulwa ketuni, ye ta dhini aalongi ye.

Oluhepo megumbo nalwo wo ontuko yonakuyiwa yomunona. Monkalo ya tya ngeyi, omunona ita mono naanaa eyakulo tali pumbiwa, nuuna ta koko, ota kambadhala aniwa, opo a mone omukuluntu omuhwepo, ngoka ta gwanitha oompumbwe dhe, ngoka wo te mu pe eputudho ewanawa.

Ohe shi ningi nee mokuyaka nomokungwandjagulathana nayakwawo, sho ihe ota shi yono po ombili monkalamwenyo. Yamwe otaa ningi omatokolo notaa ndjoina uukwiita nonando halyo eithano lyawo.

Ta kookolola ihe oondjembo ye oshoka oyo yi mu vule, ye ta lombwele omusamane gwomimvo dhi vule dhahe kutya: "Tatekulu ngele ku na okamutse petama ndi ku dhenge, oshoka komutse ita adha ko.

Aakuluntu yetu aaholike, ohole yashili yokuhola aanona yeni, kutheni oshiholelwa shaKalunga mokuhola omwana Kristus, oshoka oshiholelwa she oshiwana. Aanona ngele taa ningi omapuko, naye ga fatululilwe, yo taa kuthilwa amalunwa pahole.

Hambondagulo, nenge eteto ko lyominwe, aniwa opo omunona a tule po ngombwa. Kombinga onkwawo, omunona ngele okwa vuka muumbotsotso, muufuthi nomuukolokoshi woludhi kehe, ine ethelwa omiya dhe, na kwathwe ngaa.

Opu na mboka taa vulu, aahungimwenyo, naamboka wo taa longo miikondo yonkalamwenyo (welfare), otaa vulu okukwatha okwoopalekulula onkalamwenyo yaagundjuka moshigwana. Aagundjuka mbaka ya yonenwa ngeyi ombili nonkalamwenyo yi ihwa po, naa dhimbuluthwe, Kalunga oku ya hole nonando aakuluntu yawo noshowo ookuume monkalathano moshigwana ya nyengwa oku ya kwatha.

**E. Sh. Iimene
Fort Hare**

ESO

Okamatyona Festus Hafeni Jonas gwoomvula 22, momukunda Okomakwiya, Onesi, mUukolonkadhi oka mana oondjenda eti 14 Juni 1985 muwehame wesiku limwe moshipangelo mOshakati.

Omusamane mwene gwegumbo, Jesaja Iita okwa landula ko ishewe ombaadhilila eti 26 Juni manga ta zi ketalelopo lyomumvu kOshakati. Tate Jesaja okwa li gwoomvula 67. Okwa thigi ko omuselekadhi naanona 7.

Kalunga oye ta theta po omahodhi momemo, neso ka li kala ko we.

**Peha Iyoyana
M. Muaalua Iita**



Eongalo leni ola talelwa po tuu komubishofi pambelewa? Etaalelo po eli ihali fiiko onhele yomawendo, ku talike efiloshisho leongalo kwaava tava tulumukwa, kutya oli li ngahelipi. Momawendo aa, omubishofi oku li meongalo Okalongo, omo a koneka kutya omamanya mahapu oku na edidiliko lomushiyakano ngaashi shi na okukala kemanya lomukriste.

EIHUMITHOKOMEHO LYOMUNASHI- LONGA PAUMWENE OHALI VULI- KA TUU?

Ku Vili-Heikki Shivute

EIHUMITHOKOMEHO OSHIKE?

Eihumithokomeho okumbwalanga-ndjitha ontseyo niinima iipe, sho wa dhimbulula kutya ku shi sha. Inima mbika iipe otayi zi momambo, miifo, moonkundathana miigongi nenge moongundu dhi ili nodhi ili, mokupulakena iipopiwa yontumba, okupulakena oradio, uungalo wa kwatwa muukola, okutala nokutongonona shi tashi ningwa monkalathano yesiku kehe.

Okukonakona oonkalo dhaantu yi ili noyi ili miikondo yi ili noyi ili pomahala gi ili nogi ili nopamapipi gi ili nogi ili mekwatathano naatu. Shika osho eihumitho komeho nosho eilongo lyopaumwene, oshoka ino pulwa komuntu u shi ninge.

Eilongo ano olyo eyokomeho lyomuntu tali zi medhimbululo lyoshili lyuuhasha nolyu uka momadhiladhilo gokwaakola taga dhiladhila iinima mbyoka yaa shiwiki kunakudhiladhila, a hala e yi tseye, oshoka oku na ehala lya mana mo.

EIHUMITHOKOMEHO OLYA PUMBIWA?

Eeno, olya pumbiwa molwiitsa tayi landula:

Omunashilonga oye omukalelipo gwaKalunga muuyuni, nuuyuni otatu ende tau lunduluka, onkee omunashilonga naye okwa pumbwa a tseye elunduluko ndyoka opo a tale kutya ote ya kwatha ngiini monkalo ndjoka ompe noti ikwatha ngiini ye mwene.

Tu tye omusita ina pumbwa ashike okuuvitha, ihe aantu oya tegelela notaya tala ngele shoka tu uvitha ote shi tula miilonga. Aantu oya lesa notaya konakona shoka tatu ningi hangaashi nale aantu ya li yi itaala ashike kutya omusita oku shi ashike noiha puka nuupu.

Omunashilonga megongalo okwa tegelelwa okuhunga aantu moonkalo dhi ili nodhi ili ngaashi: Aakuluntu ye na aanona aakambeli, omuntu ta mono okanona e li pokati kolumpangwa nomwele, aavu yoshinamenena (kanker), aanona pethimbo lyeidhimbululo ndele oya piyagana, aantu ya tokolelwa ohake, oongundu dhopapolitika dhi ili nodhi ili megongalo ndyoka to yakula.

Oku li megongalo li na aatseyi yooveta, oondohotola aanongononi, aadhini taya longo

EINDILO KAALONGISIKOLA

Onda li nda talele po ooskola odhindji mOwambo ihe onda mono kutya otundi yOshiingilisa otayi longwa mOshiwambo hamOshiingilisa ngaashi nde shi mono opendji. Uunake nduno aanona taa tseye okuyamukula omapulo goshilongwa melaka ekwiilongo, ngele nani motundi ohaa pulwa owala mOshiwambo, ihe mekonakono Oshiingilisa? Natu hwameni nOshiingilisa, unene tuu moosikola dhopevi.

O. A. Japhet
Oshakati

uulunde montaneho naakengeleli, ihe oye shi ku ninga nawa aasita oshikumithi shoka oya hepa pauvoko lyopayuni.

Otwa pumbwa okutseya omalongo gi ili nogi ili, opo tu pukulule aantu nkene ye na okukala nago Ongeleki oyi na okweendela pamwe noshigwana, ihe nayi tale kutya otayi ende ngiini nomiinima yini po.

Otu na okwiilonga omakwatathano omape naantu yethimbo lyomoode. Natu tseye shoka shi li momadhiladhilo nomomalalakano gawo. Otu na okukotokela iinima yopashigwana moka tu na okukala naamoka twaa na okukala omolwoshilonga shetu. Tu tye edhano lyoongombe, okuumba oondjembo moosa nomoohango, uukwazimo, uuthiga, ohole yeliko ya pitilila nokukanitha epipi, onawa ngele ito ivundakanitha nayo.

Aantu kaye li we pehala limwe ihe otaya inyenge mpaka naampyeka, onkee moonkalo dhawo osho dhi li. Omuntu oku li mongeleka, kiilonga, kondanisa, koondingosho, mongundu yegalikano nomiita.

Ano iitsa nda tumbula pombanda otayi holola kutya omunashilonga okwa pumbwa eihumithokomeho ngele okwa hala a kwathe aantu moonkalo dhawo dhesiku kehe, ya kale aakriste, taya dhiladhila shoka taya ningi shoopalela Kalunga, hakutala komusita uuna e li po ya isimanekitha. Uuna kee po naKalunga okwa fa keepo.

EIHUMITHOKOMEHO OHALI VULIKA?

Eeno ohali vulika kwaamboka yi idhimbulula kutya kaye shi sha. Lyo eidhimbululo ndika olyo tali hwamitha omuntu a tameke okuninga sha paumwene. Mpoka pe na ehala ope na wondjila yu uka koshilalakanenwa.

Eihumithokomeho ohali uthwa kiinima tayi landula:

- Uukolele ngele opo u li otashi vulika.
- Elalakano ngele ou li na otashi vulika.
- Eipangelo mushoka wa tokola u shi ninge, shi landula.
- Kala u na omukumo.
- Kala u na ohokwe naashoka to lalakanene, ontseyo.
- Omudhingoloko ngele ogu li tuu nawa nogwiilongelela okukonakona sha paumwene noitoo kudhilwa nenge to piyaganekwa.

Omadhiladhilo ohaga gongala noto vulu okudhiladhila muule uuna pwa tya thilu. Aanyoli oyendji yomambo oye ga nyola uusiku manga uuyuni wa kotha nokwa tya thilu, opo ya pupe muuyuni womadhiladhilo gawo shoka tau ya lombwele, yo ya kundaneke uuyuni waantu ngele wa penduka.

Okulongitha ethimbo nawa osho omukithi maantu oyendji yomoshigwana shetu okwaatseya nkene hali longithwa nohashi ehameke mboka ye shi nkene hali longithwa.

KOmuwambo etango ohali tokithwa, oshoka

aniwa ihali toko mbala. Komunashilonga e shi ethimbo lye, esiku aluhe efupi kuye, shila okwiilonga ashike okutopola iilonga methimbo ndyoka e na.

Omwiihumithokomeho na tokole kaa yake po ethimbo lyiilonga yoshilongaithano she, ye ta manene ethimbo alihe meihumithokomeho.

Uuna wa ninga ngaaka, nena owa shuna monima peha lyokuya komeho, oshoka iilonga mbi ye ku dhimbulukitha kutya owa pumbwa eihumithokomeho, owe yi etha po neihumithokomeho lyoye olyu uka mombepo, notashi vulika itoo likola sha naanaa.

Eihumithokomeho lyopaumwene otashi vulika li kale eilongo lyopaumwene opo u mone onzapo yasha moshikondo shono u li nengeshimwe shi ili.

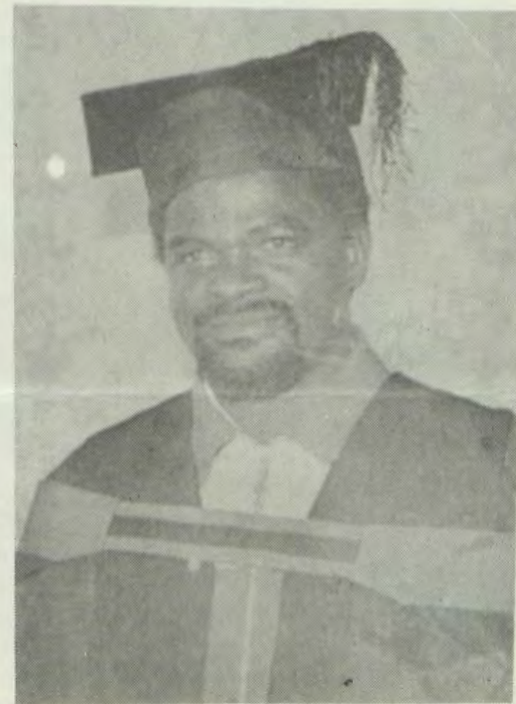
Olyo wo okulesha omambo gi ili nogi ili nowaa na elalakano lyokumona onzapo, ihe okulikola ashike uunongo. Okulesha wo iinyolwa yasha ya zi miigongi nenge komahangano gontumba nokulesha iifo tayi kundaneke aaleshi.

Ino lesa u na aluhe elalakano u likole onzapo opo u mone iimaliwa, ihe onelalakano u likole uunongo mbono to ke u gandja wo kuyalwe, opo ya ninge aanongo ya wape wo okukwatha yalwe.

EHULITHO

Eihumithokomeho lyomusita paumwene ohali vulika nolya pumbiwa, oshoka omusita okwa pumbwa okutseya oshindji. Omusita oye awike ha lalakanene omuntu aguhe moonkalo dhe adhihe.

Oha dhiladhila omuntu monakuyiwa ye nomonena nelalakano a *hupithwe* Meihumithokomeho otatu lalakanene eiuvoko mwene noku uva ko wo yalwe. Sho shika osho ihe tashi tu ningi tu kale aantulela.



Omusita Vili-Heikki Shivute

Ongundu dhoomeme muNamibia, tu kwatheni!

Otse aakiintu mOshitutuma, otatu kugu onkugo kaakiintu ayehe moNamibia. Esiku sho lya li 9-10.1985 otwa gongala mongundu yaakiintu mOshitutuma ngaashi shito.

Otundi yetu oya li yOmbimbeli. Manga nda thikama ongomuwiliki metsaii poongulu dhosikola, okwa zi okapepo kanathangwa ka zi kuuzilo, inatu haluka nando. Ohaluka aakiintu yamwe oya zi kondjila ndjoka ye enda petungo lyongeleka. Ihe manga inaa kuutumba oya tete otundi yetu pokati omolwa onkumwe.

"Yakwetu ombepo ya longo iihuna ketungo lyongeleka" Atuhe omitima dhetu odha nuka mo, oshoka ketungo okwa li aalumentu oyendji. Ayehe kehe gumwe okoshilongitho. Aantu yahamano oya li ya londa pombanda mokutula ko oombati. Mbaka ayehe ombepo oye ya tumbile mumwe nomitenge dhawo sigo opevi.

Ihe Kalunga omo a li mombepo moka, sho gumwe awike a zi ombinzi sho a tsuwa komboha Ayehe oyanakandjege. Aalumentu mboka oya ningi esiku niilonga yoshilumentu lela. Omitenge odha li dha pwa okulongwa, ya adhika ya tidha okatopolwa kahugunina.

Konima yoshikungulu omitenge adhihe iinyanyu, dha gwila pevi. Iilonga yegongalo niimaliwa ya shuna ketameko lela, nando ekuma inalli teka hewa.

Onkugo yetu oondjika kaakiintu ooyakwetu: Tu taaleleni wo kuuhupe weni sho mwa yalula iinima yeni yomumvo mu tu kwathele metamekululo lyetu lyetungululo lyongeleka. Shika otatu shi indile neinekelo, nomolwuukumwe muKristus.

Aanashitutuma atuhe otatu tumbula "Omwenyo gwandje hambelela Omuwa, ngoye ino dhimbwa uuwanawa mboka e ku ningile."

*M. Amwaalwa
Oshitutuma
Ondonga*

Outeku wovayevangeliste mu ELOC nau twikile tuu?

ONGWEDIVA:

Epulo itali xulu meenghundafana mOngeleki ei, ongeenge outeku wovayevangeliste u na oku twilika natango, ile u xulifwe po.

Epulo ola holoka vali neudo moshongalele shovafita, ngaashi la holokele moshongaleleleki shomudo 1984, ile moyoongalele nokuli ikwao yomido da pita.

Opa pita efimbo lile inaku tekulwa vali ovaevangeliste mOngeleki. Pomido edi Ongeleki oya hovela okulongifa ovadiakoni oilonga oyo ya kala hai longwa kovaevangeliste.

Meenghundafana ngeenge outeku wovayevangeliste ou na okutwikila, konyala omunhu oto hale u tye omadiladilo okufike pamwe. Vamwe ove udite omhumbwe yeyakulo lovaevangeliste momangalo otai hepeke, ongee va djuulukwa ku tekulwe vamwe vape. Vamwe ova dimina kutya oluhepo opo li li shili momangalo, ashike havaevangeliste vali tave lu mane po.

Omaufomhango Ongeleki kae na epulo moshinima osho, osheshi pashitokolifo 96 (b) otaku ufwa nokufi oilonga eshi taku tiwa: Oshilonga shomweevangeliste osho okuudifa mokati kovapaani. Oye yo oku na okulonga nokuudifa nokuhakula eemwenyo meongalo omo a nangekwa.

Oilonga ikwao omweevangeliste ote i longo padiminino lomufitaongalo. Luhapu opa udika

olungongo mokati kovafita, kutya ovaevangeliste vamwe itava shikula omaufomhango moilonga yavo. Osho yo meenghundafana vamwe otava holola yoo kutya oilonga youyevangeliste inai pumbiwa vali momangalo, osheshi omaongalo mahapu kae na vali ovapaani. Epulo ohali holoka yo menghundafana ngeenge ovanashilonga ovo ohava talele po tuu omaumbo nande ovapaani kave po.

Epulo moshongalele shovafita inali mona enyamukulo, ngeenge outeku wovayevangeliste nau twikile tuu. Oshongaleleleki 1984 osha yandjele oshisho kElelongeleki li ka longekide noli kundafane ngeenge osha pumbiwa tuu outeku wa tya ngaho u twikile. Onhele youteku wovanashilonga ava oya kala shito mEngela.

Sebulon Ekandjo

Epulo lovafita

Da dja kep. 1

Okwa ti yo kutya ovanhu ove mu tala ooxe, ovakwafi, ovapukululi, ovayandjimayele novapopili vavo monghalo keshe ya nyika oshiponga. Omufita keshe oha hoololwa noha tekulilwa oshilonga, ashike oukwatya womunhu wokedalo, owo unene hau ufa oukwatya womuwiliki nomuyakuli keshe, nande na kale a hoololwa ile a hongwa nawa.

"Otwa telelela mu longife hano enwefomo leni meyakulo liwa, opo ovo hava yakula nolungwenye, va ude ko yo ondilo younashilonga wavo. Sho eshi otashi dulika ashike ngeenge eyakulo lopaufita momangalo etu aeshe, tali tulwa pomufika umwe momangalo aeshe. Eyakulo li kale pamaufomhango ndele hapaufo leongalo."

Moshipopipiwa shaye shomapandja 8, omushamane Nghifikua ou a wanifa neudo 50, okwa tula mo oitwa 8, omo a fatlulula omufita nhumbi e na okulihumbata meyakulo laye. Okwa ulika yo kelididimiko lovafita okuhumbata oshilonga eshi pamwe neemhumbwe dihapu dopalutu.

"Otu na ehala nelineekelo omaongalo a ka ude ko diva elunduluko tali pupaleke onghalo," osho e va timaumbwilifa.

Omalanduluko moilongayakulo imwe yongeleki omupopi ou okwe a tenheka yo koshipala shovaleli vomaongalo novongeleki moshongalele eshi, ngeenge oku shi oku talululwa. Muo omwa kwatelelwa etalelo po lomufita meefikola dOshoondaxa, ependulo po loshongalele shovanashilonga meongalo osho yo omulandu wofikola yepameko noyekufilo.



Pethimbo ndika oshilonga oshinene shaayevangeliste momangalo ogendji otashi longwa po kaadiakoni. Methano ndika aadiakoni otaa yambekelwa oshilonga mEngela 1985.

Iitsa ya simana mondjokonona yuukumwe wOongeleki oonkwaLuther muNamibia

Oongeleki mbali onkwaevangeli paLuther mokati kaavalelwa mo moshilongo shika odha hololwa po koshilonga shetumo. Oongeleki ya ELC, oya hololwa po kEtumo lya Ryns, muNdowishilanda okuza 1842 noya ELCIN kEhanganotumo lyaSoomi okuza 1870.

Omumvo 1954 oongeleki ya ELCIN oya mono eipangelo lyayo naandjoka ELC omumvo 1957. Omumvo 1961 oongeleki ndhoka ndatu kwa gwedhwa Oongeleki onkwaevangeli paLuther yAandowishi (DELIC) odha gongala muKaribib moka dha tokola dhi kale hadhi gongala kumwe kehe omumvo lwaali nenge lutatu.

Elalakano lyoshigongi shoka li kale okudhika omukanka gwehangano lyoongeleki onkwaLuther, VELKSWA. Oshigongi shoka osha landulwa kiigongi iyali ya yooloka, mbyoka nayo wo ya koneke pu ningwe oongeleki yimwe muNamibia. Oshigongi sha ELC sha ningwa 1970 nosha ELCIN sha ningwa 1971.

Omumvo 1972 okwa ningwa ondjokana pokati kOongeleki mbali ELC na ELCIN, mOti-jimbingwe, mOseminali yuusita wOongeleki ndhoka. Ondjokana oya ningwa komuwili-kingeleki nakusa A. W. Habelgaarn ngoka a li omupresidende gwa FELKSA, ethimbo ndyoka.

Epangelongeleki lya VELKSWA oya gongala lwotango 1972, mOvenduka. Nakusa omu-mbisofi L. Auala okwa hogololwa moka a ninge omupresidende gwotango gwa VELKSWA, nomupreses Hans K. Diehl okwa hogololwa a ninge omupeha.

Omumvo 1977 muApilili, Epangelongeleki lya VELKSWA ndyoka lya thikama miilyo yomapangelongeleki goongeleki ndhoka mbali ELCIN na ELC, oya gongala mOvenduka. Oshigongi shoka osha kundathana eindilo lyOongeleki yAandowishi okutaambelwa muVELKSWA.

Miigongi ya VELKSWA inamu kundathanwa owala nkene taku humithwa komeho uukumwe wOongeleki, ihe omwa kundathanwa wo pomathimbo nomathimbo onkalo yoshilongo paupolotika ndjoka ya guma iilyo yOongeleki ndhoka.

Opwa pitile ethimbo ele kashona omalongekidho gehengumukilomumwe ga fa ga thikama manga, omolwombelewa yEhangano ndyoka ya kala yaa na amushanga.

Oshigongi sheti 16-16.10.1984 shEpa-ngelongeleki, lya VELKSWA, osha kolekulula etokolo lyoshigongi shomumvo 1983 okuninga Oongeleki yimwe onkwaLuther muNamibia.

Moshigongi shoka, omo mwa ulikwa Amushanga omukuluntu gwaVELKSWA.

Iigongingeleki ya VELKSWA

Iigongingeleki ya VELKSWA momimvo dha piti oya ningwa ngaashi tashi landula:

1. 1972 omuPaulinum, Otjimbingwe
2. 1975 omEngela
3. 1980 omOvenduka
4. 1983 omOngwediva

Ngashingeyi oku na uungundulongekidhi wa Velkswa okulongekidhila oshigonginge-

Palongekidho lya Velkswa, uukumwe wOongeleki muNamibia otau ka thikama andola miikandjongeleki ine. Oshigongi shaasita yOongeleki ya ELCIN shoka sha zi ko osha holola euvito lyasho Oongeleki yimwe muNamibia yi thikame mikandjongeleki ihamano.



Omudo 1983 okwa ningilwe oshoongaleleleki sha VELKSWA mOngwediva, noshini-ma shokudika Oongeleki imwe onghwaLuther muNamibia, osha kundafanenwe nelitulo-mo linene. Mefano pombada, ovawiliki vEengeleki odo vatatu okudja kolumosho; Oongeleki yOvandowishi, (DELK) yOvalaule mOushimba (ELK) nowa ELOK. Vavali kolulyo ovanashipundi shoshooongalele; omulongi J.Hoebbe nomufita Z.Nakamhela.

leki sha Velkswa shoka tashi ka kala ko 1986. Uungundu mboka owa kwatelela mo okangu-ndu kEkotampango, okangundu kuuteologi noliturgi osho wo okangundu kelelo lyOongeleki niiniwe.

Ashike etsokumwe lyomadhiladhilo oya kala edhigu okwaadhikwa, oshoka etopolo lyiikandjo mbyoka, oya kundathanwa pamwe netopolo lyiikandjo yomeni lya ELCIN, ndyoka wo omadhiladhilo gaasita taga nyengwa okutsa kumwe mulyo.

Sebulon Ekanjjo

Dha za kep. 3

ayehe ya mono esilohenda lyedhimo po lyoo-ndjo (oshoka ya yono Rom 3:23) nokaye na omwenyo gwaaluhe.

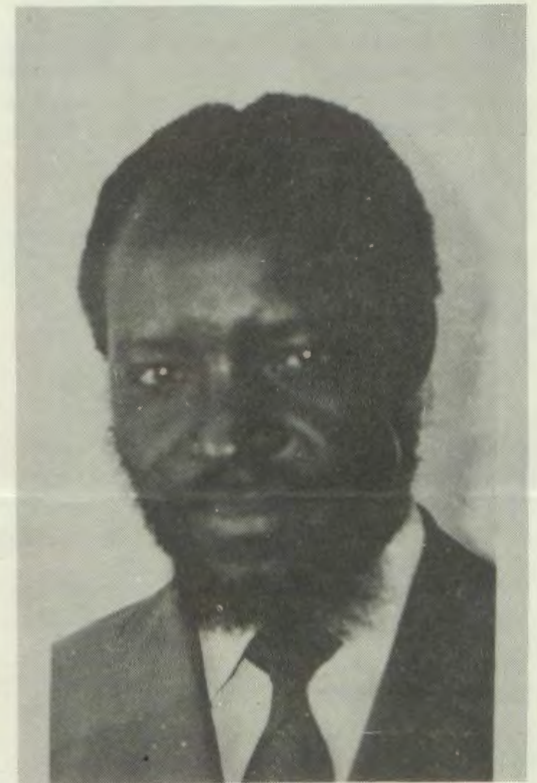
Etumo olyo wo eyamukulo lyaakriste kuuyuni mboka u li muupyakadhi. Onkugo yuuyuni otatu pumbwa oku yi nongela. Uuna nda lya nda kuta, opu na gumwe ngoka kee na sho ta li. Uuna ndi uvite elago lyehupitho opu na ngoka e li natango oshihakanwa shomutondi. Uuna tandi igidha 'Abba', opu na ngoka kee shi Kalunga kashili.

Oonkugo dhoongundu ndhika odho otadhi umpile Oongeleki (ngele oyi na omakutsi gokupulakena), oshoka ope na ondjuulukwe nomauvaneko ku 'kale oshigunda shimwe nomusita gumwe'. Etumwalaka lyEtumo olyo alike tali vulu okuyululula aantu moonkandja dha tumbulwa. Esiku lyOmuwa tse aakriste otatu ka gandja eyamukulo koshipala shOmuwa nkene twa yamukula ompumbwe yuuyuni wetu.

Monkugo yuuyuni omu na ondjala yiikulya, ondjala nenota lyehupitho nosho tuu. Otu na wo okutala kutya etumo lyopakriste olya siikilile mo aluhe *ohole, okuya nokulonga.*

Taku tsikilwa

Tomas Shivute T. T.



Omusita Ipinge - Kristof Shuuya ngoka a hogololwa 1984 a ninge Amushanga omukuluntu gwa VELKSWA.

Aalumentu taa y a m u k u l a omuhungimwenyo

MOMUKWETU No. 19/1985, otwa li twa gandja omayamukulo goshigongi shaalumentu nuu-mvo, mOngwediva, sho taa yamukula komapulo gomuhungimwenyo meme Aune Shilongo. Omapulo oga li ga kundathanwa muungundu ga monenwe eyamukulo. Mpaka otapa iandula gamwe:

EPULO:

Oshitopolwa shoalumentu mouteku wounona mefimo eli lopaije, osha tya ngahelipi?

EYAMUKULO:

- Oshitopolwa shaalumentu meputudho lyaanona kashi na oonkondo.
- Aalumentu itaa hungile we pamwe naanona.
- Aalumentu aanashilonga olwindji kaye na ethimbo lya gwana naanona yawo.
- Ombepo yaanona oya taamba elongo ewinayi tali zi pondje yegumbo, nonando aakuluntu yawo kaye na egamo ndyoka. Eputudho lyopondje neputudho lyomegumbo itaga tsu we kumwe.
- Uuna pokati kaavali yaali pu na ehilathano lyuukwazimo omukumo gweputudho otaga teka momusamane.
- Okuganda okanona kamushiinda nenge oku ka kumagidha, aavali yokanona e taa holola euvonayi lyawo, nasho wo osha yona eputudho mokati koshigwana nosha kanitha ombili pokati kaashiinda.

- Kombinga okwawo, aavali yamwe ohaa vulu okukuta miilonga aanona yaavali ooyakwawo pwaa na euvathano, naanona mboka ohaa hupu ko kelongo lyomoosikola.

EPULO:

Oshike sha nghundipaleke eputudo lounona mokati kovadali aveshe vavali?

EYAMUKULO:

- Uukwazimo
- Okwaaavathana kwaavali
- Oluhepo megumbo
- Eyooloko lyomaitaalo maavali
- Oohungi dha sa megumbo
- Uunkolwe ngele wi iyakele maavali
- Uumbanda wokutila oluvalo
- Ohole yaavali ya pitilila mokuputudha oluvalo lwawo.
- Nuluhoko lwomuvali gumwe paanona okuhokola omukwawo.

Taku twikilwa
Sebulon Ekandjo



Ovanyasha vaMbaye va talela po Onankali

Ongundu yovanyasha yedina: *Ombili yOmwene otu ina mOmbaye, momafiku 8-11.1985 oya li ya talele po pOmutwewonime. Etalelepo eli olo etitatu momapyatumo. Omudo wa ya oya li yo ya talelapo ponhele oyo nokOnankali oko ya shakenene novanyasha vopomudingonoko opo.*

Neudo eshi Ombili yOmwene ya li pOmutwewonime oya li ya talela po yo (Momapundo) momaumbo Ovankwanghala. Oya li ya twaalelamo oukulya ngaa vanangaho noidjalomwa. Osha li sha udifā nawa ovo va mona oidjalomwa, naavo inava mona va hupa ko, ova li va uda nai lela. Oidjalomwa oyo twa li tu kwete inai wanena aveshe.

Epandela olo la nyolwa Tume nge Tate, ola nyolwa ku Abel Nghihalwa, ou e li omuwiliki wongudu oyo. Nongudu yoovene oye lilongekida opo li ka peve omufita. T. Nakanyala, ye a ongele ovanyasha vopomudingonoko, opo ve li kondjele noimaliwa.

Oimaliwa oyo tai monika mo i longifwe ongekela yopOmutwewonime, oyo i na ashike etala noshinyanga osho sha pwa okutungwa. 'Eluwahanagno' nOkanyeka ohadi kwafa, opo Ombili yOmwene i ye metumo.

Abel Nghihalwa

Ofuto yomadimo oi na ngaa ouyiki?

Vakwetu, naku talwe tuu nawa moshiwana shetu kombinga yoifuta yokakadona. Ngeenge omumati okwa yandje edimo kokadona, onawa pa konakonwe tete, eshi pa monika ouyelele po tapa ufwa nee ofuto.

Ovamati vamwe ohava futu ashike R400,00 ile eengobe mbali, mboli pamwe nakupeva edimo oye mwene a ka kongele omumati. Ondi wete kutya haalushe R400,00 da pumbiwa, osheshi otashi dulika edimo limwe la pumbiwa ashike okufutwa nande R50,00. Shiwana tu konakoneni ngo eshinima osho.

L. L. Pafyaala

Ontakumandjimbo

Kandi etha ku mu lila
Ogwekongo lyetu.
Otu mu li wo melila,
Mepola ndi lyetu.
A thika kaayengeli,
E li muukengeli.
E li po a nyanyukwa,
Nokwa tundulukwa.

Esik'uun'eso lya sa,
Uuna ndo pwa li sha.
Nela lyompolongela,
Vulu ka za ndjala.
Omuwa a gepul'oothipa,
Dheso e dhi inipa.
A za mo oshimati,
A lwa oshimati.

Tshikomba wa pwina po,
Wa fa wa hula po.
Olutu lwoy'iipongo
Kayi na omongo,
Uuhoho mbu womohi,
Wa shituka evi.
Ga kukut'omasipa,
Kage na oothipa.

Tshikomba shaTaapopi,
Nge kwa luudh'ongaye.
Ondi ku li popepi,
Tii ya nda tal'eye.
Lyuyelel'uukumithi,
Kau na olwithi.
Te katuka te tuka,
Note kalulukwa.

Jason Tshikomba Amakutuwa



Ovanyasha veongalo laMbaye

YA MANGULULWA MO

Shipingana Mukwashidhila, Uukwaluudhi naKanukile Mwaala, Uukwaluudhi. Ayeche oya kwatelwe mujuni 1985 noya mangululwa muKotoba gwa zi ko.

Jason Josef, Oniipa
Jesaja Jason, Oniipa
Filippus (Kahoma) Akweenda, Oniipa. Ayeche oya kala oshiwike shimwe ya edhililwa noye ethiwa.

Natango ya dhigininwa

Anna Simon (49), Oniipa,, omulongi gwomoshinyanyangidho.

Tomas Akweenda (32), Oniipa
Johannes Festus Oshigambo
Andreas Immanuel (44), Oniipa
Sakaria Barakias
Tara Sakaria
Reinhold Wilbard (62), Oniipa
Josef Ndjambula (45), Windhoek

Mbaka ayeche oya kwatwa pokati kaAguste naSeptemba 1985.

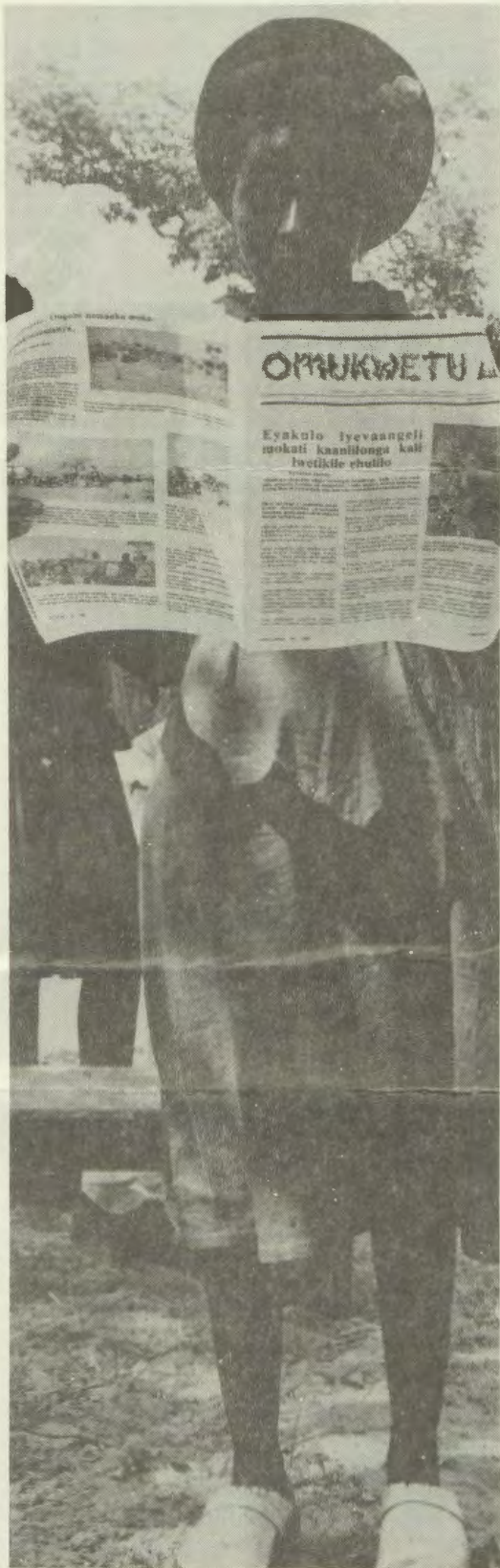
Mateus Tomas, Oniipa
Ndamangululwa Nghipandua, Endola (omulongi)
Kambunga Nghipandua, Endola, omuna gwa-Ndamangululwa, Omunangeshefa Kalambuka, Endola, Ayeche oya kwatelwe muKotoba 1985.



EFYO

Omulongi omukulu meefikola dEtumo laSoomi mOwambo, omushamane Gabriel Taapopi, okwa xulifa oweenda waye 20.9.1985, mOvenduka mepupi leedula 74. Okwa fiya ko omufiyekadi novana vaye novatekulu.

Ondjokonona yaye tala vali moshifo eshi.



ONDJOKONONA YANAKUSA G. TAAPOPI Shikomba shaTaapopi e tu tetekele

Shikomba shaTaapopi, omuntu omunene nomutango gwomOwambo mehumokomeho. Okwa valemwa mUukwanyama momukunda Epundi (ngiika opoohambo dhaNuuyoma waEelu).

Okwa valwa omumvo 2.11.1911. He oTaapopi yaEmvula yina oNandjila yaShipingana. Edhina lye Shikomba, otali ti okwa landula epaha, a komba po oshipwe shepaha. Osikola yaanona okwe yi sikola pOshimwaku. Sho a shashwa okwa ningi Gabriel.

Ye mwene okwa li omunagano a mana. Okwa yile kiiyungula. Sho a galuka ko okwa yi koskola yaamati mOngwediva. Manga a li kUushimba okwa kutha oponda e ta landa oongodhi dhokuhondja, ndhoka a hondja nadho 1932-1942 noinaa landa we oongodhi. Sho a li omunamagano okwa ningi omulongi gwooyakwawo, moka tuu mosikola yaamati.

Pethimbo ndyoka aalongwa ohaa zi niikulya yawo komagumbo. Gabriel okwa kala e na okambamba koonyandi ye ta lesa omambo ge. Sho a li e hole okwiikalela nomambo ge yakwawo oye mu luku "Kaxumba". "Oxumba yomutwe wa nyika oluhepo yaMweliketa Kaxumba, oshike she i nyikifa oluhepo, vo eeshapi ovo ve di kwete?" Mweliketa omukadhona omukalele ha kala niipatululo.

Efelo omuselekadhi Anna Glad (Ngeelanda) okwe mu hokwa noye tuu a li a ningi yina, nokwa ningi oshindji meputudho lyaGabriel.

"Pamwe oku ka longa iimaliwa hwepo"

Ngele tatu tala mokati kaalongwa omu na omaithano gi ili nogi ili, ihe oshinima tashi pukitha osho shika omulongwa a pita ontihetatu a ye owala kuulongi nande ye ina hala ko, te shi ningi nelalakano sho a tala mbeyaka taa zi ko taa ka longa iimaliwa yawo.

Ye mwene okwa li a hala okuninga omupangi ndele iipangelo itayi taamba we aanaskola mboka taa piti ontimulongo manga inaa ya za kooskola dhopombanda.

Omolvashike aalongi haa taambwa owala muulongi pwaa na okupulwa oonzapo dhopombanda? Omolvashike kuupangi haku tidhwa aantu ngele ya dopa ekonakono, omanga inandi uva omulongi a tidhwa mo inaa longa nawa?

Omolvashike shi itaalwa kaakwashigwana kutya mbaka ye li kuupangi kaye na oshilonga nande tse aakadhona twa hogolola eithano lyuupangi? Oshigwana inashi pumbwa wo aapangi?

Ngele ando omolvashono kuulongi ku na "oodidaka" omolvashike inaaya tula po oodidaka dhuupangi montimugoyi sigo ontimulongo?

Kwathii ndje eyamukulo ngashingeyi, ondi li po te kanitha eithano lyandje ndi ka ye kuulongi molwashoka oko tandi ka mona iimaliwa mbala.

Frieda Andreas

Okwe mu tumu koskola kuStofberg Gedenkskool, hoka a kala omimvo ando 1937-1940. Oye Omuwambo gwotango e ki ilongele pondje yOwambo nokwa ningi omulongi a pita oJunior.

Sho a zi ko okwa langekwa omulongi mOngwediva 1940-1953. Ongundu yetu ndjoka ya tameke 1941 naamboka ya adhikile mo ya tamekele 1939, ya li momumvo omutitatu, otse nee twe mu kangula. Pehala mpoka ye omumati omukuluntu, gwomimvo 30. Okwe tu longo Oshiwambo, Omwaalu, Oshimbulu, nosho wo Okaalita.

Onda kala naye omimvo mbali, ihe onda longeka Oshiwambo. Okwa toto omakankameno gelaka lyetu. Sho a li po Omukwambi a valemwa mUukwanyama, okwa tseye omalaka gatatu ga li ga nyolwa mOwambo pethimbo ndyoka, nogo Oshikwanyama, Oshindonga nOshikwambi.

Okwa hokana omukadhona omulongi Rauna Haifena 1941. Rauna okwa mana oondjenda dhe 1953. Kee shi mwiimbi ihe okwa toto omaimbilo ogendji. MEhangano omu na omaimbilo ge mwene ngoka a tota 13. Okwa kala wo melundululo lyOmbimbeli yOshikwanyama.

Sho a silwa Rauna okwa hokana Rauna, mbushe yaRauna e ta ninga amushanga gwoshilongo kUukwaluudhi hoka a kala 1953-1963.

Sho a li muulongi okwa longwa Oshiheberi



Nakusa Gabriel Taapopi

komulongi Alpo Hukka. Okwa li e shi shi nawa nokwa lesa Etestamendi Ekulu melaka ndyoka e li uvite omulyogolyo.

Omolvomagano ge gomalaka okwa yi ku Windhoek kombelewa yomalaka, hoka a longo 1964 sigo 1976, sho a penzelwa.

**Peha lyaalongwa ye
Jason Tshikomba Amakutuwa**

OMUKWETU OKUUME KOYE KOPOTHINGO. OTE KU TALELE PO SHAAMPOKA U LI, MOMBETE, MUUWIKE, MUUPONGEKWA, KIILONGO NENGE MONGUNDU YAYALWE MOSHILO-NGO SHENI. INYOLITHA ANO OSHIFO SHOYE SHOMUMVO 1986 MANGA KUYELE. ONDANDO ONGAASHI SHITO.

Ova shangela nge tava ti

Ovanafikola omolwashike hano twa hongweni tu shiive ouwa nowii, ndele ohatu anye okukoneka oshinima osho? Otu lyeni mofikola hano edina ile okulikola mo tuu sha tu longele Omwene fimbo tu li po?

Otwa tuleni ovadali moudjuu.unene eshi, hava ilikana efimbo keshe ndele fye ohatu hepifa ashike omaindilo avo. Tu longifeni nawa efimbo, osheshi omafiku omai.

OmuliHongi
A. Nd. Namupa Nghandi

Otwe mu pandula!

Ohatu yandje olupandu koomeme nokovaholike amushe ovo mwa li mwa kala pamwe nafye nomwa yandja omakwafo moluhodi olo twa li mo lomumwameme Elia T. Kalwenya, oo e tu tetekela 5.10.1985.

Ekundo leni nali kale Eps.25:14-22
Tangi mwaaishhe mwa kala pamwe nafye.

Ruben Natangwe
Grootfontein

Otandi pandula ookuume mboka mwi ihepekele ndje, mwa yakula mpaka naampayaka nomolwomagalikaneno geni, Omwa okwa kwatha ndje, momaudhigu ngoka nda li mugo. Egalikano olyo ikulya iwanawa tayi lotitha omwenyo.

Jeremia Ndongwi
Box 272
Ondangwa

"Inamu shuma lwanima komapulo"

Otandi yamukula mpaka omapulo gomumwameme "Unifort" ga zile moshipopwiwa sha holokele mOMUKWETU No. 17.1985, epanja 10, shoka sha li molupe lwepulo "Elongo otashi ti okudenga?"

Moshipopwiwa shoka moka omunyoli a holola kutya ye omuleshi gwOMUKWETU, onda mono mo omapulo gane. Epulo lyotango olya holoka molupe lwokapalanyolo ke: Elongo otashi ti okudenga?

Epulo etiyali olya holoka okwaaavite ko kwe ondilo yomuntu nelongo sho ta pula: Omolwashike hamu longifa edengo unene mokuputuda ounona?

Etitatu oli li momuzile gweiyali. Epulo lye etine olya holola nkenè 'Unifort' a hala okuninga oshigwana oshege nomapulo gaa fele. Otu ulike wo ondumbo ye mpo yi thike neputuko naaputudhi. "Okudenga kwoovene otaku eta tuu shili ouwa washa?"

Moosikola ihamu ningwa sha tya ngaaka kutya; 'Sha nya gumwe sha tukitha oyendji, aawe. Ino pukithwa kaaputudhwa ngoye ino kambadhala okweeta uutondwe maaputudhwa okutonda aaputudhi yawo.

Owa holola kutya oshidhigu okupangela okanona komimvo 13-23, mupyamunene ino gandja wo tuu nando omukalo omupu, kaalongi yetu. Owa tseyu tuu kutya omulongi oye omusita, ye omulongwa onzi? 'Omusita ondhimbo peke.'

Aalongi aasimanekwa, longeni oshigwana sheni, inamu shuna lwanima komapulo gomumwameme 'Unifort'!

David T. Lenga
Oranjemund

Silas Ndesheetelwa, P. O. Box 565, ota londodha aanashilonga yaa tule aluhe oshilongaithano shawo koonduku dhomalaka, (isimanekela) oshoka aniwa osho omaganohenda ashike ye ga pewa 1Kor.12:7-11.

Oti indile wo aaningi yomalongelokalunga yaa ninge oontamanana momalongelokalunga noyaa longithe iitya shaambyoka.

"Otandi shi koleke"

Onda hala okuholola kutya ote tsu kumwe natate S. Kamati, koohapu ndhoka e dhi popya mOMUKWETU gwaSeptemba 15, 1985, kombinga yaagundjuka mboka taa ningi "Kakombo ilitha, kanzi igalula."

Vanyasha tu dimbulukweni kutya, ondjabi hatu ka mona mo monghedi oyo, otai eta ondjala moshilongo neshunduko lasho. 2 Tess.3:11-12

Dymond Nghandi
Windhoek



Omu na oshindji tashi popiwa kOmbimbeli mekwatathano no-ndhila ndjika. Tala omahala gamwe: Hes.17:3;5 Mos.28:49; Eps. 103:5 najes.40:31.

"MolwaNamibia"

Ehangano loiwana younyuni (VVO) okwa li la ufa Namibia li tulwe momadimbulukwo nomomalipulo oule womafiku 6. Oshoongalele shinene osha ningilwe mokati komafiku oo kehanganano la VVO, osho yo kehanganano loukumwe waAfrika.

Omafiku okudja 27.10. fiyo 1 Novemba neudo, okwa hololwa keengudu domounyuni okufininika omapangelo a teye po ekwatafano nepangelo la SA nokwiitula kumwe nekondjo laSWAPO.

Ekwatathano nepangelo epe lya indikwa kokomisi

Omasiku ga zi ko opwa leshwa ehokololo lyokangu-ndu kuuyuuki nedheminathanopo kOngeleki yaKatoolika kaRooma, moka taka pangula noonkondo omukalo gwiikondo yimwe mOngeleki ndjoka okulungitha epangelo lyopakathimbo mOvenduka.

Ehokololo ndyoka lya kolekulula natango omakankameno kokomisi, kutya inayi yalula epangelo lyopakathimbo, olya ti wo nashi kale chalo netokolo lyomumbisofi gwongeleki yi ikwate nawa mokulungela kumwe nepangelo ndyoka.

Ope na ezimba kutya ehokololo olya penduthwa kosikola yimwe ndjoka ya hiyile oministeli yelongo mepangelo lyopakathimbo omusamane Andrew Matjila, a ninge oshipopwiwa.

Omudo wombili younyuni 1986

Omutumba wa VVO mohani ya dja ko owa ufa omudo tau ya (1986), u ufanwe omudo wombili younyuni (International Year of Peace)

Omutumba wa VVO ou li natango moipundi eshi wa tamekele muSeptemba. Ehangano la VVO ola wanifa neudo omido 40 moilonga yalo.

Kolonela Iko Carreira gwetanga lyomombepo lyAangola okwa gandja ehokololo lye kokakomisi kekonakono lyomuyonena, kutya omatanga ga SA oga hanagula po omadhagadhaga ga Angola 6, ondhila yimwe yiita yo MiG, nookwawo 21, iihauto yopakwiita 57 osho wo iilongitho yiwe.

Kolonela Carreira okwa ti shono inashi kwatelela mo omwenyo dhaantu, inaa popiwa omwaalu.

Eyonuko alihe Kolonela Carreira okwe li gandja li thike poomiliyona R 128.

Ngashingeyi omumvo gumwe gwa pita okuza 18.10.1984 sho oonkwatwa kondholongo yaMalinda dha mangujulwa nodha kala pondje. Ano tu tsikileni natango negalikano omolwaamboka ye edhililwa natango naamboka taa mono iihuna omolwevi lyetu, Kalunga ote tu uvu.
John Moddy
Katutura

1.1. Oonkondopangelo dhongongahanganano yiigwana:

Konima yiita iitiyali yuuyuni, epulo olya holoka po kutya iipangelwalongo yaAandowishi noyAaturkayi otayi ningwa ngiini Oonkundathana pokati komahanganano giilongo iinankondo muuyuni odha fala sigo omomukalo-mpango gwaapangeli yiipangelwalongo, ngoka konima gwa ka tulwa metonatelo lyOngongahanganano yiigwana (League of Nations).

Tala kep. tali landula

Okupangelwa kwaSouth West Africa ku South Africa, osho oshinima sha zi metokolo lyOngongahangano yiigwana meti 17, Desemba 1920. Epangelo lyaSouth Africa, olya thiminikwa li humithe komeho oshitopolwa shika naakalimo yasho ya mone eputuko tali yi komeho, unene tuu palutu, pambepo, palongoskola, nopaukalinawa.

South Africa okwa pewa oshimpwiyu shika shokugamena emanguluko lyomaiuvo gaakalimo osho wo elongelokalunga. Ihe okwa indikwa kaa dhike mo nande ookamba dhuukwiita (Ngaashi tadhii monika nena).

Okwa lombwelwa a ninge ha fala omushangwahokololo kOngongahangano yiigwana omathimbo nomathimbo kombinga yehumokomeho ndyoka tali holoka notali ningwa moshilongo shika, ihe South Africa ihe shi ningi.

1.2. Omathikameno giigwanahangano (VVO)

Konima yiita iitiyali yuuyuni, Ongongahangano yiigwana oya halakana po nopehala lyayo opwa totwa ihe Iigwanahangano (VVO). Iilongo ayihe mbyoka ya li yi inekelel wa oonkondo dhokupangela iipangelwalongo, ngaashi South Africa muNamibia, oyi indilwa yi hulithepo omapangelo ga tya ngaaka noyi ga tule metonatelo lyiiwanahangano. Ayihe osho ya ningi pahalo lyawo, kakele ka South Africa.

Etokolo lyoshigongi shaayehe shligwanahangano, kutya South Africa na hulithe po epangelo lyuupangelwashilongo muNamibia, shika SA ine shi itaala. Pokati mpoka ehanganu South West Africa People's organization" (SWAPO) ndyoka lya li tango nedhina Owambo People's Organization" (OPO) olya tameke okuninga oonkondo.

SWAPO okwa tameke nekondjomanguluko lye nokufatululila oshigwana uuthemba washo, omatembudho gomukalo gwehithimiko okuya komahala gamwe gi ili, uuwinayi womukalo gwokondhalate gwaanashilonga (aaunguli) nokwa indile VVO a thiminike S.A. a zemo muNamibia.

Elalakano lyiilonga noonkambadhala dha SWAPO odha fala ehanganu ndika ponkatu mpoka li taambwe ko kuuyuni ongomukaleli po gwoshili gwoshigwana shaNamibia. Nehanganu ndika olya yambidhidhwa komwaalu omunene gwaAnamibia yo yene.

Andreas H. K. Shiimi
Eengedjo Sec. School

Ewi lyaCanada muupolotika wuumbugantu waAfrika.

"Osho oshinakugwanithwa shetu, tu yelithile nawa epangelo lya SA, kutya Canada okwi ilongekidha okutula miilonga ondjindikila yiipindi, shimpa tuu inaa ninga po elunduluko lya sha", Osha kuthwa mokana kaAmushanga gwii- kwapondje gwaCanada, omusamane Joel, Clark, manga a li momutumba gwepangelo, omasiku ngaka."

Canada oshimwe shomiilongo itano yuuninginino ya hogololelwe kOraata yegameno ya

VVO, opo yi gune SA a zimine etulomiilonga lyoshitokolitho shono tashi gandja uuthemba kaAnamibia, ayehe ya hogolole omuleli gwawo ngoka ya hala yo yene.

Umukwanepangelo Clark okwa ti, epangelo lyawo muule woomwedhi hamano dha piti, oya taamba ko nale omalombwelo goongundu dhimwe, kutya SA a hulithilwe po omakwatathano ge agehe gopaudiplomati nogopaipindi, naCanada okwa ti ye ite ki iningila oshinima shoka awike, okuthiminika SA, a lundulule omulandu gwe gwoni lyoshilongo.

Epangelo lya SA olya li li na okuyelelwa moshinima shoka kutya yo (Canada) otaa ka tula miilonga ondjindikila yashaashoka, okuninga shila SA te etha po okatongotongo ke.

Miilongo oyindji ya Europa pethimbo ndika otaku uvika taku zi omathiminiko ga taalela SA omolwomulandu gwe gwomeni nomolwokwai- utha komatokolo guuyuni omolwemanguluko lyaNamibia.

Omatokolo ogendji ga ningwa SA sho ini iutha kugo, osho wo oonkundathana piitaafula sho inaadhi etitha po elunduluko lyasha momulandu gwa SA, iigwana yuuyuni oyu uvite ya thigilwa po ompiti yimwe ayike yokupopitha SA newi li uvitike, oyo oku mu konda mo mekwatathano niilongo iikwawo yuuninginino.

Sigo oompaka ekwatathano ndyoka tali hulithwa po pokati ka SA niilongo yopondje, otali ningwa miinima iishona manga yopaipindi, omukalo gwelondodho. Ngele itapu ningwa elunduluko mu SA, oonkatu oonkwawo otadhi ka katukwa.

Ewikilongundu lyOngongahangano yaAakwaluther muuyuni, moshigongi shalyo sha zi ko pehulilo lyaAguste nuumvo, olya li lya ningi eindilo komapangelo guuyuni nokehangano enene lyiipindi yuuyuni EEC, opo ga dhiladhile okuningila SA ondjindikila yomahooli. (Lwi No.10.1985)

"Omahooli niikwamahooli ayihe oya simana ku SA okulongitha muukwiita nomiilonga yaapolisi, onke nayi talike ko, tayi kondjitha oveta yOraata yegameno ya VVO, yomumvo 1977, okukelele SA a pewe omahooli," osho oshigongi shoka sha tumbula metumwalaka lyasho.

Ewiliko lyepangelo lya SA pethimbo ndika otali dhimbululwa tali ningi oonkambadhala dhimwe okwoopaleka ando omulandu gwomeni. Ihe shono lye shi ningi sigo oompaka, uuyuni wopondje owe shi tala ko "ondjenda yokukoolola oompadhi", mamga Aatiligane oyendji yomeni lyoshilongo taye shi tala "elunduluko tali matuka unene."

Umukwanepangelo Clark, gwaCanada, okwa ti ye nepangelo lyawo otaa tegelele ando elunduluko miinima tayi landula li ningwe mbala mu SA:

+ Okuhulitha po uukwamuhoko auhe moshilongo shoka, opo aantu ayehe ya kale muuthikepamwe wuukwashigwana noye na uuthemba u thike pamwe momatokolo giinima yoshilongo.

+ Ooveta adhihe dhi na sha nokatongotongo kolwaala lwomuntu nenge opamuhoko gwe dhi hulithwe po mu SA.

+ Emanguluko lyomuntu kehe mu SA li monike omuntu mwene sho e na okutokola ye mwene mpoka a hala okukala, okweenda nokulonga nopwaa na ondjindikila yasha.

+ SA u ulike noku monike, kutya okwa hala shili okukala nombili naashiinda ye ye li ngaashi ye li, ngaashi Namibia ngele ta zimine oshitokolitho 435, shi tulwe miilonga.

Iinima iikwakwo tayi landula Joe Clark okwa ti kutya ngiika inayi simana unene, ihe oya pumbiwa meopaleko lyonkalo ya SA, oyo:

— Eegululomo lyoonkwatwa moondholongo unene aawiliki yongundu; yaAfrican National Congress (ANC) noyoUnited Democratic Front (UDF), oongundu ndhoka tadhii kondjitha okatongotongo moshilongo shoka .

— Pu dhikwe omukanka gewoonkundathana pokati kepangelo nAaluudhe moshilongo, inaapu talwa omavigumbo gawo ngoka ya ningilwa.

Dr. Clark okwa tsikile ta ti, yo peha lyokumona omalunduluko taga ningwa ando mu SA, otaa mono owala iipotha, nomikalo dhilwe dhokukondjitha omulandu gwaa na uyuki. Naambaka otaa yamukulwa nelongitho lyekuni omakwato nomapatelo moondholongo.

Okwa ti wo kutya epangelo lyawo otali tegelele epangelo lya SA li mangulule omuwilikingeleki, dr Allan Boesak osho wo Nelson Mandela ngoka te ehama nokuli, opo oonkundathana pokati kalyo nayo dhi tamekwe.

Aawiliki yomahanganu omanene gatano mu SA, oya yile kuLusaka, Zambia, muSeptemba nuumvo, ya ka kundathane naawiliki yehanganu lya ANC, onakuyiwa yoshilongo. Ehangano ndyoka olya mwenekwa miilonga yalyo okuza 1964. Omukalo nguka gwokupopya naawiliki yehanganu ndyoka ogwa pangulwa noonkondo komupresidende gwoshilongo omusamane P. W. Botha.

Omusamane Botha okwa ti, okukundathana na ANC, "kashi na nando uuwanawa womuntu," (Digest 27.9.1985)

Aantu mboka ya ka kundathane nehanganu ndyoka tali kondjo momithitu dha SA, omupresidende Botha okwe ya tala kutya oyo oshihakanwa shomitoto ndhoka hadhi uvika miifo nomooradio, kutya ANC oye awike te eta po ombili nuukolele mu SA.

Etulomondholongo lya pangulwa muNamibia

Oshifonkundana shomuNamibia The Namibian, osha pangula ekwato netulomondholongo tali ningwa moshilongo shika, pwaa na ekonakono lyohofa. "Oyendji yomoshilongo shino oya hepekwa mondholongo patokolo lyomuntu gumwe awike," osho oshifo sha tumbula mokomenda yasho.

Oshifo oshu ulika komathaneko gokomfi ya Dyk ngoka ga tulwa ngaashingeyi poshitaafula shepangelo lyopakathimbo, kombinga yomakwato taga ningwa moshilongo shika.

Oshifo oshu ulika natango komautho gekotampango lyepangelo lyopakathimbo ngoka tagapopile uuthemba womuntu uuna a kwatwa.

Sebulon Ekanjo

Oveta yokugamena uuyamba waNamibia

Oshigongi shoCongress muAmerika omwedhi gwa zi ko, osha tameke okukundathana oveta ndjoka tayi keelele uuyamba waNamibia waa thipwe mo komahangano gaAmerika nenge kaakwashigwana paugumwe wawo.

Oveta oya zi momathaneko goshilyo shoshigongi shaakaleli po mepangelo lyaAmerika Patricia Schroeder petameko lyaKotoba.

Elalakano lyoveta okuthiminika epangelo lyaAmerika li iuthe koveta yiigwana yuuyuni ndjoka ya zile mompangu yuuyuni mu Den Haag, omumvo 1971, kutya epangelo lya SA muNamibia olya hulithilwe po 1966.

Epangelo lyaAmerika osho wo omakwawo agehe gaEuropa oga li ga taamba ko etokolo ndyoka lyompangu yuuyuni. Okangundu kOveta yaNamibia mo VVO, oko ka li ka pewa oonkondo okuninga omauvathano nakehe ngoka a hala okudhika ongeshefa muNamibia, ihe etokolo olya kala ashike moohapu nopombapila.

Oraata yaNamibia oya dhikilwe omumvo 1967 okulela Namibia, konima SA sho a kuthwa oonkondo okulela iigwana yaamuka.

Oveta otayi indike pwaa kale nando gumwe ta konakona evi lyaNamibia, nenge ta kutha mo sha, nenge ta fulu mo, ta halitha mo sha, te shi halitha kiilongo yopondje nenge te shi eta mo, ta telekele mo sha okuninga a shaina okondraka nOraata yeledo lyaNamibia.

Oveta oya kwatelela mo oshitopolwa wo shaMbaye noontuntu dhomefuta momeya gaNamibia.

Ombelewa ompe mOvenduka

Opwa dhikwa Ombelewa ompe mOvenduka nelalakano lyokukwatha mboka ye na ompito onshona momahupilo gonkalamwenyo yawo, opo ya tseye shono

ETSEYITHO!

Aakwashigwa asimanekwa, otamu tseyithilwa nesimaneko ondjugo ompe yomayogelo giikutu pOngwediva pompagiila dhondjila yopokati kaShakati naNgwediva nandjoka yokuya mOvalombola.

Etungo olya tseyika nedhina: ONGWEDIVA EXPRESS DRY CLEANERS. Amuhe otamu taambwa nyanyu niikutu ayihe otayi opalekwa nawa. Ngoka to pumbwa uuyeleele natango, pula kondjukithi:

Ongwediva Express Dry Cleaners
P.O. Box 194 Oshakati, 9000
nenge
Kotelefona 216, Oshakati

ONDJALULAMASIKU 1986 oya holoka.

Aaleshi otaa dhimbuluthwa yi ilandele kuyelee okambo nkaka, opo yaa ka yemate uuna taya ka adha ka pwa po, oshoka itaka ka nyanyangidhwa we. Otaka gu R1-20. O, iinima ya tuka po akwetu!

ye na okuninga uuna ya gwile muupyakadhi.

Ombelewa oya dhikwa po kehangano lyiinima yopashigwana muKhomasdal (Khomasdal Civic Association)

“Elalakano lyetu noprojeke ndjika ompe otwa hala tu gandje uuyeleele kaantu ya tseye shono ye na oku shi ninga uuna omuntu a tidhwa piilonga, e na uudhigu wokumona egumbo, woompumbwe dhegumbo nenge sha shilwe,” osho omukuluntu gwombelewa Vekuii Rukoro a tumbula.

Ombelewa yoprojeke ndjoka ye egululwa petameko lyAguste nuumvo, okwa tiwa wo otayi ka longa mekwatathano nombelewa yOraata yOngeleki muNamibia.

EPULO

Ote pula komagongalo mu tu kwathe, itatu kotha uusiku kongelegeki yoshiveva sho tayi tu hongolola momagongalo getu, aniwa oongelegeki dhetu kadhi na Kalunga, aniwa oku li ashike moomwenyo dhawo.

Unene oomeme mboka ya hokanwa klimbundu otaye tu etele omahongololo, natu ninge ano ngiini tse mbaka yoongelegeki mbali; yevangeli noyaKatoolika, sho taku ti kadhi na Kalunga?

Abraham Martin
Windhoek

EYAMUKULO

Tate Martin, oshitya wa longitha ehongololo ou shi uvite ko ngiini ano? Ongaashi tuu tu shi uvite ko, kutya ogumwe te ku kutha mondjila, e ku fale mepuko? Owa hala u pitikilwe u landule omahongololo?

Ongeleki yeni inayi mu lombwela nale nani shono mu na oku ninga sho hayi mu kumagidha aluhe mu leshe Ombimbela ne mu koleke eitaalo lyeni manga omasiku omawinayi inaage ya? Eps. 119:11 Heb.10:23-24.

Owa ti otamu hongololwa kongelegeki yoshiveva. Ngele owa dhiladhila kutya aantu mboka kaye na eitaalo lyomondjila, ito vulu wo okuya ithana Ongeleki, shila oshimpaga nenge elongo epukithi. Ongeleki oyo ndjoka ashike yi itaala Kalunga He, Kalunga Omwana (Kristus) naKalunga Ombepo Ondjapuki.

Amushanga gwOmukwetu

EINDILO KOSHIGWANA ASHISHE

Hilma Hinananye Simon, muHartapdam, ota indile oshiwana ashishe shi tule omhepo yasho kumwe, sho shi ye meilikano, opo Kalunga e tu file olukeno nohole omolwoilonga hatu i longo medu eli.

“Etu tetekele muukwaaluhe”

Omukulupe Helena Nangombe gwoomvula 84, gwedhina lya tseyika nawa Nelyanene lyaNangombe gwomomukunda Onyaanya mOndonga, okwa mana oondjenda dhe 12.6.85 moshipangelo shepangelo mOshakati muwehame wethimbo ele. Okwa thigiko oyana 7 aatekulu 65 aatekulululwa 20.

“Ileni kungame amuhe hamu longo nomwa lolokithwa, ongame notandi mu pe evululuko,” Mat.11:28 osho a kala ha tumbula.

Okatekulu
Elise Magano Uulumbu

Ondjimbolaleko

Kuku gwetu Helenanene
Ependa lyaMandongo
Nambili gwOmonyanya
Vululukwa nawa
Luhodhi we tu thigile
Ihe otwa nika uthigwa
Tu na tuu emonathano
Pujesus megulu.

Aamandongo nAanyaanya
Nosho wo ookuume ke
Katu shi ngele otatu ka dhimbwa
Omumwameme omuholike
Mashendjo niilonga yoye
Kalunga okwe yi tala
Naamboka wa ninga nayi
Naye ku dhimine po.

Omuwa ongoye lotitha
Luhodhi lwetu ndu
Moyana nosho wo maatekulu
Nosho mookuume ke
Gamena noshikaha shoye
Tala eho lyolukeno

Okatekulu
Esther M. Uulumbu

Epulo kOmukwetu

Komufimanekwa,

Onda hala okupula epulo lange: Omolwashike hano omumati ngeenge oha longo kOushimba, eshi ngoo ta i koshinyanga oku ka nyolifa ohango, omufita ote mu pula ombapila yoshiongi shovanyasha?

Kombinga yaava hava longo mOwambo otava hombola pu Desemba ile pu Novomba nosho tuu eemwedi dikwao, ihava pulwa ofuto ile ombapila yoshiongi, unene tuu ovalongi, ovapangi, nosho tuu? Hano ohandi indile omaongalo a tale po nawa opo.

Absalom Nauyoma Haiduwa
Walvisbaai

OMUKWETU

Oye oshifo shOngeleki Onkwaevangeli paLuther yomOwambokavango.
Ohashi nyanyangidhwa mOshinyanyangidho shOngeleki mOniipa.
Omukuluntu gwoshifo omumbisofi Dr. Kleopas Dumeni,

Amushanga gwoshifo omusita Sebulon Ekandjo

Ondando yOmukwetu muNamibia naSuid-Afrika R 5,00 komumvo.
Palwe muAfrika R 8,00 nokombanda yomafuta R11,00, komumvo. Mondhila R13,00.

Ondando nomambestelo agehe naga tumwe kOmukwetu, Oniipa, R/Bag 2013, Ondangwa, 9000

EV. LUTH. OWAMBOKAVANGO CHURCH PRESS
PRIVATE BAG 2013, ONDANGWA 9000
SWANAMIBIA