



KATHINDI A GALUKA NONKATU YOMUSINDILO GWOMATUNGO

Ku Sebulon Ekandjo

Oomvula ntano muAmerika o-mwiilongi Kuutumbeni Benhard Kathindi, odhe mu etele iiyimati ya simana tayi ka liwa kOngeleki ye nenge koshigwana nokuli. Kathindi omuvalelwamo gwotango mOngeleki ya ELOCN-ELOC ngoka i ilongele onkatu yopombanda lela B.Arch. moshilonga shokusinda omatungo.

“Kandi shi omutungi ngame, oshilonga shandje okuthaneka owala nokusindila mboka ye na uunongo wokutungu,” osho a yelithile OMUKWETU eyooloko lyiilonga mbyoka yopaali hayi vulu okuvundakanithwa mumwe nuupu.

Opulana yetungo ndyoka e li sindi oku mu pititha mekonakono lye lya hugunina, olya li ethaneko lyetungo lyoshihondjelo shOngeleki, pOniipa.

Metungo ndyoka tali pula uunene wehala lyombinempadhi konyala 24,000, otali kwatelele mo wo iikandjolonge iikwawo itano. Kape na uuyeleele manga ngele Elelongeleki otali ka longitha ethano ndyoka li li ngaashi li li, nenge otali ka shonopekwa.

Kathindi okwa kala e shi shi nale manga e li keilongo lye kutya ongeleki oyi na ompumbwe onene yetungo tali opalele iilonga yokuhondja. Omumvo 1983, okwiile kuNamibia moshitopolwa sheilongo lyawo shoka hashi



Omusindi gwomatungo Kuutumbeni B. Kathindi

Tala kep. 6

AGUSTE 30, 1985

OMUFITA WOVANAILONGA MOUSHIMBA, MAX A TALELA PO OVAWAMBO KONHUNHU YAICHABOE



Ontuntu yaIchaboe ya ya mefuta. Aaniilonga oye li mpoka ya tegelela omeya niikulya. Owato ndjoka oyo hayi longithwa pokati kondjete nombautu.

Ichaboe onhunhu i li koumbanganhuninginino, okudja petulilo laLindili eemaila 23 mefuta. Okudja peedula 1843-1848 onhunhu ei Ichaboe oya yambapalekwa keenduba domahaufu, oushosho woudila, ookakwaya (Pikkewyne naPelikane).

Pefimbo leedula odo da tetekela ponhunhu ei opa ndubala eeskepa daEngland di dule 300. Okudja 1847 Ehangano hali ifanwa A and E de Pass, ola shaina eudafano nepangelo laKaapa olo li kale tali tutu mo oupuna ou. Ole shi ninga fiyo 1867.

Okudja pefimbo olo epangelo laKaapa la nangala eenhunhu adishe fiyo Ombaye. Omudo keshe ovanailonga Ovawambo ohava tambulwa moilonga ei, nefimbo loilonga olo Mai fiyo Septemba.



Aamati methano ndika otaa monika taa tutu ooshako taa fala kondjete.



Oondhila dhooPelikane ndhoka tadhi gandja uuho (Gwano) kontuntu.

Efiku eti 2Juli 1985 onda mona omaindilo a dja kovamati vetu ovo va longa konhunhu, opo va talelwepo neendjovo daKalunga. Ova li 219. Onda ninga eindilo kumwene wombautu omushamane Joao de Olim ndi mone omhito mombautu yaye. Omushamane ou Omuputu okwa itavela tu ye pamwe naye novayakuli yaye.

Ondjila oya pula eevili nhano. Okudja 5vm 9vm otwa fika konhunhu novamati ova hangika va teelega ombautu, osheshi efiku la tetekela ombautu inai mona omhito okukanghama.

Efiku la tetekela efuta ola li la pindja noinava dula okulonga sha. Ombautu okwa li i na okupiluka nokushuna pehe na oilonga yasha yokulongela eeshako.

Ndele efiku la shikula mokufika kwombautu efuta ola hovela okulota. Ovamati ova helula omeva okunwa noikulya. Ova li ve udite ehafo eshi mokati kovanambautu mwa li omufita.

Otwa pewa eeminute dinini okutukula oufo voshipalanyolo Ondjila yefyo noyomwenyo. Ovamati ongashi eengobe da fya enota nondjala, opa li okafilu kenyenye, unene kwaavo ve shii okulesha.

Eshi aveshe tava leshe mo motraktaate, ondjovo ya talaleka eemwenyo davo. Ova indila ndi fyaale puvo ndele oveta inai shi pitika.

Vahapu ova landa Elongo loukriste ova tuma opo va tuminwe Eembibeli nOmaimbilo.

Diva okwa li ve na okuya momusholondodo nakeshe umwe a humbata oshako komapepe yeekilo 110kg, e i twale pondjete. Ekutu la tya ngaha tali kulukifilwa mewato lendini lakula newato eli tali twala kombautu oyo i li mondowi yefuta.

Osho ngaha fiyo ombautu ya tambula omuvalu womakutu 1,200 neendoloma 20 doku ka tala omeva notai i medimo londjila yokushuna koshilando.

Opo nge ya fika komunghulo, oushosho tau londekwa moikoto yeshina notau tumwa kuKaapa oko ku na ombelewa nofabulika ya kula. Omo hau telekwa u longwe oipeleki.

Ovamati otava longo okudja 8vm-4vm komatango. Ope na eenhunhu nhatu mudo omo hava ongele momudo eeshako doushosho 44,000.

Tala kep. 8

PAULUS

Otwa tseya Paulus, omuyapostoli omunene gwaapagani. Mokati kaakriste okwa tseyika wo nawa Paulus omuyapostoli nenge omuyapuki. Ihe osho oshidhigu okutseya omulumentu nguka muupersona we.

Otwa tseya iilonga ye nelongo lye, ihe onkene tuu opu na natango epulo lya pumbwa eyamukulo, kutya ye mwene olye naanaa? Mokapopiwa hano onda hala tu ngungumanekeni omadhiladhilo getu okathimbo, tse tu konakoneni pamwe noovelise dhontumba, kutya Paulus olye.

Otwa koneka kutya Paulus ye mwene okwa valwa ngaa pomathimbo gokuvalwa kwaKristus, a valelwa mokalando Tarso (Iil.22:3;9:11; Rom. 11:1; Iil.21:39) moshitembukilwalongo shAaroma, Kilikia muAsia Eshona.

Kilikia otashi adhikwa kuumbugantu waKapadokia naLikonina, kuuzilo washo oku na Syria nokuuninginino oPamfilia, kuumbugantu efuta lyopokati.

Aakalimo yonale moshilando shoka Aaheti nomihoko dhoombinzimbali dhAakwasem. Pethimbo lyaAlexander omunene, omwe ya Aagreka nopomimvo 64 K. i. Aaroma oya tembukile mo.

Pethimbo lyelelo lyAaselukide, Aajuuda oyendji oya li ya tembukile wo kuKilikia. Oto dhimbukukwa oya li nomukaleli po gwa wo muJerusalem petameko lyaStefanus. Iil.6:9. Osha fa ukriste owa yi kuKilikia okupitila muAntiokia. Iil. 15:23;Gal.1:21.

Paulus okwa putukila ngaa muTarso (Tarsus), oshilandopangelo shaKilikia, oshilando sha li sha tseyika sheputuko lyopaipindi nosha li ngaa sha simana. Iil.12:39.

Tarso kasha li owala sha simana omowliipindi, ihe okwo wo kwa kala oosikola dhuufilosofi waAastoa. Pamwe nasho omwa li wo eputuko lyompagani, nokape na malimbililo, omwa li wo okwaaputuka.

Paulus mwene okwa valwa Omujuda, kAajuda yomehalakano, aatembukili muKilikia. Oye ogwomezimo lyaBenjamin. Fil.3:5, ihe okwa li wo Omuruma kevalo. Iil.22:25. Edhina lye pashiHeber olyo Schaul, pashiGreka Saulos. Nolupe lwedhina Paulus olwo olwopashiLatina, tali ti omushushuka.

Mokulesha omuntu oto mono wo kutya Paulus okwa li wo ngiika nezimo enene nolya simana. MuRoma aakwanezimo lye oya li Andronikus naJunias, "va simana mokati kaayapostoli." noyo nokuli ya li yi itedhulula tango kuye: Rom.16:7,11

MuIil.23:16 Paulus ota tumbula mo omumati omutekulu gwe, omuna gwamumwayina omukiintu, ngoka pakudhiladhila a li a kala nayina muJerusalem.

Otu shi shi mokukala muTarso, Paulus okwiilongo okupopya elaka lyOshigreka ngaashi Aajuda yalwe wo yomehalakano ye shi ningi.

Elalakano ndika olyo lya li lyopaputudho pethimbo lyawo, okuza ngaa kepangelo lyomukesari Alexander sigo opethimbo lyopetameko lyelelo lyAaroma manga Oshilatina inaashi mona ehala lyotango. Elaka lyOshigreka olye mu kwatha wo komeho mevitho lyevaangeli, oshoka olyo lya li hali popiwa aluhe muuyuni wawo.

Ngaashi aanona ayehe aamati Aajuda, osha yela kutya Paulus wo okwa li a yi pamwe nahe mosinagoga momalongelokalunga muTarso. Omo moka u uvu tango elesho lyohapu yEtestamendi Ekulu.

Ngaashi he a li gwomoshimpaga shAafarisayi, osho wo okwa si oshimpwiyu omwana a putudhilwe ye a longwe elongoitaalo lyawo, pamakotalongo gAafarisayi, naanaa ngaashi Aajuda yalwe yomehalakano ya ningi.

Paulus okwa li wo a tumwa kuJerusalem a longwe oompango nomikalo dhelongelokalunga lyoshiJuda mosikola yOmurabi a simana Gamaliel (Omunongoraamata) Iil.22:3

Omadhiladhilo ngoka ga fala mpqno opo a ka longwe kuJerusalem, otaga holola kutya ngiika he nonando a li Omujuda gwomehalakano, kakwa li a hokwa ombepo yuujuda mboka womehalakano.

Shoka otashi monika wo uuna Paulus ti itangele uujuda we okwa longitha iitya "Omuheberi gwomAaheberi" Fil.3:5; 2Kor.11:22. Paulus kee na ombinzi ya vundakana, osho wo kakwa li e na evundakano melongo lyawo lyuufarisayi.

Pethimbo lyokudhipagwa kwaStefanus nomamanya, Paulus okwa li e li pomuthika gwa simana nopethimbo ndyoka okwa adhikwa i inekelwa oshilonga shokuhepeka aakriste muJerusalem sigo okiilongo nokuli. Iil.9:1;22:5.

Paitya ye mwene mu Fil.3:4-7, omuntu oto shi tala, kutya okwa adhikwa e li popepilela nokweegulula osheelo shesimano, a simanekwe kaasaseri aawiliki yelongelokalunga lyawo, naye mwene ota tumbula kutya okwa li a panda omahepeko gaakriste. Iil.8:1.

Ngaashi uumati uukwawo Uujuda mu Jerusalem nokiilongo wa li u na okwiilonga

oshilonga shontumba shokomake, Paulus wo okwa li omutungu gwiiyata yoothaila pashilonga she shokomake. Iil.18:3.

Oshilonga shokuhepeka okwa li te shi longo u udha uupyundjahi, noka li owala a dhina Mesias gwaakriste, a aalelwa komushigakano, ihe aakriste okwa li wo e ya tala oshiponga papangelo, onke okwe ke ya kongolola sigo okuDamasko ya ka pangulwe koshigongi shaakuluntu.

Otaku talwa kutya mondjila yokuDamasko omumvo 32 K. a. Paulus okwi iholelwa ombaadhilila moshanga shomutenya kuJesus mwene, Iil. 26:13 nokonima yeihololo ndika, Paulus okwi itedhulula a yi muDamasko pomulongwa gwaJesus, omukriste Ananias, nokwiishashitha. Iil.9:17-18 Paulus okwa ningi onzapo yokuhokolola Jesus moosinagoga dhAajuda.

Ehokololo lyeitedhululo lye olya hokololwa lutatu; sho ye mwene te li hokolola muDamasko. Iil.9:3-22; sho te li hokololele Aajuda, Iil.22:1-16 naasho te li hokololele aaleli Festus naAgripa. Iil.26:1-20.

Osho wo moontumwafo dhe ehokololo ndyoka okwe li ulike oshilongahenda shaKalunga. 1Kor.9:1,16;15:8-10; Gal.1:12-16 na Efes.3:1-8.

Omolvomathiminiko, Paulus okwa yi kuArabia (osha fa omukunda kuuzilo waDamasko).

Omumvo 33 K.a. Paulus okwa galukile ishewe kuDamasko. Omumvo 35 K.a. okwa zi ko a ye kuJerusalem opo a ka monathane noongudhi dhegongalo lyaJerusalem. Iil.9:26; Gal.1:17-18 Paulus okwa kala puPetrus naJakob omasiku 15.

Manga a li motempeli muJerusalem, Paulus okwa mono ishewe emoniko noshipango a fale evaangeli kaapagani. Iil. 22:17-21 nokonima yemoniko ndika, Paulus okwa shuna kuTarso (Kilikia).

Omumvo 43 K.a. Barnabas okwa ka konga Paulus kuTarso nokwe mu fala kuAntiokia muSyria, megongalo moka Paulus a ka longa Iil.11:22-26. Omegongalo ndika a kala ha zi sho ta yi moondjenda dhetumo.

Oondjendatumo dhaPaulus

1. Olweendotumo lwotango muAsia Eshona olwa li pomimvo 47-49 K.a. Iil.13:4-14.

Okwa yile wo kuJerusalem koshigongi shaayapostoli Iil.15:2-31

2. Olweendo olutiyali muAsia Eshona, Makedonia naKorinto opomimvo 50-53; Iil.15:36;18:22 (oyo naSilas). MuListra, Paulus oya tsakanene nomugundjuka Timoteus Iil.16:1-3. MuKorinto a kala

ONDJOKONONA YOSHILONGA SHOVANYASHA VA ELOC PAIFE ELCN (ELOC)

Filippus Nakanwe

EHANGANO: Ola hovela modulá 1961 mEngela, Oukwanyama. Oshoongalele shotete omo sha hovela, osho shokomudo.

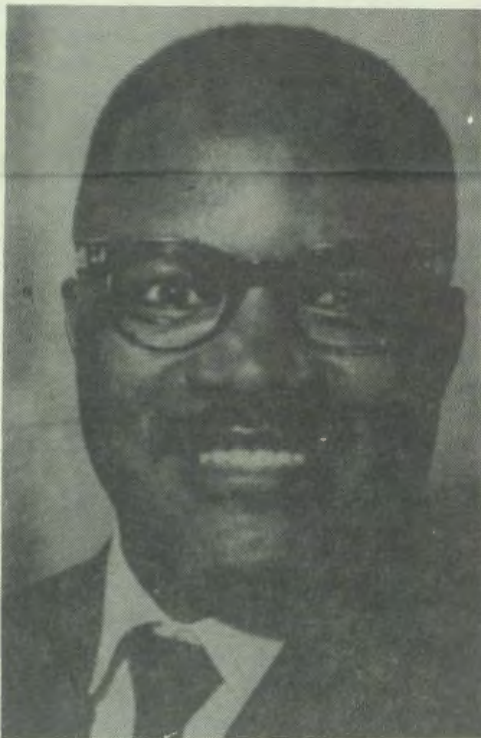
1962 Ova ongala mEngela.

1963 Ova ongala vali mEngela.

Pefimbo opo osha li ngo oukumwe wovanyasha, ndele kasha li naanaa sha ninga ehanganano lovanyasha.

1964 Ova ongala muElim, Uukwambi, mo omo nee kwa ningwa etokolo kutya oshinima nashi ninga ehanganano lovanyasha, nova indila Epangelongelesi li shi koleke.

Omuwiliki weenghundafana edi oye omuhongi Erkki Heinonen, pamwe novakwao ovo handi dimbuluka; Paulus Andreas, Kleopas Dumeni, Jason Amakutuwa nosht.



**Omusita gwtango gwaagundjuka
K. Dumeni**

1965 Ova ongala mOshitayi mOndonga.

1966 omEndola mOukwanyama

1976 omOnakayale, Ombalantu

1968 omuNkurenkuru, Okavango

1970 omOngwediva, Oukwanyama.

1971 omOkahao, Ongandjera.

1972 omOnyaanya, Ondonga

1973 omEngela, Oukwanyama

1974 omOtsandi, Uukwaluudhi

1975 omOngwediva, Oukwanyama

1976 omOnayena, Ondonga

1977 omuElim, Uukwambi

1978 omEngela, Oukwanyama.
1979 omOngwediva, Oukwanyama
1980 omOngwediva, Oukwanyama
1981 omOngwediva, Oukwanyama
1982 omOngwediva, Oukwanyama
1983 omOngwediva, Oukwanyama
1984 omuElim, Uukwambi
1985 Otava ka ongala mEngela, Oukwanyama.

Ovafita vovanyasha muELOC

1. Kleopas Dumeni 1962-1972
2. Heikki Panduleni Uushona (+) 1973-1977
3. Josafat Kashindi Shanghala 1978-1982
4. Josef Avia 1983-

Ovaevangeliste vovanyasha moita-ingeleki.

1. (a) Werner Shangheta 1962-1968, Oukwanyama
1. (b) Tomas Shivute 1962-1977 Ouninginino
1. (c) Andreas Kalumbu 1962-?? Ondonga
1. (d) Oiva Sikwaya ?? Kavango
2. (a) Immanuel Mungungu 1969-1972 Oukwanyama
2. (b) Teofilus Amwaama 1975-1980, Ouninginino
2. (c) Elifas Kaukolwa ?? Ondonga
2. (d) ?? ?? Kavango
3. (a) Lukas Neumbo 1973-1975 Oukwanyama
3. (b) Fridriki Kondjela ?? Ondonga
3. (c) T. Taanyanda 1981-1985, Ouninginino
3. (d) ?? ?? Kavango
4. (a) Filippus Nakanwe 1976-1985, Oukwanyama
Nodula 1982-1983, okwa yakula yo mOmbelewa yOvanyasha aveshe va ELOC manga pa li inape uya omufita. Tala No. 4
4. (b) Gottlieb Marrya 1981-1985, Ondonga
4. (c) Elisa Ndume 1982-1985, Oushima

Ovafita vovanyasha moitaingeleki:

- 1.1. H. Dengeinge, Oukwanyama
- 1.2. Herman Shongolo, Ondonga
- 1.3. Mikka Ilonga (+) Ouninginino
- 1.4. Oiva Sikwaya, Okavango
- 2.1. Elia Haipinge, Oukwanyama
- 2.2. Titus Ngula, Ondonga
- 2.3. Josafat Shanghala, Ouninginino
- 2.4. Johannes Hambyuka, Okavango
- 3.1. Immanuel Mungungu 1976-1980
Oye a manufulula ko efimbo la Onesmus Shanyengange 1984-1985
- 3.2. Salom Elago, Ondonga
- 3.3. Natan Kapofi, Ouninginino
- 3.4. Ludvig (Kamboloto) Ausiku, Okavango
- 4.3. Onesmus Shanyengange, 1981-1983, Oukwanyama
- 4.2. Filippus Henok, Ondonga
- 4.3. Joel Halweendo 1985- Ouninginino
- 4.4. Johannes Hambyuka, Okavango
- 5.1. Nikodemus Ntinda, Ondonga

Ovayakuli vamwe mounonaongalo nofikola yOshoondaxa:

1. H. Mp. Tshilongo 2. Aune Shilongo

Kepandja tali landula



Omusita O. Sikwaya



Omuyevangeliste E. Ndume



Omusita I. Mungungu

Dha za kep. 4

3. H. Shivute 4 A. Shanyengange (+)
5. Eva-Liisa Amadhila (Shitundeni)

**OIPANYOLO YONGELEKI
MEEDULA 1970-1985 OYO
KOSHI YEDILADILO LAYO
OYOONGALELE YA KALA
HAYI ONGALA.**

1970 "Etegameni lyiigwana okristus"
1971 "Kaleni ovayapuki" 1Petr.1:16
1972 "Omwene kwafa okuhaitavela
kwange" Mark.9:24

1973 "Ombili yaKalunga" Filp.4:7
1974 "Lifa eedi dange" Joh.21:17
1975 "Ohole oinene i dule aishe"
1Kor.13:13
1976 "Tate ehala loye nali wanifwe"
Luk.22:42
1977 "Eendjovo kaKristus nadi kale
di yadi munye" Kol.3:16a
1978 "Ekwafo lange otali di kOmwene"

Ps.121:2

1979 "Ofye ovana vaKalunga
mokwiitavela Kristus" Gal.3:26.
1980 "Nye mu va longe okudiinina
....."Mat.28:20
1981 "Eitavelo olo elineekelo la kola"
Hebr.11:1a
1982 "Kalunga oye oshiholameno shetu"
Ps.46:2
1983 "Ame neumbo lange, otwa hala
okulongela Omwene"
Josua.24:15
1984 "Omwene lundulula okukata
kwetu" Ps.126:4
1985 "Jesus Kristus oye ombili yetu"
Ef.2:14



**Meme H. Tsilongo ngoka a longa oshindji
mOsikola yOsoondaha mOngeleki**

**Osho sha ningwa po mokati
kovalihongi ovakriste
nomafaneko komesho.**

**Ehokololo loilonga yomokati
kovalihongi ovakriste moshi-
tukulwa shOwambo ola pwili-
kinwa moshoongalele shova-
lihongi ve dule 6000 eshi sha
ongalele mOngwediva
petameko lohani ei.**

Ehokololo ola kwatelela mo oilonga
yetatamudo 1984 fiyo etatamudo 1985.
Ohashi ningwa omudo keshe.

Ehepu ola ti Eeseke heyali domEeseke
nhanhonane da li mefaneko letalelo po oda
talelwa po. Owambo aishe oi na eefikola
doludi eli di li popepi no 20.

Eenghundafana dopaxungomwenyo, oipopiwa
ya kuma onghalamwenyo yovanyasha, efatululo
longushu yehangano lovalihongi oyo oinima
Munyika a ulika mehokololo laye, kutya ohai
ningwa momatalelo po.

Oku na yo ikwao hai ningwa mo ngaashi
eenghundafana nomukulunhu wofikola oyo tai
talelwa po apa sha dulika, eenghundafana
newilikongudu laapo, omapukululo mediinino
loiniwe yehangano nelongelokalunga louvalelo
uyapuki opo sha dulika.

Moinina ei omupopi okwa ti kutya oha kongo
yo ekwatafano novafita vopopepi nofikola oyo
tai talelwa po, nokwe va pandula mekwafo lavo
olo have li yandje.

Moshilonga eshi Munyika e shi kala paife
eedula kadi dule nhe eshi a hoololwa, a ninge
omufita wovalihongi, okwa shakeneka onunona
vaninilela meedula, ovo va fiya po epashukilo
lovakulunhu vavo pomaumbo nomomaongalo,
va ya mominghandjo.

"Ounona ava otava hangwa paife meeseke
mokati komakuva a ka nale notava tola ngaha
omanyamukulo komapulo avo kwaavo navo yo
tava pumbwa okukwatwa komhango," osho e
shi holola ngaha mehepu laye.

Omikundu delikufo lomadimo nelongifo
lengabeko loludalo mokati kovanafikola oda
ulikwa yo mehepu eli nonhumbi oinima ei tai
talwa koshiwana nokongeleki.

Mokati komaudjuu, "ope na natango ongudu
inene tai ulike omwenyo notai limatula
naKalunga okwa yeulula natango omhito
yokulonga", osho omufita woshilonga osho a
hepaulula.

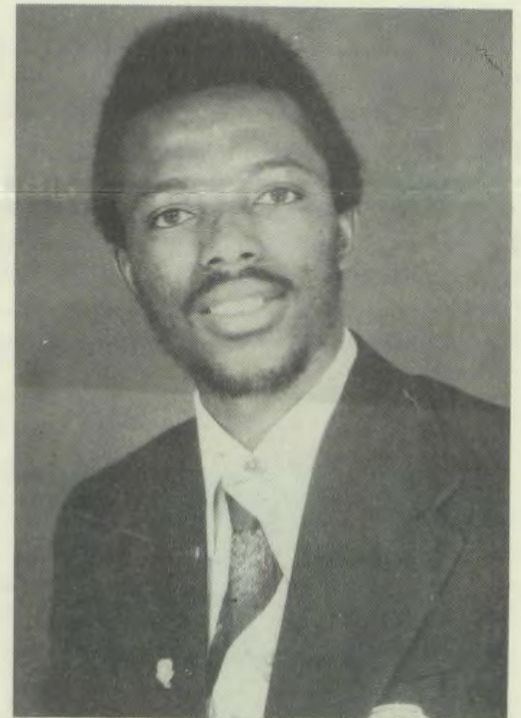
Kakele koilonga ihapu oyo ya ningwa po
mehangano eli, ngaashi okuninga eekersesa
mokati kovawiliki vehangano lovalihongi,
omafaneko mahapu okwa etwa po yo
mehokololo eli, oo a talika kutya otaa ka xumifa
oshilonga eshi komesho shi fike melalakano
lashed.

Ewilikongudu enene lehangano eli ola indilwa
li diladile elifikameno lEhangano lovalihongi
ovakriste muNamibia. Pefimbo eli ehanganoli
li oshitai shEhangano lovalihongi vomu SA.

Okwa pulwa yo ngeenge pe shii okwoongelwa
oimaliwa yokulihongifa nande omunafikola
umwe keefikola dokombada. Ehangano eli ola
kala hali futu omutumwa walo omulongi Titus
Namunyekwa muAngola ou a yapulilwa paife
oufitaongalo muJuni wa dja ko.

Efaneko likwao nalo la fikifwa momatwi
Ewilikongudu noshoongalele shovalihongi
ashishe, ngeenge ehanganoli olo tali kongelwa
natango omufita a mangulukila eyakulo lalo
efimbo alishe.

Omushamane Munyika okwa ti yo kutya
ehanganoli laye oli na oprograma yokudana
omudo wovanyasha pamwe noiwana aishe mou-



**Omuwiliki wEhangano lovalihongi
ovakriste V. Munyika**

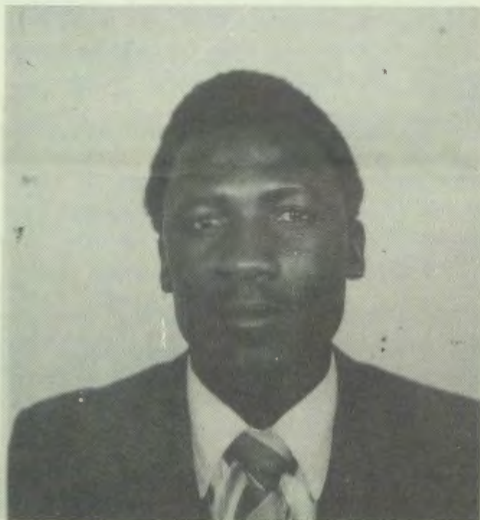
nyuni. Omolwelalakano olo eefikola di lyaafane
popepi ohadi shakene moukumwe nokuninga
po osho tashi va tungu.

Nande ope na omaudjuu, Kalunga ota pa-
ndulwa, ovanyasha vahapu otava ulike
omwenyo, otava hokwa olwiimbo, otava hokwa
oyoongalele yavo, oshilonga oshi na mwene te
shi wilike," osho omufita Munyika a hepaulula
oshilonga shaye.

KATHINDI

Da dja kep. 1

ithanwa, Ekongo lyuuyelele miinima (Reseach).



Omwiilongi F. Amwele

“Ompito ya tya ngeyi oya li ye etele ndje oowino odhindji okutseya ompumbwe yOngeleki noyoshigwana,” osho a ti.

Keyamukulo lyaashono sha kwatelelwa mo melongo lyokusinda omatungo (Architect) Kathindi okwa ulika kiitopolwa iinene itatu.



Omwiilongi I. Dumeni

a) Okutseya iitungitho, evi mpoka etungo tali thikama, ombepo nkene tayi pepe mpoka nosho tuu, (Building Science).

b) Ehistoli lyoshilonga shokusinda nokuthaneka okuza kethimbo lyAagreka manga Kristus inaa valwa (History of Arch).

c) Osho wo omukalo gwokuthaneka nokupulanda, omatungo pethimbo ndika (Designing and Planning).

“Shoka sha hugunina osho tashi kala oshitsa shopokati moka omuntu u na okumona onzapo,” osho a fatulula.

Omugundjuka nguka, Elelongeleki olye mu langeke ngashingeyi a ninge omusindili gwomatungo gooprojeke dhOngeleki, oshilonga shoka sha longwa shito kaatumwa oomvula dha piti.

Kathindi ina tseya we Omuluudhe gulwe e na onkatu moshilonga shoka, kakele komusamane Nico Bissinger, mOvenduka, ngoka a sindi etungo lyondjugo yomambo (Library) mOniipa ndyoka masiku li li pokulongithwa.

Gwomimvo 28 adhike omukwanegongalo lyaLombe, Kathindi, iimaliwa yokwiilonga okwe yi pelwe kOngongahangano yAakwaluther muuyuni (LWF) ye ehala lyokwiilonga te li pewa muAmerika mounivesity yaHoward, Washington DC.

Oye omutitatu gwaailongi ooyakwawo ya langekwa kElelongeleki miikandjolongwa yilwe muule wiiwike ya piti, nomutine ngoka a tegelela naye wo a langekwe mbala.

Omwedhi gwa zi ko, Immanuel Dumeni okwa thikile muNamibia konima yeilongo lye muAmerika konyala omimvo ntano. Naye wo hwiya okwa mono o B.A. mEhistoli nosho wo muupolotika (History and Political Science).

Elelongeleki olye mu langeke omulongi mOsikola yOkombanda yOngeleki mOshigambo. Onzapo yelongo okwe yi ilongele konima sho a mono onkatu ye.

Omusamane Filippus Amwele okwa langekwa kElelongeleki lyomwedhi nguka a kale omunamalusheno mu ELCN. Oshilonga shoka Amwele okwe

shi ilongele oomvula mbali muNdowishilanda lyuuninginino.

Omwiilongi Penda Kiiyala okwa thiki omasiku ngaka sho a mana eilongo lye mounivesity ya Old Dominion, Norfolk, Virginia muAmerika konima yoomvula ntano. Nonkatu yo B.A. mEhistoli nomuupolotika (History and Political Science), ota tegelele Ongeleki ye mpoka tayi mu langeke.

Ewiliko miinima yopashigwana (Public Administration,) ontseyo yekonomi momudhingoloko nopalwe (Domestic and international Economy) oyo iinima yimwepo mbyoka Kiiyala a konakona manga inaa pewa onkatu.

Manga inaa kutha iilongwa mbyoka, okwa tameke tango noshilongwa shiikwamiti (Chemistry) shoka nasho wo a ya kokule mekonakono lyasho.

Aailongi yetu ayehe, kakele kaAmwele, oya pewa iimaliwa kOngongahangano yAakwaluther notatu zimine mpoka ondilo yuumwayithana wooitaali



Omwiilongi Penda Kiiyala

muuyuni auhe. Tate Amwele iimaliwa yeilongo okwe yi pewa kOngeleki yimwe muNdowishilanda, VELKD.

Eso

Omusamane Petrus Inane okwa mana oondjenda 24.6.1985 moshipangelo shaNandjokwe sho a alukwa esiku limwe alike. Omusamane Petrus okwa li momukunda Onambeke mOnyaanya, mOndonga. Okwa thigako omukulukadhi gwe noyana 7 aatekulu 14.

**Hekelekweni kEimbi:500
Naemi Tangeni S. Imene**

Elelo lyaMbalantu lyu ulike oshiholelwa meputudho lyoosikola

Elelo lyoshilongo shaMbalantu oye shi pondola okutidha uunona auhe mboka wa kala hau gongalele pomalambo giyekelwahi, pookamba dhaakwiita osho wo puundingosho.

Nelenga ekuluntu moshilongo shoka Oswil Mukulu, oye mwenemwene e u fala koosikola dhi ili nodhi ili, u kale mosikola. Okwa gandja ooveta kaalongi ngele uunona mboka tau iyaka po koosikola nenge tau ningi sha shilwe sha puka posikola u lopotwe mbala kuye.

Onkatu ontiyali omuleli nguka e yi ningi, okwa topaatopitha ye mwene ooveta ndhoka wo ye mwenemwene e dhi taandelitha koosikola dhetu. Otu na oosikola 28 koombinga adhihe dhoshilongo sigo omomakuti.

Tatekulu Mukulu oye mwene a kutha ompadhi a fale ooveta dhe koosikola ndhoka. Tango okwa popitha aalongi ayehe, opo ihe konima okwa popitha aalongi pamwe naanona yawo.

Oshikalimo shomooveta ndhoka pafupi:

- Aanona yaa faule osikola pwaa na etompelo lya yela.
- Aanona yaa adhe wo osikola ya hita.
- Aanona yaa ze posikola manga osikola inaayi pita mo.
- Aalongi ya thike posikola pethimbo.
- Aanona yaa dhane we uudeyisa posikola.
- Omalugodhi ga hule koosikola.
- Elongo li dhigininwe nelalakano li adhikwe nosho tuu.

Oosikola dhetu mOmbalantu 28 odhi na aalongwa 10,439. Okanona kehe oka pewa peke lyako kene ombapila ndjoka yomautho ke yi faalele aakuluntu yako kegumbo. Omatho ngoka oge na sha nelongo. Omuntu owa hala ngaa ne u tye, ando euvoko li na ondilo li thike mpono, oli kale wo moshilongo kehe mOwambo yetu.

Inapu pita ethimbo ele nuumvo sho mOmbalantu mwa li mwa ningwa ehogololo lyomuleli omupe, mundyoka Tatekulu O. Mukulu a pitile mo mulyo nomawi ogendji ge vule gayakwawo ayehe nando ga tulwe kumwe.

Konima yehogololo lye, Radio Owambo okwiile oku mu pula nkenc u uvite naashoka a hala a ka ninge moshilongo. Mboka twa li pOradio sho tayi popi, otu uva etumbulo lye limwe lyomomayamukulo e ga gandjele sho a tile:

“Sho nda hogololwa, ondi lwete aantu oya hogolola ndje, ya hala ndi longe nondi ka longe moshigwana nonda hala oku shi ninga pamwe nekwatho noneyambidhidho lyawo.”

Omatumbulo ngoka omupopi okwe ga endulula olwindji, sigo omuntu she ku pe lela euvoko kutya, omupangeli ngoka okwa hala

okwiiyambela oshigwana.

Olwindji ope na eyooloko pokati kokupopya nokulonga. Okupopya akuke oku li wo oshinima oshipu, ihe okulonga okudhigu. Tatekulu Mukulu gwaAkwenye, ina popya ashike ngaashi oyendji haa shi ningi.

Omukulu gwonale okwa tile: “Waa pandula noyaka.” Tse yokoshitopolwa shelongo inatu hala okukala nongunga ndjoka, otwa pandula kepupalekelo lyoshilonga twe li ningilwa.

Andreas Shingenge

Ezaleko lyelapi lyowalutali moBrakwater:

Momasiku 31.3.1985 ongeleka yetu yOshitopolwa shaVenduka moBrakwater, oya li yi na ezaleko lyelapi kowalutali. Oshituthi osha li sha longekidhwa, kaayakuli yegongalo ndyoka yaali Sakeus Nangombe najonas Ndapiita Kambidhi.

Egongalo ndika ohali yakula konyala aakriste ye thike po 200. Naamboka haya yakulwa paulalelo uyapuki oye thike 131 komusita Gerson Max nomuyevangeliste Ndimwedi, okuza omumvo 1982-1983.

Momumvo 1983 Omuyevangeliste Ndimwedi okwa tembukile kOwambo. Nokwa pingewa po komuyevangeliste Elise Ndume, ngoka e li nokuli omuyakuli gwaagundjuka mUushimba.

Omusita G. Max sho Elelongeleki lye mu tembudhile koLiindili 1Juli 1984, omwa langekwa ishewe omusita Oiva Shikwaya, ngoka ta yakula oshitopolwa shoshitayi shopokati shaVenduka.

Omanga elongelokalunga inaali pwa okuningwa omusita Oiva Sikwaya okwa hokolola nkene

elandulathano tali ka enda. Okwa ningi elongelokalunga, opo ihe Elise Ndume a ningi euvitho. Omuyakuli gwegongalo Nangombe pamwe naOiva oya yala elapi kowalutali. Oshituthi osha tamekwa komuyakuli Jonas Nd. Kambidhi a lesa Eps.144:1-5.

Oondjimbo odho dha li tadhi towaleke oshituthi. Aagundjuka yomegumbo sho ya kundu aayenda, omukuluntugongalo Sakeus a lesa ondjokonona ayihe nkene a totopo egongalo, Brakwater. Esiku ndyoka aantu 369 kaya li taa gwana mo mOngeleka ndjoka.

Konalenale Brakwater ehala ndyoka aantu haya tila okweenda po, ihe ngashingeyi, Ovenduka ayihe oya hala ashike okuuva omambo moBrakwater. Ombepo yaKalunga oya longo mo iilonga iikumithi. Oosikola omo dhi li eshasho ekoleko nekuthilo.

Oshituthi sho sha pu, omukuntugongalo Kambidhi okwa pandula aayenda yoshituthi. Longekidha evaangeli pehala lyiilonga yeni mpoka mu li, opo aana yaKalunga ya yakulwe. Uuna Omuwa te ke ya ote tu pula oshitalenti shetu.

Jonas Nd. Kambidhi

Nandi kwafwe ouyelele moshinima eshi

Mbela ovatumwa votete eshi ve uya mOwambo ova hangamo nale cengeleki ngaashi Rooms Katoliek naAnglikana, ile adishe ovo ngoo ve di eta mo?

Gabriel Natangwe Lukeiko Ekandjo
Upumako

EYAMUKULO

Ongeleki ya ELOC oya hololwa po kovatumwa Ovasoomi eshi ve ile 1870.

YaKatolika kaRooma oya hololwa po keudifo lovatumwa Ovandowishi eshi ve ile 1924 mOwambo.

Osho yo yaAnglikan oya hololwa po kovatumwa Ovaingilisha, eshi ve ile 1924 mOwambo lwaapo.

Amushanga wOMUKWETU



Ongundu yaKatutura tayi gandja ekundo lyayo moshituthi

EMBO LYA PIRA MUNONA KAPISI EMBO Ruk.18:15-17

Nani munona kapisi kontunda zevhu kwelike ga kara nohepero. Nani nye momuzera wononkango daHomba mwene tatu gwana mu uhungami noumbangi wokuzera asi, munona nani untungi wendi wenewene meguru 16 b.

Sina tu zerere nye ose wokontunda zevhu asi munona nani sininke somulyo. Sirugana sembo nasinye somunona. Mukurona nyovelike kapi to dike embo.

Kutundilira momunkanzo; membo; mombara; modoropa; mosirongo dongoro mouzuni mudima munona ga kara mo. Nkenye apa pa kara epongo lyovantu munona ga kara po. Nkenye apa pa kara mbunga zonzi munona ga kara po.

Mukare monosure, monokoshuis, monosekondere ndi momapongero (nombungakriste) getu nomonosingera si moomu ku yi tumbwidira morwa omunona ga kara mo.

Nani munona ige uzuni, nani munona ige untungi, kاپisi wapa pevhu pwelike, nye nouwokwaKarunga 11.17. Munona ige muntu. Ntundi kara nomunona, ntundi mu fana ntani...

"Nani" ogu ta zeda kamwe komotunona otu, ga sira (wapera) ku mu mangera emumanya mosingo zendi noku mu zungumina memukuru (tondo) futa" MBUDI ZONGWA imo zina ku ku rondora ove gorutandu rovana wovakweneni. Ruk.17:1-2

Asi "Kupira nondja dange tadi lipepere; kupira munona emona lyange tali lihepere, nondunge dange; matedo gange nayinye eyi na weka tayi lihepere. Yimo a dimbi muKavango.

Waha pesa gumwe nokamoho, nye navenye vapesa kalyo. Epangero lyaha tara munona kapisi epangero. Embo lya pira munona kapisi embo.

J. K. Haiyambo
(Rundu)

Aagundjuka nomumvo gwawo

Tango ikalela kokule nuuwinayi ngu gwanithe uuwanawa e to kala mo aluhe, oshoka Omuwa ehole aayuuki.

Aagundjuka hololeni oonkondo dheni mpoka dhi thike momumvo gweni. Ulu-kila aanona oshiholelwa oshiwana moku ku landula. Longela Kalunga, mu imbila wa mana mo.

Nando adhikwa kaanandumbo nangoye ino tila sha, oshoka oye te ku hupitha momwigo gwomuyuli gwoondhila nokoshiponga shelega Ps.91:3

Otu li muuyuni kau na ombili, tatu hepekwa, ihe owa tegelelwa u galikanene aatondi yoye. Luk.23:34 Rom.12:19-21.

Ohole nayi kale yaa na iifundja, tileni uuwinayi, dhameni uuwanawa. Yapulilweni moshili, oshoka oohapu dhOmuwa odho oshili. Ongaashi Jesus a tumwa muuyuni osho naye te mu tumu muuyuni, mu-pukulule, mu lele, mu uvithe oshili ye, mu longe ohapu yomwenyo hoka inaaku thika evaangeli.

Vulikeni ano kuKalunga, kondjitheni ondeveli oyo notayi mu yi ontuku. Hedheni kuKalunga, oye nota hedha kune. Itheteni iikaha yeni, one aalunde, yelitheni oomwenyo dheni, one yomitima mbali. Jakob.4:7-8. Aanelago oomboka haa dhiginine omahokololo ge nohaye mu kongo nomwenyo aguhe. Yo ihaa longo shono kashi ukile, aawe, ohaa ende nomapola ge. Ps.119:2-3.

Nestor Namangundu

Tem'onyika yoye

Ndi lonyika omunyasha mounyuni
Ndi teme ndi yelete ovakwaunyuni
Ndi yooloke movakavena Kalunga
Ndi minikilwe kondjovo yoye.

Kwafa nge eenghono Jesus wange
Ndi kwate ondjila nde i diinina
Ndi he i tule momeva i diminemo
Ndi minikilwe kondjovo yoye.

Kwafe nge ndi ha ninge omweendaendi
Ndi ye apa handi tumwa po mewiliko loye
Hahalo lange, ndelene ehalo loye
Ndi minikilwe kondjovo yoye.

Povakulunhu vange ovaholike
Va kwafa nge moubanana wange
Nda hafa ndi kale kaxuxwena kuvo
Ndi minikilwe kondjovo yoye.

Oikungulu younyuni ya handuka
Tai dimi omutemo wolamba yange
Okunwa noulunde woludi keshe
Ndjovo minikilwe kondjovo yoye.

Ondjovo yoye nayi kale olamba
yeemhadi dange
Mokweenda kwange apa naapenya
Ndi endifwe kouyelele wayo
Ndjovo minikilwe kondjovo yoye.

Mounyuni kamu na ombili alushe
Elididimiko twa pumbwa alushe
Tali tu dile mondjovo yoye.
Natu minikilwe kondjovo yoye.

Ngenge hatu tale kokule kwinya
Evilimo liwa tali monika
Laai tai xulu ngomatandangole
Natu minikilwe kondjovo yoye.

Jesus hambelelwa ino tu fiya atuke
Omuhekeleki we tu tumina
Nomikemo dihapudihapu te tu ilikanene
Natu minikilwe kondjovo yoye.

Onye oiyuma ya yoololwa mongeleki yetu
Inamu longifa onyasha ngaashi Belsasar
Mepuko lelongifo loiyuma iyapuki
Ondjovo yoye nai ninge olamba yeemhadi deni.

Mwa lesa tuu eshi a kakama meengolo
Mwa uda oshipala shaye sha shituka
Ava haya tale kuye oipala yavo itai....
Ondjovo yaKaluga ouyelele mondjila yeni.

Tu lihumbateni hano nawa mefimbo eli
Okuyol'ovanhu naku fye mongudu yovanyasha
Okufimaneka naku kale oshilalakanenwa
Omolwondjovo ya ninga olamba mondjila yeni.

Keudanekelo omanangeko noupuna taa holoka
Ngaashi Omwene Kalunga ta ti 5 Mos.28:1-14
Kundweni nomwenyo we mu liyandjela 2Kor.6:1418
Omwene lundulula omwenyo wanyasha wetu.

D. Fumalekuu

PAULUS

Dha za kep. 3

oomwedhi 18 nokwa nyola ombilive yotango nontiyali kAatesalonika.

3. Olweendo olutitatu opomimvo 53-57 K.a. Iil.18:23-21 17, unene muEfeso.

- A nyola ombilive kAagalati, yotango nontiyali kAakorinto, nosho wo kAaroma.

- Okwa kwatwa muKesarea (ngiika pomimvo 57-59 K.a.).

- Ondjila ye okuya kuRoma onkwatwa oya hokololwa mIil.25:9-28 MuRoma a kala mo onkwatwa pomimvo 60-61 K.a.

Mokukala kwe mondholongo Paulus okwa nyola oombilive ndhika: kAaefeso; kAakolosa; kuFilemon; kAafilippi; yotango kuTimoteus nokuTitus nontiyali kuTimoteus.

Omumvo 69 K.a. Paulus okwa si. Omathigululwahokololo otaga ti: Okwa tetwa omutse pethimbo lyomukesari Nero.

Set Son Shivute

Onhunhu yaIchaboe

Dha za kep. 2

MuIchaboe ova ongela nokuli paife eeduba deeshako 25,000. Otava hepekwa komhepo yefuta oyo tai eta oudu wonhulo, ombuda, edimo noudu womaulu.

Monhunhu ei Ichaboe nadikwao omo ovanailonga Ovawambo ve li mo, haluhepo ashike lwopalutu ndele omu na oluhepo lopamwenyo yo. Kamu na ekwatafano novanhu ovo ve li kedu, efimbo alishe oilonga kakele nge pe na omukifi.

Ove na odjuulufi okuuda eendjovo daKalunga. Otave lihoololele ovakwateli komesho ve va leshele eendjovo daKalunga. Ohave li longo paumwene oileshwa yekoleko nekufilo, aische onghendabala uuna omumati e udite e na eenghono.

ELOC, dimbulukwa momailikano eemwenyo dovanailonga; oilyo yongeleki yoye odo di li moukololo ve lili noku lili vedu laNamibia.

Gerson Max

OMUWILIKI OYE OMUYAKULI

OKATUKULWA KOTETE

Keshe apa pe na ovanhu ve dule umwe, opa pumbwa omuwiliki, opo a longekide a endife, a kwafe a pukulule, a kwatele komesho ye a wilike ovanhu melinyengo keshe li na sha nokweetifa po sha monghalamwenyo, tashi tungu notashi pupaleke onghalafano.

Paunganeko lomushiti oshiwana keshe mounyuni, nande oshi kale shi li momilemalela meputuko, mepongololo lasho omu na eenhele dovawiliki va yooloka panghatu nopakakololo keshe kopafiloshisho monghalafano.

Eshi osha ningifa onghalamwenyo i kale tai i komesho pamifika da yooloka nope he na elipumomumwe la dja ngeno metumhakanano la etifwa kepuko la dja meunganeko lopeshito.

Komesho ohatu ka uda natango shihapu kombinga yoshinyolwa shomutaleli Abednego Nghifikua eshi te tu fatululile ewiliko nomuwilikwa eshi tashi ti. Oshinyolwa eshi osho okatukulwa kotete koshinyolwa ashishe.

Paxupi nandi tye ashike, okudja ngaho komukomesho wepangelo loshilongo, fiyo okokanona kanini taka wilike vakwao moudano wavo wokufunyauka medu, pokati opo ope na eengudu dovayakuli vahapu ovo yo ve lilile ve na okukala ovawiliki.

Ngeenge taku popiwa "omuwiliki" okwa diladilwa omukomesho keshe moshilonga shonhumba, sha kula ile shinini osho moku shi ninga ta kala mekwatafano novanhu, notave uya kuye okukonga ekwafo, kashi na nee mbudi kutya otave ya okuhakulwa ile okupukululwa, okuyava oufyoona ile okulopota, okutokolwa ile okuhanyenwa, okulanda ile okuladifa, okufuta ile okufendela, okupandula ile okutanguna.

Osha yela nawa kutya, vamwe vomovanyasha voshiwana shetu otava ka ninga yo ovawiliki novayakuli moikandjolonga ya yooloka meyakulo loshiwana shetu.

Omuwiliki okwa pumbwa okukala e na omakwatya onhumba, opo a dule okuhanga oshilalakanenwa shaye. Omawiliko nomayakulo a nghundipala, okwa nyemateka ovanhu vahapu nokwa imba eyokomesho meemhito dihapu mounyuni wetu, naunene moshiwana shetu.

Omuwiliki ke na okukala omunhu keshe, onghee luhapu ohaa hoololwa ile a

tekulilwe oshilonga shaye. Ashike nande ongaha, luhapu oukwatya womunhu wokedalolo, oo unene hau ufa oukwatya womuwiliki ile womuyakuli keshe, nande na kale a hoololwa ile a hongwa nawa.

Onghe hano osha pumbiwa shili, omuwiliki a kale shili omunhu a mona oluhepo nehepuluko, e shii okuhandukila ovanhu fiku sha pumbiwa, noku va pandula fiku ve shi lilongela, e shii oudjuu noupu, a mona nomesho aye, nokwa kuma nomake aye, oinima idjuu noinima ipu yomonghalamwenyo, nokwe lihonga okukala novanhu vomakwatya a yooloka.

Ngeenge owa mono onghenda yokukala omuwiliki, ino litada, lifya ounye. Okukala komesho yovanhu osho omholo kashi fi oufemba. Oko oshinima shokulixupipikilwa, kaku fi oshinima shokulinenepkelwa.

Okukala omukomesho wovanhu, osho oshinima shiwa, ashike osho yo oshiponga, shaashi omunhu luhapu oku na eamo lokulimona a fimana unene, shi dulife pwaashi a fimana shili, nokudimbwa filufilu elalakano loukomesho waye. Rom. 12:4-21).

Okuninga omukomesho, ile "omuwiliki", ngaashi twe shi luka, itashi ti oove omunandunge u dule vakweni, shapu otashi ti ashike oove wa mona onghenda u dule vakweni.

Efimano eli to fimanekwa nalo kovanhu li tambula, ndele ino litala wa fimana unene u dule ovanhu.

Oitwa ei tai shikula apa oimwe ashike yomomakwatya aa e na okukala momuwiliki. Itandi dulu okushanga oinima aische:

1. Omuwiliki na kale e na onhulo ye ina kala e na onhondo.
2. Omuwiliki na kale e na onhodi ye ina kala e na omhelo.
3. Omuwiliki na kale e na omakeko, ndele

4. Omuwiliki na kale omulininipiki ina kala omulinenepeki.
5. Omuwiliki na kale a ngungumana ndele ina kala a otovala.
6. Omuwiliki na kale e na onyati, ndele ina kala e na ekuni.
7. Omuwiliki na kale e na onheni, ndele ina kala e na onome.
8. Omuwiliki na kale e na ondjungu, ndele ina kala e na omhiva.
9. Omuwiliki na kale e na osheeta, ndele ina kala e na eshosha.
10. Omuwiliki na ikiwe kovanhu, ndele na lungame ve he mu ikilile.
11. Omuwiliki na lungamene ovanhu, ndele ina kotokela ovanhu.
12. Omuwiliki na kale ha yolo, ndele ina kala ha yolauka.
13. Omuwiliki na kale ha popi, ndele ina kala omupopyaani.
14. Omuwiliki na yepe omapuko, ndele ine litala e he na omapuko.
15. Omuwiliki na pwilikine olwaambo ndele ina kuta olwaambo.
16. Omuwiliki na kale e na onghoto ye ina kala e na onghone.
17. Omuwiliki na kale e na epamhi, ndele ina kala e na onduki.
18. Omuwiliki na kale ha yavala ye na kale ha yavele.
19. Omuwiliki na kale omunhu wombili, ndele ina kala omunhu wombilixa.
20. Omuwiliki na kale e na oshili, ina kala e na ekonda.
21. Omuwiliki na kale omulididimiki, ndele ina kala omulitangaleki.
22. Omuwiliki na kale e na olune, ndele na lungame olwaamhapati.
23. Omuwiliki na kale omulidiiniki, ndele ina kala omulitangaleki.
24. Omuwiliki na kale e na onghenda, ndele ina kala e na odipi.
25. Omuwiliki ina kala omutengauki, ye ina kala omuhalombwelwa.
26. Omuwiliki na kale ha kalwa, ndele ina kala ha hekwa.
27. Omuwiliki na kale he likundifwa, ndele ina kala ha ngongoshekwa.
28. Omuwiliki na kale omuwiliki, ndele ina ninga omupangalume.

Taku twikilwa

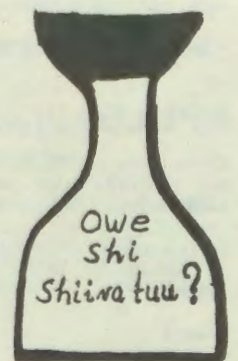
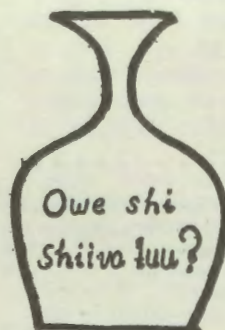
Owe shi shiiva tuu kutya

Paife oto katuka cenghatu mokukonakona, notashi ku twala moule wokushiiva? Hano omhito oyoye mwene twikila.

Owa kanifa tuu omafiku oye amwe oilonga ndele omolwokunwa kwoye?

Oho djuulukwa tuu ehola pefimbo lonhumba mefiku, ndele ngeenge ino li pewa oto tameke okukakama?

Owa didilika tuu nghe ho dimbwa oinima noiningwanima noupu? Ho dimbwa naayo wa pumbwa oku i dimbulukwa? Nena otashi ti oho nu sha pitilila nouluvi woye otashi dulika wa nyonauka koikunwa. Lilungamena u konge ekwafo.



NANDI PUKULULWE

Natango mounyuni omu na ngoo hano oiyana imwe hai tange ookalunga ve lili naku lili?

ENYAMUKULO

Tala OMUKWETU No. 14/1985 ep. 5 lwopehulilo lye pandja ndyoka. Shoka hasho ashike, ihe euliko limwe ewanawa kungoye.

Oshitiyali, nandi lombwelwe yo kutya oshitya eshi SHELA pexulilo lelevelishe dOmapisalme otashi ti ngahelipi?

Jeremia Ndilishange
Okahandja

ENYAMUKULO

Shoka omukalo ashike gwomadhengo goonote dhOshijuda, uuna taa hulitha omaimbilo gawo. Musho kamu na oshikalimo sha simana.

EPULO KOMUKWETU:

MOMUKWETU No. 12/1985 epandja eti 12 momayamukulo gatate A. L. Nghifikua, eyamukulo lye etimugoyi, kepulo omuntu oshike? Nghifikua ota ti: "Kala kaume kovanhu aveshe, ndelene ino ninga kaume komunhu keshe."

Omuntu ou a kufwa mongudu yavakwao ita dudu okuninga kauine kange, ame kaume kovanhu aveshe oye olye?

Ku: David Thomas Lengua

ENYAMUKULO:

Ohandi lundulula etumbulo kanini, opo li pupalele omupuli, ashike itandi lundulula ediladilo. Kala nombili nomunhu keshe, ndele ino lineekela omunhu keshe.

A. L. Nghifikua

EPULO

Onda hala okupukululwa mondjokonona yaShikongo shaKalulu. Ano aatumwa sho ye ya, nani oya adha Nangolo inaa sa? Sho kwa tiwa okwa si 1875 yo oyi ile 1870?

Naishewe sho taku tiwa Shipanga shaMukwiita okwa si 1858 opo Shikongo a lala oshilongo? Nenge omumvo 1878 ano? Nandi pukululwe mpoka.

Ishewe okuza kOmaruru aatumwa oya enda po owala esiku limwe? Esiku 9 Juli oya thika mOmaruru natango esiku 9 lya Juli oyo ya thiki muuwa waShikongo oya ende po owala esiku limwe?

M. Nangolo
Oshakati

EDIMBULUKIFO: Omunyoli omufimanekwa, OMUKWETU naye ke na ouyelele moshinima osho. Onawa ashike eshi we shi fikifa momatwi ovaleshi, pamwe tamu mono mo tuu oo te mu kwafa mu mone oyoosha yaye.

Hamushanga wOMUKWETU.

EPULO

Onda lesa mOMUKWETU 30 Juli 1985, moka mu na ondjokonona yomukwaniilwa Shikongo shaKalulu, ya hokoloiwa ku Tk. Namuhuja.

Omwa nyolwa aniwa Omukwaniilwa Shikongo okwa yi kuushimba 1875. Osho nenge ope na epuko lyasha?

Gweni
S. T. Nalwoondje

EYAMUKULO

- 30.7.1857 Nangolo dhaAmutenya a si
- 1857 Shikongo a ka tala ongolo neku-mbu olya luwa omumvo ngoka.
- Eti 9 Ju.i 1870 omatamba gaahongi ga zi mOmaruru.
- Eti 9 lya Juli 1870 ga thiki puuwa waShikongo.

Ombili aaleshi aasimanekwa sho twe mu piyaganeke nomapuko getu. Opalckeni ano ondjokonona yeni ngaaka.

Amushanga gwOMUKWETU

Nandi yelifilwe moshinima eshi

Omolvashike ovakulunhu vongeleki va efa oshinima shi li ngaha?

1. Omuyandji wolata yoilya ota eta oiyandjwa ponhele yokufuta eeranda nhano

2. Nde eongalo otali landifa oilya oyo R7.00 molata.

Oonakufuta navo nava yekekewe eendoxa shapo? Opo ELOC a ha nyokome R2.00 nemoniko louyuki.

Pashukeni Hamutenya
Okando

ENYAMUKULO

Oinyangaongalo ya ELOC aishe fiyo onena ohai tava R5-00 molata yoilya. Oilya ngenge inai dja meongalo omo, oya kufwa pamwe pe lili, ohaku wedelwa oimaliwa i fike pondjila ei ya endifa oilya oyo i fike moshinyanga.

Hamushanga wOMUKWETU

OIFUTWA YOMUNYASHA OKAKADONA A NYONA NAI XUPIPIKWE

Mokutala kwange ondi wete ovanyasha vopaipe ava tava nyono otava futwa ve dulife ovanyasha ava va findana.

Ngenge itapa lundululwa sha, nena oyoonda nai wedelwe opo ovanyasha ava va findana ve li monikile nawa nomapandulo avo ve va longela melididimiko.

Ondi udite kutya ngenge osho tashi i ngaho, kape na oushili washo opo. Napa ningwe sha diva opo ovapunduki va ude kutya fye inatu va pandula.

Nande Halwoodi
P/Bag x5528
Oshakati

+++++

Omolvashike aantu haa umbu oondjembo moosa? Ondi shi aniwa omuntu ngele a valwa pe na enyanu opo pwa pumbiwa okuumba oondjembo ngaashi hashi ningwa metokolamumvo? Kashi li nawa aantu mu li moluhodhi tamu kudhilwa ishewe koondjembo.

Immanuel Nkandi

Ova shangela nge tava ti.....

Onaini hano hatu liufa keendjovo dOmwene? Oshiwana otashi lyataulilwa po novafyuululifya voye otave va fininike. Ovafiyekadi novanailonga otave va neefiye otave di dipaa, ndele otava ti Omwene ite shi rono.

Omunealo oye ou ta pukululwa kuove Omwene, noto mu longo eendunge momhango yoye. U mu ningile etulumuko momafiku madjuu, osheshi Omwene iha kandula po shiwana shaye.

Hangula Salomo

+++++

Otandi indile tu galikaneneni oshilongo shaKaiti (Keetmashoop) shoka shi na ombinzi tayi kunguluka ethimbo alihe omolwaakalimo taa tsaathana noombele, opo Kalunga e shi pe Ombepe ombwanawa yonkalomwenyo.

T. A. Shikwanyu
Keetmanshoop

EPANDULO PAMWE NELONDODHO

Aakwanegonaglo, tse otwa pandula komapukululo geni. Aasita naakulukadhi yawo natu tameke okusila oomvalo dhetu oshimpwiyu tango nopo ihe egongalo.

ELONDODHO: Ihe natango natu kwathwe pwaa ka holoke omanyenyeto kutya aasita itaa gwanitha we iilonga, oyi ipyakidila asdhike neputudho lyoomvalo dhawo.

Omukukadhi gwomusita
Aino Kapewangolo

Onda li ndi shi vati okudjala ofei nepandela la yelulwa pombada mehombolo, otashi ti omukadona oo a findana. Eshi nda ka mona ohashi ningwa yo nokwaava ve na ounona nale, onda piyaana ashike.

Hano epandela nofei mOngeleka ya ELOC okulongifwa momafundula otai ti shike?

L. N. Alweendo.

+++++

Oshike ano omikalo omiwinayi dhokuthigulula itaadhi fumvikwa? Omolvashike iinima itaayi thigululwa koyana nokomuselekadhi mboka ye yi longa?

E. Shivolo
Arandis

+++++

Omunhu onda landa etunda lange kumwene womukunda, ndele hai li kokola tali ningi epya lange mwene, hai fendele keshe omudo, ndele ohaku ningi nge nda fi, omwalikadi wange ote li futu vali opo a dule okukala mo?

Ndele omutilyaane a landa ofaalama yaye, ndele ngenge okwa fi, onhele oyo ohai ningi ashike yepata laye, omolvashike? Oshinima osho oshi shii okutalululwa.

L. Ngh. Kashava
Tsumeb

A yi keveluluko lyaana yaKalunga

Tate Toivo Silvanus Nehale okwa mana oondjenda dhe ombaadhilila pegumbo lye eti 25.3.85 mOmuntele. Okwa li a langekwa momukunda gwahe Silvanu Nehale.

Omuntele okwe gu lele ashike oomvula 8. Okwa thigiko omukulukadhi gwe noyana 7 naatekeulu oyendji, okwa si e na oomvula 62.

"Olye ta pangulile mekano? Kristus Jesus oye tuu nguka a sa, ceno kwa yumudhwa nokuli oye e li kolulyo lwaKalunga note tu galikanene wo" (Rom.8:34)

Gumwe gwomaavalwa

Shoka sha tiwa kiifo yilwe

Epangelo lyaAustralia olya tokola omwedhi nguka li pate ombelewa yalyo yiipindi muJohannesburg omolwokatongotongo taka tsikile natango moshilongo shoka.

Australia omasiku ga zi ko okwa patele ombelewa yomukaleli po gwe mu SA. Oveta oya tulwa po wo opo SA kaa pungulithe we iimaliwa mu Australia, SA kaa landithe we oshimaliwa she shoshingoli muAustralia n-pwaa gandjwe we omakwatho komahangano gaAustralia ngoka taga pindike na SA.

Otaku ti iipindi yopokati kiilongo imbyoka iyali ohayi zi oomiliyona R600 komumvo. Omahangano gaAustralia ge thike lwopo 70 ohaga pindike na SA. (Adv.19.8.1985)

Ndowishilanda ondjindikila okwe yi tinda

Epangelo lyaNdowishilanda lyuuninginiono olya ti lyo otali gama kepangelo lyaBritania opo lyaaningile nando SA ondjindikila miipindi.

Ndowishilanda ota ti ondjindikila yiipindi hayo tayi lundulula SA momulandu gwe, okuninga SA, ta popithwa ashike nombili.

(Digest 2.8.1985)

Koevoet muNamibia

Etanga lyaKoevoet muNamibia olya pingewa ngashingeyi ketanga lyaapolosi okuza lyotango lyaMai nuumvo, osha tiwa komunashipundi shepangelo lyoshigwana omusamane David Bezuidenhout.

Payamukulo ndyoka e li gandja koshilyo shimwe shomomutumba gwawo, omunashipundi Bezuidenhout okwa ti, edhina Koevoet, ngashingeyi olya tseyika ashike nedhina (Coin) etanga lyokukondjitha iikulo mewiliko lyaKomufala gwaapolosi yaSuidwes.

Okwa ti wo natango kutya omatanga gaKoevoet ga SA oga shunine kaandjawa 14.4.1985 kakele kaapolosi yamwe mboka taa kwatha natango aapolosi ya Suidwes.

Onakuyiwa yepangelo lyetaagulukulo otayi pendula omapululo shi vulithe shito.

Omuniyoli gwokomenda yoshifonkundana **The Windhoek Advertiser** 20.9.1985 okwa nyola, kutya momalunza ge shi okwiinekelwa omwa ziya onkundana tayi ti, otashi vulika oshitokolitho shoka sha zimina edhiko lyepangelo epe muNamibia, shi shunwe ko komupresidende gwa SA.

Shoka ngele osha ningwa, etegameno li li po limwe alike; okuhanagula po ashike okatokolitho hoka, noonkondo dhepangelo dhi shunwe kuNgoloneya Ndjayi gwaSuidwes, oshifo shoka sha ti.

Pashifonkundana shoka okatokolitho ka gandja onkondo kepangelo lyopakathimbo R101.

Epangelo olya li lya lala oshilongo pondje yehalo lyoyendji moshigwana nomuuyuni eti 17.6.1985.

Patokolo lyomuniyoli gwokomenda ndjoka, epangelo ndyoka olya kala itaali tsu kumwe. Ongundu yaSwanu noyaSwapo D kombinga yimwe noongundu dhilwe kombinga onkwawo. Epangelo olya thikama moongundu 6.

Swanu naSwapo D oya kondjo okuza petameko, opo ando oveta AG-8 yi dhimwe po moshilongo. Inashi pita.

Oveta ndjoka oyo tayi gandja onkondo komuhoko kehe moshilongo gu gamenene po uuthemba wago. Oyo ya kaleka po natango omavigungumbo muSuiwes.

Pahistoli lyuupolotika woshilongo shetu, oveta ndjoka oya li ya kondjithwa natango kuyamwe 1982, yi tewe po, sigo she etitha olutandu mongundu yo DTA, ndjoka ya li tayi lele oshilongo pethimbo ndiyaka.

Iinima iikwawo ya tumbulwa ye etitha olutandu mepangelo ndyoka li li po ngashingeyi ongaashi; Oveta ndjoka tayi lelitha evigungumbo lyOombasitela, Rehoboth nelelelo lyaMuni moondolopa ngele nali tsikile tuu natango pamulandu huukwamuhoko nenge aawe.

Ve dule 10,000 otava palulwa kEhangano lomushiyakano omutilyane muNamibia.

Ehangano longhenda, ehanganano lomushiyakano mutilyana lopaiwana (International Red Cross) paife otaku ti otali palula ovafindjala muNamibia tava tengenekwa 10,000 ile 15,000.

Osha kundane kwa koshifonkundana shoshilongo eshi **The Windhoek Advertiser** 8.8.1985.

Ehangano lyomushiyakano mutilyana ola tamekele okulonga lwotete muNamibia okudja 1982. Oitukulwa yoshilongo ngaashi Kaokoland naKarasburg oyo unene ya tumbulwa i li mefiloshisho lehangano olo.

Eenghwate dopapolotika odo da dile kOmalinda (Marintal) nado ohadi filwa oshisho kulo.

Oveta yaAmerika

Epangelo lyaAmerika olya hala okuholola euvonayi lyalyo omolwelongitho lyokatongotongo mu SA. Omasiku ngaka olya tokola pu' ningwe oveta yomageelo ku SA sho itaa hulitha po omulandu gwokatongotongo.

— Oveta otayi indike iimaliwa ya SA yaa halithwe we muAmerika.

— Otayi indike oombaanga dhaAmerika dhaa kwathe we SA iimaliwa, okuninga iimaliwa mbyoka tayi ka longithwa meputudho, medhiko lyomagumbo, miipangelo nenge miiyakulitho yilwe mbyoka tayi egulukile omihoko adhihe moshilongo.

— Oveta otayi indike pwaa halithwe we omashina gokompyuuta ku SA nosho wo iilongitho yi na sha noonkondo dholute.

Etokolo lya hugunina moveta ndjoka inali ningwa natango, ashike yamwe otaye shi tala kutya epangelo lya Amerika oli na

omathiminiko ogendji gopondje sho lya talwa otali ningi oshishonalela mokuthiminika SA a huliithe po omulandu gwe guukwaludhi.

Ondjindikila yiipindi ku SA otayi kundathanwa pethimbo ndika miilongo oyindji.

Eilikano momaudjuu

Omwene Kalunga kefilonghenda uda eindilo lange ove u fete po, omahodi ange. Omwene, ame omunhu wongaho, ino efa nge Tate. Oluhodi ndi li na oleli Omwene, onaini to kufa po omadipaafano nomatodafano moshilongo eshi Namibia naAngola. Ohatu hepa Tate Kalunga, amena Namibia naAngola koita nokondjala. Omwene owe tu efela ngoo ne momake ovananghono Tate? Omalutu etu a ninga oimbebe, omolwomadengo. Eemwenyo detu da nyinka oupongo omolwokudipawa nokwiidilwa pe he na omatomhelo. Woo Kalunga ketu, okwoove hatu tale u tu mangukule Tate.

Omwene fiyo onaini Ovanamibia ve li pondje yoshilongo shavo? Ova djuulukwa nova hala okumona ombili yoshilongo shetu. Va kwafa u va alulile kuNamibia ove u tu pe emanguluko lohilili Kalunga ketu okwoove hatu tale u tu mangukule Tate.

Omwene ohandi ku pandula eshi wa uda omalikano etu nowa tambula mohole yashili omaindilo etu eshi wa mangukula ovaholike vetu, ovakulu vetu neendenge detu okudja kOmalinda fiyo okOnhunhu yaRobben. Kalunga hambelewa alushe ino tu efa Omwene wetu. Kefilonghenda natango ohatu kuu, omitima detu oda nyika oungundi munene. Eitavelo letu oli na omukumo wa nghundipala. Kalunga tu pa eenghono da kola neitavelo lohilili Tate.

Omwene, tala ovafitaongalo novalongifikola monghalo oyo ve li muyo. Va twa omukumo ve li kolelele muove opo va ha nyengwe kusatana. Va mangukula Tate, ove iho nyengwa kusha. Kalunga tu popila.

Omwene ove ou shii nge nawa okukala kwange ame omunhu wongaho, osheshi ngenge ndi he ku na ngi na eshi hai dudu okulonga. Nande ame omulunde Tate, uda oluhodi lange neilikano lange, aisho ei onde i ningila meenghono dOmwene wetu Jesus Kristus Omukulili wetu.

Amen.

I. T. Shindume
Windhoek

Oshigongi shOraata yegameno ya VVO osha tokolele momwedhi gwa zi ko nomawi 13 inaaga kondjithwa nando okewi limwe, opo iilongo ayihe muuyuni, kehe shimwe shi ninge etokolo lyasho shene uuna sha hala okuningila epangelo lya SA ondjindikila miipindi.

Amerika naBritania oyo ayeke ya li yi ikaleke pondje yehogololo mOraata ndjoka yi na iilyo 15. Eindilo ndyoka olya li lya falwa mo moshigongi shoka kuFulanisa, ngoka ye mwene a ningi nale omatokolo sho a kutha po omukaleli po gwe mu SA omolwelongitho lyoonkondo tali tsikile aluhe mu SA.

(Adv.14.8.1985)

Ethiminiko muukwiita itali popilwa

Kashi na uuyuuki okuthiminikila aagundjuka ya ye muukwiita wetanga lya SA noya longe iilonga mbyoka tayi kondjitha omaiuvo gawo. Osha zi mehokololo lyokomitiye yekonakonpo lyoshininima shoka.

Tala kep. 12

OMAMBO

**OMAMBO TAGA LANDULA OTAGA MONIKA MOSTOLA YOMAMBO KONIIPA
Oshako 2013, Ondangwa 9000**

Ombimbeli Ondjapuki Oshindonga/Oshikwanyama	R5-80
Omaimbilo (Ehangano)	5-50
Okambongeleki Oshindonga/Oshikwanyama	2-50
Okatikisa Okashona/Kanini	1-00
Elongo lyUukriste/Loukriste	2-50

Oto vulu okumbestela omambo ngoka kondjukithi yi li pombanda mpoka okupitithila mopoosa. Ngele to tumu embestelo lyoye li tuma pamwe nofuto ya gwana po yomambo ngoka wa mbestela. Mofuto yembo kehe gwedhela mo 50c dhopoosa. Omambo ihaga tumwa moongunga nandonando!

Udhitha e to tete mpa) _____
Mbestela ngeyi:

Omusimanekwa tumina ndje omambo taga landula:

.....	edhina lyembo	gangapi
.....	edhina lyembo	gangapi
.....	edhina lyembo	gangapi

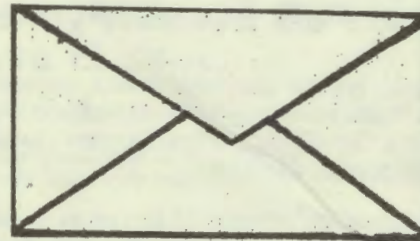
Ote patele mo opossorder yoo R _____

Edhina lyandje

Ombokisa yandje

Opoosa/oshilongo mo ndi li

Tangi unene keyakulo lyoye.



*Komunashifo shOMUKWETU,
omufimanekwa.*

Ame ondi li umwe womovalongeli vomina yongopolo mOshomeva, (Tsumeb) ndele fye otwa kundana mOradio kutya epangelo lipe eli le uya otali ti vati omushamane Andreas Shipanga oye oministeli yeemina paife muSuidwes.

Fye katu shii nee kutya opossorder yoo R _____, onghe otwa kendabala kOMUKWETU ou ha leshwa kukeshe. Fye oku ohatu mono e-xupo lii unene.

Oku otwa mona nomesho etu omushamane a longa eedula 19, nde ta pendjelwa noimaliwa R500,00, omanga twa mona Shilumbu a longa eedula 9, a pendjelwa R1500,00.

Eshi twa pula, vati osheshi oministeli yeemina pefimbo linya oya li Shilumbu. Paife ouwa ou li nee peni? OMUKWETU tu pa vali omauyejele amwe?

Silvanus Kotlipa Eduvalide
T. C. L. Posbus 40
Tsumeb

Dha za hep. 11



Ehokololo olya tsikile lya ti, omukalo gwokuhulitha po elongitho lyekuni mu SA, ongele ashike tapu vudhwa po omidhi dhiinima mbyoka tayi shi etitha po.

Okutindila Aaluudhe uuthemba wopantu netopolelathano lyaa na uuyuuki muuyamba woshilongo nowevi, oyo iinima yu ulikwa kutya oyo etindi lyelongitho lyekuni.

EDIMBULUKIFO: Omunyoli omufimanekwa, OMUKWETU naye ke na ouyejele moshinima osho. Onawa ashike eshi we shi fikifa momatwi ovaleshi, pamwe tamu mono mo tuu oo te mu kwafa mu mone opossorder yaye.

Hamushanga wOMUKWETU.

OMUKWETU

Oye oshifo shOngeleki Onkwaevangeli paLuther yomOwambokavango.

Ohashi nyanyangidhwa mOshinyanyangidho shOngeleki mOnilpa.

Omukuluntu gwoshifo omumbisofi. Dr. Kleopas Dumeni,
Amushanga gwoshifo omusita Sebulon Ekandjo

Ondando yOmukwetu muNamibia naSuid-Afrika R 5,00 komumvo.

Palwe muAfrika R 8,00 nokombanda yomafuta 11,00, komumvo. Mondhila R 13,00.

Ondando nomambestelo agehe naga tumwe kOmukwetu, Onilpa, P.Bag 2013, Ondangwa, 9000

**EV. LUTH. OWAMBOKAVANGO CHURCH PRESS
PRIVATE BAG 2013, ONDANGWA 9000
SWA/NAMIBIA**



Nakusa A. Mukwiilongo

N. Liina Uunona