

OMUKULUNTU



30c

No. 22

ISBN 0-620-06828-0

SHUUYA MUHAMUSHANGA WAVEKSWA

Omusita Ipinge-Kristof Shuuya, okwa hogololwa kElelongeleki lyEhangano lyOongeleki oonkwaLuther muNamibia (VELKSWA), a ninge amushanga omukuluntu mEhangano ndyoka. Ehogololo olya ningilwe mOvenduka muKotoba numvo.



Omusita Kristof-Ipinge Shuuya

ngeleki ayihe, oshimpwiyu shoka e shi pelwe kOongeleki konima yomimvo dhimwe dha piti.

Omumvo 1961 omo kwa li a yapulilwa oshilonga shuusitagongalo, sho a kala tango omulongi gwosikola yaanona uule womimvo mbali. Oshilonga shuusitagongalo okwa li e shi longo mOniimwandi, nomuElim, egongalo lyandjawa.

Oongeleki oya li ye mu tumu e ki ihumithe komeho kOsoomi, hoka a kala ethimbo konyala lyomimvo hamano. Ina za ko iikaha yowala, ihe okwe etelele ko onkatu M.A. melongo lyuuteologi. Ookersesa dthembo efupi niigongi okwe dhi kala wo kombanda yomafuta pomathimbo nomathimbo ngaashi kwa li e shi inekelelwa kOongeleki.

Pethimbo limwe okwa yakulithilwe kOongeleki dhomuNamibia, mokulonga mombelewa yOraata yOongeleki moshilongo shika (CCN), nokonima yaashino ELOC okwe mu langeke mosikola yaaposi noombolo mEngela, oshilonga shono shi li muule womwenyo gwe, naamoka a kuthwa sho a langekwa amushanga omukuluntu guudiakoni mOongeleki ayihe.

Omvalele yUukwambi, Shuuya, ngele u mu adhe mukweni a tya ashike oongaku dhoontsakava koompadhi (dhoo-

ngombe) nondjila onkutunkulu ya tandwa pokati komutse nomushila gwongombe tagu fungafunga oondhi, o-muntu oto hala u tye ngiika nda adha ihe omusamane gwOmuwambo a thigwa po kehumokomeho.

Konima yiitya iishona ayihe ngele mwa kundathana naye, oto ka dhimbulula mbala, kutya nani eyamukulo lyoye olya puka, Shuuya oku shi shi ye mwenye shoka ta ningi.

Aantu oye mu shi Kristof kaShuuya, nando ye mwene okwiishi Ipinge yaNetshila. Oyendji oya yi mepuko mbala sho haa dhiladhila kutya ngiika oye Ipinge yaShuuya. Lagonene ohe ya pukulula nombili kutya oye Ipinge yaNetshila.

Kee shi nando omupu moshipala, nomomayamukulo, ihe ngele ku mu shi shito itashi ku pula ootundi odhindji u mu igilile. Ombelewa yOraata yOongeleki oya li ye mu tula pondinga yomihoko moshilongo shika, ndhoka dha putudhwa momatopagulo nomokulyaathana iipungo.

Meyamukulo ndyoka, omihoko adhihe odha li dha tsa kumwe, kutya Shuuya kee na kombunda meyakulo, nomokulangekwa kwe palwe, mboka ya kala naye ohaa thigwa aluhe nomitima dha lindimana.

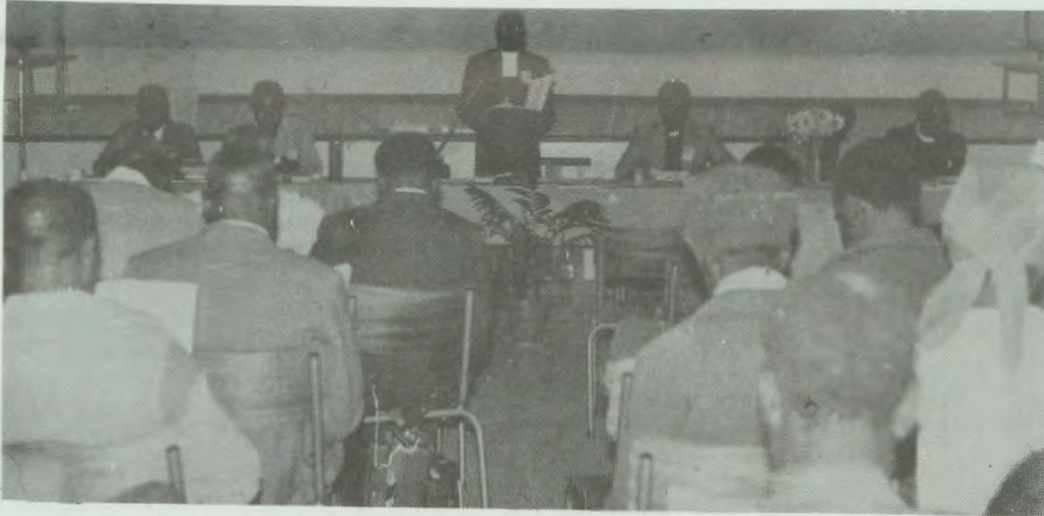
“Otatuholola enyanyu ku ELOC, sho a gandja omusita Shuuya keyakulo ndika lya simana lyokukokitha uukumwe wOongeleki yetu,” osho oshigongi sha-

Shuuya ngoka a tsakanitha etata lyethele numvo, oku li ngashingeyi omukuluntu gwoshilonga shUudiakoni mO-

EHYO LYETSIKILO LYOSHIGONGINGELEKI SHA ELOC LYA TUMWA KOMAGONGALO

KuSebulon Ekandjo

Ombelewa yomumbisofi pOniipa, oya pititha ombilive yehiyo lyoshigongingeleki sha ELOC, pehulilo, lyaKotoba. Oshigongi oshi na okutameka petameko lyaDesemba numvo. Elandulathano lyiikundathanwa moshigongi shoka, nalyo wo olya topolwa.



Omumbisofi ta popitha iilyo yoshigongingeleki sha zi ko

Oshigongingeleki osha li ko nale muJuli numvo, mOngwediva nosha li inaashi mana iikundathanwa yasho. Euvathano lya ningwa manga inaashi halakana, olya li kutya shi tsikile natango muDesemba.

Etsikilo lyoshigongi olya kwatelela mo, kutya iilyo ayihe mbyoka ya li yi na onkondo dhomatokolo, oyo yi shune natango koshigongi shoka.

“Aakwashigongingeleki mboka ya li ko muJuli, oyo yeneyene ya holoke,” osho ehiyo lyomumbisofi lya kumagidha.

Oshikundathanwa oshinene shoshigongi shiyaka, osha li eopaleko lyEkotampango epe nomauthompango gOngeleki. Omalunduluko omanene nogendji oga ningwa mokambo hoka. Elunduluko limwe epe oyo ndyoka, kutya Ongeleki ndjika yi lelwe kaambisofi ye vule gumwe.

Oshigongi tashi ya otashi ka kala natango shokukoleka okambo hoka akehe muukumwe wako pamwe nomalunduluko ngoka ga ningwa mo. Pamwe nekoleko ndika, oshigongi otashi ka utha wo ngele elongitho lyomauthompango ngoka omape, otali ningwa mbala nenge otali tegithwa komeho.

Omaludhi moshinima shoka oga holokele-po wo pethimbo lyomutumba gwomuJuli, ihe etsokumwe kalya li lya mo-

nika. Yamwe otaa dhiladhila elongitho li tameke mbala omumvo tagu ya 1985, manga yakwawo yu uvite, kutya onawa ando ga tegelele sigo okOshigongingeleki tashi ya, 1987.

Ishewe iilyo yilwe otayi dhiladhila kutya omatho omape naga tulwe mbala miilonga, ihe hamiinima ayihe yi li mo tayi vulu manga okulongithwa.

Elongitho lyomauthomango omape, olya kwatelela mo etendo lyiikandjungeleki yopaumbisofi, kokutya iikandjo mbyoka yi na okulangekwa aambisofi. Iilyo yimwe yoshigongi oya holola omadhiladhilo gawo moshinima shoka,



Moshigongingeleki sha zi ko

kutya etendo ndyoka kali shi okweendelelithwa, nomatompelo gawo oye ga gandja.

Ishewe kuyamwe omatompelo ngoka oga talwa kaage shi okwiimba etendo li ningwe, oshoka kage shi omanene ge vule ompumbwe yoku shi ninga.

Ontokolwa ya dhimbiwa

Miiningwanima yelandulathano lyoshigongi tashi ya, omu na natango ehogololo lyomuwilikingeleki. Shoka kashi shi oshipe miikundathanwa, osha li wo nomoshigongi sha piti.

Naashika oshi na wo omaudhigu gasho momadhiladhilo giilyo yoshigongi. Uudhigu washo otatu talikila kumwe naamboka welelo alihe lyOngeleki, kutya okuza moshigongingeleki shoka ngele otali ka enda natango pamauthompango omakulu nenge opamauthompango omape. Omaludhikithathano moshinima shoka, oga tegelelwa ga ka ninge omanene koshigongingeleki, ihe eyamukulo oli na okumonika.

Pantokolwa yElelongeleki 337/1978, oshigongi shomumvo, 1981 osho sha li sha indilwa shi tule iilonga yomukwathi gwomumbisofi momauthompango nokuninga wo elongekidho lyetendo lyOngeleki miikandjo iyali.

Osha yela kutya okangundu ketoto lyomauthompango, inaka tseya ontokolwa ndjoka nenge inake yi dhimbulukwa. Ashike ontokolwa ndjoka nayo wo inayi mana po omapulo agehe ngoka aantu taa ipula nago mekwatathano netendo lyOngeleki nonehogololo lyomuwilikingeleki.

AANELAGO OYO MBOKA OMUWA TE YA ADHA YA TONATA

Luk. 12:35-40



Oombwetelo dheni nadhi kale dha mangwa noolamba dheni dha hwama, ne mu fe aantu ya tegelela Omuwa gwawo ta zi kohango, opo ye mu egulule nziya ngele te ya nota konkola.

Omuntu oha lombwelwa a tonate, uuna ta kotha nenge a kotha nale nokuli. Otashi vulika wo omuntu pamwe ina kotha, ihe okwa thithikila, omeho ga pata nenge ga tsika. Ngele omuntu okwa kotha oomposi, nena shoka oshinima shokathimbo, kashi shi shethimbo alihe, uusiku nomutenya.

Ngele omuntu okwa thithikila ye oku li moondjenda, omuntu ngoka oku li moshiponga shokugwila miilambo, okuya momano nokutsakanekwa kiiponga kee yi lwete. Opo mpaka aaposi haa yuulukwa etonato, oshoka kapu na ngoka a hala a kale kee lwete ko. Jesus ote tu longo shike moohapu ndhika?

Tonateni, osho ta ti. Omukriste oku li muuyuni woomposi dhuulunde pamwe nokahalu kawo. Uulunde otatu ningi omuntu omuposi, ta kotha, otatu ningi omuntu oshiwili ongekwa thithikila. Omukulili ota kumagidha nuudhiginini omuntu a tonate. **“Tonateni.”**

Oombwetelo dheni nadhi kale dha mangwa. Ov. 35

Omuntu ka vulu okulonga nomizalo omile. Uuna ta matuka, ta longo, okwa pumbwa oku dhi manga. Noolamba dheni nadhi kale dha hwama. Olamba yomukriste oyo oohapu dhaKalunga.

“Oohapu dhoye, Kalunga odho uyelele mondjila yandje nonyeka yokoompa-dhi dhandje.” Eps.119:105. Ngele tandi ende ndaa na oohapu dhaKalunga muukriste wandje, Jesus ota papudhula ndje: **“Tonata.”**

Egaluko lyaJesus, otali pula ndje etonato. Okutegelela eso lyandje, otaku pula ndje etonato. Okukalamwenyo kwopakriste, otaku pula ndje etonato. Iinkumbi omulongo mokutegelela ombushiki, oya li ya nyengwa okutonata. **“Ayehe noya kotha.”**

Omupya omunene ogwa ningi gwayatano ya kotha, oolamba dhawo e tadhi dhimi. Nomeyele ndika, Jesus ota londodha: Tonateni, oshoka inamu tsey

ethimbo nesiku Omuwa te ya. Mat. 25:13.

Tu taleni Omukulili meyana lyaGetsemane, ota ti kuPetrus: Simon, owa kotha? Ino vula okutonata okathimbo kamwe? Tonateni ne mu galikane mwaa pwile momamakelo. Ihe otaku tiwa, omeho gaalongwa mbeyaka, oga li ga vulwa shili. Mat. 14:37,41.

Omuwa Jesus ote ya kutse ethimbo ndyoka inaatu li tengeneka ngaashi te shi thaneke nomunegumbo a za po. Aanegumbo oye na okukala ye mu ilongekidhila ethimbo alihe, uusiku nomutenya.

Omuvali nomuleli gwokanona oku na omikalo odhindji moku ka kotheka opo a vule okulonga iilonga ye kee na omapiyaganeko. Omundohotola wo opo a tande omuntu nuupu pwaa na eipangelo lyomutandwa, ote mu kotheke, ihe otu shi shi ekotheke lyomundohotola oloyo oli na elalakano ewanawa, okukwatha omumvu.

Otu na omukotheki gulwe ta kotheke

nelalakano lyaa shi ewanawa, oye Sata-na. Nguka ota kotheke aantu niikolitha, nomaliko Mat. 6:19, nosho tuu iikwawo oyindji. Iinima mbyoka otayi ningi elapi eluudhe komeho gooitaali, onke Jesus ta londodha: **Tonateni.**

Iikalunga, uunganga, etondathano, oontamanana, ondjahi, omakotokelo, efupa, omakuthathanopo, omiinima mbika oshigwana shika shi li sha siikilwa, aakuluntu naagundjuka nuunona nokuli. Aahungimwenyo wo omo ye li moshikumbatha shooposi dhiinima mbika, taa gono.

Jesus ina hala ku kane nando gumwe, ihe ayehe yi itedhulule yo ya hupithwe. Onke ta ti: **Tonata.**

Jesus ina hala ku kane nando gumwe, ihe ayehe yi itedhulule yo ya hupithwe. Onke ta ti: **Tonata.**

Titus Ngula.



OOLYELYE HAVA LESHYA MEONGALO LENI?

Apa ohatu ningi edimbulukifo kwaaveshe hava lesya OMUKWETU moshitukulwa shokoumbanganhu waNamibia, opo ku talululwe vali natango nhumbi oshifo shOMUKWETU hashi tandavele mokati koilyo yomaongalo.

Olyelye ha lesya meongalo leni? Ongudumbibeli yeni ohai tambula oshifo? Ngeenge hasho, oshike tashi imbi mu mbesitele? Ongahelipi mofikola yOshoondaxa, pomukunda weni, oshoongalele shovanyasha, ongudu yovalumenhu noyovakainhu ile yolwiimbo meongalo? Oluhepo eli halo ngo mbela li li nomeefikola detu? Opo fikola ya lyelye hapa tambulwa oshifo shOMUKWETU?

Kakele keefikola dopombada odi shi okupandulwa moshinima eshi. Inandi shi itavela nande, kutya moshifo shetu kamu na sha shokukundafanwa meengudu odo, shapo ongeenge ashike pamwe eudeko loshikalimo mokulesha olo inali tambulwa ile inali yeléla ovaleshi.

Ondi shi shi oshifo ohashi leshwa kovahnu vahapu inave shi lishangifa. Tashi

E TU TETEKELELE

Kuku Selma Amunwe gwomimvo 80 meongalo Eheke, mOndonga, okwa mana oondjenda dhe eti 11.9.1984, moshipangelo shepangelo mOshakati konima yomimvo ndatu dhuwehamé.

Okwa thigi ko omusamane gwe, oyana yatano, aatekulu 27 naatekulululwa yatatu. Peha lyakwanezimo, otandi pandula aapangi, naayakuli yopambepo mboka ye mu pe eyakulo alihe kwa li e li pumbwa. Kundweni. Eps.90:12.

K.E.Pokolo

Yadifa hano kamwe komoufooloma ava ve li apa:

Teta apa

1. Tumine nge oifo (omuvalu) yokulandifa

Edina lange

Ondjukifi.....

.....

dulika nokuli, kutya kaku na umwe ha xupu ko ina lesya nande ine lishangifa. Mongudu yavo omu na vahapu ve he na nande ounyengwi washa okutufutila oshifo.

Shiimba ito shi itavele ngeenge handi ti, kutya omukalo oo owo umwe mwaa-do tadi nghudipaleke oilonga yOshinyanyangido. Nandi shi yelifé. Omudo keshe Oshinyanyangido ohashi futu konyala R10 000 opo oshifo shi kale tashi piti fiyo opexulilo lomudo.

Noimaliwa oyo ya li i na oku ka landa eemhumbwe dimwe doilongifo, omu na eeranda doye nhano (R 5,00), odo ino tuma osheshi owa ti: **"Inga ndi lesya moshangadi"**.

Nande oiyemo yoshifo eshi oi li pedu noitai shakenifa oilonga aishe ei ye shi diladililwa, otwa tokola tu ha wedele ondado manga, ndele tu wedele ashike ovalishangifi. Nomo ku shi ninga, osho ngaha otwa wedela yo oiniwe yasho.

Opo tu shakenife elalakano eli, otwa pumbwa nee eyambidido loye moinima ivali:

a) U lishangife ove mwene nokutuma oshimaliwa shoye diva, opo u ha nyaminine vali kumukweni.

b) U tu kongele ovaleshi vape. Eshi oto dulu oku shi ninga mokushingifa oifo ooshimwe nashimwe, ile okunyolifa omadina avakweni va kale hava tambula oifo yavo medina loye.

Hamushanga wOmwetu

Teta apa

2. Tumine nge ofooloma yomadina ovalishangifi

Ame

Ondjukifi

.....

Inaku kala vali oxuxwa itai lotoka nehanda meongalo omudo 1985.

OMAONGALO AVALI AEKE A NINGA OSHO SHA UDAFANWA

Omudiinini woiniwe yOngeleki, Sakeus Hekandjo, okwa lombwela OMUKWETU omafiku aa, kutya fiyo opetameko laNovomba, omaongalo avali ashike a wanifa osho sha udafanwa koshoongalelekeleki.

Oilyo yoshoongalelekeleki neudo muJuli, mOngwediva, okwa li ya ninga etokolo, opo eongalo keshe mu ELOC li ongele R100 omuvalu wopedu, okuyambidida oshikefangeleki omolweshunomo lomutumba washo muDesemba tau ya.

Oikulya ngaashi omafila nombelela, nayo oya li kwa tiwa kutya otai tambulwa nomwenyo muwa. Fiyo opaapa omaongalo avali ashike a tuma oimaliwa yao, osho Hekandjo a ti. Ina yandja omadina omaongalo oo.

Pahokololo laye, ngeenge omaongalo itaa ningi osho sha udafanwa, moshikefa shOngeleki otamu ka tuwa ombululu ya kula, osheshi oshoongalele oshe ya po pondje yefaneko loilonga yomudo 1984.

Mokuyelifila nawa OMUKWETU oshilanduli kwaashi, Hekandjo okwa ulika ashike kelongifo loimaliwa moshoongalele shaJuli, olo a ti kutya ola pitilila noimaliwa R7 320.

Omunashikefa ou okwe shi itavela yo kutya ngeenge omaongalo inaa yambidida oshikefangeleki noimaliwa ya udafanwa, nena efaneko loixupe momaongalo i pungulwe mombaanga, nalo otali ka nyonauka.

Mombilive yeshiivo loshoongalele, osho shokuDesemba, omumbishofi, okwa dimbulukifa natango omaongalo a tume oimaliwa yao kOniipa, manga Novomba inau fya. Ashike omakwafo amwe e lili, otaa dulu okutumwa meyukililo kOngwediva.

Sebulon Ekandjo

POPILA NDOONGI MOUWA

Kalunga okwa tala oishitwa yaye noku i wete ya fewa. Nandoongi okwa fewa. Ile ndoongi ke fi oshishitwa shaKalunga hano? Mwene weshito alishe, ka li a dimbulukwa mbela nokutya ndoongi ota ka hepeka edu?

Tu taleni ndoongi nefimaneko tu ha dine eshito laKalunga. Inatu ninga ovakolonyeki vandoo-ongi. Ndoongi okwa xupila meyelu laNoa. Oini- ma yandoongi tu i alulileni kouwa.

Job P.Nghatanga

AANONA YA VALWA PONDJE YONDJOKANA

Moshifo sha tetekele, omusita Festus Ashipala okwa li a popi kombinga yengambeko lyoluvalo, unene mokati kaamboka kaye li mondjokana, aagundjuka noonkambadhala dhOngeleki ndhoka dha ningwa po okukelela omukalo ngoka. Natango oshinima oshi li moonkundathana dhOngeleki.

Oshipopiwa tashi landula mpaka, Ashipala ota gandja natango omadhiladhilo ge nkene ta tala aanona mboka ya valwa pondje yondjokana. Naampaka omunyoli okwa holola ngaa ekondjo lyOngeleki, oku shi kwatha, nonando itashi talikwa ko ngaaka kutya ekwatho ndyoka olya gwana. Ota ti ngeyi:

Oshigwana shAawambo kashi hole aanona mboka ya valwa pondje yondjokana. Ohashi ya tala, kutya oyo aantu yoshipwe. Nale oya li ye na nokuli ongamba megumbo. Uukriste inau ninga nando eyoololo lyasha kombinga yaantu mboka. Ayehe oya kala ye na uuthemba u thike pamwe wokukalamwenyo mukehe shimwe.

Omolwokutala eyono lyaakuluntu neitedhululo lyawo, omashasho gawo poompito dhimwe ga tokelithwa ngaa shili komalelogongalo. Yamwe ya shashwa aakuluntu nayamwe oyi ishashitha nokuli yoyene sho ompito yoku ya shasha ya li ye edhilwa po omolwaakuluntu yawo.

Ohaku popiwa pantseyomwenyo ngeyi, kutya ohashi vulika okukoka kwaanona mboka neputudho lyawo li nayipale. He okwa talika aluhe kutya oku na oshitopolwa oshinene meputudho lyomunona. Omunona ngoka ta valwa pondje pwaa na he meputudho, nena otashi vulika shi endameke okanona.

Ohole yayina ya pitilila nenge nokuli okuthigwa po kuyina, osho oshiponga shopamwenyo nopalutu shokanona. Shika otashi vulika shi ka holole iindhilikwa mokukalamwenyo kwomunona methimbo lyuugundjuka nolyuukuluntu.

Omambo gontseyomwenyo oga popi uupyakadhi nenge omayonagulo gaagundjuka, otayi etwa kaagundjuka mboka inaa mona eputudho ewanawa. Esiloshimpwiyu lyawo pamwenyo nopalutu, olya li enkundi.

Mokati ketu, unene miilando otatu tsakaneka aanona oyendji yomimvo 5 sigo 12 taa hehela iimaliwa. Otashi vulika ye na shili ondjala, ihe otashi

vulika wo uukwamwenyo wawo wowene wa yonuka. Oku na mboka taa ithanwa pomathimbo ngaka "Oombo-tsotso". Ngele taku konakonwa aanona mboka kutya oolye, otashi ka dhimbululwa, kutya oyendji yomuyo oyo mboka ya valwa pondje yondjokana nomeputudho mwaa na oshitopolwa shahe nenge shayina.

Oyendji yomuyo oye li pookamba dhiikolitha nayamwe iikolitha oyo iipalutha yawo, okuza muunona wawo. Uunkundi ulwe wopalutu otawu hokololwa koondohotola dhuunamiti ngaashi wondjala omolwepalutho lya nkundipala.

Omumbisofi K. Dumeni olwindji ngele ta popitha aahokanathani oha ti:

"ELOK okwa kola, oshoka omagumbo gamo oga kola. Noshigwana osha kola, oshoka omagumbo gasho oga kola."

Ngele oshigwana otashi indjipaleke aanona yopondje yondjokana, nena uukolele washo otawu kala wa nkundipala, oshoka omagumbo wo inaga kola. Onda uvu yamwe haa ti: "Ondjokana oT. B." Ndika olyo eipopilo lyowala, oshili oyo ndjika; kutya ondjokana oyo uukolele wOngeleki nowoshigwana. Egumbo olyo omukanka gweputudho lyokanona kehe.

Aavali oya hingwa konkalo nokethimbo ndika

Aavali oyendji mboka ye na aanona ya koka, oye na uudhigu noshimpwiyu kutya aagundjuka yawo otaa piti tuu methimbo ndyoka ya adhe ondjokana? Noshimpwiyu sha wo kashi shi showala, oshoka aanona oye li mekon-djo edhigu.

Aavali yamwe oya fa nokuli ya hupula noye ekelela, kutya okuyona kwaagundjuka oshipango oshitihamano nokunyanyudhathana, osho oshinima shaayehe, "oshe ya uuyuni" Omatumbulo ngoka oga zi ashike meiyekelero.

Momidhingoloko dha nika uu-

ndingosho, oshimpwiyu shaakuluntu meputudho, lyaanona, inashi gwanithwa we. Aakuluntu okuundingosho, aanona megumbo nenge aagundjuka okuundingosho, aakuluntu megumbo. Esiloshimpwiyu lyaakuluntu aagundjuka yawo kutya oye li peni notaa ningi shike, lya ningi efupi maakuluntu yamwe.

Onkalo oya ningi yomainyengo gaagundjuka. Molwosikola niilonga oyendji otaa thigi po omagumbo gawo nomidhingoloko dhawo e taa ka kalela oosikola niilonga. Aanasikola mboka ya taambwa momagumbo, yamwe kaye ga shi shito, omoluupopepi auke wosikola Muundjendi wa tya ngeyi, aanona omo ya yonukile.

Omihandjo dhimwe kadhi na elandulathano lyasha. Aanona otaa yi mpoka ya hala notaa kala mpoka ya hala notaa ningi shoka ye shi hala pwaa na etonatelo lyasha. Matrone ngoka e li mo, omugandji ashike gwiikulya naalongi otaye ya tegelele ashike mootundi potundi ontiheyali ongula kehe.

Kutya omunona ngoka te ya motundi okwa zi peni nokwa lala peni, shoka kashi shi oshinima she.

Aagundjuka oya tegelwa wo oomwigo odhindji ngashingeyi. Oku na omahala ogendji gomainyanyudho oongulohi (Night Club). Aagundjuka ayehe otaa tegelelwa moka. Aagundjuka wo otaa nyanyukilwa emanguluko ndyoka nokukala momidhingoloko omipe.

Aavali oya fa taa nyengwa notaa hingwa ashike konkalo ndjoka nomethimbo ndika. Omuvale gumwe ngoka oyana aakadhona naamati ya yonuka, okwa li ashike i igidha.

"Nde ya putudha, nde ya putudhile Satana, nde ya vala, nde ya valele oheli."

**INO FUTA NATANGO
OSHIFO SHOYE 1984.
ENDELELA ANO MANGA
OMUMVO NGUKA INAAGU
PWA KO**

OMUNGWELUME WA FINDANA MOKULITUNGILA ONGELEKA

KuJohn M. Shitundeni

Ondjakulwambinga Omungwelume, yomeongalo Ongenga, oye litungila ongeleka yopashinanena oyo patengeneko i na onunene tau wanta ovanhu 500-600. Mefiku loshivilo sheyapulo eti 28-10-1984, moipala yOvamungwelume omwa li tamu leshwa odjuulufi yokupewa omufita wavo vene unene tuu kashiimba mokutala ovafita ovo kwa li va holoka moshivilo osho va li ve fike lwopomulongo, va fikama komesho yavo, nomokutala ongeleka ya li iyadi nopondje.



Manga ovanhu inava ya mongeleka ipe, okwa li kwa ningwa engudumano momuti, omo mwa li hamu ningilwa elongelokalunga shito, opo va imbe eimbilo lehambelelo ngaashi efano tali ulike.

Oyendji oya kugu kOmuwa
Ngomapongo oya pumbwa uuwanawa
lipalutha ya kala pamaindilo
Mumbyoka muyo ayehe yi na ondilo
Mevaangeli ya kale mehupitho
MuJesus ya mone chupitho

Otu li methimbo lyiiponga
Mevi moshigwana shuudha iipongo
Moshilongo shoyendji ya ka vululukwa
Moondjenda oyendji ya za ya yuulukwa
Megumbo lyombili tayi pula mekuyunguto
Emanguluko li ze methimbo lyelulwakato

Ilingwanima momakutsi gawo ye ya
pongolitha
Kiita nehanagulo inali tegelelwa ya vulithwa
Ye shi ombili tayi zi mehalakano
Muukakombwiilitha shila ye li aahakanwi
Sigo ya kanitha ohokwe yuualwa
Ngomapongo noondjendi kaye shi aawalwa

Mokukalela Nampongo otashi hokitha
Ayihe ngele tu na tatu kanitha
Tu ze muundjendi tu yuulukwe
Tu ka kale puPamba tu vululukwe.



Mefano eli, ovanhu otava di mengudumano lomomuti va rinda mongeleka. Eengulu tadi monika konima yefano eli, ofikola yoshiwana.

Odjuulufi yOvamungwelume, oya ka nyamukulwa pamblewa komupashukili woshitai shokOukwanyama, eshi a li ta yandje ekundo lopashitai. Moku shi ninga ponhele yElelongeleki, omupashukili ou Apollos Kaulinge okwa ti:

“Ovamungwelume, fye otwa uda ko eindilo leni, eshi tamu indile mu pewe omufita. Ashike oshinima shokutotelwa eongalo apa mOmungwelume, oshi li momake elelongalo, olo tali ufa mu totelwe eongalo nefimbo olo shi na oku-

Tala kep. 7

AMUSHANGA OMUPE GWA VELKSWA

Dha za kep. 1

Velkswa sha hotola metumwalaka lyasho komagongalo.

Osha gwedha ko wo eindilo, opo omagongalo ga yambidhidhe Shuuya moshimpwiyu shoka, opo iilonga ye yi kale yi na iiyimati.

Okwa hokana noku na aanona yatano.

Sebulon Ekandjo

ningwa." Oilonga youpashukili moshitai osho, Kaulinge okwe i hovelele mulotete laApilili 1982.

Manga a li ta yapula ongeleka inya, omumbisofi Dumeni okwa hololela Ovamungwelume kutya ova ninga nawa eshi ve litungila ongeleka nokwe va twa omukumo kutya Kalunga ita efa nande aveshe ovo va longifa omaliko avo metungo longeleka ya tumbulwa, ine va nangeka noupuna.

Ashike okwe va dimbulukifa yo kutya inava mana natango okutunga, osheshi ove na ko natango oshinakuwanifwa shokushiiva

OSHIVILO SHEYAPULO LONGELEKA MOMAFANO



Fimbo ongeleka inai yeululwa, ovanhu ova li va ngudumana poshivelo shayo nokwimba nokulesha yo eendjovo daKalunga mOmbibeli.



Mefano eli, omushamane Petrus Shapi, ota yeulula ongeleka, opo ovanhu va dule okuya mo, Shapi owomOmungwelume.

oinima yopaKalunga nokukula ngaha moukriste pakuholoka alushe momalongelokalunga mongeleka tuu oyo ngaashi naana okaana Jesus ka li haka kala motembei.

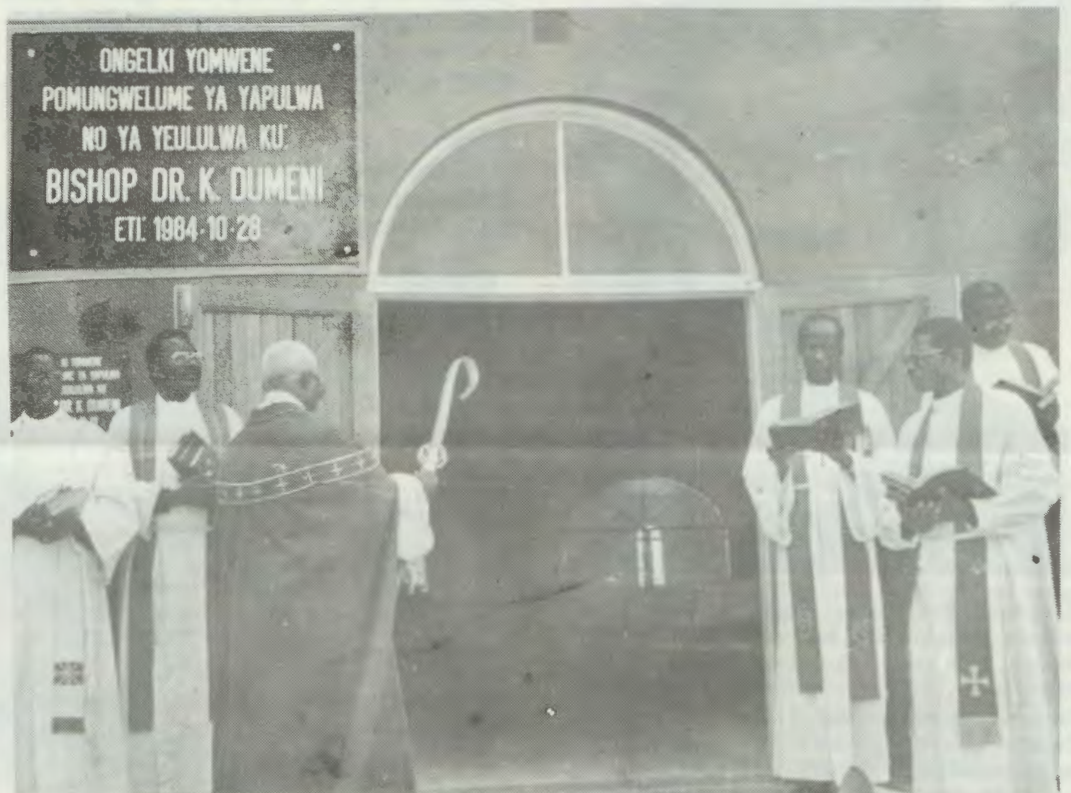
Pahokololo londjokonona yetungo longeleka yaMungwelume, etungo ola tungifwa oimaliwa ya dja meendjato dovakriste vovene voponhele opo nosha pula ashike omudo umwe lwaapo, okutunga nokumana. Sha kambela po paife ongedjo ashike nomufita nosho yo okudikilwa congalo pambelewa.

Nakayale oku na omukalo gwe okugongela iiniwe yegongalo

Pwa piti ngashingeyi konyala oomvula ndatu, ne sho egongalo lyaNakayale li ikongele omukalo gwalyo gwokukoleka oshiketha shalyo. Omumvo kehe ohaa adha shono omuntu to vulu u tye, oshituthi nenge oshinyandwa.

Moshituthi moka egongalo otali eta shaashoka shomiilikolomwa yomuntu. Komukalo nguka omayovi ogendji oga gandjwa pethimbo limwe alike.

"Oshi tu vulithile enyanyu lyohango moomwenyo dhetu," osho omukwanegongalo ndyoka gumwe a hokololele OMUKWETU sho ya kala moshituthi shoka numvo. Oshitewo tala kep. 12



Eshangelo pombada yefano eli, otali monika kekuma longeleka, la tulwa ko ongula yefiku tuu olo ya yapulwa.

OMUFITA PAULUS HEITA TA KUNDANEKE OMUKWETU ESHI SHA TYA KUSENEGAL

MuJuni neudo omufita Paulus Heita okwa tuminwe kElelo-
ngeleki a ka kalele po Ongeleki ya ELOC moshivilo sheyapulo
lovafita votete kuSenegal. Mokwaaluka kwaye kwinya, okwa
fikile yo nomombelewa yOMUKWETU omo a hokololela
OMUKWETU nhumbi sha endeke pauxupi.



Ava ovo va yapulilwa oufitaongalo. Mefano eli ova fikama novaneumbo lavo. Okudja
kolumosho; Fulgance Ndour, Ndep Diouf naNdaan Sarr, Fulgance, oye e li paife
omuwilikingeleki womaongalo oo a fyaala mepashukilo lohilonga shetumo laSoomi.



Omusamane Pieer Seen, omunafikola mo
fikola yOmbibeli mepyatumo laSenegal.

ndana kutya owa ile koSenegal oko wa
li wa tameke oshilongatumo ndele ta-
shi xulile ondjakati, omolwomhu-
mbwe yoimaliwa, paife oshike ne she
ku twalele ko?

HEITA: Oshoshili, owa uda mondjila.
Eshiivo ola dile komukulunhutumwa
wokuSenegal omufita Mikko Ter-
vonen, oo a longele yo nometumo ku-
Namibia, kOkavango, Ongeleki yetu i
ka kale moshivilo sheyapulo lovafita
votete kuSenegal.

Elelongeleki ola tumine nge ne ndi ka
kalele po Ongeleki yetu. Eyapulo ola li
ko 27.5.1984, muLul SeSeen, limwe lo-

Kepandja tali landula



Omusamane Marcel Seen, ngoka a li mo-
sikola yuusita, ihe ina yapulilwa we oshi-
longa, sho kwa hokololwa, kutya okwa u-
mbwa mo melongelokumwe netumo lya-
Soomi. Omagongalo 8 oge mu landula.
Nguka oye wo gumwe gwomaawiliki yii-
mpaga mbyoka ya adhikwa tayi longo ke-
tumo lyaSoomi nokwa li i itedhululile me-
longo ekwaLuther. Ye mwene okwa ti ota
ka tsikila natango okukala Omukwalu-
ther.

OMUKWETU okwe mu pula omapu-
lo amwe oo e a nyamukula ngaashi tashi
landula apa:

OMUKWETU: Omukwetu okwa ku-



Omudo 1980, osho ongudu yovaitaveli mepyatumo laSenegal ya li ya dana oshivilo
shaKrisimesa

Dha za kep. 8

momaongalo otete nola totwa po komu-yapulwa umwe omuwilikingeleki.

Ava ovo ovafita votete ovadelelwa mo vatatu va yapulwa, onghe oshivilo osha li shinene. Omaongalo aeshe okwa li e uya. Ehanganotumo laSoomi, nalo ola li la kalelwa po ko Jaako Elenius, oshilyo shEwilikongudu mEhanganotumo.

Oye a ninga eyapulo ponhele yomuwiki-kingeleki Emmanuel Citeni, waCame-roon, ou ina dula okufika.

OMUKWETU: Owa kala ne u udite ngahelipi eshi wa shiivifilwa kutya ou na oku ka kalela po Ongeleki yoye kwinya?

HEITA: Onda li nda haluka kanini, osheshi onda dile ko molweudafano li ha lipo. Ashike onde litwa omukumo nonde ke shi pandula eshi nda ya ko.

OMUKWETU: Onghalo yerumo kwinya oi li po nee ngahelipi paife?

HEITA: Oshilonga shoshene opo shi li notashi twikile. Ashike omaupyakadi mape okwa holoka moshilonga, omolwaasho umwe omushamane Marcel Seen okwa umbwa mo melongeloku-mwe netumo, omo ye a li omuwiliki nokwa ya nomaongalo ahetatu. (Ou vati pahepu laye ota ka twikila natango oku-kala melongo ekwaLuther).



Paap Diouf ou omutivali a shashwa komu-fita Paulus Heita, 1979

OMUKWETU: Etambulafano leni kwinya ola li ngahelipi novatumwa ovo mwa fiile ko?

HEITA: Ovatumwa yamwe okwa li va haluka navakwao ove shi hafela. Osha fa kutya navo kakwa li ve shi teelela, ame ndi tumwe ko okukalela po Ongeleki yetu. Ashike otwa kalafana nawa nombili, osheshi inandi ya ko ndi ka konakone oilonga yavo ndele onda ile koshivilo.

OMUKWETU: Pakutala kwoye nome-

sho nokupwilikina yo omahepu ovakalimo, oshike shi shi okuningwa po kOngeleki ya ELOC, omolwetumo laSenegal?

HEITA: Kanda li nda mona unene omhito iwa okukundafana navahapu, ashike ovo twa popya navo pauxupi, otashi kala shiwa unene ngenge ELOC ta endelelifa okutuma ovatumwa vaye kuSenegal. Nongenge inashi dulika, osho okunyona kehistol olo la tamekwa.

OMUMANGULULI GWAAKIINTU A TALELA PO ONIIPA

Efolo Ethel Mbalula, okwa talela po Namibia pehulilo lyaKotoba nuu-mvo. Mbalula oku li ngashingeyi amushanga mehanganano lyaakiintu mombelewa yOraata yOongeleki yomu SA, (SACC).

Konima yetalelopo lyoongundu dhaakiintu moshilongo shika, mpaka naampayaka, okwa mono wo ompito yokukala melongelokalunga mongeleka yomumbisofi, mOniipa.

Konima yelongelokalunga okwa popitha egongalo nuunene aakiintu megongalo, mboka meme Mbalula e ya hiya yi inenge oshipandi shimwe, yo ya taambe oshinaku-gwanithwa shono ye na oku shi humbata pethimbo ndika, okumangulula omukiintu.

“Aatondi yetu yaa li ayeke; omulumentu na S.Afrika,” osho e ya lombwele mpoka ye na okuukitha ekondjo lyawo.

Sho a hokolola pafupi onkalo yomukiintu nkene ya kala methimbo lya piti nando ina tumbula sha shono aalumentu haa ningile aakiintu, Mbalula okwa hwameke oludhi noku lu yelithila:

“Inandi ya mpaka tu pulathaneni ngoka e na okutameka ekondjo ndika edhigu, oshoka ngame onda tameka nale, onda tegelela ashike tu hanganeni kumwe tu kondjitheni omutondi,” osho a ti.

Okatongotongo nomaunyengwi gopauwike momagumbo okutsakanitha iinakugwanithwa yomegumbo, mbika oyo amushanga gwaakiintu, Mbalula a tumbula koshito yi li ethininiko enene mokati kaakiintu yomuumbugantu waAfrika.

Molweendo nduka kOwambo, okwa thindikilwa kuefolo Lily Magagabe, gwaAnglikan mOvenduka, ngoka naye wo a popitha egongalo, osho wo efolo Selma Shejavali Omukwaluther.

Meme Mbalula manga inaa longa mombe-



Efolo Mbalula

lewa ya SACC, moka a kala ngashingey oomvula rabali, okwa kala tango amushanga gwiinima yaakiintu mOngeleki yaandjawa yaAnglikan, oomvula 11.

“Muukumwe otatu tsaathana omayele, otatu tsaathana omukumo tu tsikile aluhe ekondjo lyetu nando omutondi te tu kondjitha, sigo she mu dhiladhilitha shoka sha penduka mutse,” osho a ngongosheke yakwawo.

Sebulon Ekandjo

Odoolopa yaValombola ya mona ongeleka



Etungo lyongeleka yaKatoolika kaRooma mOvalombola

Ongeleka yotetetete modoolopa ipe mOvalombola, popepi nOngwediva, mOwambo, oya yapulilwa oshilonga shayo 27.10.1984. Eyapulo ola ningwa komubishofi waKatoolika kaRooma, Bonifatius Haushiku, osheshi etungo olo olavo.

Omubishofi wa ELOC, Kleopas Dumeni, naye om a li moshivilo nokwa yandja olupandu laye ponhele yOngeleki yaye. Omwa li yo ovawiliki veengeleki dikwao mOwambo nova popifa oshivilo.

Ongeleka iwalela tai wanene ovanhu konyala 400, pahokololo lomufita wayo, Franz Houben, oyo oshitai shimwe sheongalo laKatana noya tungifwa oimaliwa ya koya R 100 000.

Onhele yokutungilwa yoku ELOC, nayo otai monika i li olwaamba netungo olo, noilyo ya ELOC, ya li moshivilo shinya, oya li tai lyaamene nodjuulufi inene kewiliko lOngeleki yavo, kutya onaini etungo tali hovele. Oimaliwa ohaku tiwa hayo epulo linene moshinima eshi.

"Kokule ihaku fikwa ngula," osho vamwe va dja po tave li tu omukumo wokutelela natango.

Sebulon Ekandjo

OLWIIMBO LWANIIPA MAANDJANANGOLO

Omunangeshefa Nangolo dhajacob, ke shi ashike omushiinda nOniipa, ihe oye wo kuume omunene gwegongalo lyaNiipa, nuunene kongundulwiimbo lwomegongalo ndyoka. Eti 28.10.1984, tate Nangolo, okwa hiyile ongundulwiimbo ndoka opo ya ka koleke uukuume nuushiinda wawo.

Omakundo moondjimbo nomoohapu dhaayenda nodhaanegumbo, oga li taga taambathanwa nohokwe onene. Esiku olya ka hulila miitelekela kayi shi ku holokwa.

Omulumentu nguka Nangolo, oku na oyendji kaaye shi ku mu popila othika, momagongalo gawo mOwambo, molwashoka okwe ya longela iilonga iinene yohole.

KAaniipa, esiku olya li kali dhimbitha.

Sebulon Ekandjo

Ngele ndi li oshilyo shoonzapo dhajehova nenge shaBahaula, te vulu tuu okuninga oshilyo mEhangano lyaaiongi aakriste?

Epulo ndika, olya li lya pulwa moshigongi shokomumvo shEhangano lyaaiongi aakriste nuumvo, mOngwediva. Okwa li wo omapulo omakwawo ogendji ngoka ga zi moshipopiwa shika, ngaashi limwe tali landula mpaka:

Sho pe na omaitaalo ogendji, ondi na okudhimbulula ngiini, kutya eitaalo lyandje olyo li li mondjila?

Shoka sha hanganitha aailongi mbano osho ngaa oshitaya "kriste" sha zi koshityadhina KRISTUS. Luk. 2:11 Aantu yomEhangano lyaaiongi aakriste ohaa hempulula Kristus, onke ohaa ithanwa aakriste, aakwaKristus. Oyi itaala iinima tayi landula mpaka:

a) Kalunga a ningi omuntu muJesus Kristus. Joh.1:1-2,14

b) Keso nokeigandjo lyaJesus, oondjo dha dhimwa po. Omuye amuke mu na ehupitho. Iil.4:12 Mat.1:21 IKor.15:3-4

c) Jesus okwa yumuka kuusi palutu. Eps.16:10 Luk. 24:1-3

d) Ohaa hempulula wo Kalunga katatugumwe; Kalunga Ohe, Kalunga Omwana naKalunga Ombepo Ondjapuki, ngaashi tashi holoka momahempululo gOpangeleki; Ehempululo lyopayapostoli, lyaAtanasius nolyokuNikea Konstantinopoli.

Ngoye ngele ogwoonzapo dhajehova naBahaula, oto vulu ngiini okukala oshilyo shEhangano lyaaiongi aakriste ngoye ho hempulula shi ili, shaashi shono haye shi hempulula?

Salomo Elago



Pata Franz Houben ngoka a kala mOkatana uule womimvo 10.



Tate nameme Jacob, kolulyo, otaa taamba omagano gOmbimbeli, Elongo luyukriste nOkatikisa miikaha yameme Aino Dumeni, ngoka e shi ningi peha lyongundu.

Omuleli gwaIndia, a dhipagwa

Onkundana yu uvika pehulilo lyaKotoba, otayi ti kutya oministeli yotango yaIndia, efolo Indira Gandhi, okwa dhipagwa, kaakolokoshi yamwe moshilongo she. Okwa li e na omimvo 67.

Omukulukadhi Gandhi, okwa lala oshipundi shoka 1967. Pokati mpoka opwa li iipotha oyindji tayi kondjo naye yi mu gwithe ko nopompi-to yimwe okwa gwile ko thilu, sigo 1980 uuna ndoka a gwini ehogololo lyaayehe nomawi oge-ndjilela.

India, ndyoka lya thikama miilongo yi vule 20, evi limwe muAsia. Olya monene eipangelo lya-lyo 1950 okuza muukoloni wAaingilisa. Aakalimo otaa tengenekwa poomiliyona 690 pa-yalulo lyomumvo 1980. Mokati kaantu mboka omu na aakriste oomiliyona 8.

Konyala oshigwana ashije oshAahindu. Aamo-slemi oye li mo oopelesenda 10% adhike. Otaku tiwa onkalathano moshilongo shoka ombwina-yilela paupolitika, pokati kAahindu nAamosle-mi. Omumvo kehe konyala oya kolokosha naa-ntu oyendji oya sile mo.

Indira, omuna gwoministeli yotango yonale mo-shilongo, Jawanaral Nehru, a sile 1964.

Sebulon Ekandjo



Oministeli yotango efolo Indira Gandhi

TSEYITHA MBALA E-LUNDULUKO LYO-NDJUKITHI YOYE

A ZIMINE A HEPEKWE OMOLWOSHIPA OSHILUUDHE

“Aatiligane aawinayi,” osho hashi uvika olwindji momakana gAaluudhe. Mokulandula omuntu nomuntu, ohashi ka dhimbululwa mbala, hamutiligane kehe a tya ngaaka. Oku na oyendji, unene pethimbo ndika, mboka nayo wo itaa tyapula we okukalamwenyo molwashoka oya tokola ya popile uuthemba woshipa oshiluudhe. Omuhongi Christian Frederik Beyers Naude, oye gumwe.

Omusamane gwomimvo tadhi ka tidha ngashingeyi 70, opo a mangululwa nuumvo muSeptemba mondholongo yomegumbo, muJohannesburg, moka a ngambekelwa omimvo heyali dha zi ko.

Mokati kAaluudhe yomu SA mboka ye mu shi, oye mu tala omumwayina nakuume kawo, ihe mokati koshigwana she shOombulu, okwa talika ko omugwaaleki nomu-piyagani. (Star 22.2.1982)

Okuza pedhipago enene lyAaluudhe mu-Sharpeville 1960, ndyoka ihaali dhimbiwa kAaluudhe mu SA, opo a zi inaa popila we omakankameno gelongo lyokatongotongo nosho sha ningi etameko lyokukwatathana noshigwana she li kale lya teka, sigo onena.

Omambo ohu uvu ngashingeyi mongeleka yAaluudhe muAlexandra, sho mundjoka kwa li a langekwa mo omusita, itaayi taamba Aaluudhe melongelokalunga.

Konima yokumangululwa kwe, okwa ningi eindilo lya kola kaakriste ayehe mu SA yi imange kumwe yo ya ninge Ongeleki yi na ehempululo okukondjitha omukalo kehe gwokuyuga yamwe uuthemba wawo nokweekelahi omakankameno agehe gokatongotongo.

Okwe ya dhimbulukitha wo ombinga yawo ndjoka ye na okugama, kutya oyo ndjoka yaamboka taa hepekwa. (Lwi No.42/84).

Emanguluko lyomusita Naude, olya tsakanene niipotha iinene yaanasikola sho ya tindi okukala mootundi omolwehogololo ndyoka lya ningilwe muAguste nuumvo inaaye li hala. Aalongwa 150,000 moosikola dhopevi nodhopombanda, otaku tiwa oya gumwa kiipotha mbyoka.

Pamwe nomukulukadhi gwe Ilse, oye li ashike monkalo yanathangwalela, ihe molwashoka oye shi shi, oshe ya zile peni, onkene oye yi taamba.

Eha lyomukriste okugama kumboka taa hepa shaa shi ondjo yawo, osho yi itaala ngaaka. Egumbo lyawo muKotoba gwa zi ko, olya li lya ponokelwa nomamanya kuyalwe. Omakende ogendji oga thigwa ga tatulwa mo.

Shika oshimwe shomiiningwanima oyindji iiwinayi e yi ningilwa mokati koshigwana



Mefano ndika kolulyo, omusita Beyers Naude

she. Okwa zimina a hepekwe ngaaka omolwoshipa oshiluudhe.

Sebulon Ekandjo

Omimvo tadhi landula kadhi shi okudhimbiwa mondjokonona yOngeleki ya ELOC omolwii-ningwanima tayi landula

- 1870 - Aatumwa yotango Aasoomi ya thiki mOwambo
- 1883 - Aawambo yotango 6 ya shashawa pOmulonga, mOndonga
- 1901 - Oshinyanyangidho sha tungwa mOniipa
- 1903 - Etestamendi Epe lya holoka melaka lyOshindonga

Ombelewa yomayelithilo

OMUSAMANE "EMOMIKA" MONAKAYALE

1. Osha li sha fa shi dhinitha
Ongohandje ya za meziko
Tayi gwile moshilongo
Ndele oshilongo ashihie
tashi tambula

2. Omusamane EMOMIKA
omOnakayale a valelwa
opOkango a putukila
Pokati koshipangelo nOkakwa
A ningila omulumentu

3. Sho a valwa okwa koko
Moomvula mbali adhike
Omo a pewa epangelo
Lyokupangela mOnakayale

4. Omukuluntu okwa tile
Omoshitila mwa za ondjupa
Mondhino mwa za esimano
Momvula yotango
Okwe tu pa ooranda omathele
gaheyali

5. Momvula ye ontiyali
Omusamane EMOMIKA ti itanga
Kutya okwa valwa menenegumbo
Li na oondunda ihaali lokelwa
Li na aamati ihaali si ondjala
Onke mokwiitanga kwe okwe tu pe
Omathele gaheyali nokuli

6. Sho a gwanitha ndatu
Otwali twa tegelela a sholole
Twa tala kutya okwa tota nuupenda
Ihe ye hasho a ningi
Okwa yi mo ti itanga

7. Ongame gwaTaapopi naKashea
Omuntu gwaTauya naNdatipo
Omutekulu gwaAmupala
Ngu handi gandjele Kalunga
Handi holol'omadhiladhilo
Momitima dhaamboka ye na ehala
Lyokugandjela Kalunga
Omathele omugoyi ogo ngoka
Faleni ko evaangeli

8. Nando natango twa tegelela
Tate EMOMIKA e tu pe
Otu shi ku mu pandula niitya mbi

9. Tate EMOMIKA, tse otwa pandula unene
Sho aamwameme ayehe we ya pendutha
Aamati we ya pe uunkulungu
Ye ete po omukalo omupe
Gokugandjela Kalunga

ku F. Ly. Shikwambi



Mefano eli, ovanhu otava katuka va finda kongeleka. Kombinga yokolumosho, otaku monika, ovalihongi vomosekundofikola yEengedjo i li pOmungwelume, tava imbi ve li momikweyo.

KONGOLO KWA SHI

*Aaholike nookuume amuhe hatu ya-
kulathaneni miinima yiinyanyangi-
dhwa, otatu mu tseyithile, kutya ko-
ngolo masiku kwa shi. Ngele oku na
ngoka u na oshilonga (oshinyanyangi-
dhwa) wa hala shi kale sha pita nuu-
mvo, 1984, endelega u shi longekidhe,
ngoye u shi ete mbala manga Dese-
mba inaagu thika.*

*Omumvo ogwa tya ko, go nomathimbo
gokufudha po oga tsima ko ngomwii-
dhi gwopothinge. Shika tu shi ningeni
ano nondjungu, oshoka esiku kehe tali
shi otali tu hilile kuDesemba 1984.
Dha londoka ihadhi yi iita.*



Omushamane Silvanus Vatuva ta ningi omashiivifo axuuninwa pexulilo lengudumano momuti. Meenghundafana navamwe vomOmungwelume, omutoolinghundana womukwetu okwa hokololelwa kuvahapu kutya omushamane Vatuva okwa ninga shihapu neenghono mokutungifa ongeleka yavo.

OMUKWETU

Oye oshifo shOngeleki Onkwaevangeli paLuther yomOwambokango.
Ohashi nyanyangidhwa mOshinyanyangidho shOngeleki mOniipa.
Omukuluntu gwoshifo omumbisofi Dr. Klépas Dumeni.
Amushanga gwoshifo omusita Sebulon Ekandjo.

Ondando yOmukwetu muNamibia naSuld-Afrika R5,00 komumvo.
Palwe muAfrika R8,00 nokombanda yomafuta R11,00, komumvo. Mondhila R13,00.

Oondando nomambesitelo agehe naga tumwe ko-mukwetu, Oniipa, P/Bag 2013, Ondangwa, 9000.

EV.LUTH.OWAMBOKAVANGO CHURCH PRESS
PRIVATE BAG 2013, ONDANGWA 9000
SWA/NAMIBIA



Ounona vanini vaMungwelume, navo okwa li tava imbi wiiwa, shaashi eemwenyo davo nado oda li da hafa omolwongeleka ipe.