



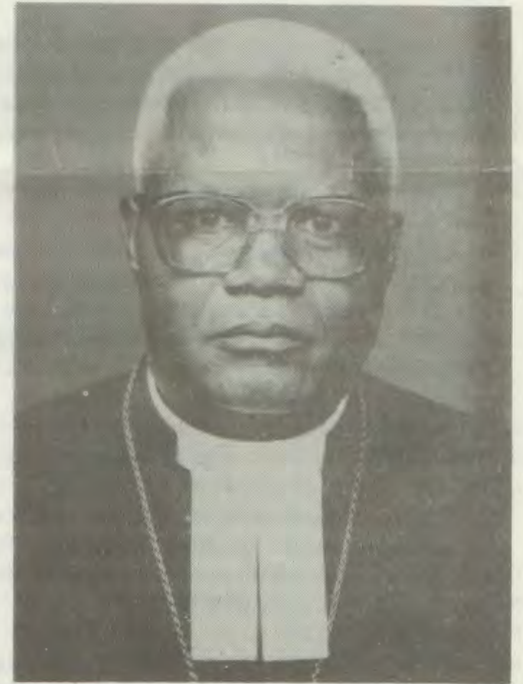
## OOMBWA DHAAPOLOSI INADHI HALA OKUHADHA OSHIHAUTO SHONGELEKI

Oshihauto shomumbisofi dr Kleopas Dumeni, osha hadhwa koombwa nokaapolosi manga shi li mondjila yokuya kiigongi ya VELKSWA, kOvenduka. Iilyo yElelongeleki aasita yane naAmushangakwatakanithi gwEhanganotumo lyaSoomi, meme U. Nenonen, oyo ya li ye ende moshihauto shoka.

Oshiningwanima osha li sheti 15.10.1984 pOshivelo sha-Namutuni, nosha ningwa konima yomasiku omashonalela sho omumbisofi nguka kwa li u uvanekelwa kaa-kuluntu yaapolosi noyaa-kwiita, mOwambo, kutya

ite shi ningilwa we.

Omitsalo adhihe moshihauto odha kuthwa mo e tadhi anekwa pomutenya. Ombwa oyi ithanwa yi ninge ekonakono naasho pwa dhimbululwa, kutya itayi longo ngaashi sha halika kooyene, opwa ka ithanwa ombwa o-ntiyali, ndjoka nayo wo pakuholola



Omumbisofi K. Dumeni

kwoontaliho, kaya li ya hala okuninga sha.

Konima yaambika ayihe, aapolosi oyi ikwatele ko yoyene mokuhadha kehe okampunda nokuyanuna kehe ombapila. Aawilikingeleki mbaka oyi idhidhimike ethimbo alihe, sigo ekonakono lya pu.

Aapolosi mboka mekonakono lyawo inaa mona mo sha, shila osha hepitha



Omumbisofi Dumeni ta popifa ovanyasha ovo va li va idililwa kokamba oyo i li popepi nOmalinda. Ota monika kombinga yokolulyolela. Ehokololo alihe tala kep. 4

Tala kep. 2

# Etumwalaka la VELKSWA komaongalo

Elelongeleki la VELKSWA, otali tumu ekundo komaongalo omakwa Luther moshilongo eshi nOndjovo yoshipalanyole shoshivike eshi:

“Noshipango eshi twe shi pewa kuyo nokutya, ou e hole Kalunga, na hole yo omumwaxe.” 1 Joh.4:21.

Fye oilyo yOngeleki ya VELKSWA ovo twa fikama meengeleki nhatu eenghwa Luther muNamibia (ELOK, ELK na DELK) otwa kala meenghundafana domoule mOvenduka 16-17.10.1984.

Otwa li tu na okudiladila onakwiiwa yetu youkumwe, sha pendulwa ketokolo la ningwa moshongaleleengeleki shOngongahangano yOvakwaluther (LWF) muBudapest. Otwa kala twa fikamenwa kepulo, ngenge etokolo olo tali kwafa tuu Velkswa a twikile noshilonga shaye, ile otali kala ashike eididiliko lexulilo londjila yaye.

Oshinima osho inatu shi diladila nande kanini, osheshi okwa kala ku na unene omapulo mahapu inaa mona omanyamukulo mokati ketu, osho yo oinima ii ya konekwa mefimbo la pita, oyo i na okuyelifwa noi tulwe meshikulafano.

Onghe pefimbo loshongalele shetu, opa kala omhepo yeyululilafano lomitima tai pangele nokupaafana yo oushima. Omanyeme aa okwa li e na okupwilikinwa nokuyelifwa.

Ashike otwe shi koneka yo kutya, ohole oyo ya pala ondjila okufika komumwatate, ngaashi twe shi lihonga meendjovo doshipalanyole pombada, otai hangika ashike mehempaululo loushima nomedimepo lomatimba. Naashi yo otashi yeulula natango ondjila yokufika pumukwetu.

Panghedi ei, ohatu taalele vali onakwiiwa yOngeleki yetu tu na omukumo netimhaumbwile. Otwe li honga okukala po kwaKalunga mokati ketu, oye mwene e tu tula vali kumwe.

Elelongeleki laVelkswa ola tambula efaneko la etwa po, olo tali kala oshishoshela shombilive ei, notali yukilile komaongalo etu. Efaneko olo otali nyanyangidwa notali tulwa melandulafano loiningwanima ikwao oyo i li omukangha woukumwe wetu oo wa fikama moshikalimo shonghalo naanaa ei yetu.

Ashike eendjovo adike itadi wana, otwa kundafana yo onghatu oyo i na okukufwa tai limonikila, opo ouumwe wOngeleki yetu u etwe po. Onghe hatu indile omaongalo etu a holole oukumwe ou

komukalo keshe tau dulika, ndelene haku u kwata moshipala.

Natu shi dimbulukweni: MOngeleki ya-Jesus Kristus ouumwe neteelelo, oya tuvikwa koku he na oufikepamwe, oku he .aa ouyuki nokomangwadjulafano pokati kovaitaveli. MuKristus kape na Omujuda ile Omugreka, omupika ile omumangululwa. Kamu na mulumenhu ile omukainhu, Omulaule ile Or utilyane. Aveshe ove li umwe muye, oo e tu lumbakanifa momushiakano. Gal.3:28.

Ongeleki oyo edidiliko lelumbakano mokuyandja oumbangi wayo mokukalamwenyo kwayo. Monghalo ei ya dalwa moukwamuhoko nometondafano, ovaitaveli otava hepaulula Omwene wavo moku mu ilikana nomokukala kumwe. Nomelumbakano lavo eli netukulilafano longhalamwenyo, itava dulu ashike va ngabekelwe moimima yomalongelokalunga noyoyoongalele, ndelene okwa li yo ve na okumonika monghalamwenyo yetu aishemOngeleki nomoshiwana.

Ongeleki muNamibia nai kale onyika pombada yoshitaafula mefimbo eli lidjuu noi kale yo oshilando sha tungilwa kondudu, opo ounyuni u mone ko wi itavele nou lidilulule. Mat.5:14-15.

Katu li melimbebeleko, ndele oshe tu yelela kutya ohatu ka shakenekwa komaupyakadi nokoiimbi mondjila yetu youkumwe. Ashike otu shi shi, Kristus ote tu kwatele komesho mondjila yetu; nomaudaneke aa omanene e dule ounghundi wetu.

Omaongalo etu ohatu a halele epuniko lOngeleki yetu eli kutya:

**Efilonghenda lOmwene wetu Jesus Kristus nohole yaKalunga nelumbakano lOmhepo Iyapuki, nali kale nafyeni atusheni.**

Ya shainwa kovawiliki veengeleki nhatu:

1. Hendrik Frederik (ELK)  
*Omupresidende wa Velkswa*
2. Wilfried J. Blank (DELK)  
*omuponhele waye*
3. Kleopas Dumeni (ELOK)

Da dja kep. 1

owala ethimbo lyaayendindjila mboka ya li ye na eulumo. Pahokololo lyomumbisofi iinima yawo ayihe oye yi shunithilwa, ashike ehadho olya ningwa “mombepo ombwinayi”, osho a ti.

Osheendo shoka sha li tashi hadhwa osha pandula oombwa ndhoka dha li inaadhi hala okulongela momutenya moka ya li ya tulwa nomitsalo dhawo.

“Oombwa sho inaadhi hala, iinima oya kokololelwa momuzile yi konakonwe nawa,” osho yo yene ya hokolola. Iinima yomukiintu wo oya hadhwa montaneho.

Oshihauto shElelongeleki olwindji mondjila ndjika yUushimba, omolwiigongi yOngeleki osha hadhwa. Ehadho lya tya ngaaka, omumbisofi ote li dhimbulukwa natango kwa li e li ningilwa pehala tuu ndyoka, konima ashike yomasiku 14 ga piti po (1.10.84).

“Onda li ndi ithana aakuluntu yaakwiita noyaapolosi ayehe mOwambo ndi ya hokololele iinima mbyoka tayi shekitha iilonga yepangelo moshigwana, nonda pewa euvaneko kutya shoka itashi ka ningwa we,” osho Dumeni a hokolola nombepo yuuvitile ohenda aaihumbati nayi yamwe yomiilonga mbyoka.

Omuwilikingeleki gwa ELOK, okwe shi yelitha natango kutya, aantu ya tya ngaaka inaa kelelwa okulonga iilonga yawo, ihe kaye na uuthemba oku hepeka aantu ngele inaa yona sha.

Kutya omalimbililo oga zi peni, shihauto shi hadhwe, omumbisofi okwa hokolola kutya, aayakuli yopehala ndyoka oya ti kutya, oshihauto osha piti po ashike, inaashi thikama.

Ihe oshili oyo ndjoka kutya, omuhingi okwa thikameke oshihauto pehala lyuuthwa nomupolosi okwa shanga shoka kwa li e na okushanga. Ihe sho kwa li e na okushangwa nani kaapolosi yaali, ye inee shi lombwelwa, otwa yi nondjila yetu. Opo mpoka twa galulwa tu hadhwe.

“Otwa li tu na okukalekwa momutenya ethimbo ele, shalongo pwa li oombwa inaadhi hala okulonga momutenya, notwa ningile ko elago,” osho ayehe ya tumbula nokupandula iinamwenyo mbiyaka.

# DELK okwiilongekidha okutsikila naamwayinangeleki

**Omalongekidho goongeleki ndatu oonkwaLuther muNamibia, oga ningi etsakaneno lyago moonkundathana omwedhi gwa zi ko, mOvenduka. Osho oshikando shotango omawiliko gOongeleki ndhoka ga tsakanene okuza koshigongi shAakwaluther ayehe muBudapest mujuli nuumvo, hoka Ongeleki yAandowishi ya tulwa megeelo.**

Iilyo yOmalelongeleki gOongeleki; onkwaevaengeli paLuther yAandowishi (DELK) nOngeleki onkwaevangeli paLuther yomOwambokavango (ELOK), oyo ya li metsakaneno ndyoka.

Opwa li pwa kundanwa kutya Ongeleki ndjika yAandowishi omolwokuyemata kwayo, sho ya tulwa megeelo, oyi iteeka noya kanitha ombepo yokuhedhathana kumwe noonkwawo. Ihe moshigongi shoka oyi iholola kutya oya hala okukambadhala natango okudhiginina epaya lyuukumwe.

Nando ongeyi ombepo oya pepe, kutya kasha li oshipu aamwameme mboka Aandowishi ya tale momeho aawiliki yOongeleki dhAaluudhe ndhoka painingwanima yokonima yomonkalathano, mwa anduka edhiladhilo lyokukonditha Ongeleki ndjoka mEhangano enene lyuuyuni.

“Konima yoonkundathana oonde, otwa yelithilathana omakankameno gomadhiladhilo getu notwa adha etsokumwe mombepo ombwanawa,” osho omumbisofi gwa ELOK, a hokolola mokugaluka kwawo koshigongi shoka.

Shoka sha tulitha Ongeleki yAandowishi megeelo. osho shono kutya opwa dhimbululwa Ongeleki ndjoka itayi longo pamakankameno gEhangano ndyoka okukondjitha omulandu gwokatongotongo.

MElelongeleki ndyoka lya VELKSWA, omwa zi omushangwahokololo gwa tumi- nwa omagongalo okuyelithila iilyo yomomagongalo, onkalathano yOongeleki ndhoka ndatu nkene yi li ngashingeyi, nokutya, etsikilo muukumwe opo li li natango nonando pweendele omalulumikathano.

“MOongeleki yaKristus uugumwe netegameno, osho yi na okukala ya kwidhidhikwa koshikogo shokwaa na uuthikepamwe, okwaanuyyuku nomangwandjulathano mokati kooitaali, ihe Kristus okwe tu hanganitha momushigakano.” Gal. 3:28, osho omushangwahokololo gwa kumagidha.

Ehokololo alihe tala palwe moshifo shika.

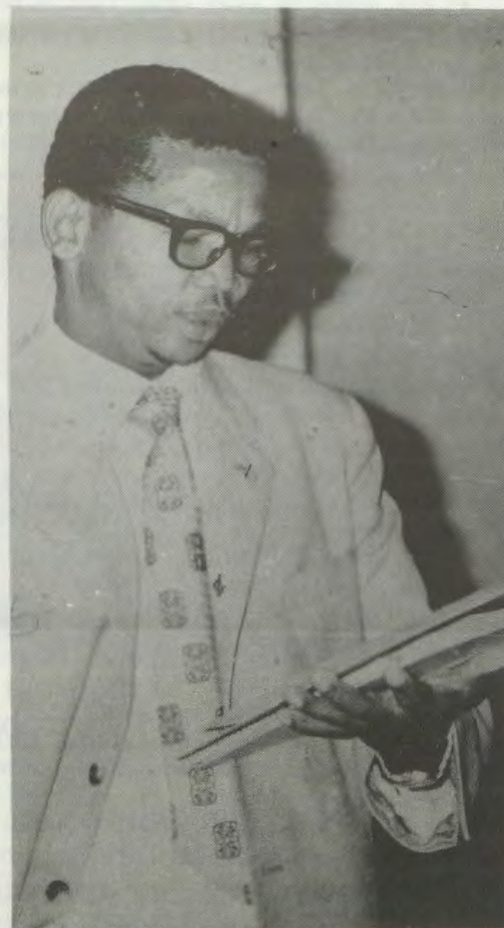
Oshigongi oshitine sha VELKSWA osha li ko muJuli 1983, mOngwediva. Musho omwa li mwa kundathanwa nkene oongeleki ndhoka tadhi ningi Ongeleki yimwe ayike muNamibia.

Oonkundathana moshinima shoka nando dha zi kokule, 1972, egwanitho lyomadhiladhilo, oyendji kaye li lwetele natango li ningwe ando muule wethimbo efupi. Naashoka oshi li pamatompelo oge- ndji.

Liyotango, ngiika iimaliwa yokweenditha elongekidho ndyoka enene tali ningwa pokati komihoko dha yooloka, omalaka nomithigululwakalo dhomalongelo- kalunga.

Patiyali, uumbanda wokukanitha olupe nuukwatya, mboka tau dhimbululwa mukehe Ongeleki yi li moshinima.

Poompito dhimwe uusama ohau gandjwa kaaleti yOongeleki noyomagongalo, kutya omandhindhiliko gehengumukilo mumwe sho gaa lwetike nawa, omolwa wo sho itaa egulula oompito dha gwana dhoku- tsakanena kwiilyo yooongeleki ndhoka.



**Omuwilikingeleki gwa ELK, Hendrik Frederik, omupresidende gwa VELKSWA Ethano olya thanekwa 1975 mEngela.**



**Omuwilikingeleki Wilfried Blank gwa DELK, kolulyo methano ndika pamwe nomusita Petrus Shipena.**

Shoka osha fa tashi talelwa unene ko- mbinga yOongeleki dhAaluudhe. Ku- ndjoka yAatiligane, ngiika oshinima oshi ili. Kundjika aakwanegongalo oya dhi- mbululwa oyo ye na uumbanda uunene, ye vule aaleli yOngeleki.

Uukomitiye owindji nopoompito odhindji, owa hogololelwa omalongekidho gehengumukilo mumwe ndyoka, ihe halwindji tau eta shono wa dhimbulula momakonakono gawo. Otashi vulika nawo wo hau nyengwa okutsakanena omolwomukundu gwijimaliwa nenge sha shilwe shi ili.

Moshigongingeleki sha ELOK nuumvo, omusita Ngeno Z. Nakamhela, gwa ELK, ngoka e li wo gumwe gwomaawiliki yoshigongingeleki sha VELKSWA, okwa tile, elongekidho lyehengumukilo mumwe lyOongeleki, otali ningwa unene moohapu shi vulithe miilonga yoyene.

Oku na yamwe taa dhiladhila, kutya andola onawa ehengumukilo ndyoka tali ka longekidhwa oshilongo ngele sha manguluka, manga yamwe ishewe taa tala kutya, onawa li ningwe manga emanguluko inaali ya. Osha yela kutya, ayehe oye na ngaa omatompelo gawo, nonando itatu ga tula mpaka.

Konyala ope na omakwatya gopaali ashike moshinima shika nkene shi na okuningwa; a) uuna Ongeleki kehe tayi kanitha uuthiga wayo wopalongelokalunga, po pu totwe omusinda gumwe aguke ngoka gu na okulandulwa kukehe ongeleki nenge b) Ongeleki kehe tayi kala muuthiga wayo, ihe miinima yontumba, oongeleki otadhi kutha omusinda gumwe. Shika sha hugunina oshipu notashi vulu okutaambwa kukehe Ongeleki nuupu.

**Sebulon Ekandjo**

# OONKWATWA 74 DHACASSINGA DHA MANGULULWA

## \*Edhina lyehala lyokamba lya tseyika

Oonkwatwa dhaCassinga 74 dha thigalele kOmalinda (Mriental), yakwawo sho ya mangululwa nuumvo muJuni, dha mangululwa ko. Osha ningwa muKotoba nguka nehokololo otali ti, kutya okamba ndjoka ngashingeyi oya yela.



Mbaka taa monika methano ndika, oyamwe yomwaamboka ya zi kOmalinda.

Oonkwatwa odha zilwe nadho kaakwiitaya SA moshiponokela shono sha ningilwe muumbugantu waAngola omumvo 1978, omasiku gane gaMai. Ookamba dhoontauki Aanamibia, muCassinga na Vietnam odha li dha mono oshiponga shoka oshidhigu

mehistoli lyiita yoshilongo shika, moka mwa sile aantu ye thike lwopeyuvi noyendji ye ehamekwa.

Mokati kawo omwa li uunona uushona, aagundjuka naakulupe. Oonkwatwa dhimwe odhe etwa nomwenyo mOshakati

muNamibia nokonima yethimbo efupi, yamwe oya mangululwa noye ethiwa ya shune momagumbo gawo moka ya zile.

Onkundana yoshiponokela shoka, oya li ya taambwa noluhodhi olunene muNamibia alihe nomuuyuni wopondje. Ihe okwa li wo ku na yamwe nomuNamibia mboka ye yi hambelele. Oonkwatwa dhi vule ethele limwe, odha ka pongekwa kehala inaali tseyika.

Opo lwotango muule womimvo heyali edhina lyokamba ndjoka tali holoka miife kutya nani oKeikamachab, li li popepi nOmalinda.

## Oonkambadhala dhOngeleki dhethimbo ele pamwe nomahangano

Ongeleki moshilongo sho ya kundana kutya mOshakati omwe etwa oonkwatwa dha ziwa nadho muAngola, oye endebele mbala opo yi mone eziminino kaakwiita ya SA okupopitha mboka ya hupu meso. Shoka inashi pita.

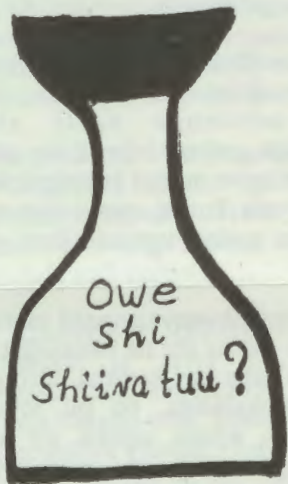
Konima yethimbo ele uuyuni wopondje, Ehanganu lyopaigwana lyomushigakano omutiligane nEhanganu lyopaigwana lyooveta dhuuthemba waantu oga popitha epangelo ombaluwali, opo li gandje epitikilo onkalo yoonkwatwa yi konakonwe yo yi talike ngele oyi li tuu pauthemba woonkwatwa.

Omatalelopo goludhi ndoka sho ga taa mbwa, natango omaindilo oga tsikile opo

Tala kep. 5

## OWE SHI SHIIVA TUU?

### Kutya:



Okangudulongekidi konghalafano mu ELOK oke na omhito oku ku kwafa.

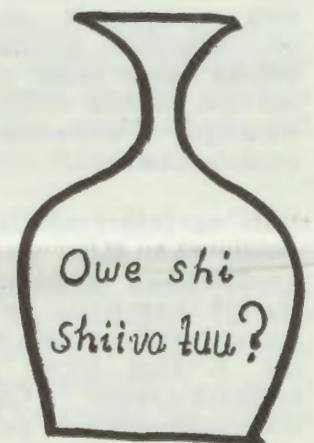
Okangudulongekidi konghalafano oka hala oku ku kwafa moudjuu, mokukundafana moileshwa nomeetu-ndifatululo.

Oka hala yo oku ku kwafa moudjuu woikunwa. Ope na eemhito edi:

1. MONandjokwe moshipangelo oto dulu okukwafwa neenghundafana okutameka muNovomba 12, mOmaandaha keshe po 11.00.

2. METihamano lotete lomwedi keshe, mongeleka yaNiipa otamu kala eetundifatululo neenghundafana kovanamaumbo ava ve na omadjuu molwoikunwa.

3. Oto dulu yo okutuma omapulo ile omaindilo ile omafaneko oye kokangudulongekidi konghalafano pOniipa.



#### Dha za kep. 4

oonkwatwa ndhoka dhi mangululwe mo. Osho Kalunga a ende ta nengenekitha onkalo ndjoka ya kala ondhigu sigo 1981;

Ongeleki sho ya zimininwa yi ninge omatonatelo gopambepo kaantu mboka. Elelongeleki lya ELOK olya utha omusita Gerson Max, mOvenduka, oye a kale he ya talele po. Konima naakwanezimo yoonkwatwa nayo oya zimininwa oku ya talela po.

Numvo muMaalitsa, aawilikingeleki yOongeleki ndatu moshilongo; Ongeleki yaKayoolika kaRooma, yaAngilikana noya ELOK, oya gandja eindilo lyawo mohofa, oshipotha shoonkwatwa 37 kOmalinda shi pulakenwe.

Ombilive ya gandjwa kaawilikingeleki mohofa, oya li ya kolekwa wo komadhina 20 gayamwe yomaakwanezimo nookuume mboka taa pula epangelo lya SA kutya omolwashike itaa mangulula oonkwatwa ndhoka.

Manga kwa li ku na ashike omasiku gaali ageke ohofa yi tameke, dho oonkwatwa 54 otadhi mangululwa ko. Ihe oshipotha onkene tuu osha tsikile netokolo inali ka ningwa ngaashi omadhiladhilo goyendji ga li ge shi tegamene.

Manga aanaveta yi ipyakidhila noshinima opo shi shunununwe mo mohofa, yo mboka ya li ya thigala ko otaa ethiwa 74. Mokati kawo omwa li mu na omukiintu gumwe awike.

Ihe omasiku ngaka opwa kundanwa mokana komunaveta ngoka e lile po oshipotha shoonkwatwa mohofa, ta ti, kutya okumangululwa kwaantu mboka itaku imbi oshipotha shi tsikile natango, opo oshikando shuuyyuki shi yelithe nawa, kutya aantu oya kala ya dhigininwa ethimbo ele pamukanka gwoveta yinipo.

#### Kalunga ota yamukula omagalikano

Inashi puka ngele omuntu to ti, omumvo gwonuumvo, omumvo gwemanguluko lyoonkwatwa. Petamekolela muFebuluali, omusamane Toivo yaToivo, okwa mangululwa ko kOntuntu yaRobben hoka a kala a pongekwa omimvo 16 peha lyomimvo 20 e dhi pelwe.

MuMai oonkwatwa 54 odha mangululwa ko kOmalinda naishewe 15 oya mangululwa ko kOntuntu yaRobben. Inatu landula emanguluko lyoonkwatwa adhihe pomahala galwe, ihe osha yela kutya hayo ayeke mboka ya tumbulwa mpaka.

Mokupopitha yamwe yomumboka 74 ya mangululwa ngashingeyi kOmalinda, omumbisofi gwa ELOK, dr. K. Dumeni, okwa ti:

“Elelongeleki olya li lye shi tala ngaaka sha pumbiwa, opo numvo tu kale noshipalanyolo shomumvo shegalikano: ‘Omuwa tu taalelulula, Omuwa Lundulula okukala kwetu’ Eps.126:4

Omumbisofi okwa tsikile ko ngeyi a ti: otu shi lweteni, Omuwa oku uvu ko omaindilo goshigwana shika nogooitaali muuyuni, onke tu na nena esiku lyehambeleo,

kushoka e tu ningile.

“Otu shi shi inatu gwana po natango. Naamboka ya thigala ko natango, omolwoonkondo dhaKalunga tadhi vulu okulundulula ashihe, otwiitaala, nayo otaa ke ya e tatu ningi oshituthihambeleo muNamibia lya manguluka.”

**Sebulon Ekandjo**



**Methano ndika, mboka ya gama oshitaafula haandiyaka, oyamwe yomaamangululwa yaCassinga, taa kundwa pombelewangeleki, poNiipa. Kolumoholela otaku monika omusita Matias Ngipandulua, ngoka ta kundu aayenda.**



**Aanambelewangeleki pamwe noonkwatwa pethimbo lyoshituthihambeleo omolwemangululwo lyawo. Ehambeleo olya ningwa pethimbo lyowandaha yongula eti 19.10.1984.**

**Omuntu omuti 75, gwoonkwatwa ndhoka dha thigalele kOmalinda nodha mangululwa omasiku ngaka, otaku hokololwa kutya ine ethiwa pamwe nooyakwawo, nonando ina thigala kokamba. Elalakano lyokudhigininwa natango, manga yakwawo taa ethiwa, kape na ngoka e li shi.**

# EHANGANO LYAALONGI MOWAMBO (OTA), LYA KOLEKE EKOTAMPANGO LYALYO

KuSebulon Ekandjo

Aalongi ye thike po 300 nenge 400 oya li ya gongalele mOseko yaShakati 20.10.1984 okukoleka ethaneko epe lyekotampango. Oshigongi shopaulumompumbwe nosha ithanwa kEwilikongundu lyEhangano ndyoka.



Oshigongi shaalongi otashi halakana shi shune komagumbo. Methano ndika otaa zi mondjugo yoshigongi.

Pafatululo lyomunashipundi sha OTA, omusamane Fransiskus Ananias Shikongo. Ethaneko lyelundululo lyekotampango olya ningilwe kokakomitiye kowina omolwoshilonga shoka okuza 1983 nolya etelwa oshigongi shaayehe numvo.

“Oshigongi shika sho sha li inaashi mana netalululo lyasho, osho sha hiyitha oshigongi shika shopaulumompumbwe,” osho omunashipundi a yelithile OMUKWETU.

Pakotampango ndika lya kolekwa, oonkondo dhelundululo kehe mekotampango, egwedhelopo lyomautho omape nenge etendomo lyomatendo ge li mo nale, mbika ayihe otayi vulu owala okuningwa ngele oopelesenda 60% dhiilyo mbyoka yi li moshigongi shokomumvo ya zimina shi ningwe.

Aalongi ayehe moshitopolwa shaWambo otaa tengenekwa 3200 mwa

kwatelelwa mboka yaa na oonzapo. Kutya aalongi ye thike peni yi inyolitha ihe mEhangano ndika, OMUKWETU okwa yamukulwa, kutya etata lyomwaalu aguhe gwaalongi oyi inyolitha nokuli.

Pakuuva komakana giilyo yimwe ya OTA, mwa kwatelelwa wo iilyo yimwe yomEwilikongundu, aalongi yamwe inaa hala nando okwiinyolitha mehanganano ndika lyawo nonando nayo wo ohaa tyapula pamwe omauthemba ngoka tage etwa po kiilyo mbyoka yi inyolitha.

“Opo aalongi ayehe ya lye shono ye shi longela muukumwe wawo, ekotampango epe ndyoka lya kolekwa, olya ningi eutho, kutya okuza mpaka omulongi kehe ota talwa oshilyo shEhangano, i inyolitha nenge ine shi ninga.” osho omunashipundi a tsikile nokuyelithila OMUKWETU omalunduluko omape ngoka ga ningwa po.

Omulongi kehe ta ningi oshilyo mEhangano ndika, oti inyolitha nokugandja R 1,00. Nokuzi mpoka ota kala ha gandja iigandjwa yEhangano R 12,00 komumvo.

Aantu yalwe yaa shi aalongi nayo wo oye na ompito okuninga iilyo nookuume kEhangano ndika shimpa tuu ye na ombepo ndjoka tayi pangele wo momadhiladhilo gaalongi, kutya:

a) Pu kondje!we eputudho nuwanawa womunona melongo muNamibia alihe.

b) Okuputudha omunona a ninge omukwashilongo gwevi ndika  
Tala kep. tali landula



Aalongi methano ndika otaa gandja iigandjwa yawo yokomumvo yehanganano kuAmushanga gwa OTA, omusamane Verner Shihepo.

nokukokeka uukwatya we wopantshitwe.

c) Okwoopaleka eputudho nokukundathana iinima yi na sha neputudho lyomunona.

d) Nokugamena uuthemba nomauwanawa gaalongi.

Omuntu kee shi omulongi ngele ti inyolitha mehanganano ndika, ota kala ha futu ashike 50c komumvo.

Kakele kokukoleka ethaneko lyekotampango, oshigongi osha li wo sha dhiladhililwa okutsakanena lwotango nomunaveta gwehangano ndyoka, omusamane Teek. Omusamane ngoka okwiile koshigongi okuza kOvenduka nokwa popitha oshigongi.

“Ehangano lyaalongi sho enene li thike mpaka nohali tsakanekwa kiinima iidhigu, otashi vulika ngiini tu kale twaa na ngoka te tu pe omauyeleele paveta nkene tu na okweenda iinima yEhangano?” osho Shikongo a tumbula nomuthindo KOMUKWETU, ongaangoka naye wo ta kongo eziminino kuye.

### Omufotolo tagu ipulwa kaalongi

Nonando oshigongi kasha li she endela iinima oyindji, iinima yimwe ye ya etela omuzile gwomalibililo miilonga yawo, oya nyengwa oku yi mwenena. Omapulo oga zi miilyo yoshigongi gu ukithwa koshipundi shewiliko.

Ngiika haagehe ga mono omayamukulo, ihe osha yela, kutya oga taambwa nombepo yesimaneko. Gamwe gomomapulo ngoka oga li ngaashi omufotolo ngoka gu li pokumana ko Owambo ayihe, kutya oosikola dhimwe moshitopolwa shika otadhi dhiladhililwa okupatwa.

Oshigongi oshi ipula wo niikandjo yimwe yomelongo hayi igidha etaambo lyoondjambi dhaalongi mOradio.

“Ihandi uvuko nando te lombwelwa kutya, oosikola dhimwe nadhi pate omolwompumbwe aniwa yiimaliwa, manga pu na omukalo gwokuhiyila mpaka aalongi taa kuthwa muuyuni wopondje,” osho omulongi gumwe a holola euvito lye kuyakwawo moshigongi.

Ewilikongundu olya thigilwa oshimpwiyu li konakone iinima mbyoka

# Ongeleki otayi ti ngiini kengambeko lyoluvalo

**Aawiliki yomokati kaagundjuka mOngeliki ya ELOK, oya thikamenwa kepulo ndika, omolwomafatululo ogendji ngoka ga holoka po taga zi palwe notaga sikumudha aagundjuka ya longithe omiti okungambeka oluvalo lwawo.**

**Shono tashi hepeke aawiliki yaagundjuka mpano, osho shoka, kutya engambeko ndyoka otali popiwa unene mokati kaagundjuka shi vulithe mokati kaamboka ye li mondjokana. Noshikwawo, Ongeliki ya ELOK sigo oompoka inayi holola ewi lyayo puuyeleele nonando melongo lyopakriste osha yela, Ongeliki itayi popile omukalo ngoka.**

Omadhiladhilo taga landula mpaka, oga gandjwa komusita Festus Ashipala, ihe ngiika kage shi naanaa okutalwa, kutya ogo ewi lyOngeliki nonando kage shi wo okweelwahi. Oge shi okulongithwa sigo

oshinima sha kundathanwa nosha konakonwa nosha monenwa eyamukulo lyopambeleva.

Omusita Ashipala onkambadhala yOngeliki okukwatha moshinima shengambeko lyoluvalo okwe yi tala ngeyi:

Inapu gandjwa nando osha sha yela paveta yoshilongo nenge yOngeliki okupopila nenge okutinda engambeko lyoluvalo. Oyendji oye shi ningi ashike pakutala kwawo yene, kutya otashi ya opalele, unene mboka ya mono ontseyo pakulesha oambo nenge omokupulakena iipopipiwa tayi fatulula oshinima shoka.

### Tala kep. 9



Ewilikongudu lya OTA. Ngoka tu ulikilwa kendhindhiliko, omusamane Epafra Uushona, omupresidende gwEhangano, kolulyo lwe omudhiginini gwiiniwe, omusamane Josaphat Mbandeka, kolulyo lwe, Amushanga omukuluntu, omusamane V. Shihepo, nokolulyo lwe omunashipundi shEhangano, omusamane F. Shikongo.

nawa opo yi etwe moonkundathana ngele osha talika sha pumbiwa.

Manga oshigongi inaashi thika pehulilo nomanga omunashipundi inee shi pandulila uupenda washo miilonga yasho nomeholoko kiigongi yEhangano, omusamane Shikongo okwe shi kumagidha nomuthindo shi koke

mombepo.

“Pulakeneni nawa, taleni iinima nawa, konakoneni nawa, kehe shono tashi ya ne ningeni wo omathaneko,” osho e ya lombwelela.

Oshigongi osha li sha kala uule wesiku limwe alike.

# Omukundaneki Halweendo

## OSHIPWE 'SHOMUHONA' TA ETELWA OTEE MOMBETE KOMUKALELE

Omafiku a dile ko omukundaneki Halweendo okwa li a talelapo eedoolopa nomalukanda manene moshilongo. Mokwaaluka kwaye, okwa hokololela ovanaifo onghalo yovanailonga vomomaumbo, 'ovakalele' novahona vavo, ngaashi hava ifanwa melaka loukoloni.

"Mefimbo olo nda kala kwinya, onda koneka kutya ovanailonga vahapu vomomaumbo meenhele tuu odo da tumbulwa, kave udite nande elao moilonga yavo, omolwomikalo dovahona vavo va nyika onyanya neudeko lavo linini lokukala novakalele novayakuli vavo ovo hava ifanwa ovakalele," osho Halweendo a li ta hokololele ovanaifo osho a uda komilungu dovakalimo venya naasho a mona nomesho aye.

Okwa twikile ta ti: "Ashike mokati komahokololo oo nda uda nondi a nine oundombwedi wa wana, omu na limwe tali hokolola ovanamaumbo vamwe vo-meenhele da tumbulwa metetekelo, ve li po hava etelwa otee meenduda dokunangala kovakalele vavo ongomukalondjikilile. Oshinima sha tya ngaha, osha li sha halukifa nge neenghono, onghoo onda ya nokweendelela komuyandjimaye wange moinima yomonghalafano, Hailwa Dalondoka, opo tu ka tale ngehe tu na okukondjifa oshipwe sha tya ngaha, manga inaashi tandavela noshilongo ashishe.

Hailwa Dalondoka eshi a uda oshinima eshi nosho tuu onghalo aishe yovakalele momalukanda enya, okwa mona kutya osha pumbiwa lelela opo, a penge omapukululo amwe ngehe ovakalele ve na okukalwa navo. "Lombwela keshe umwe ha yakulwa komukalele kutya na fimaneka omukalele waye, ngaashi naanaa omunhu keshe e na okufimanekwa. Olutivali, omukalele oye ekwafo linene meumbo, osheshi nope he na omukalele, vahapu vomovanailonga itave ke shi pondola okudiinina oukoshoki womomaumbo avo nokupalula ovaneumbo, omolwoilonga.

Omukalele na popiwe naye nawa ngeenge a ninga epuko; haku popya nondaka i li pombada; haku mu pukulululila moipafi yovanhu vamwe; ina kala ashike ha popiwa

naye nge a ninga epuko, ndele na kale ha popiwa naye peemhito dimwe unene moinima oyo tai kumu onghalamwenyo yaye; oto dulu yo okutula ko naye ongalo tamu popi oinima yomonghalafano. Hapo ta di e ku dina ngeno, ndele eshi otashi ka wapaleka ashike ekwatafano lomuyandji woilonga nomuyakuli waye," osho Hailwa Dalondoka a lombwela nge opo ndi fikife elaka eli kovanaifo vo ve litandavelife noshilongo ashishe.

Hapo ashike a hulila opo, okwa twikila ko ta ti kutya ovakalele navo nava kale hava mono omafudo opo va tulumukwe koilonga yokuwapeleka oidjalomwa, okukomba nokupyaana eumbo, okutelekela ovaneumbo, okulela ounona, okukangula, okutekela oimeno nokuhavaleka eexuxwa noingulu ngeenge ope na.

Ovayandji voilonga nava koneke kutya omukalele ngeenge okwa kala poilonga oule wodula, nena oku na okupewa efudo loivike itatu, tai futwa. Omukalele ke shii okandoongi, onghoo ngeenge ota ehama na pewe efudo lomombete fiyo a kala nawa naina pa kala nande omuyandji woilonga ta kufa ko oimaliwa imwe kondjabi yaye moule womafiku oo a kala mombete.

Omukalele ngeenge okwa nyona, na kundafanwe naye meyukililo; hano oshinima inashi twalwa vali komaumbo. Nandi endulule natango kutya omukalele ina kala ashike ha popiwa naye ngeenge ta pewa oushima, ndelene osha fimana yo oku mu pandula, nge a longa nawa fiku olo," osho Hailwa Dalondoka a holola ngaha meenghundafana detu naye.



Keembinga neembinga doshilongo shetu, ovalonga vomomaumbo osho tava monika ngaha ve lipyakidila noilonga okudja ongula fiyo onguloshi.



Pomafiku 19.10.1984 Ongeleki ya ELOK, oya talelwa po kovaenda vavali, omushamane James L. Knutson, wOngeleki onghwaevangeli paLuther yOvaamerika (ALC) tala mefano kululyo, nomushamane Karl Willem, wOngeleki onghwaevangeli paLuther ya hangana muNdowishiland (EKD). Aveshe vavali otava longo meembelewa doinima i na sha naAfrika mEengeleki davo. Navo yo opo va li eshi ovanambelewangeleki tava hambelele omolwemanguluko leenghwatwa daCassinga. Knutson oye a hovelifa oshilonga shouleliumbo mOngeleki yetu.



## Dha za kep. 7

Mboka taye shi ningi, omoluuvu nenge eputudhitho lyaanona yawo moosikola osho wo uunyengwi ulwe waakuluntu. KAawambo, omunona kehe okwa taambwa nokwa halika. Oonakuhooyamo omala kaye holike moshigwana shika muuyuni wonale.

Osha li sha vulika, yina gumwe sho a dhimbulula omwana kutya omusimba, ote mu kongele meholamo iigwanga, ela e li kuthe mo. Ihe oshinima shoka ngele osha uvika, osha ningi egeelo edhigu komuntu ngoka pashigwana.

Ongeleki oya koleke omadhiladhilo wo ngoka, sho tayi longo oshipango oshitihamano. Uunona womomala owo uunamwenyo, mboka oku u gwitha mo, osho okudhipaga.

Pethimbo ndika, omithigululwakalo dhuukwashigwana, otadhi ende tadhi hulu po nopehala itapu tulwa sha. Ooveta dhokatongotongo otadhi nyengwa okuningina muule wiinima yAaluudhe. Onke methimbo ndika tashi vulika kutya mpoka pu na aakiintu pu toolwe uunona momiligu dhomeya nenge miilambo yiyagaya.

Nongele oshinima shoka osha ningwa, otashi vulika ngaa shi monike kutya olye e shi ningi pamakonakono nokomapulapulo ihe paveta otashi vulika kashi na we mpoka tashi ukithwa, shila okongeleki ashike nelelogangalo nokosikola yekuthilo.

Engambeko lyoluvalo inali dhiladhilwa nale pondje yondjokana ngaashi shi li po pethimbo ndika. Omiti dhokukeelela oluvalo moshilongo shetu ohadhi vulu okulandwa moositola dhomiti naagundjuka otaa vulu okwiilandela.

Oondohotola dhomuEuropa, ihadhi hala nando okuzimina oshinima shoka kutya omiti muka ohadhi ilandelwa shaampoka, ihe oondohotola dhomeni otadhi shi zimine, kutya otashi vulika naanaa, nonando oshiwanaawa unene okukundathana nomundohotola.

Omundohotola Teopolina Tweumuna okwa li a ningile oClub, oshipopiwa omolwengambeko lyoluvalo kumboka ye li moondjokana, nokwa li e shi popi nomeho taga tala uundjolowe.

Okwa tile, kutya aanona mboka yopondje yondjokana pethimbo ndika oyi indjipala. Eputudho lyawo olya nkundipala, ukolele wawo palutu kau shi okupopilwa. Shika osha tya ngeyi, oshoka olwindji mboka taa mono uunona pondje yondjokana inaa hala wo okukala nawo. Ohaye u fala kooyina u ka putudhe.

Ooyina aakulupe notaa nyengwa paundjolowele okupalutha aanona mboka.

Onke olwindji aanona mboka oye li miipangelo omolwuunkundi wepalutho nenge omolwepalutho lyonayi.

Oonkundathana kombinga yoshihopiwa shika, odha li dhe ekelwahi kepipi lyaakuluntu, ihe aakiintu aagundjuka, oya li ye shi taamba ko nawa. Gumwe okwa li e shi koleke ngeyi a ti:

Omukulukadhi gumwe tu tye oku na oyana yatatu, aakadhona. Otashi vulika aakadhona mbaka ayehe yatatu otaa ningi aasimba oshita, naayehe otaa mono uunona oshita nenge pethimbo limwe. Uunona mboka utatu, auhe otau ka etelwa yinakulu a kale nawo manga aagundjuka taa manguluka. Mbuka owo uudhigu aakulupe methimbo ndika ye na.

Mokupopya ekelelo lyoluvalo maagundjuka, ondi shi shi oshinima itashi taambwa ko kaakuluntu Aawambo, nuunene

tuu kOngeleki. Ongeleki otayi tala kutya omikalo dhomautho nomatokolo muukwahedhi wayo, owa teka.

Ngele ando Ongeleki oyi shi popile okungambeka oluvalo maagundjuka, nena otayi ekelehi wo elongo lyoshihango oshitihamano. Ongeleki oyo omulongi gwoohedhi dhi dhigininwe nonando itayi etha oshilonga shayo shehungomwenyo.

Oshinakugwanithwa shOngeleki osho okuputudha oshigwana momikalo omiwanawa, opo omukundu ngoka gu hwepopale nenge gu kuthwe po. Ihe onda hala ngaa oku shi tala nomeho ga yela, kutya "omeya oge ya mondunda," oku ga shunitha, otashi pula ekondjo enene. Ihe ngele oshigwana tashi hangana kumwe, neitulomo lyomuntu kehe, omuvali nomuvalwa, esindano otali adhikwa.

## Aaluudhe oyo naa hedhe kutse tango: Aatiligane mOngeleki taa ti.

**Etokolo lyokukonda mo Oongeleki dhAatiligane Aakwaluther mOngongahangano yAakwaluther, ndyoka lya ningwa nuumvo muBudapest, inali taambwa ko nando mombepo yeikonakono kiilyo yomagongalo ga tulwa megeelo, ngaashi sha li sha tegamenwa kaanngi yetokolo.**

Osha dhimbululwa moohapu dhawo ongeyamukulo kushono ye shi ningilwa kuBudapest pamushangwahokololo ngoka ye gu pititha konima yetokolo m u S e p t e - mba gwa zi ko.

Oongeleki dhu umbwa mo mEhangano ndyoka odho ndhoka; mbali dhomu SA naandjoka yaAakwaluther Aatiligane ayeke muNamibia. Egeelo olya ningwa mokugandja uusama kOongeleki ndhoka, kutya otadhi koleke okatongotongo pamulandu gwa SA nohadhi tindi okutaamba Aaluudhe mUulalelo Uuyapuki nosho tuu omayakulo galwe gopakriste.

Nomeho ga tongolola kAakwaluther Aaluudhe, Oongeleki dha tulwa megeelo, odhe shi tumbula ngeyi mehokololo lyadho sha yela sho dha ti:

"Aamwamemengeleki mboka ya thiminike tu tulwe megeelo kuBudapest, naye shi tseye kutya, ondjila youhedhathana ngashingeyi otayi tegelelwa yi tameke kombinga yawo."

Etokolo lyegeelo moshigongi shiyaka, olya li tali leshwa ngeyi:

"Noluhodhi olunene oshigongi oshiti-6 shOngongahangano yAakwaluther kuDar es Salaam, Tanzania, osha thiki sigo oompoka, kutya natango Oongeleki dhAatiligane muumbugantu waAfrika itadhi ekelehi okatongotongo noitadhi hulitha po omatopoko mudho gopaukwamuhoko.

"Nokuli Oongeleki ndhoka odhi ikutha mo mehempululo lyuukumwe lyokuDar es Salaam, ndyoka li li omukanka guukwashilyo mOngongahangano yAakwaluther muuyuni.

"Onke oshigongi shika (shomuBudapest), osha thinimikwa okuhulitha po manga uukwashilyo wOongeleki ndhoka netegameno kutya onkatu ndjoka otayi ke dhi kwatha okuya mehempululo lya yela okukondjitha okatongotongo nokuhedha muukumwe noonkwawo muumbugantu waAfrika shi ilwetikile."

**Sebulon Ekandjo**

# OSHISHANI SHEKOPI LYOMBILI NUUMVO OSHATUTU

Osha tseyithwa muOslo, oshilandopangelo shaNorwee, kutya omumbisofi Desmond Tutu (53) mu SA, oye a gwini oshishani shombili omumvo nguka. Onkundana oya taambwa mu SA nehambelelo enene moka kAaluudhe osho wo muuyuni wopondje.

Siku sha kundanwa, oshigwana shAaluudhe mu SA oshe ya tashi ligola, tashi tanta koshipala shaTutu. Tutu mwene okwe ya taamba neimbilo lyekondjelomanguluko lyaAfrika "Nkosi sikeleleli Africa."

Omumbisofi gwaAnglikana, Tutu, ngashingeyi oku li Amushanga Ndjayi gwOraata yOongeleki mu SA (SACC), Ehangano ndyoka tali tengenekwa li na aakriste oomiliyona 12 payalulo lyomumvo nguka.

## Aantu shoka taa tile Tutu

Okomitiye yetopolo lyoondjambi dhesindano lyombili muOslo, sho ya tseyitha edhina lyaTutu, kutya oyo lya zi mehokololo, aantu oyendji, aawilikingeleki naapolitika oya holola mbala omauvito gawo ngaashi taye shi tala.

"Tutu omuntu gwohole, e shi okusila yalwe oshimpwiyu. Ondjambi eyi pewa oyo uunzapo woshilonga oshiwana sha longwa komuwilikingeleki," osho omusita gwOongeleki yopaumbisofi mOvenduka, David Bruno, a tumbula.

"Omumbisofi Tutu omuntu gwaKalunga, omuntu gwaantu. Omukumo gwe ihagu tenguka nuupenda we wokukondjela uuyuku monkalathano osho wo omishangwahokololo ndhoka olwindji pamwe dha tyololokitha eiwo lyayalwe, ngiika osho tashi siikile eitaalo lyomulumentu nguka omukriste, sho ha kugu mokule nuupu omoluuwehame waantu ye" - Oraata yOongeleki mu SA.

Ombelewa yomupresidende gwa SA, P. W. Botha yo oya tindi okugandja omadhiladhilo gayo moshinima shika. Osho wo omusamane Dirk Mudge, mOvenduka naye ina hala okutya ko sha kusho, oshoka ta ti aniwa oshinima shaantu yoku SA yoyene.

Amushanga Ndjayi gwa VVO dr Javier Perez de Cuellar, ine shi mwenena, okwa ti kutya Tutu omulumentu gweitaalo ihaali kukuka nomukumo gwe oku ulike ekondjo lyokukondjela aantu ye, opo pu ye onkalathano inaayi tungilwa we kokatongotongo.

Ondjambi ndjoka yondilo tayi tengenekwa R336 000 oyo ya pewa Tutu omolwokukondjela ombili komukalo gwombili. Oya ga-

ndjelwe nale kEhangano ndika komukondjelimanguluko gwomu SA, Dr Robert Luthuli pomimvo dho 1960.

Nguka okwa sile 1967, moshiponga shekandomo lyeshina, ihe embo lye "Let my People go", ohali leshwa sigo onena nohokwe oyindji mokati kAaluudhe.

Omumvo gwa zi ko, ondjambi ndjoka oya li ya pewa omupolotika gumwe mu Poland, omusamane Lech Walesa.

Ope na omalimbililo moyendji ngele epangelo lya SA tali ka gandja tuu shili epitikilo komumbisofi Tutu, a ka taambe ondjambi ye kuNorwee muDesemba.

MuAmerika nuumvo, omuwilikingeleki nguka, Tutu, naye okwa li wo gumwe gwomokangundu kaahogololwa, mboka gumwe e na okumonika mo a taambe ondjambi yesindano omolwokukondjela ombili pamukalo gwombili. OMUKWETU ina tseyi manga ehogololo ndyoka lyomuAmerika kutya olya hulile peni.

## Oshinakugwanithwa shaTutu kashi shi oshipu.

Konyala okuza komumvo 1920 niihupe, Aaluudhe mu SA, oya kala taa indile ya pewe uuthemba u thike pumboka u niwe kAatiligane monkalathano yesiku kehe. Poompito odhindji omapulo gawo gombili oga yamukulwa nedhengo ekukutu.

Oshidhipagelo shAaluudhe shono ihaashi dhimbiwa kAavalelwamo yomoshilongo shoka, osha ningilwe omumvo 1960 muShapeville, moka taku tiwa omwa sile aantu ye vule po 70.

Osha zile ashike sho Aaluudhe ya ka pula epangelo, opo li kuthe po oveta yokuhumbata opaasa, shaampoka u li, moshilongo wa valelwamo. Omumvo kehe Aaluudhe otaa dhimbulukwa esiku ndyoka pamukalo gwelilo lyoosa.

Ihe pakutala edhipago nuka kali vule nando ndyoka lya ningilwe pomimvo 1974, 1975 kaanasikola moka mwa li mwa sile aantu ye vule 300 sho taa indile elongo lyoshiluudhe li hulithwe po moshilongo.

Nuumvo aantu oyendji oya sile natango miikolokosha, sho ya li taa tamaneke elondo lyiifendela yomagumbo, omeya, olusheno nosho tuu, egwedhelo lyootakisa pethimbo ndyoka Aaluudhe oyendji taa kanitha iilonga.

Okuza muAguste nuumvo, oosikola odhindji dhopevi nodhopombanda, aagundjuka oya tindi okukala mootundi, sho ya geyithwa kehogololo

ndyoka lya ningilwa ashike Aandia nOombatili manga omihoko dhilwe dhAaluudhe tathi ethiwa.

Omumbisofi Tutu, osho wo aawilikingeleki ooyakwawo yalwe moshilongo nuuyuni wopondje, oya tamaneke wo oshinima shoka. Oomwenyo odhindji dhaagundjuka otaku hokololwa dha kanene miikolokosha mbyoka.

Monkalo ya tya ngeyi tayi tsikile aluhe menayipalo, omo omuwilikingeleki Tutu, a taamba oshinakugwanithwa oshidhigu, a ninge ewi lyaathitandaka yoshigwana she.

## Sebulon Ekandjo



"Ngele Kalunga ngoka e na uuthemba wokukala a ninge kayamukulwa, oye a gandja emanguluko komuntu, omolwashike emanguluko lyetu tu li pulile ezimininino kAatiligane?," osho omumbisofi Desmond Tutu, a popithile aantu 1983, muHamanskraal.

\*\*\*\*\*  
Ebba Tauja, ota hambelele oholehenda yaKalunga ndjika ye mu enditha okuza kokuvalwa kwe. Ota hambelele wo omolweputudho lyaKalunga ndyoka e mu putudhitha uule womimvo 30 sho a kala muunkundi wopalatu.

"Muunkundi mbuka we u pendje, nongele ndi na ko natango oomvula, kwatha ndje ndaa hepithe oshitalenti shoye we shi pele ndje.

\*\*\*\*\*

## Omukalo gwepangelo oyo hali tokolele Ongeleki, Werkstöm ogwe mu kenyeneka ngaashingeyi

Okuza 1982 mOngeleki okwaEvangeli paLuther yomuSweden, omwa ningwa elunduluko ekumithi sho Oshigo-ningengeleki shOngeleki ndjoka sha tokola omumvo ngoka, opo shi kale hashi ningilwa ooveta kepangelo lyoshilongo.

Oonkundathana moshinima shoka, odha zi komumvo 1979 ihe elongelokumwe lyOngeleki nepangeleo lyoshilongo ekulukulu.

Omumvo gwa zi ko epangelo olya ningi oveta, kutya omunona kehe ta valwa muSweden, oku na okunyolelwa momambo gegongalo nonando aakuluntu ye kaye shi aakwanegongalo.

Oveta ndjoka osha yela kutya itayi tsu kumwe nelongo ekwaLuther ndyoka tali ti omuntu ota ningi oshilyo shegongalo esiku ndyoka ta shashelwa megongalo. Ngaashingeyi otaku tengenekwa ku na nokuli iilyo 500, 000 mOngeleki yaSweden inaayi shashwa, ihe otayi yalulwa iilyo yegongalo nenge yOngeleki.

Oompata mOngeleki ndjoka odhi li ngashingeyi metifa, okumona omukalo kutya otaku tsikilwa ngiini komeho nomukalo gwokutaambela aapagani megongalo.

“Ongeleki yi na lela okukonga eithikameno lyayo mbala nokuza kumwe nepangelo,” osho omumbisofi omukuluntu gwOngeleki ndjoka, dr Bertil Werkström a popya nuumvo moshigongi shimwe shaagundjuka.

Ongeleki okwaLuther muSweden, oyi na konyala iilyo oomiliyona 8 naambisofi 13. Omumbisofi Werkström ngoka e li ngashingeyi omumbisofi omukuluntu, okwa hogololelwa omuthika ngoka 1983 omutetekeli gwe omumbisofi Olof Sundby sho a yi moshipundi shevululuko muJuli 1983.

Moshilongo omu na wo oongeleki dhilwe oonshona ngaa, ngaashi yaKatoolika kaRooma noyaKatoolika kokuuzilo (ortodoks), ihe ndhika inadhi kwatelelwa mo keutho lyokuninga aapagani iilyo yOngeleki.

(Kyrkans 14.10.1984)

**INO FUTA NATANGO  
OSHIFO SHOYE 1984.  
ENDELELA ANO MANGA  
OMUMVO NGUKA INAAGU  
PWA KO**



Omumbisofi Olof Sundby

## “Natse otwa hala okuumba egumbo lyoye,” Aakankolo taa ti

Etango lyoshitumbetango lyeti 20.8.1984, lwoposhinyangagongalo shaKankolo noshipangelo, pomakota giihwa nogomiti, opwa li tapu monika aanona yosikola ye li momuzalo gwosikola, taa imbi nomawi goopala.

Otaa tanga Kalunga sho a zimine opo nAakankolo wo ya tameke okutungila Jehova egumbo.

Pamatumbulo gomOmbimbeli, 2 Mos. 31:18, tatekulu Matias Nepela, omusita gwegongalo lyaKankolo, okwa hiya egongalo li gandje epandulo kuKalunga, Nampongo sho e enditha Aakankolo sigo eya thikitha pomuthika guuntu.

Oshipala shaNepela osha li tashi monika sha nyanyukwa nando a sa uunkundi, ota yolo mo nando a kumwa. Okwa hulitha nokwa tumbulile egongalo li se uulaadhi mokutungila Omuwa egumbo nokwa ti:

“Tse otu li puupatekedhi, ihe Jesus opo e li. Ileni tu kwathathaneni tu umbeni ongulu yaKalunga,” osho a ti.

Omusita okwi indila wo omagongalo agehe ga yambidhidhe metungo ndika lyongeleka, kehe gumwe naashona e shi na.

A.J.J.Nakanyala

## OMUKALO WOKULONGIFA EDIDILIKO (X) MOMAHOLOLO WA EKELWASHI MUBOTSWANA

Kehoololo laaveshe la li muBotswana neudo, Oraata yEengeleki muNamibia oya li ya tuma ko ovatumwa omulongo, va ka kalelepo eengeleki domoshilongo. Mehokololo lavo eshi va aluka, omwa hololwa kutya omukalo wokulongifa edidiliko (X) nopena pomahoololo, kakwa li tau longifwa mehoololo linya lomuBotswana, shaashi owa talwa kutya inau yela nawa okulongifwa moilongo yetu yaAfrika oyo i na natango ovanhu vahapu ve he shii okulesha nokushanga.

Ponhele yeididiliko eli, ovahoololi va pewa oumbapila, kukeshe kamwe kwa fanekwa edidiliko la yooloka kumakwao, tali ulike ongudu. Opo nee omuhoololi ota hoolola po olo longudu oyo a hala, shaashi keshe ongudu yopolotika oya li i na po layo nakeshe ongudu oya li ya yelifila nawa ovahoololi pefimbo lomalinyolifo, kutya yo otai ka longifa edidiliko la tya ngahelipi mehoololo.

Mehokololo omu na yo edimba lomadiladilo aa kutya otashi dulika omukalo ou wokupula omuhoololi kutya okwa hala okuhoolola ongudu ilipi, ye fikulimwe omunhu ou ta pulwa ke shii okulesha, nena otashi pendula omalimbililo movahoololi kutya omuhoololifi okwa didilika tuu shili pedina longudu oyo ya tumbulwa komuhoololi, ile okwa didilika shike pedina longudu oyo ye a ama kuyo?

“Epangelo laBotswana ola li la ninga omalongekido aeshe taa pumbiwa, opo ehoololo li ningwe momhepo i na ombili noku kelelwe omifenu neembubo. Okwa li yo kwa yandjwa elombwelo kutya hamuhoololi ta kala ta imbi ile a djala omaluvula omidjalo doikutu yongudu yaye yopolotika meni leemeta 200, okudja poukefa womahoololo; nenyolo loludi keshe mokati kovanambelewa ovo va li tava wilike ehoololo, kala li la pitikwa,” osho ehokololo la ti.

Osho omuhoololi keshe e na okuninga nge te ya pokakefa komahoololo, okuyandja ashike okakalata kaye oko a pelwe pefimbo lomalinyolifo, ndele te ka yandje komunambelewa oo e li po.

## Dha za kep 11

Omunambelewa ota kongo onomola yomuhoololi, ndele shimha e i mono, te i tende mo membo lovalinyolifi. Opo nee omuhoololi ota pewa ekutu li na onomola inali patwa, noukalata vatatu va tumbulwa metetekelo, ndele ta i metala, ndele ta tula okakalata oko a hoolola po mekutu, ndele ta pate ko.

Ekutu olo ote li kupula mokandooxa ka patwa, ndele ta di mo nako metala ndele te ka umbile mokakefa. Okudja opo omunambelewa ota tula omunwe wanakuholola wokolumosho mohinga, oyo ihai di po noupu; opo nee omunhu shimha a mane aishe ei, ota shuna, shaashi okwa mana ngaha ehoololo laye. Ohinga yoludi linya oya li ya longifwa opo ku ha kale nande omuhoololi ta hoolola luvali ile shi dule po.

Ehokololo ola twikila tali ti kutya ponhele keshe yomahoololelo opwa li omwaalu wonhumba wovapolifi, omolwoveta nelandulafano, ashike kava li va homata oshilwifo nande shimwe. Ekwatafano liwa



Efano otali ulike ombinga imwe yovahoololi muBotswana. Omolwedundakano la holokele muGaberone, oshilandopangelo, omupresidende waBotswana Dr Masire, okwa shiivifa kutya ovakalimo vomuGaberone otava ka pewa vali omhito opo va ka hoolole natango omukalelipo wavo mulotete laDesemba 1984.

pokati kopolifi novakwashiwana ola li tali monika apeshe opo pwa li omalinyengo ovanhu.

“Mehoololo linya, epangelo laBotswana ola li lela tali ulike oudemokoli, shaashi kakwa li nande omatilifo asha noma mbadameko taa di ngeno momatanga opolifi, ngaashi hashi monika keembinga dimwe mounyuni. Nokuli muBotswana ovapolifi ova talwa ngaashi ookaume novaameni vovanhu, ngaashi naanaa moshilongo osho sha li sha kolonyeka Botswana, England.

Nongodu oyo ya wina ehoololo, yedina Botswana Democratic Party, oya wina ashike shaashi ovanhu vomoshilongo oyo va hala, hamolwasha shimwe,” osho

ehokololo la ti.

Ongudu ya tumbulwa, The Botswana Democratic Party (BDP) oya wina ehoololo noipundi 29/34. Eengudu dikwao dimwe da li yo mehoololo linya ongaashi: The Botswana National Front (BNF) nosho (BPP). BNF okwa mona oipundi 4, omanga BPP ya mona shimwe.

Pehulilo ehokololo ola hololola kutya onawa oshilongo shetu shi kufe oshiholelwa shiwa shehoololo linya la ningwa moBotswana. Mehoololo omu na efaneko kutya ngeno nge muNamibia tamu ningwa ehoololo, li longekidwe pamikalo dipu tadi udiwa ko nokwaavo ve he shii okulesha nokushanga, li kale pauyuuki nosho tuu li kale la manguluka.

“Opo aishe ei ya tumbulwa pombada i wanifwe, ongudu keshe yopolotika moshilongo oi na okulonga nelitulomo, pakuninga oyoongalele keembinga neembinga doshilongo, opo ovakwashiwana va dule okuuda ko omulandu wongudu keshe, vo va dule nawa okuhoolola ongudu ei va hala,” osho ehokololo la fatulula.

Efeni oipupulu, tu popyeni oshili keshe tuu nomukwao. Osheshi otu na okukalafana ngoinhimbu yolutu. Ef.4:25.

Inamu tokola, mu ha tokolelwe yo. Mat.7:1-2.

P. Nd. Nanghaku

\*\*\*\*\*

Epulo otali yukilile unene kovakomesho voshiwana shetu oshiholike, kutya omolwashike twa kala nokunyakukilwa omifyuululwakalo doompekulu nootatekulu?

Otwa li tu udite ouumbo nounhwa mokumona omidjalo davo donale. Paife ovana vetu openi ne tava ka hanga omifyuululwakalo, ile navo otava ka longifa ne odo dovanhu tava ludikwa va fa eengobe, onghedi oyo ihai longifwa moshiwana shetu?

Pakudiladila kwetu, otu wete shiimba hatu xumifa komesho oshiwana shetu, ndele hasho, eshunduko ashike hatu eta moshiwana. Ovanhu ihava ludikwa shoimuna. Kape na umwe ne ke tu teyele oshipo, ofye vene ovatei voshipo.

J. Sh. Mukongo  
Walvisbaai

\*\*\*\*\*

Koshigwana oshiholike, onda lesa omatum-bulo gomunyoli mOmukwetu No.14/1984 ep. 5. Oyangapi ya kwatwa konkumwe ndjika? Otandi ku gwedha. Ihe hatse atuke, oyendji ngaa taa kumwa kiilonga mbika ya tumbulwa komunyoli.

Ote popitha tseni mboka tatu pangelwa koonkondo dhOmbepo yaKalunga. Tu tuleni uukuni kumwe megalikano, tu kuge komunankondo ngoka ta vulu iikungulu ayihe. Oshoka omutondi ota dhenge mpoka tapu tema olamba.

S. A. Niitembu

*DIDILIKA: Konima eshi ovatumwa venya vongelesi va alukila muNamibia, otwa kundana moradio kutya muGaberone, oshilandopangelo shaBotswana, omwe li tuwa okakefa kanwe inaka valulwa. Oshinima paife oshi li mohofa.*

## Ova shangela nge tava ti.....

Onawa ngenge hatu longifa oshipango oshitihetatu, omo hatu hange omatumbulo oo taa ti: Mukwetu natu mu popye nawa, fye natu mu kwafe.

Ashishe eshi mwa hala ovanhu ve shi mu ningile nanye shi va ningileni yo, osho ne oipango novaxunganeke. Mat.7:12.

## OMUKWETU

Oye oshifo shOngeleki Onkwaevangeli paLuther yomOwambokango. Ohashi nyanyangidhwa mOshinyanyangidho shOngeleki mOniipa. Omukuluntu gwoshifo omumbisofi Dr. Kleopas Dumeni. Amushanga gwoshifo omusita Sebulon Ekandjo.

Ondando yOmukwetu muNamibia naSuid-Afrika R5,00 komumvo. Palwe muAfrika R8,00 nokombanda yomafuta R11,00, komumvo. Mondhila R13,00.

Oondando nomambesitelo agehe naga tumwe ko-mukwetu, Oniipa, P/Bag 2013, Ondangwa, 9000.

EV.LUTH.OWAMBOKAVANGO CHURCH PRESS  
PRIVATE BAG 2013, ONDANGWA 9000  
SWA/NAMIBIA