



Aanashilonga 8 mu ELOK, ya pewa oomwedhi ndatu okulongela

KuSebulon Ekandjo

Aasitagongalo yatano, omuteologi gumwe, aadiakoni yaali, oya pewa oomwedhi ndatu kElelongeleki ya pakele nawa iinguma yawo noya tule oombeleva dhawo melandulathano, opo ya ka tameke oombeleva oompe omumvo tagu ya. Tala OMUKWETU No. 19/1984 ep. 8.



“Ashipala omulumentu gwomagano oge-ndji. Oku shi okutula aantu miilonga, ihe ite ku tula moshilonga shoka ye mwene inee shi lola tango uudhigu-washo. Miilonga oha yi mo ye mwene nota tseyo shoka te ku pula muyo.

“Ihe oye wo oku na omagano gokulela iiniwe. Oshitayingeleki okwe shi yambapaleke, ohenda ashike sho iilonga yetu oyi li methimbo lyuuthwa,” osho OMUKWETU a hokololelwa pafupi komulongipamwe nomusita Festus Ashipala (tala mefano) sho pwa leshwa moontokolwa kutya ota ka hulitha etonatele lyoshitayingeleki numvomuDesemba.

Gumwe gwomaanambelewa mboka Amushanga gwomayelithilo mOngeleki nomanyanyangidho, omusita Petrus Shipena ngoka a hogololwa kaasita yoshitayingeleki shOndonga a ninge omutonateli gwasho.

Elelongeleki olya gongalele pehulilo lyaSeptemba mOniipa. Omolweyakulo lyOngeleki omumvo tagu ya li kale lya andjaganekwa nawa, omalangeko nomalundululo gaanashilongangeleki oga li ge na okuningwa.

Omusita Shipenga ngoka a longo mombelewa yomayelithilo uule womimvo mbali. Elelongeleki olya koleke ethaneko lyaasita yomOndonga, a ka tameke mombelewa yuutonateli omumvo tagu ya. Omusita Festus Ashipala oye a kala mombelewa ndjoka uule womimvo 10 dha zi ko.

A hokana noku na aanona yahamano, omusamane Shipena (53) omvatele yaNdonga. Oku na owino wethimbo ele moshilonga shuulongi, manga inaa yapulilwa oshilonga shuusitagongalo omumvo 1965.

Ihe owino we wuulongi, ngiika itau vulu okuyeledwa nowokutseyo kwe oshilonga shewiliko lyOngeleki ya ELOK shoka e shi kala popepi konyala uule womimvo 20 dha zi ko. Okuza moshituthi she sheyapulo ongomusita



Omusita P. Shipena negumbo lye

okuukilile pombelewangeleki mpoka a longo pamwe nomumbisofi nakusa Leonard Auala.

Okwa yakula ongomudhiginini gwiiniwe yOngeleki, amushanga gwoponto gwOmumbisofi nogwElelongeleki nosho wo Amushanga omukuluntu gwOngeleki,ombeleva ndjoka a zi sho a taamba ombelewa yomayelithilo omumvo 1983.

Kombinga yomalangeko oku na wo aanashilonga yamwe mboka ngele omalongekidho oge ende nawa, otashi vulika nayo wo ya thige po oombeleva dhawo omolweihumithokomeho miinima yi na sha niilonga yawo.

Omusita Festus Ashipala nomwii- mbithi gwOngeleki Magdalena Kambudu, oyo omadhina gawo ga tomonwa moshinima shoka.

Efaneko eli, halo mbela li shii okutiwa ehovelo lelifikameno lOngeleki ya ELOK?

Neudo mOngwediva, mohani yaSeptemba, omwa ongalele oshoongalele shoalumenhu va dja konyala omaongalo aeshe omu ELOK, Owambo fiyo Okavango, va koya po 200. Ova li mewiliko lomuwiliki woshilonga shovalumenhu mOuninginino, omufita Hosea Iiyambo.

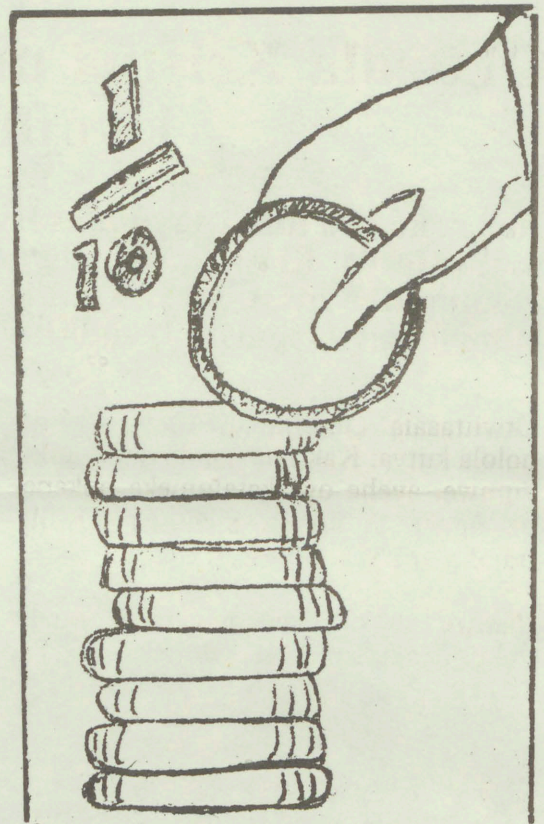
Oipopiwa ya li mo, imwe yomuyo oya li ya kuma omaxupilo Ongeleki ile omaxupilo omunhu paumwene. Enghundafana moipopwiwa ei, oda li tadi popiwa oshilumenhu, ndele omouyelele wOmbibeli.

Ngenge Oshoongaleleleki tashi ya, oshi tambule okahopaenenwa kefaneko lokuyandja aka taka landula apa, mbela oule weedula nhano tadi shikula, ELOK painiwe ita ende komaulu aye mwene?

Sho eshi kashi li ne ngashi hashi fatululwa kuvamwe, kutya okufitikinina ko omakwafo opondje e he uye vali, ahowe. Eya-mbididafano lopaumwainafana weengeleki pamhepo nopalutu, ei oi na okutwikila ngaashi shito.

Efaneko eli ola yandjwa komushamane Paulus Haufiku oo a kufa ovanhu vahamano ngeno ovo tava yandje pamikalo nhatu; a) pamukalo oo tau longifwa paife mu ELOK okuyandja oiyandjwa, b) pamukalo woshitimulongo c) nopamukalo woshitifele.

Tate Paulus okwa ti, kutya ye ngeno a pewe a hoolole po umwe, ota ame koshitimulongo eshi shi li nopa-Mbibeli.



Shimwe shomulongo mukesho oilikolomwa yoye, shi yandja kOmwe, kashi fi shoye.

Omukwaneongalo	Elikolo laye komwedi	A eyandjo likulu komudo	B Oshitimulongo komumvo	C Oshitifele komwedhi
1. Mateus	R100	R10,00	R120,00	R12,00
2. Saara	200	5,00	240,00	24,00
3. Monika	600	5,00	720,00	72,00
4. Paulus	800	10,00	960,00	96,00
5. Petrus	1000	10,00	1200,00	120,00
6. Diina	1200	5,00	1440,00	144,00
		R45,00	R4680,00	R468,00

Omukalo omukulu weyandjo mu ELOK pafaneko eli owa eta R 45, oshitimulongo osha eta R 4680 noshitifele R 468, kOmwe: Komudo.

Ove oto kufa po efaneko lilipipo? Ino dimbwa: elalakano otu hange ngahelipi elifikameno moiniwe.

Iinakugwanithwa yOngeleki onkwaevangeli paLuther yomOwambokavango (ELOK) oya ningi iinene notayi pumbwa ngashingeyi iimaliwa ya konda nokuli omiliyona. Shoka osha dhimbululwa momutengenekwamwaalu ngoka gwa thanekelwa elongitho ndyoka lya tamekele mu Maalitsa 1984 notali ka hula muMaalitsa 1985.

Iimaliwa R 1 043 170 oya thanekwa yi gongelelwe elongitho mOngeleki okuza nuumvo sigo 1985. Omwaalu ngoka ogwa londo R 384 450 shi vule ontengeneko ndjoka ya hulile 1984

painiwe muule womimvo ne, ntano dha zi ko, onkene tuu ope na oshindji okuningwa natango Ongeleki ndjika muugumwe wayo yi adhe eithikameno lyuudha.

Iinakugwanithwa oyindji niinene oye etelelwa wo ngiika kehumokomeho nomOngeleki yoyene notayi pula

Nonando omagongalo ogendji ga tameke tuu shili okwiithikamena

Ongeleki iimaliwa oyindji, opo iilonga mbyoka yi tsikile.

Iimaliwa R 516 700, oya pumbiwa nuumvo iilonga yepatudho lyopakriste palutu nopambepo, yi wape okutsikila, pahokololo lyomumbisofi gwOngeleki moshigongingeleki shoka.

Ndjoka ombinga yimwe po ashike yomiinakugwanithwa yOngeleki tayi pula iimaliwa, nOngeleki ohayi yi pititha ashike omolwomakwatho gopondje.

Sebulon Ekandjo

Okuzala Kristus mokukalamwenyo kwomuntu

Rom.5:1-8



Nena sho twa ningi aayuuki keitaalo, otu na ombili naKalunga molwaJesus Kristus nomolwe twa mono meitaalo ompito yokuthikila mesilohenda, ndika twa thikamena mo. Nohatu ismanekele etegelelo lyeadhimo lyaKalunga.

Otwiitaala Ombimbeli shoka ye tu holola kutya: Kaku na nando omuyuuki gumwe, ayehe oya katalumeka nokape na ngoka ta kongo Kalunga. Oshili ndjoka oya yela notwe yi itaala.

Pamwe shoka osho wo tashi ningi onkundana ya holoka motekisti ndjika yi kale yi na omulyo momakutsi getu sho tatu igidhilwa ishewe: Twa ningi aayuuki keitaalo, otu na ombili naKalunga molwaJesus Kristus.

Manga twa li twaa na Jesus nokatu na eitaalo lyomuye, otse twa kala kohi yondjahi yaKalunga. Okwaa na uuyuuki kwetu otwe ku likola muulunde nomekwatathano nawo. Oondunge dhomuulunde inadhi kala dha yela ngaashi Omuyapostoli Paulus te dhi popi:

“Inamu kala ngaashi aapagani haa ende muugoya womadhiladhilo gawo, omboka ya simpiki eiuvo lyawo momilema dhoondunge dhawo mokwiiteka omwenyo gwomuKalunga omoluugoya wa kala muyo. Ef.4:17.

Montopolwa ndjika yokAarooma ontintano otaku dhigininwa unene ngoka e na uuyuuki ta pewa omwenyo. Kristus neso neyumuko lye neitaalo, uuyuuki nomwenyo oyo mbyoka ya mangelwa kumwe nomuntu ita vulu okulongitha nokukutha po shimwe nokweetha po oshikwawo.

KAagalati, natango Paulus ota nyola: Oshoka one amuhe aana yaKalunga kokwiitaala Kristus... 3:26-27. Omwa zala Kristus, nokutya mwa pewa uuyuuki mboka wa kala we mu pumba omolweitaalo.

Omuzalo nguka guuyuuki ogu na oonkondo oku tu hupithitha meso lyaaluhe. Onke hatu ismanekele etegameno lyeadhimo lyaKalunga, osho kwa tiwa motekisti ndjika.

Mboka ya taamba omuzalo guuyuuki waKristus, oyo tuu ayeke mboka itaa thula we kekothi iilonga yawo yomeitaalo noku yi ninga oyo oshihako shehupitho lyawo. Oya zimina oshili

yOmbimbeli, kutya iilonga yomuntu mwene pwaa na esilohenda lyaKalunga lyomuJesus Kristus, oyo oya sa omilema.

Ihe natango tuu, mboka ya taamba omuzalo gwesilohenda lyuuyuuki waKalunga molwaJesus, kaye li wo ya dhimbakana mumwe naakaaneitaalo. “Kuume, we ya mo ngiini muka waa na onguwo yoshituthi....” Mat.22:12 Ndika olyo epulo tali adha aluhe aaimbembeleki. Omuwa oku ya shi mboka ye.

Kristus okwe tu sile pethimbo ndyoka naanaa tse twa li itaatu vulu okuninga nando sha shomehupitho lyoomwenyo dhetu. Ov. 6 Nuunkundi wetu wa tya ngeyi ou na okutsikila nosho tau kala, sigo twa zimina iilonga yaJesus

yehupitho mbyoka e yi longo peha lyetu, kutya oyo ayike tayi tompola sha.

Olwindji oshi li ngaaka kutya ngoka to nyengwa okutsakanitha omautho ga gumwe oho mu tondo nekwatathano lyeni naye ohali teka mbala. Ndjika oyo naanaa onkalo twa kala tu li naKalunga ketu, otwe mu tondo notwe mu iyageke.

Onkalo ya tya ngeyi, Kristus okwe yi tu kuthile po neso lye. Ov. 8 onkene ta ku tiwa: Otwa hanganithwa naKalunga keso lyOmwana omuholike. Ov. 10. Elongelokalunga lyetu mpaka kali shi we iilonga yontumba tu yi ninge tu hupithwe, ihe okuhambelela nokusimaneka esilohenda enene li thike mpa lye tu zile kuKalunga omolwaJesus Kristus.

(Omuuvithi)

05 ESIKU LYAMARIA

49

Yoshimaluku

Miifo ya tekele opwa popiwa nkene embo lyomaimbilo ndyoka li li ngashingeyi melongitho tali longululwa. Onomola yeimbilo methano ndika, oshiholelwa nkene embo lyetu lyomaimbilo tali ka kala.

Eimbilo ndika limwe lyomomaimbilo omape ngoka ga gwedhelwa mo. Ihe embo ndika opo li li melongekidho, inali nyanyangidhwa natango, Ngele olya holoka kuyeke, shila opehulilo lyomumvo 1985.

Omwenyo gwandje, Omuwa, otagu mu hambelele; Kalunga mbepo yandje Otayi mu nyanyukilwa. Muhupithi gwandj'a dhimbulukwa omuntu gwe muushona-we, Sho Jesus Kristus ye a ningi omumwameme muka.

2. Elago olyaMaria, yina yOmuwa ngu gwetu, Sho Kristus, omuna gwaMaria e__et'ohenda yetu. Oshoka Omuwa omunankondo__a long'iilongankondo, Okwe ya okukwatha Israeli, omuntu ngu gwe.

3. Oonakuholuunsa okwe ya halakanitha po. Aakwanii-lwa okwe ya kutha po kiipundi yawo. Oomboka ya s'ondjala e ya kutitha muuwanawa. A dhimbulukwa okusil'ohenda aana ye mba:

CD 62 My soul doth magnify the Lord
Ongowela: Yoshimaluku mulndonesia
litya: PaLukas 1:46-54

Efimbo tu li mo

Ku A. L. Nghifikwa

Mefimbo eli omaukwatya mawa oshiwana shetu otaa ende taa kana. Moshiwana shetu nale eduliko ola kala oshilalakanenwa shinene. Mefimbo eli ovakulunhu vahapu otava keme, osheshi eduliko ola ninipala. Ovawambo vonale ova kala va itavela, kutya omunhu nge iha dulika kovakulunhu, e va dina, nohe va tuku onakwiiwa yaye kai na elao, ile nokuli ke na omafiku male kombada yedu.

Mefimbo eli otu na ovanyasha vamwe shimha tuu we mu pukulula ile wa kendabala oku mu ulikila epuko laye moshinima shonhumba, wa eta outondwe. Ngenge wa hala u liyale nomunyasha wopaife, kendabala oku mu ulikila nge e li mepuko.

Mefimbo eli omu na ovakulunhu vahapu ve na oipute keemwenyo ya etifwa kokuhadulika kovana. Okanona aka ka li tete etimaumbwile laxe naina, ehafo nehekeleko lavo mokukalamwnyo kwokomesho kwa pumbwa omuyakuli, onhondje nondjaameno momido koukulupe, okanona ka tya ngaha oka ninga onhondje yoshihati sha teka, ombosha yokupangela oikefa yomidimba dovakulunhu vako, ava va hepifila ohonde yavo muko nova li ve na elineekelo muko.

Shoovene itashi twifwa omhata kutya ngeno omunhu ino lihonga okukala omuduliki manga umunini, oshidjuu kwoove okukala omuduliki moukulunhu woye. Ame onda itavela kutya mokati kovanyasha vetu, omu na vahapu tava dulu okuninga omapenda meduliko.

Eduliko olo oshinima hashi lihongwa, ndele okomunhu ashike ou we lilongekida okutambula omapukululo ovakulunhu nokuninga ngaashi tave ku lombwele. Shoovene osho oshilongwa shidjuu, unene tuu mefimbo eli, onghe omunhu e na oku shi hovela diva.

Fiyo opaapa oshiwana shetu oshi na elao, osheshi havanyasha aveshe inava dulika, vo haaveshe ve lineekela eendunge davo vene. Mokati kovanyasha vetu omu na, vahapu ava inava twila Baal eengolo. Vamwe ove udite eemwenyo davo tadi kamwa konghalo yomefimbo eli tu li mo, onghe ova djuulukwa alushe omapukulululo.

Luhapu eshi omapukululo a ekelwashi kovanyasha, oshi li epuko lovakulunhu.



Yamwe yomaagundjuka yOngeleki yaKatoolika pOshikuku. Ethano olya kuthwa moshifo shOngeleki yawo, OMUKUNI.

Konga Omwene manga umunyasha, eli olo efimbo liwa nolipu okuliyandja kOmukulili woye. Omunyasha e shii Kalunga kaye mefimbo eli, oye e hole oshiwana shaye, e litula mOngeleki yavo ye e na eenghedi diwa. Oye omunyasha e li monghalo ya yuka.

Oye ta dulu okutala naanaa omunhu keshe moshipala nomesho e he na ohoni, shaashi ke udite ongunga yasha komwenyo waye. Ovanyasha va tya ngaha, otava ka etela onakwiiwa yoshiwana shetu elao.

Omunhu oto kumwa nokuli eshi pe na ovanyasha vahapu hava tambula omapukululo ve a etelwa komukalo mwii. Eshi kashiimba osho sha ninga elipopilo lovanyasha vamwe, opo va ha tambule omapukululo.

Ashike ombedi kai li mepukululo, oi li momupukululi. Ove tambula eshi shi li mepukululo tashi ku kwafa, oshi dule okweekelashi epukululo alishe. Omunandu nge oho hoolola ino ekelashi oinima aishe. Oshixwepo u pone omuti ulula, ndele to veluka, shi dule oku u fiilashi, ndele to kala noudu woye. Omaj.19:20

Eshiivo letu fye ovakulunhu olo efyuululo, olo omunyasha keshe e na oku li pewa. Ohatu ka kala nongunga inene, ngenge i-natu li va pa. Fye otwa tungila keshiivo lovakulunhu vetu, onghe otwa hala ovanyasha vetu oko va tungile.

Ope na oluhodi linene ngenge epupi keshe otali twikile ashike komapuko aa a ningwa nale nokwa nyikifa ovanhu vahapu oluhodi. Eshi otashi ka eta ashike etekepo



Omwiilongi mosikola yokombanda ku SA ti ivululukitha, konima yomakonakono gaDesemba.

Tala kepanja tali landula

Ongeleki moshilongo shetu neshunduko loshiwana sheyu. Onakwiiwa yOngeleki noyoshiwana oi li momake ovanyasha.

Oshoshili kutya fye ovakulunhu otwa li yo nomapuko mahapu mounyasha wetu, ashike otwa hala ovanyasha vetu va hoolole pokati kouwa nowii wetu wonale ndele otwa hala va hoolole ouwa.

Otwa hala va shiive ondjila yomapuko apa i li, naapa pe na omahongaulo. Otwa hala ovanyasha va efe omapuko omondjokonona yetu, vo va konge mo eshi shiwa osho va shikule. Eshi otashi dulika ashike ngenge ovakulunhu hava pukulula ovanyasha, ndele, vo ovanyasha omapukululo tave a tambula.

Okukalamwenyo kwopaife okudjuu ku dule kwonale, ngenge hatu ku talele mouyelele woukriste. Olwoodi eli ovanyasha otava dula ashike oku li finda, ngenge tava kondjo ve li kumwe novakulunhu vavo.

Efimbo eli olexumokomesho, efimbo loinima ipe nolomalunduluko mahapu. Onghalo i li ngaha oya djuupaleka ekondjo lopakriste movanhu vahapu, ovo mokati kavo mu na yo ovanyasha vetu.

Otu li mefimbo omo ovanyasha vamwe va dina onyasha wavo, nove u tala u na ombiliha wa fa ehasha lotombo. Onghe ohave u fandifa po wa fa oikutu ya kulupa. Tave u fandifa po koikolwifa, konyalo nokokahalu kombelela. Eshi tashi nyematifa unene osheshi luhapu ovanyasha ovalineekelwa ve na eamo lokuhekelwa momapuko kookaume vai, manga sha pumba okumona omunyasha omuhelineekelwa a hekelwa mouwa komunyasha omulineekelwa.

Ondi na olupandu linene kovakriste ava tava ende mefimbo eli ve na eelamba davo da tema nonde lineekela otava ka pita mo ovafindani. Ondi na eindilo komunyasha keshe: Kwata omunyasha mwii u mu ninge omunyasha muwa. Koleka yo Ongeleki yoye noshiwana shoye.

Efimbo eli omo omunhu keshe ta kendabala okuholola eputuko komukalo wonhumba. Movanhu vahapu, unene ovanyasha oikutu oyo ya talika tai holola eputuko.

Ame mwene nghe nda dalwa inandi mona omunyasha e he hole oikutu iwa. Oukadona ovo ngaho ve shii alushe eshi shi li momoode. Ngenge hasho ngenge otashi udifa nge nai, shashi ngenge otashi ulike kutya oukadona vetu ova kambela.

Ngenge oinamwenyo nayo ohashi dulika i lifele, omolwashike omunhu e he na okulifela e dule aische? Omolwashike ovanyasha vetu ve he na okulipulwa kutya

ova djala shike ngenge tava di oko nokulipulwa ngenge ova djala nawa ile ova djala nai? Ngenge omunhu iho yavala kutya ova djala ngahelipi, opaife to kala iho yavala okutya ova tya ngahelipi. Okushendja oikutu nako okwa pumbiwa.

Ope na ovanyasha vahapu ovamati noukadona hava djala nawa nova koshoka. Omunhu oto fekele kutya ovaputuka nove na omikalo diwa. Ndele ngenge wa shaameke omikalo davo noikutu yavo, omunhu oto hale oku va dula oikutu ei va djala, u va dike oinyanyu. Oikutu iwa inai

wana okudjalwa kovanhu va tya ngaho.

Nandi ku lombwele ne oshili, okushendja oikutu inaku wana. Okushendja oikutu kwetu ngenge oku ende yo pamwe nokushendja omitima detu tu ninge ovanamikalo diwa. Eshi osho omhumbwe yotete moshwana shetu.

Shimbungu oha dula okuteka olududi ndele omakasha ihaa di ko. Ota kala shimbungu omulyani nomudipai. Neyele eli omunhu oto mono kutya ngenge okwa li omidjalo dovanhu voshiwana shetu ohadi hovele tete momitima, ngenge eputuko loshiwana shetu kaku na vali.

Omunhu keshe oto dula okwiitekula nokulihonga kwoove mwene u kale wa putuka, nande ku fi omuhongwanhu. Oto dula yo okuliyefela u kale ino putuka nande ou na ehongo la ya pombada.

Otu na okulalakanena ehologo letu lokombada, oikutu yetu i ninge okalitaalelo keemwenyo detu, opo ne hatu kala ngaashi tva wana okukala vo novanhu itave tu mono vali tu li eshi tu he li. Okadila oko akeke haka dimbulukiwa komalwenya ako. Omunhu oha dimbulukiwa koukwatya waye, ngaashi omutima u li, ndele hangaashi oikutu i li.

Mefimbo eli lomalanduluko ope na vahapu va kanifila mo eitavelo lavo noukriste wavo nova xupa po ashike nomadina eshasho osheshi ova li va hala oukriste womoode. Mefimbo eli ope na vahapu va kanifila mo oukulunhu wavo nova ninga ounona nomalai monghalafano, osheshi ova li tava kendabala okutula oukulunhu wavo nomoode.

Omunhu omukulunhu ashike ngenge te lihumbata ngaashi omukulunhu, ke fi omukulunhu molwaashi e na eedula dihapu. Omunhu nande na kale e na eedula dihapu ndele ite lihumbata ngaashi omukulunhu, ke fi omukulunhu, shapo okwa dalwa ashike nale.

Monghalamwenyo yokedu kamu na oshinima shiwa shi dule elao nefimano lomonghalafano. Omupya ou li ashike opo eshi luhapu inatu koneka kutya ouwa wa tya ngaha, otau tu dihe peni.

Mefimbo eli lounyuni wa napela, omo omunhu keshe to dulu okutoola mo eshi wa hala, omunhu ou na okukala mo wa lungama. "U lilifa iho likanifa". Elao nefimano lomunhu ole likwatelela kou-diinini woilonga, kelihumbato laye monghalafano nokonghalo yaye yopakriste.

Okukalamwenyo kwoye oku li momake oye mwene. Oto dulu naanaa oku ku shundula ile oku ku fimanekifa ngenge ova hala. Omunhu oye omunamapuko nomunamunyangwi mahapu, ndele oye yo omukwakupukululwa.

Ohandi indile nefimaneke ngenge mefimbo eli lidjuu tu li mulo, omunyasha keshe a kale ha lesa nokuleshulula embo lOmayeletumbulo aSalomo, omunyasha oo, ita kala ina mona elao nefimano monghalafano ndele nomwenyo waalushe ote ke u mona.



Omushamane L. A. Nghifikua, oshipopiwa eshi okwe shi popya tete moshongalele shovanyasha vOngeleki yaKatoolika pOshikuku 1983. Nghifikua omutalelifikola moshikondo oshiti-3 shehongo mOwambo.

EPULO

Ohandi uvu taku tiwa: Stefanus oye omuhokololambinzi gwotango. Omuhokololambinzi ngiini? Omolwashike?

EYAMUKULO:

Omuholololambinzi, omuntu ngoka ombinzi ye ya tika omolwehokololo lyaJesus. Stefanus okwa li a hwama mokuuvitha, naauvithilwa ye oye mu dhipaga, oshoka oya tindi okwiitala ndhoka te dhi uvitha.

Sho taku tiwa ogwotango, shoka osha yalulwa paTestamendi Epe, kutya oye a tetekele aalongwa yalwe.

Omuyamukuli *Festus Ashipala*

OSHIGONGI SHAANASHILONGA YA ELOK MUUSHIMBA

Omutonateli gwoshilonga shopambepo mUushimba, omusita Jason Amakutuwa, okwa hiyile aasita naayevangeliste haa longo mUushimba noku ya ningila oshigongi shawo. Etsakaneneo ndyoka olya ningilwe petameko lyomwedhi nguka muSwakopmund.



Omweevangeliste Dan Hamunjela, Omaruru, oye a kala hamushanga woshongalele.

Aanashilonga 12; aasita yaali naayevangeliste 10, oya li ya gongala, lwotango konima yomimvo odhindjidhi ndji dha piti po.

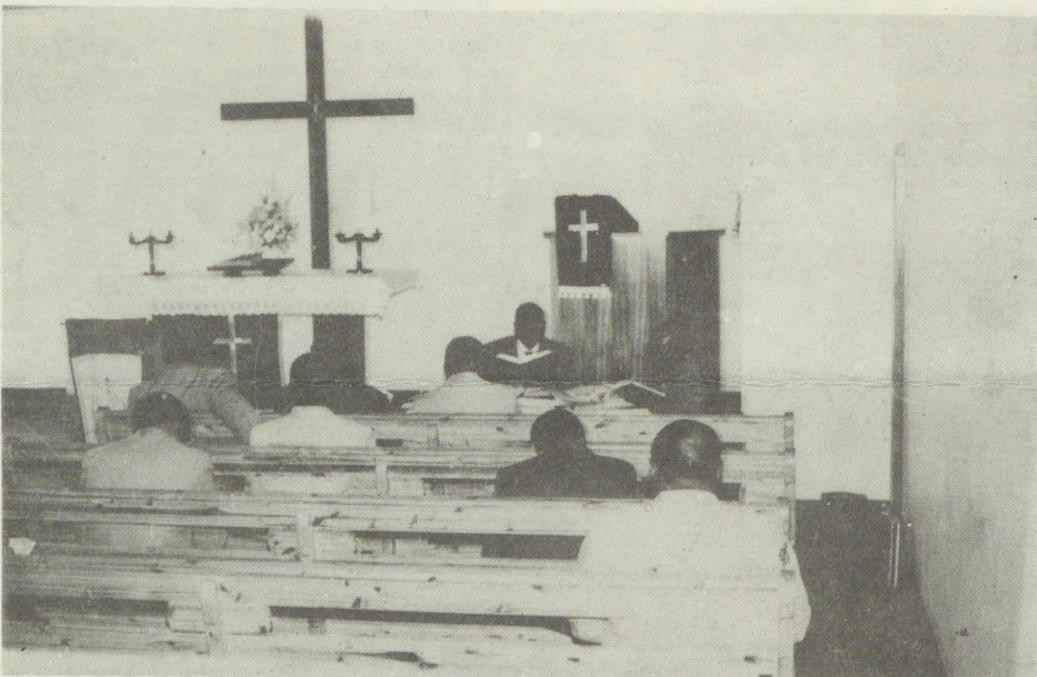
“Nonando katu na ombili mondjila yetu yeitaalo, otwa pumbwa eimweneneno koshipala shaKalunga. Manga inaatu thika keteyo, osho tu na okukala moothina,” osho Amakutuwa a kumagidha aanashilonga ye petamekolela lyoshigongi.

Lipopiwa yoshigongi oya li ya kwatelela mo ekolekathano lyomiilonga, osho wo okukonga omayamukulo miinima yi na sha niilonga yawo yesiku kehe.

Moshigongi shoka omwa li wo mu na okukala ootundi dhokudheula miinima yedhiginino lyomambo, ihe shoka inashi ningwa we ngaashi sha li sha dhiladhilwa omolwomuningi gwootundi ndhoka Sakeus Hekandjo, Oniipa ngoka inaa wapa okuthika moshigongi.

Ompito yoshigongi shoka, aakalimo musho oya li ye yi taamba nepandulo noya ningile eindilo yi kale tayi dhimbulukiwa aluhe. Pafatululo lyomusamane Amakutuwa, oshigongi osha li shi na okuningwa nokuli petameko lyomumvo, ihe iinima yimwe oya kala tayi ya po pokati.

Sebulon Ekandjo



Oshigongi osha ningilwa mOngeleki onkwaEvangeli ya ELK molukanda lwOombastela.



Omweevangeliste T. Hangula, Mariental, gumwe gwomaayevaangeliste aakulu miilonga yeuvitho mUushimba.

Elangeko Iya Nashihanga mUukwiyu

Omusitagongalo Halolye Nashihanga, okwa langekwa komumbisofi Kleopas Dumeni megongalo lyUukwiyuushona 7.10.1984. Aasitagongalo Festus Aashipala, omutonateli gwoshitaingeleki shOndonga, Absalom Hasheela, Amushanga omukuluntu gwOngeleki, Villi-Heikki Shivute, Tomoteus Shipanga naSebulon Ekandjo, oyo ya li ya kwatha omumbisofi melangeko ndyoka.

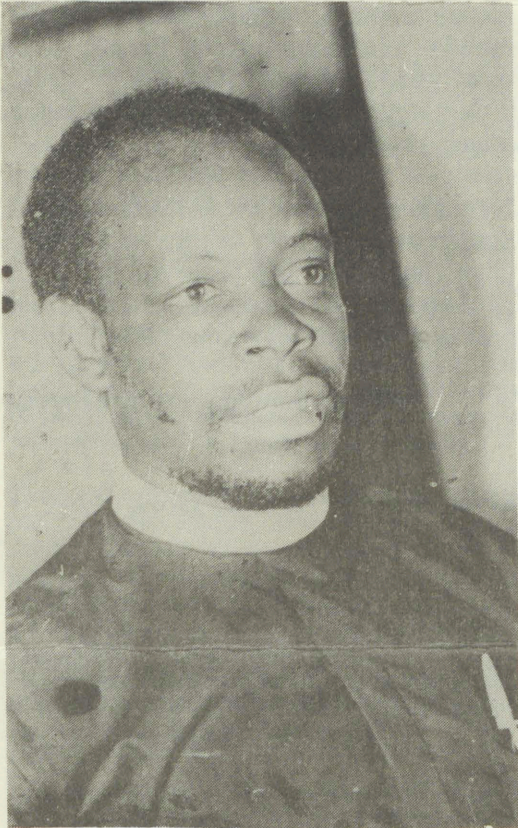
Siku ndyoka megongalo Ongeleka oya li yu udha ndo nopondje, aakwanegongalo ye ya okutala omusita gwawo sho ta langekwa megongalo.

Egongalo ndika epelela moshitayingeleki shOndonga, opwa piti ashike ngashingeyi oomwedhi ndatu sho lya li lya kanitha omusita gwalyo ependa Filippus Uusizi, omukokoli gwalyo.

Nonando pethimbo lyokuhulitha kwe oondjenda, Uusizi okwa adhikwa nokuli a pewa oshipundi shevululuko, onkene tuu okwa adhikwa natango ta longo neitulomo enene e vule aagundjuka oyendji. Omatungo ngoka a

Ongushu yookwoongala pamwe kwovanashilonga

Jesus omona waKalunga nge a pumbwa eyambidido netwomukumo lovanashilonga vakwao pefimbo olo a kala mombelela, Mat.17:1 Mark.1:9, ofye oolyeye tu kale inatu li pumbwa? Okulikalela okwa nyenga enongo.



Omufita Halolye Nashihanga

Unene fye ovanhu vombelela nohonde o-twa pumbwa ekwafo lavakwetu moilonga yetu yopaumwene, yopangeleki ile yopashiwana. Itatu dulu okulonga ngenge inatu tuwa omayele kuvakwetu noku a tambula.

Kakutukutu: Nakuhaongala pamwe navakwao, ota yelekwa noinima ihapu ngaashi kakutukutu. Aka okapuka hake

Dha za kep. 6

thikameke mehala ndyoka ogo uunzapo wa kola moshinima shika.

Oshituthi shelangeko lyomusita nguka Halolye naye omupelela, sho a yapulilwa uusitagongalo nuumvo muJuni, osha kalwa kaayenda ya za kegongalo lyaShitayi, hoka a vaelwa. Omulongelo ya li ye gu na aayenda mbaka, oondjimbo dhOmehangano lyaNakambale, mewiliko lyomwiimbithi Kristian Kadhikwa.

“Ohapu oyo ndjika u yi lye, ngoye u yi hokololele yalwe,” osho omumbisofi a kumagidha omulangekwa, manga inaa tentekwa iikaha komutse gwe.

Omalangeko gaasita yalwe aape, oga ningwa wo mIipandayaamiti nomOniimwandi, komubisofi nenge komutonatelishitayingeleki shUuninginino.

Sebulon Ekandjo

litungile okandjuwo kako ko akeke nomo taka kala fiyo oulelela wefimbo. Mokudja mo kwako, ohaka hange mounyuni mwa ningwa oinima ihapu ke he i shii. Omunhu iha ongala, ota pitililwa po ke-xumokomesho moinima yeongalo noyongeleki.

Oshitai sha payuka

Omunhu iha ongala okwa fa oshitai sha payuka komunti. Kape na omalimbililo otashi kukuta, osheshi itashi mono oikulya nomeva mefina lomuti. Ovawkwaneongalo vakwetu ovo tave tu kwafa monghalamwenyo yetu, otave tu pe oikulya yopamhepo noyopanghalafano.

Ope na ovo hava diladila kutya otava dulu okulikalela. Ame inandi shi itavela. Ngenge ino puka, wa pukifwa. Nge ino punduka, wa pundulwa. Apa ohandi ulike koshiponga osho sha hanga ovakriste vahapu, itava punduka vali, otava nangala ashike moulunde. Vakwetu okupunduka okuxwepo vali ku dule okunangala.

Ovanashilonga otu na oudjuu moilonga yetu, ohatu pumbwa tu ongale, tu ndungikafane. Jesus oye okwa ti, ote uya opo pa ongala vavali ile vatatu. Ina tya, ota ongala nomalupangi, (ovalikaleli).

Kalunga ke na omilungu dimwe di lili, di he fi odo dovanhu vakweni tamu popifafana. Kalunga ke na omaoko amwe e lili okukwafa, e he fi oo ovaitaveli vakweni tave ku kwafa nao. Kalunga ote li holola moyoongalele yetu ngaashi e shi ninga mOmona Jesus novahongwa vaye.

Inamu kala ashike omakuva haa ke, ndele ihaa upikwa. Inamu kala oihauto ihai ende kongalasho, itamu ka pitifa oilonga yeni. Onda uda omunhu umwe e na otaye nghe ya kutilwe eshi a li kofikola. Eshi e ke uya koshongalele shimwe, opo ne te lihongo, kutya ekuto lofilipusha paife ola lunduluka. Okwoongala pamwe navakwetu, ohatu lihongo oinima yeongalo noyonghalamwenyo yefiku keshe.

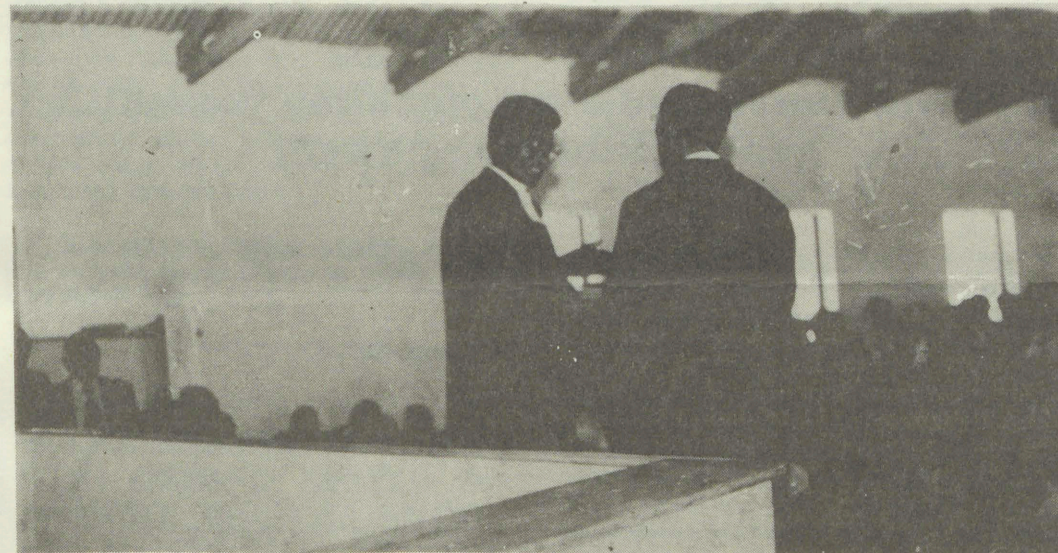
***DIDILIKA:** Oshipopiwa eshi osha xupipikwa nosha popiwa komufita V. Munyika moshongalele shovanashilonga mEndola 1984.

Olyeye te shi tomona?

Pe li vavali -----
 Okwooko kumwe -----
 Ouxuku vokuliyengela -----
 Okulikalela -----
 Edina lombwa -----

Omanyamukulo tunima kOMUKWETU, Oshako 2013, Ondangwa, 9000

(Kashi fi efiyafano, ndele elindungiko)



Omutonatelishitayingeleki Festus Ashipala, mefano ndika kolumoho, ota gandja Ombimbeli komusita Nashihanga, Ombimbeli oya gandjwa kogongalo ya pewa omusita ngoka a langekwa opo e yu uvithile ohapu yOmbimbeli.

OMUKWETU NHUMBI TAU TANDAVELE MOKATI KOVALESHI

Okudja pehovelolela leholokepo loshifo shOngeleki, fimbo sha li sha shiivika nedina Oshoondaxa, konyala osha li sha tumbulwa meumbo keshe lomukriste nove shi limonena kondado ya yeleka elikolo lopefimbo linya noya yeleka yo eudeko lovanhu mongushu yoinyolwa yopakriste.

Ongeleki pefimbo linya, oya li ashike i na ovakriste omayovi omilongo donhumba, hangaashi ve li paife omayovi omafele. Tu taleni hano apa kanini nhumbi omafele ovanhu mu ELOK hava tukulilwa oshifo shOngeleki yavo ngaashi have shi pula.

MOndonga ohamu tukulilwa oifo 1,105, Kavango 64, Oukwanyama 1,149 nOuninginino 1,761. Hano oifo 4,080 hai tukulilwa oilyo ya ELOK omwedi keshe. Omaongalo oku na ovakriste aveshe kumwe 135,820 ovo va kolekwa.

Pamivalu edi, otashi ulike kutya ovakriste 33 ohava lesa moshifo shimwe ashike. Osho kashi fi epuko mbela? Omukalo wokunyaminina kemuwa. MOkavango amuke twa koneka kutya oshifo ohashi leshwa nawa, ngenge hatu tale okamuvulu kanini oko ke li mo haka udu ko elaka



IOshiwambo, osheshi ovanhu vavali ile vatatu ovo tava lesa moshifo shimwe ashike.

Shiimba owa hangika wa udha kutya, Ewilikongudu loshifo shOMUKWETU ola tokola ondado yoshifo iha wedelwe manga omudo 1985, nonando oilonga yoshifo otai nane noudjuu molwomhumbwe yoimaliwa. Ou shii osho otashi kala ngaho fiyo onaini? Ope na okuningwa sha **diva**, nonda itavela kutya ondjila iwa ongenge hatu hapupalifa ovaleshi.

Tu kwafa u tandavelife ko koifo movaleshi

Omivalu doifo twa popya pombada, movanhu ohadi tukulilwa mo unene pamikalo dopavali da fimana.

1) Okutuma oshipandi shoifo i he na omadina, ye omunhu te ke i landifa oshimwe nashimwe. Oshifo shimwe ohashi pula 30c nomulandifi ohatu mu pe ebandulo leepelesenda 20% kukeshe oshifo a landifapo.

2) Okutuma oshipandi shoifo i na nale omadina oovene ngaashi va longekidwa komwoongeli womadina meongalo lavo. Keshe umwe ha tambula oshifo moshipandi eshi, okwa li e na o k u f u -

ta R5,00 komudo ye ta tambula oifo 24, aische kumwe.

Omwoongeli womadina a tya ngaha, ohatu mu pandula neepelesenda 10% kukeshe edina e li ongela.

Oku na yo tuu shili omukalo omutitatu wakeshe umwe ha tumu ashike edina laye kufye noshimaliwa shaye opo a kale ha tuminwa OMUKWETU.

Ino hala u kwafe vakweni va kale hava mono oifo yavo popepi pwoove omwedi keshe? Hoolola hano omukalo umwe mwaado mbali dotete twa ulika pombada. Ngeenge owa ti heeno, onda hala, yadifa hano okafooloma ke li apa, unene ngenge owa hoolola okwoongela omadina avakweni.

Ngenge owa hala okulandifa shimwe nashimwe, tumbula ashike mombapila yoye omuvulu woifo oyo wa hala okuhetekela manga u lole, u tale. Twa pandula ekwafo loye mwaashi.

Hamushanga wOmukwetu

Ova shangela nge tava ti ...

Omukwetu waAguste 30/1984 omu na onghundana iwalela noya fimana. Ame yo ohandi koleke elaka latate Werner Shiinda, kutya odula nai kale hai indiilwa kuyela. Nale okwa li haku ningwa omawikiloyambo haa shingilwa mEvale, ndele paife molwaJesus otu na oku shi ninga nomaindilo.

V. S. Kaufikepamwe

Oshigwana shika ngele otashi tsikile natango okuhalitha omakende gomalovu omalulu, osha fa ashike omuvulu ta kwiinine okamwana ko ka ke na omwenyo. Oshigwana shika oshi li pokuhula po kiikolitha.

Nikanor Nd. Muulyau

Nangame tumina ndje wo ofooloma yomadhina gaainyolithi yOmukwetu

Teta mpaka:

Edhina:

Ondjukithi:

Egongalo:

Oshilonga shandje:

TU FIMANEKAFANENI NGAASHI KALUNGA E TU FIMANEKA

Omupopyo ou owa tana movanhu, kutya ovakainhu inatu fimanekafana. Ovalumenhu ohava tumbula luhapu etumbulo eli, ndele ovakainhu vahapu ova fa tave li koleke yo. Ova yandja oiholetwa ngaashi tai landula:

Mokupopifafana ovakainhu vamwe ohava ti ashike: "Wa uhala?" Ote shi ningi omukulunhu mukwao ile e mu dule nokuli. Manga ovalumenhu taku tiwa: "Wa uhala po tate, Meneer ile Mesitela?"

Osho yo mokutambulafana sha, ovakainhu otava tifulile ovalumenhu nokutumbula: "Tumbula oshendja yoye tate," ile keshe tuu osho ta yandje. Ndele ngenge ta pe omukainhu mukwao oshendja yaye, oha umbile ashike poshitaafula shomalandifilo opo.

Mokuninga ngaha, pamwe fye inatu dimbulukwa sha, kutya ohatu ningi nayi ile nawa, ndele ovayakulwa ove shi dimbulukwa mo nawa. Ovalumenhu eshi ve li novakainhu momikweyo domayakulilo meefitola, meepoosa, meembaanga nomeembelewa, otava tale ngaho nomesho a pwa mo va kumwa. Onghe hava tumbula:

Ovakainhu inava fimanekafana nande." Nani eshi to mu tifulile, ove ino shi ningila omukainhu mukweni ou e li komesho, okwe ku kuminwa, nande hatifulo nee loovene, oitya ngaho iwa yefimaneko nokuyandja nombili.

Ovakainhu ove shi dimbulukwa nawa, oto hange nghe tava i povanhu, va fa va vavamewa notava tumbula: "Pamwe handi haulwa ngaashi nda haulilwe onghela kaanaave."

Omunhu ke fi elai, ndele paife oku liwete elai eshi a hanyenenwe mokati kovanhu ile a haulilwe. Omukainhu nge ta yakula nai ovakainhu vakwao, manga ta ningi nawa vamwe, otashi ti ashike okwe lidina ye mwene, ongho ta dini yo mukwao.

Fiku wa nyamukula mukweni nai, litula po mwene ponhele ngeno oove nee wa nyamukulwa ngaho. Lilongela komanyamukulo oye oitya iwa, opo u i longife mongula nokomesho yo. Mokufimanekafana tu paafaneni oshiholelwa shiwa. Mokupaafana oshiholelwa ohatu holelwa nokovana vetu nohatu tungu ngaha onhopa yokulyatelelwa koshiwana shokomesho.

Tate Kalunga ne tu kwafeni meyakulo laye omo e tu nangeka mo, ye mwene tu yakule ovanhu vaye pahalo laye.

R. Nd. Hasheela

**WA FA INOO FUTA NATA-
NGO OSHIFO SHOYE O-
MUMVO NGUKA? ENDE-
LELA MBALA U SHI
NINGE, MANGA INAATU
TAMEKA NOFUTO YO-
MUMVO 1985**

Ondhino yokudhinathana monkalathano otayi yonagula oshindji

Omukundu gwomauwinayi ogendji, otagu zi ashike monkalathano yaantu naantu, mokudhinathana. Omolwondhino ya tya ngaaka hamu zi ewi lyokutya; ndi mu popithe, ongele ta kwatha ndje shike? Ndi yole naye ngandi, te ti ote yolo nashike? Ndeende nangandi, aantu otaa tile ndje ngiini?

Omuntu e na ondhino kee na siku na yakula yakwawo nawa. Aantu yaali ya landa mositola yimwe notaa futu pehala limwe, gumwe ohashi vulika iinima ye yi gonyenwe mombapila manga mukwawo taku tiwa ashike tala nkene to humbata iinima yoye.

Ondhino ohashi vulika yi monike nomomagongalelo goohapu dhaKalunga. Omuntu ina hala okukuutumba poshipundi, oshoka oko kwa kuutumba nangandi e mu dhina.

Maawiliki yiilonga ohashi vulika ku tiwe: Nima oha longo nawa, oshoka ashike kee na onzapo. Shoka shi na oshilonga ando iilonga sho tayi humu komeho, haoombapila dhiilonga.

Ondhino ohayi longele pamwe nokatongotongo hoka ka hepeka uuyuni mbuka. Ino pitika ondhino yi ye mungoye, oshiponga. Tu kambadhaleni okudhipaga ondhino nomikalo tadi landula: ngaashi tadi holoka mumboka ye yi sinda.

- Ohaa nyanyukwa pamwe nayakwawo,
- Ohaa popitha ayehe nombepo ombwanawa
- Oye na ohenda nomuntu kehe nohaye ya dhiladhilile uwanawa.

Kalunga ne tu gameneni koshiponga shondhino yokudhinathana nokushundulathana.

Abner Martin

"Omwa yoololelwa Omuwa"

Ekundo lyegongalo lyaKahao moshigongi shaapapudhuki naaidhiliki shOngeleki ayihe sha li mOkahao 1983 pehulilo.

Otandi mu kunditha omatumbulo ngaka: "Omukiintu tala omumwoye, omulongwa tala nyoko." Joh.19:26-27. Omatumbulo ngaka Jesus okwe ga hulithitha okukalamwenyo kwe kwokombanda yeji.

Takele komukiintu nomulongwa, omatumbulo ngaka oga li wo ga pulakenwa kongundu yoozapo dhaKristus, ooitaali nokongundu yaakalelipo yepangelo, moka Jesus a alelelwa.

Omatumbulo oga kwatelela mo edhiladhilo ndika: Yakulathani. Otaga pendutha ohokwe momuntu okuhokwa omuntu mukwawo naamboka ya kala shito ye tondathane, ngaashi Kain naAbel, Esau naJakob, Moses nOmuegipiti nosho tuu. Omatumbulo oga tetekelelwa keulikilo lyoshiholelwa shokuyogathana oompadhi omukalo ngoka tagu holola wo eyakulathano meifupipiko. Ombimbeli inayi tu hololela nando opehala limwe, kutya aantu oyevulathane mondjundo yopambepo. Ihe omwiitaali okwa

thiminikwa a kale ngaashi okanona, opo a ninge omuyakuli omwaanawa. Yakulathani.

Eyakulathano tamu li inekelelwa olyo okupukululathana okutungathana pamukalo nopamukanka gwomwiithani gwetu. Otu na okuukithathana mondjila, mohole nohamuumbanda, oshoka mohole kamu na uumbanda.

Ne ezimo lya hogololwa nongundu yaasasele pakwaniilwa. Omwa yoololelwa Omuwa, omwa ningi aanamwenyo muKristus. Omwa ningwa aasita kOmuwa okulitha oshigwana she. One omwa ningwa wo aakwaniilwa, aapangeli yokupangela ohwehwe yiikolitha, omahulathano, omapumpagano, iifundja, omalundilo, omadhipagathano nomauwinayi galwe.

One aaholeli yaKristus nookuume ke, aasilwahenda paithano lyeni mu li na. Ngoka e mu ithana oye omudhiginini, note mu koleke mu vulike kuye.

Elia Shilumbu

Oshilonga shetumo kuSenegal sha hoko- lolwa yo nomOnangolo

Omutumwa wa ELOK kuSenegal, omufitaongalo Paulus Heita, okwa talela po ondjakulwambinga, Onangolo meengaba deongalo Eenhana Okudja 22-26.8.1984. Etalelopo eli ola ningwa owina kovakwaneongalo voponhele oyo, opo va fatululilwe oshilonga shetumo kuSenegal.

Tate Heita okwa li e na okutalela po nale onhele ei, Onangolo, ndele efimbo linya okwa hangikile a shuna manga kuSenegal, oko a tuminwe kOngeleki yetu.

Heita metalelopo laye okwa enda pamwe nomudiakoni moshitukulwa shaUkwanyama meme Foibe Shiluwa, Ongenga, ovalongwafita mEngela Petrus Haunini naElikan Katjamba. Aveshe ava vavali ovomomapyatumo muAngola.

Ova popifa tete onunona pofikola yoshiwana, pefimbo longula nopefimbo lomutenya ova kala pongulu novakwaneongalo. Konguloshi ovakwaneongalo ova ulikilwa Senegal momafano osho yo oshilonga shetumo muKongo nokOuninginino wOwambo.

Oshilonga shoudiakoni nasho osha fatululwa yo nawa nghe ovo va pumbwa eyakulo ve na okukwafwa. Tate Heita pamwe natate Katjimba ova talela po yo eenhele dimwe momudingonoko ou, Omadano nOhamenga, fimbo meme Foibe natate Haunini va li novakwaneongalo pOngeleki yEenhanz omolwoshilonga shoudiakoni neudifo levaengeli.

Ongalo ya umbwa kOvanangolo oya dja R 42,44 noya pewa Heita e i fikife koshikefa shetumo omolwaSenegal. Omusamane Heita okwa pewa yo omilongo dikwao dopaumwene kOvanangolo.

Ovaenda ava mOnangolo ova fikifilwe mo kekwafo lomushamane Gideon Shakaalela ye oye ngo e ke va shuna ko, ongho oye yo a hepaulula chepu eli.

ESO

Omulongi Eino Johannes Helmut "Muunda", Kwedhi okwa mana oondjenda dhe ombaadhilila moshiponga sheipumomumwe lyiihauto 10.10.1984 pokati kOluno nOnethindi. Okwa li omumati noku na omimvo-28.

Omulongi kwedhi, okwa tameke oshilonga shuulongi 1978 sho a mana elongo lyuulongi wopombanda 1977. Okwa longo mOseko yaLuno moka konima a langekwa mo wo omukuluntusikola gwopevi sho a mana Omatilika kuye mwene.

Eti 26.2.1983 okwa li a mono natango oshiponga mekandomo lyoshihauto pokati



Nakusa Eino Johannes Kwedhi

kaShakati nOndangwa nokwa kala moombete mOshakati oomwedhi hamano. Okwa ti po hwepo, e ta ka tsikila natango iilonga ye sigo okesiku ndyoka ishewe a hulitha.

Aantu oyendji oya kala moshituthi shefumviko lye. mOntananga. Mokati kawo omwa li aalongi, aataleli osho wo oondohotola naasita. Moshikondo shelongo unene oshiti-8, okwa li a tseyika nawa, omulongi ependa nokuhole uudhano mboka a kala omuwiliki gwawo.

"Katu etha oku mu lila"

Omuvali: Abraham Kwedhi

Omukulupe Elinanene Uusiku, okwa hulitha oondjenda dhe 20.12.1983. Okwa putukile mOniwe moka a adhika kehalo lyoohapu dhaKalunga, ihe kosikola okwa kala hi indikwa ko kaakuluntu ye, oshoka megumbo okwa kala omuleli gwaanona.

Moonkambadhala dhe okwa kala ha papata uunona mboka uyali, kamwe kombunda

nokakwawo kepepe e ta yi kosikola. Esiku limwe oyu uvathana namukwawo ya ka konge omatamba (elongo lyoohapu dhaKalunga) kOniipa. Opo ya kala sigo a shashwa nokwi iluku Elina.

Elina okwa kala ependa lyoohapu dhaKalunga. Oya hokana nomukalele omukwawo Sakaria Iilonga ngoka a kala omusita gwoongombe dhamuhongi. Konima oya tembuka mo mOniipa noya yi kooaha dhoshilongo moongamba dhegongalo lyaLukonda. Hoka Elinanene okwa tema omulilo gwevaangeli mokupukulula yakwawo noku ya leshela oohapu dhaKalunga. Iha faula Osoondaha.

Okwa ningwa omukuluntu gwegongalo, moshilonga shoka i ilikolele oshilukadhina 'Kakayiwa', oshoka pethimbo ndyoka aalumentu ayeke ya kala aakuluntu yegongalo.

Omusamane gwe okwe mu tetekelele kuukwaaluhe, ihe ye okwa tsikile nuupenda we. Omeho sho ge mu thigi po, oha gondjo nOmbimbeli ye, opo kehe ngoka te mu talele po e mu leshele mo nota nyanyukwa ihe.

Okwa hulitha mepipi lyomimvo 95, Kalunga nokwe ya pele oyana yatano, aatekulu 67 naatekulululwa 131.

"Ngoka ta sindi, otandi mu kuutumbike koshipangelapundi shandje." Ehol.3:21.

Peha lyaavalwa

Andreas Kalumbu

Johannes Nambinga Amakutsi, Onkani megongalo lyaNaanda, okwa mana oondjenda dhe 7.8.1984 ombaadhilila moshiponga shoshihauto. Okwa li e na omimvo 45. Okwa thigi ko omuselekadhi gwe naanona yatano.

Otatu pandula amuhe mboka mwiile tu dhaneni oshituthi shakuume ketu. Otatu pandula wo tate Filippus Kamanya nameme Angula mOndonga mboka ye tu tseyithile mombepo

oshiponga shika. Kundweni noohapu ndhika: Heb.13:2.

Peha lyoonakuthigwa po

Johanna Nd. Amakutsi



Nakusa Johannes Amakutsi

EPENDA LYOMONKANI

Onkani ya siluka ya fa ya kewa omiti lihwa ya kokolwa po ya fa pwa tsuwa iimpungu Eti 7 lyaAguste ondjila yaNamutuni ye tu kutha omumati.

A nduungila nelila lyaMwene gwetu Ina kala a loloka, a fa a mana po uukolele Okuhole Ombimbeli, Ehangano kOshihingitho.

Shaamakuti, unduka, mumati katuka Kotha po, vululukwa, loololwa, fudhithwa Mudhimba gu li mohi, lutu lu li mevi.

Nambinga vululukwa, Anesa fudhithwa U kale muukengeli, muuyamba kau hulu po Siku to yumuka, oto hiki enkuma.

Lukas Shavuka

ESIKU LYUUNAFALAMA NUUNIIMUNA 3.11.1984 MONANDJOKWE



Etameko: 9.00 gwongula

Melanditho omu na omashina guunafaalama, okukondjitha uuvu wepunga oongombe, omi dhiimuna, iikulya yiimuna, iilongitho nosho tuu yilwe.

Ileni pethimbo.

Eloc Agricultural Development Farm

Ofanditha - Ofanditha - Ofanditha!

EKULUKO LYOONDANDO MOSITOLA YETU

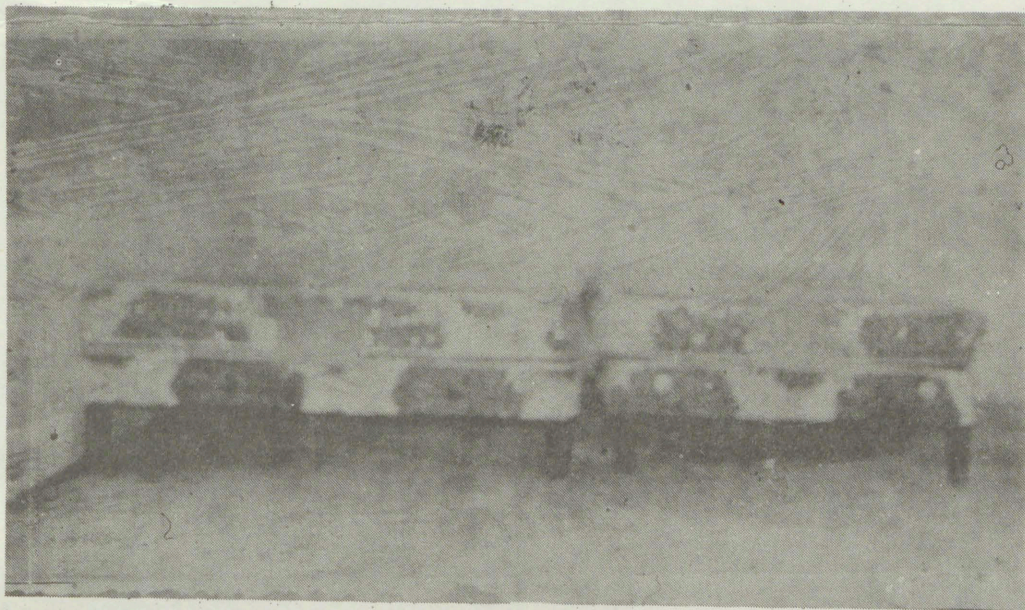
TSE YOMONETHINDI NORMAL SUPER MARKET OTATU KA KULULA OONDANDO DHIILANDITHOMWA YETU, OKUZA MULYOTANGO LYANOVOMBA SIGO OMUDESEMBA 1984.

ASHIKE OKUZA MUJANUALI 1985, OONDANDO ADHIHE OTADHI KA KALA NGAASHI SHITO. YIMWE YOMIILANDITHOMWA MBYOKA TAYI POPIWA, ONGAASHI OONGUWO, OOSIKOPA DHOONGUWO NIITAAFULA NOSHO TUU.

OMOLWIKOMBO YA NINGA ONDILO NGASHINGEYI, PETHIMBO LYOKRISMESA OTATU KA LANDITHA WO ONYAMA YOMALUDHI OGENDJI KONDANDO YOPEVI.

ENDELELA ANO WI IMONENE IIPUMBIWA YOYE KOONDANDO OOMBWANAWA, MANGA JANUALI INAAGU THIKA!

SHITIWA, OHATU LANDITHA WO OOMBETE DHOSHINANENA, UUEHMA WAANONA NOMIPEPO DHOMBEPO. AYIHE MBIKA OTAYI MONIKA MOMAFANO TAGA LANDULA:



Ombete yomuntu gumwe
R 387,40

Ombete yaantu yaali R 447,60

Normal Super market oku ku nine
oompumbwe dhoye dhOkrismesa

Opaleka uulithilo wiimuna yoye

MOmukwetu gweti 15 lyaSeptemba 1984 mepandja eti 12, omwa li oshipopiwa: "Omupopyo omwiinayi," kombinga yemuno lyuundoongi. Uundoongi owa simana shili moku tu yakula miilonga, ihe osha yela, kutya omwaalu omunene guundoongi mboka tu na, ngaashi wa halakanena moshilongo shetu, itagu yambeke nande evi lyetu, otagu li shundula shike.



Tu tale oshiholelwa shimwe. Topola enkolo lyoye miitopolwa iyali yi thike pamwe. Enkolo ndyoka nali kale naanaa lya mena nawa omwiidhi. Mokamba yimwe tula mo uundoongi uyali nomonkwawo tula mo qongombe mbali. Imuna mbika ayihe nayi kale yi na oomvula dhi thike pamwe nuukolele u thike pamwe, yo nayi nape uule woomwedhi ndatu methimbo lyokwenye.

Yelesa ihe, kutya konima yoomwedhi ndhoka ndatu okamba oyinipo tayi guguka tango? Eyamukulo oto ke li gandja ngoye mwene, kutya okamba ndjoka yi na uusino omolwomatompelo taga landula ngaashi ga konekwa kaaniimuna.

a) Omathinde gomwiidhi ngoka haga pungula iikulya pethimbo lyokwenye otaga kala ge chamekwa nayi noitaga vulu we okutsapuka nuupu nonando omvula oyi loke.

b) Omidhi dhomathinde gomwiidhi otadhi si mbala neyonuko lyenkolo lyoye otali holoka.

c) Enkolo lyoye moka mu na ndoongi otali toka too, oshoka iiyagaya ayihe ndoongi ote yi pepe mo nomilungu sigo noluhosi lwokwiishoka mokana ito lu mono mo we.

d) Omvula ngele ya loko, omwiidhi ngoka tagu ka mena menkolo ndyoka hali napa ndoongi, ogwi ili noihagu liwa we koongombe ngaashi: okashamidhi, omunimeidhi (omushoke), okadhindamagongo nosho tuu.

Evi lyenkolo lyoye otali kungululwa nuupu komeya, oshoka uutathappa walyo owa shunduka mo. Peha ndyoka otapu kala ombepo ompyu shi vule palwe ndjoka tayi nayipaleke natango omwiidhi ngoka tagu kambadhala okumena mo. Eha ndyoka otali kanitha eopalo nolyomomeho.

Uukwatya auhe mboka ito u mono mo menkolo ndyoka lya napa oongombe. Onkene ngele taku popiwa kutya okumuna uundoongi moshitopolwa shetu shokuumbangalantu naku talululwe, otse Aawambo yene tatu shi popi notu shi shi wo shoka tatu popoi pawino mboka twi ilongo methimbo lya zi ko.

Ethimbo ngele lye tu lundulukile, noitali tu galukile we, kape na we eipopilo kutya "nookuku osho ya kala." Natu dhiladhileni eopaleko lyuulithilo womoshitopolwa shika, manga inaatu hanagula po ashiheshihe.

Annianis Nd. Amunime

Hamushanga wOmukwetu, Kwafe nge u tule eendjukifi edi tadi landula apa moshifo shOmukwetu opo di kwafele ovo va pita notava ka pita Ositanda onhimulongo, omolweli-xumifokomesho melihongo lavo.

**The Registrar
University of Zululand
P/Bag x1001
KwaDalangeza, 3886**

**The Registrar
University of Western Cape
P/Bag x17
Bellville, 7530**

**The Principal
Cape College of Education
P/Bag x2041
Fort Beaufort, 5700**

**Admissions Secretary
Central Admission Office
University of the Witwatersrand
1 Jan Smuts Avenue
Johannesburg, 2001**

**The Registrar
University of the North
P/Bag x50900
Pietersburg, 0700**

**The Registrar
University of Fort Hare
P/Bag x1314
Alice 5700
Rep. of Ciskei**

Kambudu K. Shalyefu

Namibia ola kanifa ovana valo omayovi nomayovi. Vamwe ova tauka mo nokuli molwaashi inava hala okutala ina naxe va djala oshikutu shoupika. Vakwetu, otwa fa unene hatu lineekelefana fye vene molilonga yetu ile meenghono. detu vene?

Ile pamwe ohatu tale oilonga yaava tave tu hepeke nokutya otava ningi nai? Heeno osho hatu diladila osheshi ohatu lulumikwa. Ashike ngenge hatu diladila kombinga youkalunga pamwe ohatu hanyenwa kuTate Kalunga nokwa hala tu konge ombili kuye?

Ndishi omunhu iha dengele oshimuna shaye omahala, ndele ongenge ngo sha puma moshiunda? Pamwe nafye yo katu mo vali moipango yOmwene? Oho shi tale ngahelipi ngenge to tale oilonga yetu mOnamibia? Omwene ota ti ngahelipi kuyo?

Lesha eendjovo edi. Hos.7:13-16; 10:10-15.
Tu kuweni hano kOmwe wetu, ota ka nyamukula.

**S. N. Mutilifa
Walvisbaai**

OMUKWETU

**Oye oshifo shOngeleki Onkwaevangeli paLuther yomOwambokango.
Ohashi nyanyangidhwa mOshinyanyangidho shOngeleki mOniipa.
Omukuluntu gwoshifo omumbisofi Dr. Kleopas Dumeni.
Amushanga gwoshifo omusita Sebulon Ekanjo.**

**Ondando yOmukwetu muNamibia naSuid-Afrika R5,00 komumvo.
Palwe muAfrika R8,00 nokombanda yomafuta R11,00, komumvo. Mondhila R13,00.**

Oondando nomambesitelo agehe naga tumwe kOmukwetu, Oniipa, P/Bag 2013, Ondangwa, 9000.

**EV.LUTH.OWAMBOKAVANGO CHURCH PRESS
PRIVATE BAG-2013, ONDANGWA 9000
SWA/NAMIBIA**