

OMUKWEETU



30c

No. 19

ISBN 0-620-06828-0

Egongalo Omuntele lya gwanitha oomvula 20

KuJohn Shitundeni

MOmuntele omwa li oshituthi oshinene eti-7.10.1984 moka aakwanegongalo naakriste ya zi komagongalo galwe moshitayingeleki shaNdonga ya li ya hambelele Kalunga sho a humbata egongalo ndyoka moomvula dha piti sigo lya gwanitha oomvula omilongo mbali numvo. Moshituthi moka omwa li mwa kalwa kaantu ye vule 1500.

“Otwa li ngaa tu na oshituthi sneyapulo lyongeleki ndele inandi mona nale aantu ye thike mpaka ya gongala megongalo lyetu,” osho omukwanegongalo gumwe ngoka a li ta ndjandjukununa oshipopiwa tashi popi uukumwe waakwanegongalo, a ti. Nguka okwa tsikile ta ti kutya uukumwe megongalo otatu kala mo ashike ngele aakwanegongalo oye na ohole, ombili neinekelathano.

Mokundjokonona onakuziwa yegongalo Omuntele, omusita gwegongalo ndyoka, Juuso Shikongo, okwa ti egongalo olya dhikilwe kElelongeleki lya ELOC eti-1.10.1964. “Ashike omalongekidho galyo oga zi nale momumvo 1943, manga kwa li okuti kokwenekwene ku na aakriste taa nyangwanyangwa, omusita Shikongo osho a ti.

Konima yehokololo eleeleka tali hokolola nkene pwa li uudhigu opo oshitopolwa shokOmuntele shi pewe egongalo, tatekulu Shikongo okwa hololele aayenda yoshituthi, shoka aakwanegongalo ye ya longo po muule woomvula dha piti.

“Oyi itungile ongeleki ombwanawa, oshinyanga shoshinanena, okapangelo, ekuma lyongendjo noyi ipyakidhila ngashingeyi okutunga egumbo lyegongalo lyomala 6. Ondi inekela otaye shi pondola, oshoka inandi ya limbililwa,” osho a ulike nkene eitaalo li na iilonga tali monika mOmuntele.

OMUDHINGOLOKO

Pomudhingoloko gwongeleki, omeho gomuyenda otaga tala omisati odhindji, iikulukuma yetala ekulu lyokuningila omambo. Kokule kashona uuhwa uufupi, omilunga nuuyelele wa mbwalangandja. Mbalambala, momadhimbulo goye otamu ya ekumagidho lya zi kumwe gwomaakwanegongalo, omulongi Ahithophel Antindi, a ti: “One yepipi ndino eshuushuka, otandi mu lombwele kutya, ngele itamu kwata nawa omakuya geni, otamu ka kala mombuga.

Tala kep. 2



Nonando oshituthi sha li sha kwata ethimbo ele, ngiika oowili ne lwaampoka, aantu oya pulakene nawa sigo opehulilo, nonando mboka inaa mona cha mongeleki ya li ya hepekwa nayi komutenya, omolwomiti dhaa na omafo.

Einyolitho lyO-mukwetu 1985

Oshifo shOMUKWETU natango omumvo 1985, otashi futwa ngaashi shito: R5,00 muNamibia alihe nomu SA, R8,00 muAfrika alihe nenge R11,00 kombanda yomafuta ngele omosikepa. Mondhila R13,00.

Onkundana ndjoka oya fa ombwanawa kaaleshi oyendji. Oya kala ngiika ye yi tegelela yu uve kutya oshi li ngiini kondando yoshifo shawo omumvo tagu ya.

Ihe onkundana kayi shi unene ombwanawa ngaashi to dhiladhila nenge pamwe oyi na uuwanawa uushona wowala. Ewilikongundu lyoshifo shika, ndyoka hali lele oshifo, sho lya gongalele omwedhi gwa zi ko, olya dhimbulula kutya:

Eyelutho lyondando 1983 natango inali siikila nawa oompumbwe dhiilonga yoshifo shika. Iimaliwa R8 000 omumvo ngoka oya li yi na okuhehelwa palwe opo iilonga yOMUKWETU yi thiike pehulilo. Iimaliwa mbyoka ya ka hehelwa ongunga, omu na R 5,00 dhoje sho inoo inyolitha omumvo ngoka nowa yemata, kutya oshifo osha ninga ondilo.

Nuumvo inatu thika natango pehulilo, ihe osha yela kutya ekwatho ndyoka tatu ka pumbwa otali vulu lyomumvo 1983. Shoka osha konkolekwa koondando dhiilongitho sho dha londo miinyanyangidho nokiifendela yepangelo.

Konima yoonkundathana oonde dhEwilikongundu kombinga yaashono shi shi okuningwa po okuhupitha oshifo shika, opwa ningwa etokolo pu yelekelwe ngeyi, kutya ondando yaa ha gwedhelwe manga, ihe peha lyokugwedhela pu indjipalekwe aaleshi yoshifo aape, po pu talike elunduluko ndyoka tali ya po.

Mpaka opwa pumbiwa unene eyambidhidho lyoye omuleshi, ngele otwa hala tu kale natango tu na oshifo moomvula tadhi landula. Ngele hasho oshe ende nawa nenge hwepo, omumvo 1985, otashi vulika Ewilikongundu tali etelwa omukumo pu tsikilwe ngeyi nokomeho. Ihe ngele hasho, egwedhelo otali ka ningwa mbala.

Okwiinyolitha kwoye oshifo omumvo 1985 noku tsa kwoye yakweni omukumo nayo wo yi inyolithe, otashi ka kandulitha po omaudhigu ogendji kombinga yoye mwene noyaa-leshi wo ooyakweni.

Osha yela oyendji itaa ka nyanyukwa ngele oshifo shOngeleki yawo OMUKWETU, otashi dhimi po, omolwompumbwe yimaliwa manga inaatu ya tseyithila kutya uudhigu ounipo u tu li moshipala.

Inyolitha ano oshifo shoye mbala omumvo 1985. Egumbo kehe ekriste nali inyolithe oshifo shalyo. Nuumvo sho twa yalula omwaaalu gwaakwanegongalo ya kolekwa mu ELOK notwa yalula wo iifo mbyoka hatu tumine meni lyOngeleki, otwa dhimbulula nkene konyala aakriste ye vule 30 ohaa lesha moshifo ashike. Omumvo tagu ya inashi kala ngaaka nando.

Ondi shi shi oku na oyendji ye hole okulesha oshifo shika, ihe sho yi itala kutya itaa vulu oku shi landa, oye shi etha owala. Mbaka wo otandi ya tsu omukumo, kutya ngele oya ye-kelele ya mana mo, oku na oyendji taa ka sindana mekonjjo lyawo.

Otatu indile wo mboka mwa kala noshimpwiyu shokunyolitha omadhina gooyakweni momagongalo, mu tsikile nuupenda u vule woshito. Oyendji omwa yi moongunga

sho mwa nyolitha aantu yo inaa futa. Inamu tsikila we ngaaka. Tumeni omadhina kOmukwetu gaamboka mu shi shi oya futa, nenge mu na einkelelo muyo shito, kutya otaa ka futa mbala.

Kambadhaleni wo mwi ikongele aayakuli yeni koombinga adhihe dhegongalo, ku kale ngoka ta gongele omadhina. Ngele tashi vulika, omukunda kehe nagu kale nomunyolithi gwagwo. Indileni eyambidhidho lyaasita moshinima shika.

Shika otatu shi ningi nelalakano opo tuu omuntu kehe megongalo a adhikwe kehiyo lyokwiinyolitha OMUKWETU omumvo 1985 peha lyokwiigidha ashike melongelokalunga ngaashi olwindji hashi ningwa.

Amushanga gwOmukwetu

Da dja kep. 1

Ekumagidho ndika olya leshwa mongeleki pethimbo lyoshipopwiwa tashi popi kutya Omuntele oshike.

Mpaka naampeyaka, owa tala ishewe iilambo iikulu. Komilungu dhaakalimo mboka ya za nale, oto uvu ko kutya Omuntele ogwa li ehala lyomeya omalulu. Oto lombwelwa ishewe nkene ooyene yomikunda ya longo oshindji sho ya kokola okuti hoka, opo wo Ohapu yomwenyo yi vule wo okumona ompito yokulandulilamo aashitwa yaKalunga.

Ngele to pulapula kutya kuumbugantu wegongalo ndika oku na naana shike oto lombwelwa kutya, lwaahoka oku na ondjakulwambinga yegongalo Omuntele, "OSHINITOLIPO". Oto lombwelwa ishewe kutya okuza mOmuntele ekango lyomongwa ndyoka aniwa lya hupitha nale oyendji mOndonga, kali li we kokule.

Manga omuntu ino thiga po Omuntele owa li ngaa u na okupula kutya ano oshitya "omuntele" otashi ti naana ngiini. Mboka ye shi nawa, onakuziwa yoshitopolwa shoka, itaye ku dhike; otaye ku lombwele ombahu nokawawa kutya oshitya sho shene oshOshingandjera, tashi ti olukwe, ano epakolwa lyosizi lyaa na sha.

Ehokololo otali ti kutya nale moshitopolwa shoka omwa li hamu kala Aangandjera nomwa li ihe oosizi odhindjidhindji; noshitopolwa shosizi mOshingandjera

ohashi ithanwa "entele" nongele oshinenenene, ohaa ti omuntele, osho aafatululi ya ti noyendji oya li taa pulakene nawa efatululo ndika; oshoka kaya li ye shi wo kutya Omuntele otashi ti ngiini.



Mefano ndika otamu monika iipala yimwe yooyene yomikunda nomalenga mboka ya hokololwa ya ningi oshindji sho ya kokola Omuntele. Mbaka oya li ya hiywa owina noya li ya kuutumbikwa kiipundi yokomeho melongelokalunga lyoshituthi. Ondjokonona oyu ulike kutya oyendji yomuyo ya tetekele nale muukwaaluhe.

KALUNGA OYE OHOLE

Otu na eyeletumbulo ndyoka tali ti: "Ohole omposi", ihe ngame pauveko lyandje hasho sha tya ngaaka; oshoka ohole oyi na omeho ga tonata aluhe. Ngele aakuluntu yontumba taa lele aanona yawo ondembula, nena otatu koneke mbala kutya muyo kamu na ohole yokuhola aanena ya tya ngaaka, opo ye ya pukulule noye ya tule mondjila yuuka.

Mombimbeli ohole oya gama unene kehalo ndyoka li na sha niilonga, shi vulithe eiuvo; eeno eiuvo omo li li, ihe halyo unene oshinima sha simana. Omusamaria omunamutimahenda sho a mono omuntu a ehamekwa, okwe ya kuye nokwe mu kwatha.

Euvohenda mpaka halyo naana lya longo, ihe shoka sha longo osho okuya miilonga yo yene, opo omwenyo gwomulumentu ngwiya gu hupithwe. Jesus okwa gandja eyele ndika, opo e tu ulukile nkene tu na okuya miilonga noku tu hololela wo kutya Kalunga ye mwene okwa tya ngiini noku tu yelithila ishewe kutya Kalunga naye wo oha yi miilonga, okuhupitha.

Shoka tse tu na okutseya osho shoka kutya ohole yaKalunga oyo ehale lye eyapuki nolyo wo eyo lye miilonga moka ta hupitha mboka ye li mumpumbwe. Kalunga ngoka e tu hogolola tu kale ye, iha lunduluka nomolwohole ye ke na mpoka te ke tu etha po.

Otatu dhimbulukwa nawa kutya okanona ihaka pewa shaashoka ka hala, oshoka otashi vulika shi kale oshiponga kuko. Ohole wo yaKalunga otayi tondo shaashoka tashi keelele omuntu okukala a opalela Kalunga. Kalunga mboka e ya hogolola, ngaashi tse, ote ya tile ngeyi: "One amuhe onde mu hogolola maakuuyuni yokombanda yevi; onkene otandi mu geyelele omayonagulo gehi agehe." (Amos 3:2).

Otwa tseya nawa oshigwana shaIsrael shoka sha kala nokutangalala, nkene sha mono omageelo ogendji sigo nokuli oshilando Jerusalem nasho sha hanagulwa po kaatondi. Pakutala konima, Aaisrael oya dhimbulukwa omahepeko moka ya piti noya dhimbulukwa wo uuyuki nesilohenda lyaKalunga (Neh.9:17).

Ohole yaKalunga otayi monika mokusila omushitwa kehe oshimpwiyu. Okwe tu shiti twa manguluka onkene okuhola Kalunga itashi zi kethiminiko, aawe, okwe tu pe emanguluko ndika keshito, opo tu hogolole tse yene. Ihe otu na okukotoka, oshoka emanguluko ndika oli na oongamba. Otatu vulu oku li longitha tatu kondjitha ehale lyaKalunga. Ashike elago lyetu oli li mpoka sho tu shi shi shoka sha puka naashoka shi li mondjila. Ano ngele tatu yono okutseyene.

Kalunga oku uvitile ngiini uuyuni moka ondjo ye ya nosho wo omuntu ngoka a hogolola sho a ningi omunandjo? "Kalunga oku na okugeya." Ndika oyo eyamukulo lyetu kepulo ndika, otashi monika wo maantu; oshoka shaa tuu

omuntu a yono oku na okukala a tila Kalunga.

Olwindji aantu otaa dhiladhila wo kutya Kalunga ine ya mona mokuyona kwawo. Ihe sho omuntu ta dhiladhila ngeyi, pethimbo olyo tuu ndyoka eiuvo lye muule womwenyo otali mu tompele kutya hasho sha tya ngaaka. Evangeli inali tila okupopya oshili, oshoka etumwalaka lyalyo olyo ukilila; kutya ohole yaKalunga ihayi lunduluka nokuhole wo naanandjo nokuli.

Esilohenda lyaKalunga olya kala aluhe kombanda yetu, ihe hamolwaashoka tu li aawanawa andola, ihe oshoka Kalunga oye omwaanawa noku na aluhe ohole oku tu taamba. Ohenda yaKalunga otayi monika mpoka sho te tu taamba uuna tatu taagulukile kuye, oshoka Kalunga ita nyanyukilwa eso lyomulunde nando olumwe (Ezekiel 18:23,32).

Medhimpepo lyoondjo otamu ulikwa kutya oondjo kadhi na oonkondo oku tu topola naKalunga. Oondjo otashi vulika dhi tu topole naKalunga, ihe edhimpepo lyoondjo otali tidhile oondjo kokule natsé. Ngoka a dhiminwa po ke na we uumbanda washu, oshoka ngoka a dhimpepo oondjo ite dhi dhiladhila we.

Uukwatya waKalunga auhe mbuno otatu wu mono muJesus Kristus; Okusa kwe komushigakano otaku holola ohole yaKalunga okuhola omuntu. Kalunga okwe tu ulukile shoka a li e hole petameko naashoka ta ka kala e hole pehulilo. Ano ohole yaKalunga otayi holoka mokusa kwaJesus komushigakano. "The Kalunga okwe tu hololele ohole ye okuhola Jesus Kristus sho a si peha lyetu, omanga twa li aalunde (Rom.5:8).

Evangeli otali tu lombwele kutya Jesus okuume kaalunde. Ota yi mombuga a ka konge onzi ndjoka ya kana noku yi eta moshigunda. Meyumuko lyJesus otwa pewa wo omwenyo omupe; sha pitile meshasho eyapuki. Jesus okwe tu pe einkele kutya otatu vulu okuninga aantu aape, ngele tatu inekele muye notatu etha a longe mutse; notatu ningi ihe aashitwa aape.



Omulongwasita kOttjimbingwe,
F. J. Nashidengo

Otu li ihe muuyuni wopaali pethimbo limwe; muuyuni moka omuntu ta kongo uuanawa we mwene nota dhimbwa-po Kalunga; nosho wo muuyuni moka mu na ohole nehale lyaKalunga; Monkalo ya tya ngeyi, onkalamwenyo yomukriste otayi adhika komaudhigu notatu pulwa ihe tu kondje.

Kondja ekondjo ewanawa lyeitaalo, dhama omwenyo gwaaluhe we gu ithanenwa..." (1Tim.6:12). Molwashika, ohole yaKalunga otatu yi tsakaneke aluhe mesilohenda nomedhimpepo lyoondjo muJesus Kristus.

Muukwaaluhe waKalunga omo moka ohole ayike tayi pangele; omo wo moka mboka ye mu itaala taye ke mu longela nenyanyu, oshoka oya kala ye mu hole; apo taye ki ilonga oku mu hola. Mpoka pe na Kalunga opo wo pe na ohole. Ngele ongeleki oyo eha moka Kalunga a kala, nena omo wo meha lyohole yaKalunga; Kaku na ngoka te tu topola mohole ndjika, sigo ayihe ya tsakanithwa.

J. F. Nashidengo

Kala ho ende nombapila yoye yegongalo

Ombapila yeongalo oi lile po okuulika okukala kwoye meongalo kutya okwa tya ngahelipi; onghe kala alushe ho ende nombapila yoye yeongalo efimbo keshe, unene tuu nge to ya koshipangelo. Omatomhelo moshinima eshi oyaa kutya: nge owa mono oshiponga ile to yehama neenghono, to ngabuka ile nokuli wa file ponhele uhe shiivike po, shimha u na ombapila yoye yeongalo, nena oto yakulwa nawa, ndele ngenge ku i na, otashi dulika u pakwe ngaashi omupaani.

Hano keshe tuu ou to pula ekwafo u yakulwe paukriste, ndele ku na ombapila yeongalo, ino kumwa nge ito yakulwa ngaashi wa teelega, osheshi oukrite woye kau shiivike, wo ohau shiivika ashike mombapila yeongalo, paulikilo olo li li mo.

Oonakupulila onunona veni omashasho, nanye kaleni neembapila deni doomaongalo, nye tamu di shuna ko komaongalo eni konima yeyakulo.

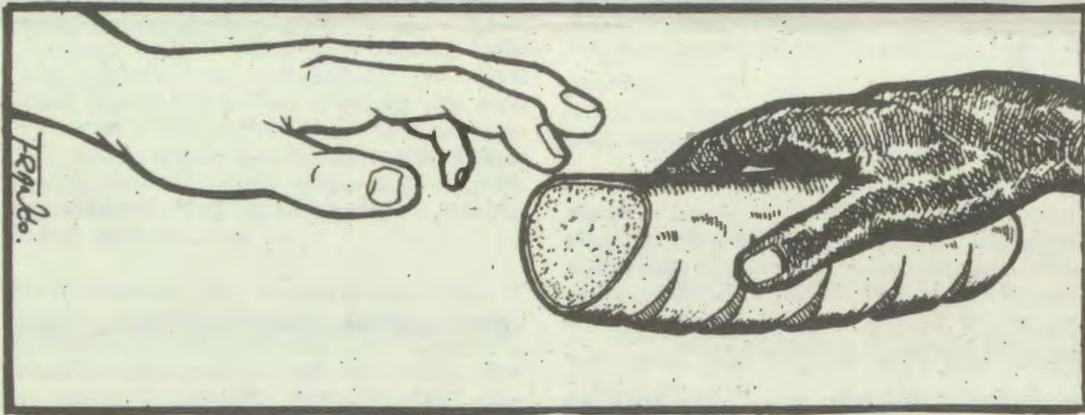
Ovayakuli vopamhepo, ava hamu yandje eembapila domaongalo, kwafeleni ovayakuli vakweni moku va pa omauyelele a wana kombinga yoilyo yomaongalo eni oyo ya pumbwa eyakulo.

Nge ope na omaimbo onhumba, naa hololwe, opo va talike kutya otava kwafwa pamukalo u lipipo.

Umwe womovayakuli moihakulilo.

OSHITUTHI SHUUDIAKONI MOSHIGAMBO

Onkundana ya zi megongalo lyaShigambo oya ti kutya aakulupe 168 oya etelwe kelongelokalunga moshituthi shuudiakoni shoka hashi ningwa megongalo ndyoka omumvo kehe. "Esiku ndyoka aakulupe oya pakelwa po omwiha, ya topolelwa omakaya, uupalwa noya zalekwa iikayiwa komitse," osho omukundaneki gwetu megongalo ndyoka a hokolola.



Okwa tsikile ta ti kutya moshituthi shoka omwa li mwa kalwa kaantu 814 nomayakulo ga ningilwa aakulupe oga li unene ga ningwa kaanashilonga megongalo ngaashi aapangi, aadiakoni, aakuluntugongalo raasita. Aapangi yokOnandjokwe oya tumbulwa wo kutya oya ningi oshindji moshituthi shiyaka sho ye shi gongelele iimaliwa R340.69.

Ehokololo olya ti kutya aakulupe oya li ya nyanyukilwa noya kuminwa omayakulo agehe ya ningilwa. "Kalunga na yambeke mboka haye

tu dhimbulukwa ngeyi, opo tu ze moondunda dhetu," osho yamwe yomaakulupe ya hokololwa ya ti ngeyi nolupandu olunene.

Omusita gwegongalo ndyoka Salomo Elago, okwa gandja wo olupandu kwaayehe mboka ya longekidha oshituthi shiyaka noya yakula nyanyu. "Kalunga ne mu shunithile shoka mwa gandja po. Oonkondo mwe dhi longitha meyakulo, niilalo mwa pya sho mwa wiyauka noombiga pomasiga, Kalunga Oye na kale omupangi nomugandji gwoonkondo," osho Elago a tumbuliile egongalo lyaShigambo.

Edhimbulukitho kaavali okulandula onkalo yaanona posikola nomegumbo

Embumbangele kosikola nomondjila

Hondjunina u tale nkene oembumbangele haa yi kosikola. Otaa matuka yu uka komeho yu uka konima nenge mooha. Otaa kayilathana, ya tya oosipenitha, oothilinga, ohiyali oohitano nosho tuu.

Yamwe otaa thiki kuyelee, yamwe taa tokelwa. Omuputudhi omusimanekwa, ngele omunona ta zi meke lyoye te ya kosikola, na kumagidhwe a adhe osikola, ye kaa kanithe shoka we shi mu pe. Aanona ohaa pulakene ngaa omakumagidho gaakuluntu.

Okukoka kwomunona neputudho lye

Omunona ngele ta tameke okukoka, ohashi tameke megumbo tango paputudho lyaavali nenge lyaaleli ye. Eputudho etiyali olyomomukunda moka ta tsakanene niinima oyindji inee yi mona nale. Yimwe iwanawa yimwe iwinayi. Oshilonga shomuvali okutala elunduluko ndyoka.



Tongolola nkene aanona mboka ye li moondjila taa galuka kosikola. Oya sa ondjala, taa taga omilunga dhaantu, taa yaka iiyimati yaantu, taa kondjo nokuhindathana taa yi koondjila dhaa shi dhawo nosho tuu.

Omuvali nomuputudhi mokulongela kumwe naalongi, na kambadhale wo okupukulula omunona kaa ninge shono inaashi pumbiwa uuna e li mondjila ye ta galukile kegumbo.

Omunona posikola

Omuputudhi na tseye omunona gwandjawa kutya oku li mongapi posikola

yawo, oshike sha longwa esiku ndyoka. Omunona na longekidhilwe wo oompumbwe dhokosikola, ina gandja ombedhi komulongi montaneho yomunona inaashi pumbiwa. Omuvali ina gandja ekwatho lya pitilila oompumbwe dhomunona.



Uunona nau longekidhilwe iipalutha mokuya nomokugaluka kosikola

OKWIIYOGA KWOMUNONA: Onda ndhindhlike kutya unene pethimbo lyuutalala aanona aashona yowala haa iyogo mokuya kosikola. Omathimbo nomathimbo muule womumvo ihaa iyogo nawa.

Onawa ano aanona ya silwe oshimpwiyu yi iyoge, ye shi ninge metonatelo lyomukuluntu nando haaluhe. Ihe onawa unene ngele pethimbo lyontumba omunona to mu yogo ngoye mwene.

Onkalathano pokati komulongi nomuvali

Omuvali kambadhala waa ponokele omulongi montaneho yomunona, oto yono

Tala kep. 5

OKUHINGA KASHI SHI UUTHEMBA, IHE OSHINAKUGWANITHWA



Aluhe ngele to hingi, tseya kutya owi ipyakidhila noshinakugwanithwa oshinene, onkene kala aluhe wa kotoka. Tula aluhe omadhiladhilo goye mokuhingwa, uuna to hingi.

Okahauto taka monika mefano pombanda, okonyala ka dhipage aantu oyendji, sho ka nuka kopate e taka uka mongundu yaantu taa landitha. Lagonene, Kalunga okwe ka kandulile ashike muundunda wokulandithila; ndele ta gamene omuhingi naayehe ya li popepi noshiningwanima shika.



Dha za kep. 4

po eputudho lyomunona mosikola. Kombinga wo yomulongi, onawa ngele to gandjaashihe shoka omunona te shi tegelele e shi tseye mosikola, nonando u kale wa kuthathana po nomukuluntu gwe. Inashi ya nando omomakutsi gomunona.

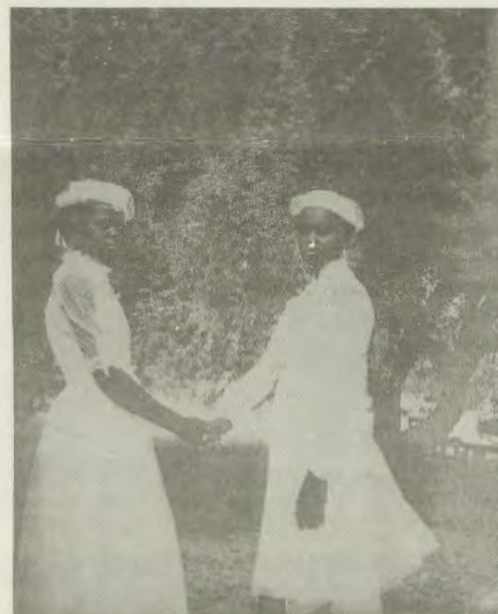
Momeya ihamu inyenge owala. Ngele aavali taa popi sha oshiwinyi kosikola nenge komulongi, ngiika opu na ngaa sha tashi inyenge. Omulongi ke shi omuntu ngoka ihaa yono, ihe okwa pumbwa owala edhimopo lyoondjo ngaashi aantu ayehe.

Tu kwathathaneni, tu kaleni kumwe, nelalakano alihe omunona a putudhwe nawa a ka kale omukwashigwana shokomeho e shi okwiinekelwa. "Waa na mutanda ku na ngombe, waa na mpagona ku na iilya."

S.W.O.Ngaikukwete

Omapameko ovanyasha momaongalo

Pamaufomhango Ongeleki Onghwaevangeli paLuther yomOwambokavango, ovakwaneongalo aveshe ove na okupita mofikola yepameko. "Ovanyasha nava ye mofikola yepameko pomido 16-18," osho eufomhango la ti.



Ovakulunhu novatekuli vamwe ve lili ngege itava tumu ovatekulwa mofikola yepameko pefimbo, omufitaongalo ne va kumaide ve shi ninge. Ngege itava shikula ekumaido lomufitaongalo, omufitaongalo na shiivifile eleloongalo oshinima eshi, opo li ninge ngaashi pwa ufwa moshitokolifo 72, osho tashi popi omapukululafano omouwike.

Efano pombada, otali ulike ovanyasha vamwe vomeongalo laNgwediva, ovo va pamekelwe pehulilo laSeptemba neudo. Omunhu oto dulu okulesha ehafo netulumuko momitima davo, konima yokukongholelwa ouklefite mofikola yepameko.

Omukundaneki Halweendo

HALWEENDO TA KUMANDA OSHIWANA

“Konima yeenghundafana detu doule wotundi lwaapo, omuyandjimaye wange moinima yomonghalafano, hailwa Dalondoka, okwa pa nge elondwelo la kola ndi kumaide ovanhu aveshe va diinine oilonga yomomapyia fiyo omoukulupe wavo,” osho Halweendo a hovelwa ta hokololele ova-pwilikini vaye.

“Inaku kala nande oumwe te litangele oupuna woimaliwa, Halweendo ta twikile osho a lombwelwa, osheshi okulya ouvalelo moshimaliwa osho ashike keshe efiku, itashi shundula ashike omifuululwakalo dootatekulu, ndele otashi etele yo eumbo oluhepo pamukalo wonhumba ile wongadi, nande hanena ile mongula.

“Onghedi ei yokuhupa moshimaliwa, otayi lemaneke yo eendunge dounona novanyasha vetu, ndele tava kala ashike nokwaalangata monyalo nokuhupa mokunyeka nomokuteya nokuvaka ngaashi sha hovelwa nokuli konima yeedula dimwedimwe da dja ko.

Kashi fi mbela shixwepo okulya netulumuko nomapuva peke oilonga, shi dule okulya to tale konima ove wa tya omapute waa ningwa eshi kwa li to vake oinima yaavo hava longo nomake avo vene?

“Omolwefimbo loita tu li mulo paife, meenghundafana detu nahailwa Dalondoka okwa li yo hatu popi oshinima shondjala noku dimbuluka omahepo ootatekulu eshi va kala hava hokolola kutya oita ngee ya dja, ohai etelele ondjala.

Ongee ame ongomukundaneki, ondi udite kutya osho oshinakuwanifwa shange okukumaida oshiwana osho tashi tondokele moushimba omolwoufukedi woimaliwa ile molwoushondolo, shiha shundule nande nande oilonga yomomapyia, ndele shi kale hashi ya komaumbo pomafimbo oilonga.

Ekumaido eli ola yukilila yo ovanashilonga novanafikola ovo va fukila oku ka fuda kOushimba pefimbo loilonga yomomapyia; pokwenye osha yeleka, nande omunhu owa i fiyo okefuta oku kwa talala nawa.

“Onakwiiwa yokushondolela mOushimba onde i tala ya fa oluhepo eli la fa omulumenhu a homata; onde i tala vali ya fa omilaulu fokofoko omo mwa hondama oiponga ihapu tashi dulika nefyo nokuli lihena omutwe nandungu; ashike onakwiiwa yomulongi wepya, ondi i wete tai vilima ya fa onyofi; noi dule noyaa ha li ouvalelo mokawe,” osho Halweendo a holola omadilongo aye omoule.

“...IHE OSHO TWA SHUNA MOOSA OONTIYALI —AakwaNakambonde ya ti

Otwe mu pandula one ooitaali yaKalunga, mwa li mwa zi koombinga noombinga mwe tu tondokela onkugo, sho twa li momuzimbi omunene twe gu pewa kuKalunga mwene. Omwa hekeleke oomwenyo dhetu noohapu dhaKalunga nomwe dhi talaleke noondjimbo dhopambepo, Kalunga ne mu yambeke.

Kaakwanezimo yatate mboka mwa li mwa kala natse pethimbo lyoosa, otwe mu pandula shili noonkondo, oshoka omwa kala natse ngaashika aana yeni, nonando tate e tu thigi po. Otwa koneke kutya omwa tseyu kutya oluhodhi lwetu olunene noludhigu, kalu shi okwiihumbatelwa.

Kuku gwaNande nakuku gaKawa, mwa ya mwe tu thigila ombili moshigumbo shatate, ihe ohaluka konima yoomwedhi ndatu, otwa holokelwa kondhikwa tayi itanga kutya yo kayi na ko nasha noothigwa, tse Yantu ne, otwa monene iihuna esiku ndyoka pamwe nameme.

Oya kwata iityi yegumbo aniwa ye yi dhikule po. Iiti ya dhikwa kpenda tate, a dhikila oyana egumbo. Oye tu pe elombwelo kutya: “Kalenii puuyelee, oshoka omwa silwa”. Twa shuna moosa dhatate oontiyali, nonando oomwenyo odha adhika opo tadhi hekele.

Twa kundana ondhikwa oyi na aayambidhidhi mboka ya hala oothigwa dhaNakambonde dhi ningilwe shaashoka tashi alula oomwenyo dhetu. Mapenda mokuthiminika nenge mokuthiminikitha oothigwa dhatate Nakambonde, kaleni mu shi shi kutya shika she tu adha, otwe shi pewa kuKalunga mwene.

Kune oonakudhikula egumbo lyatate, tse iiti katu na nayo. Moohapu dhaKalunga omo tatu mono iiti yokwiikwatelela.

Kalunga Oye He yoothigwa, nonando ne omwi iyoolola kutya kamu na nadho; Kalunga mwene gwetu opo e li. Muuyuni tse inatu ya mo nasha, nosho wo itatu zi mo nasha. Osho ngeyi tatu vulu okutumbula ngaashi Job. 1:21.

Peha lyoothigwa dhatate

S. Nd. Nakambonde



Oshigumbo shanakusa Nakambonde pethimbo lyoosa. Tala nkene kwa li egumbo lya dhikwa nuunkulungu!

ELELONGELEKI

Elelongeleki la ELOC ola li la ongala mOniipa okudja 26 fiyo 28 Septemba; amwe omomaufu oo la ninga ongaashi taa landula:

370

Elelongeleki ola ufa oshipalanyolo shomudo 1985 shi kale: JESUS KRISTU OYE OMBILI YETU (pa Ef.2:14).

Tala kep. 8

Omanangeko nomalundululo ovanashilonga:

- Omufita Jesaja Iipito, Ontananga, Elelongeleki ole mu nangeka meongalo lipe Omulondo okuhovela Januari 1, 1985. (Eongalo Omulondo ola kufwa meongalo Onayena kombinga yokoushilo).

- Omufita Eino Amaambo Elelongeleki ole mu nangeka omulongi mofikola yOmbibeli mOngwediva, okuhovela Januari 1, 1985.

Omuteologi W. Amweelo Elelongeleki ole mu mangelula moshilonga shokulonga ofikola yOmbibeli, opo a mangelukile oshilonga shaye shewiliko loshilonga shoomele mongeleki.

- Omufita Adolf Hangula, Ongenga, okwa nangekwa meyakulo kOlange omudo umwe, okuhovela Januari 1, 1985.

- Omuyevangeliste Jairus Kapenda, Onguta, okwa nangekwa meongalo Oniipa okutameka Koto^h 1, 1984.

- Omufita Vili-Heikki Shivute, Olukonda, okwa nangekwa kElelongeleki omufita-omuwiliki meongalo Oniipa okuhovela Januari 1, 1985.

Omutumwa wOngeleki koshoongalele shOngongahangano yOvakwaluther kuBudapest, meme Hilja Shivute, okwa hololela Elelongeleki kutya moshooongalele shinya omwa li oomeme vahapu. Oomeme ova djuulukwa okuudiwa ko nokupwilikinwa. Otava kondjifa 'Oukwakashike-ko-okanhu', (hano okutala kutya ou omulumenhu ile omukainhu mekwatafano nomayakulo opangeleki). Otava kondjele eyapulo lofavita ovakainhu. Otava indile ovakainhu va kale yo meenguduwiliki mOngeleki," osho meme Shivute a hokololela Elelongeleki.

Elelongeleki ola kundaneke oluhepo omolwondjala moitopolwa ihapu medu letu. Onghe otali yandje oshisho kEwilikongudu loshilonga shOudiakoni mu ELOC li nyolele omaongalo etu nokwehela omakwa oikulya ngaashi: omakunde, oilya nosho tuu, opo i tumwe kwaavo tava fi ondjala.

Oto tseya tuu omafupipiko ngaka:

VELKSWA, FELKSA,

Uuna to ga tsakaneke moshifo shika nenge palwe otaga ti:

VELKSWA = Verenigde Evangeliese Lutherse Kerk in Suidwes-Afrika = Oongeleki oonkwaEvangelii paLuther dha hangana muSuidwes-Afrika

FELKSA = Federation of Evangelical Lutheran Churches in Southern Africa = Ongongahangano yoongeleki oonkwaevangelii paLuther muumbugantu waAfrika.

GALIKANENENI MWAA NA EZIMBUKO

Onda hala tu galikaneni opo iita nondjala yi hule. Natu galikaneni wo opo omavu ga shonopale nosho wo uushiinda wu kale u na ombili nelandulathano. Otandi indile oongeleki adhihe moshilongo dhi itule mo.

Tangi sho tatu longeleni kumwe pambepe, nonando palutu otwa topoka.

Nambombola

Omwene amena Namibia 1

Koshi yevalelwa mounyuni, Menenedu laAfrika. Mu na edu Namibia, Tali kuu kuJehova. Molwekwafo neameno.

2

Molwoudjuu waNamibia, Molwoixuna yedu eli. Vahapu otava pula, Vaitaveli tava ilikana. Omwene amena Namibia.

3

Koshi yetango tali vadima, Vanamibia tava hefa. Tava pula eyambidido, Jehova amena Namibia.

4

Mouwa nomeameno, Memanguluko lashili. Vanamibia humbata, Odalele keshe yambidida. Pamba amena Namibia.

5

Kohanana tai yolo shanhemo, Komunyasha ta yolele ketayoo. Komukulupe ta lili omahodi, Molwonghalo yedu letu. Namhongo amena Namibia.

6

Mokati kenedu laAfrika, Jehova Vanamibia dimbulukwa. Pamba edu loye ino li efa. Xe yaaveshe vamwoye ongela. Omushiti amena Namibia.

7

Omhepo youmwainafana tilila, Ohole yaaveshe pa Ovanamibia. Eendjovo doye di diininwe. Oipango yoye i wanifwe. Kalunga amena Namibia.

8

Efimbo ngeenge tali ka fika, Onghalamwenyo yomunhu tai ka xula. Vanamibia papatela, Va ka imbe Halleluja. Moshilongo shomeulu. Moses Sh. Shingo

OKAMBO KAPE KOMAIMBILO GAKRISMESA

Okambo komaimbilo gaKrisimesa inaa ka monika nale, nonando ngiika ke na omaimbilo gamwe ga tseyika, oka holoka mositola yomambo pOniipa. Okambo hoka oka longekidhwa kEwilikongundu lyuumusiki mu ELOC; nolya holola kutya oka nuninwa okulongithwa kaakwanegongalo ayehe mu ELOC nosho wo tuu kwaayehe mboka ye na ehalo okuka longitha. Otaka gu oosenda 50 adhike.

“Enenedhiladhilo lyako olo okukwatha ayehe mboka haa kala ya yuulukwa Okrisimesa, ya mone sha shokwiimba sha pamba oshituthi shoka,” osho Ewilikongundu lyuumusiki mu ELOC lya fatulula ngeyi.

Nkene omaimbilo ngaka taga longithwa, Ewilikongundu olya thaneke ngeyi kutya omaimbilo gomokambo hoka, ando otaga imbwa kegongalo alihe oshita, osho wo moongundu dhegongalo nomuuwike pethimbo alihe lyaKrisimesa. Haagehe taga imbwa oshita esiku kehe ando, ihe otaga topolwa.

Mokambo moka omu na omaimbilo gaAdvendi, goshituthi shoshene shOkrisimesa, gOmuvo omupe nalimwe lyaEpifania, ano Oosondaha yaapagani; ashike natu shi tseyeni kutya okuza Advendi sigo Epifania, ndyoka alihe olo ethimbo lyaKrisimesa, otatu vulu okwiimba omaimbilo gaKrisimesa,” osho eyelitho lya tsikile.

Mokambo moka omu na wo etseyitho kutya oonote dhomaimbilo ngoka, otadhi monika kOmbelewangeleki, kondando ombwanawa. Ko kene okashona lela, oshoka oke na ashike uupandja 15 nomaimbilo agehe kumwe oge li 22.

OVAKATOOLIKA MUANGOLA TAVA INDILE EEMBIBELI

Ovakriste vometumo lokOmupanda muAngola, otava indile ovakriste muNamibia ve va tumine omambo Eembibeli notava indile yo nefimaneko pu kale elongelokumwe pokati keengudu dovanyasha, ngenge vati omuvelo pamwe itau ka pata ngaho.

Eindilo eli ola fikifwa mOmbelewa yOmukwetu kombilive ya shangwa kuj. J. Shadongala womuArandis, omo a hokolola olweendo laye olo a li a ninga mOkunene pehulilo lomudo 1983; nopehovelu lomudo 1984, omOmupanda.

Omushamane Shadongala ota hokolola nghe a kala ta ongala pamwe novakriste vongelegeki yaKatooolika kaRooma mOmupanda omafimbo nomafimbo (ye mwene ina holola mombilive oyo a shangela kOmukwetu kutya owongeleki ilipi noha longo shike mongeleki omo, ashike ohatu fekele kutya naye Omukatooolika).

Ota nyola ngaha: “Okwa li ndi udite ehafo linene nombili mokumona ovamwameme ovakriste tava imbi nokuhambelela Omwene va nyakukwa, nonande ove li moshilongo shi na oita, ndele inave mu liteeka.

Okwa twikila ta ti kutya eongalo linya lokOmupanda oli na yo ongudu yovanyasha tai kondjo; Ohave lihongo omaimbilo opakriste nohava konakona Ombibeli. Ota ti yo kutya ovakriste ohava ongala nawa momalongelokalunga nohava yadeke ongeleki

inya unene momafimbo oivilo inene yopangeleki ngaashi pEmisa. Okwa ti kutya eshi kali e shi teelela muAngola pefimbo eli; oshe mu kumwifa.

Mokupopya sha kombinga youkwatya wetungo longeleki, okwa ti kutya kakele koalutali oyo i li nawa natango, ongeleki oya hepekwa nai koita: omakende okwa tatauka mo, oshuudifilo kashi mo vali omishiyakano wokombada nowomeni kadi mo vali, ongedjo oya teywa ko nomushiyakano wayo nomeni oinima ihapu oya teywa mo filufilu, ashike oipeleki nande i na eembululu, oi li ngaho hwepo natango. Ongeleki oi na ounene womanha 75 noule owo 112,” osho omushamane Shadongala a hokolola ngaha.

Ota ti kutya eshi a mona kwinya osha koleka eitavelo laye lomeendjovo daKalunga odo tadi ti: “Ounyuni otatu hulu po, ndele eendjovo dange itadi hulu po.”

Pehulilo omushamane ou okwa taalela kovakriste vomuNamibia, ndele ta ti: “Fyeni ovakriste muNamibia otwa nyika oungundi, shaashi oto hange omunhu ta ti ita i komambo shaashi ke na oshikutu shiwa ile eenghaku. To lifufya, Kalunga ita tale oshikutu shokolutu, ndele ota tale eshi shokomwenyo.

Hano tu humbateni ovamwameme venya momailikano, Omwene a kandulepo oita puvo.

Didilika: Omupanda eongalo likulukulu laKatooolika muAngola nohaku hokololwa kutya muNamibia otamu monika natango ovakulupe vamwe-vamwe va shashelwa meongalo olo.

Dhimbulukitha wo mu- kweni a mbesitele oshifo

O m a f a t u l u l o kuukwatya womumbisofi

Moshifo oshikulu shOngeleki ya ELOK, “EHANGANO”, No. 2, 1958 omwa li mwa holoka efatululo kombinga yuukwatya womumbisofi omukwaLuther. Otatu tula mpaka inima yimwe pafupi.

Olye e na okuninga omumbisofi?

Mokuhogolola omumbisofi, kape na okulandulwa ando edhina nenge ezimo esimano nenge uyamba nenge nokuli ehalo lyoshigwana. Ongeleki oyi na okukala yi na ompango ya yela opo omusita ngoka a longekidhwa kOmbepo Ondjapuki, a wape okuhogololwa, hagulwe. Oshoka omumbisofi ota pulwa oshindji.

Ongeleki ndjoka ya tokola yi hogolole omumbisofi, oyi na okuyelithila aakwanegongalo ayehe uumbisofi wuukwaLuther shoka tau ti, opo aantu yaa faathanithe omumbisofi gwawo naambisofi yiiveva.

Omumbisofi OmukwaLuther okwa tya ngiini?

1. Pamwe nooitaali ooyakwawo, oye wo omusaseli koshipala shaKalunga. Pamwe naasita ooyakwawo, oye wo omusitagongalo gwomOngeleki.

2. Oye omusita gwaasita.

3. Oye omumbisofilela manga inaa topoka meitaalo lyaayapostoli.

4. Mokulela aasita ooyakwawo nomagongalo, ota simaneke oonkondo dhiilyo iikwawo yOngeleki, mbyoka yi li momalelogongalo, momawilikongundu mEpangelongeleki nomOshigongeleki.

Iinakugwanithwa ye oyini?

1. Otu uvitha evaangeli ngaashi twe li pewa kaayapostoli, ye a yakulile aantu mEshasho eyapuki nomUulalelo Uyapuki pamwe naasita ooyakwawo.

2. Oku na okutonatela euvitho nelongo, ga kale ga yela, ye a kwathe omaganohenda agehe omakwawo ga koke gu uka mOngeleki.

3. Ota yapula aasita.

4. Ota talele po omagongalo.

5. Ota lele Ongeleki, te shi ningi mekwatathano nElelongeleki noshigongeleki naayehe mboka ya pewa oonkondo dhelelo lyomOngeleki.

6. E na okupopila Ongeleki muuyuni auhe.

Okugamena uumbisofi waa ye pombambo.

Omumbosofi omukwaLuther kee shi endhindhiliko lyoshili lyOngeleki. Endhindhiliko lyoshili lyOngeleki Ohapu nOmasakramendi Omayapuki.

EXUNGOMWENYO MONGHALAFANO

Ouhakumwenyo owo, omhito ile ondjila ile omukalo mokuhakula omwenyo tau vele. Mwene ou ta vele oye ta fatulula ouvela waye, naanaa ngaashi omuveli wolutu ta fatulula ouvela wolutu laye.

Monghalafano otashi dulika mu na oinima ihapu tai dulu okuveleka omwenyo. Shimwe ashike eshi tashi veleke ou hasho tashi veleke mukwao.

Opo tu endeleni pamwe, otu shi okutala monghalafano oyo tashi dulika i kale oivelekimwenyo. Nomanga inatu ya movelekimwenyo yomonghalafano, tu lidimbulukifeni kutya eenghalafanomwenyo defiku keshe nado oda yooloka.

- Oomeme moilando nomeedoolopa onghalafano yavo inai fa yaava vomeefaalama.

- Osho yo ope na eyooloko longhaloukali voomeme vomohombo naavo inaava hombolwa ile ovo ovafiyekadi ile ovahengwa ile ovadali ve he li mohombo.

- Omufika weputudo nao otau dulu u holole omayooloko omonghalafano nomonghalamwenyo.

- Otashi dulika yo omayooloko a etwe po pailonga.

Mokutala oivelekimwenyo yomonghalafano, i nandi i talela momayooloko aa, ndele onda hala ashike keshe umwe a tale kutya, osho tashi veleke omwenyo waye a hala shi hakulwe osha fikama naanaa peni. Apa ohandi holola po eembinga dimwe doivelekimwenyo yomonghalafano:-

1. OIVELEKIMWENYO YOPAMUMWENE.

Ei ohashi dulika tai tungwa tai di meni. Peemhito dimwe ohashi dulika yo imwe hai di pondje yo tai shakene nai tai di meni.

Unene eshi hashi monika moomeme osho elidino ile etyololoko. Tashi tameke momunhu mwene te limono, ye ke fi sha, ina valulwa, ita pondola sha. Nena omwenyo otau litonyo.

Melitonyo la tya ngaha, otashi dulika olutu nomwenyo talu kanifa eenghono, omadiladilo taa fikama, edulo tali kana, emanguluko lomeni tali ninipala, ezwamo lelixumifokomesho tali

pwiinine nelalakano lomokukalamwenyo tali dimi. Omwenyo tau velelela.

2. OIVELIMWENYO YOMPAMHEPO

Naapa yo ohatu hange po ihapu ndele ohatu kufa po imwe, ngaashi:

- Okuya mumwe kwomukwaneongalo nomufita ile nomukulunhu weongalo ile nomunashilonga umwe.

- Okuhakala meongalo ile omhito yokuhe li meongalo nande ehala opo li li.

- Osho shi li po tashi imbi omayakulo omeongalo.

- Okuhamona ile okuhelikongela omhito yelimweneneno yeilikano, ile yokulesha Ombibeli, ile yokwoongala moyoongalele yopamhepo, otashi eta okudima kweitavelo nomalimbililo. Nena omukumo womeni nao tau kana.

- Elipyakidilo lomepuko nalo tali kufa po ombili nengungumano nelididimiko.

- Oluhepo ile okuhalongifa nawa eshi omunhu e na.

- Oikolo inai futwa, nomatimba inaa hepaululwa.

- Omatukafano, omalundilafano, eenhamanana noikonene.

- Okuhapopya nokupungulukafana ovanhu ve li pamwe.

- Okuhena ookaume vopamhepo ile okuhena omuyambididi moudjuu.

- Okuhena ombili nokuhaudanawa ponhele ile poilonga aishe ei otashi dulika yeete eshunomonima neveleko lomwenyo noudu wopamhepo.

3. OIVELEKIMWENYO YOPAPUTUDO

- Okuhalongwa sha wana ile epato lomhito yokulilonga, nande ehala opo li li, otashi ehameke.

- Ekondjifafano leputudo loshinanepa

neputado lopashwana, tali monika pokati kovaputudi novaputudwa, kovadali nounona, otali eta sha.

- Okuhenomukangha weputudo lolela.

- Okweefa ile okwiitula mo sha pitilila meputudo.

- Okweendekela kombinga kweputudo ngaashi okuhafimanekafana, okuhavalulafana okulihola ile okulidiladila mwene. Aishe ei otai eta omukifi.

Elalakaneno lexungomwenyo.

Osha yela kutya haaveshe hava veluka shi fike pamwe. Umwe ota veluka filufilu. Umwe ota mono omukumo neenghono dokuhumbata sha osho sha eta ouvela. Elalakaneno lexungomwenyo olo okukwafa omunhu.

- Okumanguluka kouvela nokwaasho sha eta ouvela.

- Okumona eenghono domeni dokukondjifa ouvela.

- Okumona omhito yokupita mo momukundu.

- Okuya mondjila yehanganifo noyokupaafana ombili.

- Okumona emanguluko kwaasho sha finda, eliudongunga oimatimba.

- Okumona ekulo lomeni lokuhumbata oudjuu nokukonga ekwafo leenghundaafana ngaashi sha pumbiwa.

- Okukala melididimiko nomohole.

- Okumona ondjila yokukalamwenyo kupe nokulundululila kouwa osho sha pumbiwa shi lundululwe.

- Okukonga omufika welifikameno noufike pamwe.

- Okufika meudonawa lomonghalafano nombili yokomwenyo.

- Okulikanghameka komukangha monghalonawa yopaumwainafana yopakriste noyopanghalafano.

Omwene ota ti: "Ohandi va wilike nge tava ende nokwiilikana."

Neilikano letu modula ei olo: "Omwene lundulula okukala kwetu" Omo mwa mangelwa onghalomwenyo nonghalafano yefiku keshe.

Aune Shilongo

OSHIGONGI SHOONGUNDU ODHINDJI SHA KANITHA NATANGO "OKUGULU"

KUMWE

Kashi na naanaa mpoka sha hololwa paupolotika woshilongo shetu nkene tapu tsikilwa komeho moshigongi shoongundu odhindji (Multi-Party Confrence), ihe omutalinawa kehe ota zimine, kutya onakuyiwa yoshigongi shoka itayi adhima we ngaashi ya li konima yoomwedhi hamano, heyali dha piti.

Shoka osha ningwa sho omusamane Moses Katjuongua ya kuthathana po niilyo yongundu ye oSwanu sigo ye mu umbu mo mewiliko lyayo moka a kala omupresidende. Katjuongua oha talwa kutya oye gumwe gwomaatotipo aanene yoshigongi shoongundu odhindji, moka a kala wo omupresidende.

Oshigongi shoka osha pingene oshigongi shOpashigwana shoka sha halakanene po omummvo 1982 pamwe noraata yooministeli.

Okuza Septemba numvo, ongundu yaSwanu oya hogolola omupresidende gwayo omupe omusamane Kuzeeko Kangwechi, peha lyaKatjuongua. Aayakuli ooyakwawo mewiliko lyongundu ndjoka nayo wo oya hogololwa.

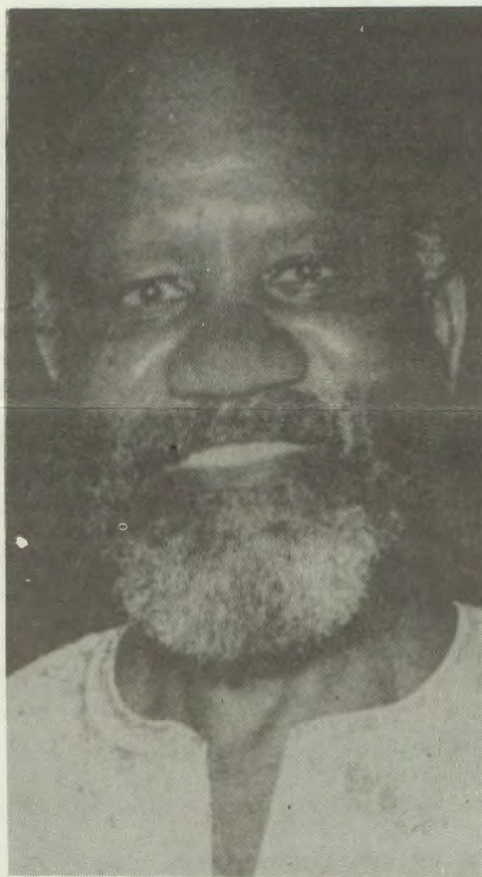
Pethimbo lyehogololo lyewilikongundu epe momutumba gwopaulumompumbwe, Swanu okwa tokola newi limwe i ipweye mo moshigongi shoongundu odhindji, moka a homekwa kuKatjuongua. Swamu okwa tokola wo a longele kumwe naSwapo osho wo oongundu dhimwe ndhoka kaadhi na elongelokumwe na SA.

Oonkambadhala dhomusamane Katjuongua dhokumweneka ewiliko epe lyaSwanu kekwa lyohofa nasho osha fa inaashi eta nando iiyimati yasha. Inapu tseyika manga kutya oshigongi shoongundu odhindji otashi ka tsikila ngiini niilonga yasho omupresidende gwoshigongi shoka sho ekelwahi ngeyi kiilyo ye noye ekelehi omulandu gwa SA.

Lwopetameko lyomumvo nguka, natango ongundu yOraata yAdamara oya thigile po oshigongi shoongundu odhindji mewiliko lyomusamane Justus Garoeb. Yamwe otaa tala kutya ehala enene lyoongundu dhomeni lyoshilongo okukundathana naSwapo ndyoka tali ende tali koko pethimbo ndika, pondje yehalo lya SA, osho unene tashi etitha olutandu pokati koongundu ndhoka hadi unganekwa ku SA.

ANDIMBA TA POPITHA OSHIGONGI SHASWANU

Ongundu yaSwanu onkulunkulu moshilongo okuza 1959 sho ya dhikwa, ethimbo wo ndyoka Swapo a walwa. Ongundu ndjoka oya thikama unene miilyo yAaherero niilyo iishonashona yomihoko dhilwe.



Andimba Toivo yaToivo, mefano ndika ngoka a yalulwa mondjokonona yuupolotika muNamibia, kutya oye e li omudhiki gwEhangano lyaSWAPO, omasiku ga zi ko okwa hogololwa kehangano ndyoka a ninge Amushanga Ndjayi gwalyo.

Omusamane yaToivo (62) okwa mangululwa numvo. mondholongo muFebuluali sho a kala mo omimvo 16 peha lyomimvo 20 ndhoka a pelwe, kOntuntu yaRobben.

Okuza petamekolela oongundu ndhoka; Swanu naSwapo odha kala dha yalulathana kutya odhi li mekondjo limwe. Ihe olwo lwotango Amushanga omukuluntu mehanganano lyaSwapo, omusamane Andi-

mba Toivo yaToivo a popitha oshigongi shaSwanu numvo konima yomimvo omulongo sho oongundu ndhoka dha li dhi itsinine okavi.

Oshigongi shoka shu umbu ko Katjuongwa kewiliko, osho sha li sha popithwa kuyaToivo.

Mboka ya landula opolitika yaNamibia nokatalekonawa, otaye shi koleke kutya okwiikutha kwaSwanu moshigongi shoongundu odhindji, okwa ningi enkawa enene moshipala shopolitika yoongundu ndhoka.

Ashike kombinga onkwawo, pawino womimvo dha piti niiningwanima yadho, shoka otashi talwa ishewe kutya hasho ehulitho lya SA okulongela kumwe noongundu dhomeni, omukalo ngoka gwa talwa koyendji, kutya ogwo ekateko lyemanguluko lyoshilongo shika.

OOMVULA 100 DHUUPIKA

Namibia olya tsakanitha numvo omimvo 100 muupika, okuza kaakolonyeki yotango Aandowishi sho yi ile mevi ndika 1884. Ehistoli otali shi yelitha ngashingeyi, kutya manga tuu Aandowishi evi ndika inaaye li yugwa kAaingilisa (pamwe nOombulu) omumvo 1915, po opwa adhikwa pwa sa nale Aanamibia ye vule 100,000 komahepeko.

Okuza 1915 sigo 1966 sho elelo lyoshilongo shika lya kuthwa SA kIigwanahangano (VVO), opwa tengenekwa pwa sa nale Aanamibia ye vule 10,000. SA elelo okwe li kuthwa ashike pamatokolo moombapila, ihe miilonga oye omuleli natango gwevi ndika.

Omahanganano omanene gOongeleki muuyuni; Ongongahanganano yAakwaluther (LWF) nOraata yOongeleki muuyuni (WCC), oga holola numvo ndjika oluhodhi lwago noonkondo omolwembwengelela lyuukoloni waNamibia. Oombelewa dhomahanganano ngoka odhi li muGeneva, Switzerland.

Iilongo 16 yokuumbangalantu waEuropa pethimbo lyoshigongi shAakwaluther muBudapest, numvo oya li ya ningi omushangwahokololo ngoka ye gu gandja moshigongi shoka gu kolekwe. Momushangwahokololo omwa hololwa wo euvitonayi lyoongeleki komukalo gwa SA okutindila muNamibia. Oye shi holola ngeyi:

Otwa koneke etindo lyaSA okulongelakumwe na VVO, onkene SA i ikongele uungundu we mwene; okangundu okagandjimaye (1971). Oshigongi shaTurhalle (1975). Embwinda lyaTurnhalle, oshigongi shopashigwana noshigongi shoongundu odhindji.

Tala kep. 12

Dha za kep 11

Onke Oshigongi shOngongahangnano yAakwaluther otashi ningi eindilo kOongeleki adhihe dhi li iilyo dhi tsikile okukoleka omayambidhidho gadho kOongeleki muNamibia okukondjitha kwadho okwaa na uuyuuki nokuyakula oomwahe dhonkalo ndjoka tayi nayipala meendelelo."

Omushangwahokololo ngoka ogwa kolekwa koshigongi shAakwaluther ayeche.

Kombinga yOraata yOongeleki muuyuni, nayo oya popya noluhodhi ketsikilo lyukoloni waNamibia itaau hulu. Manga inayai gandja iimaliwa R667 000 kOmahanganokondjelimanguluko mu-mbugantu waAfrika, muJuni nuumvo oya shanga omushangwahokololo moka ya ninga eindilo kOongeleki adhike dhi li iilyo mehanganano ndyoka.

Unene Oongeleki dhomuEuropa nodhomuAmerika odha indilwa eindilo lyowina opo dhi popithe omapangelo gadho okukondjitha okatongotongo sigo oshitokolitho 435 sha VVO sha tulwa miilonga molwemanguluko lyaNamibia.

CUBA OKU LI NATANGO MOMAKANKAMENO GE

Okuza Septemba sho pwa kundanwa, kutya otapu yelekwa nethaneko epe lyokumonena Namibia ondjila ompu yokumanguluka, inapu uvika we sha oshipe. Ngiika otashi tsu kumwe naashono sha tumbulilwe kutya ethaneko ndyoka otali lindile ehogololo lyaAmerika muNovomba tagu ya.

MuNew York, omukalelipo gwaCuba gwiinima yopondje, okwa uvika ta popi omasiku ngaka, kutya epangelo lyawo kombinga yomukundu gwaNamibia otali tegelele natango pu tsakanithwe tango oonkatu tadhi landula:

+ Oshitokolitho 435 sha VVO shi tulwe tango miilonga.

OKUHINGA KASHI SHI UUTHEMBA, IHE OSHINAKUGWANITHWA

Aluhe ngele to hingi, tseya kutya owi ipyakidhila noshinakugwanithwa oshinene, onkene kala aluhe wa kotoka. Tula aluhe omadhiladhilo goye mokuHINGA, uuna to hingi.

Okahauto taka monika mefano pombanda, okonyala ka dhipage aantu oyendji, sho ka nuka kopate e taka uka mongundu yaantu taa landitha. Lagonene, Kalunga okwe ka kandulile ashike muundunda wokulandithila; ndele ta gamene omuhingi naayeche ya li popepi noshiningwanima shika.

+ SA a hulithe po iiponokela ayihe koshilongo shaAngola naakwiita ye ayeche e ya ithaneko koshilongo shoka.

+ Omakwatho agehe haga pewa oongundu tadhi kondjitha epangelo lyaAngola ndyoka lya yalulwa, ga hulithwe po.

Omuntu ito tseya shono Angola ye mwene te shi dhiladhila, ihe omuntu ou wete kutya omadhiladhilo ge itaga yaathaña kokule naangaka gaCuba.

DTA TA POPI

MOvenduka oshigongi sho DTA osha uvika tashi lafulula natango iinima iikulu mbyoka ya li ya kaleke oonkundathana

dhemanguluko lyaNamibia dha tyuulila.

Omunashipundi gwoshigongi shoka, omusamane Dirk Mudge, okwe shi yelitha natango, kutya omukundu gwemanguluko lyoshilongo shika, kagu li ashike mAacuba mboka inaa za muAngola, ihe ogu li wo megamombinga lya VVO nomukalo gwe gwokukonga aakwiita mboka taye ya ya kalele po ehogololo muNamibia.

Omusamane nguka okwa londodha wo kutya ngele omakankameno goshitokolitho 435 sha VVO itage ethiwa po, otaga gwanithwa ngaashi ga tungwa ngashingeyi nena iita yopashigwana moshilongo muka, kape na shoka tashi yi imbi. (Adv.2.10.1984).

Pamadhiladhilo ge nongaashi wo osho tashi hatukwa opendji kaakalelipo yepangelo lya SA, oku lwete oshihwepo ngele ando tapu monika ondjila yilwe yokumangululitha oshilongo.

Sebulon Ekandjo

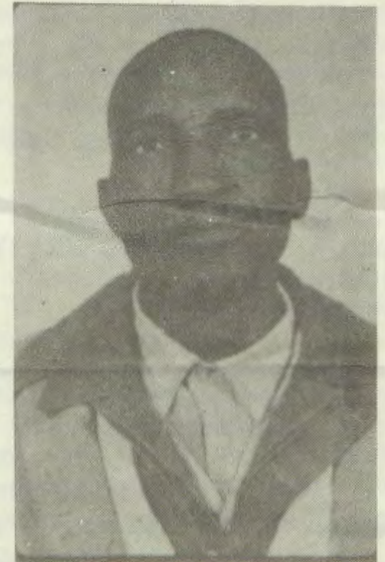
OMUKWETU TA PUKULULWA

Onda hala ndi mu pukulule kombinga yoshifo shOmukwetu No 17 moka mwa shangwa eso lyameme Aina Niita Tshiimi ngoka a hulitha oondjenda dhe momasiku 15/8/84. Ina kala mUukwaluudhi ngaashi sha shangwa mOmukwetu, ihe okwa kala mOmapale megongalo Othika mUukwambi. Onawa sho .amu shi opaleke.

Abiatar Iipinga Eliakim

OMUKWETU: Ota gandja ombili, tangi kepukululo lyoye ewanawa.

ESO



Osheeli shetu Simeon Shigwedha mOniimwandi, okwa manene oondjenda dhe eti- 10.08.84 konima yuuvu wethimbo ele. Okwa li omukulupe gwomimvo 84; okwa thigi ko omuselekadhi noyana 12 naatekulu oyendjiyendji. Okwe tu thigile oshiholelwa oshiwana sheitaalo lyomuKalunga.

T. Shigwedha

OMUKWETU

Oye oshifo shOngeleki Onkwaevangeli paLuther yomOwambokango. Ohashi nyanyangidhwa mOshinyanyangidho shOngeleki mOniipa. Omukuluntu gwoshifo omumbisofi Dr. Kleopas Dumeni. Amushanga gwoshifo omusita Sebulon Ekandjo.

Ondando yOmukwetu muNamibia naSuid-Afrika R5,00 komumvo. Palwe muAfrika R8,00 nokombanda yomafuta R11,00, komumvo. Mondhila R13,00.

Ondando nomambesitelo agehe naga tumwe ko-mukwetu, Oniipa, P/Bag 2013, Ondangwa, 9000.

EV.LUTH.OWAMBOKAVANGO CHURCH PRESS
PRIVATE BAG 2013, ONDANGWA 9000
SWA/NAMIBIA