

# OMUKWETU



30c

No. 15

ISBN 0-620-06828-0

## A kuutumba megumbo nonkatu

## B.A. muunamiti

KuSebulon Ekandjo

Omukadhona Nashilongo Elago, oye nani gumwe gwAanamibia kaaye na iilonga pethimbo ndika taa tengenekwa pambelewa 80,000, ngoka OMUKWETU e mu itsu moshilando shaVenduka omasiku ga zi ko.

Ye na ashike egumbo lyawo mOkatutura nayina naamwayina yahetatu sho ya thigwa po kuhe Elago konima yomimvo mbali dha piti, omugundjuka Nashilongo okwa li a pewa uunasikolà kOngongahangano yAakwaluther, konima sho a mana Omatilika ge muAugustineum, mOvenduka 1973.

Okwa piti onkatu ye BA, Radiation Medicine, mosikola yokombanda yaWittenberg, Springfield, Ohio, muAmerika, omumvo 1982. Oshimpungu shoka muunamiti, okwe shi fatulula ye mwene, kutya osho shoka shi na sha niilonga yomathano gonte ya X, = X-ray miipangelo.

“Oshilonga shandje ngashingeyi andola okulonga ihe mboka ye na oku ka longitha omashina ngoka,” osho a tsikile nokufatululila OMUKWETU eithano lye.

Nopakutseya kwe, oye Omunamibia gwojango a mono onzapo yoshilonga shoka.

Omugundjukalela nokweetitha olwiho lwoonkondo noluunongo, meme Nashi-



### ISHEWE MOSHIFO SHIKA

\* Omwenyo konima yefyo - ep. 3

\* Olufuko, uulodhi neteko lyoo-ndjokana: ya yamukulwa - ep. 5

\* KuSenegal naku yiwe? Eyamulo lya ELOK - ep. 6

\* Oonkundathana dhaCape Verde - ep. 11

Tala kep. 8

Omulongi Nashilongo Elago

## ELALAKANO LYEWILIKO LYONGELEKI

Elalakano olyo okutsakanitha shoka shi li momautho gayo. Okuuvitha Evaangeli lyaKristus.

- Eyakulo lyaakwanegongalo li kale lya gwana newanawa.

- Okupopila uukumwe wOngeleki yi kale yimwe, mewiliko limwe nando pu kale aayakuli oyendji.

Okukondjela wo uukumwe noomwayina-ngeleki, muuyuni u kolekwe. Okutala shoka shi li momautho ngele otashi tsakanithwa tuu, nokuninga omautho ngoka taga vulu shili okutsakanithwa kumboka ye ga uthilwa.

Okutonatela elongo lyuukriste, omahe-pululo gOngeleki ayihe ga kale ga kankamekelwa kOmbimbeli, nelalakano alihe olyo:

“Uukriste u na omwenyo u pangele nou taandele.”

Otau pangele ngiini? Otau taandele ngiini? Ngaka ogo omapulo omanene kOshigongingeleki shoka shi na oonkondo adhihe mewiliko lyOngeleki.

**Aayakuli yEwilikongeleki:**

Elelongeleki olyo hali thigilwa oonkondo dhelelo mewiliko lyongeleki niinakugwanithwa ayihe. ELOK oku na aayakuli aalumentu naakiintu aawanawa, notaa vulu okupewa iinakugwanithwa koshigongi.

Onda hala ashike tu dhiladhileni shili nawa, omolweyakulo ewanawa lyOngeleki, osho wo uumwayinathna, nuukumwe wOngeleki muuyuni.

**Iitayingeleki:**

Ongeleki ngele tayi topolwa miitayingeleki oyindji kashona, yi vule mbyoka yi li po nena, shoka otashi ti ewiliko lyOngeleki otali pupalekwa, notali indjipalekwa nawa, nomagongalo otaga ka yakulwa nuupu mbala, nomethimbo efupi.

Aatonateli, niigongi yiitayingeleki oyo wo oshitopolwa sha simana mewiliko lyOngeleki.

**Iigongigongalo:**

Oshigongigongalo oshi na oshilonga oshinene mewiliko lyOngeleki, mboka taa lele egongalo oyo wo aaleli yOngeleki ayihe. Omagongalo ngele otaga lelwa nawa pamautho, otashi ti Ongeleki ayihe otayi lelwa nawa.

Aakuluntugongalo ngele oya yelalwa nawa kiilonga yawo, ye yi uviteko nawa, nena Ongeleki ayihe oya yelalwa. Omwaalu omunene mewiliko lyOngeleki ogwo aakulu-

ntugongalo.

Otandi indile iigongigongalo momahokololo gayo gaakuluntugongalo ku kale omatufatulo ga gwana, opo ku hogololwe aakuluntugongalo, neuvoko kutya, otapu hogololwa wo ngaaka ewiliko lyOngeleki ayihe.

Ku dhiladhilwe, ayehe aakiintu, aalumentu, aakuluntu naagundjuka, naamboka taa opalele, notaa vulu wo okuhumitha ewiliko lyOngeleki komeho.

Inandi koneka unene uunkundi washu mu ELOK, ihe onduuvite osha pumbiwa okufatululwa. Omuyakuli gwoshigongigongalo oye Elelongeleki, onkee oshigongigongalo nashi kale shili noshimpwiyu mokuhogolola omuyakuli gwasho, noshi mu tonatele opo a tsakanithe iilonga yokulela e-

## HAMUSHANGA OMUKULUNHU WA ELOK A KALELE PO ONGELEKI MOSHOONGALELE-NGELEKI SHAANGLIKANI

Oshoongalele shOngeleki yaAnglikani, osha ningilwe pehulilo lohani yaJuli neudo, Hamushanga omukulunhu wa ELOK, omufita Absalom Hasheela, oye kwa li a kalela po Ongeleki ya ELOK moshoongalele osho.

Oshoongalele osha ningilwa monhele yOngeleki yaKatoolika kaRooma, muDöbra, edidiliko liyela nhumbi Eengeleki moshilongo eshi tadi tula moilonga omhepo yopaEkumene (ekwatafanopokati komaitavelo a tongoka.)



Hamushanga omukulunhu wa ELOK, omufita A.Hasheela

gongalo pankondo ndhoka e dhi na pamautho.

ELOK, ngoye ngele owa gwanitha oomvula 30, owa koka, onkee tameka okudhila-dhila ewiliko lyoye nkene tali ka kala oomvula 30 dhi li komeho. Kalunga ngele te shi utha opo u tale nkene to tsakanitha oshinakugwanithwa shika:

“Opo uukriste u na omwenyo u kale tau pangele notau taandele.”

Omagongalo ga hwamekwe mOhole yoshilonga shEtumo nuudiakoni. Kalunga oye awike a kale ta simanekwa, nOngeleki yi koke mokutseya Jesus Kristus Oye Omuwa.

**Kleopas Dumeni**

Omubishopi Bonifatius Haushiku waKatoolika kaRooma, okwe va tambula nomaako avali monhele oyo. Okwa li yo ovaenda vamwe va dja meengeleki dimwe di lili ngaashi; ELK, Metodisi, Congregationalist osho yo Ehanganano lEengeleki muNamibia olo kwa li la kalelwa po ku Hamushanga Ndjayi, dr. A.Shejavali.

Omakalelipo mukwao okwa dile yo kuPort Elizabeth wOngeleki yaAnglikani ku SA. Oshoongalele osha li mewiliko lomubishofi wOngeleki oyo, dr James Kauluma. Oshoongalele osha li yo sha hoolola omuponhelemunashipunawasho.

Nhumbi taku hangika elifikameno mOngeleki ei painiwe, osho shimwe sha li shomoikundafanwa ya fimana. Omaongalo omanghundi moiniwe, okwa pulwa a konakone osho sha etifa po ounghundi oo.

Omaongalo mahapu Ongeleki ei, unene tuu koshitukulwa shoita, oku li popepi neengaba namahapu okwa mona oixuna molwoita yoshilongo eshi. Ehongo lopauliumbo ola yandjwa koshoongalele eshi li longifwe momaongalo okudjabula po omufika womaxupilo mOngeleki oyo.

**Omuwa, lundulula okukala kwetu**

1. Nando ya li momumvo gwekuyunguto Methimbo lya li wo kuyo lyomalulwakato Moshiholameno oya kala negundjilo Meshigombanza ye li meilongelelo

2. Momumvo oyendji ya ti ogwomapenda Methimbo lyuuntu waantu yuupenda Ya nduungile yu uka ko Ya shauka ya thindi ko KuPamba e ya pa omwenyo Meihepeko molwoshigwana e ya tula omwenyo

**Ku M.N.Shimpanda**

# Omuyuuki kee na eitedhululo, oku vulike kokule komulunde i itedhulula

## OSOONDAHA ONTI-11 YA LANDULA UUKWATATU

Jesus okwa lombwele yamwe yi inekela oyo aayuuki aniwa noya dhini yalwe: Eyele.

.... Oyi inekela oyo aayuuki ....  
ov. 9

Ondjo ndjika yokutala yalwe kaye shi sha, oyi li po natango tayi longo methimbo lyetu. Haaluhe hayi dhi- mbululwa kutya oyo ondjo. Pethimbo lyaJesus oya fa ya li ya talwa, kutya oyo omukalo gwelongelokalunga lyashili.

Iiholelwa iyali otatu yi tula mpaka: Omurabi gumwe okwa galikana ngeyi:

*"Oti ku pandula Kalunga kandje, sho nangame wo ndi li mongundu yaamboka ya mona elongo lyopombanda noha mongundu yaamboka taa kuutumba owala momapandaanda goshilando.*

*"Oshoka ongula kehe ohe meneka, nayo wo ohaa meneka. Ngame ohe menekele kohapu yom- mpango yoye, ihe yo ohaa menekele kiinima yowala. Ngame ohe longo nayo wo ohaa longo. Ngame ohe longele ondjambi, yo ihaa longele sha.*

*"Ohe matuka, nayo ohaa matuka. Ngame ohe matukile komwenyo gwomuuyuni tau ya, manga oyu ota matukile koshilambo shehanagulo."*

**Omurabi Simeon Ben Jochai okwa tile ishewe ngeyi:**

*"Ngele muuyuni omu na ashike aayuuki yaali, nena ongame nomumwandje omumati. Nongele omu na omuyuuki gumwe awike, nena ngoka ongame awike.*

Omugalikani patekisti ndjika, yi li molupe lweyele, okwa li naanaa gwomongundu yaantu mboka ya kala ye na euvito lya tya ngaaka. Tala wo ovelise 11.

**Iikulya ohandi idhilike lwaali moshiwike. Ov.12**

Oveta oyu utha esiku lyeidhiliko lyiikulya, uuna Kalunga a dhi- mbulukwa oshigwana she nokwe shi mangulula muupika, shi ningwe lumwe momumvo.

Ihe ooitaali mboka ya hala okuholola uudhiginini wawo melongelo lya tya ngawo, oya gwedhele po wo omasiku gaali moshiwike, Omaandaha nEtine.

**Nghandi gandja oshitimulongo**

**miilikolwa yandje. ov 12**

Oshitimulongo nasho wo oshinakugwanithwa shompango yOmuwa. 4Mos. 18:21 5Mos.14:22 Mokudhiginina shika, aalongelikalunga oyendji oya ningi aaposi yaa dhi- mbulule we, shoka Kalunga ta tegelele kuyo. Jesus ote ya londodha moshinima shoka. Mat.23:23

**Omuteeloni okwa thikama kokule .... ov.13**

Nguka omuntu omutiyaali meyelekanitho lyeyele ndika. Okwa zi mongundu yaamboka ye na iinakugwanithwa yesiku kehe ya fa yi li kashona kokule negongalo, okufutitha oshigwana paveta dhoshilongo.

## OMWENYO KONIMA YEFYO

**Omunhu hano oshike? Penyumuko otapa ningwa shike? Omwenyo nolutu otai kalafana ngahelipi fimbo omunhu ina nyumuka?**

Aa omapulo amwe oo ovateologi vavali va hetekela okumonena omanyamukulo mokamushangwa aka kaxupi. Ovafita Veikko Munyika naAnanias Iita, ova indililwe va nyamukule kepulo eli lidjuu moyoongalele ya yooloka.

Munyika oshinima eshi okwe shi pulwa koshongalele shelindungiko (Simposium) sha ningilwe neudo mOngwediva naIita okwe shi pulwa e shi ningwe moshongalele shovafita novakulukadi vavo moshitaingeleki sha- Uninginino neudo.

Oshipopiwa osha li shi na okupewa omona okakadona kaJairus ile omona omumati womufiyekadi wokuNaini ile Lasarus, osho omufita Munyika a hovela oshipopiwa shaye nelipopilo.

Aveshe ava a tumbula pombada, okwa li va fya, ndele tava nyumunwa kuJesus koufi ngaashi Ombibeli tai ti.

Okwa twikila ta ti kutya omunhu oshinamwenyo shi dule fikwawo aische, e na eenghenga neendjuba dokomongula, onghe he li pula nonakwiwa yaye konima yefyo, Munyika ota ti, ove lidenga ashike omutwe memanya likukutu.

"Ndelene oukriste u he na enyumuko, oo eend-

Luk.18:9-14



Iilonga yawo layo wo kaya li nuuyuuki washwa, ongaashi naanaa tayi dhi- mbululwa nomethimbo lyetu. Emakelo aluhe opo li li wo puyo okupula oshindji shi vule shono shu uthwa koveta. Yelekanitha Luk.19:8

Elago olya li mpoka, kutya sho e ya kongulu yaKalunga, okwa dhi- mbulukwa iilonga ye yaa opalele.

**... Nguka okwa shuna kegumbo omuyuuki e vule nguyaka ... Ov. 14**

Tala wo Rom. 3:23 Gal.3:11 Omuyuuki kee na eitedhululo koshipala shaKalunga oku vulike kokule komulunde e li mombepe yeitedhululo.

**Sebulon Ekandjo**

jodi domutenya utwa," osho a hokolola.

**Eulu noheli**

Meefya ohaku udika luhapu omapopifafano taa ulike omwenyo wa fika nale meulu fimbo olutu li li mombila ile kokila yomodimba nokuli. Nepulo otali penduka muove: Omunhu hano oshike? Penyumuko otapa ningwa shike? Eulu oshike?

Munyika apa okwa ulika keevelise mOmbibeli odo tadi popi sha kombinga yeulu: Omuud.5:2 Ps.33:14; Jes.55:9 Oil.14:15 Ef.4:10 Eulu onhele ya holekwa omesho etu, omo Kalunga ta kala mo moku ha monika.

"Oheli ekondjifafano neulu. Onhele yetukauko naKalunga. Oto dulu oku i ifana ombila," osho Munyika a ti. pa 2 Sam.22:6

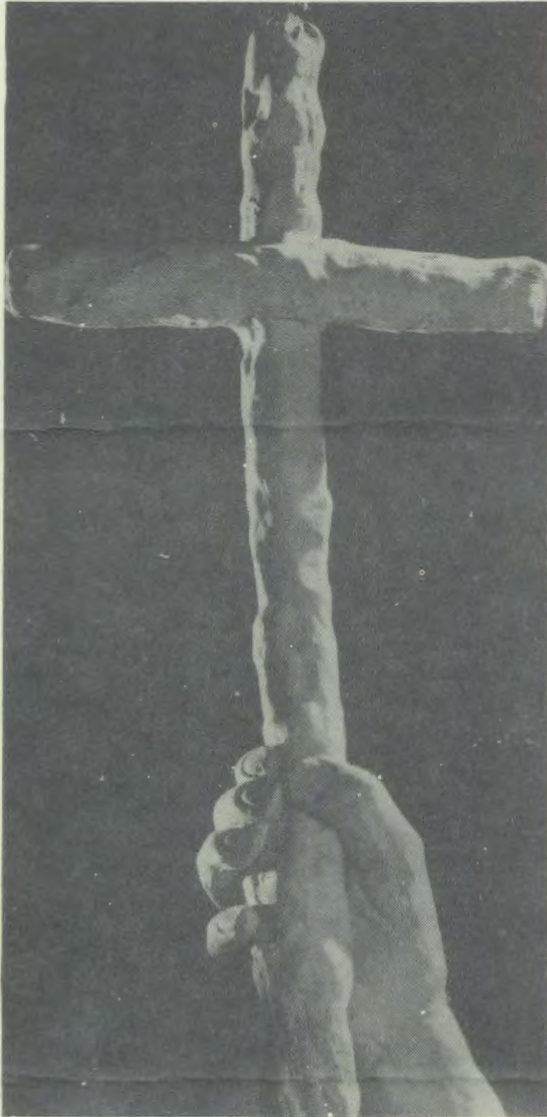
Pamadiladilo omufita Iita, efyo olo eenghono donhumba di li meshito nomevalelwa odo hadi dulu okunana omunhu omwenyo. Efyo eli ola djala omunhu efimbo keshe nande ina fya pefimbo olo, pa 1 Mos.2:7

Iita ota fatulula oshinima eshi, kutya ngaashi tapa ningwa mokukalamwenyo kwefiku keshe, omunhu ta kofa nota penduka vali, osho yo novafi tava ningi. Otava fi ndele konima yokafimbo otava teelegele ependuko, enyumuko.

1 Tes.4:15-18 Ehol.20:4-5

Pefimbo lenyumuko, omalutu aa a nyika efyo otaa shituluka ndele taa ningi omalutu omanyumuki, e lixwa po olutu nomhepo. Nomunhu oo oye nee ta i moukwaalushe ngenge oku na eiravelo. Ngenge ke li kwete, ota

**Tala kepanja tali landula**



### Enyumuko ohali tetekelwa kehumbato lomushiyakano

#### Dha za kep. 3

i koheli. Luk.16:19-31 osho Iita a yelifa oshinima.

Iita oshinima sheulu noheli, ina twikila unene nasho kokule, ndele Muniyika okwa hetekela oku shi yelifa kombinga nombinga ngaashi ota ti:

“Ngenge taku tiwa Jesus okwa londa a ya meulu, otashi ti okwa ya mounyuni oo omunhu wombelela nohonde ita hange mo. Nongenge haku tiwa vali ohatu ka ya moheli, okwa diladilwa onghalo oyo yomupya i he na Kalunga alushelushe.”

Pamadiladilo omufita ou, eulu noheli, kai fi eenhele, ndelene **eenghalo**. Onghalo yonhumba oyo tai dulu nokuli okuhovela kombada yedu.

#### Efyo

Aveshe, Muniyika naIita ova eta po omadiladilo ovashangimambo vamwe vomehistoli va fimana ovo va shanga sha nova fatulula kombinga yefyo.

Iita okwa kufa Omufilosofi wonale Socrates oo a fatlula membo limwe, kutya efyo nenyumuko, ongaashi omunhu ta kofa nota penduka vali. Konyala Ombibeli yo otai dopi oshinima osho.

Muniyika okwa ulika komuprofesoli Nürnberger, naye a fimana pefimbo eli mouteologi. Ou vati ota ti kutya okufya okuya monghalo inya omunhu wa li mo fimbo inapa holoka eteelelo u dalwe.

OMUKWETU ina itavela kutya Muniyika okwa itavela mwaasho sha tiwa kuNürnberger osheshi Muniyika okwa twikila ta ti; “efyo kovaitaveli ongaashi omhofi yoshitula.” 2 Tes.4:14 Osheshi omunhu ngenge a kofa oku li po aushe omwenyo waye nolutu fiyo a penduka.

Muniyika okwa kumaida moshinyolwa eshi ovanhu va tambule efyo pe he na omangungutulo, nande a ti yo kutya olitilifa noliyehama, osheshi olo ehandukilo.

“Mefyo Satana okwa ya moshinangela shaJesus nokwa findwa, omolwaasho nena hatu hepaulula: Onda itavela enyumuko lovafi nomwenyo waalushe.” Rom.6:9, osho Muniyika a ti.

#### Omunhu omushike?

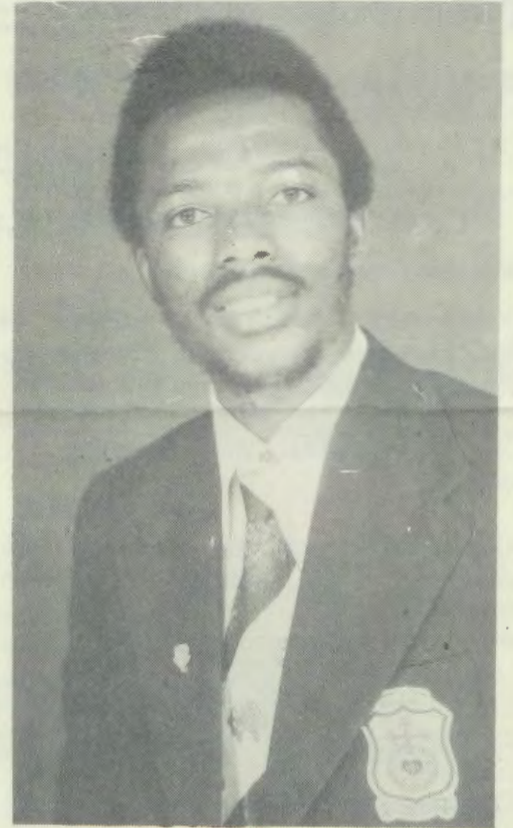
Muniyika natango okwa nyamukula oshinima eshi noitya ihapu nande hatu tumbula ko ashike imweimwe, kutya omunhu, vamwe ohava ti oye omhepo i li molutu. Vakwao olutu li na omhepo.

“Omunhu ku shi shii vali oo e li mondjila,” osho a holola.

Okwa ti pakudiladila kwaye, omunhu oye oukumwe womhepo nolutu. Ombibeli yo itai popile etukaulo lomunhu moitukulwa; olutu nomwenyo. Ovagreka ova hongana nale kutya olutu olo odolongo yomwenyo nou na okudja mo u ye kemanguluko.

Muniyika ota ti ehongo eli olo la shikulwa natango kuovo hava ti, omwenyo womunhu owa fika nale meulu, manga omudimba inau pakwa nokuli. Kape na nande osho hashi tetekelele shikwao meulu.

Osho yo ehongo lomwenyo ihau fi, kali li pa-Mbibeli. Paukriste omunhu okwa fya olutu, omwenyo nomhepo, oshita. Taleni ekumaido laPaulus kOvakorinte votete, 15:13-16



### Omufitaongalo V.Muniyika

Itaku kondjifa otekisti oyo ya ulikwa opo, ashike OMUKWETU ote linekele kutya ovaleshi vahapu itava ka twa kumwe naye koshitwa osho shaxuuninwa.

Muniyika nande e na ehalo linene ngeno oilyo yomaongalo i hongwe nawa ehongo eli, okwa itavela yo kutya, oku li shiiva ile oku he li shiiva hako taku twala omunhu mexupifo, ndelene eitavelo lomuKristus, ou e li oshihopaenenwa shetu shenyumuko.

### Sebulon Ekandjo



### Omusitagongalo Ananias Iita, ngoka ta lele egongalo lyaKahao, mUuninginino.

Omuwa nge te pwine po  
Nda fa te hulu po  
Olutu lwandj'iipongo  
Kayi na omongo  
Uuhoho mbu womohi  
Wa shituka evi  
Ga kukut'omasipa  
Kage na oothipa.

Olutu nduka evi  
Edhilo lyomevi  
Omwenyu kagu sh'evi  
Inagu shitw'evi  
Ogwa za ku Kalunga  
Notagu tuulunga  
Gu ze mo muukulupe  
Gu ye muuyun'uupe.

Omuwa Jesus taamba ndje  
Tshime pungula ndje  
U vululukithe ndje  
Omuwa kwath'aamwandje  
Mukadhandje omwali gwandje  
Nde ye ku thigile  
U ya pongololele  
Momweny'omuyelele.

Aamati yaNekanda  
Talenj onganda  
Tii mu thigile nyoko  
Sho te nokoka ko  
Konkalamwenyo ndjika  
Yomuuyuni muka  
Ndi ye nkwi kaayengeli  
Ndi ye kuukengeli.

Megulu sho nda thika  
Ndi li puKalunga  
Kandi li olukata  
Ote nyulukuta  
Tii mu galikanene  
Nde mw'inyongamene  
Tandi mu talatala  
Nde mu tegelela.

Uuna gumwe ta zi ko  
Nenge meyumuko  
Tatu ka tsakanena  
Tatu monathana  
Ongandja nokOndonga  
Tu li puKalunga  
Twa thika mUukwaaluhe  
Tseni tsen'atuhe.

Kalunga tii ku tanga  
Tii ku hambelele  
Pombanda tii ku tanga  
Tii ku ligolole  
Ekulilo muJesus  
Hupitho muKristus  
Nde li pew'omagano  
Nda thika mo nduno.

Ongowela ngaashi 421 mEhanganø

Jason Tsikomba Amakutuwa

# OMAGONGALO GA YAMUKULA EPULO LYOMUMBISOFI

Omagongalo gOngeleki ya ELOK momahokololo gago gokomumvo kehe, oga holola aluhe, kutya ombili yomagongalo otayi yonwa komaudhigu ngaashi omateko goondjokana, uunganga, uunkolwe, omalufuko noshwo wo iinima yilwe.

Omayeme ngaka gomagongalo ogo ga li ga pendulile omumbisofi gwOngeleki ndjika K.Dumeni opo a pule omagongalo ga gandje uuyelee kombinga yiyeti yomaudhigu nokombinga yomakwatho ngoka ge na andola okuningwa po.

Konima yekonakono lyomagongalo miinima mbyoka, Elelongeleki olya gandja oshimpwiyu komusita Elia Niinkoti, a tule nawa omayamukulo melandulathano, ye e etele Oshigongingeleki shonuumvo oshizemo shekonakono.

Naashika Niinkoti okwe shi ningi, notatu tula pafupilela iinima yimwe e yi tumbula ngaashi ya hololwa po komagongalo gogene. Ota ti ngeyi:

Omagongalo ngoka ga thikitha kungame omayamukulo gago pethimbo ewanawa oge li 50 ngoka nda longitha mokutunga ehokololo ndika. Oomagongalo gane, oga thikitha omayamukulo zago ethimbo lya pwa po.

Ogo Eendombe, Omundaungilo, Okatope nOnhelelwa.

Omapulo oga li gahetatu:

1. Oshike tashi eta omateko goondjokana?
2. Oshike tashi eta eitoko lyoohapu dhaKalunga, unene maalumentu?
3. Oshike tashi eta okuya koonganga?
4. Oshike tashi eta okukala niimenka?
5. Oshike tashi eta uulodhi?
6. Oshike tashi eta uunkolwe?
7. Oshike tashi eta omalufuko?
8. Oshike tashi eta okwaavulika komautho gOngeleki nokiipango yaKalunga?
9. Iinima mbika otayi kwathwa ngiini?

Omusita Niinkoti okwa tsikile, kutya kakele kaashono sha hololwa po komagongalo, ye kombinga ye wo pakuwatelwa kuuteologi nenge koowino ndhoka e dhi likola miilonga yuusitangongalo, okwa holola omadhiladhilo gontumba nogongandi nelalakano lyokugwedhela pushoka she etwa po nale, okupendula oonkundathana komaudhigu ngoka taga kudhile onkalamwenyo yaakriste momagongalo.

Mehokololo ndyoka lya leshelwa oshigongingeleki, lyomapandja 40, omwa kwatelelwa wo nomadhina gomagongalo ngoka ga yamukula nomadhina giilyo mbyoka ya li ya hogololwa megongalo kehe okukonakona omayamukulo komapulo ngoka. Oomagongalo omashona gowala

## TSEYITHA MBALA E- LUNDULUKO LYO- NDJUKITHI YOYE

ngoka inaaga tuma omadhina giilyo yuungundu, kutate Niinkoti.

### Omateko goondjokana

Iinima ya dhimbululwa tayi era eteko lyoondjokana ongaashi tayi landula mpaka:

1. **Eyalekathano lya puka:** Oopelesenda 10% dhaayamukuli otadhi popile ku ningwe omayelithilo mokati kiilyo yomagongalo mokuyalekathana. Aavali naanona ayehe oye na uusama meyalekathano.

2. **Okwaatseyathana:** Oopelesenda 8% dhaayamukuli, itadhi popile aayalekathani ya kale inaa tseyathana omikalo, manga inaa ya moondjokana.

3. **Okwaanuunona;** Oopelesenda 14% dhaayamukuli otadhi koleke kutya ondjokana yaa na oluvalo, otayi eta mbala eteko lyondjokana.

4. **Oluvalo lwa koko:** Oopelesenda 6% dhaayamukuli otadhi tsu kumwe uukwazimo wOshiwambo mboka wa gama koomeme, aanona ngele ya koko, otashi fala mbala mehongololo omukiintu a yuulukwe okwiithikamena noyana. Oyendji ya ningi uugumbo molwoshinima shoka.

5. **Omikithi omidhigu:** Omavu goshinamenena nago oga teyitha oondjokana, osha popilwa koopelesenda 10% dhaayamukuli.

6. **Eliko:** Oopelesenda 40% otadhi ziminathana, kutya uuyamba wagumwe moondjokana nenge waayehe yaali otau etitha eteko lyoondjokana. Aakiintu yamwe ya thigi po omagumbo ya ka konge iilonga. Aasamane yamwe yi ikongele nuupu aakiintu aatiyali molweliko.

Uuhethi welongitho lyeliko momagumbo, uukwazimo melongitho lyeliko megumbo nuundalapatata weliko wagumwe megumbo, ayihe tayi falitha meteko lyoondjokana.

7. **Okukukumathana:** Oopelesenda 8% dhaayamukuli dha ziminathana, kutya aakiintu yamwe itaa taamba aasamane yawo pandjokana, nohashi falitha meteko lyoondjokana.

8. **Oluhondelo:** Oopelesenda 74% dhaayamukuli, otadhi koleke kutya oluhondelo lwomuna-ndjokana, olwo lwa falitha olwindji meteko lyondjokana.

Okwa tumbulwa wo iinima iikwawo ngaashi eiteeko lyoohapu dhaKalunga, iikolitha, onyanya moondjokana, iifundja moondjokana, okwaaidhidhimika kwaanandjokana, eidhopo lyomazimo moondjokana nenge Ongeleki kayi na oveta ya kola kaateyi yoondjokana, oyo ya talika tayi kwatha meteko lyoondjokana.

### .Okuya koonganga

Oopelesenda 34% dhaayamukuli otadhi koleke  
Tala kebandja tali landula

# ELOK ONAINI TA NYAMUKULA OVA-SENEGAL?

Paife konyala eedula mbali, Ovasenegal va teelega epwanga, Ongeleki ya ELOK i va tumine ovaudifi vevaangeli kwinya. Omufitaongalo Paulus Heita ou opo a aluka ko paife eshi a shunine ko palombwelo lE-lelongeleki, opo a ka kalele po Ongeleki ya ELOK kwinya moshivilo sheyapulo lofavita votete metumo olo, ota hokolola ngaha paxupi:

“Ondaka yonghuwo yOvasenegal oyo oinene shili unene. Eembapila davo itadi fuwa, otadi ndoda alushe okwiifana ovatumwa va ELOK. Mokwiifana ngaha, ihava pula ngeno ovo va dja ko, otava pula ashike keshe omutumwa ta di ku ELOK. Ova shanga ngaha:

**Emmanuel Diouf:** “Kalunga nOmwene Jesus Kristus otwa itavela otave mu alula diva. Efi-mbo otali pi omo ndi na okuya vali kOngeleki.”



Oshoongalele shovakriste muSenegal

**Latyr Fay:** “Ohandi hambelele Kalunga oo e tu hanganifa tu ninge vamwe vedimo limwe, nohatu ka kala vali pamwe.”

**Ndaan Saar:** “Osho tuu shili kutya otamu aluka? Fye otwe mu teelega fiyo okwaaluka kweni.”

**Ouley Faye:** “Oh, ondi na ehalo lOvanamibia.”

**Issa Djeye:** “Alukeni, osheshi omu na onhele mokati ketu. Omu na onhele momapata etu, moshilongo shetu nomomikunda detu. Opu na vahapu ovo twa hala okupwilikina ondaka yomaudifo eni.”

**Fulgence Ndiur:** “Eshi Ovanamibia va li apa, otwa mona oilonga iwa. Kave na eshi ve tu nginga nonande inatu shiiva kutya ova holokele po ngahelipi, oilonga yavo otwe i hokwa. Otwa itavela kutya ngaashi va holokele po tu he shi shii, osho tuu tava ka holoka po vali, manga fye tu he shi shii nohatu ka kala navo nombili, osheshi fye ovatumwa otwe va pumbwa.”

## Einyengo lyetumo mu ELOK omolwaSenegal

Oyendji mOngeleki ndjika, oya hala oshilonga shetumo shi ka tsikile ishewe kuSenegal. Iimaliwa R 28 000 oya li ya pumbiwa kaatumwa yaali mboka ya li ko nomagumbo gawo yi gongelwe ando 1983 notayi gwanene omumvo gumwe aguke. Sigo omuJuli nuumvo, iimaliwa R 40 894 ya gongelwa po.

Omagongalo 22 ga li inaaga mana oshinakugwanithwa shago patseyitho lyotango mOmukwetu No.11/1984, ngashingeyi gatano ga gumo ko ishewe nagane ga mana ongunga yago.

Ngoka ga mana ogo; **Eengolo, Oluteyi, Onaanda nOngenga.**

Ngoka ga gumu ko ashike; **Engela, Eunda, Ohalushu, Onayena, naTshandi.**

Omagongalo 40 ga li inaaga guma ko sha nando patseyitho lyotango, sigo oompaka inaku taambwa sha kugo.

Iikandjolongwa ya mana ngashingeyi oshinakugwanithwa shayo patseyitho ndika; **Aakiintu aagundjuka nOmusika.** Oshitayingeleki shoka ashike sha mana **Uuninginino.** **Ondonga naKavango** inayi ndhindhilikwa sha natango.

Omahangano inaaga guma ko sha; **Aaidhiliki, lyAapangi, lyAanangeshefa, lyAasita nolyAalongi.**

Omatseyitho ngoka Omukwetu okwe ga taamba mombelewa yoshilonga shetumo mOngwediva ngoka taga yalulwa okuza 1983 sigo 12.7.1984.

**Sebulon Ekandjo**

## Da dja kep. 5

kutya oshigwana shAawambo oshi na natango eitaalo lya kola, kutya oku na omikithi ndhoka itaadhi vulu okwaaludhwa miipangelo.

**Omikithi ngaashi;** epaha, oompalo, oshaatu, oshithitikila, uupili, oshindya, okulika keyoka, oluthingwe, olufi, iiluli nokwaavala nosho wo oshinyenye oya tulwa mongundu ndjoka.

2. **Eitaalo muulodhi:** Oopelesenda 12% dhaayamukuli otadhi koleke, kutya oyendji oyi itaala oonganga dhOshiludhe tadhi vulu okumona ngoka e etele omukwawo uuvu, oshoka aniwa omuntu iha si inaa liwa. Aantu oye na wo eitaalo onganga tayi vulu okumona mpoka uuvu wa gama molutu.

Iinima iikwawo tayi falitha aantu koonganga ya tumbulwa mehokololo ndyoka ongaashi, omaihumbato gaapangi yamwe omawinayi, iipangelo iishona moshigwana, ombili yoonganga, nenge oofuto dhiipangelo tadhi nyengana. Oshoka aayamukuli oya ti, koonganga omuntu otashi vulika a silwe ohenda.

## UULODHI

Oopesenda 38% dhaayamukuli odha dhimbulula nkene uulodhi wa talika, oshinima shopashigwana onkene kwiitaalwa, kutya, iiponga, omikithi neso ohali zi muulodhi waantu.

Oopesenda 52% dhaayamukuli, tate Niinkoti, ota ti kutya inadhi holola nokuli omadhiladhilo gadho moshinima shoka. Omayamukulo oga tula uulodhi moongundu ndatu:

- Uulodhi wopaumpulite
- Uulodhi wokoshihokohoko shondunda nenge womondjongo, moka aantu taa etelathana iiponga nomaudhigu nonando oyelyaathane kokule.
- Nuulodhi wokulongitha omi dhuuzigo ndhoka tadhi vulu okutulwa miikulya nomiikunwa.

## Omalufuko

Oopesenda 58% dhaayamukuli otadhi koleke kutya kape na nando shimwe tahi thiminike aakriste ya fale oyana molufuko, nenge aakadhona yoyene yi igandje molufuko, shaa shi ando uumbanda wokutila okumita.

Pahokololo ndika, sigo onena aakriste Aawambo oye na eitaalo lya kola, kutya okumita okwa dhilikwa noshipwe ngele tashi ningwa, ihe ngoka a fukalekwa, oye a zimininwa koshigwana iinakugwanithwa ayihe yopaukuluntu noyopandjokana.

Kombinga yefukaleko lyopaukriste, ekonakono olya gandja omadhiladhilo ngaka, kutya ndyoka ohali ningilwa ashike omukadhona ngoka e na omulumentu.

Molwaashoka aalumentu ngashingeyi, oya pumba, ehokololo olya ti kutya aakadhona otaa ifukike ihe molufuko lwopashigwana ndoka ihaalu pumbwa pu kale omulumentu, opo ya ze oshipwe ya ka vale ihe aanona yawo nonando kaye li mondjokana. Oopesenda 22% dhaayamukuli odha koleka oshinima shoka.

Omatompelo omakwawo taga falitha aantu molufuko lwopAshiwanbo mokati kaakriste, eko-

**Tala kep.8**

# MUVELKSWA, EENDJOVO KADI LI PAMWE NOILONGA - NAKAMHELA

Eshi u lwete inaku holoka natango Ongeleki imwe aike ongw Luther muNamibia fiyo onena, osheshi melongekido loukumwe ou, eendjovo i-tadi endeke pamwe noilonga, osho omufitaongalo Zacharias Ngeno Nakamhela a popya moshongalelekele sha ELOK omafiku a dja ko mOngwediva.

Omufita Nakamhela moshongalele eshi, okwa li e lile po Ongeleki yavo onghwaevangeli paLuther yOvalaule mOushimba (ELK).

Ongomunashipundi wopedu woshongalelekele shaVELKSWA, Ehangano lEengeleki eengwaLuther muNamibia, Nakamhela mokuyandja ekundo lOngeleki yavo, okwa ulika koitwa imwe oyo a tala tai endififa kani-ni elongekido lokuhengumunina eengeleki edi mumwe.

Etongoko lomalaka taa popiwa kEengeleki odo, eendafano la pumba pokati ko-ilyo yeengeleki odo noku ha shiiva sha kwoilyo yeengeleki kombinga yomalongekido moshinima eshi nhumbi taa ende.

Kombinga yomatokolo amwe a dile moshongalelekele sha ELOK, 1981, omushamane Nakamhela okwa hololela Oshongalele shoneudo, kutya okwa li a pendula ombada momwainangeleki inya.

Omudo winya Oshongalelekele osha li sha tokola, kutya oilyo ihapu ya ELOK ei ya tembukila mOushimba omolwokufaduka po omaudjuu onghalo yoshilongo moshitukulwa shomalwoodi, napu ningwe omalongekido i tumi-nwe ovafita.

“Omolwelongekido eli, ELK, okwa hove-la okukema,” osho ashike Nakamhela a holola paxupi.

Okudja 1961, okwa dikwa ekwatafano lEengeleki eengwaLuther nhatu moshilongo; Ongeleki yOvandowishi, yOvalaule mOushimba (ELK) noya ELOK. Omudo 1970 Ongeleki ya ELK, oya eta ediladilo ku ningwe Ongeleki imwe aike onghwaLuther nola kolekwa mOshongalelekele sha ELOK 1971.

Omudo 1972 ELK na ELOK ova shaina eudafano lelongelokumwe pokati kavo olo tali longekida ku ningwe Ongeleki imwe aike. Shiimba omolwexwamo kwa li linene moshinima eshi, edina eli la pewa elongelokumwe olo, inali ulika elongelokumwe, ndele otali ulike nokuli kutya Ongeleki oya ninga imwe;



Omudo 1983 okwa ningilwe oshongalelekele sha VELKSWA mOngwediva, noshinima shokudika Ongeleki imwe onghwaLuther muNamibia, osha kundafanenwe nelitulo-mo linene. Mefano pombada, ovawiliki vEengeleki odo vatatu okudja kolomoshu; Ongeleki yOvandowishi, (DELK) yOvalaule mOushimba (ELK) nowa ELOK. Vavali kolulyo ovanashipundi shoshongalele; omulongi J.Hoebeeb nomufita Z.Nakamhela.

Verenigde Evangeliese Lutherse Kerk in Suidwes Afrika (VELKSWA). Ongeleki yOvandowishi inai ya manga meshaino olo. Ashike konima nayo osho ngo ya ka ya mō melongelokumwe eli.

Omudo 1975 ediladilo lEengeleki di hengumukile mumwe, ola twikilwa. MOshongalelekele shoukumwe wEengeleki odo mEngela, osha hoolola

okangudu kovanhu vavali ka ka konakone osho sha pumbiwa po melongekido.

Nongenge oka eta ehokololo, omalelongeleki eengeleki odo mbali nae li konakone natango, oyo panghedi ei, omalongekido a endekelelwe.

Konyala paife eedula 10 eshi taku kundafanwa oukumwe ou, nokape na na

tango omukangha washa ku shi okutungilwa, osho tate Nakamhela a popya moshongalelekele neudo.

Ina ulika nande omunwe waye kOngeleki yonhumba, okwa ti kutya eendjovo moshinima eshi, odo ngo dihapu di du-le oilonga.

**Sebulon Ekandjo**



## ESO

Omukulukadhi Elizabeth Tembu Namwandi, okwa manene oondjenda dhe 7.6.1984 moshipangelo shaShakati. Okwa hulitha muukulupe woomimvo 75. Okwa thigi ko omusamane gwe, noyana yaheyali naatekulu 64.

**Johannes A.A.Itoolwa**

Okuzi Juli, omusita Oiva Sikwaya, okwa langekwa omusita mOvenduka, manga omusita Gerson Max ngoka a kala ha yakula aalumentu mOvenduka, Elelongeleki olye mu langeke kOliindili. Omaandjagane-ko gaasita ga tya ngeyi, ogo taga dhiladhilwa komupopi, kutya oga pendulila ELK omaipulo.

# Eyamukulo lyomago-galo

## Dha za kep. 6

nakono olya tumbula wo ngaashi uunenguni wegeelo lyOngeleki moshinima shoka, nakufukala oha talika a simana momeho goshigwana nenge omukalo gwogwene ogwa talika omulilo gwoshigwana.

### Uunkolwe mOngeleki

Oopelesenda 36% dhaayamukuli odha tsa kumwe, kutya shono sha fala oyendji muunkolwe, omaudhigu gopamwenyo monkalathano. Oopelesenda 26% odha dhimbulula kutya iikolitha otayi longithwa sho ya talika oyo ehumokomeho.

Oopelesenda 12% dhaakonakoni, odha tsa kumwe kutya uunkolwe owa tana oshoka epangelo olya mangulula etaandelo lyoongeshefa dhomakende naantu kaye na uudhigu oku ga adha.

Oopelesenda 14% dhaayamukuli, otadhi tala uunkolwe owa tanekwa wo kondjala momagumbo. Oopelesenda 2% dhaayamukuli odha dhimbulula eihumbato lyaanashilonga ngaashi aasitagongalo naalangi, kutya otali kumike aantu okunwa iikolitha, oshoka naambaka oye na wo oongeshefa dhiikunwa.

### Omaudhigu taga landula nkene taga kwathwa

Uungundukonakoni momagongalo, inau konga ashike iiyeti yiinima mpoka hayi zi, ihe owa kongo wo omayamukulo okukwatha nenge okulelela iiponga mbyoka, yaa holoke we.

### Kombinga yoondjokana

Ekwatho lyokugamena condjokana, uungundukonakoni, owa tala kutya otali monika ngele aakiintu mboka ye na egamo lyokuhumbata omaudhigu gopandjokana koomwenyo nokumwena, owala, taa putudhilwa oku ga holola nokumona ekwatho mbala. Elelo lyoshilongo wo li kale nooveta dhokugamena oondjokana.

- Okambo Epukululohombo, ka longithwe mii-gongi yaakwanegongalo ayehe mOngeleki. Mc mu gwedhelwe shono shopashigwana, sha talika otashi vulu okulongithwa wo muukriste.

- Ongeleki yi tote po ombelewa yokukwatha momaudhigu gomoondjokana. Osho wo iifo nomambo ga nyolwe ngoka taga gandja omauyebele kombinga yiinima yopandjokana.

Ekonakono ndyoka inali popila nando Ongeleki yi ziminine aateyi yoondjokana, oondjokana omppe nonando dhi kale dha teywa paveta, osho wo inali ziminina mboka taye dhi teya, ya tsikile natango nuukwanegongalo wawo.

### Ekwatho kombinga yokwiiteeka uunganga

Ekonakono otali popile Ongeleki yi konge omuntu ngoka ta konakona nawa ekwatho ndyoka hali vulu okugandjwa koonganga dhOshiludhe niiponga mbyoka hadhi vulu okweeta. Iigwanga yi gongelwe noyi konakonwe.

- Oonganga dhOshiludhe dhi kundathanwe nadho, opo ku kuthwe po iifundja nomaanekelo mepango lyadho. Egeelopotudho lyOngeleki kumboka ya yi koonganga, nali longithwe

pauyuuki. sho kwa konakonwa nawa tango oshinima.

- Iipangelo nayi indjipalekwe, aapangi naa yakule nombili nonondjungu nonohole, aavu inaa lalekwa miipangelo, manga inaa aluka. Ehungomwenyo nali dhigininwe miipangelo mokati kaavu, opo ya kwathwe koomwenyo.

**UULODHI:** Ekonakono olya tala kutya eitaalo lyomuulodhi otali hulithwa po ashike keitaalo lya kola lyomuKalunga, onke Ongeleki nayi longe ashike ukriste nuudhiginini.

**OMALUFUKO:** - Olufuko ando lu konakonwe, opo pu holoke embo ndyoka tali holola nawa uukwatya walwo, ndika olyo edhiladhilo lye-konakono moshinima shoka. Ekonakono olya tsikile ngeyi kutya:

- Omukalo gwoohango dhopakriste gu talulu-lwe, opo gwaa nika Oshieuroopa. Okuninga ohangwe dhi na ondilo ku hulithawe po, oonamunganga (aafukaleki) naa talelwe po nevaangeli. Egeelopotudho lyOngeleki nali longithwe wo kumboka ya yono moshinima shika.

### UUNKOLWE NKENE TAU KWATHWA

- Ombelewa yiinima yopankalathano nayi gandje omafatululo giiponga tayi etwa kiikunwa. Oonkolwe nadhi tumwe kombelewa ndjoka dhi ka hungwe. Oshikondo shonkalonawa mepangelo (Social Welfare) nashi pulwe ekwatho kOngeleki moshinima shelongitho lyiikolitha.

Aanona yoomvula 10-18 inaa zimininwa we okunwa paveta andola. Aanashilonga yOngeleki nayo wo naa indikwe okunwa iikolitha. Epangelo nali ngambeke elanditho lyiikolitha moshigwana, osho ekonakono lya thaneke ngaaka.

### Eiteeko lyoohapu dhaKalunga, unene aalumentu

Oopelesenda 52% dhomaayamukuli otadhi shi koleke kutya iikolitha oyo ngaa yi imba aakriste poohapu dha Kalunga. Oopelesenda 42% odha gwedhela po uunangeshefa, oopelesenda 10% odha gwedhela po iilonga yomegumbo, kutya nayo otayi imbi.

Oopelesenda 10% natango odha gwedha ko eiyageko lyaakwanegongalo omolwomayono ga hofoka muyo. Oopelesenda 14% odha gwedhele po eimbo lyiita moshilongo noopelesenda 8% adhike dha gwedhele po uule woondjila.

Ekonakono olya tumbula iitsa 18, mbyoka lya dhimbulula tayi imbi aakriste poohapu dhaKalunga, yimwe yomuyo; elongitho lyooradio momagumbo. uule womalongelokalunga, omauvitho itaaga longekidhwa nawa, uunye nonyalo, uutalala womoomwenyo wa zi mokwaananga we oowandaha momagumbo nuunona itaau putudhilwa we moohapu dhaKalunga.

**OMATOMPELO GOPAUTEOLOGI** moshinima shika, ekonakono olya ti, kutya okwaa-hola Kalunga, ondhino yoohapu dhe, okwaapapudhuka kwokomwenyo nokuuva ko oohapu dhaKalunga mepuko, oyo tayi kaleke ngeyi aantu kokule noohapu dhaKalunga.

\* Molufo talu landula, otatu ka eta omadhiladhilo gamwe gomusita Niinkoti ngoka a pelwe oshimpwiyu shokutula kumwe ngeyi omayamukulo gomagongalo, shoka ta ti kiinima ayihe mbika.

### Sebulon Ekandjo

# Megumbo nonkatu yopombanda

## Dha za kep. 1

longo okwa kuutumba owala manga nonzapo yuulongi muunamiti.

“Katu na osikola manga u longele mo,” osho ashike nda yamukulwa koshikondo shuunamiti. Nkene nda kuutumba owala ngeyi pelugo lyameme,” osho a yamukula epulo lyOMUKWETU ye ti inyengitha omapepe nonkumwe, okuholola naanaa kutya okwa ningi ashihe shoka kwa li ta vulu.

Omapulo omakwawo e ga pulwa kOMUKWETU, okwa li inaa hala oku ga yamukula, sho e shi yelitha wo nawa, kutya pethimbo ndika ina hala manga okupopya oshindji kombinga yiilonga ye, pamatompelo gokugamena onakuyiwa ye.

“Ompito oye egulukila ndje muAmerika ndi longe mwiya, ihe onda hogolola ndi yakule oshigwana shandje, nando shoka kashi shi oshinima oshipu methimbo ndika,” osho ashike a ti pafupilela.

Omalongekidho opo ge li natango a shune kuAmerika opo a ka mane onkatu ye yuuMaster muudhindoli meputudho lyuukalinawa wopaunongononi (Master of Science in Health Science Education), ndjoka e yi tameke ashike peshililo lyomumvo 1982 mOsikola yokombanda yepangelo muBuffalo, muNew, York.

Omolwonkatu ndjoka, okwa li ihe a pumbwa tango eidheulo muNamibia moka te ya okulongela iilonga ye, ihe mupya munene, ompito ndjoka ine yi mona we.

Konima yokutaamba onkatu B.A., omulongi Nashilongo okwa yile wo kuGeneva, hoka a kalele ko uule woomwedhi ndatu okukonakona iilonga yomahangano omanene gOongeleki muuyuni, ngaashi LWF na WCC nokwiilonga wo kashona kombinga yomaitaalo gOongeleki dhi ili nodhi ili.

“Osha kwatha ndje shili okuuva ko iilonga yOngongahangano yAakwaluther ndjoka nda kala ashike ndi yi uvite omakutsi,” osho a tumbula nepandulo enene, ye ta menye mo kashona.

Ashike epulo lyompumbwe yiilonga muNamibia, kali shi we ashike lyaa-mboka ya tseya owala okutoola iiyagaya moostrata, ihe olya ningi wo nolyaa-mboka ya zi koosikola dhopombanda.



# ITSEYA NGOYE MWENE ONGOMULONGI

Pamwe omuntu opo u itseye ngoye mwene nkene u li, onawa u konge tango uuyelegele momapulo nomayamukulo ngoka taga landula mpaka:

**Epulo:** Ongame omushike?

**Eyamukulo:** Omulongi moshimpungu shOmuwa, okugandja uunongo koshifetha shaKalunga.

**Epulo:** Ondi na okwiiyeleka nalye?

**Eyamykulo:** Ondi na okwiiyeleka noshiholelwa shomulongi omunene, Kristus.

**Epulo:** Yalwe ohaa tile ndje ngiini?

**Eyamukulo:** Ohaa pandula ndje nohaa landula iilonga yandje iiwanawa. Ohaa pe ndje uusama mwaambyoka iiwinayi, oshoka ngame omulongi, omuputudhi gwoshigwana, ndele haku shi nyokoma.

**Yimwe yomiiholelwa yuusama handi yi pewa.**

Oh, ino ya kootundi nena? Sho u li mpano, aanona yetu otaa longwa kulye ano? Aalongi nayo nani ohaa tukana ishewe? Omulongi gwetu ngele owe mu pumbwa, mu tsa owala puundingosho waandja Nima.

Tsikila natango okwiipula nomapulo taga landula, ngele wa hala okwiitseye mwene.

**Epulo:** Ondi hole shike naanaaa?

**Eyamukulo:** Ondi na okukala ndi hole oshilonga shandje naantu mboka tandi longo nayo.

**Epulo:** Oshike ndi na okuninga?

**Eyamukulo:** Ondi na okukala ndi itaala, kutya oshigwana hashi lesa noshi na ontseyo ya gwana, oshi na elago. Onkene ondi na oku shi kwatha nomukumo moshinima shoka.

**Epulo:** Omolwashike ndi na eithano lyuulongi?

**Eyamukulo:** Onda taamba eithano lyuulongi, opo ndi kwathe aanona yoshigwana shetu moshili, ndi ya ulukile ondjila yuunongo, ndi ya putudhe palutu, pambepo nopa-nkalathano.

Ondi na wo okuyelegele shoka oshiwana hashi ningwa kaalongi

ooyakwetu mboka yu uva ko ondilo yelongo noyeputudho lyoshigwana.

**Epulo:** Uukwatya womulongi ounipo?

**Eyamukulo:** Ondi na okwiilongekidha esiku kehe nuupenda.

**Omaukwatya omakwawo gomulongi**

A tseye kutya iilonga ayihe oyi li mewiliko lyaKalunga mwene, onkene itaa pumbwa okutula.

A tseye kutya aanona kaye na omagano ge thike pamwe. Ihaa teka omukumo ihaa longo a tala membo. Ha zimine uusama we ngaashi tau holoka. Omukristelela, e hole iilonga iiwanawa nelandulthano. Noha nyolele aanona oshikalimo pafupi.

Omulongi okwa pumbwa wo okwiitseye nawa, ngele tatu tala ishewe kiinima tayi landula:

**MEGUMBO:** Ondunda yokulala yi na okusilwa nawa oshimpwiyu, yi kale ya yela. Iilongitho yomegumbo ya yela nawa, uukriste tau pangele megumbo.

**PUUSHIINDA:** Ta gandja oshiholelwa oshiwana. Omuhungimwenyo gwoshili, kee na oluhoko niikonene.

**MOMUKUNDA:** Omunambili noku shi okuholelwa. Hi ikwata nawa, ha simaneke aakuluntu noku shi okukumagidhwa.

**MEGONGALO:** Hi inekelwa nawa kegongalo lyaandjawa. Ha kala miigongi yopakriste, noku shi iinakugwanithwa megongalo lyawo.

Tseni atuheni aalongi ngele sigo ompoka otwiitseye kutya osho tu li ngaaka sha hololwa metetekelo, onawa, natu longeni ano ngaaka oshimpungu shOmuwa nuupenda.

**Omulongi omukweni Sakaria Uusiku**

**EGALIKANO:**

Omuwa Jesus, Omusindani guusiku.

Omusindani gweso,

Sameka uuyelegele mutse!

Tu pa einekelo epe!

Ngoye owe tu egululile osheelo shomwenyo omupe!

Ngoy'owe tu ulukile uukwaniilwa woye!

Kyrie eleison.

Horst Ueberall

# OMULONGI, TSEYA OMPUMBWE YOMULONGWA GWOYE

Pamalufu ga piti noomvula dha zi ko, omuleshi owa kala ho kundana sha kombinga yaanasikola naalongi yawo; oshiwana nenge oshiwani. Poompito odhindji ohapu popiwa uuyuni tau lunduluka nokweendelela. Natu shi tale ano muuyulele mbuka:

Osha simana komulongi omukwetu, u ndhindhilike nou kale u shi shi shoka aalongwa yoye ya tegelela kungoye. Kehe shoka omulongi te shi ningi, oshu ukilila omwiilongi. Omulongi oye omuwiliki gwonakuyiwa moshigwana.

\* Aalongwa oya pumbwa ewiliko miinima yesiku kehe ngaashi mokinga omatokolo gawo mokukala naantu yalwe nosho wo mokuhogolola iilongwa mbyoka ye na okukutha omolwokiilongela omaithano gawo komeho.

\* Omolweputudho ndyoka lya pumbiwa kaalongwa, oya pumbwa ihe okulongwa omakankameno.

\* Aailongi oya pumbwa ya fatululilwe nawa komulongi omutungilo nenge tu shaashoka shi na sha nomalutu gawo.

\* Mongulu yosikola omunona ota tegelele omulongi i ilongekidha nawa; Omunona ngoka a hala nokuhalelela okwiilonga, ota tegelele a pewe iilongwa komulongi mbyoka ta ka longa konima yootundi ngele dha piti mo.

Okwa tegelele wo a nyolithwe okakonakono omathimbo nomathimbo; Omunona ota tegelele omulongi e mu uveko, ngaashi naanaa ye (omulongi) a li miipundi yosikola.

Omunasikola okwa tegelele uuyuku komulongi gwe; NDHINDHILIKA: aalongi yamwe kaye hole okupulwa uuna oshinima kehe shi shi nawa. Aalongi yoludhi nduka oye na okukotoka; oshoka aalongwa oyendji ohaa taamba ashike omulongi ngoka ha kambadhala pamwe nayo sigo ya mono eyamukulo.

Ashike oshi li wo ngeyi kutya aalongwa inaa hala ashike okupewa mokana, ndele oya hala wo aalongi ye ya longe okudhiladhila kuyo yene. Omwiilongi ota tegelele wo komulongi gwe, e mu pe efano lya yela miinima yoshinanena, opo a yoolole mbyoka iiwanawa niwinayi.

Frans I. E. Imene

# OSHINAKUGWANTHWA SHOMUKIINTU MOSHIGWANA

**Oshipopiwa tashi landula mpaka, osha li sha popiwa kumeme Selma Namuhuja, moshigongi shamboka ya hokanwa kaalangi nokumboka ya hokana aalangi, sha ningilwe mOshakati mujuni, nuumvo.**

**OMUKWETU ota gandja ombili sho inaa wapa okutula omadhiladhilo agehe ngaashi ga li ga longekidhwa kumwene.**

Membo lyotango lyaMoses, ontopolwa ontiyali novelise ontihetatu nontimulongo nantano, otatu lesa: Kalunga sho a shiti omuntu, okwe mu langeke meyana lyaEden, e li longe ye e li kelele. Ano omuntu okwa pewa oshinakugwanithwa kuKalunga mwene.

Iinakugwanithwa mbika petameko oya pewa omulumentu, ihe Kakunga okwe mu pe omukwathi ngaashi Kalunga mwene a ti, "omuntu otandi mu pe omukwathi e mu opalela." Omukwathi ngoka, okwa gandjwa komuntu a pewa iinakugwanithwa. Iilonga yokulela eyana noku li longe, ya ningi yawo ayehe.

Omukiintu wo okwa pewa iinakugwanithwa ye. MEpistoli kAaefeso 5:22-23, otatu lesa nawa iinakugwanithwa yomukiintu, oshoka otatu lesa mo: "Omulumentu oye omutse gwomukiintu".

Ngele nani osho shi li ngawo, nena iinakugwanithwa yomukiintu oyo esiloshimpwiyu lyegumbo Aanegumbo ayehe oya pumbwa

ekwatho lyomukiintu.. Omusamane wo ngoka e li omutse gwegumbo okwa pumbwa ekwatho lyomukiintu.

Aanona, iinamwenyo yomegumbo nomudhilo agohe gwegumbo, ogu li mesiloshimpwiyu lyomukiintu. Iinakugwanithwa yomukiintu ano oyindji. Otayi tameke megumbo miizalomwa, miikulya nomeopaleko lyegumbo. Eputudho lyaanona, pamwe nomusamane.

Aanona nomusamane ngele oya zala oonguwo dha luudha nenge dha tuuka, nena uusama otatu pewa omukulukadhi. Aanona ngele oye na aluhe omala ga yovotoka, nena iinakugwanithwa yomukiintu megumbo inayi tsakanithwa.

Pethimbo lyiilonga yomepya, oto adha aakiintu yi ipyakidhila niilonga yomepya, nonando Kalunga okwa lombwele omulumentu epya e li longe, ye e li kelele. Iilonga yomepya oya ningi iinakugwanithwa yaakiintu momagumbo, nando aalumentu yamwe haa itula mo ngaa.

Eshunduko lyoshigwana otali ende pamwe nokwaatsakanitha iinakugwanithwa yesiku kehe. Aakiintu wo inaa hala okutsakanitha iinakugwanithwa yawo. Iilonga yomomapyo, tse oonakuvale wo otu li po twe yi dhini, onkee aakiintu aagundjuka oyendji kaye shi we iinakugwanithwa yawo yesiku kehe.

Pethimbo ndika, otatu topola aakiintu moongundu mbali. Ongundu yaakiintu aanilonga, nongundu ndjoka yaamboka haa kala momagumbo ethimbo alihe notaa tsakanitha ando iinakugwanithwa yesiku kehe.

Olwindji omuntu oto adha aakiintu mboka ye li ethimbo alihe momagumbo, ya loloka nayi komalutu nuunkundi aluhe ou li popepi. Olwindji aantu mbaka ohaa tameke okwiidhina nokwiyekelela. Olwindji omukiintu a tya ngeyi, oha yi aluhe memakelo, kutya omusamane gwe ite mu sile we oshimpwiyu. Oshiponga sha tya ngaaka, osha zi owala momvulwe.

Onkee pompito ya tya ngawo, opwa pumbiwa unene okutopola ethimbo lyokugwanitha iina-

kugwanithwa yetu yesiku kehe. Omuntu ina pumbwa okulonga ethimbo alihe, okwa pumbwa wo evululuko: Uukolele owo uuyamba wolutu.

Opu na iilonga oyindji tatu vulu oku yi longa twa kuutumba, oshoka nayo wo oyimwe yomiiinakugwanithwa yomukiintu yesiku kehe. Otu na oombale, omuntu to imonene mo oontungwa. Iilonga yokuhondja, nokuhonga iiyuma.

Oshilonga shoka nda tumbula hugunina, osha talika osho shaakuluyonale. Mushika otwa kaniitha oshindjilela. Inashi opala omukiintu ihaa longo iilonga yilwe pondje yegumbo, ihe oha landa oontungwa nenge iiyuma. Otu na okuyambidhidha aasamane yetu mboka haa longo pamikalo dhi ili nodhi ili.

Okukala methimbo li li owala, waa na iilonga, ohaku etele omuntu oshindji, ngele ito kotoka. Mokwaa na iilonga, oto haluka to yi mpoka wa li inoo dhiladhila po nando.

Tse aakiintu pamwe otu na okudhiladhila muule, kutya oshiponga shokunwa shoka sha vuka maalumentu yetu, osha zi peni. Pamwe omuhethi wetu sho ihaatu tsakanitha iinakugwanithwa yetu yesiku kehe.

Oontaku momagumbo pethimbo ndika, odha kana mo. Aasamane yongashingeyi kaye na we uumbundju. Omusamane a tya ngeyi, ota kala ngiini itaa ka konga shoka ta nu?

Omukiintu oye ngaa yina yoshigwana nomuputudhi gwasho, onke natu kambadhaleni okuniinga ashihe tatu vulu, tu pe aanona yetu oshiholelwa.

**Shoka tashi pulwa aakiintu aanashilonga**

Otwa popi owala ombinga yimwe yaakiintu mboka yaa na iilonga. Natu tye wo sha kombinga yaamboka ye na iinkaugwanithwa yilwe pondje yegumbo. Nayo wo mbaka inaa yooloka kuyakwawo. Miinakugwanithwa yawo yesiku kehe, oya faathana.

Oshi li ihe ano ngiini, tu tye, ngele omulongi iha kala megumbo ethimbo alihe? Iilonga yosikola ngele nani nayo otayi mu pula oshindji? Mpaka aakiintu ya tya ngaaka, aanashilonga, otaa pumbwa owala uudhiginini noonduge dhokutopola nawa ethimbo lyawo, opo ya tsakanithe ayihe mbyoka taye yi pulwa koombinga adhihe.

Mpoka wo omuntu otashi vulika a kwatwe komvulwe, ye ta tameke okudhiladhila kutya, egumbo lya ningi omutenge omunene komapepege. Otashi vulika u adhe omusamane ta yogo oonguwo dhe mwene, nenge u mu adhe e na oonguwo dha luudha.

Shoka otashi ulike kutya omukiintu ngoka omunashilonga, ina tsakanitha iinakugwanithwa ye. Tu topoleni nawa ethimbo lyetu, opo tu tsakanithe iinakugwanithwa yetu mbyoka twi inekelelwa notwe yi pewa kuKalunga.

Omukiintu ina pumbwa ashike a kale i ipyakidhila niilonga yegumbo nenge yosikola ethimbo alihe, okwa pumbwa wo okuvululukwa poohapu dhaKalunga.

Okuya mOngeleka, miigongi yaakiintu, moondjimbo nomootundimbimbeli, osha pumbiwa. Natse wo tu yeni tu ka ninge ngaaka.



**Okuza omumvo gwa zi ko, okwa kala taku kugwa oluhepo lwAakwankala kOmangeti. Oonkambadhala okumana po ompumbwe ndjoka, oya ningwa mpaka naampeyaka, ihe mene Hileni lingula ngoka ta longo hwiya, ota ti kutya ondjala yiikulya otayi dhengele mokati koludhi ndoka. Mpaka egongalo lyaShitayi olya yamukula ishewe ngaaka ngaashi olwindji hali shi ningi. Methano kolulya omusita gwegongalo ndyoka Titus Ngula ngoka a thindikile iikwatha mbyoka pombelewa yOshitayingeleki shaNdonga. Omusita gwaElim, Eino Amaambo ota tala iilonga mbyoka nonkumwe. Omwaalu gwii-maliwa yi vule R 100 nago opo gu li.**

# Okuza kuCape Verde, openi ishewe?

**Etsakaneno etiyali moonkundathana pokati ka SA na SWAPO, olya ningilwe 25.7.1984 mOntuntu yaCape Verde, okoloni onkulu yaPutu mu-Afrika, ndjoka yi li ontega naSenegal.**

Etsakaneno lyotango olya ningilwe muLusaka petameko lyaMai nuumvo, moka mwa li wo noongundu dhomeni. Komufala Ndjayi gwa SWA dr W. van Niekerk, ye mwene ngaashi shito, iha hala shi tiwe, kutya etsakaneno olya SA na SWAPO.

Ota ti, ye ngoka ha kala moonkundathana ndhoka, ohe shi ningi owala ongomuwiliki omukulu-tu gwepangelo lya SWA.

Aantu oyendji ihaa zimine eipopilo ndika, oshoka otaa ti, Ngoloneya mu SWA ke li mo omukwashigwana shika, nenge omukongi gwiilonga kuye mwene, ihe okwa kalela po SA ngoka ta lele evi ndika.

Ashike shoka ngiika hasho sha simana kaaleshi yOmukwetu, kutya oonkundathana odha li pokati kalye nalye, ihe shono oshigwana sha yuulukwa, oshu uve nkene oonkundathana dhe ende nomombepo yini.

Osha yelithwa mooradio nomiifo kutya etsokumwe naampoka wo inali adhikwa nando, nususama wokwaatsa kumwe, kehe gumwe ote uumbile poompadhi dhamukwawo.

SWAPO oye lela ina hala okushaina, noye a tindila ashike medhiladhilo lye ekulu, kutya omatati itaga tulwa po, manga oshitokolitho 435 sha VVO inaashi tulwa miilonga, osho Ngoloneya Ndjayi a hokololele aatoolinkundana mOvenduka mokugaluka kwe.

Uusama mbuka wa gandjwa kuNgoloneya, SWAPO okwe u tindi thiluthilu. Pamushangwahokololo ngoka a gandja kaaniifo muLuanda, Angola, konima yoonkundathana, SWAPO okwa ti, SA oye tuu a tindi ethaneko ndyoka e li eta (SWAPO) poshitaafula.

Ethaneko ndyoka aniwa olya li tali leshwa ngeyi: 'Oshigongi ashihe osha tsu kumwe shi indile Amushanga Ndjayi gwa VVO a fale mo mbala miilonga ethaneko lyiligwanahangano omolwemanguluko lyaNamibia, sho shi endele pamwe netulopo lyomatati osho wo ehulithopo alihe lyombepo yuutondwe.'

Pauelele auhe mbuka, oongundu adhihe mbali odhi na edhiladhilo lya faathana; omatati ga tulwe po, nopus hitwe ombepo yombili, yaa na uutondwe.

Eyoologo moshitsa shoka, otali dhimbululwa ashike mpoka, kutya SA shoka okwa hala shi ningwe pwaa na we ekwatathano na VVO noshi ningwe pondje yoshitokolitho 435 sha VVO, manga SWAPO a hala shi ningwe mewiliko lya VVO nosha kwatelela mo oshitokolitho 435.

Ngoloneya Ndjayi, okwa nyengwa ano okushaina ethaneko ndyoka lye etwa po ku SWAPO, neipopilo kutya ye koonkundathana ine ya ko a pewa oonkondo dhokukundathana oshitokolitho 435.

## SA okwa kotokelwa nenge aawe

Omaulikilo gamwe otaga ti, kutya oonkundathana ndhoka odha penduthwa ku SA a tumine etumwalaka kepangelo lyaAngola noku li pa uu-

yelele, kutya ye okwi ilongekidha kaa kondjithe we SWAPO, shimpa tuu SWAPO naye ti ilongekidha wo a hulithe po ombepo yuutondwe nokuhinda aantu ya SWA.

Omutumi gwelaka ndika oministeli ya SA yiinima yopondje eti 7.7.1984. Meyamukulo kushika, SWAPO okwa ti kutya ye okwi ilongekidha okukundathana oshinima shoka nepangelo lya SA.

Kombinga ya SA meyamukulo lye ku SWAPO, okwa ti ye ote shi ningi, shimpa tuu oonkundathana itaadhi kwatelele mo oshitokolitho 435, omolwAacuba mboka ye li natango muAngola, naNgoloneya Ndjayi oye e na okukala moonkundathana ndhoka.

Omatumwalaka ngoka oga li tage endithwa pateleka, ihe mbala oonkundathana sho dha tameke, pahokololo lyomusamane van Niekerk, osha ye, kutya SWAPO ina tseyi iinima mbyoka yi na okukundathanwa, oshoka aniwa ina mona etseyitho lyasha.

"Nenge SWAPO okwe shi ipatana tuu owala," osho van Niekerk a hokolola.

"Kape na etulo miilonga lyoshitokolitho 435 sha VVO manga Aacuba ye li natango muAngola, na SA ota ka katuka onkatu yaa na nando ohenda, ngele SWAPO osho ta tsikile ngeyi miilonga ye muNamibia -- olyo ekankameno lya SA moshinima shoka.

"Kape na etulopo lyomatati pwaa na etulo miilonga tango lyoshitokolitho 435 sha VVO, na SWAPO kee na we ompito yilwe yaa shi ashike shila yokuhanyeka iita ye --" osho ekankameno lya SWAPO.

Mpoka opo ihe oshigwana sha thigwa mombepo pokati komayooloko ngoka omanene pethimbo ndika notashi tegelele ashike ngiika ohenda kukehe gumwe ngoka te shi thigile omwenyo.

Kape na manga omathaneko gasha, ashike etegameno opo li li ngaashi lya hololwa koongundu ndhoka adhihe mbali nkene dhi ilongekidhilathana natango dhi shune mo moonkundathana.

Shoka osha kolekwa wo komuwiliki gwepangelo lyaCape Verde, sho a kundathana natango nomuwiliki gwepangelo lyaAngola osho wo nomusamane Sam Nuujoma, ashike mbala konima yeyonuko lyoonkundathana dha SWAPO na SA.

## Eipangelo lyopaumwene muNamibia

Opwa dhimbululwa wo kutya okuza moonkundathana dhaCape Verde, epangelo lyopaumwene muNamibia, olya tameke okwiinyenga kondungu yomilungu dhayamwe neitulomo shi vulithe shito. Unene tuu mboka yomoshigongi shoongundu odhindji.

Omadhiladhilo moshinima shika kage shi omape, ihe ethimbo alihe oga kala ga tulwa mokila nokutegelela shono tashi zi moonkundathana ndhoka dha kala po dhopondje yoshilongor.

Nokuli ohaku tiwa, epangelo ndyoka olyo ndyoka SWAPO a li ta hiyilwa mo kepangelo lya SA opo a ninge omuwiliki gwalyo, ye a gandje ashike iikondo ya simana kaawiliki mboka yoshigongi shoongundu odhindji, pashifonkundana shomuAmerika, **Christian Science Monitor**. SWAPO ehiyo ine li taamba.

Ngele Amerika naye ote shi popile, ku talwe omukalo gulwe gwokudhika epangelo muNamibia ponto yomathaneko ga VVO, ngoka ga kankamekelwa koshitokolitho 435, OMUKWETU ke na uyelele washa manga.

Amerika oye gwtango ngoka e eta po ethaneko lyaAcuba ya ze mo tango muAngola, opo pu ningwe ehogololo lyaayehe muNamibia.

Sebulon Ekandjo

## Ovenduka yi topolwe miilando iyali otashi kundathanwa ngashingeyi

Okangundu kaantu yahamano, ayehe aakiintu, oka hogololwa kaakalimo yomolukanda lwaAaluudhe, Katutura mOvenduka, opo ka konakone omadhiladhilo ngoka ge li po, olukanda lu ningwe odoolopa yi ikalela, ndjoka tayi lelwa kuMuni gwayo ikalela.

Oombapila tadhhi tamaneke edhiladhilo ndyoka, odha monika nale unene mookati kolukanda ndoka, talu tengenekwa lu na aakalimo 60,00 ya thindakana momagumbo 7,000. Oombapila dhimwe odha toolwa nomokati koshilando shaVenduka.

Oombapila otadhi indile Owenduka yi kale yimwe naakalimo yamwe. Oombapila odha ti kutya, okutopola oshilando pamukalo ngoka, okugwanitha natango ooveta dhomavigumbo.

## OMBILI YI NA EYAMBEKO

Aamwameme, pethimbo lyongashinheyi otwe shi dhimbululwa tuu kutya ombili ohayi endele pamwe neyambeko? Omukulugwonale oha ti: 'Elaka lyombili olya futa ondjo.' Okupopya ngeyi, okwa ndhindhilika kutya nando mwa ningathana nayi namukweni gwontumba, ngele tamu ka tsakanena ishewe, otamu popithathana owala nombili, nonando ino longitha oshitya ombili.

Pethimbo ndika, ondi lwete twa fa tatu kanitha ombili, tayi kanene owala miinima yaa na omutse nandungu. Otashi vulika u popithe omuntu, ihe okwe ku geela owala ngoye waa shi shoka we mu ninga.

Yamwe oya lulika owala iipala, aniwa opo ya ti-like. Ihe shoka okutidhila owala eyambeko kokule nokwiililila uutondwe. Omuntu omunambili, okwa halelwa aluhe uwananawa, manga omugeyentu ihaa popilwa muwananawa.

Tu kambadhaleni okukalathana nombili aamwameme. "Tala nkene shoopala shoopalelela aantu naamwayina ngele taa kala kumwe ye na ombili." Ps.133:1.

GwaAdam Kambonde

## Shoka sha ningilwe po ethimbo ndiyaka

MUukwambi omwa li omukulukadhi kuku Toini Shivute, ngoka wo kwa li a gwedhela mo sha mondjokonona yOngeleki. Tatekulu Abed Kandongo, kuku Toini ote mu hokolola ngeyi:

“Petameko omukwaniilwa Iipumbu yaShilongo, okwa kala nombili naatumwa puElim, ihe uudhigu owe ke ya molwa Toini Shivute omwanagona gwIipumbu. Omukwaniilwa okwa li a hala a hokane Toini, ihe Toini okwe shi tindi, ngiika unene tuu sho Toini pethimbo ndyoka o kwa shashwa.

Toini okwiiyaka mo mombala, e ta ka holama pongulu pumuhongi Oni Aho. Pongulu mpono okwe ki ilwa po komuhongi Soikanen nokwe ke mu holeka kOngwediva, a patelwa moshiketha shiipilangi.

Omukwaniilwa okwa li ta kondjitha ngaaka a hokane Toini pamwe nayinagona Mwadhina yaNembenge. Nguka komeho naye okwa ka shashwa e ta ningi Lusia. Oye yina yooTitus Kanyika Iipumbu naSilas Iipumbu osho wo Andreas Iipumbu ngoka ta pangele ngashingeyi.

Konima Toini okwa ka ya kOndonga, e ta kala mOshigambo pongulu. Okwa ka galukila kUukwambi, sho Iipumbu a falwa muupongekwa kepangelo lyoshingolo kOkavango 1932.

Toini okwa hokana naSimon kOkalongo, ihe oye li aakwanegongalo lyaElim. Eti 18 lyaJuni 1984, kuku Toini okwa mana po oondjenda dhe muukokele womimvo 68.”



Meme H. Kalenga

## OKERSESA YOLWII-MBO MOVENDUKA

Okersesa yaaimbithi moshitayi sho-mUushimba oya ningilwe eti 27.4.1984 mOsaala yaAandowishi mOvenduka. Oya li mewiliko lyomuwiliki gwomusika mOngeleki ya ELOK, meme M.Kambudu.

Meme Kambudu mokersesa ndjika, okwa wilike unene nkene omuntu e na okwiimba nenge okwiimbitha megongalo nomongundulwiimbo. Moshinima shoka okwa kwathwa kuAmushanga mombelewa yomusiki, meme Ndapanda Katuta.

Aantu 82 ya za koombinga noombinga dhoshitayi shika, oya li ya gongalele mo. Ongalo R 57,90 oya li wo ya umbwa noya tokolwa yi ye moshiketha shiilonga yomusiki mOngeleki.

Otwa pandula unene koseminali ndjika. Otwa pandula wo sho Kalunga a li e nditha nawa aawiliki mbaka. Omusita Gerson Max naye wo omo a li melongekidho ndika, noye a ningi elongelokalunga lyehulitho.

**Jonas Ndapiita Kambidhi Windhoek**

\*\*\*\*\*

## ETUMWALAKA KAAKIINTU

Ohamu longo tuu oshilonga shetumo? Ngele iho tula sha mongalo yetumo, ou na ongunga. Omuwa nge te ya ota ti: Onde ku tumu kuSenegal, ino ya ko, kuAngola ino ya ko, kuBotswana ino ya ko, kUutsathima, ino ya ko, kuuzilo woOndonga, ino ya ko.

Sho hatu lalekwa poshililo shOmuwa, ohaku tiwa: Kuvitheni edhina lyOmuwa sigo ote ya. Tu longeni oshilonga shOmuwa, manga tu na ethimbo. Tu kongeni oomwenyo dha ya kokule naKalunga.

Tu ningeni ngeyi: Ngele ou na okahema, tuma kongalo yoshiketha shaakiintu. Ou na uukaku, tumina ko. Oho hongo iiyuma, tumina ko, oho tungu oontungwa, tumina ko, oho tende oongongo, tumina ko. Nokehe tuu shoka ho shi longo.

Tu longeni oshilonga shOmuwa.

H. A.Kalenga

## Nandi pukululwe

MOkambongeleki omalongelokalunga ondi shi niwa oga yooloka? Uuna omusita kee po, nena omuningi gwelongelokalunga, omukuluntu gwegongalo nenge omuyevaangeliste, ihaku longithwa nani epandja 37-38?

Ongiini ano sho handi mono taku longithwa elongelokalunga limwe alike?

**E.A.Shivolo Arandis**

### EYAMUKULO:

Ino puka ou li mondjila. Ngele owa tsakaneke sha shilwe tashi ningwa, kwatha ashike mokupukulula, pamwe omuntu ke shi shi.

**Amushanga gwOmukwetu**

\*\*\*\*\*

## OVA SHANGELA NGE TAVA TI .....

Omufimanekwa,

Onda hala okukoleka oshinima osho sha li sha pulwa komunyoli mOmukwetu No.13/1984 epandja 12, kutya ovamati nava kufe po ovanyonwa vavo. Omunyoli ina puka nande moshinima osho.

Ovafita nava ninge po sha, napa diininwe shili. Oshwana otashi mono oixuna.

**Namutenya Hangula Katutura, Windhoek**

Tu kaleni meilikano, shiwana. Inatu lolokeni, Omwene wetu okwa ti: Indileni nde tamu pewa. Omwene ote tu mangelula komalutu nde nokeemwenyo. Hano tu lyaameneni keulu kuTate Kalunga, opo tu pewe ombili nefilonghenda.

**L.A.Nhilukilua**

### OMUKWETU

Oye oshifo shOngeleki Onkwaevangeli paLuther yomOwambokango. Ohashi nyanyangidhwa mOshinyanyangidho shOngeleki mOniipa. Omukuluntu gwoshifo omumbisofi Dr. Kleopas Dumeni. Amushanga gwoshifo omusita Sebulon Ekandjo.

Ondando yOmukwetu muNamibia naSuid-Afrika R5,00 komumvo. Palwe muAfrika R8,00 nokombanda yomafuta R11,00, komumvo. Mondhiila R13,00.

Oondando nomambesitelo agehe naga tumwe kOmukwetu, Oniipa, P/Bag 2013, Ondangwa, 9000.

**EV.LUTH.OWAMBOKAVANGO CHURCH PRESS PRIVATE BAG 2013, ONDANGWA 9000 SWA/NAMIBIA**