



Egwayeko lyolutu lwa Jesus manga e li momwenyo



Mweetheni a ninge ngaaka, oshike tamu mu piyaganeke? Oye okwa longele ndje oshilonga oshiwana.

Okwa pungulile shoka e shi na, esiku lyefumviko lyandje. Mat.26: Mark.14: na Joh.12:

Elongekido lemanya lomubishofi Auala, la ufilwa okangudu

Elelongeleki moshitokolifo shalo oshiti-102, ola hoolola ovafita vatatu; Efraim Angula, Festus Ashipala na Petrus Shipena, va longekide emanya lokombila yanakusa omubisofi Leonard Nangolo Auala.

Elongekido mokulanda emanya olo, otali ningwa mekwatafano novaneumbo lanakufya, osho Elelongeleki la ufa.

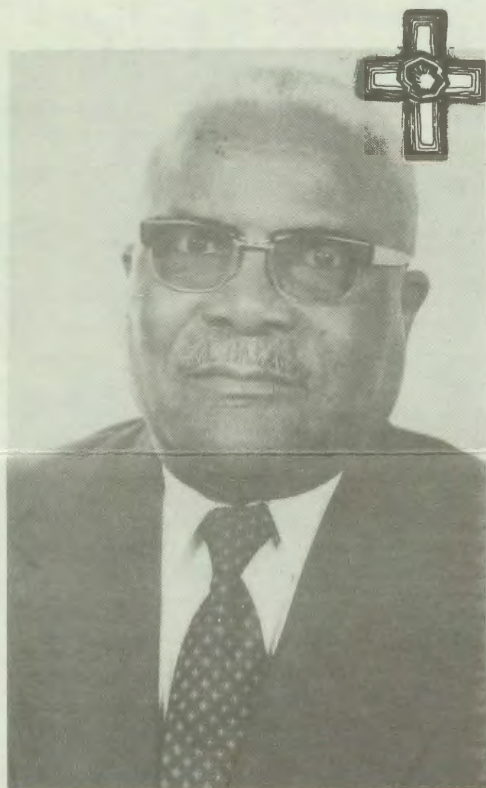
Omubishofi Auala okwa manene oweenda waye eti 4.12.1983 moshihakulilo shOngeleki, mOnandjokwe. Oshivilo shefudiko osha ningilwa mOngeleki ya Niipa eti 10.12.1983, omo mwa li ovanhu tava tengenekelwa po-2000.

Ongalo ya umbwa moshivilo osho oya dile R1690,59 noya pakulilwa i longifwe mokulanda emanya lanakufya. Oivilo ikwao yeefya omolwefyo lomubishofi ou oya li yo natango ya unganekwa mOvenduka muSoomi, Switzerland, nopalwe.

Elongelokalunga olo la ningwa muSoomi, omolwokulila eefya daNangolo, okwa li yo mwa umbwa ongalo oyo ya dile oimaliwa tai tengenekwa R 1000,00 noya ufilwa i ninge etameko loshikefa shokukwafa ovalihongi va ELOK.

Oimaliwa ei pamwe nekundo likwao lo keongalo laNivala muSoomi, nayo oya tambulwa ko nepandulo linene kElelongeleki.

Nakufya omubishofi, oungundi ou we mu taaalela, owe mu hangele e lipyakidila



Nakusa Leonard Auala

Omukwetu tu kufa ne momalimbililo

Omaongalo a ELOK oku na shili oshisho shokulongekidila Ongeleki yetu onakwiiwa iwa. Omukwetu okwa holola kutya, okwa li momalimbililo, ashike paife okwa kufwa mo. Ye okwe tu ponyonena mo ne.

EPITO LIWA LOVANAFIKOLA VA ELOK

Ovanafikola vatano ovo tave lihongo paife muAmerika nova pelwe ouanafikola kOngeleki ya ELOK, Elelongeleki ole va popila natango avshe va twikile elihongo lavo 1984-1985, eshi pa kundanwa tete kutya avshe ova pita nawa oilongwa yavo.

Ava ovo Penda Kiyala (oulongi moinima yowina), Benhard Kantindi (outeknika) Kondjeni Kafidi (Apoteka), Immanuel Dumeni (oulongi) na Gabriel Uahengo (Apoteka) Elelongeleki ole va halela yo epuniko melihongo lavo.

(Elelongeleki oshiti.91/1984)

VATATU VA MANGULULWA

Omadinga ovanashilongangeleki vatatu ovo kwa li va diininwa ketanga leomano nova mangululwa paife, okwa shiivifwa komubishofi mElelongeleki. Ovo omweevangeliste Malakia Kakongo, omufitaongalo Natanael Sirono nomukukadi waye mense Lahja.

(Elelongeleki leti 14-16.1984)

nelongekido lembo olo tali hepaulula Ongeleki ya ELOK nhumbi ya holoka po.

Eshi fiyo opoopo shihapu a fiya e shi mana nale, Hamushanga womayelifilo mOngeleki, Petrus Shipena, okwa pewa natango oshisho kElelongeleki opo a konakone oinyolwa oyo i li po, kutya oilonga oya xulila peni.

Elelongeleki otali teelele natango enyamukulo kuShipena moshinima eshi, fimbo inaali ufa nhumbi embo olo tali xulifwa. Kakele kondjokonona oyo yOngeleki i li melongekido, nakufya okwa hangikile yo natango a shanga ondjokonona yokukalamwenyo kwaye mwene.

Embo olo linyakula mokulesha, omubishofi mwene okwe li kuka "Ombilive kaamwandje 10." Oli li natango mOfitola yOma-mbo, mOniipa notali kosho R5,00.

Li imonena diva manga inali pwa po, opo u pwilikine.

Sebulon Ekandjo

Ohatu indile e tu kufe mo. Omukwetu okwa ti: "Omaongalo oku na oshisho" shokukonakona mokati kaasita ye vule 100 ye li natango miilonga ngele tamu monika gumwe to opalele oshilonga shuuwiliki wOngeleki. (Omukwetu No.4/1984 ep.1)

Omaongalo itaa konakona, otaa ulike ashike ovafita vatatu. Oudjuu wetu hao oo, Okuninga Omukwetu a hala shila oku tu lombwela, kutya katur na ovafita tava dulu moshilonga osho, ndele hasho ne. Ovafita otu va na.

Monakudiwa otwa li twa ngongoshekelwa nawa omhumbwe yewedelo lovawiliki vOngeleki, opo "oilonga yopaubishofi i wanifwe." Oshinima osha kwandjangelwa nasho nosha diminwa koshoongalele-ngeleki oshiti-11/1981 lwotete.

Oshoongalele shovafita shomundo 1983, (osho twa li yo twe shi pumbwa noneudo) osha li tashi kwandjangele natango noshinima osho tuu osho, noshe shi koleka. Eshi sha kolekwa, osha li ehoololo lovabishofi ve dule umwe ngaashi sha popilwa kOshoongaleleleleki shomundo 1981.

Omukwetu ngenge ta ti: 'nonando ompito opo yi li mEkotampango', opo ombinga ashike imwe yoshili. Osheshi eemhito doovene odi li po epasha, shi ekelweshi ile shi kolekwe.

Ovanhu vamwe ove udite ngaho, kutya hapo twa li tu na okuhovela opo. Otwa li tu na okumboona tete omukalo woilonga mOngeleki opo i wanifwe noupu. Oshoongalele shovafita shomundo 1983, osha li sha dimina Elelongeleki li mbwangule mokulongekida ehoololo eli.

Elelongeleki la ka patekena. Omukwetu okwa ti; 'ehoololo inali pumbiwa manga.' Aye ehoololo ola pumbiwa, ashike pamwe itali piti manga.

Eyelifilo lotete, ole tu yelifila nawa, kutya Elelongeleki otali katuka nelongekido lomahoololo opaubishofi moshoongale-

Ehogololo lyondjila ondhigu tayi hule mesindano

Ihe ngame nashi kale ndje kokule, omushigakano gwaKristus ogwo tuu aguke, oshoka omolwago uuyuni wa aalelelwa ndje nangame nda aalelelwa uuyuni.

Tse aakriste, otse aahumbati yomushigakano. Aluhe otatu dhimbululathana moshinima shika. Ethimbo limwe omushigakano nguka omupu nethimbo limwe omudhigu.

Ethimbo limwe ohoni yagwo nuuwehame wago uunene unene, esiku ekwawo ihwepo ngaa. Ihe onkene tuu opo gu li. Otatu gu humbata shaampoka tatu yi. Naaluhe ogwo omushigakano, hapadhi na ashike, ihe omoshili. Okuhumbata uudhigu womatidhagano nomasheko noluhodhi.

Olwindji nenge omathimbo gamwe, otatu gu humbata nomathimbo gamwe ongaamboka twa aalelwa ko. Ihe natango ogwo ngaa omushigakano. Otwe gu kutha esiku ndyoka twa tameke okwiitaala Jesus notwe mu ningi ashihe shetu.

Naashika osho okweetha uuyuni notwa pitile momweelo okuhumbata omahepeko nealelwo komushigakano lye. Mboka ye mu landula, omuhumbati gwomushigakano nomwaalelwa ko wo, otaa vulu ngiini ya kale inaa ningilwa ngaashika oye?

Otaye mu si andola ohoni? Itaye shi yalula ando kutya osha simana okulandula ondjila ndjoka? Uuyuni otau gu yolo nokudhina, ihe ogwo omushigakano gwaJesus. Ogwo ashihe kuyo.

Ndika olyo lya kala ehala lyomuhongi, okwe ya thigile kehe gumwe okuhumbata omushigakano gwe. "Ngoka a hala okulandula ndje, ni idhimbike ye mwene, na leke omushigakano gwe ye a landule ndje."

Ngoka itaa humbata omushigakano gwe ye ita landula ndje, oye ino opalela ndje. Luk.9:23; Mat.10:38. Omushigakano ogwo endhindhiliko lyaalongwa, nokaku na omulanduli gwOmuwa kee gu na.

Iinima mbika iyali itayi vulu okutopolwa. Kalunga okwe yi tula kumwe nomuntu ita vulu oku yi topola. Pwaa na omushigakano, kapu na omuyuuki, pwaa na omushigakano, kapu na Omwana. Otu na okuhumbata omushigakano mokukalamwenyo

kwetu. Otu na okushashwa eshasho limwe naye. Otu na okumona eshasho lye.

Otatu adhima uuna tu li momuzalo gwohoni ye. Onyama oyi na okwaalelwa pamwe nokahalu kayo. Jesus ote tu tsike ye mwene omushigakano nota ti: "Gu kutha, e to landula ndje. Gu kutha nou taambe esheko omolwandje. Gu humbata, u taambe omaluhodhi omolwandje. Gu kutha, ngoye u yalule ayihe uuwanawa wago mokutseya Jesus Omuwa gwoye. Gu kutha, nde to kala u na ehala lyokuya nonando okondholongo nenge okeso omolwandje. Ilonga okuhumata omushigakano nokudhina ohoni yagwo."

Tse otu na oshiholelwa shomulongi gwetu nehala lye moshinima shika. Itandi ulike ashike kushika, kutya okwa endjelelelwa komushigakano. Otandi dhiladhila wo shi vule mpoka.

Oye okwa li omuhumbati gwomushigakano okuza pethimbo ndyoka a lala mokatamba. Omasiku agehe okwa humbata omushigakano. Okukalamwenyo kwe, okwa li olweendo oluyapuki lwa uka kuGolgota. Ihe olweendo lwe aluhe lwokevi olwa kala ondjila ondhigu. O-

Gal.6:14

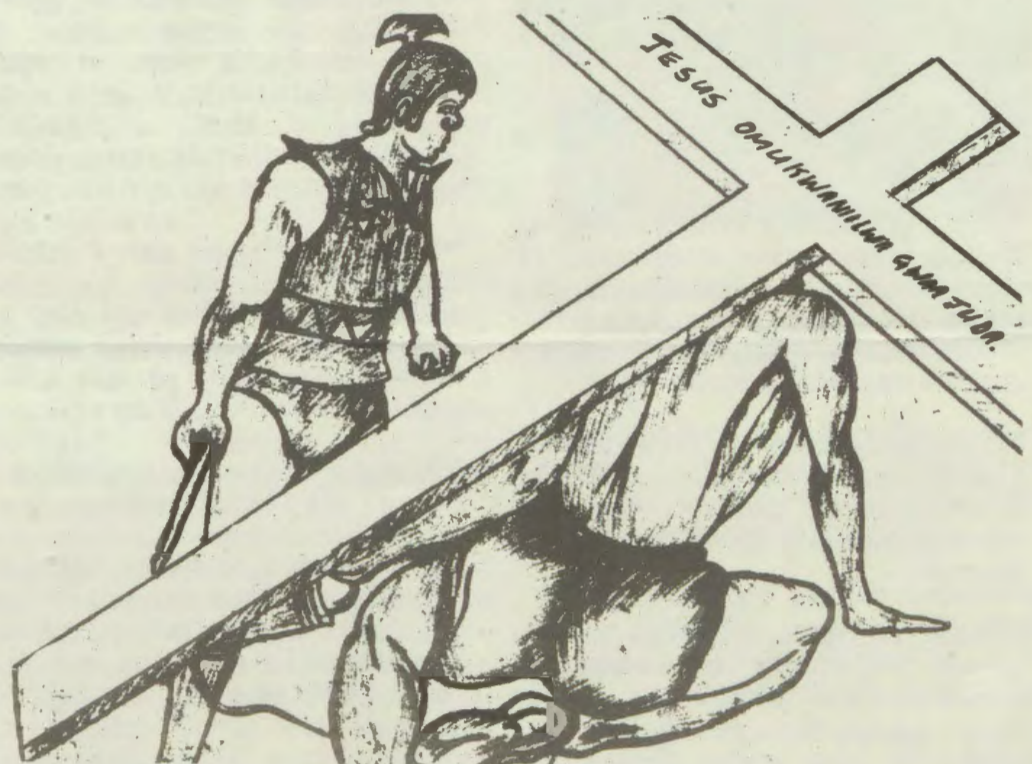


ndjila yomasheko yoluhodhi okuza kokuvalwa sigo okeso.

Okukala kwe, okwa li "omulumentu gwomahepeko, gomaluhodhi." Osho tatu mono kutya, okwa li gwomaluhodhi nokwa faathana natse. "Omulongwa kee vule omulongi gwe. Shono ye shi ningile ndje, osho taye mu ningile wo."

Oye onzigona ndjoka twa landula, onzigona ndjoka ya dhipagwa. Otse aalanduli yaangoka e na iyadhi miikaha nomoompadhi, ngoka e na omandhindhiliko guuwehame molutu lwe, ngoka a zalekwa oshipaka shomakwega. Oye omumwameme omukuluntu. Oye esipa lyomomasipa getu nontumba yomootumba dhetu.

Festus Ashipala



OMASIKU GANE AGEKE

kuLiina Mpanda

ETSIKILO:

Imuna yandje otayi ka gundjila tuu mbela ngohela?" Konyala Anna okwiipula ngeyi muule, ihe a dhi-mbulukwa mbala, kutya yina ina tseyamanga omatokolo ge.

Yina okwa vongola meipulo lye moku mu popitha ta ti: Ho masiku e ya e ku mangelule u tameke osikola yoye, sheeli."

"Eeno ope na omasiku gaali ageke, a galuke. Nonku ndjiya otayi pitilile nokuli inaayi pululwa."

Yina a kuminwa Anna e na ohenda nonku, nando e na eyeme lyosikola. "Amwaalwa kali shi manga sha." METine sho taa longo, Anna ota longo nondjungu nota tala olwindji ketango.

"Inaku sha mumwandje, iikombo oho yi piitha mo unene ongula. Ihayi ku hepeke, ngaashi inaayi ku igilila?" osho yina e mu pukulula.

"Ohe litha kokule."

"Oho litha ano peni shitiwa?"

"Okomulonga. Kuuwanawa nee! Imuna ya gundjila owala nawa, nomeya oko ge li. Aantu yalwe inaa mona ando natango ehala ndiyaka. Onda kumwa sho natate inee li lombwela ndje."

"Ngiika naho ine li mona," yina osho e mu yamukula pafupi.

Anna a yi kosikola. Ndika olyo esiku lyekonakono lyawo momwaalu. Ombinga yopakopopya oya ningwa tango. Esiku ndika olya kala unene momadhiladhilo ge, nomolwasho a ehamekwa unene kezopo lyahe.

Pethimbo lyokunyola, Anna okwa li e na uudhigu okutongolola mekende. Otaku ningi ku tiwe, ota yaka mombapila yaMatti ngoka e mu gama kekende.

Manga taa nyola, iikombo nani ya vulwa. Nekonda nomwana ya thuutuka po, e tayi yi kepya lyomusamane Ngonga. Nguka okwa adhika ta litha pooha dhepya lye,

onke okwe yi mono mbala.

Nekonda a fegula po omathinde gaali, omwana limwe. Omusamane sho e yi ganda, oye mu tongolola manga okathimbo, opo ihe ya shuna lwaanima.

"Mukwanambwa, ila u thikame piimuna, manga te thindikile iikombo yaFilippus mbi. Oye mu iyaka ngiika, sho ta ka edhilila." Osho omusamane Ngonga i igidha omukulukadhi gwe, ngoka ta kunu.

Nani iikombo ayihe omo yi li momulonga. Omusamane Ngonga okwe yi hingi, sigo okegumbo. Omukulukadhi Helena moku mu mona, okwa pula nehaluko:

"Iihuna shili! Anna oku li peni?"

"Oye e li ko?" omusamane Ngonga a yamukula wo nepulo.

"Eeno oye e li ko."

"He okwa yi peni?"

"Okwa ka tala uundoongi we kuKongo, a yi mEtiyali."

"Okwe u kundana?"

"Eeno okwa nyolelwa kumumwayina, Jafet, aniwa owa adhikwa kOshimpolo. Uusita waAnna wokomulonga, e u lombwele ndje tuu ongula yonena, ngiika hakwa ya kosikola ngawo?"

"Eeno, Anna oku li mosikola. Haye li mongundu yimwe naSaara gwandje, ye Saara okwa ti oye na ekonakono nena," omusamane Ngonga osho a yelithile omukulukadhi Helena, nokwa tsikile:

"Ndishi oye na po aniwa omulongi omupe?"

"Aniwa, ihe ngono Anna ota nyola ngiini ekonakono, ye opo a yi ko ando nena kosikola?"

"Aawe, Mukwanekamba, Anna okwa sikola omasiku agehe. Nohelalela Saara ota ti ngaa: Kandi shi wo nande, kutya omolwashike Anna ihaa hulitha ootundi dhiilonga yiikaha. Oya kundathana po ngaa nomulongi gwetu, e ta yi lwokomulonga. Nani iimuna!"

Taku tsikilwa

Omwaalu mOostanda dhopombanda

Onda hala okupopya kashona kombinga yoshipopiya shomwiilongi D. Th. Lenga, sha holokele mOmukwetu gwaFebuluali No. 4/1984, kombinga yelongo lyomwaalu moositanda dhopombanda.

Otandi zimine pamwe nomwiilongi Lenga. Onawa shili mOwambo mu monenwe aalongi ya pyokoka, mboka taa vulu okulonga omwaalu, sigo ositanda ontimulongo.

Pehulilo lyoshipopiya omwiilongi okwa ti: "Opo aalongwa tu kale tu na oshilongwa shoka okuza ko A sigo Omatilika, twa hala nenge inaatu hala."

Etumbulo ndyoka lya hugunina, itandi zimine naanaa pamwe nalyo. Aalongwa mosikola oye li mo ye na omaithano ga yooloka. Kehe omulongwa oku na uuthe-mba wokuhogolola oshilongwa shoka tashi kwatha eithano lye.

Otashi kwatha shike, ngele omulongwa oku na eithano lyuuteologi, ta thiminikilwa omwaalu, peha lyelongo lyOmbimbeli? Nenge e na eithano lyuunamapya, ta kutha omwaalu peha lyuunamapya nosho tuu.

Ihe omulongwa ngoka a hala a ka ninge omutekenika, omunamiti, omutungu, omulongisikola, omunambaanga nenge omulongi mombelewa nosho tuu, na thiminikilwe omwaalu, opo gu opaleke eithano lye.

Onawa ngele aalongisikola taa tseyithile nawa aalongwa yawo okuza positanda VIII, mpoka hapu tameke ehogololo lyiilongwa, pamulandu gwopaigwana, nkene ye na okuhogolola nawa iilongwa mbyoka tayi kwatathana nomaithano gawo, opo yaa ndope momakonakono yo yaa kanithe omaithano gawo.

Ngele tatu thiminikilwa atuhe omwaalu, nena otashi ka dhigupalela aalongwa oyendji, mboka omaithano gawo itaaga kwatathana nomwaalu. Nengele omwaalu otagu longwa owala sigo Ositanda VIII, nena otashi ka ngambeka wo aalongwa mboka ye na omaithano taga kwatathana nomwaalu, opo yaa tsakanithe we omaithano gawo.

Onkene iilongwa ayihe onawa ngele tayi kala tayi longwa sigo Ositanda X, opo aalongwa ya vule okuhogolola nawa iilongwa pamaithano gawo.

Pamulandu gwopaigwana, okuza positanda VIII, omulongwa kehe okwa pewa uuthe-mba wokuhogolola iilongwa mbyoka tayi kwatathana neithano lye nopwaa na ethiminiko lyasha. Ethiminiko oli li owala okuza ko A sigo ositanda VII.

Shikongo Vilho
Windhoek

Ovaleshi tava
pukululafana

Omukwetu, tu kufa momalimbililo

Da dja kep. 2

lengeleki tashi uya neudo. Ohaluka kwa lauka vali eyelifilo etivali tali kondjifa linya lotete, notali popi eponyo lomalongekido.

Eyelifilo etitatu eshi le tu mbunyukila, otali ti; 'havabishofi vali, ndele omuwilikingeleki umwe.' meduliko, omaongalo okwa hovela nomalongekido okuulika vatatu ovo tava ka ya mehoololo mOshoongalengeleki neudo.

Opo tu li po natango, Omukwetu waFebuluali tuu mbunyu. Ou otwe u tala oo eyelifilo etine tali haula linya etitatu notali londeke ohonde yetu.

Ohonde yetu otai londo, osheshi eyelifilo eli, otali popi oshinima shipelela inatu shiiva sha kusho nale. Itaku popiwa vali ovabishofi ngaashi sha diminwa kOshoongalengeleki oshiti 11/1981 nosha popilwa koshoongalele shovafita aveshe shomudo 1983.

Paife ope na 'domuwilikingeleki ile ovawilikingeleki voikandjungeleki, tava longo koshi yomubishofi pamafo.' Eshi epukifo linene okulongifa oshitya "omuwilikingeleki" manga nopehe na efatululo lasha.

Omukwetu, ou ta ka hoololwa mOshoongalengeleki neudo oye ou a shangwa momukanda oo wa shangelwa omaongalo tau popi "omuwilikingeleki" ile oye oo a diladilwa kElelongeleki eshi la longifa oshitya, **manga**, ile omuwilikishikandjo?

Ovatumwa vomaongalo nenge tave uya va hoolole omuwilikingeleki ngaashi ve lilongekida, otave uya ve litwe mehoololo lomuwikishikandjo? Oitya ei, otai popi omunhu umwe?

Ovatalinawa otava ifana oshinima eshi, kutya osho oupolotika wOngeleki. Omolwashike ku na okulongifwa edina olo, nande eshi sha diladilwa oshimwe shi lili? Oinima aische ei ha tu longekida, nai popye elaka lEkotamhango olo tali ka longifwa nenge la diminwa, opo paha kale omapukifafano.

Tala kep. 8

"OFABULIKA" YOOMBIMBELI MOSHIWAKOPO

Ku kRirsti Asunta

Oshinyolwa shOsoondaha yeti 26.2.1984, osha li: Ekuno lyohapu. "Iiholelwa yoshilongo shaKalunga, iinima itaayi lunduluka. Ombuto oyo ohapu yaKalunga." (Olavi Kaukola, omusitagongalo Omusoomi).

Omaludhi goombuto itaga gwana manga. Oku ga tululula otaku pumbiwa natango. MOshiwakopo (Swakopmund) muka omu na ngashingeyi ehala, moka omaludhi goombuto dhoo hapu ndhoka, taga talululwa notaga konakonwa.

Egumbo lyetu limwe ndyoka lya yakula oomvula ndatu, mboka ya fudha mOshiwakopo, olya ningi ngashingeyi "ofabulika yOmbimbeli," ngaashi Terttu Heikkinen ta ti.

Aantu mboka haa popi Oshinama muNamibia, oya kala ye na Ombimbeli yawo okuza komumvo 1966. Elundululo ndyoka lya tegelele ethimbo ele, manga inaali nyanyangidhwa.

Elaka lya li ko kaali uvitike nawa pethimbo ndyoka nokuli uuna Ombimbeli ya holoka. Omukalo gwokunyola elaka ogwa lunduluka uule wethimbo lyomimvo onke aagundjula yepipi ndika kaya uvite ko nokuli elaka ndyoka. Otatu ti: Omaludhi goombuto itaga opalele ekuno lyongashingeyi.

Ehanganombimbeli lyaSuid-Afrika, oli na ngashingeyi ooprojeke mbali molwOmbimbeli yOshinama. Tango, otaku ka ningwa enyanyangidho epe kelundululo ekulu mokulongitha omukalo omupe gwokunyola. Omapuko omanene motekisti ageke taga opalekwa.

Oshitiyali, otaku ningwa wo elundululo epe melaka lyongashingeyi, ndyoka lyu uvitike kaantu yepipi ndika. Terttu Heikkinen, ngoka a gwanitha omimvo 50 mesiku ndyoka lyekuno lyoo hapu eti 26. muFebuluali nuumvo, oye omuwiliki gwooprojeke ndhoka.

Aakiintu yamwe Aanama oya nyola elundululo ekulu pamukalo omupe gwokunyola noya ningi wo omathaneko goku li pukulula kombinga yelundululo ekulu. Pethimbo ndika Terttu ota konakona omapukululo ngoka nota longekidha

ngeyi Ombimbeli yi nyanyangidhwe pamapukululo ngoka.

Sho nde mu thaneke, oye a kuutumba poshitaafula nokwa li e na Episalmi 110 moshikaha she, ta leshulula ovelise ndjoka tayi leshwa ngeyi:

"Omeopalo lyuuyapuki woye, aagundjuka yoye taye ku andukile ngaashika omume mekolo lyeluwa."



Terttu Heikkinen ta konakona omapukululo melundululo ekulu mOmbimbeli yOshinama.

Melundululo omwa monika oshitya "ombinzi" peha lyoshitya "omume". Osho omapuko taga vulu okudhimbilulwa moetekisti.

Terttu ota longo pamwe nomulongi Omuswakopo, ngoka ta popi Oshinama, Erwin Tsowaseb. Oye okwa putudhilwa mosikola yetumo

Tala kep. 6

OFABULIKA

Dha za kep. 5

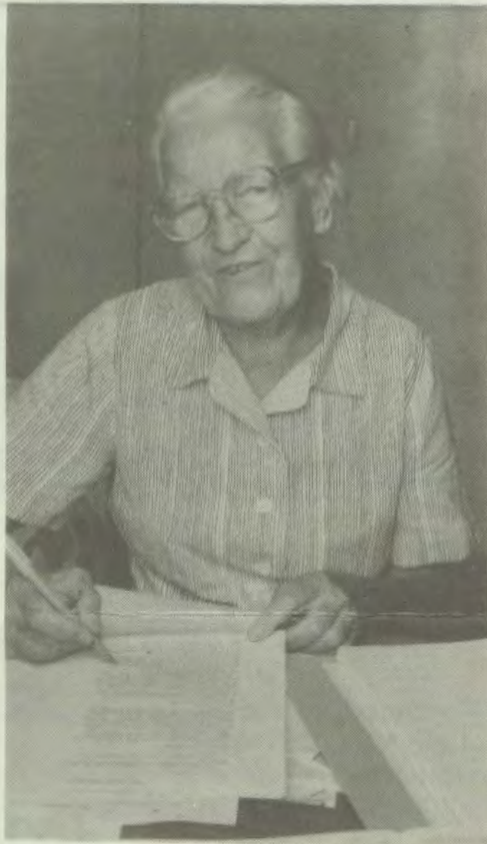
lyAandowishi (Reinse Sending)
muMartin Luther High School.

Sho a ningi omulongi okwa longo mOshiwakopo moka a valelwa. Ihe oye okwa mangululwa miilonga yosikola omimvo mbali, opo a kale moshilonga shelundululo lyOmbimbeli.

Ngashingeyi ota lundulula embo lyililonga yAayapostoli. Poshitaafula shawo oshinene opu na Oombimbeli dhomalaka gi ili nogi ili ngaashi Oshigreka, Oshiingilisa, Oshiafrikaansa, Oshindonga nosho tuu.

Ihe nandi tsikile natango. Laina Kivela, ngoka a li omimvo ne muSoomi, omimvo mbali dha hugunina mopensione nokuli okwe ya huka, a kwathe miilonga yOmbimbeli.

Oye ota leshulula oombapila dhOmbimbeli yOshindonga, elundululo epe. Oombapila otadhi zi kEhangano lyOombimbeli nomOshinyanyangidho oshinene kOkapa (Kaaapstad). Onda dhimbulula kutya Laina oku



Kuku Laina Kivela ta leshulula oombapila dhOmbimbeli yOshindonga, elundululo epe.

na oonkondo nonokwe okulonga, oshoka Ehangano lyOmbimbeli, otali nyengwa okutuma oombapila odhindji dha gwana okuleshululwa kuye esiku nesiku.

Uuna oombapila dhOmbimbeli dha pu po, okuleshululwa, Laina oha lundulula uutraktaate (uumbo womatumbulo gomOmbimbeli pafupi) mOshindonga nomOshikwanyama, opo u nyanyangidhwe wo nou topolelwe aantu omagano.

Omumbisofi Leonard Auala manga inaa mana oondjenda dhe, oku uvu kutya Laina okwa galukile kuAfrika, okwa ti: "Aalundululi yOmbimbeli naa endelele, opo aantu ya pewe elaka lyehupitho mbala, oshoka osho oshinima oshinene shi vule iinima ayihe."

Ngele oto ontamene "mofabulika" yetu yOombimbeli, oto dhimbulula mbala, nkene iilonga tayi dhigininwa noonkondo. Kehe ngoka ota petama poshitaafula mokudhiginina oshilonga she.

Omitse dhaTerttu naErwin, ohadhi yeluka ashike uuna ye na oonkundathana dhehogololo lyoshitya nenge lyetumbulo.

Oyo kaye na nokuli ethimbo lyokutala omakuthikuthi gefuta lyAatilanda ndyoka tali adhima nawa nokuhekaheka ethimbo alihe, nonando oyo taye li monene mekende enene lyondjugo yiilonga yawo.

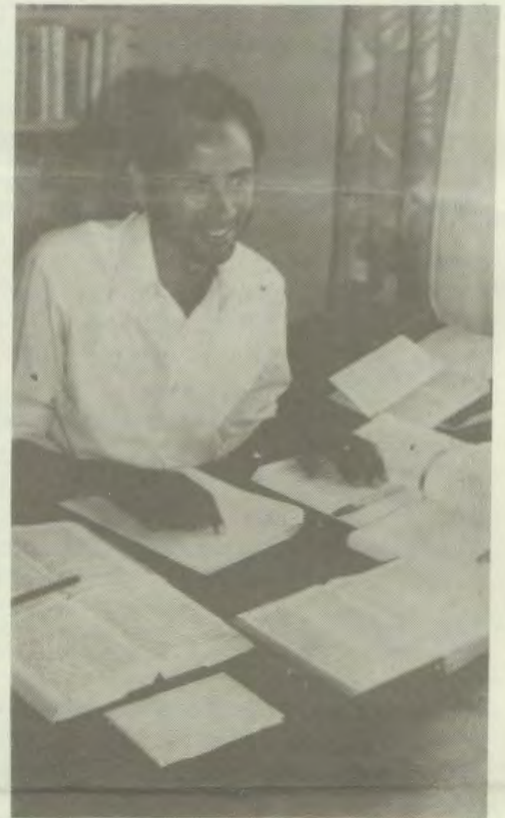
Terttu ota longo wo mokasikola ketu, Oshiingilisa nOshisweden, ongula kehe potundi 7.30 sigo 8,15 nomOlyomakaya ootundi mbali nokuli. Oye ote shi ningi kehalo lye mwene nopethimbo lye mwene, nando sho shene kashi shi oshilonga she.

Ye ina zimina, a fupipike ando ethimbo lyiilonga ye yOmbimbeli, onke ta longo ootundi dhe ongulangula. Aalundululi yOmbimbeli oye na eulumo. Oshilonga shika oshi na ondilo. Oohapu dhaKalunga, otadhi pulwa noonkondo.

Otatu shi dhimbulula nokuli mokudhiladhila iilonga mbyoaka tandi yi longo, mokuyakula melandithopo lyomambo muka, nkene nda landitha Embo lyOmaimbilo konyala omathele gatatu nOombimbeli dhi vule ethele limwe pethi-

mbo lyoomwedhi ne dha piti po ngashingeyi.

(Oshipopiwa sha nyolwa mOshisoomi, nosha lundululilwa mOshindonga kuLaina Kivela.)



Omulundululi gwOmbimbeli, Erwin Tsowaseb

ONYEKA YEPUMBA YE KU FALA KOYO- MUHONGO

Dha za kep. 8

Aayakuli yokomeho ya putudhilwe esimaneke lyaakuluntu, onkalathano nawa nontseyokalunga. Ope na oyendji yomaalongwantu taa nyengwa okusimaneka aakuluntu, uuna ya mona iilonga yontumba, ngaashi taa nyengwa wo okusimaneka aakuluntu yawo yene. Ano ino tegelela omwandi gu ime onkwiyu.

Pehulilo onda hala okutsa omukumo aavali yoshigwana shetu, ya tume aanona koosikola yo ye dhi dhiginine, opo omahala ngoka gaa na aayakuli ya gwana, nenge gaa na nandenande, gu udhithwe.

Shika onda dhiladhila kutya otashi ka pupaleka iilonga yaayakuli yoshigwana shetu.

Ndapanda Shigwedha

1. Esiku'uun'eso lya sa,
Uuna ndo pwa li sha.
Nela lyompolongela,
Vulu ka za ndjala.
Omuwa a gepul'oothipa,
Dheso e dhi inipa.
A za mo oshimati,
A kondj'oshimati.

2. Uuyuni ligoleni,
Uuyuni mu tangeni.
Tu hiyathaneni,
Omuwa e li mokola.
E li wagagula,
E tu ninga aashendo,
Tu ze momawendo.

3. Nando tu ye mombila,
Okwe yi yapula.
Uuna ndoka a lala,
Ina pugalala.
Aasi a uvithila,
Kuty'es'a vekula.
Mangathith'a dhitula,
E ga mangulula.

4. Aayapuki yi inyowo,
Aayuuki ya zi mo.
Ya kweshuk'uuyelete,
Ya zal'uuyelete.
Meemukwetw'aashekesheke,
Ya yela ngaa sheke.
Taa tanta, taa nuka,
No taa kaluluka.

5. Omuwa Tshime, pandulwa,
Simu, hambelelwa.
Pamba u ligolelwe,
Mbangu u lukulwe.
Kalunga Tate, tangwa,
Nampongo ngoy'pandwa,
Ongoye omukwaaluhe.

6. Mu omuntu onda thika,
Ndishi li pondika.
Omwenyo ngu kololo,
Sho nda mono ompolo.
Noondhi ote yolitha,
Tandi ilagithitha.
Ondjimbo ya pandeka,
Kokule yu uvika.

Jason Amakutuwa

EKULILO LYOKUGOLGATA

Kristus sho a valelwa muuyuni, okwa pitile momaudhigu ogendji sigo omekondjo lye kuGolgata. Nonando okwa li a longele aantu uuwanawa owindji; a aludha aavu, a tonatitha aaposi, a thitulula aathitamatsi ye ta yumudha aasi, okwa li ku na wo mboka yaa na eitaalo muye.

Inaa itaala oye omuhupithi nOmuna gwaKalunga. Judas wo yIskariot ngoka a li aluhe puye, omulongwa gwe, eitaalo lye olya sindika keliko lyuuyuni mbuka, kiimaliwa. Okwa dhipagitha omulongi gwe, Omukulili gwe nOmuhupithi gwomwenyo gwe .

Omuwa okwa gandjwa miikaha yaapangeli yuuyuni mbwiyaka, kaasaseli aakuluntu, mboka pethimbo ndiyaka hatu ti, aasita. Okwa gandjwa miikaha yaakesari, mboka hatu ti oopresidende, a dhipagwe.

Komutse okwa zalekwa oshipaka shomano, opo a mone shili uuwehame. Okwa dhengwa noongonyo, okwa hiyilwa omayeye nokwa shekwa nayi. Yaye kuGolgata.

Otu shi shi nomethimbo ndika omu na oye-ndji mboka ombinzi yawo yaa na oondjo tayi tika, sho tayi tiiahithwa kohole yeliko. Mbuka owo wa kala uupyakadhi wuuyuni.

Komushigakano Kristus okwa tumbula o m a t u - mbulo ngaka: Tate, dhimapo oondjo dhawo, oshoka kaye shi shi shoka taa ningi. Omukiintu, tala omumwoye nomulongwa, tala nyoko. Nda senota. Eli, Eli, Lama, Sabaktani. Onena tuu ndjika to ka kala pamwe nangame moparadisa. Sha longwa sha pwa. Tate omwenyo gwandje otandi gu gandja miikaha yoye.

Osho a tumbula ngeyi lwahugunina nokufudha mo omufudho gwe gwa hugunina. Otwa longelwa ekulilo kuGolgata. Kristus okwe tu kulile, oondjo dhetu odha yogwa po nombinzi ye.

Festus Angula Ekandjo

“ONYEKA YEPUMBA YE KU FALA KOYOMUHONGO”

Ongogumwe gwomaaleshi yOmukwetu, onda hala okupopya sha kombinga yoshipopwiwa shaLungameni yaSem, 'Ovanandunge momapeni, meeponda omalai', sha holokele mOmukwetu gwaFebuluali No.4/1984.

Otandi pandula komapukululo we ga gandja moshigwana shetu, molupe lwokushanga mOmukwetu, ngoka taga popi unene kombinga yaalongwantu. Mokulesha oshipopiwa shoye, otashi holola kutya, nangoye wo ogumwe gwomaalongwantu, ihe iitya nomatumbulo ngoka wa longitha, itaga holola euvoko lyondilo yomuntu.

Owa pukulula mboka haa 'yolagana nIlumbu nOombaati,' ihe omukulugwonale okwa tile; "omulongelo ogwa kutha omukwawo kondunda." Otashi vulika pamwe omaihumbato getu, ge tu etele wo eyakulwo lyonayi. Owe shi koneke tuu?

Onda lesa okahokololo koye neitulomo enene; hoka ke na sha neso lyokanona. Ou na tuu shili uunzapo wa gwana moshinima shino, opo u vule oku shi shanga mOmukwetu?

Egililo lyopomudhingoloko otali ti tuu sha pethimbo lyokumona okanona? Paufupi wokutseya kwandje, okumona okanona kwomuntu a longwa nenge ina longwa, e shiwiki pomudhingoloko naangoka kee shiwiki po, ashihe oshi thike pamwe. Uudhigu nuuwehame auhe umwe.

Tala kep. 8



Mombila owa lala nowe yi yapula. Kungoye tandi tala, nge niu u pokusa. Ooshoka sha zi mevi, shi shune mulyo wo. Ihe omontsi yevi, oto tu adha mo. (Ehangano 89:2)

OMUKWETU TU KUFAMOMALIMBILILLO

Da dja kep. 5

Ile Omukwetu, owa hala oku tu shiivifila, kutya Elelongeleki ola nyengwa okutwa kumwe melongifo loitya? Vamwe otava popi oshitya, **omuwilikingleki**, manga, vakwao tava popi **omuwilikishikandjongeleki**. Omukwetu ota fatulula ngahelipi omayooloko aa?

Otu shi shii kutya omaongalo okwa tuma omadina atatu keshe limwe, muo hatu ka hoolola umwe aeke. Ngenge eshi twa unganekwa notwa longekidwa itashi shikulwa, osho shipe otashi ka pita ngahelipi inashi unganekwa?

Omhumbwe yomuwilikingleki, Omukwetu owa ti oya dja nale. Oi fike hano peni? Otwa kumwa eshi Omukwetu ta ti, oshoongalele shopamaufu kashi na omhito yokuhoolola omuwilikingleki, sho shi na eenghono dokuhoolola omuwilikishikandjongeleki, ile ovawilikishikandjongeleki noku va ufila oilonga yavo.

Ngeno okwa li omhumbwe yomuwilikingleki ya monika nawa, ngeno inaku shiivwa ne oshoongalele shopaulumomhumbwe shi hoolole omuwilikingleki?

Ngenge oimaliwa yoku shi ifana katu i na, ohatu mono ngahelipi oyo yoku tu kwafa pefimbo lomuwilikingleki (ile vahapu) ve li koshi yomubishofi?

Onda li ndi udite otwa pumbwa unene oshoongalele shovafita aveshe neudo, opo shi popile tete oinima oyo ipe ya holoka po, yo i fike nawa mOshoongalele. Ashike paife otundi omulongo nambali nale. Paife nashi ninge hano ashike eindilo letu, tu tuminwe eyelifilo limwe tali tu kufa oipuvanguwo.

Omapulo kufye omahapu unene. Efimbo eli opolotika yoshilongo tai ehama, otai tu pitika tuu tu hovele oinima ipe i fike opo paife? Pamwe Ongeleki otai hangwa ya kuluka momaxupilo? Omamanguluko ohaa etelele ekuluko lomaxupilo oilongo, shaashi eliko ola pwila moita.

Paife Ongeleki oi na omaudjuu nale moinima yomaxupilo, ongahelipi mbela nge twa weda ko vali? Pamwe ohatu ka ninga "oohangolokanyange" nokushituka epyatumo?

Ongeleki tai kunguda, oi na oupu okuninga "kapokolo kaandjalukumwa". Natu lesheni omadidiliko efimbo.

Otu na etumo kuSenegal, otu na ehangano lEengeleki muNamibia, VELKSWA. Oinima ei itatu, otai endafana ngahelipi. Ohatu i dulu aishe itatu oshita? Ile pamwe kape na ou e na omukumo e tu lombwele tu efe po shimwe? Elok, ita ningi ndishi oinima oyo tai ka ninga endangalati mondjila youkumwe wOvakwaluther muNamibia?

Ohandi indile nda mana mo, oitya oyo tai longifwa i fatululwe nawa shili, opo tuha ye moinima tuhe i shii. Kalunga ne tu wilike natango, fiyo hatu hange onghatu opo oshinima tashi yela nawa. Paife oinima yetu otai lidingonoka. Pamwe natu indileni manga.

V. Munyika

Omukwetu ta yamukula Munyika kombinga yehogololo mOngeleki

Omupuli omufimanekwa, nande wa shanga oshinyolwa shile u yelifilwe vati kOmukwetu omolwehoololo tali ningwa neudo mOngeleki ya ELOK, owa fa wa pumbwa eyelifilo moitwa ivali aike;

1. Omolwashike omadina omuhoololwa taa lunduluka efimbo keshe; omubishofi (pashoongalele shomudo 1981 noshooongalele shovafita shomudo 1983), Omuwilikingleki (paLelongeleki leti 23-25.11.1983 oshit.478) ile omuwilikishikandjongeleki (paomubishofi mOmukwetu No.4/1984 ep.4.

2. Nomolwashike elelo lOngeleki li na okutukaulwa pefimbo lomalunduluko opapolotika, oo omupuli wa holola kutya ohaa eta enwefomo la kula moungundi womaxupilo Ongeleki.

Eyelifilo lOmukwetu mepulo lotete kelile. Okutya ashike Elelongeleki inali popila ehoololo lomubishofi, moshooongalele-engeleki tashi ya 1984, osheshi ola mona, kutya opu na "omalongekido manene taa pumbiwa natango," (oshit.477/1983).

Onghe la kolekulula natango onhokolwa yalo onhi 478/1983, ku hoololwe ashike manga "omukwafi ou ta ifanwa omuwilikingleki nota longo koshi yomubishofi noyElelongeleki fiyo okoshooongalele-engeleki tashi ya", 1988.

Omupuli omufimanekwa, nongenge owa lesa ombilive yeshivo lokoshooongalele-engeleki shoneudo, oyo ya tuminwa ovafita nomaongalo komubishofi, mepandja etivali mokatendo kaxuuninwa mu C omu na

naanaa oshinima osho tashi pulwa kElelongeleki, eshi pa tulwa eshikulafano loikundafanwa yoshiongi. Mu C otamu leshwa ngaha:

..... Ehogololo lyomuwilikingleki pakotampango ekulu, oshit. XII nenge omuwiliki gwopakathimbo pakotampango epe, oshit. XIII.

Hano ehoololo tu na neudo, omuwiliki wopakafimbo ta longo ashike manga, fiyo oshoongalele-engeleki shikwao tashi ke uya.

Kombinga yepulo etivali, Omukwetu ke na enyamukulo, shapo omaongalo aa taa ka hoolola, oo naa nyamukule ngenge Ongeleki oya pama tuu nokutukaulwa pefimbo eli?

Omukwetu

ONYEKA YEPUMBA

Dha za kep. 7

Okanona ngele oka thikana okuvalwa, otaka valwa ashike, kutya nee okalye, nenge opehala lini; megumbo, mondjila nenge okuza kedhiya, ngele okuuka koshipangelo nenge moshipangelo shoshene.

Iinima yi na sha nokuvalwa kwokanona oya pumbwa elongelokumwe lyanakuvala ye mwene nolydmuyakuli gwe (omualithi). Ihe ngele kapu na elongelokumwe nenge okwaaha taamba omapukululo, ohashi vulika shi ete wo iiponga yoludhi ndoka.

Kombinga yeipulapulitho lyaavalithi, 'oh, hamba omukulukadhi ogwoye?' Owe shi tala tuu koombinga adhihe, nenge owe shi talele owala kombinga ndjoka ombwinayi, sho wa sa uunye aalongwantu?

Omualithi pamwe okwa holola owala euvitonayi pamwe nanakuvala omusamane?

Owa popi ishewe kombinga yuunona oohuyali muumbete. Epuko oto tala olya lye? Omahala ngoka ge li po ngele itaga gwanene uunona mboka, ando pakutala kwandohotola u na okukala muumbete, umwe nau shunithwe nani komagumbo, nonando onkalo yawo itayi shi pitika? Mpaka ano kandi lwete ko euvoko lyoye lyondilo yomuntu.

Owa koneke tuu, kutya oyindji yomiipangelo yetu, kayi na iipumbiwa (fasiliteite) ya gwana, sha kwatelela mo wo aayakuli? Ino yeleka oosa noomposi.

Otandi tsu wo kumwe nangoye, kutya ope na yamwe yomaayakuli yetu ye na omalaka omakukutu tage tu kenyleneke moshigwana shetu noitatu simaneke nuupu eyakulo lyawo. Otatu vulu wo okudhiladhila, kutya iinima yimwe uukwatya mboka ihaa vulu okulundululwa nuupu.

Opo tu kandule po nenge tu hwepopaleke omukundu nguno, aavali yoshigwana shetu onawa ya kuthe ko oongaku yi itule mo meputudho ya mana mo, opo ye tu putudhile aayakuli yonakuyiwa yetu aawanawa.

Tala kep. 6

UUKWATATU NUULE-LIGUMBO

ku S.V.V.Nambala

ETSIKILO:

Uuleligumbo owo elongitho lyetu lyaa-shoka twa taamba, shoka twiinekelelwa kuKalunga. Shika otashi ti kutya oshinima owala kehe shomonkalathano, osha kwatelelwa mo.

Kalunga oye omushiti nolunza lwaayihe. Nkene hatu longitha shoka a gandja, osho uunzapo, euvitho, ehokololo kutse. Momathimbo ngoka omayamba uuna oothi-thiya tadhi talaleke oombuga dhoomwenyo dhetu, uuna twa tseyi ishewe kutya okukala kwetu okuudhilila pombanda omagano-henda gohole yaKalunga muKristus, nena otwa mangululwa okukala tu na eudho epe, eudho lyonkalamwenyo ndjoka ya yuulukwa okuhokolola Kalunga nokuyakula yalwe.

Uuleligumbo kau shi oshinima shopamwaalu, nenge endulopo lyontengenekofaneko ando, nenge egongeloyelutho lyiimaliwa nenge eyambulopo lyehangano lyontumba, aawe. Uuleligumbo owo eya-

Omukithi nguka otagu kuka uunake moshigwana

Aantu omayovi ogendji otaa ehama omukithi gwa tya ngeyi. Oyendji inaye shi dhimbulula sigo ethimbo lya pu po. Oyendji otaye shi ithana iilonga yomutondi, yamwe ye shi luku iilonga yomuntu mwene - omukithi ogwo iikolitha.

Uukwashili ou li ihe mpaka, ngele uuvu wa tya ngeyi inau pangwa, ope na owala ondjila yimwe, oyo eso. Ipopiwa yokuhunga aavu yiikolitha ohayi holoka olwindji miifo, miigongi yaagundjuka, yaakiintu, yaasamane nosho tuu pamikalo odhindji omiwanawa.

Omanga tuu mooRadio iikolitha otayi tangwa nokusimanekwa, kutya otayi eta ukolele molutu lwomuntu.

Ondi na okuninga ngiini ngele nda ningi ombwii noihandi mono ombili manga inaandi iganda mo?

Oyendji yomoshigwana shetu oyi itaala nale kutya omalovu oge ya pika nokape na we oxipito yoku ga etha. Omanga

mukulohalo lyenyanyu lyomwenyo omwaanawa kuKalunga mushoka e ku ningile.

Uuleligumbo kau shi wo ethiminiko lyopaveta, ihe owo ehokololo memanguluko, mokukala nomokugandja medhina lyaKristus. Luk. 6:37-38. Ngele nani uuleligumbo owa kwatela mo ashihe monkalamwenyo, nena oto shi ulike nenge oto shi tseyitha ngiini mokugandja miitopolwankalo tayi landula:

The manga inaatu mana okudhiladhila shoka tatu gandja miitopolwankalo mbika, natu ipule ishewe nomapulo ngaka: Omugandji olye? Okwa gandja shike? Okwa ga-

OMUKWETU OTA GANDJA OMBILI

Omukwetu ota gandja mpaka ombili kaaleshi, nuunene komunyoleli moshikololo shUuleligumbo S.V.V.Nambala. Oshinyolwa shoka mOmukwetu No. 6/1983 epandja 5, osha holoka sha vundakana niinyolwa iikwawo yopepandja ndyoka. Ombili. Otatu shi shuna mo ngeyi nelandulathano lyasho ngaashi shi na okukala.

Omukwetu

inaaya nwa, itaa vulu aniwa okupopya, okulonga nenge okudhiladhila.

Shika otashi vulu okuhedhitha eso lyomuntu popepi. Uyelele ou li owala mpoka kutya omuntu ota vulu okweetha po iikolitha. Otashi kala oshidhigu shili poomwedhi dhope-tameko, oshoka omuntu okwa adhikwa iigilila.

Gumwe ota ti, ota nu mo owala kamwe, ohaluka wa ningi uyali, wa ningi owindji nuukolwe wa tameke tuu ngaaka.

Uunake nda ningi ombwii yiikolitha

Halwindji omuntu ta dhimbulula, kutya a ningi omunwi gwolela nokwa pikwa nokuli kiikolitha. Oonkolwi olwindji odhi na onkalamwenyo ombwanawa. Aantu yoludhi nduka olwindji ihaa ningi iinima iiwinayi ngele ya kolwa.

Shono sha yela osho owala shono, kutya oalkoholi otayi ende tayi mene omidhi momuntu a tya ngeyi. Olutu otalu kanitha oonkondo kashona nakashona, sigo omuntu a yi mokunwa kwashili.

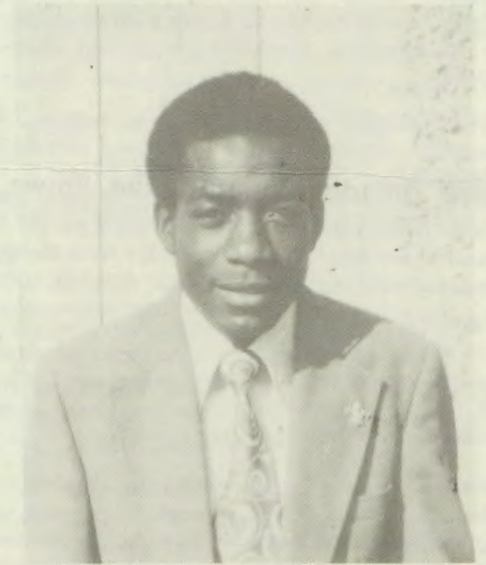
OMAPULO:

Mpaka otapu landula omapulo

ndja shi thike peni? Okwe shi pe lye? Omolwashike e shi gandja? Oshiwinyai nenge oshiwanaawa?

Melongelokalunga, monkalathano, meuvitho lyevaangeli, mopolotika, megumbo miilonga, muudhano, pookuume, paakwiilongo, melongo?

Molufu talu landula otatu tala uuleligumbo wopakriste.

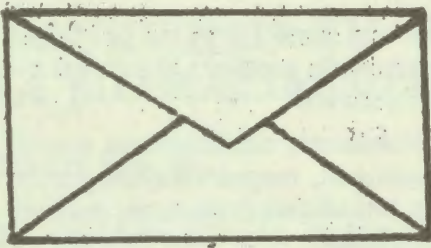


Omusita Shekutaamba V.V.Nambala

omilongo mbali, ngoka to vulu oku ga yamukula li mwe nalimwe.

1. Owa kanitha ethimbo lyiilonga molwokunwa?
2. Iikunwa otayi yono po onkalo yomegumbo lyoye?
3. Oho nu oshoka owa sa ohoni yaantu yalwe
4. Iikunwa otayi yono po esimano lyoye?
5. Oho uvu u na ongunga komwenyo ngele wa nu
6. Owa yi momaudhigu omolwokunwa?
7. Oho kala wa dhina mboka ye ku vule ngele wa nu
8. Okunwa ohaku ku kwatha okutonatela aanegumbo lyoye?
9. Onkalo yoye oya shonopala sho wa tameke okunwa?
10. Ou na ethimbo ndyoka ho yuulukwa okunwa?
11. Oho kala wa hala okunwa esiku lya landula?
12. Okunwa ohaku ku etele uupyakadhi moomposi?
13. Elalakano lyoye olya kana molwiikunwa?
14. Okunwa otaku tula iilonga yoye nenge ongeshefa yoye moshiponga?
15. Oho nu opo u yande okwaa-nakonasha nenge uudhigu?
16. Oho nu ngoye awike?

Tala kep. 12



Hamushanga wOmukwetu,

Ombapila ei oya endelega. Oshinima eshi osha kennyeneka notwa hala oku shi shivifila ovadali. Ngenge ope na omhito, tu kwafa u shi nyanyangide moshifo diva. Ombilive oyo nee tai shikula ngaha:

Fye ovahongifikola vomEeseke, otwa hangwa komaudjuu taa etwa kovanhuru ovo hava longekida eedanisha nomafiyafano omauwa meefikola detu. Onghe ame ponhele yovahongi vomEefikola adishhe da kumwa koshinima eshi, vo itave shi popile (osheshi oku na ovo tave shi popile,) onda shanga ombapila ei opo ovadali mu tu pe ouyelele.

Ombapila ei oya li i na okushangelwa ngeno omudali keshe, e na okaana ke li keefikola edi dopombada. Ashike eshi nda shiiva kutya, ovadali konyala aveshe ohava leshe Omukwetu, onda tumu ombapila ei kOmukwetu mu i leshe.

Oshinima oshi li ngaha: MOshakati nomOluno omwa tungwa oinyanga yaaveshe omo hamu ningilwa omaudano omaludi mahapu. Omaudano aa, okwa kwatela mo nee ondanisha yomafiyafano omauwa.

Aishe ei ohai ningwa owina mOlomakaya oufiku. Kashiimba ohamu i udu tuu mEeradio deni. Efiyafano limwe pauxupi ohali ningwa ngaha:

Omukainhu ote lidula oikutu yaye aishe yokombada opo a talike nawa oushitilo wolutu laye. Ou a monika ngaha kovaongali aveshe muwa mokutalwa e dule vakwao, oye haku tiwa okwa wina.

Ou a wina mouwa oudwaali 1983, otwa kundana kutya okwa mita. A mita konima yomwedi umwe eshi a findana, ile a findana a mita nale, inashi yela nawa. Vahapu ova mita oufiku tuu oo wokufindana ile popepi nefindano.

Ame inandi hala okutya oinima ei, inai ningwa mo mOwambo, ahowe. Ondi na ashike epulo kovadali ovaholike: Olyelye a dimina okamona ke li mofikola ka ka fiyafane moinima ei? Ohandi indile enyamukulo.

Epulo ola dja apa: Ounona veni meefikola ohave livake mo oufiku ndele tava i komafiyafano oo nokwaaluka pombali youfiku ile ongula. Pomhito imwe konyala eemwenyo da kana, eshi oonakutlashi ohonde va mbolokotela ovandanishi novatali, eshi olusheno moshinyanga la dima ombadilila.

Okamwoye ngeno oka monene mo oshiponga, oto hala u pule ofikola. Ohandi ku shivifile, kutya fye oinima ei otwe i kelela meefikola, ndele onunona veni otave i ningi shaashi omwe va pitika va konge omaliko avo nomikalo edi.

Onghe otwa hala mu tu yelifile, keshe ngaho o m u - dali u na okanona koye wa pitika ka ye komafiyafano aa, shivifila omukulunhufikola oko ke li, opo e ka pitike nombili ka ye ko.

Fye otwa shiiva nawanawa oiponga oyo hai shikula konima yomafiyafano oo omaufiku. Ou wa hala oku shi uda, tu pula tu ku fatululile. Ova-

OMBILIVE KOVADALI AVESHE VOUNONA VOMEESEKO MOWAMBO

nhu ohava futu, ngenge tava i moudano oo, ndele ngenge va wina, tava futwa sha. Ashike konima, aishe otai ka pula omufindani ofuto inene.

Otwa kumwa eshi onunona vaninilela tave li tula moinima yovakulunhu ovakolokoshi. Omunhu oku na tete okudika omakanghameno onghalamwenyo yaye, opo ne konima a tale yo oinima imwe.

Ovadali ovaholike, ou ha longekida oinima ei, naye Omuwambo ngafye. Ashike pakutala kwange, ota kongo ashike oimaliwa, oyo hai futwa kukeshe oo ta ka tala ovo tava fiyafana po.

Ohandi mu londwele, kutya keshe tuu ou to pitika okamwoye ke litule moinima ei yomaufiku, oto ka pewa ombedi kokaana tuu oko, ngenge ka ningi eendunge, osheshi owe ka efela moshiponga. Oto ka futa ofuto inene. Oto ka kala nongunga fiyo to i medu.

Kuye oimaliwa neoprograma daye, oya fimana i dule ouwa wovana veni. Onghee ota tumu eembapila meefikola opo onunona ve lishangife va ye keendanisha nokomafiyafano aa omaufiku.

Ame ohandi diladila kutya ngenge oinima ei nani oya pila oshiwana shetu shOwambo, nai kale yovanhu ava va mana ofikola. Ohandi indile omulongekidi womafiyafano aa, a efe oudjona vaKalunga ve lihongele eedjapo davo manga, opo nee nawa nge va piti nova pewa omadiminino kovakulunhu vavo komaumbo, ve uye koinima oyo yoififahoni.

Omukainhu hano oye oshike? Oye ekolotwe lihe na ouluvi noihali diladila? Oye oshilongifo? Oye oshinima hashi landifwa po, nohashi landwa? Hamba omukainhu oye oshikongifo shoimaliwa kukeshe ou a hala?

Efimano lomukainhu onda li ndi shii oli li mokuha talika koshi, mboli omokutalwa? Shimhaomukainhu a monika koshi kovakwaufiku aveshe, osho ne hamba efimano laye osho?

Omolwashike ovanyasha tave li dinifa ngaha notave li shundula? Kashi fi hamba ohoni inene komukainhu okuliulika ino djala sha moipafi yomayovi eengholwe neembotso? Olutu loye liwa, nokoshi otali monika shili kovaongali vomaufiku ashike? Konima oshike ne tashi ka shikula ko? Ove tuu to futwa ile ove to ka futa?

Ngenge oshi li ngaha, hamukainhu vali wa pula oufemba wokufika pamwe novalumenhu, okuninga tamu xulifa po okuliulika ngaho noku shi longekida nye vene nokuli.

**Ovadali, nyamukuleni nge. Ngee mOmukwetu, ile ku:
Omufita wovalihongi
P.O.Box, 1230, Oshakati 9000**

Veikko Mu-nyika

NDAKA DHUUMATI

Aamati yaali yopomukunda gumwe mOndonga, oya li ye na ohole onene pokati kawo, ya tsa kesipa. Ohaa ende aluhe pamwe. Molwohole yawo, yoku holathana, oya li ya tala aamati ooyakwawo yepipi lyawo, nondhino. Kaya li ye lwete ngele nayo wo aamati ngaashi yo.

Oyo ya li wo aamati yuuwa. Ngele taa ka menekela po kuuwa, ohaa yi oshita. Sho taa ya komagumbo, oyo tuu ayehe ongondoongi nokanimwena kayo. Nedhina lyawo haye li ithanathana "oNandoolye, Nandoogumwe." Tashi ti, pokati kawo kapu na ngoka ta gwana po.

Omumati gumwe a yaleke okakadhona okashona. Mukwawo a kongo okakadhona okanene ke vule kamukwawo. Ye ngoka gwokashona, a hongoloka. Okwa ti kumukwawo: Oi, mukwetu owa fa wa li uuholo komutse. Sho wa kongo okakadhona owa tala nawa. Okakadhona kandje okashona unene, oti ka etha, opo ndi konge ke thike pukoye.

E tatu kala naakadhona yetu ye thike pamwe. Ihe noohango dhetu otadhi hokana esiku limwe, e tapu kala oshiti tashi teka. Osho ya kala ngeyi taa hapula, yo taa talathana kiipala, tapu yolwa po tapu nukwa.

Onkundathana tayi koko. Ya ka kundathana naakadhona yawo oohango sho tadhi dhana. Otadhi dhana esiku eti- 4. Ye tatekulu omukwaniilwa okwiithanwa koohango dhaamati ye. Yo iimati mbiyaka ihaayi ende puuwa, tayi tila mo moshituthi shetu. Aantu yomuushamba, ohaa tila puuwa.

Aamati yomukwaniilwa sho ya mana iituthi yawo, oya tsikile oonkundathana dhawo: Otatu ka popya nomukwaniilwa e tu pe omapyo ge li kumwe. Omapyo sho ye ga pitikilwa, taa dhike mo ihe egumbo lyawo limwe, nonando ogo o m a - gumbo gaali.

Osho ya ningi. Ya dhike egumbo limwe, li na oshinyanga shimwe ashike nelugo limwe alike. Pomukunda gwaamati mbono opwa li pu na omusamane Nima, okwa luku ongombe ye; Ndakadhuumati, onani.

Konima yethimbo, naasho tuu sha li pomadhiladhilo gaamati mbaka petameko, kaye shi shi we, sha kanene mondalaye yuugundjuka. Shipanga a ka nyenga Nangolo, nando ayehe omOndonga yimwe ye li.

Hasho mbela tashi ka kala naagundjuka mboka taa dhiladhila, kutya omoode oshinima sha simana mokukalamwenyo kwomuntu?

S.Akooko

**ANIWA UUYUNI IHAU LANGE-
LWA OLUPATI LUMWE, OSHO
MBOKA YE TU TETEKELELE YA
LONDODHA**

Oopelesenda 93 muNamibia, aakriste: Nicholson

Namibia olyo evi limwe lyomomavi gaAfrika lya ningwa noonkondo ekriste. Oraata yOongeleki muNamibia nuunene tuu Ongeleki onkwaevangeli paLuther yomOwambokavango, ndjoka ya kwatathana naSWAPO, otayi vulu okukandula epangelo kehe mondjila yuukomunisi, "osho Brendan Nicholson, gumwe gwomaakonakoni yopolotika muumbugantu waAfrika a nyola omasiku ngaka.

Moshifonkundana 'The Star 24.3.1984, Nicholson okwa ti kutya SA ngele okwa shaina euvathano lyokwaahindathana naMozambikwe nota kundathana nepangelo lyaAngola ya shaine naye ombili, oshike tashi mu imbi a longele kumwe nepangelo lyaSWAPO muNamibia?

Emanguluko lyaNamibia mewiliko lyaSWAPO, otali vulu tuu okukala etilithi kepangelo lya SA lya kola ngeyi paukwiita nopamahupilo? osho omutoolinkundana ngoka a pendula omapulo omanene ongaangoka a hala okukutha Aatiligane yokuumbugantu waAfrika muumbanda mboka ye ende nawo ethimbo ele.

Omuniyoli okwe endulula omadhiladhilo ngoka ga kala maatalinawa yopolotika oye-ndji naamboka yomu SA wo, kutya ngele ehogololo mu Namibia oli ningwe, metonatele lya VVO, kape na omalimbililo SWAPO ota ka sindana.

Mpoka opo ihe omuniyoli a dhimbulula uumbanda wa SA, kutya Namibia ngele nani oli manguluke ngaaka nokoshipundi kwa yi SWAPO, nena SA ngiika okwa tegelela omatanga gAcuba ga kale tagi inyenge koongamba dhaOranje, ga hala mu SA.

Ihe naashoka omuniyoli okwe shi dhini sho a ti, kutya ngele iilongo mbyoka yi na omatanga omanene gaakwiita ga kola ngaashi Zimbabwe, Mozambikwe naAngola ogo ga tokola gaa kondjithe SA, Namibia ote shi vulu ngiini?

Nicholson okwa gandja iiholelwa oyindji tayi ulike nkene SA oshilongo sha kola pamahupilo gasho notashi imbi iishii-ndalongo ye, yi teye po ekwatathano naye thiluthilu, nonando itayi zimine omulandu gwe gwokatongotongo. Iilongo mbyoka wo ya kala ya nwethwa mo kuukomunisi.

Opo mpaka omuniyoli u ulike kuukriste mboka tau inyenge muNamibia, sho a ti: "Oopelesenda 93 dhaakalimo yaNamibia, odha shashwa. Evi ndika olyo limwe lyomiilongo yaAfrika ya "kristipalekwa" noonkondo.

"Oraata yOongeleki muNamibia (CCN) nuunene tuu Ongeleki onkwaevaangeli paLuther yomOwambokavango ndjoka iilyo yayo oyindji yi li muSWAPO, otayi vulu naanaa okukandula epangelo kehe mondjila yuukomunisi."

Namibia ngele otali tengenekwa li na aakalimo ye thike 1000,000, nena oopelesenda dhi thike mpoka, omuniyoli ota dhiladhila, kutya aantu 930,000 oye li aakriste.

Mokuulika komatumbulo gamwe ngoka a ti, kutya oga popilwe komupresinde gwaSWAPO, omusamane Sem Nujoma,

Nicholson okwa ti, iita ya SWAPO oyokukondjitha uukwamuhoko, okwaathika pamwe nepangelo lyopaukoloni ihe hakukondjitha Aatiligane nando.

"Aatiligane ngele ya hala, otaa vulu naanaa okukala aakwashigwana shaNamibia," osho a ti kutya osho sha tilwe.

Omuniyoli ngoka osha yela moshinyolwa shika, kutya oku na ontseyo oyindji momadhiladhilo gAatiligane yomuumbugantu waAfrika, okwa gwedha ko natango a ti, kutya SA okwa thikamenwa komaumbanda gopaali.

Uumbanda wotango owemanguluko lyaNamibia, sho ta dhiladhila, otali vulu aniwa okuhwameka aakondjelimanguluko yomu SA, nopatiyali emanguluko lyaNamibia, ndyoka SA a tala otali vulu okugeyitha Aatiligane mboka itaa zimine nando elunduluko lyasha lyopolotika.

"The SA ngoka a piti miikungulu yemanguluko lyaMozambikwe, a kale ngiini inaa pita miikungulu yemanguluko lyaNamibia? osho omukundaneki ngoka a kambadhala okuguna yakwawo.

NYERERE TA KA HULITHA ELELO

Omuleli gwaTanzania, Dr Mwalimu Julius Kambarage Nyerere, okwa tseyitha omasiku ngaka kutya ite ki itula we mehogololo lyuupresidende ethimbo lye ngele lya pu ko omumvo tagu ya 1985.

Omusamane Nyerere gwomimvo 62, okwa lele oshilongo shoka okuza 9.12.1961, sho sha zi muukoloni wAaingilisa. Oye okwa tseyika muuyuni auhe, unene mUumbugantu waAfrika moondunge dhe dhomuule miinima yopapolotika.

Osha yela esimano lye otali ka gwedhelwa lwaali ngele okwa ka gandja oshipundi shewiliko nomukalo ngoka ta dhiladhila. Naashoka otashi mu ningi a kale omuleli gwaAfrika, hagwoomiliyona 19 ashike dhaantu yomoshilongo she.

GAROEB I IKUTHA MEMBWINDA LYOONGUNDU

Elenga Justus Garoeb, moshigwana shAadama, okwiikutha mo nopaati ye membwinda lyoongundu, ndyoka tali igongele omasiku ngaka mOvenduka.

Omuleli gwevigumbo lyaDamara, pamulandu gwa SA, Justus, okwa ti, ye mehangano lyopaati dhomeni oti ikutha mo, oshoka okwa dhi-

Dhimbulukitha wo mukweni a mbesitele oshifo 1984

mbulula, ihadhi kundathana sha shi na oshilonga, shila okugandja ashike uusama kuSWAPO.

Poompito odhindji, omusamane Garoeb, okwe shi holola, kutya ke shi omutondi gwoshilongo

shika, nope na omafafaeko, kutya iilyo yopaati yomusamane nguka, oya yile kuLusaka, omasiku ngaka yi ka kundathane naSWAPO.

Ndjoka oyo ya li opaati onene ontiyali yi ikutha mehangano lyopaati okudhiladhila yomusamane Kalangula ndjoka inaayi ya mo nanjo.



Omupresidende Julius Nyerere



Elenga Justus Garoeb, omuleli gwevigumbo lyaDamara

Omukithi moshigwana

Dha za kep. 9

17. Owa kala muupyakadhi nenge wa kanitha omadhiladhilo molwokunwa?
18. Owa pangwa kundohotola molwokunwa?
19. Oho nu opo u tseye einekelo lyoye?
20. Owa kala moshipangelo nenge pehala lyontumba omolwokunwa?

Owa yamukula ngiini?

- a) Ngele owa yamukula, eeno, kulimwe lyomomapulo ngaka, kotoka, ou li pokuninga ombwii.
- b) Ngele owa yamukula, eeno, kugaali gomomapulo ngaka, osha yela kutya ngoye ombwii lela. Kondjitha oku ga etha.
- c) Ngele owa yamukula eeno, kugatatu nenge ge vule po, nena ou li lela muupyakadhi. Noshilanduli osho eyonuko sigo eso nokuli.

Ngele ou na uupyakadhi wiikolitha, nena ou na shili uuvu homukithi omudhigu. Endelesa u konge ekwatho manga kuye, ongula otaku shi. Omukithi nguka ngele ogwe ku eta mo, oshilanduli osho okuya oonkwengu nenge eso lyombala.

F.J.Nashidengo

ONDI NA OMUKOLO WA DJA MOTOMBO

1.
Elondanghambe tombo,
Tali tiki po oshilongo
La kwatelela mokaanda,
La twa ondodo meekofa
Hano malenga makwetu,
Ondi na omukolo wa dja motombo.
2.
Kala kokule nongoma,
Enda kokule nombaa
Ino nwa vali tatekulu tombo,
Tate ngandja mweefa po
Opo uha mone omukolo
ngaashi wange,
Ondi na omukolo wa dja motombo.
3.
Ino lya, ino makela
Nge wa tale wa makela
Nge wa makela wa lya
Nge wa li wa pona
Nge wa pona wa pepula
Ondi na omukolo wa dja motombo.

KuAtty L.P.Haininga

Osikola yoontumwafo

Ope na Osikola yoontumwafo dhOmbimbeli mOngwediva ya ELOK, ndjoka tayi taandelitha elongo lyokutseya Ombimbeli kwaayehe mboka ye na ehala ndyoka. Osikola yoontumwafo otayi gandja ekwatho ewanawa.

Osikola ndjoka oya kala shito mEnongelo lyaayakuligongalo mEngela. Ngashingeyi oya lundulukile mOngwediva mosikola yOmbimbeli. Osikola yoontumwafo oyi li oshitopolwa shosikola yOmbimbeli.

Oontumwafo odhi na aataambi oyendji koombinga noombinga dhaNamibia. Adhihe odha nyolwa melaka lyOshindonga. Aaleshi oyendji oya pandula kekatho lye ya zile moontumwafo ndhoka.

Osikola ndjoka oya dhiladhililwa unene aantu mboka ye li miilonga nenge mboka kaaye na we eha okuya miipundi yosikola. Otaa vulu okumona ekwatho moontumwafo ndhoka, tadhi ya adha mpoka ye li.

Oontumwafo odhi li hetatu adhihe kumwe miipalanyolo tayi landula:

1. Ondjila yevuliko
2. Ndi mone omwenyo muKristus
3. Kristus momanyolo
4. Oshilonga shOmbepo Ondjapuki
5. Oshilongo shoye nashi ye
6. Omadhiladhilo getumo mOmbimbeli
7. Omuyapostoli Paulus
8. Egaluko lyaKristus

Oontumwafo kehe oyi na iihampi okuza shotango sigo oshitihetatu. Oshihampi oshi na oombapila ne nenge dhi vule po. Oontumwafo ndhika otadhi ya kungoye paindilo lyoye. Oto dhi taamba e to dhi lesa nokukonakona e to yamukula omapulo ge li mo, e to dhi galulile kosikola yoontumwafo dhi talwe okutseya kwoye. Oto dhi shunithilwa pamwe noompe. Ndhoka dhe ku shunithilwa odhoye mwene.

Ngele wa mana iihampi ayihe ihetatu, oto pewa onzapo ombwanawalela. Ofuto yoontumwafo dhOmbimbeli, ohayi kala tayi lunduluka, omolwondilo yoombapila noositombe.

Omumvo nguka aataambi yoontumwafo otaa pulwa ya fute R 6,00. Oto vulu okuninga eindilo lyoye nena kondjukithi ndjika:

Osikola yoontumwafo dhOmbimbeli
P/Sak X5505, Oshakati, 9000

EKULO LYA NINGI ONGELEKI

Mboka mwa kala hamu longo molutenda nenge mu Muni, nenge miilonga yomeya, omwa tseya kutya mOmoonda (Swakopmund) omwa kala ekulo okombitha onene yaaniilonga. Ngashingeyi ekulo ndyoka ongeleka.

Ondunda onene moka aantu ya li taa paluthwa niikulya yopalutu,

ngashingeyi aantu otaa paluthwa moka noohapu dhaKalunga. Iipundi iinene nkoka aantu ya kala taa tenteke iyaha yiikulya yopalutu, ngashingeyi otaa tenteke ko Ombimbeli.

Elongelokalunga otali ningwa moka naanaa ngaashi li li. Oongundu dhomalwiimbo otadhi inyenge nawa, tadhi tanga Omuwa gwadho koshipala shegongalo. Melongelokalunga aalumentu oyo taa gongala nawa ye vule aakiintu, nando aakiintu oyo oyendji mehala ndika.

Oshinima shimwe she etitha ohenda kashona, osho okuumba kwongalo. Otaku ningwa nuuhasha. Kalunga ota hogololelwa oosenda, nando Kalunga mwene omuntu ine mu hogololela oonkondo, e mu pe mo uunkondo inaa simana.

Ngashi hatu indile Kalunga e tu pe esiku kehe oshikwiila twe shi pumbwa, osho tu mu peni wo mumbiyoka e yi tu pa. Otu shi shi mushika nenge omiinima iikwawo yilwe, Kalunga ota vulu okulundulula okukala kwetu.

Mateus Gabriel



E TU THIGI PO

Omukulupe Sakeus lithete (Mbwati) megon-galo lyaElim, okwa manene oondjenda dhe 15.1.1984 mepipi lyoomvula 104. Okwa thigi ko omukulukadhi gwe noyana yatano.

Aili N.S.Iithete

OMUKWETU

Oye oshifo shOngeleki Onkwaevangeli paLuther yomOwambokavango.
Ohashi nyanyangidhwa mOshinyanyangidho shOngeleki mOnjipa.
Omukuluntu gwoshifo omumbisofi Dr. Kleopas Dumeni,
Amushanga gwoshifo omusita Sebulon Ekandjo
Ondando yOmukwetu muNamibia naSuid-Afrika R 5,00 komumvo.
Palwe muAfrika R 8,00 nokombanda yomafuta 11,00, komumvo. Mondhila R 13,00.

Oondando nomambestelo agehe naga tumwe kOmukwetu, Onjipa, P.Bag 2013, Ondangwa, 9000

EV. LUTH. OWAMBOKAVANGO CHURCH PRESS
PRIVATE BAG 2013, ONDANGWA 9000
SWA/NAMIBIA