



“Ne inamu tidhwa po, omwa lalekwa nombili:” Dumeni

Pethimbo ndika itamu tidhwa po, Ongeleki otayi mu laleke nombili nomu na ompito yokugaluka ishewe,” osho omumbisofi gwa ELOK, dr Kleopas Dumeni, a tumbulile aatumwa yaali mOnandjokwe pehulilo lyomumvo 1983.



Aatumwa Marta von Schantz na Anna-Liisa Lundmark kolumoho. Ethano olya thanekwa sho ya langela ondjila yawo mOnandjokwe ya ka fudhe po kuSoomi.

Aalongi yokOshigambo Anna-Liisa naMarta von Schantz, oyo ya li ya popithwa ngeyi, manga ya langela ondjila yawo okushuna kuSoomi ya ka lye oshikwiila shevuvuluko konima yomimvo 30 dhiilonga mpaka.

Manga inee ya halela elago lyomondjila nomefudho lyawo pa Ps. 37:5, omumbisofi okwa dhimbulukitha aatumwa mbaka etokolo lyepangelo, konima yomimvo 10 dha piti, okuti-dha po Aasoomi ayehe moshilongo.

Mokati kaatumwa mbeyaka, omwa li wo mbaka yaali taa shuna.

Omumbisofi oku ulike natango konkambadhala yOngeleki, mewiliko lyanakusa omumbisofi Auala, (pethimbo omumbisofi ta hokolola ehokololo ndika, omudhimba gwanakusa Auala otagu lala natango mokila mOshakati.) Aasoomi ya tsikile iilonga yawo, molwashoka oya pumbiwa kOngeleki nokoshigwana.

“Ewi lyetu kalya li li na oonkondo okuvulikitha epangelo, ihe molwashoka kasha li wo ehalo lyaKalunga mu tidhwe po, ewi lyetu olyu uvika. Sigo onena ewi ndika, inatu li lundulula, otwe mu pumbwa, ne indeni ashike mu ka fudhe po nombili, inamu tidhwa po,” osho e ya tsu omukumo.

Omulongi Lundmark okwiile lwo-tango kuNamibia 1953 nomulongi M. von Schantz 1954 noya thikile kOkavango hoka “Von” ngaashi a tseyikila nedhina ndyoka, a longo iilonga yuutaleli wosikola moshitayi shiyaka manga mukwawo ta longo mombelewa yetumo.

OMUMVO GWOMAPENDA 1983

Onkalamwenyo yandje oya kala nokweeta-ndje iinima iipe. Onda kala nokutala nokudhiladhila iiningwanima mbyoka tayi holoka. Oshinima shoka oshe eta ndje ponkatu ndjoka ndi shange sha kombinga yomumvo 1983.

Etameko lyomumvo 1983, olya kala lya fa tali ende ngaa nawa, ihe pangame mwene, onda li ndi ipyakidhile nokulesha omambo gongundu ndjoka nda li mo.

Omukalondjigilile gwetu aanasikola yomOshigambo, ohatu pewa onguta yokomwenyo ongula nongulohi esiku kehe. Shika ohatu shi ningi tse yene aanasikola, kakele owala kesiku lya yoololwa momakwawo, Osoondaha, moka hatu ningilwa kukuku ngoka nda kala nde mu tseya nedhina Nadi.

Okwa li omukwiita gwaKristus kombanda yevi. Egongalo lyaShigambo oli shi oshindji kuye li vule ndje. Kuku Nadi okwa kala owala ha leshelwa, ye tu uvitha mwene.

Tse aanasikola yaShigambo, itatu mu dhimbwa nande momagalikano getu, nande e tu tetekelele kegumbo.

Esiku limwe manga tatu pewa onguta yongula yokomwenyo, omushiinda shetu okwa "kwata ondjuhwa komulungu." Okwe tu etele elaka lyoluhodhi, kutya kuku Nadi, a mana oondjenda dhe megumbo.

Onda kala nokudhiladhila uupenda we nkene e tu uvithile. Olwindji kehe Osoondaha komatango okwe shi ningi nuudhiginini. Onda mu luku ependa miilonga ye.

Omumvo gwotango nde ya mOnayena, osha li sha kutha ndje oshitima okukala ethimbo ele nda tala omukulupe gwomusita ngoka e na uule ngiika 3,60m lwaampoka. Onda kala nokupula uuyekele kombinga ye.

Onda tseyithilwa kutya oye gumwe gwaamboka ya yakula egongalo lyaNayena omimvo odhindji. Kuku nguka omusamane Ntindanene. Okwa kala esiku kehe ta holoka kongeleka, Osoondaha kehe. Osha kumitha ndje unene sho kehe esiku a tya omagulu gatatu te ya.

Manga nda li ndi ipyakidhila nokwiilongekidhila "okadhiya komayeme" kaNovomba, kwa li ku na owala omasiku omashonalela tu ye mo mekonakono, momakutsi gandje omwe ya ewi tali ti, kutya kuku Ntindanene okwa mana oondjenda.

Osha fala ndje kwaashihe shoka ndu uvu kombinga ye, sho a kala nokweenda esiku nesiku okukonga oonzi odhindji dshogunda she mOnayena. Ependa lyOnayena olya yi ishewe, lye tu tetekele'e kegumbo.

Ondi shi shi kutya Aanayena, itaye ke mu dhimbwa nando megongalo lyawo.

Omumvo 1975, manga nda li mosikola moongundu dhopevilela, onda li nde ya moshituthi shomimvo omilongontano dhegongalo lyaShikuku. Osha li kungame lwotango

okumona omumbisofi omuluudhe. Okwa li nomuyakuli gwe e na omutse omutokele to.

Edhina lyomumbisofi onde ke li uva ngaa sho a li a pewa ompito yokupopitha ongundu yaakwashituthi megongalo ndyoka lyaShikuku, oye Leonard Auala nomuyakuli gwe oKleopas Dumeni.

Sho nde ya kOnayena 1978, onda kala nokuuva oshindji kombinga ye. Onda ka lesa wo embo lya shangwa okukalamwenyo kwe. Onda kala wo nokulesha oshindji shoka ha popi mOmukwetu.

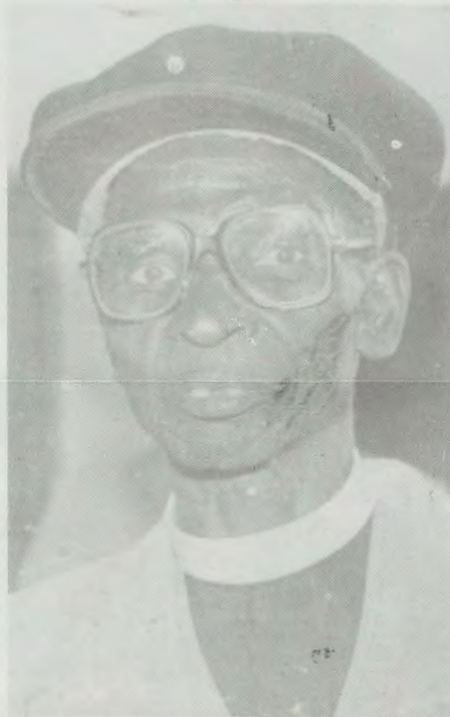
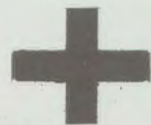
Nguka oye omumbisofi gwotango, ye ishewe okwa longa oshindji shoka Ongeleki ya ELOK, itaashi ka dhimbiwa nando, nando te nyengwa mpaka oku shi holola.

Ependa ndika olya kwatwa moshipala koomvula dhalyo. Okwa pewa a kale e li mevululuko lyuukulupe. Dr. K.Dumeni, okwa pingene po ehala lye. Omumbisofi Auala ina vulwa, okukwatha oshigwana she.

Okwa yi kOlange hoka a longo pamwe naantu ye. Okwa kwatwa kuuva mboka we mu fala sigo omombete. Okwe ya kegumbo lye kOniipa, opo a longekidhe egumbo lye.

Okwa mana oondjenda dhe mOnandjokwe 4.12.1983, Osoondaha ontiyali yomumvo gwOngeleki. Ependa omumbisofi Leonard Auala twe li kuthwa ishewe kuTate ng e li tu pele.

Onda kwatwa komadhiladhilo kutya Ongeleki ya ELOK nookuume kOngeleki ndjika, oya kanitha oshindji. Kandi shiwo tuu kutya oolye taya ka udhitha omahala gomapenda ngaka.



Nakusa Petrus Shivute



Neshila Paulinus

ELOK momvula 1983, okwa kuthwa oshindjilela notu shi shi ongaakriste kutya otatu ka monathana ishewe naamwameme mboka ya tetekele.

Neshila Paulinus

NDHINDHILIKA: Omunyoli gwoshipopiwa shika, okwa adhiikwa ina tseya ngele Ongeleki oya adhiikwa ya kanitha ependa ekwawo omusita Josua Hanyango, muKongo muFebuluali 1983.

Omuselekadhi gwatatekulu Hanyango okwa landula ko natango 22.12.1983. Shika eyelithilo ashike pafupi.

Amushanga gwOmukwetu.

Eso lyomusitagongalo Shivute

Iiningwanima yoluhodhi mOngeleki ya ELOK nuumvo, oya tameke neso lyomusitagongalo Petrus Shivute, eti 2.1.1984, moshipangalo shOngeleki mOnandjokwe.

Omusita Shivute (76), okwa kala ethimbo ele mombete yuuwehame moshipangalo nomegumbo lye. Oshituthi shefumviko osha ningilwa mOshigambo, egongalo lyaandjawa 6.1.1984.

Megongalo ndika omo wo tatekulu Shivute a longo oshilonga shuuyevangeliste ethimbo ele manga Elelongeiki inaali mu tumaketsikilo kEngela 1973 omolwokulungekidhilwa eyapulo lyuusitagongalo.

Pethimbo ndika, okwa adhiikwa Ongeleki ye mu pe oshipundi shevululuko pamautompango gOngeleki. Okwa thigi ko omuselekadhi noyana omugoyi.

Sebulon Ekandjo

Edina Jesus noshikalimo shalo

Edina Jesus oli na oshilonga shinene mounyuni aushe, momalaka aeshe omaludi ovanhu kombada yedu nomeulu. Atusheni otu shii nokutya edina eluko, oshiifanifo ndele oli na oshilonga momhito keshe.

Ohatu dimbulukwa yo omadina ovanhu vamwe momikunda dimwe va mona ile tava mono omayakulo mawa, omolwedina lomunhu umwe, tashi dulika a li ko nale ile nga e li ko. Opo pa dja Omuwambo ha ti; edina lomukengeli ihali fi.

Edina Jesus olo la tulwa meshikulafano petameko lomudo 1984 patekisti ya Luk. 2:21. Omundohotola Lukas, okwa nyolifwa kOmhepo Iyapuki ngaha:

“Ndele eshi pa pita omafiku ahetatu, okaana ka pite etanda, edina lako ola lukwa Jesus, olo tuu olo ke li lukwa komwengeli fimbo ina ka holoka medimo laina.

Edina Jesus ola pewa ou e na oku ke li luka, omwengeli Gabriel, manga Omona waKalunga ina holoka mombelela. Olo tali ti Omukulili. Ovanhu vomitwe da kasha, okukulila ove shi udite ko nawa ve dule ava vomapipi etu.

Jesus ou a kulila ovanhu vaKalunga moupika wounhu wavo ngaashi oulunde, mepangelo laSatana nomekano laalushe. Jesus oye aeke a pewa omhito yoku shi ninga ya wana noufemba wolela oku tu xupifa, nande mounyuni wetu ohatu hange mo ovanhu natango tava kongo oupika ve ke lipandekke mo vovene.

Edina lomukengeli ihali fi. Pefimbo linya leedula omilongo itatu nanhatu Jesus e shi a dalwa, opa li omadiladilo kutya ovanhu ngenge ova dipaifa Jesus, edina Jesus otali fi, fimbo epupi lEtestamendi Lipe li li metifa. Mboli eshi oku li tandavelifa ashike.

John Newton, meimbilo laye 36:1, ota ti: Edina loye Mukulili, oJesus lihe na ndjele.

Ondjele yondilo yokuxupifa medina Jesus, oya nyengana. Mounyuni wetu oinima aishe oya monikila eendjele dayo, otai dudu okumetwa. Eehonde dovanhu oda metwa, ouwe noikwamina ikwao ya fimana oya metwa. Ndele edina Jesus kali na ndjele.

Omulandu wokuyandja edina,

epitotanda. Edina eli la lukwa okaana oleli la yandjwa komwengeli ou a tuminwe e ke li tye kuMaria kedu. Epitotanda pefimbo linya, nomoshiwana shinya, ola kala ehanganano leudafano laKalunga naAbraham. 1Mos. 17:12.

Eenghudafana daGabriel nokakadonna Maria, oda yandja ouyelele ou kuMaria inakulu yexupifo lovakwounyuni aveshe mounyuni ou tu li mo paife hatu tale fye hatu pwilikine oitilifa noikumwifi.

OSIKOLA YOSOONDAHA MOLANGE



Methano ndika aanona yongundu D, ndjoka ya mono esindano lyOmbimbeli momakonakono gawo

Oya ningile oshituthi shayo shehulitho 4.12.1983, shoka hashi kala ko omumvo kehe pehulilo. Esiku ndyoka aanona oyu ulukile aakuluntu yawo shoka haa ka tala kOsikola yOsoondaha.

Osoondaha ndjoka oya li ya longekidhwa kaanona naalongi yawo mokuhololola elaka etoye lyaJesus Kristus; okwiimba nokudhana iinyandwa yi ili noyi ili. Oshinyandwa shono ya dhana, shimwe oshaDavid naGoliat, shoka shu ulike oonkondo nesimano lyaKalunga.

Oshinyandwa osha fala omadhiladhilo getu konkalo ndjoka tu li muyo, ya fa yi tu vule oonkondo ongaGoliat momemo gaDavid, ihe Kalunga ota vulu okukwatha kehe ngoka e mu inekela.

Aluhe pehulilo lyomumvo aanona mOlange, mosikola yawo yOsoondaha, ohaa ningi omakonakono, opo ku monike ngele oya pulakena nawa muule wethimbo lyomumvo.

Natu ningeni eendululo kutya, edina Jesus, kaku na likwao, “Kaku na omukwao exupifo la kala muye, oshe-shi kaku na edina limwe li li koshi yeulu la yandjelwa ovanhu, omo tu na okuxupifilwa mo.” Oil.4:12, Edina Jesus olo alike.

H.H.Hasheela

Omakonakono ohaye ga ningilwa pamithika dhawo dhokuvalwa. Mpaka otwa li tu na ongundu ne; A) aanona yomimvo 13-15; B) yomimvo 11.12; C, yomimvo 8-10; D) yomimvo 3-7.

Ongundu D, oya pandulwa nOmbimbeli mesindano lyayo. Oongundu oonkwawo odha piti niitsa yi thike pamwe nodha pewa Elaka Etoye - Mateus.

Mboka inaa faula nandenande omasiku gosikola yOsoondaha oya pandulwa nOmbimbeli, kehe gumwe. Okwa li wo omagano omakwawo ga topolwa poompito dhilwe.

Aavali yaanona oya pandulwa noohapu dhomokana komukuluntu gwOsikola yOsoondaha, omusamane Oskar Mbeeli, sho ya mangelula uunona u holoke kosikola, omusita wo ngoka he ya ningile elongelokalunga Osoondaha kehe, aalongi naanona sho taa dhiginine.

Aalongi oyu ulukilwa kondjambi yomunashilonga kehe omudhiginini Mark.10:13-16.

Kalenga I.U.D.

OMBILI YEGUMBO OTAYI

GAMENWA NGIINI?

MEME AINO DUMENI

Oshipopiwa tashi landula osha li sha popiwa kumeme Aino Dumeni moshigongi shaakiintu yomoshikandjo oshititatu - shomiikandjo yomoshikondo shElongo mOwambo. Oshigongi shika osha li mOkatana 1983. Lesha u pulakene nkene meme Dumeni ta ndungike aanamagumbo, ya dhiginine okukala nombili momagumbo.

Ombili oshinima sha pumbiwa noonkondo mokukalamwenyo kwomuntu, unene tuu megumbo. Oyo oshinima oshinene nosha simana. Megumbo ombili otayi mangele kumwe, tayi hanganitha notayi koleke wo ohole nuukumwe waanandjokana no-waanegumbo ayehe.

Ombili yomegumbo otayi pepaleke okukalamwenyo okuhumbata omitenge dhilwe hadhi adha aanandjokana ngaashi: omavu, omaluhepo, iiponga, okwaavulika nenge tuu omaupyakadhi gi ili nogi ili.

Ihe ombili ohashi vulika yi kane megumbo nomondjokana. Nuuna ya kana, otashi yono oondjokana. Ohashi yonene omuntu uuwanawa we nelago lyondjokana nenge elago lyomuvalwa nolyomutekulwa notashi vulika wo shi yonene omuntu elago nehupitho lyomwenyo gwaaluhe.

OKWAAHAUVATHANA

Euvathano pokati komusamane nomukulukadhi gwe, oshinima sha simana noshi na ondilo onene. Osho wo euvathano pokati kaagundjuka naakuluntu yawo, olya pumbiwa wo noonkondo. Okuuvathana otashi ti: "Okupulakenathana nokuziminatedhana momadhiladhilo," osho meme Dumeni a yelitha.

OKUSILA OSHIMPWIYU AANE-GUMBO

Meme ota sile nawa egumbo oshimpwiyu, ta tonatele iilonga yi dhigininwe nawa kaanegumbo, ta si oshimpwiyu iikulya yi telekwe nawa kehe esiku yo yaa hepe. Ota si wo oshimpwiyu oonguwo dhomusamane dhi kale dha kangulwa nawa naandhoka dh a tuuka dhi kale dha andekwa nawa.

Okulitha omusamane uulalelo uusiku ye okwa uhala kiilonga, nokwaahaopaleka nawa nuuyogoki, okwaahavulika komusamane nokukala noondjakumudhi, okwaa na ohole nokuyemateka aluhe megumbo, okwaahapandula aanegumbo mpoka ya longo nawa, mbika ayihe otayi yono ombili yomegumbo.

EPUTUKO LYAANONA LYA SA UUNKUNDI

Uuna aakuluntu ya topoka momadhiladhilo noihaa pulathana otashi eta uunkundi metudho lyaanona. Nena uuna gumwe kee na oshimpwiyu noyana, nenge i ikuthile eputudho lyaanona oye awike, ohashi kaniitha ombili megumbo.

Mokuputudha aanona, otapa pumbiwa: uu-kumwe, euvathano, okukundathana nokupulathana. Opwa pumbiwa eidhidhimiko nokukala nonteni nonando pamwe ota longitha omukalo gwepuko inee gu panda nenge kee gu hole. Mpaka otapa pulwa eidhidhimiko enene nepukululo lyohole negalika-no.

OKWAAASIMANEKATHANA

Omuntu ye mwene oku na egamo lyokwiihola nokwiisimaneka. Okuhole okuholola oondunge dhe tango, manga inaa pula kutya mukwawo ota ti ngiini. Onkee opo tu gamene ombili yomegumbo naku talwe omadhiladhilo gaayehe yaali: omulumentu nosho tuu omukiintu nenge ndi tye omusamane nomukulukadhi.

Ngele amuhe omu na omadhiladhilo gamwe moshinima shika, onawa. Euvathano olyo alike ewanawa, lya mana oompata.

Mpaka otapu pumbwa okumangulukulathana nokuholola shoka kehe gumwe u uvite moshinima shontumba; osho wo okupulathana kutya: "Shika oto shi tile ngiini?" Nonando mpaka aasamane olwindji ya kutha po uuthemba waakulukadhi noya tokola ayihe.

Nolwindji ishewe, aakulukadhi oya kwatwa kombepo yokwiidhina, onkee ihaa ti we sha, shila otaa zimine ashike shoka omusamane a ti, nonando momwenyo oku uvite uudhigu, ite shi holola komusamane. Shila ote ke shi popya ashike pondje. Shika otashi kala sha fa naanaa okulopota nenge okulya ko omusamane gwoye.

Nonando nee omuntu oshinima osho ha ningi shili, sho te ke shi uva pondje nenge kuyalwe, nena otashi mu tukulile ashike uutondwe nongeyo nokukanitha ombili megumbo.

ELONGITHO LYELIKO

Elongitho lyeliko mepuko, olya kanitha ombili maanegumbo oyendji; unene tuu methimbo lyetu, lyeliko lyiimaliwa. Omikalo dhokukala neliko lya topoka, okulanda nokulanditha po inaku kundathanwa, okwaadhiginina eliko nenge okuhanagulapo eliko mokunwa, mokulya nenge mokuzala, mbika ayihe otayi vulu okuyona ombili megumbo.

Okukala inaku tseyithilathanwa nenge inaaku kundathanwa omadhiladhilo miinima yuuthiga, mbika oyo hayi etele omukulukadhi uumbanda nokutula kutya ngele omusa-

mane okwa si tango kuye, nena ota ka kala po owala.

Onkene aakulukadhi yamwe taya kwatwa nokuli kuuhalu wokuyaka nge: megumbo nenge moositola dhaasamane yawo. Naashika osha kanithila aanegumbo oyendji ombili momagumbo gawo.

Unene ethigathano pokati kaanegumbo, olyo lye eta omukundu, kutya kehe gumwe okwa hala omadhiladhilo ge ogo taga longithwa nenge ogo ageke ga landulwe.

Mpaka ope na etsokumwe koomeme, kaaya nine po ashike omadhiladhilo gawo inaaye ga popya nokutumbula ashike momwenyo kutya: "Ngame omukiintu," nenge "ngame omukulukadhi mukwetu, ondi ninge ngiini?"

Dhimbulukweni, aasamane otaa kala nawa, nenge otaa longo nawa, ngele ye na aakulukadhi haye ya kwatha moku ya pukulula, mokugandja omaye le okuholola omaiuvito nenge omadhiladhilo gawo miinima.

Nonando aasamane itaa zimine pethimbo ndyoka, meni lyawo nenge konima otaa ki ipula nokudhiladhila omadhiladhilo goye. Aasamane ihaa itaale mbala, ihe uuna a tompelwa sha nokwa taamba sha, okwe shi taambelela.

Osho wo omugundjuka ino tila okuholola omadhiladhilo goye moshinima shontumba kumeme nenge kutate; oto ya kwatha. "Okupula haugoya," aawe; ko "okuminikila hamuntu keehe lwete ko." Opo tu gamene ombili yomegumbo, otatu pumbwa iinima tayi landula:

1. EUVATHANO

a) Shika inashi ningwa pakumbweengathana; nenge paumbanda wopakanona, ihe omemangunguluko, meukililo lyomuntu nenge lyoshinima, mohole nomoshili.

b) Eineekelathano, otali kutha po omalibililathano nuumbanda wokutilathana.

c) Edheminathanopo, olyo alike tali gandja omukumo gwokuholola omapuko ga ningwa nokugandja ombili.

2. ESIMANEKATHANO

Eyelathano okutala kutya mukweni omuntu noku mu tala pomuthika nopankatu mpoka e li nenge mpoka ngoye u li. Pamwe omukulukadhi oye omulongi, na simaneke nawa omulumentu gwe noku mu yela nawa.

Ngele omusamane oye omulongi, na simaneke omukulukadhi gwe nawa noku mu yela, noku mu tala wo pomuthika mpoka e li. Ote mu simaneke ngiini moku mu yela? Ote mu lombwele ngeyi: "Omukulukadhi gwandje omuholike nenge tate gwandje omuholike/omusimanekwa, tse otwa ningi onyama yimwe notu li meithano limwe.

"Ngoye nando iho, longo oskola, eithano lyandje lyuulongi olya ningi wo lyoye. Oto vulu okulonga pamwe nangame miinima oyindji nonando iho thikama motundi.

Tala kep. 5

“Shaa tatu yakulathana, tatu pukululathana miinima yopambepo nokugalikanena oshilongayakulo shandje nenge shetu, opo ndi kale omuyakuli omwaanawa, ndi na etilokalunga; opo edhina lyaKalunga li simanekwe kutse, naantu ye mboka tatu yakula ya hupithwe.”

Shika otashi eta omukumo kutate nenge kumeme. Ita kwatwa we kombepo yokwiidhina. Ihe meme nenge tate ngoka inaa mona esimaneko neineekelathano ndika, ota kwatwa kuumbanda nōti idhini nayi no-madhiladhilo ge otaga kala ga fa inaaga ndjanga nawa. Shika otashi yono po ombili yegumbo.

Oomeme aalongi, mu na aasamane yaa shi aalongi, otandi mu dhimbulutha iinima yimwe. Shotango okusimaneka mukweni, ano omusamane gwoye nomwenyo aguhe; noku mu hola nokuvulika kuye noku mu yalula kutya ye omuyakuli omukweni moshilonga shoka u shi na.

Oshoka uuna to yi kootundi nenge kokeressa, nokiigongi, omusamane ngele oku li pegumbo, oye ngaa ta dhiginine egumbo niilonga nosho wo aanona mboka aashona ihaaya yi koskola. Oye ngaa te ya sile oshimpwiyu nonando ope na omuleli nenge omusilishimpwiyu omuyakuli, omukuluntu, omukuluntu ngaa.

Meme omuholike, simaneka omulumentu gwoye, ngoye u kale wo ngaa ho mu pe uyelele miinima yoshilonga shoye.

Nongele oku na oshigongi nenge okersesa yontumba, onawa unene ngele to laleke kuye, nokuyelitha nawalela kutya otashi kala ethimbo li thike peni. Komukalo nguka, oto kwatwa nawa mukweni nota uvu uugumbo. nuwanawa woshilonga. Note ku landula nomadhiladhilo ethimbo alihe noku ku galikanena.

Ihe ngele owa laleke ashike ngeyi: “Tate, ngula otandi yi koshigongi.” Shika otashi kanitha po ombili yomegumbo.

Oomeme ayehe naamboka ye na aasamane yawo aalongi naanashilonga ooyakwawo, nayo oya kwatelwa mo mekumagidho ndika. Oomeme tu vulikeni kaasamane yetu noku ya simaneka, oshoka meifupipiko omo amuke mu na elago.

EPANDULATHANO

Olwindji nokukala kwomuntu okuhole oku uva shoka a ningi nawa nenge oopaleke. Onkee okutya “tate owa ninga nawa shontumba, owa landa ohema ombwanawa” nenge “owa zala nawa;” nenge “o, tate owoopala,” otashi pumbiwalela shi vule okumwena.

Okupandula omusamane gwoye ye kee po, ano ke ku uvite, inashi opala. Ano meme ngele iho pandula nenge u simaneka omusamane gwoye kutya okwoopala, otashi vulika a ze mo megumbo e ke ende palwe,

opo a tale ngele ta mono mboka taye mu tanga noku mu pandula sho oopala, omolwohema nenge oshuta ombwanawa ndjoka a zala.

Osho wo aagundjuka otaa tegelele wo okupandulwa miinima oyindji. Ootate wo nane otamu tegelelewa mu pandule nokutanga oomeme uuna ya opala nenge ya longa nawa. Shika otashi gamene ombili yomegumbo.

OKUGANDJA UUSAMA

Okugandja uusama kumukweni, pandunge dhoshitya shika, kashi shi okusheka nenge okuyona, ihe okuholola owala mpoka pu na omapuko nenge shoka mukweni a longo nowa tala kutya pamadhiladhilo goye inashi opala.

Olwindji aanamagumbo otaa tilathana okuhokololelathana shoka inaashi opala. Pamwe oohema nenge iinima yimwe ya landwa inaayi opala. Omukalo gwokumwena, ngoye momwenyo inoo hala, ohashi yono po ombili yomegumbo olwindji.

EYO LYOSHILONGO SHAKALUNGA NETUMONGELEKI

Otatu popi tatu ti; oshilongo shaKalunga oshi li mokati ketu notashi ya nomethimbo tali ya, kokutya otashiya kiigwana ayihe, komihoko adhihe nosho wo komuntu kehe palutu nopambepo.

Ihe aantu yamwe omuthindo ohaye gu tula owala kethimbo lyongashingeyi, koshigwana shontumba nopalutu. Mboka twa gwile mepuko lya tya ngeyi, otwa li tu na okuhempulula kutya, otse otwa dhini notwa ndopa mokumona uunene nondjundo yetumwalaka lyOmbimbeli.

Omolwashi tatu uvitha nenyanyu kutya: Oshilongo shaKalunga oshe ya mehistolli lyaantu keyumuko lya-Jesus Kristus. Tashi pangula sho tashi lundulula omapipi nomapipi.

Nonando omainyengo gaKalunga mehistolli otaga monika mOngeleki, inaga ngambekelwa ashike moka. Ethano lyaKalunga okutala Ongeleki, nongaashi a talele oshigwana shaIsrael, ngashi hatu shi lesa mEtestamendi Ekulu, oli na elalakanō lyeyambeko lyiigwana. 1Mos.12:1-3; 15:17 Jes.42:6.

Ano Ongeleki oya dhikwa yo yi kale po omolwaKalunga nomolwaantu. Mat.22:37-40.

Ongeleki oya dhikwa po yi tule uuyuni metegameno, oshoka otaku tumbulwa epipi lyongashingeyi nepipi tali ya. Etegameno lyetu itali kunguluka tali zi metyololoko

Omuntu ohe yi gongele nee ayihe mbyoka iiwinayi, nuuna ta ka mona okanima kamwe, ote ke yi piitha mo nee ayihe oshita nomukalo inaagu opala. Yakwetu, shika kashi shi oshiwana. Oshoka otashi ka shituka enyenyeto, e tashi yono po ombili yomegumbo.

OKUTALA AAKWANEZIMO AYEHE MUUTHIKEPAMWE

Shika otashi kwatha opo aakwanezimo lyomukulukadhi nenge lyomusamane, yaa mu ye pokati. Onkee kambadhaleni ayehe mu ya ningile shi thike pamwe nomu ya tale ye thike pamwe. Shika otashi gamene ombili yegumbo. Aamwameme aaholike, otwa pumbwa ano shike opo ombili yegumbo yi gamenwe?

OKWIINEKELA KALUNGA

Tango kongeni ano oshilongo shaKalunga nuuyuuki washo, nena mbino ayihe otamu yi gwedhelwa ko (Mat. 6:33). Aanelago aana mbili, oshoka oyo taa ki ithanwa aana yaKalunga (Mat.5:9).

noitatu tegamene ando sho tu wete methimbo lyongashingeyi twaa na sha aniwa, e tatu tegelele ihe iinima iipe yethimbo tali ya.

Ihe otwa tegamena ethimbo tali ya omolwiinima iinene mbyoka Kalunga e tu ningile methimbo lya piti note yi tu ningile methimbo lyongashingeyi.

Niishewe omolwomauvaneko ngoka e tu uvanekele. Otse twa peweni nale nokuli Ombepo Ondjapuki, naandika endhindhiliko kutya, otwa kulilwa notwa mangelulwa, nesiku lyaKalunga otali ya, moka Kalunga ta ka kala aguhe muayihe.

Mokugandja uumbangi wehupitho lyongashingeyi, nowehupitho lyethimbo tali ya ndyoka twa tegamena, otu na okutsakanekwa kuudhigu owindji, nolwindji otatu tsakanekwa uululu ongaamboka woshitheta shokuvala. Rom.8:22.

Ihe shika meshito epe lyaKalunga, itashi ka kala mo. “Opomasiku omahugunina iigwana otayi ka pulathana; ano ehupitho uunake tali ya?” Itapu ka kala ngoka ta pe omukwawo eyamukulo lyomondjila, oshoka omadhiladhilo gawo taga adhikwa ga pukithwa kiinima yuuyuni mbuka.

Eyo lyoshilongo shaKalunga

Dha za kep. 5

Natu adhikeni ano twi ilongekidhila oshikako shika sha hugunina, manga pu na ompito. Mat.24:16-25;46.

Ongeleki yetu otayi longo oshilonga shEtumo, oshoka oyi na ehalo nonduulukwe okugwanitha oshipango shaKalunga. Mat.28:18-20 Etumo lyetu nemoniko lyetu nayi kale yi na ethano nepangelo lyaKalunga.

Ongeleki ya manguluka, yi na omwenyo noyi na oonkondo, otayi ithanene aantu kehupitho nokemanguluko lyashili, nopethimbo olyo tuu ndyoka, otayi ya homatekekitha iikondjitho, opo ya ka kondjithe oonkondo dhomilema nokwaa he na uuyuuki.

Tu kaleni tu uka komeho noinatuholeka nando ehupitho kukamwe komaashitwa yaKalunga. Tu lalakaneneni aashitwa yaKalunga ayehe ya pewe evaangeli lyu udhilila, pambepo, palutu nopankalathano.

Mbepo Omuyapuki ote tu minikile opo tu wape okuhokolola nokuuvitha ngoka a yumuka kuusi noku li ngashingeyi kolulyo lwaKalunga He noye tuu ngoka a gandjwa a ninge omutse gwOngeleki nogwiigwana ayihe nogwiinima ayihe megulu nokombanda yevi. Ef.1:10,20-23.

Hugunina otatu hempulula kuuyuni kutya otse aawalwa yomegumbo lyaTate Kalunga. Ohatu popyeni eshitukitho. Mbika oyo iilonga yaKalunga mesiku lyahugunina. Kalunga okwiipyakidhila note ki ipyakidhila natse.

Oye okwe tu pe Ombepo ye Ondjapuki yi tu shitulule, yi tu minikile, yi tu hekeleke. Joh.16:7 Yi tu topolele omagano gi ili nogi ili. Rom.12:1; 1Kor.12. Ombepo ye yi tu homatekitho iikondjitho tu vule okuthikamena nokusinda omutondi. 2Kor.10:3-5; Gal.5:22-23.

Otatu dhimbulukithwa kutya: oondjo inaadhi hempululwa, nokutonda aashitwa ooyakweni, otatu nikitha Ombepo Ondjapuki uuthigwa Ef.4:30; Gal.5:13-16.

Omolwaashoka ohatu galikana oondjo dhetu dhi dhimwe po, tu shitilwe ombepo ombwanawa, notatu galikana wo oshilongo shaKalunga shi ye. Tu tsikileni natango okugalikanena uuyuuki, ombili nenyanyu mOmbepo Ondjapuki. Rom.14:17.

Omulongi: Justus Ndiili David

OMUYAPOSTOLI W A A N G O L A , M.NDJEBELA, A XULIFA

Martin Hepeni yaNdjebela, okwa dalelwa mOmbadja, muAngola. Okwa pita osikola youlongi mOseminali yaNiipa. Okwa kala omulongi nomuudifi ependa meongalo lavo, Nakayale, mOmbalantu.

Modula 1930, okwa li kwa ningwa oshoongalele mEdundja, omo mwa kundafanwa oluhepo levaangeli lovapaani muAngola. Moshooongalele shinya, omuhokolohonde wotete wa ELOK, Filippus Kamati naNdjebela, ove liyamba metumo.

Oshoongalele oshe va ilikanena, ndele tashi va tumu. Kamati a ya kOukwanyama waAngola, nokwa fikila momake ovanaita nevaangeli. Okwa kwatwa ndele ta file modolongo mOndjiva. Ye Ndjebela ta i kOmbandja.

Modula 1943, Ndjebela okwa dengwa nai komupangeli Omuputu, pamwe navakwao vamwe veitavelo laye ekwaprotestande, ndele tava tewatewa mo mOmbadja molwevaangeli. Ove ya kuSuidwes-Afrika.

Konima yeedula dimwe, Ndjebela okwa shuna vali kuAngola, kOmbadja. Peedula 1959-1960, okwa mona nomesho aye emanguluko lOuhamba waKalunga moshitai shaKunene, nhumbi la yeuluka.

Okwa kwatwa kouyehame wefimbo lile, ndele ta xulifa oweenda waye modula 1979, a ya a kola meitavelo. Okwa fiya ko omukwafi waye meekulu Selma novana vaye ovatungamaumbo.

S.Ndatipo

Aaleshi aasimanekwa,

*Eso lyomunashilonga nguka, ependa limave lyomomapenda ga ELOK, olya tseyithwa nale ngaa, ihe olya kala ethimbo inali thika mombelewa yOmukwetu sho pwa li tapu konakonwa omauyelee gamwe, nonando inaga gwana po sigo onena. Ombili ketoke-
lwo.*

Amushanga gwOmukwetu.

Eyamukulo komapulo gatate Elifas Ampweya

Onda lesa mOmukwetu gwaJuni 30, 1983 nOmukwetu gwaSeptemba 15, 1983 moka mu na omapulo gatate Elifas Ampweya kombinga yanakusa sho ta popithwa kukuume ke pombila, ngele oku uvite ko tuu?

Ngame otandi ti, eeno, oku uvite ko, oshoka ondi itaala kutya ina sa, mpoka onyama ya topoka ashike nomufudho, ombepo yaKalunga ndjoka ihaayi si.

Ishewe tate Ampweya, owa ti oho kala pomafumviko o-gendji, ondi inekele owa uvu po wo shimwe, ndele ino shi popya. Pakambongeleki epandja 72, efumviko, omudhimba ohagu yambekwa komusita ta tumbula:

“Owa zi mevi, oto shuna mevi”

Kandi shiwo kutya naampoka ou na epulo, nenge okombinga yepopitho lyakuume ke ashike?

Otatu lesa Maria naMaria mukwawo, oya kutha omagadhi gondilo ya ka gwayeke omudhimba gwaJesus. Shika otashi holola ohole yawo okuhola nakusa gwawo nando a sa.

Ondi shi shi omutondi gwanakusa, ita popile nakusa muuwanawa, onkee ayehe mboka taa popile nakusa muuwanawa oyo mboka ayeke ye mu hole sigo eso.

Ishewe otatu hempulula ngoye u dhime po oondjo dhetu ngaashi hatu dhimipo dhaamboka ya yono kutse. Ano sho twiitaala tse yene kutya ohatu longo wo iilonga iwinayi, onke hatu dhimine po wo mukwetu, opo a vululukwe nombili.

Ondi uvite wo kutya ayihe hayi longithwa pefumviko lyopakriste, oyi li mondjila.

Kombinga yepulo lyoye natango, kutya shoka hashi yapulwa, oshike, omudhimba nenge oshilambo ote yamukula ngeyi:

Pakambongeleki omudhimba otagu yambekwa, itagu yapulwa. Ehala lyomawendo, lyomafumvikilo gaakriste, oyo lya yapulwa nale paKambongeleki, epandja 88, lesa: Eyapulo lyolyene lyomawendo, ep. 90.

Josef T.Hango
Oranyemund



O mutumwa gwaAngola
M.N djebela

EPUKULULO

Omukwetu okwa tulwa mondjila, sho a hokolola monomola ye 24/ 1983 mepandja etitano sho a ti, Sacky Hekandjo okwa longo pombelewangeleki omimvo ntano netata.

Tate Hekandjo mwene okwa pukulula mpaka kutya, ye okwa longo omimvo hamano noomwedhi omugoyi.

Omukwetu okwa pandula keyelithilo ndika.

Ehokololo lyomunasi-kola Shekutaamba ku-Amerika

Omuwambo oha ti: "Lye ke endeke, lye ya nokashona kalyo." Oyendji ngiika osho taa talatala shoka Shekutaamba a zi nasho ku-Amerika (USA), hoka a kala ta yanuna o-mambo uule womasiku 63.

Shekutaamba okwa li ti ilongo uuleligumbo moshiputudhilo shedhina: Luther Northwestern Theological Seminary, moomwedhi ndhoka mbali, ndatu okuza Septemba sigo Novomba 1983.

Oseminali ndjika oyi li moshitopolwa sha-Minnesota muumbangalantulela waAmerika, modoolopa St. Paul.

Oshitopolwa shosikola ndjoka oshi na uutalala nomathimbo gamwe ohaku loko olumi. Paunshitwe, oshi na evi lya nika uuyamba, oshoka oli na uukwatya wuuho. Omu na omiti odhindji naakalimo oyo unene aatembukilimo ya zi kuEuropa lyokolundume.

Hwiwaka Shekutaamba okwa kala omulongwa miipundi nometalelopo lyomagongalo 14. Momagongalo moka okwa li omathimbo nomathimbo a kwatha momauvitho, mukulonga osikola yOsoondaha, mokupopitha iigongi yaakuluntu nomokutopola Omasakramendi Omayapuki.

Muukwatya mbuka, omuntu oto dhimbulula kutya Aaluudhe nAatiligane oya pumbwathana. Omayakulo agehe ngaka oga li ga ningwa owala momagongalo moka kaamwa li nando Omuluudhe gumwe, kakele ke mwene. Osha li wo euliko kutya muuyuni aantu oye li mo ya manguluka noitaa talelathana kombanda yoonyala, nonando mpaka naampeyaka uukwatya wa tya ngaaka, tau holoka wo nomuAmerika.

Omwa ti, Shekutaamba okwa li ti ilongo tuu shike? Uuleligumbo. Ndika olyo eyamukulo pafupi. Uuleligumbo, oshike, kandi uvite ko. Andiya, u tya, kala to talatala moshifo shOmukwetu pamwe tamu holoka sha omathimbo nomathimbo tashi popi uuleligumbo.

Ihe pafupi, oshinima ashihe oshi ikwatelela keshito lyomuntu ngoka naye e li meshito noti inyenge mulyo nonando haye e li shita. Pulakena ishewe kutya mpaka ope na iinima iyali; a) eshito na b) omuntu.

Eshito otali pangelwa komuntu, ihe kali shi lye. Okwe li pewa ashike kumwene gwalyo. Mwene gwalyo oKalunga. Omuntu oye nakupulwa nkene a longitha ethimbo lye, eliko lye, omagano ge, uupenda we, oonkondodhe, oshipewa she, olutu lwe, onkalamwenyo ye, naashihe shoka a pewa shomeshito lyaantu nolyamwene gwaayihe yi li meshito moka omuntu wo a kwatelelwa mo.

Shika kashi na nee mbudhi kutya okwa valwa kulye, oku na olwaala lwa tya ngiini, oha longo shike nenge oku li pehala lya tya ngiini, onkene ngaa oku li koho yepulo: "Egumbo lyandje, eshito lyandje nangoye wa kwatelelwa mo, owe li lele ngiini? Owa lele nuukwatya woshimwene ke po, nenge owa

kala to ipula ngaa kutya, wa lya shaKakodhi tala pombanda?"

Omuleligumbo omuntu kehe a shitwa kuKalunga. Ngele oku na gumwe inaa shitwa kuKalunga, ngoka haye ta popiwa. Ngele owa shitwa kuwaalye, ino ipula nomapulo guuleligumbo, oshoka ngiika ku li meshito.

Ihe nangoye takamitha, oshoka omapulo gamwene gweshito, nangoye itage ku thigi inoo pumwa ngele taga kongo aaleli mboka ya pewa oshimpwiyu shokutonatela eshito lyamwene.

Ngele ou na omunahambo ombudhi, nomunahambo omunashili, uuna to pula shokwe ya pa, ito pula owala ngoka e na oshili, ihe ayehe. Onke naKalunga oku na uutemba auhe okupula shoka shemwene kwaayehe shi thike pamwe.

Ngoka inoo pewa sha kuKalunga, shila ongele wa valwa wa sa. Ongoye lye ihe wa valwa wa sa to pulakene ndhika? Dhokana ihadhi gogoka, oshindji tala mOmikwetu tadhi ka landula.

S.V.V.Nambala

Eeshili mbali oto shikula yalyelye

Efyo nekano laalushe ola hanga omunhu eshi a ekelashi oshili yaKalunga omushiti waye nokwa landula oshili shaSatana. Kalunga okwa ti: "Oshili," ngenge wa li ko komuti ou, oto fi okufya. Genesis 2:17.

Satana okwe uya vali komunhu tuu ou ta ti: Nye itamu ka fya shili. 3:4 Eshili da ninga mbali, da yukulila omunhu. Opo nee omunhu a limbililwa nokwa ekelashi oshili ngaashi Kalunga e mu lombwela.

Elombwelo eli laKalunga opo li li nonena mokati ketu noshili yalo inai lunduluka. Satana naye yo osho eli neeshili daye deheka. Tokola hano u tale kutya otq shikula lyelye.

Omulongi woukolokoshi woludji keshe mefimbo eli, dimbulukwa nokutya oto longo koshi yewiliko laSatana nomoshili yaye omu na ehandu koshipala sha Kalunga.

Tu pitikeni Jesus a kale meemwenyo detu, opo tu ende moshili yaKalunga tu ka kale tu na omwenyo fiyo alushe.

John Kashokulu



Omusita Shekutaamba V.V.Nambala

MOMBELEWA YOKWEEVANGELIFAMWA DJA ENGONGOTO

Omukanda tau nyematele omalongekido inaa wapala oivikembibeli momaongalo mahapu a ELOK, owa pita mombelewa yoshilonga osho pexulilo lomudo 1983.

Omukanda owa shikula omapukululo mahapu a ningwa paembilive ile kokanya moyoongalele yovafita moule womido nhatu da pita.

"Ohandi endulula natango eindilo eli," osho omunyoli wombilive ei a tumbula petamekolela layo.

Okwa ti natango kutya, eemhata hadi di mepiyaano lomhepo yokomatango pefimbo eli, nohokwe ya kana movakriste okupwilikina omaingido oinima i na sha neendjovo daKalunga, osho hashi piyaaneke elongekido loivikembibeli nande i ingidwe nawa komufita mongeleka.

"Hano eongalo keshe olo inali shi ninga natango, nali hoolole Ewilikongudu moshinima eshi okutungana eshikulafano lomalweeno keenhele, unene dokokule nokuufa yo omafiku, omikunda nefimbo oshinima tashi ningwa," osho kwa kunghililwa ngaha nomufindo.

Oshilonga shokweevangelifa oshi li kumwe noshouleliumbo mOngeleki.

Dhimbulukitha wo mukweni a mbesitele oshifo

OVANANGESHEFA MOWAMBO TAVA INDILE ELONGE-LOKALUNGA LOUKUMWE

Elongelokalunga lovanangeshefa avesho mOwambo, olo la ningwa efiku lotete lomudo ou mOniipa, ola pendula ohokwe inene muvo, va kale have shi ningilwa alushe.

Ediladilo eli ove li holola moipafi yovawili-kingeleki va ELOK, meenghundafana odo da ningwa konima yelongelokalunga lefiku la tumbulwa pombada.

Ombelewa yoshitaingeleki shOndonga, oya ninga lwotete eshiivo kovanangeshefa avesho vomOwambo ve uye melongelokalunga

“Oinima yetu aisho, otai kala ashike i na oshilonga ngenge twa tula tete Kristus ponhele yote-
te,” osho omubishofi e va londwela.

Ovaenda avesho velongelokalunga ovo va tengenekwa lwopo 50, va dja oitaingeleki aisho mOwambo, ova pandula kelongekido la ningwa kombelewa yoshitaingeleki nova

fiila natango ombelewa oyo oshisho shokudimbulukwa natango olufo tali landula.

Epulo kutya olufo likwao otali ka landula ko naini, osha kundafanwa yo efimbo lile, nokonima nasho osha fiilwa ombelewa yeshiivo. Osha yelifwa yo pefimbo olo kutya okwoongala kwa tya ngaha, inaku diladililwa ashike ovanangeshefa vOngeleki yonhumba, ndele ovomOngeleki keshe.

Omunangeshefa Eliakim Shiimi (Prince), ou a eta epandulo ponhele yavakwao avesho, okwe va dimbulukifa vaha pwile moisho yee-
ngeshefa, ndele va holoke alushe yo komalo-

Tala kep. 9

Omukundaneki Halweendo

Halweendo ta halelwa omukumo

Aamwameme aaholike miilonga yOMUKWETU, enyanyu enene kungame ngele onda adha mu li nawa. Otandi mu halele omvula ompe yi na elago.

Onda hala oku mu dhimbulutha, mu tumine ndje oshifo shOMUKWETU nonuumvo. Kombinga yiipopiwa, otandi pandula oshipopiwa shahailwa Halweendo, notandi mu halele a tsikile nomukumo noneitulemo miilonga ye.

Gumwe gwomaaleshi,
Lusaka, Zambia



Konima yelongelokalunga, ovanangeshefa ova mwene po okafimbo kokupopifafana nokulipendula. Mefano eli otapu monika okangudu kamwe, fimbo tate Silas Kweyo te va tala kokule kanini.

lowina mefiku lOmudo Mupe 1984. Elalakanola ulikwa yo mombapila yeshiivo kutya:

- Okwoongala pOndjovo yaKalunga okuhambelela eshi a amena koiponga omaliko novanailonga veengeshefa.
- Okukonga eenghono dipe kuKalunga nepuniko lokuya meviyauko lolonga yomudo oo wa taalelwa oshipala.
- Nolwaxuuninwa okumona omhito yokushakena kumwe nokulishiiwa naavo ve li melalakano limwe okuyakula oshiwana pavanangeshefa.

Omubishofi wa ELOK, K.Dumeni naye okwa li yo melongelokalunga eli nokwa pandulila ovanangeshefa ehologo lavo. Fimbo ine va dimbulukifa ondilo yoinakuwanifwa yavo moshiwana shavo, okwe va pandulila tete exwamo okutunga omaongalo avo neengeleka.



Methano ndika kolulyolela konima, okwa thikama omusita Kristof Shuuja ngoka naye wo a kala moshigongi shaakuluntu yiipangelo yOngeleki, ongomukalelipo gwElongeleki. Omuwiliki gwoshigongi, Dr. Hamata, ota monika omutiyali methano okuza natango kolulyo komeho.

OVANANGESHEFA MELONGELOKA- LUNGA

Da dja kep. 8

ngelokalunga momaongalo avo. Eshi osha kolekwa yo komushamane Nangolo Jacob.

Eudifo lomelongelokalunga lotete lovanangeshefa, ola ningwa komufita Set Son Shivute, ou e va dimbulukifa ondjudo yoshikalimo shedina Jesus olo a ti kutya kali shi ku yeleanifwa nomadina makwao, ile noinima imwe ya fimana mounyuni ou. Ndele **mulo omunhu keshe ota xupifwa keitavelo.**

Omuudifili wOngeleki Efraim Angula, okwe va fatululila yo nhumbi Ombibeli tai hokolola oilonga iyapuki ya longwa kovanangeshefa vonale naasho hashi dulu oku va pundukifa.

Ongalo ya umbwa melongelokalunga olo oya dja R191,90, ovanangeshefa ava ove i yandja po i ka kwafele mondjala yOvakwanghala kOmangeti.

Oyoongalele ikwao yovanashilonga

Oshoongalele eshi shovanangeshefa, osha shikula ikwao yovanashilonga mOngeleki ya ningwa mOnandjokwe nomOniipa, fimbo ovanhu inava ya mefudo laKrisimesa.

Shotete oshovakulunhu avesho voihakulilo (oomatrone) mu ELOK, osho sha li mewiliko lomundohotola omukulunhu Naftali Hamata, mOnandjokwe.

Shitivali etalelopo lomubishofi Dumeni noyayakuli vaye koikandjolonga aishe i na eembelewa dayo pOniipa. Etalelopo eli olote mokuningwa nolopamaufomhango.



Omushamane Hans D.Namuhuja oye kwa li umwe wovakwafi vomubishofi metalelopo loikandjolonga pOmbelwangeleki. Apa okwa fikama ta popifa oshiongi. Mukwao okwa li tate Efraim Angula, oo naye ta monika komesho kolulyo lefano.

Ovanailonga avesho mombelewa yOngeleki, ovalongi mOshinyanyangido, mOngalasho yOngeleki, mOshihondjelo nomOkefe yOngeleki, ovo avesho kwa li va endelwa ketalelopo eli.

Omubishofi okwa londwela ovanashilonga ava vaha wile nande moshiponga shouhasha moilonga, shoukolwe, shodino yeendjovo



Eshiivo lovanangeshefa kelongelokalunga lavo lowina, okwa li la kwatelela mo yo ovaneumbo (omushamane nomukulukadi). Ovakainhu tava monika mefano eli, ova li po omolweengeshefa davo ile doovene vavo.

daKalunga, ndele va dimine eumukomesho nova holole elinkelwo moinakuwanifwa yavo aishe.

“Oinima yopapolitika, nai kalekwe kokule noilonga, ndele eyakulo lopakriste nali diinawe moku li ningila avesho shi fike pamwe, ovadinwa ile va fimana,” osho omuwiliki-ngeleki a kumaida nomufindo.

Sebulon Ekandjo

A KA VULULUKWA KEGUMBO LYAANA YAKALUNGA

Kerstina S.Nafuka, okwa mana oondjenda dhe eti 15.11.1983, megongalo lyUukwiyu.

Otatu mu halele eyambeko lyaTate Kalunga amuhe mboka mwe ende oondjila oonde okukala pamwe natse poshituthi shepako.

S.E.Nafuka

“Inamu tidhwa po”

Dha za kep. 1

Pomimvo 1960 niihupe oya tembukile kOwambo noya tameke elongo mOseminali yaNgwediva. Aalongi oyendji moshigwana shika oya putudhwa kuyo.

Oseminali sho ya yi miikaha yepangelo noya lundulukile kOngwediva ompe, meme Von Schantz okwa ka tsikila elongo lye kosikola yOngeleki kOshigambo manga meme Lundmark okwa tsikile natango kOngwediva oomvula dhimwe unene omolwompumbwe yaalongi ndjoka ya li petameko.

Konima naye wo okwa zi ko e ta yi kOshigambo, hoka ya kala sigo 1983 Ehanganotumo lyaandjawa sho lye ya ithana ko ya ka lye oshikwiila shawo shevululuko.

Aalongwa yomOshigambo, ngele taa piti ko, ohaa kala ye na oombapila tadhi vulu oku ya taambitha moosikola adhihe dhopombanda muuyuni, omolweitulomo lyaaputudhi mboka.

Kapu na omalimbililo, oya thigi po ombululu onene pehala lyawo mOshigambo ndjoka tatu nyengwa oku yi thitika nuupu. Ihe Kalunga ne ya pe efudho lye ya yelesa ngaashi ye mwene e shi ya dhiladhilila.

Sebulon Ekandjo

ONTANDA YAAKULUPE MOKANKOLO

Shoka tuu lya hala oku ka pa (etango) oyana, ngiika okutala mpaka naampeyaka oondjila adhihe odhu udha aakulupe. Yamwe oye li komagulu gatatu, yamwe ya kwatwa kaatekulu komeho.

Sho tuu ya pewa oondunda dhokulala, yo otaa tsu omazima, oshoka opwa pita ethimbo ihaa monathana. Gumwe okwa ti, uukulupe nani oshiponga taa.

Ndjika oya li ontanda yaakulupe megongalo lyaKankolo, muuzilo wOndonga eti 21-23.12.1983. Omwa li aakulupe 55. Omudiakoni Sakaria Ambunda, omusamane omuyedhi, nge wa yi puye, oto ti shila omwa li naye konima yokathimbo.

Ota yolo nayo ye ta hokolola. Oha longo mepyatumo, Onyuulaye moongamba dhegongalo lyaKankolo. Oye a wilike ontanda ndjika.

Mpeyaka ishewe onda mono meme Albertina M.Kutidha, kee na nando ethimbo u popye naye, sho i ipyakidhila naakulupe ye. "Tse otwa mona meme gwetu nena," osho omukulupe gumwe ya yamukula ndje ye tu ulike kumeme Albertina.

Kuku Linea Namupala okwa hokolola uuyugoki wokomalutu nowomizalo, mboka wa hololwa po kevaangeli. Om longi Linea okwa ti kutya ye okwa hala Kristus a kuthe mo oondoya dhomomitima tse tu mu kalele aluhe.

Ontanda ndjika oya pendulile ndje eipulo, kutya aagundjuka ohatu loloka mbala poohapu dhaKalunga, ihe aakulupe oya kala ethimbo ele taa kundathana ohapu yaKalulupe.



Omusitagongalo Matias Nepela, Okankolo

nga noinaa loloka nando. Tse yepipi ndika, otatu thiki tuu muukulupe?

Mokati kaakulupe onda tsakaneke mo aakriste Aakwankala yaheyali. Sho nda popi nayo, oya ti kutya yo oye hole poohapu dhaKalunga, ihe ngashingeyi ihaye dhi mono we, oshoka ihaku gongalwa we momiti omowiita.

"Ando omwa li tuu tamu etha iita, ando Kalunga ota yambeke shili aantu ye," osho gumwe ngoka a li kee na oshipala a hokololele ndje.

Omwa li wo mu na oontauki montanda ndjika, ndhoka dhe shi hokolola nepandulo shoka dhe shi ningilwa kaakriste momagongalo, okuzalekwa nokupewa iipalutha.

Moonkundathana dhontanda ndjika, omwa zi ondjuulukwe, kutya epangelo li ka yambidhidhe esiku limwe oshilonga shuudiakoni mOngeleki, opo li kwathe mokutunga omahala gomafudho gaakulupe moshigwana.

Ootundi dhuukalinawa odha li dha ningwa komupangi Frieda Nakanyala nelongo lyuukriste oya konakonwa komusita Matias Nepela. Ontanda oya hulithwa nelongelokalunga moka ya yakulwa wo nUulalelo Uuyapuki.

Aatu-J.J.Nakanyala

Eyeme lyOngeleki muNorwie molwaNamibia

Aawilikingleki yOngeleki muNorwie, oya yematele epangelo lyaandjawa sho lyi ikaleke pondje yetokolo ndyoka lya ningwa momutumba gwoshigongi sha VVO, okuningila SA, ondjindikila yipindi.

Pashifonkundana shOngongahangano yaAakwaluther, Ongeleki muNorwie, Oongeleki dhomoshilongo shoka, osho tuu omahangano galwe gopapolotika, inaga nyanyukwa nando, epangelo lyawo sho inaali tokola pamwe nomapangelo giilongo yilwe, ondjindikila yipindi yi ningwe.

Omutumba gwa VVO ngoka gwa kundathana oshinima shika ogwa li ko pehulilo lyomumvo gwa zi ko.

Oongeleki dhomuNorwie, otadhi indile ihe kepangelo lyawo opo li kuthe po epindikathano noshilongo sha SA momahooli.

"Otu shi shi, shoka otashi ka eta shili oluhepo lwiilonga moshilongo shetu, ihe esimaneke lyuuntu, oli na okutalwa aluhe tango, oshoka okatongotongo oko iihuna mbyoka inaatu mona nale, nkene twa zile muukolokoshi waHitla (Hitler)," osho Oongeleki dha ti.

Olwoodi lwokatongotongo mOngeleki

OVAKWALUTHER OVATILYANE MUNAMIBIA NOMUSUID-AFRIKA, OVA FIKA PAIFE MEFIMBO TALI VA PULA VA NINGE ETOKOLO LOMOKULE NGENGE OTAVA EFA OKATONGO TONGO ILE OTAVA KONDWAMO MOYOONGALELE YOUNYUNI.

Omadiladilo aa okwa dja moshooongalele shEengeleki adishe eenghwaLuther muAfrika sha ongalele petameko laDesemba 1983, muZimbabwe.

Oshooongalele osha li shokulilongekidila shikwao shOvakwaluther aveshe mounyuni osho tashi ka ningwa muJuli neudo muBudapest shaHungary. Hamushanga Ndjayi wOngongahangano yOvakwaluther mounyuni (LWF), dr Carl Mau Jr, nomupresidende wehangano olo omubishopi Josia Kibira navo omo va li.

Ovakwaluther Ovalaule muAfrika ova ninga efaneko li ka kolekwe kuHungary, kutya omolwEengeleki eenghwaLuther dOvatilyane muNamibia nomu SA inadi hala okuhangana kumwe nadimwaina Ovalaule, nava kufwe yo oufemba wokukala moyoongalele younyuni.

Oongeleki yOvandowishi muNamibia, oya kala efinbo lile ya nyengwa okuya mEhangano neemwainangeleki dOvalaule moshilongo, ELK na ELOK, (VELKSWA). Eshi ye ke shi ninga, oya kala ihai i momatokolo amwe, unene oo e na sha neameno loufemba wOvalaule moshilongo.

Eshi osho yo tashi ningwa kOngeleki yOvandowishi muSuid-Afrika. Meengeleki edi dOvatilyane itamu udikwa omambo kOmulaule nande a kale e udite ko elaka, ita udifile mo ye ita i kOvalalelo Uuyapuki fiyo konena eli, nande haveta yoshilongo ya kelela.

Eshi tashi indilwa kOvakwaluther Ovaafrika, osha ningilwa nale Ongeleki yEembulu mu SA (NGK), eshi ya telwe moshooongalele shEengeleki mounyuni muCanada 1982, vati omolwokuyambidida kwado okatongotongo.

Inapu shiivika manga neudo osho tashi ka ningilwa Ovandowishi, omukaliko te ke shi hokolola.

Eindilo lya popilwa

Oshiongi shovakainhu Ovakwaluther aveshe mounyuni, nasho osha koleka ediladilo lokuumba mo Ovatilyane moiongi yOngongahangano younyuni, ngenge itava ningi po sha shi lwetike mokukondjifa okatongotongo mOngeleki nova popile oufikepamwe wovanhu aveshe moshilongo.

Oshooongalele osha ningilwe eti 2.1.1984 muGeneva. Natango ovakainhu ovo va ninga eindilo kuvakwao moilongo aishe yOvakwaluther va indile omapangelo avo omahangano opo pu ningwe ondjindikila yoipindi ku SA nounyuni u kufe mo oimaliwa yao aishe ei wa pungulifa meembaanga da SA - (Lwi 2/84)

Sebulon Ekanjo

Omahaleloyambeko gaKrismesa nogOmumvo omupe

Omaalaka gedhina HEKKA, otaga halele aanangeshefa pamwe naayakuli yawo ayehe moshigwana shetu Okrismesa ya yambekwa nOmumvo omupe gu na elago Luk. 2:10-12.

ooShiimi



Paulus Hasheela, ota halele aaleshi ayehe yOmukwetu Okrismesa nOmumvo omupe gwa yambekwa. Ps. 150:1-6.

Cuba oshilongo shoka sha kwatitha emangululuko lyaNamibia ombambiyona kuAmerika

Konyala ngashingeyi oomvula omulongo dha piti po sho edhina Cuba lya tameke okukelengendja momakutsi gaakalimo yomuNamibia. Okuza kethimbo ndyoka, oyendji sigo onena otaa ipula nevi ndyoka mpoka lya gama ongonga yuuyuni.

Okavi hoka ke etitha omuzile moshikundathanwa shevi lyetu, Namibia, pamwe onawa ngele tatu holola oshipala shako kashona, omuleshi kehe a vule okulandula nawa iinima mbyoka tayi popilwa okavi hoka.

Cuba okavi ke li pokati kaAmerika lyuumbangalantu naAmerika lyuumbugantu, mefuta lyaCaribbean. Kamwe komoontuntu oonene mefuta ndyoka. Uunene wako konyala ou thike puMalawi, ihe omu na aakalimo oomiliyona omugoyi niihupe. Ombala yoshilongo oHavana.

Konyala etata lyaakalimo, "oombinzimbali" (oludhi lwopokati kAaluudhe nAayeuroopa). Ihe omu na wo Aaluudhe oyendji, mboka ekota lyawo lya zile kuAfrika mokulandithwa po aapika kAaspania mboka ya kala aakolonyeki yokavi hoka.

Aanyoli yomahistoli otaa ti kutya oshilongo osha monika tango kuChristoph Columbus 1492, ngoka haku tiwa wo oye a mono tango Amerika nonando okwa adhele ko ngaa antu yako.

Cuba osha kala melelo lyaSpania sigo 1898, sho ka mono eipangelo lyako kekwa lyaAmerika. Sigo onena elaka lyopambelewa Oshispania. Epangelo ndika inali ka enda unene nawa, sho haku tiwa Amerika okwa kala ta wilike elelo miinima oyindji peha lyaavalelwamo.

Shoka osha falitha sigo omoshiyotha oshinene shaakwiita 1953, okuteya po epangelo ndyoka, ihe osha ponyo. Mokati kaanashiyotha mboka ya hupile inaa sila mo, omwa li Fidel Castro gwomimvo 57 nuumvo, ngoka a tulwa mondholongo sigo a mangululithwa mo kEhangano lyooveta muuyuni 1955.

Konima yokumangululwa okwa yi muupongekwa kuMexico, shimwe shomiishiindalongo naCuba sigo 1959, sho a galuka netanga enene lyaakwiita ndyoka lya ponokele oshilongo sigo omuleli gwasho pethimbo ndyoka, Fulancio Batista, a fadhuka po oshipundi, Castro nokwe shi lala.

Omumvo gwa landula 1960, Castro okwe ekelehi omulandu aguhe omukulu, nokwa dhike epangelo lyopausosiale muCuba. Omaliko ogendji gaAmerika moshilongo, okwe ga ningi goshigwana noinaa galulilwa nando osha.

Osho wo oopaati adhihe dhopapolotika moshilongo odha hulithwa po iilonga yadho.

Momalunduluko ngaka omadhigu gopapolotika, kombinga yuukwambepo omu na Ongeleki yaKatoolika ndjoka tayi longo sigo

onena niilyo yoopelesenda 42 dhoomiliyona omugoyi niihupe. (Almanac/ 1984).

Omumvo 1961, Amerika okwa teya po ekwatathano lye alihe naCuba, ye Castro nokwa pungulukile kuRusia hoka a wapa okulanditha osuuka ye, ndjoka yi li okawe ka simana koshilongo shoka.

Okawe kokene muCuba kake mo, ihe okavi okayamba miikwamina yako yilwe nomuunamapya.

Omumvo 1962 hanga pu ningwe eipumo mumwe enene pokati kaAmerika naRusia omolwaCuba, ihe Kalunga okwa pungulula iihuna mbyoka ya li ya tilika kuuyuni auhe.

Shika osha landula onkambadhala yaAmerika 1961, okuteya po epangelo lyaCastro, kekwa lyaAcuba yamwe mboka ya li yi igameke kuAmerika noya ningi oontauki muAmerika. Onkambadhala ndjika nayo oya ponyo.

Nonando Amerika okwa pata iipindi ye kuCuba nokwi indikile wo iishiindalongo mbyoka yi na ombili naye, yaa pindike naCuba, sigo onena aanyoli oyendji otaa tsu kumwe mokuholola ehapuluko lyoshilongo shoka ndyoka lye etwa po kuCastro muule womimvo 25 dhelelo lye.

Ngashingeyi konyala omuntu kehe muCuba, oku shi okulesha. Uuhaku nelongo moshilongo ohayi gandjwa omagano. Ethigathano pokati komuyamba nohepele muCuba, olya sa. MuCuba ito mono mo we aaheheli momapandaanda giilando ngaashi li miilongo oyindji. - (Newsweek 9.1.1984).

Ihe oku na wo omahokololo omakwawo omuntu to vulu oku gi itsa miinyolwa, unene mbyoka ya pamba Amerika moka tamu hokololwa nkene aantu taa si ondjala muCuba, ekonomi lya shunduka nomahupilo ge nkene ge endjelele ashike kuRusia. (Hammond Almanac/ 1982).

Moonkundathana dhe nomutoolinkundana Patricia J. Sethi, gwokiigwanahangano, omusamane Castro, okwe shi ikala kutya ye opapeta yaRusia. Ihe okwa zimine elongelokumwe ewanawa li li poakti kiilongo mbyoka iyali.

"Ando Rusia ka li po, ando walyewo mpoka twa ka landitha osuuka yetu, ando walyewo mpoka twa mono omahooli. Ashike Rusia ke na nando eliko lyasha muCuba, kehe gumwe okwiithikamena kuye mwe," osho i ipopile.

Kombinga yemanguluko lyaNamibia, kutya ote li tile ngiini, Castro oku ulike ashike kuVVO, ndjoka nayo ye ekelahi eindilo lyaAmerika, kutya Acuba naa ze mo tango muAngola.

Oku ulike wo kuFulanisa ngoka a zi mokingundu kayatano omolwokutamaneka eindilo lyaAmerika nokwa ti, iilongo iikwawo ya hupu ko, nayo otayi dhiladhila okulandula Fulanisa.

"Mpoka Amerika opo ta ka kanena niigwanahangano oyo tayi ka kala yi na uuthemba womukundu aguhe," osho a yamukula.



Fidel Castro gwaCuba

Cuba oku na pethimbo ndika aaniilonga taa tengenekwa 70,000 mboka ya halakanena miilongo yaAfrika 35. Oyendji yomaaniilonga mbaka oyo aakwiita, oondohotola, aalongi naatungi.

MuAngola amuke, otamu tengenekwa mu na Acuba 25,000 sigo 30,000. MuCuba momwene, omu na wo aanasikola oyendji ya zamuAfrika taa tengenekwa 10,000. Momwaa-lu ngoka ohaku tiwa naAnamibia omo ye li.

"Ngele Amerika okupule ndje nena, ndi ethe okukwatha Angola na SWAPO, ye a kuthe po ando ondjindikila ye yiiipindi kutse, nena shoka otashi kala oshidhigu ku tse."

"Tse katu na ohokwe miinima, ashike nonando otwa li tu na ohokwe, ando itatu hala tu ningithwe shoka kaashi li pamulandu gwetu," osho a holola komutoolinkundana Sethi, etokolo lyawo puuyeleele.

Ngele Cuba ote shi tala kutya ope na natango ompito yoonkundathana naReagan ya popye omaudhigu gawo, omuleli Castro okwa ti yo inaa tinda oonkundathana, ashike "epuko" lyaReagan sho ta dhiladhila kutya uumbugantu waAmerika otse naRusia twe u piyaganeka, shoka osho ashike tashi yono.

Amerika okwa dhimbwa kutya uusosiale mboka tau kondjelwa ngashingeyi kiilongo yomuAmerika lyuumbugantu, owa kala mo nale, manga Cuba inee ya po nomanga Aarusia wo taa kondjele wawo moshilongo shawo konima yoomvula 50 dha piti, osho a yamukula.

Sebulon Ekandjo

Etilito 1984 inali fya

Hamushanga wOmu kwetu,

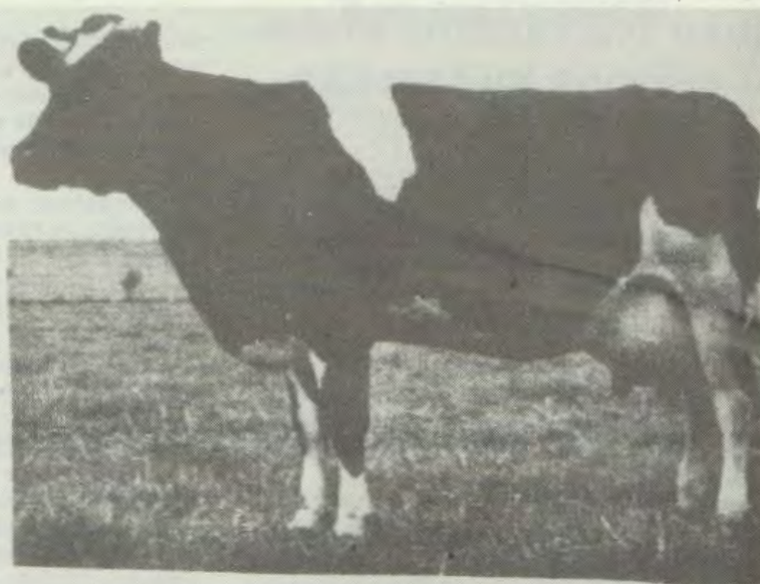
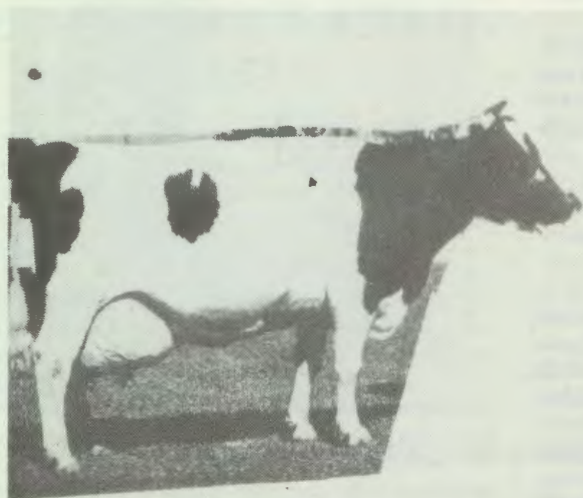
Manga nde lipyakidila nokunyanyangida omukanda ou, vo ounona ava va pita Ostanda -5, ova kalela nale Eesekundofikola poumbelewa vomatambulilo.

Ounona ava owa kala "tau li woo tau pi" nale. Eshi omomesho ange sha ningwa nondi shii oku shi hokolola nande openi.

Ovataleli voikandjo, longifeni ehandu metilito, paku kwatafana novakulunhu veefikola. Nye ovakulunhu vEesekundo ngongoshekeni ovakulunhu veengudu domeefikola deni, opo pu kandulwe owii mokati kovahnhu.

Chris Ph. Nghaamwa,
Oshikefa 647, Oshakati

Ongombe nomulumentu



**ESIKU LYUUNAFALAMA WOONGOMBE MONANDJOKWE
3 MAJ. ITSA 1984.**

ELANDULATHANO:

- 8.00 OWANDAHA: F.ASHIPALA
- 8.30 OKUKANDA OONGOMBE
- 9.30 OMALUDHI GOONGOMBE
- 10.30 ONTAKU NETALELOPO LYIIMUNA YOONGOMBE NOMATUNGO
- 11.30 OKUPALUTHA OONGOMBE
- 12.30 OKAFUDHO NOMPITO OKUTALELAPO IIMUNA YOONGOMBE
NOMATUNGO NOKULANDA WO
- 14.00 OMPUMBWE YONTSEZI
- 15.00 EKUNDO LYOMUKWANIILWA GWONDONGA
- 15.15 EHUMOKOMEHO LYIIMUNA NENGE IIKOLITHA - DR HAMATA
- 16.30 EHULITHO: PETRUS SHIPENA

**KONIMA NATANGO OMPITO YOKULANDA NENGE OMAPULO KOMBINGA YOONGOMBE
NENGE OMATUNGO.**

OMUTUNGI L.WALLACE OPO E LI MOLWOMAPULO NOSHO TATE SEPPA KALLIOKOSKI.

**I LENI AMUHE OKUKUNDATHANA KOMBINGA YOONGOMBE
EHALA LYOKUGONGALELA OMONGALASHE MONANDJOKWE NOMOSHI-
GUNDA SHOONGOMBE**

**NGELE OWAHALA OKULANDA SHA, ILA NOSHIHAUTO OKUFAALELA IINIMA YOYE KEGUMBO
NGAASHI UUTANA, IIKULYA YOONGOMBE, OONETE DHOMUZILE NIILONGITHO YILWE
OMOLWOONGOMBE.**

OMWIITHANI: Seppo naAshipala



Kalunga oye kwa li e tu enditha

Tse atuheni momumvo nguka gu li pokuhula po, otatu pandula Kalunga ngoka awike a kala e tu kwatela komeho mokukala akuhe kwetweni. Okwa koleke omalutu getu, naamboka ya kala miipangelo, okwa yambeke omiti.

Osho momumvo tagu ya, otwa hala okumona omumvo gwa yambekwa. Nomomumvo ngoka tu mone mo aantu ye shi okwiinekelwa, ya za eiuvo ewinayi. Tu kale tu na elongelokumwe methimbo ndika omadhipagathano ga vuka, uukeena ohenda wi indjipala momapipi omanene nomashona.

Tu tonateni ano momumvo ngoka tu uka omupe, oshoka katu shi we aanona yokudhanitha ethimbo ndyoka lya pwa po. Kalunga ne tu pe Ombepo ye.

Sebastian Ilonga

OMUKWETU

Oye oshifo shOngeleki Onkwaevangeli paLuther yomOwambokavango.

Ohashi nyanyangidhwa mOshinyanyangidho shOngeleki mOnilpa.

Omukuluntu gwoshifo omumbisofi. Dr. Kleopas Dumeni,

Amushanga gwoshifo omusita Sebulon Ekandjo

Ondando yOmukwetu muNamibia naSuid-Afrika R 5,00 komumvo.

Palwe muAfrika R 8,00 nokombanda yomafuta 11,00, komumvo. Mondhila R 13,00.

Oondando nomambestelo agehe naga tumwe kOmukwetu, Onilpa, P.Bag 2013, Ondangwa, 9000

EV. LUTH. OWAMBOKAVANGO CHURCH PRESS
PRIVATE BAG 2013, ONDANGWA 9000
SWA/NAMIBIA