



Omumbisofi Auala a hulitha oondjenda

OMUMBISOFI GWOTANGO GWONGELEKI YA ELOK, LEONARD NANGOLO AUALA, OKWA MANA OONDJEDNA DHE 4.12.83 MOSHIPANGELO SHONGELEKI MONANDJOKWE, KONIMA YUUWEHAME WETHIMBO ELE, MEGUMBO LYE NOMOSHIPANGELO.

Onkundana yeso lyomumbisofi oya thikithwa nziya momakutsi goyendji kekwa tho lyOradio meni lyoshilongo nokootelekisa muuyuni wopondje.

Omahekeleko komuselekadhi kuku Aina nokoluvalo ngoka ga thiki tangotango ga zi kombanda yomafuta, oga zi kEhanganotumo lyaSoomi, ndyoka lya holola po Ongeleki ya ELOK nokOngongahangano yAakwaluther muuyuni (LWF), moka omumbisofi Auala a yakula muukwashilyo wongundumpitithi yEhangano ndyoka omimvo hetatu.

Meni lyoshilongo wo, unene mOshitayingeleki shOndonga, iilyo yOonge leki dhi ili nodhi ili noyomogongalo ga ELOK, oya mbomboloka esiku ndyoka nomasiku omakwawo ga landula yu uka pegumbo lyomumbisofi okuhekeleka omuselekadhi nezimo.

“Kalunga e tu longekidhile esiku enene, inatu li mona nale mOngeliki ya ELOK. Otwa tameke ngashingeyi ethimbo epe ndyoka tatu taalele omasiku ngoka taga landula.

“Otu na mpaka oluhodhi ndoka kaalushi ashike lwegumbo lyomumbisofi nenge lyezimo lye, ihe otalu

Tala kep 10



"TALA, OKAKADONA OTAKA NINGI OUFIMBA, NDELE TAKA DALA OKAMATI;
EDINA LAKO NALI LUKWE IMMONUEL, OLO TALI TI:KALUNGA PAMWE NAFYE."
ONGHUNDANA EI YAKRISMESA OYA KUPWA MUMAT.1:23 NOYO HATU KUNDIPA
OVALESHI VETU AVESHE.

Tangi sho twa pelwe Omumvo 1983

Omumvo nguka ogu li po tagu ka dhilogela pamwe niinima yagwo yi ili noyi ili. Kutya iinima yagwo oya li po iipu nenge iikukutu, yi nyanyudha nenge yi tyololokitha, omumvo otagu yi ngaashi gwi ile.

“Mbuku itaa gogonya ko, ye shiyengele ita ti ko omushila yongolo.” Shetu shila okupandula Kalunga: Tangi sho twa pelwe omumvo 1983 gwa tya ngaaka.

Aaholike nee moshigwana, unene tuu aaleshi, aalandi yomambo, aanangeshefa naamuhe twa yakulwa kune - notwe mu yakula wo moompumbwe dheni nodhetu, mositolamambo nomuutayi wayo, moombelewa noshaampoka sha vulika pailonga yetu, tse mehala ndika alihe lyokulongekidha iinyolwa niinyangidhwa yoludhi lwetu, otatu mu pula.

Mpoka twe mu piyaganekele eiuvo nonkalonawa yeni, molweyakulo lyetu lya kala lya kangala kune, nenge inaatu li mu pa lyothaathaa pandjuulukwe yeni, mu tu kuthile po, opo tu ka tsakanekeni Okrismesa nomumvo 1984 twa kuthwa eiuvo tali nyenyeta, nenge lya yematekwa.

Otatu pandula komayeke nokomapukulo omawanawa kwa li mwe tu pe, osho tuu tatu simaneke eyambidhidho lyeni lyoludhi kehe tamu ke li tu pa nokomeho.

Mboka mwa indile shontumba noshongandi shi talwe, nongele pe na ompito shi ningwe pamukalo gwi ili (hol. “omapeko gOkatikisa ga kale ga kola,”) ngaashi yamwe ye shi indile, onakuyiwa tayi ke tu uthila shoka tu na okuninga.

Otatu dhimbulutha iinima yimwe: Kalunga ngele te tu pe natango ompito tu ka thikeni momumvo 1984, alikana aambesiteli amuhe yomambo goludhi kehe, inamu mbestela we moongunga. Itatu gandja we omambo moongunga naga kale ogoludhi luni.

Oongunga otatu dhi gandja owala koositolamambo ndhoka hatu pindike shito nadho, nokaalandithimambo, mboka hatu longele kumwe nayo okuza konale notu li mevathano ewanawa nayo ndongo onena.

Tse aayakuli yeni atuhetuhe mehala lyokulongekidha iinyolwa noku yi taa-ndelitha, otatu mu halele Okrismesa ya yambekwa nOmumvo Omupe gu tu etele elago lyokomwenyo naandika wo lyomuuyuni.

Omolvafudho lyokomumvo lyaanya-nyangidhi ayehe, otatu mu tseyithile kutya iilonga yokunyangidha ayihe otayi ka pata okuza 16 Desemba 1983,

otayi ka eguluka 16 Januari 1984.

Uisitola, yomambo nombelewa yokwiishangitha Omukwetu, eyakulo otali kala lye eguluka ethimbo alihe, kakele pomathimbo giituthi nogomayalulo gehulilo lyomumvo.

Amushanga gwomumbi-sofi nkene ta tala Okrismesa



OKRISMESA, OMATANAUKILOSHITSA GEHISTOLI LYUUYUNI

Omadhiladhilo getu okudhiladhila Okrismesa, olwindji ohaga kala omawanawa nogu udha omaivuto genyanu nuukwashituthi. Okrismesa omuti gwomuzile omutalala mombuga yokwenye okupyu kwokukalamwenyo.

Otayi tu pe okathimbo okashona kefudhupo. Nokaanona yetu omauvito omawanawa nomayamba goshituthi. Omaopaleko nokuzaleka egumbo iihwa iitalala ya ziza, okwiimba omaimbilo gaKrismesa, okulesha evaangeli lyOkrismesa, uulalelo wesakalo nomomagumbo gamwe etopolo lyomagano gaKrismesa, ayihe mbino otayi tu etele omauvito omawanawa goshituthi ongotatu tulidha okathimbo mokukalamwenyo.

Ayihe otwe yi pumbwa, ihe oyo owala omayula gokombanda yOkrismesa. Ope na omatompele ogendji tu ilonge okutala, oshike shi li meni lyomayula ngoka.

Okudhana oshituthi shaKrismesa osha za mevalo lyaJesus. Ombimbeli oya gandja omuty omunene gwaa shi kuyelekwa noshiningwanima shika shevalo lyaJesus, osho omatanaukiloshitsa gehistoli lyomushitwa gwaKalunga

Omolvafudho ethimbo lya topolwa momathimbo gaali: ethimbo manga Kristus inaa valwa (Kr. inv.) nethimbo konima yokuvalwa kwaKristus (Kr. av.). Oshikalimo shomambo gesakalo otashi tu talitha meni lyomayula gOkrismesa. Tu taleni iitsa yimwe yopokati momuty gwaOkrismesa mOmbimbeli.

“Maria nokwa lombwele omuyengeli. Shika otashi ningwa ngiini, oshoka omulumentu kandi mu shi?” Omuyengeli okwe mu yamukula a ti: “Ombepo Ondjapuki otayi ku lambele, noonkondo dhaanguka gwokombandambanda otadhi ku siikile, onkee omuvalwa nguka omuyapuki, ota ka lukwa Omuna gwaKalunga. Luk. 1:34-35.

MOmaevaangeli paLukas nopaMateus, omwa hololwa sha yela ehokololo tali popi oonkundana manga Jesus inaa valwa, osho ihe evalo lyolyene. Aayevaangeli ayehe mbano otaa holola kutya Kalunga okwi ile kombanda yeve, muusiku waKrismesa.

“The sho kwa li a dhiladhila ngeyi, tala, omuyengeli gwOmuwa okwe mu holokele mondjodhi nokwa ti: “Josef omuna gwaDavid, ino tila okweeta kungoye Maria, omukiintu gwoye, oshoka e la ndika e li na olyOmbepo Ondjapuki.”

Shino ashihe otashi ningwa, opo shi gwanithwe, shono Omuwa e shi lombwelitha omuprofeti ngoka ta ti: “Tala, omukadhona ota ningi omusimba, nota vala okamati, nedhina lyako nali lukwe Immanuel, ndyoka tali ti, Kalunga pamwe natse.” Mat. 1:20,22-23.

Kalunga a ningi omuntu mokati kaantu, noina tuma owala elaka lyetseyitho lyokutya, ye oku li ngiini, nonke natu kale ngiini. Okwe ya mwene opo tu mu uve ko, tu mu tsakanekwe tse tu mu landule.

Okwe ya okuhupitha, oshoka tse katu vulu okwiihupitha tse yene. Johannes ote shi yelitha nawa sho ta longo kutya: “Ohapu ya ningi onyama nokwa li a kala mokati ketu, notwa tala eadhimo lye, eadhimo tuu ndyoka lyEpona lyaHe.” Joh.1:14.

Kalunga sho a ningi onyama, omuntu shili mokati ketu olyo Evaangeli li li moshiningwanima shaKrismesa ndyoka. Andola shika kasha li po, noinashi ningwa, andola Kalunga a kala kokule naantu ngaashi iikalunga yaapagani, aashunimonima naakaanakonasha naKalunga.

Andola eitaalo lyopakriste lya kanitha uukwatya woshili nolya ningi owala elongoitaalo mokati komakwawo.

Mokati kaamboka ya dhiki omolongoitaalo kombanda yeve, Muhamed, Buddha, Zarathustra nayalwe, Jesus oye awike ngoka evalo lye lya li lya hunganekwa nolya tseyika oomvula dhomayovi manga inaa valwa.

Etestamendi Ekulu alihe, nohauprofeti auke, otali ulike kokuvalwa kwOmukulili. Moohapu dhaaprofeti shili otamu yelithwa etegameno epe lya yela nawa.

“Oshigwana hashi endagula nomilema, tashi tonatele uyelele owindji, naamboka haa kala mevi lyomilema thokothoko, uyelele

“TERRARUM ORBIS IMPERIUM”

Omuyevangeli Lukas montopolwa ndjika ontiyali, sho a hala okuhokolola nkene she ende pevalo lyaJesus, okwe yi tamekitha nondjokonona yopapolitika. Jesus okwa vaelwa pethimbo ndyoka uuyuni auhe mboka wa li wa tseyika, tau lelwa komukwaniilwa gumwe awike. Terrarum orbis Imperium = melelo limwe lyombanda yevi ayihe, osho ta ti.

Olwindji mpoka pu thike oonkondo dhaaleli tadhi itaandeleke kokule, opo wo hapu thiki omakemo gaalelwa. Omahupilo kage shi we omapu, iifendela ohayi londekwa, epulo lyonakuyiwa kapu na we ngoka e shi oku li yamukula, ayehe otaa tsu omazima.

Yeleka nenyolo lyaLukas: “Uuyuni auhe u yalulwe, u gandje oompale ...” Ov. 1. Osho sha li onkalo yopapolitika pethimbo lyokuvalwa kwaJesus.

Tu yeni ko kuBetlehemOv. 15. Omahckololo haga dhanwa iinya ndwa mekwatathano noshiningwanima shaasita, ohaga ulike nkene oonkundathana dhaasita dha li po tango, okwiipula nomahupilo nonakuyiwa yoshilongo shawo, nomuntu shika oto shi zimine.

Oonkundathana dhethimbo ndika mevi lyetu dhomuuwike nomoongundu, odhi na sha ashike nonakuyiwa nonkene tatu hupu nena. Shono sha thinda oomwenyo pevi, osho wo hashi kala kondungu yomilungu dhaantu.

Mushika aasita oya tembudhwa mo ashike konkundana ompe ndjoka ye ya po. Oyo ya ningi oshitsa shopokati. “Tu yeni kuBetlehem....,” osho ya lombwelathana.

Osha yela oya li ya popi oshindji kombinga yelaka ndyoka lye ya adha ombaadhilila. Osha yela onkundana oye yi tegameke tango nomaipulo gawo goshito moshigwana shawo. Mpaka etokolo ashike ndyoka lya zi moonkundathana twa hololelwa. “Tu yeni ko ano.”

KuBetlehem inaa ya ko omolwomalimbililo ando ye ga na, aawe. Oya yi ko ya ka tale owala oshili ndjoka ya lombwelwa kaayenda yokegulu.

Oya mono Maria, Josef nokanona Ov.16.

Ondjenda yokuya ko kuBetlehem, oya ningwa neulumo. “Oya yi no-

kweendelela. Aantu oyendji oya mona omatumwalaka ga simana, ihe inaa ninga mbala etokolo noinaa uluma nando okukonga shono ye shi lombwelwa.

Aasita oya mono sha. Naashono ye shi mono, Omuhupithi metemba lyiimuna. Kasha li nando oshihalukithi kuyo nenge oshilimbiliki sheitaalo lyawo. Osho ye ya yi itaala shoka, neitaalo lyawo olya kolekwa ashike.

.... Oya ka hokolola oohapu ndhoka... Ov. 17

Maria naJosef, oya tseya nawa omwana gwawo ngoka ye mu vala kutya omushike, ihe Ombimbeli inayi shi holola nando opehala limwe nkene aavali mbaka ya hokololele andola aantu omunona nguka, aawe.

Ethimbo alihe Maria okwa kala omumweni nomupulakeni gwaashono aantu taye shi hokolola kombinga yomwana nokupungula omahokololo gawo. Ov. 19. Mpaka wo okwa tiwa aasita oyo ya hokolola noya ka hokolola palwe ehupitho ndika lye ya kaantu.

Naayehe mboka ye dhi uvu oya kuminwa ndhoka ye dhi hokololelwa kaasita. Ov.18.

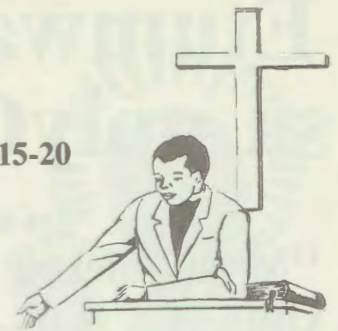
Oonkundana oya thiki ngashingeyi momakutsi gaanandunge notaye yi tegameke noondunge dhawo. Eitaalo lyehupitho itali zi nando meuvoko lyopandunge.

Sigo onena uuyuni inau mana okuyeleka onkundana ndjika yevalo lyOmuhupithi. Yamwe oya adha eitaalo lyashili, yamwe ishewe ya limbililwa noye etha. Omuleshi konakona wo omakondjo gomungoye moshinima shika.

... Maria okwa pungula oohapu ndhoka adhihe Ov. 19. Tala wo efatululo lyovelise 17.

... Oya shuna nokuhambelela Kalunga Ov. 20.

LUK. 2:15-20



Noshito aasita mbaka oya nyanyukwa ngaa mokukalamwenyo kwawo, ihe inaa makela shito enyanyu lya fa ndika ye li mono esiku ndyoka. Augustinus omuyapuki, he yOngeleki okwa popi lumwe a tile:

Oomwenyo dhetu kadhi na evululuko sigo dhe ku mono Omuwa,” osho sha ningwa nomonkalamwenyo yaasita.

Hamolwashoka uudhigu womahupilo giimuna yawo woopalekwa, nenge omaupyakadhi monkalathano yoshilongo shawo ga kuthwa mo, aawe. Enyanyu olya holoka ashike notali kala po sho pwi ilongwa ngoka awike ha gandja ombili yashili, kutya oku li natse moothina dhetu. IMMANUEL - Kalunga pamwe natse.

Oye ombili yetu, “Ombimbeli osho tayi tu longo. Ondjila yOmuhupithi kutse Kalunga okwa tokola e yi endithe nuugoya wa tya ngaaka. Omukunda gwokanyothi kuye, oshigunda shiimuna. Manga ombete ye yuuehame omushigakano.

Shika osho tashi piyaganeke omitse dhaanandunge, sho ya hala okumeta iiholekwa yaKalunga nontseyo yawo. Omuyapostoli Paulus osho ta nyola.

“Omuntu gwopayuni ita taamba shono shOmbepo yaKalunga, oshoka ohe shi tala uugoya. Oye ka vulu oku shi tseya, oshoka oshi na okuyelekwa pambepo.

“Ihe omuntu omunambepo oye ta yelege ayihe, ihe oye mwene iha yelegwa nando komuntu.” 1Kor. 2:14-15.

Oonkundana yevalo lyOmukulili, otayi hokololwa sigo onena muuyuni auhe wa tseyika “Terrarum orbis Imperium” naamboka taa igandja kuyo, omeho gawo otaga hololelwa iinima iinene yi vule mpoka.

Sebulon Ekandjo

Etumwalaka lyaKrisimesa nolyOmumvo Omupe

Lya zi komumbisofi gwa ELOK, Dr K.Dumeni

“Mwa valelwa Omukulili, Oye tuu nguka Kristus Omuwa.” Luk. 2:11.

Tango otandi pe Kalunga esimano. Otandi mu halele ombili yaKalunga yi kale moomwenyo dheni.

1. OMUMVO 1983

Omumvo 1983, otagu hulu mbala. Otandi pandula Kalunga sho a li e tu pe ompito oku mu longela nonuumvo wo. Osho sha kala ehala lyetu, pashipalanyolo shOmumvo nguka: “Ngame negumbo lyandje, otwa hala okulongela Omuwa.” Jos. 24:15.

Omumvo 1983 ogwa kala omumvo gwiita ya geya, gwondjala, omikithi, okwenye, iiponga nomaso gaaholike yetu oyendji. Otandi dhimbulukwa omapenda naayakuli yetu oyendji yOngeleki noyoshigwana, oya thigi po omaudhigu gomuyuni.

Kalunga okwa zimbula wo aauvithi yamwe moshilonga sheuvitho lyevaangeli. Yamwe yomuyo oyo; Josua Hanyango, David Shihepo, Malakia Ntinda nuunene he yOngeleki noyoshigwana shetu omumbisofi Leonard Auala.

Otatu pandula Kalunga molwawo. Inaa thiga po oshilonga shawo sigo eso. Eeno shili; “Talen i ehulilo lyoondjenda dhawo, holeleni eitaalo lyawo. Mpaka otatu galikana: “Tate, ehalo lyoye nali gwanithwe.”

Mokati kuudhigu Kalunga okwe tu yambeka wo. Ooitaali oya kolekwa meitaalo lyawo. Omumvo ogwa li gwomatungathano omatalelakathano nomagalikanenathano ga zi meni lyoshilongo nokombanda yomafuta.

Omumvo nguka ogwa li gwedhimbulukwo lyoomvula 500, okuza kevalo lya Dr Martin Luther. Eitaalo lya yela palongo lyOmbimbeli: “Omu-yuuki ota kala e na omwenyo gwo-meitaalo,” Rom. 1:17, olya kundathanwa muuyuni auhe.

Meitaalo ndika limwe, uumwayinathana wOongeleki muuyuni, owa kolekwa. Otatu pandula Kalunga sho tu



na elongo lyeitaalo lya yela. Uuthiga weitaalo lya kola lya fa lyaLuther momathimbo omadhigu, nau kale wetu tse tu imbe muudhigu:

“Kalunga oye egameno yo naa tu yuge po, Olutu mwenyo wo, Katu na konasha, oshoka tse otu na, Uuyamba waKalunga.” Eimbilo 168 mEhangano.

Kalunga otatu mu pe esimano omolwuudhiginini we nesilohenda lye enene kutse mbaka tu li po sigo onena.

2. OSHIPALANYOLO SHOMUMVO OMUPE 1984

Otwa tegelela Omumvo Omupe 1984. Oshipalanyolo shagwo patokolo lyE-

lelongeleki lyeti 19-21.7.1983, oshitolitho 315/83, oshu uthwa shi kale egalikano ndika: “Omuwa lundulula okukala kwetu, pa Eps.126:4. Egalikano ekwawo pamwe naandika olyo: “Tu taalelulula Kalunga kehupitho lyetu,” pa Eps. 85:5.

Elalakano lyeutho ndika, olyo okwiindila noku kumagidha omagongalo naakriste ayehe ya kale meitedhululo nomegalikano nomeinekelo, opo Kalunga ngoka e na moonkondo dhe ehupitho lyetu, e tu sile ohenda, e ta lundulula onkalo ayihe pambepo nopankalathano mevi lyetu.

Omumvo 1984, otagu tu dhimbulutha oomvula 10 okuza 1974 sho iilyo yomagongalo getu omayovi ya thigi po oshilongo shika omolwuudhigu mevi ndika.

Nando opu na oyendji ya yi ya tete-kela ethimbo ndyoka, omatembu (Exodus) omanene oga ningwa moomvula ndhoka omulongo dha piti. Omaso niiponga ya ningwa methimbo ndyoka oyindji niinene.

Onkee omagongalo naakriste otaa nyatipalekwa moku kugila Kalunga kehupitho lyetu e tu taalelulule, ye e tu sile oshimpwiyu shaampoka tu li, opo e tu ningile iinima iinene, e ta galula oonkwatwa ayehe muupika kehe, e te tu pe ombili.

3. ETUMWALAKA LYAKRISIMESA NOLYOMUMVO OMUPE 1984

Mpaka otandi tumine omagongalo agehe ga ELOK niilyo ayihe ya ELOK shaampoka yi li, nookuume ayehe etumwalaka lyaKrisimesa nolyOmumvo Omupe tali ti: “OTU NA KALUNGA KEHUPITHO LYETU.” Okwe tu pa Omukulili; “Mwa valelwa Omukulili.” Oye wo Omupangeli nOmupanguli, “Oye tuu nguka Kristus Omuwa,” Luk. 2:11.

Oye Omuwa gwetu nomOmumvo Omupe. One Aelok amuhe nookuume yalwe amuhe, otandi mu kundu. Otandi mu pandula sho mwa dhiginine iilongayakulo yeni omumvo 1983. Otandi mu indile mu tsikile neitulomo muudha ohole shi vule shito.

Tala kep. 5

Metumwalaka ndika otandi mu indile mu kale nomu ninge ngeyi: Mu dhiginine oohapu dhaKalunga. Oku dhi lesa, oku dhi pulakena nokuvulika kudho. Tu kaleni megalikano nomeitaalo lya kola," opo Kalunga kehupitho lyetu," e tu sile ohenda, a dhime po oondjo dhetu, e te tu pe ombili ndjoka twa yuulukwa.

Aauvithi mu longekidhe nawa neitulomo omalongelokalunga nomauvitho, opo aapulakeni ya ulukilwe noya tseye "Omukulili oye tuu nguka Kristus Omuwa." Okwiindila Kalunga ketu, opo e tu pe omvula tu gamenwe kondjala; okwenye nokiiponga ayihe. Aayakuli atuhe tu yakule aayakulwa yetu nohole no-nuuyuuki.

Okukala kwetu moohapu nomiilonga esiku kehe, ku kale taku uvitha; okwi itaala Jesus Kristus Omuwa.

Oshigwana ashihe shi kale meitedhululo okweetha uulunde, ondhinokalunga, okusimaneka iimenka, ihe tu konge aluhe edhimopo lyoondjo.

Kalunga kehupitho lyetu tu mu indile neinekelo twaa na omatenguko, opo e tu taalelulule, e tu sile ohenda, a mangulule evi lyetu muupika. Omukulili gwetu e tu sile ohenda, opo a galule noa mangulule oonkwatwa dhi galukile komagumbo gadho.

Kalunga e tu pe aaleli aakriste taa landula oshili, uuyuuki, uuthemba womuntu kehe, uuthikepamwe nokulandula EHALO lyaantu oyendji moshilongo, opo tu kale nepangelo lya kola.

Otandi tseyitha wo kutya, omumvo 1984, ogwa uthwa kElelongeleki gu kale omumvo guudiakoni mu ELOK, opo kwaa kale omuntu ta hepa; ongele palutu nenge pamwenyo e li mokati ketu.

Mpaka itatu tala Aelok ayeke, aawe. Otatu tala omuntu kehe gwaKalunga e li popepi natse, tu mu shi nenge katu mu shi. Onke otandi indile omagongalo agehe ga ELOK ga longe oshilonga shEtumo noshuudiakoni neulumo noneitulomo enene.

Oshinakugwanithwa shetu atuhe, osho okutaamba nokufala Evaangeli lyehupitho. Okukondjela nokutunga ombili, okupopila oshili, uuyuuki, nehanganitho, uuthikepamwe waa-ntu ayehe neputudho lyoshigwana shetu, notu popile uukumwe

waakriste ayehe, opo moshilongo mu kale ombili netilokalunga mokati kaantu ayehe.

Okutsakanitha eithano lyopakriste otashi tu pula tu ende nondjila ondhigu yomushigakano. Ihe nando ongaaka, otu na Immanuel, kutya Kalunga e li pamwe natse nomomaudhigu gomomumvo Omupe.

Eyambeko lyaKrismesa nelago momumvo Omupe tali zi kuKalunga kehupitho lyetu nokOmukulili gwetu, oye tuu nguka Jesus Kristus Omuwa, nali kale nane amuhe,

Amen.



E TU GALUKILE

Omudhiginini gwiiniwe mOngeleki, Sacky Hekandjo, okwa galuka keilongo lye kuNdowishilanda lyokuuninginino, hoka a kala omimvo mbali ta konakona omikalo dhomahupilo, nkene hadhi longithwa, nedhiginino lyomambo giiniwe nkene hali ningwa.

Manga inaa galukila kuNamibia, okwa talele po oshilongo shaSoomi (ombelewa yEhanganotumo lyaSoomi) noombelewa dhongongahangano yAakwaluuther muuyuni (LWF), muGeneva, kiilongo mbyoka a zi nomakundo gOngeleki yetu ogendji.

Ongongahangano oyo ya li ya vulikitha eilongo lye miinima mbyoka tayi ka kwatha Ongeleki yetu neithikameno lyomagongalo getu monakwuyiwa.

Omugundjuka Hekandjo, okwa longa mombelewa yiiniwengeleki ya ELOK omimvo ntano netata, manga inaa ka tsikila eilongo ndyoka. Nomokugaluka kwe, okwa holola ehalo ewanawa lyokutsikila okukwatha Ongeleki ye.



Sacky Hekandjo mombelewa ye pOniipa, sho a galuka kuEuropa

MUANGOLA OPENZIUNE OYA VAKWA PO

Elelongeleki la ELOK, ola kundana noluhodi kutya oimaliwa yopenziune yovanashilonga muAngola, aise youmwene noyomuhona, oya vakwa po kovakolokoshi muShangalala. Inaku yandjwa omuvalu kutya okwa li i fike peni.

Elelongeleki oshit. 426/83.

EYAKULO LA ELOK MOVALO-MBOLA

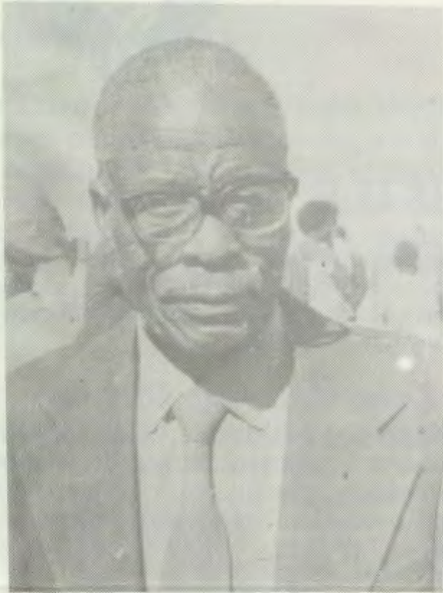
Ongeleki ya ELOK, oye li pyakidila paife nomalongekido okutungifa Ongeleka modoolopa yaValombola, popepi nOngwediva. Oimaliwa R20,000, oya yandjwa nale omaano ku CDM nonhele oya ulikwa.

Elelongeleki 424/83

Omupangi moshipundi shevululuko

Omupangi Eino Nuuyoma, Onayena, okwa lalekwa koshikondo shunamiti omumvo 1982, a ka lye oshikwiila she, shevululuko megumbo lye, konima yoomvula 46 sho a kala kondjoko yoshilonga.

Oye omutiyali maalumentu aapangi ya vululukithwa ngeyi. Omukwawo oye Sostenes Tomas, Onandjokwe.



Pwa piti ngashingeyi ethimbo ele sho muupangelo wOngeleki ya ELOK, inaamu monika we nando aapangi aalumentu, noyendji otwa li tatu dhimbwa nokuli kutya oshilonga shoka aalumentu ye shi tamekele, osikola yaapangi sho ya totwa 1930, mOnandjokwe.

Sigo oompaka aapangi mbaka yaali, Eino Nuuyoma naSostenes Tomas oyo ya li ya hugunine miilonga yuupangi. Ashike aalongwapangi mboka ya taambwa nuumvo mu-Septemba ye thike lwopo 20, mokati kawo omu na omulumentu gumwe. Ngashingeyi aalumentu miilonga yuupangi otaa monika unene mOshakati.

Nuuyoma okwa pitile 1937 konima sho ya longwa oomvula ndatu. Oya li aalumentu yaali ayeke. Omukwiita mukwawo Petrus Iileka, Okahao, okwa thiki nale mevululuko lyaaluhe, ihe oyana opo ye li ya tsikila oshilonga shahe.

Omupangi Nuuyoma ngele ta tala konima kokule, ota kuminwa ashike

omaenditho gaKalunga omakumithi. Yemwene okwa valelwa mUukwangula, mUukwambi omumvo 1912 patengeneko, muupangi.

Manga e li po omumati okwa tembukile kUukwaluudhi 1924, hoka i ilongo oohapu dhaKalunga puukalele waMuhongi poTshandi. Omumvo 1927 okwa mono esilohe-nda lyeshasho nokwa ka tameka ihe uupangi 1935.

Konima sho a piti, muupangi, okwa yakula tango monandjokwe opo okwa tumwa kOnayena nokonima okwa ka galukila ishewe kOnandjokwe. Ethimbo lye lya hugunina meyakulo, okwe li kala ishewe kOnayena hoka ku na egumbo lye.

Tate Nuuyoma ohi itala naanaa kutya oyo aakokoli yoshilonga shuupangi mOngeleki nomoshi-gwana shika nomuntu kehe u na eiuvo ewanawa, oto zimine owala pamwe naye .

Sebulon Ekandjo

Aalongwa, landuleni omaithano agehe

Mpaka ondi na unene elondodho kaalongwa yethimbo lyongashingeyi, mboka ya thiki ponkatu yokuhogolola omaithano gawo. Omukulugwonale okwa tile:

“Ku na mutanda ku na ngombe, ku na mpagona ku na iilya.”

Tse oshigwana ano okune twa tala omeho mboka mu li moosikola. Ongaamboka twa yuulukwa emanguluko lyashili lyoshilongo shetu, tango otu na okutala oluhepo no-mpumbwe yoshigwana ongoshinima shetu shopaumwene.

Aalongwa yopethimbo ndika oya fa taa lalakanene owala uulongi nuupangi. Tu taleni nawa aamwameme. Otwa pumbwa wo naapanguli, aatekeli, aahondji, aanafaalama, oomakeninga, oohamushanga nosho tuu. Yo aantu mbaka oye na okuza moshigwana shoshene.

Oshinima oshikwawo tashi yono tu landule wo omaithano galwe, osho okuyola nokusheka. Ombepo ya tya ngeyi ombwinayi noya pumbwa okuvudhwa mo nomidhi.

Ngele omuntu oku na onzapo yOmatilika e tu uvika e ki ilonge nando uuteknika, oha popiwa nayi nota shekwa. Ngele oshi li ngeyi sha ningi oshiyolitha, olye ta ka teleka momihandjo nomoohotela?

Olye ta ka gandja omayele mokukonakona omapya? Olye ta ka hondja? Aamwameme mboka tamu taalele ashike eithano limwe alike, tu taleni oompumbwe dhoshigwana nonakuyiwa yasho.

Ngele hangeyi, nena otwa fa tatu ulike kutya inatu pumbwa emanguluko manga. Nenge otwa hala tu ka konge aalongwantu kiilongo yopondje, manga tse ompito tatu yi ekelehi? Shoka ohoni yowala.

Tu kotokeni twaa kole ombwa esiku lyomilema. Ihayi gwedha we nando u yi pe ya kuta.

Loide N.Alweendo



Omugundjuka Loide Alweendo, omutekuligumbo noku li gumwe gwomaahondji aakuluntu moshihondielo sha ELOK mOniipa. Mefano ota monika iipyakidhila niilonga yawo.

Nkene to tungu opulanda yiilonga nehokololo lyegongalo nenge lyiilonga yoye

ku S.V.V.Nambala

Ondi na einekelo kutya, ngele tatu imangeni oshipandi e tatu kongo ondjila pamwe, nena otatu ka adha elalakano. Ishewe okukonga ondjila kutse yene, oshihwepo shi vulithe okutegelela aakwiilongo ye shi tu ningile. Sho tu na oowino atuheni, otashi nenepeke okutseya kwetu.

Moshinyolwa shika omu na iitya iyali tayi nana omadhiladhilo getu oyo: **opulanda** na **ehokololo**. Manga inoo hokolola sha, ou na okupulanda tango shoka to ka hokolola.

Okupulanda otaku eta okuhokolola, nehokololo ewanawa otali zi mepulando ewanawa. Ihe opulanda nehokololo oyi na aluhe okukala nasha oshititatu. Ou na okukala nasha opo u shi pulande, nope na okuningwa sha opo u mone ehokololo.

Osha oshi na aluhe okutetekela opulanda yehokololo nenge shi kale pokati kopulanda nehokololo.

Tse momagongalo **osha**, osho uukwatya wegongalo nenge wiilonga yetu momagongalo. Onkee olwindji shoka hatu hokolola oshi li pokati kopulanda nehokololo.

Okupulanda otashi ti okuninga omathaneko giilonga yoye nenge gomainyengo goye muule wethimbo lyontumba manga inoo katuka nando onkatu yimwe u uka kombinga ndjoka. Ethaneke ndika otashi vulika li kale lyethimbo efupi nenge lyethimbo ele.

Oopulanda dhimwe ohatu dhi nyola nadhimwe ohatu dhi kaleke owala momitse dhentu. Tse otatu longo momagongalo tu li wo koho yomalelogongalo pashitokolitho unene 128 (1) shOmaufomhango. Onke otu na oshinakugwanithwa shokugandja omahokololo gomagongalo nenge giilonga yetu.

Olwindji ohashi ende ngeyi pamahokololo. Omahokololo gaayevangeliste naadiakoni otaga gwedha sha komahokololo gaasita, go gaasita taga gwedha sha komahokololo gaatonateli, go gaatonateli taga gwedha sha kogomumbisofi. Opo ihe otaku monika ehokololo lyOngeleki ayihe.

Omusita opo a ka gandje ehokololo lya za oona kehulilo lyomumvo, oku na okuninga opulanda yiilonga ye yomumvo petameko lyomumvo. Onkee omusita mbika tayi landula, ote yi pumbwa mokupulanda kwe.

Moshinyanga namu kale mu na etaafula lyomatseyitho kekuma, hoka kwa tulwa omalandulathano ngaka:

- Omalelogongalo
- Omashasho
- Uulalelo Uuyapuki

d) Omalongelokalunga gokomikunda

e) Omiyalu dhaakwanegongalo momalongelokalunga nokUulalelo Uuyapuki

f) Omawilikongundu gi ili nogi ili.

1. Kala u na uumbo utatu nenge kamwe we ka topola miitopolwa itatu.

2. Okambo komatalelopo

3. Kiiningwanima iinene tayi ningwa megongalo esiku nesiku, iinyanyudhi nenge iiyematithi.

4. Komapulo nenge uupyakadhi nenge iinima yilwe yi shi okufalwa kuyakweni miigongi ngaashika yaanashilonga.

5. Ngele omusita oye wo omudhiginini gwiiniwe yomagongalo, na kale olwindji mekwatathano naakonakoni yawo pashitokolitho 120 (5) shOmaufomhango. Onawa aakonakoni ya konakone olwindji opo ya vule oku ku popila uuna pe na omapulo. Ye omusita na kambadhale aluhe a nyole iinima ya yela noku shi oku yi fatululula.

Mpaka onda eta po owala iitsa yimwe po mbyoka omusita ta vulu okulungitha mokupulanda iilonga ye mbyoka tayi ke mu pa ehokololo ewanawa.

Shimpa a ningi mbika ayihe nayilwe wo mbyoka a tala otayi mu kwatha, nena ita ka mona uudhigu woku iyaga momutse, opo a tunge ehokololo lyegongalo. Shila ongele inaa longa sha muule womumvo.

Iilonga yomuntu oto yi koneke mehokololo lye lyiilonga. Opo pwaa kale wo omahilathano gomahokololo gomagongalo, momagongalo ge na aasita ye vule gumwe, oshitokolitho 88 shOmaufomhango, nashi tulwe miilonga, opo kehe gumwe a vule okuninga opulanda ya yela yiilonga yomumvo.

Opulanda yomuyevangeliste

Omyevangeliste wo ota longo koho yElelogongalo noyomusita pashitokolitho 99. Naye wo ota pumbwa okutseyithila Elelogongalo oopulanda dhe dhiilonga yomumvo pashitokolitho 97.

Ngaashi naanaa aasita ya tegelelwa ya ninge ehokololo lyegongalo nolyiilonga yawo yomumvo, osho wo aayevangeliste taa tegelelwa ya ninge omahokololo giilonga yawo, ngoka ye na oku ga gandja kaasitawiliki.

Mehokololo lyomuyevangeliste omu na okukuthwa sha tashi tulwa mehokololo lyegongalo. Ehokololo lyomuyevangeliste, itali hulile owala momusita, ihe oli na oku ya sigo omElelogongalo, opo Elelogongalo li tale ngele opulanda yomuyevangeliste ndjoka a gandjele petameko lyomumvo, oya longa tuu nando osha.

Ngele inaku ningwa sha, lyo tali tseyithilwa omaupyakadhi ga li mondjila yiilonga. Shoka kaatu na we naanaa aapagani yondondolo pashilonga shomuyevangeliste

pashitokolitho 97 shOmaufomhango, omuyevangeliste ota vulu okulonga mokati kegongalo alihe.

Yimwe yomwaambyoka omuyevangeliste ta vulu okulonga megongalo ongaashi mbika tayi landula:

a) Okukala nolufu lweuvitho momalongelokalunga mOngeleka,

b) Okutalela po aakulupe

c) Okutalela po aashunimonima

d) Okuninga owandaha momikunda dha hiywa dhi gongale owina.

e) Nokuninga wo shilwe shoka sha guma oshilonga she pashitokolitho 97.

Omyevangeliste naye wo ota pumbwa ando a kale nokambo kamwe nenge uyali. Ngele oku na uumbo uyali, mukamwe ota shanga mo iilonga ye yomatalelopo omanga mukakwawo ta shanga mo iinima mbyoka ta tsakanekke yi shi okufaalelwa koshinyangagongalo, kaayakuli ooyakwawo nenge kElelogongalo nenge kiigongi yaanashilonga.

Muumbo wa tya ngeyi, omo wo ta vulu okushomonena iinima iipe ye mu nyanyudha nenge ye mu yemateka. Nenge omapulo ngoka ta tsakanekke kee ga nine omayamukulo. Mbika ayihe otayi mu pe uupu wokuninga ehokololo ewanawa.

Ye ishewe ota kala aluhe e na sha shokuyamukula miigongi nenge shokugandja kaayakuli ooyakwawo unene kaasita mboka taa pumbwa shili oowino tadhi ya zile kaayevangeliste. Olwindji aayevangeliste oyo ye shi egongalo ye vule aasita.

Opulanda yomudiakoni megongalo

Kombinga yomudiakoni naye wo oku na ando okutseyithila Elelogongalo uukwatya wopulanda yiilonga ye yomumvo ngoka, nenge yoshikako shoka ngele to tala oshitokolitho 100 shOmaufomhango, okapalagrafu kotango.

Oto mono kutya oshilonga shomudiakoni otashi pumbwa wo omalombwelotseyitho taga ziilile komusita nenge komuyevangeliste, sho mokweenda kwawo ya tsakanekke aantu taa pumbwa ekwatho lyomudiakoni.

Aadiakoni oye na embo ndyoka haa ndhindhike mo iilonga yawo. Osha yela ohali ya kwatha okuinga oopulanda nomahokololo omawanawa. Ehokololo lyomudiakoni nalyo wo oli na oku etwa mElelogongalo, opo li kwatelwe kumwe nehokololo lyegongalo.

Uudhigu nuupu miilongafaneko mbika

Oshitsa sha yela kutya opu na uudhigu wokuninga oopulanda dhiilonga, inaadhi lamininathana pokati kaaniilonga mbaka yatatu, ngele otaa longo megongalo limwe. Ihe osha yela wo kutya, egongalo li ya na ayehe yopatatu, oli na elago, oshoka otali yakulwa moombinga adhihe, ngele opwa

Tala kep. 8

NKENE OPULANDA YIILONGA YEGO- NGALO TAYI TUNGWA

Dha za kep. 7

pulandwa nawa.

Opo iilonga yaa lamininathane pwaa kale aakwanegongalo yamwe oya kwathwa unene, omanga yalwe inaa kwathwa nandonando, onawa aasita naayevangeliste naadiakoni ye li megongalo limwe, ya gongale aluhe patameko lyomumvo kehe, e taa ningi oopulanda dhawo pamwe, manga inaae dhi tseyithila Elelogongalo.

Opulanda ompu tayi vulu okutamekwa nayo kaanashilonga oyendji megongalo, oyokutopola egongalo miitopolwa yi thike paanashilonga mboka ye li mo. Pamwe omiitopolwa iyali, itatu nenge ine, shi thike paanashilonga.

Opo ihe omumvo kehe otamu ende nokushendja iitopolwa medhingoloko. Pamwe oshitopolwa sha li omudiakoni omumvo gwa zi ko, nuumvo oshi na omusita, naashoka sha li omusita nuumvo oshi na omuyevangeliste oshi na omudiakoni nuumvo.

Osho ngaaka iitopolwa tayi ende nokuyakulwathanwa. Muule womivo dhi thike piitopolwa, aanashilonga ayehe oya tale-pa go egongalo alihe nonando ngiika hama-gumbo agehe.

Shika shomuyakuli gwontumba e na oshitopolwa, itashi ti nee kutya, ngele okwa mono ompumbwe yombala yomuyakuli omukwawo ine yi tseyitha aawe. Na tseyithe oshinima kungoka te shi vulu, opo shi longwe nuukeka nokuye.

Shika shokutseyithilathana iilonga, osho naanaa tashi holola kutya, amuhe otamu longo oshilonga shimwe nonando oowino dheni odha yooloka. Onke otashi mu mangele kumwe nawa.

Pamukalo gwa tya ngeyi egongalo otali kwathwa naayakuli itaa si iilonga. Oopulanda dhaanashilonga dha ningilwa pamwe, otadhi eta omahokololo omawanawa nomakwatathano omawanawa.

Pamwe onawa komagongalo ngoka ge na oohamushanga niinyanga, ga pe ngaa aasita, aayevangeliste naadiakoni oompito dhokulonga iilonga yawo, yaa kale oohamushanga aatiyali.

Eeno naa holoke ngaa kiinyanga ethimbo nethimbo, oshoka oshinyanga ehala lyuutsakaneno wawo nenge tu tye osho eziko mpoka tapu ziilile oohandje dha thinda koombinga noombinga dhegongalo.

Aasita onawa unene ngele oye na mo omasiku gontumba moshiwike ngoka ye na okukala ethimbo alihe moshinyanga. Shika otashi kwatha, opo moshinyanga mu kale aluhe elandulathano nokukwatha mboka taa pumbwa shili omusita.

Shika onda eta mpaka pafupi, kashi shi oshinima oshipu, ihe onde shi ningi opo ndi

gandje shoka tashi hololwa koshipalanyolo. Ihe natu dhimbulukwe wo kutya, itatu ningi owala iinima mbyoka iipu, otu na wo okulonga naambyoka iidhigu, ngele ehalo lyetu okwaadha elalakano lyomayakulo getu pahapu dhaKalunga kombanda yeve. Luk. 14:26

Natu pulande aluhe manga inaatu tameka iilonga, opo shoka twa longa, shi gandje shoshene ehokololo.

OMUSITAGONGALO S. V. NAMBALA, OMUSITA OMUYAKULI MEGONGALO ENENE LI VULE AGEHE MU ELOK LI NA AAKRISTE 10,333.

NUUMVO OKWA KALA OOMWEDHI MBALI MOSEMINALI YA ST. PAUL MINNESOTA, MU AMERIKA TA KONAKONA IINIMA YUULELIGUMBO.

MOKUGALUKA KWE, SHO A THIKI MEGUMBO OKWA LALA MO ASHIKE ESIKU LIMWE, ETIYALI OMUFUKO GWE OTE MU ETELE KO OSHEELI SHOKAMATI. OLWEE-NDU OLWA LI LWA YAMBEKWA.

Amushanga gwOmukwetu

“Dhengwa u lungame”

“Ngame Filippus omulumentu omunwi. Osikola onde yi etha sho nda li mOsitanda ontihetatu nonda ka kongala iilonga. Konima yethimbo efupi iilonga onde yi kanitha, noinandi ilandela nando epando lyoongaku.

Esiku limwe onda gwile muupyakadhi sho nda kwatwa te hingi ohauto nda kolwa.

Onda tulwa mondholongo moka nda lomwelwa ndi fute R300,00. Onda kuthwa wo ombapila yokuhinga uule woomwedhi hetatu.

Sho nda zi mondholongo onda li nde ga yuulukwa shili noonkondo nonda tsikile okunwa. Iihuna ngame Filippus, onda ka haluka owala ndi li moshipangelo nda tsuwa oomwele ndatu.

Aapangi oyo ya lombwele ndje, kutya onda ninga mo iiwike oyindji, ihe ngame inandi shi dhimbulukwa oshoka onda li nde ga kwata noonkondo.

Okuza moshipangelo onda dhiladhila kutya onandi ka kanitha wo nomwenyo.

Ondi itsu omukumo opo ndi ka kundathane nagumwe gwomaahungimwenyo ngoka a kumagidha ndje, kutya ngele ito etha iikolotha okwa kambela owala kashona u kanithe omwenyo.

Naashoka sha tilitha ndje osho shoka okukanitha omwenyo gwaaluhe.

Ekumagidho ndika onde li siikilile momwenyo nonda tokola ndi shune mosikola. Onda mana nokuli Omatrika. Ondi na nokuli iilonga iwanawa ngashingeyi nondi na elago pamwe naanegumbo lyandje.

Onda putudhwa wo nawa opo ndi kale oshilyo shokangundu hoka taka kondjitha iikolotha.

Dhengwa u lungame.

Omukundaneki Halweendo

ENYANYU LYAKRIS- MESA NENGE UU- NKOLWE?

Omasiku ngaka, omukundaneki Halweendo okwa li ti ipula muule kombinga yoshituthi shaKrismesa shoka tashi inyenge komilungu dhoyendji ngashingeyi.

“Sho nda li tandi dhiladhila omukalo ngoka aantu haa dhana Okrismesa koombinga noombinga moshilongo shetu, onda mono efano ewinayi:

“Onda mono efano lyoonkolwe tadhi imbagana omaimbilo gopakriste, ihe paushili kaye shi mpa ye li. Onda mono ishewe yamwe ya tiliganeka omeho, taa nyenyetelathana; yo yamwe otaa tsaathana noomwele, omanga yamwe taa umbaumba oondjembo shaampoka noku kudhila aakulupe mboka taa dhiladhila neimweneneno omukulupe omukwawo Simeon, ngoka a li a mono ompito ombwaanawa yokulombwela okanona Jesus: ta ti:

“Ngashingeyi laleka omupiya gwoye ndi ye nombili, oshoka omeho gandje ga mona ehupitho lyalIsrael.”

“Opo ihe onda yi kaakwathi nokaagandjimaye yandje, opo ndi ya pule kutya iilongo yimwe muuyuni miituthi iinene ngaashi Okrismesa, ohayi ngambeke ngiini iiponga yomoondjila nomalugodhi.

“Miilongo yimwe muuyuni, twa dhini okutumbula nando omuZambia, oombaa adhihe dhomalovu moshilongo ashihe, ohadhi kala dha patwa; onkene aantu ohaa landa omalovu gawo kuyele manga esiku lyoshituthi inaali thika, e taa fala komagumbo gawo, oko ihe taa nwine hoka kehe gumwe megumbo lye, nenge ti ithana ookuumke ke opo yanwe pamwe meimweneneno.”

“Sho ndu uvu ondunge ndjika, ondi ipula ngeyi,” Halweendo ta tsikile, “aapangeli yetu ano yo uunake taa ka kutha ko oongaku moshinima shokulongitha omalovu mepuko, opo ku ngambekwe iiponga noma-so?”

OMHUMBWE OTAI PULA R20,000

Omolwovanhu vahapu Ovakwanghala neenhauki moshilongo shetu tava fi ondjala, Elelongeleki ola tokola okwiindila ekwafo limaliwa R20,000 kOngongahangano yOvakwaluther.

Elelongeleki oshit. 418/83
Elelongeleki ola tambula nale kehanganano olo R7,000 omolwomhumbwe yomiti moihakulilo yOngeleki. Unene omiiti da TB nefindakano lohonde eli la tana movanhu.

Epulo lyokwaaniilonga mokati kaagundjuka

Ethimbo ndika oshigwana oshi li pokuta-nauka omitse molwompumbwe yiilonga, unene mokati "kaanyanyamagulu". Epulo ndika olya kundathanwa moshigongi shokomumvo shaagundjuka nuumvo.

Omutamekithi gwoonkundathana ndhika, omulongi Ndinelago, okwa holola omadhiladhilo ngaka.

Okwa li omulumentu gwontumba e edhililwa mondholongo yongandi. Mondholongo moka iha mu pitikilwa sha shilwe shaa shi ashike olutu lwo-mweedhililwa niinguma yondholongo mpoka ta lala. Okwa kala mo ethimbo ele.

Kapwa li ngoka ha popi naye, kee na shoka ta ningi. Konima okwa kongo onduge opo a nyole sha. Nonando okwa li kee na mpoka ta adha iinyolitho, sho inaa kambela oondunge, okwa longita omutse gwe.

Opena ye okwe yi ningi momasipa goohi ndhoka he etelwa a lye. Ohinga nayo okwe yi longo miikulya ye. Peha lyombapila, okwa tuula po omalapi gokulala nokwe ga hondjele kumwe nomasipa goohi e ta nyola chokololo lyezimo lye. "Omuka-ga gwe ku longo okutsa ohoma."

Ngele otu shune koshipalanyolo, omolwashike omugundjuka kee na iilonga, ngele oku li nokuli omugundjuka, nena omapulo omakwawo otaga penduka. Oshilema? Okwa kambela oondunge?

Ngame oshitya iilonga ondi shi uvite ko ngeyi kutya okehe shoka to shi longo niikaha nonoonkondo nenge tashi longwa nomadhiladhilo okulongitha omutse.

Yamwe ohaa dhiladhila kutya omuntu a kutwa miilonga komuhona gwe, oye e na iilonga, ihe ngame hasho te dhiladhila shoka. Onkalo yomuntu kehe konyala pethimbo ndika oye endjelele ashike koshimaliwa. Onkene opwa pumbiwa okudhiladhila muule, nkene iimaliwa tayi monika.

Tango omugundjuka na tale omudhingoloko gwe moka e li mo, e gu tseye, opo a mone onduge oyini ta longitha mo, oshoka hainima ayihe nomikalo adhihe tadhi opalele omudhingoloko kehe.

Omuntu okwa shitilwa omagano gontumba, oshitalenti. Ne ga longithe ano. Omutumba ethe-te, onyalo oshikuusinga shaSatana. Ngele ihu umbaumba, ito li omutse gwokadhila.

IHOLELWA YIMWE YETAMEKO

Tekula oondjuhwa noku dhi landitha po onyama nenge omayi ongetamekitho. Ondjuhwa kehe gumwe oshipu oku yi likola. Ninga okakunino koye kiikwamboga niyimati, e to landitha ngele ya pi.

Tunga omatsilu, omalapi, gokoombete, iimbale [oontungwa], iyala, oondunda niigandhi nosho tuu.

Hondja ihondjomwa, teleka iikulya vi ili novi ili hongga iiyuma, tholoma oombasikena, omakende noondooha ninga nayo omaulenga gi ili nogi ili, inadhi eketwahi we.

Okulongelathana Omuluudhe nomuluudhe, nashi taambwe ko wo, tu ze mondhino yokudhinathana, "Ite longele Omuluudhe mukwetu." Longa mpoka to mono iilonga.

Lesha omambo opo u opaleke ontseyo yoye, nyola omambo niitotwahokololo yi ili noyi ili moka to ki ilikolela oshindji moku yi landitha po. Faneka omathano muunkulungu mboka wa pewa e to landitha.

Otashi vulika aagundjuka mboka kaye na iilonga yi ininge ehanganano lyontumba e taa toto po oshilonga shawo shoka ya tala itashi vulika shi totwe komuntu gumwe awike. Mbalambala otaa ka nina aagandji yiilonga kuyalwe.

Imbandungila mwene, ondapo yamukweni hayo yoye. Olutu nombepo naye longithwe nawa, dhiladhila muule, eta po sha oshipe. Mpoka onyalo tayi sindika, iilonga inayi pumba. Omay.6:6-11.

Ndinelago Emvula



Omulongiskola Ndinelago Emvu

"Okushuna monima oku na oshiponga"

Eli ola li eingido linene keongalo laKongo, eshi la leshelewa omukanda wa lauka kombonge yomusiki mEngela, kutya oshoongalele shomusiki osho sha li shi na okukala muKongo 26-28, muAguste, itashi ka kala ko vali.

Etomhelo ola li lomutotolombo kutya omolwonghalo yokoushilo ya nyaa keonga, itai nuwa momeva. Osha li she tu ningifa omwenyo mwii.

Oshoongalele osha ka ningwa 10-11 laSeptemba. Omundaungilo waShiweda mokuuda ondenge tai ningi "u lilifa iho likanifa," owa tya: "ino likuwila onghuwo, omukulu woye opo ndi li."

Ongeleka yaKongo oyo tai tengenekwa youle u fike peemeta 500 nounene shiimba weemeta 250 oya li iyadi ovanhu voshoongalele osho. Elongelokalunga ola ningwa panghedi yoyoongalele. Omuudifi a fimana meongalo laKongo, Lot Kaishungu, oye a ninga eudifo neendjovo odo da ufilwa efiku. 1Kor. 3:9-16.

Meudifo laye tatekulu Kaishungu, a shiivika

nedina Mbongola yaMukwena, okwa holola kutya oilonga keshe tai longwa komukriste tai fimaneke edina laKalunga, ya fimana ile inai fimana, ote i longo pamwe naKristus.

Okwa londwela yo kutya oilonga keshe iwa tai longwa komukriste, oyo opena yokunyolela edina laye membo lomwenyo. Fimbo oilonga ii okadimifo kedina laye.

Omushamane Mbongola okwa nyamukula epulo olo a hangwa a pulwa nale komusika, eshi ya hala okushiiva oshipala shetumo moshitai shaUkwanyama. Epulo okwe li nyamukula nondjato tai tikile poshiilikaneno.

Oshivilo okwa li sha mona omapopifo mahapu; Omufita Christian Shipunda omufita Andreas Paulus. Ovamundaungilo ova ninga oshinyandwa.

Oxungi yekondo lombashe, itai pu okuhokololwa, oya li ovanafikola voposhela, tava imbi va fa ve li moilemo.

Puleni T. N.

"OTANDI YI KO NDI KA TALE KO"

Omuwa nokwa ti: "Otaku zi onkugo ondhigu nomayonagulo gawo omadhigudhigu. Otandi yi ko ndi ka tale ko ngele ayehe ya longo shili ayihe ngaashi omupopyo gwa adha ndje ko, tagu ya popi." 1Mos. 18:20-21.

Pahapu ndhika ngele tatu dhi leshe ngaashi dha nyolwa mOmbimbeli, Kalunga okwa li a ningi etokolo opo a ye kuSodom naGomora, a ka tale shili ngele shoka tashi popiwa shi na sha niilongo mbyoka, oshoshili.

Kalunga okwa li e ya adha monkalo ngaashi naanaa a adhikwa konkundana. Nomondjahi ye omoluulunde wilando mbika., okwe yi hanagula po.

Tseni aagundjuka Aanamibia osha pumbiwa tu yeni muule womadhiladhilo e tatu ipula: Ngele nomayonagulo getu omadhigudhigu, Kalunga okwe ga kundana.

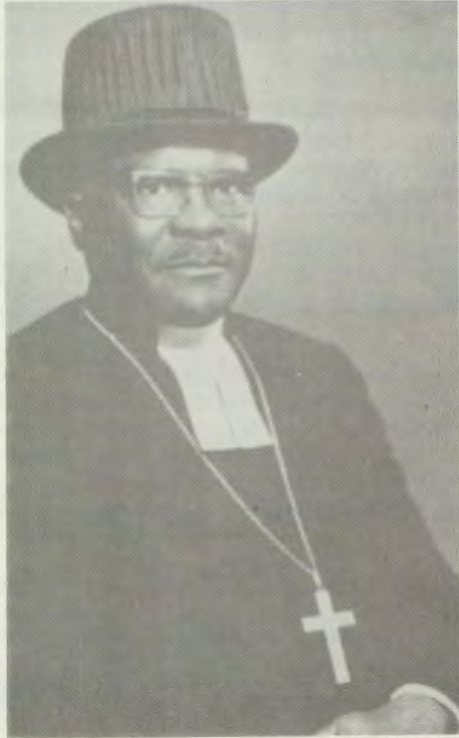
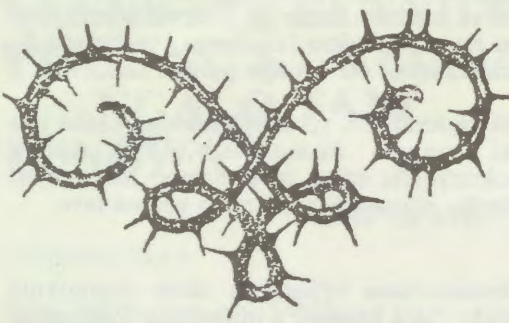
Eho lyé ethimbo nethimbo olya taalela kuNamibia. Katu shi wo uunake Kalunga taka ninga etokolo: Otandi yi ko ndi ka tale ngele omupopyo gwa adha ndje tagu popilwa Namibia ngele ogwoshili.

Inatu tegeleleni wo Kalunga a ninge etokolo okugandja egeelo kaagundjuka ayehe mesiku limwe nenge oshita, aawe. Kehe gumwe ote ku kundana palufo lwoye, note ku talele po palufo lwoye.

Sodom, naGomora, oya li ya adhikwa shili ngaashi ya kundana, okwe yi hanagula po sheke. Tse Kalunga ote tu adha tu li ngiini? Aayoni nenge aaitedhululi?

Omwiilongi
Nuugwanga Kaapanda

Omuleshi, Omukwetu ote ku halele Krismesa ombwanawa nOmu-mvo Omupe gu na eyambeko. U-tsakaneno okuJanuali 1984, Kalunga ngele te shi zimine.



Omumbisofi Nangolo Auala. Ethano olya thanekwa moshituthi she moka a pewa onkatu yuundohotola melongo lyuukalunga muHelsinki

kwata uuyuni auhe. Natu pulakeneni ano nawa shoka Kalunga a hala oku tu lombwela momasiku ngaka, ongele omiipopwiwa, momauvitho nenge moondjimbo," osho omuto-natelishitayingeleki Festus Ashipala a tumbula paapangi, oondohotola naashiinda, mboka ya li pelongekidho lyomudhimba gu ka pungulwe manga kokila, gu tegelele efumviko.

Omumbisofi okwa adhika e li momumvo gwe omutitano gwomoshipundi shevululuko kiilonga yOngeleki ye yomimvo dhi vule 40.

Okukalamwenyo kwe kwa yela kwesiku kehe okuza muunona we ngele wa hala oku ku landula, otaku adhika membo "Onakuziwa yandje," ombilive ndjoka e yi nyolele oyana omulongo. Ohali monika mO-sitola yOmambo mOniipa.

Moshifo tashi landula otatu ka hokolola kombinga yefumviko nkene lye ende.

Omumbisofi Auala okwa hulitha muukokele womimvo 75. Okwa thi-gi ko omuselekadhi noyana 10, aatekulu inaayalulwa.

Okahistoli komumbisofi Auala pafupi

Omumbisofi Leonard Nangolo yaVilho yaAuala naLoide yaShikongo. Okwa valemwa mOndonga 25.9.1908. Okwa longwa mOseminali yuulongi 1929 sigo 1931 mOniipa. Sho a piti, okwa kala omulongi gwsikola yuunona pOniipa 1932-1933.

Okwa tumwa ketsikilo kOseminali yuulongi muAugustineum, Okahandja 1934-1935. Omumvo ngoka oya hokana nomufuko gwe Aina Sakeus mOngeleki yaNiipa eti 11.1.1935.

Sho a galuka ketsikilo mUushimba 1935 okwa ningi omulongi gwotango omuvalelwamo mOseminali yuulongi mOniipa sigo 1936. Omumvo 1941 okwa hiti Osikola yuusita mOniipa nokwa yapulilwa moshilonga shuusita 1942.

Sho a yapulwa ngeyi omusita okwa langekwa megongalo lyaNiipa ndyoka e li lele sigo 1958. Pokati mpoka okwa li wo amushanga gwElelongeleki nosho wo omunashipundi gwoshigongingeleki omumvo 1945.

Omumvo 1956 okwa li natango a tumwa ketsikilo lyosikola yuusita kuMoravian Theological Seminary, Port Elizabeth, SA. hoka a kala sigo 1957.

Oye wo omuvalelwa mo gwotango mOngeleki ya ELOK, a ningi omutonateli-shitayingeleki. Osha ningwa momumvo 1958-1959, mOndonga.

Omumvo 1960 okwa hogololwa kOshigongi-geleki a kale omuwilikingeleki omuvalelwa mo gwotango gwa ELOK nokwa longo monkatu ndjoka yotango 1961-1962.

Omumvo 1962 okwa hogololwa natango kOshigongingeleki a ninge omumbisofi gwOngeleki gwotango omuvalelwa mo moka a kala sigo omumvo 1978 sho a yi moshipundi shevululuko.

Pethimbo limwe okwa kala oshilyo shompitithingundu yOngongahangano yAakwaluther okuza 1963-1970. Omumvo 1967 okwa simanekwa kOuniveesiti yaHelsinki muSoomi, nonkatu yuundohotola muuteologi.

Ehangano lyOongeleki oonkwaLuther muNamibia, (VELKSWA), oye mu hogolola a ninge omupresidende gwotango gwEhangano ndyoka omumvo 1972.

Omumvo 1971 oye a li omushaini gwombilive yeeguluka koministeli yotango yaSuid-Afrika pamwe nomusita Paulus Gowaseb nokwa li omuwiliki gwsheendo

shaakalelipo yOongeleki koonkundathana nepangelo lya SA. omolwokupopila uuthemba wAaluudhe moshilonga shika.

Omolwokukondjela kwe ombili yaayehe, omumbisofi Auala okwa li a pewa ombandi yesimano kEhangano lyaEdward Browning muAmerika 1973.

Osho wo okwa pewa natango oonkatu mbali dhesimaneko lyuundohotola kOoseminali mbali; yaColumbus Evangelical Lutheran noyaMuhlenberg, adhihe dhomuAmerika.

Moshilonga she nomolwomapulo gasho ogendji muuwilikingeleki, okwa li a dhingoloka konyala ongonga ayihe yuuyuni.

OKRISMESA ETA-NAUKILOSHITSA (ETHIMBO EPE) LYUUYUNI

Dha za kep. 2

tau yelele mo. OSHOKA TSE OTWA VALELWA OKANONA, TWA PEWA OMUMATI, NELELO TE LI PEWA LI LI KOMAPEPE GE, NEDHINA LYE TALI LUKWA OMUKUMITHI-MUPUKULULI, KALUNGA OFULE, HE GWAALUHE, OMUWA-OMUNAMBILI." Jes.9:1,5.

Esiku uuprofeti wa gwanithwa, aantu inaa imonena ko owala yoyene noondunge nenge nomatseho gawo, ihe oshinima osha tseyithwa naanaa shili komutumwa gwomegulu.

"Onena tuu ndjika mwa valelwa Omukulili moshilando shaDavid, oye tuu nguka Kristus Omuwa." Luk. 2:11.

Okrismesa Kalunga okwe yi dhiladhilile iigwana ayihe, yi ete enyanyu kwaayehe. Hamolwomayula nenge iipeta yokombanda, ihe enyanyu lyetu omolwekulilo sho twa hupithwa mokusa nomoonkondo dhaSatana.

Twa ningi aathigululi yomwenyo gwaaluhe. "Omuyengeli gwOmuwa okwa ti kuyo: (kaasita) "Inamu tila, oshoka tala, otandi mu uvithile enyanyu enene tali ningi lyaantu ayehe." Luk.2:10.

Enyanyu ndika kali shi okuyonenwathana mokutula komeho iilonga yuukolokoshi komeho nokuyona po ngeyi enyanyu nombili yaKrisimesa. Shila shoka tu shi okuninga:

Tu hanganeni pamwe naasita nokuhambelala nokusimaneka Kalunga molwaayihe mbyoka twe yi uvu, twe yi longwa notwe yi taamba. Tu shi ningeni momalolongelokalunga mokutsakanena miitya yaayevangeli naakwiita yomegulu.

"ESIMANEKO LYAKALUNGA MOKOMBANDA, NOMBILI KOMBANDA YEVI MAANTU E YA HOKWA." LUK.2:20.

Set Son Shivute

OKAHAUTO KONGE-LEKI KA YAKWA PO, NGASHINGEYI KA MONIKA

KuJohn Shitundeni

Okahauto kOngeleki ya ELOK, haka longithwa kokefe yOngeleki ndjika mOshakati, ka li ka yakwa po uusiku, oka adhika ka pongekwa kOkalongo pehulilo lyomwedhi gwa zi ko.

Peha lyokuza ko taka matuka ngaashi ka yile ko, oka zi ko taka nanwa, molwashoka aniwa itaka hwama. Oshihako shOngeleki shoka sha li ko sha tonata nawa, osha natulwa ko; nonomola yako SBA 284, oya piyaganekwa. Okahauto oka mona iihuna.

“Ngiika otashi ka pula Ongeleki omayuvi gaheyali lwaampoka, mokwoopalekitha okahauto haka,” osho gumwe a tengeneke ye ta tsikile ta ti: “ihe ando ongame andola otandi landa owala shimwe oshipe.”

Pahapu dhomusitagongalo lyaShakati, Teofelus Nelumbu, aniwa omufuthi ye mwene ina monika kaalanduli yoshihauto, ashike aakwanezimo ye oye shiwiki noya popiwa nayo koonakulandula oshihauto.

Pethimbo tatu shanga ngeyi Ongeleki kaya li manga ya ninga etokolo lyasha kombinga yokuyakwa po neyonuko lyoshihauto shoka.

Nelumbu sho a pulwa kutya omufuthi okwa pitile mbela peni sho a yi moshihauto, okwa holola okwaatseyasha kwe, ashike okwa fekele ta ti kutya okahauto oka fa ke na ekende nenge omweelo gumwe ihaagu edhile nawa.

Ngoka ha longitha okahauto hoka konyala ethimbo alihe, sho a li ta kongwa komutoolinkundana gwOmukwetu, opo ando a gandje omafatululo nomauelele agehe taga pumbiwa, ina monika.

EENGHWATWA DA MANGULULWA

ELELONGELEKI OLA TAMBU LA ESHIVIFO NEPANDULO, KUTYA OMUFITA JOHANNES SINDANO OSHO YO OMUKULUNHU WOHOSTELA, AMOS SIRONGO, RUPARA, OVA MANGULULWA MO MODOLONGO.

ESHI OSHA PANDULILWA KALUNGA

Elelongeleki oshitok. 479/1983



Ndika ota li ulike gumwe gwomaalongi yomokefe yaShakati, a nyanyukwa nomoshipala sho oshenditho shawo sha monika ishewe.

“Okakadona ka nangala nombwa,” vati kadi fi doshili

Omafiku kemale a pita po paife, eshi ovakalimo vomomalukanda aShakati novaendanandjila vomoubesha, va li tava nongofola onghundana tai etifa onghenda notai yolifa vamwe pokati kokanya: 'oshipwe', shokakadona kopofikola yaIpumbu vati ka nangala nombwa.

“Onda hangwa nokuli nale nda shakeneke kovanhu vahapu tava pula nge oshinima osho, ashike pofikola yetu inapu ningwa sha sha tya ngaho,” osho omukulunhufikola pulpumbu, omushamane Kauko Shikongo a tumbula ngaha manga a li ta pulwa 'omatiwi omafuma' komutoolinghundana wOmukwetu.

“Onda uda omahokololo amwe taa di molukanda, oo kashiimba e li efina lohinima eshi, ashike nao kae fi oshili, omalundilo ashike, osheshi pofikola yetu inapu dja nande okaana kamwekamwe pomafiku oo ka ya koshipangelo, ngaashi tashi popiwa.

“Navali ngeno okwa li pwa fya okaana pamukalo ou, ngaashi vamwe tava ti oka fya, ngeno fye ovalongi otu ka shi, shaashi fye onunona vetu aveshe otu va shi,” osho omushamane Shikongo a fatululila omunaifo.

Ofikola yaIpumbu oya totelwe po momudo 1980. Pakupopya kwamushamane Shikongo, pofikola oyo vati ope na ovalongwa aveshe kumwe 540. Ongudu yopombada pulpumbu oyo ohetatu (Std.8). Ounona vopofikola apa ohava di momaumbo omOshakati nomomudingoloko waShakati, hano kave na omuhandjo.



“Avafuko” vamwe vomomalukanda aShakati vati ohava kaka va djala ngaha omudjalo ou wovanafikola vopulpumbu nota va nyatekifa ngaha edina lofikola ei, nomalihumbato avo.

OVANASHILONGA NAVA TALE-LAFANE PO TUU.

Omhumbwe yexungomwenyo momaumbo ovanashilonga oya konekwa komudiakoni nomufita Daniel Imalwa nosha pamekwa yo kElelongeleki la ELOK. Onghe Elelongeleki ola kumaida kutya ovanashilonga diinineni tuu okulitalela po.

Elelongeleki oshit. 405/1983.

