

# OMUKWE TU



Registered at the GPO as a Newspaper

30c

No. 17

ISBN 0-620-06828-0

## Eyakulo lyevaangeli mokati kaaniilonga kali lwetikile ehulilo

KuSebulon Ekandjo

“Oshilonga shokufala ohapu yevaangeli kaaniilonga, kashi na siku nashi hule, nonando Namibia oli manguluke,” osho omusita mokati kaaniilonga Gerson Max (47) a pukulula ndje mevoko lyopombambo moshinima shoka.

Okwe shi ningi ye eegamena moshipundi shevululuko mondunda yaayenda, momisioni yaKatoolika ka Rooma mOshomeya.

Sho ta yamukula ngeyi, opo a zi koluuli lwoshihauto shoka e shi hingi ookilometa 810, okugaluka metalelopo lyaaniilonga kuCaprivi.

Okwa tongolola ndje omeho ga tili-gana kontsi yondjila noga lembe keloloko. Okwa yelitha oshilonga she mokati kaaniilonga ya thiga po omagumbo gawo ta ti:

“Omaudhigu mokati kaaniilonga, otaga tsikile aluhe nonando oshilongo oshimanguluke.”

Unene omaudhigu gondjuulukwe yomalikolelo. Oomwenyo otadhi tembuka miilikolomwa yopashigwana (uunamapya nuuniimuna) tadhi tembukile miilikolomwa yopafabulika niikwamina.

Osho oshikando oshitiyali omusamane Max a talele po ngeyi oshito-

polwa shaCaprivi hoka a kala omasiku gaali 12-13.8.1983 mokati kaaniilonga te ya yakula nevaangeli.

Etaalelopo lyotango lyopahistoli mO-ngeleki ya ELOK, koshitopolwa shoka, Max okwe li ningile petameko lela lyaKotoba 1982.

Kombinga yandje onda li ndi niwe “kenyanyu lyambishi a kwata ombuku”, sho nda adhikwa kehiyo tu ende pamwe nomusita gwaaniilonga kuCaprivi.

“Ethano ino lithiga ko tuu ngaashi wa ningile 1975,” osho gumwe miilonga yetu a londodha ndje.

“Ekandjo ndishi ongweye tuu ngoka natango...”, osho mukwawo ishewe a dhimbulutha ndje etalelopo lyandje kuAngola ndyoka lya li lya hulile muukwatwa.

Pooha dhuupondoka womikala dha sa omilema dhuusiku, okalamba komusita Max oko akeke taka gena mokadoolopa kaCaprivi, pombanda. Pooha dhe aakulukadhi taa undula



Ava omofuka ve li, va landula ooina nooxe, kapu na oshihakulilo, kapu na ofikola nokape na Ongeleka.

uunona wawo komakothi, opo u tu-lwe melandulathano lyeshasho. Ye Max oku li omutumba kekandiina lyomahooli ekulu, nekwawo okwe li ninga okataafula ke kokunyolela.

“Okanona haka onde ya po nako pomusamane nguka ndi na ngashingeyi, sho twa topoka naangoka gwondjokana yopangeleki kOwambo Haka oko nda mono puye ha. Ondjo kana inayi topolwa natango paveta.”



# Ombimbeli ya tolokwa melaka lya-meme

Etumbulo tali monika pombanda, otali etele omuntu eipulo enene, eipulo tali kwandjangele kOmbimbeli ya tolokwa melaka lya-meme. Oyendji mba nda pula, oya pendje ngaa eyamukulo, ihe yamwe oyanyengelelwa ngaa. Kombinga yoye ongiini?

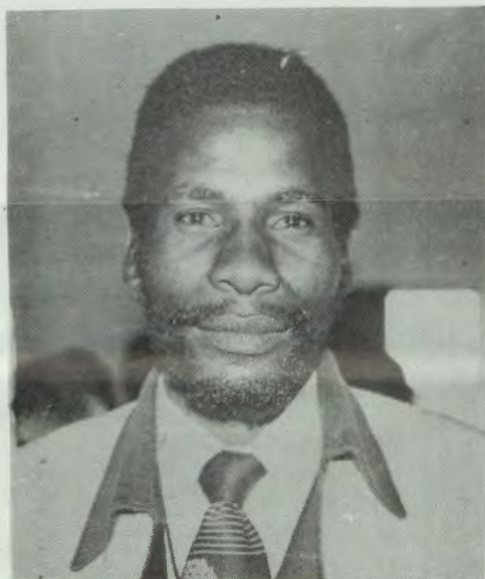
Mpaka ope na omalundululo gamwe gOmbimbeli: "The Doual Rheihms Bible 1609, The Geneva Bible 1560, Great Bible 1539, The Bishop's Bible 1568, The Authorised Version 1611 nohugunina, Ombimbeli Ondjapuki.

Pomafatululo/lundululo ngaka, ope na elundululo limwe ho lesa na ishewe, oho li uvu ko melaka lyeni. Kwatha ndje okampito ndi ku pule uupulo utatu:

1. Ombimbeli oyini ho lesa melaka lyeni?
2. Olye he ku fatululile elesho lyouye?
3. Pookuume koye oho fatulula ngiini? Ngele tatu lesa muJoh. 3:16, otamu popiwa ohole yaKalunga oku tu hola.

MuRom.5:8, otamu popiwa ohole yaKalunga ya hololwa puuyelee; sho Kristus a si molwuulunde wetu. MuJoh.1:18. Otatu lesa kutya Epona lyaHe a kala mekolo lya-He, okwa hololwa puuyelee.

Omuyapostoli Paulus ota ti: Kalunga ngele te tu gama, Olye ta tsu ondumbo natse. Oye ina hupitha Omwana, ihe okwe mu gandja molwetu Rom.8:31-32.



Omusita Joel Alweendo

Kalunga ketu iinima ayihe ote yi ningi ashike omolwohole ye. Kalunga oye omunene noye omupangeli gwegulu nevi, ngele okwe ku gama, olye ta tsu ondumbo nangoye?

Mokulesha kwandje, mOmbimbeli ondi itsu mo enenedhiladhilo lya kola: Jesus Kristus, "Ombimbeli ya tolokwa melaka lya-meme.

Kalunga mwene Oye e mu fatululile aantu meihololo, pevalo, peputuko, peso nopeyumu ko lye.

Tu kale tu mu shi oye ogwomekongolo lyetu. Lesa muMat.1:1-24.

Dhiladhila mwene nkene Jesus to mu hokolola nena, pethimbo ndi, monkalo ndjika tu li mo. Iilonga yoye otayi hokolola tuu Jesus?

Oho gwanitha tuu ehala lyaKalunga? Owa dhiminwa po tuu oondjo dhoye? Mookwaashiisha kwetu, Kalunga okwe tu dhimine po oondjo dhetu, Luk.23:34.

Nena otu na omumvo gwetumo, tatu dhimbulukwa Kalunga ketu sho e tu tumine omwana, e tu hupithe, ye e tu fale megulu kuTate Kalunga, hoka ye a zile ko.

Aamwatate aaholike otandi mu kumagidha nesimaneko nonohole yaKalunga, tu mu ineekele, tu mu tseye kutya Oye awike Tate naKalunga ketu, tu mu hole tse tu mu tseye oohapu dhe nomafatululo gadho.

Ano inda kongeleki, hempulula oondjo dhoye, e to galikana Kalunga medhina lyaJesus ngoka ta vulu ayihe. Taku ti: "Ngele Kalunga okwe tu gama olye ta tsu ondumbo natse?"

Ooitaali ooyakwetu, tu thikameni tu hokololeni Jesus Kristus, omwaalelwa komushigakano, oshoka Oye Orr bimbeli ya fatululwa melaka lyetu, Oye oonkondo dhetu dhooitaali, ekwatho muudhigu li shi okwiinekelwa. Oye ashike ti natu mu longeleni.

Amen

Joël Alweendo

## Oipupulu ohai di hano peni?

Oipupulu ohai popiwa kovanhu hakoina-mwenyo.

(a) Ohai popiwa kovanhu ovo vehe li nawa momitwe, noshitya shimwe eemhilalali.

(b) Ohai popiwa kwaawo vehe wete eshi tava lombwele vakwao.

(c) Ohai popiwa kwaawo e ku yele, molwoshinima shii we shi mu ningila. Ye ta landula nee komukulu wonale eshi ta ti:

"Shi ninga ombwa, omunhu weemhadi mbali, ote shi ku ningi yo."

(d) Ohai popiwa kovanaunhwa, ovanhu ovo va fa oonanghwe neepou.

Oipupulu ohai tandavelifwa kovanhu, hakoi-xwa ile ngeno koudila. Mukwamalanga okwa uda ngoo omhilalali yopuvo tai popi oshihauto sha ngadi sha kandoma. Ye ta lombwele ovashiinda shaye.

Ovashiinda shaye tava lombwele yo ovashiinda shavo. Nani mboli oipupulu. Yo nee ohandje imwe oya xwika ofuka.

Petrus omumati a djanga, fikulimwe okwa ka uhala keumbo looNamutenya. Namutenya okakadona komomukunda wooPetrus. Fiku olo kakwa li ooyongalele yovanyasha.

Okamati onghee ngo ke uyile ongula, fiyo ovanhu nava tule po eemusha. Paife Petrus ota lombwele ngoo nee Namutenya oipupulu, shaashi ke wete vali eshi ta popi. Ota popi oipupulu, oyo a pandwe nokuhokiwe.

Omuyelani woye ote ku popi hai kookaume koye nosho yo koshiwana ashishe. Nokonima ookaume koye neshiwana otashi hovele okutandavelifa oipupulu oyo ya popiwa komuyelani woye.

Omunhu eshi ta hepekwa kounhwa oo u li muye, eedjovo kokanya ohadi di ko ashike okukula paka po. Ota hovele okutya ye oku na eefitola nhee mOmbaye ile ye oku na shongadi inashi monika mo nale medu omu.

Oonakupwilikina navo ota va hovele okutandavelifa oipupulu ei ya popiwa komunau-nhwa.

Pexulilo loshipopiwa eshi, ohandi lombwele oonona, ovananyasha nosho yo ovakulunhu, oyo va pwilikine nawa osho omunhu te shi popi noku shi konakona nawa.

Navali lungamena eemhilalali, ovaongaongi (hesitated people) ovayelani, novanaunhwa.

Dama Meitavelo Shimakeleni

## Oshike hashi yapulwa pombila?

Miifo ya tetekele, onda gandjele omadhiladhilo nkene ando tu na okuyakulathana methimbo lyoosa, unene kombinga yiipalutha, ihe hakukolithathana.

Ngashingeyi ondi na natango uupulo umwe wa pamba oonakusa ngaashi tau landula:

a) Oshike naanaa hashi yapulwa pombila yanakusa, omudhimba nenge ombila moka mwa lala omudhimba?

b) Omolwashike iilonga yanakusa mbyoka iiwanawa, oyo ayike hayi tothwa mo, ye nonando okwa tseyikila wo ngaa omauwinyayi ogendji? Ohashi ningwa ando okumbembeleka oonakuthigwa po?

Ondi lwete kutya hwepo okupopya nomauwinayi wo, oyo shi londodhe mboka ya thigala momwenyo.

Tangi sho tandi ka yamukulwa.

Elifas Ampweya



# ONTALELO YUUKU-MWENGUNDU

Oshinima oshi li ihe ngawo kutya, nonando tse, ongomuntu gumwe [individu] iinima yetu yi kale yi li nawa, nando otu kale tatu mwena okukalamwenyo kweiuvo ewanawa otatu vulu ongiilyo yomaukumwengundu gi ili nogi ili, okulola uululu, oluhodhi noshimpwiyu omolwonakuyiwa yezimo lyomuntu kombanda yeve.

Oshimpwiyu shino otatu vulu okukala nasho oshita pamwe naafuturologia, ano aanongononi mboka haa kambadhala okuhunganeka onakuyiwa, nokomukalo nguno ohaa dhiladhila kutya osho ngeyi taa vulu ihe okukeelela nenge okupangela embonyauko ndyoka tali tegelelwa.

Ongeleki onguukumwengundu umwe uunene muuyuni aube, itayi vulu okwiikanyutulula momadhiladhilo ngono taga shikinine monakuyiwa yezimo alihe lyomuntu kombanda yeve.

Ihe osho tuu wo, itayi vulu okutungila omalandulathano giilonga yayo komufangondunge ngoka gwa puka, gwe endama nogu na oshiponga; kutya ando ongeleki oyi ipyakidhila owala nonkalo yohandiyaka yokoni ma yeso ngashi aasama haa dhiladhila nohaa popi nokuli.

Ongeleki otayi egulukilwa alube kii-nakugwanithwashimpwiyu oyindji mbyoka yi na oku yi tsakanitha. Tu tale nando itatu manga.

a) Oopulana nomahunganeko gonakuyiwa. Onakuyiwa otayi vulu okupulamwa, ngele opu na etegameno mekwatathano nonakuyiwa. Onkee ongeleki onguukumwengundu u netegameno Yi na okulala omutetekeli ' okupulana onakuyiwa yezimo lyomuntu - nokuli oya pewa kOmuwa oshinakugwanithwa shika.

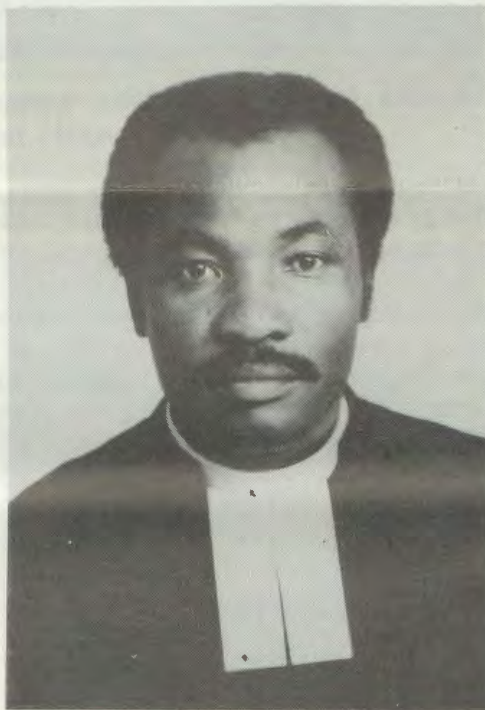
Omapulo gopokati lela ge na okulala ombili, nuuyuku wonkalathano. Kashi na okulala ngawo kutya aakriste ya kale ando aantu mboka taa tondo nenge taa indikwa okutya sha uuna iinima yatya ngeyi tayi tumbulwa. Palongo lyOmbimbeli oshilongo sha-Kalunga otashi ya mpoka ehala lya Kalunga tali gwanithwa - Mpoka Kalunga mwene ta pangele. Ihe mpoka ehala lya Kalunga itaavli gwanithwa, opu na oshilongo sha satana, netegameno kali bo.

Moonkalo adhibe, naandhika wo twa tumbula, onkundana yevaangeli oyi na omutyu gwayo gwowina. Omokundana ndjika yevaangeli mwa valwa etegameno lyaakriste hamoondunge dhokupulana nokweenditha iinima, nohapalwe.

Netegameno ndino lyaakriste, pwaa na oompata, oli shi okuminikila moonkalo adhibe. Mpoka uukumwengundu, shaamboka, tau likola etegameno ndino, opo mpoka to adha uumwengundu wa taalela onakuyiwa nomukumo pwaa na uumbanda nenge omalimbililo gasha.

b) Patiyali natu ete oshinima shino puuyeleele kutya osho oshinakugwanithwa shongeleki okuyelithila iilyo yayo kutya otashi ti ngiini okulala omukriste noshilyo shongeleki.

Shino ohashi ningwa melongo lyaakwanegonaglo nomomauvitho. METestamenti Epe, ongeleki otayi holoka onguukumwengundu mboka wa kala mehalakano.



**Epukululo**

~~Oshinyolwa shika otwe shi pewa komusita Setson Shivute, ngoka a galuka kailongo lye kuSoomi, petameko lyomumvo nguka. Hwiya okwa pewa onkatu melongo lye Master of Theology (MA). Ngashingeyi oku li amushanga gwoponto gwomumbisofi.~~

Amushanga gwOmuwetu, iinima okupukululathana ngaa, mOmuwetu No. 16/1983 epandja 3, opu na okahistoli kandje ka puka; ngaashi ke li pombanda:

KOsoomi onda zile ko 1982 muAguste. Hwiya onda adha onkatu Master of Sacred Theology (STM). Edhina lyandje oSet Son

Tangi sho tamu shi tula nawa.  
Set Son Shivute

Opwa li ngaa ethimbo lyontumba, moka onakuyiwa netegameno lyaakriste lya li lya fa lya kankamekelwa unene koshinima shono kutya ongelekei otayi koko okuza ngopashitsa shimwe, nokuhumako yi ninge omunankondo omunene gwontumba muuyuni.

Taku tsikilwa

## Nakusa mombila ohu uvu po yamwe?

Okwa li nda lesha mOmuwetu gwaJuni 30, 1983, poshipalanyolo "Oshi li tuu mondjila okupopitha onakusa" sha nyolwa ku E. Ampweya.

Eyamukulo lyandje oyo ndika, kutya oshi li mondjila, nonando ku uvitike ko ye mwene. Tse mbano oonakuya koshituthi sha kuume ketu, uuna tatu shi ningi kutya vululukwa nombili, otatu mu halele ngeyi evululuko megumbo lye lyaaluhe. Ishewe shino osho omuthigululwakalo gwetu.

Ngame mwene, uuna inaandi kala pefumviko lyakuume kandje, ndi mu tumbulile ngaaka, ohandi kala ndi uvite onguna.

Kuume Ampweya, mokapopiwa koye nangame ondi na mo nga epulo. Omolwashike aayapuli haa ti komusi; "Ongoye evi noto shuna mevi," nonando nakusa sho a li momwenyo oku shi shi nale kutya onaku ka shuna mevi?

Mbaka taa ti ngoye evi, noto shuna mevi, oyo ayeke haa uvika ko kunakusa, yo mbeyaka taa ti, vululukwa nombili, ite ya uvu? Onawa mu yamukule ndje mushika.

Otii mu kurdu wo neimbilo 354

T. Kayindonda

## Kandjambanga ta yamukulwa

Omapulo atate Gabes Kandjabanga wokOshivanda, ok va fa inaa nyamukulwa. Omapulo okwa li mOmuwetu waJuli, 15, 1983, kutya oukadona woovene owe shi panda ngaho u likongele ovamati? Navali oshike naanaa sha enda po opo oukadona ve likongele ovamati?

Omanyamukulo ange oo aa. Mumwameme Kandjabanga, Omuwetu waMai 30, 1983 ondi wete ine ku enda pomunghulo. Hano omu na oshipalanyolo tashi ti:

Tashi li ekunde, oshi li molukunde. Naave yo owa tala ovamati ovo hava nyono oukadona noku va twala moluhepo. Hano nashi ku yelee kutya okakadona oko kotete menyono eli.

1. Enyamukulo kepulo lotete oleli: Oukadona ou na okulala we shi panda, shaashi okwa tiwa nge ope na okakadona ka hala. Po apa pe na ehala, opo yo pe na ondjila.

2. Kenyamukulo lepulo etivali, eshi sha enda po ohole. Yo ohole oidjuu okukeelela sha.

Weni.  
Chrisyan Nghaamwa



# Evaangeli maaniilonga

## Dha za kep. 1

Osho omafatululo ge li ko ngeyi konyala apehe mpoka to yi, omale ga kitakana noga nyenge omalelogongalo omimvo odhindji, otage etelwa ihe Max e ga patukunune muule wominute ntano.

mpaka okangundu okakwawo ka mono ekwatho muyakwawo miilonga yekoleko, mpeyaka ishewe opu na aa kuthilwa. Kehe yamwe otaa tegelele olufo lwawo.

Otundi onti-10, 11, 12 uusiku." "Inamu halakana tu ningeni owandaha yuukumwe," osho ti igidha

mu ningi momagongalo," osho a kambadhala okuuvitha ndje ko iilonga ye.

"Oh, iilonga yaMax nani itandi yi vulu," osho nda tameke okwiipopila momwenyo gwandje.

Caprivi okatopolwavi kiihomeka pokati kaAngola, naZambia naBotswana. Uunene wako ookilometa ashike 35 manga uule ookilometa 500. Mokolandula omulonga gwaKavango,



**Omufita Max ta longekida omayakulo omashasho nomakoleko pamwe novakwaneongalo muKatima Mulilo**

manga a sizimana ti ipyakidhile naamboka ya hugunina.

Muupondoka ekudhilo otali tsikile koho yuuyelele womalehita. Oomwenyo odha tsa oshenyo, ngula kaku na iilonga Olyomakaya, kehe gumwe okwa hala okwiivululukitha.

"Ethembo lyiilonga mbika aluhe uusiku, manga ayehe ya zimbuka nomuyakuli ongoye to yi mpoka aantu ye li. hayo taye ku kongo ngaashi ha-

okuza moRundu, oto ende ookilometa 250 lwaampoka opo u adhe Bagani, ongamba yaCaprivi naKavango.

Mpaka opu na ngashingeyi okamba yimwe yaaniilonga yootelefona moka mu na iilyo yOngeleki yetu ye thike lwopo 40, aasamane, aakulukadhi naanona.

Osoondaha yeti-14.8.1983, otwe ya ningile elongelokalunga. Mboka ye na oombapila dha yela, otwe ya yakula mUulalelo Uuyapuki. Aanona yawo ya shashwa nayamwe ya kuthilwa.

Iilyo yOngeleki yevaangeli mbyoka ya thigala natango muCaprivi, otayi tengenekwa 60 sigo 80. Muka omwa kwatelelwa wo iilyo yOngeleki onkwaevangeli paLuther mUushimba (ELK).

Iilonga yawo hwiya okutunga ekwatathano lyopatelefona pokati kaKatima Mulilo naRundu nokutsa oomboola dhomeya moshitopolwa shoka momikunda ndhoka dhi li kokule nomulonga.

Kolulyo omushamane Wilhelm Filippus, wa-Anglikani ou ta kwafa vakwao momapukululo Ongeleka muKatima Mulilo.

Mpeyaka ishewe opwa tegelelwa okangundu kaamboka ya mono epukululo miilongwa yeshasho, naa-



**Eshasho muKatima Mulilo, tali ningwa komufita Gerson Max**

Tala kep. 5



## Dha za kep. 4

MuCaprivi ashihe, itamu adhikwa nando Ongeleki yimwe yopavaange-li. Pahokololo lyaakalimo Ongeleki onene oyaAdventist, e taku landula yaKatoolika kaRooma.

Omu na wo Ongeleki yOombulu (NGK) noyopaYapostoli. Momisioni yaamwameme mbaka yaKatoolika, omo twa li twa ningi ontanda yetu moka hatu zi sho tatu ka konga aakwanegongalo yetu.

Iilonga mbyoka yotelefona sho tayi humu ko yu uka koRundu, okamba onkwawo otwe yi adha ya dhikwa puAndara, ookilometa 200 okuza moRundu.

Mbaka oya hedha ngashingeyi popepi hwe-po neyakulo lyoshitayingeleki shaKavango, shi vule yakwawo yalwe. Ihe onkene tuu otashi pula natango oonkondo odhindji ne-thimbo. Oyo wo oye vule po kashona po 50, kumwe naanona yawo.

Otwe shi dhimbulula wo molweendo nduka kutya miilongo yomihoko dhAakavango; Mbunza, Sambyu, Bogendo naMbukushu, omwa halakanena wo iilyo yOngeleki ya ELOK.

Oyindji yomuyo oya shashelwa momago-ngalo ga ELOK mOkavango, manga iikwa-wo ya shashelwa mehalakano miilonga. MOcaprivi wo omu na ngashingeyi yamwe wo ngiika inaa mana ko oshikaha okuyalu-lwa, ya dhika omagumbo gawo.



**Omusita Gerson Max**

Aantu ayehe mbaka kaye na nando esilo-shimpwiyu lyasha we, kombinga yuukwa-mbepo wavo,

“Tse otwa tala ashike mOmuwa,” osho ye tu hokololele mboka twa popitha.

Etalelopo otya li lya yambekwa molweendo lwalyo aluhe. Shoka ashike twa li inaatu mo-na, nando twe shi halele, osho okwaadha ii-lyo yOngeleki yetu mbyoka yi li ko [ngele ope na] mookamba dhaakwiita yetanga lya SWA, aakiintu nuunona.

Sho twa yelekele okukonga Komandanda Badenhorst, puBagani, omolwoshimpwiyu shika, inatu mu mona. Otwa thigile ashike omukulukadhi gwe elaka opo ya konakone ngele oku na iilyo yetu pamukalo ngoka. Okwe shi taamba.

“Tala tate Ekandjo,” osho tate Max a hili omadhiladhilo gandje ndi landule shono a hala okupopya, manga ta tenteke okugulu kokukwawo a shange “ofoo”

“Oshilonga shika itashi vulika komuntu ke-he. Omolwaashoka ho mono omusita nenge omuyevangeliste a tumwa mUushimba, a yakule aantiilonga muka, mbalambala ota lundululile oshilonga she pamuthika gwego-ngalo.

Peha lyokuya kaantu, ota tegelele aantu ye ye kuye, koshinyanga nenge kegumbo lye.”



### Elongelokalunga muKatima Mulilo

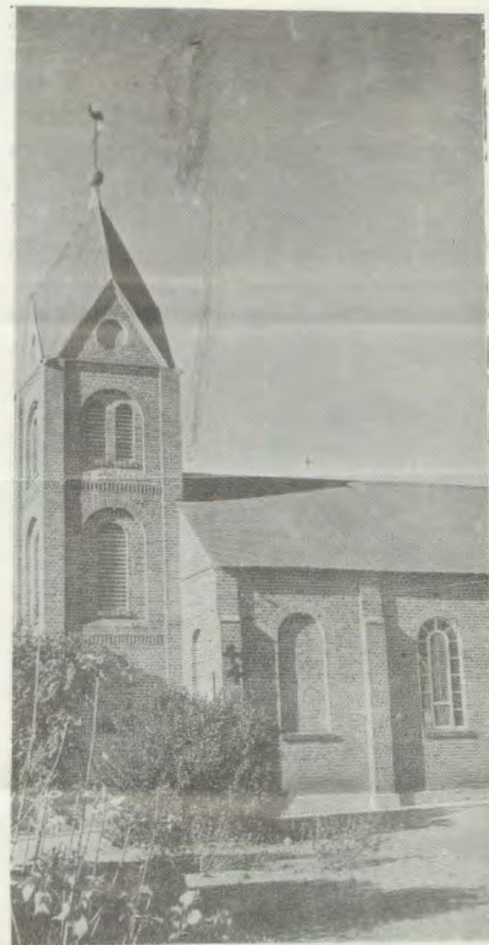
Omusita Max okwa langekwa moshilonga shoka muJuni 1966, tango mewiliko lyaahon-gi; Pauli Laukkanen naPentti Toivanen. Omumuo 1972, okwa mangulukile eyakulo alihe moshilonga shaNamibia.

Omumuo 1975 okwa kala oomwedhi mbali muLondon ta konakona omakwatho haga pewa mboka ya thiki metokolo lyeidhipago. Oomwedhi ndatu dhomumuo tuu ngoka.

te dhi kala natango muHolland okukonakona onkalo yaaniilonga nkene hayi yakulwa palu-tu nopambepo nomakwatho gawo gokupoto-konona omahilathano pokati komugandji gwiilonga nomutaambi.

MuNdowishilanda lyuuninginino okwa kala mo owala etata lyomwedhi okutala natango ehungomwenyo lyaaniilonga nkene hali longwa muiyaka.

**Tala kep. 6**



Ongeleki yaAndara, ei ya tungwa pomido 1935 ile 36, moMbukushu. Ongeleki yaKatoolika moshitukulwa eshi oya hovela oku shi shiika okudja 1903.



# Evaangeli maaniilonga

Dha za kep. 5



Kombada yeekilometa 200, okudja moRundu, otwa hanga omushamane ou a fikama kolumosho mowike waye. Oye oshilyo shOngeleki ya ELOK, nomofuka omo okwa ninga mo edula nhatu, a keelela omahooli. "Nghi na nande ou hatu ilikana naye, ashike eitavelo onde li diinina natango," osho e tu lombwela.

MUushimba oha longo pamwe naasita yata-tu naayevangeliste 12, mboka ya tumwa ku ELOK okuyakula iilyo yOngeleki ndjoka. Poompito dhimwe oha longitha wo aasita yokOwambo, uuna ye li momafudho gawo.



Nomokakuma kaNamibia moka mwa pitwa kiilyo oyindji yOngeleki ndjoka methimbo ndika, naye okwe endele mo.

Omumvo 1981 Elelongeleki lya ELOK, olye mu pe oonkondo a kale omutalelipo nevaa-ngeli, oonkwatwa dhopapolotika muMarie-ntal, ndhoka dha zile kOcassinga. Pazimino lyepangelo ohe shi ningi konyala lune momumvo.

Ekende lyomeya omapyu moshihauto she noshimbamba shiikwakuliwa, oyi li aluhe kombada yiipakete yomambo gopangeleki ngoka ta landitha neitulomo enene shaa mpoka a yi. Evaangeli ohe li uwitha wo ano pamukalo ngoka.

Oha matuka ookilometa omayovi ogendji momahala 95 muNamibia alihe. Mpoka a kwatwa keloloko, oha kutha oombe oonkunkutu mokakende kaMukwanangombe gwe [meme Kauna] a kale ta kokota nota tsikile ihe nomukumo omupe.

Pomimvo ndhika momalweendo ngaka oha monene mo ihuna kombinga yiikulya sho e li ngashingeyi mepango lyandohotola, ndyoka molwalyo ha li ashike uukulya tau konakonwa. Ashike shika inashi ninga omukundu omupe miilonga ye.

"Nuusila womahangu, oto piti nawa shaampoka to yi," osho a hokololele ndje kee na omaipulo noshinima shoka.

Kepulo kutya oha dhingoloka ko lungapi momumvo, okwa kwata ndje mbala melaka:

"Iimaliwa hayi uthilwa omalweendo ngaka, ihayi shi pitika u dhingoloke mo lwaali momumvo nonando osha li shili sha pumbiwa."

Pafatululo lye, oshilonga shevaangeli mokati kaaniilonga otashi topolwa miitopolwa iyali;

a) Aaniilonga mboka taa longo moofabulika, moomina momalutenda nosho tuu.

Mbaka ota ti, kutya eyakulo lyawo ohali ke ya konga mpoka ye li. Evaangeli tali adha omuntu miimpwiyu ye.

b) Oomboka taa longwa mokati kawo pamukankanga gwegongalo. Mbaka olwindji omuyakuli ota tegelele ye ye kuye kOngeleka nenge kegumbo lye. Mbaka nonando iana tumbula kutya otaa zi miilonga yomaludhi genipo, okwe shi tumbula nomuthindo kutya opo mpaka VELKSWA kwa li e na oshinakugwanithwa shokuyakula.

Kombinga yandje omuhokololi sho nda li nelimbililo, ngele nani iilonga mbika yomokati kaaniilonga, oya pumbwa tuu yi tsikile muNamibia lya manguluka, okwa pukula ndje ihe ngeyi:

"Etumo lyevaangeli miilonga yoofabulika [Industrial Mission], itali si nonando oshilongo oshi mone emanguluko. Omaudhigu maaniilonga otaga tsikile noga yooloka.

"Oomwenyo otadhi kala aluhe dhi li metemby, tadhi zi momudhingoloko gwopashigwana notadhi tembukile momaliko gopashingolo. Shika otashi kaleke aluhe omuntu omukwiilongo mombepo ye, nonando oku li maandjawo. Evaangeli alike tali mu hupitha monkalo ye.

Tala kep. 8

## OMAGONGALO OMANENE

### MONGELEKI YA ELOK

1. Onayena .....	10454
2. Okaku .....	10142
3. Ohalushu .....	9896
4. Onyaanya .....	9594
5. Okahao .....	9475
6. Ongenga .....	8628
7. Oshigambo .....	8622
8. Endola .....	8421
9. Engela .....	8192
10. Tshandi .....	7486
11. Eheke .....	7454
12. Nakayale .....	7178
13. Okalongo .....	7158
14. Ontananga .....	6820
15. Oshitayi .....	6764
16. Olupandu .....	6710
17. Onheleiwa .....	6649
18. Olukonda .....	6330
19. Onangalo .....	6274

## EDU LETU NAMIBIA

Namibia edu letu,  
Edu letu tu li hole,  
Shaashi olo le tu tekula  
Okudja kounona wetu

Namibia u tu shii  
Ushii ku tu tekula  
Ngaashi we shi ninga nale  
Kootatekulu vonale

Elongelokalunga puBagani mewiliko lomufita G.Max. Melongelokalunga

Ouvalelo Uyapuki owa tukulwa yo



# Eenhokolwa di- mwe dElelongele- ki leti 19-21/7/83

Elelongeleki ola ufa oshipalanyole sho-  
mudo tau ya shi kale eilikano: "OMUWA  
LUNDULULA OKUKALA KWETU" pa  
Eps.126 na Eps.85:5.

Elelongeleki ola tokola opo eefikola donge-  
leka: Ongwediva nEngela, di kale hadi hove-  
le pehovele laFebuluali, do di fude efudo  
lokomudo pexulilo laNovomba, kakele kofi-  
kola yaNkurenkuru oyo itai wapalelwa keu-  
fo eli. Omafudo makwao opokati, otaa ni-  
ngwa pamwe neefikola doshiwana. Onkure-  
nkuru otai hovele pamwe neefikola doshi-  
wana notai kala tai fuda pehovele ile pamwe  
pokati kaNovomba.

Elelongeleki la kundafana oshinima she-  
yakulo lopamhepo moushimba nopwa toko-  
lwa shi tukulwe moitukulwa ine: Ovenduka  
nOkeiti, otai kala mewiliko laGerson Max,  
Oshomeva otashi kala mewiliko laJason  
Amakutuwa, omanga Arandis tashi kala  
mewiliko laJ. Kapewangolo.

Oshoongaleleleki sha ELOC oshiti-12  
osha ufwa kElelongeleki shi ka kale kO-  
ngwediva muJuli 9-14,1984 Kalunga ngee-  
nge e shi hala.

## ETUMWALAKA KELELONGELEKI

*Otandi indile nesimaneko enene kOmukwetu,  
opo a thikithile ndje eindilo lyandje ndika kE-  
lelongeleki.*

*Otandi gwedha meme Ndaomba Nelongo kei-  
ndilo, Elelongeleki li tu falele eindilo lyetu ndika  
kElelonongelo, opo ku dhikwe osikola yaaku-  
luntu.*

*Tse aasamane, aakulukadhi, aamati naaka-  
dhona, otatu indile nesimaneko noneifupipiko  
opo tu monemwe osikola moka tatu kala noku ihu-  
mitha komeho mokulesha, mokunyola nomokuta-  
kuma omalaka tu li miipundi.*

*Ondi itaala kutya Aawambo ayehe mboka inaa  
ya mona nale elongo lya gwana, oye na ondjuu-  
lukwe, opo ya monenwe elongo pethimbo lya-  
ngashingeyi.*

A. Nd. Kambonde

## EPANDULO LYAHELENA

Ohai pandula kombinga yoshifo  
shOmukwetu, eshi tashi pukulula oshiwana  
shaNamibia, eshi shi li mOushimba mehala-  
kano. Omatwi naa fituluke hano vakwetu.

Tu djeni momilaulu doupofi wefimbo eli li-  
djuu. Oikwadu tai xulu po, ndele oikwaulu  
otai kalelele.

Ohai kundu ovaitaveli aveshe mu ELOK,  
nohole ihe na edimbuko. Kundweni nombili.

Helena Shindjoba

# Ou shi tuu edhina lyoye shoka tali ti?

Edhina Sirkka otali ti ombahu. Ngoye luka ihe  
Nambahu nena ou na edhina olyo tuu ndyoka.  
Nenge sho wa hala okuluka Lahja ndyoka tali ti  
omagano, luka ihe Magano.

Toivo sho tali ti etegameno, onawa u luke oka-  
mwoye Tegameno.

Shika hasho ando oku ku keelela omadhina goo-  
kuume koye aakwiilongo, ihe tala ashike kutya  
nayo wo nando ya kale ookuume koye, kaye na  
siku ya lukile omadhina goshigwana shoye.

Frank — a manguluka  
Frieda — kuume kombili  
Fredrich — ofule gwombili  
Fritz — ofule gwombili  
Gabriel — omuntu gwoonkondo  
dhaKalunga

Atto — tate  
Augute, Augustus  
— omudhiminwapo  
Betty — oshikwiilongo  
Barbatus — omulumentu gwoombenzi

Barnabas — omuna gwetalaleko  
Beata — omunelago

## Omuwa yambeka ndje

1. Omuwa Jesus yambeka,  
Ngame ngu omugundjuka;  
Aluhe ngame nda hala,  
Oku ku longela.
2. Longa ndje oku ku indila,  
Longa ndje oku ku pandula;  
Iipango yoye wa pe ndje,  
Oku yi dhiginina, longa ndje
3. Omuwa kwatha ndje ndi longe,  
Oshilongayakulo;  
Yakwetu ngame ndi ya longe,  
Okutaamb'ekulilo.
4. Niikaha yandje mbika,  
Omuwa ndi mu longele;  
Nelaka lyandje ndika,  
Omuwa ndi mwiimbile.
5. Omuwa ndi mu hambelele,  
Ngame sho nda kulilwa;  
Lago ndi ka likole,  
Mwenyo sho nda longelwa.
6. Nenyanyu ndi mu tange,  
Ngame ndaa itange;  
Mu ayihe ngele nda sindana,  
Otandi ke mu mona.
7. Halleluya ndi tange,  
Omuwa Omusindani;  
Omutondi sho a dhenge,  
Nda ningi omusindani.

Ku Justus N. David

## Esiku lyomutumwa gwa- Nakayale lya dhimbulu- kiwa

Egongalo lyaNakayale, olya li lya  
ningi ontanda yOsikola yOsoondaha,

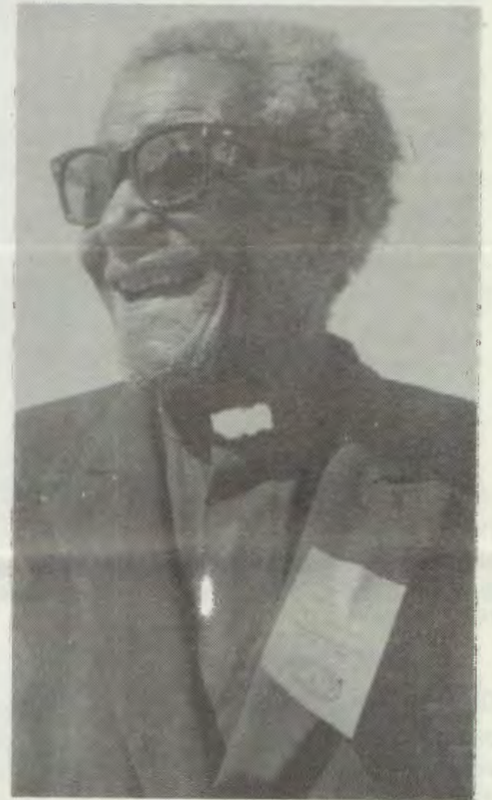
pOmpolo esiku lyetumo 10.7.1983.  
Aantu 627, oya li moshituthi shika  
noya dhimbulukwa omutumwa  
gwotangotango kegongalo ndika,  
omusita Sakeus Ihuhwa.

Omusamane Ihuhwa, gumwe  
gwaasita aayapulwa yotangotango,  
okwa thikile mOmbalantu, pegumbo  
lyelenga Aipanda yaShekuindi 1917.  
Aambalantu ayehe oya hiywa ya  
kunde omuyenda gwawo.

Omuyenda Sakeus, okwa londo  
koshaanda, momwandi gwaNa-  
maungu (omithima pooha dhomi-  
sioni yaNakayale) nokwa ti:

“Onde ya okudhaadhiga omulilo  
gwaKalunga moshilongo shika.  
Aambalantu omu li momilema.”

Ndika olyo lya li evangeli  
lyotangotango mOmbalantu.  
Pahistoli egongalo Nakayale olya  
dhikwa 1919, aakriste yotango sho ya



Omutumwa gwaAambalantu  
S.Iihuhwa

shashwa komuhongi Saari, aamati  
yatano. Ashike omusita Sakeus okwa  
tumwa ko 1917, manga e li  
omulongi. Okwa shuna ko natango  
sho a yapulilwa uusita 1925, nokwa  
kala ko sigo 22.6.1976, sho a mana  
oondjenda dhe muukulupe lela, tau  
tengenekwa poomvula 100.

Ongalo yesiku lyedhimbulukwo  
lyetumo oya zi R1115,19.

Tobias Ndeikwiila



# Caprivi, okadu pokati komilonga mbali

Moumbwalangadja weebinekilometa 824,269 daNamibia, omu na yo okatukulwa kedu Caprivi, komutamwe weekilometa 35 noule wako eekilometa 500.

Petameko laAguste neudo, hamushanga wOmuKwetu, Sebulon Ekandjo, okwa talele po okatukulwa oko nota hokolola paxupi eshiivo lipe kuye e li a shakeneka mo:



OmuCaprivi e uya komulonga waKwando okukosha oinima yaye. Kokule kanini otaku monika ofuka yaBotswana i li konima yomulonga

Okadu okamwe komomaduumbo 11 aNmibia pamulandu welelo la SA, navahapu nande ve li muNamibia, kave shii ko sha kuko, sha dja momatomhelo mahapu.

Lwotete okadu aka inaka shiivika, osheshi oke lixwekela pokati kaZambia naBotswana nopokati komilonga mbali; waZambezi koumbanganhu nowaKwando koumbuwantu. Oka pwaama omesho ovaendanandjila.

Pativali, elelo lako inali kala la kwatafana nOvenduka, ouhamba womaduumbo aNamibia, ndele ohali di kuPertoria nghe sha dja 1936.

Patitatu oCaprivi inaka yeululilwa ovaendanandjila kelelo lOvatilyaane ngaashi yo sha kala sha ningilwa Owambo nOkavango.

Ovashangi vamwe vomahistoli otava ti kutya okuhakwatafana kwako noshixupe shoshilongo, okwa dja moudjuu wondjila oyo ya kala po shito nomenota layo loshiponga.

Ashike kOvawambo ava va xwa keemina da SA naRhodesia, osmukuiwa shaCaprivi kuvo keshipe, noudjuu wako wondjila aishe, owa enda kombuda yavo.

Konima yeekilometa 500 okudja moRundu eshi wa fika muKatima Mulilo (Dima omulilo), okadoolopa keduumbo olo, ito shi tongola unene kutya owa fiya po paife oKavango.

Omutungilo womaumbo, elandifo loihongomwa peendjila, oushitilo wedu nowomulonga nomidjalo davo, otai faafana unene. Etongoko oto ke li koneka ashike melaka lOshilozu ile Oshiingilisha movaputuki. Osho yo ombili ihapu okutambula ovaenda nelixupipikilafano mokupopifafana.

Ngeenge ino tonya kanini peengolo nokude nga omake kumwe, eshi to popifa vakweni (wa buka mwa uhala?), oto liholola noupu muCaprivi kutya ove omunailongo.

Ounona novanyasha, otava kala omutumba opo ve ku kunde nawa. Onghalo aishe otai monika inai shunduka natango keenghedi dovanailongo.

Kakele kOvawanghala vamwe ve li mo mokalongo aka taka holola olupuna momiti, moulifilo nomounama, ovakalimo aveshe otava tengenekwa 39,500 pavalulo lomudo 1982, ovo ovanaimuna, ovalimi vomapya novateli veeshi.

Eshi tashi konekiwa fiyo onena, oilonga yavo ei yopashiwana, oi li lela natango pedu naitai yambula po omaxupilo moshilongo. Eshi otashi konekiwa unene kwaasho tave shi eta "Poupale voilandifomwa," kutya osha fikama ashike meeshi, moiinda nomoumbelela veengobe.

Inandi shakeneka nande opapa tapa twimaana okamwifika di ngeno koshi yoshipana shombelela ile shoumboloto, ngaashi tashi hangika meenhele dikwao muNamibia.

Eenhele domalandifilo avo nodomanwino, itadi shili natango ovanhu vahapu. Onghalamwenyo yavahapu, oye endjelela ashike komaxupilo opashingolo.

Tala kep. 9

## Omukundaneki Halweendo

Oshiningwanima shinya nda monene shomatuwa e lidenga mumwe, ngaa-shi nda tumbula nale molufo la dja ko, osha twala nge fiyo ometokolo ndi konaakone osho hashi eta oiponga ei yomakandomo, ashike fimbo inandi hovela oshilonga eshi onda ile tete kuTatekulu naMeekulu Shiwoovanhu, opo ndi pwilikine omadiladilo avo moshinima eshi," osho omukundaneki Halweendo a hovela ta hokolola.

Ovakulupe venya vavali ova pange ondunge tai landula: ova ti kutya ngeenge onda. hala shili okumona oshili, oshinima eshi ondi na oku shi konakona nefimbo la wana, ngeenge olixupi, shapo oule wohani.

"Fye ohatu dulu oku ku pa okahauto ketu, apa to pumbwa okulongifa oshihauto; nokombinga yomahooli, ino pumbwa unene okulipyakidila, nafye ohatu dulu oku ku kwafa, shaashi nafye ohatu popile onghendabala yoye yokukonakona osho hashi eta omakandomo oihauto a pitilila," osho ovayandjimayeve vomukundaneki Halweendo ve mu lombwela pefimbo leenghundafana davo.

"Elaka lomukulunhu haluhapu hali nhukwa, onghee okudja peenghundafana detu novakwafi novayandjimayeve vange, Tatekulu nemeekulu Shiwoovanhu, onda ninga etokolo ndi longife Septemba aushe, opo ndi konakone oshinima shomakandomo nomalidengo mumwe oihauto meendjila," Halweendo a tokola.

\*Ovaleshi ovafimanekwa, eshi otashi ti, omukundaneki wetu Halweendo mohani Septemba aishe, ita ka yandja vali manga eenghundana dasa kovanaifo. Shapo inga ashike mu shakena naye moinyolwa yaye muKotoba.

## Omukwetu

EMBESITELO LYOMUKWETU INALI PATA NATANGO, OTO VULU OKU SHI NINGA NOTO TSIKILE SIGO 1984.



# Caprivi, okadu pokati komilonga

Dha za kep. 7

Omhumbwe yomaliwa noyoilonga, otai hepeke vahapu.



PuNgoma, pongaba yaCaprivi naBotswana, eekilometa 42 okudja muKatima Mulilo, omufita Max ota endifa okawato momulonga waKwando. Konima okwa fikama omukwafi waye James, omushamane waFransina.

Pahistoli limwe nda shakeneka, vati fiyo 1908, Caprivi inaka nangalwa manga kOvatilyane. Ashike pomido 1890, okadu aka itavelelwa kOvaingilisha ka kale momake Ovandowishi, ongoshitukulwa sha SWA, opo Ovaingilisha va itavelelwe kOvandowishi va kale muZanzibar.

Hano Ovandowishi ovo ve ka lukila omupangeli wavo, Count von Caprivi muNdowishilanda.

Omudo 1914, Caprivi oka shuna natango mOvaingilisha noka tumimwa ovakwaita ve ka pashukile va dja kuRhodesia paife Zimbabwe, ashike ombelewa yako oya kala muBotswana, osheshi oka kala ka valulilwa moitukulwa yaBotswana.

Eshi osha kala ngaha fiyo 1922.

## Elelo lopaife

Eshi nda pula vamwe vomovalongifikola, kutya ovakalimo mokatukulwa oko ova dile peni, ova nyamukula nge kutya ova dile mu-

Zambia, va tauluka omulonga waZambezi, oo wa taula omadu aa avali pokati.

Eshi osha twa kumwe nehistoli olo nda shakeneka mokulesha, kutya ohamba Sebetwane meedula donale, oya dile onhapo yaShaka, ohamba yOvazulu mu SA, pamwe novanhu vaye Ovokololo, nde tave ya okupangela ovakalimo vokatukulwa aka fiyo omuBarotseland, muZambia.

Ehengumukilo mumwe lOvokololo novakalimo, ola eta po etukauko loitukulwa inene ivali moshilongo; Masubiya (lesha Masuvia) naMafwe, oyo keshe shimwe tashi pangelwa kohamba yasho fiyo onena.

Elaka tali pangele unene moshilongo, Oshilozi (Oshikololo) nOshisifwe. Mokati kOvamafwe, omu na yo oumuhoko vamwe va nini nomhepo otai pepe kutya, Ovamafwe ova kala va dinika kuvakwao.

Okudja nale fiyo onena, eehamba edi odi na epangelo lopokati, hali ufanwa "kuta", nohamba keshe koshitukulwa shayo, ohai kwafwa koshongalele shomalenga have shi ufana "Ngambela".

Eti 23.3.1972, edumbo eli ola pewa elipangelo lalo ku SA ngaashi e shi ningile yo omihoko dikwao moshilongo. Vamwe ohava ti osha ningwa 19.3. Odula oyo tuu oyo.

Omutungilo welelo kau lillile kokule naao wa kala po shito. Eehamba doitukulwa oyo ivali; Robert Muhinda Mamili waMafwe kouningnino naJosua Mutwa Moraliswane waMasubiya koushilo, odo hadi liyakula oshipundi shouministeli wotete.

Eehamba adishe kumwe odi li ailyo yoka-



Pofikola yaKizito, opu na yo omi doimati; omiandi (muchenje) nomikwiyu (muchaba). Ovanafikola otava endebele ngaha va ka toole eenyandi komulonga.

binete, mwa wedwa vane ovo va kufwa oo-avali kukeshe oshitukulwa. Elaka lopa-pangelo Oshiingilisha, Afrikaanisha nOshilozi.

## Eengudu dikwao dopapolitika

Pakupwilikina ehapu lovakalimo vaCaprivi, nande omunhu ito shi lineekele wa mana mo, otava ti kutya mokati kavo otamu linyenge ashike eengudu mbali nonhitatu i li monguwi, oya SWAPO.

Edi odo; Caprivi National Union (Canu), yotete yopashwana. Pomido 1960 oya hengumukilile mumwe naSWAPO, unene kwaavo va ile pondje. Omushamane Mishake Muyongo, oye omuwiliki wongudu ei ponhele yaSimbwaye ou e li paife kOnhunhu yaRobben. Muyongo okwa kala yo omupresidende waSWAPO wopedu.

Konima yodula imwe ya pita, ongudu ei oya pambuka mo moSWAPO noya alukila moshilongo, nande Muyongo mwene vati okwa fyaala natango muZambia.

Pakuhokolola kwavamwe muCaprivi, oCanu oi na ovalanduli vahapu notai kondjo paife vati i tokole ko Caprivi kuNamibia. Inandi mona ouyelele kutya elelo laCaprivi, Kuta, kutya otali tale ngahelipi Canu nomadiladilo aye.

Ongudu onhivali oDTA omo unene hamu udikila edina lohamba Mamili.

## Onghalo yaNamibia muCaprivi

Nande hashi hokololwa kutya oita oya hovela tete mouningnino wOwambo, Caprivi oka kala kotete okumakela oululu woita yoshilongo eshi.

Tala kep 10



## Dha za kep. 9

Komweenda ngaashi ame mokatukulwa kenya, onda tomhelwa ashike oshili ei keehote edi da tungwa keembinga adishe dokadoolopa kaKatima Mulilo, mokati kOvatilyane nOvalaule. Otashi yandje naanaa efano kutya navo yo ove li moshitukulwa shoita.

Kombinga ikwao, moule womafiku avali nda kala mwinya, inandi uda odila yoita tai nduduma, inandi uda omandudumo eendjebo nomunhu ito lesa nande omhepo yoshi-sho shoita moipala yovakalimo. Noveta youfiku nande hai tumbulwa ko, konyala omokanya ashike. Shiimba ove li manga mefimo lefude po.

Osho ashike she va etela elipulo linene mefimo eli, eshilafano pokati keehamba davo da tumbulwa metetekelo, okukondjela oshilongo. Oshibofa osha fikifwa nomohofa kOvenduka, ashike ove shi tala shoku eta oita youkwashiwana pokati komihoko, ngeenge itashi endeletwapo.

### Eengeleki muCaprivi neputuko loshiwana

Eshi twa fika muKatima Mulilo, otwa ya momisioni yaKatoolika kaRooma, oyo i li etata



**Omufita G.Max ta lesa omudo etungongeleka eli la fikamekwa po momissioni yaKatoolika muKatima Mulilo.**

lokilometa pondje yodoolopa. Otwa ulikilwa eemhadi domubishofi Bonifatius Haushiku, opo da di po. Otwe mu pandulila oshisho shayé nomukumo wokulidenga eefuka dile okuyakula ovanhu.

Nande taku tumbulwa kutya omisioni ei oyo yotetetete moshilongo, inandi mona ouyelele kutya oya tamekele naini. Ashike osha yela kutya omeni lefelemudo 1900.

Okangeleka momisioni ei, kawa, ka tungika ngaashi dihapu daKatoolika di li, oka tungwa vati 1953.

Ongeleki yaKatoolika moshilongo osho otaku hokololwa kutya oyo onhivali moune-ne. Yotete oyaAdventist (oyo twe i luka oshimhanga). Ongeleki onghwaevangeli ihai tumbulwa mo nande, kakele kOngeleki yEembulu (NGK).

Omu na yo Ongeleki yOvayapostoli, opo tai tamekwa. Oilyo yayo oi li ashike 3,000 manga lwaapo. Omuwiliki wOngeleki ya NGK otwe mu konga, mupya munene otwa hanga a ya ku SA.

Omisioni yaKatoolika otwe i pandulila eyakulo layo nonande omukulunhu wayo Pata Malakia, otwe mu hanga noupyakadi muhapu, inatu mona omhito yokukundafana naye. Osho yo eemisioni dikwao mondjila, ode tu ningila shihapu.

Momisioni yaKatima Mulilo omo mu na yo ofikola inene yoshiwana Kizito College, omo hamu tekulilwa ovanyasha okudja Vorm 1 fiyo Omatilika.

Muyo omu na paife ovahongwa 320, oukadona auke. Mokati kavo konyala 200, otava nangala momuhandjo. Oi li natango mewiliko lomutumwa (edina laye ola kanene kokulo yopena) umwe womeesestela daKatoolika.

Yovamati nayo opo i li, muNgweze, olukanda lOvalaule.

Moshinima sheputuko lEhongo, shiimba inava ya manga unene kokule, ndele havo yo ve li konima.

“Mokati kovakainhu omo tuu mwa kala muhe na nawa omhepo yelihongo, ashike paife oya penduka mo yo”, osho umwe (ehe fi omudalelwa mo) a hepululila nge.

OmukaInhu wotete muCaprivi ta tambula onghatu melihongo okwa teelelwa 1985.

Ove na yo oshihakulilo shomikunda hamano, hadi kwafwa kepangelo. Mupya munene inandi mona omhito ndi shi fikamene, ame ndi nongele nhumbi hava kongo ouhaku wopashingolo.

Onda ka fikamena omaalaka yavo apa hava eta oishingifomwa yavo, unene eeshi. Ova tungilwa po omudile muwa wetala noitaafula yokutenhekā ko. Ondwi hewa oi li yo kokule nonhele ei.



**Pomuvelo wofikola yaKizito, omufita Max ota popifa ovanafikola**

Ashike oukoshoki moinima ihapu yefiku keshe, oshinima shi etifa onghenda keshe tuu apa to ka hanga Omulaule muNamibia. Nomunhu oto nyengwa ou to pe oushima moshinima eshi, ngenge ovanhu vo vene ile pa-



**Omuhakuli Frieda M.Simataa, (nale Shiimi) ou e li paife omukuluntu woApoteka muKatima Mulilo. Efano ola fanekelwa meumbo laye.**



# SHOKA DE CUELLAR A SHUNA NASHO KUNEW YORK

**Amushanga Ndjayi gwa VVO, omusamane Javier Perez de Cuellar, ngoka a pelwe oomwedhi ndatu a konakone shono sha kateka emanguluko lyevi ndika, metalelopo lye osho a kwatele mo netalelopo lyiinamwenyo mEtosha, mOkashana.**

**Omusamane gwomimvo 63, oshimpwiyu shekonakono okwe shi pelwe kOraata yegameno ya VVO muMai 1983.**

Oongeleki dhi li mOraata yaNamibia; African Methodist Episcopal Church, Anglican Church, Evangelical Lutheran Church (ELC), Evangelical Lutheran Ova-mbokavango Church (ELOC), German Evangelical Lutheran Church (GELC), Methodist Church, Roman Catholic Church na United Congregational Church.

Sho a thiki mOvenduka, Oraata yOongeleki muNamibia ((CCN) oya monene wo ompito okutsakanena naye noye mu hokololele ashike kombinga yonkalo yeve ndika, unene kombinga yAaluudhe, kutya otayi ende meso noya pumbwa okuhupithwa mbala manga inaayi hula po.

Oraata sho ye mu pandulile tango eholo-kepo lye noshimpwiyu oshinene e shi na momelewa yiigwana yuuyuni, omushangwahokolo e gu pewa a ye nago, ogwa tumbula kiinima tayi landula:

“Tse Oongeleki, tu lile po mboka ye vule etatakati lyaakalimo yomevi ndika, oshilonga shetu osheshanganitho, uuyuku, ombili negameno lyoomwenyo dhaantu.

“Otwiitaala kutya oshinakugwanithwa shika shetu, otashi yelithwa keuvitho lyevaangeli, kiikitakani yomiilonga yetu yopangeleki nomomishangwahokololo twe dhi ningi iikando oyindji, ndhoka twe dhi tumine omahangano gi ili nogi ili, moka mu na wo Amerika, epangelo lya SA nokangundu kiilongo itano.

Nesimaneko enene, otwa hala tu ku tseyithile iinima tayi landula mbyoka ye tu penduthile euvitoshimpwiyu noya pumbwa okudhiladhilwa neitulomo.

1. “Oonkundathana ndhoka inaadhi adha sha sigo onena, odha hanagula po etegameno nomategelelo moyendji.

2. “Epangelo lya SA otali tsikile nokukoleka omatanga galyo muNamibia, unene kuumbangalantu woshilongo, Eitungo lya tya ngeyi, lya shi lyopaveta, lyo lya nika oshiponga, otali koleke owala ehanagulo lyoomwenyo moshilongo ashike.

“Shoka tashi tiwa egameno lyopashigwana, ndyoka SA a tula ishewe mpaka, tse Oongeleki otatu li tala kutya oluhindo kuumbagan-ntu waAfrika nokombili yuuyuni.

3. Uuthemba nehala lyaantu muNamibia, inayi simanekwa kooveta dhomangambeko, unene tuu ndjoka ye ya po yokukwatela Aa-ramibia muukwiita, oku ya edhilila moon-dholongo pwaa na ompito yokukonga ekwa-tho lyohofa nenge lyahahende, osho wo oo-veta oonkwawo ndhoka dhokuthina aantu ya gandje omayuelele nonando yo yene inaa shi hala.

“Okutula moon-dholongo nkuka nokupulagula oonkwatwa, ohashi ningwa pamwe nomadhen-go, nomaehameko osho wo omathim-niko nenge pamwe okudhipaga nokuli ngaa-shi sha ningilwa Kakuva.

“Kuumbangalantu woshilongo iilonga yetan-ga lyegameno naunene yetanga lyowina lyaapolosi, lya tseyika nedhina “Kufuta”, otayi hanagula oomwenyo odhindji ngaa-shi; Momukunda gwaKongo, mOwambo, oo-sikola hetatu odha patwa omasiku ngaka. MOkavango, aantu otaa thiminikwa ya thige po omagumbo gawo noya ka kale pomunkulo gwomulonga, mpoka ya tidhilwe po nale ko-nima yoomvula omulongi dha piti.

“Miilando yaNamibia Aaluudhe oye li kohl yomatilitho nomadhengo gokangundu kamwe kAatiligane, po pwaa na omakonakono gaapolosi, ya mone ngoka e shi ningi.



Enota otali kwata noupu okaana keedula 12, konima yokushipa omeva mondungu. Efano eli, otali ulike okamatyona take likufa enota, opo va dule nawa okutwikila nokuxwiila ongabe, opo i ka konge eshi tai li momufitu manga omutenya inau twa.

**Ehokololo alihe tala kepan-dja 12**

4. “Onkalo ayihe yoshilongo, oya mbwikwa mumwe keloŋgithonayi nokeyugo lyomahu-pilo gevi. Omapangelo gomavigumbo, eshunduko lyago nokuthipa kwago omalunza goshilongo, osha fala evi ndika membango-loto.

“Naashika osha eta ihe mokati kAaluudhe okwaa na iilonga noshe ya thigi ngaaka yaa na we omakankameno noyaa na etegameno lyonkalamwenyo.

5. “Nkene epangelo lya SA inaali itula mo memanguluko hali li popi, otashi ulikwa sha yela komathaneko gokweeta po Oraata yoshilongo ndjoka yaa na oonkondo ne-yambidhidho lyaakalimo oyendji, Aana-mibia.

Iilonga wo ngaashi mbyoka yokuulika Ngo-loneya Ndjayi nomathaneko ngaashi gOraata yOshilongo otayi kondjithathana ashike no-mapopyo ga SA mwene sho ha ti kutya aantu yaNamibia oyo yene taa utha onakuyiwa yawo.

“Tse otwa hala wo tu shi endulule kutya Aacuba muAngola kaye shi nando etilitho kaantu yaNamibia. Shoka shotango nopa-histoli, o SA ngoka ta tsikile muNamibia pwaa na eziminino lyoonkondo dhaakalimo oyendji yomevi.

Omushangwahokolo ogwa hulithwa notekisti yOmbimbili: “Aanelago aanambili, oshoka oyo taa ki ithanwa aana yaKalunga.” Mat. 5:9.

Gwa shainwa komupresidende gwOraata yOongeleki muNamibia, omumbisofi James Kauluma nokwAamushanga omukuluntu gwOraata ndjoka omusita Abisai Shejavali.



# Omahupilo: Ongobe nomunhu moka-shanakomamanya.

KuJohn Shitundeni

Pomafiku a dja ko manga nda li handi tava-kana neefuka daNdonga, onde litwa mongudu yovanahambo, ve lipyakidila nokukongela eengobe davo omeva moshitukulwa shi li moushilolundume wOmuthiyagwiipundi, sha lukwa Okashanakomamanya.

Osha li ongula yOlomakaya. Okautalala kenya ka li moshilongo omafiku a dja ko, oka li taka divilike; omafo oixwa momudingonoko wokashana, okwa li nokuli taa monika a fya koutalala wa tumbulwa. Okashana koo-vene oka li ka twima, shaashi ongula oyo okwa li ku na omhepo yeshikanyandi.

Omafano taa shikula otaa ulike onghalo noi-longa yefiku keshe yovanahambo mOkashanakomamanya.



Efano eli otali ulike ongobe tai tulumukwa konima eshi omunhu e i pa omeva. Ounima ovo va laula tava monika pedu, haaveshe omapumba eengobe, ndele vahapu vomuvo omamanya omokashana.



Ovapati venya otava ti kutya ihava nuka mo vali eemwenyo nande omaufita eengobe naa konde, osheshi vati oilonga ei yokushipa omeva meendungu paife ove i ikilila. Efano otali ulike okangudu kovafitangobe take di pe omeva. Oundoongi ovo tava monika momafano aa, vati pokwenye ovo hava humbata "omusheka", wovanahambo, vo pokulombo tava ka humbata omaadi, ngeenge ovanahambo tava londoloka. lunduluka.



Mefano eli, otamu monika ovalumenhu vavali, kolulyo nokolumosholela, tava kufa omeva mondungu nevela, opo va dule okunwefa ongobe. Otava hokolola kutya petambi opo ova ninga po nokuli paife eehani nhatu notava ka dja po ashike ngeenge odula ya hovele okuloka.



Omushamane ou e na oshixupulo meke, pamwe navakwao, opo va hangwa vati va mane okukufa edu mondungu yavo oyo kwa li ya wila mo. Paife ota xupu elambo omo hamu tulwa manga omeva ngeenge a kufwa mondungu, opo nee konima taa ka pewa ongobe i nwe.

## OMUKWETU

Oye oshifo shOngeleki Onkwaevangeli paLuther yomOwambokavango.

Ohashi nyanyangidhwa mOshinyanyangidho shOngeleki mOnlipa.

Omukuluntu gwoshifo omumbisofi Dr. Kleopas Dumeni, Amushanga gwoshifo omusita Sebulon Ekandjo

Ondando yOmukwetu muNamibia naSuid-Afrika R 5,00 komumvo.

Paife muAfrika R 8,00 nokombanda yomafuta 11,00, komumvo. Mondhila R 13,00.

Oondando nomambestelo agehe naga tumwe kOmukwetu, Onlipa, P.Bag 2013, Ondangwa, 9000

EV. LUTH. OWAMBOKAVANGO CHURCH PRESS  
PRIVATE BAG 2013, ONDANGWA 9000  
SWA/NAMIBIA