

OMUKWETU



Registered at the GPO as a Newspaper

30c

No. 16

ISBN 0-620-06828-0

Natango Kavango epya letumo?

Vahapu otava dulu okunyamukula epulo eli noupu kutya, ahowe, oshitai shaKavango, itashi valulilwa mongudu yomapyatumo mOngeleki ya ELOK, notashi dulika ve li mondjila.

Ndelene ngenge omunhu owa konakona moule kanini, oto kanghama manga u diladile onhele nomufika woshitai osho kutya otau talika ko ngahelipi.

Hamushanga wOmukwetu, Sebulon Eka-ndjo, okwa talele po oshitai shinya petameko laAguste neudo. Ota hokolola ngaha

KAVANGO

Moshitai eshi omu na oinima tai holola eyokomesho lasho nelifi-kameno. Ashike omu na sha yo tashi tula omunhu momalimbililo onakui-iwa yoshilonga shOngeleki moshitukulwa osho shi na ashike eedula 57 moukelefiti.

Fimbo oitaingeleki ikwawo itatu tai keme unene kombinga yoiniwe, oshitai shaKavango, otashi keme kombumbwe yoiniwe noyovanashilonga momaongalo.

Metalelopo eli, onda kundafana nomupashukili woshitaingeleki osho, omufita Asser Libongo kombinga yomwenyo wopamhepo moshitai osho.

"Otu na ombumbwe inene yovanas-hilonga moihakulilo," osho a tum-bula paxupi lela.

Oshitai eshi oshi na ashike manga

omaongalo atanonalimwe, omapya-tumo 13 nouhakulilo vane. Omupa-shukili Libongo, oilonga yaye ohe i longo ta "tu nodikwa" [ta longo a papata].

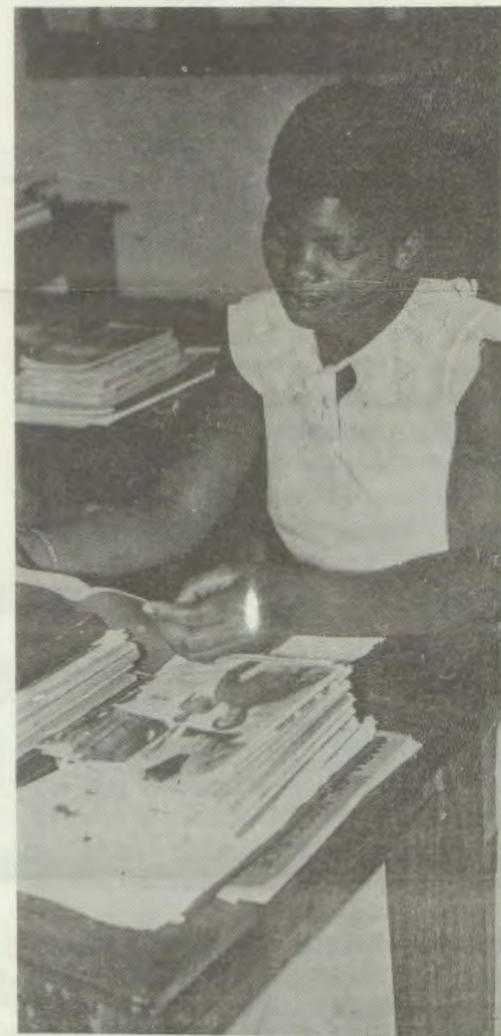
Oye omulundululi wOmbimbeli melaka lOrukwangali, oyo ya teeelwa i tumwe menyanyangidho moule we-fimbo ashike lixupi. Oye yo omufita omuwiliki weongalo Rupara, olo li na ovakriste 3,269.

Pefimbo hatu popi naye ngaha, otu li melongekido loshivilo shena-geko lomufita omunyasha, Alfeus Sikwaya, meongalo laNkurenkuru, ou opo a aluka kelihongo laye ku-Amerika oko a mona onkatu moulelumbo.

Ashike omupashukili okwe shi yelifa apa, kutya natango otava pumbwa ovafita vatatu, va fitike ombululu ei i li po natango. Pakuhokolola kwaye, kave na manga ovahongwa mofikola

youfita, va teeelwa va pite ngeno moule weedula nhatu tadi shikula.

Tala kep. 2



Omulongwa mosikola yOmbimbeli Albertina Lyambezi, ti ilongekidhile ootundi dhe esiku tali landula. Omulongwa kehe mosikola ndjika oha pulwa a gandje R20,00 komumvo okuyambidhidha oompumbwe dhosikola, osho ofuto ye.

Dha za kep. 1

Moule weedula 10 da pita oshitai eshi osha kamifa fiyo opapa ovafita vatano panghedi yonhumba ile yongadi, ovo ve li natango momwenyo.

Oshitaingeleki shaKavango, osha dikilwe 30.4.1926 kEtumo laSoomi, unene mokati komuhoko wOvakwangali. Oku na yo oilyo imwe yOvamunza nOvambukushu, nande keihapu unene.

Omuhoko wOvakwangali, ngaashi yo dikwao mOkavango, owa tungila komunghulo womulonga waKavango moshinano sheekilometa shiimba 300 okutwa moushilo waUkwanyama.

Onhele aishe, otai holola ewapalo loushitwe. Edu ola wapalela oimeno, oimuna noli yadi oulifilo nomeva mahapu.

Moule weedula edi nhano da dja ko, Ongeleki oya dika ko oproyeke yoshikunino, nekwafo loimaliwa ya dja kOngongahangano yOvakwaluther mounyuni. Osha dikwa moRupara.

Oshikunino eshi shi li paife mewiliko lomushamane Aurelio Samakupa, ou kombada ta monika a fa wongaho, ndele moilonga okwe liholola omunandunge omulineekelwa nomudini muwa moshilonga shaye.

Oku na paife omiti 264 momaludi atano moshikunino osho shounene shiimba u fike poshitine shokilometa moule. Omiti dimwe otadi hale okuteka po koiimati.

Oku na yo oikwambidi yomaludi mahapu moshinhenga shomanha e fike shiimba 200 moule nomanha 100 momutamamo washo. Pafatululo lomushamane Samakupa, ohava kunu yo omahangu, nohaa dala nawa.

Oku na shihapu shokutongwa kombinga yoshikunino nongushu yasho mokundjabula po ekonomi lOngeleki naunene loshitai shinya, ndele nandi xulile manga opo.

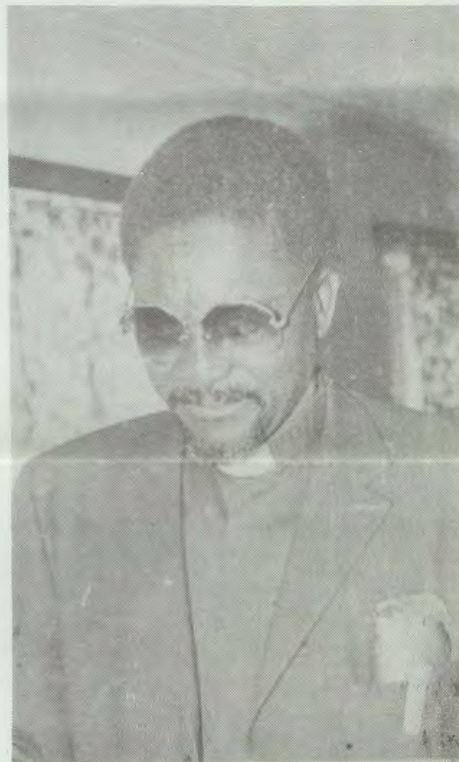
Elelongeleki leti-19-21.7.1983, moshitokolifo shalo oshiti 269, ola kumaida omaongalo oshitai eshi a kondje nouidiinini, opo a pite moiniwe yao puhe na ekwafo lopondje.

Omukwetu eshi a pula omupashukili

woshitai kutya otava ka ninga ngahelipi opo va ninge osho tashi pulwa kElelongeleki, okwa yaamena nawa moshipundi shaye, ta tale kwinya momakende ongulu, eshi a ka petuka ko okwa tumbula nondaka ya wa poshi:

“Onda tula meshikulafano loshoo-ngalele shoshitaingeleki osho tu na moshivike tashi ya [12-14.8.83] opo omufita keshe meongalo a hokolole onghalo yeongalo lavo, fye tu ninge omafaneko aasho tashi dulika po.”

Etwikilo loshilonga shouhaku moubakulilo va ELOK, moshitai shinya, nalo otali pendula oshisho shinene mOngeleki, nande ovanashilonga va-



Omutonateli shitayingeleki
Asser Lihongo

nini ovo ve li mo paife, ove na elitule mo linene moilonga yavo.

Oshihakulilo shaNkurenkuru osho ashike sha talwa shi na ehapuluko movanashilonga. Ndelene epulo kusho opo li li nale kutya, ovahakuli vavali va dile kOwambo, eshi tava ka twikila ofikola omudo tau ya, otashi ka enda ngahelipi.

Musho omwa itavelelwa ashike eembete 43, kepangelo, ashike omolwouhaku washo muwa, osha shila ovanhu vahapu, ovo itava wanenwa vali keyakulo leembete di fike opo, osho sha fatululwa kuMatrone Nghidinwa ou a ninga paife eedula mbali

meyakulo lasho.

Ohashi talelwa po komundokohotola luvali moshivike keshe.

“Eshi oshe tu kwafa unene,” osho meme Nghidinwa a holola olupandu lavo keyakulo olo.

Oku na oinima imwe moshihakulilo eshi, oyo Matrone ou ite i pandula nande ngaashi etungo lokanyofi.

Okapangelo aka otaka monika ka filwa nawa oshisho omakuma ako nonghalo yako ya nyika eshikulafano noka yela, nawa.

“Tala,” osho Matrone a kala ta shili omadiladilo ange, “omatungo mahapu ngaashi to a tale ngaho, mahapu itaa nyamukula vali eemhumbwe deyakulo lovanaudu.”

Eshi twa pitakana momikala dokapangelo aka, otwe ya metungo limwe, olo a ti kutya okwa li hali longifwa oshitandelo shovanauudu, osho paife ihashi tumbulwa mo vali.

Kombinga yomupashukili Lihongo, ye okwa hepaululila nge natango kutya okahakulilo kaMupini, oke li moikondekifo, ka patwe kepangelo, ngeenge itaka mono ovayakuli tava wapalele.

Eshi ngeenge osha ningwa, edengo linene kovanhu vomoshitukulwa shinya tashi hepekwa komalaria nokomadu makwao opomunghulo nomilonga.

Tala kep. 4



Matrone moshipangelo shaNkurenkuru, Rosalia Nghidinwa

Onakuiwa netegameno

methimbo lyetu

Iitya mbino ya holoka moshipalanyolo shi li pombanda, otayi inyenge unene nolwindji momaipulo nomoshigwana shaandjetu pethimbo ndi.

Oyi shi shili okutunga oshipalanyolo momaipulodhiladhilo getu no-goyendji, ihe shono shi na oshilonga osho oku yi uvako momikalid dhayo. Natu yi tunge ano oshipalanyolo tse tu yi konakone.

Oshipalanyolo shino otatu vulu oku shi konakona moontalelo mbali, ndjoka yomuntu gumwe (indivindu) osho wo ndjoka yongundu (uukumwendundu) (society).

Pantshitwe, montalelo yomuntu gumwe otamu monikila wo ngaa ontalelo yongundu, ihe nando ongeyi onkene tuu otashi kolekwa kutya ontalelo ndhika mbali odha yoolokathana. Natu tale tango onakuyiwa yomuntu gumwe netegameno lve.

Ontalelo yomuntu gumwe

Epulo lyetu alihe kombinga yonakuyiwa netegameno, momukanka gwalyo olyo epulo lyopakriste. Omuntu gwomelongeloitaalo lyopashipagani, ngoka ta landula efano lyuuyuni paitaalo lyomuhoko gwe, ke na konasha unene nonakuyiwa ngashi tse aakriste.

Shoshene, oku na owala omathimbo gaali; onakuziwa nethimbo ndyoka lya zi konalenale, ho, nethimbo lyokukalamwenyo kwongashingeyi, ndyoka onakuyiwa yalyo tayi vulu okukwatela ma ethimbo efupi lyoomvula tu tye pamwe 2-3.

Aantu yomomalongeloitaalo gomu-Asia, ngashi Aahindu, Aabudha, Aatao nAaconfutsio, momadhiladhilo gawo oya mangelwa mefano lyokukalamwenyo kwaanehulilo taku dhingoloka aluhe kwa fa ongonga.

Opu na evalo, okukoka, okuya moondjokana, okusa nokuvalwa ishewe nokweendulula edhingoloko ndyoka aluhe sigo aluhe. Omujuuda omukriste osho wo Omumuslemi, nonando inaa tsa kumwe momadhiladhilondunge dhawo odhindji, moshinima shino ohaa dhiladhila shimwe.

Pamadhiladhilo gawo, Kalunga oye a shita ethimbo okuza petameko,

nokwe li tulile po wo ongamba, mpoka tali hulile. Tse aantu otatu inyenge pokati kiitsa mbika iyali, etameko nehulilo.

Komuntu gumwe ondungedhiladhilo ndjino, otayi vulu oku mu etela oluhodhi lwaa hulu, nokugulwe otayi vulu okukala ompito yenyenyu enene.

Onakuyiwa yandje ongomuntu gumwe, otayi wilikwa koshinima shono kutya oya li ngiini, nongashingeyi yandje oyi li ngiini.

Onkalamwenyo yandje yonakuziwa, naandjino yongashingeyi oyo tayi kala ngomukanka kutya otayi tegelele nenge otandi tila shoka shi li komeho.

Onakuyiwa yandje netegameno yandje otayi monika ya kankamena kushono, kutya ondi na efano lya tya ngiini kombinga yokukala kuuyuni, nomaiuvo gandje mwene oge li ngiini nefano ndyoka.

linima mbyoka tayi tsakanene ndje ngaashi: uuvu, omipya, okwaa na ekwatathano ewanawa monkalathano, uuhepele, uukwaanampito, ondhino nontondo yokutondika, otayi ningi onakuyiwa yomuntu yi kale ya luudha noyi tilitha — etegameno itali popiwa nokuli.

MOmbimbeli onakuyiwa netegameno oyi li oshitsa, shopokati komuntu gumwe ngashi wo kuukumwengundu. Onakuyiwa netegameno oyi li po, oshoka Kalunga opo e li.

Kalunga oye ta gandja onakuyiwa netegameno, ngashi tashi popiwa mOmayer.23:18; Jes.29:11.

Omathimbo agehe oga Kalunga, ihe unene tuu onakuyiwa. Mekondjithathano naanongononi yonakuyiwa ngashi haa ithanwa pethimbo lyetu Aafuturologia nAaprognoctic. Ombimbeli otayi tu hololele kutya opu na gumwe ngoka ta vulu okulundulula onkalo yomuntu gumwe no-sho wo yuukumwengundu.

Ongoshiholelwa, tu taleni shoka sha popiwa muJes.38: kombinga yomukwaniilwa Hiskia. Mpaka opwa ningwa oshinima shoka, kutya okondando yi thike peni nenge onoopulana dhi thike peni, omuntu ita vulu oku shi adha (ninga).

Kalunga a lelepeke okukalamwenyo kwaHiskia noomvula 15. Ano mpano, Kalunga okwa gandja onakuyiwa netegameno komuntu gumwe.

Momathimbo agehe, uuvu neso oya kala iinima mbyoka ye etitha epulo kombinga yonakuyiwa puuyelee. Otatu vulu okuuvako kutya oluhodhi olunene olu li mpoka pwa holoka eso manga inaapu itaalwa momwenyo gwaaluhe.

Eso ngele oshinima sha hugunina, nena netegameno kali po. Onkee otatu vulu okuuvako nawa omungo gwonkundana ndjono ya gandjwa konima yoomvula konyala 2000 dha pita, sho muuyuni kwa li kwa igidhwa lwotango, "Kristus" a yumuka kuusi okwa sindi eso, okeso. "Eso ondu ngu yoye oyi li peni?"

Ano eso lyaKristus neyumuko lye oyo oongudhimukanka kumbyoka ayike ku shi okutungilwa onakuyiwa netegameno lyomuntu. Mokutala nokukankamena kiilongahupitho mbino yaKalunga ya ningwa nale nokuli methimbo lya piti, omuntu ota vulu okutaalela onakuyiwa pwaa na uumbanda nenge oshipwiyu (lesha Eps 46:).

Ota vulu okumona eiuvo ewanawa, nomukumo kutya oye omulunde a silwa ohenda, nopalongo lyEtestamenti Epe omulunde a silwa ohenda oku li pethimbo tuu ndyoka limwe omulunde nomuyalulilwa uuyuuuki (omuyukipalithwa).

Ngoka a mono eiuvo li na ombili, ota vulu okumwenyekwa nokufudhila mo ombepo ompe yongula yesiku lyuuyuni tau ya. Meiuvo ewanawa li na ombili, otatu vulu okulikola etegameno monakuyiwa notatu vulu okutumbula ongaLuther kurva:

"Nonando okutiwe ehulilo lyuuyuni otali ya ongula, ngame otandi tsike nena omuti gwoshiyapula (omuti ngoka gwa tseyika iha gu kokelele).

Taku tsikilwa

Oshinyolwa shika otwe shi pewa komusita Setson Shivute, ngoka a galuka keilongo lye kuSoomi, petameko lyomumvo nguka. Hwiya okwa pewa onkatu meilongo lye Master of Theology (MA). Ngashingeyi oku li amushanga gwoponto gwomumbisofi.

KAVANGO DA DJA KEP. 2

Fiyo opapa, okapangelo kaMupini, ohaka yambididwa moilonga yako komutumwa Kaino Kovanen, ou ha di koRupara.

“Osha fa kutya ounona vetu inave litula mo meyakulo lopaunamiti natango,” Osho omupashukili a holola noluhodi linene kOmu-kwetu.

Ouhakulilo ukwao yo, moRupara nomuMpu-
ngu, otau dengwa yo komhumbwe yovaha-
kuli va mona outeku wa wana. Ofikola you-
haku mOnandjokwe, oyo ya tekula ovahakuli
vahapu moshitai shaKavango mefimbo la
dja ko noya yakula mokutuma ko ovanashi-
longa vayo kwinya, natango osha yela kutya
oi na oshinakuwanifwa shinene mombinga
oyo.

Ashike omesho oshitaingleki shinya, otaa
tale kOvenduka, oko ku na ovanyasha va-
mwe ovadalelwa mo, tave lihongo ounamiti,
ve uye va kwafe.

Inapu tumbulwa kutya vangapi notava ka
pita naini, ashike osha yela kutya kevahapu
nande va mane po omhumbwe.



Omumbisofi Dumeni, kolumoho otaa konakona pamwe nomusita Setson Shivute omanyolo komushigakano gwedhimbulu-kwo lyetameko lyoshilongatamo mOkavango. Ogwa dhikilwe 1976, sho kwa dhane-nwe oshituthi shetumo shomimvo 50.



Moshituthi shelangeko lyomusita Sikwaya, omwa li oondjimbo odhindji tadhi toyaleke oshituthi. Mpaka opu na aagundjuka yomosikola yOmbimbeli taa imbi mOngeleka yaNkurenkuru.

Ofikola yombibeli

Momido dixupi da dja ko, moNkurenkuru omwa dikwa ofikola yOmbibeli oyo tai tekulile ovanyasha meudeko liwa loukriste.

Pahokololo lomukunhufikola, omufita Heikki Ausiku, ofikola ei hai kalwa omudo umwe auke, otai hetekele yo okukwafa ovanyasha va mone outeku muwa moinima yomomaumbo, yomeongalo osho yo mounongo mukwao wonghalamwenyo yomunhu mwe-ne.

Mupyamunene peedula edi ovanyasha kevahapu nande tava longifa omhito ei, unene tuu ovalumenhu, osho omushamane Ausiku a ti.

Ohaku tumbulwa yo ovanyasha vokOwambo, ile vamwe vomaitavelo amwe e lili, tashi ufwa keenhele.

Omaudjuu ovanhu vo vene

Okutala nomesho nokupwilikina ehapu lo-vahakuli, oshiwana shinya osha ya monhopo yoikunwa, naanaa ngashi yo tashi kundanwa meenhele dihapu doshilongo shetu.

Oilonga momaumbo nopeenhele dimwe, itai longwa vali nelitulemo. Oitwambe yomawino otai monika i yadi ovanhu vomapupi aeshe, ongula inene. Ounona vehe shi okulikwafa novakulukadi ve li meteelelelo, ova mona oupyakadi muhapu omolwokunwa.

“Etine keshe, ohatu ongele ne ovakulukadi ava tave uya koshihakulilo, noku va ningila eetundi moku lixupifa moshiponga shokunwa,” osho Sestela Nghidinwa a yelifila

Omukwetu ngaha.

Omuhakuli Nghidinwa oku na eshiivo mo-maupyakadi haa etwa koikunwa.

“Ehongo letu ola kwafa lela, osheshi alushe ohava etelele ovahongwa vape,” osho Sestela a holola nelipando monghenda-bala yavo.

Tala kep. 5



Omumbisofi ota popitha aanasikola yOmbimbeli konima yelongelokalunga. Yamwe yaamboka oya zile kOwambo.

Omaudjuu efimbo mOkavango

Okudja unene ehulilo lomudo 1982 fiyo onena, oshitukulwa shauninginino waKavango, moKwangali, osha hepekwa koita, ya lya notai li fiyo onena eemwenyo dihapu.

Ovanhu vomaumbo a kala mofuka, neudo ova kala tava halwifwa nefyo momaufiku, kuwalye. Osho ngaha ova hovela okumbobolokela komunghulo womulonga oko ku na ovanhu vahapu.

Ovapopi vamwe moifo ova li tava yandje etimba eli ketanga 'leameno' la SA, ndele lo ole shi likala filufilu.

Mokati kovatembuki ava omu na Ovakwaghala, ovo mokati kavo oshitaingeleki sha kala tashi longo oshilonga shetumo. Ovanhu ava, ova kanifa omaliko avo aeshe nosha ninga oshisho shidjuu komaongalo nhumbi tava monenwa omakwafo, edi oda dja mokanya komupashukili woshitai osho.



Omusita Alfeus Sikwaya, okwa langekwa pambelwa megongalo lyaNkurenkuru 7.8.1983. Elangeko olya ningwa komumbisofu Dumeni. Ethano olya thanekelwa pomunkulo gwomulonga esiku lya tetekelele elangeko lye. Omiti tadhiludha konima kokule kashona odhi li kombinga yahandiyaka yomulonga muAngola.

Omatilifo nomambadameko, oo oshinima shotete Ovakwangali tave shi ku lombwele shimha tuu wa fiki puvo. Eenduda dovanshilonga otava ti kutya, ohadi fikamenwa kovalumenhu va homata oufiku. Ounona oumati uhapu owa efa ofikola notau monika wa fikamena ashike oundingosho ile eekamba dovakwaita ngaashi mOwambo.

Peemhito dimwe, oto mono ashike oumatyona tava vandamene momakende oshiha-



Sigo onena, elongitho lyoshihumbatitho shoshileyi mOkavango, oli li metifa. Otashi longithwa mokuteka omeya momulonga, ngaashi to mono mefano nenge mokututa ooshako dhomausila koositola.

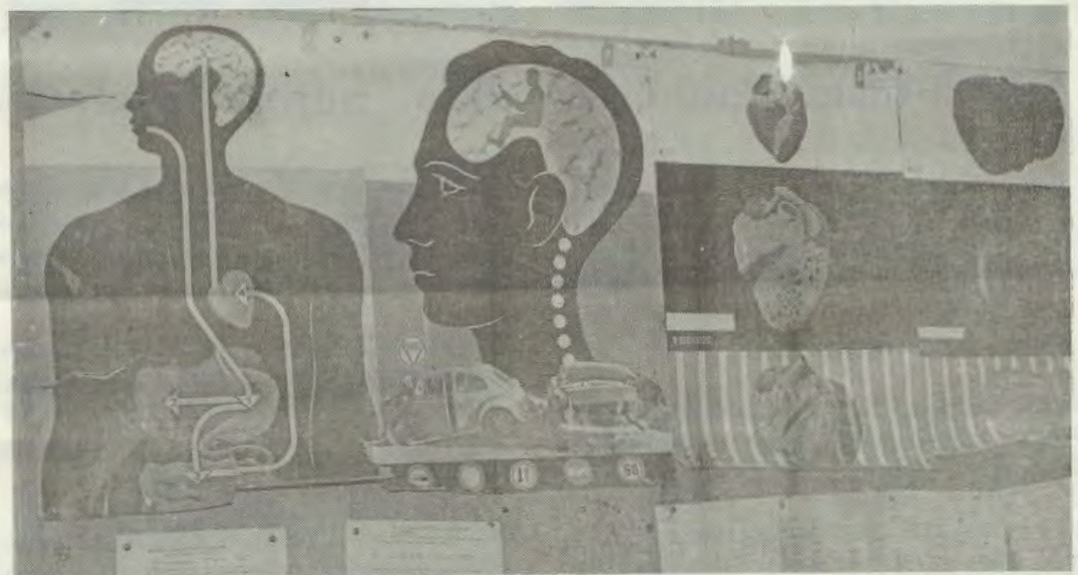
Ngoka itaa longitha oshileyi, shila ota humbata komutse nenge moshihauto, okateмба kuusino itaka monika nuupu mOkavango.

kulilo oufiku, osho omupangi umwe e di koleka.

"Inamu yeulula nande omuvelo oufiku ngeenge taku konghola," osho twa kunghililwa nasho kovakalimo moshitukulwa osho.

Ovaenda va kongholwa mo

Oufiku weti-6.8.1983, fimbo nda kofa eemhofi doshitula monduda yovaenda onda uda elinyengo lili pondje. Onda dimbulukwa osho twa londwelwa nonde limwenenena



Ethano ndika pombanda, otali hokolola iilongitho mongulu yosikola yOmbimbeli mbyoka hayi ulukilwa aalongwa yu uve ko nawa omutungilo gwomuntu gwomeni.

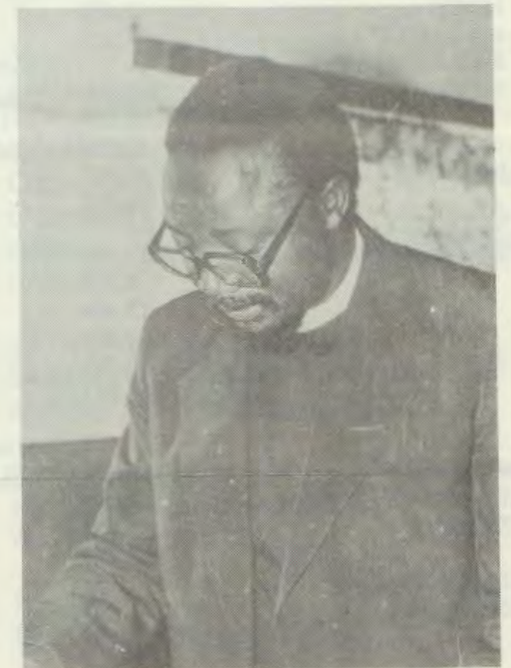
ndi pwilikine kutya etwikilo otali kala ngahelipi.

Eshi nda pwilikina ponghulo naame mukwetu ou twa li naye monduda, omufita V. H. Shivute, naye okwe limwenenena.

Ongula eshi kwa sha, otwe lipula nekongholo loufiku. Mboli naye okwe li uda. Eshi twa ka konakona pondje, otwa hanga eenghaku (kadi fi nande doshikwaita, ashike odeenyolo), da li da fikamena ekende lafeelani umwe oo kwa li a nangala monduda imwe poushiinda.

Eshi twa lengalenga natango, otwa mona

Kep. 7



Omukuluntusikola yOmbimbeli H.Ausiku

Oongeleki oonkwaevangeli paLuther muAfrika

	IILYO	AAWILIKI
ANGOLA:	3,000	— Dean Noa Ndeutapo
BOTSWANA:	13,000	— Omumbisofi: Philip Robinson
CAMEROON:	8,911	— Omusita Tomothee Houmlo
	49,121	— Omusita Paul Darman
	2,642	— Omusita Bruno Nyume
Central Afr.	20,000	— Omusita Bernard Zama
CHAD:	9,092	— Omusita M. Dansala
EGIPTI:	—	— Omusita David L. Johnson
ETIOPIA:	521,797	— Mr. Ato Emmanuel Abraham
ERITREA:	7,477	— Omusita Asfaha Mehari
	1,350	— Omusita Ghebre Yesus Techlemariam
ETIOPIA:	5,000	— Mr. Abebe Gashawbeza
GHANA:	2,000	— Omusita Paul K. Fynn
KENYA:	20,000	— Omusita John M. Kururia
LIBERIA:	25,650	— Bishop Roland J. Payne
MADAGASCAR:	470,000	— Omusita Ranaivojaona Razafimanantsoa
MOZAMBIQUE:	—	— Omusita Isaac D. Mahlalela
NAMIBIA:	173,000	(Council) — Omusita Hendrik Frederik
	300,000	(ELC) — Boshop Kleopas Dumeni
	12,000	(ELOK) — Omusita Paul G. Kauffenstein
	61,923	(DELC) — Bishop Akila Todi
	42,858	— Omusita Nelson Udo Unwene
SENEGAL:	—	— Omusita Robert Cottingham (USA)
SOUTH AFRICA:	515,000	— Bishop Daniel P. Rapoo
	8,000	— Omusita Christoph Brandt
	15,000	— Omusita Lothar T. K. Muller-Nedebock
	2,896	— Bishop Gunter F. Scharlach (free)
	30,000	— Bishop Georg Schulz
	87,692	— Bishop Sigurd Nielsen (East)
		— Bishop Albert Cloete (West)
SUDAN:	—	— Omusita Clement Janda
SWAZILAND:	2,000	(Council) — Bishop Sebastian Kolowa
TANZANIA:	902,000	(ELCSA) — Omusita Ngoy Kasukuti
ZAIRE:	2,100	— in Kinshasa
	12,000	— Omusita Raymond G. Cox
ZAMBIA:	3,600	— Bishop Jonas Chiwaro Shiri
ZIMBABWE:	32,719	

Omiyalu ndhika odha kuthwa mostatistika yomumo 1980. Nonando pwa piti oomvula mbali, onkene tuu otadhi tu ulukile uukwaLuther muAfrika mpoka u thike. Ano ot' li mo ezimo enene.

Nda si inandi kuthilwa, ondjo ndjika oyalye?

Nandi kwathwe wo ndi yamukulilwe epulo lyandje ndika. Onda tala ondohotola yolutu ya hala okweendelela, yi aludhe uuvu mboka nenge ombuto ndjoka mbalambala manga inaayi kwata olutu aluhe. Onda tala kutya shoka osha yelega ndje ngaa.

Osho wo ondohotola yopamwenyo ngiika nayo osho hayi longo ngaaka nelalakano olyo tuu ndyoka lyandohotola yuunamiti.

Epulo lyandje oli li mpano kutya: mentu gwaNima sho a dhimbulula kutya ke na we mbili megongalo, okwa yi a ka konge ombili kegongalo; e ya kaakuluntu yegongalo, ko otaku tiwa omentu nguka na talwe manga nenge na ye mekuthilo oomwedhi dhontumba.

Mentu gwaNima oye mwene a yile, sho a mono omapuko ge mwene nenge shoka shi mu li komeho, ano ina ithwanwa nando okulye.

Eewa, konima sho a pewa omatokolo ge kelelogongalo, konima yomasiku omashona, OMBAADHILILA ye mu ile po nokuli ye inaa kuthilwa. Ondjo ndjino otayi ka pulwa mulye mbela?

Omuntu ngele a pula ombili, ne yi pewe mbala, oshoka Ombiimbeli otayi ti: "Kamu shi ethimbo notundi Omuwa te ya." Sho wa ti na hite ekuthilo nenge na talwe manga iilonga ye, oshili ou li tuu mondjila ngawo?

Sho nani wa ti ngawo na ye nenge na talwe,

lyo nani esiku lyOmuwa ongulohi tuu ndjoka tu uka nenge ongula. Ondjo ndjino oyalye tuu, ye mentu gwaNima oko a li koshipala shelelogongalo?

Natu taleni utale mEvangeli lyaJohannes 5:6-9; 8:10-11, tu tale nkene Omuwa mwe- ne ta ti.

EYAMUKULO

Efano lyoye, okuyeleka omundohotola gwo- lutu nogwomwenyo, ewanawa. Kombinga yandje ondi uvite kutya ondohotola mbaka yaali, nonando ya yooloka pailonga, elalaka- no lyawo olya faathana. Omumvu ngoka ta ehama unene, omundohotola ita thikile ashi- ke te mu aludha nomuti gwokwaaludha esi- ku ndyoka.

Shoka ha ningi ooshi: Oha tula omumvu mombete, tashi vulika yoshiwike nenge yo- mwedhi nenge pamwe yoomwedhi ndatu no- kuli, sigo pamwe hamano.

Mpaka mombete, omundohotola oku na ihe ompito yokutala nokuyeleka omuti nenge omiti ndhoka tadhi vulu okwaaludha omu- mvu. Ndhindhilika wo kutya aavu oyendji, oya sile mokati komiti nomiikaha yoondoho- tola.

Kandi shi wo uuvu wokelelogongalo ngele uushona inau pumbwa ombete, opo omuntu a nwe oopela dhokomwenyo a aluke. Ele- logongalo olye ku mono kutya ku li nawa, owa pumbwa ombete. Yi lala owala nombili u aluke.

Omolvashike wa hala okugandja onduge komundohotola nkene e na oku ku panga?

Ngenge hai nyamukula sha mOmukwetu, ohai futu?

Ohandi pula kutya, ngenge nda mona sha mo- shifo shOmukwetu nghi shi udite, eshi nda hala oku shi pula, nasho ohai shi futile ngaho?

Onda pula luhapu omapulo ange mOmukwetu, ndele inandi mona enyamukulo. Oo omanyamu- kulo avakwetu ohandi a mono ngaho. Omapulo ange ihaa fiki hano?

Steve K. Ndilula

ENYAMUKULO

Tate Ndilula,

Inandi koneka sha komapulo oye, pamwe inaa fika. Ashike ngenge oto pula ediladilo lonhumba we li shakeneka mOmukwetu ku li udite, ito futu sha.

Oto futifwa ashike ngenge to shivi vakweni mo- shifo eshi, opo ve uye koshivilo shedalo loye, ile ya lande kongeshefa yoye, ile sha shimwe sha fa oyo.

Amushanga wOmukwetu

Elongo lyO- mbimbeli olyo tu li mulyo nenge twa zi mo?

Omathambo ga zi ko otwa kundana oshindji kombinga yelongo ekwaLuther nomalongo galwe, unene giimpaga. Omusita Petrus Shipena ota hokolola sha natango mpaka nomukalo gwa dhindolwa kashona. Natu landuleni ano.

1. Ohatu popi olwindji Ongeleki nosho wo iimpaga. Otatu dhimbulula ngiini kutya mpaka ope na Ongeleki naampeyaka ope na iimpaga?.

Onghundana ya dja ponghulo nomulonga, Kavango

Dha za kep. 5

Va li pamwe mosheendo eshi, omubishofi K.Dumeni, Hamushanga wouteku wopakriste mOngeleki T. Shivute, Hamushanga woponho womubishofi omufita S.Shivute nomufita V-H.Shivute, Olukonda

yo ovaenda vakwetu, ovo kwa li va nangala konduda ikwawo kokule kanini noyetu, tava shiike eenghaku odo. Navo yo ova kongholwa mo.

Konima yekongholo, omubishofi Dumeni, okwa li a hala okupenduka a ye pondje. Okwa kwatwa kumukwao noku mu fatululila elinyengo olo la li pondje. Mboli omubishofi ine li uda, kwali.

Kape na ou ta fatulula elalakano lomakongholo a tya ngaha nomafikameno omaumbo mOkavango.

KELONGELOKALUNGA OTAVA TILA KO

Omupashukili Lihongo, omunyasha lela natango womadiladilo omoule nokwa dja mepata leehamba. Eshi oshikando oshitivali eshi oshitai shavo she mu linekelela elelo lomaongalo.

Mokufatululila Omukwetu nhumbi ovakriste voshitai shaye tava ongalala peendjovo da-Kalunga, omupashukili okwa ti kutya ovanhu keembinga neembinga otava shake- nekwa komatilifo okuuya kOngeleka, vati otaku udifwa ashike oupolotika.

Ovaudifi itava udifa vali nemanguluko,

Kape na ongundu ndjoka yi itseya kutya oshimpaga, ihe aluhe otayi itala kutya yo Ongeleka yashili. Iimpaga olwindji oya hwama okutaandelitha elongo lyayo.

Otashi dhimbululwa wo kutya iimpaga kayi holathane, ohayi kondjithathana. Ngashi pokati koshimpaga oonzapo dhaJehova noshimpaga shEtililo lyOmbepo, osho wo pokati koshimpaga shaayapostoli nosheSapati.

2. Oshitya oshimpaga otashi ti ngiini?

Oshitya osha zi moshitya shOshilatina, Secta. Sha zi moshityalonga sequi shoka tashi ti okulandula, okulandula nima, nenge okuhogolola ongundu yanima.

Ano oshimpaga ongundu yontumba

osheshi oku na ovo ve va nangela okupwili- kina osho omuudifi te shi popi.

“Ashike onghalo ya tya ngaha, oya xwe- popala paife,” osho a xulifa nehepu laye.

Koilyo yomaongalo aye, omushamane Li- hongo okwa ninga eindilo ngaha: “Ileni ko- malongelokalunga, ileni peendjovo da- Kalunga, osheshi Kalunga ine tu pa omhepo youmbada.”

Okangudu kanini kovanashilonga opo ke li moshitai shinya taka kondjo, ashike oke li moshitwime shomaupyakadi mahapu e na sha nomahupilo, nopapolotika nopanghala- fano taa imbi okweehena komesho.



Epukululo

Moshifo shOmukwetu No. 15/1983, mepa- ndja 6 Abisai Shejavali, kutya ogwa ELK. Shono epuko. Omusamane Shejavali oku li natango oshilyo sha ELOK.



Oshigongi shokomumvo shaailongi aakriste mOwambo ayihe, oshi li ko 1-4.9.1983, mOngwediva. Shi gali- kanena wo.

tayi landula elongelokalunga ndyoka omuwiliki gwayo melongo lyontu- mba lyopaKalunga ta landula o- mbinga yontumba, ndjoka tayi dhiginine notayi landula edhiladhilo limwe melongo.

Otamu tulwa melongo ndyoka omuthindo koohapu dhimwe po ashike dhOmombimbeli nenge edhiladhilo limwe alike nokweetha oshikalimo ashihe shOmbimbeli.

Oshitya shika oshimpaga “secta” oshi na ondjokonona onde. Otashi holoka “laeris,” shoka tashi ti ongundu, (party). Moshitya moka omu na omadhiladhilo goshipotha nosho olutanda. Iil. 5:17, 28:22. Gal.5:20; Titus 3:10.

3. Oshitya ONGELEKI OTASHI TI SHIKE?

Kombinga yOngeleki, kaku na we Ongeleki yimwe, ihe ope na Ongeleki odhindji. Ongeleki onkwakriste oya topolwa miitopolwa iinene itatu.

- a) Ongeleki yokuuzilo
- b) Ongeleki yaKatoolika kaRooma
- c) Ongeleki yeyelitho lyeitaalo.

MOngeleki yeyelitho lyeitaalo, otatu mono nkene mwa tutuma iitopolwa oyindji ngaashi:

- i) aakwaLuther ii) Aangilikana iii) Ongeleki yOombulu (NGK).

Mongundu ndjino ya tumbulwa hugunina omwa zi ishewe iitopolwa, mbyoka taku tiwa Ongeleki dha manguluka ngaashi, ongeleki yaMethodiste, Ongeleki yaAasha- shululi, nosho tuu Kongregational.

Mundhika omwa zi ishewe Ongeleki oonshona. Ihe mudho uukumwe muKristus otau monika, eyooloko oli li ashike miinima yokombanda (miilonga yesiku).

4. Oshitya Ongeleki:

Oshitya osha zi moshitya shOshigreka “EKKLESIA” shoka sha zi moshitya “kaleo” tashi ti okwiithana. Ongeleki otashi ti aathanwa yaKristus, nenge shoka shOmuwa. “Kuriake” osha zi koshitya “Kurios”, shoka tashi ti Omuwa. Ongeleki oyOmuwa, tashi ti oyi ithanwa noyo eliko lyOmuwa.

Petrus Shipena

Tutu muushanganga wa WCC?

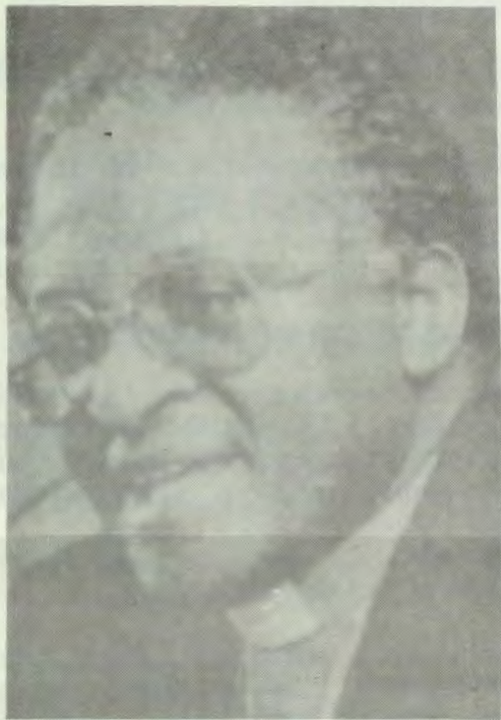


Dr. Philipp Potter

Omumbisofi gwaAnglikani Desmond Tutu, otapu tengenekwa ngashingeyi kutya pamwe onaka ninge Amushanga Omukuluntu mEhangano lyOongeleki muuyuni (WCC).

Omathathaeko ngaka oga zi moshigongi oshitiheyali shehangano ndyoka, shoka sha li mu-Vancouver, Canada, pokati kaJuli nuumvo.

Ehangano ndika oli na aakriste oomilyona 387 yoongeleki 303 dhi li iilyo. Ongeleki ya ELOK.



Omumbisofi D. Tutu

inayi ninga natango oshilyo.

Omutyali ta thanekelwa oshilonga shika, omuwilikingleki, Dr. Allan Boesak gwOngeleki yOombulu mokati kaAludhe, ihe nguka ini ikolelelwa mune.

Omumbisofi Tutu oku li ngashingeyi Amushanga

omukuluntu gwOraata yOongeleki mu SA. Nuumvo okwa mono esimano enene mOongeleki dho-muAmerika sho ta ka pewa epapa lyesimaneko okukondjitha kwe omulandu guukwamuhoko muumbantu waAfrika.

Dr. Philipp Potter, gwokuWest Indies, oye a kala amushanga gwehangano ndyoka konyala omimvo 10, nota ka hulitha po uushanganga we 1985.

~~~~~  
 ~~~~~  
 ~~~~~  
 ~~~~~

Omukundaneki Halweendo

Omahauto avali e lilumata

Omafiku aa, omukundaneki wetu Halweendo okwe litwile moshiponga shi nyanyalifa. Ongula yefiku la Shikula, okwa shakeneka ovanaiifo, tava kongo yo eenghundana ngaashi ye. Lesha u pwilikine eshi e va hokololela:

“Onghela komatango onda li mondjila nda finda keumbo, handi aluka okonda ka toolele eenghundana fiku olo. Okamhepo katalala kokomatango, oka li taka ende po nawa, taka dilile mekende lokabesha oko nda li muko.

“Opo hanga ndi fefelege po omolweloloko loilonga yefiku, ondi udite “ndalaiva” ta efa komahooli kanini nakanini. Eshi nda ka yelula omesho, Halweendo ta twikile, omoihauto ivali ye lidenga mumwe.

“Eshi okabesha ka fikama, atushe ava twa li mo, otwe lifininika pomuvelo, tu ka tale nawa, opo tuha ka tye vati. Oshiponga otwa hanga shi talala: Ovanhu vamwe otwa hanga va nangala va fya, vamwe ova teka, omanga vamwe tave lipupula omadu.”

“Tate omwa mona oshiponga?” osho nda pula nondaka yonghenda omulumenhu umwe wofika ile a tya eeshapi detuwa peke ta pakuma ombaluvali a fa a hala okuxukula ehodi.

“Ponhele yokunyamukula noitya, ye a fatulule ngeno kutya oshinima

osha enda ngahelipi, okwa komona ashike komutwe. Ota di eehonde komutwe nokoshipala, ye ha tale kehauto limwe la ehamekwa neenghono lwokumutwe nokomakende, mbela olo laye.

Penya vali otapa monika omulumenhu umwe a nangala e na oikutu ya tya eehonde. Ota tumbula sha nondaka ya nyika oupongo. Onda ehena popepi,” Halweendo ta twikile nehepu laye,” opo ndi pwilikine nawa osho ta ti.”

“Kalunga kange; Ehauto lange opo nde li lande, nomwedi oo inali ninga..., Ola ya unene moimaliwa ihapu..., oimaliwa inya oya pulile nge unene eedula dihapu, i wane mehauto eli..., Onda i longelele yo vali unene noudjuu. O, aaye, kandi udite ko kaya!”,

Omatumbulo aa oo a li tae uya matwi ange taa di mokanya kaye. Okwa kala yo ta nyengula luhapuluhapu, konyala pehulilo letumbulo keshe.

“Opo hanga ndi mu popife, ame ndi tale nenge ye pamwe ta nyamukula nge,” omukundaneki Halweendo ta twikile,” ondi udite omushingi wokabesha aka twa li nako, te tu ifana tu ka londe, shaashi vati okwa li a tila oveta yaSteyn ei tai kelele ovanhu vaha ende oufiku.

“Molwaashi etango ola li la toka shili, navali onda li natango kokule neumbo, naame onda tokola ndi londe, inandi dula vali nokuli okutelelela opolifi, opo ndi pwilikine ou e na oushima,” osho omukundaneki a fatulula.

“Manga tu li mokabesha, onda kala nda pwilikina ovanhu tava popi oiponga yoludi eli, ya kala tai holoka kopate moule weemwedi odo da dja ko. Pakupopya kwavo, oiponga oyo oya fa nokuli tai nyengana oku valula.

“Okudja opo, onda kala handi lipula moule noshinima eshi shekandomo lomatuwa. Paife onda ninga nokuli etokolo, ndi konaakone osho hashi eta oiponga oyo tai popiwa, opo ndi shi kondjife, pamwe omafyo noma-lemaneko ovanhu momakandomo oihauto taa ninipala,” osho Halweendo a hololela ovanaiifo oshilonga shaye shipe osho she mu teelela.

[Taku twikilwa]

Ekundo lya zi komuna- shipundi gwaanangeshefa Aaelok

Otseni iilyo yehangano lyaanangeshefa Aaelok, otwa li tu na okugongala andola muJuli 1, ihe pamwe omaimbo nomaupyakadhi inaaga zimina mu holoke, nonando pamwe otwa li ngaa tu na okumanguluka komaupyakadhi ngaashi ge li po ogendji, opo twaaha ninge ngaashi mbeyaka ya li ya hiywa kohango, ndele inaa holoka Mat.22:4-5.

Aamwameme otandi mu halele eyambeko lyaKalunga miilonga yeni, ihe onda hala wo tu taleni ombinga yokugongala, opo tu kundathaneni iinima mbyoka tayi gumu eithano lyetu mekwatathano nomaliko ngoka Kalunga e tu peni.

Omuwambo oha ti: "Ta kugu ota lika. Ano kaku na ngoka ha kugile ekwatho kungoka ine mu inekela. Tseni aanangeshefa Kalunga ine tu pa ashike omaliko ye ine tu ineekelela sha ando.

Kutseni osha yela, kape na ngoka ta pe kuumke ohambo yoongombe, ndele ita tegelele wo tuu nando okatenga komagadhi esiku limwe. Aamwameme otseni ookuume kaKalunga, ano okwe tu pa othitha (Tashi ti ota tegelele wo sha kutse, oshoka iinima mbyoka tu na oye). Ano natu dhiladhileni nawa kutya oshike tu na okuninga po, opo tu panduleni Kalunga.

Omaliko okwe ga tula momake getweni, manginga iilonga yongeleki Kalunga e yi tula popopi noongeshefa dhetu, ngaashi a tulile Lasarus pomuyamba Luk.16:19-22.

Ano Omuwa osho a longekidha ngaaka opo ngaashi ompito yokuyakula Lasarus oya pelwe omuyamba, ihe ye sho a pewa eliko, ina pupa ko we kuLasarus a si ondjala.

Epulo: Ehangano lyaanangeshefa AaELOK otali yamukula ngiini konkugo yoshilongatumo kuSenegal?

Taa, shi li ko oshetweni aamwameme aanangeshefa, natu taleni nawa oshili ndjika. Kalunga ketu ina ekelahi ongeleki ye okwe yi tula pooha dhaayamba, ngaashi naanaa Ye e ya pa shoka ye shi na.

Natu ikonakoneni shili. Kalunga ine shi nginga omolwuuuyuki tu u na ando, aawe, katu vule yalwe. Ano yakwetu olufo olwetweni. Omuwa tu minikila. Amen

Tomas U. Nakambonde

NONUUMVO AAKULUPE NAA NYANYUDHWE

Komagongalo ga ELOK nokaamwameme, Ewilikongundu lyuudiakoni mu ELOK, lyeti 25.6.1983, mOngwediva, olya faneke nonuumvo ku kale ontanda yaakulupe momagongalo ga ELOK, momasiku ngaka 25-28.8.1983.

Ewilikongundu olya gwedha ko wo kutya, egongalo ndyoka li ivula, otali vulu okuninga ontanda yomasiku ge vule ngoka ga gandjwa, oshoka osha dhambululwa kutya aakulupe oya hokwa ontanda ndhoka.

Ekwatho lyaKalunga Tate, nali kale pamwe natseni mokulongekidha oontanda dhaakulupe momagongalo getweni.

Iipinga K. Shuuja

Oshilonga shuudiakoni mOngeleki

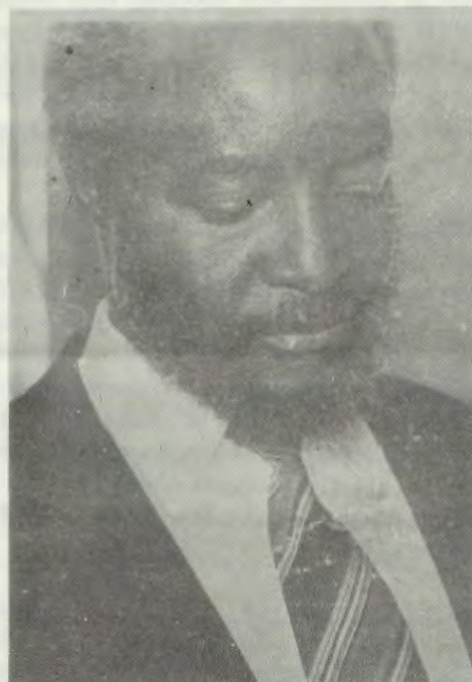
Oshigongi shaadiakoni ayehe mOngeleki, shokomumvo, osha ningilwe eti-19-22.7.1983 mOngwediva. Omwa li aadiakoni ye vule 30, mewiliko lyomupehawiliki meme Leena Kashinyenga.

Omikundu adhihe dhi na sha noshilonga shawo, oya li ye dhi kundathana neitulomo enene, mombepo ombwanawa.



Ongundu yaadiakoni yOngeleki ya ELOK moshigongi shawo shokomumvo numvo

NAVA NINGILWE OSHIVILO



Omusita gwoshilonga shUudiakoni mu ELOK, Iipinga-K.Shuuja

Nonuumvo aakulupe naa nyanyudhwe

"Shalongo pwa li Shimbungu, ando onime yi ilatha"

KuJohn Shitundeni

Petameko lyomwedhi nguka ekanda lyedhina Shimbungu shaSheya, okwa hupitha omumwayina Sheya shaShipanga mokana konime, sho e shi pondola 'okutendagula' onime ya tumbulwa, nooholo, sigo ya si, e te yi kanyutulula ko kokugulu kwaSheya kwokolulyo.

Oshiningwanima osha ningilwa pomukunda Onanke, popepi nEtosha megongalo Omuntele, mOndonga.

Sho omuntu to kundathana nomusamane Shipanga pombete ye yuuwehame moshipangelo sha Nandjokwe, moka a kala ta pangwa, ota popi nemanguluko; ina fa aagandjinkundana yalwe mboka haa haluka uuna ya mono omutoolinkundana e na iilongitho ye ya gwana po.

Omukulupe nguka gwoomvi, momutse nokoshama, nooita dhimbulukwa we kutya okwa valwa muuyuni walye, opo ando e ku lombwele oomvula dhe, ngele owe mu pula kutya okwa ehamekwa shi thike peni, ita ongaonga nando, oti isiikulula iikumbyatha ye e te ku ulukile nkene onime ya ningi okugulu kwe, ta ti:

"Tala, ... shalongo tuu Shimbungu a adhika e mu teya okwaako kumwe nooholo; oshoka ando okwa li nomanyala agehe gaali, ando koho ye ine za ko we. O, onda li nomumati Shimbungu ..." osho omukulupe Sheya a tumbula ngaaka a fa keehe lwete naanaa iitya tayi holola kutya okwa pandula mumwayina Shimbungu sho e mu hupitha mokana kwonime nokwa kuminwa wo uupenda we.

Manga to pula shika naashiyaka, oto koneke mbala kutya pombete yomumvu nguka ngashingeyi omwa ninga po oyendji. Mbaka yalwe oyo aashiwikile yomusamane Shipanga, ye ya oku mu talela po. Oye na iipala yu udha olukeno notaye mu tongolola koshipala.

Ashike sho taa pilamene ko yu uka pondje, oto tengeneke kutya ngiika oomwenyo dhawo ngashingeyi odha shuna pehala sho yu uvu onkundana yenyanyu mokana kanakulika ye mwene sho ta ti: "Omasipa gandje inaga gumwa, oontumba odho adhike dhe ehamekwa."

Oonkundathana sho dha ti pehulilo, onda halele kuku Shipanga uukolele wolutu, nda tumbu po iilongitho yandje, nonda shuna kombelewa nokweendelela.

Mesiku lya landula manga nda li ndi ipya-kidhila nokulongekidha onkundana tuu ndjika, mombelewa omwe etwa ehokololo lya nyolwa komusita gwokOmuntele, Juuso Shikongo, tali popi wo oshiponga shika sha etwa konkoshi.

Omusita Shikongo mokuyelitha shoka sha kala tashi inyenge muuzilo wOndonga moomwedhi dha zi ko, manga oshiponga shika inaashi ningwa, okwa nyola ngeyi:

"Okuza muMai naJuni nuumvo, kuumbagantu-uuzilo wOndonga okwa kala taku zi omipopyo tadhi ti:" Konima hoka ookafuta kaneganga oshiyandja. Miigunda yoonima noongandi, odhi ihoya mo. Oyendji otwa li ngaa twe shi tala ongomutotolombo'...

"The mesiku etiyali lyaAguste, omipopyo ndhoka twa kala tu uvite odha kolekwa, sho tu uvu kutya aniwa omakanda gamwe gokOnanke ge li lwopomilongo mbali lwaampoka, oga vulwa okutala onkwandambi dhawo tadhi lika opunyu, oya tokola ya ka talathane miipala naashono tashi shonopeke iigunda yawo.

Sho ya thiki mokati kokuti, oyi itsu moonime aniwa dhi li lwopuheyalu. Shimbungu, mumwayina gwaShipanga, naye omo a adhikile mongundu ndjoka. Shimbungu mbela omumentu ha endelele, aniwa sho uumbu okwa yaha po yimwe puuwanawa, noya gu. Yimwe aniwa sho yu uvu onkwawo tayi nduduma ya lala, oya zi ko ya tota yu uka kwaandjino tayi gu inana. Ndjino Shimbungu nayo e yi monena peni nooholo, noya mbata ponkwawo. Ndhika ntano dha yi konamwenyo.

Omakanda oga tokola ga shune kegumbo, dho aniwa dhi idhindolole dho dhene, molwashoka aniwa olugodhi ihalu shunine.

Mesiku lya landula sho ya shuna ko hoka ye dhi pelele ooholo, oya adha yimwe gwa kaha mo nale. Oya tsikile ko ihe nokutala kutya yimwe ndjono ya li wo ya yahwa uuna ndwiya oyi li lwaapeni. Opo ye li po, oye lwete oombwa dhawo aniwa tadhi zi komeho gawo tadhi matuka, sho ya ka yelutha omeho, aniwa oya mono kutya onkoshi oye ya, omakanda oga shenuka, onkoshi noye ya tayi hatapo omukulupe Shipanga, e tayi mu kuutumba.

Mpaka opo Shimbungu e yi peelee ooholo, sigo nayo ya si, e te yi kanyutulula ko kombanda yamumwayina. Omusamane Shipanga mpono a likila konime okwa kuthwa po kehauto ndyoka ya yile nalyo mokuti esiku ndyoka, ta falwa kokapangelo kokOmuntele, hoka a ziilile sho e etwa kOnandjokwe.

AAGUNDJUKA YA-ARANDIS YA TOKOLA YAA KANITHE E-KOPI



Omusamane K.D. Nakasole

Omolvoshigongi shaagundjuka ya ELOK, mondjakulwambinga yomUushimba, shoka sha ningilwe eti 8-10.7.1983 mOvenduka, omunashipundi gwaagundjuka, omusamane Kakombo Diogenus Nakasole, okwa kundathana naagundjuka ye, kombinga yomakopi gethigathano miigongi yawo.

Omakpoi ngaka oya zile nago kOttiwarongo, hoka ya li ya sindana moondjimbo, nomekoleko lyoshiketha shaagundjuka(miin i w e').

Mekundathano ndika, aagundjuka oya tokola oshita kutya, otaa indile Kalunga e ya kwathe uupenda noonkondo okulonga oshimati, opo ya ninge aasindani nokOvenduka. Osho sha ningwa.

Methano ndika; ekopi li li moshikaha shaNakasole shokolulyo olyesindano mukungengelela oshiketha shaagundjuka iimaliwa nekwawo kolumoho olya zi mesindano lyoondjimbo.

Shipanga ta yamukula omuleshi

Mokulesha mOMUKWETU gwonomeli 14/1983, ondi itsu mo epulo kedhina lya ndje, tali ti: "Shino osha hala okutya ngiini?". Epulo ndika olya pulwa komuleshi gwOMUKWETU, Abraham S. Nekongo.

Pakuuvako kwandje omupuli okwa yamukula nokuyelitha epulo lye mwene nokwa hulitha wo nelondodho opo tu ete shoka tashi tungu oshigwana hakudhenga aantu omitse kumwe.

Ihe mpaka onda hala wo okugandja uyelele wopakuuvako kwandje kepulo lyomuleshi. Oshoka omupuli okwa fa inaa lesa etameko lyoshipopwiwa mOMUKWETU No.9/1983, ando a dhimbulula kutya oshipopiwa shika oshopashilonga, kashi shi oshinima shehwamo lyopamauvito gopaumwene.

Onke otandi indile omuleshi omusimanekwa a leshe nenge a leshulule oshinima ashihe okuza konomola 9 sigo onomola 10, opo a uuve ko oshikalimo ashihe nawa.

Kepulo: "Olye ha longele omukwawo moondjokana?" Shika osha yela musho shene kutya "omuhokanwa". Oshoka omuhokani megumbo oku li omusilwashimpwiyu miinima ayihe: okupaluthwa, okwoopalekelwa mwa kwatelelwa esiloshimpwiyu lyoluvale nomayakulo gaayenda megumbo.

Mumbika nenge muyilwe, omuhokani ota tala koshipala shomuhokanwa gwe nokuvululukwa nenge okukundathana naayenda. Shika otashi holola nkene nakuhokanwa ha ningi oshindji momayakulo gomegumbo.

Pandjokana yuukumwe nethigululathano, omayakulo ngaka ote ga ningi neiuvo lya manguluka kokulongithwa ongomupika pashiwambo. Onke nakuhokanwa pondje yomulandu nguka, kashi shi okushundula ondjokana, uuna ta pula a futwe.

Efatululo lyomupuli kutya "Aawambo kaa na sha nooveta dhoshingolo", oondjokana dholudhi nduka, mAawambo odha etwa mo kuukriste na konima yomimvo 30, ayehe ya hokana meni lyomimvo ndhoka, oya hokana pamulandu gwoondjokana dhuukumwe weliko lyooveta dhoshilongo. Onke oonkundathana pokati kaakwaniilwa yetu, naawiliki yoongeleki dhetu, odha pita nale.

Shika osha kwatelela mo oonakuhokana ayehe moshigwana. Onke omulandu nguka ogwokutunga oshigwana shi ze mokupikathana pamithigululwakalo dhOshiwambo.

Timoteus Shipanga



Dr Javier Perez de Guellar

Yaali ya ganekwa omunwe

Ombelewa yopolosi muPertoria, oya takele omumbisofi Denis Hurly, omunwe kaapopye we kutya etanga lyegameno otali hepeke aantu muNamibia.

Omathambo ga piti, omumbisofi nguka gwa-Katolika kaRooma, okwa adhika a gandja uusama kiifo yomu SA kutya ihayi holola nando onkalo yaNamibia yi li ngaashi yi li.

MuNamibia, omuwiliki gwopaati Christian Democratic Party, omusamane Hans Rhor okwa ganekwa omunwe kombelewa yetanga lyegameno lya SWA, omolwiinima ya fa iikwawo.

Omusamane Rhor okwa yemata olwindji komahepeko taga ningwa moshitolwa sha-Kavango nokufala omanyenyeto ngaka kombelewa yetanga lyegameno.

Ngele "omatembu gaantu okuza mokuti, etanga lyegameno kali na mo sha mugo," osho a lombwelwa nokulondodhwa kaa tsikile we nomapopyo ngoka.

**MOSHIFO TASHI LANDULA,
OONKUNDANA ODHA ZI MO-
CAPRIVI. INADHI KU PITILILA
PO**

Ekonakono lya De Cuellar lye mu eta sigo mOvenduka

Oshimpwiyu shoka sha pewa Amushanga Ndjayi gwa VVO, okukonakona mpoka pu na omandangalati mondjila yemanguluko lya-Namibia, oshe mu eta sigo omoshilando shepangelo lyoshilongo shika, mOvenduka, eti-25.8.1983.

Oshimpwiyu shika Amushanga Perez De Cuellar, okwe shi pelwe muMai nuumvo koshigongi shOraata yegameno ya VVO.

Edhiladhilo ndika olye etwa po sho pwa dhimbululwa kutya okangundu kiilongo itano yUuninginino, inaka eta iiyimati yasha okutompela epangelo lya SA li taambe etulomilonga lyoshitolitho 435 shoka tashi hulitha po iita ko ku ningwe ehogololo lyaayehe.

Omusamane De Cuellar, ngoka molweendo nduka a thindikilwa komusamane Martti Ahtisaari, okwa tegelelwa a ka gandje oonkundana kaatoolinkundana eti-29.8.1983 muNew York.

Eti 31.8.1983 ota ka gandja omushangwahokololo gwe gwaashoka a dhimbulula mekonakono lye alihe.



Dr Martti Ahtisaari

Ngele ote thiminikilwa omukadhona, nandi ninge ngiini?

Ngele ondi na aakadhona yatatu, gumwe nde mu kongelwa kutate, gumwe kumeme nomukwawo onde mu kongo mwene, yo ayehe onde ya gonda, ne hokane po gunipo, opo ndaa geyithe aakuluntu yandje?

Otii ya hokana po ayehe, yo Ongeleki otayi ti omuntu na hokane omukiintu gumwe awike? Peni ndje uyelele.

*D. Kashesye,
Otjiwarongo*

EYAMUKULO

*Kuume Kashesye,
Egumbo lyeni otyo li na okukala tango li na elandulathano lya yela, opo lya ninge kehe gumwe ota tokola ashike kuye mwene ngaashi ta dhiladhila, ye kee na eziminathano naanegumbo*

ooyakwawo.

Shoka otashi ke ku kwatha ihe okutseya omukadhona oguni po to yi naye mondjokana ngaashi tashi opalele ukriste woye.

Amushanga gwOmukwetu

AAGUNDJUKA OTAA HOLOLA UUGHIGU WAWO

Onda hala ndi ku lombwele eshi sha kwata eehombo dovanyasha moshipala, unene kombinga yovamati. Edu oli na oita ye tu kenyanka, oshilongo oshi na ondjala. Okuhombola omunhu owa tila.

Eshi tashi tu tilifa osheshi. Omunhu owa kongane nee okakadona, ove oho longo kOushimba. Eshi hai pula shilumbu olifa ndi ye keumbo, ota ti ashike inda ndele ino aluka vali.

Omunhu nee shimha wa udu ngaho, oto mwena ashike. Oilonga oya pumba, kape na eshi shi dule shikwao. Ino yola vali omumati ina hambola, oku li moudjuu.

G. Kandjabanga

USHI TUU EDHINA LYOYE SHOKA TALI TI?

Aayamerika otaa luku wo omadhina gOshiyamerika ngaashi oofani ndhoka hatu uvu olwindji; Nickson — omuna gwaNick Jackson — omuna gweaJack, Willson — omuna gwaWill nosho tuu.

Go ihe omadhina goludhi nduka ge li mofani, ihashi vulika ga lukilwe edhina lyokanona. Shila otali kala ashike edhina lyezimo (Ofani) yawo. Tashi ti, okanona okatekulu nenge okamwana komuna gwaWillson, edhina ndyoka lye enda tali thigululwa.

Eufemia — oku nedhina ewanawa
Evelina, Eva — yina yaanamwenyo
Esekiel — Kalunga omunankondo
Fara — a za mezimo enene
Feliks — okwa yambekwa
Ferdinand — omugameni ofule
Fiina, Josefina — ohi indjipala
Frans, Fransisku — okwa mangukwa
Benhard — a kola a fa emwanka
Kristian — omukriste
Kristina — omukriste
Kristof — omuhumbati gwaKristus
Daniel — omutokoli gwandje
oKalunga

Naku ndulukwe embo lomadina - omuleshi ta ti

Moshifo shimwe osha ngongotolele eluko lomadina onunona haa lukwa a takuma, ove omunhu uhe shi kutya otaa ti ngahelipi. Otu na yo omadina oo haku tiwa oopakriste, nao omunhu ku shi shi eshi taa ti.

Onawa Ongeleki ngeenge otai nduluka po embo li na omadina aeshe a fatululwa eshi taa ti. Ngeenge onda puka mwaashi pukulu leni nge.

Johannes H. Silvanus



Omweevangeliste munene wounyuni, Billy Graham waAmerika ota monika mefano eli ta popifa oshoongalele shovaevangeliste konyala 4,000 va dja moilongo 113, mwa kwatelelwa Afrika.

Oshoongalele osha li ko 12-21.7.1983 muAmsterdam, shaHolland. Osho sha li oshoongalele shotete koukwatya washo, omo ovakalimo va wilikwa komushamane Graham eendjila dokufikifa evaangeli movapwilikini.



OMUKWETU

Oye oshifo shOngeleki Onkwaevangeli paLuther yomOwambokavango.

Ohashi nyanyangidhwa mOshinyanyangidho shOngeleki mOnlipa.

Omukuluntu gwoshifo omumbisofi. Dr. Kleopas Dumeni,

Amushanga gwoshifo omusita Sebulon Ekandjo

Ondando yOmukwetu muNamibia naSuid-Afrika R 5,00 komumvo.

Palwe muAfrika R 8,00 nokombanda yomafuta 11,00, komumvo. Mondhila R 13,00.

Oondando nomambestelo agehe naga tumwe kOmukwetu, Onlipa, P.Bag 2013, Ondangwa, 9000

EV. LUTH. OWAMBOKAVANGO CHURCH PRESS
PRIVATE BAG 2013, ONDANGWA 9000
SWA/NAMIBIA