

OMUKWE TU



Registered at the GPO as a Newspaper 30c

No. 14

ISBN 0-620-06828-0

Metifa lyiita m o s h i t o p o l w a sholugodhi, uukriste otau tsikile

KuSebulon Ekandjo
**Onkalo yOngeleki onkwaevangeli paLuther
mOwambokavango (ELOC), otayi monikila nawa
unene mushono tashi tsakanekwa momahokololo
gaatonateli yiitayingeleki yOngeleki ndjoka.**

Iitsa yimwe tayi landula mpaka, oya kuthwa momahokololo gomiitayingeleki unene itatu; shUukwanyama, shUuninginino noshaNdonga. Oshitayingeleki shaKavango, ina tu mona manga ehokololo lyasho.

(Iigongi ayihe mbika yiitayingeleki tayi hokololwa mpaka, oya ningilwe momwedhi nguka).

Momahokololo agehe gopatatu, gomumvo 1982 otamu holoka nkene iita tayi shundula onkalo onene yomagongalo, ihe ope na wo ehambelelo kuKalunga sho ta tsikile okudhiginina aantu ye muudhigu wawo.

Omahala gaheyali goshilongatumo mUuninginino, oga hokololwa ga mwenekwa miilonga yago konkalo yiita. Limwe lyomugo, Okatseyidhi, iipundi mongeleki oya yiwa nayo.

Aanashilonga yomugo yatano, oya dhengagulwa nagumwe Jeremia Ka-

kongo okwa kala mondholongo ethimbo ele. [Ngashingeyi okwa mangu-luka]

“Oshitaingeleki eshi osha kumwa unene koita. Ova riste vetu vamwe ova tembulwa, vakwao ova ya koshitainingeleki shaNdonga, shaUuninginino nokOkavango nokuli,” osho sha holoka mehepu loshitai sha Ukwanyama olo la kwatela mo eehani 14 da dja ko.

Eshunduko lyonkalo molwiita, otali monika ngaashi ehokololo lyoshitayingeleki shUukwanyama lya tsikile kutya:

Aagundjuka oya thiga po oshitayingeleki shawo noya halakana na-Namibia alihe.

Iiyimati yaashihe shoka, oyo eteko lyoondjokana, ekanitho lyiilonga nomahala goongeshefa nogiipindi, oga



Omudhiginini gwiiniwe Jacobine Kengele. Ehokololo alihe tala kepan-dja 2

Ishewe mOshifo shika:

- INIWE: EP. 2, 4, 5
- ONGELEKI MUNDOWISHILANDA LYUZILO: EP. 6
- OMULONGI NONGELEKI: EP. 10

Tala kep. 4

IINIWE MEDHIGININO LYAKENGELE

Jacobine Kengele, omudhiginini gwiiketha 7, yiiniwe yiikandjolonga mOsentrum yaNgwediva. Omugundjuka gwomimvo 23 adhike, Jacobine ina tsakanitha manga omumvo moshilonga she oshipe, ashike shoka te shi ningi oku shi shi.

“The pititha mo nando oshimaliwa manga inaandi pewa uyelele mboka te pumbwa,” osho a yamukula Omukwetu manga e mu kuutumbila poshitaafula she shiilonga.

Uule womasiku gane nda kala pepi naJacobine, onda ka dhimbulula kutya, ke na ashike nani ondjungu muuluwi wokutula oonomeli melandulathano lya pumbiwa, ike nomagulu wo ge omapu ngele ta katuka a ka konge molugumbo kehe ngoka ta pulwa kongodhi, ndjoka ye egekwa ashike ponto ye.

Ngaashingeyi omimvo ntano lwaampoka dha piti sho mOngeleki mwa holoka edhiladhilo, kutya andola iimaliwa yomagongalo agehe yi tulle moshiketha shimwe ashike shOngeleki.

Omikundu dhi li melongitho lyiimaliwa yopamakalo ngoka, ohayi etwa po moonkundathana dhiigongi, nando inadhi mweneka epulo sigo onena.

Yimwe yomomikundu tadhi tilitha hadhi tumbulwa ongaashi; okukane na mondjila uuna tayi tumwa okuza komagongalo nenge tayi shunithwa molupe lwiifutwa.

Ohaku popiwa wo kutya aakwanegongalo yamwe itaa ki itula mo we uuna ya dhimbulula kutya iimaliwa yawo kayi li we metonatelo lyawo yene nosho tuu.

Iikandjolonga yomOngwediva, otashi vulika ya ninga etameko ewanawa ndyoka tali ka tsa Ongeleki omukumo gwokutsikila nelongekidho lyuukumwe wiiniwe mOngeleki ndjika.

Pauelele mboka Omukwetu a pewa kuJacobine, kape na uumbanda

Ongwediva yi kale omutetekeli mushono sha tilika, okutula iiniwe mumwe.

“Osho nda adhele naampaka, kehe okaketha oki ili. Osha li she etele ndje uupyakadhi owindji wokuyalula. Otii shi pandula sho eindilo lyandje, ndi tule kumwe iinima mbika lya taambwa,” osho Jacobine a popi nomutima gwe eguluka.

Ota ti kutya ngashingeyi otashi ende nawa. Mupya munene onda nyengwa okumona gumwe gwomaakuluntu ye ndi pule kombinga yawo shoka ya dhimbulula kuye.

Sebulon Ekandjo

EYAKULO LETU OTALI TEELELWA MUSHIKE HANO?

Oshilonga sheyakulo

Oshilonga sheyakulo oshi li pamaludi mahapu ngaashi okuyakula eehepele novanau du nosho tuu.

Oshilonga keshe sheyakulo osho oshilonga shiwa sha wapalela Omwene Jesus.

Ndele ame onda hala okupopya kombinga yoshilonga sheyakulo mepya lOmwene Jesus.

Eimbilo 165 mEhangano ohatu ulukilwa nhumbi oulundé wa hapupala mounyuni. Medu eli ouyuki movanhu owa hula mo, eendjovo dOmwene oda dinika, omatimba okwa ndubala.

Hano eimbilo olo la tumbulwa momatumbulo a tetekela, otali popi “ondjoko”, tashi ti oulunde wa hapupala neenghono movanhu mounyuni ou.

Ndelenee fye ovakriste otwa pumbiwa unene tu ye meyakulo moshilonga shOmwene. Kashiimba pe na ou a hala okupula kutya oshilonga sheyakulo osho oshike?

Efina leendjovo edi olo eli: “Ka longe owa teeelwa omukriste ou wa kulilwa. Shilonga shaye twikila, ondjila owa palelwa.”

Omwene Jesus okwe tu palela ondjila oyo tu na okweenda, opo tu kale twe mu wapalela mokwiitavela eendjovo daye. Ndelenee fye otwa pumbiwa natango tu kale ovayakuli mepya lOmwene.

Okukatuka onghatu nande imwe aike, tu xume komesho moukriste osho oshilonga shiwa sha wapalela Omwene, osheshi okukala wa mwena, itaku kwafa sha.

Fye otwa pewa oshali shomeendjovo daKalunga. Umwe oku na oshali shomaimbilo umwe oshomahokololo nomukwao oshokuudifa eendjovo daKalunga.

Ndele keshe umwe ota pumbwa a kale omu-



Omudhiginini Jacobine Kengele

diinini moshali osho, e shi pewa kuKalunga. Joh.1:12.

Omwene Jesus oye ote ku pe eenghono dipe keshe efiku okukala omudiinini moshilonga keshe osho to longo, ngeenge she mu wapalela opo u humife yo ovamwaxo komesho, ovo ve li po va nghundipala keshe efiku meitavelo.

Hano nge ou na oshali shomomaimbilo, kala omudiinini momaimbilo, nge oshomahokololo, kala omudiinini momahokololo.

Ndele ngeenge ou na oshali shoku udifa eendjovo daKalunga opo u likolele Omwene ovaitaveli vahapu, shi ninga noulaadi.

Eendjovo daKalunga ota di ti: “Kondjifeni satana ndele ye te mwii onhapo., Ndele vali, oufiku wa fika keengula, omutenya ou li popepi. Tu efeni hano oilonga yomulaulu, fye tu lidikeni oilwifo youyelele.

Tu endeni mouyelele oo twa pewa ku Kalunga eendjovo daye. Tu eheneni kuKalunga nomitima da yela, opo Omwene Kalunga e tu filonghenda manga efimbo li li po.

Omwene Jesus nge ta aluka e tu hange twe mu teeelwa.

A. J. Haipinga

Ebandulo kaagongeleli yemanya lyililonga

Edhiko lyemanya pombila yanakusa omutonatelishitayingeleki, Mikka lilonga olya dhikilwe muApilili numvo. Aantu oyendji oya zile koombinga noombinga ye ya koshituthi.

Tatekulu Jason Amakutuwa otandi mu pandula sho e tu ningile oshinima oshinene mokukwatha okugongelela emanya ndyoka. Otatu pandula wo oshigwana ashihe shoka sha mbolokotitha omaliko gawo opo ku monike emanya.

Ayehe mbaka otandi ya halele Kalunga e ya tilile wo omayambeko ogendji, ya kale inaa hepa nando osha .

Eliakim Iiyambo

Oohapu dhuuyuuki, odhi thike pamwe negano pwaa na egano

Mat. 5:33-37

Monkalathano yAajuda, omwa kala aantu yomaludhi gane ya pangulwa noonkondo mokati kooyakwawo, oyo omuningi gwomategu guugoya, omufudhime, omufundja nomuhokoli ngoka e hole oluhoko.

Kombinga yokugana, Aajuda oye li tula moongundu mbali. Egano ndyoka lya kwatela mo edhina Kalunga, ndyoka oli na okudhigini-nwa. Ngele inali kwatelela mo Kalunga kape na mbudhi ngele inaali gwanithwa.

Aantu mokuhenuka okulongitha edhina lyaKalunga, osho ya tumbula omatumbulo: KuJerusalem, kevi nenge kehe tuu shoka sha dhiladhilwa. Olwindji okugana kwa tya ngeyi, okwa ningwa muudhano wowala wesiku kehe.

“Oonyokokulu oya lombwelwa”
Ov.33.

Oshikalimo shelombwelo oshi ikwatelela koshipango oshitiyali. Edhina lyOmuwa Kalunga koye ino li tumbula owala, oshoka Omuwa ite etha ina geela ngoka ta tumbula owala edhina lye. 2Mos.20:7. Tala wo nkene Moses a longo oshipango shoka 4Mos.30:2,3; 5Mos.23:22,24.

Oshipango shika osha kwatelela mo okugana nokuganitha. Osha kwatelela mo wo oohapu adhihe omuntu te dhi popi dhaa shi dhoshili. Osha kwatelela mo omauvaneko hatu ga ningi ngaashi sha dhipagitha Johannes Omushashi. Mat. 14:6-11.

Oku na oyendji tu uvanekele Kalunga mokuhupithwa miiponga, “ngele nda mono okanona otandi ka ninga shike...”, nenge ngele ‘wa mangulula evi lyetu otatu ke ku’ nosho tuu omakwawo ga fa ngoka, ihe inaga tsakanithwa.

Oshipango osha kwatelela mo wo shoka hatu shi gana koshipala sha-Kalunga noshegongalo; mokushashwa tu ethe uupagani auhe nuulunde, mokukolekwa, mondjokana mokulangekwa moshilonga nosho tuu.

“The ngame otandi mu lombwele, inamu gana nando okuli...”
Ov.34-35.

Metetekelo otwa tumbula Aajuda ya topola egano miitopolwa iyali; shono shegano li na okutsakanithwa

naashoka shegano itaali thiminike.

Egano okukoleka shoka sha limbilika aantu nenge itaashi tseyika nawa. Momapangulo moohofa, omuntu ota pulwa a ninge egano. Olyo okuhulitha po omaludhi. Heb.6:16.

Uuyuni owa tunga omikanka dhawo okumanguluka moompito dha thina-na komukalo gwegano. Elombwelo lyaJesus itali ende ondjila yopokati, ihe olyu ukilila moshinima: “Inamugana nando okuli.”

Kalunga kaJesus ina ngambekelwa methimbo lyontumba nenge monka lamwenyo yongandi moka amuke mu na okupopiwa, iinima yopakalunga nenge yopambepo ngaashi hashi tiwa.

Uukriste otatu tu pula shi thike pamwe uuna tu li mongeleki nenge uuna tu li megumbo. Tu li melongelokalunga nenge tu li moshigongi shopapolotika. Oshishitwa kehe nonkalamwenyo ayihe oyi li mekwathano naKalunga.

Kape na shoka tatu shi popi, kaashi li montaneho yaKalunga. Shoka twe shi popya inaashi tu pula egano oshi thike pamwe naashoka twe shi popya tashi tu pula oku shi koleka negano. Omuthindo palongo lyaJesus ogu li *nkene* tatu shi popi, *hauuna* tatu shi popi.

Oohapu dheni nadhi tye “eeno” na “aawe....” Ov. 37. Tala wo Jak.5;12.

Nekumagidho ndika, Jesus okwa hala kutya oohapu kehe ya popiwa muuyuuki nomuuyogoki, oyo oya kola nale muyo yene nando pwaa na egano.

Ihe omufatululi gumwe okwa ti kutya omuntu muye mwene oye omufundja nomwiinayi. Omuye tamu zi okwaainekela oohapu dhamukwawo nomuye tamu zi omakotokelo gokufundja mukwawo.

Pafatululo ndika, egano olya talika



oshitopolwa shimwe shomuulunde momuntu ngaashi uulunde uukwawo.

Sebulon Ekandjo



Oomwedhi hamano dha zi ko, omusita Eino Amaambo, Elim, okwa kala kuPaulinum ta kwatha melongo lyaalongwasita yetu. Ngashingeyi okwa shuna melelo lyegongalo lyaElim pamwe noshilonga she sheleshululo lyOmbimbeli yOshindonga.

OHOMBO IHE NA OMAFIYA TAI KENYENEKE

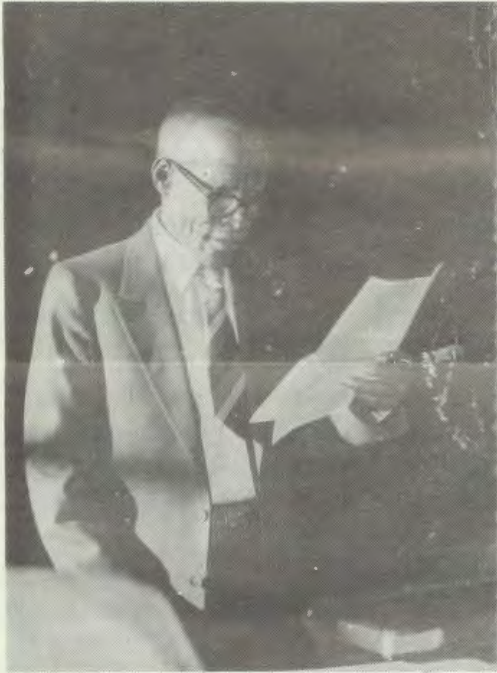
Onawa ngeno mehalakano meekomboni mu kale ha mu uya ovakulunhu veongalo oshivike keshe, opo va konakone oshinima sheehombo domokomboni dihee na omafiya.

Omunhu ota i koshililo, ile oku li mongudu yolwiimbo ta imbi, ye a fiya omukulukadi komboni mohombo ihe shivike. Ongeleki yo onawa i konakone koshinima eshi shovanyasha va hambola mOushimba.

Joel A. Shifidi

EHOKOLOLO LYIITAYINGELEKI YA ELOC

Dha za kep. 1



“Elika lyetu momagongalo itali gumu nando eliko lyopashigwana. Ashihe shoka twa kala nasho manga iimaliwa inaayi ya, osha vululukwa nombili, ihatu shi gumu nando uuna tatu popi ekoleko lyiiketha yomagongalo.”

Osho omusita Juuso Shikongo, Omuntele, a lombwele oshigongi shoshitayingeleki



Omulongi Vaino Namukwambi, Olupumbu, ngoka a kala omupehamuwiliki gwoshigongi shOshitayingeleki shUuninginino nuumvo moNakayale.

nkundipala moshitayi shoka, ehokololo lya ti.

Kombinga yoshitayingeleki shokOndonga, ongashikwawo. Moshigongi shokomumvo shono sha li moLukonda, omutonateli gwomagongalo 21, omusita Festus Ashipala, okwa hokolola ngeyi:

“Ethembo olya kala edhigu ngaashi omimvo dha piti. Ashike shoka sha zi momahokololo gomagongalo, osho shoka kutya aakwanegongalo momaudhigu gawo, oya gongala nawa momalongelokalunga.”

Uudhiginini wokukala poohapu dha-Kalunga mokati kiilyo yOngeleki ndjika, owa hokololwa wo nomitayingeleki iikwawo; shUukwanyama no-shUuninginino.

Omumvo kehe miitayingeleki ayihe yOngeleki ndjika, ohamu ningwa iigongi pamauthompango moka hamu kalwa kaasita ayehe yOshitayi shoka; omupangi gumwe, omukuluntugongalo gumwe, omulongi gumwe, omudiakon gumwe nomuyevangeliste gumwe megongalo kehe. Moshigongi sholudhi ndoka, omutonatelishitayingeleki ngoka e li omunashipundi gwopamautho, oku na okugandja ibe ehokololo lyiilonga yoshitayi shoka.

Komukanka gwehokololo ndyoka, oshigongi shoka sha talika osho omuleli gwomagongalo, otashi kundathana ibe ekoko lyuukriste nonkene u na okudhigininwa momagongalo nomomagumbo.

Okulonga oshilonga shetumo nokukoleka iiketha yomagongalo, mbyoka wo yi li omalunza ga simana goshiketha shoshitayingeleki, ohayi kundathanwa nomuthindo omunene.

Omagongalo gane gomoshitayingeleki shUuninginin), okwa hokololwa kutya kehe limwe olya humbata esiloshimpwiyu lyepyatumo limwe. Ogo Oniimwandi, Oshakati, Othika naElim.

Shoka ehokololo olya tsikile kutya otashi ningwa wo kaakwanegongalo oogumwe nagumwe ngaashi kwa tumbulwa edhina lyaHilja mOnangalo nolyaEster mOkahao. Hilja oha gandja omwedhi kehe ondjambi yomuyevangeliste gumwe mEtumo.

Moshitayingeleki shUukwanyama, omukwanegongalo gumwe okwa gandja omagano goshihauto kegongalo lyaandjawa. Edhina lyomugandji nenge lyegongalo ndyoka inali tumbulwa.

“Osha kuthwa moshipakete,” osho ehokololo lya ti.



Omutonatelishitayingeleki shUukwanyama, A.Kaulinge

Aasita noowalitali dhoongeleki, otadhi zalekwa ngashingeyi omizalo dhopalongelokalunga kaakwanegongalo sho taa uvu ko iinakugwanithwa yawo.

Shoka osho twa adha mehokololo lyoshitayingeleki shUukwanyama, ibe osho wo tashi kundathanwa miitayingeleki iikwawo mu ELOC.

Tala kep. 5



Omutonatelishitayingeleki sha-Ndonga F.Ashipala

Dha za kep. 4

Omusita Apollos Kaulinge oye omutonateli gwomagongalo 18 nomusita Jason Amakutuwa, omuhokololi oye a kala omutonateli gwomagongalo 25, goshitayingeleki shUuninginino, manga inaa hulitha 1Juli 1983 elelo ndyoka. Omagongalo gahamano goshitayingeleki kOkavango, oge li metonatelo lyomusita Asser Lihongo.

Pamahokololo giitayingeleki mbyoka, kakele koshitayi shaKavango, omwaalu gwomagongalo otagu ka lunduluka mbala kedhiko lyomagonga-

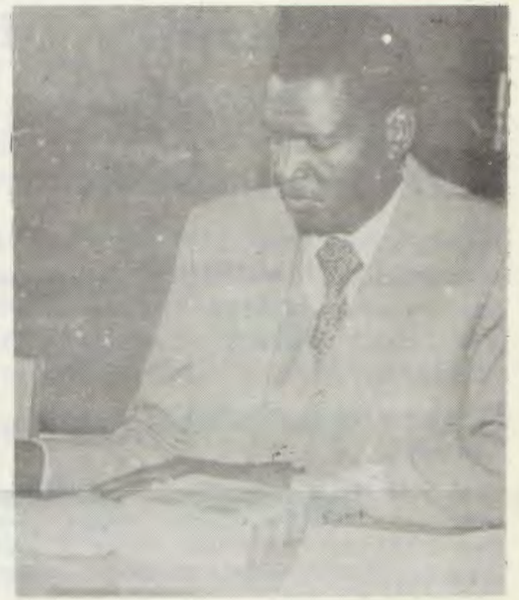
Oshitayingeleki shaNdonga osho shi na aakwanegongalo oyendji 112,585 shi vule iikwawo ayihe.

Shoka sha taambwa miitayingeleki omumvo 1983

Oonomeli tadhilandula otashi vulika mu na omatompakano mudho, ihe odho dhu ulikwa komahokololo giitayingeleki itatu ya ELOK kutya osho dha gongelwa nodha futwa moompumbwe.

Oshitayingeleki shaNdonga osha taamba R98,930,55 ihe osha futu wo oompumbwe nomwaalu R71,072,40.

Oshitayingeleki shUukwanyama osha taamba R185,911 nosha futu R147,255.



Eliaser Kushinga, Omulonga, ngoka naye wo a wilike oshigongi shOshitayingeleki shaNdonga numvo mOlukonda. Mpaka opu na euvoko epe tali tameke mOngeleki, sho aakwanegongalo taa pewa notaa taamba iinakugwanithwa iinene yOngeleki yawo, mbyoka olwindji ya kala ashike yi inekelelwa aasita.

EKOLEKO LOIKEFA YONGELEKI NALI ENDE NGAHELIPi?

Ei ondaka yomukwaneongalo umwe mOukwanyama nhumbi ta tale okuyandja kwomaongalo mOngeleki ei.

Oshipopiwa eshi osho bokololwa nosha kundafanwa moshongalate shoshitayingeleki shaUkwanyama neudo.

Otwa ika ashike okuya noshendja kOngeleka opo tu ka hoololemo 5c-10c tu i pe Kalunga melongelokalunga ile tu hoololele mo ounona wetu 1c-2c tu va longe okupa Kalunga alushe osho inandi pumbwa unene sho inashi lya nge oluhepo.

Shaashi nee shili epeni ile ofilinga (1c-10c) otai kwafa nee shike mondjato yange? Nge nde i hekela Kalunga ou iha nyengula, ovanhu ove shi ngo onda umba ongalo nandehasho.

Omapeni aa ngaashi naanaa itaa kwafa sha moshikefa ile mondjato yoye mwene, osho naanaa itaa tungu sha moshikefaongalo. Tu lihongeni fyevene fye tu longe ovana vetu okulongela Kalunga haku mu fufya ngaashi hatu fufyafana melongelokalunga letu.

Omikweyo diledile ongovaitaveli tava pe Kalunga kavo olupandu eshi e va yakula melongelokalunga noku va humbata oule woshiwike, ndele mboli ofilinga a hoololela Kalunga, olupandu.

Ovanhu vamwe ove na oilonga. Kalunga oye tuu oo ta fufya oye e mu pa aische a dule oku-



Omutonatelishitayingeleki shaKavango, omusita Asser Lihongo, i ipyakhila noshilonga shelundululo lyOmbimbeli melaka lyaandjawa Rukwangali. okwa monò iihuna oyindji numvo pamwe naakwashigwana she omolwongalo yiita.

lo omape.

Muukwanyama otamu longekidhwa omagongalo omape gaali, mUuninginino 6 nomOndonga gatatu. KOkavango inatu tseya sha manga.

Oshitayingeleki shUuninginino osha li sha taamba R281,952 nosha futu oompumbwe dhasho R224,974.



Iilyo yimwe yoshigongi shOshitayingeleki shaNdonga numvo yi li miipundi moonkundathana dhomikundu dhomagongalo.

MOOMPADHI DHALUTHER KUWITTENBERG NKOKA KU NA EGUMBO LYE, ONGELEKA YE NOSHINYANGA SHE SIGO ESO LYE 18.2.1546.

MOmukwetu No. 11/1983 epandja 4, omumbisofi K.Dumeni okwa li a hokolola kombinga yomuyelithili gweitaalo, Martin Luther koho yoshipalanyolo:

Moompadhi dhaLuther kuWartburg, Eisenach

Ehokololo ndyoka olya zile metalelopo ndyoka e li ningile muMai nuumvo kuNdowishilanda lyOkuzilo moka a kala miituthi yokudhimbulukwa evalo lyaLuther.

Mpaka opu na etsikilo lyehokololo ndyoka:

KuWittenberg

Wittenberg oshilando shaLuther, egumbo lye moka a kala nokwa longo oshilonga sheyelitho lyeitaalo. Moshinyanga she otamu monika iitafula ye omambo, omizalo dhe, no-sho tuu.

Omakuma ogendji oga opalekululwa. Opu na iitopolwa yimwe yi li molupe naanaa ndoka ya kala pethimbo lye. Aantu otaa zi muuyuni, taye ya okutala egumbo lyaLuther moka a kala pwa pita ngashingeyi oomvula 400.

MuWittenberg, omu na epopilongulu. Mepopilongulu omu na wo ongeleka moka Luther a kala omuuvithi. Osoondaha yeti-8.5.1983 omwa hololwa omagano gomafano gaayelithi yeitaalo.

Ombila yaLuther omo yi li mongeleka ndjoka. Omatompelo 95 ngoka Luther a li a tula komweelo, oga tulwa ngashingeyi molupe lwa kola, naanaa peha mpoka a li e ga alela.

Omahala oga opalekululwa, ihe iitopolwa yimwe oyi li ngaashi ya li pethimbo lye.

MuWittenberg omu na ongeleka onkwawo wo yaLuther. Mongeleka ndjika omo ishewe a kala hu uvitha. Ndjika oya talika ko eliko lyOngeleka, manga onkwawo ya tumbulwa metetekelo yi li eliko lyEpangelo.

Efano lye sho tu uvitha tu ulike kefano lyaJesus, nota holola kutya "aantu naa pulakene oohapu dha-

Jesus," otali monika mOngeleka ndjoka. Elongelokalunga itali kulupa.

MuWittenberg, pehala lyaLuther, opu na Oseminali, etungo enene li ikalela. Luther okwa li uushiinda na-Filipp Melankton. Aalongwa mboka ya ningi aayelithi yeitaalo, oya zile muuyuni noye ya kuWittenberg.

Oya shuna ya zi muWittenberg noya fala ko evaangeli neyelitho kiilongo yawo ngaashi Mickael Angrikola (1510-1557), okwa longwa muWittenberg, oomvula ndatu, (1536-1539) sho a zile kuSoomi.

Osikola onene yokombanda yaWittenberg oyi li popepi negumbo lyaLuther. Mokutala iinima iikulu, omahala, omambo, omafano, iilongitho oto dhimbulula oondunge dhethimbo ndiyaka.

Oto tala wo uuyamba, elongo noma-luhepo nkene ga li po. Ihe hasho ashike shoka. Oonkondo dheitaalo, ekondjo lyokukondjela uuyuki otali dhimbululwa nawa.

Tala kep. 7

Ependa lya ELOC mopenzela

Omuyevangeliste Malakia Amuthenu, Onilpa, okwa li a longo muSwakopmund uule woomvula dhi vule 10 metumo lya ELOC.

Omulumentu gwomuthika omuyeleke no-shipala shu udha enyanyu neimemehi ethimbo kehe. Okwa li a dhiginine oompango dha ELOC ngoka kwa li e mu tumu mUushimba. Okwa kala nokuyakula Aaeloc mehalakano moshikandjo shaMoonda.

Okwa yakula wo moosinagoga dhaMoonda Uis-myn, Brandberg, Kaap-Kruis, Stratmore, Henties-baai.

Olweendo nduka ohalu mu pula omasiku 14 nenge 17. Ta kambadhala noolefa ongomweendanandjila. Oyendji sho ye mu tseya oya kala noku mu faalela.

Okwa li wo monale ha longitha ombasikela ngele ta ka talelapo oosinagoga dha gama kuuzilo waSwakopo ookilometa 58. Koshikokota, Debelin myn osho wo oofaalama adhihe sigo odhopOmulamba u uka moMoonda. Mpaka otashi mu pula omasiku 5-7.

Ependa lya ELOC Amuthenu ine etha ompango yElelongeleki ndyoka lye mu tumine sigo tali mu shunitha. Osho a li a kala nokutumbula ta ti:

"Ngame onda tumwa ku ELOC ndi yakule iilyo ya ELOC puukololo auhe mpoka yi li." sho osho tuu kwa li a ningi shili.

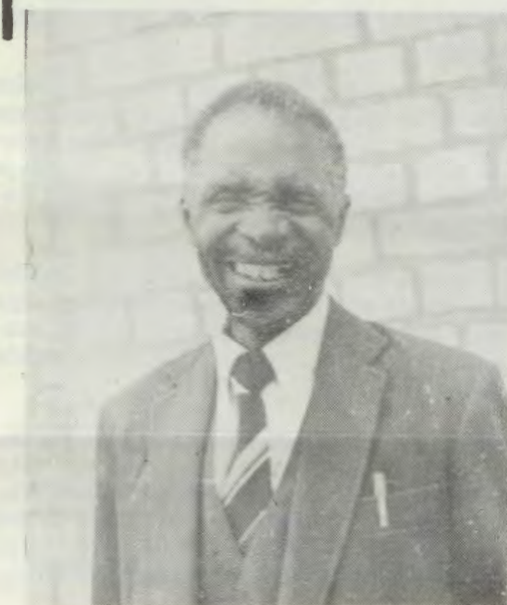
Elogongalo lyaaniilonga moSwakopo okwa li lya zimine nepandulo okatokolitho 537/12/83 hoka ku utha Amuthenu a ye moshipundi shevululuko.

Elogongalo okwa li lya pandula sho kwa li lyu uvanekelwa tali pewa omuyevangeliste F. Mbangula. Okwa thiki nokuli.

Egongalo moka kwa li tamu longo Amuthenu, okwa li lye mu laleke eti-27-2-1983. Ooitaali oyendji oyi ile ye mu laleke. Gumwe gwomegongalo lyopuushiinda oye omusita J. D. Strydom, Ombaatili.

Tse yokuSwakopmund otatu pandula Elelongeleki sho lya li lye tu dhimbulukwa tu mone omuyakuli. Natango otu shi shi otali tu sile oshimpwiyu.

J. N. Angula
Peha lyegongalo



OMUYEVANGELISTE MALAKIA AMUTHENU, NGOKA A YI NUUMVO MOSHIPUNDI SHEVULULUKO. IHE OYE TA YAKULA NATANGO MOKATI KAAVU MONANDJOKWE, NOTE SHI NINGI NENYANYU NGAASHI A KALA SHITO.

MOOMPADHI DHALUTHER KUWI-TTENBERG

Dha za kep. 6

Iholelwa yaatetekeli nayi landulwe

Oohapu ndhoka otadhi ti: "Dhimbulukweni aakuluntu yeni ye mu uvithile oohapu dhaKalunga. Taleni ehulilo lyoondjenda dhawo, holeleni eitaalo lyawo." Heb.13:7, otadhi tsu naampaka wo.

Konima yiituthi, onda talele po omagongalo niitayingeleki. Onda talele po aakuluntugongalo, aakulupe momagumbo, oombelewa dhiitayingeleki, iigongi yaasita, aavu miipangelo, aanona moontanda dhawo moka omagongalo taga longo uukriste maanona. Aagundjuka miigongi yawo nokukala wo moonkundathana nayo.

Ehala kehe oli na uudhigu walyo. Oto dhimbulula nawa wo nkene omagongalo taga kondjo, opo aantu ayehe ya longwe noya uvithilwe oohapu dhaKalunga.

Unene tuu aanona naagundjuka, otaa kondjelwa, muyo mu kunwe uukriste. Mooitaali aakuluntu oto dhimbulula nkene eitaalo omo li li. Kombinga onkwawo oto mono yamwe ye na uukriste wa sa uutalala.

Oshinakugwanithwa osho oku ya galikanena ashike, opo eitaalo li kale lya kola.

Enyanyu enene nomata getalaleko

Enyanyu lyandje enene, olya li mpoka sho nda vulu molweendo nduka okutalela po iilyo yimwe yOongeleki dhetu noyoshigwana shetu miilongo ayihe mbyoka nde ende mo. Onda gandja kuyo omakundo ga zi mu-Namibia.

Otandi mu pe wo amuhe aaleshi yOmukwetu niilyo yoshigwana shetu, omakundo ga zi kAanamibia ye li pondje. Osha li okambinga okashona netalaleko kungame sho pwa holo-kele okampito okutsakanitha shoka Omaufomhango ga ELOC tage shi pula kutya:

Ku landulwe iilyo yOongeleki yetu mpoka yi li po.

Otashi nyanyudha nkene taa holola kutya oyo aakriste. Shoka ya longwa muukriste, otaa ti kutya ove shi na.

Otaa pandula komagalikaneno. Kalunga ota yamukula omagalikano ogendji.

Ngele ku na mboka ya kanitha eitaalo lyawo, ngaashi wo tashi monika nomokati kAanamibia meni lyoshilongo, shoka oshi li oshilonga shomukriste okugalikanenathana, okupukulula, okulonga nokuuvitha elaka etoye.

Momalongelokalunga, moowandaha, nomoonkundathana muuwike, otamu

longwa oshindji. Onda holola koyendji mbaka kutya:

Tse aavali, aamwanyoko, omagongalo, Oongeleki noshigwana sheni, otu li kokule nane. Ihe itatu mu dhimbwa nando noitatu ka zimbuka oku mu galikanena.

Ihe dhimbulukweni oohapu dha-Jesus: "Ihe tala, ongame ondi li pamwe nane omasiku agehe." Mat. 28:20.



METHANO NDIKA, KOLUMOHO OTAKU MONIKA FILIPP MELANKTON TAA KUNDATHANA NAKUUME KE LUTHER.

Eitaalo lyAakwa-luther nayalwe

ku Salomo Elago



Omusita Salomo Elago

ESAPATI NELUNDULUKILO MESIKU LYOSHIWIKE

Mombimbeli itatu mono mo elundululo nenge ovelise ya sha tayi li popi lya yela. Ihe Ombimbeli otayi holola kutya iiningwanima mbyoka yi li ondinga yeitaalo nelongo lyetu nehupitho lyetu, inayi ningwa mesiku lyEsapati (Olyomakaya), manga Kristus e li mombila, ihe omesiku lyotango lyoshiwike.

Olye u utha esiku lyotango lyoshiwike li ninge esiku lyevululuko?

Esiku lyotango lyoshiwike, olya yapulwa kuJesus mwene, neyumuko lye kuusi. "Esapati sho lya shi ko, esiku lyotango lyoshiwike etango manga opo tali piti..." Mark.16:1-2.

Eihololo lye kaantu nokaalongwa ye. "Nena esiku etitatu shika sho sha ningwa." Luk.24:21.

Etililo lyOmbepo Ondjapuki. "Ya gongala pehala limwe omasiku omilongo ntano konima yeyumuko lye." Iil.2:1-4.

Oshipango shetumo kaalongwa ye. "Esiku lyotango lyoshiwike." Joh.20:19-21 Iiningwanima mbika niikwawo inaayi tumbulwa mpaka, oya ningwa esiku lyotango lyoshiwike.

Omuyapostoli Paulus mokulandula oshiholelwa shOmuwa gwe, oya dhiginine okugongala mesiku lyotango lyoshiwike. Iil.20:7 Esiku ndyoka olya li wo esiku lyokugandja omayambo (ongalo) 1Kor.16;2 "Kehe gumwe na kale e na sha maandjawa."

Esiku ndyoka olya li wo esiku lyoku uvitha. Olyi ithanwa esiku lyOmuwa. "Onda li mombepo esiku lyOmuwa nondu uvu..." Ehol.1:10 MuKristus ompango yaMoses nesa-pati lyAajuda, oya thigala mombila.

Keyamukulo lyaJesus, esiku lyotango lyoshiwike, olya zi mombila. "Tala iikulu ya hulu po, tala ayihe otandi yi shitukitha iipe." 2Kor.5:17 Esiku lyotango lyoshiwike olya simanekwa kaakriste ayehe yopetameko osho ngeyi esapati lyopaJuda, lye ethiwa.

Omadhiladhilo gayalwe

"Tse otwa dhiginine esiku etihetatu (lyotango lyoshiwike) nenyanyu, oshoka omo moka Jesus okwa yumuka kuusi." — Barnabas a kala pomimvo 100 konima yeso lyaKristus.

"Mesiku ndyoka ya tiwa Osoondaha muRoma, otwa gongala muukumwe, oshoka omo moka Jesus okwa yumuka kuusi." — Justinus omuhokolola mbinzi.

"Tse otwa yapula esiku konima yesiku etihayali, twa pingathana naamboka haye li luku esapati." — Tertullianus.

[Taku tsikilwa]

Omukundaneki Halweendo

HALWEENDO TA PEWA ETUMWALA- KA

Omukundaneki wetu Halweendo omafiku a dja ko okwa monene ombilive ya dja ku umwe womovaleshi vOMUKWETU, tai mu indile a ye kwaaveshe ovo va fimaneka emona ponhele yokufimanekifa Kalunga, notava longifa ngaha emona lavo okuteyifapo omaumbo avakwao, notashi twala fiyo omoushiinda woshoonga.

Paxupi omushangi wombilive okwa ti: "Tate Halweendo inda ko kuvo, ndele to va leshele eendjovo tadi landula: Joh. 10:10-18."

Omulunga iha endele oshinima shimwe, okuvaka ashike nokudipaa nokunyonauna. Ame onde uya opo va kale ve na omwenyo nouyadi.

Ame omufita ou muwa. Omufita ou muwa, ota yandjele eedi daye omwenyo waye. Ndelene omulongeli wondjabi ou ehe fi omufita, needi dihe fi daye mwene, ota mono embungu tali uya, oye te di fii po nde ta i onhapo. Nembungu tali di kwata noku di halakanifa.

Ota i onhapo, osheshi oye omulongeli wondjabi, needi ke na konasha nado. Ame omufita ou muwa, eedi dange ondi di shii, needi dange odi shii nge.

Ngaashi Tate e shii nge, naame onda shiiva Tate. Nomwenyo wange ohandi u yandjele eedi. Ondi na yo eedi dimwe dihe fi domoshiinda eshi. Naadinyo ondi na oku di eta mo, nde tadi udu ondaka yange, nde tapa kala oshiunda shimwe nomufita umwe.

Onghe Tate e hole nge, eshi handi yandje omwenyo wange, opo ndi u tambule vali. Kape na ou te u kufa nge, ndelene ame mwene handi u yandje.

Ame ondi na eenghono oku u yandja, ndele ondi na yo eenghono oku u tambula vali. Oshipango eshi onde shi pewa kuTate. Joh.10:10-18.

Tse aagundjuka yomuKeetmanshoop, otwa yuulukwa uuwanawa mbono tau tyapulwa moodoolopa dhimwe ngaashi Luderitz, Gibeon, Swakopmund, Tsumeb nomuWindhoek; Osikola yOshiingilisa ndjono hayi longwa uusiku. Natu kwathwe oshinima shoka, otwe shi pumbwa noonkondo - J. Mushele-nga, Box 311, Keetmanshoop.

Elongelokumwe lOngeliki nEpangelo kombinga yehongo

Oshipopiwa tashi shikula apa, osha li oshikundafanwa moshongalele shoshitaingeleki shaUkwanyama neudo. Enyamukulo kusho, onde lineekela otali kala yo ekwafo linene kovaleshi moitaingeleki ikwao yo. Tate Nghishekwa ota yandje ne ouyelele ngaha:

Elongelokumwe oshike hano? Olo eudafano ile omhangela noukumwe moilonga yonhumba tai longwa, notai shakenifwa inapa holo loka eenhamanana dasha.

Ngenge otwa taleni koinima ei ivali EONGALO, nOSHIKONDO SHEHONGO, osha yela lela kutya ava vavali ova ninga eudafano pokati kavo opo va longele kumwe meputudo lokaana, neudafano olo opo li li natango, Otu shi shi nawa kutya eputudo lokaana nefiloshisho lako ola kala meke longeleki (eongalo) noinima aishe oya kala hai ningwa konge leki. Nosh sha kala ngaho ongeleki tai

wilike oinima aishe i nakonasha nehongo (ounona novahongi).

Lwopeedula 1960-1962 lwaapo opo epangelo la hovela okuya mo eenyala meputudo lokaa na nopo pa ningwa eudafano olo twa di no kupopya paife.

Kutya nee eudafano ola li li li ngahelipi konda dalunde kandi na naana owino ya wana okushitumbula ndee omadiladilo taa landula otae tu pe ngaa okauyelele haxwe.

Oshikondo shehongo osha shiiva nawa lela kutya ounona novalongi ovo oilyo yongeleki, omolwaasho mokutota po eekomitiye dofikola ohadi kala omufitaongalo ile omuyevangeliste.

Omadiladilo okwa li opo oukriste mokati kovalongi novalongwa u kale wa yela nawa, nosh sha kala lela.

Omalunduluko okwa enda ngo taa holoka kombinga yoshikondo shelongo ndele nande ongaha eudafano opo li li natango la pama. Shaashi lwopeedula 1974-1975 omatonatelo nongelo okwa xulifwa po, kutya nee opamukalo u li pi nongenge opa udafanwa sha, inandi shiiva sha.

Nande ongaha ope na ngaa eekomitiye dofikola odo natango tadi longo naana ngaashi "Omatonatonongelo" shaashi omu na oilyo ivali i lile po ongeleki nelalakano ongaashi twe shi popya nale.

Pokati nee opo opa enda sha shimwe shi lili shihe fi shiwa, kutya nee osha enda ngahelipi, oshi na ngeno okukundafanwa kwaaveshe.

Ovawiliki vomaongalo ova fa va tala ovalongi ovanhu vaholomende novalongi ova fa va uda ko omunyongofolo oo nova hovela okuwila momapuko manene, oo kwa li ihaa ningwa nale.

Ndele tapa holoka lela onghalo yededele, novawiliki vomaongalo nomaleloongalo peefikola domeni leengaba dao, ova tala ko ashike. Na nakuwila mepuko ta ningine mo naana, kutya ye owa holomende lela.

Ovanhu ovo ovongeleki lela nongeleki otai teelwa okuxunga eemwenyo davo. Ohandi indile nefimaneko linene kutya omaongalo a tale shili noshisho ovanhu vavo tava alangata momapuko va pumbwa ekwafo lavo.

Apa ohandi shiivifa ashike kutya omaongalo amwe okwa dimbuluka shili onghalo ei i li ngaha nokwa kufa lela eenghatu da diinina. Notapa ningwa eindilo la mana mo kovawilikiongalo aveshe opo va tonatele ovanashilongava vavo.

Fye ovanashilonga meni leengaba deongalo omo tu li ohatu udu nawa ngenge tu wete ovakwamhepo tava talele po noku tu popifa nondjovo yaKalunga.

Kutya eudafano eli la kala po nale inali lunduluka otashi kolekwa konhumwafo yopashikondo yo No. 21/1980 oyo ya yandja natango omhito opo ovakwamhepo va longife eetundi mbali va kundafane noilyo yomaongalo avo kombinga youkriste.

Oshinima osho osha pumba okuningwa mo maongalo mahapu ndele oshiwa nee lela okuningwa. Ovakatoolika kaRooma ove shi diinina nomhito oyo ohave i longifa peefikola davo.

Ohandi indile nefimaneko omaleloongalo a tonatele nawa meni leengaba dao, va kumaide nokupukulula ovanashilongava vavo neluudo liwa. Ovalongi ovavo.

Osho tashi tu tu omukumo moshilonga shetu osheshi fiyo opaapa ovalongi, novalongwa aveshe tu na, ovakriste. Shapu oyoye mwene a efelwa ngaha mededele nomouholume, nomoukolwe, nde te liitavelifa mwene kutya osho ngoo nee e li osho. Nokongeleki iha i ko vali, ye nomufitaongalo waye okwa tala ko ashike ngaho kutya oshikondo shehongo mbela kashi wete ko ngoo.

Ndele ngenge eleloongalo ola kundafana oshinima osho mekwatafano liwa noshikondo shehongo neenghatu da yukilila tadi katukwa nawa, nena otapa ka kwafwa ngaho vahapu.

Otashi holoka moinima ngaashi ei, omanyenyeto amwe ohaa twalwa koshikondo shelongo e na sha nande onomulongi ite li humbata nawa moinima yopaukriste ndee oshikondo ihashi lundulula po unene shihapu.

Oto hange omulongi a ninga oinenenima meongalo longeleki ya Eloc oha kendabala ashike a lundulukile keengeleka dimwe po, ngaashi tu shi shii kutya mOwambo omu na paife eengeleki nomaitavelo mahapu neluudo la fa lili ngaha kutya ongeleki oyokupiyaaneka nge shaashi koshikondo shelongo okwa fa ngaa pe na omupofi moinima oyo, nande kashi li nande ngaho.

Opa pumbwa elongelo kumwe la pama paukriste, opo u kale wa yela moshiwana shetu. "Oshiwana shi na Kalunga kasho osho oshi na elao." Rom.14:19.

Paulus N. Nghishekwa



MOmukwetu gwa zi ko, No. 13, epandja 2, otwa li twa hokolola eyapulo lyomusita Villi-Heikki, ihe otwa li twa nyengwa okumona ethano lye. Ngashingeyi otu na oshipala she mpaka, nonando otatu gandja ombili, oshoka ethano inali yela nawa. Okwa langekwa manga omusita omuyakuli mOlukonda.

Meme Maria Nangolo, Eheke, ota popitha oshituthi shOsikola yOsoondaha mOniipa 1982. Oye a hogololwa nuumvo koshigongi shoshitayingeleki shaNdonga a ninge oshilyo mewilikongundu lyOsikola yOsoondaha nomewilikongundu lyolwiimbo. Efaneko inali kolekwa manga.

VAKWETU OHATU VA PE SHI DULIFE PUSHAKALUNGA

Dha za kep. 5

kala e na oilonga. Pamwe mefiku oha mono ondjabi yi dule nande R1.00 ndele ye Kalunga ote mu pe ashike 10c moshiwike ile nokuli komwedi.

Umwe Kalunga okwe mu pa oukolele wolutu nowomwenyo. Tala nge wa kanifa oukolele mounyuni; eengobe ngapi; eelata ngapi, ile eeranda ngapi to kanifa mokukonga oukolele kombada yedu?

Ndelene Kalunga e ku pa oukolele oshali. Owa hoolola u mu pe shike moshiwike ongolupandu melongelokalunga?

Vakwe; tu taleni ngoo nawa ou e tu pa aishe nge oukolele ile emona ke fike nande pokaume ketu ovo nge twa shakena navo hatu fi ohoni oku va pa nande (10c) Ofilinga mounyuni wopaife ohai pewa okaana to ka ningi omashendjo to ti:

Tambula 10c mutekulu wange u ka lande ouleke woye ko okaana oke wete nee nawa shaashi neendunge dako opo di fike opo.

Oshikefa nee eshi sha kola ngaha otashi longo noupu oilonga yasho meongalo. Pexulilo lomudo ohatu ka tambula OSHIHUPE pamwe eongalo ola xupifa nokuli R2000-R4000 eshi eendjabi noinakuwanifwa ya topolwa.

Oshiketha shoshitaingeleki

Oshitai kashi na odjo imwe, adishe odi li meongalo do odo nee odo twa longifa alushe ndele inadi ndjabula po sha shomupondo nanamutenya ou.

Oshitai otashi nyengwa okweenda kusho shene. kashi na omaulu nokahauto oko taka duma opo okomunhu mwene.

Tala ombelewa yasho nOsaala yokwoongalela kai po, kape na ekwatatano nomaongalonde ongori nee ngoo (tel.) momaongalo, nande oyaa nee opopepi.

Ounghundi moshitai omuhapu itandi mana kuvalula ongaashi naana u u wete ngaho.

Vakwetu tu kufeni ko eenghaku, tu tungeni shetu, tu tuleni oukuni kumwe, tu ninge po shomungundo ongomutoti wokatevo.

Oshike mbela tashi tu imbi oimaliwa yoixupe momaongalo aishe oyo ihe na manga oilonga momaongalo, tu i mbaange ile tu yeete kevalulo loshitai? Yo tai ningi onduba ya kula i li medina limwe IOSHITAI shetu?

Omaongalo mOshitai ngenge oku li 18 ile 20. Eongalo keshe ola xupifa nee R4000 x 20 R80,000. Moshikefa shOshitai omwa ya nokuli onduba yakula modula imwe, yo oiwedela yOmbaanga, tya nee 10% R8000 kodula.

Meedula mbali moshikefa shoshitai omu na shi dulife omayovi efele R176 000,00. Paife

ngaha epopyo letu oli na okulunduluka nale ohatu ti:

Oshitai osha humbata komaongalo ndele nee pamukalo ou oshitai otashi humbata omaongalo shaashi oshitai eshi shiwa osho otashi yambidida nee omaongalo meemhumbwe dao.

Eongalo otali dulu okuyuka kouwa koshitai notali nyamukulwa, nondjovo yaKalunga otai topolekeka nee shaashi kape na olungwenye omlwondjala ngaashi hasei monika opo oluhepo tali pangele.

S. Vatuwa

Omayamukulo gaalumentu komapulo gawo

Aalumwentu yomegongalo Ompundja mUukwambi, oya yamukula omapulo ga li gu ukithwa mongundu yawo. Otashi vulika omuleshi itoo tsu naana kumwe nago nenge to ga koleke nokuli. Omapulo oge li po ngeyi:

1. Oshike she tu kutha aalumentu moongundumbimbeli?
2. Oshike she tu kutha momalongelokalunga?
3. She tu kutha moongundu dhaalumentu momagongalo?

OSHIKE WA HALA SHI NINGWE:

- a) melongelokalunga
- b) mongundumbimbeli
- c) nomoongundu dhaalumentu momagongalo?

Omayamukulo

Shoka she tu imbi moongundu dha tumbulwa pombanda, ondhinokalunga, onyalo, ohole yela, ohole yeliko, okwaapya moohapu dhaKalunga, oohapu dhaKalunga otadhi tu popi tu li ngaashi tu li, onke tatu yi ontuku ngaashi Adam.

Melongelokalunga omauvitho naga kale omafupi, namu kale oondjimbo, (ookuwolo), namu ningwe omagalikaneno gaalumentu, namu egululilwe ompito dhomalaleko aalumentu ngele taa shuna kiilonga nege dhomakundo ngele taa galuka.

Naku gandjwe wo ompito yokulesha mOmbimbeli kaalumentu, uuna gumwe te shi pumbwa.

2. Moongundumbimbeli aawiliki naa kale ya pyokoka mewiliko lyawo. Naku paathanwe omalufu mewiliko. Naku kale oondjimbo tadhi longwa neitulomo.

3. Moongundu dhaalumentu; namu kale oonkundathana dha manguluka, namu ningwe egalikano omolwethimbo ndika mo namu longwe wo otundi yOshiingilisa noyuunimuna.

Omapulo nomayamukulo ngaka otwe ga pewa ga zi komusitagongalo gwegongalo ndyoka, Elia Haiyinge.

Dr. Martin Luther, Omuyelithi gweitaalo okwa valwa 1483, oomvula 500 dha piti. Oongeleki odhindji oonkwaLuther muuyuni otadhi dhana oshituthi shika. Lesha miifo tayi landula.

A YI KEVULULUKO LYAANA YAKALUNGA

Omunona Abisai Taapopi Kaanoshili yatate Angala Bwity nameme Paulina Naakande, okwa hulitha oondjenda dhe eti-6.7.1983 moshipangelo shaShikuku moka a kala ethimbo efupilela.

Omunona nguka okwa li e na omumvo gumwe aguke netata.

Aapangi yaShikuku, naamuhe mwa li mwe tu hekeleke nohapu yaKalunga pomawendo nomegumbo, otwe mu pandula. Otatu mu gandja ashike kunguka gwopombanda.

Iinima ayihe otatu yi gandja meke lyaanguka iha nyengwa nando okusha, oye Kalunga. Ef.4:4-7; Heb.4:9-10 Eimbulo 316 na 627

P. Naakande
Peha lyaakuluntu ye

Omafupipiko gomasiku nogoomwedhi nogoshiwike pamukalo gwa ziminwa

1. Omasiku		2. Oomwedhi	
Osoondaha	— So	Januali	— Jan
Omaandaha	— Ma	Febuluali	— Feb
Etiyali	— Ti	Maalitsa	— Maal
Etitatu	— Tu	Apilili	— Api
Etine	— Te	Mai	— Mai
Etitano	— Ta	Juni	— Jun
Etihamano	— To	Juli	— Jul
Olyomakaya		Auguste	— Ag
		Septemba	— Sep
		Kotoba	— Kot
		Novomba	— Nov
		Desemba	— Des

Ndhindhilika: komafupipiko ihaku tulwa oshitsa.

OIPUTE YOMATUKANO

Oku na vahapu tava nyengwa okupangela oinhimbu yomalutu avo nove i dumifa. Luhapu ovanhu va tya ngaha, otava pukifwa notava pe Kalunga oushima ou e i va pa.

Kalunga ine tu pa oilyo yetu i tu pangele nande. Ashike okwe i tu pa tu mu longele nayo notu mu fimanekife nayo.

Shimwe shomoinhimbu ei osho elaka. Ngenge to ende mounyuni, momaongalo, meefikola, noilonga i lili noi lili, oto hange ovanhu ve na oipute keemwenyo ya djaomalaka makukutu ve a pewa.

Omalaka makukutu a pewa ovashamane, ovakulukadi, ounona, ovafita, ovanaudu, ovapangeli ovapangi, ovalongi nosho tuu. Ove owa ninga vangapi oipute ei?

Jesus ota ti, "ame ohandi uya diva." Ovanhu ovo oifefa yaKalunga. Tu lungameni hano omanyono elaka.

Eeno E. Kamati

Shino osha hala

oku tya ngiini?

Tate Timoteus Shipanga,

Onda limbililwa koshipopwiwa shoye shedhina "omautho goondjokana dhopaveta moshigwana shika, oga limbilike natango oyendji," mOmu-kwetu gwaMai No.10/1983 ep.6.

Onda limbililwa uunene tuu mokatopolwa hoka taka ti:

"Oshoka uuna omuhokani oye inaa zimina ondjokana yuukumwe nethigululathano, nena omuhokanwa oku na uuthemba wokupula a kale ha futwa ngomuniilonga omolwomayakulo ge agehe gomegumbo."

Epulo lyandje oli li ihe ngeyi: Olye ha longele mukwawo mondjokana, nomolwashike omuhokanwa oye awike a pewa uuthemba wokupula ufuto? Ngele omuhokani oye a tindi?

2. Ishewe ngele ando otwa haleni shili oshinima shuuthiga shi potonoke, oshi na okukala sha ningilwa oonkundathana pokati kaakwaniilwa yetu naawiliki yoongeleki dhetu.

Oshoka aathigululi Aawambo kaa na sha nooveta dhoshingolo. Etestamendi lyoondjokana ngele olya dhikwa mekwatathano naawa, yetu, ondi inekela otali taambwa ko shi vulithe edhengo lyomitse kumwe neshundulo lyoondjokana ondjapuki.

Natu gandjeni omadhiladhilo taga tungu moshigwana. Otu li moshigwana inaashi mona eputuko lya gwana, onke inatu sindweni kuuwinayi, ihe natu u kondjithe noohapu oontalala tadhi tungu.

Abraham S. Nekongo

Aaleshi taa pulwa

OMUKWETU, tu pa uuyecele.

Pandjalulamasiku yetu 1983, eti-5.11.1983, olyo Esiku lyaayapuki, olya ningwa lya fa Osoondaha. Oku na elongelokalunga esiku ndyoka

EYOMO, E - EYOMO

Oombapila dhokugonyena mo iilandomwa, okusiikila olutu lwoshihautu tashi mbyukwa, okuyala pevi pu tentekwe iinima, okukonda mo oompatolona, okuzaleka omambo gaaha luudhe nokulongitha pampumbwe kehe, otadhi yomonwa kOshinyanyangidho sha ELOK, (ELOC PRESS) kOniipa.

Oombapila ndhino dhuunene 435 mm x 610 mm, odha yalulwa e tadhi mangwa nawa moongonga.

a) Ongonga ndjono 50 ohayi gu R1,00 nduku,

b) onkwawo yi na 100 ohayi gu R2,00 adhike.

Otatu ku hiya u endebele okwiilandela ko dhoye manga pwa keelwa kunambambala! Ngele we ya po, pukululwa ombelewa yOshinyanyangidho.

ETSEYITHO LYOSIKOLA YANANDJOKWE

Osikola yaapangi mOnandjokwe otayi ka taamba aalongwa aape, mboka ye na ositanda ontihetatu, omumvo tagu ya (1984).

Kehe ngoka u na ehalo, ninga eindilo mu na iinima tayi landula mpaka:

- 1. Ombapila yoye yeindilo.*
- 2. Ombapila yegongalo lyeni.*
- 3. (a) Onzapo yoye yongundu ontihetatu yopuJuni nuumvo. (1983).
(b) Onzapo yoyene yositanda ontihetatu, ngele owa pita nale.*

Otatu indile neinekelo aakuluntu yoosikola osho wo aasitagongalo ya pukulule noya dhimbuluthe aanasikola, opo oombapila adhihe ndatu dhi kale dha tumwa.

Ngele hasho, nena eindilo lya tya ngaaka inali gwana po, noitali yamukulwa.

Ano, eindilo lyoye lya gwana po nali kale lya thika manga 16.10.1983 inaali pita. Nali ukithwe:

*KOMukuluntusikola (The Principal)
Onandjokwe Lutheran Hospital
P/Bag 2016,
Ondangwa 9000*

*IyOlyomakaya?
Penna Josef,
Oshaaziwa*

Eyamukulo

*Kaku na Osoondaha molyOmakaya, ihe Esiku lyaayapuki otatu li dhana ngaa eti-6.11.1983, mOsoondaha. Tangi sho mwe shi dhimbulula kuyele nomwe tu pukulula.
Amushanga gwOmukwetu.*

Okersesa yokufifa

MOmukwetu gwaJuni 30 ep. 12, omwa yelithilwe nawa kombinga yokersesa yokuthitha (sifting), ndjoka Omukwetu gwa tile kutya meme Haufiku ina tya oyi li ko uunake.

Okersesa ndjika oyi li ko omumvo kehe, okuza Januari sigo oDesemba. Aapangi otaa kala mo oomwedhi hamano adhike, manga oosestela taa kala mo oomwedhi ndatu.

Okersesa ofupi lela. Ila u shi italele ngoye mwene. Ngele ino shi lesa nale tala Omukwetu gwa tumbulwa pombanda.

*F. M. Niilonga
Gumwe gwomaapangi*

AME NDE LI DOPA MO YO

Nefimaneko linene, onda hala kokapopiwa mOmukwetu waApilili, 30,1983 epandja 7 mokapalanyole: "Naashi nashi ngabekwe."

Naame yo ondi udite oudjuu kombinga yomumati nokakadona ngenge va nyonafana ndele itave likufa po.

Ashike kombinga ikwao, otashi dulika omumati a nyone okakadona, nde ta tokola ngeno e ka kufe po, oto mono ovakulunhu vokakadona inava hala omumati oo. Eshi onde shi mona itai ti vati.

Ashike omunhu ngenge a nyona mukwao, oshiwa e mu kufe po. Eli nali ukilile nee ovadali vetu. Ame osho nde lidopa mo ngaho.

Abednego A. Namhola

Ou shi tuu edhina lyoye shoka tali ti?

MOshiwambo ngele oto uvu okanona ka lukwa Mpingana nenge Mpinge, nena ou shi uvite ko nale kutya okanona hoka oka landula okakwawo ka mana po oondjenda.

Osho wo ngele to uvu okanona ka lukwa Uugwanga nenge Nuugwanga, nena ou shi uvite ko nawa kutya okanona hoka okakwanambwiyu.

Omadhina ga tya ngeyi otaga vulu okushashwa naanaa ngaashi omakwawo gooRakel nooLea. Aasita yomagongalo wo otaa kumagidhwa mpaka yaa tinde we okushasha omadhina gOshiwambo kaanona, manga taa zimine goshikwiilongo ngoka kaye shi kutya otaga ti ngiini.

Monakuyiwa aanona yetu ota ye ke tu pula kutya tatekulu okwa li Omusoomi sho a li Toivo? Nenge okwa li Omuyamerika sho a li Jackson?

Unene tuu muNamibia omo to adha omadhina ngaka goshiEuropa ogendji manga omadhina gopashigwana ge ekelwahi. Aanona otaa lukwa ooJohannes yaDavid David yaAbraham.

Nenge taa lukwa ooSirikka, ooLahja nooUlla. Onawa sho tu hole okulukila ookuume ketu naakwiilongo wo, ihe tu puleni wo tango shoka omadhina gawo taga ti.

Tala ano omadhina omakwawo shoka taga ti

Teodor, Dorte — omagano gaKalunga
Ebba — a za mezimo lyomukwaniilwa
Edward, Edmund — ota gamene eliko lye
Edwin — e hole eliko
Elias — Kalunga oye Jehova
Elli, Elise — Kalunga okwa gana
Elisabet, Elisa — Kalunga



Mombepo yegundjilo noyesimanekathano, ootundi dhOshiingilisa otadhi longwa ngashingeyi koombinga noombinga. Tala omahala apehe mpoka hadhi longelwa moshinyolwa shoka shi li mOshiingilisa

OONKUNDANA DHOMUULE KONDUNGU YOPENA

English becomes popular in Namibia

By John Shitundeni

Since 1978, a few Namibian adults have been improving their literacy skills under the Namibian Council of Churches, English Language Project (CELP) and today CELP has centres in the following towns:

Windhoek, Swakopmund, Walvis Bay, Luderitz, Okahandja, Otjiwarongo and in Tsumeb. The other centres are at Rehoboth, Hoachanas, Gibeon, Ongwediva, Oshakati, Oshigambo, Engela, Okahao, Nkurenkuru and Oniipa. The last-mentioned Centre was established recently in this month.

According to the director of CELP, Mr. Madawa Nouiseb, the prospective new centres are: Rundu, Mungu, Usakos, Karibib and Keetmanshoop.

The teachers, Mr. Nouiseb said, are being drawn from the Namibians themselves and they are mostly locals from their communities. "the majority of them have been recommended to us by local pastors," he added. Our teachers, Mr. Nouiseb continued, are trained in training courses arranged quarterly in Windhoek. Only after training and careful screening, are teachers employed to start teaching our classes.

"Besides the chance of learning and improving their English, the students have the opportunity to widen their general knowledge considerably. Thus, the subjects being introduced are African

History, Namibia Geography, Literacy and Numeracy. All these subjects are being taught in English as the medium of instruction.

Most of the material being used in CELP, come from the United Kingdom. This the CELP director said, has been supplemented with books from South Africa, Lesotho, Swaziland and Zimbabwe.

Although these are good and appropriate material in all respects, especially those from Southern Africa, materials from the UK seem to be culture bound and somehow alien. However, we are in the process of publishing some text and reading books with a very strong Namibian content. This would include some pieces written by the students about their own lives, the director explained.

Mr. Nouiseb pointed out too, that classes are being conducted in church buildings and in some instances CELP makes use of government classrooms.

There is a nominal payment of a certain amount up to R15 for electricity and in some places for the use of the buildings as well.

In order to promote the sense of self-reliance, CELP does not offer everything free of charge.

Therefore, the students in rural areas contribute R2.10 or less, while those who are in urban areas contribute the maximum of R4.00 a month. All the contributions are sent by the teachers directly to the CELP Head office in Windhoek, at the end of every month for official useges.

CELP is administered from the Council of Churches in Namibia offices in Windhoek. The director of the programme, Mr. Nouiseb, is a Namibian by birth (27) and he has been assisted by Mr. Moses Omeh who is presently doing a diploma course in English in Scotland for nine months.

In 1982, some 600 Namibian adults completed their English Language courses at the following levels: the beginner level, elementary and intermediate levels.

CELP Students are also given Certificates at the end of every year.

OMUKWETU

Oye oshifo shOngeleki Onkwaevangeli paLuther yomOwambokavango.

Ohashi nyanyangidhwa mOshinyanyangidho shOngeleki mOniipa.

Omukuluntu gwoshifo omumbisofi. Dr. Kleopas Dumeni,

Amushanga gwoshifo omusita Sebulon Ekandjo

Ondando yOmukwetu muNamibia naSuid-Afrika R 5,00 komumvo.

Palwe muAfrika R 8,00 nokombanda yomafuta 11,00, komumvo. Mondhila R 13,00.

Oondando nomambestelo agehe naga tumwe kOmukwetu, Oniipa, P.Bag 2013, Ondangwa, 9000

EV. LUTH. OWAMBOKAVANGO CHURCH PRESS
PRIVATE BAG 2013, ONDANGWA 9000
SWA/NAMIBIA