

# OMUKWETU

KIRI ASTO



Registered at the GPO as a Newspaper

30c

No. 13

ISBN 0-620-06828-0

## ELOK A DHANA OOMVULA 113 DHETUMO MONGWEDIVA

1870 - ETUMO - 1983

'Ongeleki ndjika oya holoka po sho aatumwa Aasoomi ya vulika kOmbepo yaKalunga. Osha pitile momaluhepo, momahepeko nomomaso gaatumwa, eyambeko lyaAbraham li ye nokutse aapagani.'

Shika osha popiwa komumbisofi gwa ELOK, Dr. K.Dumeni sho a popitha ongundu yaantu 500 nenge 600 eti 10.7.1983 mOngwediva.

Aantu ya zile moshitopolwa ashihe shOwambo sigo Okavango, oya ngundumanene moshituthi shokudhimbulukwa etumo lyaSoomi sho lya thikile mpaka konima yomimvo 113 dha piti.

Aatumwa yaali ayeke ya kala moshituthi shika yomaatumwa 16 taa longo natango mOngeleki.

Mokundjandjukununa shono oshigwana shoka she shi zile meyambeko lyaAbraham tali popiwa mukAagalati 3:13,14 omolwetumo, omumbisofi okwa tumbula:

"Otu li nena mpaka oshoka otwa pewa oonkondo, otwa gamenwa notu na enyanyu.

Sho a kaleke omuthika aatumwa ayehe yOngeleki taa longo meni nopo ndje, koshipala shoshituthi, omuwilingeleki okwe ya tumbulile:

"Indeni mo miilonga, oonkondo dhaKalunga otadhi mu gamene, eyambeko lyaAbraham opo li thike no kaapagani."

Mokati kaanashilongatumo omwa li

JULI 15, 1983

wo aatumwa ya ELOK mboka yi ithanwa ko kOngeleki ombaadhilila kuSenegal omolwepulo lyiimaliwa.

Ongeleki ya Elok oya hiyilwe kEhanganotumo lyaSoomi 1974 yi li tumine aanashilonga oku ya kwatha kepyatumo lyaSenegal, ndyoka lya li opo lya tamekwa.

Konima yoomvula hamano dhokulonga pamwe hwiya, Ehanganotumo lyaSoomi olya ningi omathaneko omape ngoka tagi indile ELOK a sile oshimpwiyu aatumwa ye mwene mompumbwe adhihe.

ELOK sho inaa ilongekidhila shika, aatumwa ye okwe ya ithana ko ashike, manga tapu dhiladhilwa kutya otaa shuna ko ngiini.

"Tu ningeni oshiponokela shaashi, shedhipago lyoomwenyo, ihe oku dhi hupitha meso nomomilema," osho omusitagongalo Titus Ngula, a tumbula nomuthindo omunene mevitho lye lyelongelokalunga lyoshituthi shoka.

Aasitagongalo Johannes Tolu, Natanael Sirongo naMetusalem Shilongo oyo ya li aaningi yelongelokalunga ndyoka lya tetekele oshituthitumo.

Ngula ngoka e li omupehatonateli gwoshitayingeleki shOndonga, okwa kumagidha aapulakeni noku ya londodha sho a ti kutya ukriste itaa u longo etumo, owa fa omudhimba momecho gaKalunga.

"Etumo otwe li shonga, onkene tu kotokeni opo twaa likithe aantu. Shoka we shi shongo, otashi ku umpile wo," osho amushanga gweputudho



Omumbisofi Dumeni, oshituthitumo okwe shi thikithile wo omakundo ga zi komumbisofi Auala nokEhanganotumo lyaSoomi.



## Etumo kuSenegal olya thiki peni?

Ehanganotumo lyaSoomi olya tegelele oomwedhi dhi vule omulongo, Ongeleki ya ELOK yi thike metokolo lyokushaina euvathano lyetopoko mokulonga shilongatumo kuSenegal pamwe nalyo.

Elongelokumwe pokati kEhanganotumo ndiyaka na ELOK, olya hulithilwepo 1982 petameko. Eti 21.6.1982 omukuluntutumi omupe mEhanganotumo ndyoka, Dr. Hendrik Smedjebacka, okwa kundathana nElelongeleki mOniipa oshinima shika moka a holola iitsa yimwe ngeyi:

'Okuzi 1977, Ehanganotumo olya tokola lyaalandule we omautho ngoka ga kala taga landulwa kuSenegal. Etalululo lyeuvathano sho lya ningwa kEwilikongundu, otwa tokelwa shili okutseyithila ELOK, omatompelo getu kutya cmolwashike inaatu tsikila we mevathano lyotango.

'Otatu indile ombili.' (pashitokolitho 234/1982 shElelongeleki).

Elelongeleki lya ELOK olya dhimbulula ethaneko epe ndyoka lye etwa po olya tulwa nale nokuli miilonga manga inali kundathanwa noinaali ziminwa koongundu ndhika adhihe mbali, ETS na ELOK.

Onkene konima yoonkundana oonde pamwe nomusamane Smedjebacka, Elelongeleki olya tokola ngaashi tashi landula:

'Ethaneko lyeuvathano epe, ELOK, okwe li tala ewanawa ngaa, ihe sho itaa vulu oku li tula miilonga nokulonga palyo, ELOK, ota pumbwa okukala omutumba ethimbo, opo a tale nkene ta tsikile pauvathano epe.

'Aatumwa yokuSenegal sho inaa edhililwa mo manga methaneko epe, ELOK okwa thiminikwa oku ya ithana ko ashike pamalufu gomafudho gawo, ngele taga thiki noitaku ka tumwa aatumwa aape, sigo uuna ndoka ELOK ta vulu okutaamba euvathano epe.' (Oshit. 239/1982).

Ompumbwe yiimaliwa mu ELOK, oyo eimbo lyotango okushaina euvathano epe. Onkee Elelongeleki olya gandja oshimpwiyu komagongalo opo omumvo 1983 gu kale momainyengo gokugongelela etumo iimaliwa. (ELOC Mission Action pashit. 459/1982.).

Etameko lyegongelo lyiimaliwa olya ningwa nokuli, ihe otali gandja tuu omukumo Ongeleki yi tameke eithikameno kuSenegal?

Igongi yaasita numvo, moshitayingeleka shOndonga noshaasita yOngeleki ayihe mOngwediva, oya nyengwa okuyamuku la epulo lyaashoka tashi kambadhaliwa ngele otashi vulikitha tuu eithikameno. Opwa dhimbululwa opu na omagongalo gamwe ga longo nawa. Ihe osha dhim-

bululwa wo kutya otwa pumbwa natango omalunza ga kola.

Oku na oshindji shoka tashi ulike kutya otaku pumbiwa ethimbo lya gwana ELOK a yamukule etumo lye kuSenegal kutya otali ka tsikila uunake.

Oshigongi shaasita, osha popile oshilonga kuSenegal shi tsikilwe. Osha popile Elelongeleki li tsikile nomalongekidho taga pumbiwa, opo oshilonga shi ka tsikilwe pauvathano epe. (pashit. 239/1982).

Sebulon Ekandjo

## E y a p u l o lyomusitagongalo mOniipa

Omusita omuti-120 gwomaasitagongalo 129 yOngeleki ya ELOK, okwa yapulilwa oshilonga shuusita eti-26.6.1983 mOngeleki yopaumbisofi mOniipa.

Aantu ye vule 600, oyendji yomuyo iilyo yegongalo lyaNiipa, oya kala moshituthi shoka. Yalwe oya zile momagongalo gopuushinda nomiitayingeleki yilwe.

Omugundjuka gwomimvo 38 Villi-Heikki Shivute, okwa yapulilwa uusitagongalo komumbisofi Kleopas Dumeni. Okwa gwedha ketanga lyaasita mOngeleki ndjika ye li natango miilonga 114 nayakwawo taa vululukwa momagumbo 15.

Mepopitho lye kaayenda yoshituthi, omumbisofi okwa yelitha unene koshikalimo sheyapulo sho a ti:

'Eyapulo ohali ningwa lumwe aluke nomuntu ota kala omuyapulwa sigo aluhe. Ohali zi meithano lyOmbepo Ondjapuki nomokutentekwa likaha, omuyapulwa ota tulwa mongundu yaauvithi noyAayapostoli.'

Komuyapulwa omumbisofi okwe mu popitha nomátumbulo ga kola sho e mu tumbulile ngeyi:

'Oto ka uvitha evaangeli, negaluko lyomulunde nando gumwe okwiitedhulula muulunde we, shoka osho tashi kala ondjambi yoye.'

'Ehupitho lyomwenyo gwoye nolyayalwe, nali kale aluhe kumwe niilonga yoye, Kala omwiihempululi.'

Omusita V. H. Shivute, omwana gwomusita Petrus Shivute gumwe gwaasita mboka taa li oshikwiila shevululuko, okwa sikola uuteologi kuMapumulo, Natal, hoka a pewa onkatu yopombanda B. Th. melongo ndyoka okuza 1978.

Oomwedhi ntano dhopetameko numvo okwe dhi kala meidheulo, tango mOniipa opo ihe mOlukonda moka Elelongeleki lye mu langeke ngashingeyi omusita omuyakuli.

## Omagongalo ngaka oga dhimbiwa?

Kaasimanekwa aaholike, Pamwe Ondjalulamasiku yandje yomumvo 1983, oyo ya shangwa epuko sho inaamu ndhindhilikwa omagongalo gaali:

1. David Angula, Onangalo
2. Paulus Isak Nangolo, Otamanzi.

Pamwe oga dhimbiwa, nenge ano ongiini? Nandi pukululwe mwaashoka.

A. T. Angukku,  
Luderitz

## Eyamukulo

Eeno, oga dhimbiwa, nosha kala ethimbo ele inaashi dhimbululwa, sigo sha limbilike oyendji.



Mefano ndika otamu monika ongundu onene yaanashilongatumo yomeni noyopondje yOngeleki ya thikama komeho goshituthi. ELOK metumo omo nale e li hapo te li tameke.



# OSHITUTHITUMO

## Dha za kep. 1

Iyopakriste mOngeleki, omusita Tomas Shivute, a tumbula moshipo-piwa shetamekitho lyoshituthi.

Nomadhiladhilo ngaka Dr. Shivute okwa hala okutsa iilyo ya ELOK omukumo kutya otayi popi oshinima oshinene, onkene yi na okuninga omato-kolo ga kola.

Omukalo nkene ELOK ta shuna ko aatumwa ye kuSenegal, oshi li epulo enene miigongi yOngeleki omathimbo ngaka.

“Shoka sha pumbiwa ngashingeyi osho iilonga, shi vulithe oohapu dhowala,” osho gumwe gwaamboka yi ithanwa ko kiilonga kuSenegal, omulongi Justus David a tumbula moshituthi shoka.

Ngoka wa tila mokati ketu za mo,” mukwawo ishewe osho i igidha, omusita Paulus Heita ngoka a li omutanogotango okutumwa ko.

Oshigongi shaasita ayehe yOngeleki nuumvo, osha li sha popi olule oshinima shokushuna aatumwa kuSenegal.

“Eeno, naa shune ko” na “aawe,” ayihe mbika oya li tayi uvika momakana gaapopi yoshigongi shiyaka. Elelongeleki otali ka konakona mbala omathaneko ngoka ga li ge etwa po kuungundu woshigongi shoka, notashi tsikile sigo okOshigongingeleki tashi ya 1984.

Nomuthindo gwa kola, omumbisofi Dumeni okwa kumagidha ngeyi aapulakeni yomomisioni yonuumvo mOngwediva ndjoka ya li mewiliko lyomuyevangeliste Tomas Shigwedha:

“Ngele opu na shoka tashi tu li omolwetumo, tse otu na elalakano, otu shi shi shoka tashi tu likitha.”

Mokuulika kongundu onene yaanashilongatumo ya li moshituthi, omumbisofi okwa tsikile ngeyi kutya:

“ELOK, aatumwa ngele opo ye li yi ilongekidha okuya, katu na we etompelo lyokumwena. Shoka tashi tu li, otu na elalakano omolwashike tatu lika nashi tu faalele, opo eyambeko lyaAbraham li adhe omuntu

kehe.”

Momisioni ndjika, opwa fa kapwa li naanaa eyooloko enene okuyeleda niituthi yamisioni yomimvo dha piti. Ashike nuumvo opwa li pwa tulwa owina oshinakugwanithwa shelongekidho lyokushuna kuSenegal.

Ombelewa yEtumo mOngwediva, oya li ya longekidha omagongalo ganginge ashihe shoka taga vulu okugongelela etumo, momisioni ndjika.

Omagongalo 50 inaga eta sha natango nonando ope na etegameno otage ke shi ninga. Omagongalo konyala 21 ngoka ge shi ningi, omugoyi ageke gomugo ga gandja ga konda R100.00.

Egongalo lyaShitayi oyo alike lya li esindani sho lya gandja R800.00 moshituthi shiyaka. Pamwe noma kwawo oya kaleke oshitayingeleki shaNdonga mongundu yesindano.

Einyengo ndyoka li li momagongalo omolwokwiilongekidhila etumo, ogo omanene kutya otaga ka adha oshilalakanenwa, shoka otashi ki imonikila pehulilo lyomumvo.

*Sebulon Ekandjo*

## OSHILONGA SHOPAMBEPO MOKATI KAANAMIBIA PONDJE YOSHILONGO

Ehokololo lyeuvitho lyevaangeli mokati kAanamibia mboka ya halakana pondje yoshilongo shawo, otwe li pewa omasiku ngaka lya zi mombelewa yomumbisofi gwa ELOK.

Ehokololo ndika, omumbisofi Dumeni okwe li thindikile nomatumbulo ge moka ta holola shoka e shi penduthilwa koshikalimo shehokololo. Omuwilikingeleki ota ti ngeyi:

Euvitho lyevaangeli mokati kAanamibia mboka ya halakana pondje yoshilongo otwe li pewa lya zi mombelewa yomumbisofi gwaElok nolya thindikilwa koohapu dhomumbisofi dr. K. Dumeni moka ta holola omauvito ge ngeyi:

“Onda taamba mombelewa yandje ehokololo lyiilonga yopambepo mokati kiilyo yOongeleki dhetu mbyoka yi li muAngola nomuZambia.”

Otashi nyanyudha okudhimbulula kutya nonando oku na oluhepo lwaayakuli mokati kawo, omwenyo gwopakriste onkene tuu opo gu li natango.”

“Shika otashi kolekwa kehokololo pafupi ngaashi tali landula mpaka.”

## Eyakulo muAngola 82

Ehokololo otali ti kutya muAngola 1982 okugongala momalongelokalunga okwa li okuwanawa.

Osoondaha kehe momalongelokalunga omwa kala ookuwolo dhaagundjuka noongundu dhaakiintu.

Iigongi yopangeleki oya hokiwa kuyo. Eitaalo lyawo okwiitaala Omuwa gwawo nOmukulili gwawo omunene, olya kola.

“Aanamibia mbaka oya fa ya hala okutya: Ongeleki nayi uvithe evangeli lyomwenyo mokati kaantu.

“Evaangeli oyo nali wilike okukalamwenyo akuhe. Ehokololo otali pandula unene Oongeleki ndhoka dha kala nokukwatha aantu mboka momaudhigu nomoluhepo lwa wo.

“Ashihe otashi talelwa momukanka gwoo-hapu dhOmuwa: Ayihe mwe yi ningile gumwe gwaamboka aamwatate aashuushuka, ongame mwe yi ningile.”

Mat.25:34-42.

## Ehokololo momiyalu

Ehokololo olyu ulike omiyalu dhaamboka ya yakulwa omumvo 1982 muAngola ngaashi tadhi landula:

Mboka ya shashwa aanona oya li 500 naakuluntu 250.

Omahokano oga li po 200 omumvo ngoka. Aakolekwa 925 naamboka ya yakulwa mUulalelo Uuyapuki 1,098 momumvo ngoka.

## Shono sha ningwa muZambia

NomuZambia wo Aanamibia oya holola omwenyo gwawo gwopakriste.

Aanona yawo ya fa ya keshasho omumvo 1982 oye li 190, aakuluntu yi ishathitha 90 muZambia.

Okwa li wo mboka ya kolekwa 700, ya hokana 80 naamboka yi iyakulitha mUulalelo Uuyapuki oya li 800, ehokololo osho lya ti.

Omumbisofi okwa tsikile nomauvito ge omolwehokololo ndyoka nokwa ti:

“Ngame sho nda tala omiyalu nokulesha ehokololo, onda dhimbulula kutya, omiyalu dhaahokani ominene dhi vule dhomomagongalo omanene meni lyaELOK.

“Osho wo aashashwa naakolekwa oyendji ye vule momagongalo ogendji.

“Sho nda dhiladhila oluhepo lwaasita mokati kawo, ondu uvite Oongeleki dhetu odhi shi okudhiladhila po sha.

Kombinga onkwawo osha yela kutya omagalikano ngoka haga ningwa momalongelokalunga Osoondaha kehe, nomuuwike, Ka-

Tala kep. 12



# Paulinum a gwanitha omimvo 20.



Aayenda yoshituthi ya tegelela ethimbo lyetameko li thike mehale lyaPaulinum

Edhina lyayo Paulinum, lya za kuPaulus olya thigululwa kedhina lyosikola ndjoka manga ya li tayi putudha aalongi naayevangeliste yOngeleki ya ELOK, okuza 1866.

Osheendo shaantu 20, oyendji yomuyo aalongwa aakulu mOseminali ndjoka, oya zile mu Elok oku ka tyapula oshituthi.

Aatalinawa yamwe oya ti kutya oshituthi shOseminali ndjoka ya ningi ondondo yotangotango okulonda kompani yokwaadha uukumwe pokati kOngeleki oonkwa-Luther moshilongo shika shomatopauko gi-gwana, inashi pendutha ohokwe moyendji ngaashi sha li andola sha tegelelwa.

Yamwe ishewe oya tumbula kutya elongekidho lyoshituthi olya li enkundi ngaashi tashi monika moprograma yoshituthi.

Ihe nando ongeyi, aalongwa mboka ye li nangotango miipundi oya li ya kutha ethimbo ko-

Okuza 22-23.6.1983, opwa dhanwa oshituthi oshinene shegwanitho lyomimvo 20 dhEhangano lyOseminali yuusita yOngeleki mbali, Ongeleki onkwaevaangeli paLuther yomUushimba (ELK) nOngeleki onkwaevaangeli paLuther yomOwambokavango (ELOK), mOtjimbingwe.

Oseminali ndjoka yuukumwe oyeegululilwe pambelewa 16.6.1963 kaalongwa ya zile mOngeleki ndhoka mbali ye vule 20 pamwe naalongi yawo. Omusita Otto Milk, oye a ningi omukuluntusikola ndjoka gwotango.

Ku ELOK okwa zile aalongi, omusita Timoteus Shipanga, omusita Matias Ngipandulua nafeelani Rauha Voipio. Elaka lya longithwa ethimbo ndiyaka kaanegumbo lyaPaulinum Oshimbulu nOsheherero. Ngashingeyi omwa gwedhelwa Oshiingilisa.

nyala lyootundi ne (4) moondjimbo, noku shi mwenyeka omwenyo.

Pokati koondjimbo opwa li pwe egulukila aayenda ayehe yoshituthi kehe gumwe a tumbule shoka a hala. Noprograma ndjika oya ningwa ongulohi yeti 22, esiku lya tetekele lyoshituthi shoshene.

Omuwilikingeleki gwOngeleki onkwaLuther yAaluudhe mUushimba, omusamane Hendrik Fredrik, oye awike gwOmaawilikingeleki yomoshilongo shika a kala moshituthi shoka.

Yalwe oya tumu ashike omahaleloyambeko gawo, ngaashi Ehanganotumo lyaRhens muNdowishiland lyuuninginino nolyaSoomi. Kombinga yaElok amushanga omukuluntu gwOngeleki Absalom Hasheela, oye a gandjele ekundo peha lyaElok.

Otjimbingwe ehala pomunkulo gwomulonga gwaSwakopmund li li ookilometa konyala 40 kuumbugantuzilo waKaribib.

Mooha dhomulonga ngoka hagu tondoka omeya pethimbo lyomvula nokutilahi mefuta lyaSwakopo, omu na omi omile, moka tamu adhika wo omilunga nomisati dhOshiwambo.

Ehala ndyoka olya talelwa po lwotango komukwaniilwa gwAaherero pomimvo 1700, ngoka mokudhimbululz uuyamba walyo wo-

meya, okwa ti kutya "Omundu ma zingwa momutjima." (Omutima gwomuntu otagu mono ombili).

Koshitya "zingwa" okwa tungilwa oshitya "otjimbingwe", shoka hatu ithana ngashingeyi Otjimbingwe (pafatululo lya dr. H.Ve- dder).



Okangundu kamwe kaayenda yoshituthi pomweelo gwongeleki yaPaulinum konima yoshituthi sho sha hulu manga inaa ka lya iitelekela kokombitha.

Etokolo ku dhikwe ngeyi oseminali yuusita yOngeleki oonkwaLuther moshilongo shika, olya thikwa mulyo 1961. Niimaliwa yoku shi vulikitha oya monika koshiketha sheputudho lyopausita muumbugantu waAfrica (TEF) nokOngeleki yaReins mu Ndowishilanda.



Ootundi dhi vule ne (4) aalongwa oyi imbi mohungi ya tetekele esiku lyoshituthi sigo ya nyengwa okumana oprograma yawo, "oshoka odha nyengele nomuselekadhi"

Tala kep. 5

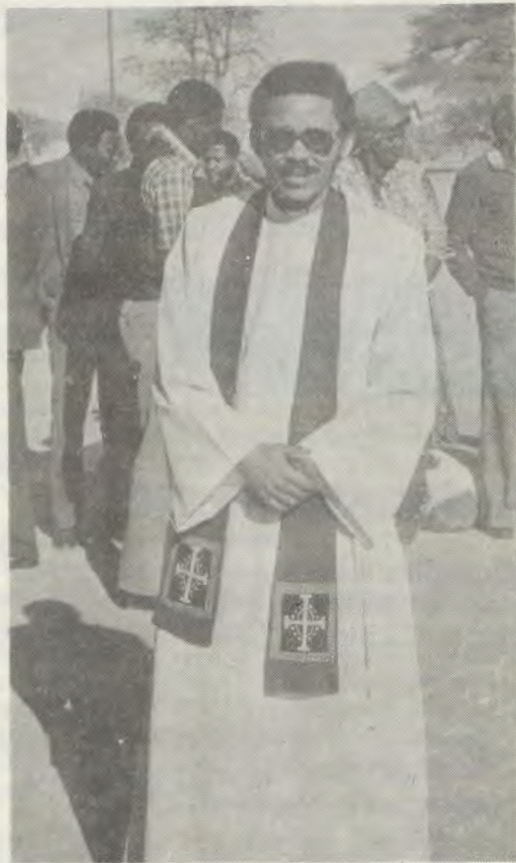


## Da dja kep. 4

Ehala ndyoka li na ngashingeyi aakalimo konyala 3,000 mboka taa hupu ashike moongombe niikombo olyo lya hogololwa mu dhikwe Osikola yuusita.

Opwa tumbulwa wo omatompelo goku li hogolola ngoka pamadhiladhilo gaalongwa ya-Paulinum yopethimbo ndika pamwe naalongi yawo, itaaga ti we sha kuyo.

“Ehala oli li puuwinayi. Aalongwa naalongi oya tetwa ko kuuyuni. Etembu lyosikola ndjika olya pumbiwa mbala nando shoka hasho eyamukulo ewanawa kuudhigu waakalimo ayehe mOtjimbingwe,” osho gumwe gwomaalongi dr. R. Umbach a tumbula mo-



**Omukuluntusikola gwongashingeyi Paulus Isaak, mesiku lyoshituthi konima yelongelokalunga.**

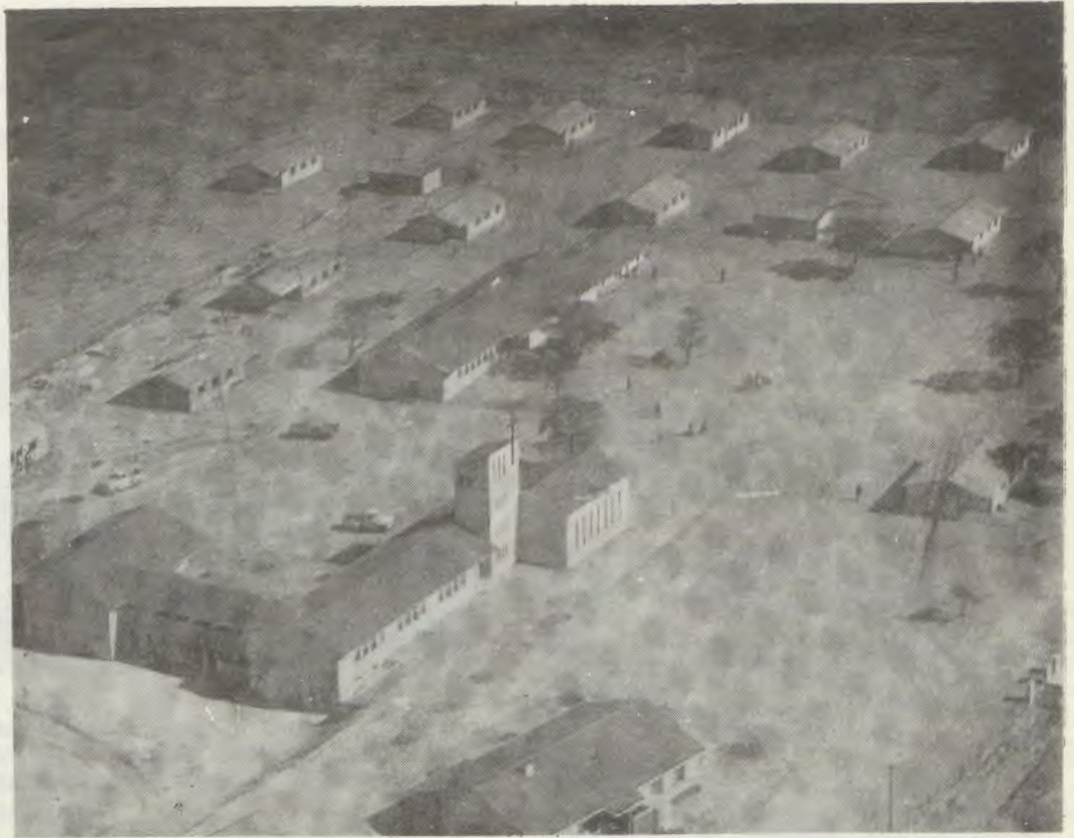
shituthi shoka kaayenda.

### Ehempululo lyaPaulinum

Pahokololo lyosikola ndyoka lya gandjwa komukuluntusikola Paul Isaak, moshituthi, oshiputudhilo shoka shaateologi muNamibia oshi na wo omukanka hoka sha tungila iilonga yasho.

Iitsa yimwe pafupi yomehempululo lyasho otayi landula mpaka:

1. “Otat u koleke kutya tse aakriste otwi ithanwa muuyuni mbuka pamwe naantu yaKalunga ayehe tu ninge iilongitho yombepo yaKalunga okuteta po iikeleli ayihe mbyoka tayi etwa po. Okupendutha eiuvo lyomuntu gwaKalunga opo a dhibulule oshinakugwanithwa she niilonga ye; nokuhiya ayehe opo yi itaale omauva-



Methano ndika egumbo alihe lyaPaulinum tali monika. Popepi kashona kombinga yokolumoho otaku monika Ongeleka yOsikola ndjoka ya kwatathana noongulu dhosikola. Pevilela egumbo lyomukuluntu gwsosikola pethimbo ndiyaka.

neko gaKalunga, ya mangeluke noya longegaamangululwa.

2. “Otat u kondjo tu ninge shono Jesus a ningi noku tu vulikithe tu shi ninge wo mOmbepo ye Ondjapuki paitaalo.
3. “Otat u kondjitha omadhiladhilo ga patz. nombepo yokwiikwatha mwene, ndjoka yi li maakuluntu nomuunona sho taa itungile ngeyi omakuma pokati kawo nokukuna omatopoko pokati kaantu yaKalunga pokati kOmuluudhe nOmuluudhe, pokati komukriste nomukriste, pokati kOmutili-

gane nOmutiligane, pokati kOmutiligane nOmuluudhe, pokati keitaalo neitaalo nokudhina uugumwe mboka tu u na muKalunga katatugumwe noku mu yuga ngeyi uyuyamba wuukumwe we, mOngeleki ye nomoshigwana.

4. Otatu iindilile tse yene, tu kale aainkelwa mokulandula Jesus mungoka awike omilema dhomethimbo lya piti tadhi lundulukile muuyeleele methimbo lvo-komeho.

**Tala kep. 9**



Ongundu yaalongwasita yotangotango ya zile mu ELK nomu ELOK naalongi yawo. Ethano olya thanekwa momumvo gwawo gwahugunina 1975. Pokatilela kaalongi mboka ye li omutumba omukuluntusikola ndjoka gwtangotango omusita O.Milk.



Omumvo tu li mugwo omumvo gwEtumo, moka aantu yotango Aawambo ya shashwa nomolwasho otwa hala ngaa okutya ko sha kugwo.

Etumo olyo omwenyo gwOngeleki nolyo omwenyo gwegongalo. Ongeleki negongalo ohayi holola omwenyo gwayo ngele otayi longo oshilongatumo.

Aantu mboka tu li iilyo mOngeleki notu li iilyo megongalo, otse Ongeleki. Otse wo egongalo.

Otatu pumbwa okulonga oshilongatumo twa mana mo ngele otu li iilyo yi na omwenyo. Otu shi shi kutya omuntu ngele okwa sa iha longo we sha, iha dhiladhila we sha, oshoka okwa sa.

Ihe omumuntu ngele oku na omwenyo ota vulu okulonga nokudhiladhila nokwiipula wo. Ondi na omukumo sho ndi shi kutya Ongeleki ya ELOK oyi na iilyo yi na omwenyo, onkee tandi ti Aaelok aaholike, otu na sha okutala notu na sha okwiipula.

Tu ipule kutya otwa zi peni? Otu li peni nena? Na otu li ngiini nena? Omolwashike tu li ngeyi nena?

Andola okwa li tashi vulika ku ithanwe gumwe gwomaasi yonale a galuke nando otatekulu Nangolo dhAmutenya, ondi shi shi kutya ota haluka, siku limwe a fadhuke po nokuli.

Ota tila kuuyelele wehumokomeho methimbo ndika. Oshoka okwa thigile omilema dhuupagani tadhii panga.

Omilema dha kandulwa po kuuyelele we etwa kEtumo lyEvaangeli. Uuyelele wEvaangeli nkene tuu wa shelele mOmandongo owa yelee Owambo ayihe sigo Okavango.

Mbela Aasoomi mbono ye tu etela Evaangeli sho ya li taa longo ya mana mo sigo Evaangeli lya thiki kutse kOwambo, oya li aayamba ye tu vule nena?

Ondi inekela kutya kaya li andola aayamba ye tu vule. Oya li ngaa ye na omaluhepo nomaudhigu ogendji. Shimwe ashike ya li ye na oya li ye na omwenyo ngashi ye gu na sigo onena mokulonga oshilongatumo.

Aaelok aaholike, otwa tegelelwa tu longwe sha opo aamwameme ye li momilema ya mone ko.

Ondu uvite wa fa wa hala okulonga oshilongatumo ihe owa fa wa nyengwa kutya oto ningi ngiini?

Wa fa u na iimaliwa? Wa fa u na iimuna? Wa fa u na oonguwo? Oho tungu oontungwa? Oho hongo iiyuma? Owa fa ho landitha. Wa fa u na oonkondo u na olutu lwa kola?

Ondi uvite u na ewi nandi tye ondi wete u na ayihe yo ayihe mbyono u yi na owe yi pewa omagano kuKalunga nokwa tegelela u yi longithe mokulonga oshilongatumo.

Nenge ano owa hala u kale u na shike opo u tameke? Ombimbeli otayi ti:

## Omupangi Mweendeleli ta ti sha koshilongatumo

“One mwa pewa omagano, gandjeni wo omagano.”

Iikandjolongwa yimwe oyi na iiketha ye yi totu, yo yene omolwoshilongatumo nandi tye ngaashi aanangeshefa, aapangi, aasita noshu tuu. Miiiketha mbino omu na tuu sha? Oho tula mo tuu ngashi petameko?

Oshiketha sheni sha fa shi na oongunga molwoye? Owa tegelela u mone iimaliwa yi thike peni opo u tule mo?

Ngele tse iilyo yongeleki tu na omwenyo otu na okutopola mokashona ketu hoka hatu mono, opo oshilongatumo shi longwe noshi taandele sige okooha dhuuyuni.

Te ti: Aatumwa yetu oya za ko kOseneagal molwaasho iimaliwa kayi po. Yo aapagani oko ye li ya sa ondjala noya sa enota lyoohapu dhaKalunga.

Otandi dhimbulukwa oohapu dha popilwe kOmulonga eti-6-1-83 gumwe gwomaapopi a tile:

“Elok owa hiywa u kuutumbe opo u tale ngele oto vulu.”

Okwa tsikile ta ti: “Elok kandi ku wete kutya ito vulu. Ondi inekela kutya oto vulu.”

Ano Elok oto vulu shili okuninga sha, opo aatumwa yetu ya shune kOseneagal.

Miinima yi ili noyi ili Eloka ota monika kutya okwa koka, ke shi wEkanona nOngeleki ya-Soomi oye shi dhimbulula, onke ya ti kutya Elok longa ngame nyoko ndi ku ambidhidhe.

Aasoomi oya pola onku yawo. Onku yi li ko oyetu. Kalunga okwa tegelela tu yi longwe tse tu yi pole. Oonkondo nuupenda ote tu pe.

Okulonga oshilongatumo oko okugwanitha oshipango shaJesus ngoka a ti:

“Indeni nuuyuni auhe ne mu ka uvithile aashitwa ayehe Evaangeli.”

Epya Senegal olya tiligana iilya ya hala okuteyelwa miigandhi yaKalunga, ihe aalongi kaye ko oya za ko. Tu galikaneni, tu gandjeni, opo Kalunga a tume aalongi meteyo lye palwe nokOseneagal.

Loide Mweendeleli

## OONKUNDANA DHOMUULE KONDUNGU YOPENA

KuJohn Shitundeni

### ELONGO MOSHITAMBI SHANEHALE

Aalongi yomOshitambi shaNehale oya ningile etokolo, ya kale haa gongala pamwe, lumwe momumvo kehe, opo ya kundathane iinima mbyoka tayi gumu elongo moshikandjo shoka oshitimugoyi shomiikandjo 11 yomoshikondo shelongo mOwambo.

Ompumbwe ndjono ya fala sigo ometokolo ndika, oya li ya hololwa moonkundathana

dhaalongi yomoshikandjo tuu shoka pehulilo lyoshigongi shawo, sha li mOnayena muMai numvo.

Tala kep. 7



Mefano otamu monika yamwe yomaalongi taa pulakene neitulomo, iipopiwa mbyoka ya li tayi gumu iilonga yawo pamukalo nguka nenge ngwiyaka.



## Dha za kep. 6

Omutaleli gwoshikandjo sha tumbulwa, omusamane Leonard Hamunyela, oye a lombwele omutoolinkundana gwOmukwetu kutya oshigongi shiyaka sha ningwa lwotango nuumvo, oya tokola shi kale hashi kala ko omumvo kehe.

Shika okwe shi popi sho mbaka yaali ya li ya kundathana pethimbo lyoshigongi uule wominute ndatu adhike.

### Ehokololo lyopashikandjo

Omutalelishikandjo Hamunyela sho a li ta leshele aalongi yoshikandjo she ehokololo lyoshikandjo, okwe ya tsu omukumo yaaha ethe okuninga omatsali poosikola, oshoka aniwa moshikandjo she omu na natango ompumbwe yomala 85 ngoka a ti kutya itaga ka monika mbala.

Mokuuva oshinima shika shomatsali, onda dhimbulukwa omatsali ngoka handi mono olwindji taga nyengana okuyalula, ge li poosikola odhindji miikandjo yilwe.

### Omatungo moshikandjo

Omusamane Hamunyela okwa holola kutya oshinima shomatungo moshikandjo she, omumvo gwa zi ko inashi enda naanaa nawa. Mokutumbula ngeyi, oku ulike komala gane ageke ga tungwa omumvo gwa zi ko, posikola yopEmanya. Sho a li ta popi omuhandjo gwoseko yaNehale, okwa tengeneke kutya ngiika otagu ka longithwa metatamumvo etiyali momumvo tagu ya, 1984.

### Omatalelopo goosikola

Omutaleli nguka, ngaashi aataleli yamwe wo haa popi, okwa ti kutya oshilonga she shokutalela, osha ende nuunkundi, omlwonkalo yongashingeyi. Okwa tsikile ta ti kutya sigo opethimbo ndyoka a li ta popi, okwa li owala a talele po oosikola 15 dhomoosikola 65, ndhoka dhi li moshikandjo shika oshitimugoyi ngashingeyi.

Pompito ndjika omusamane Hamunyela okwa kumike aalongi yomOshitambi, ya longi iilonga yawo neitulomo, ya talelwa po komutalelishikandjo, nenge inaa talelwa po. Okwe ya indile wo opo aniwa ye mu pyakidhike nomapulo miinima mbyoka tayi ya nyenge, ngele opu na.

Oosikola dhomoshikandjo shika odha ningi 65, molwaashoka aniwa opwa totwa oosikola oompe ngaashi tadhi landula: Awala, Ombalagelo, Ombundu, Onakatumba na Shikanyandi. Omutalelishikandjo Hamunyela, ota ti kutya oosikola oompe natango odha pumbiwa moshikandjo shika, Okwa ulike wo kosikola yaShifitu, ndjoka inayi eguluka natango, aniwa omolwompumbwe yomulongi.

Moshikandjo ashihe sigo oompaka, otaku tiwa omu na oositanda 5 dhi li 19.

### Omiyalu dhaalongwa yomoshikandjo

Omusamane Hamunyela mokutsikila nehokololo lye, okwa ti kutya oshikandjo shiyaka oshitimugoyi, osho oshinene shi vule iikandjo iikwawo, molwashoka aniwa oshi na aanona oyendji.

## ELONGO MOSHITAMBI SHANEHALE



**Omusamane Leonard Hamunyela ta popitha aalongi yomoshikandjo she moshigongi shawo shoka sha li sha gongalele mongeleka yaNayena.**

Okwa ti kutya, omwaalu gwaalongwa moosikola dhooprima, ano oosikola dhopevi, ogwi indjipala naalongwa 2252 noya ningi 17954.

“Eindjipalo ndika olya faathana mokuyeleka nolyomumvogu 2000. Moshito omwaalu gwaalongwa yetu mositanda 5, ohagu londo naalongwa 100, ihe nuumvo ogwa londo owala naanona 34. Aanona mositanda 5, oye li owala 975, okuyeleanitha noyamumvogu 941.

“Omwaalu 975 ogu vule gwaanona mositanda 4 nuunona 86. Shika otashi ulike kutya, oonakundopela moshitanda 5, oyendji natango.

Otashi holola wo kutya, aanona oyendji oye li mositanda 5, ihe kaye li pamuthika gwayo mokwiilonga. Mositanda 6 sigo 8 omu na aagundjuka 767, mokuyeleanitha nomwaalu gwamumvogu 564. Aanona 102 yomaanona 767, otaa ka nyola ekonakono lyositanda 8 nuumvo; omumvogu oya li 131,” osho omutaleli Hamunyela a fatulula pakugandja omiyalu; okwa pandula wo Kalunga sho a pe oshigwana uuyamba waanona.

### Omapito gomumvo 1982

Mokundjandjukununa omapito gomumvo gwa zi ko, omusamane Hamunyela okwa ti kutya ositanda 5, oya pitile tashi nyanyudha, oshoka oopresenda 57 odho dha li dha piti. Ihe okwa tsikile nokuholola oluhodhi lwe, sho aalongwa yositanda 8 ya pitile nuunkundi omumvo gwa zi ko.

Shika okwe shi popi niitya ye mwene ta ti: “Natango noluhodhi olunene, otandi holola kutya aalongwa yetu mositanda 8, inaye shi fulula ko nawa. Maalongwa 131, omwa piti owala aalongwa 47, elondo lyoopresenda 5,1. Itashi nyanyudha natango. Otwa hala

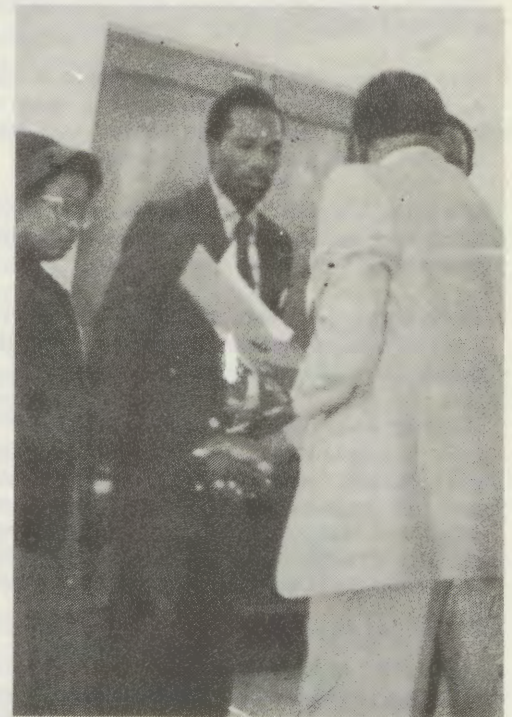
oopresenda 50 nenge dhi vule po dhi kale dha pita.

“Oyendji yomaandopi oya ndopa: omatematika, ano omwaalu, ehistolli nOshiingilisa; kandi na etompelo lya yela kutya omolwashike aanona taa ndopa...” Moshikandjo shika, Hamunyela a ti, ngashingeyi omu na aalongi 375. tashi ti aanona 46,1 komulongi gumwe.

### Omaunkundi ga ndhindhilikwa

Pehulilo lyoshipopipiwa she, omutaleli nguka okwa ulike kiinima yimwe mbyoka ya ndhindhilikwa mokati kaayakuli mbaka yoshigunda shOmuwa; shitiwa, oshipalanyolo shoshigongi shiyaka osha li: Kaleni aasita yoshigunda.

Iinima mbyoka yu ulikwa komusamane Hamunyela oyo nee ngaashi: Okwaaitula miilonga kwamumvo namumvo, okugwayeka aanona omahoka komilungu, omalovu ga pittilila, okwaana uukumwe miilonga nokwaanongela sha miilonga.



**Mefano ndika, otamu monika omutalelishikandjo, Gerson Shipuata, ta minike iilyo yimwe yewilikongundu lya OTA, epe lya hogololwa pethimbo lyoshigongi.**



# Omunangeshefa ta popitha aalandithi naalandi

Omasiku ga zi ko, OMUKWETU okwa taamba oshinyolwa tashi landula, tashi popi ekwatathano pokati komulandithi nomulandi.

Omuniyoli gwasho oye omunangeshefa gwombeka yoomboloto mOshakati, meme Hilenny Elago. Lesha u pulakene nkene omunangeshefa nguka ta siikulula omaunkundi gamwe po gaalandithi nogaalandi.

Otandi ka popya pafupilela kombinga yekwatathano pokati komulandithi nomulandi, ndyoka tali uvikwa ko kumbaka yaali, uuna ayehe yu uvite ko kutya:

a) Ongeshefa oya thikama po omolwomuwiliki, omusilishimpwiya nomutonateli gwayo: omulandithi.

Olutiyali, ongeshefa oya thikama po omolwomuyambidhidhi gwayo, omuhona gwayo: omulandi.

Olwindji ohapu holoka oompito, uuna omulandithi nomulandi taa patathana. Kehe gumwe okwa tala kutya ombinga ye yokukaleka po ongeshefa oyo onene noya simana yi vule yamukwawo, nonando oombinga adhihe mbali odhi thike pamwe notadhi udhithathana shi thike pamwe.

Ano omulandithi onkatu ye unene oyo ngaa ndjono yomuyakuli nomulongeli gwomulandi. Niitya yimwe, omulandithi oye omukalelipoyakuli gwomulandi mongeshefa.

Ota pumbwa nee okulonga nokulanditha nohole, neifupipiko, noneidhidhimiko nondjunga noneidhidhimiko enene.

Ihe shino hasho tashi monika olwindji mongeshefa, omolwomaunkundi gopakwiuhumbata kwomulandithi nokwomulandi.

Olwindji aalandithi ohaa pewa omapukululo gopauteku, nkene ye na okwiuhumbata miilongayakulo yawo, okusimaneka aalandi, paku ya endelesa po, pakupopya nayo nombili noneifupipiko nonkene ye na okunya nyudha aalandi noku ya uvitha kutya otaa landa mongeshefa yawo ndjoka yi li po, yi ya yakule.

Aalandithi ohaa gandwa wo, ngele ya taaguluka elandulathano nekwatathano lyopantu ewanawa. Ihe tu shi tseyeni kutya omapukululo ngoka aalandi taa pewa, otaye ga taamba noku ga dhiginina ngele omukanka gwokegumbo ogwa kala wo gwa kola.

Omuntu ngoka a tekulwa nawa megumbo lyaandjawa nokwa kala ha dhiginine ompango dhaavali ye, oye wo ta vulu okudhiginina omikalo omiwanawa muulandithi.

Oyendji mboka ya thigi po omagumbo gavalu yawo nelalakano lyokwiimonena emanguluko koompango dhaavali yawo, oyo tuu mboka wo taa yemateke aalandi meyakulo lyawo noyo wo itaa vulu iilonga.

Omapukululo itaga ti sha kuyo, oshoka otaa ti: "Nokegumbo ihandi shi tiwa, nenge: "Natate nameme mba ya vala ndje, ihaa pangele ndje." Mbaka oyo taa taa eta omatukano mongeshefa, otaa yamukula nayi aalandi, itaye ya endelesa po, itaye ya popitha nokuli. Kaalandi oya hala ko owala iimaliwa, ihe otaye yi taamba ko wo nomilungu dha pungululwa, itaa simaneke uuntu (human dignity) womulandi.

Osha fa sha konekiwa olwindji kutya omukuluntuwiliki mongeshefa, ngele okwa zi po, nena omulandithi oti iningi omuhona omunene, oshoka omathimbo gamwe aalandi yamwe otaa lombwele aakuluntuwiliki yongeshefa taa ti: "Oko nda li kongeshefa yoye, nda hala okulanda, ihe aantu yoye mbe ya inaa pukulula ndje." Yamwe otaa ti: "Omukuluntuwiliki gwongeshefa X oku li nawa nongele e li po onawa, ihe ngele ke po, ino mana po ethimbo lyoye, (u ye ko), oshoka mba haa landitha mo aakumithi."

Aakuluntuwiliki nayo wo oya koneka uudhigu mbuka noye shi wo okweetelwa ohenda nokugalikanenwa. Ihe itaa vulu okukala yaa na aalandithi mbaka nonando aawinayi, oshoka iilonga oyi na okulongwa.

Ano otaa ningi ngaa ne "Ambata e vule Awala. "Aalandithi ya tya ngaaka katu vulu oku ya ekelahi, oshoka nayo aakwashigwana shetu naamwameme. "Shilema shoye kashi dhipagwa, yakweni nayo oye na yawo."

Omakumagidho nomapukululo naga tsikile sigo elunduluko ewanawa tali holoka. Ihe inatu tegelela omuntu a ninge omwanawa nomunamikalo mesiku limwe alike. Otashi kutha ethimbo lyomimvo opo omuntu a lunduluke monkalo ye onkulu moka a kela mo sigo ta gwanitha omimvo 20-22, pethimbo ndyoka oyendji taa kongo iilonga yuulandithi.

Aavali ngele ya nyengwa, aagandji yiilonga nayo wo itaa vulikitha aantu mbaka nuupu. Otashi dhimbululwa olwindji nkene aakuluntuwiliki yongeshefa taa gandja omapukululo kaalandithi, taa ganda notaa kumagidha. Aanelago aashona, mboka haa taamba omapukululokun agidho ngoka, ihe yamwe otaa kolonda ow: ia.

Sho nda popi ngeyi omaunkundi gaalandithi, inandi ekelahi oompito nomathimbo gopantshitwe, uuna omuntu ha kala uvite nayi. Ano ngele a adhiha ngeyi komulandi ndele ine mu nyanyukilwa, itashi ti osho e li aluhe, omuntu iha ye ngaashi eyi.

Otashi vulika pamwe oku na omupambebe gwe e li moshipangelo te ehama nenge pamwe a silwa ye ina mona manga ompito yokumanguluka miilonga nenge a taamba onkundana ombwinayi nenge ti ipula nomaudhigu gethimbo ndino nenge a limbililwa oshinima shontumba meitaalo lye.

Aalandithi otaye ya kiilonga niinima yawo ayihe iidhigu niipu, yopalutu noyopambepo. Otaa pumbwa ashike okupukululwa neidhidhimiko.

Mokuulika omaunkundi gaalandithi, itashi ti aalandi yo kaye na wo omaunkundi gawo. Ngele otwa ziminathaneni kutya iilonga yomulandi nomulandithi, oya humbatathana notayi udhithathana, natu zimineni wo kutya

omaunkundi gaalandithi itaga nkundipaleke aalandi, nuunkundi waalandi otawo nkundipaleke iilonga yomulandithi.

Natu tumbule pafupi ngeyi: Omulandi ota adha omulandithi e li miilonga ye okwa zile komukunda gwawo nenge pamwe ekula lye. Omulandithi nguka okwa hala ihe yu uhale taa kutulathana shokomukunda, manga aalandi yalwe itaa yakulwa yo taa nyenyeta.

Gumwe ote ya a hala aalandithi ye mu landele mo, yo inaye ya yi ilongekidha oku mu landela mo. Opo ihe ota tameke okutya aalandithi mboka kaye li nawa nenge te ya etele nokuli oombata manga aalandi yalwe ye li momukweyo omule.

Tala kep. 11

## Omukundaneki Halweendo

OMULESHI TA PULA KOMBINGA YOUSHIINDA TAU SHONGOLA

Onda haa nokuhalelela, opo ovashangi vOMUKWETU mu nyamukule nge nombili yaKalunga, ngenge tashi dulika. Onda lesa moshifo shOmukwetu shaMaalitsa 30, 1983, tashi popi omukalo mwii wovashiinda tave litalele kombada yeenyala.

Paife ngeenge omushiinda okwa nangala nomukulukadi wange ile ame nda nangala nowaye, ohatu kala ngahelipi tu na ombili nohatu udafana ngahelipi naye?

Natu tye vali pamwe omushiinda okwa dipaa mumwameme ile a vaka po oinima yange, ohatu kala ngahelipi tu na ombili naye?

Kombinga imwe, omushiinda ngeenge oshinima ote shi ningile odino nandi kale naye nombili ilipipo?

### Eyamukulo

Pokati koye nomushiinda shoye, ngeenge ope na oshinima shoshili, notashi mu imbi mu kale nombili, onawa mu shi kundafane pouyelele sha yela.

Inaku tiwa kutya, okukala nombili nomushiinda, okuholeka osho shii nda ningilwa kuye, ile osho ame nde mu ningila. Hano oinima yoshili, ohai popiwa pouyelele; moihokolola yoshilongo ile molupale leongalo.

Onghone nolungwenye lwomomwenyo, itai kwafa sha, otai ku ehameke ashike notai ehameke yo vakweni vamwe.

Ngeenge omwa popi nomushiinda shoye nomwa twa kumwe kutya otamu hangana, nena oshinima osha pwa ngaho; ino pumbwa vali okukala noinima ikulu momutima, mu dimina po ashishe.

Kombinga yomushiinda shoye ta nangala nomukulukadi woye, kashi fi ashike odino yamushiinda shoye oye e ku dina. Ndele oshininenima osheshi kutya: omukulukadi woye ine ku fimaneka. Pokati keni opu na sha sha pumbwa okuwapalekwa tete.



# OSHIGONGI SHAASITA YA ELOK MONGWEDIVA

Aasitagongalo 105 muELOK oya kala omasiku gatano mOngwediva okuza 26.6.-1.7. 1983. Shika osha li oshigongi shokomumvo mewiliko lyomumbisofi dr. K. Dumeni.

Omusita Matti I. Amadhila okwa li wo a hokolwa a ninge omupehawiliki gwoshigongi.

Moshigongi shika okwa kundathanwa oshindji shoka sha li nelalakano lyokutunga aasita pambepo nokulongekidhila wo Oshigongi shomumvo 1984 iikundathanwa pamauthompango.

Aasita ye li moshipundi shevululuko yatano nayo oya kala ethimbo alihe moshigongi shika.

“Otwe ya mpaka tu kwathathane tse tu hungathaneni,” osho omumbisofi Dumeni a kumagidha aaleli yomagongalo 71 gaELOK, petamekolela lyoshigongi.

Etopolo lyOngeleki miikandjo itatu yopambisofi osha kolekwa natango moshigongi shika shi tsikile nelongekidho lyasho. Oshilonga shetumo pondje nomeni lyayo, nasho osha kundathanwa ethimbo ele moshigongi.

Aasita ayehe otaa popile Ongeleki yi longe oshilongatomo. Omukalo gwoku shi ninga ogwo aguke inaagu ziminwa kwaayehe.

Aanashilonga mbaka naahungimwenyo oya kundathana wo neitulomo enene ehungomwenyo lyiilyo oyindjiyindji yOngeleki ndjika mbyoka ya tembukile mUushimba.

Omathaneko ngoka ga etwa po otagi indile pu ningwe osheendo shaasita tashi talele po omahala gi ili nogi ili mwiya nokupopitha iilyo mbyoka.

Opwa thanekwa wo omuyevangeliste gwOngeleki, a tunge elandulathano ele omolwoshitopolwa shoka. Omathaneko ngoka otaga yi kElongeleki ga mone ekoleko.

Oshigongi osha hulithwa netopo lo lyUulalelo Uuyapuki.

*Sebulon Ekandjo*

## Oukadona ve likongele ovamati?

Modula 1981, otwa ile koshoongalele shovanyasha kEngela oko kwa tilwe:

Ngeke ope na okakadona ka mona omumati ke mu panda, oshiwa ngenge taka i ko kuye ke mu konge po.

Epulo lange oli li opo kutya, oukadona woovene eshi ove shi panda ngaho? Oshike naanaa sha enda po, opo oukadona u likongele ovamati?

*Gabriel Kandjambanga  
Grootfontein*

# Eshi Paulinum ta ningile Eengeleki muNamibia

Okudja 16-6-1963 Eengeleki eenghwaLuther dOvalaule muNamibia ELK na ELOK), oda tula Oseminali youfita kumwe oyo ya dikwa mOtjimbingwe.

Ofikola youfita mu ELOK oya kala peenhele dihapu ngaashi Oniipa, Onayena naElim opo ya dja i ye kuPaulinum 1963.

Ofikola youfita mu ELK oya kala muKari-bib. Ovafita votete mu ELOK ova yapulilwa oshilonga shoufitaongalo 1925.

Manga ovafitaongalo votete mu ELK va yapulilwe 1949 konima yomalipulo mahapu eedula dihapu ngenge Omulaule ota dula tuu okunangekwa moshilonga shi fike opo.

Omukulunhufikola oyo paife omushamane Paul Isaak, ina pa nge enyamukulo kutya ovafita va pita mosiminali oyo eshi ya hangana ove fike peni.

Ashike osha yela kutya okudja 1965 ovayapulwa votete moseminali youkumwe eshi va yapulwa, okwa ka shikula vahapu momudo omutivali keshe.

Omufinda wehongo lovafita moumbuwanhu aushe waAfrika oo tau longifwa yo nomofikola ei. Ovalihongi vostanda VIII fiyo opombada ovo unene ve na omhito yokutambuli-lwa mo.

Ohaku tambulwa yo novahongifikola ovo ve na owino moshilonga.

Ovo ve na oStd. 9 fiyo opombada, ohava kwatakanifwa yo nOfikola yokombada ya SA. opo ve li honge onghatu B. A. mouteologi paenhumwafo.

Okudja eshi kwa dikwa oukumwe wofikola ei, ovafitaongalo momaongalo ova kala yo hava ifanenwa ko okukala meekersesa delixumifokomesho.

Ovaevangeliste yo navo osho va kala tava ningilwa, unene vOngeleki ya ELK, omolwoupu wavo welaka lOshimbulu.

Ovakulukadi vovahongwafita navo ova mona omapukululo mahapu mofikola ei.

Paulinum okwa pitifa yo ovateologi ovainhu, vamwe nokuli va yapulilwa moufitaongalo mOngeleki ya ELK.

Paulinum okwa yandja efano liwa momesho ovadiladili moshinima shOukumwe wEengeleki eenghwaLuther moshilongo eshi nometifikameno lado, nande ondjila oile natango i na okweendwa fimbo inashi yelela omunhu keshe.

*Sebulon Ekandjo*

We tu tekulila oilonga  
we tu putudila elongo  
Paife otwa huma komesho  
Moilonga nomehongo



Ongeleki ndjika yaTjimbingwe, oya tungilwe 1865 kuEdward Halbich mewiliko lyomuhongi Hugo Hahn, hekulu yaShongola. Miita yaakwashigwana pethimbo ndiyaka oya longithwa epopilongulu.

Nopethimbo ndika, nando tayi longithwa natango kaakwashigwana, oyu uthwa kepangelo yi kale edhimbulukwo (Museum) lyomatungo omakulu.

## OTWA TSEYA TUU OMAFUPIPIKO NGAKA

Sho twa li twa gandja omapulo gomafupipiko ga pewe omayamukulo, otwa ya mukulwa kuyahamano. (Tala Omukwetu No.9/1983 ep. 3.)

Ayehe mboka ya li methigathano, kakele kagumwe, oya li ye shi enditha nawa. Mbaka oyo:

Tuovi K. Hasheela, O. T. Mupewa, Julius Shigwedha, Mahevo Amkongo naSimon Shikongo.

Amuhe otamu pandulilwa eindungiko lyeni molupe nduka. Omayamukulo ogo ngaka:

ELOK — Ongeleki onkwaevangeli paLuther yomwambokavango.

ELK — Ongeleki onkwaevangeli paLuther yomUushimba yaAvalelwamo.

CCN — Oraata yOongeleki muNamibia.

LWF — Ongongahangano yaAakwaluther muuyuni.

WCC — Oraata yOongeleki muuyuni.

ETS — Ehangano tumo lyaSoomi (mOshiwambo)

VELKSWA — Ehangano lyOongeleki onkwaevangeli paLuther muSuidwes-Afrika.

FELKSA — Ehangano lyOongeleki onkwaevangeli paLuther muumbugantu waAfrika.



# Ovafita vavali mu ELOC va aluka neenghatu melihongo

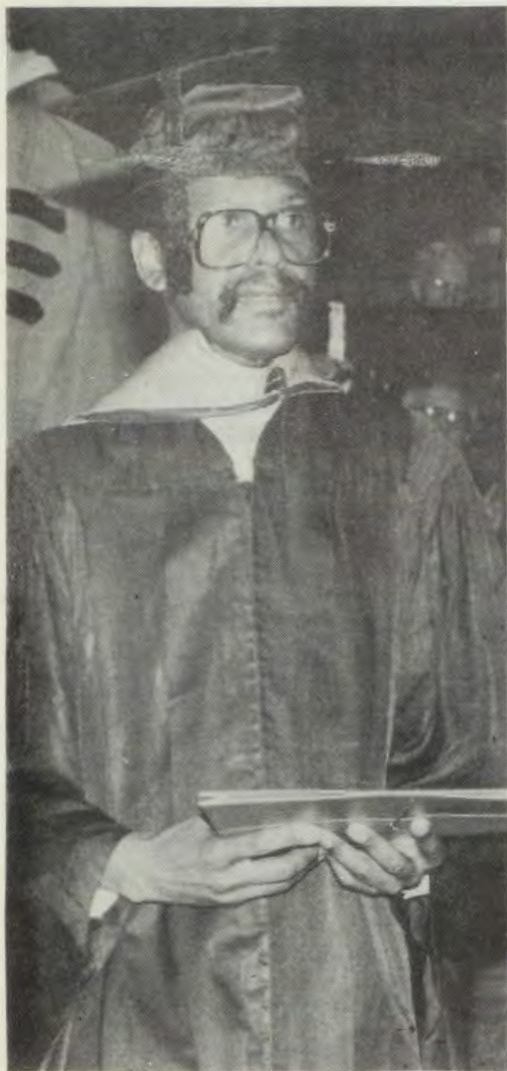
Ovalihongi vouteologi omufita Alfeus Sikwaya nomufita Elia Nghikembwa, ova aluka kelihongo lavo kuAmerika metatamudo eli.

Omulongi wofikola youfita kuPaulinum, omushamane E. Nghikembwa okwa kala omudo umwe mOseminali yaChrist Semine, America omo a konakona outeologi nokwa pewa onghatu yo Master of Sacred Theology (STM).

Onghatu ei okwe i pewa pashivilo eti-21-5-1983. Panghatu ei, Nghikembwa okwa valulilwa paife mongudu yovaprofesoli muEuropa.

Oshikumwifa shikwao melihongo lomulumenhu ou, onghatu oyo hai monika moule weedula nengege odinini nhano, okwe i mona modula imwe aike nokwa xupifa oitwa imwe natango tai valulilwa konghatu youndohotola nengege ona ka twikila natango.

“Osha li shi kumwifa nokuame, nonde shi pandulila Kalunga,” osho Nghikembwa a hokololela Omukwetu, ye te limemesha kehafo.



Omusita E. Nghikembwa esiku lye lyokutamba ograate muAmerika. Nghikembwa okwa ka tsikila nokulonga ateologi yetu kuPaulinum.

Sikwaya yo okwa kala eedula mbali mOseminali yaLuth. Northwestern, St. Paul, Minnesota, muAmerika. Mekonakono laye loshilongwa shOuleliumbo, Okwa hanga onghatu Master of Divinity (M. Div.)

Oye yo okwa longa oshilumenhulela eshi a xupifa eedula mbali omo kwa li e na okumona onghatu ei.

Omumati natango weedula 26, Sikwaya, inapu shiivika manga kutya ota nangekwa peni. Ndele omushamane Nghikembwa okwa hombola noku na onunona 9, ota twikile okuhonga ovateologi kuPaulinum.

## Ehangano lyaalongi mOwambo otali ka katuka onkatu, opo li koke

Oshigongi sha OTA = Owambo Teachers Association, sha gongalele mosekundosikola yaShakati petameko lyomwedhi nguka, osha tokolele kondjambi yomulongi kehe ku kale haku kuthwa oranda omwedhi kehe.

Oshigongi inashi popya kutya etokolo ndika otali ka tulwa miilonga uunake, ashike mokutala omake gaalongi ogendjigendji ga yeluthwa mombanda, sho taa koleke etokolo ndika, omuntu oto mono kutya yo itaa dhana, ihe oya hala okuninga po sha shi wetike

Elalakano lyokukutha iimaliwa koondjambi dhaalongi pamukalo nguka, aniwa okukokitha ehanganondika tali lalakanene okugamena omauthemba gaalongi, paimaliwa, ano mbyoka ya pumbiwa mokwiilongitha aantu ya pyokoka miilongwa yontumba ngaashi omwaalu, mokutungitha ombelwa ya OTA nomokutotifa po oshifonghundana sha OTA.

Moshigongi shiyaka omwa li mwa kalwa kaalongi oyendji ya za koombinga noombinga dhOwambo; omwa li wo ookuume kehangano mbono ya li ya pitikilwa mo pakotampango lya OTA.

Shitiwa, yamwe yomaakwashigongi oya li ya popi yu ukilila kutya ekotampango lya OTA ngashingeyi oya 'kulupa' onkene oli na okutalwa natango, opo mu lundululwe iinima yimwe.

Sho nda kundathana oshinima shika naalongi yamwe, onda lombwelwa kutya edhina lyehanganondika onawa li lundululwe, oshoka oli li pavigumbo.

## Omulumentu oku na oshilonga shashike moshigwana?

Epulo ndika olya kundathanwa megongalo lyaMpundja mUukwambi nomo lya kongelwa omayamukulo ngaashi taga landula:

Omulumentu oye omutse gwoshigwana, omupangeli, omutungu, omugongeli nomugameni.

Oye oku li po okuhumitha komeho Ongeleki

niilonga ye. Oye oshilyo shOngeleki, omutonateli nomuwiliki gwopambepo, nomoshigwana she.

## Sha mena osha za ketindi, komunona odha tsa

Osha tseyika nawa kutya okanona ohaki ilongo oshindji meni lyoomvula ntano sigo heyali dhopetameko okuza kokuvalwa kwako.

Pethimbo ndika okanona ohaki ilongo komukalo gokuhololela aakuluntu yako. Ohaka holele iilonga, okupopya nomikalo dhaakuluntu yako, oshoka sha mena osha za ketindi.

Konakona u tale aamwoye ngoye u tale shoka we ya nwetha mo pailonga, pahapu nopa-mikalo. Owe ya nwetha mo tuu ngaashi Kalunga a hala? Nongele hasho ongunga oyalye?

[a] Gandja iiholelwa iiwanawa kokamwoye.

Okanona okashona ihaka yoolola uuwanawa nuuwinayi. Komuvali ta kolwa okanona ke otaki ilongo ko uukolwe. Mboka haya tukana, ye na oluhoko osho tuu.

Aavali ningeni aaidhiliki yuuwinayi kehe. Holeni aantu ayehe ne mu hole Kalunga, one notamu gwanitha ehala lyajesus nelongo lye.

Moku mu holela oluvalo lweni otalu ningi wo olugwanithi lwompango. Nane wo amuhe otamu ningi aathigululi yomwenyo gwaa-luhe.

(b) Longa okanona koye okudhiladhila nawa mokukala ke na omatompele momatokolo gako.

Osho oshinakugwanithwa shomukuluntu okulonga omunona iilonga. Mokolonga omumwoye mu kwatha wo okudhiladhila nokukala e na omatompele mokuninga omatokolo.

Iiholelwa; He ngoka a hala a ka tyaye nomwana omvula ngele ya sheka ota vulu okulombwela omwana ngeyi:

“Otwa pumbwa iikuni poshinyanga mpaka” (edhiladhilo). Tu ye tu ka tyaye (etokolo). Nena otatu tyaya iikuni yomuhongo (etokolo), oshoka oyo hayi hwama mbala (etompele).

Yina ngoka ta lombwele okamwanakadhona ya telekele omumati gwaandjawa ota vulu okutya:

Mumwanyoko oku uhala nondjala (edhiladhilo). Tu mu telekele (etokolo), oshoka oku uvite ondjala (etompele).

Ino tidha po omunona te ku popitha, oshoka pompito ndjika opo ta mono iiyimati yelongo lyoye muye, ngoye to mono wo mpo a pumbwa epukululo nekumagidho.

Kumagidha omumwoye okuganda omadhiladhilo niilonga iiwinayi mu pa wo omato-



# OKANGHELO OKA XUPA MEDIKO LOBOMA

## XE YAKO NOVAMWAINA VANE

### NOVATEKULWA VATATU, OVA FILA MO

#### ----- OILONGA 'YAWALYE'



Efano eli otali ulike oshipana yovalumenhu, tai kongo onduge ngene i na okupangulula mo oindjina yofoota ei yofoo-wila. Konima yeetundi dimwedimwe ove ke shi pondola, ndele tave i tulike metuwa, opo i ka longifwe natango.

Oshiponga osha ningwa ongula yOsoondaha yeti-3 laJuli 1983, mongalama ei ya enda pOnandjokwe ya finda moushilo, konyala ashike eekilometa nhatu okudja opo pwa ningilwa oshiponga okuya momukunda Eenhana omo mu na eumbo lanakufya Filippus Kautondokwa.

Omidimba adishe nanonahatu (8) oda pakwa momaendo eongalo IEenhana. Manga omunhu to endaenda nomaendo aa, oto ulu-

## UUNANGESHEFA

### Dha za kep. 8

Omulandi gumwe ote ya e na omayeme ge a zi nago kegumbo nota tegelele ando a mone ombili tayi mu zilile maalandithi, ihe kaye na ontseyo ndjoka. Gumwe ote ya ta kudhile ta kongo aalandi moombepo, opo aalandi ye mu gande, ye a kolokoshe nduno.

Gumwe ote ya mongeshefa ta kongo sha andola, ihe ngele aalandithi ye ya kuye, e taye mu pula: "Nandi ku kwathe tate/meme, ota yamukula: "Ine pumbwa ekwatho lyoye" nenge: "Owa uva nda hala okukwathwa?"

Omulandithi komukalo nguno ota yemata komwenyo nota kala nuumbanda okuya a ka pule aalandi yalwe opo e ya yakule andola.

Olundji nopendji, eyamukulo iyomulandithi, olya thikama kepulo iyomulandi nomombepo moka tali pulwa. Aalandi oyendji otaa yemateke wo aalandithi sho taa kwatakwata nokugumaguma iilandomwa nuuna itaa landa.

Ando ya pule ekwatho kaalandithi nombepo ombwanawa yo naalandithi ye ya kwathe noku ya yakula nombepo ombwanawa.

kilwa eembila doongadi noonhumba vomeongalo olo, va fila moiponga yeeboma.

Nakufya Kautondokwa okwa kala efimbo lile moilonga yokushinga ehauto olo hali humbata ovanaudu okudja kEenhana noku va twala kOnandjokwe, ashike moilonga ei okwa lundululilwe mo oudwaali ndele ta nangekwa moilonga yokupashukila oshipangelo shEenhana oilonga ei youpashukili woshipangelo oyo a hangwa ha longo.

Okudja pehovelu lodula ei, oshipangelo shEenhana osha kala hashi shingilwa komushamane Victor Nghihamba. Emangululo lomufi Filippus moilonga yokushinga, okwe li pelwe konima eshi a li a xupa moshiponga shoboma, oyo a lyatele nehauto loshipangelo omudo wa dja ko. Moshiponga shinya, omwa li mwa fila ovanhu ve dule vavali.

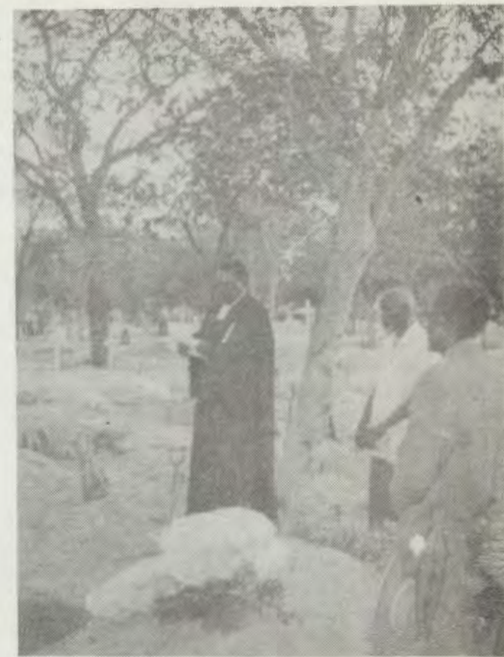
Moshikando eshi, vati omushamane nakufya okwa hangwa ta findikile ounona vaye 'koshitaashi' yoihauto oyo ya finda kOushimba, opo va ye kefudo kOushimba. Oonakufya vamwe twa tumbula, vati ova hangwa tava ka talela po ovanaudu kOnandjokwe.

Nakufya Filippus okwa li e na eedula 46. Okwa fiya ko omukukadi waye nokanghelo kavu oko ka xupifwa meenghono doboma, odo da li nokuli de shi pondola okukupulashi kokule oitenda yondjudo i dule yokaana kenya, konyala oshinano shomudingonoko weekilometa mbali netata.

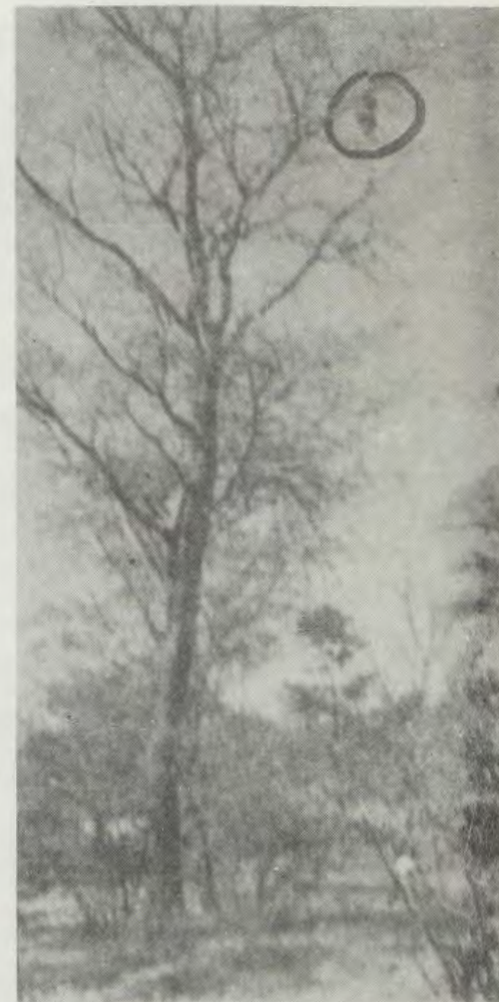
Kautondokwa ota hokololwa kookaume kaye nokovashiinda shaye kutya okwa li omulumenhu wombili, ha longo neendelelo, e na elungi nokuhole ongeleka ---.

Apa omufitaongalo womEenhana Johannes Kashihakumwa, okwa yandja oundombwedi kutya alushe nakufya ngeenge kwa li te ya komambo, okwa li he ya pamwe nounona vaye aveshe nomukulukadi waye.

John Shitundeni



Mefano eli, omufitaongalo, Johannes Kashihakumwa ota lesha ombilive yehekeleko ya dja komubishopi wa ELOC, Kleopas Dumeni. Omukanda ou owa shangelwa omufiyekadi meme Karolina.



Oshinima shilaula tashi monika koxulo yomuti ou, kombinga yokolulyo, oshitukulwa shimwe shomalola ehauto eli la lyata oboma, oyo ya faalela ovanhu 8. Okudja pomuti apa, omunhu oto ende po konyala oshinano shetata lokilometa imwe, opo u fike nawa pelambo opo pwa lyatelwa oboma.



# Moushilo mwa ngunguma

1.

Openi hano pa li tapa ngunguma  
Omoushilo oo wa li vati waShingunguma  
Mboli hadula ya li tai ngunguma  
Oboma i tilifa oyo ya dipaa  
Apehe oya udika eshi kwa tya mbwaa  
Ndele taku ti vali shili twaa!

2.

Oya telwa nawa kunhumba paendunge  
Odo da yandjwa kungadi omunaendunge  
Namhongo omunashili iha endwa meendunge  
Nande sha ningwa nee va ti konghulungu  
Osha yela osha ningilwa lela eenghulungu  
Odo da shitwa kuxe yavo paungulungu.

3.

Okwe li tala vati ye ependa  
Nande ye ota longele ashike oiponda  
Okafimbo kaxupi ote ke li ponda  
Shaashi ye mboli ke na eenghedhi  
OngaJudas ote ke livela eembedi  
Nande na kale ye vati omhedhi

4.

Osha ningilwa ovo va itavela momwenyo  
Nosha nyematifa ovo va fyaala po ovakamwenyo  
Sha eta shili omaipulo mahapu movanamwenyo  
Tave li pula alushe neenghono noudjuu  
Oshinima osha li unene shidjuu  
Noshe tu etela omalimbililo mai madjuu

5.

Vahapu ove shi taka ko oulai  
Shaashi vati nani osha ningwa komalai  
O e shii ovanhu vetu oulai  
Okwe shi ningila kwa li owina  
Noku shi shii kutya okwe shi wina  
Okwe shi tala vati osha wana

6.

Oboma oya yetekwa vati oidjuu  
Inaku shiivika oya telwa noudjuu  
Sha yela oye va etela oudjuu  
Noya shiivika nawa apa ya dja  
Edina layo kali fi nande Shekudja  
Shalimba nge ya telwa kuNdemudja

7.

Osha yela ova ya kuXe kuPamba  
Namhongo oo womeulu e va pamba  
Ouwa meulu otava ka pewa kohamba  
Tave ke u tambula shili oshali momake  
Notava ka kala va ukatwa momake  
Kalunga tate yetu ota ka pewa omake

8.

Meulu kave na vali nande oku ka talukwa  
Osha yelelela mwinya otava ka kalukwa  
Nomadina avo mawa mape otaa ka lukwa  
Tava talika shili vehe na etimba  
Ova diminwa po filu sheke omatimba  
Pamwe naavo ve va tula etimba

9.

Ohatu ka monafana nohatu ka udafana  
Atushe neefiye nooRakel ohatu ka faafana  
Notu shishii kutya ohatu ka holafana  
Osho twa pumbwa mufye osho eitavelo  
Opo nafye tu ka pite moivelo  
Ndele tuha puke tu ka pite mevelo.

Shalimbange Ndatyooli

## “Sha mena osha zi”

### Dha za kep 10

mpelo omoiwashike to ti oshinima oshiwinyai.

Oshiholelwa;

Okanona okashona, hoka ka hala ka ka kweye omeya momuthima otaka vulu okulombwelwa ngeyi:

“Ino ya ko nande esiku limwe komuthima ngoye awike (ekumagidho) oshoka otashi vulu u gwile mo (etompelo).”

[c] Eputudho.

Mokuputudha aamwoye ino kala u hole pogumwe, aawe, kumagidha, guna, ngoye ganda ayehe.

Nongele pu na ngoka kuuvite ko, olunwa nalu longithwe. Ihe omunona ina dhengelwa eso, aawe, edhengo nali pangelwe kohole.

“Ooongoka ehole omwana, ite mu lele dhaha huka ye ite mu dhenge a mone oshiponga.

Umumwoye mu putudhila Kalunga. Mu fatululila oovelise dhimwe mOmbibeli. Ninga owandaha megumbo. Gandja omalufu kaanona ya galikane nosho tuu.

Kambadhala okuningila okanona koye etameko ewanawa manga inaaka ya mosikola. Ka longa oondanda, okuyalula nosho tuu.

Mu fatululila kutya omolwashike e na okuya kosikola (kenongelo).

Ayihe mbika otayi kwatha omunona opo e ki ilonge nuupu noku hokwe enongelo.

Tuma omunona gwoye mbala kosikola, oshoka aanona yetu oyendji ohaya tameke enongelo aakuluntu, ngaaka kutya ihaya ka tumpola we sha.

Yakuluntu, putudheni omaluvalo geni, opo gaa ka ulwe: “Kashipile oho ti kasha li nankuni”.

J. A. Mshaandja

## Ou shi tuu edhina lyoye shoka tali ti?

Aantu yamwe ohaa aniladhila kutya omadhina ngaashi ooPetrus, Josua, noo-Justina, oga zile megulu noga lukwa aniwa kutya ogo gopakriste.

Otaa tala wo kutya omadhina ngaashi ooTangeni, ooNuusiku nooNangula, aniwa ogoshipagani. Yamwe pamwe otaa vulu ya dhiladhile kutya ngele e na edhina ngaashi Stefanus nenge Frieda nenge kehe tuu limwe lya fa ngoka opo ashike ta ka hupithwa.

Shika hasno nando. Omadhina tu ga na ga za mOmbimbeli, nenge gAatiligane nenge taga takuma hago ando gopakriste, ihe ogiigwana yawo noga za momalaka gawo.

Pethimbo lyEtestamendi Ekulu tali nyolwa, okwa longithwa omadhina gomelaka lyOshiheberi nopenhimbo lyEtestamendi Epe kwa longithwa ngoka gomelaka lyOshigreka nOshilatina.

Omadhina gAasoomi nogAandowishi nenge gOombulu, hago gopakriste, ihe ogopaigwana yawo naapagani yawo oye ga na, ye ga hokwa oshoka oye shi shi shoka taga ti.

Edhina oshinima sha simana shoka tashi holola kutya omuntu ogwoshilongo shini. Onke oge ndji oge na omafatululo gago notaga holola ehistoli lyegumbo nolyezimo kehe.

Tala ano omadhina omakwawo gOshisoomi shoka ta ga ti:

Sisko	—	mumwameme
Rauha	—	ombili
Onni	—	Elago
Hilja	—	mwena
Usko	—	eitaalo
Juha	—	lya za kuJohannes
Taimi	—	oshitayi

[Taku tsikilwa]

## OSHILONGA SHOPAMBEPO

### Dha za kep. 3

lunga okwe ga uvu nora tsikile oku ga yamukula.”

Omuwilikingeleki Dumeni okwa gwedha ko kutya ota pandula wo Oongeleki muuyuni naayehe mboka taa yakula iilyo yOongeleki dhetu.

“Ondu uvite wo aayakuli, aasita, aayevingeliste naayehe kumwe, otaa pandulwa sho taa kondjo, opo uukriste u kale mokati kawo,” osho a hokolola olupandu lwe kaayakuli ayehe ye li mokati kAanamibia miilongo yopuushiinda.”

### Omuwa oye omuwiliki

Ehokololo lyiilonga yopambepo mokati kiilyo yaSwapo pondje yoshilongo olya gandja esimano alihe kuKalunga.

Naashika tate Dumeni oshe mu penduthile omadhiladhilo ngaka ngaashi ye mwene e ga holola ngeyi:

“Otandi zimine nomwenyo aguhe etumbulo lyomehokololo lyoshilonga shopambepo shomumvo 1982 muAngola naZambia sho tali ti:

“Ongeleki nayi gandje evaangeli lyomwenyo opo li wilike aantu monkalathano yawo.

Osho wo iigongi yopangeleki oyo tayi kwatha mokudheula eitaalo okwiitaala Omuwa nomuwiliki gwetu omunene.”

Eeno shili, Omuwa Jesus oye omuwiliki omunene e vule ayehe.

## OMUKWETU

Oye oshifo shOngeleki Onkwaevangeli paLuther yomOwambokavango.

Ohashi nyanyangidhwa mOshinyanyangidho shOngeleki mOnlipa.

Omukuluntu gwoshifo omumbisofi Dr. Kleopas Dumeni,

Amushanga gwoshifo omusita Sebulon Ekandjo

Ondando yOmuwetu muNamibia naSuid-Afrika R 5,00 komumvo.

Palwe muAfrika R 8,00 nokombanda yomafuta 11,00, komumvo. Mondhila R 13,00.

Oondando nomambestelo agehe naga tumwe kOmuwetu, Onlipa, P.Bag 2013, Ondangwa, 9000

EV. LUTH. OWAMBOKAVANGO CHURCH PRESS  
PRIVATE BAG 2013, ONDANGWA 9000  
SWA/NAMIBIA