

# OMUKWETU

Registered at the General Post Office as a Newspaper

15c

## Ewiliko lya yela otali tungu oshindji

Okutala mpaka pafupi iilonga yaakiintu moshitayingeleki shOndonga, itatu thigi ko wo meme Aino Kapewangolo, omuwiliki gwasho.

Omukiintu omugundjuka lela, gwoompangela dha kola, omutungu gwomathaneko nomuungakaneki onkulungu.

Monkambadhala ye okuthikitha oohapu dhe pamwe niilonga oku tu vule oyendji. Iha patekene mushoka a tala tashi tungu noshi li mondjila.

Omuteologi Aino, oku na ombepo yewiliko nomagano getopolo lyiilonga kuyalwe. Ngiika aakiintu moshitayi shika, otaa zimine ndje kutya oyu uvite elago okukala ye mu na mewiliko.

Oye gumwe i itaala kutya ekonomi lyOngeleki, kali na siku nali yambuke, manga inaali tungilwa keliko lyopamithigululwakalo.

Numvo ishewe okwa gongele aakiintu yomagongalo agehe mOndonga, moshigongi shokomumvo, moka e ya nongeke nkene eliko lyomagongalo gawo taye li kankamekele kushono ye shi na nale.

Konyala oomvula mbali e dhi kala mewiliko ndika, okwa tungitha onzimbogo one ne yoshinanena mOlukonda, moka aakiintu aagundjuka taa idheula okuhonga iiyuma.

Oye egululilwa iilonga yayo moshigongi shoka sha li ko petameko lyaSeptemba numvo.

Pethimbo lyoshigongi shika, aakiintu oya gongele R 7,379,10. Egongalo Onyaa-nya alike, olya gandja R 1,534,36 nolya yi nepandela.



Meme Aino Kapewangolo

Oye yi gongele ngiini? Oye yi adha peni? Omapulo ngoka otaga yamukulwa shila kaawiliki yaakiintu momagongalo.

Ombelewangeleki momwaatu ngoka oya dewa mo R 400,00

Tala kep. 4

# Oraata yOongeleki muNamibia tayi ulike natango ekankameno lyayo

Sho pu na mboka kaa uvite ko oshinakugwanithwa sha simana, Oraata ndjika yi shi na, ye na ano okudhimbuluthwa kutya ashike mpaka otashi ningwa pauelele weigandjo nevuliko keithano lyaKristus.

Osho shi li momushangwahokololo gwOraata yOongeleki muNamibia (CCN), ngoka gwa pitithwa omasiku ngaka.

Ehokololo olya zi momutumba gwaayehe gwOraata ndjika sho gwa li ko petameko lyaSeptemba nuumvo.

Okuyelitha nawa mpoka Oraata ya thikama, omushangwahokololo ogwa ti;

Ooprograma miilonga yOraata, opauteologi nenge oyomakwatho gopalutu, nayi talelwe ashike muuyelele weigandjo lyOraata nevuliko lyayo keithano lyaKristus.

Opwa nyolwa mehokololo ndika, kutya Oongeleki dhi na okuhempulula kumwe kutya, Jesus Oye Omuwa nOmuhupithi ngaashi sha yelithwa mEtestamendi Ekulu nEpe.

Kombinga yonkalo yoshilongo, omushangwa ogwa tsikile ngeyi kutya, onkalo muNamibia oye etitha oluhodhi.

Ombinzi otayi tsikile okutika sho aantu yaa na ondjo taa hutwa po kiita yehanagulo, mbyoka itaayi yalula we ondilo yongamba yoshilongo shomuntu, ondilo yomwenyo gwomuntu nenge eliko lye.

Oraata sho ya tompelwa kutya kape na we sha mpaka shokweeta ombili; nashi kale eopaleko lyomutumba gwopashigwana, onkambadhala yomuntu gwontumba nenge yongundu yongandi.

Oraata otayi ulike ashike natango koshitokolitho 435 sha VVO, kutya osho ashike tashi hulitha po omahepeko netiko lyombinzi.

“Otatu hiya ayehe mboka taye etitha iihuna mbika, ya pulakene onkugo yOongeleki yopauprofeti.”

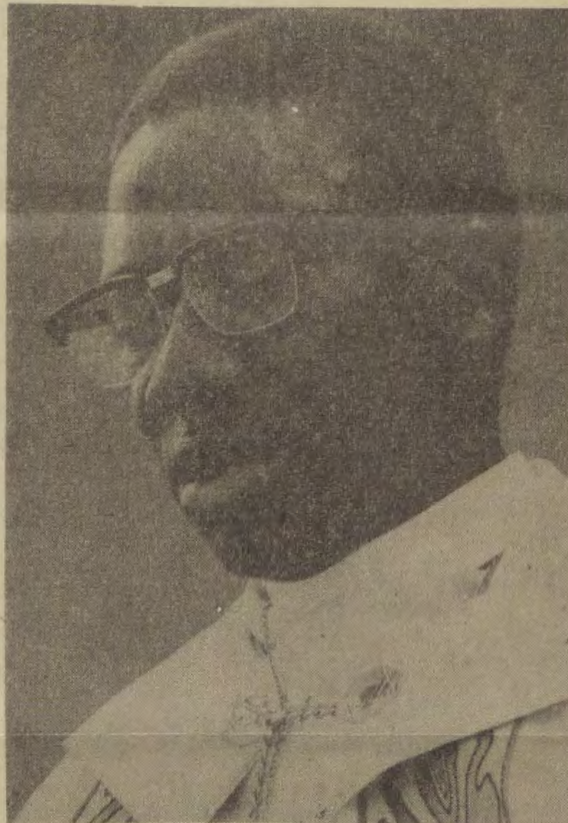
Osho omushangwa gwa popya noluhodhi olunene.

Ekwatakanitho lyemanguluko, lyaNamibia nAacuba muAngola, nasho inashi popilwa mehokololo ndika.

Opwa tulwa omusholondondo gwiiningwanima mbyoka ya talwa tayi ehameke oshigwana, nando pwa indilwa olwindji yi kandulwe po. Ngaashi;

- Epango lyopamihoko miipangelo yepangelo
- Okuyuga omaliko gOongeleka nokuvu-ndakanitha omalongelokalunga
- Okuyuga omaliko gaantu poomisioni
- Okushundula uuthemba womuntu nooveta dhaKomufala Ndjayi
- Oveta yuusiku nomukalo gwehadho lyaakwiita
- Okuumbila omatenda gooboma momahala gaantu
- Nokumwenena oveta yethiminikilo muukwiita, epangelo nando lya indilwa olwindji li yi kuthe po.

**Tala kep.3**



**Omumbisofi James Kauluma ngoka a hogolululwa moshigongi shoka a tsikile natango nuupresidente wOraata.**

## DHA ZA KEP. 2

Omolwiiyemateki mbika moshilongo shetu nomolwoshipango shOmuwa gwetu Kristus, otatu endulula nokuholola omadhiladhilo ngaka nosho tatu tsikile nasho kutya pu kundathanwe iita yi hule po mbala, ehokololo lya ti.

Oraata ndjoka yi na ngashingeyi iilyo yomagongalo 812,000 molwOongeleki mbali dha taamba uukwashilyo pethimbo lyomutumba, oya hulitha ehokololo lyayo niitya mbika:

“Oshilonga otatu shi longo komukanka woshipango shaJesus, ngoka a fatulula etumwalaka lyOshilongo shaKalunga niilonga ye.

Okwa aludha iilema, a tonatitha aaposi, a palutha aasindjala nokwa kala pamwe naalunde mboka ya li ya talwa aakolokoshi moshigwana.

“Oye Jesus ngoka ta kala omukanka gwOraata ndjika. Uukumwe wOongeleki sho u li mokati kekondjo lyopapolotika, osho ngeyi ya ithanwa wo yi konakone noyi holole elalakano lyuuyuyuni waKalunga mehistolli nomeshito lyuuyuni.

“Oongeleki itayi mwena, ihe otayi popile uukumwe mbuka.”

Oongeleki dha taambelwa muukwashilyo; oyaKatolika kaRooma noyaMethodist ndhoka dha gwedhele mo iilyo yomagongalo gadho 166,000.

Iikandjolongwa iyali, nayo oya gwedhelwa miinakugwanithwa yEhangano ndika; oshikandjo shuuteologi noshuulinawa (welfare) wopashigwana.



Ndjika ongundu yaakriste ya tengenekwa 1,500 ndjoka ya kala melongelokalunga lyuukumwe mOongeleki yaKatolika muKatutura



Yatatu kolulyo, aanambelewa yOraata yOongeleki nokolumoho omusita S.V.V. Nambala gumwe gwaakalelipo ya ELOK moshigongi shoka



## ELOK TA SHUNA OMADHINA KEHOGOLOLO

### Ombelewangeleki, Oniipa

Elelongeleki la ELOK ola kolekulula vali omadina ookandidate va CCN, va kale natango mehoololo lipe, fiyo kwa monika hamushanga wOraata oyo.

Omufita Matias Ngipandulua, omufita Dr. Abisai Shejvali, nomufita Zacharia Nakamhela wa ELK.

Eengelekishilyo mOraata yEengeleki muNamibia (CCN), okudja pehoololo lotete laHamushanga Ndjai, eshi la dopa muSeptemba 1982, oda indilwa natango di tume omadina.

Omufita Matias Ngipandulua, omufita Abisai Shejvali nomushamane Daniel Tjongarero, ovo va li tete mehoololo eli inali pita.

Ehoololo lopaife shiimba otali ka ningwa mu-Desemba 1982 ngenge inapu lundulukwa sha.

# KASINDANI TA YAMUKULA MAGANO

Tala Omukwetu gwaAguste No. 16/1982 omo to mono shoka Kasindani ta yamukula mpaka

**K = KASINDANI**

**M = MAGANO**

## Engambeko lyoluvalo

**M.** Aalumentu aawambo oyi itaala kutya uunona kau shi udhwawo.

**K.** Hasho. Tse aalumentu otwa hala uunona wetu, kakele koomeme sho hamu itanga natse, hamu hengana natse nohamu tu tondiha ootate kutya kaye shi aakwetu.

**M.** Ngele wa ningi uyali auke, opo nee tuu ningi uukwetu?

**M.** Aaselekadhi ihaa thigululwa sha nando.

**K.** Oomeme oyo naanaa oshiponga kombinga yethigululo, uuna a ya moosa dhamumwayina. Osho he mono methimbo ndika.

**M.** Owa hala ya valwe oyendji u ya fale peni?

**K.** Ngame ondi itaala muukwashigwana wi indjipala. Inandi itaala muukwazimo, omo kwaashoka nda hala oshigwana shi kale kohi yoshipango shaKalunga.

*"Waa na aanona ku na aantu."*

**M.** Shono okuhepeka oshigwana sho.

**K.** Ngu ta dhipagele uunona mela, oye omuhepeki nomudhipagi omunene a gwana okumangelwa emanva mothingo, e tu umbilwd muule wefuta.



Omusita T. Ngula (Kasindani)

*Nenge inu uva Jesu. ta ti; Etheni uunona u ye kungame, inamu u keelela ko? Owa dhiladhila omayi goluvalo ga dhipagelwa mu yina, otau yi nga kuJesus kuume kawo?*

**M.** Yangapi yaa na iilonga ngashingeyi?

**K.** Pangame, omuntu omunene e vule iilonga. Onawa sho wa ti otu li methimbo lyiita noomina, oofabulika niilonga oyindji oya pata.

*Tegelela kashona ünima yi tulwe pomahala, nepangelo shampa lya kala omutumba, e tali ku patululile iilonga, oto ka mona nkene aantu kutya nani aashona.*

*Aantu onaa ka ze kiilongo yopondje, opo ya udhithi omahala. Ando wa tseya aakali yomuKiina oomiliyona 953, ihe kamu na ompumbwe yiilonga, omo kwonkalo nawa yeve lyawo.*

**M.** Oombotsotso sho dhi li po odhindji, Ongeleki nepangelo oyu uvite ngini?

*Ongeleki nepangelo kayu uvite nawa, otaa yemata. Ihe kala u shi shi kutya Ongeleki ongoye, nepangelo ongoye. Kala wo u shi shi, kutya aakolokoshi oya za nale.*

*Kain okwa dhipagwa kumumwayina Abel Onke sigo onena, oku na ooKain oyendji nonando aanona ya fupipi kwe.*

**M.** Owa hala egulu lyu udhe oombotsotso niikumbu?

**K.** Ondi itaala kutya ehupitho lyandje nolyomuntu kehe oye endjelela meitedhululo nomokutaamba Jesus Omuwa.

*"Shaa ngoka te ya kungame, itandi mu tidha po," osho Jesus a ti. Nishewe; "Onde ya okukonga nokuhupitha shoka sha kana." Luk. 19:10.*

**M.** Ngele okwa tsilwa mpono e ta si?

**K.** A si? Onda tseya kutya oshipango otashi ti: Ino dhipaga. Itashi ti; ino dhipagwa.

*Oshinima sheso nethimbo, oshi li meutho lyaKalunga. Walyewo ngele omudhipagi gwoombotsotso, oye wo ta yi megulu, ngele ini itedhulula e ta dhiminwa po ondjjo dhe.*

*Ano ino sindwa kuuwinayi, sinda uuwinayi nuuwana nawa. Rom. 12:21.*

**M.** Owa tsu ihe aantu omukumo ya vale nomukalo shaangoka. Okuudhitha evi hoka?

**K.** Aawe, ine hala ya vale nomukalo shaangoka. Ote dhiladhila ya vale pamukalo gwelandulathano lyaKalunga.

*Shoka inee hala, uunona u dhipagelwe momala gooyina.*

Tala kep. 5

## DHA ZA KEP. 4

M. Momalukanda oto mono uunona wa hepekwa.

K. Hamolwaashoka owindji nee, ihe shoka sha pumbi-wa epukululo lyesiloshimpwiyu kaavali yawo, momalukanda nomomagumbo. Ondjala otayi li shaangoka ita silwa oshimpwiyu shüpalutha.

M. Tse oomeme, otwa vulwa, otatu ngambeke.

K. Ino dhipaga, oshoka omudhipagi kee na omwenyo gwaaluhe. ngele owe shi ninga nale, konga omuhempuluthitate nenge meme.

M. Aakiintu otamu ya mitike, ne tamu yi ipatana.

K. Ngele he okwe ki ipatana, ondi itaala kutya ezimo lyomuvali yina, itali ki ipatana nando. Sho shono hwepo shi vule edhipago lyomunona.

M. Pamwe ou wete tatu hulike po oshigwana, tu yakulii ko ano.

K. Eeno, otamu hulike shili oshigwana, itashi gwana po we. Kombinga yeyamukulo lyokuhumbata omala, itatu shi ningi, otatu yono kuKalunga.

Ngoye, ongoye wa longekidhwa komushiti u kale yina yaantu, ngame ndi kale he yasho. Hasho?

M. Iigwana yimwe muuyuni, oya taamba uunona ongomazimo gawo.

K. Shimpa owala oomeme tamu üedhulula mu ze m-mithigulubwakalo dhookuku. Oshiponga muukwazimo wameme osho nashi kondjithwe. Ondi na etegameno kutya aalumentu kaye shi aakukutu moshinima shoka. Katu shi ti meho nokuli.

Tala, aanona oyo omagano gOmuwa noluvale twela otwo oshipewa. Omunelago oye ngoka e ya na yuudha ombalukutu ye ..... Ps. 127:4-5.

xx

Kaaleshi okwa za wo omayamukulo ogendii ga verdu-thwa koshipopiwa shameme Magano. Inatu vula okutula iipopiwa yawo mpuka, shila okuholola omadhina;

Oga zi kuHowlong Nekwaya, Hilja Akawa, Oniimwandi, Ndahumbatwa Ambinga, Onüpa naKarlus T. Shilongo, Arandis osho wo Jonas Nd. Kambidhi.

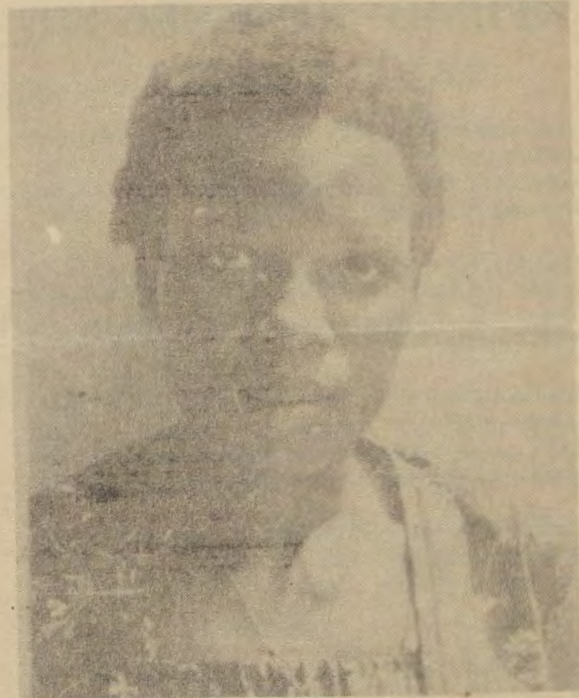
Ayehe mbaka komatompelo gaMagano aantu ya ngambeke, oya ti: aaawe. Onkene sho inatu mona ngoka a koleke Magano, otatu pata manga oshikundathanwa shika.

Amushanga gwOmukwetu

### NATANGO OKANGUDU KOPOLOTIKA MOSHILONGO

Natango opa dikwa okangudu kape kopolotika muNamibia. Eshi otashi ningi eengudu dopolotika moshilongo shomiliyona imwe, di fike 46.

Okangudu kedina Riemvasmaker Party, oka totwa momuhoko wOvadamara. Ovatali nawa, ohava ti kutya eengudu dihapu odi na ashike omuwiliki nomukulukadi waye nombwa yawo.



Aino Kalenga amushanga mombelewa yaakiintu mOngwediva

## Ewiliko ewanawa

Dha za kep.

Etumo lyaSenegal olya pewa mo

R 56,23

Ekwatho kegongalo egundjuka, Uukwiyu

36,01

“Ehwamo nehumokomeho opo li li lela moshilonga shika, unene miilonga yiika-ha,” osho omutonatelishitayingeleki shoka, omusita Festus Ashipala e dhi koleke.

Sebulon Ekandjo

## Amwaanyena ku LWF

Omulongi Maria Amwaanyena, okwa ulikwa kElolongeleki, a kalele po aakiintu Aanamibia mokersesa yewiliko moshilonga shomokati kolu-dhi ndoka.

Oshigongi shoka otashi ka kwata oomwedhi ndatu, Aguste sigo Novomba 1983, notashi ka kala muNew York.

Omupangi Hilma Amaambo, oye omupeha gwe ngele a mono omaimbo.

# ETUMO KUSENEGAL NALI TSIKILE

Ewilikongundu lyoshilonga shEtumo mOngeleki olya ninga ethaneko kutya Elok, na tsikile natango noshilonga shika kuSenegal. Efaneko ndika olya taambwa kElelongeleki.

MuJuni Elelongeleki olya li lya ningi etokolo, Ongeleki ndjika yi hulithe po manga etumo lyayo kuSenegal, sigo kwa monika ondjila ompe tayi vullika kOngeleki.

Etokolo ndika olya zile methiminiko lyEhanga-notumo lyaSoomi ndyoka lya tameke okupula ELOK, a sile aatumwa ye kepya ndyoka, oshimpwiyu manga ELOK inee shi ilongekidhila.

Momutumba gwalyo gwotango omumvo nguka, Ewilikongundu lyEtumo mOngeleki, olyi indile Ongeleki yi tsikile noshilonga shika kuSenegal 1984.

Olyi indila wo oshitayingeleki kehe shi gongele 5c koshilyo kehe moshitayi shasho negongalo kehe li gongele 10c koshilyo kehe shomegongalo, omwaalu gwopevi.

Iikandjolonga ayihe mOngeleki nayo yi gandje wo R 300,00 omwaalu gwopevi komumvo. Osho wo omahangano taga longo Etumo mOngeleki.

Shika osha ningwa okusiikila omwaalu aguhe tagu pulwa kuSenegal R 28,000,00 kaatumwa mboka ye li ko nale.

Walyewo ngele osha konekiwa tuu kEwilikongundu nokElelongeleki, kutya omwaalu gwa pumbiwa kaatumwa ye li ko nale R 28,000, kutya momumvo 1984 otagu ka tya ko gwa za oonkondo.

Ashike omathaneko ngaka oga kolekwa kElelongeleki.

## OU SHI TUU MPOKA E LI?

KOmukwetu,

Kwatha ndje u ulike ondjukithi yandje, opo ngoka a hala okunyolela ndje e shi ninge:

Posbus 265, Omaruru  
nenge

Posbus 25, Arandis/Swakopmund  
9000

Gweni,  
Stefanus Itewa

# EGWEDHELO LYOOFUTO

## OSHIGAMBO

Ovanafikola tava tambulwa mOseko yaShigambo 1983, ofuto yavo otai ka wedelwa R 20,00 komudo.

Eshi osha dja metokolo lElelongeleki nosha etifwa kelondo leendado doinima nokexupipiko lekwafo olo hali monika pondje yOngeleki.

Omuhongwa keshe ota ka futa paife R 80,00 komudo.

Ewedelo leefuto ola monika yo moihakulilo aishe mOwambo, okudja etatamudo loneudo.

## OONKUNDANA OOKWAWO

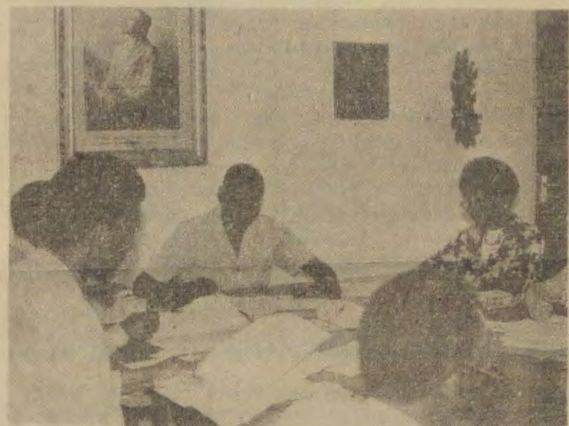
Omwilongi gwotango gwomusika kuZimbabwe, Hilma Konstantin. okwa langekwa kElelongeleki a kale omulongi mosikola yomusika mOngwediva 1983.

Omugundjuka Hilma, oye omulongwa gwotango kuZimbabwe noye omutiyali i idheula oshilonga shika pondje yOngeleki.

XX

## Kavango

Omupangi Maria Syria, kuSoomi, oti ithanwa ngashingeyi a galukile keyakulo lyaELOK. Shika Elelongeleki olye shi tokola omolwoluheno lwevakulo lyopaunamiti koshitayingeleki shiyaka shaKavango.



Ewilikongundu lyEtumo miipundi



# UDHITHA OFOOLOMA NDJIKA U MBESITELE OMUKWETU GWOYE

Teta mpaka -----

EDHINA .....

OWADELESI .....

\* Tumina ndje oshifo shOmukwetu 1983

\* Eyalulo lyOmukwetu gwandje otali ka pwa ko mu ..... 1983, nokonima ote ka tsikila natango.

(Nkwanuna okamusinda pushono wa pumbwa)

\* Onda patela mo R --,c-- ofuto yomumvo.

KOmukwetu, Oniipa  
P/Bag 2013,  
Ondangwa, 9000

Teta mpaka -----

## Nai pukululwe mwaashi

*KOmukwetu, ohandi pula ekwafo kovanyanyangidi vOmukwetu. Ngenge nda hala okulombwela sha oshiwana moshifo shOmukwetu, kutya ondi na okufuta ngahelipi note futile peni?*

*Onde lineekela ovakwashiwana vahavu ohava kala va hala okushivifa sha ndele oupyakadi ou li ashike opo.*

*D. Nghipunduka*

## EYAMUKULO

*Omumwameme Nghipunduka, Ngenge oto shiivifa sha shokuhonga omunhu, shoku mu pukulula, shoku mu kumaida palutu ile opamhepo, nena ito futu sha nande koshifo eshi.*

*Ngenge oto shiivifa sha kombinga yeengombe doye to di landifa po, ongeshefa yoye to i yeulula, ile to ipate, eendoongi doye da kana ile eekafa doye u pule ou e i mona;*

*Oinima yoludi eli oto futu. Nofuto otai yelekwa kutya oya kufa onhele i fike peni mepandja.*

*Didilika: Epandja alishe li yadi otali kosho R 93,50, etata lepanja R 46,75 osho nosho.*

*Hamushanga wOmukwetu*

## OMAOPALEKO

**MOMUKWETU NO. 21/1982 EP. 5, EFANO NDYOKA LYA TIWA ETUNGONGELEKI MONANKALI LI NA OKUTIWA MONKANI.**

**NOYO NDJOKA YA YAPULILWA OSHILONGA SHAYO KOMUMBISOFI ETI 10.10.1982 NGAASHI SHA POPIWA MEPANDJA 4, MPOKA PWA TIWA EDHIKO LYONDJAKULWAMBINGA.**

## OMUKWETU

Oye oshifo shOngeleki Onkwaevangeli paLuther yomOwambokavango.

Ohashi nyanyangidhwa mOniipa.

Omukuluntu gwoshifo omumbisofi dr. Kleopas Dumeni, Amushanga gwoshifo omusita Sebulon Ekandjo

Ondando yoshifo komumvo muAfrika alihe R2,60. Kombanda yomafuta R5, 00, nondhila R6, 24.

Oondando nomambestelo agehe naga tumwe kOmukwetu, Oniipa, P.Bag 2013, Ondangwa, 9000

EV. LUTH. OWAMBOKAVANGO CHURCH PRESS  
PRIVATE BAG 2013, ONDANGWA 9000 SWA/NAMIBIA