

OMUKWETU

Registered at the General Post Office as a Newspaper

15c

Ombululu yoholo mOshinyanyangidho

OMBELEWANGELEKI, Oniipa

Ombululu yoholo oya dhimbululwa mewawa limwe lyetungo lyOshinyanyangidho. Oshikondo shegamenomOndangwa, osha zimina eyono ndyoka.

Ombelewangeleki oya ningi omushangwahokololo ngaashi tagu landula:

Tala kep. 2

Maasdorp a thigi po Namibia

Omusita Albertus Maasdorp mu ELK, okwa hulitha po uukwashilongo we wa-Namibia, nopakuuva a ka kale muHolland.

Ye mwene ina monika a gandje uuyelegele moshinima shika.

Ewilikongundu lyOraata yOongeleki mu-Namibia (CCN) oli ipyakidhila ngashingeyi okukonga amushanga omukuluntu gwEhangano ndyoka.

Omusamane Maasdorp (46), okwa kala oye amushanga mombelewa yOraata oomwedhi omulongo dha zi ko.

A hokana noku na aanona yatatu, Maasdorp, okwa li nale amushanga kOngongahangano yAakwaluther (LWF) oomvula 8, hoka i ithanwa kOraata yOongeleki yi mu yakulithe mpaka.

Ngashingeyi sho pwa holoka omwaka mopoosa ndjika, Oongelekishilyo kehe oyi



Omusita Maasdorp

indilwa yi konge ookandidate meni lyayo nenge pondje manga oshigongi shaayehe tashi ka ninga etokolo lya hugunina.

ELOK okwa tumbula aasita; Matias Ngipandulua, Abisai Shejavali na Zacharia Nakamhela gwomu ELK.

Inapu tseyika manga mboka ya tumbulwa koongeleki dhilwe. Oshigongi shaayehe shOraata ndjika pathaneko oshi li ko pokati kaSeptemba 1982.

OMBULULU YOHOLO MOSHINYANYANGIDHO

“Osha li Omaandaha 23.8.1982 otundi 8.30, konima yowandaha yongula, sho pwa dhimbululwa kutya ewawa limwe lyetungo lyOshinyanyangidho, olya tsuwa ombululu yoshikuti, okuza pombanda.

“Etungo olyo ndyoka epe lela lya li lye egululilwa iilonga yalyo eti 6.6.1982, sho lya li lya yonagulwa po ishewe 19.11.1980.”

“Oshikuti sholudhi ndwoka lwokugwitha oondhila mombanda, oshu ulula ondunda yOshinyanyangidho, tashi nyanyagula oshipilangi sha manga ontala, tashi dhenge oshitenda shondhalate yopekende e tashi yaha mevi nomungunda.”

“Ombelewangeleki oya tseyithile mbala etanga lyegameno ndyoka Komandanda gwaShakati, A.S. Klein-Hans a tumu omukalelipo gwe Komandanda Nel gwaNdangwa.

“Komandanda Nel okwa hempulula kutya oshikuti oshetanga lyegameno nosha umbwa okuza kOndangwa.”

“Omunashipundi gwokomitiye yEwilikongundu lyEpangelo lyOwambo, naye wo okwa tseyithilwa oshinima shika kOmbelewangeleki.”

“Komandanda Nel, okwa dhiginine a pewe eyalulo lyaashono sha yonuka po Ombelewangeleki oye mu pula wo opo etanga lyegameno li ninge ekonakono lyomuule koshinima shika, lyo li gandje omushangwahokololo pambapila”

“Kombinga yeyalulo lyeyonagulo, oshinima otashi ka ningwa konima.”

“Inima yoludhi nduka, oya holoka olwindji, ya ningilwa omaliko gOngeleki nosho wo gomuntu gumwe nagumwe. Nepulo oli li mpono kutya:

“OMOLWASHIKE oshikuti shika she ya naanaa shi yahe etungo ndika epeepe lyOshinyanyangidho, ndyoka lya yonagulilwe po olutiyali nokuli komutondi gwOngeleki nogwoshigwana kee shi-wike?

“Ashike Kalunga ota pandulwa sho inaamu ehamkelwa nando omwenyo gwomuntu, mo inaamu yonukila nando eshina limwe.”

Gwa shainwa komumbisofi gwa ELOK

Nonale omapenda osho ga kala haga ningi shoka. Ohaga ekelehi etokolo lyomupanguli omudhudhuntu, e tagi igandja mokusa omolwohole yOmuwa gwawo.

Ohagi igandja mokupya meziko ge na omwenyo, sho ye shi shi omwenyo gwaaluhe omegulu taa te gu pewa.

Omuntu gwOmuwa, sa uunye okukondjitha Ongeleki, opo waa ikondjithe ngoye mwene. Osha nyenga yakweni, lesa Ombibeli, opo nangoye wo u ka hupithwe.

Ongeleki oya ganenwa egano lyaaluhe, kutya itayi ka sindwa nando Osho ya laleka ngaaka kumwene gwayo sho kwe yi yeluthile iikaha yu ululwa e ta londo ta yi kuHe.

Josefina Nangongo

OMBILIVE KOMAGONGALO

Ndjika onde yi shanga nda nika uupongo: Otandi mu tseyithile one omagongalo amuhe, natu hogololeni po esiku lyegalikano, tu galikanene evi lyetu.

Itandi vulu okuhogolola esiku, aawe. Nashi kale miika-ha yaawiliki. Mpaka otapu landula ando elandulathano lyegalikano.

a) Okuhempulula oondjo dhAanamibia ayehe koshipala shaKalunga.

b) Tate Kalunga e-tu mangululile evi lyetu, oshoka tse otwa nyengwa.

Kalunga okuhole mboka taye mu galikana mOmbepo nomoshili noha sile ohenda mboka ye mu inekela.

Kalunga ne mu pe eitaalo lya kola ye ne mu longe okugalikana.

Titus Halweendo



Etungo epe lyOshinyanyangidho

Eshi omesho ange a pange muIsraeli

ku Tomas Ndiwakalunga

Mokakololo kanini, mouyelele wotakuwiwile engafifi lovanhu, okwa li tali monika. Otava hambelele Kalunga kavu omolwohole yaye. Otava indile, tava tu eengolo, tava tifula notava komona komitwe mbaluvali.

Omonhele tuu ei, etemba lokulila oimuna la hokwa memanya, tali monika fiyo onena, Omwene nOhamba yeehamba a li a nangekwa. Omu-Betlehem nena tamu monika ovakriste ve li lwopo 80,000.

Nasaret (Mat.2:23)

Paendjovo dOmuprofeti, okaana aka otaka ifanwa Omunasaret. Eshi osha dja ashike opo eshi Jesus a kulila muNasaret. Ovakulunhu vaye Josef naMaria omo va li eumbo lavo.

Ponhele tuu oyo ya itavelwa kutya oyo ya li eumbo lavo, opa tungwa Ongeleka, ya lukilwa Josef. Okanhele kanini, komamanya oipayombwa nokehe na omutalelo washa.

Omo mwa kala ovahoololwa novanangekwa nou-puna vaKalunga. Opo apa hatu mono Omukulili ta longo povakulunhu vaye nokudulika kuvo fiyo a wanifa eedula omilongo nhatu.

Ovapwilikini kehongo laye ova kuminwa nove lipula: MuNasaret otamu di tuu ouwa washa?

Okalando okadinififa shili, osho ke li fiyo onena, ndele Omuxupufi wounyuni aushe, omo a tekulilwa omu.

Fye ovaitaveli vomuJesus otu shi shii, kutya oupu-na wourongo noweendunge adishe, ou li mu-Kristus Omunasaret. Omuye ashishe meulu nokombda yedu ya shitwa noi na ewapalo nefimano.

MuKaana ohatu shiivifilwa shihapu shomoukwatya waJesus. Otwa hangika twa tile oye omulixupipiki washili. MuKaana ohatu lombwelwa vali nghene ounene wefimano laye wa lunda nou fike pelixupipiko laye.

Eenghono daye, onghenda yaye nefimano ole liholola muKaana shorruGalilea. Okwa popya ashike ondjova, nomeva okwa ninga omaviinyu. Oye.ota popi, ndele oyo tai ningwa. Oye ta shitulula keenghono daye nota wapaleke aishe pefimbo.

Fiyo okonena eli to mono muKaana oitoo noumbudju ovo kwa itavelwa ova longifwa mefimbo laJe-

sus. Eshi otashi tu etele ehafo nomukumo mokwiitavela kutya fiyo onena Omwene oku na eenghono dokulundulula eenghono detu.

Kaana otashi udifa kutya, Omunaenghono ote tu lundulula nota lundulula onghalo yetu. Oluhedi ote li shitukifa ehafo. Oikulundudu neemhunda domaupyakadi ote di pale ondjila ya kula, omo fye hatu dulu okweenda mo nehafo nombili tu mu longele moshilongo shetu.

Meemhadi daJesus nena

Omushangi ota indile omuleshi a kufe Ombibeli yaye ye a landule nawa osho sha ningilwa peenhele tadi ka popiwa moishangomwa tai shikula.

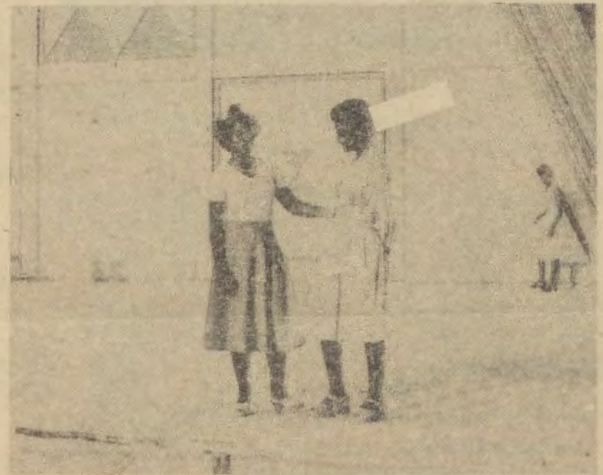
Okulandula Omwene meemhadi daye, okuhovela muBetlehem, omo hatu mu mono okahanana muNasaret, omunyasha muGalilea, a popya nokwa longa muJerusalem, a hepekwa, a dipawa nokwa finda efyo nepangelo lalo.

Oye Omwene wetu oo e na odjualufi yokuliholola ye mwene kufye nena. A hala yo tu mu konge neemwenyo detu ketumwalaka laye lohole:

Lidilululeni, osheshi ouhamba waKalunga owe ehena popepi.

Omapandja taa shikula, nae tu kwafe mokutalela po eenhele diyapuki da tumbulwa mOmbibeli, tadi monika fiyo onena. Nae tu yambidide yo mokushitwa kwetu kwonale kweenhele edi.

Taku twikilwa



MONGwediya omwa ningwa wo oshigongi shokomumvo shaailongi aakriste 3-6.9.1982, moka ya ningi iipopwa niikundathanwa oyindji okwiitunga muakriste. Omwa li aalongwa ye vule eyuvi. Mbaka ta thikama mpaka oyo yamwe.

Ondjala younona mOwambo

Hamushanga wOmukwetu, eshi oshimwe sho-
moipopiwa yokangudulongekidi kopanghalafano.
Etwalemo ola ningwa nale kutatekulu J.
Amakutuwa (Tala Omukwetu No. 13/1982 ep. 4)

**Itandi ka popya sha shile kwaashi,
shaashi ohandi ka pula omuhakuli umwe
e tu hokololele sha koshinima eshi.**

*Pefimbo eli, unene kwaava have linyenge moipa-
ngelo, naava hava ende nomesho taa tale eputu-
do nefiloshisho lounona, otaku didilikwa kutya
oku na اونونا vahapu tava fi ondjala, ile va liwa
ondjala.*

*Nandi holole omikalo ile eemhito odo tadi dulu o-
kulya اونونا ondjala.*



1. Omudali omunyasha ta fiile ina omukulupe
okaana kaye, ye ine mu fiila nande omashini ile oi-
maliwa yomashini noiimati.

2. Omudali omulumenhu ehe na oshisho nokaa-
na kaye na ina, e va pe ekwafo, opo okaana na
ina ka palulwe.

3. Unene onghalo yehalakano yovadali pehe li mo-
hombo, otai kaleke اونونا mokukalamwenyo ku-
he na ovafilishisho.

4. Okukulila kwounona vahapu poundingosho ta-
va li oshuumbululwa nomusha nouvalelo weha-
lasha, otaku hepeke اونونا nondjala.

5. Okuuhala nokutokelwa kwovadali, ngee ova-
shamane ile ovakulukadi, poundingosho, otaku
dindike اونونا kondjala.

6. Ope na vamwe va tala kutya okunyamifa osha

*dja mo momoode. Okuhafimaneka okunyamifa
okaana, otaku nghundipaleke oukolele wokaana.*

*Unene "ovahumi" naava va hala okulininga
"ovahumi" otava nyamifa اونونا efimbo lihupi
tle itava nyamifa nokuli.*

7. Ope na ovadali vamwe va tala kutya ouleke nou-
mbisikiti oshuuka ooloshana ile oshinamunate o-
yo oikulya younona yoshinanena.

*Hasho! Ei otai nghundipaleke اونونا, shaa oyo
aike tai longifwa. Notai etele اونونا omikifi.*

*Onawa u konakone nawa efiloshisho lokaana ko-
ye ove u lilonge sha shipe moku ka fila oshisho
u ka amene kondjala nokomikifi.*

*Meme Elisabeth, oto ti ngahelipi kombinga yo-
shinima eshi shounona tava fi ondjala?*

Taku twikilwa

Ekklesia IyaKahao

Okahao egongalo lyotangotango mOngandjera. Aa-
tumwa oye li lukile Rehoboth.

Egongalo ndika (ekkklesia) olyo lyotango muElok,
okuholola po Ongeliki yoshungo yiipeleki. Olya vala
omagongalo 4 ge na iilyo ayihe kumwe 13,351.

Omukulupe nguka gwomimvo 76 adhike, oku na nata-
ngo iilyo 9,144, yi na oonkondo nehalo ewanawa lyo-
kutunga olutu lwayo.

Moshipehambelero shalyo nuumvo, olya gandja ola-
ta dhiilya 493. Iimaliwa R360,00. Nando omimvo mbali
inaa mona eteyo, omumvo kehe egongalo ndika ohali
piti nawa.

"Otatu vulu okuyalula iilya mbyoka miimaliwa, osho-
ka oya landwa po nale notatu kala tu na R2,825,00," o-
sho omusitawiliki Ananias liita a tumbula mombepo
yuuvite nawa.

Katu shi naanaa okuyelekanitha mpaka iilonga yalwo
nomagongalo galwe mu ELOK, oshoka inatu pewa sha
kugo. Ashike osha yela kutya ogendji otagi iyadha ga
kanena mondalae.

Omagongalo makwao

Eongalo lipe Eengolo, mOmbalantu, ola kala me-
kondjo letungo lOngelika yalo konyala oule wee-
dula hetatu. Etungo la pama loipeleki ola holoka
po, li li kumwe noshinyanga sheongalo.

Tala kep. 5

Da dja kep. 4

Ewapalo lomeni, owalitali noshuudifilo olikumwifa. Omubishopi dr. Kleopas Dumeni, okwe li yapulile oshilonga shalo 14.7.1982.

Oshivilo osha li shinene noshotete meongalo eli la dikilwe muApilili 1973.

Fiku tuu olo omufita oye wotete okufikama powalitali ipe ta hepaulula eitavelo laye, olo komukangha walo ta ka lela eongalo. Osho a punkilwa ngaha oshilonga shaye.

Omufita omunyasha lela Josef Avia nomukulukadi waye Ndiyakupi, okanona kavo kotete meumbo lavo, oko kotete yo ka etwa keshasho powalitali ya yapulilwa oshilonga shayo, konima yotundi yimwe.

Omaongalo mahapu moshitaingeleki osho sha-Uningininino okwa holokele nokwa ninga eembangimokutala oilonga neitavelo leongalo olo lipe.

xxxxxxxxxxxxxxxxxxxxxxxx

MOukwanyama meongalo Onheleiwa, ova ninga yo oshilonga sha fimana. Ovakriste vombinga yoshinagoga, Odibwa, ova pangela okulitungila ongulu yokwoongalela peendyovo daKalunga.

Ounghulungu wavo wokuninga omafaneko nomhepo youkumwe mokati kavo, otashi yelifwa ketungo la pama loipeleki la fikamekwa po ashike meni leehani 12.

Meme Lineekela Johannes oye a yandja onhele oshali keongalo.

Etalelopo lopaubishopi mOnheleiwa eti 13-15.8.1982, ola tomhelwa koshilonga eshi sha fimana nova itavela etungo olo li talwe naanaa ongongeleka.

Omubishopi K. Dumeni okwe li yapulila oshilonga shalo 13.8.1982. Osho sha li oshivilo shopaongalo, unene vomomudingonoko wOdibwa.

Omawendo ponhele oyo, nao a yapulilwa yo elongifwo.

Kakele komhepo iwa movakriste pOdibwa, oshitilo wonhele nao ewapalo ito mane.

xxxxxxxxxxxxxxxxxxxxxxxx

Eehani Juli naAgute mOngeleki ya ELOK, odo eehani doivilo yetumo.

Moshitaingeleki shaUkwanyama, oshivilo sha tya ngaha, osha danenwe 5.9.1982. Osha tokelwa kanini.

Omaongalo mahapu moshitai osho, okwa holokele nokuyandja oinakuwanifwa yEtumo. Mumwe noshivilo eshi, opwa li yo oshoongalele shokomudo sheendjibo.

Oipopiwa tai fatulula elalakano nondilo yoshilonga shetumo, oya kala tai pangele omhepo yoshivilo shetumo.

Imwe yomuyo hatu ke i holola mOmukwetu pomafimbo nomafimbo. Moitaingeleki ikwao yo o oshivilo osha danwa nale muJuli.

Ashike onghe ngo omunhu oto fiilwa elipulo kuya onaini omhepo yetumo mu ELOK, i dje meendjovo, yo i lundulukile moilonga.

Sebulon Ekandjo



Efano pombada ongudulwiimbo moshivilo mOhalushu. Mefano pedu engafifi melongelokalunga letumo. Etengeneko longudu ei 800 ile 9000.

Aasi naalilasa mOwambo

Sigo onena aakwashigwana shetu, unene mboka ya gama kolundume lwoshilongo nda konenena shi vullithe yalwe, ohaa tondokele oonakusilwa onkugo pamikalo odhindji ngaashi:

1. Okuza koombinga noombinga nokuya ya nyanyagule oluhodhi pakugongala pamwe megumbo lya siwa nokutsaathana ngaaka omukumo.

2. Okupendula oonakuthigwapo nokuya etela oontaku uusila, omalovu niikwathi yilwe yokukwathitha aalilisa.

3. Esiku wo lyefumviko ohaa eta nenge ohaa tumu o matumwalaka getsomukumo noongala dhokombila. Mbika ayihe oyo etalaleko shili koonakuthigwa po.

Pamukalo wo nguka ohole yuumwayinathana otayi mwenyopalekwa lela.

Nandi shi holole ngaa mpaka kutya ope na mboka inaa tseye ekwatathano lyaasi nolyaanamwenyo, unene tuu mboka taa sila muKristus nenge mboka ye li po natango aakriste.

Ope na omagongalo gaali mpaka noge na elalakano li-mwe. Mboka ya kotha po ye li aakriste oye li megongalo lyaategeleli yongula yependuko, ya tegelela Omuwa Jesus e ya yumudhe.

Aakriste mboka ye li momwenyo natango, nayo oye li megongalo ndyoka tali kondjo natango.

Ayehe oya tegelela gumwe awike ngoka te ya Oye Kristus Jesus Omuwa.

Mboka ye li natango miilonga oyo ye na okusila aathuwipo mboka oshimpwiyu.

Aanamwenyo otaa vulu okusila oonakusa ngeyi oshimpwiyu:

1. **EHALA LYOMAWENDO:** Ongeleki yetu oya koneke kutya okusila oshipwiyu oonakusa aakriste oshi li pamBibeli.

Onkee oya ningi iitokolitho 67-70 yOmaufomhangongo Ongeleki.

Omawendo oyo egongalo lyaategeleli oonakusa aakriste.

Lesha iitokolitho mbika.

2. **OSHIKETHA:** Okulandela omusi oshiketha moka ta lala mevululuko nokutegelela Omukulili gwe esiku ndyoka ta fumvikwa.

3. **EYAPULO LYOMUDHIMBA:** Omudhumba gwomwiitaali ihagu ekelwahi ngomuntu ta ka fumvika mbi-shi a sa. Ihe ohagu ningilwa oshituthi shelaleko nuuyamba. Lesha oshitokolitho 68 shOmaufomhangongo.

4. **OSHITUMBO:** Ehala mpoka nakusa a langetwa nali kale aluhe tali opalekwa nolya yela.

5. **EMANYA [OMUSHIGAKANO]:** Oto vulu wo okuuli-

ka ohole yoye nekwatathano lyeni na nakusa, sho to mu kongele emanya nenge omushigakano.

Emanya koshitumbo otali holola kutya mpaka opwa lala Nima yaNima ngoka a si i itaala Kalunga omushiti gwe.

Kemanya olwindji oku na edhina lyomusi, omumvo a valwa nomumvo a si. Kugamwe oku na endhindhiliko lyomushigakano nenge omatumbulo gomOmbibeli.

Mbika ayihe otayi ulikile omapiipi tage ya ondjokonona yaangoka ta lala mpoka.

Ihe unene okuulika ngaa kutya okwa li omukriste nokwa tegelela uukwaaluhe.

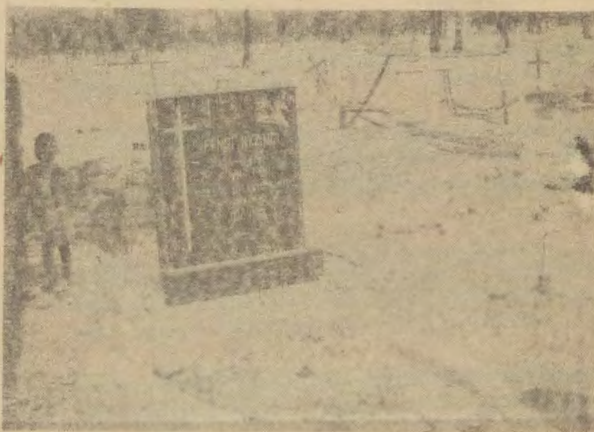
Shoka wo nda hala ndi tumbule mpano nonda hala u shi ipule nasho osho shi:

1. Oongala ndhoka hadhi tulwa kiitumbo yoonakusa. Pangaye ondi wete tadhi nyanyudha ngaa shili oonakuthigwapo esiku ndyoka sho taa tala ombila yomuholike gwawo yu udha oongala.

Otadhi kwatha wo mboka haye dhi landitha ya mone iimaliwa.

Ihe iimaliwa mbyoka wa li u na okulanda nayo ongala yokathimbo, ando u yi gandje yi ninge ekwatho mukulanda emanya.

Otandi zimine pamwe nangoye kutya haaluhe pe na shili omuntu ta vulu okutaamba oshimpwiyu shelando lye-manyanya pethimbo ndyoka.



Efano ndika inatu li tula mpaka okuholola uuhethi nenge okwasasiwa oshimpwiyu, kwewendo ndika, ihe okuholola shoka tashi popiwa.

Ihe tala, oonakusa mbaka haa etelwa oongala odhindji oyo ngaa mboka wo olwindji ya thiga po mboka taa vulu okumona iimaliwa ya tya ngaaka.

Oongala ndhika dhoonailona [dhopaunongo] ihadhi nyanyudha uha fa ndhopauntshitwe.

Tala kep. 8

Namibia konima yaAguste 15

Agute 15, 1982, oga kala ga tegelelwa muNamibia nomitima tadhi tuna nokutala shono tashi ningwa po kiita yoshilongo yomimvo 16.

Ashike okupita po kwalyo pamukalo gwaa na omutompo gwasha, inashi kala wo nando oshihaluthi koyendji.

Omandhindhiliko gokupopya kweuvathano lyesiku ndyoka oga kala ge li puuyelele. Oonakwiigidha esiku ndyoka, oyo wo oonakugandja ongamba, yAacuba ya ze mo shila tango muAngola.

Okuza ihe kesiku ndyoka sigo onena sho tatu tula oshinyolwa shika pombapila, Amerika okwa kala ta matuka kuAngola opo a ziminithe epangelo ndiyaka, Aacuba ya shune kaandjawa.

Onkambadhala ndhika okwe dhi ningile wo nomanga omasiku 15 inaaga thikana. Ine shi pondola.

Epangelo lyaAngola sigo onena, olya tinda okuzimina Amerika kutya Aacuba oye li eimbo lyemanguluko lyaNamibia.

Iilongo yaAfrika iishiinda na SA noyi na ewi mekundathano lyaNamibia, oya gongalele petameko lyaSeptemba 1982 muLusaka shaZambia.

Moonkundathana oya tsu kumwe naAngola moshinima shAacuba. Swapo naye wo oku li medhiladhilo ndika.

Shoka tashi dhiladhilwa kuyalwe

Omutoolinkundana gwoshifo shoStar muWashington, John D Oliveira, sho a konakona omukundu gwaNamibia okwa ti:

“Kutya Aayafrika omukundu nguka otaye gu tala ngiini, aakonakoni yomuule yuupolotika, oye shi mona mo nale kutya mpaka opu na owala omashongathano gaAmerika naRusia ngaashi taga adhika palwe wo muuyuni.”
(Star 18-8-1982)

MuApilili numvo omutoolinkundana a simana gwoshifo Rand Daily Mail, mu SA. Benjamini Pogrand, okwa li a holola omalimbililo ge ngele SA okwiilongekidha shili okugandja SWA.

Okwa tumbulile iitsa ine, a tala tayi imbi SA a gandje SWA. Pethimbo ndyoka omukundu gwAacuba inagu etwa natango moohapu.

Mpaka otatu ulike shimwe ashike shomiitsa iikwawo a tumbulile. Okwa tile:

Okuyanda aniwa uukomunisi waa lale mOvendu-

ka, epangelo olya putudha po oDTA yi kale yi na aniwa enwethomo enene maantu, uuna ehogololo nali ningwa.

Pogrand okwa ti kutya momutungilo gwo DTA omwa ningwa ihe epuko enene, sho omutiligane oye a tulwa natango komutse gwelelo nooveta dhokatongotongo odha tsikile ngaashi shito.

Pamadhiladhilo gaPogrand, shika osha nkundinaleke ihe ondilo yo DTA momeho gaAaluudhe, mboka ye li omwaalu omunene moshilongo noyo ya yuulukwa shili emanguluko.

Uunkundi mboka wo DTA momeho gaantu, omusamane Pogrand, okwa nyola ta ti kutya, itau gandja nando omukumo we ku SA, a zimine ehogololo ndyoka e shi shi kutya aantu ye itaa ka pita mo mulyo.

Pamatompelo ga fa omakwawo ngaka, Pogrand ota hulitha oshinyolwa she kutya; “onke omatokelelitho moshinima shehogololo, itaga ka pwa po nando.”
(Rand Daily Mail 19.4.1982)

Sebulon Ekandjo

Ova shangelange tava ti

Ihe Kalunga kombili oye mwene ne mu yapule unntu auhe, omwenyo nombepo nolutu lu gamenwe lwaa na oshipo sigo okugaluka kOmuwa Jesus Kristus.

Salmi O. A. Shümi

xxxxxxxxxxxx

Otatu pandula onye ovaholike vomaangalo aa; Endola, Olupandu, Engela nOhaingu omo twa kendabala paxupi okuhokolola oshilonga shetumo nghe shi li moushilo woOshitaingeleka shetu mOukwanyama.

Mokulonga ouwa, inatu lolokeni, osheshi efimbo ngeenge la fika ohatu ka teyeni.

Lot Kaishungu naTakailondo

xxxxxxxxxxxx

Aamwameme, nyanyukweni shüi ngele tamu adhika komamakelo gopendji. Oshoka omu shi shi, shika otashi kumike nokukoleka eitaalo lyeni.

Sacky Asino

xxxxxxxxxxxx

Aakriste ooyakwetu, ethimbo ndika tu lyeni mulyo oiyomuntu wi ilongekidha ethimbo kehe. Konakona muMat. 25:1-10 u dhimbulule kutya okombinga yini wa gama. Oye hupitho nenge oye kano.

Yoga oondjo dhoye mombinzi yEpona lyOMUNA gwaKalunga, u ka ligole pamwe nombushiki sho ta galuka.

Hilja Nd. Mwatukange

xxxxxxxxxxxx

Aasi naalilasa mOwambo

Dha za kep. 6

Dho ishewe ohadhi nyateke omawendo ngoka taku tiwa natu opaleke pashitokolitho 70 shOmaufomhango.

2. Mokugandja oshimaliwa koonakuthigwa po peha lyokulanda ongala, otashi vulu wo okukwatha mpoka pwa zile iimaliwa yoshiketha nenge yokulanda iikulya yaa-lilisa.

Pe ha lyongala yopaunongo hwepo shila u konge onga-la yopauntshitwe nenge u tume owala etumwalaka pam-bapila, oshihwepo.

a) Omalovu: Pashitokolitho 64 b) shomaufomhango o-mape gOngeleki yetu otaku tiwa:

"Ovkwaneongalo pefimbo leenghali ve na okufila o-shisho oonakufiwa po ve va kwafe pamwenyo nopalutu kombinga yoku va etela oipalwifa.

"Moivilo yeenghali ngaashi moivilo ikwawo yovakri-ste omwa keeletwa oikolwifa."

Oshitokolitho shika otandi shi koleke netompelo ndi-no kutya, aantu oto adha omuntu ta lili omahodhi ga tsa koompadhi, nani ita lili shili omusi, ihe ogo taga panga.

Yamwe moosa otaa lala nuukende, noombike, noowi-siki kohi yuigwilo, opo ya kale ngaa taa ihahala mo ma-nga ye li moosa.

Ngele ando ongame nda silwa e to ya u hekeleke ndje wa kolwa ngeyi, oshihwepo ando wa li inoo ya.

Monkolwe kamu na ehungomwenyo netalaleko.

Oondjembo: Kandi wete elalakano lyokuumba oondje-mbo miituthi yopakriste.

Moosa omitopelo dhoondjembo otadhi halutha owala omitima dhaalilisa taa pumbwa etalaleko ethimbo ndyo-ka. Ethimbo ndika otu na wo oyendji yaala uuvu wo-mitima.

Tse aakriste oosa dhetu nadhi yooloke kodhaapagani naashuni monima.

Omaso gaamwameme naga ninge euvitho kutse mbo tatu kala po natango. Ngoye oto ti nguini?

S. V. V. Nambala

E TU FIYA PO

Omafiku 14.6.1982 omukulupe a shilvika nawa Moses N. Ndakeva, okwe tu fiya po nokwa ya ketulumuko lovana vaKalunga.

Tatekulu Ndakeva okwa tonga oshilonga shouyevangeliste efimbo lile. Okwa fiya po omufiyekadi waye nouona 11. Ovakanedimo hekelekweni nOndjovo yaKalunga Ps. 90.

Nangula

Oinyolwa ilipipo mOmukwetu hai futilwa?

KOmukwetu,

Onda hala okupula nawa. Ngele nda hala oshipo-piwa shange shi ye mOmukwetu, ohapu futwa sha? Nofuto oyo oi fike peni?

Ile oipopiwa ilipipo hano hashi dulika i futilwe? Tangi eshi tamu kwafa nge mwaashi.

Simon Shaulwa.

EYAMUKULO: Tate Simon,
Oipopiwa hai futilwa onhele moshifo shOmukwe-
tu, ongaashi:

— To shiivifa eenghobe doye da kana ile keshe tuu shimwe sha kana, u toolifwe ko, ile u toolife ko mukweni.

— Okushiva oshivilo shedalo loye, ile keshe tuu oshivilo wa hala kushiva vakweni tashi pitile mO-mukwetu.

— Ongenge to shivi eyeululo longeshefa yoye, ile to i pata, ove wa hala nee ovanhu va kale va shiiva osho sha ningwa po nosho tuu.

Oinyolwa ikwao yokutungafana meendunge nomeitavelo, ohatu i tambula oshali.

Amushanga wOmukwetu



OMUKWETU

Oye oshifo shOngeleki Onkwaevangeli paLuther yomOwa-mbokavango.

Ohashi nyanyangidhwa mOniipa.

Omukuluntu gwoshifo omumbisofi dr. Kleopas Dumeni,
Amushanga gwoshifo omusita Sebulon Ekandjo

Ondando yoshifo komunvo muAfrika alihe R2,60. Kombanda yomafuta R5, 00, nondhila R6, 24.

Oondando nomambestelo agehe naga tumwe kOmukwetu,
Oniipa, P.Bag 2013; Ondangwa, 9000

EY. LUTH. OWAMBOKAVANGU CHURCH PRESS
PRIVATE BAG 2013, ONDANGWA 9000 SWA/NAMIBIA