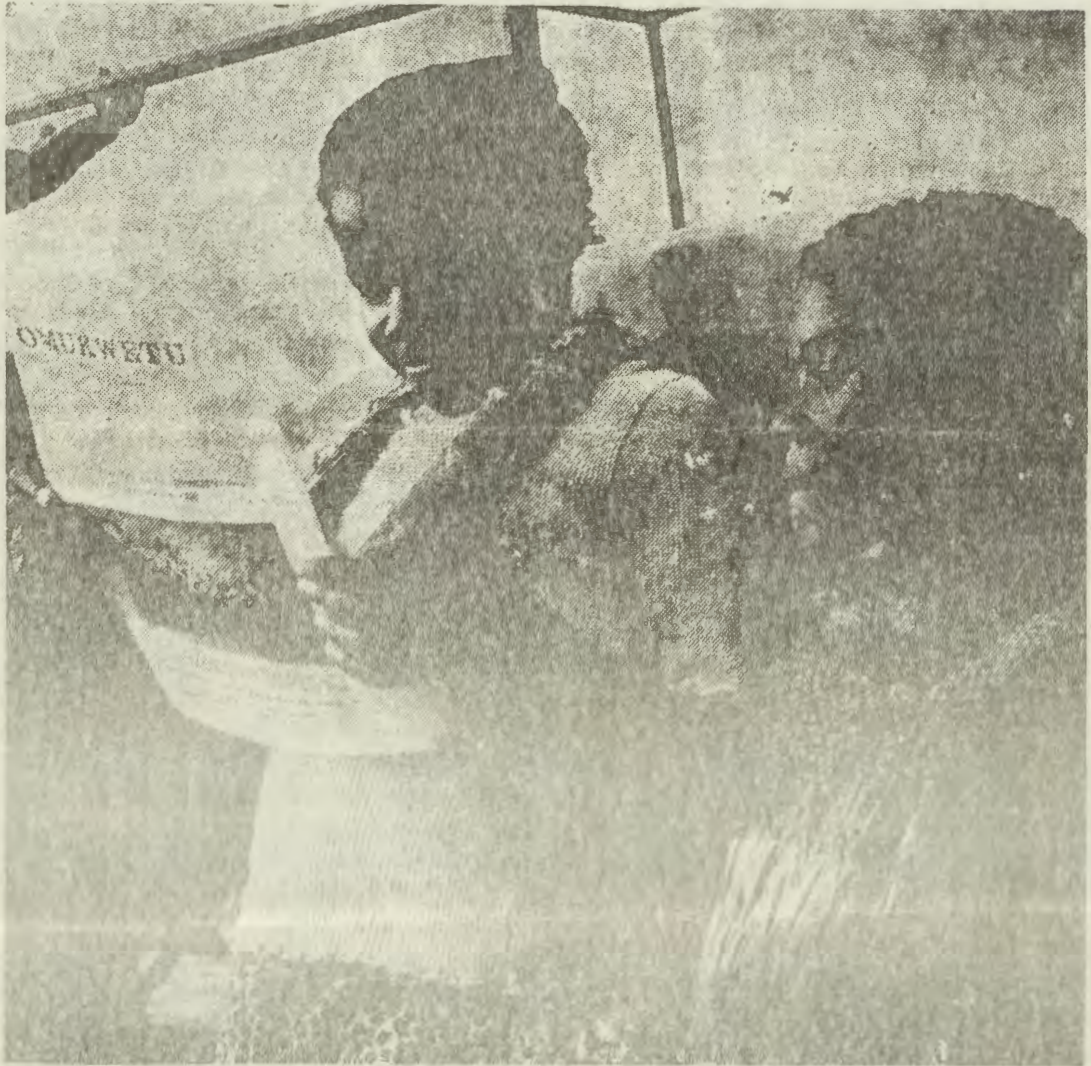


# OMUKWETU

Registered at the GPO as a Newspaper 15c



"Omukwetu", omukweni, kuume koye, omukwanezimo lyye, ngaashi tashi holoka medhina, ogu na aluhe etumwalaka lyomomuntu, gwepipi nogweithano lehe. Koombinga noombinga otaku uvika nkene aagundjuka ya hokwa okulesha. Efano tu li lwete mpaka olyo ombangi: aagundjuka ya oyi ipyakidhila okwiilikolela uunongo tau kalelele naamboka tau ya kwatha kombanda yevi, moshifo shongeleka yavro: Omukwetu.

# Aagundjuka ya ELOK ya galuka kOkahandja

Oshigongi shaagundjuka ya ELOK shotangotango mUushi-mba, osha li sha ningilwa mOkahandja okuza 7-9-8-1981. Ehuku lyoshigongi olya li : "EITAALO OSHIPATULULO."

KOwambo okwa li kwa za aagundjuka 75. Yamwe oya li ya za koombinga noombinga ngaa-shi kOshomeya kOklein Aub, nokOrossing (Arandis). Omwa li wo aakalelipo yoongeleka dhilwe naagundjuka yoongeleka dhi ili nodhi ili ya za kosikola yaAkademi kOvenduka. Nдохотola Sheyavali pamwe nongundu yaalongwasita yokOtjimbingwe oya li wo ya kwatha mokuyamukula omapulo ga pulwa moshigongi. Mboka-ya li ya landa omandhindhili-ko ayehe kumwe oye li 500.

Oshigongi osha li sha ningilwa pehala lyaagundjuka noomeme pomatungo gongeleka onkwaevangeli paLuther yomUushimba. Aayenda ayehe oya li ya taambwa nawa kaayakuli yopehala mpoka.

Kakele kiipopiwa ya dhenga mbanda, noondjimbo tadhi hwameke, oshigongi osha ningi omaindilo gaali ga simana kEpangelongeleka.

Eindilo lyotango otali indile aayakuli ya ELOK mUushimba yi indjipalekwe, omolwiilyo yongeleka ndjika mbyoka yi li mUushimba. Eindilo etiyali ota li indile oshigongi sholudhi nduka shi kale ando hashi kala ko omumvo kehe. Oshigongi shomumvo tagu ya 1982 osha thanekwa shi ka kale kOtjiwarongo.

Aagundjuka mboka ya zile kOwambo oya li wo ya longitha ompito ndjika mokutalela po omahala gi ili nogi ili, oshoka aagundjuka oyendji kaya li ye endanale mUushimba.

Oya talele po oshikunino shiina-mwenyo mOkahandja nomahala gamwe kOvenduka ngaashi oombelewa dhongeleka onkwaevangeli paLuther yomUushimba (ELK), noombelewa dha-Anglikan. Oya talele po wo oombelewa dhOngongahangano yoongeleka muNamibia (CCN) noho wo ongulu moka mwa pungulwa iinima yomapipi gonale (museum).

## Shoka sha konakwe

- \*Elongelokumwe ewanawa pokati koongeleka;
- \*Ombepo yiimpaga maagundjuka yamwe yomUushimba;
- \*Omwenyo gwaagundjuka sho taa piti nawa mokufuta omalweendo kuyo yene.
- \*Eyokomeho miileshwa yaagundjuka ewanawa maagundjuka yoku-Arandis.

Omuwa ngele e shi hala oshigongi shokomumvo shaagundjuka ya ELOK otashi ka kala moshi-nyanga shiigongi mOngwediva okuza 1-4 Kotoba 1981.

Ngiika aagundjuka yegongalo lyeni oyo taa ka gandja enyowa lyo epanдела itali ka tukile WE KU CDM.

# EPULO OLINI PO ANO?

## Lukas 18: 9—14

MuPalestina, aayuuki ohaa galikana lutatu mesiku; potundi onti 9, ponti 12, noponti 3. Egalikano olya li lya talwa li na ondjundo onene, uuna lya ningilwa motempeli. Onkee pootundi ndhoka, oyendji oya li haa yi ya ka galikanene motempeli.

Ompango yAajuda oyu utha esiku limwe alike lyokwiidhilika iikulya momumvo, olyo esiku lyehanganitho, 3Mos.16. Ihe monkambadhala yokwiipanditha anuwa kuKalunga, oyendji oya tameke okwiidhilika wo iikulya lwaali moshiwike kehe, Omaandaha nEtine. Oyi igwayeke wo iipala yawo yi kale ya toka, opo ayehe mboka taa ya mono, ya tseye kutya yo oyi idhili-ká iikulya. Osho wo pa 4Mos.18:21, Aalevi oya li ye na okupewa oshitimulongo shomeliko kehe lyomulumentu Omujuda kehe. Ano eyele ndika lyOmuwa Jesus otu na oku li talela muwelele mbuka.

Omuwa Jesus mpaka ota popi aalumentu yaali, omufarisayi nomufendelithi, mboka ya yile esiku limwe motempeli, pamukalo nguka, opo ya ka galikane. Mokugalikana kwawo, ayehe yaali oya kala omuthika. Ayehe oya tumbula Kalunga kedhina. Ayehe oya longitha omukalo gu uka gwegalikano: gumwe okwa hambelele nomukwawo okwa okwi indile esilohenda.

Ihe eyooloko pokati kawo olya li mpaka: Omufendelithi okwa li e na eiyuvito lyomuule lyoondjo nokwa li e na ompumbwe yokudheminwa po oondjo dhe nokupewa uuyuuki mboka Kalunga awike ta vulu oku u gandja. Oye ina ya kotempeli, opo a ka monike kaantu, ndele okwa yi ko a ka konge esilohenda a ka hempulule oondjo dhe, a ka pewe edhimopo lyoondjo noma-yambeko agehe gaKalunga; ye a mone ehala mongundu yaantu yaKalunga.

Kombinga ye omufarisayi, okwa li a tseye omikalo dhelonge-lokalunga, ihe okwa li ina tseye Kalunga nuukwatya we. Oye ina ya kotempeli okugalikana Kalunga, okuhempulula oondjo dhe, ndele okulombwela Kalunga nkene ye e li po omwaanawa. Ina ya kotempeli, a ka taambe eyambeko lyaKalunga, ihe okupewa esimano kaantu.

Pahapu ndhika, omuyuuki oongoka omwiifupipiki, ngoka a koneka kutya uuyuuki we mwene wopailonga, kau na esiku nau ka gwana oku mu kaleka omuthika koshipala shaKalunga. Aayuuki oomboka taa ethele epangulo alihe lyawo miikaha yaKalunga. Omufarisayi okwa ningi etokolo ye mwene kombinga ye nokwa fa a sindana pakutala kwaantu. Ihe okwa li a puka nomwiinenepeki momoho gaKalunga. Onkee okwa shuna kegumbo lye ngashi a zile ko. Omufendelithi okwa li omunandunge e vule mukwawo:

Okwiithana Kalunga oye a kale omupanguli nomupopili gwe oshita, nokwa mono emangululo neyukipulitho koshipala sha-Kalunga.

Egalikano lyoshili olyo okutegameka okukala kwetu noonapu dhaKalunga niipango ye, hakwiitegameka naantu aakwetu. Eeno, shoka sha popiwa komufarisayi oshoshili. Okwa li shili ha ningi ayihe mbyoka a tumbula. Ihe epulo kali li mpoka nokali na okukala ngaaka kutya, ngele ngame omwaanawa ndi vule aantu yalwe, ndele epulo oli na okukala ndika: Ngele ngame omwaanawa tuu nda fa Kalunga ?

Uuna tatu tegameke okukala kwetu nokukala kwaJesus nomuuyapuki waKalunga, nena otatu ka dhimbulula mbala kutya shoka twe shi pumbwa, osho okugalikana pamwe nomufendelithi: "KALUNGA SILA NDJE OHENDA, ONGAME OMULUNDE OMUKWEYI!"  
A M E N.

M.I.AMADHILA

## **Okatongo mOwambo oke vule muPretoria**

Etumbulo ndika olya popiwa komusamane Tibinyane, omukalelipo gwaAatswana mOraata yEeministeli kOvenduka, sho a li ta popitha ongundu yaantu ya li ya gongala moshigongi sho DTA, sha li moshinyanga shaayehe popepi nombelelewa yoshilongo mOshakati eti 22.8, 1981.

Omuntu oto koneke mbala kutya aawiliki yoshigongi shiyaka, oyi itaala wo kutya Kalunga oye awike omukwathi omunene nomiinima yopolotika, oshoka oshigongi osha li sha tamekwa no-sha hulithwa negalikano.

Omusamane Frans Iindongo oye a li a ulikwa a ninge omunashipundi gwoshigongi shiyaka. Aapopi oya li omutiligane gwedhina Botha, Tibinyane, nomusamane P.Kalangula.

Tibinyane moshipopiwa she shoka sha li unene tashi dhenge ondhimbo pokatongotongo, okwa holola kutya okatongo pokati komutiligane nomuluudhe mOwambo otaka kenyanekke. Shika osha kolekwa sho moshigongi shika mwa li owala aatiligane 8 ayeke, nonando pakutala ehiyo lyomusamane Kalangula ina li ninga ondjoolola.

Aantu owala yane ya li ya pewa ompito yokupula, oshoka aani-angi yoshigongi oya li aniwa ye na oku ka ninga ishewe oshigongi kOluno esiku tuu ndyoka.

Omupuli gumwe okwa holola (nomwenyo gu uvite shili uudhigu) nkene pe na uudhigu okuza molukanda lwaShakati uusiku uuna pe na omuntu ta alukwa noonkondo nenge omuntu e li pokweeta okanona. Omusamane Kalangula okwa uvanekkele nakupula kutya ota ka ya mbalambala kwaamboka haa ithanwa etanga lyegameno, opo eke ya tseyithile oshinima shoka. Okwa dhimbulutha wo omupuli kutya ngele okwa mono kutya inape ya elunduluko, onawa e mu tseyithile kutya oshinima natango inashi opalekwa.



Momumvo 1975 aanongononi yuuntsi-twe oya li ya popi sha shoka tashi ka ningwa mombwlangandja notashi ka eta omalunduluko gi ili nogi ili kongonga yevi momimvo 1981-1982.

Momumvo ngoka osha li sha nyolwa mii-fo yomuEuropa. Okapambu kashimwe shomiifo mbyoka oka li ka pungulwa komutsini gumwe a tale ngele a thiki ko komimvo ndhoka ota ka mona tuu shili omalunduluko ngoka ga popiwa kaanongononi. Itandi ka eta mpaka oshinima ashike, ihe otandi eta ashike iinima yontumba mpoka oondunge dhandje tadhi adha.

Kalunga sho a shiti omaminikilo ngashi etango, evi nomwedhi okwe yi shiti hayi inyenge notayi dhingoloka kooakseli dhayo, ihe ohayi dhingoloka ishewe edhingoloko lyongonga yontumba yi li moondjila nomomisinda moka ya uthilwa. Etango ohali dhingoloka mongonga yalyo omimvo 11, opo li thike mpoka lya tamekele. Aanongononi otaa ti nee mpoka tali ka kala omumvo 1981-82, waalyewo omolwashike, otapu ka kala omainyengo mombwalangandja, oshoka otali tsakanitha omimvo 11 medhingoloko lyalyo. Omainyengo ngoka haga etwa kushika omashona ngaa kage shi omnene unene noitaga dhimbululwa komuntu kehe. Ano otashi vulika ngaa shi dhimbululwe kaanongononi yo yene nenge kuyalwe ngaashim momakudhilo gooradio nenge omakuthikuthi itaga tsu kumwe noshowo mootelevisi tashi vulika sho wa patulula u tale nenge wa pulakena hasho tashi ya nenge u uve ngoye u mone ooprograma dha londathana dhi li mumwe inoo tseyo otashi zi peni.

Otashi vulika shi dhimbululwe mowindji nenge muushona weloko lyomwula. Ihe oshiningwanima oshinene ishewe sha gwedha kushika natango tashi ka eta elunduluko mombwalangandja noshowo kevi ooshika kutya:

Oongundunyothi ndhoka dha kunduka etango lyetu adhihe omugoyi otadhi ka kala kombinga yimwe yetango notadhi ka hila oonkondo metango kombinga yimwe ayike ano inadhi kondekwa we ngaashi shito.

Oonyothi ndhika odhi lo 9 odho Mercurius, Venus, Evi, Mars, Jupiter, Saturus, Uranus, Neputunus naPlato. Ano adhihe ndhika momumvo 1981-82, otadhi ka kala dhi li momutete gumwe, okutya osha zi mbela peni, osha zi ngaa momadhingoloko gadho oshoka adhihe ohadhi inyenge noku-dhingoloka moongonga dhadho.

Shika sha tya ngeyi oa ohadhi shi ningi aluhe ngele pwa piti omimvo 179. Ano nee sho iinima mbika ayihe iyali sho tayi tsakanene ku na etango tali udhitha edhingoloko lyalyo koku na omutete gwoongundunyothi dhetango lyetu tadhi hilile kombinga yimwe otaku ka ndhindhilikwa sha ngaa momimvo ndhika.

Otashi ka eta omalunduluko gi ili nogi ili kevi nomombepo. Nandi tubmbule gamwe ngaashi ya tumbula: Einyengo nekudhilo nomakuthikuthi gooradio nootelevisi. Pomahala gamwe otashi vulika tapu lokwa noonkondo inaashi monika nale manga pamwe tapa itaapa gumwa nando oketa lyomvula nando ohapu lokwa shito.

Pethimbo limwe uupyu unene manga pethimbo lyontumba uutalala sha kwata wo kehala nehala. Otashi ka lundulula kashona omilonga dhomefuta moondjila dhadho notashi ke dhi lundulula muukwatya, omutalala nenge omupyu kashona nenge unene. Otashi vulika wo shi ete omainyemgo galwe ngaashi omakakamo gevi, iikungulu, omaluteni nosho nosho.

Owe shi itaala?

Olwoodi omo mwa ehamekelwa ovanhu nomwa kanena eemwenyo davamwe, ola li la tukuka pokati kOvawambo nOvadamara molukanda lovalaule, mOtjiwarongo, okudja 7-10 Auguste 1981.

Pashifo shOshiingilisa "the Windhoek Advertiser" sheti 11.8.1981, pepandja eti 3, osho sha eta olwoodi Omuwambo umwe vati a twa omukainhu Omudamara nombele oufiku wEtitano, 7 Auguste.

Pefimbo lomutenya, mOlomakaya 8.8.1981, eengudu dinene dOvadamara, oda ponokela eumbo lOmuwambo a tumbulwa metetekelo, ndele tadi hanauna shihapu. Osho ngaha omalwoodi pokati keengudu edi mbali a ya mokati.

Tete molwoodi omwa li ashike mwa longifwa omamanya, eehamala, omanga nosho nosho, ashike konima oshinima osho nee sha ka nyikala.

Paudafano lOvawambo nopolifi, ovawambo ova itavela okudja mo mokomboni, opo mu hadwe. Kakele keembele noulwifo vamwe vanafangwa, kaku shiivike vali ngeenge omwahangwa tuu nee oilwifo yasha yee nghono. Manga tuu osheendifo osho she uyile okuninga ehado tashi pilameneko, oshiponokela shikumwifa osha ningilwa ongudu yOvawambo 500, ya li ya ongala kouninginino wokomboni tai kundafana nombili, novehe na ngeno ediladilo lokuninga oukolokoshi wa sha.

Ongudu ei yovaponokeli cya dilila kouningininoumbanganhu. Ongudu ei mwa kwatelwa "ovakwaita" valaula vati inava djala oikutu youkwaita, oya kupula oitopifa yomukuwomahodi (teargas) mongudu yovawambo 500. Vo vene ova li va djala omambale okulaamena koitopifa ei. Kakele koitopifa ei, ova li vali ve na eedibo domakenya.

Osho ngaha Ovawambo va wila momake ovatondi, konima ashike eshi opo va kufwa oilwifo yavo.

Vamwe ova faduka po va yuka moixwa vo tava tewa koihauto yovapolifi nyopaumwene, omanga vamwe ve li 50 va tondokela komatungo etumo longeleka yaKatoolika kaRooma, opo va ka konge eameno kwaavo hava longo opo. Ovalongi voponhele apa ova kelela ovaponokeli vaha ye mongeleka omo mwa hondama Ovawambo.

Ovawambo nande va dipaelwa ovamwaina navamwe va ningwa oiveta, ove li diinika opo va ye koilonga ongula yEtivali, 11 Auguste.

One ookuume, aamwayina noyana yaNakusa T.E. Tirronen taambeni omakundo gu udha epanduloga zi kumeme Ester nonkelo yawo Anni Tirronen, omolwaashihe mwe shi ningile kuume keni Toivo nomwe shi ya ningile wo ayehe. Oye mu halele omayambeko ogendjigendji. Ombelewangeleki otayi mu pandulile eyakulo lyeni, mwe li ningile kuume keni T.E. Tirronen.

Otamu tseyithilwa mpaka shoka mwe shi gongele, ashihe kumwe R2053-09 sho mwa zi yokulanda oshiketha R160-00 nondando yongulu yomidhimba R20-00. Opwa hupu R1873-09, niimaliwa mbika otayi ka landwa emanya lyokombila. Onkene mboka mu na nantango ehalo lyokutuma sha, ukitheni kombelewangeleki kOniipa. Omwa longa sha simana aamwameme.

"Kalunga ketu ke shi omugoyokithi." Ote mu galulile.

Kape na omalimbililo, oshiningwani-  
ma eshi sha ningwa mOtjiwarongo,  
otashi halukifa omudalelwamo keshe  
ta popile onghendabala yokuhangani-  
fa oshiwana shaNamibia shi kale shi-  
mwe moupu nomeefina.

Kashi na naanaa ekwafo okufikamena  
epulo kutya Ovadamara ile Ovawambo  
ve na epuko moshiningwanima eshi,  
shaashi otashi tu kateke; Fye otwa  
yuka komesho, hamonima. Shapo natu  
shi pungule, opo ondjokonona yoshi-  
longo eshi i ka ninge omutokoli.

Nonande oita yoludi eli ya kala hai  
holoka noshito, fye ava tu li po  
twa hala nokuhalelela eluwa lemangu-  
luko li tende, itatu dulu unene oku  
shi landula, shaashi venya kwali  
have shi ningi kava li manga va yoo-  
lola olulyo nolumoshu.

Kombinga yepulo kutya omolwashike  
eameno lOvawambo la li li na okutu-  
lwa momake avo vene, ngaashi sha ho-  
loka moshiningwanima eshi, otashi  
nyamukula epulo kutya omolwashike  
naanaa twa fya enota lemanguluko.

Kepulo kutya omolwashike oiningwa-  
nima yoludi i na okukala tai holo-  
ka fiyo onena, enyamukulo itali ko-  
ngwa kokule; osheshi havaNamibia  
aveshe va koneka kutya paife efi-  
mbo ola pya, opo omulaule muNami-  
bia a koneke kutya osha fimana  
okutunga oukumwe wovadalelwamo  
wakola.

Nopehe na oukumwe wovadalelwamo  
wa kola, kape na emanguluko le li-  
xwapo.

Oshili otai kala ngaashi i li ku-  
tya ngeenge ovalaule muNamibia  
ohatu kofele ofika, ohatu ke li  
mana po filu, ndele ounyuni tau  
tu yolo.

## OSIKOLA YU UPANGI

### MONANDJOKWE

Otayi taamba aalongwa aape  
1982, Kalunga ngele te shi pi-  
tika. Ngoka ta vulu okutaambwa  
na kale omugundjuka a pita  
St.8, nuuna a konakonwa na ta-  
lwe kutya oto opalele andola  
oshilonga shuupangi.

Eindilo lyoye nali ningwe  
ngeyi:

- 1) Ombilive yeindilo lya nyo-  
lwa kungoye mwene, nolya sha-  
inwa noshikaha shoye.
- 2) Ombapila yegongalo (we yi  
pewa nuumvo).
- 3) Onzapo yo St.8 nenge onza-  
po ya Juni-81 nenge okopie  
ya ningwa koskola yeni (ha  
kungoye mwene).
- 4) Onzapo yiilonga nenge epo-  
pilo ngele wa kala nokuli mii-  
longa
- 5) Tuma eindilo lyoye manga  
esiku eti 15 lya Kotoba 1981  
inaali thika:-

KOMUKULUNTUSIKOLA  
ONANDJOKWE LUTHERAN HOSPITAL  
PRIVATE BAG 2016  
ONDANGWA  
9000

Omaindilo naga kale ga gwana  
po noga thike pethimbo.  
Ngele hasho, nena ito ka mo-  
na eyamukulo lyasha.



# Owa talela pa tyu nale oshihondjelo sha ELOK pOniipa? ...keemhadi kaku na maka

Moshihondjelo shOngeleka ya ELOK pOniipa, paife otamu hondjwa oidjalomwa noilongifo imwe oyo ya kala ya djuulukiwa nale kuvahapu.

Ngeenge omunhu to tale ngehene ovahondji vomoshihondjelo eshi, mewiliko lameme Irja Soikkeli nameme Aino Dumeni, tava sheketifa omashina okolusheno naa okeemhadi, oto koneke kutya eitavelo lokutya shihapopi iha anye, otali wedele omukumo wavo efiku nefiku mokulonga oilonga ei tai pula omunhu okatalekonawa noukeka.

Ngeenge fiyp opapa ku shii ko sha koshihondjelo eshi, handiya ndi ku kufile ko.

Omufitaongalo ngeenge onguwo yoye itoka ile ilaula otai holola oukulupe, ino kwataakwata yukilila kOniipa. Kwinya oto kondelwa ei kadalwakaende ye ku yeleka nawa moule nomoune ne, shamha tu u na R90.00. Shamha wa fiki moshihondjelo oto ka mona yo kutya mboli nomalapi okowalitari ohaa monika mo.

Kombinga yovanyasha ava mwa dimbuluka kutya okulikalala okwa nyenga enongo, ope na omhito yokupa Ovenduka ombuda, ndele to tu laNiipa, shimha tuu u na oshiyata shoye mwe ne shofeyi meke. Eeshuta domakanda dokutulifa moipundi, shilindi manga.

Ava mu li mofikola yopombada yaShigambo, ndele kamu na omudjalo wofikola, ningeni shanamatete kOniipa, mu ke li mone ne oumudjalo veni ve mu yeleka.

Kombinga yoshiwana ashishe, inamu efela Eembibeli deni onghayi, oipeko yomukova otai liufana watate moshihondjelo shaNiipa.

Penya oto hondjelwa yo ofulukweva, ohema nobuluse yoshiyata keshe eshi wa hala. Natu tye nee ou na nande omhumbwe yomamate okuyala poshi, ino dingilila ke i lopote kOniipa.

Ava mu li momudingonoko waNiipa oshihondjelo oshe mu teelega Etine keshe mu uye mu li landele osho mwa hala OIPINDI OMOMESHO!

## Imonena ombandi yuutekuligumbo

Ombandi yuutekuligumbo ohayi gu ngashingeyi R1-34 mEnongelo Iyaayakuligongalo mEngela. Shaangoka we yi hala, mbesitela owala kOmukuluntunongelo P.O. OSHIKANGO 9000.

## OMUKWETU

Oye oshifo shOngeleka Onkwa-evaangeli paLuther yomOwambokavango. Ohashi nyanyangidhwa mOshinya-nyangidho shOngeleka, ELOK, mOniipa. Omukuluntu gwoshifo omumbisofi K.Dumeni. Ondando yOmukwetu R2-60 komuvo muAfrica. Kombanda yomafuta R5-00. Omambesitelo naga tumwe kOmukwetu.

Ev. Luth.Owambokavango  
Church Press  
Private Bag 2013  
ONDANGWA 9000