

OMUKWETU

No. 15

Registered at the GPO as a Newspaper

12c



Omulongwapangi Maria oku na meke lye Elaka Etoye noshe mu nyanyudha.
Oshilonga shetaandelitho lyelaka etoye tala kep. 2

Oshikwiila shOmwenyo

Ohole oyi na omutima gwomuntu mukwawo notayi topola oshikwiila naye.

— Ohole oyi na omakutsi okupulakena yakwawo.

— Ohole oyi na omeho okumona oluhepo lwayakwawo.

— Ohole oyi na oompadhi okuya ko okugandja ekwatho kungoka a lala pooha dhondjila.

— Ohole oyi na iikaha okukwatha yalwe.

— Ohole yaKalunga otayi tu hiya atuheni kuye.

— Jesus Oye ohole, Oye ohapu,

— Jesus Oye oshikwiila shomwenyo.

MOHAPU OMU NA OMAGADHI OKUGWAYEKA IILALO YOMETHIMBO NDIKA

Uudhigu wolutu hawo unene omikundu ominene dhethimbo lyetu. Omukithi omudhigu, uunkundi womwenyo mboka tau zi ekano lyomwenyo, osho sha popiwa koshifo "OMUKUNI Aguste 1979."



Omafano ngaka gaali otaga ulike okomitiye yeleshululo lyOmbimbeli sho yi li mii-longa.

Oshifo shika shOngeleka yaKatolika ka-Roma, hashi nyanyangidhwa moDöbra, popepi nOvenduka, osho shimwe shomiifo iishona tayi monika ngashingeyi muNamibia, tayi yamukula omapulo goyendji methimbo ndika.

MOshipalanyolo shimwe shasho, "EHO-KOLOLO LYIILONGA YEHANGA-NOMBIMBELI LYA S. AFRIKA 1978", oshifo osha yelitha nkene uuntu womuntu itaau tungwa owala kehumokomeho lyokombanda nokuunongononi.

"Omukithi omudhigu ogwo uunkundi womwenyo, mboka u li ekano lyomwenyo. Onke pamwe naahunganeki yonale otatu pula kutya:

"MuGilead kamu na we omagadhi ga-Balsam, nenge kamu na we omupangi ta panga?" Jer.8:22, osho oshifo sha dhimbulukitha omuleshi okudhiladhila ompumbwe yomuntu gwonena.

Eyamukulo, oto li zimine?

Omafatululo taga landula mpaka, gamwe oga zi moshinyolwa shoka, moka omuleshi ta dhimbulula ondjunga yi li po okupanga iilalo yomethimbo tu li na nena.

Omatokolo gamwe gEpangelongeleka muJuni

189/79

Okangundulongekidho kEpangelongeleka oka pewa oshimpwiyu ka longekidhe noka faneke oolye ye na okuya kiigongi yopaali mbyoka tayi ka kundathana oshilongatumo kuAustaralia nokuThailand 1980.

196/79

Epangelongeleka olye etelwa ehokololo lyoshilongatumo muSenegal moka mwa dhimbululwa oshilonga nkene tashi humu komeho. Evangeli olya uvithwa nema-nguluko, noshilonga shuudiakoni otashi longwa mokuhupa omithima nokutopola iipalutha kaasindjala. Iilonga mepya ndiyaka oyi li po oyindji naalongi otaa pumbiwa.

199/79

Epangelongeleka olya utha omusamane Moses Amkongo nomusita Asser Liango, ya kalele po Ongeleka yaElok, mokomitiye yOmbimbelihangano muNamibia.

Ehangano lyOombimbeli muSuid-Afrika otali dhike oshitayi shalyo mOvenduka nomatungo oga kundandwa kutya oga pwa.

Aapeha yomadhina ga tumbulwa metetekelo oyo aasita Jason Amakutuwa na Gerson Max.

Shoka tashi humitha komeho onkambadhala ndjika osho Ehanganombimbeli lya-Britania nolyilongo, lya dhikilwe 1804. Oli na iitayihangano 59 miilongo 150. Oshitayi shalyo shamu S. Afrika osha dhikilwe 1820, moka tamu zi oshikwawo shoka tashi dhikwa numvo mOvenduka.

Omalaka 90 gomuumbugantu waAfrika, otaga longekidhilwa ngashingeyi okumona Ombimbeli melaka lyaandjawa. Gamwe gago, oyo tage ke yi mona oshikando shotango.

Momumvo 1978, Ombimbeli oya holokele oshikanndo shotango momalaka 28. Nomumvo 1977, Oombimbeli 2.162,632 odha taandelithwa kaaleshi.

Metilokalunga tali zi mOhapu ye, omu na eyaluko lyomwenyo.



Okulesha, oshinima sha simana, ihe okuleshulula ishe-we niishewe, oshinima shi vule po mpoka.

Omikalo 6 ondjovo ya Kalunga tai dulu okufikifwa keongalo

Ondjovo yaKalunga oya pumbwa okulongifwa nawa kovaudifi, va shiive nova yoolole kutya eudifo e li udifa loludi lilipipo, opo a kwafe eongalo ngaashi tali pumbwa.

Apa otapa shikula omikalo dimwe, odo omuudifi keshe e na okukala ngeno a shiiva, ye a nyamukule epulo laye kutya: Eudifo lange nena eli, eongalo otali li kwafa shike.

1. EUDIFO LEPANGULO: Epanguloudifo otali popi ounghundi weongalo ile womwiitave-li wonhumba. Eudifo loludi eli, ola longifwa unene kovaprofeti mEtestamendi Likulu. Mulo omuudifi ota eta ondjovo yaKalunga molupe lepangulo, tai pangula eongalo, eshi la nyengwa okuwanifa oipango yaKalunga. Oku mu hola nokuholafana.

Unene ohali udifilwa eongalo eli la nyengwa okulidilulula. Efiku limwe ohashi kala sha pumbiwa opo eongalo li mone shili oulunde walo nomhumbwe yalo okupumbwa Kristus.

Ashike omuudifi keshe oku na okukoneka kutya, eudifo eli kali lilepo okweekelashi omulunde, ndelene okweekelashi oulunde. Onghee omuudifi na kale e li tongola ko hano kumakwao, opo aha kale ashike ta udifa epangulo neongalo otali ka shiiva ashike ondjovo yaKalunga kombinga imwe.

2. EUDIFO LEPAPUDULO - Epapuloudifo inali fa eudifo lepangulo. Eudifo eli oli na okuudifwa opo eongalo li ulikilwe ounyengwi walo noli shingilwe kelidilululo nokokutambula evangeli noku li fya enota.

IIMALIWA INAYI GANDJA ETALALEKO

Iimaliwa R65,000 oya futwa kepangelo ezimo lyaSteve Biko (Isha Stiivi), Okwii-theta omahodhi. Peha lyokutya "Tangi", aakwazimo mbaka oya ti owala kutya ofuto etameko lyiihokolola.

Biko onkwatwa yopapolotika, mu S. Afrika ya sila mondholongo 1978 neso lye olya li lya halutha uuyuni. Konima yekondjo edhigu pu dhimbululwe oshike she mu lya, epangelo olya zimine okufuta omuselekadhi, aanona nayina yanakusa.

"Iimaliwa hayo tayi mana po omukundu," osho ezimo lya ti.

Ofuto yomuselekadhi R30,000 peha lyokupewa R50,000 ndhoka a pula, okwa ti kutya ombinga yimwe ote ke yi gandja koshilonga shekondjelo lyuuthemba womuntu mokati kaaluudhe, oshilonga shoka Biko a kala ta longo musho.

Ombinga yimwe yomayovi 65,000 oya gandjwa kuyina yanakusa, Efolo Elice Biko nokoothigwa.

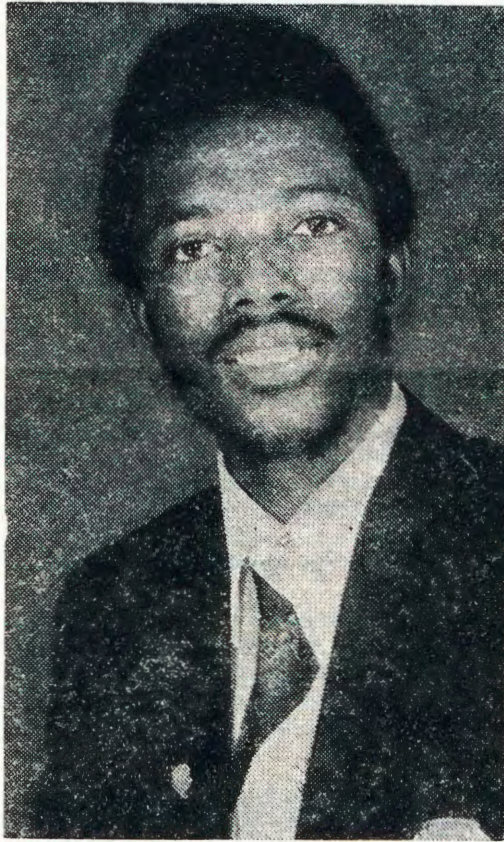
(The Voice)

Konima yeudifo eli, eongalo ohali kala la pendulwa meemhofi dopamhepo la kala mo. Ohava dimbulukifwa yo nawa kutya onaini inava wana noitava dulu okulixupifa voovene, ndele ope na ou ta xupifa moulunde, Jesus Kristus.

Apa opo nee pe na efimano lomhango momaudifo nokovaudifilwa. Omaudifo aa avala a tetekela, otaa dulu okukwatelwa kumwe meudifo limwe.

3. EUDIFO LEVANGELI: Momaudifo oludi eli, Kristus ngaashi e li noshilongaxupifo shaye, okwa hololwa nawa noku na okuhololwa shili. Evangeli olo oshikalimo shinene meudifo loludi eli, mekondjifafano nomhango.

"Osheshi osho Kalunga a kala e hole ounyuni, okwa yandja Omona waye ewifa,



Munyika Veikko

opo keshe ou te mu itavele aha kane, ndelene a mone omwenyo waalushe." Joh.3:16

4. EUDIFO LELONDWELO: Ondjovo yaKalunga kai li ashike ouyelele meendjila detu, ndele oi li yo "nanghwe", mudo. Kalunga ote tu londwele alushe meendjovo daye. Meudifo loludi eli, oshiponga she tu ama momupolo, ohatu shi londwelelwa diva.

Oshiponga shi li pokuhanga oshiwana, nasho omudo hatu shi mono tete. Antikristus naye meendjovo daKalunga hatu mu longwa. "Livangekeni antikristus 1 Joh. 2:18-25. Ile, "Kaleni mu na elidiliko nomwa pashuka, omutondi weni satana ohe

mu dingilile ngaashi onghoshi hai kumbu nota kongo ou te mu xwake po." 1 Petr.5:8

Omaudifo oludi eli, okwa pumbiwa opo omaongalo etu a londwelwe, unene pefimbo eli la nyika oimhanga nomaudjuu, opo tu kale twe lilongekida.

5. EUDIFO LETALALEKO: Eudifo loludi eli ola fimana alushe mOngeleka, ndele unene tuu mOngeleka yetu, omo oilyo tai fininikwa shili. Pomafimbo ngaashi tu a na nena, ovakwaneongalo vetu ova pumbwa etalaleko tali di meendjovo daKalunga.

Eshi inashi hala nee kutya, alushe otu na ashike okutalaleka, hasho. Ohatu kala tu talalekele moulunde. Ashike osho sha yela osho eshi kutya, konima yeudifo loludi eli, eongalo ohali ka shuna li na omukumo mupe okutaalela onakwiwa noupyu wayo.

Ito shi itavele kutya eli olo eudifo la pumbiwa unene nena? "Ileni kuame nye hamu longo nomwa lookifwa, ame ohandi mu pe etulumuko." Mat.11:28

6. EHONGOUDIFO ile EKOLEKOU-DIFO: Meudifo eli, eshiivo lipe otali wedelwa meongalo. Nomeshiivo eli, eongalo otali kolekwa meitavelo. Eudifo eli nalo ola fimana unene, osheshi ngeenge ihali ningwa, nena omaongalo etu itaa kulu meshiivo lehongo lOngeleka. Mat.7:3-5

Onda itavela kutya ovalongekidi vOulindeli vetu, ohava tale yo oinima oyo, onghee inandi itavela pe na eetekisti da landulafana di na oukwatya umwe, kakele keamo letu olo hali tu shilile kwaasho shihee li meendjovo.

Munyika Veikko

Shoka Ombimbeli tayi tile Jesus

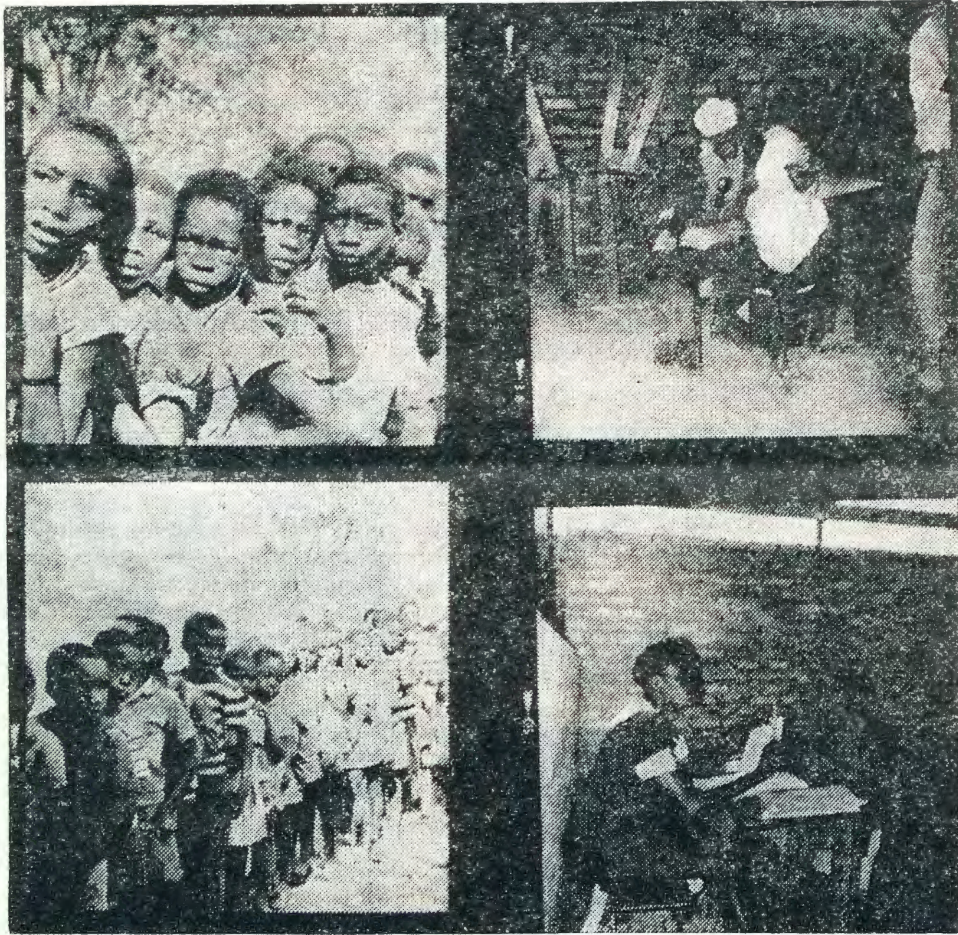
Mokukonakona Ombimbeli ndjoka tu yi na, otatu dhimbulula nkene tayi tula Jesus peha mpoka itaapu gwana we nando olye naayengeli yaKalunga inaa pewa eha lya tya ngaaka. Omusitagongalo Titus Ngula ote tu etele omatumbulo gamwegamwe;

Ombepo kehe itaayi hempulula Jesus, oyo inayi za muKalunga. 1 Joh.4:1-3.

Kaku na omukwawo ehupitho lya kala muye, oshoka kaku na edhina lilwe kohi yegulu lya hololelwa aantu tu na okuhupithilwa mo lyl.4:12.

Kalunga okwe mu lenge nokwe mu luku edhina li vule omadhina agehe, opo ayehe ye na okutsoongolo medhina lyaJesus. Naamboka yomegulu noyokombanda yevi noyomeni lyevi. Nelaka kehe nali simaneke Kalunga He mokuhololola Jesus Kristus kutya Oye Omuwa. Fil.2:9-11.

Jesus mwene okwa ti: Kaku na ngoka te ya kuTate, okuninga ta pitile mungame. Ongame ondjila noshili nomwenyo. Joh.14:6.



Evangelii nali tameke meumbo kounona

Eshi omudo woneudo wa sheyelwa ounona, eshi osha hala kutya ounona momudo ou tave tu pula shihapu. Haku va landela ashike oikutu noku va longekidila oikulya, ndele okutala yo ombinga youteku wopamhepo.

Omodali keshe naaveshe ovo ve na owino mokutekula ounona, otava pulwa ve shi ninge va mana mo, opo va kale shili ve udite elao momudo wavo nove li likolele mo sha.

TWALA OUNONA VOYE KOMUSHIYAKANO. Ngeenge to valula omaano oye oo a dja kuKalunga, luhapu oho tameke noikwaumbo yoye aishe ngaashi oimuna, eexuxwa, oilya noimaliwa, oilongifo noikwatelwa.

Pamwe vamwe tava weda ko yo nokuli eembiya domakaya, eefenya, pamwe ombishi yo, eembwa nosho tuu. Ndele oshinima shi na okukala monomola yotete osho ounona.

Ovadalakadi otava shiiva nawa kutya, kape na fiku liwa li dule olo meumbo mwa wedwa okamati ile okakadona. Konima yefimbo lile, meme a kala meteelelo, okwa mangu luka nokamati eshi ka mwataula omesho, otake mu dimbifa omaudju aeshe a li nao moku ka mona.

Okaana tuu oko, oko omaano twa pewa kuKalunga tu ke mu tekulile nawa. Noshisho eshi oshinene. Kalunga okwa teele-

la momudo ou tu hongwe ounona vetu novaye, ehalo laye. 5 Mos.6:6-9

Oshipango eshi osha yela notu na nokuli okutameka okuhonga ounona vetu meumbo. Tu ulikile ounona omushiakano meumbo manga ve li vanini noinava mona oipukifi pondje yeumbo. Apa ohatu pulwa tu shi ninge noitya, ndele noilonga yo nononghalomwenyo yetu yoovene.

Osho tu na okuhonga ounona

Ounona nava hokololelwe oilonga yaJesus pomafimbo taa wapalele ngaashi peexungi nopokwoomba. Onghalomwenyo yoye nai kale i shii okuholelwa. Hakutumbula omatya mai, hakwaamba, hakulwaalwaa, hakupikafana.

Eexungi nadi xulifwe nomaalikano okupandula Kalunga molwefiku nokuliyandja meameno laye oufiku. Eexungi inadi imba ounona va hangwe va kofa keilikano.

Efiku keshe lipe nali tamekwe neilikano nokuliyandja kuye nokwiindila omayambeko. Ounona nava shiivifilwe nawa kutya omolwashike hakuilikanwa onguloshi nongula. Nava kale ve shii kutya vo omolwashike ve li ovakriste.

Ounona nava hongwe okudiminfana po, okupaafana ombili noku i tambula shili va mana mo. Nava pewe omhito va pule osho vehe udite ko, voo nava pewe omanyamukulo e li mondjila.

Omafimbo a wapala

Koneka omafimbo a wapalela outeku wounona. Omafimbo eloloko, ehandu, kemawa okukwafa ounona. Efimbo nave li konekifwe va kale ve li shii. Oshixwepo ovakulunhu va xungile konima, yeili-

kano, shi dule okwiilikana voo ounona va kofa. Oxungi konima yeilikano, kai na oshiponga sha sha.

Okaana ngeenge takā vele naka ilikanenwe ke udite ko koovene. Naka pulwe yo ngeenge oka pumbwa tuu yo okwiilikanenwa. Naka hokololelwe eenghono da-Jesus ha dule okuvelula ovo ve mu itavela.

Okudja komambo, okafimbo kawa yo okuhokololela ounona. Va pula eshi va uda komambo. Ngeenge va nyengwa ku ku lombwela; va lombwela eshi sha tiwa ko. Walye nee naave ngeenge "onga-Inhyaela".

Poradio tai popi kepawa okuhokolola oinima yopakriste. Poudano nasho kashi lidule. Okahalutali kovaneumbo oko onhele iwa i dule dihapu opo ovaneumbo tava hokololelafana ei tai tungu omwenyo. Eshi oto shi ningile polupale, pomundilo, pepata pumeme ile mokamuti ka kombwa nawa, ounona otava tambula ashishe.

Longifa Ombibeli

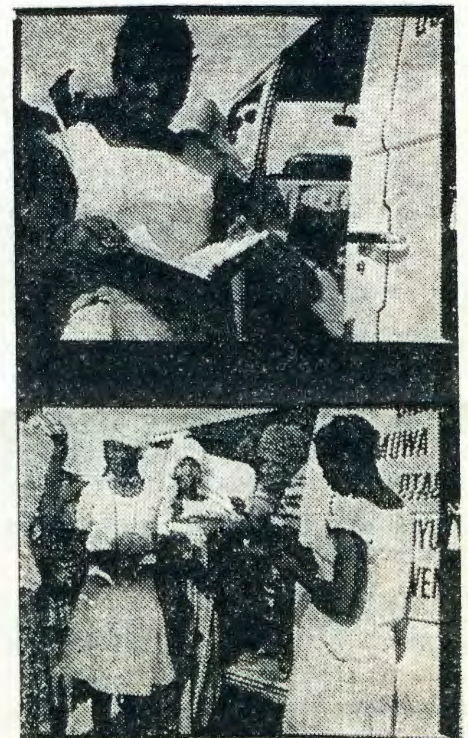
Yelifila ounona kutya eilikano oli na ekota mOmbibeli. Va hongwa kutya oshiyelikifo shoukriste nosheitavelo osho Ombibeli. Nava didilike kutya Ombibeli inai fa omambo makwao, oya fimana.

Va ulikila eevelishe dimwe ve na oupu oku di uda ko ngaashi:

- Kalunga oku ku hole shili Joh.3:16
- Ovanhu aveshe ovalunde Rom.3:23
- Itavela Jesus ou e ku fila Joh.1:12
- Jesus okwa fila oulunde woye 1 Kor.15:3

Ino dimbwa okukoleka omatokolo ounona tave a ningi. Ngeenge ka tokola moipafi kutya oka hala okulandula Jesus, ka pa omhito ke shi nyole mOmbibeli yako. Ka efa yo ke shi hokololele vakwawo pondje yeumbo.

Munyika Veikko



MOngeleka yaElok, Oombibeli nomaambo omakwawo ohaga falwa koombinga noombinga hoka ku na aantu.

Oyoonda nomafiku avali naa kale po

Ohandi nyamukula koshipalanyole eshi sha dja moshifo sheti 30.5.1979. Onda hala okunyamukula koshipopiwa sha kuma ovanyasha novadali vetu. Otashi dulika ngoo inashi fatulukila nge nawa, ndele ngeenge eshi tashi tongwa osho nda nyamukula, onda shambukwa.

Oukadona ngeenge tamu i novavaleki veni, diladileni kutya ke fi wokafimbo ashike oko tamu kongo oikutu, ndele owoye alushe. Oimaliwa nai longifwe ngoo nawa mokukonga oikutu.

Vali, tala yo kutya otamu ka ninga eumbo. Kala u na onghenda, oimaliwa kai po. Okudja moikutu ope na omalweendo, oikulya, oinghumbi nolweendo olo mu li mulo otamu li ngoo oimaliwa oyo noupolopolo vahapu opo tamu ke va landa. Ope na yo omatemo. Hano longifeni nawa oimaliwa.

Ove koneka yo; Okakadona naka fimanelwe yo eshi ka diinina oukadona wako. Oto ka pe nee odede yeeranda 120? Owe ka diinina ngeenge owe ka pe oyo, onghete oke lilongela efewa. Ashike nande ongha, oimaliwa nai longifwe nawa.

Vamati, indeni kOngeleka

Ovamati, oimaliwa R200 ile R400, hayo tai kwimbi kOngeleka, ino fufya. Ngeenge owa diladila ehombolo, ohali longelwa to ti nande oule wodula? Kali shii oshiifanene, loo kali fi ondjabi ei hai shivi opo u longelwe.

Ounghumbi: Owa mona omufuko ehee na oinghumbi peni? Hano nai kale po ngoo nande ivali. Ounona oshinima sheni vene, ngeenge otamu kongo ile ahowe.

Ou ina hala, ine shi ninga

Okulya omafiku avali, osho omhito iwa yelekelo lomufuko. Omudali keshe oha lekelele omona waye molupale. Hano woye oto mu lekelele peni? Omudalwa keshe okwa hala ta di mooxe ta ka hombolwa, a lekelwa. Ou ito shi dula, ino shi ninga, ndele walye nee kutya oto ningi po shike.

Onde shi tala ko eshunduko, ngeenge oshivilo tashi li lumwe. Walye kutya ometwali ile omongulu to lile ile openi. Shiwana, ino puka.

Kombinga yoyoonda, ngeenge oya di po nokulya luvali naku fye po. Ndele ngeenge otai kala po nokulya luvali naku kale po. Inai topoka ei ivali nande. Tala nawa, ove u tokole pashiwana, sha yela.

Kondja Hainghumbi



Elise Hanhindi

E ke lihonga

Elise Hanhindi, hamushanga pombelewangeleka, okwa ya omafiku aa kelihongo laye kombada yomafuta. Elongekido moshinima eshi ola pula konyala oule weedula mbali.

Hamushanga Elise okwa manene omatili-ka 1975 mOngwediva nokwa tameka oilonga pombelewangeleka. Okwa twalele yo omuhelo kofikola yokombada kuSuid-Afrika, ina kala ko. Okwe lishuna pombelewa opo a dja paife.

Meme Elise okwa hokwa unene oshilongwa shuuekonomi (omahupilo) nosho ta ka konakona natango kwinya oule weedula nhatu ile nhe.



Tu longathaneni, inatu ngungutulilathaneni

Muuyuni omu na aantu aakumithi, 'oya' hala uuyuni u opalekwe, ihe oya hala ooyakwawo ye u opaleke. Aantu ya tya ngaaka, otaa pula:

Ep. Omolwashike inapu tungwa osikola?

Ey. Naa tameke okugongela iimaliwa nokukonga aatungi.

Ep. Omolwashike mOngeleka hamu imbwa aluhe omaimbilo ga faathana?

Ey. Naa longekidhe omaimbilo omape.

Ep. Omolwashike kapu na oshigongi shaagundjuka pomukunda gwetu?

Ey. Shi toteni po.

Ep. Omolwashike kape na osikola yaakulupe mOsoondaha?

Ey. Naa mone aalongi, ye yi longe.

Ep. Omolwashike aavu naakulupe momagumbo ihaa talelwa po?

Ey. Nayo wo aakriste ya pewa oshipango shohole, oye ya talela po?

Ep. Omolwashike memalongelokalunga, aasamane aashona?

Ey. Naa ya hiye, ye ye wo koohapu dhaKalunga.

Ep. Omolwashike Kalunga ita keeiele aantu mokuyona?

Ey. Naa tameke okwiipapula ya ninge aayapuki.

Omukuni/Juli 1974

Osho tashi tongwa mevangeli paJohannes etukulwa etimulongo, ovelise omulongo naimwe fiyo omulongo nanhatu, otashi monika yo nomefimbo letu eshi ku na ovafita vai.

Omufita omufutwa nowopefimbo letu ota mono embungu tali li po eedi, ndele ke na ko nasha needi, osheshi okwa teelela ashike ofuto yaye, omwedi u fye. Eedi daye nande di pwe po, ota ti kutya inga a ka konga oilonga imwe pamwe pe lili.

E. Hamukwaya

Epukitholongo lya tameke mOndonga

Omutiligane gumwe nomukiintu gwe oya tameke okutaandelitha elongoitaalo epe lyomuprofeti gwedhina Bah' u llah, mOndonga. Ohaa longitha omutoloki omvatele yaNiipa, David Matatias. Ohaa monika unene momudhingoloko gwaShitayi, Ondangwa, Onguta nOniipa.

Pakukonakona elongo lyomuprofeti nguka olya tamekele 1844 nolya taandela aniwa miilongo 115, momahala 60,000. Mpaka otapu landula omakankameno gelongo lyaBaha' u llah:

- Jesus okwa li owala omulongi moshikunino shaKalunga ngaashi Moses naMuhamed.
- Muuyuni moka Jesus kwa li ta longo, ngashingeyi owa yonagulwa kuulunde, koontamanana dhOngeleka nokiita.
- Omuprofeti Baha' u llah ote eta oompango dhaKalunga muuyuni, opo e u aludhe.
- Omuprofeti ota longo kutya omuntu oku na okukonga Kalunga noondunge dhe mwene nokukonakona momambo omayapuki sigo e mu tseya shili.
- Ngoka i itaala, aniwa nomwenyo aguhe kutya Baha' ullah, oye omuprofeti o-

mupe gwethimbo ndika, nokuhole Kalunga e ta vulika kiipango yaBaha' ullah, oye ti ithanwa Omubaha 1.

Oku na iinima oyindji natango kombinga yelongo ndika, ihe konakona manga iitsa mbyoka 5 nde ku etele. Oku na wo omagalikano ogendji. Omugalikani iha ti Amen, aawe. Peha lya Amen, opu na owala Baha' ullah.

Oshifo shawo shomagalikano shomapandja 18, omu na omagalikano gongula nongulohi nomakwawo ogendji. Kamu na nando edhina Jesus nenge Kristus. Ihe petameko konyala lyoshinyolwa kehe yilwe, oya tamekitha oohapu dhaJesus ngashi Luk.21:33, Joh.16:12,13 Mat.24:42 nosho tuu.

Aantu mbaka otaa taandelitha elongo lya-wo nokutopola uumbo omagano nenge taa landitha, noyendji momudhingoloko gwomahala ga tumbulwa metetekelo oyi imonena nale eitaalo ndika epe. Ohaa uvitha wo momikunda nokuheka aakriste aankundi (yaa na ontseyo meitaalo ekwavanngeli.)

Ombimbeli otayi tu londodha: Aamwame-me: Inamu itaala shaa ombepo, aawe. Kehe Ombepo itaayi hempulula Jesus kutya oye Omuwa, kayi shi yomuKalunga 1 Joh.4:1-3.

Rev. T. Ngula



Egumbo lyaJustus siku ya lalekelwa oshilongatumo

Twa thiki nawa ookuume

Omathimbo hamale, sho meti 13 Aguste 1978, mOngerki ya Nakayale mwa li mwa ningwa Oshituthiyapulo shaatumwa aape Justus, Ruth naanona yawo; Foibe na Ndamono.

"Luhonga inda, Luhonga inda, ku uvithe ku Senegal." Omwiimbi osho a li i imbi ngawo nomuthindo.

Twa lalekwa nombili kaakuluntu yetu, kaamwameme, kookuume, kEgongalo no kOngeleka wo. Twa kutha omitsalo dhetu tu ye ku Senegal, ihe, o etopoko olya li edhigu ngiini. Oshi na okukala ngeyi opo ndhika dhi tse:

"Ngele pe na ngoka te ya kungame, ye ina tonda he na yina nomukiintu gwe noyana, naamwayina, nomwenyo gwe mwene nokuli, oye ita wapa okukala omulongwa gwandje Lukas 14:26-27."

Ihe ondjila yokuSenegal onde ngiini! Twa kala ngashingeyi mela lyondjila konyala uule woomwedhi omulongo nagumwe. Olwindji omuntu to si ondjala, enota, to vulwa kokweenda, to vulwa wo kokuhumbata, nosho wo omaudhigu omakwawo.

Ihe nando pu na omaudhigu ge thike mpono, otu shi okuhambelela Kalunga sho natango e tu pa oonkondo, nomukumo okupulakena kwi lya Jesus sho ta ti:

"Ikoleleni, ongame nguka; ina mu tila." (Mateus 14:27)

Oomwedhi dhetu heyali dhopetameko otwe dhi kala muSoomi. Mwiya otwa li twa tameke ootundi dhelaka lyOshifransa. Kakele owala kootundi dhelaka, okukala kwetu mOsoomi ondi shi oku pandula paitsa mbi:

(a) Megumbo lyetumo moka twa kala, otwa tseyathana naatumwa ooyakwetu oyendji, nokuli yamwe otu uka nayo mEpyatumo Senegal.

(b) Otwa mono wo nkene aatumwa aape ye na ootundi dha kwata miiti, opo ihe konima otaa tumwa.

(c) Twa nongele wo shoka hashi ningilwa aatumwa konima yokugaluka kwawo miilonga mOmapyatumo.

Nethimbo lyetu lya hugunina otwe li kala mu Fransa. Moka twa kala metsikilo lyootundi dhelaka lyOshifransa. Ngashingeyi ethimbo lyetu lyokukala muEuropa lya ti pehulilo.

Twa yi ihe kEpyatumo Senegal. Kombinga ya Senegal ite vulu manga okuhokolola ko sha, ihe shino otandi ke shi ninga komeho.

Otatu mu pandula sho mwa kala noku tu galikanena. Otatu mu pandula sho tamu tu galikanene natango naahwiyaka ku Senegal. Ayihe otatu yi vuleni, mu nguka te tu koleke.

Kundweni aaholike nombili yOmuwa.

Justus, Ruth, Foibe, Ndamono

Ova shangela nge tava ti

Opu na aantu yamwe taa ti kutya yo ita vulu okukondjela evi lyetu, oshoka kaye na iikondjitho. Tala Omunamibia omukwetu, kondjela emanguluko nokugalikana, Kalunga note tu kwathele.

Kalunga ote tu kwatha ngaashi naanaa e shi ningile Aaisrael muEgipiti 2 Mos.14:19-31. Shigwana shandje, tu galikaneneni ihuna ayihe tayi ningwa mevi lyetu, onkugo yepongo, oKalunga he yi tondoka.

L. Ndagwedhapo

Onaini hano hatu pewa oveta i shii okulinee-kelwa noi na ko nasha neemwenyo detu mbela? Natu indileni Kalunga opo eveta keshu ya fa ei youfiku i kufwe po kOmwene weshito.

Omunhu ngeenge a kwatwa moveta oyo ota futifwa R500,00, sho fiyo opaapa kapu na omunhu ha mono eeranda di fike opo komwedi. Kombinga yeedula modolongo, vahapu va idililwa, ihatu va mono vali.

Inatu dimbweni okwiindilila ovanaita nafye nosho yo ovahepeki vetu. Ovakwetu tuhee va na, ve li kombada yoshilongo eshi, omolwoudjuu wedu. Tu kuweni kOmwene, ovalunde tu lidilulule, Omwene ote tu udu.

Kandubu Vyno

Omukwetu oto tile ngiini oshiningwanima shino? Aavali yopethimbo ndino otaa ligolele aagundjuka yawo mboka inaa sindana muugundjuka. Ondigolo tayi tokoka, omishila tadhil yeluka, omapandela ga tsilika, omolwaa-mboka inaa sindana nando mekondjo lyawo, oshili tuu shono?

Ngele mbaka otaa ningilwa ngeyi, aamati naakadhona mboka ya kondjo noya sindana natu ya ningeni ngiini? Nenge yakwetu oshinima shino ohamu shi tala ano ngiini?

S. Akooko

Epangelo tali lele paife Namibia ohali ti lyo epangelo li na ohole. Omolwashike ano aantu oyendji ye li mondholongo yo inaa pewa omatompelo gomausama gawo ngoka ya ninga?

Ohole nayi kale yaa na iifundja. Shoka tashi monika muNamibia peha lyohole, ehepeko, ethindilo kongudhi, etiko lyombinzi lya vuka, elemaneko lyomalutu nolyoondunge omolwomahepeko. Ohole oya pumba mevi ndika.

T.Sh.Amuulo

Ngame Omuluudhe, omugundjuka siku limwe ondi na ngaa omagano nondi shi uvitile uuntsa. Kandi na eidhino molwaashoka ngame Omuluudhe, ine limbililwa oshipa shandje neyulu lyandje lya mbatalala noine limbililwa omuhoko nenge oshigwana shetu.

Shoka tashi hepeke omwenyo gwandje osho ezimba ewinayi monkalopamwe yaantu Aanamibia. Otu li monkalathano yetondathano nekotokelathano. Onkalo ndjika oya tungilwa kuukwamuhoko nokopolotika ya nkundipala nokomadhiladhilo ga nyata.

Onda hala Aaluudhe tu pukululadhaneni opo twaa pukithilwe aamwameme koopropaganda dhopombambo. Onda hala omulongwa, omulongi nomupangi nokehe gumwe e ethe okwiithana mukwawo opapete, oshoka uuna to mu shundula ngeyi, oti igameke komutondi.

Tu pukululathaneni manga tse tu dhimine po mboka ya galuka. Tu ningathaneni ookuume haatondi. Mboka ya pukithwa onda hala okutya nayo oye li muupika nando yi ithanwe "omusimanekwa".

Shilomhoka

OSHO OIFO YE TU LOMBWELA

SALISBURY —

MuRhodesia omwa kundanwa kutya omutenge-nekwamuvalu woimaliwa ya pumbiwa moita yoshilongo osho oi fike peemiliyna eeranda 500 (R500,000,000).

Elongifo loimaliwa ei otali hovele 30 Juni 1979 fiyo 1980. Mefiku otamu ka longifwa R1,375,000 (Adv. 27.7.1979)

Okudja Apilili neudo eshi kwa ningwa eehoolo moshilongo, omapangelo onyuni okwa anyakuvalula epangelo laMuzorewa nondjidikila yepindiko loipindi noshilongo osho, onge ya diininwa fiyo onena kounyuni.

OIWANAHANGANO —

Ohangela ya S. Afrika yomonanguwi, vati okuninipika Ovaulaule muNamibia, oya etwa poluhaela omafiku a dja ko komupresidende wOraata yaNamibia kOiwannahangano (VVO).

Omuwili wOraata ei, omushamane Paul Lusaka, okwa popya kOiwana ya hangana nokutya S. Afrika okwa tunga omhangela yomido nahan okuninipika Ovaulaule muNamibia novanhu 200,000.

Omushamane Lusaka, osho a luka "omhangela yomonguwi" ya S. Afrika, okwe i kwatakanifa mehokololo laye noshikonga shoilyo yaSwapo moshilongo oyo ya tulwa modolongo moule weehani nhatu da pita.

Eenghwate edi, okwe di tengeneka mouhapu wado ve fike 15,000. S. Afrika epopyo eli okwe li likala.

LONDON —

Pauyelele wa yandjwa ku Dr. Eschel Rhoodie, koshifonghundana shimwe muNdowishiland, otaw holola natango omadina avali eeministeli mepangelo la S. Afrika e na sha nelongifo nai loimaliwa yepangelo.

Oministeli yomaxupilo oshilongo, Senator Howard noministeli yotete ya S. Afrika, omushamane Peter W. Botha ovo ya tumbuwa meshiivifo eli. (The Star 28/7/1979)

Ovakulunhu vavali meepangelo la S. Afrika, ova wako nale koipundi pakupewa oushima melongifo loimaliwa yepangelo. Ovo omushamane Belthazar Johannes Vorster oministeli yotete pefimbo linya nokwa hangika koshiponga eshi moupresidende woshilongo noministeli yoikwameni lohilongo Connie Mulder.

Omuhololi woiholekwa, omushamane Rhoodie, okwa kala hamushanga womayelifilo mepangelo olo noku li paife mu Fulanisha onghwate ya teele'a epangulo omolwoimaliwa tuu oyo.

Pashifo "Die Afrikaner 29\$7\$1979", nenge oshinima eshi onashi ke mu twalifa pamwe mefyo imali yuka, ile shi mu shunife vali ku S. Afrika shihe fi pahalo laye, ye ota ka holola natango oiholekwa imwe oyo a fiya ko natango.

MONROVIA —

Ondjila inene younyuni otai diladilwa paife i tungwe pokati kaVenduka na Tripoli shaLibya. Omhangela oya dja mefaneko lokakomitiye ka VVO, koinima yomaxupilo muAfrika.

Ngeenge osha wanifwa, ei otai kala ondjila onhimugoyi ya tavakana Afrika alishe melalakanano loiwana ya hangana okuwapeka omukundu waAfrika paendjila nopakwatafano lomomhepo.

Ondjila i li metifa, tai longwa oya tavakana Afrika laushilo pokati, okudja muGaberone shaBotswana fiyo Cairo, oshilandopangelo shaEgipiti. Oku na ondjila imwe ya dja muMombasa, etuliloshikepa laTanzania fiyo kuLagos sha Nigeria.

Opulanda aishe oya fanekelwa omido 1978 fiyo 1980 (The Star 28/7/1979).

COUNTDOWN

Otwa loloka kefyo ngashi tu li ngaha. Ovanhu otava fi ngashi eedi komashini osho Omurhodesia umwe a nyolela omupambeleye waye ombilive a kala muSoweto mu S. Afrika.

Pashifo "The Voice 22-28/7/1979", omuhokololi waasho shi li meni laRhodesia okwa ti kutya, inamu itavela nande osho hashi kundana meeradio nohashi leshwa moifo kombinga yoshilongo shetu, kashi fi shoshili.

"Omu ovanhu otava fi mani," osho a kunghilila.

Fimbo ombilive yaye ine i xulifa nehehelo lomailikaneno, okwa tumbula yo omalimbililo e li moshilongo omolwoonakufila vati pokati komaumbafano ovakwaita.

Alushe Ovaulaule ovo ngo hatu lombwelwa tava file po, Ovatilityane ihava file po nande. Okwa ti kutya inapa ningwa natango ekonakono moshinima osho, ndele omalimbililo movanhu omahapu.

Diinineni natango oku tu iikanena, otwee shi pumbwa shili monghalo yetu ya naipala. Fye otwa loloka koita ei tai li ovanhu ngashi eedi tadi file komashini, osho a ti.

ILANDELA OSHIHAUTO SHOPETHIMBO

Mongalashe yOngeleka yaELOK, omu na oshihauto sha V-W Kombi 2000

OMODELA 1977

Eshina epeepee, nondando ombwanawa R4000,00. E-ndelega u ye wi italele ko waa ki ipe ombedhi komeho.

MAPUMULO OSHI LI KOMBANDA YOMAFUTA?

Ope na oyendji mboka haa dhiladhila kutya osikola yuusita yaMapumulo moka hamu longwa aalongwasita yamwe ya-ELOK, oya kala kombanda yomafuta. Mboka haa dhiladhila ngeyi, oya pumbwa ekwatho. Mpaka otapu landula okakwatho okashona kowala.

Mapumulo osikola yuusita ya fa naanaa ndjoka yaPaulinum, kOtjimbingwe. Eyooloko oli li owala mpoka sho ya kala muSuid-Afrika, manga Paulinum yi li muNamibia.

Ishewe Mapumulo oyi lile po unene aalongwasita yOngeleka onkwaevangeli paLuther yomu S. Afrika. Aanamibia mboka haa longwa mo, okelago owala sho pu na ekwatathano pokati koomwayinangeleka dhAakwaluther muumbugantu waAfrika. Ando nayo okOtjimbingwe ngaa ye li.

Ano oMapumulo kage li kombanda yomafuta, ihe opopepi naDurban, Natal, hoka haku mbesitelwa koyendji oonguwo.

Shitiwa, nonuumvo osikola ndjoka yaMapumulo, oya tamekele nawa. Nando omaudhigu oge li po ogendji, Kalunga ota tangwa natango mosikola ndjika.

Aalongwa 57 oye li mosikola ndjika, ya za komahala gi ili nogi ili muumbugantu waAfrika: Zimbabwe (1), Namibia (6), Botswana (1), Swaziland (4) ni hupe o mu S. Afrika ya za. Ohamu popiwa omalaka 10 inaamu kwatelelwa Oshiingilisa. Aalongi oye li 8.

Aanamibia ye li ko:
Tate na meme Roger N.E.Kapofi noyana 2
Tate na meme J. Mutuleni omwana 1
V.H. Shivute
J.J.Uugwanga
V.D.Munyika
S.V.V.Nambala

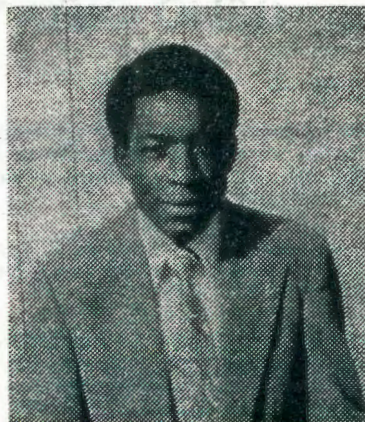
Kalunga ngele e shi hala, gumwe gwawo ota mana nuumvo nokuya moshilonga shOmuwa. Pamwe pu na ngaa ngoka ta pumbwa ondjukithi yaMapumulo:

Luth. Theol. College
P/Bag. 206
4470 Mapumulo, Tel 14
NATAL, RSA

Meilongo aanasikola otaa gwanitha nawa iilonga yawo, unene ngele taa dhimbulukiwa momagalikano gaakwashigwana. Kalunga oye ha longekidha shoka a hala. Tse wo meilongo lyetu opombanda twa ligamepa.

Kaaleshi ayehe, etilokalunga olyo nali kale oshitsa shotango kutse. Otatu mu kundu unene mOmuwa.

S.V.V.Nambala



S.V.V.Nambala

Ebandulo lyAaniimwandi

Egongalo lyaNiimwandi, otatu pandula unene sho twa tuminwa ooranda 17, dha zi kaamati yetu kOlange. Ne ookuume mu li kOlange, otatu mu pandula shili sho mwa li mwiitula mo moshilonga shika.

Ekwatho lyeni lya thiki kutse, otwe shi nyanyukilwa. Ookuume, inamu shi etha, Kalunga ketu ita kala inee mu yambeka amuhe mwa gandja sha kongalo ndjika.

Omakundilo getu otatu ge mu kuthile moshipalanyolo shomuumvo: Tseni atuheni aana yaKalunga kokwiitala Kristus Gal. 3:26. Eitaalo ndyoka olyo tali thiminike tu ye miilonga yetu.

*Peha lyegongalo
Ev. T. Shigwedha*

AME ONDI LI MONGWEDIVA

Onda hala ku mu shiivifila amushe ootate, oomeme ovakulu vange nondenge nookaume amushe mounyuni aushe, kutya ondi li mOngwediva.

Ou wa hala okutalela nge po, palupe lwombapila, shanga hano ngaha:

Simon Kaupa Mwatotele,
Ongwediva
P.O.Box 424
9290 Oshakati,
Namibia

Etaambo lyaapangi mOnandjokwe 1980

Aalongwa aape aapangi otaa ka taambwa mOnandjokwe 1980 Kalunga ngele e shi hala.

Ngoka wa hala okutaambelwa mo, ninga eindilo manga 16.10.1979 inaali thika. Tuma wo:

1. *Onzapo yaJuni yoVorm III.*
2. *Ombapila yeindilo lyo-ye mwene.*
3. *Ombapila yegongalo (ontokele).*

Ayihe mbika tuma kOmukuluntu gwosikola,
P/Bag 2016, Ondangwa 9270

Omudiinini wemona ta pumbiwa

Ofikola youfita ya Velkswa, Paulinum, mOtjimbingwe, oya pumbwa ou e shii kudiinina omambo oiniwe noku shi yo okutopatopa. Na kale omulumenhu ile omukainhu, ha udu ko Oshiingilisha nOshimbulu, omukriste e shii kulineekelwa, e na omhepo yokuyakula Ongeleka yaKristus muNamibia.

OMUKWETU

Oye oshifo shOngeleka Onkwaevangeli paLuther yomOwambokavango. Oha nyanyangidhwa mOshinyanyangidho shOngeleka mOniipa. Omukuluntu gwoshifo omumbisofi dr. Leonard Auala. Ondando yOmukwetu komuumvo muAfrika R 2-60, kombanda yomafuta R 5-00. Omambesitelo pamwe noondando naga tumwe kOmukwetu Oniipa, P/B. 2013 Ondangwa 9270

OWAMBOKAVANGO CHURCH PRESS
ONIIPA P/BAG 2013 ONDANGWA 9270