

OMUKWETU

Registered at the General Post Office as a Newspaper

10c



“Nena onyothi ndjoka ye yi monene kuuzilo, oye ya kwatele komeho noya thikama kombanda yeha mpoka pwa li okanona. Oyo oya yi megumbo noya mono okanona. nayina Maria.”

Tu dimbulukweni oshilongatumo mefimbo laKrisimesa

Mefimbo lokuilongekidila Okrisimesa nokulanda eeshali dokuhafifa eefamili nookaume, onawa unene ngeenge hatu dimbulukwa yo oshilongatumo nomapyatumo. Omaindilo omolwo-shilongatumo naa xwamifwe mefimbo eli, opo Jesus Kristus Omuxupifi wounyuni a vadimifwe moilonga yetweni, neudifo IEvaengeli laKristus liha kale ongaho momapyatumo.

Okuyandja oilya ile oimaliwa koshilongatumo ongeeshali daKrisimesa osho oshinima sha fimana noshiwa. Ponhele yokulandela onunona vetweni ouleke neeshuuka odo tadi nyono o-mayoo nomandjadja ovanhu, onawa okulombwela onunona eemhumbwe doshilongatumo, nokuxwameka ohole yetumo meemwenyo davo. Udafaneni navo, opo va dine ouleke neefyuuka, noimaliwa i yandjwe noi kwafe moshilongatumo.

Omwene Jesus ne mu punikile Okrisimesa nokunangeka nouputa oilonga yeni iwa mokitandavelifa Evaengeli.

Dr. A. Shejavali

Ehala lyOngeleka monkalo yaNamibia

Omuntu iha tseya shoka shi li komeho, ihe oha dhimbulukwa nawa shoka shi li konima. Okupopya shoka tashi ka ningwa komeho osho omafekela gowala. Omumvo nguka gu uka ngashingeyi kehulilo omuntu oto dhimbulukwa naanaa shika naashiyaka, sha ningwa mokati koshigwana shetu.

Omukulu gwonale oku li mondjila sho ta ti: Omumvo nongola. Nuumvo oshi iholola kutya omumvo nguka inagu fa omimvo dha piti. Omumvo nguka ogwa li ethimbo moka Namibia a popiwa noonkondo. Oyendji unene Aanamibia, oyi itungile uugumbo. Koyendji osha shitukile momategameno inaaga gwanithwa nomaipulo inaaga mona omayamukulo.

Omolwonkalo yopapolitika moshilongo muka inaayi yela nawa aanapolitika yamwe ya faalelwa koshikungulu shika. Ihe haashihe sha li po sholuhodhi. Oshili yoshipalanyolo shonuumvo: "Ekwatho lyandje otali zi kOmuwa", oyi iholola.

Osha li oshinima shotango pethimbo lyetu Aanamibia oyendji ya se esiku li-mwe. Osha li meti 4 lyaMai sho aakwiita ya SA yi iyakele muAngola noya thekeke po omaluvalo getu ge vule 600. Sigo oompaka inaku tseyika sha yela kutya oolye ya faalelwa koshiponokela shika.

Monkalo ya tya ngeyi ongeleka inayi kala owala yi ihukata, ihe oya gwanitha oshilonga shayo shopauporofeti. Ongeleka sho yu uvu kutya epangelo lya SA olya tindi ethaneko lya VVO okufala Namibia memanguluko patonate lye na SA okwa hala a ninge ehogololo te li tonatele ye mwene, ongeleka oya ningi ekumagidho ye li nyolele koministeli yotango ya SA, tali ti ngeyi:

"Ngele ino longitha ompito ndjika ongoye to ka pewa uusama kuuyuni auhe molweindjipalo lyiita yaa shi kuyandwa, iinene niitilithi moshilongo shika."

Oongelesa odha popi wo kehogololo ndyoka SA ta ka ninga kutya itali ke eta epotokonono lyomukundu gwaNamibia, ihe otali ka nayipaleka owala onkalo yoshitopolwa. Oongelesa odha holola wo okwaana einekelo kwadho mehogololo tali ka ningwa petameko lyaDesemba muNamibia metonatele lyepangelo lya SA, kutya itali ka kala pauyuki molwaasho einyolitho kalya li pauyuki onkee osha yela nehogololo osho tali ka kala, lyaa na uuyuki.

Onkalo yoshilongo shika inayi kala owala ya lagalela mboka yi itula mopopolitika, ihe oya kala wo ethimbo edhigu kongeleka. Osha li oshiholelwa oshiwanawa kutya emanguluko lyokomwenyo otali endeke pamwe nolyokomalutu.

Monkalo ya tya ngeyi, ya nayipala, oshilonga shevaangeli inashi huma we komehc ngaashi shito. Kasha li oshipu okwaadha aakriste yomagongalo gomooha nokulonga oshilonga shevaangeli. Oondjila odha nika iiponga, okweenda niyenditho nenge kolupadhi ashihe osha faathana, pomahala wo go gene kape na wo egameno.

Momaudhigu ngaka osha li euvitho enene ku ELOK. Omuwilikingeleka Dumeni okwa li e shi popi nokupopya ashihe koshito kutya ELOK okwa uvithilwa pamikalo odhindji nuumvo:

Edhipago lyoontauki dhi vule 600 muAngola (ndyoka twa popi metetekelo), edhipago lyAawambo mOvenduka, etopo lyomboma kegongalo lyaNayena, ekandamo lyoshihauto tashi zi kOshigongi shAagundjuka ya ELOK kEngela, moka mwa sile aakadhona yatatu noyendji ye ehamekwa. Kalunga okwa uvitha wo momboma ndjoka ya faalele aantu 17 kuKongo mUukwanyama, moka mwa sile wo omusitagongalo Gerhald Shangheta, gwegongalo lyaKongo.

Momaudhigu ga tya ngeyi ELOK okwa tsikile noshinakugwanithwa she shokuuvitha evaangeli: Iigongi niituthi yopangeleka oya li ya ningwa omumvo nguka. Momagongalo okwa kala nokuningwa omalongelokalunga naakriste oya gongala nawa mootundimbimbeli nomiigongigongalo. Aayevaangeliste yongeleka oya longo oshilonga shawo shokweevaangelitha nuupenda noyendji oya gongala nokupulakena nohokwe neitulomo.

Oyendji oya li ya holoka wo komasakramendi omayapuki nokudhimbulukwa eso lyOmukulili gwawo. Aasitagongalo 11 oya li ya yapulilwa oshilonga shuusitagongalo mEngela nompumbwe yaasitagongalo ndjoka yi li natango mongeleka yetu oya hwepopalekwa.

Oongelesa hamano dhomuNamibia odha toto Oraata yOongelesa dhaNamibia, ehanganano ndika olya totwa kiilyo mbyoka ya li nale mehanganano lyopokati lyAakriste (Christian Centre).

Tala kep. 3

ELILONGEKIDO

LAKRISMESA

(i)

*Mafilu naa fufilwe,
Mangolyo naa yukifwe,
Mamanya naa yelekaniwe,
Eemhunda noitunhu yo,
Jesaja a profeta.
Olyelye ita dimine,
Ondaka iwa yelondwelo?*

(ii)

*Elilongekido lashili,
Ola kwatela mo ei:
Edimepo lomatimba,
Elidiliko lokulonga,
Oukolokoshi noulunde.
Nelalakano laashishe:
Okupa JESUS omhito,
A dalelwe yo nomufye.*

(iii)

*Ongomulongimanya omunandunge,
E wete kongolo kwa sha,
Namwaanga ya piluka,
Oshike mbela ta ningi?
Ota kokola epya laye,
Nongubu te i pameke,
Nelalakano laye,
Okwaamena eembuto.*

(iv)

*Nafye oonakulukihwa,
JESUS KRISTUS
natu lilongekidileni,
Edalo lOmukulili,
Twa mana mo twa tokola,
Ongovafiyafani po.
Oudano nomalihoko,
Aishe natu dimbweni.*

(v)

*Satana ota kondjo
A hala e tu kondeke
Nopefimbo yo laKRISMESA
A hala tu pofipale
Tuha mone MESIASA.
Nghene ta konghola,
A ye mufye, a kale mo,
A pangele, e tu longe.*

(vi)

*Penduka ou to kofa,
Pashuka ilikana,
Kristus ou iha nyengwa,
Oye te ku minikile
Oye te ku p'oupenda,
Shaashi OYE EPENDA
A finda efyo polumwe
penya, muGolgota.*

Johannes K. Shitundeni

Ef. 1:5

Poompito odhindji uukwamuhoko mboka wa ninga omukithi gwolutapo methimbo lyetu, owi ipumu nomoshinima shokuvalwa kwaKristus. Omaudhigu guukwamuhoko ngaashi ge tu li nayi methimbo lyetu, oga pendutha omalimbililo mutse kutya pamwe okugandja esimano kuKristus osho okugandja esimano koshigwana shaIsraeli.

Mokokonakona Ohapu yaKalunga osho wo tatu dhimbulukwa nuupu nkene Israel ye mwene wo kwa li a hala okuninga Kristus noshilonga she shi kale oshinima shuukwamuhoko. Otu na onzapo yomuyapostoli Petrus sho ta ti:

"Ngashingeyi onde shi tsey a shili kutya nani Kalunga iha tala omuntu kombanda. Moshilonga kehe ngoka he mu tila e ta dhiginine uuyuuki, ote mu opalele." Iil. 10:34-35.

Metetekelo lyoohapu ndhika omu na elondodho kuPetrus opo kaa dhine nando omuntu gumwe ngoka kee shi Omujuda kevalo. Abraham meithano nomehogololo lye omo mu na uyelele owindji kombinga yaKalunga nkene ta dhiladhila iigwana yilwe. Abraham okwa lombwelwa:

Omungoye aantu ayehe kombanda yevi taa ka yambekelwa mo". 1 Mos. 12:3b Uukwashigwana womethimbo lyetu otu kondjo u ninge Jesus gwomuhoko gwontumba nenge gwongandi. Ota thanekwa molupe lwOmuluudhe gwoshinanena nenge ta thanekwa molupe lwOmutiligane Omujuda.

Omuntu kee shi omuntu omolwolupe lwe kombanda. Shoka tashi ningi omuntu a kale nima osho omutima gwe. Omutima gwaJesus inagu mangwa komuhoko gwontumba.

uukwamuhoko aube. Ngoka ta tsakanene po naye ihe mu pangula kelaka ndyo ta popi nenge kolupe lwoshipala she, ihe ota tala omutima gwe note mu yalulile ihe nkoka a gama. Tala omadhiladhilo gaJesus moshinima shoka.

"Ngoka ta gwanitha ehalo lyaTate oye omumwameme omulumentu nenge omukii-ntu nenge meme." Mark. 3:35.

Otatu ka tsakaneka methimbo efupituthi shaKrismesa — evalo lyaJesus. Kehe gumwe ne shi dhane nomutima gu udha, inaa kwidhidhikwa komadhiladhilo guukwamuhoko.

Kristus nando a valwa moshigwana shAajuda edhiladhilo lyaKalunga kali shi ndyoka a yeluthe Uujuda kombanda dhomitse dhiigwana yilwe.

Edhiladhilo lyaKalunga okuvalithila Jesus muuyuni oku tu hanganitha naye, omuhoko kehe, mombinzi yOmwana. Okutungulula ehanganano lyetu ndyoka twa li tu li na moParadisa manga inaku yalulwa oshinima shuukwamuhoko. Shika osho shoka tashi nyolwa kOmujuda Johannes ta ti:

"Ayehe mboka ya taamba Jesus, Jesus okwe ya pe oonkondo ya ninge aana YaKalunga." Joh. 1:12, kokutya naa kale oya za moludhi lwa tya ngiini.

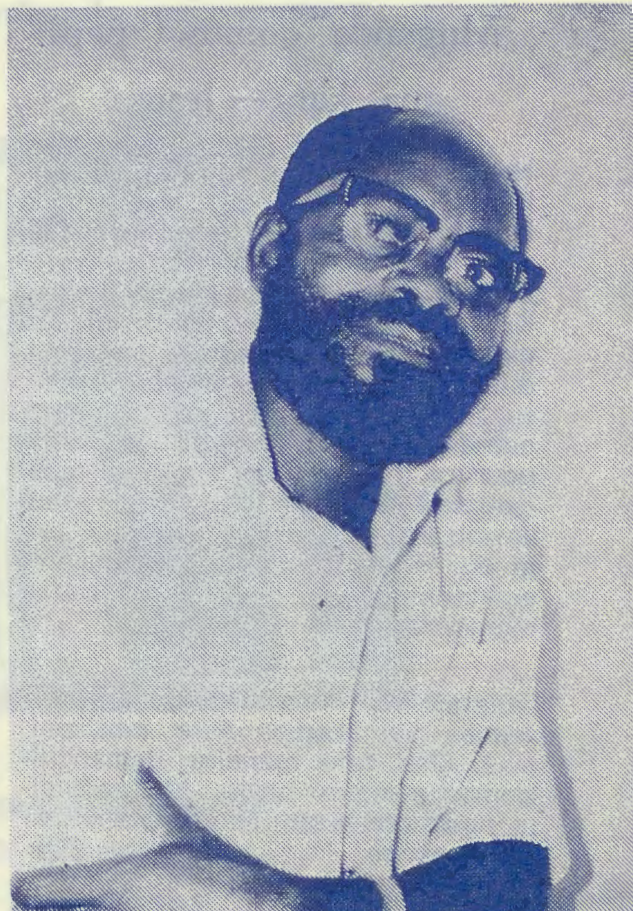
Dha za kep. 2

Ehala lyOngeleka monkalo yaNamibia

Oongeleka ndhika odhe ehamekwa sho amushanga gwaChristian Centre omusamane Justine Ellis a tidhwa muNamibia ombaadhilila, komupanguli Steyn, omasiku ngaka. Omusamane Ed Morrow naye okwa li a tidhwa pokati komumvo, aasita yaali yaKatoolika: Hunke na Kleinhitpass mboka ya li yu ulike elongelokumwe ewanawa, nayo oya tidhwa po wo.

Ngashingeyi otu li pehulilo lyomumvo twa taalela omumvo 1979. Kaku na ngoka a tsey a shoka she edhililwa mo komumvo ngoka. Tse aakriste otwa tsey a nawa shoka tu na oku ka longa. Ongeleka otayi ka tsikila okuthindikila evaangeli koombinga noombinga, ngaashi osho shi li oshinakugwanithwa shayo. Ongeleka itayi ka kala yaa na nkoka ya gama ihe otayi ka kutha ombinga — okupangula uukwaanuyuki — okulonga oshilonga shopauprofeti.

Oshipalanyolo shomumvo tagu ya: One aana yaKalunga mokwiitaala Jesus Kristus." (Gal.3:26) Tse aana yaKalunga otwi inekela Kalunga ote ke tu sila oshimpwiyu nomomumvo tagu ya, 1979. Aaleshi amuhe yOmukwetu; yambekelweni oKrismesa, thikithweni wo momumvo tagu ya ne mu ka kale mo mu na elagò.



Omusitagongalo Sebulon Ekandjo

Omujuda omukwawo Paulus ota nyolele iigwana yilwe ngeyi mbyoka haku tiwa iigwana yaapagani:

"Oshoka ne amuhe aana yaKalunga kokiitaala Jesus... kape na we mpaka etongoko lyOmujuda nenge lyOmugreka". Nota tsikile natango.

"One ngele ano oyaKristus, nena one wo oluvalo lwaAbraham." Gal. 3:26-29.

Pamadhiladhilo ngaka nosho wo omakwawo inaatu ga tala: Abraham ina hogololwa kuKalunga a ninge osigeli nenge oshihako shomuhoko gwaJuda.

Oshoka naAbraham ye mwene naSaara inaa za moshigwana shaIsraeli. aawe omiigwana yilwe mbyoka hayi ithanwa iigwana yaapagani.

Katu na we oshituthi muuyuni shi li shaayehyehe (internasionale) ngaashi shino shaKrismesa — evalo lyaJesus shika kehe gumwe ote shi ningi oshituthi she nenge shomuhoko gwe, nde oku li mondjila. Nogo omadhiladhilo gaKalunga ngoka. Tu shi dhaneni mOmayambeko gOmuwa.

Sebulon Ekandjo

ONDJALULAMASIKU 1979 OYA HOLOKA NALE MUNOVOMBA NOTATU TSEYITHA AYEHE MBOKA YA HALA OKU YI IMONENA, YE SHI NINGE MANGA INAAYI PWA PO. OTAYI GU 40c ADHIKE.

Mugenda gomuwa pepi ana kara — Jesusa

Nanamumvo tatu ndindire ezuvha lya-Keresemisa. Keresemisa ilyo ezuvha lyenene lyevharo lyaHomba gwetu Jesusa Kristusa. Ezuvha eli kutudiworokesa ewizo lyaHomba gwetu Jesusa Kristusa ropomuhowo moUzuni. Izo nkango zaHomba za wizire panyama, moUzuni wEtestamende lyekurukuru. Sirongo saKarunga kwakere sinandindire ogu ana kuwiza aya vama-ngurure moupika woUzuni ou. Vapagani nawo kwakere vana ndindire muzowoli aya vaparure moupika woUzuni ou. Morwa nawo Karunga gavaron-gikidilire kutambura Homba Jesusa momambo gawo.

Ntantani kapi tuna kundindire hena Jesusa vamuhampurukire moUzuni, awe. Ose tatu ndindire mupanguli Homba gweguru nevhu. Mokundindira nawa ntene tatu likonakona nomapuro gamwe.

Jesusa tatu mu ndindire siruwoke? Age mwene ga tanta asi, kareni munavangara yeeyi kapi mwa diva siruwo notundi munagomuntu ta wiza. Kudiva siruwo notundi taku tu kwasa tu kare tuna vangara, mpamwe ta wiza siruwo oso ose tuna zumbanesa endindiro lyetu. Diworoka vakadona murongo.

Tatu ndindire Jesusa gokufana ngapi? Kapi tatu mu ndindire aya tu dongwene po nonzo detu awe. Yeeyi tuna kara nendi ogu ana ku tu dongwena po nonzo detu. Kapi tatu ndindire aya tu mangurure mononkondo doUzuni ou awe, age gatu mangurura nare. Jesusa ta wiza aya pangure vakwaUzuni navenye. Yeeyi mwene ta uyunga ngesi asi Mat.24:30-31.

Jesusa kupi ngaya tu gwana? Age mwene kwa tanta asi, taya tu gwana momambo getu nomoyirugana yetu yezuvha nkenye. Nye tu kareni tuna kotoka mosininke simwe. Yeeyi mwene ta tanta asi: "Eguru nevhu ngayi haga, nye nonkango dange narumwesi dihage po." Wovanzi taya tu gwana tunalipaparere mavandero goyininke yahanasi yaKarunga. Nomwenyo detu tuna di tura moyininke yoUzuni ou. Nga momu kurandesa, kutunga matungo gokutyilisa rutu romuntu. Vamwe taya tu gwana tuna lipyekidire yipito yohango, nokuliku-tika komarutu. Ose vangesi kutupu siruwo sokuli mwenene nokukonakona nonkango daKarunga. Mononkango daKarunga ose vangesi erago lyetu mutupu mo.



Muswamane Paulus Ausiku (30) ogu anarugana moSivhukisiro nomwedi hamano, kwa wiza mo moJuni, 26 — 1978.

Mokundindira Jesusa inke natu rugana? Tu tareni vandindire vakwetu asi inke varuganene. MEtestamende lyEpe tatu gwana mo muswamane Simeon nomukurukadi Hanna. Simeon kwa kere ana litura monompango daKarunga unene, ipo pokatyi kawo naKarunga pwaha kara maudigu gongandi. Simeon kwa kere moyirugana yoyidigu, nye ana ndindire ngororo endindiro lyalsrael (Luk.2:25) Hanna kwa kere mosirugana sokundindira epingidiro lyaKarunga li moneke

(Luk.2:37) navenye vanamono epingidiro lyaKarunga. Vana hamberere Karunga nokusanseka nasinye oso vanamono (Luk.2:28-38).

Imo tatu rugana yirugana yetu yommapya, yonomberewa imo hena lyoyitora. Inye sinakugwanesa setu sokuhova eparu lyomwenyo gwanarunye. Twa hepa kuvangara nokundindira nokukanderera. Jesusa tatu mu ndindire mononkango dendi. Vadinkantu wovanzi vanaligusa moyirugana yopaudinkantu. Imo hena vakurona vana ligusa monotundimbibeli nomomaruganenoKarunga. Vamwe tava horoka, nye kapi vana kupapara usili wononkango daKarunga. Vamwe kuna kuli popera asi, tatu resere momambo. Nye ntene otara sili kapi vana kuliresera sili momambo, nonkango daKarunga. Yeeyi vanalipyakidire noyinke yoUzuni ou. Tani tengurura hena nkango ezi asi, nonkango dange kapi tadi hurupo, nye nayinye tayi hurupo.

KALUNGA TA POPI NANGOYE OMWANA

Ee! Eewa ano omumwandje, pulakena nawa sho tandi ku lombwele. Onda kala ndi ku lwete sho to kambadhala noshinakupwanithwa nde shi ku pe. Onda ku kwatha mokwaamonika, opo u sindane.

Owa galikanene oyendji oyo noyi itedhulula. Ihe ngoye owa shuna monima nowa dhimbwa ndje. Ongame Alpha na Omega. Onda tseya ilonga yoye ayihe noluhepo lwoye wo. Onda tseya ohole yoye yokuhola ooitaali nuudhiginini woye woku ya galikanena. Ihe natango tu ondi na ohapu nangoye sho waa hole ndje we, ngaashi sha li petameko.

Dhimbulukwa ano okushuna monima kwoye mpoka ku thike, ngoye wi itedhulule u kale ngashi petameko. Ihe ngele ito itedhulula, otandi ya kungoye e te kandula po oshihukikwanyeka shoye pehala lyasho."

Aaleshi aaholike, Kalunga osho te tu popitha ngaaka, shaangoka polwe. Olye ando gwomutse keehe shi Omwana gwaKalunga, ye kaa popithwe ngeyi kuye? Ndishi atuhe oyana, Hebr.12:7. Kalunga ota popi ano nomwiitaali kehe.

Oshike nduno tu na okuninga? — Natu ikonakoneni tseyene, opo tu tale ngele otu li tuu meitaalo, opo tu opalele ehu-pitho, tse twaa etheni ngeyi oshinene-nima shoka shi vule ayihe.

Kalunga ngele osho ha popi ngeyi, ohatu mu pulakene tuu? Otwa koneka tuu omukalo ngoka Kalunga ha popi nagwo kutse? Ngele owa hala oku gu koneka, nou uvu ewi lye, lesha Ombimbeli yoye nawa. Inda komambo nokiiigongi iiyapuki. Pulakena nawa ewi lyaKalunga nkene tali pitile mokana komuuvithi. Shika shi ninga meitaalo pamwe negalika-no, nena oto ka uva shili ewi lyaKalunga sho tali popitha ooitaali ye.

"Onena tuu ndjika ngele tamu uvu ewi lyaKalunga, inamu ikukutika, ngaashi mwa tsile ondumbo naye, sho mwa li mwe mu hindi uuna ndwiyaka mombuga," Hebr.3:7-8.

Jesusa ige mugenda gombili. Koveli vagenda vamwe woku tu tarerapo, iwo kaume ketu ava twa hara. Inye rorunzi kapi ava tu retere mbili. Ntudi ntene kapi varekera vayatugwane kapi twa lirongikida Jesusa gatu pukurura nare kapi ana hara kuzona po mbili zetu. Nzo ntudi zamwetu ntene kapi tuna lirongikida. Lirongikida sipito saHomba pepi sina kara ipo waha yazamo nosikoverera sokunyata sokomwenyo goye.

P. Ausiku



Esimano olyaKalunga gwokombandambanda! Nombili kombanda yevi maantu e ya hokwa!

Elaka lyenyanyu olya li lya uvika uusiku mokuti kwaBetlehem. Nelaka ndika olya li lyu uvika kaasita sho ya li ya langela iimuna yawo mokuti kowala, popepi nokalando okashonashona edhina lyako Betlehem.

Omuyengeli gwOmuwa okwa holokele aasita nokwa li e na eyambidhidho lyOmuwa. Shino osha li sha halutha aasita, onkee omuyengeli okwa ti kuyo: Inamu tila! Oshoka ngame otandi mu uvithile elaka lyenyanyu enene tali ningi lyaantu ayehe.

Omanga omuyengeli gwaKalunga ina hulitha okupopya omawi gehambelesho ogu uvika ishewe sho ongundu onene yaakwiita yaKalunga ya zi megulu noya tumbula oshita taya ti: Esimano olyaKalunga mokombandambanda! Nombili kombanda yevi maantu e ya hokwa!"

Aakwiita yomegulu oya popi shili ombili ye ya kombanda yevi; Kristus omuhupithi sho e tu vaelwa — esiku ndika lyaKrismesa nokwa eta ombili kombanda yevi. Otwa vaelwa omuhupithi note tu hupitha. Omukulili e tu kulile mo meso nomiikungulu yuuyuni mbuka. Omumangululi a mangulula oomwenyo dhetu koonkandja dheso nodhuulunde dhe tu manga.

Metumwalaka lyandje lyaKrismesa iigwana ayihe mpaka naampeyaka, pomahala agehe ge na ombili nenge oontamanana, ge na iita nenge omahomonathano mesiku ndika lyOmuwa tu punguleni iikondjitho yetu e tatu tumbuleni pamwe naakwiita yomegulu tatu ti: Esimano olyaKalunga gwokombandambanda! Nombili kombanda yevi maantu e ya hokwa. Kalunga okwe tu hokweni shili nonando tse inatu hokwathaneni.

Festus Angula Ekandjo

OMUTUMWA WOMOMHEPO OKWA TALELE PO UUSHIMBA

Onda li nda mona omhito okutwala elaka lOmwene mOushimba. Onda hovela mOvenduka. Eti 23 laJuli 1978, otwa ya natate G. Max nameme Foibe Kankondi kOmbaye. Otwa hanga ve tu teelega moxungi.

MOsondaha omo nee nda ka mona omhito ya yeuluka nawa. Melongelokalunga longula otwa ongala novatakumi, nomelongelokalunga lomutenya otwa ongala nOvawambo. Mefiku la shikula otwa ya kOmoonda. Otwa hovele nOvawambo nefiku la shikula Ovatakumi.

Otwe li tukauka, tate Max a fyaala po, omanga ame nomudiakoni Kanghondi twe yakOtjiwarongo. Namo yo otwa ninga mo oxungi. Nefiku eti 8 laAguste 1978 onde ya kOtavi. Onda ningi oxungi nOvatakumi nonguloshi ya ka shikula onda ninga oxungi nOvawambo.

Onde u ya kOshomeva. Otwa ongala nawa navo fiyo omelongelokalunga. Onda shi okupandula efilonghenda latate Kalunga omolwoiningwanima nde i ningilwa.

Onda li meumbo latate Shilongo, ndele meti 16 Aguste 78, omhanga nda li mongulu oyo hai nangala, ombete yange okwa li ya yukilila ekende. Ohaluka ekende ola dengwa po. Ame onda nuka po ashike. Tate Kalunga okwaamena nge noitandu yomakende inai kuma nge nde.

Natango tuu oufiku wEtitano manghanda li mokati keemhofi, onda uda ondaka tai pendula nge tai ti: Penduka, penduka to dipawa komunhu te ku twile mombululu yekende.

Eshi nda penduka po kondaka oyo, onda pashuka nawa. Onda mona (mekende) omakende a yeululwa-inai mona nonhumbi nda nuka ko kombete. Onda mona omulumenhu e li ashike mekende nelapi okwe li kufapo nokwa li ta tale nge nawa.

Inapu pita vali efimbo lile onhee oya denga noshihauto shatate Kaijamo osho sha twala nge mOwambo oshe uya. Okudja opo omutima wange owa li tau kakama nokanya kange oka li ka lula fiyo omOwambo.

Omangha tu li mondjila, ondaka oya hanga nge tai ti: Oshinima osho shi shangela mOshifo shOmukwetu to ti: Vakwetu ame onda tumwa kunye kuKalunga ndi mu lombwele ndele nye omwa hala okudipaa nge. Ondaka oya ti:

Omufita wokOshitayi T. Ngula eendjovo odo ne di shangele mOmukwetu. Ovatatate ovaholike novaitaveli amushe, Omwene ota ti:

"Ame ondi li pamwe nanye omafiku ashe." Ohandi mu kundu neendjovo di li ku 1 Petr.4:12-16 neimbilo 500. Vakwetu kaleni oupafi mefimbo eli lomaudjuu, ndele tu holafaneni.

Ovakwaita vOmwene, inamu tila Omwene ota ti: Holeni ovanaita nanye, ohatu ve lididimikila. Omwene ne ve lidilululife.

Meme Justina Haihambo

Omutumi kOmukwetu

T. Ngula

**Oonomola dhimwe
moontokolwa
dhEpangelongeleka
lyeti 26-27.10.78**

Oshitokolitho 320

Omusitagongalo Timoteus Hameva, ngoka pantokolwa onti 223 yEpangelongeleka lyeti 27-28 Juli 1978, okwa langekwa megongalo Edundja. Ihe omolwoshiponga sheso lyomusita mu-Kongo, Epangelongeleka olya lundulula ontokolwa yalyo ndjoka ya tumbulwa metetekelo nolya langeke omusita nguka Timoteus Hameva a kale omusita omuyakuli megongalo Kongo, okuza 1 Januari 1979.

Oshitokolitho 321

Epangelongeleka olya kolekulula ontokolwa yalyo yonale, opo omusitagongalo Abisai Shejavali, ngoka a galuka keilongo lye nonkatu yuundohotola, a langekwe omulongi mOscola yuusita kuPaulinum, Otjimbingwe, okuza 1 Januari 1979.

Oshitokolitho 322

a) Omolwoshilonga shelundululo lyOmbimbeli moRukwangali sho tashi pumbiwa shi pwe mbala, Epangelongeleka lya utha omusita Natanael Sirongo megongalo Mpungu, oye a ninge omutonatelishitayingeleka sha-Kavango pamwe noshilonga shEtumo mOshitayingeleka shoka.

b) Omusita Asser Lihongo, ngoka e li omutonatelishitayingeleka gwongashingeyi, a uthwa a tsikile noshilonga shelundululo lyOmbimbeli ethimbo alihe ye a kale omupehayakuli muutonatelishitayingeleka

Oshitokolitho 329

Sho pwa kundathanwa ompumbwe yaasita nomalunduluko ngoka taga pumbiwa maayakuli yomu Elok konima yoonkundathana oonde, Epangelongeleka olya tokola omalunduluko gaasita taga landula ga ningwe:

a) Omusitagongalo Johannes Mufeti a langekwa omusita omuyakuli megongalo Engela nota ka tameka hwi-yaka eti 1 Januari 1979.

b) Epangelongeleka olya langeke omusita Eino Amaambo megongalo Elim. Opwa uthwa a tameke eyakulo ndika okuza 1 Januari 1979.

c) Omusitagongalo Filippus Henok, ngoka ta yakula melongo lyaasita kuPaulinum, Otjimbingwe, a langekwa omusita omuyakuli megongalo Onayena nota tameke eyakulo ndika okuza 1 Januari 1979.

**OMAHUNGANEKO GAKRISTUS
OGA GWANITHWA**

Sho hatu lesa mOmbimbeli, ohatu lesa iiningwanima, ano iinima ya ningwa nale nosho wo omahunganeke giinima tayi ka holoka. Iinima mbika oya hunganekwa kuKristus nokAapropeti.

Omuwa Jesus okwa li a pulwa kaalongwa ye, sho e ya lombwele nokutya ota ka shuna megulu nota ka galuka. Oshike ano tashi ka kala pehulilo, omanga inaa galuka? Kepulo ndika Omuwa Jesus okwa yamukula aalongwa ye nokwa ti: "Tonateni oshoka kamu shi esiku ndyoka uuna tali ya." Okwe li yeleke nokuli lya fa omufuthi. Omuwa Jesus okwa gwedha ko wo ta ti, shaa tuu taa uvu oonkundana dhiita, omakakamo gomavi, oondjala nosho wo oondumbo nooantikristus, nena naa tseye nokutya ehulilo oli li popepi.

Oi, iinima ya hunganekwa kuKristus sho a li kombanda yevi, oya holoka nee. Olye mbela inaa uva nenge inaa mona ayihe mbika pethimbo ndika? Oonkundana dhiita nomakakamo otaga uvika muuyuni ahe nomokati ketu. Omakakamo gomavi omwe ga uvu miifo nomooradio. Aantu yomayovi oya si nokuli nale momakakamo gomavi. Oondjala omwe dhi uvu, yamwe omwe dhi mona nokuli ne yene. Tala owala pomudhingoloko nomonkalamwe-nyo yoye; aantu otaa tsilathana oondumbo, iilongo niigwana osho wo.

Ooantikristus oya holoka wo pethimbo ndika notaa pukitha oshigwana shaKalunga. Oku na nokuli gumwe ta ti oye omupangeli, noka ku na we omupangeli e mu vule oonkondo, nota itaalitha aantu paitaalo lye, nokuthiminika oshigwana sha-Kalunga, opo shi iyuthe kepangelo lye nando nali kale lya puka.

Ashike nee oku na omupangeli ngono e vule aapangeli yuuyuni mbuka, noye Omushiti gwegulu nogwevi. Oye wo a shita aapangeli yuuyuni mbuka. Okwe ya pa epangelo lyopakathimbo note ke ya zimbula milonga yawo pamwe naapangelwa; ote ke ya tala ayehe ye thike pamwe, moshilongo she, uuna ya taambelwa mo.

Taleni, inatu iningeni ooantikristus (aandumbo naKristus) kombanda yevi ndika tali hulu po. Ayihe ya popilwe kuKristus nokAapropeti oya holoka no inaku thigala nando shimwe. Ashike shono tatu tegelele eyo lyaKristus sho te ya a gandje kushaangoka shi thike piilonga ye. Tala, esiku oli li popepi.

Yayee, sho tandi adhika inaandi tonata. Yayee, sho tu na oondjila inaadhi yelithwa nawa kombanda yevi ndika.

Omuwa yelitha ondjila dhandje, opo ndaa tile esiku ndyoka uuna tali ya nonando nali ye lya fa omufuthi.

Festus Angula Ekandjo

**OMUKANDA
KOVALANDIFIMAMBO
NOMUKWETU**

Ovalandifi vomambo nOmwetu ovafimanekwa, kundweni medina lomwene wetu Jesus Kristus, ou tatu dana oshivilo shedalo laye omafiku aa.

Ame onde shi dimbulukwa kutya, nye ovalandifi novatandavelifi vOndjovo yOmwene momambo nomoshifo, omwa makela tete oonyenye wondjovo ei, onghee mokulandifa kweni oinyolwa oyo, omwa hala yo ovamwanyoko novana vaKalunga ovo nye hamu longo mokati kavu, va makele oonyenye oo neemwenyo davo di ndjenekwe komundjene ou womeendjovo nou li moipopiwa i lili nokulili mOmwetu wetu.

Shi dimbulukweni yo kutya eliyandjo leni neliyambo meyakulo lokutandavelifa oinyolwa ei youkriste, kali fi oshimha, ndele omOmwene.

Ovafimanekwa, apa onda hala oku mu dimbulukifa vali kutya ngeenge owa kufa omambo kofitola yomambo kOniipa, ndele wa didilika kutya efimbo leehani dihapu la pita po noma mbo itaa landwa, onawa u a shunife ko ove u kufe ko oo taa pulwa kovantu voponhele opo.

Eshi otashi ku kwafa uha kale wa fikamenwa kongunga molwomambo oo ita landwa po.

Otashi kwafa yo Oshinyanyangido osho hashi kongo eembapila noipumbiwa ikwao yenyanyangido okunya mukula omapulo aavo hava landifa oipumbiwa ei kusho nokOfitolamambo yetu.

Omwene ne mu nangeke nouputa ye ne mu amenene mefilonghenda laye, mOkrisimesa, mOmudo Mupe nomefimbo yo eli lidjuu tu li mulo.

Omukweni moilonga M. Amkongo

Tala egulu Nkene lya yela! Mevi lya opala twa kala mo! Ee, nokutanga Tse tatu uka, Megulu nomeligolo.

Nando ethimbo tali endelele Mapipi gendji ga dhimbiwa, Eeno, natango Ndjimbombo yo opala Yeligoio hayuvika.

Tango aasita Yuuvu ko ondjimbo, Nena koyendji ya dhimbiwa wo. Simano lyOmwetu mevi ombili, Omukulili okwe ya po!



PASHUKENI MU TALE ONYOFI KOUSHILO

Ohandi mu halele eyambeko moku-dana Okrismesa iwa. Omona waKalunga Omukulili wetu okwa dalwa e tu kulile mefyo noku tu kufe meke lomutondi. Hambeleleni Kalunga amushe hamu longo nomwa lolokifwa koilonga. Otamu ka mona etulumuko mouhamba waKalunga, omo mu na ovayukilela.



E. H. Djikolo

Ovanangeleka, ovapangi noondokotola, ovalongi, ovanangeshefa, ovalimivomapya, ovafitangombe novalongi voilonga i lili noku lili: Dimbulukweni efilonghenda laKalunga eshi e mu dimbulukwa - e mu pa okaana - Omona waye Ewifa. E ke mu pa oshali, opo mu kulilwe mu dje moupika womutondi satana, mu ifanwe ovana vaKalunga.

Amushe pashukeni mu tale onyofi mawila, tai piti kOushilo ya yuka kOuninginino, i mu ulukile ondjila oyo mu na okuya nayo kuJerusalem mu ka tale oshili yomoshili, eshi ya dja muKalunga, eshi ta tumbula ta ti: Ou Omona wange omuholike, onde mu hokwa. Eshi te mu lombwele ta ti: Omwa dalelwa ohamba yaalushe, Ohamba ihai xulu po. Ohai hekeleke ovo ve na oluhodi.

Vakwetu va tetekela vamwe meedolongo omo va li, navamwe omo ve li, vamwe katu va wete, vamwe twe va mona. Tu homateni oikondjifo, opo tu dule okukondjifa satana. Oku li mewangandjo; okwa tewa ko keulu, oku li popepi nafye - oufiku nomutenya. Kufa Ombimbeli yoye neimbilo nye mu pandule Kalunga eshi e mu pa Ewifa laYe.

Inamu tila nye inamu tilifwa. Kalunga oku na omwenyo. Owa teelwa u ye kuye wa yela nawa, opo a fete po oluhodi lokOkashinga, olo itali dimbiwa nande eedula nadi pwe ko.

Ovatetekeli otava ka kala konima, osho Kalunga a popya nale. Eshi otashi lombwelwa ovo ve na omatwi haa udu ko nawa. Ovalikukutiki kave udite ko eshi Kalunga ta ti. Osho Kalunga e shi tonga ihashi lunduluka.

KALUNGA OXE YOOLYELYE?

Vahapu ohava diladila kutya Kalunga oxe yovanhu aveshe, onghee ovanhu ovamwainafana. Ndele paMbibeli Kalunga oxe ashike yovaitaveli nomolwashi ovakriste ovo aveke ovamwainafana. Paitavelo lEtestamendi Likulu nomomaitavelo elili nokulili, Kalunga okwa talwa Xe yoishitwa aishendele ye omushiti wayo. KALUNGA OYE XE YAJESUS KRISTUS PAMUKALO WELIKALEKELWA NOYE XE YOVAITAVELI OKUPITILA MESHASHO LIYAPUKI.

Kalunga Oye Xe yaJesus

Oudalwa waJesus kuKalunga inau faafana naau wovaitaveli. MEtestamendi Lipe Jesus ngeenge ta ti: "Tate yetu" ine likwatela mo (Mat. 6:9). Nongeenge ta ti: "Tate" ovaitaveli inava kwatelelwa mo (Luk.2:49, Mat.16:17).

Tala kep. 9

Krischer

Oonakakukutu keendunge dounyuni ou nave lihonge diva. Ope na efimbo liningholi, lixupi. Ngeenge itave lihongo paamha, nena itava ka kala nefimbo lokulihonga. Efimbo ove li pewa paamha, ve lilongekidile oshilongo shaKalunga. Otava ifanwa va itavele Kalunga. Kalunga na kale pamwe naye nye mu kale yo pamwe naKalunga. Tambuleni omakundo: Joh.5:19-29.

E.H.Djikolo

ETALELEPO KOMAPYATUMO

Onda li nda pulwa ekwafo kuhamushanga woshilongatumo, omufita Reijo Kaarto, opo tu talele po omapyatumo omOumbuwanhuninginino wOukwambi. Oo: Onaushe nOnkani. Eshi otwe shi ninga momafiku 3-4 aNovomba 1978.

Onaushe

POnaushe oshilonga otashi longwa mokati kOvakwanghala. Osha hovelwa po modula 1972 komushamane Mikael yaAbiniel nahefolo laye Viktoria yaErasmus. Ye mwene meme Viktoria oye e shi okutalwa ngongudi moshilongatumo penya. Oha longo ofikola yeshasho nosho yo eengudu dopedulela dofikola yovakwanghala. Nande oye oha futwa ashike eeranda 17 keemwedi nhatu, oshilongatumo oshi li ondilo inene momesho aye.

Omaudjuu e li po

Nande meme Viktoria ina holola oudjuu washa molwofuto oyo, onghene tuu otu shi okudiladila oshikulunhu, tu kale tu na olukeno nomhepo i shi okukwafa, opo ebandulo lavakwetu moilonga yetumo li yelulwe.

Oudjuu umwe: Ounona vofikola oha va di komaumbo avo nosho oshinima shiwa. Ndele opo na oitutumba opo. Osheshi nge Ovakwanghala va mana po oilya yavo oyo va limine, ohava ka endaenda nokumenekela komaumbo "aayamba", va pameke omadimo avo. Okweendaenda kwatya ngaha ihaku fiye po onunona, nehongo lofikola otali piyaanekwa unene omolwoshinima eshi. Hano pOnaushe opo shi okutulwa omuhandjo (ohostela) wovanafikola. Oku shi yo okukala haku tumwa oikulya; nOvakwanghala ove shi okupewa natango eewinomayeke mokulonga omapya avo. Va humbate oshinakuwanifwa shokufila oshisho omaumbo avo.

Omwevaengeliste ile omudiakoni ota pumbiwa yo unene ponhele ei. Elalakano olo okufikifa ondaka yexupifo laKristus komatwi omunhu keshe.

Onkani

Oshilonga shetumo kombinga yehongo lounona osha hovelwa po pOnkani kumeme Ruth Samuel. Naashishe osho a ninga po note shi ningi fiyo onena mewiliko lOmhepo Iyapuki oshi shi okupandulwa shili.

POnkani opo nee pu na omufita Andreas Kanhalelo nameekulu Viktoria Kanhalelo. Ovayakulingeleka ava vakulu ova li ve tu yakula nawa mefimbo letalelepo letu mOnkani. Ohatu yandje iyaloo inene kuvo.

OoKanhalelo ove uya po pOnkani modula 1976, neumbo lavo ove li dika modula 1977. Apa ova hanga po ovanhu ve li ongeedi dihe na omufita. Opo nee omufita Kanhalelo a hovela okwoongela ovanhu, nge ovakriste ile ovaliteeki ile ovapaani. Neudo oha longo ofikola yeshasho mu na ovahongwa 14, nofikola yekoleko mu na vahamano noyekufilo mu na ovahongwa vane.

Osoondaha keshe otava ningi oamambo mokangeleka oko ka dikiwa po mewiliko lomushamane Kanhalelo. Ovanhu otava ongala nawa, unene nokuli fiku ku na Ovavalelo Uyapuki. Odula keshe ovanhu otava tane, tava di koshilongo, nova hala okulimone na eenhele diwa domapya nodoulifilo muwa.

Eemhumbwe

Kwinya otaku pumbiwa yo ovayakuli ovanyasha, omweevaengeliste ile omudiakoni, opo va yakulafane nomukulupe wetu moilonga Iyapuki. Otaku pumbiwa yo okapangelo, opo ovanhu venya ve li kokulekule noipangelo va mone omauhaku opalutu. Osho yo eendungu da longwa nawa ile deembola, onawa ngeno di ningwe ko, opo ovanhu va popilwe keembakiteli dii nokoiponga idjuu.

Dr. A. Shejavali

Waa pandula noyaka

Otatu mu pandula aamwameme amuhe mu li kOkawe, sho mwe tu kwatha omolwetungo lyongeleka yetu mOshigambo. likwatha yeni oya thika nawa, mewiliko Iyaamati ooyakweni yomadhina taga landula:

- Aksel Nakambunda: R24,00**
- Tomas Namupala: R02,44**
- Abed Nikodemus: R03,80**

Otatu mu halele eyambeko IyaKalunga miinima ayihe, mu kale aayamba yiinima ne mu kale mwa gamenwa kolutu nokomwenyo.

Omukweni

Salomo Elago

v. 18 Ndele Jesus okwe uya kovahongwa vaye ndele okwe va lombwela nde ta ti: Ame onda pewa eenghono adishe meulu nokombada yedu.

v. 19 Indeni hano ka ningeni ovanhu avesho ovahongwa vange mounyuni ausho. Oshitya twa hala okulongifa shi na omufindo osheshi:

1. Jesus ta ti: Ame onda pewa eenghono adishe meulu nokombada yedu. (Kwanyama).
2. Ngame onda pewa oonkondo adhihe nepangelo alihe (Ndonga).
3. (Suthu) Kineiloe Borena Bohle kutya (epangelo)
4. (Zulu) Ngiphiwe Amandla tashi ti (eenghono).
5. (Oshiingilisa) Power is given unto me, tashi ti (eenghono).
6. Oshimbulu Alle mag is aan my gee (eenghono doukwahamba).



Pastor Vilho Shiyandja

Omeulu ile okombada yedu ashishe shimwe. Osho kape na ou omukwambada yedu ehe shi shi nande. Ope na ngaho vamwe ngaashi ohamba Herodes yefimbo la pita ou a li ta ku ti wa okavandje a fa ngaho mokanya ta ulike Jesus ohamba, mboli meni laye ombadje (Mat.2:6-8). Walye tuu ovapangeli vefimbo letu ove na tuu elao lokumushiiva ongomupangeli waaveshe nomunaenghono adishe.

Eshi onda hala ndi shi popye nomufindo ngaashi ame nda koneka kutya komapepe aJesus oko kwa humbata ouhamba aushe. (Jes.9:5). Pilatus omupanguli waJesus okwa ti kuJesus: Ku shi kutya ondi na eenghono oku ku yandja u vallewe komushiyakano ile dokukumangulula? (Jah.19:10-11). Jesus okwe mu nyamukula: Ngeno okwa li ino pewa eenghono edi okudja meulu ngeno ku di kwete.

Osho ngaha ovapangeli vamwe itava koneke kutya eenghono dokupangela nodokutokola ove di pewa da dja kwaau wokombada. Shiwana shi koneka ove u shi didilike nawa, onghee onda hala ndi ku findile kutya owa tumwa.

v. 19 Mediladilo eli nomeudo u shi shiive kutya Jesus okwe ku tuma neenghono edi u ye nado. Mepangelo omo wa tulwa mo kali fi loye moshilonga shoye, moufitaongalo, mongeleka yoye, mepangelongeleka, mofikola yoshiwana shoye, ekoleko, eshasho, pamwe oshikunino nokuli, ofikola yOsoondaha, meumbo loye, omukunda woye, nde osho shi na oshilonga epangelo li na tete okutameka meni loye (lange) opo tali du lu okuya mounyuni aushe.

Ohandi mangele kumwe omadiladilo etu oo twa pewa kumwene woshilonga eshi aeshe kumwe noshipalanyole shomudo ou (1978), Ekwafo letu otali di peni mbela? Hakuye ou a pewa Eenghono (epangelo) aishe meulu nokombada yedu.

Ou a wana okumatula oipatifo yomuto nywashangwa ou (Ehol.5:6-10).

Nomoudjuu aushe tau tu hange ohatu ti ashike: Ouhamba woye nau uye nokufye yo, ndele dima po omatimba etu, ehalo loye nali longwe yo kombada yedu ngaaashi hali longwa meulu, nome du letu Namibia, nali longwe mo yo. Osheshi ouhamba owoye, neenghono odoye. Alushe fiyo alushe Amen, Amen, Amen.

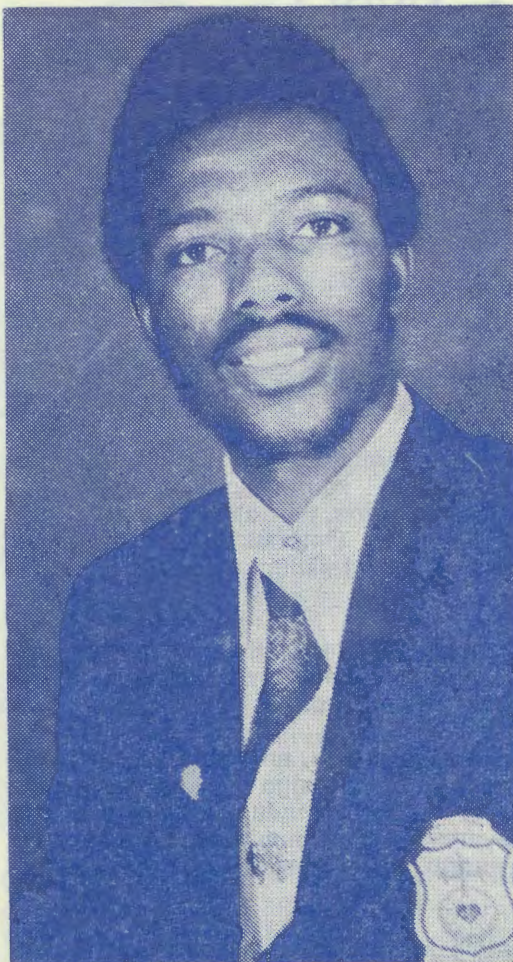
Pastor Vilho Shiyandja

Kalunga Oxe yovaitaveli aveke

(Da dja kep. 7)

Jesus ina hongana nande kutya Kalunga Oye Xe yomushitwa keshe. Oshoshili kutya Kalunga Oye omushiti waaveshe, ndele nashi yele kutya ye ke fi Xe yavo aveshe, kakele kovakriste. NomEtestamendi Likulu Kalunga Oxe ashike yOvaisraeli. Ngeenge ovakriste hatu ti: "Tate yetu", nena otwa diladila ovakriste aveke.

Kristus ngeenge ta ti: "Xo" (Mat. 5:45, Mark.11:25, Luk.6:36), okwa diladila ovalanduli vaye. Onghee ovo va shashelwa medina laKristus ovo aveke ovana vaKalunga. Ovapaani ovashitwa ashike vaye.



Veikko Muniyika omulihongi mOseminali youfita kuMapumulo, lesa oshinyolwa shaye: Kalunga Oxe yoolyelye.

Kalunga omushiti ashike wounyuni ndele ke fi Xe yawo. Ngaashi naanaa omuhongi woitoo itashi dulika a ifanwe ina yayo. Kalunga Oxe yaJesus shili, noXe yovakriste shili, shima tuu inatu kanifa efilonghenda olo twa pewa momaudaneko.

Hano ope na ovanhu vamwe vehe fi ovana vaKalunga. Kalunga okwa hala aveshe va ninge ovana vaye, opo va xupifwe. Diladila hano nawa opo u tale kutya onomukalo u lipi to kwafa oshilongatumo osho she lipyakidilwa nasho mokati kovashitwa noku va ninga ovana vaKalunga. Otwa pewa oshinakuwanifwa.

Indeni ka ningeni ovanhu aveshe ovahongwa vange mu va shashele medina laXe noOmona noOmhepo Iyapuki (Mat.28:19).

Muniyika Veikko

**OSHIPALANYOLO SHOMUMVO
TAGU YA: ONE AANA YAKALUNGA
KOKWIITAALA JESUS KRISTUS.**

OUKOLWI OWO OSHIPONGA

Ovanyasha, ovamati noukadona, nanye ovanyasha vakwetu amushe ovanamaumbo, ohandi pula kutya oko tuu mwe shi ama oko? Ohandi mu kundu unene amushke keembinga neembinga nohandi mu tumine etumwalaka e li kutya: Efimbo letu lounyasha nali kondjelwe, inaku kala nande umwe ta dini ounyasha waye, Ef.5:15-20.

Eshi ohandi shi popi noluhodi linene, osheshi ovanyasha vakwetu vahapu ova kanifa ounyasha wavo nove u landifa po moikunwa. Ondjelo younyasha wavo oya kana mo muvo, ihave li pukulula vali komalutu avo.

Eendunge diwa oda kana mo muvo, notava monika paife ve na eendunge da fa eemhengu domamhila. Otava popi oini ma ihe li melandulafano. Oukolwi owe va ya meengolo nowe va teyaula momakipa, no ihava fiki vali melongelokalunga ile moyoongalele yavo yovanyasha. Oukolwi owa etele nokuli ovanyasha vahapu ovaya. Ondi udite oluhodi linene osheshi ovanyasha vakwetu vamwe ova tokola vati itava ka hombola vali mongeleka, osheshi vati ohombo yomongeleka oi na ondilo kombinga yomidjalo noikulya. Onghe otave li kufile tave li hombolifa voovene, Oshidamala. Efina laaishe ei oukolwi.

Ovanyasha vakwetu ovo mu li monghalo ya tya ngaha notamu diladila ngaho, onda hala oku mu kumaida kutya: Ohombo yopakriste oyo omayambeko aTate Kalunga to a pewa mOngeleka poshiyambelo opo to kufwa ounyashamatikadona woye noto djalekwa nee ouneumbo. Onghe hombola mongeleka omo mwa hombolifwa vakweni, osheshi ohombo yokulikufila ove mwene inai yambekwa.

Ovanyasha vakwetu ovo natango mu li momadiladilo a tya ngaha, onda hala mu leshe mOshifo shOmukwetu shaApilili 1978, onomola 7, pepandja 4. Moshipopipi wa shomufimanekwa Jonas H. Mweutota, omo wa pukululwa nawa nghe u na okuya mohombo yopakriste. Omufimanekwa Mweutota, okwa xulifa ta ti: Efikilo lelao lohombi yopakriste otali kungulukile fiyo omeulu.

Nge hatu tale natango ovanyasha ovanamaumbo, omaumbo mahapu avo okwa dima. Alushe emushamane nomukulukadi otava tokelwa ashike meekamba, fiyo omokati koufiku nokunwa efimbo alishe. Nge ne tave uya keumbo mokati koufiku, mondjila otava ende tave li denge, keshe umwe okuwete vati mukwao okwa kolwa, nande aveshe "oda kandelwa ehola li mwe."

Momaumbo ovanyasha va tya ngaha otamu udika omatanguno malemale nomatukano ehe shi okupwilikinwa. Ombili nohole neyakulafano nefimanekafano aishe ei oya kana meumbo molwoukolwi.

Ovanyasha vakwetu ohatu kumaidweni tu kale hatu tokelweni momaumbo etu pamwe nounona vetu, fye tu va longe omikalo diwa vo va tonde okukala meekamba nomokati komaufiku. Pwilikina ovanhu ta va ti: "Shamena omuno oketindi sha di."

MuKaaroma 7:7, Paulus ota ti: Ando okwa li pwaa na ompango ando inandi tseyu uulunde. Oshoka ando ompango ya li inaayi ya ando kaku na uulunde. Oshoka ompango ando inaayi tya ino "haluka" ando inandi tseyu okahalu.

Epulo 1

- (i) Wo wene uulunde owa za mompango, nenge ompango oyo ya za muulunde?
- (ii) Ngele ando uulunde owa za mompango nani uulunde owa shitwa, oshoka ompango oya shitwa?
- (iii) Nongele ando uulunde owa shitwa, omolwashike Kalunga e tonde uulunde ye sho e yi shiti okwe yi tala yo opala?

Ohatu leshe membo lyaGenesis, kutya petameko Kalunga okwa shiti aantu yotango yaali Adam naEva. Konima sho ya li inaa iutha kompango yOmuwa, oya tidhwa moshikunino shaEdeni. Nokwa tiwa Kalunga ine ya tidha mo owala ete ya etha, ihe okwe ya pe oluvalo aanona yaali aamati. Omutango Kaen nondenge Abel. Kaen okwa dhipaga omumwayina. Nongele tatu tsikile komeho mokulesha mu Gn.4, otatu uvu oluvalo lwaKaen.

1. Peshito itapu tumbulwa nando eshito lyuulunde. Shoka Kalunga a tala sho opala eshito lye pwaa na uulunde. Eyono lyomuntu oye ya konima ayihe, sho ya shitwa nale ya pwa uulunde owo wa yonagula eshito lyaKalunga.

Ompango nayo wo oye ya pokati konima yeyono lyomuntu, ano inayi shitwa petameko. Uulunde owa eta eyonuko komuntu notau li eta sigo onena, ompango yaKalunga kayi shi ashike uutondwe waKalunga okutonda uulunde, ihe oyo wo ohole ye okupopila nokugamena omuntu keyonuko hali zi muulunde. Omuntu inaa tseyu ompango yaKalunga nenge ompango yuuntu, oye omukambeli, oshoka ina yoolola natango olulyo nolumoho.

Onkee ompango oyo ye mu kokeke mokuyoolola kutya oshike oshivanawa, noshike oshiwani, oshike shu uka noshike inaashi uka. lipango, ano oyo ewi lyaKalunga ndyoka tali ulike shoka omuntu ena oku shi longa nenge kee na ku shi longa, opo a opalele Kalunga. Ompango yaKalunga oyi li po okutseyithila omuntu shoka tayi tseyitha, ihe ngele omuntu ine yi tseyu nena ina tseyu wo Kalunga, no ina yoolola ompango muulunde, oshoka oku li monkalo yopakana ndjoka inaayi yoolola natango.

Epulo 2

- (i) Petameko ano opwa li pwa shitwa aantu yalwe yi ili yaa shi Adam naEva? Nenge omukiintu gwaKaen okwa kaza peni?
- (ii) Kaen otashi vulika a hokanathana nomumwayina gumwe omukiintu?
- (iii) Nongele Kaen okwa hokana nomumwayina, omolwashike tse ngele twa hala okuhokana naamwameme nenge nomazimo getu hashi taliwa ko nayi?

Natango membo lya 1 Mose mono ru na ehokololo lyoshigwana shalsraeli. Ngele ando Kalunga okwa shiti owala Adam naEva petameko. Nena natse wo aatekulu naathigululi yaAdam. Nongele tse aatekulu yaAdam, nena inashi pumbiwa we tu ithanwe iigwana yaapagani.

2. Uushitwe wo wene otawu uthwa komushiti awike Kalunga. Oye a uutha aantu ayehe ya ze momuntu gumwe. Nkene sha ende nonkene tashi ende otashi nyenge aantu. Okuhokana nomumwayina nenge okwaahokana nomumwayina, oshinima tashi popilwa koompango wo dhaantu omolu ukolele wopalutu. Ihe moshinima shehupitho lyomuntu nolyaKalunga kashi li ompango. Ano epulo ndika kali shi unene lyopateologi, ihe olyopaunongononi (wetenskap)

Epulo 3

- (i) Ngele ando wa vala aanona yoye omulongo nayaali, yaali yomuyo aapangi, yaali aalongisikola, yaali aasitagongalo, yaali aanangeshefa, yaali oonkolwe nayaali aafuthi. Ngele okwa tiwa gongela aamwoye otashi vulika u thige po mbono oonkolwi naambo aafuthi, e to kutha po owala mbono aapangi, aanangeshefa, aalongisikola naasitagongalo?
- (ii) Mbeya otaya ningi aana yalye? Otaya ningi nee nduno oonzi dhomomugulu?
- (iii) Ngele tse atuhe aana yaAdam, omolwashike Jesus mokutuma aalongwa ye tango mu Mat.10:5-6, okwa ti inaya ya nando kiigwana yaapagani. Indeni owala kaantu yanje yomulsrael.

Oshoka otse twa valelwa okanona, twa pewa omumati, nelelo te li pewa, ku li na komapepe ge, nedhina lye otali lukwa: Omukumithi - Mupukululi, Kalung'ofule, He gwaaluhe, Omuwa Omunambili.

Eeno shili, otu uka methimbo lyokuvalwa kwOmukuli. Ta valelwa muuyuni mbuka wa nika eso, etondathano, oontamanana, ondjahi niita.

Ta valelwa muuyuni wa kanitha ombili, onkee ote ya e tu pe ombili ye, oshoka oye ombili yetu. "Elelo lye olindjilindji, nombili ye kayi na mpoka tayi hulu po." Ombili yaJesus kayi na nando ogumwe tayi hulile po, shila oongoka itee yi kongo.

Jesus ote ya u udha ontalanteni, esilohenda, nombili muuyuni waa na ombili. Jesus ote ya moshigwana hashi endagula momilema, opo mboka tu li mevi lyomilema thokothoko uyelele we u tu yelele. Mat.3:3. Johannes ota ti: "Ewi lyomwiigidhi tali igidha mombuga tali ti: "Longekidhileni Omuwa ondjila, Yelekanitheni omapola ge."

MOkrismesa yonuumvo oto yi mo tuu wa longekidhila Omuwa gwoye ondjila, opo a wape okupita mo?

Tala kep. 11

James T. K. Amadhila ota nyola ngeyi: Oto mono aagundjuka ya zala nawa noto dhiladhila kutya ngiika oyu uka kongeleka, kolwiimbo lwaagundjuka nenge koshigongi shawo shontumba sha simana, ihe nani aye'e! Aamati momitsuhu dhondilo otaa inana nadho yu uka koombaa. Oko nduno to adha yu umbu oothingo ho, taa nu, taa nu notaa nu! Konima yethimbo oto mono shike? Ohaluka yowala oto ka mona omumati ta gu noshuta ye, iikolitha ye mu nu po ondjumbu.

Oshike sha tya ngawo? Nkee u li omumati omugundjuka (youth) okuudha ongoye to yugathana omahalasa nohomweno puundingosho! Aye'e! Tu dhiladhilii po nawa mpe, oshoka onkalo ndjika oye tu ukitha meyonuko enene. Omuntu wa li ngaa omumatiiti to lilwa kokadhila, ndele nohaluka owa ningi ehuuhuu lyowala. Iikolitha ihayi tila. Nando kala nee omugundjuka wa kola ngiini, ongele ngaa nayi ku zazameke.

Tu ikeleleni ano kiikolitha, tse tu kutheni omukalo omwaanawa gwokugongala poohapu dhaKalunga.



Dha za kep. 10

Aayengeli otaa lombwele aasita yimuna: "Talen Inamu tila! Oshoka ongame otandi mu uvithile enyanyu enene, nenyanyu ndyoka tandi li mu uvithile otali ningi lyeni, nosho wo tuu lyaantu ayehe."

Oshinima oshikumithi ngiini? Okuvalwa kwaJesus kwa tseyithilwa tangotango aasita yimuna mbeya ya li ya langela iimuna yawo uusiku mokuti kwaBetlehem. Aasita yimuna, ano aanahambo oyo aantu mboka yaa na nando esimano lyasha, ihe etumwalaka lyokuvalwa kwOmukulili olya tseyithilwa tangotango aantu ya tya ngaaka, yaa na esimano, aadhinwa.

Aasita mbeyaka oya li ya langele onzi mokuti uusiku, oyo ya mono tangotango okanzi hoka ka tumwa kuKalunga, opo ka kuthe po oondjo dhuuyuni.

Dha za kep. 10

(iv) Natango Jesus nomukiintu Omukaanani miitopolwa yaTirus naSidon ota ti: Ngame inandi tuminwa kaantu yamwe okoonzi dha kala dhomegumbo lyalsrael." Oshoka inashi opala okukutha oshikwiila shuunona noku shi umbila "uumbwena" Sha hala okutya inashi pumbiwa okukutha ehupitho lyalsrael noku li dhaadhigila aapagani. Mat.15:24-25.

Omolvashike Jesus ta yeleke iigwana yaapagani noombwa?

(vi) Omolvashike Jesus inaa hala okuninga gwiigwana yaapagani ye a ti ineen-ndela aayuki, ihe aalunde yi itedhulule?

3 Aantu ayehe oyaKalunga, oye e ya shiiti. Aantu inaa vulika oya yono ehalo lye. Evuliko lyomuntu gumwe Abraham olya yalulitha oshigwana shalsrael. Kalunga ano ota silohenda sigo oluvalo lwomayuvi ogendji omolu evuliko lyomuntu gumwe nomoluukumwe we naye. Ihe omolvoshigwana wo shika shimwe sha vulika kuye. ligwana ayihe oya silwa ohenda, omolvewuliko lyJesus. Aantu ayehe oya ningi mboka ya tseyi notaya longele Kalunga. Eyooloko lyaapagani naalsrael oli li mokutseya Kalunga hamokushitwa.

Matheus N. Ambondo

Okwa hepekwa sho i igandja ye mwe- ne, ye ina makula okana ke, ongashika okanzi taka falwa ka ka dhipagwe, ongashika onzi tayi mwenene omukululi gwayo, ongashika naye ina makula okana ke. Oye okwa kuthwa mo mevi lyaanamwenyo, omolvomayonagulo goshigwana shandje.

Jesus ota valelwa muuyuni mbuka nonuumvo, opo tse nangoye tu hupithwe mo momayonagulo getu ngoka hage tu adha ethimbo nethimbo.

Okwa ethiwa kaantu, nokwa dhinwa kaantu, omulumentu gwomahepeko nomuvuntu, omolvangoka ayehe ya siikile iipala yawo, yaa ye mu tale, omudhinwa twe mu tala kwa fa oshinima showala. Jes.53:3.

Pamwe mOkrismesa yonuumvo ongo- ye gumwe gwaamboka ya siikile iipala yawo, opo yaa tale Jesus. Otaku tiwa mpaka omulumentu gwomahe-

peko nomuvuntu, hamolvashoka a yona sha andola, ihe omolvashoka oku udha esilohenda, onkee a piti- kwa a valelwe muuyuni muka, opo e tu hupithe moondjo dhetu.

Omulumentu gwomahepeko nomuvu- ntu, ihe oye ngoka i itsike omauvu goondjo dhetu, nokwa humbata po omeehamo getu agehe.

Otu uka mOkrismesa yomumvo 1978, onkee atuheni tu yeni ano kuBetle- hem, opo tu ka taleni shoka sha ningwa ko.

J. Akudhenga

OUKOLWI OWO OSHIPONGA

Dha za kep. 9

Apa onda hala ndi hokolole okahokololo kamwe mangha nda li omunyasha meongalo letu Okalongo. Efiku limwe pamwe novanyasha vakwetu otwa li twa teelega oshihauto shi tu twale koshoongalele shovanyasha vongelesa aishe ya ELOK, ke- ngela. Manga tu li po twa teelega otu we- te nokuli ovanyasha vakwetu vokoNaka- yale tava ende po tava yi koshoongalele ve li kolupadi, nafye otwa tokola yo tu ye pamwe navo kolupadi. Ondjila yetu ka- pwa li ou e i shii.

Onghe otwa li ashike twa lambalala oshi- tauwa, noshitauwa osha li sha dingonoka unene nomwa li efululu la kula. Mongudu yetu omwa li nee mu na okakadona ka- mwe kali kaxupi neenghono. Mondjila o- twa enda nee hatu ka yolo, shashi oka li taka tyulile mefululu.

Tala kep. 13

Mbushoye te ku nyikifa oluhodi

Fye otu hole okulukila ile okulilukila oom- bushe. Ovanhu vahapu otu hole okuliluki- la ile okulukila ovanhu ovanamadina. Oonakulukilwa ohava kala va hafa ngee va mono oombushe nohave va pe yo omaano. Ohave va lombwele yo va diinine nawa e- dina lavo.

Konima yomafiku oto ka hanga oonaku- kilwa vahapu va nyika oluhodi, molwaashi oombushe yavo inava endifa nawa edina lavo, mouyelele, ngaashi e li hangele.

Vamwe ove li ovadipai novanyeki vovanhu nande mwene wedina (mbushaye) oye omu- lalakaneni wombili, ohole, omunanghenda, omuyakuli omudiakoni muwa. Vamwe ve li- honga onyalo novaendaendi, vokunangala ashike apa naapenya. Ndele mbushaye oye omulalakaneni wexumokomesho nokwa ha- la mbushaye a kale ngaashi ye.

Onghee hano mbushaye te mu nyikile olu- hodi, osheshi oilonga ei ta longo inai wa- pala okwa fa oye te i longo, osheshi edina oleni naye, olo tali udikila oinima inai yela.

Vakwetu amushe ovo mwa lukilwa oombu- she manga mwa li ounona, nanye ovo mwe lilukila manga mu li ovakulunhu, kondjeni shili edina leni liha udikile vali mondjila ya nyata.

Likoleleni — Nalikondjelwe Haileka