

OMUKWETU

Registered at the General Post Office as a Newspaper

10c



EKUNDO LYOKRISMESA KAALESHI YOMUKWETU -LYA ZI KOMUMBISOFI AUALA

"Esimano olyaKalunga gwokombandambanda! Nombili kombanda yevi maantu e ya hokwa."

Aatumwa yomegulu osho ngeyi ya li ya tumwa kuKalunga ye ete kombanda yevi ekundo lyaKalunga mwene, ekundo lyOkrismesa. Kalunga mwene ta kundu aantu ayeheyehe, yomuuyuni auhe, yomiigwana ayihe, yomomalaka agehe, yomomapipi agehe-gomomathimbo agehegehe. Kalunga mwene ta kundu aantu nekundo ndika enene lyOkrismesa yaaluhe. "Esimano olyaKalunga gwokombandambanda! Nombili kombanda yevi maantu e ya hokwa."

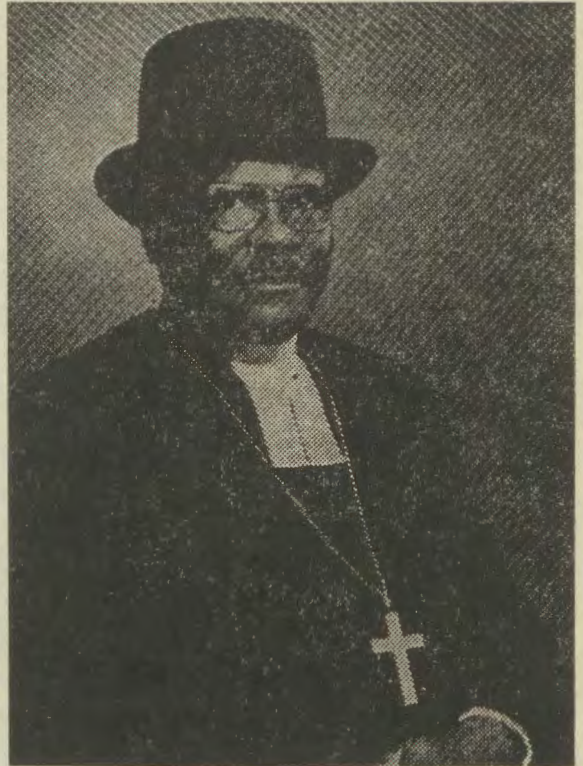
Omumvo nguka guukuya uyali, 1977, nani nago wo ugu na enyanyu lyOkrismesa. Kalunga na hambelwe. Nani nomomumvo nguka guukuya uyali tau hahalathana, onkene tuu oitaali, nani, otaa vulu ngaa okukala ye na ombili yaKalunga yi li moomwenyo dhawo. Ombili yaKalunga ndjoka yi vule uunongo auhe wopantu. Ombili ndjoka yaa na nando ekudhilo, noitayi piyaganekwa nando okusha. Ombili yaKalunga ndjoka tayi gamene oomwenyo dhooitaali nomadhiladhilo gawo muKristus Jesus. Eeno shili ombili ndjika osho yi nokukala oshoka Esimano olyaKalunga gwokombandambanda! Nombili kombanda yevi maantu e ya hokwa.

Aatumwa yomegulu nani Kalunga okwe ya tumu ye ye wo kaantu mboka ya thikithwa kesilohenda lyaKalunga methimbo lyOkrismesa yomumvo guukuya uyali '77,' opo aantu atuhetuhe tu uve kutya: Esimano lyolyenelye-ne kali shi lya gulwe, nandenande, aawe. Esimano alihelihe olyaKalunga mwene; lyaKalunga nguka gwokombandambanda, ano gwokombanda yaayiheyihe, yaayeheyehe noyaashiheshihe.

Ano omuntu kehe, ngoka esilohenda lyaKalunga lye mu thikitha po pomataambathano gomimvo ndhika: 1977-1978, oti igidhwa kaatumwa yomegulu, kutya: Oshili, esimano lya ninge lyetu! Eeno, Esimano lyaa ninge lyetu, aawe. Esimano alihelihe nali kale ngashi li nokukala lyaTate Kalunga mwene awike. Ngoka ta vulu okuhempulula ngeyi neifupipiko, oye a tseyo Kalunga nOmwana Jesus Kristus. Ombimbeli tayi ti ihe: Nakutseya nguka na Naku hempulula ngeyi, oye e na omwenyo gwaaluhe.

Mokuvalwa kwaJesus Omuhupithi omo mwa holoka kutya: Oshili Esimano alihe olyaKalunga awike. Mokuvalwa kwOmukulili guuyuni, omo mwa dhimbululwa sha yela kutya: Osho Kalunga a kala nani e hole shili uuyuni. Oshoka Ohapu ndjoka ya li ko manga uuyuni inaa shitwa. Ohapu ndjoka ya li puKalunga. Ohapu ndjoka ya li Kalunga. Ohapu ndjoka Kalunga e yi shititha uuyuni, nokaku na nando oshinima shimwe shomeshito inaa shi shitwa ando kOhapu ndjo.

Ano Ohapu ndjono yoonkondo adhihe dheshito Kalunga sho e yi tumu kevi yi ninge Kalungomuntu; Ohapu ndjono yoonkondo dhuukalunga sho Kalunga e shi utha yi valelwe monyama yetu noyi kale mokati ketu, yi ninge ehupitho lyetu; osho naanaa shoka sha holoka kutya:



Omumbisofi dr. Leonard Auala

Oshili Kalunga okwe tu hokwa tse aantu. Kalunga okwa tokola shili a kale nombili naantu ye nokwe shi longekidha nawalela, yemwene. Eeno oshili, Esimano olyaKalunga gwokombandambanda! Nombili kombanda yevi maantu e ya hokwa.

Ndishi atuheni otwe shi tseyo kutya Kalunga ine tu hokwa tse aantu moluuwanawa wetu ando, nenge sho hatu vulika ando kehalo lyaKalunga, aawe. Ando ongeyi ando inatu pumbwa okuvalelwa Omukulili.

Oshikumithi oshinene osho shika: Ohole yaKalunga oku tu hola tse aantu, Kalunga okwe yi holola pethimbo naanaa ndyoka tse aantu twa hokwa okulandula omahalo getu yene, ngoka ga tsondumbo nehale lyaKalunga. Pethimbo naanaa ndyoka aantu taa hakana esimano lyawo yene, ihe Esimano lyaKalunga awike ihaye li kongo. Pethimbo naanaa ndyoka aantu ya pikwa nayi kuuhalu wesimano, kuuhalu weliko luyuyuni nokuuhalu woludhi kehe. Pethimbo naanaa ndyoka aantu ya pilamena Kalunga. Pethimbo olo tuu ndyoka Kalunga e tu hololele, kutya Ye oku tu hole nokwa gandja Kristus Jesus a valelwe monyama yetu, a ninge omukwetu, gwezimo lyetu. Tu kale aakwanezimo lyaJesus, aakwanezimo lyegulu.

Tala kep. 9

ENYANYU LYASHILI

Otwa tseya uuyuni nonkalo yawo; omainyanyu-dho niinyanyukilwa yamo. Ohatu inyanyudha niitelekela, omalalo gomagumbo noostola, uudhano, eyotho lyonyama, oondanisa, nosho tuu.

Ohatu nyanyukilwa wo ngashi: olutu lwa kola, uulinawa moshilongo, megumbo nomomukunda nosho wo omahupilo ge li nawa.

Enyanyu li li mumbika eshona noli li po oka-thimbo. Oli li wo lyopakatongotongo, oshoka kiituthi ohaku hiywa aanamadhina naamboka ya tseyika nawa.

Enyanyu lyashili oloyo Jesus mwene. Ndyoka lyaantu ayehe, pwaa na ondjoolola. "Enyanyu ndika otali ningi lyaantu ayehe," Luk.2:10. Aayamba nayo omo ye li mongundu ndjika, nando twa tala ya fa ya gwana.

Omuyamba a yuulukwa okumona Jesus nomwenyo aguhe. onkee ta londo komuti. Ta popi ta ti: "ONDA NYANYUKWA sho nde ku mono Omuwa." Ayihe ye kayi na we oshilonga kuye. Esilohenda neliko lyashili e li mono enene li vu-le ayihe ye. (Luk.19:1-10).

Otu na aantu oyendji aanyanyukwi notaa nya-nyudha monkalathano. Otwa pumbwa shili aantu ye na uusosiale wa tya ngeyi. Omunashipala sha geya oha tonyaleke onkalo yamukwawo ngoka e li naye.

Dhimbulukwa, Omuuvithi ta ti: Uutoye wokombanda yeve, nenyanyu lyokunyanyukilwa iilonga yokombanda yeve, owala owaleelela. Oondjola odho uugoya nenyanyu itali vulu sha, owalawala, (Omuuv. 2:1-2).

Enyanyu lyashili otatu li adha ano peni? Omokulya nokunwa, omiitelekela nenge omonkalathano ombwanawa? Aawe, omuJesus Kristus, medhimopo lyoondjo.

Omolvashike twa pumbwa Jesus komeho gaayihe?

- (i) Oye ondjila ndjoka tu na okweenda.
- (ii) Oye uyelele mboka tau tu minikile.
- (iii) Omunambili nomunyanyudhi gwetu.
- (iv) Omukwathi nomugameni, nohatu galikana Kalunga medhina lye.
- (v) Oye e tu kulila mo muulunde.

Elago lyaamboka ya kulilwa uunake? Enyanyu otaye ke li mona ko. Oshimpwiyu neyemato tali kana po, (Jes.35:10).

Ethimbo ndika aauvithi otaa uvitha **JESUS ENYANYU LYASHILI**, ndyoka lyaantu ayehe, onkee natu li taambe nomwenyo aguhe, nopwaa na uutondwe washa. Kalunga ota taamba aantu Ye. Aatondathani ote ya hanganithile muYe mwene. Otaa taambathana nawa notaa yakulathana nawa palutu nopambepo. (Iil. 16:33-34).

Jesus ta ti: "Mbino onde yi mu lombwela enyanyu lyandje li kale mune nenyanyu lyeni li kale lya gwanenena," Joh.15:11.

Ooitaali amuhe, oohapu dhaKristus nadhi kale dhu udhilila mutse, opo enyanyu lyaKristus li kale lya gwana mutse, notu longathane, tu imbi-le wo Kalunga ketu.

Tu kongeni ano Jesus, enyanyu lyashili manga tali monika momushigakano. Kalunga ketegameno note tu udhitha enyanyu lyashili alihe, nombili meitaalo opo tu kale twa gwana, notu na onakuyiwa yi li nawa yuuyuni mboka tau ya.

S. Nuugwanga Iiyenda



NDELE OOVE BETLEHEM EFRATA, OOVE MUNINI MOKATI KOMAPATA AJUDA, MUOVE TAMU KA DILA OU, TA KA NINGA OMUPANGELI MUISRAEL. NEHOVELO LAYE OLO SHITO NALE, HEENO OLOMOKWALUSHE.

ELONGEKIDO LOIVIKEMBIBELI MOMAONGALO A ELOC

Ongeleka ya Eloc oyo imwe yaado da fimaneka oshilonga sheudifo londjovo yaKalunga. Oshilonga osho ya hala tete okuningila omunhu kombinga yexupifo, osho oku mu pa ondjovo yomwenyo, oyo hai shitulula okukalamwenyo kwomunhu, nde tai mu shingile kuKristus.

Ongeleka oye shi ulika sha yela mokudeula ovaevangeliste, ovatumwa vokutwala EVANGELI momaumbo, momikunda nomoitukulwa ya nyika ovapaani. Mokukonakona ehapupalo loilyo yomaongalo mu Eloc, ola hovela unene pomido 1946, eshi momukunda mwa dikwa eefikola da lukwa odomoixwa. Oda shashifa ovanhu vahapu, hano etano netandavelo la Eloc ola ningwa unene pefimbo lokuevangelifa, shi dule nale.

Omudo ya hoolola omubishofi olo yo omudo ya hoolola umwe womovafita, a yoololelwa oshilonga shokuevangelifa mongeleka. Ou iha ende nomikunda nomaumbo, ndele omomaongalo

Pehovelo omalongekido oivikembibeli kakwa li haa pula shihapu meongalo, okuteelela omuudifi. Nge elaka le uya molupale lweongalo, omufita neleloongalo ohava ningi eshikulafano lomeongalo lavo, nde tave li ingida momalongelokalunga limwe ile avali.

Efimbo lopaafa, ovanhu aveshe ove na omatokelelwa, va endavaelela vo ve na omilombo neenghundana dihapu. Onghee omaingido opangeleka kae na eenghono muvahapu onghee iha e lilombwelwa vali naanaa, unene oinima ei ya pamba oyoongalele nomaudifo.

Eshi osha holoka sha yela ngeenge hatu i momaongalo mahapu, konyala momikunda ohatu hange ovanhu vehe na eshi ve shii. Momaongalo mahapu momikunda ovanhu ohava etwa ashike keingido lombako noi have lixupo vali.

Meongalo limwe otamu hange nomolupaleongalo loovene, omufita nahamushanga va dimbwa olufo leongalo lavo, neongalo inali lilongekida sha, nande ombapila yeshikulafano omo i li. Ovafita vamwe ohava ningi eshikulafano lomomikunda eshi omuudifi a fika. Omalaka otaa tumwa nee fiku lehoyelo novanashoongalele.

Komukalo wa tya ngaha omalweendo ondilo, omadindamhadi ongaho nokwa hepa ashike. Shapu ohatu lipula pefimbo eli la lunduluka kutya ohatu ningeni ngahelipi mokulongekida oivikembibeli yetu, opo tu twe kumwe nefimbo eli novanhu valo.

Pamwe otashi wapala pefimbo eli ngeenge hatu unganeke eongalo mokuteelela oshivikembibeli tu dimbulukwe oinima ei tai shikula apa noku i wanifa:

1. Onawa meongalo keshe mu kale okangudu ka hoololwa, ewilikongudu ile okangudulongekido koyoongalele yokuevangelifa. Ongudu i hoololwe pamukalo womawilikongudu aeshe, yo i pewe eenghono noshisho keleloongalo okuninga omashivo meongalo okuuya koivi-

kembibeli. Onawa va tukaulilwe eenhele omo keshe umwe ta shivifa ovanhu efiku nohele yokwoongala momukunda nokuya kongelesa pefimbo olo la ufwa. Onawa onhele yokwoongala, i shivike nawa kovanhuh aveshe vombinga oyo. Elongelokumwe nali ningwe pokati keleloongalo newilikongudu lokueevangelifa, opo onghendabala tai eta oiimati.

2. Ewilikongudu nge la mane omalongekido ndele natango ope na efimbo, oshivike shi li kokule, ngeenge otashi dulika, onawa li shangele omuudifi oo e li molufo, oku mu shivifila kutya okwa teelelwa momafiku oo e li meshikulafano. Nge kape na omhito meongalo pefimbo olo la ulikwa meshikulafano, omolwonhumba nongadi, nashi shiivifilwe omuudifi, opo a ha tyuuke ko ashike ovanhu inave mu teelela. Olweendo nefimbo lo tali hepa ashike.

3. Ombapila yeshikulafano nge ye uya molupale, nai leshwe moshooongalele shomalongekido. Keshe okanima ke li mo naka leshwe, naasho sha wana okulikundwa nokuyukifwa nashi ni-



Omuuvithi Natanael Shinana

ngwe, nomapulo naa kongelwe omanyamukulo, opo ovanakangudu va dje mo tava hovele nawa oilonga yavo yomaunganeko.

4. Nge ope na ofikola tai lipopifilwa, nashi kale sha yela shiha ka ningwe omhulukuta, osho yo eekamba da diladilwa okupopifwa, noovene vado nava shivifilwe efiku notundi. Eshi oshilonga shEwilikongudu lokueevangelifa meongalo.

5. Mokulongekida eongalo omolwoshivikembibeli inaku talwa ashike pOinagoga ile pomikunda opo hapu ningwa omaudifo. Naku talwe omikunda odo di na ovanhu ovo ihava fiki unene kongelesa. Ovanhu aveshe vomomikunda domomudingonoko nava shiivifilwe. Elalakanovanhu aveshe meengaba deongalo va ude eendjovo daKalunga moshivike eshi.

6. Onawa mokulongekida Oshivikembibeli, pa kale eembapila domashikulafano omalweendo, omafiku neevili dokwoongala. Eembapila di kale poivelo yeengulu ile pomafina omi apa tapa ongalelwa, nedina lomuudifi ou te ya.

7. Ovakwaneongalo nava kumaidwe va etelelafane koyoongalele novapaani yo, ovashunimomima neengholwe. Nande wa ongala pomukunda, owa teelwa mongeleka efiku keshe, ino kala ashike wa teelela komikunda pamwe novakulupe.

ELONGELOKUMWE LOVAUDIFI

Oshvikembibeli meongalo osho okuxwameka oukriste u na omwenyo, okupendulwa meemhofi nomounye nokupamekwa meitavelo nometelelo leuyo laKristus, unene pefimbo eli lomaudjuu namataatao a teelwa apeshe. Oshvikembibeli osho yo exwamekafano lovaudifi voovene.

Moshvikembibeli keshe omuudifi ota kwatwa kekxwamo lopamhepo, shaa pu na elongelokumwe. Omweenda yo ota xwamekwa kelongelokumwe novaudifi vakwao meongalo, eshi ta pwilikine komapopifo avo, nge tava ningi omahovelo.

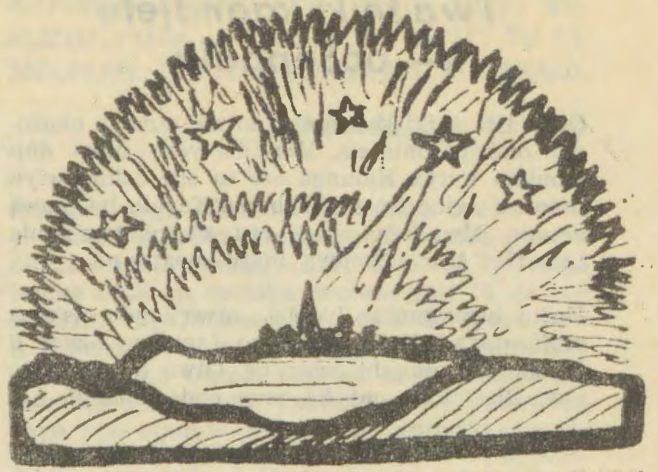
Momapopifo ovaneumbo omo omweenda ta mono oikongo yokukwatelela mokuholola oshipopiwa shaye. Omo yo ta mono ombinga oko ta endekele eudifo laye. Hano ovauudifi atushe vevangeli, natu longeleni kumwe tu xwamekafaneni. Omukulu wonale okwa tile: "Okwooko kumwe ihaku pandula omhandu, kwo ihaku litoola ona."

Onawa mokulongela kumwe tu ningeni ngaha:

1. Ovauudifi aveshe meongalo, nge kape na omaimbo nava kale momauudifo unene pongeleka. Ou a pewa olufo lokuhovelifa omaudifo, na kendabale ngoo okulongekida epopifo la twa nola yela. A ha leshe ashike nokwiindila nokuyandja omhito komweenda.
2. Onawa ku longekidwe ongudu yeilikano meongalo, i kale keengolo efiku keshe momaumbo, ile mongeleka ile ponhele yonhumba fimbo oshoongalele inashi ya mo. Onawa nge ominute 15 tadi tetekele okwoongala di kale domailikano ovauudifi kumwe nongudu yeilikano, opo ku ha iwe mo ashike oshiwayela, ndele omelimweneneno.
3. Ongudu yolwiimbo meongalo nai shiivifwe kuyela, opo i longekide omaimbilo okunyenye-paleka oshvikembibeli. Otashi dulika vamwe va iwe navo komikunda oku ka udifa nomaimbilo. Omaimbilo ohaa pendula eemwenyo onghee onawa omaimbilo oo mawa a kale pehovelo, manga oshipopiwa shefiku inashi hovele.
4. Ongudu yovanyasha, ofikola yeshasho nekoleko novakongholi navo nava kale moyoongalele ya tya ngaha.
5. Ewilikongudu nali shive yo ovanangeshefa aveshe, veengeshefa dinini nadakula hava landifa oinima ilili noi lili. Aveshe ve uye fimaneko kotundi yavo fiku i li ko.

NDELE NATANGO OVAMWATATE NYE, TU INDILILENI, OPO ONDJOVO YOMWENE I TONDOKE I KA FIMANEKWE PAMWE NGAASHI PUNYE," 2Tess. 3:1.

Natanael H. Shinana



Ovakriste tu taleni alushe kuBetlehem

Luk. 2:8-20

Elaka eli ola popiwa nalenale kelundu laBetlehem, komwengeli omuyapuki, eshi a holoka povanahambo va li mofuka yonghange. Okwa li e na evadimo nouyelele uhe shii okuyelekwa nasha, (Luk. 2:9).

Evadimo eli ola tilifa ovafita venya unene. Opo omwengeli e va lombwela: "Inamu tila, taleni ame ohandi mu udifile ehafo linene tali ningi lovanhu aveshe," Luk.2-10.

Elaka eli ola fika yo nokufye nena: "Inamu tila." Eshi fye twa kala mehalakano lomeembuwa dounyuni ou nomomilaulu fokofoko, Jes.9:1,7.

Ouyeleele nevadimo latate Kalunga we tu yeleele ndee tau tu minikile. Exupifo la holokela oiwana aishe yomounyuni muyo nafyeni yo tu li mo.

Omwene Kalunga e tu tumina eendjovo daye diyapuki, omo twa lombwelwa, otwa dalelwa Omukulili, oye Kristus, Jesus Omwene womwenyo, Joh. 1:11-18.

Ovakriste vakwetu, tu taleni alushe kuBetlehem. "Omwa dalelwa Omukulili!" Otwa dalelwa Omukulili, moshilando shaDavid, Joh. 3:16-21.

Tu djeni mo meehambo doulunde tu yeni kongula, omo Kristus e tu dalelwa, tu xupifwe. Tu twaleni elaka olo kovapaani - ova dalelwa Kristus omuxupifi. Ouyeleele okuminikila ovapaani, Luk. 2:29-32. Omukriste, ingidila onyuni: "Inamu tila!"

Kristus, dalelwa yo nonena meemwenyo detu nde to tu yadifa ombili nehafo fiyo omexupifo.

S. M. Haimbili

* * *

Aanene naashona amuhe, mu ye, KuBetlehem otse atuhe tu ye, Elago enene lya ningilwa mo, Kalunga ngu Tate e li tumine ko.

Twa thiki kaandjetu — ooSeppälä

Osho twa thiki kaandjetu notwa tameka okufudha ombepo ontalala. Mondjila yetu otwa dhimbulula kutya Kalunga ote tu sile oshimpwiyu miinima ayihe iinene niishona. Kepulo lyOmuwa Jesus: "Mwa hepa sha?" otu na okuyamukula tatu ti: "Aawe, Omuwa, inatu hepa nande."

Esiku lyahugunina lyaMei otwa londo oskepa muKaaapstad. Esiku lyotango, uusiku, okwa li ku na oshikungulu oshinene. Otwa li tu uvite nayi. Ihe okuza mpoka otwe ende nombili.

Sho twa thiki kuEngelanda, moshilando sha-Southampton otu uvu kutya aaniilonga oya niinga oshipotha, molwoondjambi. Onke inatu mona iinima yetu (iinguma) mbyoka twa pumbwa unene: oontenta, ekende lyogas, omakumbyatha niililomwa.

Otwa haluka. Otatu ka ninga ngiini naanegumbo lyetu oyendji! Etango olya li lya taka. Okwa li ku na uutalala. Okulala mohotela otaku pula iimaliwa oyindji. Kalunga okwe tu etha tuu? osho twi ipula.

Otwa pasiona mondoolopa. Mokweenda otwa mono sestela gwomOngeleka yaAakatoolika tu umbu oposa. Onda yi kuye nokupula ngele okwa tseye ehala lyokulala li nombiliha. Okwe tu ulukile ondunda yi na ombiliha. Okwe tu hiya tu ka lye uulalelo. Sho twa li uulalelo sestela (Theresia) okwe tu thindikile mongeleka yawo notwa kala mo okathimbo tatu hambelele Kalunga. Okwe tu pula omadhina getu opo a dhimbulukwe oku tu galikanena.

Uukumwe u thike peni mokati kaakriste! Pokuthikama kwetu okwe tu pe ondooha onene yu udha oomboloto: "Taambeni onguta yomondjila." Oshili inatu hepa!

Esiku lya landula otwa ka konga iinima yetu. Natango aanashilonga oya tsikila okwaalonga. Iinima yetu inatu yi mona. "Otatu ka lala peni?" osho twi ipula twa limbililwa. Inatu vula okushuna megumbo moka twa lala, omolwondilo. Otwa kongo membo lyotelefonta ehala lyontumba: "Christian Alliance" (Uukumwe wAakriste).

Ando tu yelekeleni. "Ondi na oombete ne kadhi na mwene." "Oombete ne ... ooSepälä yaheyali? Kape na mbudhi. Yaali naya lale kombete yimwe. Huismoeder gwomegumbo moka okwe tu taamba nawa. Okwe tu longekidhile oombete heyali nokwe tu palutha nawa. Pokuthikama kwetu sho twa hala okufutula omulalo gwetu, okwa ti: "Taambeni omagano itamu pumbwa okufuta sha." Uukumwe waakriste ou thike peni!

Esiku etitatu iinima yetu otwe yi mono notwa thikama okuya kuLondon. Okwa li ku na uutalala. Onda dhiladhila okulala kwetu motenta. Otu na omatalashe gaali, ageke. Aanona oye na okulala nomakumbyatha. Onda ndhindhlike wo kutya ekende lyetu lyogas olya pwa. Sho twa pula ompito opo tu li udhithe, otwa yamukulwa kutya kape na ompito. Omakende gAayafrika

itaga udhithwa. Natango onda dhimbwa okulanda okatee. Otatu ningi ngiini! Okakopi okapyu otatu ka pumbwa, omolwuutalala. Otwa thiki pehala mpoka hapu dhikwa ootenta.

Omukiintu gumwe Omwaamerika okwe endelete ya kungame nokupula ngele onda pumbwa etalashe. Sho nde mu hololele ompumbwe yalyo, okwe tu etele omatalashe gaali noshipakete shimwe shu udha iihupe yiikulya ye, oshoka okwa li ta zi po pehala mpoka. Moshipakete onda adha mo okakende kogas nokapakete kotee. Kalunga na hambelelewe.

MuEngelanda otwa talele po uule woshiwike shimwe. Aanegumbo lya Peter Wilde, omutumwa Omwaangilikana nomukulukadhi gwe Viivi, mboke ya longo kOdibo, otaye mu kundile po. Ayehe yaali otaya yuulukwa kOwambo.

Okuza muEngelanda otu uka kuFrankryk, Duitsland, Belgia, Denemark naNoorweë. Iilongo ayihe mbyoka otwe ende muyo nokutalelapo: ongeleka noomuseum dhimwe. Otwa tala notwa kuminwa iilonga yaKalunga niilonga yaantu. MOsoomi otwa thiki mo petameko lyaJuli, ethimbo lyiiyimati ya pya, momakuti.

Ngashingeyi aanona oya tameke osikola. Timo Osikola yIikaha; Eva - Liisa, Osikola yopombanda; Sakari naMari (aavalelwamo Aawambo), Osekundosikola naHanna onkelo ote ende pamwe natse moshigwana. Kalunga okwe tu pe egumbo moka tatu gwana mo. Olutu otalu kuutumba moka ihe oomwenyo dhetu tadhini inyenge mOwambo.

Kalunga ne mu yambeke ne mu gamene. Inatu dhimbwathaneni momagalikano.

Gweni

Raili naMatti Seppälä



Egumbo lyomusamane Matti Seppälä manga ya li mOwambo. Tate Seppälä manga inaa shuna kOsoomi okwa li ha longo mOmbelewa yetumo omanga meme Seppälä moshilonga shaakiintu.

ONANE NOKUNWA

Simpe kapi tunazi mokutarurura siparatjango setu, tu reseni kumwe velise ezi Yisewe 31:30.

Pausupi tani tangauka uwa womukadi. Kapisi runinga ndi meho gomazera, ago kukumbage-ra. Uwa musinke nye no? Yirugana, ukaro naunye wouwa.

One vagolikadiee, uzuni wozinyakurwetu, nye mukadi kutokwera komambo epata lyendi nonzugo zendi ayo yi dime? Hame ndangone dedi!

Yidira yetu nani ngayi wapeke sirongo Eyi yina wiza asi vakriste kutupu yidira, nani yina zono. Epata lyomukadi nokudima si nani ya kere nawa. Nye tu tareni eyi una kutanta ukriste. Yisewe.31:30 **Mukadi gomukadikadi yilye ta ka mu gwana. Uwe wendi wa pitakana ou wotuwe toutende. Mutjima gwa mu huguvara.**

Nane, nsene ove karume koyikorwesa kutupu egwanekero novelise ezi. Zamba yindere o kare novanona ndi varerwa pepata nane, ee, nye ngano kumakera mo membo ogu yoge, nda ngano ga diruka mo. Nye vava vagara velyezuva nawo, walye.

Nkorwi, nane, kapi za diva kutereka, ndungilira zelize za kara pepa ta lyendi. Oyo yigendagura noyilidindwilira nonkinda nonobira, nye ngo diva kukuhwa yininke ya yoge? Nye no mu hara no? Eharo lyosipara nye nsene pweli nawa, nye ehudi lyendi kousimba ndi koyirugana. Nomuga da ku pwa dokuhundira. Ogu ana ku pe yige googo nye. A, one nane, nye yimo wo kere uzuni wetu sili wosipagani ndi? Ndangone.

Muswamane koRundu ndi kupi koyirugana. Mungura ta zuvhu asi ani mukurukadi goge yikosa kunwa ndi kutokwera. Ngo ka purakana ko tupu asi yoge ga ka kwara. Nani yina mu limbi eyi na rugana. Ove nsene patupu kumana egarona, nsene pweli kunwa nkinda zimwe. Ava vamwe mpili yendi pweli, nhi, amesi nage kunwa ame nyame yisi? Tani nu nage nye kwapeke ta ka ku divara. Apa ana kara walye nye oko, apa ani kara po ya tjinda ngosina, hawe yige sa nye hena. Ove asi mutjima gwendi hagwa ku huguvarera, ndangove nane lyange. Ove asi ediworoko mo? Hame lya fa nu Ngano nye yirugana yoge yiwa kwendi, ngano ga ku huguvara, mpili a dukagane nouzuni wendi ta tanta tupu asi: Ame mukadange, nayinye eyi mapuko tupu, ame googo.

Nane, kara mureli nomuhuguvarwa gwembo lyoge. Yilidindwilira-dindwi lira yikorwesa yidona. Kapi twa yi diveni kuyinwa vakurukadi. Twa ha lisiken yirugana oyo yovagara hasa. Ose tatu reteni nomuga kwanyamwetu kovaswamane vetu nokorudi rwetu. Ose vareli worudi. To vhuru kurera ndi kuronga nawa ove monkinda ono piti, azo nkinda yige zinyaudona naunye.

Ame kuhara kuferera nsene ni gwana mukurukadi mobotere ndi mositaura ana korwa, morwa eyi ana kurugana nokuvhura si kutara ko. Nye nsene membo ana kara ta viyauka hawe mbeyo zelize. Mutjima gwa yendi too nye nago.

KARUNGA NGANO A TU PE KO MEHO NO-KUZEGURURA NONDUNGE DETU TU DIMBURURE UDONA WOKUNWA KOVAKADI.

Mpandu. Eila Nsinano

Aanashilonga yOshinyanyangidho ayehe otaa yi mefudho lyOkrismesa nolyOmumvo omupe okuza 19 Desemba 1977. Eyakulo lyiilonga mbika otali ka monika konima yeti 15 Januari 1978, ihe Ostolamambo eyakulo lyayo opo li li ethimbo alihe lyiilonga, kakele kethimbo ndyoka uuna Ostola tayi ka ninga omayalulo gehulilo lyomumvo. Ombelewa yOmukwetu nayo oye eguluka nomu na omuyakuli gwe-thimbo alihe lyiilonga.

Dhimwe dhomoontokolwa dhEpangelongeleka lyeti 8-9.11.1977

298

Omusita Simson Ndatipo ngoka a yakula egongalo lyaShakati, Epangelongeleka olye mu langeke megongalo lyaNakayale, okutameka 1 Febuluali 1978, Kalunga ngele e shi hala.

299

Omusita Heikki Uushona a uthwa a kale omusita megongalo lyaShakati, okutameka 1 Febuluali.

308

Epangelongeleka lyu utha oshipalanyolo shomumvo 1978, shi kale "EKWATHO LYANDJE OTALI ZI KOMUWA, EPS.121:2."

310

Omusitagongalo Elia Haipinga (Lupandu), Epangelongeleka lye mu langeke megongalo Ompundja, okutameka 1 Januari 1978.

311

Epangelongeleka lya langeke omusita Paulus Musheko, Epembe, megongalo Olupandu, okutameka 1 Januari 1978.

320

Epangelongeleka lya taamba onkundana yenyanyu kutya aayakulingeleka aape, aapopi yOshisoomi: omundohotola Reijo Ojutkangas neefolo lye Terttu, osho wo omusita Reijo Kaarto neefolo lye Rakel, omundohotola gwo-mayego ye ya meyakulongeleka lya ELOK. Kalunga na hambelelwe shili omolwekwatho lye.

321

Epangelongeleka otali ithana omusita Kaipia-nen, ngoka a yakula nale ongeleka ndjika, a galukile keyakulo lya ELOK.

MWA VALELWA OMUKULILI

Luk.2:1-20

ESIKU NDIKA LYONENA OLYO ESIKU TUU NDYOKA OMUNTU NGOKA A GWILE MUULUNDE NOKWA ZI PO PUKALUNGA TA KONGWA NGAASHI KWA NYOLWA: OSHOKA ESILOHENDA LYAKALUNGA OLYA HOLOKA LI ETELE AANTU AYEHE EHUPITHO.

Tate Kalunga ngoka inaa nyanyukilwa eso lyo- mulunde okwa tokola pethimbo lyo opala o- kukonga omuntu opo e mu galulile kuye i- shewe, a mone omwenyo. "Ihe ethimbo sho lya thikana Kalunga okwa tumu omwana a valwa komukiintu nokwa valelwa koho yompa- ngo, tse tu ninge aavalwa. Nomwana nguka okwa lukwa edhina tali ngelengendja nawa momakutsi gomulunde, tali ti:

"Omuhupithi ngoka ta hupitha oshigwana she moondjo dhasho," Mat.1:20. Nomu nguka Kalunga a hedha kaantu ye, Mat.1:23 e ya hupithe mo muulunde nomeso, Jes.7:14.

Shika osha ningwa muuyuni womukesari Au- gustus, ngoka a li a gandja ompango opo uu- yuni auhe wopethimbo lye u yalulwe, u ga- ndje oompale. Josef okwa li muNasaret omo- lwiilonga. Ihe okwa yi kuBetlehem, koshila- ndo shaandjawa, pamwe nomuyalekwa gwe Maria e ki iyalulithe, koshilando shaDavid.

Manga ye li nkoka shoka sha hunganekwa nale momakana gaaprofeti osha gwanithwa, Mik.5:1. "Ihe ongoye Betlehem, Efrata, ongo- ye oshishonashona mokati komazimo gaJuda omungoye tamu zile ndje ngoka ta lele Israeli." MuBetlehem Josef naMaria inaa mo- na eha lya simana, ihe oyi ikongele omulalo mokakololo kondundu moka hamu kala aasita niimuna yawo.

Pethimbo tuu ndika Maria a yelipa omutango gwe okamati, e ka dhingile momalapi. Mo- lwaasho inaa mona eha mongulu yaayenda, okwe ka langeke metemba lyokulila iimuna. Omukwaniilwa gwesimano a valwa ongohe- pele, oshoka ina taambwa moongulu dhuuya- mba, okwa tulwa puuyelee pontundulu, opo ayehe naasita wo taa vulu oku mu mona.

Nando a langekwa ngeyi pehala ehepele o- molwokuvalwa nkuka kwe, aakwanegulu inaa vula okumwena nokutala owala oshiningwani- ma shika megulu, aawe. Oye ya kevi okuha- mbelela Kalunga, omolwesilohenda lye oku- hupitha aakuuyuni ayehe, moondjo dhawo.

Gumwe gwomaakwanegulu oye u uvithile lwotango aasita yiimuna elaka lyevaangeli. "Mwa valelwa omukulili," Luk.2:9-12. Naa- kwanegulu aakwawo ye ya po ya hambe- lele nokusimaneka Kalunga, Luk.2:14. Nokwil- mba lwotangotango ondjimbo ndjoka hatu i- mbi sigo onena: "Esimano lyaKalunga nombi- li kombanda yevi maantu e ya hokwa."

Opo mpoka aakwanegulu naakwanevi ya tsa- kanenithwa okuhambelela Kalunga. Omukulili ina mona owala eha metemba lyokulila iimu- na esiku ndyoka, aawe, okwa mono wo eha moomwenyo dhaasita yiimuna, aadhinwa mbo.



Omuuvithi Stefanus Mvula

Amuhe nga, aanona ne, Pombanda ne mu nyanyukwe, Esiku ndi lyOmukulili Otu li na onena ndji.

Oshoka sho ya longo ngashi ya lombwelwa komuyengeli, oya thiki petemba noya mono Jesus ta lala metemba.

Oya kwatwa kenyanu enene, kwa tiwa oya shuna nokuhambelela nokusimaneka Kalunga omolwaayihe mbyoka ye yi mono noye yi u- vu.

Omuna gwaKalunga owa uva tuu elaka ndika ekumithi? Tali ti: Mwa valelwa Omukulili, O- mumangululi nOmuwa omunambili, ngoka ta eta ombili momwenyo gwaa na ombili nyenya- nyu lyaKrismesa.

Oye tuu nguka kwa tiwa ina monenwa eha mongulu yaayenda, oshoka omu udha. Ota mono tuu eha okukala momwenyo gwoye? O- ye ta thikama posheelo shomwenyo gwoye nena ta konkola a hala e ye mo opo e ete mo enyanu, moshipangelo shoye nomego-

ngalo lyoye, Ehol.3:20. Taamba omuhupithi gwoye nena opo u ningwe kuye omunamwe-nyo nomuna gwaKalunga, Joh.1:12.

Oyendji otaa kambadhala nomikalo dhi ili opo yi inyanyudhe naashoka taa longekidhile esiku lyaKrismesa. Tala aasita oye ya ashike petemba mpoka pwa lala omunona Jesus noya mono ashihe ye shi lombwelwa komuyengeli. "Oya shuna nokuhambelela nokusimaneke Kalunga."

Osho nangoye wo to tegelelwa u taambe enyanyu lyaJesus, meitaalo mokulesha nokupulakena elaka etoye tali ku hokololelwa: "Wa valelwa Omukulili." Oye ngaa Jesus Kristus Omuwa mungoka tu na ekulilo nedhimopo lyondjo dhetu nomu ngoka tate Kalunga a hedha kutse e tu hupithe muulunde wetu.

Ngaashi omuyapostoli Paulus ta ti: "Ohapu ndjika oyoshili noyi shi lela okutaambwa nokwiitaalwa: Jesus Kristus okwe ya muuyuni, a hupithe aalunde, nangame wo omulunde omunene ndi vule aalunde ayehe," 1Tim.1:15-16.

Tala nkene twa taalela esilohenda ndika lye etwa kutse mokuvalwa kwOmukulili gwetu, ngoka a langekwa puuyeleele opo nomudhinwa nohepele, ayehe ya mone ompito okuthika kuye. Ando a mono eha moongulu dhuuyamba nodhaanentu andola itatu vulu okuya ko nokuthika ko. Ihe Omuwa okwe shi ningi pethimbo tuu ndyoka lyu uthwa, opo tu mone ompito okuya kuye noondjo dhetu nomaudhigu getu.

Meitaalo otatu silwa ohenda pethimbo lyo opala. Onke pulakena taku igidhwa: "Mwa valelwa Omukulili, oye Jesus Kristus Omuwa."

N. Stefanus Mvula

EKUNDO LYOMUMBISOFI AUALA

Dha za kep. 2

Okuvalwa kwOmukulili ta valelwa monyama yetu ngele ano otaku tu ulukile kutya: Ngoka a pewa omapangelo agehe megulu nokombanda yevi nani oye omukwetu notse akwanezimo lye; nena nomumvo omupe (1978) ngoka gwa fanekelwa iinima yi ili noyi ili, iinene niishona, iidhigu niipu, iinyanyudhi niihaluthi; omumvo ngoka wo otatu ke gu tsakaneka ashike nomukumo sho tu shi shi kutya:

Elaka lyOmbimbeli olyoshili, ndyo tali ti: Iko-leleni! Inamu tila! Omuwa ote mu kondjele. Ihe ne kaleni mwa mwena. Etegameni lyilgwana oKristus nguka e tu valelwa.

Aaleshi yOmukwetu amuhe, osho ngeyi tandi mu halele Enyanyu lyOkrismesa nOmumvo Omupe gwOmayambeko.

dr. Leonard Auala

OSHINAKUGWANITHWA SHOMUGUNDJUKA MEGUMBO, MEGONGALO, NOMOSHIGWANA

Otseni aagundjuka twa shitwa kuKalunga, notwa shitwa ngaaka tu na eopalo, endjango, nuuwanawa owindji. Inatu shitwa andola tu kale omafano gokotalika ku yalwe, ihe otwa pewa iilonga nenge tu tye iinakugwanithwa mbyoka tse tu na oku yi tsakanitha. Nomokugwanitha iinakugwanithwa mbika yetu otatu mono eyambeko, ndyoka itaali kala ashike lyetu yene ihe olyoshigwana ashihe.

Moshigongi shaagundjuka kOnayena omumvo gwa piti oshipalanyolo shika osha kundathanenwa kaagundjuka. Omusita Josaphat Shanhala mokutamekitha oshipopiwa shika okwa leshele 1Mos.1:28; moka Kalunga a gandja nokuli oshimpwiyu komuntu okulela nokupangengela, ano okuwilika nokwoopaleka eshito alihe.

Aagundjuka oya li ya topoka muungundu okuyamukula omapulo ngoka omutamekithi a tala otaga yelitha nawa iinakugwanithwa mbika. Omapulo oga yamukulwa kaagundjuka yoyene ngeyi:

Oshike wa tegelela egongalo li ku ningile?

1. Li pukulule ndje mpoka te puka, lyo li idhidhimikile wo omapuko gandje.
2. Ehungomwenyo mombepo yuukriste.
3. Li galikanene ndje ndi gwanithe oshinaku-gwanithwa shandje.
4. Li pendje omapitikilo nde ga pumbwa.
5. Li kumagidhe ndje; li kokithe ndje muukriste noli putudhe ndje wo.
6. Li ningile ndje shaashoka shi na sha nehupitho lyaaluhe.
7. Li pukulule ndje uuna nda yono opo ndaa adhika kegeelo ombadhilila.
8. Li tse ndje omukumo miilonga yandje ayihe yuuka koshipala shOmuwa.
9. Momasakaramendi nomayakulo agehe omayapuki, eshasho, ekoleko nehombolo.
10. Oli na oku tu yakula koompumbwe dhetu adhihe.

Egongalo olya tegelela shike kungoye?

1. Ndi li kwathe nondi igandjele miilonga noompumbwe dhalyo.
2. Ndi ende monkalo yopakriste nondi yi gwanithe.
3. Otali tegelele ndi li galikanene.
4. Ndi longe oshilonga shuudiakoni (sheyakulo)
5. Ondjangu miilongangeleka nenge miilongagongalo.
6. Ndi li yakule pambepo nopalutu wo.
7. Miilonga yegongalo okulonga oongulu dhegongalo, okukumba nokuyakula aayenda ye ya po, nokulonga Oosikola dhOsoondaha nomalwiimbo, megongalo, nokwoopaleka meni lyongeleka, omakende nopehale.

Tala kep. 10

OSHINAKUGWANITHWA SHOMUGUNDJUKA

Dha za kep. 9

Pambepo

Okuvvitha noohapu noondjimbo
Okupukulula.

Palutu

Okukwatha nokuyakula oohepele.
Ndi li yakule wo niilonga yandje pakuga-
ndja iikwatha yi ili noyi ili.



Ovalongwa ovo va nyola Omatilika neudo
mOfikola yopombada yaShigambo. Otwe li-
neekela otava ka yakula nokuwanifwa oshi-
nakuwanifwa shavo moshiwana.

Onda tegelela shike kegumbo?

1. Ohole, einkelo, ontalanteni neidhidhimiko.
2. Eputudho lyopakriste.
3. Esiloshimpwiyu lyopalutu.
4. Oku tu yakula koompumbwe dhetu adhihe.
5. Aakuluntu oye na okugwanithila aagundjuka ohole.
6. Omukuluntu oku na okumangulula omugundjuka okuya koohapu dhaKalunga.

8. Okutala oompumbwe dhaakulupe mego-
ngalo noku ya yakula.
9. Omagano ndi ga na ngaashi: eliko lyandje,
nokulongitha iikaha yandje.

Oshike nda tegelela koshigwana?

1. Shi yakule ndje moompumbwe dhandje
adhihe.
2. Shi inekele ndje pailonga yandje iiwanawa.
3. Shi kale shi na ombili nangame.
4. Shi pendje uunongo pamaye.
5. Shi uve uudhigu wandje noku u yamukula.
6. Eputudho lyopapangelo, okulonga melathano.

Onda tegelela ndi ningile shike oshigwana?

1. Ndi gandje oshiholelwa oshiwana koshigwana.
2. Osha tega ndi shi pe uunongo wulwe wopondje.
3. Ndi shi galikanene.
4. Ndi shi yakule noku shi pukulula, shimpa tashi uvu omapukululo gandje.
5. Ndi uvithele oshigwana.
6. Ndi longe uuwanawa pwaa na ontongo yasha.
7. Ndi ya pukulule pambepo.
8. Nandi taambwe moshigwana ngaashi omukwashigwana nda gwana.

Onda tegelela ndi ninge shike megumbo?

1. Ndi gwanithe iinakugwanithwa yandje ayihe yomegumbo (ndi vulike, ndi ete mo iiholelwa iiwanawa)
2. Ndi longe oshilonga shetumo megumbo.
3. Ndi dhiginine uukalinawa megumbo.
4. Ndi kwathe aakuluntu yandje miilonga: yokulitha iimuna, okuya kohambo, okutsa, okulima, nokuhwa nokuteleka.
5. Okulonga uunona iipango, omaimbilo, nevuliko; okunyanyukwa pamwe nayo.
6. Oku ya ningila oandaha esiku kehe.

OLUHODI MOLANGE

Eti 25.10.77 otwa dengwa nodimbo yakula, eshi twa kufwa ovalongi pamwe nafye momina yaLange. Ovalumenhu ava ove li Ovawambo vata-tu nova li va hambola. Ovo nee:

Efraim Thomas	Oshinyadhila
Hamutenya Negumbo	Okalindi
Stefanus Nembwaangu	Eemhomo
Aveshe ova dile moshilongo shaUkwambi.	

Oshiponga osha etwa koshihauto (Land Rover) eshi she lidenga mumwe neshina lakula olo hali ifanwa 769. Ova xulifila opo. Kalunga okwa kufa po yo vali Godfried Kambangula, ou yo a li omulongi pamwe nafye. Nakufya Godfried okwa li ependa nokwa li omuwiliki wolwiimbo mUubvley. Okwa dile koNzinze meongalo laRupara; kOkavango. Naye yo okwa wa metuwa.

Kovafiwapo aveshe nokookaume koonakufya o-hai ti: "Omvene ne mu hekeleke moluhodi olo mu li mo." Noponhele yovaunguli aveshe o-hai ti: Kalunga na hekeleke ovamwaina novakwadi-mo vonakufya. Kalunga oye omutali nomumoni waaishe oyo ya penga. Oye mwene e shii fiku te ku dimbula mounyuni ou. Oku shi shi yo kutya ohatu ka monafana muJerusalem shiyapuki.

F. H. Haikwiyu

Omakundo Okrimesa kovakongindjila aveshe muNamibia

Omafimbo oku li po taa endelele neenghono, ongheene twa fika nokuli moshivilo shedalo lOmukulili wetu, osho hatu ti: OKRISME-S.A.

Onye amushe ovakongindjila nookaume ketu, ohandi mu halele elilongekido liwa lokulilongekidila edalo lOmukulili momaongalo eni. Ohandi mu indile mu lilongekidile oshivilo eshi shaKrimesa omaimbilo, omahokololo nakeshe tuu osho tamu dulu oku shi ninga momaongalo.

Mefudo mu li mo onawa mu ha dimbwe po oshinakuwanifwa sheni shopaukongindjila, kutya; osho okuliufa komhango nokeudaneko nokuholola yo keshe opo u li po, kutya oove omukongindjila nowa hala alushe okudii-nina nokuliufa keudaneko loye.

Fudeni nawa, opo momudo tau ya tu dule okutwikila noupenda moilonga yetu yopaukongindjila. Efudo nali kale sha kunye, nanye moneni na yeletweni kouyelele wonyofi oyo ya li ya yeleta ovanongo vokoushilo.

Pexulilo ohandi yukililifa ehalelokundo lange kovakondjilakadona va punikilwe Okrimesa iwa nosho yo omudo mupe u na elao. Weni moukongindjila
A. H. Shanyengange "Peeka"

Ova hala okudiinina omukulupe wavo

Onda hala oku mu dimbulukifa onhokolwa imwe yoshoongalele shOshitaingeleka sha li sha ongala mOhalushu. Monhokolwa omu omwa li oshipopiwa sha etwa kutatekulu Vilho Ueyulu. Osha li tashi kundafana ongeleka ikulu yomOukwanyama, oyo ya yakula Ovakwanyama vahapu; kutya oi li pokuwa po.

Eshi Ovangela ve litungila ongeleka yavo yoshinanena, ova efa po nee ongeleka ei ikulu. Moshiwana shovakwanghala omunhu ngeenge a kulupa, oha fiwa ashike mepundo fiyo ta file mo ile ta lika po. Ndele mufye ovayamba ohatu diinine ovakulupe vetu noku va wapeka nawa fiyo Kalunga mwene te va ile po.

Oshoongalele shinya, mexwamifo latatekulu Mwaandjai, osha tokola okuwapeka omukulupe wetu, ongeleka ei ya yakula noiholike kOvakwanyama. Inava hala yoongotele mo yo i ninge omakulukuma. Vati otava kala va ninge va fa omukwanghala ta fiye ina ile xe mepundo.

Okangudu ka li ka hoololwa moshoongalele mwinya, oka tala nee kutya opo tu ha fiye omukulupe mepundo, onawa eongalo keshe li ongele R150,00. Omuvalu ou nande itau

wanene, pamwe otau ka ninga ngaa ekwafo lotete komukulupe wetu. Vati oshi fifa ohoni unene kOvakwanyama nge tava ende po, ya ninga omakulukuma. Mo mounyuni oinima ikulu ohai diininwa opo omapipi nomapipi a tale oilonga yovatetekeli.

Onghee ohandi mu indile amushe Ovakwanyama tu lituleni mo. Ovakriste atushe ovahongifikola novanangeshefa vetu nookaume amushe, tu ningeni omuhangenwa iha findi.

Otu na efaneko nge ya wapalekwa ombinga imwe i kale ongeleka, ongedidiliko letu. Nombinga imwe i ka tukulwe momadimo oyoongalele i lili noi lili neengulu dovaenda. Hano nge to ongele ile to ongelifa, didilika kutya, otwa hala okudiinina omukulupe wetu.

Ohandi pandula unene eshi to liyandje meyakulo eli.

**F. Shikomba
Omupashukili**

OOMEME VE LITUNGILA ONGULU

Ovakulukadi vomomaongalo oo a dingilila Engela nohava teelee moshipangelo mEngela, ova kufa ko eenghaku. Inava hala vali okunangala tava iokwa mengulu loihati, la kulupa.

Mewiliko laNepando (Paula Heikkilä) nongudu yaye, ova ongela ngaha:

Edundja	R 180,70
Okatope	R 93,80
Ohalushu	R 507,80
Ongenga	R 323,48
Ondobe	R 741,73
Engela	R1050,05
Ovanashilonga	R 57,70
Omalandifo	R 485,80
Kumwe	R3441,06

Ongulu paife oya pwa, yoipeleki needopi dosamende noi na omadimo anhe (4), neelamba domalusheno oino di li. Moshikefa shetungo eli omwa fyaala natango R1625,74.

Ila nee meme u tale nhumbi wa longa. Ongulu ei oyoye nomaludalo oye otae ke ku pandula.

Omwene na punike oonakulonga ava vaha pumbwe sha kolutu nokomwenyo.

Johannes Nghilundilwa

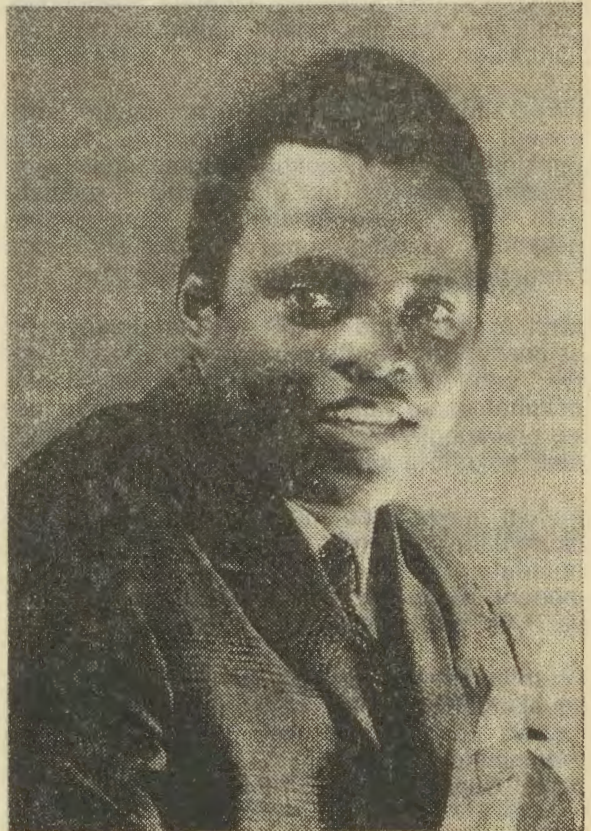
“Ositola ylipundi nOngwediva Meubel Mark,” otaya halele aalandi yawo Okrimesa ya yambekwa nomumvo omupe gu na elago.

**E. P. Shiimi
Ondangwa, Tel. 110**



Omuniyoli gwomambo, tatekulu Toivo E. Tirronen oye gumwe gwaamboka tu shi okupandula moku tu kundaneke nuumvo. Omusamane Tirronen oku li ngashingeyi omukwatakanithi (coordinator) gwokangundu kokutoloka Ombimbeli yOshindonga nEhangano mbimbeli lyaSouth Africa.

Kakele komambo ge ngoka a nyola nuumvo omolwOmuumvo gwOmambo; oyendji otaya dhimbulukwa wo nawa iipopiwa ye ya pamba omambo, mbyoka e yi popi miigongi yi ili noyi ili. Miipopiwa ye, omusamane Tirronen okwa tula omuthindo mongushu yomambo nokulesha. Otwi inekela kutya oyendji otaya ka landula oshiholelwa shomusamane Tirronen momumvo ngoka tu uka (1978). Yamwe oya tameka nokuli.



Omufitaongalo Elia Niinkoti, ou ta yakula paife mEnongelo lOvayakuliongalo, mEngela, naye yo okwa kala 'Shikwetepo,' moku tu kumaida.

Nande okwa kala e na oisho ihapu yomenongelo, ina loloka okulonga, nokukumaida oshiwana. Tangi tatekulu Niinkoti (osho yo ava inatu tumbula omadina eni) koinyolwa yoye tai fatulula nhumbi Ombibeli tai ti.

Edhimbuluthotseyitho kaaleshi yOmukwetu

Pantokolwa dhEwilikongundu lyoshifo shOmukwetu, lya gongalele meti 14 lyaApilili 1977, mOniipa, olya tokolele (ontokolwa 5) oshifo shOmukwetu shi nenepekwe, okutameka omumvo tagu ya; shi kale shi thike pwaashiyaka shonale, omanga Oshinyanyangidho oshikulu inaashi pya po.

Shika otashi ti kutya otatu ka pumbwa iinyolwa oyindji; elongelokumwe lyeni olya pu-

mbiwa noonkondo. Tsikileni okunyolela kOmukwetu, ngaashi hamu shi ningi shito.

Oombelewa dhiikandjo, ngaashi: Ombelewa yAagundjuka, yAakiintu noonkwawo, inatu dhimbweni euvaneno lyetweni

OTANDI MU HALELE, PAMWE NAALONGI
AAKWETU, OKRISMESA YA YAMBEKWA
NOMUMVO OMUPE GU NA ELAGO.

A.W.Amutenja

Ayihe twe yi likola nuumvo osho esilohenda lyOmuwa

Uuna ndwiya sho twa li tatu dhana oshitu-thi sheti 1.1.77, ka pwa li ngoka a vulu oku-tengeneka nkene iinima tayi ke enda meko-komoko lyomumvo ngo. Shaangoka okwa li owala ta dhiladhila kutya Kalunga ngoka e li kombanda yaashihe oye awike a tseyana nkene te ke enditha aashitwa ye momumvo ngoka.

Kalunga osho shili a longo pamadhiladhilo ge omakumithi, sho ngame nangoye twa thikama sigo opethimbo ndika.

Eeno, uudhigu nuutapate wawo we tu tsakaneke, osho Nakuuthaayihe a zimine ngeyi, onkene natu inekele edhina lye.

Elago nenyanyu twe li likola momumvo nguno, osho esilohenda lyOmuwa tu na oku li hambelelela-atuhe otwa lili naalili nosho tuu twa yolo naanyanyukwi.

Omumvo 1978 sho gwa tsima ko, iilonga yetu ngaashi wo yeni, otayi hukakana. Omukwetu gwetu wo ina hala oshilonga she shi thikame ondjakati nomolwasho ota thiki ano kungoye molupe luukwanambwiyu, nokutya oonomola 23-24 dhi ihumbata, nokwa hala u mu taambe ngaashi wu mulwete koshipala shoye, omuleshi, ngawo.

Aayakuli yOmukwetu, aalandithi yomambo nane aamwameme amuhe twa yakulathaneni moshilonga shiinyanyangidhwa nuumvo, tse mboka tatu longo mehala ndika alihe lyoshi-nyanyangidho nostolamambo, otatu mu kundile po notatu mu halele wo ngeyi enyanyu lyOkrisimesa li udhilile mune nOmumvo Omupe, twe gu tegelela, gu mu etele elago.

M. Amkongo

(Omuwiliki gwOshinyanyangidho)

Elago tse twa tuminwa, Oshoka tse twa valakwa OJesus ngu Omukulili, Oye tuu wo Omupopili.

EENDJOVO DAVORSTER ODIWA NDELE OILONGA OINYANYALIFA

Ovamwatate amushe Ovanambia pondje nomeni, kundweni nopexulilo lodula 1977. Efilonghenda lOmwene wetu olo la kala noku mu humbata odula aishe, nali kale nanye fiyo alushe.

Ombili eshi pexulilo lodula handi mu fikifile ekundo lidjuu tamu nyengwa oku li uda ko, hapo mulo omu na oshili yasha. Kwafeni nge mu li leshe nawa neemwenyo di na yo odjuulufi oku li tambula.

Ovamwatate, meendjovo doministeli yotete Vorster omu na sha shi shi okwiitavelwa. Eendjovo daye ohandi hale oku di itavela, nande oilonga yovakwaita vaye ohandi i nyanyala. Oilonga yomadipaafano ngeno okwa li ngaho ihe po, ngeno ondi na omukumo okutya eendjovo daye odi shii okwiitavelwa.

Edi nda tala di shii okwiitavelwa ododo tadi ti: "Onakwiiwa yaNamibia oi li momake Ovanambia voovene." We shi itavela, ile ino shi itavela! Naame ohandi shi koleke.

Hapo inandi hala u shi ude ko mepuko. Onda hala u shi tale keembinga adishe. "Onakwiiwa yaNamibia oi li momake Ovanambia." Osho oministeli Vorster ha endulula mokupopya kwaye. Nge nee oyokukala po kwaNamibia ile okuhana-uka po kwaNamibia, vati oi li ngaho momake Ovanambia.

Palaka laye ina holola kutya omomake Ovanambia a tya ngahelipi. Nongeenge okwe shi tya, patumbulo olo osha fa sha yukilila keshe umwe. Nosha yela kutya Omunambia keshe eke laye li kwete sha ile lihe kwete sha, oye ngaho e na onakwiiwa yaNamibia.

Omunambia e na oshikondjifo meke laye ta kondjifa Ovanambia vakwao oye ngaho e na onakwiiwa yaNamibia. "Ou ta kwata eongamukonda ota fi keongamukonda." Omunambia ehe na sha meke laye, oye ngaho e na onakwiiwa yaNamibia. Nande yo ope na epulo, kutya ngeenge ku na oshikondjifo, ou na shike? Meke loye, omo mu na onakwiiwa yaNamibia omu na shike tashi kwafa onakwiiwa yaNamibia?

Onda holola nale kutya eendjovo doministeli odi shii okwiitavelwa, nande oilonga yovakwaita otai nyanyalifa. Onda lineekela naye yo ota landula ngaho nokutala onghalo yaNamibia. Nnde lineekela naye epulo nonghuwo yovaNamibia oku i wete noku i udite ko.

Otwa teelela efimbo lenyamukulo leenghuwo detu. Nande epulo tali kala alushe komesho yetu, kutya okomukalo u lipi po. Na okomukalo wa tya ngahelipi hatu tambula ko enyamukulo olo hatu mono.

Luhapu yo okaana ngeenge, ka li kupula ndele ita ka pewa, ngeenge ka ka pewa konima yefimbo oke kwete okuliteeka, ile ka tambule nomwenyo inau hafa.

"Onakwiiwa yaNamibia oi li momake Ovanambia." Omunambia u na meke loye oshilwifo, oto kala u udite ngahelipi ngeenge taku ti ondjebo ekelashi? Ou wa li uhe na ondjebo oto kala u udite ngahelipi, ngeenge ou a li e na ondjebo e i ekelashi.

Omunambia ou na onakwiiwa yaNamibia ya tya ngahelipi, noto i teelele ya tya ngahelipi. Okumwe nemanguluko laNamibia lombili ou li udite ko ngahelipi noto li tambula ko ngahelipi? Ame mokulineekela Tate Kalunga ohandi itavele kutya: (Ehol. 21:1-7) Omwene Kalunga Oye omunaenghono noha dula aishe. Fye atushe ohatu pumbwa ashike okutya:

"Omwene tu dimina po osheshi katu shi shii eshi hatu ningi." Olo eilikano lidjuu, ndele omo yo mu na eeshapi doukumwe wemanguluko laNamibia. Omwene ne tu kwafe.

A. Shilongo

Eengeleka domuAngola dahangana

Omukanghaveta wokutota Olaata yEengeleka muAngola, owa diminwa moshongalele shomafiku avari, sha li muLuanda. Omwa li ovakalelipo veengeleka di lili nodi lili, domuAngola.

Eengeleka odo da li da kalelwa po moshongalele muLuanda odo: Olaata yEengeleka Eenghwaevaangeli domoshitukulwa shopokati kaAngola; Ongeleka Onghwaevaangeli yopakriste muLuanda, - Onghwaevaangeli mOumbanganhu waAngola, - Onghwaevaangeli muAngola, - Ometodi yaHanga, - Onghwaevaangeli yEtumo laPentekoste noKimbainguist.

Omukanghaveta otau pitike ashike ongeleka oyo: ya itavela kutya Ouhamba waKalunga owa hololwa muJesus Kristus, naayo ya pitikwa paveta okukala moshilongo; oyo i ninge oshilyo shOlaata ei.

Olaata oya ulike omalalakano ayo kutya oo: okuevangelifa, okuputuda ovafita, okukwafa monghalafano, ekwatafano nomayelifilo. O-pwa totwa yo okakomisi kokuyakula monghalafano.

OVawiliki vOlaata ei ovo: Omupresidende, omubishofi Emilio de Carvalho (Methodist), omufita Henrique Daniel Etaungo (Council of Evangelical Churches), omupresidende wopedu, omufita Daniel Ntoni-Nzinga (Baptist) ohamushangandjai nomudiinini woiniwe omufita Arango Jose Antonio Mateus (Methodist).

(KAIROS)

SWAIOV INA PANDA ETIDHO LYAALONGWA MOKAKARARA

Ehangano lyAalongi Aayafrika mUushimba "The South West African Teachers Association" (SWAIOV), oya nyolele komufalandjai omupanguli Steyn ontumwafo moka tali pula kutya aalongwa 17 mboka ya tidhilwe mOseminali yaKakarara ya pitikilwe ishewe mosikola, opo ya shange omakonakono.

Oya ti kutya oya nyolele kukomufalandjai molwaasho Oshikandjo shElongo lyopaBantu oshi li ngashingeyi mepangelo lye.

Aalongwa mboka oya tidhilwe moskola sho mwa ningilwe ehogololo lyaalongwa mboka taya kwatele yakwawo komeho. Sho aahogololwa inaaya tambulwa kaalongwa aalongi yoyene oya hogolola aalongwa mboka ya hala oyo ya ninge aawiliki yayakwawo. Aalongwa kombinga yawo oya tindi okuwilikwa kaantu mboka inaye ya hogolola.

Oshiningwanima shika osha ningitha kutya aalongwa ya hadhwe. Konima sho kwa monika kutya oye na ukalata woongundu dhopapolotika, ndhoka inaadhi halika (SWAPO, SWANU na Nabso), oya tidhwa mo.

Oveta R17 ya lundululwa

Komufalandjai gwa SWA/Namibia, omupanguli Steyn, okwa kutha oonkondo oveta R17, ndjoka ya li tayi dhengele mOwambo. Peha lyoveta ndjika opwa tulwa yimwe ndjoka tayi kala tayi longithwa miitopolwa ayihe yokUmbangalantu waNamibia (Owambo, Okavango noOkaprivi), hamOwambo we amuke.

Oshitopolwa shokoongamba, shuule wokilomete yimwe, osha kolekululwa natango kutya oshitopolwa shaa na mwene.

Oveta yongashingeyi otayi ti ngeyi:

- Epitikilo inali pumbiwa we okuninga oshigongi shopaupolotika.
- Ekwato lyomuntu ethimbo inaali ngambekwa olya kuthwa po.
- Oompangulilo dhaakwaniilwa nomalenga kadhi na we oonkondo.
- Egeelo okutsondumbo nepangelo olya pupalekwa.

Nale opelemeta oya li ya pumbiwa okuninga oshigongi shaantu ye vule yatano. Ngashingeyi shoka sha pumbiwa osho okutseyithila mangestalata meni lyethimbo lyootundi 24, omanga oshigongi inaashi ninga, kombinga:

- (a) yehala nethimbo mpoka tapu ningilwa oshigongi
- (b) yuukwatya woshigongi
- (c) yomuntu nenge ehangano ndyoka tali ningi oshigongi

Oveta ndjika yokuninga iigongi inayi kwatelela mo: iigongi yongeleka, yuudhano noyopapangelo.

Omuntu ina pitikwa okweedhililwa ethimbo li vule ootundi 96(omasiku gane) - ihe ke na uuthemba okukala mekwatathano naagandjindunge yopaveta omanga komufalandjai ine shi zimina.

Oveta ndjika oya gandja uuthemba kaapolosi okuhadha ehala nenge oshihauto shomuntu ngoka ta tengenekwa nenge omuntu kehe e na uyelele wu na sha nomuyoni gwoveta-aapolosi oye na uuthemba oku shi ninga pwaa na ezimino lyepangelo.

(The Star)

SWAIOV okwa pangula oodepartemende naama-mbelewa yamwe mboka itaya longo pauyuuki. Okwe shi tala ko kutya otashi ka eta epiyagano. Okukala kwaasolotati moosikola oye shi tala wo kutya oshiwiniyi, oshoka ekwatathano pokati komulongwa nomulongi (gomusolotati) inali mangeluka.

(Advertiser)

STEYN OKU LILE PO OMADUUMBO - SWAPO

Hamushanga wOikwaveta wa SWAPO, feelani Lusia Hamutenya, okwa yandja efatululo koifo omo ta pangula komufalandjai, Steyn, mokutokola kwaye oinima ehe na owino.

Okwa ti eshi osha holoka nawa moveta yaye yotete yopambelewa, "Oveta yOtete yehoololo yaRehoboth 1977."

Otwa didilika kutya 'Oveta yelipangelo yaRehoboth' ine i kufa po nosho yo ina pula sha koshitokolifo oshitihamano shoveta yaye oyo tai humifa ko omulandupangelo wokatongotongo kepangelo la S.Africa, muNamibia, osho efatululo la ti.

Okwa twikila ta ti: SWAPO okwe shi kufa mo kutya, komufalandjai okulile po omulandupangelo wa SA, womaduumbo, nota vatele epangelo la S. Africa mokutukaula Namibia.

Okwa ulikwa ashike okuwanifa pamukalo woineya osho epangelo la SA la li tali kendabala noTurnhalle. Kokutya a kaleke po omalandulafano oo e li po.

Ekufepo loveta yeepasha SWAPO okwe shi tala kutya komufalandjai ota longifwa, notashi ulike eenghendabala daye okudenga oshiwana oixwa komesho noku shi piyaaneka.

Ponhele yokuxulifa po ondjoollola yopaminghoko, komufalandjai onghene ngaa e wete sha pumbiwa natango okutwikila nokutotela ovakalimo moitukulwa yomoiando eeveta.

Otwa hala okushiivifila komufalandjai kutya, Ovanamibia inava tunhulwa keendululo leeveta, olo la lundulula ashike omadina oma-
tauluko, lo tali mwenene omalihumbato ova-
kwanepangelo va S.Africa.

Oveta yeameno moshitukulwa 1977 (AG 9) oyo ya ya ponhele yoveta R17, oyo ya kufwa po; pamwe nOveta yOukulo natango oda yandja eenghono kovakwaita okukwata noku-
diinina ovanhu efimbo inali ngabekwa, no-
pehe na epangulo ile ekwatafano; ponhele
keshe ya wapalela ovakwaita. Engabeko le-
fimbo lokudiinina ovanhu eetundi 96 ina
pangulwa, olo la vilikilwa kukomufala moku-
wapaleka oveta R17, itali ti sha. Omakwato
ehe na ongaba otaa ningwa natango omu-
lwoshitokolifo 6 shOveta yOukulo, oyo i na
eenghono natango.

Omahepeko onghene ngaa taa twikile natango nande komufalandjai ina hala oku shi itavela.

Feelani Hamutenya okwa xulifa ta ti: 'Otwa hala okuudikila komufalandjai kutya kape na oshilonga shiwa ta dulu okulonga shi dule okufiya po Namibia pamwe naaveshe ovo a kalela po.'

(Advertiser)

Angola okwa tokola aakwiita ya S. Africa

Oministeli yEgameni yaAngola, Komandanda Ikko Carreira, okwe shi yelitha kutya aakwiita yoshilongo shawo oyi ilongekidhila kehe shoka tashi ningwa, okukondjitha epangelo lyawo. Oministeli mokupopya, inayi ulika nando koshilongo shontumba, oya ti:

Ope na aantu ye na elalakano okukuna onkalo yaa na ombili opo ya piyaganeke epangelo lya MPLA. Okwa ti wo kutya epangelo lye inali tila omipopyo ndhoka tadhi ti kutya ope na aakwiita taya tulwa koongamba opo ya matukile oshilongo shawo.

Okwa kumike aakwashigwana she ta ti: "Oongamba dhoshilongo shetu odha gamenwa nawa. Angola evi enene nolya gamenwa nawa. MuAfrica kamu na nando omuntu gumwe ta vulu oku tu etela uudhigu koongamba. Tse otwi ilongekidha okugamena oshilongo shetu," osho komandanda Carreira a ti.



**Omupresidende gwOrepublika yaAngola
Agostinho Neto**

Oompangela dha S. Africa

Momushangwahokololo ngoka gwa gandjwa ku SWAPO kiifo, okwa pangula S. Africa sho e na ompangela yokukwathela ehanganano lya UNITA, ndyoka li li mewiliko lya Dr Jonas Savimbi, okudhika epangelo kOlukadhi lwaAngola; lyo emanguluko lyaNamibia li dhikale aakwiita ya SWAPO sho itaaya vulu we okumatukila muNamibia, nuupu.

Kombinga yaSavimbi okwa uvaneka okulwitha SWAPO noku yona ehogololo, opo SWAPO kaa-
pangele Namibia. Oshoka oku shi shi, kutya
SWAPO ngele okwa ningi omupangeli gwaNa-
mibia nena ita ka vula we okumatukila Angola,
ta ziilile muNamibia.

Tala kep. 16

Oihauto tai landifwa

1974 FORD 1 TON	R3500.00
1974 FORD 1 TON MET KAP	R3600.00
1969 FORD DRIEKWART TON	R1800.00
1973 CHEV. 1½ TON	R3000.00
1972 MAZDA BAKKIE	R1500.00
1974 DATSUN CABALL PLATBAK	R2500.00
1966 CHEV. 1½ TON DROPSIDE	R1800.00

PULA OUYELELE WA WANA KU:

MNR. HUSSELMANN

VISSERS CAR SALES

POSBUS 1258, TEL. 2720

TSUMEB

OTASHI DULIKA UHE SHII APA TO DI ENOTA LEPUTUKO LOPAHONGO?

1. Mombelewa yEhangano lOvalihongivene, mOngwediva Ikulu, otamu ka yeululwa pehovele lodula tai ya (1978) obiblioteek (ongulu yomambo okulesha), omo to likoia omaunongo e lili nae lili.

2. MOshakati, pOneshila, otapu ka yeululwa yo ofitola yomambo yedina: "SATIS HOUSE BOOKSHOP," Box 99; omo tamu monika omambo mawa opamuindalongo: oilongwa yoJuniolo noMatilika. Omambo mawa omaunongo amwe: ovakulunhu nou-nona naashishe shi na sha nexumokomesho (education), otaa ka monika apa.

ANGOLA OKWA TOKOLA AAKWIITA YA S. AFRICA

Dha za kep. 15

Ehokololo olya ti kutya S. Africa okwa gandja nale okadhila kuSavimbi opo a vule okutalela po iilongo yaAfrica lyokUuninginino: Zaire, Ivory Coast, Senegal, Togo naGabon.

Savimbi oku uvaneke wo kutya ota ka longitha oontauki dhomuAngola opo dhi ka kwathele okuhogolola iilyo yoTurnhalle, osho ehokololo lya ti.

Ehokololo olya hulitha tali ti kutya S. Africa ngashingeyi oku li po ta lombwele uuyuni kutya oontauki otadhi fadhuka po epangelo lya MPLA, nando hasho.

(Advertiser)



Oyendji sho Okrismesa ya hedha popepi oyi ipyakidhila okwoopaleka nawa pomahala mpoka ye li po, opo ya dhane evalo lyOmulilili ye li puuwanawa. Omuti tagu monika mefano ohagu adhika mOstola yOmambo, pOniipa, kondando ombwanawa. Omuti nguka ohagu longo ethimbo ele ihe ihagu kani-tha uuwanawa wago.

OMUKWETU

Oye oshifo shOngeleka Onkwaevangeli paLuther yomOwambokavango.

Oha nyanyangidhwa mOshinyanyangidho shOngeleka mOniipa.

Omukuluntu gwoshifo omumbisofi dr. Leonard Auala.

Amushanga Ambrosius W. Amutenja.

Ondando yOmukwetu komumvo muAfrika R 2-00, kombanda yomafuta R 4-00.

Omambesitelo pamwe noondando naga tumwe ko-mukwetu Oniipa, P/B. 2013 Ondangwa 9270

OWAMBOKAVANGO CHURCH PRESS
ONIIPA P/BAG 2013 ONDANGWA 9270