

OMUKWETU

Registered at the General Post Office as a Newspaper

10c

Vahapu vomufye ova pikwa koimaliwa

Gen. 21:9-13; Joh.8:35.

Meumbo la Abraham omwa tukuluka eenhamana. Sara okwe shi dimbuluka nokwa lombwela Abraham a taatae mo omupika nomona waye. Abraham okwa ninga omwenyo mwii ndele Kalunga okwe mu lombwela a ninge ngaashi ta lombwelwa ku Sara, osheshi omupika ita dulu okuninga omufyuululi.

Etumbulo eli Jesus okwe li longifa yo mOvajuda nokutya omupika ita dulu okukala meumbo osheshi iha kala moshili. Alushe omupika oye omunaipupulu nomulinenepeki. Osha holoka mu-Hagar eshi a tameka okusheka Sara, osho tashi monika yo nonena mokati kovanhu.

Oupika ou li pahapu. Ngaashi Esau ta lande po oushiveli waye molwoupika wedimo, Gen. 25: 29-34. Osho shi li fiyo onena vahapu otava lande po oukwashilongo wavo noimaliwa. Omunhu te li ti oye omukwashilongo nande ye okwe lilanda po oimaliwa. Paulus ta ti: "Oukwashilongo wange wa Roma inandi u landa oimaliwa."

Omunhu nge ta lande po oukwashilongo waye okwe li ninga omupika woimaliwa noke na vali eenghono doukwashilongo.

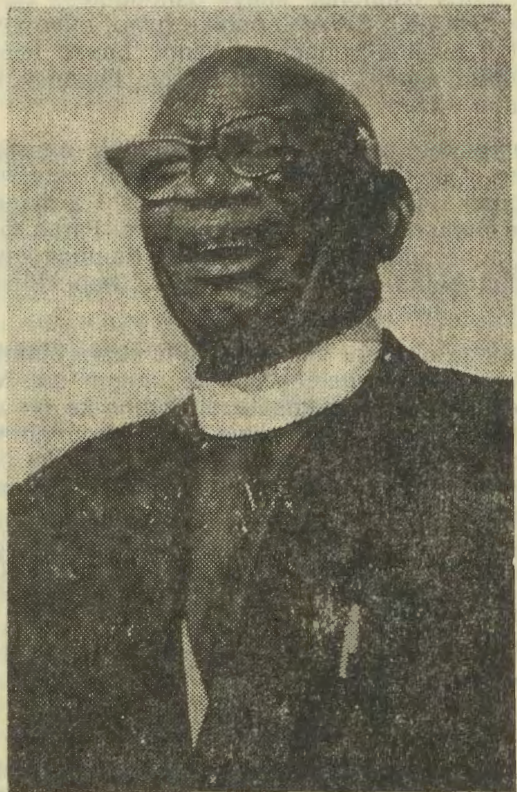
Tu taleni oupika wOvajuda muEgipti. Ovajuda ova li ovapikaelela, kombada yedu inaku monika oupika wa fa wOvaisrael muEgipti. Ova longifwa oilonga idjuu noshilongo ove shi tungila oilando inene ya kola nove shi xumifa komesho nove shi etela oupuna muhapu.

Ndele nande ongaha ova kala ve shi shi kutya edu kali shi lavo. Ova kala tava ifana Kalunga. Kalunga okwa uda onghuwo yavo onghee okwe va longekidila okudja mo kwavo moupika.

Ovaegipti okwe va ningila omadidiliko mohole shaashi ina hala oku va nyona po, opo va efe oshiwana shaye shi ye nombili. Efimbo eshi la fika, Ovajuda ova dja mo aveshe. Kalunga eshi a hala okutala eitavelo lavo; okwa djuupaleka ondjila, opo ngeno oshiwana shi li yandje kuye noku mu lineekela. Osho natango ovaitaveli vaKalunga ve na okweenda momaudjuu, opo ve lineekele Kalunga.

Ovaisrael eshi ondjila ya djuupala; ondjala ne-nota, ova hovela, okuhepeka Moses. Tava ti Moses okwe va kufa muEgipti peembiya deembelele va uye va file mombuwa. Meemwenyo dOvaisrael oupika ove u dimbwa. Osho tashi holo-ka vamwe vomufye ve li peembiya doimaliwa, eshi tava li tava nu, oupika ove u dimbwa.

Tala kep. 3



Omusitagongalo Vilho Kaulinge (83) ngoka e tu nyolele oshinyolwa shekumagidho (tashi monika pepandja mpaka). Tatekulu Kaulinge oshilonga shuusitagongalo okwe shi yapulilwa momumvo 1933 nokwa kala nokuyakula mEgongalo lyaNdobe.

Okwa kala omulongi (1926-33). Omimvo dhimwe okwa li omutaleli gwoosikola. Omulumentu nguka gwomalaka ga kola, ngashingeyi ota li oshikwiila shevululuko.

Ongeleka otai ka longa ngahelipi nge oshiwana kashi na ombili?

Ongeleka ovanhu ile eengulu? Konakona na-wa epulo eli. Onda hala okukumaida ovamwameme kutya, inamu kwatwa komapopyo oo taa ti Ongeleka kai na oufemba okupopila oshiwana, kokutya okulitula mopolitika nomoshinima shokumangulula omunhu, a kale a manguluka.

Epulo otali ti: "Ongeleka otai ka longa ngahelipi ngeenge oshiwana kashi na ombili?" Nge opo to ka udifa evaangeli opo to hange ovanhu vongeleka yoye ve na oluhodi, oto va kwafa ngahelipi noto va lombwele shike? Oto tambulwa tuu kovanhua va tya ngaha notava pwilikine tuu keudifo loye ngeenge ou li pondje yomaudjuu avo?

Tala, otaku ti: "Okwooko kwoye ngeenge taku ehama, nena olutu alishe otali vele." Omo-lwashike ongeleka ihe na oufemba okupopila oshiwana shayo? Ovanhu ovo tava hepekwa kave shi oilyo yongeleka hamba!

Ope na omupopyo tau ti omundohotola Lukas de Vries oshilonga shaye oshongeleka ile osho SWAPO. SWAPO oshike hano, oilyo yaye kai fi ovanhu vongeleka hano? Epuko lakula okupula ngaha. Kape na ou iha ehamwa koshilyo shaye.

Hafye votete mounyuni okukondjela emanguluko. Oshinima shikulu mounyuni, okulikufa moupika. Osha dja muKalunga eshi a mangulula Ovaisraeli moupika womutondi Farao. Opo va mone omhito oku ka longela Kalunga kavu. Kalunga ina tya ovanhu nava hepekafane, ndele okwa tya va holafane.

Kalunga oku shi shi ye mwene kutya elalakanu letu ile longeleka oshike. Inamu pukifwa nye inamu tilifwa kusatana. Satana ke na eenghono. Efyo Jesus okwe li ta, ondungu yefyo ya teka, omanga mombila a nyumuka mo, novaitaveli otava ka nyumuka. Kakele komutondi oo a teelela efyo lilitifa, laalushe.

Kombinga yetu Kalunga okuwete ko, ina kofa. Oudjuu nande u kale u fike peni, ote u kandula po filufilu.

Ombili yaKalunga nai kale nanye.

Meshita Djikolo

Epangelongeleka lyeti 11-12.10.1977 olya taambebe mbaka taa landula ya ye kOsikola yuusita kOti jimbingswe omumvo tagu ya:

Villi-Heikki	Shivute	Oshigambo
Etuhole	Shifiona	Onaanda
Johannes	Tolu	Eunda
Teofilus	Nelumbu	Endola
Nikanor	Shuukwanyama	Epembe
Daniel	Hamukwaya	Ongenga
Andjelenu	Petrus	Mpungu
Joel	Alweendo	Eengolo
Martin	Nelumbu	Kongo
Filippus	Haulofu	Ongenga
Lapindjala	Nghole	Okatope
Titus	Niishinda	Okahao
Petrus	Uugulu	Onyaanya

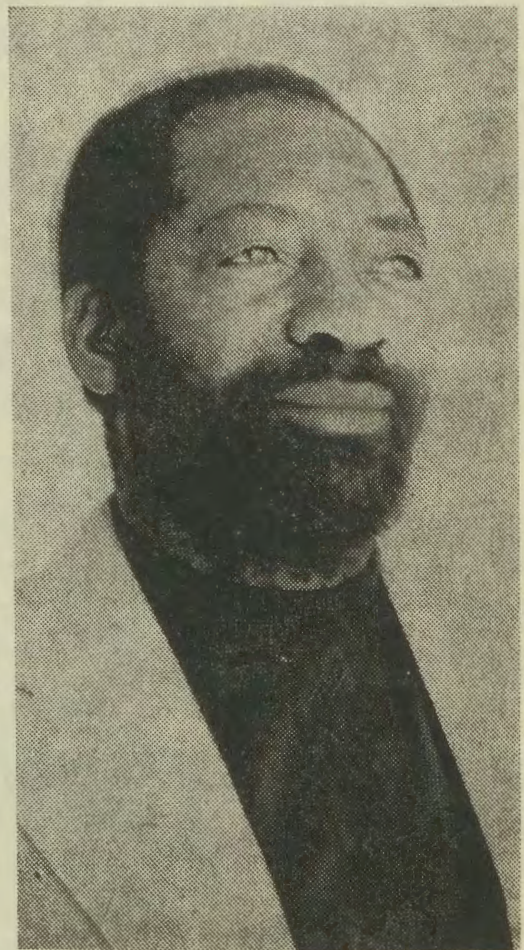
Oshili oyo tayi mangulula

Etumwalaka lyandje olyetsomukumo, omolweitaalo ndyoka tu li na, okutegamena nuupenda wokwiidhidhimikila uunkundi womapuko, nogomapangelo wo. Oshili yoyene oyo tayi mangulula. Ihe haaluhe omugwanithi gwayo ta tegelele ombili ongoshilanduli. Omuwambo oha ti: "lifundja kayi na iyala." Ihe tse otu na okupopya oshili noku yi hepekelwa. Omeehamo oge na okutegelelwa komukriste nokomuholishili-mbili kehe.

Ongiilyo yongeleka muKristus, otu na etegameno lya kola. Otu na okupopya nokulongithwa koshili. Kashi na nee kutya otashi tu fala sigo omeso. Oshoka oonkondo dholudhi nduno odhi na okuhula po uunalumwe.

Oshinakugwanithwa shetu haku kambadhala tu ninge nayi mboka taye tu hepeke. Oshoka itatu vulu nandonando tu lande uuwinayi nuuwinayi, ihe onuuwanawa! Otu na okuulukila aatondi yetu oshili, mpoka tashi vulika. Tse, ongaakriste, otatu kondjitha oonkondo tadhi longithwa papuko, hamuntu! Onkee otu na okwiikolelela mOmuwa nomoonkondo dhe oonene, (Ef.6:10-12).

Tala kep. 5



Meshita E. H. Djikolo

Methimbo tu li mulyo otamu adhika oyendji taya pitililwa po kiinima omolwokutokelwa kwawo. Momalongelokalunga yamwe, Osoondaha kehe, inaa hempulula oondjo dhawo. Oya edhililwa pondje, ya tokelwa.

Yakwawo onkene ya pitile mo pokati inaa mona we ompito yokushuna mo. Egongalo nge tali igidhilwa elaleko nuuyamba, yo kaye mo mongulu. Otaa zi komambo ongaa-mbo yaaha li ko.

Pethimbo lyetu oyendji ihaa mono iipalutha momapya sho taa tokelwa okukuna. Aluhe otaa ifundju: "Ethembo inali pwa po." nenge "Otatatu ka likila iilya kuudhila nokiimuna nge twe endebele okukuna."

Shika osho hashi ningwa miituthi yi ili noyi ili nomomahiyo gi ili nogi ili. Iigwana yilwe hayi popiwa ya vuka mokulongitha ethimbo nayi ngashi iigwana yaAfrika.

Omuyapostoli Paulus ota londodha mokulongitha ethimbo. Oti indile oongunga dhi futwe ndhoka tadhi vulika, kakele kongunga yohole ndjoka tu na oku yi futila yakwetu sigo tatu si.

Oonakusa ye tu thigi muuyuni muka yamwe oya shunitha oongunga dhaantu, manga inaa sa. Omukalo omwaanawa ngoka. Ihe yamwe oongunga odha ka futwa kaakwanezimo. Ombimbeli tayi tu kumagidha: "Longekidha egumbo lyoye, oshoka oto si," Jes.38:1.

Okathimbo twe ka hupithilwa ko okokwiilongekidhila epweko lyethimbo okukondjela mehupitho. Okuyanda oshiponga shetokelwo sha londodhwa kuJesus mu Mat.25:11-13, oonakutokelwa sho ya lombwelwa: "Kandi mu shi."

Etokelwo otashi ti okulonga iilonga kaayi shi yopethimbo ndyoka. Peha lyokukatuka tu ye kongeleka, ote kondjo nomafufu nenge nokwiitala muusipili. Peha lyokuhempulula oondjo dhi dhimwe po, olyo ethimbo tandi ke dhi longa nenge tii dhi holeke. Mokutsikila ngeyi sigo omeso lyandje; opo tapu popiwa: "A tokelwa."

Otundi yomuntu gwaKalunga eidhiliko. Uuposi nuusiku wokwaatseya ethimbo lyaKalunga osho embonyokelo mushaashoka, ov. 13-14.

Nomethimbo tu li mulyo nena, omu na oshindji shi lwetike kumboka ye hole uuyelele kaatu shi lwete. Tu pulakeneni omalondodho gawo.

S. Ekandjo

Josef okwa li omupika ndele okwa li yo elenga etitatu loshilongo. Ine likufa ko koshiwana shaye. Okwa li eshi uditile onghenda nokwe shi kongela nokuli eenhele diwa muEgipti. Nande kwa li elenga li fike apa ina dina oukwashiwana waye noi ne litula mokati kovaegipti.

Petembu loshiwana shaye ngeno ola hangele e na omwenyo, osha yela kutya ngeno ina kala muEgipti; osheshi okwa ti ngenge tava i nava twaalele omudimba waye u ka pakwe medu lavo. Aishe ei otai holola kutya Josef okwa li kumwe noshiwana shaye.

Vomufye otova tile nee ngahelipi, ova fa tuu Josef? Ove hole tuu oshiwana shavo nove litula tuu kumwe nasho ngaashi Josef. Omu shi hole tuu nomwenyo aushe nomwa hala okuhumbata oudjuu nokukema pamwe nasho ile omu shi hole ashike mokanya? Pamwe omu li peembiya doimaliwa?

Tu taleni vali mu Matt.26:14-16. Judas omulongwa waJesus okwa li e hole omulongi waye ndele eshi a kala peembiya doimaliwa, ohole yokuhola Omukulili waye okwe i nyekwa koimaliwa. Ina hala okweenda nOmukulili nomongudu omo okwa kufwa mo koimaliwa.

Ove omo tuu u li mongudu yovaitaveli vakweni ile oimaliwa ye ku kufa mo? Omukriste oku na alushe okudimbulukwa kutya: "Onda shitwa mohole, onda kulilwa mohole." Hano inatu kulilwa noimaliwa ile noinima imwe i lili. Mukwetu ondi na oku mu tala meshito omo nda shitwa noku mu dimbulukwa mekulilo omo nda kulilwa. Omukriste ngeenge ta kalele eembiya doimaliwa ota dimbwa nhumbi a shitwa nokwa kulilwa nomunhu a tya ngaha ota dimbwa epata laye lo-pamhepo.

Shapwa shaMukanga okwa li okakadona konghwate, a kwatwa kuIhalwa yaKalongela, elenga laUeyulu. Shapwa okwa kala a lengwa kuIhalwa. Ooxekulu vaShapwa ove uya oku mu kulila ko neengobe. Shapwa eshi a pulwa nge ovanhu venya oku va shii okwa ti: 'Heeno.' Ndele eshi a lombwelwa kutya ove mu ila, Shapwa a mena omidi; a li kukondjifwa, fiyo ooxekulu ve li shunina, tava lili. Shapwa a kala mooIhalwa, omo a fila. Shapwa ohole yaye yokuhola ovakwapata okwe i landa po ohole youlenga womooIhalwa. Nomefimbo letu ope na ovo va hokwa oupika woimaliwa ngaashi naanaa Shapwa.

Mu Joh.2:15-17 otamu tiwa: "Inamu kala nokuhola ounyuni nakeshe eshi shi li mo. Ngeenge pe na ou e hole ounyuni ohole yaTate kai mo muye. Osheshi keshe eshi shi li mounyuni, ngaa-shi okahalu kombelela nokahalu komesho noifulalala yokukalamwenyo, inai dja muTate, oya dja mounyuni. Ounyuni otatu xulu po pamwe nokahalu kao; ou ta longo ehala laKalunga, oye ta kala alushe."

Vilho Kaulinge

OMUKRISTE PETHIMBO LYOMAUDHIGU

(a) **OMUKRISTE:** Oye oye na otashi ti ngiini? Pafupi oshitya omukriste oshi na ekota lyasho medhina "Kristus" tashi ti omuntu gwaKristus. Omuntu shaangoka e mu itaala nokwa shashelwa medhina lye, nokwa ningi omukwanezimo lyaKristus oye oti ithanwa omukriste

(b) **OMAUDHIGU:** Ogeni taga dhiladhilwa mpaka? Omaudhigu moka omukriste ta vulu okukala mo otashi vulika gopalutu, uuwehame, omahepeko gopandjokana, nogopankalathano nosho tuu nenge gopambepo gomeni, ngashi oondjo nosho tuu.

IHHOLELWA

1. Jesus Kristus PETHIMBO LYOMAUDHIGU:

Otatu vulu okutala omaha gamwe mOmbimbili; Mark.14:35-36, Luk.22:39-46, Mat.26:39-46.

1. **Onkalo ye:** Ota kamwa, uuwehame, uumbanda, oluhodhi sigo okusa, ano okwa kala awike momaudhigu sigo Kalunga e mu mangulula mo.

2. **Ehalo lye:** Uudhigu ando u pite po, eso, oshiteinga ando shi mu pitilile po.

3. **Etokolo lye:** Okupula ehala lyaHe li granithwe, okugalikana ethimbo alihe.

4. **Ethimbo lyokukala momaudhigu:** Ethimbo lyokukalamwenyo kwe muuyuni olyu udha omaudhigu sigo eso.

Pashiholelwa shika osha yela kutya Kristus okwa kala momaudhigu, nando opu na omathimbo gamwe omaudhigu ga lundu sigo otaga fala meso.

2. Aalongwa: Aakriste momaudhigu:

Tala Joh.20:19-21, 6:16-21, Mat.14:22-33.

Onkalo yaakriste: Oye li mongulu ya patwa. Oya li ya tala Aayuda. Oye li moshikungulu; osha li uusiku. Oye li kokule nomunkulo. Otaa monithwa iihuna komakuthikuthi. Ombepe otayi ya dhenge komeho. Otaa kugu pombanda kuumbanda. Otaa tameke okuningina mo.

Etokolo lyawo: Okugalikana: "Omuwa hupitha ndje".

Ehalo lyawo: Oshikungulu shi lote, okuthika komunkulo. Osha yela wo ethimbo lyawo alihe oya kala momaudhigu sigo ya mono ekwatho nenge ya zimbulwa mo.

3. OSHIGWANA SHAKALUNGA MOMAUDHIGU:

Tala 2Mose 14:1-14.

Onkalo yoshigwana: Oyu uka mefuta, oya tila aakwiita yaFarao. Oya tala omalugodhitamba. Aatondi oya hedha popepi

Etokolo lyawo: Oya galikana "Oyi ithana Omuwa e ya kwathe" ovelise 10.

Naampaka osha yela wo kutya oshigwana shaKalunga osha kala momaudhigu sigo sha taaguluka efuta.

4. SHOKA KALUNGA NAJESUS A NINGILE OONAKUKALA MUUDHIGU:

1. **Jesus muGetsemane:** Kalunga okwa tumu omuyengeli kuJesus oku mu tsa omukumo, Luk.22:43.

2. **Aalongwa momaudhigu:** Jesus okwe ya mowato e ta ti: "Inamu tila Ongame ngu" nomongulu ya patwa ote ya mo "Ombili nayi kale nane". Efuta otali loto. Oyo otaa nyanyukwa, Mat.14:31. Oya ti shili ongoye omuna gwaKalunga.

3. **Oshigwana shaKalunga momaudhigu:** Mose ta lombwele oshigwana "inamu tila Omuwa ote mu kondjele," 2Mose:14:14. Omuwa okwa hupitha Aaisrael, ovelise 30.

Otwa dhimbulula kutya nonando opu na omayooloko monkalo momaudhigu yamwe otaa tala kuudhigu, yamwe ye na eitaalo, yamwe taa galikana, yamwe ya mwena. Ongele omaudhigu palutu nenge pambepo Kalunga mwene naJesus Kristus oya kala pamwe naakriste nomoshigwana she momaudhigu.

Otatu vulu okugandja eyamukulo kutya Omukriste momaudhigu ge Kalunga opo e li Jesus mowato moshikungulu pamwe naalongwa ye. Owato otayi thiki. Oshigwana otashi taaguluka efuta.

5. OMOLWASHIKE AAKRISTE YE NA OKUKALA MOMAUDHIGU?

Oku na omapulo ogendji: Omolwashike tandi hepa? Otu na oshiholelwa shaJob olutu nomwenyo ogwa ehamekwa ethimbo ele. Ina kwatwa kedhiladhilo okwiidhipaga, aawe. Osha fa aakriste otaa hepa, manga aakeenakalunga ye na ombili, Job.21. Yamwe taa ti omoluulunde, Job.22; Joh.9:24-25. Osha yela kutya omaudhigu gomukriste kage shi aluhe edhindhiliko lyeoyo.

Otashi vulika taga etwa kuunkundi weitaalo nenge kokwaaigandja kwaakriste momaudhigu gawo kuJesus. Nenge kokwaa lya ikulya yopambepo, noko kwaavulika kehalo lyaKalunga ndyoka tashi vulika oyo okukala muudhigu, momahepeko sigo omeso, ihe ehulilo oyo ehupitho lyomwenyo.

Otatu mono wo mehistoli kutya, aantu yaKalunga momaudhigu gawo oya kala mo wo nenyanyu, noyu uvite oyo aanelago sho taa hepekwa sho ye li aakriste. Dhimbulukwa Paulus naSilas mondholongo, sigo oompaka otaa holola onkalo yaakriste momaudhigu pandjokonona nenge pahistoli. Ihe nando ongaaka osha yela kutya onkalo yaakriste ngashi ya li nale, osho yi li nena nosho tayi ka kala. Oshoka Jesus iha lunduluka, Heb.13:8.

6. ONDJILA YOMUKRISTE NEITAALO LYE MOMAUDHIGU:

Omaudhigu ngele taga holoka gogene nando inatuga konga, nokatuna omwaaludhi nomukwathi ta vulu oku ga mweneka, natu dhimbulukwe: "Ekwatho ohali zi kOmuwa," Eps.121:2.

Omaudhigu agehe, nuulunde womaludhi kehe nomutondi ngele ta holoka a fa efundja enene noshikungulu oshinene, tala kuJesus. Ota vulu okukwata oshikaha shoye. Ngoye ngele omukriste shi itaala, oku li kombinga yoye; ote ku nakula mo. Omukriste nomaudhigu oku li meke lyaJesus ngoka ta vulu oku mu hupitha, (Heb.2:17-18).

Oshoshili kutya kashi shi oshipu omukriste uuna e li muudhigu okumona ondjila ndjoka nokwiitaala oshili ndjoka. Onawa shi kale sha yela komukriste kehe kutya: **Onakuyiwa ye mayi kankamekelwa kushoka tashi mu adha nenge shoka ta tala, aawe, ihe oya tungilwa komukanka gwaashoka Kalunga ta popi moohapu dhe, konkalo ndjoka.**

Otu shi lwete Omuwiliki gwehupitho lyomukriste kehe okwa kala momaudhigu, Luk.24:46, ihe okwa piti mo. Onakuyiwa yetu oye tu yeleka, ngele tse otu li notwi itaala oshili ndjika, 2Tim.2:11-13.

Onawa wo tu shi dhimbulukwe uuna ku na omaudhigu kutya, "Omechamo guuyuni wongaashingeyi kage shi okuyelekwa neadhimo ndyoka tali ka holokela mutse," Rom.8:17-18.

Omukriste ando a dhimbulule kutya omaudhigu nando opo ge li ogokathimbo. Ehol.21:3-4; Eimbilo: 415.

7. OMUKRISTE FRANCES HEVERGAL: pethimbo lyomaudhigu ota ti:

1. Omilema ndhika otadhi ka landulwa kuuyelele. Oluhepo nekanitho otayi ka landulwa kokulikola. Uunkundi mbuka otau ka pingenwa koshishani. Uululu mbuka otau landulwa kuutoye. Uumbanda peha lyawo otapu ke ya einekelo. Ombuga nohambo ndjika otayi ka pingenwa kegumbo ewanawa. Konima yombila oku na **Omwenyo**. Uuyuki nombili naKalunga oyo ondjila yesilohenda tayi fala hoka.

2. Konima yekuno otaku landula eteyo. Konima yomuzimbi niikogo iiluudhe otaku holoka etango. Konima yuwehame otaku landula ombili. Oluhodhi otalu ka landulwa kenyanu. Konima yomaudhigu otaku ya evululuko. Konima yomatopoko nehakano ayehe otaa ka kala pamwe. Konima yuuiwe nuutondwe otaku ya ohole. Konima yombila **omwenyo**. Uuyuki nombili naKalunga oyo ondjila yesilohenda tayi fala omukriste memanguluko lyaaluhe.

Tala kep. 6

Imikeni oiimati yelidilululo

Eli olo eudifo lotete lomutumwa waKalunga, Johannes, ou a tumwa a tetekela okulondwela oshiwana shi lidilulule. Okwa kala mofuka mombuwa nokwa li omulumenhu e na elaka la taanana la fa ongedjo, tali udika kokule, tali ti: Imikeni oiimati iwa ya wapalela elidilululo, mu xupifwe, osheshi ehandu lOmwene oli li popepi, Mat.3:8-9.

Ovanhu mokupwilikina eudifo eli ova li va haluka unene. Eudifo eli ola li la kwata keemwenyo doshiwana. Osheshi keshe umwe ole mu kuma komutima waye, pailonga yaye. Onghe ova hovela nee okuuya kofuka, kuJohannes, ve li oungudu noungudu notava pula tava ti: "Otu na okuninga ngahelipi opo tuha nyonwe po kehandu lOmwene?" Johannes te va nyamukula ta ti:

Imikeni oiimati iwa, nye inamu nyeka vali vakweni oinima yavo, waneni naasho mu kwete. Ileni mu shashwe, omatimba eni a dimwe po, Luk.3:10-14. Osho ngaha ovanhu eengudu ve uya komulonga okushashwa nomatimba avo a dimwa po.

Konima aishe eshi ya longwa, omona waKalunga, Jesus Kristus, ou a tetekelwa kuJohannes okwe uya nee a longe noku wanife oilonga e i tuminwa kuxe, mounyuni, okuudifa evangelii. Eudifo laye lotete ola li: "Lidilululeni mu xupifwe, osheshi ouhamba waKalunga owa ehena popepi," Mat.4:17. Eengudu omayovi ode uya kuye tadi lyatafana. Oda tala yo omona waKalunga eshi ta longo oikumwifa mokati kavo noku va udifila oupuna wevangeli, Joh.6:1-15.

Omwene Jesus mokufiya po ounyuni ou palutu, okwe tu fiila yo oshipango shaye shinene tu shi longe nouidinini, fyeni ava tu li ovakwaneongalo laye, tashi ti: "Indeni ka ningeni ovanhu aveshe ovahongwa vange noku va shasheya medina laXe Ndele ame ondi li pamwe nanye omafiku aeshe fiyo okexulilo lefimbo lounyuni", Mat.28:19-20.

Paife exulilo lounyuni eshi li li po la fika, ounyuni owa hovela tau ingida: "Inamu itavela vali eendjovo deudifo longeleka, osheshi otai mu pukifa." Ovanhu mokupwilikina eingido eli lounyuni, vahapu paife ova kwatwa komalimbililo, vamwe ova tala osha fa shoshili. Onghee otava mweneke eudifo noitava udika vali. Vamwe ova tala ounyuni ou, vamwe ova hovela okukwatwa kounye. Vamwe otava hovele okuvalula kominwe efimbo olo va udifa, onghee vati otava fuda po manga. Vamwe ova efa eudifo omolwedimo, okulya nokunwa. Vamwe ova efa po eudifo omolwokahalu keliko lounyuni, Hes.33:19-20.

Ovakwetu, oko tuu mwe shi ama keembinga neembinga, oko? Oshike ihatu udu vali eudifo leni? Omu na tuu natango omwenyo wopamhepo ile omwa fya? Onda hala oku mu twa omukumo kutya:

Inamu tala nye inamu tilifwa, evangeli loshipango shaKristus nali udifwe la manamo, li hange omunhu keshe. Li dude mo oukulu ou wa

Oshili tayi mangulula

Dha za kep. 2



Shekutaamba V. V. Nambala

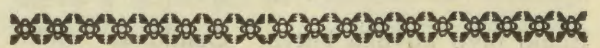
Aamwameme, omaudhigu oge na okukala po, omanga twa hala oshili. Ihe oge na okupita. Esilohenda lyaTate Kalunga olyo alike tali kalelele. Otwa kumwa tatu ti: "hoo!" - ihe kuKristus Jesus otatu mono ALUHE EENO! (2Kor.1:19). Shampa tatu gandja omaudhigu getu kuYe.

"ESILOHENDA LYANDJE OLYO ALIKE WE LI PUMBWA, OSHOKA OONKONDO DHANDJE ODHO OONENENENE KWAAMBOKA AANKUNDI," (2Kor.12:9).

Tate Kalunga na koleke eitaalo lyetweni!

Gweni muKristus

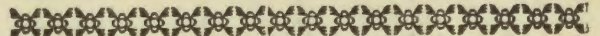
S. V. V. Nambala



INYOLITHA OMUKWETU

GWOMUMVO TAGU YA

(1978)



kanyatela muye noli ete mo oiimati ipe iwa. Omunhu e lidilulule, a shiive okuya mexupifo, Sef.2:1-3.

Tuma eudifo loye mwi momhepo, li hange omunhu keshe poradio yaye. Tuma eudifo loye moshifo "Omukwetu", shi twaalele eudifo eli keembinga neembinga, Jer.29:19. Ovakwetu, efimbo ola fika, ndele evangeli laKristus nali kondjelwe, li udifwe la manamo. Inamu tala, Omwene oku li pamwe nafye fiyo exulilo lounyuni. Omawi etu naakuwaane, ngaashi Johannes mombuwa. Inamu tilal!

Abraham Haileka

Oshilonga mokati kaakiintu otashi humithwa ngiini komeho?

OMUKRISTE MOMAUDHIGU

Dha za kep. 4

Oshilonga shomokati kaakiintu mongeleka yetu osha kala mo oomvula oonshona dhowala. Osha tamekwa nuunkundi oshoka opwa li oluhepo lwomuwiliki. Momagongalo omwa kala aawiliki mboka ya kambadhala naashoka taa vulu okuninga. Ngashingeyi oshilonga oshi na aawiliki yasho, mboka taya vulu okugandja omauyebele gi ili nogi ili kaawiliki yomomagongalo.

Ndika olyo elago lyaakiintu yongeleka yetu, sho twa mono ompito yi thike mpa, opo tu vule okukala miigongi yetu otse atuke, tu kundathane iinima mbyoka tayi tu kwatha palutu nopamwenyo.

Oshilonga shika osha kankamekelwa kQmbimbeli. Okuhokolola eyumuko lyaJesus kwaa-yehe, ngashi aakiintu ye shi ningile peyumu-ko lYe.

Elalakano lyoshilonga shika okuhumitha komeho aakiintu pamwenyo nopalutu; muuteku wopakriste nomokukonakona oohapu dhaKalunga noku mu imbila. Omukiintu u uve ko kutya naye okwa ithanwa a fale evaangeli. Shika ote shi ningi noohapu nomokukala kwesiku kehe. Omukiintu a uve ko kutya omukwashigwana ngoka ehukumomeho neshunomonima lyoshigwana li li miikaha ye.

Oshilonga shika otashi lalakanene omukiintu u uve ko kutya oye omukwanegongalo, nota tegelelwa a yakule egongalo lye ngashi ha yakula egumbo lye.

Epulo olyo ndyoka kutya: Oshilonga shika otashi humithwa komeho ngiini? Inandi mona eyamukulo lilwe, otandi ti owala oshilonga shika otashi pula okudhiginina okugongala miigongi. Omukiintu kehe okwa tegelelwa a holoke koshigongi megongalo lyaandjawa.

Oolye ano iilyo yoshigongi?

Omukiintu kehe a kolekwa sigo omukulupe gwoomvula 80, oye oshilyo. Ihe oshinima osha fa kaashi uvitike ko nawa, oshoka miigongi ohamu gongala ookuku noomeme, aashona yowala. Mbaka aagundjuka uulodhi uunene, ihaku monika omugundjuka nando ogumwe.

Aakiintu yongeleka yetu, shika osho elago lyetu onkene inatu dhanitheni ethimbo ndika twe li pewa omagano. Tu etheni okugongala pomahala gi ili mpoka itatu mono po uunongo washa, shila eishekitho owala. Dhimbulukwa kutya ou na iilonga oyindji megumbo, mbyoka itaayi ku pitika u ye mpaka naampayaka. Iyuga miilonga yoye u ye poohapu dhaKalunga, mpoka to mono uunongo.

8. EGALIKANO LYOMUNASIKEPA OMOLWE-GAMENO:

Uuyebele waKalunga owa kundukidha ndje. Ohole yaKalunga oya dhiginina ndje. Oonkondo dhaKalunga otadhi gamene ndje. Kalunga ngoka e li pamwe nangame aluhe oye ta langele ndje.

Shaa mpoka adi li po naKalunga kandje ope e li. Opo mpaka pe na omukumo gwomukriste pethimbo lyomaudhigu. Oshoka oye okwiitaala moonkondo nomegameno lyaKalunga.

Kleopas Dumeni

Moshilonga shika omu na wo omauthompango. Megongalo kehe namu kale ewilikongundu. Moshitayingeleka namu kale wo ewilikongundu, tali hogololwa koshigongi shoshitayingeleka.

Ewilikongundu lyaakiintu megongalo

Olyo tali tonatele oshilonga mokati kaakiintu megongalo. Ngele aantu oya hokwa tuu okugongala nohaa gongala tuu pethimbo nokuhulitha pethimbo.

Aantu mootundi ohaa mono mo sha tuu tashi tungu? Aantu oya topolelwa tuu iilonga pamagano gawo nenge okwa talwa ookahewa? Iilyo yewilikongundu oyi na tuu ekwatathano nomusita notayi longo tuu kohi yomauthompango goshilonga mokati kaakiintu?

Omuwiliki megongalo

Omuwiliki na gandje wo kuyakwawo ompito yokuninga sha, haye awike ta longo. Na longo pamwe newilikongundu miinima ayihe. Na kale e na owino yokuwilika, haku thimnika aantu nenge okuninga nayi ngoka ta wilike motundi yontumba.

Onawa ngele iilongwa tayi topolelwa aantu pamagano gawo. Ewilikongundu sho lya ningi elandulathano lyootundi, nakuninga otundi ne li landule lela, opo aantu yaa kale moshilongwa shimwe ethimbo eleleka nenge efupifupi. Nakuninga otundi niilongekidhe a popye pafupi. Na pe aantu ompito yokukundathana, opo yi ilonge okukwathathana, hakupulakena ashike. Omuwiliki na tse omukumo mboka haa kala inaa manguluka, opo nayo wo ya holole omadhiladhilo gawo.

Opo ewiliko li ende nawa, aantu naa longele kumwe. Omuwiliki na landule omadhiladhilo gomuntu kehe, nando ga kale ga nika uugoya ngiini. Ewiliko ewanawa olyo ndyoka tali pangelwa kohole neifupipiko. Eidhidhimiko otali pumbiwa unene.

Selma Namuhuja

Amushangandjai gwa SACC eetha po iilonga

Okweetha po iilonga kwamushangandjai gwOraata yOongelesa dha S. Africa (SACC), omusita John Thorne, okwa tseyithwa noluhodhi.

Omusitagongalo Thorne oshilonga shuhamushanga okwe shi pelwe petameko lyaJuni numvo. Tashi ti okwa longo owala oomwedhi ne. Pamatopelo gomusamane Thorne aniwa okwa etha po iilonga mbika oshoka inayi mu opalela. Ye ota opalele owala moshilonga shuusitagongalo. Ihe hamiilonga mbika iidhigu, moka omuntu ho kala olwindji ongo ye awike.

Ewilikongundu lyOraata yOongelesa mu S. Africa (SACC) mokutaamba eethopo lyiilonga lyomusamane Thorne olya simaneke okwiinkelwa kwe, osho wo omukumo gwe okuninga etokolo ndika edhigu nolye mu halele onakuyiwa yi na elago.

Omusamane John Rees, ngoka a li nale amushanga omukuluntu gwa SACC okwa indilwa a yakule ongamushangandjai sigo pehulilo lyomumvo. Ewilikongundu olyi ipyakidhila nokukonga ngoka ta landula omusamane Thorne, moshilonga shuhamushangandjai.

Omusamane John Thorne omasiku ga piti oya talele po Namibia sigo nokuli kUumbangalantu woshilongo. Molweendo lwawo oya li na dr W. Kistner (omukuluntu mOraata yOongelesa dha S. Africa moshikandjo shUuyuki nEhanganitho), omukulukadhi D. Mabiletsa (omukuluntu moshikandjo shUuyuki niilonga yAakulukadhi), osho wo omusita F. Bell, amushangandjai gwa FELCSA.

Momushangwahokololo gwawo ngoka ya longekidhile Ewilikongundu (lya SACC) mokusagaluka kwawo kuNamibia, oya holola kutya oongelesa dhomuNamibia odhi na oshindji okugandja koongelesa dhomu S. Africa, mwaa-shoka dha likola methimbo lyomahepeko.

Oya holola wo kutya aantu yomu S. Africa inaya tseya shoka tashi inyenge muNamibia. Ihe omaudhigu ngashingeyi oge thike pamwe. Eyooloko oli li owala mpoka sho ekondjelo-manguluko lyaNamibia li li poku adha ehulilo, osho ehokololo lya ti.

Ehokololo olya hulitha tali ti: Namibia oshilongo sha pumbwa ombili nehulithopo lyiikolokosha.

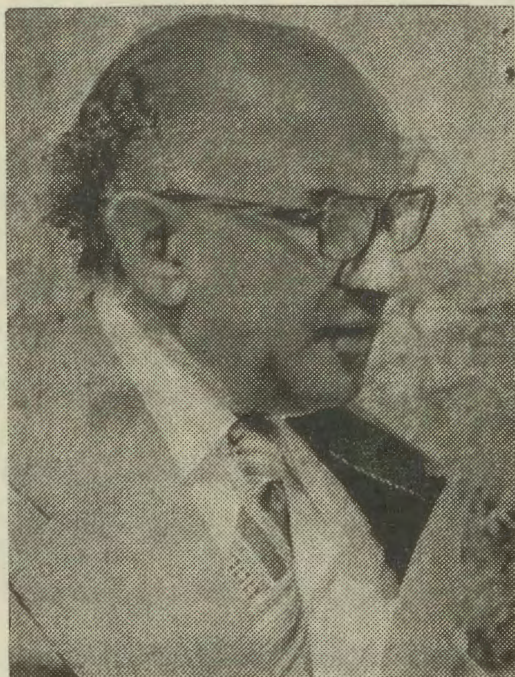
Oya pumbwa omagalikaneno nuukumwe.

Oya pumbwa ekwatho lyopaigwana opo S. Africa a hulithe po epangelo lye ndyoka lyaashihipaveta.

Oye li mompumbwe onene yaalongi ya longeka, yomuthika kehe. Aanamibia oya li taa vulu okuhuma nawa komeho andola kapwa li omathindilokongudhi.

Oya pumbwa ehogololo lya manguluka osho wo emanguluko. Tse yomu S. Africa osho wo uuyuni auhe otwa pumbwa okutseya oshili kombinga yonkalo yaNamibia neshundulo alihe lyuuthemba womuntu.

(KAIROS)



Rev. John Thorne

Oshigongi shAalongi mOshitayingeleka shOndonga, mOlukonda eti 14-16.10.1977

Omwa li aalumentu 50 naakiintu 90. Omulongi Usko Shivute oye a li a hogololwa omunashipundi gwoshigongi.

Iikundathanwa oyindji ya simana oya kundathanwa, mbyoka ya guma oshilonga shawo neonge ongeleka moka ye li iilyo.

Omusamane Hans D. Namuhuja a hokolola oshilonga shetumo shono tashi longwa mongeleka ayihe. Aalongi wo oyo yamwe taa longo oshilongatumo nokuli okuza 1968 mOkahao.

Namuhuja okwa holola olupandu lwehwamo lyaalongi moshitayi shika, sho yamwe ya gandja oshindji shi vule shoka ya pulwa muukwashilyo. Ofuto yuukwashilyo R2,00 komumvo. Inaku popiwa natango iimaliwa yetumo lyaalongi otayi ka longa peni.

Aalongi ye thike lwopo 700 oyi inyolithulula ishewe mEhanganano lyaAalongi, sho lya li lya mwena omimvo dha zi ko.

EYOOLOKO POKATI KOONGANGA DHOSHIWAMBO NODHOSHINGOLO kuSalmi Shivute
* AYEHE OTAA LONGITHA IIMBONDI

Tala kep. 8

AALESHI TAA NYOLA

Amushanga omusimanekwa

Ohandi ukilile koshipopiwa shomufimanekwa Jonas Mweutota mOmukwetu waSeptemba onomola 17, kependja etivali. Onda hala okukonenena okatukulwa okativali okudja pedu, oko taka ti:

“Mokukala monghalo ei idjuu, omesho amwe otaa tale kepangelo. Epangelo ola tulwa po kuKalunga, Rom.13.”

Onda panda oshikalimo shoshipopiwa shaye, ndele ohandi kondjifa omatumbulo aye oo axuuninwa. Osha li shiwa ngeno a yandjele efatululo la yela leendjovo edi.

Ovanhu vahapu ohava piyaana nge tava leshe eendjovo edi, (Rom.13). Epangelo, unene ovo tava kondjifa ekondjelomanguluko letu, ohava longifa Rom.13, okuyukipalifa oilonga yavo, oyo ihe fi yohanhu.

1Petr.2:13-15 otamu tiwa ovanhu nava dulike kovaleli vavo. Nokudulika oku, inaku diladilwa tu dimine okatongotongo noilonga aische yopaukolokoshi, oyo hatu fininikilwa.

Osha ninga nokuli omukalondjikilile kovanhu vamwe, okulongifa Ombibeli opo va yukipalife omafatululo avo opapolitika, oo luhapu oipupulu notaa pukifa

Aische oyo tai ningwa kovaleli vetu moshilongo eshi, oyo ashike okuwapalela oilumbu. Okatongotongo oka etwa po kovafukedi, ovo va hala ashike okuukifa oinima aische iwa kuvo. Fye ovalaule (ovakalimo vashili), tave tu undulile kwinya, koluhepo nokoitukulwa yoshilongo oko ku na eputuko li li pedu.

Epangelo olo la tulwa po kuKalunga oliyapuki nokali lihole loovene. Ame mwene onda tala epangelo olo tu na paife noonakukalamo, kutya kali li ngaashi olo la diladilwa pa Rom.13 na 1Petr.2:13-15.

Eino M. Hauuanga
Tsumeb

EGWEDHELOPO

Moshifo shOmukwetu gwaMai 30 onomola 10, 1977, omwa holokele oshinyolwa tashi fatulula Rom.13, sha nyolwa komusita Elia Ninkoti. Oshipopiwa shika noshoye ondi inekela oya yelithila nawa aaleshi kutya shoka tashi dhiladhilwa mu Rom.13 oshike.
Amushanga

- Aawambo kaye na omambo
- Oya shatelwa oshilonga
- Opu na iifundja meyanekelo
- Otaa taandelitha eso
- Ihaku talwa uukuluntu
- Ihaku yelekwa omi

Woshingolo

- Otau konakonwa nawa
- Otaa keelele eso
- Otaa konakona nomashina
- Taku talwa uukuluntu mepango

OONKUNDATHANA

Aapangi yoshingolo oya li haa gandja iikulya nuuyogoki, ihe ngashingeyi ohole kayi po. Ohole otayi panga.

- Eitaalo oshinima oshinene, shoka tashi aludha omuvu.
- Oyendji oya pangwa kAawambo noya aluka sha nyenga iipangelo yoshingolo.
- Omikithi oko dhi li dhaa shiwiki kaatiligane naandhoka dhaa shiwiki kAawambo.

Omundohotola Hamhata okwa holola nkene unona 1 000, 1975 wa si muAfrika, Asia na Latin Amerika molwoimela, oukoshoki uhe po, o T.B. nosho tuu.

Elalakano louhakuli olutu neendunge i kale nawa.

- Ovanamikifi va kwafwe fimbo kuyela.
- Oikulya oya pumbiwa.
- Omeva ma yela otaa ngabeke omaudu.
- Opwa pumbiwa okandjuwo okungabeka oupuka.
- Omunafikola na twaalele ehongo laye meumbo - ombete, omuleko woikutu, oikulya nosho tuu.
- Ovateeleli nava pukululwe va longife oshihakulilo va hakulwe.
- Omai, oikwambidi nombelela oya fimana meumbo.

Sebulon Ekandjo

OMUKWETU

Oye oshifo shOngeleka Onkwaevangeli paLuther yomOwambokavango.

Oha nyanyangidhwa mOshinyanyangidho shOngeleka mOniipa.

Omukuluntu gwoshifo omumbisofi dr. Leonard Auala.

Amushanga Ambrosius W. Amutenja.

Oadando yOmukwetu komumvo muAfrika R 2-00, kombanda yomafuta R 4-00.

Omambesitelo pamwe noondando naga tumwe koOmukwetu Oniipa, P/B. 2013 Ondangwa 9270

OWAMBOKAVANGO CHURCH PRESS
ONIIPA P/BAG 2013 ONDANGWA 9270