

# OMUKWETU

Registered at the General Post Office as a Newspaper

10c



Engathithi lyaantu mboka ya li ya gongala peyapulo lyetungongeleka lyaNaanda ndyoka lya li lya ningwa komuwilikingeleka Kleopas Dumeni (11.9.77).

“Nando mu se iilonga yeni (Aanaanda) otayi ka yakula omimvo odhindji. Kalunga ne mu yambeke kamu kale mwa hepa sha. Tu kaleni nombili yegongalo opo Kalunga a taambe onkalo ayihe yongeleka ndjika. Ye e yi ninge eha lyevululuko, opo aanona naayehe taya ka gongalela mo, ya yambekwe yo ya faalelwe eyambeko akuhe hoka taa yi.

“Tu galikaneni opo aasaseri ye ya kale ya zalekwa ehupitho, opo ya vule oku li zaleka yalwe. Ileni amuhe egongalo lyaNaanda, ileni ongeleka oya pwa, opo mu zalekwe ehupitho mboka kamu na omapitikilo, inaamu hokana, inaamu shashwa, ihamu yi kuulalelo, mu na iinima ya holama - mu zalekwe eyambeko. Mpaka ope na ombila mpoka tapu fumvikwa oondjo - kape na uudhano,” osho omuwilikingeleka Dumeni a ti.



## ONGHALO YEONGALO LOMEENHANA

Pexulilo lodula 1975 omatanga aSuid Afrika okwa tula popepi nongelesa noshihakulilo, opo hava ningile omalideulo avo, neendjebo. Osho yo okukala peendjila okukwata ovanhu noku va pulapula noku va hepeka.

Eshi osha shunifa ovanhu monima okufika komalongelokalunga nokoyoongalele yeendjovo daKalunga, amolwomatilifo nomathepeko. Omolwomathepeko oo oshiwana osha hovela okufaduka po sha yuka kombada yongaba nokweefa po omaumbo nomaliko asho aeshe. Vahapu vomuvo va kanifa nokuli eemwenyo davo muAngola.

Otwa kanifa oinagoga ivali; Ohehonge nOmutwewondjaba neefikola dayo. Eongalo lopou-shiinda lAngilikana ola hangika yo komaupyakadi aa.

Shaashi otu udite kutya oshinakuwanifwa shetu, otwa kendabala oku va kwafa mwashi ve shi pumbwa.

Paife ohatu ongala ngaa nawa; kape na unene omakondeko peendjila. Ovanhu vetu vahapu ova makela oululu womathepeko nowefyo nokuli. Ounona va fiwa peefikola ovahongi va kwatwa po. Ovakulunhuongalo novaudifi va fiya po omayakulo va twalwa keedolongo.

Nande ku na omatilifo eongalo laKristus ola xwama nande okangudu oka fa kanini. Momaudjuu otwa talelwa po kovakulunhu vongelesa. Navahapu ovo va li kokule neongalo, omaudjuu okwe va ehenifa popepi.

Omapopifo omueevangeliste Efraim Angula, okwa twa omukumo ovakriste ovo va li va holoka po naavo vali va wila po ova pendulwa. Otu na vahapu tava konghola nova yeululwa. Ava va li va kanifa omasakramendi ove a shunina noinakuwanifwa ikwao yopakriste.

Iyaloo eshi hamu tu dimbuluka momailikano eni. Ava ve hole Omwene oinima aishe otai ende mumwe ouwa.

### Ounona nava putudilwe metilokalunga

Ovakwetu ovaholike, ookaume amushe ova-tungambo ohandi mu kundu unene nohandi mu kumaida kutya: Ounona vetu nava putudilwe metilokalunga nomokutila ovakulunhu aveshe, omanga ve li po vanini, opo va kale ve na oiimati iwa.

Omwene Kalunga tate ota tale yo omudali keshe nghe ta putuda okaana kaye. Shovene kashi fi shipu okuputuda okaana noka kale ke na oiimati iwa. Otashi pula ekondjo linene fiyo wa findana.

Onda tala yo ovadali vamwe va nyika oluhodi linene, tava lili omolwounona vavo eshi ihava dulika. Ndele oshiponga shimwe ohashi etwa kovaputudi vokaana, shaashi vamwe ova putudila onunona vavo moiimati ilula, oikolwifa, omanga vanini. Okaana nge ka kulu, ka shiiva okukala omutumba koovene nena otaka hovele okulipindila kongoma.

Eshi okaana taka lili koukolwe, ovakulunhu vako otava kutuka ashike notave ka popi noku ka tanga nefimaneko tava ti: "Okaana ketu ohaka nu ashike otombo, oshikundi kake shi hole, ohashi ka vele medimo.

Okaana eshi taka kulu nena oiimati yako otai ningi ilula. Omutwe wako itau kala vali nawa nomadiladilo ako itaa longo vali nawa; omalyudo ako okwa fya. Ettilokalunga itali kala mo vali muko. Oilonga yokomake itake ke i dula vali. Mofikola itaka dulu mo. Otaka ningi ashike okashingi komeekamba.

Omudali omukwetu oshiponga shetimba li fike apa dimbulukwa otali ka pulwa mwoove, osheshi ove we ka putudila moiimati ilula, omanga ka li kanini, 1 Sam.3:13. Ounona vetu nge va tameke ofikola tu va tuleni pokati meputudo: ovadali pamwe nomulongi.

Okaana nge take uya take ku lombwele eshi ka ningwa kofikola shaashi inaka hala okulilonga, ile okuya koolonga yomake; ka pukuluni noku ka kumaida ke li longe shili noka longe oilonga aishe yokomake take i lombwela komulongi. Nena okaana eshi taka di opo otake li longo nawa, osheshi kake na vali opo taka mono elipopilo, nokomesho otamu ke ka pandula.

Otu na onunona vetu vamwe hava danauka nounona vopoushiinda, ovo inava putudwa notava etelele oitya ii meumbo. Apa ovakulunhu inatu kaleni ashike hatu yoleni, ndele natu va pukulule nombili noku va lombwela kutya oitya oyo inai wapala. Ounona nava longwe okutila ovakulunhu aveshe noku va fimaneka, fimbo vanini.

Ounona nava longwe okwiilikana. Nava longwe yo eindilo lOmwene wetu osho yo eitavelo lOvakriste. Longa ashike noku litula mo, osheshi okaana kake kwete okutambula. Ounona yo ovo va kula hava i kofikola nava longwe yo onunona ovo vanini, autevo vokofikola, peexungi, opo eshi tava ka hovela ofikola ove na sha shihapu.

Ope na vali oshiponga shimwe mufye ovadali. Okaana otaka lombwele tate ile meme kutya oka hala okuya komambo. Omushamane ota nyamukula okaana ta ti: "Eshi wa hala okuya komambo ou ta ka lifa olye? Ame nena ohandi ka uhala kokamba." Ile meme ota ti: "Eshi to i komambo, olye ta uhala meumbo, ame ohandi ka uhala peni."

Ovadali ovakwetu, tu efeni onunona va ye kelongelokalunga, opo va kale ve shii nawa elandulafano longeleka yavo omo va dalelwa mo vaha kale mo va fa ovaenda, Mat.18:10, Mark.10:14.

Tala kep. 8



## EENDJOVO DAKALUNGA OTADI KALELELE

Okwa li ku na omulonga omo mwa kala eeshi. Popepi nomulonga opwa li ondobe, omo mwa kala omadivedive. Omadivedive okwa kala mondobe yao nokuhafa, noi naa diladila kutya ondobe otai ka pwiinina.

Efiku limwe oshi oya dja komulonga opo i ka talele po omadivedive oo a kala mondobe. Oshi oya popifa omadivedive nawa nombili. Oya pula ookaume kayo venya tai ti: "Ookaume ovaholike, eshi mu li mondobe yeni omu, ohamu lile mo nee shike?" "Oikulya oihapu kufye; hatu li ngoo oumeno nonhata yetu," osho omadivedive a nyamukula.

Oshi mokuuda enyamukulo eli oya eta onghenda noya tya: "Onawa ngenge hatu yeni pamwe komulonga, osheshi ondobe otai pwiinine diva," osho oshi ya ti. "Ha ha ha ha, ku na tuu oshiyele nafye, osho omadivedive a nyamukula. "Ondobe ku wete ngaho apa i fike, oto ti otai pwiinine oyo, itatu i ko." Oshi oya ya nombili komulonga. Omafiku kemale, ondobe oya pwiinina nomadivedive okwa fila mo.

Omumwameme omuholike muKristus, ofye naave ohatu pulwa nena kutya, otwa didilika tuu kutya oonyuni ou tu li muo owopokafimbo? Ovatumwa vOmwene ngenge tave uya kufye noku tu ulikila ondjila yomwenyo, ohatu va tambula tuu, ile twa ninga nokuli ovasheki vOmhepo iyapuki?

Ngenge twa dimbuluka eshi, tu efe po aishe oyo tai tu ondubo nehala laKalunga, Kol.3:5-9. Pamwe twa lolokifwa nokuli kounyuni, Mat. 11 1:28-30. Jesus mwene ota ifana tuye kuYe, tu ka mone etulumuko. Oonyuni nou-djuu wao otawo xulu po, ndele Jesus ota kala alushe fiyo alushe.

Omukwetu, dimbuluka, Omwene okwa tuwa omolwetu. Okwa nyanyaulwa omolwomatimba etu. Okwa handukilwa kuKalunga opo tu kale tu na omwenyo, Jes.53:1-12.

Ovamwatate ovaholike, tu ningeni eenghelo daKristus ndele hatu ka likola oshishani osho itatu shi kufwa nande okulye, Ehol.3:11.

**David H. Hamukwaya**

## MONAKAYALE AALUMENTU OYA TOTO OSHIKETHA NOO R400

Aalumentu yegongalo lyaNakayale oya toto oshiketha shawo nomwaalu ogwindji, methimbo efupi.

Oshiketha osha holoka po pamukalo gushi kuhokololwa. Mboka ya pewa oshimpwiyu shiinima yaalumentu megongalo, Ewilikongundu, olya gongele aalumentu yegongalo e taa fatulula oshilonga shomumentu: megongalo, mongeleka, megumbo nomoshigwana.

Oonkundathana odha li dha kwata miiti. Omeme naagundjuka nayo omo ya li moshigongi shika. Okwa gongelwa R24,00. Oshigongi osha hogolola iilyo yimwe yi kale aagongeleli yoshiketha. Aalumentu oya yi miilonga ngashi yi inekelelwa oshimpwiyu.

Okwa longwa oshindji. Omusamane Christian V. Aukongo okwa gongele oshindji e vule ayehe. Okwa gongele R160,00 noondumetana mbali oonene, itaadhi koko we, meni lyiiwike iyali.

Oondumetana ndhika kehe yimwe otayi gu R100,00. Tashi ti tate Aukongo okwa gongele kumwe R360,00. Omwaalu aguhe kumwe R414,48, gwa gongelwa muule wethimbo lyiiwike iyali.

Ongundu yaalumentu megongalo ndika otayi pandula nokusimaneka tate Aukongo naakwathi ye ayehe noku ya halela eyambeko tali zi kombanda, kuMwene gwOongundu dhaalumentu mu ELOK.

Kalunga nguka iha hepa sha ota vulu oku mu yambekela omaliko geni ga tane, opo mu wape natango okutunga egongalo nongeleka Ye kombanda yevi alihe.

**Tobias Amupala**



**Christian V. Aukongo**



# ADAM OMUNHU OU LI PENI?

1Mos.3:9-10

Omwene Kalunga okwa shita omunhu efano laye. Okwe mu tula mOparadisa opo a kale noku mu longela mwinyu, 1Mos.2.15. Omunhu ina dulika kuKalunga ndele a dulika komutondi satana nokoulunde aushe. A kanifa ondjelo youKalunga nokwa tewatewa mo mepya laKalunga, 1Mos.3:23-24.

Omweno waKalunga wa ehamekwa unene kenyo lomunhu nokokufingwa kwaye omolwoulunde. Oulunde wa kufa Adam puKalunga kaye. A kanifa ouKalunga, 1Mos.3:17-19.

Nonena tate Kalunga ota ingida nondaka inene; "Adam omunhu ou li peni?" "Adam wopaife ou li peni?" 1Mos.2:9-10.

Vahapu otwa pilamena Kalunga ketu nefilonghenda laye li li muKristus Jesus, notwa taalela kalunga kounyuni ou. Pwilikina Kalunga tate ota ingida; "Adam omunhu ou li peni-omukriste ou li peni?" Kaume ohatu kongwa kutate Kalunga. Te tu kongo koshi youlunde woludi keshe tu li muwo, Jes.9:1.

Eshi twa dja puKalunga ketu, notwe mu pilamena shili, ohatu kongwa .... "Ileni, alukeni, ileni mu xupifwe," osho Omwene te tu ifana, Jes.1:18-19.

Adam okwa nyamukula; "Aame ou, ndele ondi li olutu lwongaho," 1Mos.3:10. Kalunga tate kenyamukulo laAdam okwa eta onghenda nokwa udanekela Adam: "Ohandi ke va tumina ou te va alulile mOparadisa yoshili, Jes.9:1-6, 11:1-9.

Omwaalulili wovakani puKalunga oKristus omuxupifi, Jes.53:6. Atushe ooAdam vopaife otu na exupifo muKristus aeke. Paife kaku na vali etokolo lokukanifa ava ve li muKristus Jesus, Rom.8:1-2, Joh.6:37-40.

Elombwelo olo eli tu kale puKristus tu xupifwe, tu mangululwe, tu mone edimepo lomatimba muJesus, opo tu ninge Adam mupe; ou ha kala alushe koshipala shaKalunga moyuki nomoukoshoki.

"Adam, ou li peni?" Natu tyeni: "Aame ou, ashike kandi na omidjalo," Enyamukulo Omwene, Sak.3:4-5, Ehol.3:18-19.

**S. M. Haimbili**

## OSHIGONGI SHAAKULUKA-DHI MOKUTI SHE YA HUPITHA MESO

Sebulon Ekandjo

Oshigongi shaakulukadhi yaali, Njeri Mwangi naHelena Shiwela osha hulile metokolo aakulukadhi mbaka ya tsikile owala nokuhumbata omitenge dhawo mondjokana. Ayehe yaali oya li netokolo lyokwiidhipaga.

Njeri, yina yuunona uhamano esiku limwe okwi iyaka aanona ye megumbo sho a li itaa vuku we oku ya tongolola sho taa lili kondjala. He yaanona oye a yonuka tango sho a ningi onkolwi nokwa kanitha iilonga ye.

Njeri manga a lala miihwa a tegelela eso lye, oshoka naye wo okwa li a nkundipala komadhiladhilo nokondjala, ohaluka oku uvite popepi naye tapu zi oshihomo shewi lya nika uudhigu. Tangotango okwa li a limbililwa nokwa dhiladhila kutya pamwe omawi otaga zi muye, oshoka okwa li e li pokukanitha omauvitokoneko ge mwene agehe.

Mbalambala okwe shi kutha mo kutya nani omawi itaga zi muye. Osho a papudhuka pomulalo gwe gweso a ka konakone mpoka tapu zi omawi. Okwi itsu momuvali omukwawo ta nona e li pokusa. Oye Helena Shiwela.

Moku mu yambidhidha ngeyi a godhipukwe monkalo yeso, Helena okwa tameke mbala ehokololo omolwashike a tokola e ye a sile mokuti. Aniwa Helena okwa kala omimvo ntano mondjokana, ihe ina mona nando okanona. Shika oshinima sha li itaashi vuku okwiidhidhimikilwa komusamane gwe. Mpoka pwa zi uudhigu auhe wondjokana.

Njeri okwa hokololele wo mukwawo omolwashike naye wo e ya a konge eso lye miihwa. "Aanona mboka nda vala oyendji oye etele ndje uupyakadhi unene," osho a hokolola. Njeri haye awike a mono uudhigu omolwaanona, ihe omusamane gwe wo, nosho sha fa she mu fala nomokunwa.

Opwa piti okathimbo okale aakulukadhi mbaka, molwonkumwe yokukalamwenyo kwomuntu, sho inaa mona we iitya yasha okutumbula, shila okutalathana kowala, manga omahodhi taga ndonda momemo.

"Njeri," osho Helena a popitha mukwawo konima yemweno lyokathimbo okale. "Inatu tsikila we nuugoya womadhiladhilo ga tya ngeyi tu konge eso, tu fadhuke po uudhigu wetu. Ondi shi shi Kalunga oye e shi ningi tu tsakanene ngeyi. Tu shune tu ka tsikile okukalamwenyo kwetu medhina lyaKalunga."

Njeri ngoka kwa li inaa ya muule weitaalo lyomuKalunga okwa zi moshigongi shawo nomukumo omupe. Okwa ningi omwiinekeli-kalunga ihaa tifuka we.

Oshiningwanima shika osha ningwa muKenya. Sho nde shi lesa, onda dhimbulukwa oonkundathana dhimwe moshigongi shoshitayingeleka moka mwi ipulwa nompumbwe yiigongi yoomeme momagongalo.

"Iigongi yoomeme otwe yi pumbwa. Muyo omo amuke twa adha uudhigu wetu tau gumwa koshito shi vule miigongi ayihe ya kala hayi ningwa mOngeleka sigo oompaka," osho meme gumwe a tumbula nokugamena etsikilo lyiigongi yoomeme. Osha yela wo momahokololo ngaka agehe gaali kutya, nani omwenyo gwoshigongi ogu li ashike mpoka uuna ta ku popiwa shono sha guma onkalo yoye.



# OKULESHA ONAINI TAKU KE YA MOMODE?

Ovanyasha ngenge ohava lesa nena efano la yela kutya oshiwana osha putuka kombinga yokulesha. Ovanyasha ovo oshiwana shomongula. Ashike ngenge oshiwana shomongula itashi lesa, shomongheleinya otashi ka mona peni oshihopaenenwa shokulesha? Ounona ohava ningi eshi va mona kovakulunhu vavo.

Osho shili kutya katu na eefitola domambo keembinga adishe, onghee katu na yo omambo aa taa pumbiwa kovanyasha. Ashike nande ongaho, vangapi vomovanyasha voshiwana shetu va talela po ofitola yomambo yomOushimba, fimbo va li kwinya metalelepo ile yo va vandamena mo, manga inava ya keefitola doikutu? Vangapi vomovanyasha voshiwana shetu ve shii apa pa ama ofitola yomambo yaNiipa ile yaShakati? Vangapi va tala mo nova mona kutya omambo aa e li mo hao tava pumbwa ile pamwe ove a lesa nale, ile pamwe ove a hala ndele va nyengwa omolwomhumbwe yoimaliwa? Vangapi vomovalihongi vetu hava talele po eebibiloteka domeefikola davo noku kufa mo omambo va ka leshe? Vangapi hava dulu okumana ko omambo avali modula?

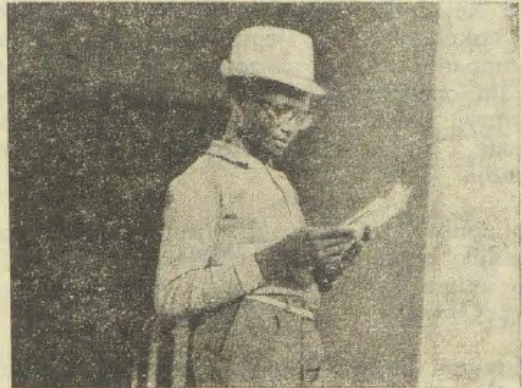
Nale otwa li hatu xungile nootate noomeme pomalupale, hatu hongwa eendunge. Efimbo lopaike itali shi dimine, onghee ponhele yokuxungila novakulunhu efiku keshe ope uya omambo, oo hae tu pukulula, nande ohatu ka wedelwa ko ngaho kovakulunhu vetu. Nongenge ope na omunhu iho lesa, ino kumwa ngeenge to udu vakweni tave ku pula tava ti: "Oho xungile tuu?"

Omulihongi ota lesa hamolwekonakono, ndele omolwokulesha. Hafimbo ashike e li mofikola, ndele okukalamwenyo kwaye. Ofikola oyo onhele omo omunhu ta dulu okulideula a ninge omuleshi muwa wokomesho. Omunhu ngeenge okwa di mofikola ine li ikifa okulesha oku na oudjuu oku ka ninga omuleshi muwa komesho.

Momafiyafano amwe, a li moshilongo shonhumba, omulumenhu umwe okwe ya mo a humbata ongobe yohove komapepe. Ovanhu ova li va haluka unene keenghono di fike opo dopaupulile. Eshi a pulwa kutya okwe shi enda ngahelipi, okwa nyamukula noupu kutya ongobe oyo okwa hovela oku i humbata fiku ya dalwa, nokwa kala nee he shi ningi efiku keshe, fiyo okefiku lomafiyafano.

Omulumenhu ou ngeno okwa pitifile po nande oshivike shimwe ile omafiku nande avali ina humbata ongobe inya, ngeno ina dula okwiihumbata fiku lomafiyafano. Omunyasha ta lesa efiku keshe, nande okulesha ominute omulongo, shi dule okulesha ominute omilongo hamano konima yoshivike.

Paushili omunhu oha lesa eshi a hala okulesha, hasheshi a halikila a leshe komushanggi. Kovalihongi osha fa shi pu kanini, shaashi otashi dulika momambo oshitilyane ve li twe mo aa va hala okulesha. Ndele ngenge hatu diladila komayovi oshiwana shetu ovo ihava dulu okulesha omalaka oshitilyane, nena otashi tu yelege kutya, otwa pumbwa omambo.



Ope na ovanhu vamwe va itavela kutya omhumbwe yomambo otai kandulwa po diva ngeenge taku lundululwa omambo. Oshinima eshi oshi na ashike okutalika ekwafo lotete, osheshi okulundulula embo, ou na okutolokela omunyoli walo. Ou na okutoloka ngaashi ta popi, hangaashi wa hala a popye.

Otu na shili okupandula ava va kendabala okweeta po sha, ngee ovashangi ile ovalundululi. Oshili oyo ashike oyo kutya, eshi sha ningwa po oshi li kokule nokuwana, nande paushili omambo ihaa wana.

Eembulu ohadi ti: "Ngeenge wa hala okude-nga ombwa, oho mono oshiti noupu." Ngee wa hala okushanga embo oto mono oshikalimo noupu. Fiyo onaini tu na okulesha eshi twa halikila tu leshe, kovashangi voiwana i lili? Fiyo onaini tu na okukala omutumba twa mwena twa teelega omambo a we meulu, a fa omana.

Omunashilonga keshe oku na okukala he li landele embo limwe konima yeemwedi mbali, ile omwedi keshe. Omunashilonga oku na yo okukala ha tambula oshifo shimwe ile ivali. Ovanashilonga ngeenge itava lesa, oolyelye nee ve na okulesha? Ovanashilonga ngeenge itava pendulile oshiwana ehalo lokulesha, ova teelega ve shi ningilwe kulye?

Keshe umwe okwa shiiva etumbulo eli hali popiwa luhapu: "Kandi na efimbo." Etumbulo eli ola popiwa eedula omayovi, loo osho ngaho tali kala tali popiwa, onghee tu lilugameneni.

Epulo kovanyasha: Okulesha onaini taku ke uya momode? Ngeno oku uye mo, vahapu otava dimbuluka kutya ova hepifa efimbo nale.

Tala kep. 8



# MATTI HUKKA E YA KEGUMBO

“Okukala nookuume oshi vule okugongela iimaliwa oyindji. Muuyuni kashi shi uuyamba ashike. Uuyuni uukwanampinyuka,” osho omusamane Matti Hukka omwana gwomusamane Alpo Hukka, ngoka a li omutumwa mOwambo omimvo dha piti, ngashingeyi oku li omukulututumi mEhanganotumo lyaSoomi, muHelsinki a ti moonkundathana nOmukwetu.

Omusamane Hukka oya li ya thiki omasiku ngaka mOwambo, pamwe negumbo lye, paindilo lyepangelongeleka, okuyakula miinima yuuekonomi, miipangelo.

Mokukundwa kEpangelongeleka, omusamane Hukka okwa holola enyanyu lye sho i ithane-nwa keyakulo lyongeleka ndjoka a vaelwa mo nokompito e yi egululilwa yokulandula moompadhi dhahe, ongomutumwa, nonando ke shi omusita ngashi he. Okwa holola wo enyanyu lye kompito yokulonga pamwe nookuume. “Shika oshi vule okulonga niimaliwa oyindji,” osho a ti.

Mokupulwa kOmukwetu kutya oshi li tuu mondjila omuntu ngele ta lalakanene okwiilonga iinima yuuekonomi opo a ninge omuyamba. Okwa ti:

“Muuyuni kashi shi uuyamba ashike. Uuyuni uukwanampinyuka. (Okwa popi ta yelekani-tha nokambo kUUYUNI UUKWANAMPINYUKA, hoka ka nyolwa komusamane Hans

D. Namuhuja) Tala omulumentu nguka a li naakulukadhi yatatu. Ngele to tameke okudhiladhila iimaliwa owala nena ope na oshiponga. Kape na we ethimbo lyokuninga ookuume. Oto kanitha wo elandulathano lyuuntu.”

Okwa tsikile ko ishewe ta ti: “Okwiilonga ekonomi osho okuyakulathana omitenge-yakweni otaya mono ompito okulonga iilonga yilwe, omanga ngoye to ya kwatha.”

Momwedhi nguka meme Maija Kaljunen okwa galukile ishewe mOwambo, paithano lyepangelongeleka opo a yakule natango miinima yuuekonomi, unene okukwatha omudhiginini gwiiniwe mongeleka ayihe, tate Sakeus Hekandjo, ngoka a kala a dhingililwa kiilonga oyindji.



Omusamane Matti Hukka nomukulukadhi gwe Marjo nokakadhona kawo Mira (4). Meme Hukka (26) okwi ilonga oCosmetology, iilonga yokwoopaleka nawa olutu, oshipa, omafufu, iipanyala nosho tuu. Ye mwene okwa ti okwa hala oku ka kwatha oomeme miilonga yokuhondja.



# OONKUNDATHANA DHOMUPRETORIA ODHE ETA SHIKE?

(Omukalelipo mOvenduka)

Oonkundathana dhasiku gane pokati kaakalelipo yatano yilongo yokUuninginino, mOraata yEgameni ya VVO nepangelo lya S. Afrika, odha hulile momatokolo inaaga pya nawa. Oshikundathanwa oshinene osha li shokukuthwa mo komatanga gaakwiita ya S. Afrika muNamibia, omanga inaaku ningwa ehogololo ndyoka S.A. a zimina, mukulongekidha okufala Namibia memanguluko.

SWAPO okwa hala aakwiita ya ze mo, omanga ehogololo inaali ningwa, yo ya pingenwe kaakwiita ya VVO. Ihe S. Afrika okwa yamukula kutya okukuthwa mo omatanga ge osha faathana nokugandja oshilongo ku SWAPO.

Oodiplomate dhokUuninginino nEpangelo lya S. Afrika kaya li ya hala okupopya sha koonkundathana ndhoka ya ningi muPretoria. Aatoolinkundana yi ili noyi ili oya gandja efano, tali landula, lyaashoka sha kundathana.

Moshigongi shotango, ongula yEtine, omanga omusamane Vorster a li a kala moonkundathana, oodiplomate dhAauninginino odha ningi ekankameno lyepotokonono lyekalemo lyaakwiita ya S. Afrika muNamibia, pethimbo lyehogololo. Ethaneko olya kwatelela mo efupipiko lyomwaalu gwaakwiita muNamibia, uuna pwa adhika etsokumwe lyokutula po omatati.

Aakwiita, ya S.A., ye thike pomayuvi gatanosigo omulongo otaya ka pitikwa ya kale muNamibia, metonatelo lyiligwanahangano. Aakwiita ya SWAPO nayo otaya ka kala metonatelo lyiligwanahangano.

Omoluupyakadhi mbuka wa tameke ayehe oya tokola opo ya tsikile natango nokukundathana. MEtitano omusamane Both (ominister ylikwapondje ya S.A.) okwa tsakanene naakuluntu yaakwiita na oya ningi ethaneko limwe, epe, ndyoka lya gandjwa kaakalelipo yAauninginino, moshigongi shoka sha ningwa mEtihamano komatango.

Okwa li omafekelo kutya omathaneko ngaka oga kwatelela mo ekuthomo lya yamwe yomaakwiita lyo einyengo lyaakwiita li kale tali ende tali fupipala, uuna SWAPO ta tula po omatati nuuna VVO ta takamitha kutya muNamibia itamu yiwa nando komukwiita gwa SWAPO.

Ethaneko ndika olya li ishewe lya kundathana nomusamane Vorster, mOmaandaha komatango. Oodiplomate dhAauninginino konima yoonkundathana ndhika oya holola kutya otaya ka pula manga omayeke komapangelo gawo. Konima ngiika otaku ka kala natango oonkundathana nepangelo lyaPretoria.

# Oonkambadhala okugalulila Winter kuNamibia

Ombapila yeindilo ya nyolwa kaawiliki yatanoyongelesa muNamibia oya tuminwa komufala omupe, ngoka a langekwa omasiku ngaka kepangelo lya S. Africa muNamibia, omusamane M. T. Steyn, okugandja epitikilo komumbisofi gwAangilikana, Colin Winter, a galukile kuNamibia, konima sho a tidhilwe (1972), pwaa na omatompelo gasha.

Meindilo ndika omwa hololwa kutya ongeleka yAangilikana ndjoka yi na iilyo 60 000 okuzi 1972 oya kala yaa na eyakulo lyopaumbisofi nonando oya kala muNamibia omimvo 50.

"Tse otwi itaala kutya onkatu ndjoka ya katukilwa omumbisofi Winter kayi li pauyuki. Otashi yolitha wo sho iinima mbyoka ya kala tayi pewa uusama komumbisofi Winter oyo yi li po tayi pewa uusama koTurnhalle," osho ombilive ndjika ya ti.

Eindilo ndika olya tukuluthwa komumbisofi Winter, sho a indile oongeleka dhomuNamibia dhi mu galikanene pamwe naapongekwa ooyakwawo, ngaashi egongalo lyaJerusalem lya li lya ningi mokugalikanena Petrus. (Iil.12:1-5)

Pantumwafo yomumbisofi Winter okwa holola kutya yo inaya yona sha kepangelo nenge komuntu gwontumba. Oshoka andola ya yonene andola oya tulwa mohofa nokupangulwa. "Inatu lombwelwa kutya otwa yona shike," osho Winter a ti.

Pamatompelo gomumbisofi Winter eindilo ndika okwe li ningi oshoka oku uvite kutya okwa pumbiwa noonkondo kiilyo yongeleka ye osho wo kaawiliki yongeleka dhaaludhe. Ihe eindilo ndika itali ti andola kutya:

1. okwa lundulula omakankameno ge
2. ota indile a silwe ohenda nenge ombili, aawe
3. ina itaala we ngashi shito kutya S. Africa oku na uuthemba okukala muNamibia
4. ita pitika nando euvathano lyontumba opo andola a galukile kuNamibia

## NUYOMA OTA POPILE EHOLOLO LYAAYEHE

Omupresidende gwa SWAPO omusamane Sam Nuyoma ota popile ehogololo lyaNamibia lya manguluka, osho omupresidende gwa VELKSWA dr de Vries a holola mokugaluka kwe kuEuropa.

Dr de Vries okwa holola kutya okwa monene ompito okukundathana nomusamane Nuyoma, pamwe naanambelewa ya SWAPO muLondon. Oya kundathana komaudhigu gaNamibia na okwe shi yelitha nawa kutya ongeleka itayi popile nando elongitho lyoonkondo.

Tala kep. 8



## OMBELEWA YOMUKALELIPO WOVANDOWISHI OTAI KA PATA

Epangelo laNdowishilanda laUtokelo ola shiivifa mafiku aa kutya, otali ka pata ombelewa yomukalelipo (Consulate) walo mOvenduka, oshilandopangelo shaNamibia, momwedi tau ya.

Ombelewa otai ka patwa meti 31 laKotoba, naBonn ota ka kala ehe na vali omukalelipo moshitukulwa eshi sha li okoloni yaye, komesho yOita yOtete yOunyuni, fiyo sha pewa elifikameno lasho kepangelo laSouth Africa. Paendjovo depangelo laNdowishilanda okwe lineekelwa kutya Namibia shiimba otali manguluka omudo tau ya.

Omukalelipo ou okwa li he lipyakidile noinima yovakwashilongo Ovandowishi muNamibia, ve fike lwopo 18 000.

Ndowishilanda laUtokelo oye umwe womoilongo itano, oyo i li oilyo yOlaata yEameno IOiwana yaHangana, oyo tai kundafana naSouth Africa, kombinga yonakwiiwa yoshitukulwa eshi, pambili. Oilongo ikwao oyo: Amerika, Kanada, Britania naFranisa. Oilongo ei kai na mo ovakalelipo muNamibia.

Ovalaule muAfrika ovo va fininika Ndowishilanda opo a kufe mo omukalelipo waye mOvenduka, osheshi okukala mo kwaye ove ku tala ongedidiliko lokukwafela epangelo la S. Africa.

Oministeli yoikwapondje yaNdowishilanda mefatululo laye okwa ti kutya, etokolo lokupata ombelewa yomukalelipo ola ningwa mouyelele welitulemo IOvandowishi, aule wefimbo life.

Okwa ti yo kutya, eyakulo lopukalelipo lovakwashilongo Ovandowishi otali ka longekidwa pefimbo lepangelo lopokati. Kokutya otali ka longekidwa pamukalo ulipi, inashi shiivika natango.

(Advertiser)

Dha za kep. 7

Omusamane Nuyoma okwa holola wo kutya ye okwa panda ekandulopo lyomukundu gwevi ndika pambili.

"Nuyoma okwa lombwele ndje wo kutya okwa hala okukala mehogololo, uuna shoka a pula sha gwanithwa," osho de Vries a ti.

Omusamane Nuyoma ota pula, unene, South Africa a kuthe mo omatanga ge gaakwiita muNamibia, omanga inaaku ningwa ehogololo lyaayehe lya manguluka.

(Advertiser)

## Eputudo Iounona

Dha za kep. 2

Inatu dimbweni oshipopiwa shomufimanekwa Aune Sara Amkongo, moshifo shOmukvetu shaMaalista, onomola onhinano, pepandja etine; eshi te tu kumaida nghee tu na okuputuda oyanyasha vetu. Okwa xulifa ta ti: "Inatu lombweleni ovanyasha vetu kutya: 'Pombululu opo ino pita po,' fye ovakulunhu hatu piti po."

Mokuputuda ounona vetu, inatu tya ashike; "Tila Kalunga novakulunhu," omanga movakulunhu muhe na etilokalunga nefimaneko lovakulunhu vakwao. Vamwe nokuli ihatu popi, novashiinda, nounona vetu ove shi shi. Eshi yo itashi etele ounona oiimati iwa. Oounona vetu otava tale osho hatu ningi, osheshi ovakulunhu ofye omuti, nounona vetu otava li oiimati mufye.

Abraham Haileka

## OKULESHA MOMODE

Dha za kep. 5

- Ngeno oukadona otava pande eexwiki davo ve na omambo pomake.
- Ovamati otave li fula tava leshe.
- Ovanhu otava teelee eebesha tava kundafana omambo noifo, itava kala ashike tava popi.
- Eefitola domambo otadi talelwa po ombulu nokaku.
- Ovalihongi otava hokwa oku lilandela omambo ponhele youleke.
- Omafimbo okutalela po nokuya keepati otaa xupipala.
- Okulesha otaku kala oshinima sha fimana, shaashi oku li momode.

A. L. Nghifikwa

## OMUKWETU

Oye oshifo shOngeleka Onkwaevangeli paLuther yomOwambokavango.

Oha nyanyangidhwa mOshinyanyangidho shOngeleka mOniipa.

Omukuluntu gwOmukwetu omumbisofi dr. Leonard Auala.

Amushanga gwOmukwetu omulongi Ambrosius W. Amutenja.

Ondando yOmukwetu komumvo, muAfrika R 2-00, kombanda yomafuta R 4-00.

Omambesitelo pamwe noondando naga tumwe kOmukwetu Oniipa, P/B. 2013 Ondangwa 9270

OWAMBOKAVANGO CHURCH PRESS  
ONIIPA P/BAG 2013 ONDANGWA 9270